

**Impact of aerosols and clouds on decadal trends in all-sky
solar radiation over the Netherlands (1966 – 2015)**

Reinout Boers¹, Theo Brandsma¹ and A. Pier Siebesma¹

¹KNMI, De Bilt, PO Box 201, Netherlands

Correspondence to: Reinout Boers (reinout.boers@knmi.nl)

Abstract. A 50-year hourly dataset of global shortwave radiation, cloudiness and visibility over the Netherlands was used to quantify the contribution of aerosols and clouds to the trend in yearly-averaged all-sky radiation ($1.81 \pm 1.07 \text{ Wm}^2/\text{decade}$). Yearly averaged clear-sky and cloud-base radiation data show large year-to-year fluctuations caused by yearly changes in the occurrence of clear and cloudy periods and cannot be used for trend analysis. Therefore, proxy clear-sky and cloud-base radiations were computed. In a proxy analysis hourly radiation data falling within a fractional cloudiness value are fitted by monotonic increasing functions of solar zenith angle and summed over all zenith angles occurring in a single year to produce an average. Stable trends can then be computed from the proxy radiation data. A functional expression is derived whereby the trend in (proxy) all-sky radiation is a linear combination of trends in fractional cloudiness, (proxy) clear-sky radiation and (proxy) cloud-base radiation. Trends (per decade) in fractional cloudiness, (proxy) clear-sky and (proxy) cloud-base radiation were respectively 0.0097 ± 0.0062 , $2.78 \pm 0.50 \text{ Wm}^2$, and $3.43 \pm 1.17 \text{ Wm}^2$. To add up to the all-sky radiation the three trends have weight factors, namely the difference between the mean cloud-base and clear-sky radiation, the clear-sky factor (1-fractional cloudiness) and the fractional cloudiness, respectively. Our analysis clearly demonstrates that all three components contribute significantly to the observed trend in all-sky radiation. Radiative transfer calculations using the aerosol optical thickness derived from visibility observations indicate that Aerosol Radiation Interaction (ARI) is a strong candidate to explain the upward trend in the clear-sky radiation. Aerosol Cloud Interaction (ACI) may have some impact on cloud-base radiation, but it is suggested that decadal changes in cloud thickness and synoptic scale changes in cloud amount also play an important role.

1 Introduction

Aerosols and clouds impact the solar radiation reaching the surface by radiative absorption and scattering. Although there have been well-recorded trends in the all-sky radiation all over the globe it has been difficult to precisely attribute such trends to trends in either aerosols or clouds. Wide-spread reductions in all-sky radiation in the 1950 – 1970's ('dimming') have been followed by increases in later decades ('brightening'), especially in Europe (Wild et al., 2005; Wild, 2009). Indeed, a thorough evaluation of all-sky radiation data over Europe (Sanchez-Lorenzo et al., 2015) shows conclusively the distinct dip during the 1970's flanked on either side by an earlier downward trend and a later upward trend. The later upward trends are thought to be the result of changes in aerosol content and/or to changes in fractional cloudiness.

One issue hampering the understanding of records of all-sky radiation is that the impacts of aerosols and clouds need to be derived from a single record at observational sites where additional data for instance from clouds, were often not present. This has led some investigators to group data into regions and rely either on cloud data from stations in the immediate surroundings or from satellites (or both) to supplement their radiation records (Norris and Wild, 2007). Even though good results on trends in clear-sky radiation can be obtained at sites where direct and solar radiation are recorded at the same time such as Baseline Surface Radiation Network stations (Long and Ackermann, 2000; Long et al., 2009; Wild et al., 2005; Gan et al., 2009), most often an investigator will have to rely on single global radiation data records that are specific to the region of interest (such as Manara et. al., 2016) or on data stored in the Global Energy Balance Archive (GEBA) archive. GEBA data can be used to good effect because of the fact that many stations have submitted data, but the peculiarities

of the radiative signals typical to individual localities are invariably lost in the abundance of data. It is therefore of great importance that regional studies are carried out that record the changes in surface radiation in relation to atmospheric parameters that can influence such changes.

In the context of Europe there have been a considerable number of regional studies that focus on trends in global radiation and their attribution, such as in Germany (Liepert and Tegen, 2002; Liepert and Kukla, 1997; Liepert, 1997; Liepert, 2002)), in Germany and Switzerland combined (Ruckstuhl et al., 2008; Ruckstuhl and Norris, 2009; Ruckstuhl et al., 2010), in Estonia (Russak, 2009), in the general Baltic states (Ohvri et al., 2009), in Spain (Mateos et al., 2014), in Norway (Parding et al., 2014), northern Europe in general (Stjern et al, 2009) and in Italy (Manara et al., 2015). Even though there are regional differences the summarized global or all-sky radiation data from Europe combined (Sanchez-Lorenzo et al, 2015) displays a minimum in 1984 – 1985 at the end of a ‘dimming’ period with a subsequent return to higher values. The consensus about the decadal trends in global radiation hides a considerable discourse about the attribution of the radiation trends. Of the parameters of interest when investigating the trends in all-sky radiation namely clear-sky radiation, cloudy-sky radiation and fractional cloudiness, the first two have been difficult to isolate from data and were addressed in only a few studies (Wild, 2010). Yet an increasing number of studies indicate that there are good reasons to believe that Aerosol Radiation Interaction (ARI) is responsible for the rise in all-sky radiation after 1985 (f.e. Philipona et al, 2009; Manara et al, 2016; Ruckstuhl et al, 2008) although the timing of the minimum or intensity cannot be simulated very well using current aerosol emission inventories (Ruckstuhl and Norris, 2009; Liepert and Tegen, 2002, Romanou et al, 2007; Turnstock et al, 2015). About the influence of clouds, the situation continues to be elusive. While it is obvious that clouds are important, the difficulty here is that there are several factors that control their impact. For example there are considerable regional differences in fractional cloudiness (Norris, 2005): fractional cloudiness is constant in Northern Europe (Parding et al, 2014), in Germany before 1997 (Liepert, 1997) well after the minimum in global radiation in 1984, and is declining in the period after 1997 in Switzerland and Germany, at least up to 2010 (Ruckstuhl et al, 2010). Furthermore, cloud optical thickness changes can be the result of changes in microphysics or cloud thickness and current observations are not able to separate the two effects. Nevertheless, modelling and observation studies by Romanou et al (2007), Ruckstuhl and Norris (2009), Chiacchio and Wild (2010), Liepert (1997), Liepert and Kukla (1997), Long et al. (2009 and Augustine and Dutton (2009) suggest a definite but mixed role for clouds impacting the trend in all-sky radiation.

Attribution studies using only surface-based observations must rely on supplemental data, namely those of clouds (predominantly fractional cloudiness) and aerosols. Also, data on fractional cloudiness need to be collected simultaneously with radiation data. Up to the mid-1990 clouds were observed by human observers but since then the role of the observers is taken over by ceilometers. Apart from occasional sun photometer records (Ruckstuhl et al (2008) data on aerosol are often unavailable. However, recent studies by Wu et al. (2014) and Boers et al. (2015) have shown that it is possible to retrieve useful aerosol optical thickness data from surface visibility records. The principal idea behind both studies is almost 50 years old (Eltermann, 1970; Kriebel, 1978; Peterson and Fee, 1981; and revived by the work of Wang, 2009) and asserts that clear-sky optical thickness is most often caused by aerosols residing in the planetary boundary layer which can be characterized by the optical

extinction at 550 nm. This parameter is by definition proportional to the inverse of atmospheric horizontal visibility which in turn is a quantity abundantly observed over at least 50 years, often together with observations of radiation.

Because of the importance attached to potential attribution of observed regional trends in all-sky radiation to aerosols and / or clouds, we analyze hourly records of radiation, cloudiness and visibility data at five climate stations in the Netherlands for the 50-year period 1966–2015. The two aims of this study are a) to quantify the decomposition of the all-sky flux into its contributing components and compute the decadal trends in the components, and b) to discern the relative importance of aerosols and clouds in shaping the observed trends.

The remainder of this paper is organized as follows: Section 2 describes briefly the theory and analysis procedures to obtain clear and cloudy-sky signals from the all-sky data. The procedures combine radiation and cloud coverage data. Equations are given describing the manner in which the all-sky radiation is explicitly dependent upon fractional cloudiness, clear-sky radiation and radiation emanating at cloud-base. The equations are based on elementary principles but we believe that this is the first time that these dependencies are explicitly quantified, although the work by Liepert (1997), Liepert (2002), Liepert and Kukla (2002), and Ruckstuhl et al. (2010) contain elements similar to our work. A full derivation of the equations is presented in the Appendix.

In section 3 the data analysis is discussed: all meta-data for all stations recorded between the late 1950's and today were examined in order to better understand the impact of any changes in instruments and location and calibrations on the data. Homogeneity tests were performed to discern any possible discontinuities in the data and to understand whether all climate stations indeed belonged to the same climatological regime. Also attention is given to a break in the cloud observations that occurred in 2002 with the transition from the human observer to the ceilometer. Section 4 show the results. The relative influence of clear-sky radiation, cloudy-sky radiation and fractional cloudiness on the all-sky radiation are shown. Also the relative merits of Aerosol Radiation Interaction (ARI) and Aerosol Cloud Interaction (ACI) in influencing the all-sky radiation are discussed.

Section 5 concludes this paper with discussion and conclusions.

2 Method

2.1 Radiation data, their proxies and trends

An important aspect of this paper is to quantify the various radiative contributions to the all-sky radiation. It is shown in this subsection that there is an elegant way to do so while invoking a minimum set of assumptions. The radiative contributions arise from skies under clear, partly cloudy or overcast sky conditions. The presence of cloud cover which is recorded simultaneously with the radiation assures that it is possible to quantify these different contributions. Cloud cover is normally recorded in oktas (0-8) so that nine different contributions to the radiation can be identified, which together build up the all-sky radiation.

For each okta value it will be assumed that the observed radiation is a linear combination of clear-sky radiation and radiation emanating from cloud-base, each with cloud fraction weight factors that correspond to the okta

value at hand. The result is an equation which casts the all-sky radiation as a function of only three components: 1) the clear-sky radiation, 2) the cloud-base radiation and 3) the fractional cloudiness. Long term changes in cloud type could perhaps affect cloud optical properties (liquid water versus ice water) but their influence on trends is unknown and not studied here. The process to calculate the three components is then repeated for each year in the period 1966 – 2015, resulting in three time series. The method thus assures that the relative importance of clear-sky radiation, cloud-base radiation and fractional cloudiness to the trend in all-sky radiation can be quantified.

Unfortunately, as has been shown before (Ruckstuhl et al., 2010) the analysis of trends using real data time series is prone to large errors as periods of cloud and clear sky occur at random times throughout the year. Thus, the year-to-year variations in averages are mostly the result in differences in the selection of solar zenith angles used in constructing yearly averages. In the study of decadal variability that may be attributable to physical causes this is an undesirable side effect so that an alternative method needs to be applied in the trend analysis.

The method we applied is coined an analysis of ‘proxies’. We make use of the fact that for each okta value the observed radiation data can be fitted by a monotonically increasing function of solar zenith angle. The line fit is next evaluated at all hourly solar zenith angles occurring in a single year and averaged. The average proxy radiation data that are thus obtained give a much more stable set of values from which (decadal) trends can be calculated.

If S_k is the yearly averaged all-sky radiation (an observable), then S_{pk} is the yearly averaged all-sky proxy radiation in year y_k . It can be shown that

$$S_{pk} = S_{p,c_0,k} (1 - c_k) + c_k S_{p,cloud,k} \quad (1)$$

where $S_{p,c_0,k}$ is the yearly averaged clear-sky proxy radiation, c_k is the yearly averaged fractional cloudiness and

$$S_{p,cloud,k} = \frac{\sum_{j=1}^8 f_k(c_j) c_j S_{p,cb,c_j,k}}{\sum_{j=1}^8 f_k(c_j) c_j} \quad (2)$$

with $f_k(c_j)$ the fractional occurrence of okta j in a given year k , c_j the fractional cloudiness corresponding to okta j , and $S_{p,cb,c_j,k}$ the cloud-base proxy radiation occurring at okta value j . A full derivation to arrive at Eq. (1) is given in the Appendix.

In summary, The all-sky proxy radiation can be expressed as a linear combination of the clear-sky proxy, and the cloud-base proxy radiation each weighted by their yearly mean coverage. Note that the real all-sky radiation (S_k) and the proxy all-sky radiation (S_{pk}) are different, although they are of course quite close in value. S_k

161 is an observable, S_{pk} is derived from Eq. (1) after its components on the right side are first evaluated. However
 162 an *a posteriori* comparison between the two has shown that they agree with each other better with a better than
 163 5% margin.

164

165 Using Eq. (1) trends can be calculated using the deviation from the averages over the five decades:

$$166 \quad S'_{pk} = c'_k (\overline{S_{p,cloud}} - \overline{S_{p,c_0}}) + (1 - \bar{c}) S'_{p,c_0,k} + \bar{c} S'_{p,cloud,k} + c'_k (S'_{cloud,k} - S'_{p,c_0,k}) \quad (3)$$

167 with

168 S'_{pk} is yearly deviation of the average over the five decades of the all-sky proxy radiation

169 c'_k is the yearly deviation of the average over the five decades of the fractional cloud cover

170 \bar{c} is the average over the five decades of the fractional cloudiness

171 $S'_{p,c_0,k}$ is the yearly deviation of the average over the five decades of the clear-sky proxy radiation

172 $\overline{S_{p,c_0}}$ is the average over the five decades of the clear-sky proxy radiation

173 $S'_{p,cloud,k}$ is the yearly deviation of the average over the five decades of the cloud-base proxy radiation

174 $\overline{S_{p,cloud}}$ is the average over the five decades of the cloud-base proxy radiation.

175

176 The derivation of Eq. (3) is given in the Appendix.

177 Eq. (3) is the desired result for the analysis of trends. The first component on the right hand side represents
 178 perturbations / trends in fractional cloudiness multiplied by the difference in cloud-base and clear-sky radiation,
 179 which is negative. Therefore a positive trend in fractional cloudiness will impact as a negative trend component
 180 in building up the all-sky radiation. The second term represents the clear-sky perturbations / trend weighted by
 181 the average occurrence of clear skies (in our case approximately 0.32). The third term represents the
 182 perturbations / trend in cloud-base radiation weighted by the fractional cloud cover (in our case approximately
 183 0.68). The fourth term is a cross correlation term which in practice can be neglected.

184

185 Eq. (3) explains to a large extent the difficulties in attribution studies of the all-sky radiation. Not only the trends
 186 in fractional cloudiness, clear-sky and cloud-base radiation are important, but also their relative weight as
 187 determined by the mean fractional cloudiness and the difference between the mean clear-sky and cloud-base
 188 radiation. In other words, there are a total of five different factors contributing to the trend in all-sky radiation.
 189 For example, when the mean cloud fraction is large, as in northwestern Europe, the impact of the trend in clear-
 190 sky radiation on the trend in all-sky radiation will be relatively modest in comparison to the impact of trend in
 191 cloud-base radiation. The latter would be weighted by a factor 2 more than the trend in clear-sky radiation (0.32
 192 versus 0.68).

193

194 Tests of trends will be performed using the standard Mann-Kendall (M-K) (Kendall, 1975) non-parametric test
 195 often used in this type of analysis (see f.e. Long et al., 2009). after the time series was first decorrelated. The
 196 uncertainty value attached to the trend is a test of significance indicating the 95% confidence interval of the

197 calculated slope line. The uncertainties in trend are due to two factors, namely those in yearly-averaged values
 198 of S_p as a result of uncertainties in fitting constants in Eq. (A19) (see Appendix for details) and due to natural
 199 variability of a multi-year or even decadal origin. Thus the stated uncertainty in output trend is a mix of both
 200 factors.

201 **2.2 Retrieval of aerosol optical thickness**

202 Once the method to decompose the all-sky radiation into its clear-sky and cloudy-sky (proxy) components has
 203 been applied and a trend analysis is performed, then it is our goal to seek an answer to the question which
 204 processes might be responsible for their long-term change. Although possible long-term changes in the synoptic
 205 conditions are a conceivable influence an obvious candidate for exploration of cause is the changing aerosol
 206 content of the atmosphere. Aerosol content / concentration was not directly observed but visibility was recorded
 207 throughout the period from which aerosol optical thickness was derived.

208

209 Aerosol optical thickness is the single most controlling factor in changing clear-sky radiation. A radiative
 210 transfer model is used here to calculate the clear-sky radiation as a function of the changing optical thickness.
 211 The output was compared to the observed clear-sky radiation. The process whereby aerosol can directly affect
 212 clear-sky radiation is denoted as the aerosol direct effect or, using a term used in the IPCC (IPCC, 2013) report,
 213 the Aerosol Radiation Interaction (ARI).

214

215 Aerosols can also affect the microphysical structure of clouds which in turn affects its radiative structure, a
 216 process which is commonly denoted as the aerosol indirect effect, or Aerosol Cloud Interaction (ACI, as using
 217 the terminology of IPCC, 2013).

218

219 The aerosol optical thickness of the atmosphere (τ_a) is a function of aerosol extinction (σ_a) integrated over the
 220 depth of the atmosphere

$$221 \quad \tau_a = \int_0^h \sigma_a dr = \int_0^h \int_r Q n(r) r^2 dr dz \quad (4)$$

222

223 where Q is the scattering efficiency and can be obtained from Mie-calculations. The parameter $n(r)$ is the
 224 density of the size distribution and r is the radius of the particle. The vertical integration over height z is over the
 225 depth of the atmosphere (h) and this yields using the Mean Value Theorem:

$$226 \quad \tau_a \sim \sigma_{a,mean} H = Q_{mean} N_a H R^2 \quad (5)$$

227

228 Here N_a is the concentration of aerosols, R is the mean size of the aerosol particles and H is a scaling depth
 229 proportional to the depth of the planetary boundary layer. The proportionality factor includes all vertical
 230 variations in aerosol, size distribution and optical properties. Aerosol extinction can be approximated as
 231 (Eltermann, 1970; Kriebel, 1978, Peterson and Fee, 1981; Wang et al., 2009)

$$232 \quad \sigma_{a,mean} = \frac{-\log_e(0.05)}{Visibility} \quad (6)$$

233

234 Visibility is a measurable quantity and it provides a means to compute aerosol optical thickness at hourly
235 intervals from standard weather station observations. This procedure has been used to obtain decadal time series
236 of the aerosol optical thickness over the Netherlands and China (Boers et al, 2015; Wu et al., 2014). We
237 examined the European Center for Medium Range Weather Forecast Reanalysis (ERA) data (Dee et al., 2011)
238 for changes in the planetary boundary layer depth. No indications for changes were found in the course of 50
239 years and a value of 1000 m was used to reflect conditions over the Netherlands.

240 **2.3 Radiative transfer calculations**

241 Variations or trends in solar radiation under cloudless conditions are mostly caused by variations in the optical
242 properties and concentrations of aerosols, the ARI. The principle aim here is to assess whether the variations in
243 optical properties can explain the observed variations in solar radiation. For this purpose, we used a simple
244 radiation transfer model based on the delta-Eddington two-stream approach, as added complexity in radiative
245 transfer models will not increase the confidence in our results (Boers et al., 1994).

246

247 For model calculations, the parameters affecting the radiation are aerosol optical thickness, single scattering
248 albedo, asymmetry parameter and Ångström parameter. Of these four parameters the first two are the most
249 important and only the first one can be obtained from observations. It was attempted to derive the single
250 scattering albedo and its time variation from the aerosol composition in the Netherlands (Boers et al., 2015) but
251 its precise quantification remains elusive due to its uncertain dependence on aerosol composition, wavelength,
252 aerosol hygroscopicity and relative humidity. Thus a constant value of 0.90 was used instead. The results of
253 Boers et al. (2015) indicate that a considerable portion of the reduction in aerosol optical thickness or potential
254 solar brightening can be attributed to the reduction of sulphate aerosols after the 1980's. Even though the nitrate
255 values did increase over the same time, their increases cannot completely counterbalance the decreasing
256 sulphate concentrations. The asymmetry parameter and the Ångström parameter are set to 0.69 and 1.5
257 respectively to reflect typical aerosol values derived for the Netherlands (Boers et al., 2015).

258 **2.4 Solar radiation and aerosol-cloud interaction**

259 Variations or trends in solar radiation emanating from the action of clouds are mostly caused by variations in the
260 cloud fractional coverage and by variations in the optical properties and concentrations of droplets or ice. The
261 two main hypotheses for ACI to operate on cloud properties are formulated below as Hypothesis 1 and 2, in the
262 remainder of this paper referred to as ACI-I, and ACI-II, respectively. ACI-I suggests that variations in cloud
263 optical properties are attributable to variations in aerosol concentration itself. A massive amount of literature has
264 been devoted to this subject, but Twomey (1977) is the first one to describe this effect. It is based on a causal
265 link between changes in aerosol concentration (N_a) and cloud droplet concentration (N_c). These two parameters
266 are not necessarily linearly linked: as the amount of aerosol particles increases, it becomes more and more
267 difficult to raise the supersaturation necessary to activate additional particles. Therefore, N_c and N_a are often
268 related by means of a logarithmic function or a power law with exponent smaller than one (Jones et al., 1994;
269 Gultepe and Isaac, 1995), e.g.,

$$270 \quad N_c \sim N_a^{0.26} \quad (7)$$

Only a limited amount of aerosol particles will be activated to cloud droplets and incipient water droplets all compete for the same amount of water vapor as they grow. This means that the mean size of cloud droplets decreases as the number of cloud droplets increases. The consequence for the cloud optical thickness (Twomey, 1977) is that :

$$\tau_{c,ACI} \sim H_c N_c^{1/3} \quad (8)$$

276

Here H_c is the depth of the cloud and $\tau_{c,ACI}$ is the cloud optical thickness attributable to the aerosol aerosol-cloud interaction (ACI-I). Thus, compared to Eq.(5) where the equivalent link between aerosol optical thickness and aerosol number concentration is described the dependence of cloud optical depth to number concentration is much weaker.

281

Combining Eqs. (7) and (8) with Eq. (5) we find:

$$\tau_{c,ACI} \sim \tau_a^{0.26/3} \quad (9)$$

284

As the cloud optical thickness τ_c (which is due to the ACI –I and other causes) can be obtained from inverting the cloud-base radiative fluxes and τ_a can be obtained from Eqs (7), (8), the validity of the Eq. (9) can be studied.

288

ACI-II suggests that increasing N_c will result in suppression of precipitation so that cloud life time and cloud fraction is increased (Albrecht, 1989). In our analysis, cloud fraction is obtained in a straightforward manner by counting the hourly cloud data so that the hypothesis that changes in aerosol results in changes in cloud cover can be tested.

293 3 Data analysis

294 3.1 Data sources

We used quality controlled time series of hourly data of surface radiation, cloudiness and visibility which are standard output commonly available to the general public and submitted to the traditional climate data repositories. The surface radiation data consist of 10 second data for shortwave radiation instruments integrated over the hour. To be consistent with most publications on the subject of trends in radiation, the hourly average is taken and expressed in Wm^{-2} . The visibility is recorded at the end of each hour, either by the Human Observer (until 2002) or taken from a Present Weather Sensor (PWS, after 2002). The PWS detects the forward scattering of light emitted by a Near Infrared Light Emitting Diode under an angle of 42° . Cloud cover is observed by the Human Observer until 2002 and represents the last 10 minutes of every hour. After 2002 it is observed by a vertically pointing ceilometer and represents the average of the last 30 minutes of the hour.

304

A serious concern is that conditional sampling was done on the radiation data in a situation where the observation that represents the condition (namely whether or not clouds are present), was not taken in exactly the same time interval as the observation (radiation) itself. Therefore the conditionally sampled data are an

imperfect representation of the true situation. This is particularly true for rapidly changing cloudiness conditions. This issue cannot be rectified. However, in this paper exclusive use is made of yearly averages of conditionally sampled radiation data. For these data, the averaging procedure cancels out data with too much or too few clouds within the hour of the selected radiation data, so that the variability observed in the data will be simply enhanced random noise.

3.2 Metadata

Table 1 presents the basic metadata of the five principal climate stations in the Netherlands together with the dates when the collection of radiation data started. The station metadata archive was analyzed from which it was apparent that initially the regular maintenance and understanding of instruments was inadequate. Typical problems that needed to be overcome were the build-up of moisture between the concentric glass half-domes, the removal of dust and bird droppings, the horizontal alignment of the instrument and the proper positioning of instruments with respect to shading obstacles such as (growing) trees.

Apart from these issues, insufficient (re)calibration of the instruments, irregular replacement / rotation of instruments from the instrument pool are the reason that the initial years of observation often yielded data of dubious quality. In the end it was decided to discard all data from the climate stations before the year 1966. The data from the station De Bilt are of acceptable quality from 1961 onwards, in particular since from that year onward radiation was measured by two radiometers that were placed side-by-side. However these earlier data will not be used here because this would induce unacceptable weighting on this station of the radiation average in the five year period prior to the year 1966.

3.3 Homogeneity test

Even though some investigators have attempted with some success to homogenize and gap-fill their data (Manara et al, 2016) for a small region of the Netherlands with few stations (in our case 5) such a homogenization procedure is unlikely to be successful. The reason is that it carries the risk of replacing real data with bogus data which would weigh heavily on the few data time series available. Nevertheless it is instructive to apply a homogeneity test to understand differences between the time series.

The five radiation time series were analyzed for statistical homogeneity using the Standard Normal Homogeneity Test (SNHT; Alexanderson, 1986). Instead of applying SNHT directly to each station series, we used relative testing. Relative testing removes the natural variation from a time series (while assuming that natural variation is about the same for all locations), which increases the probability of detecting statistically significant breaks. The SNHT was twice applied to each station series. In the first test each station series was subtracted by the mean of the four other station time series. In the second test each station series was subtracted by the other four station time series separately. The latter would reveal a break in the series. Note however that the results yield potential statistical breaks, not real ones.

The homogeneity testing was applied to the 1966-2015 period. The results indicate that De Bilt data are different from the others in the 1966-1975 period, though a possible inhomogeneity reveals itself only in two of

the four relative series. From the metadata there is, however, no reason to doubt the quality of the series of De Bilt in this particular period. In fact of all five stations the instruments at the De Bilt observatory were probably maintained in the most optimum way. Also, the series of Eelde appears to be high relative to the other four station for the 1966 -1972 period although again from the metadata there is no reason to judge the series of Eelde in this particular period as suspect. Eelde is the most north-easterly station in the Netherlands and data from this station were compared to the most nearby German station with a long radiation time series (Norderney, 1967 – 2015). This comparison indicated that Eelde is homogeneous with Norderney, strongly suggesting that the relative high values of radiation at Eelde in the period 1966 – 1972 are indicative of real atmospheric variability rather than instrumental problems.

A similar homogeneity test was applied to the standard aerosol optical thickness output from the stations based on Eq. (6) which in turn are based on the visibility observations. No discontinuity was detected at the year 2002 indicating good adjustment procedures from Human Observer to instrument at the transition time. From these tests it emerges that the stations Vlissingen and De Bilt depart the most from the average. Furthermore, when all stations are compared, De Bilt departs the most from the other four. Again these differences can very well imply real differences between station, such as for example may be the result of local differences in air pollution that influence visibility (and thus optical thickness).

For the remainder of the research we decided to use the mean of all five stations for the 1966-2015 period. We studied the sensitivity of the results to leaving out stations and found that even though some details were different, it did not significantly alter any of the findings and conclusions.

3.4 Okta and cloud amount

Even though cloud amount is commonly indicated with the parameter okta, its translation to actual cloud amount as a fraction is necessary for usage in this paper. According to World Meteorological Organization guidelines (WMO, 2008) actual cloud amount should be indicated as one okta in case a single cloud is present in an otherwise completely clear-sky. Similarly, if a single hole exist in an otherwise overcast sky cloud amount should be indicated as seven out of eight. Therefore, a cloud amount of one okta corresponds to a lower cloud amount than expected based on the numerical value of one-eighth. Similarly, a cloud amount of seven-eighth corresponds to a larger value than indicated by its numerical value. Boers et al. (2010) evaluated observed cloud amounts expressed in oktas with fractional cloud amounts derived from all-sky observation of clouds using a Total Sky Imager (an instrument sensitive to radiation in the visible part of the solar spectrum) and using a Nubiscope (an all-sky scanning infrared radiometer). We adhere to the results of their study (their section 2.3, table 1) where for okta 0-8 the following cloud amounts are given (in percentage): 0.00, 6.15, 24.94, 37.51, 50.03, 62.56, 75.18, 95.07, 100.

In the analysis presented in the next section a practical problem occurred in distinguishing between radiation emanating from a completely clear-sky or from a sky with a single cloud but otherwise clear. In the latter case, provided that the cloud does not completely block the direct solar beam, it will be impossible to discern whether the radiative flux would have come from a sky with the okta=0. For this reason it was decided to take data from

c=0 and c=1 together and designated the combined data as ‘clear-sky’. A similar argument can be made for the radiation at the high end of cloudiness. Hence, data from c=7 and c=8 were lumped together as designating an ‘overcast’ sky.

3.5 Discontinuity in 2002

During the year 2002 the Human Observer was replaced by the Present Weather Sensor for visibility observations and by the ceilometer for cloud observations. While the former transition posed little problems in the analysis of data, such was not the case for the latter. When observing clouds the Human Observer takes into account the full 360-degree view of the horizon. A ceilometer only observes a narrow portion of the sky in vertical direction. Although the half –hour averaging of the cloud observations to some extent compensates for the absence of instantaneous hemispheric information, the two types of observation represent different methods of estimating cloud cover so that the conditional sampling of the radiation is significantly affected. For example, the digital nature of the ceilometer observation results in many more observations in the $c = 0$ (cloudless) and the $c = 8$ (overcast) cloud cover selection bin than obtained from the Human Observer (Boers et al., 2010). As a result, the selectively sampled radiation data in both okta bins will be contaminated by data recorded under fractionally cloudy conditions. Contamination by other okta values is also present for data selected for each of the 1 – 7 okta range but less than for overcast sky conditions. As a result, the selectively sampled radiation data showed distinct discontinuities in 2002.

402

To account for the discontinuity we decided to apply a so-called quantile-quantile correction to the frequency distribution of cloud coverage from the period after 2002 (during which the ceilometer was operative) and adjust it to the frequency distribution from the period before 2002 (during which the Human Observer was operative). The quantile-quantile correction (Li et al., 2010) is commonly used to adjust distributions of meteorological parameters of numerical models to observed distributions of the same parameters. As a first step cloud cover data (converted from okta to fractional cloudiness, see section 3.4) from the period 2002 – 2015 was smoothed by a Gaussian filter with a half-width of two data points (i.e. two hours). This produced a smooth distribution which, when converted back to okta, yielded a distribution similar but not the same to the okta distribution of the Human Observer. The next step was to do a quantile-quantile correction on the smoothed data. The credibility of a quantile-quantile correction depends on whether it can be assured that the average distribution function as observed by the Human Observer does not change over the break (in case the Human Observer would have made the observations after the break). Although there were some long-term changes in the distribution function before the year 2002 they were small enough to assume the invariance of the distribution function over the break. With the application of the quantile-quantile correction the okta values and hence the fractional cloudiness values after the break assume new / corrected values that are applied as new / corrected discriminators in the selection of the radiative flux.

419

As a proof of soundness of the procedure we applied the quantile – quantile correction and recomputed the

fractional cloudiness as the summation $\sum_{i=1}^8 f_i c_i = \bar{c}$ (see discussion beneath Eq. (A4) in the Appendix) and

compared the result to satellite observations derived from successive NOAA-satellites (Karlsson et al, 2017). Figure 1 shows the results.

The NOAA data (red line) comprises an average over the Netherlands and have been bias-corrected. It is clear that the surface data (black line) which are break-corrected after the year 2002 provides an excellent agreement to the NOAA data when compared to the data which are not-break corrected (blue line). Note also that the data that are not break-corrected show a downward trend in cloudiness while the break-corrected data show an upward trend. These results are thus at odds with observations in Germany close to the Netherlands (Ruckstuhl et al, 2010) where cloud cover seems to be declining at least until 2010.

4 Results

4.1 Decomposing the all-sky radiative fluxes

As a first step in understanding the relative impact of clear and cloudy skies on the all-sky radiative flux it is instructive to examine the manner in which the top-of-atmosphere (TOA) radiative flux is reduced by the various constituents and scattering and absorption mechanisms in the atmosphere (Figure 2). The combined effect of all these processes is responsible for reducing the TOA radiative fluxes down to the observed all-sky radiative flux as indicated by the white line at the bottom of the figure. Figure 2 is a combination of calculations and observations. Observed are the all-sky flux (the white line at the bottom of the Figure) and the clear-sky flux (the white line in the middle). Starting from the top downward, the first reduction of the TOA flux is due to Rayleigh scattering, namely downwards from 274 to 253 Wm^{-2} . Continuing downwards ozone absorption is responsible for a further reduction from 253 to 246 Wm^{-2} . Next water vapor absorption reduces the radiative flux by a further 39 Wm^{-2} from 246 to 207 Wm^{-2} . These three decrements were calculated from inputs from the European Centre for Medium Range Weather Forecast's Re-Analysis project, ERA (for the ozone and water vapor absorption) or surface pressure observations (for the Rayleigh scattering).

The next reduction is due to the aerosol scattering and absorption which takes the radiative flux further down to the observed clear-sky flux (or more precisely the proxy) from 207 Wm^{-2} to $\sim 170 \text{ Wm}^{-2}$ around 1970 or to $\sim 185 \text{ Wm}^{-2}$ near 2015 with a steady increasing value during the intermediate years. The solid white line in the middle of the plot represents the clear-sky flux. The rest of the reduction from the clear-sky radiative flux to the all-sky flux is entirely due to the action of clouds. The observed clear-sky (proxy) shortwave radiation shows that about 13.6 W m^{-2} has been added to the clear-sky radiation over a period of 5 decades. A trend value at $2.78 \pm 0.50 \text{ W m}^{-2} / \text{decade}$ was calculated. The upward trend in clear-sky radiation is thus deemed to be strongly significant. The lower white solid line represents the all-sky radiation which is derived straight from the publicly available climate data sources. It shows considerable short-term variations but overall there is a positive trend. The trend value was calculated as $1.81 \pm 1.07 \text{ W m}^{-2} / \text{decade}$ and is thus also considered significant.

When comparing the different contributions there are three important points to be considered. First, the combined effects of Rayleigh scattering, ozone and water vapor absorption is constant over time. Even though there is a slight increase in water vapor path over the 50-year period, this is not reflected in any discernable

460 decrease in radiative flux. Second, despite the absence of any significant trends in the respective radiative
 461 reductions they make up a very substantial part of the overall reduction from the TOA radiative flux to the all-
 462 sky flux (40 – 50%). Third, the two-pronged action of clouds by 1) blocking part of clear-sky flux in reaching
 463 the surface and 2) by scattering radiation inside the clouds is considerably larger than the action of scattering
 464 and absorption of radiation by aerosols in reducing the TOA radiative flux. The former ranging from double the
 465 latter at the beginning of the period to triple the latter at the end of the period.

466

467 Figure 3 shows the measured all-sky radiation and the proxy clear-sky and weighted cloud-base radiation.
 468 Linear regression lines (blue) as well as a 21-point Gaussian fit (red) are shown in the figure. There is a weak
 469 minimum in all-sky radiation at 1984 which is matched by a minimum in cloud-base radiation near 1982 – 1984.
 470 In contrast the clear-sky radiation has an upward trend throughout the entire period. All trend are significant
 471 when taken over the entire period.

472

473 Figure 4 shows the key result of this paper namely the reconstruction of the trend in the all-sky (proxy) flux out
 474 of its three main components as formulated in Eq. (3). Here, the last term, a cross correlation term is not shown
 475 on account of its very small yearly values (less than 0.5 W m^{-2}). The black curve shows the variation in all-sky
 476 proxy radiation as a function of time. Note again that this function is slightly different from the real all-sky
 477 radiation data as its construction is based on the proxy data. Even so, the fluctuations and trends in the proxy
 478 data are clearly very close to the fluctuations and trends as observed in the real all-sky data of Figure 3.
 479 However, the Gaussian-filtered data indicates that the weak minimum in the original data is replaced by a (close
 480 to) constant value in the proxy data. The red curve is the contribution to the trend in all-sky proxy radiation due
 481 to the trend in cloud amount. Cloud amount is increasing and as a consequence the contribution to the overall
 482 trend in solar radiation is negative. The green line is the contribution to the trend in all-sky proxy radiation as a
 483 result of the positive trend in clear-sky proxy radiation, but modulated by the average fraction of time that it is
 484 actually clear (32%). The blue line is the contribution to the trend in all-sky radiation as a result of the positive
 485 trend in proxy cloud-base radiation. It has a broad minimum, but modulated by the fraction that it is cloudy on
 486 average (68%). Each curve represents a perturbation with respect to its average and the large tick marks
 487 represent intervals of 10 W m^{-2} .

488

489 A number of intermediate conclusions can be drawn at this point:

- 490 1. The cloud-base and cloud cover contributing trends are of the same order of magnitude whereas the
 491 clear-sky trend contribution is less significant than either one of them.
- 492 2. As the mean fractional cloudiness at 0.68 is larger than 0.50, the contribution to the all-sky flux due to
 493 a trend in cloud-base radiation has a comparatively larger weight than the contribution of the trend in
 494 clear-sky radiation.
- 495 3. The increase in cloud cover results in a negative trend contribution to the trend in all-sky (proxy)
 496 radiation which thus dampens the strong trend contribution due to the increasing cloud-base proxy
 497 radiation. The implication is that clouds have become (optically thinner) but at the same time more
 498 frequent, the cause of which is unclear.

4. The short-term variations in all-sky radiation are almost entirely due to the short-term variations in fractional cloudiness.
5. The weak minimum (constant) in all-sky (proxy) radiation is strongly linked to trends in clouds, but not as much to the trend in clear-sky radiation.

Table 2 summarizes the results of the trend analysis. Here, also a subselection is made according to the time period over which trend analysis is performed. Significance is indicated in the last column. Note that both the trends in all-sky radiation and the trend in all-sky proxy radiation are given in the table. The trend in all-sky radiation is simply inferred from the data whereas the trend in all-sky proxy radiation is computed from Eq. (3). Thus, contrary to common notion the trend in measured all-sky radiation cannot be recovered from the trends in proxy data. It is only the all-sky proxy trend that can be recovered from the clear-sky proxy term and the cloud-base proxy term of Eq. (3) and in addition from the fractional cloudiness term of Eq. (3). Note furthermore that the fractional cloudiness term in Eq. (3) is a scaled version of the trend in fractional cloudiness, whereas the other two are scaled versions of the trend in clear-sky proxy radiation and cloud-base proxy radiation.

Inspection of the table indicates that none of the trends (including those of the clear-sky proxy radiation) is significant in the period 1966 – 1984. All significant trends occur in the period 1984 – 2015. Two-thirds of the strong upward trend in cloud-base proxy radiation is offset by cloud fraction trend term in the same period.

To our knowledge these calculations are the first of their kind and demonstrate the relative importance of the impacts of clear and cloudy skies on the all-sky radiation. Trend values for the all-sky radiation all fall within the bounds of Sanchez-Lorenzo et al. (2015) given by their comprehensive summary of Europe's observations. For the clear-sky proxy radiation the trend is positive throughout the entire period and the absence of a curvature matching that of the all-sky radiation does not suggest a very strong causal link with it. In contrast the curvature of the cloud-base proxy radiation curve much more resembles that of the all-sky radiation. Because the fractional cloud cover term partly compensates the strong upward trend of the cloud-base curve after 1985, it strongly suggests that for the Netherlands cloud processes are the dominant factor that impact the shape of the all-sky radiation time series.

4.2 Aerosol-radiation interaction (ARI)

To investigate the possibility of aerosol-radiation interaction the median aerosol optical thickness is derived from the visibility observations. Next radiative transfer model calculations were performed to compute the solar radiation. Figure 5 shows the time series of median aerosol optical thickness for the Netherlands. To about 1985 the optical thickness has a weakly downward trend albeit that there are considerable year-to-year variations. After 1985 there is a distinct downward trend that remains present until the end of the time series in 2015. Overall trend is -0.032 per decade and is significant.

Figure 6 shows the results from radiative transfer computation compared to the clear-sky flux. The solid black and accompanying shading represents the best fit through the data (the points connected by a black line). The blue line is the result of calculating the clear-sky radiation using the aerosol optical thickness in Figure 5 as an input, with a fixed value of the single scattering albedo of 0.90. The calculations indicate a remarkable

agreement with the observed clear-sky radiation. The blue line falls entirely within the shaded area of uncertainty of the slope through the data.

The accuracy of the modeled radiation curves is dependent upon the accuracy of the optical thickness derived from the visibility observations and the value of the single scattering albedo. If the scaling depth used to match the optical thickness observations to satellite and surface-base radiation data (Boers et al., 2015) is changed, so will the position of the model output (blue line) change with respect to the clear – air data ($\delta SW = 5 - 6 \text{ W m}^{-2}$ for $\delta \tau = -0.1$).

There is however no useful information on the time-dependence of the single scattering albedo, the mean value of which is not clear either. The value of 0.90 as used here reflects a compromise between the necessity of having to assign it a value less than one due to the presence of radiation absorbing aerosols (Black Carbon and Organic Aerosols), and the prevalence of pure scattering aerosols in an environment of high relative humidity (sulfates and nitrates) which tend to keep the single scattering albedo at a high value.

However, the overall conclusion is that the reduction in aerosol concentration resulting in a reduction in aerosol optical thickness is a very strong candidate cause explaining the overall increase in clear-sky solar radiation. This implies that there is a compelling argument that ARI i.e. the direct aerosol effect is responsible for the decadal change in clear-sky radiation.

4.3 Aerosol-cloud interaction (ACI)

Concerning ACI-I we plotted the left and right sides of the function described in Eq. (9). Here (Figure 7) the cloud optical thickness for clouds has been derived from the monotonic relationship between solar radiation and cloud optical thickness and using the mean weighted cloud-base radiation (bottom curve in Figure 2) as the radiative input. The cloud optical thickness that is thus derived constitutes the left side of Eq. (9). The right side of Eq. (9) is based on the aerosol optical thickness data as shown in Figure 5. According to Figure 7, there is indeed an indication that there may be a link between the two optical thicknesses but the regression line has a larger slope than suggested by Eq. (9). This suggests that there may be other mechanisms that play a role in changing the cloud optical thickness. The most likely candidate responsible for these additional changes is a decadal thinning of clouds. However, there is no confirmation by independent data sources suggesting that such thinning has indeed taken place over the course of five decades.

Under ACI-II cloud amount is governed by precipitation. Here a reduction in aerosols over time would increase the size of cloud droplets, thus enhancing the fall-out of liquid water and thus reducing cloud amount. However, data shown in Figure 1 indicate that cloud fraction is increasing after 1985 when at the same time the aerosol optical thickness decreases. This does not necessarily mean that ACI-II is not operative, but that other factors (such as large scale synoptic changes) at least overwhelm any possible cloud cover changes due to ACI-II.

575 5 Discussion and conclusions

576 Our derivation of a trend equation for the all-sky radiation shows that there are five parameters that influence
577 the trend, namely 1) a trend in fractional cloudiness, 2) a trend in clear-sky radiation, 3) a trend in cloud-base
578 radiation, 4) the decadal mean of the fractional cloudiness, and 5) the difference between the decadal means of
579 the cloud-base and the clear-sky radiation. It is therefore not surprising that it has been difficult up to now to
580 come up with any firm conclusions about the relative importance of trends in clouds or clear-sky radiation in
581 contributing to the trend in all-sky radiation. This situation is further hampered by difficulties in the derivation
582 of clear-sky and cloud-base radiation, requiring a specialized analysis removing the year-to-year internal
583 fluctuations in radiation estimates. They are the results of periodic synoptic conditions that favor certain
584 cloudiness conditions. An analysis of annual means of radiation selected under specific okta values will produce
585 unrealistic results, as noted by Ruckstuhl et al (2010). In order to overcome this last issue we have cast the
586 problem of estimating annual mean radiation in a two-dimensional framework with cloud fraction (okta) and
587 cosine of solar zenith angle as the two controlling variables. A proxy radiation is derived by fitting per okta
588 value a function that is solely dependent upon cosine of zenith angle. Next annual means are computed using the
589 annually constant distribution of cosine values. Stable values of radiation ensue from which trends can be
590 calculated.

591

592 Our analysis comprises 50 years of hourly radiation, cloudiness and visibility data at the five principal climate
593 stations in the Netherlands. We summarize the main conclusions of this work.

- 594 1) The three most important mechanisms reducing the top-of-the-atmosphere radiation to the observed all-
595 sky radiation are absorption of radiation by water vapor, and scattering and absorption by aerosols and
596 clouds. Over the Netherlands the reduction in radiation due to water vapor absorption is actually larger
597 than from aerosol scattering and absorption. However, as there is no trend in water vapor, there is no
598 trend in the all-sky radiation due to trends in water vapor.
- 599 2) Trends in clear-sky, cloud-base radiation and fractional cloudiness are all important in contributing to
600 the trend in all-sky radiation.
- 601 3) Over the Netherlands the clear-sky trend is weighted by 0.32 which is one minus the decadal mean
602 fractional cloud cover and the cloudy-sky trend is weighted by 0.68 (i.e. the decadal mean of fractional
603 cloudiness). Therefore, in the Netherlands a trend in cloud-base radiation has double the weight of a
604 clear-sky radiation trend in contributing to the all-sky radiation trend. Thus, in a general sense this
605 means that the actual value of fractional cloudiness, which has a strong regional dependence, exerts a
606 considerable control over the relative importance of clear-sky and cloud-base radiation trends.
- 607 4) Over the Netherlands the trend in fractional cloudiness is significantly positive in the period after 1985
608 and because this trend is multiplied by the (negative) difference between the decadal means of cloud-
609 base and clear-sky radiation, it contributes as a negative trend to the trend in all-sky radiation. As the
610 literature suggests (f.e. Norris, 2005) there are significant regional differences in long term trends in
611 cloud cover, so it indicates that strong regional differences will exist in its contribution to the trend in
612 all-sky radiation.
- 613 5) As found in most studies (see summary of Sanchez-Lorenzo et al., 2015), a minimum in all-sky
614 radiation is found around 1985. The negative trend of -1.4 Wm^{-2} up to 1985 is weaker than the average

of Europe (-2.5 Wm^{-2}). The upward trend from 1985 onwards of 2.3 Wm^{-2} is also weaker than the average of Europe (3.2 Wm^{-2}).

- 6) The minimum in all-sky radiation is not matched by a corresponding minimum in clear-sky proxy radiation. An increasing trend of 1.22 Wm^{-2} is found over the earlier period which increased to 3.40 Wm^{-2} later on. After significant amounts of local natural gas were found in the late 1950s the Netherlands were a very early (1960 – 1965) adapter to cleaner fuels which may explain the increase in clear-sky radiation in the earlier period (1966-1985).
- 7) The trend in cloud-base radiation has a similar shape as that of the all-sky radiation. It is weakly negative before 1985 (-0.77 Wm^{-2}) and strongly positive thereafter (4.94 Wm^{-2}). Consequently, the conclusion is justified that the curvature /weak minimum in all-sky radiation around 1985 is caused mostly by the cloud-base radiation.
- 8) As our techniques are able to isolate the clear-sky radiative component it has been possible to study the attribution of changes in aerosol content to the observed trend in clear-sky radiation. Radiative transfer calculations demonstrate that the increase in clear-sky radiation can be completely explained by a concomitant decrease in aerosol optical thickness. This strongly suggests that the ARI (the direct aerosol effect) is a prime candidate to explain the observed increase in clear-sky radiation.
- 9) Similarly, ACI-I and ACI-II have been studied to understand their potential impact on the all-sky radiation. Neither is shown to have a dominant contribution to the trend in the overall all-sky flux but the potential influence of ACI-I and ACI-II cannot be ruled out by the data: There may be other influencing mechanisms that mask the impact of ACI-I and ACI-II such as decadal changes in cloud thickness and fractional cloudiness as a result of large-scale synoptic phenomena.

Prerequisite for our method to work is the availability of simultaneous time series of radiation, cloudiness and visibility. The first two are necessary to resolve the difference between clear and cloudy-sky signals in the radiation data, a method which in this paper has been called the determination of ‘proxies’. Additional observations of visibility are necessary to understand the possible influence of aerosols on radiation.

There are a number of ways to improve and/or facilitate this work in the future:

- 1) The practice of observing different parameters simultaneously can be improved by a more optimum consideration of the impact of one parameter on another. For example aerosols and clouds impact radiation, but radiation is recorded as an hourly average, while clouds and visibility parameters are recorded as averages of smaller time intervals. Often these different recording and averaging intervals are based on WMO standards. Yet, they inhibit the analysis and interpretation of their physical links. It would be better if averaging times were standardized more uniformly or if the basic data underlying the averages become available.
- 2) The relative contribution to the all-sky radiation of cloud thickness remains unclear. Therefore, the potential impact of ACI-I and ACI-II cannot be unambiguously quantified. The best way to resolve this issue is by adding observations of clouds using a cloud radar and a cloud lidar. As clouds are largely transparent to radar probing cloud thickness and its long-term variations can thus be derived. Here, super-sites such as those of the Atmospheric Radiation Measurement program and CloudNet, or long -

term data from CloudSat could be of great assistance. Passive radiation data from satellites are less suitable as they only record radiation emanating from the top of clouds or from the layer just beneath cloud top.

- 3) The impact of changes in the single scattering albedo is unclear. This situation is best resolved by direct observations of the single scattering albedo including its wavelength dependence. However, this suggestion only works for future studies as observations of single scattering albedo have hardly been performed in the past. It may be that regional modelling of past aerosol composition and physical and optical properties may alleviate the historical lack of single scattering albedo data.

664 Appendix A

665

666 A1.1 Averaging using real data

667

668 Here we provide a full derivation of the analysis leading to Equations (1) and (3) in the main text. The essential
 669 elements in this analysis are 1) A transition from ‘real’ data to ‘proxy’ data which constitutes a different way of
 670 averaging yearly data, 2) Expressing the all-sky proxy radiation as a linear combination of clear-sky and cloud-
 671 base proxy radiation, and 3) A perturbation analysis from which trends can be calculated.

672

673 We analyze the trends of time series of global radiation S_k where S is the yearly averaged global radiation and k
 674 is the index of a year in the period 1966 – 2015. We write S_k as a function of two controlling variables:
 675 fractional cloudiness c and cosine of solar zenith angle $\mu_0 = \cos(\theta_0)$. Each of these two parameters varies
 676 between 0 and 1 (i.e. when the sun is below the horizon the variable μ_0 is set to zero).

677

678 In the observations from meteorological stations the global radiation comes in discrete values, in our case as
 679 hourly averages, 8760 or 8784 values in a year. Each of these hourly averages is thus assigned a specific value
 680 of μ_0 , namely the mid-point of the hour. The index i is the bin index of counting over μ_0 . To build up the
 681 probability space for μ_0 bins of μ_0 can be selected at the analyst’s discretion (for example with width 0.05).

682

683 Observations of cloudiness are usually assigned in oktas. Okta values (0 – 8) are associated with specific
 684 margins of fractional cloud coverage (see table 1 of Boers et al, 2010). We will designate the fractional
 685 cloudiness associated with each okta value as c_j where $j = 0 - 8$. The yearly bivariate distribution function can
 686 then be constructed as

$$687 \quad p_k(\mu_{0i}, c_j) = \frac{N_{ijk}}{N_k} \quad (\text{A1a})$$

688 where N_{ijk} is the number of observations in a single bin and

$$689 \quad \sum_i \sum_j N_{ijk} = N_k \quad \text{and} \quad \sum_i \sum_j p_k(\mu_{0i}, c_j) = 1 \quad (\text{A1b,c})$$

690 Marginal distribution functions of Eq. (A1a) are

$$691 \quad f_k(c_j) = \sum_i p_k(\mu_{0i}, c_j) = \frac{\sum_i N_{ijk}}{N_k} = \frac{N_{jk}}{N_k} \quad (\text{A2})$$

692 where $f_k(c_j)$ is the fractional occurrence of cloud cover within a specific okta value, and

$$693 \quad f(\mu_{0i}) = \sum_j p_k(\mu_{0i}, c_j) = \frac{\sum_j N_{ijk}}{N_k} = \frac{N_{ik}}{N_k} \quad (\text{A3})$$

694 where $f(\mu_{0i})$ is the distribution of cosines of solar zenith angle. While the distribution $f(\mu_{0i})$ is invariant
 695 with time as it is solely dependent on the latitude of the observations, $f_k(c_j)$ is varying with time due to yearly

696 and possible decadal trends. Yearly averaged fractional cloudiness c_k is found as the expected value of c of the
 697 marginal distribution p_k

$$698 \quad c_k = \sum_{j=1}^8 c_j f_k(c_j) \quad (A4)$$

699 The yearly averages S_k can be computed as the expected value of S , namely the double summation over all
 700 values of c and μ_0 that jointly occur in a single year

$$701 \quad S_k = \sum_i \sum_j S_k(\mu_{0i}, c_j) p_k(\mu_{0i}, c_j) \quad (A5)$$

702 Here $S_k(\mu_{0i}, c_j)$ is the average value of S_k in the bin (i, j, k) .

703 For each okta class we can derive the distribution of zenith angles as the conditionally sampled bivariate
 704 distribution at the specific okta class c_j :

$$705 \quad f_k(\mu_{0i} | c_j) = \frac{p_k(\mu_{0i}, c_j)}{f_k(c_j)} \quad (A6)$$

706 We now obtain the yearly averaged global radiation in each okta class as the expected value of the hourly global
 707 radiation data sampled conditionally with okta class:

$$708 \quad S_{c_j, k} = \sum_i S_k(\mu_{0i}, c_j) f_k(\mu_{0i} | c_j) \quad (A7)$$

709 Combining Eq. (A5), (A6) and (A7) yields

$$710 \quad S_k = \sum_j f_k(c_j) S_{c_j, k} \quad (A8)$$

711 Provided that there are adequate observations of cloudiness to select each observation of global radiation
 712 according to the okta class in which it occurs, it is possible to calculate $S_{c_j, k}$ and hence S_k directly from the
 713 observations.

714

715 The assumption we make at this point is that the hourly observation of radiation is a linear combination of a
 716 clear-sky term and a cloud-base term, each weighted by their occurrence:

717

$$718 \quad S_k(\mu_{0i}, c_j) = S_k(\mu_{0i}, c_0)(1 - c_j) + S_{k, cb}(\mu_{0i}, c_j) c_j \quad (A9)$$

719

720 where $S_{k, cb}$ is the cloud-base radiation. Although Eq. (A9) is a customary approximation, it is almost certainly
 721 incomplete as it neglects possible contributions to the flux from three-dimensional photon scattering between
 722 clouds, in particular when cloud cover is broken. However, to our knowledge no useful correction to Eq. (A9)
 723 has been published taking such scattering into account. To produce a yearly average this function is multiplied
 724 by the conditional distribution f (from Equation A6) and summed over all observations occurring in the specific
 725 okta class:

726

$$\sum_i S_k(\mu_{0i}, c_j) f_k(\mu_{0i} | c_j) = \sum_i S_k(\mu_{0i}, c_0) f_k(\mu_{0i} | c_j) (1 - c_j) + \sum_i S_{k,cb}(\mu_{0i}, c_j) f_k(\mu_{0i} | c_j) c_j$$

(A10)

729

730 We thus find that

$$S_{c_jk} = S_{c_0k} (1 - c_j) + S_{cb,j,k} c_j + R_1 \quad (A11a)$$

732 with

$$R_1 = \sum_i S_k(\mu_{0i}, c_0) [f_k(\mu_{0i} | c_j) - f_k(\mu_{0i} | c_0)] (1 - c_j) \quad (A11b)$$

734 And

$$S_{cb,j,k} = \sum_i S_{k,cb}(\mu_{0i}, c_j) f_k(\mu_{0i} | c_j) \quad (A11c)$$

736 In (A11c) all cloud base radiation in a single okta class is simply lumped together. We now calculate the total
737 radiation:

738

$$S_k = \sum_j S_{c_jk} \quad (A12a)$$

740

741 With further manipulation we then find that

742

$$\begin{aligned} S_k &= S_{c_0k} [1 - \sum_{j=1}^8 f_k(c_j) c_j] + \sum_{j=1}^8 f_k(c_j) c_j S_{cb,c_jk} + \\ 743 \quad &\sum_j f_k(c_j) \sum_i S_k(\mu_{0i}, c_0) [f_k(\mu_{0i} | c_j) - f_k(\mu_{0i} | c_0)] \quad (A12b) \\ &= S_{c_0k} [1 - c_k] + c_k S_{cloud,k} + \sum_j \sum_i S_k(\mu_{0i}, c_0) f_k(c_j) [f_k(\mu_{0i} | c_j) - f_k(\mu_{0i} | c_0)] \end{aligned}$$

744 from which it follows that

745

$$S_k = S_{c_0k} [1 - c_k] + c_k S_{cloud,k} + R_2 \quad (A13a)$$

$$R_2 = \sum_j \sum_i S_k(\mu_{0i}, c_0) f_k(c_j) [f_k(\mu_{0i} | c_j) - f_k(\mu_{0i} | c_0)] \quad (A13b)$$

748

749 Here

$$S_{cloud,k} = \frac{\sum_{j=1}^8 f_k(c_j) c_j S_{cb,c_jk}}{\sum_{j=1}^8 f_k(c_j) c_j} \quad (A14)$$

751

The rest terms R_1 and R_2 stem from the fact that the average value S_{c_0k} (A11a) is different for individual okta classes as the summation is done over values of the cosine of solar zenith angle that are different for each okta class. Nevertheless it is expected that both terms are small as the summations in R_1 and R_2 are done over small terms that are positive as well as negative and thus will partly cancel. The parameter $S_{cloud,k}$ is the cloud-base radiation weighted by cloud fraction.

757

758 A1.2 Averaging using proxy data

It has long been recognized that S_{c_jk} has large year-to-year fluctuations because $p_k(\mu_{0i}, c_j)$ varies from year-to-year. Extended periods of cloudiness of certain types that influence $p_k(\mu_{0i}, c_j)$ are associated with synoptic systems that may occur randomly during the year. This means that trend analysis based on Eq. (A13) will be subject to large uncertainties that can only be alleviated by collecting data over large areas so that different synoptic systems are sampled at the same time (Liepert, 2002), or by averaging S_{c_jk} over several years and then performing trend analysis on the reduced and averaged data set (Liepert and Tegen, 2002)). Over a relatively small region as the Netherlands Eq. (A13) is unsuitable to use. In fact Ruckstuhl et al (2010) demonstrated that the use of the radiation data in its pure form would lead to wrong interpretations of trends. To reduce the uncertainty in estimates of S_{c_jk} , in particular when estimating the global radiation under cloudless skies S_{c_0k} some investigators have resorted to fitting an ‘umbrella’ function of clear-sky radiation over all observations within one year (Long et al, 2009; Ruckstuhl et al, 2010) based for example on discrimination of clear skies by analysis of direct and diffuse radiation. In our formulation the approach of fitting an umbrella function is equivalent to a procedure whereby $S_k(\mu_{0i}|c_0)$ is fitted by a function $G_{c_0k}(\mu_{0i})$. When we proceed in this way, the parameter S_{p,c_0k} which is a proxy for S_{c_0k} is calculated as

$$773 \quad S_{p,c_0k} = \sum_i G_{c_0k}(\mu_{0i}) f(\mu_{0i}) \quad (A15)$$

There are strong theoretical arguments to suggest that $G_{c_0k}(\mu_{0i})$ is a monotonically increasing function of μ_{0ik} given a specific value of c_j . The use of the marginal distribution $f(\mu_{0i})$ in the summation assures that the entire distribution of cosines of solar zenith angles representative for the location at hand is used in the calculation rather than conditional distribution $f_k(\mu_{0i}|c_0)$ which is highly variable from year-to-year and for which only a summation over a limited set of observations can be used.

779

In this paper the approach will be to generalize Eq. (A15) to all nine okta values as

$$781 \quad S_{p,c_jk} = \sum_i G_{c_jk}(\mu_{0i}) f(\mu_{0i}) \quad (A16).$$

In other words we will calculate functions of the type $G_{c_jk}(\mu_{0i})$ for each okta value using the observations at hand.

784

785 The notion that the functions $G_{c,j,k}(\mu_{0i})$ are monotonic increasing with μ_{0i} comes from Beer's Law stating that
 786 for a single wavelength only the optical thickness of the atmosphere and μ_{0i} itself are parameters controlling the
 787 change in downwelling radiation with μ_{0i}

$$788 \quad S_s = \mu_0 S_e \exp(-\tau / \mu_0) \quad (A17)$$

789 Here S_s is the downwelling radiation at the surface, S_e is the extraterrestrial radiation, and τ is the optical
 790 thickness of the atmosphere.

791

792 Even though the global radiation is a wavelength-integrated quantity, the scattering through the atmosphere
 793 consisting of water droplets, ice crystals and aerosols at high relative humidity can in first order be assumed to
 794 be conservative. Therefore, it is reasonable to assume that $G_{c,j,k}(\mu_{0i})$ has a functional form resembling Eq.
 795 (A17). When regressed through data taken over an entire year the fitted line has a parameter akin to the yearly
 796 averaged optical thickness of the atmosphere as its sole controlling variable.

797

798 Consequently, we will adopt the function

$$799 \quad G(\mu_0) = \mu_0 A \exp(-B / \mu_0) \quad (A18)$$

800 where B is a parameter depending on μ_0 according to

$$801 \quad B(\mu_0) = \alpha \mu_0^\beta \quad (A19)$$

802 The parameters α and β are constants determined by fitting the data. The method expressed in Eq (A18) is
 803 equivalent to the Langley method of obtained optical thickness with the only difference the weak dependence of
 804 B on sun angle. Such dependence is necessary to include because the diffuse radiation arriving at the surface is
 805 weakly dependent upon μ_0 ,

806

807 Following the procedure outlined for the real data exactly but including the subscript p to indicate 'proxy' and
 808 changing the conditional distributions (A6) with the marginal distribution (A3) we can finally write for the
 809 proxy global radiation

$$810 \quad S_{pk} = S_{p,c_0k} (1 - c_k) + c_k S_{p,cloud,k} \quad (A20)$$

811 where $S_{p,cloud,k}$ is obtained from an equation identical to Eq. (A9) with $S_{cb,k}$ replaced by $S_{p,cb,k}$. Note
 812 however that the rest terms R_1 and R_2 have vanished in the proxy formulation. The reason is that the conditional
 813 distributions have been replaced by the marginal distribution of cosine of solar zenith angles, which is
 814 independent of cloud cover fraction and time. Therefore the marginal distributions in the rest term are all
 815 identical and thus will cancel exactly. Equation (A20) is represented in the main text as Eq. (1).

816

817 Eq (A19) expresses the dependence of atmospheric optical thickness on μ_0 . Regression fits using Eq. (A19)
 818 carries uncertainties into the parameter B and through Eq. (A18) into parameter G and into Eq. (A20). For clear-
 819 sky the scatter is small but for skies under (partly) cloudy skies the scatter is larger. The standard 1-sigma

uncertainty associated with the clear sky proxy computed in Eq. (A20) is 2-3%, increasing to 8-9 % for high
okta values.

The year-to-year determination of proxies in Eq. (A20) is used in this paper as it will yield more stable results
than the determination of ‘true’ averages. The approach will avoid all seasonal elements and yearly variations
that are inherent in the distribution $f_k(\mu_{0i}|c_j)$ due to the yearly variable numbers of μ_{0i} values necessary to
compute the conditionally sampled data. Therefore, the computed trends of proxies will reflect the yearly
changing transmission through the atmosphere, which is the purpose of this study.

Note finally that $S_k \neq S_{pk}$ as the proxy analysis is based on an evaluation of proxy fluxes, not of the ‘real’
fluxes. In the analysis to be performed, however, differences between them turned out to be less than 5%.

A1.3 Analysis of trend

Once a time series of proxy radiation values is obtained it is possible to compute trends. As explained in the
previous section trends in the observed time series of clear-sky and cloudy sky radiation are not very useful due
to the year-to-year variability. However, trends in the proxy radiation time series do not suffer from such noise
and thus can yield meaningful results. A single equation will be derived for the trend in all-sky (proxy) radiation
from which it emerges that such trend is the result of three components: a) a trend in fractional cloudiness, b) a
trend in clear sky radiation and c) a trend in radiation at cloud-base.

To derive trends from the yearly averages (proxy) data we write:

$$c_k = \bar{c} + c'_k, S_{p,c_0,k} = \overline{S_{p,c_0}} + S'_{p,c_0,k}, S_p(y_k) = \overline{S_p} + S'_p(y_k), S_{p,cloud,k} = \overline{S_{p,cloud}} + S'_{p,cloud,k}$$

(A21)

Here the bar represents an average over 5 decades of the yearly averages, and the primed variables are the yearly
deviations from the averages over the five decades under analysis. Inserting into Eq. (A20) yields

$$S_{pk} = \overline{S_p} + S'_{pk} = (1 - \bar{c} - c'_k)(\overline{S_{p,c_0}} + S'_{p,c_0,k}) + (\bar{c} + c'_k)(\overline{S_{p,cloud}} + S'_{p,cloud,k}) \quad (A22)$$

Defining $\overline{S_p} = (1 - \bar{c})\overline{S_{p,c_0}} + \bar{c}\overline{S_{p,cloud}}$ and collecting terms yields

$$S'_k = c'_k(\overline{S_{p,cloud}} - \overline{S_{p,c_0}}) + (1 - \bar{c})S'_{p,c_0,k} + \bar{c}S'_{p,cloud,k} + c'_k(S'_{cloud,k} - S'_{p,c_0,k}) \quad (A23)$$

Eq (A23) can be used for trend analysis and is represented in the main text as Eq. (3).

The implications of this expression are quite important. Eq. (A23) demonstrates that the trend in all-sky
radiation is not a simple summation of trends in clear-sky and cloudy-sky trends, which would perhaps be an
intuitive notion when seeking to explain the observed trend in all sky radiation. Eq. (A23) demonstrates that a)
the trends in clear-sky and cloud-base radiation need to be weighted by their fractional occurrence in the

855 atmosphere, and that b) there is a third term constituting the trend in fractional cloudiness scaled by the
856 difference in average cloud-base and clear-sky radiation. Furthermore, the additional fourth term, which is
857 shown to be negligible in the current analysis, may not always be small when there are significant cross
858 correlations between the perturbations.

859

860 **Data availability**

861 The data used in this paper can be downloaded from the KNMI website:

862 <http://www.knmi.nl/nederland-nu/klimatologie/uurgegevens>

863

864 **Acknowledgments**

865 We acknowledge the use of EUMETSAT's CMSAF cloud climatology data sets. We much appreciated
866 discussions with Jan Fokke Meirink who made us aware of this data set and who instructed us on its use in this
867 analysis. We also appreciated discussion with Wiel Wauben about the break analysis.

868

869 **Tables**

870

871 **Table 1: Details of the stations and the introduction data of the radiometers.**

| Station | WMO nr. | LAT (N) | LON (E) | ALT (m) | Introduction date |
|------------|---------|------------|------------|---------|-------------------|
| De Kooy | 06235 | 52.924 | 4.785 | 0.5 | 24 September 1964 |
| De Bilt | 06260 | 52.101 | 5.177 | 2.0 | 10 May 1957 |
| Eelde | 06280 | 53.125 | 6.586 | 3.5 | 2 October 1964 |
| Vlissingen | 06310 | 51.442 | 3.596 | 8.0 | 10 April 1962 |
| Maastricht | 06380 | 50.910 | 5.768 | 114.0 | 5 March 1963 |

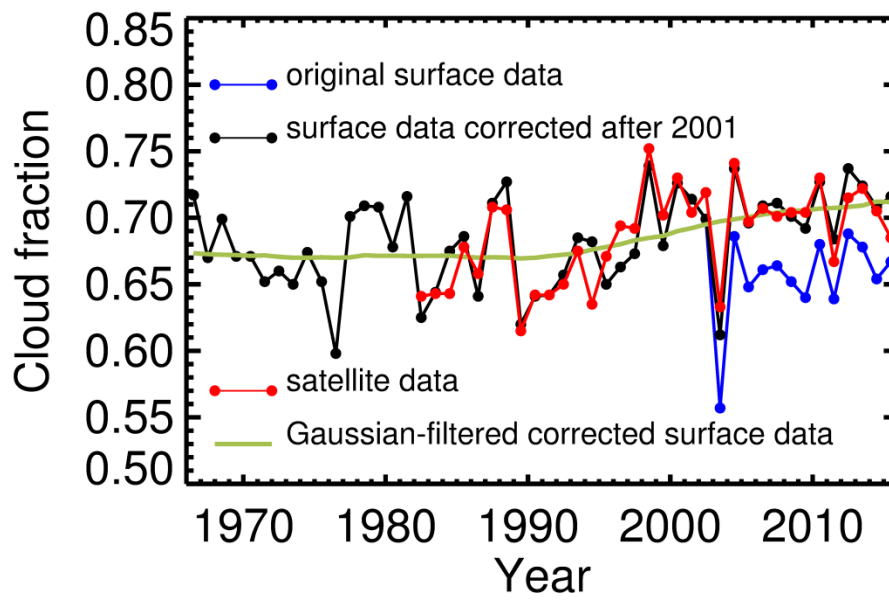
872

873

874 **Table 2. Summary of trend analysis. Except for the fractional cloudiness, all parameters have $W m^{-2} /$**
875 **decade as a unit. Whether or not the indicated trend is significant is indicated by the star in the column**
876 **‘uncertainty’.**

| Type | Period | Trend | Uncertainty |
|---|------------|---------|-------------|
| Fractional cloudiness | 1966-2015 | 0.0097 | 0.0062* |
| | 1966-1984 | -0.0055 | 0.0344 |
| | 1984-2015 | 0.0205 | 0.0117* |
| All-sky radiation | 1966-2015 | 1.81 | 1.07* |
| | 1966-1984 | -1.40 | 4.19 |
| | 1984-2015 | 3.30 | 1.55* |
| All-sky proxy radiation | 1966- 2015 | 1.89 | 0.78* |
| | 1966- 1984 | 0.39 | 3.86 |
| | 1984- 2015 | 2.30 | 1.68* |
| Clear-sky proxy radiation | 1966-2015 | 2.78 | 0.50* |
| | 1966-1984 | 1.22 | 2.14 |
| | 1984-2015 | 3.46 | 1.35* |
| Cloud-base proxy radiation | 1966-2015 | 3.43 | 1.17* |
| | 1966-1984 | -0.77 | 2.01 |
| | 1984-2015 | 4.94 | 2.30* |
| Fractional cloudiness term of Equation (3) | 1966-2015 | -1.06 | 0.67* |
| | 1966-1984 | 0.43 | 3.30 |
| | 1984-2015 | -2.22 | 1.19* |
| Clear-sky proxy term of Equation (3) | 1966-2015 | 0.88 | 0.16* |
| | 1966-1984 | 0.39 | 0.68 |
| | 1984-2015 | 1.09 | 0.43* |
| Cloud-base proxy term of Equation (3) | 1966-2015 | 2.35 | 0.80* |
| | 1966-1984 | -0.53 | 1.38 |
| | 1984-2015 | 3.37 | 1.57* |

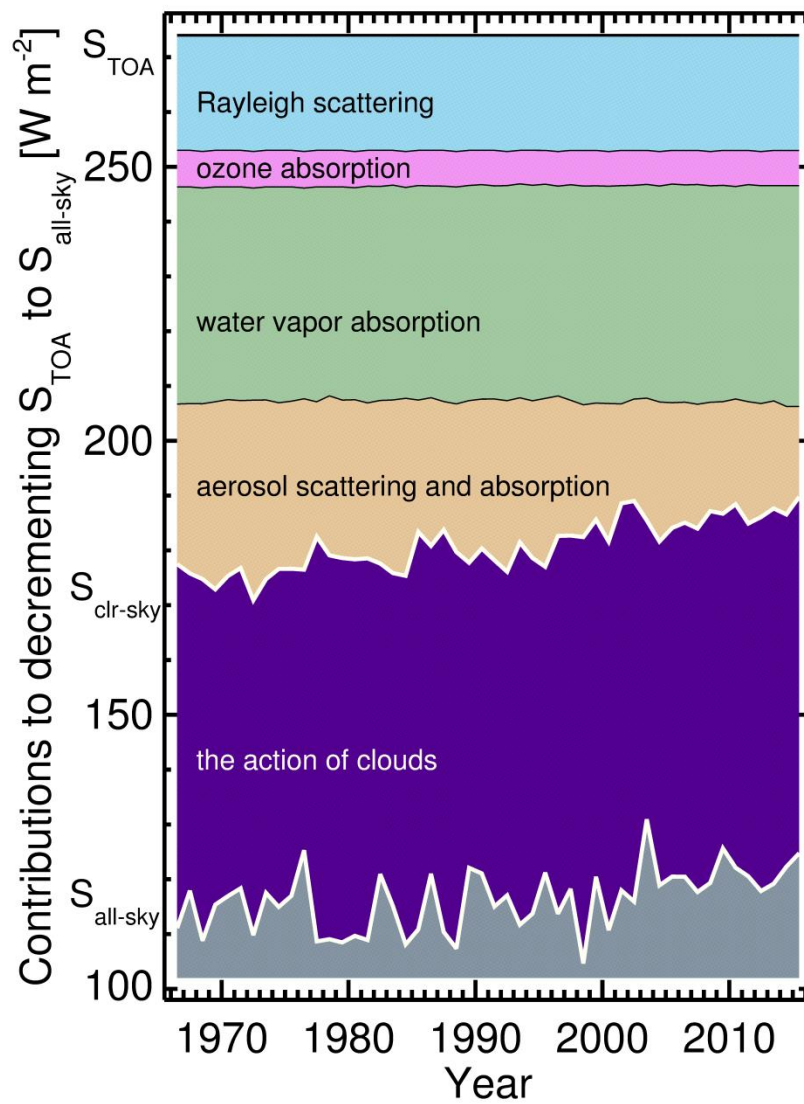
877



879

880 **Figure 1. Surface-based cloud fraction estimates versus satellite-based estimates.**

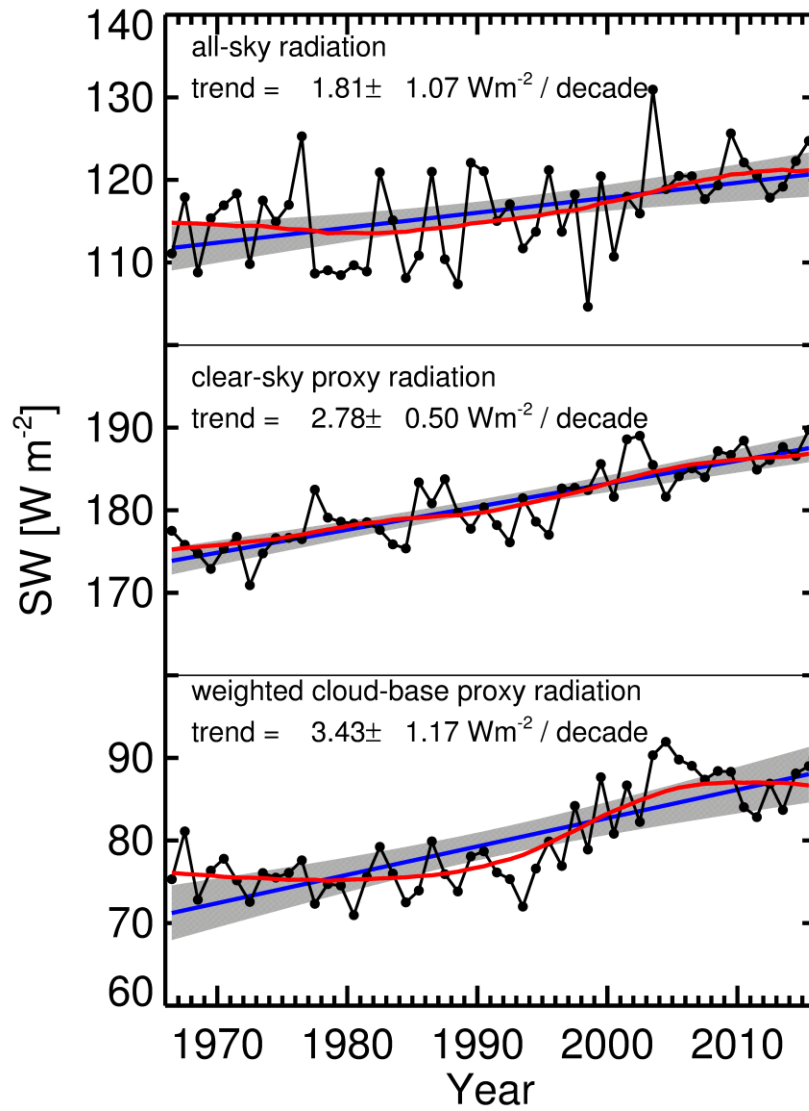
881



882

883 **Figure 2. Impact on all-sky flux due to Rayleigh scattering, ozone absorption, water vapor absorption,**
 884 **aerosol scattering and absorption and the action of clouds.**

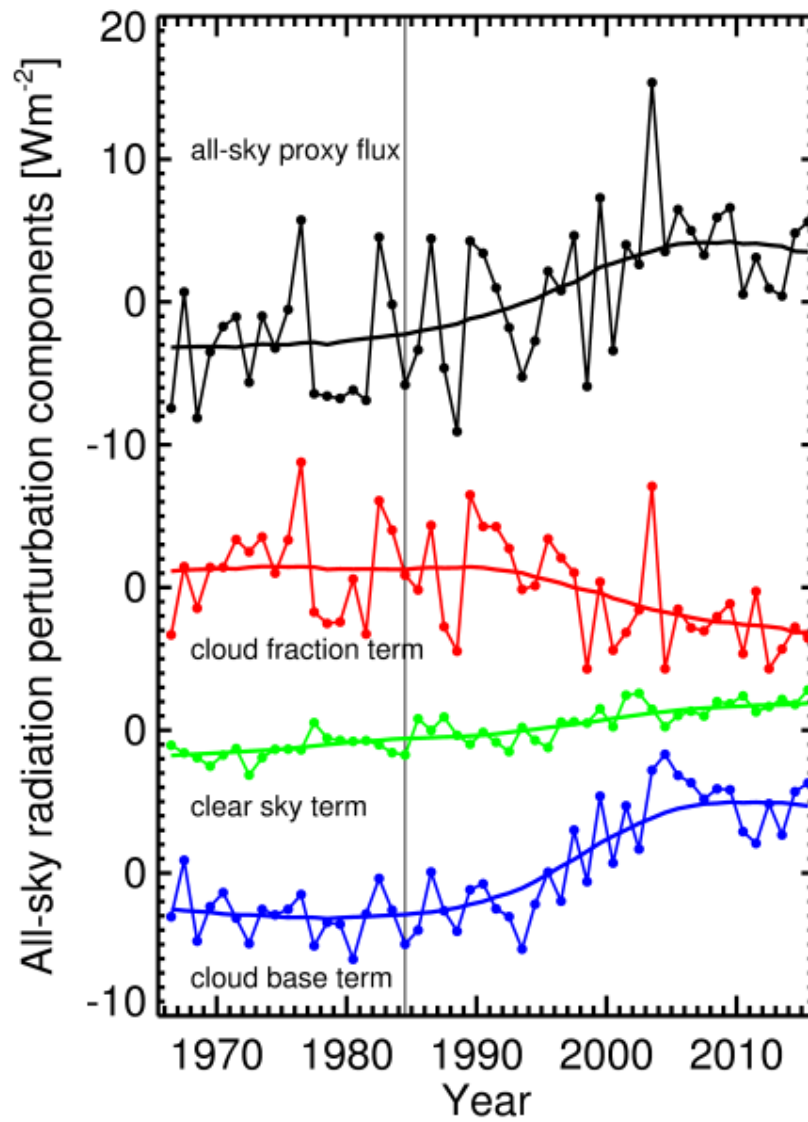
885



886

887 **Figure 3. All-sky, clear-sky proxy and cloud-base proxy radiation as a function of time. Blue lines are the**
 888 **regression fits with the grey area as the uncertainty around the fit. The red lines are 21-point Gaussian**
 889 **filter smoothers.**

890



891

892 Figure 4. All-sky radiation perturbation components. Terms are indicated in the graph. 21-point
 893 Gaussian filter smoothers are drawn through the curves.

894

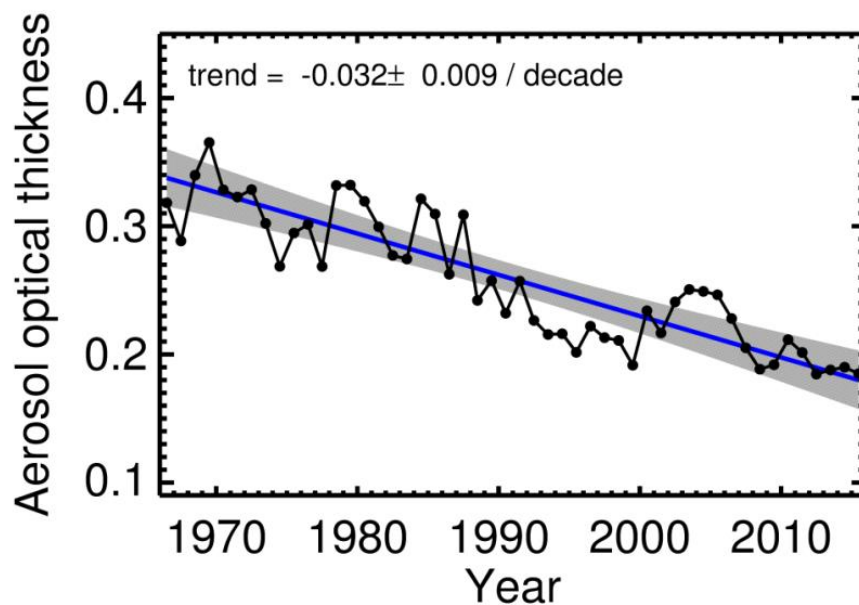


Figure 5. Aerosol optical thickness derived from visibility observations.

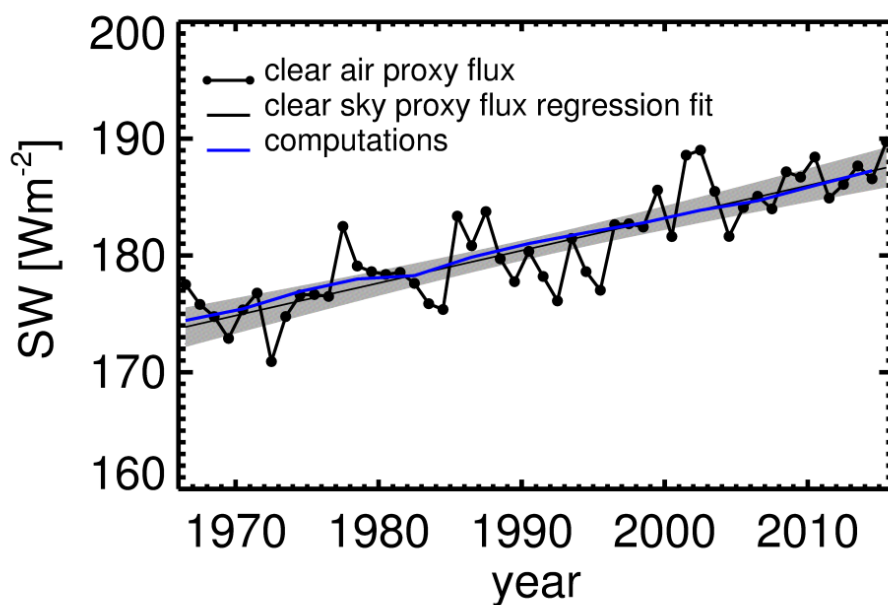
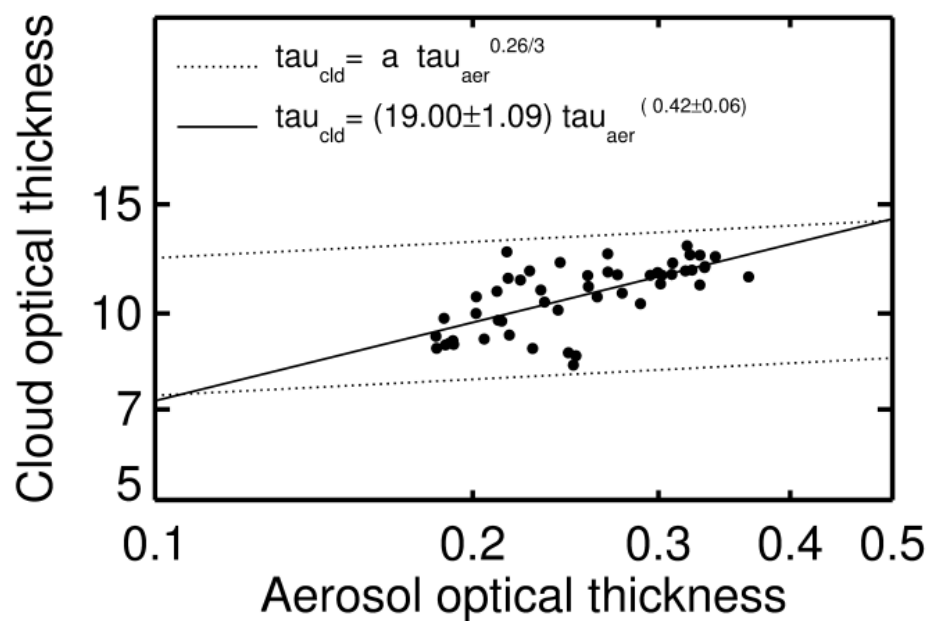


Figure 6. Clear-sky radiation observations matched by radiative transfer computations.



901
 902 **Figure 7.** Cloud optical thickness as a function of aerosol optical thickness. The broken lines are the
 903 suggested dependencies of the two optical thicknesses assuming that ACI-I is valid. The solid line is the
 904 actual fit through the data.
 905

906 **References**

- 907 Albrecht, B. A., Aerosols, cloud microphysics and fractional cloudiness, *Science*, 245, 1227 – 1230, 1989.
- 908
- 909 Alexanderson H., A homogeneity test applied to precipitation data, *J. of Clim.*, 6, 661-675, 1986.
- 910
- 911 Augustine, J. A. and E.G. Dutton, Variability of the surface radiation budget over the United States from 1996
- 912 through 2011 from high-quality measurements, *J. Geophys. Res.*, 118, doi:10.1029/2012JD018551.
- 913 Boers, R and R. M. Mitchell, Absorption feedback in stratocumulus cloud: Influence on cloud top albedo,
- 914 *Tellus*, 46A, 229 – 241, 1994.
- 915
- 916 Boers, R., M. J. de Haij, W. M. F. Wauben, H. K. Baltink, L. H. van Uft, M. Savenije, and C. N. Long,
- 917 Optimized fractional cloudiness determination from five ground-based remote sensing techniques, *J. Geophys.*
- 918 *Res.*, 115, D24116, doi:10.1029/2010JD014661, 2010.
- 919
- 920 Boers, R., M. van Weele, E. van Meijgaard, M. Savenije, A.P. Siebesma, F. Bosveld and P. Stammes,
- 921 Observations and projections of visibility and aerosol optical thickness (1956–2100) in the Netherlands: Impacts
- 922 of time-varying aerosol composition and hygroscopicity, *Environ. Res. Lett.*, 10, 015003, doi:10.1088/1748-
- 923 9326/10/1/015003, 2015.
- 924
- 925 Chiacchio, M., and M. Wild, Influence of NAO and clouds on long-term seasonal variations of surface solar
- 926 radiation in Europe, *J. Geophys. Res.*, 115, D00D22, doi:10.1029/2009JD012182, 2010.
- 927
- 928 Dee, D. et al., The ERA-Interim reanalysis: configuration and performance of the data assimilation system.
- 929 *Quart. Journal Roy. Meteor. Soc.*, **137**, 553 – 597, 2010.
- 930
- 931 Eltermann, L., Relationships between vertical attenuation and surface meteorological range, *Appl. Optics.*, 9,
- 932 1804–1810., doi:10.1364/ AO.9.001804, 1970.
- 933
- 934 Gan, C.-M., J. Pleim, R. Mathur, C. Hogrefe, C. N. Long, J. Xing, S. Roselle, and C. Wei, Assessment of the
- 935 effect of air pollution controls on trends in shortwave radiation over the United States from 1995 through 2010
- 936 from multiple observation networks. *Atmos. Chem. Phys.*, 14, 1701–1715, 2014, www.atmos-chem-
- 937 phys.net/14/1701/2014/doi:10.5194/acp-14-1701-2014, 2014.
- 938
- 939 Gultepe, I and G. A. Isaac, The relationship between cloud droplet and aerosol number concentration for
- 940 climate models. *Int. J. Climat.* 16, 941 – 946, 1995.
- 941
- 942 IPCC, Climate Change 2013: The Physical Science Basis. Contribution of Working Group I to the Fifth
- 943 Assessment Report of the Intergovernmental Panel on Climate Change [Stocker, T.F., D. Qin, G.-K. Plattner, M.
- 944 Tignor, S.K. Allen, J. Boschung, A. Nauels, Y. Xia, V. Bex and P.M. Midgley (eds.)]. Cambridge University

945 Press, Cambridge, United Kingdom and New York, NY, USA, 1535 pp, doi:10.1017/CBO9781107415324,
 946 2013.

947

948 Jones, A, D. L. Roberts and A. Slingo, A climate model study of indirect radiative forcing by anthropogenic
 949 sulphate aerosols. *Nature*, 370, 450 – 453, 1994.

950

951 Karlsson, K.-G., Anttila, K., Trentmann, J., Stengel, M., Meirink, J. F., Devasthale, A., Hanschmann, T., Kothe,
 952 S., Jääskeläinen, E., Sedlar, J., Benas, N., van Zadelhoff, G.-J., Schlundt, C., Stein, D., Finkensieper, S.,
 953 Håkansson, N., and Hollmann, R., CLARA-A2: The second edition of the CM SAF cloud and radiation data
 954 record from 34 years of global AVHRR data, *Atmos. Chem. Phys. Discuss.*, doi:10.5194/acp-2016-935, revised
 955 manuscript accepted for publication in ACP..

956

957 Kendall, M.G., *Rank Correlation Methods*, 4th edition, Charles Griffin, London, 1975.

958

959 Kriebel, K. T., On the determination of the atmospheric optical depth by measurements of the meteorological
 960 range, *Beitr. Phys. Atmos.*, 51, 330, 1978.

961

962 Li, H., J. Sheffield, and E. F. Wood, Bias correction of monthly precipitation and temperature fields from
 963 Intergovernmental Panel on Climate Change AR4 models using equidistant quantile matching, *J. Geophys. Res.*,
 964 115, D10101, doi:10.1029/2009JD012882, 2010.

965

966 Liepert, B. G., Observed reductions of surface solar radiation at sites in the United States and worldwide from
 967 1961 to 1990, *Geophys. Res. Lett.*, 29, 10, 1421, 10.1029/2002GL014910, 2002.

968

969 Liepert. B. G., Recent changes in solar radiation under cloudy conditions in Germany. *Intern. J. climatology* 17,
 970 1581 – 1593, 1997.

971

972 Liepert, B and I. Tegen, Multidecadal solar radiation trends in the United States and Germany and direct
 973 tropospheric aerosol forcing. *J. Geophys. Res.*, 107, D12, 4153, 10.1029/2001JD000760, 2002.

974

975 Liepert, B. and G. Kukla, Decline in solar radiation with increased horizontal visibility in Germany between
 1964 and 1990. *Journal of Climate*, 10, 2391 – 2401, 1997.

976

977 Long , C. N., and T. P. Ackerman, Identification of clear skies from broadband pyranometer measurements and
 978 calculation of downwelling shortwave cloud effects, *J. Geophys. Res.*, 105, D12, 15,609-15, 626, 2000.

979

980 Long, C. N., E. G. Dutton, J. A. Augustine, W. Wiscombe, M. Wild, S. A. McFarlane, and C. J. Flynn,
 981 Significant decadal brightening of downwelling shortwave in the continental United States, *J. Geophys. Res.*,
 982 114, D00D06, doi:10.1029/2008JD011263, 2009.

983

984 Manara, V, M. Brunetti, A. Celozzi, M. Maugeri, A. Sanchez-Lorenzo, and M. Wild, Detection of
 985 dimming/brightening in Italy from homogenized all-sky and clear-sky surface solar radiation records and
 986 underlying causes (1959–2013), *Atmos. Chem. Phys.*, 16, 11145–11161, doi:10.5194/acp-16-11145-2016,
 987 2016.
 988
 989 Mateos, D., A. Sanchez-Lorenzo, M. Antón, V. E. Cachorro, J. Calbó, M. J. Costa, B. Torres, and M. Wild,
 990 Quantifying the respective roles of aerosols and clouds in the strong brightening since the early 2000s over the
 991 Iberian Peninsula, *J. Geophys. Res.*, 119, 10,382–10,393, doi:10.1002/2014JD022076, 2014.
 992
 993 Norris, J. R., Multidecadal changes in near-global cloud cover and estimated cloud cover radiative forcing, *J.*
 994 *Geophys. Res.*, 110, D08206, doi:10.1029/2004JD005600, 2005.
 995
 996 Norris, J. R., and M. Wild, Trends in aerosol radiative effects over Europe inferred from observed cloud cover,
 997 solar “dimming,” and solar “brightening”, *J. Geophys. Res.*, 112, D08214, doi:10.1029/2006JD007794, 2007.
 998
 999 Ohvri, H., et al., Global dimming and brightening versus atmospheric column transparency, Europe, 1906–
 1000 2007, *J. Geophys. Res.*, 114, D00D12, doi:10.1029/2008JD010644, 2009.
 1001
 1002 Parding, K., J. A. Olseth, K. F. Dagestadt and B. G. Liepert, Decadal variability of clouds, solar radiation and
 1003 temperature at a high-latitude coastal site in Norway, *Tellus B* 66, 25897, 2014.
 1004
 1005 Peterson, J. T., and C. J. Fee, Visibility-atmospheric turbidity dependence at Raleigh, North Carolina, *Atmos.*
 1006 *Environ*, 15(12), 2561-2563, 1981.
 1007
 1008 Philipona, R., K. Behrens, and C. Ruckstuhl, How declining aerosols and rising greenhouse gases forced rapid
 1009 warming in Europe since the 1980s, *Geophys. Res. Lett.*, 36, L02806, doi:10.1029/2008GL036350, 2009.
 1010
 1011 Romanou, A., B. Liepert, G. A. Schmidt, W. B. Rossow, R. A. Ruedy, and Y. Zhang, 20th century changes
 1012 in surface solar irradiance in simulations and observations, *Geophys. Research Lett.* 34, L057113, doi:
 1013 10.1029/2006GL028356, 2007.
 1014
 1015 Ruckstuhl, C., and J. R. Norris, How do aerosol histories affect solar “dimming” and “brightening” over
 1016 Europe?: IPCC-AR4 models versus observations, *J. Geophys. Res.*, 114, D00D04, doi:10.1029/2008JD011066,
 1017 2009.
 1018
 1019 Ruckstuhl, C., J. R. Norris, and R. Philipona, Is there evidence for an aerosol indirect effect during the recent
 1020 aerosol optical depth decline in Europe?, *J. Geophys. Res.*, 115, D04204, doi:10.1029/2009JD012867, 2010.
 1021
 1022 Ruckshuhl, C. and R. Philipona, Detection of cloud-free skies based on sunshine duration and on the variation of
 1023 global solar irradiance, *Meteor. Zeitschrift*, 17, No. 2, 181-186, 2008.

1024

1025 Ruckstuhl, C., R. Philipona, K. Behrens, M. Collaud Coen, B. Durr, A. Heimo, C. Matzler, S. Nyeki, A.
1026 Ohmura, L. Vuilleumier, M. Weller, C. Wehrli, and A. Zelenka, Aerosol and cloud effects on solar brightening
1027 and the recent rapid warming, *Geophys. Res. Lett.*, 35, L12708, doi:10.1029/2008GL034228, 2008.

1028

1029 Russak, V., Changes in solar radiation and their influence on temperature trend in Estonia (1955–2007), *J.*
1030 *Geophys. Res.*, 114, D00D01, doi:10.1029/2008JD010613, 2009.

1031

1032 Sanchez-Lorenzo, A., M. Wild, M. Brunetti, J. A. Guijarro, M. Z. Hakuba, J. Calbó, S. Mystakidis, and B.
1033 Bartok, Reassessment and update of long-term trends in downward surface shortwave radiation over Europe
1034 (1939–2012), *J. Geophys. Res. Atmos.*, 120, 9555–9569, doi:10.1002/2015JD023321, 2015.

1035

1036 Stjern, C. W., J.E. Kristjansson and A. W. Hansen, Global dimming and global brightening – an analysis of
1037 surface radiation and cloud cover data in northern Europe. *Int. J. Climatol.* 29: 643–653, 2009.

1038

1039 Turnock, S.T., D. V. Spracklen, K. S. Carslaw, G. W. Mann, M. T. Woodhouse, P. M. Forster, J. Haywood, C.
1040 E. Johnson, M. Dalvi, N. Bellouin, and A. Sanchez-Lorenzo, Modelled and observed changes in aerosols and
1041 surface solar radiation over Europe between 1960 and 2009 *Atmos. Chem. Phys.*, 15, 9477–9500, [www.atmos-](http://www.atmos-chem-phys.net/15/9477/2015/)
1042 [chem-phys.net/15/9477/2015/](http://www.atmos-chem-phys.net/15/9477/2015/) doi:10.5194/acp-15-9477-2015, 2015.

1043

1044 Twomey, S., The influence of pollution on the shortwave albedo of clouds, *J. Atmos. Sci.*, 34, 1149 – 1152,
1045 DOI: [http://dx.doi.org/10.1175/1520-0469\(1977\)034](http://dx.doi.org/10.1175/1520-0469(1977)034), 1977.

1046

1047 Wang, K. C., R. E. Dickinson, and S. L. Liang, Clear-sky visibility has decrease over land globally from 1973 to
1048 2007, *Science*, 323, 1468–1470, doi:10.1126/science.1167549, 2009.

1049

1050 Wild, M., Global dimming and brightening: A review, *J. Geophys. Res.*, 114, D00D16,
1051 doi:10.1029/2008JD011470, 2009.

1052

1053 Wild, M., H. Gilgen, A. Roesch, A. Ohmura, C. N. Long, E. G. Dutton, B. Forgan, A. Kallis, V. Russak, A.
1054 Tsvetkov, From Dimming to Brightening: Decadal Changes in Solar Radiation at Earth's surface. *Science*, 308,
1055 , 847, Doi: 10.1126/science.1103215, 2005.

1056

1057 Wild, M., Introduction to special section on Global Dimming and Brightening, *J. Geophys. Res.*, 115, D00D00,
1058 doi:10.1029/2009JD012841, 2010.

1059

1060 World Meteorological Organization (WMO), WMO guide to meteorological instruments and methods of
1061 observation, 7th ed., WMO-No. 8, Geneva, Switzerland, 2008.

1062

1063 Wu, J., J. Luo, L. Zhang, L. Xia, D. Zhao, and J. Tang, Improvement of aerosol optical depth retrieval using
1064 visibility data in China during the past 50 years, *J. Geophys. Res.*, 119, 13,370–13,387,
1065 doi:10.1002/2014JD021550, 2014.
1066