

## **Response to referees' comments**

Journal: ACP

Title: Seasonal variation and light absorption property of carbonaceous aerosol in a typical glacier region of the southeastern Tibetan Plateau

Author(s): Hewen Niu et al.

MS No.: acp-2017-865

MS Type: Research article

Iteration: Correction

Special Issue: Study of ozone, aerosols and radiation over the Tibetan Plateau (SOAR-TP) (ACP/AMT inter-journal SI)

We thank the referees for their careful review and insightful comments and suggestions, which greatly helped us to improve the manuscript. Below are our point-by-point responses and detailed corrections/revisions made to the manuscript accordingly.

### **RC 1**

#### **Anonymous Referee #2**

This paper reports two-years filter-based measurements of carbonaceous aerosols at two sites a typical glacierization region of the Tibetan Plateau. The dataset provided by this manuscript is important because of the unique location of the experimental site and the profound implication of carbonaceous aerosols deposition on glacier melting. However, I found that some of the conclusions were not solid and lack of sufficient data analysis (or at least relevant reference) support; many of the discussions were superficial and need to be revised. I suggest this manuscript may be accepted for a publication in ACP after the authors could address the following comments. Major concerns:

1. Despite Mt. Yulong and Ganhaizi are special sampling sites, I have not seen much interesting or unique scientific findings. Except providing the basic dataset (numerous

descriptive words like “high”, “low”, “important”), neither was the dataset analyzed and discussed enough, nor were the conclusions obtained in a solid way. Many statements lack sound evidence or support. Here are some examples: P8, line 2-4; P10, line 17-20; P10, line 28-30; P11, line 13-15; line 23-25; P12, line 2-8; line 21-23; P13, line 27-30; P14, line 2-5; P15, line 25-29.

Response: We have thoroughly revised the manuscript, particularly, to the places mentioned here, by providing solid evidence or support for each argument/statement. Detailed revisions to the paper for some arguments are discussed below in response to specific comments and we have now highlighted new findings of this work. After revision, we believe the manuscript is much improved and the interesting scientific findings are clear.

2. The authors claim that the sampling sites are in a typical glacier region of the Tibetan Plateau; that is not true. The two sampling sites are very close to each other: The Mt. Yulong site is likely a mountaintop site and the Ganhaizi site is located on the foot of Mt. Yulong. In this regard, the title of this MS is apparently overstated because two ground-based measurement sites are not enough to capture the characteristics of “spatio-temporal variability of carbonaceous aerosol”. Two sites are “... separated from the urban area, but is an increasingly popular tourist destination, with a geological museum and a golf course. Moreover, there is a spacious parking lot and a tourist dining-center in GHZ.” Local sources may be important as already stated in the text.

Response: We agree with the referee that the two sampling sites are close to each other and cannot be used to characterize “spatial variability”. However, there is an obvious elevation difference between the two sampling sites. The sampling site in Mt. Yulong (4510 m asl) is above the terminal of the Baishui Glacier (4430 m asl), while GHZ (3054 m asl) is a flat basin and nearly at the foot of Baishui Glacier. Both of the two sampling sites are in glacier region. We have revised the title of this

manuscript accordingly to "Seasonal variation and light absorption property of carbonaceous aerosol in a typical glacier region of the southeastern Tibetan Plateau".

3. I appreciate the efforts of a global aerosol-climate model used in the study to quantify the source attribution of BC. However, the model simulation didn't cover the sampling period of this study, which dramatically diminish the reliability and importance of their modeling work. The authors found that there was a significant inter-annual variation of carbonaceous aerosols induced by emission reduction, I don't think they a climate model with outdated emission input can be used to infer the sources of carbonaceous aerosols measured in the current work.

Response: We agree that it would be more desirable to have the model simulation cover the same time as the sampling period for observations. However, as we mentioned in the manuscript, the emissions are only available up to year 2014. Even if we had an up-to-date global emission inventory available, which usually doesn't have a good estimate of small-scale local sources, a coarse-resolution climate model wouldn't be able to capture the quantitative source attributions of the measured BC at the sampling sites. Therefore, the model experiment was not designed to simulate the two-year observations of aerosols in the sampling area, but rather for a recent time period (2010-2014) to estimate the climatological mean source attributions and seasonal variations of near-surface BC concentrations, which has approved to be useful to help understand the observational analysis in the TP region (e.g., Wang et al., 2015). We did find a significant difference in measured carbonaceous aerosols between 2015 and 2016, which was partly attributed to emission changes based on some emission data of Yunnan province rather than model results. We agree that it is speculative and the model results cannot directly support this hypothesis. We have now clarified this in the paper and added precipitation difference as another possible driver of the difference in the measured aerosols (see Fig. 11a, b) as follows:

“The annual mean concentrations of carbonaceous matter collected in 2016 were lower than those in 2015 for the two sites (Fig 11a, b), which could be partly due to the strict mitigation measures that improved the local atmospheric environment in the Mt. Yulong region. For example, the amount of soot emissions (2.44 Tg C) in 2016 were reduced by 21.76% compared to 2015 in Yunnan province (<http://www.zhb.gov.cn/>), where the Mt. Yulong locates. Other factors likely contributed to the inter-annual difference as well. The amount of precipitation is important to determine aerosol wet removal from the atmosphere during the transport (e.g., Wang et al., 2015). The stronger precipitation in 2016 than in 2015 at Mt. Yulong and GHZ (Fig. 11a, b) partly explains the smaller carbonaceous aerosols mass concentrations in 2016.”

4. The current form of the abstract is informative but frequently distract my focus. Please show the readers your most important and exciting findings.

Response: We have significantly reduced the length of the abstract to just highlight the most important results and findings. Below is the revised abstract:

"Deposition and accumulation of light-absorbing carbonaceous matters on glacier surfaces can alter the energy balance of glaciers. In this study, two years (December 2014 to December 2016) of continuous observations of carbonaceous aerosols in glacierized region of Mt. Yulong and Ganhaizi (GHZ) basin are analyzed. The average black carbon (BC) and organic carbon (OC) concentrations were  $1.51 \pm 0.93$  and  $2.57 \pm 1.32 \text{ g m}^{-3}$ , respectively. The average secondary OC (SOC) concentration, quantified using BC-tracer method, was  $1.67 \pm 1.15 \text{ g m}^{-3}$ . Although the annual mean OC/BC ratio was  $2.45 \pm 1.96$ , monthly mean BC concentrations during the post-monsoon season were even higher than OC in the high altitudes (approximately 5000 m asl) of Mt. Yulong. Strong photochemical reactions and local tourism activities were likely the main factors inducing high OC/BC ratios in the Mt. Yulong region during the monsoon season. The mean mass absorption efficiency (MAE) of BC, measured for the first time in Mt. Yulong, at 632 nm with

a thermal-optical carbon analyzer under the filter-based method, was  $6.82 \pm 0.73 \text{ m}^2 \text{ g}^{-1}$ , comparable with the results from other studies. Strong seasonal and spatial variations of BC MAE were largely related to the OC and SOC abundance. Source attribution analysis using a global aerosol-climate model, equipped with a BC source tagging technique, suggests that East Asia emissions, including local sources, have the dominant contribution (over 50%) to annual mean near-surface BC in the Mt. Yulong area. There is also a strong seasonal variation in the regional source apportionment. South Asia has the largest contribution in BC emission during the pre-monsoon season, while East Asia dominates the monsoon season and post-monsoon season. Results in this study have great implications for accurately evaluating the influences of carbonaceous matter on glacial melting and water resource supply in glacierization areas."

Specific comments:

1. Title: overstated as pointed out above.

Response: We have changed the title of this manuscript to "Seasonal variation and light absorption property of carbonaceous aerosol in a typical glacier region of the southeastern Tibetan Plateau".

2. P3, line 8: missing reference.

Response: We have added at least one reference for each point as follows.

"... visibility (Park et al., 2003), atmospheric radiative balance (Bond et al., 2013; Schuckmann et al., 2016), and the surface albedo of snow and ice (Gertler et al., 2016; Kaspari et al., 2014; Niu et al., 2017a, b)."

3. P4, line 1: specify the "absorbing aerosols".

Response: The "absorbing aerosols" denote aerosols containing BC, brown carbon,

and/or dust that can absorb solar radiation. Below is the revised text.

“... absorbing aerosols (e.g., BC, dust, and brown carbon)”

4. Line 7: partially correct.

Response: We have revised this sentence to the following:

EC is usually denoted by BC (e. g., Cheng et al., 2011a; Ming et al., 2013; Xu et al., 2009b), which is assumed to have a nearly elemental composition. This is most suitable to diesel soot or lamp black, where BC has a chemical composition close to EC (Andreae and Gelencsér, 2006).

5. Line 13: overstated.

Response: We revised the previous sentence to the following:

“This is closely related to water resources for a large population of local habitants in South Asia.”

6. Line 17: For BC particles,

Response: We have added "," after "For BC particles" in the revised manuscript.

7. P6, line 27: specify the number of samples collected at the two sites.

Response: We added the number of samples collected at the two sites in the current submitted manuscript.

"The number of aerosol samples collected at Mt. Yulong and GHZ was 117 and 120, respectively."

8. P7, line 3-5: this is nonsense if you have no attempt to give more details.

Response: We agree that this sentence doesn't add much useful information to the paper, so we have decided to remove this sentence.

9. Line 9: specify the temperature protocol you adopted.

We adopted the improved U.S. Interagency Monitoring of Protected Visual Environments (IMPROVE)-A thermal/optical reflectance protocol (Niu et al., 2017b). The residence time of each heating step was determined by the stabilization of the carbon signal. This has now been added to the text.

10. Line 20: the authors suggested different values of  $(OC/BC)_{min}$  should be used to estimate SOC for different dataset (pre- or after-monsoon season), but I didn't see the discussion about data processing.

Response: We have now added a discussion on different values of  $(OC/BC)_{min}$  in section 3.1 of the revised manuscript as follows.

“Note that the minimum value of OC/BC ratio is used in the SOC calculation, as described in Eqs. (1) and (2). It varies greatly among different seasons (i.e., 0.38, 0.71, 0.42 and 0.35 for winter, pre-monsoon, monsoon, and post-monsoon in Mt. Yulong, respectively), so seasonal minimum values are used to estimate SOC concentrations in the corresponding seasons.”

11. P8, line 1-4: given that “there is no standard or more perfect method of OC<sub>sec</sub> estimation (Yu et al., 2007)”, how can you claim that “BC-tracer method employed here is reliable in determining SOC concentrations.”

Response: We have now revised the statement to the following:

“The semi-empirical (BC-tracer technique) estimates of OC<sub>sec</sub> after screening for outliers are comparable to the empirical estimates, and sometimes are even superior to empirical estimates. Thus, we believe the BC-tracer method employed here is

acceptable in determining SOC concentrations.”

12. P10, line 29: needs solid evidence.

Response: We have now provided the following evidence to support the statement in the revised manuscript.

“An obviously higher BC and OC concentrations were found in the post-monsoon season at the Mt. Yulong site and in winter season at the GHZ site (Figs. 4 and 5) when wet removal by precipitation is inefficient. This suggests the importance of seasonal changes in sources (Carrico et al., 2003; Cong et al., 2015b; Wan et al., 2017). In addition, OC/BC ratio was usually employed to evaluate the combustion fuel sources. Previous studies reported that the global mean of OC/BC by biomass burning was higher than fossil fuel burning (Bond et al., 2004; Cao et al., 2010; Liousse et al., 1996). Vehicle emissions from numerous touring buses in the GHZ basin play an important role in the variations of OC/BC ratios.”

13. P11, line 9: NCO-P?

Response: NCO-P stands for Nepal Climate Observatory-Pyramid (NCO-P). We have noted this in the revised manuscript.

14. Line 13-15: needs solid evidence.

Response: This was based on conclusions of previous studies that are mentioned later in the text. We have decided to remove this statement here.

15. Line 17: keep a constant significance digit.

Response: Done as suggested for the entire manuscript.



16. Line 17-20: lacking of logic.

Response: We have revised the statement and provided solid evidence to support our argument in the revised manuscript.

“It is quite likely that frequent rainfall events with occasional dust (e.g., Dong et al., 2011; Niu et al., 2014) from anthropogenic activities (Shrestha et al., 2000) during the monsoon in 2015 are responsible for this unusual phenomenon (i.e. relatively high content in monsoon season in 2015).”

17. Line 21: the annual average concentrations of OC and SOC.

Response: This sentence has been revised as follows.

“... the annual average concentrations of OC and SOC,  $3.50 \pm 1.50 \mu\text{g m}^{-3}$  and  $2.20 \pm 1.40 \mu\text{g m}^{-3}$ , respectively, ...”

18. Line 23-25: any solid evidence?

Response: We don't have solid evidence, but we revised the text to reflect our hypothesis/assumption on this:

“Remote sources are likely to have a similar impact on aerosols over the two sites that are fairly close to each other. Therefore, the additional OC and SOC in the GHZ basin was more likely contributed by local sources such as fossil fuel (vehicle) emissions associated with the frequent and intense tourism activities, which is totally different from that of Mt. Yulong.”

19. P12, line3-5: missing reference or supporting evidence.

Response: We have rewritten this sentence to actually support the previous hypothesis on the impact of local vehicle emissions.

“... which is consistent with the assumption that the extensive vehicle emissions

contributed to SOC formation in the GHZ basin. The monsoon season is also the peak tourism season, and the strong solar radiation in summer (Fig. 2) can enhance the yield of SOC through photochemical reactions (Antony et al., 2011; Schneidemesser et al., 2009; Wan et al., 2017; Niu et al., 2017b, c).”

20. Line 6: “somewhat” should be avoided as much as possible in a scientific paper.

Response: We deleted the word “somewhat” in the revised manuscript.

21. Line 5-8: needs solid evidence.

Response: We have now made it clear in the revised manuscript.

“...The seasonal variation of carbonaceous aerosols found in the GHZ basin was different from that found in Mt. Yulong. It is likely related to the distinct elevation difference (nearly 1,500 m) and different amount of local human activities (here mainly referring to tourism related activities) between the Mt. Yulong and the GHZ sampling sites. The GHZ site location is close to a parking lot for private vehicles and touring buses and a visitor service center that involves food cooking. These tourism activities can contribute to local emissions of carbonaceous aerosols and precursor gases for SOC (Borrego et al., 2000; Cong et al., 2015a; Shi et al., 2017). However, we don’t have direct observational evidence to support this.”

22. Line 21-26: needs solid evidence.

Response: Please see our response to the previous comments on similar issues. There is no solid evidence for the statement, so we have removed it here.

23. P13, line 18: any reference?

Response: We have added two references to the statement.

“In addition, brown carbon (BrC) appearing in the particle mixture can decrease the BC MAE (Jeong et al., 2004; Hecobian et al., 2010).

24. Line 25: “apparent spatial discrepancy”?, I don’t think so.

Response: We have rephrased it to "a discernable small-scale spatial variation".

25. Line 28-30: unconvinced evidence. Any reference?

Response: We agree that the evidence is not convincing. The statement has been rewritten as “In addition to the elevation difference, other potential factors such as the more tourism activities near GHZ than at Mt. Yulong could partly account for the difference, but there is no observational evidence to support this.”

26. P14, line 2-5: I suggest the authors to explore the effects of precipitation on the difference of carbonaceous aerosols mass loadings measured in different years.

Response: Following the great suggestion, we analyzed the annual total precipitation amount (mm) in 2015 and 2016 observed at the Mt. Yulong and GHZ sites and added it to Fig. 11a, b. We have also included a discussion on the possible impact of precipitation on the difference of carbonaceous aerosols mass loading between 2015 and 2016 at the Mt. Yulong and GHZ sites as follows:

“Other factors likely contributed to the inter-annual difference as well. The amount of precipitation is important to determine aerosol wet removal from the atmosphere during the transport (e.g., Wang et al., 2015). The stronger precipitation in 2016 than in 2015 at Mt. Yulong (Fig. 11a) and GHZ (Fig. 11b) partly explains the smaller carbonaceous aerosols mass concentrations in 2016.”

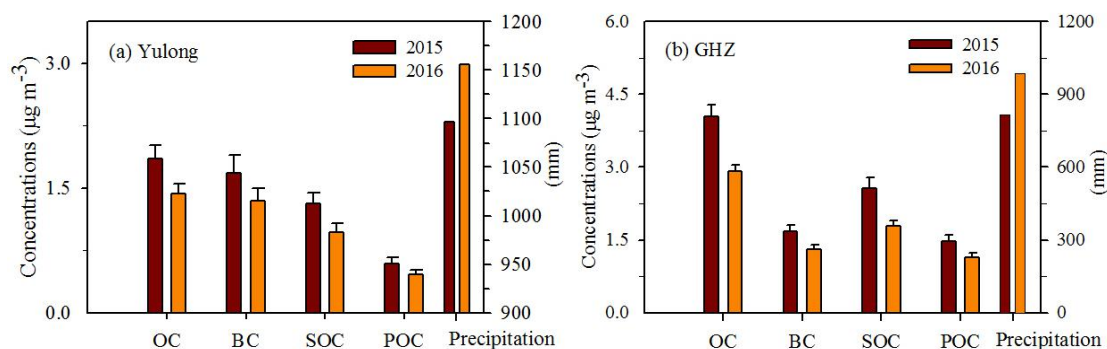


Fig. 11 (a) and (b)

27. Line 12-16: I am not sure if these results in previous studies were derived from TSP samples.

Response: We confirmed that the results in previous studies were derived from TSP samples.

28. P15, line 25-27: needs more solid evidences.

Response: This statement is based on the climate model simulation that used the 2010-2014 emissions. As discussed in our response to the major comment #3, we don't mean to attribute sources for BC measured at the sampling sites during 2015-2016, but rather to characterize the seasonal variation in the climatological mean source attribution. We have revised the sentence to clarify a little more.

“According to our climate model results, emissions (2010-2014) from East Asia, including local sources accounted in the emission dataset, have a dominant contribution to the near-surface BC in the Mt. Yulong area during the monsoon (78%) and post-monsoon (68%) seasons, as well as the winter season (53%).”

## RC 2

### Anonymous Referee #1

#### Comments to the Author

This manuscript presented a topic with spatial and temporal variability and light absorption property of carbonaceous aerosols (OC and BC) in a typical glacierization region of Tibetan plateau. However, there are several key issues that authors should address and enhance/clarify (see below):

(a) The annual mean OC/BC ratio was found to be highest in the monsoon season and lowest in winter. The author needs to mention, which types of photochemical reactions are involved that increased OC/BC ratio. Generally, photochemical reaction changing their physical and chemical properties from the original molecule of the substance. When this occurs, these molecules tend to form a new structure, or combine with each other or other molecules. This may change the state of OC or BC or OC/BC ratios.

Response: Following the great suggestion, we have added a discussion to the manuscript as follows.

“The aging process of BC (or soot) resulting from photochemical oxidation by molecular O<sub>2</sub> and the photooxidation of OC (Han et al., 2012) were likely involved and increased OC/BC ratio. Photochemical reaction can change their physical and chemical properties from the original molecule of the substance (alkyne C-H ( $\equiv$ C-H) and aromatic C-H (Ar-H)) (Kirchner et al., 2000; Cain et al., 2010). When this occurs, these molecules tend to form a new structure by combining with each other or with other molecules (carbonyl C=O and ether C-O) (Daly and Horn, 2009; Cain et al., 2010; Nieto-Gligorovski et al., 2008), which may change the state of OC, BC or OC/BC ratios. The photochemical oxidation by O<sub>2</sub> under sunlight is an important aging process for BC (Han et al., 2012).”

(b) Author mentioned that tourism activities in monsoon season were attributed to relatively high OC/BC ratios in Mt. Yulong region, especially in GHZ basin. Firstly, author did not define tourism activities in whole manuscript. Second, how do author think “tourism activities” term used for vehicles or buses emission. Please explain in scientific literature that indicates tourism related activities contributed to OC, BC emissions with reference to justify the statement.

Response: Following the suggestion, we have now explained a little more about how the tourism related activities contributed to OC, BC emissions along with some references (i.e. Borrego et al., 2000; Cong et al., 2015a; Shi et al., 2017). Below is the revised text:

“...The seasonal variation of carbonaceous aerosols found in the GHZ basin was different from that found in Mt. Yulong. It is likely related to the distinct elevation difference (nearly 1,500 m) and different amount of local human activities (here mainly referring to tourism related activities) between the Mt. Yulong and the GHZ sampling sites. The GHZ site location is close to a parking lot for private vehicles and touring buses and a visitor service center that involves food cooking. These tourism activities can contribute to local emissions of carbonaceous aerosols and precursor gases for SOC (Borrego et al., 2000; Cong et al., 2015a; Shi et al., 2017). However, we don’t have direct observational evidence to support this.”

(c) In the result and discussion part “human activities” creating difference in Mt. Yulong and GHZ basin. This is a major observation indicated by author, but there is no concrete evidence available to support the results particularly what types of human activities?

Response: Human activities in our manuscript mainly refer to local tourism related activities, including the use vehicles and food cooking near the sampling site. This has been clarified in the text. Please also refer to our response to the comment (b) for more details added to the revised manuscript.

(d) Comments: Authors stated that “A large amount of biomass burning emissions in the high atmosphere (around 5000 m asl) in Mt. Yulong were probably long range transported from source regions”. This observation is supported by the higher BC concentration than OC especially during monsoon season to post monsoon season. How do authors assume this observation without performing Trajectory analysis with HYSPLIT model? In order to find the transport of pollutant emission from biomass burning, author needs to perform trajectory analysis during the study period to support the results for Dec. 014 and Dec. 2016.

Response: Following the suggestion, we performed trajectory analysis with the HYSPLIT model. From the monsoon season to post monsoon season, the trajectory of air mass reaching the sampling location changed much. In the monsoon season, the air mass (and pollutants) mainly originated from southwest and southeast monsoons, while in the post monsoon season it mainly came from the west. However, we still cannot verify the source type. In response to similar comments from RC1, we have revised the text and removed the unverified statements.

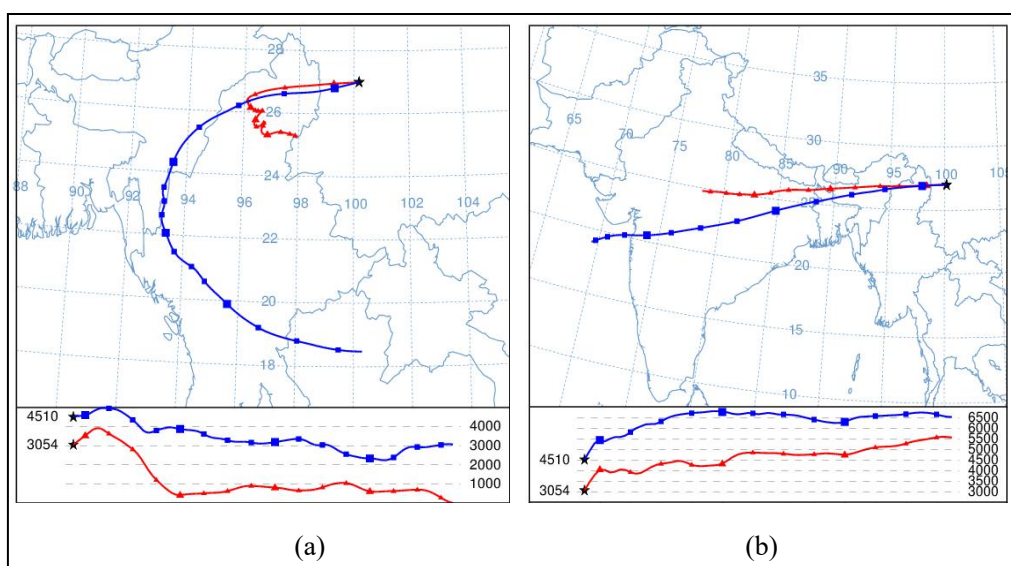


Fig. 7 Seven-day backward trajectory analysis with HYSPLIT model (a) in the monsoon and (b) post monsoon seasons during the study period (Source ★ at 27.01 N, 100.20 E). The trajectories of air mass in the plot were the average of a few

episodes. The two heights are the elevation of Mt. Yulong and GHZ, respectively.

(e) Authors selected experiment dates (December 2014-December 2016) for time series of meteorological parameters at Mt. Yulong. On the other hand, in model experimental part for CAM5, selected dates are 2010 to 2014, although the author stated the reason but for actual results synchronization, it should be similar dates to give clearer picture and what is base to select there years?

Response: we totally understand the concern here, which is similar to the major comment 3) of RC1. Please refer to our response there regarding the limitation and purpose of the climate model results. This has been clarified more in the revised manuscript.

(f) In result and discussion parts, author mentioned “seasonal changes in BC and OC sources (e.g., biomass burning vs. fossil fuel combustion) might play an important role for the variations of OC/BC ratios”. How does seasonal change affect in OC/BC ratio? Explain the reason and factors involved in this change.

Response: We totally understand the concern here, which is similar to the comment 12) of RC1. Below is the revised text:

"An obviously higher BC and OC concentrations were found in the post-monsoon season at the Mt. Yulong site and in winter season at the GHZ site (Fig. 4 and 5) when wet removal by precipitation is inefficient. This suggests the importance of seasonal changes in sources (Carrico et al., 2003; Cong et al., 2015b; Wan et al., 2017). In addition, OC/BC ratio was usually employed to evaluate the combustion fuel sources. Previous studies reported that the global mean of OC/BC by biomass burning was higher than fossil fuel burning (Bond et al., 2004; Cao et al., 2010; Liousse et al., 1996). Vehicle emissions from numerous touring buses in the GHZ basin play an important role in the variations of OC/BC ratios.



(g) How did author's calibrate the particulate sampling apparatus (TH150-Tianhong INST group)? And the quality assurance of this apparatus is not explained in manuscript.

Response: We calibrated the particulate sampling apparatus by weighting the mass of atmospheric gas filtrated by a vacuum pump, and recording the temperature of gas to calculate the virtual volume of gas during a specific collecting timescale. Then we made comparisons between the calculated value and the displayed volume of gas in the apparatus. In addition, we adjusted the flow of TSP (i.e. total suspended particulate), and recorded the meteorological parameters during the sampling period to timely calibrate the apparatus in case of inaccuracy. The quality assurance of this apparatus is explained in the revised manuscript:

“The quality assurance of this apparatus (TH150-A) is demonstrated by the difference between manually calculated volume of gas and automatically recorded value. The volume of atmospheric gas was usually recorded automatically by the apparatus. The air (and suspended particulates) was sampled at a flow rate of 100 L min<sup>-1</sup> with an accuracy of  $\pm 2.5\%$ , and each sample was collected for 24 h using a stable vacuum pump, which had a good quality and performance (e.g., running steadily with low noise level).”

Some minor revision is as follows:

(a) In the abstract part line 2-3 write down the name for adjoining areas.

Response: In addressing a comment of RC1, we deleted this sentence (... adjoining areas) in the abstract focus just on the most important and exciting findings.

(b) In the introduction part line 1-2 add Bond et al. 2007 reference to support the statement.

Response: We have now added Bond et al. (2007) reference to support the statement.

(c) In the introduction part line 3 - 4 use words as “ human health and living species” instead of using “living organisms”

Response: We have changed the "living organisms" to "human health and living species" in the revised manuscript.

(d) In the introduction part line 4 reference is missing.

Response: We have now added references for these points.

"... visibility (Park et al., 2003), atmospheric radiative balance (Bond et al., 2013; Schuckmann et al., 2016), and the surface albedo of snow and ice (Gertler et al., 2016; Kaspari et al., 2014; Niu et al., 2017a, b)."

(e) Page 4; line 4 Tibetan plateau (TP), abbreviation is already used in abstract part, so need to use full word.

Response: The sentence contains “Tibetan plateau (TP)” in the abstract was deleted, so the “TP” is now spelled out in the introduction, but we made sure that only the abbreviation is used thereafter.

(f) Page 5; line 12 please elaborate the model names that are not considered absorption by OC with reference.

Response: There are many of them, but we have now added one model name (CESM) and references as an example. CESM is a very popular community model that has many users, which is also used in this study.

“However, light absorption by OC has not yet been taken into consideration in many climate models, e.g., various versions of the Community Earth System Model (CESM) (Flanner and Zender, 2006; Wang et al., 2013; Qian et al., 2015; Liu et al., 2016), ...”

(g) In material and method part page 5; Line 29. This statement needs reference to support the arguments.

Response: This sentence doesn't add much useful information to the paper, so we have decided to remove this sentence.

(h) Page 6, line 13; use some other words instead of using “But”.

Response: Changed to “However, it becomes ...”.

(i) Page 6; line 16, Is there any other pollution sources? if yes please mention and explain their sources.

Response: Yes, there are other minor pollution sources. We have now mentioned them in the revised manuscript. The following is the revised statement.

“Besides the major emissions from tourist vehicles, there are some other limited pollution sources, such as agricultural waste burning, (open fire) biomass burning, and crustal aerosols (Niu et al., 2014, 2016) near the study sites.”

(j) Page 9; line 20, write down “Then they” instead of using “They then”

Response: Changed as suggested.

(k) Page 10; line 20 reference is missing

Response: We have added some references to support the statement:

It is quite likely that frequent rainfall events with occasional dust (e.g., Dong et al., 2011; Niu et al., 2014) from anthropogenic activities (Shrestha et al., 2000) during the monsoon in 2015 are responsible for this unusual phenomenon (i.e. relatively high content in monsoon season in 2015).

(l) Page 12; line 7 what type of human activities involved between Mt. Yulong and the GHZ sampling sites?

Response: The involved human activities are vehicle emissions and visitor services near the GHZ site but only sightseeing on Mt. Yulong. We have now made it clear in the revised manuscript. The following is the revised text.

“...The GHZ site location is close to a parking lot for private vehicles and touring buses and a visitor service center that involves food cooking. These tourism activities can contribute to local emissions of carbonaceous aerosols and precursor

gases for SOC (Borrego et al., 2000; Cong et al., 2015a; Shi et al., 2017). However, we don't have direct observational evidence to support this."

(m) Page 14; line 17 write down the full name for "QSMS".

Response: There was a typo in the abbreviation, which is supposed to be "QOMS". It stands for Qomolangma (Mt. Everest) Station for Atmospheric and Environmental Observation (Cong et al., 2015b).

(n) Page 17; line 11 add "in BC emission" after "contribution".

Response: Revised as suggested.

"East Asia has a dominant contribution in BC emission in the monsoon and post-monsoon seasons, ..."

(o) Page 41; Fig. 11. Is there any major difference or key observation that author found in current study which is actually different from others. Please explain in the footnotes of Fig.11.

Response: We have added a key message from the comparison in the caption of Fig. 11 (Fig. 12 of the revised manuscript):

"Annual mean BC concentrations at Mt. Yulong were rather low ( $\sim 1.5 \text{ g m}^{-3}$ ), while most of the compared BC concentrations (counted by number of measurements) were within the range of  $1.0\text{-}2.5 \text{ g m}^{-3}$ .

## References

- Andreae, M. O. and Gelencsér, A.: Black carbon or brown carbon? The nature of light-absorbing carbonaceous aerosols, *Atmos. Chem. Phys.*, 6, 3131-3148, doi:10.5194/acp-6-3131-2006, 2006.
- Antony, R., Mahalinganathan, K., Thampan, M.: Organic carbon in Antarctic snow: spatial trends and possible sources, *Environ. Sci. Technol.*, 45, 9944-9950, 2011.
- Bond, T. C., Streets, D. G., Yarber, K. F.: A technology-based global inventory of

- black and organic carbon emissions from combustion, *J. Geophys. Res-Atmos.*, 109(14), D14203. DOI:10.1029/2003JD003697, 2004.
- Bond, T. C., Bhardwaj, E., Dong, R., Jogani, R., Jung, S. K. Roden, C., Streets, D. G. and Trautmann, N. M.: Historical emissions of black and organic carbon aerosol from energy-related combustion, 1850-2000, *Global Biogeochem. Cycles*, 21(2), doi:10.1029/2006GB002840, 2007.
- Bond, T. C., et al.: Bounding the role of black carbon in the climate system: A scientific assessment, *J. Geophys. Res. Atmos.*, 118, 5380-5552, doi:10.1002/jgrd.50171, 2013.
- Borrego, C., Tchepel, O., Barros, N., Miranda, A.: Impact of road traffic emissions on air quality of the Lisbon region, *Atmos. Environ.*, 34, 4683-4690, 2000.
- Cain, J. P., Gassman, P. L., Wang, H., Laskin, A.: Micro-FTIR study of soot chemical composition-evidence of aliphatic hydrocarbons on nascent soot surfaces, *Phys Chem. Chem. Phys.*, 12(20), 5206-5218, 2010.
- Cao, J. J., Tie, X., Xu, B. Q., Zhao, Z., Zhu, C., Li G., Liu S.: Measuring and modeling black carbon (BC) contamination in the SE Tibetan Plateau, *J. Atmos. Chem.*, 67, 45-60, 2010.
- Carrico, C. J., Bergin, M. H., Shrestha, A. B.: The importance of carbon and mineral dust to seasonal aerosol properties in the Nepal Himalaya, *Atmos. Environ.*, 37, 2811-2824, 2003.
- Castro, L, P. C, Harrison, R. M, et al.: Carbonaceous aerosol in urban and rural European atmospheres: estimation of secondary organic carbon concentrations, *Atmos. Environ.*, 33, 2771-2781, 1999.
- Cheng, Y., He, K. B., Zheng, M., Duan, F. K., Du, Z. Y., Ma, Y. L., Tan, J. H.: Mass absorption efficiency of elemental carbon and water-soluble organic carbon in Beijing, China, *Atmos. Chem. Phys.*, 11, 11497-11510, 2011a.
- Cong, Z. Y., Kawamura, K., Kang, S. C., et al.: Penetration of biomass-burning emissions from South Asia through the Himalayas: new insights from atmospheric organic acids, *Scientific Report*, 5, 9580, Doi:10.1038/srep09580, 2015a.

- Cong, Z. Y., Kang, S. C., Kawamura, K.: Carbonaceous aerosols on the south edge of the Tibetan Plateau: concentrations, seasonality and sources, *Atmos. Chem. Phys.*, 15, 1573-1584, 2015b.
- Daly, H. M., Horn, A. B.: Heterogeneous chemistry of toluene, kerosene and diesel soots, *Phys. Chem. Chem. Phys.* 11(7), 1069-1076, 2009.
- Dong, Z. W., Li, Z. Q., Ross, E., Wu, L. H., Zhou, P.: Temporal characteristics of mineral dust particles in precipitation of Urumqi River Valley in Tian Shan, China: a comparison of alpine site and rural site, *Atmos. Res.*, 101, 294-306, 2011.
- Flanner, M. G. and Zender, C. S.: Linking snowpack microphysics and albedo evolution, *J. Geophys. Res.-Atmos.*, 111, D12208, doi:10.1029/2005jd006834, 2006.
- Gertler, C. G., Puppala, S. P., Panday, A., Stumm, D., Shea, J.: Black carbon and the Himalayan cryosphere: a review. *Atmos. Environ.*, 125, 404-417, 2016.
- Han, C., Liu, Y. C., Ma, J. Z., He, H.: Key role of organic carbon in the sunlight-enhanced atmospheric aging of soot by O<sub>2</sub>, *Proc. Natl. Acad. Sci. USA*, 109 (52), 21250-21255, 2012.
- Hecobian, A., Zhang, X., Zheng, M., Frank, N., Edgerton, E. S., Weber, R. J.: Water-soluble organic aerosol material and the light-absorption characteristics of aqueous extracts measured over the Southeastern United States, *Atmos. Chem. Phys.*, 10, 5965-5977, 2010.
- Jeong, C. H., Hopke, P. K., Kim, E., and Lee, D. W.: The comparison between thermal-optical transmittance elemental carbon and Aethalometer black carbon measured at multiple monitoring sites, *Atmos. Environ.*, 38, 5193-5204, 2004.
- Kaspari, S. D., Painter, T. H., Gysel, M., Skiles, S. M., Schwikowski, M.: Seasonal and elevational variations of black carbon and dust in snow and ice in the Solu-Khumbu, Nepal and estimated radiative forcings, *Atmos. Chem. Phys.*, 14, 8089-8103, 2014.
- Kirchner, U., Scheer, V., Vogt, R.: FTIR spectroscopic investigation of the mechanism and kinetics of the heterogeneous reactions of NO<sub>2</sub> and HNO<sub>3</sub> with

- soot, *J. Phys. Chem. A*, 104, 8908-8915, 2000.
- Liu, X., Ma, P.-L., Wang, H., Tilmes, S., Singh, B., Easter, R. C., Ghan, S. J., and Rasch, P. J.: Description and evaluation of a new four-mode version of the Modal Aerosol Module (MAM4) within version 5.3 of the Community Atmosphere Model, *Geosci. Model Dev.*, 9, 505-522, <https://doi.org/10.5194/gmd-9-505-2016>, 2016.
- Liousse, C., Penner, J. E., Chuang, C.: A global three-dimensional study of carbonaceous aerosols, *J. Geophys. Res-Atmos.*, 101(D14), 19411-19432, 1996.
- Ming, J., Wang, P. L., Zhao, S. Y., Chen, P. F.: Disturbance of light-absorbing aerosols on the albedo in a winter snowpack of Central Tibet, *J. of Environ. Sci.*, 25(8), 1601-1607, 2013.
- Nieto-Gligorovski, L., et al.: Interactions of ozone with organic surface films in the presence of simulated sunlight: Impact on wettability of aerosols, *Phys. Chem. Chem. Phys.*, 10(20), 2964-2971, 2008.
- Niu, H. W., He, Y. Q., Lu, X. X., Shen, J.: Chemical composition of rainwater in the Yulong Snow Mountain region, Southwestern China, *Atmos. Res.*, 144, 195-206, 2014.
- Niu, H. W., He, Y. Q., Kang, S. C., Lu, X. X.: Chemical compositions of snow from Mt. Yulong, southeastern Tibetan Plateau, *J. Earth Syst. Sci.*, 125(2), 403-416, 2016.
- Niu, H. W., Kang, S. C., Shi, X. F.: In-situ measurements of light-absorbing impurities in snow of glacier on Mt. Yulong and implications for radiative forcing estimates, *Sci. of the Tot. Environ.*, 581-582, 848-856, 2017a.
- Niu, H. W., Kang, S. C., Zhang, Y. L., Shi, X. F.: Distribution of light-absorbing impurities in snow of glacier on Mt. Yulong, southeastern Tibetan Plateau, *Atmos. Res.*, 197, 474-484, 2017b.
- Niu, H. W., Kang, S. C., Shi, X. F.: Water-soluble elements in snow and ice on Mt. Yulong, *Sci. of the Tot. Environ.*, 574, 889-900, 2017c.
- Pachauri, T., Singla, V., Satsangi, A.: Characterization of carbonaceous aerosols with special reference to episodic events at Agra, India, *Atmos. Res.*, 128, 98-110,

2013.

- Park, R. J., Jacob, D. J., Chin, M., Martin, R. V.: Sources of carbonaceous aerosols over the United States and implications for natural visibility, *J. Geophys. Res.*, 108(D12), 4355, doi:10.1029/2002JD003190, 2003.
- Qian, Y., Yasunari, T., Doherty, S. J.: Light-absorbing particles in snow and ice: Measurement and modeling of climatic and hydrological impact, *Adv. Atmos. Sci.*, 32, 64-91, 2015.
- Ram, K., Sarin, M. M.: Atmospheric carbonaceous aerosols from Indo-Gangetic Plain and Central Himalaya: Impact of anthropogenic sources, *Journal of Environmental Management*, 148, 153-163, 2015.
- Schneidmesser, E. V., Schauer, J. J., Hagler, G. S. W.: Concentrations and sources of carbonaceous aerosol in the atmosphere of Summit, Greenland, *Atmos. Environ.*, 43, 4155-4162, 2009.
- Schuckmann, K. V., Palmer, M. D., Trenberth, K. E.: An imperative to monitor Earth's energy imbalance, *Nature Climate Change*, 6, DOI: 10.1038/NCLIMATE2876, 2016.
- Shi, X. F., Niu, H. W., He, Y. Q.: Characteristics of rainwater chemistry in Lijiang-Yulong Snow Mountain, *Environmental Chemistry* 36(5), 994-1002, 2017. (in Chinese with English abstract)
- Shrestha, A. B., Wake, C. P., Dibb, J. E., Mayewski, P., Whitlow, S.: Seasonal variations in aerosol concentrations and compositions in the Nepal Himalaya, *Atmos. Environ.* 34, 3349-3363, 2000.
- Wan, X., Kang, S. C., Li, Q. L., Rupakhetiet, D., Zhang, Q. G., Guo, J. M., Chen, P. F.: Organic molecular tracers in the atmospheric aerosols from Lumbini, Nepal, in the northern Indo-Gangetic Plain: Influence of biomass burning. *Atmos. Chem. Phys.*, 17, 8867-8885, 2017.
- Wang, H., Easter, R. C., Rasch, P. J., Wang, M., Liu, X., Ghan, S. J., Qian, Y., Yoon, J.-H., Ma, P.-L., and Vinoj, V.: Sensitivity of remote aerosol distributions to representation of cloud–aerosol interactions in a global climate model, *Geosci. Model Dev.*, 6, 765-782, doi:10.5194/gmd-6-765-2013, 2013.



- Wang, M., Xu, B. Q., Cao, J. J., et al.: Carbonaceous aerosols recorded in a southeastern Tibetan glacier: analysis of temporal variations and model estimates of sources and radiative forcing, *Atmos. Chem. Phys.*, 15, 1191-1204, 2015.
- Xu, B. Q., Wang, M., Joswiak, D. R., Cao, J. J., Yao, T. D., Wu, G. J., Yang, W., Zhao, H. B.: Deposition of anthropogenic aerosols in a southeastern Tibetan glacier, *J. Geophys. Res.*, 114, D17209, doi:10.1029/2008JD011510, 2009b.

## Seasonal variation and light absorption property of carbonaceous aerosol in a typical glacier region of the southeastern Tibetan Plateau

Hewen Niu<sup>a</sup>, Shichang Kang<sup>a,\*</sup>, Hailong Wang<sup>b,\*</sup>, Rudong Zhang<sup>c, b</sup>, Xixi Lu<sup>d</sup>, Yun Qian<sup>b</sup>,

5 Shijin Wang<sup>a</sup>, Rukumesh Paudyal<sup>a</sup>, Xiaofei Shi<sup>e</sup> and Xingguo Yan<sup>f</sup>

<sup>a</sup> State Key Laboratory of Cryospheric Science, Northwest Institute of Eco-Environment and Resources, Chinese Academy of Sciences, Lanzhou 730000, China.

<sup>b</sup> Atmospheric Sciences and Global Change Division, Pacific Northwest National Laboratory  
10 (PNNL), Richland, WA 99352, USA

<sup>c</sup> Institute for Climate and Global Change Research, School of Atmospheric Sciences, Nanjing University, Nanjing, China; Collaborative Innovation Center of Climate Change, Jiangsu Province, China.

<sup>d</sup> Department of Geography, National University of Singapore, 1 Arts Link, Singapore 117570,  
15 Singapore

<sup>e</sup> College of Earth Environmental Sciences, Lanzhou University, Lanzhou 730000, China.

<sup>f</sup> College of Geography and Environmental Science, Northwest Normal University, Lanzhou 730030, China

\* Corresponding authors: shichang.kang@lzb.ac.cn; Hailong.Wang@pnnl.gov

20

25

## Abstract:

Deposition and accumulation of light-absorbing carbonaceous matters on glacier surfaces can alter the energy balance of glaciers. In this study, two years (December 2014 to December 2016) of continuous observations of carbonaceous aerosols in glacierized region of Mt. Yulong and Ganhaizi (GHZ) basin are analyzed. The average black carbon (BC) and organic carbon (OC) concentrations were  $1.51 \pm 0.93$  and  $2.57 \pm 1.32 \mu\text{g m}^{-3}$ , respectively. The average secondary OC (SOC) concentration, quantified using BC-tracer method, was  $1.67 \pm 1.15 \mu\text{g m}^{-3}$ . Although the annual mean OC/BC ratio was  $2.45 \pm 1.96$ , monthly mean BC concentrations during the post-monsoon season were even higher than OC in the high altitudes (approximately 5000 m asl) of Mt. Yulong. Strong photochemical reactions and local tourism activities were likely the main factors inducing high OC/BC ratios in the Mt. Yulong region during the monsoon season. The mean mass absorption efficiency (MAE) of BC, measured for the first time in Mt. Yulong, at 632 nm with a thermal-optical carbon analyzer under the filter-based method, was  $6.82 \pm 0.73 \text{ m}^2 \text{ g}^{-1}$ , comparable with the results from other studies. Strong seasonal and spatial variations of BC MAE were largely related to the OC and SOC abundance. Source attribution analysis using a global aerosol-climate model, equipped with a BC source tagging technique, suggests that East Asia emissions, including local sources, have the dominant contribution (over 50%) to annual mean near-surface BC in the Mt. Yulong area. There is also a strong seasonal variation in the regional source apportionment. South Asia has the largest contribution in BC emission during the pre-monsoon season, while East Asia dominates the monsoon season and post-monsoon season. Results in this study have great implications for accurately evaluating the influences of carbonaceous matter on glacial melting and water resource supply in glacierization areas.

## 1. Introduction

Carbonaceous aerosols play an important role in Earth's climate system and energy budget (Bond et al., 2007, 2013; Schuckmann et al., 2016). It has sophisticated/complex effects on the human health and living species (Jerret et al., 2005), visibility (Park et al., 2003), atmospheric radiative balance (Bond et al., 2013; Schuckmann et al., 2016), and the surface albedo of snow and ice (Gertler et al., 2016; Kaspari et al., 2014; Niu et al., 2017a, b). Carbonaceous aerosol is an aggregate of thousands of species with various thermal, physicochemical and optical properties (Andreae and Gelencsér, 2006; Cheng et al., 2011a). In the atmosphere, carbonaceous aerosols affect the radiative balance by absorbing and scattering solar radiation and affecting the properties of clouds (IPCC, 2013; Lohmann and Feichter, 2005; Carslaw et al., 2010). In the cryosphere, deposition of carbonaceous matter on snow and glaciers reduces the surface spectral albedo (snow darkening) (Flanner et al., 2009; Doherty et al., 2013; Qian et al., 2015; Niu et al., 2017a) and accelerates snow/glacial melting (Hansen and Nazarenko, 2004; Xu et al., 2009a).

Carbonaceous matter in smoke/emissions from biomass burning and fossil fuel combustion has been identified as the typical atmospheric pollutant since historical period (Brimblecombe, 1987). Recently, scientific attention has shifted from the role of carbonaceous matter as atmospheric pollutant to its influence as one of driving factors of climate change (Andreae, 1995; Andreae and Gelencsér, 2006; Hansen et al., 2005; Ramanathan et al., 2005). Some model simulations proposed that the radiative forcing of black carbon (BC) is comparable to that of methane (Chung and Seinfeld, 2005; Jacobson, 2004), suggesting that BC may be the second most important warming agent (only after CO<sub>2</sub>) in terms of direct radiative forcing (Jacobson, 2001). Ding et al. (2016) found that BC particles play a key role in modifying/heating the planetary boundary layer (PBL) and enhancing the haze pollution, called the “dome effect” of BC, and suggested an urgent need for reducing BC emissions to mitigate the extreme haze pollution in megacities in China. In addition, high concentrations of absorbing aerosols (e.g., BC, brown carbon, and/or dust) over eastern China during

winter and spring were found to be the major reason for the observed recent warming trend (Yu et al., 2001). BC in snow can increase the surface air-temperature by approximately 1.0 °C over the Tibetan Plateau (TP) and reduce spring snow cover (Qian et al., 2011). Generally, sampled carbonaceous aerosols can be divided into  
5 elemental carbon (EC) and organic carbon (OC) using thermal/optical reflectance (TOR) method (Cao et al., 2010; Chow et al., 1993), and EC is usually denoted by BC (e. g., Cheng et al., 2011a; Ming et al., 2013; Xu et al., 2009b) which is assumed to have a nearly elemental composition. This is most suitable to diesel soot or lamp black, where BC has a chemical composition close to EC (Andreae and Gelencsér,  
10 2006). Moreover, in the low-latitude and high-elevation areas, extensive incoming solar radiation and large amount of carbonaceous aerosol deposited on snowpack and glaciers result in surface albedo reduction and the retreat of glaciers in the TP, and further affect Asian hydrological cycle and monsoon climate (Qian et al., 2011; Qu et al., 2014; Li et al., 2016a). This is closely related to water resources for a large  
15 population of local habitants in South Asia (Ramanathan et al., 2005, 2007). Therefore, it is rather important and necessary to carry out carbonaceous aerosol study in glacierization regions.

The mass absorption efficiency (MAE,  $\text{m}^2 \text{g}^{-1}$ ) is a typical parameter characterizing the optical (or light absorbing) properties of aerosols. For BC particles, it is  
20 determined by the mass concentration ( $\mu\text{g m}^{-3}$ ) and absorption coefficient ( $b_{\text{abs}}$ ,  $\text{Mm}^{-1}$ ) of BC (Liousse et al., 1993; Chen et al., 2011), where  $b_{\text{abs}}$  is the cross section of BC available to absorb light (Bond and Bergstrom 2006a; Knox et al., 2009). MAE of BC is usually estimated using quartz filter based methods, which detect the change in the light transmittance through a quartz filter due to the presence of BC particles (Sharma  
25 et al., 2002; Knox et al., 2009; Cheng et al., 2011a). Bond and Bergstrom (2006a) suggested a mass-normalized MAE of  $7.5 \pm 1.2 \text{ m}^2 \text{g}^{-1}$  at 550 nm for uncoated aerosol particles. However, Ram and Sarin (2009) studied the  $b_{\text{abs}}$  and MAE of BC in aerosols sampled at three typical sites in India, and they found a distinct spatio-temporal variability in  $b_{\text{abs}}$  and BC MAE on a regional scale. Discrepancies are sometimes  
30 inevitable for the filter based techniques related to aerosol-filter interactions (Cheng et

al., 2011a; Ssandradewi et al., 2008). Moreover, the MAE of BC can be largely influenced by the aerosol mixing state (Bond et al., 2006b; Doran et al., 2007; Jacobson, 2001; Schnaiter et al., 2005). It was proposed that non-carbon species (e.g., sulphate, nitrate) can increase the MAE value of BC (Knox et al., 2009) because the coating by other components can focus light into the BC core of the particle (Bergstrom et al., 1982; Cheng et al., 2011a). Enhancement of MAE by coating can be described in terms of absorption amplification that is largely independent of coating thickness (Schnaiter et al., 2005; Knox et al., 2009). Therefore, it is quite necessary to make a further analysis on BC MAE to reduce the uncertainties in evaluating light absorption of carbonaceous aerosols.

Recently, in addition to BC, it has been recognized that certain organic carbon (OC) components in carbonaceous aerosol can also absorb light (Andreae and Gelencsér, 2006; Cheng et al., 2011a). However, light absorption by OC has not yet been taken into consideration in many climate models, e.g., various versions of the Community Earth System Model (CESM) (Flanner and Zender, 2006; Wang et al., 2013; Qian et al., 2015; Liu et al., 2016), which causes certain uncertainties in precisely evaluating climate/radiative forcing of carbonaceous aerosol in the atmosphere and snow/ice. The radiative forcing of carbonaceous aerosol remains one of the great challenges in climate simulation (Jacobson, 2001; IPCC, 2013).

In this study, total suspended particulates (TSP) were simultaneously collected at two remote stations on Yulong Snow Mountain (abbreviated Mt. Yulong), in the southeast fringe of the TP. Small scale spatial and seasonal variations of atmospheric carbonaceous matter are examined, and the corrected BC MAE is calculated to evaluate light-absorbing property of carbonaceous aerosol in the typical glacierization area. Cloud-Aerosol Lidar with Orthogonal Polarization (CALIOP) is used to retrieve total attenuated backscatter and sub-type information of smoke plumes to help on source attribution of carbonaceous aerosols in Mt. Yulong.

## 2. Material and methods

### 2.1 Study area and TSP sampling

The study area, Mt. Yulong (26°59'-27°17' N, 100°04'-100°15' E), is the

southernmost glaciated mountain in the Eurasian continent (Fig. 1). The Baishui glacier (27°06'16 N; 100°11'44 E) on Mt. Yulong is a typical temperate glacier that has large energy fluxes, particularly at lower snow-covered elevations. The climate of Mt. Yulong is typically affected by the Indian summer monsoon and East Asian summer monsoon (Nie et al., 2017) in the monsoon season (June-September), and characterized by other three distinct seasons: post-monsoon (Oct. - Nov.), winter (Dec. - Feb.), pre-monsoon (Mar. - May) season (Chen et al., 2015; Cong et al., 2015b; Bonasoni et al., 2010; Niu et al., 2013). Annual precipitation in Mt. Yulong occurs considerably (~80%) in the monsoons season (Fig. 2). There is little precipitation in winter when the westerly jet dominates (Liu et al., 2017).

One of the TSP sampling sites is at the elevation of 4510.25 m asl, which is close to the location of the upper station (27°06 16.953 N, 100°11 59.297 E) of tourism cableway on Mt. Yulong. Ganhaizi (GHZ) basin, the other TSP sampling site (27°06 08.285 N, 100°15 25.418 E), is located on the east side and the foot of Mt. Yulong, at an elevation of 3054.05 m asl. It is separated from the urban area. However, it becomes an increasingly popular tourist destination, with a geological museum and a golf course. Moreover, there is a spacious parking lot and a tourist dining-center in GHZ. Besides the major emissions from tourist vehicles, there are some other limited pollution sources, such as agricultural waste burning, (open fire) biomass burning, and crustal aerosols (Niu et al., 2014, 2016) near the study sites. These two sampling sites are located on the southeast fringe of the TP, away from urban areas, and thus considered as typical remote areas in the Northern Hemisphere (Li et al., 2016a) and ideal observation areas for atmospheric environment in glacierization region.

The TSP samples analyzed in this study were collected from December 2014 to December 2016 at these two sites using a particulate sampling apparatus (TH150-A, Wuhan Tianhong INST Group). The sampling apparatuses were placed 15 m above the ground, away from the surface dust and any specific pollutant sources. The quality assurance of this apparatus (TH150-A) is demonstrated by the difference between manually calculated volume of gas and automatically recorded value. The volume of atmospheric gas was usually calculated automatically by the apparatus. The air (and

suspended particulates) was sampled at a flow rate of  $100 \text{ L min}^{-1}$  with an accuracy of  $\pm 2.5\%$ , and each sample was collected for 24 h using a stable vacuum pump, which had a good quality and performance (e.g., running steadily with low noise level). The sampling interval for each TSP sample was 6 days. The number of aerosol samples collected at Mt. Yulong and GHZ was 117 and 120, respectively. The collected TSP samples were loaded on 90 mm (in diameter) pre-combusted (heating at  $550^\circ\text{C}$  for 6 h in an oven) quartz fibre filters (Whatman Corp.).

After sampling, the quartz filters were wrapped with an aluminum foil and were kept in a refrigerator at  $4^\circ\text{C}$  in the Yulong Glacier Station of Chinese Academy of Sciences in Lijiang city, and then were transported to the State Key Laboratory of Cryospheric Science in Lanzhou city for chemical analysis.

## 2.2 Sample analysis

OC and BC on the quartz filters were analyzed using a Desert Research Institute (DRI) Model 2001 thermal-optical reflectance carbon analyzer (Atmoslytic Inc., Calabasas, California) to determine the BC mass and optical attenuation (ATN) (Chow et al., 2001, 2004; Cheng et al., 2011a; Li et al., 2016b; Niu et al., 2017a). We adopted the improved U.S. Interagency Monitoring of Protected Visual Environments (IMPROVE)-A thermal/optical reflectance protocol (Niu et al., 2017b). Every filter was analyzed for a portion of carbon in a  $0.502 \text{ cm}^2$  punch. A temperature peak ( $550^\circ\text{C}$ ) was designed to reduce measuring time that BC exposed in the catalyzing atmosphere. The applied heating conditions permitted the separation of BC portions in  $\text{O}_2$  (2%) and helium (98%) atmosphere and OC portions in a helium atmosphere (Wang et al., 2015; Niu et al., 2017a). The residence time of each heating step was determined by the stabilization of the carbon signal.

## 2.3 Calculation methods of SOC, ATN and MAE

### 2.3.1 SOC calculation

$$\text{OC}_{\text{pri}} = (\text{BC} \cdot (\text{OC}/\text{BC})_{\text{min}}, \text{OC}_{\text{tot}})_{\text{min}} \quad (1)$$

$$\text{OC}_{\text{sec}} = \text{OC}_{\text{tot}} - \text{OC}_{\text{pri}} \quad (2)$$

where  $(\text{OC}/\text{BC})_{\text{min}}$  is the minimum OC/BC ratio in a specific set of data, the same sets of samples as used in this study.  $\text{OC}_{\text{pri}}$  indicates the primary OC (or POC) content.



SOC (i.e.  $OC_{sec}$ ) is calculated as the difference between total OC content ( $OC_{tot}$ ) and  $OC_{pri}$ . The  $OC_{pri}$  is constrained so that it may not exceed the  $OC_{tot}$  (Yu et al., 2004, 2007). The minimum OC/BC (OC-to-BC) ratio was suggested for use in the calculation of SOC concentration in several previous studies (Castro et al., 1999; 5 Cong et al., 2015b; Ram and Sarin, 2015; Pachauri et al., 2013). Semi-empirical BC-tracer technique was employed in the SOC calculation, and  $OC_{sec}$  was set to zero in cases where  $(OC/BC)_{pri} > (OC_{tot}/BC)$  (Yu et al., 2007). These cases are indicative of model overestimations of  $(OC/EC)_{pri}$ . The semi-empirical estimates of  $OC_{sec}$  after screening for outliers are comparable to the empirical estimates, and sometimes are 10 even superior to empirical estimates. Thus, we believe the BC-tracer method employed here is acceptable in determining SOC concentrations.

### 2.3.2 ATN calculation

The ATN is calculated based on the transmittance signal during the filter analysis, defined as

$$15 \quad ATN = \ln\left(\frac{I_0}{I}\right)$$

where  $I_0$  and  $I$  are the transmittance signal after and before the thermal/optical analysis (Ram and Sarin, 2009). Lights passing through a particle-loaded and a blank filter were simultaneously measured in the determination of ATN by the (thermal-optical reflectance) carbon analyzer. ATN determined by the carbon analyzer 20 is similar to the Aethalometer (Cheng et al., 2011a). Previous studies have demonstrated that ATN of blank quartz fibre filters averaged  $0.00 \pm 0.01$ , suggesting that the ATN of loaded quartz filter could generally be ascribed to the existence of light-absorbing carbon (Yang et al., 2009; Cheng et al., 2011a).

### 2.3.3 MAE calculation

25 The mass absorption efficiency (MAE) is calculated as:

$$MAE = \frac{ATN}{BC_s} \times 10^2 \times \frac{1}{C}$$

where  $BC_s$  ( $\mu\text{g C cm}^{-2}$ ) is the filter loading amount of BC, which is directly measured from the thermal optical analysis. The filter-based determination of light absorption

has many artifacts, though the various scattering effects can be properly corrected by an empirical factor,  $C$ . A value of  $C = 3.6$  was proposed for the internally mixed atmospheric aerosol when employing thermal-optical analysis method in several studies (Weingartner et al., 2003; Doran et al., 2007; Ram and Sarin, 2009; Cheng et al., 2011a). The same empirical factor was also used in the optical measurement by the Aethalometer (Ram and Sarin, 2009). There are many factors (e.g., measurement methods, mixed states) accounting for the discrepancy of MAE. The corrected equation of MAE calculation (i.e., corrected for the multiple scattering effects) performed in this study has greatly diminished the uncertainties (around 15%). By converting previously published MAE values (Ram and Sarin, 2009) to the equivalent-MAE, Cheng et al. (2011a) has found that the equivalent-MAE was much lower in the regions severely affected by biomass burning (e.g., Allahabad, India).

The dependence of light attenuation (ATN) detected at 632 nm on BC loading ( $BC_s$ ) is shown in Fig. 3, to identify the artifact relevant to filter-based measurements. As a result, ATN and  $BC_s$  correlate well ( $R^2=0.83$ ) with a slope ( $K$ ) of  $0.08 \text{ m}^2 \text{ g}^{-1}$  and an intercept ( $b$ ) of  $0.35 \text{ m}^2 \text{ g}^{-1}$  for our samples at the Mt. Yulong sampling site. Strong correlation ( $R^2=0.62$ ) between ATN and  $BC_s$  also exists for the GHZ sampling site, with  $K=0.08 \text{ m}^2 \text{ g}^{-1}$  and  $b=0.45 \text{ m}^2 \text{ g}^{-1}$ . Strong dependence of ATN on  $BC_s$  has been found in the present study, and artifact associated with filter-based method was not identified and thus can be neglected.

## 2.4 Model experiment

We use a global aerosol-climate model, the Community Atmosphere Model version 5 (CAM5) equipped with a BC source tagging technique (Wang et al., 2013, 2014; Zhang et al., 2015), to help estimate the source attribution of BC in the Mt. Yulong area. The 4-mode modal aerosol scheme of CAM5 recently developed by Liu et al. (2016) is used here, in which BC and primary OC particles are emitted into a primary-carbon mode. Then they grow through condensation of gas-phase precursors (e.g., sulfuric and organic gases) and move to the accumulation size mode, where hygroscopic aerosol particles, including carbonaceous aerosols, are subject to wet removal by precipitation.

The CAM5 experiment is conducted for five years (2010-2014) at horizontal grid spacing of  $1.9^{\circ} \times 2.5^{\circ}$  and 30 vertical levels. The sea surface temperatures and sea ice concentrations are prescribed with observations, and winds are constrained with reanalysis from NASA Modern Era Retrospective-Analysis for Research and Applications (MERRA) (Rienecker et al., 2011; Ma et al., 2013). Monthly mean anthropogenic and open fire emissions (Hoesly et al., 2017; van Marle et al., 2017; Yang et al. 2017), including primary OC, SOC gases and BC, used in the simulation come from the recently released datasets for the Coupled Model Intercomparison Project Phase 6 (CMIP6), which are only available up to year 2014. **Therefore, the model experiment is not designed to simulate the two-year observations of aerosols in TP, but rather for a recent time period (2010-2014) to estimate the mean source attributions and seasonal variations of near-surface BC concentrations.**

### 3. Results and discussion

#### 3.1 Characteristics of the carbonaceous aerosols

Temporal variations of carbonaceous matter measured from Mt. Yulong are shown in Fig. 4. Distinct seasonal differences presented during the sampling time period. The winter season and post-monsoon season had higher concentrations of carbonaceous matter in the TSP during the two years, which is consistent for BC, OC, SOC, and POC. However, the OC/BC ratio showed an opposite seasonal contrast. Monsoon season in 2016 had the lowest carbonaceous matter contents in the two-year time period (Fig. 4), whereas the concentrations of OC, BC, and POC in the monsoon and pre-monsoon season in 2015 presented relatively high and low values, respectively. **This is uncharacteristic, compared to the general seasonal variations of atmospheric chemistry (Kang et al., 2004, 2007; Niu et al., 2013, 2016). It is quite likely that frequent rainfall events with occasional dust (e.g., Dong et al., 2011; Niu et al., 2014) from anthropogenic activities (Shrestha et al., 2000) during the monsoon in 2015 are responsible for this unusual phenomenon (i.e. relatively high content in monsoon season in 2015). Note that the minimum value of OC/BC ratio is used in the SOC calculation, as described in Eqs. (1) and (2). It varies greatly among different seasons (i.e., 0.38, 0.71, 0.42 and 0.35 for winter, pre-monsoon, monsoon, and post-monsoon**

in Mt. Yulong, respectively), so seasonal minimum values are used to estimate SOC concentrations in the corresponding seasons.

In comparison to Mt. Yulong, the trends of carbonaceous matter from the GHZ basin presented more distinct seasonal variations (Fig. 5), i.e., the monsoon season regularly had the lowest concentrations of BC, OC, SOC, and POC. The OC/BC ratio was consistently opposite to that, e.g., higher values of OC/BC appeared in monsoon seasons. Lower ratio of OC/BC in the other seasons (winter, pre-monsoon, post-monsoon) was probably attributed to the little material available for external-coating of BC, and the limited photochemical ability of OC during the non-monsoon season (Knox et al., 2009). In addition, seasonal changes in BC and OC sources (e.g., biomass burning vs. fossil fuel combustion) might play an important role for the variations of OC/BC ratios. An obviously higher BC and OC concentrations were found in the post-monsoon season at the Mt. Yulong site, and in winter season at the GHZ site (Fig. 4 and 5) when wet removal by precipitation is inefficient. This suggests the importance of seasonal changes in sources (Carrico et al., 2003; Cong et al., 2015b; Wan et al., 2017). In addition, OC/BC ratio was usually employed to evaluate the combustion fuel sources. Previous studies reported that the global mean of OC/BC by biomass burning was higher than fossil fuel burning (Bond et al., 2004; Cao et al., 2010; Liousse et al., 1996). Vehicle emissions from numerous touring buses in the GHZ basin play an important role in the variations of OC/BC ratios.

Table 1 summarizes statistical results of BC, OC, SOC, and POC concentrations in atmospheric aerosol from Mt. Yulong. The annual mean BC concentration was  $1.53 \pm 1.49 \mu\text{g m}^{-3}$ , with the sampled values ranging from 0.02 to  $6.83 \mu\text{g m}^{-3}$  during the study period (December 2014-December 2016). The post-monsoon season had the highest BC content of  $3.51 \pm 1.20 \mu\text{g m}^{-3}$ , ranging from 1.22 to  $5.80 \mu\text{g m}^{-3}$ . The annual average OC and SOC concentrations were  $1.65 \pm 1.14 \mu\text{g m}^{-3}$  and  $1.15 \pm 0.96 \mu\text{g m}^{-3}$ , respectively, with the lowest concentrations in the monsoon season (OC:  $1.34 \pm 0.90 \mu\text{g m}^{-3}$  and SOC:  $0.96 \pm 0.80 \mu\text{g m}^{-3}$ ) and the highest concentrations in the post-monsoon season (OC:  $2.57 \pm 1.30 \mu\text{g m}^{-3}$  and SOC:  $1.42 \pm 1.20 \mu\text{g m}^{-3}$ ). Similar

seasonal differences were also found in other areas such as Lumbini, Nepal (Wan et al., 2017), Nepal Climate Observatory-Pyramid (NCO-P) (Bonasoni et al., 2010), Kanpur, India (Ram et al., 2012), and Delhi, India (Mandal et al., 2014). Moreover, monthly averaged BC and OC concentrations were analyzed for Mt. Yulong (Fig. 6).

- 5 It shows that from the monsoon season to the post-monsoon season (particularly from September to December), BC concentrations were higher than that of OC. A large amount of biomass burning emissions in the high atmosphere (around 5000 m asl) in Mt. Yulong were probably transported from distant source regions which can be determined by the analysis of CALIOP retrievals and source apportionment of carbonaceous aerosols (see section 3.4). In addition, we performed trajectory analysis with the HYSPLIT model. From the monsoon season to post monsoon season, the trajectories of air mass reaching the sampling location changed much. In the monsoon season, the air mass (and pollutants) mainly originated from southwest and southeast monsoons, while in the post monsoon season it mainly came from the west (Fig. 7).
- 15 The annual mean OC/BC ratio was found to be highest in the monsoon season and lowest in winter. The aging process of BC (or soot) resulting from photochemical oxidation by molecular O<sub>2</sub> and the photooxidation of OC (Han et al., 2012) were likely involved and increased OC/BC ratio. Photochemical reaction can change their physical and chemical properties from the original molecule of the substance (alkyne C-H ( $\equiv$ C-H) and aromatic C-H (Ar-H)) (Kirchner et al., 2000; Cain et al., 2010). When this occurs, these molecules tend to form a new structure by combining with each other or with other molecules (carbonyl C=O and ether C-O) (Daly and Horn, 2009; Cain et al., 2010; Nieto-Gligorovski et al., 2008), which may change the state of OC, BC or OC/BC ratios. The photochemical oxidation by O<sub>2</sub> under sunlight is an
- 25 important aging process for BC (Han et al., 2012).

Statistical results of BC, OC, SOC, and POC concentrations in aerosol from the GHZ site are shown in Table 2. The annual average BC concentration,  $1.50 \pm 0.90 \mu\text{g m}^{-3}$ , is comparable with that from Mt. Yulong ( $1.53 \pm 1.49 \mu\text{g m}^{-3}$ ). However, the annual average concentrations of OC and SOC,  $3.50 \pm 1.50 \mu\text{g m}^{-3}$  and  $2.20 \pm 1.40 \mu\text{g m}^{-3}$ , respectively, were greatly higher than those from Mt. Yulong. Remote sources

30

are likely to have a similar impact on aerosols over the two sites that are fairly close to each other. Therefore, the additional OC and SOC in the GHZ basin was more likely contributed by local sources such as fossil fuel (vehicle) emissions associated with the frequent and intense tourism activities, which is totally different from that of Mt.

5 **Yulong.** Maximum seasonal mean BC and OC concentration occurred in the winter season (BC:  $2.42 \pm 0.74 \mu\text{g m}^{-3}$ , OC:  $4.09 \pm 1.70 \mu\text{g m}^{-3}$ , respectively) in the GHZ basin, and their lowest concentrations conventionally occurred in monsoons season (BC:  $0.75 \pm 0.30 \mu\text{g m}^{-3}$ , OC:  $2.80 \pm 0.80 \mu\text{g m}^{-3}$ , respectively). The pre-monsoon season had the highest SOC concentration of  $2.45 \pm 1.30 \mu\text{g m}^{-3}$ , ranging from  
10  $0.17\text{--}6.10 \mu\text{g m}^{-3}$ . The mean SOC concentration in the monsoon season was larger than the post-monsoon SOC in the GHZ basin (Table 2), which is consistent with the assumption that the extensive vehicle emissions contributed to SOC formation in the GHZ basin. The monsoon season is also the peak tourism season, and the strong solar radiation in summer (Fig. 2) can enhance the yield of SOC through photochemical  
15 reactions (Antony et al., 2011; Schneidemesser et al., 2009; Wan et al., 2017; Niu et al., 2017b, c). The seasonal variation of carbonaceous aerosols found in the GHZ basin was different from that found in Mt. Yulong. It is likely related to the distinct elevation difference (nearly 1,500 m) and different amount of local human activities (here mainly referring to tourism related activities) between the Mt. Yulong and the  
20 GHZ sampling sites. The GHZ site location is close to a parking lot for private vehicles and touring buses and a visitor service center that involves food cooking. These tourism activities can contribute to local emissions of carbonaceous aerosols and precursor gases for SOC (Borrego et al., 2000; Cong et al., 2015a; Shi et al., 2017). However, we don't have direct observational evidence to support this.

25 The OC/BC ratios at the two sites were relatively low, and they have distinct seasonal variations and spatial differences over the Mt. Yulong region. The annual average value was  $2.06 \pm 3.38$  for Mt. Yulong, with the highest value occurred in the pre-monsoon season ( $3.67 \pm 5.70$ ) and the lowest value in the post-monsoon season ( $0.79 \pm 0.40$ ) (Table 1). Monthly variation of the average OC/BC ratio was  
30 determined by the relative concentrations of BC and OC in aerosol, for example, the

lowest OC/BC ratio occurred in post-monsoon was due to substantially high BC concentrations in that season (Fig. 6). The annual mean OC/BC ratio in samples from the GHZ basin was  $2.90 \pm 1.80$ , while the monsoon season had the highest value ( $4.40 \pm 2.00$ ) and the winter season had the lowest value ( $1.93 \pm 1.58$ ) (Table 2). Previous studies suggested that OC/BC ratios from biofuel and biomass burning emissions are generally higher than those from fossil fuel combustion (Cao et al., 2013; Ram et al., 2012; Cong et al., 2015b; Wan et al., 2017). Strong photochemical reactions (due to extensive solar radiation) (Fig. 2) and tourism activities in the monsoon season (is the peak season for tourism) were likely the main factors that result in relatively high OC/BC ratios in GHZ. In addition, high OC/BC ratios are closely related to the OC concentration ( $2.80 \pm 0.80 \mu\text{g m}^{-3}$ ) and the formation of large amount of SOC ( $2.14 \pm 0.70 \mu\text{g m}^{-3}$ ) in the monsoon season in GHZ site (Table 2) when extensive photochemical processes were proceeded (e.g., Antony et al., 2011; Schneidemesser et al., 2009).

### 3.2 Optical properties of BC

The corrected MAE values of BC at 632 nm (calculated using the equation in section 2.3.3) were  $7.38 \pm 1.01$  and  $6.25 \pm 0.46 \text{ m}^2 \text{ g}^{-1}$  for Mt. Yulong and GHZ samples, respectively. The BC MAE has distinct seasonal variations, with the peak of BC MAE values in the pre-monsoon and monsoon seasons at Mt. Yulong and GHZ, respectively (Fig. 8). The high MAE values suggest an enhancement of MAE (or absorption amplification) by external-coating with OC (particularly SOC) (Cheng et al., 2011a; Knox et al., 2009; Schnaiter et al., 2005). Strong seasonal and spatial differences of BC MAE values in Mt. Yulong and GHZ largely related to OC and SOC abundance. Furthermore, the variations of weekly mean MAE are consistent with the variations of OC concentration and SOC/OC ratio in Mt. Yulong (Fig. 9 and 10), and agree well with the trend of OC/BC ratio (Fig. 10). MAE and POC/OC ratio, ATN, and  $\text{BC}_s$  are negatively correlated. The correlations between MAE and OC/BC ratio, SOC/OC ratio, and OC appear to be substantially influenced by the OC abundance. The availability of POC or SOC for external-coating is responsible for the variations of mean BC MAE (Knox et al., 2009). Values of atmospheric BC MAE are

also dependent on the extent of internal-mixing of the BC with other substances (Cappa et al., 2012; Schnaiter et al., 2005). Atmospheric BC light absorption is linearly proportional to the BC concentration since BC particles are small enough (Schwarz et al., 2013).

5 Many previous studies have quantified the BC MAE values at various sites (Bond and Bergstrom, 2006a; Cheng et al., 2011a; Knox et al., 2009; Ram and Sarin, 2009; Li et al., 2016c). However, large uncertainties exist among different calculation approaches. Measurement methods of ATN and EC<sub>s</sub> (various temperature protocols) definitely affect the BC MAE (Cheng et al., 2011a, b; Li et al., 2016c). In addition,  
10 brown carbon (BrC) appearing in the particle mixture can decrease the BC MAE (Jeong et al., 2004; Hecobian et al., 2010). BrC is less absorptive comparing with pure BC (Cheng et al., 2011a). BrC emitted from biomass burning considerably lower MAE values (Jeong et al., 2004). Whereas coating by organic aerosol (particularly SOC) or mixing-state can enhance the MAC values (Knox et al., 2009; Zhang et al.,  
15 2008). Higher absorption cross-sections result from coating processes in the atmosphere (Andreae and Gelencsér, 2006; Bond et al., 2013). BC particles in aerosol, due to condensation processes and/or cloud processing, acquire non-absorbing coatings (mainly sulfate and OC), which lead to absorption enhancements (Andreae and Gelencsér, 2006; Fuller et al., 1999; Schnaiter et al., 2005).

### 20 3.3 Controls of carbonaceous matter components

Our results show that carbonaceous matter (BC, OC, SOC) in aerosol exhibited a discernable small-scale spatial variation between Mt. Yulong and GHZ. In addition to the elevation difference, other potential factors such as the more tourism activities near GHZ than at Mt. Yulong could partly account for the difference, but there is no  
25 observational evidence to support this.

In addition, inter-annual differences of carbonaceous aerosol from Mt. Yulong and GHZ were also distinct (Fig. 11). The annual mean concentrations of carbonaceous matter collected in 2016 were lower than those in 2015 for the two sites (Fig 11a, b), which could be partly due to the strict mitigation measures that improved the local  
30 atmospheric environment in the Mt. Yulong region. For example, the amount of soot



emissions (2.44 Tg C) in 2016 were reduced by 21.76% compared to 2015 in Yunnan province (<http://www.zhb.gov.cn/>), where Mt. Yulong locates. Other factors likely contributed to the inter-annual difference as well. The amount of precipitation is important to determine aerosol wet removal from the atmosphere during the transport (e.g., Wang et al., 2013). The stronger precipitation in 2016 than in 2015 at Mt. Yulong and GHZ (Fig. 11a, b) partly explains the smaller carbonaceous aerosols mass concentrations in 2016. The average OC/BC ratios also decreased in 2016 compared to 2015, whereas the mean SOC/OC and POC/OC ratios have no obvious difference between the two years in both Mt. Yulong and GHZ (Fig. 11).

We also compare atmospheric BC concentrations in Mt. Yulong with other (results derived from TSP samples) interested areas. It shows that BC concentrations in Mt. Yulong aerosol were relatively low and, among the compared values, most of BC concentrations were within the range of 1.0-2.5  $\mu\text{g m}^{-3}$  (Fig. 12), while some of values were extremely low (close to 0.5  $\mu\text{g m}^{-3}$ ) or high (above 6.0  $\mu\text{g m}^{-3}$ ). The low BC concentrations were typically found in the TP, e.g., QOMS (i. e. Qomolangma (Mt. Everest) Station for Atmospheric and Environmental Observation), TP (Cong et al., 2015b), pre-monsoon season in Mt Yulong. Whereas the BC concentrations in Agra, India ( $6.1 \pm 0.83 \text{ g m}^{-3}$ ) (Pachauri et al., 2013) were almost three folds of values found in Mt. Yulong. Agra and Lumbini have been identified as regions in the world that are highly affected by biomass burning (Wan et al., 2017). A large amount of carbonaceous aerosols emitted from those regions can reach Mt. Yulong by crossing the Himalayas (e.g., Lüthi et al., 2014), which substantially influence the Mt. Yulong region.

### 3.4 Source apportionments of carbonaceous aerosols

Aerosol vertical distributions from CALIOP retrievals often reveal that smoke plume could reach approximately 6 km (Fig. 13), which is higher than most of the mountains and mountain glaciers in the Himalaya regions. Some typical CALIOP/CALIPSO transections, having strong backscattering signal (i.e., 532 nm total attenuated backscatter), show spatially continuous atmospheric pollutant layers from the ocean all the way to Mt. Yulong (Fig. 13), indicating a penetration of smoke

plume toward the inland of the TP. Carbonaceous aerosols is an important anthropogenic driving force of the observed changes in the high elevations (> 5000 m asl) and remote regions (such as the TP and Himalayas region) (Lau et al., 2010; Ramanathan and Carmichael, 2008). It was reported that the pre-monsoon season is the major vegetation-fire period in the foothill areas of the southern Himalaya (Vadrevu et al., 2012; Putero et al., 2014), and the winds surrounding the Himalayas and TP could facilitate the transport of carbonaceous matter from South Asia to the Himalayas (Cong et al., 2015a; Dong et al., 2017b; Lau et al., 2010).

We analyze the CAM5 model results to quantify the source attributions of BC in the Mt. Yulong area. BC emissions from each of the four source regions in the surrounding area (i.e., South Asia, East Asia, Middle East and Southeast Asia) are explicitly tracked. Figure 14 shows the annual and seasonal mean relative contributions from the tagged source regions. The two sampling sites locate in the same model grid box, as marked in the figure. The modeled near-surface BC is predominately (more than 90%) from South Asia and East Asia. East Asia has a dominant contribution in the monsoon, post-monsoon and winter seasons, while South Asia dominates in the pre-monsoon season (Table 3). As discussed by Wang et al. (2015), circulation patterns during the monsoon and non-monsoon seasons largely determine the seasonal variations in the transport of aerosols from the different major sources to the southeastern TP. Strong precipitation during the monsoon season can substantially remove atmospheric BC during the transport, especially, from South Asia. Although smoke plumes can sometimes be lifted over the natural block of the Himalayas, they have relatively less important contribution to the surface than to the upper-level BC concentrations. According to our climate model results, emissions (2010-2014) from East Asia, including local sources accounted in the emission dataset, have a dominant contribution to the near-surface BC at the Mt. Yulong sites during the monsoon (78%) and post-monsoon (68%) seasons, as well as the winter season (53%). The seasonal changes in source apportionment also have an implication on the cause of variations in OC/BC ratios over the southeastern TP (e.g., Wang et al., 2015).

#### 4. Conclusions and remarks

Carbonaceous aerosols from the Mt. Yulong region and GHZ basin were measured to investigate the **small-scale** spatio-temporal variations and light-absorbing properties. Results of first two years of continuous observations show that the annual mean BC and OC concentrations in aerosol were  $1.51 \pm 0.93$  and  $2.57 \pm 1.32 \mu\text{g m}^{-3}$ ,  
5 respectively. The average SOC concentrations were  $1.67 \pm 1.15 \mu\text{g m}^{-3}$  determined using BC-tracer method.

Concentrations of carbonaceous matter displayed distinct seasonal differences, with the lowest content found in monsoon season and the highest concentration in winter season. Monthly mean BC concentrations in aerosols from monsoon to post-monsoon  
10 season were higher than OC, a large impact from biomass burning emissions in the high atmosphere (approximately 5000 m asl) of Mt. Yulong. The seasonal differences of carbonaceous matter found in GHZ basin were different with that in Mt. Yulong, distinct elevation difference and different degrees of human **(or tourism related)** activities between the two sites were the main reasons account for the discrepancy.  
15 Furthermore, high carbonaceous matter associated with OC in GHZ basin was mainly contributed from vehicle emissions. **Therefore**, there **was a discernable** spatial difference in the concentrations of carbonaceous matter in this glacierized region. Moreover, inter-annual differences of carbonaceous aerosols in Mt. Yulong and GHZ were also distinct. The annual mean concentrations of carbonaceous matter in 2016  
20 were lower than those in 2015, **partly indicating** the improvement of local **air quality** in the Mt. Yulong region.

The annual mean OC/BC ratio was  $2.45 \pm 1.96$  in Mt. Yulong, with the highest value in monsoon season ( $4.4 \pm 2.0$ ) and the lowest in winter ( $0.79 \pm 0.4$ ). Strong photochemical reactions and local tourism activities in monsoon season were **likely**  
25 the main factors resulting in relatively high OC/BC ratios in the Mt. Yulong region, particularly in GHZ basin.

BC MAE was quantified using a thermal-optical carbon analyzer, and was measured at 632 nm under the quartz filter-based method. The corrected mean BC MAE at 632 nm was  $6.82 \pm 0.73 \text{ m}^2 \text{ g}^{-1}$  in the Mt. Yulong region, comparable with the  
30 results in other studies. The trends of weekly mean BC MAE consistent with the

variations of OC concentrations, SOC/OC, and OC/BC ratios. **Strong seasonal variations and spatial difference** of BC MAE in the study area were largely related to the **OC abundance**. The enhancement of MAE was mainly due to external-coating of OC (particularly **SOC**) and/or mixing state.

5 To quantitatively estimate the source apportionment of BC **in the Mt. Yulong area**, we used a global aerosol-climate model, in which BC emissions from four regions (i.e., South Asia, East Asia, Middle East and Southeast Asia) are explicitly tracked. The five-year (2010-2014) mean results show that East Asia has the largest contribution (52%) to the annual mean near-surface BC concentration in this area,  
10 followed by South Asia (43%). There is a quite strong seasonal variation in the source apportionment. East Asia has a dominant contribution **in BC emission** in the monsoon and post-monsoon seasons, while South Asia dominates in the pre-monsoon season.

**The authors declare that they have no conflict of interest.**

15

## **Acknowledgements**

This work was supported by the National Natural Science Foundation of China (41601071, 41421061, 41225002), the "Light of West China" Program (Y62992) **and the independent program of SKLCS (SKLCS-22-2017)**, and China Postdoctoral  
20 Science Foundation (2015M582725, 2016T90963) and Youth Talent Program of CAREERI CAS (Y551C11001). R. Zhang acknowledges support from NSFC (41605041), Jiangsu Provincial Science Fund (BK20160621), Fundamental Research Funds for the Central Universities (020714380020) and International Postdoctoral Exchange Fellowship (20160046). H. Wang and Y. Qian acknowledge support from  
25 the U.S. Department of Energy (DOE), Office of Science, Biological and Environmental Research as part of the Earth System Modeling program. The Pacific Northwest National Laboratory (PNNL) is operated for DOE by Battelle Memorial Institute under contract DE-AC05-76RLO1830. The model simulations were performed using PNNL Institutional Computing resources.

30

## References

- Andreae, M. O.: Climatic effects of changing atmospheric aerosol levels, in: World Survey of Climatology, Future Climates of the World, edited by: Henderson-Sellers, A., Elsevier, Amsterdam, Vol. 16, pp. 341-392, 1995.
- Andreae, M. O. and Gelencsér, A.: Black carbon or brown carbon? The nature of light-absorbing carbonaceous aerosols, *Atmos. Chem. Phys.*, 6, 3131-3148, doi:10.5194/acp-6-3131-2006, 2006.
- Antony, R., Mahalinganathan, K., Thamban, M.: Organic carbon in Antarctic snow: spatial trends and possible sources, *Environ. Sci. Technol.*, 45, 9944-9950, 2011.
- Bergstrom, R. W., Ackerman, T. P., and Richards, L. W.: Optical properties of particulate elemental carbon. Particulate carbon: atmospheric life cycle, edited by: Wolff, G. T. and Klimisch, R. L., Plenum Press, New York, USA, 43-51, 1982.
- Bonasoni, P., Laj, P., Marinoni, A., Sprenger, M., Angelini, F., Arduini, J., Bonafe, U., Calzolari, F., Colombo, T., Decesari, S., Di Biagio, C., Di Sarra, A., Evangelisti, F., Duchi, R., Facchini, M., Fuzzi, S., Gobbi, G., Maione, M., Panday, A., Roccato, F., Sellegri, K., Venzac, H., Verza, G., Villani, P., Vuillermoz, E., Cristofanelli, P.: Atmospheric brown clouds in the Himalayas: first two years of continuous observations at the Nepal Climate Observatory-Pyramid (5079 m), *Atmos. Chem. Phys.* 10, 75150-7531, 2010.
- Bond, T. C., Streets, D. G., Yarber, K. F.: A technology-based global inventory of black and organic carbon emissions from combustion, *J. Geophys. Res-Atmos.*, 109(14), D14203. DOI:10.1029/2003JD003697, 2004.
- Bond, T. C., and Bergstrom, R. W.: Light absorption by carbonaceous particles: an investigative review, *Aerosol Sci. Technol.* 40:27-67, 2006a.
- Bond, T. C., Habib, G., and Bergstrom, R. W.: Limitations in the enhancement of visible light absorption due to mixing state, *J. Geophys. Res.*, 111, D20211, doi:10.1029/2006JD007315, 2006b.
- Bond, T. C., Bhardwaj, E., Dong, R., Jogani, R., Jung, S. K. Roden, C., Streets, D. G. and Trautmann, N. M.: Historical emissions of black and organic carbon aerosol

- from energy-related combustion, 1850-2000, *Global Biogeochem. Cycles*, 21(2), doi:10.1029/2006GB002840, 2007.
- Bond, T. C., et al.: Bounding the role of black carbon in the climate system: A scientific assessment, *J. Geophys. Res.-Atmos.*, 118, 5380-5552, doi:10.1002/jgrd.50171, 2013.
- Borrego, C., Tchepel, O., Barros, N., Miranda, A.: Impact of road traffic emissions on air quality of the Lisbon region, *Atmos. Environ.*, 34, 4683-4690, 2000.
- Brimblecombe, P.: The big smoke: a history of air pollution in London since medieval times, London, New York, Methuen, 185 p., 1987.
- 10 Cain, J. P., Gassman, P. L., Wang, H., Laskin, A.: Micro-FTIR study of soot chemical composition-evidence of aliphatic hydrocarbons on nascent soot surfaces, *Phys Chem. Chem. Phys.*, 12(20), 5206-5218, 2010.
- Cao, J. J., Tie, X., Xu, B. Q.: Measuring and modeling black carbon (BC) contamination in the SE Tibetan Plateau, *J. Atmos. Chem.*, 67, 45-60, 2010.
- 15 Cappa, C. D. et al.: Radiative absorption enhancements due to the mixing state of atmospheric black carbon, *Science*, 31, 337, 1078-1081, 2012.
- Carrico, C. J., Bergin, M. H., Shrestha, A. B.: The importance of carbon and mineral dust to seasonal aerosol properties in the Nepal Himalaya, *Atmos. Environ.*, 37, 2811-2824, 2003.
- 20 Carslaw, K. S., Boucher O., Spracklen D. V., Mann G. W., Rae J. G. L., Woodward S., Kulmala M.: A review of natural aerosol interactions and feedbacks within the Earth system, *Atmos. Chem. Phys.*, 10, 1701-1737, 2010.
- Castro, L, P. C, Harrison, R. M, et al.: Carbonaceous aerosol in urban and rural European atmospheres: estimation of secondary organic carbon concentrations, *Atmos. Environ.*, 33, 2771-2781, 1999.
- 25 Cao, J. J., Tie, X., Xu, B. Q., Zhao, Z., Zhu, C., Li G., Liu S.: Measuring and modeling black carbon (BC) contamination in the SE Tibetan Plateau, *J. Atmos. Chem.*, 67, 45-60, 2010.
- Cao, J. J., Zhu, C. S., Tie, X. X., Geng, F. H., Xu, H. M., Ho, S. S. H., Wang, G. H., Han, Y. M., Ho, K.F.: Characteristics and sources of carbonaceous aerosols from

- Shanghai, China, *Atmos. Chem. Phys.*, 13, 803-817, 10.5194/acp-13-803-2013, 2013.
- Chen, P. F, Kang, S. C, Li, C. L., Rupakheti, M., et al.: Characteristics and sources of polycyclic aromatic hydrocarbons in atmospheric aerosols in the Kathmandu Valley, Nepal, *Sci. of the Tot. Environ.*, 538, 86-92, 2015.
- Cheng, Y., He, K. B., Zheng, M., Duan, F. K., Du, Z. Y., Ma, Y. L., Tan, J. H.: Mass absorption efficiency of elemental carbon and water-soluble organic carbon in Beijing, China, *Atmos. Chem. Phys.*, 11, 11497-11510, 2011a.
- Cheng, Y., He, K. B., Duan, F. K., Zheng, M., Du, Z. Y., Ma, Y. L., Tan, J. H.: Ambient organic carbon to elemental carbon ratios: Influences of the measurement methods and implications, *Atmos. Environ.*, 45, 2060-2066, 2011b.
- Chow, J. C., Watson, J. G., Pritchett, L. C., Pierson, W. R., Frazier, C. A., and Purcell, R. G.: The DRI Thermal/Optical Reflectance carbon analysis system: description, evaluation and applications in U.S. air quality studies, *Atmos. Environ.*, 27A, 1185-1201, 1993.
- Chow, J. C, Watson, J. G., Crow, D.: Comparison of IMPROVE and NIOSH carbon measurements, *Aerosol Sci. Technol.*, 34, 23-34, 2001.
- Chow, J. C., Watson, J. G., Chen, L. W. A., et al.: Equivalence of elemental carbon by thermal/optical reflectance and transmittance with different temperature protocols, *Environ. Sci. Technol.* 38, 4414-4422, 2004.
- Chung, S. H., Seinfeld, J. H.: Climate response of direct radiative forcing of anthropogenic black carbon, *J. Geophys. Res.*, 110, D11102, doi:10.1029/2004JD005441, 2005.
- Cong, Z. Y., Kawamura, K., Kang, S. C., et al.: Penetration of biomass-burning emissions from South Asia through the Himalayas: new insights from atmospheric organic acids, *Scientific Report*, 5, 9580, Doi:10.1038/srep09580, 2015a.
- Cong, Z. Y., Kang, S. C., Kawamura, K.: Carbonaceous aerosols on the south edge of the Tibetan Plateau: concentrations, seasonality and sources, *Atmos. Chem. Phys.*, 15, 1573-1584, 2015b.
- Daly, H. M., Horn, A. B.: Heterogeneous chemistry of toluene, kerosene and diesel

soots, *Phys. Chem.*, 11(7), 1069-1076, 2009.

- Ding, A. J., Huang, X., Nie, W., Sun, J. N., Kerminen, V., Petäjä, T., Su, H., Cheng, Y. F., Yang, X. Q., Wang, M. H., Chi, X. G., Wang, J. P., Virkkula, A., Guo, W. D., Yuan, J., Wang, S. Y., Zhang, R. J., Wu, Y. F., Song, Y., Zhu, T., Zilitinkevich, S.,  
5 Kulmala, M., and Fu, C. B.: Enhanced haze pollution by black carbon in megacities in China, *Geophys. Res. Lett.*, 43, 2873-2879, 2016.
- Doherty, S. J., Grenfell, T. C., Forsström, S.: Observed vertical redistribution of black carbon and other insoluble light-absorbing particles in melting snow, *J. Geophys Res-Atmos.*, 118, 5553-5569, 2013.
- 10 Dong, Z. W., Li, Z. Q., Ross, E., Wu, L. H., Zhou, P.: Temporal characteristics of mineral dust particles in precipitation of Urumqi River Valley in Tian Shan, China: a comparison of alpine site and rural site, *Atmos. Res.*, 101, 294-306, 2011.
- Dong, Z. W., Kang, S. C., Qin, D. H., Qin, X., Yan, F. P., Du, W. T., Wei, T.: Temporal and diurnal analysis of trace elements in the Cryospheric water at remote Laohugou  
15 basin in northeast Tibetan Plateau, *Chemosphere*, 171, 386-398, 2017a.
- Dong, Z. W., Kang, S. C., Guo, J. M., Wang, X. J., Qin, D. H.: Composition and mixing states of brown haze particle over the Himalayas along two transboundary south-north transects. *Atmos. Environ.*, 156, 24-35, 2017b.
- Doran, J. C., Barnard, J. C., Arnott, W. P., Cary, R., Coulter, R., Fast, J. D., Kassianov, E. I., Kleinman, L., Laulainen, N. S., Martin, T., Paredes-Miranda, G., Pekour, M. S., Shaw, W. J., Smith, D. F., Springston, S. R., and Yu, X. Y.: The T1-T2 study: evolution of aerosol properties downwind of Mexico city, *Atmos. Chem. Phys.*, 7, 1585-1598, 2007.
- 25 Flanner, M. G. and Zender, C. S.: Linking snowpack microphysics and albedo evolution, *J. Geophys. Res.-Atmos.*, 111, D12208, doi:10.1029/2005jd006834, 2006.
- Flanner, M. G., Zender, C. S., Hess, P. G., Mahowald, N. M., Painter, T. H., Ramanathan, V., Rasch, P. J.: Springtime warming and reduced snow cover from carbonaceous particles, *Atmos. Chem. Phys.* 9, 2481-2497, doi:10.5194/acp-9-2481-2009, 2009.
- 30



- Fuller, K. A., Malm, W. C., and Kreidenweis, S. M.: Effects of mixing on extinction by carbonaceous particles, *J. Geophys. Res.*, 104, 15941-15954, 1999.
- Gertler, C. G., Puppala, S. P., Panday, A., Stumm, D., Shea, J.: Black carbon and the Himalayan cryosphere: a review. *Atmos. Environ.* 125, 404-417, 2016.
- 5 Han, C., Liu, Y. C., Ma, J. Z., He, H.: Key role of organic carbon in the sunlight-enhanced atmospheric aging of soot by O<sub>2</sub>, *Proc. Natl. Acad. Sci. USA*, 109 (52), 21250-21255, 2012.
- Hansen, J., and Nazarenko, L.: Soot climate forcing via snow and ice albedos, *Proc. Natl. Acad. Sci. USA*, 101(2), 423-428, doi:10.1073/pnas.2237157100, 2004.
- 10 Hansen, J., Sato, M., Ruedy, R., et al.: Efficacy of climate forcings, *J. Geophys. Res.*, 110, D18104, doi:10.1029/2005JD005776, 2005.
- Hecobian, A., Zhang, X., Zheng, M., Frank, N., Edgerton, E. S., Weber, R. J.: Water-soluble organic aerosol material and the light-absorption characteristics of aqueous extracts measured over the Southeastern United States, *Atmos. Chem. Phys.*, 10, 5965-5977, 2010.
- 15 Hoesly, R. M., Smith, S. J., Feng, L., Klimont, Z., Janssens-Maenhout, G., Pitkanen, T., Seibert, J. J., Vu, L., Andres, R. J., Bolt, R. M., Bond, T. C., Dawidowski, L., Kholod, N., Kurokawa, J. I., Li, M., Liu, L., Lu, Z., Moura, M. C. P., O'Rourke, P. R., and Zhang, Q.: Historical (1750-2014) anthropogenic emissions of reactive gases and aerosols from the Community Emission Data System (CEDS), *Geosci. Model Dev.*, 11, 369-408, 2018.
- 20 IPCC, 2013.: Summary for Policymakers. In: *Climate Change 2013: The Physical Science Basis. Contribution of Working Group I to the Fifth Assessment Report of the Intergovernmental Panel on Climate Change*, (Stocker, T. F., Qin, D., Plattner, G. K., et al.: Cambridge University Press, Cambridge, United Kingdom and New York: NY, USA. 129-234, 2013.)
- Jacobson, M. Z.: Strong radiative heating due to the mixing state of black carbon in atmospheric aerosols, *Nature*, 409, 695-697, 2001.
- Jacobson, M. Z.: Climate response of fossil fuel and biofuel soot, accounting for soot's feedback to snow and sea ice albedo and emissivity, *J. Geophys. Res.*, 109,
- 30

D21201, doi:10.1029/2004JD004945, 2004.

Jeong, C. H., Hopke, P. K., Kim, E., and Lee, D. W.: The comparison between thermal-optical transmittance elemental carbon and Aethalometer black carbon measured at multiple monitoring sites, *Atmos. Environ.*, 38, 5193-5204, 2004.

5 Jerret, M., Burnett, R. T., Ma, R., Pope, C. A., Krewski, D., Newbold, K. B., Thurston, G., Shi, Y., Finkelstein, N., Calle, E. E., and Thun, M. J.: Spatial analysis of air pollution and mortality in Los Angeles, *Epidemiology*, 16, 727-736, 2005.

Kang, S. C., Mayewski, P. A., Qin, D. H., Sneed, S. R., Ren, J. W. and Zhang, D. Q.: Seasonal differences in snow chemistry from the vicinity of Mt. Everest, central Himalayas, *Atmos. Environ.*, 38, 2819-2829, 2004.

Kang, S. C., Zhang, Q. Q., Kaspari, S. S., Qin, D. H., Cong, Z. Y., Ren, J. W. and Mayewski, P. A.: Spatial and seasonal variations of elements composition in Mt. Everest (Qomolangma) snow/firn, *Atmos. Environ.*, 41, 7208-7218, 2007.

Kaspari, S. D., Painter, T. H., Gysel, M., Skiles, S. M., Schwikowski, M.: Seasonal and elevational variations of black carbon and dust in snow and ice in the Solu-Khumbu, Nepal and estimated radiative forcings, *Atmos. Chem. Phys.*, 14, 8089-8103, 2014.

Kirchner, U., Scheer, V., Vogt, R.: FTIR spectroscopic investigation of the mechanism and kinetics of the heterogeneous reactions of NO<sub>2</sub> and HNO<sub>3</sub> with soot, *J. Phys. Chem. A*, 104, 8908-8915, 2000.

Knox, A., Evans, G. J., Brook, J. R., Yao, X., Jeong, C. H., Godri, K. J., Sabaliauskas, K., and Slowik, J. G.: Mass absorption cross-section of ambient black carbon aerosol in relation to chemical age, *Aerosol Sci. Technol.*, 43, 522-532, 2009.

Lau, W. K. M., Kim, M. K., Lee, W. S.: Enhanced surface warming and accelerated snow melt in the Himalayas and Tibetan Plateau induced by absorbing aerosols, *Environ. Res. Lett.*, 5, 025204, doi:10.1088/1748-9326/5/2/025204, 2010.

Li, C. L., Yan, F. P., Kang, S. C., et al.: Light absorption characteristics of carbonaceous aerosols in two remote stations of the southern fringe of the Tibetan Plateau, China, *Atmos. Environ.*, 143, 79-85, 2016a.

30 Li, C. L. et al.: Sources of black carbon to the Himalayan-Tibetan Plateau glaciers,

- Nat. Commun., 7, 12574, doi: 10.1038/ncomms12574, 2016b.
- Li, C. L., Chen, P. F., Kang, S. C., Yan, F. P., Hu, Z. F., Qu, B.: Concentrations and light absorption characteristics of carbonaceous aerosol in PM<sub>2.5</sub> and PM<sub>10</sub> of Lhasa city, the Tibetan Plateau, Atmos. Environ., 127, 340-346, 2016c.
- 5 Lioussé, C., Cachier, H., and Jennings, S. G.: Optical and thermal measurements of black carbon aerosol content in different environments: variation of the specific attenuation cross-section, sigma ( ), Atmos. Environ., 27A, 1203-1211, 1993.
- Liu, X., Ma, P.-L., Wang, H., Tilmes, S., Singh, B., Easter, R. C., Ghan, S. J., and Rasch, P. J.: Description and evaluation of a new four-mode version of the Modal  
 10 Aerosol Module (MAM4) within version 5.3 of the Community Atmosphere Model, Geosci. Model Dev., 9, 505-522, <https://doi.org/10.5194/gmd-9-505-2016>, 2016.
- Liu, J. B., Rühland, K. M., Chen, J. H., Xu, Y. Y., Chen, S. Q., Chen, Q. M., Huang, W., Xu, Q. H., Chen, F. H., Smol, J. P.: Aerosol-weakened summer monsoons decrease lake fertilization on the Chinese Loess Plateau, Nature Climate Change,  
 15 DOI:10.1038/NCLIMATE3220, 2017.
- Lioussé, C., Penner, J. E., Chuang, C.: A global three-dimensional study of carbonaceous aerosols, J. Geophys. Res-Atmos., 101(D14), 19411-19432, 1996.
- Lohmann, U. and Feichter, J.: Global indirect aerosol effects: a review, Atmos. Chem. Phys., 5, 715-737, 2005.
- 20 Lüthi, Z. L., Skerlak, B., Kim, S. W., et al.: Atmospheric brown clouds reach the Tibetan Plateau by crossing the Himalayas, Atmos. Chem. Phys., 14, 28105-28146, 2014.
- Ma, P. L., Rasch, P. J., Wang, H., Zhang, K., Easter, R. C., Tilmes, S., Fast, J. D., Liu, X., Yoon, J. H., and Lamarque, J. F.: The role of circulation features on black  
 25 carbon transport into the Arctic in the Community Atmosphere Model version 5 (CAM5), J. Geophys. Res.-Atmos., 118, 4657-4669, doi:10.1002/jgrd.50411, 2013.
- Mandal, P., Saud, T., Sarkar, R., Mandal, A., Sharma, S. K., Mandal, T. K., and Bassin, J. K.: High seasonal variation of atmospheric C and particle concentrations in Delhi, India, Environ. Chem. Lett., 12, 225-230, 10.1007/s10311-013-0438-y, 2014.
- 30 Ming, J., Wang, P. L., Zhao, S. Y., Chen, P. F.: Disturbance of light-absorbing aerosols

- on the albedo in a winter snowpack of Central Tibet, *J. of Environ. Sci.*, 25(8), 1601-1607, 2013.
- Nie, J., Garziona, C., Su, Q., Liu, Q., Zhang, R., Heslop, D., Necula, C., Zhang, S., Song, Y., Luo, Z.: Dominant 100,000-year precipitation cyclicity in a late Miocene lake from northeast Tibet, *Sci. Adv.* 3, e1600762. 2017.
- Nieto-Gligorovski, L., et al.: Interactions of ozone with organic surface films in the presence of simulated sunlight: Impact on wettability of aerosols, *Phys. Chem. Chem. Phys.*, 10(20), 2964-2971, 2008.
- Niu, H. W., He, Y. Q., Zhu, G. F., Xin, H. J., Du, J. K., Pu, T., Lu, X. X.: Environmental implications of the snow chemistry from Mt Yulong, southeastern Tibetan Plateau, *Quaternary International*, 313-314, 168-178, 2013.
- Niu, H. W., He, Y. Q., Lu, X. X., Shen, J.: Chemical composition of rainwater in the Yulong Snow Mountain region, Southwestern China, *Atmos. Res.*, 144, 195-206, 2014.
- Niu, H. W., He, Y. Q., Kang, S. C., Lu, X. X.: Chemical compositions of snow from Mt. Yulong, southeastern Tibetan Plateau, *J. Earth Syst. Sci.*, 125(2), 403-416, 2016.
- Niu, H. W., Kang, S. C., Shi, X. F.: In-situ measurements of light-absorbing impurities in snow of glacier on Mt. Yulong and implications for radiative forcing estimates, *Sci. of the Tot. Environ.*, 581-582, 848-856, 2017a.
- Niu, H. W., Kang, S. C., Zhang, Y. L., Shi, X. F.: Distribution of light-absorbing impurities in snow of glacier on Mt. Yulong, southeastern Tibetan Plateau, *Atmos. Res.*, 197, 474-484, 2017b.
- Niu, H. W., Kang, S. C., Shi, X. F.: Water-soluble elements in snow and ice on Mt. Yulong, *Sci. of the Tot. Environ.*, 574, 889-900, 2017c.
- Pachauri, T., Singla, V., Satsangi, A.: Characterization of carbonaceous aerosols with special reference to episodic events at Agra, India, *Atmos. Res.*, 128, 98-110, 2013.
- Park, R. J., Jacob, D. J., Chin, M., Martin, R. V.: Sources of carbonaceous aerosols over the United States and implications for natural visibility, *J. Geophys. Res.*, 108(D12), 4355, doi:10.1029/2002JD003190, 2003.

- Putero, D. et al.: Influence of open vegetation fires on black carbon and ozone variability in the southern Himalayas (NCO-P, 5079 m a.s.l.), *Environ. Pollut.*, 184, 597-604, 2014.
- Qian, Y., Flanner, M. G., Leung, L. R., Wang, W.: Sensitivity studies on the impacts of Tibetan Plateau snowpack pollution on the Asian hydrological cycle and monsoon climate, *Atmos. Chem. Phys.*, 11, 1929-1948, 2011.
- Qian, Y., Yasunari, T., Doherty, S. J.: Light-absorbing particles in snow and ice: Measurement and modeling of climatic and hydrological impact, *Adv. Atmos. Sci.*, 32, 64-91, 2015.
- 10 Qu, B., Ming, J., Kang, S. C., Zhang, G. S., Li, Y. W., Li, C. D., Zhao, S. Y., Ji, Z. M., Cao, J. J.: The decreasing albedo of the Zhadang glacier on western Nyainqentanglha and the role of light-absorbing impurities, *Atmos. Chem. Phys.*, 14, 11117-11128, 2014.
- Ram, K. and Sarin, M. M.: Absorption coefficient and site-specific mass absorption efficiency of elemental carbon in aerosols over urban, rural, and high-altitude sites in India, *Environ. Sci. Technol.*, 43, 8233-8239, 2009.
- 15 Ram, K., Sarin, M.M., and Tripathi, S. N.: A 1 year record of carbonaceous aerosols from an urban site in the Indo-Gangetic Plain: Characterization, sources, and temporal variability, *J. Geophys. Res.-Atmos.*, 115, 10.1029/2010jd014188, 2010.
- 20 Ram, K., Sarin, M. M., and Tripathi, S. N.: Temporal trends in atmospheric PM<sub>2.5</sub>, PM<sub>10</sub>, elemental carbon, organic carbon, water-soluble organic carbon, and optical properties: impact of biomass burning emissions in the Indo-Gangetic Plain, *Environ. Sci. Technol.*, 46, 686-695, 10.1021/es202857w, 2012.
- Ram, K., Sarin, M. M.: Atmospheric carbonaceous aerosols from Indo-Gangetic Plain and Central Himalaya: Impact of anthropogenic sources, *Journal of Environmental Management*, 148, 153-163, 2015.
- 25 Ramanathan, V., Chung, C., Kim, D., Bettge, T., Buja, L., Kiehl, J. T., Washington, W. M., Fu, Q., Sikka, D. R., and Wild, M.: Atmospheric brown clouds: Impacts on South Asian climate and hydrological cycle, *Proc. Natl. Acad. Sci. USA*, 102, 5326-5333, 2005.
- 30

- Ramanathan, V., Li, F., Ramana, M. V., Praveen, P. S., Kim, D., Corrigan, C. E., Nguyen, H., Stone, E. A., Schauer, J. J., Carmichael, G. R., Adhikary, B., Yoon, S. C.: Atmospheric brown clouds: hemispherical and regional variations in long-range transport, absorption, and radiative forcing, *J. Geophys. Res. Atmos.*, 112, 2007.
- 5 Ramanathan, V., Carmichael, G.: Global and regional climate changes due to black carbon, *Nature Geoscience*, 1(4), 221-227, doi: 10.1038/ngeo156, 2008.
- Rienecker, M. M., Suarez, M. J., Gelaro, R., Todling, R., Bacmeister, J., Liu, R., Bosilovich, M. G., Schubert, S. D., Takacs, L., Kim, G-K, Bloom, S., Chen, J., Collins, D., Conaty, A., da Silva, A., Gu, W., Joiner, J., Koster, R. D., Lucchesi, R.,
- 10 Molod, A., Owens, T., Pawson, S., Pegion, P., Redder, C. R., Reichle, R., Robertson, F. R., Ruddick, A. G., Sienkiewicz, M., and Woollen, J.: MERRA: NASA's modern-era retrospective analysis for research and applications, *J. Climate*, 24, 3624-3648, 2011.
- Schnaiter, M., Linke, C., Mohler, O., Naumann, K. H., Saathoff, H., Wagner, R.,
- 15 Schurath, U., and Wehner, B.: Absorption amplification of black carbon internally mixed with secondary organic aerosol, *J. Geophys. Res.*, 110, D19204, 2005.
- Schneidemesser, E. V., Schauer, J. J., Hagler, G. S. W.: Concentrations and sources of carbonaceous aerosol in the atmosphere of Summit, Greenland, *Atmos. Environ.*, 43, 4155-4162, 2009.
- 20 Schwarz, J. P., Gao, R. S., Perring, A. E., Spackman, J. R., and Fahey, D. W.: Black carbon aerosol size in snow, *Nat. Sci. Reports*, 3, 1356. doi:10.1038/srep01356, 2013.
- Schuckmann, K. V., Palmer, M. D., Trenberth, K. E.: An imperative to monitor Earth's energy imbalance, *Nature Climate Change*, 6, DOI: 10.1038/NCLIMATE2876,
- 25 2016.
- Sharma, S., Brook, J. R., Cachier, H., Chow, J., Gaudenzi, A., and Lu, G.: Light absorption and thermal measurements of black carbon in different regions of Canada, *J. Geophys. Res.*, 107, 4771, doi:10.1029/2002JD002496, 2002.
- Shi, X. F., Niu, H. W., He, Y. Q.: Characteristics of rainwater chemistry in
- 30 Lijiang-Yulong Snow Mountain, *Environmental Chemistry* 36(5), 994-1002, 2017.

(in Chinese with English abstract).

Shrestha, A. B., Wake, C. P., Dibb, J. E., Mayewski, P., Whitlow, S.: Seasonal variations in aerosol concentrations and compositions in the Nepal Himalaya, *Atmos. Environ.* **34**, 3349-3363, 2000.

- 5 Vadrevu, K. P. et al.: Vegetation fires in the Himalayan region - Aerosol load, black carbon emissions and smoke plume heights, *Atmos. Environ.*, **47**, 241-251, 2012.
- van Marle, M. J. E., Kloster, S., Magi, B. I., Marlon, J. R., Daniau, A. L., Field, R. D., Arneth, A., Forrest, M., Hantson, S., Kehrwald, N. M., Knorr, W., Lasslop, G., Li, F., Mangeon, S., Yue, C., Kaiser, J. W., and van der Werf, G. R.: Historic global biomass burning emissions based on merging satellite observations with proxies and fire models (1750-2015), *Geosci. Model Dev.*, **10**, 3329-3357, 2017.
- 10 Wan, X., Kang, S. C., Li, Q. L., Rupakhetiet, D., Zhang, Q. G., Guo, J. M., Chen, P. F.: Organic molecular tracers in the atmospheric aerosols from Lumbini, Nepal, in the northern Indo-Gangetic Plain: Influence of biomass burning. *Atmos. Chem. Phys.*, **17**, 8867-8885, 2017.
- 15 Wang, H., Easter, R. C., Rasch, P. J., Wang, M., Liu, X., Ghan, S. J., Qian, Y., Yoon, J.-H., Ma, P.-L., and Vinoj, V.: Sensitivity of remote aerosol distributions to representation of cloud-aerosol interactions in a global climate model, *Geosci. Model Dev.*, **6**, 765-782, doi:10.5194/gmd-6-765-2013, 2013.
- 20 Wang, H., Rasch, P. J., Easter, R. C., Singh, B., Zhang, R., Ma, P. L., Qian, Y., Ghan, S. J., and Beagley, N.: Using an explicit emission tagging method in global modeling of source-receptor relationships for black carbon in the Arctic: Variations, sources, and transport pathways, *J. Geophys. Res.-Atmos.*, **119**, 888-12,909, doi:10.1002/2014JD022297, 2014.
- 25 Wang, M., Xu, B. Q., Cao, J. J., et al.: Carbonaceous aerosols recorded in a southeastern Tibetan glacier: analysis of temporal variations and model estimates of sources and radiative forcing, *Atmos. Chem. Phys.*, **15**, 1191-1204, 2015.
- Weingartner, E., Saathoff, H., Schnaiter, M., Streit, N., Bitnar, B., and Baltensperger, U.: Absorption of light by soot particles: determination of the absorption coefficient by means of Aethalometers, *J. Aerosol Sci.*, **34**, 1445-1463, 2003.
- 30

- Xu, B. Q., and Coauthors: Black soot and the survival of Tibetan glaciers, *Proc. Natl. Acad. Sci. USA*, 106(52), 22 114-22 118, doi: 10.1073/pnas.0910444106, 2009a.
- Xu, B. Q., Wang, M., Joswiak, D. R., Cao, J. J., Yao, T. D., Wu, G. J., Yang, W., Zhao, H. B.: Deposition of anthropogenic aerosols in a southeastern Tibetan glacier, *J. Geophys. Res.*, 114, D17209, doi:10.1029/2008JD011510, 2009b.
- Yu, S. C., Saxena, V. K., and Zhao, Z.: A comparison of signals of regional aerosol-induced forcing in eastern China and the southeastern United States, *Geophys. Res. Lett.*, 28, 713-716, 2001.
- Yu, S. C., Dennis, R. L., Bhawe, P. V., Eder, B. K.: Primary and secondary organic aerosols over the United States: estimates on the basis of observed organic carbon (OC) and elemental carbon (EC), and air quality modeled primary OC/EC ratios, *Atmos. Environ.*, 38, 5257-5268, 2004.
- Yu, S. C., Bhawe, P. V., Dennis, R. L., and Mathur, R.: Seasonal and regional variations of primary and secondary organic aerosols over the continental United States: Semi-empirical estimates and model evaluation, *Environ. Sci. & Tech.*, 41(13), 4690-4697, 2007.
- Zhang, R., Wang, H., Qian, Y., Rasch, P. J., Easter, R. C., Ma, P.-L., Singh, B., Huang, J., and Fu, Q.: Quantifying sources, transport, deposition, and radiative forcing of black carbon over the Himalayas and Tibetan Plateau, *Atmos. Chem. Phys.*, 15, 6205-6223, <https://doi.org/10.5194/acp-15-6205-2015>, 2015.
- Zhang, T., Claeys, M., Cachier, H., Dong, S. P., Wang, W., Maenhaut, W., and Liu, X. D.: Identification and estimation of the biomass burning contribution to Beijing aerosol using levoglucosan as a molecular marker, *Atmos. Environ.*, 42, 7013-7021, 2008.
- Zhao, Z., Cao, J., Shen, Z., Xu, B., Zhu, C., Chen, L. W. A., Su, X., Liu, S., Han, Y., and Wang, G.: Aerosol particles at a high-altitude site on the Southeast Tibetan Plateau, China: implications for pollution transport from South Asia, *J. Geophys. Res.-Atmos.*, 118, 11360-11375, 2013.



Table 1

Statistical results of BC, OC, SOC, and POC concentrations ( $\mu\text{g m}^{-3}$ ) and OC/BC ratios in aerosol from Mt. Yulong during Dec. 2014-Dec. 2016.

	Annual (n=120)		Winter (n=36)		Pre-monsoon (n=34)		Monsoon (n=33)		Post-monsoon (n=17)	
	Mean $\pm$ SD	Range	Mean $\pm$ SD	Range	Mean $\pm$ SD	Range	Mean $\pm$ SD	Range	Mean $\pm$ SD	Range
OC	1.65 $\pm$ 1.14	0.07-5.96	1.75 $\pm$ 0.8	0.51-3.66	1.37 $\pm$ 1.2	0.07-5.73	1.34 $\pm$ 0.9	0.24-4.6	2.57 $\pm$ 1.3	0.99-5.96
BC	1.53 $\pm$ 1.49	0.02-6.83	1.81 $\pm$ 1.5	0.02-6.83	0.55 $\pm$ 0.4	0.03-1.77	1.25 $\pm$ 1.2	0.04-3.9	3.51 $\pm$ 1.2	1.22-5.8
OC/BC	2.06 $\pm$ 3.38	0.35-20.9	1.45 $\pm$ 1.1	0.38-5.55	3.67 $\pm$ 5.7	0.7-22.9	1.85 $\pm$ 1.8	0.42-8.3	0.79 $\pm$ 0.4	0.35-2.27
SOC	1.15 $\pm$ 0.96	0.06-5.44	1.15 $\pm$ 0.5	0.32-2.56	1.18 $\pm$ 1.2	0.06-5.44	0.96 $\pm$ 0.8	0.19-4.5	1.42 $\pm$ 1.2	0.19-4.59
POC	0.53 $\pm$ 0.53	0.009-2.4	0.63 $\pm$ 0.5	0.008-2.39	0.19 $\pm$ 0.1	0.01-0.62	0.43 $\pm$ 0.4	0.01-1.3	1.24 $\pm$ 0.4	0.42-2.04

Table 2

Statistical results of BC, OC, SOC, and POC concentrations ( $\mu\text{g m}^{-3}$ ) and OC/BC ratios in aerosol from GHZ during Dec. 2014-Dec. 2016.

	Annual (n=116)		Winter (n=27)		Pre-monsoon (n=47)		Monsoon (n=28)		Post-monsoon (n=12)	
	Mean $\pm$ SD	Range	Mean $\pm$ SD	Range	Mean $\pm$ SD	Range	Mean $\pm$ SD	Range	Mean $\pm$ SD	Range
OC	3.5 $\pm$ 1.5	1.1-10	4.09 $\pm$ 1.7	2.3-9.9	3.7 $\pm$ 1.7	1.3-10	2.8 $\pm$ 0.8	1.1-4.7	3.1 $\pm$ 1.1	2.0-5.6
BC	1.5 $\pm$ 0.9	0.15-4.5	2.42 $\pm$ 0.74	1.1-4.2	1.4 $\pm$ 0.7	0.28-4.5	0.75 $\pm$ 0.3	0.15-1.5	1.58 $\pm$ 0.9	0.63-3.2
OC/BC	2.9 $\pm$ 1.8	0.87-8.8	1.93 $\pm$ 1.58	0.87-8.9	2.72 $\pm$ 1.3	1.1-8.3	4.4 $\pm$ 2.0	1.7-8.5	2.36 $\pm$ 0.9	1.1-3.9
SOC	2.2 $\pm$ 1.4	0.16-8.9	2.06 $\pm$ 1.9	0.47-8.9	2.45 $\pm$ 1.3	0.17-6.1	2.14 $\pm$ 0.7	0.9-3.8	1.67 $\pm$ 0.8	0.68-3.4
POC	1.3 $\pm$ 0.8	0.13-4	2.11 $\pm$ 0.7	0.9-3.7	1.25 $\pm$ 0.6	0.25-4.0	0.67 $\pm$ 0.3	0.13-1.3	1.4 $\pm$ 0.8	0.56-2.9

Table 3 Fractional contribution (%) from four major source regions including south Asia (SAS), East Asia (EAS), Southeast Asia (SEA), and Middle East (MDE) to BC surface concentrations over the Mt. Yulong region in winter (December-February), pre-monsoon (March-May), monsoon (June-September), post-monsoon (October-November), and all months during the model simulation time period (2010-2014).

Source region	Winter	Pre-monsoon	Monsoon	Post-monsoon	Annual
SAS	40.8	67.63	17.12	27.14	42.49
EAS	53.76	25.37	77.96	68	52.1
SEA	3.03	2.52	3.73	3.18	3.02
MDE	1.06	2.39	0.47	0.67	1.02

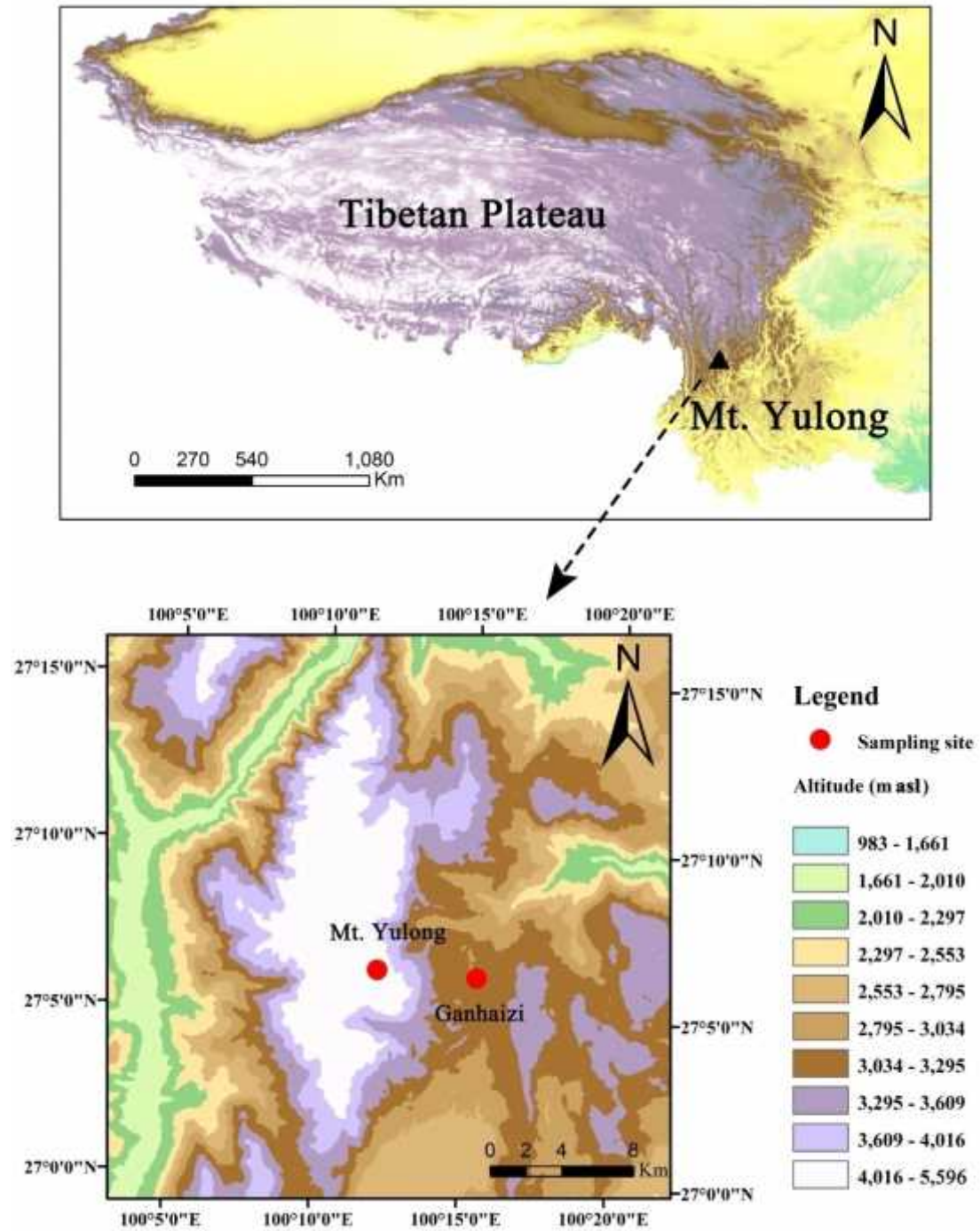


Fig. 1 Location of Mt. Yulong in the Tibetan Plateau and the sampling sites at Mt. Yulong and Ganhaizi basin.

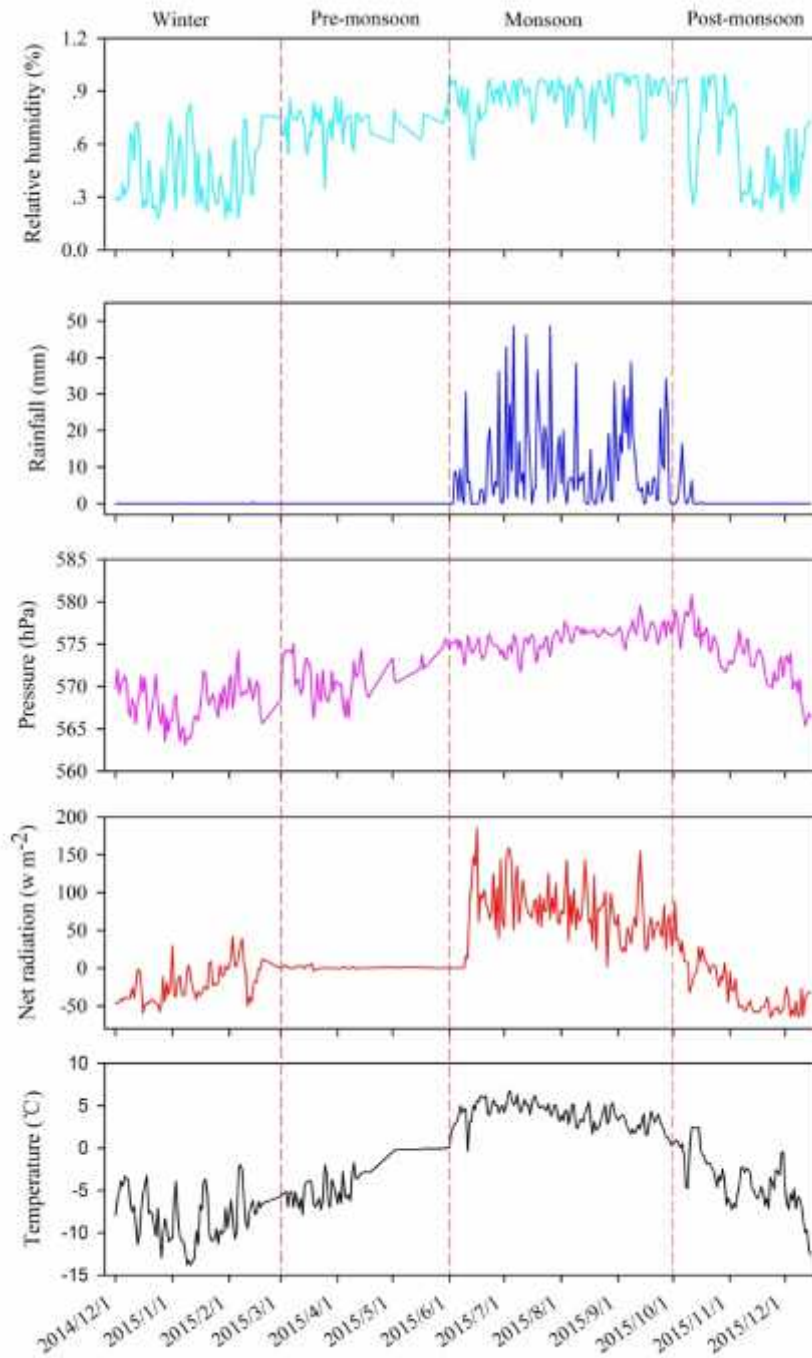


Fig. 2 Time series of meteorological parameters (air-temperature, net radiation, pressure, rainfall, relative humidity) at Mt. Yulong from December 2014 to December 2015. Monsoon and non-monsoon seasons (including winter, pre-monsoon, post-monsoon seasons) are divided by vertical lines.

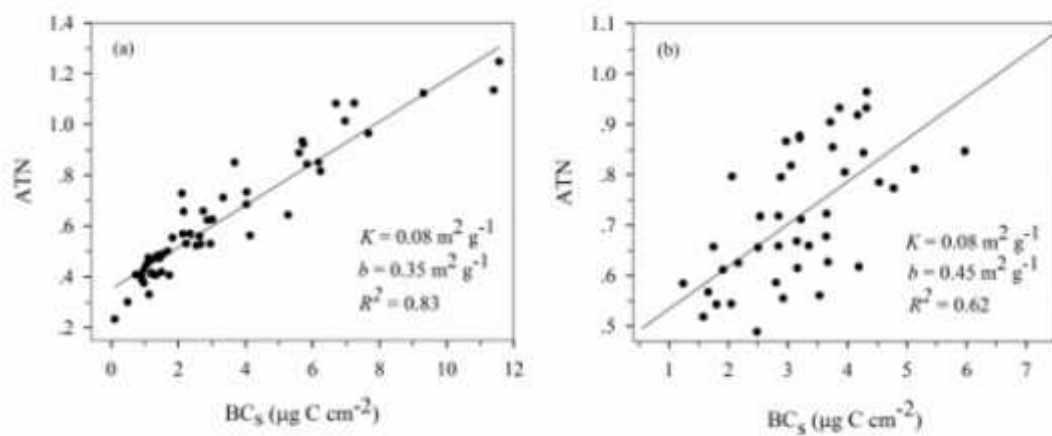


Fig. 3 Dependence of optical attenuation (ATN) detected at 632 nm on the BC loading (BC<sub>s</sub>) for (a) the Mt. Yulong sampling site and (b) the GHZ sampling site. Results of linear regression are displayed with  $K$  as the slope and  $b$  as the intercept.

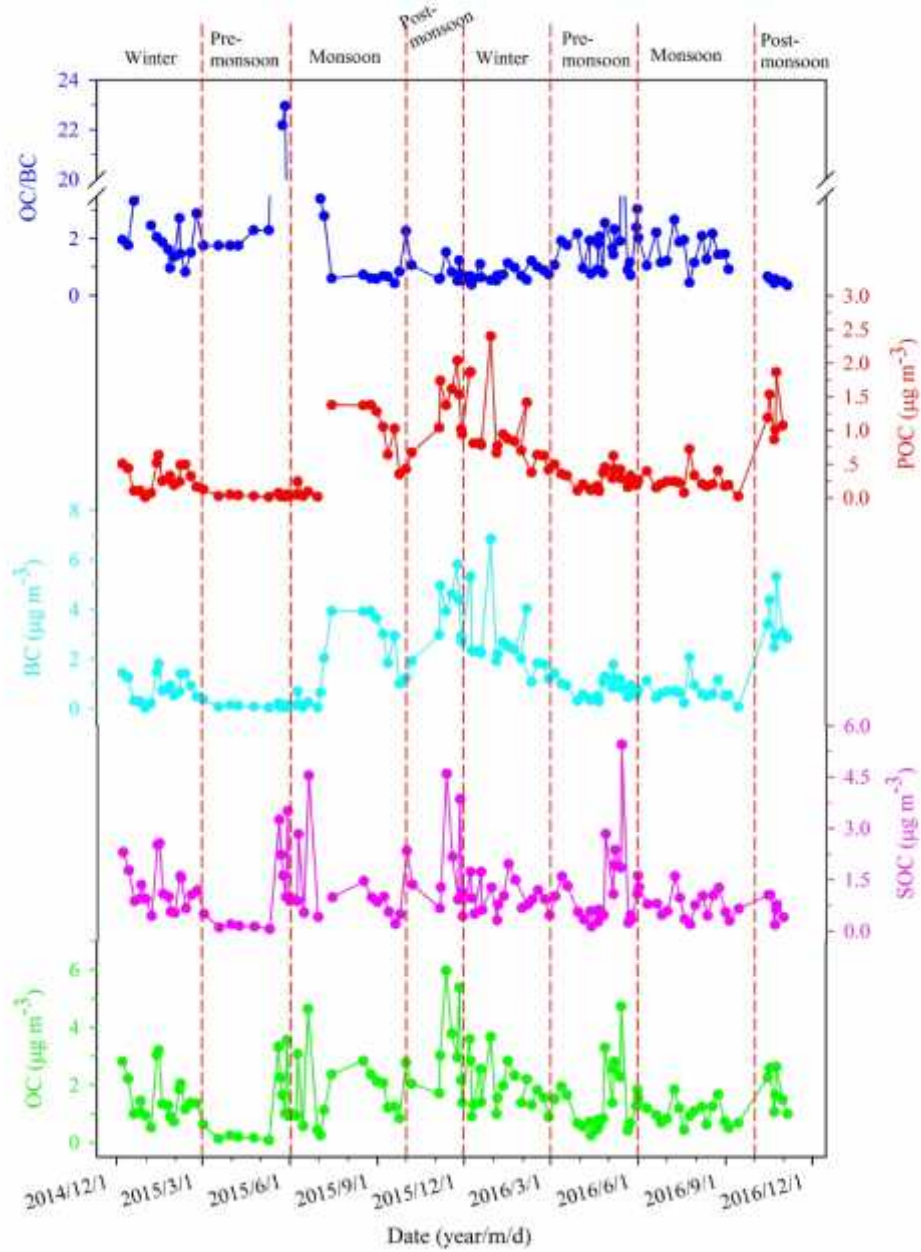


Fig. 4 Seasonal variations of BC, OC, SOC, and POC concentrations and OC/BC ratio from Mt. Yulong during Dec. 2014-Dec. 2016.

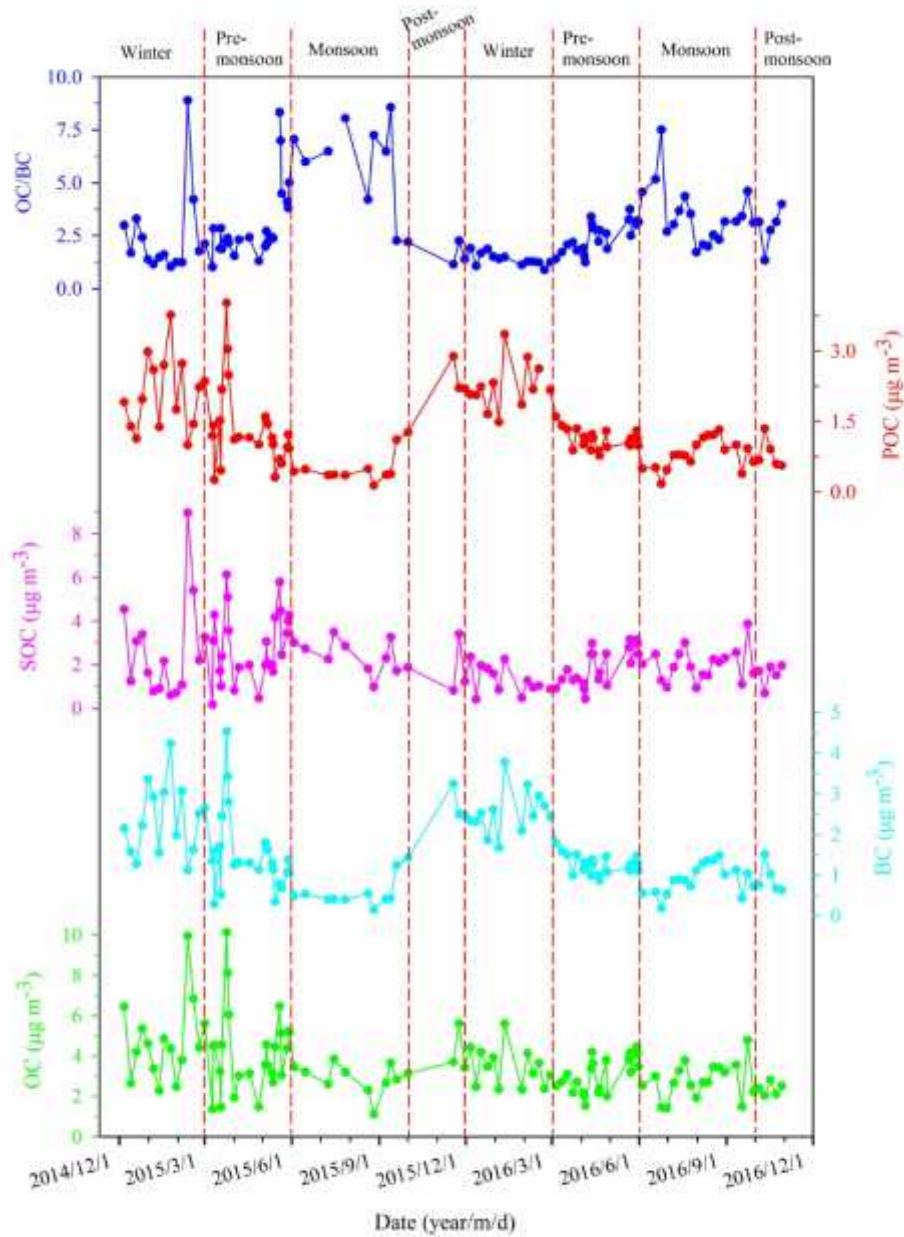


Fig. 5 Seasonal variations of BC, OC, SOC, and POC concentrations and OC/BC ratio from GHZ basin during Dec. 2014-Dec. 2016.



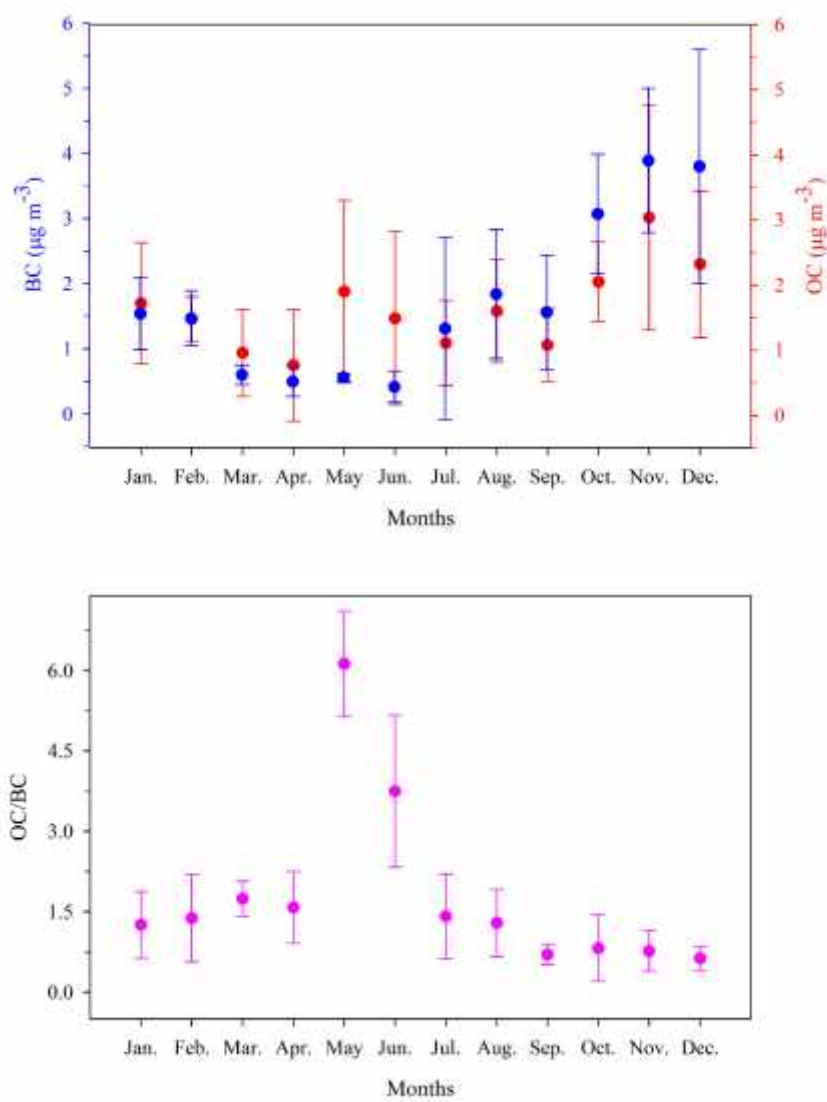


Fig. 6 Monthly averaged BC, OC concentrations and OC/BC ratios from Mt. Yulong.

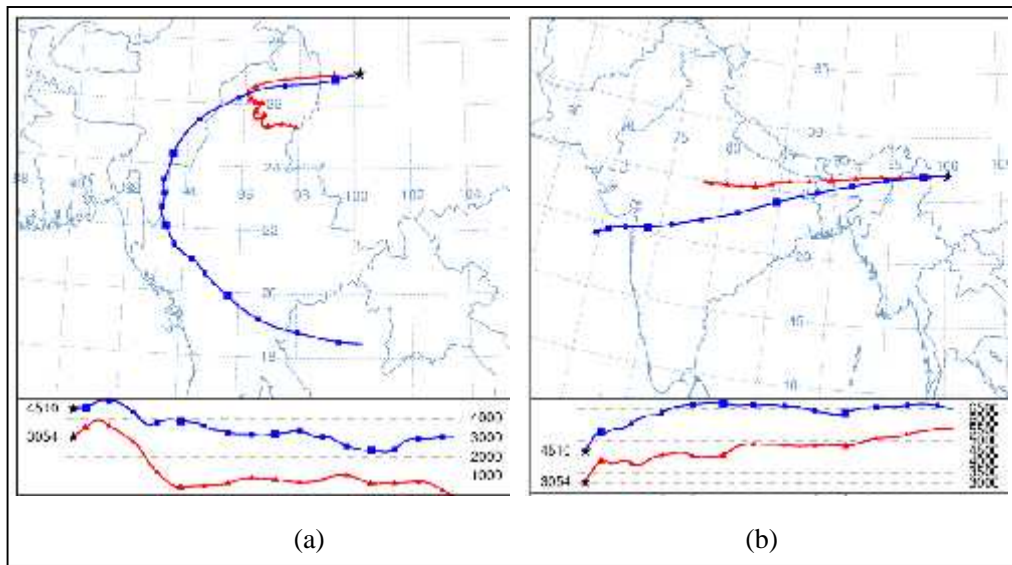


Fig. 7 Seven-day backward trajectory analysis with HYSPLIT model (a) in the monsoon and (b) post monsoon seasons during the study period (Source ★ at 27.01 N, 100.20 E). The trajectories of air mass in the plot were the average of a few episodes. The two heights are the elevation of Mt. Yulong and GHZ, respectively.

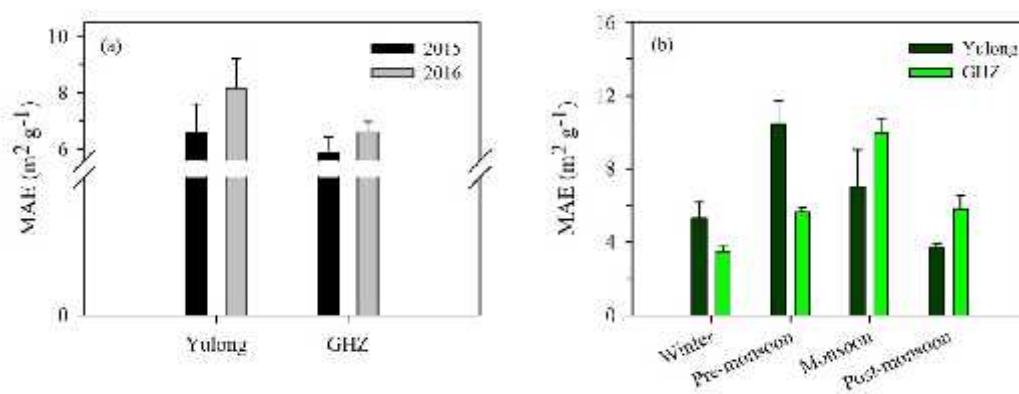


Fig. 8 Histogram of (a) annual mean and (b) seasonal mean MAE values of atmospheric BC from Mt. Yulong and GHZ sampling sites during December 2014-December 2016.

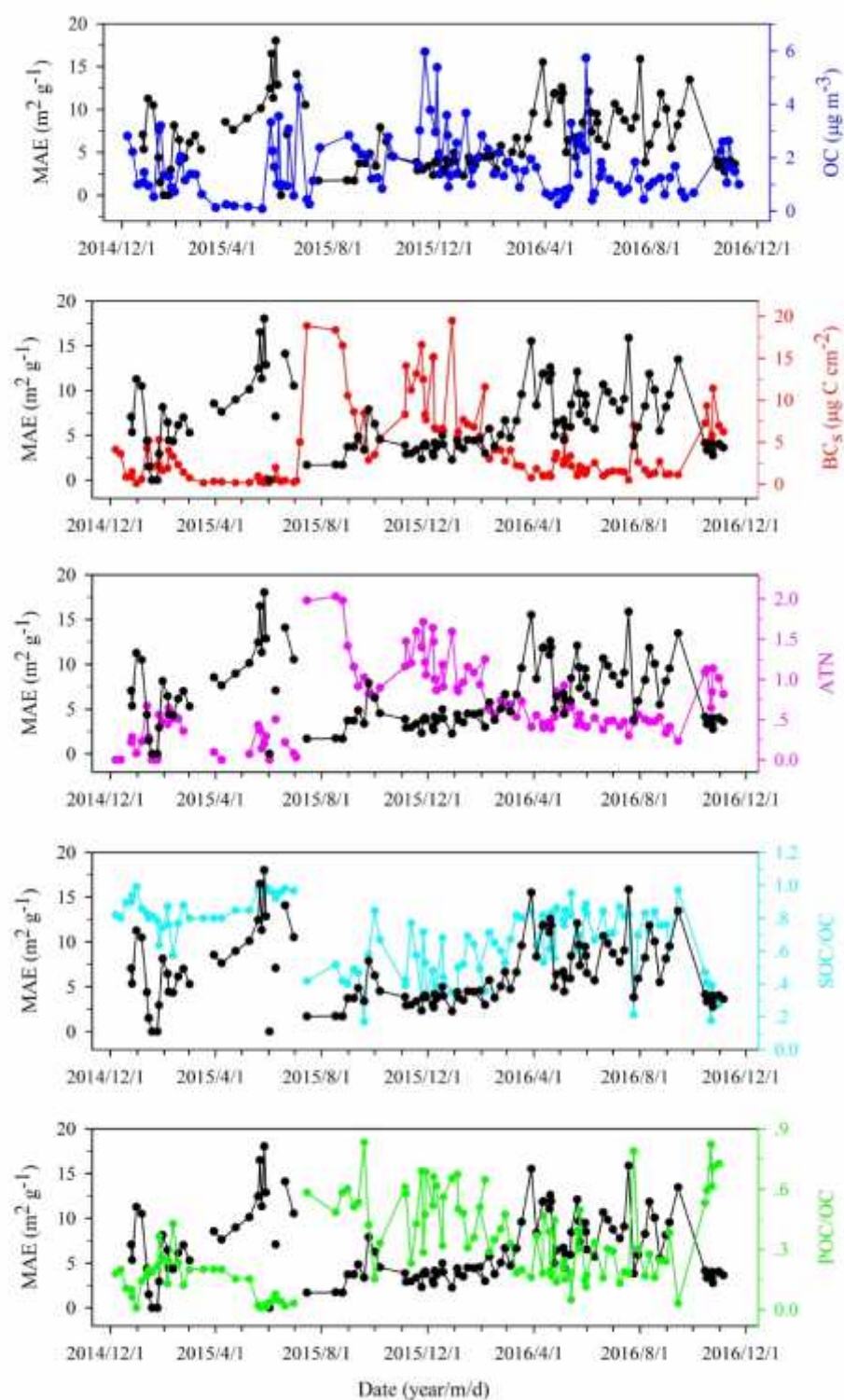


Fig. 9 Weekly mean MAE values in Mt. Yulong aerosol during December 2014 to December 2016. The variations of POC/OC and SOC/OC ratios, ATN,  $\text{BC}_s$ , and OC

concentrations are also displayed for comparison with MAE.

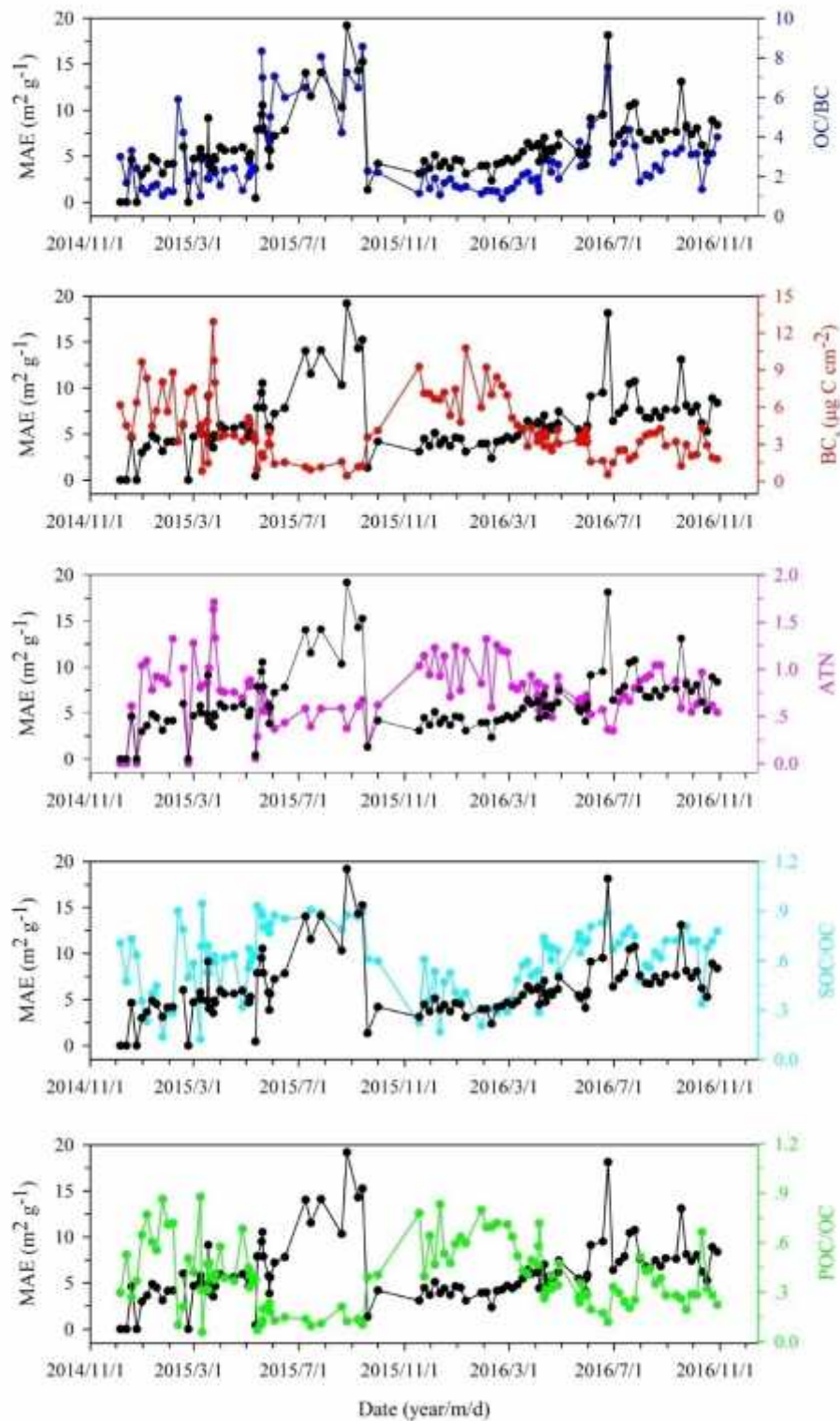


Fig. 10 Weekly mean MAE values in GHZ aerosol during December 2014 to December 2016. The variations of POC/OC, SOC/OC, and OC/BC ratios, ATN,  $\text{BC}_s$ ,

values are displayed for comparison with MAE.

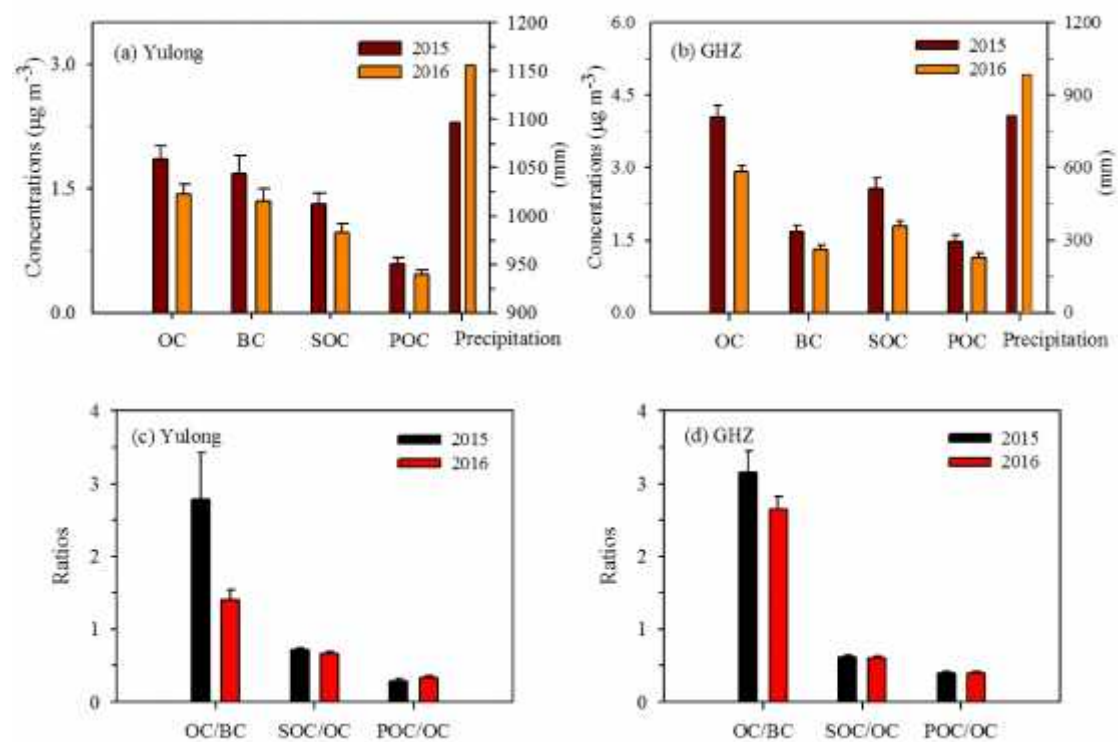


Fig. 11 Inter-annual differences of OC, BC, SOC, and POC concentrations at (a) Yulong and (b) GHZ site. Precipitation at Mt. Yulong and GHZ sites in different years was also plotted in (a) and (b). The OC/BC, SOC/OC, and POC/OC ratios are shown in (c, d).

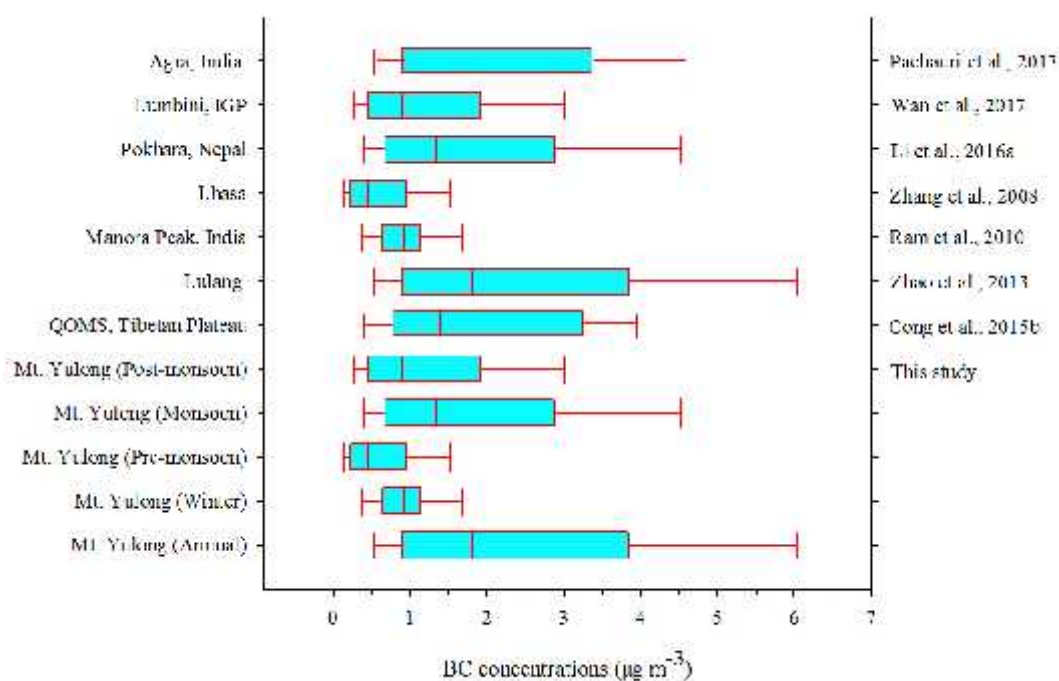


Fig. 12<sup>a</sup> Comparison of BC concentrations in aerosols from Mt. Yulong and other areas of interest.

<sup>a</sup> Annual mean BC concentrations at Mt. Yulong were rather low ( $\sim 1.5 \mu\text{g m}^{-3}$ ), while most of the compared BC concentrations (counted by number of measurements) were within the range of  $1.0\text{-}2.5 \mu\text{g m}^{-3}$ .



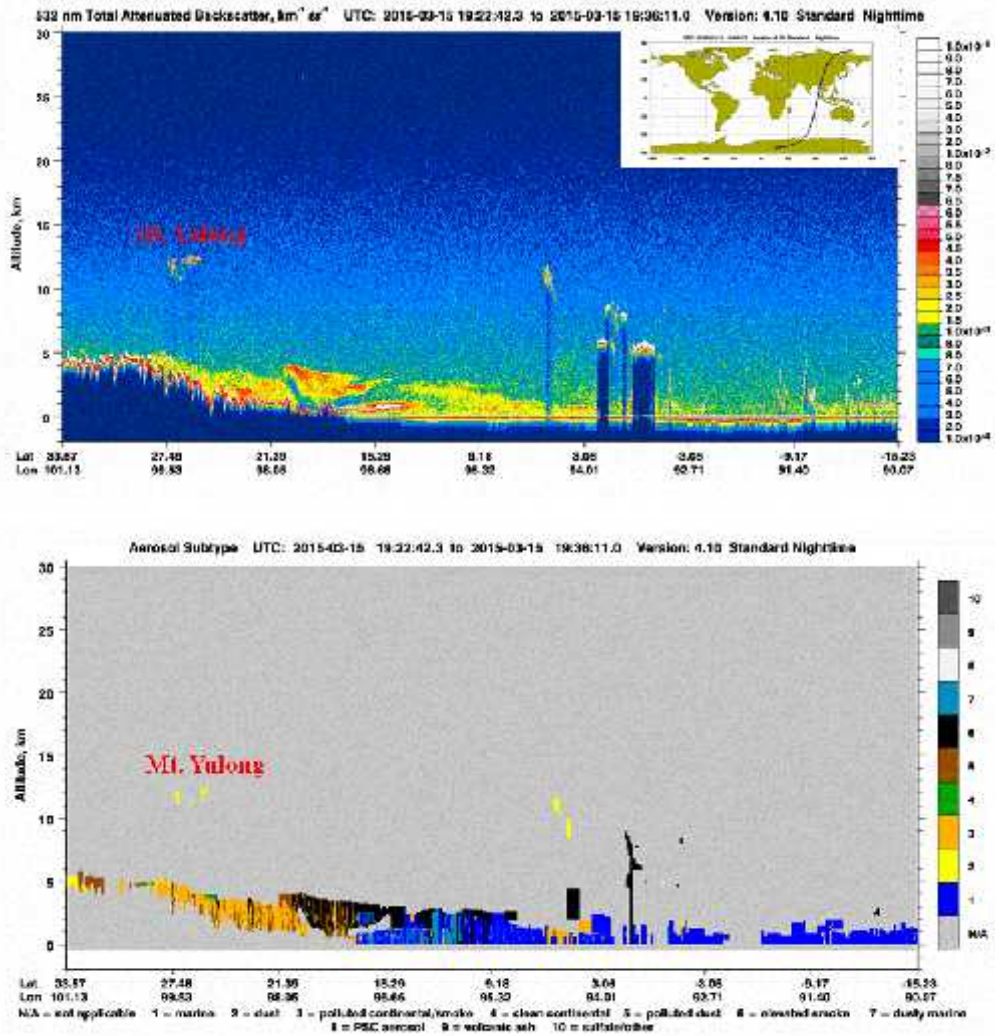


Fig. 13 CALIPSO retrieved backscatter signal at 532 nm (upper panel) and aerosol sub-type information (bottom panel) on 15 March, 2015. The Mt. Yulong region was covered by a thick aerosol layer (mainly consisting of polluted smoke and dust) in the high atmosphere (above 6000 m asl), likely transported far from their source regions. CALIPSO profiles were obtained from (<http://www-calipso.larc.nasa.gov>). The CALIOP-derived reflectivity is usually taken as an indicator to reflect the structure of atmospheric layers since it depends on mass concentration and optical properties of atmospheric aerosol (Bou et al., 2010; Dong et al., 2017a). The topography is outlined by a solid red-line. Suspended dust and aerosol pollutants are in orange and red.



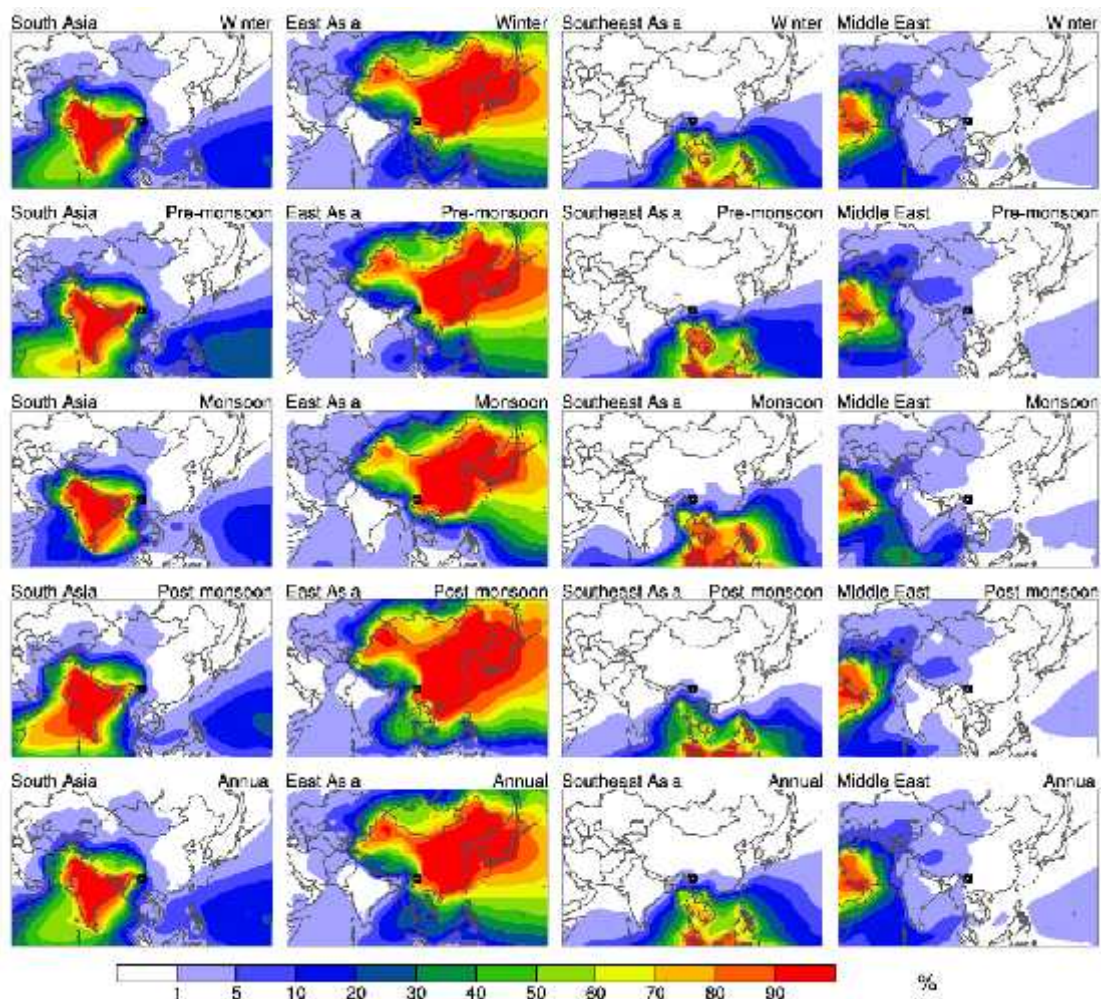


Fig. 14 Annual and seasonal (winter, pre-monsoon, monsoon and post-monsoon) mean relative contributions of emissions in four tagged source regions, including South Asia, East Asia, Southeast Asia and Middle East, to near-surface BC concentrations. The black box in each panel marks the grid box where the Yulong and GHZ sites locate.