

Interactive comment on “The Interactions Between Precipitation, Vegetation and Dust Emission Over Semi-Arid Mongolia” by Yuki Sofue et al.

Yuki Sofue et al.

aosier@rakuno.ac.jp

Received and published: 19 July 2017

Desertification is a kind of environment regime shift. However, the environment regime shifting was not found in this Mongolian sites (such as our study area) and it found in this Chinese sites (Sofue et al, 2017, Fig.1).

Please also note the supplement to this comment:

<https://www.atmos-chem-phys-discuss.net/acp-2017-83/acp-2017-83-AC8-supplement.pdf>

Interactive comment on Atmos. Chem. Phys. Discuss., <https://doi.org/10.5194/acp-2017-83>, 2017.

Printer-friendly version

Discussion paper



Desertification is a kind of environment regime shift. However, the environment regime shifting was not found in this Mongolian sites (such as our study area) and it found in this Chinese sites (Sofue et al., 2017, Fig.1).

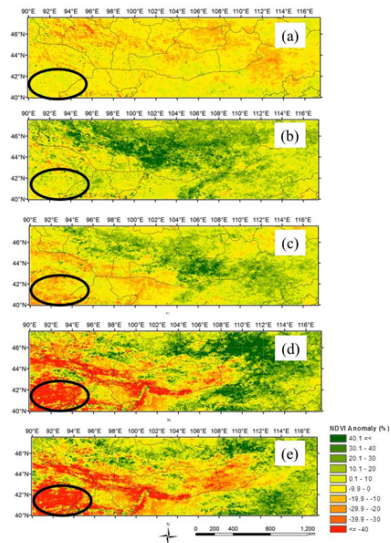


Fig.1 The anomaly NDVI of vegetation growing period in (a): 1989; (b): 1994; (c): 2003; (d) 2012 and (e): 2013 (Sofue et al., 2017).

Fig. 1.