

Review for Atmos. Chem. Phys.

“Harmonisation and trends of 20-years tropical tropospheric ozone data”

Authors: Leventidou, Weber, Eichmann, Burrows, Heue, Thompson, and Johnson

Review submitted: 18 March 2018

General Comments:

This review is of the revised paper. While the authors attempted to address many of the concerns raised by the other reviewer and me, I’m afraid I still have some important concerns about this paper. It is not at all clear that Scenario 1 is the best approach (or better than any of the other 5 scenarios the authors test). As a result, the tropical trend calculations are more uncertain than the paper communicates. Perhaps a Monte Carlo approach is necessary to better characterize the uncertainties in the trend analysis? I’m afraid this paper still needs another round of revisions and should not yet be published in ACP.

Our response:

We clearly indicated that tropospheric ozone trends in the tropics using multi-instrument data may vary significantly with the merging approach selected. The differences in the calculated trends (up to 6 DU/decade, see: Fig. 2 (top) in the supplement) can be even larger than the statistical uncertainty (less than 4 DU/decade) of the trend derived from any single merged dataset. This means that the trend uncertainties are in reality larger than given by regression statistics alone. This is the first time that different merging approaches are considered and their possible impact on tropospheric ozone trends investigated. This may be one of the reasons why tropospheric ozone trends from different studies do not agree with each other (see e.g. TOAR report). Monte Carlo simulations might be a good idea to better characterize these uncertainties but we believe that such a study is out of the scope of our paper and it will not change our final result that the mean trend in the tropics (15° S-15° N) is statistically non significant and close to zero.

Comments on Response to Reviewers:

“...and Hilo is strongly affected by volcanic outgassing resulting in negligible ozone concentrations in the boundary layer.” That’s not quite true. More accurate would be that the tropospheric ozone data in Hilo often shows interference from SO₂. It’s not that the ozone isn’t there; it’s that the ECC measurement doesn’t work well in regions with significant SO₂ (see Komhyr, 1969 and Morris et al., 2010).

The phrase: “..and Hilo is strongly affected by volcanic outgassing resulting in negligible ozone concentrations in the boundary layer” has been changed as follows: “..and Hilo is strongly affected by volcanic outgassing which interferes with the ozonesondes’ electrochemical concentration cells (ECC), resulting in negligible ozone concentrations being measured in the boundary layer (Morris et al., 2010).”

“Tropical troposphere ozone trends critically depend on the merging/harmonization approach.” Agreed. But a problem for the authors is that they have not shown any one approach is better than another!

The selection of the preferred merging scenario has been investigated by calculating the mean biases between six scenarios in seven ozonesonde stations from the SHADOZ network. The comparison, as the Reviewer also mentions, showed that there is no strong

indications on selecting one of them according to statistics, instead logical arguments have been used in order to decide. These are the fact that the overlap period between SCIAMACHY and GOME is very short (10 months) in order to use correction offsets used in scenarios 3, 4 and 5. For this reason these scenarios can be rejected. Scenario 6 can also be rejected due to the fact that the drift in GOME-2 correction offset is mostly (81%) statistically not significant. The lack of significant drifts between GOME-2 and SCIAMACHY biases over the overlapping period (5 years) shows that the data records are quite stable. For these reasons and due to the fact that scenario 1 has the smallest mean bias with the ozonesondes (-0.4 DU), lead us to select scenario 1 for merging the datasets.

Page 1

Lines 13-14: "...was applied for GOME, and mean biases...were calculated and applied..."

Changed

Lines 21 – 21: Since you're citing "decreases," I believe you do not need negative signs in front of the magnitudes.

Changed

Page 1 – second one

Line 10: "...during the monsoon period..."

Changed

Line 15: "...on the order of..."

Changed

Line 16: You repeat "year-1."

Changed

Line 34ff: This is the first point at which we find out what THIS paper is going to do. It's a lot of introductory text. Might be good to get to this earlier and better integrate how previous studies shape/motivate the need for this one.

The main findings and the goal of this paper are already presented in the abstract. The introduction presents the necessary background for tropical tropospheric ozone and trend studies. The last paragraph of the introduction discusses the main goal of this study and the structure of the paper. One sentence has been added in order to better connect the previous paragraphs with the last one and the last paragraph of the introduction is now as follows:

"Using a convective clouds differential (CCD) method, developed at the Institute of Environmental Physics (IUP)/University of Bremen and applied to retrievals of total ozone and cloud data from GOME/ERS-2 (1995-2003), SCIAMACHY/Envisat (2002-2012), and GOME-2/MetOp-A (2007-2015), new datasets of monthly mean tropical tropospheric columns of ozone (TTCO) have been created (Leventidou et al., 2016). The main differences between our CCD algorithm and the one developed by Heue et al. (2016) mainly originate from the different corrections that we have applied in the above cloud column calculation of GOME and GOME-2 data and handling of the outlier data (Leventidou et al., 2016). The main goal of this study is to derive long-term trends from our merged CCD tropical tropospheric ozone datasets. In a first

step the three satellite data are merged into a consistent long-term dataset. Six possible approaches for merging the data are considered and evaluated by comparisons to SHADOZ ozonesondes and by trend evaluations (Section 2). The comparisons to ozonesonde, among other criteria, are used to identify the preferred merging scenario. The trend evaluation of the six merging scenarios will allow us to roughly estimate the contribution of the merging approach to trend uncertainties. In Section 3 the multiple linear regression model is briefly described. Detailed trend results for the tropics 15S -15N as well as for selected regions are presented in Section 4 for the preferred merged dataset. This paper ends with a summary and discussion (Section 5)."

Page 2 – second one

Line 13: "...integrated (up to 200 hPa)..."

Changed

Line 14 – 15: Rework. Something is not right...

Changed as: " have been found to be within the uncertainties of the mean biases of 6 DU (1 sigma)"...

Line 16: Since you've got two sources listed, delete the word "One," and change to "Large sources of uncertainty are..."

Changed

Line 28: "...because SCIAMACHY is the only instrument..."

Changed

Page 3

Line 5: Seems like the sentence should end, "...GOME and GOME-2)." Just delete the rest of the sentence.

The sentence is correct as is.

Line 21: I thought in the response to the reviewers that the authors were going to limit their analysis to 15S – 15N, yet here they reference results in the 17.5 – 20N latitude band. See also Figure 1 on Page 4.. Why not limit every part of this analysis to the more restrictive latitude band?

Our tropical tropospheric ozone dataset extends to 20° S and 20° N. In order to investigate the biases with which we are going to harmonize the three individual datasets we calculated the mean biases and their drifts (only for SCIAMACHY-GOME-2) using SCIAMACHY as reference throughout these latitude bands. This has been also done by other studies (Heue et al., 2016). However, whenever we refer to results above 15° we mention that their interpretation should be generally made with a cautionary note because they are influenced by the low sampling of data. Later, we show that the under-sampling that we see in the biases appear for some scenarios also in the trends. Only for the mean tropical tropospheric ozone trend we use the data between 15° S and N which are not affected by this effect.

Page 5

Line 4: "...with respect to SCIAMACHY is added..."

Changed

Page 6

Line 16: As I remarked in my comment on the response to the reviewers section, this statement on “high SO₂ emissions, resulting in negligible ozone concentrations...” is not accurate. See my earlier explanation.

See our comments above

Lines 3 and 4: Is it “ozone sondes” or “ozonesondes.” I’d pick the latter.

Changed throughout the text

Line 14: “For these reasons, scenario 1 has been selected...” I can’t figure out a good justification here – lots of issues. The next page contains a table of the ways I’ve sliced and diced the data you provided and upon which you based your decision. Your analysis looked at the mean bias and took the one closest to 0, which led to your choice of Scenario 1. I’ve added the standard deviation calculation to the calculation of the mean. As you can see, in every scenario, the standard deviations of the data are greater than the mean biases. Thus, I would argue that the differences in the means are statistically insignificant. This approach is not a good one for selection of the best scenario. Furthermore, if we just eliminate American Samoa, the conclusion is not robust: now Scenario 6 is the clear winner by the smallest mean (although again, the standard deviations exceed the mean biases in every case). Better, I think, is looking at the root-mean-square bias, because you’re really interested in which approach produces the smallest magnitude bias on average rather than the smallest mean of the biases (e.g., biases of -10 and + 10 would have a mean bias of 0 but a rms bias of 10). If you use this approach (which I believe marginally better), you conclude that Scenario 2 has the lowest mean bias, but again not statistically significantly different from any of the other scenario means. Finally, if you eliminate American Samoa, Scenarios 1, 2, 5 and 6 are all pretty close.

The comparison with the ozone profiles from seven ozonesonde stations and the statistics performed by us does indeed not provide a strong evidence upon which scenario should be selected or rejected. The fact that the ozonesonde profiles represent localized concentrations of ozone whereas the CCD retrievals a much broader region of 2.5°x5° should also be taken into account.

In the text we mention: “Although the comparison between the TCO from the individual harmonised scenarios and the ozonesonde data does not favor clearly any harmonisation scenario, the scenarios that can be confidently rejected are scenarios 3, 4 and 5 where GOME data are corrected with respect to SCIAMACHY since the overlap period between GOME and SCIAMACHY is very short (10 months, 8/2002-6/2003). Scenario 6 can also be rejected due to the fact 10 that the drift in GOME-2 correction offset at 81% of the grid-boxes is statistically non significant. Lack of significant drifts in the comparison between GOME-2 and SCIAMACHY over the overlapping period shows that the data records are quite stable.”

The last sentence has been changed as follows:

“For these reasons, scenario 1 (no drift corrections and bias correction for GOME-2) which also has the smallest mean bias with the ozonesondes (-0.4 DU) has been selected to be the preferred harmonisation scenario for merging the TCO datasets.”

Therefore, the selection of the preferred scenario is made following logical arguments. The comparison with the ozonesondes has only an auxiliary role in this decision.

Page 7

Line 2 – 3: “However, the biases of each scenario with ozone sondes are very close to each other for every station.” I don’t see the data in Table 1 supporting this statement. There’s great variability in both rows and columns.

The biases between CCD and ozonesondes from the six scenarios are on the order of ± 1 DU. Taking into account the differences in the spatial resolution between the CCD retrievals and the ozonesonde profiles and the fact that the uncertainties are on the same order, we consider that these biases are very close to each other and can not help alone in making a decision with confidence.

Line 8: "...the scenarios that can be confidently rejected are..." I see nothing in Table 1 upon which to base any rejection of one scenario over another.

Since we have shown that the comparison with ozonesonde profiles does not lead to a clear preference for any scenario we make the selection based on other scientific arguments.

Line 13: "...has the smallest mean bias with the ozone sondes (-0.4 DU)." As you can see above, this mean bias is not statistically significantly different from any of the other scenarios.

This is true, but the bias with the ozonesondes is not the only criterion that we used for our decision.

Page 10

Figure 3: Why does panel f show more area as statistically significant in %/year trends than panel e? I think it's because the criteria in panel e is stricter (exceed the range of all harmonization scenarios), but it's confusing to have these next to one another. Why not use the same criteria? I think f makes a more interesting map than e. But based on my analysis above, I don't see one scenario as preferable to another.

Fig. 3 e shows only the pixels where the 2 sigma (statistical) uncertainty of the trend exceeds the maximum absolute difference of the trends calculated between any pairs out of the six scenarios. With this figure we want to highlight how small the number of pixels is where we can state with confidence that the trend is significant.

Page 12

Table 2: I take it these 2 sigma uncertainties are determined by the trend analysis itself and to not include the additional uncertainty resulting from the harmonization choice itself? If that's right, these results look better (and more significant) than they are. Perhaps a better approach would be to use a Monte Carlo analysis that mixes between the scenarios and reflects the uncertainty in the bias of the scenario to figure out the total uncertainty in the trend. At this point, I have little confidence in the quoted uncertainty in this Table and as a result, the associated discussion.

Yes, the 2 sigma refer to the trends calculated from the individual merged datasets. This is "the standard" methodology used also from previous studies in tropospheric ozone trends (Ziemke et al., 2005; Kulkarni et al., 2010; Heue et al., 2016; Ebojie et al., 2016). As we have mentioned before, we not only estimate the trends and their uncertainties based on one merged scenario, but we estimate the additional uncertainty (may exceed 4 DU/decade) that the merging procedure can introduce to the trends. As the reviewer correctly mentions, the statistical uncertainties of the trends are always lower than if all uncertainties (incl. merging approach) were accounted for. This is exactly the message that our paper wants to communicate.

Below follows the track changed manuscript:

Harmonisation and trends of 20-years tropical tropospheric ozone data

Elpida Leventidou¹, Mark Weber¹, Kai-Uwe Eichmann¹, John P. Burrows¹, Klaus-Peter Heue², Anne M. Thompson³, and Bryan J. Johnson⁴

¹Institute of Environmental Physics (IUP), University of Bremen, Germany

²Deutsches Zentrum für Luft- und Raumfahrt, Münchener Str. 20, 82234 Oberpfaffenhofen, Germany

³NASA Goddard Space Flight Center, Greenbelt, Maryland, USA

⁴Global Monitoring Division, NOAA ESRL, Boulder, CO, USA

Correspondence to: E. Leventidou (Levent@iup.physik.uni-bremen.de)

Abstract. Using a convective clouds differential (CCD) method, developed in house and applied to retrievals of total ozone and cloud data from three European satellite instruments (viz. GOME/ERS-2 (1995–2003), SCIAMACHY/Envisat (2002–2012), and GOME-2/MetOp-A (2007–2015)) monthly mean tropical tropospheric columns of ozone (TTCO) have been retrieved, which are in good agreement with ozonesondes (biases less than 6 DU). As small differences in TTCO between the individual instruments were evident, it was necessary to develop a scheme to harmonise the three datasets into one consistent time-series starting from 1996 until 2015. Correction offsets (bias) between the instruments using SCIAMACHY as intermediate reference have been calculated and six different harmonisation/merging scenarios have been evaluated. Depending on the merging approach, the magnitude, pattern, and uncertainty of the trends strongly vary. The harmonisation/merging represents an additional source of uncertainty in the trends (2 DU/decade on average, exceeding in most of the cases the uncertainty from the regression). For studying further details on tropospheric ozone trends on various spatial scales in the tropics we stick with one preferred merged dataset that shows best agreement with ozonesondes. In this merged dataset no correction was applied for GOME, and mean biases with respect to SCIAMACHY in the overlapping period (2007–2012) ^{RV2:}was/were calculated and applied for GOME-2 in each grid-box ($2.5^{\circ} \times 5^{\circ}$). In contrast with other studies we found that the tropospheric trend averaged over the tropics (15°S – 15°N) is not statistically significant. The mean tropospheric ozone trend equals -0.2 ± 0.6 DU decade⁻¹ (2σ). Regionally, tropospheric ozone has a statistically significant increase of ~ 3 DU decade⁻¹ over southern Africa (~ 1.5 % year⁻¹), the southern tropical Atlantic (~ 1.5 % year⁻¹), southeastern tropical Pacific Ocean (~ 1 % year⁻¹), and central Oceania (~ 2 % year⁻¹) and by ~ 2 DU decade⁻¹ over central Africa (2 – 2.5 % year⁻¹) and south India (~ 1.5 % year⁻¹). On the other hand, tropospheric O₃ decreases by ^{RV2:} ~ 3 DU decade⁻¹ over the Caribbean sea and parts of the North Pacific Ocean (\sim ^{RV2:} 2 % year⁻¹), and by less than ^{RV2:} 2 DU decade⁻¹ over some regions of the southern Pacific and Indian Ocean (\sim ^{RV2:} 0.5 – 1 % year⁻¹).

1 Introduction

As is well known since the industrial revolution the earth's population and its standard of living have grown dramatically. At the same time the urban population has grown. Since 2011, more than 50% of the world's population live in urban areas and the population has now passed 7.5 Billion. In the past two decades, the population has grown by more than 2 Billion.

5 An increasing population and standard of living inevitably leads to increased energy consumption, which is used in industry, transportation, and food production. These human activities release a large number of atmospheric pollutants which can be harmful to public health and/or vegetation and modify the terrestrial climate (Crutzen, 2002). Climate change may also impact air pollution events (WMO/IGAC, 2012). Tropospheric ozone (O_3) is regarded as one of the most important surface pollutants. This is because it oxidizes the biological tissues causing respiratory problems or even death (WHO, 2006), acts as a greenhouse

10 gas (IPCC, 2007), and controls the oxidizing capacity of the troposphere (Jacob, 2000). O_3 in the troposphere is expected to increase by 60 to 80% by 2050 in Southeast Asia, India and Central America under the A2 IPCC (2013) scenario. However, the effects of climate change, especially the increased tropospheric temperatures and water vapor, may offset this increase by 10% to 17% (Stevenson et al., 2000; Grewe et al., 2001; Hauglustaine et al., 2005; IPCC, 2013).

Ozone is not directly emitted in the troposphere but it is a byproduct of the oxidation of volatile organic compounds (VOCs) in the presence of nitrogen oxides (NO_x) and sunlight (Crutzen, 1970; Chameides and Walker, 1973). Young et al. (2013)

15 estimated that 4877 ± 1706 (2σ) Tg of O_3 are chemically produced every year. Additionally, 477 ± 392 Tg \cdot yr $^{-1}$ are transported from the stratosphere to the troposphere via the stratosphere to troposphere exchange (STE) (Holton and Lelieveld, 1996; Young et al., 2013). Tropospheric ozone loss is controlled by deposition to the Earth's surface and chemical destruction, mainly by photolysis to atomic oxygen ($O(^1D)$), followed by the reaction of $O(^1D)$ with water (H_2O) to produce two hydroxyl radicals

20 ($2OH$) (Levy, 1972). The net chemical production (production minus loss) is estimated at 618 ± 550 Tg \cdot yr $^{-1}$ (2σ) (Young et al., 2013; IPCC, 2013). The mean tropospheric ozone burden is 337 ± 46 Tg (2σ) today, which is about 30% more than in 1850 (Young et al., 2013).

The sources of ozone precursors (VOCs and NO_x) can be both of anthropogenic and natural origin. Various efforts towards reducing NO_x and VOC emissions have been taken in developed countries, particularly in Europe and North America, leading

25 to negative surface ozone trends on a local scale (Derwent et al., 2003; Cooper et al., 2014; Parrish et al., 2014). Nevertheless, tropospheric ozone pollution is a matter of global concern, because ozone and its precursors are transported from polluted areas to clean regions over continental distances and into the free troposphere through atmospheric dynamics, increasing the tropospheric ozone abundances over remote areas. For example, air masses originated from eastern China have increased ozone abundance over Japan and North America's West Coast, despite the US legislation of reducing NO_x emissions (Parrish et al.,

30 2009; Cooper et al., 2010; Oltmans et al., 2013; Verstraeten et al., 2016). Additionally, the high tropospheric ozone amounts noticed over the south Atlantic ocean, the so-called "tropical Atlantic paradox", arise from ozone precursor emissions by biomass burning taking place in south America and Africa (Thompson et al., 2000; Diab et al., 2003).

The long-term evolution of tropospheric ozone is complex and depends upon the evolution of precursor emissions and climate change. As the predicted increase of trace gases emissions for the next years is mainly located over low latitudes (Grenfell

et al., 2003), long term observations of tropospheric ozone in the tropics should receive particular attention. Various studies have been performed in urban and rural sites using in situ data in order to estimate tropical tropospheric ozone trends. Lelieveld et al. (2004) noticed an increase in surface ozone in the order of 0.4 ppbv year⁻¹ over the northeastern tropical Atlantic, 0.4 ppbv year⁻¹ over the southeastern tropical Atlantic, and a smaller trend of 0.1 ppbv decade⁻¹ over the southwestern tropical Atlantic Ocean, based on ship-borne measurements (1977–2002). Oltmans et al. (2013) observed an increase of 3.8 % decade⁻¹ (0.16 ppbv year⁻¹) in surface ozone in Mauna Loa, Hawaii (19.5°N) in the North Pacific since 1974 and a smaller insignificant trend in the order of 0.7 % decade⁻¹ (0.01 ppbv year⁻¹) in American Samoa (14.5°S) after 1976. Additionally, Cooper et al. (2014) report a significant increase of 0.19 ppbv year⁻¹ in the subtropical site of Cape Point in South Africa from 1983 to 2011. Thompson et al. (2014) using ozonesonde data from the SHADOZ stations in Irene (25.9°S, 28.2°W) and Réunion (21.1°S, 55.5°W) noticed statistically significant trends in the middle and upper troposphere of ~ 25 % decade⁻¹ (1 ppbv year⁻¹) and ~35–45 % decade⁻¹ (2 ppbv year⁻¹) respectively during winter (June–August). Smaller positive trends appear, close to the tropopause in summer.

Satellite remote sensing is required to perform trend analysis up to global scale. One key challenge to retrieve tropospheric ozone column amounts from the measurements of satellite remote sensing instrumentation is the accurate subtraction of stratospheric ozone from the total column ozone. This requires accurate knowledge of the pressure/ altitude level at which the tropopause is located. However in the tropics, where the the tropopause is not strongly modulated by frontal systems, the retrieval uncertainties due to the day to day variability of the tropopause can be reduced using monthly averages (Jensen et al., 2012). Most of the methods of estimating tropospheric ozone columns from space in the tropics derive from the residual approach (TOR) of Fishman and Larsen (1987) and Fishman et al. (1991). Later, more methods were developed such us the scan angle method from Kim et al. (1996), a modified residual method from Thompson and Hudson (1999), the convective clouds differential (CCD) from Ziemke et al. (1999), the cloud slicing (CS) technique from Ziemke et al. (2001), a modified trajectory enhanced tropospheric ozone residual method (TTOR) from Schoeberl et al. (2007) and Doughty et al. (2011), and the limb nadir matching (LNM) from (Ebojie et al., 2014).

These methods have provided valuable datasets with which tropospheric ozone trends have been derived in the tropics. For example, Ziemke et al. (2005) using the CCD method on Total Ozone Mapping Spectrometer (TOMS) version 8 data from 1979 to 2003, found a statistically significant positive linear trend in the mid-latitudes but not in the tropics. Beig and Singh (2007) using the same data found an increasing trend of 7–9 % decade⁻¹ over some parts of south Asia, 4–6 % decade⁻¹ over the Bay of Bengal and 2–3 % decade⁻¹ over the central Atlantic ocean and central Africa up to 2005. Kulkarni et al. (2010) using Tropospheric Ozone Residual (TOR) data from TOMS, SAGE and SBUV instruments, calculated statistically significant trends over three Indian mega-cities during 1979–2005. They showed that ozone increased by 3.4 % decade⁻¹ in Delhi ^{RV2:}during the monsoon period, while it increased by 3.4–4.7 % decade⁻¹ in Hyderabad and 5–7.8 % decade⁻¹ in Bangalore during pre-monsoon and post-monsoon, respectively. One objectives of the SCIAMACHY proposal in 1988 (Burrows et al., 1995 and references therein) was the retrieval of tropospheric ozone by making limb and nadir observation in the back scattered and reflected solar radiation. Ebojie et al. (2016) using the full record of SCIAMACHY limb-nadir matching data (2002–2011) retrieved regional and global tropospheric ozone trends. An insignificant positive trend ^{RV2:}on the order of 0.5 DU decade⁻¹ was

noticed for the northern tropics (0-20°N) and in the order of 0.3 DU decade⁻¹ in the southern tropics (0-20°S). Regionally, they reported statistically significant trends of -1.6 % year⁻¹ ^{RV2: year-1} over Northern South America (0-10°S, 75-45°W), of 1.6 % year⁻¹ in Southern Africa (5-15°S, 25-35°E), of 1.9 % year⁻¹ over Southeast Asia (15-35°N, 80-115°E), and a trend of 1.2 % year⁻¹ over Northern Australia (20-10°S, 100-130°E). Most recently, Heue et al. (2016) published a study about
5 tropical tropospheric ozone trends using the CCD method on a harmonised dataset consisting of data retrieved from GOME, SCIAMACHY, GOME-2 and OMI satellite instruments from July 1995–December 2015 which are based upon different total ozone and cloud retrievals as well as merging approaches. The mean tropical tropospheric ozone trend that they found is 0.7 DU decade⁻¹ and regionally the trend reaches 1.8 DU decade⁻¹ near the African Atlantic coast, and -0.8 DU decade⁻¹ over the western Pacific. Seasonally, they found that the trend over the South African coast maximises in summer, whereas the
10 negative trend over the southwest Pacific ocean maximises during autumn. As discussed earlier, the trend results from the various studies vary significantly, and in some cases they do not agree with each other, even though the same dataset was used.

^{RV2:} Using a convective clouds differential (CCD) method, developed at the Institute of Environmental Physics (IUP)/University of Bremen and applied to retrievals of total ozone and cloud data from GOME/ERS-2 (1995–2003), SCIAMACHY/Envisat (2002–2012), and GOME-2/MetOp-A (2007–2015), new datasets of monthly mean tropical tropospheric columns of ozone (TTCO) have been created (Leventidou et al., 2016). The main differences between our CCD algorithm and the one developed by Heue et al. (2016) mainly originate from the different corrections that we have applied in the above cloud column calculation of GOME and GOME-2 data and handling of the outlier data (Leventidou et al., 2016). The main goal of this study is to derive long-term trends from our merged CCD tropical tropospheric ozone datasets. In a first step the three satellite data are merged into a consistent long-term dataset. Six possible approaches for merging the data are considered and evaluated by comparisons to SHADOZ ozonesondes and by trend evaluations (Section 2). The comparisons to ozonesonde, among other criteria, are used to identify the preferred merging scenario. The trend evaluation of the six merging scenarios will allow us to roughly estimate the contribution of the merging approach to trend uncertainties. In Section 3 the multiple linear regression model is briefly described. Detailed trend results for the tropics 15S -15N as well as for selected regions are presented in Section 4 for the preferred merged dataset. This paper ends with a summary and discussion (Section 5).

15
20
25

2 Harmonisation/merging of the TTCO datasets

2.1 Tropical tropospheric O₃ data

Monthly mean TTCO data have been retrieved as reported by Leventidou et al. (2016) using the Convective Clouds Differential (CCD) method on GOME (Burrows et al., 1999), SCIAMACHY (Burrows et al., 1995; Bovensmann et al., 1999), and GOME-2 (Callies et al., 2000) total ozone and cloud data from 1996 to 2015. These instruments have different properties such as
30 spatial resolution, cloud algorithms, overpass time, etc. The individual TTCO datasets have been created taking into account these specific characteristics. The individual TTCO datasets have been separately validated with integrated (^{RV2:} up to 200 hPa) tropospheric ozone columns by ozonesondes from the SHADOZ network (Thompson et al., 2003) (see: Leventidou et al. (2016)). The biases between them have been found to be within ^{RV2:} 6 DU which is mostly within the uncertainties of the mean biases

of 6 DU (1 sigma).^{RV2:One} One Large source of uncertainties in these comparisons are the low sampling of the sondes (typically less than five launches in a month) and the fact that CCD ozone is only derived as monthly means covering rather large areas (grid box). The uncertainty of the tropospheric ozone column retrieval with the CCD method is in the order of 3 DU (~ 10%). For most of the stations, the bias with the ozonesondes is within the retrieval uncertainty, with the exception of GOME-2 TTCO
5 which is in the order of 5 DU. Finally, the CCD TTCO from SCIAMACHY data have been compared with the Limb-Nadir-Matching (LNM) tropospheric O₃ columns up to 200 hPa altitude from the same satellite instrument, showing that the bias and the RMS values are within the ones calculated for the comparison with ozonesondes.

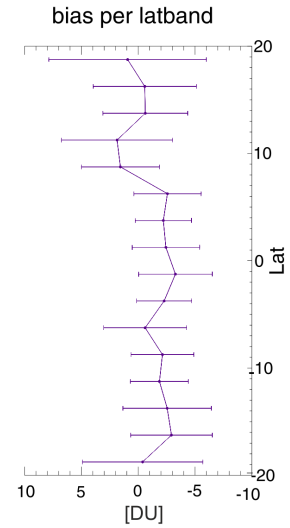
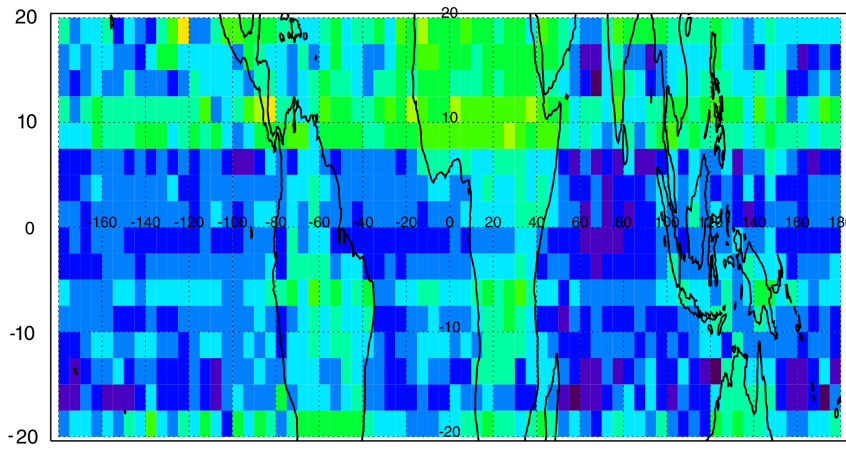
2.2 Correction offsets between GOME and GOME-2 with respect to SCIAMACHY TTCO

For trend calculations the existence of a constant bias (in clouds and ozone) between the instruments, caused by the spatial
10 and temporal differences of the individual instruments, can be removed by using a suitable merging approach as will be shown here. Correction offsets have been calculated in order to create one consistent tropical tropospheric columns dataset from the CCD method for the whole timespan of the operation of the European satellites (1996–2015). SCIAMACHY TTCO were used as the reference,^{RV2:because} because SCIAMACHY is the only instrument that overlaps (2002–2012) both with GOME and GOME-2 and has the smallest bias with respect to the ozonesondes (< 2 DU). The average difference (bias) for each grid-box during
15 the common years of the instruments operation (2002 for SCIAMACHY–GOME and 2007–2012 for SCIAMACHY–GOME-2) was computed and applied (added) to GOME and GOME-2 TTCO data. The mean biases, shown in Fig. 1, range between -6 and 6 DU for GOME, with positive differences (3–6 DU) located mainly over land. There are also two regions with positive biases appearing north of 7.5°N until 20°N, and between -5 and -7.5°S. For GOME-2, the bias ranges between -8 and 0 DU, with the biases being smaller over land, especially over south America and north/central Africa. Possible reasons for the
20 biases are the different cloud algorithms used for each instrument (SACURA for SCIAMACHY and FRESCO for GOME and GOME-2) and the small biases noticed in the total ozone columns (e.g. ~ -2.5 DU between SCIAMACHY and GOME-2). Differences in spatial resolution and overpass time of the instruments have also minor contributions in the biases.

The latitudinal dependence of the mean bias is shown at the bottom of Fig. 1. The average differences between GOME and GOME-2 with SCIAMACHY are generally negative (less than 5 DU) in all latitude bands with the exception of the northern
25 tropical latitudes, where GOME mean biases are positive (0–2 DU). GOME mean biases have stronger latitudinal variability than those of GOME-2. This behavior may be explained by the short time of common operation (Jan. 2002–Jun. 2003) between GOME and SCIAMACHY instruments. The 1 σ standard deviation (uncertainty bars) of the mean bias per latitude band is comparable to the magnitude of the biases, ranging from less than 5 DU close to the equator to 7 DU for latitude bands close to the tropical borders. For the case of GOME, the mean correction offset is -1.2 DU, whereas for GOME-2, it is -5.7 DU.
30 The mean offset of GOME-2 is almost twice the CCD retrieval uncertainty (~3 DU). For this reason and because of the large biases with the ozonesonde data, it seems reasonable to apply a correction for the GOME-2 TTCO dataset.

The drift on the average differences (bias), β , has been estimated using a simple linear regression model such as: $Y = \alpha + \beta \cdot X_t$, where Y is the time-series of the biases, X_t is the time variable in months, and α is the offset. The drift between SCIAMACHY and GOME-2 is shown in Fig. 2. There are not enough overlapping years to calculate a trend in the GOME-

SCIA - GOME Trop. O3 column bias



SCIA - GOME-2 Trop. O3 column bias

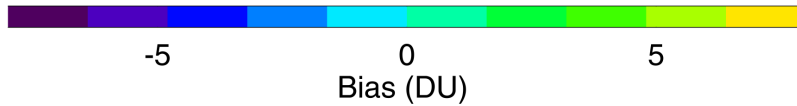
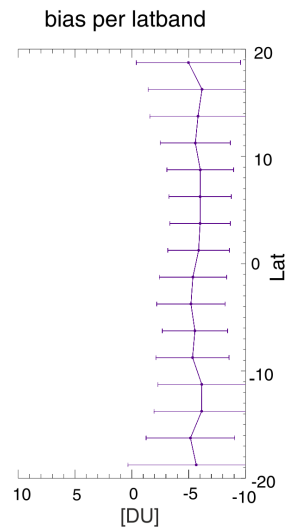
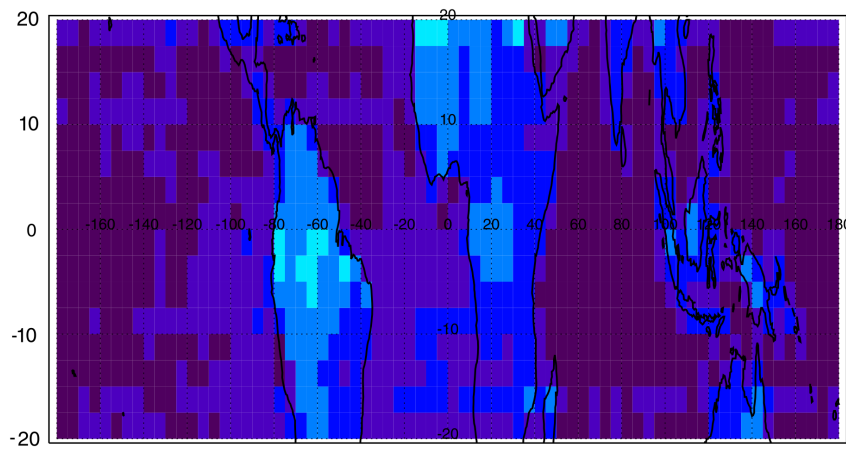


Figure 1. Correction offsets using SCIAMACHY TCO as reference. (up) Correction offset for GOME: average difference of GOME from SCIAMACHY TCO for the years 2002-2003. (down) Correction offset for GOME-2: average difference of GOME-2 from SCIAMACHY TCO (in DU) for the years 2007-2012. On the right are shown the biases per latitude band. The error bars denote the 1σ standard deviations of the latitudinally averaged biases.

SCIA - GOME2 Trop. O3 column Bias drift

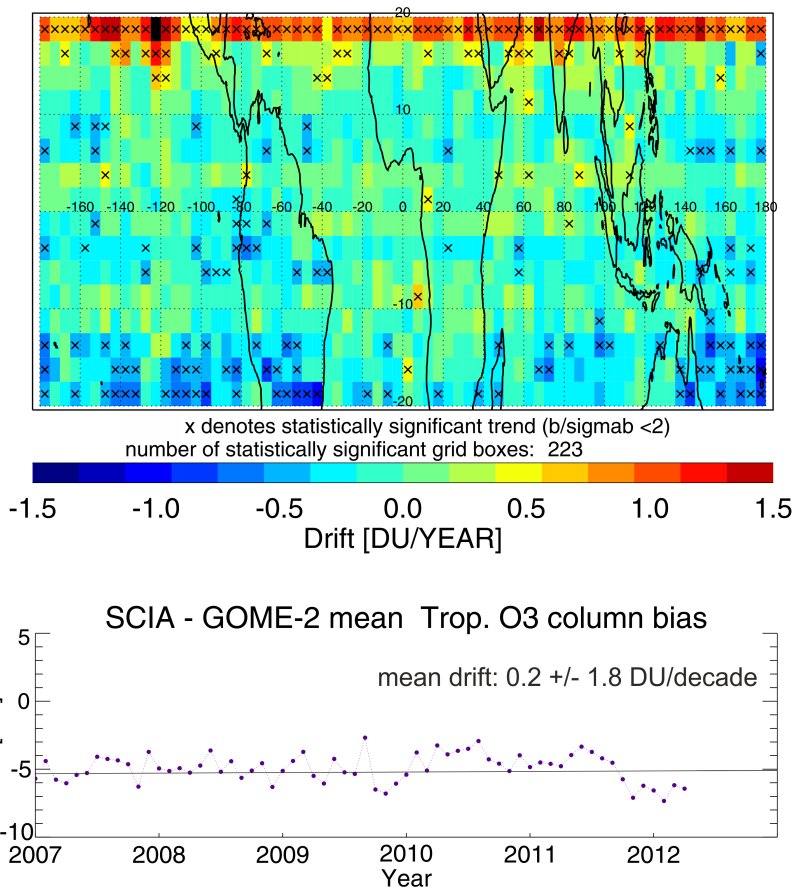


Figure 2. Top: drift in the correction offset for GOME-2. Black "x" denotes statistically significant trend. Bottom: average difference and drift in the correction offset for GOME-2 between 2007 and 2012.

SCIAMACHY difference time-series. The drift is generally less than ~ 0.4 DU per year and is statistically not significant ($\beta/\sigma_\beta < 2$ (Weatherhead et al., 1998; Wilks, 2011)) for nearly all grid boxes, with the exception of the 17.5–20 °N latitude band, where it is statistically significant and exceeds 1 DU year⁻¹. During local winter months at the tropical borders, there are often missing TCO data owing to the movement of the ITCZ and the inability to retrieve a reliable stratospheric O₃ column. For this reason, calculated drifts for these latitudes are not reliable, in spite of the fact that they might appear to be statistically significant. Consequently, the trend of the correction offsets is considered to be negligible.

2.3 Six Harmonisation scenarios

The creation of a consistent tropical tropospheric ozone column dataset from multiple satellite instruments demands a careful selection of the optimal harmonisation approach, since it introduces additional uncertainty in the merged dataset. Six harmon-

isation scenarios have been tested. They all use the SCIAMACHY TCO dataset as a reference, which is in the middle of the time period, as follows:

- **Scenario 1:** No correction applied to GOME data (which maybe justified by the very short overlap period), while GOME-2 is corrected using for each grid-box the mean bias with respect SCIAMACHY for the common years of operation (2007–2012 for GOME-2).
- **Scenario 2:** No correction applied to GOME data and the average bias (-5.7 DU) with respect ^{RV2:}to SCIAMACHY is added to all GOME-2 TCO data.
- **Scenario 3:** GOME and GOME-2 have been corrected using for each grid-box the mean bias with respect to SCIAMACHY for the common years of operation.
- **Scenario 4:** The average bias with respect to SCIAMACHY (-1.2 DU) is added to all GOME TCO data, whereas GOME-2 TCO has been corrected using for each grid-box the mean bias with respect to SCIAMACHY for the common years of operation (2002 for GOME and 2007-2012 for GOME-2).
- **Scenario 5:** The average bias with respect to SCIAMACHY (-1.2 DU) for GOME and for GOME-2 (-5.7 DU) is added to all GOME and GOME-2 TCO data respectively.
- **Scenario 6:** No correction applied to GOME, whereas for GOME-2 both the bias and the drift is included in the correction of GOME-2 TCO in each grid-box.

After the correction terms for all scenarios have been applied to the original data, the "corrected" GOME (1996-2002) and GOME-2 (2007-2015) TCO were averaged with the ones from SCIAMACHY (2003-2012) for the overlapping months (Jan. 2002–Jun. 2003 and Jan. 2007–Dec. 2012, respectively).

In order to decide which is the most suitable harmonisation scenario, the various merged datasets were compared with integrated ozone columns up to 200 hPa altitude from nine ozonesonde stations: (a) Ascension (8°S, 14.4°W), b) Paramaribo (5.8°N, 55.2°W), c) Java (7.6°S, 111°E), d) Natal (5.4°S, 35.4°W), e) Samoa (14.4°S, 170.6°W), f) Nairobi (1.4°S, 36.8°E), and g) Kuala Lumpur (2.7°S, 101.7°E). Fiji (18.1S, 178.4E) station is not included in the comparison because it is highly influenced by air coming in from mid-latitudes and the upper troposphere (Thompson et al., 2017). ^{RV2:}Hilo (19.4N, 155.4W) is strongly affected by volcanic outgassing which interferes with the ozonesondes' electrochemical concentration cells (ECC), resulting in negligible ozone concentrations being measured in the boundary layer (Morris et al., 2010). Therefore, this station is also not included. As seen in Table 1, the mean bias between the six harmonised TCO datasets and the ozonesondes range between -1.1 and 0.9 DU which is well within the retrieval uncertainty showing that for most scenarios the spatio-temporal offsets with respect to ozonesondes are minimised. However, the biases of each scenario with ozonesondes are very close to each other for every station. The same occurs for the correlation between the harmonised TCO datasets and the ozonesondes (not shown here). Although the comparison between the TCO from the individual harmonised scenarios and the ozonesonde data does not favor clearly any harmonisation scenario, the scenarios that can be confidently rejected are scenarios 3, 4 and 5

Table 1. Mean differences (in DU) between merged TCO data, retrieved with the CCD method using six possible harmonisation scenarios, with integrated ozone columns up to 200 hPa from nine SHADOZ stations. The stations marked with asterisk present data from the newest reprocessed (V05.1_R) version (Thompson et al., 2007; Witte et al., 2017). The regions where the merged scenarios have the smallest biases with the ozonesondes are marked with bold. Scenario 1 has the smallest mean bias for all the stations.

CCD – Sondes TCO [DU] /Site	scenario 1	scenario 2	scenario 3	scenario 4	scenario 5	scenario 6
Am. Samoa (14.4S,170.6W)*	-0.89	-0.92	-1.99	-0.61	-0.93	4.59
Ascension (8S,14.4W)	0.03	-0.14	-0.77	-0.42	-0.60	0.03
Java (7.6S,111E)	-0.11	-0.12	-1.12	-0.54	-0.55	-0.11
Kuala Lumpur (2.7N,101.7E)	-1.81	-2.12	-2.12	-2.14	-2.48	-1.78
Nairobi (1.3S,36.8E)	1.81	1.10	1.80	1.48	0.74	1.84
Natal (5.4S,35.4W)	0.56	0.63	-0.21	0.22	0.28	0.57
Paramaribo (5.8N,55.2W)*	-2.98	-2.95	-3.02	-4.11	-4.34	-0.11
Mean bias for all stations	-0.48	-0.64	-1.06	0.87	-1.13	0.72

where GOME data are corrected with respect to SCIAMACHY since the overlap period between GOME and SCIAMACHY is very short (10 months, 8/2002-6/2003). Scenario 6 can also be rejected due to the fact that the drift in GOME-2 correction offset at 81% of the grid-boxes is statistically non significant. Lack of significant drifts in the comparison between GOME-2 and SCIAMACHY over the overlapping period shows that the data records are quite stable. ^{RV2:} Finally, scenario 1 (no drift corrections and bias correction for GOME-2) has the smallest mean bias with the ozonesondes (-0.4 DU). For these reasons, scenario 1 has been selected to be the preferred harmonisation scenario for merging the TCO datasets. For these reasons, scenario 1 (no drift corrections and bias correction for GOME-2) which also has the smallest mean bias with the ozonesondes (-0.4 DU) has been selected to be the preferred harmonisation scenario for merging the TCO datasets. Before we discuss in details tropical tropospheric trends using the preferred scenario (Section 5), we try to estimate the potential contribution of the merging approaches to trend uncertainties in tropical tropospheric ozone.

2.4 Sensitivity of the trend to the merging approach

The statistical trend uncertainty derived from a single dataset usually does not account for uncertainties due to the merging approach applied. Here we will provide a rough estimate on how large the trend uncertainties may be. We applied the multivariate linear regression model (see Section 3, Eq. 1 for details on the regression) to derive trends from all six merged datasets. The tropospheric O₃ trends from all scenarios range between ~ -4 and 4 DU decade⁻¹, with mean values between 0 and 0.8 DU decade⁻¹, without any of them being statistically significant for the global tropics (see Fig. S1 in the supplement). The maximum trend difference among all six harmonisation scenarios is on average 2 DU decade⁻¹ exceeding the $2\sigma_\beta$ uncertainty of the trends which is ~ 1.2 DU decade⁻¹ (see Fig. S2 in the supplement). These differences in the trends among the differ-

ently harmonised datasets reveal the additional uncertainty which results from the harmonisation procedure of multiple TCO datasets.

3 The multi-linear regression trend model

Changes in ozone precursor emissions due to urbanization and land use, along with changes in the atmospheric dynamics which impact tropical upwelling or the horizontal ozone transport, may cause long-term changes in the tropospheric ozone burden. This in turn impacts the photochemical ozone production and loss in the troposphere (Ziemke and Chandra, 2003; Solomon et al., 2007; Chandra et al., 2009; Voulgarakis et al., 2010; WMO, 2011; Neu et al., 2014; Monks et al., 2015). Some of these factors can be represented by periodic seasonal proxies, such as the El Niño Southern Oscillation (ENSO), the quasi-biennial oscillation (QBO), and the solar cycle (SC). These indexes are embodied in the trend model described here.

The time series of the monthly mean tropical tropospheric ozone columns Y_t at a specific latitude and longitude (i,j) (running every 2.5° and 5° , respectively) is described by the following trend model:

$$Y_t(i,j) = \alpha(i,j) + \beta(i,j) \cdot X_t + S_t(i,j) + R_t(i,j) + N_t(i,j), \quad (1)$$

where a is the offset for the first month $t=1$, β the linear trend in DU month⁻¹, X the time variable (months running from zero to 239) covering the years 1996–2015, S_t is the seasonal variation, R_t are the terms with the various proxies (ENSO, QBO, solar cycle) and N_t is the noise of the time series, representing the unexplained portion of the variability in the fit. The seasonal cycle is modeled by a Fourier series (see Eq. 2), with $\gamma_{11}, \gamma_{21}, \gamma_{12}, \gamma_{22}, \gamma_{13}, \gamma_{23}$ being the regression coefficients for 12-, 6- and 4-month periodicities, with sine and cosine terms for each periodicity, respectively:

$$S_t(i,j) = \sum_{n=1}^3 (\gamma_{1n} \cdot \sin(\frac{2 \cdot \pi \cdot n \cdot t}{12}) + \gamma_{2n} \cdot \cos(\frac{2 \cdot \pi \cdot n \cdot t}{12})). \quad (2)$$

R_t , represents the time dependent regression coefficients for the ENSO, QBO, and solar cycle proxies which can be expressed as:

$$R_t = \delta \cdot ENSO_t + \varepsilon \cdot QBO_{30t} + \zeta \cdot QBO_{50t} + \eta \cdot SC_t. \quad (3)$$

Because the tropospheric ozone lifetime approaches a month, the pattern of tropospheric ozone for a month has the tendency to persist into the next month. Even after removing the seasonal and other effects in the time series shown in Eq. 1, there is still a month-to-month correlation (ϕ) in residuals. This phenomena is called persistence (Wilks, 2011) and is quantified by the degree of autocorrelation of a parameter, shifted by p time steps (lag p). Therefore, the first order autocorrelation of the noise (AR[1]) is included in the model, as explained by Weatherhead et al. (1998).

4 Tropical tropospheric ozone trends

For the rest of the discussion about tropical tropospheric ozone, the trend refers to the preferred harmonisation scenario (scenario 1).

4.1 Tropical distribution of tropospheric O₃ trends and mean tropical trend

5 Figure 3 summarises the tropical tropospheric ozone trends calculated in a $2.5^\circ \times 5^\circ$ grid as derived from the preferred merged CCD TCO dataset using the multivariate regression model (Eq. 1) between 1996 and 2015. As shown in 3a, the trend varies between -3.2 and 3.7 DU decade⁻¹, and the average trend for the period 1996–2015 is statistically not-significant and equal to -0.1 ± 1.2 DU decade⁻¹ (2σ). Fig. 3b shows the 2σ of the trend, which is in the order of ~ 0 – 4 DU decade⁻¹ (mean: 1.2 DU decade⁻¹), with higher values at the tropical borders and values close to zero along the equator. Fig. 3c shows the
10 correlation between the model and the time-series. The correlation coefficient reaches 1 over the north and central-east Pacific and the southern Atlantic Ocean. The regions of smaller correlations are mostly over the west Pacific, the Caribbean sea, the south-east Asia, and over the central African continent. The main reason for the low correlation is the weak seasonal cycle observed in these regions. Fig. 3d shows the RMS between the time-series and the model fit. The RMS is less than 3 DU close to equator and reaches 7 DU at the tropical borders. Fig. 3e presents only those grid boxes where the trend is statistically
15 significant and exceeds the maximum difference of the trends calculated from all six scenarios. This additional criterion (to exceed the differences between harmonisation scenarios) allows us to identify grid boxes that have significant trends with higher confidence. Using this stricter criterion, tropospheric ozone trends are positive over some parts of central Africa (~ 2 DU decade⁻¹), southern Africa and Atlantic Ocean (~ 2 – 3 DU decade⁻¹), India (~ 2 DU decade⁻¹) and Oceania (~ 3 – 4 DU decade⁻¹) but are negative over the Caribbean sea and parts of North Pacific Ocean (~ -2 – -3 DU decade⁻¹), as well as
20 over some regions of the southern Pacific Ocean (~ -2 DU decade⁻¹) seem to be relevant, however, for all other grid boxes trends are highly uncertain and mainly dependent on the choice of the harmonisation scenario. The negative trends appearing in a region at the northern latitudes (Caribbean sea and northern Pacific) may be an artifact of the data-set (low sampling of data, 54 out of 240 months of data). Finally, Fig. 3f shows the tropical tropospheric ozone trends in per cent per year ($\% \text{ year}^{-1}$) that are statistically significant. Here the maximum increase is observed over central Africa, $\sim 3\% \text{ year}^{-1}$, over southern Africa, south tropical Atlantic and Oceania $\sim 1.5\% \text{ year}^{-1}$, and finally over India and south-east Asia $\sim 1\% \text{ year}^{-1}$. The maximum tropospheric ozone decreasing trend is observed over the Caribbean sea and the north-east tropical Pacific, about $\sim -2\% \text{ year}^{-1}$, followed by the central-south Pacific and Indian Ocean, $\sim -1\% \text{ year}^{-1}$.

The southern and northern boundary of the tropics (15 – 20 S and 15 – 20 N) is strongly influenced by stratospheric intrusions via tropopause foldings and air masses being transported from the mid-latitudes and the upper troposphere (Pickering et al.,
30 2001; Thompson et al., 2017). Therefore, in order to estimate a more reliable mean trend for the tropics the multivariate regression model (1) has been applied to the mean tropical time-series between 15° S– 15° N. The fit results are shown in Fig. 4. The mean ("global") tropical trend equals -0.2 ± 0.6 DU decade⁻¹ (2 sigma). This means that there is no significant trend for tropospheric ozone in the tropics. The mean tropospheric ozone trend is in agreement with Ziemke et al. (2005) (using

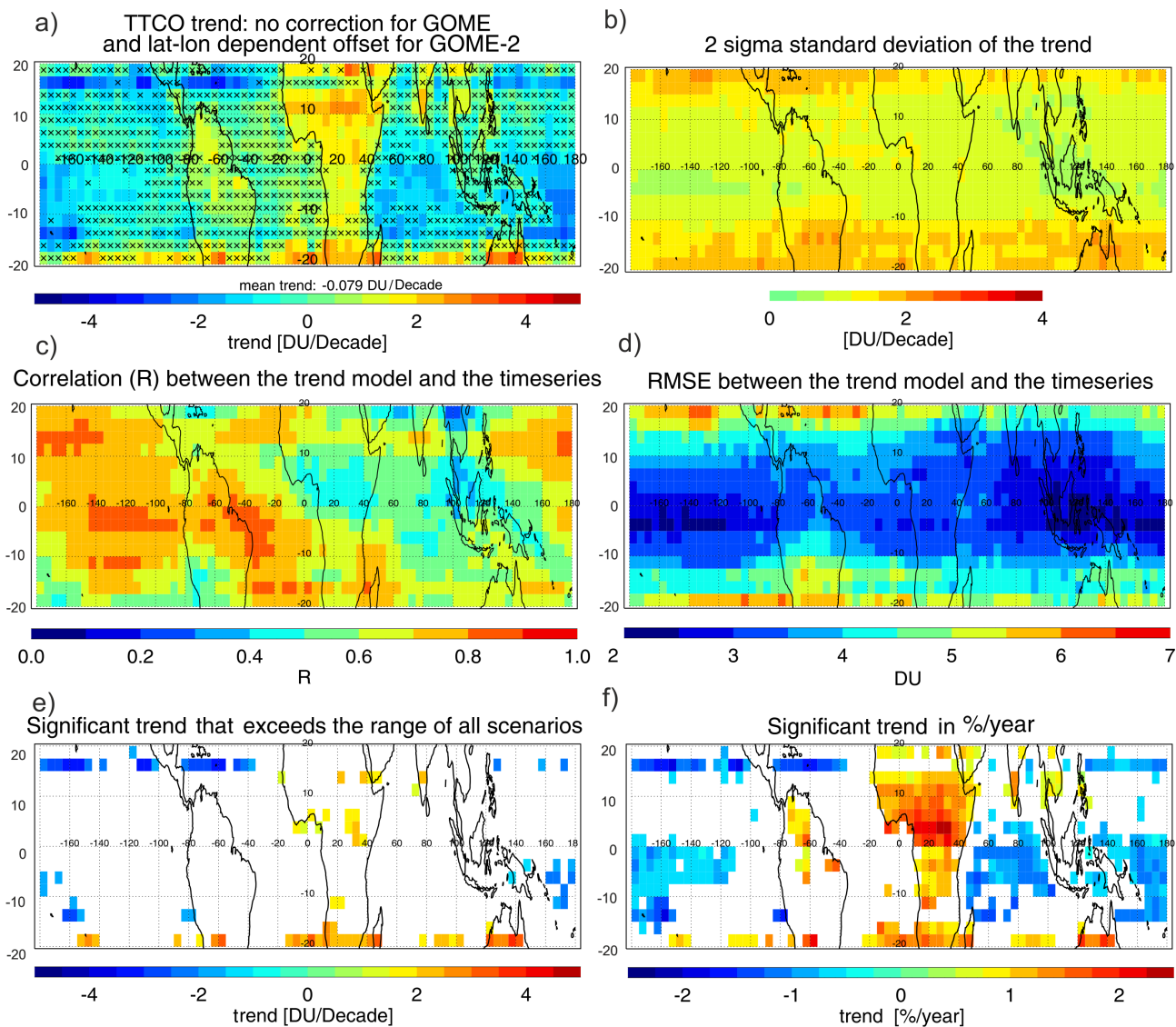


Figure 3. (a) Tropical tropospheric ozone trends using a linear multivariate first order auto-regression model for the selected harmonised scenario 1 in DU decade^{-1} . Grid-boxes marked with "x" are statistically non-significant at the 95% confidence level ($b > 2\sigma_\beta$). b) 2σ standard deviation of the trend. c) The correlation coefficient, R, between the multi-linear trend model fit and the original time-series. d) The RMS error between the trend model and the time-series. e) The statistically significant trend that exceeds the maximum absolute difference of the trends calculated for all six scenarios. f) The significant tropical tropospheric ozone trend in $\% \text{ year}^{-1}$.

solar backscatter ultraviolet (SBUV) and Total Ozone Mapping Spectrometer (TOMS) version 8 data from 1979 to 2003) and Ebojie et al. (2016) (using SCIAMACHY limb-nadir-matching (LNM) observations during the period 2003–2011) who also indicated insignificant and near zero global trends in the tropics, although their analysis was based on different datasets and covered shorter time periods. Nevertheless, Heue et al.(2016), using a similar CCD method on the same period and satellite instruments, reported a significant average increase of 0.7 ± 0.1 DU decade⁻¹.

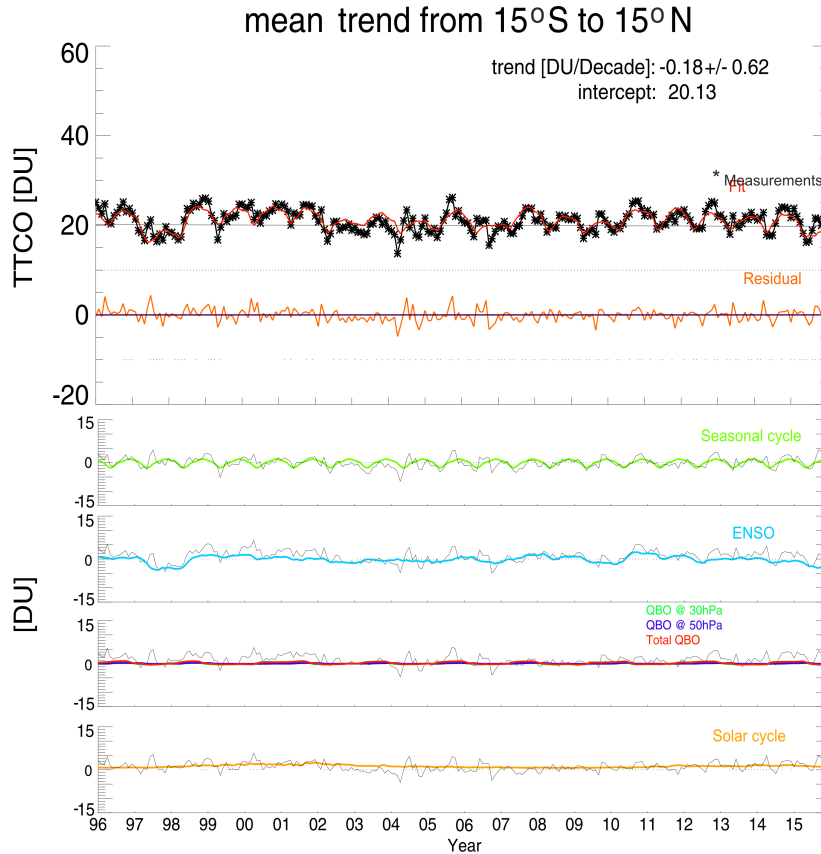


Figure 4. Mean tropical tropospheric ozone trends between 15°S – 15°N for the period 1996 to 2015. Top: The multivariate linear trend (black), the fit (red) and the residual (orange) are over-plotted. The mean tropical tropospheric ozone trend is equal to -0.18 and the 2σ uncertainty of the trend is ± 0.62 DU decade⁻¹. The next panels show the harmonic functions (green), ENSO (light blue), QBO (red), solar (orange). Overlaid in black for all proxies are the time series with all fit terms removed except the particular fit parameter.

The tropical mean tropospheric ozone time-series (black stars) shows a seasonal cycle with higher values in Jul–Oct. The time-series are well followed by the regressed tropospheric ozone (red line) and the residual (orange line in upper panel) is less than 5 DU. The seasonal cycle contributes the most to the TTCO variability in the tropics by about ± 2 DU. Tropical tropospheric ozone is reduced by -4 DU during El Niño years (1997-98, 2006-07, 2009-10, 2015) and slightly increases by 1 – 2 DU during strong La Niña years (1999-00, 2007-08, 2010-11). QBO and the solar cycle, do not contribute to the inter-annual

mean tropical tropospheric ozone variability. Overlaid in black for all proxies are the time series with all fit terms removed except the particular fit parameter. This allows us to relate the magnitude of changes due to a selected process to the observed residuals (or unexplained variations).

4.2 Regionally averaged tropical tropospheric ozone trends

- 5 We also studied regional trends focusing on the regions where the trends are statistically significant. The TCO have been regionally averaged for eight regions and the regression analysis applied to them. The regions are: A: Caribbean Sea ($15^\circ - 17.5^\circ, -85^\circ - -45^\circ$), B: India ($10^\circ - 20^\circ, 70^\circ - 85^\circ$), C: north-south America ($0^\circ - 10^\circ, -75^\circ - -60^\circ$), D: North Africa ($5^\circ - 15^\circ, -17.5^\circ - 50^\circ$), E: east Pacific Ocean ($0^\circ - 7.5^\circ, -180^\circ - -110^\circ$), F: Indian Ocean ($0^\circ - 7.5^\circ, 50^\circ - 100^\circ$), G: west Pacific Ocean ($0^\circ - 7.5^\circ, 160^\circ - 180^\circ$), and H: southern Africa ($-20^\circ - -12.5^\circ, 10^\circ - 50^\circ$).

Table 2. Regional tropospheric ozone trends in 8 tropical regions. Bold are the regions where the trend is greater than three times the standard deviation of the trend (3σ).

Area	Tropospheric O ₃ trend $\pm 2\sigma$ in DU decade ⁻¹
A) Caribbean sea	-1.59 \pm 1.30
B) India	1.10 \pm 0.86
C) North South America	0.99 \pm 0.94
D) North Africa	1.54 \pm 1.09
E) East Pacific Ocean	-1.21 \pm 0.65
F) Indian Ocean	-1.61 \pm 0.83
G) West Pacific Ocean	-1.87 \pm 0.72
H) South Africa	1.44 \pm 1.28

- 10 As shown in Figure 5 and Table 2, regions B, C, D and H show significant increase in the order of 1–1.5 DU decade⁻¹ and regions A, E, F, and G a significant ozone decrease in the order of -1.2 – 1.9 DU decade⁻¹. The observed significant positive changes in tropospheric O₃ over north Africa and parts of the Arabian sea (D), south Africa and the southern African outflow (H), parts of India (B), and north south America (C) agree well with results of Lelieveld et al. (2004), Beig and Singh (2007), Kulkarni et al. (2010), Ebojie et al. (2016) and Heue et al. (2016) who also observed an increasing ozone trend over these
- 15 regions. Although, Ebojie et al. (2016) observe a decreasing trend of -0.5 DU decade⁻¹ in tropospheric ozone over north-east Africa (D).

The negative changes in TCO over the Caribbean sea (A) are in agreement with the results of Ebojie et al. (2016). However, the observed trends over the northern and southern tropical latitudes ($18^\circ - 20^\circ$ in SH and NH) should be generally interpreted

Trop. O3 column trend

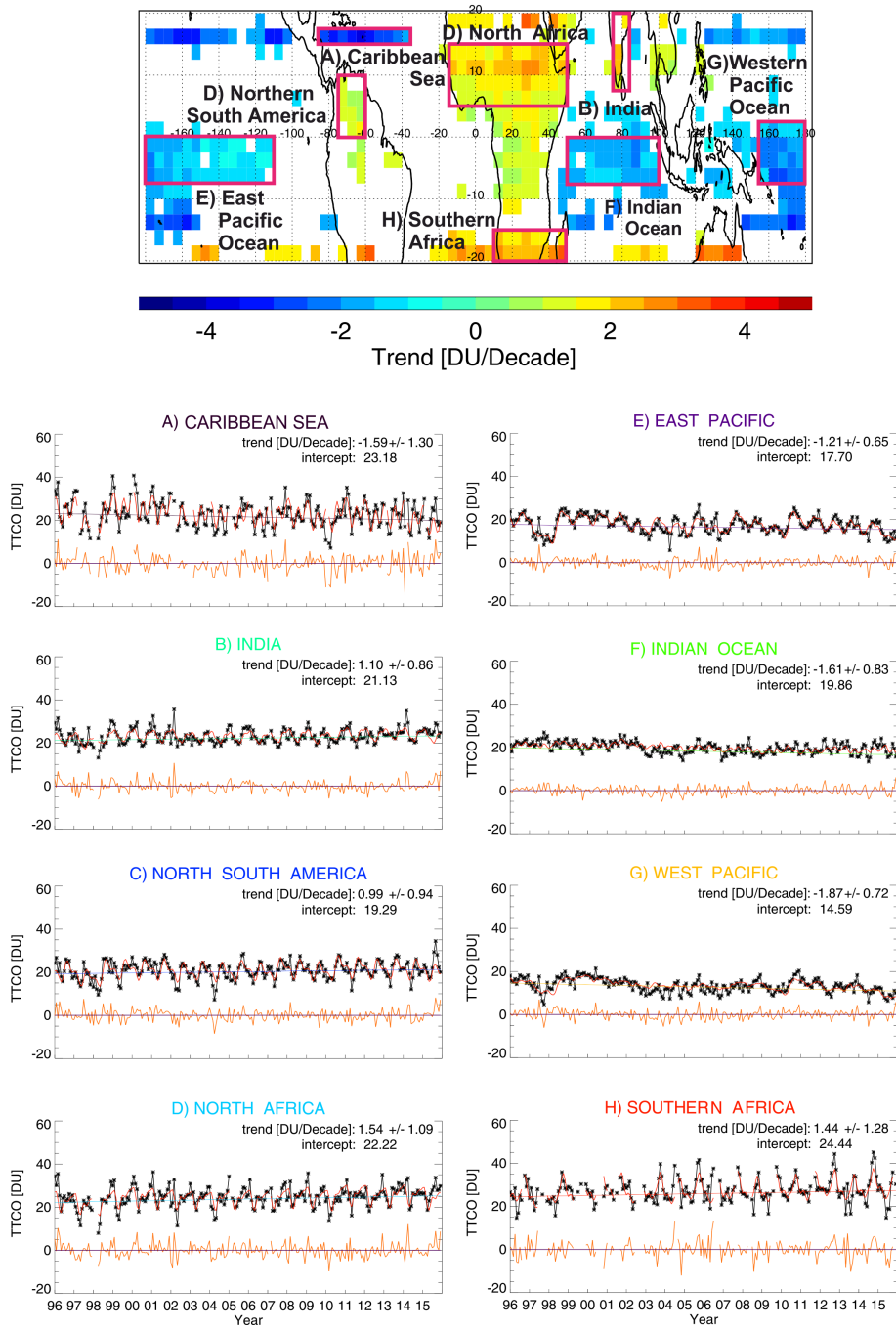


Figure 5. Tropical tropospheric ozone trend in A) central America, B) India, C) east Pacific Ocean, D) South America, E) central Atlantic Ocean, F) Indian Ocean, G) south Atlantic Ocean, and H) southern Africa.

with caution because they are influenced by low sampling of data due to the movement of the ITCZ, which reduces the cloudy data during local winters and makes the above cloud ozone column (ACCO) retrieval difficult, violating in some cases the invariance of the ACCO per latitude band. The decreasing tropospheric ozone trend over the western Pacific (G) and Indian (F) Oceans agrees well with Heue et al. (2016). On the other hand, the decreasing trend over the eastern Pacific Ocean (E) is in disagreement with Heue et al., (2016) who reported a significant increase in the order of $0.5 - 1 \text{ DU decade}^{-1}$.

4.3 Seasonal tropospheric O_3 trends

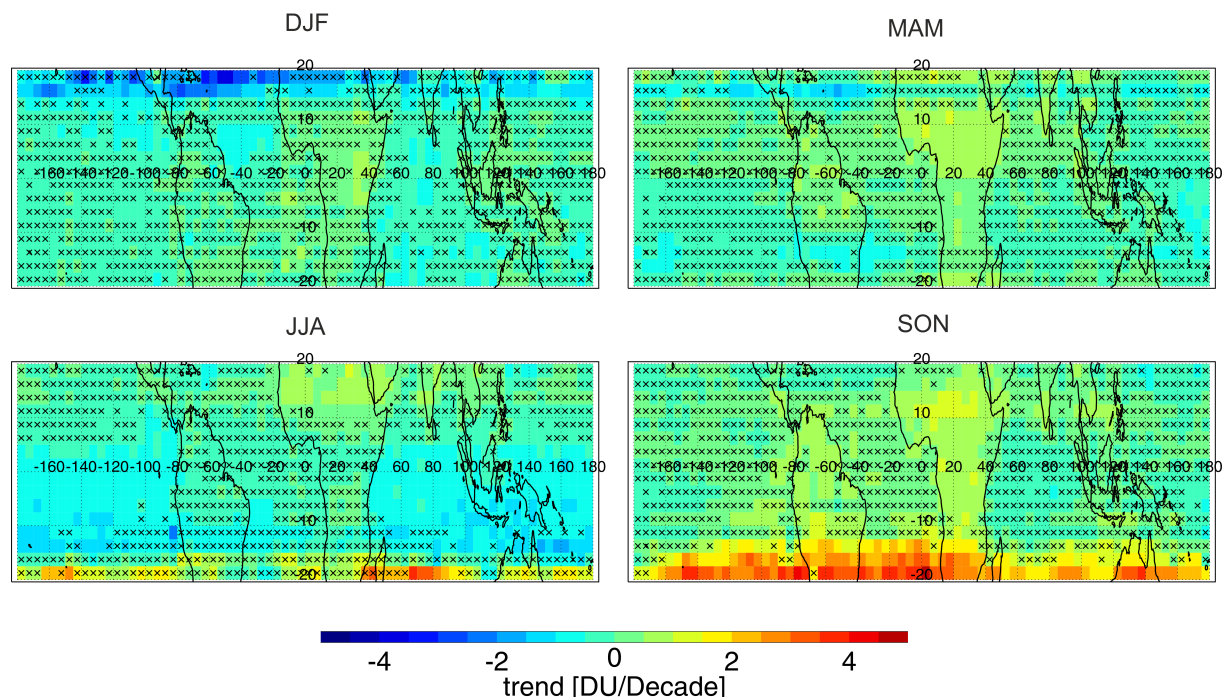


Figure 6. Tropical tropospheric ozone trends for winter (DJF), spring (MAM), summer (JJA), and autumn (SON) for the years 1996 to 2015. Black "x" denotes statistically significant trend.

Seasonal tropospheric O_3 trends can be useful for understanding the connection between the factors (e.g. meteorology or emissions) that contribute to tropospheric ozone changes and its distribution. For this reason, the multi-linear regression model has been applied to monthly time-series containing only the following months: Dec.–Feb., Mar.–May, Jun.–Aug., and Sep.–Nov respectively. For these time series no seasonal terms are used in the regression. In Fig. 6, the maximum decreasing trends appear during December to February over the northern tropical Atlantic and Pacific Oceans ($\sim -4 \text{ DU decade}^{-1}$). These air masses are more affected by changes occurring in the mid-latitudes due to the southward movement of the ITCZ in these months and the strong westerly air flow over the tropical borders (Oltmans et al., 2004). Therefore, it is possible that changes in ozone precursors, such as NO_2 over North America and Europe may have affected the O_3 trends over these tropical latitudes (Logan et

al., 2012; Hilboll et al., 2013b). This decrease might also be associated with the limited number of TCO measurements on the northern tropical borders, thus it demands a more careful investigation. The trends are mostly insignificant between March and May, with the exception of Africa where ozone is increasing by $\sim 1 \text{ DU decade}^{-1}$ and some parts over South America where ozone is decreasing by less than 1 DU decade^{-1} . During June to August, ozone shows a small statistically significant decrease
5 over the Pacific and Indian Oceans ($1\text{-}2 \text{ DU decade}^{-1}$). Possible reasons for tropospheric ozone decrease over the oceans may be related to changes in sea surface temperatures (SSTs), which are closely tied to the tropospheric humidity (Trenberth, 2011; IPCC, 2007). As discussed earlier, the production of HOx (OH and OH₂) from water vapor in the troposphere accounts for one of the most important sinks of tropospheric ozone (Jacob, 2000). An increase in vertical convective patterns over the tropical oceans may result in lower ozone mixing ratios in the upper troposphere where the WFOAS retrieval is more sensitive (Morris
10 et al., 2010; Wai et al., 2014; Fontaine et al., 2011; Ziemke et al., 2008; Coldewey-Egbers et al., 2005). Several studies have shown that the total column of water vapour (TCWV) has increased over the tropics. Mieruch et al. (2014) and Trenberth et al. (2005) found that the TCWV has increased by $\sim 1\text{-}2 \text{ \% decade}^{-1}$ over the oceans. Chen and Liu (2016) found that also the precipitable water vapor (PWV) increased by $1\text{-}2\%$ in the tropics between 1992–2014. The precipitation increase is about 4% over the ocean, while a decrease of 2% is found over land in the latitude range 25°S to 25°N , between 1979 and 2001 (Adler
15 et al., 2003). The significant positive trend of ozone at the southern tropical Atlantic, southern Africa, South America, and Oceania maximise during September to November ($\sim 4 \text{ DU decade}^{-1}$). According to MODIS/TERRA Fire Radiative Power (mW/m^2) data (<https://disc.gsfc.nasa.gov/neespi/data-holdings/mod14cm1.shtml>) autumn is the season with the most intense fires over southern Africa and South America. The burned area in southern tropical Africa increased by 1.8 \%/yr during the period 2000 to 2011 (Giglio et al., 2013). Ziemke et al. (2009b) and Wai et al. (2014) estimated that biomass burning can
20 contribute to an increase in tropospheric ozone column by $\sim 20\%$. Hence, it is very likely that biomass burning could be the origin of the observed ozone increase.

5 Summary and discussion

The new harmonised dataset of tropical tropospheric ozone columns for the last 20 years between 1996 and 2015, makes it possible to calculate and study long-term tropospheric O₃ variability and trends. Correction offsets have been calculated
25 for GOME and GOME-2 TCO using SCIAMACHY as reference (in the middle of the time-series) in order to reduce the instrumental effects in the long-term time series. Nevertheless, the short overlap period between GOME and SCIAMACHY limits the harmonisation of the GOME dataset. The correction offsets for GOME presented artificial features which are also visible afterwards in the trend (see Fig. S1). In order to identify the best way to merge the CCD data and also to investigate how the harmonisation approach may affect the observed trends, six different harmonisation scenarios have been evaluated
30 by comparing with ozonesondes. The merging scenario, using no correction for GOME (short overlap) and the mean bias correction of GOME-2 with respect to SCIAMACHY in each grid box was found to show slightly smaller differences to ozonesondes and therefore, was considered to be the preferred scenario. From the trend analysis of all merged datasets a rough

estimate on the variability of trends due to merging approaches was provided ($\sim \pm 2$ DU decade⁻¹). After the harmonisation, the data obtained from the different instruments agree better with each other and with ozonesondes.

Harmonisation and merging of multi-instrument datasets is one of the largest sources of uncertainty. Most of the trend studies that use multiple satellite data (e.g. Xu et al. (2011), Loyola et al. (2009), Heue et al. (2016), and TOAR) do not account for uncertainties related to the merging approach. Therefore, in order to quantify the uncertainty due to harmonisation, multi-linear tropospheric ozone trends using all six harmonised datasets have been derived and the maximum deviation between them has been calculated. The trends range between about -4 and 4 DU decade⁻¹ and the average difference between the trends from the six scenarios has been found to be ~ 2 DU decade⁻¹, exceeding locally the 2σ of the individual trends (0 to 4 DU decade⁻¹). We conclude that the overall uncertainties in the trends are larger than the statistical ones reported.

Despite the fact that the trend results using the preferred merged dataset are small ($< \pm 4$ DU decade⁻¹ or 3 % year⁻¹) and mostly uncertain (66 % are statistically insignificant), there are regions such as over southern Africa, the southern tropical Atlantic, south-east tropical Pacific Ocean, and central Oceania where tropospheric O₃ increased significantly by ~ 3 DU decade⁻¹. In central Africa and southern India, tropospheric ozone increased by ~ 2 DU decade⁻¹. Regional positive tropospheric ozone trends of similar magnitude were also observed in other studies (e.g. Lelieveld et al., 2004; Beig and Singh, 2007; Kulkarni et al., 2010; Cooper et al., 2014; Ebojie et al., 2016; Heue et al., 2016). On the other hand, tropospheric O₃ decreases by ~ 3 DU decade⁻¹ over the Caribbean sea and parts of North Pacific Ocean, and by less than -2 DU decade⁻¹ over some regions of the southern Pacific Ocean. The most important limitation in interpreting the observed trends over the northern and southern tropical latitudes (18°–20° in SH and NH) is the low data sampling at these latitudes. Due to the ITCZ movement, cloudy data during local winters are reduced, making the above cloud ozone column (ACCO) retrieval difficult or violating the invariance of the ACCO per latitude band. Therefore, even though they might appear to be statistically significant, they should be referred to with caution.

The mean tropospheric ozone trend has been estimated between 15S and 15N during the period 1996–2015. This restriction has been applied in order to avoid the influence of sub-tropical air masses on tropospheric ozone abundances at the tropical borders (Thompson et al., 2017). The global mean trend is found to be almost equal to zero (-0.1 ± 0.3 % year⁻¹) and statistically non significant. This is in agreement with studies of Ziemke et al. (2005) (nearly zero trend) and Ebojie et al. (2016) (0.3 ± 0.4 % year⁻¹ for the southern tropics and 0.1 ± 0.5 % year⁻¹ for the northern tropics) who also found no trend or insignificant trends. This is in contrast with the results of Heue et al. (2016) who found a mean increase of 0.7 ± 0.1 DU decade⁻¹ for the entire tropics.

Comparison of several independent studies conducted on tropospheric ozone trends shows that the trends vary in sign and magnitude for the past few decades in the tropics (Cooper et al., 2014; Ziemke et al., 2005; Monks et al., 2015; Oltmans et al., 2013; Lelieveld et al., 2004; Lin et al., 2014; Beig and Singh, 2007; Kulkarni et al., 2010; Thompson et al., 2014; Heue et al., 2016; Ebojie et al., 2016). This is a significant issue for the scientific community, especially climate modelers who try to use recent past data to evaluate the performance of climate and global atmospheric chemistry models for future prediction (Zhang et al., 2016; Young et al., 2018). At the moment, there is a new activity of the International Global Atmospheric Chemistry Project (IGAC), named Tropospheric Ozone Assessment Report (TOAR), which aims to assess our knowledge of

the tropospheric ozone distribution, pattern and trends, using the available surface ozone data, ozone sonde, aircraft and satellite observations (currently under review in Elementa: <https://collections.elementascience.org/toar/>).

The accurate interpretation of the trend results is challenging and requires the parallel investigation of changes in numerous factors that impact on ozone production, loss, and transport in the troposphere, including various feedbacks (e.g. ? and references therein). Finally, the attribution of observed TCO trends in specific regions to the various processes is not possible without the additional use of chemistry-transport models that can potentially disentangle the different contributions to tropospheric ozone variability (dynamics and chemistry)(Grewe et al., 2012; Coates et al., 2015).

The launch of Sentinel 5 precursor(S5p) satellite in 2017 and the planned launches of three consecutive Sentinel 5 instruments until 2030 will extend the TCO record which will likely result in more reliable trends. The grid box size used in this study was relatively coarse ($2.5^{\circ} \times 5^{\circ}$ degrees), due to the instruments spatial resolution (GOME pixel $\simeq 320$ km), and in order to remove the residual noise. The high spatial resolution (7×7 km) of the TROPOMI instrument aboard S5p will improve the trend estimates of tropospheric ozone in particular over mega-cities.

6 Data availability

Data used in this publication can be accessed via the IUP website: <http://www.iup.uni-bremen.de/UVSAT/datasets> or by contacting the corresponding author.

Acknowledgements. We thank the two anonymous reviewers for their helpful comments and suggestions. The article processing charges for this open-access publication were covered by the University of Bremen. This study was supported in parts by the DLR S5P project (50EE1247 and 50EE1618) and the federal state of Bremen.

References

- Adler, F. R., Huffman G. J., Chang A., Ferraro R., Xie P.P., Janowiak J., Rudolf**, Schneider B.U., Curtis S., Bolvin D, Gruber A., Susskind J., Arkin P., and Nelkin E.: The version-2 Global Precipitation Climatology Project (GPCP) monthly precipitation analysis (1979 - present), *J. Hydrometeor.*, 4, 1147-1167, 2003.
- 5 Beig, G., and V. Singh: Trends in tropical tropospheric column ozone from satellite data and MOZART model, *Geophys. Res. Lett.*, 34, L17801, doi:10.1029/2007GL030460, 2007.
- Bovensmann, H., Burrows, J. P., Buchwitz, M., Frerick, J., Noël, S., Rozanov, V. V., Chance, K. V. and Goede, A. P. H.: SCIAMACHY: Mission Objectives and Measurement Modes, *J. Atmos. Sci.*, 56(2), 127-150, doi:10.1175/1520-0469(1999)056<0127:SMOAMM>2.0.CO;2, 1999.
- 10 Burrows, J. P., Hlzle, E., Goede, A., Visser, H., and Fricke, W.: SCIAMACHY - scanning imaging absorption spectrometer for atmospheric cartography, *Acta Astronautica*, 35, 445-451, 1995.
- Burrows, J. P., Weber, M., Buchwitz, M., Rozanov, V., Ladstätter-Weissenmayer, A., Richter, A., DeBeek, R., Hoogen, R., Bramstedt, K., Eichmann, K.-U., Eisinger, M. and Perner, D.: The Global Ozone Monitoring Experiment (GOME): Mission Concept and First Scientific Results, *J. Atmos. Sci.*, 56(2), 151-175, doi:10.1175/1520-0469(1999)056<0151:TGOMEG>2.0.CO;2, 1999.
- 15 Callies, J., Corpaccioli, E. and Eisinger, M., Hahne, A. and Lefebvre, A.: GOME-2 - Metop-s second-generation sensor for operational ozone monitoring, *ESA Bull. Sp. Agency*, 102, 28-36, 2000.
- Chameides, W. L. and Walker, J. C. G.: A photochemical theory for tropospheric ozone, *J. Geophys. Res.*, 78, 8751-8760, 1973.
- Chandra, S., Ziemke, J.R., Tie, X. and Brasseur, G.: Elevated ozone in the troposphere over the Atlantic and Pacific oceans in the Northern Hemisphere. *Geophysical Research Letters* 31: doi: 10.1029/2004GL020821. issn: 0094-8276, 2004.
- 20 Chandra, S., Ziemke, J. R., Duncan, B. N., Diehl, T. L., Livesey, N. J., and Froidevaux, L., Effects of the 2006 El Niño on tropospheric ozone and carbon monoxide: implications for dynamics and biomass burning, *Atmos. Chem. Phys.*, 9, 4239-4249, doi:10.5194/acp-9-4239-2009, 2009.
- Chen, B., and Z. Liu: Global water vapor variability and trend from the latest 36 year (1979 to 2014) data of ECMWF and NCEP reanalyses, radiosonde, GPS, and microwave satellite, *J. Geophys. Res. Atmos.*, 121, 11,442-11,462, doi:10.1002/2016JD024917, 2016.
- 25 Coates, J. and Butler, T. M.: A comparison of chemical mechanisms using tagged ozone production potential (TOPP) analysis, *Atmos. Chem. Phys.*, 15, 8795-8808, doi:10.5194/acp-15-8795-2015, 2015.
- Coldewey-Egbers, M., Weber, M., Lamsal, L. N., de Beek, R., Buchwitz, M. and Burrows, J. P.: Total ozone retrieval from GOME UV spectral data using the weighting function DOAS approach, *Atmos. Chem. Phys.*, 5(4), 1015-1025, doi:10.5194/acp-5-1015-2005, 2005.
- 30 Cooper, O. R. et al. Increasing springtime ozone mixing ratios in the free troposphere over western North America. *Nature* 463, 344-348, 2010.
- Cooper, O. R., Parrish, D. D., Ziemke, J., Balashov, N. V., Cupeiro, M., Galbally, I. E., Gilge, S., Horowitz, L., Jensen, N. R., Lamarque, J.-F., Naik, V., Oltmans, S. J., Schwab, J., Shindell, D. T., Thompson, A. M., Thouret, V., Wang, Y. and Zbinden, R. M.: Global distribution and trends of tropospheric ozone: An observation-based review, *Elem. Sci. Anthr.*, 2, 000029, doi:10.12952/journal.elementa.000029, 2014.
- 35 Crutzen P. J.: The influence of nitrogen oxides on the atmospheric ozone content, *Quart. J. Roy. Meteorol. Soc.*, 96, pp. 320-325, 1970
- Crutzen, P. J.: Geology of mankind: the anthropocene. *Nature* 415, 23, 2002.

- Dahlmann, K., Grewe, V., Ponater, M., Matthes, S.: Quantifying the contributions of individual NO_x sources to the trend in ozone radiative forcing. *Atmos. Environ.* 45 (17), 2860e2868. doi:10.1016/j.atmosenv.2011.02.071, 2011
- Derwent, R.G., Jenkin, M.E., Saunders, S.M., Pilling, M.J., Simmonds, P.G., Passant, N.R., Dollard, G.J., Dumitrean, P., Kent, A.: Photochemical ozone formation in northwest Europe and its control. *Atmospheric Environment* 37, 1983–1991, 2003.
- 5 Diab, R. D., Raghunandan, A., Thompson, A. M., and Thouret, V.: Classification of tropospheric ozone profiles over Johannesburg based on mozaic aircraft data, *Atmos. Chem. Phys.*, 3, 713-723, doi:10.5194/acp-3-713-2003, 2003.
- Dickerson, R. R., K. P. Rhoads, T. P. Carsey, S. J. Oltmans, J. P. Burrows, and P. J. Crutzen: Ozone in the remote marine boundary layer: A possible role for halogens, *J. Geophys. Res.*, 104(D17), 21385?21395, doi:10.1029/1999JD900023, 1999.
- Doughty, D. C., A. M. Thompson, M. R. Schoeberl, I. Stajner, K. Wargan, and W. C. J. Hui: An intercomparison of tropospheric ozone retrievals derived from two Aura instruments and measurements in western North America in 2006, *J. Geophys. Res.*, 116, D06303, 10
doi:10.1029/2010JD014703, 2011.
- Duncan, B. N., Yoshida, Y., Olson, J. R., Sillman, S., Martin, R. V., Lamsal, L., Hu, Y., Pickering, K. E., Retscher, C., Allen, D. J., and Crawford, J. H.: Application of OMI observations to a spacebased indicator of NO_x and VOC controls on surface ozone formation, *Atmos. Environ.*, 44, 2213?2223, 2010.
- 15 Duncan, B. N., L. N. Lamsal, A. M. Thompson, Y. Yoshida, Z. Lu, D. G. Streets, M. M. Hurwitz, and K. E. Pickering: A space-based, high-resolution view of notable changes in urban NO_x pollution around the world (2005-2014), *J. Geophys. Res. Atmos.*, 121, 976?996, doi:10.1002/2015JD024121, 2016.
- Ebojje, F., von Savigny, C., Ladstätter - Weißenmayer, A., Rozanov, A., Weber, M., Eichmann, K., Bötel, S., Rahpoe, N., Bovensmann, H., and Burrows, J. P.: Tropospheric column amount of ozone retrieved from SCIAMACHY limb/nadir-matching observations, *Atmos. Meas. 20
Tech.*, 7, 2073-2096, doi:10.5194/amt-7-2073-2014, 2014.
- Ebojje, F., Burrows, J. P., Gebhardt, C., Ladsttter-Weienmayer, A., von Savigny, C., Rozanov, A., Weber, M., and Bovensmann, H.: Global tropospheric ozone variations from 2003 to 2011 as seen by SCIAMACHY, *Atmos. Chem. Phys.*, 16, 417-436, doi:10.5194/acp-16-417-2016, 2016.
- Fishman, J., and J. C. Larsen, Distribution of total ozone and stratospheric ozone in the tropics: Implications for the distribution of tropo-
spheric ozone, *J. Geophys. Res.*, 92, 6627-6634, 1987.
- 25 Fishman, J., C. E. Watson, J. C. Larsen, and J. A. Logan: Distribution of tropospheric ozone determined from satellite data, *J. Geophys. Res.*, 95(D4), 3599–3617, doi:10.1029/JD095iD04p03599, 1990.
- Fontaine, B., Roucou, P., Gaetani, M. and Marteau, R.: Recent changes in precipitation, ITCZ convection and northern tropical circulation over North Africa (1979-2007). *Int. J. Climatol.*, 31: 633-648. doi:10.1002/joc.2108, 2011.
- 30 Grenfell, J.L., D.T. Shindell, and V. Grewe, 2003: Sensitivity studies of oxidative changes in the troposphere in 2100 using the GISS GCM. *Atmos. Chem. Phys.*, 3, 1267-1283, doi:10.5194/acp-3-1267-2003.
- Grewe, V., M. Dameris, R. Hein, R. Sausen, and B. Steil: Future changes of the atmospheric composition and the impact of climate change. *Tellus*, 53B, 103-121, doi:10.1034/j.1600-0889.2001.d01-10.x, 2001.
- Grewe, Volker and Dahlmann, Katrin and Matthes, Sigrun and Steinbrecht, Wolfgang: Attributing ozone to NO_x emissions: Implications for
climate mitigation measures. *Atmospheric Environment*, 59, pp. 102-107. DOI: 10.1016/j.atmosenv.2012.05.002, 2012.
- 35 Giglio, L., Randerson, J. T., and van der Werf, G. R.: Analysis of daily, monthly, and annual burned area using the fourth generation global fire emissions database (GFED4), *J. Geophys. Res.-Biogeo.*, 118, 317?328, doi:10.1002/jgrg.20042, 2013
- Jacob, D. J.: *Introduction to Atmospheric Chemistry*, Princeton University Press., 2000.

- Jensen, A. A., Thompson, A. M., and Schmidlin, F. J.: Classification of Ascension Island and Natal ozonesondes using self-organizing maps, *J. Geophys. Res.-Atmos.*, 117, D04302, doi:10.1029/2011jd016573, 2012.
- JCGM 100: Evaluation of measurement data - Guide to the expression of uncertainty in measurement, Joint Committee for Guides in Metrology, 2008.
- 5 Hauglustaine, D. A., J. Lathière, S. Szopa, and G. A. Folberth: Future tropospheric ozone simulated with a climate-chemistry-biosphere model, *Geophys. Res. Lett.*, 32, L24807, doi:10.1029/2005GL024031, 2005.
- Heue, K.-P., Coldewey-Egbers, M., Delcloo, A., Lerot, C., Loyola, D., Valks, P., and van Roozendaal, M.: Trends of tropical tropospheric ozone from 20 years of European satellite measurements and perspectives for the Sentinel-5 Precursor, *Atmos. Meas. Tech.*, 9, 5037-5051, doi:10.5194/amt-9-5037-2016, 2016.
- 10 Hilboll, A., Richter, A., and Burrows, J. P.: Long-term changes of tropospheric NO₂ over megacities derived from multiple satellite instruments, *Atmos. Chem. Phys.*, 13, 4145-4169, doi:10.5194/acp-13-4145-2013, 2013b
- Hilboll, A., Richter, A., and Burrows, J. P.: NO₂ pollution over India observed from space ? the impact of rapid economic growth, and a recent decline, *Atmos. Chem. Phys. Discuss.*, doi:10.5194/acp-2017-101, in review, 2017.
- Holton J.R., Lelieveld J.: Stratosphere-Troposphere Exchange and its role in the budget of tropospheric ozone. In: Crutzen P.J., Ramanathan V. (eds) *Clouds, Chemistry and Climate. NATO ASI Series (I: Global Environmental Change)*, vol 35. Springer, Berlin, Heidelberg, 1996.
- 15 Hwang, S.-H., Kim, J., Won, Y.-I., Cho, H. K., Kim, J. S., Lee, D.- H., Cho, G.-R., and Oh, S. N.: Statistical characteristics of secondary ozone density peak observed in Korea, *Adv. Space Res.*, 36, 952-957, <https://doi.org/10.1016/j.asr.2005.05.080>, 2005.
- IPCC Working Group 1, I., Stocker, T. F., Qin, D., Plattner, G.-K., Tignor, M., Allen, S. K., Boschung, J., Nauels, A., Xia, Y., Bex, V. and Midgley, P. M.: IPCC, 2013: *Climate Change 2013: The Physical Science Basis. Contribution of Working Group I to the Fifth Assessment*
- 20 *Report of the Intergovernmental Panel on Climate Change, IPCC, AR5, 1535, 2013.*
- IPCC *Climate Change 2007: The Physical Science Basis*, Cambridge Univ. Press, 2007.
- Kim, J. H., R. D. Hudson, and A. M. Thompson, A new method of deriving time-averaged tropospheric column ozone over the tropics using total ozone mapping spectrometer (TOMS) radiances: Intercomparison and analysis using TRACE A data, *J. Geophys. Res.*, 101, 24,317-24,330, 1996.
- 25 Kulkarni, P. S., Ghude, S. D., and Bortoli, D.: Tropospheric ozone (TOR) trend over three major inland Indian cities: Delhi, Hyderabad and Bangalore, *Ann. Geophys.*, 28, 1879-1885, doi:10.5194/angeo-28-1879-2010, 2010.
- Leventidou, E., Eichmann, K.-U., Weber, M., and Burrows, J. P.: Tropical tropospheric ozone columns from nadir retrievals of GOME-1/ERS-2, SCIAMACHY/Envisat, and GOME-2/MetOp-A (1996–2012), *Atmos. Meas. Tech.*, 9, 3407-3427, doi:10.5194/amt-9-3407-2016, 2016.
- Lelieveld, J., van Aardenne, J., Fischer, H., de Reus, M., Williams, J., and Winkler, P.: Increasing ozone over the Atlantic Ocean, *Science*,
- 30 304, 1483–1487, 2004.
- Lelli, L., Kokhanovsky, A. A., Rozanov, V. V., Vountas, M., and Burrows, J. P.: Linear trends in cloud top height from passive observations in the oxygen A-band, *Atmos. Chem. Phys.*, 14, 5679-5692, doi:10.5194/acp-14-5679-2014, 2014.
- Levy, H., II, Normal atmosphere: Large radical and formaldehyde concentrations predicted, *Science*, 173, 141–143, 1972.
- Lin, M., Horowitz, L. W., Oltmans, S. J., Fiore, A. M., and Fan, S.: Tropospheric ozone trends at Mauna Loa Observatory tied to decadal climate variability, *Nat. Geosci.*, 7, 136-143, doi:10.1038/ngeo2066, 2014.
- 35 Logan, J. A., Staehelin, J., Megretskaia, I. A., Cammas, J.-P., Thouret, V., Claude, H., De Backer, H., Steinbacher, M., Scheel, H.-E., Stübi, R., Fröhlich, M., Derwent, R., Changes in ozone over Europe: Analysis of ozone measurements from sondes, regular aircraft (MOZAIC) and alpine surface sites, *J. Geophys. Res.*, 117, D09301, doi:10.1029/2011JD016952, 2012.

- D. G. Loyola, M. Coldewey-Egbers, W. Zimmer, M. Koukouli, D. Balis, C. Lerot, M. Van Roozendael, and M Dameris: Total Ozone Trends Derived From The 14-Years Merged Gome/Sciamachy/Gome-2 Data Record, Proceedings: Proc. Atmospheric Science Conference, Barcelona, Spain, 7-11 September 2009 (ESA SP-676, November 2009), 2009.
- Mieruch, S., M. Schröder, S. Noël, and J. Schulz: Comparison of decadal global water vapor changes derived from independent satellite time series, *J. Geophys. Res. Atmos.*, 119, 12,489–12,499, doi:10.1002/2014JD021588, 2014.
- Mieruch, S., Noël, S., Bovensmann, H., and Burrows, J. P.: Analysis of global water vapour trends from satellite measurements in the visible spectral range, *Atmos. Chem. Phys.*, 8, 491-504, doi:10.5194/acp-8-491-2008, 2008.
- Monks, P. S., Archibald, A. T., Colette, A., Cooper, O., Coyle, M., Derwent, R., Fowler, D., Granier, C., Law, K. S., Mills, G. E., Stevenson, D. S., Tarasova, O., Thouret, V., von Schneidemesser, E., Sommariva, R., Wild, O., and Williams, M. L.: Tropospheric ozone and its precursors from the urban to the global scale from air quality to short-lived climate forcer, *Atmos. Chem. Phys.*, 15, 8889-8973, doi:10.5194/acp-15-8889-2015, 2015.
- Morris, G. A., Thompson, A. M., Pickering, K. E., Chen, S., Bucsela, E. J., and Kucera, P. A.: Observations of ozone production in a dissipating tropical convective cell during TC4, *Atmos. Chem. Phys.*, 10, 11189-11208, doi:10.5194/acp-10-11189-2010, 2010.
- Neu, J. L., Flury, T., Manney, G. L., Santee, M. L., Livesey, N. J., and Worden, J.: Tropospheric ozone variations governed by changes in stratospheric circulation, *Nat. Geosci.*, 7, 340-344, doi:10.1038/ngeo2138, 2014
- Ojha, N., Pozzer, A., Akritidis, D., and Lelieveld, J.: Secondary ozone peaks in the troposphere over the Himalayas, *Atmos. Chem. Phys.*, 17, 6743-6757, <https://doi.org/10.5194/acp-17-6743-2017>, 2017.
- Oltmans, S. J., Johnson, B. J., Harris, J. M., Thompson, A. M., Liu, H. Y., Chan, C. Y., Voemel, H., Fujimoto, T., Brackett, V. G., Chang, W. L., Chen, J.-P., Kim, J. H., Chan, L. Y., and Chang, H.-W.: Tropospheric ozone over the North Pacific from ozonesonde observations, *J. Geophys. Res.*, 109, D15S01, doi:10.1029/2003JD003466, 2004.
- Oltmans, S., Lefohn, A., Shadwick, D., Harris, J., Scheel, H., Galbally, I., Tarasick, D., Johnson, B., Brunke, E.-G., and Claude, H.: Recent tropospheric ozone changes - a pattern dominated by slow or no growth, *Atmos. Environ.*, 67, 331-351, doi: 10.1016/j.atmosenv.2012.10.057, 2013.
- Parrish, D. D., Millet, D. B., and Goldstein, A. H. Increasing ozone in marine boundary layer inflow at the west coasts of North America and Europe. *Atmos. Chem. Phys.* 9, 1303-1323, 2009.
- Parrish, D. D., Lamarque, J.-F., Naik, V., Horowitz, L., Shindell, D. T., Staehelin, J., Derwent, R., Cooper, O. R., Tanimoto, H., Volz-Thomas, A., Gilge, S., Scheel, H.-E., Steinbacher, M., and Fröhlich, M.: Long-term changes in lower tropospheric baseline ozone concentrations: Comparing chemistry-climate models and observations at northern midlatitudes, *J. Geophys. Res. Atmos.*, 119, 5719–5736, doi:10.1002/2013JD021435, 2014.
- Pickering, K. E., A.M.Thompson, H.C.Kim, A.J.DeCaria, L.Pfister, T.L.Kucsera, J.C.Witte, M.Avery, D.R.Blake, J.H.Crawford, B.G.Heikes, G.W.Sachse, S.T.Sandholm, R.W.Talbo: Trace gas transport and scavenging in PEM-Tropics B South Pacific Convergence Zone convection, *J. Geophys. Res.*, 106(D23), 32591–32607, doi:10.1029/2001JD000328, 2001.
- Rex, M. , Wohltmann, I. , Ridder, T. , Lehmann, R. , Rosenlof, K. , Wennberg, P., Weisenstein, D. K. , Notholt, J., Krüger, K., Mohr, V. and Tegtmeier, S.: A Tropical West Pacific OH Minimum and Implications for Stratospheric Composition, *Atmospheric Chemistry and Physics*, 14 (9), pp. 4827-4841. doi: 10.5194/acp-14-4827-2014, 2014.
- Sauvage, B., Gheusi, F., Thouret, V., Cammas, J.-P., Duron, J., Escobar, J., Mari, C., Mascart, P., and Pont, V.: Medium-range mid-tropospheric transport of ozone and precursors over Africa: two numerical case studies in dry and wet seasons, *Atmos. Chem. Phys.*, 7, 5357-5370, doi:10.5194/acp-7-5357-2007, 2007.

- Schneider, P., Lahoz, W. A., and van der A, R.: Recent satellite-based trends of tropospheric nitrogen dioxide over large urban agglomerations worldwide, *Atmos. Chem. Phys.*, 15, 1205-1220, doi:10.5194/acp-15-1205-2015, 2015.
- Schoeberl, M. R.: A trajectory-based estimate of the tropospheric ozone column using the residual method, *J. Geophys. Res.*, 112, D24S49, doi:10.1029/2007JD008773, 2007.
- 5 Seinfeld, J. H. and Pandis, S. N.: *Atmospheric Chemistry and Physics: From Air Pollution to Climate Change*. [online] Available from: <http://www.amazon.com/dp/0471178160>, 2006.
- Solomon S, Qin D, Manning M, Alley RB, Berntsen T, Bindoff NL, et al. Technical summary. In: *Climate Change 2007: The Physical Science Basis*. In: Solomon S, Qin D, Manning M, Chen Z, Marquis M, Averyt K, Tignor M, Miller HL, editors. Contribution of Working Group I to the Fourth Assessment Report of the Intergovernmental Panel on Climate Change. Cambridge, UK, /New York, NY: Cambridge University Press; pp. 19-91, 2007.
- 10 Stevenson, D. S., C. E. Johnson, W. J. Collins, R. G. Derwent, and J. M. Edwards: Future tropospheric ozone radiative forcing and methane turnover—The impact of climate change, *Geophys. Res. Lett.*, 27, 2073 – 2076, 2000.
- Thompson, A. M., Doddridge, B. G., Witte, J. C., Luke, W. T., Johnson, J. E., Johnson, B. J., Oltmans, S. J., and Weller, R.: A tropical Atlantic paradox: Shipboard and satellite views of a tropospheric ozone maximum and wave-one in January-February 1999, *GEOPHYSICAL RESEARCH LETTERS*, Volume: 27, Issue: 20, Pages: 3317-3320, 2000.
- 15 Thompson A. M. and Hudson R. D., Tropical Tropospheric Ozone (TTO) maps from Nimbus-7 and EarthProbe TOMS by the modified-residual method: Evaluation with sondes, ENSO signals and trends from Atlantic regional time series, *J. Geophys. Res.*, 26,961-26,975, 1999.
- Thompson, A.M., et al.: Southern Hemisphere Additional Ozonesondes (SHADOZ) 1998-2000 tropical ozone climatology 1. Comparison with Total Ozone Mapping Spectrometer (TOMS) and ground-based measurements, *J. Geophys. Res.*, 108, 8238, doi:10.1029/2001JD000967, 2003.
- 20 Thompson, A. M., Balashov, N. V., Witte, J. C., Coetzee, J. G. R., Thouret, V., and Posny, F.: Tropospheric ozone increases over the southern Africa region: bellwether for rapid growth in Southern Hemisphere pollution?, *Atmos. Chem. Phys.*, 14, 9855-9869, doi:10.5194/acp-14-9855-2014, 2014.
- 25 Thompson, A. M., Witte, J. C., Sterling, C., Jordan, A., Johnson, B. J., Oltmans, S. J., ... Thiongo, K. : First reprocessing of Southern Hemisphere Additional Ozonesondes (SHADOZ) ozone profiles (1998–2016): 2. Comparisons with satellites and ground-based instruments. *Journal of Geophysical Research: Atmospheres*, 122, 13,000–13,025. <https://doi.org/10.1002/2017JD027406>, 2017.
- Trenberth, K.E., Fasullo, J., and Smith, L.: Trends and variability in column-integrated atmospheric water vapor, *Climate Dynamics*, 24: 741. doi:10.1007/s00382-005-0017-4, 2005.
- 30 Trenberth K. E.: Changes in precipitation with climate change. *Clim Res* 47:123-138. <https://doi.org/10.3354/cr00953>, 2011.
- UNEP, *Environmental Effects of Ozone Depletion: 1998 Assessment*, United Nations Environment Programme, 205pp, ISBN 92-807-1724-3, 1998. Available at: <https://www.esrl.noaa.gov/csd/assessments/ozone/1998/> (last access: 09 February 2017)
- Valks, P. J. M., R. B. A. Koelemeijer, M. van Weele, P. van Velthoven, J. P. F. Fortuin, and H. Kelder: Variability in tropical tropospheric ozone: Analysis with Global Ozone Monitoring Experiment observations and a global model, *J. Geophys. Res.*, 108, 4328, doi:10.1029/2002JD002894, D11, 2003.
- 35 Valks, P., Hao, N., Gimeno Garcia, S., Loyola, D., Dameris, M., Jöckel, P. and Delcloo, A.: Tropical tropospheric ozone column retrieval for GOME-2, *Atmos. Meas. Tech. Discuss.*, 7(1), 727-768, doi:10.5194/amtd-7-727-2014, 2014.

- Verstraeten W. W. , Neu L. J., Williams E.J., Bowman W. K., Worden R.J. and, Boersma F.K.:Rapid increases in tropospheric ozone production and export from China, *Nature Geoscience* 8, 690–695, doi:10.1038/ngeo2493, 2016.
- Voulgarakis, A., Savage, N. H., Wild, O., Braesicke, P., Young, P. J., Carver, G. D., and Pyle, J. A.: Interannual variability of tropospheric composition: the influence of changes in emissions, meteorology and clouds, *Atmos. Chem. Phys.*, 10, 2491–2506, doi:10.5194/acp-10-2491-2010, 2010.
- Wai, K. M., Wu, S., Kumar, A., and Liao, H.: Seasonal variability and long-term evolution of tropospheric composition in the tropics and Southern Hemisphere, *Atmos. Chem. Phys.*, 14, 4859–4874, doi:10.5194/acp-14-4859-2014, 2014.
- Weatherhead E. C., Reinsel, Gregory C. and Tiao, George C. and Meng, Xiao-Li and Choi, Dongseok and Cheang, Wai-Kwong and Keller, Teddie and DeLuise, John and Wuebbles, Donald J. and Kerr, James B. and Miller, Alvin J. and Oltmans, Samuel J. and Frederick, John E.: Factors affecting the detection of trends: Statistical considerations and applications to environmental data, *J. Geophys. Res.*, 103(D14), 17149–17161, doi:10.1029/98JD00995, 1998.
- WHO.: Health risks of particulate matter from long-range transboundary air pollution. [online] Available from:http://www.euro.who.int/data/assets/pdf_file/0006/78657/E88189.pdf, 2006.
- Wilks, Daniel S. *Statistical Methods in the Atmospheric Sciences*. 3rd ed. Oxford ; Waltham, MA: Academic Press, 2011.
- WMO: World Meteorological Organization: Global Ozone Research and Monitoring Project. Scientific Assessment of Ozone Depletion: 2010, Report No. 52, World Meteorological Organization, Geneva, Switzerland, 2–4 May 2011.
- WMO: World Meteorological Organization/International Global Atmospheric Chemistry: WMO/IGAC Impacts of Megacities on air pollution and climate, GAW Report No. 205, Ch. 7, pp. 250–275, 2012..
- WMO (World Meteorological Organization), Assessment for Decision-Makers: Scientific Assessment of Ozone Depletion: 2014, 88 pp., Global Ozone Research and Monitoring Project?Report No. 56, Geneva, Switzerland, 2014.
- Xu, X., and W. Lin: Trends of tropospheric ozone over China based on satellite data (1979–2005). *Adv. Clim. Change Res.*, 2(1), doi: 10.3724/SP.J.1248.2011.00043, 2011.
- Young, P.J., A.T. Archibald, K.W. Bowman, J.-F. Lamarque, V. Naik, D.S. Stevenson, S. Tilmes, A. Voulgarakis, O. Wild, D. Bergmann, P. Cameron-Smith, I. Cionni, W.J. Collins, S.B. Dalsøren, R.M. Doherty, V. Eyring, G. Faluvegi, L.W. Horowitz, B. Josse, Y.H. Lee, I.A. MacKenzie, T. Nagashima, D.A. Plummer, M. Righi, S.T. Rumbold, R.B. Skeie, D.T. Shindell, S.A. Strode, K. Sudo, S. Szopa, and G. Zeng: Pre-industrial to end 21st century projections of tropospheric ozone from the Atmospheric Chemistry and Climate Model Intercomparison Project (ACCMIP). *Atmos. Chem. Phys.*, 13, 2063–2090, doi:10.5194/acp-13-2063-2013, 2013.
- Young PJ, Naik V, Fiore AM, Gaudel A, Guo J, Lin MY, et al.. Tropospheric Ozone Assessment Report: Assessment of global-scale model performance for global and regional ozone distributions, variability, and trends. *Elem Sci Anth*. 2018;6(1):10. DOI: <http://doi.org/10.1525/elementa.265>
- Zhang, Y., Cooper, O. R., Gaudel, A., Thompson, A. M., Nédélec, P., Ogino, S. Y., and West, J. J.: Tropospheric ozone change from 1980 to 2010 dominated by equatorward redistribution of emissions. *Nature Geoscience*, 9(12), 875–879. DOI: 10.1038/ngeo2827, 2016.
- Ziemke, J. R., Chandra, S. and Bhartia, P. K.: Two new methods for deriving tropospheric column ozone from TOMS measurements: Assimilated UARS MLS/HALOE and convective-cloud differential techniques, *J. Geophys. Res.*, 103(D17), 22115, doi:10.1029/98JD01567, 1998.
- Ziemke, J. R., and S. Chandra.: La Nina and El Nino-induced variabilities of ozone in the tropical lower atmosphere during 1970–2001, *Geophys. Res. Lett.*, 30, 1142, doi:10.1029/2002GL016387, 3, 2003.

Ziemke, J. R., S. Chandra, and P. K. Bhartia: A 25-year data record of atmospheric ozone in the Pacific from TotalOzone Mapping Spectrometer (TOMS) cloud slicing: Implications for ozone trends in the stratosphere and troposphere, *J. Geophys.Res.*, 110, D15105, doi:10.1029/2004JD00568, 2005.

5 Ziemke, J. R., Joiner, J., Chandra, S., Bhartia, P. K., Vasilkov, A., Haffner, D. P., Yang, K., Schoeberl, M. R., Froidevaux, L. and Levelt, P. F.: Ozone mixing ratios inside tropical deep convective clouds from OMI satellite measurements, *Atmos. Chem. Phys. Discuss.*, 8(4), 16381-16407, doi:10.5194/acpd-8-16381-2008, 2008.

Ziemke, J. R., Chandra, S., Duncan, B. N., Schoeberl, M. R., Torres, O., Damon, M. R., and Bhartia, P. K., Recent biomass burnings in the tropics and related changes in tropospheric ozone, *Geophys. Res. Lett.*, 36, L15819, doi:10.1029/2009GL039303, 2009b.