

## Response to Anonymous Referee #1

### Comments to the Author

5

#### General comments

10 **In this paper, the spatial and temporal evolution of desert dust aerosols over South-East Asia has been systematically investigated based on CALIPSO since it can provide much information about aerosols. However, I'm interesting to see this paper published before revised as below suggestion.**

15 The authors would like to thank the reviewer for the interesting and at the same time substantial comments and suggestions. We tried, and did our best, to incorporate the most suitable proposed changes and corrections in the revised manuscript, aiming to the improvement of the presented paper. Following, you will find our responses that are addressed to the Editorial board and the reviewers too.

#### Specific comments

20 **1. Page 1, Line 1: "Dust aerosols have a significant role on climate through the direct radiative effect of absorption and scattering of solar and thermal terrestrial radiation".**

I think you should add the reference:

- 25 • **Huang, J., Fu, Q., Su, J., Tang, Q., Minnis, P., Hu, Y., Yi, Y., and Zhao, Q.: Taklimakan dust aerosol radiative heating derived from CALIPSO observations using the Fu-Liou radiation model with CERES constraints, Atmos. Chem. Phys., 9, 4011-4021, <https://doi.org/10.5194/acp-9-4011-2009>, 2009.**
- **Chen, SiYu, JianPing Huang, JingXin Li, Rui Jia, NanXuan Jiang, LiTai Kang, XiaoJun Ma, and TingTing Xie. 2017. "Comparison of Dust Emissions, Transport, and Deposition between the Taklimakan Desert and Gobi Desert from 2007 to 2011." Science China-Earth Sciences 60 (7):1338–55. <https://doi.org/10.1007/s11430-016-9051-0>.**

30 We agree with the reviewer that the manuscript and the discussion would improve by including the recommended references. References are added in the manuscript.

**2. In the paragraph 1, the semi-effect of dust should be also added. The effect can be seen from the references:**

- 35 **Huang, Jianping, Bing Lin, Patrick Minnis, Tianhe Wang, Xin Wang, Yongxiang Hu, Yuhong Yi, and J. Kirk Ayers. 2006. "Satellite-Based Assessment of Possible Dust Aerosols Semi-Direct Effect on Cloud Water Path over East Asia." Geophysical Research Letters 33 (19):L19802. <https://doi.org/10.1029/2006GL026561>.**

40 We agree with the reviewer that the manuscript and the discussion would improve by including the recommended references. References are added in the manuscript.

**3. Line 10: "airborne mineral dust is considered a significant atmospheric aerosol contributor", should be corrected into "...considered as a..."**

45

Corrected.

50 **4. Page 2, Line 29-32: "although passive satellite sensors provide information on the column properties of aerosols with adequate spatial and temporal resolution, they are bound to certain limitations, the major limitation being the lack of information on the three-dimensional distribution**

# Summary of Comments on acp-2017-797-referee-response.pdf

---

This page contains no comments

**(vertical profile) of aerosols in the atmosphere, an important information for the assessment of the aerosols radiative forcing on climate as well as their contribution as IN and CCN (IPCC 2013).” This sentence is too long to understand it means, please rewrite it.**

5 The long sentence was re-written, in order to be easier to understand: “Although passive satellite sensors provide information on the column properties of aerosols with adequate spatial and temporal resolution, they are bound to certain limitations. The major limitation is the lack of aerosol information on the three-dimensional distribution (vertical profile), which consist of an important parameter for the assessment of the aerosols radiative forcing on climate as well as their contribution as IN and CCN (IPCC  
10 2013).”.

**5. Page 4, line 10: I think you should delete this words: “in order to discriminate the detected atmospheric features types into subtypes”, because we have known the goal of the classification algorithm before this sentence.**

15 The authors are of the opinion that this section consists a methodology bridge to the pure-dust product, between the CALIPSO algorithm and aerosol subtype classification and the decoupling of the pure-dust component from the classified as dust and polluted dust aerosol layers by CALIPSO . Towards this goal and since the methodology section largely is based on the classification algorithm, the authors considered that these lines should not be deleted, but under consideration of the recommendation of  
20 the reviewer they are modified to:

“The Level-2 (L2) product consists the high-level quality products. More specifically, CALIPSO L2 algorithm classifies the detected layers into characteristic classes (Vaughan et al., 2009), namely into clear air, cloud, aerosol, stratospheric, surface, subsurface, totally attenuated or invalid feature types.

25 The classification algorithm (Omar et al., 2009) utilizes the depolarization ratio and the magnitude of the attenuated backscatter signal, the height of the aerosol layers and the characteristics of the Earth’s surface along the CALIPSO footprint (desert, ocean, snow/ice) in order to discriminate the detected atmospheric features types into subtypes”.

30 **6. Page 4, line 14: the “20x50 grid resolution” should be corrected into “2°x5°”.**

Corrected.

**7. Page 4, line 17: “10x10” need to be corrected. The whole paper should be checked again.**

35 Corrected. The whole paper was checked again.

**8. Page 6, line 18: since you have said that the daytime minimum and nighttime minimum, what does the “minimum detectable AOD of 0.005” mean?**

40 According to the reviewer’s recommendation the text is corrected to: “Regarding the uncertainties of the products, CALIOP L2 V3 is characterized by daytime minimum detectable backscatter of  $0.0017 \pm 0.0003 \text{ km}^{-1} \text{sr}^{-1}$ , nighttime minimum detectable backscatter of  $0.0008 \pm 0.0001 \text{ km}^{-1} \text{sr}^{-1}$  and AOD of 0.005 (based on the minimum CALIOP 532 nm channel detection sensitivity, Winker et al., 2009)”.

45 **9. Page 4, line 24: what does the “SAMUM” mean? Please write the full name.**

The text is modified according to the reviewer’s recommendation: “During the SAharan Mineral dUst experiMent (SAMUM) 1 and 2 campaigns Saharan dust ...”.

50

This page contains no comments

**10. Page 4, line 51: in this paragraph you introduce the methods of distinguish pure dust and non-dust. However, I still don't know the differences of the CALIPSO product of dust and polluted dust with the pure dust and non-dust. Since we can directly derive the dust extinction coefficient and profiles from the product, why don't you use it? And what about merits of the method to select the pure dust? What's the differences of the pure dust and dust products directly from CALIPSO L2?**

The CALIPSO V3 aerosol classification algorithm classifies the detected aerosol features as marine, dust, clean continental, polluted continental, polluted dust and smoke (Omar et al., 2009). Typical dust particle depolarization ratio values measured with lidars in field campaigns around the globe show values between 0.27 and 0.35 at 532 nm. Furthermore, the measurements show little variation independently of the source region, (e.g., Ansmann et al., 2011; Sakai et al., 2000; Liu et al., 2008b; Freudenthaler et al., 2009; Groß et al., 2011; Burton et al., 2013; Groß et al., 2013; Groß et al., 2015; Illingworth et al., 2015). Based on the dust depolarization ratio, a methodology has been established to discriminate the pure-dust component from mixtures of dust and non-dust aerosol layers (Tesche et al., 2009). In this methodology both the CALIPSO dust and polluted dust aerosol types are treated as mixtures of dust aerosols and non-dust aerosols. The methodology is applied and the final CALIPSO pure-dust product (the pure-dust component of the dust/polluted dust layers of CALIPSO) (Amiridis et al., 2013) are available to perform CALIPSO climatological studies (Marinou et al., 2017) and to develop interesting dust-related products (LIVAS-Amiridis et al., 2015).

**11. Page 5, line 30: please check this sentence of "The seasonal zonal distribution of the climatological and conditional dust extinction coefficient ( $Mm^{-1}$ )". If it's right to explain it.**

The reviewer is right, this was an editing error by the authors. The author's intention was to implement typographical symbol in order to introduce a list of CALIPSO products that would be used in the study and accordingly extensively discussed. Omitting the typographical symbol resulted in much confusion and we apologize for this mistake. The symbols have been restored, the list is clarified along with the sentence.

**12. Page 5, line30: I want to know whether the climatological dust extinction coefficient means the aerosol extinction without dust extinction coefficient since you write this sentence "This is accomplished by setting the dust extinction coefficient value of  $0 km^{-1}$ , for observations with non-dust aerosols". And the conditional dust product only has the dust extinction coefficient.**

The climatological extinction coefficient is computed by setting the extinction coefficient value of the non-dust aerosols to  $0 km^{-1}$ , when averaging the profiles over a grid. The authors agree with the reviewer that this part of the manuscript was not clear, therefore it is re-written as follows:

"The climatological dust product is a measure of the average dust load over a geographical domain and is computed acknowledging only the contribution of the dust component in the atmosphere. Technically, this is accomplished by setting the extinction coefficient value of the non-dust aerosols to  $0 km^{-1}$ , when averaging the profiles over a grid. The dust climatological product can be used for studies related to the contribution of dust to the total aerosol load over a period of time. In addition, the climatological dust product can be used in the evaluation of models related to dust transport and to radiative transfer models, in studies of dust-related physical processes (dust transport dynamics, CCN, IN), to investigate the effect of dust aerosols on ecosystems (dust deposition into the oceans) and to determine the dust aerosol load over highly industrialized and densely populated regions.

The conditional dust product is a measure of the average intensity of dust load over a geographical domain and is based explicitly on the dust profiles, hence ignoring completely non-dust aerosols. Technically, this is accomplished by setting the extinction coefficient value of the non-dust aerosols to

This page contains no comments

not-a-number (NaN), when averaging the profiles over a grid. The conditional dust product is related to the intensity of the dust events.”

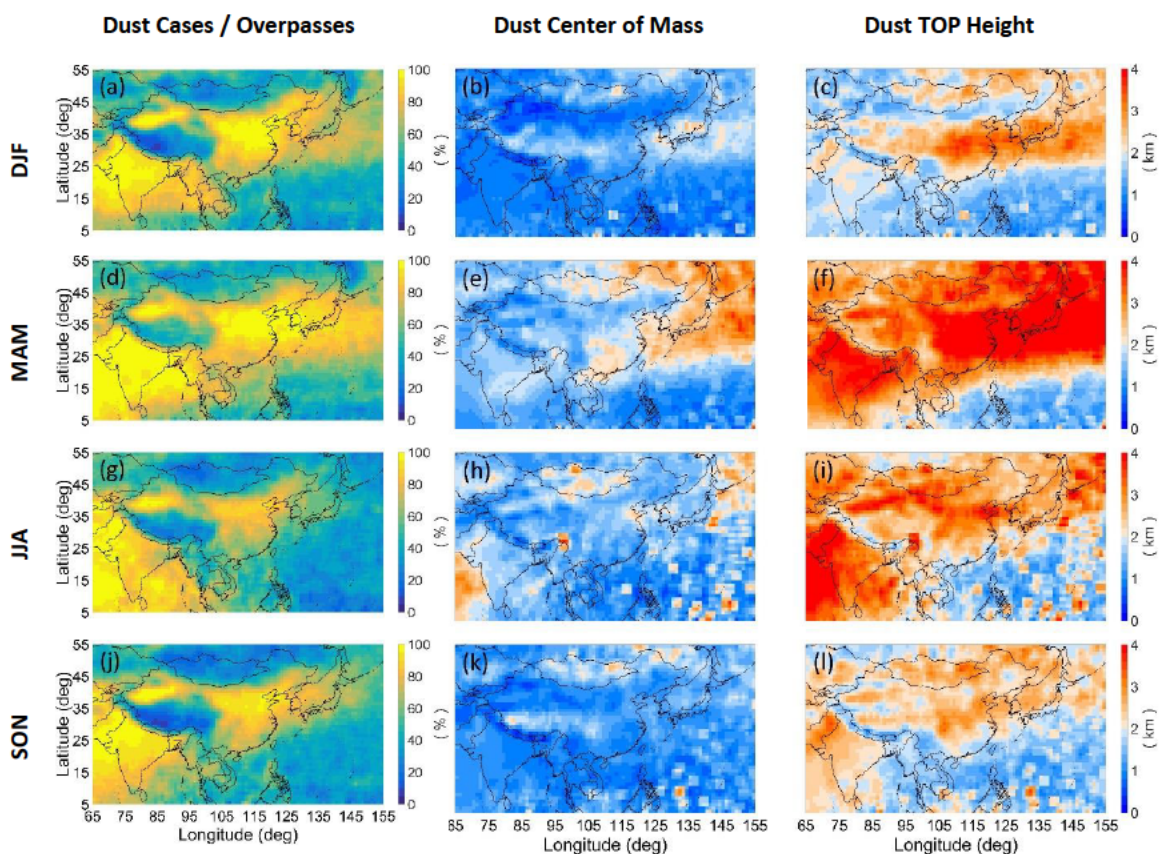
13. Page 7, line 33: what does the “N. China” mean?

5 Corrected to: “Over N. China, for latitudes northern than 35° N, a similar pattern with respect to the features of dust contribution to the total aerosol load due to the dust aerosol emitted from the Taklimakan and Gobi deserts are observed”.

10 14. Page 8, line 11: from the figure 3, the differences of dust frequency in the four seasons are not clear, and the minimum in Fig. 3a is not obvious.

Both the scale and the colormap of the dust frequency, CoM and TH are modified, according to the suggestion by the reviewer. Please see the figures below, before and after the adaptation of the figures.

15 **Before**



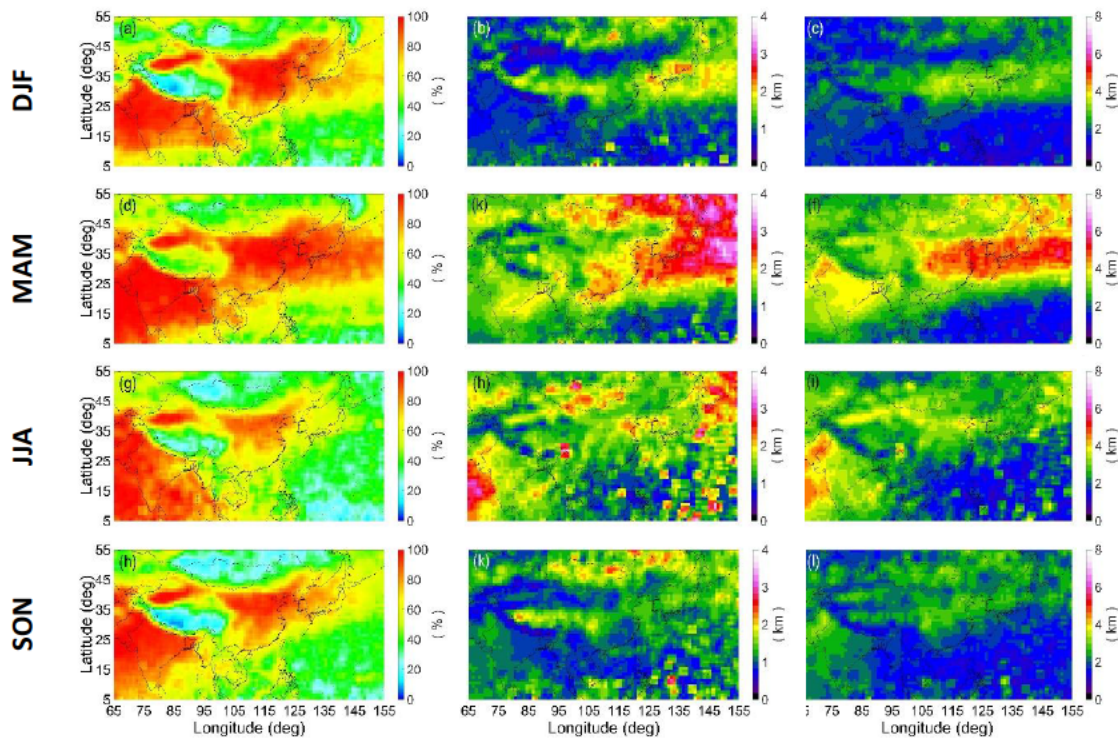
20 **Fig. 3: Spatial distribution of dust occurrence [%], climatological pure-dust CoM (Center of Mass) and dust TH (Top Height) in km a.g.l., for each season over the domain between 65°-155° E and 5°-55° N and for the period 01/2007-12/2015.**

**After**

Dust Cases / Overpasses      Dust Center of Mass      Dust Top Height

This page contains no comments





**Fig. 3: Spatial distribution of dust occurrence [%], climatological pure-dust CoM (Center of Mass) and dust TH (Top Height) in km a.g.l., for each season over the domain between 65°-155° E and 5°-55° N and for the period 01/2007-12/2015.**

5  
 15. Page 8, line 39: please explain the pattern of the dust transport since you said “however, the pattern reverses (Fig. 3i)”

Corrected to: “During MAM, dust particles emitted from the Taklimakan and Gobi deserts are transported over C. China and the Pacific Ocean, while at the same time significant long-range transport of dust aerosols emitted from Thar Desert is not-observed (Fig. 3f). During JJA, however, the pattern reverses, with longer range of dust particles transported from Thar Desert over the Indian Peninsula, the Arabian Sea and the Bay of Bengal, while no significant dust transport of dust aerosol emitted from Taklimakan Desert is observed (Fig. 3i).”

15

20

25

This page contains no comments

## Response to Anonymous Referee #2

5 The paper by Proestakis et al. presents a 9-year climatology derived with mainly CALIOP measurements of the aerosol (dust) conditions over East and South Asia. The main focus is set on dust distribution but also non-dust aerosol is discussed. These novel results are thus of interest for atmospheric research and give a good overview of the dust distribution in this part of the world. Therefore in principle the paper is of interest for publication in ACP, however I recommend major revisions before it can be published. This is further explained below.

10 The authors would like to thank the referee for the interesting and at the same time substantial constructive comments and suggestions. We tried, and did our best, to incorporate the proposed changes and corrections in the revised manuscript, aiming to the improvement of the presented paper. Following, you will find our responses that are addressed to the Editorial board and the reviewers as well.

### Major comments

20 In my opinion the naming of the study area is misleading. Even though South-East Asia may not be a protected phrase, many people have a different understanding concerning the region called this way. See for example:

[https://en.wikipedia.org/wiki/Southeast\\_Asia](https://en.wikipedia.org/wiki/Southeast_Asia)

25 Therefore, I recommend to find a better name for the study area (e.g. South and East Asia or whatever) to avoid confusion and change the title and text accordingly.

According to the reviewer's recommendation the name of the study area is changed from "Southeast Asia" to "South and East Asia", both in the title and the text.

30 The difference between the climatological and conditional dust product needs be more discussed in both, the methodology section (I just understood the difference when reading Marinou 2017 but as this is essential it should be explained more explicitly here), but also in the result section. The reader is left alone with contradictory statements, like for example the dust top height which seems to be completely different between the two products. Therefore it should be clearly discussed:

(1) Which product can be used for which purpose?

(2) Does it make sense to use this two different products, if yes why and for what?

(3) What we can learn from the two products presented here with respect to South and East Asia.

40 Both the "Data and Methodology" and the "Results" Sections have been revised and re-written according to the recommendation of the reviewer. To be more specific, (1) and (2) have been re-written and extended as follows:

45 The seasonal zonal distribution of the climatological and conditional dust extinction coefficient ( $Mm^{-1}$ ). The climatological dust product is a measure of the average dust load over a geographical domain and is computed acknowledging only the contribution of the dust component in the atmosphere. Technically, this is accomplished by setting the extinction coefficient value of the non-dust aerosols to 0  $km^{-1}$ , when averaging the profiles over a grid. The dust climatological product can be used for studies related to the contribution of dust to the total aerosol load over a period of time. In addition, the climatological dust product can be used in the evaluation of models related to dust transport and to radiative transfer models, in studies of dust-related physical processes (dust transport dynamics, CCN,

This page contains no comments

IN), to investigate the effect of dust aerosols on ecosystems (dust deposition into the oceans) and to determine the dust aerosol load over highly industrialized and densely populated regions.

The conditional dust product is a measure of the average intensity of dust load over a geographical domain and is based explicitly on the dust profiles, hence ignoring completely non-dust aerosols.

5 Technically, this is accomplished by setting the extinction coefficient value of the non-dust aerosols to not-a-number (NaN), when averaging the profiles over a grid. The conditional dust product is related to the intensity of the dust events.

In addition to the above a Flowchart is provided according to the reviewer's suggestion in the end of the "Data and Methodology" Section (comment 4.3).

10 (3) is additional included. In general the findings are summarized in "Summary and conclusions" Section, which is re-written.

**Conclusion: The current conclusion is not very informative. Thus, it should be really overworked to highlight new things and discuss what lessons have been learned, i.e. what are new results or newly gathered knowledge or does your study just confirm former studies etc...**


The authors agree with the reviewer, the conclusion section was re-written in order to provide more information and highlights of the study. Below we provide a part of the conclusion which was vastly rephrased and extended: "In this work, CALIPSO is used to provide a multiyear 4-D climatology of desert dust aerosols over South and East Asia at a spatial resolution of 1x10 deg grids. An optimized dust aerosol product, developed using CALIOP backscatter and particle depolarization ratio, along with a regional correction on dust lidar ratio suitable for Asian dust is used. The optimized product is utilized to provide the horizontal and vertical distribution along with the temporal evolution of dust aerosols over a 9-year period (01/2007-12/2015).

20 Regarding the horizontal distribution of **Aerosol Optical Depth (AOD), Dust Aerosol Optical Depth (D\_AOD) and Non-Dust Aerosol Optical Depth (Non-Dust AOD)**, our analysis shows similar patterns between all four seasons, although the magnitude of the observed features varies with season. High values of Non-Dust AOD are consistently observed over the heavily industrialized and densely populated regions of China and India (Non-Dust AOD > 0.5). In addition to the anthropogenic densely populated areas of South and East Asia, the major sources of dust aerosols, namely the Taklimakan, Gobi and Thar Deserts are clearly mapped through the systematic high D\_AOD values throughout the year. The magnitude though of the D\_AOD observed features is subject to high seasonality, ranging between D\_AOD 0.2 during winter and higher than 0.6 during spring and summer seasons. Maximum activity of Gobi and Taklimakan deserts is observed during spring, while the highest activity of Thar Desert is during summer. The seasonality of the dust transport pathways is additionally well-captured. Dust transport over the Indian Peninsula is more pronounced during spring and summer, while over China similar patterns of a persistent dust aerosol background is evident throughout the year, with a peak during spring when the dust transport across the Pacific Ocean is at its maximum.

30 Regarding the vertical distribution of dust aerosols, the Center of Mass (CoM), Top Height (TH) and the mean Dust Extinction Coefficient profiles (Climatological and Conditional) are **implemented** to provide, together with the horizontal distribution, the full three-dimensional structure of dust aerosols and the atmospheric dust transport pathways over the entire South and East Asia. Based on the synergy of CoM, TH and the CALIPSO dust extinction profiles two distinct dust transport pathways over South and East Asia are observed: a **the** Trans-Pacific belt between 25o and 45o N and a second one, extending from Thar Desert towards the Bay of Bengal and the Arabian Sea. Both zones of dust transport are subject to high seasonality. Highest dust aerosol transport from the Taklimakan Desert towards the Pacific Ocean is observed during spring, while dust aerosol transport from the desert of Thar and across the Indian Subcontinent is more pronounced during summer.

45 Regarding the temporal evolution of AOD and D\_AOD between 01/2007 and 12/2015, the analysis showed statistically significant positive short-term AOD trends over the Indian Peninsula (0.01 yr<sup>-1</sup>), NW China (0.007 yr<sup>-1</sup>) and E China (0.01 yr<sup>-1</sup>), whereas our study shows negative short-term AOD trends over SE China (-0.007 yr<sup>-1</sup>). ~~CALIPSO positive AOD trends are found over the broader central and eastern Indian Peninsula (0.01 yr<sup>-1</sup>).~~ The CALIOP observed trends between 01/2007 and 12/2015 are generally in qualitative agreement with the derived MODIS AOD trends over large domains of South and East Asia, although the short-term trends disagree over specific regions. The CALIOP and MODIS trends though are interpreted and compared with caution, since the samples of the datasets are non-uniform. "

---

 Number: 1 Author: Referee Subject: Comment on Text Date: 20.12.2017 11:26:40

As AOD can be also measured from other satellites, I wonder if you should highlight that such precise dust and non-dust distinction is only possible from lidar with polarization capabilities, i.e. only with Calipso. Or i am wring and one could do the same with e.g. MODIS?

---


 Number: 2 Author: Referee Subject: Comment on Text Date: 20.12.2017 11:24:21

evaluated?

---

 Number: 3 Author: Referee Subject: Cross-Out Date: 20.12.2017 11:26:50

---

 Number: 4 Author: Referee Subject: Cross-Out Date: 20.12.2017 11:28:09

---

Please check spelling and grammar intensively again. There are many sentences which are fractals, i.e. words are missing. Furthermore, many commas are missing, considering the bunch of co-workers this should be no problem.

- 5 The authors have gone through the entire manuscript again to check for spelling and grammar again. At this point the authors would like to thank the reviewer once more for the substantial contribution towards the direction of improving the overall manuscript.

10

## Minor comments

15 **Page 1.1:** According to the reviewer's recommendation the name of the study area is changed from "Southeast Asia" to "South and East Asia", both in the title and the text.

**Page 1.2:** According to the reviewer's suggestion, two sentences are used to simplify the initial sentence: "To distinguish desert dust from total aerosol load we apply a methodology developed in the framework of EARLINET (European Aerosol Research Lidar Network). The methods involves the use of particle linear depolarization ratio and updated lidar ratio values suitable for Asian dust, from multiyear CALIPSO observations (01/2007-12/2015)."

20 **Page 1.3:** Wavelength is included: "532 nm".

**Page 1.4:** Suggestion is included.

**Page 2.1:** Suggestion is included, the text is modified accordingly.

25 **Page 2.2:** The text is corrected: from "Major dust Asian" to "Major Asian dust".

**Page 2.3:** According to the suggestion the text is modified: from "CALIOP measures total attenuated backscatter signals at ..." to "CALIOP measures total attenuated backscatter at ..."

30 **Page 3.1:** According to the suggestion the text is rephrased: "Using this classification they either did not take into consideration the dust component ~~if the~~ classified as ~~2~~ polluted dust aerosol subtype, or they defined as "dust" both the dust and polluted dust aerosol subtypes (hence including the non-dust component of polluted dust)".

**Page 3.2:** Suggestion is included.

**Page 3.3:** Suggestion is included: "... this new pure dust ...".

35 **Page 3.4:** Suggestion is included: "... pure dust product ...".

**Page 3.5:** The text is corrected: from "laser" to "lidar".

**Page 3.6:** Since according to the reviewer the sentence was not clear the text is rephrased to: "CALIOP transmits linear polarized light, while a telescope of 1 m diameter collects the backscatter component backscattered by the atmosphere."

40

**Page 4.1:** The text is modified according to the reviewer's recommendation and the different feature type classes are included: "The Level-2 (L2) product ~~consists~~ the high-level quality products. More specifically, CALIPSO L2 algorithm classifies the detected layers into characteristic classes (Vaughan et al., 2009), namely into clear air, cloud, aerosol, stratospheric, surface, subsurface, totally attenuated or invalid feature types."

45 **Page 4.2:** The manuscript is cross-checked and the aerosol subtype classification scheme is not explained before this part in the data and methodology section. Part of the paragraph though is rephrased: "The classification algorithm (Omar et al., 2009) utilizes the depolarization ratio and the magnitude of the attenuated backscatter signal, the height of the aerosol layers and the characteristics of the Earth's

50 surface along the CALIPSO footprint (desert, ocean, snow/ice) in order to discriminate the detected

---

 Number: 1 Author: Referee Subject: Cross-Out Date: 20.12.2017 11:31:22

---

 Number: 2 Author: Referee Subject: Cross-Out Date: 20.12.2017 11:31:26

---

 Number: 3 Author: Referee Subject: Cross-Out Date: 20.12.2017 11:34:13

---

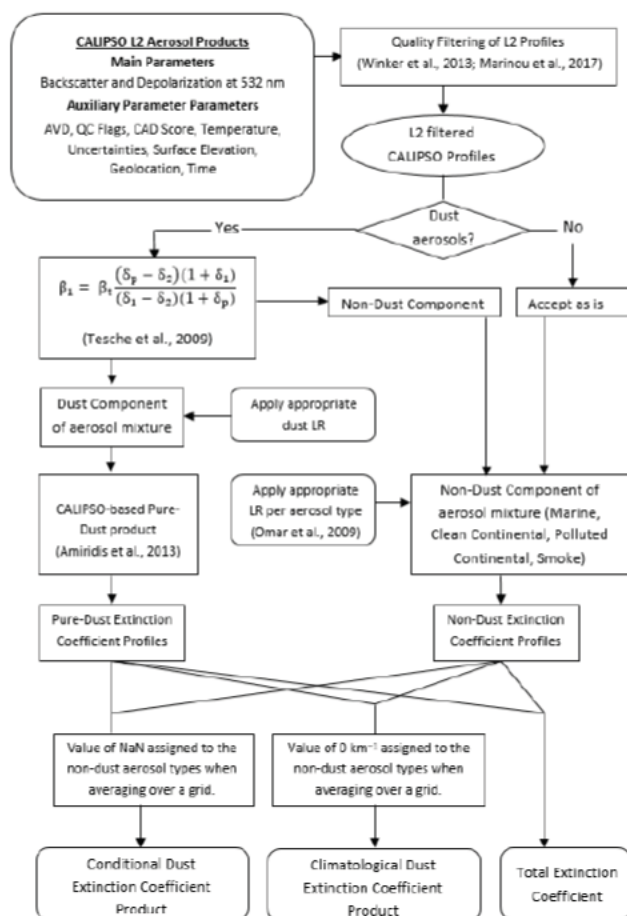
 Number: 4 Author: Referee Subject: Inserted Text Date: 20.12.2017 11:34:11  
s are

---



atmospheric features types into subtypes. The atmospheric features types classified as aerosols are further distinguished into specific aerosol subtypes (Clean Marine, Dust, Clean Continental, Polluted continental, Polluted Dust and Smoke).”

5 **Page 4.3:** According to the suggestion the following Flowchart, diagrammatic representation from the CALIPSO data to the Pure-Dust product and the Climatological/Conditional Dust products used in the study is added to the end of the “Data and Methodology” Section.



10 **Fig. 2:** Flowchart of the CALIPSO Pure-Dust, Conditional Dust Extinction Coefficient and Climatological Dust Extinction Coefficient products.

**Page 4.4:** The text is corrected: from “... with cloud observations are filtered from ...” to “... with cloud observations are filtered out from ...”.

15 **Page 4.5:** According to the suggestion the text is modified: from “... value of the pure dust component,  $\beta_{\perp}$  ...” to “... **Value of the pure dust component in the aerosol mixture,  $\beta_{\perp}$  ...**”

**Page 4.6:** According to the recommendation by the reviewer the following two references are added: “Omar et al., 2009”.

20 **Page 5.1:** The authors agree with the reviewer that the paragraph in the beginning of the “Data and Methodology” section is confusing, therefore the entire paragraph was moved to the end of the “Introduction Section” at the part of the description of the study domain.

**Page 5.2:** According to the reviewer’s recommendation the name of the study area is changed from “Southeast Asia” to “South and East Asia”.

25 **Page 5.3:** The backscatter coefficient.

**Page 5.4:** The text is corrected: from “extinction coefficient” to “backscatter coefficient”.

---

Number: 1 Author: Referee Subject: Comment on Text Date: 20.12.2017 11:39:58

That's not true.  $\delta_p$  is the particle depolarization ratio containing all particles in the mixture. The depolarization value of the pure dust component you assume with  $\delta_1$  in formula (2) and use this for separation.

**Page 5.5:** The reviewer is right, this was an editing error. The author's intension was to implement typographical symbol in order to introduce a list of CALIPSO products that would be used in the study and accordingly discussed. Omitting the typographical symbol resulted in much confusion to both the reviewers and we apologize for this mistake. The symbols have been restored and the list is clarified along with the sentence.

**Page 5.6:** Done (major comment and comment 4.3).

**Page 5.7:** Done (major comment and comment 4.3).

**Page 5.8:** According to the reviewer's recommendation the sentence is modified to include which product: "Validation of the pure dust aerosol product against ...".

**Page 5.9:** According to the reviewer's recommendation the sentence is modified to include the domain: "... observations over northern Africa and Europe show ...".

**Page 5.10:** The sentence did not make sense since it is part of a list which was omitted. Corrected through the introduction of the list and the typographical symbols (comment 5.5).

**Page 6.1:** Full stop added.

**Page 6.2:** Wavelength is included: "532 nm".

**Page 6.3:** Discuss AOD uncertainty is approximately 100% close to the surface (Marinou et al., 2017).

**Page 6.4:** According to the suggestion from the reviewer the sentence "Additional, uncertainty which propagates into the D\_AOD product is introduced due to the depolarization ratio of the non-dust aerosols, coupled into the polluted-dust aerosol subtype." is rephrased to: "In addition, as it is already mentioned, both aerosol types classifies by CALIPSO as dust or polluted dust are a mixture of a dust component and a non-dust component. Thus another source of uncertainty in the decoupling of the dust component from the total aerosol load is the lack of information regarding the non-dust component in the aerosol mixture, due to the low depolarization ratio values of the non-dust aerosol subtypes (Omar et al., 2009)."

**Page 6.5:** According to the suggestion from the reviewer the sentence "... the seasonal approach is selected ..." is rephrased to: "... in this section we present and discuss the horizontal distribution of aerosols and dust over South and East Asia per season."

**Page 6.6:** According to the suggestion from the reviewer the entire paper is homogenised. "ΔOD" is replaced to "Non-Dust AOD".

**Page 7.1:** Satellite-based remote sensing, both passive and active, is highly sensitive to the presence of clouds. Regarding CALIOP, the nadir-viewing lidar measurements and orbital characteristics of CALIPSO result in a low frequency of overpasses over each region and consequently the significant fewer observations with respect to passive sensors. Therefore, in order to provide meaningful climatologies on a regional scale, long-term and multiyear CALIOP observations are required. Even though over specific regions which are characterized of extensive cloud coverage of dense cloud (Bay of Bengal, Indonesia, N. Pacific Ocean), the number of observations in the sample is even sparser, due to attenuation in dense clouds. Therefore rare regional events are not well captured over regions of extensive cloud coverage, resulting in weighted values toward regions of less extensive cloud coverage (Winker et al., 2013).

**Page 7.2:** Indochina is a political and geographical correct term. Indochina, originally Indo-China, is a geographical term originating in the early nineteenth century and referring to the continental portion of the region now known as Southeast Asia. The name refers to the lands historically within the cultural influence of India and China, and physically bound by the Indian Subcontinent in the west and China in the north. It corresponds to the present-day areas of Myanmar, Thailand, Laos, Cambodia, Vietnam, and (variably) peninsular Malaysia and Singapore. See for example: <https://en.wikipedia.org/wiki/Indochina>

**Page 7.3:** According to the suggestion from the reviewer the sentence is modified to: "Over China similar geographical patterns in the horizontal distribution of aerosols are evident between all four seasons, with larger Non-Dust AOD values over the major sources of anthropogenic aerosols (~~Beijing, Shanghai,~~



~~Guangzhou, Chongqing, Wuhan~~) such as urban clusters (Beijing, Shanghai, Guangzhou, Chongqing, Wuhan) (Kourtidis et al., 2015) and high D\_AOD values over the deserts of Taklimakan and Gobi (Che et al. 2014, 2015)”.  
1

**Page 7.4:** Done (comment 7.3).

5 **Page 7.5:** Done (comment 7.3).

**Page 7.6:** Corrected: “... high D\_AOD values ...”.

**Page 7.7:** For example to the north of the plateau of Tibet, during the period between March and May the strong surface winds which develop over the Mongolian Plateau create favourable mechanisms of extreme dust events (Bory et al., 2003; Yu et al., 2008). This feature is evident throughout the year, although more pronounced during spring. By activation of the deserts the authors mean the creating of favourable conditions for dust generation and injection in higher altitude in the atmosphere.  
10

**Page 7.8:** The sentence is rephrased to: “Over China, for latitudes northern than 35o N, a similar pattern with respect to the features of dust contribution to the total aerosol load due to the dust aerosol emitted from the Taklimakan and Gobi deserts are observed. More specific, a persistent dust aerosol background is evident during all seasons, with a peak during MAM (Fig. 3f).”  
15

**Page 7.9:** Rephrased (comment 7.8).

**Page 7.10:** This is in line with previous studies, reporting rare events of dust transport over Himalayas (Huang et al., 2007; Liu et al., 2008b; Yumimoto et al., 2009). The region to the North of Taklimakan, Gobi and Mongolia is also characterized by low values of AOD and D\_AOD, except during MAM (Fig. 3f, h). The high dust aerosol load observed to the east of the major dust aerosol source of Taklimakan (D\_AOD values greater than 0.3) and the high percentage of D\_AOD with respect to the total AOD indicate a strong eastward transport of both dust (Fig. 3f) and anthropogenic aerosols (Fig. 3g). The paragraph is modified accordingly.  
20

**Page 8.1:** Both suggestions are implements, the a.g.l. is added to the figure caption and the common nomenclature are used.  
25

**Page 8.2:** According to the reviewer’s recommendation the name of the study area is changed from “Southeast Asia” to “South and East Asia”.

**Page 8.3:** According to the recommendation by the reviewer we have included some numbers. More precisely the following part is added: “Lower frequencies of dust occurrence, which still exceed 70%, are also evident over east China and south-eastern India. Conversely over Indochina and Indonesia the occurrence of dust is particularly low, especially during summer (Fig. 4g) and autumn (Fig. 4j). To be more specific, values of dust occurrence percentage between 50% and 60% over Thailand and Cambodia, 40% to 60% over Laos and Vietnam, ~60% over SE China, and lower than 40% over Malaysia and Philippines are observed, during JJA and SON.”.  
30  
35

**Page 8.4:** Comma added.

**Page 8.5:** “s” deleted.

**Page 8.6:** The authors are not sure in which paper the reviewer is referring to, though we suspect that the differences most probably are related to the definition of the TH and CoM, probably to differences in the above ground level or above sea level reported profiles, maybe to different seasonality, sensor detection limits, differences in the techniques applied, to different samples. There are just many factors that may result in the different observations.  
40

**Page 8.7:** The sentence is rephrased according to the suggestion of the reviewer, since the meaning was not clear. The sentence is rephrased from: “In addition, the observed gradient in the horizontal distribution of D\_AOD values between the sources and the Pacific Ocean (Fig. 3f), parallel to the ubiquitous dust layer and the high dust TH (Fig. 4f), are an indicator of the longer range of transport of lower concentration of dust particles.” to “In addition, a decreasing west-to-east D\_AOD gradient is observed over N. China, between the dust sources over Taklimakan and Gobi and the Pacific Ocean (Fig.  
45



3f). The decreasing gradient of TH is less pronounced during MAM, when dust aerosol are injected as high as 10 km height (a.s.l.) and transported longer distances over the Pacific Ocean (Fig. 4f).”

Page 8.8: Comma added.

Page 8.9: Since according to the reviewer the meaning was not clear, the paragraph was rephrased accordingly: “during MAM, dust particles emitted from the Taklimakan and Gobi deserts are transported over C. China and the Pacific Ocean, while at the same time significant long-range transport of dust aerosols emitted from Thar Desert is not-observed (Fig. 4f). During JJA, however, the pattern reverses, with longer range transport of dust particles from Thar Desert over the Indian Peninsula, the Arabian Sea and the Bay of Bengal, while no significant dust transport of dust aerosol emitted from Taklimakan Desert is observed (Fig. 4i).”

Page 8.10: Sentence corrected (comment 8.9).

Page 8.11: “larger” is replaced by “higher” according to the recommendation by the reviewer.

Page 8.12: Adapted (comment 27.1).

Page 8.13: Comma deleted.

Page 8.14: “into” is replaced by “over” according to the recommendation by the reviewer.

Page 9.1: “the” deleted.

Page 9.2: Sentence is modified accordingly: “... provided in Table 1”.

Page 9.3: The pure dust component is of interest to regions where dust aerosols are present. In the domain of South and East Asia, such domains are East China and India. East China is affected from dust aerosol transport from the Taklimakan and Gobi, while India is affected from dust transport from Thar Desert and the Arabian Peninsula. The significance of dust load is even larger due to the anthropogenic emissions of the densely populated provinces of China and the regions of India.

Page 9.4: Initially we had a column of the study domain, encompassing the different domains. In general, after initial submission, we have tried to move the individual figures as close to each other as possible, otherwise the individual plots won't exceed stamp size in the final paper and the reader won't be able to recognise a thing. Towards this need, we had to omit as much redundant information from the initial submission as possible, including the map plots which indicated the bands of interest, since the reader can take this information from Figure 1.

Page 9.5: Corrected: “The continuous and dashed lines correspond to the average elevation of the surface level and to the average maximum elevation respectively.”

Page 9.6: This threshold is arbitrarily selected to filter out low dust aerosol extreme cases scenarios in order to limit the influence of rare events on climatology. To be clearer, the following was added: of the pure dust climatological extinction coefficient, arbitrarily selected, in order to avoid presenting extreme rare events in high altitudes at the same time with climatological values close to the surface level

Page 9.7: Indeed the sentence “Regarding the Taklimakan Desert, this region is a very prolific arid area encompassed by Tarim Basin” is clarified to “Taklimakan Desert, consists a very arid area encompassed by Tarim Basin”.

Page 10.1: Indeed, the reviewer is right, the sentence is modified accordingly: from “during MAM lofted of dust extinction coefficient ...” to “... during MAM dust aerosol layers are detected ...”.

Page 10.2: According to the opinion of the authors, the CoM should not be plotted together with the climatological dust extinction coefficient, and the reason is threefold. First of all, the purpose of the climatological dust product is to answer the question, which is the aerosol load over a specific region on a climatological basis, while the purpose of the CoM is to provide the climatological center of mass of the average dust profile. A rare example is related to a region where dust is never present. Over such a region the climatological dust profile is a well-defined profile of zeros. On the contrary, by mathematical definition, the CoM over such profile cannot be computed (NaN). The second reason is related to the representativeness. An example over the study domain of South and East Asia is the Himalayas orographic barrier. Extreme and very rare events of dust transport over Himalayas have been reported.





The CoM plotted together with the climatological dust extinction coefficient profiles would create to the reader a misleading view of frequent dust transport over this region, due to the lack of the information of how many events are used to compute the profile and the CoM. The third reason is related to the fact that the CoM is always defined above ground level. Due to the complex surface

5 orography of South and East Asia, the mean surface elevation of the used regions sometimes may be above the CoM. For example Tarim Basin, the basin that encompasses the Taklimakan Desert has an elevation approximately 2 km higher than the Taklimakan desert elevation. Thus during the non-active seasons the dust CoM would be below or very close to the mean Surface elevation of the region.

**Page 10.3:** Indeed, the sentence is modified accordingly from "... attributed the gravitational settling of aerosols and to dry and wet deposition (Colarco et al., 2003)." to "... attributed to both dry and wet deposition processes that remove dust aerosol from the atmosphere (Colarco et al., 2003)."

10

**Page 10.4:** Indeed, the reviewer is right, the sentence is modified accordingly: from "MAM a lofted layer of dust climatological extinction coefficient up to  $25 \text{ Mm}^{-1}$  is observed ..." to "...MAM a lofted layer of dust aerosols that yields climatological extinction coefficient up to  $25 \text{ Mm}^{-1}$  is observed ...".

15

**Page 10.5:** The Climatological Total Extinction Coefficient close to the surface over the densely populated regions of East China, especially during MAM when a large component of the AOD is related to dust aerosols transported from Taklimakan and Gobi deserts is as high as  $200 \text{ Mm}^{-1}$ . For more information: de Leeuw, G., Sogacheva, L., Rodriguez, E., Kourtidis, K., Georgoulias, A. K., Alexandri, G., Amiridis, V., Proestakis, E., Marinou, E., Xue, Y., and van der A, R.: Two decades of satellite observations of AOD over mainland China, *Atmos. Chem. Phys. Discuss.*, <https://doi.org/10.5194/acp-2017-838>, in review, 2017.

20

**Page 11.1:** The difference between climatological and conditional is improved and adapted and already discussed.

**Page 11.2:** "coefficient" deleted.

25

**Page 12.1:** Since according to the reviewer it was not clear through the sentence where the features of dust transport pathways are observed in Figure 6, the sentence is modified accordingly: "To the north and east of the Tibetan Plateau two distinct eastward pathways of dust transport are evident: (1) a northern flow that propagates towards the Yellow Sea and the Pacific Ocean (Uno et al., 2009) (Fig. 6f, g) and (2) a southern flow that occurs over central China (Kuhlmann and Quaas, 2010) (Fig 6k, o)."

30

**Page 12.2:** Corrected. "Both transport pathways are observed at the middle and upper troposphere ...".

**Page 12.3:** Indeed the authors agree with the reviewer that the paragraph was not written in a clear way to help the reader to navigate along the figures and easily absorb the information provided. Thus the entire paragraph was rewritten: "To the north and east of the Tibetan Plateau two distinct eastward pathways of dust transport are observed: (1) a northern flow that propagates towards the Yellow Sea and the Pacific Ocean (Uno et al., 2009) and (2) a southern flow that occurs over central China (Kuhlmann and Quaas, 2010). The northern flow is mostly evident during winter (Fig. 3d), while the southern transport pathway over C. China is more prominent during spring (Fig. 3h). Figure 6 provides information on the vertical distribution and depth of the two dust transport pathways. Both transport pathways are observed at the middle and upper troposphere, indicated by dust conditional coefficient values as high as  $20 \text{ Mm}^{-1}$ , observed at altitude up to 10 km a.s.l. Another noticeable feature is that the vertical intensity of the transported dust aerosol plumes is subject to high spatial and seasonal variability. Decreasing values of both dust aerosol climatological and conditional values are observed with increasing distance from the dust sources of Taklimakan and Gobi deserts towards and over the Pacific Ocean."

35

40

45

**Page 12.4:** Comment 12.3

**Page 12.5:** Comma deleted.

**Page 12.6:** Comment 12.3

**Page 12.7:** The reviewer is right. "(as discussed in Section Data and Methodology)" is added.

This page contains no comments

**Page 12.8:** According to the different particle depolarization values, a mean value of 0.03 value is used for the non-spherical aerosol types. This introduces uncertainties since the 0.03 is a mean value,  $\pm 0.01$ .

**Page 12.9:** "particle" added.

5 **Page 12.10:** Indeed the sentence is rephrased: "Figure 7 shows the vertical, horizontal and seasonal variability of the average particle depolarization ratio of the cases classified by CALIOP as dust or polluted dust aerosol subtypes based on nine years of CALIPSO observations (01/2007-12/2015) and for five zones of 10° latitudinal interval, between 5° and 55° N."

10 **Page 12.11:** The misleading sentence is rephrased according to the reviewer's recommendation from "In general, to the north of Himalayas (Fig. 7e-h), a structure of three different height ranges is evident." to: "In general, to the north of Himalayas, low values of particle depolarization ratio are observed close to the surface, while particle depolarization ratio increases with increasing height (Fig. 7e-h)."

15 **Page 13.1:** Rephrased to: "Over Thar Desert the average particle depolarization ratio of cases classified as dust or polluted dust by the CALIPSO classification algorithm yield average depolarization values greater than 25% throughout the year".

**Page 13.2:** Height in Fig. 4 are defined above ground level while at Fig. 5, 6 and 7 characteristic are above sea level.

**Page 13.3:** Comma added.

**Page 13.4:** The sentence is deleted after cross-checking.

20 **Page 13.5:** The entire manuscript is homogenised accordingly.

**Page 14.1:** Over the manuscript frequently the authors have discussed the horizontal and vertical distribution of AOD and dust aerosol respectively. Both MODIS Aqua and CALIPSO CALIOP are utilized. Both sensors utilize different algorithms for cloud screening for cloud fraction and extensive cloudiness prevent retrievals over specific domains (Bay of Bengal and monsoon period). These figures, although not extensively discusses, are in the manuscript for completeness reason, for a reviewer to have a full overview of the datasets utilized.

25 **Page 14.2:** According to the reviewer's recommendation the sentence is rephrased from "Strong statistical increase is observed by MODIS over the Arabian Sea ( $0.01 \text{ yr}^{-1}$ ), while not statistical significant positive AOD550nm trends are present over the Bay of Bengal ( $0.002 \text{ yr}^{-1}$ )." to "MODIS shows not statistical significant AOD increasing trends of the order of ( $0.002 \text{ yr}^{-1}$ ) over the Bay of Bengal and strong positive statistical significant trends over the Bay of Arabian Sea ( $0.01 \text{ yr}^{-1}$ ). The strongly increasing AOD trend over the Arabian Sea though is not corroborated by CALIOP observations."

30 **Page 14.3:** The abbreviation is removed according to the reviewer's suggestion.

35 **Page 15.1:** Indeed, the reviewer is right. Based on CALIOP both the horizontal and vertical distribution of aerosol can be studied.

**Page 15.2:** According to the reviewer's recommendation the abbreviations are explained one last time in the beginning of the "Summary and Conclusions" section. To be more specific the following phrase is modified: "Our analysis shows similar patterns in the horizontal distribution of Aerosol Optical Depth (AOD), Dust Aerosol Optical Depth (D\_AOD) and Non-Dust Aerosol Optical Depth (Non-Dust AOD) between all four seasons ...".

**Page 15.3:** The authors mean, the range of the observations, how high/low the observed values are.

**Page 15.4:** Corrected.

45 **Page 15.5:** According to the reviewer's recommendation the sentence is rephrased: "The CoM, TH and the mean extinction coefficient profiles are implemented in order to provide the vertical dust aerosol distribution, and together with the horizontal distribution of AOD and D\_AOD to provide in the end the three-dimensional structure of dust aerosol over South and East Asia and the atmospheric dust aerosol transport pathways."

This page contains no comments

Page 15.6: “The Summary and Conclusions” Section is adapted according to the reviewer’s suggestion (major comment).

Page 15.7: The sentence is rephrased. Actually the entire “Summary and Conclusions” Section is modified. The Angstrom Exponent and the spectral dependence of AOD is crucial since it can be used as a fingertip for identifying coarse aerosol types and different aerosol cases (e.g. dust or non-dust cases)

5

Page 15.8: Comma added.

Page 26.1: “Under” is deleted.

Page 26.2: Capital “T” is used according to the reviewer’s correction.

10

Page 26.3: Clarified. “Climatological” is added.

Page 26.4: Indeed the two figures it is better to be plotted together, the authors totally agree with the reviewer’s recommendation.

Page 26.5: Corrected. Word “Geographical” is deleted from the caption of figures 5, 6 and 7.

15

Page 27.1: Both the scale and the colormap are modified, according to the suggestion by the reviewer. Please see the figures below, before and after the adaptation of the figures.

Page 27.2: Both the scale and the colormap are modified, according to the suggestion by the reviewer. Please see the figures below, before and after the adaptation of the figures. In addition the phrase “please note the different height scale” is added to the manuscript.

20

### Before

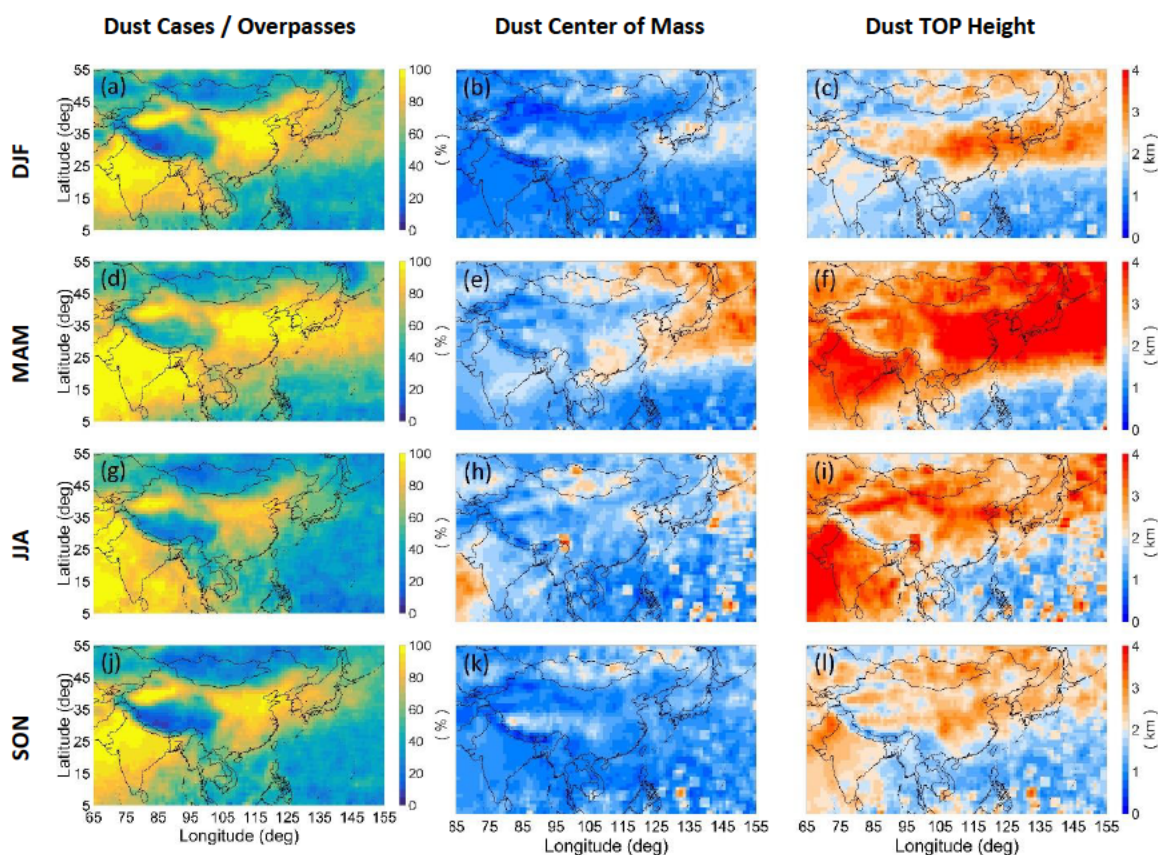
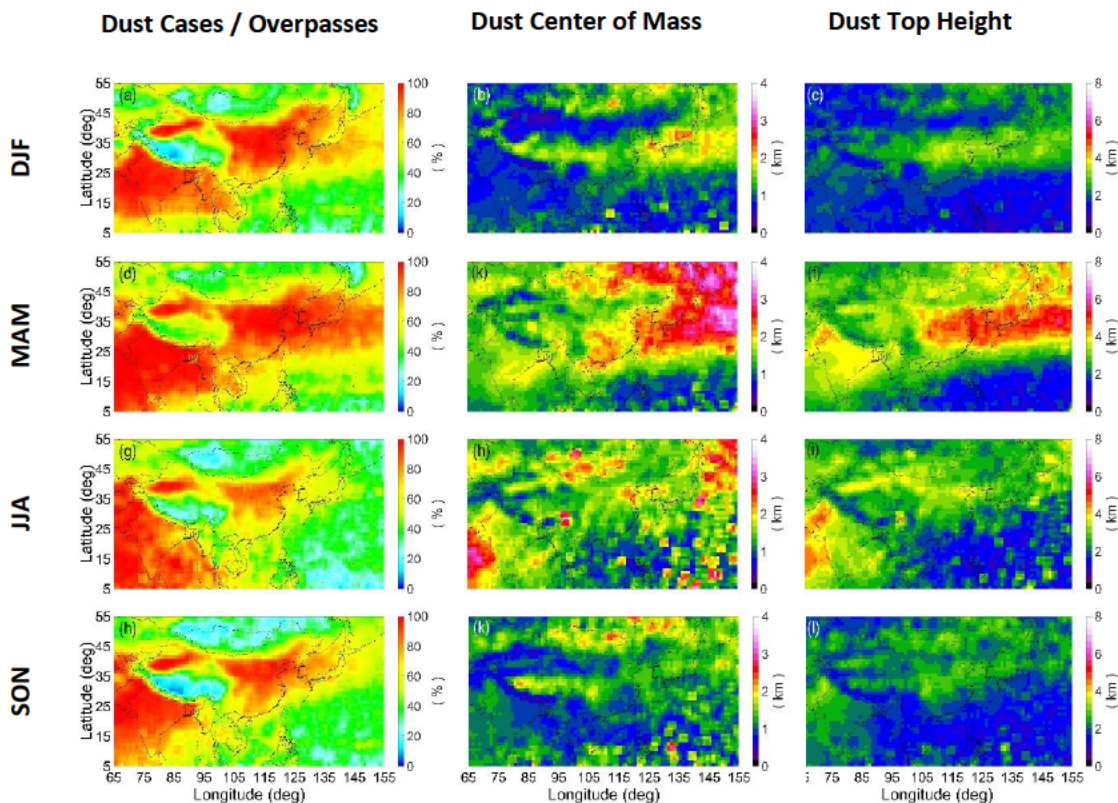


Fig. 4: Spatial distribution of dust occurrence [%], climatological pure-dust CoM (Center of Mass) and dust TH (Top Height) in km a.g.l., for each season over the domain between 65°-155° E and 5°-55° N and for the period 01/2007-12/2015.

25

### After

This page contains no comments



**Fig. 4: Spatial distribution of dust occurrence [%], climatological pure-dust CoM (Center of Mass) and dust TH (Top Height) in km a.g.l., for each season over the domain between 65°-155° E and 5°-55° N and for the period 01/2007-12/2015.**

5

**Page 30.1:** Since CALIPSO CALIOP classifies layers as dust or polluted dust over these domains, even if the frequency is low - as indicated by the question of the reviewer, it makes sense to decouple those few cases to the pure-dust and non-dust components of the detected aerosol mixtures. The need is supported also by the evidence that dust sources are not only natural but anthropogenic activity may also lead to dust particles in the atmosphere, over domains where no natural dust is supposed to be observed through intercontinental transport. Chen, S., Huang, J., Jiang, N., Zang, Z., Guan, X., Ma, X., Jia, Z., Zhang, X., Zhang, Y., Huang, K., Xu, X., Zhang, G., Li, J., Yang, R., and Liao, S.: Estimations of anthropogenic dust emissions at global scale from 2007 to 2010, *Atmos. Chem. Phys. Discuss.*, <https://doi.org/10.5194/acp-2017-890>, in review, 2017.

10 **Page 30.2:** Suggestion is implemented – comment 27.1.

**Page 30.3:** The scale of figures are adapted according to the recommendation of the reviewer in order to include both higher values (comments 27.1, 27.2, 30.3)

15 **Page 31.1:** The authors are of the opinion that any redundant information added on the figures 5, 6 and 20 7 would make it harder to read features on them. Thus the authors have not included marks indicating the desert regions on the figures, since a reader can take the information of the regions of interest and the locations of the deserts from Figure 1.

**Page 32.2:** According to the reviewer’s recommendation, the caption of the colormap is changed to: “Dust Extinction Coefficient”.

25

This page contains no comments



# 9-year spatial and temporal evolution of desert dust aerosols over South and East Asia as revealed by CALIOP

Emmanouil Proestakis<sup>1,2</sup>, Vassilis Amiridis<sup>1</sup>, Eleni Marinou<sup>1</sup>, Aristeidis K. Georgoulas<sup>3,4</sup>, Stavros Solomos<sup>1</sup>, Stelios Kazadzis<sup>5,6</sup>, Julien Chimot<sup>7</sup>, Huizheng Che<sup>8,9</sup>, Georgia Alexandri<sup>3</sup>, Ioannis Binietoglou<sup>10</sup>, Vasiliki Daskalopoulou<sup>1,11</sup>, Konstantinos A. Kourtidis<sup>3</sup>, Gerrit de Leeuw<sup>12,13</sup>, Ronald J. van der A<sup>14</sup>

<sup>1</sup>IAASARS, National Observatory of Athens, Athens, 15236, Greece

<sup>2</sup>Laboratory of Atmospheric Physics, Department of Physics, University of Patras, 26500, Greece

<sup>3</sup>Laboratory of Atmospheric Pollution and Pollution Control Engineering of Atmospheric Pollutants, Department of Environmental Engineering, Democritus University of Thrace, Xanthi, Greece

<sup>4</sup>Energy, Environment and Water Research Center, Cyprus Institute, Nicosia, Cyprus

<sup>5</sup>Institute of Environmental Research and Sustainable Development, National Observatory of Athens, Lofos Koufou, 15236 Penteli, Athens, Greece

<sup>6</sup>Physikalisch - Meteorologisches Observatorium Davos, World Radiation Center (PMOD/WRC) Dorfstrasse 33, CH-7260, Davos Dorf, Switzerland

<sup>7</sup>Department of Geoscience and Remote Sensing (GRS), Civil Engineering and Geosciences, TU Delft, the Netherlands

<sup>8</sup>Key Laboratory of Atmospheric Chemistry (LAC), Chinese Academy of Meteorological Sciences (CAMS), CMA, Beijing, 100081, China

<sup>9</sup>Jiangsu Collaborative Innovation Center of Climate Change, Nanjing, 210093, China

<sup>10</sup>National Institute of R&D for Optoelectronics, Magurele, Romania

<sup>11</sup>Department of Physics, University of Crete, Heraklion, Greece

<sup>12</sup>Finnish Meteorological Institute (FMI), Helsinki, Finland

<sup>13</sup>Department of Physics, University of Helsinki, Helsinki, Finland

<sup>14</sup>Royal Netherlands Meteorological Institute, De Bilt, Netherlands

Correspondence to: Emmanouil Proestakis ([proestakis@noa.gr](mailto:proestakis@noa.gr))

**Abstract.** We present a 3-D climatology of the desert dust distribution over South and East Asia derived using CALIPSO (Cloud-Aerosol Lidar and Infrared Pathfinder Satellite Observation) data. To distinguish desert dust from total aerosol load we apply a methodology developed in the framework of EARLINET (European Aerosol Research Lidar Network). The method involves the use of particle linear depolarization ratio and updated lidar ratio values suitable for Asian dust, applied on multiyear CALIPSO observations (01/2007-12/2015). The resulting dust product provides information on the horizontal and vertical distribution of dust aerosols over South and East Asia along with the seasonal transition of dust transport pathways. Persistent high D\_AOD (Dust Aerosol Optical Depth) values at 532 nm, of the order of 0.6, are present over the arid and semi-arid desert regions. Dust aerosol transport (range, height and intensity) is subject to high seasonality, with highest values observed during spring for northern China (Taklimakan/Gobi deserts) and during summer over the Indian subcontinent (Thar Desert). Additionally we decompose the CALIPSO AOD (Aerosol Optical Depth) into dust and non-dust aerosol components to reveal the non-dust AOD over the highly industrialized and densely populated regions of South and East Asia, where the non-dust aerosols yield AOD values of the order of 0.5. Furthermore, the CALIPSO-based short-term AOD and D\_AOD time series and trends between 01/2007 and 12/2015 are calculated over South and East Asia and over selected sub-regions. Positive trends are observed over northwest and east China and the Indian subcontinent, whereas over southeast China trends are mostly negative. The calculated AOD trends agree well with the trends derived from Aqua/MODIS (Moderate Resolution Imaging Spectroradiometer), although significant differences are observed over specific regions.

## 1 Introduction

Airborne mineral dust is a major category of particles in the Earth's atmosphere that influences climate from local and regional to global scale (Huang et al., 2006). Dust aerosols have a significant role on climate through the direct radiative effect of absorption and scattering of solar and thermal terrestrial radiation (Ramanathan et al., 2001; Tegen et al., 1996; Huang et al., 2009). Moreover dust aerosols, depending on the atmospheric conditions and on the dust composition, act either as effective

This page contains no comments

CCN (Cloud Condensation Nuclei) (Hatch et al., 2008) or as IN (Ice Nuclei) (DeMott et al., 2009; Chou et al., 2011), modifying cloud albedo, coverage and precipitation (Rosenfeld et al., 2008). Hence, the indirect effect of dust on the Earth's climate lies in the modulation of the solar radiation forcing by altering the cloud microphysical and macrophysical properties (Twomey, 1977; Albrecht, 1989; Haywood and Boucher, 2000, Huang et al., 2006). Besides the direct and the indirect effects and the effect on meteorological processes, dust transported over large distances has significant impact on human health and life expectancy due to degradation of air quality (Griffin, 2007; Goudie, 2014). In addition to human life quality, the aeolian transport of dust is crucial for the sustainability of marine and terrestrial ecosystems through the deposition of mineral inputs and nutrients (Martin et al., 1994; Okin et al., 2004; Jickells et al., 2005).

Over Asia, airborne mineral dust is considered a significant atmospheric aerosol contributor. Major Asian dust sources include the deserts of the Arabian Peninsula in southwest Asia and the Middle East, Thar Desert (Pakistan/India), the sandy Taklimakan region across northwest China and the vast arid and semiarid Gobi desert in north China and southern Mongolia (Figure 1). The dust aerosol load generated in the Gobi and Taklimakan deserts is estimated to  $800 \text{ Tg yr}^{-1}$  (Zhang et al., 1997). Airborne dust originating from Asian deserts is frequently transported eastward across China (Zhang et al., 2003), over the north Pacific Ocean (Shaw, 1980; Duce et al., 1980) to the western coast of north America (Uno et al., 2001; Huang et al., 2008) and in extreme cases to even longer distances, completing full global circuits (Clarke et al., 2001; Uno et al., 2009).

In order to examine the composition, properties and radiative effect of Asian dust, several field campaigns have been conducted. Regional aircraft and ground-based campaigns, such as the Indian Ocean Experiment (INDOEX) (Rasch et al., 2001), the Asian Aerosol Characterization Experiment (ACE-Asia) (Huebert et al., 2003), the Intercontinental Chemical Transport Experiment (INTEX-B) (McKendry et al., 2008), the Aeolian Dust Experiment on Climate Impact (ADEC) (Mikami et al., 2006), the NASA Transport and Chemical Evolution over the Pacific (TRACE-P) (Jacob et al., 2003) and the Pacific Dust Experiment (PACDEX) (Stith et al., 2009) have contributed considerably to our knowledge and understanding of Asian dust. In addition to the field campaigns, extensive measurements on the spatial variability and temporal evolution of dust aerosols are required in order to assess their contribution to climate. To this end, several passive remote sensing satellite instruments, such as the Advanced Very High Resolution Radiometer (AVHRR) (Husar et al., 1997), the MODerate resolution Imaging Spectroradiometer (MODIS) (Remer et al., 2005) on board both Terra and Aqua platforms, the Total Ozone Mapping Spectrometer (TOMS) on board Nimbus 7 (Prospero et al., 2002) and the Ozone Mapping Instrument (OMI) onboard Aura have been used (Chimot et al., 2017). Although passive satellite sensors provide information on the columnar properties of aerosols with adequate spatial and temporal resolution, they are bound to certain limitations. The major limitation is the lack of information on the vertical distribution of aerosols and clouds, an important parameter for the assessment of the aerosols radiative forcing on climate as well as their contribution as IN and CCN (IPCC 2013).

The vertical structure of aerosols and clouds is provided through ground-based and satellite-based LIDAR (LIght Detection And Ranging) systems (Liu et al., 2002). Regarding satellite-based lidar observations, CALIOP (Cloud Aerosol Lidar with Orthogonal Polarization) provides vertically resolved information on both aerosols and clouds on a global scale since June 2006. CALIOP consists the main instrument onboard the NASA/CNES CALIPSO (Cloud-Aerosol Lidar and Infrared Pathfinder Satellite Observations) satellite (Winker et al., 2007). CALIOP measures total attenuated backscatter at 532 nm and 1064 nm and the linear depolarization ratio at 532 nm. The depolarization ratio is a crucial parameter in the dust aerosol classification (Ansmann et al., 2003, Liu et al., 2008c), since dust particles are strongly depolarizing, as opposed to other aerosol types. Thus CALIOP is an ideal instrument to detect dust aerosols and study the dust 3D spatial distribution and temporal evolution (Yang et al., 2012; Amiridis et al., 2013; Marinou et al. 2017).

Over the past decade CALIOP retrievals have been frequently utilized in dust aerosol studies with focus on South and East Asia. Huang et al. (2007) examined summertime dust plumes appearing over the Tibetan Plateau and found that they originate from the nearby Taklimakan Desert. Liu et al. (2008b) examined the spatial distribution of dust over the Tibetan Plateau and the surrounding areas on a seasonal basis. Huang et al. (2008), using CALIOP, a micropulse lidar and surface meteorological

This page contains no comments

data from the Gansu Meteorological Bureau studied the long-range transport of dust from the Taklimakan and Gobi deserts over east China and the Pacific Ocean during the PACDEX (PACific Dust EXperiment) campaign (March to May 2007). They also showed that the dust storms over the Gobi region are more intense but less frequent than the dust storms over the Taklimakan region. The passage of dust from Taklimakan/Gobi to Japan (covering 1000-1500 km/day) and consequently over the Pacific Ocean is in addition reported by Uno et al. (2008), using extinction coefficient profiles from CALIOP, a dust transport model and forward trajectory analysis. Huang et al. (2010) used CALIOP dust data along with other A-Train satellite observations to study the climatic effect of dust on the semi-arid areas of northwest China. Ge et al. (2014) combined dust CALIOP data with observations from the Multiangle Imaging Spectroradiometer (MISR) showing that the Taklimakan dust can be injected vertically up to 10 km height above sea level, as a result of the local topography and synoptic conditions. He and Yi (2015) utilizing data from CALIOP and ground based lidar observations over China to examine thirteen dust events within the period 2010-2012, while Xu et al. (2016) studied the horizontal, vertical and temporal variability of dust aerosols over China based on CALIOP. More recently, Tan et al. (2016) and (2017) combined CALIPSO, MODIS-Terra, OMI data and ground-based dust records and studied the transport processes of five dust storms in spring 2010 from the Taklimakan and Gobi deserts to the Pacific and their impacts on the ocean. Satellite-based observations from CALIPSO have also been utilized to study the effect of dust transport from Thar Desert to the Indian subcontinent (Gautam 2009; Das et al., 2013; Kumar et al., 2014).

The aforementioned studies used the standard CALIPSO product and aerosol subtype classification (Omar et al., 2009). Using this classification the studies either did not take into consideration the pure-dust component of the classified as polluted dust aerosol subtype or they defined as “dust” both the dust and polluted dust aerosol subtypes (hence considering the non-dust component of polluted dust as dust). In the present study we use a separation methodology developed in the framework of EARLINET (European Aerosol Research Lidar Network), which makes use of the particle linear depolarization ratio and updated lidar ratio values suitable for Asian dust, in order to distinguish the pure dust component from the dust and polluted dust aerosol subtypes. In this paper we use this new pure-dust product in order to provide the three-dimensional seasonal distribution and the short-term temporal evolution of dust over South and East Asia, based on nine years of CALIOP observations (01/2007-12/2015). The domain of the study is confined between 65°-155° E and 5°-55° N (Fig 1). South and East Asia encompasses three major sources of dust aerosols, namely the deserts of Taklimakan, Gobi and Thar. Regarding the dust aerosol transport, the transport pathways highly depend on the atmospheric circulation, which in the case of Asia is heavily affected by the Himalaya orographic barrier. The area southwest of Himalayas (Arabic Peninsula, India, Indian Ocean) is mostly affected by long range transport of dust generated from the Arabian Desert and from the arid areas of Somalia and Ethiopia (Prospero et al., 2002). Local dust sources in arid areas of Iran, Iraq and Afghanistan additionally contribute to the regional dust load. On the contrary, the areas located to the east of the Himalaya barrier (Mongolia, China, southeast Asian Peninsula, Pacific Ocean) are mostly affected by dust originating from the Gobi and Taklimakan deserts (Prospero et al., 2002). The pure dust aerosol product can be used to study the horizontal and vertical distribution of dust aerosols over the major sources along with the intercontinental transport, the temporal evolution of dust aerosols and the intensity of the dust events (Marinou et al., 2017).

The paper is organized as follows: Sect. 2 provides a description of CALIOP, of the data used and the methodology followed in the study. Sect. 3 provides the main results. In Sect. 3.1 results on the horizontal distribution of aerosols over South and East Asia (AOD, D\_AOD, Non-Dust AOD) and of the observed dust Center of Mass and dust Top Height over South and East Asia are presented and discussed. The vertical distribution of dust aerosols is presented and discussed in Sect. 3.2-3.3 through the dust climatological and conditional extinction coefficient profiles, while the short-term temporal evolutions of AOD and D\_AOD during the study period are examined in Sect. 3.4. Finally, Sect. 4 provides a summary of the study along with the main concluding remarks.

This page contains no comments

## 2 Data and methodology

CALIPSO is a sun-synchronous polar orbit satellite with an equatorial crossing time around 13:30 local time and approximately sixteen days repetition orbit. CALIPSO, the collaborative NASA and CNES project, joined the A-Train formation of satellites on April 2006 (Winker et al. 2007). CALIOP, the primary instrument onboard CALIPSO, consists of a Nd:YAG elastic backscatter and polarization lidar (Hunt et al., 2009). CALIOP transmits linear polarized light, while a telescope of 1 m diameter collects the backscattered component by the atmosphere. Utilizing the total backscatter signals and the polarization of the backscattered light CALIOP provides almost continuously height-resolved information on the vertical structure of aerosols and clouds (Winker et al., 2009), from the ground up to 30 km height.

Three levels of CALIPSO products are provided from NASA and CNES. The Level-1 (L1) product consists the raw range-corrected signals in the highest spatio-temporal resolution. The Level-2 (L2) product consists the high-level quality products. More specifically, CALIPSO L2 algorithm classifies the detected layers into characteristic classes (Vaughan et al., 2009), namely into clear air, cloud, aerosol, stratospheric, surface, subsurface, totally attenuated or invalid feature types. The classification algorithm (Omar et al., 2009) utilizes the depolarization ratio and the attenuated backscatter signal, the height of the aerosol layer and the characteristics of the Earth's surface along the CALIPSO footprint (desert, ocean, snow/ice) in order to discriminate the detected atmospheric features types into aerosol subtypes (Clean Marine, Dust, Clean Continental, Polluted continental, Polluted Dust and Smoke). In addition, CALIPSO L2 algorithm uses specific lidar ratio (LR) values for each classified aerosol type in order to derive the profiles of extinction coefficient (Young and Vaughan, 2009). The final L2 product is characterized by 5 km horizontal resolution and vertical resolution of 60 m in the altitude range -0.5-20.2 km and 120 m in the altitude range 20.2-30.1 km above sea level. The L2 aerosol extinction product is used to provide the Level 3 (L3) product of CALIPSO, characterized by 2°x5° grid resolution (Winker et al., 2013).

In the framework of this study we use the CALIPSO L2 optimized profiles (based on the CALIPSO Version 3 dataset), developed as an intermediate product under the collaborative EARLINET-ESA LIVAS (Lidar climatology of Vertical Aerosol Structure) project (Amiridis et al., 2015). This product has a spatial resolution of 1°x1° and is described in detail and compared with AERONET in Amiridis et al. (2015). In brief, for this product, several quality control filters are applied in the CALIPSO L2 V3 dataset, following the filtering proposed for L3 product (Winker et al. 2013). Moreover, in order to ensure the high-quality of the aerosol product, in addition to the filters described in Winker et al. (2013), L2 profiles with cloud observations are filtered out from the dataset (Amiridis et al., 2013).

In addition to the CALIPSO L2 optimized profiles, the aerosol observations categorized through the CALIOP classification scheme as dust or polluted dust (Omar et al., 2009) are used in order to retrieve the pure dust aerosol component. To this end, the particle depolarization ratio of dust is used. During the Saharan Mineral dUst experiMent (SAMUM) 1 and 2 campaigns Saharan dust particle depolarization ratio values varied between 0.27 and 0.35 at 532 nm (Ansmann et al., 2011). Typical dust particle depolarization ratio values measured with lidars in field campaigns around the globe are consistent with these values, showing little variation independently of the source region, (e.g., Sakai et al., 2000; Liu et al., 2008b; Freudenthaler et al., 2009; Groß et al., 2011; Burton et al., 2013; Groß et al., 2013; Groß et al., 2015; Illingworth et al., 2015). According to the methodology proposed by Tesche et al. (2009) the aerosol layers classified as dust or polluted dust and having a depolarization ratio lower than 0.31 are assumed to be a mixture of pure dust and non-dust aerosol components. The particle depolarization ratio value of the pure dust component is then calculated by:

$$\delta_p = \frac{\beta_{\perp}}{\beta_t - \beta_{\perp}} \quad [1]$$

where  $\delta_p$  is the particle depolarization value of the pure dust component in the aerosol mixture,  $\beta_{\perp}$  is the perpendicular component of the backscatter value and  $\beta_t$  is the total backscatter of the aerosol layer. The backscatter contribution of the pure dust component is calculated by:

This page contains no comments



$$\beta_1 = \beta_t \frac{(\delta_p - \delta_2)(1 + \delta_1)}{(\delta_1 - \delta_2)(1 + \delta_p)} \quad [2]$$

where  $\delta_1$  ( $\delta_2$ ) is a theoretical depolarization value of the dust (non-dust) component. For the non-dust aerosols, we assume particle depolarization ratio values of  $0.03 \pm 0.02$ , computed as a mean value of non-dust spherical particles (Omar et al., 2009), considering minor contributions to depolarization by dried marine particles and by anthropogenic particles. Using this methodology, the CALIPSO pure dust backscatter coefficient profile at 532 nm is calculated.

5 In order to retrieve the pure dust extinction coefficient profile at 532 nm the pure dust backscatter coefficient profile has to be multiplied with the appropriate LR for Asian dust. The LRs observed globally are summarized in the works of Müller et al. (2007) and Baars et al. (2016). In general, different deserts produce dust of different mineralogy, thus with different properties and different LRs. Typical values of LR of desert dust aerosols vary between 35 and 55 sr. The LR values of desert dust originating from the deserts of the Arabian Peninsula, the Taklimakan region and the vast semiarid Gobi Desert have been  
 10 investigated with ground based lidars (Sakai et al., 2002; Murayama et al., 2004; Ansmann et al., 2005; Tesche et al., 2007; Xie et al., 2008; Haenel et al., 2012; Komppula et al. 2012; Mamouri et al., 2013), airborne instrumentation (Anderson et al., 2003) and during intensive campaigns (Liu et al., 2002, Murayama et al., 2003). Based on the atmospheric circulation over Asia, the dust aerosol transport and the observed LR values, the domain of this study can be divided in two subdomains and two different LRs for pure dust can be assigned in these regions. Southwest of the Himalayas (Arabic Peninsula, India, Indian  
 15 Ocean) a LR of 40 sr is assigned to pure dust, while east of the Himalayas the value of 47 sr is used. The assigned LR values are used for the retrieval of the pure dust aerosol extinction coefficient profiles at 532 nm through the backscatter coefficient profiles at 532 nm (Tesche et al., 2009).

In this study, based on the aerosol extinction coefficient profiles at 532 nm and on the pure-dust extinction profiles at 532 nm (from here on referred as dust extinction), the following products are discussed:

- 20 • The seasonal CALIPSO L3 Aerosol Optical Depth (AOD), dust Optical Depth (D\_AOD) and non-dust Aerosol Optical Depth aggregated in  $1^\circ \times 1^\circ$  spatial resolution grids.
- The seasonal CALIPSO L3 dust profile Top Height (TH) and dust Center of Mass (CoM) aggregated in grids of  $1^\circ \times 1^\circ$  spatial resolution grids. The dust TH (km) is defined as the height where 98% of the D\_AOD lies below while the dust CoM height is defined according to Mona et al. (2006), as the backscatter weighted altitude where 50% of the D\_AOD lies  
 25 below. The CoM is given by the equation:

$$\text{CoM} = \frac{\int_{z_b}^{z_t} z \cdot \beta(z) dz}{\int_{z_b}^{z_t} \beta(z) dz} \quad [\text{km}] \quad [3]$$

where:  $z$  is the height in the atmosphere,  $\beta(z)$  is the backscatter coefficient of the dust layer at heights  $z$ ,  $z_b$  and  $z_t$  the base and top heights of the profile respectively.

- The seasonal zonal distribution of the climatological and conditional dust extinction coefficient profiles ( $\text{Mm}^{-1}$ ).  
 The climatological dust product is a measure of the average dust load over a geographical domain and is computed  
 30 acknowledging only the contribution of the dust component in the atmosphere. Technically, this is accomplished by setting the extinction coefficient value of the non-dust aerosols to  $0 \text{ km}^{-1}$ , when averaging the profiles over a grid. The dust climatological product can be used for studies related to the contribution of dust to the total aerosol load over a period of time. In addition, the climatological dust product can be used in the evaluation of models related to dust transport and to radiative transfer models, in studies of dust-related physical processes (dust transport dynamics, CCN, IN), to investigate  
 35 the effect of dust aerosols on ecosystems (dust deposition into the oceans) and to determine the dust aerosol load over highly industrialized and densely populated regions.

The conditional dust product is a measure of the average intensity of dust load over a geographical domain and is based explicitly on the dust profiles, hence ignoring completely non-dust aerosols. Technically, this is accomplished by setting

This page contains no comments

the extinction coefficient value of the non-dust aerosols to not-a-number (NaN), when averaging the profiles over a grid. The conditional dust product is related to the intensity of the dust events.

Validation of the pure-dust aerosol product against collocated AERONET observations over northern Africa and Europe show absolute biases between CALIPSO and AERONET AODs of -0.03 (Amiridis et al., 2013). The methodology followed for the calculation of the dust climatological extinction coefficient profiles and the dust conditional coefficient profiles is shown in the flowchart of Figure 2. In the recent study of Marinou et al. (2017), the climatological and conditional dust products have been used to study the dust distribution above Europe and North Africa. In this study, the climatological and conditional products are similar to the study of Marinou et al., (2017), with the only difference in the selection of the domain depended LR values (55 sr for Saharan desert).

- Short-term CALIOP time series and trends of AOD and D\_AOD for the study domain, based on nine years of CALIPSO overpasses (01/2007-12/2015). In addition to the CALIPSO/CALIOP time series and trends, Aqua/MODIS trends for the same period (01/2007-12/2015) are included.

The (Moderate resolution Imaging Spectroradiometer) MODIS onboard Aqua satellite was launched on May 4, 2002. The sensor has a daytime equator crossing at 13:30 LT (noon). Due to its wide swath (2330 km) it is capable of providing almost global coverage on a daily basis. MODIS measures backscattered radiation in 36 spectral bands, from 0.415 to 14.235  $\mu\text{m}$ , with a spatial resolution of 250, 500 and 1000 m depending on the band. In this work, monthly AOD550 data from the Level-3 MODIS/Aqua Collection 6  $1^\circ \times 1^\circ$  gridded dataset (MYD08\_M3) are used. The MODIS data were acquired from NASA's Level 1 and Atmosphere Archive and Distribution System (LAADS) (<http://ladsweb.nascom.nasa.gov>) covering the period from 01/2007 to 12/2015. AOD550 is retrieved using two algorithms, the "Dark Target" (DT) and "Deep Blue" (DB). There are two separate DT algorithms, one used for land surfaces and one for water surfaces (Kaufman et al., 1997; Tanré et al., 1997; Remer et al., 2005; Levy et al., 2010, 2013). The DT expected error for Collection 6 is  $\pm(0.05+0.15\tau_A)$  over land and  $\pm(0.04+0.1\tau_A)$ ,  $-(0.02+0.1\tau_A)$  over ocean relative to the AERONET aerosol optical thickness ( $\tau_A$ ) (Levy et al., 2013). While DT is used over vegetated surfaces and surfaces covered by dark-soil, the DB algorithm is capable of retrieving AOD550 over bright surfaces such as deserts, arid and semiarid areas (Hsu et al., 2004, 2013). The new DB algorithm which is used for the production of Collection 6 is applicable over all land surfaces (Sayer et al., 2013, 2014; Hsu et al., 2013). For Collection 6 the DB expected error is  $\sim\pm(0.03+0.2\tau_M)$  relative to the MODIS aerosol optical thickness ( $\tau_M$ ) (Hsu et al., 2013; Sayer et al., 2015). In this work, AOD<sub>550</sub> data from the merged (DT and DB) (Levy et al., 2013) datasets are used.

Regarding the uncertainties of the products, CALIOP L2 V3 is characterized by daytime minimum detectable backscatter of  $0.0017\pm 0.0003 \text{ km}^{-1}\text{sr}^{-1}$ , nighttime minimum detectable backscatter of  $0.0008\pm 0.0001 \text{ km}^{-1}\text{sr}^{-1}$  and AOD of 0.005 north China (based on the minimum CALIOP 532 nm channel detection sensitivity, Winker et al., 2009). The reported underestimation in the CALIPSO AOD (Kittaka et al., 2011; Rogers et al., 2014; Papagiannopoulos et al., 2016; Tian et al., 2017) is additionally related to the limitation of CALIOP to collect backscatter signals lower than the minimum detectable backscatter from aerosol layers in the free troposphere. The estimation of the uncertainties of CALIPSO L2 V3 product is based on the assumptions that they are random and uncorrelated (Young, 2010). Under these assumptions the backscatter, depolarization and AOD are characterized by uncertainties of 30-100%, 30-160% and 100% respectively. In addition to the inherited uncertainties of the CALIOP L2 V3 standard product to the AOD and D\_AOD optimized products used in the study, uncertainties are introduced due to the selection of LR values suitable for Asian dust. A LR of  $47\pm 4$  sr is used for dust aerosols emitted from the Taklimakan and Gobi deserts, based on the literature (Liu et al., 2002; Sakai et al., 2002; Anderson et al., 2003; Murayama et al., 2003; Murayama et al., 2004; Ansmann et al., 2005; Tesche et al., 2007; Xie et al., 2008; Hänel et al., 2012; Komppula et al. 2012; Mamouri et al., 2013). The LR introduces uncertainty in the D\_AOD product approximately of 20%. In addition, as it is already mentioned, both aerosol types classified by CALIPSO as dust or polluted dust are a mixture of a dust component and a non-dust component. Thus another source of uncertainty in the decoupling of the dust component from the total aerosol load is the lack of information regarding the non-dust component in the aerosol mixture, due to the low depolarization ratio values of the

This page contains no comments

non-dust aerosol subtypes (Omar et al., 2009). As already discussed, for the non-dust component a mean value for the different aerosol subtypes depolarization ratio of  $0.03 \pm 0.02$  is used. Extended analysis on the way that uncertainties propagate into the products is presented in Marinou et al. (2017).

### 3 Results and discussion

#### 5 3.1 Horizontal distribution of aerosols and dust

In this section we present and discuss the CALIPSO L3 optimized AOD and the D\_AOD products. Since the mechanisms of dust generation and transport and the removal processes of aerosols from the atmosphere vary with season in this section we present and discuss the horizontal distribution of aerosols and dust over South and East Asia per season. The seasons are defined as follows: December-January-February (DJF), March-April-May (MAM), June-July-August (JJA) and September-  
10 October-November (SON). Figure 3 shows the spatial distribution of the seasonal-mean AOD (Fig. 3a, e, i, m), D\_AOD (Fig. 3b, f, j, n), and Non-Dust AOD computed as the difference between the total AOD and D\_AOD (Fig. 3c, g, k, o) and the corresponding percentage of D\_AOD to the total AOD (Fig. 3d, h, l, p) in  $1^\circ \times 1^\circ$  grid resolution and based on 9 years of CALIPSO observations (01/2007-12/2015).

Regarding the horizontal distribution of AOD and Non-Dust AOD, similar geographical patterns are evident between all four  
15 seasons, although the observed features vary in magnitude. High values of Non-Dust AOD are consistently observed over the heavily industrialized and densely populated regions of India, Bangladesh and China. Over the Indo-Gangetic Plain and the entire region extending between New Delhi and Calcutta, the observed Non-Dust AOD values are persistently higher than 0.5 during DJF (Fig. 3a-d), MAM (Fig. 3e-h) and SON (Fig. 3m-p) while during JJA (Fig. 3i-l) the AOD is suppressed ( $< 0.3$ ). The relatively lower AOD values observed during JJA over the Bay of Bengal (0.3) is related to the regional meteorology  
20 (monsoons). The high frequency of cloudiness (Fig. 8c,d) results in **weighted** mean AOD values since extreme aerosol events are less frequently captured (Winker et al. 2013). Furthermore the wet deposition rate of aerosols increases during the summer monsoon period of the year (Lau et al., 1988). The countries of Indochina are characterized by inhomogeneities in the observed aerosol load, with larger Non-Dust AOD values observed during MAM ( $> 0.5$ ) and DJF ( $> 0.3$ ) and lower values during JJA ( $< 0.15$ ) and SON ( $< 0.1$ ). The lower values during these months are attributed to the monsoon season in the area, which runs  
25 roughly between June and October. Over the Maritime southeastern Asia, the AOD values are relatively similar between the different seasons with mean AOD values of  $0.2 \pm 0.1$ . Similar features have been shown by Campbell et al., (2013) who investigated the 2D variability of aerosols over the Indonesia region. Over China similar geographical patterns in the horizontal distribution of aerosols are evident between all four seasons, with larger Non-Dust AOD values over the major sources of anthropogenic activity such as urban clusters (Beijing, Shanghai, Guangzhou, Chongqing, Wuhan) (Kourtidis et al., 2015) and high D\_AOD values over the deserts of Taklimakan and Gobi (Che et al. 2014, 2015).  
30

Regarding the horizontal distribution of dust aerosols over South and East Asia, the main difference is attributed to the high seasonality of dust aerosols generation and transport. Moreover, the activation mechanisms of the desert regions may vary as well (Prospero et al., 2002). Asian dust emission sources in India (Thar Desert) and China (Taklimakan, Gobi) are clearly mapped through the systematic high D\_AOD values throughout the year (Fig. 3b,f,j,n). The seasonality of the Great Arabian  
35 Desert, the Thar Desert and the arid regions of Ethiopia and Somalia is mainly related to the West Indian Monsoon activity (Vinoj et al., 2014) and is mostly evident during summer months (Fig. 3f). The local dust sources at the arid areas of Iran, Iraq and Afghanistan additionally contribute to the regional dust load. However the activation mechanism of these sources is mainly related to convective episodes (Karami et al., 2017) and the contribution of these dust events to long range transport is limited. On the contrary to the desert regions of southwest Asia, the maximum activity of Gobi and Taklimakan deserts is observed  
40 during March and May (Husar et al., 2001).



Regarding the transport of dust aerosols, the long-range transport is usually related to the activation of the major deserts (Liu et al., 2008a). Dust aerosols emitted from the Great Arabian Desert, Thar Desert and Somalia are transported eastwards over India and the Indian Ocean reaching even the west coast of Indochina and Indonesia (Mao et al., 2011). The feature of dust transport over the Indian Peninsula and the Bay of Bengal is more prominent during MAM and JJA (Fig. 3f, j). The transported dust aerosols significantly contribute to the observed aerosol load over India, although the magnitude of the contribution varies with season. Over China, for latitudes northern than 35° N, a similar pattern with respect to the features of dust contribution to the total aerosol load due to the dust aerosols emitted from the Taklimakan and Gobi deserts are observed. More specific, a persistent dust aerosol background is evident during all seasons, with a peak during MAM (Fig. 3f). The Asian dust generated from the Gobi and Taklimakan deserts is transported over China, Korea and Japan and across the Pacific Ocean (Liu et al., 2008b). This dust belt is usually confined between 25°N and 45°N (Fig. 3d), extends frequently towards the western coast of north America and is most prominent during MAM (Clarke et al., 2001; Uno et al. 2009).

Regions of low AOD and D\_AOD values, regardless of the season of the year, are additionally evident. On climatological basis little evidence of dust transport over the Himalaya orographic barrier and low AOD over the Tibetan Plateau are shown. This is in line with previous studies, reporting rare events of dust transport over Himalayas (Huang et al., 2007; Liu et al., 2008b; Yumimoto et al., 2009). The region to the north of Taklimakan, Gobi and Mongolia is also characterized by low values of AOD and D\_AOD, except during MAM (Fig. 3f, h). The high dust aerosol load observed to the east of the major dust aerosol source of Taklimakan (D\_AOD values greater than 0.3) and the high percentage of D\_AOD with respect to the total AOD indicate a strong eastward transport of both dust (Fig. 3f) and anthropogenic aerosols (Fig. 3g). Similarly, the maritime region of the Pacific Ocean south of 25°N is also characterized by low AOD and D\_AOD values, observation which is in line with previous studies (Huang et al., 2008; Kellogg and Griffin, 2006).

Figure 4 shows the seasonal geographical distribution of dust occurrences (Fig. 4a,d,g,j), dust CoM (Fig. 4b,e,h,k) and the corresponding Dust TH (Fig. 4c,f,i,l). Please note the different height scale between CoM and TH. The dust occurrences are calculated as the number of CALIPSO overpasses with Dust observations, compared to the total number of CALIPSO overpasses (percentage). Both the dust CoM and TH are defined as the height in km above ground level (a.g.l.). The dust occurrences, dust CoM and dust TH are provided in a spatial resolution of 1°x1° deg and are based on nine years of CALIOP observations, between 01/2007 and 12/2015.

The distribution of dust occurrences shows that over the extensive desert areas of South and East Asia (Tarim Basin, Thar Desert, southern Mongolia and Pakistan) the presence of dust is continuously high, over 80%, throughout the year. Between Taklimakan, Gobi and Thar deserts similar seasonal features are observed. Based on Figure 4, the occurrence of dust over these desert regions reach a maximum during spring (Fig. 4d), while minimum dust activity is observed during winter (Fig. 4a). Lower frequencies of dust occurrence, which still exceed 70%, are also evident over east China and southeastern India. Conversely, over Indochina and Indonesia the occurrence of dust is particularly low, especially during summer (Fig. 4g) and autumn (Fig. 4j). To be more specific, values of dust occurrence percentage between 50% and 60% over Thailand and Cambodia, 40% to 60% over Laos and Vietnam, ~60% over southeast China, and lower than 40% over Malaysia and Philippines are observed, during summer and autumn. The patterns of dust frequency are in good agreement and consistent with the distribution of dust provided by Liu et al. (2008a), based on one year of CALIPSO overpasses. Another noticeable feature of Figure 4 is the two distinct pathways which are observed, the Trans-Pacific belt between 25° and 45° N, and a second one, over the Indian subcontinent towards the Bay of Bengal and the Arabian Sea. The observed values of dust occurrence over the major pathways decrease with increasing distance from the dust source regions. Furthermore, the distribution of dust occurrences shows that the range of dust transport is subject to high seasonality. Over the dust belt of the Pacific Ocean (25°-45° N), values of dust occurrence vary between 30% during summer (Fig. 4g) and 90% during spring (Fig. 4d). To the south of the dust belt and over the Pacific Ocean, persistent low values of dust occurrence, which rarely exceed 30%, are observed

This page contains no comments



almost all year long. The low dust occurrence over the Pacific Ocean south of 25° N concurs with studies based on CALIPSO regarding the long-range transport of Asian dust (Huang et al., 2008; Liu et al., 2008a).

The distributions of dust CoM and TH show that during DJF (Fig. 4b,c) dust aerosols are, in general, suppressed below 3 km height, with the CoM below 2 km. Maximum values of dust TH during DJF are observed across central and eastern China with a peak around 3 km height a.g.l. During MAM (Fig. 4e,f) a large “dust belt” is observed, extending from the desert regions of Taklimakan and Gobi to the east across central China and over the Pacific Ocean. Dust is advected from the deserts, which are at elevation 1.5-2 km above seas level (a.s.l.) (Taklimakan) and 1-1.5 km a.s.l. (Gobi). When dust is transported eastward over the Pacific Ocean the above sea level distance of the layer remains constant, although due to the change of the surface elevation the absolute distance above ground level seems to increase. Thus, the observed differences of CoM and TH between land and ocean and the high values observed over the Pacific Ocean (more pronounced during MAM) are an artifact of the change in the terrain elevation. In addition, a decreasing west-to-east D\_AOD gradient is observed over north China, between the dust sources over Taklimakan and Gobi and the Pacific Ocean (Fig. 3f). The decreasing gradient of TH is less pronounced during MAM, when dust aerosols are injected as high as 10 km height (a.s.l.) and are transported longer distances over the Pacific Ocean (Fig. 4f). Over the Indian Peninsula and the Arabian Sea, dust CoM (TH) tends to be observed between 1-2 km (3-4 km) a.g.l., while both dust TH and dust CoM are decreasing toward southeast and over the Bay of Bengal. Himalaya Mountains are clearly observed as they act as a physical barrier to the transport of dust aerosols emitted from the Great Arabian and Thar deserts towards the Tibetan Plateau. Another noticeable feature of Figure 4 is that the dust aerosols observed over the Tibetan Plateau during spring are transported from the Taklimakan desert. During MAM, dust particles emitted from the Taklimakan and Gobi deserts are transported over central China and the Pacific Ocean, while at the same time significant long-range transport of dust aerosols emitted from Thar Desert is not observed (Fig. 4f). During JJA, however, the pattern reverses, with longer range transport of dust particles from Thar Desert over the Indian Peninsula, the Arabian Sea and the Bay of Bengal, while no significant dust transport of dust aerosols emitted from Taklimakan Desert is evident (Fig. 4i). Dust CoM and TH values are higher over the Indian Peninsula and the source of Thar Desert than over the Taklimakan and Gobi deserts. The dust TH over Thar Desert extends to altitude as high as 5 km a.g.l. while over the Taklimakan and Gobi deserts the corresponding altitude varies around 3.5 km height a.g.l. Furthermore during JJA dust aerosols emitted from the deserts to the southwest of Himalayas are transported over longer distances and injected into higher altitudes. The dust TH over the entire Indian Peninsula during summertime is in general around 3.5 km, gradually decreasing eastwards towards the Bay of Bengal. To the North of Himalayas, over the Tibetan Plateau and central China large inhomogeneities in dust CoM and TH are observed. The “dust belt” during MAM is still evident, although the magnitude and extend of the dust transport is clearly decreased. The dust TH during JJA varies over China between 1.5 km to the coastal region and 4 km a.g.l. over central China. The season with the minimum observed dust CoM and TH values throughout the year is SON (Fig. 4k,l), with dust CoM and TH values between 1.5 and 3 km a.g.l.

A regional statistics description of the dust product is provided for six regions of interest over the domain of South and East Asia in Table 1: Indian Peninsula (5°-30°N, 65°-95°E), Tibetan Plateau (30°-36°N, 80°-103°E), Taklimakan / Gobi Deserts (36°-45°N, 77°-115°E), southeast China, N Pacific Ocean (20°-45°N, 125°-155°E) and the Indochina / Indonesia region (5°-20°N, 95°-155°E). Figure 1 provides a map of the selected domains while the statistical description of the dataset per domain is provided in Table 1. More specifically, Table 1 provides the mean D\_AOD and standard deviation of D\_AOD, the maximum observed D\_AOD value and the 95<sup>th</sup> percentile, the mean dust CoM and the standard deviation of CoM in km (a.g.l.) and the dust mean TH and the standard deviation of dust TH in km (a.g.l.). Finally the number of profiles where dust or/and polluted dust aerosol subtypes to the total number of cloud-free profiles is included. The statistical representation of the dataset is provided per domain and per season, for the period 01/2007-12/2015.

This page contains no comments

### 3.2 Climatological dust extinction coefficient

In this section we present and discuss the vertical distribution of dust aerosols in the atmosphere over South and East Asia, thus we present and discuss the vertical dimension of the 3-D dust distribution and transport. The derivation of a pure dust product from the CALIOP is of particular importance particularly for the densely populated areas of India and China where a significant percentage of the overall observed AOD is related to dust. The term climatological refers to the computation process, where the mean pure dust extinction coefficient value is computed based on the cases where dust aerosols are detected, while the extinction coefficient of non-dust aerosol types is assigned to 0  $\text{Mm}^{-1}$ . Therefore the zonal vertical distributions discussed in this section correspond to the horizontal distribution of the  $D\_AOD$  presented in Sect.3.1.

The domain of interest, between  $5^\circ$  and  $55^\circ$  N, is divided into five  $10^\circ$  longitudinal bands. Based on 9 years of CALIPSO observations (01/2007-12/2015) Figure 5 shows the vertical distributions of the dust climatological extinction coefficient ( $\text{Mm}^{-1}$ ), for the four seasons winter (DJF), spring (MAM), summer (JJA) and autumn (SON). The surface elevation of the area is denoted with black colour in the plots (below the minimum elevation the contour plots have black colour). The continuous and dashed lines correspond to the average elevation of the surface level and to the average maximum elevation respectively. A threshold of four dust cases is applied to the computation process of the pure dust climatological extinction coefficient, (arbitrarily selected) in order to avoid presenting extreme rare events in high altitudes at the same time with climatological values close to the surface level.

The north of the study domain, i.e. the region between  $45^\circ$  and  $55^\circ$  N (Fig. 5a,b,c,d), is characterized by relatively low values of dust extinction coefficient. Dust layers are relatively homogeneous and constrained below 4 km a.s.l. The dust climatological extinction coefficient values are in general below  $25 \text{Mm}^{-1}$ . The highest values in this region, as high as  $35 \text{Mm}^{-1}$  are observed during winter over the Plains of Manchuria ( $120^\circ$ - $135^\circ$ E) and extend as high as 5 km a.s.l. (Fig. 5a).

To the south of this region the Taklimakan and Gobi deserts ( $77^\circ$ - $115^\circ$ E) are the dominant land characteristics of the domain between  $35^\circ$  and  $45^\circ$  N (Fig. 5e,f,g,h). Over this belt dust is ubiquitously present close to the surface throughout the year. Taklimakan Desert consists a very arid area encompassed by Tarim Basin. Due to the local topography of the Tarim Basin and the cyclonic systems generated over the Mongolia Plateau (Sun et al., 2001; Gong et al., 2006) Taklimakan desert is active throughout the year (Liu et al., 2008b). Over this region the favourable topographic and meteorological conditions form an elevated layer of dust aerosols where climatological dust extinction coefficient values greater than  $100 \text{Mm}^{-1}$  are regularly observed. The vast semiarid region to the east of the Tarim Basin, the Gobi Desert, is considered an additional source of Asian dust. Although the Tarim Basin is the primary source of Asian dust to the north of the Tibetan Plateau, values of climatological dust extinction coefficient as high as  $100 \text{Mm}^{-1}$  close to the surface of Gobi Desert are present throughout the year. During the period between March and May the strong surface winds which develop over the Mongolian Plateau create favourable mechanisms of extreme dust events (Bory et al., 2003; Yu et al., 2008). More specifically, the maximum dust climatological extinction coefficient values over the entire South and East Asia are observed over the region of Taklimakan Desert during spring, reaching values as high as  $200 \text{Mm}^{-1}$  (Fig. 5f). Although the dust layer is mostly observed between 1.5 and 4 km a.s.l., during MAM dust aerosol layers are detected as high as 9 km (a.s.l.). The observed features of dust transport are consistent with the values of dust height reported in the literature (Huang et al., 2008; Eguchi et al., 2009). The elevated dust layers are captured by the strong westerly jet in the upper troposphere and accordingly transported eastwards across the mainland of China (Zhang et al., 2003) and the Pacific Ocean (Duce et al., 1980; Shaw, 1980). This feature is evident throughout the year, although more pronounced during spring. The maximum height of dust transport also varies significantly with season. Moving from the Taklimakan Desert towards the coastline and over the Pacific Ocean, the highest altitude where dust layers are observed is decreasing from 8 km a.s.l. over the Taklimakan Desert to less than 2.5 km a.s.l. over the Pacific Ocean. The decrease of the altitude of transport of the dust layers is attributed to both dry and wet deposition processes that remove dust aerosols from the atmosphere (Colarco et al., 2003). This characteristic is evident through the steep decrease across the coastline and over the Yellow Sea and the Pacific Ocean, although during MAM a lofted layer of dust aerosols that yields

This page contains no comments

climatological extinction coefficient up to  $25 \text{ Mm}^{-1}$  is observed up to 10 km a.s.l. (Fig. 5f). Close to the surface, over the densely populated and highly industrialized provinces of East China, a persistent dust layer with climatological extinction coefficient values as high as  $100 \text{ Mm}^{-1}$  is observed throughout the year.

5 The region between  $25^\circ$  and  $35^\circ \text{ N}$ , hence the area to the south of the dust belt which encompasses the deserts of Taklimakan and Gobi, is the domain of Asia which is heavily affected by the Himalaya orographic barrier and the Tibetan Plateau (Fig. 5i,j,k,l). Dominant sources of dust aerosols of this area are the Thar Desert and the Arabian Peninsula to the west of Himalayas, while to the south lies the dense populated Indian subcontinent. Over the Thar Desert dust is ubiquitously present throughout the year, although the magnitude of dust activity is characterized by high seasonality. During the dry season, between March and May, an elevated layer of dust aerosols forms in the lower altitudes over Afghanistan, Pakistan and the western part of  
10 India (Fig. 5j). Typical values of dust climatological extinction coefficient are around  $100 \text{ Mm}^{-1}$  and high concentrations of dust are observed close to the surface, although airborne dust is also frequently observed as high as 4 km altitude (a.s.l.). Significantly higher dust climatological extinction coefficient values, as high as  $200 \text{ Mm}^{-1}$  are observed over Thar Desert during the summer season (Fig. 5k). Although the dust layer is primary observed between the surface and 2.5 km altitude, during JJA elevated layers of dust are detected over the sources at altitudes as high as 7 km. The elevated layer of dust is  
15 accordingly transported eastwards, over the highly industrialized and densely populated Indo-Gangetic plains, where dust interacts with locally generated aerosol particles (Middleton, 1986). Due to the gravitational settling and to wet deposition (Colarco et al., 2003), significantly lower values are recorded southeastern of the dust sources, over the Indian subcontinent. The observed dust climatological extinction coefficient values range between 50 and  $100 \text{ Mm}^{-1}$  over the Indo-Gangetic plains and the foothills of Himalayas. Dust climatological extinction coefficient values of  $25 \text{ Mm}^{-1}$  indicate the advection and  
20 presence of dust aerosols even as high as the Tibetan Plateau and Himalayas. The observations regarding the vertical structure of dust over this domain support the Elevated Heat Pump hypothesis (Lau et al., 2006) of the accelerating Himalayas warming (Liu and Chen, 2000; Thompson et al., 2003) due to the presence of dust aerosols coupled with black carbon over the Tibetan Plateau. Significantly lower values, between 25 and  $75 \text{ Mm}^{-1}$  are observed to the East of the Himalayas. The decrease in the dust climatological values over the Tibetan Plateau is less pronounced during MAM, when Taklimakan and Gobi deserts to  
25 the north of this domain are characterized by maximum dust activity (Fig. 5j). Additionally, throughout the year, a steep decrease in the dust climatological extinction coefficient close to the coastline and the Pacific Ocean is evident. Over southeast China the values close to the densely populated surface are persistently higher than  $45 \text{ Mm}^{-1}$ , while over the Pacific Ocean the dust climatological extinction coefficient values are decreased to less than  $10 \text{ Mm}^{-1}$ .

The domain between  $15^\circ$  and  $25^\circ \text{ N}$  encompasses the largest part of India and of the countries of Indochina and Maritime  
30 southeastern Asia (Fig. 5m,n,o,p). This domain is characterized by large inhomogeneities. High values of dust climatological extinction coefficient are observed over India and the Arabian Sea, as high as  $100 \text{ Mm}^{-1}$ , especially during MAM and JJA and lower values (Fig. 5n,o), below  $50 \text{ Mm}^{-1}$ , during SON and DJF (Fig. 5p,m). Over the Bay of Bengal the dust climatological extinction coefficient values are drastically decreased compared to the mainland India and values around  $25 \text{ Mm}^{-1}$  are frequently encountered. The steep decrease over the Bay of Bengal during MAM and JJA is most probably caused by wet  
35 deposition of dust aerosol particles due to the heavy monsoon rainfall (Lau et al., 2006).

Similar patterns are observed in the domain between  $5^\circ$  and  $15^\circ \text{ N}$ , although the features vary in magnitude (Fig. 5q, r, s, t). Over the Arabian Sea, to the south of  $15^\circ \text{ N}$ , values of dust climatological extinction coefficient between 75 and  $100 \text{ Mm}^{-1}$  are observed during MAM and JJA (Fig. 5r, s). Over south India during JJA elevated dust is present at altitudes as high as 5 km a.s.l., while over the Bay of Bengal the monsoon effect is observed through the steep decrease of the dust climatological  
40 extinction coefficient values (Fig. 5s), as a result of the wet deposition of aerosols. Values consistently below  $25 \text{ Mm}^{-1}$  are observed over the Indonesia region throughout the year.

This page contains no comments

### 3.3 Conditional dust extinction coefficient

In this section we present and discuss the intensity of the dust events and the purity of dust aerosols in the atmosphere over South and East Asia (three-dimensional). In order to investigate the intensity of the dust events the dust conditional extinction coefficient parameter is used, as defined in Sect 2. The vertical distributions of the dust conditional extinction coefficient and the corresponding conditional depolarization ratio are presented in Figures 6 and 7 respectively. More specific, Figure 6 shows the seasonal vertical distribution of the dust conditional extinction coefficient ( $\text{Mm}^{-1}$ ) for nine years of CALIPSO observations (01/2007-12/2015) and for the five zones of  $10^\circ$  latitudinal interval between  $5^\circ$  and  $55^\circ$  N. The vertical structure of the atmosphere is shown for altitudes higher than the average surface elevation of the CALIPSO orbits during the 9 year period between 01/2007 and 12/2015. The continuous and dashed lines correspond to the average elevation of the surface level and to the average maximum elevation of the surface elevation respectively.

Distinct sources of dust generation, where dust conditional extinction coefficient values exceed  $200 \text{ Mm}^{-1}$  are revealed. High values of dust conditional extinction coefficients indicate that Taklimakan and Gobi deserts are the most dominant sources of dust aerosols to the north of the Tibetan Plateau. To the east of the orographic barrier of Himalayas the major source of dust generation is the Thar Desert. In addition to the natural sources, regions of dust emissions related to anthropogenic activities are also evident. As seen in Figure 6, values that exceed  $100 \text{ Mm}^{-1}$  are observed throughout the year over the highly-industrialized and densely-populated regions of southeast China and over the Indian subcontinent. At the northern part of China though, the near surface dust emissions to the west of the Tarim Basin most probably represent a mixture of Gobi and anthropogenic dust emissions. These features are consistent with the observation that close to the sources of dust generation the conditional extinction coefficient values are of the same magnitude as the climatological coefficient values.

Although the spatial and seasonal features between the observed conditional and climatological values are highly consistent, two major differences are evident: (1) the climatological values become significantly lower than the conditional values with increasing distance from the sources of dust; and (2) the conditional values observed in the upper troposphere are significantly higher than the climatological values. The differences are attributed to the difference between the definitions of the dust conditional and climatological products. The dust climatological product is related to the contribution of the dust load to the total aerosol load. By contrast, the dust conditional coefficient product describes exclusively the dust events. As a consequence, areas of rare dust events in general yield low climatological extinction coefficient values. This makes the conditional coefficient values an ideal parameter in order to realistically describe and study the routes of transport of the dust plumes.

To the north and east of the Tibetan Plateau two distinct eastward pathways of dust transport are observed: (1) a northern flow that propagates from Taklimakan and Gobi towards the Yellow Sea and the Pacific Ocean (Uno et al., 2009) and (2) a southern flow that occurs over central China (Kuhlmann and Quaas, 2010). The northern flow is mostly evident during winter (Fig. 3d), while the southern transport pathway over central China is more prominent during spring (Fig. 3h). Figure 6 provides information on the vertical distribution and depth of the two dust transport pathways. Both transport pathways are observed at the middle and upper troposphere, indicated by dust conditional coefficient values as high as  $20 \text{ Mm}^{-1}$ , observed at altitude up to 10 km a.s.l. Another noticeable feature is that the vertical intensity of the transported dust aerosol plumes is subject to high spatial and seasonal variability. Decreasing values of both dust aerosol climatological and conditional values are observed with increasing distance from the dust sources of Taklimakan and Gobi deserts towards and over the Pacific Ocean.

To the south and west of the Tibetan Plateau dust transport that originates from the Arabian Peninsula and Thar Desert and propagates towards the Indian Subcontinent (Gautam et al., 2009) and the Indian Ocean is observed. The maximum altitude and intensity of the flow of dust aerosols originating from the northwest part of India is subject to high seasonal oscillation. During the period between May and August dust events yield values of dust extinction coefficient as high as  $200 \text{ Mm}^{-1}$  over the source of Thar Desert. The layer of dust over the Indian subcontinent during this period exceeds the altitude of 5 km a.s.l., while during the period between September and May the dust aerosols are constrained lower than 4 km a.s.l. Over Indonesia, Indochina and the Bay of Bengal, the dust aerosol layer is well-confined within the first 4 km a.s.l. throughout the year, with

This page contains no comments



dust extinction coefficient values up to  $30 \text{ Mm}^{-1}$  for heights greater than 1 km a.s.l. In the first km a.s.l. we see relatively height values that regularly exceed  $40 \text{ Mm}^{-1}$ . These values are affected from the selection of the particle depolarization ratio of the non-dust aerosols in our dust-separation methodology (as discussed in Section Data and Methodology). In this technic we selected the most dominant value for the depolarization of the non-dust aerosols (optimal for anthropogenic and marine cases).

5 Furthermore under specific conditions the particle depolarization ratio of dry marine aerosols can exceed these values reaching up to 0.1, especially close to the top of the marine boundary layer (Haarig et al., 2017). By using the generic non-dust depolarization of 0.03, we have to recognize a bias in the marine boundary layer, extinction values up to 50% of the mean values of the conditional dust product.

The depolarization ratio is an ideal intensive parameter for the discrimination between spherical and non-spherical aerosols, hence for the classification of dust aerosols (Omar et al., 2009). Values of particle depolarization ratio at 532 nm that exceed 30% denote the presence of pure dust aerosols (Liu et al., 2008c), while lower values that range between 10% and 30% suggest a mixture of dust with more spherical aerosols (Murayama et al., 2003; Tesche et al., 2009). Therefore, the depolarization ratio is used here as an indicator in order to describe the state of the dust mixture and as a discriminator between pure dust and polluted dust cases.

15 Figure 7 shows the vertical, horizontal and seasonal variability of the average particle depolarization ratio of the cases classified by CALIOP as dust or polluted dust aerosol subtypes based on nine years of CALIPSO observations (01/2007-12/2015) and for five zones of  $10^\circ$  latitudinal interval, between  $5^\circ$  and  $55^\circ$  N. The vertical cross sections of the mean depolarization ratio correspond to the dusty CALIPSO observations (dust and polluted dust cases), hence correspond to the dust conditional extinction coefficient parameter described above (Fig.6). Based on Figure 7, dust depolarization ratio values between 30% and 35% are regularly observed over the Taklimakan, Gobi and Thar deserts throughout the year. Intermediate depolarization ratio values, between 25% and 35%, are observed close to the dust sources, while even lower values, between 10% and 25%, are evident over the densely-populated and highly-industrialized regions of southeast China and India and over the remote domains of Indonesia and Indochina.

In general, to the north of Himalayas, low values of particle depolarization ratio are observed close to the surface, while particle depolarization ratio increases with increasing height (Fig. 7e-h). The low dust depolarization ratio values observed over the densely-populated and highly-industrialized regions suggest the occurrence of a mixture of non-spherical aerosols with particles of anthropogenic origin (Heese and Wiegner, 2008). Conversely to the aerosol layers close to the urban/industrial regions, the elevated layers over China and India are characterized by intermediate dust depolarization ratio values, from about 15% to 25%. The higher values of dust depolarization ratio in the middle/upper troposphere compared to the lower troposphere are consistent with the characteristics of dust transport. More specifically, to the north of the Tibetan Plateau, between  $25^\circ$  and  $45^\circ$  N, three ranges of dust depolarization ratio are observed. The air masses below 2 km altitude are characterized by significantly low dust depolarization ratio values, in general below 15%. The observed low values are most probably the effect of anthropogenic emissions coupled with near-surface dust aerosols. The altitudinal range between 2 and 4 km height is characterized in general by depolarization ratio values greater than 15%, which though rarely exceed the value of 20%. The third elevated layer, above about 4 km, is characterized by depolarization ratio values greater than 20%. The dust layers between 2 and 4 km height and above 4 km height have been observed and identified as dust aerosol layers with different origin, from Gobi and Taklimakan deserts respectively (Kwon et al., 1997; Matsuki et al., 2003).

To the west of the Tibetan Plateau, between  $25^\circ$  and  $35^\circ$  N, Thar Desert is located. Over Thar Desert the average particle depolarization ratio of cases classified as dust or polluted dust by the CALIPSO classification algorithm yield average depolarization values greater than 25% throughout the year. Average depolarization values of the dust cases (dust or polluted dust) that exceed 30% are observed during JJA, when Thar dust activity is at its maximum (Fig. 7k). The elevated layer of dust is accordingly transported eastwards, over the highly-industrialized and dense-populated Indo-Gangetic plains. The interaction of dust aerosols with locally generated aerosol particles (Middleton, 1986) is evident through the decrease of the dust

This page contains no comments

depolarization ratio over the Indian subcontinent. The observed depolarization ratio values range between 15% and 20% over the Indo-Gangetic plains and the foothills of Himalayas (Fig. 7i-l). Furthermore, dust depolarization ratio values observed to the west of the Himalayas are typically larger than the values observed over the eastern Himalayas and over the Tibetan Plateau. The observed intermediate values of dust depolarization ratio values at the windward slopes of the Himalayas are consistent with the Elevated Heat Pump hypothesis (Lau et al., 2006), which assess the accelerating Himalayas warming as the effect of accumulation of dust aerosols coupled with black carbon over the Tibetan Plateau.

The average particle depolarization ratio of cases classified as dust or polluted dust by the CALIPSO classification algorithm over Indochina and Indonesia are significantly different from the corresponding depolarization ratio features observed over China and India (Fig. 7m-t). The dust depolarization values to the south of the Tibetan Plateau and to the east of the Indian subcontinent are in general below 15% indicating that the dust aerosols are coupled with natural and anthropogenic emissions.

### 3.4 Temporal evolution of AOD and D\_AOD

In this section, the CALIPSO AOD and D\_AOD timeseries, based on nine years of overpasses, are presented and discussed. In addition to the CALIPSO/CALIOP AOD and D\_AOD trends, Aqua/MODIS AOD trends for the same period (01/2007-12/2015) are presented. The short-term trends in this paper are calculated through the method originally proposed by Weatherhead et al. (1998). The applied method has been broadly used to examine the trends of trace gasses, aerosols and surface solar radiation (e.g. De Smedt et al., 2010; de Meij et al., 2012; Pozzer et al., 2015; Georgoulias et al., 2016; Alexandri et al., 2017). Monthly satellite-based time series are fitted by using a model with a linear trend and a Fourier-based seasonal component for the annual cycle. According to the method, the calculated trend ( $\omega$ ) is statistically significant at the 95% confidence level if the absolute value of the ratio of  $\omega$  to its precision ( $\sigma_\omega$ ) is greater than 2 ( $|\omega/\sigma_\omega| > 2$ ). The approach followed here is extensively described in Alexandri et al. (2017).

Figure 8 shows the short-term trends of CALIOP/CALIPSO and MODIS/Aqua over South and East Asia for the period 01/2007-12/2015. MODIS/Aqua AOD trends were calculated from the C6 DTDB merged AOD dataset and are presented in Fig.8b. For computing the CALIOP/CALIPSO AOD trends the methodology includes additionally a spatial expansion of each grid, in order to increase the accuracy and representativeness of each AOD value in the sequence of the monthly mean CALIOP/CALIPSO time series. The mean optical depth value per month is computed based not only on each grid but additionally on the corresponding eight surrounding neighbour grids. Finally the methodology proposed by Weatherhead et al. (1998) is applied to examine the statistical significance of CALIOP/CALIPSO AOD (Fig.8a). On the trend plots the “+” symbol denotes trends statistically significant at the 95% confidence level. Negative trends are shown in blue, while red colour indicates positive trends. In addition to the short-term trends the mean Aqua Cloud Fraction (Fig.8d) and the number of months used in CALIPSO time series (Fig.8c) are shown.

Regarding China, CALIOP shows significantly positive AOD trends over the northwest and eastern provinces whereas negative statistically significant trends are mostly found over the south-eastern provinces. MODIS shows statistically significant positive AOD trends over northwest, central and eastern China; where over northeast China AOD trends are mostly positive. More specifically, both CALIOP and MODIS sensors quantitatively agree on a statistically significant increase at the 95% confidence level over Xinjiang ( $0.007 \text{ yr}^{-1}$ ) and Hebei ( $0.01 \text{ yr}^{-1}$ ) provinces. Towards central China and the Tibetan Plateau differences are observed between CALIOP and MODIS. Over the broader Tibetan Plateau low positive trends are shown by MODIS while no trends is found by CALIOP. However the disagreement over the region of Tibetan Plateau (Tibet, Qinghai, Gansu and Yunnan provinces) is not relevant considering both the absence of statistical significance and the small magnitude of the AOD trends. Larger differences between the MODIS and CALIOP short-term trends are detected over southeast China. MODIS shows a strong significant increase of AOD ( $0.01 \text{ yr}^{-1}$ ) whereas significantly decreasing AOD trends are visible by CALIOP ( $-0.007 \text{ yr}^{-1}$ ). Over the Indian Peninsula MODIS and CALIOP trends qualitatively agree over the 9-year period in

This page contains no comments

most regions. Positive AOD trends ( $0.01 \text{ yr}^{-1}$ ) are found by both sensors over the broader central and eastern Indian Peninsula, although disagreements are observed over the western regions of India. The AOD trends of CALIOP and MODIS are very similar over land, while over ocean (Arabian Sea, Bay of Bengal), discrepancies are observed. MODIS shows not statistical significant AOD increasing trends of the order of ( $0.002 \text{ yr}^{-1}$ ) over the Bay of Bengal and strong positive statistical significant trends over the Arabian Sea ( $0.01 \text{ yr}^{-1}$ ). The strongly increasing AOD trend over the Arabian Sea though is not corroborated by CALIOP observations. The observed trends from CALIOP and MODIS should be interpreted and compared with caution, since the observed discrepancies between MODIS and CALIOP AOD short-term trends may be attributed to several aspects such as the different measurement principles and sampling of the two sensors among others. Differences between the two sensors have been reported in the literature (Redemann et al., 2012).

Three domains of interest are selected to perform regional analysis on the CALIPSO AOD and D\_AOD time series: South and East Asia ( $5^{\circ}$ - $55^{\circ}$ N,  $65^{\circ}$ - $155^{\circ}$ E), eastern China ( $22^{\circ}$ - $43^{\circ}$ N,  $105^{\circ}$ - $124^{\circ}$ E) and south Asia ( $5^{\circ}$ - $33^{\circ}$ N,  $65^{\circ}$ - $91^{\circ}$ E). Figure 9 shows the linear trends of D\_AOD (left column) and AOD (right column) for the selected domains. The continuous black lines represent the seasonal variability between 01/2007 and 12/2015, while the dashed lines depict statistical significant (non-statistical significant) trends. The scatter points in grey denote the monthly mean D\_AOD and AOD values over the selected areas, while estimated trends ( $1/\text{yr}$ ) and changes of D\_AOD and AOD with respect to 2007 ( $\%/ \text{yr}$ ) are additionally shown.

Focusing on the selected domains, over South and East Asia the D\_AOD trend is negative ( $-5 \times 10^{-4} \text{ yr}^{-1} / 0.96\% \text{ yr}^{-1}$ ), while despite the decreasing D\_AOD trend, the AOD trend is slightly positive ( $4 \times 10^{-4} \text{ yr}^{-1} / 0.21\% \text{ yr}^{-1}$ ). Both the D\_AOD and AOD trends over South and East Asia though are not statistically significant. In contrast to the South and East Asia region, the observed AOD trend over eastern China is statistically significant negative ( $-5 \times 10^{-3} \text{ yr}^{-1} / -1.38\% \text{ yr}^{-1}$ ). Similar to the AOD, the region of eastern China presents a statistically significant negative D\_AOD trend ( $-2.1 \times 10^{-3} \text{ yr}^{-1} / -2.28\% \text{ yr}^{-1}$ ). The negative AOD trend observed over eastern China is in line with the air quality regulations and the applied policies promoting the reduction of emissions over China. Van der A et al. (2017) report on the decrease of aerosol precursor gases ( $\text{SO}_2$ ,  $\text{NO}_2$ ) based on OMI, SCIAMACHY and GOME-2 satellite observations, while Yoon and Pozzer (2014) report on the decrease of biomass-burning related emissions. The decline of AOD over China is additionally observed by several authors (Kang et al., 2016, Zhang et al., 2017), with the suggested pivot point around 2011 (Zhao et al., 2017). The negative AOD trend over southeastern China is further enhanced due to the negative D\_AOD trend, which in turn can be attributed to the positive precipitation trend over southeastern China and the increase of dust aerosol deposition (Pozzer et al., 2015). Focusing over the south Asia region though similar behaviour as over South and East Asia is observed. South Asia is characterized by not statistically significant decreasing D\_AOD trends ( $-1.5 \times 10^{-3} \text{ yr}^{-1} / -1.01\% \text{ yr}^{-1}$ ). In contrast, due to the increasing emissions of the fast-developing India, the observed AOD trend is positive ( $3.3 \times 10^{-3} \text{ yr}^{-1} / 0.98\% \text{ yr}^{-1}$ , not significant).

#### 4 Summary and conclusions

In this work, CALIPSO is used to provide a multiyear 4-D climatology of desert dust aerosols over South and East Asia at a spatial resolution of  $1^{\circ} \times 1^{\circ}$  deg grids. An optimized dust aerosol product, developed using CALIOP backscatter and particle depolarization ratio, along with a regional correction on dust lidar ratio suitable for Asian dust is used. The optimized product is utilized to provide the horizontal and vertical distribution along with the temporal evolution of dust aerosols over a 9-year period (01/2007-12/2015).

Regarding the horizontal distribution of Aerosol Optical Depth (AOD), Dust Aerosol Optical Depth (D\_AOD) and Non-Dust Aerosol Optical Depth (Non-Dust AOD), our analysis shows similar patterns between all four seasons, although the magnitude of the observed features varies with season. High values of Non-Dust AOD are consistently observed over the heavily industrialized and densely populated regions of China and India (Non-Dust AOD > 0.5). In addition to the anthropogenic densely populated areas of South and East Asia, the major sources of dust aerosols, namely the Taklimakan, Gobi and Thar

This page contains no comments

Deserts are clearly mapped through the systematic high D\_AOD values throughout the year. The magnitude though of the D\_AOD observed features is subject to high seasonality, ranging between D\_AOD 0.2 during winter and higher than 0.6 during spring and summer seasons. Maximum activity of Gobi and Taklimakan deserts is observed during spring, while the highest activity of Thar Desert is observed during summer. The seasonality of the dust transport pathways is additionally well-captured. Dust transport over the Indian Peninsula is more pronounced during spring and summer, while over China similar patterns of a persistent dust aerosol background is evident throughout the year, with a peak during spring when the dust transport across the Pacific Ocean is at its maximum.

Regarding the vertical distribution of dust aerosols, the Center of Mass (CoM), Top Height (TH) and the mean Dust Extinction Coefficient profiles (Climatological and Conditional) are implemented to provide, together with the horizontal distribution, the full three-dimensional structure of dust aerosols and the atmospheric dust transport pathways over the entire South and East Asia. Based on the synergy of CoM, TH and the CALIPSO dust extinction profiles two distinct dust transport pathways over South and East Asia are revealed: a the Trans-Pacific belt between 25° and 45° N and a second one, extending from Thar Desert towards the Bay of Bengal and the Arabian Sea. Both zones of dust transport are subject to high seasonality. Highest dust aerosol transport from the Taklimakan Desert towards the Pacific Ocean is observed during spring, while dust aerosol transport from the desert of Thar and across the Indian Subcontinent is more pronounced during summer.

Regarding the temporal evolution of AOD and D\_AOD between 01/2007 and 12/2015, the analysis showed statistically significant positive short-term AOD trends over the Indian Peninsula ( $0.01 \text{ yr}^{-1}$ ), NW China ( $0.007 \text{ yr}^{-1}$ ) and E China ( $0.01 \text{ yr}^{-1}$ ), whereas our study shows negative short-term AOD trends over SE China ( $-0.007 \text{ yr}^{-1}$ ). CALIPSO positive AOD trends are found over the broader central and eastern Indian Peninsula ( $0.01 \text{ yr}^{-1}$ ). The CALIOP observed trends between 01/2007 and 12/2015 are generally in qualitative agreement with the derived MODIS AOD trends over large domains of South and East Asia, although the short-term trends disagree over specific regions. The CALIOP and MODIS trends though are interpreted and compared with caution, since the samples of the datasets are non-uniform.

Observational evidence regarding the vertical distribution of dust layers is of particular interest for modelling studies and consequently for assessing the role of airborne dust on radiation (direct climate effect) and clouds (indirect climate effect). So far, modelling simulations of dust are evaluated through comparisons with column dust observations (e.g. AERONET and MODIS AOD) and only occasionally with lidar or in-situ measurements at specific stations. Moreover, the availability of ground measurements (lidar and in-situ) is limited near the dust sources. Assimilation of dust in atmospheric models is also problematic since the 2D initial observational fields need to be assimilated towards the 3D prognostic model variables. Other than AOD aerosol properties (e.g. Ångström exponent or aerosol type) are essential for radiative forcing studies as the spectral dependence of AOD, impacts the RF model results for different aerosol cases (e.g. dust or non-dust cases). Furthermore, studies of transboundary aerosol transport (e.g. China, Korea and Japan) should include a quantification of natural (dust) and anthropogenic aerosol components. In this context, utilization of the CALIPSO pure dust profiles derived here will certainly assist both the evaluation and assimilation activities in relevant atmospheric simulations and will provide better estimation of the climatic impact of dust aerosols.

## Acknowledgements

The authors acknowledge support through the following projects and research programs:

MarcoPolo under grant agreement n° 606953 from the European Union Seventh Framework Programme (FP7/2007-2013).

ESA-ESTEC project LIVAS (contract N°4000104106/11/NL/FF/fk).

ACTRIS-2 under grant agreement no. 654109 from the European Union's Horizon 2020 research and innovation programme

ECARS under grant agreement No 602014 from the European Union's Horizon 2020 Research and Innovation programme.

This page contains no comments



European Research Council under the European Community's Horizon 2020 research and innovation framework program / ERC Grant Agreement 725698 (D-TECT).

Proestakis Emmanouil acknowledge support through the Stavros Niarchos Foundation.

Proestakis Emmanouil and Eleni Marinou acknowledge support from A. G. Leventis Foundation scholarship.

- 5 The authors acknowledge EARLINET for providing aerosol lidar profiles available under the World Data Center for Climate (WDCC). We thank the AERONET PIs and their staff for establishing and maintaining the AERONET sites used in this investigation. CALIPSO data were obtained from the ICARE Data Center (<http://www.icare.univ-lille1.fr/>). CALIPSO data were provided by NASA. We thank the ICARE Data and Services Center for providing access to the data used in this study and their computational center.

## 10 References

- Albrecht, B.: Aerosols, Cloud Microphysics, and Fractional Cloudiness, *Science*, 245(4923), 1227–1230, doi:10.1126/science.245.4923.1227, 1989.
- Alexandri, G., Georgoulas, A. K., Meleti, C., Balis, D., Kourtidis, K. A., Sanchez-Lorenzo, A., Trentmann, J. and Zanis, P.: . A high resolution satellite view of surface solar radiation over the climatically sensitive region of Eastern Mediterranean, *Atmos. Res.*, 188, 107–121, doi:10.1016/j.atmosres.2016.12.015, 2017.
- 15 Amiridis, V., Wandinger, U., Marinou, E., Giannakaki, E., Tsekeri, A., Basart, S., Kazadzis, S., Gkikas, A., Taylor, M., Baldasano, J. and Ansmann, A.: Optimizing CALIPSO Saharan dust retrievals, *Atmos. Chem. Phys.*, 13(23), 12089–12106, doi:10.5194/acp-13-12089-2013, 2013.
- Amiridis, V., Marinou, E., Tsekeri, A., Wandinger, U., Schwarz, A., Giannakaki, E., Mamouri, R., Kokkalis, P., Biniotoglou, I., Solomos, S., Herekakis, T., Kazadzis, S., Gerasopoulos, E., Proestakis, E., Kottas, M., Balis, D., Papayannis, A., Kontoes, C., Kourtidis, K., Papagiannopoulos, N., Mona, L., Pappalardo, G., Le Rille, O. and Ansmann, A.: LIVAS: a 3-D multi-wavelength aerosol/cloud database based on CALIPSO and EARLINET, *Atmos. Chem. Phys.*, 15(13), 7127–7153, doi:10.5194/acp-15-7127-2015, 2015.
- 20 Anderson, T. L., Masonis, S. J., Covert, D. S., Ahlquist, N. C., Howell, S. G., Clarke, A. D. and McNaughton, C. S.: Variability of aerosol optical properties derived from in situ aircraft measurements during ACE-Asia, *J. Geophys. Res.-Atmos.*, 108(D23), 8647, doi:10.1029/2002JD003247, 2003.
- 25 Ansmann, A., Bosenberg, J., Chaikovsky, A., Comeron, A., Eckhardt, S., Eixmann, R., Freudenthaler, V., Ginoux, P., Komguem, L., Linne, H., Marquez, M. a. L., Matthias, V., Mattis, I., Mitev, V., Muller, D., Music, S., Nickovic, S., Pelon, J., Sauvage, L., Sobolewsky, P., Srivastava, M. K., Stohl, A., Torres, O., Vaughan, G., Wandinger, U. and Wiegner, M.: Long-range transport of Saharan dust to northern Europe: The 11-16 October 2001 outbreak observed with EARLINET, *J. Geophys. Res.-Atmos.*, 108(D24), 4783, doi:10.1029/2003JD003757, 2003.
- Ansmann, A., Engelmann, R., Althausen, D., Wandinger, U., Hu, M., Zhang, Y. H. and He, Q. S.: High aerosol load over the Pearl River Delta, China, observed with Raman lidar and Sun photometer, *Geophys. Res. Lett.*, 32(13), L13815, doi:10.1029/2005GL023094, 2005.
- 35 Ansmann, A., Petzold, A., Kandler, K., Tegen, I., Wendisch, M., Muller, D., Weinzierl, B., Muller, T., and Heintzenberg, J.: Saharan Mineral Dust Experiments SAMUM–1 and SAMUM–2: what have we learned?, *Tellus B*, 63, 403–429, doi:10.1111/j.1600-0889.2011.00555.x, 2011.
- Baars, H., Kanitz, T., Engelmann, R., Althausen, D., Heese, B., Komppula, M., Preißler, J., Tesche, M., Ansmann, A., Wandinger, U., Lim, J.-H., Ahn, J. Y., Stachlewska, I. S., Amiridis, V., Marinou, E., Seifert, P., Hofer, J., Skupin, A., Schneider, F., Bohlmann, S., Foth, A., Bley, S., Pfüller, A., Giannakaki, E., Lihavainen, H., Viisanen, Y., Hooda, R. K., Pereira, S. N., Bortoli, D., Wagner,
- 40

This page contains no comments

- F., Mattis, I., Janicka, L., Markowicz, K. M., Achtert, P., Artaxo, P., Pauliquevis, T., Souza, R. A. F., Sharma, V. P., van Zyl, P. G., Beukes, J. P., Sun, J., Rohwer, E. G., Deng, R., Mamouri, R.-E. and Zamorano, F.: An overview of the first decade of PollyNET: an emerging network of automated Raman-polarization lidars for continuous aerosol profiling, *Atmos. Chem. Phys.*, 16(8), 5111–5137, doi:10.5194/acp-16-5111-2016, 2016.
- 5 Bory, A. J. M., Biscaye, P. E. and Grousset, F. E.: Two distinct seasonal Asian source regions for mineral dust deposited in Greenland (NorthGRIP), *Geophys. Res. Lett.*, 30(4), 1167, doi:10.1029/2002GL016446, 2003.
- Burton, S. P., Ferrare, R. A., Vaughan, M. A., Omar, A. H., Rogers, R. R., Hostetler, C. A., and Hair, J. W.: Aerosol classification from airborne HSRL and comparisons with the CALIPSO vertical feature mask, *Atmos. Meas. Tech.*, 6, 1397–1412, doi:10.5194/amt-6-1397-2013, 2013.
- 10 Campbell, J. R., Reid, J. S., Westphal, D. L., Zhang, J., Tackett, J. L., Chew, B. N., Welton, E. J., Shimizu, A., Sugimoto, N., Aoki, K. and Winker, D. M.: Characterizing the vertical profile of aerosol particle extinction and linear depolarization over Southeast Asia and the Maritime Continent: The 2007–2009 view from CALIOP, *Atmospheric Research*, 122, 520–543, doi:10.1016/j.atmosres.2012.05.007, 2013.
- Che, H., Xia, X., Zhu, J., Li, Z., Dubovik, O., Holben, B., Goloub, P., Chen, H., Estelles, V., Cuevas-Agullo, E., Blarel, L., Wang, H., 15 Zhao, H., Zhang, X., Wang, Y., Sun, J., Tao, R., Zhang, X. and Shi, G.: Column aerosol optical properties and aerosol radiative forcing during a serious haze-fog month over North China Plain in 2013 based on ground-based sunphotometer measurements, *Atmos. Chem. Phys.*, 14(4), 2125–2138, doi:10.5194/acp-14-2125-2014, 2014.
- Che, H., Zhang, X.-Y., Xia, X., Goloub, P., Holben, B., Zhao, H., Wang, Y., Zhang, X.-C., Wang, H., Blarel, L., Damiri, B., Zhang, R., 20 Deng, X., Ma, Y., Wang, T., Geng, F., Qi, B., Zhu, J., Yu, J., Chen, Q. and Shi, G.: Ground-based aerosol climatology of China: aerosol optical depths from the China Aerosol Remote Sensing Network (CARSNET) 2002-2013, *Atmos. Chem. Phys.*, 15(13), 7619–7652, doi:10.5194/acp-15-7619-2015, 2015.
- Chen, SiYu, JianPing Huang, JingXin Li, Rui Jia, NanXuan Jiang, LiTai Kang, XiaoJun Ma, and TingTing Xie. 2017. “Comparison of Dust Emissions, Transport, and Deposition between the Taklimakan Desert and Gobi Desert from 2007 to 2011.” *Science China-Earth Sciences* 60 (7):1338–55. <https://doi.org/10.1007/s11430-016-9051-0>.
- 25 Chimot, J., Veeffkind, J. P., Vlemmix, T., de Haan, J. F., Amiridis, V., Proestakis, E., Marinou, E. and Levelt, P. F.: An exploratory study on the aerosol height retrieval from OMI measurements of the 477 nm O-2-O-2 spectral band using a neural network approach, *Atmos. Meas. Tech.*, 10(3), 783–809, doi:10.5194/amt-10-783-2017, 2017.
- Chou, C., Stetzer, O., Weingartner, E., Juranyi, Z., Kanji, Z. A. and Lohmann, U.: Ice nuclei properties within a Saharan dust event at the Jungfraujoch in the Swiss Alps, *Atmos. Chem. Phys.*, 11(10), 4725–4738, doi:10.5194/acp-11-4725-2011, 2011.
- 30 Clarke, A. D., Collins, W. G., Rasch, P. J., Kapustin, V. N., Moore, K., Howell, S. and Fuelberg, H. E.: Dust and pollution transport on global scales: Aerosol measurements and model predictions, *J. Geophys. Res.-Atmos.*, 106(D23), 32555–32569, doi:10.1029/2000JD900842, 2001.
- Colarco, P. R., Toon, O. B., Reid, J. S., Livingston, J. M., Russell, P. B., Redemann, J., Schmid, B., Maring, H. B., Savoie, D., Welton, E. J., Campbell, J. R., Holben, B. N. and Levy, R.: Saharan dust transport to the Caribbean during PRIDE: 2. Transport, vertical 35 profiles, and deposition in simulations of in situ and remote sensing observations, *J. Geophys. Res.-Atmos.*, 108(D19), 8590, doi:10.1029/2002JD002659, 2003.
- Das, S. K., Chen, J.-P., Ratnam, M. V. and Jayaraman, A.: Investigation of radiative effects of the optically thick dust layer over the Indian tropical region, *Ann. Geophys.*, 31(4), 647–663, doi:10.5194/angeo-31-647-2013, 2013.
- De Smedt, I., Stavroukou, T., Muller, J.-F., van der A, R. J. and Van Roozendaal, M.: Trend detection in satellite observations of 40 formaldehyde tropospheric columns, *Geophys. Res. Lett.*, 37, L18808, doi:10.1029/2010GL044245, 2010.

This page contains no comments

- DeMott, P. J., Sassen, K., Poellot, M. R., Baumgardner, D., Rogers, D. C., Brooks, S. D., Prenni, A. J. and Kreidenweis, S. M.: African dust aerosols as atmospheric ice nuclei (vol 36, L07808, 2009), *Geophys. Res. Lett.*, 36, L07808, doi:10.1029/2009GL037639, 2009.
- Duce, R., Unni, C., Ray, B., Prospero, J. and Merrill, J.: Long-Range Atmospheric Transport of Soil Dust from Asia to the Tropical North Pacific - Temporal Variability, *Science*, 209(4464), 1522–1524, doi:10.1126/science.209.4464.1522, 1980.
- 5 Eguchi, K., Uno, I., Yumimoto, K., Takemura, T., Shimizu, A., Sugimoto, N. and Liu, Z.: Trans-pacific dust transport: integrated analysis of NASA/CALIPSO and a global aerosol transport model, *Atmos. Chem. Phys.*, 9(9), 3137–3145, doi:10.5194/acp-9-3137-2009, 2009.
- Freudenthaler, V., Esselborn, M., Wiegner, M., Heese, B., Tesche, M., Ansmann, A., Müller, D., Althausen, D., Wirth, M., Fix, A., Ehret, G., Knippertz, P., Toledano, C., Gasteiger, J., Garhammer, M., and Seefeldner, M.: Depolarization ratio profiling at several wavelengths in pure Saharan dust during SAMUM 2006, *Tellus Ser. B*, 61, 165–179, doi:10.1111/j.1600-0889.2008.00396.x, 2009.
- 10 Gautam, R., Liu, Z., Singh, R. P. and Hsu, N. C.: Two contrasting dust-dominant periods over India observed from MODIS and CALIPSO data, *Geophys. Res. Lett.*, 36, L06813, doi:10.1029/2008GL036967, 2009.
- 15 Ge, J. M., Huang, J. P., Xu, C. P., Qi, Y. L. and Liu, H. Y.: Characteristics of Taklimakan dust emission and distribution: A satellite and reanalysis field perspective, *J. Geophys. Res.-Atmos.*, 119(20), 11772–11783, doi:10.1002/2014JD022280, 2014.
- Georgoulas, A. K., Alexandri, G., Kourtidis, K. A., Lelieveld, J., Zanis, P. and Amiridis, V.: Differences between the MODIS Collection 6 and 5.1 aerosol datasets over the greater Mediterranean region, *Atmos. Environ.*, 147, 310–319, doi:10.1016/j.atmosenv.2016.10.014, 2016.
- 20 Gong, S. L., Zhang, X. Y., Zhao, T. L., Zhang, X. B., Barrie, L. A., McKendry, I. G. and Zhao, C. S.: A simulated climatology of Asian dust aerosol and its trans-Pacific transport. Part II: Interannual variability and climate connections, *J. Clim.*, 19(1), 104–122, doi:10.1175/JCLI3606.1, 2006.
- Goudie, A. S.: Desert dust and human health disorders, *Environ. Int.*, 63, 101–113, doi:10.1016/j.envint.2013.10.011, 2014.
- Griffin, D. W.: Atmospheric movement of microorganisms in clouds of desert dust and implications for human health, *Clin. Microbiol. Rev.*, 20(3), 459–477, doi:10.1128/CMR.00039-06, 2007.
- 25 Groß, S., Tesche, M., Freudenthaler, V., Toledano, C., Wiegner, M., Ansmann, A., Althausen, D., and Seefeldner, M.: Characterization of Saharan dust, marine aerosols and mixtures of biomass burning aerosols and dust by means of multi-wavelength depolarization-and Raman-measurements during SAMUM-2, *Tellus B*, 63, 706–724, 2011.
- Groß, S., Esselborn, M., Weinzierl, B., Wirth, M., Fix, A., and Petzold, A.: Aerosol classification by airborne high spectral resolution lidar observations, *Atmos. Chem. Phys.*, 13, 2487–2505, doi:10.5194/acp-13-2487-2013, 2013.
- 30 Groß, S., Freudenthaler, V., Schepanski, K., Toledano, C., Schäfler, A., Ansmann, A., and Weinzierl, B.: Optical properties of longrange transported Saharan dust over Barbados as measured by dual-wavelength depolarization Raman lidar measurements, *Atmos. Chem. Phys.*, 15, 11067–11080, doi:10.5194/acp-15-11067-2015, 2015.
- Haarig, M., Ansmann, A., Gasteiger, J., Kandler, K., Althausen, D., Baars, H., and Farrell, D. A.: Dry versus wet marine particle optical properties: RH dependence of depolarization ratio, backscatter and extinction from multiwavelength lidar measurements during SALTRACE, *Atmos. Chem. Phys. Discuss.*, <https://doi.org/10.5194/acp-2017-545>, in review, 2017.
- 35 Haenel, A., Baars, H., Althausen, D., Ansmann, A., Engelmann, R. and Sun, J. Y.: One-year aerosol profiling with EUCAARI Raman lidar at Shangdianzi GAW station: Beijing plume and seasonal variations, *J. Geophys. Res.-Atmos.*, 117, D13201, doi:10.1029/2012JD017577, 2012.

This page contains no comments

- Hatch, C. D., Gierlus, K. M., Schuttlefield, J. D. and Grassian, V. H.: Water adsorption and cloud condensation nuclei activity of calcite and calcite coated with model humic and fulvic acids, *Atmos. Environ.*, 42(22), 5672–5684, doi:10.1016/j.atmosenv.2008.03.005, 2008.
- Haywood, J. and Boucher, O.: Estimates of the direct and indirect radiative forcing due to tropospheric aerosols: A review, *Rev. Geophys.*, 38(4), 513–543, doi:10.1029/1999RG000078, 2000.
- 5 He, Y. and Yi, F.: Dust Aerosols Detected Using a Ground-Based Polarization Lidar and CALIPSO over Wuhan (30.5 degrees N, 114.4 degrees E), China, *Adv. Meteorol.*, 536762, doi:10.1155/2015/536762, 2015.
- Heese, B. and Wiegner, M.: Vertical aerosol profiles from Raman polarization lidar observations during the dry season AMMA field campaign, *J. Geophys. Res.-Atmos.*, 113(D17), D00C11, doi:10.1029/2007JD009487, 2008.
- 10 Hsu, N. C., Tsay, S. C., King, M. D. and Herman, J. R.: Aerosol properties over bright-reflecting source regions, *IEEE Trans. Geosci. Remote Sensing*, 42(3), 557–569, doi:10.1109/TGRS.2004.824067, 2004.
- Hsu, N. C., Jeong, M.-J., Bettenhausen, C., Sayer, A. M., Hansell, R., Seftor, C. S., Huang, J. and Tsay, S.-C.: Enhanced Deep Blue aerosol retrieval algorithm: The second generation, *J. Geophys. Res.-Atmos.*, 118(16), 9296–9315, doi:10.1002/jgrd.50712, 2013.
- 15 Huang, Jianping, Bing Lin, Patrick Minnis, Tianhe Wang, Xin Wang, Yongxiang Hu, Yuhong Yi, and J. Kirk Ayers. 2006. "Satellite-Based Assessment of Possible Dust Aerosols Semi-Direct Effect on Cloud Water Path over East Asia." *Geophysical Research Letters* 33 (19):L19802. <https://doi.org/10.1029/2006GL026561>. Huang, J., Minnis, P., Yi, Y., Tang, Q., Wang, X., Hu, Y., Liu, Z., Ayers, K., Trepte, C. and Winker, D.: Summer dust aerosols detected from CALIPSO over the Tibetan Plateau, *Geophys. Res. Lett.*, 34(18), L18805, doi:10.1029/2007GL029938, 2007.
- 20 Huang, J., Minnis, P., Chen, B., Huang, Z., Liu, Z., Zhao, Q., Yi, Y. and Ayers, J. K.: Long-range transport and vertical structure of Asian dust from CALIPSO and surface measurements during PACDEX, *J. Geophys. Res.-Atmos.*, 113(D23), D23212, doi:10.1029/2008JD010620, 2008.
- Huang, J., Fu, Q., Su, J., Tang, Q., Minnis, P., Hu, Y., Yi, Y., and Zhao, Q.: Taklimakan dust aerosol radiative heating derived from CALIPSO observations using the Fu-Liou radiation model with CERES constraints, *Atmos. Chem. Phys.*, 9, 4011-4021, <https://doi.org/10.5194/acp-9-4011-2009>, 2009. Huang, J., Minnis, P., Yan, H., Yi, Y., Chen, B., Zhang, L. and Ayers, J. K.: Dust aerosol effect on semi-arid climate over Northwest China detected from A-Train satellite measurements, *Atmos. Chem. Phys.*, 10(14), 6863–6872, doi:10.5194/acp-10-6863-2010, 2010.
- 25 Huang, J. P., Minnis, P., Lin, B., Wang, T. H., Yi, Y. H., Hu, Y. X., Sun-Mack, S. and Ayers, K.: Possible influences of Asian dust aerosols on cloud properties and radiative forcing observed from MODIS and CERES, *Geophys. Res. Lett.*, 33(6), L06824, doi:10.1029/2005GL024724, 2006.
- 30 Huebert, B. J., Bates, T., Russell, P. B., Shi, G. Y., Kim, Y. J., Kawamura, K., Carmichael, G. and Nakajima, T.: An overview of ACE-Asia: Strategies for quantifying the relationships between Asian aerosols and their climatic impacts, *J. Geophys. Res.-Atmos.*, 108(D23), 8633, doi:10.1029/2003JD003550, 2003.
- Hunt, W. H., Winker, D. M., Vaughan, M. A., Powell, K. A., Lucker, P. L. and Weimer, C.: CALIPSO Lidar Description and Performance Assessment, *J. Atmos. Ocean. Technol.*, 26(7), 1214–1228, doi:10.1175/2009JTECHA1223.1, 2009.
- 35 Husar, R. B., Prospero, J. M. and Stowe, L. L.: Characterization of tropospheric aerosols over the oceans with the NOAA advanced very high resolution radiometer optical thickness operational product, *J. Geophys. Res.-Atmos.*, 102(D14), 16889–16909, doi:10.1029/96JD04009, 1997.
- Husar, R. B., Tratt, D. M., Schichtel, B. A., Falke, S. R., Li, F., Jaffe, D., Gasso, S., Gill, T., Laulainen, N. S., Lu, F., Reheis, M. C.,
- 40 Chun, Y., Westphal, D., Holben, B. N., Gueymard, C., McKendry, I., Kuring, N., Feldman, G. C., McClain, C., Frouin, R. J.,

This page contains no comments



- Merrill, J., DuBois, D., Vignola, F., Murayama, T., Nickovic, S., Wilson, W. E., Sassen, K., Sugimoto, N. and Malm, W. C.: Asian dust events of April 1998, *J. Geophys. Res.-Atmos.*, 106(D16), 18317–18330, doi:10.1029/2000JD900788, 2001.
- Illingworth, A. J., Barker, H. W., Beljaars, A., Ceccaldi, M., Chepfer, H., Clerbaux, N., Cole, J., Delanoë, J., Domenech, C., Donovan, D. P., Fukuda, S., Hidakata, M., Hogan, R.J., Huenerbein, A., Kollias, P., Nakajima, T., Nakajima, T.-Y., Nishizawa, T., Ohno, Y., Okamoto, H., Oki, R., Sato, K., Satoh, M., Sephard, M. W., Velázquez-Blázquez, A., Wandinger, U., Wehr, T., and van Zadelhoff, G.-J.: The EarthCARE Satellite: The Next Step Forward in Global Measurements of Clouds, Aerosols, Precipitation, and Radiation, *B. Am. Meteorol. Soc.*, 96, 1311–1332, doi:10.1175/BAMS-D-12-00227.1, 2015.
- IPCC 2013: Climate Change 2013: The Physical Science Basis. Contribution of Working Group I to the Fifth Assessment Report of the Intergovernmental Panel on Climate Change, edited by: Stocker, T. F., Qin, D., Plattner, G.-K., Tignor, M., Allen, S. K., Boschung, J., Nauels, A., Xia, Y., Bex, V., and Midgley, P. M., Cambridge University Press, Cambridge, UK and New York, NY, USA, 1535 pp., available at: [https://www.ipcc.ch/pdf/assessment-report/ar5/wg1/WG1AR5\\_Frontmatter\\_FINAL.pdf](https://www.ipcc.ch/pdf/assessment-report/ar5/wg1/WG1AR5_Frontmatter_FINAL.pdf) (last access: 29 November 2016), 2013.
- Jacob, D. J., Crawford, J. H., Kleb, M. M., Connors, V. S., Bendura, R. J., Raper, J. L., Sachse, G. W., Gille, J. C., Emmons, L. and Heald, C. L.: Transport and Chemical Evolution over the Pacific (TRACE-P) aircraft mission: Design, execution, and first results, *J. Geophys. Res.-Atmos.*, 108(D20), 1–19, doi:10.1029/2002JD003276, 2003.
- Jickells, T., An, Z., Andersen, K., Baker, A., Bergametti, G., Brooks, N., Cao, J., Boyd, P., Duce, R., Hunter, K., Kawahata, H., Kubilay, N., laRoche, J., Liss, P., Mahowald, N., Prospero, J., Ridgwell, A., Tegen, I., and Torres, R.: Global iron connections between desert dust, ocean biogeochemistry, and climate, *Science*, 308, 67–71, doi:10.1126/science.1105959, 2005.
- Kang, N., Kumar, K. R., Hu, K., Yu, X. and Yin, Y.: Long-term (2002-2014) evolution and trend in Collection 5.1 Level-2 aerosol products derived from the MODIS and MISR sensors over the Chinese Yangtze River Delta, *Atmos. Res.*, 181, 29–43, doi:10.1016/j.atmosres.2016.06.008, 2016.
- Karami, S., Ranjbar, A., Mohebalhojeh, A. R. and Moradi, M.: A rare case of haboob in Tehran: Observational and numerical study, *Atmos. Res.*, 185, 169–185, doi:10.1016/j.atmosres.2016.10.010, 2017.
- Kaufman, Y. J., Tanre, D., Remer, L. A., Vermote, E. F., Chu, A. and Holben, B. N.: Operational remote sensing of tropospheric aerosol over land from EOS moderate resolution imaging spectroradiometer, *J. Geophys. Res.-Atmos.*, 102(D14), 17051–17067, doi:10.1029/96JD03988, 1997.
- Kellogg, C. A. and Griffin, D. W.: Aerobiology and the global transport of desert dust, *Trends Ecol. Evol.*, 21(11), 638–644, doi:10.1016/j.tree.2006.07.004, 2006.
- Kittaka, C., Winker, D. M., Vaughan, M. A., Omar, A. and Remer, L. A.: Intercomparison of column aerosol optical depths from CALIPSO and MODIS-Aqua, *Atmos. Meas. Tech.*, 4(2), 131–141, doi:10.5194/amt-4-131-2011, 2011.
- Komppula, M., Mielonen, T., Arola, A., Korhonen, K., Lihavainen, H., Hyvarinen, A.-P., Baars, H., Engelmann, R., Althausen, D., Ansmann, A., Mueller, D., Panwar, T. S., Hooda, R. K., Sharma, V. P., Kerminen, V.-M., Lehtinen, K. E. J. and Viisanen, Y.: Technical Note: One year of Raman-lidar measurements in Gual Pahari EUCAARI site close to New Delhi in India - Seasonal characteristics of the aerosol vertical structure, *Atmos. Chem. Phys.*, 12(10), 4513–4524, doi:10.5194/acp-12-4513-2012, 2012.
- Kourtidis, K., Stathopoulos, S., Georgoulas, A. K., Alexandri, G., and Rapsomanikis, S.: A study of the impact of synoptic weather conditions and water vapor on aerosol-cloud relationships over major urban clusters of China, *Atmos. Chem. Phys.*, 15, 10955-10964, doi:10.5194/acp-15-10955-2015, 2015.
- Kuhlmann, J. and Quaas, J.: How can aerosols affect the Asian summer monsoon? Assessment during three consecutive pre-monsoon seasons from CALIPSO satellite data, *Atmos. Chem. Phys.*, 10(10), 4673–4688, doi:10.5194/acp-10-4673-2010, 2010.

This page contains no comments

- Kumar, R., Barth, M. C., Pfister, G. G., Naja, M. and Brasseur, G. P.: WRF-Chem simulations of a typical pre-monsoon dust storm in northern India: influences on aerosol optical properties and radiation budget, *Atmos. Chem. Phys.*, 14(5), 2431–2446, doi:10.5194/acp-14-2431-2014, 2014.
- 5 Kwon, S. A., Iwasaka, Y., Shibata, T. and Sakai, T.: Vertical distribution of atmospheric particles and water vapor densities in the free troposphere: Lidar measurement in spring and summer in Nagoya, Japan, *Atmos. Environ.*, 31(10), 1459–1465, doi:10.1016/S1352-2310(96)00310-X, 1997.
- Lau, K., Yang, G. and Shen, S.: Seasonal and Intraseasonal Climatology of Summer Monsoon Rainfall Over East-Asia, *Mon. Weather Rev.*, 116(1), 18–37, doi:10.1175/1520-0493(1988)116<0018:SAICOS>2.0.CO;2, 1988.
- Lau, K.-M. and Kim, K.-M.: Observational relationships between aerosol and Asian monsoon rainfall, and circulation, *Geophys. Res. Lett.*, 33(21), L21810, doi:10.1029/2006GL027546, 2006.
- 10 Levy, R. C., Remer, L. A., Kleidman, R. G., Mattoo, S., Ichoku, C., Kahn, R. and Eck, T. F.: Global evaluation of the Collection 5 MODIS dark-target aerosol products over land, *Atmos. Chem. Phys.*, 10(21), 10399–10420, doi:10.5194/acp-10-10399-2010, 2010.
- Levy, R. C., Mattoo, S., Munchak, L. A., Remer, L. A., Sayer, A. M., Patadia, F. and Hsu, N. C.: The Collection 6 MODIS aerosol products over land and ocean, *Atmos. Meas. Tech.*, 6(11), 2989–3034, doi:10.5194/amt-6-2989-2013, 2013.
- 15 Liu, D., Wang, Z., Liu, Z., Winker, D. and Trepte, C.: A height resolved global view of dust aerosols from the first year CALIPSO lidar measurements, *J. Geophys. Res.-Atmos.*, 113(D16), D16214, doi:10.1029/2007JD009776, 2008a.
- Liu, X. D. and Chen, B. D.: Climatic warming in the Tibetan Plateau during recent decades, *Int. J. Climatol.*, 20(14), 1729–1742, doi:10.1002/1097-0088(20001130)20:14<1729::AID-JOC556>3.0.CO;2-Y, 2000.
- 20 Liu, Z., Liu, D., Huang, J., Vaughan, M., Uno, I., Sugimoto, N., Kittaka, C., Trepte, C., Wang, Z., Hostetler, C. and Winker, D.: Airborne dust distributions over the Tibetan Plateau and surrounding areas derived from the first year of CALIPSO lidar observations, *Atmos. Chem. Phys.*, 8(16), 5045–5060, 2008b.
- Liu, Z., Omar, A., Vaughan, M., Hair, J., Kittaka, C., Hu, Y., Powell, K., Trepte, C., Winker, D., Hostetler, C., Ferrare, R. and Pierce, R.: CALIPSO lidar observations of the optical properties of Saharan dust: A case study of long-range transport, *J. Geophys. Res.-Atmos.*, 113(D7), D07207, doi:10.1029/2007JD008878, 2008c.
- 25 Liu, Z. Y., Sugimoto, N. and Murayama, T.: Extinction-to-backscatter ratio of Asian dust observed with high-spectral-resolution lidar and Raman lidar, *Appl. Optics*, 41(15), 2760–2767, doi:10.1364/AO.41.002760, 2002. Mamouri, R. E., Ansmann, A., Nisantzi, A., Kokkalis, P., Schwarz, A. and Hadjimitsis, D.: Low Arabian dust extinction-to-backscatter ratio, *Geophys. Res. Lett.*, 40(17), 4762–4766, doi:10.1002/grl.50898, 2013.
- 30 Mao, R., Ho, C.-H., Shao, Y., Gong, D.-Y. and Kim, J.: Influence of Arctic Oscillation on dust activity over northeast Asia, *Atmos. Environ.*, 45(2), 326–337, doi:10.1016/j.atmosenv.2010.10.020, 2011.
- Marinou, E., Amiridis, V., Binietoglou, I., Tsikerdekis, A., Solomos, S., Proestakis, E., Konsta, D., Papagiannopoulos, N., Tsekeri, A., Vlastou, G., Zanis, P., Balis, D., Wandinger, U. and Ansmann, A.: Three-dimensional evolution of Saharan dust transport towards Europe based on a 9-year EARLINET-optimized CALIPSO dataset, *Atmos. Chem. Phys.*, 17(9), 5893–5919, doi:10.5194/acp-17-5893-2017, 2017.
- 35 Martin, J., Coale, K., Johnson, K., Fitzwater, S., Gordon, R., Tanner, S., Hunter, C., Elrod, V., Nowicki, J., Coley, T., Barber, R., Lindley, S., Watson, A., Vanscoy, K., Law, C., Liddicoat, M., Ling, R., Stanton, T., Stockel, J., Collins, C., Anderson, A., Bidigare, R., Ondrusek, M., Latasa, M., Millero, F., Lee, K., Yao, W., Zhang, J., Friederich, G., Sakamoto, C., Chavez, F., Buck, K., Kolber, Z., Greene, R., Falkowski, P., Chisholm, S., Hoge, F., Swift, R., Yungel, J., Turner, S., Nightingale, P., Hatton, A., Liss, P. and
- 40 Tindale, N.: Testing the Iron Hypothesis in Ecosystems of the Equatorial Pacific-Ocean, *Nature*, 371(6493), 123–129, doi:10.1038/371123a0, 1994.

This page contains no comments

- McKendry, I. G., Macdonald, A. M., Leaitch, W. R., van Donkelaar, A., Zhang, Q., Duck, T. and Martin, R. V.: Trans-Pacific dust events observed at Whistler, British Columbia during INTEX-B, *Atmos. Chem. Phys.*, 8(20), 6297–6307, 2008.
- de Meij, A., Pozzer, A. and Lelieveld, J.: Trend analysis in aerosol optical depths and pollutant emission estimates between 2000 and 2009, *Atmos. Environ.*, 51, 75–85, doi:10.1016/j.atmosenv.2012.01.059, 2012.
- 5 Middleton, N.: A Geography of Dust Storms in Southwest Asia, *Journal of Climatology*, 6(2), 183–196, 1986.
- Mikami, M., Shi, G. Y., Uno, I., Yabuki, S., Iwasaka, Y., Yasui, M., Aoki, T., Tanaka, T. Y., Kurosaki, Y., Masuda, K., Uchiyama, A., Matsuki, A., Sakai, T., Takemi, T., Nakawo, M., Seino, N., Ishizuka, M., Satake, S., Fujita, K., Hara, Y., Kai, K., Kanayama, S., Hayashi, M., Du, M., Kanai, Y., Yamada, Y., Zhang, X. Y., Shen, Z., Zhou, H., Abe, O., Nagai, T., Tsutsumi, Y., Chiba, M. and Suzuki, J.: Aeolian dust experiment on climate impact: An overview of Japan-China joint project ADEC, *Glob. Planet. Change*, 10 52(1–4), 142–172, doi:10.1016/j.gloplacha.2006.03.001, 2006.
- Mona, L., Amodeo, A., Pandolfi, M., and Pappalardo, G.: Saharan dust intrusions in the Mediterranean area: three years of Raman lidar measurements, *J. Geophys. Res.-Atmos.*, 111, d16203, doi:10.1029/2005JD006569, 2006.
- Murayama, T., Masonis, S. J., Redemann, J., Anderson, T. L., Schmid, B., Livingston, J. M., Russell, P. B., Huebert, B., Howell, S. G., McNaughton, C. S., Clarke, A., Abo, M., Shimizu, A., Sugimoto, N., Yabuki, M., Kuze, H., Fukagawa, S., Maxwell-Meier, K., Weber, R. J., Orsini, D. A., Blomquist, B., Bandy, A. and Thornton, D.: An intercomparison of lidar-derived aerosol optical 15 properties with airborne measurements near Tokyo during ACE-Asia, *J. Geophys. Res.-Atmos.*, 108(D23), 8651, doi:10.1029/2002JD003259, 2003.
- Murayama, T., Muller, D., Wada, K., Shimizu, A., Sekiguchi, M. and Tsukamoto, T.: Characterization of Asian dust and Siberian smoke with multiwavelength Raman lidar over Tokyo, Japan in spring 2003, *Geophys. Res. Lett.*, 31(23), L23103, 20 doi:10.1029/2004GL021105, 2004.
- Okin, G. S., Mahowald, N., Chadwick, O. A., and Artaxo, P.: Impact of desert dust on the biogeochemistry of phosphorus in terrestrial ecosystems, *Global Biogeochem. Cycles*, 18, GB2005, doi:10.1029/2003GB002145, 2004.
- Omar, A. H., Winker, D. M., Kittaka, C., Vaughan, M. A., Liu, Z., Hu, Y., Trepte, C. R., Rogers, R. R., Ferrare, R. A., Lee, K.-P., Kuehn, R. E. and Hostetler, C. A.: The CALIPSO Automated Aerosol Classification and Lidar Ratio Selection Algorithm, *J. Atmos. Ocean. Technol.*, 26(10), 1994–2014, doi:10.1175/2009JTECHA1231.1, 2009.
- Papagiannopoulos, N., Mona, L., Alados-Arboledas, L., Amiridis, V., Baars, H., Biniotoglou, I., Bortoli, D., D’Amico, G., Giunta, A., Guerrero-Rascado, J. L., Schwarz, A., Pereira, S., Spinelli, N., Wandinger, U., Wang, X., and Pappalardo, G.: CALIPSO climatological products: evaluation and suggestions from EARLINET, *Atmos. Chem. Phys.*, 16, 2341–2357, doi:10.5194/acp-16-2341-2016, 2016.
- 30 Pozzer, A., de Meij, A., Yoon, J., Tost, H., Georgoulias, A. K. and Astitha, M.: AOD trends during 2001-2010 from observations and model simulations, *Atmos. Chem. Phys.*, 15(10), 5521–5535, doi:10.5194/acp-15-5521-2015, 2015.
- Prospero, J. M., Ginoux, P., Torres, O., Nicholson, S. E. and Gill, T. E.: Environmental characterization of global sources of atmospheric soil dust identified with the Nimbus 7 Total Ozone Mapping Spectrometer (TOMS) absorbing aerosol product, *Rev. Geophys.*, 40(1), 1002, doi:10.1029/2000RG000095, 2002.
- 35 Ramanathan, V., Crutzen, P. J., Kiehl, J. T. and Rosenfeld, D.: Atmosphere - Aerosols, climate, and the hydrological cycle, *Science*, 294(5549), 2119–2124, doi:10.1126/science.1064034, 2001.
- Rasch, P. J., Collins, W. D. and Eaton, B. E.: Understanding the Indian Ocean Experiment (INDOEX) aerosol distributions with an aerosol assimilation, *J. Geophys. Res.-Atmos.*, 106(D7), 7337–7355, doi:10.1029/2000JD900508, 2001.
- Redemann, J., Vaughan, M. A., Zhang, Q., Shinozuka, Y., Russell, P. B., Livingston, J. M., Kacenelenbogen, M. and Remer, L. A.: 40 The comparison of MODIS-Aqua (C5) and CALIOP (V2 & V3) aerosol optical depth, *Atmos. Chem. Phys.*, 12(6), 3025–3043, doi:10.5194/acp-12-3025-2012, 2012.

This page contains no comments

- Remer, L. A., Kaufman, Y. J., Tanre, D., Mattoo, S., Chu, D. A., Martins, J. V., Li, R. R., Ichoku, C., Levy, R. C., Kleidman, R. G., Eck, T. F., Vermote, E. and Holben, B. N.: The MODIS aerosol algorithm, products, and validation, *J. Atmos. Sci.*, 62(4), 947–973, doi:10.1175/JAS3385.1, 2005.
- Rogers, R. R., Vaughan, M. A., Hostetler, C. A., Burton, S. P., Ferrare, R. A., Young, S. A., Hair, J. W., Obland, M. D., Harper, D. B., Cook, A. L., and Winker, D. M.: Looking through the haze: evaluating the CALIPSO level 2 aerosol optical depth using airborne high spectral resolution lidar data, *Atmos. Meas. Tech.*, 7, 4317–4340, doi:10.5194/amt-7-4317-2014, 2014.
- Ronald, J. van der A., Mijling, B., Ding, J., Koukouli, M. E., Liu, F., Li, Q., Mao, H. and Theys, N.: Cleaning up the air: effectiveness of air quality policy for SO<sub>2</sub> and NO<sub>x</sub> emissions in China, *Atmos. Chem. Phys.*, 17(3), 1775–1789, doi:10.5194/acp-17-1775-2017, 2017.
- 10 Rosenfeld, D., Lohmann, U., Raga, G. B., O’Dowd, C. D., Kulmala, M., Fuzzi, S., Reissell, A. and Andreae, M. O.: Flood or drought: How do aerosols affect precipitation?, *Science*, 321(5894), 1309–1313, doi:10.1126/science.1160606, 2008.
- Sakai, T., Shibata, T., Kwon, S.-A., Kim, Y.-S., Tamura, K., and Iwasaka Y.: Free tropospheric aerosol backscatter, depolarization ratio, and relative humidity measured with the Raman lidar at Nagoya in 1994–1997: contributions of aerosols from the Asian continent and the pacific ocean, *Atmos. Environ.*, 34, 431–442, doi:10.1016/S1352-2310(99)00328-3, 2000.
- 15 Sakai, T., Shibata, T., Iwasaka, Y., Nagai, T., Nakazato, M., Matsumura, T., Ichiki, A., Kim, Y. S., Tamura, K., Troshkin, D. and Hamdi, S.: Case study of Raman lidar measurements of Asian dust events in 2000 and 2001 at Nagoya and Tsukuba, Japan, *Atmos. Environ.*, 36(35), 5479–5489, doi:10.1016/S1352-2310(02)00664-7, 2002.
- Sayer, A. M., Hsu, N. C., Bettenhausen, C. and Jeong, M.-J.: Validation and uncertainty estimates for MODIS Collection 6 “Deep Blue” aerosol data, *J. Geophys. Res.-Atmos.*, 118(14), 7864–7872, doi:10.1002/jgrd.50600, 2013.
- 20 Sayer, A. M., Munchak, L. A., Hsu, N. C., Levy, R. C., Bettenhausen, C. and Jeong, M.-J.: MODIS Collection 6 aerosol products: Comparison between Aqua’s e-Deep Blue, Dark Target, and “merged” data sets, and usage recommendations, *J. Geophys. Res.-Atmos.*, 119(24), 13965–13989, doi:10.1002/2014JD022453, 2014.
- Sayer, A. M., Hsu, N. C., Bettenhausen, C., Jeong, M.-J. and Meister, G.: Effect of MODIS Terra radiometric calibration improvements on Collection 6 Deep Blue aerosol products: Validation and Terra/Aqua consistency, *J. Geophys. Res.-Atmos.*, 120(23), doi:10.1002/2015JD023878, 2015.
- 25 Shaw, G.: Transport of Asian Desert Aerosol to the Hawaiian-Islands, *J. Appl. Meteorol.*, 19(11), 1254–1259, doi:10.1175/1520-0450(1980)019<1254:TOADAT>2.0.CO;2, 1980.
- Stith, J. L., Ramanathan, V., Cooper, W. A., Roberts, G. C., DeMott, P. J., Carmichael, G., Hatch, C. D., Adhikary, B., Twohy, C. H., Rogers, D. C., Baumgardner, D., Prenni, A. J., Campos, T., Gao, R., Anderson, J. and Feng, Y.: An overview of aircraft observations from the Pacific Dust Experiment campaign, *J. Geophys. Res.-Atmos.*, 114, D05207, doi:10.1029/2008JD010924, 2009.
- Sun, J. M., Zhang, M. Y. and Liu, T. S.: Spatial and temporal characteristics of dust storms in China and its surrounding regions, 1960-1999: Relations to source area and climate, *J. Geophys. Res.-Atmos.*, 106(D10), 10325–10333, doi:10.1029/2000JD900665, 2001.
- 35 Tan, S., Li, J., Gao, H., Wang, H., Che, H. and Chen, B.: Satellite-Observed Transport of Dust to the East China Sea and the North Pacific Subtropical Gyre: Contribution of Dust to the Increase in Chlorophyll during Spring 2010, *Atmosphere*, 7(11), 152, doi:10.3390/atmos7110152, 2016.
- Tan, S.-C., Li, J., Che, H., Chen, B. and Wang, H.: Transport of East Asian dust storms to the marginal seas of China and the southern North Pacific in spring 2010, *Atmos. Environ.*, 148, 316–328, doi:10.1016/j.atmosenv.2016.10.054, 2017.
- 40 Tegen, I., Lacis, A. A. and Fung, I.: The influence on climate forcing of mineral aerosols from disturbed soils, *Nature*, 380(6573), 419–422, doi:10.1038/380419a0, 1996.

This page contains no comments



- Tesche, M., Ansmann, A., Mueller, D., Althausen, D., Engelmann, R., Hu, M. and Zhang, Y.: Particle backscatter, extinction, and lidar ratio profiling with Raman lidar in south and north China, *Appl. Optics*, 46(25), 6302–6308, doi:10.1364/AO.46.006302, 2007.
- 5 Tesche, M., Ansmann, A., Mueller, D., Althausen, D., Engelmann, R., Freudenthaler, V. and Gross, S.: Vertically resolved separation of dust and smoke over Cape Verde using multiwavelength Raman and polarization lidars during Saharan Mineral Dust Experiment 2008, *J. Geophys. Res.-Atmos.*, 114, D13202, doi:10.1029/2009JD011862, 2009.
- Thompson, L. G., Mosley-Thompson, E., Davis, M. E., Lin, P. N., Henderson, K. and Mashiotta, T. A.: Tropical glacier and ice core evidence of climate change on annual to millennial time scales, *Clim. Change*, 59(1–2), 137–155, doi:10.1023/A:1024472313775, 2003.
- 10 Tian, P., Cao, X., Zhang, L., Sun, N., Sun, L., Logan, T., Shi, J., Wang, Y., Ji, Y., Lin, Y., Huang, Z., Zhou, T., Shi, Y., and Zhang, R.: Aerosol vertical distribution and optical properties over China from long-term satellite and ground-based remote sensing, *Atmos. Chem. Phys.*, 17, 2509–2523, doi:10.5194/acp-17-2509-2017, 2017.
- Twomey, S.: The influence of pollution on the shortwave albedo of clouds, *J. Atmos. Sci.*, 34, 1149–1152, 1977.
- Uno, I., Amano, H., Emori, S., Kinoshita, K., Matsui, I. and Sugimoto, N.: Trans-Pacific yellow sand transport observed in April 15 1998: A numerical simulation, *J. Geophys. Res.-Atmos.*, 106(D16), 18331–18344, doi:10.1029/2000JD900748, 2001.
- Uno, I., Yumimoto, K., Shimizu, A., Hara, Y., Sugimoto, N., Wang, Z., Liu, Z. and Winker, D. M.: 3D structure of Asian dust transport revealed by CALIPSO lidar and a 4DVAR dust model, *Geophys. Res. Lett.*, 35(6), L06803, doi:10.1029/2007GL032329, 2008.
- Uno, I., Eguchi, K., Yumimoto, K., Takemura, T., Shimizu, A., Uematsu, M., Liu, Z., Wang, Z., Hara, Y. and Sugimoto, N.: Asian 20 dust transported one full circuit around the globe, *Nat. Geosci.*, 2(8), 557–560, doi:10.1038/NGEO583, 2009.
- Vaughan, M. A., Powell, K. A., Kuehn, R. E., Young, S. A., Winker, D. M., Hostetler, C. A., Hunt, W. H., Liu, Z., McGill, M. J. and Getzewich, B. J.: Fully Automated Detection of Cloud and Aerosol Layers in the CALIPSO Lidar Measurements, *J. Atmos. Ocean. Technol.*, 26(10), 2034–2050, doi:10.1175/2009JTECHA1228.1, 2009.
- Vinoj, V., Rasch, P. J., Wang, H., Yoon, J.-H., Ma, P.-L., Landu, K. and Singh, B.: Short-term modulation of Indian summer 25 monsoon rainfall by West Asian dust, *Nat. Geosci.*, 7(4), 308–313, doi:10.1038/ngeo2107, 2014.
- Winker, D. M., Hunt, W. H. and McGill, M. J.: Initial performance assessment of CALIOP, *Geophys. Res. Lett.*, 34(19), L19803, doi:10.1029/2007GL030135, 2007.
- Winker, D. M., Vaughan, M. A., Omar, A., Hu, Y., Powell, K. A., Liu, Z., Hunt, W. H. and Young, S. A.: Overview of the CALIPSO Mission and CALIOP Data Processing Algorithms, *J. Atmos. Ocean. Technol.*, 26(11), 2310–2323, 30 doi:10.1175/2009JTECHA1281.1, 2009.
- Winker, D. M., Tackett, J. L., Getzewich, B. J., Liu, Z., Vaughan, M. A. and Rogers, R. R.: The global 3-D distribution of tropospheric aerosols as characterized by CALIOP, *Atmos. Chem. Phys.*, 13(6), 3345–3361, doi:10.5194/acp-13-3345-2013, 2013.
- Xie, C., Nishizawa, T., Sugimoto, N., Matsui, I. and Wang, Z.: Characteristics of aerosol optical properties in pollution and Asian 35 dust episodes over Beijing, China, *Appl. Optics*, 47(27), 4945–4951, doi:10.1364/AO.47.004945, 2008.
- Xu, H., Zheng, F. and Zhang, W.: Variability in Dust Observed over China Using A-Train CALIOP Instrument, *Adv. Meteorol.*, 1246590, doi:10.1155/2016/1246590, 2016.
- Yang, W., Marshak, A., Varnai, T., Kalashnikova, O. V. and Kostinski, A. B.: CALIPSO observations of transatlantic dust: vertical stratification and effect of clouds, *Atmos. Chem. Phys.*, 12(23), 11339–11354, doi:10.5194/acp-12-11339-2012, 2012.
- 40 Yoon, J. and Pozzer, A.: Model-simulated trend of surface carbon monoxide for the 2001–2010 decade, *Atmos. Chem. Phys.*, 14(19), 10465–10482, doi:10.5194/acp-14-10465-2014, 2014.

This page contains no comments

- Young, S.: CALIOP V3 Extinction Uncertainty: Uncertainty Analysis for Particulate Backscatter, Extinction and Optical Depth Retrievals reported in the CALIPSO Level 2, Version 3 Data Release, available at: [https://eosweb.larc.nasa.gov/sites/default/files/project/calipso/CALIOP\\_Version3\\_Extinction\\_Error\\_Analysis.pdf](https://eosweb.larc.nasa.gov/sites/default/files/project/calipso/CALIOP_Version3_Extinction_Error_Analysis.pdf) (last access:1 March 2017), 2010.
- 5 Young, S. and Vaughan, M.: The retrieval of profiles of particulate extinction from Cloud Aerosol Lidar Infrared Pathfinder Satellite, Observations (CALIPSO) data: algorithm description, *J. Atmos. Ocean. Tech.*, 26, 1105–1119, doi:10.1175/2008JTECHA1221.1, 2009.
- Yu, H., Remer, L. A., Chin, M., Bian, H., Kleidman, R. G. and Diehl, T.: A satellite-based assessment of transpacific transport of pollution aerosol, *J. Geophys. Res.-Atmos.*, 113(D14), D14S12, doi:10.1029/2007JD009349, 2008.
- 10 Yumimoto, K., Eguchi, K., Uno, I., Takemura, T., Liu, Z., Shimizu, A. and Sugimoto, N.: An elevated large-scale dust veil from the Taklimakan Desert: Intercontinental transport and three-dimensional structure as captured by CALIPSO and regional and global models, *Atmos. Chem. Phys.*, 9(21), 8545–8558, 2009.
- Zhang, J., Reid, J. S., Alfaro-Contreras, R. and Xian, P.: Has China been exporting less particulate air pollution over the past decade?, *Geophys. Res. Lett.*, 44(6), 2941–2948, doi:10.1002/2017GL072617, 2017.
- 15 Zhang, X. Y., Arimoto, R. and An, Z. S.: Dust emission from Chinese desert sources linked to variations in atmospheric circulation, *J. Geophys. Res.-Atmos.*, 102(D23), 28041–28047, doi:10.1029/97JD02300, 1997.
- Zhang, X. Y., Gong, S. L., Shen, Z. X., Mei, F. M., Xi, X. X., Liu, L. C., Zhou, Z. J., Wang, D., Wang, Y. Q. and Cheng, Y.: Characterization of soil dust aerosol in China and its transport and distribution during 2001 ACE-Asia: 1. Network observations, *J. Geophys. Res.-Atmos.*, 108(D9), 4261, doi:10.1029/2002JD002632, 2003.
- 20 Zhao, B., Jiang, J. H., Gu, Y., Diner, D., Worden, J., Liou, K.-N., Su, H., Xing, J., Garay, M. and Huang, L.: Decadal-scale trends in regional aerosol particle properties and their linkage to emission changes, *Environ. Res. Lett.*, 12(5), 054021, doi:10.1088/1748-9326/aa6cb2, 2017.

This page contains no comments

## 5 Tables and Figures

Figure 1. Illustration of the study domain, confined between longitudes 65°-155° E and latitudes 5°-55° N. Major dust aerosol sources (yellow colour) are included (Taklimakan, Gobi, Thar deserts). Dashed black lines delineate domains of high surface elevation (Tibetan Plateau, Himalayan Ridge). The grey lines delineate the domains of regional statistics provided in Table 1: (1) Taklimakan / Gobi Deserts, (2) Tibetan Plateau, (3) SE China, (4) Indian Peninsula, (5) North Pacific Ocean, (6) Indochina / Indonesia.

Figure 2: Flowchart of the CALIPSO Pure-Dust, Conditional Dust Extinction Coefficient and Climatological Dust Extinction Coefficient products.

Figure 3: Spatial distribution of the seasonal mean CALIPSO Aerosol Optical Depth (AOD), Dust Optical Depth (D\_AOD), Optical Depth difference between AOD and D\_AOD (Non-Dust AOD) and of the percentage of D\_AOD with respect to the total AOD for the domain between 65°-155° E and 5°-55° N and for the period 01/2007-12/2015.

Figure 4: Spatial distribution of dust occurrence [%], climatological pure-dust CoM (Center of Mass) and dust TH (Top Height) in km a.g.l., for each season over the domain between 65°-155° E and 5°-55° N and for the period 01/2007-12/2015.

Figure 5: Zonal distribution of the climatological dust extinction coefficient ( $Mm^{-1}$ ) profiles for the regions with longitude from 65° to 155° E and latitudes 45° to 55° N (a-d), 35° to 45° N (e-h), 25° to 35° N (i-l), 15° to 25° N (m-p), 5° to 15° N (q-t), as illustrated by the domain maps on the left; profiles are presented as three-month averages: December-January-February (a,e,i,m,q), March-April-May (b,f,j,n,r), June-July-August (c,j,k,o,s) and September-October-November (d,h,l,p,t). The minimum terrain elevation is denoted with black colour. The black continuous (dashed) line refers to the mean (max) elevation of the surface.

Figure 6: Zonal distribution of the conditional dust extinction coefficient ( $Mm^{-1}$ ) profiles for the regions with longitude from 65° to 155° E and latitudes 45° to 55° N (a-d), 35° to 45° N (e-h), 25° to 35° N (i-l), 15° to 25° N (m-p), 5° to 15° N (q-t), as illustrated by the domain maps on the left; profiles are presented as three-month averages: December-January-February (a,e,i,m,q), March-April-May (b,f,j,n,r), June-July-August (c,j,k,o,s) and September-October-November (d,h,l,p,t). The minimum terrain elevation is denoted with black colour. The black continuous (dashed) line refers to the mean (max) elevation of the surface.

Figure 7: Zonal distribution of the conditional dust depolarization ratio profiles for the regions with longitude from 65° to 155° E and latitudes 45° to 55° N (a-d), 35° to 45° N (e-h), 25° to 35° N (i-l), 15° to 25° N (m-p), 5° to 15° N (q-t), as illustrated by domain maps on the left; profiles are presented as three-month averages: December-January-February (a,e,i,m,q), March-April-May (b,f,j,n,r), June-July-August (c,j,k,o,s) and September-October-November (d,h,l,p,t). The minimum terrain elevation is denoted with black colour. The black continuous (dashed) line refers to the mean (max) elevation of the surface.

Figure 8: Trends of MODIS/Aqua and CALIOP/CALIPSO AOD at 532 nm over South and East Asia for the period 01/2007-12/2015. Left column: CALIOP/CALIPSO trends of AOD at 532 nm (a) and the number of months used in the CALIOP/CALIPSO time series (c). Right column: MODIS/Aqua C6 AOD at 550 nm trends of DTDB merged datasets (b) and mean Cloud Fraction (d). Symbol “+” denotes trends statistically significant at the 95% confidence level.

Figure 9: Short-term time series of CALIPSO/CALIOP AOD and D\_AOD over South and East Asia (AS), of Eastern China (EC) and of South Asia (SA) based on observations during the period 01/2007-12/2015. The dashed lines show the multi-annual trend line while the continuous black lines depict the seasonal variability.

This page contains no comments

**Table 1: Domain statistics on mean Dust Optical Depth, max D\_AOD / 95<sup>th</sup> percentile, dust Center of Mass (CoM) and Top Height (TH) (both in km a.g.l.) and number of dust profiles to the total number of cloud-free profiles, based on the period 01/2007-12/2015.**

	Mean D_AOD ± SD (Climatological)	D_AOD Max / Percentile 95% (Climatological)	Dust CoM ± SD (km / a.g.l.) (Conditional)	Dust Top Height ± SD (km / a.g.l.) (Conditional)	Nr of Dust in Nr of cloud-free
<b>Taklimakan / Gobi</b>					
DJF	0.078 ± 0.135	1.802 / 0.327	2.31 ± 1.39	3.47 ± 2.01	0.74
MAM	0.193 ± 0.308	2.729 / 0.819	3.06 ± 1.43	5.01 ± 2.17	0.78
JJA	0.113 ± 0.232	2.504 / 0.529	3.19 ± 1.38	4.94 ± 1.8	0.68
SON	0.095 ± 0.18	2.488 / 0.401	2.58 ± 1.27	3.92 ± 1.77	0.73
<b>Tibetan Plateau</b>					
DJF	0.012 ± 0.037	0.758 / 0.062	6.01 ± 1.26	6.96 ± 1.42	0.31
MAM	0.028 ± 0.055	0.731 / 0.127	6.2 ± 1.21	7.76 ± 1.64	0.52
JJA	0.013 ± 0.033	0.676 / 0.068	5.99 ± 1.05	7.13 ± 1.3	0.39
SON	0.006 ± 0.023	0.631 / 0.032	6.08 ± 1.37	6.87 ± 1.45	0.24
<b>SE China</b>					
DJF	0.062 ± 0.104	1.769 / 0.254	1.73 ± 1.29	3.03 ± 1.84	0.79
MAM	0.108 ± 0.171	2.39 / 0.404	2.38 ± 1.47	4.35 ± 2.26	0.85
JJA	0.032 ± 0.064	1.06 / 0.145	1.9 ± 1.56	3.09 ± 2.13	0.69
SON	0.045 ± 0.081	1.329 / 0.19	1.6 ± 1.27	2.74 ± 1.71	0.72
<b>Indian Peninsula</b>					
DJF	0.043 ± 0.065	1.736 / 0.147	1.13 ± 0.9	2.13 ± 1.28	0.84
MAM	0.171 ± 0.188	1.944 / 0.521	1.79 ± 0.99	3.63 ± 1.44	0.93
JJA	0.199 ± 0.167	2.071 / 0.751	2.05 ± 1.22	3.72 ± 1.55	0.86
SON	0.075 ± 0.106	1.459 / 0.267	1.29 ± 0.87	2.54 ± 1.25	0.83
<b>N Pacific</b>					
DJF	0.026 ± 0.059	1.169 / 0.113	1.55 ± 1.54	2.49 ± 1.97	0.67
MAM	0.046 ± 0.085	1.596 / 0.196	2.29 ± 1.86	3.96 ± 2.7	0.79
JJA	0.007 ± 0.02	0.613 / 0.035	1.55 ± 1.95	2.29 ± 2.38	0.45
SON	0.012 ± 0.032	0.929 / 0.057	1.26 ± 1.49	2.06 ± 1.89	0.56
<b>Indochina / Indonesia</b>					
DJF	0.005 ± 0.016	0.562 / 0.022	0.84 ± 0.99	1.28 ± 1.11	0.39
MAM	0.005 ± 0.012	0.269 / 0.024	0.98 ± 1.16	1.47 ± 1.29	0.47
JJA	0.003 ± 0.01	0.383 / 0.018	1.19 ± 1.96	1.6 ± 2.07	0.33
SON	0.003 ± 0.012	0.712 / 0.016	1.02 ± 1.57	1.45 ± 1.71	0.38

This page contains no comments



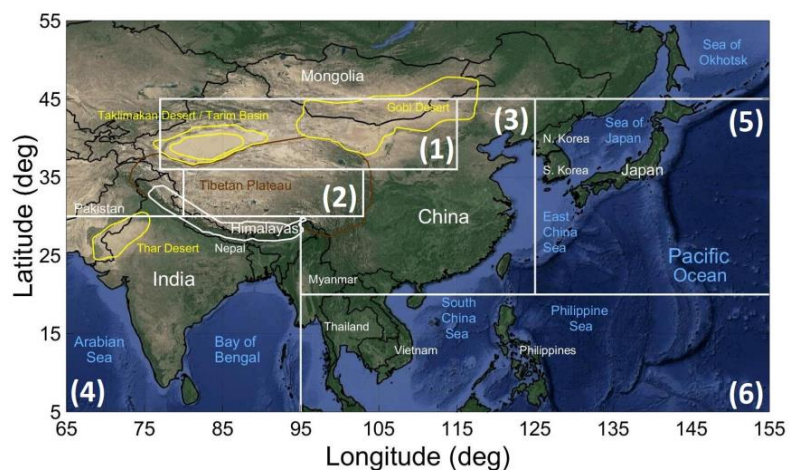
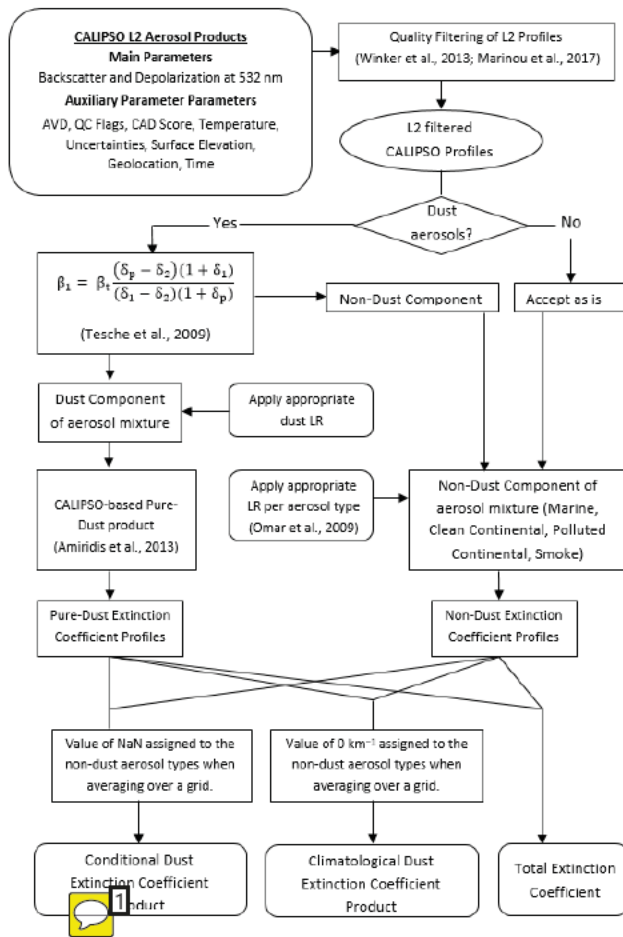


Fig.1

5

This page contains no comments



5 Fig.2



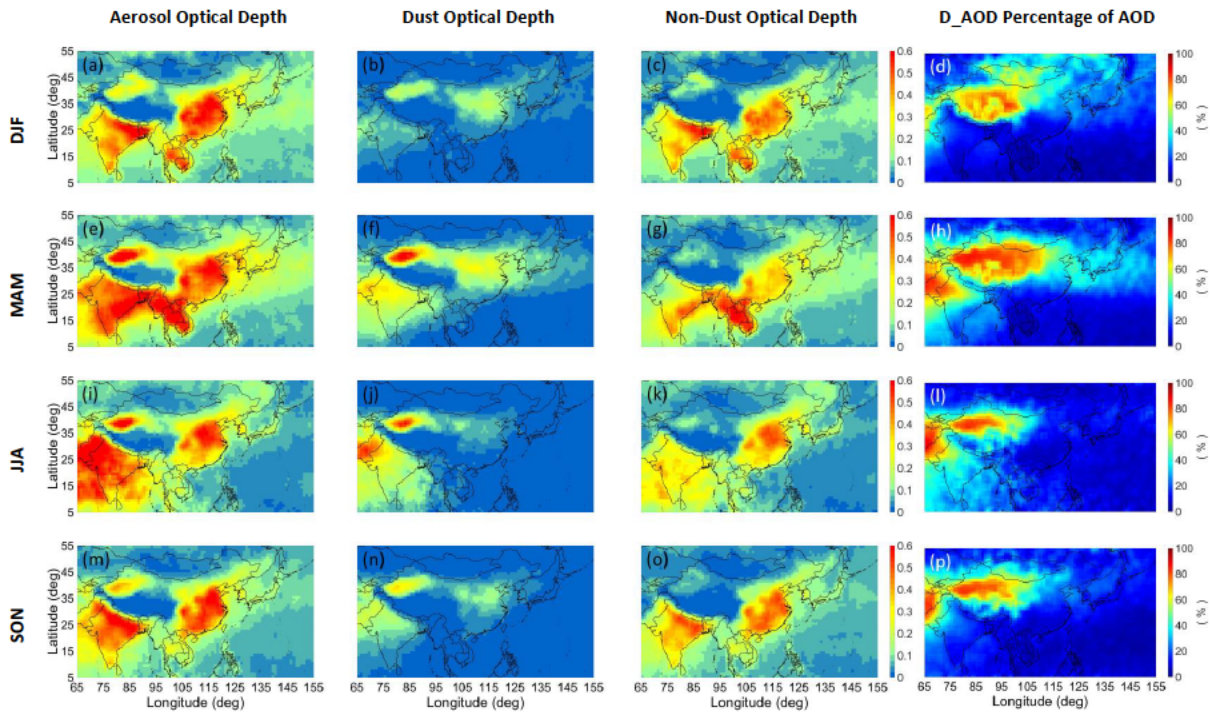
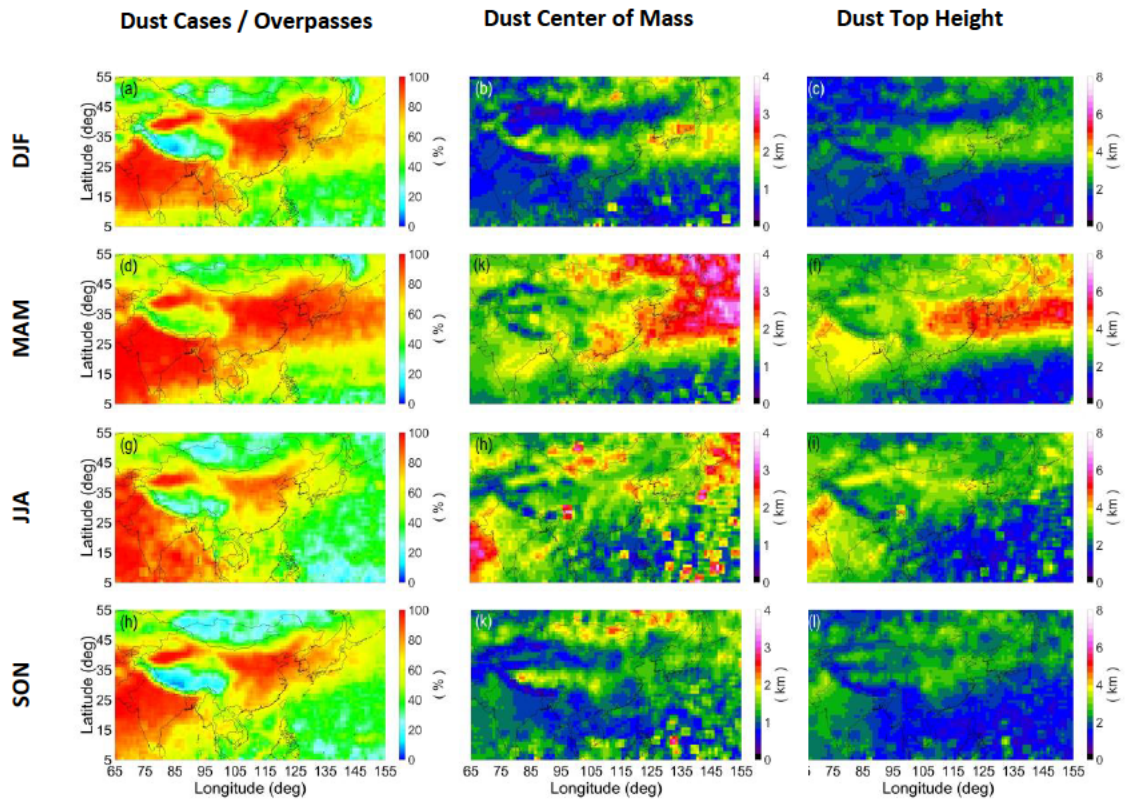


Fig.3

This page contains no comments



5 Fig. 4

10

15

20

This page contains no comments



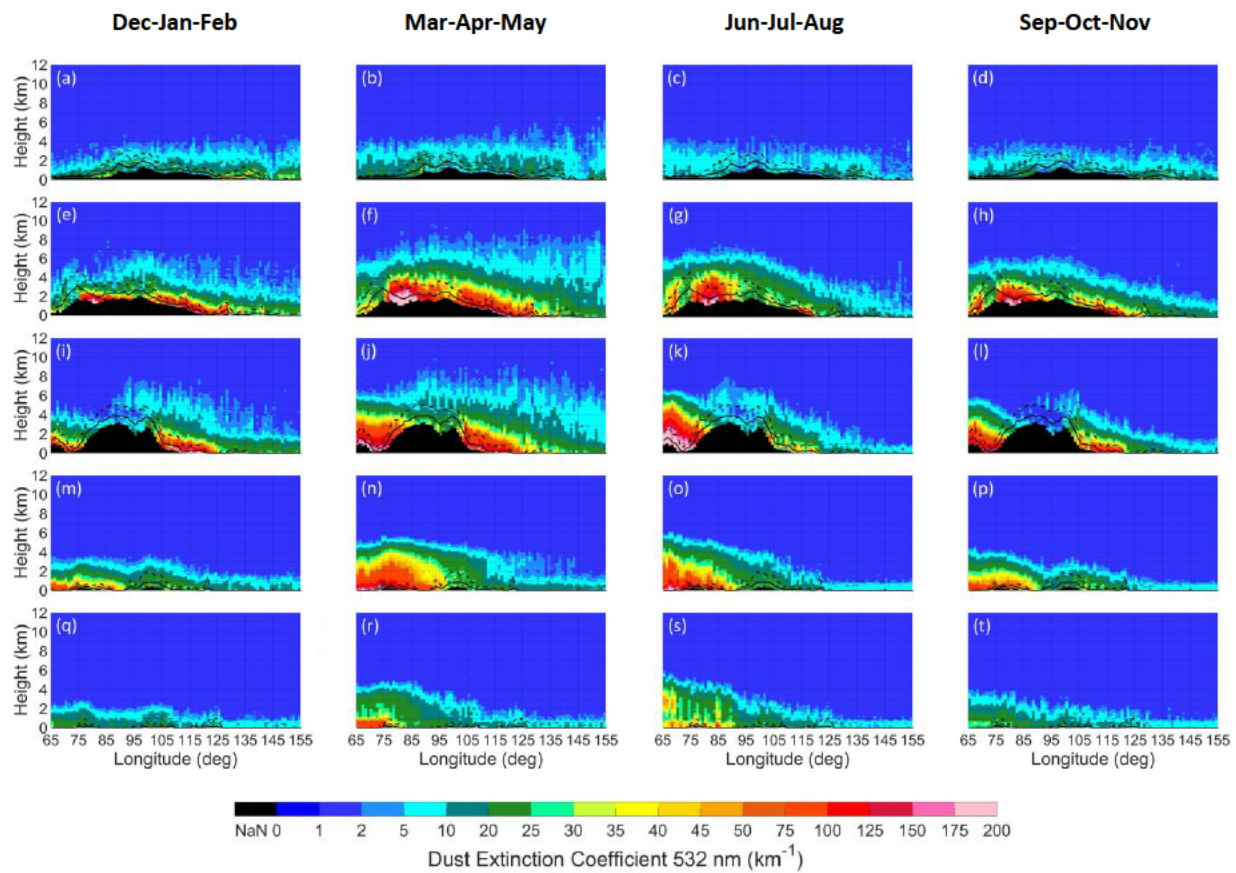


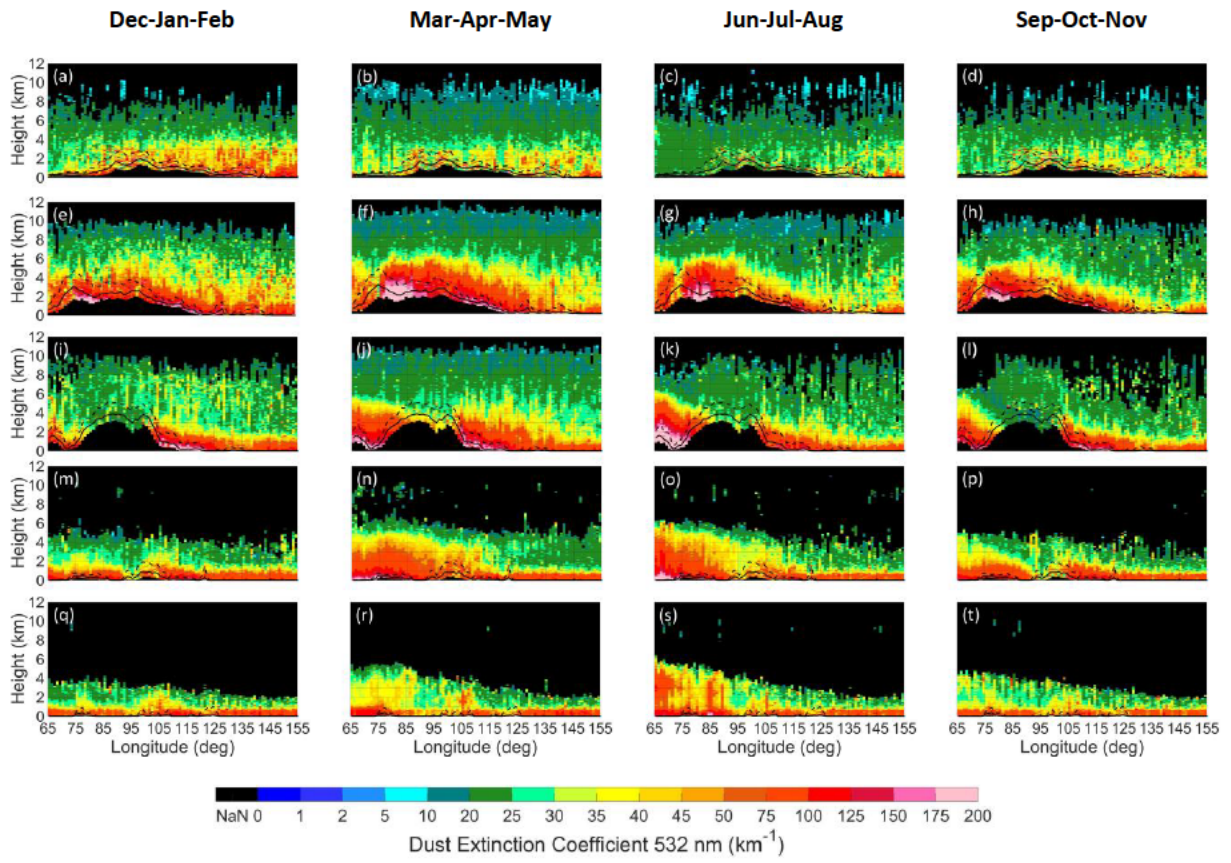
Fig. 5

5

10

15

This page contains no comments

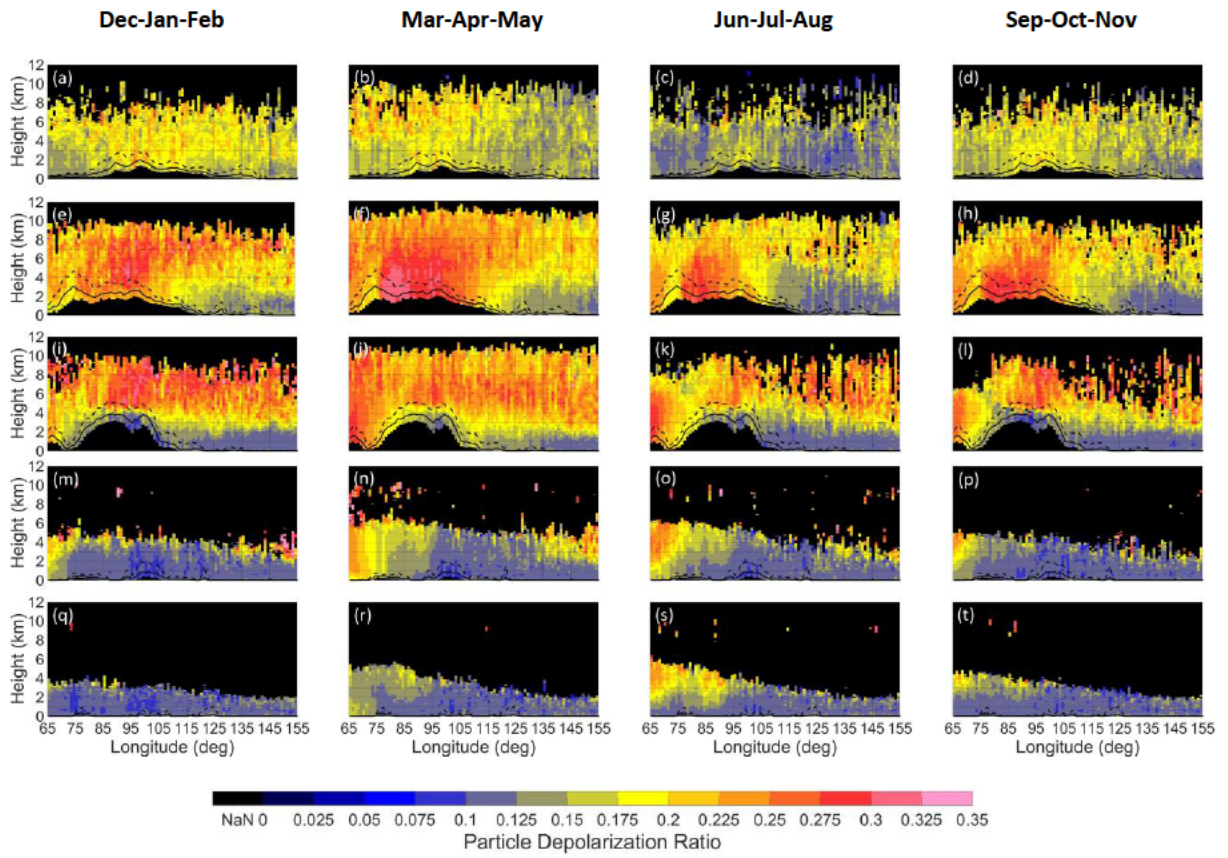


5 Fig. 6

10

15

This page contains no comments



5 Fig. 7

10

15

This page contains no comments

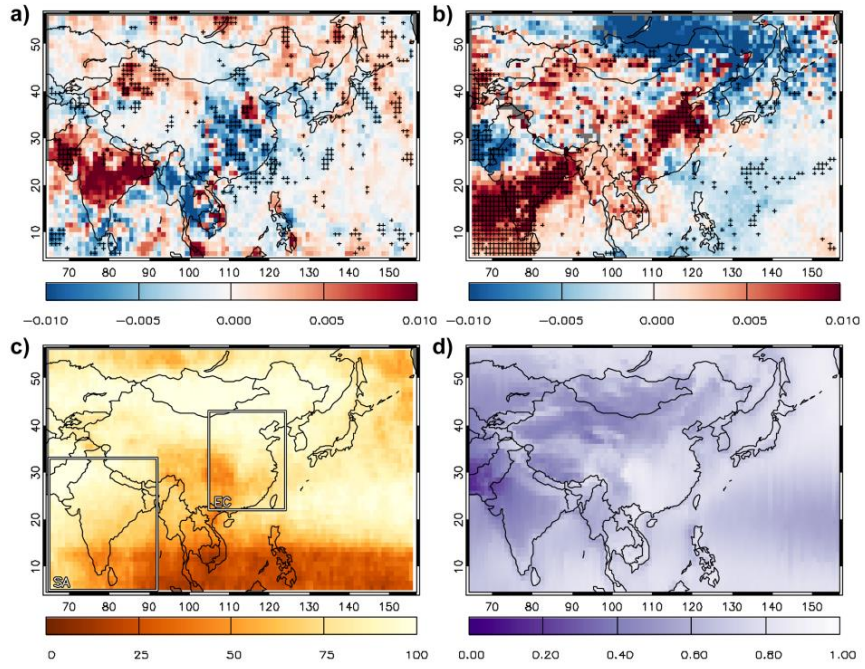


Fig. 8

This page contains no comments



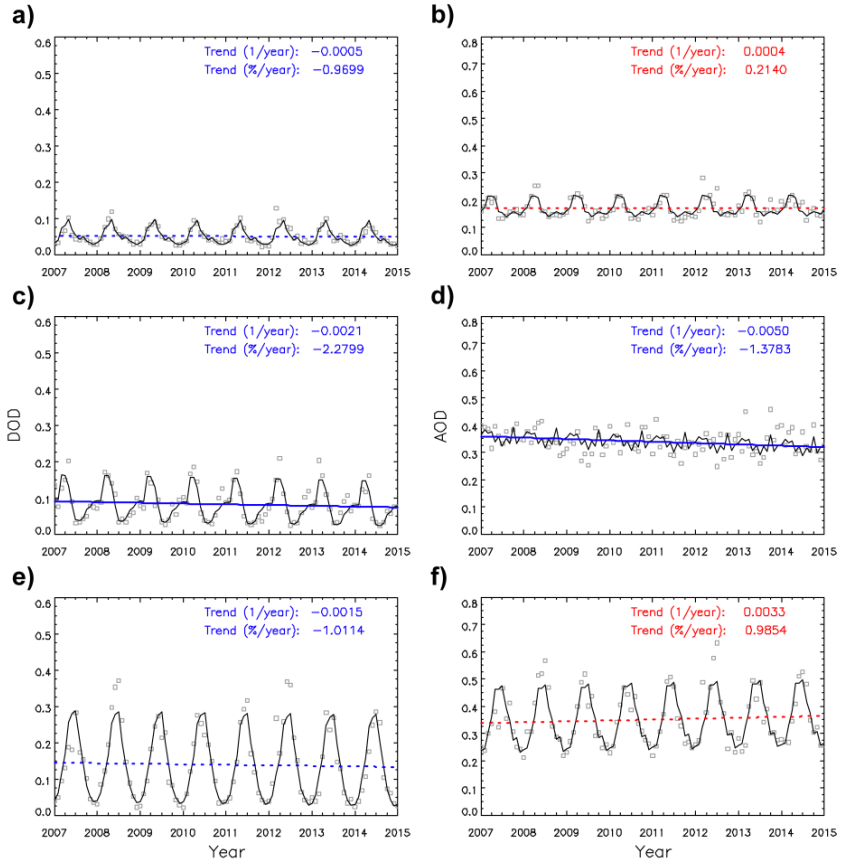


Fig. 9

This page contains no comments