

Supplementary material

A multi-model comparison of meteorological drivers of surface ozone over Europe

Noelia Otero^{1,3}, Jana Sillmann², Kathleen A. Mar¹, Henning W. Rust³, Sverre Solberg⁴, Camilla Andersson⁵, Magnuz Engardt⁵, Robert Bergström⁵, Bertrand Bessagnet⁶, Augustin Colette⁶, Florian Couvidat⁶, Courneiluis Cuvelier⁷, Svetlana Tsyro⁸, Hilde Fagerli⁸, Martijn Schaap^{9,3}, Astrid Manders⁹, Mihaela Mircea¹⁰, Gino Briganti¹⁰, Andrea Cappelletti¹⁰, Mario Adani¹⁰, Massimo D'Isidoro¹⁰, María-Teresa Pay¹¹, Mark Theobald¹², Marta G. Vivanco¹², Peter Wind^{8,13}, Narendra Ojha¹⁴, Valentin Raffort¹⁵ and Tim Butler^{1,3}

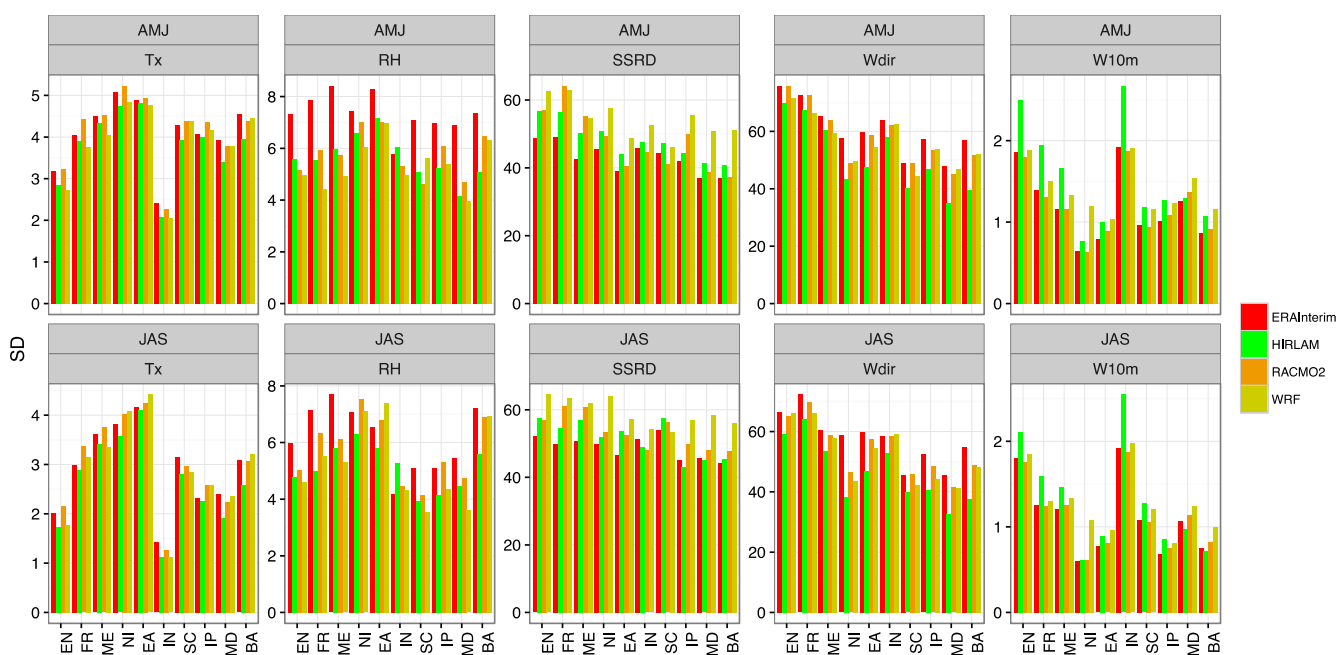


Figure S1. Standard deviations of the meteorological predictors: Maximum temperature (Tx), relative humidity (RH), solar radiation (SSRD), wind direction (Wdir) and wind speed-10m (W10m). Standard deviations are computed for each season, AMJ (top) and JAS (bottom), and for each region: England (EN), France (FR), Mid-EU (ME), NI (North Italy), EA (East-EU), IN (Inflow), SC (Scandinavia), IP (Iberian Peninsula), MD (Mediterranean) and Balkans (BA).

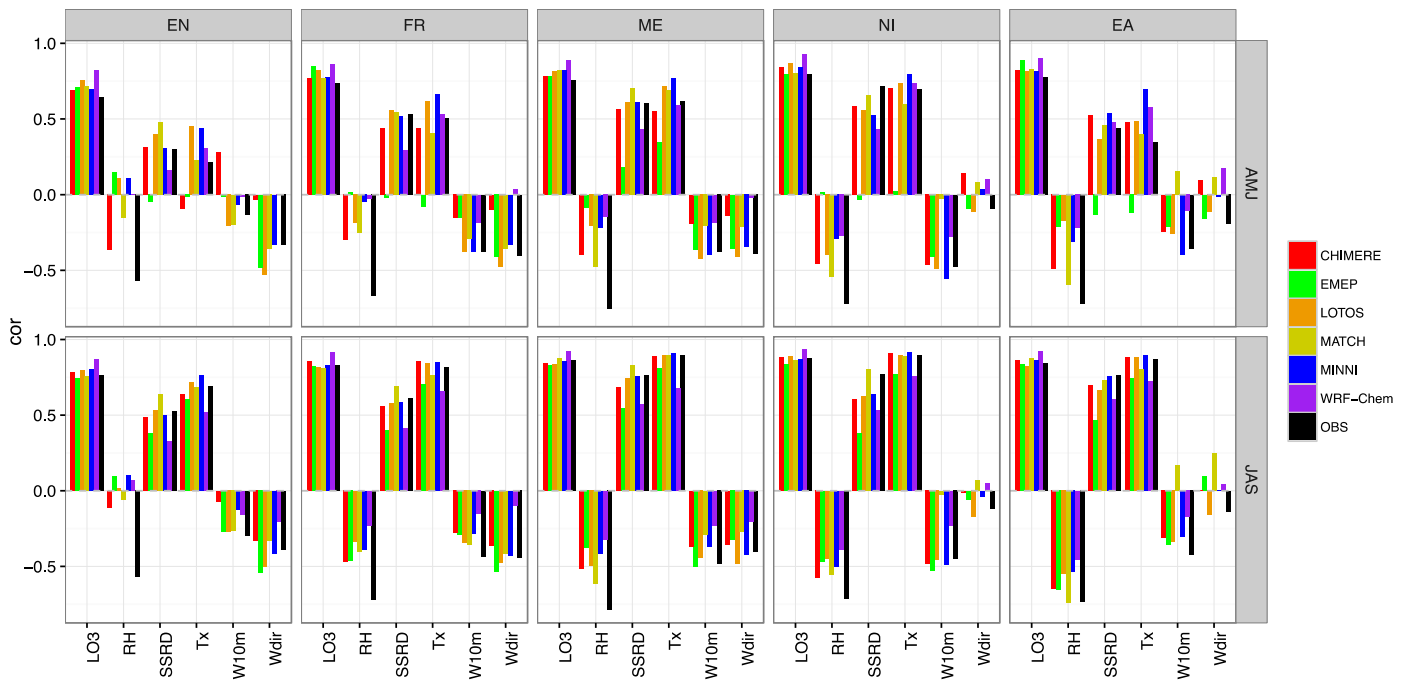


Figure S2. Correlation coefficients between MDA8 O₃ and each potential predictor used in the MLR. Correlations are computed for each season, AMJ (top) and JAS (bottom), and for internal regions: England (EN), France (FR), Mid-EU (ME), NI (North Italy), EA (East-EU).

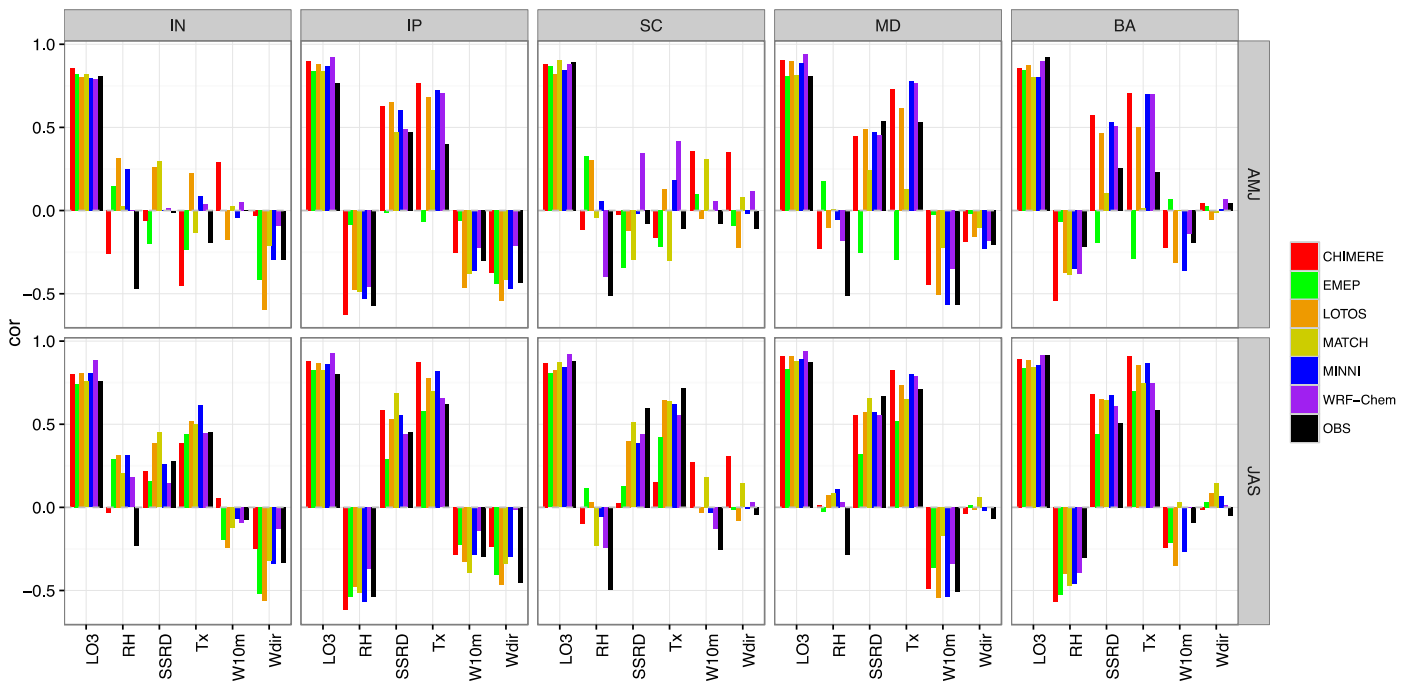


Figure S3. Correlation coefficients between MDA8 O₃ and each potential predictor used in the MLR. Correlations are computed for each season, AMJ (top) and JAS (bottom), and for external regions: IN (Inflow), SC (Scandinavia), IP (Iberian Peninsula), MD (Mediterranean) and Balkans (BA).

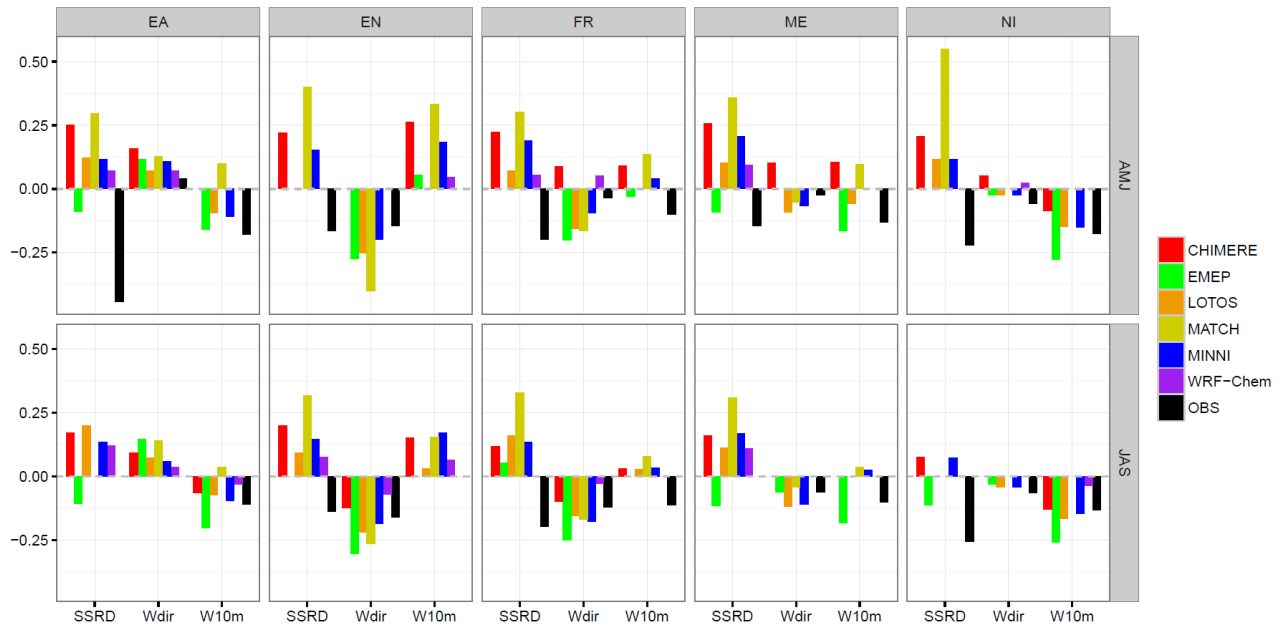


Figure S4. Standardised coefficients values of the rest of the meteorological predictors (SSRD, Wdir and W10m) for each CTM-based and observation-based MLR in AMJ (top) and JAS (bottom) and for the internal regions: England (EN), France (FR), Mid-Europe (ME), North Italy (NI) and East-Europe (EA).

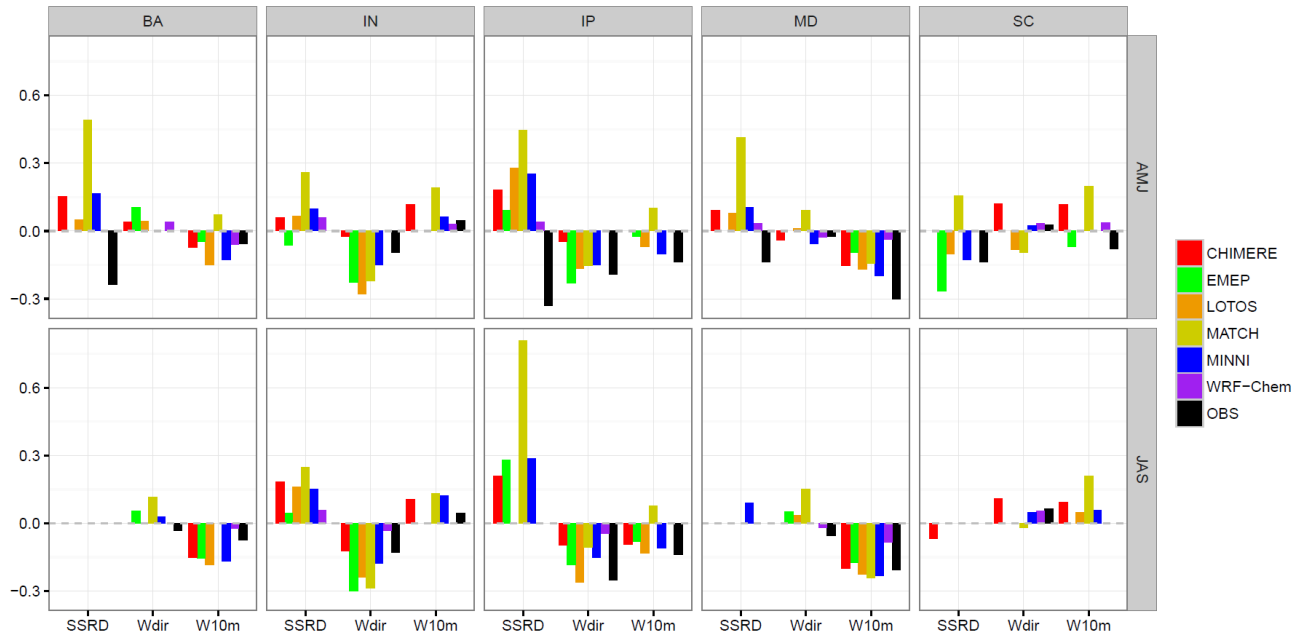


Figure S5. Standardised coefficients values of the rest of the meteorological predictors (SSRD, Wdir and W10m) for each CTM-based and observation-based MLR in AMJ (top) and JAS (bottom) and for the external regions: Inflow (IN), Iberian Peninsula (IP), Scandinavia (SC), Mediterranean (ME) and Balkans (BA).