

Response of Trace Gases to the Disrupted 2015-2016 Quasi-Biennial Oscillation

Olga V. Tweedy¹, Natalya A. Kramarova^{2,4}, Susan E. Strahan^{3,4}, Paul
A. Newman⁴, Lawrence Coy², William J. Randel⁵, Mijeong Park⁵, Darryn
W. Waugh¹, and Stacey M. Frith^{2,4}

¹Johns Hopkins University, Baltimore, MD, USA

²Science Systems and Applications Inc., Lanham, MD, USA

³Universities Space Research Association, Greenbelt, MD, USA

⁴NASA GSFC, Greenbelt, MD, USA

⁵National Center for Atmospheric Research, Boulder, CO, USA

Correspondence to: Olga Tweedy (otweedy1@jhu.edu)

Abstract. The quasi-biennial oscillation (QBO) is a quasi-periodic alternation between easterly and westerly zonal winds in the tropical stratosphere, propagating downward from the middle stratosphere to the tropopause with a period that varies from 24 to 32 months (~ 28 months on average). The QBO wind oscillations affect the distribution of chemical constituents, such as ozone (O_3),
5 water vapor (H_2O), nitrous oxide (N_2O) and hydrochloric acid (HCl), through the QBO induced meridional circulation. In the 2015-2016 winter, radiosonde observations revealed an anomaly in the downward propagation of the westerly phase, which was disrupted by the upward displacement of the westerly phase from ~ 30 hPa up to 15 hPa, and the sudden appearance of easterlies at 40 hPa. Such a disruption is unprecedented in the observational record from 1953-present. In this study we
10 show the response of trace gases to this QBO disruption using O_3 , HCl, H_2O and temperature from the Aura Microwave Limb Sounder (MLS) and total ozone measurements from the Solar Backscatter Ultraviolet (SBUV) Merged Ozone Data Set (MOD). Results reveal development of positive anomalies in stratospheric equatorial O_3 and HCl over ~ 50 -30 hPa in May-September of 2016 and a substantial decrease in O_3 in the subtropics of both hemispheres. The SBUV observations show
15 near record low levels of column ozone in the subtropics in 2016, resulting in an increase of surface UV index during northern summer. Furthermore, cold temperature anomalies near the tropical tropopause result in a global decrease in stratospheric water vapor.

1 Introduction

The quasi-biennial oscillation (QBO) is a quasi-periodic alternation between easterly and westerly zonal winds in the tropical stratosphere that is driven by a broad spectrum of vertically propagating Kelvin and mixed Rossby-gravity waves along with smaller-scale gravity waves (Lindzen and Holton, 1968; Holton and Lindzen, 1972; Dunkerton, 1997). The alternating wind regimes (i.e., the easterly and westerly phases) propagate downward from the middle stratosphere to the tropopause with a period that varies from 24 to 32 months (~ 28 months on average).

There is also a QBO in ozone (O_3), which was first observed by Funk and Garnham (1962) in Australian mid-latitude total column O_3 observations. Ramanathan (1963) showed the connection between the QBO in total O_3 and the QBO in equatorial zonal winds using a series of ground stations spanning both hemispheres, but most importantly noted the out-of-phase relationship between ozone in mid-latitudes and the equator. Angell and Korshover (1964) found a QBO signal in Shanghai ($31.2^\circ N$) total O_3 observations in the 1932-1942 period. Zawodny and McCormick (1991) used satellite O_3 profile observations to show the ozone QBO vertical structure from 20-50 km and $50^\circ S$ - $50^\circ N$. Randel and Wu (1996) used numerical techniques to filter the QBO ozone structure showing the equatorial and mid-latitude “out-of-phase” relationship and revealing the seasonal synchronization between the equatorial QBO and the large amplitude winter-to-spring extratropical O_3 anomalies that appear in both winter hemispheres.

Because most O_3 is found in the lower stratosphere where its lifetime is more than 1 year, the tropical O_3 distribution is strongly controlled by the tropical lower stratosphere transport (Ling and London, 1986). Gray and Pyle (1989) used a two-dimensional (latitude vs. altitude) model to simulate the relationship between winds, temperatures, and the O_3 distributions. Those modeled relationships were confirmed by the observations of Zawodny and McCormick (1991). The Gray and Pyle (1989) simulation revealed that the wave-induced QBO drove a secondary meridional circulation which modulated the O_3 distribution. Assimilated meteorological data and modern transport models confirm these early results, and satellite instruments such as the Microwave Limb Sounder (MLS) have shown additional QBO impacts on water (H_2O), hydrochloric acid (HCl), nitrous oxide (N_2O), and carbon monoxide (CO) (Schoeberl et al., 2008).

The QBO meridional circulation develops between the tropics and subtropics (from the equator to $\sim 30^\circ N$ and $30^\circ S$) to maintain the thermal wind balance between the descending QBO wind shear and its temperature anomaly. At the equator, westerly shear (westerlies aloft and easterlies below) is in balance with a downward propagating, adiabatically warmed perturbation, while easterly shear (easterlies aloft and westerlies below) produces an upward, adiabatically cooled perturbation. The enhanced upwelling during easterly shear and reduced upwelling during westerly shear in the tropics are mass balanced by the changes in the subtropical descent. The circulation is ‘completed’ by the equatorial divergence/convergence of air at the levels of maximum easterly/westerly winds (Choi et al., 2002). The QBO-induced meridional circulation acts on local trace gas gradients to modify

55 their distributions (Gray and Chipperfield, 1990). O₃ responds with increased/decreased values in
the tropics and decreased/increased values in the extratropics during descending westerly/easterly
shear.

QBO effects on composition are found throughout the extratropics. QBO-driven column O₃ anoma-
lies originating in the southern subtropics in early winter reach 60°S by the early spring (Gray and
60 Ruth, 1993; Randel and Wu, 1996; Kinnnersley and Tung, 1998). Strahan et al. (2015) also showed a
transport pathway by which the midlatitude middle stratosphere QBO signal affects polar O₃ deple-
tion by modulating Antarctic inorganic chlorine.

The QBO has been widely analyzed because it is a major source of stratospheric O₃ inter-annual
variability (Baldwin et al., 2001), and the QBO in total column O₃ is a dominant factor controlling
65 inter-annual variations of surface ultraviolet levels (Udelhofen et al., 1999). Further, the detection
and attribution of long-term O₃ changes caused by ozone depleting substances (ODSs) requires
accurate statistical models that include QBO regression terms in order to remove the QBO driven
natural O₃ variability and thereby reveal the residual ODS forced ozone depletion (e.g. Stolarski
et al., 1991). Hence, investigating the QBO driven variability is fundamental to understanding O₃
70 levels and trends, and the resulting changes to surface ultraviolet (UV) radiation.

During the Northern Hemisphere (NH) winter of 2015-2016, radiosonde observations revealed
that the normal downward propagation of the QBO westerly phase was disrupted by upward prop-
agation of westerlies from ~30 hPa up to 15 hPa, and the sudden appearance of easterlies at 40
hPa (Newman et al., 2016; Osprey et al., 2016). This disruption began in November 2015, and the
75 easterlies were fully developed by March 2016. Such a disruption is unprecedented in the equatorial
wind observational record from 1953-present. Osprey et al. (2016) showed that this anomalous event
was linked to the transport of easterly momentum from the northern extratropics into the equatorial
region, and Coy et al. (2017), using meteorological analysis fields beginning in 1980, showed that
the 2015-2016 tropical easterly momentum flux had the largest values over the December-February.
80 None of these studies examined the changes in O₃ or other trace gases during 2015-2016.

In this study we investigate the response of stratospheric trace gases to the 2015-2016 event. We
quantify the impact of the disruption on O₃ and other trace gases and further compare their observed
changes to the expected behavior due to the QBO in the absence of the disruption. Furthermore, we
examine the interannual variations in total ozone and water vapor.

85 **2 Methods and Data**

We use Aura MLS version 4.2 Level 2 measurements of temperature (T), O₃, and HCl from January
2005 to February 2017 between 10-100 hPa. O₃ and T are reported on a fixed vertical grid with 12
surfaces per decade change in pressure between 1000 hPa and 1 hPa; HCl is reported on 6 pressures
per decade. O₃ and HCl have vertical resolution of ~3 km in the pressure range used in this analysis

90 while the vertical resolution of T is ~ 4 km. Although O_3 and T are reported on the same pressure
grids, their vertical resolution is not the same because the number of independent measurements
that the instrument makes varies between MLS T and O_3 (Livesey et al., 2015). O_3 accuracy varies
from 50 to 300 ppb between 100 and 10 hPa while HCl accuracy is estimated at $\sim 10\%$. MLS
temperatures have a -1 K bias in the stratosphere with respect to correlative measurements. Details
95 on MLS measurements, data quality and improvements over previous versions can be found in MLS
v4.2 data quality document (Livesey et al., 2015).

We examine total column O_3 during the anomalous QBO event using total O_3 observations from
the Solar Backscatter Ultraviolet (SBUV) Merged Ozone Data Set (MOD). The MOD is constructed
from monthly zonal mean ozone profiles by individual SBUV instruments, providing the longest
100 available satellite-based time series of profile and total O_3 from a single instrument type (Frith et al.,
2014). The MOD used here includes observations from January 1980 to the present to evaluate the
temporal and spatial distribution of total O_3 .

We use monthly averaged analyses of meteorological data on constant pressure levels from the
Modern-Era Retrospective analysis for Research and Applications- Version 2, (MERRA-2) (Bosilovich
105 et al., 2015) to determine the vertical wind shear and QBO phase. The MERRA-2 analysis begins in
January 1980. Coy et al. (2016) showed that MERRA-2 produces a realistic QBO from 1980-2016,
a period encompassing 15 QBO cycles. We show changes in the meridional circulation due to the
disrupted QBO using the vertical component of the MERRA-2 residual mean meridional circulation,
 \bar{w}^* (Andrews et al., 1987), which is calculated using 3-hourly output.

110 To determine the impact of the 2015-2016 disruption on the distribution of trace gases, we create
a QBO composite ('QBO climatology') for each analyzed dynamical variable (T, zonal winds (\bar{u}),
and upwelling by the residual circulation (\bar{w}^*)) and trace species (O_3 , HCl, and total O_3). These
QBO composites include all available data except for 2015-2016. We composite based on the month
of change from zonal mean easterly (negative) to westerly (positive) vertical wind shear at 40 hPa.
115 This is identified by month '0' in the figures. Compositing based on this criterion emphasizes that
chemical trace gases are most closely related to the changes in the wind shear ($\frac{\partial \bar{u}}{\partial z}$ or \bar{u}_z), not the
zonal wind (\bar{u}) (Baldwin et al., 2001). Compositing dates (month 0) for each QBO cycle are listed
in Table 1. Prior to compositing, we use monthly \bar{u} data to compute \bar{u}_z as a first vertical derivative
of an unevenly-spaced array of \bar{u} using three-point (quadratic) Lagrangian interpolation. The annual
120 cycle was removed from T, \bar{w}^* and trace gases to better isolate QBO variations, and values are shown
in percent difference relative to the monthly climatology, except for the total column O_3 , which is
shown as absolute difference in Dobson Units (DU). Anomalies due to the 2015-2016 event are
calculated as the difference between '2015-2016' and the composite, with values larger than two
standard deviations considered as "significant".

125 Empirical orthogonal function (EOF) analysis has been applied to specify the instantaneous state
of the QBO (Wallace et al., 1993). The two leading EOFs (EOF1 and EOF2) were derived from the
deseasonalized monthly mean zonal mean wind data from Singapore radiosondes.

Interannual changes in global stratospheric water vapor and cold point tropical tropopause temper-
atures were analyzed by forming timeseries from multiple observational data sets. Data were deseas-
130 onalized to isolate anomalies due to the QBO. Time series of stratospheric water vapor anomalies
were derived from combined HALOE (1991-2005) and Aura MLS (2004- 2016) satellite measure-
ments. These data represent near-global ($\sim 60^\circ\text{N-S}$) averages in the lower stratosphere (83 hPa).
HALOE and MLS data were combined using the overlap period during 2004-2005. Cold point tem-
peratures are derived from radiosonde data (1991-2016) and GPS radio occultation data (2001–2016).
135 More details of the data and analysis are provided by Randel and Jensen (2013).

3 Results

3.1 The response of the equatorial stratosphere to the anomalous QBO event

Prior to 2015, wind observations show the robust features of the QBO’s zonal wind pattern of de-
scent in the middle and lower equatorial stratosphere (Newman et al., 2016; Coy et al., 2017). The \bar{u}
140 composite in Fig. 1 (top, column a) shows typical descending easterlies (blue) and westerlies (red)
with the zero wind shear (thick solid black contours). The alternating regime of downward propa-
gating wind shear leads to a modification of lower stratospheric tracers. Composites of tropical O_3
and HCl (Fig. 1, column a) show decreases/increases in mixing ratios, relative to the climatological
seasonal values, during negative (easterly)/positive (westerly) wind shear. This O_3 and HCl behav-
145 ior results from the QBO-induced (“secondary”) meridional circulation, acting on local gradients of
these chemical tracers (Gray and Chipperfield, 1990). A downward (adiabatically warmed) perturba-
tion (decreased \bar{w}^* and increased T) is associated with descending westerly wind shear (positive \bar{u}_z)
while an upward (adiabatically cooled) perturbation is associated with easterly shear (negative \bar{u}_z).
Since the tracer’s tendency ($\bar{\chi}_t$) is proportional to $-\bar{w}^*\bar{\chi}_z$ and mixing ratios of both chemical species
150 increase with height in the lower stratosphere (positive vertical gradient, $\bar{\chi}_z$), O_3 and HCl decrease
with time when \bar{w}^* increases. The opposite is true for a downward perturbation (decreased \bar{w}^*). This
is supported by the good agreement between the analyzed \bar{w}^* and observed T, O_3 and HCl com-
posites with vertical wind shear. As discussed in the introduction, horizontal transport completes the
circulation and also contributes to some changes in tropical stratospheric composition (not shown).

155 In late 2015 westerlies were displaced upward between 30 and 15 hPa and anomalous easterlies
developed at ~ 40 hPa in early 2016 (Newman et al., 2016; Coy et al., 2017), see Fig. 1b (top). Dur-
ing the northern spring the anomalous ascending westerlies reverted back to a more typical descent,
reaching 50 hPa in September 2016 and 70 hPa in February 2017. The vertical residual velocity,
 \bar{w}^* (Fig. 1b bottom), responded to the changes in equatorial zonal winds during 2015-2016 with de-

160 creased upwelling in association with the westerly shear and increased upwelling below the easterly maximum. A strong positive temperature perturbation developed in the 50-30 hPa layer (westerly shear zone) due to this reduced upwelling, while a strong negative perturbation developed in the easterly shear zone – due to the enhanced upward motion. Although analyzed \bar{w}^* is noisy and involves greater uncertainty because of its highly derived nature, the excellent agreement between the
165 wind shear and temperature changes (Fig. 1b bottom panels) provide evidence of secondary circulation changes resulting from the anomaly.

The circulation anomalies created by the 2015-2016 event altered stratospheric composition patterns (Fig. 1b, O₃ and HCl) relative to the composites seen in the left column. Changes in O₃ and HCl are in good agreement with changes in the wind shear and temperature (and thus \bar{w}^*). Prior to
170 November 2015, both trace gases were following similar tendencies to their composites. Beginning February 2016 (black vertical line in Fig. 1b), O₃ and HCl increased between 50-30 hPa (due to the reduced upward motion) and decreased below 50 hPa (due to the enhanced upward motion). When the composites are subtracted from the last QBO cycle (Fig. 1c), QBO-induced anomalies in T, O₃ and HCl are seen to be co-located with the changes in wind shear during the last QBO cycle and
175 anomalies in U, T and O₃ are larger than 2 standard deviations (hatched gray lines), indicating that their changes were driven by the 2015-2016 QBO disruption.

The unprecedented nature of the 2015-2016 event is demonstrated in Fig. 2 showing "the orbits of the QBO" in two dimensional phase space, based on the projections on two leading empirical orthogonal functions (EOF1 and EOF2), following Wallace et al. (1993). QBO orbits are used to quantify
180 the amplitude and phase propagation among the QBO cycles. Each point in this figure describes the instantaneous state of the QBO, described by the amplitude and phase angle of the vector in polar coordinates and specified in terms of variables (EOF1 and EOF2) that define the vertical structure of the zonal wind. EOF1 reflects the negative correlation between zonal wind fluctuations at 10 and 70 hPa while EOF2 indicates the variability at intermediate levels. Time progression corresponds to
185 counterclockwise transits and each orbit corresponds to an individual QBO cycle.

Prior to 2016, the QBO orbits (blue dots in Fig. 2) are roughly circular and data points are distributed uniformly along the orbits, indicating the remarkably uniform structure and nearly constant amplitude of the QBO in this record (1987-2015). During this time, EOF1 and EOF2 combined explain ~95.5% of the variance of the deseasonalized smoothed time series of zonal winds between
190 70 to 10 hPa. Based on this stability, EOF1 and EOF2 are commonly used to isolate the variability related to the QBO when deriving ODS-induced changes in long-term ozone records.

The repetitive QBO pattern was disrupted in 2016, as shown by the red points that deviate from the regular circular pattern. The smaller amplitude (closer to the center) of EOF1 and EOF2 in Figure 2 during the disruption means the zonal winds either are weaker than the typical QBO or not fitting
195 the EOFs well. Analysis of the variance explained by two leading EOFs shows that the first two EOF patterns don't match the disruption very well, with the lowest percent variance (~71%) explained by

the two EOFs in the entire data record occurring during the disruption (not shown). Such disruptions add unpredictable variability to the time series, reducing the accuracy of stratospheric ozone trends determined by multivariate regressions.

200 3.2 Latitudinal changes in ozone

The stratospheric impact of the 2015-2016 event extends into the extratropics. Figure 3 shows the evolution of O_3 for the composite (left), 2015-2016 (middle) and their difference (right). The top panels of Fig. 3 (a, b, and c) show MLS O_3 at 38 hPa, the pressure level of maximum O_3 anomaly during the NH summer of 2016. As shown in the composite (Fig. 3a), the positive O_3 perturbation during the westerly shear in the tropics and the negative perturbations in the extratropics are replaced by anomalies of opposite signs as the wind shear reverses to easterly 12-14 months later. However, in 2016 (Fig. 3b) the 40 hPa westerly shear changes to a weak easterly shear for only a short time interval (Jan-Apr) before switching back to westerly shear (note that the wind shear at 30 hPa remains westerly). O_3 responds by decreasing/increasing in mixing ratios during the easterly/westerly shear changes. The O_3 anomalies due to the 2015-2016 event are highlighted in Fig. 3c, which show large differences after February 2016 (black line). A strong negative tropical O_3 perturbation developed by early spring 2016, propagating to the extratropics in both hemispheres by the end of the NH summer. In the equatorial region, a positive perturbation replaced the negative O_3 perturbation as the wind shear switched back to westerly. QBO-induced anomalies after February 2016 are larger than two standard deviations.

The 2016 NH summer positive tropical O_3 anomaly at 30-50 hPa - the level of maximum O_3 number density - contributed to substantial changes in the total column O_3 . As in the 38 hPa O_3 from MLS (Fig. 3, top), the typical QBO behavior of SBUV total O_3 (Fig. 3d) contrasts to the anomalous 2015-2016 behavior (Fig. 3e), with their difference (Fig. 3f) highlighting the 2016 anomalies. The SBUV total O_3 QBO composite is based on 14 transitions of wind shear at 40 hPa (excluding 2015-2016). Total O_3 was deseasonalized and values are shown as absolute difference from the monthly climatology (in Dobson Units). This SBUV composite captures the major features of the typical QBO and the O_3 perturbations.

Prior to February 2016, Fig. 3f shows small total O_3 differences except for the large midlatitude anomalies from 0 to +6 months in the southern (negative anomaly) and northern (positive anomaly) hemispheres. However, only the negative anomaly in the southern midlatitudes is larger than 2 standard deviations. The cause of these anomalies prior to the 2015-2016 disruption remains unclear and is a subject of ongoing investigation. After February 2016 (black line in Fig. 3e), there is a large decrease in total ozone in the extratropics and midlatitudes of both hemispheres and the total O_3 differences between composite and last QBO cycle (Fig. 3f) are very similar to the differences in 38 hPa O_3 from MLS (Fig. 3c). This strongly suggests that the 2015-2016 event had a significant impact on both tropical and extratropical total O_3 .

3.3 Temporal and spatial morphology of ozone in April and August 2016

Large negative O_3 anomalies in the lower stratosphere start in April 2016 in the tropics and propagate
235 to the extratropics by August 2016. Note, these two months occur at 11 and 15 months after month
0 on the "composited" time axes and are indicated by arrows in Fig. 3. Therefore, we compare the
latitudinal and vertical extent of the QBO-induced anomalies in T and O_3 during these two months
(Fig. 4b and Fig. 4d) to the expected behavior based on the composite eleven (+11 mon) and fifteen
(+15 mon) months after the wind shear reversal (Fig. 4a and Fig. 4c). In agreement with Fig. 1b,
240 in April 2016 the anomalous easterly shear below 40 hPa (dashed horizontal line in Fig. 1b) leads
to strong negative T and O_3 perturbations in the tropics while the appearance of ascending westerly
shear leads to weak tropical T and O_3 increases between 20-40 hPa. By August 2016, the westerly
shear strengthens and descends to 30-50 hPa resulting in strong positive T and O_3 perturbations
in this layer, while the easterly shear below 50 hPa leads to negative perturbations in the equatorial
245 (10°N - 10°S) stratosphere. This is consistent with our understanding of trace gas response to changes
in tropical upwelling. The consistency of O_3 and T anomalies during 2015-2016 is evidence of
circulation changes.

In the subtropics, the deseasonalized O_3 QBO signature is out-of-phase with that at the equator,
in agreement with Fig. 3b. In August 2016, strong negative O_3 perturbations develop during the NH
250 summer on both sides of the equator (although much stronger in the winter southern hemisphere)
as a response to the QBO-induced meridional circulation. In the composites at +11 and +15 months
(Fig. 4a and Fig. 4c) anomalies in MLS O_3 and T are opposite to those observed in April and August
2016 (Fig. 4b and Fig. 4d) due to the descending easterly shear. Thus, O_3 is responding as expected
to a QBO-induced meridional circulation but this period is anomalous with respect to a normal QBO
255 progression.

The observed 2015-2016 anomalies are unique in the total O_3 record. Figure 5 compares the
latitudinal distribution of deseasonalized total O_3 from April and August 2016 (in red) to the total
 O_3 composite (the average from the 14 composited QBO cycles) shown in Fig. 3d at +11 and +15
months respectively (in black). Total O_3 from each individual QBO cycle included in the composite
260 is shown in blue, with light blue shading indicating the range of total O_3 from all QBO cycles
(excluding 2015–2016). In the absence of the disruption, we expect total O_3 at +11 (Fig. 5a) and
+15 (Fig. 5b) months to lie within the blue shaded range of past observations. Instead, in April 2016
total O_3 is lower than during other QBO cycles in the NH tropics (10°N - 20°N). Furthermore,
during August 2016 total ozone is higher at the equator and lower/near the edge in the extratropics
265 between 10°S - 40°S / 30°N - 50°N compared to other QBO cycles.

Calculations suggest that anomalously low total column O_3 at 22.5°S in August 2016 increased
the monthly zonal mean surface clear-sky UV index by $\sim 8.5\%$ compared to the 36-yr mean (New-
man and McKenzie, 2011). Increased surface UV radiation has a harmful effect on health by dam-
aging cells, DNA, and increasing the risk of developing skin cancer. Increased exposure to UV in

270 plants leads to enhanced plant fragility, growth limitation, and yield reduction affecting our ability to secure food production (Caldwell et al., 1995; Tevini, 1993).

3.4 QBO-driven changes in total ozone and water vapor in the context of long-term time series

Examination of the interannual variations in SBUV monthly and zonal mean total O₃ shows very low total O₃ values in the extratropics during spring and summer of 2016 compared to other years within this observational record. Figure 6 displays the time series for April (top panels) and August (bottom panels) total O₃ values in the northern and southern extratropics. The regions shown are locations with large anomalies in Fig. 3f. The individual 1-sigma error estimates are shown as the vertical gray bars in Fig. 6, while the horizontal line is the 2016 value. Each of these plots show that 280 the 2016 value was the record or near record low in the more than 40 years of the SBUV data.

Near record low total O₃ in the extratropics during the spring-summer 2016 is due to the 2015-2016 QBO disruption event. As shown in Fig. 3e, beginning about February 2016 the disruption in the descent of easterly zonal winds led to lower O₃ values in both the northern and southern extratropics and persisted into the fall of 2016. The ozone anomalies, shown in Fig.3e, are up to -12 285 DU at 12.5°N in April 2016, and -15 DU at 17.5°S in August 2016. This strongly contrasts with the expected behavior (Fig. 3d) that would have been either near zero or small positive anomalies.

The 2015-2016 QBO event also significantly impacted the global amount of stratospheric water vapor in 2016. H₂O enters the stratosphere from the troposphere primarily in the tropics. The amount of H₂O in the stratosphere is controlled by the tropical tropopause temperature ("cold point tropopause temperatures", or T_{cp}) with colder T_{cp} resulting in less H₂O entering the tropical stratosphere from the troposphere. Figure 7 demonstrates very strong correlation of stratospheric water vapor anomalies with T_{cp} (also see Randel and Jensen, 2013). In 2016, cold tropical tropopause temperatures (in balance with anomalous easterlies) led to a global decrease in the stratospheric H₂O in October-December 2016. Global H₂O in November is amongst the lowest in the record 295 (1992-2016) due to very low T_{cp}.

In addition to the QBO disruption, there was a strong El-Niño in 2015-2016 winter [Hu et al., 2016]. While changes in the global water content and stratospheric ozone from late spring to the end of fall 2016 are attributed mostly to the unprecedented QBO event, El-Niño could strongly influence the lower stratosphere during the winter of 2016. Previous studies showed cooling of the tropical 300 lower stratosphere and strengthening of the Brewer-Dobson circulation during El-Niño (Randel et al., 2009; Calvo et al, 2010) followed by an associated decrease in ozone and increase in H₂O in this region. The impact of ENSO on stratospheric water vapor, however, is non-linear and often depends on the phase of the QBO (Liess and Geller, 2012), time of the year (early or late in the winter) and location (Central or Eastern Pacific) where ENSO maximum occurs (Garfinkel et al, 2013).

305 The interplay between El-Niño and the QBO disruption during 2015-2016 boreal winter is not well understood and their relative importance on trace gas distribution requires a detailed investigation.

4 Concluding remarks

This study demonstrates that the 2015-2016 QBO disruption had a substantial impact on the composition of the stratosphere. It led to a modified circulation that reduced the equatorial upward circulation in association with the positive (westerly) shear, while the negative shear below the easterly maximum led to enhanced upward motion. Following the appearance of the disruption in February 2016, there were two layers of zonal wind shear in the tropics. Westerly shear in the 30-50 hPa layer was linked to increased temperature and decreased upwelling, resulting in positive perturbations in O_3 and HCl. The easterly shear from the disruption in the 50-100 hPa layer produced negative temperature perturbations in association with increased tropical upwelling, inducing negative perturbations in O_3 and HCl. Cold temperature anomalies extended to the tropopause level in late 2016, resulting in decreases in global stratospheric water vapor. Because the ozone number density maximum is in the 50-30 hPa layer, the QBO disruption increased total O_3 at the equator.

The decrease in tropical ascent during the disruption was balanced by reduced downwelling in the extratropics. This reduced extratropical downward motion decreased O_3 in those regions (although the horizontal component to this circulation contributes as well). In this study we focused mostly on O_3 changes, however, the response of other long-lived tracers such as HCl and N_2O is consistent with the QBO meridional circulation induced by the disrupted QBO. While HCl anomalies are consistent with the O_3 anomalies, the N_2O anomalies have an opposite sign due to the negative vertical gradient of this tracer. The similarities in the responses of temperature and observed changes in chemical trace gases to the QBO disruption shows that these composition changes are primarily dynamically driven. Trace gases show perturbed behavior compared to the past, but their response is consistent with our understanding of the QBO-induced meridional circulation.

At nearly the same time as the QBO disruption, there was one of the strongest in record El-Niño event and very strong stratospheric polar vortex in early to mid- winter [Cheung et al.,2016; Hu et al.,2016; Scaife et al., 2017]. The interplay of these three events and their potential impact on trace gas distributions remains to be investigated. For instance, we acknowledge the possible influence of 2015-2016 El-Niño event on tropical tropopause temperature and therefore global redistribution of stratospheric water vapor. Furthermore, previous studies by Fioletov and Shepherd [2003, 2005] showed very strong correlations between polar and midlatitude total ozone. Ozone depleted air inside cold polar vortex could mix into the northern hemisphere midlatitudes contributing to the negative anomalies in total ozone during 2016 boreal summer. Strahan et al. [2016] showed that the impact of Arctic ozone depletion on the midlatitudes in spring after winters with moderate depletion (such as 2016) was about 5 DU (south of 45°N). But they also found that the dynamical impact on O_3 due

340 to a strong polar vortex winter roughly opposed the depletion changes, resulting in very little net
impact. Furthermore, very symmetric nature of negative anomalies around equator during the boreal
summer and fall strongly suggests a dominant role of circulation changes due to the 2015-2016 QBO
disruption.

It is unclear if this QBO disruption is an event of great rarity or if similar events will reoccur.
345 Similar disruptions with the same timing could potentially alter ozone and trace gas distributions,
affecting the stratospheric climate and making it more difficult to accurately estimate climate trends.
For example, a series of disruptions could drive a downward ozone trend and lead to a long-term
increase in the surface UV index during the peak of northern summer.

At present, numerical models are unable to predict such events (Osprey et al., 2016), pointing to
350 incomplete understanding of QBO forcing mechanisms. The model failures could result from miss-
ing processes, poor representation of necessary wave forcings, or resolution. Osprey et al. (2016)
pointed out that only one event similar to the observed during 2016 was identified among the avail-
able models that produce an internally-generated QBO. Our inability to simulate and/or predict a
disrupted QBO will add uncertainty to future predictions of ozone and other chemical constituents
355 from coupled chemistry climate models, as well as limit our ability to resolve statistically-significant
ODS-related changes in the observed O₃ record. This event, whether unique or the first of many QBO
disruptions, emphasizes the crucial need to continue collecting and evaluating high quality satellite
measurements to trace the impact of stratospheric dynamical changes.

5 Data availability

360 The observational data sets used in this study are publicly available. MLS data are available from the
NASA Goddard Space Flight Center Earth Sciences (GES) Data and Information Services Center
(DISC). SBUV total ozone data have been obtained from the NASA Goddard Space Flight Center
Website ([https://acd-ext.gsfc.nasa.gov/Data services/merged/](https://acd-ext.gsfc.nasa.gov/Data%20services/merged/)). The MERRA-2 reanalysis fields were
obtained from the NASA Earth Observing System Data and Information System ([https://earthdata.
365 nasa.gov](https://earthdata.nasa.gov)). Daily global radiosondes have been collected at NASA/GSFC and are provided from the
Global Telecommunications System (available via the NOAA/NCEP web site: <ftp://ftp.cpc.ncep.noaa.gov/wd53rl/rsonde/>).
HALOE data set is available at <http://haloe.gats-inc.com> and GPS radio occultation data is obtained
from the COSMIC data center at <http://www.cosmic.ucar.edu/>

Acknowledgements. Authors acknowledge, and thank, Luke Oman for providing us with vertical component of
370 the residual circulation, \bar{w}^* , calculated from MERRA-2 reanalysis product and all those who are members of
the MLS and SBUV data science and support teams. Olga Tweedy is supported by the National Science Found-
ation Graduate Research Fellowship Program under Grant No.DGE-1232825. Support for this study was also
provided under the NASA Atmospheric Composition Modeling and Analysis Program. NCAR is operated by

the University Corporation for Atmospheric Research, under sponsorship of the National Science Foundation.

375 We thank the two reviewers for their substantive comments.

References

- Andrews, D. G., Holton, J. R., and Leovy, C. B.: Middle atmosphere dynamics, 40, Academic press, 1987.
- Angell, J. K. and Korshover, J.: Quasi-biennial variations in temperature, total ozone, and tropopause height, *Journal of the Atmospheric Sciences*, 21, 479–492, 1964.
- 380 Baldwin, M., Gray, L., Dunkerton, T., Hamilton, K., Haynes, P., Randel, W., Holton, J., Alexander, M., Hirota, I., and Horinouchi, T.: The quasi-biennial oscillation, *Reviews of Geophysics*, 39, 179–229, 2001.
- Bosilovich, M. G. and yih Sun, W.: Monthly simulation of surface layer fluxes and soil properties during FIFE, *Journal of the Atmospheric Sciences*, 72, 2015.
- Caldwell, M., Teramura, A. H., Tevini, M., Bornman, J., Björn, L. O., and Kulandaivelu, G.: Effects of increased
385 solar ultraviolet-radiation on terrestrial plants, *Ambio*, 24, 166–173, 1995.
- Calvo, N., Garcia, R., Randel, W., and Marsh, D.: Dynamical mechanism for the increase in tropical upwelling in the lowermost tropical stratosphere during warm ENSO events, *Journal of the Atmospheric Sciences*, 67, 2331–2340, 2010.
- Cheung, H. H., Zhou, W., Leung, M. Y., Shun, C., Lee, S., and Tong, H.: A strong phase reversal of the Arctic
390 Oscillation in midwinter 2015/2016: Role of the stratospheric polar vortex and tropospheric blocking, *Journal of Geophysical Research: Atmospheres*, 121, 2016.
- Choi, W., Lee, H., Grant, W. B., Park, J. H., Holton, J. R., LEE, K., and Naujokat, B.: On the secondary meridional circulation associated with the quasi-biennial oscillation, *Tellus B*, 54, 395–406, 2002.
- Coy, L., Wargan, K., Molod, A. M., McCarty, W. R., and Pawson, S.: Structure and dynamics of the quasi-
395 biennial oscillation in MERRA-2, *Journal of Climate*, 29, 5339–5354, 2016.
- Coy, L., Newman, P., Pawson, S., and Lait, L. R.: Dynamics of the Disrupted 2015-16 Quasi-Biennial Oscillation, *Journal of Climate*, 2017, submitted.
- Dunkerton, T. J.: The role of gravity waves in the quasi-biennial oscillation, *Journal of Geophysical Research: Atmospheres*, 102, 26 053–26 076, 1997.
- 400 Frith, S. M., Kramarova, N. A., Stolarski, R. S., McPeters, R. D., Bhartia, P. K., and Labow, G. J.: Recent changes in total column ozone based on the SBUV Version 8.6 Merged Ozone Data Set, *Journal of Geophysical Research: Atmospheres*, 119, 9735–9751, doi:10.1002/2014JD021889, 2014.
- Funk, J. and Garnham, G.: Australian ozone observations and a suggested 24 month cycle, *Tellus*, 14, 378–382, 1962.
- 405 Garfinkel, C. I., Hurwitz, M. M., Oman, L. D., and Waugh, D. W.: Contrasting effects of Central Pacific and Eastern Pacific El Niño on stratospheric water vapor, *Geophysical Research Letters*, 40, 4115–4120, 2013.
- Gray, L. and Chipperfield, M.: On the interannual variability of trace gases in the middle atmosphere, *Geophysical Research Letters*, 17, 933–936, 1990.
- Gray, L. and Pyle, J.: A two-dimensional model of the quasi-biennial oscillation of ozone, *Journal of the Atmospheric Sciences*, 46, 203–220, 1989.
410
- Gray, L. J. and Ruth, S.: The modeled latitudinal distribution of the ozone quasi-biennial oscillation using observed equatorial winds, *Journal of the Atmospheric Sciences*, 50, 1033–1046, 1993.
- Holton, J. R. and Lindzen, R. S.: An updated theory for the quasi-biennial cycle of the tropical stratosphere, *Journal of the Atmospheric Sciences*, 29, 1076–1080, 1972.

- 415 Kinnersley, J. S. and Tung, K.-K.: Modeling the global interannual variability of ozone due to the equatorial QBO and to extratropical planetary wave variability, *Journal of the Atmospheric Sciences*, 55, 1417–1428, 1998.
- Lindzen, R. S. and Holton, J. R.: A theory of the quasi-biennial oscillation, *Journal of the Atmospheric Sciences*, 25, 1095–1107, 1968.
- 420 Ling, X.-D. and London, J.: The quasi-biennial oscillation of ozone in the tropical middle stratosphere: A one-dimensional model, *Journal of the Atmospheric Sciences*, 43, 3122–3137, 1986.
- Livesey, N. J., Read, W. G., Wagner, P. A., Froidevaux, L., Lambert, A., Manney, G. L., Millán-Valle, L. F., Pumphrey, H. C., Santee, M. L., Schwartz, M. J., Wang, S., Fuller, R. A., Jarnot, R. F., Knosp, B. W., and Martinez, E.: Version 4.2x Level 2 data quality and description document, Tech. Rep. JPL D-33509 Rev. B, 425 Jet Propulsion Laboratory, available at <http://mhs.jpl.nasa.gov>, 2015.
- Newman, P., Coy, L., Pawson, S., and Lait, L.: The anomalous change in the QBO in 2015–2016, *Geophysical Research Letters*, 43, 8791–8797, 2016.
- Newman, P. A. and McKenzie, R.: UV impacts avoided by the Montreal Protocol, *Photochemical and Photobiological Sciences*, 10, 1152–1160, 2011.
- 430 Osprey, S. M., Butchart, N., Knight, J. R., Scaife, A. A., Hamilton, K., Anstey, J. A., Schenzinger, V., and Zhang, C.: An unexpected disruption of the atmospheric quasi-biennial oscillation, *Science (New York, N.Y.)*, 353, 1424–1427, doi:science.aah4156 [pii], IR: 20161006; CI: Copyright (c) 2016; JID: 0404511; ppublish, 2016.
- Ramanathan, K.: Bi-annual variation of atmospheric ozone over the tropics, *Quarterly Journal of the Royal Meteorological Society*, 89, 540–542, 1963.
- 435 Randel, W. J. and Jensen, E. J.: Physical processes in the tropical tropopause layer and their roles in a changing climate, *Nature Geoscience*, 6, 169–176, 2013.
- Randel, W. J. and Wu, F.: Isolation of the ozone QBO in SAGE II data by singular-value decomposition, *Journal of the Atmospheric Sciences*, 53, 2546–2559, 1996.
- Randel, W. J., Garcia, R. R., Calvo, N., and Marsh, D.: ENSO influence on zonal mean temperature and ozone 440 in the tropical lower stratosphere, *Geophysical Research Letters*, 36, 2009.
- Scaife, A. A., Comer, R., Dunstone, N., Fereday, D., Folland, C., Good, E., Gordon, M., Hermanson, L., Ineson, S., and Karpechko, A.: Predictability of European winter 2015/2016, *Atmospheric Science Letters*, 18, 38–44, 2017.
- Schoeberl, M., Douglass, A., Newman, P., Lait, L., Lary, D., Waters, J., Livesey, N., Froidevaux, L., Lambert, 445 A., and Read, W.: QBO and annual cycle variations in tropical lower stratosphere trace gases from HALOE and Aura MLS observations, *Journal of Geophysical Research: Atmospheres*, 113, 2008.
- Stolarski, R. S., Bloomfield, P., McPeters, R. D., and Herman, J. R.: Total ozone trends deduced from Nimbus 7 TOMS data, *Geophysical Research Letters*, 18, 1015–1018, 1991.
- Strahan, S., Oman, L., Douglass, A., and Coy, L.: Modulation of Antarctic vortex composition by the quasi- 450 biennial oscillation, *Geophysical Research Letters*, 42, 4216–4223, 2015.
- Strahan, S., Douglass, A., and Steenrod, S.: Chemical and dynamical impacts of stratospheric sudden warmings on Arctic ozone variability, *Journal of Geophysical Research: Atmospheres*, 121, 2016.
- Tevini, M.: UV-B radiation and ozone depletion: effects on humans, animals, plants, microorganisms, and materials, Lewis Publishers Boca Raton, FL., 1993.

- 455 Udelhofen, P. M., Gies, P., Roy, C., and Randel, W. J.: Surface UV radiation over Australia, 1979–1992: effects of ozone and cloud cover changes on variations of UV radiation, *Journal of Geophysical Research: Atmospheres*, 104, 19 135–19 159, 1999.
- Wallace, J. M., Panetta, R. L., and Estberg, J.: Representation of the equatorial stratospheric quasi-biennial oscillation in EOF phase space, *Journal of the Atmospheric Sciences*, 50, 1751–1762, 1993.
- 460 Zawodny, J. M. and McCormick, M. P.: Stratospheric Aerosol and Gas Experiment II measurements of the quasi-biennial oscillations in ozone and nitrogen dioxide, *Journal of Geophysical Research: Atmospheres*, 96, 9371–9377, 1991.

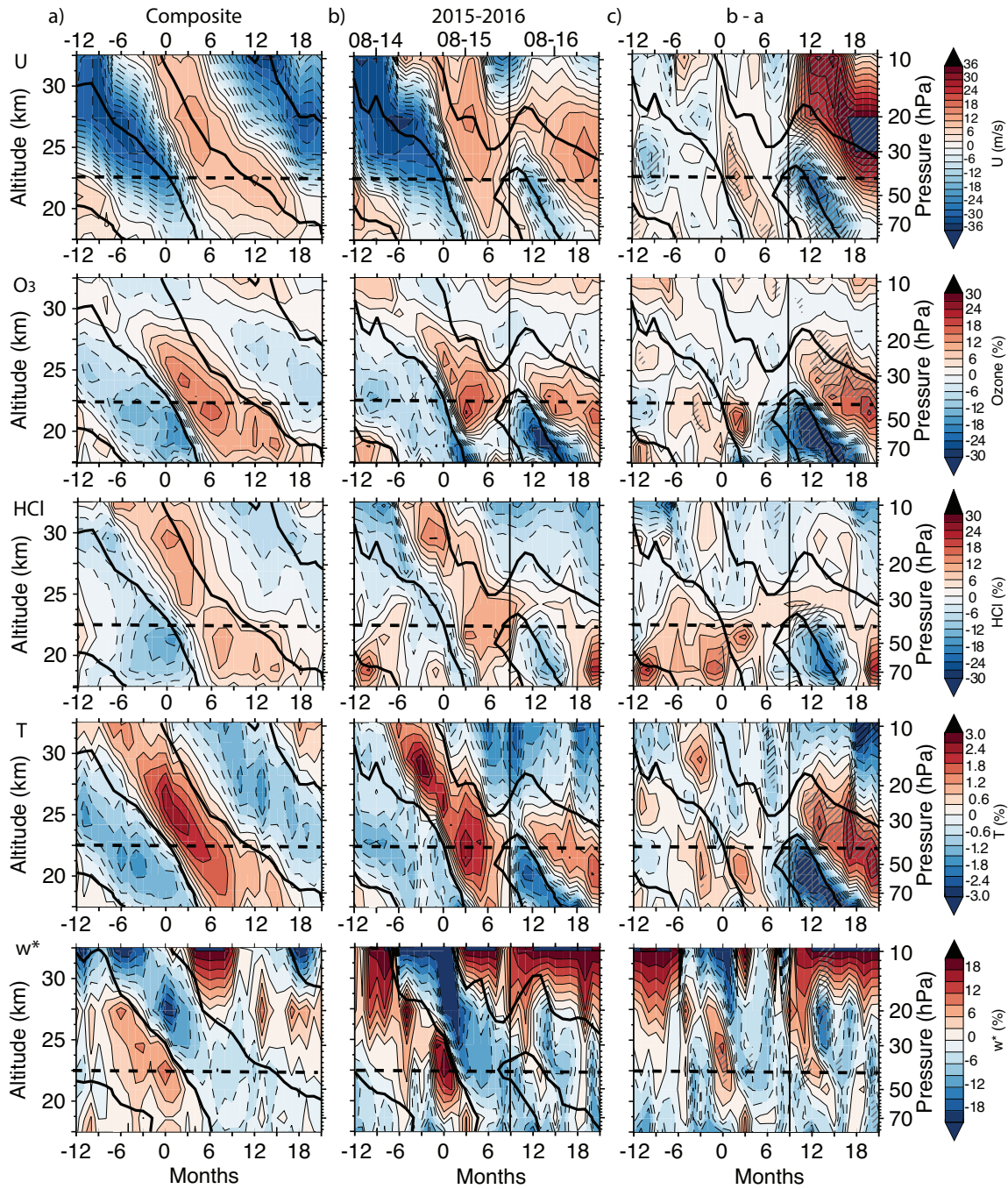


Fig. 1. The rows show the MERRA-2 zonal mean zonal wind component, \bar{u} (m s^{-1}), deseasonalized MLS O_3 , HCl, temperature (T) and vertical component of the MERRA-2 residual circulation (\bar{w}^*), as a function of time and pressure (in percent change from long term monthly averages), averaged over 5°S – 5°N . The left column (a) shows the composite of the easterly-to-westerly shear transitions based on 4 shear transitions at 40 hPa. The middle column (b) shows the 2015-2016 QBO cycle, which includes the data from April 2014 to September 2016, with month 0 in May 2016. The right column (c) shows the difference between the 2015-2016 event and the climatology (b-a) with hatching indicating regions with absolute difference ($b-a$) larger than two standard deviations. The thick black contours denote the zero wind shear. The horizontal dashed line indicates the 40 hPa level while vertical line indicates February, 2016.

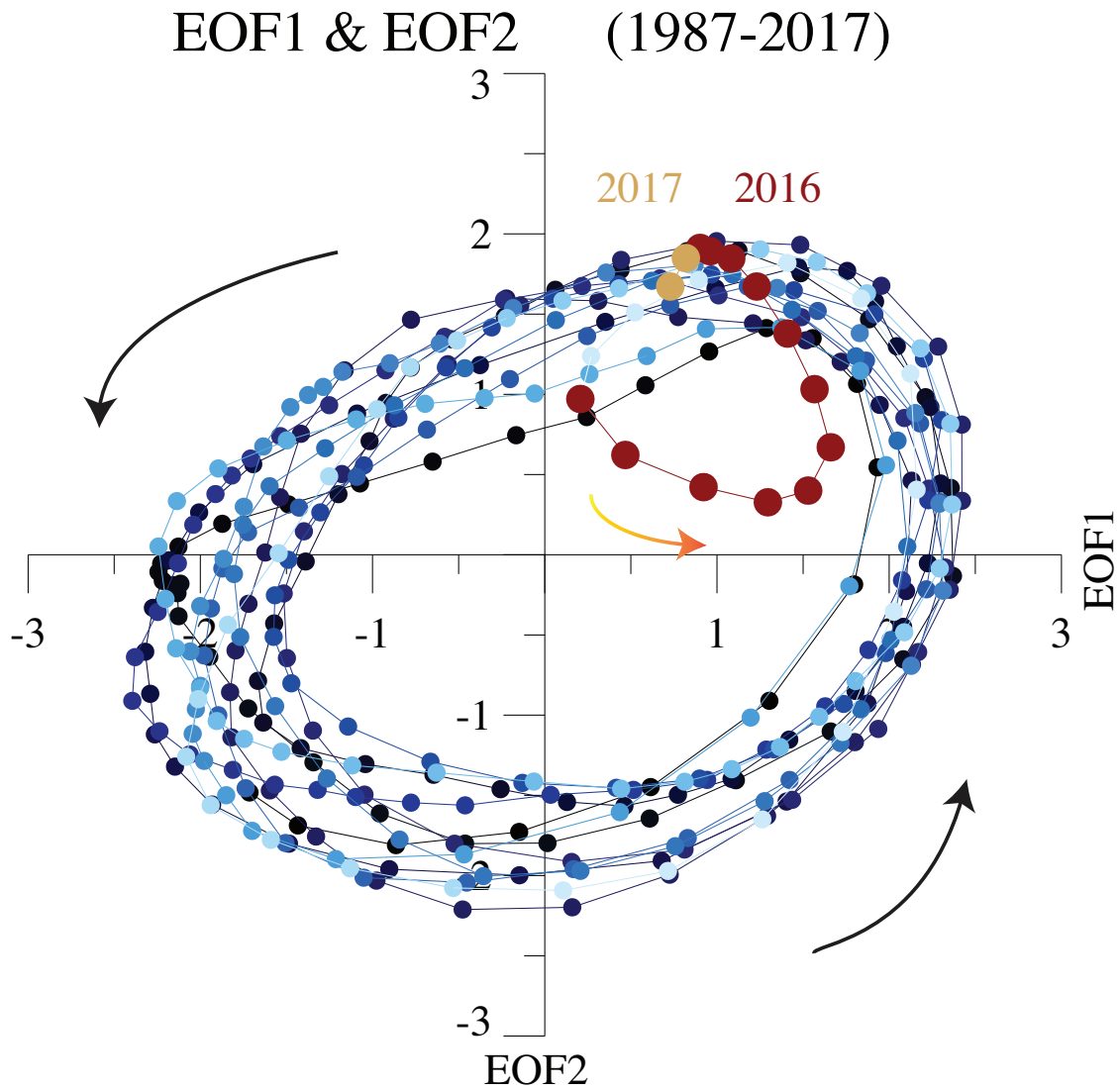


Fig. 2. Phase space diagram of the projection of the monthly equatorial zonal wind anomalies onto spatial structures EOF1 and EOF2. Time progression coincides with counterclockwise orbit transits. Dots represent each month from January 1987 to February 2017. Different shades of blue indicate different years from 1987-2015 (from darker to lighter), while red and yellow dots correspond to 2016 and 2017 respectively

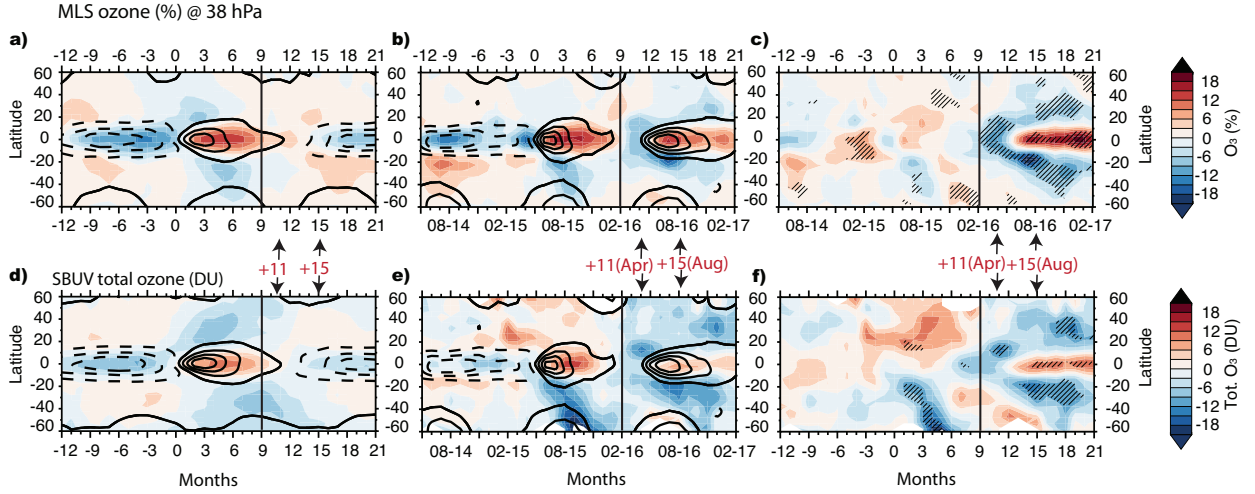


Fig. 3. Latitude and time evolution of MLS ozone at 38 hPa (top row) for (a) the composite, (b) 2015-2016, and (c) their difference (b-a), highlighting the anomalies due to the disruption. MLS ozone values are shown in percent change from long term monthly averages with contour intervals every 3 % (zero contour is omitted). The bottom row shows the deseasonalized SBUV total ozone (in Dobson Units, contour intervals every 3 DU) for d) the composite, e) 2015-2016, and f) their difference (e-d). Black thick solid and dashed contours show westerly and easterly vertical wind shear respectively for (a and d) the composites and (b and e) 2015-2016. MLS (SBUV) composites are based on 4(14) transitions from easterly to westerly vertical wind shear at 40 hPa. Vertical black line highlights +9 months after windshear reversal from negative to positive (month 0), corresponding to February 2016 in (b) and (e) while arrows indicate ozone at +11 and +15 months after month 0, corresponding to April 2016 and August 2016 in (b) and (e). Gray hatching in (c) and (f) indicates regions with absolute difference between 2015-2016 and the composites being larger than two standard deviations

Table 1: the QBO composite dates (month 0)

QBO cycle	1	2	3	4	5	6	7	8
Month 0	1982-06	1984-10	1987-06	1989-12	1992-06	1994-09	1996-11	1998-09
QBO cycle	9	10	11	12	13	14	15	
Month 0	2001-10	2003-12	2006-02	2008-01	2010-06	2012-12	2015-05	

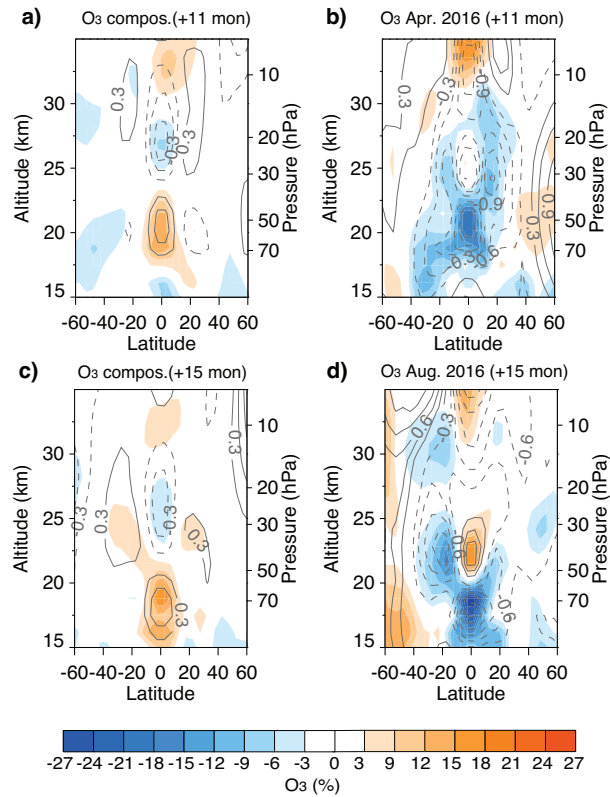


Fig. 4. Latitude-height cross sections of deseasonalized MLS ozone (filled) and temperature (gray contours) in the composite (a) 11 and (c) 15 months after the wind shear reversal based on 4 QBO cycles and during (b) April (+11 mon.) and (d) August 2016 (+15 mon.). Ozone and temperature values are shown in percent change from long term monthly averages with contour intervals every 3% and 0.3% respectively (zero contour is omitted).

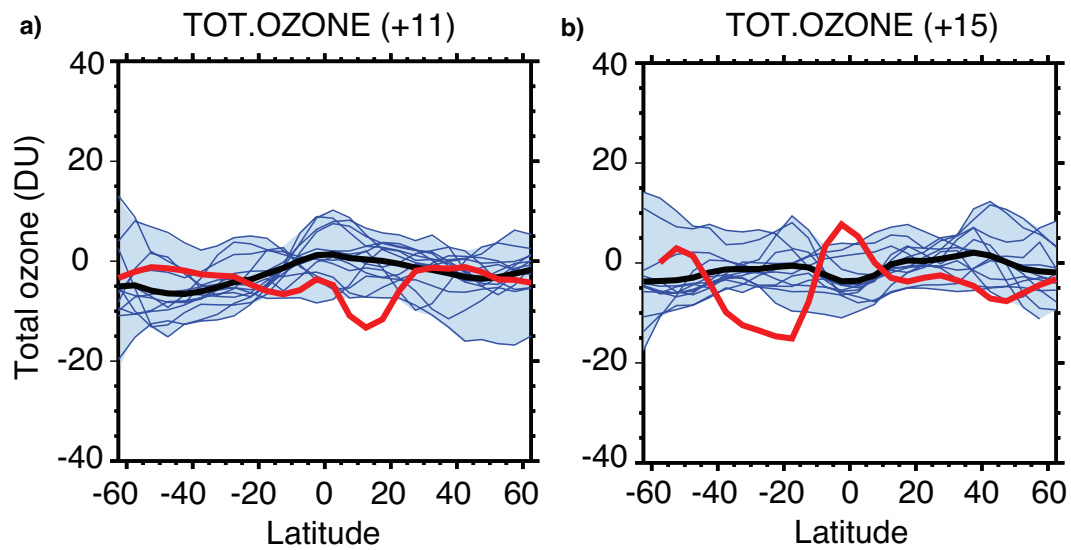


Fig. 5. (a) Deseasonalized SBUV total ozone (in Dobson Units) as a function of latitude 11 months after wind shear reversal from easterly to westerly from fourteen QBO cycles prior to 2015-2016 (blue lines), the composite (black line) based on 14 QBO cycles and 2015-2016 (April 2016, red line). (b) The same as in (a) only for total ozone at +15 months, corresponding to August 2016. The blue shading shows the observed O₃ range at +11 and +15 months respectively for all 14 QBO cycles (excluding the 2015–2016 event).

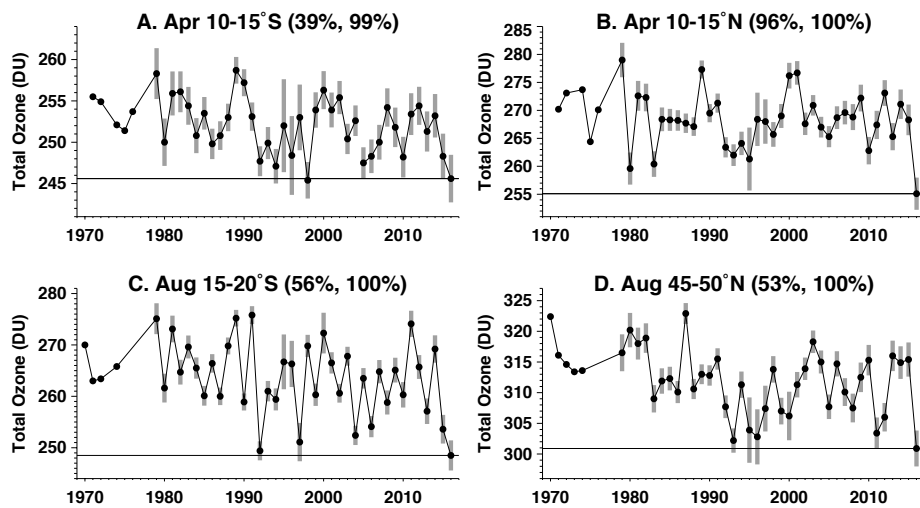


Fig. 6. SBUV total ozone (in Dobson Units) timeseries from 1970-2016 for April, averaged over (a) 10°S -15°S and (b) 10°N -15°N, and for August, averaged over (c) 15°S -20°S and (d) 45°N -50°N . Vertical bars show 1-sigma uncertainties in the measurements. The horizontal line shows the total ozone value in April or August 2016 and the panel titles show the percentage estimates of the 2016 value being the lowest and amongst the lowest 20% of all values. The probability that the 2016 values were record lows was estimated using a 10,000 Monte Carlo simulations of the monthly means in the time series (Frith et al, 2014).

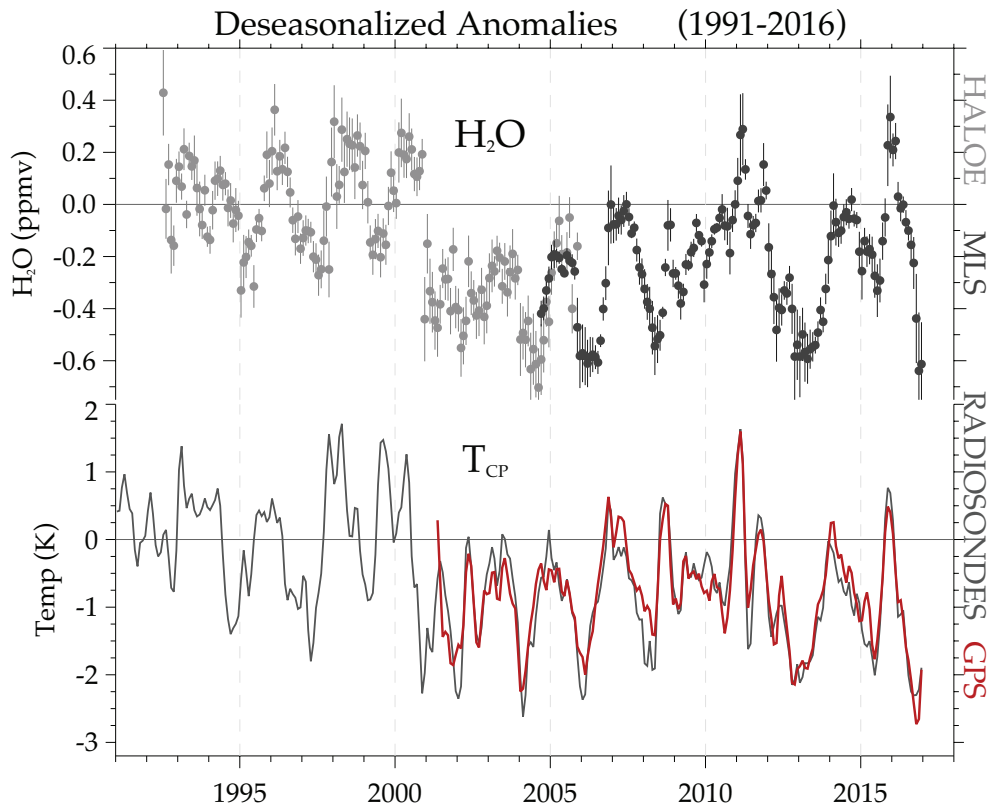


Fig. 7. Observed variations in lower stratospheric water vapor and tropical cold-point tropopause temperatures from satellite measurements over the period 1992–2016. Water vapor data are deseasonalized near-global averages at 83 hPa from combined HALOE and MLS satellite measurements. Each dot represents a monthly average. Temperatures are deseasonalized anomalies derived from radiosonde data (black line) and GPS radio occultation data (red line, for 2001–2016). Vertical bars are one sigma standard deviations of the monthly averages.