

Anonymous Referee #2 Received and published: 12 September 2017

Overview: I find this manuscript to be well written and logically organized. The manuscript describes 8 biomass burning measurements of organic aerosol (OA) and refractory black carbon (rBC) from one type of rubberwood material in a highly controlled combustion system. The combustion system was designed through international standards for measuring combustion properties of different fuels for industrial and insurance purposes. This is (at least) one of the first studies that start to bridge the gap between industrial standard combustion practices and ambient environmental studies. I applaud the authors for taking this approach. As these highly detailed measurements are important and there are few such measurements reported in current literature, this manuscript is both timely and appropriate material for ACP. The manuscript should be published with attention paid to the following minor issues.

General comments:

1.) "...from African biomass combustion" in the title implies a broader appeal than the actual use of 32 pieces from one specific type of rubberwood tree. Perhaps, "... from combustion of a common African biofuel source".

This has been changed.

2.) What was the mass of the combusted fuel? The only details given are one dimension (100 mm), a picture, and ~7% moisture value.

More detail of the sample mass has been added in lines 178-9.

The mass and dimensions of all samples were as uniform as possible: the mean mass of the samples (each containing four pieces of wood) was 160.0 g, with a standard deviation of 12.4 g.
--

3.) Interestingly, the authors do not emphasize the use of an industrial standard equipment for controlling the combustion process. This is a ready mechanism for others in the field to conduct similar experiments, such that a bit more detail might help move the whole field further along.

More detail about the reason for conducting experiments as we did, as well as a recognition of the FPA being used a standard methodology for test combustion of materials, has been added in lines 93-100.

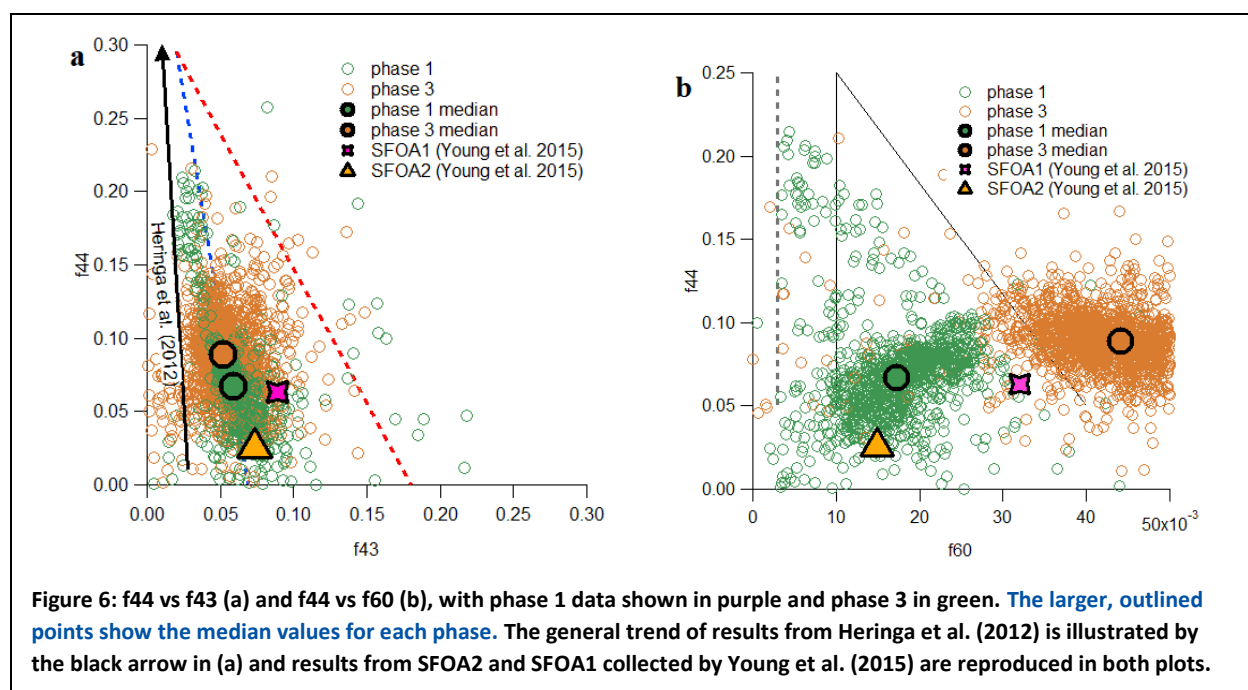
Combustion experiments were carried out in the Rushbrook Fire Laboratory, School of Engineering, University of Edinburgh. The Fire Propagation Apparatus (FPA) allows determination and quantification of material flammability characteristics including time to ignition, gaseous emissions, burning rate and heat release rate. Small (approximately 100 mm) samples of fuel are heated and ignited under highly-controlled conditions (Brohez et al., 2006). Emissions from combustion are inherently linked to the combustion environment, which adds a layer of complexity for free burning fires as the number of variables impacting the burning behaviour and emissions increases. Therefore, in order to understand emissions more clearly, it is important to understand the impact of the test environment on the combustion processes. Essentially, the FPA is a reactor chamber in which it is possible to study the burning behaviour of materials while maximising control over important parameters, but without diverting too far from a free-burning fire. Use of the FPA is widespread as a standard methodology for test combustion of materials for approval in industrial applications, as it provides highly repeatable conditions. Such conditions have not, to date, been available often in environmental burn studies.

4.) In the discussion of the OA mass spectra, is there a reason why PMF was not done on the current data set to see how well it reproduces the average spectra for the two conditions (phase 1 and 3)?

PMF is a method for deconstructing complex datasets that result from the superposition of different sources. In this case, the source was already isolated. As such, it was not felt that the use of PMF in this case would contribute towards the scientific discussion.

5.) In the discussion of Figure 6, placing either PMF factors or phase 1/3 weighted means on the plots would help in interpreting the discussions of the relative abundances of f44 vs f43 and f44 vs f60. For example, line 395 “On average, the f44 contribution increased as combustion developed” is stated without an average value on the plot to assess. Attempting to discern “averages” of data points on a plot is difficult for readers, especially when the markers overlap.

Median values for the emissions during phases 1 and 3 have been added to both plots in Fig. 6.



6.) Differences in the PMF factors from Young et al. showed very nice correlations with the differences in the mass spectra from phase 1 and 3. How do the actual PMF factors compare with the phase 1/3 mass spectra? While the differences are important, the actual connection in the text is that the Young et al. SFOA1 and SFOA2 may well represent phases 1/3 in ambient, which is a comparison of the absolute individual spectra, rather than just differences.

We did examine the absolute individual mass spectra, but we have focused the discussion on the difference between the two mass spectra. The two ambient spectra reported by Young et al. are not as distinct as the two spectra reported here. This is both because the real-world combustion sources will be a complex mixture of both emission types, and because ambient PMF data is separated by temporal trends as well as spectral trends, so a less distinct separation would be expected.

7.) During the discussion of ambient measurements (around lines 505 and 560+), the authors cite Zhou et al (2017) and Brito et al (2014), but appear to have missed Collier et al (2016), which showed a very strong correlation between OA/(CO₂+CO) (which is a type of ER or emission ratio, rather than EF or emission factor, given the lack of information on fuel mass) and MCE in ambient wildland fires in the western US. The current lab results and these ambient results are in strong agreement about how OA emissions are governed in large part by combustion conditions for similar fuel types. They may differ by the pyrolysis emissions and/or effects of heat. The implications emphasized herein and noted in Collier et al. are important from both ambient and lab viewpoints and could readily be included.

The Collier et al. (2016) paper has now been added in lines 519-21, and referenced again in lines 547-9.

A similar result was noted by Weimer et al. (2008), who observed a distinct difference between particulate emissions from different phases, but almost none between wood types. Collier et al. (2016) observed considerably higher OA emissions during smouldering than flaming emissions during measurements of wildfires in the Pacific Northwest region of the United States. This is supported here: the greatest differences in particle emissions were between individual phases of combustion, rather than being between different burning environments.

8.) Lines 483-485. The authors appear to give a median values of m/z 46:30 as 0.084 ± 0.15 and linear correlation with a slope of 0.29. Are these values from the same distributions, suggesting that the m/z 46:30 distribution is highly skewed? What does a skewed distribution say about the results?

We thank the referee for their comments since, on looking into the data again, we have identified an error in the calculation that led to a large upward bias in the nitrate to organic ratio. This has now been rectified. The results actually show that the most likely contribution to the m/z 30 peak is in fact pure organic. Section 3.1 has been removed and replaced with a paragraph describing this new take on the result in lines 486-96.

Previous experiments have used the ratio of m/z 46 to m/z 30 to determine the proportion of organic and inorganic nitrate present in aerosol mass (Farmer et al., 2010; Reyes-Villegas et al., 2007). Using data from experiments *hF.1*, *hF.2* and *HF.1*, a median m/z 46:30 ratio of 0.084 ± 0.15 was found here. Such low ratios have often been used in the literature to suggest the presence of organic nitrate (Hao et al., 2014; Sato et al., 2010; Reyes-Villegas et al., 2017). However, these analyses generally assume only a small organic interference on the m/z 30 peak. Here, the m/z 30 value was low compared with surrounding peaks, which was not the case in the aforementioned studies. An $(m/z$ 30 + m/z 46):OA ratio of 0.029:1 was found. These peaks were emitted concurrently with other organic mass with a correlation of $r^2 = 0.99$. These results strongly suggest that nitrogen-containing species were not emitted in appreciable amounts during this set of experiments.

9.) The authors rightly emphasize the potential impact of pyrolysis OA emissions in the underlying emission factor variations observed with MCE (especially lab studies); however, the authors thereby downplay differences in heat load on fuels for a given fire. Here, the authors include this parameter explicitly (perhaps for the first time for ambient-related measurements). The heat load can vary depending upon whether the combustion occurs inside a stove (i.e., solid fuel combustion) or open air (wild land combustion). It can also vary by how much fuel is available (both in lab and ambient) and how well packed. Might this have a large an impact on measured OA emissions per MCE, similar to that suggested for pyrolysis?

A comment on this has been added in lines 588-92.

This could begin to explain some of the large variability in biomass burning EF measurements, even between tests with similar MCEs and within the same investigation. If this is the case, identifying a further parameter that is able to capture pyrolysis OA could add a significant further constraint to bottom-up studies of EFs.

Furthermore, the heat load placed on samples, which was included in this study as a specific parameter, was found to influence the quantity of OA emitted during pyrolysis. In real-world combustion, the heat load can vary substantially based on how the fuel is packed and where combustion is taking place. Hence, it can be very different between wood stove burns and wildfires, and vary according to burn conditions or fuel density in each type of combustion.

Highly-controlled, reproducible measurements of aerosol emissions from combustion of a common African biofuel source

Sophie L. Haslett¹, J. Chris Thomas², William T. Morgan¹, Rory Hadden², Dantong Liu¹, James D. Allan^{1,3}, Paul I. Williams^{1,3}, Sekou Keita⁴, Cathy Liousse⁵ and Hugh Coe¹.

5 ¹ Centre for Atmospheric Science, University of Manchester, Manchester, M13 9PL, United Kingdom

² School of Engineering, University of Edinburgh, Edinburgh, EH9 3JL, United Kingdom

³ National Centre for Atmospheric Science, University of Manchester, Manchester, M13 9PL, United Kingdom

⁴ L'Université Félix Houphoët-Boigny, VPV34, Abidjan 01, Côte D'Ivoire

⁵ Laboratoire d'Aérodynamique, Université Paul Sabatier Toulouse III, France

10 *Correspondence to:* Hugh Coe (hugh.coe@manchester.ac.uk)

Abstract. Particulate emissions from biomass burning can both alter the atmosphere's radiative balance and cause significant harm to human health. However, due to the large effect on emissions caused by even small alterations to the way in which a fuel burns, it is difficult to study particulate production of biomass combustion mechanistically and in a repeatable manner. In order to address this gap, in this study, small wood samples sourced from Côte
15 D'Ivoire in West Africa were burned in a highly-controlled laboratory environment. The shape and mass of samples, available airflow and surrounding thermal environment were carefully regulated. Organic aerosol and refractory black carbon emissions were measured in real time using an Aerosol Mass Spectrometer and a Single Particle Soot Photometer, respectively. This methodology produced remarkably repeatable results, allowing aerosol emissions to be mapped directly onto different phases of combustion. Emissions from pyrolysis were visible as a distinct phase
20 before flaming was established. After flaming combustion was initiated, a black-carbon-dominant flame was observed during which very little organic aerosol was produced, followed by a period that was dominated by organic-carbon-producing smouldering combustion, despite the presence of residual flaming. During pyrolysis and smouldering, the two phases producing organic aerosol, distinct mass spectral signatures that correspond to previously-reported variations in biofuel emissions measured in the atmosphere are found. Organic aerosol emission
25 factors averaged over an entire combustion event were found to be representative of the time spent in the pyrolysis and smouldering phases, rather than reflecting a coupling between emissions and the mass loss of the sample. Further exploration of aerosol yields from similarly carefully controlled fires and a careful comparison with data from macroscopic fires and real-world emissions will help to deliver greater constraints on variability of particulate emissions in atmospheric systems.

30 **1 Introduction**

Atmospheric aerosol particles emitted from biomass burning have a substantial influence on global climate, atmospheric chemistry and cloud processes, in addition to being detrimental to human health. Domestic fires used for cooking and heating, agricultural burning, forest wildfires and savannah fires all contribute to the atmospheric loading of biomass burning aerosol (BBA). Andreae & Merlet (2001) identify biomass burning to be the largest

35 source of primary fine carbonaceous particles in the atmosphere globally. Eighty per cent of global BBA is thought to originate from the tropics (Hobbs et al., 1997) and a significant proportion of this is anthropogenic. However, with the resurgence of biomass burning as a source of renewable energy in the developed world (Johansson et al., 2004), issues surrounding BBA are of increasing concern worldwide.

40 Black carbon and organic carbon are both produced in high quantities by biomass burning, along with inorganic species such as sulphates, nitrates and potassium. Black carbon absorbs incoming short-wave radiation, re-emitting it at infrared frequencies that warm the surrounding air. In contrast, the majority of organic carbon and inorganic species scatter incoming sunlight. Given the presence of both absorbing and scattering aerosol, it is clear that BBA must be well characterised in order for its impact on climate to be fully understood. The ratio of organic matter to black carbon is likely to have a large influence on the net effect of BBA in the atmosphere.

45 One of the greatest anthropological sources of black carbon is the residential burning of solid fuels, which contributes 25% of emissions: more than both diesel engines and industrial coal burning (Bond et al., 2013). Given this large contribution, it is important to be able to constrain the estimate of emissions from this source in order to model black carbon in the Earth's atmosphere accurately. A considerable number of studies have been carried out in order to establish the emission factors – the mass emitted per unit fuel burned – of various chemical species for
50 different fuels and circumstances. There has been a particular focus in the literature on emission factors from cookstoves (e.g. MacCarty et al., 2008; Roden et al., 2009; Zhang et al., 2000) and wildfires (e.g. Christian et al., 2007; Yokelson et al., 2008). Others, including Schneider et al. (2006), Weimer et al. (2008) and Elsasser et al., (2013) have investigated the chemical composition of BBA emissions in real time during biomass combustion in the laboratory. Attempts to compile all available measurements of emission factors for a number of different species,
55 both gaseous and particulate, have been carried out by Andreae & Merlet (2001) and more recently by Akagi et al. (2011).

However, due to the complex nature of biomass combustion, and high sensitivity to the combustion environment (i.e. ventilation and heat transfer), it has proven difficult to establish repeatability in the results of laboratory-based biomass burning experiments. Even small alterations in the burning environment can lead to huge variations in
60 particulate emission factors (Akagi et al., 2011) and as such, the majority of studies have found considerable differences in the observed aerosol emission factors and efficiency of combustion between nominally identical burns. Furthermore, the standard approach in many such studies has been to consider only average emission factors from an entire combustion event, which can mask significant changes in emissions that take place throughout combustion. Nonetheless, some recent studies have been carried out, which consider real-time particulate emissions
65 under more controlled conditions, including Alfarra et al. (2007) and Elsasser et al. (2013).

In ambient studies that measure the mass spectra of organic aerosols, techniques such as positive matrix factorisation (PMF) are regularly used to identify and quantify distinct mass spectra with different properties (Zhang et al. 2011). The multilinear engine (ME-2) uses pre-identified mass spectra to constrain the factors identified by PMF (Paatero,

1999; Canonaco et al., 2013). Biomass burning is known to produce one of the most difficult organic signatures to constrain using this method. This is due to its large variability. For example, Crippa et al. (2014) advise allowing for a variability of $\pm 30\text{-}50\%$ when attempting to constrain mass spectra from the biomass burning component of atmospheric aerosols in studies using the Aerosol Mass Spectrometer. In comparison, the recommended constraint for hydrocarbon-like OA is only $\pm 5\text{-}10\%$. An improved understanding of biomass burning on a mechanistic level has the potential to tighten these constraints.

75 In this study, an emphasis was placed on enhancing the repeatability of combustion events in order to study aerosol emissions on a mechanistic level, rather than attempting to simulate real-world combustion. In order to achieve this, wood samples were prepared to be as similar as possible during each test. The Fire Propagation Apparatus (ASTM, 2000), was used to control the combustion environment. Samples were heated by a series of infrared heaters and controlled air flow was delivered from below the sample.

80 Measurements of the combustion products were made in real time using an Aerosol Mass Spectrometer (AMS) (Aerodyne Research, Inc., Billerica, MA, USA) and a Single Particle Soot Photometer (SP2) (Droplet Measurement Technologies, Longmont, CO, USA) to measure organic aerosol (OA) and refractory black carbon (rBC) respectively. Emission factors were measured with a time resolution of 5 s, which allowed extremely fine detail in the dynamics of emissions to be distinguished.

85 Large differences were observed in the ratio between OA and rBC during different periods of each individual burning event. As such, three different phases of combustion were defined based on this ratio, each of which displayed a unique chemical signature.

2 Method

90 Combustion experiments were carried out in the Rushbrook Fire Laboratory, School of Engineering, University of Edinburgh. The Fire Propagation Apparatus (FPA) allows determination and quantification of material flammability characteristics including time to ignition, gaseous emissions, burning rate and heat release rate. Small (approximately 100 mm) samples of fuel are heated and ignited under highly-controlled conditions (Brohez et al., 2006). Emissions from combustion are inherently linked to the combustion environment, which adds a layer of complexity for free burning fires as the number of variables impacting the burning behaviour and emissions increases. Therefore, in order to understand emissions more clearly, it is important to understand the impact of the test environment on the combustion processes. Essentially, the FPA is a reactor chamber in which it is possible to study the burning behaviour of materials while maximising control over important parameters, but without diverting too far from a free-burning fire. Use of the FPA is widespread as a standard methodology for test combustion of materials for approval in industrial applications, as it provides highly repeatable conditions. Such conditions have not, to date, been available often in environmental burn studies.

100

105 A custom-made stainless steel basket was used to hold the samples and allowed an air flow to enter from beneath. A flow controller allowed control over the quantity of air reaching the sample from below; here, this was held at either 50 or 200 lpm. The sample holder was placed on a mass balance. Four infrared heat lamps provided a spatially uniform heat flux across the surface of the samples. Heat fluxes of 30 kW m^{-2} or 50 kW m^{-2} were used. The sample was surrounded by a quartz tube to ensure that ambient laboratory air did not reach the fuel during combustion. A pilot flame was used to initiate flaming combustion, which had a negligible influence on CO and CO₂ emissions due to the low flow rate of the pre-mixed flame ($< 1.0 \text{ lpm}$) compared with the high flow in the exhaust duct ($\sim 150 \text{ lps}$) and the forced airflow imposed in the test chamber (50 or 200 lpm of air). Emissions from the pilot flame would be primarily CO₂, but its impact was small enough not to be visible in gas measurements.

110

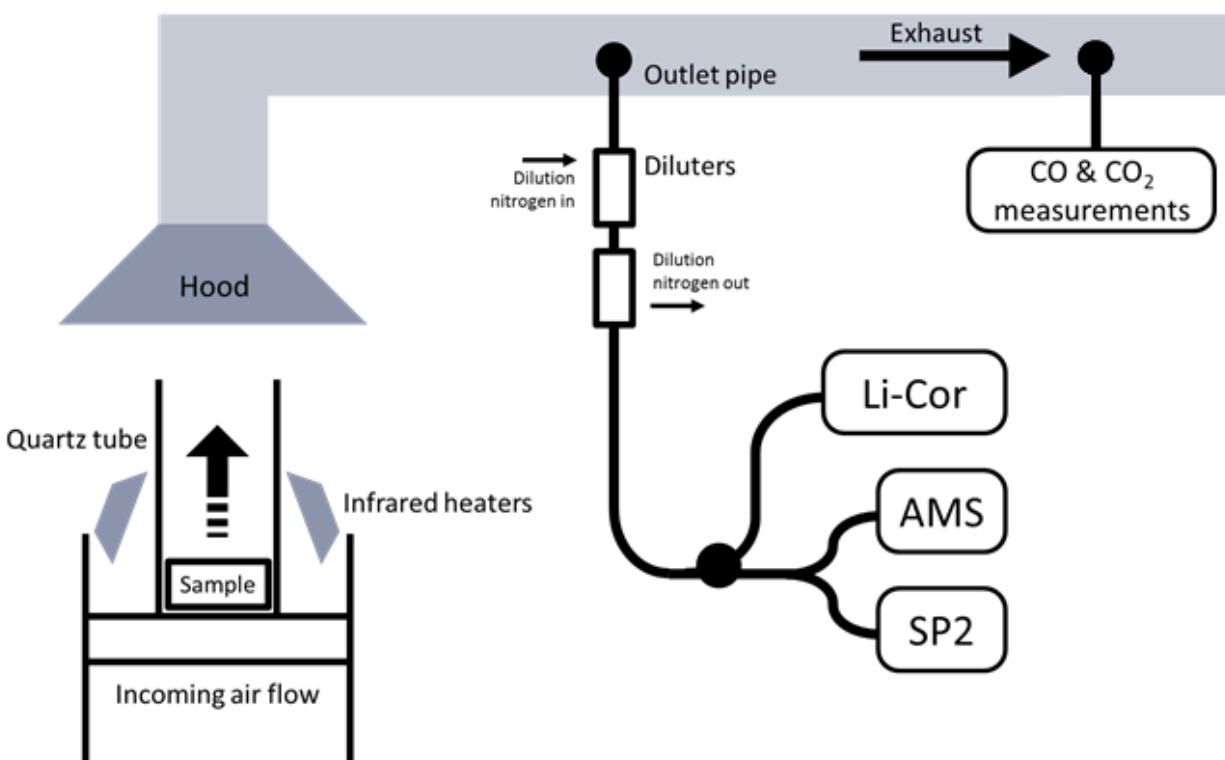


Figure 1: The experimental set-up, showing the sample in the FPA and the location of the sample pipes in the exhaust.

115 Exhaust gases from combustion were collected in a hood before entering into the exhaust duct, where turbulence encouraged mixing. Air samples for aerosol measurement were extracted from the exhaust tube from a forward-facing subsampling inlet. After passing through a filtering condensing system, concentration of oxygen, carbon dioxide and carbon monoxide in the exhaust gas were measured using non-dispersive infra red techniques (Servopro 4200). A separate sample system allowed aerosol properties in the exhaust to be monitored in real time by the AMS and the SP2, after being passed through a system of two Dekati DI-1000 ejector diluters, which diluted the aerosol in

120 pure nitrogen by a combined factor of 100. These were included to prevent saturation of the signals. The CO₂ concentration here was measured by a Li-Cor Biosciences (Lincoln, NE USA) model LI-6262 CO₂ analyser to verify the level of dilution. Certified reference gases provided by BOC were used to calibrate all gas instruments.

The use of two CO₂ measurements in parallel (one on the flue and one on the nitrogen-diluted flow) was for the purpose of evaluating the dilution factors of the ejector diluters. However, while both instruments were calibrated using the same standards, the Li-Cor suffered from continuous drifts in its baseline, prohibiting a reliable real-time measurement. The dilution factor could still be estimated by comparing the magnitude of abrupt changes within the two measurements (e.g. onset of combustion). Because the dilutor flows were identical between experiments, the dilution factor was assumed to be consistent and a value of 100 was used, based on an average of these comparisons.

130 **The diluters used have been designed to sample combustion particles and therefore to minimise particle losses. However, it must be recognised that there may be some perturbation of aerosol composition through processes such as the repartitioning of OA species or diffusional loss of smaller particles. The experiment design has minimised these effects as much as possible.**

135 An Aerodyne Compact Time-of-Flight Aerosol Mass Spectrometer (AMS) was used to measure the OA concentration, as well as that of inorganic species including sulphates, nitrates and ammonium. This instrument has been documented extensively in the literature (see e.g. Drewnick et al., 2005; Canagaratna et al., 2007).

140 During this test series, the AMS was used in the fast mode (Kimmel et al., 2011), which allowed results to be collected with a much higher time resolution than the default 'MS' mode. The chopper alternated between 30 seconds in its open position, allowing particles to pass through, and 10 seconds in its closed position to establish the background. This mode allowed a time resolution of 0.5 s during open phases. Particle size distributions were not measured as this requires the AMS to have a larger averaging time and use 'pToF' mode. Routine calibrations of the baseline, single ions and m/z ratio were carried out before and after each test and where possible, nitrate ionisation efficiency calibrations were carried out between tests using particles of 350 nm, size-selected using a DMA.

145 As described by Allan et al. (2004), a fragmentation table was used to calculate the contribution of distinct chemical species to each m/z peak from raw AMS data. The abundance of nitrogen in this experiment due to the dilution required changes to be made to this table. Previous literature has remarked on the need to alter fragmentation tables for certain m/z ratios when biomass burning is being measured (Ortega et al., 2013). The changes made for this experiment have been documented in **the supplementary material**. The collection efficiency for the AMS was assumed to be 1: this represents the probability that a given particle will stick to the vaporiser and be detected, so the mass concentration must be divided by this to be quantitative. Although there has been no definitive assessment of the collection efficiency for biomass burning, previous studies in biomass-burning-dominant areas have used this figure (see e.g. Brito et al., 2014).

The SP2 was used to measure the concentration of refractory black carbon (rBC) in the emitted particles. rBC is carbonaceous, insoluble and vaporises only at temperatures near 4000 K (Petzold et al., 2013; Schwarz et al., 2008). The operation and process of data interpretation have been described by Liu et al., (2010) and McMeeking et al., (2010). Particles pass through a 1064 nm laser beam inside the instrument and the consequent incandescent and scattered light is detected on a single-particle basis. The intensity of the laser is sufficient to vaporise absorbing material, which re-emits radiation in the visible spectrum on incandescence. Both scattering and incandescence signals are measured: the magnitude of the scattering signal is proportional to the optical diameter of a particle. Scattering-only particles smaller than 200 nm cannot be detected. The incandescent signal is proportional to the mass of incandescent material, which is assumed to consist almost exclusively of rBC. Incandescent particles with a mass lower than 0.3 fg (approximately 70 nm diameter, assuming a density of 1.8 g cm⁻³) cannot be detected. The instrument was calibrated using Aquadag, with the standard correction of 0.75 applied (Laborde et al. 2012).

The SP2 has often been used to examine the thickness of organic or other non-incandescent materials that form coatings on rBC particles (e.g. Liu et al. 2014; Liu et al. 2017). The presence of a coating enhances the scattering cross section of the particle, which allows the relative thickness of the coating to be determined using the methodology detailed in Taylor et al. (2015) and Liu et al. (2014). This approach was attempted here, but in this case, rBC was often not emitted concurrently with organic material, which is likely to have resulted in extremely low coating thicknesses during these times. As the technique relies on the interpretation of only the leading edge to reconstruct the scattering signal (i.e. as the particle enters the laser but before the coating begins to evaporate), very thin coatings on small particles are difficult to retrieve with this method, as the algorithm only utilises a very small number of data points with a very low signal-to-noise ratio to fit the ‘tail’ of a Gaussian distribution. Here, even the highest retrieval percentages were lower than 30%, which means that the successful fits were likely biased towards particles with larger coatings. As such, this data cannot be used.

The wood used in this experiment was rubberwood (*hevea brasiliensis*), a variety commonly used in West Africa as a domestic cooking fuel. This was sourced from Côte D'Ivoire. Four pieces of wood were used in each sample. Each piece was cut from one of three similar lengths of wood with a diameter of approximately 10 cm, before being sanded down to ensure the highest possible consistency across the separate tests (see Figure 2); bark was removed during the sanding process. The mass and dimensions of all samples were as uniform as possible: the mean mass of the samples (each containing four pieces of wood) was 160.0 g, with a standard deviation of 12.4 g. The fuel moisture content (FMC) was approximately 7%, which was calculated on a dry weight basis using the calculation shown in Eq. 1, where m_{wet} and m_{dry} refer to the mass of the pre- and post-treatment wood, respectively. A subsample was conditioned in a convection oven for 24 hours at 60°C, and the weight was measured before and after conditioning.

$$FMC = \frac{m_{wet} - m_{dry}}{m_{dry}} \cdot 100 \quad (1)$$

185



Figure 2: An example of one of the wood samples used.

The modified combustion efficiency (MCE) was calculated using the technique described by Akagi et al. (2011) and Ward & Radke (1993) (Eq. 2):

$$MCE = \frac{\Delta CO_2}{\Delta CO_2 + \Delta CO} \quad (2)$$

Where ΔCO_2 and ΔCO refer to the CO_2 and CO enhancement respectively over background concentrations. This calculation yields the percentage of carbon released in the form of CO_2 , assuming a small contribution from particulate matter. This assumes a negligible contribution from other gas phase organic compounds, including CH_4 and other, larger molecules. This can be constrained using results presented by McMeeking et al. (2009), who showed that CO and CO_2 together make up about 96% of carbon emitted during biomass burning. This method to calculate MCE is generally found to be accurate to within a few percent (Ferek et al., 1998).

The emission factors presented in Sect. 3.3 refer to the ratio of the mass of the emitted species to the mass of dry fuel consumed, in $g\ kg^{-1}$ (Cachier et al., 1995). The mass of the sample was measured during this experiment using a mass balance in the FPA, allowing a more direct computation of this value than is often possible in field experiments during which the mass loss of fuels must be approximated from emissions of CO and CO_2 . Emission factors were calculated as follows (Eq. 3):

$$EF = \frac{\text{particulate emissions (g)}}{\text{sample mass loss (kg)}} = \frac{\bar{X} \times f \times 10^{-1}}{\overline{\Delta M}} \quad (3)$$

Where \bar{X} is the average concentration of the species during the period being measured ($\mu g\ m^{-3}$), f is the flow rate of air in the exhaust tube ($m^3\ s^{-1}$), $\overline{\Delta M}$ is the average mass loss rate of the sample ($g\ s^{-1}$).

Eight flammability experiments were undertaken, with different heat fluxes and flow rates. These, and the notation used to refer to them, are presented in table 1.

Table 1: Outline of the burning environments used for the eight different tests carried out.

Burning environment	Heat = 30 kW m ⁻² Flow rate = 200 lpm	Heat = 50 kW m ⁻² Flow rate = 200 lpm	Heat = 50 kW m ⁻² Flow rate = 50 lpm
Number of tests	2	3	3
Notation	<i>hF.1, hF.2</i>	<i>HF.1, HF.2, HF.3</i>	<i>Hf.1, Hf.2, Hf.3</i>

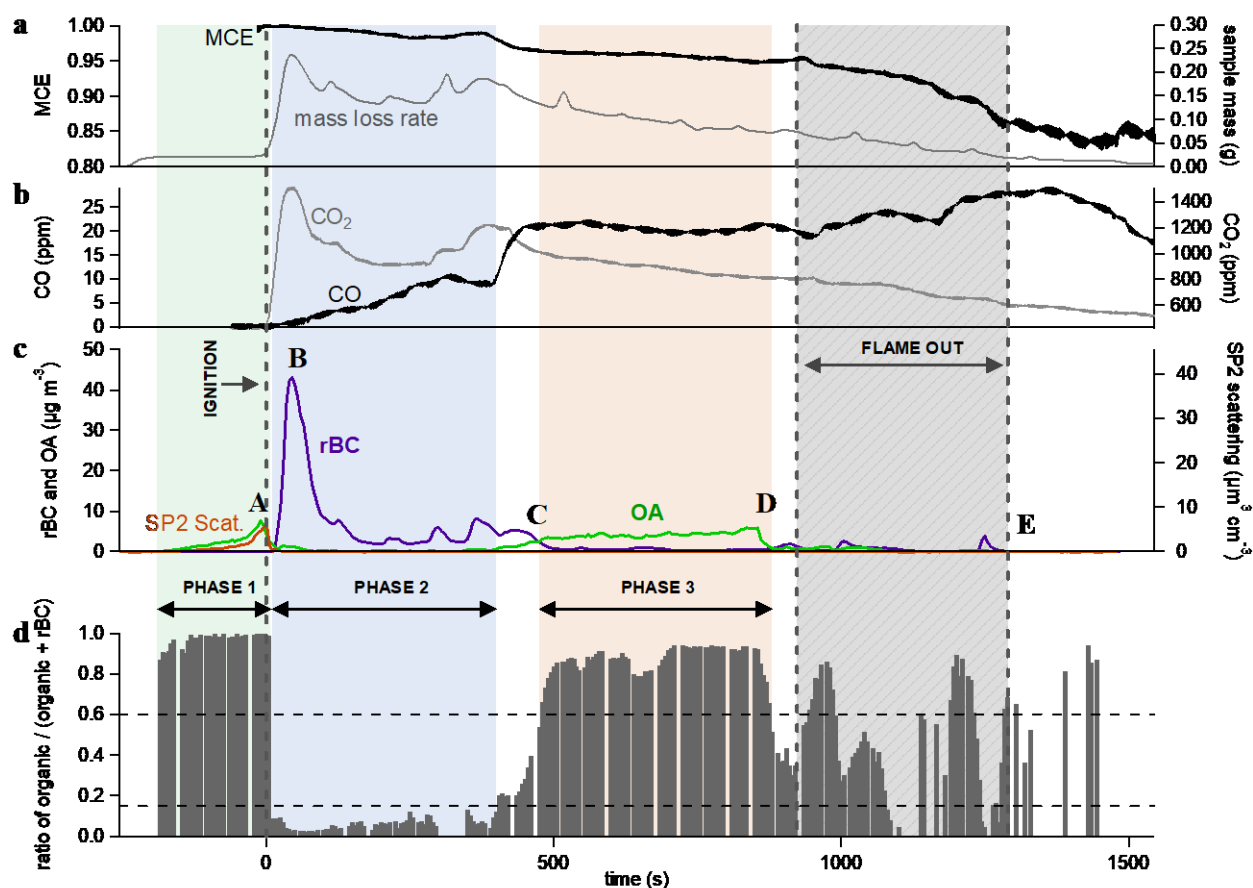
210 Due to the emphasis placed on reproducibility during these tests, some aspects differ from real-world biomass burning and these must be taken into account when comparing these results with emissions reported elsewhere. The heating of samples throughout the experiments allowed greater reproducibility by reducing the effects of the external conditions, and as a result these data are more representative of burning of a larger accumulation of material. Emissions here are sampled in a duct rather than from an ambient environment and as such, there is no effect of mixing with ambient air.

215 Each test began by initiating the air flow at the desired rate and instantaneously exposing the samples to the desired heat flux. A small flame was fixed above the sample, to drive piloted ignition of the pyrolysis gases when their concentration was sufficient. **The pilot flame was a pre-mixed flame made from an ethylene/air mixture, which formed a blue conical flame of around 1 mm in diameter and 1-1.5 mm in length.** Ignition was defined to be the time at which a luminous flame was first visible. Similarly, extinction of each piece of wood was defined as the time when a luminous flame was no longer visible.

3 Results

225 Figure 3 shows the time series of aerosol and gas species being released during a test with 30 kW m⁻² heat flux and an air flow rate of 200 lpm (test *hF.1*). This experiment has been chosen for illustrative purposes as it demonstrates most of the different emission behaviours seen throughout these experiments. Ignition is indicated by the vertical line at $t = 0$ s and flame extinction by the period in dark grey (this begins with the extinction of the first piece of wood and ends with the extinction of the last). Between ignition and the extinction period, all four pieces of wood in the sample burned relatively steadily with a yellow-blue flame that decreased in intensity towards extinction. All four pieces of wood extinguished within 300 s of one another.

230



235

Figure 3: Three panels representing results as a function of time from a single combustion event under low heat (30 kW m^{-2}) and high flow (200 lpm) conditions. **Panel a** shows the MCE in black and the mass loss rate of the sample in grey. **Panel b** shows CO and CO_2 mixing ratios in black and grey respectively. **Panel c** shows the concentrations of particulate OA and rBC (mass measured in $\mu\text{g m}^{-3}$, not dilution-corrected) and particle volume measured by detected scattered light using SP2 (volume in $\mu\text{m}^3 \text{ cm}^{-3}$). The mass derived from this volume can be obtained from the left hand y-axis, assuming a particle density of 1.1 g cm^{-3} . **Panel d** shows the ratio of OA to total aerosol. The green, blue and red shading represent different combustion phases, established from the OA/total aerosol ratio. The grey area is the period during which the sample flames were extinguishing.

240

245

Throughout this experiment, noticeable changes were observed in the MCE, represented in panel a, which began to decrease gradually from unity after ignition. Combustion was highly efficient at the beginning of the experiment, as evidenced by the MCE remaining above 0.98 for the first 400 s, with a large quantity of CO_2 being produced. This is typical for flaming combustion. As the experiment proceeded, the MCE decreased at a relatively steady rate until the first piece of wood extinguished, after which it dropped more rapidly from 0.95 to around 0.85. The general decline in MCE as the experiment progressed is typical of biomass combustion and can be seen in other laboratory experiments e.g. Heringa et al. (2012) during laboratory-based combustion in a log wood burner. This is typical of the burning of charring solids in which the char layer results in a decrease in the pyrolysis rate and ultimately flame quenching (Bryden et al. 2002). After flaming combustion of the wood has quenched, any residual smouldering

250 activity will produce relatively high yields of CO, which accounts for the sharp drop in efficiency during the extinction period (e.g. Lobert 1991; Urbanski 2013; Yokelson et al. 1997).

Figure 3c shows how measurements of rBC and OA varied over the course of the combustion event. Aerosol measurements began as soon as the sample was exposed to the heat flux. A clear peak in OA could be seen prior to ignition as the sample was exposed to heat, which was also observed in the scattering volume measurement (**A** in Fig. 3c). This was likely due to the pyrolysis of the wood. During this process, gaseous pyrolysis products evolve which are volatile at high temperatures but are likely to condense into aerosol in the cooler environment of the exhaust. Almost no rBC particles were seen during this period, as a luminous flame is required for these to be produced. The aerosol mass derived from the volume-convolved number distribution from SP2 scattering intensity signals are on the same scale as the AMS organic mass in Fig. 3c if a particle density of 1.1 g cm^{-3} is assumed, which is consistent with organic biomass burning aerosol (Schkolnik et al., 2007). The similarity in magnitude seen in this image supports our assumption that the collection efficiency used for the AMS is unity.

Immediately after the flame ignition, there was an abrupt decrease in the production of OA, while rBC simultaneously increased, peaking at just over $40 \mu\text{g m}^{-3}$ (**B**). This large enhancement in the emission of rBC is associated with the onset of flaming combustion (see, for example, Bond et al., 2013; Kuhlbusch & Crutzen, 1995). Flaming oxidises the pyrolysis gases to produce predominantly CO and CO₂. The MCE during this phase was high, remaining above 0.98. After reaching its peak 45 s after ignition, the concentration of rBC fell, although it continued to dominate particulate emissions. This accompanied a notable decrease in the CO₂ concentration (see Fig. 3b). At this stage, char was observed on the top surface of the wood. The thermal properties of the char layer reduce the energy that is available to drive the pyrolysis reaction thereby decreasing the rate of production of flammable gases and decreasing the combustion intensity.

Approximately 450 s after ignition, the rBC mass reduced to become almost negligible and there was a large increase in organic mass measured by the AMS (**C**), which remained steady for 400 s. This was accompanied by a substantial increase in the production of CO. This behaviour suggests a change from a flaming-dominant regime to one dominated by smouldering combustion, although a luminous flame was still visible. As the combustion became less intense and the flame retreated, oxygen was able to reach the surface of the sample, allowing smouldering combustion to occur alongside flaming. Although the MCE was considerably lower during this period than during the earlier, intense flaming combustion, it was still higher than is generally reported for smouldering combustion in the literature (Akagi et al., 2011), although care should be exercised in the interpretation of this, as the definition of 'smouldering' is subjective and could be defined differently for different systems. The SP2 did not detect any light scattering particles at this time despite the comparatively large OA mass concentrations measured by the AMS. This suggests that the size distribution of organic particles here was significantly lower than during pyrolysis, with the majority of particles having an optical diameter smaller than 250 nm, the minimum size of non-incandescent particles detected by the SP2.

285 After 855 s, as the flaming combustion continued to decrease in intensity, there was a significant drop in the production of particulate matter (**D**). Flaming combustion of the whole sample had stopped by 1545 s, after which particle measurements were negligible (**E**). There was not an exclusively smouldering period that released particulate after the flames had extinguished, likely because the majority of the original mass of the samples had already been consumed by this stage.

290 Due to the high level of control and the small sample sizes used in this experiment, it has been possible to distinguish very clearly between these different periods of combustion. It is important to note that during real-world burning or larger-scale laboratory-based experiments, combustion will be more heterogeneous, with different phases of combustion highlighted here taking place simultaneously and the emissions free to form complex mixtures through mixing, condensation and coagulation.

295 Given the distinctive contrast in aerosol emissions at different times, as well as the recurrence of similar features observed during all tests, the ratio between the OA mass measured by the AMS and the sum of OA and rBC measured by the SP2, r_{OA} , was used to identify distinct phases of combustion ($r_{OA} = \frac{OA}{OA+rBC}$). In Fig. 3c, grey bars indicate the change in r_{OA} throughout the burn: when this is high, OA dominates emissions; when low, rBC dominates. A ratio is not calculated when the total particulate emissions are less than $0.1 \mu\text{g m}^{-3}$ due to noise in the signal. Some noise is visible after around 900 s, but this does not fall within the phases studied here so does not affect results.

300

As is illustrated in Fig. 3d, phase 1 represents pyrolysis immediately prior to ignition, where OA makes up more than 85% of the total particulate carbon emitted. Phase 2 is the period after ignition during which OA was less than 15% of particulate carbon produced (or rBC more than 85%). Phase 3 is smouldering-dominant combustion: the period during which organic mass contributed over 60% to total particulate carbon. As there is generally a swift transition from one regime to the next, the majority of the time series during combustion falls within one of these descriptions, although some tests, particularly those under *HF* conditions, contained more data in transition regions than others. The division described above allows the characteristics of each phase to be analysed separately and compared both within and between tests.

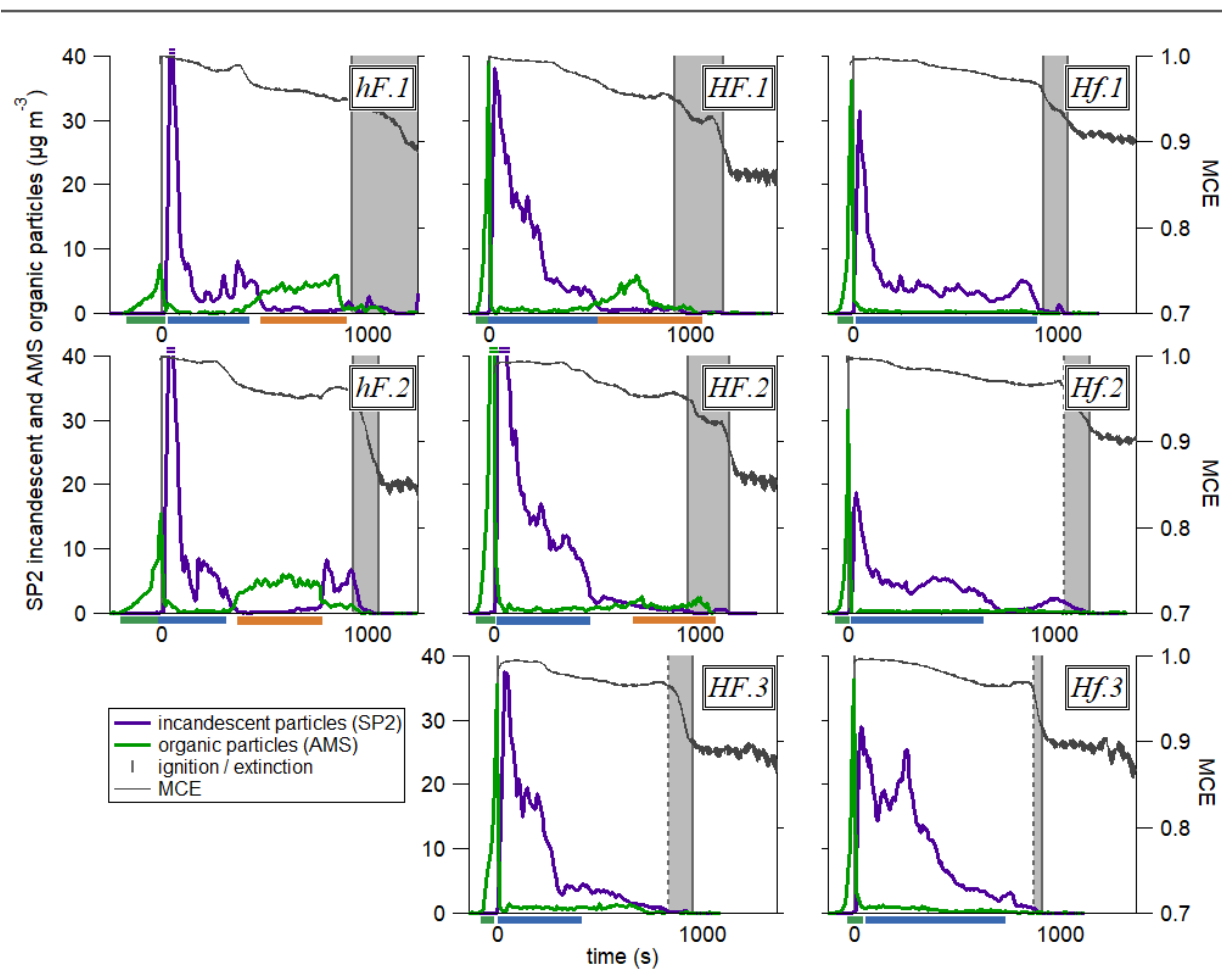
305

Results found in the literature generally support the assertion that OA dominates during pyrolysis and smouldering and more rBC is emitted during flaming than smouldering (e.g. Akagi et al. 2011; Kuhlbusch & Crutzen 1995; Simoneit et al. 1999). However, in the majority of experiments and ambient measurements, the proportion of OA emitted during flaming is significantly higher than the 15% used to identify the phase here. In a review of the literature, Reid et al. (2005) report a summary of carbon apportionment from studies using thermal emission techniques, with OA and black carbon reported as mass fractions. Most of the samples were taken from real-world forest or Savanna fires. Reid et al. (2005) reported the ratio of BC:OA from 17 flaming studies (MCE>0.9), from which the r_{OA} can be calculated. In these studies, the mean r_{OA} was 0.87, with a standard deviation of 0.09. The significant difference between this high value and the low one (<0.15) reported in the present study is almost

310

315

320 certainly due to the heterogeneous nature of real-world combustion compared with the extremely controlled, high temperature and therefore more efficient combustion that takes place during phase 2 here. It is also likely that during smouldering phases as described for more complex fires, weak flames are still present between pieces of fuel, meaning that the definitions are inconsistent between these experiments. The mean r_{OA} of the three smouldering measurements was 0.95, which is consistent with phase 3.



325 Figure 4: Time series of the particulate properties during each of the eight tests carried out. The coloured traces show
 particulate concentration, as in panel b in Fig. 3, and the dark grey lines represent the MCE. The MCE scale on the first
 plot applies to all plots. The dark grey boxes show the time between the extinction of the first piece of wood and that of
 the last. Where the first line is dotted, the first extinction was not recorded and the time is therefore an estimation based
 330 on the patterns seen across the tests in MCE and particulate concentrations around the time of extinction. Where two
 scored lines are shown at the concentration peak for a species, this means that the highest concentration for that species is
 above the scale for these plots; more information can be found in the supplementary material. The bars beneath each x-
 axis show which phase of combustion is taking place: phase 1 is the green bar before ignition, phase 2 is the blue bar and
 phase 3 is the orange bar.

335 Figure 4 shows the evolution of rBC and OA mass and SP2-derived scattering particle volume throughout each of
 the eight combustion tests carried out. For each of these experiments, larger figures showing more detail, as in Fig.

3, are included in the supplementary material. The recurrence of the same phases described above can be seen in these tests, with the coloured bar beneath each panel highlighting the phase of combustion taking place. The difference in emissions from phase to phase is clearly much larger than the difference between overall emissions released from different tests.

Nevertheless, differences between the different burning environments can be identified. For example, the peak in OA particle mass due to pyrolysis prior to ignition was noticeably smaller under low heat conditions than high. The influx of a large amount of energy from the infrared heaters under high heat conditions resulted in a faster and more intense period of pyrolysis before the flame ignited, increasing the vaporisation rate of semi-volatile species from the sample.

The shape of the rBC curve differed slightly between environments, with a far more gradual decrease under *HF* conditions after the initial peak. In general, the rBC under *Hf* conditions were the lowest, with a low peak followed by an abrupt decrease, although this is slightly less distinct in test *Hf.3*.

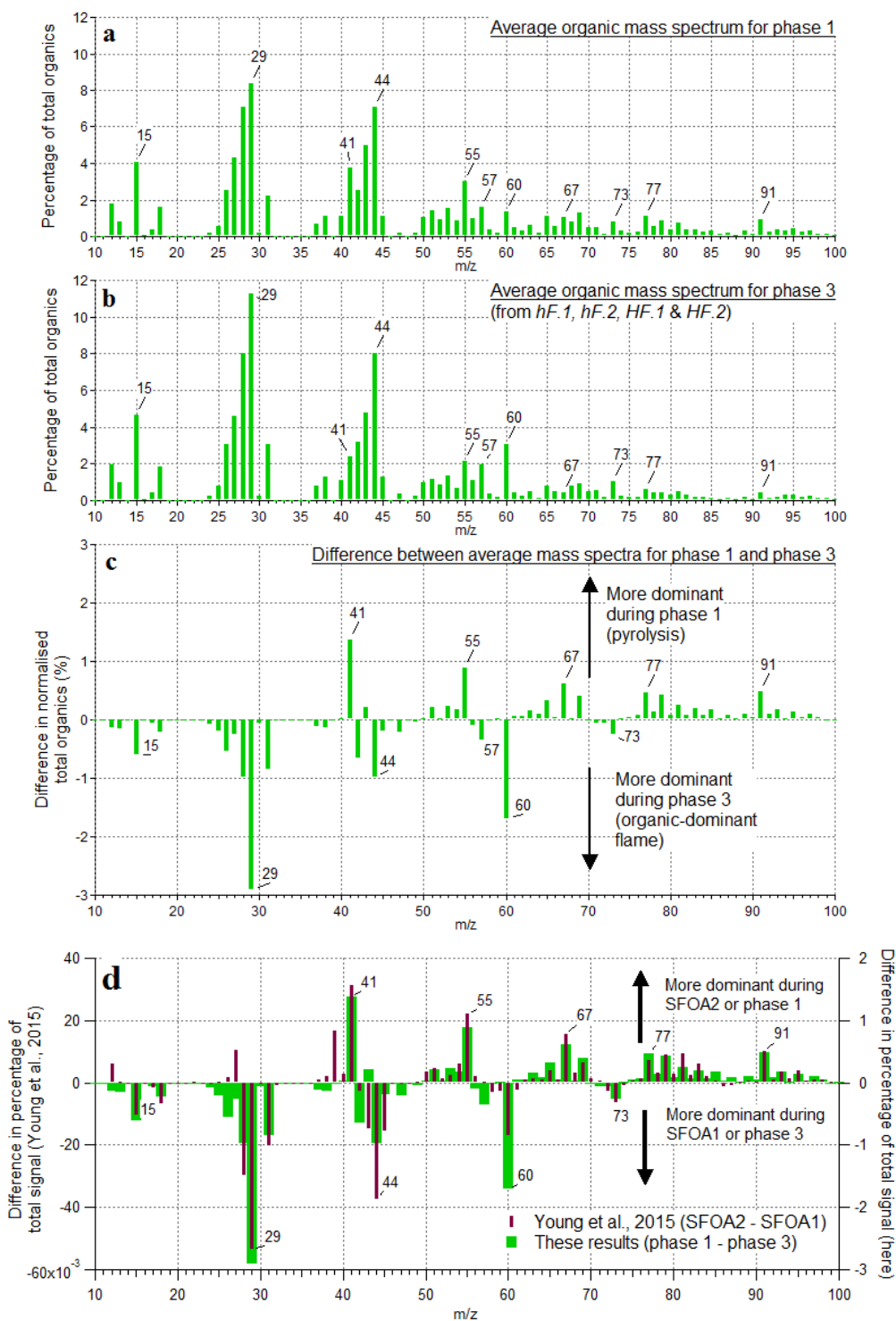
In both *hF* tests, substantial OA particle mass was seen later during the combustion period in phase 3, where it is likely that smouldering combustion was the dominant regime. Under *HF* conditions, there was sometimes a slight increase in organic mass loading later during combustion, but to a much lesser and less well-defined extent than in *hF*. OA-dominant behaviour was not seen at all after ignition in *Hf* tests. This shows that the higher radiant heating was able to sustain highly efficient flaming combustion for a longer time period, which prevented the smouldering behaviour evident in the *hF* example above from becoming established in some cases. The higher flow rate had a cooling effect on the sample, so the most efficient combustion was seen under *Hf* conditions. Here, the high energy environment was able to maintain a more consistent luminous, rBC-producing flame throughout the entire period of combustion.

3.1 Organic aerosol mass spectra

Figure 5 shows the average mass spectra of organic particles from phases 1 (a) and 3 (b) as a percentage of the total OA released, along with the difference between the two phases (c). The mass spectrum from phase 2 is not considered here due to the very low concentrations of OA emitted. The two spectra shown are dominated by hydrocarbon ion fragments, including $C_nH_{2n-1}^+$ ($m/z = 41, 55, 69$), $C_nH_{2n+1}^+$ ($m/z = 29, 43, 57$), $C_nH_{2n-3}^+$ ($m/z = 67, 81$) and $C_{5+n}H_{5+2n}^+$ ($m/z = 77, 91$). These peaks are associated with fragments of saturated alkenes, alkanes, cycloalkanes and aromatic compounds, respectively, although it is possible that some of these peaks (e.g. $m/z 43$) could contain an oxygen. These are similar to spectra reported elsewhere during biomass combustion: for example, Schneider et al (2006) and Weimer et al. (2008) both observed organic spectra dominated by hydrocarbon ion fragments during laboratory-based biomass burning. The largest peaks seen in those experiments were generally $m/z 43$ or 44 , and 29 , as is also seen here. The peak at $m/z 60$ that is seen in both combustion phases here, though more predominantly in phase 3, is associated with fragments of levoglucosan and related anhydrous sugars. These are organic compounds formed from the pyrolysis of cellulose; $m/z 60$ is often seen together with smaller peaks at m/z

57 and 73 (Alfarra et al. 2007) and is used as a marker for biomass burning organic aerosol (BBOA), as so few other sources produce this peak (Simoneit et al. 1999). This is useful mainly for fresh aerosol, as the m/z 60 signal diminishes as the BBA ages (Cubison et al. 2011).

375 The peaks that were more prominent in phase 1 than phase 3 included the series m/z 41, 55, 67, 77 and 91. In phase 3, more prominent peaks were m/z 15, 29, 44, 57, 60 and 73. Heavier molecules were preferentially produced during phase 1. Thus, despite their similarities, it is clear that these two different processes produced distinguishable OA signatures.

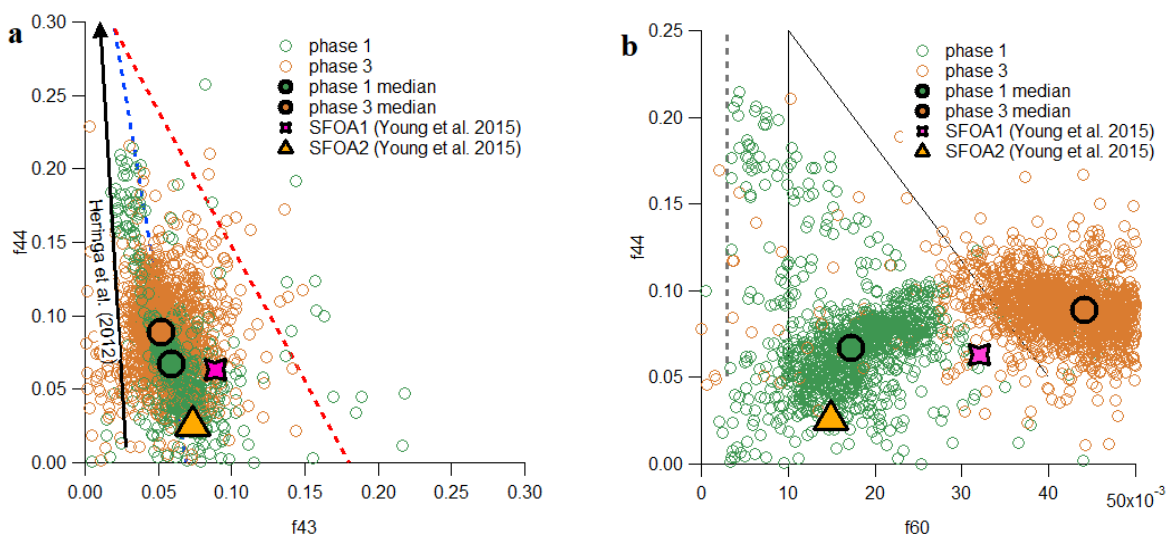


380 **Figure 5:** The mass spectra of OA presented as a percentage of total OA produced during phases 1 (a) and 3 (b), and the differences between them (c). This is an average of the mass spectra for each phase across all tests from all burning environments. (d) shows a comparison between the difference of the two ambient solid fuel factors identified by PMF by Young et al. (2015) and the difference of the two organic phases observed here.

385 An ambient investigation into the urban burning of solid fuels carried out in London in winter 2012 (Young et al.,
2015) identified two different mass spectral factors contributing to the solid fuel organic aerosol (SFOA). These
were found using positive matrix factorisation (PMF), a technique used to identify different components of organic
aerosol contributing to the overall mix in ambient air (Zhang et al. 2011). The data were sampled from a large air
390 mass with a number of contributing sources, of which two were identified to be SFOA. Various explanations for the
origin of these two factors of SFOA were considered, with the authors concluding that different burning conditions
was a likely reason that two different factors were produced. The difference between these two factors shows a
remarkable similarity to the difference between the two combustion phases examined here; results from Young et al.
(2015) are reproduced in Fig. 5d alongside the difference spectrum from the two organic phases observed in our
controlled experiments.

395 Given the striking similarities between these two difference spectra, it is probable that the SFOA factors identified
by Young et al. (2015) are related to the two OA-producing phases of combustion identified here, pyrolysis and
smouldering. Young et al. (2015) noted that the peaks observed most strongly for the factor SFOA2, which are
similar here to phase 1 (above the x-axis in Fig. 5d), are primarily composed of reduced hydrocarbons. Those in
SFOA1, associated with phase 3 (below the x-axis in Fig. 5d), are composed of oxidised hydrocarbons. This is what
400 would be expected from pyrolysis and smouldering aerosol respectively: before ignition, there is limited opportunity
for aerosol to become oxidised, in contrast to aerosol produced while combustion is taking place.

A closer examination of Young et al (2015)'s results generally supports these associations. There was a significant
time correlation between the two SFOA factors, which is consistent with the proposition that they were produced by
the same sources during different phases of combustion. In some cases, SFOA2 (associated with pyrolysis) was seen
405 to peak slightly earlier than SFOA1 (smouldering), which could be related to an increase in pyrolysis early during
combustion. There was a slight dependency on wind speed and direction, with SFOA1 more likely to originate from
the south and SFOA2 from the east or west. This cannot be immediately reconciled with the idea that factors are
related to combustion phases, but could be related to different types of burning taking place in different areas.



410

Figure 6: f_{44} vs f_{43} (a) and f_{44} vs f_{60} (b), with phase 1 data shown in purple and phase 3 in green. The larger, outlined points show the median values for each phase. The general trend of results from Heringa et al. (2012) is illustrated by the black arrow in (a) and results from SFOA2 and SFOA1 collected by Young et al. (2015) are reproduced in both plots.

415 Comparing the relative contributions of significant m/z peaks shows further resemblances between the SFOA factors and our results. One example of this is the fractions of m/z 44 and 43 (f_{44} and f_{43}), which are plotted against one another in Fig. 6a. The primary contribution to f_{44} is from the CO_2^+ fragment, with a possible contribution from $\text{C}_2\text{H}_4\text{O}^+$; f_{43} is associated with the $\text{C}_2\text{H}_3\text{O}^+$ and C_3H_7^+ fragments, which decrease as the aerosol ages. These plots are often used to describe the ageing of OA in the atmosphere, with fresher aerosol populating the lower portion of the triangle shown in Fig. 6a and aged, more oxidised aerosol being found at the top. In general, ambient aerosol populates the inside of the triangle (Ng et al. 2010; Morgan et al., 2010). In contrast to ambient measurements, Heringa et al. (2012) found that fresh BBOA from laboratory-based log wood combustion contained lower f_{43} . Thus, the majority of these datapoints fell outside the triangle to the left. On average, the f_{44} contribution increased as combustion developed.

425 In Fig. 6a, the data collected from phases 1 and 3 from all eight experiments are projected onto this space, alongside a diagrammatic representation of Heringa et al. (2012)'s fresh BBOA results and averages from Young et al. (2015)'s two SFOA factors. The data collected during this project are slightly closer to the ambient triangle than that of Heringa et al. (2012), but show a broadly similar pattern, with phase 1 data containing less f_{44} on average than phase 3, although there is considerable overlap between the phases. The same pattern is seen in the averages of Young et al. (2015)'s two SFOA factors: SFOA2 (phase 1, pyrolysis) contains less f_{44} than SFOA1 (phase 3, smouldering). SFOA1 contains more f_{43} than would be expected, but this is perhaps unsurprising, as f_{43} has been shown to be one of the most variable quantities in fresh biomass burning measurements (e.g. Crippa et al., 2014; Weimer et al., 2008).

435 A second comparison of m/z peaks, this time considering f_{44} vs f_{60} , is shown in Fig. 6b. The peak at m/z 60 is associated with levoglucosan and other anhydrous sugars, which means it can be used as a marker for biomass burning. Similar to the first plot, ambient biomass burning aerosol is found within the marked triangle, with fresher aerosol at the bottom and more aged aerosol at the top. As the aerosol becomes more processed, f_{60} decreases. The dotted line to the left shows the general location of ambient aerosol not associated with biomass burning (Cubison et al. 2011).

440 The two phases of the burn are separated horizontally in Fig. 6b. Phase 1 occupies the lowest, left-most part of the triangle, with low values of f_{44} and f_{60} . This is generally within expected ambient boundaries for fresh biomass burning. Phase 3 OA, in contrast, is found to have higher f_{60} than is seen in ambient measurements. These very high levels are likely due to the proximity of the measurements to the source, which allowed little opportunity for atmospheric processing. Data from the two ambient factors reported by Young et al. (2015), as shown in Fig. 6b, 445 show the same pattern, with the SFOA2 data (associated above with phase 1, pyrolysis) sitting lower and to the left, and SFOA1 data (associated with phase 3, smouldering) sitting higher and to the right, although with a slightly lower average level of f_{60} than the very fresh aerosol that was produced during this experiment. Given that these points do not lie on a line of negative correlation, Young et al. (2015) hypothesised that the difference between the two factors was due to more than just the degree of atmospheric processing, suggesting either fuel type, burn 450 conditions or the phase of combustion as possible reasons for the difference. Data collected here strongly supports the notion that the phase of combustion producing them is the primary difference between these two different factors of SFOA.

The ratio of levoglucosan to potassium has been used in the past as an indicator of biomass combustion efficiency (Harrison et al. 2012). In high temperature fires, levoglucosan is more completely consumed by the flame and more 455 potassium is emitted in particles, resulting in a low levoglucosan:potassium ratio from more efficient combustion. Young et al. (2015) found a lower ratio in SFOA1 (smouldering) than SFOA2 (pyrolysis), leading to the conclusion that the SFOA1 factor was from more efficient combustion.

However, Young et al. (2015) did not consider the possibility that a factor could be associated with pyrolysis rather than flaming or smouldering combustion. In our results, the lower levoglucosan during pyrolysis (judged from m/z 460 peaks at 60, 57 and 73) cannot be ascribed to inefficient combustion because combustion, as such, was not yet taking place at this time. Furthermore, potassium was emitted almost exclusively during phase 2 (see supplementary material section S4), so it was not related to either OA-producing phase. This could not be measured quantitatively by the AMS due to surface ionisation (see e.g. Drewnick et al. 2006), but the timing of its qualitative emission was able to be established.

465 The clear similarities between Young et al. (2015)'s two SFOA factors and the mass spectra of pyrolysis and smouldering combustion presented here give a strong indication that our results could have an application in identifying ambient BBOA factors. Results presented here not only confirm that different phases contribute to

BBOA variability by producing different mass spectra; further, they imply that it is possible to distinguish between these two factors in ambient measurements. If future work is carried out to characterise the mass spectra produced by pyrolysis and smouldering combustion more completely, it may be possible to decrease the uncertainty in the BBOA factor constraints by assuming two related but independent biomass burning factors, rather than the current approach of using one.

Ambient studies have been carried out by both Zhou et al. (2017) in the western US and Brito et al. (2014) in South America, which used PMF to establish three and two BBOA factors respectively. However, analysis of these factors in both cases suggested that the differences between them were due to the aerosol ageing in the atmosphere, rather than any difference in the phase of combustion at the source. Given that there was no ageing of the aerosol in our experiment, the features of phases 1 and 3 described here would likely both have contributed to the ‘fresh BBOA’ factor in each of these ambient studies. The relative remoteness of the sources and warmer temperatures for Zhou et al. (2017) and Brito et al. (2014)’s measurements when compared with Young et al. (2015)’s likely contributed to the inability to distinguish between pyrolysis and smouldering emissions in these cases. This suggests that results presented here are likely to be most valuable in situations where measurements are made in close proximity to the biomass burning source and where atmospheric processing of aerosol is limited. Zhou et al. (2017)’s study was of a summertime wildfire, and Brito et al. (2014)’s of open biomass burning, in contrast to Young et al. (2015)’s observations, which were identified with household heating fires. Thus, it is possible that the nature of the combustion in these different circumstances played a role in the emissions released.

Previous experiments have used the ratio of m/z 46 to m/z 30 to determine the proportion of organic and inorganic nitrate present in aerosol mass (Farmer et al., 2010; Reyes-Villegas et al., 2007). Using data from experiments *hF.1*, *hF.2* and *HF.1*, a median m/z 46:30 ratio of 0.084 ± 0.15 was found here. Such low ratios have often been used in the literature to suggest the presence of organic nitrate (Hao et al., 2014; Sato et al., 2010; Reyes-Villegas et al., 2017). However, these analyses generally assume only a small organic interference on the m/z 30 peak. Here, the m/z 30 value was low compared with surrounding peaks, which was not the case in the aforementioned studies. An (m/z 30 + m/z 46):OA ratio of 0.029:1 was found. These peaks were emitted concurrently with other organic mass with a correlation of $r^2 = 0.99$. These results strongly suggest that nitrogen-containing species were not emitted in appreciable amounts during this set of experiments.

3.2 Emission factors

In atmospheric models, the emissions from wildfires, cookstoves and other sources of BBA are often represented by average emission factors (EFs), which relate the production of a given pollutant to the mass of fuel that has been burned (e.g. Liousse et al. 2010). The average EFs employed by these models are measured in the field or in laboratories for specific fuels and, occasionally, burning conditions. They are compiled into inventories, such as those presented by Andreae & Merlet (2001) and Akagi et al. (2011). However, very large variation in EFs can be found even within individual datasets; uncertainties are attributed to fuel type and characteristics, combustion

phases, fire intensity and the naturally chaotic behaviour of fires (Reid et al. 2005). Results presented here provide some insight into some of the mechanisms that result in this high variability.

505 In order to compare results collected here with those in the literature, average EFs for the duration of each phase of combustion have been calculated for OA and rBC for each of the experiments. **These have been calculated based on aerosol emissions and the measured mass loss during each phase, as outlined in section 2, with a correction of 100 made to account for dilution in the aerosol sample line.** These, alongside average MCEs for the entire combustion period, are displayed in table 2. The average OA and rBC emission factors for each entire burn are plotted against overall MCEs in Fig. 7.

510 **Table 2: Emission factors for OA and rBC during each phase for each test. EFs are shown based on the measured mass loss during each phase, and a weighted average is shown in Fig. 7. Errors represent the standard error of the means.**

Test	Phase 1		Phase 2		Phase 3		MCE
	OA (g kg ⁻¹)	rBC (g kg ⁻¹)	OA	rBC	OA	rBC	
<i>hF.1</i>	1.20 ± 0.07	0.0163 ± 0.0007	0.028 ± 0.002	0.81 ± 0.04	0.61 ± 0.01	0.088 ± 0.002	0.958
<i>hF.2</i>	2.0 ± 0.1	0.019 ± 0.001	0.044 ± 0.002	1.09 ± 0.06	0.70 ± 0.01	0.053 ± 0.002	0.964
<i>HF.1</i>	4.5 ± 0.7	0.0075 ± 0.0009	0.044 ± 0.009	1.13 ± 0.03	0.48 ± 0.01	0.096 ± 0.002	0.967
<i>HF.2</i>	3.4 ± 0.4	0.04 ± 0.01	0.053 ± 0.003	1.31 ± 0.03	0.312 ± 0.007	0.124 ± 0.003	0.967
<i>HF.3</i>	4.2 ± 0.4	0.012 ± 0.001	0.053 ± 0.001	1.19 ± 0.02			0.973
<i>Hf.1</i>	1.9 ± 0.2	0.011 ± 0.002	0.0268 ± 0.0007	0.48 ± 0.01			0.981
<i>Hf.2</i>	2.8 ± 0.4	0.0042 ± 0.0006	0.0268 ± 0.0007	0.459 ± 0.008			0.977
<i>Hf.3</i>	1.5 ± 0.2	0.009 ± 0.002	0.0581 ± 0.0007	1.00 ± 0.01			0.981

515 Within each experiment type and phase shown in table 2, the EFs for each species were reasonably consistent; the variation from the mean in 13 cases out of 16 was less than 25%. It is important to note, however, that these sample sizes were extremely small (n = 2 or 3). A large number of studies have suggested that the phase of combustion (flaming or smouldering) is the best indicator of particulate emissions. For example, McMeeking et al. (2009) found a strong correlation between combustion phases and emission factors, but only a weak correlation with fuel type. A similar result was noted by Weimer et al. (2008), who observed a distinct difference between particulate emissions from different phases, but almost none between wood types. **Collier et al. (2016) observed considerably higher OA emissions during smouldering than flaming emissions during measurements of wildfires in the Pacific Northwest region of the United States.** This is supported here: the greatest differences in particle emissions were between individual phases of combustion, rather than being between different burning environments.

525 Considering the entire combustion period instead of individual phases, Fig. 7a shows a negative correlation between the overall OA emission factor and MCE, with both being strongly influenced by the burning environment in which combustion took place. Low heat and high flow (*hF*) tests yielded the lowest MCE and highest OA EFs, while high heat and low flow (*Hf*) resulted in a high MCE and low OA EFs. This is largely in line with what would be

expected: less efficient combustion is generally understood to result in OA being released in higher quantities. This was closely related to the presence and duration of phase 3. The four experiments with the lowest OA EFs are, as would be expected, the four in which there was no OA-producing phase 3.

530 The trend in emission factors for rBC is less clear. Previous literature suggests that a positive correlation can be expected between rBC emissions and MCE (see e.g. Andreae & Merlet, 2001; Christian et al., 2003; McMeeking et al., 2009), due to the preferential emission of rBC during more efficient flaming combustion. Such a correlation could be seen here for tests at a high flow rate (*hF* and *HF*), but only one of the three low flow cases continued this trend, with the other two having much lower EFs.

535

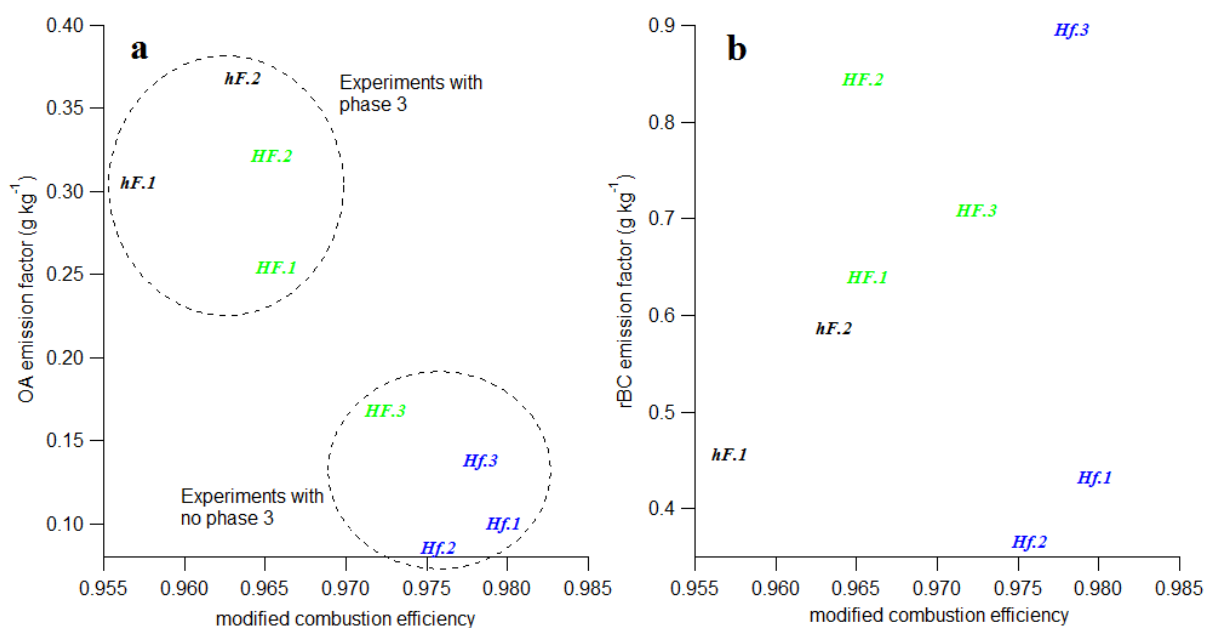
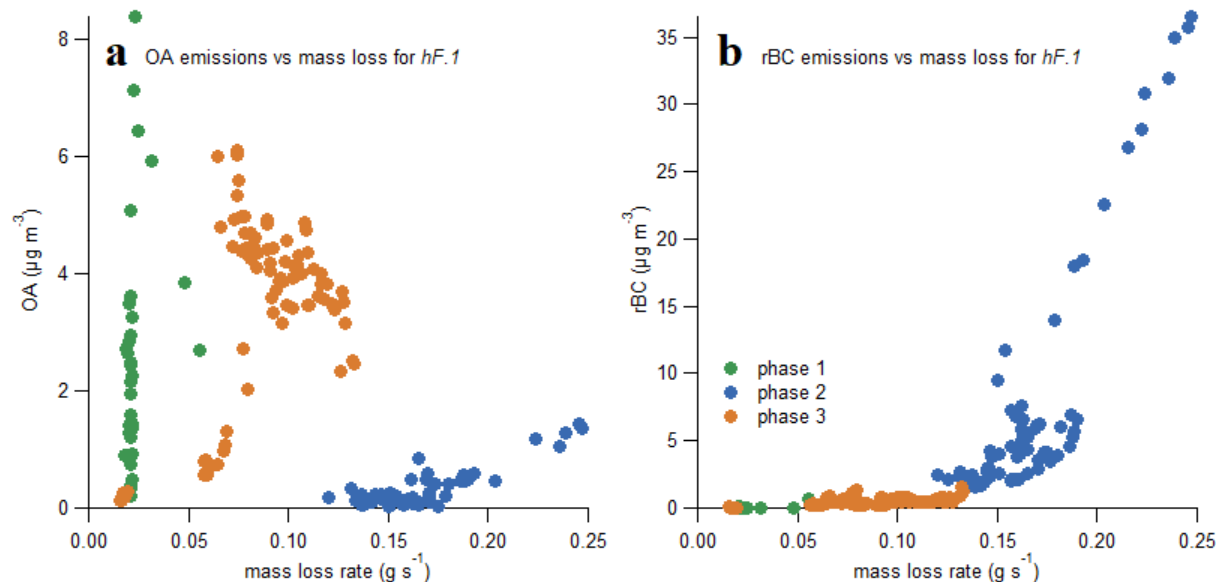


Figure 7: overall OA and rBC emission factors for each test.

540 Andreae & Merlet (2001) reported average EFs for biofuel burning under ambient conditions of 4.0 g kg⁻¹ and 0.59 g kg⁻¹ for organic carbon and black carbon respectively (based on a summary of data from a number of different studies). Michel et al. (2005) used values between 2.1 and 6.4 g kg⁻¹ to represent OA EFs and between 0.6 and 0.725 g kg⁻¹ for black carbon. For both of these examples, BC EFs are comparable with ours, but OA EFs are an order of magnitude higher. This is likely explained by the high efficiency of combustion in our experiments compared with that of real-world combustion, and this discrepancy is resolved when experiments at similar MCEs are considered.

545 In a series of laboratory-based experiments, McMeeking et al. (2009) observed a strong correlation between OA EFs and MCE, with emission factors ranging from around 0.5 g C kg⁻¹ at high MCE to 50 g C kg⁻¹ for low MCE; this correlation, as with ours, was attributed to the increasing amount of smouldering combustion at low MCE. A similar correlation between OA EFs and MCE was presented by Collier et al. (2016) from field measurements of wildfires,

550 which suggests that this relationship holds both in the laboratory and in real world observations. Results presented here are comparable with both McMeeking et al. (2009) and Collier et al. (2016)'s high MCE results and show a similarly clear negative trend. The McMeeking et al. (2009) study saw a less obvious correlation between elemental carbon EF_s (which can be compared with rBC here) and MCE. This was particularly variable above an MCE of 0.95. Thus, the variability of rBC EF_s results collected here fits well with results in the literature.



555

Figure 8: OA (a) and rBC (b) concentrations against mass loss, averaged over every 5 seconds.

Due to the high time resolution of the experiments carried out here, it was possible to examine the change in EF_s in more detail throughout each phase. The change in rBC and OA concentrations with the rate of mass loss for experiment *hF.1* is presented in Fig. 8, which illustrates key features that recur throughout the test series.

560

There was little correlation between emissions of OA and the mass loss rate of the sample during either phase 1 or 3, the two phases when the vast majority of OA was emitted. This illustrates the highly variable nature of smouldering combustion, even within these well-controlled experiments. Very low rates of mass loss during pyrolysis yielded extremely high and variable OA emissions, which suggests that mass loss rate during this phase is a particularly poor indicator of expected emissions. These results show that the most reliable indicator of the OA emitted from combustion is the efficiency of combustion and the duration of phase 3.

565

The rBC emissions always increased with an increasing rate of mass loss. An interesting feature is that above a threshold rate of mass loss in each experiment, the rate of rBC emission substantially increased. In Fig. 8 this transition can be seen at a rate of mass loss of approximately 0.15 g s⁻¹, after which the gradient becomes noticeably steeper. Thus, disproportionately more rBC was produced by flames that remained above this threshold mass loss

570

rate for longer. This feature could explain why there is more variability in the emission of BC at high MCEs in studies such as that carried out by McMeeking et al. (2009): above this threshold, small changes in the intensity will have a much larger effect on rBC emissions

575 The presentation of three phases here, rather than the standard two, provides some insight into the large variation in EFs reported in the literature and the mechanisms producing these. EFs are typically examined in relation to two variables: the fuel mass loss and the MCE, which is used as a proxy for the proportion of flaming or smouldering combustion. Nevertheless, studies have shown that less than 50% of the variance in particle EFs can be accounted for by the MCE (Ferek et al. 1998; Janhäll et al. 2010; Reid et al. 2005). Comparable uncertainties are seen in relating emissions directly to mass loss (e.g. Freeborn et al. 2008; McMeeking et al. 2009).

580 The pyrolysis phase as defined here cannot be parameterised with MCE, as CO and CO₂ are not produced prior to ignition. Nevertheless, both the large concentrations of OA released during phase 1 here, and the comparison with Young et al. (2015)'s ambient results shown in Sect. 3.1, suggest that direct pyrolysis emissions could account for a significant proportion of ambient BBOA aerosol described in the literature. It is therefore possible that the current approach of describing biomass burning emissions using mass loss and MCE as key variables is unable to account
585 for emissions released during pyrolysis. This could begin to explain some of the large variability in biomass burning EF measurements, even between tests with similar MCEs and within the same investigation. If this is the case, identifying a further parameter that is able to capture pyrolysis OA could add a significant further constraint to bottom-up studies of EFs. Furthermore, the heat load placed on samples, which was included in this study as a specific parameter, was found to influence the quantity of OA emitted during pyrolysis. In real-world combustion,
590 the heat load can vary substantially based on how the fuel is packed and where combustion is taking place. Hence, it can be very different between wood stove burns and wildfires, and vary according to burn conditions or fuel density in each type of combustion.

4 Summary and conclusion

595 Biomass burning experiments were performed under highly controlled test conditions in a Fire Propagation Apparatus. Eight experiments were performed in three different burning environments. In each case, the samples were exposed to heat fluxes of 30 or 50 kW m⁻² and an imposed airflow of 50 or 200 lpm of air. Emissions of organic aerosol and refractory black carbon were measured in real time using an Aerosol Mass Spectrometer and a Single Particle Soot Photometer, respectively.

600 Emissions were observed to be dependent on three separate phases during small-scale wood burning: pyrolysis (phase 1), which produces mostly OA; flaming combustion (phase 2), when most of the rBC is produced; and smouldering-dominated combustion (phase 3), which emits primarily OA, although a luminous flame can still be seen. The emissions from any real-world burning event will comprise a variable combination of these phases taking place simultaneously within a mass of burning material. We have shown that the relative abundances of key gas and

605 particulate components emitted during each particular combustion phase are similar across tests in different burning environments. However, the environment in which combustion takes place affects the duration of each phase, and smouldering behaviour is only observed when conditions exist to lower the flaming intensity.

Our observations show that the particulate emitted during pyrolysis and smouldering is primarily OA, and that the OA in each of these burn phases is chemically different. The composition of the former contains more reduced hydrocarbons and the latter is characteristic of more oxidised hydrocarbons. The ratio of f44 to f60 as measured
610 using an Aerosol Mass Spectrometer differs between these two phases, with smouldering having a much higher proportion of f60. This can be distinguished from the process of aerosol ageing, as aged aerosol would show lower quantities of f60 alongside greater quantities of f44, which is not seen here.

The differential chemical characteristics of these two phases are similar to those of two solid fuel organic aerosol factors identified by Young et al. (2015) in ambient air. This suggests that the differences in burn phases can
615 contribute to the variability of ambient BBOA mass spectra and confirms that it is possible to infer burn conditions based on measurements of fresh emissions.

The emission factors for both aerosol species were consistent with results in the literature from experiments with similar modified combustion efficiencies. Within each experiment type and phase, emissions were reasonably consistent. Averaging over the entire period of combustion showed better correspondance between EFs and the
620 MCE for OA than for rBC, which is consistent with results from previous experiments. However, the release of OA during pyrolysis and smouldering were not coupled to mass loss, which suggests that the correlation with MCE is best explained by the duration of the smouldering phase. The variability in rBC EFs could be related to a large increase in the rate of rBC emission above a certain threshold flame intensity.

The presentation of different chemical characteristics for three phases of biomass burning here provides a physical
625 basis that could help to explain why there is such large variability in biomass burning emissions. This variability creates difficulties when producing bottom-up representations of emissions. If the difference in emissions associated with the pyrolysis and smouldering phases are better understood, however, and if further approaches to quantifying pyrolysis are developed, it could be possible to constrain emission estimates more completely. **The development of real-world combustion differs from our experimental burns, which may affect the balance of emissions in the**
630 **different phases. The yield of OA from the pyrolysis phase was largely dictated by the heat that reached the sample, with higher applied heat increasing the vaporisation of semi-volatile species. In the context of a wildfire, a number of variables could affect the rapidity and intensity of heating, and hence the pyrolysis yield. Examples of these include the fuel density, the fuel water content or the radiant heating of unburnt fuel adjacent to flaming combustion. The high radiant heat in the centre of a wildfire could show features of our high heat experiments, although this**
635 **could be hindered by the fuel type or moisture content. Conditions are more constrained in a stove used for cooking or heating, where fuel is introduced in batches, but variations in fuel loading, moisture and type still result in more variation in emissions than has been seen here.**

By being able to reproduce fire characteristics consistently between experiments and control the combustion
640 environment we have been able to explore and separate processes that form different aerosol components during its
evolution. In doing so we have been able to relate a number of key aspects of the burn to real world systems and to
highlight why the systems behave in the way they do. Our work shows that whilst black carbon emission factors can
be used robustly caution needs to be used when applying OA emission factors averaged empirically over whole
burns to other systems since the emission of OA is decoupled from the total mass loss. Further exploration of
645 aerosol yields from such carefully controlled fires and relation to larger-scale experiments may help to deliver
greater constraint on variability of particulate emissions in atmospheric systems.

Data availability. Raw and processed data are archived at the University of Manchester and available on request.

Author contributions. S.L.H., J.C.T., R.H., J.D.A. and H.C. designed the project; S.L.H., J.C.T., W.T.M., J.D.A.,
P.I.W. and K.S. operated, calibrated and performed QA of instrument measurements; all authors contributed to the
650 interpretation of data; S.L.H led the manuscript preparation, with J.D.A., H.C., J.C.T., R.H., D.L., K.S. and C.L
contributing and critically reviewing.

Acknowledgements. This work was supported by the UK Natural Environment Research Council (NERC) through
the SAMBBA project (grant ref: NE/J010073/1) and the lead author was supported by the NERC Doctoral Training
Programme (grant ref: NE/L002469/1).

655 Professor Albert Simoeni (now at Worcester Polytechnic Institute) is acknowledged for his input in the initial
discussions and conception of this work.

References

- Akagi, S. K., Yokelson, R. J., Wiedinmyer, C., Alvarado, M. J., Reid, J. S., Karl, T., Crounse, J. D. and Wennberg,
P. O.: Emission factors for open and domestic biomass burning for use in atmospheric models, *Atmos. Chem. Phys.*,
660 11(9), 4039-4072, doi: 10.1021/es062289b, 2011.
- ~~Alfarra, M. R., Paulsen, D., Gysel, M., Garforth, A. A., Dommen, J., Prévôt, A. S. H., Worsnop, D. R.,
Baltensperger, U., and Coe, H.: A mass spectrometric study of secondary organic aerosols formed from the
photooxidation of anthropogenic and biogenic precursors in a reaction chamber, *Atmos. Chem. Phys.*, 6, 5279–5293,
doi: 10.5194/acp-6-5279-2006, 2006.~~
- 665 Alfarra, M. R., Prevot, A. S. H., Szidat, S., Sandradewi, J., Weimer, S., Lanz, V. A., Schreiber, D., Mohr, M. and
Baltensperger, U.: Identification of the mass spectral signature of organic aerosols from wood burning emissions,
Environ. Sci. Technol., 41(16), 5770-5777, doi: 10.1021/es062289b, 2007.

- Allan, J. D., Delia, A. E., Coe, H., Bower, K. N., Alfarra, M., Jimenez, J. L., Middlebrook, A. M., Drewnick, F., Onasch, T. B., Canagaratna, M. R., Jayne, J. T. and Worsnop, D. R.: A generalised method for the extraction of chemically resolved mass spectra from Aerodyne aerosol mass spectrometer data, *Aerosol Sci. Tech.*, 35, 909-922, doi: 10.1016/j.jaerosci.2004.02.007, 2004.
- 670
- Andreae, M. and Merlet, P.: Emissions of trace gases and aerosols from biomass burning, *Global Biogeochem. Cy.*, 15(4), 955-966, doi: 10.1029/2000GB001382, 2001.
- ASTM E2058-00: Standard test method for measurement of synthetic polymer material flammability using a Fire Propagation Apparatus (FPA), January 2000, American Society for Testing and Materials, West Conshohocken, PA, 2000.
- 675
- ~~Bahreini, R., Keywood, M. D., Ng, N. L., Varutbangkul, V., Gao, S., Flagan, R. C., Seinfeld, J. H., Worsnop, D. R. and Jimenez, J. L.: Measurements of secondary organic aerosol from oxidation of cycloalkenes, terpenes, and *m*-xylene using an Aerodyne Aerosol Mass Spectrometer, *Environ. Sci. Technol.*, 39, 5674-5688, doi: 10.1021/es048061a, 2005.~~
- 680
- Bond, T. C., Doherty, S. J., Fahey, D. W., Forster, P. M., Berntsen, T., DeAngelo, B. J., Flanner, M. G., Ghan, S., Kärcher, B., Koch, D., Kinne, S., Kondo, Y., Quinn, P. K., Sarofim, M. C., Schultz, M. G., Schulz, M., Venkataraman, C., Zhang, H., Zhang, S., Bellouin, N., Guttikunda, S. K., Hopke, P. K., Jacobson, M. Z., Kaiser, J. W., Klimont, Z., Lohmann, U., Schwarz, J. P., Shindell, D., Storelvmo, T., Warren, S. G. and Zender, C. S.: Bounding the role of black carbon in the climate system: a scientific assessment, *J. Geophys. Res.*, 118(11), 5380-5552, doi: 10.1002/jgrd.50171, 2013.
- 685
- Brito, J., Rizzo, L. V., Morgan, W. T., Coe, H., Johnson, B., Haywood, J., Longo, K., Freitas, S., Andreae, M. O. and Artaxo, P.: Ground-based aerosol characterization during the South American Biomass Burning Analysis (SAMBBA) field experiment, *Atmos. Chem. Phys.*, 14(22), 12069-12083, doi: 10.5194/acp-14-12069-2014, 2014.
- 690
- Brohez, S., Marlair, G. and Delvosalle, C.: Fire calorimetry relying on the use of the fire propagation apparatus. Part I: Early learning from use in Europe, *Fire Mater.*, 30, 131-149, doi: 10.1002/fam.897, 2006.
- Bryden, K. M., Ragland, K. W. and Rutland, C. J.: Modeling thermally thick pyrolysis of wood, *Biomass Bioenerg.*, 22(1), 41-53, doi: 10.1016/S0961-9534(01)00060-5, 2002.
- Canagaratna, M. R., Jayne, J. T., Jimenez, J. L., Allan, J. D., Alfarra, M. R., Zhang, Q., Onasch, T. B., Drewnick, F., Coe, H., Middlebrook, A., Delia, A., Williams, L. R., Trimborn, A. M., Northway, M. J., DeCarlo, P. F., Kolb, C. E., Davidovits, P. and Worsnop, D. R.: Chemical and microphysical characterization of ambient aerosols with the Aerodyne Aerosol Mass Spectrometer, 26, 185-222, doi: 10.1002/mas.20115, 2007.
- 695
- Canonaco, F., Crippa, M., Slowik, J. G., Baltensperger, U. and Prévôt, A. S. H.: SoFi, an Igor based interface for the efficient use of the generalized multilinear engine (ME-2) for source apportionment: application to aerosol mass spectrometer data, *Atmos. Meas. Tech.*, 6, 3649-3661, doi: 10.5194/amt-6-3649-2013, 2013.
- 700
- Cachier, H., Liousse, C. and Buat-Menard, P.: Particulate content of Savanna fire emissions, *J. Atmos. Chem.*, 22, 123-148, doi: 10.1007/BF00708185, 1995.

- Christian, T. J., Kleiss, B., Yokelson, R. J., Holzinger, R., Crutzen, P. J., Hao, W. M., Saharjo, B. H. and Ward, D. E.: Comprehensive laboratory measurements of biomass-burning emissions: 1. Emissions from Indonesian, African,
705 and other fuels, *J. Geophys. Res. Atmos.*, 108(D23), doi: 10.1029/2003JD003704, 2003.
- Christian, T. J., Yokelson, R. J., Carvalho Jr., J. A., Griffith, D. W. T., Alvarado, E. C., Santos, J. C., Neto, T. G. S.,
Veras, C. A. G., and Hao, W. M.: The tropical forest and fire emissions experiment: trace gases emitted by
smoldering logs and dung on deforestation and pasture fires in Brazil, *J. Geophys. Res.*, 112, D18308,
doi:10.1029/2006JD008147, 2007.
- 710 Collier, S., Zhou, S., Onash, T. B., Jaffe, D. A., Kleinman, L., Sedlacek III, A. J., Briggs, N. L., Hee, J., Fortner, E.,
Shililng, J. E., Worsnop, D., Yokelson, R. J., Parworth, C., Ge, X., Xu, J., Butterfield, Z., Chand, D., Dubey, M. K.,
Pekour, M. S., Springston, S. and Zhang, Q.: Regional influence of aerosol emissions from wildfires driven by
combustion efficiency: insights from the BBOP campaign, *Environ. Sci. Technol.*, 50, 16, 8613-8622, doi:
10.1021/acs.est.36b01617, 2016.
- 715 Crippa, M., Canonaco, F., Lanz, V. A., Äijälä, M., Allan, J. D., Carbone, S., Capes, G., Ceburnis, D., Dall'Osto, M.,
Day, D. A., DeCarlo, P. F., Ehn, M., Eriksson, A., Freney, E., Hildebrandt Ruiz, L., Hillam, R., Jimenez, J. L.,
Junninen, H., Kiendler-Scharr, A., Kortelainen, A.-M., Kulmala, M., Laaksonen, A., Mensah, A. A., Mohr, C.,
Nemitz, E., O'Dowd, C., Ovadnevaite, J., Pandis, S. N., Petäjä, T., Poulain, L., Saarikoski, S., Sellegri, K.,
Swietlicki, E., Tiitta, P., Worsnop, D. R., Baltensperger, U. and Prévôt, A. S. H.: Organic aerosol components
720 derived from 25 AMS data sets across Europe using a consistent ME-2 based source apportionment approach,
Atmos. Chem. Phys., 14, 6159-6176, doi: 10.5194/acp-14-6159-2014, 2014.
- Cubison, M. J., Ortega, A. M., Hayes, P. L., Farmer, D. K., Day, D., Lechner, M. J., Brune, W. H., Apel, E., Diskin,
G. S., Fisher, J. A., Fuelberg, H. E., Hecobian, A., Knapp, D. J., Mikoviny, T., Riemer, D., Sachse, G. W., Sessions,
W., Weber, R. J., Weinheime, A. J., Wisthaler, A. and Jimenez, J. L.: Effects of aging on organic aerosol from open
725 biomass burning smoke in aircraft and laboratory studies, *Atmos. Chem. Phys.*, 11, 12049-12064, doi: 10.5194/acp-
11-12049-2011, 2011.
- Drewnick, F., Hings, S. S., DeCarlo, P., Jayne, J. T., Gonin, M., Fuhrer, K., Weimer, S., Jimenez, J. L., Demerjian,
K. L., Borrmann, S. and Worsnop, D. R.: A new time-of-flight aerosol mass spectrometer (TOF-AMS) - Instrument
description and first field deployment, *Aerosol Sci. Tech.*, 39, 637-658, doi: 10.1080/02786820500182040, 2005.
- 730 Drewnick, F., Hings, S. S., Curtius, J., Eerdekens, G. and Williams, J.: Measurement of fine particulate and gas-
phase species during the New Year's fireworks 200 in Mainz, Germany, *Atmos. Env.*, 40(23), 4316-4327, doi:
10.1016/j.atmosenv.2006.03.040, 2006.
- Elsasser, M., Busch, C., Orasche, J., Schön, C., Hartmann, H., Schnelle-Kreis, J. and Zimmerman, R.: Dynamic
changes of the aerosol composition and concentration during different burning phases of wood combustion, *Energ.*
735 *Fuel*, 27(8), 4959-4968, doi: 10.1021/ef400684f, 2013.

- Farmer, D. K., Matsunaga, A., Docherty, K. S., Surratt, J. D., Seinfeld, J. H., Ziemann, P. J. and Jimenez, J. L.: Response of an aerosol mass spectrometer to organonitrates and organosulfates and implications for atmospheric chemistry, *P. Natl. Acad. Sci. U.S.A.*, 107, 6670-6675, doi: 10.1073/pnas.0912340107, 2010.
- 740 Ferek, R. J., Reid, J. S., Hobbs, P. V., Blake, D. R., and Lioussé, C.: Emission factors of hydrocarbons, halocarbons, trace gases, and particles from biomass burning in Brazil, *J. Geophys. Res.*, 103(D24), 32107–32118, doi:10.1029/98JD00692, 1998.
- Freeborn, P. H., Wooster, M. J., Hao, W. M., Ryan, C. A., Nordgren, B. L., Baker, S. P. and Ichoku, C.: Relationships between energy release, fuel mass loss, and trace gas and aerosol emissions during laboratory biomass fires, *J. Geophys. Res.*, 113(D1), doi: 10.1029/2007JD008679, 2008.
- 745 ~~Fry, J. L., Kiendler Scharr, A., Rollins, A. W., Wooldridge, P. J., Brown, S. S., Fuchs, H., Dubé, W., Mensah, A., dal Maso, M., Tillmann, R., Dorn, H. P., Brauers, T. and Cohen, R. C.: Organic nitrate and secondary organic aerosol yield from no₃ oxidation of β -pinene evaluated using a gas-phase kinetics/aerosol partitioning model, *Atmos. Chem. Phys.*, 9, 1431-1449, doi: 10.5194/acp-9-1431-2009, 2009.~~
- 750 Hao, L. Q., Kortelainen, A., Romakkaniemi, S., Portin, H., Jaatinen, A., Leskinen, A., Komppula, M., Miettinen, P., Sueper, D., Pajunoja, A., Smith, J. N., Lehtinen, K. E. J., Worsnop, D. R., Laaksonen, A. and Virtanen, A.: Atmospheric submicron aerosol composition and particulate organic nitrate formation in a boreal forestland-urban mixed region, *Atmos. Chem. Phys.*, 14, 13483-13495, doi: 10.5194/acp-14-13483-2014, 2014.
- Harrison, R. M., Beddows, D. C. S., Hu, L. and Yin, J.: Comparison of methods for evaluation of wood smoke and estimation of UK ambient concentrations, *Atmos. Chem. Phys.*, 12, 8271-8283, doi: 10.5194/acp-12-8271-2012, 755 2012.
- Heringa, M. F., DeCarlo, P. F., Chirico, R., Lauber, A., Doberer, A., Good, J., Nussbaumer, T., Keller, A., Burtscher, H., Richard, A., Miljevic, B., Prevot, A. S. H. and Baltensperger, U.: Time-resolved characterization of primary emissions from residential wood combustion appliances, *Environ. Sci. Technol.*, 46, 11418-11425, doi: 10.1021/es301654w, 2012.
- 760 ~~Hersey, S. P., Craven, J. S., Schilling, K. A., Metcalf, A. R., Sorooshian, A., Chan, M. N., Flagan, R. C. and Seinfeld, J. H.: The Pasadena Aerosol Characterization Observatory (PACO): chemical and physical analysis of the Western Los Angeles basin aerosol, *Atmos. Chem. Phys.*, 11, 7417-7443, doi: 10.5194/acp-11-7417-2011, 2011.~~
- Hobbs, P., Reid, J., Kotchenruther, R. A., Ferek, R. J. and Weiss, R.: Direct radiative forcing by smoke from biomass burning, *Science*, 275(5307), 1777-1778, doi: 10.1126/science.275.5307.1777, 1997.
- 765 Janhäll, S., Andreae, M. O. and Pöschl, U.: Biomass burning aerosol emissions from vegetation fires: particle number and mass emission factors and size distributions, *Atmos. Chem. Phys.*, 10, 1427-1439, doi: 10.5194/acp-10-1427-2010, 2010.
- Johansson, L. S., Leckner, B., Gustavsson, L., Cooper, D., Tullin, C. and Potter, A.: Emission characteristics of modern and old-type residential boilers fired with wood logs and wood pellets, *Atmos. Environ.*, 38(25), 4183-4195, 770 doi: 10.1016/j.atmosenv.2004.04.020, 2004.

- Kimmel, J. R., Farmer, D. K., Cubison, M. J., Sueper, D., Tanner, C., Nemitz, E., Worsnop, D. R., Gonin, M. and Jimenez, J. L.: Real-time aerosol mass spectrometry with millisecond resolution, *Int. J. Mass Spectrom.*, 303(1), 15-26, doi: 10.1016/j.ijms.2010.12.004, 2011.
- 775 Kuhlbusch, T. and Crutzen, P.: Toward a global estimate of black carbon in residues of vegetation fires representing a sink of atmospheric CO₂ and a source of O₂, *Global Biogeochem. Cy.*, 9(4), 491-501, doi: 10.1029/95GB02742, 1995.
- Laborde, M., Schnaiter, M., Linke, C., Saathoff, J., Naumann, K.-H., Möhler, O., Berlenz, S., Wagner, U., Taylor, J. W., Liu, D., Flynn, M., Allan, J. D., Coe, H., Heimerl, K., Dahlkötter, F., Weinzierl, B., Wollny, A. G., Zanatta, M., Cozic, J., Laj, P., Hittenberger, R., Schwarz, J. P. and Gysel, M.: Single Particle Soot Photometer intercomparison 780 at the AIDA chamber, *Atmos. Meas. Tech.*, 5, 3077-3097, doi: 10.5194/amt-5-3077-2012, 2012.
- Liousse, C., Guillaume, B., Grégoire, J. M., Mallet, M., Galy, C., Pont, V., Akpo, A., Bedou, M., Castéra, P., Dungall, L., Gardrat, E., Granier, C., Konaré, A., Malavelle, F., Mariscal, A., Mieville, A., Rosset, R., Serça, D., Solmon, F., Tummon, F., Assamoi, E., Yoboué, V. and Van Velthoven, P.: Updated African biomass burning emission inventories in the framework of the AMMA-IDAF program, with an evaluation of combustion aerosols, 785 *Atmos. Chem. Phys.*, 10, 9631-9646, doi: 10.5194/acp-10-9631-2010, 2010.
- Liu, D., Flynn, M., Gysel, M., Targino, A., Crawford, I., Bower, K., Choularton, T., Juranyi, Z., Steinbacher, M., Huglin, C., Curtius, J., Kampus, M., Petzold, A., Weingartner, E., Baltensperger, U. and Coe, H.: Single particle characterization of black carbon aerosols at a tropospheric alpine site in Switzerland, *Atmos. Chem. Phys.*, 10, 7389-7407, doi: 10.5194/acp-10-7389-2010, 2010.
- 790 Liu, D., Allan, J. D., Young, D. E., Coe, H., Beddows, D., Fleming, Z. L., Flynn, M. J., Gallagher, M. W., Harrison, R. M., Lee, J., Prévôt, A. S. H., Taylor, J. W., Yin, J., Williams, P. I. and Zotter, P.: Size distribution, mixing state and source apportionment of black carbon aerosol in London during wintertime, *Atmos. Chem. Phys.*, 14, 10061-10084, doi: 10.5194/acp-14-10061-2014, 2014.
- Liu, D., Whitehead, J., Alfarra, M. R., Reyes-Villegas, E., Spracklen, D. V., Reddington, C. L., Kong, S., Williams, 795 P. I., Ting, Y.-C., Haslett, S., Taylor, J. W., Flynn, M. J., Morgan, W. T., McFiggans, G., Coe, H., Allan, J. D.: Black-carbon absorption enhancement in the atmosphere determined by particle mixing state, *Nature Geosci.*, 10, 184-191, doi: 10.1038/NGEO2901, 2017.
- Lobert, J.: Experimental evaluation of biomass burning emissions: Nitrogen and carbon containing compounds, in *Global Biomass Burning: Atmospheric, Climatic and Biospheric Implications*, MIT Press, Cambridge, 289–304, 800 1991.
- MacCarty, N., Ogle, D., Still, D., Bond, T. and Roden, C.: A laboratory comparison of the global warming impact of five major types of biomass cooking stoves, *Energy Sustain. Dev.*, 12(2), 56-65, doi: 10.1016/S0973-0826(08)60429-9, 2008.
- McMeeking, G. R., Kreidenweis, S. M., Baker, S., Carrico, C. M., Chow, J. C., Collett, J. L., Hao, W. M., Holdern, 805 A. S., Kirchstetter, T. W., Malm, W. C., Moosmüller, H., Sullivan, A. P. and Wold, C. E.: Emissions of trace gases

and aerosols during the open combustion of biomass in the laboratory, *J. Geophys. Res.*, 114(D19), D19210, doi: 10.1029/2009JD011836, 2009.

810 McMeeking, G. R., Hamburger, T., Liu, D., Flynn, M., Morgan, W. T., Northway, M., Highwood, E. J., Krejci, R., Allan, J. D., Minikin, A. and Coe, H.: Black carbon measurements in the boundary layer over western and northern Europe, *Atmos. Chem. Phys.*, 10, 9393-9414, doi: 10.5194/acp-10-9393-2010, 2010.

Michel, C., Lioussé, C., Grégoire, J.-M., Tansey, K., Carmichael, G. R. and Woo, J.-H.: Biomass burnign emission inventory from burnt area data given by the SPOT-VEGETATION system in the frame of TRACE-P and ACE-Asia campaigns, *J. Geophys. Res. Atmos.*, 110(D9), doi: 10.1029/2004JD005461, 2005.

815 ~~Mohr, C., Lopez-Hilfiker, F. D., Zotter, P., Prevot, A. S. H., Xu, L., Ng, N. L., Herndon, S. C., Williams, L. R., Franklin, J. P., Zahniser, M. S., Worsnop, D. R., Knighton, W. B., Aiken, A. C., Gorkowski, K. J., Dubey, M. K., Allan, J. D. and Thornton, J. A.: Contribution of nitrated phenols to wood burning brown carbon light absorption in detling, united kingdom during winter time, *Environ. Sci. Technol.*, 47, 6316-6324, doi 10.1021/Es400683v, 2013.~~

820 Morgan, W. T., Allan, J. D., Bower, K. N., Highwood, E. J., Liu, D., McMeeking, G. R., Northway, M. J., Williams, P. I., Krejci, R. and Coe, H.: Airborne measurements of the spatial distribution of aerosol chemical composition across Europe and evolution of the organic fraction, *Atmos. Chem. Phys.*, 10, 4065-4083, doi: 10.5194/acp-10-4065-2010, 2010.

825 Ng, N. L., Canagaratna, M. R., Zhang, Q., Jimenez, J. L., Tian, J., Ulbrich, I. M., Kroll, J. H., Dochery, K. S., Chhabra, P. S., Bahreini, R., Murphy, S. M., Seinfeld, J. H., Hildebrandt, L., Donahue, N. M., DeCarlo, P. F., Lanz, V. A., Prévôt, A. S. H., Dinar, E., Rudich, Y. and Worsnop, D. R.: Organic aerosol components observed in Northern Hemispheric datasets from aerosol mass spectrometry, *Atmos. Chem. Phys.*, 10, 4625-4641, doi: 10.5194/acp-10-4625-2010, 2010.

Ortega, A. M., Day, D. E., Cubison, M. J., Brune, W. H., Bon, D., de Gouw, J. A. and Jimenez, J. L.: Secondary organic aerosol formation and primary organic aerosol oxidation from biomass burning smoke in a flow reactor during FLAME-3, *Atmos. Chem. Phys.*, 13, 11551-11571, doi: 10.5194/acp-13-11551-2013, 2013.

830 ~~Perring, A. E., Pusede, S. E., and Cohen, R. C.: An observational perspective on the atmospheric impacts of alkyl and multifunctional nitrates on ozone and secondary organic aerosol, *Chemical Reviews*, 113, 5848-5870, doi: 10.1021/er300520x, 2013.~~

835 Paatero, P.: The multilinear engine – A table-driven, least squares program for solving multilinear problems, including the n-way parallel factor analysis model, *J. Comp. Graph. Stat.*, 8, 854-888, doi: 10.1080/10618600.1999.10474853, 1999.

Petzold, A., Ogren, J. A., Fiebig, M., Laf, P., Li, S.-M., Baltensperger, U., Holzer-Popp, T., Kinne, S., Pappalardo, G., Sugimoto, N., Wehrli, C., Wiedensohler, A. and Zhang, X.-Y.: Recommendations for reporting “black carbon” measurements, *Atmos. Chem. Phys.*, 13, 8365-8379, doi: 10.5194/acp-13-8365-2013, 2013.

840 Reid, J. S., Koppmann, R., Eck, T. F. and Eleuterio, D. P.: A review of biomass burning emissions part II: intensive physical properties of biomass burning particles, *Atmos. Chem. Phys.*, 5, 799-825, doi: 10.5194/acp-5-799-2005, 2005.

845 Reyes-Villegas, E., Priestley, M., Ting, Y-C., Haslett, S., Bannan, T., Le Breton, M., Williams, P. I., Bacak, A., Flynn, M. J., Coe, H., Percival, C. and Allan, J. D.: Simultaneous Aerosol Mass Spectrometry and Chemical Ionisation Mass Spectrometry measurements during a biomass burning event in the UK: insights into nitrate chemistry, *Atmos. Chem. Discuss.*, doi: 10.5194/acp-2017-605, 2017.

~~Roberts, J. M. and R.W. Fajer, UV absorption cross sections of organic nitrates of potential atmospheric importance and estimation of atmospheric lifetimes, *Environ. Sci. Technol.*, 23, 945-951, doi: 10.1021/es00066a003, 1989.~~

850 Roden, C. A., Bond, T. C., Conway, S., Osorto P., Anibal B., MacCarty, N. and Still, D.: Laboratory and field investigations of particulate and carbon monoxide emissions from traditional and improved cookstoves, *Atmos. Environ.*, 43(6), 1170-1181, doi: 10.1016/j.atmosenv.2008.05.041, 2009.

Sato, K., Takami, A., Isezaki, T., Hikida, T., Shimono, A. and Imamura, T.: Mass spectrometric study of secondary organic aerosol formed from the photo-oxidation of aromatic hydrocarbons, *Atmos. Environ.*, 44, 1080-1087, doi: 10.1016/j.atmosenv.2009.12.013, 2010.

855 Schkolnik, G., Chand, D., Hoffer, A., Andreae, M. O., Erlick, C., Swietlicki, E. and Rudich, Y.: Constraining the density and complex refractive index of elemental and organic carbon in biomass burning aerosol using optical and chemical measurements, *Atmos. Environ.*, 42(5), 1107-1118, doi: 10.1016/j.atmosenv.2006.09.035, 2007.

Schneider, J., Weimer, S., Drewnick, F., Borrmann, S., Helas, G., Gwaze, P., Schmid, O., Andreae, M. O. and Kirchner, U.: Mass spectrometric analysis and aerodynamic properties of various types of combustion-related aerosol particles, *Int. J. Mass Spectrom.*, 258(1-3), 37-49, doi: 10.1016/j.ijms.2006.07.008, 2006.

860 Schwarz, J. P., Gao, R. S., Spackman, J. R., Watts, L. A., Thomson, D. S., Fahey, D. W., Ryerson, T. B., Peischl, J., Holloway, J. S., Trainer, M., Frost, G. J., Baynard, T., Lack, D. A., de Gouw, J. A., Warneke, C., and Del Negro, L. A.: Measurement of the mixing state, mass, and optical size of individual black carbon particles in urban and solid fuel burning emissions, *Geophys. Res. Lett.*, 35, L13810, doi: 10.1029/2008GL033968, 2008.

865 ~~Shinozuka, Y., Clarke, A. D., DeCarlo, P. F., Jimenez, J. L., Dunlea, E. J., Roberts, G. C., Tomlinson, J. M., Collins, D. R., Howell, S. G., Kapustin, V. N., McNaughton, C. S., and Zhou, J.: Aerosol optical properties relevant to regional remote sensing of CCN activity and links to their organic mass fraction: airborne observations over Central Mexico and the US West Coast during MILAGRO/INTEX-B, *Atmos. Chem. Phys.*, 9, 6727-6742, doi: 10.5194/acp-9-6727-2009, 2009.~~

870 Simoneit, B. R. T., Schauer, J. J., Nolte, C. G., Oros, D. R., Elias, V. O., Fraser, M. P., Rogge, W. F. and Cass, G. R.: Levoglucosan, a tracer for cellulose in biomass burning and atmospheric particles, *Atmos. Environ.*, 33(2), 173-182, doi: 10.1016/S1352-2310(98)00145-9, 1999.

Taylor, J. W., Allan, J. D., Liu, D., Flinn, M., Weber, R., Zhang, X., Lefer, B. L., Grossberg, N., Flynn, J. and Coe, H.: Assessment of the sensitivity of core/shell parameters derived using the single-particle soot photometer to density and refractive index, *Atmos. Chem. Phys.*, 8, 1701-1718, doi: 10.5194/amt-8-1701-2015, 2015.

875 Urbanski, S. P.: Combustion efficiency and emission factors for wildfire-season fires in mixed conifer forests of the northern Rocky Mountains, US, *Atmos. Chem. Phys.*, 13, 7241-7262, doi: 10.5194/acp-13-7241-2013, 2013.

Ward, D. E. and Radke, L. F.: Emissions measurements from vegetation fires: a comparative evaluation of methods and results, in Crutzen, P. and Goldammer, J.: *Fire in the environment: the ecological, atmospheric and climatic importance of vegetation fires*, Wiley, 53-76, 1993.

880 Weimer, S., Alfarrá, M. R., Schreiber, D., Mohr, M., Prévôt, A. S. H. and Baltensperger, U.: Organic aerosol mass spectral signatures from wood-burning emissions: influence of burning conditions and wood type, *J. Geophys. Res.*, 113(D10), D10304, doi: 10.1029/2007JD009309, 2008.

Yokelson, R. J., Susott, R., Ward, D., Reardon, J. and Griffith, D.: Emissions from smoldering combustion of biomass measured by open-path Fourier transform infrared spectroscopy, *J. Geophys. Res.-Atmos.*, 102, 18865–
885 18877, doi:10.1029/97JD00852, 1997.

Yokelson, R. J., Christian, T. J., Karl, T. G. and Guenther, A.: The tropical forest and fire emissions experiment: laboratory fire measurements and synthesis of campaign data, *Atmos. Chem. Phys.*, 8(13), 3509-3527, doi: 10.5194/acp-8-3509-2008, 2008.

890 Young, D. E., Allan, J. D., Williams, P. I., Green, D. C., Harrison, R. M., Yin, J., Flynn, M. J., Gallagher, M. W. and Coe, H.: Investigating a two-component model of solid fuel organic aerosol in London: processes, PM₁ contributions, and seasonality, *Atmos. Chem. Phys.*, 15, 2429-2443, doi: 10.5194/acp-15-2429-2015, 2015.

Zhang, J., Smith, K. R., Ma, Y., Ye, S., Jiang, F., Qi, W., Liu, P., Khalil, M. A. K., Rasmussen, R. A. and Thorneloe, S. A.: Greenhouse gases and other airborne pollutants from household stoves in China: a database for emission factors, *Atmos. Environ.*, 34(26), 4537-4549, doi: 10.1016/S1352-2310(99)00450-1, 2000.

895 Zhang, Q., Jimenez, J. L., Canagaratna, M. R., Ulbrich, I. M., Ng, N. L., Worsnopp, D. R., Sun, Y.: Understanding atmospheric organic aerosols via factor analysis of aerosol mass spectrometry: a review, *Anal. Bioanal. Chem.*, 401(10), 3045-3067, doi: 10.1007/s00216-011-5355-y, 2011.

~~Zhang, J. K., Cheng, M. T., Ji, D. S., Liu, Z. R., Hu, B., Sun, Y. and Wang, Y. S.: Characterization of submicron particles during biomass burning and coal combustion periods in Beijing, China, *Sci. Total Environ.*, 562, 812-821, doi: 10.1016/j.scitotenv.2016.04.015, 2016.~~
900

Zhou, S., Collier, S., Jaffe, D. A., Briggs, N. L., Hee, J., Sedlacek III, A. J., Kleinman, L., Onasch, T. B., and Zhang, Q.: Regional influence of wildfires on aerosol chemistry in the western US and insights into atmospheric aging of biomass burning organic aerosol, *Atmos. Chem. Phys.*, 17, 2477-2493, <https://doi.org/10.5194/acp-17-2477-2017>, 2017.

905

Reviewer 1: purple

Reviewer 2: blue

Reviewer 3: red

Highly-controlled, reproducible measurements of aerosol emissions from combustion of a common African biofuel source

Sophie L. Haslett¹, J. Chris Thomas², William T. Morgan¹, Rory Hadden², Dantong Liu¹, James D. Allan^{1,3}, Paul I. Williams^{1,3}, Sekou Keïta⁴, Cathy Liousse⁵ and Hugh Coe¹.

¹ Centre for Atmospheric Science, University of Manchester, Manchester, M13 9PL, United Kingdom

² School of Engineering, University of Edinburgh, Edinburgh, EH9 3JL, United Kingdom

³ National Centre for Atmospheric Science, University of Manchester, Manchester, M13 9PL, United Kingdom

⁴ L'Université Félix Houphoët-Boigny, VPV34, Abidjan 01, Côte D'Ivoire

⁵ Laboratoire d'Aérodologie, Université Paul Sabatier Toulouse III, France

S1 Fragmentation table updates for AMS analysis

Description for table S1.

The fragmentation table for AMS data has been developed to quantify the proportion of each m/z peak that can be attributed to each species measured by the AMS (organics, NO₃ etc.; Allan et al. 2004). This was established using typical mass spectra from ambient measurements. During biomass burning, however, the contribution of sulphate to the overall mass spectrum is considerably lower. Typically, sulphate loadings are calculated first and organics are treated as an interference on the sulphate peaks. Ortega et al. (2013) suggest a modification to the fragmentation table in which sulphate is instead treated as an interference on the organic peaks, given that organics are so much more dominant in pure biomass burning emission. The same adjustments to the fragmentation table were made as those shown by Ortega et al. (2013) in their table S1.

Further adjustments were made to the fragmentation table to account for the dilution of the emissions in nitrogen before being measured by the AMS. All air peaks that are based on the nitrogen peak at m/z 28 were updated as shown in table S1 here.

Table S1: Fragmentation table updates for unit mass resolution AMS analysis due to nitrogen dilution.

Fragment	Standard entry	Updated entry
CO2[44]	0.00037*1.36*1.28*1.14*frag_air[28]	0.01*0.00037*1.36*1.28*1.14*frag_air[28]
RH[18]	0.01*frag_air[28]	0.001*frag_air[28]
O16[16]	0.353*frag_air[14]	0.01*0.353*frag_air[14]
air[40]	0.009*1.11*1.28*1.14*frag_air[28]	0.01*0.009*1.11*1.28*1.14*frag_air[28]

S2 Time series for each experiment carried out

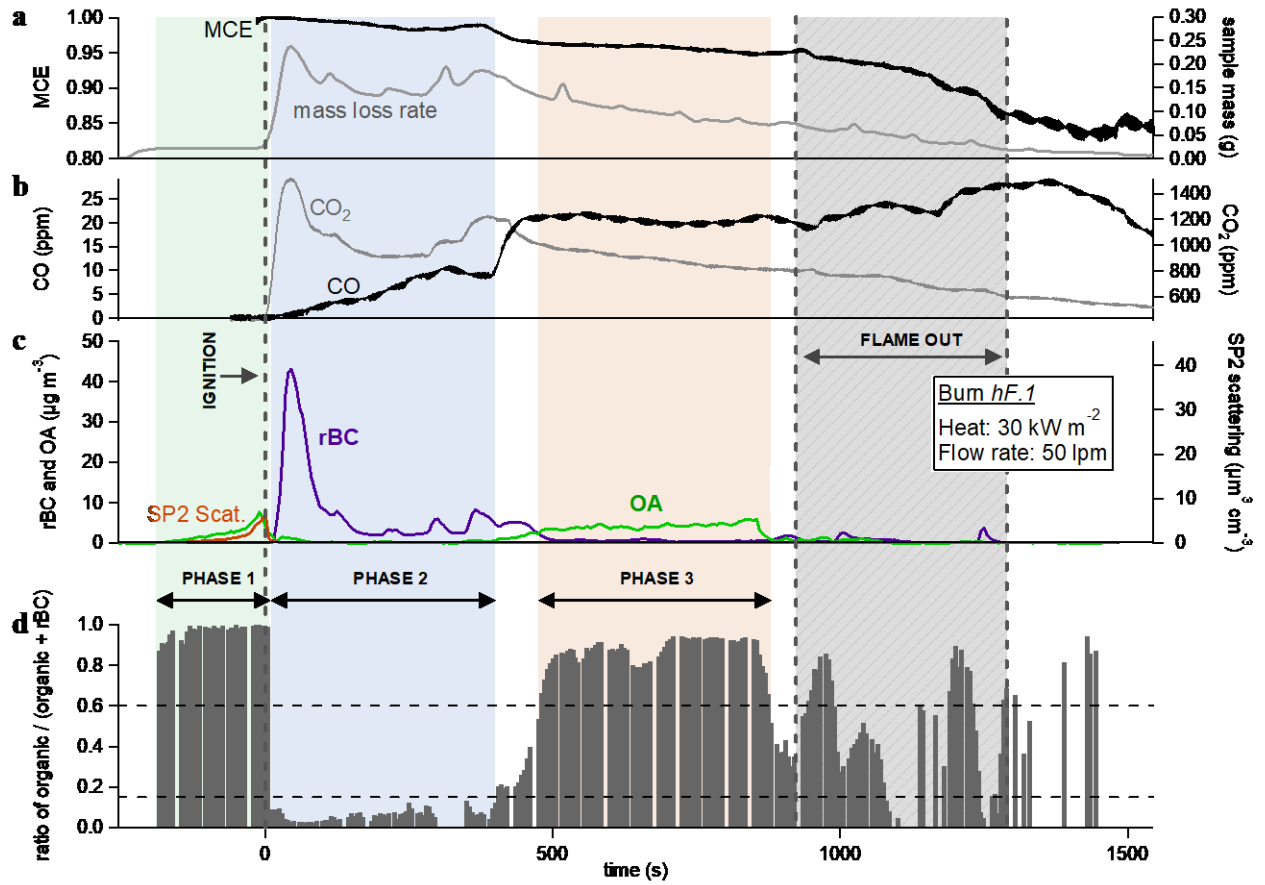


Figure S1.1: time series for experiment *hF.1*

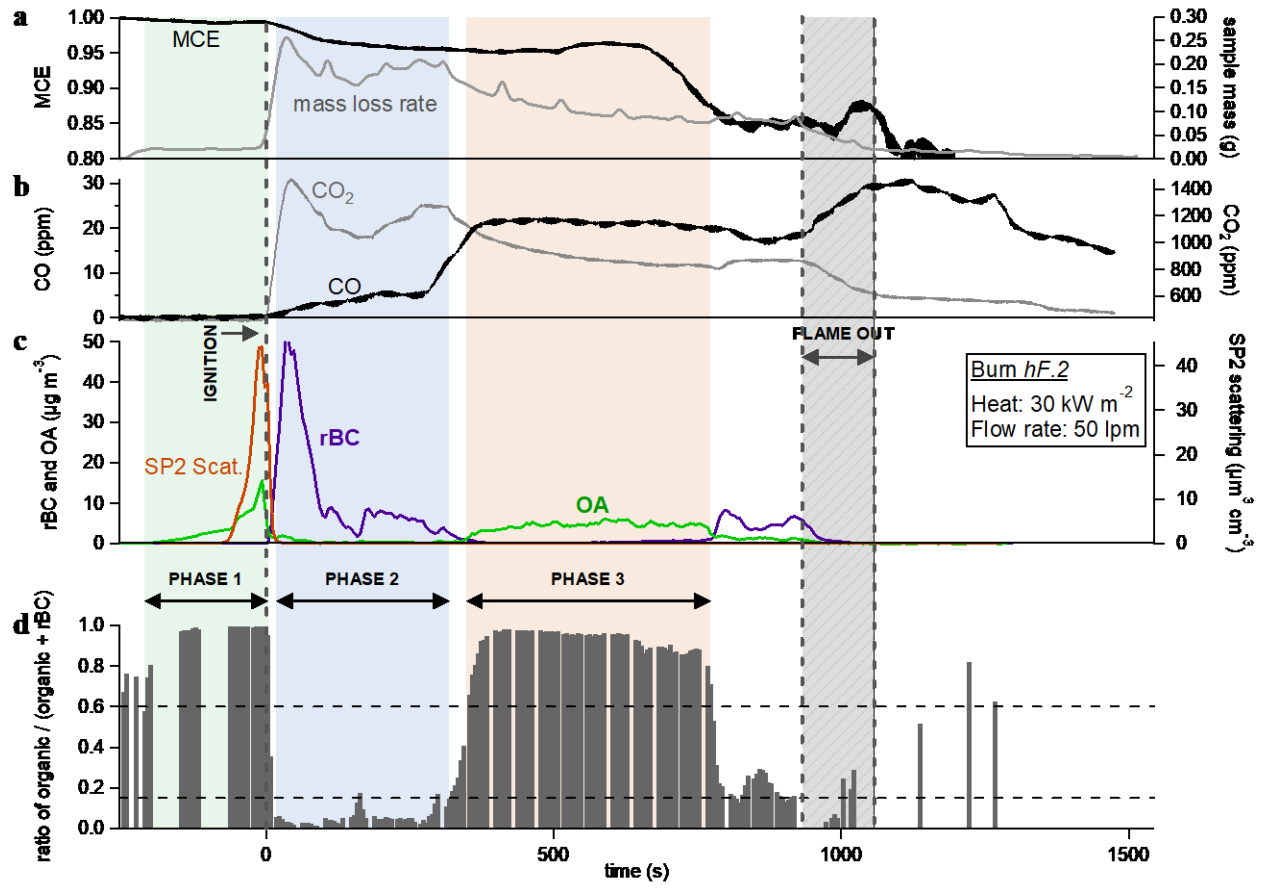


Figure S1.2: time series for experiment *hF.2*

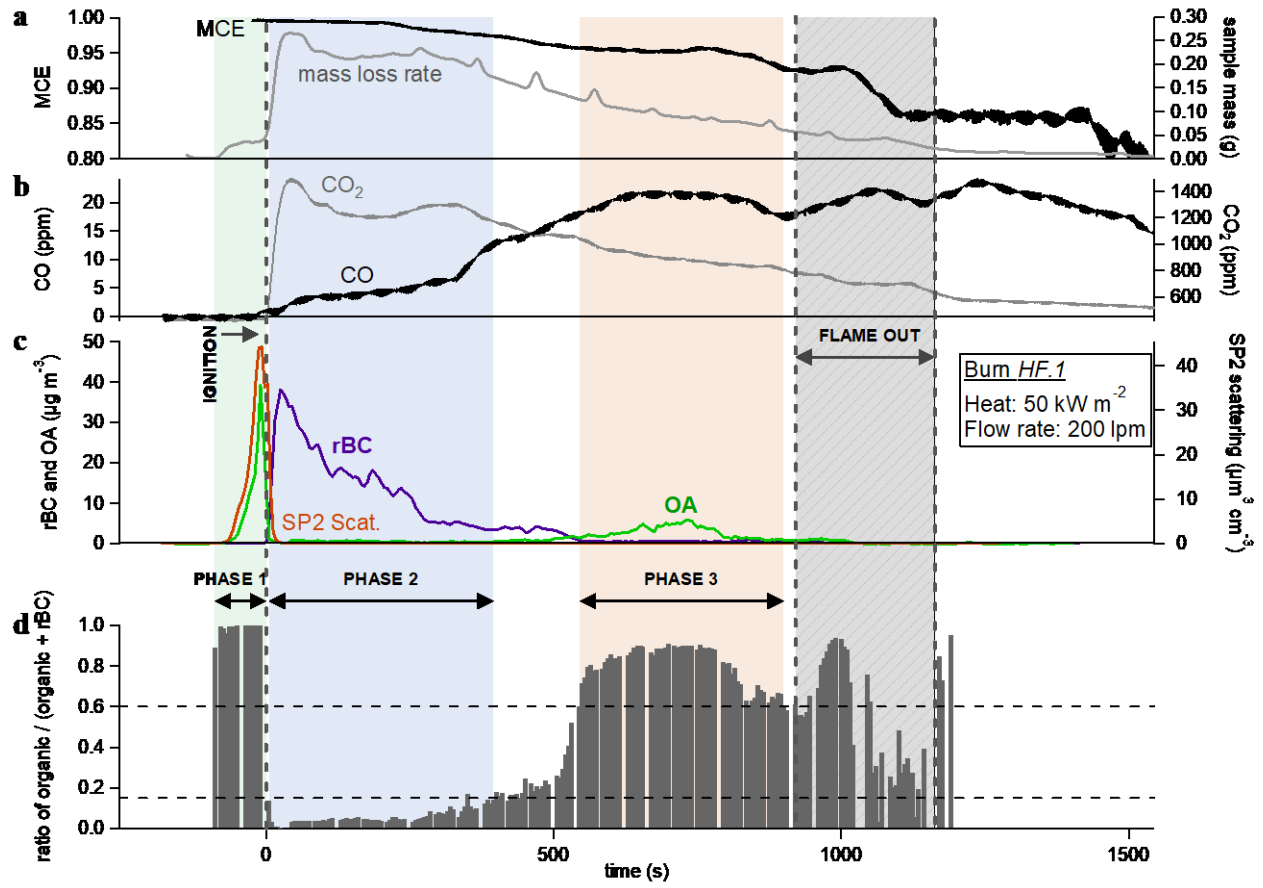


Figure S1.3: time series for experiment *HF.1*

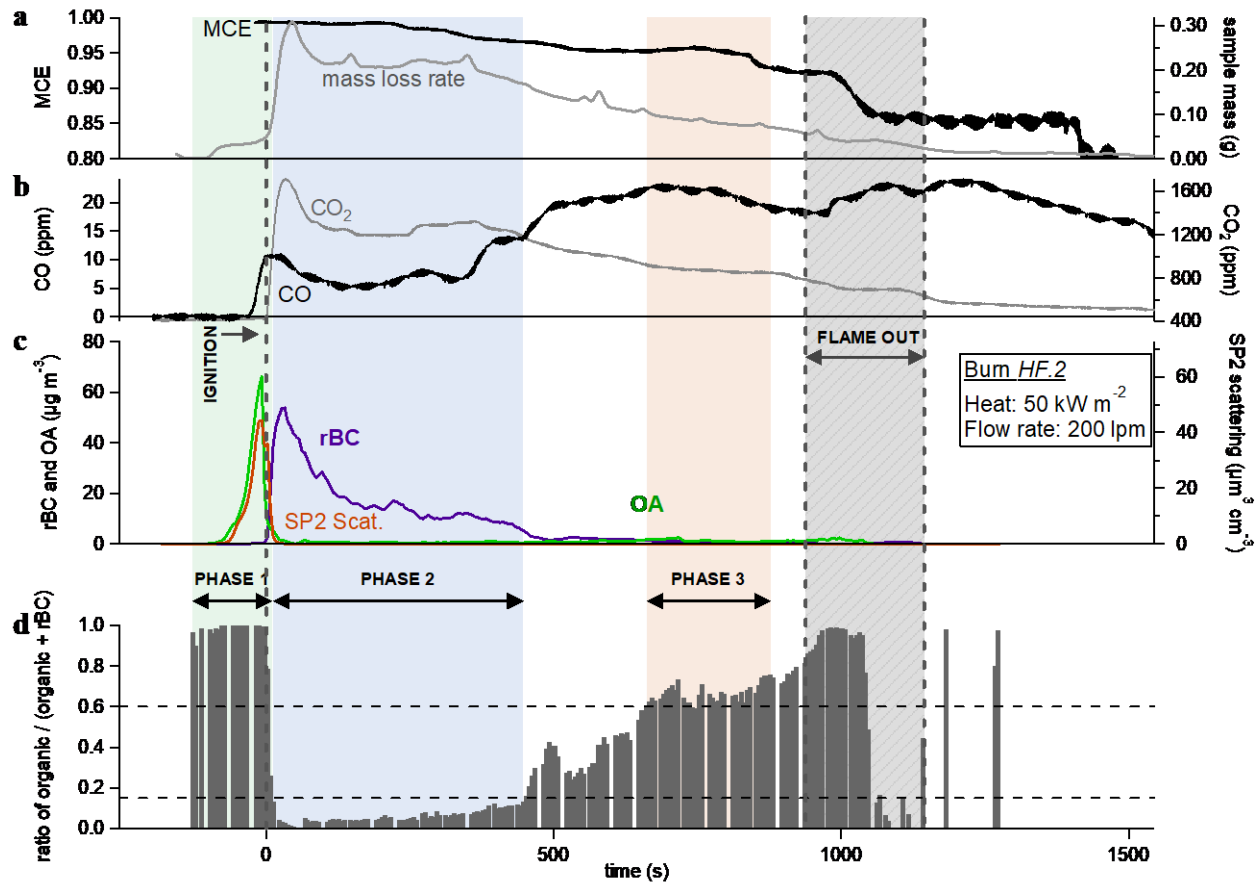


Figure S1.4: time series for experiment *HF.2*

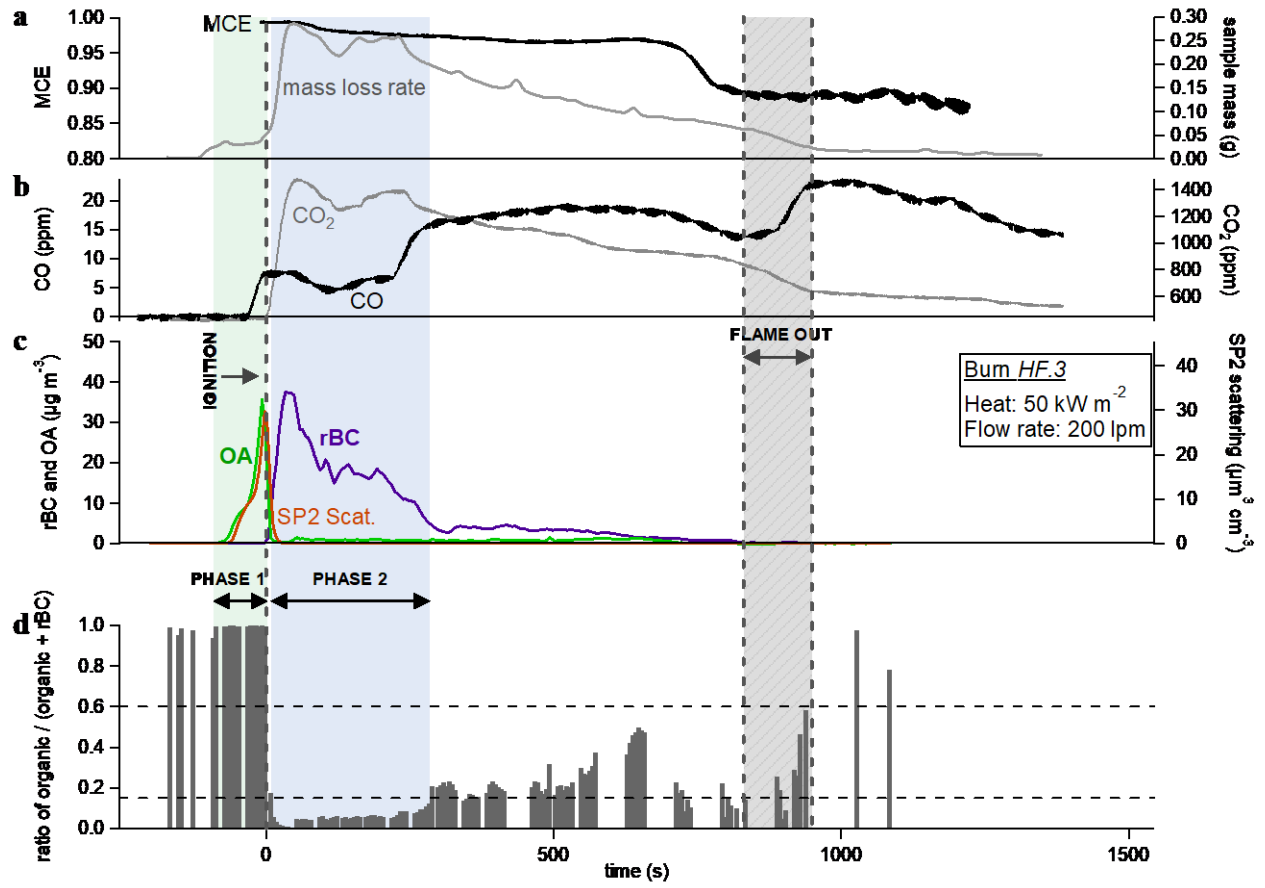


Figure S1.5: time series for experiment *HF.3*

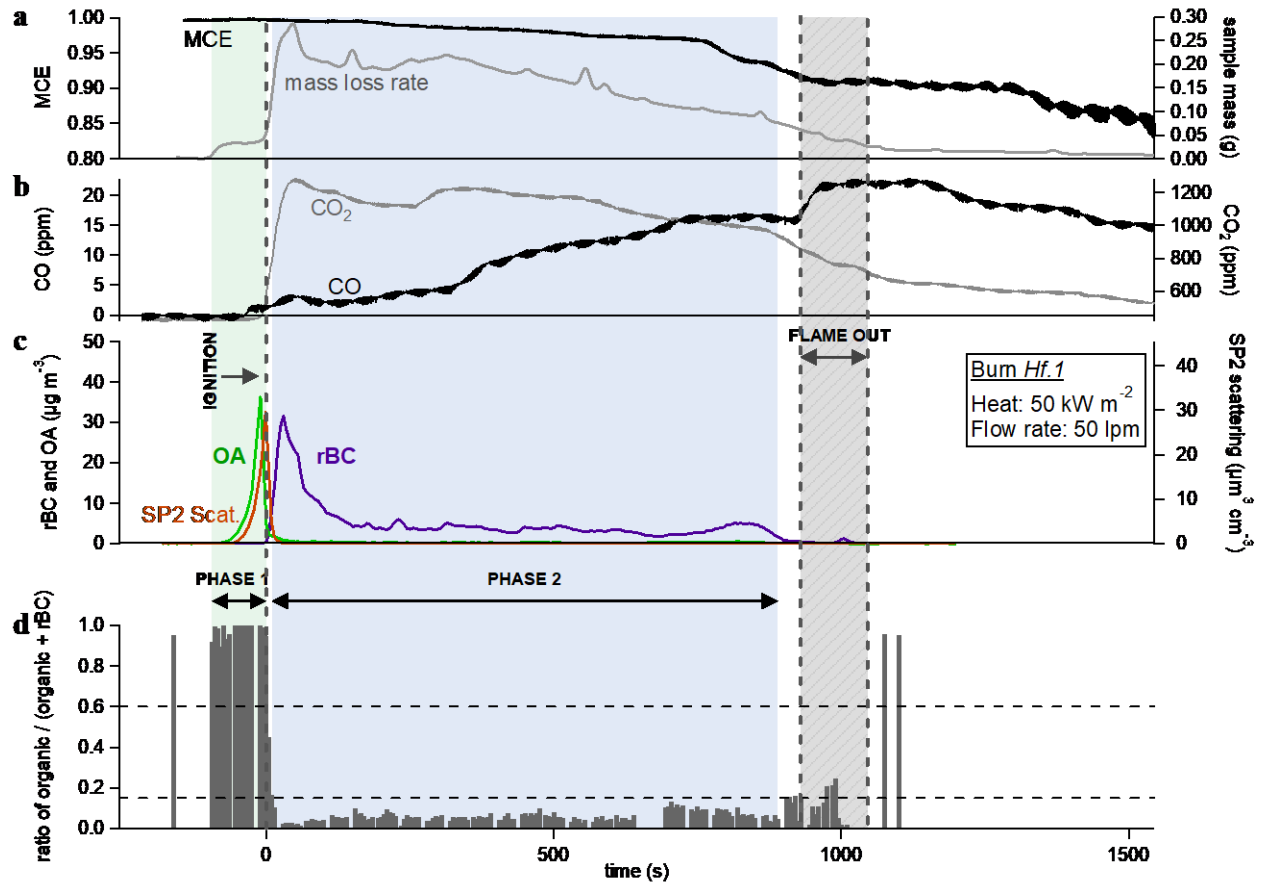


Figure S1.6: time series for experiment *Hf.1*

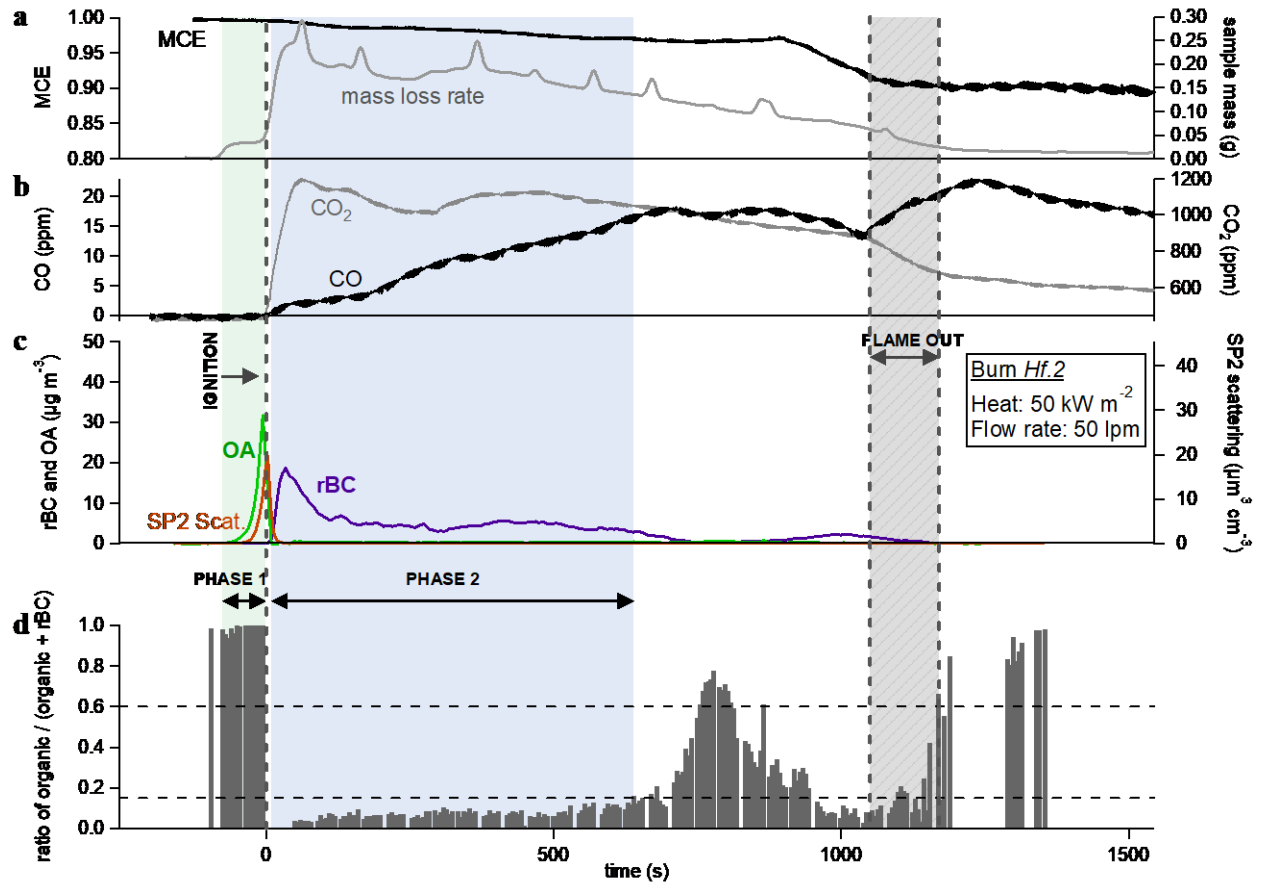


Figure S1.7: time series for experiment *Hf.2*

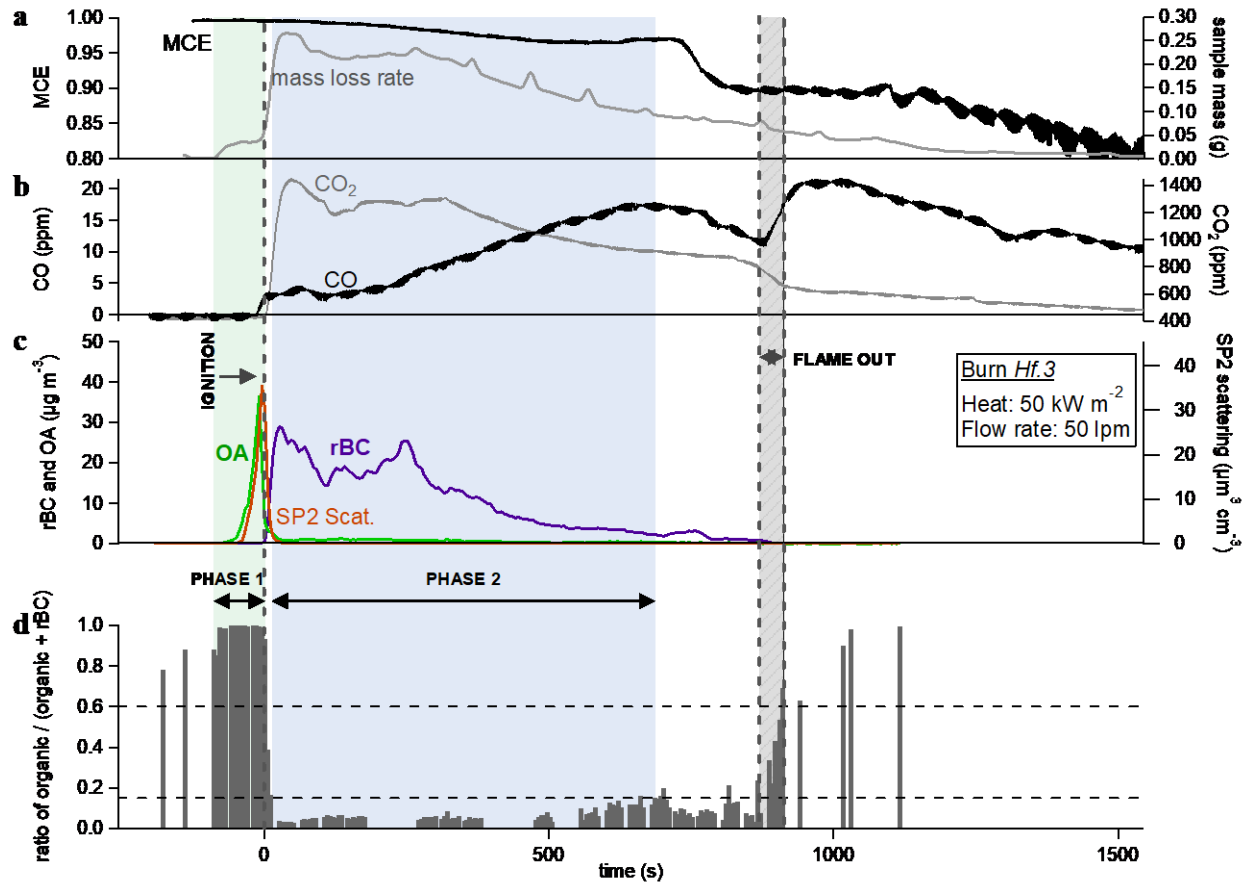


Figure S1.8: time series for experiment *Hf.3*

S3 OA and rBC concentrations vs mass loss for each experiment carried out, averaged over 5 s.

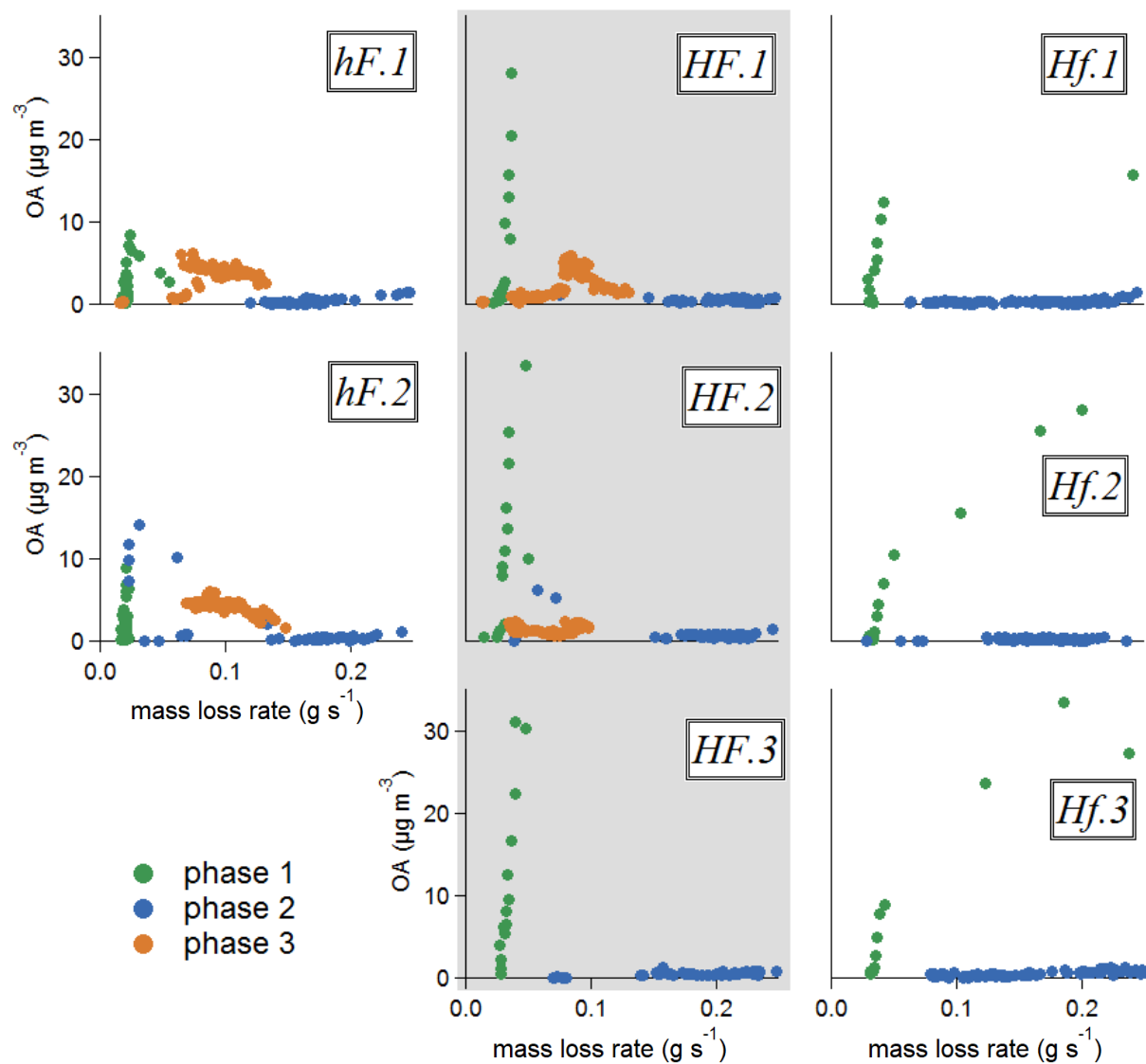


Figure S2: OA emissions vs mass loss for each experiment, averaged over every 5 seconds.

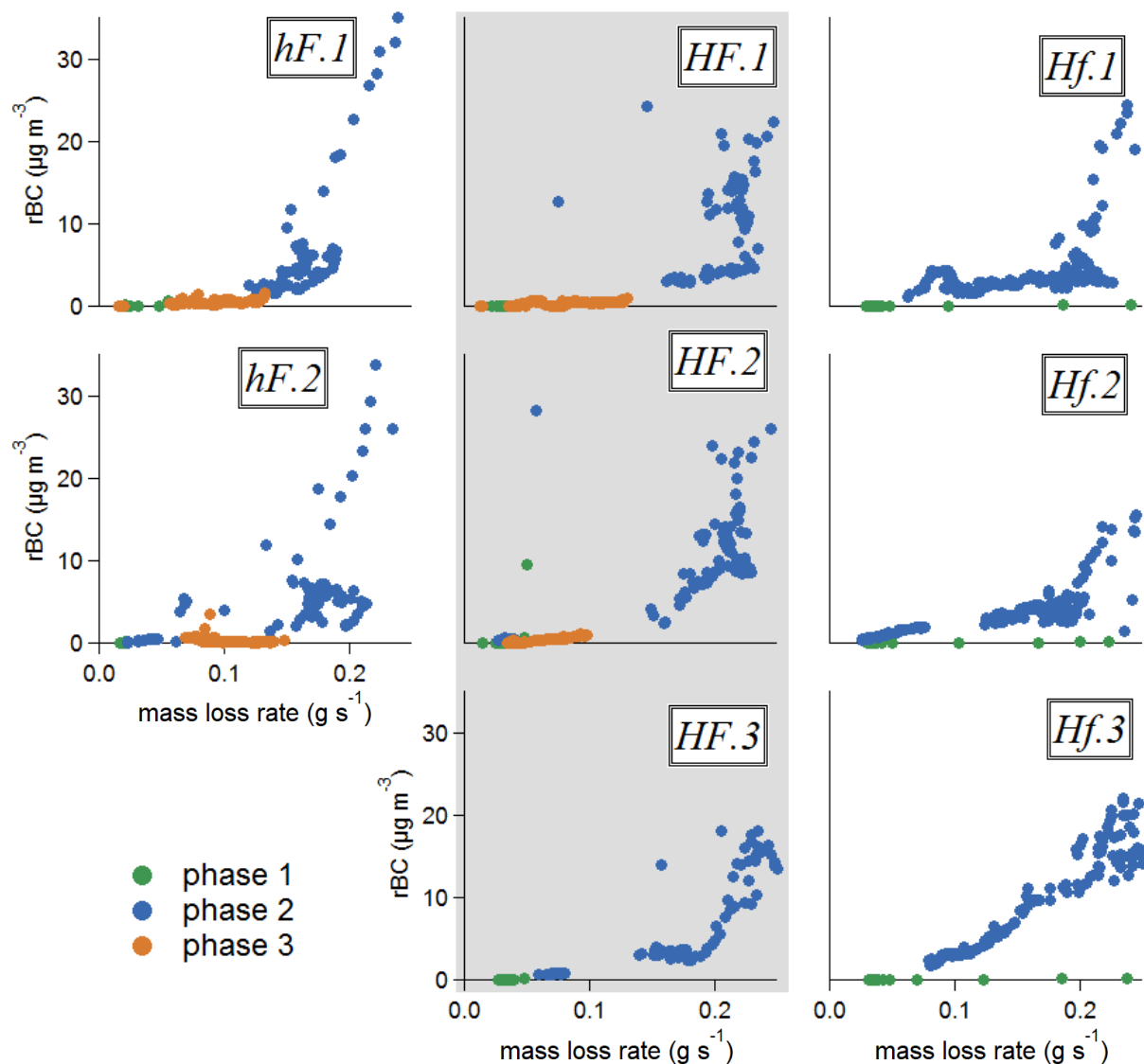


Figure S3: rBC emissions vs mass loss for each experiment, averaged over every 5 seconds.

S4 Alkali metal measurements

During the flaming period of each test (phase 2), extremely large quantities of potassium were recorded by the AMS at m/z 39 and 41; at times, enough to saturate the instrument. Such measurements are routinely discarded, as the thermal ionisation of alkali metals on the AMS heater result in large, unquantitative measurements. However, qualitatively, measurements of potassium were high during phase 2. Large peaks at m/z 85 and 87 were consistent with the naturally-occurring isotope ratio of rubidium-85 to rubidium-87, suggesting that alkali metals in general were emitted during this phase. The natural and measured abundances of these species are shown in table S1.

Table S1: Natural and measured abundances of alkali metals.

Isotopes	Natural abundance	Measured abundance
----------	-------------------	--------------------

Potassium
K-39 : K-41 0.932 : 0.067 0.934 : 0.066

Rubidium
Rb-85 : Rb-87 0.722 : 0.278 0.713 : 0.287