

## Response to Comments by Reviewer 1

### General Comments

In “Impacts of Different Characterizations of Large-Scale Background on Simulated Regional-Scale Ozone Over the Continental United States”, Hogrefe et al. evaluated ozone concentrations at the surface and throughout the column from the Community Multiscale Air Quality (CMAQ) model against observations for 2010 with a careful experimental design that investigated the influence of modeled background ozone concentrations. Additionally, they calculated the contribution to the modeled ozone concentrations of different information used by the model (i.e., boundary conditions, emissions) with a brute force approach as well as processes within the model with an instrumented modeling approach. Leveraging results of the Air Quality Model Evaluation International Initiative (AQMEII) and Task Force on Hemispheric Transport of Air Pollution (TF-HTAP) projects, they quantified the impacts to ozone concentrations at the surface and ozone burdens at different heights aloft of using boundary conditions from four different hemispheric or global models.

The authors showed that the choice of global or hemispheric model for boundary conditions has potential to influence substantially the regulatory metric for ozone on the regional scale on an individual day and the model performance metrics, including the direction of bias. The language and structure of the manuscript are impeccable. The manuscript clearly describes the scope of the investigation, places it in the context of previous research as well as the AQMEII and TF-HTAP efforts, highlights novel results of the analysis, and suggests future research directions this analysis uncovered. I recommend this manuscript for publication in Atmospheric Chemistry and Physics with only editorial changes suggested.

*Response: We would like to thank the reviewer for the overall positive assessment of our manuscript. We would also like to thank the reviewer for the careful review and helpful suggestions which have led to improvements in some of the figures. Our responses to the specific reviewer comments and the changes incorporated in the revised manuscript are shown below in italics.*

### Specific Comments

Comment: p. 10, l. 14 “regional-scale simulation”. Consider adding “especially near boundaries.” The following paragraph highlights the different performance further inland, so it seems important to highlight that this statement is pertinent especially near the boundaries.

*Response: This suggested change has been incorporated into the revised manuscript.*

Comment: p. 10, l. 29 Please change “Figure” to “figure”.

*Response: Thank you for catching this typo, it has been corrected in the revised manuscript.*

Comment: p. 12, l. 8 Might “downward” have been intended to be “downwind”?

*Response: Thank you for catching this typo, it has been corrected in the revised manuscript.*

Comment: Table 4c Is the orange in this table a different color than in Tables 4a and 4b?

*Response: No, the colors are the same. However, upon reviewing Tables 3 and 4b, we noticed that the Normalized Mean Error (NME) values for the BASE simulation included in those tables were incorrect. Specifically, the NME values for the BC H-CMAQ were shown instead of the NME values for BASE in these tables, this has been corrected in the revised manuscript.*

Comment: Figure 3 “right row”, “left row” are likely intended to be “right column”, “left column”.

*Response: Thank you for catching this typo, it has been corrected in the revised manuscript.*

Comment: Figures 3, 6, 9, 11, 13 These figures nicely represent a single statistical metric (e.g., median, mean) for the information shown; however, more information could be conveyed if the standard deviation about the mean or the 5%/95% about the median were displayed with shading or error bars. Could this additional information please be added?

*Response: We appreciate this suggestion and considered it for all the figures listed by the reviewer.*

*For Figure 3 and 13, the variability that could be depicted in addition to the median would represent the spatial variability of model-observation differences across all stations in a given region for a given observed percentile. We prepared versions of these figures that included dashed lines for the 25<sup>th</sup> and 75<sup>th</sup> percentile values but decided not include them in the revised manuscript because (i) we found them to be too cluttered especially for the paired-in-time analysis and (ii) we did not consider the additional information on spatial variability contained in these alternate versions to add additional insights for the discussion. However, for completeness, these alternate versions of the figures are included at the end of these responses so that they are available to interested readers as part of the manuscript discussion.*

*For Figure 6, the average represents a temporal average (monthly) of spatially summed hourly ozone column mass values or spatially averaged hourly surface ozone mixing ratios. For the revised version, we updated the figure to include dashed lines that represent the 5<sup>th</sup> and 95<sup>th</sup> percentile of the hourly values used to compute the monthly average values.*

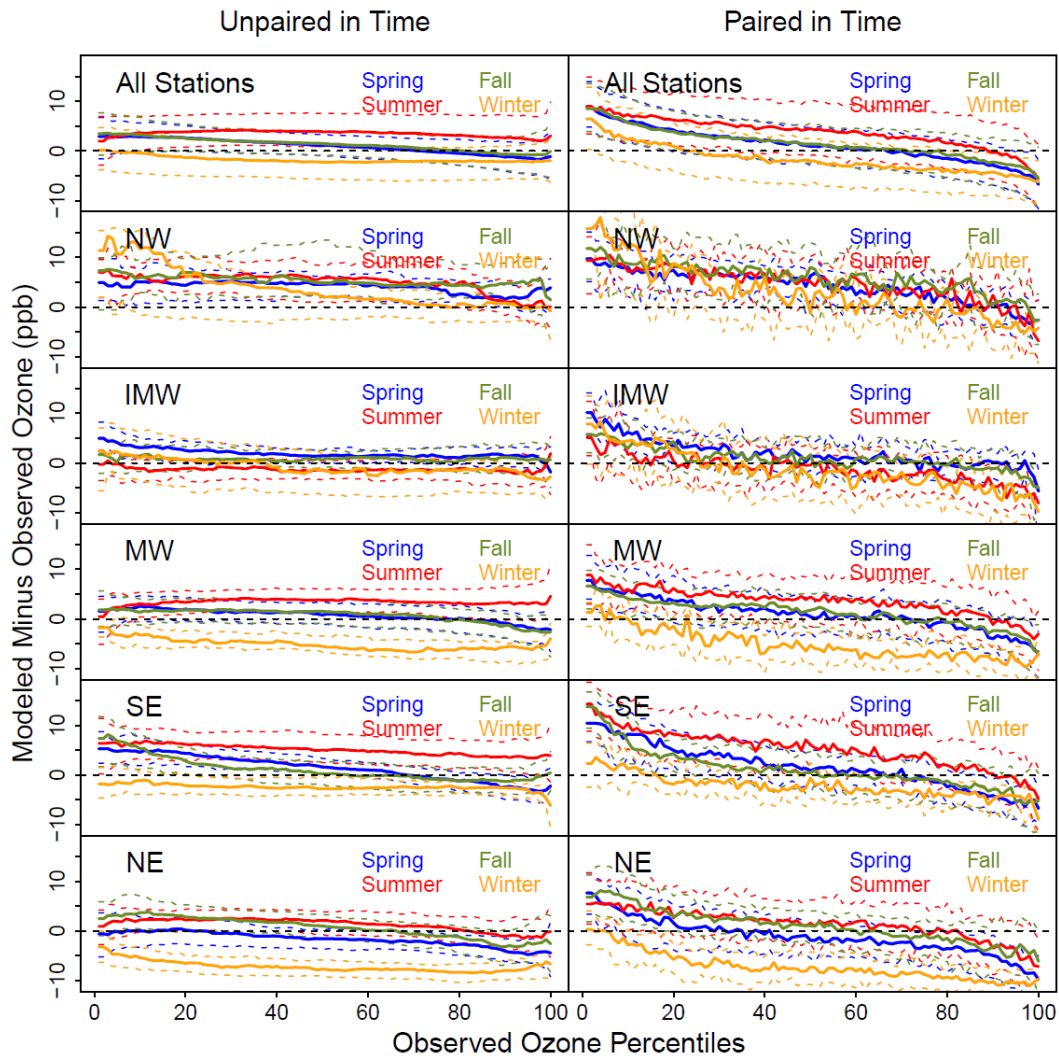
*For Figure 9, we considered it too confusing to add more lines or shading since the panels already include four solid and four dashed lines (representing global and regional-scale model results, respectively) as well as a shaded range (depicting the range of observed values averaged over the different altitude ranges represented by the specific model layers at which the individual model values were extracted). Thus, no alternate version of this figure was prepared.*

*For Figure 11, the issue of temporal variability is already addressed by comparing panels c)-d) which show monthly average model-observation differences with panels e)-f) which show the corresponding daily values. The issue of spatial variability of model-observation differences is already addressed in Figure 12 which shows these differences for spring at summer at CASTNET stations. Thus, no alternate version of this figure was prepared.*

Comment: Figure 8 The units seem to have been cut off of the colorbar for these figures. Please include them. Also, for the sake of ease in comparison of the regional figures with the global ones, would it be possible to have the y-axes reach the same extent in each but leave white (e.g., a bar across the bottom in the global, a bar across the top in the regional) to indicate that the model did not calculate values at those pressure levels?

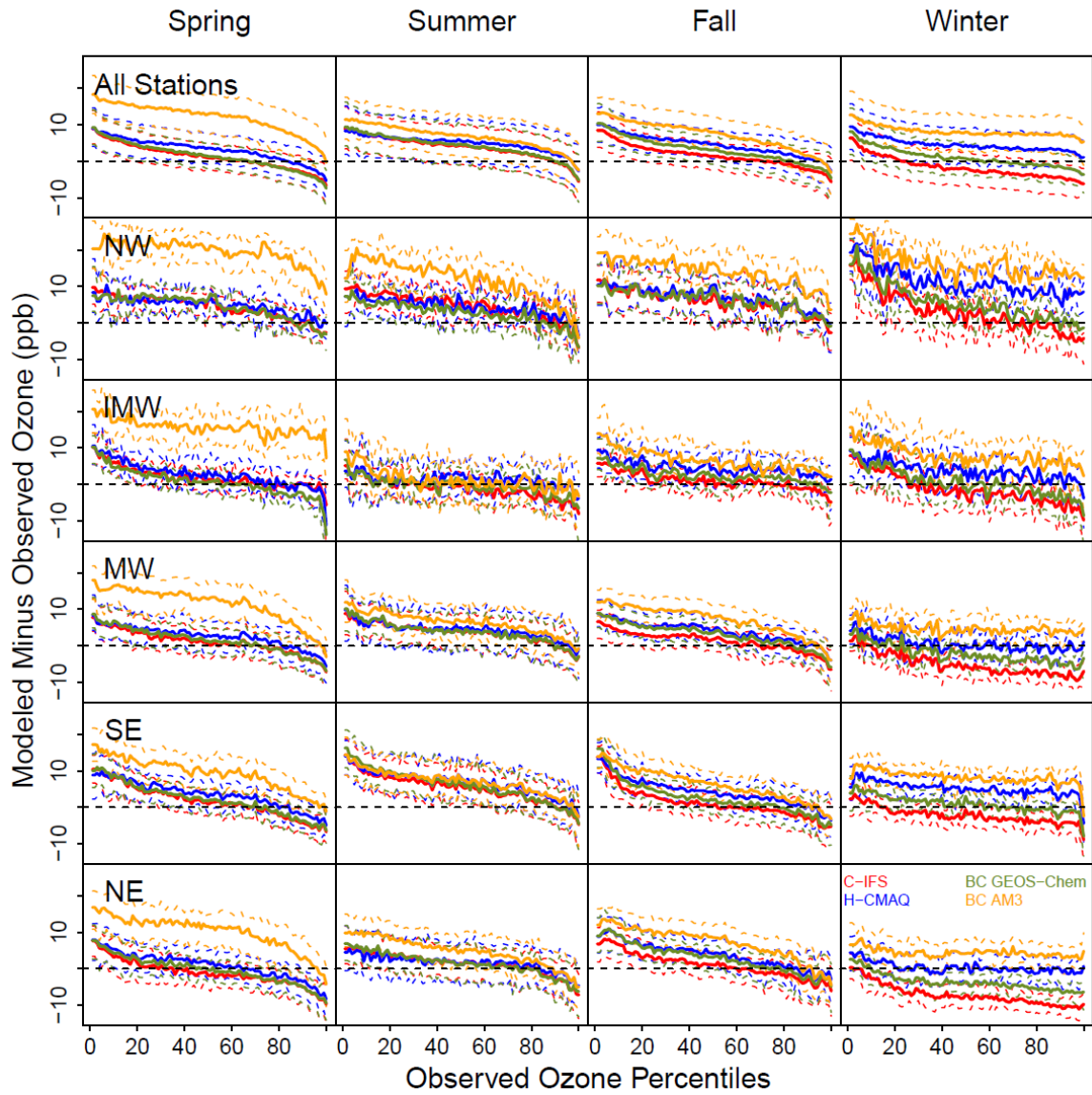
*Response: Thank you for this helpful suggestion, Figure 8a-b has been updated to use the same extent of the vertical axes in all panels. Missing units have been added to the color-bar of Figures 8a-b as well as to the color-bars of Figures 7, 10, 12, and S1. Furthermore, we have also added the following text to Section 3.2.1 when introducing Figure 8a-b*

*“Note that even though observations and large-scale model predictions (except H-CMAQ) are available for higher altitudes (see Figure 1), only values up to the highest model level below 50 mb were extracted for these figures to be comparable to the output from the regional-scale CMAQ simulations (specifically, C-IFS values were only extracted up to layer 38, GEOS-Chem values were only extracted up to layer 37, and AM3 values were only extracted up to layer 26 for this comparison). For easier comparison between models and sites, all figures use a common vertical pressure range of 1025 mb to 50 mb even though this full range is not covered at all sites and by all models.”*



*Alternate version of Figure 3 including dashed lines representing the 25<sup>th</sup> and 75<sup>th</sup> percentiles of model-observed differences across all stations in a given region for a given observed percentile. The solid lines represent the median across all stations for a given region and given observed percentile.*





Alternate version of Figure 13 including dashed lines representing the 25<sup>th</sup> and 75<sup>th</sup> percentiles of model-observed differences across all stations in a given region for a given observed percentile. The solid lines represent the median across all stations for a given region and given observed percentile.

## Response to Comments by Reviewer 2

The authors present results from a number of 12 km WRF-CMAQ base and sensitivity simulations and process analysis related to CONUS ozone in 2010. A great amount of model evaluation (against AQS, CASTNET and sondes observations) work was carried out. The paper does contain a number of highlights and is highly relevant to AQMEII/HTAP2, so I think is publishable after the following comments are addressed.

*Response: We would like to thank the reviewer for the overall positive assessment of our manuscript. We would also like to thank the reviewer for the careful review and helpful comments and suggestions which have led to an improved manuscript. Our responses to the specific reviewer comments and the changes incorporated in the revised manuscript are shown below in italics.*

### Specific comments:

Comment: 1. Table 1 is helpful. For some cases of species mapping, not all CMAQ chemicals had a match from its boundary condition model - Did the authors use a constant (default value)? How was the mapping of aerosol species handled? I'd like to see some comments on how the completeness of boundary condition model species and the species mapping approach may have contributed to CMAQ model errors (and CMAQ-boundary condition model discrepancies). When we evaluate a given global model's suitability of being used as CMAQ (and other regional CTMs) boundary conditions, should the similarity of CMAQ/boundary condition model's chemistry be considered as an important factor?

*Response: Yes, when a CMAQ species was not available from a given large-scale model, a constant default value was used for that species. Information on the mapping of aerosol species has been added to the revised manuscript. In terms of whether similarity between the chemistry used in the large-scale model and regional CMAQ should be a consideration when assessing the suitability of a given large-scale model to provide boundary conditions for regional CMAQ, we believe that this question fits in the broader context of our discussion of future research directions in Section 4, specifically our discussion of model consistency across scales. Thus, in response to this comment, we have updated Sections 2 and 4 as follows:*

*"A list of the gas phase species mapped between the large-scale models and CMAQ is shown in Table 1 and a depiction of the vertical layers used in the large-scale models and regional CMAQ simulations is provided in Figure 1. Sulfate, nitrate, ammonium, elemental and organic carbon aerosols were available from all large-scale models while CMAQ trace element aerosol concentrations were estimated from large-scale model dust and sea-salt concentrations except in the case of H-CMAQ which used the same aerosol mechanism as the regional-scale CMAQ simulations. CMAQ species not available from the large scale models were obtained from the time-invariant CMAQ default profile (available at [https://github.com/USEPA/CMAQ/blob/5.0.2/models/BCON/prof\\_data/cb05\\_ae6\\_aq/bc\\_profile\\_CB05.d](https://github.com/USEPA/CMAQ/blob/5.0.2/models/BCON/prof_data/cb05_ae6_aq/bc_profile_CB05.dat) at, last accessed January 10, 2018)."*

*"The results shown in Section 3 (e.g. Figures 8-9) strongly suggest that differences in the mid-tropospheric ozone mixing ratios simulated by the large-scale models were the main driver of ozone differences between the corresponding regional-scale CMAQ simulations. However, differences in other species such as PAN, differences in the availability of a complete set of CMAQ species from all large-scale*

*models (see Table 1), and inconsistencies in chemical speciation between the large-scale models and regional-scale CMAQ may also have contributed to the ozone differences between the regional-scale CMAQ simulations. Thus, while linking output from available global or hemispheric models to regional-scale models despite such differences represents current best practices in the regional-scale air quality modeling community, additional research should be geared towards developing modeling frameworks that enable a consistent representation of model processes, species, and vertical grid representation across scales. An example of such efforts is the ongoing work to extend CMAQ to hemispheric scales (Mathur et al., 2017). Ensuring such consistency does not in itself guarantee improved model performance but would allow for more targeted diagnostic model evaluation aimed at specific processes which is more challenging when linking together different modeling systems. To achieve such consistency, future work should also be directed toward developing and implementing scale-dependent treatment for atmospheric chemistry in next-generation global dynamic models with variable grid resolution features such as the Model for Prediction Across Scales (MPAS) (Skamarock et al., 2012) and the Finite-Volume Cubed-Sphere Dynamical Core (FV3) model (Harris and Lin, 2013)."*

**Comment:** 2. P5, L7: "Note that these analysis regions do not cover the entire modeling domain." Could the authors explain why they focus on the selected five regions for some of their analyses? The paper does also show the model behavior over other CONUS regions (e.g., Figures 7, 10, 12, and elsewhere). Perhaps an additional panel (named as "entire CONUS" or "all other CONUS regions") could be added to Figures 3 and 13?

**Response:** *Thank you for this comment and suggestion. We have added results for the entire domain to Tables 3 – 4 and Figures 3, 13, S3 and S4. We have also added the following information to Section 2 in the revised manuscript:*

*"Model performance evaluation was performed both across the entire domain (1207 AQS monitors and 79 CASTNET monitors) and separately for five sub-regions that are characterized by differences in their proximity to the domain boundaries, elevation, and relative abundance of anthropogenic and biogenic emissions: Northwest (NW) (41 AQS monitors and 2 CASTNET monitors), Intermountain West (IMW) (53 AQS monitors and 7 CASTNET monitors), Midwest (MW) (195 AQS monitors and 13 CASTNET monitors), Southeast (SE) (166 AQS monitors and 13 CASTNET monitors), and Northeast (NE) (204 AQS monitors and 15 CASTNET monitors)."*

**Comment:** 3. P5, L7: some clarification is needed on how observations and model data are paired. This is particularly important for understanding the AQS-model evaluation as the numbers of observations in each grid can differ substantially, and can be quite large for some models.

**Response:** *The following information has been added to Section 2 in the revised manuscript:*

*"Furthermore, each monitored value was paired with the corresponding model value based on the model grid cell in which the monitor was located. In particular, multiple observations within the same grid cells were not averaged because the definition of the horizontal grids varied between all the simulations analyzed in this study."*

Comment: 4. Section 2 and Table 2: I suggest adding some brief introductions on nonanthropogenic emissions used in CMAQ and its boundary condition models. These would help us understand each model's performance presented later, and support "the treatment of vertical mixing, lightning emissions, chemistry, deposition and biogenic emissions" in P10, L24-25 and other related statements in the results section.

*Response: Thank you for this suggestion. We have added the following information to Section 2 and also have updated the list of references accordingly:*

*"However, non-anthropogenic emissions were not harmonized across the global and regional-scale simulations. As described in Flemming et al. (2015), the C-IFS simulations used lightning emissions based on the parameterization introduced in Meijer et al. (2001), biogenic emissions calculated with version 2.1 of the Model of Emissions of Gases and Aerosols from Nature (MEGAN) (Guenther et al., 2006), and biomass burning emissions produced by the Global Fire Assimilation System (GFAS) version 1 (Kaiser et al., 2012). The H-CMAQ simulations used climatological biogenic and lightning emissions from the Global Emission Inventory Activity (GEIA) dataset (Guenther et al., 1995; Price et al., 1997) and biomass burning emissions from version 4.2 of the Emission Database for Global Atmospheric Research (EDGAR) (European Commission, 2011). The GEOS-Chem simulations used lightning emissions based on the methodology described in Murray et al. (2012), biogenic emissions calculated with MEGAN version 2.1, and biomass burning from version 3 of the Global Fire Emissions Database (GFED) (Randerson et al., 2013; van der Werf et al., 2006). The AM3 simulations used lightning emissions based on the parameterization introduced in Horowitz et al. (2003), biogenic emissions calculated with MEGAN version 2.1, and biomass burning emissions from the Fire INventory from NCAR (FINN) (Wiedinmyer et al., 2011). The regional-scale CMAQ simulations did not include lightning emissions, calculated biogenic emissions using version 3.14 of the Biogenic Emission Inventory System (BEIS) (Pierce et al., 1998; Vukovich et al., 2002; Schwede et al., 2005) and used 2010 wildfire emissions as described in Pouliot et al. (2015)."*

Comment: 5. I like the way vertical grid of CMAQ is introduced in P7, L16, i.e., listing the number of vertical layers by altitude range. I suggest adding such information for other models which would nicely complement Figure 1.

*Response: Thank you for this suggestion. To address the reviewer's comment and to more clearly depict how the vertical structures of the large-scale models relate to the analysis in Figures 5 and 6, we have added layer indices for each model to Figure 1 and have also included horizontal dashed lines at 750mb, 250mb, and 50mb. We believe that including this additional information in the figure enables the reader to easily compare the vertical discretization used by the different models in the pressure ranges of interest. The figure caption has been updated as follows:*

*"Depiction of the vertical levels used in the four different large-scale models and the regional CMAQ model analyzed in this study. The pressure values were extracted for a location near the southwestern corner of the 12km CMAQ modeling domain and represent annual average values for 2010 at the*

*midpoint of each vertical level. The dashed lines delineate the three pressure ranges (surface – 750 mb, 750 mb – 250 mb, and 250 mb – 50 mb) used for vertical integration in subsequent analyses.”*

Comment: 6. The authors suggested in P17, L6-8 that “Future work analyzing long-term simulations from multiple global models linked to corresponding regional-scale simulations would be beneficial in better constraining the effects of large-scale inter-annual variability on regional-scale ozone burdens.” I suggest adding some supporting sentences here, e.g., including the differences of ozone and its variability in CMAQ and its boundary condition models (e.g., GEOS-Chem and BC GEOS Chem; AM3 and BC AM3; HCMAQ and BC HCMAQ; C-IFS and BC C-IFS). Such information is included in quite a few figures and discussions but should also be well summarized here (and perhaps in abstract as well if there is space).

*Response: This sentence is meant as caveat given that the analysis presented in our manuscript was based on only one year of simulations and as motivation for performing multi-year simulations with both large-scale and regional models to better quantify the effects of inter-annual variability. We do not believe that the results of our current analysis can provide any insights into these effects. In the revised manuscript, we have expanding this sentence in Section 4 as follows to clarify that this should be the focus of future work rather than something that can be obtained from our current work:*

*“Future work analyzing multi-year simulations from multiple global models linked to corresponding regional-scale simulations would be beneficial in better constraining the effects of large-scale inter-annual variability on simulated regional-scale ozone burdens and the inter-annual variability of contributions from large-scale ozone to surface ozone especially during time periods of elevated concentrations”*

Minor issues:

Comment:1. In Figure 2 caption or in P5 in text: define lat/lon ranges of each box (region) and numbers of observation sites within each box; provide lat/lon of the ozonesonde sites; Showing the names of the ozonesonde sites in Figure 2 would also be helpful.

*Response: Figure 2 has been updated to include the names of the ozonesonde sites. Information on the latitude, longitude and elevation of each ozonesonde site and the number of AQS and CASTNET sites in each analysis region has been added to Section 2 in the revised manuscript. Because the rectangular analysis regions are defined on the regional CMAQ modeling grid which uses a Lambert Conformal projection, their bounds are not specified by latitude and longitude ranges. While latitude and longitude values could be provided for each corner of the analysis domains, we believe the graphical depiction of these domains in Figure 1 should be sufficient.*

Comment:2. Define the seasons somewhere.

*Response: The definition has been added to Section 2 in the revised manuscript.*

Comment: 3. Figure 4, x axis label: is it possible to write it as a math equation?

*Response: The axis label has been updated as suggested in the revised manuscript.*

Comment: 4. Figures 7, 11: “i” appears to be “l” in the figure captions

*Response: This impression appears to have been created when pasting the figures into the same document containing the manuscript text and tables since some resolution may have been lost. The original figures which will be provided to the publisher clearly show the correct letter.*

Comment: 5. Unit is missing in Figures 7, 8, 10, 12. Both ppb and ppbV (e.g., Figure 9) are used in the paper and it'd be better to just stick to one of them throughout the paper.

*Response: The figures have been updated to include the units on the colorbar. The use of “ppb” has been made consistent throughout the manuscript and figures.*

Comment: 6. Typo in P18, L3: Fiore et al. (2004) Fiore et al. (2014)

*Response: Thank you for catching this typo, it has been corrected in the revised manuscript.*

Comment: 7. Typo in Table 4c: BC AM4[56] in the second column should be “BC AM3”

*Response: Thank you for catching this typo, it has been corrected in the revised manuscript.*

Comment: 8. Use subscripts for chemical species (e.g., in Table 1)

*Response: This change has been made in the revised manuscript.*

Comment: 9. Add data sources of AQS, CASTNET, ozonesondes in the “Acknowledgements and Disclaimer” section

*Response: URLs with the datasources have been added to the revised manuscript.*

# Impacts of Different Characterizations of Large-Scale Background on Simulated Regional-Scale Ozone Over the Continental United States

Christian Hogrefe<sup>1</sup>, Peng Liu<sup>2</sup>, George Pouliot<sup>1</sup>, Rohit Mathur<sup>1</sup>, Shawn Roselle<sup>1</sup>, Johannes Flemming<sup>3</sup>, Meiyun Lin<sup>4,5</sup>, and Rokjin J. Park<sup>6</sup>

5 <sup>1</sup>Computational Exposure Division, National Exposure Research Laboratory, U.S. Environmental Protection Agency, RTP, NC, USA

<sup>2</sup>National Research Council Fellow at National Exposure Research Laboratory, U.S. Environmental Protection Agency, RTP, NC, USA

<sup>3</sup>European Centre for Medium-Range Weather Forecasts, Reading, U.K.

10 <sup>4</sup>Atmospheric and Oceanic Sciences, Princeton University, Princeton, NJ 08540, USA

<sup>5</sup>NOAA Geophysical Fluid Dynamics Laboratory, Princeton, NJ 08540, USA

<sup>6</sup>School of Earth and Environmental Sciences, Seoul National University, Seoul, Republic of Korea

*Correspondence to:* Christian Hogrefe (hogrefe.christian@epa.gov)

**Abstract.** This study analyzes simulated regional-scale ozone burdens both near the surface and aloft, estimates process contributions to these burdens, and calculates the sensitivity of the simulated regional-scale ozone burden to several key model inputs with a particular emphasis on boundary conditions derived from hemispheric or global scale models. The Community Multiscale Air Quality (CMAQ) model simulations supporting this analysis were performed over the continental U.S. for the year 2010 within the context of the Air Quality Model Evaluation International Initiative (AQMEII) and Task Force on Hemispheric Transport of Air Pollution (TF-HTAP) activities. CMAQ Process Analysis (PA) results highlight the dominant role of horizontal and vertical advection on the ozone burden in the mid-to-upper troposphere and lower stratosphere. Vertical mixing, including mixing by convective clouds, couple fluctuations in free tropospheric ozone to ozone in lower layers. Hypothetical bounding scenarios were performed to quantify the effects of emissions, boundary conditions, and ozone dry deposition on the simulated ozone burden. Analysis of these simulations confirms that the characterization of ozone outside the regional-scale modeling domain can have a profound impact on simulated regional-scale ozone. This was further investigated by using data from four hemispheric or global modeling systems (Chemistry – Integrated Forecasting Model (C-IFS), CMAQ extended for hemispheric applications (H-CMAQ), GEOS-Chem, and AM3) to derive alternate boundary conditions for the regional-scale CMAQ simulations. The regional-scale CMAQ simulations using these four different boundary conditions showed that the largest ozone abundance in the upper layers was simulated when using boundary conditions from GEOS-Chem, followed by the simulations using C-IFS, AM3, and H-CMAQ boundary conditions, consistent with the analysis of the ozone fields from the global models along the CMAQ boundaries. Using boundary conditions from AM3 yielded higher springtime ozone columns burdens in the mid- and lower troposphere compared to boundary conditions from the other models. For surface ozone, the differences between the AM3-driven CMAQ simulations and the CMAQ simulations driven by other large-scale models are especially pronounced during spring and winter where they can reach more

15  
20  
25  
30

than 10 ppb for seasonal mean ozone mixing ratios and as much as 15 ppb for domain-averaged daily maximum 8-hr average ozone on individual days. In contrast, the differences between the C-IFS, GEOS-Chem, and H-CMAQ driven regional-scale CMAQ simulations are typically smaller. Comparing simulated surface ozone mixing ratios to observations and computing seasonal and regional model performance statistics revealed that boundary conditions can have a substantial impact on model performance. Further analysis showed that boundary conditions can affect model performance across the entire range of the observed distribution, although the impacts tend to be lower during summer and for the very highest observed percentiles. The results are discussed in the context of future model development and analysis opportunities.

## 1 Introduction

Regional-scale air quality modeling systems such as the Community Multiscale Air Quality (CMAQ) model (Byun and Schere, 2006), the Comprehensive Air Quality Model with Extensions (CAMx) (Environ, 2014), the Weather Research and Forecasting model coupled to Chemistry (WRF-Chem) (Chapman et al., 2009), and CHIMERE (Vautard et al., 2001) are routinely used for air quality forecasting and planning applications. Many of these models trace their heritage to local-scale models developed to better understand and mitigate elevated ozone in highly polluted urban airsheds such as the Los Angeles basin (McRae and Seinfeld, 1983; Harley et al., 1993). As further research highlighted regional aspects of ozone pollution such as multi-state transport of ozone and its precursors (Eder et al., 1994; Vukovich, 1995; Schichtel and Husar, 2001), these urban-scale models were expanded to represent processes relevant to regional- and continental scale air quality. Because of their origin in urban- and regional-scale air quality modeling and their primary application focus of simulating air quality as it relates to human health (i.e. air applications for air quality planning and forecasting), the performance of these modeling systems is often evaluated primarily at the surface against measurements from monitors in the vicinity of populated areas (Simon et al., 2013; Appel et al, 2017).

The evaluation and intercomparison of regional-scale air quality models has been the central focus of the Air Quality Evaluation International Initiative (AQMEII) that was initiated in 2009 (Rao et al., 2011). Much of the initial work under AQMEII focused on operational model evaluation (Solazzo et al., 2012a,b; Im et al., 2015a,b) while there was an increasing emphasis on diagnostic evaluation in more recent analyses (Solazzo and Galmarini, 2016; Solazzo et al., 2017a,b). Some of these diagnostic analyses have pointed to external model inputs, in particular emissions and boundary conditions representing the larger-scale atmospheric background, as key sources of model error (Schere et al., 2012; Giordano et al., 2015; Solazzo et al., 2017a,b).

Somewhat in parallel to the increased development and use of regional-scale air quality models for air quality management and forecasting starting in the mid-to-late 1990s and early 2000s, there also was active development of global-scale chemistry-transport models such as GEOS-Chem (Bey et al., 2001), the Model for Ozone and Related chemical Tracers (MOZART)



(Horowitz et al., 2003; Emmons et al., 2010), and AM3 (Donner et al., 2011; Lin et al., 2012a) as well as on-line coupled weather-chemistry models such as the European Center for Medium Range Weather Forecasts (ECMWF) Composition – Integrated Forecast System (C-IFS) model (Flemming et al., 2015). A primary use of such global models has been to better understand long-term trends and variability in tropospheric pollutant burdens and budgets and to quantify intercontinental transport. Such research on intercontinental transport of air pollution (Jacob et al., 1999; Li et al., 2002; Holloway et al., 2003; Fiore et al., 2009; Reidmiller et al., 2009; Lin et al., 2015; 2017) led to the increasing recognition of surface ozone as a pollutant that is impacted by phenomena occurring on spatial scales ranging from local to global and temporal scales ranging from hours to decades. Much of this research either contributed to or was directly organized through the Task Force on Hemispheric Transport of Air Pollution (TF-HTAP), resulting in a comprehensive assessment of the science underlying long-range pollutant transport (TF-HTAP, 2010). Model evaluation performed for such global models often has focused on remote, rural, and/or high elevation sites since the grid resolution employed in these models is not expected to fully resolve more fine-scale physical and chemical processes that are important in areas of complex terrain, land/sea interfaces or areas of large emission gradients.

The growing realization that regional-scale air quality models depend on inputs from global models to properly characterize large scale pollutant fluctuations while global models may benefit from the experiences gained in modeling air quality at finer scales motivated the organization of coordinated global and regional-scale modeling experiments under the umbrella of TF-HTAP (HTAP2) with contributions from the third phase of AQMEII (AQMEII3) as well as the MICS-Asia community as detailed in Galmarini et al. (2017). In this study, we present the results of regional-scale CMAQ simulations over North America driven by different representations of large-scale atmospheric composition as simulated by large-scale models participating in TF-HTAP. The study aims at quantifying simulated regional-scale ozone burdens both near the surface and aloft, estimating process contributions to these burdens, and calculating the sensitivity of the simulated regional-scale ozone burden to several key model inputs, in particular the global atmosphere as simulated by large-scale models and represented in CMAQ through the use of different boundary conditions. It should be noted at the outset that an intercomparison and evaluation of the various large-scale models is outside the scope of this study but is being pursued by other groups in the context of TF-HTAP.

## 2 Model Simulations and Observations

The 2010 annual simulations analyzed in this study were performed with version 5.0.2 of the CMAQ model (Byun and Schere, 2006) using meteorological fields prepared with version 3.4 of the Weather Research and Forecasting (WRF) model (Skamarock and Klemp, 2007) and emission inputs described in Pouliot et al. (2015). The CMAQ simulations were performed with a horizontal grid spacing of 12 km over the continental U.S. and used 35 vertical layers extending to 50mb.

For the base case simulations (hereafter referred to as BASE), lateral chemical boundary conditions were prepared from global concentration fields simulated by C-IFS (Flemming et al., 2015). Meteorological and air quality fields from these BASE

simulations were evaluated against observations by Solazzo et al. (2017a,b). The BASE simulations also included the tracking of contributions from different processes to ozone mixing ratios using the Integrated Process Rate (IPR) Process Analysis (PA) approach (Jeffries and Tonnesen, 1994; Jang et al., 1995) as implemented in CMAQ (Byun and Ching, 1999).

To assess the maximum impacts of boundary conditions, anthropogenic emissions within the domain, and ozone dry deposition on simulated ozone mixing ratios, the BASE simulations were augmented by three annual bounding simulations. In the first of these bounding simulations (hereafter referred to as BC ZERO), lateral boundary conditions for all species were set to a time-invariant value of zero while all other settings were identical to BASE. In the second simulation (hereafter referred to as EM ZERO), all anthropogenic emissions as well as wildfire emissions within the domain were set to zero while all other settings were identical to BASE. For the third simulation (hereafter referred to as NO O3 DDEP), ozone dry deposition was set to zero while all other settings were identical to BASE.

Finally, to further investigate the effects of using chemical boundary conditions derived from different global or hemispheric models, three additional annual simulations were performed using concentrations derived from: 1) CMAQ version 5.1 configured for hemispheric applications, hereafter referred to as H-CMAQ (Xing et al., 2015 a,b; Mathur et al., 2017), 2) the GEOS-Chem model (Bey et al., 2001) version 9-01-03 which includes full tropospheric chemistry and a climatological representation of stratospheric sources and sinks, and 3) the AM3 model (Donner et al., 2011; Lin et al., 2012, 2017) with coupled stratosphere-troposphere chemistry. These simulations leveraged the coordinated AQMEII3/HTAP2 modeling experiments (Galmarini et al., 2017; Huang et al., 2017). In particular, all of these alternative global simulations providing boundary conditions (as well as the C-IFS simulations providing boundary conditions for BASE) utilized the same global anthropogenic emission inventory described in Janssens-Maenhout et al. (2015) that is consistent with the regional-scale inventory used in the CMAQ simulations and described by Pouliot et al. (2015). However, non-anthropogenic emissions were not harmonized across the global and regional-scale simulations. As described in Flemming et al. (2015), the C-IFS simulations used lightning emissions based on the parameterization introduced in Meijer et al. (2001), biogenic emissions calculated with version 2.1 of the Model of Emissions of Gases and Aerosols from Nature (MEGAN) (Guenther et al., 2006), and biomass burning emissions produced by the Global Fire Assimilation System (GFAS) version 1 (Kaiser et al., 2012). The H-CMAQ simulations used climatological biogenic and lightning emissions from the Global Emission Inventory Activity (GEIA) dataset (Guenther et al., 1995; Price et al., 1997) and biomass burning emissions from version 4.2 of the Emission Database for Global Atmospheric Research (EDGAR) (European Commission, 2011). The GEOS-Chem simulations used lightning emissions based on the methodology described in Murray et al. (2012), biogenic emissions calculated with MEGAN version 2.1, and biomass burning from version 3 of the Global Fire Emissions Database (GFED) (Randerson et al., 2013; van der Werf et al., 2006). The AM3 simulations used lightning emissions based on the parameterization introduced in Horowitz et al. (2003), biogenic emissions calculated with MEGAN version 2.1, and biomass burning emissions from the Fire INventory from NCAR (FINN) (Wiedinmyer et al., 2011). The regional-scale CMAQ simulations did not include lightning emissions, calculated

biogenic emissions using version 3.14 of the Biogenic Emission Inventory System (BEIS) (Pierce et al., 1998; Vukovich et al., 2002; Schwede et al., 2005) and used 2010 wildfire emissions as described in Pouliot et al. (2015).

To create boundary conditions for the regional CMAQ simulations, outputs from the large-scale models were vertically interpolated and gas phase and aerosol species were mapped to the CB05TUCL/Aero6 mechanism used by CMAQ. Previous studies deriving regional-scale boundary conditions from global scale models noted the importance of maintaining sufficient vertical resolution in the upper troposphere / lower stratosphere in the regional model (Lin et al., 2009) and properly mapping chemical species between the modeling systems (Henderson et al., 2014). A list of the gas phase species mapped between the global-large-scale models and CMAQ is shown in Table 1 and a depiction of the vertical layers used in the global-large-scale models and regional CMAQ simulations is provided in Figure 1. Sulfate, nitrate, ammonium, elemental and organic carbon aerosols were available from all large-scale models while CMAQ trace element aerosol concentrations were estimated from large-scale model dust and sea-salt concentrations except in the case of H-CMAQ which used the same aerosol mechanism as the regional-scale CMAQ simulations. CMAQ species not available from the large scale models were obtained from the time-invariant CMAQ default profile (available at  
[https://github.com/USEPA/CMAQ/blob/5.0.2/models/BCON/prof\\_data/cb05\\_ae6\\_aq/bc\\_profile\\_CB05.dat](https://github.com/USEPA/CMAQ/blob/5.0.2/models/BCON/prof_data/cb05_ae6_aq/bc_profile_CB05.dat), last accessed January 10, 2018). The sensitivity simulations with the three alternate sets of boundary conditions are hereafter referred to as BC H-CMAQ, BC GEOS-Chem, and BC AM3, respectively. For reference, a list of all simulations, their acronyms and their configurations is provided in Table 2.

For the purpose of CMAQ evaluation, hourly observations of ozone were retrieved from the U.S. Environmental Protection Agency (U.S. EPA) Air Quality System (AQS) database and were used to calculate daily maximum 8-hour average (MDA8) ozone values. In addition, CASTNET hourly ozone observations were also obtained to evaluate the performance of both large-scale models and regional CMAQ at these mostly rural locations. Finally, ozonesonde observations at Trinidad Head (latitude -124.16°W, longitude 40.8°N, elevation 20m), Edmonton (latitude -114.1°W, longitude 53.55°N, elevation 766m), Churchill (latitude -94.07°W, longitude 58.75°N, elevation 30m), Boulder (latitude -105.2°W, longitude 39.95°N, elevation 1743m), Huntsville (latitude -86.59°W, longitude 35.28°N, elevation 196m), and Wallops Island (latitude -75.48°W, longitude 37.9°N, elevation 13m) were obtained from the National Oceanic and Atmospheric Administration (NOAA) Earth System Research Laboratory and the World Ozone and UV Data Center to evaluate upper air ozone simulated by the large-scale models and regional CMAQ. Model performance evaluation at AQS monitors was performed both across the entire domain (1207 AQS monitors and 79 CASTNET monitors) and separately for five different analysis-sub-regions that are characterized by differences in their proximity to the domain boundaries, elevation, and relative abundance of anthropogenic and biogenic emissions: Northwest (NW) (41 AQS monitors and 2 CASTNET monitors), Intermountain West (IMW) (53 AQS monitors and 7 CASTNET monitors), Midwest (MW) (195 AQS monitors and 13 CASTNET monitors), Southeast (SE) (166 AQS monitors and 13 CASTNET monitors), and Northeast (NE) (204 AQS monitors and 15 CASTNET monitors). Note that these

analysis sub-regions do not cover the entire modeling domain. For all comparisons of observations and model simulations presented in this study, data pairs were included in the computation of derived metrics, such as daytime averages (defined as average mixing ratios between 10 am and 5 pm local standard time) or monthly averages, only when both observations and model simulations were available for a given hour. Furthermore, each monitored value was paired with the corresponding model value based on the model grid cell in which the monitor was located. In particular, multiple observations within the same grid cells were not averaged because the definition of the horizontal grids varied between all the simulations analyzed in this study. For seasonal analyses, winter was defined as December – February, spring was defined as March – May, summer was defined as June – August, and fall was defined as September – November. Figure 2 shows a map of the entire WRF/CMAQ 12km modeling domain, these five analysis regions, and the location of the AQS monitors, CASTNET monitors, and ozonesonde sites used in the analysis.

### 3 Results and Discussion

#### 3.1 Analysis of BASE CMAQ Simulations

##### 3.1.1 Evaluation Summary

Before analyzing ozone results for the sensitivity simulations, this section provides an overview of ozone model performance in the five analysis regions used in this study for the BASE simulation. Results for meteorology, ozone and other pollutants from these simulations were already analyzed and compared to other models in Solazzo et al. (2017 a,b).

Table 3 provides a summary of model performance for the BASE simulation for MDA8 ozone at AQS monitors over the five analysis regions shown in Figure 2. The metrics shown in this table are the Normalized Mean Bias (NMB), Normalized Mean Error (NME), and correlation coefficient (R). These metrics were computed at each site for each season and the median metric across all sites in a given region and season is shown in Table 3. The cells in the table are color-coded based on the model evaluation goals and acceptability criteria proposed by Emery et al. (2017) based on a review of published model evaluation studies. Green cells indicate regions and seasons where model performance meets the goal for a given metric (NMB  $< \pm 5\%$ , NME  $< 15\%$ , and  $R > 0.75$ ), yellow cells indicate regions and seasons where model performance meets the acceptability criterion but not the goal ( $+5\% < \text{NMB} < \pm 15\%$ ,  $15\% < \text{NME} < 25\%$ , and  $0.5 < R < 0.75$ ), and orange cells indicate regions and seasons where neither the goal nor the acceptability criterion are met ( $\text{NMB} \geq \pm 15\%$ ,  $\text{NME} \geq 25\%$ ,  $R \leq 0.5$ ). Regionally, results show that model performance tends to be worst in the NW compared to other regions while seasonally, model performance tends to be worst during winter compared to other seasons. The three instances of model performance not meeting the acceptability criterion proposed by Emery et al. (2017) all occur during the winter. Except for the NW, NMB is negative during winter in all regions, suggesting that large-scale ozone background concentrations specified through C-IFS

provided model boundary conditions may be underestimated in this simulation, particularly over the Northern portion of the modeling domain. This is consistent with the findings of Flemming et al. (2017).

The model performance overview presented in Table 3 does not provide information on the ability of the BASE simulation to capture different portions of the observed MDA8 ozone distribution. To this end, we also computed differences between observed and modeled MDA8 ozone distributions at AQS monitors for each season and analysis region. For each season and region, the observed MDA8 ozone concentrations were rank ordered at each station. Differences between CMAQ simulations and observations were then computed for each observed percentile either by selecting the model value corresponding to the date of the observed percentile (paired-in-time comparison) or rank-ordering the model values and then selecting the modeled percentile corresponding to the observed percentile (unpaired-in-time comparison). The median value of these paired-in-time and unpaired-in-time differences across all AQS stations in a given season and region was then computed for each observed percentile and is shown in Figure 3.

One general feature visible throughout all seasons and regions is that the unpaired-in-time differences tend to be more flat across the range of the observed percentiles while the curves for the paired-in-time differences tend to have a negative slope. This different behavior of the unpaired-in-time and paired-in-time comparison indicates that the CMAQ simulations have better skill in capturing the width of the observed MDA8 distribution than in capturing the timing of specific observed ozone events. The NW is the only region with positive unpaired-in-time differences throughout all seasons. The IMW has the least spread in model performance across seasons for all percentiles, both in terms for unpaired-in-time and paired-in-time differences. Unpaired-in-time winter results for the MW, SE, and NE show an underestimation of observed MDA8 ozone across all percentiles. This is also true for the comparison of paired-in-time differences for all observed percentiles greater than the 20<sup>th</sup> percentile. In contrast, summer differences in these regions tend to be positive for all but the highest percentiles. For all regions, model-observations differences for spring and fall tend to be similar to each other. For the MW, SE, and NE regions, differences for these seasons fall between the winter and summer results with consistently small unpaired-in-time differences and a tendency to overestimate lower observed percentiles and underestimate higher observed percentiles when considering paired-in-time differences. The analysis presented in Section 3.2.3 will explore the sensitivity of these model performance results towards alternate lateral boundary conditions.

### 3.1.2 Process Analysis Contributions to Ozone Columns

The analysis above focused on ground-level ozone evaluation. Ground level ozone is affected by a number of physical and chemical processes both near the surface and aloft. The PA tool in CMAQ (Jeffries and Tonnesen, 1994; Jang et al., 1995) provides a method to track these process contributions to the modeled ozone. In this study, we configured PA to track the contributions of the following processes to simulated ozone: horizontal advection (HADV), vertical advection (ZADV), horizontal diffusion (HDIF), vertical diffusion (VDIF), dry deposition (DDEP), chemistry (CHEM), and cloud processes

including vertical mixing by convective clouds and removal through scavenging and aqueous chemistry (CLDS). The resulting process contributions are available for each grid cell and each hour throughout the annual simulation.

Figure 4 shows profiles of seasonal total ozone column mass changes for each model layer due to the seven processes summed over the entire modeling domain. The PA terms represent the net change in ozone mass due to a given process in a given model layer and season. For almost all layers and seasons, HADV and ZADV are of similar magnitude and opposite direction due to mass consistent advection and are the dominant processes for layers above ~800 mb. In the first model layer, DDEP is a strong sink of ozone, balanced largely by VDIF, i.e. flux of ozone from upper layers to the surface. VDIF tends to become insignificant above ~500 mb while the effect of HDIF is negligible for all model layers. CHEM is a sink in the first model layer, a source in the boundary layer, and a net sink between approximately 800 mb and 400 mb for all seasons except winter. CLDS tends to be a source of ozone in the lower atmosphere and a sink in the upper atmosphere.

To better illustrate the seasonal variations of the process contributions in the upper model layers, free troposphere, and boundary layer / lower troposphere, Figure 5 presents monthly domain-wide total PA contributions to ozone columns in CMAQ layers 1-21 (surface to approximately 750 mb), 22 – 31 (approximately 750 – 250 mb), and 32 – 35 (approximately 250 mb – 50 mb). The horizontal and vertical advection and diffusion terms were summed to compute the effects of total advection (TADV) and total diffusion (TDIF), respectively. Consistent with the profiles shown in Figure 4, changes in ozone mass in the upper layers are dominated by TADV, with these layers gaining ozone mass through TADV early and late in the year when tropopause heights are lower and a larger portion of the lower stratosphere is included in the model while they tend to lose mass through the effects of TADV from April through September. The column between 250 mb and 750 mb gains ozone mass through TADV for almost all months, indicating that both lateral boundary conditions and ozone in the upper layers determine the ozone column burden simulated in the free troposphere. CHEM is a net sink especially during summer. Vertical mixing by convective clouds also removes ozone from these layers while the effect of TDIF is small. The ozone column below 750 mb gains mass through the effects of CHEM especially during summer as well as through the effects of vertical mixing by convective clouds that tap into the ozone reservoir in the free troposphere to enhance the lower atmospheric ozone burden. The dominant sink term of ozone mass in this layer range is DDEP at the surface. TADV and TDIF play a secondary role in modifying the total ozone burden in this column range. It should be noted that the PA results shown in Figures 4-5 are based on a single year. ~~Interannual~~Inter-annual variability would be expected to affect the absolute magnitude and month-to-month variations especially of the advection processes, however, the qualitative differences in process rankings between different layer ranges would be expected to be robust with respect to ~~interannual~~inter-annual variability. Moreover, the process contributions presented here are monthly totals over the entire domain. Contributions for specific locations and episodes would likely differ. For example, while the CLDS term is shown to be a net source for lower tropospheric ozone over the entire domain, it might be a net sink during episodes of high ozone formation in the boundary layer. Overall, the results indicate that alternate model representation of advection, dry deposition and cloud processes as well as alternate model inputs (boundary

conditions affecting advected ozone and emissions affecting ozone chemistry) would be expected to have noticeable effects on the simulated ozone burdens and their seasonal variation. Hypothetical bounding scenarios quantifying the effects of emissions, boundary conditions, and ozone dry deposition on the simulated ozone burden are explored in the next section.

### 3.1.3 Brute Force Bounding Simulations

5 The upper three panels of Figure 6 present time series of the monthly average ozone column mass for the BASE, BC ZERO, EM ZERO, and NO O<sub>3</sub> DDEP sensitivity simulations for the same three layer ranges analyzed in the previous section while the lowest panel presents time series of monthly average ozone mixing ratios for the first model layer. These time series confirm the PA findings that the ozone column burden above 250 mb is almost entirely driven by advection of lateral boundary conditions in these continental-scale CMAQ simulations. Specifically, in this layer range the BC ZERO simulation has an  
10 ozone column of essentially zero while the burdens simulated for the EM ZERO and NO O<sub>3</sub> DDEP cases are indistinguishable from the burden simulated for the BASE case. The results for the free troposphere (750 mb – 250 mb) show a small difference in the column base simulated by the BASE and EM ZERO simulations especially during summer. This difference quantifies the net effects of ozone production from emissions but is dwarfed by the impacts from the BC ZERO simulation which again is suggestive that the variability in the free troposphere is largely driven by the specification of lateral boundary conditions.  
15 Results for the column from the surface to 750 mb show noticeable differences in ozone column mass between all four simulations, with the differences with respect to the BASE simulation being lowest for the NO O<sub>3</sub> DDEP case and highest for the BC ZERO case. For the surface ozone monthly mean mixing ratio, the largest signal is seen for the NO O<sub>3</sub> DDEP case followed by the BC ZERO case. The EM ZERO case has the smallest impact at the surface but, as shown above, emissions have a larger cumulative impact on column ozone burden than dry deposition.

20 Furthermore, the surface results for the BASE, BC ZERO and EM ZERO sensitivity simulations indicate that during wintertime, domain-average simulated ozone mixing ratio are almost exclusively driven by boundary conditions, i.e. the BASE and EM ZERO are very similar despite the lack of anthropogenic emissions in the latter, and mixing ratios in the BC ZERO simulation are close to 0 ppb. The EM ZERO results also indicate that the impact of boundary conditions on regional ozone is  
25 largest in springtime when free tropospheric ozone in the northern hemisphere reaches a maximum. If one views the ozone from the EM ZERO simulation as the amount of regional ozone due to boundary conditions and biogenic emissions, and BC ZERO as the amount of ozone due to anthropogenic and biogenic emissions within the domain, the results indicate that the former dominates the latter throughout the year in terms of domain-average monthly mean mixing ratios at the surface. However, it should be noted that the impacts of these bounding simulations on simulated surface ozone vary spatially. Solazzo  
30 et al. (2017b) analyzed seasonal cycles from these simulations sampled at ozone monitoring locations and found that during the summer time the impact of anthropogenic emissions on monthly mean concentrations was comparable to or larger than the impact of boundary conditions in the subregions considered in their analysis.

To investigate the spatial variability of surface ozone from these bounding scenarios, Figure 7 shows maps of differences in seasonal mean mixing ratios between the three sensitivity simulations (BC ZERO, EM ZERO, and NO O3 DDEP) and the BASE simulation. The results show that as expected the impact of zeroing out boundary conditions decreases with distance from the boundaries in all seasons, with the smallest impacts typically seen in the southeastern portion of the modeling domain.

5 In contrast, the effects of zeroing out the anthropogenic and wildfire emissions tend to be largest in the eastern portion of the modeling domain, leading to larger decreases in simulated ozone compared to the BC ZERO case during summer in that region. Increases of seasonal mean ozone can be observed in urban areas for the EM ZERO simulation in all seasons. The effects of ozone dry deposition on simulated seasonal mean surface ozone mixing ratios is most pronounced in the eastern portion of the modeling domain during spring and especially summer, with increases of more than 20 ppb simulated across a  
10 broad region. These NO O3 DDEP results indicate that intercomparing and evaluating ozone dry deposition approaches would be a fruitful avenue for future model intercomparison activities aimed at better constraining processes affecting surface ozone fluctuations simulated by different models.

Overall, the analysis of the brute-force sensitivity simulations presented in this section as well as the process analysis results  
15 presented in Section 3.1.2 confirm that the characterization of ozone outside the regional-scale modeling domain can have a profound impact on simulated regional-scale ozone. However, these brute force bounding simulations do not represent plausible representations of real-world conditions. In the next section, we present regional-scale CMAQ simulations utilizing boundary conditions derived from different large-scale models. This is aimed at investigating the impact of different state-of-science representations of the global atmosphere on air quality simulated over the United States with a 12 km resolution  
20 regional-scale model.

### **3.2 Analysis of CMAQ Simulations with Boundary Conditions from Different Global Models**

#### **3.2.1 Comparisons of Aloft Concentrations from Global Models and Regional CMAQ**

Figure S1 shows time-height cross sections of monthly mean ozone mixing ratios along the western, southern, eastern, and northern boundary of the regional CMAQ domain for the four large-scale models from which boundary conditions were  
25 derived. The mixing ratios were averaged over all columns or rows defining a given boundary and also were averaged for each month. For all boundaries, GEOS-Chem and C-IFS tend to have the highest ozone mixing ratios for levels above 150 mb. All models show a springtime maximum and fall minimum for these levels. During springtime, AM3 shows the deepest intrusion of higher ozone mixing ratios from upper levels to mid- and lower-tropospheric levels at the western, northern and eastern boundary.

30 Time-height cross sections of monthly mean ozone were also prepared at the location of the six ozonesonde stations shown in Figure 2. These monthly mean mixing ratios were calculated for observations, the four large-scale models, and the corresponding four regional CMAQ simulations. Since ozonesonde measurements are available at a much higher vertical



resolution than the model simulations, observations were vertically averaged to the vertical structure used by each model (see Figure 1) and the observations as averaged to the C-IFS layer structure are depicted in Figures 8a-b. Note that even though observations and large-scale model predictions (except H-CMAQ) are available for higher altitudes (see Figure 1), only values up to the highest model level below 50 mb were extracted for these figures to be comparable to the output from the regional-scale CMAQ simulations (specifically, C-IFS values were only extracted up to layer 38, GEOS-Chem values were only extracted up to layer 37, and AM3 values were only extracted up to layer 26 for this comparison). For easier comparison between models and sites, all figures use a common vertical pressure range of 1025 mb to 50 mb even though this full range is not covered at all sites and by all models. Figure 8a shows the time-height cross sections for the three ozonesonde sites that are located in close proximity of the western and northern regional CMAQ boundaries (i.e. Trinidad Head, Edmonton, and Churchill) where inflow into CMAQ is expected to be most important due to prevailing flow patterns. The cross sections for the large-scale models in rows 1, 3 and 5 are consistent with the cross sections for the western and northern boundaries shown in Figure S1. In particular, GEOS-Chem and C-IFS tend to have the highest ozone mixing ratios for levels above 150 mb while AM3 shows the deepest intrusion of higher ozone mixing ratios from upper levels to mid- and lower-tropospheric levels especially during springtime. Comparing the large-scale model results to the observed cross sections in the left column reveals that free tropospheric mixing ratios simulated by C-IFS, H-CMAQ and GEOS-Chem tend to be closer to the observations than the mixing ratios simulated by AM3 which tend to be overestimated. Another key feature of the cross sections shown in Figure 8a is that the regional CMAQ results at Trinidad Head and Edmonton shown in rows 2 and 4 closely mirror those simulated by the corresponding large-scale models, emphasizing the impact of boundary conditions on regional-scale simulations especially near the boundaries (note that no regional-scale results are shown for Churchill as the station is located outside the 12 km modeling domain shown in Figure 2).

Figure 8b shows corresponding results for the three ozonesonde locations in the interior of the regional-scale CMAQ modeling domain: Boulder, Huntsville, and Wallops Island. At all of these sites, AM3 tends to simulate higher free tropospheric and lower tropospheric mixing ratios than the other large-scale models during spring while GEOS-CHEM tends to simulate higher mixing ratios during summer. The observed cross section at Boulder suggests that no large-scale model performs systematically better or worse than another at this location in the free troposphere. At Huntsville and Wallops Island, free tropospheric mixing ratios are overestimated by AM3 during spring and by GEOS-CHEM during summer. Finally, the comparison between the regional CMAQ cross sections and the corresponding large-scale model cross sections at these three sites shows some differences as well as similarities, indicating that differences in factors such as the treatment of vertical mixing, lightning emissions, chemistry, deposition and biogenic emissions can lead to deviations between the large-scale models and the regional CMAQ simulations over the continental United States.

The connection between large-scale models and the corresponding regional CMAQ simulations is further explored in Figure 9. This figure shows monthly average time series of 500 mb observed ozone, ozone simulated by the large-scale models

(solid lines), and ozone simulated by regional CMAQ driven with boundary conditions from the different large scale models (dashed lines) at Trinidad Head, Edmonton, Boulder, Huntsville, and Wallops Island. Model simulations were extracted for the layer closest to 500 mb and observations were vertically averaged across the depth of each of these different model layers. As a result of the different vertical structure of the four large-scale models and the regional CMAQ simulations depicted in Figure 1, five different estimates of 500 mb observations were derived and the range of these different estimates is indicated by the shaded area in Figure 9. Between March and June, AM3 mixing ratios are up to 20 ppb higher than the mixing ratios simulated by the other three large-scale models at Trinidad Head, Boulder and Wallops Island and up to 10 ppb higher at Boulder and Huntsville. At all sites except Boulder, the AM3 simulations are also systematically higher than observations during this time period. At the sites closest to the western and northern inflow boundaries, i.e. Trinidad Head and Edmonton, the time series for the regional CMAQ results closely mirror those for the corresponding large-scale models. Within the modeling domain, there is more separation of the large-scale and regional CMAQ results, especially between the GEOS-Chem and BC GEOS-Chem results during summer at Huntsville and Wallops Island where BC GEOS-Chem simulates substantially lower mixing ratios than GEOS-Chem. These differences may be at least partially due to the representation of emissions from lightning. While the regional CMAQ simulations did not include lightning NO emissions, it was included in the GEOS-Chem simulations. Zhang et al. (2014) and Travis et al. (2016) note that the standard GEOS-Chem treatment of lightning NO<sub>x</sub> yields for midlatitudes may be too high and can lead to positive ozone biases at the surface.

The differences in the magnitude of mid-tropospheric ozone mixing ratios between the large-scale models at the more remote Trinidad Head, Edmonton, and Churchill sites point to differences in the representation of stratospheric ozone and stratosphere/troposphere exchange processes. The representation of the latter might also be affected by differences in vertical resolution as shown in Figure 1. In conjunction with the results presented in Section 3.1, Figures 8 and 9 also suggest that regional scale CMAQ simulations using these four different sets of boundary conditions will yield different estimated ozone burdens. It should be noted that in-depth evaluation and intercomparison of the different large-scale simulations is beyond the scope of the current study. Previous studies evaluating H-CMAQ, GEOS-Chem, C-IFS and AM3 include Xing et al. (2015a,b), Mathur et al., (2017), Fiore et al. (2009), Flemming et al., (2015), and Lin et al. (2012a,b, 2017). Three of these simulations (GEOS-Chem, C-IFS and AM3) are also being compared against aloft and surface ozone measurements by Cooper et al. (2017).

### 3.2.2 Seasonal Differences in CMAQ Simulated Ozone Columns

Figure S2 shows daily time series of CMAQ-simulated domain-total ozone column mass for the same three layer ranges used in the previous sections. The results are for the BASE, BC H-CMAQ, BC GEOS-Chem, and BC-AM3 simulations. For layers 32 – 35 (i.e. the layers approximately above 250 mb), all simulations show a maximum in spring and a minimum in fall. All simulations track each other but the magnitudes differ by up to a factor of two. The largest ozone abundance in the upper layers is simulated by BC GEOS-Chem, followed by BASE, BC AM3 and BC H-CMAQ, consistent with the analysis of boundary

conditions in the Section 3.2.1. The most notable feature for the ozone column mass in layers 22 – 31 (i.e. approximately 750 mb – 250 mb) is the larger springtime ozone burden simulated by BC AM3 compared to the other three simulations, consistent with the analysis of the ozone boundary conditions at 500 mb in the previous section. The same feature is also found for the ozone column mass in layers 1- 21 (i.e. surface to approximately 750 mb) which confirms the notion that vertical exchange  
5 between this layer range and the free troposphere leads to a tight coupling of their ozone fluctuations. For all layer ranges, these results confirm that differences in ozone boundary conditions result in differences of CMAQ-simulated ozone column mass over the modeling domain.

### 3.2.3 Seasonal Differences in CMAQ Surface Ozone Mixing Ratios

Figure 10 shows maps of seasonal mean ozone mixing ratios at the surface for the four simulations. The left column shows the  
10 mixing ratios for the BASE simulation while the second, third and fourth columns show the differences between BC H-CMAQ and BASE, BC GEOS-Chem and BASE, and BC AM3 and BASE, respectively. For the BASE simulations, many regions including the intermountain west and the central U.S. show a springtime peak in seasonal mean ozone while summer peaks are present ~~downward-downwind~~ of more urban areas such as in California and the Mid-Atlantic corridor. Differences between the BASE simulations and the three sensitivity simulations are generally highest near the domain boundaries in all seasons but  
15 differences of 10 ppb in seasonal mean O<sub>3</sub> can be found even in the center of the modeling domain in some cases. The largest differences exist between the BC AM3 and BASE simulations and are especially pronounced during spring and winter. In contrast, the differences between BC H-CMAQ and BASE and BC GEOS-Chem and BASE are typically smaller (+/- 4 ppb for most of the modeling domain except for BC H-CMAQ during winter). These impacts of lateral boundary conditions on surface ozone mixing ratios are consistent with the analysis of the large-scale models and CMAQ ozone column burdens in  
20 the previous sections. Separate analysis shows that considering MDA8 ozone instead of hourly ozone leads to very similar spatial patterns of seasonal mean differences between the model simulations. This is expected since the effect of boundary conditions on the average diurnal cycle manifests itself mostly as a constant shift throughout the course of the day as shown in Solazzo et al. (2017b).

25 Figure 11 a-f shows time series of differences between modeled and observed ozone mixing ratios. Panel a) shows results for monthly means of daytime average mixing ratios at CASTNET monitors for the four regional model simulations, panel b) shows the results for the four corresponding large-scale models, panel c) shows results for monthly means of daytime average mixing ratios at AQS monitors instead of CASTNET monitor for the four regional model simulations, panel d) shows results for the four regional models at AQS monitors using monthly means of MDA8 instead of monthly means of daytime average  
30 mixing ratios, and panels e) and f) correspond to panels c) and d) but show daily rather than monthly mean values. These time series illustrate that regardless of metric (daytime average vs MDA8) and network (CASTNET vs. AQS), all regional CMAQ simulations overestimate domain-mean observed ozone throughout the year with the exception of the BASE simulation during winter, with the overestimation being most pronounced for BC AM3 during spring. The spread in monthly MDA8 ozone biases

(i.e. model minus observation differences) between the four regional CMAQ simulations is on the order of 7-10 ppb for most of the year at AQS sites, i.e. roughly 15% - 30% of simulated monthly mean values. The spread is smaller from June to September when it drops to less than 5 ppb. The spread in biases of domain-wide daily MDA8 ozone at AQS sites can reach as high as 15 ppb during springtime. In contrast to the comparison of regional CMAQ and large-scale model results for aloft ozone in Section 3.2.2, the comparison of panels a) and b) shows that model performance for daytime average surface ozone mixing ratios at CASTNET monitors are not tightly linked between these two groups of simulations. This again indicates that while CMAQ free tropospheric ozone mixing ratios are dominated by advection, other factors modulate surface ozone, including the treatment of vertical mixing, chemistry, deposition and biogenic emissions. Moreover, the larger spread in model bias for the large-scale models compared to regional CMAQ can be explained by the fact that the large scale models differ in their representation of many of these processes while the four regional CMAQ simulations share all input files and process representations and only differ in their representation of large-scale background concentrations. The comparison of panels a) and b) also illustrates that the biases of the regional CMAQ simulations are comparable to or lower than the biases of the large-scale models.

The bias time series in Figure 11 considered spatial averages over all CASTNET or AQS monitors. To investigate spatial variations in these biases, Figure 12 shows maps of seasonal mean biases for daytime average ozone at CASTNET sites for BASE, BC H-CMAQ, BC GEOS-Chem, and BC AM3 (rows 1 and 3) and C-IFS, H-CMAQ, GEOS-Chem, and AM3 (rows 2 and 4) for spring (rows 1 and 2) and summer (rows 3 and 4). These maps correspond to the time series shown in Figures 11a)-b). Two features stand out in these maps. First, all regional CMAQ simulations and corresponding large-scale simulations tend to be positively biased in the Eastern United States during spring and summer; this is especially pronounced for C-IFS, GEOS-Chem and AM3 during summer. Significant positive ozone biases at CASTNET sites in the SE were also reported for GEOS-Chem for summer 2013 by Travis et al. (2016) who attributed a large portion of the bias to overestimated anthropogenic NO<sub>x</sub> emissions. In the current study, the annual total anthropogenic NO<sub>x</sub> emissions are shared across all regional and large-scale simulations since the HTAP2 global inventory (Janssens-Maenhout et al., 2015) incorporated the AQMEII2 regional inventory (Pouliot et al., 2015) over North America, although differences may exist in terms of temporally and vertically allocating these emissions for a specific model. This suggests that factors other than anthropogenic emissions, such as biogenic emissions, chemistry, and deposition that differ between the large-scale models as well as between the large-scale models and regional CMAQ also affect the ozone bias in this region. Second, consistent with the time series shown in Figures 11a)-b), the model performance of the regional CMAQ simulation and the corresponding large-scale simulation are not tightly linked. As discussed above, this indicates that while free tropospheric regional CMAQ ozone mixing ratios are dominated by advection, other factors including the treatment of vertical mixing, chemistry, deposition and biogenic emissions modify surface ozone. However, despite the general differences between the regional CMAQ and large-scale model results, the bias patterns during spring and summer tend to be most similar between BC H-CMAQ and H-CMAQ compared to all other pairs of regional / large-scale models, likely pointing to greater consistency in the treatment of physical and chemical processes across scales for

this particular combination. It should be emphasized that the comparison of regional and large-scale model biases in Figures 11a)-b) and 12 is not aimed at establishing the relative merits of either modeling approach or of using one set of boundary conditions over another in the regional CMAQ simulations but rather to illustrate the magnitude of the impact of modeling choices on model performance.

5

Table 4 a)-c) presents corresponding model performance metrics (NMB, NME, R) for MDA8 O<sub>3</sub> at AQS monitors across the five analysis regions and four seasons for the four CMAQ simulations with different boundary conditions. Consistent with the results for the BASE simulations evaluated in Table 3 in Section 3.1.1, model performance for all simulations tends to be worst in the NW. However, the noteworthy feature of the results shown in Tables 4 a-c) is that boundary conditions can have a substantial impact on model performance as measured by the goals and acceptability criteria proposed by Emery et al. (2017). Boundary conditions also can affect conclusions about the directionality of the model bias. While wintertime MDA8 O<sub>3</sub> is underestimated by the BASE run for all regions except NW as shown earlier, the opposite is true for the BC H-CMAQ and BC AM3 simulations. Regardless of whether or not these proposed model performance acceptability criteria will ultimately be adopted by the regional air quality model community, the results presented here show that the choice of lateral boundary conditions would be influential in measuring model performance against these acceptability criteria.

10  
15

The results above assess the impact of different boundary conditions on model performance as measured across an entire season. Figure 13 shows paired-in-time CMAQ-observation differences of MDA8 O<sub>3</sub> at AQS monitors across the range of observed percentiles for each simulation, season, and region, analogous to the results shown in Figure 3 for the BASE simulations. Overall, these graphs indicate that boundary conditions can affect model performance across the entire range of the observed distribution, although the impacts tend to be lower during summer and for the very highest observed percentiles. The results also reaffirm that the differences between the four simulations tend to be largest during winter and spring across all regions. During spring, most of the spread is caused by the higher MDA8 ozone values simulated by BC AM3 compared to the other three simulations across all regions. During summer, BC AM3 results are noticeably higher than results from the other three simulations only over the NW and NE regions. During fall, this is the case only for the NW region, while for the other four regions there is roughly equal spread between all simulations for all percentiles. During winter when local production is small, the difference in lateral boundary conditions results in a clear separation between the four simulations across all regions and percentiles.

20  
25

30

Corresponding paired-in-time results comparing daytime average O<sub>3</sub> from the large-scale models and corresponding regional CMAQ simulations against observations at CASTNET monitors are presented in Figure S3 and S4. The daytime average CMAQ results at CASTNET monitors in Figure S4 are very similar to the MDA8 ozone results at AQS monitors shown in Figure 13, consistent with the comparison of difference time series for different metrics and networks in Figure 11. The spread in model-observation differences is larger for the large-scale models than the spread for the regional CMAQ results for most

percentiles, seasons and regions (note that the y-axis range for the large-scale model results in Figure S3 is larger than the range for the CMAQ model results in Figure S4). In contrast to the CMAQ results which show a similar relative ranking of the four simulations for most seasons and regions (with BC AM3 generally having the highest model-to-observation differences, followed by BC H-CMAQ, BC GEOS-Chem, and BASE), the performance of the four large-scale models shows more variable behavior with no clear and systematic model-to-model differences across seasons and regions. This reaffirms that differences in free tropospheric ozone at the boundary of regional simulations can have a systematic impact on such regional simulations throughout the domain while the effects of other model differences (e.g. transport, vertical mixing, chemistry and deposition) manifest themselves in a spatially and temporally more complex manner. As a result, there is no clear similarity between surface ozone model performance for the large-scale models and the performance of the regional CMAQ simulations with the possible exception of the H-CMAQ / BC H-CMAQ pair which shares process representations across scales.

#### 4 Summary and Discussion

The results presented in this study are aimed at quantifying CMAQ-simulated regional-scale ozone burdens both near the surface and aloft, estimating process contributions to these burdens, and calculating the sensitivity of the simulated regional-scale ozone burden to several key model inputs with a particular emphasis on boundary conditions. The model simulations supporting this analysis were performed over the continental U.S. for the year 2010 within the context of the AQMEII3/HTAP2 activities. Process analysis was employed to track the contributions of horizontal and vertical advection and diffusion, dry deposition, chemistry and cloud processes on simulated ozone burdens. Changes in ozone mass in the upper layers were found to be dominated by advection. Advection also is the largest source of ozone for the column between 250 mb and 750 mb throughout most of the year, indicating that both lateral boundary conditions for this layer range and ozone in the upper layers (which in turn depends on lateral boundary conditions specified for the upper layers) have a profound impact on the burden simulated in the free troposphere. Chemistry and vertical mixing by convective clouds are the main sink for this column range. The ozone column below 750 mb gains mass through the effects of chemistry especially during summer as well as through the effects of vertical mixing by convective clouds that tap into the ozone reservoir in the free troposphere to enhance the lower atmospheric ozone burden. The dominant sink term of ozone mass in this layer range is dry deposition at the surface. Advection and diffusion play a secondary role in modifying the domain-total ozone burden in this column range. These PA contributions to CMAQ simulated ozone column burdens indicate that alternate model representation of advection, dry deposition and cloud processes as well as alternate model inputs (boundary conditions affecting advected ozone and emissions affecting ozone chemistry) would be expected to have noticeable effects on the simulated ozone burdens and their seasonal variation.

Hypothetical bounding scenarios were performed to quantify the effects of emissions, boundary conditions, and ozone dry deposition on the simulated ozone burden by zeroing out each of these factors in turn. Analysis of these simulations confirmed

the key importance of boundary conditions which dominates over the other two factors for the free and upper troposphere and lower stratosphere. Ozone burdens below 750 mb and especially ozone mixing ratios at the surface show significant changes in the no emissions and no ozone dry deposition simulations, and the relative impact of all three bounding simulations on surface ozone varies seasonally and spatially. Overall, the analysis of the brute-force sensitivity simulations confirms that the characterization of ozone outside the regional-scale modeling domain can have a profound impact on simulated regional-scale ozone.

Four global and hemispheric modeling systems, i.e. C-IFS, H-CMAQ, GEOS-Chem, and AM3, were used to derive alternate boundary conditions for the regional-scale CMAQ simulations. When comparing ozone from these four large-scale models against each other along the boundaries of the regional-scale CMAQ domain, noticeable differences were found both in terms of the magnitude and seasonal variations of ozone mixing ratios. GEOS-Chem and C-IFS simulated the highest ozone mixing ratio in the stratosphere while AM3 generally simulated the largest ozone mixing ratio in the free troposphere and PBL. Model-to-model differences in the magnitude and seasonal variations of ozone mixing ratios along the regional model boundaries in the mid-troposphere point to differences in the representation of stratospheric ozone and stratosphere/troposphere exchange processes in the large-scale models.

The regional-scale CMAQ simulations using these four different boundary conditions showed that the largest ozone abundance in the upper layers was simulated by BC GEOS-Chem, followed by BASE (using C-IFS lateral boundary conditions), BC AM3 and BC H-CMAQ, consistent with the analysis of the ozone fields from the large-scale models along the CMAQ boundaries and with the notion that the stratospheric ozone burden simulated by regional-scale CMAQ is driven by advection of lateral boundary conditions. The most notable feature for the ozone column mass in the mid-troposphere was found to be the larger springtime ozone burden simulated by BC AM3 compared to the other three simulations, again consistent with the analysis of the ozone boundary conditions in that layer range. The same feature was also found for the ozone column mass closer to the surface which confirms the notion that vertical exchange between this layer range and the free troposphere leads to a tight coupling of their ozone fluctuations. For all layer ranges, the analysis of these regional-scale CMAQ simulations highlighted that differences in ozone boundary conditions result in differences of CMAQ-simulated ozone column mass over the modeling domain.

The results for surface ozone mixing ratios are consistent with the results for the free tropospheric and lower tropospheric / PBL ozone burdens. In particular, the largest differences between the four sets of simulations exist between the BC AM3 and BASE simulations and are especially pronounced during spring and winter where they can reach more than 10 ppb for seasonal mean ozone mixing ratios and as much as 15 ppb for domain-averaged MDA8 ozone on individual days. In contrast, the differences between BC H-CMAQ and BASE and BC GEOS-Chem and BASE are typically smaller ( $\pm$  4 ppb for most of the modeling domain except for BC H-CMAQ during winter). Comparing simulated surface ozone mixing ratios to observations

and computing seasonal and regional model performance statistics revealed that boundary conditions can have a substantial impact on model performance and can also affect conclusions on the directionality of model biases. Further analysis showed that boundary conditions can affect model performance across the entire range of the observed distribution, although the impacts tend to be lower during summer and for the very highest observed percentiles.

5

While the results presented in this manuscript highlight the importance of boundary conditions for regional-scale ozone simulations, it should be noted that they were based on a single year of simulations. Many previous studies have shown a strong connection between ~~interannual~~inter-annual meteorological variability and ozone on continental- to global scales (Lin et al., 2012a,b, 2017; Hegarty et al., 2007; Porter et al., 2017; Hogrefe et al., 2011), especially as it relates to the impacts of variations in hemispheric-scale ozone on regional-scale ozone. Future work analyzing ~~long-term~~multi-year simulations from multiple global models linked to corresponding regional-scale simulations would be beneficial in better constraining the effects of large-scale ~~interannual~~inter-annual variability on ~~simulated~~ regional-scale ozone burdens ~~and the inter-annual variability of contributions from large-scale ozone to surface ozone especially during time periods of elevated concentrations.~~

10

15

~~Future work should also be geared towards developing modeling frameworks that enable a consistent representation of model processes, species, and vertical grid representation across scales.~~ The results shown in Section 3 (e.g. Figures 8-9) strongly suggest that differences in the mid-tropospheric ozone mixing ratios simulated by the large-scale models were the main driver of ozone differences between the corresponding regional-scale CMAQ simulations. However, differences in other species such as PAN, differences in the availability of a complete set of CMAQ species from all large-scale models (see Table 1), and inconsistencies in chemical speciation between the large-scale models and regional-scale CMAQ may also have contributed to the ozone differences between the regional-scale CMAQ simulations. Thus, while linking output from available global or hemispheric models to regional-scale models despite such differences represents current best practices in the regional-scale air quality modeling community, additional research

20

25

Future work should also be geared towards developing modeling frameworks that enable a consistent representation of model processes, species, and vertical grid representation across scales. An example of such efforts is the ongoing work to extend CMAQ to hemispheric scales (Mathur et al., 2017). Ensuring such consistency does not in itself guarantee improved model performance but would allow for more targeted diagnostic model evaluation aimed at specific processes which is more challenging when linking together different modeling systems, while

30

To achieve such consistency, future work should also be directed toward developing and implementing scale-dependent treatment for atmospheric chemistry ~~may be directed at implementing treatment for atmospheric chemistry~~ in next-generation global dynamic models with variable grid resolution features such as the Model for Prediction Across Scales (MPAS) (Skamarock et al., 2012) and the Finite-Volume Cubed-Sphere Dynamical Core (FV3) model (Harris and Lin, 2013). ~~Furthermore~~Finally, the results from the bounding sensitivity simulations suggest that coordinated evaluation and intercomparison activities for ozone dry deposition would be valuable in better constraining simulated ozone budgets.



In addition to these potential future research directions for the global and regional-scale air quality modeling communities, there are also several more concrete opportunities for further analyses that could be pursued as part of the current collaboration between AQMEII and TF-HTAP. First, while the present study shows that different boundary conditions can have an impact across the entire range of modeled ozone mixing ratios, it does not analyze such impacts during specific events and at specific locations. Such case study analyses could be the topic of future work. Second, the CMAQ PA results indicate the importance of vertical mixing processes (including mixing by convective clouds), advection and dry deposition on the modeled vertical distribution of ozone. Inert tracers of boundary conditions included in the AQMEII3 simulations analyzed by Solazzo et al. (2017a) can aid in the diagnosis of how model-to-model differences in these processes affect the impact of boundary conditions on ozone simulated by different regional-scale models (Liu et al., 2017). Finally, the “EM ZERO” bounding simulation could be further analyzed in the context of estimating “North American Background” (NAB) (Fiore et al., 2014) or “U.S. Background” (USB) (Dolwick et al., 2015) ozone, especially if this bounding simulation were to be repeated with lateral boundary conditions derived from H-CMAQ, GEOS-Chem, and AM3 instead of C-IFS. However, even without such additional runs, the results from the simulations with different boundary conditions performed for base emission conditions suggest that estimated NAB or USB values resulting from such potential simulations would vary by as much as 10 ppb on a seasonal mean basis since chemical destruction of boundary conditions in the base emissions scenario used in this study likely acts to reduce the degree to which ozone differences at the boundaries can influence surface ozone simulated within the regional-scale CMAQ domain. The effect of this chemical destruction of boundary ozone on estimated boundary contributions to surface ozone under a base emissions scenario has been quantified by Baker et al. (2015). Such an expected range of up to 10 ppb in CMAQ-estimated seasonal mean NAB or USB values resulting from the use of boundary conditions derived from the four different large-scale models used in the present study would be consistent with the differences in NAB estimates reported by Fiore et al. (2014) that were derived from GEOS-Chem and AM3 applied for 2006.

#### Acknowledgements and Disclaimer

We gratefully acknowledge the Air Quality Model Evaluation International Initiative (AQMEII) and the Task Force on Hemispheric Transport of Air Pollution (TF-HTAP) for facilitating the analysis described in the manuscript by designing and coordinating internally consistent global- and regional-scale air quality model simulations. We also thank the maintainers of the AQS ([https://aqs.epa.gov/aqsweb/airdata/download\\_files.html](https://aqs.epa.gov/aqsweb/airdata/download_files.html)) and CASTNET ([www.epa.gov/castnet](http://www.epa.gov/castnet)) data portals from which the surface ozone observations used in this study were obtained. We would also like Finally, we would like to acknowledge NOAA ESRL for making available the ozonesonde measurements at Trinidad Head, Boulder, and Huntsville (<https://www.esrl.noaa.gov/gmd/ozwv/ozsondes/>) and the World Ozone and UV Data Center for making available the ozonesonde measurements at Edmonton, Churchill and Wallops Island (<http://woudc.org/> and [http://woudc.org/archive/Archive-NewFormat/OzoneSonde\\_1.0\\_1/](http://woudc.org/archive/Archive-NewFormat/OzoneSonde_1.0_1/)). Although this work has been reviewed and approved for publication by the U.S. Environmental Protection Agency, it does not necessarily reflect the views and policies of the agency.

## References

- Appel, K. W., Napelenok, S. L., Foley, K. M., Pye, H. O. T., Hogrefe, C., Luecken, D. J., Bash, J. O., Roselle, S. J., Pleim, J. E., Foroutan, H., Hutzell, W. T., Pouliot, G. A., Sarwar, G., Fahey, K. M., Gantt, B., Gilliam, R. C., Heath, N. K., Kang, D., Mathur, R., Schwede, D. B., Spero, T. L., Wong, D. C., and Young, J. O., 2017. Description and evaluation of the  
5 Community Multiscale Air Quality (CMAQ) modeling system version 5.1, *Geosci. Model Dev.*, 10, 1703-1732, doi:10.5194/gmd-10-1703-2017
- Baker, K.R., C. Emery, P. Dolwick, G. Yarwood, 2015. Photochemical grid model estimates of lateral boundary contributions to ozone and particulate matter across the continental United States, *Atmos. Environ.*, 123, 49-62, <https://doi.org/10.1016/j.atmosenv.2015.10.055>
- 10 Bey, I., D. J. Jacob, R. M. Yantosca, J. A. Logan, B. Field, A. M. Fiore, Q. Li, H. Liu, L. J. Mickley, and M. Schultz, 2001. Global modeling of tropospheric chemistry with assimilated meteorology: Model description and evaluation, *J. Geophys. Res.*, 106, 23,073-23,096
- Byun, D. W. & Ching, J. K. S., 1999. Science Algorithms of the EPA MODELS-3 Community Multiscale Air Quality (CMAQ) Modelling System. U.S. Environmental Protection Agency, Washington, D.C., EPA/600/R-99/030 (NTIS PB2000-  
15 100561)
- Byun, D. W. and K.L. Schere, 2006. Review of the governing equations, computational algorithms, and other components of the Models- 3 Community Multiscale Air Quality (CMAQ) Modeling System, *Appl. Mech. Rev.*, 59, 51–77
- Chapman, E. G., Gustafson Jr., W. I., Easter, R. C., Barnard, J. C., Ghan, S. J., Pekour, M. S., and Fast, J. D., 2009. Coupling aerosolcloud radiative processes in the WRF-Chem model: Investigating the radiative impact of elevated point sources,  
20 *Atmos. Chem. Phys.*, 9, 945–964, doi:10.5194/acp-9-945-2009
- Cooper, O.R., G. Carmichael, X. Dong, L. Emmons, Joshua Fu, J. Flemming, D. Henze, C. Hogrefe, M. Huang, A. Lenzen, Meiyun Lin, R. Park, R. B. Pierce, K. Sudo, Y. Wang, 2017. A comparison of global and regional-scale chemistry model simulations of western North America baseline ozone, *Atmospheric Chemistry and Physics Discussion*, in preparation
- Dolwick, P., F. Akhtar, K.R. Baker, N. Possiel, H. Simon, G. Tonnesen, 2015. Comparison of background ozone estimates  
25 over the western United States based on two separate model methodologies, *Atmo. Environ.*, 109, 282-296, <https://doi.org/10.1016/j.atmosenv.2015.01.005>
- Donner, L. J., Wyman, B. L., Hemler, R. S., et al., 2011. The Dynamical Core, Physical Parameterizations, and Basic Simulation Characteristics of the Atmospheric Component AM3 of the GFDL Global Coupled Model CM3, *J. Climate*, 24, 3484–3519, doi:10.1175/2011jcli3955.1
- 30 Emery, C., L. Zhen, A.G. Russell, M.T. Odman, G. Yarwood and N. Kumar, 2017: Recommendations on statistics and benchmarks to assess photochemical model performance, *Journal of the Air & Waste Management Association*, 67, 582-598, DOI: 10.1080/10962247.2016.1265027

- Emmons, L. K., Walters, S., Hess, P. G., Lamarque, J.-F., Pfister, G. G., Fillmore, D., Granier, C., Guenther, A., Kinnison, D., Laepple, T., Orlando, J., Tie, X., Tyndall, G., Wiedinmyer, C., Baughcum, S. L., and Kloster, S., 2010. Description and evaluation of the Model for Ozone and Related chemical Tracers, version 4 (MOZART-4), *Geosci. Model Dev.*, 3, 43-67, doi:10.5194/gmd-3-43-2010
- 5 Environ, 2014. CAMx (Comprehensive Air Quality Model with Extensions) User's Guide Version 6.1 ENVIRON International Corporation, Novato, CA.
- European Commission: Joint Research Centre (JRC)/Netherlands Environmental Assessment Agency (PBL). Emission Database for Global Atmospheric Research (EDGAR), release version 4.2., available at: <http://edgar.jrc.ec.europa.eu/overview.php?v=42> (last access: 8 January 2018), 2011.
- 10 Fiore, A. M., Dentener, F. J., Wild, O., et al., 2009. Multimodel estimates of intercontinental source-receptor relationships for ozone pollution, *J. Geophys. Res.*, 114, D04301, doi:10.1029/2008jd010816
- Fiore, A. M., J. T. Oberman, M. Y. Lin, L. Zhang, O. E. Clifton, D. J. Jacob, V. Naik, L. W. Horowitz, J. P. Pinto, and G. P. Milly, 2014. Estimating North American background ozone in U.S. surface air with two independent global models: Variability, uncertainties, and recommendations, *Atmos. Environ.*, 96, 284–300, doi: 10.1016/j.atmosenv.2014.07.045.
- 15 Flemming, J., Huijnen, V., Arteta, J., Bechtold, P., Beljaars, A., Blechschmidt, A.-M., Diamantakis, M., Engelen, R. J., Gaudel, A., Inness, A., Jones, L., Josse, B., Katragkou, E., Marecal, V., Peuch, V.-H., Richter, A., Schultz, M. G., Stein, O., and Tsikerdekis, A., 2015. Tropospheric chemistry in the Integrated Forecasting System of ECMWF, *Geosci. Model Dev.*, 8, 975-1003, doi:10.5194/gmd-8-975-2015
- Flemming, J., Benedetti, A., Inness, A., Engelen, R. J., Jones, L., Huijnen, V., Remy, S., Parrington, M., Suttie, M., Bozzo, A., Peuch, V.-H., Akritidis, D., and Katragkou, E., 2017. The CAMS interim Reanalysis of Carbon Monoxide, Ozone and Aerosol for 2003–2015, *Atmos. Chem. Phys.*, 17, 1945-1983, doi:10.5194/acp-17-1945-2017
- 20 Galmarini, S., Koffi, B., Solazzo, E., Keating, T., Hogrefe, C., Schulz, M., Benedictow, A., Griesfeller, J. J., Janssens-Maenhout, G., Carmichael, G., Fu, J., and Dentener, F., 2017. Technical note: Coordination and harmonization of the multi-scale, multi-model activities HTAP2, AQMEII3, and MICS-Asia3: simulations, emission inventories, boundary conditions, and model output formats, *Atmos. Chem. Phys.*, 17, 1543-1555, doi:10.5194/acp-17-1543-2017
- 25 Guenther, A., Hewitt, C. N., Erickson, D., Fall, R., Geron, C., Graedel, T., Harley, P., Klinger, L., Lerdau, M., McKay, W. A., Pierce, T., Scholes, B., Steinbrecher, R., Tallamraju, R., Taylor, J., and Zimmerman, P.: A Global Model of Natural Volatile Organic Compound Emissions, *J. Geophys. Res.*, 100, 8873–8892, 1995.
- Guenther, A., Karl, T., Harley, P., Wiedinmyer, C., Palmer, P. I., and Geron, C.: Estimates of global terrestrial isoprene emissions using MEGAN (Model of Emissions of Gases and Aerosols from Nature), *Atmos. Chem. Phys.*, 6, 3181–3210, doi:10.5194/acp-6-3181-2006, 2006.
- 30 Harris, L.M., and S.-J. Lin, 2013: A two-way nested global-regional dynamical core on the cubed-sphere grid. *Mon. Wea. Rev.*, 141, 283–306, doi:10.1175/MWR-D-11-00201.1.

- Hegarty, J., H. Mao, and R. Talbot, 2007. Synoptic controls on summertime surface ozone in the northeastern United States, *J. Geophys. Res.*, 112, D14306, doi:10.1029/2006JD008170
- Henderson, B. H., Akhtar, F., Pye, H. O. T., Napelenok, S. L., and Hutzell, W. T., 2014. A database and tool for boundary conditions for regional air quality modeling: description and evaluation, *Geosci. Model Dev.*, 7, 339-360, doi:10.5194/gmd-7-339-2014
- 5 Hogrefe, C., Hao, W., Zalewsky, E. E., Ku, J.-Y., Lynn, B., Rosenzweig, C., Schultz, M. G., Rast, S., Newchurch, M. J., Wang, L., Kinney, P. L., and Sistla, G., 2011. An analysis of long-term regional-scale ozone simulations over the Northeastern United States: variability and trends, *Atmos. Chem. Phys.*, 11, 567-582, doi:10.5194/acp-11-567-2011
- Hogrefe, C., S.J. Roselle, and J.O. Bash, 2017. Persistence of initial conditions in continental scale air quality simulations, *Atmos. Environ.*, 160, 36-45
- 10 [Horowitz, L. W., Walters, S., Mauzerall, D.L., Emmons, L.K., Rasch, P.J., Granier, C., Tie, X., Lamarque, J.F., Schultz, M.G., Tyndall, G.S., Orlando, J.J., and Brasseur, G.P., 2003. A global simulation of tropospheric ozone and related tracers: Description and evaluation of MOZART, version 2, \*J. Geophys. Res.\*, 108\(D24\), 4784, doi:10.1029/2002JD002853.](#)
- Horowitz, L., Walters, S., Mauzerall, D., Emmons, L., Rasch, P., Granier, C., Tie, X., Lamarque, J.-F., Schultz, M., Tyndall, G., Orlando, J., and Brasseur, G., 2013. A global simulation of tropospheric ozone and related tracers: Description and evaluation of MOZART, version 2, *J. Geophys. Res.*, 108, 4784, doi:10.1029/2002JD002853
- 15 Huang, M., Carmichael, G. R., Pierce, R. B., Jo, D. S., Park, R. J., Flemming, J., Emmons, L. K., Bowman, K. W., Henze, D. K., Davila, Y., Sudo, K., Jonson, J. E., Lund, M. T., Janssens-Maenhout, G., Dentener, F. J., Keating, T. J., Oetjen, H., and Payne, V. H., 2017. Impact of Intercontinental Pollution Transport on North American Ozone Air Pollution: An HTAP Phase II Multi-model Study, *Atmos. Chem. Phys.*, doi:10.5194/acp-2016-958
- 20 Jang, J.-C. C., H. E. Jeffries, D. Byun, J. E. Pleim, 1995. Sensitivity of ozone to model grid resolution—I. Application of high-resolution regional acid deposition model, *Atmos. Environ.*, 29, 3085-3100
- Janssens-Maenhout, G., Crippa, M., Guizzardi, D., Dentener, F., Muntean, M., Pouliot, G., Keating, T., Zhang, Q., Kurokawa, J., Wankmüller, R., Denier van der Gon, H., Kuenen, J. J. P., Klimont, Z., Frost, G., Darras, S., Koffi, B., and Li, M., 2015. HTAP\_v2.2: a mosaic of regional and global emission grid maps for 2008 and 2010 to study hemispheric transport of air pollution, *Atmos. Chem. Phys.*, 15, 11411-11432, doi:10.5194/acp-15-11411-2015
- 25 Jeffries, H., S. Tonnesen, 1994. A comparison of two photochemical reaction mechanisms using mass balance and process analysis, *Atmospheric Environment*, 28, 2991-3003
- [Kaiser, J. W., Heil, A., Andreae, M. O., Benedetti, A., Chubarova, N., Jones, L., Morcrette, J.-J., Razinger, M., Schultz, M. G., Suttie, M., and van der Werf, G. R.: Biomass burning emissions estimated with a global fire assimilation system based on observed fire radiative power, \*Biogeosciences\*, 9, 527–554, doi:10.5194/bg-9-527-2012, 2012.](#)
- 30 Lin, M., Holloway, T., Oki, T., Streets, D. G., and Richter, A., 2009. Multi-scale model analysis of boundary layer ozone over East Asia, *Atmos. Chem. Phys.*, 9, 3277-3301, doi:10.5194/acp-9-3277-2009

- Lin, M., Holloway, T., Carmichael, G. R., and Fiore, A. M., 2010. Quantifying pollution inflow and outflow over East Asia in spring with regional and global models, *Atmos. Chem. Phys.*, 10, 4221–4239, doi:10.5194/acp-10-4221-2010
- Lin, M., Fiore, A. M., Cooper, O. R., Horowitz, L. W., Langford, A. O., Levy, H., Johnson, B. J., Naik, V., Oltmans, S. J., and Senff, C. J., 2012a. Springtime high surface ozone events over the western United States: Quantifying the role of stratospheric intrusions, *J. Geophys. Res.*, 117, D00V22, doi:10.1029/2012jd018151
- 5 Lin, M., Fiore, A. M., Horowitz, L. W., Cooper, O. R., Naik, V., Holloway, J., Johnson, B. J., Middlebrook, A. M., Oltmans, S. J., Pollack, I. B., Ryerson, T. B., Warner, J. X., Wiedinmyer, C., Wilson, J., and Wyman, B., 2012b. Transport of Asian ozone pollution into surface air over the western United States in spring, *J. Geophys. Res.*, 117, D00V07, doi:10.1029/2011jd016961
- 10 Lin, M., L.W. Horowitz, O.R. Cooper, D. Tarasick, S. Conley, L.T. Iraci, B. Johnson, T. Leblanc, I. Petropavlovskikh, E.L. Yates, 2015. Revisiting the evidence of increasing springtime ozone mixing ratios in the free troposphere over western North America, *Geophysical Research Letter*, 42, doi:10.1002/2015GL065311
- Lin, M., Horowitz, L. W., Payton, R., Fiore, A. M., and Tonnesen, G.: US surface ozone trends and extremes from 1980 to 2014, 2017. quantifying the roles of rising Asian emissions, domestic controls, wildfires, and climate, *Atmos. Chem. Phys.*, 17, 2943-2970, doi:10.5194/acp-17-2943-2017
- 15 Liu, P., C. Hogrefe, U. Im, J. Bieser, R. Mathur, U. Nopmongcol, S. Roselle, T. Spero, 2017. Multi-model Comparison of Lateral Boundary Contributions to Surface Ozone over the United States, *Atmospheric Chemistry and Physics Discussion*, in preparation
- Mathur, R., Xing, J., Gilliam, R., Sarwar, G., Hogrefe, C., Pleim, J., Pouliot, G., Roselle, S., Spero, T. L., Wong, D. C., and Young, J., 2017. Extending the Community Multiscale Air Quality (CMAQ) Modeling System to Hemispheric Scales: Overview of Process Considerations and Initial Applications, *Atmos. Chem. Phys.*—~~Discuss.~~, 17, 12449-12474, doi:10.5194/acp-17-12449-2017, 2017doi:10.5194/acp-2017-329, in review
- 20 Meijer, E. W., van Velthoven, P. F. J., Brunner, D. W., Huntrieser, H., and Kelder, H.: Improvement and evaluation of the parameterization of nitrogen oxide production by lightning, *Phys. Chem. Earth, Part C*, 26, 577–583, 2001
- 25 Murray, L. T., D. J. Jacob, J. A. Logan, R. C. Hudman, and W. J. Koshak (2012), Optimized regional and inter-annual variability of lightning in a global chemical transport model constrained by LIS/OTD satellite data, *J. Geophys. Res.*, 117, D20307, doi:10.1029/2012JD017934
- Pierce, T.; Geron, C.; Bender, L.; Dennis, R.; Tonnesen, G.; Guenther, A. Influence of Increased Isoprene Emissions on Regional Ozone Modeling; *J. Geophys. Res.* 1998, 103, 25611-25629
- 30 Porter, P.S., S.T. Rao, Christian Hogrefe, Rohit Mathur, 2017. A reduced form model for ozone based on two decades of CMAQ simulations for the continental United States, *Atmos. Poll. Res.*, 8, 275-284, https://doi.org/10.1016/j.apr.2016.09.005
- Pouliot et al., 2015: Analysis of the emission inventories and model-ready emission datasets of Europe and North America for phase 2 of the AQMEII project, *Atmos. Env.*, doi:10.1016/j.atmosenv.2014.10.061

Price, C., Penner, J., and Prather, M.: NOx from lightning 1: Global distribution based on lightning physics, *J. Geophys. Res.*, 102, 5929–5941, 1997.

Randerson, J.T., G.R. van der Werf, L. Giglio, G.J. Collatz, and P.S. Kasibhatla. 2013. *Global Fire Emissions Database, Version 3 (GFEDv3.1). Data set. Available on-line [http://daac.ornl.gov/] from Oak Ridge National Laboratory Distributed Active Archive Center, Oak Ridge, Tennessee, USA. doi:10.3334/ORNLDAAAC/1191*

Rao, S.T., S. Galmarini, and K. Puckett, 2011, Air Quality Model Evaluation International Initiative (AQMEII): Advancing the State of the Science in Regional Photochemical Modeling and Its Applications, *Bull. Amer. Meteor. Soc.*, 92, 23-30, doi:10.1175/2010BAMS3069.1

Reidmiller, D. R., Fiore, A. M., Jaffe, D. A., Bergmann, D., Cuvelier, C., Dentener, F. J., Duncan, B. N., Folberth, G., Gauss, M., Gong, S., Hess, P., Jonson, J. E., Keating, T., Lupu, A., Marmer, E., Park, R., Schultz, M. G., Shindell, D. T., Szopa, S., Vivanco, M. G., Wild, O., and Zuber, A., 2009. The influence of foreign vs. North American emissions on surface ozone in the US, *Atmos. Chem. Phys.*, 9, 5027-5042, doi:10.5194/acp-9-5027-2009.

Schere, K. J. Flemming, R. Vautard, C. Chemel, A. Colette, C. Hogrefe, B. Bessagnet, F. Meleux, R. Mathur, S. Roselle, R.-M. Hu, R. S. Sokhi, S. T. Rao, and S. Galmarini, 2012. Trace gas/aerosol boundary concentrations and their impacts on continental-scale AQMEII modeling domains, *Atmos. Env.*, 53, 38-50, doi:10.1016/j.atmosenv.2011.09.043

Schwede, D., Pouliot, G. A., and Pierce, T.: *Changes to the Biogenic Emissions Inventory System Version 3 (BEIS3), In Proceedings of the 4th CMAS Models-3 Users' Conference, Chapel Hill, NC, 26–28 September 2005, available online at [https://www.cmascenter.org/conference/2005/abstracts/2\\_7.pdf](https://www.cmascenter.org/conference/2005/abstracts/2_7.pdf)*

Simon, H., K.R. Baker, S. Phillips, 2012. Compilation and interpretation of photochemical model performance statistics published between 2006 and 2012, *Atmos. Env.*, 61, 124-139, doi:10.1016/j.atmosenv.2012.07.012.

Skamarock, W. C., and J. B. Klemp, 2007: A time-split nonhydrostatic atmospheric model for research and NWP applications. *J. Comp. Phys.*, special issue on environmental modeling. 3465-3485

Skamarock, W.C., J.B. Klemp, M.G. Duda, L. Fowler, S.-H. Park, and T.D. Ringler, 2012 A Multi-scale Nonhydrostatic Atmospheric Model Using Centroidal Voronoi Tessellations and C-Grid Staggering. *Monthly Weather Review*, 240, 3090-3105, doi:10.1175/MWR-D-11-00215.1

Solazzo, E., Bianconi, R., Hogrefe, C., Curci, G., Tuccella, P., Alyuz, U., Balzarini, A., Baró, R., Bellasio, R., Bieser, J., Brandt, J., Christensen, J. H., Colette, A., Francis, X., Fraser, A., Vivanco, M. G., Jiménez-Guerrero, P., Im, U., Manders, A., Nopmongcol, U., Kitwiroon, N., Pirovano, G., Pozzoli, L., Prank, M., Sokhi, R. S., Unal, A., Yarwood, G., and Galmarini, S., 2017a. Evaluation and error apportionment of an ensemble of atmospheric chemistry transport modeling systems: multivariable temporal and spatial breakdown, *Atmos. Chem. Phys.*, 17, 3001-3054, doi:10.5194/acp-17-3001-2017

Solazzo, E., Hogrefe, C., Colette, A., Garcia-Vivanco, M., and Galmarini, S., 2017b. Advanced error diagnostics of the CMAQ and Chimere modelling systems within the AQMEII3 model evaluation framework, *Atmos. Chem. Phys. Discuss.*, doi:10.5194/acp-2017-257, in review

- Task Force on Hemispheric Transport of Air Pollution (HTAP), 2010. 2010 Final Assessment report, Part A: Ozone and particulate matter, [http://www.htap.org/activities/2010\\_Final\\_Report/HTAP%202010%20Part%20A%20110407.pdf](http://www.htap.org/activities/2010_Final_Report/HTAP%202010%20Part%20A%20110407.pdf).
- Travis, K. R., Jacob, D. J., Fisher, J. A., Kim, P. S., Marais, E. A., Zhu, L., Yu, K., Miller, C. C., Yantosca, R. M., Sulprizio, M. P., Thompson, A. M., Wennberg, P. O., Crounse, J. D., St. Clair, J. M., Cohen, R. C., Laughner, J. L., Dibb, J. E., Hall, S. R., Ullmann, K., Wolfe, G. M., Pollack, I. B., Peischl, J., Neuman, J. A., and Zhou, X., 2016. Why do models overestimate surface ozone in the Southeast United States?, *Atmos. Chem. Phys.*, 16, 13561-13577, doi:10.5194/acp-16-13561-2016
- 5 [doi:10.5194/acp-16-13561-2016](https://doi.org/10.5194/acp-16-13561-2016)
- [van der Werf, G. R., Randerson, J. T., Giglio, L., Collatz, G. J., Kasibhatla, P. S., and Arellano Jr., A. F.: Inter-annual variability in global biomass burning emissions from 1997 to 2004. \*Atmos. Chem. Phys.\*, 6, 3423-3441, <https://doi.org/10.5194/acp-6-3423-2006>, 2006.](https://doi.org/10.5194/acp-6-3423-2006)
- 10 <https://doi.org/10.5194/acp-6-3423-2006>, 2006.
- Vautard, R., Beekmann, M., Roux, J., and Gombert, D., 2001. Validation of a hybrid forecasting system for the ozone concentrations over the Paris area. *Atmos. Environ.*, 35:2449–2461
- [Vukovich, J. and Pierce, T.: The Implementation of BEIS3 within the SMOKE Modeling Framework, in: Proceedings of the 11th International Emissions Inventory Conference, Atlanta, Georgia, available at: \[www.epa.gov/ttn/chief/conference/ei11/modeling/vukovich.pdf\]\(http://www.epa.gov/ttn/chief/conference/ei11/modeling/vukovich.pdf\), 15–18 April 2002](http://www.epa.gov/ttn/chief/conference/ei11/modeling/vukovich.pdf)
- 15 [www.epa.gov/ttn/chief/conference/ei11/modeling/vukovich.pdf](http://www.epa.gov/ttn/chief/conference/ei11/modeling/vukovich.pdf), 15–18 April 2002
- [Wiedinmyer, C., Akagi, S. K., Yokelson, R. J., Emmons, L. K., Al-Saadi, J. A., Orlando, J. J., and Soja, A. J.: The Fire INventory from NCAR \(FINN\): a high resolution global model to estimate the emissions from open burning. \*Geosci. Model Dev.\*, 4, 625-641, <https://doi.org/10.5194/gmd-4-625-2011>, 2011](https://doi.org/10.5194/gmd-4-625-2011)
- 20 <https://doi.org/10.5194/gmd-4-625-2011>, 2011
- Xing, J., Mathur, R., Pleim, J., Hogrefe, C., Gan, C.-M., Wong, D. C., Wei, C., Gilliam, R., and Pouliot, G., 2015a. Observations and modeling of air quality trends over 1990–2010 across the Northern Hemisphere: China, the United States and Europe, *Atmos. Chem. Phys.*, 15, 2723–2747, doi:10.5194/acp-15-2723-2015
- Xing, J., Mathur, R., Pleim, J., Hogrefe, C., Gan, C.-M., Wong, D. C., and Wei, C., 2015b. Can a coupled meteorology–chemistry model reproduce the historical trend in aerosol direct radiative effects over the Northern Hemisphere?, *Atmos. Chem. Phys.*, 15, 9997-10018, doi:10.5194/acp-15-9997-2015
- 25 Zhang, L., Jacob, D. J., Yue, X., Downey, N. V., Wood, D. A., and Blewitt, D., 2014. Sources contributing to background surface ozone in the US Intermountain West, *Atmos. Chem. Phys.*, 14, 5295-5309, doi:10.5194/acp-14-5295-2014

## List of Tables

Table 1. Mapping of gas-phase species from C-IFS, H-CMAQ, GEOS-Chem and AM3 to regional-scale CMAQ

Table 2. List of regional-scale CMAQ simulations

5

Table 3. Seasonal model performance for MDA8 ozone at AQS sites as measured by Normalized Mean Bias (NMB), Normalized Mean Error (NME), and correlation coefficient for the BASE simulations for the five analysis regions shown in Figure 2. The metrics were computed at each AQS site for each season and the median metric across all sites in a given region and season is shown in this table. The cells in the table are color-coded based on the model evaluation goals and acceptability criteria proposed by Emery et al. (2017). Green cells indicate regions and seasons where model performance meets the goal for a given metric (NMB  $\leq \pm 5\%$ , NME  $< 15\%$ , and  $R > 0.75$ ), yellow cells indicate regions and seasons where model performance meets the acceptability criterion but not the goal ( $-5\% < \text{NMB} < \pm 15\%$ ,  $15\% < \text{NME} < 25\%$ , and  $0.5 < R < 0.75$ ), and orange cells indicate regions and seasons where neither the goal nor the acceptability criterion are met (NMB  $> \pm 15\%$ , NME  $\geq 25\%$ ,  $R \leq 0.5$ )

10

15

Table 4a. NMB for MDA8 ozone at AQS sites for BASE, BC H-CMAQ, BC GEOS-Chem, and BC AM3. See the legend for Table 3 for a description on how the metrics were computed and for a definition of the color coding used in this Table.

Table 4b. NME for MDA8 ozone at AQS sites for BASE, BC H-CMAQ, BC GEOS-Chem, and BC AM3. See the legend for

20

Table 3 for a description on how the metrics were computed and for a definition of the color coding used in this Table.

Table 4c. R for MDA8 ozone at AQS sites for BASE, BC H-CMAQ, BC GEOS-Chem, and BC AM3. See the legend for Table 3 for a description on how the metrics were computed and for a definition of the color coding used in this Table.



## List of Figures

Figure 1. Depiction of the vertical levels used in the four different large-scale models and the regional CMAQ model used analyzed in this study. The pressure values were extracted for a location near the southwestern corner of the 12km CMAQ modeling domain and represent annual average values for 2010 at the midpoint of each vertical level. The dashed lines delineate the three pressure ranges (surface – 750 mb, 750 mb – 250 mb, and 250 mb – 50 mb) used for vertical integration in subsequent analyses.

Figure 2. Map of the 12 km CMAQ modeling domain, the five analysis domains, and the location of the AQS and CASTNET surface O<sub>3</sub> monitoring stations and ozonesonde launch sites.

Figure 3. Differences between observed and BASE modeled MDA8 ozone at AQS stations for each season and analysis region. For each season and region, the observed MDA8 ozone concentrations were rank ordered at each station. Next, differences between CMAQ simulations and observations were computed for each observed percentile either by selecting the model value corresponding to the date of the observed percentile (paired-in-time comparison, right row/column) or rank-ordering the model values and then selecting the modeled percentile corresponding to the observed percentile (unpaired-in-time comparison, left row/column). Finally, the median value of these paired-in-time and unpaired-in-time differences across all AQS stations in a given season and region was then computed for each observed percentile and is depicted in this figure

Figure 4. Profiles of BASE seasonal total ozone column mass changes  $\Delta O_3$  for each CMAQ model layer due to the effects of horizontal advection (HADV), vertical advection (ZADV), horizontal diffusion (HDIF), vertical diffusion (VDIF), dry deposition (DDEP), chemistry (CHEM), and cloud processes including vertical mixing by convective clouds (CLDS). The values are summed over the entire modeling domain and represent the net change in ozone mass due to a given process in a given model layer and season.

Figure 5. Time series of monthly domain-wide total Process Analysis contributions to BASE ozone columns in CMAQ layers 1-21 (surface to approximately 750 mb), 22 – 31 (approximately 750 – 250 mb), and 32 – 35 (approximately 250 mb – 50 mb). The horizontal and vertical advection and diffusion terms were summed to compute the effects of total advection (TADV) and total diffusion (TDIF), respectively.

Figure 6. The upper three panels present time series of the monthly average domain total ozone column mass for the BASE, BC ZERO, EM ZERO, and NO O<sub>3</sub> DDEP sensitivity simulations for the same three layer ranges analyzed in Figure 5 while the lowest panel presents time series of monthly average domain average ozone mixing ratios for the first model layer. The

dashed lines represent the 5<sup>th</sup> and 95<sup>th</sup> percentiles of the hourly domain total ozone column mass and domain average ozone mixing ratios for a given month.

Figure 7. Maps of differences in seasonal mean ozone mixing ratios between the three sensitivity simulations (BC ZERO, EM  
5 ZERO, and NO O3 DDEP) and the BASE simulation.

Figure 8a. Time-height cross sections of monthly mean ozone mixing ratios for ozonesonde observations (column 1), large-  
scale models (columns 2 – 5 in rows 1, 3, and 5), and regional CMAQ simulations (columns 2 – 5 in rows 2 and 4) at Trinidad  
Head, Edmonton, and Churchill. Note that no regional CMAQ results are shown for Churchill because the station is located  
10 outside the regional model domain. Additional details on the processing of observations and model simulations are provided  
in the text.

Figure 8b. Time-height cross sections of monthly mean ozone mixing ratios for ozonesonde observations (column 1), large-  
scale models (columns 2 – 5 in rows 1, 3, and 5), and regional CMAQ simulations (columns 2 – 5 in rows 2, 4, and 6) at  
15 Boulder, Huntsville, and Wallops Island. Additional details on the processing of observations and model simulations are  
provided in the text.

Figure 9: Monthly average time series of 500 mb observed ozone, ozone simulated by large-scale models (solid lines), and  
ozone simulated by regional CMAQ driven with boundary conditions from different large scale models (dashed lines) at  
20 Trinidad Head, Edmonton, Boulder, Huntsville, and Wallops Island. Additional details on the processing of observations and  
model simulations are provided in the text.

Figure 10. Maps of seasonal mean ozone mixing ratios at the surface for the BASE, BC H-CMAQ, BC GEOS-Chem, and BC-  
AM3 simulations. The left column shows the mixing ratios for the BASE simulation while the second, third and fourth columns  
25 show the differences between BC H-CMAQ and BASE, BC GEOS-Chem and BASE, and BC AM3 and BASE, respectively

Figure 11. Time series of differences between modeled and observed ozone mixing ratios. a) monthly means of daytime  
average mixing ratios at CASTNET monitors for regional model simulations, b) as in a) but for large-scale models, c) as in a)  
but for AQS monitors, d) as in c) but for monthly means of MDA8 instead of monthly means of daytime average mixing ratios,  
30 e) as in c) but for daily daytime average mixing ratios, and f) as in d) but for daily MDA8.

Figure 12. Map of seasonal mean bias for daytime average ozone at CASTNET sites for BASE, BC H-CMAQ, BC GEOS-  
Chem, and BC AM3 (rows 1 and 3) and C-IFS, H-CMAQ, GEOS-Chem, and AM3 (rows 2 and 4) for spring (rows 1 and 2)  
and summer (rows 3 and 4)

Figure 13. Paired-in-time differences between observed and modeled MDA8 ozone at AQS stations for each season and analysis region. Model results are for BASE (red), BC H-CMAQ (blue), BC GEOS-Chem (green), and BC AM3 (orange). For each season and region, the observed MDA8 ozone concentrations were rank ordered at each station. Next, differences between CMAQ simulations and observations were computed for each observed percentile by selecting the model value corresponding to the date of the observed percentile. Finally, the median value of these paired-in-time differences across all AQS stations in a given season and region was then computed for each observed percentile and is depicted in this figure.

Table 1. Mapping of gas-phase species from C-IFS, H-CMAQ, GEOS-Chem and AM3 to regional-scale CMAQ

CMAQv5.0.2 CB05-TUCL Target Species	C-IFS Species	H-CMAQ Species	GEOS-Chem Species	AM3 Species
O <sub>3</sub>	O <sub>3</sub>	O <sub>3</sub>	O <sub>3</sub> -NO <sub>x</sub>	O <sub>3</sub>
CO	CO	CO	CO	CO
FORM	CH <sub>2</sub> O	FORM	CH <sub>2</sub> O	
NO	NO	NO	NO	NO
NO <sub>2</sub>	NO <sub>2</sub>	NO <sub>2</sub>	NO <sub>2</sub>	NO <sub>2</sub>
HNO <sub>3</sub>	HNO <sub>3</sub>	HNO <sub>3</sub>	HNO <sub>3</sub>	HNO <sub>3</sub>
N <sub>2</sub> O <sub>5</sub>		N <sub>2</sub> O <sub>5</sub>	N <sub>2</sub> O <sub>5</sub>	
PAN	PAN	PAN	PAN	PAN
PANX		PANX	PPN, PMN	
SO <sub>2</sub>	SO <sub>2</sub>	SO <sub>2</sub>	SO <sub>2</sub>	SO <sub>2</sub>
PAR	PAR, CH <sub>3</sub> COCH <sub>3</sub> , C <sub>2</sub> H <sub>6</sub>	PAR	C <sub>3</sub> H <sub>8</sub> , ALK4, ACET, MEK, BENZ	ACETONE, PROPANE
ETHA	C <sub>2</sub> H <sub>6</sub>	ETHA	C <sub>2</sub> H <sub>6</sub>	C <sub>2</sub> H <sub>6</sub>
MEOH	CH <sub>3</sub> OH	MEOH		
ETOH	C <sub>2</sub> H <sub>5</sub> OH	ETOH		
ETH	C <sub>2</sub> H <sub>4</sub>	ETH		
ALD2	ALD2	ALD2	ALD2	
OLE	OLE	OLE	PRPE	
ISOP	ISOP	ISOP	ISOP	
ISPD		ISPD	MACR, MVK	
FACD	HCOOH	FACD		
MEPX	CH <sub>3</sub> OOH	MEPX	MP	
NTR	ONIT	NTROH, NTRALK, NTRCN, NTRCNOH, NTRM, NTRI, NTRPX	R4N2	
PNA		PNA	HNO <sub>4</sub>	
H <sub>2</sub> O <sub>2</sub>		H <sub>2</sub> O <sub>2</sub>	H <sub>2</sub> O <sub>2</sub>	
IOLE		IOLE	PRPE	
TOL		TOL	TOLU	
XYL		XYL	XYLE	
BENZENE		BENZENE	BENZ	

Formatted: Subscript

Formatted: Subscript

Formatted: Subscript

Formatted

Formatted: Subscript

Formatted: Subscript

Formatted: Subscript

Formatted: Subscript

Formatted: Subscript

Formatted: Subscript

Formatted: Subscript

Formatted: Subscript

Formatted: Subscript

Formatted: Subscript

Formatted: Subscript

Formatted: Subscript

Formatted: Subscript

Formatted: Subscript

Formatted

Formatted

Formatted: Subscript

Formatted: Subscript

Formatted: Subscript

Formatted: Subscript

Formatted: Subscript

Formatted

Formatted

Formatted

Formatted

Formatted

Formatted

Formatted: Subscript

Formatted

Formatted

Formatted: Subscript

Formatted

Formatted

Formatted

**Table 2. List of regional-scale CMAQ simulations**

Acronym	Lateral Boundary Conditions	Emissions	CMAQ configuration
BASE	C-IFS	Pouliot et al. (2015)	Solazzo et al. (2017a) Hogrefe et al. (2017)
BC ZERO	Zero for all species	Pouliot et al. (2015)	Solazzo et al. (2017a) Hogrefe et al. (2017)
EM ZERO	C-IFS	Zero for anthropogenic and wildfire emissions within the CMAQ modeling domain	Solazzo et al. (2017a) Hogrefe et al. (2017)
NO O3 DDEP	C-IFS	Pouliot et al. (2015)	Solazzo et al. (2017a) Hogrefe et al. (2017) Modified to “turn off” ozone dry deposition
BC H-CMAQ	H-CMAQ	Pouliot et al. (2015)	Solazzo et al. (2017a) Hogrefe et al. (2017)
BC GEOS-Chem	GEOS-Chem	Pouliot et al. (2015)	Solazzo et al. (2017a) Hogrefe et al. (2017)
BC AM3	AM3	Pouliot et al. (2015)	Solazzo et al. (2017a) Hogrefe et al. (2017)

Table 3. Seasonal model performance for MDA8 ozone at AQS sites as measured by Normalized Mean Bias (NMB), Normalized Mean Error (NME), and correlation coefficient for the BASE simulations for all sites and the five analysis regions shown in Figure 2. The metrics were computed at each AQS site for each season and the median metric across all sites in a given region and season is shown in this table. The cells in the table are color-coded based on the model evaluation goals and acceptability criteria proposed by Emery et al. (2017). Green cells indicate regions and seasons where model performance meets the goal for a given metric (NMB <+/- 5%, NME <15%, and R > 0.75), yellow cells indicate regions and seasons where model performance meets the acceptability criterion but not the goal (+5% < NMB <- 15%, 15% < NME <25%, and 0.5 < R < 0.75), and orange cells indicate regions and seasons where neither the goal nor the acceptability criterion are met (NMB >= +/- 15%, NME >= 25%, R <= 0.5)

		NW	IMW	MW	SE	NE	
NMB	Spring	9.1	3.6	2.0	2.6	-3.2	
	Summer	13.5	-3.2	6.3	9.6	2.6	
	Fall	13.0	2.1	1.0	2.1	1.7	
	Winter	11.0	-2.8	-23.1	-7.3	-28.2	
NME	Spring	13.3	10.6	11.9	11.7	11.6	
	Summer	15.4	11.4	14.6	16.3	13.2	
	Fall	22.0	12.2	14.2	13.2	16.1	
	Winter	30.5	18.0	15.9	15.1	14.4	
R	Spring	0.57	0.66	0.8	0.82	0.74	
	Summer	0.78	0.67	0.7	0.72	0.82	
	Fall	0.72	0.74	0.84	0.81	0.87	
	Winter	0.57	0.6	0.75	0.76	0.69	
		All	NW	IMW	MW	SE	NE
NMB	Spring	2.1	9.1	3.6	2.0	2.6	-3.2
	Summer	6.8	13.5	-3.2	6.3	9.6	2.6
	Fall	3.1	13.0	2.1	1.0	2.1	1.7
	Winter	-5.1	11.0	-2.8	-23.1	-7.3	-28.2
NME	Spring	11.3	13.1	8.5	11.3	11.3	12.0
	Summer	13.6	16.2	10.5	13.3	14.7	12.0
	Fall	13.5	20.8	9.4	12.1	11.7	14.4
	Winter	18.8	20.5	19.2	28.8	12.0	29.1
R	Spring	0.75	0.57	0.66	0.8	0.82	0.74
	Summer	0.73	0.78	0.67	0.7	0.72	0.82
	Fall	0.82	0.72	0.74	0.84	0.81	0.87
	Winter	0.65	0.57	0.6	0.75	0.76	0.69

Table 4a. NMB for MDA8 ozone at AQS sites for BASE, BC H-CMAQ, BC GEOS-Chem, and BC AM3. See the legend for Table 3 for a description on how the metrics were computed and for a definition of the color coding used in this Table.

		NW	IMW	MW	SE	NE
Spring	BASE	9.1	3.6	2.0	2.6	-3.2
	BC H-CMAQ	10.3	5.2	5.0	5.8	0.7
	BC-GEOS-Chem	8.9	1.0	2.5	3.3	-1.7
	BC-AM3	31.6	23.4	18.2	14.8	16.2
Summer	BASE	13.5	-3.2	6.3	9.6	2.6
	BC H-CMAQ	11.8	2.0	7.5	12.4	3.2
	BC-GEOS-Chem	8.9	-1.2	6.7	11.1	2.8
	BC-AM3	23.0	2.9	10.6	12.1	8.4
Fall	BASE	13.0	2.1	1.0	2.1	1.7
	BC H-CMAQ	18.4	8.7	7.1	7.7	8.8
	BC-GEOS-Chem	15.9	5.0	5.0	4.7	6.3
	BC-AM3	30.4	12.3	13.7	10.7	15.1
Winter	BASE	11.0	-2.8	-23.1	-7.3	-28.2
	BC H-CMAQ	27.2	9.2	3.5	12.1	1.3
	BC-GEOS-Chem	16.6	3.3	-8.3	1.2	-12.9
	BC-AM3	36.4	19.6	13.5	17.9	12.1

		All	NW	IMW	MW	SE	NE
Spring	<u>BC-C-IFS</u> BASE	2.1	9.1	3.6	2.0	2.6	-3.2
	BC H-CMAQ	5.3	10.3	5.2	5.0	5.8	0.7
	BC GEOS- <u>CHEM</u> Chem	2.1	8.9	1.0	2.5	3.3	-1.7
	BC AM3	18.6	31.6	23.4	18.2	14.8	16.2
Summer	<u>BASE</u> BC-C-IFS	6.8	13.5	-3.2	6.3	9.6	2.6
	BC H-CMAQ	8.8	11.8	2.0	7.5	12.4	3.2
	BC GEOS- <u>Chem</u> CHEM	7.5	8.9	-1.2	6.7	11.1	2.8
	BC AM3	11.4	23.0	2.9	10.6	12.1	8.4
Fall	<u>BASE</u> BC-C-IFS	3.1	13.0	2.1	1.0	2.1	1.7

	BC H-CMAQ	9.2	18.4	8.7	7.1	7.7	8.8
	BC GEOS- <del>ChemCHEM</del>	6.3	15.9	5.0	5.0	4.7	6.3
	BC AM3	13.3	30.4	12.3	13.7	10.7	15.1
Winter	<del>BASEBC-C-IFS</del>	-5.1	11.0	-2.8	-23.1	-7.3	-28.2
	BC H-CMAQ	11.3	27.2	9.2	3.5	12.1	1.3
	BC GEOS- <del>ChemCHEM</del>	2.2	16.6	3.3	-8.3	1.2	-12.9
	BC AM3	18.4	36.4	19.6	13.5	17.9	12.1



Table 4b. NME for MDA8 ozone at AQS sites for BASE, BC H-CMAQ, BC GEOS-Chem, and BC AM3. See the legend for Table 3 for a description on how the metrics were computed and for a definition of the color coding used in this Table.

		NW	IMW	MW	SE	NE
Spring	BASE	13.3	10.6	11.9	11.7	11.6
	BC-HEMI	13.3	10.6	11.9	11.7	11.6
	BC-GEOS	13.6	8.6	11.2	11.1	11.2
	BC-AM3	31.6	23.7	20.1	17.1	18.9
Summer	BASE	15.4	11.4	14.6	16.3	13.2
	BC-HEMI	15.4	11.4	14.6	16.3	13.2
	BC-GEOS	13.9	10.8	13.6	15.4	12.3
	BC-AM3	24.7	13.8	15.2	16.1	13.8
Fall	BASE	22.0	12.2	14.2	13.2	16.1
	BC-HEMI	22.0	12.2	14.2	13.2	16.1
	BC-GEOS	20.6	10.0	13.7	12.7	15.9
	BC-AM3	30.5	14.5	18.1	14.6	20.0
Winter	BASE	30.5	18.0	15.9	15.1	14.4
	BC-HEMI	30.5	18.0	15.9	15.1	14.4
	BC-GEOS	21.3	17.0	19.0	11.0	16.8
	BC-AM3	38.7	22.7	18.0	19.4	15.5

		All	NW	IMW	MW	SE	NE
Spring	BASE- C-IFS	11.3	13.1	8.5	11.3	11.3	12.0
	BC H- CMAQ- HEMI	12.1	13.3	10.6	11.9	11.7	11.6
	BC-GEOS- Chem- BC- GEOS	11.1	13.6	8.6	11.2	11.1	11.2
	BC-AM3	20.2	31.6	23.7	20.1	17.1	18.9
Summer	BASE- C-IFS	13.6	16.2	10.5	13.3	14.7	12.0

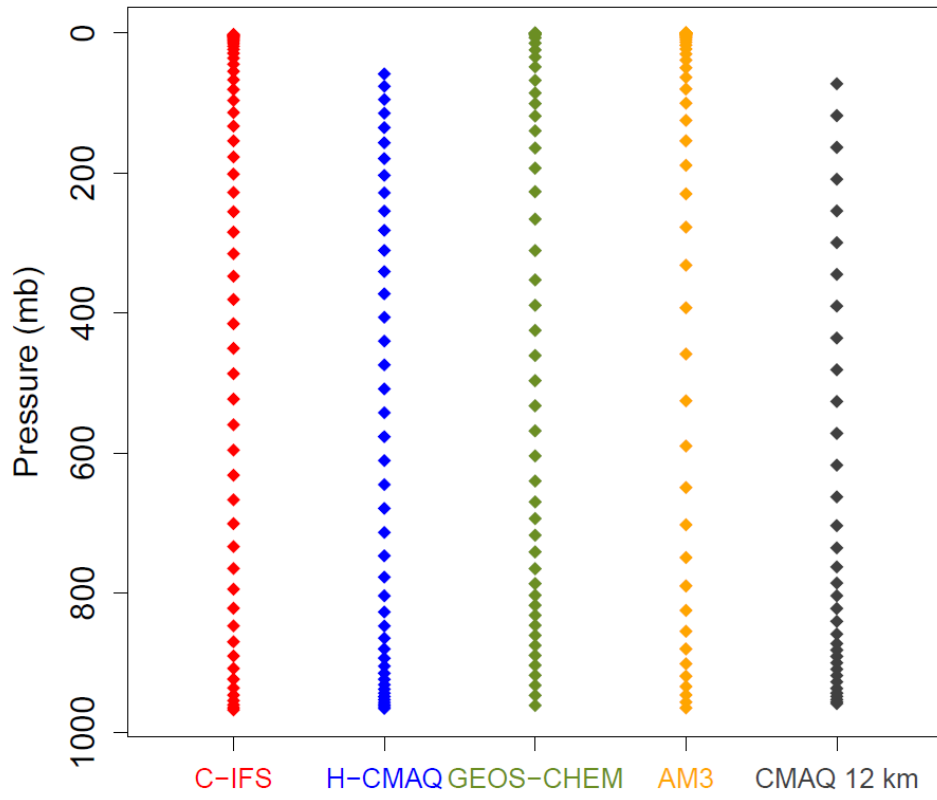
	<u>BC H-</u> <u>CMAQBC</u> <u>HEMI</u>	14.9	15.4	11.4	14.6	16.3	13.2
	<u>BC GEOS-</u> <u>ChemBC</u> <u>GEOS</u>	14.0	13.9	10.8	13.6	15.4	12.3
	BC AM3	16.0	24.7	13.8	15.2	16.1	13.8
Fall	<u>BASEBC</u> <u>C-IFS</u>	13.5	20.8	9.4	12.1	11.7	14.4
	<u>BC H-</u> <u>CMAQBC</u> <u>HEMI</u>	15.2	22.0	12.2	14.2	13.2	16.1
	<u>BC GEOS-</u> <u>ChemBC</u> <u>GEOS</u>	14.3	20.6	10.0	13.7	12.7	15.9
	BC AM3	17.9	30.5	14.5	18.1	14.6	20.0
Winter	<u>BASEBC</u> <u>C-IFS</u>	18.8	20.5	19.2	28.8	12.0	29.1
	<u>BC H-</u> <u>CMAQBC</u> <u>HEMI</u>	17.4	30.5	18.0	15.9	15.1	14.4
	<u>BC GEOS-</u> <u>ChemBC</u> <u>GEOS</u>	15.8	21.3	17.0	19.0	11.0	16.8
	BC AM3	21.2	38.7	22.7	18.0	19.4	15.5

Table 4c. R for MDA8 ozone at AQS sites for BASE, BC H-CMAQ, BC GEOS-Chem, and BC AM3. See the legend for Table 3 for a description on how the metrics were computed and for a definition of the color coding used in this Table.

		NW	IMW	MW	SE	NE
Spring	BASE	0.57	0.66	0.8	0.82	0.74
	BC-HEMI	0.59	0.55	0.8	0.82	0.72
	BC-GEOS	0.57	0.62	0.81	0.83	0.75
	BC-AM3	0.45	0.6	0.65	0.77	0.59
Summer	BASE	0.78	0.67	0.7	0.72	0.82
	BC-HEMI	0.78	0.67	0.68	0.71	0.8
	BC-GEOS	0.78	0.66	0.68	0.68	0.81
	BC-AM4	0.64	0.56	0.69	0.72	0.79
Fall	BASE	0.72	0.74	0.84	0.81	0.87
	BC-HEMI	0.71	0.72	0.81	0.81	0.86
	BC-GEOS	0.71	0.74	0.81	0.79	0.86
	BC-AM5	0.67	0.59	0.75	0.8	0.83
Winter	BASE	0.57	0.6	0.75	0.76	0.69
	BC-HEMI	0.71	0.63	0.75	0.71	0.7
	BC-GEOS	0.68	0.64	0.77	0.75	0.71
	BC-AM6	0.71	0.64	0.78	0.72	0.73

		All	NW	IMW	MW	SE	NE
Spring	BASEBC C-IFS	0.75	0.57	0.66	0.8	0.82	0.74
	BC H- CMAQBC HEMI	0.72	0.59	0.55	0.8	0.82	0.72
	BC-GEOS- ChemBC GEOS	0.74	0.57	0.62	0.81	0.83	0.75
	BC-AM3	0.63	0.45	0.6	0.65	0.77	0.59
Summer	BASEBC C-IFS	0.73	0.78	0.67	0.7	0.72	0.82

	<u>BC H-</u> <u>CMAQBC</u> <u>HEMI</u>	0.72	0.78	0.67	0.68	0.71	0.8
	<u>BC GEOS-</u> <u>ChemBC</u> <u>GEOS</u>	0.70	0.78	0.66	0.68	0.68	0.81
	BC AM3	0.71	0.64	0.56	0.69	0.72	0.79
Fall	<u>BASEBC</u> <u>C-IFS</u>	0.82	0.72	0.74	0.84	0.81	0.87
	<u>BC H-</u> <u>CMAQBC</u> <u>HEMI</u>	0.80	0.71	0.72	0.81	0.81	0.86
	<u>BC GEOS-</u> <u>ChemBC</u> <u>GEOS</u>	0.80	0.71	0.74	0.81	0.79	0.86
	BC AM3	0.77	0.67	0.59	0.75	0.8	0.83
Winter	<u>BASEBC</u> <u>C-IFS</u>	0.65	0.57	0.6	0.75	0.76	0.69
	<u>BC H-</u> <u>CMAQBC</u> <u>HEMI</u>	0.67	0.71	0.63	0.75	0.71	0.7
	<u>BC GEOS-</u> <u>ChemBC</u> <u>GEOS</u>	0.67	0.68	0.64	0.77	0.75	0.71
	BC AM3	0.68	0.71	0.64	0.78	0.72	0.73



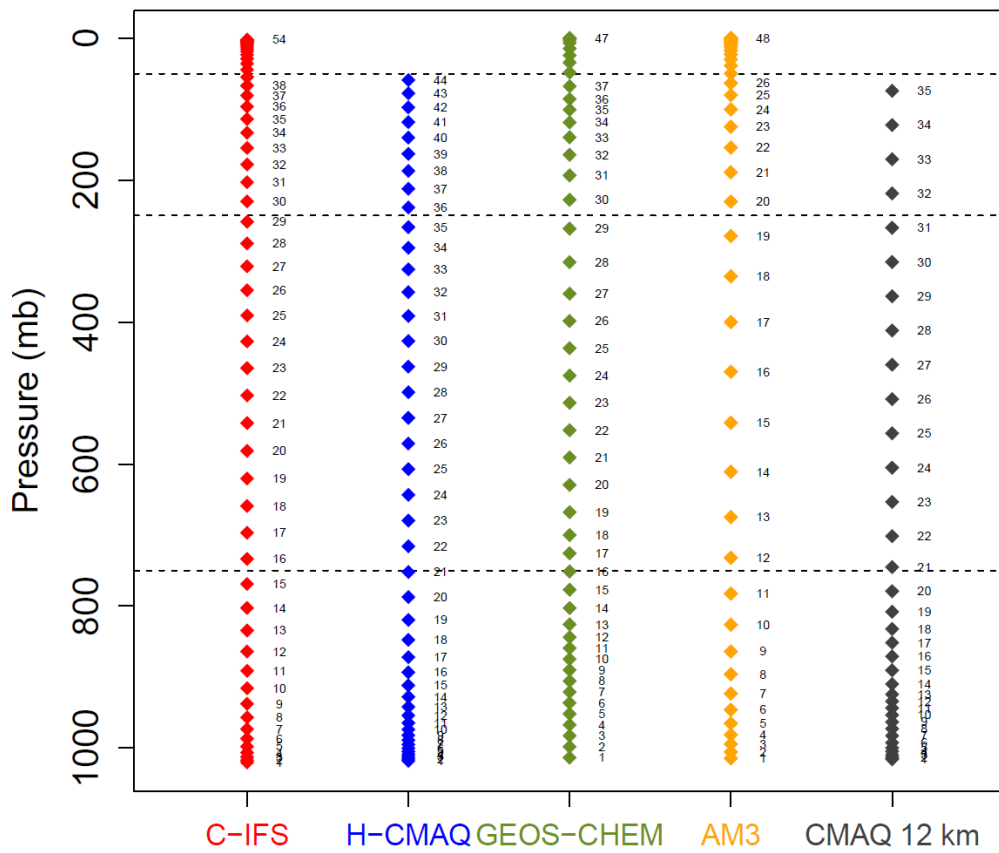
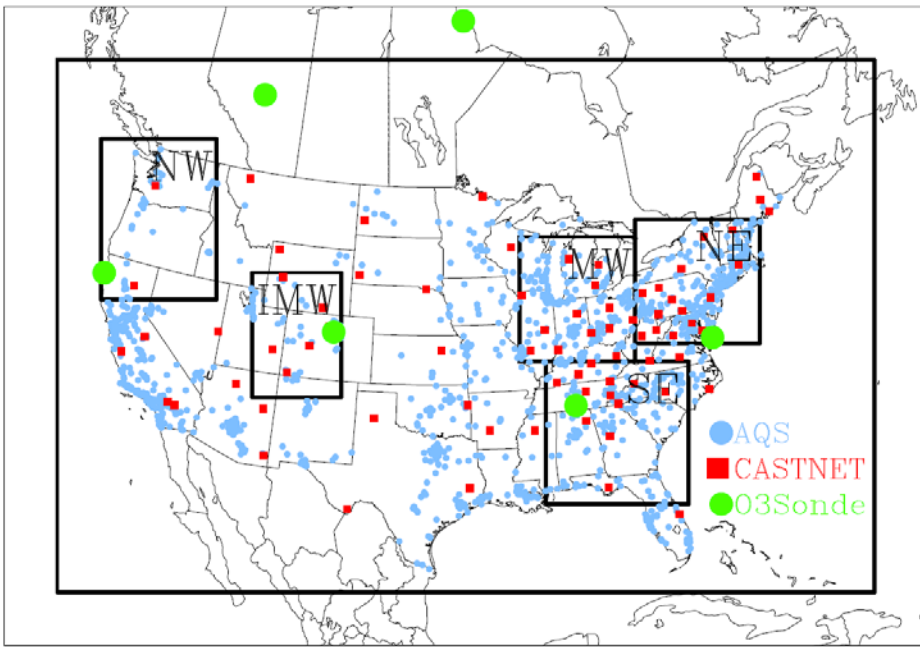


Figure 1. Depiction of the vertical levels used in the four different large-scale models and the regional CMAQ model used analyzed in this study. The pressure values were extracted for a location near the southwestern corner of the 12km CMAQ modeling domain and represent annual average values for 2010 at the midpoint of each vertical level. The dashed lines delineate the three pressure ranges (surface – 750 mb, 750 mb – 250 mb, and 250 mb – 50 mb) used for vertical integration in subsequent analyses.







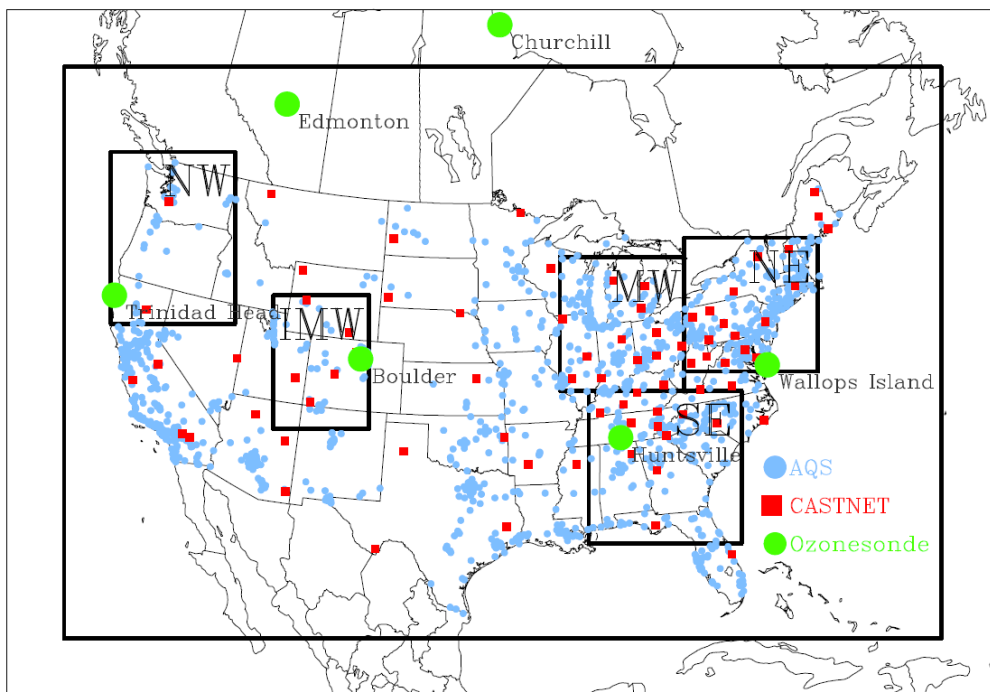
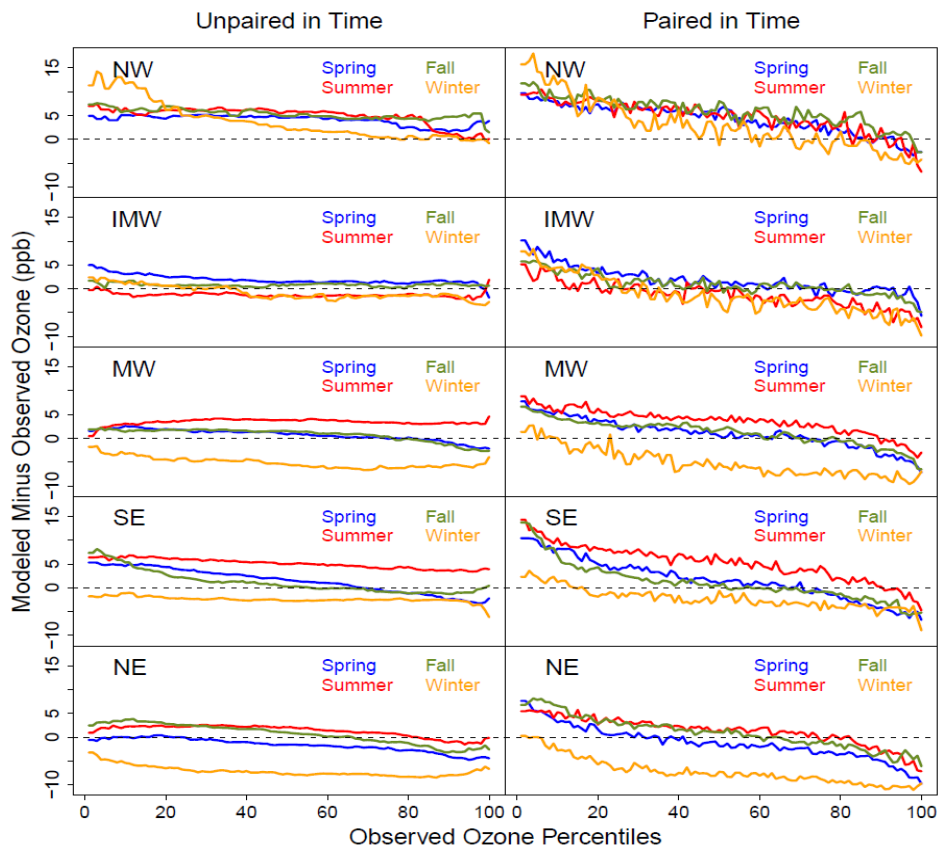


Figure 2. Map of the 12 km CMAQ modeling domain, the five analysis domains, and the location of the AQS and CASTNET surface O<sub>3</sub> monitoring stations and ozonesonde launch sites.





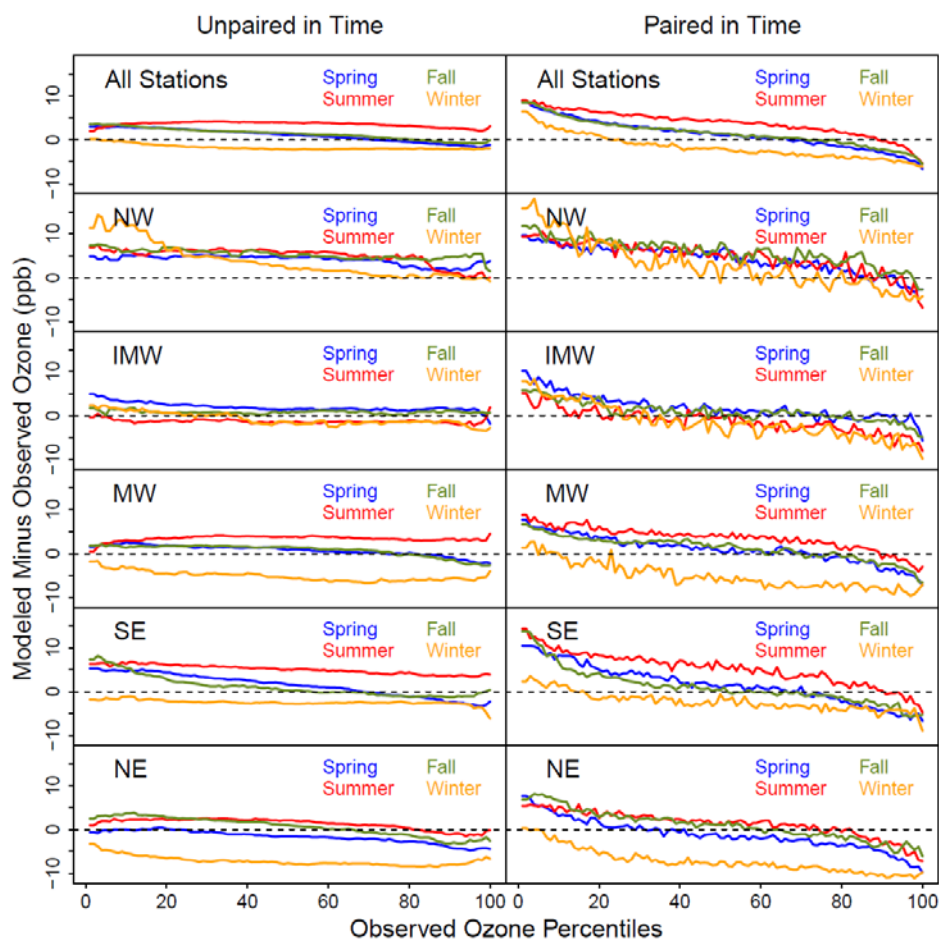
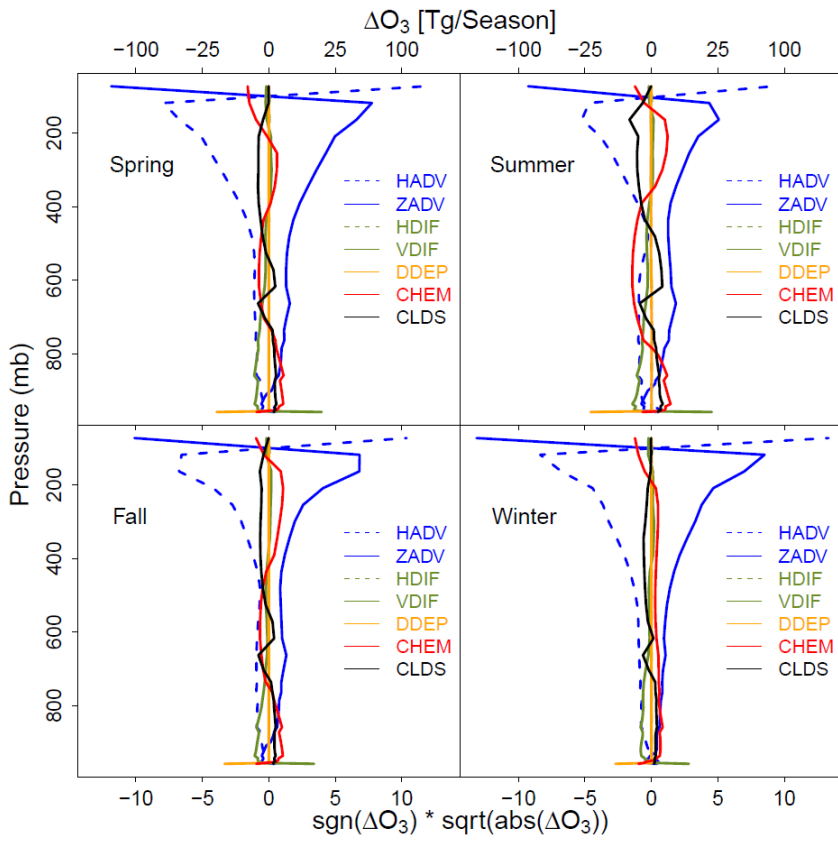


Figure 3. Differences between observed and BASE modeled MDA8 ozone at AQS stations for each season and analysis region. For each season and region, the observed MDA8 ozone concentrations were rank ordered at each station. Next, differences between the BASE simulations and observations were computed for each observed percentile either by selecting the model value corresponding to the date of the observed percentile (paired-in-time comparison, right row/column) or rank-ordering the model values and then selecting the modeled percentile corresponding to the observed percentile (unpaired-in-time comparison, left row/column). Finally, the median value of these paired-in-time and unpaired-in-time differences across all AQS stations in a given season and region was then computed for each observed percentile and is depicted in this figure.



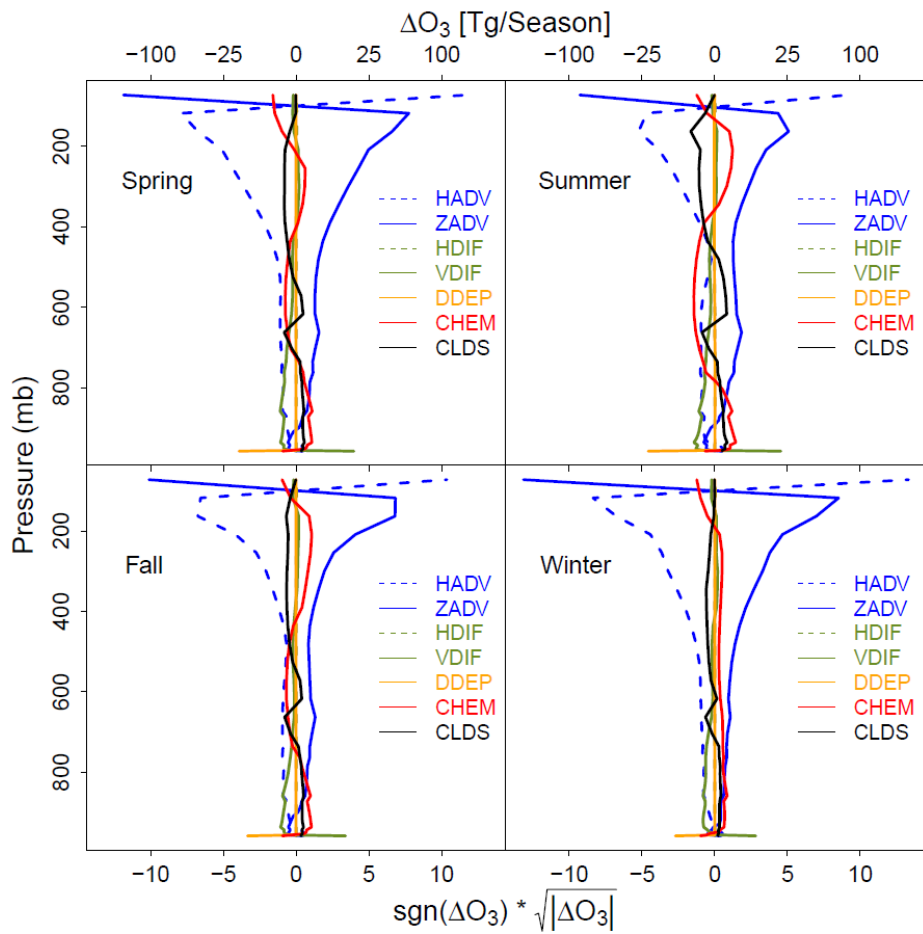


Figure 4. Profiles of BASE seasonal total ozone column mass changes  $\Delta O_3$  for each CMAQ model layer due to the effects of horizontal advection (HADV), vertical advection (ZADV), horizontal diffusion (HDIF), vertical diffusion (VDIF), dry deposition (DDEP), chemistry (CHEM), and cloud processes including vertical mixing by convective clouds (CLDS). The values are summed over the entire modeling domain and represent the net change in ozone mass due to a given process in a given model layer and season.

Formatted: Subscript

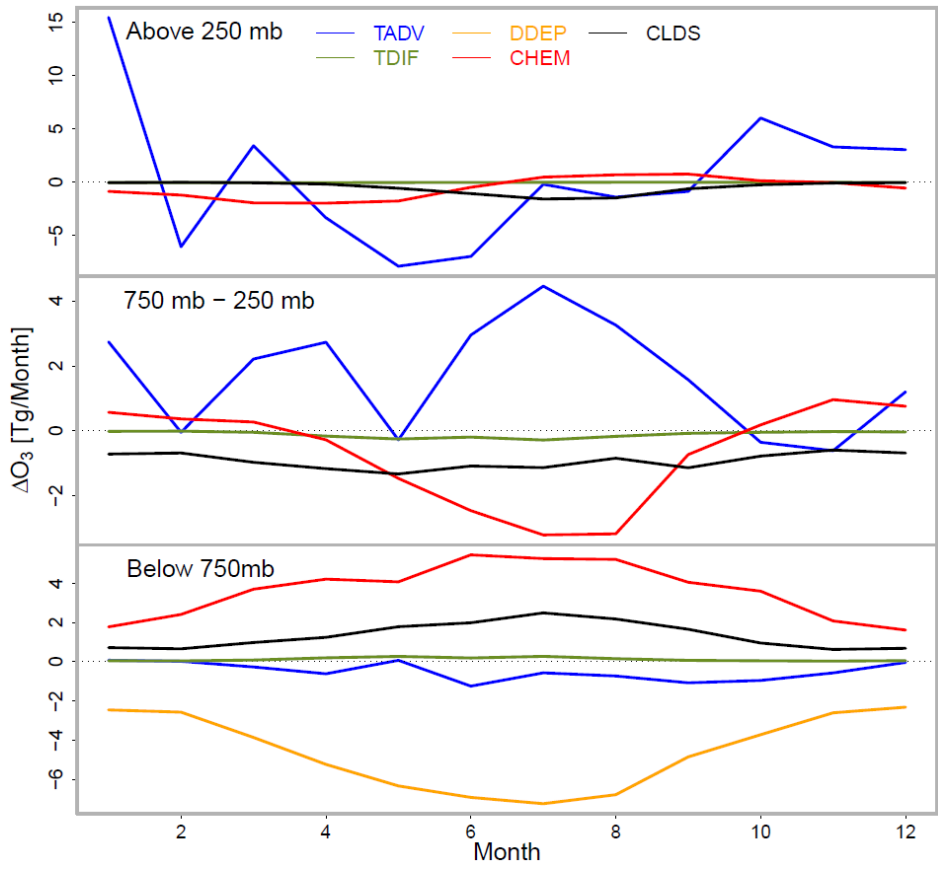
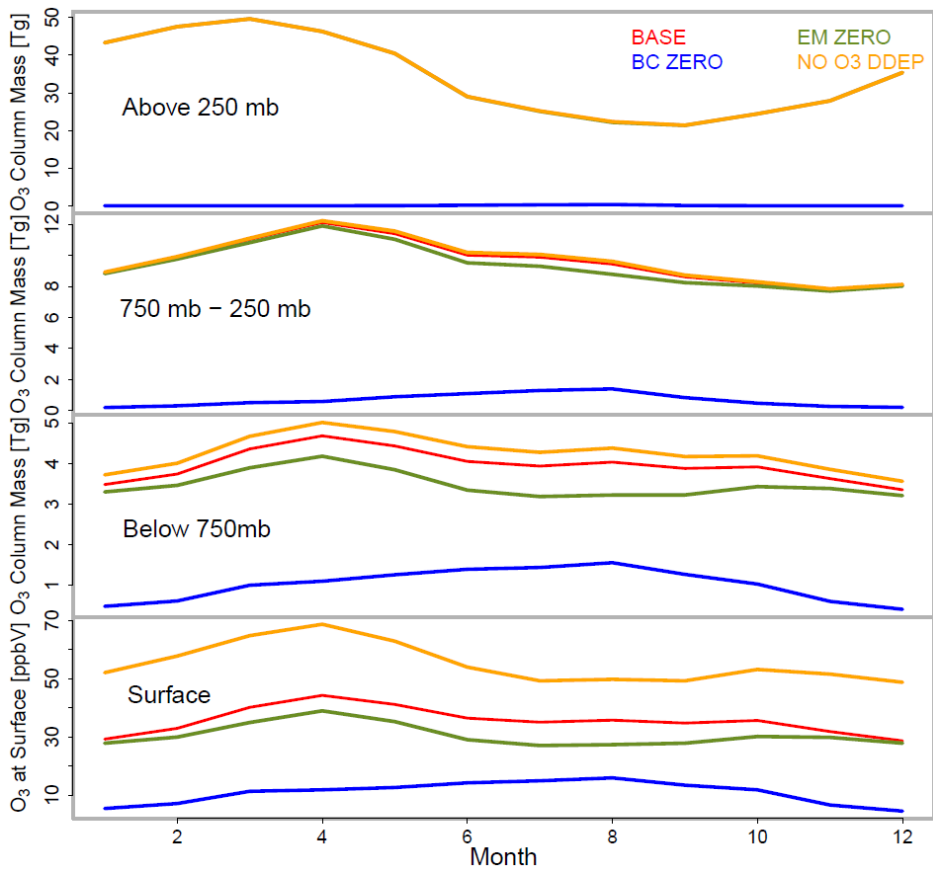


Figure 5. Time series of monthly domain-wide total PA contributions to BASE ozone columns in CMAQ layers 1-21 (surface to approximately 750 mb), 22 - 31 (approximately 750 - 250 mb), and 32 - 35 (approximately 250 mb - 50 mb). The horizontal and vertical advection and diffusion terms were summed to compute the effects of total advection (TADV) and total diffusion (TDIF), respectively.







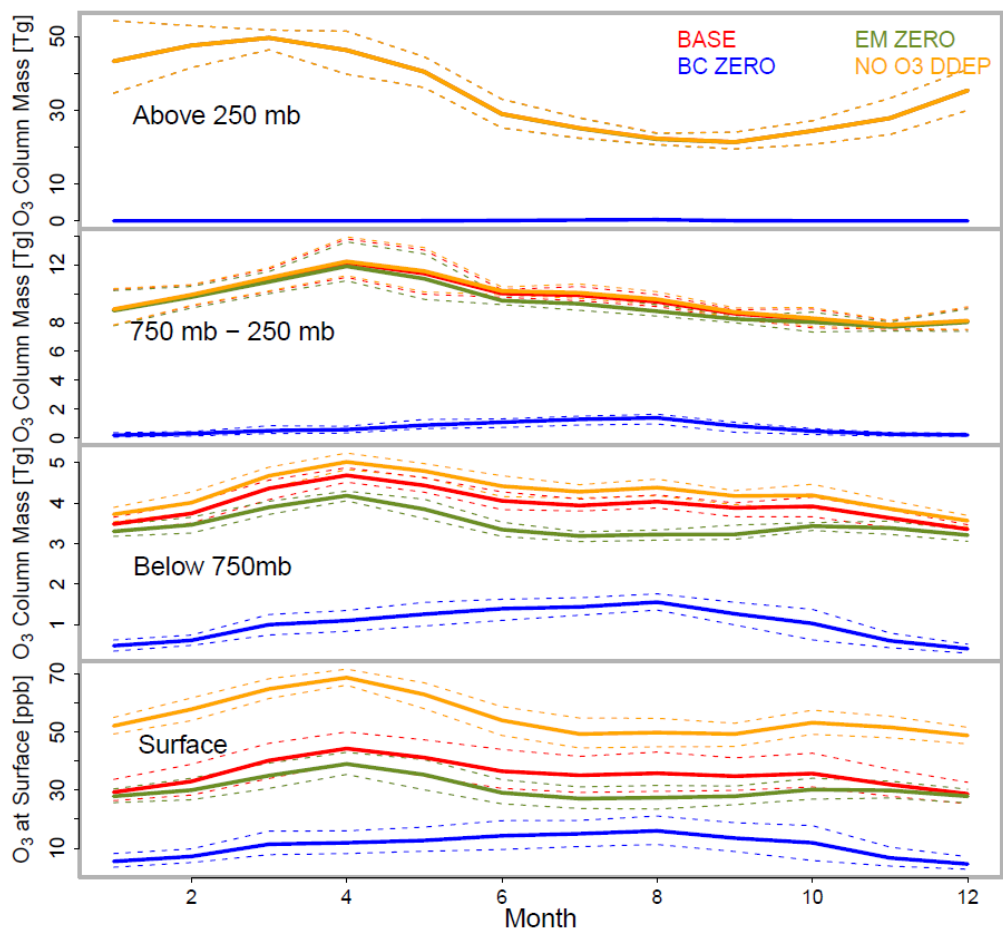


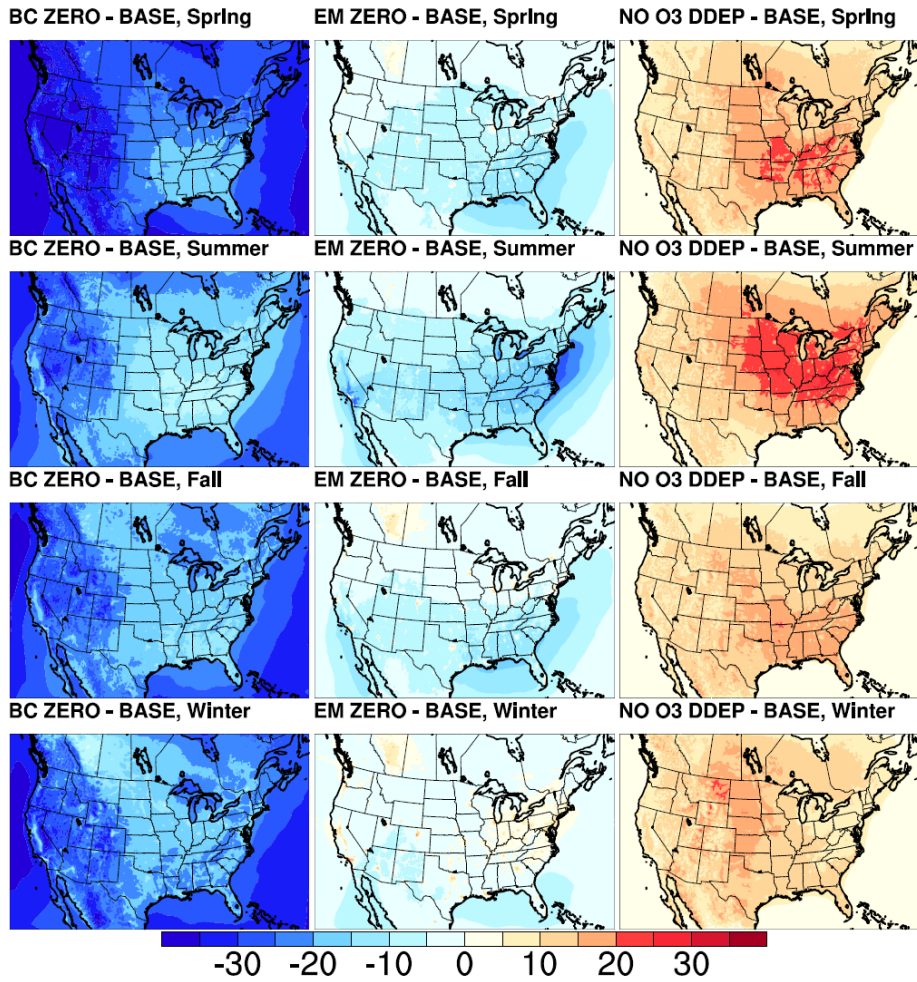
Figure 6. The upper three panels present time series of the monthly average **domain total** ozone column mass for the BASE, BC ZERO, EM ZERO, and NO O3 DDEP sensitivity simulations for the same three layer ranges analyzed in Figure 5 while the lowest panel presents time series of monthly average **domain average** ozone mixing ratios for the first model layer. **The dashed lines represent the 5<sup>th</sup> and 95<sup>th</sup> percentiles of the hourly domain total ozone column mass and domain average ozone mixing ratios for a given month.**

5

Formatted: Superscript

Formatted: Superscript





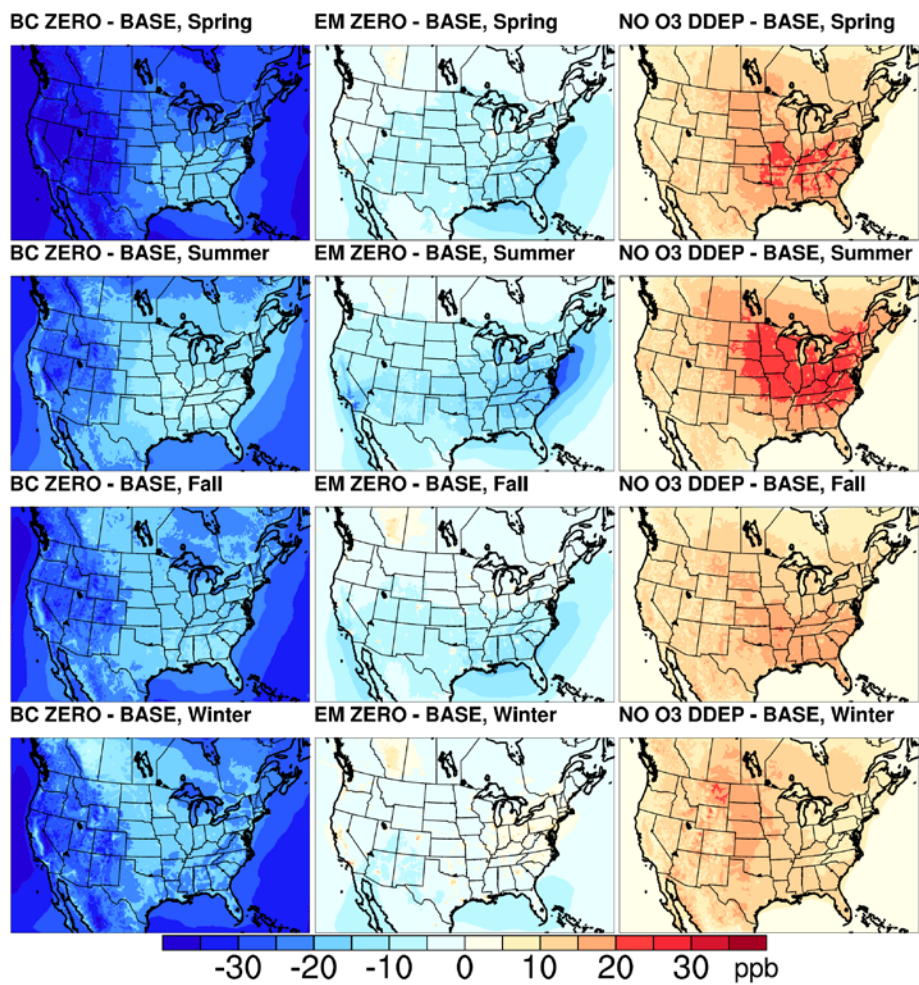
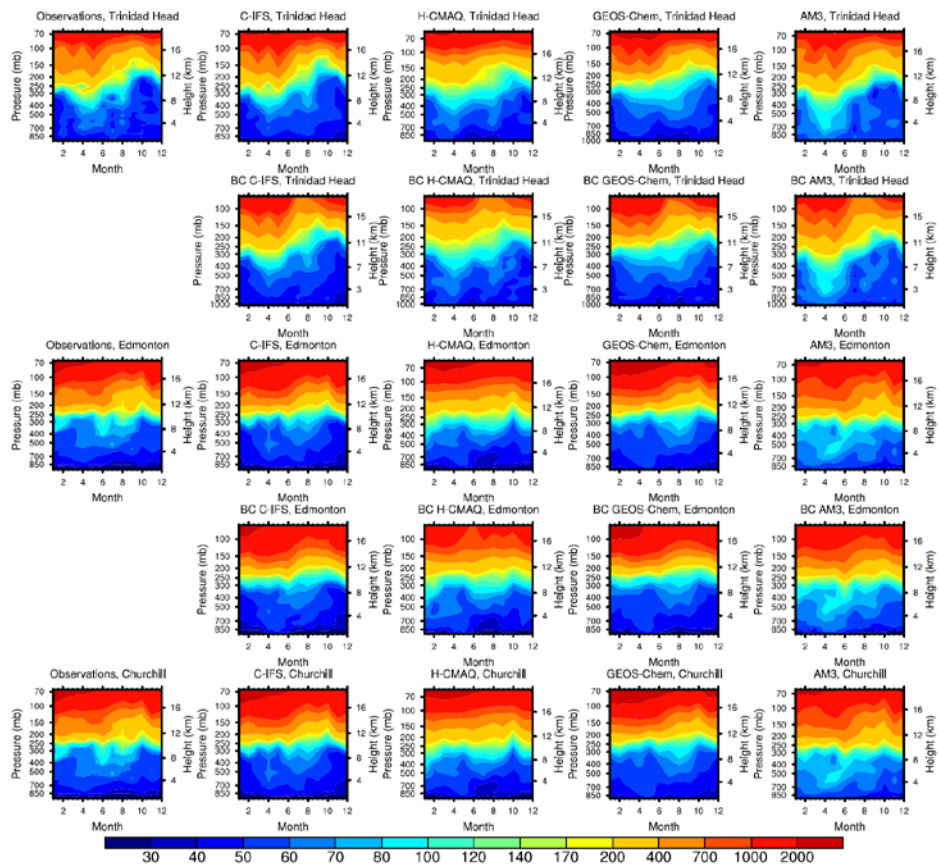


Figure 7. Maps of differences in seasonal mean ozone mixing ratios between the three sensitivity simulations (BC ZERO, EM ZERO, and NO O3 DDEP) and the BASE simulation.





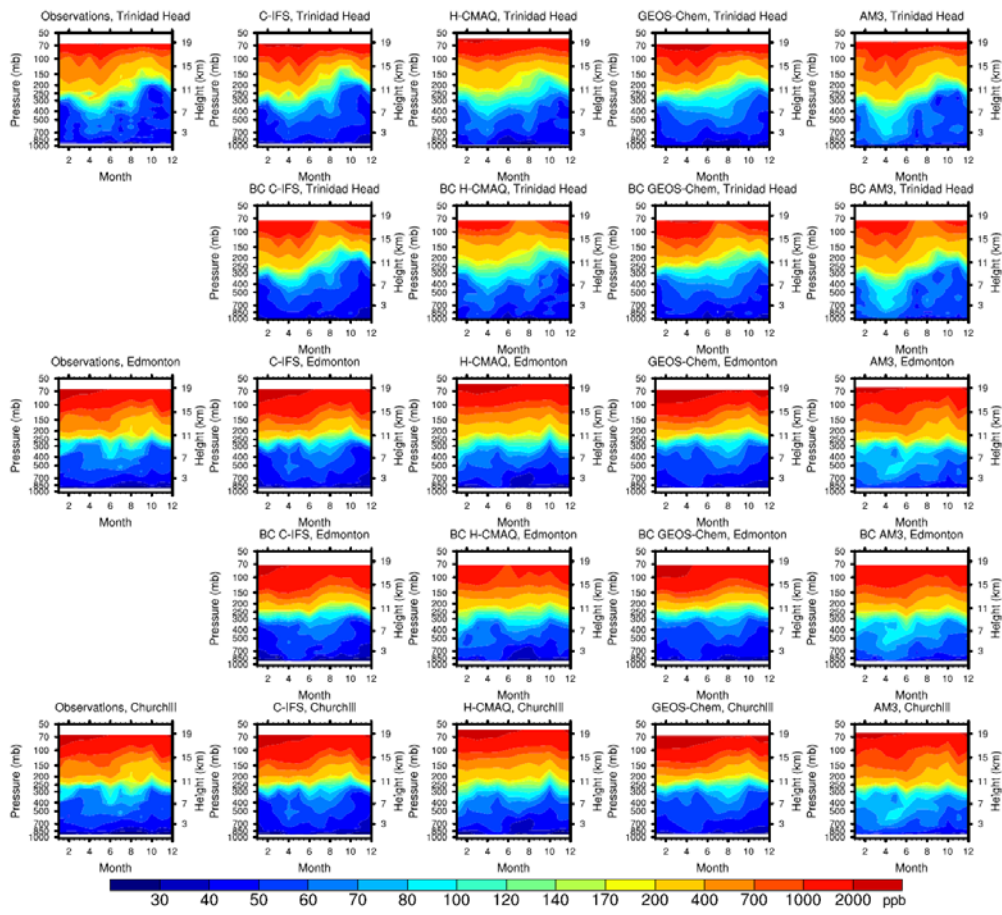
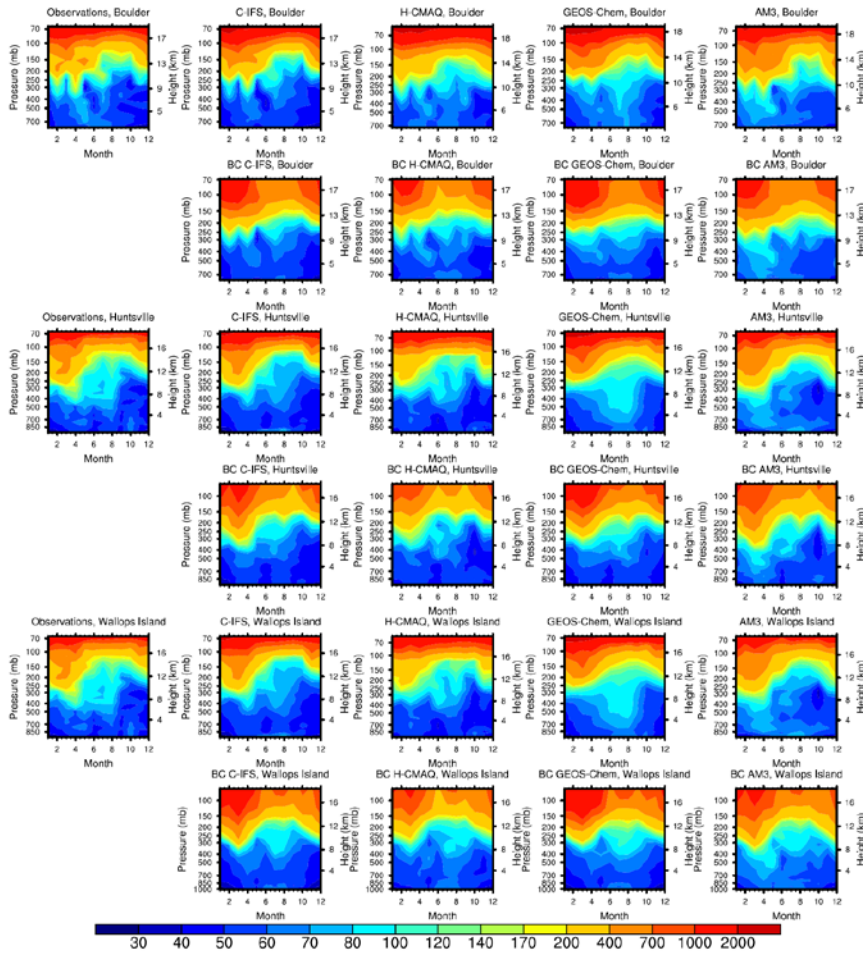


Figure 8a. Time-height cross sections of monthly mean ozone mixing ratios for ozonesonde observations (column 1), large-scale models (columns 2 – 5 in rows 1, 3, and 5), and regional CMAQ simulations (columns 2 – 5 in rows 2 and 4) at Trinidad Head, Edmonton, and Churchill. Note that no regional CMAQ results are shown for Churchill because the station is located outside the regional model domain. Additional details on the processing of observations and model simulations are provided in the text.





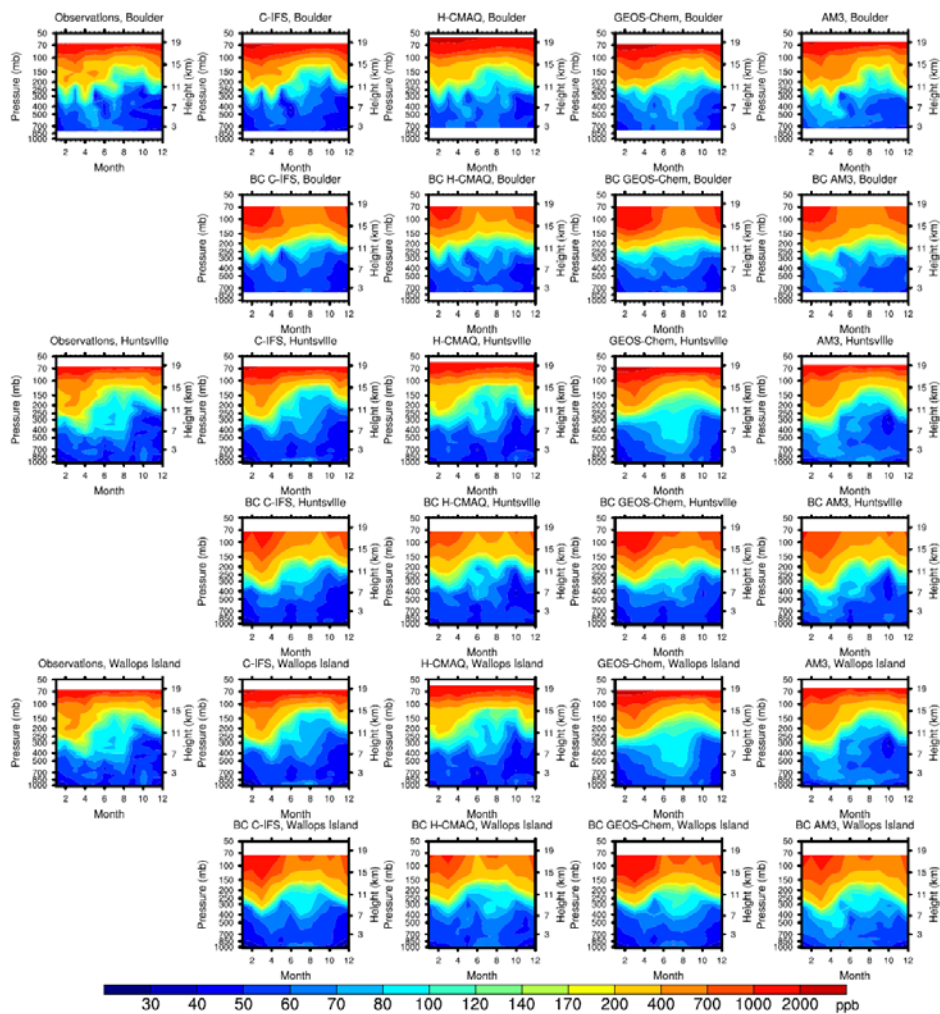
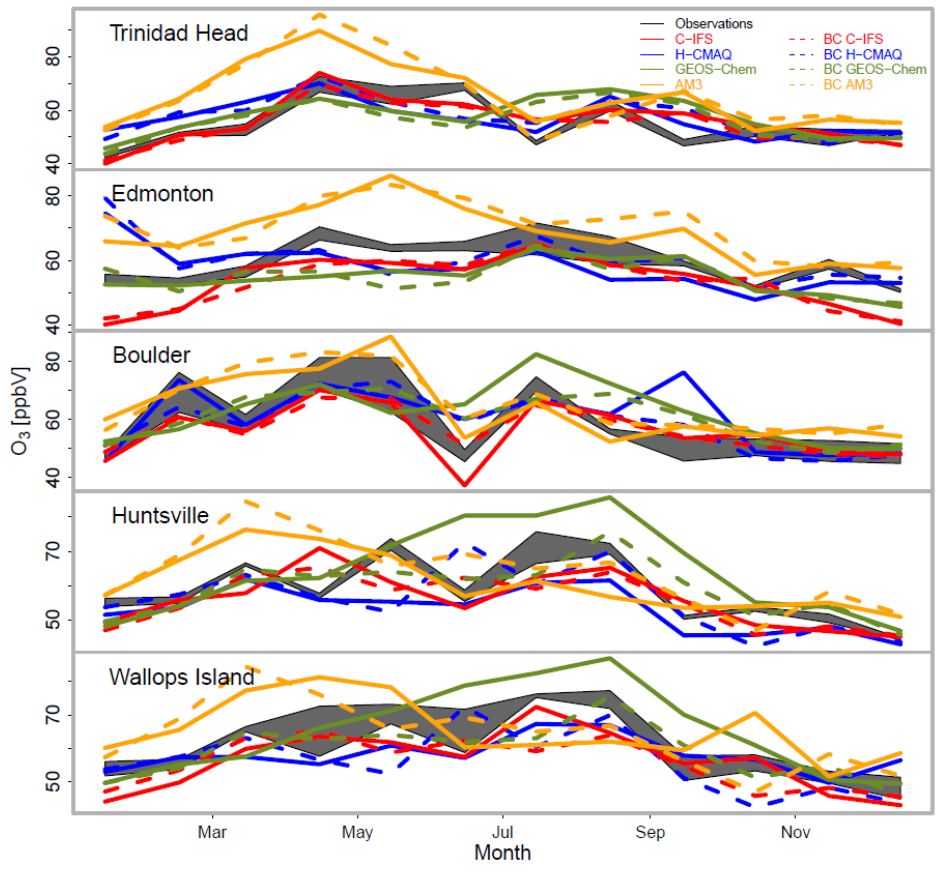


Figure 8b. Time-height cross sections of monthly mean ozone mixing ratios for ozonesonde observations (column 1), large-scale models (columns 2 – 5 in rows 1, 3, and 5), and regional CMAQ simulations (columns 2 – 5 in rows 2, 4, and 6) at Boulder, Huntsville, and Wallops Island. Additional details on the processing of observations and model simulations are provided in the text.





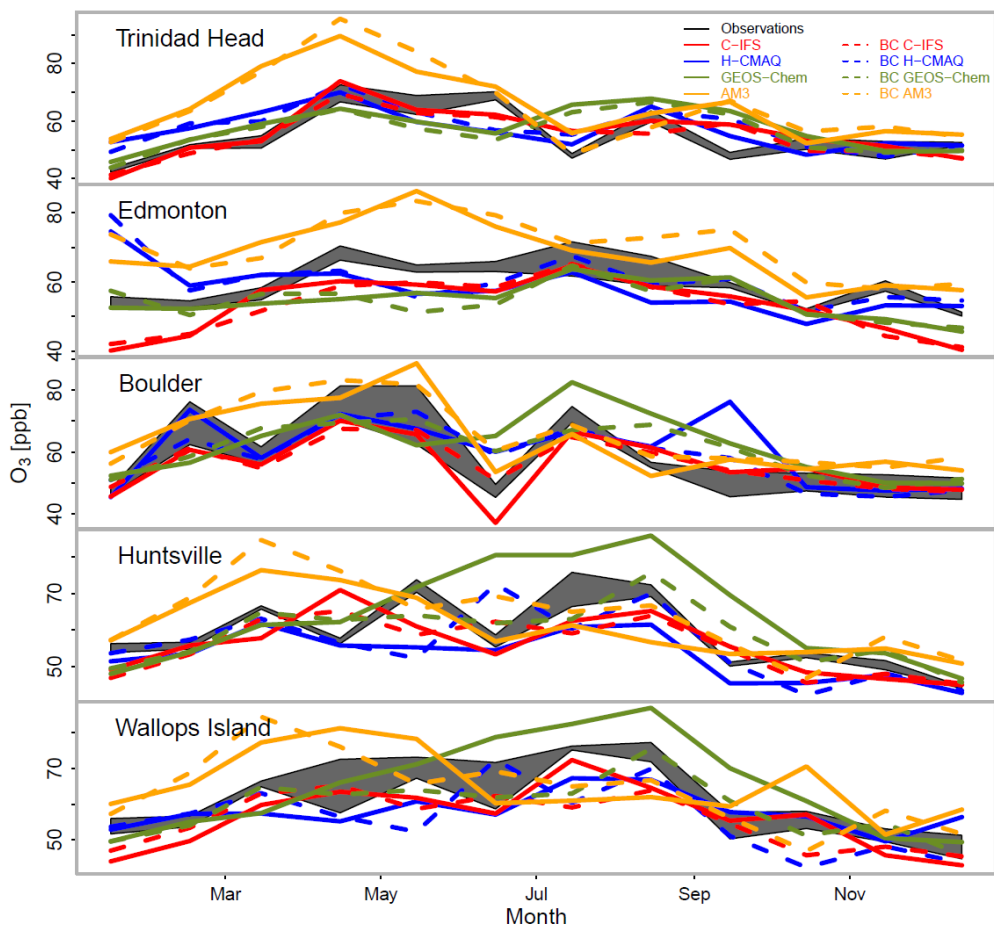
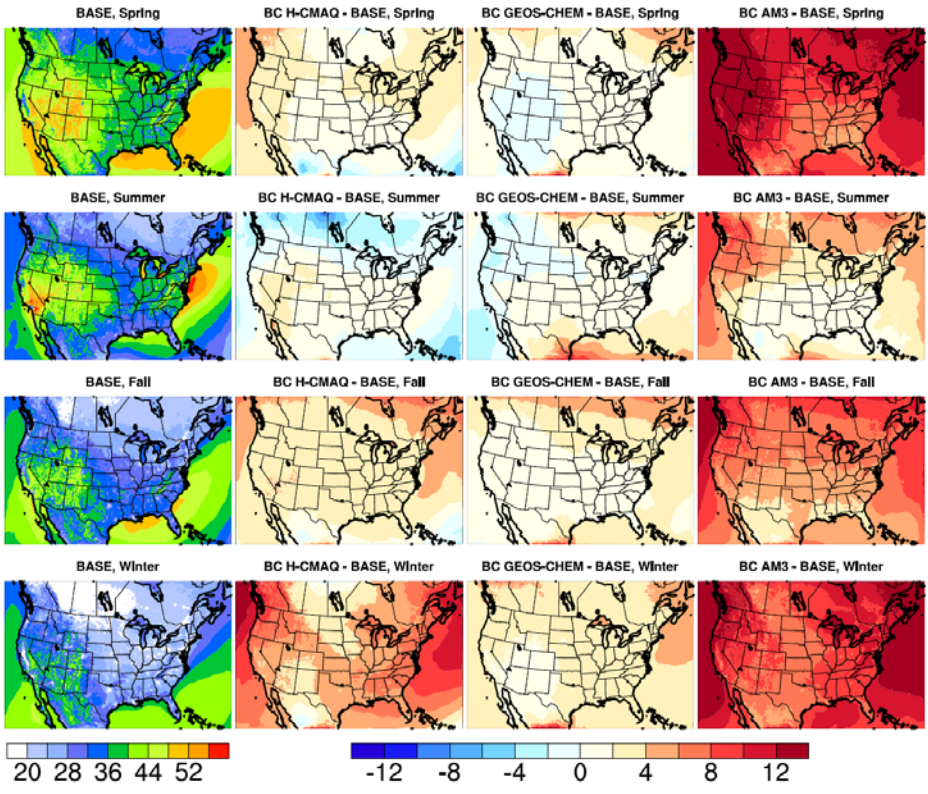


Figure 9: Monthly average time series of 500 mb observed ozone, ozone simulated by large-scale models (solid lines), and ozone simulated by regional CMAQ driven with boundary conditions from different large scale models (dashed lines) at Trinidad Head, Edmonton, Boulder, Huntsville, and Wallops Island. Additional details on the processing of observations and model simulations are provided in the text.





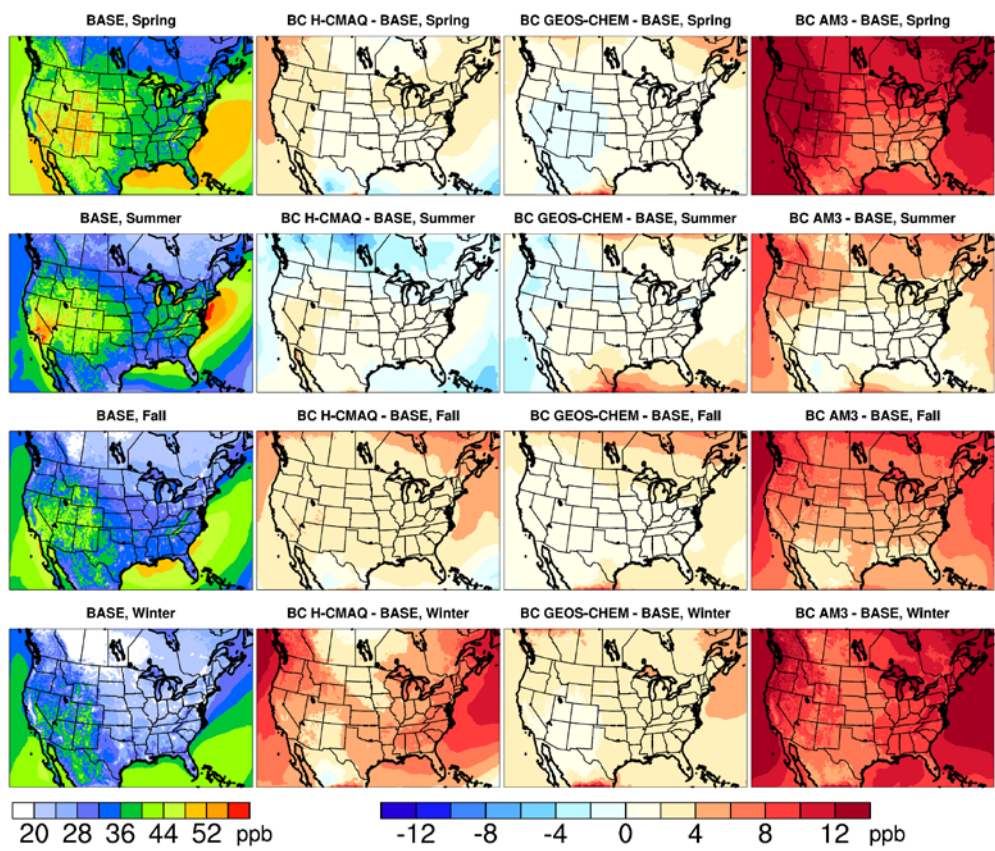


Figure 10. Maps of seasonal mean ozone mixing ratios at the surface for the BASE, BC H-CMAQ, BC GEOS-Chem, and BC-AM3 simulations. The left column shows the mixing ratios for the BASE simulation while the second, third and fourth columns show the differences between BC H-CMAQ and BASE, BC GEOS-Chem and BASE, and BC AM3 and BASE, respectively

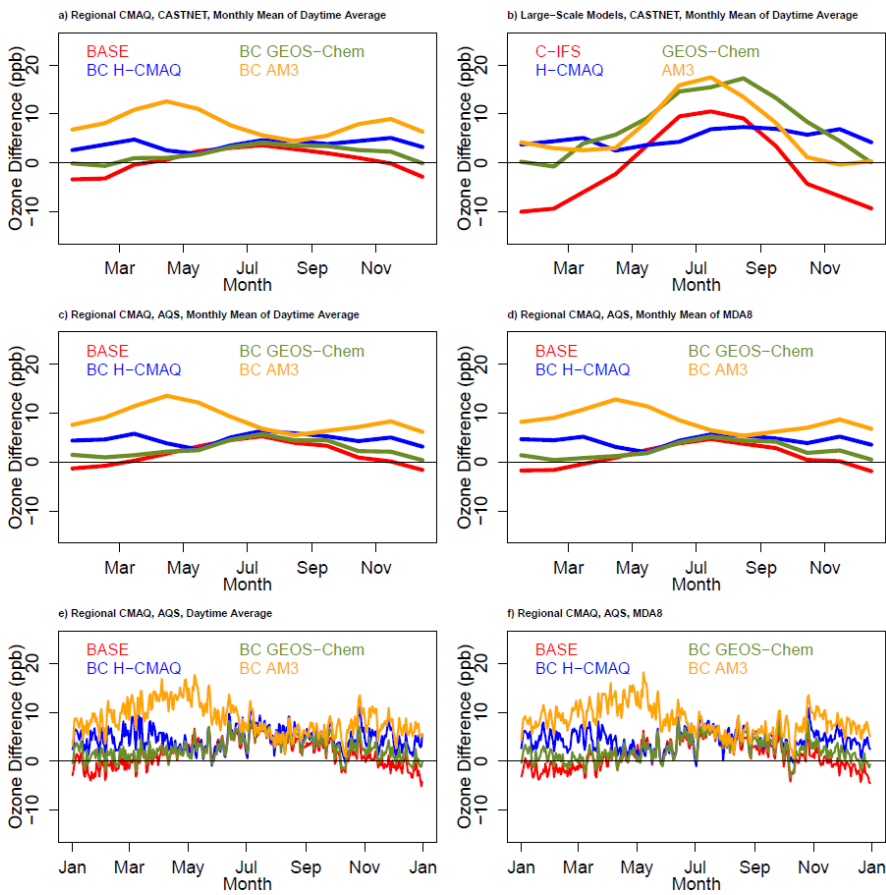
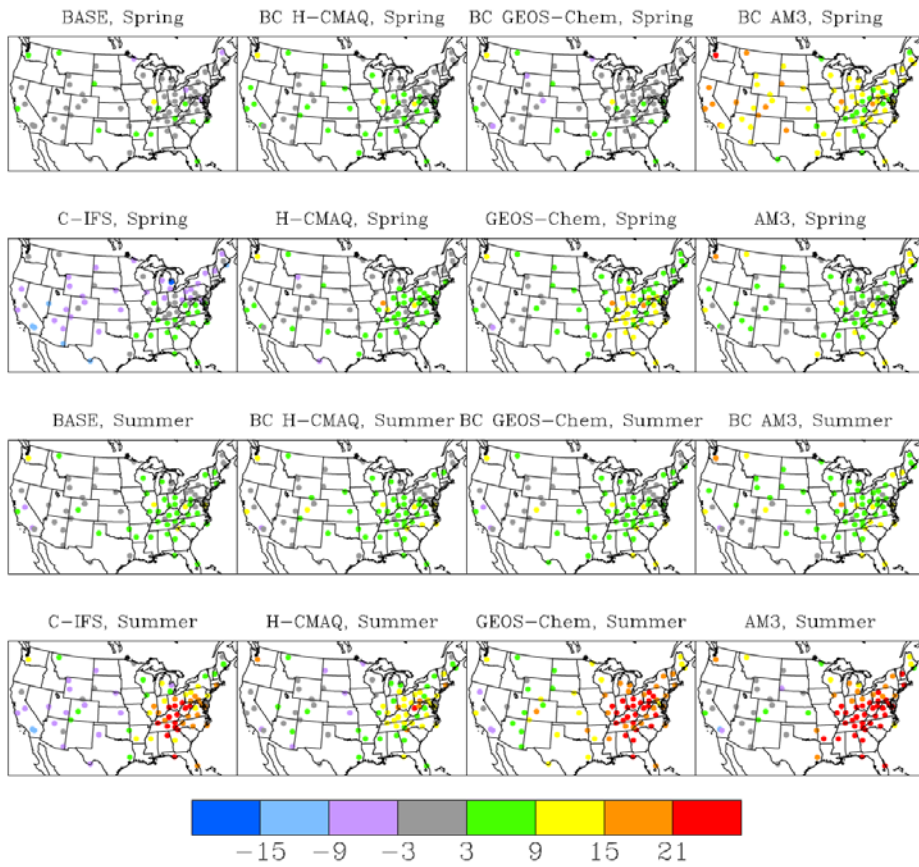


Figure 11. Time series of differences between modeled and observed ozone mixing ratios. a) monthly means of daytime average mixing ratios at CASTNET monitors for regional model simulations, b) as in a) but for large-scale models, c) as in a) but for AQS monitors, d) as in c) but for monthly means of MDA8 instead of monthly means of daytime average mixing ratios, e) as in c) but for daily daytime average mixing ratios, and f) as in d) but for daily MDA8.





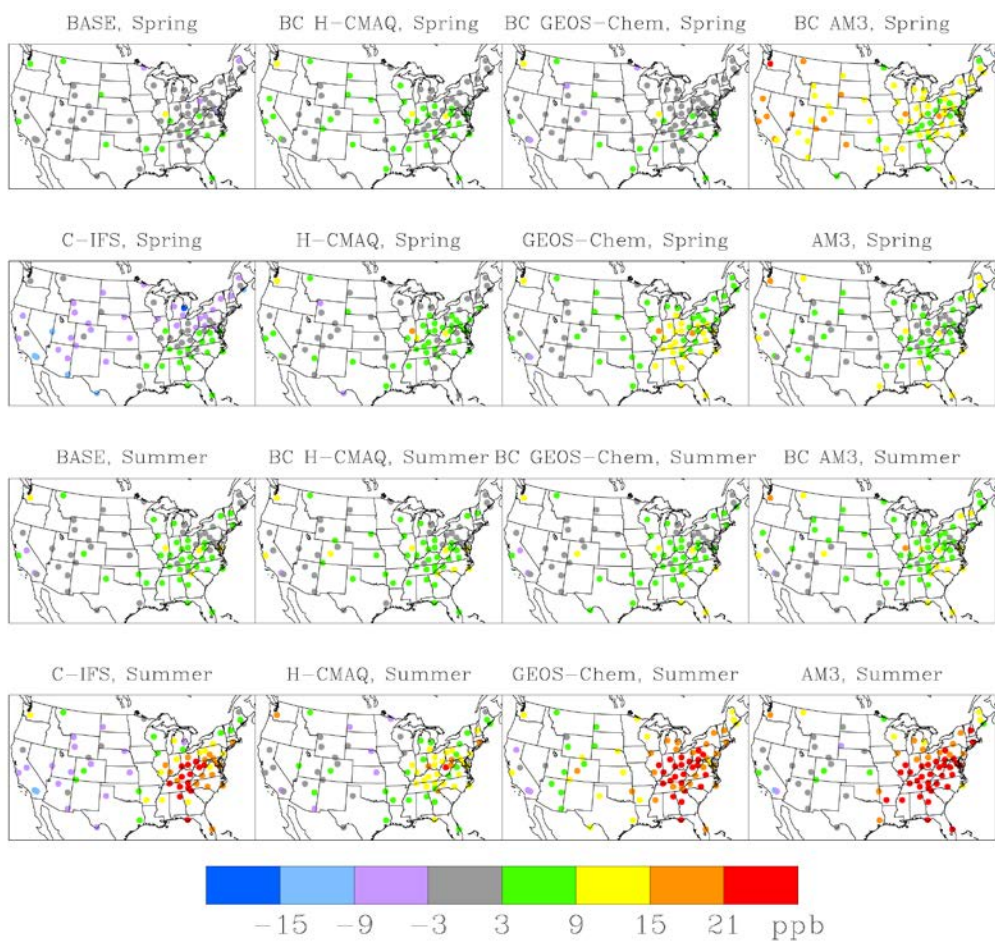
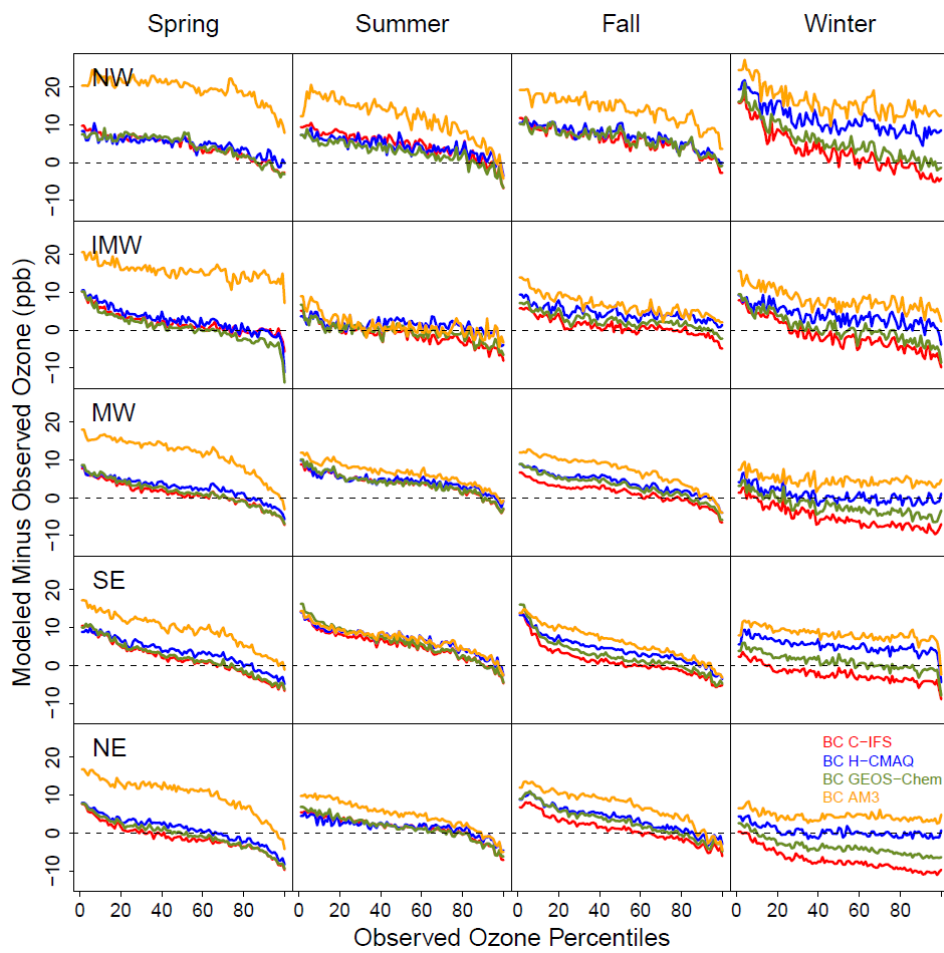


Figure 12. Map of mean bias for daytime average ozone at CASTNET sites for BASE, BC H-CMAQ, BC GEOS-Chem, and BC AM3 (rows 1 and 3) and C-IFS, H-CMAQ, GEOS-Chem, and AM3 (rows 2 and 4) for spring (rows 1 and 2) and summer (rows 3 and 4)





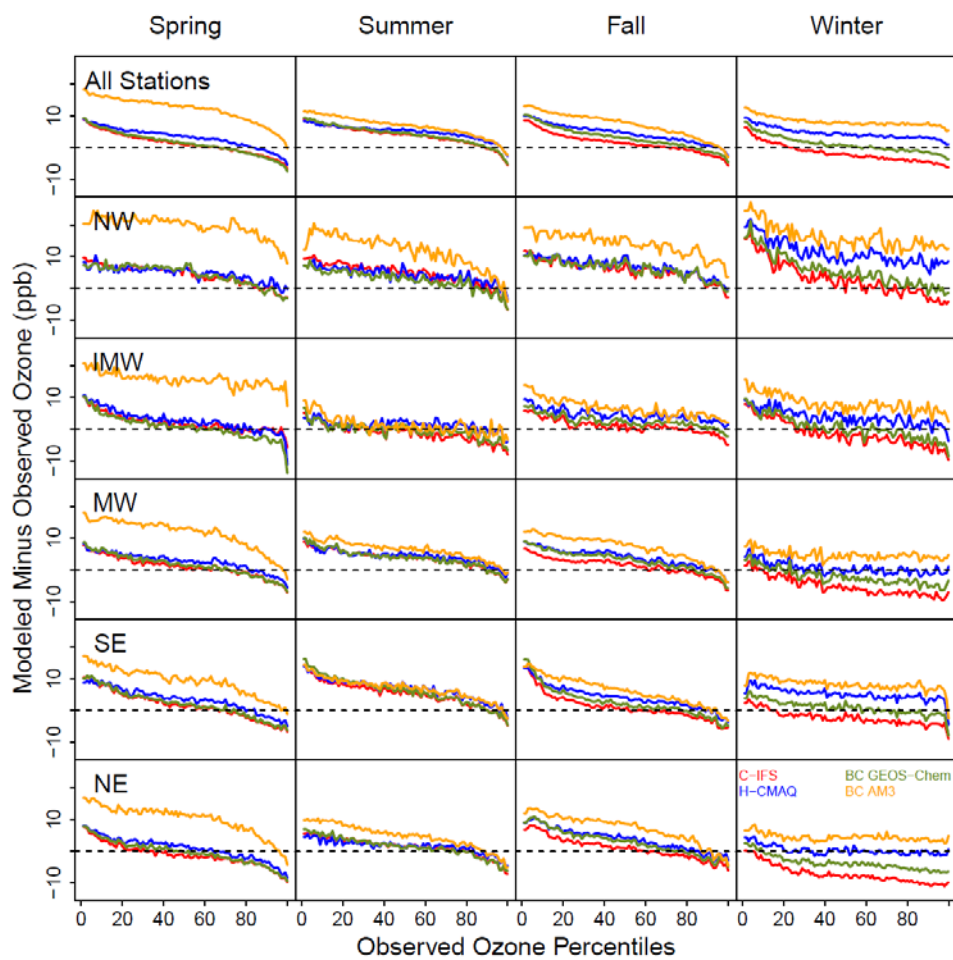


Figure 13. Paired-in-time differences between observed and modeled MDA8 ozone at AQS stations for each season and analysis region. Model results are for BASE (red), BC H-CMAQ (blue), BC GEOS-Chem (green), and BC AM3 (orange). For each season and region, the observed MDA8 ozone concentrations were rank ordered at each station. Next, differences between CMAQ simulations and observations were computed for each observed percentile by selecting the model value corresponding to the date of the observed percentile. Finally, the median value of these paired-in-time differences across all AQS stations in a given season and region was then computed for each observed percentile and is shown in this figure.

## Supplemental Material for “Impacts of Different Characterizations of Large-Scale Background on Simulated Regional-Scale Ozone Over the Continental United States”

5 Christian Hogrefe<sup>1</sup>, Peng Liu<sup>2</sup>, George Pouliot<sup>1</sup>, Rohit Mathur<sup>1</sup>, Shawn Roselle<sup>1</sup>, Johannes Flemming<sup>3</sup>,  
Meiyun Lin<sup>4,5</sup>, and Rokjin J. Park<sup>6</sup>

<sup>1</sup>Computational Exposure Division, National Exposure Research Laboratory, U.S. Environmental Protection Agency, RTP, NC, USA

<sup>2</sup>National Research Council Fellow at National Exposure Research Laboratory, U.S. Environmental Protection Agency, RTP, NC, USA

10 <sup>3</sup>European Centre for Medium-Range Weather Forecasts, Reading, U.K.

<sup>4</sup>Atmospheric and Oceanic Sciences, Princeton University, Princeton, NJ 08540, USA

<sup>5</sup>NOAA Geophysical Fluid Dynamics Laboratory, Princeton, NJ 08540, USA

<sup>6</sup>School of Earth and Environmental Sciences, Seoul National University, Seoul, Republic of Korea

*Correspondence to:* Christian Hogrefe (hogrefe.christian@epa.gov)

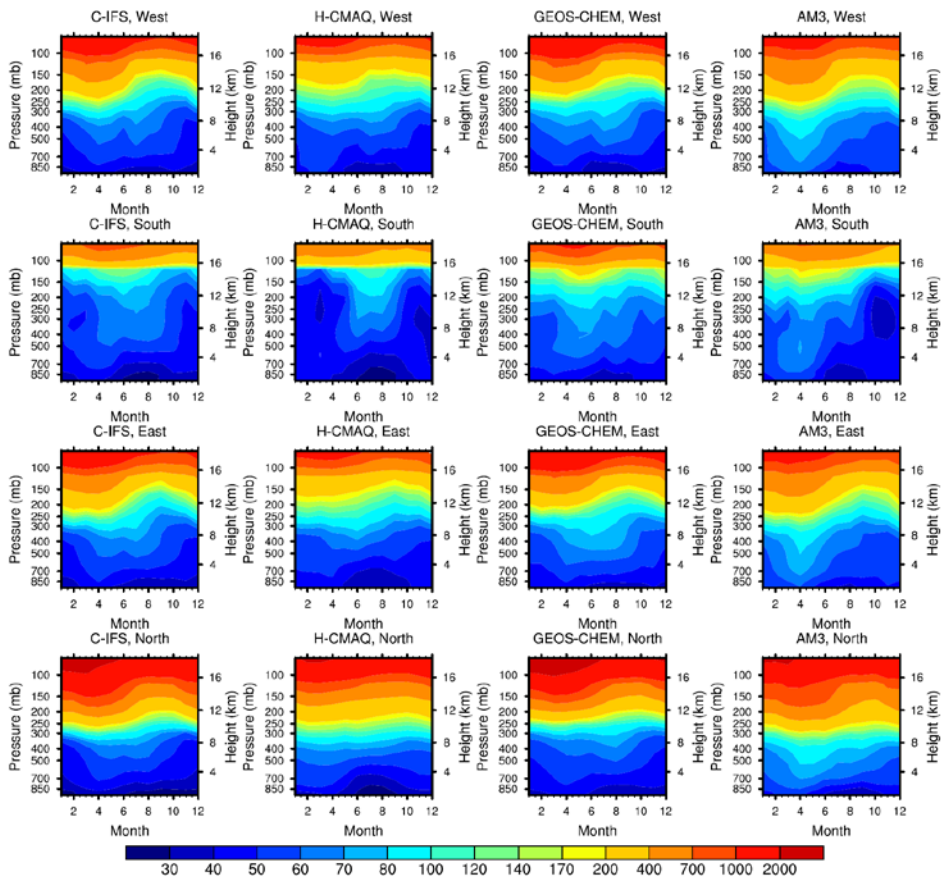


Figure S1. Time-height cross sections of monthly mean ozone mixing ratios along the western, southern, eastern, and northern boundary of the regional CMAQ domain for the four large-scale models from which boundary conditions were derived, i.e. C-IFS, H-CMAQ, GEOS-Chem, and AM3. The mixing ratios were averaged over all columns or rows defining a given boundary and also were averaged for each month.

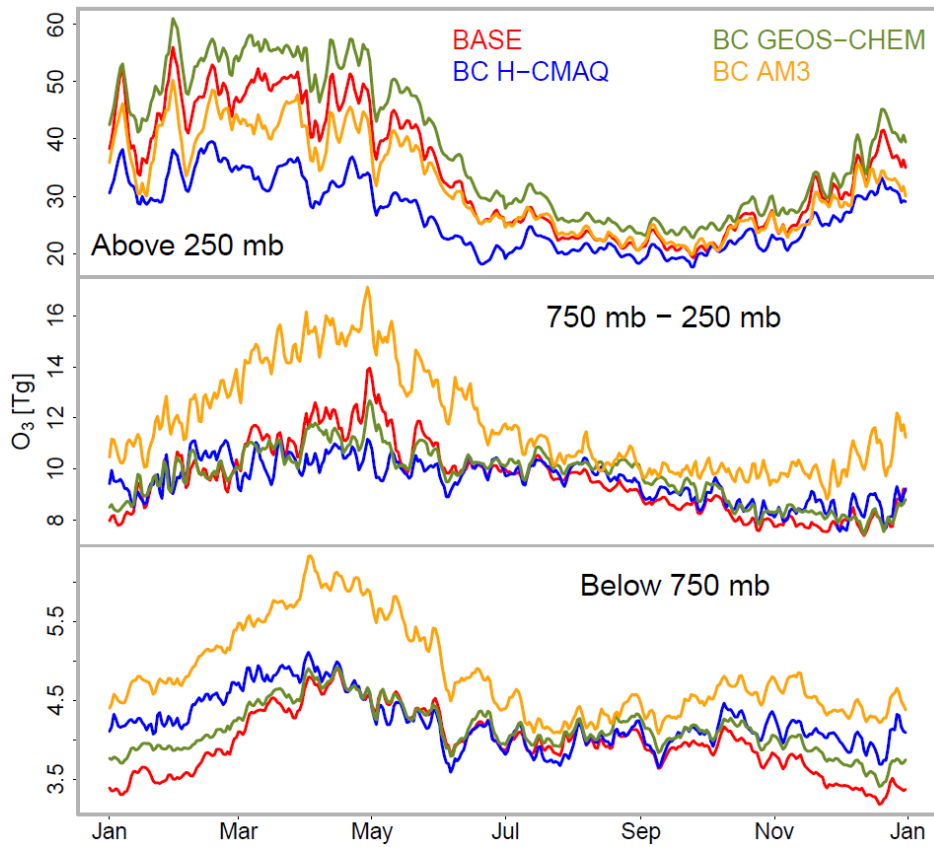
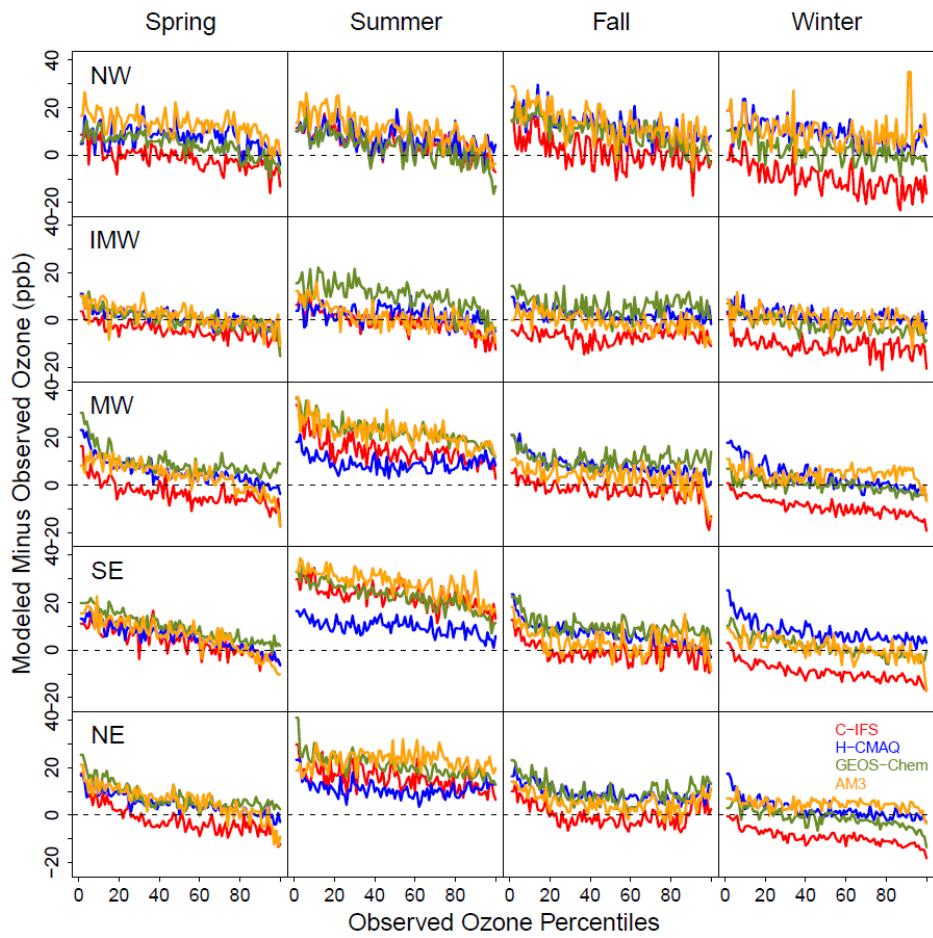


Figure S2. Daily time series of CMAQ-simulated domain-total ozone column mass for the same three layer ranges used in Figures 5 and 6. The results are for the BASE, BC H-CMAQ, BC GEOS-Chem, and BC-AM3 simulations.





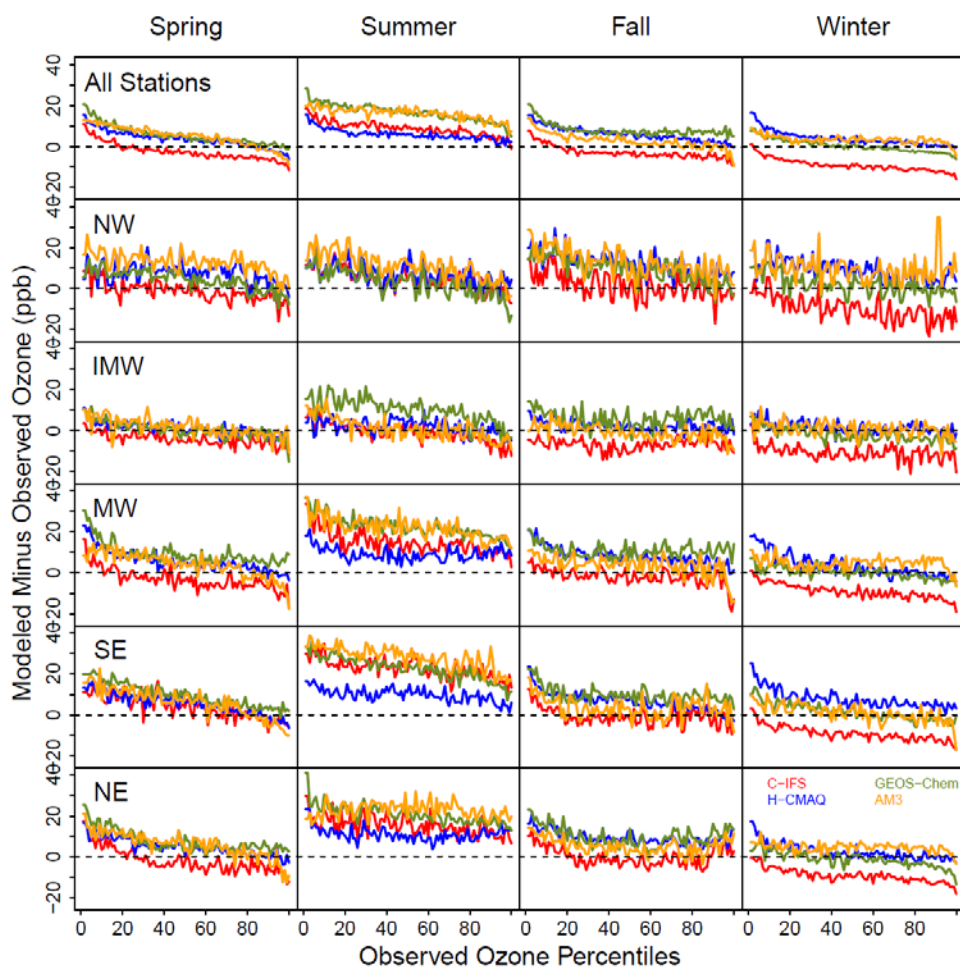
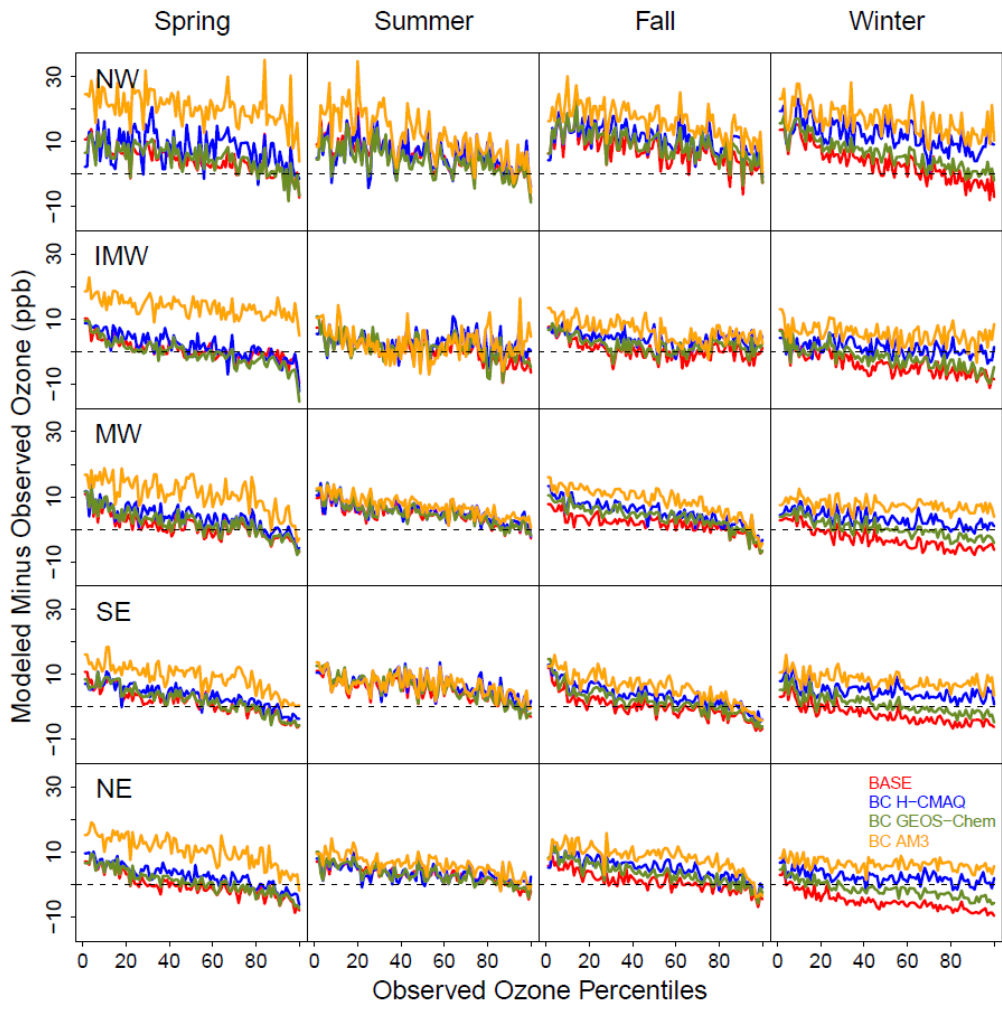


Figure S3. Paired-in-time differences between daytime average ozone from observations and large-scale models for each season and analysis region. Model results are for C-IFS (red), H-CMAQ (blue), GEOS-Chem (green), and AM3 (orange). For each season and region, the observed daytime average ozone concentrations were rank ordered. Next, differences between large-scale model simulations and observations were computed for each observed percentile by selecting the model value corresponding to the date of the observed percentile. Finally, the median value of these paired-in-time differences across all CASTNET stations in a given season and region was then computed for each observed percentile and is shown in this figure.



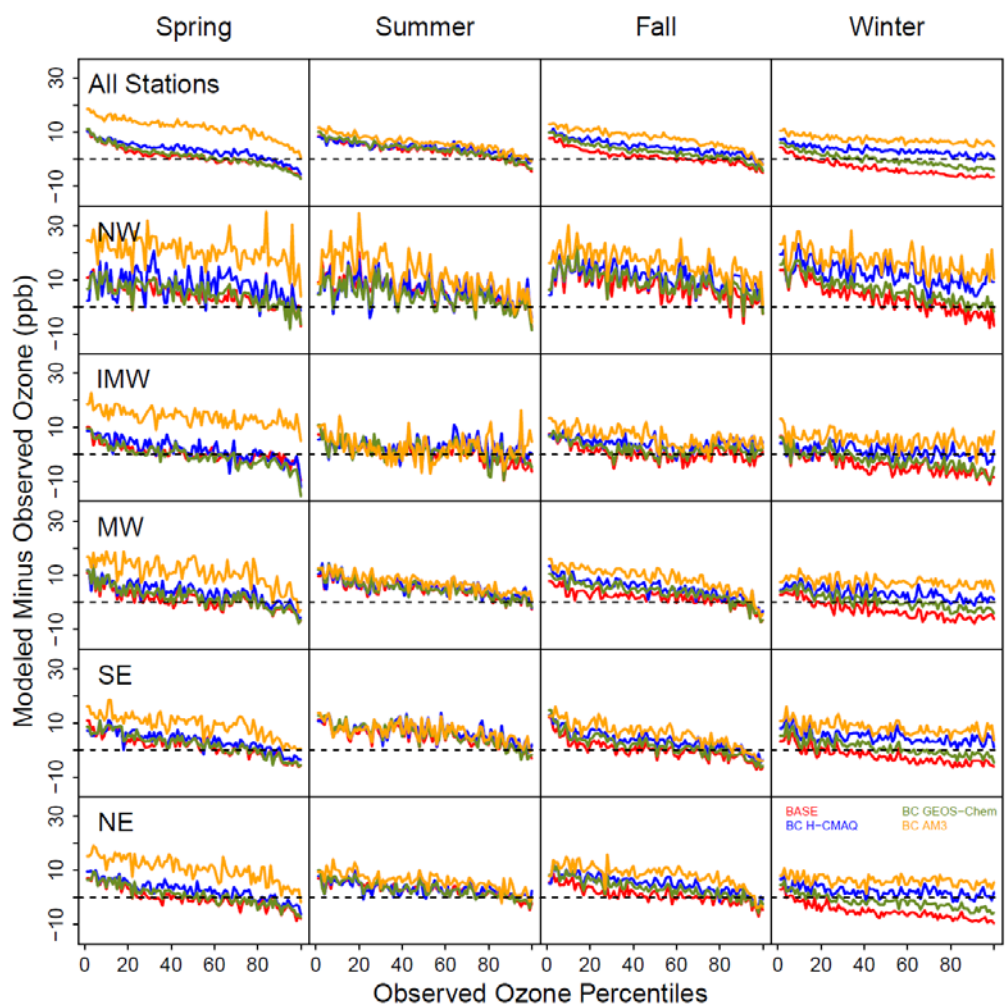


Figure S4. Paired-in-time differences between observed and CMAQ modeled daytime average ozone at CASTNET stations for each season and analysis region. Model results are for BASE (red), BC H-CMAQ (blue), BC GEOS-Chem (green), and BC AM3 (orange). For each season and region, the observed daytime average ozone concentrations were rank ordered. Next, differences between large-scale model simulations and observations were computed for each observed percentile by selecting the model value corresponding to the date of the observed percentile. Finally, the median value of these paired-in-time differences across all CASTNET stations in a given season and region was then computed for each observed percentile and is shown in this figure.