

How a European network may help estimating methane emissions at the French national scale

Isabelle Pison¹, Antoine Berchet², Marielle Saunois¹, Philippe Bousquet¹, Grégoire Broquet¹, Sébastien Conil³, Marc Delmotte¹, Olivier Laurent¹, Damien Martin⁴, Simon O'Doherty⁵, Michel Ramonet¹, T. Gerard Spain⁶, Kieran Stanley⁵, Alex Vermeulen^{7,a}, and Camille Yver Kwok¹

¹Laboratoire des Sciences du Climat et de l'Environnement, LSCE-IPSL (CEA-CNRS-UVSQ), Université Paris-Saclay, 91191 Gif-sur-Yvette, France.

²Laboratory for Air Pollution/Environmental Technology, Empa - Swiss Federal Laboratories for Materials Science and Technology, Dübendorf, Switzerland

³Agence Nationale pour la gestion des Déchets RadioActifs, Châtenay-Malabry, France

⁴Centre for Climate and Air Pollution Studies, School of Physics, National University of Ireland Galway, Galway, Ireland

⁵Atmospheric Chemistry Research Group, School of Chemistry, University of Bristol, Cantocks Close, Bristol, United Kingdom

⁶National University of Ireland Galway, Galway, Ireland

⁷Energy Research Centre of the Netherlands, Heerhugowaard, The Netherlands

^anow at Dept. Phys. Geography and Ecosystem Science, Lund, Sweden

Correspondence to: I. Pison (isabelle.pison@lsce.ipsl.fr)

Supplementary material

S.1 Time series of the afternoon (14 h-18 h) hourly data at the stations in 2012

Only the data selected for assimilation is shown here i.e the 14 h-18 h hourly means when the boundary layer height is higher than 500 m in the model, at the highest available level for sites with several levels.

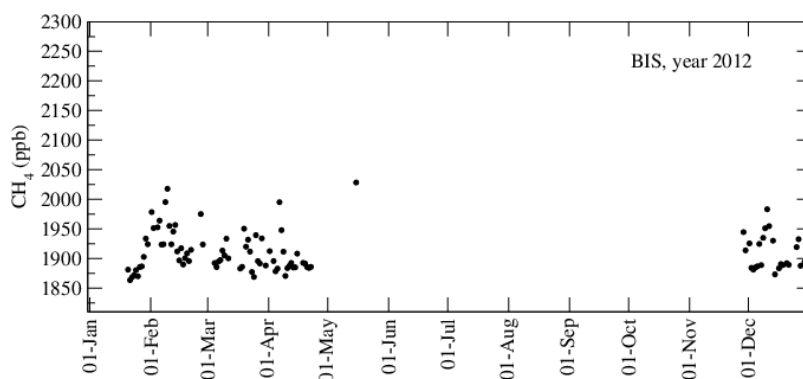


Figure S.1. Afternoon hourly means of CH₄ mixing ratios at Biscarosse (France) in 2012.

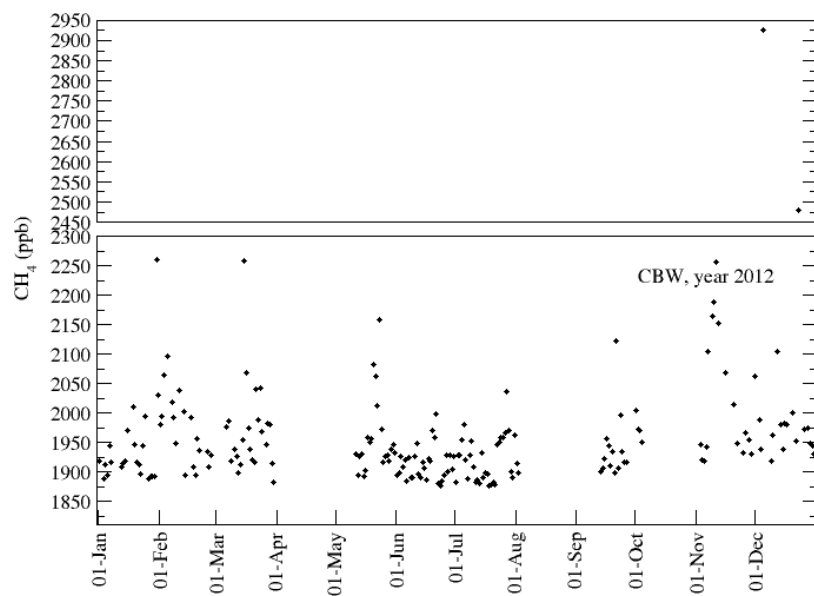


Figure S.2. Afternoon hourly means of CH_4 mixing ratios at Cabauw (The Netherlands) in 2012.

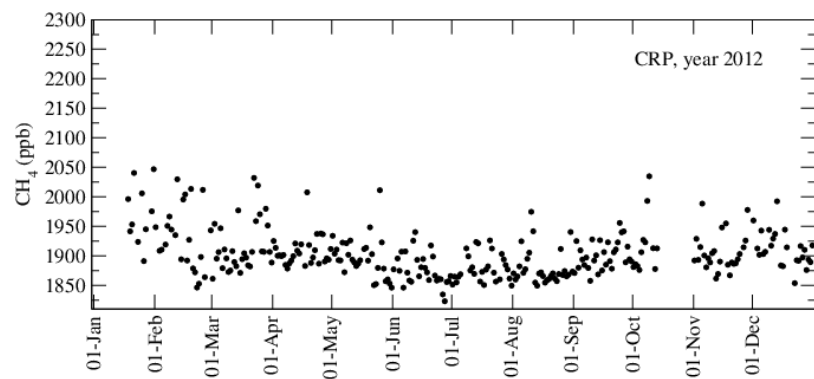


Figure S.3. Afternoon hourly means of CH_4 mixing ratios at Carnsore Point (Ireland) in 2012.

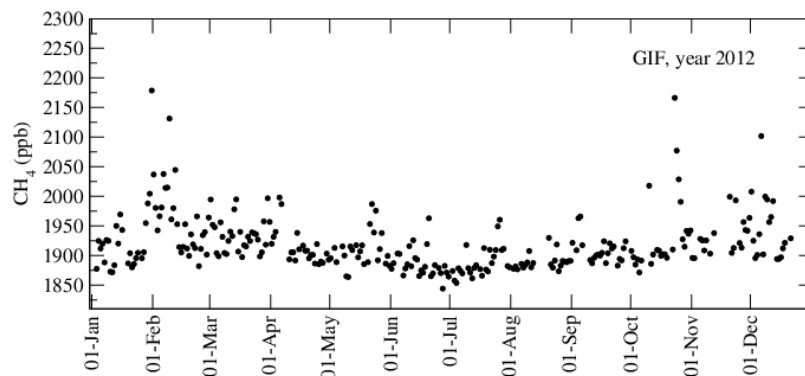


Figure S.4. Afternoon hourly means of CH_4 mixing ratios at Gif-sur-Yvette (France) in 2012.

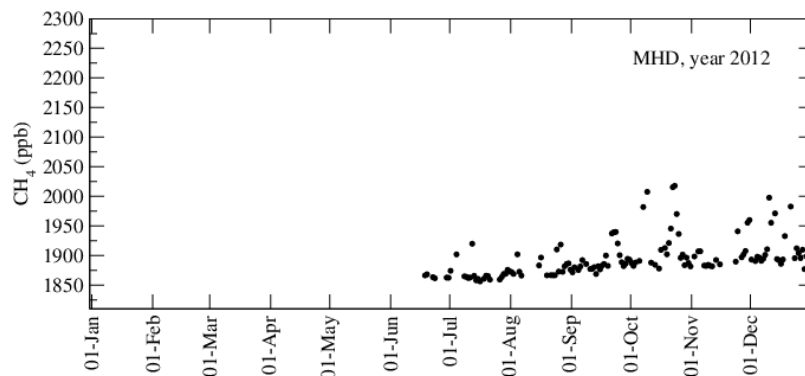


Figure S.5. Afternoon hourly means of CH_4 mixing ratios at Mace Head (Ireland) in 2012.

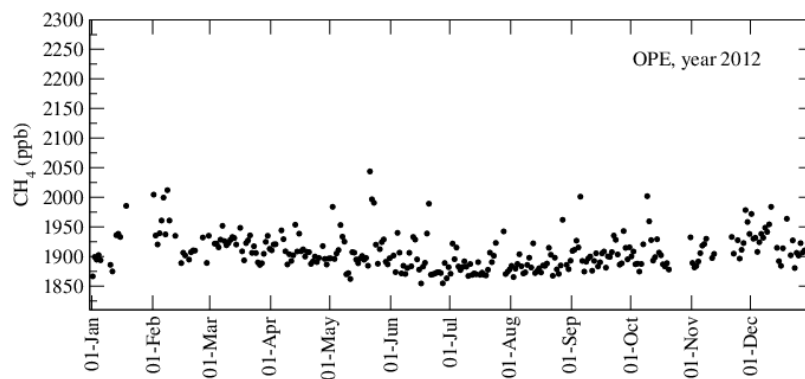


Figure S.6. Afternoon hourly means of CH_4 mixing ratios at the Observatoire Pérenne de l'Environnement (France) in 2012.

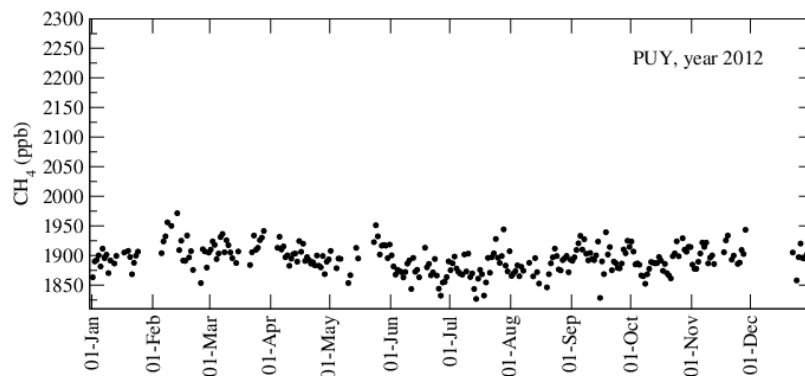


Figure S.7. Afternoon hourly means of CH_4 mixing ratios at Puy-de-Dôme (France) by a gas-chromatograph in 2012.

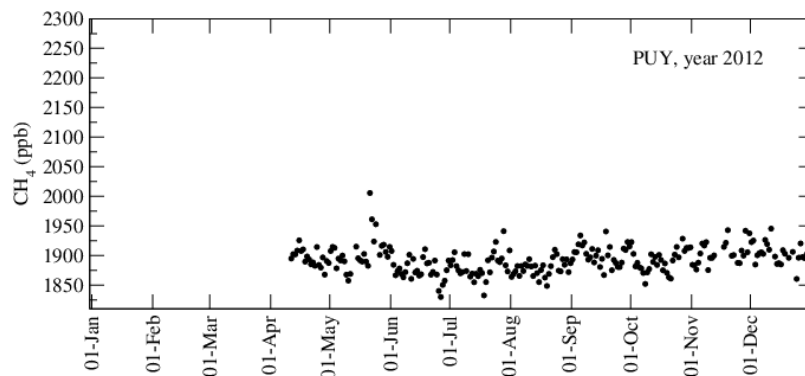


Figure S.8. Afternoon hourly means of CH_4 mixing ratios at Puy-de-Dôme (France) by a Picarro instrument in 2012.

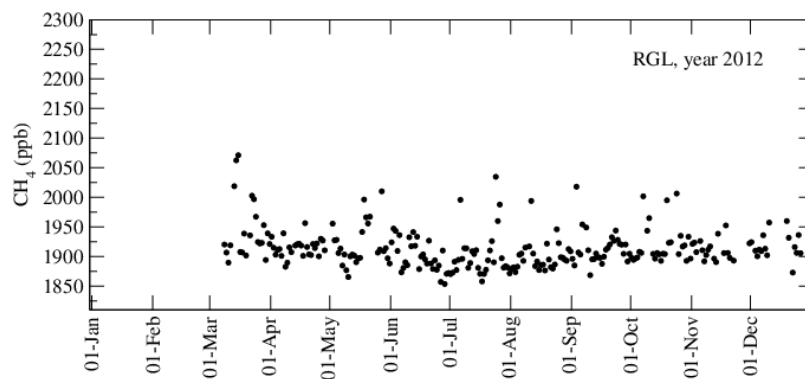


Figure S.9. Afternoon hourly means of CH_4 mixing ratios at Ridge Hill (United Kingdom) in 2012.

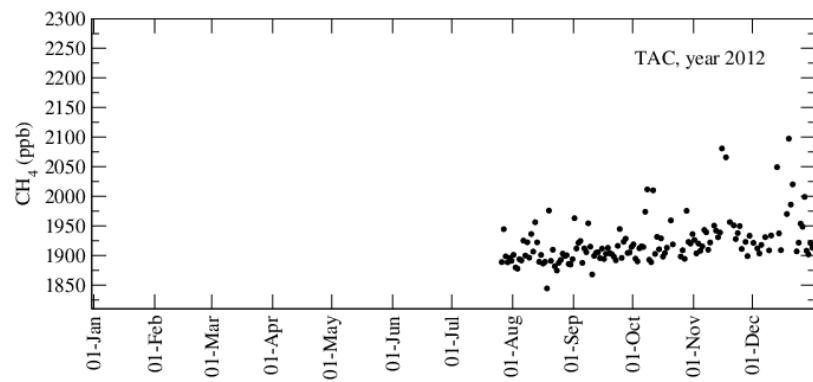


Figure S.10. Afternoon hourly means of CH_4 mixing ratios at Tacolneston (United Kingdom) in 2012.

S.2 Prior maps of CH₄ emissions by IER

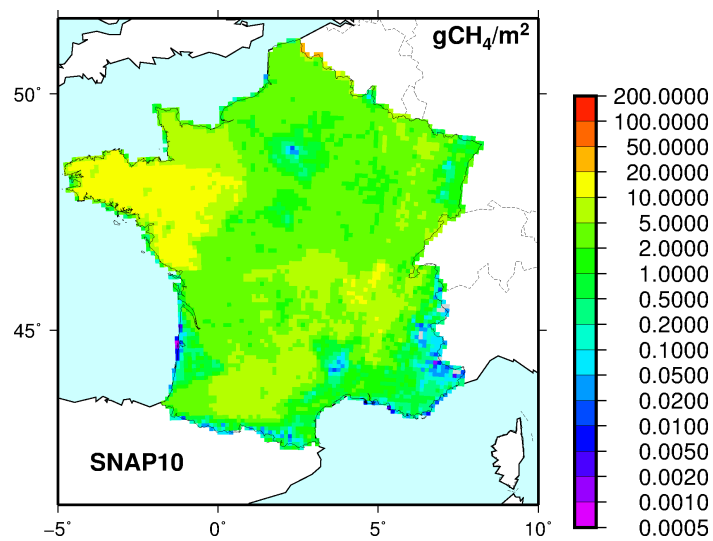


Figure S.11. SNAP 10: agriculture, yearly total in France in 2012: 2356 Gg.

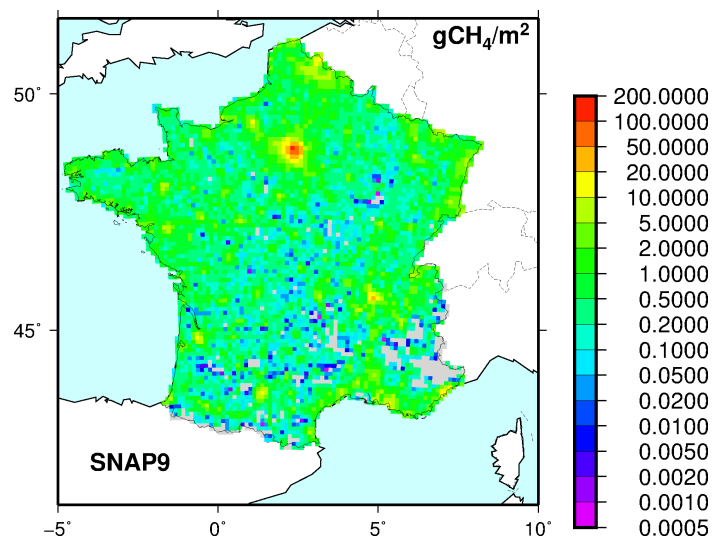


Figure S.12. SNAP 9: waste treatment and disposal, yearly total in France in 2012: 522 Gg.

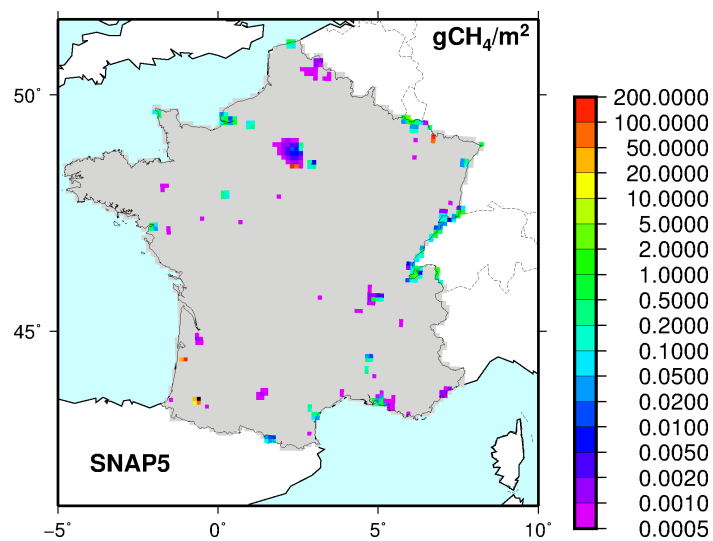


Figure S.13. SNAP 5: distribution of fossil fuel, yearly total in France in 2012: 94 Gg.

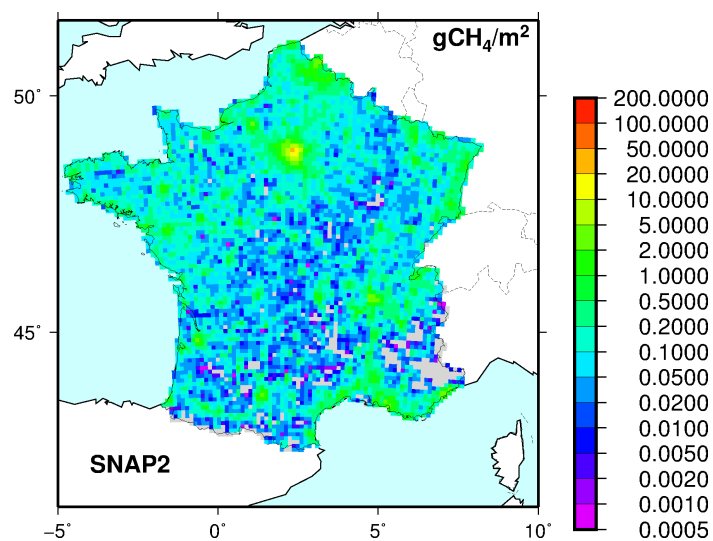


Figure S.14. SNAP 2: non-industrial combustion plants, yearly total in France in 2012: 107 Gg.

S.3 Information used at the measurement sites in 2012

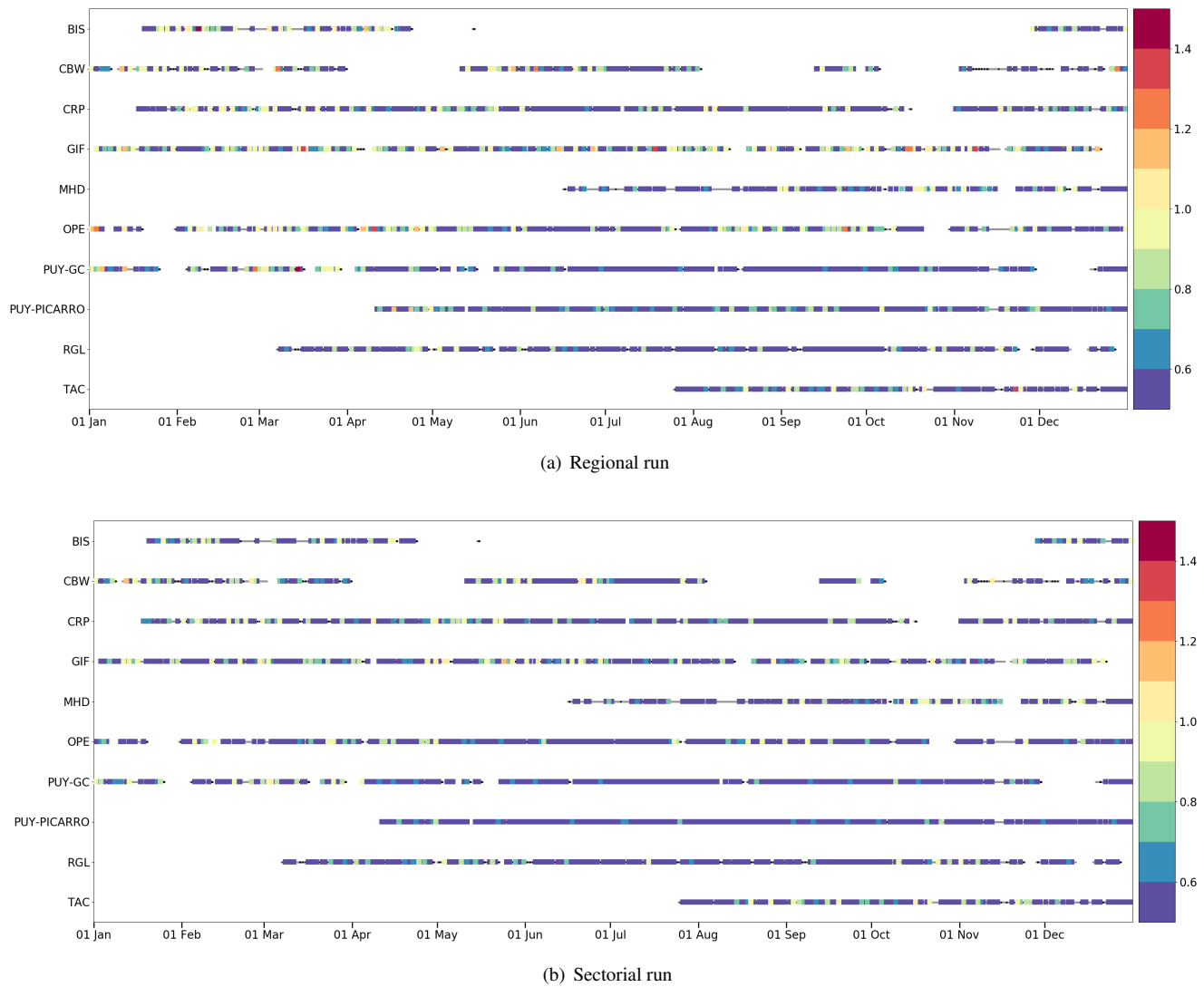


Figure S.15. Available hourly means of CH_4 mixing ratios and contribution of each site to the inversion of CH_4 emissions: available data in grey; selected data (between 14 h and 18 h UTC when the boundary layer height is higher than 500 m in the model) in black; on the colour scale, data actually used by the inversion i.e after filtering out plume situations and under-constrained areas: the value gives the information brought each day (from 0 to a maximum of 5 for the 5 hourly means between 14 and 18 h included); it is computed from the diagonal terms of the sensitivity matrix. A value of 1 means that the data assimilation system uses the equivalent of one hourly mean.