

Supplementary information

Significant Seasonal Change in Optical Properties by atmospheric humic-like substances (HULIS) in Water-Soluble Organic Carbon Aerosols

Heejun Han¹, Guebuem Kim¹

¹School of Earth and Environmental Sciences/RIO, Seoul National University, Seoul 08826, Korea

Correspondence to: Guebuem Kim (gkim@snu.ac.kr)

List of Figures

Figure S1. Map of the geographical region around the study site. Correlations between total PM concentration of the study site (PM_T) and PM_{10} concentrations of each region in Korea from March 2015 to January 2016.

Figure S2. Contour plots of fluorescence EEM spectra and excitation-emission loadings of (a) humic-like (C1), (b) protein-like (tryptophan) (C2), and (c) terrestrial humic-like (C3) components identified by PARAFAC model for the aerosol WSOM samples collected from March 2015 to January 2016 in Seoul.

Figure S3. Correlations between fluorescence intensity of (a) component 1 (C1; HULIS) and component 2 (C2), and between (b) C1 and component 3 (C3).

Figure S4. Temporal variations of (a) SO_4^{2-} , (b) Ca^{2+} , (c) K^+ , and (d) NO_x in the aerosol samples collected from March 2015 to January 2016 in Seoul.

Figure S5. Temporal variations of ratio of (a) K^+ to Ca^{2+} and (b) K^+ to SO_4^{2-} in the aerosol samples collected from March 2015 to January 2016 in Seoul.

Figure S6. Seasonal-averaged variations of fluorescence intensity of HULIS (C1), WSOC concentration, and UV radiation rate from cold (Oct–Jan) to transition (Mar–May and Sep–Oct), and to warm season (Jun–Sep) in Seoul.

Figure S7. Contour plots of fluorescence EEM spectra of non-irradiated initial samples collected during the (a) winter (Dec/30/15) and (b) summer (Aug/14/15), and UV irradiated (6 weeks) samples collected during the (c) winter (Dec/30/15) and (d) summer (Aug/14/15).

Figure S8. Absorbance spectra of the aerosol sample solutions collected during the (a) winter (Dec/30/15) and (b) summer (Aug/14/15), and relationship between fluorescence intensity of HULIS with (c) typical absorption spectrum (λ) at 240 nm, $a(240)$, and (d) at 350 nm, $a(350)$.

List of Tables

Table 1. Spectral characteristics of the fluorescence components identified by PARAFAC model for the aerosol samples.

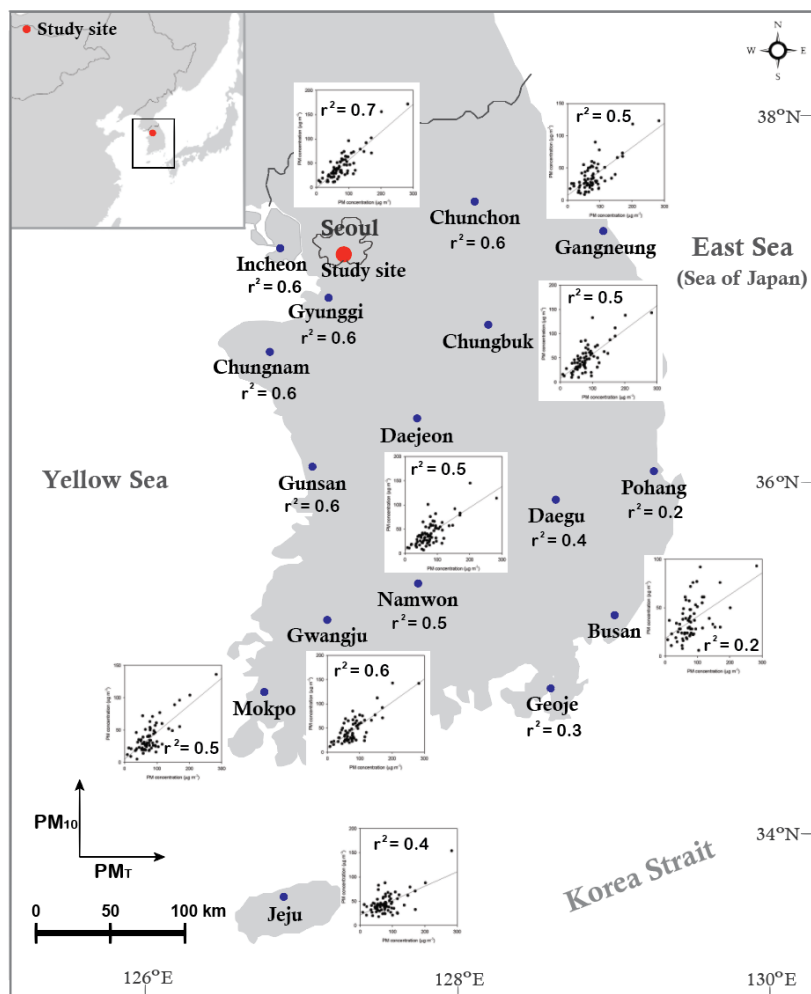


Figure 1: Map of the geographical region around the study site. Correlations between total PM concentration of the study site (PM_T) and PM₁₀ concentrations of each region in Korea from March 2015 to January 2016.

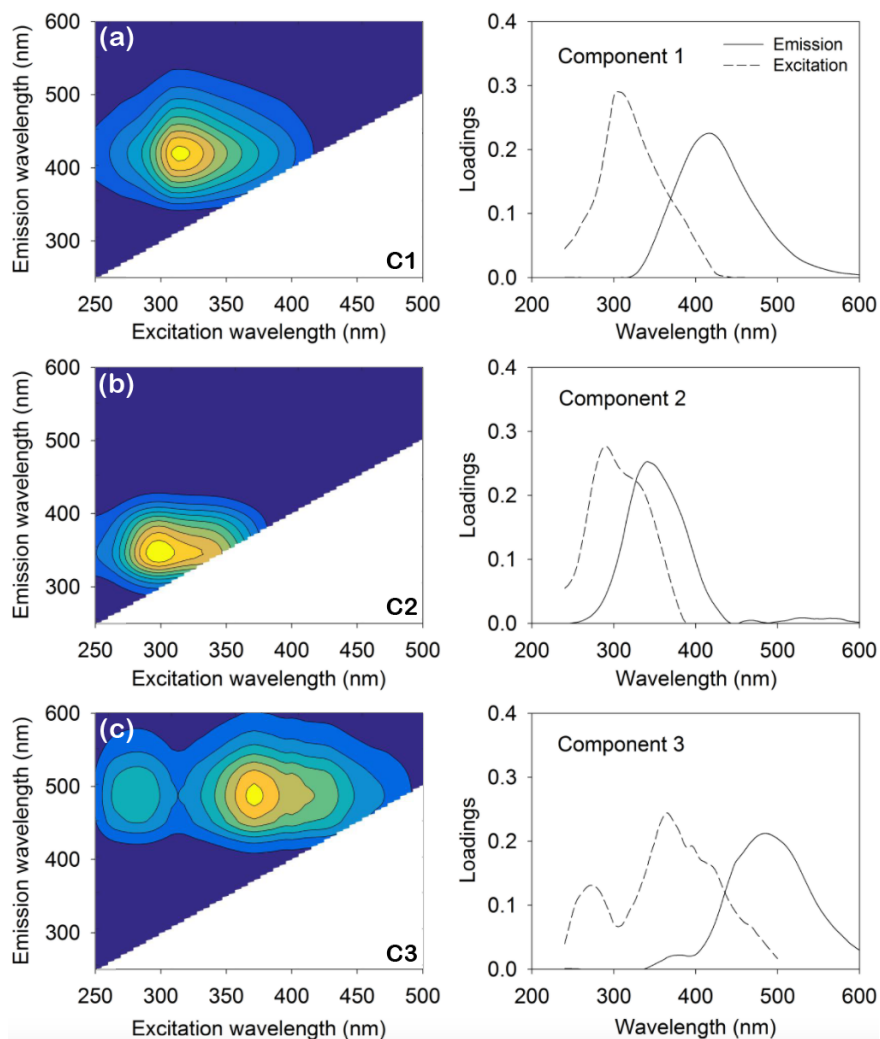


Figure 2: Contour plots of fluorescence EEM spectra and excitation-emission loadings of (a) humic-like (C1), (b) protein-like (tryptophan) (C2), and (c) terrestrial humic-like (C3) components identified by PARAFAC model for the aerosol WSOM samples collected from March 2015 to January 2016 in Seoul.

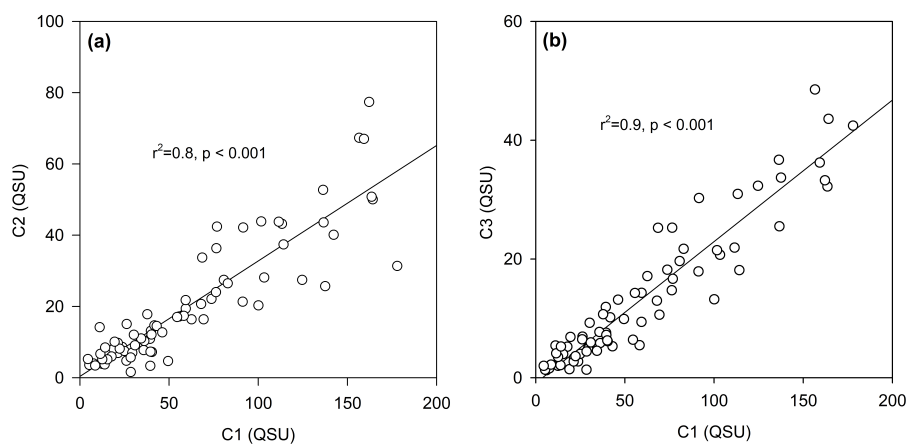


Figure S3: Correlations between fluorescence intensity of (a) component 1 (C1; HULIS) and component 2 (C2), and between (b) C1 and component 3 (C3).

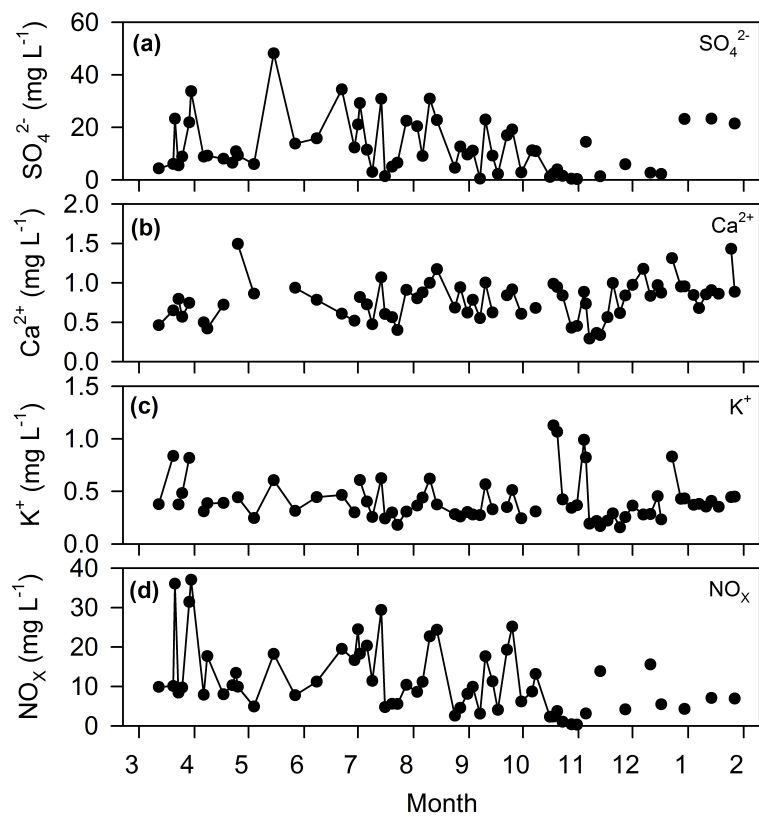


Figure S4: Temporal variations of (a) SO_4^{2-} , (b) Ca^{2+} , (c) K^+ , and (d) NO_x in the aerosol samples collected from March 2015 to January 2016 in Seoul.

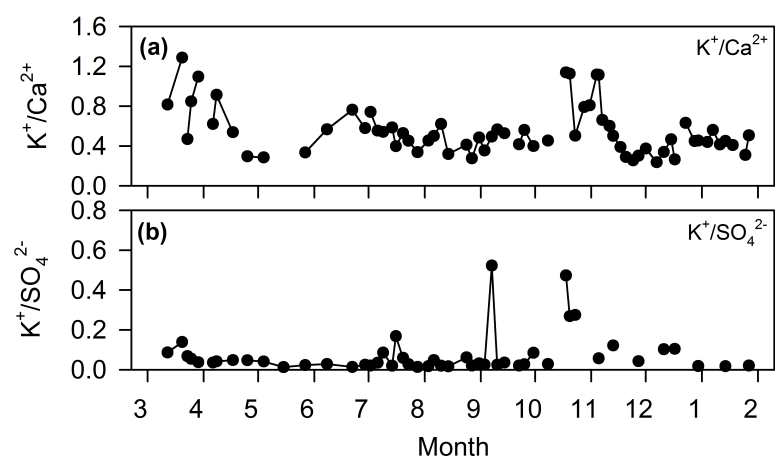


Figure S5: Temporal variations of ratio of (a) K^+ to Ca^{2+} and (b) K^+ to SO_4^{2-} in the aerosol samples collected from March 2015 to January 2016 in Seoul.

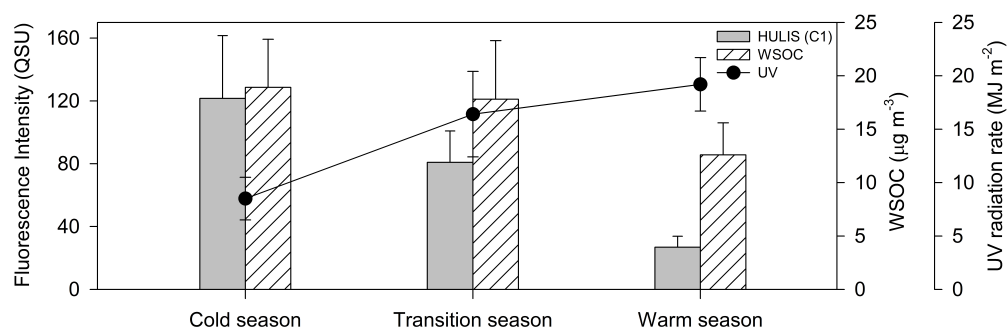


Figure S6: Seasonal-averaged variations of fluorescence intensity of HULIS (C1), WSOC concentration, and UV radiation rate from cold (Oct–Jan) to transition (Mar–May and Sep–Oct), and to warm season (Jun–Sep) in Seoul.

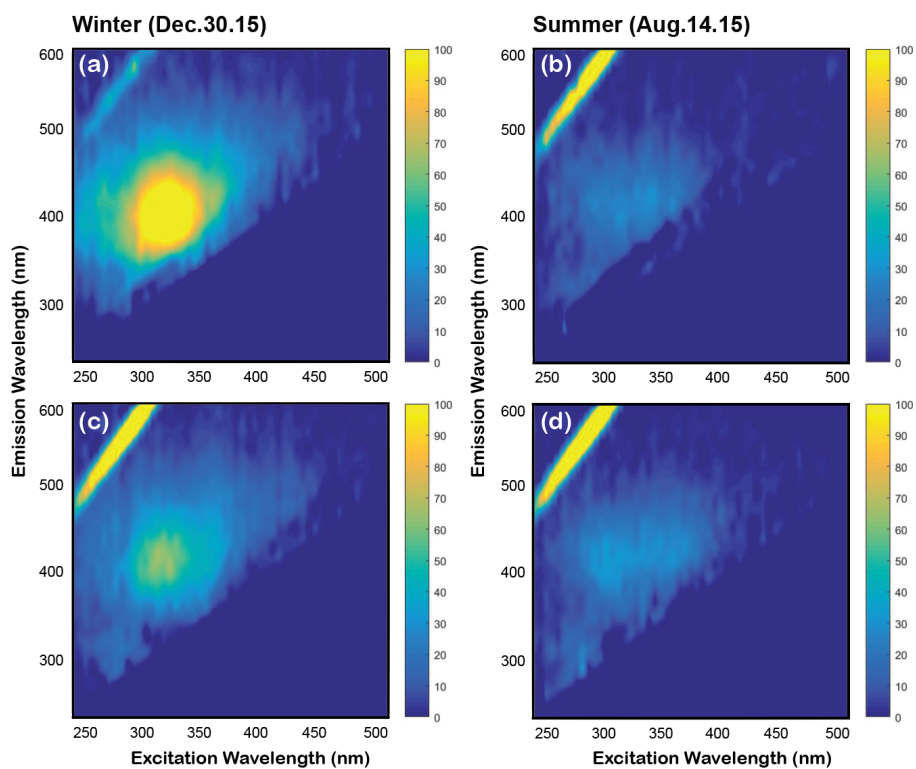


Figure S7: Contour plots of fluorescence EEM spectra of non-irradiated initial samples collected during the (a) winter (Dec/30/15) and (b) summer (Aug/14/15), and UV irradiated (6 weeks) samples collected during the (c) winter (Dec/30/15) and (d) summer (Aug/14/15).

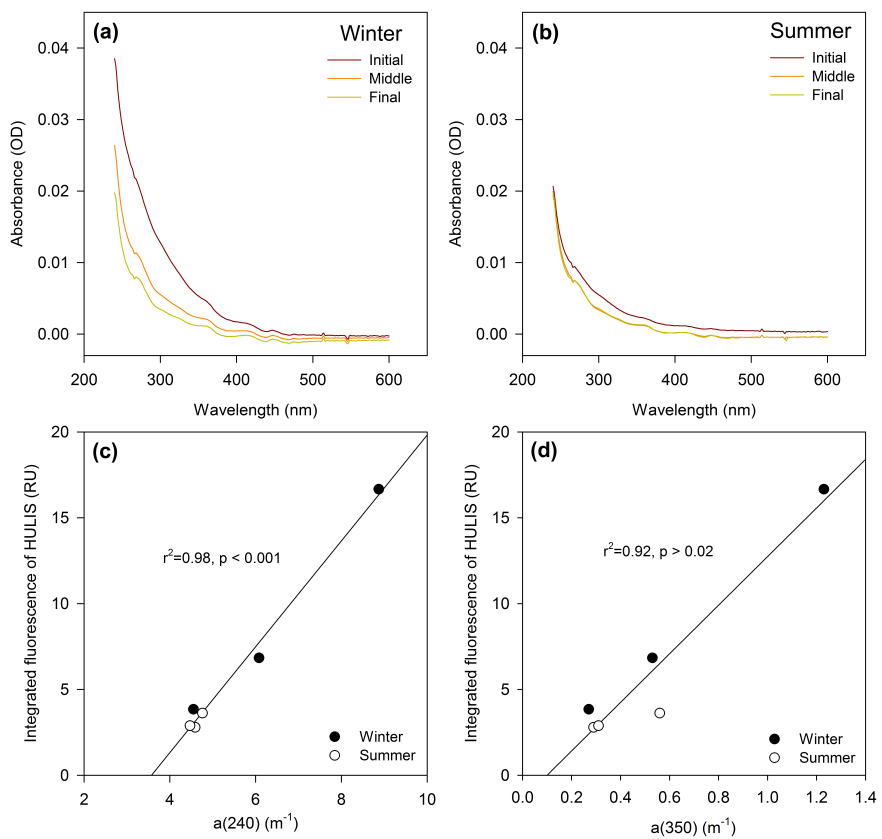


Figure S8: Absorbance spectra of the aerosol sample solutions collected during the (a) winter (Dec/30/15) and (b) summer (Aug/14/15), and relationship between fluorescence intensity of HULIS with (c) typical absorption spectrum (λ) at 240 nm, $a(240)$, and (d) at 350 nm, $a(350)$.

Table 1: Spectral characteristics of the fluorescence components identified by PARAFAC model for the aerosol samples.

Component	Ex/Em wavelengths [nm]	Peak	Description and origin
C1	305/416	M	Terrestrial humic-like component (Stedmon and Markager, 2005); HULIS (Pöhlker et al., 2012)
C2	290/340	T	Protein-like (tryptophan-like) component derived from autochthonous processes (Stedmon and Markager, 2005; Pöhlker et al., 2012)
C3	365/484	C	Terrestrial humic-like component (Stedmon and Markager, 2005)