

Impact of aerosols on ice crystal size

Bin Zhao¹, Kuo-Nan Liou¹, Yu Gu¹, Jonathan H. Jiang², Qinbin Li¹, Rong Fu¹, Lei Huang^{1,2}, Xiaohong Liu³, Xiangjun Shi³, Hui Su², and Cenlin He¹

[1] Joint Institute for Regional Earth System Science and Engineering and Department of Atmospheric and Oceanic Sciences, University of California, Los Angeles, California 90095, USA.

[2] Jet propulsion Laboratory, California Institute of Technology, Pasadena, California 91109, USA.

[3] Department of Atmospheric Science, University of Wyoming, Laramie, Wyoming 82071, USA.

Correspondence to: Bin Zhao (zhaob1206@ucla.edu) and Yu Gu (gu@atmos.ucla.edu)

Abstract.

The interactions between aerosols and ice clouds represent one of the largest uncertainties in global radiative forcing from pre-industrial time to the present. In particular, the impact of aerosols on ice crystal effective radius (R_{ei}), which is a key parameter determining ice clouds' net radiative effect, is highly uncertain due to limited and conflicting observational evidence. Here we investigate the effects of aerosols on R_{ei} under different meteorological conditions using 9-year satellite observations. We find that the responses of R_{ei} to aerosol loadings are modulated by water vapor amount in conjunction with several other meteorological parameters. While there is a significant negative correlation between R_{ei} and aerosol loading in moist conditions, consistent with the “Twomey effect” for liquid clouds, a strong positive correlation between the two occurs in dry conditions. Simulations based on a cloud parcel model suggest that water vapor modulates the relative importance of different ice nucleation modes, leading to the opposite aerosol impacts between moist and dry conditions. When ice clouds are decomposed into those generated from deep convection and formed in-situ, the water vapor modulation remains in effect for both ice cloud types, although the sensitivities of R_{ei} to aerosols differ noticeably between them due to distinct formation mechanisms. The water vapor modulation can largely explain the difference in the responses of R_{ei} to aerosol

loadings in various seasons. A proper representation of the water vapor modulation is essential for an accurate estimate of aerosol-cloud radiative forcing produced by ice clouds.

1 Introduction

Aerosols are known to interact with clouds and hence affect Earth's radiative balance, which represents the largest uncertainty in global radiative forcing from pre-industrial time to the present (IPCC, 2013). The interactions between aerosols and liquid as well as mixed-phase clouds have been extensively studied (Rosenfeld et al., 2014; Seinfeld et al., 2016; Zhao et al., 2017b), however, much less attention has been paid to ice clouds, among which cirrus clouds are globally distributed and present at all latitudes and seasons with a global cloud cover of about 30% (Wylie et al., 1994; Wylie et al., 2005). Ice clouds, formed with various types of aerosols serving as ice nucleating particles (INPs) (Murray et al., 2012; Hoose and Moehler, 2012), act as a major modulator of global radiation budget and hence climatic parameters (e.g., temperature and precipitation) by reflecting solar radiation back to space (solar albedo effect, cooling) and by absorbing and re-emitting long-wave terrestrial radiation (greenhouse effect, warming); the balance between the two is dependent on ice cloud properties, particularly ice crystal size (Liou, 2005; Waliser et al., 2009; Fu and Liou, 1993). Limited estimates (IPCC, 2013; Liu et al., 2009; Fan et al., 2016) have shown that the global aerosol-cloud radiative forcing produced by ice clouds can be very significant but highly uncertain, ranging from -0.67 W m^{-2} to 0.70 W m^{-2} . For reference purposes, the best estimate of global aerosol-cloud radiative forcing produced by all cloud types is -0.45 W m^{-2} (90% confidence interval $[-1.2, 0 \text{ W m}^{-2}]$) according to the Intergovernmental Panel on Climate Change (IPCC) (Fig. TS.6 in IPCC, 2013).

The substantial uncertainty in aerosol-ice cloud radiative forcing arises largely from a poor understanding of the aerosol effects on ice cloud properties, in particular ice crystal effective radius (R_{ei}), a key parameter determining ice clouds' net radiative effect (Fu and Liou, 1993). Very limited observational studies (Jiang et al., 2008; Jiang et al., 2011; Su et al., 2011; Chylek et al., 2006; Massie et al., 2007) have investigated the response of R_{ei} to aerosol loadings. Most of them (Jiang et al., 2008; Jiang et al., 2011; Su et al., 2011) found that polluted clouds involved smaller R_{ei} than clean clouds, in agreement with the classical "Twomey effect" for liquid clouds (Twomey, 1977), which states that more aerosols can result in more and smaller cloud droplets and hence larger cloud albedo. In contrast, a couple of studies over the Indian Ocean (Chylek et al., 2006; Massie et al., 2007) reported that R_{ei} is

roughly unchanged (Massie et al., 2007) or larger (Chylek et al., 2006) during more polluted episodes. It has been shown that increased aerosols (and thus INPs) lead to enhanced heterogeneous nucleation, which is associated with larger and fewer ice crystals as compared to the homogeneous nucleation counterpart (DeMott et al., 2010; Chylek et al., 2006). However, the reasons for disagreement among various studies, and the controlling factors for different aerosol indirect effects are yet to be explored, therefore the sign and magnitude of the overall aerosol effects remain in question.

With the objective to resolve the substantial uncertainty, we systematically investigate the effects of aerosols on R_{ei} of two types of ice clouds under different meteorological conditions using 9-year continuous satellite observations from 2007 to 2015. The study region is East Asia and its surrounding areas (15° - 55° N, 70° - 135° E; Fig. S1), where aerosol loadings can range from small to extremely large values in different locations and time periods (Wang et al., 2017).

2 Data and Methods

2.1 Sources of observational data

We obtain collocated aerosol/cloud measurements primarily from MODIS (Moderate Resolution Imaging Spectroradiometer) onboard the Aqua satellite, and CALIPSO (Cloud-Aerosol Lidar and Infrared Pathfinder Satellite Observations), as summarized in Table S1.

We acquire aerosol optical depth (AOD) retrievals at 550 nm from the level 2 MODIS aerosol product (MYD04, Collection 6) at a resolution of $10 \text{ km} \times 10 \text{ km}$. The accuracy of AOD (denoted by τ) retrievals has been estimated to be about $\pm(0.05 + 0.15\tau)$ over land and $\pm(0.03 + 0.05\tau)$ over ocean (Levy et al., 2010; Remer et al., 2005). Similarly, we obtain cloud effective radius (equivalent to R_{ei} in the case of ice phase) and cloud phase determined by the “cloud optical property” algorithm from the level 2 MODIS cloud product (MYD06, Collection 6) at a $1 \text{ km} \times 1 \text{ km}$ resolution (Platnick et al., 2015). The MYD06 product provides an estimate of the uncertainty in R_{ei} for each pixel, which takes into account a variety of error sources including 1) instrument calibration, 2) atmospheric corrections, 3) surface spectral reflectance, and 4) forward radiative transfer model, e.g., the size distribution assumption (Platnick et al., 2015). The pixel-level R_{ei} uncertainties for the samples used in this study are $6.41\% \pm 4.97\%$ (standard deviation). In the subsequent analysis (Section 3.1-3.3) we use mean R_{ei} within certain AOD bins and the uncertainties are smaller than those for individual pixels. Also, we focus on R_{ei} changes in response to aerosol loading instead of

1 absolute R_{ei} values. For these reasons, the R_{ei} uncertainty ranges are much smaller than the
2 magnitude of R_{ei} trends depicted in this study (see Figs. 1 and 3). We note that the current
3 uncertainty evaluation has not considered the assumptions of ice crystal habit (shape), which
4 will be discussed in Section 3.4. Stein et al. (2011) compared the MODIS R_{ei} data with the
5 “DARDAR” retrieval product (Delanoe and Hogan, 2008, 2010) based on CloudSat and
6 CALIPSO measurements. The default DARDAR retrievals of R_{ei} are mostly larger than
7 MODIS’s values, which is partly attributable to different assumptions of ice crystal habit in
8 these two products. When the DARDAR retrievals are adjusted to mimic the MODIS
9 assumption of ice crystal habit, the joint distribution of individual R_{ei} retrievals has its peak
10 close to the ratio of 1 between the two products, indicating a much better agreement (Stein et
11 al., 2011). Nevertheless, the overall shape of the distributions indicates that the MODIS
12 retrievals mostly lie between 10 and 50 μm , while both DARDAR products regularly retrieve
13 R_{ei} above 60 μm . Hong and Liu (2015) reveals that the large R_{ei} values in DARDAR
14 retrievals are predominantly associated with large cloud optical thickness (> 3.0 , particularly
15 > 20). In this study, however, we focus on ice-only clouds (mostly cirrus clouds), which
16 typically have an optical thickness less than 5.0 (see Fig. 2). For this reason, the agreement in
17 R_{ei} between MODIS and DARDAR could be better for the type of cloud used in our analysis.

18 The CALIPSO satellite flies behind Aqua by about 75 seconds and carries CALIOP
19 (Cloud-Aerosol Lidar with Orthogonal Polarization), a dual-wavelength near-nadir
20 polarization lidar (Winker et al., 2007). CALIOP has the capability to determine the global
21 vertical distribution of aerosols and clouds. In this study, we make use of the CALIPSO level
22 2 merged aerosol and cloud layer product (05kmMLay, version 4.10) with an along-track
23 resolution of 5 km and a high vertical resolution of 30-60 m below 20.2 km. The variables we
24 employ for the investigation include aerosol/cloud layer numbers, layer base temperature,
25 layer top/base height, layer aerosol/cloud optical depth, feature classification flags (containing
26 the flags of “cloud type” and “aerosol type”), and two quality control (QC) flags named the
27 cloud aerosol discrimination (CAD) score, and extinction QC (Atmospheric Science Data
28 Center, 2012).

29 To examine the impact of meteorological conditions on aerosol- R_{ei} relations, we also
30 obtain vertically-resolved pressure, relative humidity (RH), and temperature from the
31 CALIPSO aerosol profile product (05kmAPro, version 4.10), and middle cloud layer
32 temperature (T_{mid}) from the CALIPSO 05kmMLay product (version 4.10). The other
33 meteorological parameters (see Table S1) are collected from the NCEP’s Final Analysis

reanalysis data (ds083.2), which are produced at a $1^\circ \times 1^\circ$ resolution every six hours. Since Aqua and CALIPSO satellites overpass the study areas between 5:00-8:00 UTC, the ds083.2 datasets at 6:00 UTC are utilized.

2.2 Processing of observational data

In the analysis, we identify a CALIPSO profile layer at 5 km resolution as ice cloud when its “cloud type” is “cirrus” or its layer base temperature is colder than -35°C . Previous studies (Mace et al., 2001; Mace et al., 2006; Kramer et al., 2016) have distinguished two major types of ice clouds characterized by distinct formation mechanisms: ice clouds generated from deep convection (convection-generated ice clouds) and those generated in-situ due to updraft caused by frontal systems, gravity waves, or orographic waves (in-situ ice clouds). Considering that the impact of aerosols could differ according to formation processes, we separate these two ice cloud types using CALIPSO data and a similar approach to that developed by Riihimaki and McFarlane (2010). First, we group ice cloud profiles at 5 km resolution into objects using the criteria that neighboring ice cloud profiles must vertically overlap (the base of the higher cloud layer is lower than the top of the lower cloud layer) and be separated by no more than 1 profiles horizontally (i.e., distance ≤ 5 km). Only single-layer ice cloud objects with valid QA flags ($20 \leq \text{CAD score} \leq 100$, Extinction QC = 0/1) are accepted in this study. We subsequently classify ice cloud objects into three types, i.e., convection-generated, in-situ, and other ice clouds, according to their connection to other clouds. The criteria to determine whether two clouds are connected are consistent with that used to group ice cloud objects, i.e., the neighboring profiles must vertically overlap and horizontally separated by no more than 5 km. Convection-generated ice clouds consist of ice cloud objects that are connected to larger clouds that include deep convective cloud profiles (i.e., the “cloud type” flag is “deep convection”). An ice cloud object is classified as in-situ if at least 95% of a cloud consists of a single ice cloud object which is at least 25 km (i.e., 5 profiles) in the horizontal direction, and none of the remaining profiles are deep convection type. The remaining ice cloud objects are categorized as the “other” type. We should be cautious that the convection-generated and in-situ ice clouds may not be perfectly separated using the approach described above. For example, the in-situ ice clouds identified here could include convectively-detained objects that are no longer connected with their parent deep convection, and convectively-detained objects whose parent deep convective clouds do not overlap with CALIPSO’s track. The convection-generated ice clouds may also be

1 contaminated by some in-situ formed ice cloud objects that happen to be spatially connected
2 to deep convection. However, the classification scheme appears to be reasonable, as indicated
3 by the distinct properties of the two ice cloud types shown in Section 3.2.

4 We then match collocated MODIS/Aqua and CALIPSO observations by averaging
5 retrieved AOD and R_{ei} from MODIS level 2 products (MYD04 and MYD06) within 30 km
6 and 5 km radii of each 5 km ice cloud profile from CALIPSO, respectively. The averaging is
7 done to achieve near-simultaneous aerosol and cloud measurements, since AOD observations
8 from MODIS are missing at cloudy conditions. As AOD variation has a large spatial length
9 scale of 40-400 km (Anderson et al., 2003), it is averaged within a larger radius than that for
10 R_{ei} to increase the number of data points with valid AOD observations. The average R_{ei} is
11 calculated based on the pixels with “cloud phase” of ice. Apart from the column AOD, we
12 also need to obtain AOD of the aerosol layers mixed with ice cloud layers, as in-situ ice
13 clouds are primarily affected by aerosols at the ice cloud height. For this purpose, we use the
14 CALIPSO 05kmMLay product to select the aerosol layers which have valid QA flags (-100
15 \leq CAD score ≤ -20 , Extinction QC = 0/1; Huang et al., 2013) and are vertically less than
16 0.25 km away from the ice cloud layer following Costantino and Breon (2010). The AOD of
17 these aerosol layers are averaged within a 30 km radius of ice cloud profiles. The
18 meteorological parameters from the NCEP datasets (ds083.2) are matched to the CALIPSO
19 resolution by determining which NCEP’s grid contains a certain CALIPSO 5 km profile.
20 Finally, we eliminate profiles with column AOD > 1.5 to reduce the potential effect of cloud
21 contamination (Wang et al., 2015).

22 Convection-generated ice clouds are generated by convective updraft originating from
23 lower troposphere and are therefore affected by aerosols at various altitudes, whereas in-situ
24 ice clouds are primarily dependent on aerosols near the cloud height. For this reason, we use
25 column AOD and layer AOD mixed with ice clouds as proxies for aerosols interacting with
26 convection-generated and in-situ ice clouds, respectively. We also investigate the overall
27 effect of aerosols on all types of ice clouds. In this case, column AOD is used as a proxy for
28 aerosol loading affecting ice clouds following a number of previous studies (Jiang et al., 2011;
29 Massie et al., 2007; Ou et al., 2009). The rationale is that the MODIS-detected AOD generally
30 shows a close correlation to the MLS (Microwave Limb Sounder)-observed CO concentration
31 in ice clouds (Jiang et al., 2008; Jiang et al., 2009), which in turn correlates well with the
32 aerosol loading mixed with clouds in accordance with both aircraft measurements and
33 atmospheric modeling (Jiang et al., 2009; Li et al., 2005; Clarke and Kapustin, 2010). After

the preceding screening, about 2.73×10^4 , 1.09×10^4 , and 5.68×10^4 profiles are used to analyze the relationships between column/layer AOD and R_{ei} of convection-generated, in-situ, and all types of ice clouds. The available profiles for in-situ ice clouds are fewer because aerosols mixed with ice clouds are often optically thin or masked by clouds and hence may not be fully detected by CALIPSO.

2.3 Cloud parcel model simulation

To support the key findings (i.e., the water vapor modulation of R_{ei} -aerosol relations) from satellite observations and elucidate the underlying physical mechanisms, we perform model simulations using a cloud parcel model, which was originally developed by Shi and Liu (2016) and updated in this study to incorporate immersion nucleation. The model mimics formation and evolution of in-situ ice clouds in an adiabatically rising air parcel. The model's governing equations that describe the evolution of temperature, pressure, and mass mixing ratio, number concentration, and size of ice crystals can be found in Pruppacher and Klett (1997). The main microphysical processes considered include homogeneous nucleation and two modes of heterogeneous nucleation (deposition and immersion nucleation), depositional growth, sublimation, and sedimentation. The rate of homogeneous nucleation of supercooled sulfate droplets is calculated based on the water activity of sulfate solution (Shi and Liu, 2016). The dry sulfate aerosol is assumed to follow a lognormal size distribution with a geometric mean radius of 0.02 μm . The deposition nucleation on externally mixed dust (deposition INP) and immersion nucleation of coated dust (immersion INP) are parameterized following the work of Kuebbeler et al. (2014); the critical ice supersaturation ratios are 10% ($T \leq 220 \text{ K}$) or 20% ($T > 220 \text{ K}$) for the former, and 30% for the latter. Anthropogenic INPs are not included in the cloud parcel model following recent studies (Shi and Liu, 2016; Kuebbeler et al., 2014). This is because 1) ice nucleation experiments for black carbon show contradicting results (Hoose and Moehler, 2012), and 2) ice nucleation parameterizations for anthropogenic aerosol constituents other than black carbon have not been adequately developed under ice cloud conditions due to limited experimental data. Also, we find that the relationships between R_{ei} and loadings of dust aerosols are similar to those between R_{ei} and loadings of all aerosols (Section 3.1). As such, we argue that the general pattern of simulation results would remain unchanged if more INPs were incorporated. The accommodation coefficient of water vapor deposition on ice crystals is assumed to be 0.1 (Shi and Liu, 2016). The sedimentation velocity of ice crystals is parameterized following Ikawa and Saito (1991). The model

neglects some ice microphysical processes such as aggregational growth of ice crystals. Although aggregational growth can affect the concentration and size of ice crystals, its effects should be relatively small in terms of the response of R_{ei} to aerosol loading since this process is not strongly dependent on aerosols.

We conduct two groups of numerical experiments with different available water amount for ice formation, denoted by initial water vapor mass mixing ratios (pv). Each group is comprised of 100 sub-groups with initial sulfate number concentrations increasing linearly from 5 cm^{-3} to 500 cm^{-3} . The concentration ratios of externally mixed dust (deposition INP), coated dust (immersion INP), and sulfate (not INP) are prescribed with values of 0.75:0.25:10000 for all experiments, since INPs represent only 1 in 10^3 to 10^6 of ambient particles (Fan et al., 2016). In each sub-group, we conduct 100 one-hour experiments driven by different vertical velocity spectra following the approach described by Shi and Liu (2016). The vertical air motions at a 10 s resolution were retrieved from Millimeter Wave Cloud Radar (MMCR) observations at a site located in the Southern Great Plains (SGP; 36.6°N , 97.5°W) for a 6 h period (Shi and Liu, 2016). For each of the 100 experiments, we randomly sample a 1 h time windows from the 6 h vertical velocity retrievals, subtract the arithmetical mean, and adjust the standard deviation to 0.25 m s^{-1} . The sampled vertical velocity spectra are subsequently added a constant large-scale updraft velocity of 0.02 m s^{-1} to drive the parcel model. The initial pressure and temperature for all experiments are set at 250 hPa and 220 K, respectively.

The model assumes that the air parcel has no mass or energy exchange with the environment except for sedimentation of ice crystals, which is not realistic. For example, the outburst of homogeneous nucleation in an air parcel can quickly exhaust supersaturation and take water vapor from surrounding parcels. To conceptually mimic this process, we have divided the 100 experiments within a sub-group into 10 combinations, each consisting of 10 experiments. It is assumed that the air parcels in the same combination can exchange water vapor and reach equilibrium. Consequently, the occurrence of homogeneous nucleation in one parcel will suppress the homogeneous nucleation in the connected parcels due to the depletion of water vapor.

The ice crystal number concentration (N_i) and R_{ei} at the end of the experiments are used to construct the aerosol-cloud relationships. The N_i for a given aerosol number concentration (i.e., a sub-group of experiments) is calculated using an arithmetical mean of the 100 experiments, while R_{ei} is calculated from mean N_i and mean ice volume.

3 Results and Discussion

3.1 Relationships between R_{ei} and aerosols modulated by meteorology

In this section we discuss the impact of aerosols on R_{ei} , with both ice cloud types lumped together, based on satellite data (Fig. 1). The aerosol effects on individual ice cloud types will be discussed in the next section. The dash line in Fig. 1a shows the overall changes in R_{ei} with AOD. R_{ei} generally increases with increasing AOD for moderate AOD range (< 0.5), and decreases slightly for higher AOD. This relationship is attributable to complex interactions between meteorological conditions and microphysical processes, which will be detailed below.

Having shown overall response of R_{ei} to AOD, we investigate whether the responses are similar under different meteorological conditions. We plot the R_{ei} -AOD relationships separately for different ranges of meteorological parameters, as shown in Fig. 1a-c and Fig. S2. Included in the analysis are most meteorological parameters that can potentially affect ice cloud formation and evolution, including the relative humidity averaged between 100 hPa and 440 hPa ($RH_{100-440hPa}$), convective available potential energy (CAPE) which is an indicator of convective strength, middle cloud layer temperature (T_{mid}), wind speed and direction at ice cloud height and at surface, vertical velocity below and at ice cloud height, and vertical wind shear. For some meteorological parameters, e.g., vertical wind shear and vertical velocity at 300/500 hPa, the curve shapes are similar for different meteorological ranges. However, for $RH_{100-440hPa}$, CAPE, and U-component of wind speed at 200 hPa (U_{200}), the curve shapes vary significantly according to different ranges (Fig. 1a-c). As illustrated by $RH_{100-440hPa}$ and CAPE, R_{ei} decreases significantly with increasing AOD for high $RH_{100-440hPa}$ ($> 65\%$) or CAPE (> 500 J/kg) following the rule of “Twomey effect”. In contrast, for low $RH_{100-440hPa}$ ($< 45\%$) or CAPE (0 J/kg), R_{ei} generally increases sharply with AOD; an exception is that at a large AOD range (> 0.5), a further increase in AOD could decrease R_{ei} slightly. To the best of our knowledge, the strong dependency of R_{ei} -AOD relationships on meteorological conditions for ice clouds has been demonstrated for the first time.

These correlations, however, may not be necessarily attributed to aerosols. It is theoretically possible that certain meteorological parameters lead to simultaneous changes in both AOD and ice cloud properties and produce a correlation between these two parameters. To rule out this possibility, we examine the responses of AOD to the above-mentioned meteorological parameters (Fig. S3) and find that AOD does not serve as proxy for them since it varies by less than 0.2 in response to variation in any meteorological parameter. Furthermore, we bin observed R_{ei} according to $RH_{100-440hPa}$, CAPE, and U_{200} , for different

1 ranges of AOD (Fig. 1d-f). Using $RH_{100-440hPa}$ as an example, a larger AOD corresponds to
 2 smaller R_{ei} for a given $RH_{100-440hPa}$ within the larger $RH_{100-440hPa}$ range, whereas an increase in
 3 AOD enlarges R_{ei} for a given $RH_{100-440hPa}$ within the smaller $RH_{100-440hPa}$ range. Similar results
 4 are found for CAPE and U200 (Fig. 1d-f), demonstrating the role of aerosols in altering R_{ei}
 5 under the same meteorological conditions. Moreover, the cloud contamination in AOD
 6 retrieval (Kaufman et al., 2005) or aerosol contamination in cloud retrieval (Brennan et al.,
 7 2005) is not likely to lead to observed R_{ei} -AOD correlations, because the retrieval biases
 8 cannot explain the opposite correlations under different meteorological conditions. Therefore,
 9 we conclude that both the positive and negative correlations between AOD and R_{ei} are
 10 primarily attributed to the aerosol effect. This causality is also supported by numerical
 11 simulations using a cloud parcel model to be described in Section 3.4. Furthermore, we find
 12 that the three meteorological parameters which pose the strongest impact on R_{ei} -AOD
 13 relationships ($RH_{100-440hPa}$, CAPE, and U200) are closely correlated with each other, with
 14 correlation coefficients between each two exceeding ± 0.5 and p-value less than 0.01 (Table
 15 S2). In fact, all these three parameters are closely related to the amount of water vapor
 16 available for ice cloud formation. It is obvious that $RH_{100-440hPa}$ is an indicator of water vapor
 17 amount. CAPE represents convective strength and hence water vapor lifted to ice cloud
 18 heights; U200 is the zonal wind at 200 hPa as opposed to the meridional wind, and denotes
 19 the origin of air mass such as moist Pacific Ocean (negative U200, easterly wind) or dry
 20 inland continent (positive U200, westerly wind). Therefore, water vapor amount is likely a
 21 key factor which modulates the observed impact of aerosols on R_{ei} .

22 The proposed mechanism for the water vapor modulation is that different water vapor
 23 amount substantially alters the relative significance of different ice nucleation modes, thereby
 24 resulting in different R_{ei} -AOD relationships. Specifically, ice crystals form via two primary
 25 pathways: homogeneous nucleation of liquid cloud droplets (or supercooled solution particles)
 26 below about -35°C , and heterogeneous nucleation triggered by INPs (IPCC, 2013; DeMott et
 27 al., 2010). INPs possess surface properties favorable to lowering the ice supersaturation ratio
 28 required for freezing (IPCC, 2013; DeMott et al., 2010), therefore the onset of heterogeneous
 29 nucleation is generally easier and earlier in rising air parcels. Under moist conditions (high
 30 $RH_{100-440hPa}$, high CAPE, or negative U200), an air parcel could experience longer time for
 31 supersaturation development, increasing the odds of exceeding the supersaturation threshold
 32 for homogeneous ice nucleation. Therefore, homogeneous nucleation dominates in this case,
 33 and more aerosols could give rise to more numerous and smaller ice crystals, which is in

1 connection with the “Twomey effect” for liquid clouds. Under dry conditions, however, the
2 earlier onset of heterogeneous nucleation can strongly compete with and possibly prevent
3 homogeneous nucleation involving more abundant liquid droplets or solution particles (IPCC,
4 2013; DeMott et al., 2010). Therefore, more aerosols (and hence more INPs) are expected to
5 lead to a higher fraction of ice crystals produced by heterogeneous nucleation comprising of
6 fewer and larger ice crystals. This is known as “negative Twomey effect” as first described by
7 Karcher and Lohmann (2003). At very large AOD range (> 0.5), heterogeneous nucleation
8 dominates and a further increase in aerosols would decrease R_{ei} due to the formation of more
9 smaller ice crystals. These proposed mechanisms will be supported and elaborated on using
10 model simulations in Section 3.4.

11 Here an inherent assumption is that INP concentration is roughly proportional to, or at
12 least positively correlated with AOD. Considering that INPs only account for a small fraction
13 of ambient aerosols, we may not take this assumption for granted. Here we plot the R_{ei} -AOD
14 relations using only the cases in which the “aerosol type” (a flag contained in the feature
15 classification flags of CALIPSO) is dust (Fig. 1g-i), and find that the water modulation effect
16 is very similar to the preceding results (i.e., Fig. 1a-c). In addition to column AOD, we also
17 find similar dependences of R_{ei} on layer AOD (mixed with in-situ ice clouds) for all aerosols
18 and for dust only (see Fig. 3d-i). Since specific components of dust aerosols have been known
19 as effective INPs (Murray et al., 2012; Hoose and Moehler, 2012), the similar R_{ei} -AOD
20 relations of dust and of all aerosols to some extent support the proposed mechanisms for
21 water vapor modulation.

22 **3.2 R_{ei} -aerosol relationships for two types of ice clouds**

23 Considering that distinct formation mechanisms of convection-generated and in-situ ice
24 clouds may lead to different aerosol effects, we distinguish these two ice cloud types based on
25 their connection to deep convection (Section 2.2). In the study region, the convection-
26 generated, in-situ, and other ice clouds account for 44.9%, 52.4%, and 2.7% of all ice cloud
27 profiles, respectively. Figure 2 illustrates the accumulative probability distribution of cloud
28 thickness, cloud optical thickness (COT), and R_{ei} of the two ice cloud types. The cloud
29 thickness and COT of convection-generated ice clouds are remarkably larger than those of in-
30 situ ice clouds, because more water is transported to upper troposphere in the formation
31 process of the former type, consistent with numerous aircraft measurement results (e.g.,
32 Kramer et al., 2016; Luebke et al., 2016; Muhlbauer et al., 2014). The R_{ei} of convection-
33 generated ice clouds is slightly larger than that of in-situ ice clouds, which has also been

1 reported in a number of aircraft campaigns (Luebke et al., 2016; Kramer et al., 2016). The
2 larger R_{ei} in convection-generated ice clouds is attributed to larger water amount and the fact
3 that they are produced by convection emerging from lower altitude. Below the $-35\text{ }^{\circ}\text{C}$
4 isotherm, ice crystals stem only from heterogeneous nucleation, which tends to produce larger
5 ice crystals compared to the homogeneous nucleation counterpart (Luebke et al., 2016).

6 Figures 3 shows the impact of aerosols on R_{ei} under different meteorological conditions
7 for convection-generated and in-situ ice clouds, respectively. As described in Section 2.2, we
8 use column AOD and layer AOD mixed with ice clouds as proxies of aerosols interacting
9 with convection-generated and in-situ ice clouds, respectively. The most impressive feature
10 from these figures is that the meteorology modulation remains in effect for either of the two
11 ice cloud types, such that R_{ei} generally decreases with AOD under high $RH_{100-440\text{hPa}}$ /high
12 CAPE/negative U200 conditions, whereas the reverse is true under low $RH_{100-440\text{hPa}}$ /low
13 CAPE/positive U200 conditions. Similar to the Section 3.1, we also demonstrate that the R_{ei} -
14 aerosol relationships are primarily attributed to the aerosol effect by illustrating role of
15 aerosols in altering R_{ei} under the nearly constant meteorological conditions (Fig. S4). For
16 example, a larger AOD is associated with a smaller R_{ei} for a given $RH_{100-440\text{hPa}}$ within the
17 larger $RH_{100-440\text{hPa}}$ range, while an increase in AOD leads to a larger R_{ei} for a given RH_{100-}
18 440hPa within the smaller $RH_{100-440\text{hPa}}$ range. These results illustrate that the meteorology
19 modulation of aerosol effects on R_{ei} is valid regardless of ice cloud formation mechanisms.

20 A closer look at Fig. 3 shows that there exist noted differences between the R_{ei} -aerosol
21 relationships for the two ice cloud types. For convection-generated ice clouds, a weak
22 negative correlation (but still statistically significant at the 0.01 level) between R_{ei} and AOD
23 is found under moist conditions, while a strong positive correlation is found under dry
24 conditions. Note that at a large AOD range (> 0.5) under dry conditions, a further increase in
25 AOD could slightly reduce R_{ei} because of the “Twomey effect” when heterogeneous
26 nucleation prevails. For in-situ ice clouds, however, weaker positive and stronger negative
27 correlations are shown under dry and moist conditions, respectively. As a result, overall R_{ei}
28 slightly increases with aerosol loading for convection-generated ice clouds, but slightly
29 decreases for in-situ clouds.

30 These differences are again linked to the distinct formation mechanisms of the two ice
31 cloud types. As the formation mechanism of convection-generated ice clouds is quite complex,
32 we first briefly review major pathways of ice crystal formation in convection-generated
33 clouds. On one hand, ice crystals are produced by heterogeneous freezing of liquid droplets at

1 temperatures larger than about -35°C or possibly by homogeneous freezing of liquid droplets
2 at about -35°C (Kramer et al., 2016). The ice crystals are then lifted to the temperature range
3 $< -35^{\circ}\text{C}$ and are considered to be ice clouds (Kramer et al., 2016). On the other hand, an
4 additional freezing of solution particles (in contrast to liquid droplets in the former case) may
5 occur in the presence of “preexisting ice” if the updraft is sufficiently strong. The freezing
6 mechanism is likely homogeneous nucleation, since INPs have already been consumed
7 (Kramer et al., 2016). Such additional freezing events are very difficult to occur and hence
8 make less important contributions to ice crystal budget (Luebke et al., 2016), since the pre-
9 existing ice suppresses supersaturation and prevents the threshold for homogeneous
10 nucleation to take place (Shi et al., 2015). In this study, “homogeneous nucleation” refers to
11 freezing of liquid droplets near the -35°C isotherm as well as the freezing of solution
12 particles below -35°C . The former could be important for ice formation, because any liquid
13 droplets would be homogeneously nucleated when they are lifted to the -35°C isotherm.
14 Evidence for homogeneous droplet freezing has been frequently observed in deep convective
15 clouds and convection-generated cirrus clouds (Twohy and Poellot, 2005; Heymsfield et al.,
16 2005; Rosenfeld and Woodley, 2000; Choi et al., 2010). In particular, liquid droplets are
17 frequently observed to supercool to temperatures approaching -35°C and even below, and at
18 slightly colder temperature only ice is found, which serves as strong evidence for
19 homogeneous droplet freezing (Rosenfeld and Woodley, 2000; Choi et al., 2010). Even if the
20 occurrence frequency of homogeneous droplet freezing is low, its contribution to ice number
21 concentration and R_{ei} may still be substantial in view of the fact that numerous ice crystals
22 can be produced in a single homogeneous nucleation event.

23 Obviously, convection-generated ice clouds are influenced by aerosols at various heights,
24 which presumably contain much more INPs than the thin upper tropospheric aerosol layers in
25 the case of in-situ ice clouds. In addition, the heterogeneously formed ice crystals in
26 convective clouds are able to grow before being lifted to -35°C isotherm where
27 homogeneous nucleation bursts, giving rise to a larger difference between the ice crystal sizes
28 produced by heterogeneous and homogeneous nucleation as compared to in-situ ice clouds.
29 For these reasons, under dry conditions, the increase in R_{ei} with aerosol loading, which is due
30 to the transition from homogeneous-dominated to heterogeneous-dominated regimes, would
31 be much more pronounced for convection-generated ice clouds.

32 At moist conditions, homogeneous nucleation could dominate for both ice cloud types as
33 described in Section 3.1, but the mass fraction of homogeneously formed ice crystals is

smaller for convection-generated ice clouds than that for in-situ ice clouds, leading to a weaker decline in R_{ei} with aerosols. Alternatively, for convection-generated ice clouds, ice multiplication, a microphysical process in which collision between ice particles and large supercooled droplets rapidly produces many secondary ice particles in strong updrafts (Lawson et al., 2015; Koenig, 1965, 1963), could also play a remarkable role in ice formation. Its role could be important only under moist conditions where cloud droplets may grow to large sizes required for ice multiplication (Lawson et al., 2015; Koenig, 1965, 1963). The onset of ice multiplication may suppress or even prevent homogeneous nucleation to occur. In the situation dominated by ice multiplication, the relatively flat response of R_{ei} to AOD in case of convection-generated ice clouds can also be explained, since ice multiplication is supposed to be stronger at the lower AOD which favors the formation of large cloud droplets. Whether the ice formation under moist conditions is dominated by homogeneous nucleation or ice multiplication is clearly dependent on environmental conditions such as updraft velocity, water vapor, cloud height and thickness, etc, a subject requiring further research.

3.3 Seasonal variations in R_{ei} -aerosol relationships

Furthermore, we find that the meteorological modulation can largely explain differences in R_{ei} -AOD relationships as a function of season. Figure 4a shows that the R_{ei} -AOD relationships are dramatically different associated with season, such that R_{ei} decreases significantly with increasing AOD in summer (June, July, and August), while R_{ei} increases rapidly in winter (December, January, and February). Figure 4d-f illustrate the probability distribution functions (PDFs) of $RH_{100-440hPa}$, CAPE, and U200 in different seasons (the area under any PDF equals 1.0). The overlapping area of PDFs in summer and winter represents the degree of difference in meteorological conditions between these two seasons. We find that meteorological conditions are significantly distinct in summer and winter in terms of $RH_{100-440hPa}$, CAPE, and U200, as indicated by relatively small overlapping areas (<0.6) for these three parameters. The $RH_{100-440hPa}$ and CAPE tend to be higher and U200 tends to be more negative in summer. Moreover, the shapes of R_{ei} -AOD curves in summer and winter highly resemble those under high- $RH_{100-440hPa}$ /high-CAPE/negative-U200 and low- $RH_{100-440hPa}$ /low-CAPE/positive-U200 conditions, respectively (see Fig. 1a-c), which demonstrates that the discrepancy in meteorological conditions between winter and summer can, to a large extent, explain the distinct R_{ei} -AOD relationships in these two seasons.

With regard to different ice cloud types, the percentages of ice cloud profiles that are convection-generated type are 38.2%, 48.1%, 51.4%, and 39.1% in winter, spring, summer,

1 and fall, respectively. The corresponding percentages for in-situ ice clouds are 57.0%, 49.6%,
2 47.0%, and 58.2%, respectively. Fig. 4b-c show that, for both ice cloud types, the R_{ei} -aerosol
3 curves in summer and winter are largely similar to those under moist and dry conditons (Fig.
4 3), indicating that the seasonal variations in R_{ei} -aerosol relations for both ice cloud types are
5 largely attributable to the meteorology modulation. For convection-generated ice clouds, in
6 winter, spring and fall, R_{ei} generally increases when $AOD < 0.5$, characteristic of
7 homogeneous nucleation being overtaken by heterogeneous nucleation, while R_{ei} decreases
8 slightly when $AOD > 0.5$ in accordance with heterogeneous nucleation and increasing INP
9 concentrations. In summer, R_{ei} shows a weak decreasing trend with AOD, which could be
10 explained by the domination of homogeneous nucleation or ice multiplication as described in
11 Section 3.2. For in-situ ice clouds, a sharp decline in R_{ei} with AOD is observed in summer,
12 attributed to the “Twomey effect” when homogeneous nucleation prevails. The trends in other
13 seasons are rather weak (although an increase is noticed in winter at low layer AOD). A
14 probable reason is that each season consists of varying meteorological conditions (Fig. 4d-f).
15 As shown in Fig. 3d-f, the decreasing trends in R_{ei} under moist conditions are strong, while
16 the increasing trends under dry conditions are relatively weak. Even if the occurrence
17 frequency of dry conditions is large in a season, say winter, the integration of all
18 meteorological conditions may still yield a relative flat R_{ei} -aerosol relationship. Another
19 possible reason is that the correlation of INP concentration and layer AOD could be weak in
20 some physical conditions.

21 **3.4 Modeling support for the water vapor modulation**

22 We have shown that the R_{ei} -aerosol relationships are modulated by meteorological conditions,
23 particularly water vapor amount. To support the observed relationships and our proposed
24 physical mechanisms, we perform model simulations as described in Section 2.3 and
25 summarize the results in Fig. 5.

26 Figure. 5a reveals that the simulated patterns of R_{ei} -aerosol relationships under different
27 water vapor amount agree fairly well with the corresponding observed patterns (Fig. 1a-c).
28 Specifically, with an adequate water vapor supply ($pv = 103$ ppm), R_{ei} decreases significantly
29 with aerosol concentrations (“Twomey effect”). Under a dry condition ($pv = 78$ ppm), R_{ei}
30 increases noticeably with small-to-moderate aerosol concentrations (“negative Twomey
31 effect”), and decreases slightly with further aerosol increase. A deeper analysis of the
32 simulation results supports our proposed mechanism (Section 3.1) that the competition
33 between different ice nucleation modes is the key to explain the water vapor modulation.

1 With an adequate water vapor supply ($p_v = 103$ ppm), the onset of deposition and immersion
2 nucleation consumes only a small fraction of water vapor due to the small INP population.
3 Considerable supersaturation remains. After further updraft movement, homogeneous
4 nucleation is triggered and occurs spontaneously over a higher and narrow ice supersaturation
5 range (140-160%). Therefore, homogeneous nucleation acts as the dominant ice formation
6 pathway, as indicated by the very small number fraction ($< 10\%$) of heterogeneously formed
7 ice crystals, shown in Fig. 5b. In this case, more aerosols are associated with the formation of
8 more numerous and smaller ice crystals, consistent with the simulation results of Liu and
9 Penner (2005). With an inadequate water vapor supply ($p_v = 78$ ppm), Fig. 5b reveals that the
10 number fraction of heterogeneously formed ice crystals increases dramatically from $< 1\%$ to
11 $\sim 95\%$ when aerosol number concentrations increase from 5 cm^{-3} to $\sim 300 \text{ cm}^{-3}$ (the INP
12 number concentrations increase proportionally). Obviously, the occurrence of heterogeneous
13 nucleation could consume a considerable fraction of water vapor such that the remaining
14 supersaturation is quite low and would require extremely strong updraft to uphold the
15 homogeneous nucleation threshold. When aerosol loading increases, homogeneous nucleation
16 is gradually suppressed and reduced to a minimum. Since the outburst of homogeneous
17 nucleation generally produces more ice crystals at smaller size compared with the
18 heterogeneous counterpart, an increasing fraction of heterogeneous nucleation would result in
19 fewer ice crystals with larger average size (“negative Twomey effect”). At larger aerosol
20 loading ($> 300 \text{ cm}^{-3}$), a further aerosol increase slightly reduces R_{ei} in accordance with
21 heterogeneous nucleation and the “Twomey effect”.

22 The current cloud parcel model simulates the environmental conditions and physical
23 processes for in-situ ice clouds. For convection-generated ice clouds, the competition between
24 homogeneous and heterogeneous nucleation may explain the observed R_{ei} -aerosol relations
25 especially at dry conditions; however, the formation of this ice cloud type involves additional
26 complex physical processes. As described in Section 3.2, ice multiplication together with
27 heterogeneous nucleation may play an important role and dominate the ice formation in moist
28 conditions. Furthermore, ice crystals in convection-generated ice clouds are formed primarily
29 by freezing of liquid droplets rather than nucleation on solution particles. The simulation of
30 the aerosol impact on convection-generated ice clouds calls for more sophisticated models
31 and future investigations.

32 As a simplified model, the simulation results of the cloud parcel model may not be
33 quantitatively compared with the observational data. In satellite data analysis, we used

1 column/layer AOD and $RH_{100-440hPa}$ (or CAPE, U200) as proxies for aerosol loading related to
2 ice clouds and overall available water amount at the upper atmosphere, respectively.
3 However, the cloud parcel model only tracks the aerosol number concentration and water
4 vapor within a single air parcel. It is clear that a direct and quantitative comparison between
5 satellite observations and model results requires developing a 3-D atmospheric model and
6 analysis, a difficult task for further investigation in the future. Although the indices are not
7 exactly the same, we submit that the simulated dependency of R_{ei} on aerosols could be used to
8 qualitatively interpret the observed relationships, because the indices used in satellite analysis
9 (AOD and $RH_{100-440hPa}$) and parcel model (aerosol number concentration and water vapor
10 mixing ratio) are closely correlated with each other, and that the meteorological parameters
11 and aerosol concentration ranges used in the simulations are representative of typical in-situ
12 ice clouds.

13 Finally, a factor that could potentially induce changes in satellite-retrieved R_{ei} but has not
14 been considered is the habit of ice crystals. Based on previous studies (Bailey and Hallett,
15 2009; Lawson et al., 2006; Lynch et al., 2002), the habit of ice crystals is dependent on a
16 number of factors, among which the most important one is temperature, followed by ice
17 supersaturation ratio. In this study we focus on R_{ei} changes with aerosol loading, for which
18 temperature does not appear to have noticeable effect. For supersaturation ratio, the formation
19 of ice crystals under moist conditions is dominated by homogeneous nucleation, therefore the
20 ice supersaturation ratio surrounding ice crystals is usually very low and the ice habit is not
21 likely to change significantly with aerosol loading. Under drier conditions, however,
22 heterogeneous nucleation gradually takes over homogeneous nucleation with aerosol loading
23 increase. Subsequently, the supersaturation ratio surrounding ice crystals would become
24 higher, possibly leading to changes in ice crystal habit. Considering that a single habit (i.e.,
25 aggregated column) is assumed in Collection 6 MODIS retrieval algorithm (Platnick et al.,
26 2015), ice habit changes could possibly induce changes in the satellite-retrieved R_{ei} . However,
27 this retrieval bias should not change our major conclusion about the aerosol impact on ice
28 crystal size, which has been supported by the cloud parcel modeling used in this study. The
29 quantitative assessment of the impact of ice crystal habit on satellite retrievals of R_{ei} is a very
30 complicated and difficult task that merits further study.

31 **4 Conclusions and implications**

32 In this study, we investigate the effects of aerosols on R_{ei} under different meteorological
33 conditions using 9-year satellite observations. We find that the responses of R_{ei} to aerosol

1 loadings are modulated by water vapor amount in conjunction with several other
2 meteorological parameters, and vary from a significant negative correlation (“Twomey effect”)
3 to a strong positive correlation (“negative Twomey effect”). Simulations using a cloud parcel
4 model indicate that the water vapor modulation works primarily by altering the relative
5 importance of different ice nucleation modes. The water vapor modulation holds true for both
6 convection-generated and in-situ ice clouds, though the sensitivities of R_{ei} to aerosols differ
7 noticeably between these two ice cloud types due to distinct formation mechanisms. The
8 water vapor modulation can largely explain the different responses of R_{ei} to aerosol loadings
9 in various seasons.

10 R_{ei} is a key parameter determining the relative significance of the solar albedo (cooling)
11 effect and the infrared greenhouse (warming) effect of ice clouds; the variation of R_{ei} could
12 change the sign of ice clouds’ net radiative effect (Fu and Liou, 1993). Aerosols have strong
13 and intricate effects on R_{ei} through their indirect effect. We provide the first and direct
14 evidence that the competition between the “Twomey effect” and “negative Twomey effect” is
15 controlled by certain meteorological parameters, primarily water vapor amount. Consequently,
16 the first aerosol indirect forcing, defined as the radiative forcing due to aerosol-induced
17 changes in R_{ei} under a constant ice water content (IPCC, 2013; Penner et al., 2011), would
18 change from positive to negative between high and low RH ranges, implying that the water
19 vapor modulation could play an important role in determining the sign, magnitude, and
20 probably seasonal and regional variations of aerosol-ice cloud radiative forcings. An adequate
21 and accurate representation of this modulation in climate models will undoubtedly induce
22 changes in the magnitude and sign of the current estimate of aerosol-ice cloud radiative
23 forcing. Finally, although this study focuses on East Asia, we anticipate that the present
24 findings might be generalized to other regions as well in view of the fact that the aerosol
25 loadings in East Asia usually span a larger range than other regions (Zhao et al., 2017a) and
26 that the aerosol effects on ice cloud properties are particularly pronounced at low and
27 moderate aerosol loadings (Figs. 1, 3, 4).

29 **Acknowledgements**

30 Research work contained in this paper has been supported by NSF EAGER Grant AGS-
31 1523296, NSF Grant AGS-1701526, and NASA ROSES ACMAP and CCST grants. We also
32 acknowledge the support of the Joint Institute for Regional Earth System Science and

- 1 Engineering at University of California, Los Angeles and the Jet Propulsion Laboratory,
- 2 California Institute of Technology, under contract with NASA.

References

- Anderson, T. L., Charlson, R. J., Winker, D. M., Ogren, J. A., and Holmen, K.: Mesoscale variations of tropospheric aerosols, *J Atmos Sci*, 60, 119-136, Doi 10.1175/1520-0469(2003)060<0119:Mvota>2.0.Co;2, 2003.
- Atmospheric Science Data Center: CALIPSO Quality Statements Lidar Level 2 Cloud and Aerosol Layer Products Version Releases: 3.01, 3.02: https://eosweb.larc.nasa.gov/PRODOCS/calipso/Quality_Summaries/CALIOP_L2LayerProducts_3.01.html, access: October 1, 2016, 2012.
- Bailey, M. P., and Hallett, J.: A Comprehensive Habit Diagram for Atmospheric Ice Crystals: Confirmation from the Laboratory, AIRS II, and Other Field Studies, *J Atmos Sci*, 66, 2888-2899, 10.1175/2009jas2883.1, 2009.
- Brennan, J. I., Kaufman, Y. J., Koren, I., and Li, R. R.: Aerosol-cloud interaction-misclassification of MODIS clouds in heavy aerosol, *IEEE T Geosci Remote*, 43, 911-915, 10.1109/Tgrs.2005.844662, 2005.
- Choi, Y. S., Lindzen, R. S., Ho, C. H., and Kim, J.: Space observations of cold-cloud phase change, *P Natl Acad Sci USA*, 107, 11211-11216, 10.1073/pnas.1006241107, 2010.
- Chylek, P., Dubey, M. K., Lohmann, U., Ramanathan, V., Kaufman, Y. J., Lesins, G., Hudson, J., Altmann, G., and Olsen, S.: Aerosol indirect effect over the Indian Ocean, *Geophys Res Lett*, 33, L06806, DOI 10.1029/2005gl025397, 2006.
- Clarke, A., and Kapustin, V.: Hemispheric aerosol vertical profiles: Anthropogenic impacts on optical depth and cloud nuclei (vol 329, pg 1488, 2010), *Science*, 330, 1047-1047, 2010.
- Costantino, L., and Breon, F. M.: Analysis of aerosol-cloud interaction from multi-sensor satellite observations, *Geophys Res Lett*, 37, L11801, DOI 10.1029/2009gl041828, 2010.
- Delanoe, J., and Hogan, R. J.: A variational scheme for retrieving ice cloud properties from combined radar, lidar, and infrared radiometer, *J Geophys Res-Atmos*, 113, 10.1029/2007jd009000, 2008.
- Delanoe, J., and Hogan, R. J.: Combined CloudSat-CALIPSO-MODIS retrievals of the properties of ice clouds, *J Geophys Res-Atmos*, 115, 10.1029/2009jd012346, 2010.
- DeMott, P. J., Prenni, A. J., Liu, X., Kreidenweis, S. M., Petters, M. D., Twohy, C. H., Richardson, M. S., Eidhammer, T., and Rogers, D. C.: Predicting global atmospheric ice nuclei distributions and their impacts on climate, *P Natl Acad Sci USA*, 107, 11217-11222, 10.1073/pnas.0910818107, 2010.
- Fan, J. W., Wang, Y., Rosenfeld, D., and Liu, X. H.: Review of Aerosol-Cloud Interactions: Mechanisms, Significance, and Challenges, *J Atmos Sci*, 73, 4221-4252, 2016.
- Fu, Q., and Liou, K. N.: Parameterization of the Radiative Properties of Cirrus Clouds, *J Atmos Sci*, 50, 2008-2025, Doi 10.1175/1520-0469(1993)050<2008:Potrpo>2.0.Co;2, 1993.
- Heymsfield, A. J., Miloshevich, L. M., Schmitt, C., Bansemer, A., Twohy, C., Poellot, M. R., Fridlind, A., and Gerber, H.: Homogeneous ice nucleation in subtropical and tropical convection and its influence on cirrus anvil microphysics, *J Atmos Sci*, 62, 41-64, 10.1175/jas-3360.1, 2005.
- Hong, Y. L., and Liu, G. S.: The Characteristics of Ice Cloud Properties Derived from CloudSat and CALIPSO Measurements, *J Climate*, 28, 3880-3901, 10.1175/jcli-d-14-00666.1, 2015.
- Hoose, C., and Moehler, O.: Heterogeneous ice nucleation on atmospheric aerosols: a review of results from laboratory experiments, *Atmos Chem Phys*, 12, 9817-9854, 10.5194/acp-12-9817-2012, 2012.

1 Huang, L., Jiang, J. H., Tackett, J. L., Su, H., and Fu, R.: Seasonal and diurnal variations of
2 aerosol extinction profile and type distribution from CALIPSO 5-year observations, *J*
3 *Geophys Res-Atmos*, 118, 4572-4596, 10.1002/jgrd.50407, 2013.

4 Ikawa, M., and Saito, K.: Description of a Non-hydrostatic Model Developed at the Forecast
5 Research Department of the MRI, available at [http://www.mri-](http://www.mri-jma.go.jp/Publish/Technical/DATA/VOL_28/28_en.html)
6 [jma.go.jp/Publish/Technical/DATA/VOL_28/28_en.html](http://www.mri-jma.go.jp/Publish/Technical/DATA/VOL_28/28_en.html), Meteorological Research
7 Institute, Tsukuba, Ibaraki, Japan, 1991.

8 IPCC: Climate Change 2013: The Physical Science Basis. Contribution of Working Group I
9 to the Fifth Assessment Report of the Intergovernmental Panel on Climate Change,
10 edited by: Stocker, T. F., Qin, D., Plattner, G.-K., Tignor, M., Allen, S. K., Boschung, J.,
11 Nauels, A., Xia, Y., Bex, V., and Midgley, P. M., Cambridge University Press,
12 Cambridge, United Kingdom and New York, NY, USA, 1535 pp., 2013.

13 Jiang, J. H., Su, H., Schoeberl, M. R., Massie, S. T., Colarco, P., Platnick, S., and Livesey, N.
14 J.: Clean and polluted clouds: Relationships among pollution, ice clouds, and
15 precipitation in South America, *Geophys Res Lett*, 35, L14804, DOI
16 10.1029/2008gl034631, 2008.

17 Jiang, J. H., Su, H., Massie, S. T., Colarco, P. R., Schoeberl, M. R., and Platnick, S.: Aerosol-
18 CO relationship and aerosol effect on ice cloud particle size: Analyses from Aura
19 Microwave Limb Sounder and Aqua Moderate Resolution Imaging Spectroradiometer
20 observations, *J Geophys Res-Atmos*, 114, D20207, DOI 10.1029/2009jd012421, 2009.

21 Jiang, J. H., Su, H., Zhai, C., Massie, S. T., Schoeberl, M. R., Colarco, P. R., Platnick, S., Gu,
22 Y., and Liou, K. N.: Influence of convection and aerosol pollution on ice cloud particle
23 effective radius, *Atmos Chem Phys*, 11, 457-463, 10.5194/acp-11-457-2011, 2011.

24 Karcher, B., and Lohmann, U.: A parameterization of cirrus cloud formation: Heterogeneous
25 freezing, *J Geophys Res-Atmos*, 108, 10.1029/2002jd003220, 2003.

26 Kaufman, Y. J., Koren, I., Remer, L. A., Rosenfeld, D., and Rudich, Y.: The effect of smoke,
27 dust, and pollution aerosol on shallow cloud development over the Atlantic Ocean, *P*
28 *Natl Acad Sci USA*, 102, 11207-11212, 10.1073/pnas.0505191102, 2005.

29 Koenig, L. R.: The glaciating behavior of small cumulonimbus clouds, *J Atmos Sci*, 20, 29-47,
30 10.1175/1520-0469(1963)020<0029:tgbosc>2.0.co;2, 1963.

31 Koenig, L. R.: Drop freezing through drop breakup, *J Atmos Sci*, 22, 448-&, 10.1175/1520-
32 0469(1965)022<0448:dftdb>2.0.co;2, 1965.

33 Kramer, M., Rolf, C., Luebke, A., Afchine, A., Spelten, N., Costa, A., Meyer, J., Zoger, M.,
34 Smith, J., Herman, R. L., Buchholz, B., Ebert, V., Baumgardner, D., Borrmann, S.,
35 Klingebiel, M., and Avallone, L.: A microphysics guide to cirrus clouds - Part 1: Cirrus
36 types, *Atmos Chem Phys*, 16, 3463-3483, 10.5194/acp-16-3463-2016, 2016.

37 Kuebbeler, M., Lohmann, U., Hendricks, J., and Karcher, B.: Dust ice nuclei effects on cirrus
38 clouds, *Atmos Chem Phys*, 14, 3027-3046, 10.5194/acp-14-3027-2014, 2014.

39 Lawson, R. P., Baker, B., Pilon, B., and Mo, Q. X.: In situ observations of the microphysical
40 properties of wave, cirrus, and anvil clouds. Part II: Cirrus clouds, *J Atmos Sci*, 63,
41 3186-3203, 10.1175/jas3803.1, 2006.

42 Lawson, R. P., Woods, S., and Morrison, H.: The Microphysics of Ice and Precipitation
43 Development in Tropical Cumulus Clouds, *J Atmos Sci*, 72, 2429-2445, 10.1175/jas-d-
44 14-0274.1, 2015.

45 Levy, R. C., Remer, L. A., Kleidman, R. G., Mattoo, S., Ichoku, C., Kahn, R., and Eck, T. F.:
46 Global evaluation of the Collection 5 MODIS dark-target aerosol products over land,
47 *Atmos Chem Phys*, 10, 10399-10420, 10.5194/acp-10-10399-2010, 2010.

48 Li, Q. B., Jiang, J. H., Wu, D. L., Read, W. G., Livesey, N. J., Waters, J. W., Zhang, Y. S.,
49 Wang, B., Filipiak, M. J., Davis, C. P., Turquety, S., Wu, S. L., Park, R. J., Yantosca, R.

- M., and Jacob, D. J.: Convective outflow of South Asian pollution: A global CTM simulation compared with EOS MLS observations, *Geophys Res Lett*, 32, L14826, DOI 10.1029/2005gl022762, 2005.
- Liou, K. N.: *Cirrus clouds and climate* in McGraw-Hill Yearbook of Science and Technology, McGraw-Hill Professional, New York, U.S.A., 2005.
- Liu, X. H., and Penner, J. E.: Ice nucleation parameterization for global models, *Meteorologische Zeitschrift*, 14, 499-514, 10.1127/0941-2948/2005/0059, 2005.
- Liu, X. H., Penner, J. E., and Wang, M. H.: Influence of anthropogenic sulfate and black carbon on upper tropospheric clouds in the NCAR CAM3 model coupled to the IMPACT global aerosol model, *J Geophys Res-Atmos*, 114, D03204, DOI 10.1029/2008jd010492, 2009.
- Luebke, A. E., Afchine, A., Costa, A., Grooss, J. U., Meyer, J., Rolf, C., Spelten, N., Avallone, L. M., Baumgardner, D., and Kramer, M.: The origin of midlatitude ice clouds and the resulting influence on their microphysical properties, *Atmos Chem Phys*, 16, 5793-5809, 10.5194/acp-16-5793-2016, 2016.
- Lynch, D. K., Sassen, K., Starr, D., and Stephens, G.: *Cirrus*, Oxford University Press, New York, U.S.A., 2002.
- Mace, G. G., Clothiaux, E. E., and Ackerman, T. P.: The composite characteristics of cirrus clouds: Bulk properties revealed by one year of continuous cloud radar data, *J Climate*, 14, 2185-2203, 10.1175/1520-0442(2001)014<2185:tccocc>2.0.co;2, 2001.
- Mace, G. G., Benson, S., and Vernon, E.: Cirrus clouds and the large-scale atmospheric state: Relationships revealed by six years of ground-based data, *J Climate*, 19, 3257-3278, 10.1175/jcli3786.1, 2006.
- Massie, S. T., Heymsfield, A., Schmitt, C., Muller, D., and Seifert, P.: Aerosol indirect effects as a function of cloud top pressure, *J Geophys Res-Atmos*, 112, D06202, DOI 10.1029/2006jd007383, 2007.
- Muhlbauer, A., Ackerman, T. P., Comstock, J. M., Diskin, G. S., Evans, S. M., Lawson, R. P., and Marchand, R. T.: Impact of large-scale dynamics on the microphysical properties of midlatitude cirrus, *J Geophys Res-Atmos*, 119, 3976-3996, 10.1002/2013jd020035, 2014.
- Murray, B. J., O'Sullivan, D., Atkinson, J. D., and Webb, M. E.: Ice nucleation by particles immersed in supercooled cloud droplets, *Chem Soc Rev*, 41, 6519-6554, 10.1039/c2cs35200a, 2012.
- Ou, S. S. C., Liou, K. N., Wang, X. J., Hansell, R., Lefevre, R., and Cocks, S.: Satellite remote sensing of dust aerosol indirect effects on ice cloud formation, *Appl Optics*, 48, 633-642, 10.1364/Ao.48.000633, 2009.
- Penner, J. E., Xu, L., and Wang, M. H.: Satellite methods underestimate indirect climate forcing by aerosols, *P Natl Acad Sci USA*, 108, 13404-13408, 10.1073/pnas.1018526108, 2011.
- Platnick, S., King, M. D., and Meyer, K. G.: MODIS cloud optical properties: user guide for the collection 6 level-2 MOD06/MYD06 product and associated level-3 datasets: https://modis-images.gsfc.nasa.gov/_docs/C6MOD06OPUserGuide.pdf, 2015.
- Pruppacher, H. R., and Klett, J. D.: *Microphysics of Cloud and Precipitation*, Springer, New York, U.S.A., 1997.
- Remer, L. A., Kaufman, Y. J., Tanre, D., Mattoo, S., Chu, D. A., Martins, J. V., Li, R. R., Ichoku, C., Levy, R. C., Kleidman, R. G., Eck, T. F., Vermote, E., and Holben, B. N.: The MODIS aerosol algorithm, products, and validation, *J Atmos Sci*, 62, 947-973, Doi 10.1175/Jas3385.1, 2005.

- 1 Riihimäki, L. D., and McFarlane, S. A.: Frequency and morphology of tropical tropopause
2 layer cirrus from CALIPSO observations: Are isolated cirrus different from those
3 connected to deep convection?, *J Geophys Res-Atmos*, 115, 10.1029/2009jd013133,
4 2010.
- 5 Rosenfeld, D., and Woodley, W. L.: Deep convective clouds with sustained supercooled
6 liquid water down to -37.5 degrees C, *Nature*, 405, 440-442, 10.1038/35013030, 2000.
- 7 Rosenfeld, D., Andreae, M. O., Asmi, A., Chin, M., de Leeuw, G., Donovan, D. P., Kahn, R.,
8 Kinne, S., Kivekas, N., Kulmala, M., Lau, W., Schmidt, K. S., Suni, T., Wagner, T.,
9 Wild, M., and Quaas, J.: Global observations of aerosol-cloud-precipitation-climate
10 interactions, *Rev Geophys*, 52, 750-808, 10.1002/2013RG000441, 2014.
- 11 Seinfeld, J. H., Bretherton, C., Carslaw, K. S., Coe, H., DeMott, P. J., Dunlea, E. J., Feingold,
12 G., Ghan, S., Guenther, A. B., Kahn, R., Kraucunas, I., Kreidenweis, S. M., Molina, M.
13 J., Nenes, A., Penner, J. E., Prather, K. A., Ramanathan, V., Ramaswamy, V., Rasch, P.
14 J., Ravishankara, A. R., Rosenfeld, D., Stephens, G., and Wood, R.: Improving our
15 fundamental understanding of the role of aerosol-cloud interactions in the climate
16 system, *P Natl Acad Sci USA*, 113, 5781-5790, 10.1073/pnas.1514043113, 2016.
- 17 Shi, X., Liu, X., and Zhang, K.: Effects of pre-existing ice crystals on cirrus clouds and
18 comparison between different ice nucleation parameterizations with the Community
19 Atmosphere Model (CAM5), *Atmos Chem Phys*, 15, 1503-1520, 10.5194/acp-15-1503-
20 2015, 2015.
- 21 Shi, X., and Liu, X.: Effect of cloud-scale vertical velocity on the contribution of
22 homogeneous nucleation to cirrus formation and radiative forcing, *Geophys Res Lett*, 43,
23 6588-6595, 10.1002/2016GL069531, 2016.
- 24 Stein, T. H. M., Delanoe, J., and Hogan, R. J.: A Comparison among Four Different Retrieval
25 Methods for Ice-Cloud Properties Using Data from CloudSat, CALIPSO, and MODIS, *J*
26 *Appl Meteorol Clim*, 50, 1952-1969, 10.1175/2011jamc2646.1, 2011.
- 27 Su, H., Jiang, J. H., Lu, X. H., Penner, J. E., Read, W. G., Massie, S., Schoeberl, M. R.,
28 Colarco, P., Livesey, N. J., and Santee, M. L.: Observed Increase of TTL Temperature
29 and Water Vapor in Polluted Clouds over Asia, *J Climate*, 24, 2728-2736,
30 10.1175/2010JCLI3749.1, 2011.
- 31 Twohy, C. H., and Poellot, M. R.: Chemical characteristics of ice residual nuclei in anvil
32 cirrus clouds: evidence for homogeneous and heterogeneous ice formation, *Atmos*
33 *Chem Phys*, 5, 2289-2297, 2005.
- 34 Twomey, S.: Influence of pollution on shortwave albedo of clouds, *J Atmos Sci*, 34, 1149-
35 1152, 10.1175/1520-0469(1977)034<1149:tiopot>2.0.co;2, 1977.
- 36 Waliser, D. E., Li, J. L. F., Woods, C. P., Austin, R. T., Bacmeister, J., Chern, J., Del Genio,
37 A., Jiang, J. H., Kuang, Z. M., Meng, H., Minnis, P., Platnick, S., Rossow, W. B.,
38 Stephens, G. L., Sun-Mack, S., Tao, W. K., Tompkins, A. M., Vane, D. G., Walker, C.,
39 and Wu, D.: Cloud ice: A climate model challenge with signs and expectations of
40 progress, *J Geophys Res-Atmos*, 114, D00a21, DOI 10.1029/2008jd010015, 2009.
- 41 Wang, F., Guo, J. P., Zhang, J. H., Huang, J. F., Min, M., Chen, T. M., Liu, H., Deng, M. J.,
42 and Li, X. W.: Multi-sensor quantification of aerosol-induced variability in warm clouds
43 over eastern China, *Atmos Environ*, 113, 1-9, 10.1016/j.atmosenv.2015.04.063, 2015.
- 44 Wang, J. D., Zhao, B., Wang, S. X., Yang, F. M., Xing, J., Morawska, L., Ding, A. J.,
45 Kulmala, M., Kerminen, V. M., Kujansuu, J., Wang, Z. F., Ding, D. A., Zhang, X. Y.,
46 Wang, H. B., Tian, M., Petaja, T., Jiang, J. K., and Hao, J. M.: Particulate matter
47 pollution over China and the effects of control policies, *Sci Total Environ*, 584, 426-447,
48 10.1016/j.scitotenv.2017.01.027, 2017.

1 Winker, D. M., Hunt, W. H., and McGill, M. J.: Initial performance assessment of CALIOP,
2 Geophys Res Lett, 34, L19803, DOI 10.1029/2007gl030135, 2007.

3 Wylie, D. P., Menzel, W. P., Woolf, H. M., and Strabala, K. I.: 4 Years of Global Cirrus
4 Cloud Statistics Using HIRS, J Climate, 7, 1972-1986, Doi 10.1175/1520-
5 0442(1994)007<1972:Fyogcc>2.0.Co;2, 1994.

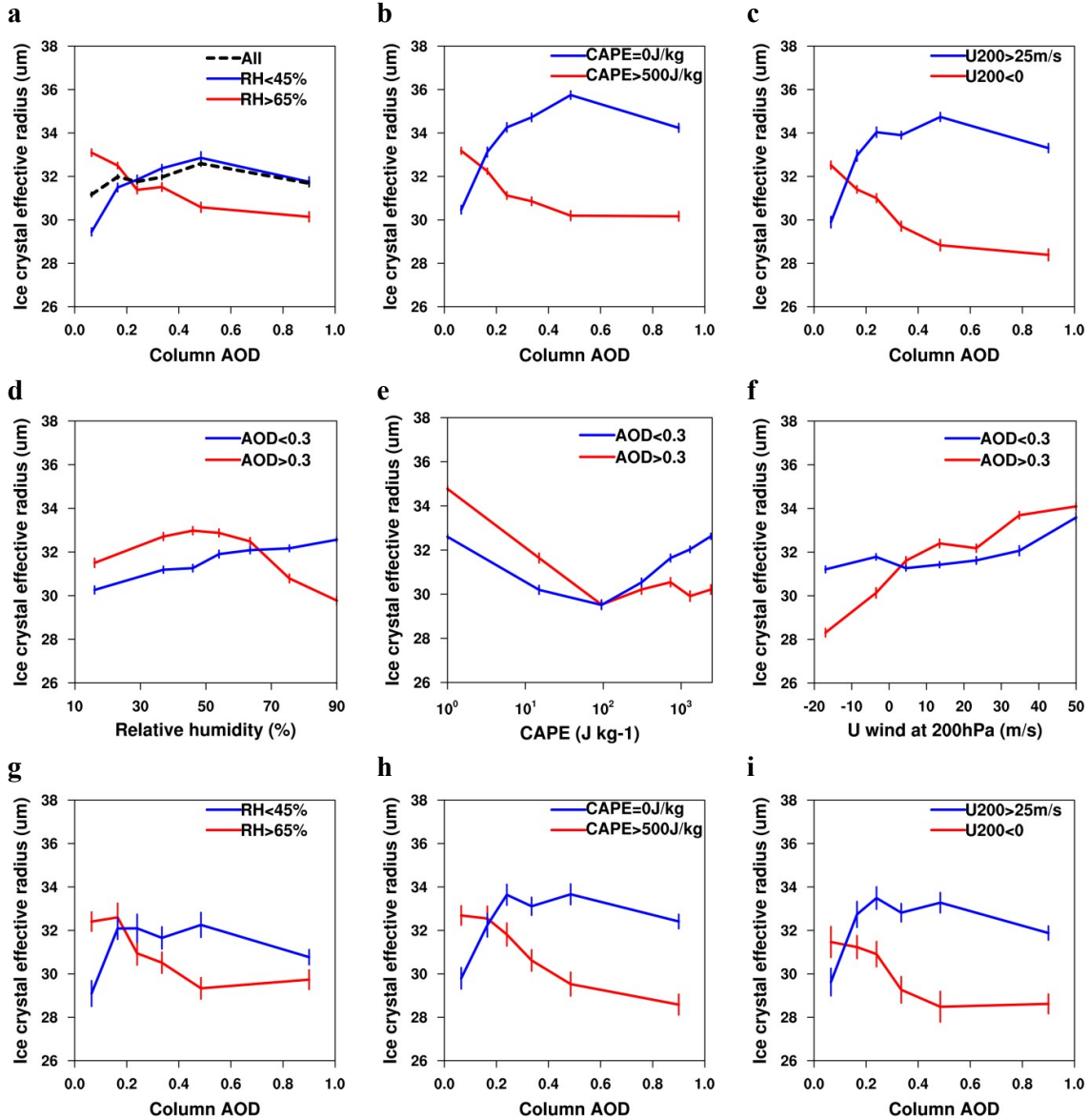
6 Wylie, D. P., Jackson, D. L., Menzel, W. P., and Bates, J. J.: Trends in global cloud cover in
7 two decades of HIRS observations, J Climate, 18, 3021-3031, Doi 10.1175/Jcli3461.1,
8 2005.

9 Zhao, B., Jiang, J. H., Gu, Y., Diner, D., Worden, J., Liou, K. N., Su, H., Xing, J., Garay, M.,
10 and Huang, L.: Decadal-scale trends in regional aerosol particle properties and their
11 linkage to emission changes, Environ Res Lett, 12, 054021, 10.1088/1748-9326/aa6cb2,
12 2017a.

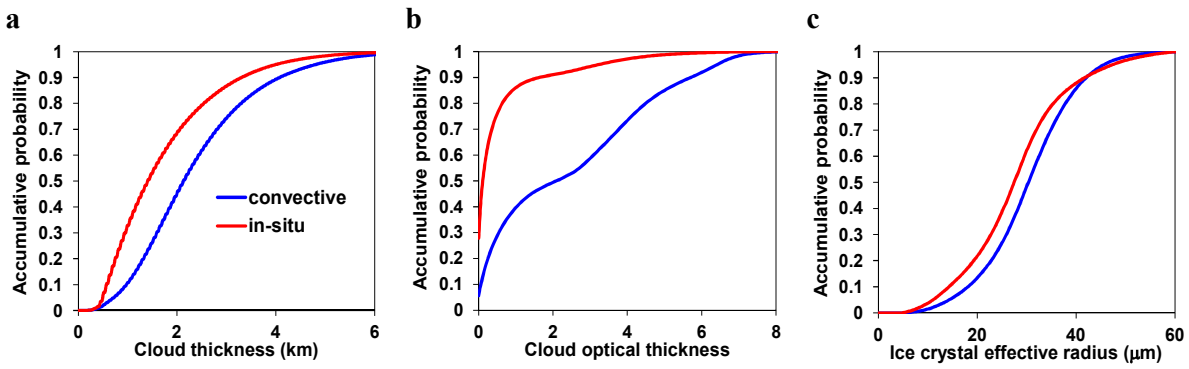
13 Zhao, B., Liou, K. N., Gu, Y., Li, Q. B., Jiang, J. H., Su, H., He, C. L., Tseng, H. L. R., Wang,
14 S. X., Liu, R., Qi, L., Lee, W. L., and Hao, J. M.: Enhanced PM_{2.5} pollution in China
15 due to aerosol-cloud interactions, Sci Rep-Uk, 7, 4453, 10.1038/s41598-017-04096-8,
16 2017b.

17
18
19

1 Figures



2 Figure 1. Influence of aerosols on ice crystal effective radius (R_{ei}) of ice clouds modulated by
3 meteorological conditions. (a-c) Changes in R_{ei} with AOD for different ranges of (a) RH_{100-}
4 $440hPa$, (b) CAPE, and (c) U200. (d-f) Changes in R_{ei} with (d) $RH_{100-440hPa}$, (e) CAPE, and (f)
5 U200 for different ranges of AOD. (g-i) The same as (a-c) but for the profiles with dust
6 aerosols only. The meteorological parameters and AOD are divided into 3 and 2 ranges
7 containing similar numbers of data points, respectively; the curves for the medium
8 meteorological range are not shown. The error bars denote the standard errors (σ/\sqrt{N}) of the
9 bin average, where σ is the standard deviation and N is the sample number. The influences of
10 other meteorological parameters are shown in Fig. S2. The total number of samples used in
11 this figure is 5.68×10^4 .



1 Figure 2. Accumulative probability distribution of the properties of two ice cloud types: (a)
2 cloud thickness, (b) cloud optical thickness, and (c) R_{ei} .

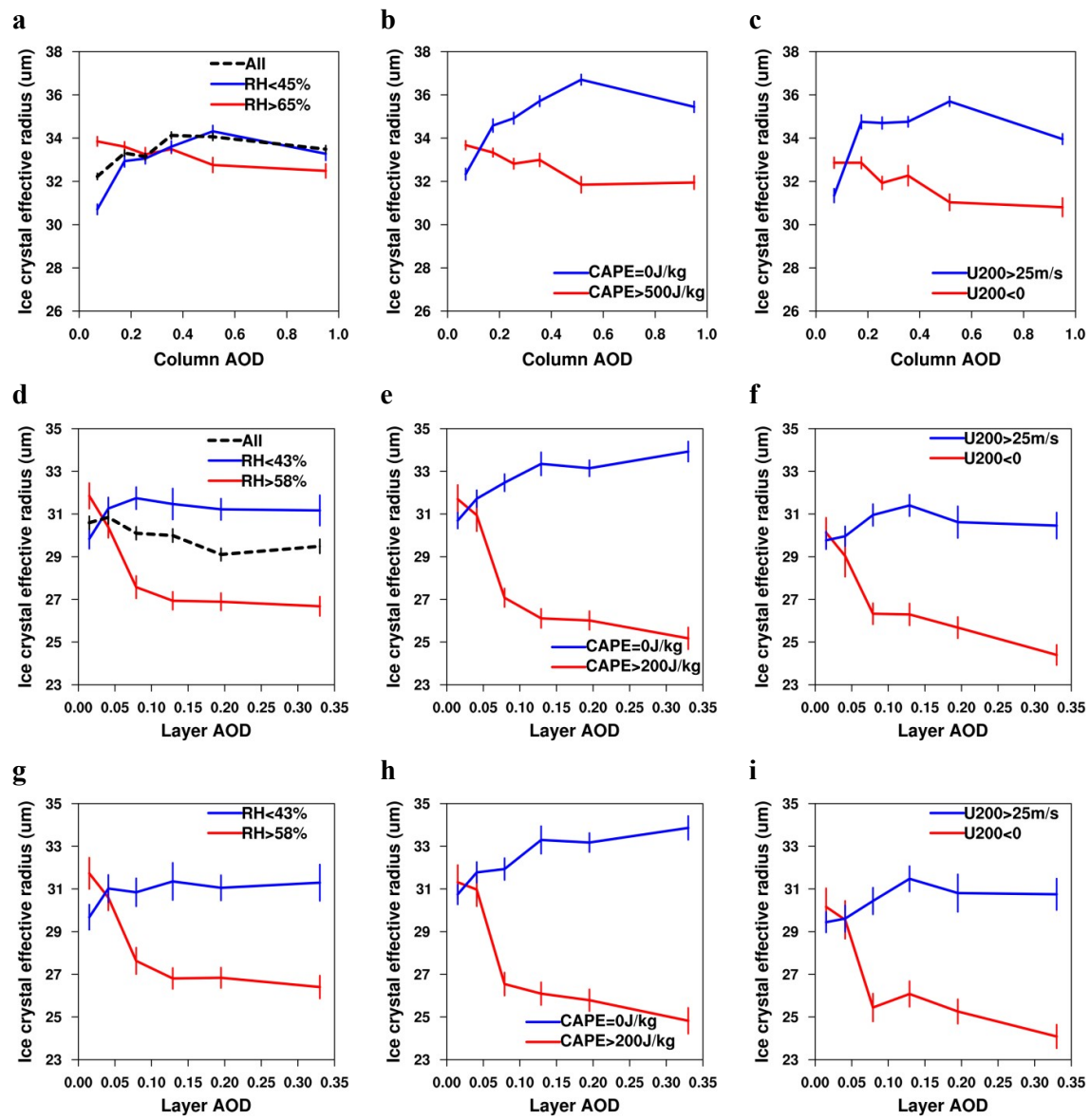
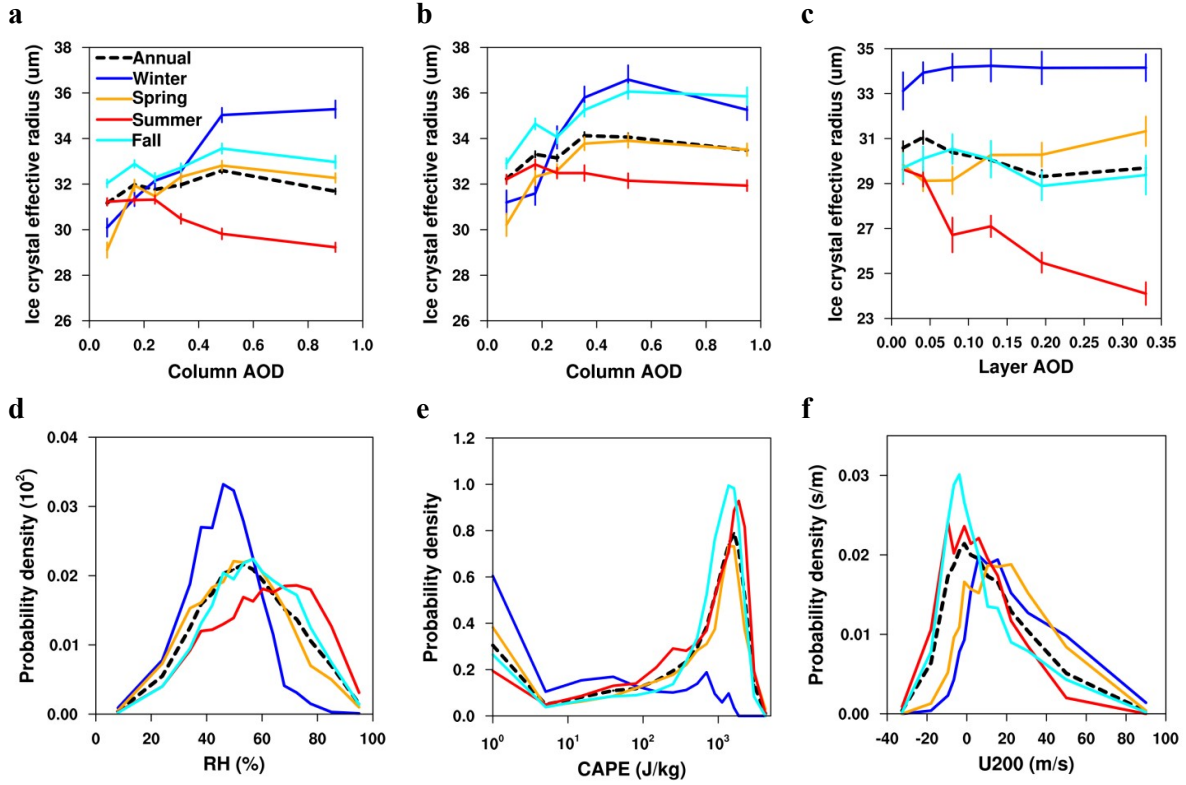
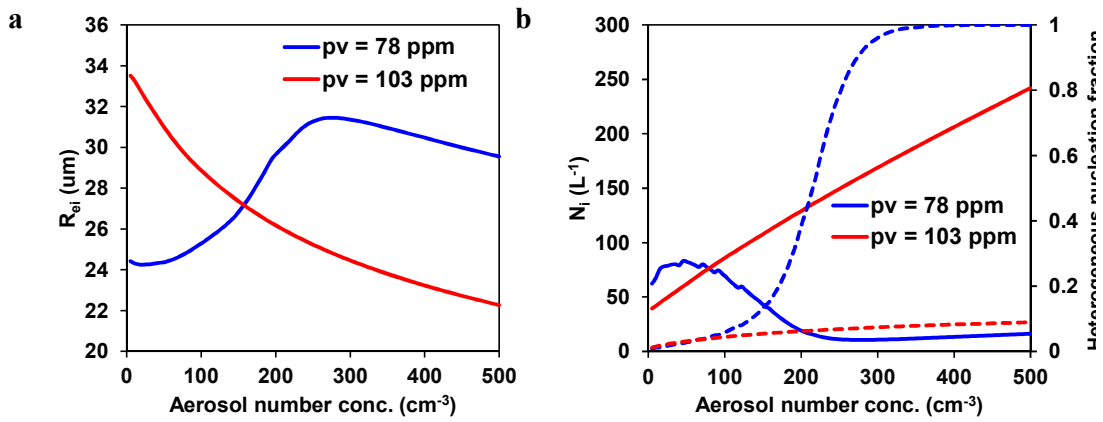


Figure 3. Changes in R_{ei} of convection-generated and in-situ ice clouds with aerosols. (a-c) Changes in R_{ei} of convection-generated ice clouds with AOD for different ranges of (a) $RH_{100-440hPa}$, (b) CAPE, and (c) U200. (d-f) Changes in R_{ei} of in-situ ice clouds with layer AOD for different ranges of (d) $RH_{100-440hPa}$, (e) CAPE, and (f) U200. (g-i) The same as (d-f) but for the profiles with dust aerosols only. The meteorological parameters are divided into 3 ranges containing similar numbers of data points, and the curves for the medium range are not shown. Note that we use column AOD and layer AOD mixed with ice clouds as proxies for aerosols interacting with convection-generated and in-situ ice clouds, respectively. The definition of error bars is the same as in Fig. 1. The total numbers of samples used for convection-generated and in-situ ice clouds are 2.73×10^4 and 1.09×10^4 , respectively.



1 Figure 4. Changes in R_{ice} with AOD and the probability distribution of selected meteorological
2 parameters as a function of season. (a-c) Changes in R_{ice} with AOD as a function of season for
3 (a) all ice clouds, (b) convection-generated ice clouds, and (c) in-situ ice clouds. (d-f) The
4 probability distribution of (d) $RH_{100-440hPa}$, (e) CAPE, and (f) U200 as a function of season.
5 Definitions of season are as follows: Winter – December, January, and February; Spring –
6 March, April, and May; Summer – June, July, and August; Fall – September, October, and
7 November. The definition of error bars is the same as in Fig. 1. The total numbers of samples
8 used in (a, d-f), (b), and (c) are 5.68×10^4 , 2.73×10^4 , and 1.09×10^4 , respectively.



1 Figure 5. Simulated changes in (a) ice crystal effective radius (R_{ei}) and (b) ice crystal number
2 concentration (N_i) and the fraction of ice crystal number produced by heterogeneous
3 nucleation as a function of the total aerosol number concentration. Simulations are conducted
4 for two initial water vapor mass mixing ratios (pv), an indicator of available water amount for
5 ice formation. The ratios of externally mixed dust (deposition INP), coated dust (immersion
6 INP), and sulfate (not INP) are prescribed with values of 0.75:0.25:10000 in all experiments.