

Dear Stefano, ACP,

We thank both reviewers for their thoughtful and insightful comments that have considerably improved the manuscript. We provide our responses to reviewer's comments below and describe changes made to the manuscript. Any other changes to the manuscript not noted here are purely editorial. The reviewer's comments are copied below in italics, with our responses in below and our modifications to the manuscript in quotes. In our revised manuscript, the modified text is shown using track changes, and the modified figures are highlighted.

Referee #2

*The paper makes use of a global co tracer to track changes in advection patterns between present and future climate. The tracer has a fixed decay of 50 days. In this way the total CO mass is the same in both present and future climate, and any changes in in CO can be attributed to changes in advection. This is an innovative use of tracers that can single out effects from pure advection processes as opposed to the combined effects of advection and chemistry etc in chemical tracer models. A major portion of the CO tracer is from biomass burning emitted in the tropics. Similar studies using purely anthropogenic tracers emitted at mid. latitudes are referred to in manuscript. In this way this study complements previous studies.*

We thank the reviewer for their positive comments.

*Major comments/suggestions:*

*I wonder if the zonally averaged figures (Figure 2-3, 6-7) would have been easier to interpret if the distance between the latitudes and the vertical axis had been scaled by mass?*

We have thought carefully about this comment. However we have not followed this recommendation for the following reasons. 1) Scaling by mass would further highlight the tropics and the surface features of the CO-tracer in response to climate change there, which we feel are clear enough in our zonal-mean plots, but this scaling would capture less well the climate-change related features in the northern mid-latitudes near the tropopause which is an important result that we highlight. Moreover, we compare these prominent features of the CO-tracer response to climate change with results from previous studies such as Fang et al. (2011), that do not scale by mass. Hence we feel our comparison with previous studies would be less clear if we did scale by mass.

*Reading the paper the reader really has to keep the tongue straight in the mouth in order to follow all the effects of seasonal sources, convection etc. Maybe this is how it has to be, but could some sort of illustration/table help? Just a suggestion to be considered: Maybe a table or bar figure in section 2, "Data sets and methods" (page 4 - 5) with seasonal emissions split by region and natural vs anthropogenic emissions would help in the interpretation? The table/figure could in some way also be supplied with for example arrows of varying length, indicating the convective strength as this is a key feature in the interpretation of the data?*

We thank the reviewer for their suggestions. We feel the best way to highlight the connections between the seasonality in emissions and seasonality in convection is to add to Figure 1 a line to show the position of the ITCZ in the different seasons. We also explored the use of a multi-model mean contour of convective mass flux, but this was too noisy so we retained a line to display the ITCZ position. We have added the following text to section 2 "Data Sets and Methods" and to the caption of figure 1:

Page 5 line 32: “The location of these emission peaks in relation to the position of the Intertropical convergence zone (ITCZ) can be clearly seen (Fig 1). “

“Figure 1.....panels).The dashed line shows the approximate position of the Intertropical Convergence Zone (ITCZ) in the different seasons.”

We also feel this addition to Figure 1 makes the existing text in section 3.1 (page 7 line 5) and thereafter, where we highlight connections between emissions and dynamical seasonal patterns and co-location, clearer to understand.

*On page 12 the authors state that this study presents a clear and robust picture of the effect of climate change on the transport of pollution from major emission source regions. This is not quite true, as the major sources in this study are located in the tropics. This is partially true for CO, but not necessarily true for other air pollutants.*

We agree our study highlights the major CO sources in the tropics and their interactions with deep convective lofting; however we do also highlight the ubiquitous decrease in CO-tracer in most of the troposphere due to climate change. We have revised the text in the manuscript to highlight these points.

Page 7 line 27: “In general, in both winter and summer, CO-tracer mixing ratios decreases are ubiquitous throughout most of the troposphere.”

Page 13 line 10: “Nevertheless, this multi-model study presents a clear and robust picture of the effect of climate change on the transport of pollution from major emission source regions, in particular from biomass burning regions in the tropics that are strong CO sources, and how this effect varies seasonally as governed by the seasonal location of the ITCZ and biomass burning emissions sources.”

*The authors should also state more clearly what knowledge has been gained, and in what way this study may improved out understanding of future air quality (and short lived climate forcers). Could there for instance be any potential feedback mechanisms to climate?*

We are unable to discuss potential feedback mechanisms to climate as the chemistry-climate model simulations did not include this two-way interaction between chemistry and radiation. Without explicitly including this interaction in the model set-up we could not reliably discuss feedbacks to climate. We agree that the last sentence of the manuscript could be much clearer about knowledge gained, and our understanding of future air quality and we thank the reviewer for this suggestion. We have added additional text to the last paragraph of the discussion and conclusions:

Page 13, line 17: “Hence, transport changes alone in the absence of stricter emissions controls, may reduce future air quality in the vicinity of emission source regions especially in the tropics, due to reductions in vertical transport and dispersion by deep convection. However, this study examines the impacts of climate change on transport alone, whilst future air quality will also be greatly influenced by climate-driven changes in chemistry and by future changes in emissions. Future multi-model comparison studies would benefit from a larger suite of meteorological variables that enable a more detailed diagnosis of the large-scale dynamical responses to climate change. Such improved dynamical attribution in tandem with tracer transport studies will permit a fuller quantification of the response of global air pollution transport to greenhouse gas warming.”

*Minor corrections*

*Starting with the introduction (page 2) I see that for several citation the reference year in the text and the reference list don't match. Starting from page 2 (Introduction): TF- HTAP 2011 (2010), Kang et al. 2014 (2013), Cooper et al. 2002 (2004), Langford et al. 2014 (2015) Hwan Seo et al. 2014 - should it be Seo et al. 2014? Year in text and year in reference list in brackets. Please double check, and use the correct year both places. NB! I have only checked the first page, and leave it to the authors to check the rest of the manuscript.*

We thank the reviewer for noting these citation errors. We have modified the text and checked throughout.

*Page 3, line 10 Bengsson or Bengtssen (as in reference)?*

Amended to that in the reference.

*Page 4, Confusing use of "one model" (line 18) and models in lines 19 - 23.*

Re-phrased (now page 4, line 20) to: "The aim of this paper is to explore the robustness of the changes in transport found in the single-model study described above, across an ensemble of CCMs..."

Referee #3

*Overview.*

*The authors compare present-day day air pollution transport patterns with projected end-of-21st-century conditions. For this purpose, seasonally-averaged volume mixing ratio fields of an artificial tracer simulated by four chemistry-climate-model of the ACCMIP project are inter-compared. The tracer has a 50-day lifetime and is emitted using present-day anthropogenic and biomass burning CO emissions. The authors find a general decrease in tracer concentrations in the troposphere and an increase near the tropopause in the simulation of all models. The authors attribute this mainly to reduced convection in the tropics and an increase in tropopause height. The results agree across the four models and also with previous studies.*

*General comments*

*The work is a scientifically sound study of the impact of climate change. Decrease in convective activity, increase in tropopause height as well as weakening but increase in extend of the Hadley circulation is a climate response simulated by many CCMs. Showing the impact on concentration patterns as presented in the study is a step further in understanding the impact of these circulation changes.*

We thank the reviewer for their positive comments.

*The relevance and novelty aspect of the study could be enhanced by elaborating in more detail the agreement but also the disagreement with the studies from the literature, many of them mentioned in the introduction. Please include this in the conclusion section.*

This is a good point. We have carefully gone through the manuscript and clarified further the agreement and disagreement with previous studies. We have highlighted a further novelty of our study being it examines seasonal transport patterns and their robustness across multiple models.

We have added more detail on agreement by providing quantitative estimates of decreases in CO-tracer mixing ratios in the free troposphere to compare with previous studies and discussing decreased convective mass fluxes in our study alongside findings by Held and Soden (2006) and

Abalos et al. (2017). We have emphasised in the discussion and conclusions the higher tropopause height, and the poleward shift in zonal-mean winds and transport that have been outlined in sections 3.2 and 4.2.

The following additions have been made to the text:

*a) in terms of highlighting novelty:*

Page 4, line 20: “The aim of this paper is to explore the robustness of the changes in transport found in the single-model study described above, across an ensemble of CCMs participating in the recent Atmospheric Chemistry and Climate Model Intercomparison Project (ACCMIP) using a globally emitted CO-tracer (Lamarque et al., 2013), and to quantify for the first time seasonal transport changes in response to climate change and their dynamical attribution.”

Page 11, line 27: This study quantifies the seasonal variation and the robustness of changes in transport under climate change. “

*b) in terms of highlighting agreement and disagreement:*

Page 3, line 28: “This study also found a 25% lower tropospheric average tracer mixing ratio.” (referring to Holzer and Boer 2001).

Page 7, line 32: “Fang et al. (2011) also find substantial decreases in annual-mean CO-tracer concentrations in the free troposphere (-2 to -12% at 400 hPa) but...”

Page 12, Discussion and conclusions, line 4: “The relative changes in annual-mean CO-tracer mixing ratios at the surface and in the free troposphere are of similar magnitude to those reported by Fang et al. (2011) using the GFDL-AM3 model. Somewhat larger decreases in tropospheric-average idealised tracer mixing ratios of 25% were reported in 2100 by Holzer and Boer (20001) under a different climate change scenario.”

Page 9, section 3.2, line 27: “A robust feature across all of the models is an overall reduction in convection, as reported by Held and Soden (2006), in response to climate change in the 2090s ...”

Page 12, Discussion and conclusions, line 13: “..., in agreement with tropical convective mass flux reductions diagnosed by Held and Soden (2006). However, in contrast to our findings, Abalos et al.(2017) suggests decreases in convection mass fluxes are limited to ~5km.”

Page 12, Discussion and conclusions, line 22: “The higher tropopause is a robust finding across climate change studies (e.g. Kang et al. 2014; Vallis et al. 2015).”

Page 12, Discussion and conclusions, line 25: “A poleward and upward shift in zonal-mean winds is consistent across the four models and noted in previous studies (e.g., Orbe et al. 2015).”

*The presented study focuses a lot on the tropics. But changes in the transport to the Arctic is also an important aspect given the impact of black carbon on the radiative forcing. For example Orbe et al. (2015) and (2013) find enhanced pole-ward transport towards the Arctic. It would be good if the results of the current study would report more on the change in the poleward transport.*

We have considered the role of poleward transport in more detail, although we find in section 4.2 that much of the increase in CO-tracer mixing ratios is due to the upward movement of the tropopause. We have plotted the difference in the vertically integrated CO-tracer column between 2000 and 2100 and find that this quantity increases north of ~30-40°N (as shown below). This shows that the re-distribution of CO-tracer in the future climate is not purely a vertical redistribution (else

the net column change would be zero), and that some advective poleward transport appear to occur. However, we have not added this extra figure to the text as we note above that the rise in the tropopause is the main driver of the CO-tracer increases in this region, although it is not possible to separate out the effects of these two processes cleanly.

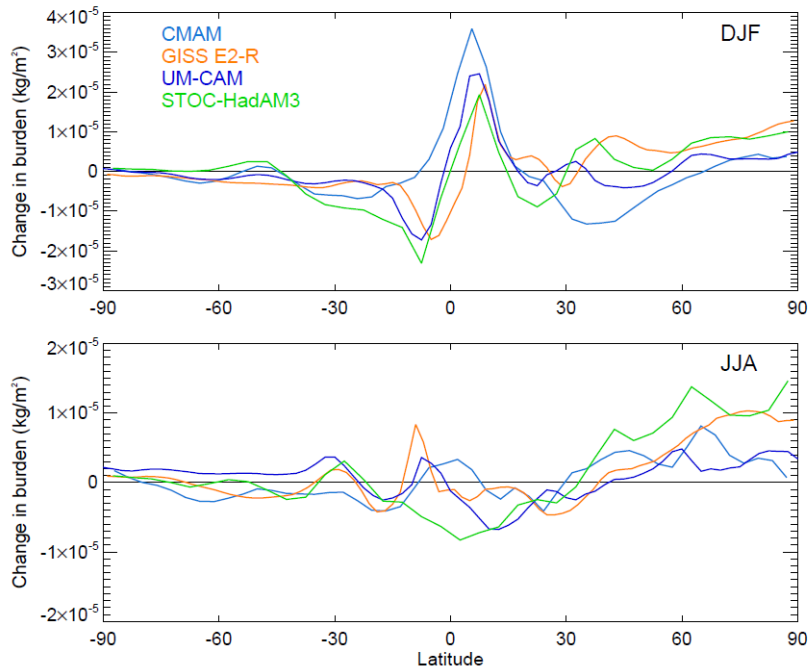


Figure: Differences in vertically integrated CO-tracer column mixing ratios between the 2090s-2000s for winter and summer.

We have added further text of finding from Orbe et al. (2013, 2015) to the introduction and main text in section 3.2. :

Page 3, introduction, line 29: “More recently, Orbe et al. (2015) used idealized tracers of air-mass origin, as described in Orbe et al. (2013), to track how future increases in greenhouse...”

Page 8, section 3.2, line 6: “The contribution of the rise in the tropopause to the increase in CO-tracer mixing ratios is explored further in section 4.2. This near-tropopause increase in CO-tracer mixing ratios in the northern mid to high latitudes is also consistent with future increases in poleward transport reported by Orbe et al. (2015) based on tracers of air mass origin. Increases in the vertically integrated CO-tracer column between the 2000s and 2090s between 30°-40°N in all models also suggests an increase in advective transport poleward, since vertical re-distribution alone would not produce an increase in the vertical column.”

*Also, please show maps from 90S -90N and do not omit the high latitudes.*

We have reproduced Figures 4-5 and 8-9 to display 90°S-90°N as requested at the end of these responses to the reviewers (see pages 14-17). However, there are no additional noteworthy CO-tracer or convective mass flux patterns at these high altitudes for this mid-tropospheric altitude range, and hence we prefer to retain the current latitude ranges of 40°S to 60°N for maximum clarity. We do note that Figures 8, and 9 that show convective mass fluxes, originally had a more

restricted latitude range so we have revised these figures so that the latitude ranges span 40°S to 60°N also.

*To avoid misunderstandings, the authors should discuss more clearly the limitations of the study because of the use of the artificial tracers: i.e. no impact of the photochemistry (loss by OH and production by VOC) or the precipitation patterns (deposition), and, most importantly, no change in the emissions.*

We have revised the text in the introduction to read more clearly:

Page 2, line 8: “To understand how these changes will influence future pollutant distributions, it is therefore important to disentangle the relative impacts of changes in transport and chemistry as well as future emission changes. The focus of this study is to quantify climate change impacts on atmospheric transport.”

We have added the following text to the discussion and conclusions where we discuss our results in the context of air quality as requested by reviewer 1.

Page 13, line 17: “Hence, transport changes alone in the absence of stricter emissions controls, may reduce future air quality in the vicinity of emission source regions especially in the tropics, due to reductions in vertical transport and dispersion by deep convection. However, this study examines the impacts of climate change on transport alone, whilst future air quality will also be greatly influenced by climate-driven changes in chemistry and by future changes in emissions.”

*The end-of-century volume mixing ratios appear overall lower than the volume mixing ratios of the present day runs. But the total burdens should be the same ( p6 l1). It would be good if you could confirm the mass conservation and explain in more detail how the burden was redistributed. A comment on the mass conservation of the SL-advection scheme of STOC-HadAM3 might also be helpful.*

The global average tracer burdens are given below for the 2000s and 2100s periods in units of kg-CO/m<sup>2</sup>.

CMAM	2000s	0.000274696	2100s	0.000274829	difference= 0.05%
GISS	2000s	0.000273159	2100s	0.000273218	difference = 0.02%
UM-CAM	2000s	0.000270511	2100s	0.000270244	difference = 0.1%
STOC-HADAM3	2000s	0.000279364	2100s	0.000277364	difference = 0.7%

We believe these results re-affirm very-near mass conservation across the models, and do not feel that these differences merit further discussions for STOC-HadAM3.

We have however modified the text to read:

Page 6, line 11: “Note that the monthly-average atmospheric burden of the CO-tracer is nearly identical for the 2000s and 2090s, as expected....”

*The mechanism for the increase in tracer mixing ratios below the tropopause should be better explained. Is it simply because of the higher tropopause (i.e. the increase occurs near the present day tropopause) or do differences in stratosphere-troposphere exchange also play a role. Once it is established that the tropopause is higher from the GCM run, it is somewhat a trivial finding that tropospheric mixing ratio for primary tracers are increased at the same height.*

Our results in Figure 11 suggest that indeed it is simply the higher tropopause is the main cause increase in CO tracer mixing ratios near and below the tropopause. We also suggest there may be a potential minor role for enhanced poleward transport based on an increase in the vertically integrated CO-tracer column poleward of  $\sim 30^\circ\text{N}$ . However, Figure 11 shows this would not be more than a few ppb at most. We do not have any diagnostics to determine the role of STE, although Abalos et al. (2017) note this process also to be influenced by the displacement of the tropopause. However, we expect that with a 50-day lifetime there will be not be that much of the CO-tracer reaching the stratosphere, hence the amount of CO-tracer in the future might actually decrease with that mechanism if there is more downward transport of low CO values from the stratosphere.

We have added text to section 3.2:

Page 11, line 11: “Therefore, much of the CO-tracer increase near the tropopause that occurs in the future arises from a rise in tropopause height, as reported in Fang et al. (2011) and also by Abalos et al. (2017) using the e90 tracer....This also suggests that the impacts of enhanced poleward and upward transport in the northern mid-high latitudes near the tropopause on CO-tracer mixing ratios (section 3.2) are largely outweighed by the impact of the rise in the tropopause, although these effects may be inter-related.”

We have also revised the text in the Discussion and conclusions, to read:

Page 12, Line 23: “The strong increases in CO-tracer concentrations in the vicinity of the tropopause are mainly due to a higher tropopause under greenhouse gas warming, whereby this region has low-CO stratospheric air for present-day and higher-CO in tropospheric air in the future, in accord with Fang et al. (2011). A poleward and upward shift in zonal-mean winds is consistent across the four models and noted in previous studies (e.g., Orbe et al. 2015). Resultant enhanced poleward transport may also contribute in a minor fashion to CO-tracer increases in the future near the tropopause in the northern mid-latitudes; and changes in eddy mixing may also have an impact. However, all these processes may be inter-related such that it is not possible to discern the impacts of individual processes on CO-tracer mixing ratios. “

Page 12, line 32: “Further diagnostics to allow more detailed dynamical insights would be most useful to probe the relative contributions of different large-scale dynamical processes including stratosphere-troposphere exchange, alongside other aspects of the Hadley Circulation...”

*Specific comments:*

*P1 L 24 , I think the weaker Hadley cell is a result of the GCM calculations, i.e. a given for this study So please consider rephrasing “.. in turn reflect...” to “...causes...”*

We have not been able to diagnose the Hadley circulation directly as we do not have the v wind component for calculation of the streamfunction, hence we are unable to make this definitive statement.

*P1 L25 Please add a sentence on the mechanism of increase in tracer because of increase in tropopause height.*

*The following text has been added to the abstract:*

*Page 1, line 26: “...rise in tropopause height enabling lofting to higher altitudes”*

*P2 L19-L27 This is more relevant for ozone and not so much for transport of primary pollutants. Consider shortening or omitting it.*

Agreed. The paragraph has been shortened (and one reference removed) to:

Page 2, line 19: “Descent from the lower stratosphere and upper troposphere to the mid-troposphere can occur in the dry intrusion airstreams of cyclones (e.g. Langford et al., 2015; Knowland et al. 2015). This is also the main mechanism for stratosphere–troposphere exchange of ozone that occurs in the mid-latitudes, and which may extend to the surface in regions prone to deep stratospheric ozone intrusions (Lin et al., 2015). Deep convection is also important for lofting surface pollution in mid-latitude regions in summer when the landmass is warm.”

*P3 L 17 Is this response in ozone caused by transport ? If not please omit.*

This sentence relates shifts in storm track position to reduced mid- latitude cyclone frequency to reduced ozone, so yes this ozone response is caused by changes in transport. We have added “ozone” to the start of this sentence for clarity:

Page 3, line 13: “In terms of ozone pollution transport...”

*P3 L 23 Please discuss the impact of changes in stratosphere-troposphere exchange for the tracer transport*

*This text has been revised/added:*

Page 3, line 19: “Ozone transport from the lower stratosphere to the troposphere will also be influenced by future changes in stratosphere-troposphere exchange, which is expected to increase under greenhouse gas warming owing to a strengthening of the Brewer Dobson circulation in the stratosphere, leading to higher ozone mixing ratios in the mid-to upper troposphere (Butchart and Scaife, 2001; Neu et al. 2014). Higher mixing ratios of idealised tracers of stratospheric origin in the tropical/sub-tropical troposphere have also been found due to enhanced stratosphere-troposphere exchange in a future warmer climate (Orbe et al. 2013a; Abalos et al. 2017).”

*P3 L31 Please add also Orbe et al. (2013).*

Now page 3, line 30: Added.

*P4 L29 Please add also information about the different convection schemes of the 4 Models*

The following text has been added and references included:

Page 5, line 1: “Deep convection schemes used by the models are based on two main parameterisations: Gregory and Rowntree (1990) for GISS-E2-R, UM-CAM and STOC-HadAM3 and Zhang and McFarlane (1995) for CMAM. In addition STOC-HadAM3 uses Collins et al. (2002) to derive using convective mass fluxes the probability of a parcel being subject to convective transport. Although these two parameterisations are based on a mass flux approach, there can be a wide spread in simulated convective mass fluxes within a single parameterisation (Scinocca and McFarlane 2004; Lamarque et al. 2013). In addition, how the transport of the CO-tracer is implemented will influence the impacts of the convection schemes.”

*P5 L19 Please state the temporal resolution of the GFED 2 data*

Now page 5, line 27: Text amended to: “and monthly average biomass burning emissions”. We have also updated the GFED v2 web-link in the paper.

*P7 L4 Please add a discussion here how the present-day CO tracers compare to actual CO. The NH CO maximum occurs in April, which seems not the case for tracer.*



A description of actual CO occurs just below this text on lines P7, L17-20. Here we have added the following text to discuss the season cycle of the CO-tracer and actual CO:

Page 7, line 20: “The seasonality of the CO-tracer and CO are fairly similar, with a more pronounced winter peak in the tropics in the CO-tracer in the mid-troposphere. The relative changes in CO-tracer mixing ratios are largest in the tropics and during winter and smaller in summer. Henceforth, the focus is on findings for boreal winter and summer.”

*P7 L5 It is not clear that lower values do not deserve consideration. The changes could be even stronger. Please elaborate on this. MAM is the maximum of present day CO.*

"We thank the reviewer for noting this point. We erroneously stated that the absolute concentrations of the CO-tracer were lower during spring and autumn. We have revised the text accordingly describing the seasonality in absolute and relative (difference between 2090s-2000s) of the CO-tracer (as shown below for UM-CAM). We also add text to outline that the peak differences the CO-tracer occurs in winter in the tropics and smaller differences occur in summer, which was our rationale for focussing on these two seasons. We initially had shown all four seasons but found the figures too repetitive:

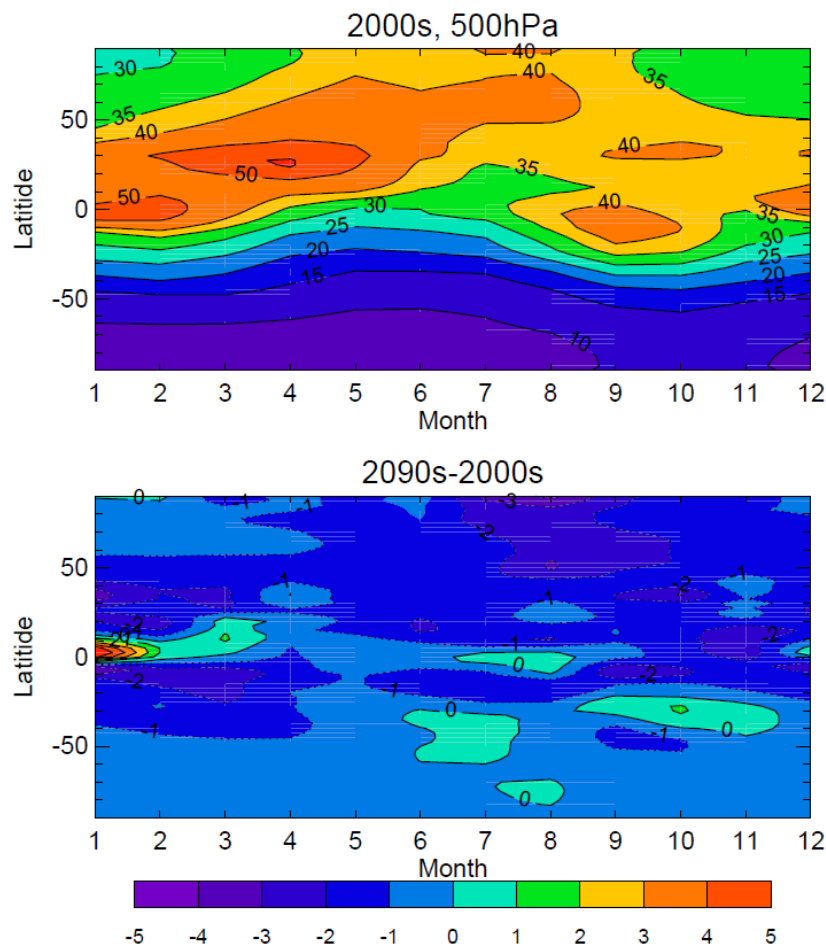


Figure: Annual cycle in CO-tracer mixing ratios at 500 hPa in UM-CAM for the 2000s (top) and the differences 2090s-2000s (bottom).

Page 6, line 17: “In the tropics, the largest CO-tracer mixing ratios occur during boreal winter (DJF), hereinafter winter, (Fig. 2) compared to boreal summer (JJA), hereinafter summer (Fig. 3). In the

northern mid-latitudes CO-tracer mixing ratios are largest in boreal spring and in the southern mid-latitudes in boreal autumn. Elsewhere CO-tracer mixing ratios have a fairly uniform seasonal cycle.”

Page 7, line 20: “The seasonality of the CO-tracer and CO are fairly similar, with a more pronounced winter peak in the tropics in the CO-tracer in the mid-troposphere. The relative changes in CO-tracer mixing ratios are largest in the tropics and during winter and smaller in summer. Henceforth, the focus is on findings for boreal winter and summer.”

*P7 L23 Please clarify if this is the thermal present-day tropopause or the tropopause for the respective time slice. How does the thermal tropopause relate to a "tracer" tropopause?*

We have clarified in the methods section that a thermal tropopause is calculated for present-day and future and added a clarification to section 3.2 as requested that we are discussing the present-day tropopause.

Page 6 line 3: “The tropopause is defined separately as an average for the 2000s and the 2090s as the lowest model level at which the lapse-rate decreases to...”

Page 8, line 4: “Future CO-tracer mixing ratios also increase substantially by ~2-6 ppb (~10-25%) near the present-day tropopause and into...”

We have added text in the methods to discuss that lapse rate tropopause has been shown to compare well to the e90 tracer tropopause, and added appropriate references.

Page 6, line 4: “Studies have shown the lapse rate or thermal tropopause approximately coincides with a 90-day e-folding tracer tropopause which is used to distinguish stratospheric and tropospheric air (Prather et al. 2011; Abalos et al. 2017).”

*P8 L9 Please discuss also the changes at high latitudes. (see Orbe et al. 2013)*

As discussed in the general comments above, we have added further text on mid to high latitude changes to section 3.2:

Page 8, line 7: “This near-tropopause increase in CO tracer mixing ratios in the northern mid to high latitudes is also consistent with future increases in poleward transport, as reported by Orbe et al. (2015) based on tracers of air mass origin. Increases in the vertically integrated CO column between the 2000s and 2090s between 30°-40°N in all models also suggests an increase in advective transport poleward, since vertical re-distribution alone in this region would not produce an increase in the vertical column.”

*P8 L17 From all ACCMIP models or only the four discussed here ?*

Text revised (now page 9, line 5) to: “from the four ACCMIP model simulations”.

*P8 L18 For the present-day or end-of-century runs ?*

Text revised (now page 9, line 5) to: “For present-day, during both winter and summer...”

*P8 L20 Please provide more explanation for the up to factor 4 differences in the convective fluxes by the models. Is it driven by the meteorological input (i.e. T profile) or the specifics of the parametrisation.*

It is difficult to provide a conclusive explanation for these differences. Even if the large-scale temperature profiles were the same across the models there may still be differences in the behaviour of convective mass fluxes across the models. In response to an earlier comment for

details on the convection schemes we added text from Scinocca and McFarlane (2004) that shows that even using a single convective parameterisation there can be a wide spread in behaviour due to implementation details. In previous work we have also noted large differences in convective mass fluxes simulated by different models (e.g., see fig 1. Doherty et al. 2005, Atmos. Chem. Phys.) We have added further text (and included references) to the methods and section 4 to discuss these points:

Page 5, line 1: “Deep convection schemes used by the models are based on two main parameterisations: Gregory and Rowntree (1990) for GISS-E2-R, UM-CAM and STOC-HadAM3 and Zhang and McFarlane (1995) for CMAM. In addition STOC-HADAM3 uses Collins et al. (2002) to derive using convective mass fluxes the probability of a parcel being subject to convective transport. Although these two parameterisations are based on a mass flux approach, there can be a wide spread in simulated convective mass fluxes within a single parameterisation (Scinocca and McFarlane 2004; Lamarque et al. 2013). In addition, how the transport of the CO-tracer is implemented will influence the impacts of the convection schemes.”

(section 4, now page 9, line 13): “Substantial differences of a factor of 2-3 in annual-mean zonal convective mass fluxes simulated across three models (including STOC-HadAM3) were also reported in Doherty et al. (2005). Since, the same parametrization is used by UM-CAM, HadAM3 and GISS-ER-2, it may be the specific details of its implementation and interactions with internal parameters (Scinocca and McFarlane 2004) that cause this large difference in magnitudes across the four CCMs.”

*P8 L21 Is there any indication, which of the models simulates more realistic mass fluxes.*

The distribution and strength of convection are not well constrained by observations so we cannot say which models are more realistic. All models will evaluate well for global precipitation patterns, but yet we see large differences in 3-D convective mass fluxes. In Doherty et al. (2005) we compared convective mass fluxes from HadAM3 to ERA-40, and found HadAM3 has higher mass fluxes (by up to a factor of 2) and that convection also generally reaches greater altitudes but it is not obvious that ERA-40 values reflect the real atmosphere either. It should be noted that even with this factor of four difference in convective mass fluxes, present-day CO tracer distributions and responses to climate change are fairly consistent.

*P9 L9 Please discuss also the increase in convection north of 60 N in DJF shown in Figure 6.*

This is already discussed at P9 L17 now Page 10, line 7. We have inserted “hemisphere” for clarity: “A strong increase in convective mass fluxes in the northern hemisphere polar latitudes ...in winter”

*P10 L10 Please provide a plot of the increase in the thermal tropopause height between present-day and end-of-century or give some numbers in pressure and height.*

The sentence describing the rise in tropopause height refers to figs 2 and 3 that depict this graphically. In addition we have added the following text:

now Page 11, line 2: " The annual-mean multi-model mean tropopause in the 2090s moves upward by 12 hPa in the tropics and 27 hPa in the mid-latitudes relative to its position in the 2000s."

*P10 L15 Please discuss Fig 11 in more detail. Is the conclusion based on the fact that dotted and solid blue lines overlap more than the respective green lines? I am not sure if this is actually the case especially for the tropics.*

Yes, that is correct. We have expanded and revised this text for clarity.

now page 11, line 9: “Comparison of annual-mean CO-tracer profiles reveals that when vertical CO-tracer profiles are compared in tropopause relative co-ordinates there is less difference between present-day and future, unlike when the CO-tracer profiles are plotted relative to pressure. Therefore, much of the CO-tracer increase near the tropopause that occurs in the future reflects a rise in tropopause height, as reported in Fang et al. (2011). This is evident for all models, in particular over the northern mid-latitudes (40°N) near the tropopause (Fig 11).”

We have also revised the Figure 11 caption:

“plotted against altitude as pressure (green) and with distance from the tropopause for the respective time period (blue).”

*P10 L21 The weaker across-the-tropopause gradient is an interesting finding. It should be mentioned more clearly in the paper, i.e. the conclusions*

The weaker gradient response we discuss is within the mid-upper troposphere and is associated with the changes in zonal-mean winds. We have added the following text to the conclusions:

Page 12, line 26: “Resultant enhanced poleward transport may also contribute in a minor fashion to CO-tracer increases in the future near the tropopause in the northern mid-latitudes; and changes in eddy mixing may also have an impact. However, all these processes may be inter-related such that it is not possible to discern the impacts of individual processes on CO-tracer mixing ratios.”

*P11 L18 Please discuss also the response in the Arctic (compare with Orbe et al. (2013, 2015)) and the hemispheric gradient (Holzer and Boer, 2011)*

We have expanded this text to read:

Page 12, line 25: “A poleward and upward shift in zonal-mean winds is consistent across the four models and noted in previous studies (e.g., Orbe et al. 2015). Resultant enhanced poleward transport may also contribute...” (see comment above).

In response to reviewer 2 general comments we have added text on reduced tropospheric average mixing ratios from Holzer and Boer (2001):

Page 12, line 6: “Somewhat larger decreases in tropospheric-average idealised tracer mixing ratios of 25% were reported in 2100 by Holzer and Boer (2001) under a different climate change scenario.”

*P11 L22 Please mention that you found a weaker across-the-tropopause gradient (if this is the case)*

As noted above, we did not discuss a cross-tropopause gradient, only a weaker gradient in the upper troposphere in Fig 11, so we retain only to mention a change in mixing:

Page 12, line 28 “...and changes in eddy mixing may also have an impact.”

*Figures 4,5, 8 etc. please show maps from 90S-90N*

Please see our response in the general comments. We have reproduced these Figures (see pages 14-17 of these responses). However, there are no additional noteworthy CO-tracer or convective mass flux patterns at these high altitudes for this mid-tropospheric altitude range, and hence we prefer to retain the current latitude ranges of 40°S to 60°N for maximum clarity.

*Figure 1 add to caption "for different seasons"*

Added.

*Figure 2, please use either present-day or REF not both*

Amended to present-day.

*Figure 11, please mention that the distance is from the respective tropopause for each time slice.*

Added.

Literature: Orbe, C., M. Holzer, L. M. Polvani, and D. Waugh (2013), Air-mass origin as a diagnostic of tropospheric transport, *J. Geophys. Res. Atmos.* 118, 1459–1470, doi:10.1002/jgrd.50133

Added.

Figure 4 . Top panels within subplots a-d): Present-day (1995-2006) DJF climatological mean CO distribution, averaged over 400-800 hPa. Bottom panels: 2090-2099 (RCP8.5) - 1995-2006 difference in DJF climatological mean distributions, wherein black contours denote the present-day climatology. Results are presented for a) UM-CAM and b) STOC-HadAM3 (top panels) and c) CMAM and d) GISS-E2-R (bottom panels). Grey shading indicate where results are not significant at  $p < 0.05$  as evaluated with a Student t-test using 10 years of data for the 2090s (RCP 8.5) and present-day climate simulations. Note the different scales for UM-CAM and STOC-HadAM3 and for CMAM and GISS-E2-R for the difference plots.

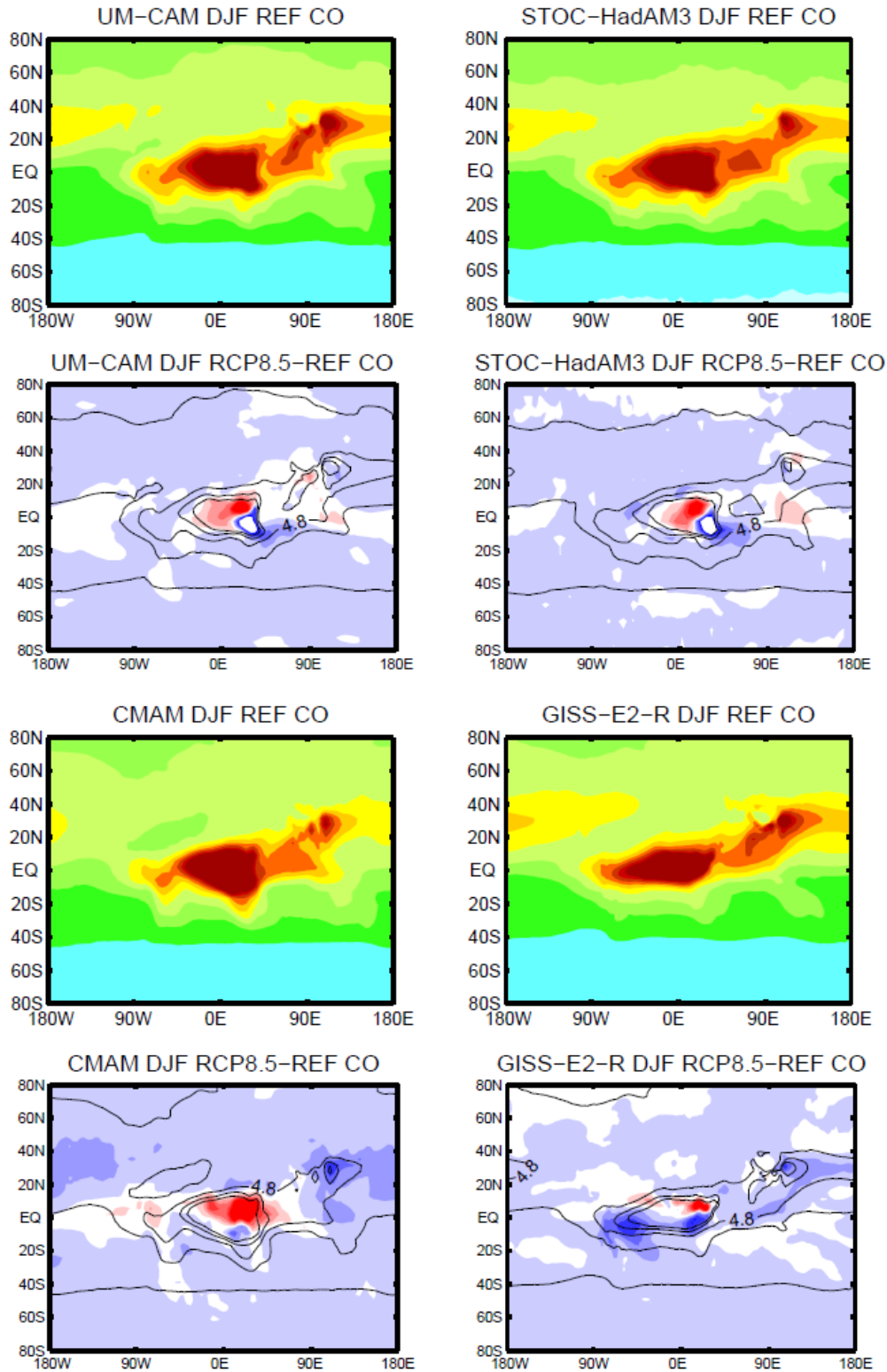


Figure 5: Same as Figure 4 but for JJA. Note the different scales for UM-CAM and STOC-HadAM3 and for CMAM and GISS-E2-R for the difference plots.

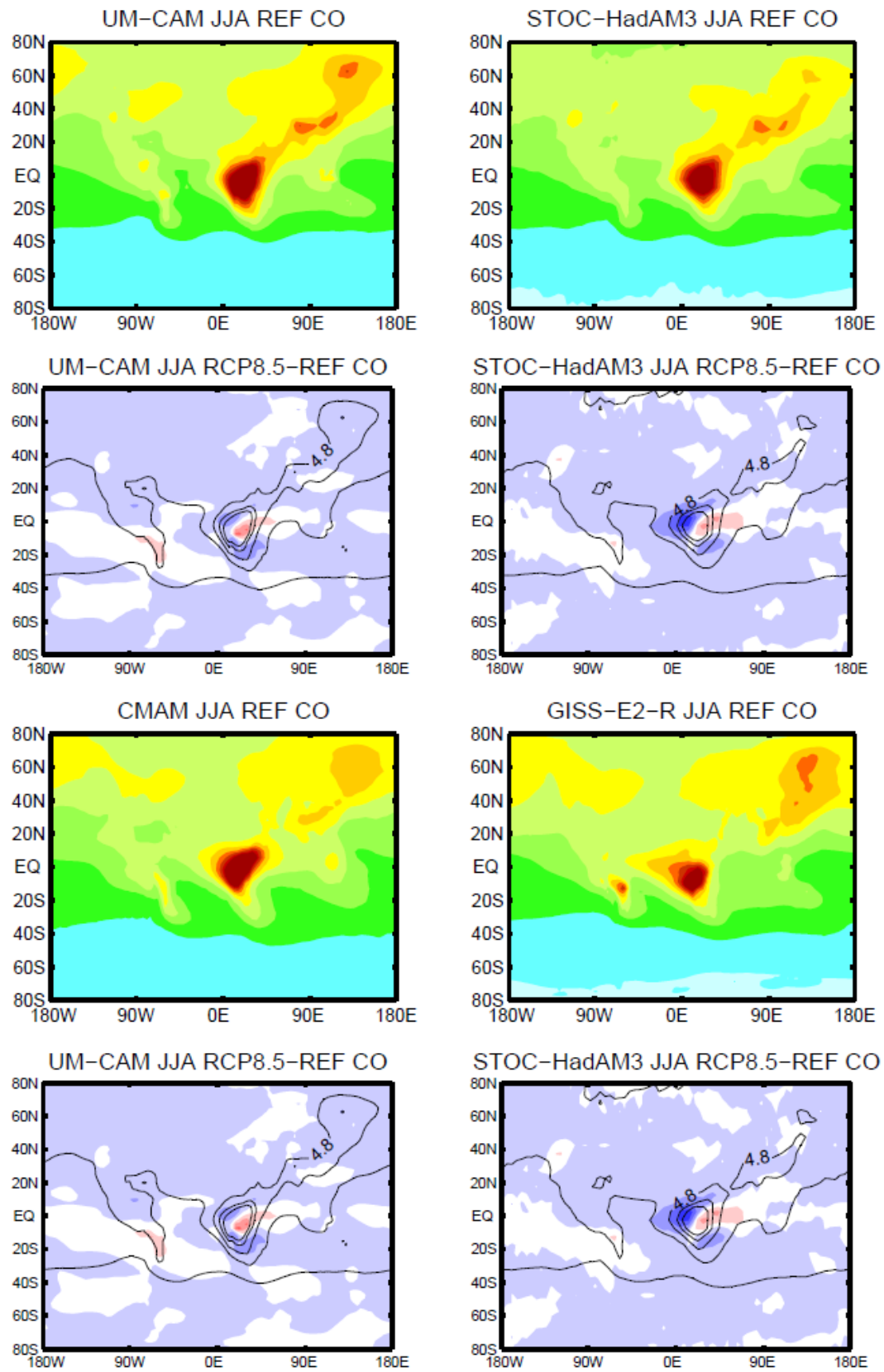


Figure 8. Top panels within subplots a)-d): DJF climatological mean convective mass fluxes, averaged over 300-800 hPa for 1996-2005 (present-day). Bottom panels e)-h): Same, but for 2090-2099 (RCP8.5)- 1996-2005 (present-day) difference, wherein black contours denote the present-day climatology. Results are presented for UM-CAM and STOC-HadAM3 (top panels) and CMAM and GISS-E2-R (bottom panels). Grey shading indicate where results are not significant at  $p < 0.05$  as evaluated with a Student  $t$ -test using 10 years of data for the 2090s (RCP 8.5) and present-day climate simulations.

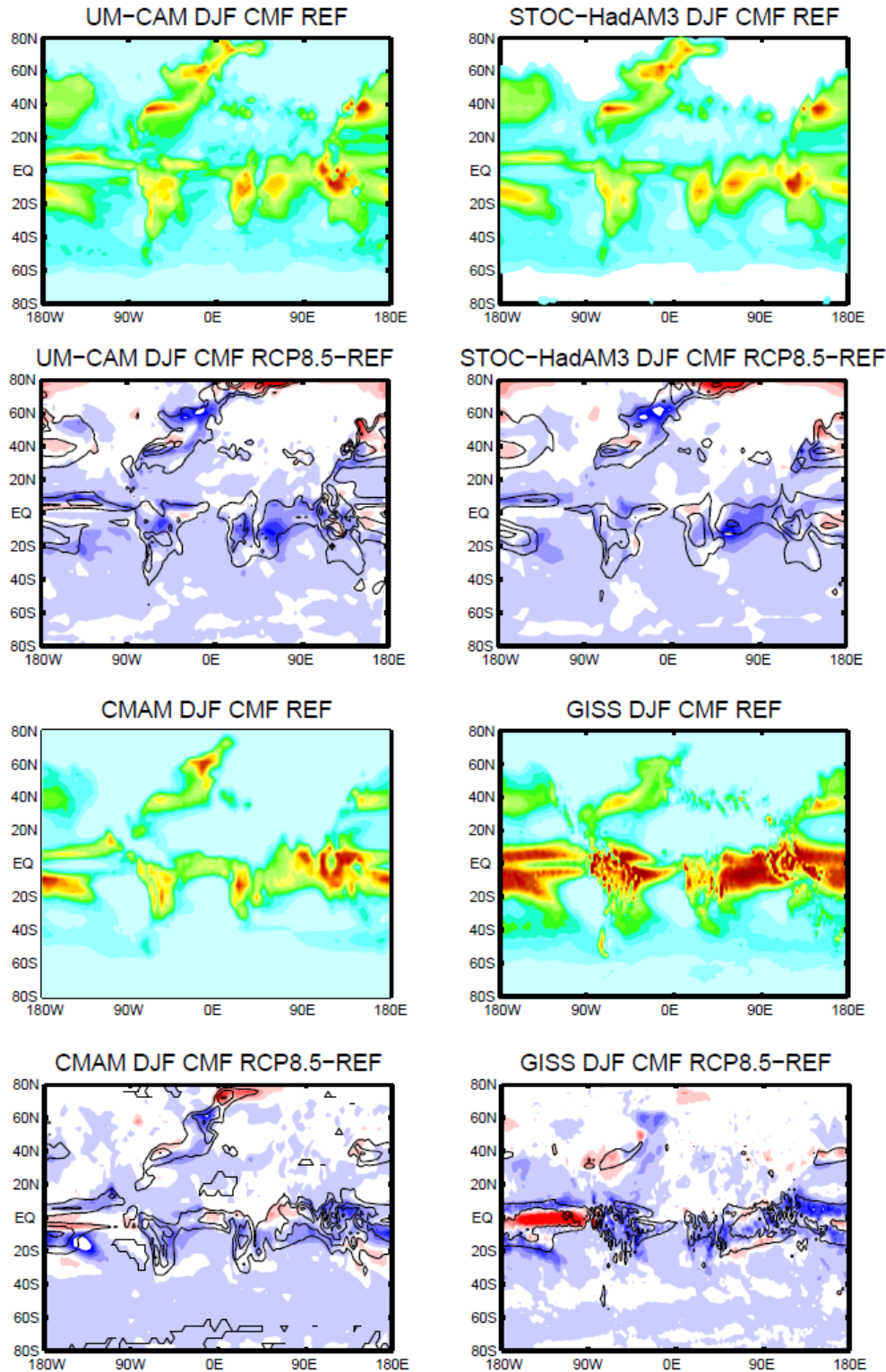
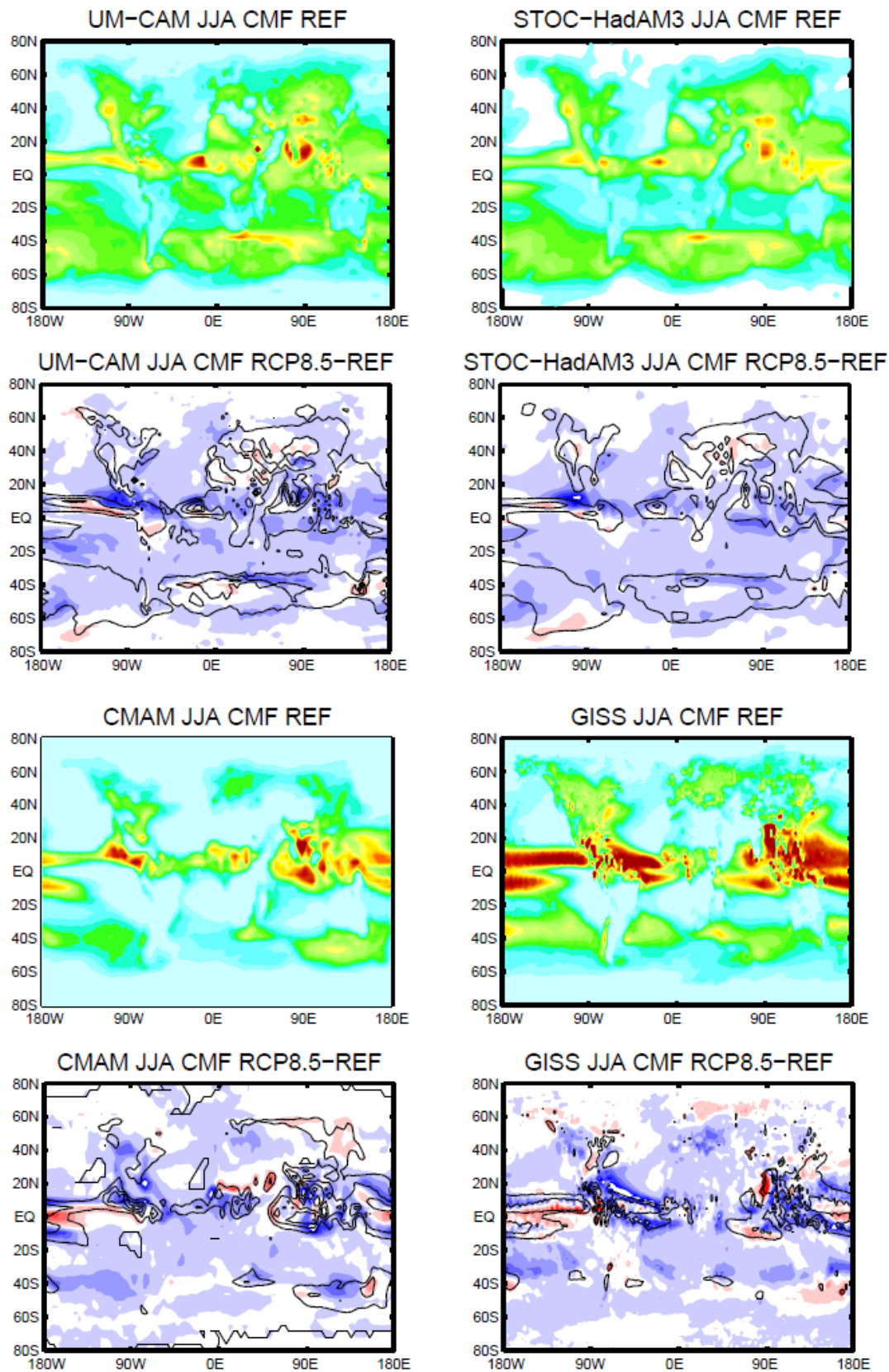




Figure 9. Same as Figure 8 but for JJA. Note the different scales for UM-CAM and STOC-HadAM3 and for CMAM and GISS-E2-R for the difference plots.



# Multi-model Impacts of Climate Change on Pollution Transport from Global Emission Source Regions

Ruth M. Doherty<sup>1</sup>, Clara Orbe<sup>2</sup>, Guang Zeng<sup>3</sup>, David A. Plummer<sup>4</sup>, Michael J. Prather<sup>5</sup>, Oliver Wild<sup>6</sup>, Meiyun Lin<sup>7</sup>, Drew T. Shindell<sup>8</sup>, Ian A. Mackenzie<sup>1</sup>,

<sup>1</sup>School of GeoSciences, University of Edinburgh, UK  
<sup>2</sup>Goddard Earth Sciences Technology and Research (GESTAR); Johns Hopkins University, USA  
<sup>3</sup>National Institute of Water and Atmospheric Research, Wellington, New Zealand  
<sup>4</sup>Canadian Centre for Climate Modelling and Analysis, Environment and Climate Change Canada, Montréal, QC, Canada  
<sup>5</sup>Department of Earth System Science, University of California, Irvine, CA 92697-3100, USA  
<sup>6</sup>Lancaster Environment Centre, Lancaster University, UK  
<sup>7</sup>Program in Atmospheric and Oceanic Sciences at Princeton University and NOAA Geophysical Fluid Dynamics Laboratory, Princeton, NJ 08540, USA  
<sup>8</sup>Nicholas School of the Environment, Duke University, Durham, NC 27708, USA

Correspondence to: Ruth M Doherty (ruth.doherty@ed.ac.uk)

**Abstract.** The impacts of climate change on tropospheric transport, diagnosed from a carbon monoxide (CO)-like tracer species emitted from global CO sources, are evaluated from an ensemble of four chemistry-climate model (CCMs) contributing to the Atmospheric Chemistry and Climate Model Intercomparison Project (ACCMIP). Model time-slice simulations for present-day and end of the 21<sup>st</sup> century conditions were performed under the Representative Concentrations Pathways (RCP) climate scenario RCP 8.5. All simulations reveal a strong seasonality in transport, especially over the tropics. The highest CO-tracer mixing ratios aloft occur during boreal winter when strong vertical transport is co-located with biomass burning emission source regions. A consistent and robust decrease in future CO-tracer mixing ratios throughout most of the troposphere, especially in the tropics, and an increase around the tropopause is found across the four CCMs in both winter and summer. Decreases in CO-tracer mixing ratios in the tropical troposphere are associated with reduced convective mass fluxes in this region, which in turn may reflect a weaker Hadley Cell circulation in the future climate. Increases in CO-tracer mixing ratios near the tropopause are largely attributable to a rise in tropopause height enabling lofting to higher altitudes, although a poleward shift in the midlatitude jets may also play a minor role in the extra-tropical upper troposphere. An increase in CO-tracer mixing ratios also occurs near the Equator, centred over Equatorial/Central Africa, extending from the surface to the mid troposphere which is most likely related to localised decreases in convection in the vicinity of the Intertropical Convergence Zone, resulting in larger CO-tracer mixing ratios over biomass burning regions and smaller mixing ratios downwind.

Deleted: n important

1 Introduction

The transport of pollutants from the atmospheric boundary layer is governed by meteorological processes including deep convection, Hadley Cell driven overturning in the tropics, mid-latitude cyclones as well as slow low-altitude airflow, small-scale turbulent mixing and other motions (e.g., Cooper et al. 2011; TF-HTAP 2010). Climate change may affect the large-scale circulation of the atmosphere through the above processes, and hence impact the intercontinental transport of pollutants. In addition to influencing meteorological transport processes, changes in climate will also modify the atmospheric chemical environment and pollutant lifetimes. To understand how these changes will influence future pollutant distributions, it is therefore important to disentangle the relative impacts of changes in transport and chemistry, as well as future emission changes. The focus of this study is to quantify climate change impacts on atmospheric transport.

In the tropics, the Hadley Circulation determines the location of the intertropical convergence zone (ITCZ) (e.g. Kang et al. 2013). Deep convection and mean upwelling associated with the Hadley Circulation control transport processes influencing pollutant distributions. For example, satellite measurements from MOPITT reveal that deep convection during the Asian summer monsoon carries pollutants emitted at the surface aloft into the upper troposphere (Kar et al., 2004). Deep convective transport of biomass burning emissions into the middle and upper troposphere was observed over Brazil during the TRACE A atmospheric chemistry field campaign experiment (Pickering et al., 1996).

Over the mid-latitudes, ascent of pollution from the surface to the mid-to-upper troposphere occurs along warm conveyor belt (WCB) airstreams embedded within synoptic-scale mid-latitude cyclones (Cooper et al. 2004; Brown-Steiner and Hess, 2011; Lin et al. 2012). Descent from the lower stratosphere and upper troposphere to the mid-troposphere can occur in the dry intrusion airstreams of cyclones (e.g. Langford et al., 2015; Knowland et al. 2015). This is also the main mechanism for stratosphere–troposphere exchange of ozone that occurs in the mid-latitudes, and which may extend to the surface in regions prone to deep stratospheric ozone intrusions (Lin et al., 2015). Deep convection is also important for lofting surface pollution in mid-latitude regions in summer when the landmass is warm.

Changes in climate may influence many of these tropical and mid-latitude transport processes, but the impact of these future changes on chemical composition remains unclear. In the tropics and subtropics a number of studies have shown a poleward expansion and weakening of the Hadley Cell circulation in response to future increases in greenhouse gases, which is most robust in boreal winter (Vecchi and Soden 2007; Lu et al. 2007, Ma et al. 2012, Levine and Schneider 2011; Williamson et al. 2013; Seo et al. 2014; Kang et al. 2014). While these studies posit that the weakening of the Hadley Cell is related to a weakening of the meridional temperature gradient between the tropics and sub-tropics, other studies have invoked thermodynamic constraints to suggest that convective mass fluxes throughout the tropics may decrease in response to increasing greenhouse gases (Held and Soden, 2006).

Deleted: 1

Deleted: ,

Deleted: s and transport

Deleted: 4

Deleted: d

Deleted: 2

Deleted: Also

Deleted: , d

Deleted: 4

Deleted: Descent to the surface from the upper or mid-troposphere primarily occurs through subsidence in anticyclones at the ends of the mid-latitude storm tracks or in the vicinity of the descending branch of the Hadley Cell (Stohl et al. 2002; Cooper et al. 2004).

Deleted: However, weaker descent and enhanced photochemical destruction in summer compared to other seasons may lessen the importance of deep convection in reducing surface pollution levels (Brown-Steiner and Hess, 2011).

Deleted: impact

Deleted: Hwan

As temperatures increase in the troposphere but decrease in the stratosphere in response to enhanced CO<sub>2</sub> concentrations, there is a decrease in static stability close to the tropopause that leads to an increase in its height (Manabe and Wetherald, 1975; Santer et al. 2003; Lorenz and De Weaver 2007; Kang et al. 2013; Vallis et al. 2015). A higher tropopause may also be associated with a poleward expansion or widening of the Hadley Cell (Lu et al. 2007), but the mechanisms underlying this change remain unclear.

Over the mid-latitudes, there is a general consensus that the storm tracks will shift poleward in response to future increases in greenhouse gases, at least in the zonal mean (Yin et al. 2005, Bengtsson et al. 2006, Barnes et al. 2013, Christensen et al. 2013; Shaw et al. 2016). This poleward shift in the mid-latitude storm tracks has been dynamically linked to the weakening of the Hadley circulation in the tropics (Vallis et al. 2015; Shaw et al. 2016) and to the rise in tropopause height (Lorenz and De Weaver, 2007). However, the zonally asymmetric and seasonally varying response of mid-latitude storm tracks to forced climate change is much less robust (Simpson et al. 2014; Shaw et al. 2016), partly due to interannual variability (Deser et al. 2012; Shepherd 2014).

In terms of ozone pollution transport, this shift in the mid-latitude storm track position has been related to reduced mid-latitude cyclone frequency leading to increased summertime surface O<sub>3</sub> pollution episodes over the eastern USA and Europe (Mickley et al., 2004; Forkel and Knoche, 2006; Murazaki and Hess, 2006; Leibensperger et al., 2008; Wu et al., 2008), although other studies do not report such changes in frequency (Racherla and Adams 2008; Lang and Waugh, 2011). The shift in mid-latitude storm tracks has also been related to changes in regional climate phenomena in particular the North Atlantic Oscillation (Ulbrich et al. 2009; Christensen et al. 2013), blocking anticyclone frequency (Masato et al. 2013), and the Pacific Decadal Oscillation (Lin et al., 2014; Allen et al., 2014). Ozone transport from the lower stratosphere to the troposphere will also be influenced by future changes in stratosphere-troposphere exchange, which is expected to increase under greenhouse gas warming owing to a strengthening of the Brewer Dobson circulation in the stratosphere, leading to higher ozone mixing ratios in the mid-to upper troposphere (Butchart and Scaife, 2001; Neu et al. 2014). Higher mixing ratios of idealised tracers of stratospheric origin in the tropical/sub-tropical troposphere have also been found due to enhanced stratosphere-troposphere exchange in a future warmer climate (Orbe et al. 2013a; Abalos et al. 2017).

Few studies have explicitly isolated the effects of climate change on air pollutant transport from its effects on chemical processes (e.g. through enhanced chemical reaction rates or changes in natural climate-sensitive emissions). Idealised tracers from surface sources were used by Holzer and Boer (2001) to show increases in interhemispheric exchange times, mixing times and mean transit times between 2000 and 2100. This study also found a 25% lower tropospheric average tracer mixing ratio as well as a reduced cross-tropopause tracer gradient that they attributed to a slightly higher tropopause. More recently, Orbe et al. (2015) used idealized tracers of air-mass origin, as described in Orbe et al. (2013b), to track how future increases in greenhouse gases modify transport patterns extending from the northern midlatitude boundary layer into the Arctic. Using idealised tracers they diagnosed enhanced poleward transport of the mid-latitude air arising from the poleward migration of the mid-latitude storm tracks, as outlined above.

Deleted: o

Deleted: ant

Deleted: of ~10%

Deleted: showed

Deleted: that a slightly higher tropopause was associated with reduced cross-tropopause tracer gradients and

Deleted: (Holzer

Deleted: and Boer, 2001)

Deleted: (Orbe et al. 2015)

Using a carbon monoxide (CO)-like tracer, which has present-day fossil fuel emissions as its source and loss by reaction with present-day OH, Mickley et al. (2004) related 5-10% enhancements at the high percentile values of summer CO-tracer distributions in the United States to reduced cyclone passage across southern Canada under a future 2050 climate compared to present-day. Several other studies have used idealised CO-tracers emitted from continental sources to investigate climate variability and change impacts on pollutant transport (Shindell et al. 2008, Doherty et al. 2013, Lin et al. 2014; Monks et al. 2015). Using a regional CO-like tracer with surface emissions from Asia held constant, Lin et al. (2014) examined the mean influence of Eurasian pollution over the subtropical North Pacific, influenced by the position of the sub-tropical jet and its decadal variability. Under the SRES A2 climate forcing scenario for the 2090s compared to the 2000s, distinct dipole patterns in the changes in surface CO-tracer mixing ratios were interpreted as a response to future shifts in regional circulations within four continental regions and their outflow locations (Doherty et al. 2013).

A detailed analysis by Fang et al. (2011) used a global CO-like tracer with a first-order 25 day lifetime and global anthropogenic CO emissions to investigate changes in transport under the SRES A1B scenario between 1981-2000 and 2081-2100 using the GFDL-AM3 chemistry-climate model (CCM). They found that CO-tracer mixing ratios increased at the surface and decreased in the tropical free troposphere due to reduced convective mass fluxes, and that reduced CO-tracer mixing ratios in the southern hemisphere were most likely a response to a weaker Hadley circulation and reduced interhemispheric exchange (Fang et al. 2011). A large increase in CO-tracer mixing ratios near the tropopause was suggested to arise from the upward migration of the tropopause (Fang et al. 2011). This study focussed on annual-mean distributions. Similarly, the trends in mixing ratios of a 90-day e-folding (e90) tracer between 1955 and 2099 have been related to trends in tropopause height (Abalos et al. 2017).

The aim of this paper is to explore the robustness of the changes in transport found in the single-model study described above across an ensemble of CCMs participating in the recent Atmospheric Chemistry and Climate Model Intercomparison Project (ACCMIP) using a globally emitted CO-tracer (Lamarque et al., 2013), and to quantify for the first time seasonal transport changes in response to climate change and their dynamical attribution. Section 2 describes the models used while section 3 discusses future changes in CO-tracer mixing ratios (with emissions held constant). Section 4 outlines the transport processes and circulation changes that most likely drive CO-tracer redistribution under climate change. Discussion and conclusions are presented in section 5.

## 2 Data Sets and Methods

In the ACCMIP model intercomparison, four global CCMs included a CO-like tracer emitted from global sources: UM-CAM, GISS-E2-R, CMAM, and STOC-HadAM3. A description of these models, including their chemistry, transport and configuration, can be found in Lamarque et al. (2013) and Young et al. (2013). The horizontal resolution of the models varied between 1.875° by 2.5° and 5° by 5°. Two of the models, UM-CAM and STOC-HadAM3, have the same driving GCM; however, their advection schemes differ substantially since STOC-HadAM3 is the only model to use a Lagrangian

**Deleted:** using one model,

**Deleted:** and to gain new insights into seasonal variability and

approach to simulate transport processes. Deep convection schemes used by the models are based on two main parameterisations: Gregory and Rowntree (1990) for GISS-E2-R, UM-CAM and STOC-HadAM3 and Zhang and McFarlane (1995) for CMAM. In addition STOC-HadAM3 uses Collins et al. (2002) to derive using convective mass fluxes the probability of a parcel being subject to convective transport. Although these two parameterisations are based on a mass flux approach, there can be a wide spread in simulated convective mass fluxes within a single parameterisation (Scinocca and McFarlane 2004; Lamarque et al. 2013). In addition, how the transport of the CO-tracer is implemented will influence the impacts of the convection schemes. The simulations were performed using decadal-average monthly sea surface temperature and sea ice concentration distributions for two 10-year periods: present-day (“acchist” simulations) as represented by a period centred on the year 2000 (1996-2005), and a future projection under the latest IPCC Representative Concentration Pathway (RCP) RCP8.5 scenario for 2090-2099. Note that each modelling group derived their own set of sea surface temperature and sea ice fields, typically from a closely-related coupled-ocean GCM. Under RCP 8.5 the increase in global mean surface temperature between 2081–2100, relative to 1986–2005 is projected to be 2.6-4.8°C averaged across all (~39) participating GCMs, (Collins et al. 2013). For the four models used here the global mean surface temperature change between 1996-2005 and 2090-2099 is 3.1°-4.6°C.

The CO-like tracer was implemented as a chemically inert species with monthly-varying emissions representing all global anthropogenic and biomass burning CO sources with a first-order decay lifetime of 50 days (Shindell et al., 2008; Fang et al., 2011; Doherty et al. 2013). This idealised tracer is relatively long-lived such that it can undergo interhemispheric transport and be used to diagnose how changes in transport from source regions affect the distributions of trace gas species with similar lifetimes (such as CO and O<sub>3</sub>). Monthly CO-tracer fields were generated for two 10-year periods (1996-2005 and 2090-2099), and the four models used the same emissions data for 2001 for both time periods. Thus, for each CCM the differences in CO-tracer mixing ratio distributions between these two periods are due solely to how climate change affects transport from global emission regions. To establish whether the CO-tracer distributions in the present-day (1996-2005) and future (2090-2099) periods are significantly different, a Student t-test was performed using the 10 years of annual data for each period for each model grid cell; a p-value < 0.05 was used to determine statistical significance.

The Task Force for Hemispheric Transport of Air Pollution (TF-HTAP) CO-tracer emissions dataset was used in ACCMIP, which consists of annual mean anthropogenic emissions for the year 2001 from the RETRO project (Schultz and Rast 2007; <http://www.retro.enes.org>) and ~~monthly average~~ biomass burning emissions (injected into the models at, or near, the surface) from GFED version 2 (van der Werf et al. 2006; <http://www.globalfiredata.org/>). The major source regions for anthropogenic CO emissions are in the northern mid-latitudes with peak levels in East and South Asia (Fig 1). Unlike the anthropogenic emissions, the biomass burning emissions feature a strong seasonality, with high values over Equatorial Africa during December-January-February (DJF), peak values southward of the Equator in South America and Central Africa in June-July-August (JJA), and a stronger peak value in Southeast Asia during JJA (Fig 1). The location of these emission peaks in relation to the position of the Intertropical convergence zone (ITCZ) can be clearly seen (Fig 1). Biomass emissions during March-April-May (MAM) and September-October-November (SON) are significantly weaker (Fig. 1).

**Deleted:** seasonally

**Deleted:** varying

**Deleted:** <http://www.geo.vu.nl/~gwerf/GFED.htm>

Temperature data from the four CCMs were used to calculate the thermal tropopause following the World Meteorological Organization (WMO) lapse rate definition as implemented by Reichler et al (2003) for gridded reanalysis data. The tropopause is defined separately as an average for the 2000s and the 2090s as the lowest model level at which the lapse-rate decreases to 2°C/km, provided that the average lapse-rate between this level and higher levels does not exceed this. Studies have shown the lapse rate or thermal tropopause approximately coincides with the e90 tracer tropopause which is used to distinguish stratospheric and tropospheric air (Prather et al. 2011; Abalos et al. 2017). Convective mass flux and zonal (u) wind data (available for three of the four CCMs) were also used for qualitative attribution purposes.

Deleted: as

### 3 CO tracer Redistribution in Response to Climate Change

Deleted: s

The distribution of the CO-tracer in the troposphere under present-day conditions and its redistribution under the RCP8.5 climate scenario are now discussed. Similarities and differences across the four CCMs and with season are highlighted. Note that the monthly-average atmospheric burden of the CO-tracer is nearly identical for the 2000s and 2090s, as expected given the specified emissions and lifetime, so that the differences in mixing ratio discussed here result purely from a re-distribution due to changes in transport.

#### 3.1 Present-day Distributions

For the present-day period (1995-2006), the CO-tracer distributions show the effect of deep convection in the tropics and synoptic and convective lifting over mid-latitudes. There is a strong seasonality in the CO-tracer distributions, which is driven by both the seasonality of CO source emissions (Fig. 1) and seasonal changes in transport. In the tropics, the largest CO-tracer mixing ratios occur during boreal winter (DJF), hereinafter winter, (Fig. 2) compared to boreal summer (JJA), hereinafter summer (Fig. 3). In the northern mid-latitudes CO-tracer mixing ratios are largest in boreal spring and in the southern mid-latitudes in boreal autumn. Elsewhere CO-tracer mixing ratios have a fairly uniform seasonal cycle.

Deleted: With the exception of middle and high latitudes

During winter, large CO-tracer mixing ratios are found near the Equator, with decadal-average values of more than 60 ppb extending from the surface to ~700 hPa, and up to 40 ppb in the mid-upper tropical troposphere in all four CCMs (Fig. 2). In summer CO-tracer mixing ratios are lower in the tropics and northern extra tropics extending to ~40°N (~40-50 ppb at the surface and 30-40 ppb in the mid- upper troposphere in the northern hemisphere; Fig. 3) than in winter (Fig 2). In contrast, in the northern middle and high latitudes CO-tracer mixing ratios are higher in summer (up to 50 ppb near the surface; Fig 3) than in winter (Fig 2). Note that, while the CO-tracer distribution patterns are fairly similar between the models, there are some differences. In particular, CMAM simulates slightly lower values in the tropical upper troposphere in winter compared to the other CCMs (Fig. 2c), while the GISS-E2-R simulation features larger values above 700 hPa over northern mid-latitudes during summer (Fig. 3d).

The spatial pattern of the CO-tracer averaged over the lower-mid troposphere (400-800 hPa; Fig. 4) is zonally relatively uniform in winter and is similar across the four CCMs. This pattern also highlights the influence of strong vertical transport



in the tropics and subsequent horizontal transport of the CO-tracer from its major anthropogenic surface sources over East and South Asia and biomass burning sources in Equatorial and Central Africa. During summer, the lower-mid tropospheric CO-tracer patterns are more closely confined to the source region locations over East/South Asia and Central Africa (Fig. 5) suggesting weaker transport around the middle troposphere than in winter.

The seasonal differences in CO-tracer mixing ratios in the tropics reflect the combined influence of seasonal differences in biomass burning emissions and in tropical convection. In particular, during winter, when the Intertropical Convergence Zone (ITCZ) is located in the Southern Hemisphere, the largest emissions from biomass burning originate over Africa near the equator (Fig. 1). In contrast, during summer, when the ITCZ is located north of the equator, the peak biomass burning emissions are located further southward (~20°S) (Fig. 1). Thus, in summer tropical convection is weakly collocated with biomass burning emissions, resulting in lower CO-tracer mixing ratios in the tropical mid-troposphere as a whole and a more confined region of peak CO-tracer mixing ratios over Central Africa (Fig. 5), compared to winter (Fig. 4). The influence of the ITCZ position is also seen in the CO-tracer vertical gradient (the ratio of the CO-tracer relative to its value at the surface) which is shallower in the southern tropics during winter and in the northern tropics in summer (not shown) due to greater vertical mixing from convective lofting along the ITCZ (section 4.1). Note that seasonal differences related to the transport of anthropogenic sources in the mid-latitudes may also be important, with strong surface lofting in winter storm tracks resulting in larger CO-tracer mixing ratios over the northern extratropics during winter (Fig. 4) than in summer (Fig. 5).

Note that the CO-tracer mixing ratios in this study are higher than those reported by Fang et al. (2011) since we use a longer lifetime of 50 days rather than 25 days. CO-tracer mixing ratios are typically lower than modelled or observed real CO (which is usually more than 100 ppb over source regions) as there is no chemical production of CO-tracer, which accounts for about half of atmospheric CO (Shindell et al. 2006). The seasonality of the CO-tracer and CO are fairly similar, with a more pronounced winter peak in the tropics in the CO-tracer in the mid-troposphere. The relative changes in CO-tracer mixing ratios are largest in the tropics and during winter and smaller in summer. Henceforth, the focus is on findings for boreal winter and summer.

### 3.2 Response to Greenhouse Gas Increases

The response of CO-tracer mixing ratios to climate change shows robust features that are statistically significant across the four CCMs (Figures 2 and 3). This suggests a general consistency in changes in transport between 1995-2006 and 2090-2099 under the RCP 8.5 climate scenario. In general, in both winter and summer, CO-tracer mixing ratios decreases are ubiquitous throughout most of the troposphere. The largest changes occur in boreal winter with decreases of ~2-6 ppb (~5-10%) in CO-tracer mixing ratios near the surface at the Equator and especially in the middle to upper tropical troposphere in the tropics and the northern mid-latitudes (Fig. 2). In contrast, there is a narrow region of increases in CO-tracer mixing ratios of up to 6 ppb (~10%) at ~5-10° N reaching from the surface to the mid-troposphere (and into the upper troposphere in CMAM). This feature is also seen in the annual-mean CO-tracer distributions for the four CCMs (not shown). Fang et al. (2011) also find substantial decreases in annual-mean CO-tracer concentrations in the free troposphere (-2 to -12% at 400 hPa) but more

**Moved down [2]:** Henceforth, therefore, the focus is on findings for boreal winter and summer.

**Deleted:** . The concentrations of CO-tracer are significantly lower during boreal spring (MAM) and autumn (SON) (not shown)

**Deleted:** compared to

**Deleted:** is used in our study

**Deleted:** also

**Moved (insertion) [2]**

**Deleted:** therefore,

**Deleted:**

**Deleted:** (Fig

**Deleted:** . 2)



widespread increases (2-7%) in annual-mean CO-tracer mixing ratios near the surface that extend from the Equator to the northern mid-latitudes. Since the same emission data are used in both studies this difference is likely to arise from differences in CO-tracer lifetime used as well as differences in representing shallow convection and/or advection processes. Future CO-tracer mixing ratios also increase substantially by ~2-6 ppb (~10-25%) near the present-day tropopause and into the lower stratosphere (where the relative changes can reach 50%), especially in the tropics and northern mid-latitudes in all the CCMs (Fig. 2). The contribution of the rise in the tropopause to the increase in CO-tracer mixing ratios is explored further in section 4.2. This near-tropopause increase in CO-tracer mixing ratios in the northern mid to high latitudes is also consistent with future increases in poleward transport reported by Orbe et al. (2015) based on tracers of air mass origin. Increases in the vertically integrated CO-tracer column between the 2000s and 2090s between 30°-40°N in all models also suggests an increase in advective transport poleward, since vertical re-distribution alone would not produce an increase in the vertical column. Similar difference patterns occur in summer, except that the narrow region of increase is above the surface and is smaller in magnitude and vertical extent and is centred south of the Equator, where present-day CO-tracer concentrations peak (coinciding with the summer biomass burning peak) (Fig. 3). The fractional or relative changes in CO-tracer concentrations between winter and summer are fairly similar (not shown).

Examining the spatial changes in tropical CO-tracer concentrations in the lower to mid troposphere in relation to the future increases and decreases described above, a clear dipole pattern emerges across all four CCMs (Figures 4 and 5). In particular, during winter, there is a large increase centred over Equatorial and Central Africa (the regions with peak biomass burning) and a decrease south of this of similar magnitude of ~15 ppb (and up to 30 ppb for the region of decrease in UM-CAM and STOC-HadAM3) (Fig. 4). The area of increase coincides with the increase near the Equator extending from the surface to the mid-troposphere, seen in Figures 2 and 3 described above. This dipole pattern reflects stronger confinement of CO-tracer mixing ratios near regions of emissions, flanked by smaller concentrations downwind to the south. Note that, while the zonally varying pattern of the response in the CO-tracer is characterised by high internal variability, this dipole pattern is statistically significant across most of its extent in all of the CCMs. However, there are small differences across models. Similar patterns of change are simulated by the UM-CAM and STOC-HadAM3 CCMs (Figures 4e-f, 5e-f) since they use the same driving GCM. A stronger and more extensive area of increase and a weaker area of decrease is simulated by the CMAM model in both seasons (Figures 4c, 5c), while GISS-E2-R simulates a weaker area of increase and a more extensive area of decreases that extends latitudinally across to S. America in winter (Figures 4d). Both CMAM and GISS-E2-R also depict an area of decrease over East Asia, although these changes are not statistically significant.

#### 4. Potential Drivers of Changes in Transport in a Future Climate

The impact of climate change under the RCP 8.5 scenario on deep convection and on jet-stream locations are outlined here in relation to the seasonal CO-tracer redistributions described above. The increase in tropopause height under CO<sub>2</sub> warming

Deleted: model variability

Deleted:

Deleted: are shown

Deleted: (Figures 4 and 5)

Deleted: (Figures 4, 5)

and its influence on CO-tracer distributions is also elucidated. Modifications to these transport processes have implications for pollutant transport from major source regions in the future.

4.1 Convection and Jet-streams

The meteorological and physical drivers of the CO tracer mixing ratios and changes due to climate change are examined using data from the four ACCMIP model simulations. For present-day, during both winter and summer, deep convection in the tropics extends from the surface to ~300 hPa or higher in all four CCMs (Figures 6 and 7). While the magnitude of the parameterised convective mass fluxes simulated by CMAM and especially the GISS-E2-R CCM (up to  $30\times10^{-3}\text{ kgm}^{-2}\text{s}^{-1}$ ) are larger than for UM-CAM and STOC-HadAM3 which are driven by the same GCM (up to  $8\times10^{-3}\text{ kgm}^{-2}\text{s}^{-1}$ ), the spatial patterns and seasonalities of convection are consistent across all models (Figures 6 and 7). For example, in the tropics and subtropics, the strongest convective mass fluxes shift location from 10°-20°S in winter to 10°-20°N in summer as the Intertropical convergence Zone (ITCZ) migrates south and northwards of the Equator. Convective mass fluxes are also large in the northern mid-latitudes in winter and in the southern mid-latitudes in summer when the mid-latitude jet-streams are strongest, but their vertical extent is shallower than in the tropics. Substantial differences of a factor of 2-3 in annual-mean zonal convective mass fluxes simulated across three models (including STOC-HadAM3) were also reported in Doherty et al. (2005). Since the same parameterisation is used by UM-CAM, HadAM3 and GISS-ER-2, it may be the specific details of its implementation and interactions with internal parameters (Scinocca and McFarlane 2004) that cause this large difference in magnitudes across the four CCMs.

The spatial patterns of convective mass fluxes averaged over the lower to upper troposphere (800 to 300 hPa) highlight the zonal symmetry of deep convection across the ITCZ, and depict the seasonal migration of the ITCZ within the sub-tropics (Figures 8 and 9). Hence, as discussed in section 3.1, the large CO-tracer mixing ratios over Equatorial and Central Africa during winter (Fig. 4) reflect the strong co-location of biomass burning emissions and convection in the Southern Hemisphere subtropics when the ITCZ has shifted south of the equator. By comparison, lower CO-tracer mixing ratios over Equatorial Africa during summer reflect both a southward migration in emissions and a northward migration of the ITCZ, resulting in weaker convective lofting in this region (Fig. 5). The larger CO-tracer mixing ratios at higher altitudes over northern mid-latitudes during summer simulated by the GISS-E2-R CCM (Figure 2d) may be related to stronger convective mass fluxes at this altitude (Fig. 7d).

A robust feature across all of the models is an overall reduction in convection, as reported by Held and Soden (2006), in response to climate change in the 2090s throughout most of the troposphere in both winter and summer (up to  $3\text{-}5\times10^{-3}\text{ kgm}^{-2}\text{s}^{-1}$ ; ~10-30%) that is slightly larger for UM-CAM and STOC-HadAM3 than the other two CCMs (Figs. 6 and 7). Absolute and relative changes in convective mass fluxes between winter and summer are similar (not shown). This reduction occurs both in the tropics and in the extra-tropics, extending to about 40°N/S. The UM-CAM and STOC-HadAM3 CCMs also feature strong decreases in convection centred at 60°N and 60°S extending vertically from the surface to 700 hPa in both

Deleted: available

Deleted: D

Deleted: (

Deleted: )

Deleted: the

Deleted: , as described in section 3.1

Deleted: values of

Deleted: (driven

Deleted: by the same GCM)

seasons. The spatial pattern of the magnitude of convective mass fluxes averaged over the mid-upper troposphere shows the largest decreases occurring along the ITCZ (including the ITCZ portion over Africa) in both seasons for all CCMs (Figs 8 and 9).

Although convective mass fluxes predominately decrease under greenhouse-gas warming, there are small areas of increase. Close to the surface in the tropics increases in convective mass fluxes are simulated by the UM-CAM and STOC-HadAM3 CCMs, but not by the other two CCMs (Figure 6 a-b, 7\_a-b). The GISS-E2-R CCM depicts a small band of increased convective mass fluxes at the Equator extending from the surface to the upper troposphere in winter. A strong increase in convective mass fluxes in the northern hemisphere polar latitudes at the surface extending upwards is also a consistent model feature in winter, which is most prominent in UM-CAM and STOC-HadAM3. Since this region is not collocated with major emissions, these increases in convection have a very small influence on the CO-tracer distributions. Increases in convective mass fluxes are also simulated over the East Pacific portion of the ITCZ by GISS-E2-R and, to a lesser extent, by the CMAM model (Fig. 8 c-d, 9 c-d). Again, since this area of increase is over the ocean and hence not collocated with emissions, there is little influence on the spatial patterns of CO tracer concentrations change (Figure 4 c-d, 5 c-d).

The decrease in convective mass fluxes in the tropics under climate change described above is consistent with the reduced convective lofting of biomass burning emissions and, hence, decreased CO-tracer mixing ratios in the tropical mid to upper troposphere in all of the CCMs. Furthermore, reduced convection in the tropics may also explain the dipole pattern of change in CO-tracer mixing ratios over Equatorial/Central Africa in the lower to mid-troposphere, through greater confinement of CO-tracer concentrations to the region directly aloft of the surface emissions source (Figure 4 and 5). These changes in CO-tracer concentrations are primarily determined by the extent of co-location between convective and biomass burning source regions, and how convection changes over these emission source regions.

Reduced convective mass fluxes in the future may also partly explain decreases in CO-tracer concentrations in the mid-latitude mid to upper troposphere (Figure 2 and 3), although changes in the mid-latitude storm tracks may also play an important role in modulating the CO-tracer changes at these higher altitudes. In particular, all of the models feature a poleward shift in their zonal-mean zonal winds under climate change, as found in previous studies (e.g. Yin et al. 2005; Orbe et al. 2015), leading to reductions in zonal-mean winds in adjacent regions of the mid-latitude troposphere, in both seasons although generally largest in winter (Fig. 10). However, although the broad patterns of change in zonal-mean winds are similar, there are different magnitudes and patterns of responses across latitude bands for the different models with UM-CAM and CMAM featuring substantially weaker ( $\sim 5 \text{ ms}^{-1}$ ; Fig 10a-b) zonal-mean winds poleward of  $\sim 35^\circ\text{S}$  in winter, while the GISS-E2-R CCM shows weaker ( $5 \text{ ms}^{-1}$ ; Fig. 10c) zonal-mean winds poleward of at  $\sim 35^\circ\text{N}$  in winter and  $\sim 35^\circ\text{N}$  in summer. In the tropics, the zonal-mean wind response to climate change are rather variable. Other wind component fields were not archived in the ACCMIP simulations, which prohibits further investigation into the relationship between mid-latitude jet stream changes and CO-tracer responses over the mid-latitudes.

Deleted: (Figure 6d)

Deleted: (Figure 6a-b)

Deleted: the

Deleted: s

Deleted: (Figures 2 and 3; section 3.2)

Deleted: ; section 3.2

Deleted: (section 3.1)

Deleted: a

Deleted: Zonally varying zonal

4.2 Tropopause Height

Robust increases in CO-tracer mixing ratios near the tropopause in the tropical and northern mid-latitudes in response to climate change are seen in all four CCMs (Figs 2 and 3). The annual-mean multi-model mean tropopause in the 2090s moves upward by 12 hPa in the tropics and 27 hPa in the mid-latitudes relative to its position in the 2000s. Previous studies have attributed similar CO-tracer changes to changes in tropopause height (Fang et al. 2011) which is a robust feature of greenhouse-gas warming (e.g., Kang et al. 2014), and shown by all four CCMs.

Following Fang et al. (2011), we elucidate the role of an increase in tropopause height in modulating CO-tracer concentrations by comparing annual-mean profiles of the CO-tracer, plotted relative to the thermal tropopause, for both present-day and future periods (Fig. 11). Comparison of annual-mean CO-tracer profiles reveals that when vertical CO-tracer profiles are compared in tropopause relative co-ordinates there is generally less difference between present-day and future, unlike when the CO-tracer profiles are plotted relative to pressure. Therefore, much of the CO-tracer increase near the tropopause that occurs in the future, arises from a rise in tropopause height, as reported in Fang et al. (2011) and also by Abalos et al. (2017) using the e90 tracer. This is evident for all models, especially in the northern mid-latitudes (40°N) near the tropopause (Fig 11). Hence the increase in CO-tracer mixing ratios arises from a transition between low-CO stratospheric air for present-day and higher-CO in tropospheric air in the future.

This also suggests that the impacts of enhanced poleward and upward transport in the northern mid-high latitudes near the tropopause on CO-tracer mixing ratios (section 3.2) are largely outweighed by the impact of the rise in the tropopause, although these effects may be inter-related. However, the tropopause-relative profiles in the 2090s also show a slightly weaker vertical gradient between the mid-upper troposphere in the NH extra-tropics (40°N), compared to the 2000s (Fig. 11, top panels). This reduced vertical gradient has been noted in previous studies and also related to a rise in tropopause height (Holzer and Boer (2001)). At the same time, a reduced vertical gradient may also reflect an overall increase in eddy mixing associated with the upward and poleward shifts in zonal-mean winds (Wu et al. (2011)). Similar transport responses to GHG-induced changes in eddy mixing have been documented in other studies (Orbe et. al. 2015; Abalos et al. (2017). Since changes in eddy mixing near the tropopause are also linked to changes in tropopause height, it is not possible to disentangle the separate imprint of these changes on the CO-tracer distributions.

5. Discussion and Conclusions

This study quantifies the seasonal variation and the robustness of changes in transport under climate change. In response to future increases in greenhouse gases in the 2090s under the RCP 8.5 scenario, changes in mixing ratios of a CO-like tracer with a 50-day lifetime exhibit robust features across four Chemistry-Climate Models (CCMs) participating in the ACCMIP model intercomparison. These include a decrease in CO-tracer mixing ratios throughout most of the troposphere, especially in the tropics (5-10%), and an increase in CO-tracer mixing ratios near the tropopause (10-25%), especially over the tropics and northern mid-latitudes. Underlying these changes there is a strong seasonality in transport patterns between winter and

Deleted: (Figs 2 and 3)

Deleted: s

Deleted: , plotted both relative to pressure and tropopause height,

Deleted: positive

Deleted: (Figs 2 and 3)

Deleted: simulations by the CCMs

Deleted: reflects

Deleted: (Fig. 11)

Deleted: holds for all of the models

Deleted: over

Deleted: after accounting for the influence of a higher tropopause using

Deleted: ,

Deleted: in

Deleted: the RCP 8.5 climate simulations

Deleted: ,

Deleted: have

Deleted: in

Deleted: ,

Deleted: the present-day simulations in

Deleted: This may reflect an overall increase in mixing related to changes in meridional eddies, which shift upward and poleward in concert with the zonal mean zonal winds (as described above) and which weaken the gradient of the CO-tracer between the surface and the upper troposphere (Wu et al. 2013; Orbe et al. 2015). ¶

Formatted: English (United States)

Deleted: : a

Deleted: )

Deleted: b)

summer, with higher CO-tracer mixing ratios, aloft in winter when biomass burning emissions source regions are located along the ITCZ.

These absolute changes in CO-tracer mixing ratios, due to climate change are generally larger in boreal winter than in summer, although relative changes are similar. The relative changes in annual-mean CO-tracer mixing ratios at the surface and in the free troposphere are of similar magnitude to those reported by Fang et al. (2011) using the GFDL-AM3 model. Somewhat larger decreases in tropospheric-average idealised tracer mixing ratios of 25% were reported in 2100 by Holzer and Boer (20001) under a different climate change scenario.

In addition, all four CCMs simulate a small region of increase in zonal-mean surface CO-tracer mixing ratios at ~5-10°N that extends to the mid troposphere, with decreases southwards, which arise from a dipole pattern of adjacent increases and decreases in CO-tracer mixing ratios over Equatorial and Central Africa – the largest biomass burning emission source regions.

Convective mass fluxes consistently decrease throughout most of the troposphere in the future in all four CCMs in both seasons, with the strongest decreases occurring within the tropics along the ITCZ, in agreement with tropical convective mass flux reductions diagnosed by Held and Soden (2006). However, in contrast to our findings, Abalos et al.(2017) suggests decreases in convection mass fluxes are limited to ~5km. Decreased convective mass fluxes in our study are consistent with a weakening of the Hadley Cell in winter when this feature is robust (Hwan-Seo et al. 2014; Kang et al. 2014; Vallis et al. 2015). The decreases in CO-tracer mixing ratios in the tropical troposphere therefore most likely reflect reduced convection in the future. Reduced convection in the tropics may also explain the dipole in CO-tracer response that occurs near the Equatorial and Central Africa, since the seasonal patterns of changes in CO-tracer concentrations in the tropics are in essence determined by how seasonal changes in convection project onto seasonally-varying biomass burning emissions. Biomass burning emissions were held constant for present-day and future in this study.

The higher tropopause reported here is a robust finding across climate change studies (e.g. Kang et al. 2014; Vallis et al. 2015). The strong increases in CO-tracer concentrations in the vicinity of the tropopause can be largely attributed to a higher tropopause under greenhouse gas warming, whereby this region has low-CO stratospheric air for present-day and higher-CO in tropospheric air in the future, in accord with Fang et al. (2011). A poleward and upward shift in zonal-mean winds is consistent across the four models and noted in previous studies (e.g., Orbe et al. 2015). Resultant enhanced poleward transport may also minorly contribute to CO-tracer increases in the future near the tropopause in the northern mid-latitudes; and changes in eddy mixing may also have an impact. However, all these processes may be inter-related such that it is not possible to discern the impacts of individual processes on CO-tracer mixing ratios.

Overall, large-scale dynamical responses linked to changes in the Hadley Cell circulation and their impact on convection, mid-latitude jets and in tropopause height appear to govern the main features of the redistribution of CO-tracer mixing ratios between present-day and future simulated by four CCMs in this study. Further diagnostics to allow more detailed dynamical insights would be most useful to probe the relative contributions of different large-scale dynamical processes including

**Deleted:** concentrations

**Deleted:** concentrations

**Deleted:** These

**Deleted:** features have previously been reported by Fang et al. (2011) using the GFDL-AM3 CCM.

**Deleted:** are of similar magnitude to those in found for winter/summer in our study

**Deleted:** CCM

**Deleted:** at the surface,

**Deleted:** with

**Deleted:** - at least

**Deleted:** climate change

**Deleted:** .

**Deleted:** Changes in mixing in the upper troposphere, associated with a po

**Deleted:** (a response that i

**Deleted:** may also play be important in interpreting some of the near-tropopause changes in the CO-tracer.

stratosphere-troposphere exchange, alongside other aspects of the Hadley Circulation such as its broadening or poleward expansion under climate change.

One further limitation of this study is that the CO-tracer data [was not archived](#) at a higher temporal resolution than monthly. Hence, it is not possible to examine how CO-tracer concentrations in the mid-latitudes are influenced by changes in synoptic-scale storm or blocking frequency. Our ability to look further into relationships between the mid-latitude storm tracks and CO-tracer distributions over middle and high latitudes is also limited by the fact that only zonally-average zonal wind fields were [archived](#). Another limitation is that, while the use of a single tracer emitted from all global CO-sources highlights transport associated with the global continental emission source regions, it precludes an in-depth analysis of regional changes in transport patterns under climate change.

Nevertheless, this multi-model study presents a clear and robust picture of the effect of climate change on the transport of pollution from major emission source regions, [in particular from biomass burning regions in the tropics that are strong CO sources](#), and how this effect varies seasonally as governed by the seasonal location of the ITCZ and biomass burning emissions sources. Furthermore, the key roles of reduced convection consistent with a weakened Hadley Circulation in winter and a higher tropopause in governing transport changes are confirmed. Overall, a reduction in tropical deep convection under climate change will confine pollution more closely to its surface source regions, potentially reducing inter-continental transport in upper-level winds aloft. In the mid-latitudes transport of pollution aloft [may](#) be impacted by a poleward shift in storm track pathways. [Hence, transport changes alone in the absence of stricter emissions controls, may reduce future air quality in the vicinity of emission source regions especially in the tropics, due to reductions in vertical transport and dispersion by deep convection. However, this study examines the impacts of climate change on transport alone, whilst future air quality will also be greatly influenced by climate-driven changes in chemistry and by future changes in emissions. Future multi-model comparison studies would benefit from a larger suite of meteorological variables that enable a more detailed diagnosis of the large-scale dynamical responses to climate change. Such improved dynamical attribution in tandem with tracer transport studies will enable better quantification of the response of global air pollution transport to greenhouse gas warming.](#)

*Data availability.* The ACCMIP data used in this study can be obtained from the British Atmospheric Data Centre (BADC) upon request.

*Competing interests.* There are no competing interests.

*Author contribution.* RD, CO, GZ, MP, DP, ML contributed to conception and design. GZ, DP, DS and IM performed ACCMIP simulations with the UM-CAM, CMAM, GISS-ER-2, and STOC-HadAM3 CCMs respectively. CO, RD, GZ and IM contributed to processing of data. All co-authors contributed to the analysis and interpretation of data. RD and CO

**Deleted:** is not available

**Deleted:**

**Deleted:** available as output

**Deleted:** Future work performed for the Chemistry Climate Model Initiative (Eyring et al., 2013) using seasonally invariant emissions will aid to allow isolation of the effects of seasonality in transport from seasonality in emissions, to enable further insights into climate change impacts on transport.

**Deleted:** will

**Deleted:** Understanding these dynamical changes

**Deleted:** will aid to

**Deleted:** characterise

drafted the article aided with revisions by GZ, DP, ML, IM, OW. All co-authors approved the submitted version for publication.

*Acknowledgements.* Ruth Doherty and Ian MacKenzie acknowledge ARCHER, the UK national high-performance computing service which is funded by the Office of Science and Technology through EPSRC High End Computing Programme, and funding under the UK Natural Environment Research Council grant NE/I008063/1, NE/M003906. GZ acknowledges the contribution of NeSI high-performance computing facilities to the results of this research. NZ's national facilities are provided by the NZ eScience Infrastructure and funded jointly by NeSI's collaborator institutions and through the Ministry of Business, Innovation & Employment's Research Infrastructure programme (<https://www.nesi.org.nz>). ACCMIP is organized under the auspices of Atmospheric Chemistry and Climate (AC&C), a project of International Global Atmospheric Chemistry (IGAC) and Stratospheric Processes And their Role in Climate (SPARC) under the International Geosphere-Biosphere Programme (IGBP) and World Climate Research Program (WCRP). The authors are grateful to the British Atmospheric Data Centre (BADC), which is part of the NERC National Centre for Atmospheric Science (NCAS), for collecting and archiving the ACCMIP data, and to Jean Francois Lamarque for overall ACCMIP co-ordination.

References

Abalos, M., W. Randel, D. Kinnison, and R. Garcia, 2017: Using the artificial tracer e90 to examine present and future UTLS tracer transport in WACCM. *J. Atmos. Sci.* doi:10.1175/JAS-D-17-0135.1.

Allen, R. J., Norris, J. R., and Kovilakam, M.: Influence of anthropogenic aerosols and the Pacific Decadal Oscillation on tropical belt width, *Nat. Geosci.*, 7, 270–274, doi:10.1038/ngeo2091, 2014.

Barnes E. A. and Fiore A. M.: Surface ozone variability and the jet position: Implications for projecting future air quality, *Geophys. Res. Lett.*, 40, 2839–2844, doi:10.1002/grl.50411, 2013.

Bengtsson, J, Hodges, K. I. and Roeckner, E.: Storm tracks and climate change. *Journal of Climate*, 19 (15). pp. 3518-3543, 2006.

Brown-Steiner, B., and Hess, P.: Asian influence on surface ozone in the United States: A comparison of chemistry, seasonality, and transport mechanisms, *J. Geophys. Res.*, 116, D17309, doi:10.1029/2011JD015846. 1, 2011.

Butchart N, Scaife A. A.: Removal of chlorofluorocarbons by increased mass exchange between the stratosphere and troposphere in a changing climate, *Nature*, 410:799–802, doi:10.1038/35071047, 2001.

Christensen, J. H., Krishna Kumar, K., Aldrian, E., An, S.-I., Cavalcanti, I, F, A., de Castro, M., Dong, W., Goswami, P., Hall, A., Kanyanga, J. K., Kitoh, A., Kossin, J., Lau, N.-C., Renwick, J, Stephenson, D. B., Xie, S.-P and Zhou, T.: Climate Phenomena and their Relevance for Future Regional Climate Change. In: *Climate Change 2013: The Physical Science Basis. Contribution of Working Group I to the Fifth Assessment Report of the Intergovernmental Panel on*

Deleted:

Deleted:

Deleted: a

- Climate Change [Stocker, T.F., D. Qin, G.-K. Plattner, M. Tignor, S.K. Allen, J. Boschung, A. Nauels, Y. Xia, V. Bex and P.M. Midgley (eds.)]. Cambridge University Press, Cambridge, United Kingdom and New York, NY, USA, pp. 1217–1308, doi: 10.1017/CBO9781107415324.028, 2013.
- Collins, M., Knutti, R., Arblaster, J., Dufresne, J.-L., Fichefet, T., Friedlingstein, P., Gao, X., Gutowski, W. J., Johns, T., Krinner, G., Shongwe, M., Tebaldi, C., Weaver, A. J., and Wehner, M.: Long-term Climate Change: Projections, Commitments and Irreversibility. In: Climate Change 2013: The Physical Science Basis. Contribution of Working Group I to the Fifth Assessment Report of the Intergovernmental Panel on Climate Change [Stocker, T.F., D. Qin, G.-K. Plattner, M. Tignor, S.K. Allen, J. Boschung, A. Nauels, Y. Xia, V. Bex and P.M. Midgley (eds.)]. Cambridge University Press, Cambridge, United Kingdom and New York, NY, USA, 2013.
- Cooper, O. R., Forster, C., Parrish, D., Trainer, M., Dunlea, E., Ryerson, T. B., Hübler, G., Fehsenfeld, F., Nicks, D., Holloway, J., Nowak, J., Brock, C., de Gouw, J., Warneke, C., Roberts, J., Flocke, F., Moody, J.: A case study of trans-Pacific warm conveyor belt transport: The influence of merging airstreams on trace gas import to North America, J. Geophys. Res., 109, D23S08, doi:10.1029/2003JD003624, 2004.
- Cooper, O. R., Oltmans, S.J., Johnson, B. J., Brioude, J., Angevine, W., Trainer, M., Parrish, D. D., Ryerson, T. R., Pollack, I., Cullis, P. D., Ives, M. A., Tarasick, D. W., Al-Saadi, J., and Stajner, I.: Measurement of western U.S. baseline ozone from the surface to the tropopause and assessment of downwind impact regions, J. Geophys. Res., 116, D00V03, doi:10.1029/2011JD016095, 2011.
- Deser, C., A., Phillips, S., Bourdette, V., and Teng, H.: Uncertainty in climate change projections: The role of internal variability. Climate Dyn., 38, 527–546, doi:10.1007/s00382-010-0977-x, 2012.
- Doherty, R. M., Stevenson, D. S., Collins, W. J., and Sanderson, M. G.: Influence of convective transport on tropospheric ozone and its precursors in a chemistry-climate model, Atmos. Chem. Phys., 5, 3205–3218, <https://doi.org/10.5194/acp-5-3205-2005>, 2005.
- Doherty, R. M., et al. (2013), Impacts of climate change on surface ozone and intercontinental ozone pollution: A multi-model study, J. Geophys. Res. Atmos., 118.
- Fang, Y., Fiore, A. M., Horowitz, L. W., Gnanadesikan, A., Held, I., Chen, G., Vecchi, G., and Levy, H.: The impacts of changing transport and precipitation on pollutant distributions in a future climate, J. Geophys. Res., 116, D18303, 2011.
- Forkel R and Knoche R.: Regional climate change and its impact on photooxidant concentrations in southern Germany: Simulations with a coupled regional climate-chemistry model. J. Geophys. Res. 2006;111:D12302.
- Held, I. M. and B. J. Soden, B. J.: (2006), Robust response of the hydrological cycle to global warming, J. Clim., 19, 5686–5699
- Gregory, D. and Rowntree, P. R.: A mass flux scheme with representation of cloud ensemble characteristics and stability-dependent closure, Mon. Weather Rev., 118, 1483–1506, 1990.
- Holzer, M. and Boer, G. J., 2001: Simulated changes in atmospheric transport climate. J. of Climate, 14, 4398–4420, 2001.

**Deleted:** Eyring, V., Lamarque, J.-F., Hess, P., Arfeuille, F., Bowman, K., Chipperfield, M. P., Duncan, B., Fiore, A., Gettelman, A., Giorgetta, M. A., Granier, C., Hegglin, M., Kinnison, D., Kunze, M., Langematz, U., Luo, B., Martin, R., Matthes, K., Newman, P. A., Peter, T., Robock, A., Ryerson, T., Saiz-Lopez, A., Salawitch, R., Schultz, M., Shepherd, T. G., Shindell, D., Staehelin, J., Tegtmeier, S., Thomason, L., Tilmes, S., Vernier, J.-P., Waugh, D., and Young, P. J.: Overview of IGAC/SPARC Chemistry-Climate Model Initiative (CCMI) community simulations in support of upcoming ozone and climate assessments, SPARC Newsletter, 40, 48–66, 2013.¶



- Kang, S. M., Deser, C. and Polvani, L. M.: Uncertainty in climate change projections of the Hadley circulation: the role of internal variability. *J. Climate*, 26, 7541-7554, doi: 10.1175/JCLI-D-12-00788.1, 2013
- Kar, J., Bremer, H., Drummond, J. R., Rochon, Y. J., Jones, D. B. A., Nichitui, F., Zou, J., Liu, J., C. Gille, J. C., P. Edwards, D. P., Deeter, M. N., Francis, G., Ziskin, D., and Warner, J.: Evidence of vertical transport of carbon monoxide from Measurement of Pollution in the Troposphere (MOPITT), *Geophys. Res. Lett.*, 31, L23105, doi:10.1029/2004GL021128, 2004.
- Knowland, K. E., Doherty, R. M., and Hodges, K. I.: The effects of springtime mid-latitude storms on trace gas composition determined from the MACC reanalysis, *Atmos. Chem. Phys.*, 15, 3605-3628, doi:10.5194/acp-15-3605-2015, 2015.
- Lamarque, J.-F., Bond, T. C., Eyring, V., Granier, C., Heil, A., Klimont, Z., Lee, D., Liousse, C., Mieville, A., Owen, B., Schultz, M. G., Shindell, D., Smith, S. J., Stehfest, E., Van Aardenne, J., Cooper, O. R., Kainuma, M., Mahowald, N., McConnell, J. R., Naik, V., Riahi, K., and van Vuuren, D. P.: Historical (1850–2000) gridded anthropogenic and biomass burning emissions of reactive gases and aerosols: methodology and application, *Atmos. Chem. Phys.*, 10, 7017–7039, doi:10.5194/acp-10-7017-2010, 2010.
- Lamarque, J.-F., Shindell, D. T., Josse, B., Young, P. J., Cionni, I., Eyring, V., Bergmann, D., Cameron-Smith, P., Collins, W. J., Doherty, R., Dalsoren, S., Faluvegi, G., Folberth, G., Ghan, S. J., Horowitz, L. W., Lee, Y. H., MacKenzie, I. A., Nagashima, T., Naik, V., Plummer, D., Righi, M., Rumbold, S. T., Schulz, M., Skeie, R. B., Stevenson, D. S., Strode, S., Sudo, K., Szopa, S., Voulgarakis, A., and Zeng, G.: The Atmospheric Chemistry and Climate Model Intercomparison Project (ACCMIP): overview and description of models, simulations and climate diagnostics, *Geosci. Model Dev.*, 6, 179–206, doi:10.5194/gmd-6-179-2013, 2013.
- Lang, C., and Waugh, D. W.: Impact of climate change on the frequency of Northern Hemisphere summer cyclones, *J. Geophys. Res.*, 116, D04103, doi:10.1029/2010JD014300, 2011.
- Langford, A.O., Senff, C. J., Alvarez II, R. J., Brioude, J., Cooper, O.R., Holloway, J.S., Lin, M. Y., Marchbanks, R. D., Pierce, R. B., Sandberg, S. P., Weickmann, A. M., and Williams, E. J.: An overview of the 2013 Las Vegas Ozone Study (LVOS): Impact of stratospheric intrusions and long-range transport on surface air quality. *Atmos. Environ.*, doi:10.1016/j.atmosenv.2014.08.040, 2015.
- Leibensperger, E. M., Mickley, L. J., and Jacob, D. J.: Sensitivity of US air quality to mid-latitude cyclone frequency and implications of 1980–2006 climate change, *Atmos. Chem. Phys.*, 8, 7075-7086, doi:10.5194/acp-8-7075-2008, 2008.
- Levine, X. J., and Schneider, T.: Response of the Hadley circulation to climate change in an Aquaplanet GCM to a simple representation of ocean heat transport, *J. Atmos. Sci.*, 68, 769–783, 2011.
- Lin, M., Fiore, A. M., Horowitz, L. W., Cooper, O. R., Naik, V., Holloway, J., Johnson, B.I., Middlebrook, A.N., Oltmans, S. J., Pollack, I. B., Ryerson, T. B., Warner, J. X., Wiedinmyer, C., Wilson, J., and Wynam, B.: Transport of Asian ozone pollution into surface air over the western United States in spring, *J. Geophys. Res.*, 117, D00V07, doi:10.1029/2011JD016961, 2012

- Lin, M., Fiore, A. M., Horowitz, L. W., Langford, A. O., Oltmans, S. J., Tarasick, D., Reider, H. E.: Climate variability modulates western US ozone air quality in spring via deep stratospheric intrusions, *Nature Communications*, 6, 7105, doi:10.1038/ncomms8105, 2015
- Lin, M., Horowitz, L. W., Oltmans, S. J., Fiore, A. M., Fan, S.: Tropospheric ozone trends at Manna Loa Observatory tied to decadal climate variability, *Nature Geoscience*, 7, 136-143, doi:10.1038/NGEO2066, 2014
- 5 Lorenz, D. J., and E. T. DeWeaver, E. T.: Tropopause height and zonal wind response to global warming in the IPCC scenario integrations, *J. Geophys. Res.*, 112, D10119, 2007.
- Lu, J., Vecchi, G. A., and T. Reichler, T.: Expansion of the Hadley cell under global warming, *Geophys. Res. Lett.*, 34, L06805, doi:10.1029/2006GL028443, 2007.
- 10 Ma, J., Xie, S.-P. and Y. Kosaka, Y.: Mechanisms for tropical tropospheric circulation change in response to global warming, *J. Clim.*, 25, 2979–2994, 2012.
- Manabe, S. and Wetherald, R. T.: Effects of doubling CO<sub>2</sub> concentration on the climate of a general circulation model, *J. Atmos. Sci.*, 32, 3–15, 1975.
- Masato G, Hoskins B. J, Woollings T. J.: Winter and summer Northern Hemisphere blocking in CMIP5 models. *J. Climate*. 15 26:7044–7059. doi: <http://dx.doi.org/10.1175/JCLI-D-12-00466.1>, 2013.
- Mickley, L. J., Jacob, D. J., and Field, B. D.: Effects of future climate change on regional air pollution episodes in the United States, *Geophys. Res. Lett.*, 31, L24103, 2004.
- Monks, S.A., Arnold, S., R, Emmons, L. K., et al. (18 more authors). Multi-model study of chemical and physical controls on transport of anthropogenic and biomass burning pollution to the Arctic. *Atmospheric Chemistry and Physics*, 15 (6). 20 3575 - 3603. ISSN 1680-7316, 2015.
- Murazaki, K., and Hess. P.: How does climate change contribute to surface ozone change over the United States?, *J. Geophys. Res.*, 111, D05301, doi:10.1029/2005JD005873, 2006.
- Neu, J. L., Flury, T, Manney, G.L., Santee, M.L., Livesey, N. J., Worden, J., Tropospheric ozone variations governed by changes in stratospheric circulation, *Nature Geoscience*, 7, 340–344, doi:10.1038/ngeo2138, 2014.
- 25 [Orbe, C., Holzer, M., Polvani, L. M., & Waugh, D. \(2013a\). Air-mass origin as a diagnostic of tropospheric transport. \*Journal of Geophysical Research: Atmospheres\*, 118\(3\), 1459-1470.](#)
- [Orbe, C., M. Holzer, L. M. Polvani, and D. Waugh \(2013b\). Air-mass origin as a diagnostic of tropospheric transport, \*J. Geophys. Res. Atmos.\* 118, 1459–1470, doi:10.1002/jgrd.50133](#)
- Orbe, Clara, Newman, P. A., Waugh, D. A., Holzer, M., Oman, L., Polvani, L. M., and Li, F., Air-mass origin in the Arctic. Part II: Response to increases in greenhouse gases. *Journal of Climate* 28, 23: 9105-9120, 2015.
- 30 [Prather, M. J., X. Zhu, Q. Tang, J. Hsu, and J. L. Neu, 2011: An atmospheric chemist in search of the tropopause. \*Journal of Geophysical Research Atmospheres\*, 116 \(4\), 1–10. doi:10.1029/2010JD014939.](#)

- Pickering, K. E., Thompson, A. M., Wang, Y., Tao, W.-K., McNamara, D. P., Kirchhoff, V. W. J. H., Heikes, B. G., Sachse, G. W., Bradshaw, J. D., Gregory, G. L., and Blake, D. R.: Convective transport of biomass burning emissions over Brazil during TRACE A, *J. Geophys. Res.*, 101, 23,993–24,012, 1996.
- Racherla, P. N. and P. J. Adams.: The response of surface ozone to climate change over the Eastern United States, *Atmos. Chem. Phys.*, 8, 871–885, doi:10.5194/acp-8-871-2008, 2008.
- Reichler, T., Dameris, M., and Sausen. R.: Determining the tropopause height from gridded data, *Geophys. Res. Lett.*, 30, 2042, doi:10.1029/2003GL018240, 20, 2003.
- Santer, B. D., Sausen, R., Wigley, T. M. L., Boyle, J. S., AchutaRao, K., Doutriaux, C., Hansen, J. E., Meehl, G. A., Roeckner, E., Ruedy, R., Schmidt, G., and Taylor, K. E.: Behavior of tropopause height and atmospheric temperature in models, reanalyses, and observations: Decadal changes, *J. Geophys. Res.*, 108 (D1), 4002, doi:10.1029/2002JD002258, 2003.
- Schultz, M. and Rast, S.: RETRO report on emission data sets and methodologies for estimating emissions, work package 1, deliverable D1-6, EU-Contract EVK2-CT-2002-00170, Max Planck Inst. For Meteorol., Hamburg, Germany. [Available at [http://retro.enes.org/reports/D1-6\\_final.pdf](http://retro.enes.org/reports/D1-6_final.pdf)], 2007.
- Seo, K.-H., Frierson, D. M. W., and Son, J.-H.: A mechanism for future changes in Hadley circulation strength in CMIP5 climate change simulations, *Geophys. Res. Lett.*, 40, 5251–5258, doi:10.1002/2014GL060868, 2014.
- Shaw, T.A., Baldwin, M., Barnes, E. A., Caballero, R., Garfinkel, C.I., Hwang, Y.-T., Li, C., O’Gorman, P. A., Rivière, G., Simpson, I.R., and Voigt, A. Storm track processes and the opposing influences of climate change, *Nat. Geosci.*, 9, 656–664, doi:10.1038/ngeo2783, 2016.
- Shepherd, T. G.: Atmospheric circulation as a source of uncertainty in climate change projections: *Nature Geoscience*, 7 (10), 703–708, 2014.
- Shindell, D. T., Faluvegi, G., Stevenson, D. S., Krol, M. C., Emmons, L. K., Lamarque, J.-F., Petron, G., Dentener, F. J., Ellingsen, K., Schultz, M. G., Wild, O., Amann, M., Atherton, C. S., Bergmann, D. J., Bey, I., Butler, T., Cofala, J., Collins, W. J., Derwent, R. G., Doherty, R. M., Drevet, J., Eskes, H. J., Fiore, A. M., Gauss, M., Hauglustaine, D. A., Horowitz, L. W., Isaksen, I. S. A., Lawrence, M. G., Montanaro, V., Muller, J.-F., Pitari, G., Prather, M. J., Pyle, J. A., Rast, S., Rodriguez, J. M., Sanderson, M. G., Savage, N. H., Strahan, S. E., Sudo, K., Szopa, S., Unger, N., van Noije, T. P. C., and Zeng, G.: Multimodel simulations of carbon monoxide: Comparison with observations and projected near-future changes, *J. Geophys. Res.*, 111, D19306, doi:10.1029/2006JD007100, 2006.
- Shindell, D. T., Chin, M., Dentener, F., Doherty, R. M., Faluvegi, G., Fiore, A. M., Hess, P., Koch, D. M., MacKenzie, I. A., Sanderson, M. G., Schultz, M. G., Schulz, M., Stevenson, D. S., Teich, H., Textor, C., Wild, O., Bergmann, D. J., Bey, I., Bian, H., Cuvelier, C., Duncan, B. N., Folberth, G., Horowitz, L. W., Jonson, J., Kaminski, J. W., Marmer, E., Park, R., Pringle, K. J., Schroeder, S., Szopa, S., Takemura, T., Zeng, G., Keating, T. J., and Zuber, A.: A multi-model assessment of pollution transport to the Arctic, *Atmos. Chem. Phys.*, 8, 5353–5372, doi:10.5194/acp-8-5353-2008, 2008.

**Moved down [1]:** Shepherd, T. G.: Atmospheric circulation as a source of uncertainty in climate change projections: *Nature Geoscience*, 7 (10), 703–708, 2014.¶

**Moved (insertion) [1]**

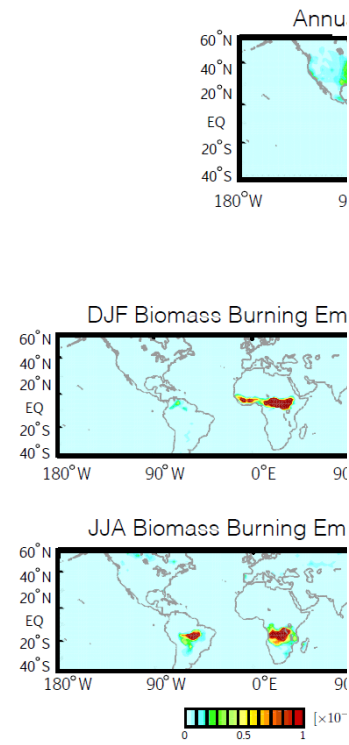
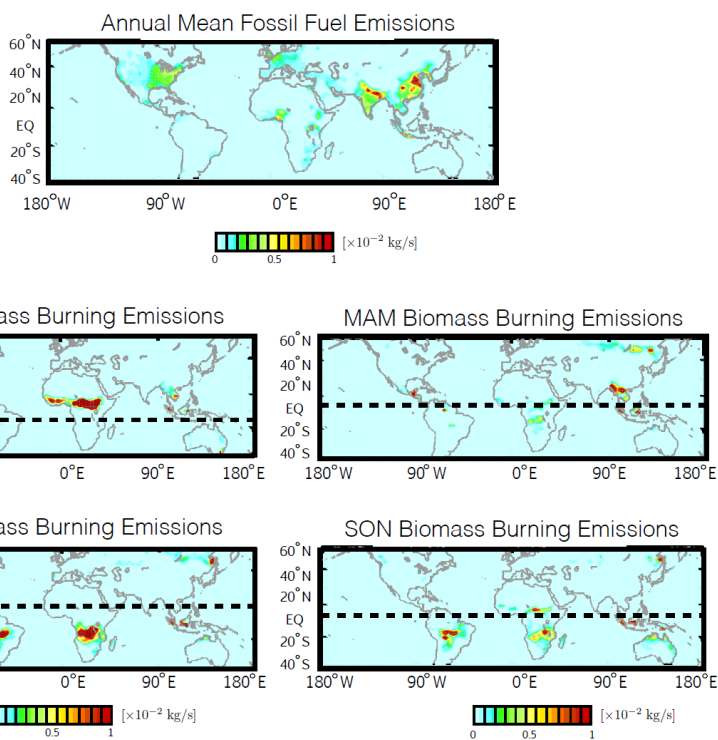
**Deleted: ¶**

- Simpson, I. R., Shaw, T. A., and Seager, R.: A diagnosis of the seasonally and longitudinally varying midlatitude circulation response to global warming, *Journal of the Atmospheric Sciences* 71.7: 2489-2515, 2014.
- [Scinocca, J. F. and McFarlane, N. A.: The variability of modelled tropical precipitation, \*J. Atmos. Sci.\*, 61, 1993–2015, 2004.](#)
- 5 Task Force on Hemispheric Transport of Air Pollution (TF-HTAP): Hemispheric Transport of Air Pollution 2010, Air Pollut. Stud. 17, edited by: Dentener, F., Keating, T., and Akimoto, H., UNECE, Geneva, Switzerland, available at: <http://www.htap.org/>, 2010.
- Ulbrich, U., Leckebusch, G. C., and J. G. Pinto, J. G.: Extra-tropical cyclones in the present and future climate: A review. *Theor. Appl. Climatol.*, 96, 117–131, 2009.
- 10 van der Werf, G. R., Randerson, J. T., Giglio, L., Collatz, G. J., Kasibhatla, P. S., and Arellano Jr, A.F.: Interannual variability in global biomass burning emissions from 1997 to 2004, *Atmos. Chem. Phys.*, 6, 3423–3441, doi:10.5194/acp-6-3423-2006, 2006.
- [Vallis, G. K., P. Zurita-Gotor, C. Cairns, and J. Kidston, 2015: Response of the large-scale structure of the atmosphere to global warming. \*Quarterly Journal of the Royal Meteorological Society\*, 141 \(690\), 1479–1501, doi:10.1002/qj.2456.](#)
- 15 Vecchi, G. A., and Soden, B. J.: Global warming and the weakening of the tropical circulation, *J. Clim.*, DOI: <http://dx.doi.org/10.1175/JCLI4258.1>, 2007.
- Williamson, D. L., et al.: The Aqua-Planet Experiment (APE): Response to changed meridional SST profile, *J. Meteorol. Soc. Jpn.*, 91A, 57–89, 2013.
- World Meteorological Organization (WMO): Meteorology A Three-Dimensional Science: Second Session of the
- 20 Commission for Aerology, WMO Bulletin IV (4), WMO, Geneva, 134–138, 1957
- Wu S, Mickley L. J., Leibensperger E. M., Jacob D. J., Rind D., Streets D. G.: Effects of 2000-2050 global change on ozone air quality in the United States, *Journal of Geophysical Research*. 2008b;113, doi:10.1029/2007JD008917, 2008.
- Wu, Y., M. Ting, M., Seager, R., Cane, M. A., and Huang, H.-P.: Changes in Storm Tracks and Energy Transports in A Warmer Climate Simulated by the GFDL CM2.1 Model. *Clim. Dyn.*, 37, 53-72, 2011.
- 25 Yin, J. H.: A consistent poleward shift of the storm tracks in simulations of 21st century climate, *Geophys. Res. Lett.*, 32, L18701, 2005.
- Young, P. J., Archibald, A. T., Bowman, K. W., Lamarque, J.-F., Naik, V., Stevenson, D. S., Tilmes, S., Voulgarakis, A., Wild, O., Bergmann, D., Cameron-Smith, P., Cionni, I., Collins, W. J., Dalsøren, S. B., Doherty, R. M., Eyring, V., Faluvegi, G., Horowitz, L. W., Josse, B., Lee, Y. H., MacKenzie, I. A., Nagashima, T., Plummer, D. A., Righi, M.,
- 30 Rumbold, S. T., Skeie, R. B., Shindell, D. T., Strode, S. A., Sudo, K., Szopa, S., and Zeng, G.: Pre-industrial to end 21st century projections of tropospheric ozone from the Atmospheric Chemistry and Climate Model Intercomparison Project (ACCMIP), *Atmos. Chem. Phys.*, 13, 2063-2090, 2013.
- [Zhang, G. J. and McFarlane, N. A.: Sensitivity of climate simulations to the parameterization of cumulus convection in the Canadian Climate Center general circulation model, \*Atmos. Ocean\*, 33, 407–446, 1995.](#)

**Deleted:** Stohl, A., Eckhardt, S., Forster, C., James, P., and Spichtinger, N.: On the pathways and timescales of intercontinental air pollution transport, *J. Geophys. Res.*, 107(D23), 4684, doi:10.1029/2001JD001396, 2002.

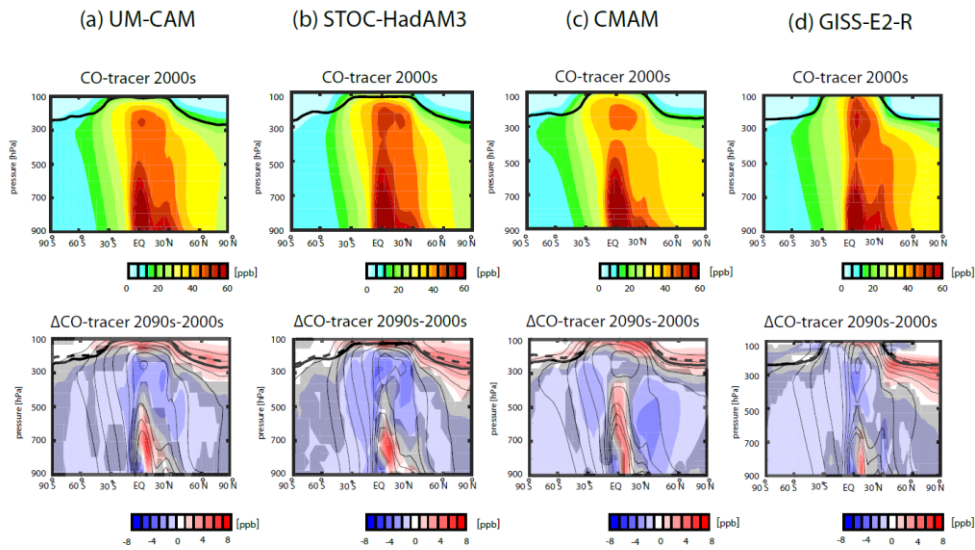
**Deleted:** 0





**Figure 1.** Annual mean anthropogenic CO emissions ( $\text{kg s}^{-1}$ ) from fossil fuels (top panel) and seasonal-mean biomass burning CO emissions for the different seasons ( $\text{kg s}^{-1}$ ) (middle/bottom panels). The dashed line shows the approximate position of the Intertropical Convergence Zone (ITCZ) in the different seasons.

DJF

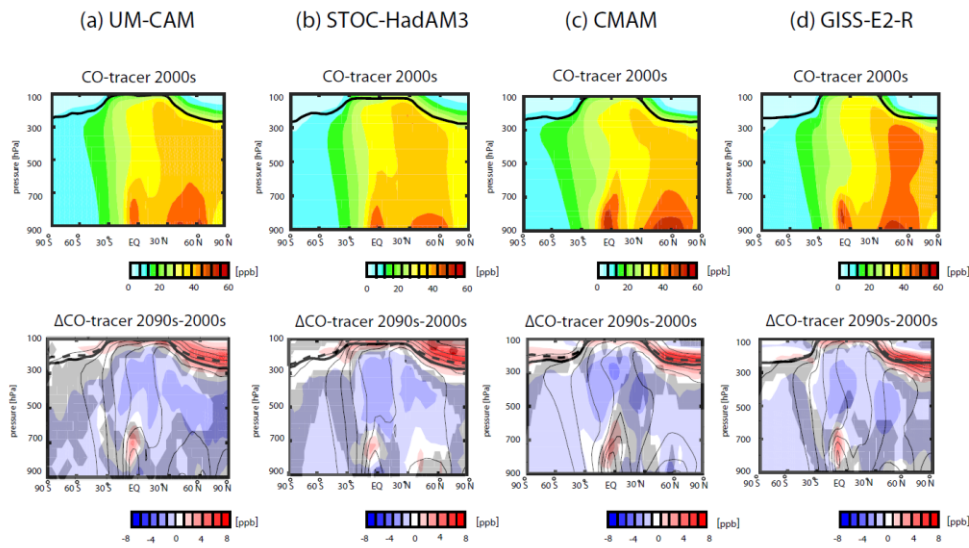


**Figure 2.** Top panels: Present-day (1995-2006) boreal winter (DJF) climatological mean zonal mean CO distribution for a) UM-CAM, b) STOC-HadAM3, c) CMAM and d) GISS-E2-R CCMs. The thick black solid line represents the present-day (DJF) zonally averaged thermal tropopause. Bottom panels: 2090-2099 (RCP 8.5) - 1995-2006s (present-day) differences in the DJF 10-year climatological mean zonal mean CO distribution. Thin black contours denote the present-day DJF climatology. The thick solid and dashed lines represent the DJF zonally averaged thermal tropopause for present-day and the 2090s (RCP8.5) climatologies. Grey shading indicate where results are not significant at  $p < 0.05$  as evaluated with a Student t-test using 10 years of data for the 2090s (RCP 8.5) and present-day climate simulations.

**Commented [DR14]:** Sort label

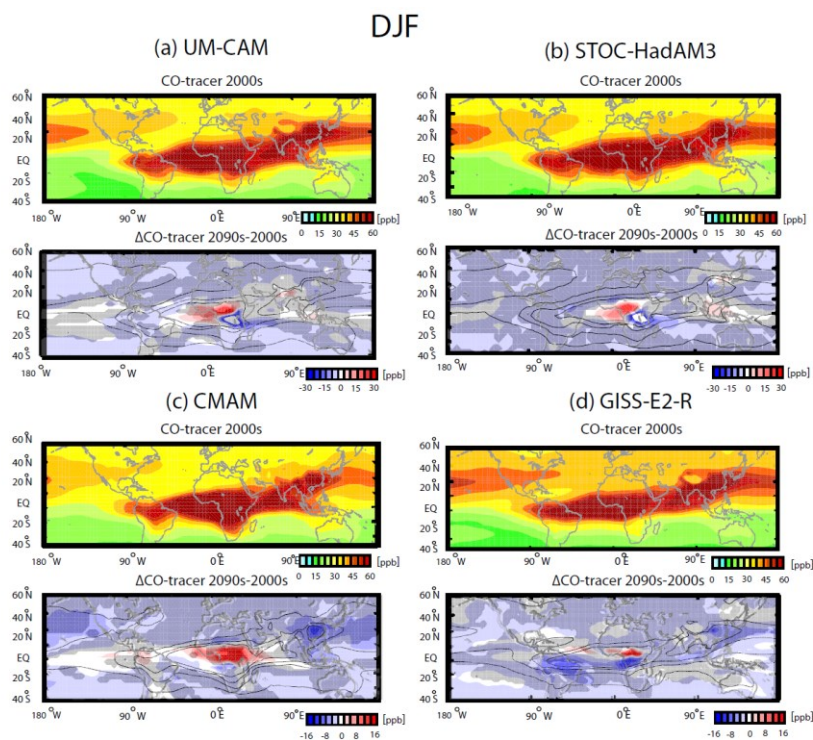
**Deleted:** or REF

JJA



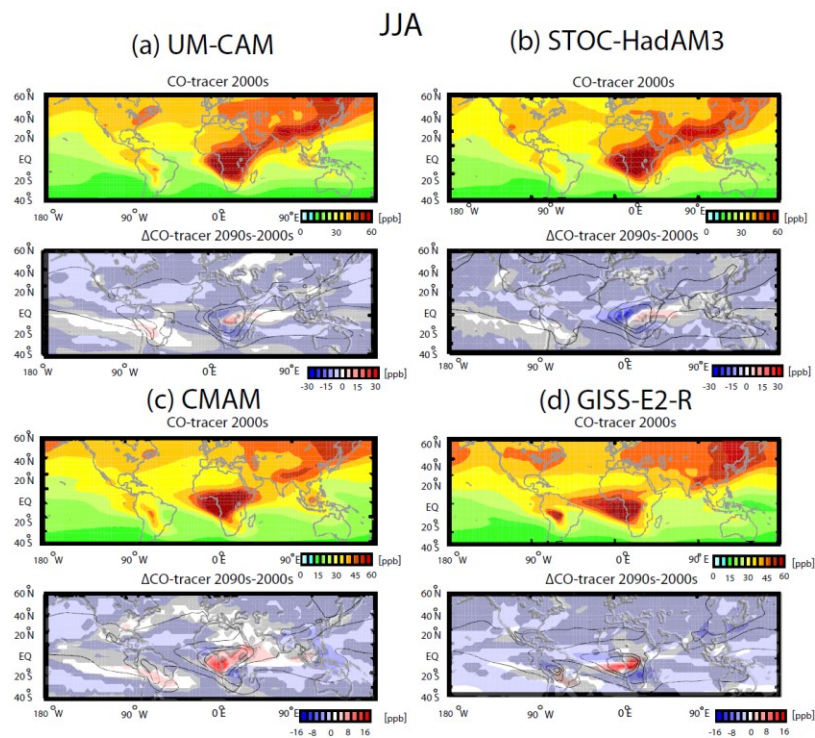
**Figure 3.** Same as Figure 2 but for Boreal summer (JJA).





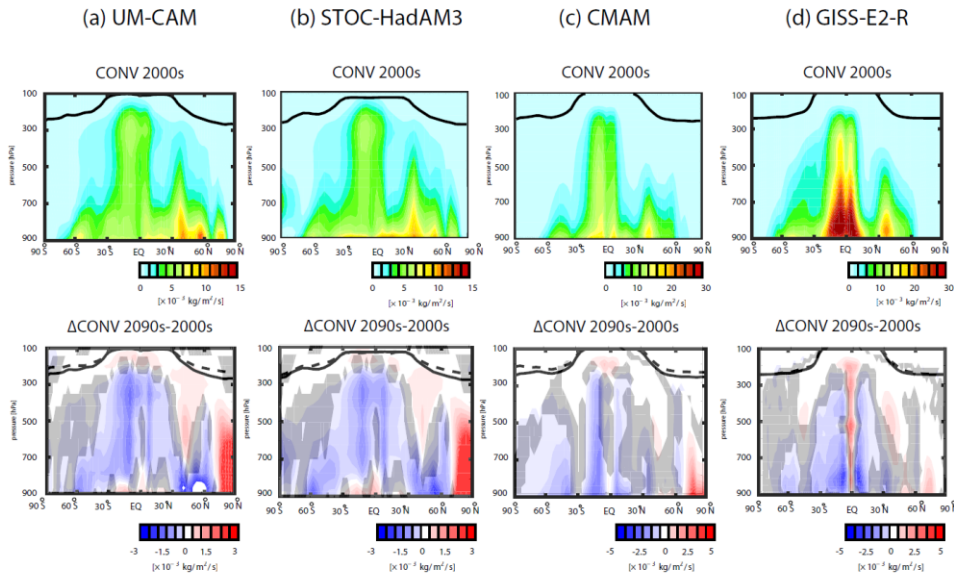
**Figure 4.** Top panels within subplots a-d): Present-day (1995-2006) DJF climatological mean CO distribution, averaged over 400-800 hPa. Bottom panels: 2090-2099 (RCP8.5) - 1995-2006 difference in DJF climatological mean distributions, wherein black contours denote the present-day climatology. Results are presented for a) UM-CAM and b) STOC-HadAM3 (top panels) and c) CMAM and d) GISS-E2-R (bottom panels). Grey shading indicate where results are not significant at  $p < 0.05$  as evaluated with a Student t-test using 10 years of data for the 2090s (RCP 8.5) and present-day climate simulations. Note the different scales for UM-CAM and STOC-HadAM3 and for CMAM and GISS-E2-R for the difference plots.

Deleted: or REF



**Figure 5.** Same as Figure 4 but for JJA. Note the different scales for UM-CAM and STOC-HadAM3 and for CMAM and GISS-E2-R for the difference plots.

DJF



**Figure 6.** Top panels: DJF climatological mean zonally averaged convective mass fluxes for present-day (1995-2006) for a) UM-CAM, b) STOC-HadAM3, c) CMAM and d) GISS-E2-R. The thick black solid line represents the present-day (DJF) zonally averaged thermal tropopause. Bottom panels: 2090-2099 (RCP8.5) -2000s differences in the DJF climatological mean zonal mean convective mass fluxes. The thick solid and dashed lines represent the DJF zonally averaged thermal tropopause for the present-day and the 2090s (RCP8.5) climatologies. Grey shading indicate where results are not significant at  $p < 0.05$  as evaluated with a Student t-test using 10 years of data for the 2090s (RCP 8.5) and present-day climate simulations. Note the different scales for UM-CAM and STOC-HadAM3 and for CMAM and GISS-E2-R.

Deleted: or REF

JJA

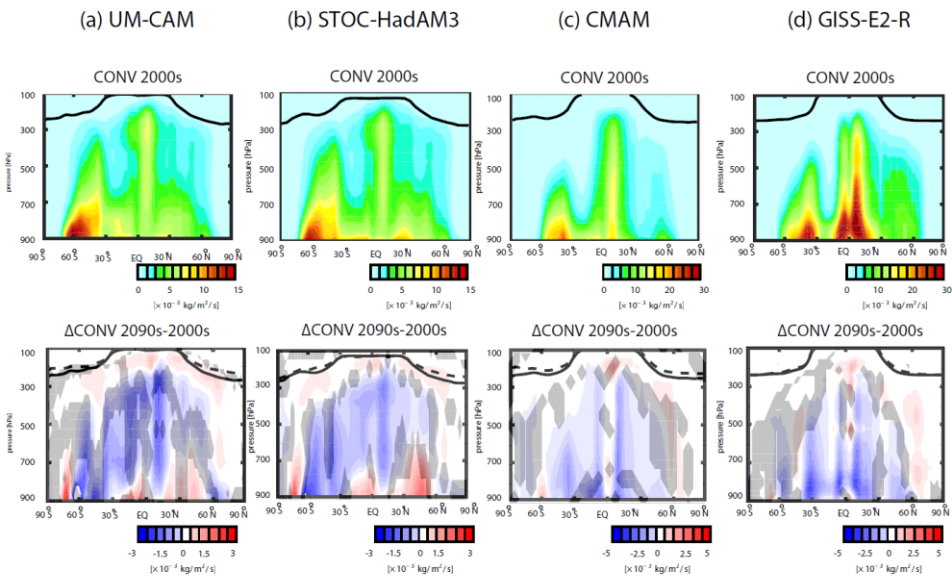
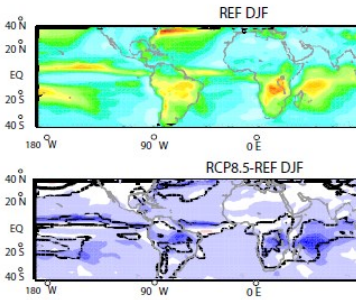


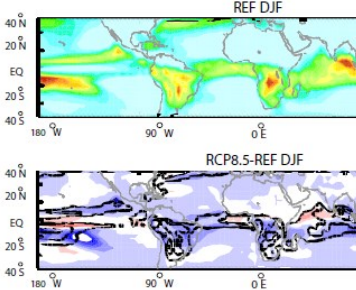
Figure 7. Same as Figure 6 but for JJA. Note the different scales for UM-CAM and STOC-HadAM3 and for CMAM and GISS-E2-R.

5

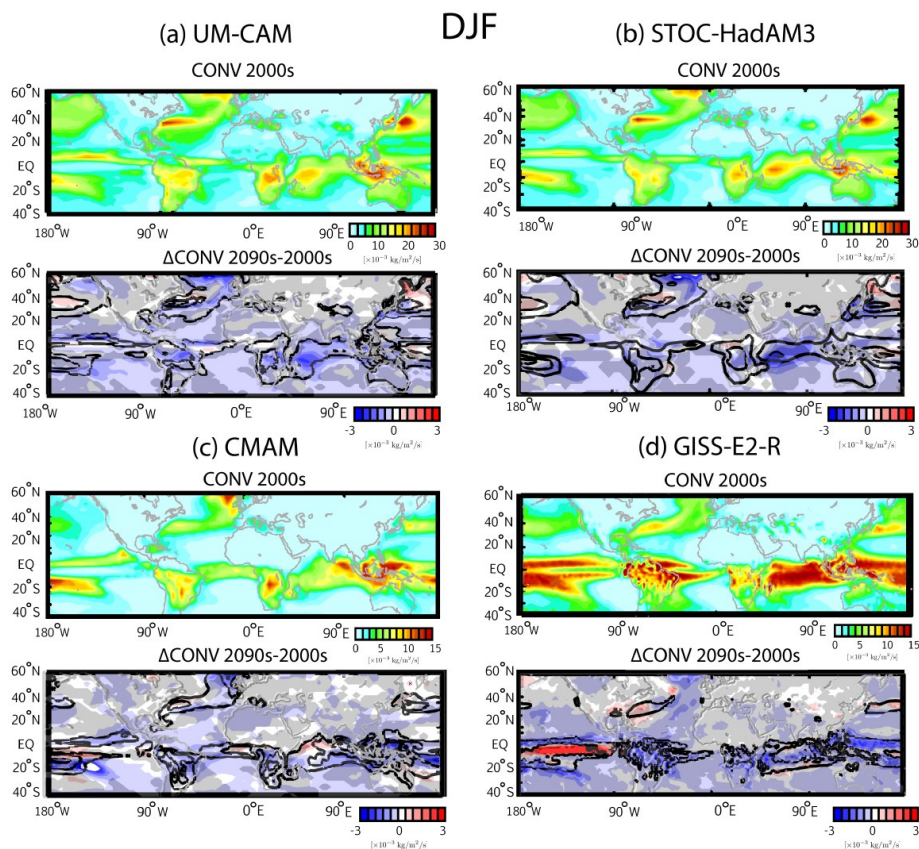
(a) UM-CAM



(c) CMAM



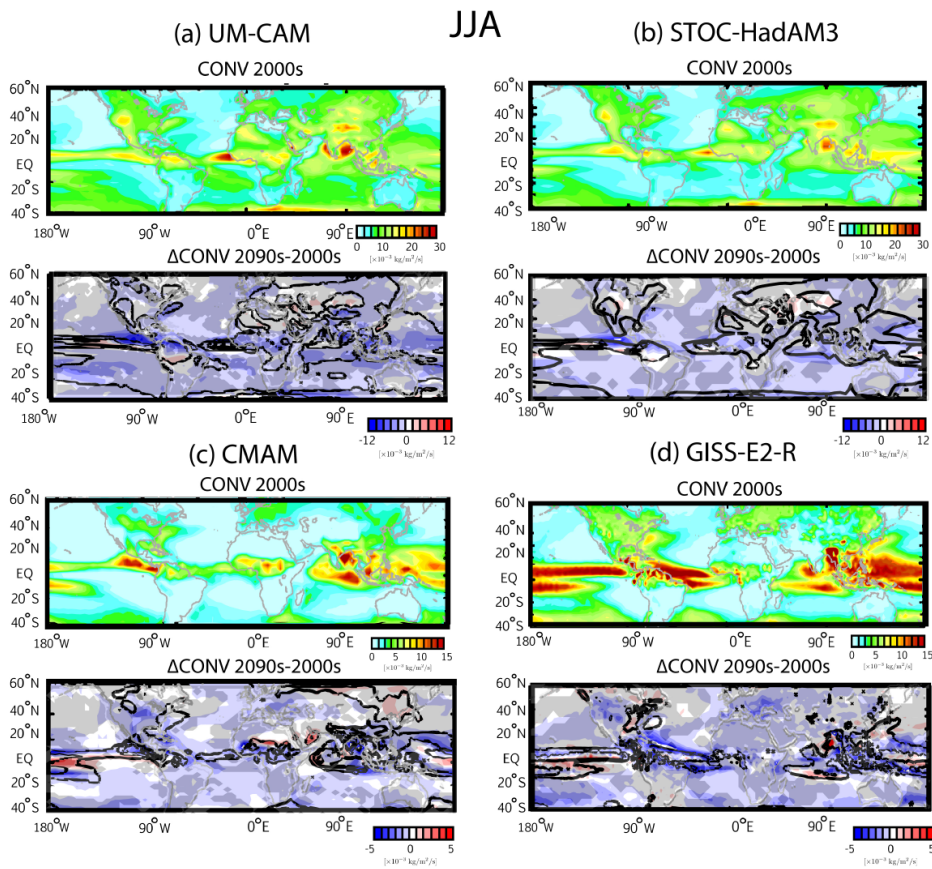
Deleted:



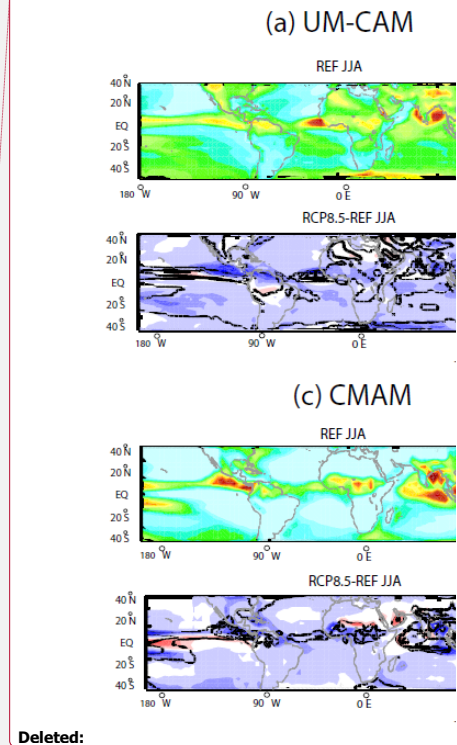
**Figure 8.** Top panels within subplots a)-d): DJF climatological mean convective mass fluxes, averaged over 300-800 hPa for 1996-2005 (present-day). Bottom panels e)-h): Same, but for 2090-2099 (RCP8.5)- 1996-2005 (present-day) difference, wherein black contours denote the present-day climatology. Results are presented for UM-CAM and STOC-HadAM3 (top panels) and CMAM and GISS-E2-R (bottom panels). Grey shading indicate where results are not significant at  $p < 0.05$  as evaluated with a Student t-test using 10 years of data for the 2090s (RCP 8.5) and present-day climate simulations. Note the different scales for UM-CAM and STOC-HadAM3 and for CMAM and GISS-E2-R.

Deleted: or (REF)





**Figure 9.** Same as Figure 8 but for JJA. Note the different scales for UM-CAM and STOC-HadAM3 and for CMAM and GISS-E2-R.



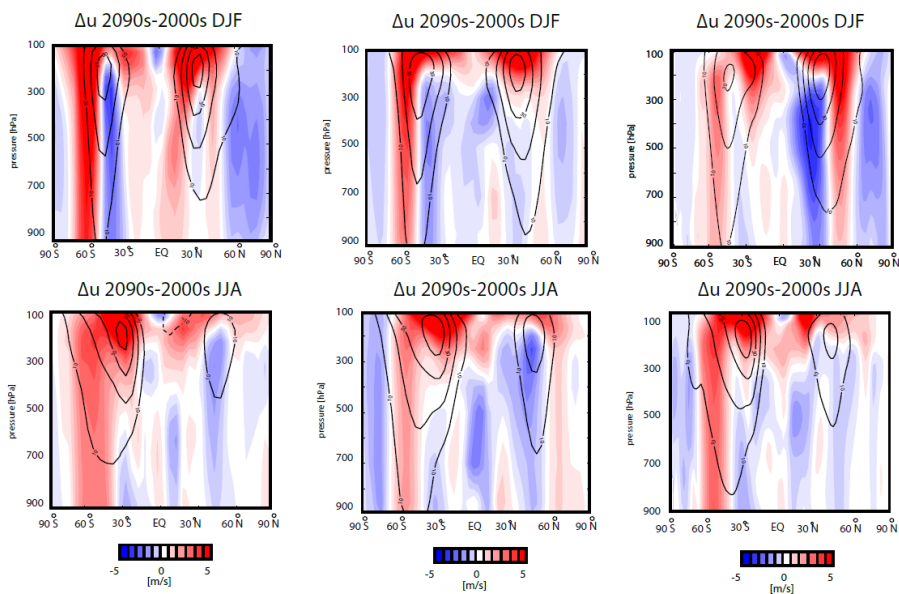
Deleted:

Deleted: for the difference plots

(a) UM-CAM/  
STOC-HadAM3

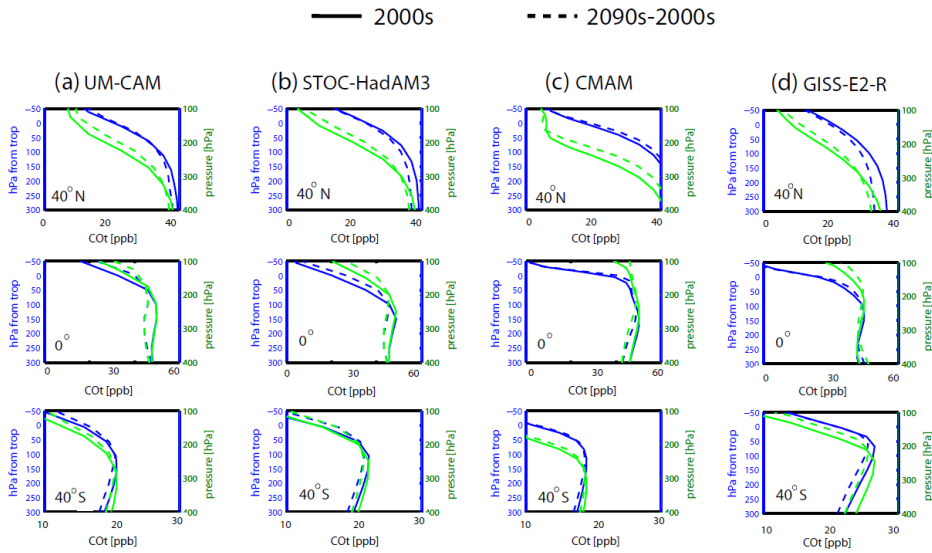
(b) CMAM

(c) GISS-E2-R



**Figure 10.** Zonal mean zonal wind 2090-2099 (RCP8.5) - 1996-2005 (present-day) differences for DJF (top panels) and JJA (bottom panels). Results are shown for a) UM-CAM/STOC-HadAM3 (same driving GCM), b) CMAM and c) GISS-E2-R. Black contours denote the present-day climatology.

Deleted: or (REF)



5 **Figure 11.** CO- tracer mixing ratio annual-average profiles (ppb) averaged over various latitude bands (40°N, 0, 40°S) for the 2000s (Present-day) and the 2090-2099 (RCP8.5) for a) UM-CAM, b) STOC-HadAM3, c) CMAM and d) GISS-E2-R plotted against altitude as pressure (green) and with distance from the tropopause for the respective time period (blue).

Deleted: or (REF)

Deleted: