

Response to Referee #1:

We first thank the valuable comments of the reviewer. We have taken reviewer's comments into consideration and revised the manuscript accordingly. All the changes have been highlighted in the revised manuscript. Our detailed responses are as follows.

This paper elaborates the role of fast-response and slow-response in shaping the total equilibrium response of the East Asian summer monsoon (EASM) to SO₄ and BC using the Community Earth System Model. This paper states the importance of ocean response to aerosol forcing in driving the changes of the EASM. I recommend for its publication after revision.

Comments: (1) Lack of clarity at a few places in the manuscript. For example: In section 2.2 add details of how an ensemble of five perturbed simulations is obtained. Explain why the averaging time of SO₄ (60 yrs) is less than BC (300 yrs).

Response: The ensemble of five perturbed simulations for BC was performed by altering the atmospheric initial conditions by an air temperature difference at round-off level (order of 10⁻¹⁴ °C). To enhance the signal-to-noise ratio of the response, the 300 years in the BC perturbed simulations (60 years × 5 members) was conducted because of weaker BC forcing than SO₄. We have added these statements. Please see line 8 – 9 in page 4 in the revised manuscript.

Section 3

Line 1: Do you mean changes in optical depth induced by SO₄ or BC?

Response: Yes, it is. We have corrected it. Please see line 3 in page 5 in the revised manuscript.

5

Lines 4-5: "The aerosol optical depth increases significantly over most of the globe except for some oceans due to the increase in anthropogenic aerosol loading".

Mention the region of the oceans.

Response: Done. Please see line 5 – 9 in page 5 in the revised manuscript.

10

Lines 22-23: Comparison with previous studies if any.

Response: Done. Please see line 28 – 31 in page 5 in the revised manuscript.

15

Figure 3: It is interesting to show opposite response due to SO₄ and BC aerosols on SSTs. This discussion should be elaborated.

Response: Accepted. We have elaborated the opposite SST responses due to SO₄ and BC. Please see line 25 – 28 in page 5 in the revised manuscript.

20

It will also be interesting to know the simulated annual mean SST changes caused by SO₄ and BC for the northern and southern hemisphere separately.

Response: Accepted. We have added the SST changes caused by SO₄ and BC for both hemispheres separately. Please see the line 31 in page 5 – line 1 in page 6

and Table 2 in the revised manuscript.

Anomalies in wind should be plotted in Figure 5a-c. It will provide information on circulation changes.

5 **Response: Accepted. We have added the figures of anomalous winds induced by SO₄ and BC in the supplement material. Please see the Figures S2 and S4.**

I suggest plotting tropopause anomalies in Figures 5d-f. Drop in geopotential height and tropopause has linkages with suppression on monsoon convection and weakening
10 *of the EASM.*

Response: Accepted. We have added the figures of tropopause height anomalies induced by SO₄ and BC and the corresponding discussions. Please see the Figure 7, line 17 – 21 in page 7, line 31 in page 8 – line 2 in page 9, and line 15 – 16 in page 9 in the revised manuscript.

15

I also suggest plotting monsoon Hadley circulations in Figure 7 and 11 along with precipitation. Discussions on subsidence/ascending motion will be helpful.

Response: Accepted. We have added the figures of changes in meridional circulations and stream functions induced by SO₄ and BC in the supplement
20 **material and the corresponding discussions. Please see the Figure S2 – S5, line 32 – 33 in page 7, and line 25 – 29 in page 9 in the revised manuscript.**

Add confidence level (95% or 99%) in figures 7 and 11 as hitch lines to show the results are significant.

Response: This has been added. Please see the revised figures.

5 *I think that Figures 7 and 11, both indicate that for BC and SO₄ (both) precipitation pattern for the total-response is a sum of the fast-response and the slow-response. If the magnitude of the fast-response is higher than the slow-response, then it dominates. Please verify by quantitative analysis and results should be modified accordingly.*

Response: Accepted. We have modified the statements about which response
10 **dominates over the total response of precipitation to BC and SO₄ in different regions. Please see the line 2 – 8 in page 8 and line 25 – 31 in page 9 in the revised manuscript.**

Table-2 suggests that BC induces a weak increase in precipitation due to slow
15 *response and decrease due to fast response. While SO₄ induces a decrease in precipitation due to both slow and fast response. Figure 7 and 11 suggest that total response induced by SO₄ weakens the EASM but total response by BC aerosols is "wetter-south-dryer-north". Do this wetter-south-dryer-north points to weak increase or decrease in overall precipitation? Does this study conclude that SO₄ and BC both*
20 *cause a decrease in overall precipitation?*

Response: Table 2 was aimed at the regional mean changes over East Asia. It could be misleading by using large areal average. Thus, we improved the

statements in this Table. Please see the Table 3 in the revised manuscript.

Response to Referee #2:

We first thank the helpful comments of the reviewer. We have taken reviewer's comments into consideration and revised the manuscript accordingly. All the changes have been highlighted in the revised manuscript. Our detailed responses

5 **are as follows.**

Reviewer's comments for the paper (ACP-2017-464), entitled "Disentangling fast and slow responses of the East Asian summer monsoon to reflecting and absorbing aerosol forcings" by Wang et al., submitted to ACP.

10 *Recommendation, Major revision.*

General comments

By performing some time slice experiments using an AGCM and a coupled GCM, this paper investigates the fast and slow responses of East Asian summer monsoon to

15 *changes of sulphur dioxide (SO₂) and black carbon (BC) from preindustrial to present day. While the topic is an interesting one. However, results in current version of paper are not very well presented and some conclusions are lack of evidence to support them. Therefore, paper needs a major revision by addressing some major and specific comments listed below before it can be accepted for publication.*

20 **Response: We have addressed all the comments and revised the manuscript. Please see the specific description below.**

Major comment

1. *Some conclusions for precipitation changes over East Asia are based on areal average over a large domain including both land and ocean. The precipitation responses to different forcings show some clear contrast features over land over East Asia and adjacent ocean. For example, Fig. 7 shows that the decrease of precipitation over land over East Asia in total response to SO₄ change is dominated by the fast response while changes over adjacent ocean might be dominated by slow response. Therefore, some statements about fast response and slow response of EASM to the SO₄ change are misleading by using large areal average.*

10 **Response: Thanks for the reviewer's comment. We have improved these statements. Please see the last paragraph in page 7, the first paragraph in page 8, and line 25 – 31 in page 9 in the revised manuscript.**

2. *The current version of the paper lacks quantitative statements when either the fast or slow responses to different forcings are described. This aspect needs to be improved.*

Response: Accepted. We have improved this aspect. Please see the revised manuscript.

20 3. *It is worth of discussing the JJA SST responses since the paper is about EASM.*

Response: Accepted. We have added the figures of JJA SST responses in the supplement material and the corresponding discussions. Please see the Figure S1,

line 21 – 23 in page 6, and line 3 – 5 in page 9 in the revised manuscript.

4. *There are detailed analyses of zonal averaged temperature and zonal wind over sector 100°E-140°E in response to different forcings. However, the relation between these sectorial averaged changes with the regional pattern of precipitation changes is not clearly illustrated.*

Response: Accepted. We have added the illustration about the relation between the changes in zonal averaged temperature and zonal wind with the regional pattern of precipitation changes. Please see the last paragraph in page 7, the first paragraph in page 8, and line 25 – 31 in page 9 in the revised manuscript.

Specific comments

1. *Lines 24-25 on page 1. “Consequently, the EASM is enhanced north of 30°N but slightly reduced south of 30°N in the total response to BC.”. This statement is very confusing. EASM is a summer climate system over East Asia. It is difficulty to follow your argument that EASM north of 30°N enhances and south of 30°N weakens.*

Response: We have corrected this sentence in the revised manuscript.

2. *In several places, it states “pressure drop at 200 hPa” or “drop in pressure at 200 hPa”. This does not make sense.*

Response: We have removed it in the revised manuscript.

3. Lines 25-27 on page 6. How does “the southward displacement of the EASJ will result in an anomalous anticyclone over the East Asian continent”? Need some explanations.

Response: Accepted. We have added the explanations. Please see the line 6 – 8 in
5 **page 7 in the revised manuscript.**

4. Lines 27-28. It is not clear which season “there is an enhanced NH Hadley cell” since figure 3 is annual SST responses.

Response: Here is the response of Hadley cell in the summer. We have improved
10 **this statement. Please see the line 11 – 12 in page 7 in the revised manuscript.**

5. Lines 5-6 on page 8. “This leads to increase in vertical ascending motion between 20°N and 40°N (the position of subsiding branch of the NH Hadley cell)”. This is confusing. Subsiding branch of local Hadley Cell shall be in southern hemisphere in
15 JJA.

Response: Yes, it should be the ascending branch of local Hadley Cell. We have corrected it. Please see the line 9 – 10 in page 9 in the revised manuscript.

6. Lines 4-5 on page 9. “We emphasize that the SO₄-induced slow response plays a
20 more important role in driving the changes of the EASM.” See major comment 1.

Response: This has been revised. Please see the line 16 – 18 in page 10 in the revised manuscript.

7. Lines 10-11 on page 9. “the EASM in the total response to BC is weaker and less significant, with an enhancement north of $30^{\circ}N$ (northern China), but a slightly weakening south of $30^{\circ}N$ (southern China).”. see specific comment 1.

Response: This has been revised. Please see the line 23 – 24 in page 10 in the
5 **revised manuscript.**

Disentangling fast and slow responses of the East Asian summer monsoon to reflecting and absorbing aerosol forcings

Zhili Wang¹, Lei Lin², Meilin Yang³, Yangyang Xu⁴, Jiangnan Li⁵

¹State Key Laboratory of Severe Weather and Key Laboratory of Atmospheric Chemistry of CMA, Chinese Academy of Meteorological Sciences, Beijing, 100081, China

²School of Atmospheric Sciences and Guangdong Province Key Laboratory for Climate Change and Natural Disaster Studies, Sun Yat-sen University, Zhuhai, 519000, China

³Institute of Urban Meteorology, China Meteorological Administration, Beijing, 100089, China

⁴Department of Atmospheric Sciences, Texas A&M University, College Station, Texas, 77843, USA

⁵Canadian Centre for Climate Modelling and Analysis, Science and Technology Branch, Environment Canada, Victoria, V8P5C2, Canada

Correspondence to: Lei Lin (linlei3@mail.sysu.edu.cn)

Abstract. We examine the roles of fast and slow responses in shaping the total equilibrium response of the East Asian summer monsoon (EASM) to reflecting (sulfate, SO₄) and absorbing (black carbon, BC) aerosol forcings over the industrial era using the Community Earth System Model version 1. Our results show that there is a clear distinction between fast and slow responses of the EASM to aerosol forcings and the slow climate response due to aerosol-induced change in sea surface temperature plays an important role in the impacts of aerosols on the EASM. The EASM is weakened by a decrease in land-sea surface thermal contrast in the fast response component to SO₄ forcing, whereas the weakening is more intensive by the changes in tropospheric thermodynamic and dynamic structures in the slow response component to SO₄. The total climate adjustment caused by SO₄ is a significant weakening of the EASM and a decrease in precipitation. The BC-induced fast adjustment strengthens the EASM both by increasing the local surface land-sea thermal contrast and shifting the East Asian subtropical jet northwards. The BC-induced slow climate adjustment, however, weakens the EASM through altering the atmospheric temperature and circulation. Consequently, the EASM is slightly enhanced, especially north of 30°N, in total response to BC. The spatial patterns of precipitation change over East Asia due to BC are similar in total response and slow response. This study highlights the importance of ocean response to aerosol forcings in driving the changes of the EASM.

1 Introduction

The East Asian summer monsoon (EASM) is one of the most complex and influential monsoon systems over the globe (Ding and Chan, 2005). The activities of about 20% of world's population would be affected by rainfall change due to the variation of the EASM (Lei et al., 2011). Further understanding of the features of the EASM change has important implications for social economics, agriculture, ecosystem, and water resource management (Hong and Kim, 2011; Auffhammer et al., 2012).

The long-term variation of the EASM is possibly attributed to the influence of various factors including natural factors (e.g., internal climate variability, volcanic eruptions, and solar variability) and anthropogenic factors (e.g., anthropogenic aerosols and greenhouse gases (GHGs)) (Wang et al., 2001; J. Li et al., 2010; Salzmann et al., 2014; Wang et al., 2015; Z. Li et al., 2016). Among them, aerosol forcing has been recognized as an important contributor to the long-term change. The analyses
5 based on the Coupled Model Intercomparison Project phase 5 (CMIP5) multimodel simulations indicated that aerosol forcing contributed dominantly to the weakening of the Asian summer monsoon during the second half of the twentieth century (Salzmann et al., 2014; Song et al., 2014). Other previous studies based on individual climate models also showed that the increases in anthropogenic aerosols could decrease the land-sea surface thermal contrast, thereby leading to a weakening of the EASM (e.g., X. Liu et al., 2011; Zhang et al., 2012; Jiang et al., 2013; J. Liu et al., 2017; Wang et al.,
10 2017).

Despite the modelling and observational evidence, there is still debate over whether the total aerosols enhance or weaken the EASM (Guo et al., 2013; Yan et al., 2015), which could be related to the complicated nature of aerosol chemical compositions, an issue we aim to address in this study. Aerosols in the atmosphere consist of optically reflecting and absorbing components. Reflecting aerosols (e.g., sulfate (SO₄) and organic carbon) can cool the surface by decreasing the
15 amount of sunlight arriving at the top of the atmosphere (TOA) and surface, and cause weak cooling inside the atmosphere due to a weakened solar absorption (Myhre et al., 2013). However, absorbing aerosols (e.g., black carbon (BC), dust, and some component of organic carbon) are able to not only change the radiation budget at the TOA and surface but also directly heat the atmospheric column (Koch and Del Genio, 2010; Huang et al., 2014). Consequently, BC affects the atmospheric stability, cloud cover, and convection. Therefore, the impact of aerosols on climate derived from modelling studies is likely
20 to be substantially different when various aerosol species are accounted for (Ocko et al., 2014). Using a GISS model, Menon et al. (2002) suggested that the "wetter-south-dryer-north" phenomenon that has appeared frequently in summer over eastern China during the past decades may be related to the increase in BC emission. But Zhang et al. (2009) showed responses that are opposite to that in Menon et al. (2002) when considering the integrated effects of carbonaceous aerosols.

Several studies attempted to contrast the SO₄ and BC responses and indicated that scattering and absorbing aerosols would
25 have markedly different effects on regional temperature, atmospheric circulation, and precipitation over East Asia (e.g., Guo et al., 2013; Jiang et al., 2013; Persad et al., 2014). However, these studies all only considered the fast adjustments of atmosphere and land surface to aerosol forcings, without considering the response of oceans. Climate response to a forcing agent can be regarded as a synthesis of fast and slow responses (Andrews et al., 2010; Ganguly et al., 2012). The response to direct effects of aerosols on radiation, cloud, atmospheric heating rate, and land surface is treated as the fast response, while
30 the response to change in global surface temperature, especially sea surface temperature (SST), caused by the aerosol forcing is identified as the slow response. The latter can have a more important effect on the climate system (Allen and Sherwood, 2010; Ganguly et al., 2012; Xu and Xie, 2015; Voigt et al., 2017). A general circulation model study by Hsieh et al. (2013) showed that aerosols could lead to different spatial responses of climate over the global scale when using an interactive

ocean model as opposed to fixed SST as the ocean boundary conditions. Ganguly et al. (2012) also indicated that the slow component played a more critical role in shaping the total equilibrium response of the South Asian summer monsoon to aerosol forcing.

The East Asian monsoon is considered as a more complex monsoon system. What role does the feedback of oceans to aerosol forcings play in driving the changes of the EASM? This study explores the roles of fast and slow responses in forming the total equilibrium response of the EASM to both reflecting and absorbing aerosol forcings over the industrial era using a state-of-the-art Earth system model. We take SO₄ and BC as the representatives of reflecting and absorbing aerosols separately. To our knowledge, no previous study has partitioned the fast and slow responses of the East Asian monsoon to various aerosol species using a fully coupled climate model.

The paper is organized as follows. The model and simulations performed are described in Sect. 2. The total, fast, and slow responses of the EASM to various aerosol forcings are presented in Sect. 3. Our discussion and conclusions are summarized in Sect. 4. We primarily focus on the variation of the EASM over the region 20°-40°N, 100°-140°E. The summer includes the months of June, July, and August (JJA).

2 Method

2.1 Global climate model

We used the Community Earth System Model version 1 (CESM1), a fully coupled ocean–atmosphere–land–sea-ice model, created by the National Center for Atmospheric Research (NCAR) of the U.S. (Hurrell et al., 2013). The model is a version with a finite-volume approximate 1° horizontal resolution (latitude 0.9° × longitude 1.25° for the atmosphere and land, and 1° × 1° for the ocean) and 30-level vertical resolution, with a rigid lid at 4 hPa. CESM1 includes the primary anthropogenic forcing agents, such as GHGs, tropospheric and stratospheric ozone, sulfate, black, and primary organic carbon. The three-mode modal aerosol model that contains Aitken, accumulation, and coarse modes has been implemented in the model (Liu et al., 2012). It can provide the number and mass concentrations of internally mixed aerosols for the three modes. The model also includes the physical representations of aerosol direct, semi-direct, and indirect effects for both liquid and ice phase clouds (Morrison and Gettelman, 2008; Gettelman et al., 2010; Ghan et al., 2012).

Anthropogenic and biomass burning emissions of aerosols and their precursors are based on Lamarque et al. (2010). However, the BC emission at present day is adjusted due to the potential underestimation of BC heating in the atmosphere in CESM1 (Xu et al., 2013; Xu and Xie, 2015). BC emissions over East Asia and South Asia are increased by a factor of 2 and 4, respectively. The emissions are changed in all economic sectors (industrial, energy, etc.) and all seasons by the same ratio. Such an adjustment significantly improved the simulated radiative forcing compared to the direct observations.

2.2 Simulations

This study used a series of simulations (Table 1):

Fully Coupled CESM1 simulations. The control case was a 394-year pre-industrial simulation (referred to as PI). Two perturbed simulations: sulfur dioxide (SO_2) (a precursor of SO_4) and BC emissions were increased instantaneously from pre-industrial to present-day levels, but the GHG concentrations were unchanged (referred to as PDSO₄ and PDBC). Starting from the end of the 319th year, the perturbed simulations were run for 75 years, with the last 60 years being analyzed. To increase the signal-to-noise ratio caused by BC forcing (a smaller forcing), we performed an ensemble of five perturbed simulations **by altering the atmospheric initial conditions by an air temperature difference at round-off level (order of 10^{-14} °C)**. The long averaging time (394 years for the PI case, 60 years in the SO_4 perturbed simulations, and **60×5** years in the BC perturbed simulations) can restrain the impact of decadal natural climate variability and obtain a clear effect due to aerosol forcings.

Atmosphere-only model simulations with fixed SST. The model settings were same as those in (1), but the SST was always fixed at the pre-industrial level, with only seasonal variability. The SST data is from the outputs of PI coupled simulation. Three simulations were performed: using the pre-industrial aerosol emissions (referred to as PI_FSST), present-day SO_2 emission (referred to as PDSO₄_FSST), and present-day BC emission (referred to as PDBC_FSST), respectively. Each simulation was run for 75 years, with the last 60 years being analyzed. These three atmosphere-only simulations were also used to calculate the effective radiative forcings (ERFs) of SO_4 and BC at the present day following Myhre et al. (2013).

Those sets of simulations mentioned above have been adopted to examine the responses of the tropospheric atmosphere (Xu and Xie, 2015), mountain snow cover (Xu et al., 2016), and terrestrial aridity (Lin et al., 2016) to various forcing agents. The total response (TR) of the EASM to SO_4 or BC forcing was defined as the difference between PDSO₄ or PDBC and PI:

$$\text{TRSO}_4 = \text{PDSO}_4 - \text{PI}, \quad (1)$$

$$\text{TRBC} = \text{PDBC} - \text{PI}. \quad (2)$$

The fast response (FR) of the EASM to SO_4 or BC forcing was expressed as the difference between PDSO₄_FSST or PDBC_FSST and PI_FSST:

$$\text{FRSO}_4 = \text{PDSO}_4\text{-FSST} - \text{PI_FSST}, \quad (3)$$

$$\text{FRBC} = \text{PDBC_FSST} - \text{PI_FSST}. \quad (4)$$

Note that the slow response (SR) of the EASM to aerosol forcing, defined as climate response to aerosol-induced SST change, was calculated by subtracting the FR from the TR (Andrews et al., 2010; Ganguly et al., 2012; Samset et al., 2016), rather than by performing the simulations with perturbed SST pattern caused by aerosol forcing:

$$\text{SR} = \text{TR} - \text{FR}. \quad (5)$$

Hsieh et al. (2013) and Xu and Xie (2015) indicated that this approximate method was a legitimate metric to obtain the slow response of climate to aerosol forcing.

3 Results

3.1 Aerosol ERFs and their induced SST responses

Figure 1 shows the changes in aerosol optical depths (AODs) at 550 nm from PI to PD induced by SO₄ and BC. The AOD increases significantly over most of the globe except for some oceans due to the increase in anthropogenic aerosol loading. The change in AOD induced by SO₄ is larger than that induced by BC. The prominent increase in AOD caused by SO₄ appears over eastern China and USA, India, and Western Europe, while the AOD decreases over the tropical and subtropical oceans of the Southern Hemisphere (SH). The change in BC leads to a large increase in AOD over eastern China and South Asia but a slight reduction over the tropical Pacific and Indian ocean of the Northern Hemisphere (NH), northern Atlantic, and high latitudes of the SH.

The fifth assessment report of the Intergovernmental Panel on Climate Change (IPCC AR5) provided a new definition of radiative forcing named as ERF, which is a better indicator of the climate responses (Myhre et al., 2013). The global distributions of simulated SO₄ and BC ERFs at the top of the atmosphere (TOA) are shown in Fig. 2. The ERFs are calculated using the atmosphere-only model simulations with fixed SST by subtracting the net radiative flux at the TOA. There are fundamental differences between both aerosol ERFs. Reflecting SO₄ gives rise to large negative ERFs, especially in East and Southeast Asia, Central Africa, Western Europe, and subtropical oceans. However, absorbing BC leads to marked positive ERFs over East and South Asia and Central Africa, where the BC emission is large. The simulated global annual mean SO₄ and BC ERFs are -0.98 W m^{-2} and $+0.36 \text{ W m}^{-2}$, respectively. The simulated SO₄ forcing is close to those estimated by Zelinka et al. (2014) and Forster et al. (2016), while our results show a larger BC forcing. This is attributed to the correction of BC emission in our simulations (Xu et al., 2013). The difference between reflecting and absorbing aerosol forcings implies the substantially different climate responses.

Aerosol-induced SST change is an important part of the climatic effect of aerosols (Xu and Xie, 2015). Figure 3 shows the changes in SST caused by various aerosol species from the fully coupled simulations. Despite the essential difference between both types of forcings, the spatial pattern of SST change caused by SO₄ is found to be similar to that caused by BC (opposite in sign). It is characterized by a large SST change over the mid- and high-latitude oceans of the NH, but only a slight SST change in the SH. The SO₄ forcing leads to a significant decrease in SST over the northern Pacific, northwestern Atlantic, and NH high-latitude oceans, with the largest cooling exceeding 1.5 K. However, the opposite occurs over those regions in response to BC, with the largest warming reaching 1 K. A unique characteristic of SST response to BC is the obvious warming over the Indian Ocean-western Pacific warm pool. Similar patterns in SST changes were found by Chung and Seinfeld (2005), Friedman et al. (2013), and Ocko et al. (2014). However, Ocko et al. (2014) showed a weaker SST change in the NH high latitudes induced by SO₄ or BC and a warming in the SH high latitudes caused by SO₄, which wasn't seen in other studies. The simulated global annual mean SST changes caused by SO₄ and BC are -0.44 K (NH: -0.7 K , SH: -

0.24 K) and +0.12 K (NH: +0.17 K, SH: +0.07 K), respectively (Table 2). Such an interhemispheric asymmetric adjustment in SST has been used as a crucial index of climate change (Ocko et al., 2014).

3.2 Response of the EASM to SO₄ forcing

The sign of change in surface temperature is consistent well with that of the forcing. Negative SO₄ forcing leads to a marked surface cooling in summer over the East Asian monsoon region (EAMR), which increases with latitude (Fig. 4a). In particular, the cooling exceeds 1 K over most of the NH subtropical oceans. The anomalous northerly winds prevail over eastern China and the surrounding oceans between 20°N and 40°N due to SO₄ forcing (Fig. 4d), which signifies the weakening of the EASM circulation. As seen in Fig. 4, the slow responses of surface air temperature and winds at 850 hPa to SO₄-induced SST change close resembles the total responses of them to SO₄.

The fast response of surface air temperature to SO₄ forcing primarily features a cooling over the East Asian continent, with the values being less than -0.3 K over most of the East Asian continent (Fig. 4b), because the SST is fixed in these simulations and changes in SO₂ emissions are concentrated over land. Such a change in surface temperature decreases the land-sea surface thermal contrast over the EAMR, thus weakening the EASM circulation (Fig. 4e). This is consistent with previous studies using other general circulation models with fixed SST (e.g., Jiang et al., 2013; Dong et al., 2016). However, note that the weakening of the EASM in fast response to SO₄ is too weak to explain the total response of the EASM to SO₄, especially over eastern China (Figs. 4d and e). Therefore, we next elaborate the physical mechanism behind the slow response of the EASM to SO₄.

Figure 5 shows the JJA mean responses of zonally averaged atmospheric temperature between 100°E and 140°E to SO₄ forcing over the EAMR. The SO₄-induced slow climate response leads to a significant cooling in the whole troposphere (Fig. 5c), though SO₄ doesn't largely affect the radiation in the atmosphere. It is responsible for a large fraction of the atmospheric cooling in total response to SO₄ (Figs. 5a and c). This is because the prominent decrease in JJA mean SST caused by SO₄ also occurs in the NH mid-latitude oceans, with the values being less than -1 K over most of the northern Pacific and northwestern Atlantic (Fig. S1a). The interhemispheric asymmetric change in SST may distinctly affect the free troposphere by alerting the tropical circulations and mid-latitude eddies (Ming et al., 2011; Hsieh et al., 2013; Ocko et al., 2014; Xu and Xie, 2015). The most remarkable feature of change in atmospheric temperature in slow response to SO₄ is a deep tropospheric cooling between 30°N and 45°N (Fig. 5c). A similar temperature response to aerosol forcings was found by Rotstayn et al. (2014) based on the multi-model ensemble simulations, which indicates that this is a robust feature of climate response to aerosols. There is an anomalous cooling center at the upper troposphere (200 – 500 hPa), with the cooling exceeding 1 K (Fig. 5c), which leads to a prominent decrease in geopotential height at those altitudes (Fig. 5f). The geopotential height at about 200 hPa is reduced by more than 35 m.

The East Asian subtropical jet (EASJ) that is located around 40°N at 200 hPa is an important component of the East Asian monsoon. The change in geopotential height in slow response to SO₄ increases the poleward (equatorward) pressure gradient

force to the south (north) of the cooling center region. Such a change in pressure gradient force leads to increase (decrease) in westerlies to the south (north) of the EASJ center through the geostrophic balance between the Coriolis force and pressure gradient force (Yu et al., 2004). It is shown in Fig. 6a that the largest increase and decrease of more than $\pm 1 \text{ m s}^{-1}$ in westerlies occur at about 25°N and 45°N , respectively. Consequently, the EASJ shifts southwards in response to SO_4 . The slow response dominates over the total response of the EASJ to SO_4 (Fig. 6).

The north and south flanks of the jet axis correspond generally to the divergence and convergence areas in the lower atmosphere, respectively. The southward displacement of the EASJ center implies the southward spread of divergence areas, thereby resulting in an anomalous surface anticyclone over the East Asian continent between 30°N and 40°N . The anomalous subsidence motion in the lower atmosphere around 40°N (Fig. S2c) due to the large surface cooling also intensifies the anomalous surface anticyclone. To the east of the anticyclonic center, anomalous northerlies increase prominently (Fig. 4f). In addition, the interhemispheric SST gradient caused by SO_4 (Fig. S1a) strengthens the ascending branch of the local Hadley cell between 20°N and 35°N in the summer (Figs. S2c and S3c), thereby resulting in an anomalous cyclonic vortex over southeastern China and the western Pacific (Fig. 4f). To the west of the cyclonic center, anomalous northerly winds are further increased. Finally, the SO_4 -induced slow climate response leads to a more intense weakening of the EASM circulation than its fast response. Dai et al. (2013) also suggested that the thermal contrast in the mid-upper troposphere played a more important role than that in the mid-lower troposphere in impacting the strength and variations of the Asian summer monsoon circulations. Drop in tropopause height has linkages with suppression on monsoon convection and weakening of the EASM. As seen in Fig. 7a, the tropopause north of 40°N in the summer declines significantly in total response to SO_4 , which primarily contributed by its slow response. The sharp drop also coincides with the southward displacement of the NH subtropical jet, as the jet approximately divides the tropics (with higher tropopause) and extratropics (Ming et al., 2011). The above analyses indicate the important of ocean response to SO_4 forcing in driving the changes of the EASM circulation.

Note that the changes in atmospheric temperature and geopotential height due to the adjustments in clouds and atmospheric states in fast response to SO_4 (Figs. 5b and e) lead to the increase of more than 0.8 m s^{-1} in westerlies at the north of the jet center (Fig. 6b). The positive change of westerlies in fast response is comparable to the negative change of westerlies in slow response to SO_4 due to the comparable changes in temperature and geopotential height. The change of the jet in fast response to SO_4 (Fig. 6b) is conducive to the enhancement of the EASM, which partially offsets the weakening of the EASM due to the decrease of land-sea surface thermal contrast.

The weakening of the EASM circulation caused by SO_4 forcing suppresses the transport of surface warm and moist air northwards and upwards, which results in significant decrease in precipitation over eastern and southern China and the ambient oceans (Fig. 8a). In particular, the precipitation is decreased by more than 0.6 mm day^{-1} over most of southern China. The cooling in the lower troposphere and warming in the upper troposphere due to the fast response north of 20°N (Fig. 5b) can suppress the vertical ascend motion (Fig. S2b) and moisture transfer, thereby also contributing to the decrease in

precipitation. However, the precipitation increases (yet not significantly) over some of the western Pacific due to the enhanced convection in slow response to SO_4 (Fig. S2c), with the maximum exceeding 1 mm day^{-1} . Note that the SO_4 -induced slow climate response leads to a large increase in precipitation over western China, which is opposite compared to its fast response (Figs. 8b and c). This is because the enhanced easterly anomalies in the lower troposphere between 25°N and 35°N in slow response (Figs. 4f and 6c) bring about more moisture into the inland regions of China, which is beneficial to the formation of clouds and precipitation. In a word, the decrease in precipitation over land in East Asia in total response to SO_4 is dominated by the fast response while the change in precipitation over adjacent ocean is dominated by the slow response.

3.3 Response of the EASM to BC forcing

Figure 9 shows JJA mean responses of surface air temperature and wind vectors at 850 hPa to BC forcing. Absorbing BC increases the surface air temperature over the EAMR, with the largest warming appearing at the NH mid-latitudes, especially over the northwestern Pacific, with the maximum exceeding 0.8 K (Fig. 9a). This is mainly from the contribution of slow climate response to BC (Fig. 9c). The small anomalous southerly winds at 850 hPa prevail and the EASM circulation is slightly enhanced, especially north of 30°N , in total climate response to BC (Fig. 9d), which is mainly attributed to their fast responses to BC. The fast and slow responses of surface winds to BC over the EAMR are inverse. The anomalous northerlies in slow response that tend to weaken the EASM greatly offset the anomalous southerlies in fast response to BC (Figs. 9e and f).

Now we explain why the enhancement of monsoon in fast response to BC forcing is strong. Firstly, the large surface warming in fast response to BC occurs over the East Asian continent, especially north of 30°N with the warming exceeding 0.2 K (Fig. 9b). This increases the land-sea surface thermal contrast over the EAMR, thereby enhancing the EASM circulation (Fig. 9e). This mechanism is also at work in fast response to SO_4 . Secondly and unique to the BC case, the direct absorption of solar radiation by BC leads to a deep tropospheric warming of 0.2 to 1 K at the NH mid-latitudes (Fig. 10), which dominates over the tropospheric warming in total response to BC. An anomalous warming center of more than 0.6 K appears and the geopotential height is increased by more than 10 m at the upper troposphere of around 40°N (Fig. 10e). Consequently, the pressure increases at the uppermost troposphere, which strengthens the poleward (equatorward) pressure gradient force to the north (south) flank of warming region. This results in an increase of 0.2 to 1 m s^{-1} (a decrease of 0.8 to 1.2 m s^{-1}) in westerly winds to the north (south) flank of the EASJ center and the northward movement of the EASJ (Fig. 11b). The total response of the jet is consistent with the fast response of it to BC. With the change of the EASJ, an anomalous cyclonic vortex is formed over the East Asian land, and anomalous southerly winds increase over eastern China. This second mechanism involving the EASJ change further magnifies the enhancement of the EASM caused by the increase in land-sea surface thermal contrast in fast response to BC. The elevating of the tropopause between 40°N and 50°N in the

summer due to the fast response also implies the strengthening of the EASM (Fig. 7b). The fast response dominates over the total response of tropopause height to BC.

The BC-induced slow response is in the opposite direction of the fast response. Like the annual mean SST response, the significant increase in JJA mean SST caused by BC occurs not only in the NH mid-latitude oceans but also in the Indian Ocean-western Pacific warm pool, with the warming exceeding 0.2 K over most areas (Fig. S1b). This results in the deep tropospheric warming north of 40°N and a larger warming in the upper troposphere between 20°N and 30°N, respectively (Fig. 10c). Keshavamurty (1982) found that the warming over tropical western Pacific could significantly enhance the convection motion in the western Pacific, and it was more efficient in producing atmospheric circulation anomalies. Therefore, the BC-induced slow climate response also strengthens the ascending branch of the local Hadley cell between 15°N and 30°N in the summer (Figs. S4c and S5c). This leads to an anomalous cyclone in the lower atmosphere over these regions, thus increasing the anomalous northerly winds over eastern China (Fig. 9f). While the tropospheric temperature increases in slow response to BC, the warming in the upper troposphere of around 40°N is less than those on both flanks of it (Fig. 10c). Such an adjustment in tropospheric temperature is conducive to a southward shifting of the EASJ (Fig. 11c). These EASJ changes cause the BC-induced slow response to weaken the EASM circulation, which even overcomes the strengthening of the EASM due to the increase in land-sea surface thermal contrast in slow response (Fig. 9c). The opposite fast and slow responses of tropopause height to BC also indicate their adverse impact on the EASM circulation (Fig. 7b).

Lastly, the JJA mean response of precipitation to BC forcing over the EAMR is weaker than those found in response to SO₄ with less area with significant changes (Fig. 12), mainly because of a smaller radiative forcing. The total response of precipitation to BC manifests a spatial pattern of "wetting-drying-wetting" from north to south over the EAMR, with an increase of 0.1 to 0.6 mm day⁻¹ over most of southeastern China and north of 40°N and a decrease of 0.1 to 0.5 mm day⁻¹ over the Yangtze-Huaihe River valley (Fig. 12a). This is not consistent with that reported by Menon et al. (2002), which indicated that BC forcing primarily contributed to the "wetter-south-drier-north" phenomenon in eastern China during the past decades. The change in precipitation caused by BC forcing is mainly in line with the change in monsoon circulation. The fast and slow responses of precipitation to BC are almost opposite over the EAMR (Figs. 12b and c) due to the opposite circulation changes. The deep tropospheric warming north of 40°N due to the fast response (Fig. 10b) can intensify the vertical ascend motion (Fig. S4b) and moisture transfer, which dominates over the increase in precipitation here. However, the warming in the troposphere and anomalous surface easterly winds between 20°N and 30°N due to the slow response (Figs. 10c and 11c) are conducive to the development of ascending motion (Fig. S4c) and moisture transport from the oceans, which contributes to the increase in precipitation over these regions. In addition, the southward shifting of the EASJ in slow response leads to an increase in surface divergence (Fig. 9f) and a decrease in precipitation over the Yangtze-Huaihe River valley. In general, the spatial distribution of total precipitation response agrees well with that of slow precipitation response to BC except north of 40°N, which also shows the significance of SST change induced by BC forcing in impacting the EASM.

4 Discussion and conclusions

This study investigates the roles of fast and slow components in shaping the total equilibrium response of the EASM to reflecting SO_4 and absorbing BC forcings using an Earth system model with a fully coupled dynamic ocean, in contrast to most of the previous studies that adopted a slab ocean model (e.g., Allen and Sherwood, 2010; Ganguly et al., 2012). Such a decomposition of total response will be helpful to better understanding the mechanisms by which aerosols impact the EASM. Our results show that reflecting SO_4 produces a global mean ERF of -0.98 W m^{-2} while absorbing BC leads to an ERF of $+0.36 \text{ W m}^{-2}$. Despite the essential difference in forcings, the spatial distribution of SST response at the global scale is prominently similar between SO_4 and BC forcings. However, a unique characteristic of SST response to BC is the obvious warming over the Indian Ocean-western Pacific warm pool.

There are significantly different mechanisms between fast and slow responses of the EASM to different aerosol forcings. Table 3 provides a summary of the responses of the EASM in various cases. The SO_4 -induced fast climate response weakens the EASM through decreasing the land-sea surface thermal contrast over the EAMR. This has been shown in many earlier studies (e.g., Jiang et al., 2013; Wang et al., 2015). However, we show here that the SO_4 -induced SST change (i.e., slow climate response) further weakens the EASM by changing the tropospheric thermodynamic and circulation structures, especially through a southward shifting of the EASJ. Eventually, the EASM circulation is significantly weakened, and the precipitation is reduced over the EAMR in total response to SO_4 . However, the decrease in precipitation over land in East Asia in total response to SO_4 is dominated by the fast response while the change in precipitation over adjacent ocean is dominated by the slow response.

The BC-induced changes are weaker and more complicated. The fast climate response significantly strengthens the EASM both by increasing the land-sea surface thermal contrast over the EAMR and moving the EASJ northwards. However, the BC-induced slow climate response weakens the EASM through strongly affecting the atmospheric temperature and circulation. The role of the EASJ hasn't been clearly shown in previous studies that often only considered the fast adjustment of climate to BC forcing. As a result of the competing factors of land-sea contrast and EASJ shift, the EASM in total response to BC is weaker and less significant, with a slight enhancement north of 30°N . As for the precipitation responses, the total response to BC shows a spatial pattern of "wetting-drying-wetting" from north to south over the EAMR. This differs from the results in Menon et al. (2002), which suggested that the increased BC emission contributed to the "wetter-south-dryer-north" phenomenon in summer over eastern China in the past decades. The spatial pattern of total precipitation response is similar to that of slow precipitation response to BC.

This study elaborates the mechanisms of the impacts of various aerosol species on the EASM system, highlighting the importance of ocean response to aerosol forcings (i.e., slow response component) in driving the changes of the EASM. Given a larger negative ERF due to SO_4 , it can be speculated that the integrated effect of total anthropogenic aerosols likely

tends to weaken the EASM over the industrial era, as suggested by earlier works (e.g., Song et al., 2014; Salzmann et al., 2014).

Our results clearly suggest that one pathway for aerosol forcings to affect the EASM is by changing the land-sea surface thermal contrast, as shown in previous studies (e.g., Liu et al., 2011; Zhang et al., 2012; Salzmann et al., 2014; Wang et al., 5 2015). But we also emphasize the role of the EASJ, which could amplify or offset the effects of surface thermal contrast. The response of the EASJ to aerosols need further studies preferably using multi-model ensembles, because (1) it is quite sensitive to the atmospheric forcing component (Fig. 11b) that is altitude dependent and (2) as a component of the larger NH westerly jet stream, it is more subject to the influence of non-local (outside Asia) aerosols that could undergo a different emission pathway than local aerosol emissions in a shorter time.

10

Data availability

The model outputs analyzed in this study can be accessed by contacting the corresponding author Lei Lin (linlei3@mail.sysu.edu.cn).

15 Author contributions

Z. Wang and L. Lin conceived the study and performed the analysis. Z. Wang, L. Lin, M. Yang, and Y. Xu wrote the paper. All authors provided comments and contributed to the text.

Competing interests

20 The authors declare that they have no conflict of interest.

Acknowledgments

The authors thank the two anonymous reviewers for valuable comments and suggestions. This study was supported by the National Key R&D Program of China (2017YFA0603503 and 2016YFC0203306), and (key) National Natural Science 25 Foundation of China (41575139 and 91644211).

References

- Allen, R. J., and Sherwood, S. C.: The impact of natural versus anthropogenic aerosols on atmospheric circulation in the Community Atmosphere Model, *Clim. Dyn.*, 36(9), 1959–1978, 2010.
- Andrews, T., Forster, P. M., Boucher, O., Bellouin, N., and Jones, A.: Precipitation, radiative forcing and global temperature 30 change, *Geophys. Res. Lett.*, 37, L14701, doi:10.1029/2010GL043991, 2010.
- Auffhammer, M., Ramanathan, V., and Vincent, J. R.: Climate change, the monsoon, and rice yield in India, *Clim. Chang.*, 111(2), 41–424, 2012.

Chung, S. H., and Seinfeld, J. H.: Climate response of direct radiative forcing of anthropogenic black carbon, *J. Geophys. Res.*, 110, D11102, doi:10.1029/2004JD005441, 2005.

5 Dai, A., Li, H., Sun, Y., Hong, L.-C., Ho, L., Chou, C., and Zhou, T.: The relative roles of upper and lower tropospheric thermal contrasts and tropical influences in driving Asian summer monsoons, *J. Geophys. Res. Atmos.*, 118, 7024–7045, 2013.

Ding, Y. H., and Chan, J. C. L.: The East Asian summer monsoon: an overview, *Meteorol. Atmos. Phys.*, 89, 117–142, 2005.

Dong, B., Sutton, R. T., Highwood, E. J., and Wilcox, L. J.: Preferred response of the East Asian summer monsoon to local and non-local anthropogenic sulphur dioxide emissions, *Clim. Dyn.*, 46 (5), 1733–1751, 2016.

10 Forster, P. M., Richardson, T., Maycock, A. C., Smith, C. J., Samset, B. H., Myhre, G., Andrews, T., Pincus, R., and Schulz, M.: Recommendations for diagnosing effective radiative forcing from climate models for CMIP6, *J. Geophys. Res. Atmos.*, 121, 12460–12475, 2016.

Friedman, A. R., Hwang, Y.-T., Chiang, J. C., and Frierson, D. M.: Interhemispheric temperature asymmetry over the twentieth century and in future projections, *J. Clim.*, 26, 5419–5433, 2013.

15 Ganguly, D., Rasch, P. J., Wang, H., and Yoon, J.: Fast and slow responses of the South Asian monsoon system to anthropogenic aerosols, *Geophys. Res. Lett.*, 39, L18804, doi:10.1029/2012GL053043, 2012.

Gettelman, A., Liu, X., Ghan, S. J., Morrison, H., Park, S., Conley, A. J., Klein, S. A., Boyle, J., Mitchell, D. L., and Li, J.-L. F.: Global simulations of ice nucleation and ice supersaturation with an improved cloud scheme in the community atmosphere model, *J. Geophys. Res.*, 115, D18216, doi:10.1029/2009JD013797, 2010.

20 Ghan, S. J., Liu, X., Easter, R. C., Zaveri, R., Rasch, P. J., Yoon, J.-H., and Eaton, B.: Toward a minimal representation of aerosols in climate models: comparative decomposition of aerosol direct, semi-direct and indirect radiative forcing, *J. Clim.*, 25, 6461–6476, 2012.

Guo, L., Highwood, E. J., Shaffrey, L. C., and Turner, A. G.: The effect of regional changes in anthropogenic aerosols on rainfall of the East Asian Summer Monsoon, *Atmos. Chem. Phys.*, 13, 1521–1534, doi:10.5194/acp-13-1521-2013, 2013.

25 Hong, J., and Kim, J.: Impact of the Asian monsoon climate on ecosystem carbon and water exchanges: a wavelet analysis and its ecosystem modeling implications, *Global Change Biol.*, 17, 1900–1916, 2011.

Hsieh, W.-C., Collins, W. D., Liu, Y., Chiang, J. C. H., Shie, C.-L., Caldeira, K., and Cao, L.: Climate response due to carbonaceous aerosols and aerosol-induced SST effects in NCAR community atmospheric model CAM3.5, *Atmos. Chem. Phys.*, 13, 7489–7510, doi:10.5194/acp-13-7489-2013, 2013.

30 Huang, J., Wang, T., Wang, W., Li, Z., and Yan, H.: Climate effects of dust aerosols over East Asian arid and semiarid regions, *J. Geophys. Res. Atmos.*, 119, 11398–11416, 2014.

Hurrell, J. W., et al.: The Community Earth System Model: a framework for collaborative research, *Bull. Amer. Meteor. Soc.*, 94, 1339–1360, 2013.

Jiang, Y., Liu, X., Yang, X.-Q., and Wang, M.: A numerical study of the effect of different aerosol types on East Asian summer clouds and precipitation, *Atmos. Environ.*, 70, 51–63, 2013.

Keshavamurty, R. N.: Response of the atmosphere to sea surface temperature anomalies over the equatorial Pacific and the teleconnections of the Southern Oscillation, *J. Atmos. Sci.*, 39(6), 1241–1259, 1982.

Koch, D., and Del Genio, A. D.: Black carbon semi-direct effects on cloud cover: review and synthesis, *Atmos. Chem. Phys.*, 10, 7685–7696, doi:10.5194/acp-10-7685-2010, 2010.

5 Lei, Y., Hoskins, B., and Slingo, J.: Exploring the interplay between natural decadal variability and anthropogenic climate change in summer rainfall over china. Part I: observational evidence, *J. Clim.*, 24, 4584–4599, 2011.

Li, J., Wu, Z., Jiang, Z., and He, J.: Can global warming strengthen the East Asian summer monsoon?, *J. Clim.*, 23, 6696–6705, 2010.

Li, Z., Lau, W. K.-M., Ramanathan, V., Wu, G., Ding, Y., Manoj, M. G., Liu, J., Qian, Y., Li, J., Zhou, T., Fan, J., Rosenfeld,
10 D., Ming, Y., Wang, Y., Huang, J., Wang, B., Xu, X., Lee, S.-S., Cribb, M., Zhang, F., Yang, X., Zhao, C., Takemura, T., Wang, K., Xia, X., Yin, Y., Zhang, H., Guo, J., Zhai, P. M., Sugimoto, N., Babu, S. S., and Brasseur, G. P.: Aerosol and monsoon climate interactions over Asia, *Rev. Geophys.*, 54, 119–161, 2016.

Lin, L., Gettelman, A., Xu, Y., and Fu, Q.: Simulated responses of terrestrial aridity to black carbon and sulfate aerosols, *J. Geophys. Res. Atmos.*, 121, 785–794, 2016.

15 Liu, J., Rühland, K. M., Chen, J., Xu, Y., Chen, S., Chen, Q., Huang, W., Xu, Q., Chen, F., and Smol, J. P.: Aerosol-weakened summer monsoons decrease lake fertilization on the Chinese Loess Plateau, *Nat. Clim. Chang.*, 7, 190–194, 2017.

Liu, X., Xie, X., Yin, Z., Liu, C., and Gettelman, A.: A modeling study of the effects of aerosols on clouds and precipitation over East Asia, *Theor. Appl. Climatol.*, 106, 343–354, 2011.

Liu, X., Easter, R. C., Ghan, S. J., Zaveri, R., Rasch, P., Shi, X., Lamarque, J.-F., Gettelman, A., Morrison, H., Vitt, F.,
20 Conley, A., Park, S., Neale, R., Hannay, C., Ekman, A. M. L., Hess, P., Mahowald, N., Collins, W., Iacono, M. J., Bretherton, C. S., Flanner, M. G., and Mitchell, D.: Toward a minimal representation of aerosols in climate models: description and evaluation in the Community Atmosphere Model CAM5, *Geosci. Model Dev.*, 5, 709–739, doi:10.5194/gmd-5-709-2012, 2012.

Menon, S., Hansen, J., Nazarenko, L., and Luo, Y.F.: Climate effects of black carbon aerosols in China and India, *Science*,
25 297, 2250–2253, 2002.

Ming, Y., Ramaswamy, V., Chen, G.: A model investigation of aerosol-induced changes in boreal winter extratropical circulation, *J. Clim.*, 24(19), 5125–5133, 2011.

Morrison, H., and Gettelman, A.: A new two-moment bulk stratiform cloud microphysics scheme in the community atmosphere model, version 3 (CAM3). Part I: description and numerical tests, *J. Clim.*, 21, 3642–3659, 2008.

30 Myhre, G., Shindell, D., Bréon, F.-M., Collins, W., Fuglestedt, J., Huang, J., Koch, D., Lamarque, J.-F., Lee, D., Mendoza, B., Nakajima, T., Robock, A., Stephens, G., Takemura, T., and Zhang, H.: Anthropogenic and natural radiative forcing, in: *Climate Change 2013: The Physical Science Basis. Contribution of Working Group I to the Fifth Assessment Report of the Intergovernmental Panel on Climate Change*, edited by: Stocker, T. F., Qin, D., Plattner, G.-K., Tignor, M., Allen, S. K.,

- Boschung, J., Nauels, A., Xia, Y., Bex, V., and Midgley, P. M., Cambridge Univ. Press, Cambridge, UK, New York, NY, USA, 659–740, 2013.
- Ocko, I. B., Ramaswamy, V., and Ming, Y.: Contrasting climate responses to the scattering and absorbing features of anthropogenic aerosol forcings, *J. Clim.*, 27(27), 5329–5345, 2014.
- 5 Persad, G. G., Ming, Y., and Ramaswamy, V.: The role of aerosol absorption in driving clear-sky solar dimming over East Asia, *J. Geophys. Res. Atmos.*, 119, 10410–10424, 2014.
- Rotstayn, L. D., Plymin, E. L., Collier, M. A., Boucher, O., Dufresne, J.-L., Luo, J.-J., von Salzen, K., Jeffrey, S. J., Foujols, M.-A., Ming, Y., and Horowitz, L. W.: Declining aerosols in CMIP5 projections: effects on atmospheric temperature structure and midlatitude jets, *J. Clim.*, 27, 6960–6977, 2014.
- 10 Salzmann, M., Weser, H., and Cherian, R.: Robust response of Asian summer monsoon to anthropogenic aerosols in CMIP5 models, *J. Geophys. Res. Atmos.*, 119, 11321–11337, 2014.
- Samset, B. H., Myhre, G., Forster, P. M., Hodnebrog, Ø., Andrews, T., Faluvegi, G., Fläschner, D., Kasoar, M., Kharin, V., Kirkevåg, A., Lamarque, J.-F., Olivé, D., Richardson, T., Shindell, D., Shine, K. P., Takemura, T., and Voulgarakis, A.: Fast and slow precipitation responses to individual climate forcings: a PDRMIP multimodel study, *Geophys. Res. Lett.*, 43,
- 15 2782–2791, 2016.
- Song, F., Zhou, T., and Qian, Y.: Responses of East Asian summer monsoon to natural and anthropogenic forcings in the 17 latest CMIP5 models, *Geophys. Res. Lett.*, 41, 596–603, 2014.
- Voigt, A., Pincus, R., Stevens, B., Bony, S., Boucher, O., Bellouin, N., Lewinschal, A., Medeiros, B., Wang, Z., and Zhang, H.: Fast and slow shifts of the zonal-mean intertropical convergence zone in response to an idealized anthropogenic aerosol,
- 20 *J. Adv. Model. Earth Syst.*, 9, doi:10.1002/2016MS000902, 2017.
- Wang, B., Wu, R., and Lau, K. M.: Interannual variability of Asian summer monsoon: contrast between the Indian and western North Pacific-East Asian monsoons, *J. Clim.*, 14, 4073–4090, 2001.
- Wang, Q. Y., Wang, Z. L., and Zhang, H.: Impact of anthropogenic aerosols from global, East Asian, and non-East Asian sources on East Asian summer monsoon system, *Atmos. Res.*, 183, 224–236, 2017.
- 25 Wang, T. J., Zhuang, B. L., Li, S., Liu, J., Xie, M., Yin, C. Q., Zhang, Y., Yuan, C., Zhu, J. L., Ji, L. Q., and Han, Y.: The interactions between anthropogenic aerosols and the East Asian summer monsoon using RegCCMS, *J. Geophys. Res. Atmos.*, 120(11), 5602–5621, 2015.
- Wang, Z. L., Zhang, H., and Zhang, X. Y.: Projected response of East Asian summer monsoon system to future reductions in emissions of anthropogenic aerosols and their precursors, *Clim. Dyn.*, 47(5), 1455–1468, 2016.
- 30 Xu, Y., Bahadur, R., Zhao, C., Leung, L., and Ramanathan, V.: Estimating the radiative forcing of carbonaceous aerosols over California based on satellite and ground observations, *J. Geophys. Res. Atmos.*, 118, 11148–11160, 2013.
- Xu, Y., and Xie, S.-P.: Ocean mediation of tropospheric response to reflecting and absorbing aerosols, *Atmos. Chem. Phys.*, 15, 5827–5833, doi:10.5194/acp-15-5827-2015, 2015.

Xu, Y., Ramanathan, V., and Washington, W. M.: Observed high-altitude warming and snow cover retreat over Tibet and the Himalayas enhanced by black carbon aerosols, *Atmos. Chem. Phys.*, 16, 1303-1315, doi:10.5194/acp-16-1303-2016, 2016.

5 Yan, H., Qian, Y., Zhao, C., Wang, H., Wang, M., Yang, B., Liu, X., and Fu, Q.: A new approach to modeling aerosol effects on East Asian climate: parametric uncertainties associated with emissions, cloud microphysics, and their interactions, *J. Geophys. Res. Atmos.*, 120, 8905–8924, 2015.

Yu, R., Wang, B., and Zhou, T.: Tropospheric cooling and summer monsoon weakening trend over East Asia, *Geophys. Res. Lett.*, 31, L22212, doi:10.1029/2004GL021270, 2004.

10 Zelinka, M. D., Andrews, T., Forster, P. M., and Taylor, K. E.: Quantifying components of aerosol-cloud-radiation interactions in climate models, *J. Geophys. Res. Atmos.*, 119, 7599–7615, 2014.

Zhang, H., Wang, Z. L., Guo, P. W., and Wang, Z. Z.: A modeling study of the effects of direct radiative forcing due to carbonaceous aerosol on the climate in East Asia, *Adv. Atmos. Sci.*, 26(1), 57–66, 2009.

15 Zhang, H., Wang, Z. L., Wang, Z. Z., Liu, Q. X., Gong, S., Zhang, X.-Y., Shen, Z. P., Lu, P., Wei, X., Che, H., and Li, L.: Simulation of direct radiative forcing of typical aerosols and their effects on global climate using an online AGCM-aerosol coupled model system, *Clim. Dyn.*, 38, 1675–1693, 2012.

20

25

30

Table 1: Simulation setups.

Simulation	Aerosol emissions	Ocean	Ensembles
PI	Year 1850 SO ₂ and BC	Dynamic ocean model	1
PDSO ₄	Year 2000 SO ₂ and 1850 BC	Dynamic ocean model	1
PDBC	Year 1850 SO ₂ and 2000 BC	Dynamic ocean model	5
PI_FSST	Year 1850 SO ₂ and BC	Fixed SST from PI	1
PDSO ₄ _FSST	Year 2000 SO ₂ and 1850 BC	Fixed SST from PI	1
PDBC_FSST	Year 1850 SO ₂ and 2000 BC	Fixed SST from PI	1

5

10

15

20

25

Table 2: Simulated changes in annual/JJA mean sea surface temperatures caused by SO₄ and BC averaged over globe, Northern Hemisphere (NH), and Southern Hemisphere (SH) (unit: K).

	Globe	NH	SH
SO ₄	-0.44 / -0.42	-0.7 / -0.64	-0.24 / -0.26
BC	0.12 / 0.11	0.17 / 0.16	0.07 / 0.08

5

10

15

20

25

30

Table 3: Summary of the fast and slow responses of the EASM to SO₄ and BC forcings.

	Fast response				Slow response			
	Thermal contrast	Subtropical jet	Southerly winds	Precipitation	Thermal contrast	Subtropical jet	Southerly winds	Precipitation
SO ₄	Decrease	Northward shift (weakly)	Decrease (weakly)	Decrease over land	Decrease (weakly)	Southward shift	Decrease	Decrease in eastern and southern China but increase in western China
BC	Increase	Northward shift	Increase	Pattern of drying-wetting-drying	Increase (weakly)	Southward shift (weakly)	Decrease	Pattern of wetting-drying-wetting

5

10

15

20

25

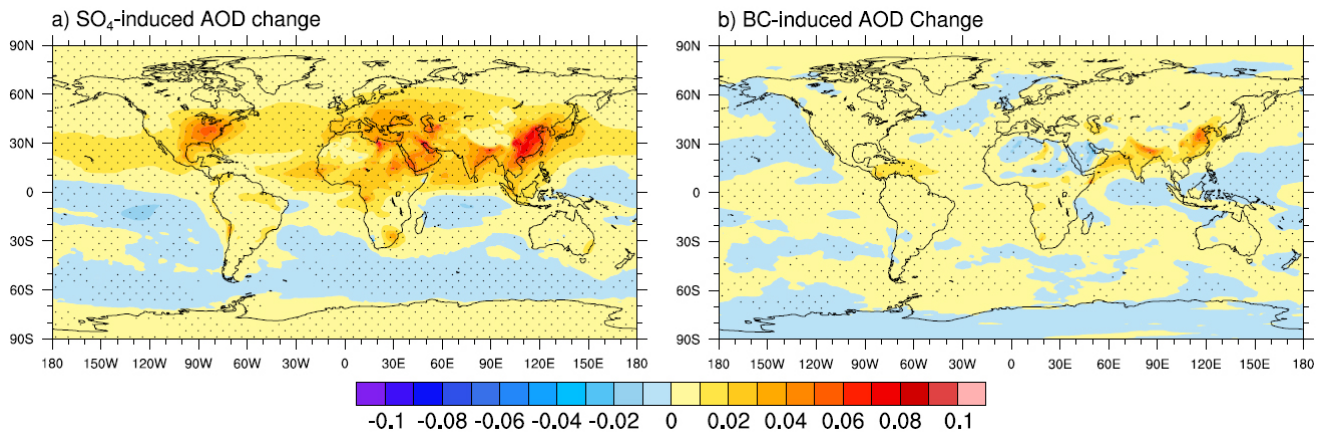


Figure 1: Annual mean distributions of changes in aerosol optical depths at 550 nm from PI to PD induced by (a) SO₄ and (b) BC. The dots represent significance at $\geq 95\%$ confidence level from the t test.

5

10

15

20

25

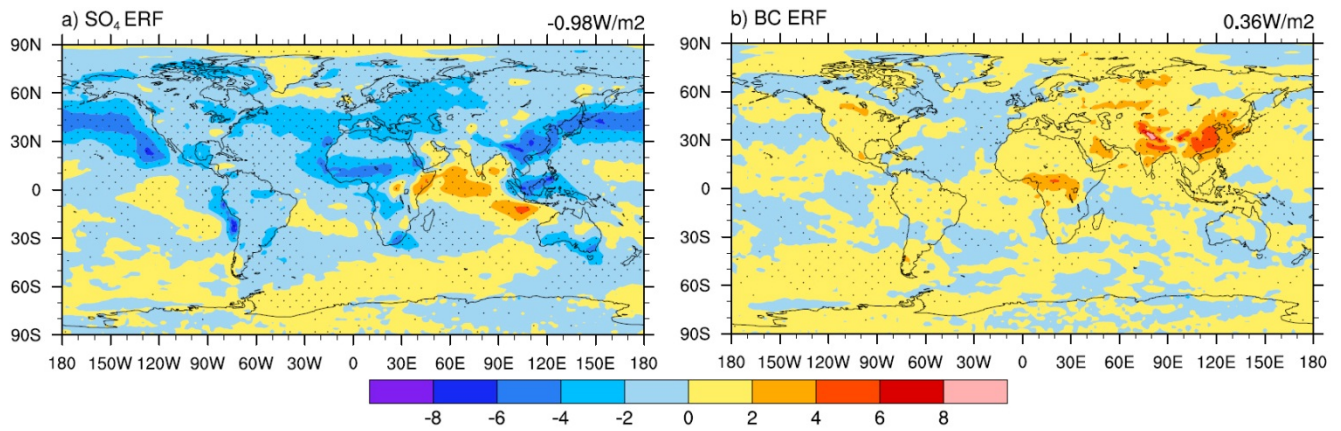


Figure 2: Annual mean distributions of (a) SO₄ and (b) BC ERF from PI to PD (unit: W m⁻²). ERF is defined as the perturbation of net radiative flux at the TOA caused by aerosols. The dots represent significance at $\geq 95\%$ confidence level from the t test.

5

10

15

20

25

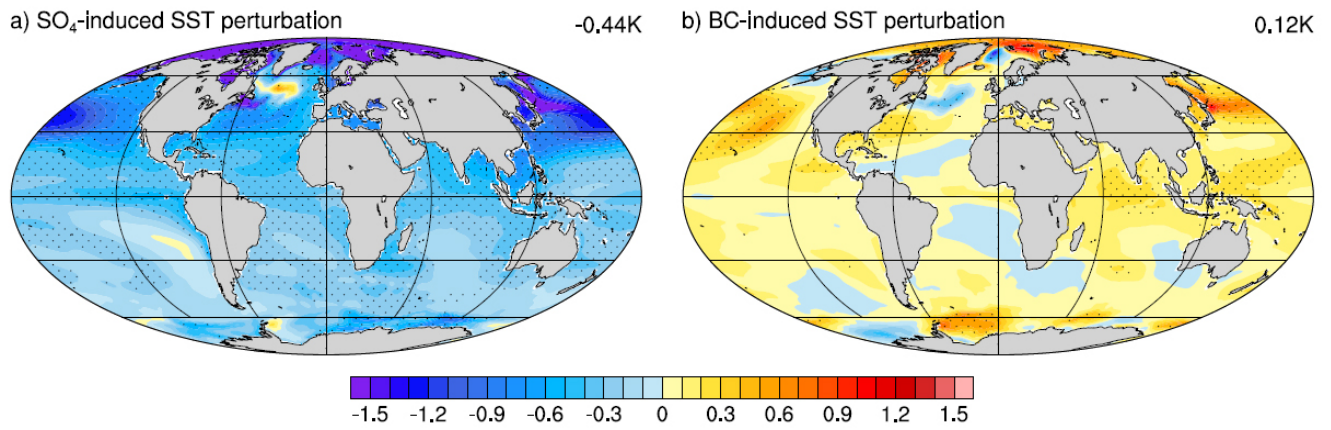


Figure 3: Annual mean distributions of SST responses to (a) SO₄ and (b) BC forcings (unit: K). The dots represent significance at $\geq 95\%$ confidence level from the t test.

5

10

15

20

25

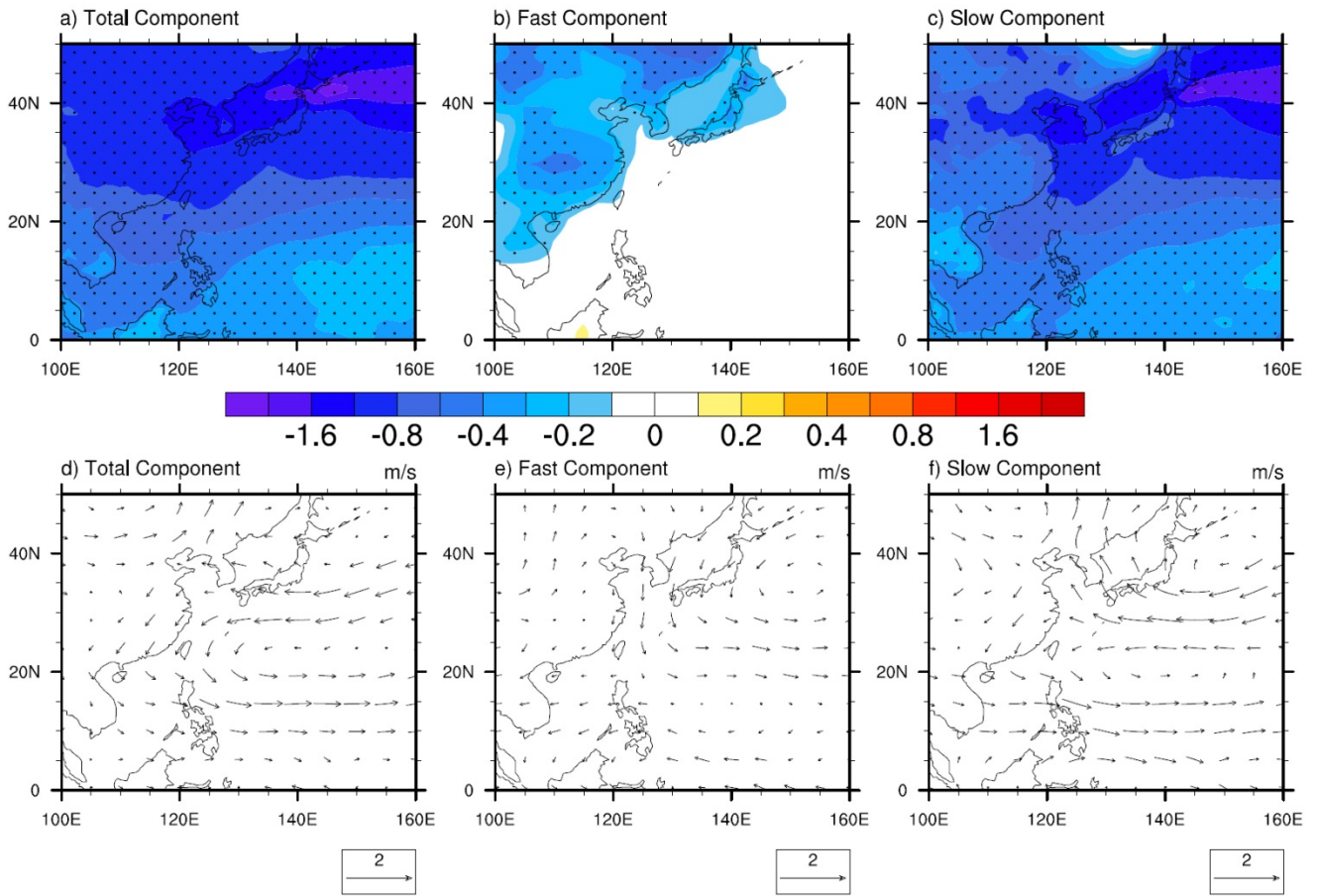


Figure 4: JJA mean total, fast, and slow responses of (a, b, c) surface air temperature (unit: K) and (d, e, f) wind vectors at 850 hPa (unit: m s^{-1}) to SO_4 forcing. The dots represent significance at $\geq 95\%$ confidence level from the t test.

5

10

15

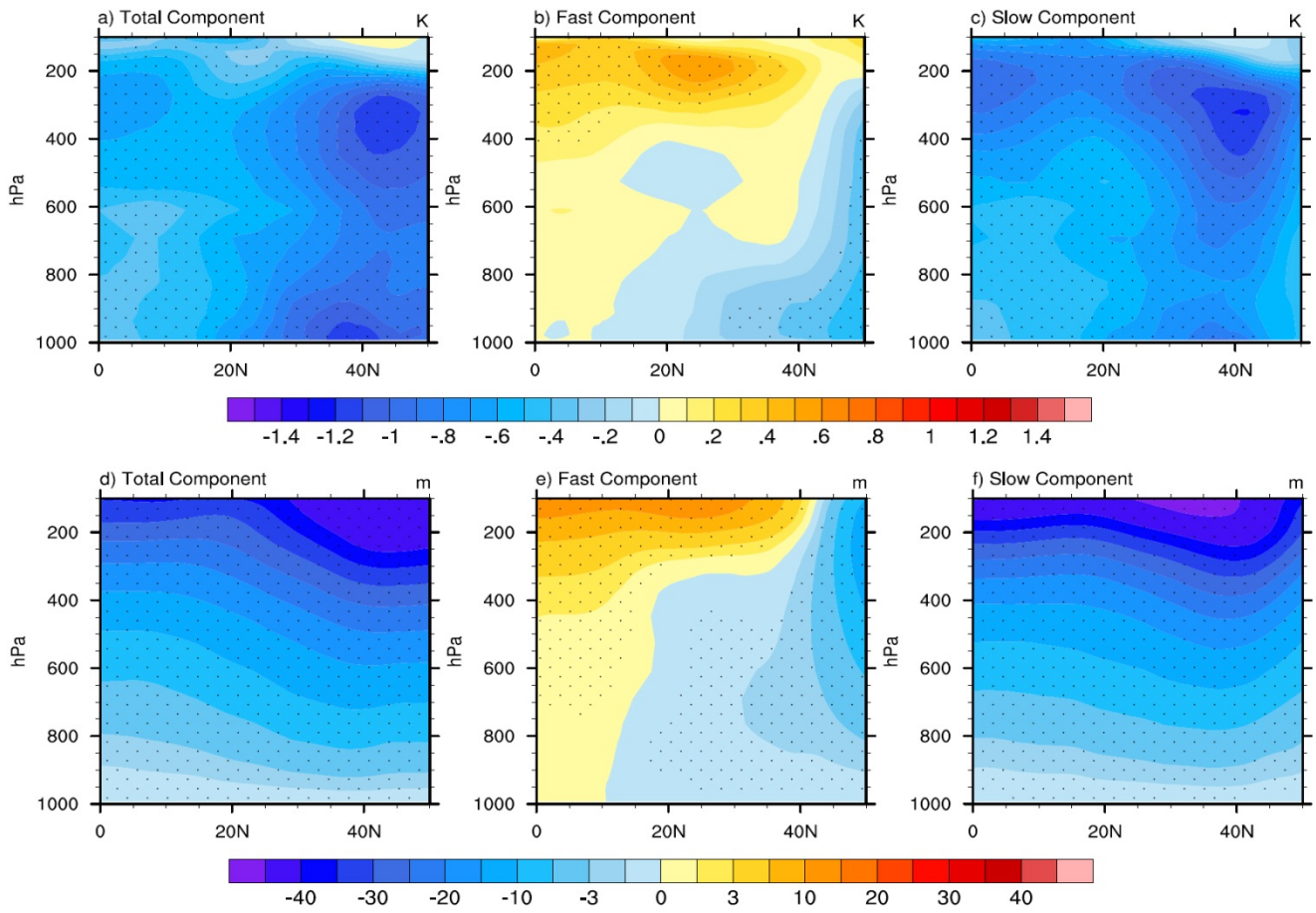


Figure 5: JJA mean total, fast, and slow responses of zonally averaged (a, b, c) atmospheric temperature (unit: K) and (d, e, f) geopotential height (unit: m) between 100°E and 140°E to SO₄ forcing. The dots represent significance at $\geq 95\%$ confidence level from the t test.

10

15

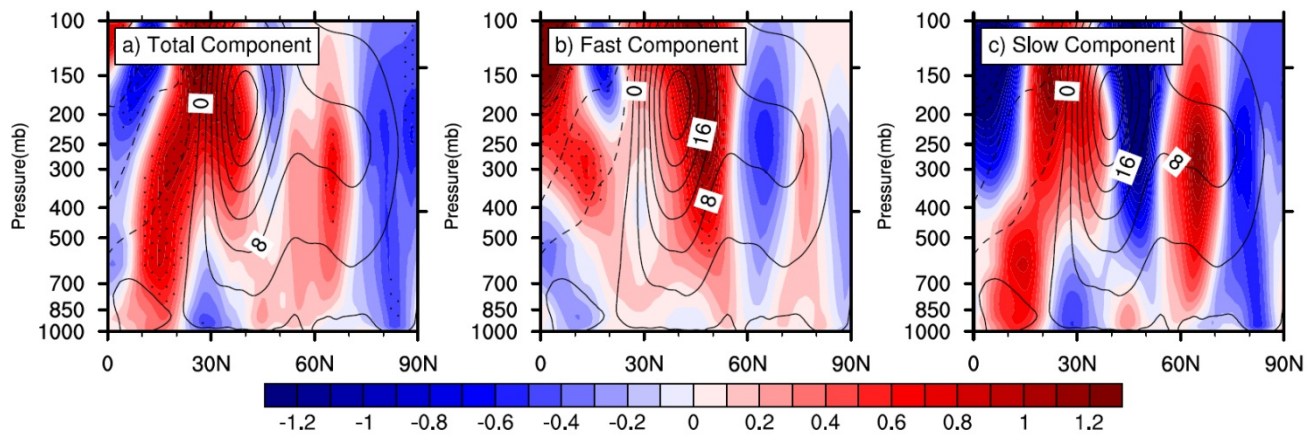


Figure 6: JJA mean total, fast, and slow responses of zonally averaged zonal wind between 100°E and 140°E to SO_4 forcing (unit: m s^{-1}). The dashed and solid lines represent the climatological JJA mean easterly and westerly winds in PI, respectively. The dots represent significance at $\geq 95\%$ confidence level from the t test.

10

15

20

25

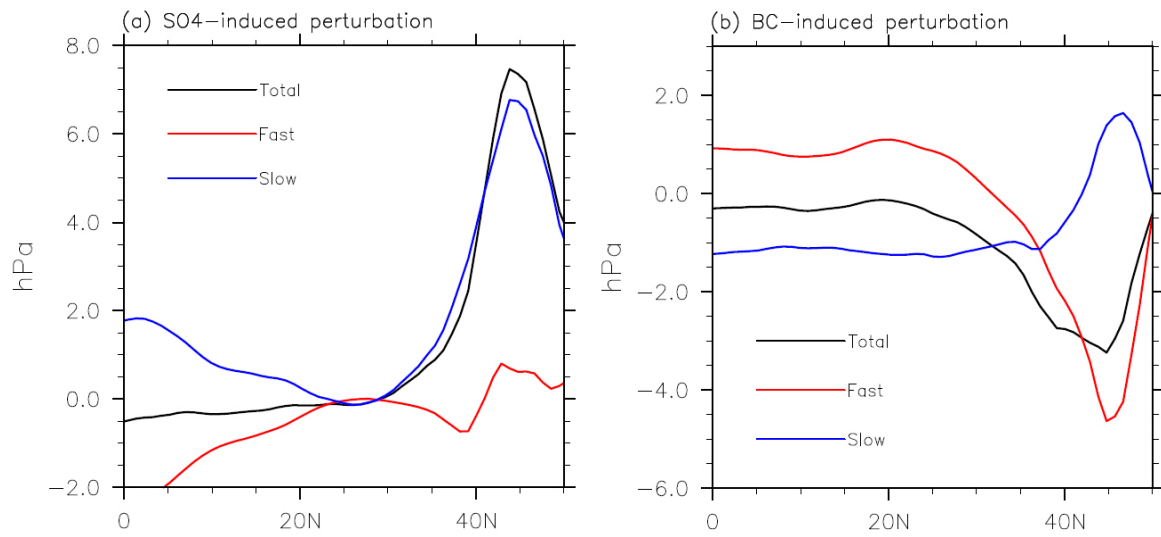


Figure 7: JJA mean total, fast, and slow responses of zonally averaged tropopause heights between 100°E and 120°E to (a) SO₄ and (b) BC forcing (unit: hPa). The positive values indicate drop in tropopause.

5

10

15

20

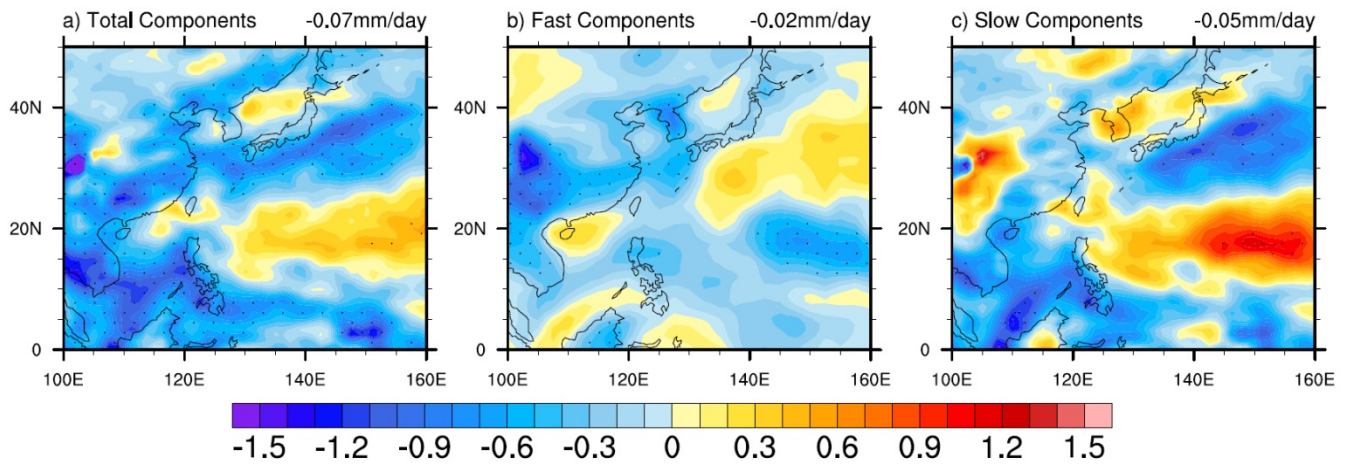


Figure 8: JJA mean total, fast, and slow responses of precipitation rate to SO₄ forcing (unit: mm day⁻¹). The values in the top right corner of the figures represent the responses averaged over the region 0°-50°N, 100°-140°E. The dots represent significance at $\geq 95\%$ confidence level from the t test.

5

10

15

20

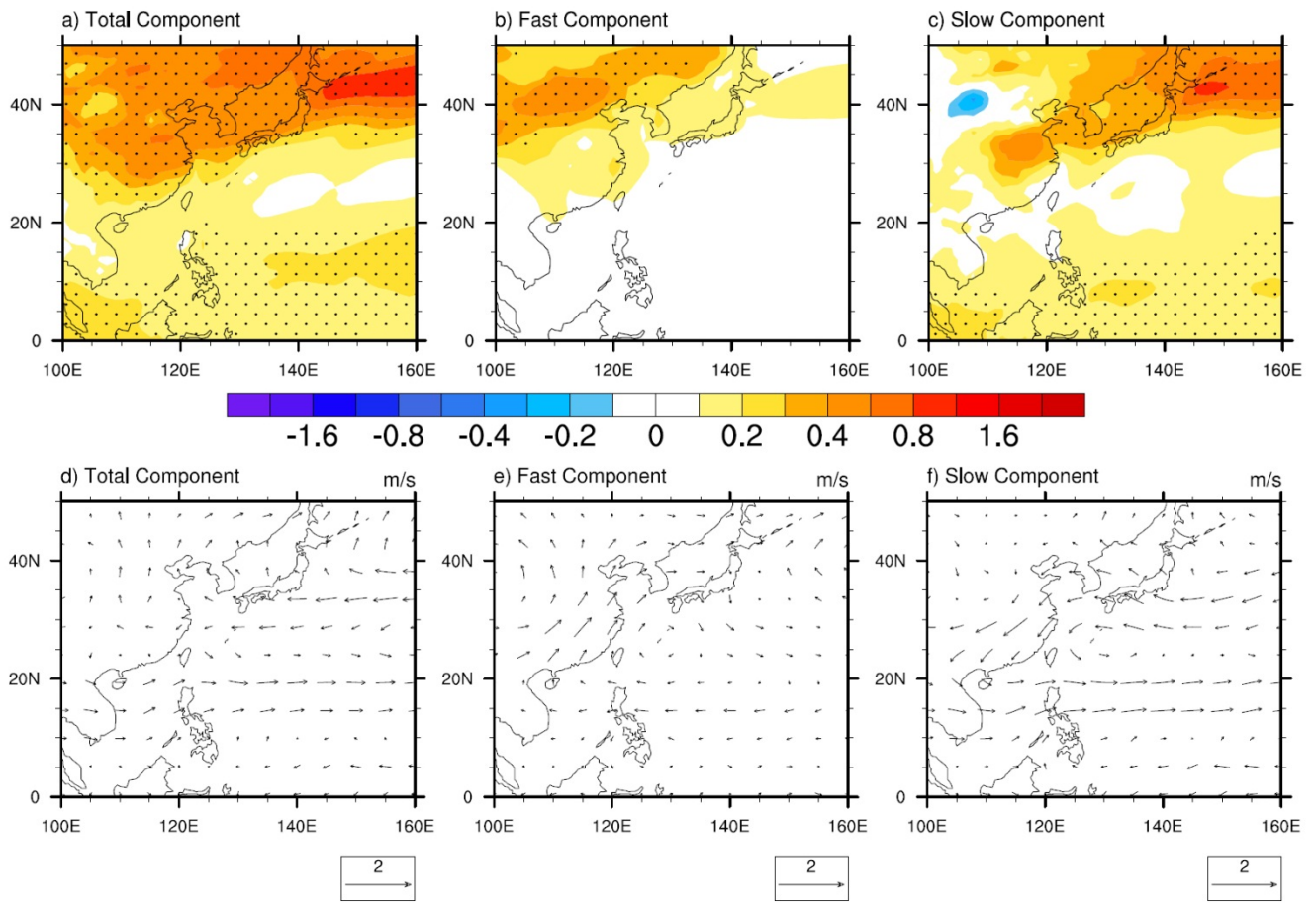


Figure 9: JJA mean total, fast, and slow responses of (a, b, c) surface air temperature (unit: K) and (d, e, f) wind vectors at 850 hPa (unit: m s^{-1}) to BC forcing. The dots represent significance at $\geq 95\%$ confidence level from the t test.

5

10

15

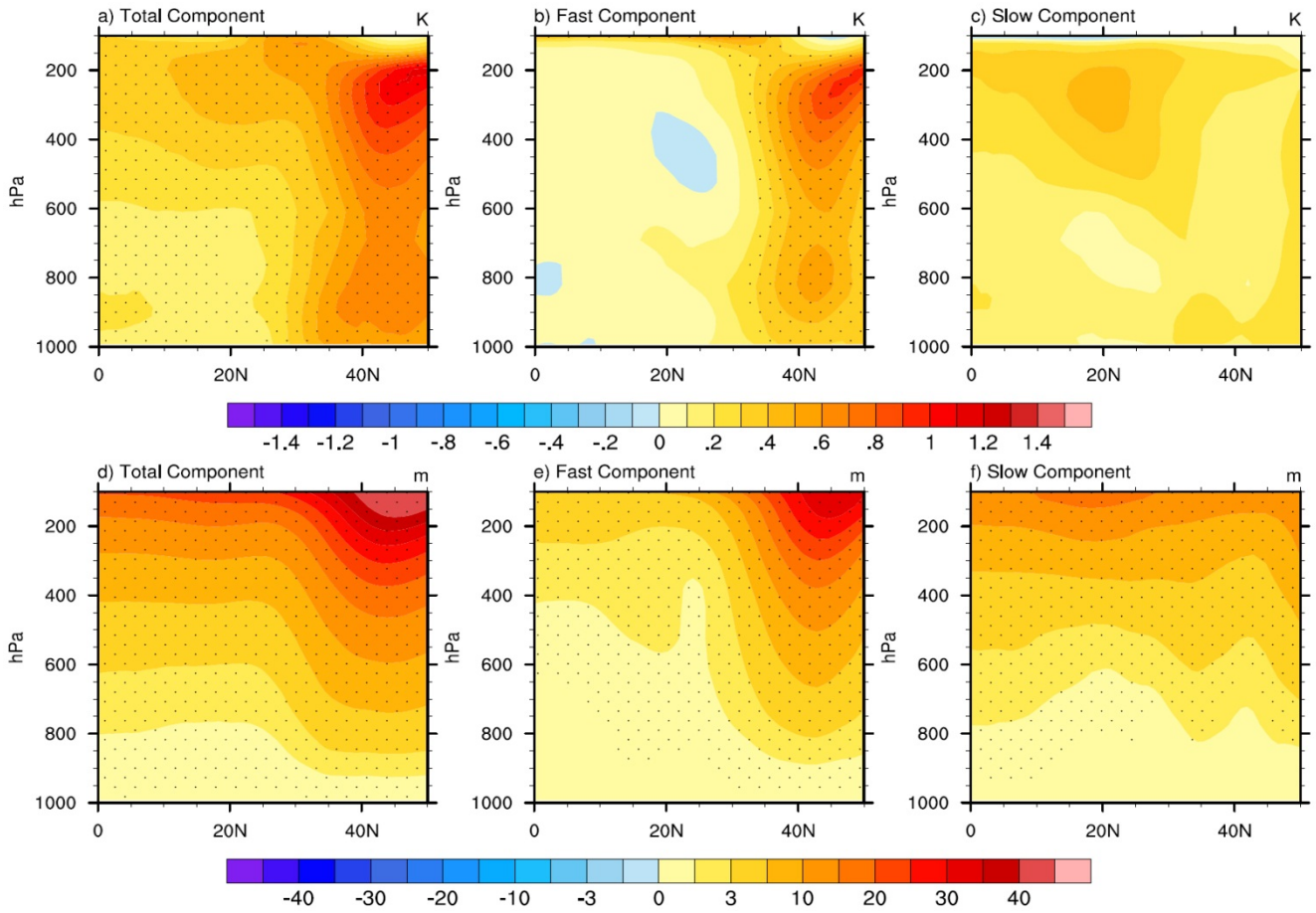


Figure 10: JJA mean total, fast, and slow responses of zonally averaged (a, b, c) atmospheric temperature (unit: K) and (d, e, f) geopotential height (unit: m) between 100°E and 140°E to BC forcing. The dots represent significance at $\geq 95\%$ confidence level from the t test.

10

15

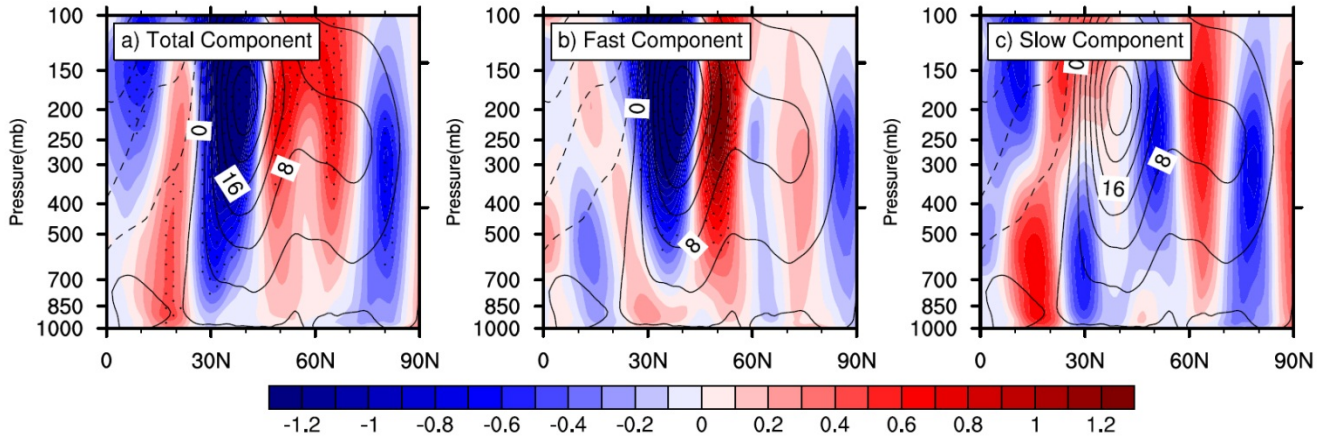


Figure 11: JJA mean total, fast, and slow responses of zonally averaged zonal wind between 100°E and 140°E to BC forcing (unit: m s^{-1}). The dashed and solid lines represent the climatological JJA mean easterly and westerly winds in PI, respectively. The dots represent significance at $\geq 95\%$ confidence level from the t test.

10

15

20

25

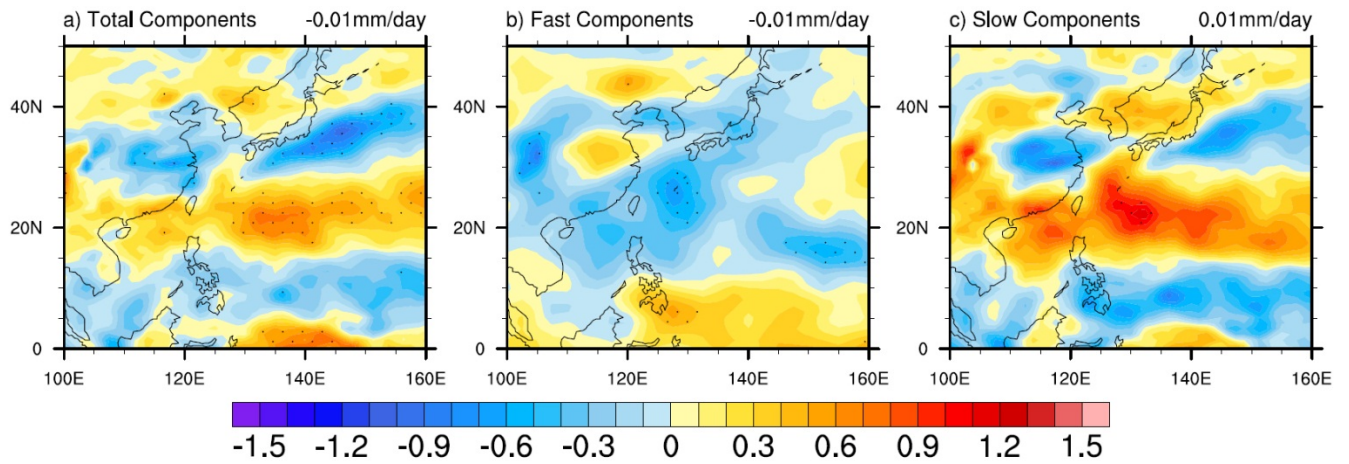


Figure 12: JJA mean total, fast, and slow responses of precipitation rate to BC forcing (unit: mm day^{-1}). The values in the top right corner of the figures represent the responses averaged over the region 0° - 50° N, 100° - 140° E. The dots represent significance at $\geq 95\%$ confidence level from the t test.

Supplement of
Disentangling fast and slow responses of the East Asian summer monsoon to reflecting and absorbing aerosol forcings

Zhili Wang et al.

5

Correspondence to: Lei Lin (linlei3@mail.sysu.edu.cn)

The copyright of individual parts of the supplement might differ from the CC BY 3.0 License.

10

15

20

25

a) SO₄-induced SST perturbation

-0.42K b) BC-induced SST perturbation

0.11K

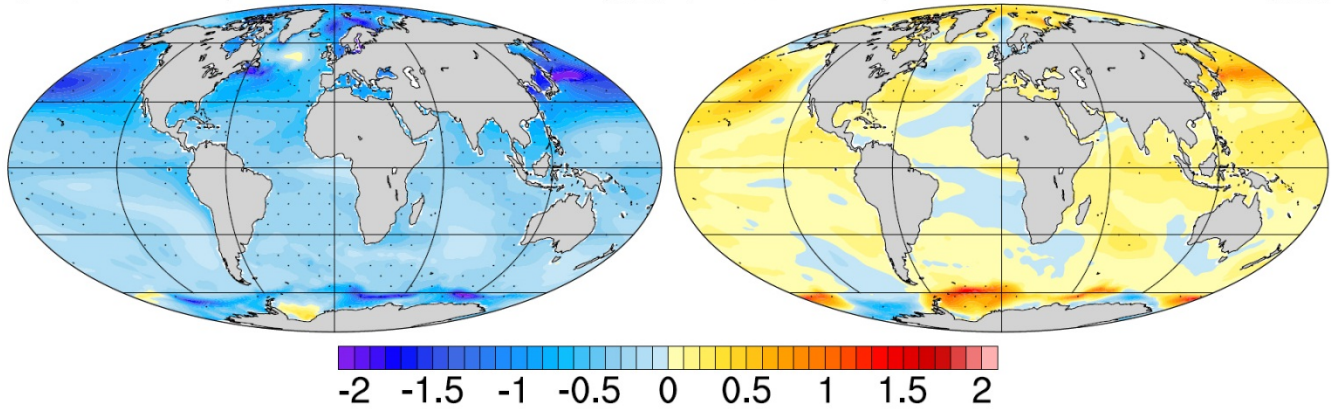


Figure S1: Global distributions of JJA mean SST responses to (a) SO₄ and (b) BC forcings (unit: K). The dots represent significance at $\geq 95\%$ confidence level from the t test.

5

10

15

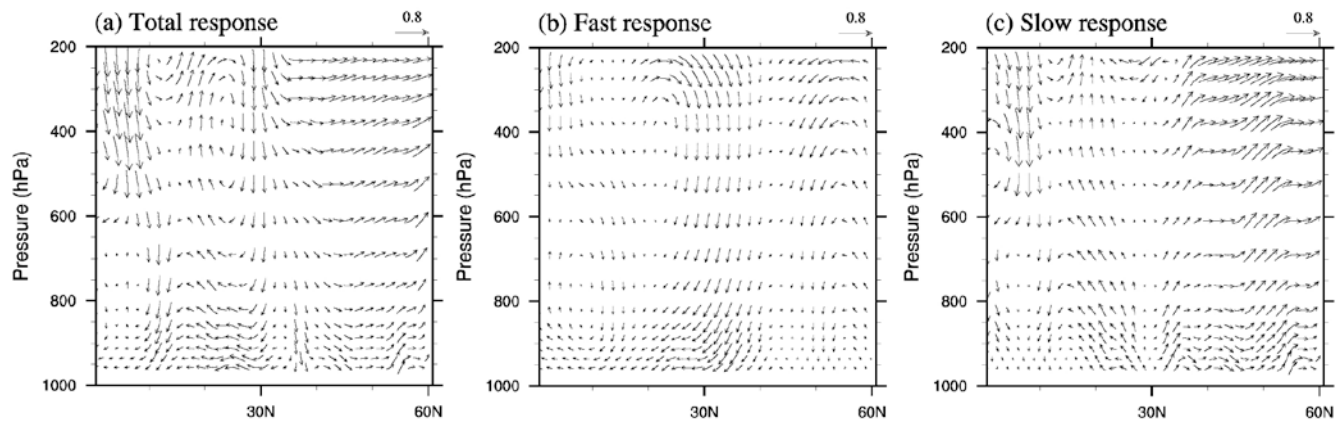


Figure S2: JJA mean total, fast, and slow responses of zonally averaged meridional circulation depicted by $(v, -\omega)$, where v is the meridional velocity (unit: m s^{-1}) and $-\omega$ is the vertical velocity (unit: hPa s^{-1}), between 100°E and 140°E to SO_4 forcing.

5

10

15

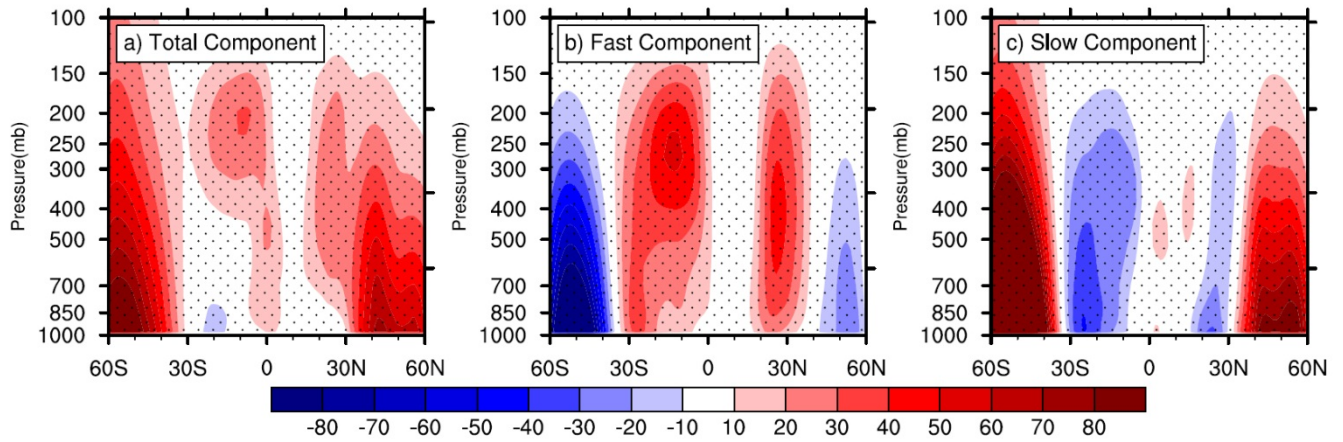


Figure S3: JJA mean total, fast, and slow responses of zonally averaged meridional stream function between 100°E and 140°E to SO₄ forcing (unit: 10⁹kg s⁻¹). The positive values indicate clockwise circulation. The dots represent significance at ≥95% confidence level from the t test.

5

10

15

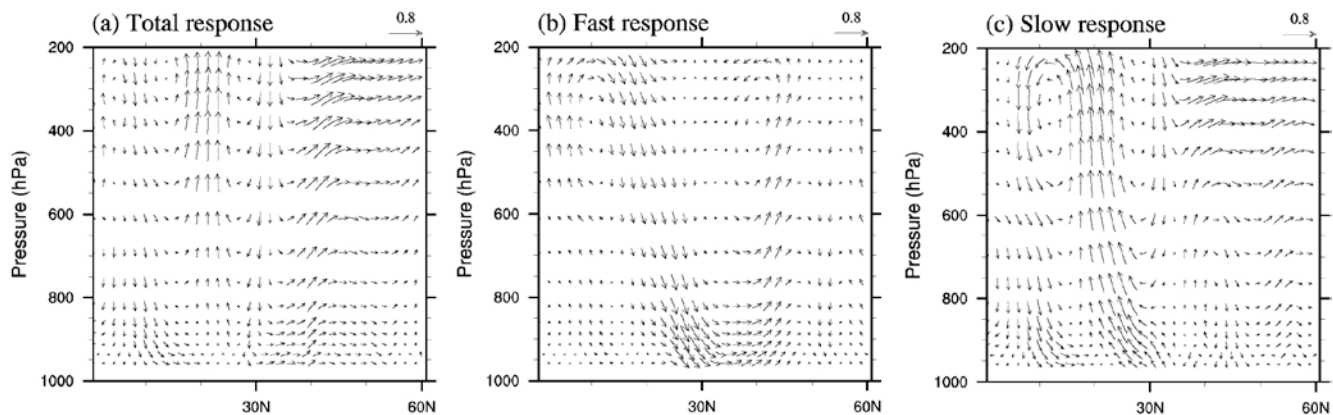


Figure S4: JJA mean total, fast, and slow responses of zonally averaged meridional circulation depicted by $(v, -\omega)$, where v is the meridional velocity (unit: m s^{-1}) and $-\omega$ is the vertical velocity (unit: hPa s^{-1}), between 100°E and 140°E to BC forcing.

5

10

15

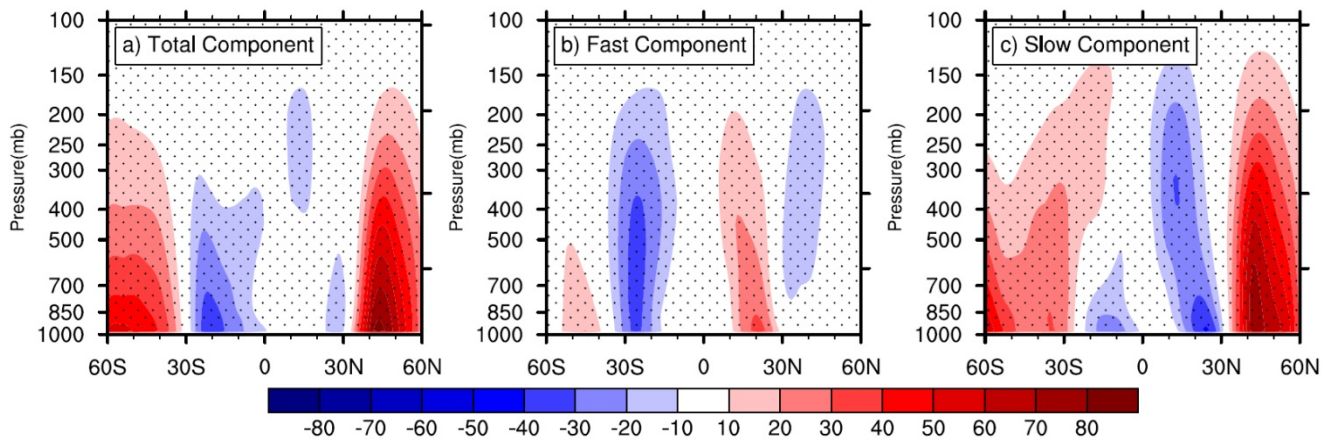


Figure S5: JJA mean total, fast, and slow responses of zonally averaged meridional stream function between 100°E and 140°E to BC forcing (unit: 10^9kg s^{-1}). The positive values indicate clockwise circulation. The dots represent significance at $\geq 95\%$ confidence level from the t test.