

The following file comprises our responses to the referees and a copy of the manuscript with the changes tracked (using latexdiff). In addition to the changes to address the referees' comments, we have remade all the figures to use the newly redefined standard S-RIP colors for each reanalysis, and corrected some minor typos.

Interactive comment on “Reanalysis comparisons of upper tropospheric/lower stratospheric jets and multiple tropopauses” by Gloria L. Manney et al.

Anonymous Referee #1

This paper provides a comprehensive study of the dynamics of the UTLS regions as encapsulated in the jets and multiple tropopauses occurring in this region. The paper provides useful information to the atmospheric sciences community. The discussion of the performance of the reanalyses further provides information on their ability to represent the dynamics of the UTLS region. I recommend acceptance for ACP once the authors address the specific comments below.

We thank the referee for their helpful comments. The referee’s comments are shown in blue italics; our responses are shown in black. (Note that in addition to addressing the referees’ comments, the figures have been re-done to use the recently updated “standard” S-RIP colors for each reanalysis.)

Specific comments

P. 5 L. 23 and elsewhere: Is the standard convention ms⁻¹ or m/s? Same for similar ratios C1 (and see caption for Fig. 13).

We have changed all occurrences to ms⁻¹, and, similarly, K/km to Kkm⁻¹.

P. 6 L. 9-11: Perhaps rephrase, as the meaning of this sentence is not fully clear to this reviewer.

This text has been rephrased to describe the definition and methods used here more explicitly, and text added to address the comments of Dr. Añel. The revised text reads:
“If dT/dz drops below -2 Kkm^{-1} above the primary thermal tropopause, then the next level above that where the WMO criterion is fulfilled is identified as a multiple tropopause (Randel et al. 2007, Manney et al. 2011, Manney et al. 2014); this definition follows that of Randel et al. (2007), who showed that requiring dT/dz to drop only below -2 Kkm^{-1} above the primary tropopause for the relatively coarse resolution reanalyses (rather than -3 Kkm^{-1} as is typically used for high-resolution temperature profiles) resulted in multiple tropopause distributions more comparable to those from high resolution measurements. Linear interpolation is used to locate the tropopause between two adjacent vertical gridpoints. Note that “multiple tropopause” is used here to denote any profile with more than one tropopause. As quantified by Schwartz et al. (2015), a very small fraction of the profiles have more than two tropopauses, and using only double tropopause versus all multiple tropopause profiles makes no significant difference in our results.”

L. 18: As a percent of what?

We have added a parenthetical remark explaining this, thus: "...expressed as a percent (representing the fraction of the time there is a jet core, multiple tropopause, or subvortex jet in the bin, as discussed below in relation to normalization)". The immediately following wording has also been revised / clarified in response to a comment from referee #2.

P. 8 L. 29: Why is this unsurprising?

The much coarser vertical grid spacing (about 2 km for pressure coordinate versus less than 1 km for model level fields) leads to effective vertical smoothing of the fields, so that the magnitude of gradients and extrema can be underestimated. This is particularly likely to affect the representation of threshold phenomena using criteria based on vertical structure. We have changed the sentence in question to read "Because the much coarser vertical grid spacing can lead to underestimation of gradients and extrema, it is also unsurprising that a vertical spacing near 2 km in the UTLS..."

P. 10 L. 18: Omit superfluous "the".

This has been corrected.

P. 14 Sect. 4, Summary and conclusions: This is an editorial decision, but I would suggest the authors consider splitting this section into two, a summary and a conclusion sections with the latter being succinct.

We feel that the Summary and Conclusions section is already concise and focused, and do not see a natural way to divide into two sections that would provide further information or further clarify the results. We have therefore chosen to keep it as one section.

P. 23 Fig. 1: Not clear to this reviewer which contour line corresponds to each percentage. I suggest the authors make this clearer in the figure, maybe by attaching the percentage to the contour (same for other figures, e.g., Fig. 2). I also suggest the authors consider providing information in the caption what the colours indicate, e.g., red/blue indicate positive/negative differences. Same for other figures.

It would be difficult to add legible numbers to the contours on the figures, and would make the figures more "cluttered". However, we have modified the Fig. 1 caption to read: "...Overlaid contours show frequency values from each reanalysis of 10, 20, and 30% for upper tropospheric and subvortex jets, and 30, 45, and 60% for multiple tropopauses; the smallest value is always the largest or "outermost" contour. In the difference plots, blues/oranges indicate negative/positive differences." We have added similar text to each caption where overlaid contours are described and difference plots are shown.

P. 28 Fig. 6: The authors should clarify in the caption the differences between Figs. 5 and 6.

To clarify this, we have changed the start of the Fig. 5 caption to:

“Seasonal maps of frequency distributions during JJA in 1980 through 2012 of JRA-55 (left) fields and the difference between JRA-55 and JRA-55C fields (right).”

And that of the Fig. 6 caption to:

“Seasonal latitude/altitude cross-sections of frequency distributions for JJA in 1980 through 2012 of JRA-55 fields (left) and the difference between JRA-55 and JRA-55C fields (right).”

*Interactive comment on “Reanalysis comparisons of upper tropospheric/lower stratospheric jets and multiple tropopauses” by Gloria L. Manney et al.
Anonymous Referee #2*

General Comments

In this paper Manney et al. present an intercomparison of UT/LS and stratospheric jets and tropopause diagnostics derived from five recent meteorological reanalyses. The study covers ERA-Interim, JRA-55, MERRA, MERRA-2, and NCEP’s CFSR for a 35-year time period (1980-2014). The study found very good qualitative agreement between the climatological features. It is speculated that quantitative differences, which are found to be largely related to differences in resolution of the forecast models and output grids, would still be important for transport and variability studies. Overall, I found this to be a carefully designed study. The paper is well-written and fits in the scope of ACP. I would recommend it for publication once the few remaining minor comments and technical corrections listed below have been considered.

We thank the referee for their helpful comments. The referee’s comments are shown in blue italics and our responses in black. (Note that in addition to addressing the referees’ comments, the figures have been re-done to use the recently updated “standard” S-RIP colors for each reanalysis.)

Specific Comments

p4, l16: It might be worthwhile mentioning some of the updates from MERRA to MERRA-2 that are possibly relevant for this study at this point?

We have added this to the text as follows:

“MERRA-2 (Gelaro et al., 2017) uses a similar model and assimilation system to MERRA, with updates also described by Bosilovich et al. (2015), Molod et al. (2015), and Takacs et al. (2016). Some of the changes between MERRA and MERRA-2 that may affect UTLS dynamical fields are:

- New observation types have been added in MERRA-2, including hyperspectral infrared data from IASI (Infrared Atmospheric Sounding Interferometer) and CrIS (Cross-track Infrared Sounder), GPS-RO (Global Positioning System-Radio Occultation) bending angles, and polar wind observations from AVHRR (Advanced Very High Resolution Radiometer).
- MERRA-2 treats conventional temperature data differently, including changes in their error statistics and usage of adaptive bias correction for aircraft temperature data.
- Changes were made to the general circulation model, most notably a different horizontal grid and an improved convective parameterization scheme.”

p6, 17-11: I was wondering if the estimation of tropopause heights does involve any kind of higher-order interpolation (e.g. cubic spline) of the coarse-grid temperature profiles from the reanalyses on a fine vertical grid?

No higher order interpolation is used because it may exaggerate extrema in regions of strong temperature gradients (such as often occur near the tropopause). A linear interpolation between the two levels on either side of the threshold is used to locate the tropopause between adjacent levels; we have added a sentence to this effect in the text (which has also been modified to address a comment from Dr. Añel).

p6, 114: Why doesn't it make sense to construct means of frequency distributions from multiple reanalyses?

To compare fields between multiple reanalyses, a “reanalysis ensemble mean” is often used, wherein the fields from each reanalysis are summed and the result divided by the number of reanalyses. What we meant to convey here is that using this procedure for frequency distributions does not produce a field that is useful for comparisons, since a mean constructed that way is no longer a frequency distribution, does not “weight” each reanalysis equivalently, and differences from that field would be problematic to interpret. Since we need a “reference” to take differences, we have chosen to use MERRA-2, the most recent of the reanalyses studied here. In the revised text, we state: “A reference distribution is needed to evaluate differences between the frequency distributions. However, taking a mean of the frequency distributions from the five reanalyses would result in a field that is problematic to interpret since it no longer represents a frequency distribution, and the reanalyses would not be equally weighted. Therefore, we have chosen to compare the other reanalyses to MERRA-2....”

p6, 117-21 (and other places): It might be more clear if arithmetic differences of percentages would be referred to as "percentage points (pp)" rather than using "%" as the unit for these differences.

This is a very good idea, and we have implemented it in the revised text. The discussion of arithmetic differences of percentages has been modified as follows:

“Because the frequency distributions are expressed as a percent (representing the fraction of the time there is a jet core, multiple tropopause, or subvortex jet in the bin, as discussed below in relation to normalization), the arithmetic differences (i.e., $\text{Freq_r1} - \text{Freq_r2}$, where r1 and r2 are two reanalyses) between two frequency distributions that are shown in the figures are expressed as “percentage points” (pp); this should not be confused with the approximate percentage values for relative differences (e.g., $(\text{Freq r1} - \text{Freq r2}) / 0.5(\text{Freq r1} + \text{Freq r2}) \times 100$) mentioned in the text....”

Also, the units of % for frequency distributions and pp for arithmetic differences of frequency distributions have been added to all of the figures. In the Figure 1 caption, we now state “In this

and all following figures, frequency distributions are expressed in percent (%) and arithmetic differences of frequency distributions in percentage points (pp).”

The statement in Section 3.2 regarding this has been modified as follows: “(Recall that, as described in Section 2.3, since frequency is expressed as a percent, the arithmetic differences between MERRA-2 and other reanalysis frequency distributions are expressed as percentage points (pp); the relative (percent) differences noted here are obtained by dividing the pp value in the difference plot by the percent value in the MERRA-2 frequency distribution plot.)”

p8, 19-16: Can you provide a physical explanation of the northward shift of the jets between the MERRA-2 ASM and ANA fields?

We have added the following statement to the text:

“Because of the IAU procedure used (see, e.g., Bloom et al. 1996, Fujiwara et al. 2016), the differences between ASM and ANA are to first order half of the analysis increment, with ASM being closer to the model results for a short forecast, and ANA (albeit less balanced) being closer to the observations. The ASM-ANA differences thus largely reflect small biases between the model and observations that develop over a short forecast period. These might be expected to be qualitatively similar to the biases between the free-running model and the reanalysis. Molod et al. (2012) noted zonal mean wind biases between MERRA and a free-running GCM suggesting differences in both strength and position of the subtropical jet, as well biases in the eddy geopotential height fields that suggest regional variations in wind biases. Biases of this sort persist between MERRA-2 and corresponding free-running models (Clara Orbe, personal communication) that appear broadly consistent with the shift of the jets seen here.”

p9, 112-21: Here I was also wondering if you could possibly provide a more detailed physical reasoning for the differences, the jet shifts in particular?

A detailed analysis of the differences each observational input makes in the assimilated fields is beyond the scope of this paper. However, the satellite radiance inputs play a large role in determining the temperature profiles, and without them the SH high latitude fields are poorly constrained by data. They directly and substantially affect the multiple tropopause distributions, and are also expected, via thermal wind balance, to play a large role in constraining the winds in the UTLS. We have added a note to this effect in the text (at the end of the paragraph on the JRA-55 / JRA-55C comparisons): “Because the SH middle to high latitude fields are poorly constrained by conventional data, the assimilated satellite radiances are critical to constraining the temperature profiles here and, via thermal wind balance, are expected to be an important constraint for the wind fields as well. Thus poor agreement in multiple tropopause distributions in SH middle to high latitudes, as well as larger differences in the jet distributions than in other regions, is consistent with expectations.”

Technical Corrections

p6, l14: doesn't -> does not

The wording has already been changed per a previous comment.

p10, l18-19: "in the both the" -> "in both the"

Corrected.

p12, l9-11: A verb seems to be missing in this sentence.

The verb “show” has been added.

p18, l1: The acronym "JETPAC" was not introduced before.

We have modified the first sentence of section 2.2 to correct this omission, it now reads “The JETPAC (JEt and Tropopause Products for Analysis and Characterization) package described by Manney et al. (2011, 2014) is used here to characterize the UTLS jets and the tropopauses.”

Interactive comment on “Reanalysis comparisons of upper tropospheric/lower stratospheric jets and multiple tropopauses” by Gloria L. Manney et al.

J. A. Añel

We thank Dr. Añel for his interest and his helpful comments. His comments are shown in blue in italics, and our responses in black.

Major comments:

My main concern with this study is about the definition that the authors use for the tropopause and multiple tropopauses. Being clear about this the document to cite in the second paragraph in page 6 is the WMO definition of the tropopause (see below) and it could be that the computation of multiple tropopauses that the authors have done is wrong, as the WMO definition states that a multiple tropopause needs a vertical thermal gradient of 3 degrees to be considered as such, and not 2 degrees (Celsius not Kelvin according to the original definition to be fair). This should be double checked by the authors and figures replotted if necessary.

We apologize for not being more explicit about the definition we use in the paper. As is described in detail in Manney et al (2011, 2014), we followed Randel et al (2007), who found that for relatively coarse vertical resolution reanalyses such as these, relaxing the definition such that the vertical thermal gradient for the secondary tropopause was only 2 C / km (or equivalently 2 K/km) resulted in multiple tropopause distributions that were more comparable with those obtained from high-resolution measurements such as those from GPS-RO or radiosondes using the more stringent definition. We will state this explicitly in the revised paper.

Other issue is that the paper does not include a proper discussion on how the results here shown compare to the existing literature. This is specially important because this paper deals with reanalysis and previous results include radiosonde or GPS-RO data. Therefore I think that it would be really useful a section discussing the results of multiple tropopauses (at least for the well known planetary hotspots) in comparison with those obtained by Schmidt et al. (2006), Randel et al. (2007) (already cited) and Añel et al. (2008). Again I acknowledge that the focus of the paper is on the intercomparison, but maybe a good idea of doing this is to include in the discussion the spread of the reanalysis respect to the existing literature (e.g. the reanalysis with the minimum value for MTs over Japan is X with a value of Y and this is in the range (or not) of the values obtained by previous works). Maybe a table for the four hotspots of the North Hemisphere and South Hemisphere would be a good idea.

Using the MERRA reanalysis, Manney et al (2014) provided a detailed climatology of upper tropospheric jets, multiple tropopauses, the subvortex jet, and the relationships between these features. Detailed discussion is given in that paper of the multiple tropopause distributions in relation to those in previous literature, including Randel et al (2007), Añel et al. (2008), and Peevey et al (2012) (see Manney et al, 2014, pages 3257--3259, and the paragraph spanning pages 3263 and 3264); Añel et al (2008) and, especially, Peevey et al (2012) in turn contain

detailed comparisons of multiple tropopause distributions with previous studies. Given the extensive comparisons already in the literature, including Manney et al (2014) with one of the reanalyses used here and with exactly the same methods, and the fact that the focus is on intercomparison, we do not feel it is important to include further detailed comparisons with previous studies here. It is difficult, if not impossible, to quantitatively compare these studies because of the vast differences in geographic sampling and methods (bin size, normalization, etc) used to construct the frequency distributions; Manney et al (2014) contains some discussion of spatial and temporal sampling effects that may result in some of the differences seen between results from previous studies.

A comparison of multiple tropopauses in these reanalyses with those derived from other datasets such as GPS-RO, radiosondes, or relatively high-resolution satellite datasets such as HIRDLS, if done using consistent methods across all datasets and accurately accounting for geographic sampling differences, would be a valuable study but is well beyond the scope of this paper.

We will, however, add a paragraph explicitly referring to these previous comparisons, and giving the “spread” among the reanalyses considered here.

Also along the text and figures I have not seen a clear statement on what the authors mean by 'multiple tropopauses'. Multiple tropopauses should not be confound with double tropopauses. Right now there is a pretty clear distinction in the literature about this. From the manuscript I guess that the authors refer to double tropopauses all along the text and not multiple (e.g. triple tropopauses or above). A clear statement of what is considered as multiple tropopause should be included. For example, are you mixing cases of double tropopauses and multiple tropopauses? this could lead to inhomogeneous results because of the vertical resolution of the reanalysis. Anyway a clarification is needed.

As discussed in Manney et al (2011, 2014) and Schwartz et al (2015), the term “multiple tropopause” is used to mean any profile with more than one tropopause, and “double tropopause” to mean profiles with exactly two tropopauses. These definitions are consistent with those that we have seen used in the extensive literature on double and multiple tropopauses. Thus, as quantified by Schwartz et al (2015), there are a very small fraction of profiles included in this analysis that have more than two tropopauses. Including or excluding these does not change our results in any significant respect. We will add a note to this effect in the methods description in the revised paper.

Minor comments:

page 2, line 22: 'they'

When a colon is used to divide independent clauses, and there are two or more sentences that follow from the clause preceding the colon (as is the case here), the word following the colon is capitalized.

page 2, line 32: Chen et al. 2013 shows a nice case study along three field campaigns with radiosondes, combined with GOME-2 ozone data, lagrangian transport modeling of STE exchange and jet analysis that could be helpful to additionally support this view:

Thank you for this citation -- we will include it with the others in support of this point.

Along the text the surname 'Peña' is not well written, it would be good to write it correctly with the 'ñ'. It is just necessary copy+paste or with LaTeX to write it as 'ñ'

We apologize for this oversight; it has been corrected.

page 3, line 20: it would be good to put the 'th' as uppercase

In the references I find to this reanalysis (e.g., the online information on it at NOAA), the "th" is not capitalized.

there are some minor typos along the text, please double check them.

We will, indeed, proofread the revised paper very carefully, and already have some corrections pointed out by the referees.

Reanalysis comparisons of upper tropospheric/lower stratospheric jets and multiple tropopauses

Gloria L. Manney^{1,2}, Michaela I. Hegglin³, Zachary D. Lawrence², Krzysztof Wargan⁴, Luis F. Millán⁵, Michael J. Schwartz⁵, Michelle L. Santee⁵, Alyn Lambert⁵, Steven Pawson⁴, Brian W. Knosp⁵, Ryan A. Fuller⁵, and William H. Daffer⁵

¹NorthWest Research Associates, Socorro, NM USA

²New Mexico Institute of Mining and Technology, Socorro, NM USA

³University of Reading, Reading, United Kingdom

⁴NASA/Goddard Space Flight Center, Greenbelt, MD USA

⁵Jet Propulsion Laboratory, California Institute of Technology, Pasadena, CA, USA

Correspondence to: Gloria L Manney (manney@nwra.com)

Abstract. The representation of upper tropospheric/lower stratospheric (UTLS) jet and tropopause characteristics is compared in five modern high-resolution reanalyses for 1980 through 2014. Climatologies of upper tropospheric jet, subvortex jet (the lowermost part of the stratospheric vortex), and multiple tropopause frequency distributions in MERRA (Modern Era Retrospective Analysis for Research and Applications), ERA-I (the ECMWF interim reanalysis), JRA-55 (the Japanese 55-year Reanalysis), and CFSR (the Climate Forecast System Reanalysis) are compared with those in MERRA-2. Differences between alternate products from individual reanalysis systems are assessed; in particular, a comparison of CFSR data on model and pressure levels highlights the importance of vertical grid spacing. Most of the differences in distributions of UTLS jets and multiple tropopauses are consistent with the differences in assimilation model grids and resolution: For example, ERA-I (with coarsest native horizontal resolution) typically shows a significant low bias in upper tropospheric jets with respect to MERRA-2, and JRA-55 a more modest one, while CFSR (with finest native horizontal resolution) shows a high bias with respect to MERRA-2 in both upper tropospheric jets and multiple tropopauses. Vertical temperature structure and grid spacing are especially important for multiple tropopause characterization. Substantial differences between MERRA and MERRA-2 are seen in mid- to high-latitude southern hemisphere winter upper tropospheric jets and multiple tropopauses, and in the upper tropospheric jets associated with tropical circulations during the solstice seasons; some of the largest differences from the other reanalyses are seen in the same times and places. Very good qualitative agreement among the reanalyses is seen between the large scale climatological features in UTLS jet and multiple tropopause distributions. Quantitative differences may, however, have important consequences for transport and variability studies. Our results highlight the importance of considering reanalyses differences in UTLS studies, especially in relation to resolution and model grids; this is particularly critical when using high-resolution reanalyses as an observational reference for evaluating global chemistry climate models.

20 1 Introduction

Variations in the upper tropospheric/lower stratospheric (UTLS) jets and extratropical tropopause influence high-impact weather and climate on regional and global scales: They play key roles in circulation changes, especially the observed widening of the tropics (e.g., Staten et al., 2016) and storm track evolution (Barnes and Screen, 2015; Messori et al., 2016; Woollings et al., 2016, and references therein). They influence surface weather patterns (e.g., see reviews by Lucas et al., 2014; Harnik et al., 2016) such as rainfall changes (e.g., Price et al., 1998; Raible et al., 2004; Karauskas and Ummenhofer, 2014; Huang et al., 2015; Xie et al., 2015; Delworth and Zeng, 2014; Bai et al., 2016), destructive wind storms (e.g., Pinto et al., 2009, 2014; Gómara et al., 2014; Messori and Caballero, 2015), and extreme temperature events (e.g., Francis and Vavrus, 2012; Harnik et al., 2016). Moreover, transport processes that alter the extent and consequences of extra-tropical stratosphere-troposphere exchange (STE) are closely linked to the tropopause and jets, which are themselves sensitive to climate change and ozone depletion (e.g., Seidel and Randel, 2006; Lorenz and DeWeaver, 2007; Polvani et al., 2011; WMO, 2011; Hudson, 2012; Grise et al., 2013; Waugh et al., 2015). Both tropospheric and total column ozone vary with tropopause height and STE near the UTLS jets (e.g., Olsen et al., 2002; Neu et al., 2014), as well with natural modes of variability such as ENSO that alter the jets

(Hudson, 2012; Lin et al., 2014, 2015; Olsen et al., 2016, and references therein). Thus, much of the variability in UTLS ozone is inextricably linked to that of the UTLS jets.

Modern high-resolution reanalyses from data assimilation systems produced by European Centre for Medium-range Weather Forecasts (ECMWF), the National Aeronautics and Space Administration’s (NASA’s) Global Modeling and Assimilation Office (GMAO), the National Centers for Environmental Prediction (NCEP), and the Japanese Meteorological Agency (JMA) are invaluable tools for studying and understanding UTLS dynamical and transport processes. It is only the latest generations of these reanalyses that provide products on the full model grids that can resolve many of the regionally and rapidly varying dynamical processes in the UTLS. While high-resolution datasets such as those from sondes and Global Positioning System-Radio Occultation provide critical insights on the structure of the extra-tropical tropopause region, no available data sources can provide the global time-resolved fields, including winds, that reanalyses provide that are necessary to understand the global effects of jet and tropopause variations. Reanalyses are thus a critical tool for UTLS studies, and are also widely used as an observational reference for climate model intercomparisons (e.g., Gettelman et al., 2010). However, they are also highly dependent on the details of the underlying general circulation models and assimilation systems, as well as on the input datasets and processing. Several previous studies have shown differences in upper tropospheric jet and/or tropopause information from multiple reanalyses (e.g., Archer and Caldeira, 2008; Peña-Ortiz et al., 2013; Boothe and Homeyer, 2016). Studies of tropical width using metrics related to zonal mean upper tropospheric jets and/or the tropopause have shown inconsistent results between models and reanalyses, as well as among reanalyses (e.g., Davis and Rosenlof, 2012; Davis and Birner, 2017). Most of these studies have used older reanalyses or focused on tropopause and/or jet diagnostics based on zonal means. Peña-Ortiz et al. (2013) used a three-dimensional (3D) jet characterization scheme, but applied it to the NCEP/NCAR Reanalysis and the NCEP “20th Century” reanalysis (the latter assimilates only surface observations), both of which use relatively unsophisticated or outdated assimilation systems, have coarse horizontal resolution and poor vertical resolution in the UTLS, and have been shown to have limited skill in the UTLS and above (see Fujiwara et al., 2017, for a review of reanalysis system characteristics and evaluations). While Davis and Birner (2017) used four of the five modern reanalyses we will compare here, their tropopause and jet-based tropical width diagnostics were based on analysis of zonal mean fields.

Manney et al. (2011) developed a method for characterizing the upper tropospheric jets, the stratospheric subvortex jet, and multiple tropopauses. Manney et al. (2014) used this package to present a detailed climatology of these UTLS jets and multiple tropopauses, and the relationships between them, using GMAO’s Modern Era Retrospective-analysis for Research and Applications (MERRA). Here we evaluate the representation of these climatological features in the four other most recent high-resolution reanalyses: MERRA-2 (the successor to MERRA), ECMWF’s ERA-Interim, JMA’s JRA-55, and NCEP’s Climate Forecast System Reanalysis (CFSR); comparisons of MERRA-2 with its predecessor are also included. These diagnostics cannot be directly compared with observations, and thus reanalysis comparisons are a unique tool to help assess the robustness of and uncertainties in the representation of UTLS dynamical features in reanalyses. Section 2 describes the reanalysis datasets and the methods used. In Section 3.1 we evaluate differences between several commonly used configurations of and output products from several of the reanalyses. Section 3.2 provides a comparison of seasonal upper tropospheric jet, multiple

tropopause, and subvortex jet distributions, while Section 3.3 compares the climatological annual cycles of these fields among the reanalyses. A summary and conclusions are presented in Section 4.

2 Data and Methods

2.1 Reanalysis Data

5 The reanalysis datasets used here are briefly described below. Detailed descriptions of the models, assimilation systems, and data inputs for each are given in the overview paper on the Stratosphere-troposphere Processes And their Role in Climate-Reanalysis Intercomparison Project (S-RIP) (Fujiwara et al., 2017). The five recent high-resolution “full-input” reanalysis climatologies are compared for 1980 through 2014, with the December-January-February, DJF, seasonal plots starting with December 1979. All analyses are done using daily 12-UT fields from each reanalysis dataset.

10 2.1.1 MERRA and MERRA-2

The National Aeronautics and Space Administration (NASA) GMAO’s MERRA (Rienecker et al., 2011) dataset is a global reanalysis covering 1979 through 2015. It is based on the GEOS (Goddard Earth Observing System) version 5.2.0 assimilation system, which uses 3D-Var assimilation with Incremental Analysis Update (IAU) (Bloom et al., 1996) to constrain the analyses. The model uses a $0.5^\circ \times 0.667^\circ$ latitude/longitude grid with 72 hybrid sigma-pressure levels, with about 0.8 km vertical spacing
15 in the upper troposphere, increasing to ~ 1.2 km in the UTLS. The fields used here are provided on the model grid.

MERRA-2 (Gelaro et al., 2017) uses a similar model and assimilation system to MERRA, with updates also described by Bosilovich et al. (2015), Molod et al. (2015), and Takacs et al. (2016); ~~the~~. Some of the changes between MERRA and MERRA-2 that may affect UTLS dynamical fields are:

- New observation types have been added in MERRA-2, including hyperspectral infrared data from IASI (Infrared Atmospheric Sounding Interferometer) and CrIS (Cross-track Infrared Sounder), GPS-RO (Global Positioning System-Radio Occultation) bending angles, and polar wind observations from AVHRR (Advanced Very High Resolution Radiometer).
- MERRA-2 treats conventional temperature data differently, including changes in their error statistics and usage of adaptive bias correction for aircraft temperature data.
- Changes were made to the general circulation model, most notably a different horizontal grid and an improved convective
25 parameterization scheme.

Details of these changes are given by (Gelaro et al., 2017) and references therein.

The MERRA-2 data products are described by Bosilovich et al. (2016). All MERRA-2 data products used here are on model levels (the same vertical grid as for MERRA) and a $0.5^\circ \times 0.625^\circ$ latitude/longitude grid. Data from MERRA-2 from its spin-up year, 1979, are not in the public MERRA-2 record; we do, however, use December data from that year to construct the DJF
30 climatologies.

For MERRA-2, GMAO provides “Analyzed” (ANA) and “Assimilated” (ASM) file collections (Global Modeling and Assimilation Office (GMAO), 2015b, a, respectively). As described by Fujiwara et al. (2017), the ANA fields are written after the analysis step, but before the IAU is applied; these products are analogous to the analyzed fields produced by other reanalysis centers (e.g., Fujiwara et al., 2017). The ASM output is the product of IAU written by the general circulation model forced by the analysis increments computed in the analysis step. The GMAO recommends the ASM file collection for most purposes, because it provides the most dynamically consistent set of fields, as well as a fuller set of atmospheric variables. For MERRA, however, the ASM fields are not available on the model grid, but only at degraded horizontal and vertical resolution; because of the importance of resolution to UTLS studies, we thus use the MERRA ANA collection here. Differences between ANA and ASM fields are small, but can be non-negligible (see Section 3.1).

10 2.1.2 ERA-Interim

ERA-Interim (see Dee et al., 2011) is another global reanalysis that covers the period from 1979 to the present. The data are produced using 4D-Var assimilation with a $T_L255L60$ spectral model. Here we use the data on a $0.75^\circ \times 0.75^\circ$ latitude/longitude grid (near the resolution of the model’s Gaussian grid) on the 60 model levels. The spacing of the model levels in the lower stratosphere is ~ 1 km.

15 2.1.3 JRA-55

JRA-55 (Ebita et al., 2011; Kobayashi et al., 2015) is a global reanalysis that covers the period from 1958 to the present. The data are produced using 4D-Var assimilation with a $T_L319L60$ spectral model. We use the fields on the model grid and vertical levels, which has a resolution of ~ 1 km in the UTLS. A reanalysis, JRA-55C, using the same assimilation system as for JRA-55, but with only “conventional” data inputs (that is, no satellite data) was run for 1972 through 2012 (Kobayashi et al., 2014; Fujiwara et al., 2017). In Section 3.1 we compare results for JRA-55 and JRA-55C for 1979 through 2012 (during the “satellite era”).

2.1.4 CFSR

NCEP-CFSR/CFSv2 (hereinafter CFSR) (Saha et al., 2010) is a global reanalysis covering the period from 1979 to the present. The data are produced using a coupled ocean-atmosphere model and 3D-Var assimilation. The model resolution is $T382L64$; the data used here are on a $0.5^\circ \times 0.5^\circ$ horizontal grid on the model levels (available through 2014); vertical resolution in the UTLS is near 1 km. These model level data have only recently been made available; prior to that, the NCEP $0.5^\circ \times 0.5^\circ$ data were provided only on a vertical grid with 37 pressure levels between 1000 and 1 hPa, resulting in a vertical spacing near 2 km in the UTLS; in Section 3.1 we compare pressure and model level fields to illustrate the importance of vertical resolution.

2.2 Jet and Tropopause Characterization

The ~~methods-~~JETPAC (JEt and Tropopause Products for Analysis and Characterization) package described by Manney et al. (2011, 2014) is used here to characterize the ~~jets and tropopauses are those of Manney et al. (2011, 2014)~~ UTLS jets and the tropopauses. At each longitude, an upper tropospheric jet core is identified at every latitude and vertical grid-point where the windspeed maximum exceeds 40 m/s ms^{-1} . The boundaries of the jet region are the four grid-points vertically above and below and horizontally poleward and equatorward of the core where the windspeed drops below 30 m/s ms^{-1} . When more than one windspeed maximum greater than 40 m/s ms^{-1} appears within a given 30 m/s ms^{-1} contour, they are defined as separate cores if the latitude distance between them is greater than 10° or the value of the minimum windspeed on the line between them is at least 30 m/s ms^{-1} less than the windspeed value at the strongest core. These parameters were tuned to approximate as closely as feasible the choices that would be made by visual inspection.

The subvortex jet core is identified as the most poleward maximum in westerly windspeed at each model level that exceeds 30 m/s ms^{-1} , and the locations of the 30 m/s ms^{-1} contour crossings poleward and equatorward of this define the boundaries of the subvortex jet region. The bottom of the subvortex jet often extends down to the top levels of the upper tropospheric jets. To distinguish between the two in such cases, we first identify the subvortex jet at levels down to a pressure near 300 hPa. We then work down from the model level nearest 80 hPa to identify the lowest altitude at which the windspeed of the jet is still decreasing with decreasing altitude; this is defined as the bottom of the subvortex jet. “Merged” subvortex and upper troposphere jets are identified as those where the bottom of the subvortex jet region is not separated from the top of an upper tropospheric jet region. Maps of subvortex jet frequency distributions use the latitude at the minimum altitude as the position of each subvortex jet identified.

The thermal (temperature gradient) tropopause is calculated using the World Meteorological Organization (WMO) definition, wherein dT/dz must rise above -2 K/km Kkm^{-1} and remain about that on average for at least 2 km (see, e.g., Homeyer et al., 2010, for review and discussion of issues related to calculating the thermal tropopause). ~~Multiple thermal tropopauses are identified if~~ If dT/dz drops below -2 K/km Kkm^{-1} above the primary thermal tropopause, ~~as then~~ the next level ~~above that~~ where the WMO ~~criteria are again fulfilled~~ criterion is fulfilled is identified as a multiple tropopause (e.g., Randel et al., 2007; Manney et al., 2011, 2014); ~~this definition follows that of Randel et al. (2007), who showed that requiring dT/dz to drop only below -2 Kkm^{-1} above the primary tropopause for the relatively coarse resolution reanalyses (rather than -3 Kkm^{-1} as is typically used for high-resolution temperature profiles) resulted in multiple tropopause distributions more comparable to those from high resolution measurements. Linear interpolation is used to locate the tropopause between two adjacent vertical gridpoints. Note that “multiple tropopause” is used here to denote any profile with more than one tropopause. As quantified by Schwartz et al. (2015), a very small fraction of the profiles have more than two tropopauses, and using only double tropopause versus all multiple tropopause profiles makes no significant difference in our results.~~

2.3 Comparison methodology

The bulk of the comparisons presented here are of frequency distributions, calculated as described in more detail by Manney et al. (2014). ~~Because it doesn't make sense to construct means of~~ A reference distribution is needed to evaluate differences between the frequency distributions. However, taking a mean of the frequency distributions from ~~multiple reanalyses the five~~ reanalyses would result in a field that is problematic to interpret since it no longer represents a frequency distribution and the reanalyses would not be equally weighted. Therefore, we have chosen to compare ~~all the~~ other reanalyses to MERRA-2. MERRA-2 was chosen because it is the most recent of the modern high-resolution reanalyses and thus the comparisons extend the evaluation of this new reanalysis dataset. We show frequency distributions from MERRA-2, and differences between those distributions and MERRA-2 for the other reanalyses. Because the frequency distributions are expressed as a percent ~~, the~~ absolute (representing the fraction of the time there is a jet core, multiple tropopause, or subvortex jet in the bin, as discussed below in relation to normalization), the arithmetic differences (i.e., $\text{Freq}_{r1} - \text{Freq}_{r2}$, where $r1$ and $r2$ are two reanalyses) between two frequency distributions that are shown in the figures are ~~also in units of percent~~ expressed as "percentage points" (pp); this should not be confused with the approximate percentage values for relative differences (e.g., $(\text{Freq}_{r1} - \text{Freq}_{r2}) / 0.5(\text{Freq}_{r1} + \text{Freq}_{r2}) \times 100$) mentioned in the text.

To directly compare frequency distributions from reanalyses on different grids, we construct the 2D histograms using the same bins for each reanalysis. Comparing frequency distributions for "threshold" phenomena such as the existence of jets or multiple tropopauses is problematic. In general, we characterize the jets and tropopauses on the high-resolution latitude/longitude grids of the reanalysis datasets. These characterizations are then used to calculate 2D histograms within wider latitude/longitude bins. In the following description "gridpoints" refers to the reanalysis grid, and "bins" to the coarser latitude/longitude grid on which the 2D histograms are constructed. The issue of consistent normalization is relatively straightforward: The normalization procedure used herein is similar to that described by Manney et al. (2014), but for each reanalysis, we calculate the number of gridpoints that would "fill" each individual bin based on the bin size and the reanalysis grid spacing; the total counts in each bin are then divided by this value. The upper tropospheric and subvortex jet distributions are normalized by the total number of longitude gridpoints in each bin since the definition of the jets makes it extremely unlikely that more than one jet at the same longitude would be in the same bin: For example, upper tropospheric jets must be separated by either a drop in windspeed to below 30 m/s ~~ms⁻¹~~ or 10° in latitude; with latitude bin size of 3 or 4° (the values used here and in Manney et al., 2014, respectively), to have two jets at one longitude in a single bin would require exceptionally strong wind-speed gradients in a region where the jet core windspeed was just above the 40 m/s ~~ms⁻¹~~ threshold. The multiple tropopause distributions are normalized by the total number of gridpoints (latitudes by longitudes) that are in each bin since the profile at each gridpoint has the potential to have more than one tropopause.

Beyond this, however, aliasing discrepancies arise in cases where a strong localized (particularly in latitude) feature lies near the boundary of a bin. In such cases, the differences between the reanalysis grid point locations with respect to the bin edges can result in counts (such as existence of a jet core or multiple tropopause) falling preferentially in one bin in one reanalysis and in the adjacent bin in another reanalysis. This problem is not substantially improved for jet distributions (identified in

part by the latitude of the maxima) by interpolating to a common latitude grid, because that interpolation can lead to similar problems wherein the maximum of the interpolated field can be preferentially shifted in one direction depending on the relative spacing of the interpolated and uninterpolated grids. We have found that choosing a latitude bin size such that an integer number of reanalysis gridpoints fits into the bin practically eliminates this difficulty. For JRA-55 and JRA-55C, where the data are provided on an approximately 0.5625° Gaussian grid, we chose to interpolate to a 0.5° latitude grid before doing the jet and tropopause identification analysis. This grid is sufficiently close to the native grid that aliasing of a jet core (location of maximum in windspeed) by the interpolation is uncommon. Throughout this paper, we use 3° latitude and 6° longitude bins for maps, and 3° latitude and 1 km altitude bins for cross-sections. When our histograms constructed with the “matched” bin sizes are normalized by the maximum in the frequency distribution for each reanalysis (thus eliminating information on the difference in maximum frequency between reanalyses), the results show nearly identical patterns to those using the normalization described above, suggesting that our normalization procedure is robust.

For altitude/latitude cross-sections, because there is no obvious way to define the number of vertical gridpoints that “fill” a bin (because the relationship of model levels to bin locations varies with time and geographical location), we have chosen not to normalize by vertical spacing. The 1 km vertical bin size used here is chosen to include approximately one vertical grid point at each latitude/longitude. This is of little consequence for upper tropospheric jets and multiple tropopauses, where there is one vertical location identified for each feature. For the subvortex jets, which are identified at each level, we will show some differences that arise from the relationship between different model vertical grids and bin size. While one might argue that these are merely an artifact-artefact of the analysis procedure, they do provide information on the limitations of the information content of the reanalysis fields as provided to users.

20 3 Results

3.1 Grid, Output Product, and Assimilated Field Choices

Most reanalysis centers provide products on several different grids, in particular both on model levels and interpolated to a coarser set of standard pressure levels. In addition, they provide different types of output datasets and sometimes alternate reanalyses based on limited input datasets. We explore here the results of some of these choices of which product to use.

25 Products available from MERRA-2 include those from the ANA and ASM collections, as described above and by Bosilovich et al. (2016). While the ASM products are recommended by GMAO for most studies, this distinction has not been widely recognized, so usage of one rather than the other has been inconsistent in existing studies. Furthermore, ASM products for MERRA were only available on a reduced-resolution grid – interpolated both to a coarser horizontal grid and pressure levels with coarser vertical spacing. Figures 1 and 2 show the differences between frequency distributions from MERRA-2 ASM and ANA for 30 September-October-November (SON) for upper tropospheric jets, multiple tropopauses, and subvortex jets. SON was chosen to illustrate characteristic differences seen in both hemispheres; differences are generally slightly larger in the winter solstice season in each hemisphere, and smaller (or undefined in the case of subvortex jets) in the summer solstice season. Differences are generally small (less than about 5% of the maximum MERRA-2 frequencies for upper tropospheric and subvortex jets, and

about 10% of the maximum MERRA-2 frequencies for tropopause locations and multiple tropopause frequencies). Systematic differences include a slight northward shift of both northern hemisphere (NH) and southern hemisphere (SH) subtropical jets (top row of Figure 1) and of the SH subvortex jet (bottom row of Figure 1) in ASM versus ANA fields. The NH subvortex jets show a pattern of alternating negative and positive differences near the pole, which is even more pronounced in DJF (not shown); this is a known ~~artifact-artefact~~ that arises because the horizontal wind vector in the ASM fields is remapped from the model's cubed-sphere grid to a latitude-longitude grid, whereas the ANA fields are produced by the analysis module, which uses a latitude-longitude grid (Bosilovich et al., 2015). The top row of Figure 2 indicates that the poleward shift of the NH subtropical jet (centered near 30°N) in ASM versus ANA is accompanied by a downward shift of about a kilometer; small negative differences near 40°N below this jet suggest this may partly be due to a narrowing of its vertical extent.

Because of the IAU procedure used (see, e.g., Bloom et al., 1996; Fujiwara et al., 2017), the differences between ASM and ANA are to first order half of the analysis increment, with ASM being closer to the model results for a short forecast, and ANA (albeit less balanced) being closer to the observations. The ASM–ANA differences thus largely reflect small biases between the model and observations that develop over a short forecast period. These might be expected to be qualitatively similar to the biases between the free-running model and the reanalysis. Molod et al. (2012) noted zonal mean wind biases between MERRA and a free-running GCM suggesting differences in both strength and position of the subtropical jet, as well biases in the eddy geopotential height fields that suggest regional variations in wind biases. Biases of this sort persist between MERRA-2 and corresponding free-running models (Clara Orbe, personal communication) that appear broadly consistent with the shift of the jets seen here.

There is a lower incidence of multiple tropopauses in ASM versus ANA (Figure 1, second row; Figure 2 third and fourth rows). The second row of Figure 2 (single tropopause locations) indicates a downward shift of the tropical tropopause in ASM versus ANA. While all of the ASM/ANA differences are small, they are often systematic. To the extent that the MERRA and MERRA-2 models and assimilation systems are similar, these differences may help indicate the level of differences that might have been seen if ASM fields were available for MERRA.

The CFSR dataset, for which model-level fields have only recently been made available, is used to illustrate the importance of vertical grid spacing for jet and tropopause characterization. Figures 3 and 4 compare jet and tropopause frequency distributions between model and pressure level CFSR fields for SON on the same horizontal grids. The pressure level data show a small but significant (up to about 10% of the maximum frequencies seen in the model level data) global decrease in the number of upper tropospheric jet cores detected (Figure 3, top row). Figure 4 (top row) shows an oscillatory pattern in the altitudes of the jets that are identified between the model level and pressure level data. The patterns in both figures suggest that jets are often mis-located in the vertical, and may be missed entirely where the spacing of the pressure levels is such that the maximum windspeed on those levels does not exceed the ~~40 m/s threshold. It ms⁻¹ threshold.~~ Because the much coarser vertical grid spacing can lead to underestimation of gradients and extrema, it is also unsurprising that a vertical spacing near 2 km in the UTLS for the pressure level data results in many fewer multiple tropopause identifications, and consequently more single tropopause identifications (Figure 3, second row, and Figure 4, second through fourth rows). The multiple tropopauses, and mid- to high-latitude single tropopauses, that are identified in the pressure level data appear on average to be close to the same

altitude as those in the model level data. The single tropical tropopause shows a low altitude bias. The pressure level results show a small deficit (seen as positive values) in the total number of subvortex jets (Figure 3, third row), with a dipole pattern suggesting systematic shifts in the position; this shift likely arises because the stratospheric vortex typically increases in area, and also tilts, with height, both of which change the latitude of the subvortex jet demarking its edge (these changes with height are especially pronounced in the disturbed conditions during NH fall and winter, consistent with the large NH differences over Asia and the western Pacific). The pressure level data show a marked surplus of merged subvortex and upper tropospheric jets (Figure 3, bottom row), because those are identified by comparing the vertical gradient in windspeed at adjacent levels, and the coarser resolution misses levels that are in neither jet region.

Several of the reanalysis centers have produced “conventional data only” (i.e., no satellite data inputs) reanalyses (for an overview, see Fujiwara et al., 2017). The JMA’s JRA-55C is such a reanalysis for 1972 through 2012 using the same model and assimilation system as for JRA-55 (Kobayashi et al., 2014). To elucidate the impact of including satellite data in the assimilation during the period since 1979 that we study here (often referred to as the “satellite era”), Figures 5 and 6 show the JRA-55/JRA-55C differences for June-July-August (JJA) (again, the season is chosen to show the most characteristic behavior). The SH extratropical differences are much larger than those in the NH in all seasons, as expected given the dearth of conventional data in the SH; especially, NH subvortex differences are very small even in DJF (not shown). Both the subtropical and polar upper tropospheric jets (Figure 5, top row) show an equatorward shift in JRA-55C with respect to JRA-55, which is consistently seen in all seasons. The SH polar jet shows a consistent upward and poleward shift in JRA-55C with respect to JRA-55 (Figure 6, top row). The differences between JRA-55 and JRA-55C multiple tropopauses in JJA show a longitudinal dipole pattern poleward of 60°S, with more multiple tropopauses in JRA-55 than in JRA-55C in the western hemisphere and an opposite pattern with fewer multiple tropopauses in JRA-55 than in JRA-55C in the eastern hemisphere. In March-April-May (MAM) (not shown) this same pattern appears, but without the global band of higher multiple tropopause frequencies in JRA-55 near 40–60°S. Multiple tropopauses at high latitudes have higher secondary tropopauses (Figure 6, fourth row) in JRA-55C, and single tropopauses (Figure 6, second row) are lower in SH high latitudes. The SH subvortex jets are consistently shifted equatorward in JRA-55C with respect to those in JRA-55 during all seasons when they are present (Figure 5, third row).

Because the SH middle to high latitude fields are poorly constrained by conventional data, the assimilated satellite radiances are critical to constraining the temperature profiles here and, via thermal wind balance, are expected to be an important constraint for the wind fields as well. Thus poor agreement in multiple tropopause distributions in SH middle to high latitudes, as well as larger differences in the jet distributions than in other regions, is consistent with expectations.

The above results illustrate the consequences of some of the choices of products from a given reanalysis center. Some of these differences are large enough to have a significant impact on zonal mean quantities calculated from these datasets, with multiple tropopause characteristics being particularly sensitive to the reanalysis configuration. In the following sections, we evaluate in detail the differences in upper tropospheric/subvortex jet and multiple tropopause climatologies from the most recommended and widely used products from each reanalysis center: MERRA ANA products, the MERRA-2 ASM file collection, ERA-Interim, JRA-55, and CFSR, with all datasets used on model levels and at the available horizontal resolution closest to the model grid.

3.2 Evaluation of Reanalysis Seasonal Climatologies

Figure 7 shows MERRA-2 upper tropospheric jet frequency distributions during the solstice seasons, DJF and JJA, and differences between those and the other reanalyses. Differences in the equinox seasons (not shown) are of similar character, but in general smaller than those shown here. Overall, the differences between MERRA and MERRA-2 are smaller in magnitude than the differences between MERRA-2 and the other reanalyses, which is not surprising given the greater similarity in the models, assimilation systems, and grids used in these related reanalyses. MERRA shows slightly more frequent jets in the regions where they are most persistent (e.g., the NH subtropical jet over Africa and Asia) than in MERRA-2, and at high latitudes (poleward of about 60°) in both hemispheres, with lower jet frequencies in the extratropical regions with moderate to low jet frequencies.

Each of the other reanalyses shows more jets poleward of about 60° latitude in both hemispheres than does MERRA-2 (albeit very slightly in ERA-I). Overall, ERA-Interim shows fewer, and CFSR shows more, midlatitude upper tropospheric jets than does MERRA-2; this general pattern is likely related to the native latitude grid spacing of ERA-I being coarser and that of CFSR being finer than that of MERRA-2: The native Gaussian grid spacing for ERA-I is near 0.7° , that of CFSR is near 0.3° , and the MERRA-2 latitude grid spacing is 0.5° . ERA-I does show a slightly stronger or more persistent subtropical jet in the NH in DJF across Africa, Asia, and the western Pacific, and in the SH in JJA from about 45°E eastward to about 120°W . These are the regions where there is a very strong persistent subtropical jet at a nearly constant location, and may also be related to resolution in that the finer grid of MERRA-2 may lead to more accurate placement of jets that are very near a bin edge, thus making the jet frequency distributions appear sharper in ERA-I than in MERRA-2. JRA-55 generally shows fewer jets than MERRA-2 in midlatitudes. CFSR shows more extratropical jets at all latitudes, but the patterns suggest a slight poleward shift relative to MERRA-2 of the SH subtropical jet in JJA around most of the globe.

Many of the largest differences are in the tropics: In DJF, MERRA-2 shows more frequent/persistent jets than any of the other reanalyses near the equator (primarily just south of it) near 150°W to 90°W , in the westerly circulation downstream of the Australian monsoon. ERA-I and JRA-55 also show considerably lower frequencies of tropical easterlies than MERRA-2 in ~~the~~ both the Australian (DJF, ~ 90 – 140°E near equator) and Asian (JJA, ~ 40 – 140°E just north of equator) monsoon regions, as well as somewhat lower frequencies of midlatitude westerlies that bound the polar side of the Asian monsoon circulation. While CFSR and MERRA show weaker equatorial westerlies than MERRA-2 like the other reanalyses, they show slightly stronger Australian monsoon easterlies in DJF; CFSR also shows generally stronger Asian monsoon easterlies, while MERRA shows a dipole pattern that suggests that the Asian monsoon easterlies peak slightly closer to the equator in MERRA. MERRA-2 shows a stronger Atlantic “westerly duct” (e.g., Horinouchi et al., 2000; Homeyer et al., 2011) in DJF, with all other reanalyses showing a center of negative differences just north of the equator near 50 – 10°W .

Cross-sections comparing the jet frequency distributions in JJA (Figure 8) show differences that are typical for this view. Most striking are the general patterns of alternating differences in all the comparisons except for those between MERRA and MERRA-2. Since MERRA and MERRA-2 use the same vertical model grids, the altitude locations differ only to the extent that the relationships between pressure and geopotential height (which is converted to geometric altitude) differ, and thus

are expected to be much closer to each other than to the levels used in any of the other reanalyses. The primary differences between MERRA and MERRA-2 are an altitude shift in preferred location of the tropical and the SH jets, especially in high latitudes, and higher jet frequencies in MERRA in the high latitude NH. The DJF differences (not shown) are similar, but with a downward shift in MERRA versus MERRA-2 also apparent around the NH subtropical jet, and an opposite shift of the tropical jets (indicating different behavior for the Asian and Australian monsoons, as was seen in the maps).

As shown in Fujiwara et al. (2017) (their Figure 3), all of the reanalyses have vertical spacing finer than 1 km up to about 8 km, where the MERRA/MERRA-2 spacing quickly jumps to about 1.2 km, while that of the others increases gradually to 1 km at about 14 km, and exceeds that of MERRA/MERRA-2 at about 16 km. Thus, in the altitude region of the strong subtropical jets (11–12 km), ERA-I, JRA-55, and CFSR all have finer vertical spacing than MERRA and MERRA-2, and all show similar patterns of differences, with higher frequencies near the upper part of the subtropical jet surrounded by lower frequencies. For the high latitude jets, the patterns are more complex, but consistent with the differences seen in the maps.

In both zonal mean/altitude and map views including all altitudes, the differences seen here are nearly all less than about 10% of the maxima in the frequency distributions, thus amounting to under 20% of the local frequencies except in regions where jets are very uncommon and in the Asian summer monsoon region. (Recall that, as described in Section 2.3, since frequency is expressed as a percent, the ~~absolute arithmetic~~ differences between MERRA-2 and other reanalysis frequency distributions are ~~also in units of percent~~ expressed as percentage points (pp); the relative (percent) differences noted here are obtained by dividing the ~~number pp value~~ in the difference plot by the ~~number percent value~~ in the MERRA-2 frequency distribution plot.) Differences near the 20% level are much more common in the vertical distribution than in the maps, with only the equatorial circulations showing differences this large in the maps. These differences, albeit substantial, are generally either very localized, suggesting small shifts in the identified positions of the jets, or quite broad, suggesting an overall bias in the number of jets. Given these patterns of differences, the picture of the relative jet frequencies as a function of geographic location is very similar in all of the reanalyses.

Figures 9 and 10 show the differences in multiple tropopause frequencies among the reanalyses. The overall spread among the analyses is considerably larger than that seen for the upper tropospheric jets, with differences of up to about 50% in regions of high multiple tropopause frequencies. As with the jets, differences between MERRA and MERRA-2 are usually less than those between MERRA-2 and the other reanalyses. MERRA shows almost uniformly slightly fewer multiple tropopauses than MERRA-2 in DJF; in JJA, there are larger differences (up to 30% of the corresponding frequency) in the SH, with a nearly zonally symmetric pattern of fewer SH multiple tropopauses in midlatitudes and more multiple tropopauses in high latitudes.

In DJF, ERA-I shows fewer multiple tropopauses than MERRA-2 near 30° latitude in both hemispheres, and more at higher latitudes. These differences are largest (up to about 30%) in the regions of the westerly ducts and the westerlies of the Walker circulation. JRA-55 has fewer multiple tropopauses than MERRA-2, with largest differences in DJF in the subtropics in both hemispheres, indicating that the multiple tropopauses associated with the temperature structure of the NH lower stratospheric vortex and subvortex in winter are similarly represented in JRA-55 and in MERRA-2. In JJA, largest differences (up to ~30–40%) are in the SH, from the subtropics to about 65°S. CFSR shows many more multiple tropopauses than any of the other reanalyses globally, with differences from MERRA-2 of 30–50% in midlatitudes and SH winter high latitudes. CFSR also

shows a significant number of multiple tropopauses identified in the tropics, which are not present in any of the other reanalyses, and which are especially prominent along the equator in the longitude region of the Asian summer monsoon during JJA.

The cross-sections in Figure 10 indicate that the primary tropopauses are typically near the same altitude in all reanalyses, with latitudinal differences reflecting those seen in the maps. The secondary tropopauses, however, show quite different distributions in different reanalyses in the SH, with MERRA-2 generally showing a distribution that is more localized in the vertical than that of the other reanalyses: There is thus a deficit of multiple tropopauses near 15–17 km in all other reanalyses (including MERRA) with respect to MERRA-2, flanked by regions with more secondary tropopauses above and below. Multiple tropopauses identified in the polar winter, especially in the SH, are largely a consequence of weak vertical temperature gradients over a large altitude region, which result in “re-crossing” the lapse rate, and are very sensitive to the details of that temperature structure (Manney et al., 2014; Schwartz et al., 2015, and references therein). The systematic difference in structure between MERRA-2 and the other reanalyses appears broadly consistent with differences in zonal mean temperature structure (e.g., Long et al., 2017). Examination of multiple tropopause differences for the earliest and latest ten years studied here indicates that the pattern of differences in secondary tropopause altitude between MERRA-2 and the other reanalyses in the climatology is driven primarily by differences in the early years, with recent years showing smaller differences without the consistent high-low-high pattern seen in the climatology. Evaluations of zonal mean temperature structure for S-RIP (summarized by Long et al., 2017) indicate greatly improved agreement in stratospheric temperatures after 1998, when the transition between TOVS and ATOVS radiances was made. Furthermore, polar vortex temperature diagnostics (similar to those in Lawrence et al., 2015, not shown) [show](#) an abrupt increase in the agreement between reanalyses in the SH vortex at that time that extends down to at least ~ 15 km, below the level of most secondary tropopauses. Together, these suggest that reanalysis temperature differences related to handling of the coarser-resolution TOVS radiances before 1999 is a significant factor in the patterns of SH polar winter multiple tropopause differences seen here. Detailed evaluations of vertical temperature variations in each of these reanalyses, and their impact on multiple tropopause distributions, is work in progress that is beyond the scope of this paper.

In the NH winter (not shown), as is the case in JJA, the primary tropopause altitudes, as well as mid- and low-latitude secondary tropopause altitudes, agree well, with differences reflecting the latitudinal patterns seen in the maps. The secondary tropopause altitudes again differ among the reanalyses, but here it is not a consistent shift with respect to MERRA-2, and significant differences are generally limited to the highest latitudes (poleward of about 70°). These smaller NH differences also appear broadly consistent with the results of Long et al. (2017) and with much smaller differences in temperature diagnostics in the lowest part of the stratospheric vortex.

Figure 11 shows differences among the reanalyses in subvortex jets in NH winter (DJF). Overall, these differences are small. In the preferred region for subvortex jets (highest frequencies in MERRA-2 plots), they show a high bias in ERA-I and a low bias in JRA-55; in the regions where subvortex jets persist at lower latitudes, especially over eastern Asia and the eastern Pacific, the opposite bias is seen, with ERA-I showing fewer and JRA-55 more subvortex jets than in MERRA-2. Differences between MERRA-2 and MERRA and CFSR are smaller than those for ERA-I and JRA-55, with slightly larger maximum frequencies in MERRA than in MERRA-2, and slightly lower maximum frequencies in CFSR. The patterns of merged jets

(subvortex jets that merge into an upper tropospheric jet at the bottom; not shown) and differences in them among reanalyses are very similar to those shown here for all subvortex jets.

The SH winter (JJA, Figure 12) subvortex jets show a similar picture (again, the results are very similar for merged subvortex and upper tropospheric jets, not shown). A slight poleward shift is seen in the preferred position of subvortex jets in MERRA with respect to that in MERRA-2, while ERA-I shows a slight equatorward shift with respect to MERRA-2. JRA-55 shows fewer subvortex jets near the preferred region for them, and more at both higher and lower latitudes, suggesting more variability in their locations, but indicating an equatorward shift with respect to MERRA-2 from about 45°W to 90°E longitude. CFSR shows a pattern that is more complex and longitude-dependent, but suggests a poleward shift of the preferred region with respect to MERRA-2. The zonal mean cross-sections show very small differences between MERRA and MERRA-2 (which have the same vertical grids). The other reanalyses show patterns of differences that are consistent with the vertical grids. ERA-I and JRA-55 have very similar vertical grids, with finer spacing than the ~1.2 km MERRA-2 interval below about 16 km and slightly coarser spacing (up to ~1.4 km) above, while the CFSR resolution remains finer than that of MERRA-2 throughout the region shown (~0.8–1.0 km) (Fujiwara et al., 2017, Figure 3). Consistent with this, and the patterns seen in the maps, ERA-I and JRA-55 show very similar patterns, with regions of higher and lower frequencies dependent on the relative spacing of the vertical grids and bins. For both ERA-I and JRA-55, lower frequencies than MERRA-2 occur over broader latitude regions than do higher frequencies, suggesting that both of these reanalyses often have lower windspeeds in the lowermost stratosphere than MERRA-2. Conversely, CFSR shows considerably higher integrated frequencies consistent with higher overall windspeeds.

3.3 Evaluation of Reanalysis Climatological Annual Cycle

To complement the seasonal snapshots, we show here the climatological annual cycle in the frequency distributions and, for the jets, the associated windspeeds. These are shown for daily values averaged over the 35-year period; thus, while somewhat noisy, they reflect the full degree of scatter and variability in these fields.

Figure 13 shows the frequency distributions and windspeeds for the upper tropospheric jets. While the frequencies evolve through the seasons (as described in detail by Manney et al., 2014), the patterns of differences are quite consistent: MERRA-2 has fewer (and weaker, as seen in the windspeed differences) jets at high latitude than the other reanalyses. ERA-I shows fewer jets than MERRA-2 throughout the domain and year except near each pole (where jet frequencies and windspeeds are both slighter higher than those in MERRA-2), and at the maxima of the frequency distributions. Largest negative differences in the NH subtropical jet are seen in April and May, suggesting that the ERA-I subtropical jet weakens earlier in spring than that in MERRA-2; negative differences in the subtropical jet increase again in October to November, suggesting that the ERA-I subtropical jet also strengthens later in fall. JRA-55 shows similar patterns to ERA-I, including indications that the NH subtropical jet weakens earlier in spring; positive differences near the poles and in much of the SH are larger than those in ERA-I. CFSR shows more jets than MERRA-2 except in low frequency regions in the tropics; the uniformity of the differences throughout the year suggests an overall bias rather than differences in the time of strengthening or weakening. Lower windspeeds are closely correlated with fewer jets except in regions of high windspeeds, where few of the jets are near the threshold value of 40 m/s . The windspeed differences are quite small, usually within $\pm 3 \text{ m/s}$ (with these maximum

values in regions where the differences exceed the range of the color bar). That such small differences in windspeed lead to significant differences in the jet cores identified highlights the sensitivity of threshold diagnostics such as the jet locations; such diagnostics are, however, widely used because of their value in describing/understanding atmospheric processes.

Figure 14 summarizes how the upper tropospheric jet frequencies and windspeeds are related. The MERRA-2 distribution of frequency versus windspeed constructed from the values in Figure 13 shows peaks in the jet frequency distribution near 45 m/s and 60 m/s . The latter peak arises primarily from the strong jets that persist with nearly constant locations through winter in each hemisphere, while the former reflects the more variable jets in summer and highly variable regions such as over North America, as well as the tropical westerly and easterly jets (which have lower windspeeds). Very similar patterns appear in the other reanalyses (not shown), with the slopes of the linear fits ranging from 0.530 (ERA-I) to 0.564 (CFSR), and the correlation coefficients from 0.850 (ERA-I) to 0.865 (JRA-55). If differences in windspeeds were the primary reason for the differences in jet frequencies among the reanalyses, we would expect the difference correlation plots to peak at negative/positive frequencies and negative/positive windspeeds. This pattern is seen clearly for ERA-I (third row in Figure 14), where weaker jet windspeeds in ERA-I correspond closely to lower frequencies, that differences in jet frequencies between ERA-I and MERRA-2 arise largely from lower peak windspeeds in ERA-I is consistent with the results shown previously and with the coarser resolution of ERA-I. MERRA and JRA-55 show a less distinct pattern of this sort, suggesting that some of the differences arise from typically weaker peak windspeeds in those two reanalyses than in MERRA-2; it is not so clear in these cases whether the weaker windspeeds are related to resolution, since MERRA has the same latitudinal and only slightly coarser longitudinal resolution than MERRA-2, and JRA-55 only slightly coarser latitudinal and longitudinal resolution. The CFSR comparison shows higher frequencies than MERRA-2 that are nearly independent of windspeed, suggesting that windspeed differences are not the primary reason for the frequency differences.

The multiple tropopause frequencies (Figure 15) show lower values in the preferred region along the subtropical jet in both hemispheres in MERRA, ERA-I, and JRA-55 than in MERRA-2 throughout the year. As shown in the maps, CFSR has higher multiple tropopause frequencies globally, consistent with Figure 9. The magnitude of the differences between all reanalyses is largest in the SH winter, with MERRA and ERA-I showing positive differences near the pole that persist into November. Large, but gradually decreasing, negative differences in SH midlatitudes (about 30° to 60°S) during May through August in MERRA, ERA-I, and JRA-55 suggest that multiple tropopauses in MERRA-2 form later in this region. While systematic differences are seen in the altitude of the primary tropopause, the magnitude of these is typically no more than about 0.5–0.7 km, which is consistent with differences arising from slightly different spacing of model levels that are ~ 0.8 to 1.2 km apart at these altitudes. Primary tropopause altitude differences are not very meaningful in the tropics where multiple tropopause frequencies are very low.

The annual cycle of merged subvortex jet frequencies is shown in Figure 16; the differences in total subvortex jet frequencies (not shown) have very similar patterns to those for the merged jet. Small differences are seen throughout the winter seasons in each hemisphere that are consistent with those seen in maps (e.g., Figures 11 and 12), with ERA-I showing lower frequencies at low latitudes and higher frequencies at high latitudes in NH winter, and JRA-55 showing the opposite. Differences are typically no more than about 10% of the frequency in MERRA-2. The minimum altitudes of the merged jets are very close in MERRA

and MERRA-2, consistent with the use of the same vertical grids. Other reanalyses show differences in minimum altitude that can exceed 2 km, with ERA-I generally having higher minimum altitudes and JRA-55 lower ones, and CFSR showing latitudinally and seasonally varying biases. The differences are generally largest in SH spring and NH fall.

4 Summary and Conclusions

5 We have compared the climatologies of upper tropospheric jets, multiple tropopause, and subvortex jets in the five latest generation high-resolution reanalyses, for the 35-year period spanning 1980 through 2014. While overall qualitative agreement is very good, significant quantitative differences illuminate the limits and uncertainties of these reanalyses for UTLS dynamical studies (which in turn have implications for transport and composition of radiatively active trace gases in the UTLS).

Comparisons of occurrence frequency distributions of jets and tropopause of each of the other reanalyses were made against
10 those in MERRA-2, the most recent of the full-input reanalyses to be released. The other analyses are MERRA, ERA-Interim, JRA-55, and NCEP's CFSR. Comparisons of different data products from each of these centers highlight some of the sensitivities of the representation of UTLS dynamics to model and data assimilation configuration:

- The MERRA-2 “ANA” (before incremental analysis update) and “ASM” fields show small differences (typically less than 5% for jet frequency distributions and less than 10% for tropopause characteristics) that are nevertheless significant
15 in some regions. For most analyses, including the current work, the ASM fields are recommended as providing the most complete and dynamically consistent products.
- Differences between the newly available model level CFSR products and those interpolated to a coarser pressure-level grid illustrate the importance of vertical resolution/grid spacing for UTLS analyses. While differences are, as expected, largest for multiple tropopause distributions (up to ~60%), significant discrepancies (commonly 15 to 30%) are also
20 seen in upper tropospheric jets, and in merged upper tropospheric and subvortex jets.
- Comparison of JMA's JRA-55 with its conventional data only counterpart, JRA-55C, reveals quite small differences in the NH and large differences in the SH, reflecting the sparsity of conventional data in the SH. The largest differences are in high-latitude SH fall and winter multiple tropopause, which show a dipole pattern in longitude of higher/lower frequencies in JRA-55C poleward of about 65°S (resulting in 20–30% differences in frequencies), and fewer multiple
25 tropopause around the globe near 40–60°S.

Comparisons of jets and multiple tropopause in each of the other reanalyses with those in MERRA-2 reveal the following systematic differences:

Upper tropospheric jet frequency distributions are generally lower in MERRA, ERA-I, and JRA-55 than in MERRA-2 and generally higher in CFSR. In the polar regions, however, MERRA-2 shows lower frequencies than any of the other reanalyses.

30 Tropical jets associated with the Walker circulation westerlies in NH winter are less frequent/persistent in all of the other reanalyses than in MERRA-2; Asian and Australian monsoon easterlies are less frequent in ERA-I and JRA-55, and more frequent in CFSR. Monsoon differences between MERRA and MERRA-2 are more complicated, with a stronger Australian

monsoon and shift in position/size of the Asian monsoon. Differences in upper tropospheric jet altitude are consistent with the differences in assimilation model vertical grids, with ERA-I and JRA-55 (which have very similar vertical grids) showing more jets than MERRA-2 near the subtropical jet maximum and fewer above and below. A strong upward shift in high-latitude jets in MERRA-2 versus MERRA is seen in SH winter.

- 5 **Multiple tropopause frequency distributions** indicate fewer globally in ERA-I and JRA-55 than in MERRA-2, and more in CFSR. As for the upper tropospheric jets, the only significant differences between MERRA and MERRA-2 are in the SH winter in middle to high latitudes. Primary tropopause altitudes are similar in all reanalyses, but secondary tropopause altitudes in the SH in MERRA-2 are more clustered at the same altitude than in the other reanalyses. CFSR shows many more multiple tropopauses in the tropics than the other reanalyses.
- 10 **Subvortex jet frequency distributions** show relatively small differences among the reanalyses. ERA-I shows slightly higher, and JRA-55 slightly lower, maximum subvortex jet frequencies in NH winter, while MERRA / MERRA-2 NH winter differences are nearly negligible. CFSR / MERRA-2 differences are also very small in NH winter. In SH winter, differences in geographic existence patterns are again small, with slight latitude shifts indicated in MERRA, ERA-I, and CFSR, and a less sharply peaked pattern in JRA-55 than in MERRA-2. Vertical distributions show patterns related primarily to the differing
15 vertical grids.

In general, the reanalyses show modest quantitative differences in the distributions of UTLS jets and multiple tropopauses, most of which are consistent with expectations based on differences in assimilation model grids and resolution. ERA-I typically shows a significant low bias in upper tropospheric jets with respect to MERRA-2 and JRA-55 a more modest one, while CFSR shows a high bias in both upper tropospheric jets and multiple tropopauses. With a few exceptions, differences between
20 MERRA and MERRA-2 are very small. These patterns of frequency differences may arise partially from the fact that ERA-I has coarser and CFSR finer native horizontal resolution than MERRA and MERRA-2 – for these threshold phenomena, a finer grid is likely to more accurately pinpoint the location where that threshold is crossed, particularly in the case of upper tropospheric jets, for which the criterion is a single maximum in the latitude/altitude plane. For multiple tropopauses, the vertical grid spacing and details of vertical temperature structure are particularly critical.

- 25 The only places where MERRA and MERRA-2 show substantial differences are in the mid- to high-latitude SH winter upper tropospheric jets and multiple tropopauses, and in the upper tropospheric jets associated with the tropical circulations during the solstice seasons. These are also times and places where some of the largest differences from the other reanalyses are seen. The MERRA/MERRA-2 difference in multiple tropopauses are more pronounced in the earliest decade of the comparison than in the latest, suggesting that they arise from differences in temperature structure (as reported in zonal mean fields by Long et al.,
30 2017) related to changes in the satellite radiance inputs to the reanalyses. Note that another difference between MERRA-2 and the other reanalyses is its assimilation of MLS and OMI ozone data in a system where assimilated ozone is interactive with the radiation code; in the SH winter and spring this significantly changes the assimilated ozone (Davis et al., 2017; Wargan et al., 2017); whether significant differences in temperature structure may arise from this is a subject for future exploration. Coy et al. (2016) showed improved representation of the Quasi-Biennial Oscillation in MERRA-2 versus MERRA (in part because of

improvements in the equatorial gravity wave drag parameterization) that likely reflects a general improvement in capturing tropical circulations.

The differences overall show very good qualitative agreement among the reanalyses, giving high confidence in the large scale climatological features of the UTLS jet and multiple tropopause distributions. Figure 17 shows that, for most fields compared here, in the largest scale global picture, the reanalyses agree quite well quantitatively; especially in the case of the jets (upper tropospheric and subvortex), this likely reflects the overall similar and accurate representation of large scale dynamics in all of the models and the first-order effects of assimilating largely the same datasets. This view is supported by the fact that (in contrast to the situation for multiple tropopauses) examination of the first and last decades of the comparison period (not shown) indicates no substantial changes in the upper tropospheric and subvortex jet differences. As noted above, and seen in the second row of Figure 17, larger differences are seen globally in multiple tropopause occurrence and altitudes than for the jets, with CFSR showing higher frequencies globally and significant differences in the peak altitude and altitude distributions of the secondary tropopause. The merge altitude of merged upper tropospheric and subvortex jets (Figure 17, bottom right panel) also shows somewhat larger differences. Multiple tropopause frequencies and altitudes and upper tropospheric/subvortex jet merge altitudes are strongly dependent on vertical resolution and grid spacing, thus differences in reanalysis vertical grids are reflected globally in these fields.

We have shown above that larger quantitative differences are seen on regional and seasonal scales. These differences may have important consequences for the representation or simulation of transport of radiatively active trace gases such as ozone and water vapor in the UTLS; a follow-on paper will examine assimilated ozone in a jet and tropopause focused framework compared with Aura Microwave Limb Sounder observations as a way of assessing these effects. Because derived quantities such as global locations, distributions, and strength of jets cannot be compared directly with observations, the degree of agreement among state-of-the-art reanalyses is an important tool for assessing uncertainties in our knowledge of their climatology and variability. In a concurrent paper, we use agreement among these reanalyses to assess the robustness of variability and trends in upper tropospheric jet locations and windspeeds (Manney and Hegglin, 2017). The significance of the choice of which reanalysis or reanalyses to use will depend strongly on the type of study: While the large scale climatological picture seen in each of the reanalyses is very robust, differences in regional and seasonal distributions, especially of multiple tropopauses and tropical upper tropospheric jets, may have significant consequences. Studies relying on these patterns should thus ideally evaluate more than one reanalysis. Because of the importance of resolution and model grids in characterizing UTLS jet and tropopause structure, assessing the impact of using different reanalyses is particularly critical when assimilated meteorological fields are used to evaluate the representation of UTLS jets and tropopauses in global chemistry-climate models.

5 Data Availability

The datasets used are publicly available, as follows:

- MERRA-2: <https://disc.sci.gsfc.nasa.gov/uui/datasets?keywords=%22MERRA-2%22>
- MERRA: <https://disc.sci.gsfc.nasa.gov/uui/datasets?keywords=%22MERRA%22>

- ERA-I: <http://apps.ecmwf.int/datasets/>
 - JRA-55: Through NCAR RDA at <http://dx.doi.org/10.5065/D6HH6H41>
 - JRA-55C: Through NCAR RDA at <https://doi.org/10.5065/D67H1GNZ>
 - CFSR, pressure level data: Through NCAR RDA at <http://dx.doi.org/10.5065/D69K487J>
- 5 – CFSR model level data: Available upon request from Karen H Rosenlof (karen.h.rosenlof@noaa.gov)
- JETPAC products: Contact Gloria L Manney (manney@nwra.com)

Author contributions. GLM and MIH designed the studies. LFM, GLM, and WHD ran the JETPAC processing and postprocessing. BWK, ZDL, AL, RAF, and WHD obtained, managed, and formatted the reanalysis datasets. KW and SP provided advice and analysis relating to usage and characteristics of MERRA and MERRA-2 reanalyses. ZDL, AL, MIH, MJS, MLS, and LFM provided advice on figure selection, content, layout, and interpretation. GLM wrote the paper. The coauthors read and commented on the manuscript.

Competing Interests. The authors declare that they have no conflict of interest.

Acknowledgements. We thank the MLS team for computational, data processing, management, and analysis support; Nathaniel Livesey ~~for~~ ~~helpful suggestions~~, Clara Orbe, Larry Takacs, Larry Coy, Austin Conaty, Juan Añel, and two anonymous referees for helpful comments; NASA's GMAO, ECMWF, JMA, and NCEP for providing their assimilated data products; and Amy Butler, Jeremiah Sjoborg, Craig Long, Sean Davis, Henry L Miller, and Karen Rosenlof for processing and providing the model level CFSR data. Work at the Jet Propulsion Laboratory, California Institute of Technology, was done under contract with the National Aeronautics and Space Administration.

References

- Archer, C. L. and Caldeira, K.: Historical Trends in the Jet Streams, *Geophys. Res. Lett.*, 35, L08803, doi:10.1029/2008GL033614, 2008.
- Bai, K., Chang, N.-B., and Gao, W.: Quantification of relative contribution of Antarctic ozone depletion to increased austral extratropical precipitation during 1979–2013, *J. Geophys. Res.*, 121, 1459–1474, doi:10.1002/2015JD024247, <http://dx.doi.org/10.1002/2015JD024247>,
5 2016.
- Barnes, E. A. and Screen, J. A.: The impact of Arctic warming on the midlatitude jet-stream: Can it? Has it? Will it?, *Wiley Interdisciplinary Reviews: Climate Change*, 6, 277–286, 2015.
- Bloom, S. C., Takacs, L. L., da Silva, A. M., and Ledvina, D.: Data assimilation using incremental analysis updates, *Mon. Weather Rev.*, 124, 1256–1271, 1996.
- 10 Boothe, A. C. and Homeyer, C. R.: Global large-scale stratosphere-troposphere exchange in modern reanalyses, *Atmos. Chem. Phys. Disc.*, doi:10.5194/acp-2016-788, 2016.
- Bosilovich, M., Akella, S., Coy, L., Cullather, R., Draper, C., Gelaro, R., Kovach, R., Liu, Q., Molod, A., Norris, P., Wargan, K., Chao, W., Reichle, R., Takacs, L., Vikhliav, Y., Bloom, S., Collow, A., Firth, S., Labow, G., Partyka, G., Pawson, S., Reale, O., Schubert, S. D., and Suarez, M.: MERRA-2: Initial Evaluation of the Climate, Series on Global Modeling and Data Assimilation, NASA/TM–2015-104606,
15 Vol. 43, NASA, 2015.
- Bosilovich, M. G., Lucchesi, R., and Suarez, M.: MERRA-2: File Specification, Office Note 9, GMAO Office Note, 73 pp, available from http://gmao.gsfc.nasa.gov/pubs/office_notes/, 2016.
- Coy, L., Wargan, K., Molod, A. M., McCarty, W. R., and Pawson, S.: Structure and Dynamics of the Quasi-Biennial Oscillation in MERRA-2, *J. Clim.*, 29, 5339–5354, doi:10.1175/JCLI-D-15-0809.1, 2016.
- 20 Davis, N. and Birner, T.: On the Discrepancies in Tropical Belt Expansion between Reanalyses and Climate Models and among Tropical Belt Width Metrics, *J. Clim.*, 30, 1211–1231, 2017.
- Davis, S. M. and Rosenlof, K. H.: A multidagnostic intercomparison of tropical-width time series using reanalysis and satellite observations, *J. Clim.*, 25, 1061–1078, 2012.
- Davis, S. M., Hegglin, M. I., Fujiwara, M., Dragani, R., Harada, Y., Kobayashi, C., Long, C., Manney, G. L., Nash, E., Tegtmeier, S., Wang,
25 T., Wargan, K., and Wright, J. S.: Assessment of upper tropospheric and stratospheric water vapour and ozone in reanalyses, *Atmos. Chem. Phys. Disc.*, p. submitted, 2017.
- Dee, D. P., Uppala, S. M., Simmons, A. J., Berrisford, P., Poli, P., Kobayashi, S., Andrae, U., Balmaseda, M. A., Balsamo, G., Bauer, P., Bechtold, P., Beljaars, A. C. M., van de Berg, L., Bidlot, J., Bormann, N., Delsol, C., Dragani, R., Fuentes, M., Geer, A. J., Haimberger, L., Healy, S. B., Hersbach, H., Hólm, E. V., Isaksen, I., Kållberg, P., Köhler, M., Matricardi, M., McNally, A. P., Monge-Sanz, B. M., Morcrette, J.-J., Park, B.-K., Peubey, C., de Rosnay, P., Tavolato, C., Thépaut, J.-N., and Vitart, F.: The ERA-Interim reanalysis: configuration and performance of the data assimilation system, *Q. J. R. Meteorol. Soc.*, 137, 553–597, 2011.
- 30 Delworth, T. L. and Zeng, F.: Regional rainfall decline in Australia attributed to anthropogenic greenhouse gases and ozone levels, *Nature Geosci.*, 7, 583–587, 2014.
- Ebita, A. et al.: The Japanese 55-year Reanalysis “JRA-55”: An interim report, *SOLA*, 7, 149–152, 2011.
- 35 Francis, J. A. and Vavrus, S. J.: Evidence linking Arctic amplification to extreme weather in mid-latitudes, *Geophys. Res. Lett.*, 39, L06801, doi:10.1029/2012GL051000, 2012.

- Fujiwara, M., Wright, J. S., Manney, G. L., Gray, L. J., Anstey, J., Birner, T., Davis, S., Gerber, E. P., Harvey, V. L. and Hegglin, M. I., Homeyer, C. R., Knox, J. A., Krüger, K., Lambert, A., Long, C. S., Martineau, P., Monge-Sanz, B. M., Santee, M. L., Tegtmeier, S., Chabrillat, S., Tan, D. G. H., Jackson, D. R., Polavarapu, S., Compo, G. P., Dragani, R., Ebisuzaki, W., Haraña, Y., Kobayashi, C., McCarty, W., Onogi, K., Pawson, S., Simmons, A., Wargan, K., Whitaker, J. S., and Zou, C.-Z.: Introduction to the SPARC Reanalysis Intercomparison Project (S-RIP) and overview of the reanalysis systems, *Atmos. Chem. Phys.*, 17, 1417–1452, doi:10.5194/acp-17-1417-2017, www.atmos-chem-phys.net/17/1417/2017/, 2017.
- Gelaro, R. et al.: The Modern-Era Retrospective Analysis for Research and Applications, Version-2 (MERRA-2), *J. Clim.*, doi:doi:10.1175/JCLI-D-16-0758.1, in press, 2017.
- Gettelman, A., Hegglin, M. I., Son, S.-W., Kim, J., Fujiwara, M., Birner, T., Kremser, S., Rex, M., Añel, J. A., Akiyoshi, H., Austin, J., Bekki, S., Braesike, P., Brühl, C., Butchart, N., Chipperfield, M., Dameris, M., Dhomse, S., Garny, H., Hardiman, S. C., Jöckel, P., Kinnison, D. E., Lamarque, J. F., Mancini, E., Marchand, M., Michou, M., Morgenstern, O., Pawson, S., Pitari, G., Plummer, D., Pyle, J. A., Rozanov, E., Scinocca, J., Shepherd, T. G., Shibata, K., Smale, D., Teyssède, H., and Tian, W.: Multimodel assessment of the upper troposphere and lower stratosphere: Tropics and global trends, *J. Geophys. Res.*, 115, n/a–n/a, doi:10.1029/2009JD013638, <http://dx.doi.org/10.1029/2009JD013638>, d00M08, 2010.
- Global Modeling and Assimilation Office (GMAO): MERRA-2 inst3_3d_asm_Nv: 3d, 3-Hourly, Instantaneous, Model-Level, Assimilation, Assimilated Meteorological Fields V5.12.4, Greenbelt, MD, USA, Goddard Earth Sciences Data and Information Services Center (GES DISC), Accessed 1 November 2015, doi:10.5067/WWQSXQ8IVFW8, 2015a.
- Global Modeling and Assimilation Office (GMAO): MERRA-2 inst3_3d_asm_Nv: 3d, 6-Hourly, Instantaneous, Model-Level, Analysis, Analyzed Meteorological Fields V5.12.4, Greenbelt, MD, USA, Goddard Earth Sciences Data and Information Services Center (GES DISC), Accessed 1 August 2016, doi:10.5067/IUUF4WB9FT4W, 2015b.
- Gómara, I., Pinto, J. G., Woollings, T., Masato, G., Zurita-Gotor, P., and Rodríguez-Fonseca, B.: Rossby wave-breaking analysis of explosive cyclones in the Euro-Atlantic sector, *Q. J. R. Meteorol. Soc.*, 140, 738–753, doi:10.1002/qj.2190, <http://dx.doi.org/10.1002/qj.2190>, 2014.
- Grise, K. M., Polvani, L. M., Tselioudis, G., Wu, Y., and Zelinka, M. D.: The ozone hole indirect effect: Cloud-radiative anomalies accompanying the poleward shift of the eddy-driven jet in the Southern Hemisphere, *Geophys. Res. Lett.*, 40, 1–5, doi:10.1002/grl.50675, 2013.
- Harnik, N., Garfinkel, C. I., and Lachmy, O.: The influence of jet stream regime on extreme weather events, in “Dynamics and Predictability of Large-Scale, High-Impact Weather and Climate Events”, 2, 79–94, 2016.
- Homeyer, C., Bowman, K. P., and Pan, L. L.: Extratropical tropopause transition layer characteristics from high-resolution sounding data, *J. Geophys. Res.*, 115, D13108, doi:10.1029/2009JD013664, 2010.
- Homeyer, C. R., Bowman, K. P., Pan, L. L., Atlas, E. L., Gao, R.-S., and Campos, T. L.: Dynamical and chemical characteristics of tropospheric intrusions observed during START08, *J. Geophys. Res.*, 116, D06111, doi:10.1029/2010JD015098, 2011.
- Horinouchi, T., Sassi, F., and Boville, B. A.: Synoptic-scale Rossby waves and the geographic distribution of lateral transport routes between the tropics and the extratropics in the lower stratosphere, *J. Geophys. Res.*, 105, 26,579–26,592, 2000.
- Huang, D.-Q., Zhu, J., Zhang, Y.-C., Wang, J., and Kuang, X.-Y.: The Impact of the East Asian Subtropical Jet and Polar Front Jet on the Frequency of Spring Persistent Rainfall over Southern China in 1997–2011, *J. Clim.*, 28, 6054–6066, doi:10.1175/JCLI-D-14-00641.1, 2015.
- Hudson, R. D.: Measurements of the movement of the jet streams at mid-latitudes, in the Northern and Southern Hemispheres, 1979 to 2010, *Atmos. Chem. Phys.*, 12, 7797–7808, 2012.

- Karnauskas, K. B. and Ummenhofer, C. C.: On the dynamics of the Hadley circulation and subtropical drying, *Clim. Dyn.*, 42, 2259–2269, doi:10.1007/s00382-014-2129-1, <http://dx.doi.org/10.1007/s00382-014-2129-1>, 2014.
- Kobayashi, C. A., Endo, H., Ota, Y., Kobayashi, C., Onoda, H., Harada, Y., Onogi, K., and Kamahori, H.: Preliminary results of the JRA-55C, an atmospheric reanalysis assimilating conventional observations only, *Sci. Online Lett. Atmos.*, 10, 78–82, 2014.
- 5 Kobayashi, S., Ota, Y., Harada, Y., Ebata, A., Moriya, M., Onoda, H., Onogi, K., Kamahori, H., Kobayashi, C., Endo, H., Miyaoka, K., and Takahashi, K.: The JRA-55 Reanalysis: General Specification and Basic Characteristics, *J. Meteor. Soc. Japan*, 93, doi:10.2151/jmsj.2015-001, 2015.
- Lawrence, Z. D., Manney, G. L., Minschwaner, K., Santee, M. L., and Lambert, A.: Comparisons of polar processing diagnostics from 34 years of the ERA-Interim and MERRA reanalyses, *Atmos. Chem. Phys.*, 15, 3873–3892, 2015.
- 10 Lin, M., Horowitz, L. W., Oltmans, S. J., Fiore, A. M., and Fan, S.: Tropospheric ozone trends at Mauna Loa Observatory tied to decadal climate variability, *Nature Geosci.*, 7, 136–143, 2014.
- Lin, M., Fiore, A. M., Horowitz, L. W., Langford, A. O., Oltmans, S. J., Tarasick, D., and Rieder, H. E.: Climate variability modulates western US ozone air quality in spring via deep stratospheric intrusions, *Nature Commun.*, 6, 2015.
- Long, C. S., Fujiwara, M., Davis, S., Mitchell, D. M., and Wright, C. J.: Climatology and Interannual Variability of Dynamic Variables in Multiple Reanalyses Evaluated by the SPARC Reanalysis Intercomparison Project (S-RIP), *Atmos. Chem. Phys. Disc.*, 2017, doi:10.5194/acp-2017-289, <http://www.atmos-chem-phys-discuss.net/acp-2017-289/>, 2017.
- 15 Lorenz, D. J. and DeWeaver, E. T.: Tropopause height and zonal wind response to global warming in the IPCC scenario integrations, *J. Geophys. Res.*, 112, D10119, doi:10.1029/2006JD008087, 2007.
- Lucas, C., Timbal, B., and Nguyen, H.: The expanding tropics: A critical assessment of the observational and modeling studies, *WIREs: Climate Change*, 5, 89–112, doi:10.1002/wcc.251, <http://dx.doi.org/10.1002/wcc.251>, 2014.
- 20 Manney, G. L. and Hegglin, M. I.: Seasonal and Regional Variations in Long-Term Changes in Upper Tropospheric Jets from Reanalyses, *submitted to J. Clim.*, 2017.
- Manney, G. L., Hegglin, M. I., Daffer, W. H., Santee, M. L., Ray, E. A., Pawson, S., Schwartz, M. J., Boone, C. D., Froidevaux, L., Livesey, N. J., Read, W. G., and Walker, K. A.: Jet characterization in the upper troposphere/lower stratosphere (UTLS): Applications to climatology and transport studies, *Atmos. Chem. Phys.*, 11, 6115–6137, 2011.
- 25 Manney, G. L., Hegglin, M. I., Daffer, W. H., Schwartz, M. J., Santee, M. L., and Pawson, S.: Climatology of Upper Tropospheric/Lower Stratospheric (UTLS) Jets and Tropopauses in MERRA, *J. Clim.*, 27, 3248–3271, 2014.
- Messori, G. and Caballero, R.: On double Rossby wave breaking in the North Atlantic, *J. Geophys. Res.*, 120, 11,129–11,150, doi:10.1002/2015JD023854, <http://dx.doi.org/10.1002/2015JD023854>, 2015.
- 30 Messori, G., Caballero, R., and Gaetani, M.: On Cold Spells in North America and Storminess in Western Europe, *Geophys. Res. Lett.*, pp. 6620–6628, 2016.
- Molod, A., Takacs, L., Suarez, M., Bacmeister, J., Song, I.-S., and Eichmann, A.: The GEOS-5 atmospheric general circulation model: Mean climate and development from MERRA to Fortuna, *Tech. Rep. TM-2012-104606*, NASA, Goddard Space Flight Center, 2012.
- Molod, A., Takacs, L., Suarez, M., and Bacmeister, J.: Development of the GEOS-5 Atmospheric General Circulation Model: Evolution from MERRA to MERRA-2, *Geosci. Model Dev.*, 8, 1339–1356, 2015.
- 35 Neu, J. L., Flury, T., Manney, G. L., Santee, M. L., Livesey, N. J., and Worden, J.: Tropospheric Ozone Variations Governed by Changes in the Stratospheric Circulation, *Nature Geosci.*, 7, 340–344, 2014.

- Olsen, M. A., Douglass, A. R., and Schoeberl, M. R.: Estimating downward cross-tropopause ozone flux using column ozone and potential vorticity, *J. Geophys. Res.*, 107, 4636, doi:10.1029/2001JD002041, 2002.
- Olsen, M. A., Wargan, K., and Pawson, S.: Tropospheric column ozone response to ENSO in GEOS-5 assimilation of OMI and MLS ozone data, *Atmos. Chem. Phys.*, 16, 7091–7103, doi:10.5194/acp-16-7091-2016, <http://www.atmos-chem-phys.net/16/7091/2016/>, 2016.
- 5 Peña-Ortiz, C., Gallego, D., Ribera, P., Ordóñez, P., and Álvarez-Castro, M. D. C.: Observed trends in the global jet stream characteristics during the second half of the 20th century, *J. Geophys. Res.*, 118, 2702–2713, doi:10.1002/jgrd.50305, <http://dx.doi.org/10.1002/jgrd.50305>, 2013.
- Pinto, J. G., Gómara, I., Masato, G., Dacre, H. F., Woollings, T., and Caballero, R.: Large-scale dynamics associated with clustering of extratropical cyclones affecting Western Europe, *J. Geophys. Res.*, 119, 13,704–13,719, doi:10.1002/2014JD022305, <http://dx.doi.org/10.1002/2014JD022305>, 2014.
- 10 Pinto, Joaquim G. and Zacharias, S., Fink, A. H., and Leckebusch, Gregor C. and Ulbrich, U.: Factors contributing to the development of extreme North Atlantic cyclones and their relationship with the NAO, *Clim. Dyn.*, 32, 711–737, doi:10.1007/s00382-008-0396-4, <http://dx.doi.org/10.1007/s00382-008-0396-4>, 2009.
- Polvani, L. M., Waugh, D. W., Correa, G. J., and Son, S.-W.: Stratospheric ozone depletion: The main driver of twentieth-century atmospheric circulation changes in the Southern Hemisphere, *J. Clim.*, 24, 795–812, 2011.
- 15 Price, C., Stone, L., Huppert, A., Rajagopalan, B., and Alpert, P.: A possible link between El Niño and precipitation in Israel, *Geophys. Res. Lett.*, 25, 3963–3966, doi:10.1029/1998GL900098, <http://dx.doi.org/10.1029/1998GL900098>, 1998.
- Raible, C. C., Luksch, U., and Fraedrich, K.: Precipitation and Northern Hemisphere regimes, *Atmos. Sci. Lett.*, 5, 43–55, doi:10.1016/j.atmoscilet.2003.12.001, <http://dx.doi.org/10.1016/j.atmoscilet.2003.12.001>, 2004.
- 20 Randel, W. J., Seidel, D. J., and Pan, L.: Observational characteristics of double tropopauses, *J. Geophys. Res.*, 112, D07309, doi:10.1029/2006JD007904, 2007.
- Rienecker, M. M. et al.: MERRA: NASA's Modern-Era Retrospective Analysis for Research and Applications, *J. Clim.*, 24, 3624–3648, 2011.
- Saha, S. et al.: The NCEP Climate Forecast System Reanalysis, *Bull. Am. Meteor. Soc.*, 91, 1015–1057, 2010.
- 25 Schwartz, M. J., Manney, G. L., Hegglin, M. I., Livesey, N. J., Santee, M. L., and Daffer, W. H.: Climatology and variability of trace gases in extratropical multiple tropopause regions from MLS, HIRDLS and ACE-FTS measurements, *J. Geophys. Res.*, 120, 843–867, doi:10.1002/2014JD021964, 2015.
- Seidel, D. J. and Randel, W. J.: Variability and trends in the global tropopause estimated from radiosonde data, *J. Geophys. Res.*, 111, D21101, doi:10.1029/2006JD007363, 2006.
- 30 Staten, P. W., Grise, K. M., and Davis, S. M.: The Width of the Tropics: Climate Variations and Their Impacts, *SPARC Newsletter*, 46, 26–31, 2016.
- Takacs, L. L., Suárez, M. J., and Todling, R.: Maintaining atmospheric mass and water balance in reanalyses, *Q. J. R. Meteorol. Soc.*, 142, 1565–1573, 2016.
- Wargan, K., Labow, G., Frith, S., Pawson, S., Livesey, N., and Partyka, G.: Evaluation of the Ozone Fields in NASA's MERRA-2 Reanalysis., *J. Clim.*, 30, 2961–2988, doi:10.1175/JCLI-D-16-0699.1, 2017.
- 35 Waugh, D. W., Garfinkel, C. I., and Polvani, L. M.: Drivers of the Recent Tropical Expansion in the Southern Hemisphere: Changing SSTs or Ozone Depletion?, *J. Clim.*, 28, 6581–6586, doi:10.1175/JCLI-D-15-0138.1, <http://dx.doi.org/10.1175/JCLI-D-15-0138.1>, 2015.
- WMO: Scientific assessment of ozone depletion: 2010, *Global Ozone Res. and Monit. Proj. Rep. 52*, Geneva, Switzerland, 2011.

- Woollings, T., Papritz, L., Mbengue, C., and Spengler, T.: Diabatic heating and jet stream shifts: A case study of the 2010 negative North Atlantic Oscillation winter, *Geophys. Res. Lett.*, 43, 2016.
- Xie, Z., Du, Y., and Yang, S.: Zonal Extension and Retraction of the Subtropical Westerly Jet Stream and Evolution of Precipitation over East Asia and the Western Pacific, *J. Clim.*, 28, 6783–6798, doi:10.1175/JCLI-D-14-00649.1, 2015.

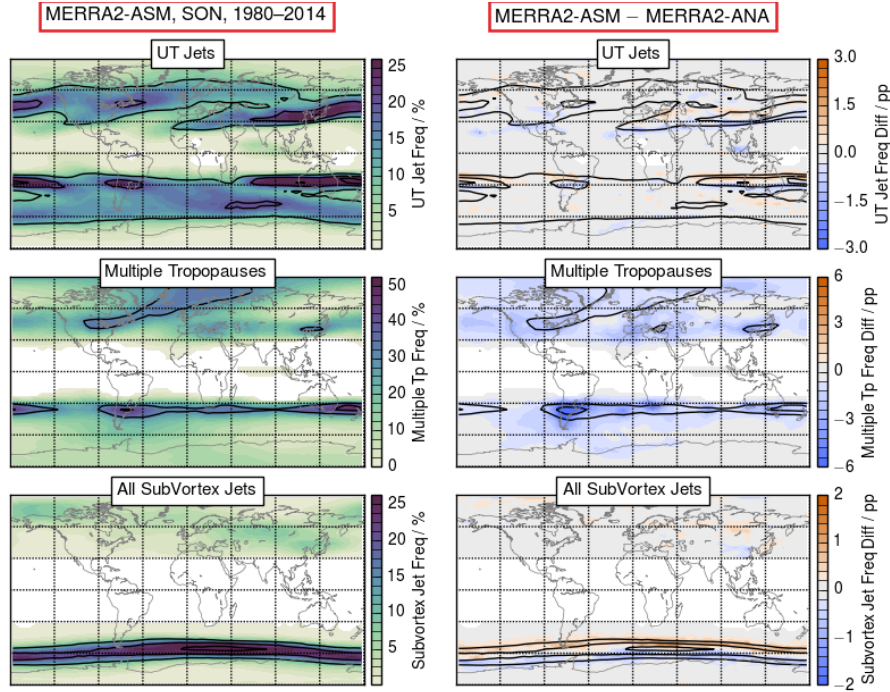


Figure 1. Seasonal maps for SON in 1980 through 2014 of MERRA-2 frequency distributions, from ASM (see text; left) fields, and the difference between ASM and ANA (see text). The rows show (top to bottom): upper tropospheric jet frequency, multiple tropopause frequency, and frequency of subvortex jets. Overlaid contours highlight the ASM distributions on the left (ASM plots) and ANA distributions on the right (difference plots). Frequencies are normalized as described in Section 2.3. Overlaid contours show frequency values from each reanalysis of 10, 20, and 30% for upper tropospheric and subvortex jets, and 30, 45, and 60% for multiple tropopauses; the smallest value is always the largest or “outermost” contour. In the difference plots, blues/oranges indicate negative/positive differences. In this and all following figures, frequency distributions are expressed in percent (%) and arithmetic differences of frequency distributions in percentage points (pp).

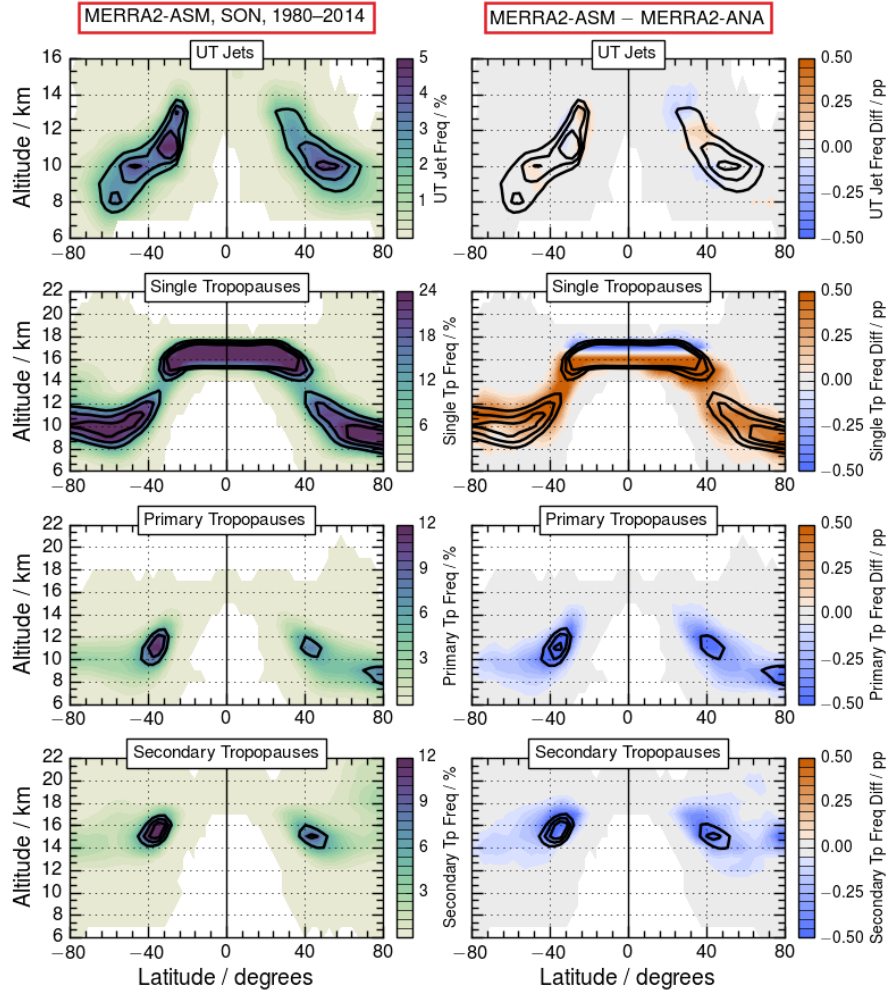


Figure 2. Seasonal cross-sections for SON in 1980 through 2014 of MERRA-2 frequency distributions, from ASM (left) and the difference between ANA and ASM (right). The rows show (top to bottom): upper tropospheric jet frequency, single tropopause frequency, frequency of primary multiple tropopause, and frequency of secondary multiple tropopause. Overlaid contours highlight the ASM distributions on the left and ANA distributions on the right. Frequencies are normalized as described in Section 2.3. Overlaid contours show frequency values from each reanalysis of 2, 3, and 4% for upper tropospheric jets and 12, 18, and 24% for multiple tropopauses; the smallest value is always the largest or “outermost” contour. In the difference plots, blues/oranges indicate negative/positive differences..

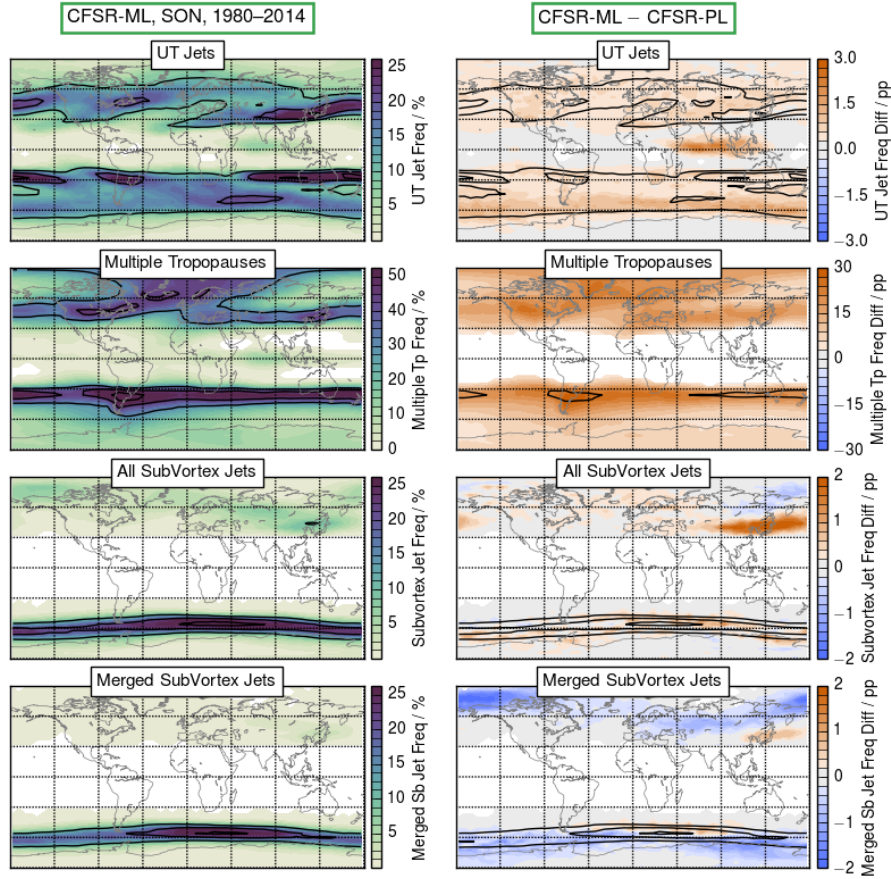


Figure 3. Seasonal maps for SON in 1980 through 2014 of CFSR frequency distributions, from model level data (left) and the difference between model and pressure level data (right). Layout is as in Figure 1, except frequencies of merged subvortex jets are shown in the fourth row.

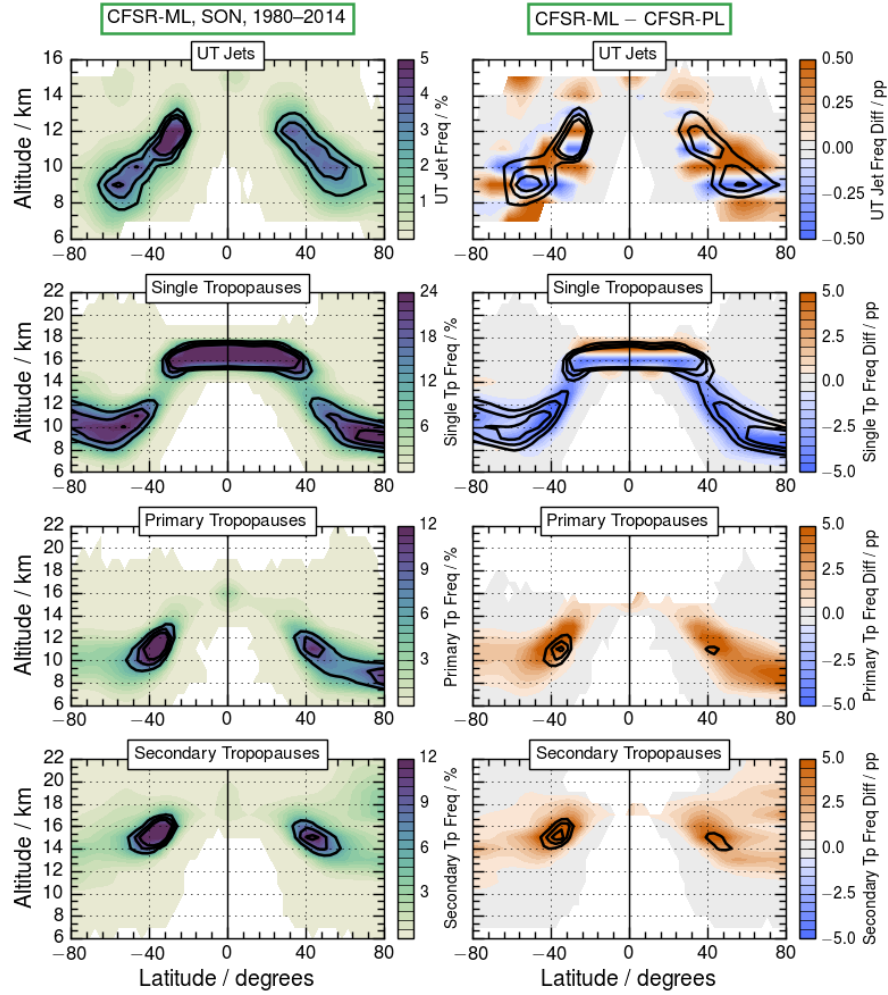


Figure 4. Seasonal cross-sections for SON in 1980 through 2014 of CFSR frequency distributions, from model level data (left) and the difference between model and pressure level data (right). Layout is as in Figure 2.

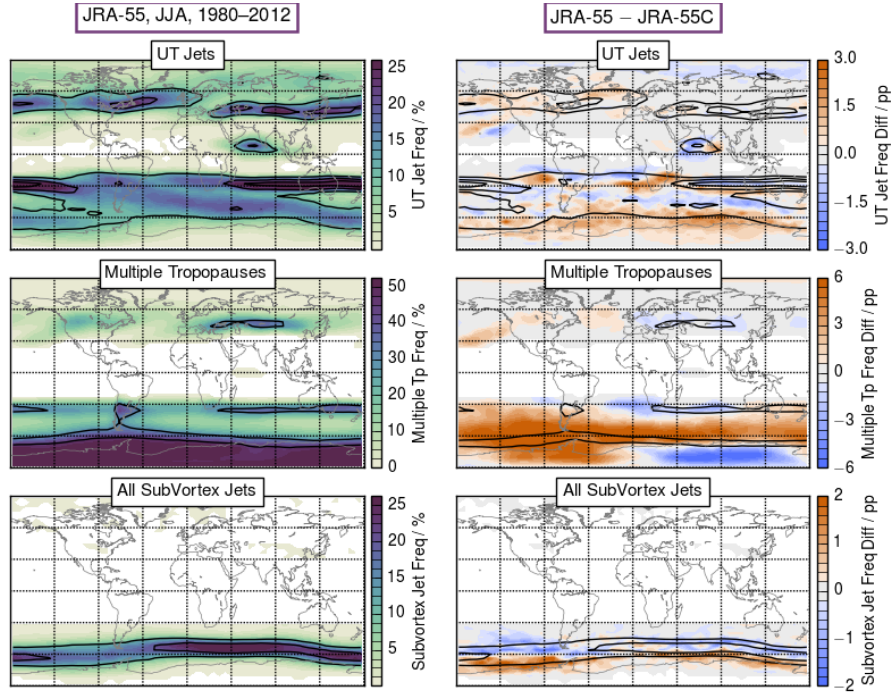


Figure 5. Seasonal maps for of frequency distributions during JJA in 1980 through 2012 of JRA-55 (left) fields and the difference between JRA-55 and JRA-55C fields (right). Layout is as in Figure 1.

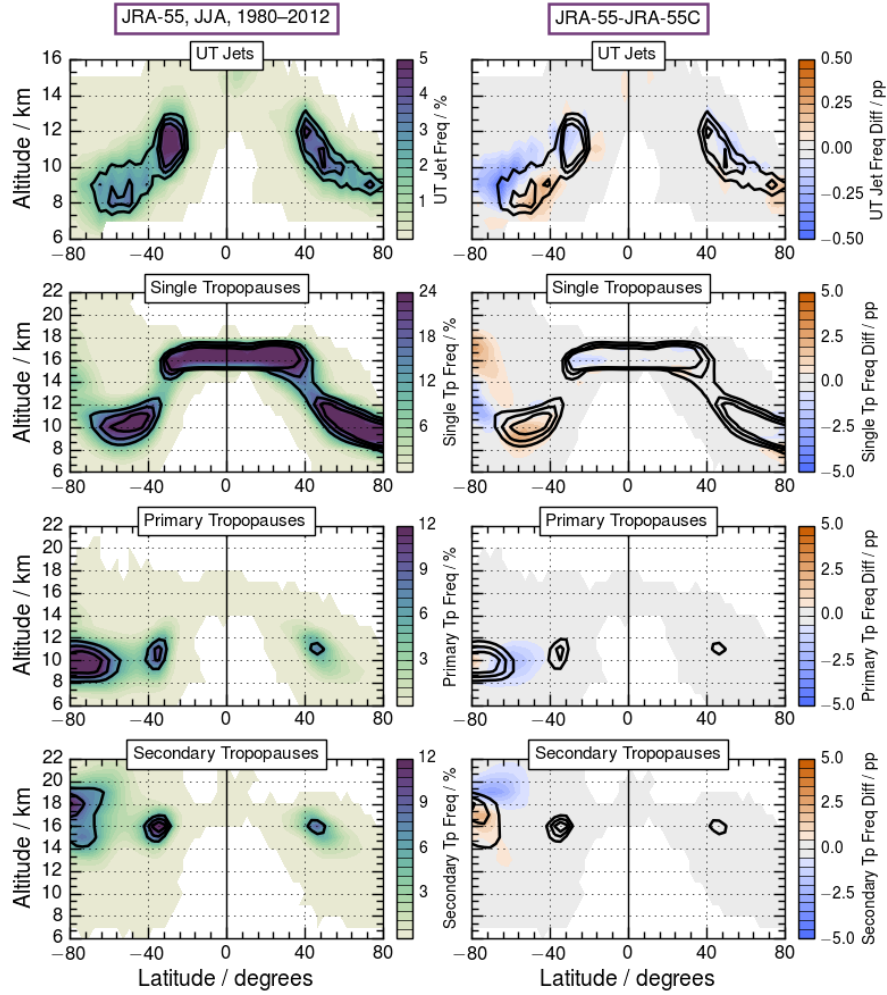


Figure 6. Seasonal latitude/altitude cross-sections of frequency distributions for JJA in 1980 through 2012 of JRA-55 fields (left) and the difference between JRA-55 and JRA-55C fields (right). Layout is as in Figure 2.

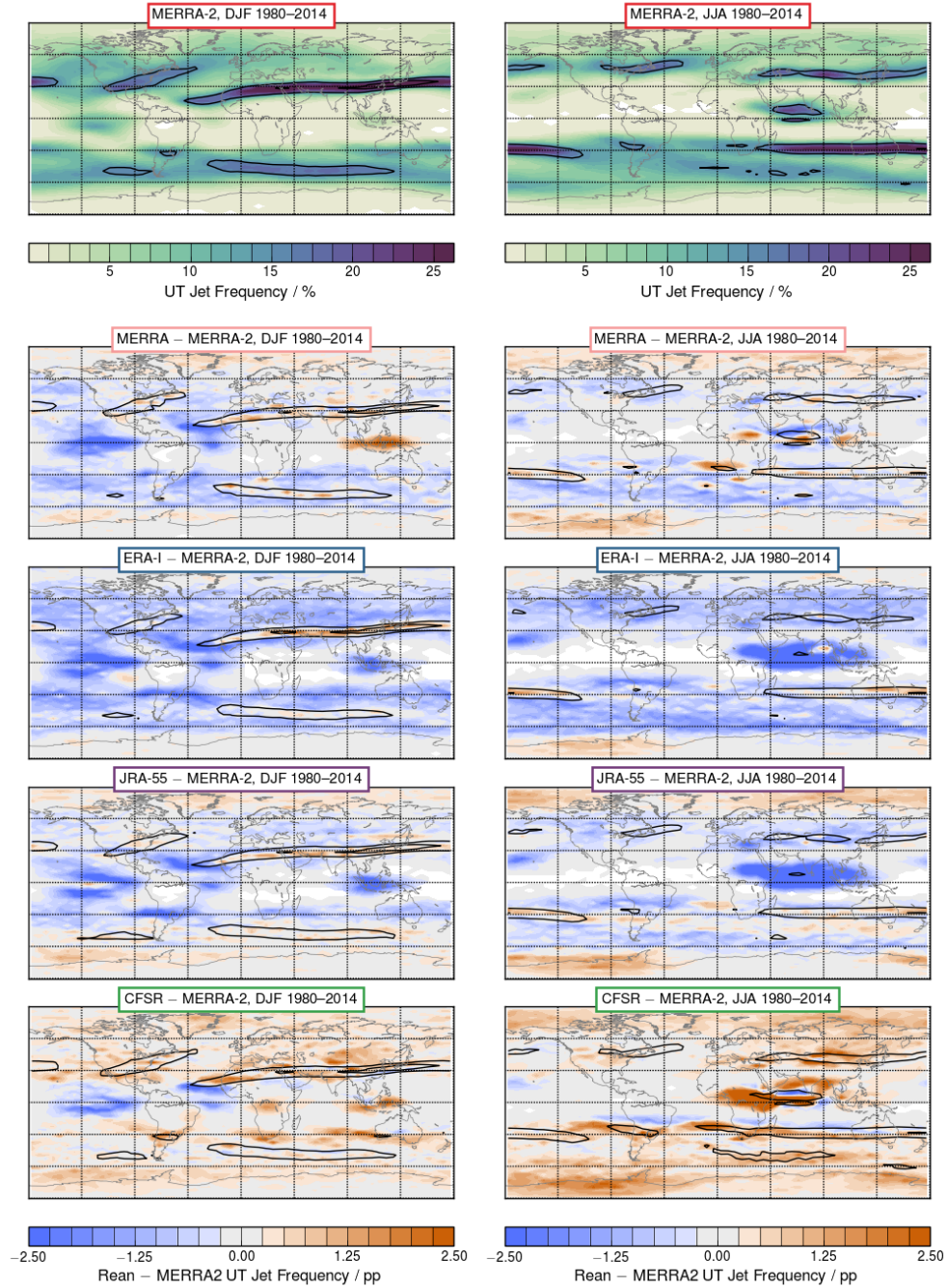


Figure 7. (Left) DJF and (right) JJA maps for 1980 through 2014 of MERRA-2 upper tropospheric jet frequency distributions, and differences between MERRA-2 and MERRA, ERA-I, JRA-55, and CFSR. Overlaid contours are climatological frequency distributions for each reanalysis of 15, 30 and 45%; the smallest value is always the largest or “outermost” contour. In the difference plots, blues/oranges indicate negative/positive differences..

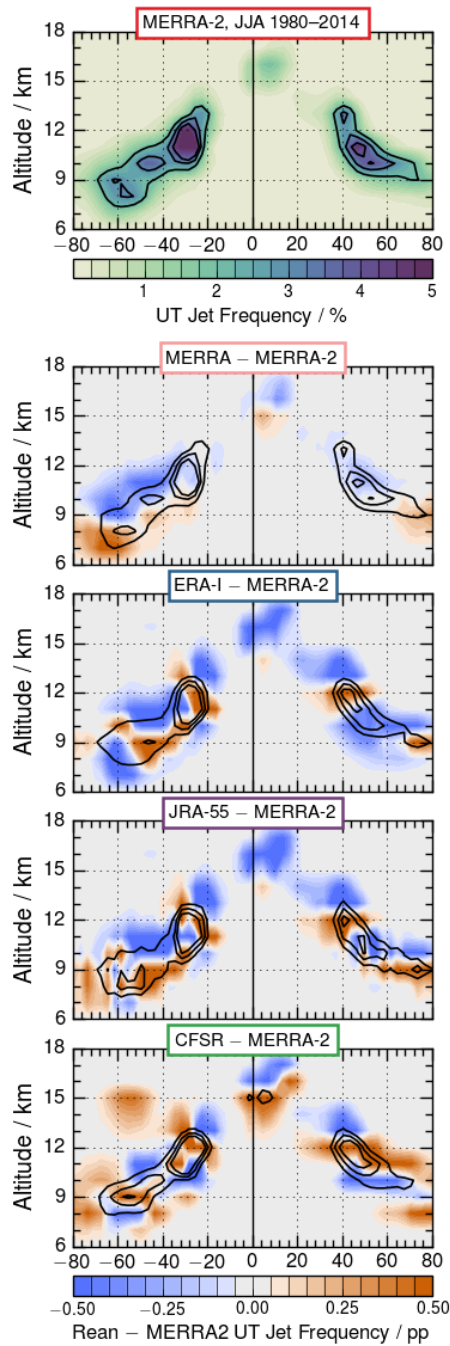


Figure 8. Latitude/altitude cross-sections of JJA jet frequency distributions for MERRA-2 (top), and differences between MERRA-2 and MERRA, ERA-I, JRA-55, and CFSR. Overlaid contours are climatological frequency distributions for each reanalysis of 2, 3, and 4%.

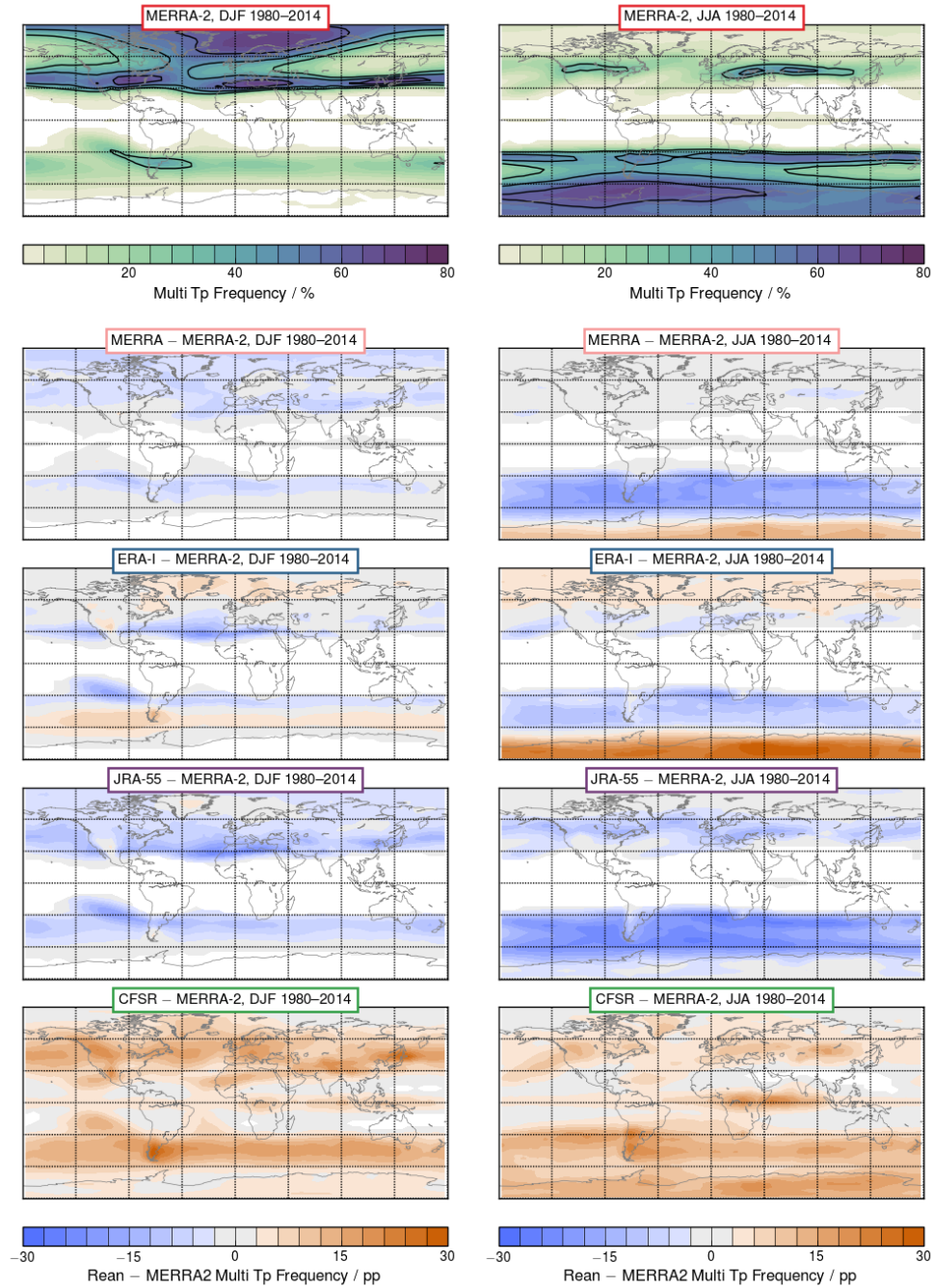


Figure 9. As in Figure 7, but for multiple tropopause frequency distributions. Overlaid contours show frequency values from each reanalysis of 30, 45, and 60%; the smallest value is always the largest or “outermost” contour. In the difference plots, blues/oranges indicate negative/positive differences.

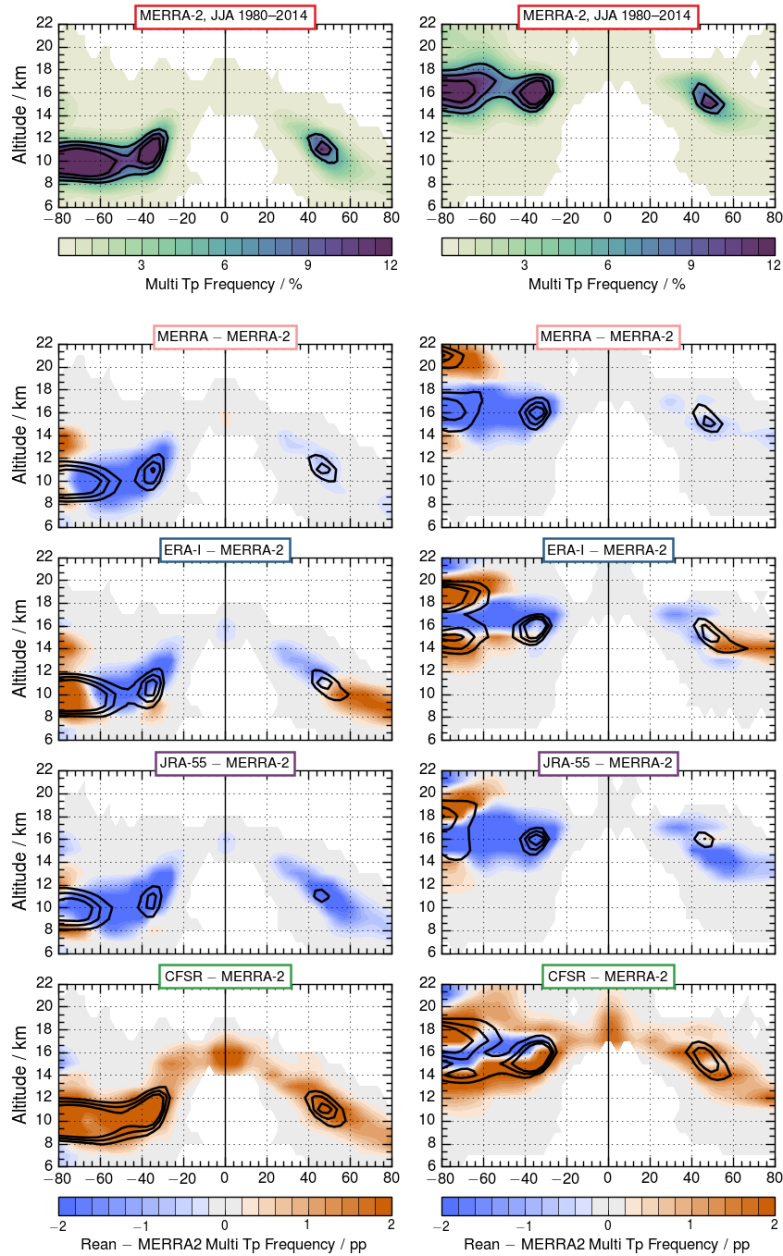


Figure 10. As in Figure 8, but for multiple tropopause frequency distributions. Primary tropopause frequencies are shown on the left and secondary tropopause frequencies on the right. Overlaid contours are frequencies of 6, 9, and 12%; the smallest value is always the largest or “outermost” contour. In the difference plots, blues/oranges indicate negative/positive differences..

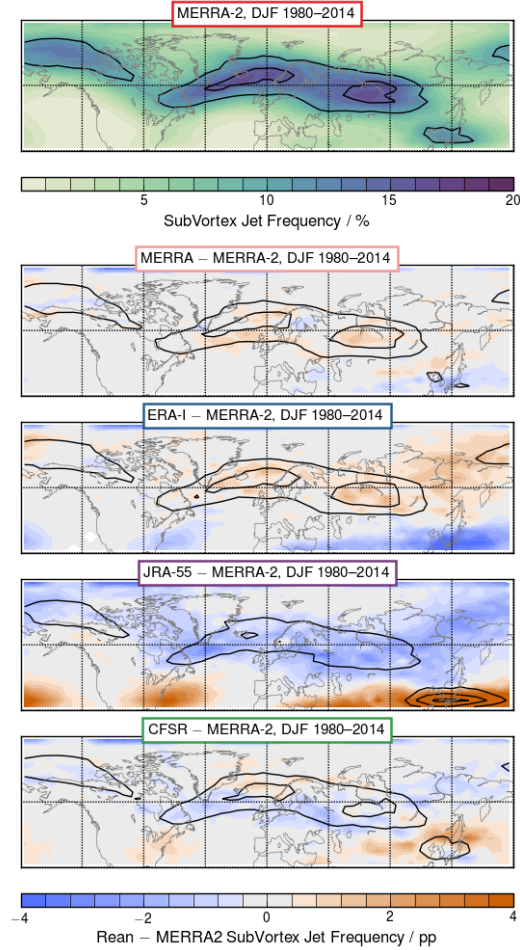


Figure 11. As in Figure 7, but for NH subvortex jet frequency distributions in DJF. The latitude domain shown is north of 30°N . Overlaid contours are frequencies of 10, 15, and 20% for each reanalysis; the smallest value is always the largest or “outermost” contour. In the difference plots, blues/oranges indicate negative/positive differences.

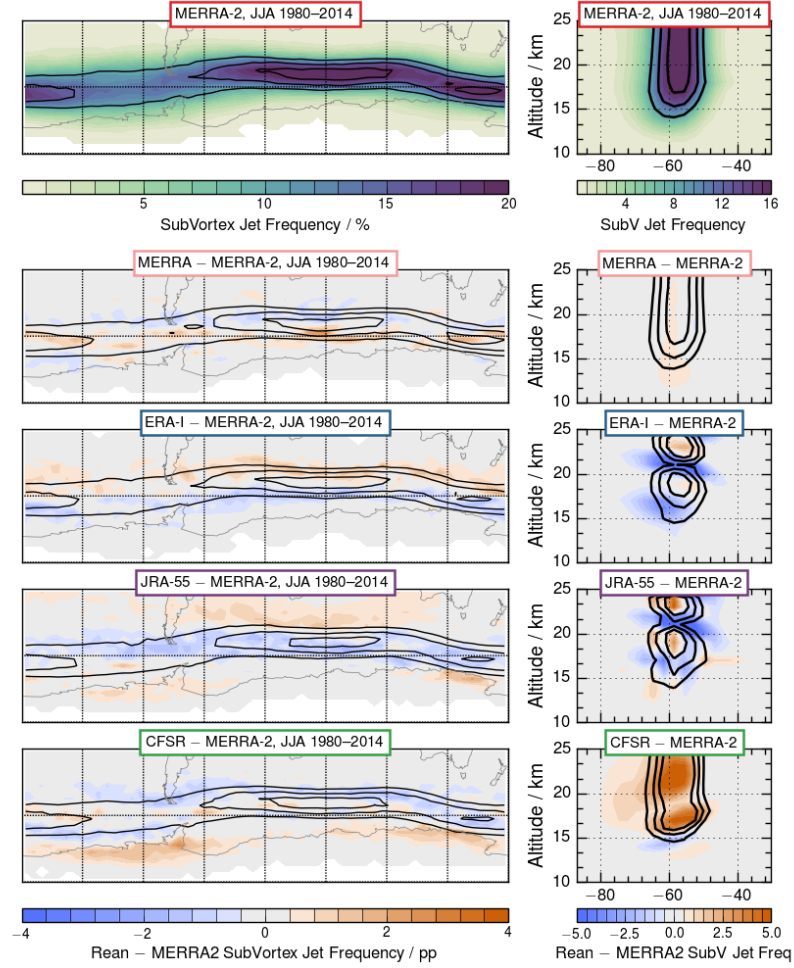


Figure 12. As in Figure 11, but for maps (left) and cross-sections (right) of SH frequency distributions of all subvortex jets in JJA. The latitude domain shown is south of 30°S.

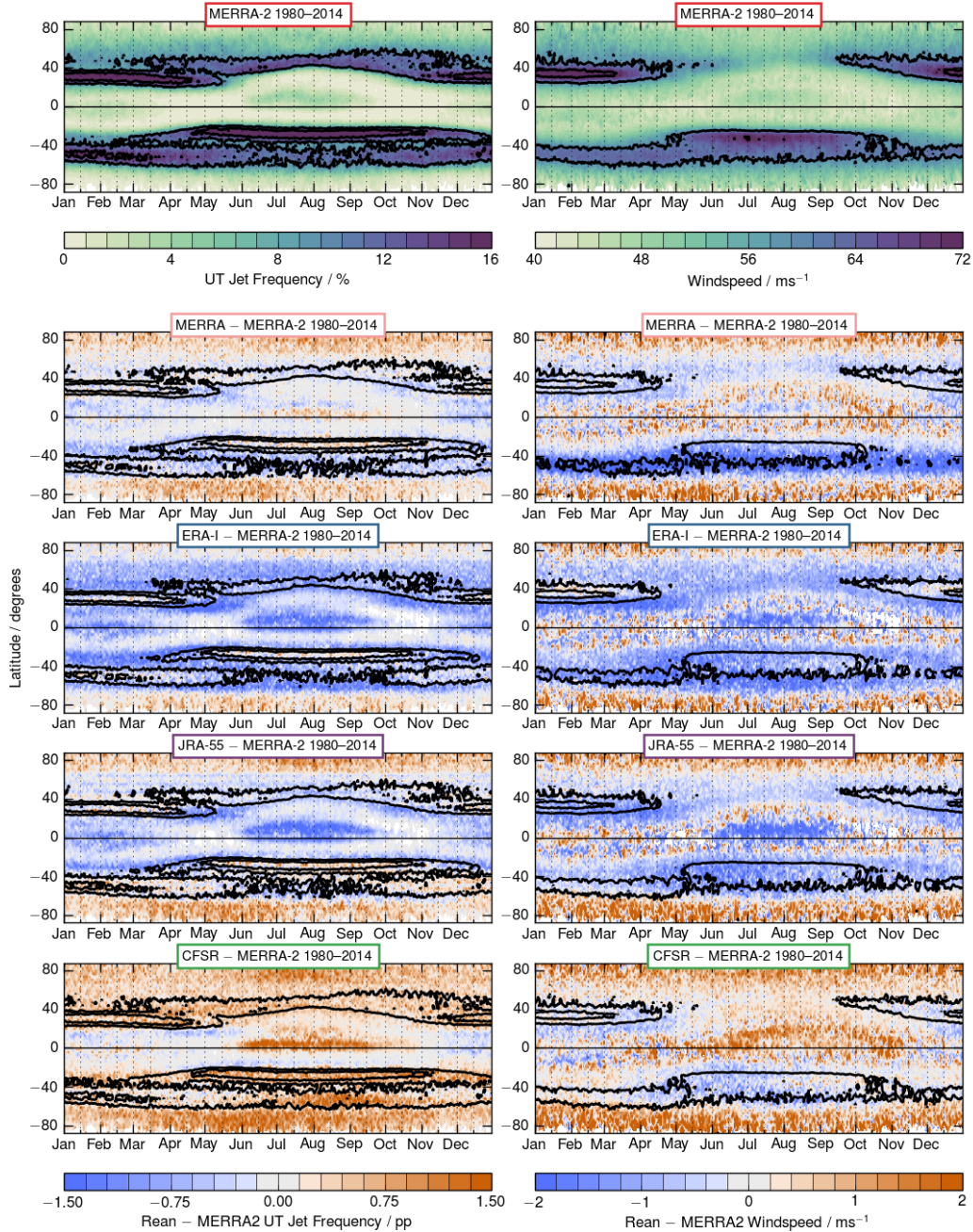


Figure 13. Climatological seasonal cycle in upper tropospheric jet frequencies for MERRA-2 compared with the other reanalyses. Jet frequency distributions are shown on the left, and mean windspeeds at jet cores on the right. Overlaid contours are climatological values for each reanalysis of 10 and 15% for frequencies and 60 and 72 ms^{-1} for windspeeds; the smallest value is always the largest or “outermost” contour. In the difference plots, blues/oranges indicate negative/positive differences.

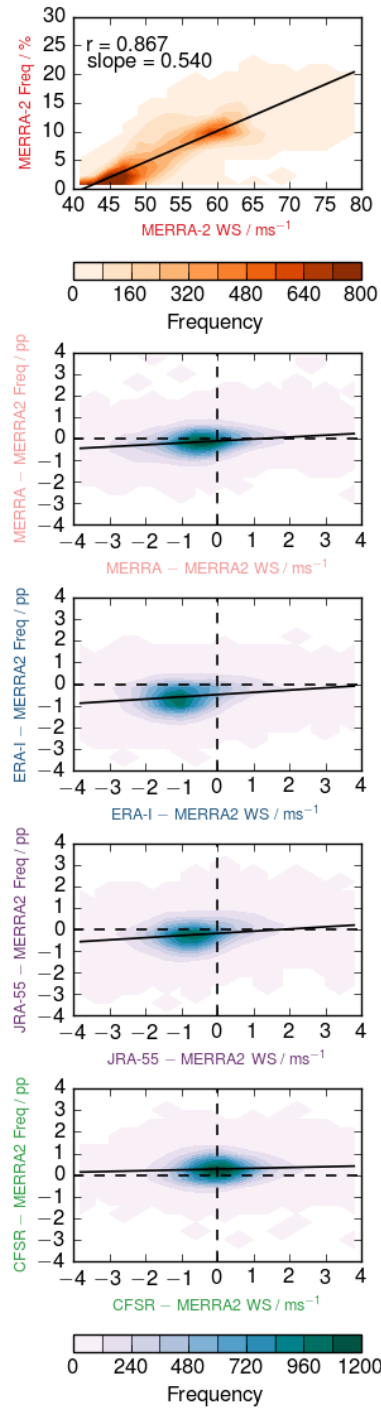


Figure 14. Density plots of (top) MERRA-2 climatological daily jet frequencies versus climatological daily jet windspeeds (values are from Figure 13), and of the corresponding (reanalysis – MERRA-2) frequency differences versus jet windspeed differences for (second to fifth rows) MERRA, ERA-I, JRA-55, and CFSR. Black lines are the linear fit to the distributions.

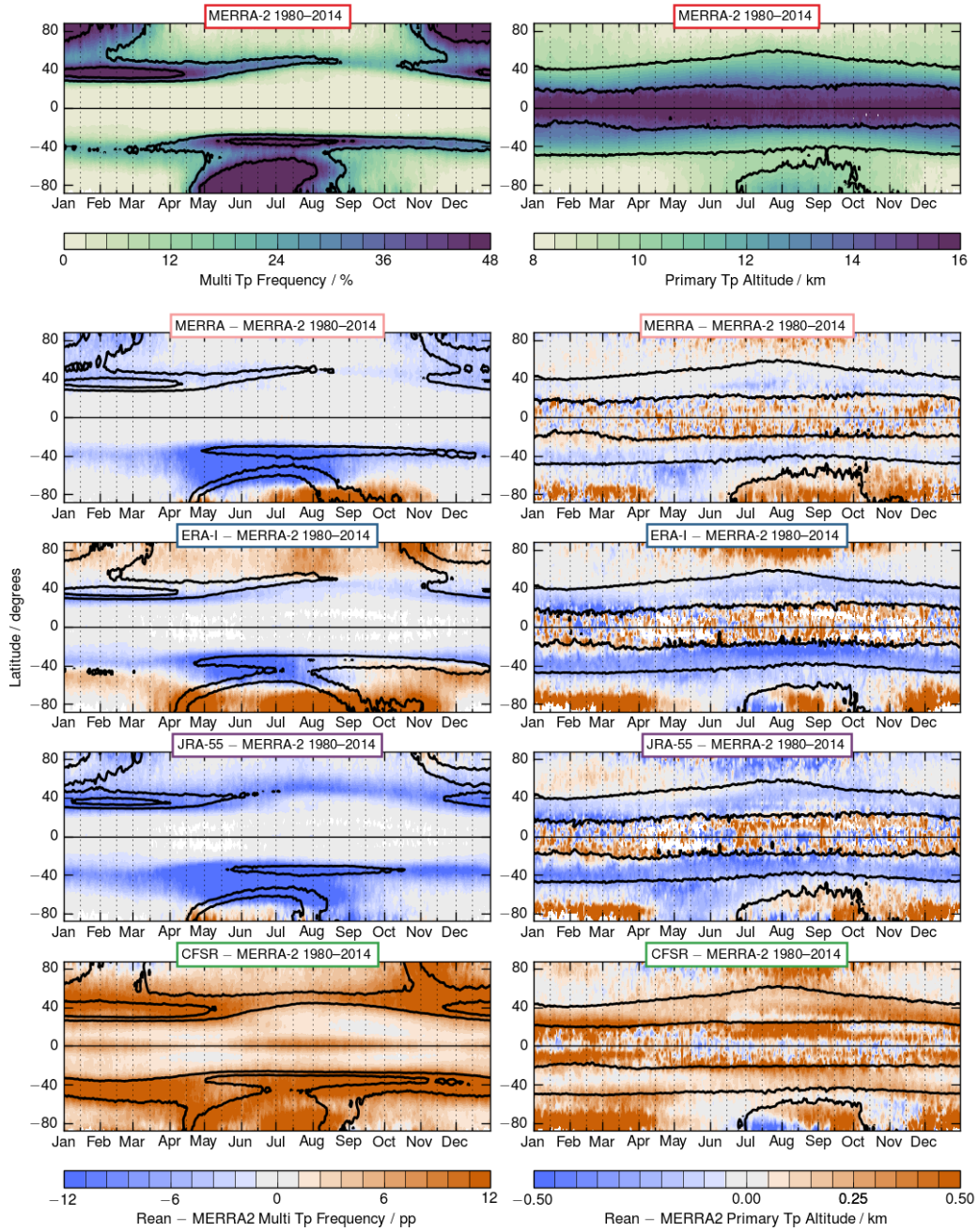


Figure 15. As in Figure 13 but for multiple tropopauses, with frequency distributions on the left and primary tropopause altitude on the right. Overlaid contours are 24 and 48% for frequencies and 10 and 14 km for altitudes; the smallest value is always the largest or “outermost” contour. In the difference plots, blues/oranges indicate negative/positive differences.

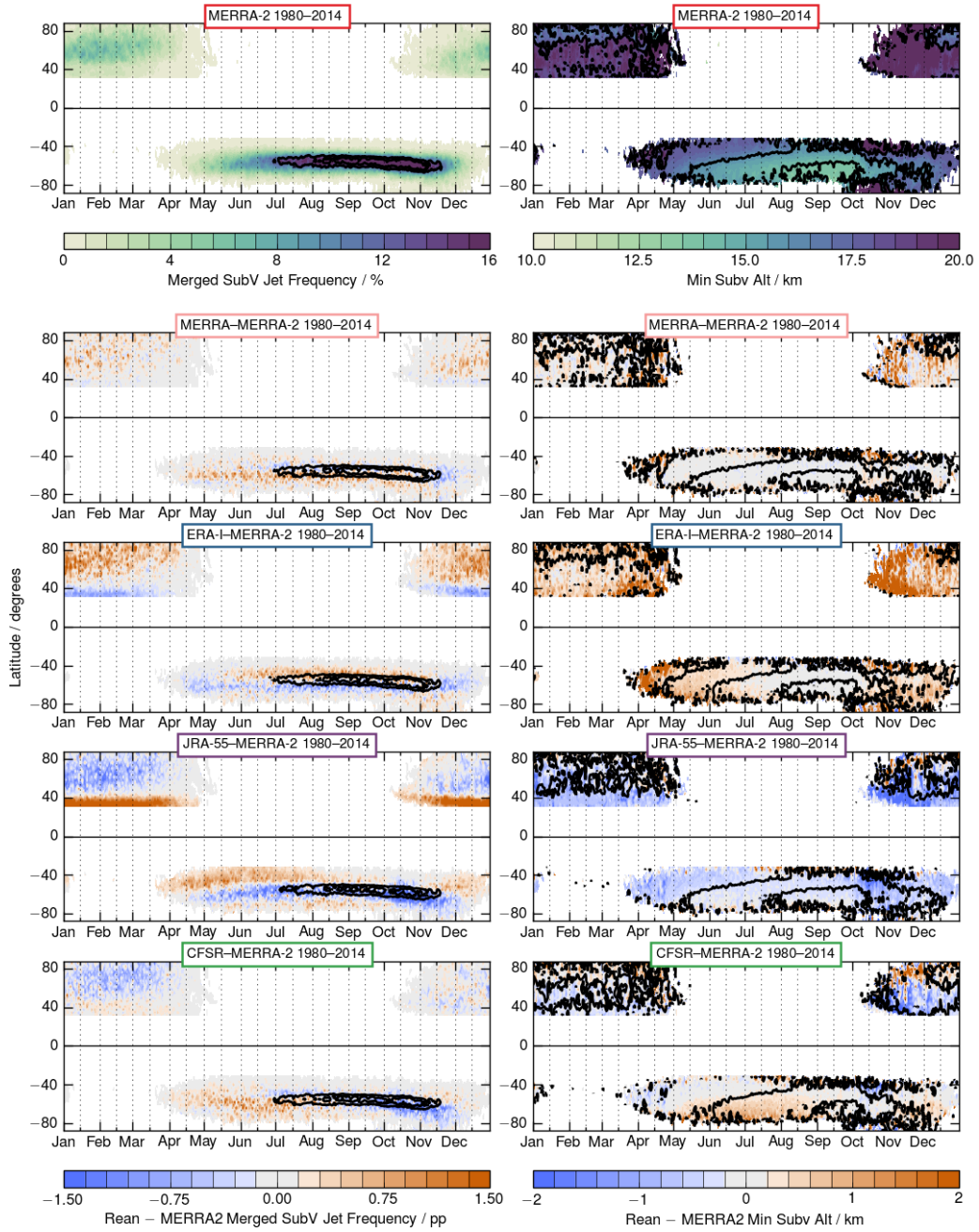


Figure 16. As in Figure 13 but for merged subvortex jets, with merge altitude on the right. Overlaid contours are 12 and 16% for frequencies and 14 and 18 km for merge altitudes; the smallest value is always the largest or “outermost” contour. In the difference plots, blues/oranges indicate negative/positive differences.

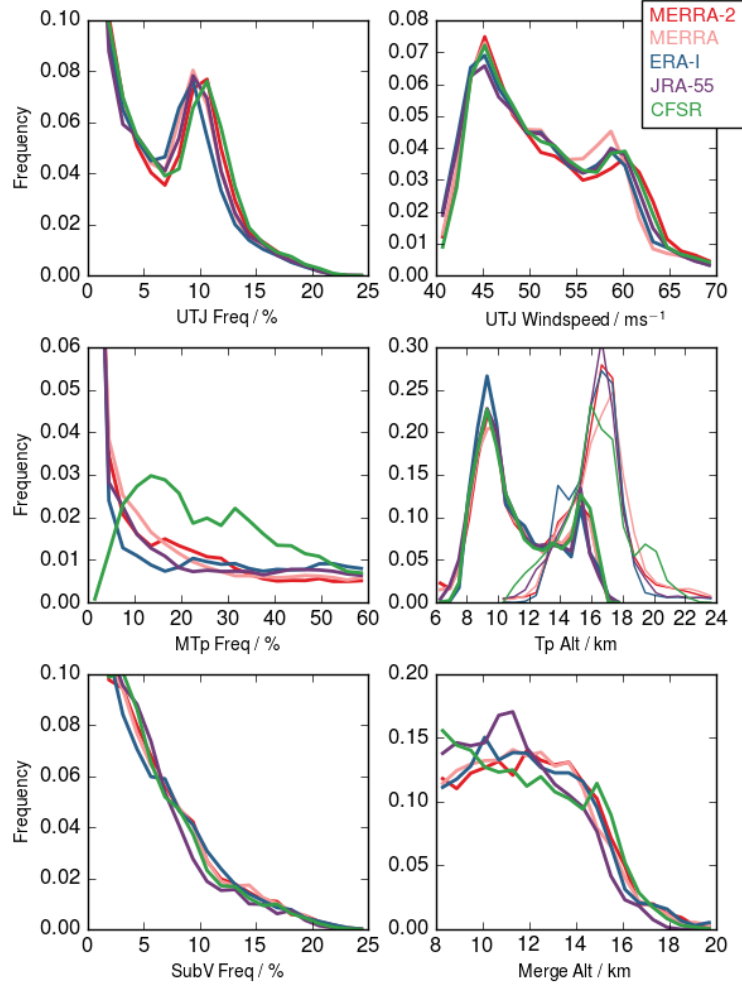


Figure 17. Frequency distributions summarizing the global differences in (top row) upper tropospheric jet frequency distributions and wind-speeds, (second row) multiple tropopause distributions and primary (thick lines) and secondary (thin lines) tropopause altitudes, and (bottom row) subvortex jet frequency distribution and merge altitudes for merged subvortex jets. Values summarized are from timeseries such as those in Figures 13, 15, and 16. PinkRed, redpink, blue, purple, and green lines show MERRA-2, MERRA, ERA-I, JRA-55, and CFSR, respectively.