

Anonymous Referee #1

The manuscript presents a method to determine trends in NO_x emission over China. The authors apply a methodology, introduced by the same authors in a previous paper, to determine NO_x emission from satellite-based observations. The approach is particularly valuable as it is independent of chemical transport models and their uncertainty/assumptions. The results confirm the observed decline in the Chinese NO_x emissions after year 2011. I recommend the publication after addressing the following comments:

Response: We thank Referee #1 for the encouraging comments. All comments and suggestions have been considered carefully and well addressed below.

Specific comments:

1. Several recent studies have shown decreasing NO_x levels in China from satellite data. Can you evaluate how your trends compare with these existing results? This is mentioned in the introduction but it could be discussed in the conclusion too or where you present your numerical results? The results are derived at different resolutions I guess, but are you able to evaluate how consistent they are? For example, in this manuscript (Recent reduction in NO_x emissions over China: synthesis of satellite observations and emission inventories doi:10.1088/1748-9326/11/11/114002) you analyzed the NO₂ peak year: how do the peak year for the provinces agrees you're your latest city level results? Answering this question you should also be able to stress the added value of this work, compared to existing results.

Response: We thank for the suggestion and add the discussion of the comparison with other existing studies to the conclusion, as follows:

“The average emission trend fitted by this study is consistent with the previous findings, which showed that OMI NO₂ levels peaked in 2011 over China (Krotkov et al., 2016; Duncan et al., 2016) and NO_x emissions from satellite data assimilation peaked in 2011/2012 (Miyazaki et al., 2017; van der A et al., 2017; Souri et al., 2017) respectively. Additionally, the fitted emission peaks for individual cities showed reasonable agreement with the peaks of OMI NO₂ levels at provincial level (Liu et al., 2016b). Half of the investigated cities reached simultaneous emission peaks with the corresponding provinces. For the another half, the majority (over 70%) reached emission peaks prior to the average provincial timeline, which are most likely caused by emission control policies implemented in the city ahead of the provincial schedule, such as the previously discussed new vehicle emission standards in Guangzhou.”

2. Section 2.1 and later: You talk about "valid lifetime" or "satisfactory result" for the fitting: could you remind the reader how you define a satisfactory fitting? Especially for the power plants (only 7 good ones) can you explain the reasons for the unsuccessful fits?

Response: We followed the criteria defined in Liu et al. (2016a) to assure a good fit performance (i.e., satisfactory fitting). We add the description for the criteria in Section 2.1, as follows:

“The fitting results with poor performance (i.e., $R < 0.9$, lower bound of confidence interval $CI < 0$, CI width for lifetime > 10 h, CI width for the NO_2 mass $> 0.8 \times \text{mass}$) were discarded, in accordance with the criteria in Sect. 2.2 of Liu et al. (2016a).”

We failed to get the satisfactory fitting results for most power plants because their signals are not strong enough to be distinguished from the surroundings, particularly for those located in/near urban areas. More than half of the power plants were discarded from the final analysis because they locate in a radius of 100 km around city centers. Others were dismissed due to the low R or unreasonable CI resulting from the low signal/background ratio. The number of power plants with valid fitting results decreases sharply when NO_2 concentrations over power plants decline because of the installation of denitration devices. The number of power plants with satisfactory results for the period of 2013-2015 is only half of that for the period of 2005-2007.

We have rephrased the sentences in Section 2.3, as follows:

“Among over 200 pre-selected cities, 48 cities (including 14 mountainous sites) were fitted with good performance (see the definition in Sect.2.1). While among over 100 pre-selected power plants, more than half were excluded from the fit procedure, because they are located in a radius of 100 km around prefecture-level city centers, on the basis of a visual inspection of satellite imagery from Google Earth. Only 7 power plants (including 3 mountainous sites) were fitted with good performance.”

3. Fig. 7 and page 8: What do you mean by market share of SCR? Share with respect to what? Could you define that?

Response: We define the market share of SCR as the percentage of unit capacity of power plants installing SCR in the total capacity of all the power plants. We replaced “market share” with “penetration”, which is more commonly used in the emission inventory community, and added the definition in the revised manuscript.

4. Fig. 8 Can you comment on why for power plants there is a sort of bias, with bottom-up emissions generally higher than your emissions? (All points are below the 1:1 line)

Response: We agree that there are certain uncertainties of the fitted emissions, which are explained in detail in Section 3.4. Emissions for mountainous sites are expected to be biased due to the bias in wind fields (Liu et al., 2016a). But we do not expect a systematic bias associated with those uncertainties for non-mountainous sites. This is confirmed by the comparison for power plants with valid fitting results for the period of 2010-2012 in the figure S1. There are differences between the fitted and bottom-up estimates, but no significant bias. It is thus probably coincidence that the fitted emissions for the four power plants (blue points in Fig. 8a & S1) that have valid fitting results for each three consecutive years from 2005 to 2015 are lower than the bottom-up estimates.

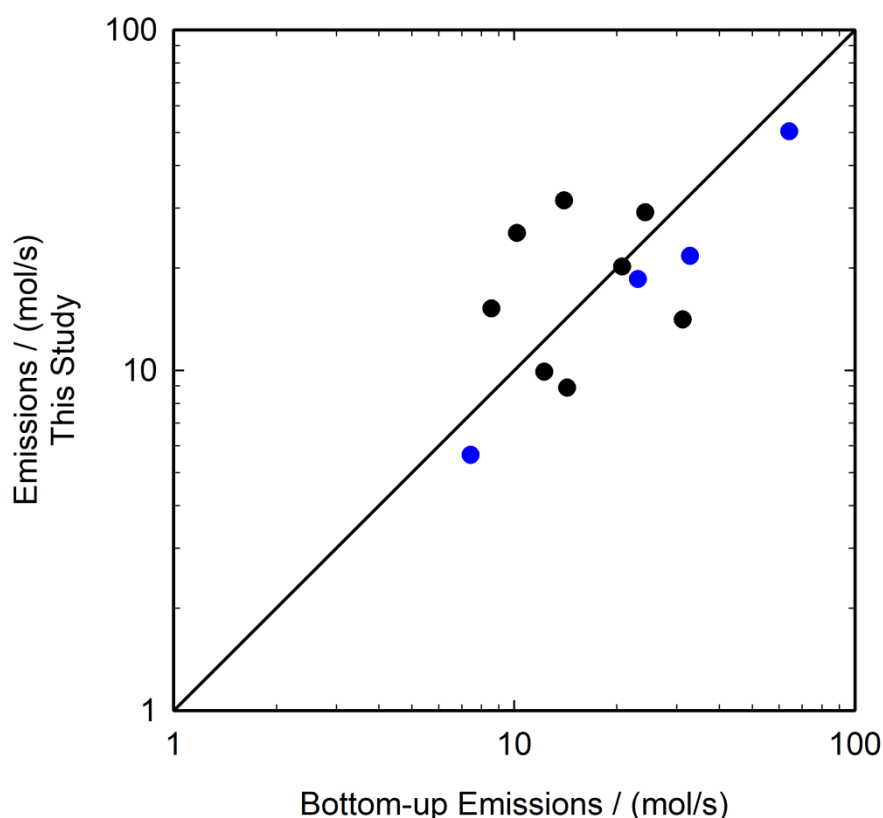


Figure S1: Scatterplots of the fitted NO_x emissions for the investigated non-mountainous power plants versus the bottom-up emission inventories (MEIC) during 2010 to 2012. The sites displayed in Fig.8a are color coded by blue.

5. Section 3.4 What kind a error/bias is due to the fact that you use summer days and clear sky data? How do you see this might affect your comparison with bottom-up inventories?

Response: Concerning the usage of summer data, we generally agree that there are monthly variations in NO_x emissions for cities and power plants in China. Emissions typically peak in December of each year because of high year-end industrial activities (Li et al., 2017). Thus, the fitted emission rates based on non-winter satellite data maybe biased compared to the annual mean rates. However, it will not affect the comparison with bottom-up inventories, because only bottom-up emissions for non-winter seasons were used for comparison (see Section 2.2).

With respect to clear sky data, we agree that the selection of cloud-free OMI NO_2 TVCDs used for fitting emissions does not represent the average level for all days, due to the accelerated photochemistry and different meteorological conditions (e.g. boundary layer height, atmospheric transport) under clear sky conditions. But still the emission estimates are appropriate, as both the NO_x lifetime and total mass derived from the NO_2 TVCDs are derived consistently, both of which reflect the values under clear sky conditions. Thus, this effect is of minor importance for this study and is not expected to bias the estimated NO_x emissions.

Technical comments

6. Figure 6 Please specify in the caption that you mean anthropogenic as bottom-up inventory, the emission you calculate by fitting are also anthropogenic, they might get confused. Also the color coding in confusing, could you use something else than redblue in b-panel, because one might think they relate to the red-blue of panel a, while they are not.

Response: Thanks. We have specified it in the caption and changed the color to green/grey in Figure 6 in the revised manuscript.

References

- Duncan, B. N., Lamsal, L. N., Thompson, A. M., Yoshida, Y., Lu, Z., Streets, D. G., Hurwitz, M. M., and Pickering, K. E.: A space-based, high-resolution view of notable changes in urban NO_x pollution around the world (2005–2014), *J. Geophys. Res.*, 121, 976–996, doi: 10.1002/2015jd024121, 2016.
- Krotkov, N. A., McLinden, C. A., Li, C., Lamsal, L. N., Celarier, E. A., Marchenko, S. V., Swartz, W. H., Bucsela, E. J., Joiner, J., Duncan, B. N., Boersma, K. F., Veefkind, J. P., Levelt, P. F., Fioletov, V. E., Dickerson, R. R., He, H., Lu, Z., and Streets, D. G.: Aura OMI observations of regional SO₂ and NO₂ pollution changes from 2005 to 2015, *Atmos. Chem. Phys.*, 16, 4605–4629, doi: 10.5194/acp-16-4605-2016, 2016.
- Li, M., Zhang, Q., Kurokawa, J. I., Woo, J. H., He, K., Lu, Z., Ohara, T., Song, Y., Streets, D. G., Carmichael, G. R., Cheng, Y., Hong, C., Huo, H., Jiang, X., Kang, S., Liu, F., Su, H., and Zheng, B.: MIX: a mosaic Asian anthropogenic emission inventory under the international collaboration framework of the MICS-Asia and HTAP, *Atmos. Chem. Phys.*, 17, 935–963, doi: 10.5194/acp-17-935-2017, 2017.
- Liu, F., Beirle, S., Zhang, Q., Dörner, S., He, K., and Wagner, T.: NO_x lifetimes and emissions of cities and power plants in polluted background estimated by satellite observations, *Atmos. Chem. Phys.*, 16, 5283–5298, doi: 10.5194/acp-16-5283-2016, 2016a.
- Liu, F., Zhang, Q., Ronald, J. van der A., Zheng, B., Tong, D., Yan, L., Zheng, Y., and He, K.: Recent reduction in NO_x emissions over China: synthesis of satellite observations and emission inventories, *Environmental Research Letters*, 11, 114002, 2016b.
- Miyazaki, K., Eskes, H., Sudo, K., Boersma, K. F., Bowman, K., and Kanaya, Y.: Decadal changes in global surface NO_x emissions from multi-constituent satellite data assimilation, *Atmos. Chem. Phys.*, 17, 807–837, doi: 10.5194/acp-17-807-2017, 2017.
- Souri, A. H., Choi, Y., Jeon, W., Woo, J.-H., Zhang, Q., and Kurokawa, J.-i.: Remote sensing evidence of decadal changes in major tropospheric ozone precursors over East Asia, *J. Geophys. Res.*, 122, 2474–2492, doi: 10.1002/2016JD025663, 2017.
- van der A, R. J., Mijling, B., Ding, J., Koukouli, M. E., Liu, F., Li, Q., Mao, H., and Theys, N.: Cleaning up the air: effectiveness of air quality policy for SO₂ and NO_x emissions in China, *Atmos. Chem. Phys.*, 17, 1775–1789, doi: 10.5194/acp-17-1775-2017, 2017.

Anonymous Referee #2

China is experiencing dramatic changes in economy and energy structure. Due to the poor air quality in developed regions, a series of emission control measures have been taken and changes in air pollutant emissions could be expected. Independent from the bottom-up emission inventory that might be limited by the accuracy and timeliness of data, this work applied OMI NO₂ data and estimated the trends of NO_x emissions for selected cities and power plants across the country, following previous studies from the same research group. In general the paper was well organized, clearly written, and easy to follow. I recommend its publication with some more discussions or corrections as suggested below:

Response: We thank Referee #2 for the encouraging comments. We addressed the comments carefully as below.

Specific comments:

1. Is there any big difference or correction in the method of "top-down" emission calculation between this work and the authors' previous studies (i.e., Liu et al., 2016a; b)? I understand the inter-annual trend is included in this work, but other improvement in method (if any) needs to be clarified so that the audience could easily compare different papers.

Response: In general, there is no fundamental change in methodology between this study and our previous one (Liu et al., 2016a). In order to perform the inter-annual analysis, we made the adjustment as follows: we based the estimation on NO₂ columns around the source of interest averaged over three years, similar as in previous studies (e.g., Fioletov et al., 2011; Lu et al., 2015); afterwards, the total NO_x mass was integrated over the mean TVCDs at weak wind speeds (below 3 m/s) instead of calm winds (below 2 m/s) used in our previous work for better statistics. We have clarified this in Sect.2.1.

Another previous study (Liu et al., 2016b) calculated changes in OMI NO₂ column densities for each province over China from 2005 to 2015 and compared them with the bottom-up inventory to examine NO_x emission trends and their driving forces. It is not directly associated with the methodology in this study.

2. Pages 4-5, the authors said they presented cities/plants with satisfactory fitting results. Here needs some explanations: what's the criterion of examining the fitting results, and why were there any "unsatisfactory results"? Does that imply that there are some problems or limitations in the calculation method and it cannot be applied for all the selected cities/plants?

Response: We followed the criteria defined in Liu et al. (2016a) to assure a good fit performance. We add the description for the criteria in Section 2.1, as follows:

“The fitting results with poor performance (i.e., $R < 0.9$, lower bound of confidence interval $CI < 0$, CI width for lifetime > 10 h, CI width for the NO₂ mass $> 0.8 \times \text{mass}$) were discarded, in accordance with the criteria in Sect. 2.2 of Liu et al. (2016a).”

Satisfactory results stand for fitting results meeting the criteria above. The fit method

can be applied for all cities/plants in principle, but the fit may fail because of the low R or unreasonable CI resulting from the low signal/background ratio. We rephrase the sentences in Section 2.3, as follows:

“Among over 200 pre-selected cities, 48 cities (including 14 mountainous sites) were fitted with good performance (see the definition in Sect.2.1). While among over 100 pre-selected power plants, over half were excluded from the fit procedure, because they are located in a radius of 100 km around prefecture-level city centers, on the basis of a visual inspection of satellite imagery from Google Earth. Only 7 power plants (including 3 mountainous sites) were fitted with good performance.”

3. Although the emission trends between top-down and bottom-up methods were generally consistent with each other, it seems that larger emission growth was estimated based on the OMI data than MEIC for both cities and power plants before 2012 (e.g., Figure 3 and 7). Uncertainties in bottom-up emissions (i.e., MEIC) might be part of the reasons, and I suggest a paragraph of discussion including comparisons with other available bottom-up estimates.

Response: We agree that uncertainties in bottom-up emissions contribute to the differences, which has been detailed in Section 3.2. The spatial allocation approach adopted in bottom-up inventories tends to diminish regional diversity and may consequently result in smaller emission growth compared to top-down estimates. This is a general limitation of applying regional inventories to calculating urban emissions. We thank for the suggestion of including more bottom-up inventories into the comparison. We added the comparison with other widely used bottom-up emission inventories in the community. In order to keep consistent with the top-down estimates derived from 3-year average NO₂ concentrations, only inventories with more than three years data available from 2005 to 2015 are included. We finally added Emission Database for Global Atmospheric Research version 4.3 (EDGAR v4.3, Crippa et al. 2016), Regional Emission inventory in Asia version 2.1 (REAS v2.1, Kurokawa et al., 2013). All bottom-up inventories show similar growth rates, suggesting that the differences to our estimates indeed arise from the methodology of deriving urban emissions from regional inventories, rather than depend on the chosen inventory. We added a brief introduction of the available bottom-up inventories in Section 2.2 and further discussed the comparison with the fitting results in Section 3.1.

4. Figure 4. Did that imply the poorer estimation in emissions from small industrial plants than those from power plants in MEIC? Needs clarification.

Response: We agree that it implies the poorer estimation in emissions from small industrial plants than those from power plants in the MEIC inventory. We have clarified it in Section 3.2, as follows:

“For industrial emissions, MEIC first downscaled provincial totals to counties using industrial GDP, and then allocate county emissions to grids with population density. Thus uncertainty of emissions from the industrial sector is larger than that from power plants.”

5. *Small issues: Line 40, Page 4: "section 2.2" ? please check. Line 28, Page 5: "new dry-process" or "precalciner"?*

Response: Thanks for pointing out them. We have replaced “section 2.2” with “section 2.1” and replaced “new dry-process” with “precalciner” in the revised manuscript.

References

- Crippa, M., Janssens-Maenhout, G., Dentener, F., Guizzardi, D., Sindelarova, K., Muntean, M., Van Dingenen, R., and Granier, C.: Forty years of improvements in European air quality: regional policy-industry interactions with global impacts, *Atmos. Chem. Phys.*, 16, 3825–3841, 10.5194/acp-16-3825-2016, 2016.
- Fioletov, V. E., McLinden, C. A., Krotkov, N., Moran, M. D., and Yang, K.: Estimation of SO₂ emissions using OMI retrievals, *Geophys. Res. Lett.*, 38, L21811, doi: 10.1029/2011gl049402, 2011.
- Kurokawa, J., Ohara, T., Morikawa, T., Hanayama, S., Janssens-Maenhout, G., Fukui, T., Kawashima, K., and Akimoto, H.: Emissions of air pollutants and greenhouse gases over Asian regions during 2000–2008: Regional Emission inventory in ASia (REAS) version 2, *Atmos. Chem. Phys.*, 13, 11019–11058, doi: 10.5194/acp-13-11019-2013, 2013.
- Liu, F., Beirle, S., Zhang, Q., Dörner, S., He, K., and Wagner, T.: NO_x lifetimes and emissions of cities and power plants in polluted background estimated by satellite observations, *Atmos. Chem. Phys.*, 16, 5283–5298, doi: 10.5194/acp-16-5283-2016, 2016a.
- Liu, F., Zhang, Q., Ronald, J. van der A., Zheng, B., Tong, D., Yan, L., Zheng, Y., and He, K.: Recent reduction in NO_x emissions over China: synthesis of satellite observations and emission inventories, *Environmental Research Letters*, 11, 114002, 2016b.
- Lu, Z., Streets, D. G., de Foy, B., and Krotkov, N. A.: Ozone Monitoring Instrument observations of interannual increases in SO₂ emissions from Indian coal-fired power plants during 2005–2012, *Environ. Sci. Technol.*, 47, 13993–14000, 2013.
- Lu, Z., Streets, D. G., de Foy, B., Lamsal, L. N., Duncan, B. N., and Xing, J.: Emissions of nitrogen oxides from US urban areas: estimation from Ozone Monitoring Instrument retrievals for 2005–2014, *Atmos. Chem. Phys.*, 15, 10367–10383, doi: 10.5194/acp-15-10367-2015, 2015.

NO_x emission trends over Chinese cities estimated from OMI observations during 2005 to 2015

Fei Liu^{1,2,3,a,b*}, Steffen Beirle³, Qiang Zhang¹, Ronald J. van der A^{2,5}, Bo Zheng⁴, Dan Tong¹ and Kebin He^{1,4}

¹Ministry of Education Key Laboratory for Earth System Modeling, Department of Earth System Science, Tsinghua University, Beijing, China

²Royal Netherlands Meteorological Institute (KNMI), P.O. Box 201, De Bilt, the Netherlands

³Max-Planck-Institut für Chemie, Mainz, Germany

⁴State Key Joint Laboratory of Environment Simulation and Pollution Control, School of Environment, Tsinghua University, Beijing, China

⁵[Nanjing University of Information Science & Technology \(NUIST\), Nanjing, China](#)

*now at: ^aUniversities Space Research Association (USRA), GESTAR, Columbia, MD, USA

^b[NASA Goddard Space Flight Center, Greenbelt, MD, USA](#)

Correspondence to: Fei Liu (fei.liu@nasa.gov; liuf1010@gmail.com)

Qiang Zhang (qiangzhang@tsinghua.edu.cn)

Abstract. Satellite NO₂ observations have been widely used to evaluate emission changes. To determine trends in NO_x emission over China, we used a method independent of chemical transport models to quantify the NO_x emissions from 48 cities and 7 power plants over China, on the basis of Ozone Monitoring Instrument (OMI) NO₂ observations during 2005 to 2015. We found that NO_x emissions over 48 Chinese cities increased by 52% from 2005 to 2011 and decreased by 21% from 2011 to 2015. The decrease since 2011 could be mainly attributed to emission control measures in power sector; while cities with different dominant emission sources (i.e. power, industrial and transportation sectors) showed variable emission decline timelines that corresponded to the schedules for emission control in different sectors. The time series of the derived NO_x emissions was consistent with the bottom-up emission inventories for all power plants ($r=0.8$ on average), but not for some cities ($r=0.4$ on average). The lack of consistency observed for cities was most probably due to the high uncertainty of bottom-up urban emissions used in this study, which were derived from downscaling the regional-based emission data to cities by using spatial distribution proxies.

1 Introduction

Nitrogen oxides (NO_x), including nitrogen dioxide (NO₂) and nitric oxide (NO), are atmospheric trace gases with a short lifetime, and they actively participate in the formation of tropospheric ozone and secondary aerosols and thus harm human health and significantly affect climate (Seinfeld and Pandis, 2006). Anthropogenic activities, particularly fossil fuel consumption, are the most important sources of NO_x emissions. Anthropogenic NO_x emissions are clustered over densely populated urban areas and suburban/rural industrial areas where large point sources such as power plants are located.

Tropospheric NO₂ observations detected from space have been applied to infer the strength of NO_x emissions. The concentration of NO₂ in a vertical column of air can be measured via satellite instruments and related to NO_x emissions according to the mass balance by considering transport and chemical conversion. A pioneering study has used the downwind decay of NO₂ in continental outflow regions to estimate the average NO_x lifetime and global NO_x emissions (Leue et al., 2001). Subsequent studies have used chemical transport models (CTMs) to exploit satellite measurements as a constraint to improve NO_x emission inventories at the global/regional scale (e.g., Martin et al., 2003; Konovalov et al., 2006; Kim et al., 2009; Lamsal et al., 2011). The spatial and temporal resolution of tropospheric NO₂ observed from space has increased over

time, from the Global Ozone Monitoring Experiment (GOME), which was launched in 1995 (Burrows et al., 1999), to the Ozone Monitoring Instrument (OMI) (Levelt et al., 2006), which was launched in 2004 and enables the use of satellite retrievals to resolve emissions at a finer scale. OMI NO₂ observations sorted according to wind direction from wind fields developed by the European Center for Medium range Weather Forecasting (ECMWF) have been fitted by Beirle et al. (2011), who have used the exponentially modified Gaussian function, which allows for a simultaneous fit of the NO_x lifetime and emissions for megacities without further input from CTMs. In the previous work, we have advanced this method for estimating NO_x emissions from sources located in a polluted background (Liu et al., 2016a). An alternative approach to quantifying urban NO_x emissions, proposed by Valin et al. (2013), involves rotating satellite observations according to wind directions such that all observations are aligned in one direction (from upwind to downwind), thus increasing the number of observations. Subsequent studies have applied the concept of CTM-independent methods for estimating SO₂ by introducing an advanced three-dimensional function (Fioletov et al., 2015; Fioletov et al., 2016; McLinden et al., 2016).

Satellite observations are particularly suitable for evaluating emission changes because they provide continuous and timely tropospheric NO₂ measurements with global coverage (Lelieveld et al., 2015). Changes in the spatial heterogeneity of NO₂ trends have been observed worldwide, and substantial decreases over Europe and the US (Russell et al., 2012) and significant increases over Asia have widely been detected in recent decades (Richter et al., 2005). A linear function superposed on an annual seasonal cycle has been introduced by van der A et al. (2008) to derive a quantitative estimate of emission trends for a grid with a spatial resolution of 1° × 1° by fitting the corresponding monthly NO₂ columns. Follow-up studies (e.g., Schneider and van der A, 2012; Schneider et al., 2015) have applied similar statistical analyses to time series of NO₂ in finer grid cells located over the center of the city and have quantified the long-term average pattern of NO₂ for megacities. The multi-annual (moving) average is an alternative method of describing local NO₂ trends. The interannual variation in the mass of a chemical species integrated around the source has been used as an indicator of emission changes and has been shown to be capable of illustrating the emission changes over US power plants (Fioletov et al., 2011), Canadian oil sands (McLinden et al., 2012) and Indian power plants (Lu et al., 2013). In addition, de Foy et al. (2015) and Lu et al. (2015) have adopted the fitting function proposed by Beirle et al. (2011) and have provided estimates of NO_x emission trends from isolated power plants and cities over the US on the basis of 3-year average NO₂ values obtained through the plume rotation technique described by Valin et al. (2013).

China is one of the largest NO_x emitters in the world and is the source of approximately 18% of the global NO_x emissions (EDGAR 4.2, EC-JRC/PBL, 2011). China has experienced rapid increases in NO_x emissions because of its growing economy over the past two decades, during which emissions have increased by a factor of three (Kurokawa et al., 2013) and have caused severe air pollution. To improve air quality, the Chinese government implemented new emission regulations aimed at decreasing the national total NO_x emissions by 10% between 2011 and 2015 (The State Council of the People's Republic of China, 2011). Several recent studies (e.g., Duncan et al., 2016; Krotkov et al., 2016) have suggested the effectiveness of the air quality policy, as evidenced by a decreasing trend in NO₂ columns over China since 2012. Miyazaki et al. (2017), van der A et al. (2017) and Souri et al. (2017) have further reported a recent decline in national NO_x emissions on the basis of satellite data assimilation. Liu et al. (2016b) have studied changes in NO₂ column densities for each province from 2005 to 2015 and have performed an intercomparison of a bottom-up inventory and satellite observations; the study attributes the decline in regional NO₂ to decreased emissions from power plants and urban vehicles. However, few analyses have been performed for individual cities or power plants, which are the primary targets of the new control measures. Such investigations may provide stronger evidence of the effects of control measures on NO_x emissions.

In this work, we quantified NO_x emission trends over urban areas in China from 2005 to 2015. Certain widely used approaches, including linear trend analysis (e.g., Duncan et al., 2016; Krotkov et al., 2016) and exponentially modified Gaussian method (e.g., de Foy et al., 2015; Lu et al., 2015), are difficult to directly apply to hot spots in China. The linear trend analysis approach is particularly useful for quantifying changes for cities with a linear trend; however, it is not

applicable to most Chinese cities, which show a clear turning point of emissions. The exponentially modified Gaussian method may introduce significant uncertainties to the fit results because of the heterogeneously polluted background over China (de Foy et al., 2014; Liu et al., 2016a). We applied our advanced fitting function to sources located in a polluted background (Liu et al., 2016a) to calculate the 3-year moving averages of NO_x emissions of pollution hotspots including individual cities and power plants, and to relate their variations to bottom-up information. The main purpose of this study was not only to demonstrate the recent decrease in NO₂ levels across the country, as indicated by previous reports (Liu et al., 2016b) but also to display the diverse emission characteristics among cities and provide in depth interpretations of these characteristics. The fitting function and data sets used in this study are detailed in Sect. 2. The interannual variations of NO_x emissions and the analysis of emission trends for cities derived from the fitting function are provided in Sect. 3.1 and Sect. 3.2, respectively. The fitting results for cities are presented in Sect. 3.3. The uncertainties associated with the fitting results are discussed in Sect. 3.4, and the primary findings of this study are summarized in Sect. 4.

2 Methodology

2.1 Fitting method

We improved the exponentially modified Gaussian method (Beirle et al., 2011) to quantify the multi-year average NO_x emissions obtained from OMI NO₂ observations for sources located in a polluted background (Liu et al., 2016a). In this work, we adapted the fitting functions of Liu et al. (2016a) to calculate the NO_x emissions for individual cities and power plants, including adjustments to meet the requirements of the trend analysis.

Consistently with our previous study (Liu et al., 2016a), we used the OMI tropospheric NO₂ (DOMINO) v2.0 product (Boersma et al., 2011) together with the ECMWF ERA interim reanalysis (Dee et al., 2011) to perform the analysis. We calculated the mean NO₂ tropospheric vertical column densities (TVCDs) for calm wind speeds below 2 m/s and 8 different wind direction sectors, by following the approach in Beirle et al. (2011), and for weak-wind conditions (below 3 m/s), by following the recommendations in Lu et al. (2015), from 2005 to 2015. We used only non-winter data (from March to November) because these data should have larger uncertainties because of larger solar zenith angles and variable surface albedo (snow). In addition, the longer NO_x lifetimes in winter resulted in a less direct relationship between NO_x emissions and satellite NO₂ observations.

Emissions were derived in a two-step approach in Liu et al. (2016a). The first step was to use NO₂ patterns under calm wind conditions as a proxy for the spatial distribution of NO_x emissions and determine the effective atmospheric NO_x lifetime from the change of spatial patterns measured at higher wind speeds. The second step was to derive emissions from the NO₂ mass integrated around the source of interest divided by the corresponding lifetime.

To perform a trend analysis, we adjusted the method as follows: we based the estimation on NO₂ columns around the source of interest averaged over three years, in agreement with previous studies (e.g., Fioletov et al., 2011; Lu et al., 2015); and then the total NO_x mass was integrated over the mean TVCDs at weak wind speeds (below 3 m/s) instead of calm winds (below 2m/s) to balance the need for increasing the number of observations and minimizing interferences by advection. Notably, we were not able to derive valid lifetimes on the basis of the 3-year average NO₂ columns; instead, we fitted the lifetimes on the basis of multiple-year data (the entire study period) because of the lack of sufficient observations for different wind sectors within a 3-year period. Therefore, the NO_x emissions for each 3-year period were calculated by dividing the corresponding total NO_x mass by the multiple-year average lifetime. In this way, the temporal variations in NO_x emissions were merely dependent on the changes in the total NO_x mass, excluding background pollution, assuming that the lifetimes did not change over time. However, we wanted to include the fit over the lifetime in this study to make the comparison of top-down and bottom-up estimates more straightforward. Subsequently, we included mountainous sites, which were defined as sites where the absolute difference in elevation between ECMWF and GTOPO data (available at <https://lta.cr.usgs.gov/GTOPO30>,

rescaled to 0.05°) was larger than 250 m, in the following analysis. Our previous findings (Sect. 2.6, Liu et al., 2016a) have indicated that appropriate wind fields, which are required for accurate lifetime calculations, may not always be achieved from the ECMWF simulation over mountainous regions. However, depending on changes in the total NO_x mass, the fitted emission trends are not as sensitive as the fitted lifetimes to wind fields; thus, we did not exclude mountainous sites from the trend analysis. The fitting results with poor performance (~~e.g., $R < 0.9$, large confidence interval~~ i.e., $R < 0.9$, lower bound of confidence interval $CI < 0$, CI width for lifetime > 10 h, CI width for the NO₂ mass $> 0.8 \times \text{mass}$) were discarded, in accordance with the criteria in Sect. 2.2 of Liu et al. (2016a).

We selected the Huolin power plant (site 2#, 45.5°N, 119.7°E), which is located in Hologol, a county-level city of Inner Mongolia of China (shown in Fig. 1), to demonstrate our approach. The Huolin power plant has a total capacity of 2400 MW and dominates the NO_x emissions from the city of Hologol, contributing over 80% of the total emissions estimated by using the Multi-resolution Emission Inventory for China (see Sect. 2.2), which is a bottom-up emission inventory. Fig. 2(a) displays the 3-year average NO₂ TVCDs around the power plant under weak-wind conditions from 2005 to 2015. For simplicity, the 3-year period is represented by the middle year with an asterisk (e.g., 2006* denotes the period from 2005 to 2007). A significant increase in TVCDs was observed from 2006* to 2010*, which was followed by a subsequent decrease. Fig. 2(b) presents the fitted background and NO_x emissions. The fitted NO_x emissions showed an increase of up to a factor of four from 2006* to 2010* and a decrease of 30% from 2011* to 2014*, whereas the fitted background was steady and showed a standard deviation of less than 10% from 2006* to 2014*. The growth of the fitted NO_x emissions in the early stage was found to be consistent with the construction of new electric-generating units, with the total capacity increasing from 300 MW to 2400 MW from 2005 to 2009. Subsequently, the fitted NO_x emissions remained steady from 2010* to 2012*, when no new electric-generating units were placed into service, and finally decreased after the installation of Selective Catalytic Reduction (SCR) equipment at the power plants. This decrease in emissions indicated the effectiveness of SCR equipment for decreasing emissions.

2.2 Bottom-up information

We used bottom-up information to pre-select promising sites and to perform a comparison with the fitted top-down emission trends. We selected bottom-up emission inventories widely used in the community, in which multi-year gridded estimates are provided (more than three years data available from 2005 to 2015). We finally included Emission Database for Global Atmospheric Research version 4.3 (EDGAR v4.3, available for 1970–2010, Crippa et al. 2016), Regional Emission inventory in Asia version 2.1 (REAS v2.1, available for 2000–2008, Kurokawa et al., 2013) and MEIC (<http://www.meicmodel.org>) compiled by Tsinghua University. The analysis was focused on the MEIC inventory that are available for the whole period. We used the MEIC (<http://www.meicmodel.org>), compiled by Tsinghua University, for urban emissions. Vehicle population and coal consumption at the city level were derived from the China Statistical Yearbook for Regional Economy (NBS: CSYRE, 2004–2014) and the China Environment Yearbook (NBS: CEY, 2004–2015), respectively. We derived the information for the coordinates, unit capacities ~~and,~~ technologies ~~and emissions~~ for individual power plants from the unit-based China coal-fired Power plant Emissions Database (CPED) (Liu et al., 2015) integrated in MEIC.

We calculated the NO_x emissions from cities and power plants ~~by using the MEIC and the CPED inventories, respectively,~~ from 2005 to 2015. Only emissions for non-winter seasons were considered, in accordance with the emissions included for the top-down estimates, except for EDGAR in which only annual emissions are available. The gridded ~~MEIC bottom-up inventories~~ were integrated over a 40 × 40 km² metropolitan area for which the proposed top-down method was sensitive to calculate the total urban emissions (Liu et al., 2016a). Emissions for individual power plants are derived from CPED and the power plant sector of REAS directly (emissions from individual point sources are not available in EDGAR). Notably, the emissions uncertainties associated with power plants derived from CPED were much lower (30%) than those for cities

(50%~200%) because the former was calculated directly from unit-level information whereas the latter was derived by downscaling regional-based emission data to finer grids using spatial proxies and integrating emissions from corresponding grids.

2.3 Selection of locations

5 We selected large cities and power plants over China as the pre-selected sites for which bottom-up emission information was derived from the and MEIC and CPED inventories, respectively. China classifies its administrative divisions into five practical levels (from large to small): province, prefecture, county, township and village. Only prefecture-level cities were selected for analysis in this study. ~~Power plants located in a radius of 100 km around prefecture level city centers, on the basis of a visual inspection of satellite imagery from Google Earth, were excluded.~~ Power plants with NO_x emission rates greater than 10 Gg/yr were selected for emission fitting. Fig. 1 illustrates all investigated sites where the fit results showed good performance ~~(see Sect. 2.2 for details).~~ Among over 200 pre-selected cities, 48 cities (including 14 mountainous sites) were fitted with good performance (see the definition in Sect.2.1). While among over 100 pre-selected power plants, more than half were excluded from the fit procedure, because they are located in a radius of 100 km around prefecture-level city centers, on the basis of a visual inspection of satellite imagery from Google Earth. Only 7 power plants (including 3 mountainous sites) were fitted with good performance. ~~satisfactory results. While among over 100 pre-selected power plants, only 7 power plants (including 3 mountainous sites) were fitted with satisfactory results.~~ Detailed information on the sites is tabulated in Table S1 of the supplement.

3 Results and Discussion

3.1 Interannual trends in OMI NO_x emissions for cities

20 The trends in the fitted NO_x emissions for 48 cities from 2006* to 2014* are shown in Fig. 3a, with an average growth trend of 52% prior to 2011* for all investigated cities and a declining trend of 21% from 2011* to 2014*. The NO_x emissions over urban areas essentially represent a marker for combustion-related emissions, including coal combustion for power generation and industrial processes and oil combustion for transportation. Fig. 3b further summarizes the statistical data of industrial coal consumption (open squares) and vehicle population (proxy of oil consumption, solid squares), which are available for only 28 cities. Not surprisingly, the fitted emission trends for the 28 cities (circles) were consistent with those for the overall 48 cities. The observed sharp growth of 47% in NO_x emissions during the period of 2006*–2011* was attributed to the growth of 75% and 158% in coal consumption and vehicle population, respectively. Coal consumption and vehicle population continued to rise and increased by 8% and 26% from 2011* to 2014* respectively; however, a subsequent decline in NO_x emissions was observed. We further divided these NO_x emissions by coal consumption and vehicle population because their respective temporal variations can be treated as an approximation of the average emission factor trends in the industrial (including power) and transportation sectors, on the basis of the assumption that contributions of NO_x emissions from corresponding sectors are constant over time. The ratio of emissions to coal consumption and vehicle population has diminished over time and decreased by 37% and 65% from 2011* to 2014*, respectively. This declining trend was greater than the fluctuations in contributions of NO_x emissions from the corresponding sectors (ranging from 1%–24% for individual cities) and indicated the effectiveness of emission control measures.

The time series between fitted emissions and bottom-up inventories are generally consistent in Fig. 3b. The changes in NO_x emissions from 2005 to 2015 according to sector for the investigated cities on the basis of MEIC estimates are summarized in Fig. 3a and indicate the driving force underlying the emission changes. In agreement with previous findings (Liu et al., 2016b), power plants are the primary component responsible for the decline in NO_x, and the associated bottom-up NO_x emissions decreased by 59% between 2011 and 2015. This finding was further supported by the power plant emission trends

shown afterwards in Sect. 3.3. The decrease in both fitted and bottom-up emissions has accelerated since 2013 because of the implementation of air pollution prevention and control action plans (the State Council of China, 2013). Such plans require the deployment of denitration devices for coal-fired boilers and cement precalciners, and the requirements are not limited to power plants, as observed in earlier policies. By 2015, 92% of the power plant boilers and ~~new-dry-process~~ cement precalciner kilns in China had installed denitration devices. In addition, low-efficiency small coal-fired boilers and even complete factories have been phased out. Iron, steel and cement factories with an overall production capacity of 86 Gg, 44 Gg, and 263 Gg were shut down in China from 2013 to 2015. Additionally, Chinese cities have pursued a reduction in coal consumption through the gradual transformation of the energy system from coal to renewable energy and natural gas. For instance, Beijing has outlined plans for “coal-free zones” that ban coal usage, and these plans required the replacement of all coal-fired boilers with natural gas in inner suburban districts by 2015 (Clean Air Action Plan 2013–2017, Beijing Municipal Government, 2013). Accordingly, China reached peak coal consumption in 2013, and a decline of 4% in coal consumption for the investigated cities was observed between 2013 and 2014 (Fig. 3b). Moreover, Chinese cities have been required to meet more stringent vehicle emission standards. For instance, Euro IV emission standards were widely implemented in 2015, and the NO_x emission factor is only 2.6% of the Euro 0 standard for gasoline vehicles (Huo et al., 2012). Because of the notable success of emission control induced by stricter emission standards, the contributions of high-emitting old vehicles (Euro 0 in most cases) to overall emissions are becoming increasingly significant. Reports have indicated that Euro 0 vehicles accounted for more than 50% of the total vehicle emissions in China in 2009 (MEP, 2010). Thus, China has marked high-emitting vehicles with yellow labels, implemented traffic restrictions and subsidized scrappage programs for these vehicles (Wu et al., 2017). A total of 15 million yellow-label vehicles were scrapped between 2013 and 2015. Significant progress in controlling vehicle emissions has also been observed with improvements in vehicular fuel combustion efficiency and license registration control policies, which allocate quotas for new vehicles through public auction or lottery. Note that all bottom-up inventories show lower increase rate around the year 2010, compared to the fitted emissions (Fig. 3b). This is most likely caused by the spatial allocation approach adopted in bottom-up inventories, which tends to diminish regional diversity and may consequently result in smaller emission growth (see further discussion in Sect. 3.2).

3.2 Interannual trends of NO_x emissions for individual cities

The fitted results allowed for a closer examination of the trends and causes of emission changes at the individual city level instead of at a regional level, as performed in previous studies (e.g., Liu et al., 2016b). Fig. 4 compares the fitted and bottom-up emissions for selected cities, which can be considered in 3 broad categories: mega cities with large amount of vehicle emissions (Guangzhou and Shanghai in Fig. 4a and b); cities with power plants as the dominant emission source (Wuhai and Huainan in Fig. 4c and d); and cities with industrial plants as the dominant emission source (Karamay and Jiayuguan in Fig. 4e and f).

Fig. 4a and b show that megacities reached the emission peak prior to the average timeline shown in Fig. 3. Here, we discuss in detail the temporal variations in Guangzhou, the largest city in South China. The early decline in emissions was primarily related to the stricter regulations on vehicles, which was the only source that showed decreasing emissions, as indicated by the bottom-up inventory. Guangzhou implemented Euro III emission standards for all light-duty vehicles and heavy-duty diesel vehicles in 2006, which was two years earlier than the national requirement. Traffic restrictions for motorcycles and trucks and for yellow-label vehicles have also been implemented since 2007 and 2008, respectively. In addition, alternative fuels in buses and taxis have also been promoted in Guangzhou, and 75% and 94% of these vehicles, respectively, were using liquefied petroleum gas by 2009 (Zhang et al., 2013). The early decline before 2010 in Shanghai shown in Fig. 4b is attributable to similarly strict regulations for vehicle emissions that were implemented before the national schedule. In addition, Guangzhou has gradually phased out the high-pollution iron and steel industry since 2008; however, such emission reductions were not well presented by the bottom-up inventory. In line with the national denitration procedure, coal-fired

power plants have remained a significant contributor to emission reductions since 2011. The bottom-up NO_x emissions from power plants in Guangzhou decreased by over 50% between 2011 and 2015, because of the wider deployment of denitration devices at power plants.

The interannual trends of NO_x emissions for the cities of Wuhai and Huainan are displayed in Fig. 4c and d, and power plants were the dominant source of NO_x emissions. Not surprisingly, the top-down and bottom-up information was more consistent than the information for the other two categories, because of the better quality of emission estimates for the power sector. The fitted emissions decreased with the decline in emissions from power plants around 2012, and this finding was related to the deployment of denitration devices.

Emission variations for cities for which the industrial sector was the dominant emission source are shown in Fig. 4e and f, which indicate significant inconsistencies in the top-down and bottom-up information, even for the total amount. Cities belonging to this category were usually medium and small cities. For instance, the city of Jiayuguan (Fig. 4f) has a total population of 0.2 million, a vehicle population of 0.03 million and a large-sized industrial enterprise (Jiuquan Iron & Steel (Group) Co., Ltd). Industrial activities are the most likely contributor to the recent deceleration and even decline in total emissions, because of the small human and vehicle populations and the limited amount of power plant emissions (light blue line) in the city. To meet the demands of the air pollution prevention and control action plan (the State Council of China, 2013), the iron and steel enterprises have been required to regulate their emissions since 2013. Additionally, the city is required to meet stricter vehicle emission standards and retire aged vehicles. However, the bottom-up inventory for the city of Jiayuguan was consistent with this analysis for only the transportation sector and not the industrial sector as shown in Fig. 4f. The bottom-up transportation emissions experienced a decline of 10% and a sharp increase of 20% in the vehicle population between 2013 and 2015. In addition, the NO_x emissions from the industrial sector were fairly steady and showed a decrease of only 2% between 2013 and 2015 and account for a small share (20%) of the total emissions. For industrial emissions, MEIC first downscaled provincial totals to counties using industrial GDP, and then allocate county emissions to grids with population density. Thus uncertainty of emissions from the industrial sector is larger than that from power plants. Such changes in the industrial sector most probably represent the regional average level and do not represent the levels for a city with a large-sized iron and steel enterprise, because of the uncertainty of downscaling approaches adopted in the bottom-up inventory.

Although we used bottom-up inventories to interpret the changes in NO_x emission, certain notable discrepancies occurred between the fitted emissions and the bottom-up inventories. We further explored the reasons for these inconsistencies in cities by examining the differences in trends between top-down and bottom-up estimates at different spatial scales. Fig. 5 presents the temporal variations at provincial and city scales from 2006* to 2014* for the top-down and bottom-up data sets. The top-down information at the provincial level (Fig. 5a) was the 3-year average OMI NO₂ column densities for non-background regions, where the average annual NO₂ column densities were larger than 1×10^{15} molec/cm² or the average NO₂ column densities for summer exceeded those for winter in Liu et al. (2016b), and the top-down estimates (Fig. 5c) at the city level were derived from this study. The bottom-up emissions were calculated by summing the emissions of the corresponding grids belonging to individual provinces (Fig. 5b) or cities (Fig. 5d, see Sect. 2.2). Not surprisingly, the comparison of the two independent data sets showed that the trends at both the provincial and city levels were generally consistent, with both levels experiencing a sharp rise before 2012* (2011* in Fig. 5c) and a continuous decline thereafter. However, a closer examination of the magnitude of relative changes showed that the differences were scale dependent. The provincial-level comparison showed a growth trend of $40\% \pm 26\%$ and $34\% \pm 21\%$ from 2006* to 2012* and a subsequent declining trend of $9\% \pm 4\%$ and $14\% \pm 6\%$ from 2012* to 2014* for the top-down and bottom-up data sets, respectively, and indicated the acceptable accuracy of provincial totals in bottom-up estimates. However, the city-level comparison exhibited a large discrepancy in the magnitude of change rates. For instance, the top-down growth rates reached $45\% \pm 46\%$ in the period from 2006* to 2012*, whereas the bottom-up rates were only $25\% \pm 27\%$ for the same period.

We expect that the scale dependence of the differences shown in Fig. 5 may be explained by the spatial allocation approach adopted in bottom-up inventories. Current gridded bottom-up emission inventories rely heavily on spatial proxies because rare emissions, excluding the emissions from stacks of large point sources, can be directly measured. A variety of spatial proxies, such as population density, road density and satellite-observed nightlights, are used to geographically distribute emission totals from a large scale down to the scale of geographic grids of various sizes. Several studies (e.g., Hogue et al., 2016) have indicated that such a spatial distribution approach using proxy data introduces significant uncertainties because emissions can be misallocated spatially and temporally. Although the MEIC inventory has substantially improved its accuracy, such as by using the high-resolution power plant database CPED (Liu et al., 2015), a lack of data has led to the inclusion of other types of point sources (such as industrial boilers) as areal sources of emissions. For example, the MEIC first downscales provincial industrial emission totals to county totals according to industrial GDP values and then distributes county emissions to grids according to the population density. However, industrial facility locations are likely to be decoupled from spatial proxies, because polluted facilities are often required to be located in rural areas with smaller GDP and populations (Zheng et al., 2017), and this decoupling may have resulted in the underestimation of emissions from steel and iron factories shown in Fig. 4f. In addition, the spatial distribution of proxies cannot easily represent the emission changes caused by anti-leapfrogging policies implemented in cities ahead of the national schedule, such as the previously discussed new vehicle emission standards in Guangzhou. Thus, regional diversity may have been diminished and consequently resulted in the small standard deviation over cities shown in Fig. 5d.

The correlation coefficients of the pair-wise trends between the fitted NO_x emissions and the bottom-up inventory for the period 2006* to 2014* are illustrated in Fig. 6. The correlation coefficient of the time series of NO_x emissions showed remarkable diversity for cities and reached over 0.9 for Urumqi (#9 in Fig. 6) and dropped to less than -0.7 for Jinzhou (#5 in Fig. 6), probably because of the high uncertainties of the bottom-up inventories for cities. Notably, the negative correlation coefficients do not necessarily correspond to a strong inverse linear relationship and may suggest inconsistency over only one or two periods (Fig. 4b). Additionally, the negative correlation coefficients were always observed when the time series of fitted emissions experienced a minor fluctuation without a significant trend, as demonstrated in Fig. 6b by cities with a correlation coefficient less than -0.4.

3.3 Interannual trends in OMI NO_x emissions for power plants

The trends in fitted NO_x emissions for 7 power plants from 2006* to 2014* are shown in Fig. 7. The changes in the total NO_x mass and derived NO_x emissions were consistent with the addition of new units in individual power plants until the installation of denitration devices. The dramatic growth in NO_x emissions (red line) prior to 2010*, which reached 89% on average for all power plants investigated in this study, was driven by increases in the capacity of 84% for the corresponding power plants (gray bar). However, the subsequent decline in NO_x emissions could not be explained by the simultaneous changes in total unit capacities, which increased by 3% from 2010* to 2014*, but suggests a good agreement with the wider deployment of denitration devices, such as SCR equipment. The installation of SCR devices generally ensures a NO_x removal efficiency of 80–85% (Forzatti et al., 2001). However, the denitration devices used in Chinese power plants usually do not meet this standard efficiency, because of the non-optimal use of catalysts and reductants. The average removal efficiency of SCR equipment for 2014 was only 60% on the basis of statistics from the CPED. In this way, the increasing market share penetration of SCR equipment (up to 73%, blue line) corresponded to a decrease of approximately 40% (i.e., $73\% \times 60\%$) in NO_x emissions, a result consistent with the changes in fitted emissions. The fitted emissions were further compared with the bottom-up emission estimates, and both values shared a similar trend. The significant decline of $40 \pm 22\%$ (mean \pm standard deviation) in fitted NO_x emissions for individual power plants from 2010* to 2014* was generally consistent with the simultaneous decline in bottom-up estimates of $22 \pm 29\%$. However, a minor difference in the peak year

of emissions was detected for a few power plants, and was most probably caused by uncertainty in the fitted emissions related to the lack of interannual variations in NO_x lifetimes.

China has implemented the new emission standards for thermal power plants (Ministry of Environmental Protection of China (MEP), 2011) in 2012, requiring power plants, particularly large plants, to install denitration devices, such as SCR equipment, to control their NO_x emissions. The deployment of denitration devices (shown in Fig. 7) was consistent with this new policy, and the national average market share penetration of SCR equipment grew from 18% to 86% between 2011 and 2015 (China Electricity Council, 2012–2016). Given that the overall capacity of the power plants investigated in this study was equivalent to only 2% of the total national capacity; we may not be able to conclude that the temporal variations in NO_x emissions derived from the 7 power plants reflect the emissions from large power plants at the national level. While for the investigated power plants, the derived emissions were consistent with the bottom-up emissions and the time series of the two estimates were well correlated, even for mountainous sites where the absolute values of the emission estimates differed significantly (Fig. 6a). The good consistency increased our confidence that the fitted emission trends accurately represented the real-world emission variations, because the uncertainty of the bottom-up emission inventory for power plants is fairly low (Liu et al., 2015).

3.4 Uncertainties

The fitted NO_x emissions were compared with the bottom-up emission estimates (Sect. 2.2) for all 48 cities and 7 power plants in Fig. 8, and their correlations were consistent with the average emission estimates for multiple years shown in the previous work (Liu et al., 2016a). In general, the comparisons indicated consistency among non-mountainous sites, which presented a higher correlation coefficient for power plants (blue symbols in Fig. 8a, $r=0.89$) than cities (blue symbols in Fig. 8b, $r=0.81$). The results for the mountainous sites showed higher scatter for both power plants (red symbols in Fig. 8a, $r=0.79$) and cities (red symbols in Fig. 8b, $r=0.44$), thus confirming that those top-down estimates had higher uncertainties because of inaccurate ECMWF wind fields for mountainous sites (Liu et al., 2016a). The comparable correlation among the results presented here and in the previous study by Liu et al. (2016a) increased our confidence in the accuracy of the fitted results.

We estimated the uncertainty of the fitted NO_x emissions and their trends by using a method analogous to that in Liu et al. (2016a) because of the consistency in methodology between the two studies. The uncertainty analysis was performed on the basis of the fit performance and according to sensitivity studies that have investigated the dependencies on a priori settings, which are detailed in the supplement of Liu et al. (2016a). The major sources of errors contributing to the overall uncertainties included (a) fit error; (b) choice of fit intervals; (c) tropospheric NO_2 VCDs and the NO_x/NO_2 ratio; (d) choice of wind fields and (e) lifetime variations. The uncertainties arising from (a) – (c) were consistent with those reported in Liu et al. (2016a). Here, we briefly discuss the impact of (d) and (e).

(d) Choice of wind fields. The NO_2 trends observed under weak-wind conditions may vary from those under all-wind conditions (Lu et al., 2015), because higher wind speeds are expected to cause longer NO_x lifetimes because of the faster dilution of NO_x (Valin et al., 2013). A change in the weak-wind conditions by all-wind conditions affects the resulting total mass by approximately 10% on average.

(e) Lifetime variations. We use multiple-year average lifetimes and 3-year average NO_2 masses to calculate NO_x emissions trends in this study. The variations in total NO_2 mass do not necessarily correlate linearly with NO_x emissions, because of changes in the NO_x lifetimes related to variations in meteorology and NO_x chemistry. However, the temporal variations in lifetimes corresponding to the 3-year moving averages of TVCDs are reduced significantly, as supported by the similar decreases in the 3-year mean NO_x emissions and OMI NO_2 observations over urban areas in the US (Lu et al., 2015). In addition, we could not unambiguously relate the variability of fitted NO_x lifetimes to NO_2 levels (Liu et al., 2016a).

The method was applied to the period prior to the row anomaly (the 3-year period from 2005 to 2007), which had a larger number of observations than the other periods. The method was successful for 19 sites, and the fitted lifetimes were not sensitive to the NO₂ changes within the studied period, with the lifetimes increasing by only 9% when the average NO₂ increased by ~20% compared with the multiple-year level. The uncertainties caused by lifetime variations were estimated to be 10%, and this value was applied to all considered sources.

The total uncertainty was defined as the root of the quadratic sum of the aforementioned contributions, which were assumed to be independent. We estimated that the total uncertainties of the fitted NO_x emissions were within 66%–99% for all investigated sites. Notably, this estimate is rather conservative because of the assumption that all the contributors to uncertainties are independent. In addition, the uncertainty in emission trends was significantly lower than that of emissions because the errors from the choice of fit intervals, wind fields, tropospheric columns and NO_x/NO₂ ratios were generally compensated for in the assessment of trends.

4 Conclusions

We quantified the NO_x emissions of cities over China obtained from satellite NO₂ observations for the period 2005 to 2015. The lifetimes were determined from the average changes in NO₂ distributions under windy conditions compared with calm conditions, and the emissions were subsequently estimated by dividing the total mass of NO₂ integrated around the source of interest in any three consecutive years from 2005 to 2015 by the derived lifetimes. The method was successfully applied to 48 cities and 7 power plants to obtain the NO_x emission trends over China.

We detected similar temporal variations in the derived NO_x emissions for cities and power plants, both of which experienced a rapid growth until approximately 2011 and a sharp decline thereafter. The NO_x emissions from selected cities experienced an average growth of 52% prior to 2011*, because of the increase in fuel consumption. The subsequent decline of 21% was quantitatively attributed to the successful control of NO_x emissions in the power, industrial and transportation sectors. In addition to installing denitration devices at power plants and cement plants, China has transformed its industrial structure by phasing out heavily polluting industrial factories, decreasing coal consumption, controlling vehicle emissions through stricter emission standards and scrapping aged vehicles. The average emission trend fitted by this study is consistent with the previous findings, which showed that OMI NO₂ levels peaked in 2011 over China (Krotkov et al., 2016; Duncan et al., 2016) and NO_x emissions from satellite data assimilation peaked in 2011/2012 (Miyazaki et al., 2017; van der A et al., 2017; Souri et al., 2017) respectively. Additionally, the fitted emission peaks for individual cities showed reasonable agreement with the peaks of OMI NO₂ levels at provincial level (Liu et al., 2016b). Half of the investigated cities reached simultaneous emission peaks with the corresponding provinces. For the another half, the majority (over 70%) reached emission peaks prior to the average provincial timeline, which are most likely caused by emission control policies implemented in the city ahead of the provincial schedule, such as the previously discussed new vehicle emission standards in Guangzhou.

We further compared the derived NO_x emissions with the bottom-up emission estimates for individual cities. Megacities with a large amount of vehicle emissions reached the emission peak prior to the average timeline, because of the stricter vehicle regulations that were implemented ahead of the national schedule. Cities with power and industrial sectors as the dominant emission sources reached the emission peak at dates that were consistent with the schedule for emission control in the corresponding sectors. In addition, we found that the derived NO_x emissions were significantly less consistent with the regional inventory MEIC for cities ($r=0.4$ on average) than the high-resolution power plant inventory CPED, a result related to the uncertainties in the spatial allocation technique, in which surrogates were used to break down regional-based emission data to the level of cities. However, the discrepancy was strongly scale dependent, and the trends between the top-down and bottom-up estimates were consistent at the province level but not at the city level. This finding indicated that the allocation technique used in bottom-up inventory misrepresents the spatial and temporal patterns for emissions over cities.

Our results indicated that OMI NO₂ observations can be used to estimate NO_x emission trends for individual cities and power plants, even those with a polluted background. Moreover, this method can be applied to quantify the emission variations from various hot spots worldwide. Notably, the lifetimes were derived on the basis of the average NO₂ columns for the entire study period of 2005–2015 because of a lack of statistics for shorter periods. Because future satellite instruments, such as TROPOMI (Veefkind et al., 2012), GEMS (Kim et al., 2012), TEMPO (Chance et al., 2012) and Sentinel-4 (Ingmann et al., 2012), have improved spatial and temporal resolution, the capabilities of this method is expected to be further enhanced. We expect that future estimates of interannual lifetimes as well as diurnal cycles from geostationary satellites will be able to account for changes in meteorology and NO_x chemistry. In addition, the trend analysis for annual and even seasonal NO_x emissions should be achievable and should serve as a more reliable tool for interpreting emission changes.

10 Acknowledgements

This research was funded by the National Natural Science Foundation of China (41625020, [41571130032](#)), [the National Key R&D Program \(2016YFC0201506\)](#), China's National Basic Research Program (2014CB441301), and the MarcoPolo project of the European Union Seventh Framework Programme (FP7/2007-2013) under Grant Agreement number 606953.

References

- 15 Beirle, S., Boersma, K. F., Platt, U., Lawrence, M. G., and Wagner, T.: Megacity emissions and lifetimes of nitrogen oxides probed from space, *Science*, 333, 1737–1739, 2011.
Beijing Municipal Government: The Clean Air Action Plan 2013–2017, available at <http://zhengwu.beijing.gov.cn/ghxx/qtgh/t1324558.htm> (last accessed: 30 March 2017), 2013 (in Chinese).
- Boersma, K. F., Eskes, H. J., Veefkind, J. P., Brinksma, E. J., van der A, R. J., Sneep, M., van den Oord, G. H. J., Levelt, P. F., Stammes, P., Gleason, J. F., and Bucsela, E. J.: Near-real time retrieval of tropospheric NO₂ from OMI, *Atmos. Chem. Phys.*, 7, 2103–2118, doi: 10.5194/acp-7-2103-2007, 2007.
- 20 Boersma, K. F., Eskes, H. J., Dirksen, R. J., van der A, R. J., Veefkind, J. P., Stammes, P., Huijnen, V., Kleipool, Q. L., Sneep, M., Claas, J., Leitão, J., Richter, A., Zhou, Y., and Brunner, D.: An improved tropospheric NO₂ column retrieval algorithm for the Ozone Monitoring Instrument, *Atmos. Meas. Tech.*, 4, 1905–1928, doi: 10.5194/amt-4-1905-2011, 2011.
- 25 Burrows, J. P., Weber, M., Buchwitz, M., Rozanov, V., Ladstätter-Weissenmayer, A., Richter, A., DeBeek, R., Hoogen, R., Bramstedt, K., Eichmann, K.-U., Eisinger, M., and Perner, D.: The Global Ozone Monitoring Experiment (GOME): Mission Concept and First Scientific Results, *Journal of the Atmospheric Sciences*, 56, 151–175, 1999.
- Chance, K., Lui, X., Suleiman, R. M., Flittner, D. E., and Janz, S.J.: Tropospheric Emissions: Monitoring of Pollution (TEMPO), presented at the 2012 AGU Fall Meeting, San Francisco, USA, 3–7 December 2012, A31B-0020, 2012.
- 30 China Electricity Council (CEC): Annual report on information about flue gas desulfurization and denitrification for thermal power plants in 2011, available at <http://huanzi.cec.org.cn/dongtai/2012-02-28/80830.html> (last accessed: 22 May 2016), 2012 (in Chinese).
China Electricity Council (CEC): Annual report on information about flue gas desulfurization and denitrification for thermal power plants in 2012, available at www.cec.org.cn/yaowenkuaidi/2013-03-19/98992.html (last accessed: 22 May 2016), 2013 (in Chinese).
- 35 China Electricity Council (CEC): Annual report on information about flue gas desulfurization, denitrification and dust removal for thermal power plants in 2013, available at <http://huanzi.cec.org.cn/dongtai/2014-05-07/121302.html> (last accessed: 22 May 2016), 2014 (in Chinese).

- China Electricity Council (CEC): Annual report on information about environmental protection for thermal power plants in 2014, available at <http://huanzi.cec.org.cn/tuoliu/2015-05-07/137531.html> (last accessed: 22 May 2016), 2015 (in Chinese).
- China Electricity Council (CEC): Annual report on information about environmental protection for thermal power plants in 2015, available at <http://huanzi.cec.org.cn/tuoliu/2016-04-25/152005.html> (last accessed: 22 May 2016), 2016 (in Chinese).
- 5 [Crippa, M., Janssens-Maenhout, G., Dentener, F., Guizzardi, D., Sindelarova, K., Muntean, M., Van Dingenen, R., and Granier, C.: Forty years of improvements in European air quality: regional policy-industry interactions with global impacts, *Atmos. Chem. Phys.*, **16**, 3825–3841, 10.5194/acp-16-3825-2016, 2016.](#)
- de Foy, B., Wilkins, J. L., Lu, Z., Streets, D. G., and Duncan, B. N.: Model evaluation of methods for estimating surface emissions and chemical lifetimes from satellite data, *Atmos. Environ.*, **98**, 66–77, 2014.
- 10 de Foy, B., Lu, Z., Streets, D. G., Lamsal, L. N., and Duncan, B. N.: Estimates of power plant NO_x emissions and lifetimes from OMI NO₂ satellite retrievals, *Atmos. Environ.*, **116**, 1–11, 2015.
- Dee, D. P., Uppala, S. M., Simmons, A. J., Berrisford, P., Poli, P., Kobayashi, S., Andrae, U., Balmaseda, M. A., Balsamo, G., Bauer, P., Bechtold, P., Beljaars, A. C. M., van de Berg, L., Bidlot, J., Bormann, N., Delsol, C., Dragani, R., Fuentes, M., Geer, A. J., Haimberger, L., Healy, S. B., Hersbach, H., Hólm, E. V., Isaksen, I., Kållberg, P., Köhler, M., Matricardi, M.,
- 15 McNally, A. P., Monge-Sanz, B. M., Morcrette, J. J., Park, B. K., Peubey, C., de Rosnay, P., Tavolato, C., Thépaut, J. N., and Vitart, F.: The ERA-Interim reanalysis: configuration and performance of the data assimilation system, *Quarterly Journal of the Royal Meteorological Society*, **137**, 553–597, 2011.
- Duncan, B. N., Lamsal, L. N., Thompson, A. M., Yoshida, Y., Lu, Z., Streets, D. G., Hurwitz, M. M., and Pickering, K. E.: A space-based, high-resolution view of notable changes in urban NO_x pollution around the world (2005–2014), *J. Geophys. Res.*, **121**, 976–996, doi: 10.1002/2015jd024121, 2016.
- 20 European Commission (EC): Joint Research Centre (JRC)/Netherlands Environmental Assessment Agency (PBL), Emission Database for Global Atmospheric Research (EDGAR), release version 4.2, available at: <http://edgar.jrc.ec.europa.eu> (last access: 1 December 2013), 2011.
- Fioletov, V. E., McLinden, C. A., Krotkov, N., Moran, M. D., and Yang, K.: Estimation of SO₂ emissions using OMI retrievals, *Geophys. Res. Lett.*, **38**, L21811, doi: 10.1029/2011gl049402, 2011.
- 25 Fioletov, V. E., McLinden, C. A., Krotkov, N., and Li, C.: Lifetimes and emissions of SO₂ from point sources estimated from OMI, *Geophys. Res. Lett.*, **42**, 2015GL063148, doi: 10.1002/2015gl063148, 2015.
- Fioletov, V. E., McLinden, C. A., Krotkov, N., Li, C., Joiner, J., Theys, N., Carn, S., and Moran, M. D.: A global catalogue of large SO₂ sources and emissions derived from the Ozone Monitoring Instrument, *Atmos. Chem. Phys.*, **16**, 11497–11519, doi: 10.5194/acp-16-11497-2016, 2016.
- 30 Forzatti, P.: Present status and perspectives in de-NO_x SCR catalysis, *Applied Catalysis A: General*, **222**, 221–236, 2001.
- Hogue, S., Marland, E., Andres, R. J., Marland, G., and Woodard, D.: Uncertainty in gridded CO₂ emissions estimates, *Earth's Future*, **4**, 225–239, 2016.
- Huo, H., Yao, Z., Zhang, Y., Shen, X., Zhang, Q., Ding, Y., and He, K.: On-board measurements of emissions from light-duty gasoline vehicles in three mega-cities of China, *Atmos. Environ.*, **49**, 371–377, 2012.
- 35 Ingmann, P., Veihelmann, B., Langen, J., Lamarre, D., Stark, H., and Courrèges-Lacoste, G. B.: Requirements for the GMES Atmosphere Service and ESA's implementation concept: Sentinels-4/-5 and-5p, *Remote Sens. Environ.*, **120**, 58–69, 2012.
- Kim, J.: GEMS (Geostationary Environment Monitoring Spectrometer) onboard the GeoKOMPSAT to monitor air quality in high temporal and spatial resolution over Asia-Pacific region, presented at the 2012 EGU General Assembly, Vienna, Austria, 22–27 April 2012, EGU2012-4051, 2012.
- 40 Kim, S. W., Heckel, A., Frost, G. J., Richter, A., Gleason, J., Burrows, J. P., McKeen, S., Hsie, E. Y., Granier, C., and Trainer, M.: NO₂ columns in the western United States observed from space and simulated by a regional chemistry model and their implications for NO_x emissions, *J. Geophys. Res.*, **114**, D11301, doi: 10.1029/2008jd011343, 2009.

- Konovalov, I. B., Beekmann, M., Richter, A., and Burrows, J. P.: Inverse modelling of the spatial distribution of NO_x emissions on a continental scale using satellite data, *Atmos. Chem. Phys.*, 6, 1747–1770, doi: 10.5194/acp-6-1747-2006, 2006.
- Krotkov, N. A., McLinden, C. A., Li, C., Lamsal, L. N., Celarier, E. A., Marchenko, S. V., Swartz, W. H., Bucsela, E. J.,
5 Joiner, J., Duncan, B. N., Boersma, K. F., Veefkind, J. P., Levelt, P. F., Fioletov, V. E., Dickerson, R. R., He, H., Lu, Z., and Streets, D. G.: Aura OMI observations of regional SO₂ and NO₂ pollution changes from 2005 to 2015, *Atmos. Chem. Phys.*, 16, 4605–4629, doi: 10.5194/acp-16-4605-2016, 2016.
- Kurokawa, J., Ohara, T., Morikawa, T., Hanayama, S., Janssens-Maenhout, G., Fukui, T., Kawashima, K., and Akimoto, H.: Emissions of air pollutants and greenhouse gases over Asian regions during 2000–2008: Regional Emission inventory in
10 ASia (REAS) version 2, *Atmos. Chem. Phys.*, 13, 11019–11058, doi: 10.5194/acp-13-11019-2013, 2013.
- Lamsal, L. N., Martin, R. V., Padmanabhan, A., van Donkelaar, A., Zhang, Q., Sioris, C. E., Chance, K., Kurosu, T. P., and Newchurch, M. J.: Application of satellite observations for timely updates to global anthropogenic NO_x emission inventories, *Geophys. Res. Lett.*, 38, L05810, doi: 10.1029/2010gl046476, 2011.
- Lelieveld, J., Beirle, S., Hörmann, C., Stenchikov, G., and Wagner, T.: Abrupt recent trend changes in atmospheric nitrogen
15 dioxide over the Middle East, *Science Advances*, 1, 2015.
- Leue, C., Wenig, M., Wagner, T., Klimm, O., Platt, U., and Jähne, B.: Quantitative analysis of NO_x emissions from Global Ozone Monitoring Experiment satellite image sequences, *J. Geophys. Res.*, 106, 5493–5505, doi: 10.1029/2000JD900572, 2001.
- Levelt, P. F., van den Oord, G. H. J., Dobber, M. R., Malkki, A., Huib, V., Johan de, V., Stammes, P., Lundell, J. O. V., and
20 Saari, H.: The ozone monitoring instrument, *Geoscience and Remote Sensing, IEEE Transactions on*, 44, 1093–1101, 2006.
- Liu, F., Zhang, Q., Tong, D., Zheng, B., Li, M., Huo, H., and He, K. B.: High-resolution inventory of technologies, activities, and emissions of coal-fired power plants in China from 1990 to 2010, *Atmos. Chem. Phys.*, 15, 13299–13317, doi: 10.5194/acp-15-13299-2015, 2015.
- Liu, F., Beirle, S., Zhang, Q., Dörner, S., He, K., and Wagner, T.: NO_x lifetimes and emissions of cities and power plants in
25 polluted background estimated by satellite observations, *Atmos. Chem. Phys.*, 16, 5283–5298, doi: 10.5194/acp-16-5283-2016, 2016a.
- Liu, F., Zhang, Q., Ronald, J. van der A., Zheng, B., Tong, D., Yan, L., Zheng, Y., and He, K.: Recent reduction in NO_x emissions over China: synthesis of satellite observations and emission inventories, *Environmental Research Letters*, 11, 114002, 2016b.
- 30 Lu, Z., Streets, D. G., de Foy, B., and Krotkov, N. A.: Ozone Monitoring Instrument observations of interannual increases in SO₂ emissions from Indian coal-fired power plants during 2005–2012, *Environ. Sci. Technol.*, 47, 13993–14000, 2013.
- Lu, Z., Streets, D. G., de Foy, B., Lamsal, L. N., Duncan, B. N., and Xing, J.: Emissions of nitrogen oxides from US urban areas: estimation from Ozone Monitoring Instrument retrievals for 2005–2014, *Atmos. Chem. Phys.*, 15, 10367–10383, doi: 10.5194/acp-15-10367-2015, 2015.
- 35 Martin, R. V., Jacob, D. J., Chance, K., Kurosu, T. P., Palmer, P. I., and Evans, M. J.: Global inventory of nitrogen oxide emissions constrained by space-based observations of NO₂ columns, *J. Geophys. Res.*, 108, 4537, doi: 10.1029/2003jd003453, 2003.
- McLinden, C. A., Fioletov, V., Boersma, K. F., Krotkov, N., Sioris, C. E., Veefkind, J. P., and Yang, K.: Air quality over the Canadian oil sands: A first assessment using satellite observations, *Geophys. Res. Lett.*, 39, L04804, doi:
40 10.1029/2011gl050273, 2012.
- McLinden, C. A., Fioletov, V., Shephard, M. W., Krotkov, N., Li, C., Martin, R. V., Moran, M. D., and Joiner, J.: Space-based detection of missing sulfur dioxide sources of global air pollution, *Nature Geosci*, 9, 496–500, 2016.

- Ministry of Environmental Protection of China (MEP): China vehicle emission control annual report 2010, available at <http://vecc-mep.org.cn/index/20101110nianbao.pdf> (last accessed: 22 May 2016), 2010 (in Chinese).
- Ministry of Environmental Protection of China (MEP): Emission Standard of Air Pollutants for Thermal Power Plants: GB13223-2011, China Environmental Science, Beijing, China, 2011 (in Chinese).
- 5 Miyazaki, K., Eskes, H., Sudo, K., Boersma, K. F., Bowman, K., and Kanaya, Y.: Decadal changes in global surface NO_x emissions from multi-constituent satellite data assimilation, *Atmos. Chem. Phys.*, 17, 807–837, doi: 10.5194/acp-17-807-2017, 2017.
- National Bureau of Statistics (NBS): China Environment Yearbook (CEY), China Statistics Press, Beijing, China, 2004–2015 (in Chinese).
- 10 National Bureau of Statistics (NBS): China Statistical Yearbook for Regional Economy (CSYRE), China Statistics Press, Beijing, China, 2004–2014 (in Chinese).
- Richter, A., Burrows, J. P., Nusz, H., Granier, C., and Niemeier, U.: Increase in tropospheric nitrogen dioxide over China observed from space, *Nature*, 437, 129–132, 2005.
- Russell, A. R., Valin, L. C., and Cohen, R. C.: Trends in OMI NO₂ observations over the United States: effects of emission control technology and the economic recession, *Atmos. Chem. Phys.*, 12, 12197–12209, doi: 10.5194/acp-12-12197-2012, 2012.
- 15 Schneider, P., and van der A, R. J.: A global single-sensor analysis of 2002–2011 tropospheric nitrogen dioxide trends observed from space, *J. Geophys. Res.*, 117, D16309, doi: 10.1029/2012jd017571, 2012.
- Schneider, P., Lahoz, W. A., and van der A, R.: Recent satellite-based trends of tropospheric nitrogen dioxide over large urban agglomerations worldwide, *Atmos. Chem. Phys.*, 15, 1205–1220, doi: 10.5194/acp-15-1205-2015, 2015.
- 20 Seinfeld, J. H. and Pandis, S. N.: Atmospheric chemistry and physics: From air pollution to climate change, John Wiley and Sons, New York, 204–275, 2006.
- Souri, A. H., Choi, Y., Jeon, W., Woo, J.-H., Zhang, Q., and Kurokawa, J.-i.: Remote sensing evidence of decadal changes in major tropospheric ozone precursors over East Asia, *J. Geophys. Res.*, 122, 2474–2492, doi: 10.1002/2016JD025663, 2017.
- 25 State Council of the People’s Republic of China: Integrated work plan for energy saving and emission reduction during the twelfth five-Year plan, available at http://gov.cn/zwggk/2011-09/07/content_1941731.htm (last accessed: 22 May 2016), 2011 (in Chinese).
- State Council of the People’s Republic of China: Air pollution prevention and control action plan, available at http://www.gov.cn/zwggk/2013-09/12/content_2486773.htm (last accessed: 30 March 2017), 2013 (in Chinese).
- 30 Valin, L. C., Russell, A. R., and Cohen, R. C.: Variations of OH radical in an urban plume inferred from NO₂ column measurements, *Geophys. Res. Lett.*, 40, 1856–1860, doi: 10.1002/grl.50267, 2013.
- van der A, R. J., Eskes, H. J., Boersma, K. F., van Noije, T. P. C., Van Roozendael, M., De Smedt, I., Peters, D. H. M. U., and Meijer, E. W.: Trends, seasonal variability and dominant NO_x source derived from a ten year record of NO₂ measured from space, *J. Geophys. Res.*, 113, D04302, doi: 10.1029/2007JD009021, 2008.
- 35 van der A, R. J., Mijling, B., Ding, J., Koukouli, M. E., Liu, F., Li, Q., Mao, H., and Theys, N.: Cleaning up the air: effectiveness of air quality policy for SO₂ and NO_x emissions in China, *Atmos. Chem. Phys.*, 17, 1775–1789, doi: 10.5194/acp-17-1775-2017, 2017.
- Veefkind, J. P., Aben, I., McMullan, K., Förster, H., de Vries, J., Otter, G., Claas, J., Eskes, H. J., de Haan, J. F., Kleipool, Q., van Weele, M., Hasekamp, O., Hoogeveen, R., Landgraf, J., Snel, R., Tol, P., Ingmann, P., Voors, R., Kruizinga, B., Vink, R., Visser, H., and Levelt, P. F.: TROPOMI on the ESA Sentinel-5 Precursor: A GMES mission for global observations of the atmospheric composition for climate, air quality and ozone layer applications, *Remote Sens. Environ.*, 120, 70–83, 2012.

- Wu, Y., Zhang, S., Hao, J., Liu, H., Wu, X., Hu, J., Walsh, M. P., Wallington, T. J., Zhang, K. M., and Stevanovic, S.: On-road vehicle emissions and their control in China: A review and outlook, *Sci. Total Environ.*, 574, 332–349, 2017.
- Zhang, S., Wu, Y., Liu, H., Wu, X., Zhou, Y., Yao, Z., Fu, L., He, K., and Hao, J.: Historical evaluation of vehicle emission control in Guangzhou based on a multi-year emission inventory, *Atmos. Environ.*, 76, 32–42, 2013.
- 5 Zheng, B., Zhang, Q., Tong, D., Chen, C., Hong, C., Li, M., Geng, G., Lei, Y., Huo, H., and He, K.: Resolution dependence of uncertainties in gridded emission inventories: a case study in Hebei, China, *Atmos. Chem. Phys.*, 17, 921–933, doi: 10.5194/acp-17-921-2017, 2017.

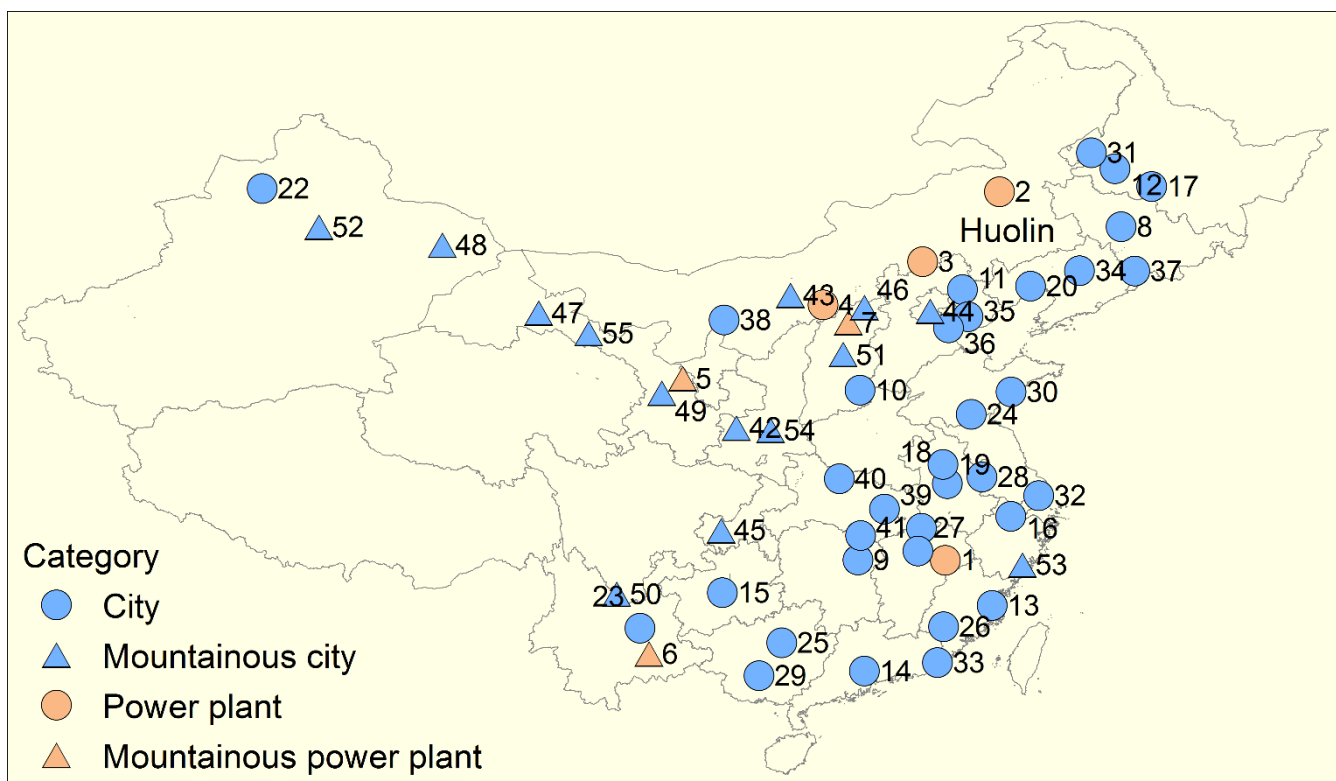
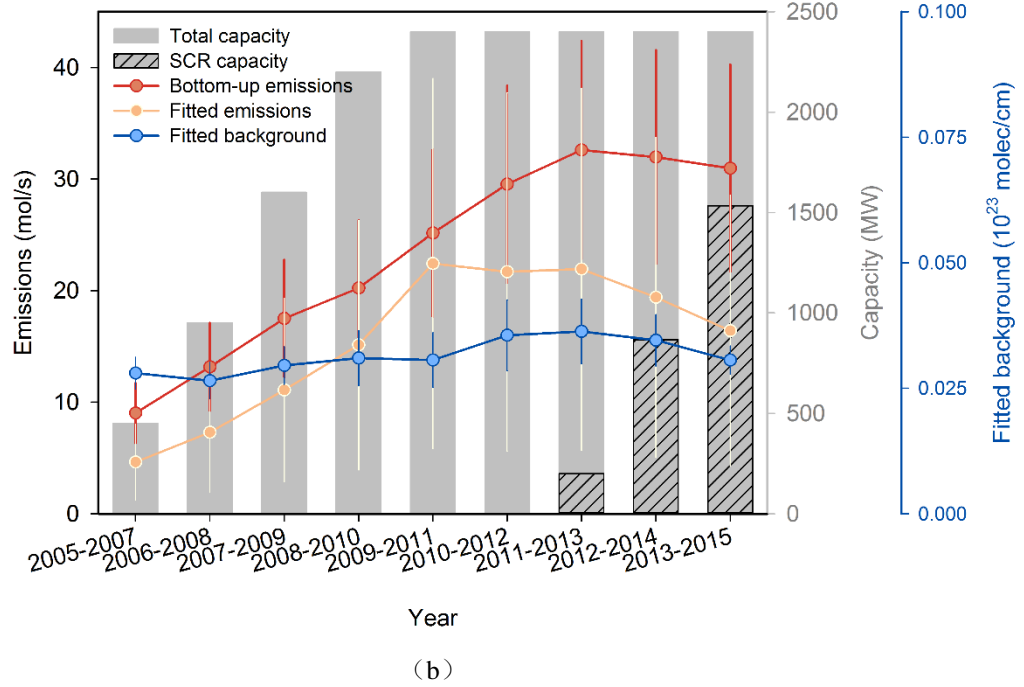
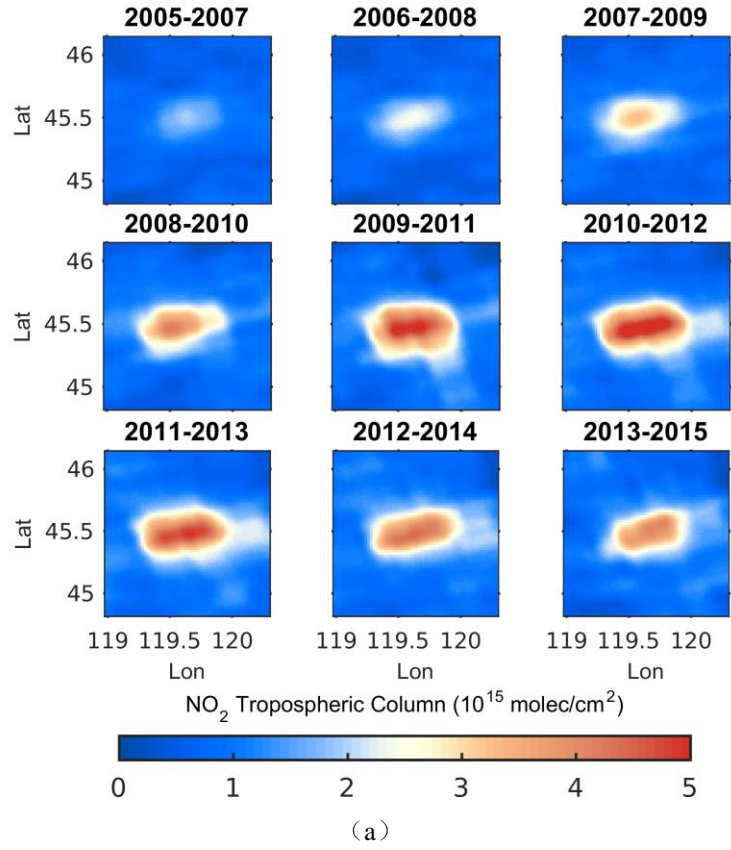


Figure 1: Locations of the selected sites in this study. The triangles represent the mountainous sites defined in Sect. 2.1. All locations are labeled with their IDs (see Table S1).



5 Figure 2: (a) OMI NO₂ TVCD map under weak-wind conditions (<3 m/s) around the Huolin power plant (#2 in Fig. 1) during 2005 to 2015 and (b) the corresponding fit results. The red and blue lines denote the fitted emissions and background, respectively; the pink line denotes the bottom-up emission estimates; the solid and dashed bars denote the total capacity of the generation units and the capacity of generation units that installed SCR equipment, respectively. The information on the capacity and SCR equipment is derived from the CPED database (Liu et al.,
 10 2015). Error bars show the uncertainties for emissions by using this method and bottom-up inventories (see Sect. 3.4).

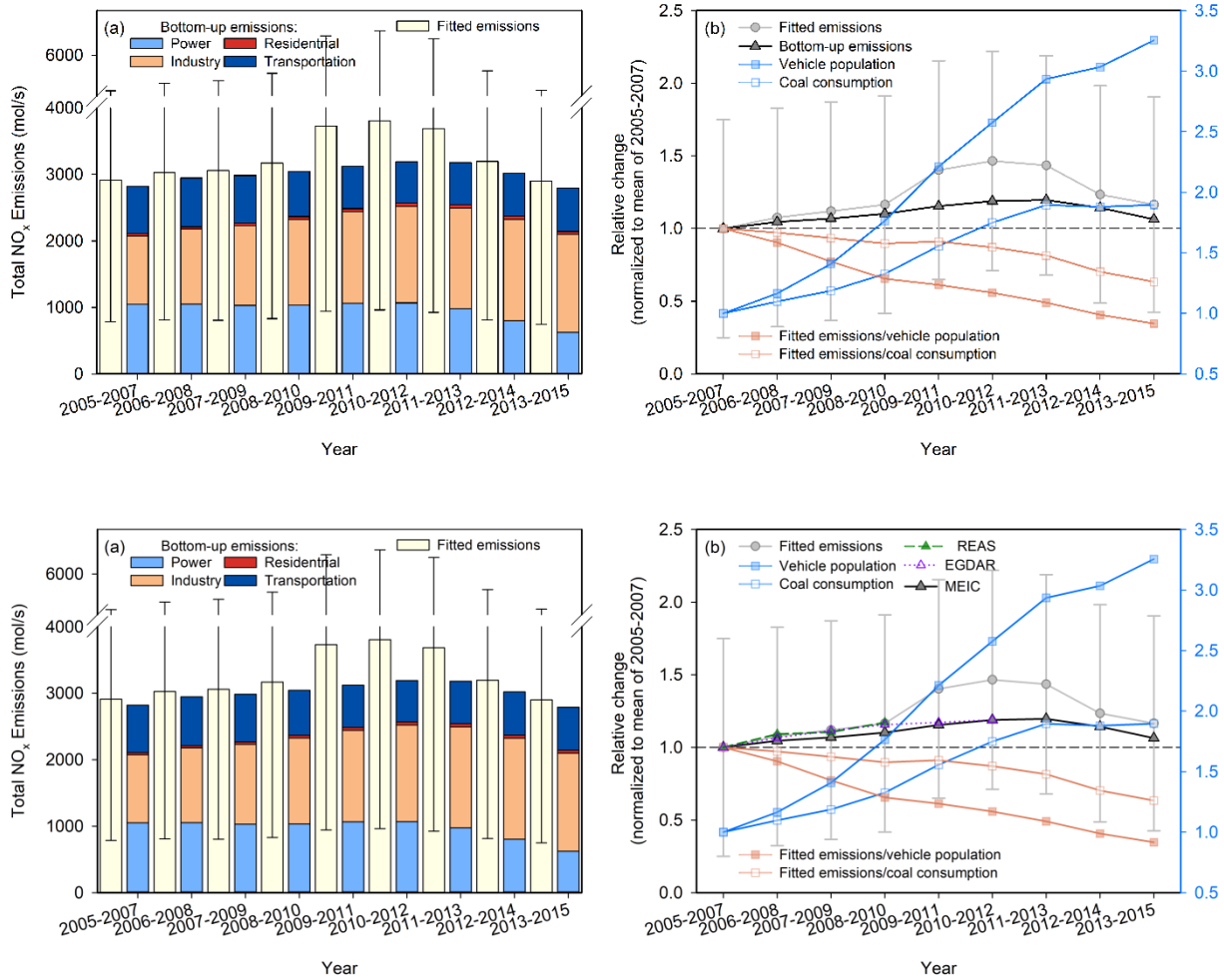


Figure 3: (a) Fitted (yellow bar) and total anthropogenic NO_x emissions by sector for all investigated cities in this study during 2005 to 2015. The emissions data are derived from the MEIC model. (b) Interannual trends of the fitted (gray line) and bottom-up anthropogenic (black line) NO_x emissions for selected cities with valid information on the vehicle population (blue solid squares) and coal consumption (blue open squares) from 2005–2015. The emissions deriving from the MEIC, REAS v2.1 and EDGAR v4.3 inventory are displayed in black, green and purple respectively. The pink lines denote the ratio of the fitted NO_x emissions in this study to the vehicle population (solid squares) and coal consumption (open squares). The relative changes of the vehicle population and coal consumption are indicated by right axes. Error bars show the uncertainties for the fitted emissions by using this method (see Sect. 3.4).

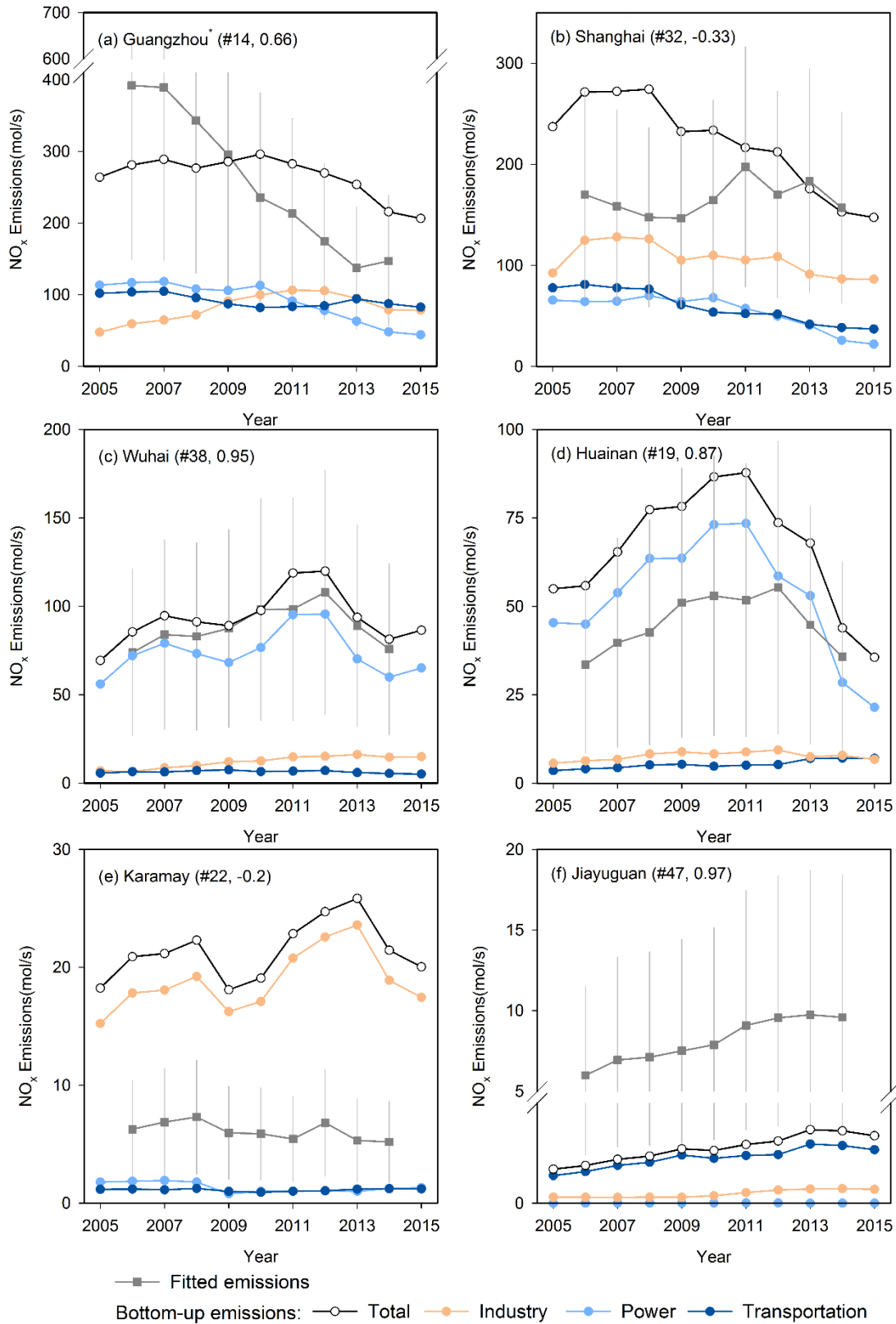


Figure 4: Interannual trends in the fitted (gray squares) and bottom-up anthropogenic NO_x emissions for 2005 to 2015 including total (black circles), industrial (pink circles), power plant (light blue circles) and transportation (dark blue circles) emissions. Error bars denote the uncertainty of the fitted NO_x emissions. The IDs from Fig. 1 and the correlation coefficients of the pair-wise trends between the bottom-up and fitted NO_x emissions are shown in the bracket after the name of the city.

Guangzhou* represents the cities of Guangzhou, Foshan and Dongguan, which are recognized as the same hot spot in the map of NO_2 TVCDs.

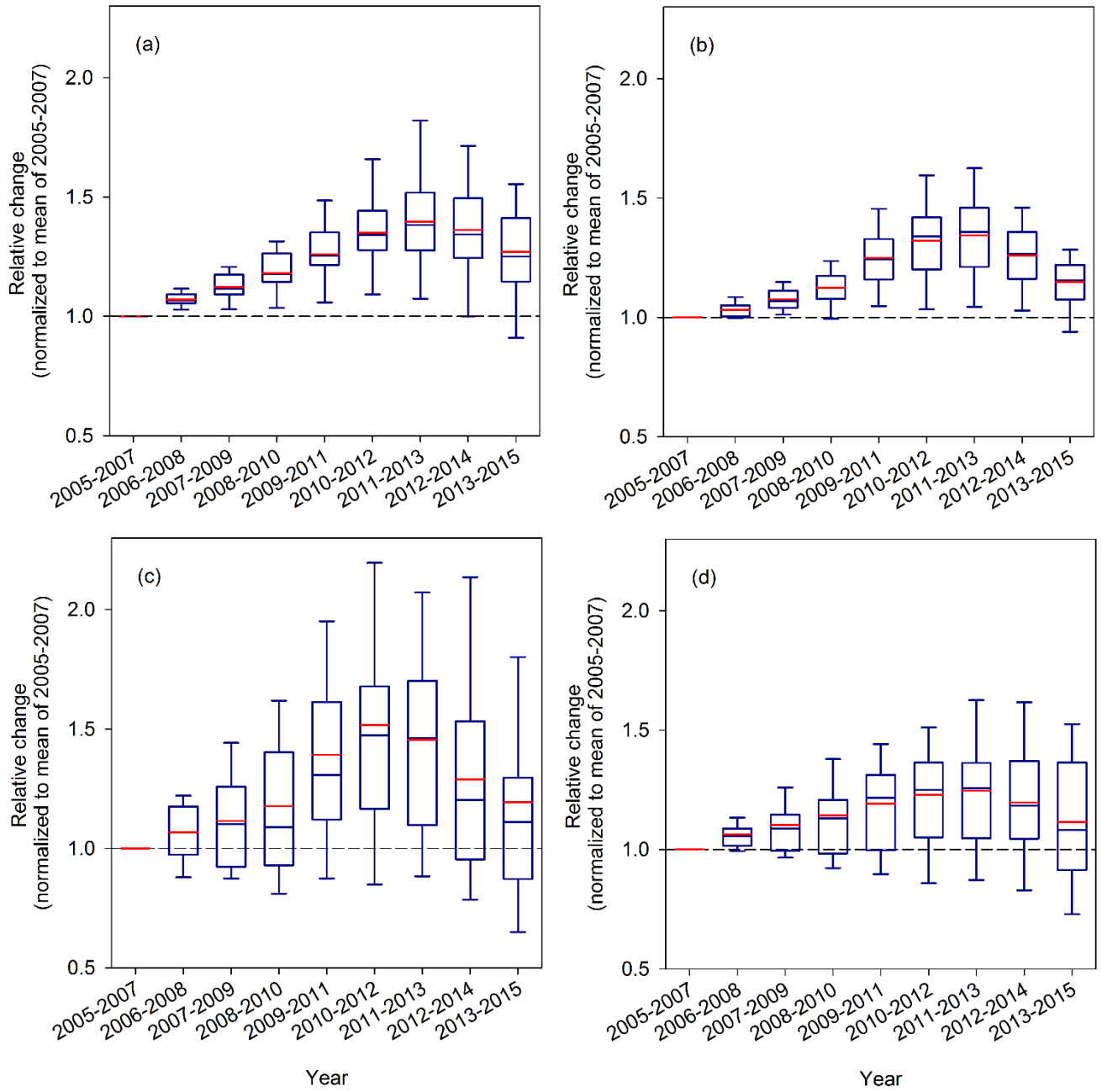


Figure 5: Comparisons of the trends in satellite observations (left panels) with those in the bottom-up emission inventory (right panels) at the province and city level during 2005 to 2015. The box plots show the relative changes in (a) the average OMI tropospheric NO₂ column densities for provinces in China; (b) the anthropogenic NO_x emissions for provinces in China; (c) the fitted NO_x emissions for cities investigated in this study; and (d) the anthropogenic NO_x emissions for cities investigated. The blue horizontal line is the median of the relative differences; the red horizontal line is the mean of the relative differences; the box denotes the 25% and 75% percentiles; and the whiskers denote the 10% and 90% percentiles. The bottom-up emission data are derived from the MEIC model.

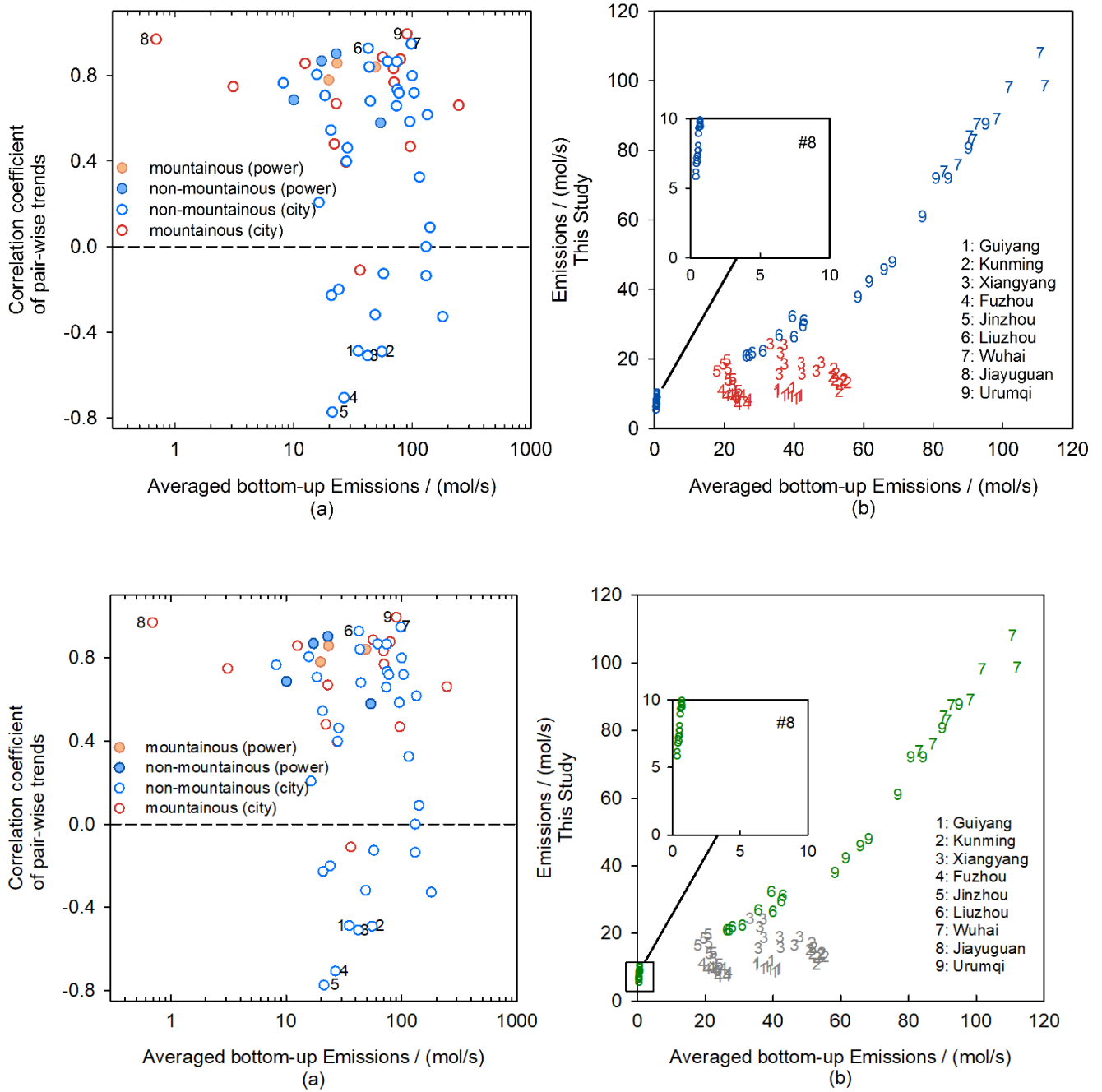


Figure 6: (a) Correlation coefficients of the pair-wise trends between the bottom-up **anthropogenic** and fitted NO_x emissions for all selected sites during 2006* to 2014*. The results for sites with correlation coefficients less than -0.4 or larger than 0.9 are indicated by digits. (b) Scatterplots of the fitted NO_x emissions for investigated cities versus bottom-up **anthropogenic** emission inventories during 2006* to 2014*. Urban emissions from bottom-up inventories are integrated over an area of 40 km × 40 km (see Sect. 2.2). Results with correlation coefficients less than -0.4 or larger than 0.9 are color coded by **red-grey** and **bluegreen**, respectively.

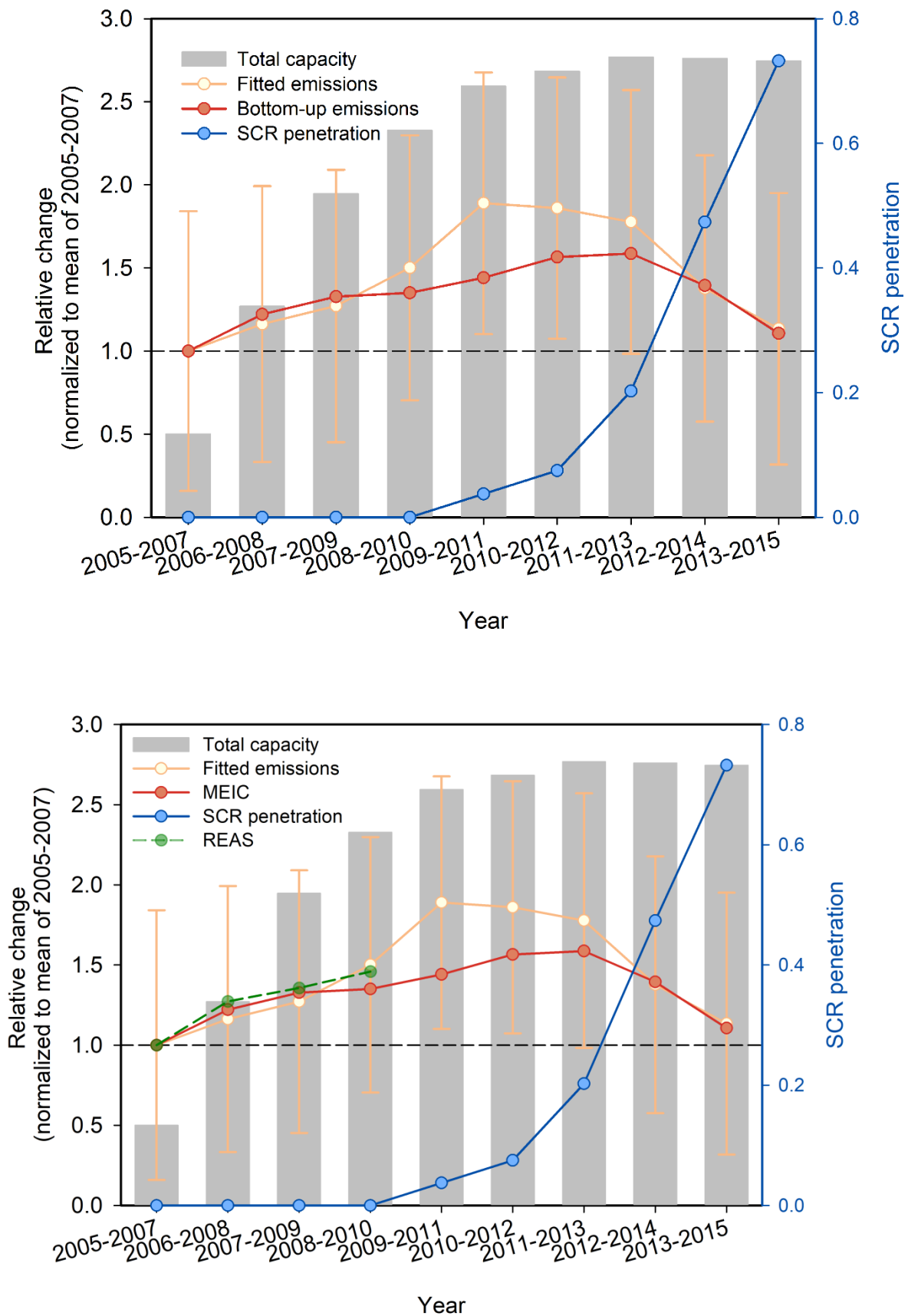


Figure 7: Interannual trends of the fitted (red line) and bottom-up (pink line) NO_x emissions for selected power plants during 2005 to 2015. The emissions deriving from the MEIC and REAS v2.1 inventory are displayed in pink and green respectively. The bar denotes the total capacity of selected power plants. The blue line denotes the penetration of power plants with denitration devices (defined as the percentage of unit capacity of power plants installing SCR in

the total capacity of all the power plants). Error bars show the uncertainties for fitted emissions by this method (see Sect. 3.4).

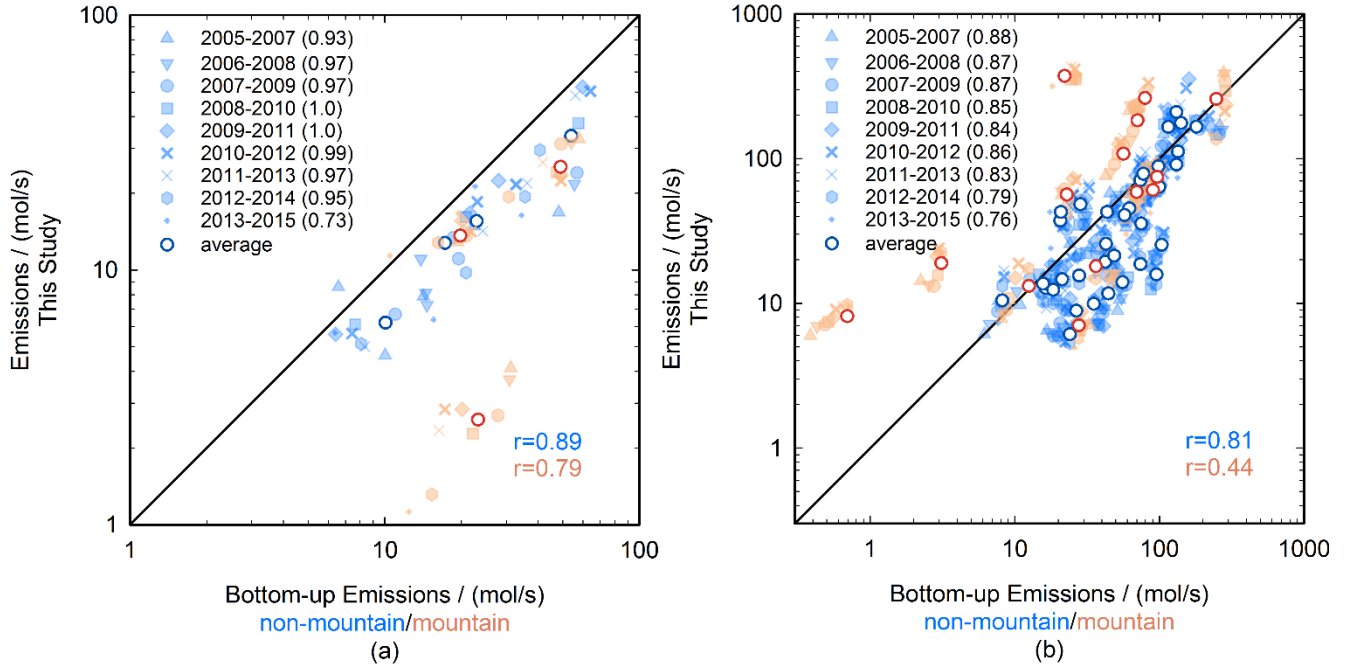


Figure 8: Scatterplots of the fitted NO_x emissions for the investigated (a) power plants and (b) cities versus the bottom-up emission inventories during 2006* to 2014*. Urban emissions from bottom-up inventories are integrated over an area of $40 \text{ km} \times 40 \text{ km}$ (see Sect. 2.2). The correlation coefficients of non-mountainous sites for individual 3-year periods are shown in brackets. Open circles represent the average emissions for non-mountainous (blue) and mountainous (red) sites during the entire period. The correlation coefficients of the average emissions for non-mountainous and mountainous sites are color-coded in blue and red, respectively. The straight line represents the ratio of 1:1.