

Response to comments from Referee #1

We thank the Referee for their comments. Response is given in black and respective changes to the manuscript in *italics*. The Referee comments are reproduced in *blue*.

Review of “Leipzig Ice Nucleation chamber Comparison (LINC): Inter-comparison of four online ice nucleation counters” by Burkert-Kohn et al.

Summary and general comments

This study presents a quantitative evaluation of the ice nucleation (IN) abilities of seven types of aerosol particles measured by four IN counters co-located at TROPOS, Leipzig. Based on the results obtained, the authors address the importance of the inter-comparison workshop with co-deployed instruments, uniform aerosol dispersion procedure and size segregation method. From my point of view, the difference in the ice crystal threshold sizes of PINC and SPIN is well justified (Sect. 3.2). Not employing upstream impactors to minimize biases of particle losses throughout this inter-comparison work was wise (P5L2-4).

Besides the suggestions for future studies made by the authors (P22L28-33), a comparative validation workshop of atmospherically representative ambient samples or in-situ field comparison of IN techniques (DeMott et al., 2017, ACPD) is also an important assignment for the IN research community. Finding a universal calibrant that can be used for validating any IN instruments at home bases should be kept as an alternative approach especially for those who may join this research field in the future. I support publication of this manuscript after some minor comments below are properly addressed. Given the technical nature of the manuscript, it may be better published as a technical note in ACP or AMT than a regular research article according to the journal guidance:

www.atmospheric-chemistry-and-physics.net/about/manuscript_types.html.

I will leave this discussion to the authors and the editor.

The authors thank the Referee for their comments on suggestions and provide responses to their comments and questions below:

We acknowledge the reviewer’s comment to move this paper to AMT due to the technical nature of some parts. However, we suggest retaining the paper in ACPD/ACP because the instruments inter-compared in this paper are of a common design/identical to instruments already used to publish results in ACP and future publications with similar instruments (e.g. SPIN) are anticipated in ACP. So it would be unusual that a paper addressing comparisons of instruments whose results have been and will be published in ACP is itself published in AMT.

Secondly, the inter-comparison is based on results of non-technical aspects, which are

1. The investigation of the ice nucleation ability of birch pollen washing waters (biological) using continuous flow diffusion chambers for experiments in the deposition and condensation freezing regime
2. A study on nitric and sulfuric acid treated microcline for which the acid has been completely removed prior to the experiments. The results address conditions of immersion freezing (nitric/sulfuric acid treatment), as well as condensation freezing (nitric acid treatment).

Minor/technical comments

Section 3.3: It is not conclusive that the observed difference between FF and AF is due to different ice nucleation modes (that is, immersion vs. condensation) or technical artifacts/limitations (e.g., different methods in ice detection and IN efficiency estimation).

The following sentences have been added to the manuscript: *“Possible reasons for observed differences, such as technical artifacts or differences in the ice nucleation modes, are discussed. For simplicity, FF is used for experiments exclusively performed in the immersion mode. In contrast, for ice nucleation chambers measuring in the condensation mode, which is in this case not explicitly*

distinguishable from immersion freezing, data is presented as AF in the following figures.” (p. 19, line 15 ff).

Is it really fair to say what the authors present in this particular section is immersion vs. condensation? One can presume that the technical artifacts, such as ice detection, IN efficiency estimation (e.g., FF vs. AF), misalignment of particle stream in the chamber and inhomogeneous distribution of particles in individual droplets, play substantial role on potentially explaining the observed difference amongst the compared techniques. For this matter, the sub-title of this section should be named differently?

We agree with the reviewer and have changed the name of section 3.3 to “*Apparent differences between immersion and condensation freezing*”. (p. 19, line 5)

P1L10: Better read with “the whole range of atmospherically relevant thermodynamic conditions”

The suggested change has been made (p. 1, line 10).

P2L19: The dominance of immersion freezing (P18 L2-3) may be better discussed in here. The extended discussion may be helpful to the reader.

We accepted this valuable suggestion. The explanation (p. 18, line 2-3 in the initial manuscript) has been moved and implemented as follows: “*Further, Marcolli (2014) suggested that deposition nucleation might in fact be immersion freezing (or homogeneous freezing for $T < 235$ K) of water trapped in pores and cavities at water subsaturated conditions. Which ice nucleation pathways exist and under what conditions they are relevant in the atmosphere is not fully understood, but has been speculated and discussed (e.g., Kanji et al., 2017). It has been suggested that immersion mode is the dominant heterogeneous freezing pathway under mixed-phase cloud conditions (e.g., Ansmann et al., 2008, de Boer et al., 2011, Westbrook and Illingworth, 2011).*” (p. 2, line 19 ff)

P4L5-6: “...droplet containing a single aerosol particle...” - how good is this assumption? In reality, multiple particles might be in a droplet when aerosols were made using a suspension (Emersic et al., 2015, ACP; Baydoun et al., 2016, ACP; also your own statement in P9L4-5). This may be RH & droplet size dependent. Would this factor be important to interpret the difference between FF and AF?

Indeed particles from suspensions may contain agglomerates, particularly when comparably large droplets are generated directly from suspensions. These are the kind of droplets that are referred to in the literature you cite above. However, in our case, the suspension is atomized and the resulting droplets are then dried and the residual dry particles are size selected. Based on measurements done earlier in other experiments, we know from dispersion of dry particles from the mineral dust samples, that small enough particles in mineral dust samples are not available so as to form agglomerates amounting to the sizes studied in this work (200 – 500 nm). However, as this cannot be ruled out completely and to clarify this, we added the following: “*For insoluble materials such as kaolinite or feldspar, such a particle could consist of an agglomerate of smaller primary particles. However, the number concentration of primary particles in the dry sample strongly decreases with size for the mineral dust samples and the size range used in this study, which makes the presence of dust agglomerates unlikely.*” (p. 5, line 1 ff).

For the birch pollen samples it has been shown that the suspension contains small macromolecules, in which case agglomerates of molecules are produced. The following sentence has been added to the manuscript: “*For suspension of birch washing waters containing small macromolecules, an agglomerate of molecules is produced, which is referred to as a (single) aerosol particle after size selection in this work...*”. (p. 5, line 4)

Ice nucleation instruments obtain AF and FF, which are based on particle counting after suspension, drying and size selection, as such single particles (or similar agglomerates of molecules for birch washing waters) can be assumed to be investigated in both cases. If they exist, any agglomeration should be systematically biasing the variables in FF and AF and therefore cannot be used to explain the

difference between AF and FF. We have reworded the mentioned sentence and it now reads “...droplets containing single-immersed aerosol particles...”. (p. 4, line 9-10)

P14 L12: Sullivan et al., 2010, GRL – authors perhaps meant to cite the following paper?

Sullivan, R. C. et al. (2010, ACP), Irreversible loss of ice nucleation active sites in mineral dust particles caused by sulphuric acid condensation, Atmos. Chem. Phys., 10, 11, 471–1 1, 487, doi:10.5194/acp-10-11471-2010.

Sullivan et al. (2010, GRL) demonstrated that condensation/diffusion of hygroscopic materials could make particles ice active in immersion/condensation mode (which may be discussed anyway in the paper separately...).

The reviewer correctly pointed out that the Sullivan et al., (2010) paper in ACP was to be cited here and was accidentally cited as the GRL 2010 manuscript by the same first author. In the revised manuscript Sullivan et al. (2010, GRL) has been replaced by Sullivan et al. (2010, ACP). (p. 14, line 10).

P14L24-25: “The birchN particles are the most hygroscopic...” - based on what? CCNC? Either data or reference is missing.

Indeed, this statement is based on CCNC measurements, which were continuously conducted in parallel to the INP measurements. For birchN, already at SS = 0.1% (i.e., RH_w = 100.1%, the lowest supersaturation sampled) all particles with a diameter of 300 nm were activated to droplets (CCN/CN = 1), while for all other samples, particle hygroscopicity could be derived. The information about the source of our statement was added to the text: “The birchN particles are the most hygroscopic particles of the samples examined in this work, which was deduced from CCNC measurements where 300 nm particles fully activated at a supersaturation of 0.1% (i.e., the lowest supersaturation sampled), while for all other samples, particle hygroscopicity could be derived, i.e. 50% active fraction was achieved at a higher supersaturation.” (p. 15, line 7 ff).

P21L4-5: “...particles of uniform composition such as microcline” - I disagree with this statement. The authors state that their microcline sample contains bi-components (P4L10-12).

We agree with the reviewer and have deleted the respective sentence in the manuscript.

P22L7-10: I suggest separating into two sentences to improve the clarity of the statement - e.g., “Treatment of the microcline sample with either sulfuric or nitric acid...permanently in immersion freezing. In addition, the nitric acid treatment lead to...between 233 K and 243 K.”

The suggested change has been made and the section reads as follows: “Treatment of the microcline sample with either sulfuric or nitric acid, followed by washing off the acid, destroyed the ice nucleation ability of the microcline permanently in immersion freezing mode. In addition, the nitric acid treatment led to a significantly reduced AF in deposition nucleation and condensation freezing conditions between 233 K and 243 K.” (p. 22, line 19 ff)

References

- Ansmann, A., Tesche, M., Althausen, D., Müller, D., Seifert, P., Freudenthaler, V., Heese, B., Wiegner, M., Pisani, G., Knippertz, P., and Dubovik, O.: Influence of Saharan dust on cloud glaciation in southern Morocco during the Saharan Mineral Dust Experiment, *J. Geophys. Res.*, 113, doi:10.1029/2007JD008785, d04210, 2008.
- Beydoun, H., Polen, M., and Sullivan, R. C.: Effect of particle surface area on ice active site densities retrieved from droplet freezing spectra, *Atmos. Chem. Phys.*, 16, 13359-13378, doi:10.5194/acp-16-13359-2016, 2016.
- de Boer, G., Morrison, H., Shupe, M. D., and Hildner, R.: Evidence of liquid dependent ice nucleation in high-latitude stratiform clouds from surface remote sensors, *Geophys. Res. Lett.*, 38, doi:10.1029/2010GL046016, 01803, 2011.
- DeMott, P. J., Hill, T. C. J., Petters, M. D., Bertram, A. K., Tobo, Y., Mason, R. H., Suski, K. J., McCluskey, C. S., Levin, E. J. T., Schill, G. P., Boose, Y., Rauker, A. M., Miller, A. J., Zaragoza, J., Rocci, K., Rothfuss, N. E., Taylor, H. P., Hader, J. D., Chou, C., Huffman, J. A., Pöschl, U., Prenni, A. J., and Kreidenweis, S. M.: Comparative measurements of ambient atmospheric concentrations of ice nucleating particles using multiple

- immersion freezing methods and a continuous flow diffusion chamber, *Atmos. Chem. Phys. Discuss.*, 2017, 1–29, doi:10.5194/acp-2017-417, 2017.
- Emersic, C., Connolly, P. J., Boulton, S., Campana, M., and Li, Z.: Investigating the discrepancy between wet-suspension- and dry-dispersion-derived ice nucleation efficiency of mineral particles, *Atmos. Chem. Phys.*, 15, 11311–11326, doi:10.5194/acp-15-11311-2015, 2015.
- Kanji, Z. A., Ladino, L. A., Wex, H., Boose, Y., Burkert-Kohn, M., Cziczo, D. J., and Krämer, M.: Ice Formation and Evolution in Clouds and Precipitation: Measurement and Modeling Challenges, Chapter 1: Overview of Ice Nucleating Particles, *Meteor. Monogr.*, doi:10.1175/AMSMONOGRAPHS-D-16-0006.1, 2017.
- Sullivan, R. C., Petters, M. D., DeMott, P. J., Kreidenweis, S. M., Wex, H., Niedermeier, D., Hartmann, S., Clauss, T., Stratmann, F., Reitz, P., Schneider, J., and Sierau, B.: Irreversible loss of ice nucleation active sites in mineral dust particles caused by sulphuric acid condensation, *Atmos. Chem. Phys.*, 10, 11 471–11 487, doi:10.5194/acp-10-11471-2010, 2010.
- Westbrook, C. D. and Illingworth, A. J.: Evidence that ice forms primarily in supercooled liquid clouds at temperatures $>-27^{\circ}\text{C}$, *Geophys. Res. Lett.*, 38, doi: 10.1029/2011GL048021, 2011.

Response to comments from Referee #2

Referee comments are reproduced in *blue*. Response is given in black and respective changes to the manuscript in *italics*.

Review of “Leipzig Ice Nucleation chamber Comparison (LINC): Inter-comparison of four online ice nucleation counters” by Burkert-Kohn et al.

General Comment:

This manuscript presents the results of the direct inter-comparison of four cloud chambers (i.e., The Leipzig aerosol cloud interaction simulator (LACIS), the Portable immersion mode cooling chamber coupled to the portable ice nucleation chamber (PIMCA-PINC), the Portable ice nucleation chamber (PINC), and the spectrometer for ice nuclei (SPIN)). Different size-selected (200, 300, and 500 nm) uncoated (microcline, kaolinite, birch pollen) and coated (microcline/H₂SO₄, microcline/HNO₃) aerosol types were used to determine the performance of these INP counters. Given the versatility of the used cloud chamber, three out of the four heterogeneous ice nucleation modes were also studied (i.e., deposition nucleation, condensation and immersion freezing).

Although this manuscript does not present a completely novel idea given that this approach was introduced/presented in earlier studies, it is the first time that these four instruments are directly compared. This is of high value for the ice nucleation community, especially because the SPIN is a commercial instrument that will be used in several studies. There is an urgent need to understand what different cloud chamber measures, and this study provides very useful information that helps cloud chamber users to interpret their results. The manuscript is very well written and the figures are easy to follow. The experiments were carefully designed and the results are accurately interpreted. This manuscript can be accepted in ACP after the following minor corrections are taken into account.

The Authors thank the Reviewer for the comments and address the minor comments below:

Minor comments:

- 1. I am wondering if the authors can comment about the following question. Out of the four instruments investigated in this study, what is the most reliable? Is there a “standard” instrument that can be used to validate a newly designed INP counter?*

In this study, we address the inter-comparison of four ice nucleation chambers with their similarities and differences, including three chamber configurations that have been used in the field for sampling ambient INPs. We refrain from endorsing one particular chamber precisely because what we demonstrate in the manuscript is, that a number of factors need to be considered to interpret the data and inter-compare. Our goal here is to bring to attention to the community these different aspects and factors that need to be considered. Endorsing one INP counter also depends on what the research goals are for a given field or laboratory experiment. As has been pointed out recently in Cziczo et al. (2017) that a variety of instruments and methods would be necessary to cover the dynamic T and RH range and particle sizes for investigating heterogeneous ice nucleation in the atmosphere.

- 2. I like Figure 2 but it took me sometime to follow it. It may be more useful to use filled and open symbols here.*

We agree with the reviewer. In the current version symbols only distinguish PIMCA-PINC experiments (circles) and LACIS (crosses) for clarity and different colors have been used for different aerosol samples investigated as in the previous version of the manuscript. We choose crosses for LACIS data rather than open symbols due to the number of (partly overlapping) data points in particular in Panel A (Fig. 2 and Fig. B1). We think the use of a different shape improves the readability of the plot.

3. *I did not understand why the LACIS modeled results by the SMB reached a plateau but not the PIMCA-PINC? Is it the model instrument specific?*

The SBM model is not observed to be instrument dependent as has been previously shown by Peckhaus et al. (2016) where microcline data from a cold stage has successfully been modelled based on Niedermeier et al. (2015) data. Also, already in Niedermeier et al. (2015), SBM calculations based on LACIS measurements were found to agree well with data from Atkinson et al. (2013), another cold stage method. The increase in FF of the PIMCA-PINC data has been reproduced well by the SBM, however, SBM produces a plateau (constant AF as a function of decreasing T) whereas PIMCA-PINC observations show a levelling-off in the slope of the FF (small increase in AF as a function of decreasing T). The reason for this discrepancy is currently unclear and a plateau as modeled by the SBM has also not been observed with similar instrumentation from other previous studies (see p. 9, line 16-17).

The following statement has been added to the manuscript: *"In a recent study by Peckhaus et al. (2017) the SBM was successfully used to reproduce other ice nucleation data from a cold stage experiment. In principle, a contact angle distribution describes the ice nucleation ability of a material, and is then combined with classical nucleation theory in the SBM. Thus the SBM is not believed to be instrument specific."* (p. 9, line 22 ff).

Specific comments:

Page 2, line 3: Do the authors mean: "its importance"?

The sentence has been changed the following: *"The importance of ice nucleation mechanisms and the properties of aerosol particles acting as so-called ice nucleating particles (INPs),..."* (p. 2, line 4-5).

Page 2, line 3: I don't think this is the only paper showing this. Please add more references here.

We agree with the reviewer and have added two more references here (Boucher et al., 2013, Mülmenstädt et al., 2015 (p. 2, line 3)).

Page 2, line 4: Spell-out INP.

Done.

Page 2, line 6: Add references after "climate".

The following references have been added in the suggested location: DeMott et al. (2010) and Phillips et al. (2013). (p. 2, line 7)

Page 2, line 19: Replace "which" with "what".

The sentence has been changed as follows: *"Which ice nucleation pathways exist and under what conditions they are relevant in the atmosphere is not fully understood, but has been speculated and discussed (e.g., Kanji et al., 2017)."* (p. 2, line 20-22)

Page 2, line 20: Add references after "understood".

We have added a reference as suggested by the reviewer (Vali et al., 2015, Kanji et al., 2017, p. 2, line 5-6).

Page 2, lines 20-22: I don't understand what the authors want to communicate here. Please clarify it.

To avoid confusion the following sentence has been deleted from the manuscript: *"However, there is no reason to believe that in the atmosphere, and particularly in mixed-phase clouds, a difference in the freezing mechanism might be relevant, as ice formation in these clouds generally proceeds via the liquid phase."*

Page 2, line 25: hourly? daily?

The sentence has been rephrased using *"hour-to-day timescales"* when referring to online ice nucleation measurements (p. 2, line 28).

Page 2, line 33: DeMott et al., 2016 could be add it to the list.

The suggested reference has been added (p. 3, line 2).

Page 3, line 10: Please state what type of CFDC the authors refer to. CSU?

We have added “CSU-CFDC” to be clear which CFDC we refer to in all relevant locations (p. 3, line 4, 5 13 and 15; p. 19, line 33. The acronym “CFDC” without further distinction is used throughout the manuscript for all continuous flow diffusion chambers and for statements concerning typical CFDCs (including e.g., PINC and/or SPIN).

Page 3, line 12: Please state what type of mineral dust was used.

We have now specified in the revised manuscript the sources of the dust used (see p. 3, line 15-16).

Page 3, line 33: Add references after “activity”.

We have slightly modified the preceding sentence and added a reference (see p. 3, line 35 ff) to read as follows: *“During long-range transport of aerosol particles in the atmosphere, internal mixing with organics and inorganic constituents can cause a temporary or permanent change in the physicochemical properties of the particles and can decrease their ice nucleation activity as discussed in Kanji et al., 2017.”*

Page 4, line 23: I found the pore size quite big. Is there any chance that small fragments of the pollen grains could go through the filter pores?

The pore size of the filters is indeed comparably high. However, we like to refer the reader to Pummer et al. (2012) who have investigated the same pollen type as used in this study. They examined the pictures of an electron microscope (dried pollen extracts) to make sure that no submicron particle fragments are left in their solution and the ice active components were much smaller than the filter size. In addition, experiments in this study were performed for size-selected particles in the submicron range, thus any larger particles would not have had any importance on the results.

Page 4, line 31 and Figure 1: I think it should be “Nuclei” instead of “Nucleus”.

We agree and have made the corresponding changes in the revised manuscript (p. 5, line 8 and Fig. 1 caption).

Page 5, line 12: “parallel” is out of place.

The sentence has been rephrased by replacing “parallel” by “simultaneously”. It reads as follows in the revised manuscript: *“Typical particle concentrations during the ice nucleation experiments measured simultaneously with a CPC were $240 \pm 70 \text{ cm}^{-3}$ for the presented measurements and were diluted to $25\text{--}40 \text{ cm}^{-3}$ for PIMCA-PINC measurements.”* (p. 6, line 8)

Page 6, line 12: Please state what diameter the authors are referring to.

We refer to the particle size threshold to distinguish unactivated aerosol particles from ice crystals. The sentence has been changed and reads as follows: *“For data analysis in this study an ice crystal size threshold of $2 \mu\text{m}$ (diameter) is used.”* (p. 7, line 7 ff)

Page 7, line 29-30: Based on Garimella et al. (2016), the SPIN has a depolarization optical detector. I am wondering why the authors did not use this to discriminate between ice particles and droplets, instead to focus on their size only?

The reviewer is correct in pointing out that SPIN has a depolarization detector to distinguish between ice particles and droplets. The depolarization signal was not used in the current study due to two reasons:

- a) To make the comparison of SPIN and PINC data more direct (PINC uses an OPC only measuring particle size).

- b) Monodisperse particles were used for the experiments allowing reliable distinguishing of ice from dry particles. The limiting factor for the discrimination from a depolarization detector is the growth of ice crystals that are large enough (which is the case for LACIS and PIMCA-PINC). The depolarization signal of very small ice is not distinct from the dry particle signal and therefore could be prone to errors for smaller ice crystals as expected to be formed in PINC and SPIN in this study.

Page 8, line 6: Delete Hartmann et al., 2011.

Change made.

Page 10, line 25: I am wondering why the authors did not perform an experiment with 500 nm microcline particles as done for kaolinite and Birch pollen.

The particle types and sizes were chosen based on the following criteria and considering available experiment time of the study:

- a) The general selection of particle types and sizes has been made to allow instrument inter-comparison for the maximum range of operational conditions for the instruments to evaluate the instruments performance in comparison with each other (see p. 4, line 4-5).
- b) Technical limitations to produce a high enough particle concentration for the measurements with all participating instruments. For example for microcline particles a sufficient particle concentration for the measurement was not achieved for a particle size of 500 nm size-selected particles.

We have added this explanation in methods section and reads as follows: *“The specific particle sizes were chosen to allow measurements in the whole range of detectable frozen/activated fractions for all instruments and for comparison with literature data. A limiting factor for larger particle sizes was the particle generation system, which did not produce a sufficiently high particle concentration for simultaneous measurements with all instruments, thus for example microcline was not tested for sizes larger than 300 nm.”* (p. 6, line 4 ff).

Page 11, line 1: Add references after “INPs”.

Two references (Archuleta et al., 2005, Welti et al., 2009) have been added to the manuscript (p. 11, line 19).

Page 11, line 16: “note” is out of place.

The sentence has been rephrased in the revised manuscript as follows: *“Note, that measurements with PIMCA-PINC using the same particles show a significant reduction in the ice activity with a T_{50} of ~ 2 K lower for wet generated kaolinite (Fluka) particles for measurements conducted at ETH Zurich in succession to LINC (see Appendix C for more details).”* (p. 11, line 34 ff)

Page 12, line 18-19: This is a bit unclear. Please clarify it.

The sentence has been rephrased and now reads as follows: *“This is observed in the PINC data, which indicates that the most active particles are found at 233 K with initial onset of ice formation at RH_w of 82-86% corresponding to RH_i of 121-127%.”* (p. 13, line 14-15)

Page 14, line 28-32: Given that these experiments differ from the others (i.e., they are not directly comparable), I am wondering if this should be removed for consistency.

The data on nitric acid treated microcline for the PINC and SPIN instruments are shown here for completeness. All aerosol particles were prepared and produced in the same manner with the same aerosol generation instruments and both data sets were taken individually by each instrument. There are no limiting factors to exclude the data from this study except that measurements were not performed in parallel, from which a difference was not to be expected. The explanation has been revised as follows: *“Note that measurements on nitric acid treated microcline were performed on two different batches of nitric acid treated samples, i.e. PINC and SPIN did not measure in parallel for this*

aerosol type for which a discrepancy was not expected. It is possible that the observed difference between SPIN and PINC data is based on the ice active material in the PINC batch which may not have been as thoroughly deactivated during acid treatment compared to the batch measured with SPIN.” (p. 15, line 12 ff).

Page 17, line 11-12 and Figure 7: Add “W” to RH.

The authors would like to keep “RH” without the index “w” in this respect. The reason is that the RH here refers to both, RH_w and/or RH_i (p. 18, line 10-11).

Page 18, line 3: I don’t think this is the only paper showing this. Please add more references here.

The sentence: “Recently, CFDCs have often been used for field measurements of INP concentration at water supersaturated conditions to represent immersion freezing (e.g., Kanji et al., 2017 and references therein)” has been deleted from the manuscript.

We rephrased the sentence, which reads as follows in the revised version: “In many field measurements CFDCs have been used for measurements of INP concentration at water supersaturated conditions (e.g., DeMott et al., 2010, 2016, Tobo et al., 2013, Boose et al., 2016, Lacher et al., 2017) and sometimes are used to represent immersion freezing (e.g., DeMott et al., 2017).” (p. 19, line 6 ff)

Table 1. Why is microcline twice here?

The two lines for microcline have been used to distinguish between 200 nm and 300 nm size-selected aerosol particles. This distinction has been made more clear by adding “(200 nm)” and “(300 nm)” to the current manuscript (Table 1, first column, rows 1-2).

References

- Archuleta, C., DeMott, P., and Kreidenweis, S.: Ice nucleation by surrogates for atmospheric mineral dust and mineral dust/sulfate particles 10 at cirrus temperatures, *Atmos. Chem. Phys.*, 5, 2617–2634, doi:1680-7324/acp/2005-5-2617, 2005.
- Boose, Y., Kanji, Z. A., Kohn, M., Sierau, B., Zipori, A., Crawford, I., Lloyd, G., Bukowiecki, N., Herrmann, E., Kupiszewski, P., Steinbacher, M., and Lohmann, U.: Ice nucleating particle measurements at 241 K during winter months at 3580 m a.s.l. in the Swiss Alps, *J. Atmos. Sci.*, doi:10.1175/JAS-D-15-0236.1, 2016.
- Boucher, O., Randall, D., Artaxo, P., Bretherton, C., Feingold, G., Forster, P., Kerminen, V.-M., Kondo, Y., Liao, H., Lohmann, U., Rasch, P., Satheesh, S., Sherwood, S., Stevens, B., and Zhang, X.: *Clouds and Aerosols*, book section 7, pp. 571–658, Cambridge University Press, Cambridge, United Kingdom and New York, NY, USA, doi:10.1017/CBO9781107415324.016, 2013.
- Cziczko, D. J., Ladino, L., Boose, Y., Kanji, Z. A., Kupiszewski, P., Lance, S., Mertes, S. and Wex, H.: Measurements of Ice Nucleating Particles and Ice Residuals, *Meteorological Monographs*, 58, 2017.
- DeMott, P. J., Hill, T. C. J., McCluskey, C. S., Prather, K. A., Collins, D. B., Sullivan, R. C., Ruppel, M. J., Mason, R. H., Irish, V. E., Lee, T., Hwang, C. Y., Rhee, T. S., Snider, J. R., McMeeking, G. R., Dhaniyala, S., Lewis, E. R., Wentzell, J. J. B., Abbatt, J., Lee, C., Sultana, C. M., Ault, A. P., Axson, J. L., Diaz Martinez, M., Venero, I., Santos-Figueroa, G., Stokes, M. D., Deane, G. B., Mayol-Bracero, O. L., Grassian, V. H., Bertram, T. H., Bertram, A. K., Moffett, B. F., and Franc, G. D.: Sea spray aerosol as a unique source of ice nucleating particles, *Proceedings of the National Academy of Sciences*, 113, 5797–5803, doi:10.1073/pnas.1514034112, 2016.
- DeMott, P. J., Hill, T. C. J., Petters, M. D., Bertram, A. K., Tobo, Y., Mason, R. H., Suski, K. J., McCluskey, C. S., Levin, E. J. T., Schill, G. P., Boose, Y., Rauker, A. M., Miller, A. J., Zaragoza, J., Rocci, K., Rothfuss, N. E., Taylor, H. P., Hader, J. D., Chou, C., Huffman, J. A., Pöschl, U., Prenni, A. J., and Kreidenweis, S. M.: Comparative measurements of ambient atmospheric concentrations of ice nucleating particles using multiple immersion freezing methods and a continuous flow diffusion chamber, *Atmos. Chem. Phys. Discuss.*, 2017, 1–29, doi:10.5194/acp-2017-417, 2017.
- DeMott, P. J., Prenni, A. J., Liu, X., Kreidenweis, S. M., Petters, M. D., Twohy, C. H., Richardson, M. S., Eidhammer, T., and Rogers, D. C.: Predicting global atmospheric ice nuclei distributions and their impacts on climate, *Proc. Natl. Acad. Sci. U.S.A.*, 107, 11 217–11 222, doi:10.1073/pnas.0910818107, 2010.
- DeMott, P. J., Prenni, A. J., McMeeking, G. R., Sullivan, R. C., Petters, M. D., Tobo, Y., Niemand, M., Möhler, O., Snider, J. R., Wang, Z., and Kreidenweis, S. M.: Integrating laboratory and field data to quantify the

- immersion freezing ice nucleation activity of mineral dust particles, *Atmos. Chem. Phys.*, 15, 393–409, doi:10.5194/acp-15-393-2015, 2015.
- Garimella, S., Kristensen, T. B., Ignatius, K., Welti, A., Voigtländer, J., Kulkarni, G. R., Sagan, F., Kok, G. L., Dorsey, J., Nichman, L., Rothenberg, D. A., Rösch, M., Kirchgäßner, A. C. R., Ladkin, R., Wex, H., Wilson, T. W., Ladino, L. A., Abbatt, J. P. D., Stetzer, O., Lohmann, U., Stratmann, F., and Cziczo, D. J.: The SPectrometer for Ice Nuclei (SPIN): an instrument to investigate ice nucleation, *Atmos. Meas. Tech.*, 9, 2781–2795, doi:10.5194/amt-9-2781-2016, 2016.
- Hartmann, S., Niedermeier, D., Voigtländer, J., Clauss, T., Shaw, R. A., Wex, H., Kiselev, A., and Stratmann, F.: Homogeneous and heterogeneous ice nucleation at LACIS: operating principle and theoretical studies, *Atmos. Chem. Phys.*, 11, 1753–1767, doi:10.5194/acp-11-1753-2011, 2011.
- Kanji, Z. A., Ladino, L. A., Wex, H., Boose, Y., Burkert-Kohn, M., Cziczo, D. J., and Krämer, M.: Ice Formation and Evolution in Clouds and Precipitation: Measurement and Modeling Challenges, Chapter 1: Overview of Ice Nucleating Particles, *Meteor. Monogr*, doi:10.1175/AMSMONOGRAPHS-D-16-0006.1, 2017.
- Mülmenstädt, J., Sourdeval, O., Delanoë, J., and Quaas, J.: Frequency of occurrence of rain from liquid-, mixed-, and ice-phase clouds derived from A-Train satellite retrievals, *Geophys. Res. Lett.*, 42, 6502–6509, doi:10.1002/2015GL064604, 2015GL064604, 2015.
- Niedermeier, D., Augustin-Bauditz, S., Hartmann, S., Wex, H., Ignatius, K., and Stratmann, F.: Can we define an asymptotic value for the ice active surface site density for heterogeneous ice nucleation?, *J. Geophys. Res.*, 120, 5036–5046, doi:10.1002/2014JD022814, 2014JD022814, 2015.
- Peckhaus, A., Kiselev, A., Hiron, T., Ebert, M., and Leisner, T.: A comparative study of K-rich and Na/Ca-rich feldspar icenucleating particles in a nanoliter droplet freezing assay, *Atmos. Chem. Phys.*, 16, 11 477–11 496, doi:10.5194/acp-16-11477-15 2016, 2016.
- Phillips, V. T. J., Demott, P. J., Andronache, C., Pratt, K. A., Prather, K. A., Subramanian, R., and Twohy, C.: Improvements to an Empirical Parameterization of Heterogeneous Ice Nucleation and Its Comparison with Observations, *J. Atmos. Sci.*, 70, 378–409, doi:10.1175/JASD-12-080.1, 2013.
- Pummer, B. G., Bauer, H., Bernardi, J., Bleicher, S., and Grothe, H.: Suspendable macromolecules are responsible for ice nucleation activity of birch and conifer pollen, *Atmos. Chem. Phys.*, 12, 2541–2550, doi:10.5194/acp-12-2541-2012, 2012.
- Tobo, Y., Prenni, A. J., DeMott, P. J., Huffman, J. A., McCluskey, C. S., Tian, G., Pöhlker, C., Pöschl, U., and Kreidenweis, S. M.: Biological aerosol particles as a key determinant of ice nuclei populations in a forest ecosystem, *J. Geophys. Res.*, 118, 10,100–10,110, doi:10.1002/jgrd.50801, 2013.
- Vali, G., DeMott, P. J., Möhler, O., and Whale, T. F.: Technical Note: A proposal for ice nucleation terminology, *Atmos. Chem. Phys.*, 15, 10 263–10 270, doi:10.5194/acp-15-10263-2015, 2015.
- Welti, A., Lüönd, F., Stetzer, O., and Lohmann, U.: Influence of particle size on the ice nucleating ability of mineral dusts, *Atmos. Chem. Phys.*, 9, 6705–6715, doi:10.5194/acp-9-6705-2009, 2009.

Leipzig Ice Nucleation chamber Comparison (LINC): Inter-comparison of four online ice nucleation counters

Monika Burkert-Kohn¹, Heike Wex², André Welti², Susan Hartmann², Sarah Grawe², Lisa Hellner², Paul Herenz², James D. Atkinson¹, Frank Stratmann², and Zamin A. Kanji¹

¹Institute for Atmospheric and Climate Science, ETH Zurich, Universitaetstrasse 16, 8092 Zurich, Switzerland

²Leibniz-Institute for Tropospheric Research (TROPOS), Permoserstrasse 15, 04318 Leipzig, Germany

Correspondence to: Monika Burkert-Kohn (Monika.Burkert@env.ethz.ch) and Zamin A. Kanji (Zamin.Kanji@env.ethz.ch)

Abstract. Ice crystal formation in atmospheric clouds has a strong effect on precipitation, cloud lifetime, cloud radiative properties and thus the global energy budget. Primary ice formation above 235K is initiated by nucleation on seed aerosol particles called ice nucleating particles (INPs). Instruments that measure the ice nucleating potential of aerosol particles in the atmosphere need to be able to accurately quantify ambient INP concentrations. In the last decade several instruments have
5 been developed to investigate the ice nucleating properties of aerosol particles and to measure ambient INP concentrations. Therefore, there is a need for inter-comparisons to ensure instrument differences are not interpreted as scientific findings. In this study, we inter-compare the results from parallel measurements using four online ice nucleation chambers. Seven different aerosol types are tested including untreated and acid treated mineral ~~dust (microcline-~~dusts (microcline, which is a
K-feldspar- and kaolinite), as well as birch pollen washing waters. Experiments exploring heterogeneous ice nucleation above
10 and below water saturation are performed to cover the whole range of atmospherically relevant thermodynamic conditions that can be investigated with the inter-compared chambers. The Leipzig Aerosol Cloud Interaction Simulator (LACIS) and the Portable Immersion Mode Cooling chAmber coupled to the Portable Ice Nucleation Chamber (PIMCA-PINC) performed measurements in the immersion freezing mode. Additionally two continuous flow diffusion chambers (CFDCs) PINC and the Spectrometer for Ice Nuclei (SPIN) are used to perform measurements below and just above water saturation nominally
15 presenting deposition nucleation and condensation freezing. The results of LACIS and PIMCA-PINC agree well over the whole range of measured frozen fractions (FF s) and temperature. In general PINC and SPIN compare well and the observed differences are explained by the ice crystal growth and different residence times in the chamber. To study the mechanisms responsible for the ice nucleation in the four instruments, FF (from LACIS and PIMCA-PINC) and activated fraction, AF (from PINC and SPIN) are compared. Measured FF s are up-to-on the
20 order of a factor of three higher than AF s, but not consistent for all aerosol types and temperatures investigated. It ~~showed~~ is shown that measurements from CFDCs cannot be assumed to produce the same results as those instruments exclusively measuring immersion freezing. Instead the need to apply a scaling factor to CFDCs operating above water saturation has to be considered to allow comparison with immersion freezing devices. Our results provide further awareness ~~on-of~~ of factors such as the importance of dispersion methods and the quality of particle size-selection for inter-comparing online INP counters.

1 Introduction

Ice crystal formation in the atmosphere changes cloud physical and optical properties, thus influencing the lifetime of clouds, and is important for precipitation formation (Lohmann and Feichter, 2005). Ice (e.g., Lohmann and Feichter, 2005; Boucher et al., 2013; Mülmenstädt et al., 2015). The importance of ice nucleation mechanisms and the properties of aerosol particles acting as so-called INPs (ice nucleating particles (INPs)), which are seed particles necessary for ice nucleation to occur on, are not sufficiently understood (see e.g., Vali et al., 2015; Kanji et al., 2017) and demand further investigation to accurately parameterize atmospheric ice formation in models for weather and climate (DeMott et al., 2010; Phillips et al., 2013). Laboratory measurements on well-characterized aerosol particles and ambient observations improve our understanding of atmospheric ice nucleation processes and INP abundance in the atmosphere. This helps to quantify the role of different INPs on cloud formation and in cloud formation under the conditions commonly found in the atmosphere.

Ice nucleation can occur via different mechanisms, either homogeneously at temperatures (T) lower than 235 K (e.g., Pruppacher and Klett, 1997), or heterogeneously – catalyzed by an INP which provides a surface for ice to nucleate on at $T > 235$ K. For heterogeneous ice nucleation, several pathways are distinguished: Deposition nucleation, in which water vapor directly deposits on an INP to form ice in water subsaturated conditions; contact freezing where ice formation is due to a supercooled cloud droplet colliding with an INP; condensation freezing in which water vapor directly deposits on an INP to form water and/or ice in water supersaturated conditions with the existence of liquid water expected but not explicitly observed; and immersion freezing, where an INP is immersed in a droplet and has attained sufficient supercooling to freeze (e.g., Vali, 1985). While the above given descriptions are followed in this paper, it is discussed that there may not be a difference between condensation and immersion freezing on a process level, when possible freezing point depressions are accounted for (Wex et al., 2014; Vali et al., 2015). Further, Marcolli (2014) suggested that deposition nucleation might in fact be immersion freezing (or homogeneous freezing for $T < 235$ K) of water trapped in pores and cavities at water subsaturated conditions. Which ice nucleation pathways exist and under which-what conditions they are relevant in the atmosphere is not fully understood. However, there is no reason to believe that in the atmosphere, and particularly in, but has been speculated and discussed (e.g., Kanji et al., 2017). It has been suggested that immersion mode is the dominant heterogeneous freezing pathway under mixed-phase clouds, a difference in the freezing mechanism might be relevant, as ice formation in these clouds generally proceeds via the liquid phase cloud conditions (e.g., Ansmann et al., 2008; de Boer et al., 2011; Westbrook and Illingworth, 2011). This has been observed in multiple previous studies (see e.g., Murray et al., 2012; Kanji et al., 2017, and references therein).

Instruments developed to explore ice nucleation for different formation pathways and to measure the concentration of atmospheric INPs fall into two broad categories: Offline measurements of aerosol particles collected on filters (e.g., Bigg, 1967; Klein et al., 2010; Conen et al., 2012) or in suspensions (e.g., Hader et al., 2014), which operate on hour-to-day-hour-to-day timescales, and online measurements which are capable of real-time detection of INP concentration with a higher temporal resolution from seconds to minutes. The portable online instruments report INP concentrations for both ground-based (e.g., DeMott et al., 2010; Chou et al., 2011; Garcia et al., 2012; Tobo et al., 2013) and airborne measurements (Rogers et al., 2001a;

DeMott et al., 2003a, b, 2010).

Inter-comparing instruments in the laboratory under controlled conditions is necessary to characterize their performance for field studies and to compare quantitative reproducibility. Some studies have already investigated the comparability of a number of online and offline instruments on selected aerosol types in a laboratory setting

5 ~~(DeMott et al., 2011; Wex et al., 2014, 2015; Hiranuma et al., 2015)~~
(DeMott et al., 2011; Wex et al., 2014, 2015; Hiranuma et al., 2015; DeMott et al., 2016). Ice nucleation measurements have been conducted with the Leipzig Aerosol Cloud Interaction Simulator (LACIS, Hartmann et al., 2011, immersion mode) in parallel to the Colorado State University-Continuous Flow Diffusion Chamber (CSU-CFDC, Rogers et al., 2001b, condensation mode) on size-selected kaolinite particles including samples coated with soluble material (Wex et al., 2014). Lower FF 's
10 were measured in LACIS compared to the CSU-CFDC, and good agreement was found when particle residence times in the respective instruments were accounted for. Wex et al. (2015) reported measurements on size-selected Snomax[®] particles with seven instruments including LACIS and the Portable Ice Nucleation Chamber (PINC, Chou et al., 2011). Wex et al. (2015) examined droplets formed on single particles and droplets taken from suspensions containing Snomax[®]. The varying mass of Snomax[®] per droplet or per particle that was examined by the different instruments was accounted for, and the results agreed
15 within a factor of three below 263 K for all instruments. The PINC measurements at water supersaturated conditions showed an activation onset temperature (ice fraction larger $\sim 10^{-3}$) of 2 K lower than LACIS i.e. less ice activity was observed in PINC than for immersion freezing with LACIS. ~~What~~ Which factors cause this deviation is not yet explored. DeMott et al. (2015) presented a comparison of ~~a CFDC~~ the CSU-CFDC to the Aerosol Interaction and Dynamics in the Atmosphere (AIDA) cloud chamber and found agreement only when an empirically determined factor of three was applied to the ~~CFDC~~ CSU-CFDC
20 data for their measurements of mineral dust (natural samples from Asian, Saharan and Canary Island sources) at a relative humidity with respect to water (RH_w) of 105%. A previous study on immersion freezing (Hartmann et al., 2016) observed differences in the ice nucleation active site density (n_s) between LACIS and the Immersion Mode Cooling chamber coupled to the Zurich Ice Nucleation Chamber (IMCA-ZINC, Lüönd et al., 2010) when the same particle type and size was tested at different times/locations. An offset of about one order of magnitude in n_s or a temperature shift of 5–6 K for kaolinite particles
25 was found. The fraction of multiple-charged particles as a reason for the deviation was discussed in Hartmann et al. (2016). For the study of Hiranuma et al. (2015) an identical illite NX sample was used for their comprehensive inter-comparison of 17 ice nucleation instruments which showed an even larger deviation of 8 K or three orders of magnitude in n_s between the different instruments. So far it has not been possible to narrow down whether these discrepancies are inherent to the instruments used or other factors such as the particle generation techniques and size-selection ~~are the cause, because~~ may be the cause since a
30 number of instruments in the Hiranuma et al. (2015) study were not operated in parallel. The discrepancies found in the Fourth International Ice Nucleation workshop with a selection of different instruments and aerosol types (e.g., DeMott et al., 2011; Kanji et al., 2011) emphasized the importance of parallel measurements for a direct comparison of ice nucleation instrumentation. Parallel measurements of specific particle sizes can be used to identify any discrepancies that arise from the ice nucleation methods itself while excluding factors such as differences in aerosol sample, particle generation method or particle size.
35 We present a comparison of four online ice nucleation instruments performed during the Leipzig Ice Nucleation chamber

Comparison (LINC) in September 2015, which was hosted by TROPOS, Leipzig. Seven different types of size-segregated aerosol particles were tested for their immersion freezing potential, four were additionally tested for condensation freezing and deposition nucleation. The samples were two untreated mineral dusts (microcline and kaolinite), nitric or sulfuric acid treated microcline particles and birch pollen washing water of samples from the Czech Republic and Sweden. During long-range
5 transport of aerosol particles in the atmosphere, ~~coating with e.g. sulfuric acid~~ internal mixing with organics and inorganic constituents can cause a temporary or permanent change in the physicochemical properties of the particles and can decrease their ice nucleation activity as discussed in Kanji et al. (2017). Acid treatment of microcline particles was chosen in the present study to investigate a permanent change after treatment and removal of the acid coating. The selection of aerosol types and sizes known to be ice active at different temperatures allows for a comparison over the full range of detectable frozen/activated
10 fractions possible with the instruments.

A simultaneous comparison of LACIS and PIMCA-PINC (Portable Immersion Mode Cooling chamber coupled to PINC) as well as the direct comparison between PINC and SPIN (the Spectrometer for Ice Nuclei) on size-selected aerosol particles in water sub- and supersaturated conditions is presented for the first time allowing to investigate instrument specific differences. Furthermore, observations with the four instruments are used for an explicit comparison of immersion freezing of droplets
15 containing ~~a single aerosol particle~~ single-immersed aerosol particles (LACIS and PIMCA-PINC) to experiments using dry particles above water saturation, where it is not possible to distinguish between immersion and condensation freezing (SPIN and PINC).

2 Materials and methods

2.1 Aerosol samples and treatment

20 The kaolinite sample used in this study is a commercially available product from Fluka (same as Sigma-Aldrich). The microcline sample is a K-feldspar from Minas Gerais in Brazil consisting of 76% microcline (K-feldspar) and 24% albite (Na-feldspar) (Augustin-Bauditz et al., 2014). It was provided by the Technical University Darmstadt within the framework of the Ice Nucleation research UnIT (INUIT). 2.5 g of the respective powder material was suspended in 30 ml of double deionized water (Milli-Q, 18.2 M Ω cm) for the purpose of wet aerosolization. For the acid treatment, 2.5 g of the microcline powder
25 was suspended in 30 ml of 1M sulfuric or nitric acid solution for about twelve hours. To remove the acid, the suspension was centrifuged at 17000 rpm for ten minutes to settle the particles. The supernatant was removed from the sample, its pH level determined, and the sample diluted with Milli-Q water. This step was repeated several times until the pH of the supernatant reached the pH level of deionized water (pH ~ 5). The pollen washing water was made from two birch pollen samples belonging to the species *Betula pendula*. One birch pollen sample originated from the Czech Republic (Pharmallerga[®], referred to as
30 birchS) and the other one from Sweden (AllergonAB[®], referred to as birchN). The sample preparation of the pollen washing water followed the procedure described in Pummer et al. (2012). One gram of the pollen was suspended in 20 ml of Milli-Q water. After one night (about 12h) in the refrigerator, the pollen grains were removed from the suspension by gravitational filtering (round filter, Schleicher and Schüll Selecta 595, pore size 4 – 7 μ m).

2.2 Instrumental setup, particle generation and ~~size-selection~~size selection

A schematic of the instrumental setup is shown in Fig. 1. All samples were aerosolized from suspension using a home-built atomizer (design similar to TSI, Model 3076). Droplets of the suspension were passed through a diffusion dryer creating ~~agglomerates~~particles from the residuals of the droplets, which were size-selected in a Differential Mobility Analyser (DMA, type Vienna medium, Knutson and Whitby, 1975). For insoluble materials such as kaolinite or feldspar, such a particle could consist of an agglomerate of smaller primary particles. However, the number concentration of primary particles in the dry sample strongly decreases with size for the mineral dust samples and the size range used in this study, which makes the presence of dust agglomerates unlikely. For suspension of birch washing waters containing small macromolecules, an agglomerate of molecules is produced, which is referred to as a (single) aerosol particle after size selection in this work. To remove multiple-charged larger particles, a cyclone ($D_{50} = 500\text{ nm}$) was operated at 4 lmin^{-1} downstream of the DMA. As shown in Fig. 1, downstream of the cyclone an aerosol distributor (mixing volume) supplied the aerosol (RH_w below 1%) to all instruments including a Condensation Particle Counter (CPC, TSI, Model 3010), a Cloud Condensation ~~Nucleus~~Nuclei Counter (CCNC, Droplet Measurement Technologies, Roberts and Nenes, 2005), an Ultra High Sensitivity Aerosol Spectrometer (UHSAS, Droplet Measurement Technologies), SPIN, LACIS and either PINC or PIMCA-PINC (see Sect. 2.3 for description of ice nucleation chambers). Individual impactors upstream of the ice counters were not used for any of the experiments to exclude biases from particle losses. UHSAS measurements indicated a substantial reduction in the number of multiple-charged particles by the cyclone but not a complete removal. Table 1 summarizes the selected particle sizes and the fraction of multiple-charged particles based on UHSAS measurements during the ice nucleation experiments. It was ~~found~~observed that the fraction of multiple-charged particles remained constant in time during each experiment for all particle types investigated. Therefore, the measurements of identical samples at different times have been averaged. CCNC measurements were used to derive particle ~~hygroscopicities~~hygroscopicity values. Hygroscopicity values of acid treated and untreated particles were similar (with the treated sample having a slightly lower CCN activity) indicating that soluble material added during the acid treatment was completely removed by the applied procedure of repeated rinsing of the sample. The specific particle sizes were chosen to allow measurements in the whole range of detectable frozen/activated fractions for all instruments and for comparison with literature data. A limiting factor for larger particle sizes was the particle generation system, which did not produce a sufficiently high particle concentration for simultaneous measurements with all instruments, thus for example microcline was not tested for sizes larger than 300 nm. Typical particle concentrations during the ice nucleation experiments measured simultaneously with a CPC ~~in-parallel~~ were $240 \pm 70\text{ cm}^{-3}$ for the presented measurements and were diluted to $25 - 40\text{ cm}^{-3}$ ~~for PIMCA-PINC measurements~~only for measurements with PIMCA-PINC.

2.3 Description of ice nucleation chambers

2.3.1 PINC

PINC is a portable parallel-plate vertical CFDC with two individually ~~temperature-controlled~~temperature-controlled walls. Prior to an experiment, a thin ~~ice-layer~~ice layer is applied to the chamber walls to provide a source of water vapor. A difference

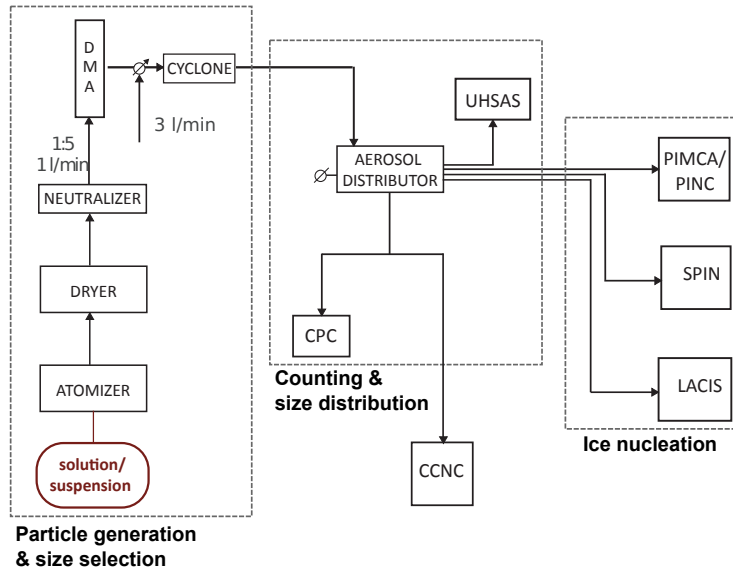


Figure 1. Schematic of the inter-comparison setup during LINC. Components include a Differential Mobility Analyzer (DMA), Condensation Particle Counter (CPC), Cloud Condensation ~~Nucleus~~ Nuclei Counter (CCNC), Ultra High Sensitivity Aerosol Spectrometer (UHSAS), the Leipzig Aerosol Cloud Interaction Simulator (LACIS), the Portable Immersion Mode Cooling Chamber (PIMCA), the Portable Ice Nucleation Chamber (PINC) and the Spectrometer for Ice Nuclei (SPIN).

in temperature (ΔT) is set between the walls that generates a parabolic supersaturation profile with a peak saturation close to the center plane. Sample aerosol is introduced with a flow rate of 1 l min^{-1} and layered between two particle-free sheath air flows (4.5 l min^{-1} on each side) ensuring a narrow, centered sample lamina. After a residence time (t_{res}) of 4 – 5 s in the ice nucleation section, the aerosol enters the evaporation section of the chamber where both walls are isothermally set to the warm wall temperature. In the subsaturated environment with respect to liquid water any formed droplets evaporate while ice crystals are maintained at ice saturated conditions until detection. At the bottom of the chamber, exiting aerosol particles and ice crystals are counted by an optical particle counter (OPC, Lighthouse R5104). Particles larger than a set size threshold are counted as ice crystals. For data analysis in this study ~~a an ice crystal~~ an ice crystal size threshold of $2 \mu\text{m}$ (diameter) is used. Ice nucleation below water saturation ($RH_w < 100\%$) is classified as deposition nucleation and above water saturation ($RH_w \geq 100\%$) as condensation freezing. The accuracy of the temperature sensors is $\pm 0.1 \text{ K}$ and the variation of temperature across the sample lamina $\pm 0.4 \text{ K}$. This corresponds to an uncertainty in RH_w of $\pm 2\%$ (Chou et al., 2011). Experiments consist of a scan in RH at a prescribed T and are conducted from ice saturation to above water saturation up to an RH at which droplets do not completely evaporate in the evaporation section and, therefore, cannot be distinguished from ice crystals based on size (droplet breakthrough). Before and after each scan, background concentrations of ice crystals in the chamber are obtained while sampling filtered air. Background counts are linearly interpolated between two filter periods and subtracted from the

Table 1. Size and fraction of single- (1) or multiple-charged particles (2, 3 and 4) of the resulting aerosol after size-selection and the cyclone.

Aerosol type		Charges			
		1	2	3	4
Microcline (200 nm)	Stokes size [nm]	200	324	439	552
	Fraction	0.593	0.307	0.086	0.014
Microcline (300 nm)	Stokes size [nm]	300	507	706	
	Fraction	0.815	0.182	0.003	
Microcline H ₂ SO ₄	Stokes size [nm]	300	507	706	
	Fraction	0.821	0.162	0.017	
Microcline HNO ₃	Stokes size [nm]	300	507	706	
	Fraction	0.867	0.131	0.002	
Kaolinite	Stokes size [nm]	500	889		
	Fraction	0.988	0.012		
BirchS	Stokes size [nm]	500	889		
	Fraction	0.935	0.065		
BirchN	Stokes size [nm]	300	507	706	
	Fraction	0.893	0.105	0.002	

sample signal. The activated fraction (AF) is calculated as the ratio of ice crystals detected with the OPC to the number of total aerosol particles measured with the CPC. Uncertainty in AF is 14%, resulting from 10% uncertainty in each the OPC and CPC measurements. More details on the design and operation of PINC can be found in Chou et al. (2011).

2.3.2 PIMCA-PINC

- 5 The PIMCA-PINC setup is the portable version of the laboratory design IMCA-ZINC (Lüönd et al., 2010; Stetzer et al., 2008) allowing for measurements explicitly in the immersion freezing mode. PIMCA is a vertical extension of PINC in which aerosol particles are activated to as cloud droplets at ~~303~~313 K, prior to supercooling the droplets to the desired ice nucleation temperature. RH_w in PINC is set to water saturation conditions to maintain cloud droplets at a radius of 5 – 7 μm . Flow rates are set to 0.6 lmin^{-1} sample air with 2.2 lmin^{-1} of sheath air on either side of the aerosol lamina. This gives a residence time
- 10 of ~ 7 s at ice nucleation conditions in PINC. Ice crystals and cloud droplets are distinguished via depolarization with the ice optical detector IODE (Nicolet et al., 2010). Unlike the detection system used in the PINC configuration, IODE only observes a small volume of the sample lamina. The frozen fraction (FF) is derived from the ratio of ice crystals to the total particles detected in this subset of the sample. More details on the specifications of the PIMCA-PINC setup can be found in Kohn et al. (2016). In a typical experiment a temperature scan is performed, starting at homogeneous freezing conditions at $T < 233$ K.
- 15 Temperature is then increased until the detected FF is not distinguishable anymore from the experimental background. Each

reported data point consists of an average of two to five individual measurements at the same T . This adds up to more than 3000 individual (particle) intensity peaks analyzed per data point shown. Error bars in FF indicate the measurement uncertainty from the classification of ice crystals and cloud droplets and the statistical error using standard error propagation. The temperature uncertainty is $\pm 0.4\text{K}$ due to variation across the sample lamina and accuracy in the thermocouples of $\pm 0.1\text{K}$.

5 2.3.3 SPIN

The SPIN geometry is equivalent to PINC but with a longer ice nucleation section allowing roughly double the residence time. It is the first commercially available ice nucleation chamber (Droplet Measurement Technologies, Inc.) and was recently described by Garimella et al. (2016). Particle residence time in the ice nucleation section is 9–12s depending on the T and RH set points of the experiment. Additionally, experimental temperatures as low as 228K can be reached and the temperature and supersaturation conditions in the evaporation section can be controlled independently from the ice nucleation section. Similar to PINC, ice crystals are discriminated from non-activated aerosol particles by a size threshold. For this study a threshold size of $2.5\mu\text{m}$ is used. This threshold size is somewhat larger compared to PINC and chosen to clearly distinguish ice crystals from background counts. For SPIN, the chamber background is determined at the beginning of each RH scan (relative humidity with respect to ice (RH_i) below 103%) while sampling aerosol resulting in a few aerosol counts in the ice channel. This signal is subtracted from the ice counts detected during the experiment. The AF is obtained in the same way as for PINC. Uncertainty in AF is 14% due to a 10% uncertainty in both the SPIN OPC and the CPC. Temperature uncertainties give the highest and lowest deviation from the average lamina temperature to the calculated temperature between 15 opposite pairs of temperature measurements along the walls of SPIN. Experimental uncertainties are typically within $\pm 1\text{K}$ for temperature and $\pm 5\%$ for supersaturation as reported for homogeneous freezing experiments by Garimella et al. (2016).

20 2.3.4 LACIS

LACIS (Hartmann et al., 2011) is a laminar flow tube where, in contrast to ice coated CFDCs, humidified sheath air is the source of water vapor and the ice covered tube walls are water vapor sinks. LACIS consists of seven one-meter long tube sections with an internal diameter of 15mm with each tube section separately ~~temperature-controlled~~ temperature-controlled by a thermostat. The aerosol surrounded by humidified particle free sheath air enters LACIS in an isokinetic fashion. This leads to the formation of a particle beam with a diameter of roughly 2mm at the center of the flow tube. All particles moving along the center-line of the laminar flow tube experience the same humidity and temperature conditions, which depend on the inlet dew point and temperature as well as the wall temperature of the tube sections. Detailed information about the setup can be found in Hartmann et al. (2011). In this study LACIS was operated in the immersion mode. Aerosol particles are activated to droplets which subsequently may freeze upon further cooling while passing through the tube. At the LACIS outlet the ratio of frozen droplets to the total droplet number is determined after a residence time of 1.6s at the coldest adjusted temperature. Experimental FF is derived from measurements with the Thermo-stabilized Optical Particle Spectrometer for the detection of ice (TOPS-Ice, Clauss et al., 2013). TOPS-Ice is installed underneath LACIS ~~evaluating and it evaluates~~ a change in ~~polarization~~ depolarization in order to distinguish between frozen and unfrozen droplets. For each data point, typically 2000 droplets are

examined. The measurement uncertainty in FF is based on [the](#) counting statistics of TOPS-Ice and the Poisson error is given as twice the standard deviation. The temperature error is ± 0.3 K.

3 Results and discussion

3.1 Results of immersion freezing measurements

5 A total of seven aerosol samples were investigated for immersion freezing during LINC. Figure 2A summarizes size-segregated measurements conducted with PIMCA-PINC and LACIS for mineral dusts (top) and pollen washing waters (bottom). For comparison fit lines to LACIS data from literature derived with the Soccer Ball Model (SBM) are [used](#). [The SBM fit lines](#) shown in Fig. 2B/C ~~;~~ [which account for the presence of multiple-charged particles as determined for this study \(Table 1\) and](#) assume external mixtures for particles of different sizes (i.e. being differently charged) ~~as determined for this study (Table 1) and~~. [The](#) [fit lines also](#) account for the instrumental residence times in PIMCA-PINC ($t_{\text{res}} \sim 7$ s) and LACIS ($t_{\text{res}} \sim 1.6$ s). Parameters used for the SBM calculations are taken from Niedermeier et al. (2015), Augustin et al. (2013), Augustin-Bauditz et al. (2016) and Hartmann et al. (2016) (see Appendix A and Table A1 for more details).

For 200 and 300 nm microcline particles (Fig. 2, teal and orange) a good agreement between the two instruments is observed. The temperature at which half the cloud droplets freeze (T_{50}) is observed to be 244 – 244.5 K for PIMCA-PINC and
15 244 – 245.5 K for LACIS. The increase in FF with decreasing T is well reproduced by the model calculations for PIMCA-PINC (Fig. 2B), but for $T < 240$ K the model results underestimate the measurements, which do not show a pronounced plateau [as modeled by the SBM but rather only a levelling-off in the slope of the frozen fraction curve](#), i.e., ~~FF being constant is still increasing slightly~~ with decreasing T ; ~~as modeled by the SBM~~. A plateau of this kind was also not observed for experiments on
20 other untreated mineral dusts in previous studies using similar instrumentation (e.g., Lüönd et al., 2010; Welti et al., 2012; Kohn et al., 2016). Niedermeier et al. (2015) explain the appearance of a plateau with the assumption that not all particles immersed in a droplet feature an ice nucleating site. ~~As the ice activity~~ ~~As~~ of particles scales with the surface area and ~~hence~~, [hence](#), with particle size, the height of this plateau scales with particle size, too, and vanishes for sufficiently large particles. For LACIS the SBM curves underpredict the FF and predict T_{50} of 1 – 2 K lower than the measurement (Fig. 2C). However, the majority of the results are within measurement uncertainty and ~~a~~ [the](#) plateau is more apparent in the LACIS data. [In a recent study by](#)
25 [Peckhaus et al. \(2016\) the SBM was successfully used to reproduce other ice nucleation data from a cold stage experiment. In principle, a contact angle distribution describes the ice nucleation ability of a material, and is then combined with classical nucleation theory in the SBM. Thus the SBM is not believed to be instrument specific.](#) It is currently unclear why there is a plateau in the LACIS data ~~;~~ ~~but not~~ [which only shows up as a levelling-off of the steep \$FF\$ slope](#) in the PIMCA-PINC results. Also it should be mentioned that the used SBM parameterization (Niedermeier et al., 2015) is obtained for dry dispersed particles, while particles examined in this study were dispersed from suspensions. A lowering of the ice activity of feldspars when
30 it was suspended and kept in water for some months prior to ice nucleation measurements is possible. Such effect has been observed in previous immersion freezing studies (Peckhaus et al., 2016; Harrison et al., 2016) and a decrease in T_{50} of 2 K for the microcline sample used in our study was found by Peckhaus et al. (2016). This could hint towards the lower ice activity

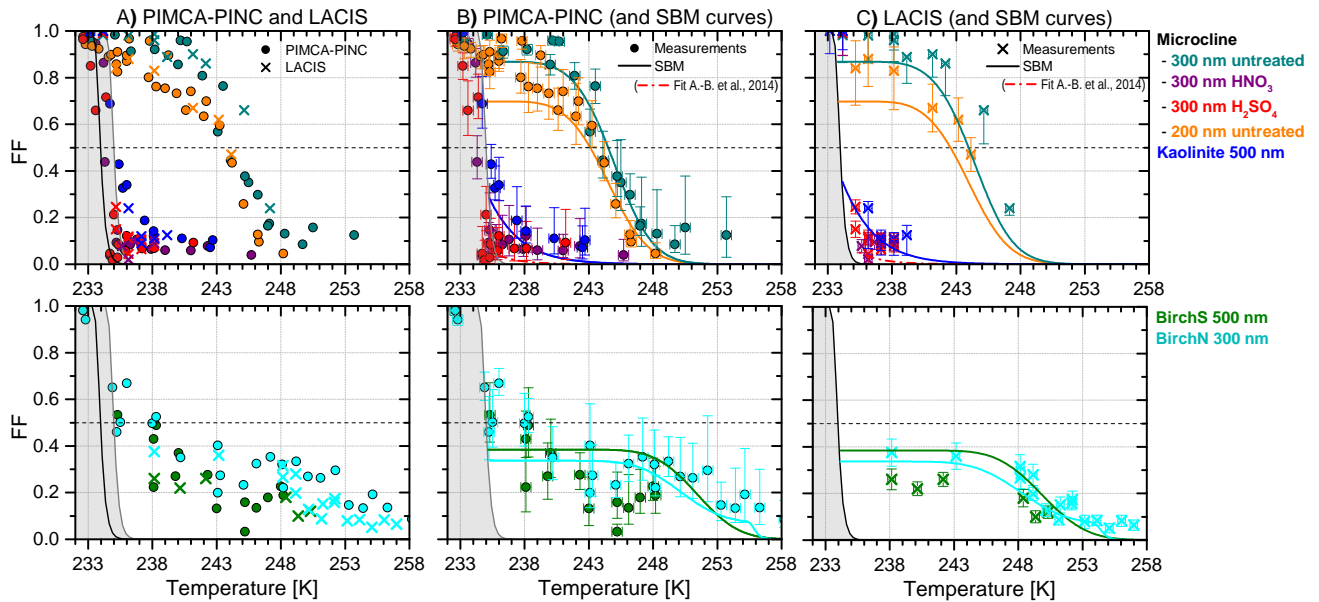


Figure 2. Summary of immersion mode experiments. A) Results are shown for untreated and either nitric or sulfuric acid treated mineral dusts (upper panel) and for birch pollen washing waters of two sources (birchS and birchN, lower panel) for PIMCA-PINC and LACIS. The grey and black curves represent homogeneous freezing for PIMCA-PINC (Kohn et al., 2016) and LACIS respectively, which differ due to differences in droplet size and residence time. T_{50} where half of the droplets have frozen, is indicated by the horizontal black dashed line; different filled symbols correspond to independent PIMCA-PINC experiments. Columns B and C: Curves (except red) show results of the SBM using fit parameters from literature (see text for details) for comparison to data obtained with PIMCA-PINC (B) and LACIS (C) in this study. The red curve is taken from Augustin-Bauditz et al. (2014) representing a fit line to measurements of acid coated mineral dust. Error bars show the uncertainty due to the in ice identification technique detection and the uncertainty in T in each instrument.

in the current study to be being an effect of the dispersion method. However, it should be added that the suspensions used in this study were at maximum two weeks old at the time of measurement. Here, both the measured and modeled data are those for the aerosol including multiple-charged, i.e. larger \bar{r} -particles, which allows direct comparison between our measurements and the SBM model. For completeness, the corrected frozen fractions accounting for multiple-charged particles (FF_{corr}) are given in Appendix B and it can be seen that due to the comparably low fractions of multiple-charged particles, differences between uncorrected and corrected values are not large. However, whenever comparing FF to literature data, a possible effect of multiple charges has to be kept in mind.

When microcline samples were treated with either sulfuric or nitric acid (Fig. 2, purple and red) the resulting FF is significantly lower and heterogeneous freezing is not quantifiable with PIMCA-PINC due to measurement uncertainties for $T > 235$ K. In a previous study Augustin-Bauditz et al. (2014) found a significant decrease in the ice nucleation ability of the same particle type in the immersion mode when coated with sulfuric acid, but without removing the acid prior to the ice nucleation experiment.

A fit curve to their data of sulfuric acid coated mineral dusts is presented in Fig. 2B/C as a red curve. A similar processing (“weathering”) of feldspars with acids has been indicated in some previous studies to form clay minerals (e.g., Zhu et al., 2006). It is noteworthy that acid treated microcline has a slightly lower freezing curve than kaolinite (Fig. 2, blue). The kaolinite (Fluka) sample in the current study contains of about 5% potassium feldspar (Atkinson et al., 2013), which could explain the higher FF compared to the acid treated microcline. This study shows that there is a persistent reduction in the ice activity even after removing acid residuals from the microcline surface and it implies altering of the microcline surface properties responsible for its ice nucleation ability. Formation of a clay mineral shell covering the microcline surface could result in a similar ice nucleation ability of kaolinite and acid treated microcline. Homogeneous freezing is observed at lower temperatures for acid treated microcline samples compared to homogeneous freezing experiments by Kohn et al. (2016, grey area in Fig. 2A/B). A reduction in the hygroscopicity of the aerosol particles due to the acid treatment and washing (see Sec. 2.2) could have led to a delayed droplet activation in PIMCA leading to smaller droplets causing lower T of homogeneous freezing.

Kaolinite particles of 500 nm (untreated) were less ice active than untreated microcline particles but similar in activity to the acid treated particles. Heterogeneous freezing between 235 – 243 K with PIMCA-PINC and 236 – 239 K with LACIS is observed, but a T_{50} was only reached at homogeneous freezing conditions. The two immersion mode instruments compare well within uncertainties in the investigated temperature range and with respect to their instrument specific homogeneous freezing conditions (Fig. 2A). Kaolinite from the same supplier has also been used in previous work, e.g., in studies with PIMCA-PINC and IMCA-ZINC (Kohn et al., 2016; Lüönd et al., 2010; Welti et al., 2012) and LACIS (Hartmann et al., 2016). Kohn et al. (2016) reported for 400 nm particles a T_{50} of 238 K, which agreed well with IMCA-ZINC experiments by Welti et al. (2012) when taking time dependence into account ($T_{50} = 238.5$ K also for 400 nm). The freezing curve, i.e. T_{50} of 500 nm kaolinite particles measured with PIMCA-PINC in this study is about 3 K lower than for the 400 nm particles used by Kohn et al. (2016) using the same instrument. Alternatively this can be viewed as for kaolinite, at fixed T of 238 K, the FF is ~ 0.3 lower for 500 nm than for 400 nm particles previously investigated. This is surprising given that the larger sized particles should be more effective INPs (e.g., Archuleta et al., 2005; Welti et al., 2009). SBM fit lines (Fig. 2B/C) are based on data from Hartmann et al. (2016) investigating the same kaolinite sample, however, the SBM underestimates the FF in the present study by up to $0.1 - 0.15$ in PIMCA-PINC and up to 0.1 in LACIS throughout the investigated temperature range, although both PIMCA-PINC and LACIS results agree within measurement uncertainty to the fit curves (Fig. 2B/C). The fraction of multiple-charged particles is already considered in the presented SBM fit curves in Fig. 2, thus this is not the reason for the discrepancy. A reason which may contribute to the discrepancy in ice activity when comparing to literature can be the method of particle generation such as dispersal from an aqueous solution or vs. dry dispersal from a powder may influence the results. Particles in this work were generated from an aqueous suspension while Kohn et al. (2016), Welti et al. (2012), Lüönd et al. (2010) and Hartmann et al. (2016) examined dry dispersed particles. Producing particles from an aqueous suspension may e.g., lead to a redistribution of soluble material, affecting the exposure of ice active sites on the particle surface. However in immersion mode a redistribution of solutes on the surface should not play a significant role since the solute should re-mobilize in the comparatively large droplets formed previous prior to ice nucleation. A decrease in the freezing temperature was previously observed for microcline during immersion freezing as mentioned above and also for Arizona test dust in water

subaturated conditions (Koehler et al., 2010). If at all, only a small difference within experimental uncertainty was found between Hartmann et al. (2016, dry dispersed particles) and LACIS in this study (wet dispersed particles) [for the kaolinite particles](#). This can be seen by comparing LACIS kaolinite measurements and respective SBM curves in Fig. 2C. ~~Note, Note, that~~ measurements with PIMCA-PINC using the same particles show a significant reduction in the ice activity with a T_{50} of ~ 2 K lower for wet generated kaolinite (Fluka) particles for measurements conducted at ETH Zurich in succession to LINC (see Appendix C for more details). This indicates that there is a change in the ice activity of kaolinite particles when suspended in water and that multiple-charged particles are not the sole reason for this discrepancy. We suggest that setup specific discrepancies such as the method of particle generation and the quality of size-selection plays a non-negligible role which requires close attention to quantitatively compare INP measurements.

The broadest temperature range (233 – 258 K) investigated during LINC was for the two birch pollen washing waters (Fig. 2, lower panels; cyan and green). Parallel measurements with LACIS and PIMCA-PINC (Fig. 2A) agree well within their uncertainty. The birch pollen washing waters birchS and birchN are active below 258 K. In comparison to the mineral dusts, the FF shows a weaker temperature dependence and the FF levels off below ~ 248 K, i.e. a fraction of more than 35 % of the droplets froze homogeneously. In the present study, the birchN sample (300 nm) shows a higher ice activity than birchS (500 nm). ~~The~~ [Comparing SBM curves, the](#) results for the birchN sample compare well to Augustin-Bauditz et al. (2016), who tested the same sample batch (Fig. 2B/C) ~~when comparing SBM curves~~. Using fit parameters for birchS from Augustin et al. (2013) the SBM curve overpredicts the FF measured with both PIMCA-PINC and LACIS. The lower ice activity of birchS could arise from storage of the sample at room temperature for more than three years between measurements done by Augustin et al. (2013) from which the SBM parameters were taken and measurements presented herein. The birchS sample seems to loose ice activity during storage suggesting that care should be taken when comparing results ~~on of~~ ice nucleation of biological samples because some samples could potentially change over time. A loss of ice activity over time also has been previously observed for *Pseudomonas syringae* (e.g., Polen et al., 2016).

In order to quantify the overall instrumental differences between PIMCA-PINC and LACIS, the FF data is averaged in 1 K bins and plotted in Fig. 3A. A good agreement is found between the two instruments within the experimental uncertainty for the majority of the data. By using the Bland-Altman approach (Bland and Altman, 1999), the difference in FF between PIMCA-PINC and LACIS is calculated as a function of their obtained mean FF and shows no trend (see Fig. 3B), implying that no instrument specific offset in FF is observed. This result suggests ~~;~~ that discrepancies found previously are not due to the performance of PIMCA-PINC or LACIS to accurately quantify immersion freezing as results are well within the measurement uncertainties of the instruments when operated in parallel. Instead, it suggests that differences in sample material or treatment of the particles prior to measurements such as the particle generation and the size-selection procedure, as discussed above could be the cause of previous discrepancies. ~~A) Correlation of frozen fraction for all aerosol types measured between PIMCA-PINC and LACIS. Data is binned in 1 intervals for the correlation. The dashed line represents the 1:1-line and the red line is a linear fit to all samples. B) Differences between PIMCA-PINC and LACIS are shown as a function of their mean FF . Red dashed lines show the standard deviation (1σ) range.~~

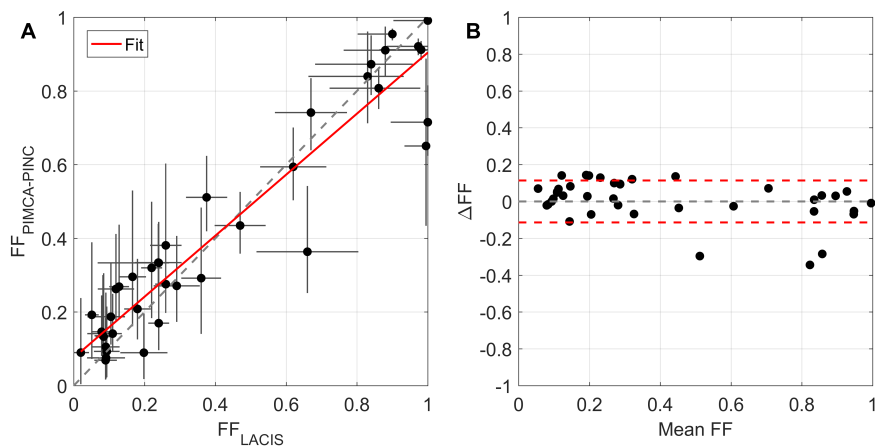


Figure 3. A) Correlation of frozen fraction for all aerosol types measured between PIMCA-PINC and LACIS. Data is binned in 1 K intervals for the correlation. The dashed line represents the 1:1-line and the red line is a linear fit to all samples. B) Differences between PIMCA-PINC and LACIS are shown as a function of their mean FF . Red dashed lines show the standard deviation (1σ) range.

3.2 Results of deposition and condensation mode measurements

For the first time PINC and SPIN measurements were conducted using the same sample and size-segregated aerosol particles. Experiments between 233 K and 253 K were performed with both instruments by scanning RH from ice saturation up to above water saturation until droplet breakthrough was observed. The tested samples were: untreated and nitric acid treated microcline, kaolinite and birch pollen washing water (birchN). The ice activity of the individual aerosol types is discussed on the basis of PINC measurements shown in Fig. 4 and the comparison between PINC and SPIN is discussed thereafter.

An active INP in the deposition mode is expected to have a high AF or activate at lower RH compared to less active INPs. PINC data indicate This is observed in the PINC data, which indicates that the most active particles are not surprisingly found to be found at 233 K with initial onset of ice formation at RH_w of 82 – 86 % corresponding to $RH_i = 121 – 127 RH_i$ of

121 – 127 %. Among the tested mineral dust samples, the untreated microcline particles (300 nm) show the highest AF for a given RH (Fig. 4A). The ice formation onset (here defined for convenience of discussion as $AF = 10^{-3}$) for untreated microcline at $T = 233$ K is observed at $RH_w = 89$ % ($RH_i = 120$ %) and the maximum AF ranges from $6 \cdot 10^{-1}$ to $3 \cdot 10^{-3}$ at 236 – 253 K respectively. Earlier deposition nucleation studies on K-feldspars observed a similar range of AF (Yakobi-Hancock et al., 2013; Zimmermann et al., 2008). Treatment of microcline with nitric acid (Fig. 4B) resulted in a lower maximum AF of 10^{-2} for the temperature range investigated (233 – 243 K) compared to untreated microcline which showed AF on the order of 10^{-1} for the same temperature range. The decrease in ice activity for acid treated particles was also observed in the immersion freezing experiments as discussed above. Freezing onset conditions do not significantly change with acid treatment below 240 K (Fig. 4B), but at 243 K a higher RH_w is needed to reach $AF = 10^{-3}$. Kulkarni et al. (2014) also reported a reduction in the ice nucleation ability of 200 nm particles of a K-feldspar sample after coating with sulfuric acid. A general reduction

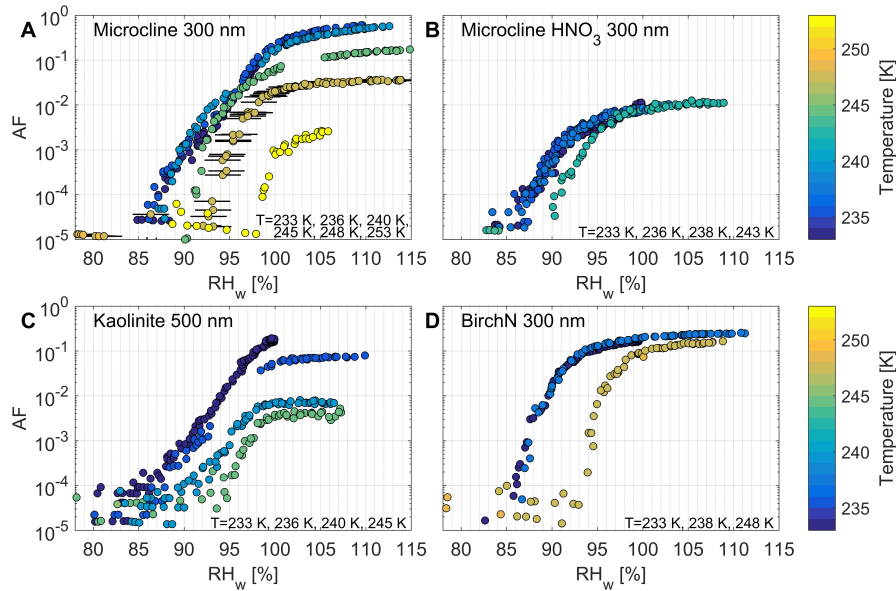


Figure 4. Activated fractions measured with PINC as a function of RH_w at measured temperatures for four aerosol types: A) microcline untreated (300nm) and B) microcline after treatment with HNO_3 (300nm), C) kaolinite (500nm) and D) birch pollen washing water (birchN, 300nm). Exemplary measurement uncertainties are given for microcline (A) at 248 K.

in the ice nucleation ability agrees with the immersion freezing measurements on microcline after treatment with nitric acid presented in this work, but sulfuric acid treatment was not tested with PINC. For a discussion of possible causes of the reduced ice activity after acid treatment we refer the reader to Sec. 3.1.

The ice nucleation activity of 500 nm kaolinite particles (Fig. 4C) was tested at four temperatures. Onset freezing conditions ($AF = 10^{-3}$) are observed at $RH_w = 90 - 98\%$ for the whole measured temperature range. For temperatures 236 K, 240 K and 245 K a plateauing effect is observed for $RH_w < 100\%$ indicating a saturation effect of ice nucleation occurring. It is unclear if this would also be observed at 233 K because the experiment was stopped shortly after reaching water saturation as the limit of the supersaturation attainable by PINC (limited by the cooling power of the walls) was reached. When comparing to previous studies, a 15 – 20% higher RH_w is required in this study to reach an AF of 10^{-3} compared to Wex et al. (2014) at $T = 239 - 243$ K using 300 – 700 nm particles. Also comparing to Welte et al. (2014), the required RH_w of 94% ($T = 233$ K) to reach $AF = 10^{-2}$ in the current work is again $\sim 20\%$ higher (Welte et al., 2014, $RH_w = 74\%$ at $T = 233$ K using 400 nm particles). This indicates that kaolinite particles investigated during LINC were less active INPs compared to previous studies. As mentioned before, a difference between previous studies and the present work is that aerosol particles in Welte et al. (2014) and Wex et al. (2014) were dry dispersed. In contrast to immersion freezing, wet dispersed particles can show a reduced deposition nucleation ability because of soluble material from an aqueous suspension having re-mobilized to the most hydrophilic locations on the particle surface during drying of the particles before being sampled into an INP counter. In such a case **presumably**

, presumably, the active sites on the particle are blocked and it would be necessary for the RH to overcome the deliquescence RH of the soluble material to induce a phase change and further increase in RH to overcome the solute effect followed by ice nucleation resulting in an observed delay in onset RH of ice formation. These processes have already been suggested by earlier studies (e.g., Sullivan et al., 2010a; Koehler et al., 2010; Alpert et al., 2011; Welti et al., 2014; Wex et al., 2014) 5 (e.g., Sullivan et al., 2010b; Koehler et al., 2010; Alpert et al., 2011; Welti et al., 2014; Wex et al., 2014). Thus, the reduction in activity observed in the deposition nucleation regime suggests, but is not limited to, an effect of the wet dispersion. Birch pollen washing water (birchN sample, Fig. 4D) shows a steep increase and high maximum value in AF , suggesting uniformity among the particles responsible for ice nucleation. At 248 K, ice nucleation onset occurs at 94% RH_w and at 233 K, the onset RH_w is 85%. There is only a small temperature dependence of the maximum AF value of the pollen sample, suggesting 10 a threshold temperature required for deposition nucleation on birchN. An additional decrease in temperature results in only a marginal increase in the activated fraction as shown in Fig. 4D.

Comparison between SPIN and PINC

In Fig. 5 we show SPIN and PINC data for all aerosol types and temperatures investigated with both instruments. Similar dependencies of AF on RH_w and temperature are observed. Quantitatively, SPIN detects higher AF s, with differences more 15 pronounced at lower temperatures and RH_w . For the birchN, the difference at low temperatures is less pronounced than for the mineral dusts, suggesting an aerosol specific feature leading to instantaneous ice nucleation in the chamber. The birchN particles are the most hygroscopic particles of the samples examined in this work. ~~The ice activity of particles influences the time for ice growth within the residence time of the chamber. Less efficient INPs display a higher nucleation time dependence. Due to non-instantaneous nucleation upon entering the chamber they have a shorter available growth time.~~, which was deduced 20 from CCNC measurements where 300 nm particles fully activated at a supersaturation of 0.1% (i.e., the lowest supersaturation sampled), while for all other samples, particle hygroscopicity could be derived, i.e. 50% active fraction was achieved at a higher supersaturation.

The largest deviation between PINC and SPIN is observed for measurements on nitric acid treated microcline, which showed a lower AF measured with SPIN compared to PINC at T of 238 K and 243 K. Note that measurements on nitric acid treated 25 microcline were performed on two different batches of nitric acid treated samples, i.e. PINC and SPIN did not measure in parallel for this aerosol type ~~and it for which a discrepancy was not expected~~. It is possible that the observed difference between SPIN and PINC data is based on the ice active material in the PINC batch which may not have been as thoroughly deactivated during acid treatment compared to the batch measured with SPIN.

Grouping the data in $\pm 2\%$ RH_w and 1 K temperature bins, AF s measured with PINC and SPIN can be compared (Fig. 6). 30 For the lowest AF s close to the detection limits of SPIN and PINC, scattering is larger as can be seen by the differences between SPIN and PINC as a function of the mean AF (Fig. 6B). The deviation from the 1:1-line can be attributed to T and RH uncertainties, different data analysis procedures e.g. ice crystal threshold size and instrument design differences such as residence time. These differences are discussed in the following section.

As described in Sec. 2.3.1 and 2.3.3, chamber backgrounds are treated differently for the ice nucleation counters. For PINC,

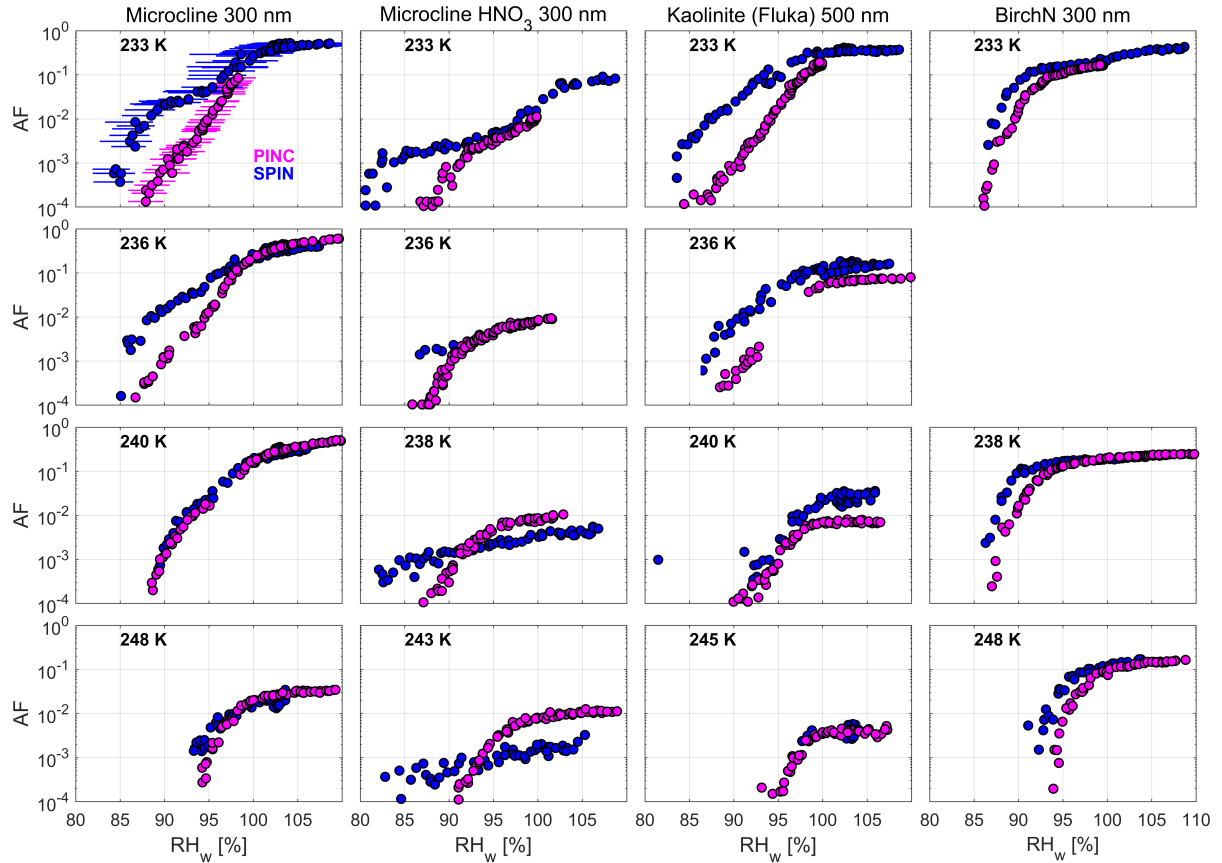


Figure 5. Resulting AF from RH_w scans measured with PINC (magenta) and SPIN (blue) for four aerosol types. The upper left panel includes an example of measurement uncertainties in AF (not visible) and RH_w .

the background is found to increase during the RH scan and a typical background concentration of particle free air between the start and end of an RH scan was 3.01^{-1} obtained with a typical sample ice concentration of 61301^{-1} on average for example for an experiment on kaolinite at 248 K. Typically the ice crystal concentrations in the experiment that reached $AF \geq 10^{-3}$ were sufficiently large that the background counts only played a minor role. The relative contribution of the background is higher at low AF and RH . It is reasonable to assume that the background counts in SPIN also increase with increase in ΔT (and RH) as is the case in PINC. However, the lack of a high RH background measurement can yield a lower average background correction as a function of experimental time resulting in higher ice crystal counts for SPIN than PINC at the end of a RH scan. Note that background estimates for SPIN are justified by the fact that the contribution of aerosol particles is larger than that of the background counts arising from an increase in RH and ΔT . Even though background counts were estimated differently in the two experiments, the resulting change in AF with or without background correction (see Appendix D for an example on PINC data) neither explains the discrepancies in AF at high RH_w nor the difference in onset conditions. The

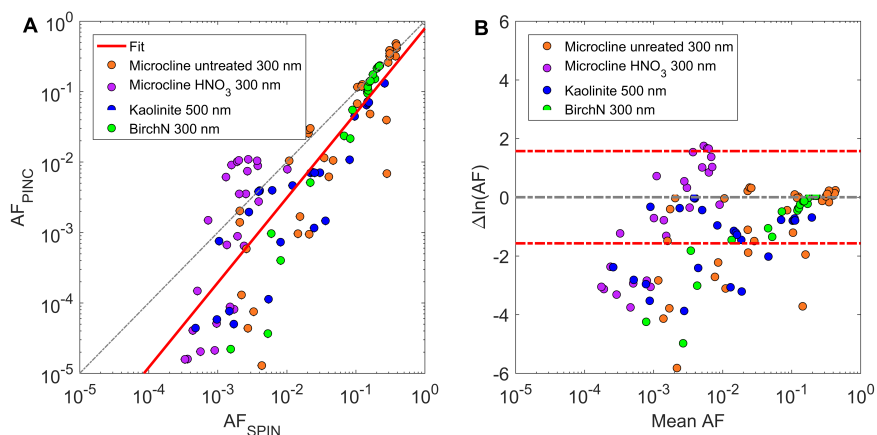


Figure 6. A) Correlation of AF measured with PINC and SPIN differentiated for aerosol types. Data is binned in $\pm 2\%$ in RH_w to obtain the correlation. B) Differences in AF between PINC and SPIN as a function of their mean AF measured. The red dashed lines show the standard deviation (1σ) range.

evaluation of the background could ~~however,~~ however, still contribute to differences in observed AF at low RH_w as shown by the yellow circles and crosses in Fig. D1 (Appendix D).

Another reason for observed differences between SPIN and PINC arises from the fact that ice crystals are identified using an experiment-specific size threshold to distinguish ice crystals from unactivated aerosol particles, which can complicate a direct comparison, especially at low T and RH where ice growth is kinetically limited. The comparison between PINC and SPIN was performed with ice crystal size thresholds of 2 and $2.5\mu\text{m}$, respectively. The size thresholds were chosen such that ice crystals could accurately be counted while preventing unactivated particles from being falsely counted as ice crystals. To demonstrate the effect of a change in the threshold size, Fig. 7 shows a comparison of the example of RH scans on kaolinite using a $2\mu\text{m}$ ice crystal threshold for PINC and either $2.5\mu\text{m}$ or a $4\mu\text{m}$ size threshold for SPIN. While the maximum AF observed in SPIN did not change significantly with a change in the threshold size from $2.5\mu\text{m}$ to $4\mu\text{m}$, the freezing onsets ($AF = 10^{-3}$) increased by 3 – 4% RH_w . Increasing the ice threshold to $4\mu\text{m}$ in SPIN gives a better agreement to PINC onset conditions, but not in the maximum AF . Thus, changing the threshold size does not overcome the discrepancy in AF observed with PINC and SPIN for kaolinite, which suggests that other factors such as time dependence of ice nucleation may contribute to the discrepancy for which the difference in the residence time in the chamber between SPIN ($t_{\text{res}} \approx 9\text{s}$) and PINC ($t_{\text{res}} \approx 5\text{s}$) plays a role.

For aerosols that demonstrate a nucleation time dependence as has been shown with this kaolinite sample (Welti et al., 2012), longer residence time allows more particles to act as INP and grow to larger ice crystal sizes before detection. In particular at low T , where the growth rates are lower, this could explain a higher AF measured with SPIN compared to PINC. Following Rogers and Yau (1989) the crystal growth by diffusion for spherical ice crystals as a function of temperature was calculated for the typical residence times in PINC and SPIN (Fig. 8). The mass accommodation coefficient was set to 0.3 based on literature data in Rogers and Yau (1989) (0.2 for small ice at $T > 263\text{K}$) and Skrotzki et al. (2013) (0.2 – 1 for $T = 190 - 235\text{K}$). The

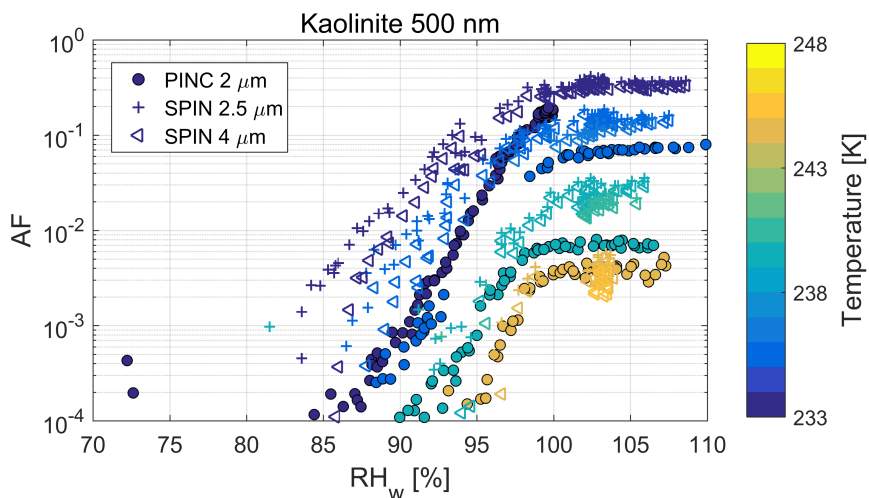


Figure 7. PINC and SPIN RH scans for size-selected kaolinite particles. PINC data is analyzed with an ice crystal size threshold of $2\mu\text{m}$. SPIN data is presented with the used ice threshold size of $2.5\mu\text{m}$ and a larger one of $4\mu\text{m}$.

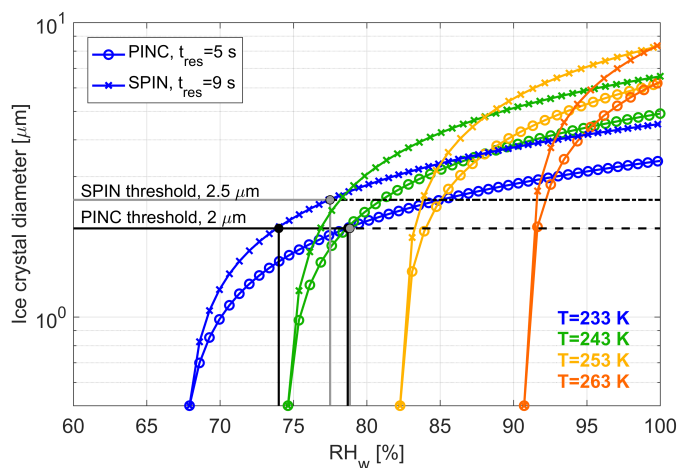


Figure 8. Ice crystal growth calculations for the typical residence times of 5 s in PINC (circles) and 9 s in SPIN (crosses), according to Rogers and Yau (1989) using a mass accommodation coefficient of 0.3. Vertical black lines show the discrepancy in RH_w arising from ice crystals counted with the same ice threshold size of $2\mu\text{m}$ in both SPIN and PINC. Grey lines indicate the ice threshold size used during LINC resulting in a much smaller discrepancy in onset RH_w . The used ice threshold sizes for PINC and SPIN are indicated by the horizontal dotted lines. Markers on the line plots are spaced by $1\% RH_1$.

initial starting particle diameter was set to 500nm , the same diameter as used for kaolinite experiments. Note, that t_{res} changes by 1 – 3 s depending on the experimental temperature and supersaturation. Assuming instantaneous nucleation of ice upon exposure of the aerosol particles to the chamber conditions, the growth calculations show that for a threshold size of $2\mu\text{m}$

at 233K, PINC would detect an ice crystal at $RH_w = 78.5\%$ and SPIN at $RH_w = 74\%$ (solid black lines/symbols, Fig. 8). The ice threshold size of $2.5\mu\text{m}$ used for SPIN in this study accounts for the growth time effect (grey lines), which reduced the observed difference in ice onset to $\sim 1\%$ RH_w between PINC and SPIN. While this resulting difference is small, note that due to chamber flow dynamics, the particles are exposed to a RH range across the aerosol sample lamina of $\pm 2\%$, depending on the nominal T and RH condition. Therefore, we expect a range of ice crystal sizes because of the range in RH as also has been reported recently by Garimella et al. (2017). Further, the calculation shown in Fig. 8 assumes spherical ice crystal growth and also that nucleation is instantaneous and the entire residence time in the nucleation chamber is available for growth. If the latter two were not the case, it would result in a reduction of available time for ice crystal growth, and therefore larger differences would be expected at the position of detection for the two chambers. The efficiency of an INP will therefore influence the proportion of residence time that will be available for growth of the crystal after nucleation has occurred. More efficient INPs would rapidly grow to ice crystals without a large time delay and support the hypothesis of ice growth effects and a weaker time dependence as can be observed for microcline at lower temperatures and birchN (Fig. 5). Instead, less efficient aerosol particles such as kaolinite with a demonstrated time dependence would have a smaller proportion of the residence time available for growth in PINC (residence time of 5s) than in SPIN (residence time of 9s) due to non-instantaneous nucleation upon entering the chamber. This time effect could explain the offset between PINC and SPIN observed at a given RH .

3.3 Comparing Apparent differences between immersion and condensation freezing

~~It has been suggested that immersion mode is the dominant heterogeneous freezing pathway under mixed-phase cloud conditions (e.g., Ansmann et al., 2008). Recently, CFDCs have often~~ In many field measurements CFDCs have been used for field-measurements of INP concentration at water supersaturated conditions (e.g., DeMott et al., 2010, 2016; Tobo et al., 2013; Boose et al., 2016; Lacher et al., 2017) and sometimes are used to represent immersion freezing (see Kanji et al., 2017, and references therein)(e.g., DeMott et al., 2017). As water supersaturated conditions in CFDCs should result in droplet formation followed by freezing at a constant temperature, CFDCs should simulate condensation freezing (see e.g., Welti et al., 2014, for a discussion of possible condensation freezing mechanisms). If condensation freezing in CFDCs is mechanistically different from immersion freezing, is doubtful as both nucleation mechanisms should proceed via the liquid phase with the requirement of overcoming an activation barrier of ice germ formation from liquid water molecules. How well CFDCs at or above water saturation compare with instruments that explicitly observe immersion freezing has been addressed before (e.g., DeMott et al., 2015; Hiranuma et al., 2015; Garimella et al., 2017).

Here we compare measurements from PIMCA-PINC and LACIS to those from SPIN and PINC (Fig. 9). Possible reasons for observed differences, such as technical artifacts or differences in the ice nucleation modes, are discussed. For simplicity, FF is used for experiments exclusively performed in the immersion mode. In contrast, for ice nucleation chambers measuring in the condensation mode, which is in this case not explicitly distinguishable from immersion freezing, data is presented as AF in the following figures. PIMCA-PINC and PINC cannot be operated at the same time and therefore experiments were repeated on different days. For the three tested aerosol types (microcline, kaolinite and birchN), a clear offset is found between measurements with PINC and SPIN compared to the immersion freezing experiments in PIMCA-PINC and LACIS (Fig. 9). Maximum

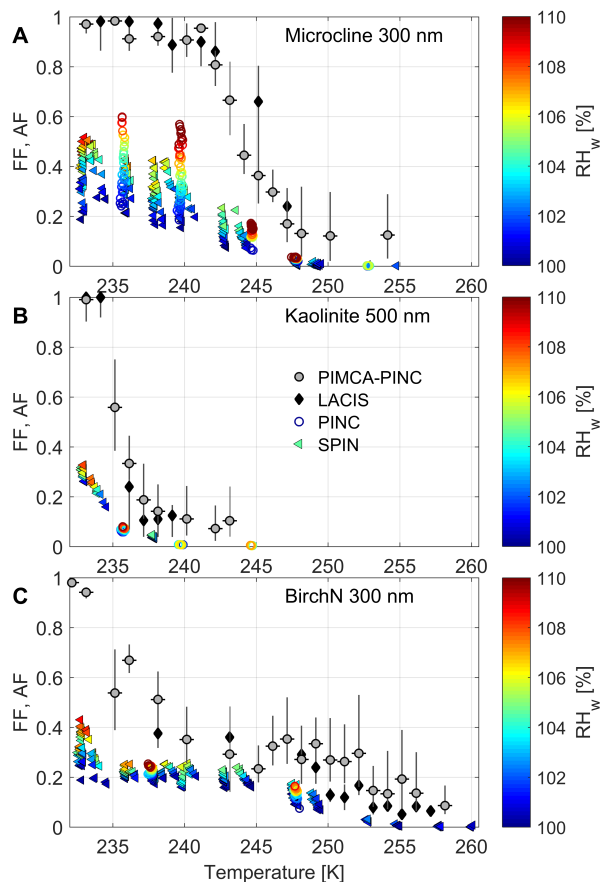


Figure 9. Comparison of all instruments. PIMCA-PINC and LACIS experiments were performed with droplet activation prior to exposure to freezing conditions. Results from immersion freezing experiments are reported as FF . PINC and SPIN measured the activated fraction (AF) at ice nucleation conditions above water saturation and RH_w up to droplet breakthrough, which is the limitation for the scan range. RH_w is indicated by the color bar. The uncertainty in AF for PINC and SPIN is 14%.

AF in PINC and SPIN ~~does~~ did not exceed $AF = 0.6$, even at $RH_w > 105\%$ where droplet breakthrough biases the results. An AF of approx. 0.6 was also the highest value reported for SPIN measurements in homogeneous freezing experiments, even well above water saturation and below 233K in Garimella et al. (2016). Chamber characterization experiments with PINC revealed particle losses below 5% (Boose et al., 2016) ~~thus~~, thus these losses do not explain the observed difference between the CFDC (PINC) and immersion freezing (PIMCA-PINC, LACIS). In Fig. 10 a scatter plot for FF of PIMCA-PINC and the AF of PINC and SPIN obtained at $RH_w = 105\%$ are shown with respective lines for ratios of 1:1, 1:2 and 1:3 between the samples. LACIS data ~~is~~ are excluded from the figure for clarity ~~and~~; it is also not necessary for this discussion due to the good agreement found with PIMCA-PINC (Sec. 3.1). For microcline FF 's measured with PIMCA-PINC are a factor of 2 – 3 higher below 243K and more than a factor of three higher at higher temperatures. A similar behavior is observed for kaolinite

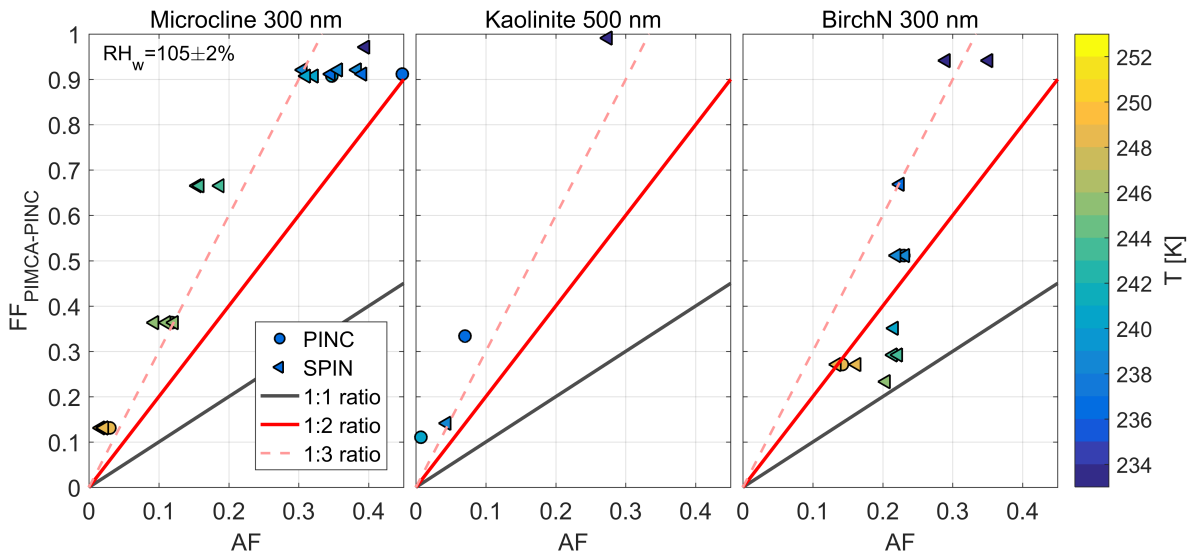


Figure 10. Scatter plot of FF (immersion freezing) and AF (condensation freezing) showing discrepancies between the instruments. Lines show the 1:1, 1:2, 1:3 ratios (black, red, pink respectively) for three different aerosol types. PINC and SPIN data are binned by RH_w of $\pm 2\%$.

with factors of three or larger required to achieve agreement with immersion freezing. A factor of three difference between isothermal CFDC measurements and immersion freezing experiments has previously been reported by DeMott et al. (2015) comparing experiments on mineral dust between CSU-CFDC and the AIDA cloud chamber. In the present study, an offset between FF and AF is observed for all samples and in particular for the low T measurements the offset is not within measurement uncertainties. It is also noteworthy that the factor is found to change across the different experimental temperatures and aerosol types tested. As an example, for the birchN sample, the factor changed from less than two for $T > 243\text{ K}$ up to even larger than three for $T \leq 235\text{ K}$.

The disagreement in ice activity observed with the two CFDCs and the two instruments explicitly measuring immersion freezing provides evidence that CFDCs should not be assumed to give the same results as the existing in-situ experiments designed to exclusively measure immersion freezing. The results raise the question what possible differences can lead to this discrepancy and whether these are of physical or instrumental nature. If the ice nucleation mechanism is the same in all instruments (i.e. ice forms from liquid at the surface of an immersed particle), the most fundamental difference between condensation and immersion freezing experiments is the additional need to create liquid water during condensation freezing starting with a dry aerosol particle or the presence of soluble material on the particle surface leading to freezing point depression. Recently, DeMott et al. (2015) showed that aerosol particles can in fact be activated inside the CFDC to a sufficiently large droplet size to investigate immersion freezing in the CFDC for RH_w well in excess of 100%. However, at which time in the chamber droplet activation occurs and whether the residence time after droplet activation is sufficient to nucleate ice is unclear. Common ice

nucleation counters operate on different residence times and if the time is not sufficient for droplet growth in the instrument prior to freezing, a discrepancy is possible. The time ~~lost nucleating that is spent for nucleation~~ and creating sufficient liquid within the growth section of the CFDC would cause a reduction in the observed condensation freezing, especially for INPs that show a time dependence for immersion freezing which is the case for the kaolinite sample used here (Welti et al., 2012).

- 5 In theory one could increase RH_w until all particles are activated and nucleate ice, however the droplet breakthrough imposes limitations on the maximum attainable ~~$RH - RH_w$~~ in a CFDC. The question arises as to why such high RH_w is required to see activation of these particles to ice crystals? It could be morphological or compositional heterogeneity even within a size-segregated sample, implying that only a subset of particles are ice nucleation active. ~~However, this is also observed with particles of uniform composition such as microcline.~~ An increase in ΔT to increase RH_w causes turbulence in the chamber
- 10 and changes the flow dynamics in a CFDC at high RH_w (Rogers, 1988; DeMott et al., 2015) especially for larger temperature gradients of about 10 – 15K causing deviations from ideal flow conditions. Recently, Garimella et al. (2017) have provided further empirical evidence that aerosol particles may escape the lamina of CFDC type instruments resulting in particles being exposed to much lower RH_w than predicted by ideal behavior of CFDCs and a resulting variable correction factor of 2.6 – 9.5 was obtained from their pulse tests. Particles escaping the lamina would require CFDCs to be operated at much higher RH_w
- 15 in order to activate all particles to water droplets to truly observe immersion freezing. Aerosol particles that escape the sample lamina cannot be expected to be processed at the set T and RH conditions (mean of the expected lamina), thus potentially leading to an underestimate of counted ice crystals. This underestimate may be more pronounced for higher RH as the increase in turbulence may favor non-ideal conditions further supporting the differences observed between FF and AF in the work presented here.
- 20 Another difference between the CFDCs and the immersion mode instruments are the different methods of ice crystal detection. While the CFDCs detect the ice crystals as an absolute concentration ~~in the sample air volume via a size threshold~~ (ratio of ice to total particle number entering the chamber) ~~in the sample air volume via a size threshold~~, LACIS and PIMCA-PINC observe the ~~relative fraction (ratio ice to ratio of ice to the total number of ice and droplets)~~ via depolarization in a subset of the sample ~~i.e., a relative count is used, which is a relative fraction~~. The latter assumes that the sample volume is representative of the total sample
- 25 air, with the advantage of being less sensitive to particle losses in the chamber and counting efficiency errors arising from two different counting methods (OPC and CPC). ~~In addition it is noteworthy that for LACIS, the optical detection instrumentation used here yielded FF s similar to an AF from an absolute measurement method (Clauss et al., 2013) only when a correction factor normalizing to the particle concentration was applied as described in Niedermeier et al. (2010).~~ ~~Thus, the application of an absolute counting method using depolarization to distinguish the particle phase would combine all advantages in ice~~
- 30 ~~detection for future studies.~~

4 Summary and outlook

Experimental results of four online ice nucleation counters were compared using ~~several~~ size-selected aerosol ~~particles as INPs~~ ~~particle types~~. Two devices designed to observe immersion freezing (PIMCA-PINC and LACIS) and two CFDCs for

measuring deposition nucleation and condensation freezing (PINC and SPIN) were used in this study. The investigated aerosol samples were microcline untreated and treated with either sulfuric or nitric acid, kaolinite (Fluka) and two types of birch pollen washing waters. The variety of samples allowed for measurements in the whole temperature (and RH) range possible with the chambers.

- 5 Treatment of the microcline sample with either sulfuric or nitric acid, followed by washing off the acid, destroyed the ice nucleation ability of the microcline permanently in immersion freezing ~~for both sulfuric and nitric acid and mode~~. In addition, the nitric acid treatment led to a significantly reduced AF in deposition nucleation and condensation freezing conditions between 233 K and 243 K ~~when nitric acid treatment was applied~~.

- A comparison of parallel measurements with LACIS and PIMCA-PINC, conducted for the first time with these instruments, 10 showed a very good agreement for the investigated aerosol types. No instrument specific differences for immersion freezing experiments were found in parallel measurements suggesting that other factors such as the particle ~~size-selection~~ size selection and dispersion method ~~contributing may contribute~~ to discrepancies found when comparing results from instruments operated at different times and places. Measurements from the two CFDC instruments PINC and SPIN were compared in the sub- and supersaturated RH_w regime. Results showed qualitative agreement. However, a direct comparison showed that SPIN detects 15 higher AF , in particular at low temperatures (233 – 236 K) and lower RH_w . Calculations of ice crystal growth revealed that the chamber residence times, in addition to the selected ice crystal threshold sizes can largely explain these discrepancies and showed that their effects on reported results from a CFDC cannot be ignored.

- Lastly, results from all four instruments were compared to investigate possible differences between condensation- ($RH_w = 105\%$) and immersion freezing. Overall a clear discrepancy up to on the order of a factor of three ~~or higher~~ (or higher) 20 was found between immersion freezing and condensation freezing results, which is similar to the scaling factor of three as reported by DeMott et al. (2015) for mineral dust particles. This factor was observed to vary with aerosol type and temperature investigated in this work. When comparing CFDCs with chambers exclusively measuring immersion freezing, the detection methods used to evaluate ~~FF and AF~~ ice activity should be kept in mind in addition to the RH_w of the CFDC at which the comparison is done. For instance, CFDC instruments report AF s by measuring absolute ice concentrations from an OPC, 25 which are normalized to total sampled particles from a CPC, while immersion freezing FF s are obtained by normalizing using the ratio of ice crystals to the sum of ice and droplets from the same ~~instrument~~ detector. To determine the extent CFDCs are able to measure immersion freezing, further investigation at very high RH_w allowing for full droplet activation within the residence time of the chamber would be necessary. ~~An assessment if~~ An assessment whether the instruments measure the same physical mechanism (i.e. immersion freezing) cannot be made based on the present study. To which extent the observed deviations 30 originate due to the different ice detection methods or residence time for droplet activation requires further investigation. ~~For~~ and for future studies the use of detectors measuring the absolute number of ice crystals and water droplets by depolarization would be advantageous.

Appendix A: Soccer Ball Model (SBM)

The SBM can model ~~temperature-dependent~~ temperature-dependent frozen fractions for particles of different materials based on classical nucleation theory and was introduced in detail by Niedermeier et al. (2011). The ice nucleating sites of the material are represented by a contact angle distribution with an average contact angle, μ_θ , and the standard deviation, σ_θ , together with an assumed size of the ice active sites, S_{site} . The abundance of these sites is given by λ , the average number of sites per particle. The nature of the ice nucleating sites of the respective material, is described by μ_θ and σ_θ , i.e., they represent a material property, while λ represents the abundance of sites and might differ for different batches of the same material.

Table A1. Parameters used for SBM calculations shown in Fig. 2 with the fractions of multiple-charged particles (Table 1). The mean average contact angle, μ_θ , and the standard deviation, σ_θ , of the contact angle distribution and λ as a function of the particle diameter (D_p) and S_{site} are taken from literature.

Aerosol type	S_{site} [m ²]	μ_θ [rad]	σ_θ [rad]	λ	Reference
Microcline 200/300 nm	10^{-14}	1.29	0.10	$2.03 \cdot 10^{13} \text{ m}^{-2} \cdot D_p^2$	Niedermeier et al. (2015)
Kaolinite 500 nm ^a	10^{-14}	1.87	0.25	n.a. ($n_{\text{site}} = 3.14 \cdot 10^{12} \cdot D_p^2 + 0.0203$)	Hartmann et al. (2016)
BirchN 300 nm ^b	$3.14 \cdot 10^{-16}$	1.016	0.080	(a) $3.30 \cdot 10^{12} \text{ m}^{-2} \cdot D_p^2$	Augustin-Bauditz et al. (2016)
	$3.14 \cdot 10^{-16}$	0.834	0.0005	(b) $6.65 \cdot 10^{11} \text{ m}^{-2} \cdot D_p^2$	Augustin-Bauditz et al. (2016)
BirchS 500 nm	$3.14 \cdot 10^{-16}$	1.016	0.080	$1.78 \cdot 10^{12} \text{ m}^{-2} \cdot D_p^2$	Augustin et al. (2013)

^a In the case of kaolinite, n_{site} relates to a former version of the SBM and describes the number of surface sites which is assumed to be equal for equally sized particles.

^b BirchN parameters are similar to those given in Augustin et al. (2013), with the exception of λ , i.e., the average number of ice active molecules per particle, which is different due to the use of a different batch of the birchN sample.

Appendix B: Correcting the frozen fraction for multiple-charged particles

Previously, Hartmann et al. (2016) have introduced the correction for multiple-charged particles in the size distribution of quasi-monodisperse particles to inter-compare independent studies on INPs in the immersion mode.

According to Table 1, the FF has been recalculated assuming that all particle sizes feature the identical heterogeneous nucleation rate (J_{het}):

$$FF_{\text{calc}} = a_1 \cdot (1 - \exp(\underline{J - J_{\text{het}}} \cdot A_1 \cdot t_{\text{res}})) + a_2 \cdot (1 - \exp(\underline{J - J_{\text{het}}} \cdot A_2 \cdot t_{\text{res}})) + a_3 \cdot (1 - \exp(\underline{J - J_{\text{het}}} \cdot A_3 \cdot t_{\text{res}})) + \dots \quad (\text{B1})$$

with a_i being the fraction of particles with i charges and the particle surface area of A_i . J_{het} is chosen to reach the minimum squared error for the difference between FF and FF_{calc} . The corrected frozen fraction FF_{corr} is then obtained by

$$FF_{\text{corr}} = \underline{a_1 \cdot (1 - \exp(\underline{J - J_{\text{het}}} \cdot A_1 \cdot t_{\text{res}}))} \quad (\text{B2})$$

as shown in Fig. B1 for measurements with PIMCA-PINC and LACIS.

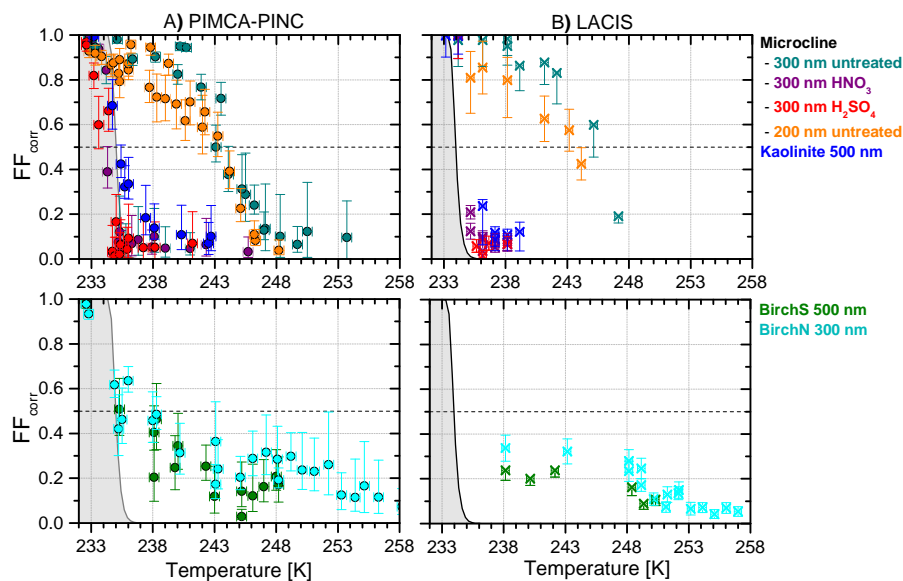


Figure B1. Frozen fraction for results obtained with PIMCA-PINC (A) and LACIS (B) accounting for the fraction of multiple-charged particles in the quasi mono-disperse sample given in Table 1.

Appendix C: Immersion freezing of kaolinite with PIMCA-PINC using different particle generation methods

In succession of the LINC study, additional measurements were conducted with PIMCA-PINC using the same kaolinite sample. Results are shown in Fig. C1. Measurements with size-selected particles of 400nm were compared when wet and dry generation methods were used. The particles were either dispersed from an aqueous solution-suspension via an atomizer similar to the method in this study or by dry dispersion using a Fluidized Bed Generator (TSI) as described in Kohn et al. (2016). Multiple individual measurements consisting of a temperature scan were conducted. Dry dispersed FF measurements by Kohn et al. (2016) were reproducible. A difference in FF based on the particle generation method is clearly observed in this comparison and in particular between temperatures of 235 K and 240 K found to exceed measurement uncertainty.

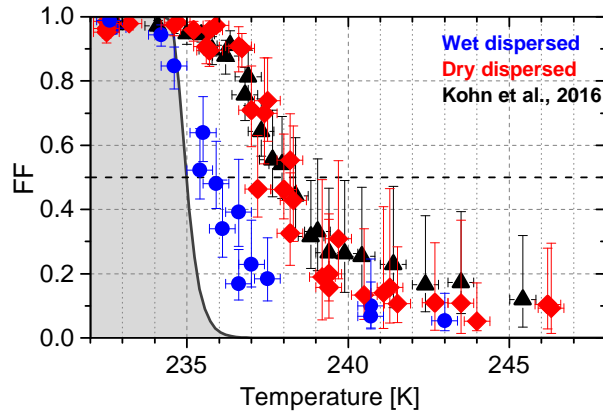


Figure C1. Frozen fraction for measurements of size-selected kaolinite (Fluka) particles (400 nm) using the PIMCA-PINC instrument after the LINC campaign (blue and red). Data from a previous study by Kohn et al. (2016) are shown for comparison (black; dry dispersed).

Appendix D: Effect of instrument background correction on the activated fraction

Ice crystal counts in CFDCs are biased by background counts such as frost particles falling off the iced chambers walls, which are falsely counted as ice crystals. The background counts are evaluated for PINC at the beginning and at the end of each RH scan. Linear interpolation between the two background measurements is used to determine background counts as a function of RH which are then subtracted from the sample counts. The background correction for SPIN was conducted in a different manner in the presented inter-comparison study. Background counts are determined from the ice crystal counts at the start of RH scans ($RH_i < 103\%$) where no ice nucleation is expected. Using sample air allows to include the concentration of false ice counts due to the measured aerosol population. The change in AF by accounting for the background in a typical experiment during this study is shown on the example of kaolinite (Fig. D1). It shows that for high AF (high RH_w) the correction has a minor effect (data points are overlapping). Thus, for measurements presented here the treatment of the background between SPIN and PINC does not affect the main findings. The interpolation through the scan for PINC would in particular **effect** **affect** the values at high RH_w . However, for low AF closer to the freezing onset, the background correction reduces the AF . Thus, the method of accounting for the background does not explain differences observed between PINC and SPIN. Instead, it supports that for particle concentrations used in this study, accounting for the background counts does not have an influence on the results. It is noteworthy that a stronger effect may be found for experiments with low observed AF or INP concentration e.g. when RH scans are conducted in field studies for which the correction of the background has to be carefully considered.

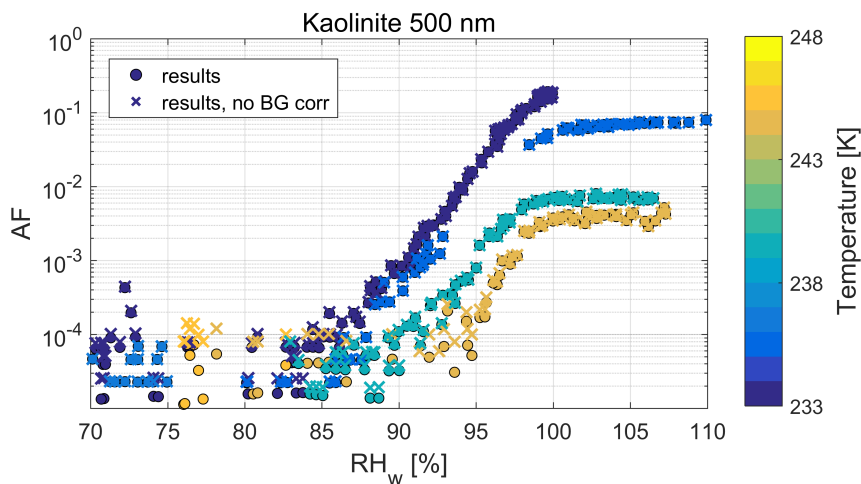


Figure D1. Activated fraction results of PINC including background correction (circles) as shown in Fig. 7 and raw data without accounting for background counts (crosses).

Author contributions. MBK prepared the manuscript with contributions from ZK, HW, SH, AW, SG and JA. MBK, ZK, AW and HW interpreted the data with contributions from SH and SG. MBK conducted and analyzed PIMCA-PINC and PINC measurements and prepared all overview figures of the manuscript; AW and PH run SPIN measurements and AW analyzed the data; HW oversaw and organized the campaign; SH, SG and LH operated LACIS and analyzed the data and all TROPOS participants helped with particle preparation and generation as well as sizing.

Acknowledgements. [The work of](#) M. Burkert-Kohn was funded by grant no. ETH-17 12-1, ETH Zurich. This work is partly funded by the German Research Foundation (DFG), Research Unit FOR 1525 (INUIT), project WE 4722/1-2 and has received funding from the European Union's Seventh Framework Programme (FP7/2007-2013) project BACCHUS under grant agreement no. 603445. We thank B. Würz from UFZ for giving support to use the centrifuge, Pharmallerga for providing pollen samples (birchS) and [Hannes Wydler and Thomas H. Wydler](#) and [T. Conrath](#) for technical support. The authors are grateful for editing of the manuscript by [Robert R. O. David](#) and M. Paramonov and for helpful comments on ice growth calculations from [Paul P. J. DeMott](#).

References

- Alpert, P. A., Aller, J. Y., and Knopf, D. A.: Initiation of the ice phase by marine biogenic surfaces in supersaturated gas and supercooled aqueous phases, *Phys. Chem. Chem. Phys.*, 13, 19 882–19 894, doi:10.1039/C1CP21844A, 2011.
- Ansmann, A., Tesche, M., Althausen, D., Müller, D., Seifert, P., Freudenthaler, V., Heese, B., Wiegner, M., Pisani, G., Knippertz, P., and
5 Dubovik, O.: Influence of Saharan dust on cloud glaciation in southern Morocco during the Saharan Mineral Dust Experiment, *J. Geophys. Res.*, 113, doi:10.1029/2007JD008785, d04210, 2008.
- Archuleta, C., DeMott, P., and Kreidenweis, S.: Ice nucleation by surrogates for atmospheric mineral dust and mineral dust/sulfate particles at cirrus temperatures, *Atmos. Chem. Phys.*, 5, 2617–2634, doi:10.1680-7324/acp/2005-5-2617, 2005.
- Atkinson, J. D., Murray, B. J., Woodhouse, M. T., Whale, T. F., Baustian, K. J., Carslaw, K. S., Dobbie, S., O’Sullivan, D., and Malkin, T. L.:
10 The importance of feldspar for ice nucleation by mineral dust in mixed-phase clouds, *Nature*, 498, 355–358, doi:10.1038/nature12278, 2013.
- Augustin, S., Wex, H., Niedermeier, D., Pummer, B., Grothe, H., Hartmann, S., Tomsche, L., Clauss, T., Voigtländer, J., Ignatius, K., and Stratmann, F.: Immersion freezing of birch pollen washing water, *Atmos. Chem. Phys.*, 13, 10 989–11 003, doi:10.5194/acp-13-10989-2013, 2013.
- 15 Augustin-Bauditz, S., Wex, H., Kanter, S., Ebert, M., Niedermeier, D., Stolz, F., Prager, A., and Stratmann, F.: The immersion mode ice nucleation behavior of mineral dusts: A comparison of different pure and surface modified dusts, *Geophys. Res. Lett.*, 41, 7375–7382, doi:10.1002/2014GL061317, 2014.
- Augustin-Bauditz, S., Wex, H., Denjean, C., Hartmann, S., Schneider, J., Schmidt, S., Ebert, M., and Stratmann, F.: Laboratory-generated mixtures of mineral dust particles with biological substances: characterization of the particle mixing state and immersion freezing behavior,
20 *Atmos. Chem. Phys.*, 16, 5531–5543, doi:10.5194/acp-16-5531-2016, 2016.
- Bigg, E. K.: Cross Sections of Ice Nucleus Concentrations at Altitude over Long Paths, *J. Atmos. Sci.*, 24, 226–229, doi:10.1175/1520-0469(1967)024<0226:CSOINC>2.0.CO;2, 1967.
- Bland, J. M. and Altman, D. G.: Measuring agreement in method comparison studies, *Stat. Methods Med. Res.*, 8, 135–160, doi:10.1177/096228029900800204, 1999.
- 25 Boose, Y., Kanji, Z. A., Kohn, M., Sierau, B., Zipori, A., Crawford, I., Lloyd, G., Bukowiecki, N., Herrmann, E., Kupiszewski, P., Steinbacher, M., and Lohmann, U.: Ice nucleating particle measurements at 241 K during winter months at 3580 m a.s.l. in the Swiss Alps, *J. Atmos. Sci.*, doi:10.1175/JAS-D-15-0236.1, 2016.
- Boucher, O., Randall, D., Artaxo, P., Bretherton, C., Feingold, G., Forster, P., Kerminen, V.-M., Kondo, Y., Liao, H., Lohmann, U., Rasch, P., Satheesh, S., Sherwood, S., Stevens, B., and Zhang, X.: Clouds and Aerosols, book section 7, pp. 571–658, Cambridge University Press,
30 Cambridge, United Kingdom and New York, NY, USA, doi:10.1017/CBO9781107415324.016, 2013.
- Chou, C., Stetzer, O., Weingartner, E., Jurányi, Z., Kanji, Z. A., and Lohmann, U.: Ice nuclei properties within a Saharan dust event at the Jungfraujoch in the Swiss Alps, *Atmos. Chem. Phys.*, 11, 4725–4738, doi:10.5194/acp-11-4725-2011, 2011.
- Clauss, T., Kiselev, A., Hartmann, S., Augustin, S., Pfeifer, S., Niedermeier, D., Wex, H., and Stratmann, F.: Application of linear polarized light for the discrimination of frozen and liquid droplets in ice nucleation experiments, *Atmos. Meas. Tech.*, 6, 1041–1052,
35 doi:10.5194/amt-6-1041-2013, 2013.
- Conen, F., Henne, S., Morris, C. E., and Alewell, C.: Atmospheric ice nucleators active $\geq -12^\circ\text{C}$ can be quantified on PM₁₀ filters, *Atmos. Meas. Tech.*, 5, 321–327, doi:10.5194/amt-5-321-2012, 2012.

- de Boer, G., Morrison, H., Shupe, M. D., and Hildner, R.: Evidence of liquid dependent ice nucleation in high-latitude stratiform clouds from surface remote sensors, *Geophys. Res. Lett.*, 38, doi:10.1029/2010GL046016, 101803, 2011.
- DeMott, P. J., Cziczo, D. J., Prenni, A. J., Murphy, D. M., Kreidenweis, S. M., Thomson, D. S., Borys, R., and Rogers, D. C.: Measurements of the concentration and composition of nuclei for cirrus formation, *Proc. Natl. Acad. Sci. U.S.A.*, 100, 14655–14660, doi:10.1073/pnas.2532677100, 2003a.
- DeMott, P. J., Sassen, K., Poellot, M. R., Baumgardner, D., Rogers, D. C., Brooks, S. D., Prenni, A. J., and Kreidenweis, S. M.: African dust aerosols as atmospheric ice nuclei, *Geophys. Res. Lett.*, 30, doi:10.1029/2003GL017410, 2003b.
- DeMott, P. J., Prenni, A. J., Liu, X., Kreidenweis, S. M., Petters, M. D., Twohy, C. H., Richardson, M. S., Eidhammer, T., and Rogers, D. C.: Predicting global atmospheric ice nuclei distributions and their impacts on climate, *Proc. Natl. Acad. Sci. U.S.A.*, 107, 11217–11222, doi:10.1073/pnas.0910818107, 2010.
- DeMott, P. J., Mohler, O., Stetzer, O., Vali, G., Levin, Z., Petters, M. D., Murakami, M., Leisner, T., Bundke, U., Klein, H., Kanji, Z. A., Cotton, R., Jones, H., Benz, S., Brinkmann, M., Rzesanke, D., Saathoff, H., Nicolet, M., Saito, A., Nillius, B., Bingemer, H., Abbatt, J., Ardon, K., Ganor, E., Georgakopoulos, D. G., and Saunders, C.: Resurgence In Ice Nuclei Measurement Research, *Bull. Amer. Meteor. Soc.*, 92, doi:10.1175/BAMS-D-10-3119.1, 2011.
- DeMott, P. J., Prenni, A. J., McMeeking, G. R., Sullivan, R. C., Petters, M. D., Tobo, Y., Niemand, M., Möhler, O., Snider, J. R., Wang, Z., and Kreidenweis, S. M.: Integrating laboratory and field data to quantify the immersion freezing ice nucleation activity of mineral dust particles, *Atmos. Chem. Phys.*, 15, 393–409, doi:10.5194/acp-15-393-2015, 2015.
- DeMott, P. J., Hill, T. C. J., McCluskey, C. S., Prather, K. A., Collins, D. B., Sullivan, R. C., Ruppel, M. J., Mason, R. H., Irish, V. E., Lee, T., Hwang, C. Y., Rhee, T. S., Snider, J. R., McMeeking, G. R., Dhaniyala, S., Lewis, E. R., Wentzell, J. J. B., Abbatt, J., Lee, C., Sultana, C. M., Ault, A. P., Axson, J. L., Diaz Martinez, M., Venero, I., Santos-Figueroa, G., Stokes, M. D., Deane, G. B., Mayol-Bracero, O. L., Grassian, V. H., Bertram, T. H., Bertram, A. K., Moffett, B. F., and Franc, G. D.: Sea spray aerosol as a unique source of ice nucleating particles, *Proc. Natl. Acad. Sci. U. S. A.*, 113, 5797–5803, doi:10.1073/pnas.1514034112, 2016.
- DeMott, P. J., Hill, T. C. J., Petters, M. D., Bertram, A. K., Tobo, Y., Mason, R. H., Suski, K. J., McCluskey, C. S., Levin, E. J. T., Schill, G. P., Boose, Y., Rauker, A. M., Miller, A. J., Zaragoza, J., Rocci, K., Rothfuss, N. E., Taylor, H. P., Hader, J. D., Chou, C., Huffman, J. A., Pöschl, U., Prenni, A. J., and Kreidenweis, S. M.: Comparative measurements of ambient atmospheric concentrations of ice nucleating particles using multiple immersion freezing methods and a continuous flow diffusion chamber, *Atmos. Chem. Phys. Discuss.*, 2017, 1–29, doi:10.5194/acp-2017-417, 2017.
- Garcia, E., Hill, T. C. J., Prenni, A. J., DeMott, P. J., Franc, G. D., and Kreidenweis, S. M.: Biogenic ice nuclei in boundary layer air over two U.S. High Plains agricultural regions, *J. Geophys. Res.*, 117, D18209–, 2012.
- Garimella, S., Kristensen, T. B., Ignatius, K., Welti, A., Voigtländer, J., Kulkarni, G. R., Sagan, F., Kok, G. L., Dorsey, J., Nichman, L., Rothenberg, D. A., Rösch, M., Kirchgäßner, A. C. R., Ladkin, R., Wex, H., Wilson, T. W., Ladino, L. A., Abbatt, J. P. D., Stetzer, O., Lohmann, U., Stratmann, F., and Cziczo, D. J.: The SPectrometer for Ice Nuclei (SPIN): an instrument to investigate ice nucleation, *Atmos. Meas. Tech.*, 9, 2781–2795, doi:10.5194/amt-9-2781-2016, 2016.
- Garimella, S., Rothenberg, D. A., Wolf, M. J., David, R. O., Kanji, Z. A., Wang, C., Roesch, M., and Cziczo, D. J.: Uncertainty in counting ice nucleating particles with continuous diffusion flow chambers, *Atmos. Chem. Phys. Discuss.*, 2017, 1–28, doi:10.5194/acp-2016-1180, 2017.
- Hader, J. D., Wright, T. P., and Petters, M. D.: Contribution of pollen to atmospheric ice nuclei concentrations, *Atmos. Chem. Phys.*, 14, 5433–5449, doi:10.5194/acp-14-5433-2014, 2014.

- Harrison, A. D., Whale, T. F., Carpenter, M. A., Holden, M. A., Neve, L., O'Sullivan, D., Vergara Temprado, J., and Murray, B. J.: Not all feldspars are equal: a survey of ice nucleating properties across the feldspar group of minerals, *Atmos. Chem. Phys.*, 16, 10927–10940, doi:10.5194/acp-16-10927-2016, 2016.
- Hartmann, S., Niedermeier, D., Voigtländer, J., Clauss, T., Shaw, R. A., Wex, H., Kiselev, A., and Stratmann, F.: Homogeneous and heterogeneous ice nucleation at LACIS: operating principle and theoretical studies, *Atmos. Chem. Phys.*, 11, 1753–1767, doi:10.5194/acp-11-1753-2011, 2011.
- Hartmann, S., Wex, H., Clauss, T., Augustin-Bauditz, S., Niedermeier, D., Rösch, M., and Stratmann, F.: Immersion Freezing of Kaolinite: Scaling with Particle Surface Area, *J. Atmos. Sci.*, 73, 263–278, doi:10.1175/JAS-D-15-0057.1, 2016.
- Hiranuma, N., Augustin-Bauditz, S., Bingemer, H., Budke, C., Curtius, J., Danielczok, A., Diehl, K., Dreischmeier, K., Ebert, M., Frank, F., Hoffmann, N., Kandler, K., Kiselev, A., Koop, T., Leisner, T., Möhler, O., Nillius, B., Peckhaus, A., Rose, D., Weinbruch, S., Wex, H., Boose, Y., DeMott, P. J., Hader, J. D., Hill, T. C. J., Kanji, Z. A., Kulkarni, G., Levin, E. J. T., McCluskey, C. S., Murakami, M., Murray, B. J., Niedermeier, D., Petters, M. D., O'Sullivan, D., Saito, A., Schill, G. P., Tajiri, T., Tolbert, M. A., Welti, A., Whale, T. F., Wright, T. P., and Yamashita, K.: A comprehensive laboratory study on the immersion freezing behavior of illite NX particles: a comparison of 17 ice nucleation measurement techniques, *Atmos. Chem. Phys.*, 15, 2489–2518, doi:10.5194/acp-15-2489-2015, 2015.
- Kanji, Z. A., DeMott, P. J., Möhler, O., and Abbatt, J. P. D.: Results from the University of Toronto continuous flow diffusion chamber at ICIS 2007: instrument intercomparison and ice onsets for different aerosol types, *Atmos. Chem. Phys.*, 11, 31–41, doi:10.5194/acp-11-31-2011, 2011.
- Kanji, Z. A., Ladino, L. A., Wex, H., Boose, Y., Burkert-Kohn, M., Cziczo, D. J., and Krämer, M.: Ice Formation and Evolution in Clouds and Precipitation: Measurement and Modeling Challenges, Chapter 1: Overview of Ice Nucleating Particles, *Meteor. Monogr.*, doi:10.1175/AMSMONOGRAPHS-D-16-0006.1, 2017.
- Klein, H., Nickovic, S., Haunold, W., Bundke, U., Nillius, B., Ebert, M., Weinbruch, S., Schuetz, L., Levin, Z., Barrie, L. A., and Bingemer, H.: Saharan dust and ice nuclei over Central Europe, *Atmos. Chem. Phys.*, 10, 10211–10221, doi:10.5194/acp-10-10211-2010, 2010.
- Knutson, E. and Whitby, K.: Aerosol classification by electric mobility: apparatus, theory, and applications, *J. Aerosol Sci.*, 6, 443 – 451, doi:10.1016/0021-8502(75)90060-9, 1975.
- Koehler, K. A., Kreidenweis, S. M., DeMott, P. J., Petters, M. D., Prenni, A. J., and Möhler, O.: Laboratory investigations of the impact of mineral dust aerosol on cold cloud formation, *Atmos. Chem. Phys.*, 10, 11955–11968, doi:10.5194/acp-10-11955-2010, 2010.
- Kohn, M., Lohmann, U., Welti, A., and Kanji, Z. A.: Immersion mode ice nucleation measurements with the new Portable Immersion Mode Cooling Chamber (PIMCA), *J. Geophys. Res.: Atmos.*, 121, 4713–4733, doi:10.1002/2016JD024761, 2016.
- Kulkarni, G., Sanders, C., Zhang, K., Liu, X., and Zhao, C.: Ice nucleation of bare and sulfuric acid-coated mineral dust particles and implication for cloud properties, *J. Geophys. Res.*, 119, 9993–10011, doi:10.1002/2014JD021567, 2014JD021567, 2014.
- Lacher, L., Lohmann, U., Boose, Y., Zipori, A., Herrmann, E., Bukowiecki, N., Steinbacher, M., and Kanji, Z. A.: The Horizontal Ice Nucleation Chamber HINC: INP measurements at Conditions Relevant for Mixed-Phase Clouds at the High Altitude Research Station Jungfraujoch, *Atmos. Chem. Phys. Discuss.*, 2017, 1–49, doi:10.5194/acp-2017-474, 2017.
- Lohmann, U. and Feichter, J.: Global indirect aerosol effects: a review, *Atmos. Chem. Phys.*, 5, 715–737, doi:10.5194/acp-5-715-2005, 2005.
- Lüönd, F., Stetzer, O., Welti, A., and Lohmann, U.: Experimental study on the ice nucleation ability of size-selected kaolinite particles in the immersion mode, *J. Geophys. Res.*, 115, D1402, doi:10.1029/2009JD012959, 2010.
- Marcolli, C.: Deposition nucleation viewed as homogeneous or immersion freezing in pores and cavities, *Atmos. Chem. Phys.*, 14, 2071–2104, doi:10.5194/acp-14-2071-2014, 2014.

- Mülmenstädt, J., Sourdeval, O., Delanoë, J., and Quaas, J.: Frequency of occurrence of rain from liquid-, mixed-, and ice-phase clouds derived from A-Train satellite retrievals, *Geophys. Res. Lett.*, 42, 6502–6509, doi:10.1002/2015GL064604, 2015GL064604, 2015.
- Murray, B. J., O'Sullivan, D., Atkinson, J. D., and Webb, M. E.: Ice nucleation by particles immersed in supercooled cloud droplets, *Chem. Soc. Rev.*, 41, 6519–6554, doi:10.1039/C2CS35200A, 2012.
- 5 Nicolet, M., Stetzer, O., Lüönd, F., Möhler, O., and Lohmann, U.: Single ice crystal measurements during nucleation experiments with the depolarization detector IODE, *Atmos. Chem. Phys.*, 10, 313–325, doi:10.5194/acp-10-313-2010, 2010.
- Niedermeier, D., Hartmann, S., Shaw, R. A., Covert, D., Mentel, T. F., Schneider, J., Poulain, L., Reitz, P., Spindler, C., Clauss, T., Kiselev, A., Hallbauer, E., Wex, H., Mildenerger, K., and Stratmann, F.: Heterogeneous freezing of droplets with immersed mineral dust particles – measurements and parameterization, *Atmos. Chem. Phys.*, 10, 3601–3614, doi:10.5194/acp-10-3601-2010, 2010.
- 10 Niedermeier, D., Shaw, R. A., Hartmann, S., Wex, H., Clauss, T., Voigtländer, J., and Stratmann, F.: Heterogeneous ice nucleation: exploring the transition from stochastic to singular freezing behavior, *Atmos. Chem. Phys.*, 11, 8767–8775, doi:10.5194/acp-11-8767-2011, 2011.
- Niedermeier, D., Augustin-Bauditz, S., Hartmann, S., Wex, H., Ignatius, K., and Stratmann, F.: Can we define an asymptotic value for the ice active surface site density for heterogeneous ice nucleation?, *J. Geophys. Res.*, 120, 5036–5046, doi:10.1002/2014JD022814, 2014JD022814, 2015.
- 15 Peckhaus, A., Kiselev, A., Hiron, T., Ebert, M., and Leisner, T.: A comparative study of K-rich and Na/Ca-rich feldspar ice-nucleating particles in a nanoliter droplet freezing assay, *Atmos. Chem. Phys.*, 16, 11477–11496, doi:10.5194/acp-16-11477-2016, 2016.
- Phillips, V. T. J., Demott, P. J., Andronache, C., Pratt, K. A., Prather, K. A., Subramanian, R., and Twohy, C.: Improvements to an Empirical Parameterization of Heterogeneous Ice Nucleation and Its Comparison with Observations, *J. Atmos. Sci.*, 70, 378–409, doi:10.1175/JAS-D-12-080.1, 2013.
- 20 Polen, M., Lawlis, E., and Sullivan, R. C.: The unstable ice nucleation properties of Snomax® bacterial particles, *J. Geophys. Res. Atmos.*, doi:10.1002/2016JD025251, 2016JD025251, 2016.
- Pruppacher, H. and Klett, J.: *Microphysics of Clouds and Precipitation*, Atmospheric and Oceanographic Sciences Library, Kluwer Academic Publishers, 1997.
- Pummer, B. G., Bauer, H., Bernardi, J., Bleicher, S., and Grothe, H.: Suspendable macromolecules are responsible for ice nucleation activity of birch and conifer pollen, *Atmos. Chem. Phys.*, 12, 2541–2550, doi:10.5194/acp-12-2541-2012, 2012.
- 25 Roberts, G. C. and Nenes, A.: A Continuous-Flow Streamwise Thermal-Gradient CCN Chamber for Atmospheric Measurements, *Aerosol Sci. Technol.*, 39, 206–221, doi:10.1080/027868290913988, 2005.
- Rogers, D. C.: Development of a continuous flow thermal gradient diffusion chamber for ice nucleation studies, *Atmos. Res.*, 22, 149 – 181, doi:10.1016/0169-8095(88)90005-1, 1988.
- 30 Rogers, D. C., DeMott, P. J., and Kreidenweis, S. M.: Airborne measurements of tropospheric ice-nucleating aerosol particles in the Arctic spring, *J. Geophys. Res.*, 106, 15053–15063, doi:10.1029/2000JD900790, 2001a.
- Rogers, D. C., DeMott, P. J., Kreidenweis, S. M., and Chen, Y.: A Continuous-Flow Diffusion Chamber for Airborne Measurements of Ice Nuclei, *J. Atmos. Oceanic Technol.*, 18, 725–741, doi:10.1175/1520-0426(2001)018<0725:ACFDCE>2.0.CO;2, 2001b.
- Rogers, R. and Yau, M.: *A Short Course in Cloud Physics*, vol. 113, Elsevier Science, 3rd edn., 1989.
- 35 Skrotzki, J., Connolly, P., Schnaiter, M., Saathoff, H., Möhler, O., Wagner, R., Niemand, M., Ebert, V., and Leisner, T.: The accommodation coefficient of water molecules on ice - cirrus cloud studies at the AIDA simulation chamber, *Atmos. Chem. Phys.*, 13, 4451–4466, doi:10.5194/acp-13-4451-2013, 2013.

- Stetzer, O., Baschek, B., Lüönd, F., and Lohmann, U.: The Zurich Ice Nucleation Chamber ZINC-A New Instrument to Investigate Atmospheric Ice Formation, *Aerosol Sci. Technol.*, 42, 64–74, doi:10.1080/02786820701787944, 2008.
- Sullivan, R. C., Minambres, L., DeMott, P. J., Prenni, A. J., Carrico, C. M., Levin, E. J. T., and Kreidenweis, S. M.: Chemical processing does not always impair heterogeneous ice nucleation of mineral dust particles, *Geophys. Res. Lett.*, 37, doi:10.1029/2010GL045540, 2010a.
- 5 Sullivan, R. C., Petters, M. D., DeMott, P. J., Kreidenweis, S. M., Wex, H., Niedermeier, D., Hartmann, S., Clauss, T., Stratmann, F., Reitz, P., Schneider, J., and Sierau, B.: Irreversible loss of ice nucleation active sites in mineral dust particles caused by sulphuric acid condensation, *Atmos. Chem. Phys.*, 10, 11 471–11 487, doi:10.5194/acp-10-11471-2010, 2010b.
- Tobo, Y., Prenni, A. J., DeMott, P. J., Huffman, J. A., McCluskey, C. S., Tian, G., Pöhlker, C., Pöschl, U., and Kreidenweis, S. M.: Biological aerosol particles as a key determinant of ice nuclei populations in a forest ecosystem, *J. Geophys. Res.*, 118, 10,100–10,110, doi:10.1002/jgrd.50801, 2013.
- 10 Vali, G.: Nucleation terminology, *J. Aerosol Sci.*, 16, 575 – 576, doi:10.1016/0021-8502(85)90009-6, 1985.
- Vali, G., DeMott, P. J., Möhler, O., and Whale, T. F.: Technical Note: A proposal for ice nucleation terminology, *Atmos. Chem. Phys.*, 15, 10 263–10 270, doi:10.5194/acp-15-10263-2015, 2015.
- Welti, A., Lüönd, F., Stetzer, O., and Lohmann, U.: Influence of particle size on the ice nucleating ability of mineral dusts, *Atmos. Chem. Phys.*, 9, 6705–6715, doi:10.5194/acp-9-6705-2009, 2009.
- 15 Welti, A., Lüönd, F., Kanji, Z. A., Stetzer, O., and Lohmann, U.: Time dependence of immersion freezing: an experimental study on size selected kaolinite particles, *Atmos. Chem. Phys.*, 12, 9893–9907, doi:10.5194/acp-12-9893-2012, 2012.
- Welti, A., Kanji, Z. A., Lüönd, F., Stetzer, O., and Lohmann, U.: Exploring the Mechanisms of Ice Nucleation on Kaolinite: From Deposition Nucleation to Condensation Freezing, *J. Atmos. Sci.*, 71, 16–36, doi:10.1175/JAS-D-12-0252.1, 2014.
- 20 Westbrook, C. D. and Illingworth, A. J.: Evidence that ice forms primarily in supercooled liquid clouds at temperatures $> -27^{\circ}\text{C}$, *Geophys. Res. Lett.*, 38, doi:10.1029/2011GL048021, 2011.
- Wex, H., DeMott, P. J., Tobo, Y., Hartmann, S., Rösch, M., Clauss, T., Tomsche, L., Niedermeier, D., and Stratmann, F.: Kaolinite particles as ice nuclei: learning from the use of different kaolinite samples and different coatings, *Atmos. Chem. Phys.*, 14, 5529–5546, doi:10.5194/acp-14-5529-2014, 2014.
- 25 Wex, H., Augustin-Bauditz, S., Boose, Y., Budke, C., Curtius, J., Diehl, K., Dreyer, A., Frank, F., Hartmann, S., Hiranuma, N., Jantsch, E., Kanji, Z. A., Kiselev, A., Koop, T., Möhler, O., Niedermeier, D., Nillius, B., Rösch, M., Rose, D., Schmidt, C., Steinke, I., and Stratmann, F.: Intercomparing different devices for the investigation of ice nucleating particles using Snomax as test substance, *Atmos. Chem. Phys.*, 15, 1463–1485, doi:10.5194/acp-15-1463-2015, 2015.
- Yakobi-Hancock, J. D., Ladino, L. A., and Abbatt, J. P. D.: Feldspar minerals as efficient deposition ice nuclei, *Atmos. Chem. Phys.*, 13, 11 175–11 185, doi:10.5194/acp-13-11175-2013, 2013.
- 30 Zhu, C., Veblen, D. R., Blum, A. E., and Chipera, S. J.: Naturally weathered feldspar surfaces in the Navajo Sandstone aquifer, Black Mesa, Arizona: Electron microscopic characterization, *Geochimica et Cosmochimica Acta*, 70, 4600 – 4616, doi:http://doi.org/10.1016/j.gca.2006.07.013, 2006.
- Zimmermann, F., Weinbruch, S., Schätz, L., Hofmann, H., Ebert, M., Kandler, K., and Worringer, A.: Ice nucleation properties of the most abundant mineral dust phases, *J. Geophys. Res.*, 113, doi:10.1029/2008JD010655, d23204, 2008.
- 35