

Supplementary information

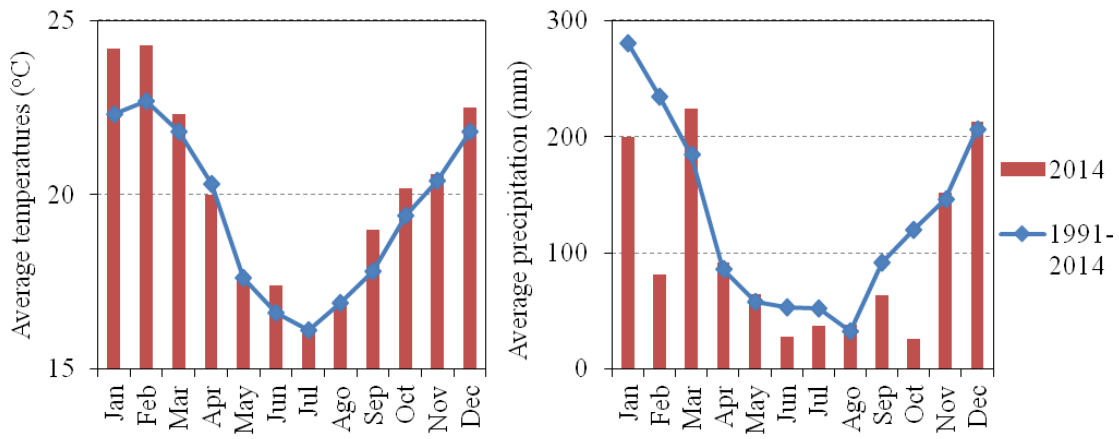


Figure S1. Comparison of monthly average temperatures for 2014 and average for the period 1991-2014 (IAG, 2014).

5 Table S1. Correlations between PM₁₀, PM_{2.5} and atmospheric conditions.

	Min Temp.	Avg. Temp.	Max Temp	Therm. Ampl.	Avg. Precip.	Min RH	Avg. RH	Avg. WS
PM ₁₀	-0.52	-0.28	0.02	0.58	-0.23	-0.53	-0.38	-0.49
PM _{2.5}	-0.48	-0.21	0.04	0.56	-0.21	-0.55	-0.26	-0.54

10

15

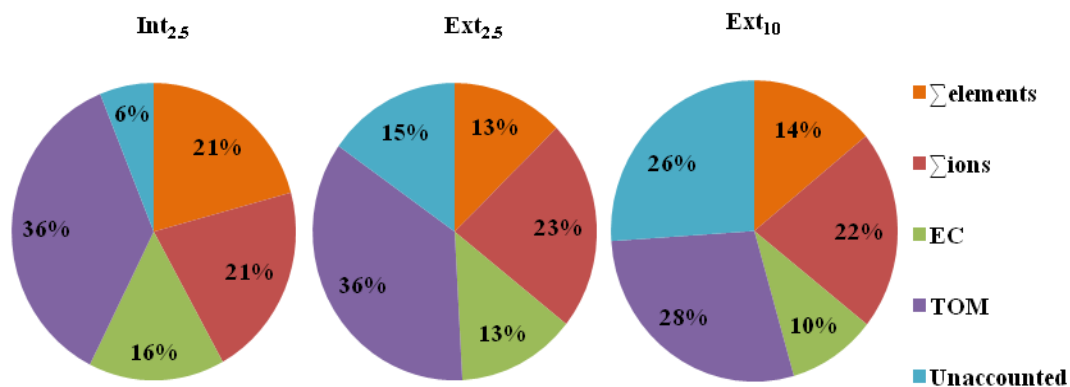
20

Table S3. Enrichment factors for all campaigns.

	Int_{2,5}	Ext_{2,5}	Ext₁₀
Li	1.2	1.9	1.9
Mg	0.34	0.44	0.47
Al	1	1	1
K	3.5	3.5	2.8
Ca	1.1	1.0	1.2
Cr	8.5	14.0	13.5
Mn	1.3	2.3	2.6
Fe	0.7	1.4	1.7
Co	0.7	1.2	1.7
Ni	3.3	7.0	5.6
Cu	120	229	233
Zn	168	207	215
As	69	158	103
Se	5011	7496	4417
Rb	3.3	3.8	2.8
Sr	0.8	1.0	1.1
Cd	710	754	642
Sn	417	639	495
Cs	4.9	7.6	6.1
Tl	13.7	27.9	18.7
Pb	187	363	276
Bi	4233	7388	8822

Table S4. Carbonaceous species in all campaigns.

	Int_{2,5}	Ext_{2,5}	Ext₁₀
($\mu\text{g m}^{-3}$)	Average	Average	Average
	(Min - Max)	(Min - Max)	(Min - Max)
OC	10.2 (3.0–20.8)	6.7 (2.3–14.1)	7.8 (2.6–17.7)
EC	7.0 (0.6–15.9)	4.1 (0.6–13.4)	4.4 (0.3–17.6)
TOM	16.4	10.7	12.5
OC/EC	1.5	1.7	1.8



35 Figure S2. Mass balance for all campaigns.

Table S5. Biomass burning tracers for all campaigns.

	Int _{2.5}	Ext _{2.5}	Ext ₁₀
(ng m ⁻³)	Average (Min - Max)	Average (Min - Max)	Average (Min - Max)
Lev	509 (69–1263)	262 (15–1263)	319 (11–1854)
Man	45 (6–137)	26 (<DL–137)	29 (3–158)
Gal	33 (5–89)	21 (<DL–89)	30 (4–159)
NssK ⁺	809 (237–2007)	366 (49–1137)	413 (63–1181)
Lev/Man	11.3	10.1	11
NssK ⁺ /Lev	1.6	1.4	1.3

Table S6. Fraction (%) of species in the fine and coarse particles*.

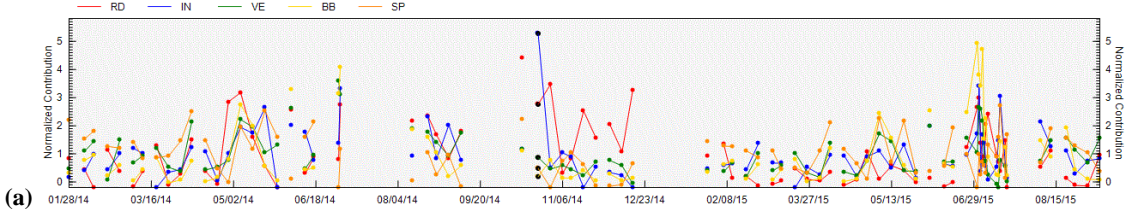
	Fine	Coarse		Fine	Coarse
Lev	76	24	Cor	73	27
Man	77	23	Ca	34	66
Cl ⁻	49	51	Fe	46	54
NO ₃ ⁻	45	55	Cu	61	39
SO ₄ ⁻	66	34	As	78	22
Na ⁺	51	49	Cd	82	18
NH ₄ ⁺	80	20	Pb	77	23
nss-K ⁺	73	27	OC	82	18
BaP	82	18	EC	86	14

*The fractions were calculated for days when both PM₁₀ and PM_{2.5} were collected.

40 Table S7. *Q* value to evaluate the number of factors.

	3 factors	4 factors	5 factors	6 factors
Qrobust (=Qtrue)	623	466	367	291
Qexpected	591	502	413	324
Qrobust/Qexpected	1.05	0.93	0.89	0.90
		-12 %	-4 %	1 %

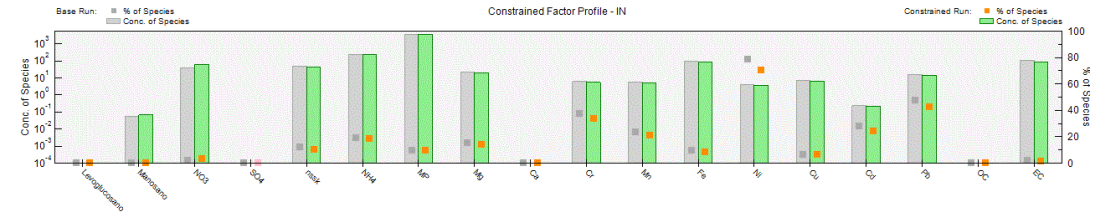
Factor Contributions (avg = 1)



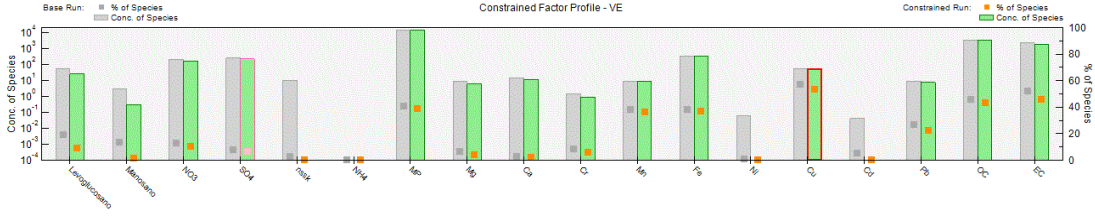
(a)



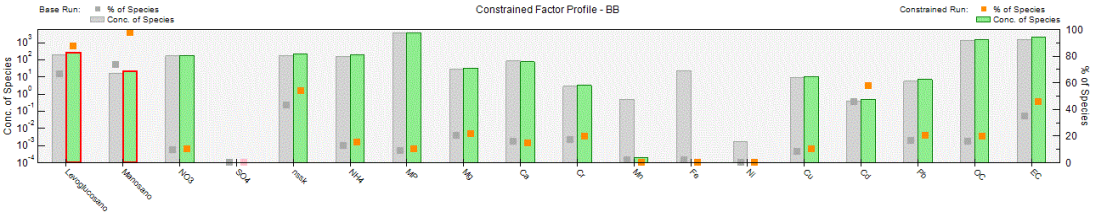
(b)



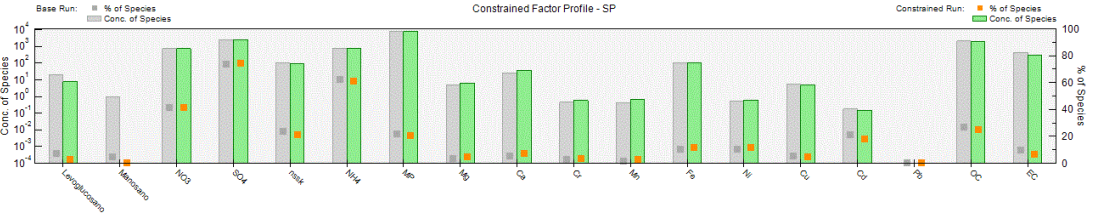
(c)



(d)

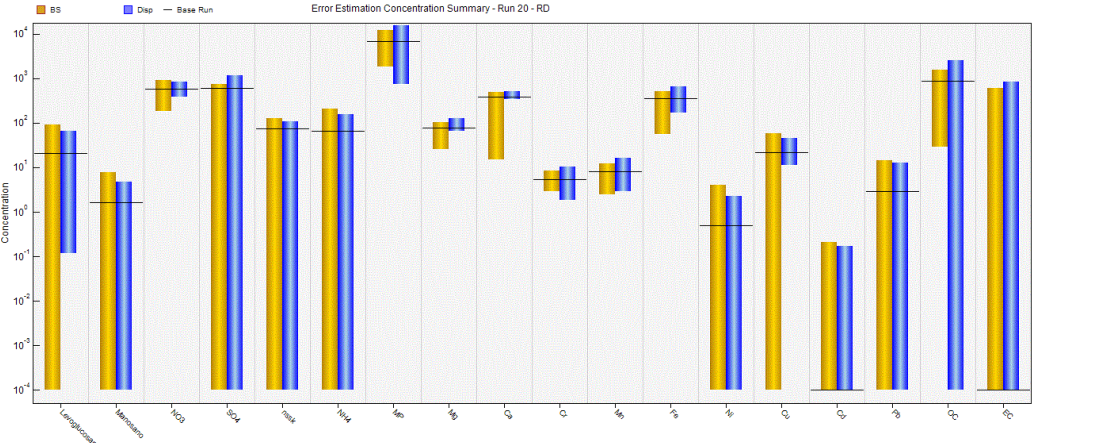


(e)

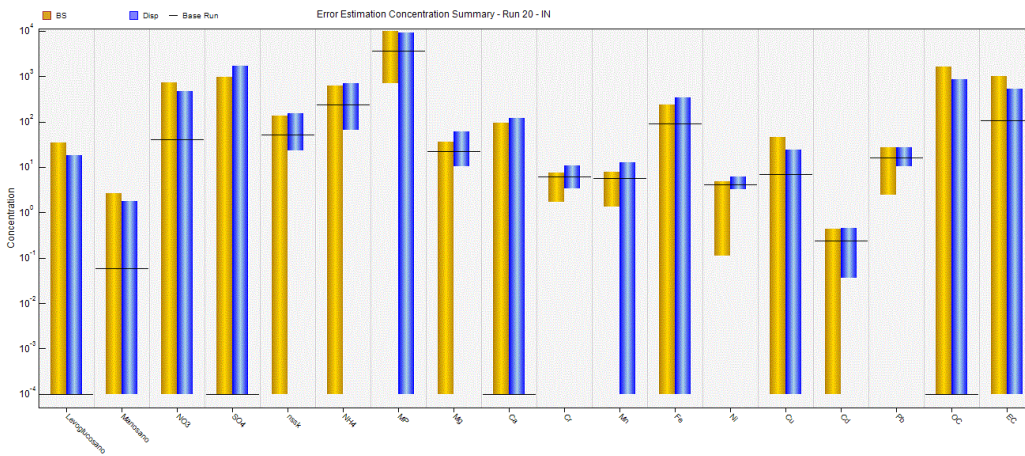


(f)

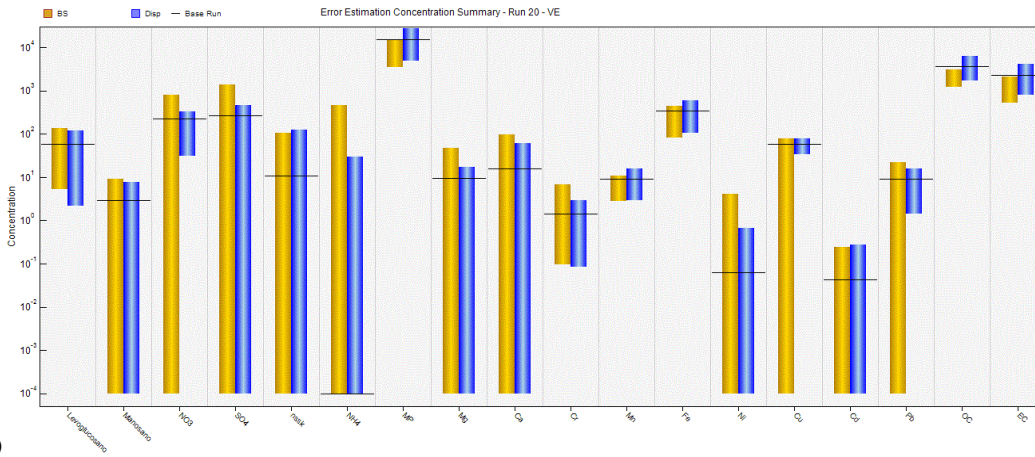
45



(g)

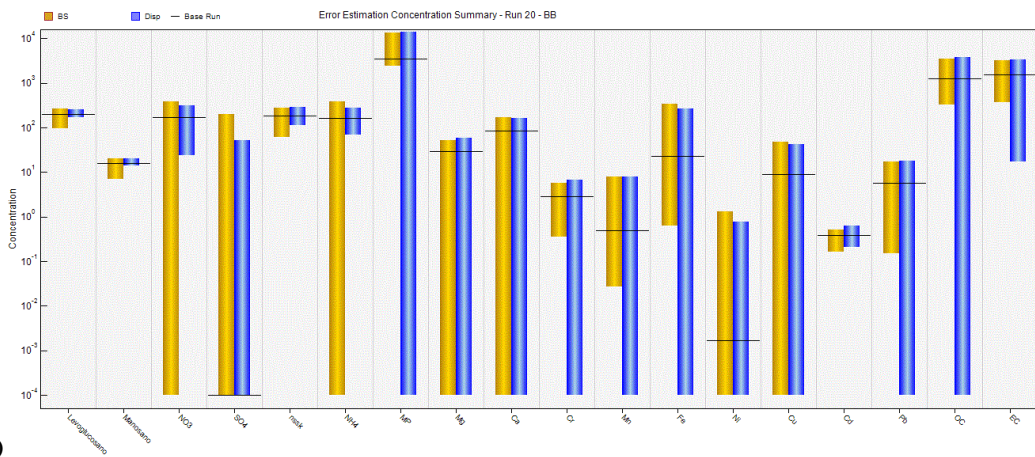


(h)

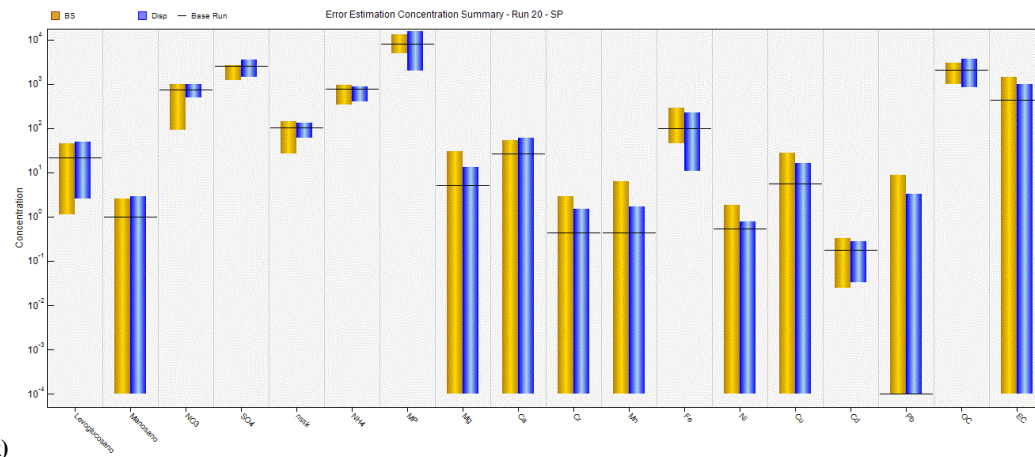


(i)

50



(j)



(k)

Figure S3. PMF charts (factor contributions – a; constrained factor profiles – b, c, d, e and f; and error concentration summaries – g, h, i, j and k).