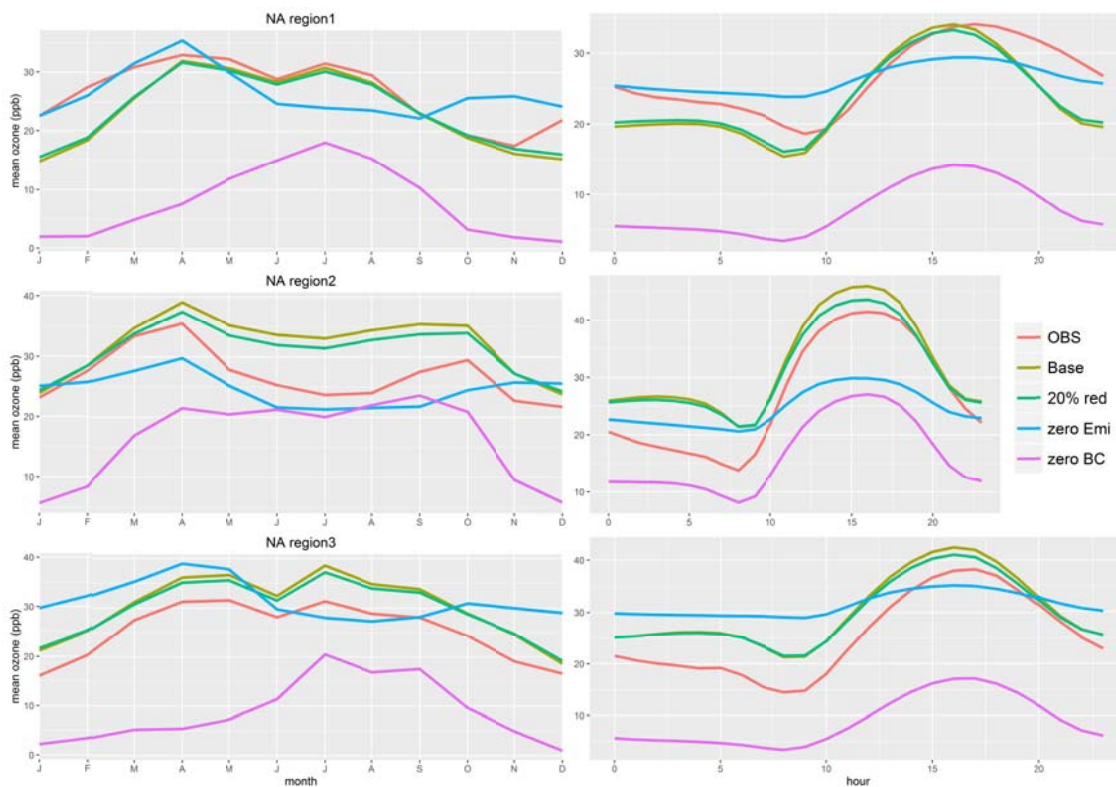


975 SUPPLEMENTARY FIGURES

976

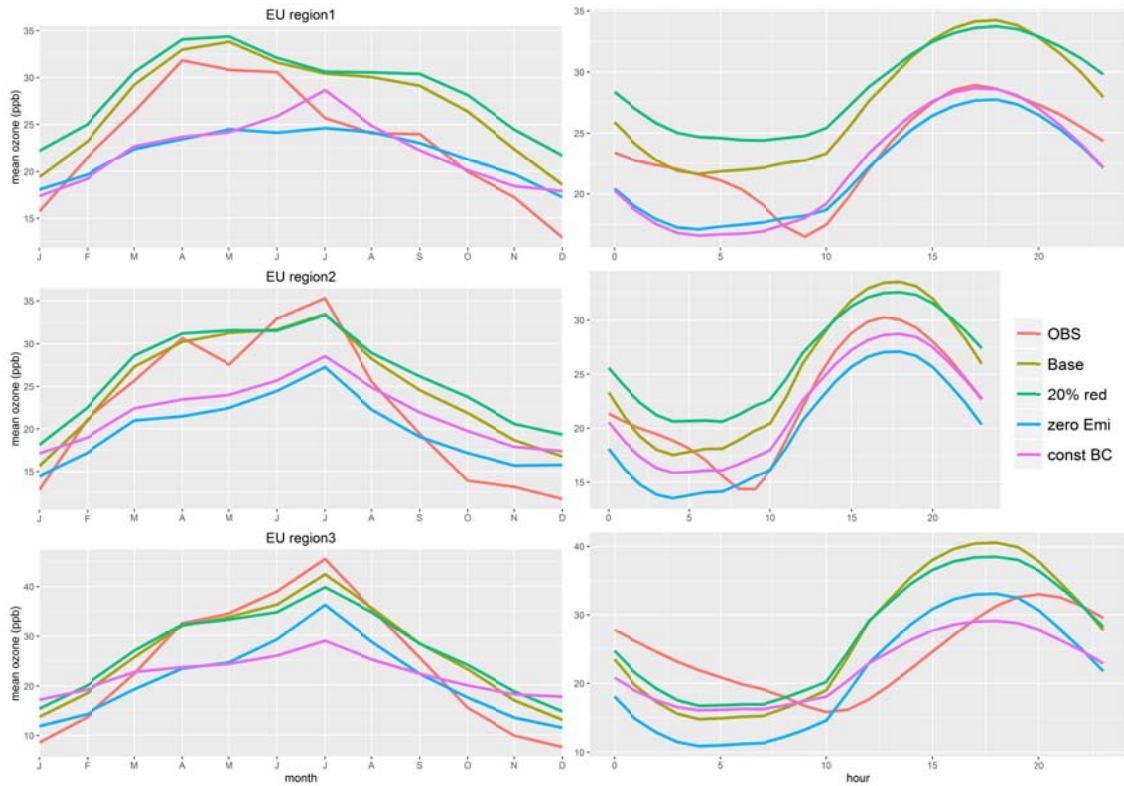


977

978 **FIGURE S1** Annual aggregated ozone time series for the North American sub-regions (Urban stations only). Average monthly and diurnal
 979 curves

980

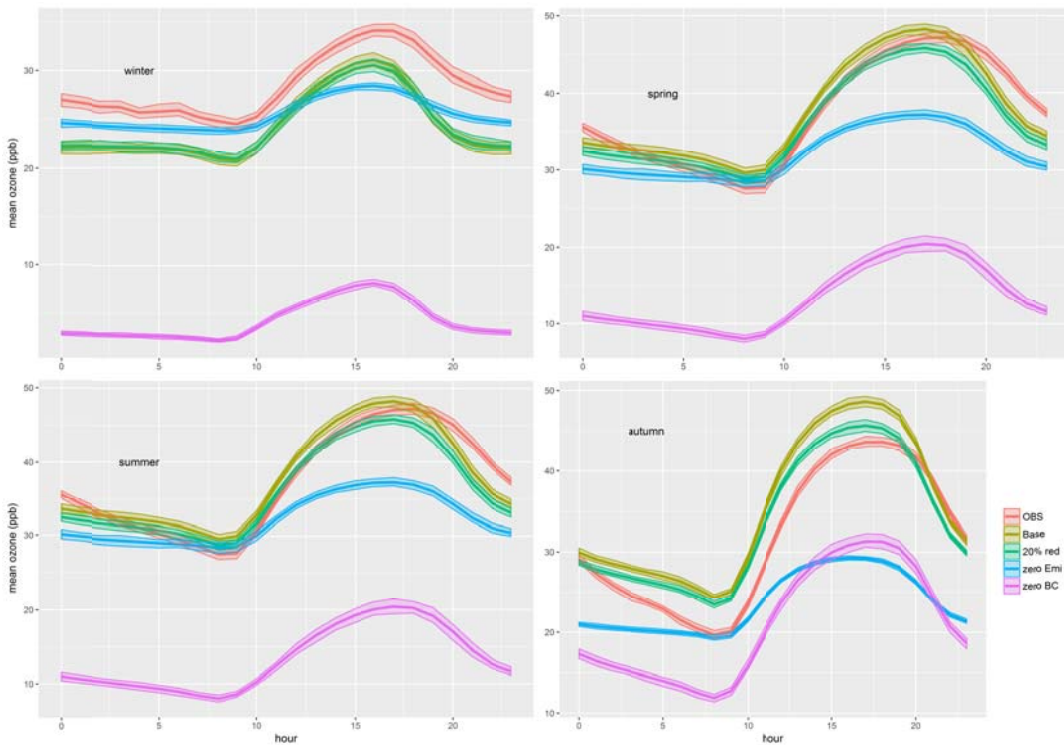
981



982

983

FIGURE S2. Annual aggregated ozone time series for the European sub-regions (urban stations only). Average monthly and diurnal curves

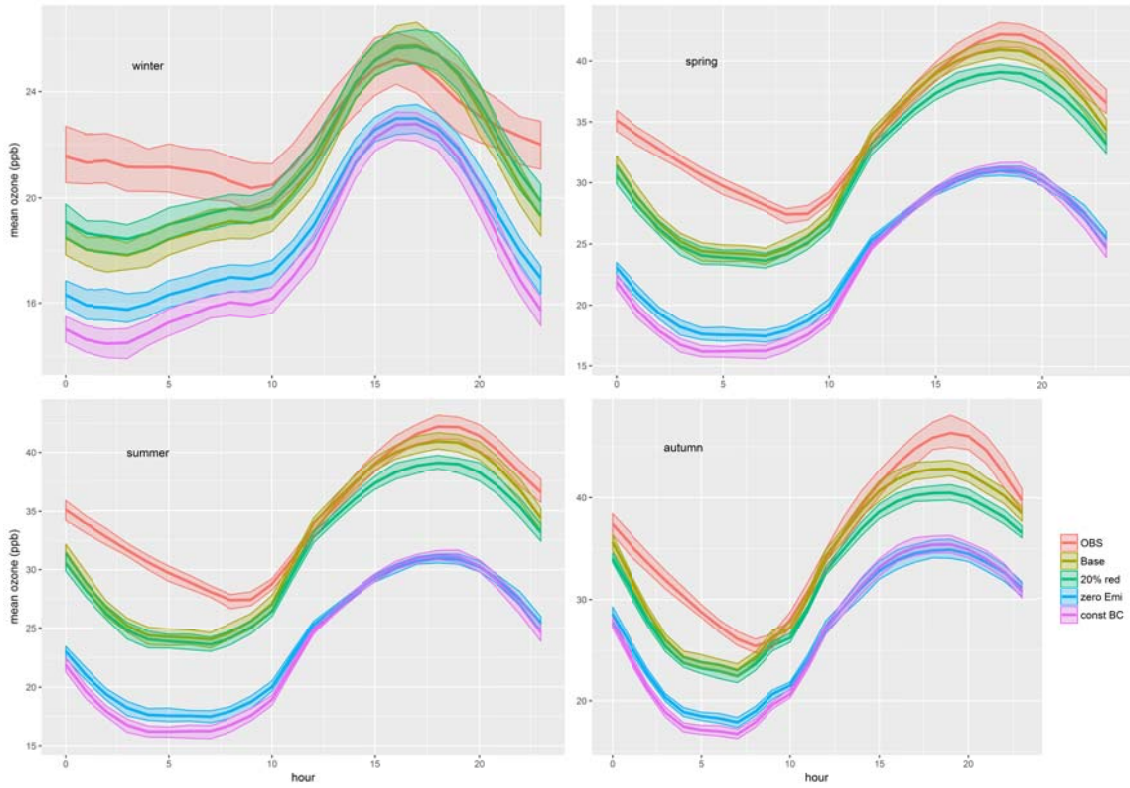


984

985

986

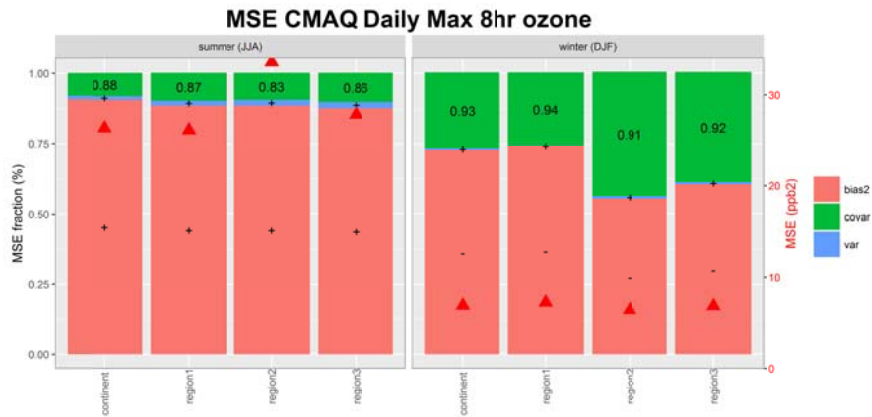
FIGURE S3. Network average seasonal daily ozone profiles for North America. The confidence bands indicate the 95% confidence interval of the mean

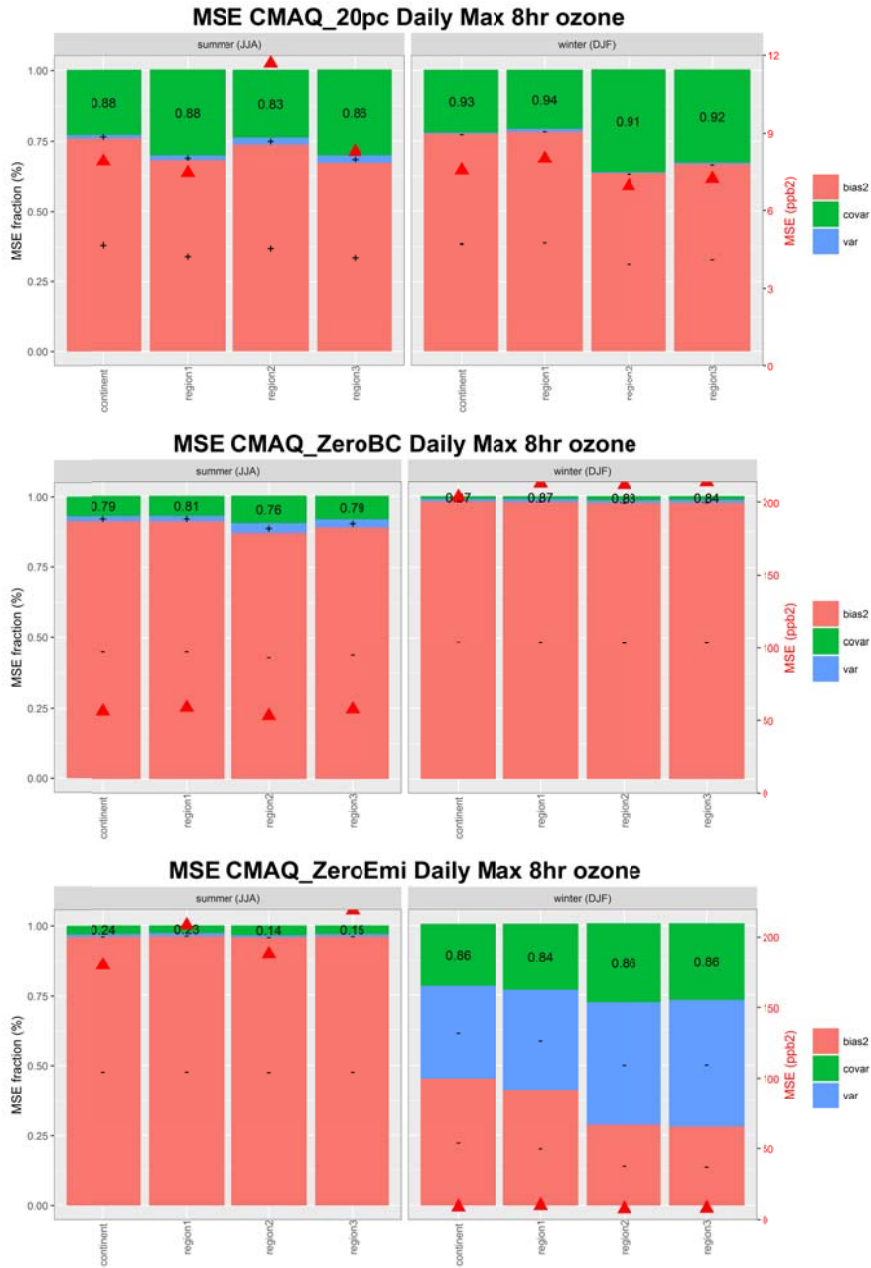


987

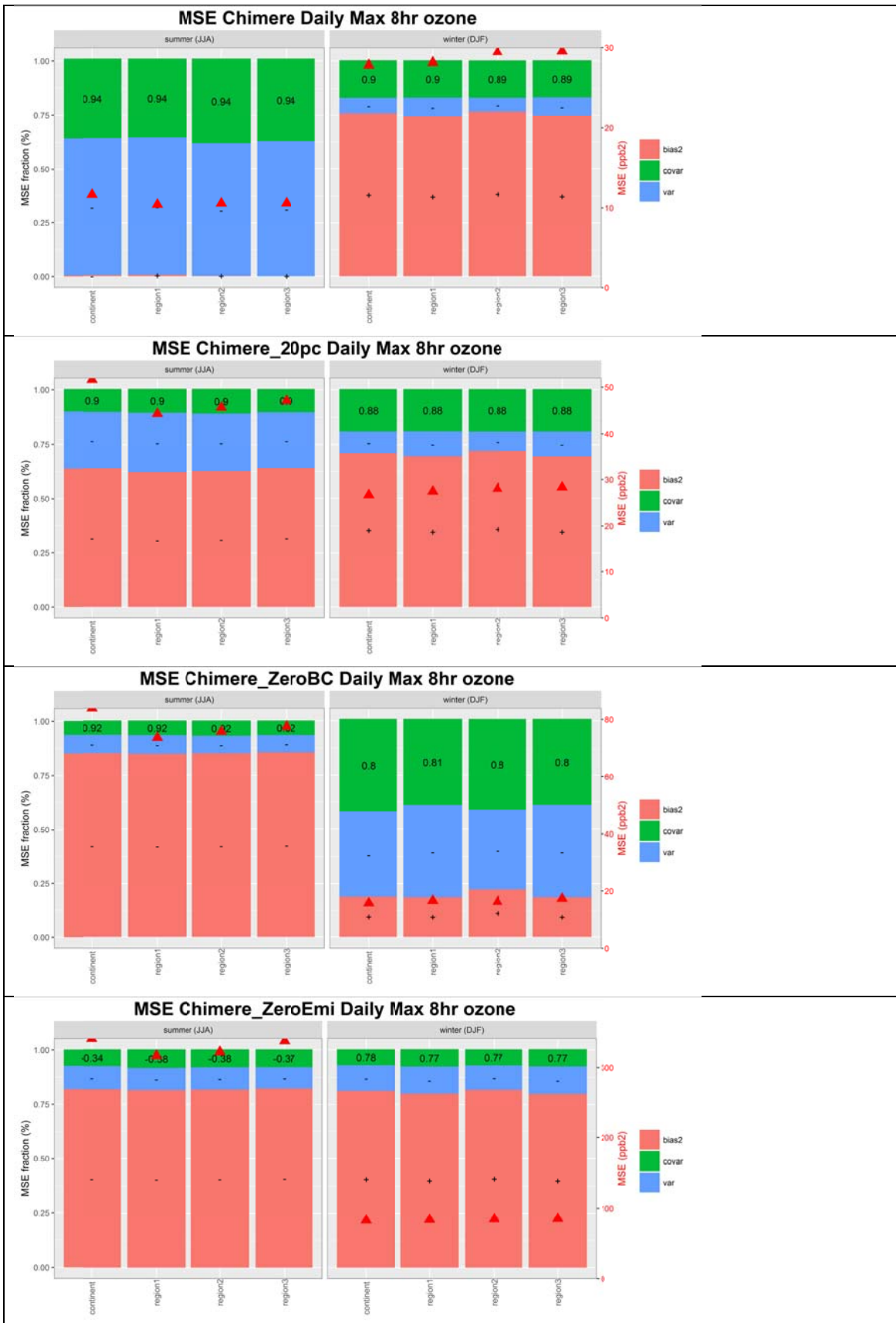
988 **FIGURE S4.** Network average seasonal daily ozone profiles for Europe. The confidence bands indicate the 95% confidence interval of the
 989 mean

990

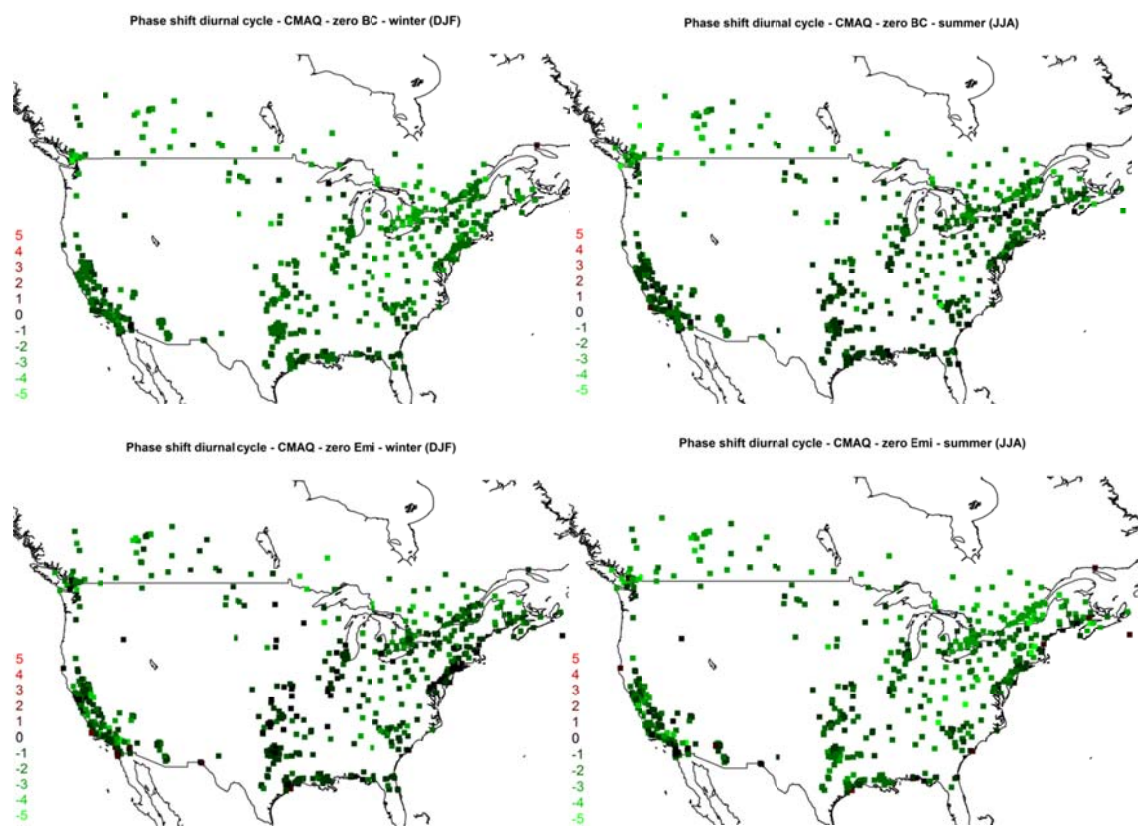




991 FIGURE S5. SAME AS FIGURE 6 OF THE MAIN TEXT FOR THE DAILY MAXIMUM 8-HOUR ROLLING AVERAGE OZONE



992 FIGURE S6. SAME AS FIGURE 7 OF THE MAIN TEXT FOR THE DAILY MAXIMUM 8-HOUR ROLLING AVERAGE OZONE



993

994

995 **FIGURE S7.** Phase shift of the diurnal cycle (in hour) for the network of receptors in NA (includes all stations types). A positive phase shift
 996 indicates that the model peak is 'late', vice-versa if the phase shift is negative, the model peak occurs earlier than the observed peak. Top
 997 panels 'Zero BC' case (winter and summer); lower panels: 'Zero EMI' case (winter and summer)

998

999

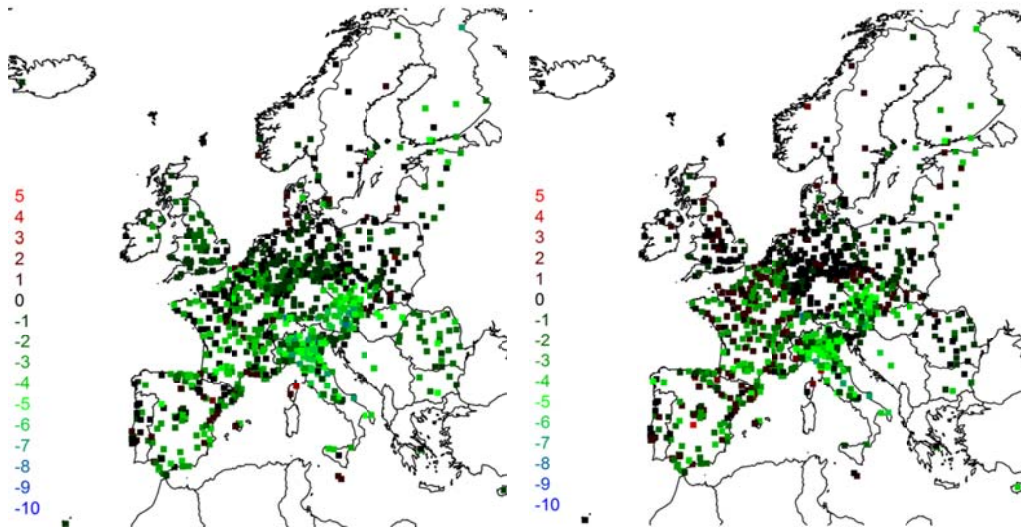
1000

1001

1002

Phase shift diurnal cycle - Chimere - const BC - summer (JJA)

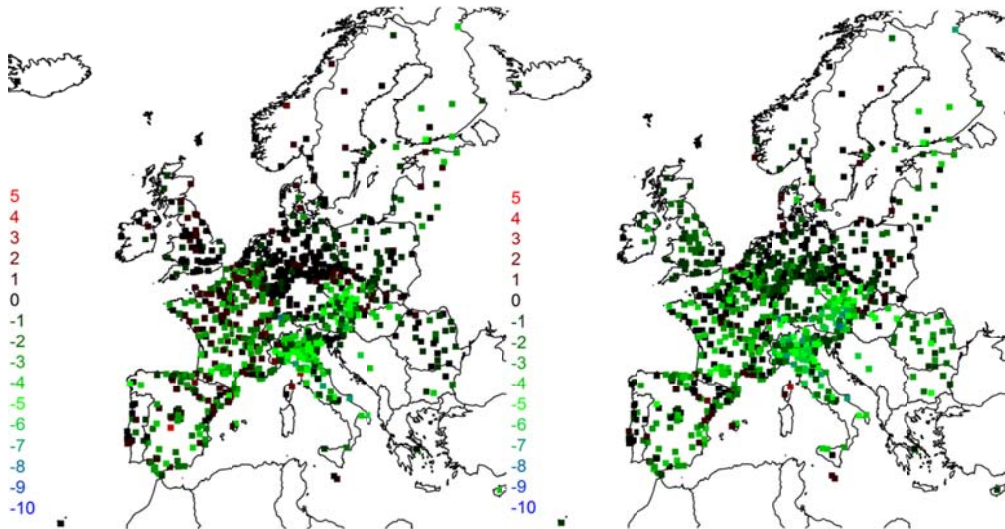
Phase shift diurnal cycle - Chimere - const BC - winter (DJF)



1003

Phase shift diurnal cycle - Chimere - zero Emi - winter (DJF)

Phase shift diurnal cycle - Chimere - zero Emi - summer (JJA)

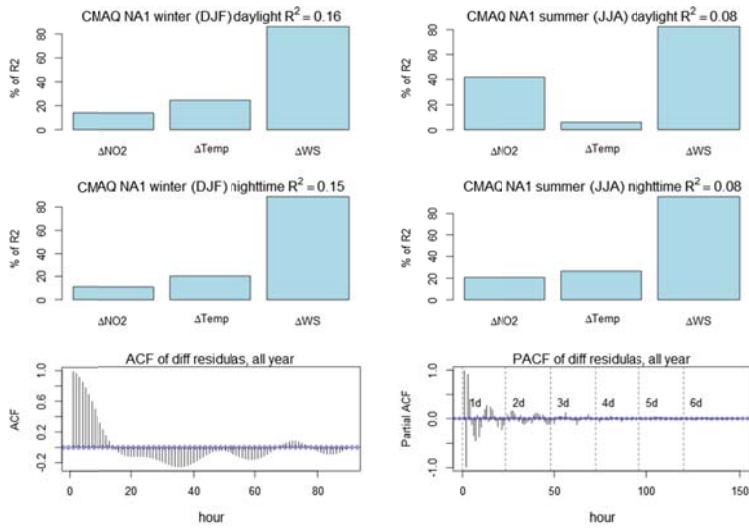


1004

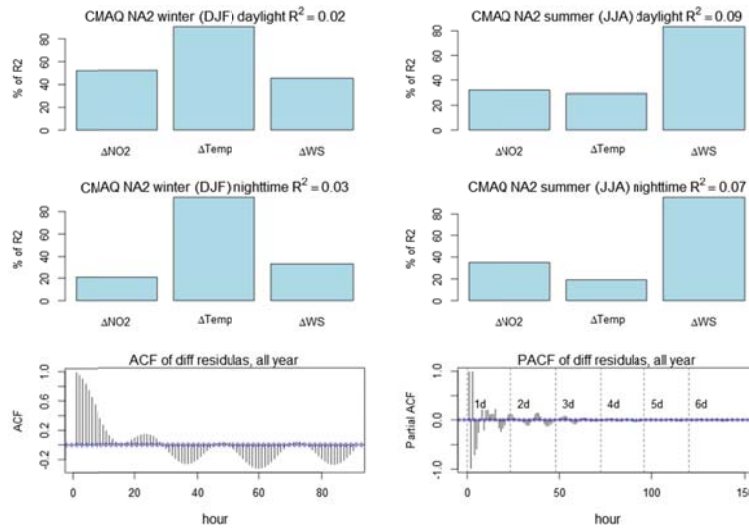
1005 Figure S8. As in Figure S7 for Europe

1006

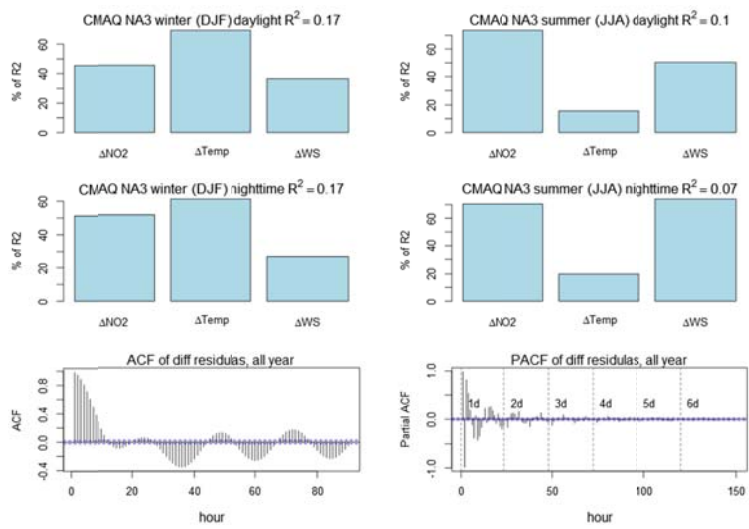
1007



1008



1009

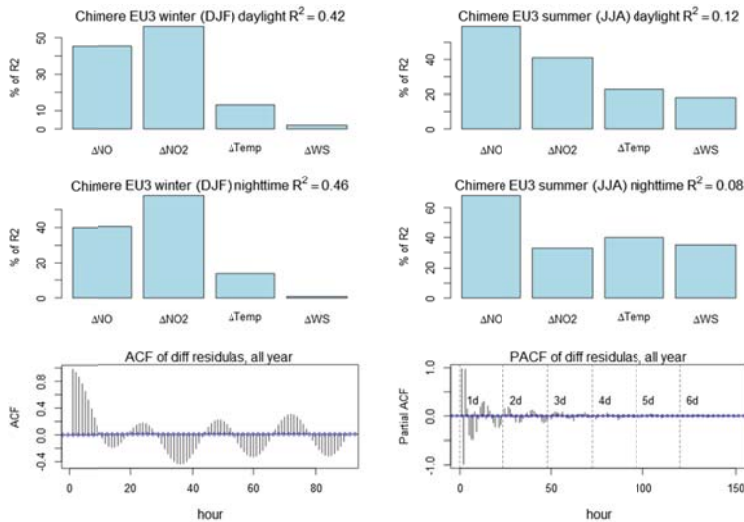


1010

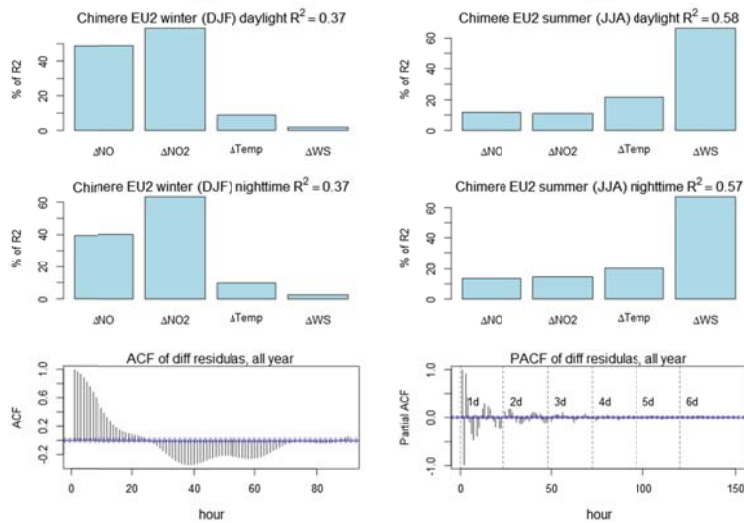
1011 **FIGURE S9.** Percentage of variance explained by the regressors (the total R^2 for the regression is reported in the title of each panel) when
 1012 the diurnal fluctuations are removed. The relative importance of each variable is assessed by using a bootstrap resampling. The plots at

1013 the bottom show the ACF and PACF of the yearly time series of residual of the fit, that is of what is not captured by the linear regressions
1014 on the available variables.

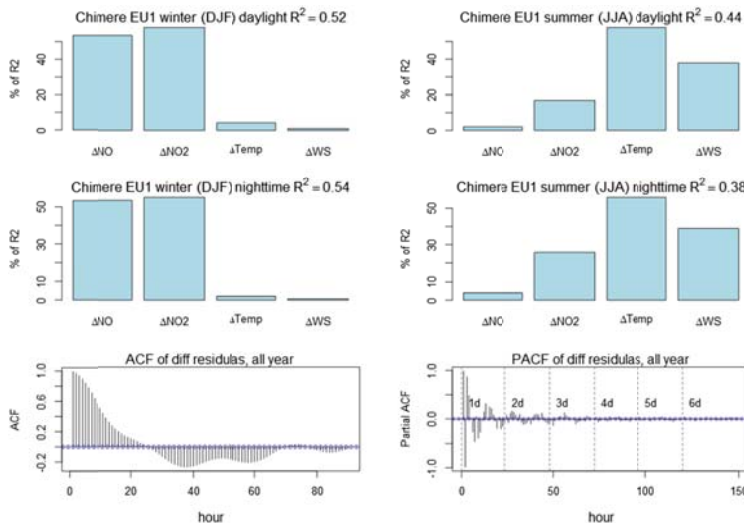
1015



1016



1017



1018

Figure

S9

1019 **FIGURE S10.** Same as for **FIGURE S9** EU

1020

1021