

Reply to Referee #1

Thank you very much for carefully reading our manuscript and providing valuable suggestions. We have thoroughly revised the manuscript following the comments by the reviewers. The original comments from the reviewers are in **bold** and our
5 responses in plain text.

Major Comments:

**In abstract authors seem to claim that the new scheme has improved comparison with observations, however, this does not seem to be true when looking at figure 2 for Barrow and Zeppelin where the so called standard scheme
10 suggests a better comparison with observation. Also why there is no blue line in Fig. 3 similar to Fig. 2?, how does blue line compare here? Why Fig. 4 does not show comparison with standard and new scheme?**

We agree that the new scheme did not improve the reproducibility at Barrow and Zeppelin. We have modified the expression claiming that the model reproducibility has been entirely improved by the new scheme in abstract. The statement about the
15 model performance in abstract was modified to “Firstly, we evaluated the simulated BC by comparing it with observations at the Arctic sites and examined the sensitivity of an aging parameterization and wet scavenging rate by ice clouds” (Page1, Lines 11-12).

We have added the results of the standard scheme to Fig. 3 and Fig. 4 and discussions on comparisons with standard and new schemes as described below.

20

**Page 2, lines 30-33: I agree that Eckhardt et al. (2015) found that BC is still underestimated in several models. The potential reasons for this were investigated by Mahmood et al. (2016) who used data from same model used by Eckhardt et al., 2015 and found that one major reason is convective wet deposition process outside the Arctic which influences transport of BC into Arctic. This is a major study for Arctic BC processes and should be included in the
25 introduction. Mahmood, R., K. von Salzen, M. Flanner, M. Sand, J. Langner, H. Wang, and L. Huang (2016), Seasonality of global and Arctic black carbon processes in the Arctic Monitoring and Assessment Programme models, J. Geophys. Res. Atmos., 121, doi:10.1002/2016JD024849**

We have added the following description about the study of Mahmood et al. (2016) to the introduction section (Page 2, Line
30 34-Page 3, Line 2).

“Mahmood et al. (2016) pointed out that convective wet deposition outside the Arctic influenced vertical distribution and seasonal variations of BC in the Arctic by analyzing the same models used by Eckhardt et al. (2015).“

Page 4: Emission inventory: I wondering why the authors are using an older version of GFED fire emission data when a new version (GFED4 and GFED4s) are available?

5 We compared BC emissions of GFEDv3.1 with GFEDv4.1s for 2007-2011 (simulation period) and confirmed that the difference of global BC emissions between these inventories is 9%. For boreal forests, BC emission from Siberia (defined as SIB-BB in this study) of GFEDv4.1 is only 8% larger than that of GFEDv3.1. The emission from Alaska and Canada (ALC-BB) of GFEv4.1s is 32% smaller compared with GFEDv3.1. Therefore, we think that the main conclusion of this study will not be influenced by the difference in the version of GFED.

10 **Page 4, lines 10-25: It is not quite clear which anthropogenic emission inventory the authors are using. At beginning they say that “In this study, we adopted the BC emissions of HTAPv2.2”, however later on they mention that they used an inventory by Huang et al., 2015. In addition, the authors also claim, without any proof, that the inventory of Huang et al., 2015 improved comparison with observation. I do not see any such results of their so called “preliminary simulations”.**

15

Because the emission of Huang et al. (2015) is the regional inventory for Russia, we adopted this inventory only for Russia and HTAPv2.2 was used for all regions except Russia. We have added the results of the preliminary simulation as Fig. S1. This sentence has been modified to “Our preliminary simulations found that the model result replacing HTAPv2.2 emission in Russia by the inventory of Huang et al. (2015) improved the reproducibility of the observed BC concentrations at the Arctic sites (see, Supplemental Fig. S1), and thus we used this emission dataset as the anthropogenic BC emissions for Russia” (Page 4, Lines 27-30).

20

Page 4, lines 15-20: The doubling of BC emissions in Asia and Russia, How realistic that would be? The authors argue that it is necessary to match modeled BC with observations in Arctic, but could this not be due to other modelling errors/discrepancy? How certain the authors are about this? A recent study showed that the differences in modeled aerosol processes in different models can contribute to overall concentrations in the Arctic (Mahmood, R., K. von Salzen, M. Flanner, M. Sand, J. Langner, H. Wang, and L. Huang (2016), Seasonality of global and Arctic black carbon processes in the Arctic Monitoring and Assessment Programme models, J. Geophys. Res. Atmos., 121, doi:10.1002/2016JD024849.)

30

This description is about the previous study of Wang et al. (2011) who used the inventory of Bond et al. (2007), and not for this study. We do not make any changes from the original emission data (i.e., HTAPv2.2 and the inventory of Huang et al., 2015 for Russia).

Page 4 lines 20-22: “which was about 20%”, Is 20% correct? It seems to be ~22.2% from the numbers given in that line? Even after rounding it would be 22%? Please also check the subsequent numbers.

5 We corrected it and subsequent numbers. This part has been modified to “The target year of HTAPv2.2 was 2010 and global annual emissions were estimated to be 5.5 Tg yr⁻¹, which was about 22 % larger than that of Bond et al. (2007) (4.5 Tg yr⁻¹). On a regional basis, the emissions from China were 40 % larger than those of Bond et al. (2007), and the emissions from Europe and North America were 34 % and 11 % smaller than those in Bond et al. (2007), respectively” (Page 4, Lines 21-24).

10 **Page 5 paragraph 25: the authors say “We separated the major source regions of anthropogenic BC such as Europe, Russia, Asia and North America into different tracers”, which different tracers?**

We have modified this sentence to “We separated Europe, Russia, Asia and North America to examine transport patterns and contributions to the Arctic from the major source regions.” (Page 5, Lines 28-29)

15

Page 5, lines 25-30: “Asia was separated into three regions (i.e., East Asia, Southeast Asia and India)”, According to Fig. 1, the region named “India” contains several other countries, e.g. Sri Lanka, Pakistan, Nepal, Bangladesh, Myanmar, so this region should be named “South Asia : SA”.

20 We have changed the name of this region to “South Asia” in the text, the figures, and the tables.

Page 6, lines 25-30: The authors claim that the correlations between observed and model BC has improved with new scheme. However, at least from Figure 2, it does not seem to appear that the new curve changed in its shape compared to standard scheme, only the magnitude seems to have changed then how the correlation is improved?

25

30 We have modified the discussion on the model performance of the seasonal variations based on correlation coefficients (R) and root mean square error (RMSE) at each Arctic site. R values were improved by the new scheme from 0.89 to 0.92 at Alert and from 0.935 to 0.944 at Tiksi, respectively. At Barrow, R was increased from 0.69 to 0.81, but RMSE was not improved by the new scheme. At Zeppelin, the standard scheme ($R=0.89$) showed a good agreement compared with the new simulation ($R=0.83$). Based on these results, the discussion about the model reproducibility has been modified to the following statement (Page 7, Lines 11-16). These statistics (R and RMSE) have also been added to Fig. 2.

“The standard scheme underestimated observed BC in winter and spring at Alert and Tiksi. The model negative biases were reduced by the new scheme in these seasons, and R values were improved from 0.89 to 0.92 at Alert and from 0.935 to 0.944 at Tiksi (Fig. 2). At Barrow, while the new simulation improved the negative biases in spring, the observed concentrations

were overestimated during winter. As a result, the correlation coefficient was increased from 0.69 to 0.81, but root mean square error (RMSE) was not improved by the new scheme at Barrow. Whilst there was an improvement at Alert and Tiksi, the observations at Zeppelin showed a reasonably good agreement with the standard simulation (R=0.89) rather than the new simulation (R=0.83).”

5

Page 6, lines 30-35: the authors say: “This is mainly because the new scheme yielded an increase in BC concentrations except in summer with maximum effects in winter at the all four Arctic sites.”. Figure 2 clearly shows that BC is also increased in summer, though relatively small. Thus I think this sentence is not correct. Similarly from Figure 2, I do not think that the new scheme improved BC values at Barrow as the authors seem to claim. There is clearly way more over-estimations for 9 months in new scheme than the standard scheme. How can the authors claim it an improvement when it is overestimating more than the standard scheme for most months of the year including, November, December, January, February?

We have removed the phrase “except in summer” from this sentence. The following statement about the seasonal variation of sensitivities (winter maximum) was added (Page 7, Lines 9-11).

15

“The sensitivities by changing these parameterizations were largest in winter because wet removal by ice clouds was most important in this season and aging time scale which depends on OH number concentrations also became longer than other seasons.”

We have modified the statement of the model performance at Barrow as described above. Please also see our reply to the above comment.

20

Page 7 lines 10-15: Is there any evidence for overestimation of BC emission from Russia?

We have deleted this sentence.

25

Page 7, lines 15-30: Why there is no discussion of standard scheme in Fig. 3? If the authors want to claim that the new scheme is better than the standard scheme then all model and observations comparisons should include results from both schemes. Same comments for next paragraphs about Figure 4.

We have added the results of the standard scheme to Fig. 3 and Fig. 4 and discussions about the comparison between the standard and the new schemes. For vertical profiles (Fig. 3), the standard scheme underestimated the observations especially in the middle troposphere. The new scheme improved the model performance by increases BC concentrations from the surface to the upper troposphere. The following description has been added (Page 7, Line 34-Page, 8 Line 4).

30

“Although the standard scheme reproduced the increase from near the surface to the middle troposphere and the decrease from 5 km to the upper troposphere, the observed concentrations were underestimated 24–42 % in the middle troposphere. The negative biases were improved by the new scheme by increasing BC concentrations 18–23 ng m⁻³ in the middle troposphere. These increases by the new scheme were caused by the longer lifetime of BC in the high latitudes as discussed above.”

The sensitivities were small in the major anthropogenic source regions (Europe, East Asia, and North America), because BC aging time of the new scheme is similar to that of the standard scheme (~1 day) in the mid-latitudes and wet scavenging by ice clouds is not so important in these regions. We have added the following description (Page 8, Lines 24-27).

“The differences between the standard and new schemes were small in the all three regions (Fig. 4). This is because BC aging time by the new scheme is similar to that of the standard scheme (~1 day) around the source regions in the mid-latitudes and wet scavenging by ice clouds is not so important in these regions. Because the BC concentrations tended to slightly increase in the new simulation, NMB were improved by the new scheme from -14–-43 % to -6–-42 % (Fig. 4).”

Page 9, lines 10-15: The authors write “The stable condition by cold temperatures near the surface suppresses the upward transport of BC over Russia especially in winter”, I agree that stable conditions would suppress vertical transport of BC, but it would also depend on source. For example, if source is gas flaring or forest fires then emissions could reach middle troposphere?

Because fires in boreal forests occur from late spring to autumn, BC emitted from forest fires is not included in the discussion on the transport process in the cold season. Injection heights of anthropogenic sources including gas flaring are not provided by emission inventories. Thus, it is difficult to investigate the source dependence of vertical distribution at the present stage. We would like to make this issue to address in the future research.

Page 11, lines 17-18: “The relative importance to the BC concentrations on an annual basis will be discussed later (Table 2)” This sentence does not make much sense and therefore need be rewritten.

We have removed this sentence.

Page 12, lines 25-27, How is the BC lifetime defined here? More importantly how this discussion is related to the current study which is primarily about regional BC processes. It would more relevant if the lifetime of BC in the Arctic is given here since this study is focused on Arctic (for a multi-model comparison of lifetimes see Mahmood et al., 2016)

The BC lifetime is defined as the BC burden divided by the annual total (wet and dry) deposition. The definition of BC lifetime was added to the text (Page 14, Line 13). We have added the BC lifetimes in the Arctic to Table 1 and Table S1 and a comparison with the lifetimes reported by Mahmood et al. (2016). The following statement was added (Page 14, Lines 16-21).

5 “The BC lifetimes of each tracer in the Arctic (66°–90°N) were estimated to be 8.6–92.7 days. The lifetime of EAS-AN BC in the Arctic (57.5 days) was longer than those of EUR-AN (14.2 days) and RUS-AN (12.9 days), because East Asia BC was distributed mainly in the middle troposphere (Fig. 9) and its deposition to the Arctic was smaller than those of EUR-AN and RUS-AN (Table 1). The average lifetime of 21.3 days in the Arctic was close to 20.0 days of the multi-model mean in the AMAP (Arctic Monitoring and Assessment Programme) models (Mahmood et al., 2016).”

10

Page 13 lines 32-33: the authors write “We also quantitatively estimated the relative contributions to the total deposition of BC to the Arctic region (Table 2)”. relative contributions of what?

We modified this sentence to “We also quantitatively estimated the relative contributions of each source to the total deposition of BC to the Arctic region (Table 2)” (Page 15, Line 26).

15

Page 14: Conclusions: This section has conclusions which I would find hard to agree with. For example, the authors seem to claim that they have identified important pathways for BC transport to the Arctic. Stohl (2006) had discussed the transport pathways to the Arctic. I am not satisfied that the authors provide adequate discussions of transport pathways and how they would differ with those discussed by Stohl 2006. Again authors seem to claim that new scheme improved bc simulation in Arctic which is not obvious for at least two of the four sites for which observation data they used. Also there is no discussion of uncertainty about BC simulation results. Using just one model simulation can have problematic results. It is advisable that the author either use nudging technology or ensemble members or both to minimize the influence natural variability or at least provide some uncertainty range.

20
25

We have added discussions on transport pathways from individual sources and their seasonal variations in section 3.2. A new figure of horizontal winds in the lower and middle troposphere and precipitation was also added as Figure 7. In conclusions, we have modified the expression on transport pathways as follows. (Page 16, Lines 31-32)

30 “We examined detailed transport pathways from the individual source regions to the Arctic and identified important regions where inflow from the individual source regions to the Arctic occurred.”

We agree that the new scheme did not improve the reproducibility at Barrow and Zeppelin as replied above. We modified the expression claiming that the model reproducibility has been entirely improved by the new scheme in conclusions. The statement on the model performance in conclusions was modified as follows. (Page 16, Lines 20-24)

“We introduced a parameterization of BC aging into GEOS-Chem and changed the wet scavenging ratio by ice cloud (T<258 K) to examine the sensitivities of these processes to the Arctic BC. By using these new schemes, the BC concentrations were increased at the Arctic especially in winter and spring. Although the new scheme overestimated the observations at Zeppelin and Barrow especially during winter, model the negative biases in the cold season were improved at Alert and Tiksi.”

Because the model used in this study (GEOS-Chem) is a chemical transport model (not a chemical climate model), meteorological fields are not calculated in the model and assimilated meteorological fields GEOS-5 are used to drive it. Thus, nudging and ensemble simulations are not required in this study. We agree that it is important to provide uncertainty range. We have added the interannual variations of the source contributions to annual mean BC concentrations at the surface and 5 km altitude, annual deposition and burden in the Arctic (Table S3). Because the anthropogenic emissions used in this study had no interannual trends, interannual variations in source contributions were caused by those in meteorological conditions and biomass burning emissions. We found that results of each year were similar to that of the 5-year averaged contributions. The following description of the interannual variations of the relative contributions from each source to the Arctic BC was added in section 3.4. (Page 16, Lines 5-9)

“We estimated interannual variations of relative contributions from individual sources to the Arctic BC and found that results of each year were similar to that of the 5-year averaged contributions (see, supplemental Table S3). The differences of the relative contributions from each source to the BC concentrations between maxima and minima were lower than 12 %. For BC total deposition, the relative contribution from biomass burning in Siberia (SIB-BB) showed the variation from 8.2 % to 24.0 % (Table S3).”

Minor comments:

Several figures can be improved. For example for Figure 4, 5 and 6 only color bar may be used instead of repeating same color bar for individual plots. The font size of numbers of color bars is too small.

We have modified these figures, according to the referee comment.

Thank you very much for carefully reading our manuscript and providing valuable suggestions. We have thoroughly revised the manuscript following the comments by the reviewers. The original comments from the reviewers are in **bold** and our responses in plain text.

Major Comments:

In this paper, the authors claim that using the new scheme “the model reproducibility of the seasonal variations is increased” or “ the simulated seasonal variations were improved”.

10 However, based on figure 2 this claim is only correct for Alert and Tiksi sites. I believe this needs further clarifications. For example, for Zeppelin site, the above claims are not true at all and the standard scheme shows significantly better performance in capturing both values and seasonality of BC. For Barrow, the standard scheme captures the summer, fall, and winter-time BC concentration better than the new scheme and we only see the improvement in the simulations for spring. Also for Tiksi, although the new scheme values are closer to observations, 15 they are still under predicting BC very significantly. I would recommend adding some statistical analysis and more discussion for backing up this claim.

We agree that the new scheme did not improve the reproducibility at Barrow and Zeppelin. We have modified the expression claiming that the model reproducibility has been entirely improved by the new scheme in abstract and conclusions.

20 In section 3.1, we have modified the discussion on the model performance of seasonal variations based on the correlation coefficients (R) and root mean square error (RMSE) at each Arctic site. R values were improved by the new scheme from 0.89 to 0.92 at Alert and from 0.935 to 0.944 at Tiksi, respectively. At Barrow, R was increased from 0.69 to 0.81, but RMSE was not improved by the new scheme. At Zeppelin, the standard scheme ($R=0.89$) showed a good agreement compared with the new simulation ($R=0.83$). Based on these results, the discussion about the model reproducibility has been **25** modified to the following statement (Page 7, Lines 11-16). These statistics (R and RMSE) have also been added to Fig. 2.

“The standard scheme underestimated observed BC in winter and spring at Alert and Tiksi. The model negative biases were reduced by the new scheme in these seasons, and R values were improved from 0.89 to 0.92 at Alert and from 0.935 to 0.944 at Tiksi (Fig. 2). At Barrow, while the new simulation improved the negative biases in spring, the observed concentrations were overestimated during winter. As a result, the correlation coefficient was increased from 0.69 to 0.81, but root mean **30** square error (RMSE) was not improved by the new scheme at Barrow. Whilst there was an improvement at Alert and Tiksi, the observations at Zeppelin showed a reasonably good agreement with the standard simulation ($R=0.89$) rather than the new simulation ($R=0.83$).”

I would highly recommend comparing the results of the new scheme vs. the standard scheme for the vertical distributions along the ARCTAS flight path. Also, did you make any comparisons for each flight? Have you checked the performance of you model for the ARCTAS flights below 66N?

5 We have added the results of the standard scheme to Fig. 3 and discussions about differences between the standard and the new schemes. The standard scheme underestimated the observations especially in the middle troposphere. The new scheme improved the model performance by increases BC concentrations from the surface to the upper troposphere. The following description has been added (Page 7, Line 32-Page 8, Line 2). This comparison showed averaged vertical distributions of five flights in April and did not include the observations below 66N.

10 “Although the standard scheme reproduced the increase from near the surface to the middle troposphere and the decrease from 5 km to the upper troposphere, the observed concentrations were underestimated 24–42 % in the middle troposphere. The negative biases were improved by the new scheme by increasing BC concentrations 18–23 ng m⁻³ in the middle troposphere. These increases by the new scheme were probably caused by the longer lifetime of BC in the high latitudes as discussed above.”

15

Finally, I would recommend adding more description on the transport mechanisms from each sector and the reasons behind the seasonality. The paper shows interesting results, but it needs more discussion on how the transport pathways change in different seasons.

20 We added the description on the transport patterns from each source and their seasonal variations to section 3.2 based on meteorological fields. A new figure of horizontal winds in the lower and middle troposphere and precipitation was added as Figure 7. For the low-level transport from Europe and Russia, northeastward winds prevailing over northern Europe and western Russia probably played an important role on the poleward transport in winter and spring. Low precipitation (< 1 mm day⁻¹) over Russia also contributed to the effective transport to the Arctic from northern Eurasia in the cold season. In
25 contrast, during summer the circulation pattern changed to southeastward winds and was not preferable for the poleward transport. In addition, precipitation increased over high-latitude Eurasia in summer leading to effective wet removal. The weak transport to the Arctic from Europe and Russia in summer was attributed to these meteorological conditions.

The poleward transport from East Asia in the middle troposphere was attributed to northward winds blowing over the Okhotsk Sea, East Siberia and the Bering Sea in winter. Although seasonal mean northward winds in spring over these
30 regions were weaker than those in winter, the contribution of East Asia BC in spring was larger than that in winter. This enhancement of EAS-AN BC during spring was not sufficiently explained by only the seasonal mean winds, suggesting that synoptic-scale disturbances on shorter time scales had an important role on the poleward transport from East Asia to the Arctic. Based on these results, we have added the discussions on seasonal variations of transport patterns from individual sources to the first three paragraphs in section 3.2 (Page 8 Line 31-Page10 Line 22).

Minor Comments:

Page 6, Lines 17-20: Please add a reference or citations for the observation data used for this section.

5 We have added a reference for the observation data (Page 6, Lines 23-24).

“The measurement data at the Arctic sites were obtained from EMEP and WDCA database (<http://ebas.nilu.no>).”

Page 6, Lines 30-31: I would recommend removing the “expect in summer” phrase from the following sentence and add further clarifications to it. “This is mainly because the new scheme yielded an increase in BC concentrations except in summer with maximum effects in winter at the all four Arctic sites.” Based on figure2 the new scheme shows higher values for summer as well, but the increase is smaller than other seasons.

We have removed “except in summer” from this sentence. The following statement was added to discuss the seasonal difference of the sensitivity (Page 7, Lines 9-11).

15 “The sensitivities by changing these parameterizations were the largest in winter because wet removal by ice clouds was most important in this season and aging time scale which depends on OH number concentrations also became longer than other seasons.”

Page 7, Line 13: What would be the possible reasons for “a too effective transport to Zeppelin”?! I would recommend adding more clarifications on why the model overestimated BC in Zeppelin.

We have removed this sentence. Our simulations suggested that it is difficult to reproduce the seasonal variations at the all Arctic sites in the current model. Although the cause of the discrepancies remains unclear, it is useful to show the sensitivities of aging and wet removal by ice clouds processes at the Arctic sites. One reason is that the sensitivities of these processes at Zeppelin were larger than those at Barrow and Alert, leading to the overestimation of the new scheme in winter and spring. (Page 7, Lines 19-20)

Page 7, Lines 15-23: What would be the possible reasons for underestimation below 3k and overestimation in mid-troposphere? Adding more discussion and statistical analysis in this section will help. Also please add the standard scheme results to this analysis and figure3.

We have added the result of the standard scheme and discussion as described above. The possible reason was added (Page 8, Lines 7-8).

“The simulated vertical gradient from the surface to the middle troposphere was slightly weaker than that of the observations. One possible reason is that upward transport of BC was underestimated by the model.”

Page 7, Line 17: Please add the dates of flights used for this analysis.

5
We have added the dates of flights used for this analysis (Page 7, Line 31).
“The dates of flights used for the comparison were April 8, 9, 12, 16, and 17.”

**Page 7, Lines 28-30: I would recommend adding references here or in page 6-lines17-20. Please see the above
10 comment. Also please add a map with the locations of the sites that are selected for this study.**

We have added references for IMPROVE and EUSAAR sites as follows (Page 8, Lines 14 and 16). A map of the sites used in this study was also added to Figure 4.

“For North America, the data from the IMPROVE network for 2007–2011 was used (<http://views.cira.colostate.edu/fed>).”
15 “The measurement data at EUSAAR sites were obtained from EMEP and WDCA database (<http://ebas.nilu.no>).”

Page 7, Lines 25-30: Adding discussion on possible reasons on why the model underestimates the observations over Europe and East Asia. Also, please add the results of new scheme vs. standard scheme. How was the performance of the standard scheme for these selected sites?

20
We have added the following discussion on possible reasons over Europe and East Asia (Page 8, Lines 22-24). “The possible reasons for the model underestimation over Europe and East Asia are that BC emissions from these regions are underestimated and removals around the source regions are overestimated by the model.”

We have added the result of the standard scheme to Fig. 4 and discussions about differences between the standard and the
25 new schemes. The sensitivities were small in the major anthropogenic source regions, because BC aging time of the new scheme is similar to that of the standard scheme (~1 day) in the mid-latitudes and wet scavenging by ice clouds is not so important in these regions. We have added the following statement (Page 8, Lines 24-27).

“The differences between the standard and new schemes were small in the all three regions (Fig. 4). This is because BC aging time by the new scheme is similar to that of the standard scheme (~1 day) around the source regions in the mid-
30 latitudes and wet scavenging by ice clouds is not so important in these regions. Because the BC concentrations tended to slightly increase in the new simulation, NMB were improved by the new scheme from -14–43 % to -6–42 % (Fig. 4).”

Page 8, Lines 15-30: Please add some description on how you calculated meridional fluxes for these plots.

We have added the following description (Page 9, Lines 3-4). “The horizontal fluxes were calculated by multiplying 6-hourly BC mass concentrations by horizontal wind speeds and were averaged for three months. ”

Page 9, Lines 15-32: I would recommend adding more discussions here and summarize some previous studies on Transport pathways and why there is a strong aloft meridional flux. (For example adding more discussions on location of polar dome and relative vertical mixing in different seasons).

We have added discussion on uplifting of East Asia and North America BC during long-range transport including the influence of the polar dome. The following statements were added.

10 “The Arctic lower troposphere is isolated by the closed polar dome which is formed by isentropic surfaces of lower potential temperatures and pollutants cannot easily be penetrated into the Arctic from outside of the polar front (Barrie, 1986). East Asia is located at south of the polar dome and EAS-AN BC is emitted from at higher potential temperatures. As a result, the low-level transport of East Asia BC into the Arctic was weak and it was transported at higher altitudes (Klonecki et al., 2003; Stohl, 2006).” (Page 11, Lines 7-11)

15 “This is because North America BC is also emitted from higher potential temperatures and was transported to the Arctic above the polar dome.” (Page 11, Lines 14-15)

Page 12, Lines 17-20: I have found the following sentence very confusing. Please modify this sentence. “Although the efficiency of the EAS-AN BC transport to the Arctic was lower than that of the other anthropogenic sources (EUR-AN, RUS-AN and NAMAN) due to the effective wet removal (Fig. 9), the inflow flux was the largest among the four major sources. “

25 We have modified this sentence to “Although the fraction of BC from East Asia transported to the Arctic was lower than those of the other anthropogenic sources (EUR-AN, RUS-AN and NAM-AN) due to the effective wet removal (Fig. 9), the inflow flux of EAS-AN was the largest among the four major sources.” (Page 14, Lines 5-7)

Page 13, Line 24: The second largest what? Maybe “The second largest was the contribution” -> “The second largest contributor to the Arctic BC was”?

30 This sentence was modified to “The second largest contributor to the BC burden over the Arctic was Russia (21.0 %)” (Page 15, Lines 17-18)

Page 15, Lines 11-15: Please add the % contributions of BB emission from Siberia and Alaska and Canada during summer.

We have added the relative contributions of BB from Siberia (32 %) and Alaska and Canada (31 %) to BC deposition on the Arctic during summer. (Page 17, Lines 19-21)

5 “However, for BC deposition on the Arctic, the contributions of biomass burning emissions from Siberia and Alaska and Canada that became substantial during summer were important, accounting for 15 % (32 %) and 12 % (31 %) in annual mean (during summer), respectively.”

Figure 1-a: The plot would be easier to read if you mark the whole East Asia as well, maybe adding a zoomed map for that section to show the East Asian regions (i.e. Korean Peninsula, South China, etc.) It was difficult to locate the region of East Asia and its sub-regions in the emission plot.

10

We have added a zoomed map for the East Asian region to Fig. 1(a) for clarity.

Figure 3: Please add the standard scheme vs new scheme comparison with observation in Figure 3. Also, it would be nice, if you can add the error bars and NMB (or RMSE).

15

We have added the result of the standard scheme as described above. The error bars and NMB were added to Figure 3.

Figure 4: It would be great to add the locations of the observations site on a map. For example, it is not obvious which IMPROVE sites were chosen for plotting and this comparison.

20

We have added a map of the observation sites used in this study to Figure 4.

Figure 5 and Figure 6: I would recommend removing wet scavenging lines from these plots or export the plots at a higher resolution. The font of these plots was very small and very hard to follow. What do the numbers in the white squares represent? The numbers are very hard to read.

25

We modified Figure 5 and Figure 6 to high-resolution figures.

Figure 8 and Figure 9: Please add a description if this is the area average concentration for the Arctic or the concentration at a specified location in the Arctic?

30

We have added the averaged area (66-90N) to the top of these figures.

Tagged tracer simulations of black carbon in the Arctic: Transport, source contributions, and budget

Kohei Ikeda¹, Hiroshi Tanimoto¹, Takafumi Sugita¹, Hideharu Akiyoshi¹, Yugo Kanaya², Chunmao Zhu², Fumikazu Taketani²

5 ¹National Institute for Environmental Studies, Tsukuba, 305-8506, Japan

²Japan Agency for Marine-Earth Science and Technology, Yokohama, 236-0001, Japan

Correspondence to: Kohei Ikeda (ikeda.kohei@nies.go.jp), Hiroshi Tanimoto (tanimoto@nies.go.jp)

Abstract. We implemented a tagged tracer method of black carbon (BC) into a global chemistry-transport model GEOS-Chem, examined the pathways and efficiency of long-range transport from a variety of anthropogenic and biomass burning emission sources to the Arctic, and quantified the source contributions of individual emissions. Firstly, we evaluated the simulated BC by comparing it with observations at the Arctic sites and ~~examined the sensitivity of an aging parameterization and wet scavenging rate by ice clouds~~ ~~found that the simulated seasonal variations were improved by implementing an aging parameterization and reducing the wet scavenging rate by ice clouds~~. For tagging BC, we added BC tracers distinguished by source types (anthropogenic and biomass burning) and regions; the global domain was divided into 16 and 27 regions for anthropogenic and biomass burning emissions, respectively. Our simulations showed that BC emitted from Europe and Russia was transported to the Arctic mainly in the lower troposphere during winter and spring. In particular, BC transported from Russia was widely spread over the Arctic in winter and spring, leading to a dominant contribution of 62 % to the Arctic BC near the surface as the annual mean. In contrast, BC emitted from East Asia was found to be transported in the middle troposphere into the Arctic mainly over the Okhotsk Sea and East Siberia during winter and spring. We identified an important “window” area, which allowed a strong incoming of East Asian BC to the Arctic (130°–180°E and 3–8 km altitude at 66°N). The model demonstrated that the contribution from East Asia to the Arctic had a maximum at about 5 km altitude due to uplifting during the long-range transport in early spring. The efficiency of BC transport from East Asia to the Arctic was smaller than that from other large source regions such as Europe, Russia and North America. However, the East Asian contribution was most important for BC in the middle troposphere (41 %) and BC burden over the Arctic (27 %) because of the large emissions from this region. These results suggested that the main sources of the Arctic BC differed with altitude. The contribution of all the anthropogenic sources to Arctic BC concentrations near the surface was dominant (90 %) on an annual basis. The contributions of biomass burning in boreal regions (Siberia, Alaska and Canada) to the annual total BC deposition onto the Arctic were estimated to be 12–15 %, which became the maximum during summer.

1 Introduction

Arctic temperatures have increased more rapidly than the global average during the recent decades (Shindell and Faluvegi, 2009). While increases in long-lived greenhouse gases certainly play a leading role in Arctic warming, short-lived climate pollutants (SLCPs) such as aerosols and tropospheric ozone also have a substantial influence on Arctic climate (Shindell, 2007; Quinn et al., 2008; Sand et al., 2016). Black carbon (BC) has particularly attracted interest due to its large influences on radiative forcing in the Arctic (AMAP, 2015). BC causes a heating in the atmosphere by absorbing solar radiation, which is more efficient in the Arctic because of the high surface albedo of snow and ice (Quinn et al., 2007). In addition, deposition of BC on snow and ice reduces the surface albedo and results in faster-melting snow and ice sheets in the Arctic (Hansen and Nazarenko, 2004; Flanner et al., 2007). Enhanced aerosol concentrations can also increase cloud longwave emissivity and lead to surface warming in the Arctic (Lubin and Vogelmann, 2006; Garrett and Zhao, 2006). In the Arctic, air pollution and climate change are strongly linked and reductions in the concentrations of SLCPs could contribute to mitigating the Arctic warming (Quinn et al., 2008; Arnold et al., 2016).

Aerosols in the Arctic show a distinct seasonal variation with a maximum during winter and early spring and a minimum in summer (Barrie, 1986). Arctic air pollution including high concentrations of aerosols and reactive gases (so-called Arctic haze) is primarily originated from anthropogenic pollutants transported from the northern midlatitudes (Law and Stohl, 2007). The seasonal variation of the Arctic air pollution is caused by enhanced transport of pollutants from the mid-latitudes and inefficient removal processes in winter and spring and increased wet scavenging during summer (Law and Stohl, 2007; Garrett et al., 2011).

Previous studies using chemical transport models (CTMs) and chemical climate models (CCMs) revealed that these models had difficulty in reproducing the seasonal variations of aerosols in the Arctic (Shindell et al., 2008; Koch et al., 2009; Lee et al., 2013). Most models underestimated the concentration levels of BC in the peak season, and the model-to-model differences were also quite large (Shindell et al., 2008). This is caused by uncertainties in the model treatments of transformation from hydrophobic to hydrophilic BC and removal processes during the long-range transport from source regions to the Arctic. The seasonal variation of simulated BC in the Arctic is particularly sensitive to parameterizations of BC aging (Liu et al., 2011; Lund and Berntsen, 2012; [He et al., 2016](#)) and wet scavenging processes (Liu et al., 2011; Bourgeois and Bey, 2011; Browse et al., 2012; [Qi et al., 2017a, 2017b](#)). This is consistent with observational analyses by Garrett et al. (2011) who suggested that the wet scavenging process was dominant in determining the seasonal variations of light absorption and light scattering aerosols in the Arctic. Although a recent model intercomparison study indicated that the model performance of the BC simulations in the Arctic has improved, the seasonal amplitude at the surface was too weak and the BC concentration levels at the surface sites were still underestimated in the Arctic haze season in many state-of-the-science models (Eckhardt et al., 2015). [Mahmood et al. \(2016\) pointed out that convective wet deposition outside the Arctic](#)

[influenced vertical distribution and seasonal variations of BC in the Arctic by analyzing the same models used by Eckhardt et al. \(2015\)](#). These difficulties in the model simulation of the Arctic BC are key uncertainties in calculating the source contributions from important emission sources in the northern mid- and high-latitudes.

5 In addition to the model representations of BC aging and removal processes, it has been recently reported that missing emission sources in the high-latitudes significantly contribute to the underestimation of simulated BC in the Arctic (Stohl et al., 2013; Huang et al., 2015). Stohl et al. (2013) estimated that gas flaring in Russia that is not treated in most inventories contributes 42% to the annual mean BC concentrations near the surface in the Arctic. Huang et al. (2015) also showed that newly developed BC emissions for Russia which includes emissions from gas flaring improved the model biases of BC at
10 the surface sites in the Arctic.

Previous efforts of investigating the source regions of BC in the Arctic were made using a Lagrangian trajectory model (Stohl, 2006; Hirdman et al., 2010) and chemical transport models (Koch and Hansen, 2005; Shindell et al., 2008; Huang et al., 2010; Bourgeois and Bey, 2011; Wang et al., 2011; Sharma et al., 2013; Wang et al., 2014; [Qi et al., 2017c](#)). These
15 previous studies revealed that major BC sources transported to the Arctic were anthropogenic emissions in Europe, Russia, Asia, and North America. However, the relative importance among these source regions is still rather uncertain or even contradictory because the estimated contributions to the Arctic BC varies in earlier studies (Wang et al., 2014). For instance, while Lagrangian trajectory model analyses suggested that northern Eurasia was the major source of BC near the surface in the Arctic (Stohl, 2006; Hirdman et al., 2010), Koch and Hansen (2005) estimated that the degree of the contribution from
20 South and East Asia was similar to that from Europe and Russia during winter and spring. In the middle troposphere over the Arctic, some studies suggested that the contributions from Europe and/or Russia were larger than or comparable to those from Asia (Shindell et al., 2008; Huang et al., 2010; Sharma et al., 2013), but other studies indicated that the contribution from Asia was dominant (Koch and Hansen, 2005; Wang et al., 2011; Wang et al., 2014). This highlights the need and importance of mechanistic understanding of transport pathways and wet removal processes during long-range transport from
25 individual major source regions to the Arctic.

Previous studies have also reported that biomass burning emissions from boreal forests in Siberia and North America and agricultural fires in Europe have substantial influences on the Arctic BC especially from late spring to summer (Stohl et al., 2006, 2007; Warneke et al., 2010; Matsui et al., 2011). Stohl (2006) suggested that the contribution from Siberian forest fires
30 to the Arctic was greater than that from anthropogenic sources during summer. Matsui et al. (2011) indicated that the biomass burning emissions in Russia had the most important contributions of BC in the North American Arctic in spring 2008, when severe fires occurred in Siberia. Emissions from fires in boreal forests may increase under the future warm climate (Stocks et al., 1998). Thus, it is important to investigate the contribution from biomass burning emissions at relatively high latitudes to the Arctic BC.

In this study, we investigated the long-range transport of BC from various source regions and origins to the Arctic using a global chemical transport model GEOS-Chem with a tagged tracer simulation for the past five years (2007–2011). The tagged tracer method was used to analyze detailed transport pathways and transport efficiencies of BC from individual sources to the Arctic. We identified an important geographic region, where the inflow of BC from major source regions into the Arctic occurred. This analysis also provides us with an interpretation of the seasonal variation of the Arctic BC and useful diagnostics of the model performance to understand the possible causes of model biases. We also quantitatively estimated the contributions of emissions from various sources to BC concentrations and depositions in the Arctic region.

2 Model description

We used the GEOS-Chem version 9-02 as a global chemical transport model (Bey et al., 2001). The GEOS-Chem is driven by assimilated meteorological data of Goddard Earth Observing System (GEOS-5) provided by the NASA Global Modelling and Assimilation Office (GMAO). The model used a horizontal resolution of $2^{\circ} \times 2.5^{\circ}$ with 47 vertical layers from the surface to 10 hPa. The dry deposition process in GEOS-Chem adopts a standard resistance-in-series scheme as implemented by Wang et al. (1998). Over snow and ice, BC dry deposition velocity is set to 0.03 cm^{-1} to improve aerosol concentrations at the Arctic surface sites as described in Fisher et al. (2011) and Wang et al. (2011).

2.1 Emission inventories

For anthropogenic emissions of BC, GEOS-Chem originally uses an inventory of Bond et al. (2007) for 2000. Wang et al. (2011) indicated that emissions in Asia and Russia were required to be doubled for matching with observed BC over the Arctic. This doubling was done to account for the emission increases since 2000 in Russia and China (Wang et al., 2011). In this study, we adopted the BC emissions of HTAPv2.2 (Janssens-Maenhout et al., 2015) which had been developed for the experiments of HTAP phase 2 for anthropogenic emissions. The target year of HTAPv2.2 was 2010 and global annual emissions were estimated to be 5.5 Tg yr^{-1} , which was about 22% larger than that of Bond et al. (2007) (4.5 Tg yr^{-1}). On a regional basis, the emissions from China were 40 % larger than those of Bond et al. (2007), and the emissions from Europe and North America were 34% and 11% smaller than those in Bond et al. (2007), respectively. As argued in recent studies, BC emissions from Russia may be underestimated due to missing sources such as gas flaring and have a significant impact on the Arctic BC (Stohl et al., 2013; Huang et al., 2015). Annual BC emissions in Russia were estimated to be 224 Gg yr^{-1} in Huang et al. (2015), which was about 2.5 times larger than those of HTAPv2.2. Our preliminary simulations found that the model result replacing HTAPv2.2 emission in Russia by the inventory of Huang et al. (2015) improved the reproducibility of the observed BC concentrations at the Arctic sites (see Supplemental Fig. S1), and thus we used this emission dataset as the anthropogenic BC emissions for Russia. For biomass burning emissions, we used GFED (Global Fire Emissions Database)

v3.1 with $0.5^\circ \times 0.5^\circ$ spatial resolution and daily temporal resolution (van der Werf et al., 2010). In GFEDv3.1 the BC emissions from biomass burning were globally estimated to be 1.9 Tg yr^{-1} , averaged for 2007–2011.

2.2 BC aging and wet scavenging schemes

In the standard GEOS-Chem, 80% of BC is initially emitted as hydrophobic BC and then converted to hydrophilic BC with a constant e-folding time of 1.15 day (Park et al., 2005). However, it is unknown whether it is appropriate to adopt a constant value for the entire atmosphere. Because this value was estimated from observations of continental outflow near the source regions in the mid-latitudes (Park et al., 2005), it may be overestimated especially in remote regions including the high latitudes. In this study, we implemented a parameterization of BC aging developed by Liu et al. (2011) into GEOS-Chem and tested this impact on BC concentrations over the Arctic. This parameterization derives a time scale of BC aging based on the number concentration of OH radical (Liu et al., 2011). In remote areas including the high latitudes, the aging time is expected to be longer than that in the mid-latitudes near the source regions, resulting in an increase in BC concentrations. Liu et al. (2011) showed that the simulated seasonal variations at Arctic sites were improved by implementing this parameterization due to the increases in the BC concentrations during winter and spring.

Wet scavenging processes are also important to simulate BC in the Arctic region. The wet scavenging scheme for aerosols in GEOS-Chem is originally described by Liu et al. (2001). Wang et al. (2011) implemented several improvements for wet scavenging to distinguish between liquid and ice clouds for in-cloud scavenging (rainout) by comparing it with ARCTAS aircraft measurements over the Arctic. In liquid clouds ($T \geq 258 \text{ K}$), hydrophilic aerosols are assumed to be incorporated in the cloud droplets. In the case of ice clouds ($T < 258 \text{ K}$), the model assumes that hydrophobic BC can serve as ice nuclei. However, the scavenging of BC by ice clouds is highly uncertain (Wang et al., 2011). The assumption of 100 % of hydrophobic BC can lead to overestimation of BC scavenging in ice clouds. We conducted a sensitivity simulation in which the scavenging rate of hydrophobic BC was reduced to 5% of water-soluble aerosols for liquid clouds following earlier model studies (Bourgeois and Bey, 2011). We found that the reducing scavenging rate by ice clouds improved the model reproducibility of BC at the Arctic sites in winter and spring, as will be discussed in detail below.

2.3 BC tracer tagging by sources and regions

In the tagged tracer simulations, we distinguished the BC tracers by source types (i.e., anthropogenic and biomass burning) as well as regions. The horizontal definitions of source regions are shown in Fig. 1. For the tagging of anthropogenic (AN) BC, we divided the global domain into 16 regions (Fig. 1a). We separated Europe, Russia, Asia and North America to examine transport patterns and contributions to the Arctic from the major source regions. ~~We separated the major source regions of anthropogenic BC such as Europe, Russia, Asia and North America into different tracers.~~ Asia was separated into three regions (i.e., East Asia, Southeast Asia and South Asia~~India~~). East Asia was further divided into four regions: Japan, Korean Peninsula, North China, and South China. For biomass burning (BB) emissions, we separated the model domain into

27 regions (Fig. 1b). For boreal forests, Siberia was separated into 6 regions based on vegetation types, and North America was divided into Alaska, West Canada and East Canada in addition to the United States.

We performed the tagged simulation for five years from 2007 to 2011 after a model spin-up for six months. The model simulation was conducted as an off-line aerosol simulation and used an improved wet scavenging and aging process. The monthly average OH distributions for the calculation of BC aging time were stored by the full-chemistry simulation for each year.

To examine the role of wet removal during transport for each tagged BC tracer, we estimated the wet scavenging ratio of BC. Using the wet scavenging ratio we discuss the differences in transport efficiency among source regions and the roles of wet removal processes for the seasonal variations of BC concentrations. We conducted an additional simulation in which the wet scavenging processes were off and thus BC was removed from the atmosphere only by dry deposition at the surface. The wet scavenging ratio of each BC tracer was estimated as follows:

$$\text{Wet scavenging ratio (\%)} = (C_{\text{wetoff}} - C_{\text{ctl}})/C_{\text{ctl}} \times 100, \quad (1)$$

where, C_{ctl} and C_{wetoff} are 6-hourly BC concentrations of the control run and the simulation in which wet the removal processes are off, respectively.

3 Results and discussion

3.1 Model-observation comparison

The BC mass concentrations simulated by GEOS-Chem were compared with measurements of equivalent BC (EBC) converted from aerosol light absorption at four Arctic sites: Barrow, Alaska (156.6°W, 71.3°N, 11 m a.s.l.), Alert, Canada (62.3°W, 82.5°N, 210 m a.s.l.), Zeppelin, Norway (11.9°E, 78.9°N, 478 m a.s.l.) and Tiksi, Russia (128.9°E, 71.6°N, 8 m a.s.l.). Aerosol light absorption is observed by particle soot absorption photometers (PSAPs) at Barrow, Alert and Zeppelin, and by an aethalometer at Tiksi. The measurement data at the Arctic sites were obtained from EMEP and WDCA database (<http://ebas.nilu.no>). EBC is calculated from the particle light absorption coefficient with an assumption of a mass absorption efficiency. In this study, the measured light absorption coefficients with PSAPs have been converted to EBC mass concentrations using the mass absorption efficiency of $10 \text{ m}^2 \text{ g}^{-1}$ (Bond and Bergstrom, 2006). The conversion to EBC has been internally performed by the aethalometer for Tiksi.

Figure 2 shows the seasonal variations of BC concentrations simulated with the GEOS-Chem standard scheme and our new scheme in comparison to the observations at the Arctic sites. The observed seasonal variations of BC at the Arctic surface sites show a maximum during winter and early spring (i.e., Arctic haze season) and a minimum in summer. This observed seasonal feature was relatively well simulated with the standard scheme at the semi-quantitative level (the correlation

coefficients between the modeled and the observed BC (R) were 0.69–0.94). ~~In contrast, the new scheme improved the reproducibility of the model ($R=0.81-0.94$). This is mainly because the new scheme yielded an increase in BC concentrations except in summer with maximum effects in winter at the all four Arctic sites. The model reproducibility of the seasonal variations was improved, in particular, at Barrow, Alert and Tiksi. For instance, the standard scheme underestimated BC in winter and spring at Alert and Tiksi and during spring at Barrow. These negative biases were improved by introducing an aging parameterization and reducing ice cloud scavenging. This is consistent with the results of Liu et al. (2011) and Bourgeois and Bey (2011). By introducing the aging parameterization of Liu et al. (2011), the lifetime of BC was increased due to a slower time scale of aging in the high latitudes. Reducing the wet scavenging ratio by ice clouds also increased the lifetime of BC in the cold season. The sensitivities by changing these parameterizations were largest in winter because wet removal by ice clouds was most important in this season and aging time scale which depends on OH number concentrations also became longer than other seasons. The standard scheme underestimated observed BC in winter and spring at Alert and Tiksi. The model negative biases were reduced by the new scheme in these seasons, and R values were improved from 0.89 to 0.92 at Alert and from 0.935 to 0.944 at Tiksi (Fig. 2). At Barrow, while the new simulation improved the negative biases in spring, the observed concentrations were overestimated during winter. As a result, the correlation coefficient was increased from 0.69 to 0.81, but root mean square error (RMSE) was not improved by the new scheme at Barrow. Whilst there was an ~~substantial~~ improvement at ~~Barrow, Alert, and Tiksi~~, the observations at Zeppelin showed a reasonably good agreement with the standard simulation ($R=0.89$) rather than the new simulation ($R=0.83$). The new scheme yielded nearly double BC concentrations in winter, while the observed BC concentrations were somewhat lower than those at the other three sites. The sensitivities of aging and wet removal by ice clouds processes at Zeppelin were larger than those at Barrow and Alert, leading to the overestimation of the new scheme in winter and spring. Previous model studies also showed similar tendencies with larger BC concentrations in the European Arctic (i.e., at Zeppelin) than those in the North American Arctic (i.e., at Barrow and Alert) (Sharma et al., 2013; Stohl et al., 2013; AMAP, 2015). It should be noted that the mass absorption efficiency used for the conversion from the particle absorption coefficients to the EBC concentrations has an uncertainty of at least a factor of two (AMAP, 2015). ~~Other possible reasons include an overestimation of the emissions from Russia because of their dominant contribution to Zeppelin or a too effective transport to Zeppelin in the model.~~~~

We further compared the vertical profiles of BC concentrations over the Arctic with the observations during the Arctic Research of the Composition of the Troposphere from the Aircraft and Satellites (ARCTAS) campaign made in April 2008 (Fig. 3). Since the ARCTAS aircraft campaign covered mainly the North American Arctic, the observations made in the area north of 66°N were used. The dates of flights used for the comparison were April 8, 9, 12, 16, and 17. The model results by the standard and the new schemes were analyzed at the grid closest to the locations and times of the observations. The observed and simulated BC concentrations were averaged for 1-km altitude intervals from the surface to 10 km altitude. The observed vertical profile showed a maximum in the middle troposphere at 5 km altitude. Although the standard scheme

reproduced the increase from near the surface to the middle troposphere and the decrease from 5 km to the upper troposphere, the observed concentrations were underestimated 24–42 % in the middle troposphere. The negative biases were improved by the new scheme by increasing BC concentrations 18–23 ng m⁻³ in the middle troposphere. These increases by the new scheme were caused by the longer lifetime of BC in the high latitudes as discussed above. Although the new scheme model slightly underestimated the observed BC concentrations from 3 to 7 km altitude, the model successfully captured the observed mean vertical profile, including the peak in the middle troposphere as well as the concentration level near the surface. The simulated vertical gradient from the surface to the middle troposphere was slightly weaker than that of the observations. One possible reason is that upward transport of BC was underestimated by the model.

10 In addition to the Arctic region, we compared the model results with measurements in the major anthropogenic source regions: East Asia, Europe, and North America. For East Asia, we used BC data at nine rural and remote sites in China during 2006 and 2007 by Zhang et al. (2012). In addition, we used measurements at Fukue Island, a remote site located in western Japan (Kanaya et al., 2016). For North America, the data from the IMPROVE network for 2007–2011 was used (<http://views.cira.colostate.edu/fed>). In this study, we selected 43 IMPROVE sites located above 1500 m altitude for
15 comparison. For Europe, we used measurements at 12 sites by EUSAAR (European Supersites for Atmospheric Aerosol Research) for 2007–2011. The measurement data at EUSAAR sites were obtained from EMEP and WDCA database (<http://ebas.nilu.no>). Figure 4 shows the scatterplot of the annual mean BC concentrations simulated by the model with the standard and the new schemes in comparison to the observations in these three regions. The normalized mean bias (NMB) for East Asia was –42 %, mainly because the model largely underestimated the observations at two sites located in western
20 China. Without these two sites, the NMB for East Asia was improved to –19 %. For Northern America, the simulated concentration levels were in good agreement with the observations (NMB=–6 %). For Europe, the model tended to underestimate the observations (NMB=–33 %). The possible reasons for the underestimations over East Asia and Europe are that BC emissions from these regions are underestimated and removals are overestimated by the model around the source regions. The differences between the standard and new schemes were small in the all three regions (Fig. 4). This is because
25 BC aging time by the new scheme is similar to that of the standard scheme (~1 day) around the source regions in the mid-latitudes and wet scavenging by ice clouds is not so important in these regions. Because the BC concentrations tended to slightly increase in the new simulation, NMB were improved by the new scheme from –14––43 % to –6––42 % (Fig. 4).
Overall, these model-to-observations comparisons showed that our model simulations with the new scheme reasonably reproduced the observed BC levels, horizontal and vertical distributions, and spatial and temporal variabilities, thus
30 demonstrating the model’s capability to examine the long-range transport of BC to the Arctic and its underlying physical and chemical mechanisms.

3.2 BC transport from anthropogenic sources to the Arctic

Figure 5 shows the horizontal distributions of tagged BC tracers of major anthropogenic sources (AN) and their fluxes at about 1 km altitude in winter (DJF), spring (MAM), and summer (JJA). The horizontal fluxes were calculated by multiplying 6-hourly BC mass concentrations by horizontal wind speeds and were averaged for three months. East Asia (EAS-AN) was defined as the sum of Japan (JPN-AN), the Korean Peninsula (KOR-AN), North China (NCH-AN) and South China (SCH-AN). North America (NAM-AN) was defined by adding Alaska and Canada (ALC-AN) to NAM-AN. BC originating from Russia (RUS-AN) widely distributed over the Arctic during winter and has a large contribution ($30\text{--}100\text{ ng m}^{-3}$) over almost the entire Arctic region. The RUS-AN contribution showed a maximum in central Siberia, which is a large source region of gas flaring (Fig. 1, Huang et al., 2015). Northeastward winds prevailing over western Russia and central Siberia ($30^\circ\text{--}90^\circ\text{E}$) in winter probably played an important role on the transport of Russian BC to the Arctic (Fig. 7). Low precipitation in the cold season over Russia also contributed to the effective transport to the Arctic due to inefficient wet scavenging. Figure 7 shows that the precipitation level was less than 1 mm day^{-1} over a large part of Russia during winter. Horizontal distributions of wet scavenging ratio are also shown in Fig. 5. The wet scavenging ratio of RUS-AN was lower than those of the other source regions especially during winter. The meteorological conditions in Russia during cold season are characterized by low precipitation and cold temperatures at the surface. These meteorological conditions lead to ineffective removal and hence effective transport from Russia to the Arctic in winter and spring. In summer, the transport from RUS-AN to the Arctic was much weaker than those in the other seasons (Fig. 5). This is because precipitation increased ($1\text{--}4\text{ mm day}^{-1}$) over Russia leading to effective removal and the circulation pattern also changed to the southeastward winds at $30^\circ\text{--}90^\circ\text{E}$ during summer (Fig. 7). The seasonal variation of the large-scale circulation pattern is caused by the intensified Siberian high during winter and its replacement by a low pressure in summer (Stohl, 2006). Strong northeastward fluxes from Europe (EUR-AN) were seen at 1 km altitude in winter and spring. BC originating from EUR-AN was enhanced over European Arctic during winter ($20\text{--}50\text{ ng m}^{-3}$) and spring. The transport from Europe to the Arctic was also attributed to northeastward winds blowing over northern Europe in the cold season (Fig. 7). This result is consistent with previous studies which showed that the high-latitude Eurasia (i.e. Russia and Europe) was an important source region of BC at the surface in the Arctic (Stohl, 2006; Hirdman et al. 2010).

The horizontal fluxes of East Asia BC (EAS-AN) and North America BC (NAM-AN) showed that the long-range transport from East Asia and North America to the Arctic was inefficient in the lower troposphere. In winter, BC from East Asia was transported mainly southeastward by northwesterly winds associated with the winter monsoon circulation, which were dominant over north China, Japan and the Northwest Pacific (Fig. 7). BC from EAS-AN had a contribution of $10\text{--}20\text{ ng m}^{-3}$ in the Eurasian and North American Arctic during winter and spring. The NAM-AN contribution was estimated to be $5\text{--}10\text{ ng m}^{-3}$ in the North American Arctic during winter and spring. The transport from EAS-AN and NAM-AN was also weak during summer compared with the other seasons because precipitation increases around the source regions (Fig. 7). The long-

~~range transport of BC from these four source regions was very weak during summer compared with the other seasons. This is because precipitation increases and wet removal becomes effective during summer.~~

The Horizontal distributions of tagged BC tracers and their fluxes at 5 km altitude are shown in Fig. 6, highlighting the long-range transport of BC in the middle troposphere from individual source regions. In the middle troposphere, BC originating from East Asia (EAS-AN) was transported eastward and northeastward in winter and spring. The eastward pathway from East Asia reached North America across the North Pacific. BC from East Asia also spread northeastward over the Okhotsk Sea and East Siberia and reached the Arctic. It was further transported eastward over the Arctic Ocean. BC from East Asia had a contribution of 20–40 ng m⁻³ in the Eurasian Arctic in winter and spring. In winter, northward winds blowing over the Okhotsk Sea, East Siberia and the Bering Sea could play an important role on the poleward transport of EAS-AN BC (Fig. 7). Although seasonal mean northward winds in spring over these regions were weaker than those in winter (Fig. 7), the contribution of East Asia BC in spring was larger than that in winter (Fig. 5). This enhancement of EAS-AN BC during spring was not sufficiently explained by only the seasonal mean winds, suggesting that synoptic-scale disturbances on shorter time scales had an important role on the poleward transport from East Asia to the Arctic (Di Pierro et al., 2011). The patterns of the horizontal fluxes suggested that EAS-AN BC was transported mainly over the Okhotsk Sea and East Siberia to the Arctic Ocean in winter and spring. This transport pathway agreed with the results of Di Pierro et al. (2011) that analyzed aerosol export events from East Asia to the Arctic region using satellite observations. The vertical profiles of aerosol observed by the CALIOP lidar onboard CALIPSO satellite showed that the pollution plumes were transported from East Asia to the Arctic through East Siberia in the middle troposphere (Di Pierro et al., 2011). The distribution of wet scavenging ratio showed that about 90 % of BC from East Asia was deposited before arriving at the Arctic at 5 km altitude during winter and spring. The BC transport from East Asia was much weaker in summer than those in winter and spring. BC from North America (NAM-AN) was also transported eastward and northeastward at 5 km altitude during winter and spring. In addition to eastward transport to Europe across the North Atlantic, NAM-AN BC was transported from eastern US to Greenland. The contribution of BC from Russia (RUS-AN) in the middle troposphere was much weaker compared with the lower troposphere especially during winter (Fig. 5). The stable condition by cold temperatures near the surface suppresses the upward transport of BC over Russia especially in winter. BC from Europe (EUR-AN) at 5 km altitude was also smaller than that at 1 km altitude.

Figure 87 shows the longitude-height distributions of the meridional fluxes of BC from individual source regions at 66°N in winter, spring and summer. From these figures, we can identify important regions where inflows of BC from major source regions to the Arctic occur. A significant BC transport from EUR-AN toward the Arctic was seen at 0°–60°E below 2 km altitude in winter and spring. Transport from RUS-AN to the Arctic occurred mainly in the lower troposphere at 30°–90°E. During winter, low temperatures at the surface lead to a thermally stable stratification that reduces vertical mixing (Barrie, 1986). Due to the stable condition over Russia, the inflow from RUS-AN to the Arctic was concentrated below 1 km altitude

during winter. A strong inflow from EAS-AN to the Arctic was seen in the middle-upper troposphere, and the low-level transport to the Arctic was weak in contrast to EUR-AN and RUS-AN. BC from EAS-AN was uplifted during the long-range transport to the Arctic due to the large latitudinal gradient in the potential temperature (Klonecki et al., 2003). A strong poleward transport of EAS-AN BC occurred at 130°–180°E at 3–8 km altitude during winter. Although the inflow from EAS-AN became slightly weaker than that in winter, the similar structure to winter was also seen during spring. This result was in good agreement with the observational study by Di Pierro et al. (2011), which showed that the meridional transport of aerosol originating from East Asia to the Arctic took place at 3–7 km altitude. The Arctic lower troposphere is isolated by the closed polar dome which is formed by isentropic surfaces of lower potential temperatures and pollutants cannot easily be penetrated into the Arctic from outside of the polar front (Barrie, 1986). East Asia is located at south of the polar dome and EAS-AN BC is emitted from at higher potential temperatures. As a result, the low-level transport of East Asia BC into the Arctic was weak and it was transported at higher altitudes (Klonecki et al., 2003; Stohl, 2006). In summer, BC transport from EAS-AN to the Arctic was much weaker in the middle troposphere and was confined in the upper troposphere. BC transport from NAM-AN to the Arctic across 66°N was also seen in the middle-upper atmosphere, and the inflow in the lower troposphere was weak, similarly to EAS-AN. This is because North America BC is also emitted from higher potential temperatures and was transported to the Arctic above the polar dome. The inflow from NAM-AN to the Arctic occurred mainly at 30°–90°W at 3–8 km altitude. Pollutants exported from East Asia and North America experience ascent transport by vertical mixing such as warm conveyor belts from the boundary layer to the free troposphere, and are eventually transported to the Arctic in the middle-upper troposphere (Klonecki et al., 2003).

The distribution of the wet scavenging ratio at 66°N showed that about 90 % of the EAS-AN BC was removed from the atmosphere during long-range transport to the Arctic in winter and spring (Fig. 87). This value is consistent with the transport efficiency (i.e., the fraction of BC not removed during transport) from Asia (13 %) derived from the BC/ Δ CO ratio over the Northern American Arctic, observed during the ARCTAS spring campaign (Matsui et al., 2011). The wet scavenging ratio of NAM-AN (85–90 %) was similar to that of EAS-AN. The wet scavenging ratio in the strong inflow regions of RUS-AN across 66°N (30°–90°E, below 1 km altitude) was 30–50 % during these seasons. Thus, the wet removal of the RUS-AN BC was much less than that of EAS-AN and NAM-AN, leading to an efficient transport to the Arctic. The dry condition with low precipitation in high-latitude Eurasia reduces wet deposition and leads to a longer lifetime of BC in the Arctic troposphere especially in winter. The wet scavenging ratio of EUR-AN BC at 66°N was estimated to be 40–80 % at 0°–60°E below 2 km altitude during winter and spring.

3.3 Relative contributions from anthropogenic and biomass burning emissions

Figure 98 shows the seasonal variations of the individual source contributions, averaged for the Arctic (66°–90°N) from the surface to 10 km altitude. The total contribution from anthropogenic sources other than the four major source regions (Europe: EUR-AN, Russia: RUS-AN, East Asia: EAS-AN and North America: NAM-AN) was aggregated to OTH-AN. For

biomass burning (BB), the contributions from Russia (7 regions) and from Alaska and Canada (3 regions) were aggregated to SIB-BB and ALC-BB, respectively. The total contribution from biomass burning sources other than SIB-BB and ALC-BB was defined as OTH-BB. In Fig. 98, the relative contributions from individual sources to the total BC concentrations are also shown.

5

Due to the effective transport in the lower troposphere (Fig. 5), the contribution from RUS-AN increased from late autumn to early spring mainly below 2 km altitude. It was largest near the surface and decreased with altitude in these seasons (Fig. 98). This structure reflected a thermally stable stratification by cold temperatures at the surface during the cold season (Klonecki et al., 2003; Stohl, 2006). RUS-AN BC had a relative contribution of 40–70 % to the Arctic BC below 1 km altitude except during summer. The contribution from EUR-AN also increased below 2 km altitude in winter and early spring, accounting for 10–20 % of the Arctic BC. EAS-AN BC increased with altitude from the surface and had the largest contribution at about 5 km altitude due to the strong poleward transport in the middle troposphere (Figs. 6 and 87). The seasonal variation of the contribution from EAS-AN showed a maximum in early spring (March) and a minimum during summer. The relative contribution from EAS-AN was estimated to be 30–50 % in the middle and upper troposphere in winter and spring. The contribution from NAM-AN showed a maximum in winter at about 5 km altitude. Because BC from East Asia and North America located at relatively lower latitudes was emitted at higher potential temperatures, it was uplifted in the middle troposphere during long-range transport to the Arctic (Klonecki et al., 2003). OTH-AN which consisted mainly of the anthropogenic sources in the northern low latitudes and the southern hemisphere had the contribution in the upper troposphere above about 8 km altitude. In contrast to the anthropogenic sources, the contributions of biomass burning emissions from SIB-BB and ALC-BB increased in summer because boreal fires in Siberia, Alaska and Canada increased from late spring to autumn. The relative contributions of SIB-BB and ALC-BB were estimated to be 20–40 % and 30–40 %, respectively, during summer in the lower troposphere.

Figure 109 shows the seasonal variations of the contributions from individual sources to BC mass concentrations near the surface and at about 5 km altitude averaged for the Arctic region (66°–90°N). The wet scavenging ratios of the anthropogenic sources (EUR-AN, RUS-AN, EAS-AN and NAM-AN) are also shown to highlight the role of wet removal processes on the seasonal variations of the Arctic BC. Near the surface, RUS-AN was a dominant contributor of 40–70 % on a monthly basis, followed by EUR-AN (10–20 %) and EAS-AN (5–15 %) in winter, spring, and autumn. Thus, the contributions of anthropogenic sources were remarkably larger than those of biomass burning sources during the seasons except summer. SIB-BB and ALC-BB had a substantial contribution of 10–40 % and 30–40 %, respectively, during summer, resulting in a larger contribution from biomass burning than those from anthropogenic sources in this season. At 5 km altitude, EAS-AN was the most important, accounting for 30–60 % on a monthly basis, followed by small but substantial contributions from EUR-AN (10–20 %), NAM-AN (10–15 %), RUS-AN (5–20 %), and OTH-AN (10–15 %) in winter, spring, and autumn. The contributions of SIB-BB and ALC-BB were substantial in spring (15–20 % from SIB-BB) and

summer (10–30 % from SIB-BB and 15–30 % from ALC-BB). The biomass burning contribution was comparable to that of the anthropogenic sources in summer. ~~The relative importance to the BC concentrations on an annual basis will be discussed later (Table 2).~~

5 Near the surface, the contribution from RUS-AN showed a large seasonal variation with a maximum during winter (~ 100 ng m^{-3}) and a minimum in summer (~ 10 ng m^{-3}) (Fig. 109). BC originating from Russia was most important to the Arctic BC near the surface except during summer, and hence had a large influence on the seasonal variation of the total BC concentration over the Arctic. The wet scavenging ratio of RUS-AN had a large seasonal variation from 20 % in winter to 70 % during summer. Although the wet scavenging ratios of all four anthropogenic sources (EUR-AN, RUS-AN, EAS-AN
10 and NAM-AN) decreased during winter and increase in summer, the amplitude of RUS-AN was the greatest among these sources. In addition, the wet scavenging ratio of RUS-AN was the lowest among the major anthropogenic sources in all seasons, leading to a significant contribution to the Arctic BC. The seasonal variation of the contribution from EUR-AN near the surface was similar to that of RUS-AN (Figs. 98 and 109). EUR-AN was most important during winter with a contribution of ~ 20 ng m^{-3} to the Arctic. The wet scavenging ratio of EAS-AN was the highest among the four major
15 anthropogenic sources and exceeded 90 % in all seasons near the surface.

In the middle troposphere (at ~ 5 km altitude), the seasonal variation of EAS-AN BC showed an increase in spring and a decrease during summer (Figs. 98 and 109). Due to the large contribution of EAS-AN, the total BC concentration also showed a maximum in spring, which was different from the seasonal variation near the surface (winter maximum). Although
20 the wet scavenging ratio of EAS-AN was the largest among the major anthropogenic sources, the contribution from EAS-AN was dominant except during summer in the middle troposphere. This is because the BC emission of EAS-AN is much larger than that from the other sources as discussed below. Because EAS-AN BC was uplifted from the lower troposphere to the middle and upper troposphere during long-range transport, its contribution was larger in the middle troposphere than near the surface. Although the wet scavenging ratio of NAM-AN was slightly less than that of EAS-AN, the contribution from NAM-
25 AN was about 10 ng m^{-3} in winter and spring and was smaller than that from EAS-AN. The contribution from RUS-AN at about 5 km altitude was much less compared with that near the surface especially in winter and spring (Figs. 98 and 109). Because of the thermally stable conditions over Russia in the cold season, the upward transport of RUS-AN BC to the middle and upper troposphere is suppressed. The contribution of EUR-AN in the middle troposphere was also smaller than that near the surface.

30 3.4 Source contributions to the annual budget of BC in the Arctic

In Table 1, we summarized the budgets of each BC tracer averaged for 2007–2011 (see supplemental Table S1 for more detailed source regions). The annual total amount of the poleward BC flux from East Asia (EAS-AN) across $66^\circ N$ which was calculated by 6-hourly concentrations and northward winds ($v > 0$) was estimated to be 175.4 Gg yr^{-1} , corresponding to

about 10 % of the total emissions (1844.9 Gg yr⁻¹). The deposition amount of the EAS-AN BC on the Arctic region (66°–90°N) was 12.3 Gg yr⁻¹, which was about 1 % of the EAS-AN emissions. Thus, a large part of the EAS-AN BC transported to the Arctic was transported outside of the Arctic without depositing onto the surface within the Arctic. ~~Although the efficiency of the EAS-AN BC transport to the Arctic was lower than that of the other anthropogenic sources (EUR-AN, RUS-AN and NAM-AN) due to the effective wet removal (Fig. 9),~~ Although the fraction of BC from East Asia transported to the Arctic was lower than those of the other anthropogenic sources (EUR-AN, RUS-AN and NAM-AN) due to the effective wet removal (Fig. 10), the inflow flux of EAS-AN was the largest among the four major sources. This is because the emissions of EAS-AN are much larger than those from the other source regions (Table 1). On the other hand, the emissions from Russia (RUS-AN: 196.8 Gg yr⁻¹) were relatively small among the major anthropogenic sources, but the inflow flux was the second largest (103.0 Gg yr⁻¹). This is due to the effective transport from Russia to the Arctic especially during winter and spring (Figs. 5 and 109).

The global lifetimes of BC tracers which were defined as the burden divided by the annual total deposition were estimated to be 5.7–9.1 days (Table 1). The average lifetime of 7.3 days agreed with the value of the multi-model mean in the ACCMIP project (7.4 days, Lee et al., 2013) and with those reported by previous studies (e.g., 7.3 days from Koch and Hansen, 2005 and 5.9 days from Wang et al., 2011). The BC lifetimes of each tracer in the Arctic (66°–90°N) were estimated to be 8.6–92.7 days. The lifetime of EAS-AN BC in the Arctic (57.5 days) was longer than those of EUR-AN (14.2 days) and RUS-AN (12.9 days), because East Asia BC was distributed mainly in the middle troposphere (Fig. 9) and its deposition to the Arctic was smaller than those of EUR-AN and RUS-AN (Table 1). The average lifetime of 21.3 days in the Arctic was close to 20.0 days of the multi-model mean in the AMAP (Arctic Monitoring and Assessment Programme) models (Mahmood et al., 2016).

Table 2 summarized the relative contributions from individual sources to the annual mean BC concentrations, burden and depositions over the Arctic (66°–90°N). In Table 2, the tagged BC tracers were aggregated to 5 anthropogenic and 3 biomass burning sources. As expected from Figs. 98 and 109, Russia (RUS-AN) was the most important contributor to the BC concentrations at the surface, accounting for 61.8 %. Europe (EUR-AN) had the second largest contribution at the surface (13.4 %) among the sources. The relative contribution from East Asia (EAS-AN) was estimated to be 8.0 %. This result is similar to previous studies which showed that Northern Eurasia (Europe and Russia) was the dominant source region and East Asia had a smaller contribution at the Arctic surface (Shindell et al., 2008; Hirdman et al., 2010; Sharma et al., 2013; Wang et al., 2014). The larger contribution from Russia than Europe in this study is consistent with recent studies using newly developed emissions including gas flaring (Stohl et al., 2013; Huang et al., 2015). The contributions from biomass burning in Siberia (SIB-BB) and Alaska and Canada (ALC-BB) were about 5 % at the surface. Thus, the contribution of anthropogenic emissions was dominant at the surface over the Arctic, accounting for 90 % in annual mean.

In the middle troposphere (5 km altitude), East Asia (EAS-AN) had the largest contribution of 40.6 % to the annual mean BC concentration over the Arctic. Among the source regions in East Asia, North China (NCH-AN) had the most significant contribution of 29.4 % (see, supplemental Table S2). The dominance from East Asia in the middle troposphere is consistent with previous studies (Wang et al., 2011; Wang et al., 2014). The relative contribution from RUS-AN was 9.8 % at 5 km altitude, which was much less than that at the surface (62 %). Thus, the main contributor to the Arctic BC differed with altitude. This is because the transport pathways from individual sources to the Arctic are different as described before (Figs. 5–7). The transport from East Asia to the Arctic was characterized by uplifting to the middle and upper troposphere during the long-range transport (Figs. 6 and 7). BC from Russia was transported to the Arctic mainly in the lower troposphere due to the stable condition during the cold season (Figs. 5 and 7). In the context of air pollution over the Arctic, BC from Russia and Europe is more important due to the large contributions near the surface during the Arctic haze season. In addition, BC in the lower troposphere effectively warms the Arctic surface (Flanner, 2013). On the other hand, BC in the middle troposphere is more important to radiative forcing at the top of the atmosphere and causes atmospheric heating in the lower and middle troposphere (Flanner, 2013). Thus, it is important to understand altitudinally varying source contributions of the Arctic BC because the Arctic climate response is sensitive to the vertical distribution of BC in the Arctic.

For the BC burden over the Arctic, the contribution from East Asia (EAS-AN) was the most important and accounted for 27.4 % in annual mean. ~~The second largest was the contribution from Russia (21.0 %).~~ The second largest contributor to the BC burden over the Arctic was Russia (21.0 %). This result is consistent with AMAP (2015) that showed that the main contributors to the BC burden in the Arctic were East and South Asia and Russia. Wang et al. (2014) also estimated that East Asia and Northern Asia (consisting mainly of Russia) had the two largest contributions of 23.4 % and 22.6 %, respectively, to the BC burden in the Arctic, consistent with this study. Bourgeois and Bey (2011) showed that Siberia, Asia and Europe had comparable contributions to the Arctic BC burden. In this study, other anthropogenic sources (OTH-AN) also had a significant contribution of 17.0 %. In OTH-AN, ~~South Asia~~ India (SASIND-AN) provided the most important contribution of 8.7 % (see, supplemental Table S2).

We also quantitatively estimated the relative contributions from each source to the total deposition of BC to the Arctic region (Table 2). The contribution from Russia (RUS-AN) was the largest (34.7 %). The second largest was the contribution from EUR-AN (19.0 %). Thus, the major sources of the deposition on the Arctic were identical to the dominant contributors to the BC concentrations at the surface. This is similar to previous studies which showed that Europe and Russia provided the two largest contributions to BC deposition to the Arctic, while East Asia contributed less to deposition than to burden (Huang et al., 2010; Bourgeois and Bey, 2011; Sharma et al 2013; Wang et al., 2014), although some studies estimated a larger contribution from Europe than from Russia (Huang et al., 2010; Sharma et al., 2013; Wang et al., 2014). The contributions of biomass burning in Siberia (SIB-BB) and Alaska and Canada (ALC-BB) were also important, accounting for 14.7 % and 12.1 %, respectively. These values of biomass burning sources were larger than their relative contributions to BC

concentrations at the surface (~5 %). This is because BC deposition is enhanced during summer due to increased precipitation, and the contributions from SIB-BB and ALC-BB to the BC concentrations become large in this season in contrast to the anthropogenic sources (Fig. 910).

We estimated interannual variations of relative contributions from individual sources to the Arctic BC and found that results of each year were similar to that of the 5-year averaged contributions (see, supplemental Table S3). The differences of the relative contributions from each source to the BC concentrations between maxima and minima were lower than 12 %. For BC total deposition, the relative contribution from biomass burning in Siberia (SIB-BB) showed the variation from 8.2 % to 24.0 % (Table S3).

10 4. Conclusions

We investigated the long-range transport of BC from various source regions and origins to the Arctic and quantified source contributions using a global chemical transport model GEOS-Chem with a tagged tracer simulation for five years (2007–2011). This study especially focused on the transport pathways from the individual source regions to the Arctic and the role of wet scavenging during long-range transport. For tagging BC, we distinguished BC tracers by source types (anthropogenic and biomass burning) and regions; the global domain was divided into 16 and 27 regions for anthropogenic and biomass burning emissions, respectively.

We evaluated the simulated BC by comparing it with observations at surface measurement sites in the Arctic and near large source regions in the northern midlatitudes. The vertical profile of modeled BC was also compared with the observations by the ARCTAS aircraft campaign over the Arctic. We introduced a parameterization of BC aging into GEOS-Chem and changed the wet scavenging ratio by ice cloud ($T < 258$ K) examine the sensitivities of these processes to the Arctic BC. By using these new schemes, the BC concentrations were increased at the Arctic especially in winter and spring, ~~and the model reproducibility of the seasonal variations was improved.~~ Although the new scheme overestimated the observations at Zeppelin and Barrow especially during winter, model the negative biases in the cold season were improved at Alert and Tiksi.

The model also successfully reproduced the observed mean vertical distribution of BC over the Arctic. Our simulations suggested that there remain uncertainties in aging and wet scavenging processes and measurements are crucial to constrain the model representations of these processes. Further model improvements of key processes including microphysics-based parameterization of BC aging (Oshima and Koike, 2013; He et al., 2016) and wet scavenging by mixed-phase clouds (Qi et al., 2017a; 2017b) are also important.

We ~~revealed~~ examined detailed transport pathways from the individual source regions to the Arctic and identified important regions where inflow from the individual source regions to the Arctic occurred. Our simulation showed that BC originating

from Europe and Russia was transported to the Arctic mainly in the lower troposphere during winter and spring. In particular, BC transported from Russia extensively distributed over the Arctic in these seasons, leading to the dominant contribution of 62 % to the Arctic BC near the surface in annual mean. We also found that this contribution of BC from Russia had a key role in the seasonal variation of the Arctic BC at the surface. For the Arctic air pollution near the surface, BC originating from anthropogenic sources of Russia and Europe was important due to their large contributions during the Arctic haze season.

In the middle troposphere, we found a large contribution from East Asia to the Arctic BC, which resulted from uplifting during the long-range transport. Our simulation demonstrated that BC from East Asia was transported to the Arctic mainly through the Okhotsk Sea and East Siberia during winter and spring. We identified an important region where a strong inflow from East Asia to the Arctic occurred (130°–180°E and 3–8 km altitude at 66°N). The model simulation showed that the contribution from East Asia to the Arctic had a maximum at about 5 km altitude in early spring. The efficiency of transport from East Asia to the Arctic was smaller than that from other large source regions such as Europe, Russia and North America. However, the contribution of East Asia was most important to the middle troposphere (41 %) and BC burden (27 %) over the Arctic because of large emissions from this region. These results suggest that the main source of the Arctic BC differs with altitude.

The total contribution of anthropogenic sources to the BC concentrations at the surface was dominant (about 90 %) compared with that of biomass burning in annual mean. However, for BC deposition on the Arctic, the contributions of biomass burning emissions from Siberia and Alaska and Canada that became substantial during summer were important, accounting for 15 % (32 %) and 12 % (31 %) in annual mean (during summer), respectively.

Acknowledgements

Measurement data at Arctic and EUSAAR sites were obtained at <http://ebas.nilu.no>. Data of IMPROVE network in US were taken from <http://views.cira.colostate.edu/fed>. We thank NASA for providing the ARCTAS aircraft campaign data. This research was supported by the Environmental Research and Technology Development Fund (2-1505) of the Ministry of the Environment, Japan, ~~and~~ the Coordination Funds for Promoting AeroSpace Utilization by the Ministry of Education, Culture, Sports, Science and Technology (MEXT), Japan, ~~and~~ [JSPS KAKENHI Grant Number JP26550021](#). We thank Dr. Satoshi Inomata (National Institute for Environmental Studies) for valuable comments and discussions. This work is a contribution to PACES (air Pollution in the Arctic: Climate Environment and Societies), an activity sponsored by the IGAC (International Global Atmospheric Chemistry) project.

References

- AMAP: AMAP Assessment 2015: Black Carbon and Ozone as Arctic Climate Forcers, Arctic Monitoring and Assessment Programme (AMAP), Oslo, Norway, vii + 116 pp, 2015.
- Arnold, S. R., Law, K. S., Brock, C. A., Thomas, J. L., Starkweather, S. M., von Salzen, K., Stohl, A., Sharma, S., Lund, M. T., Flanner, M. G., Petäjä, T., Tanimoto, H., Gamble, J., Dibb, J. E., Melamed, M., Johnson, N., Fidel, M., Tynkkynen, V.-P., Baklanov, A., Eckhardt, S., Monks, S. A., Browse, J., and Bozem, H.: Arctic air pollution: Challenges and opportunities for the next decade, *Elementa: Science of the Anthropocene*, 4, 000104, doi:10.12952/journal.elementa.000104, 2016.
- Barrie, L. A.: Arctic air pollution: An overview of current knowledge, *Atmos. Environ.*, 20, 643–663, doi:10.1016/0004-6981(86)90180-0, 1986.
- Bey, I., Jacob, D. J., Logan, J. A., and Yantosca, R. M.: Asian chemical outflow to the Pacific in spring: Origins, pathways, and budgets, *J. Geophys. Res.-Atmos.*, 106, 23097–23113, 2001
- Bond, T. C. and Bergstrom, R. W.: Light absorption by carbonaceous particles: An investigative review, *Aerosol Sci. Technol.*, 40, 27–67, doi:10.1080/02786820500421521, 2006.
- Bond, T. C., Bhardwaj, E., Dong, R., Jogani, R., Jung, S. K., Roden, C., Streets, D. G., and Trautmann, N. M.: Historical emissions of black and organic carbon aerosol from energy-related combustion, 1850-2000, *Glob. Biogeochem. Cy.*, 21, Gb2018, doi:10.1029/2006GB002840, 2007.
- Bourgeois, Q., and Bey, I.: Pollution transport efficiency toward the Arctic: Sensitivity to aerosol scavenging and source regions, *J. Geophys. Res.*, 116, D08213, doi:10.1029/2010JD015096, 2011.
- Browse, J., Carslaw, K. S., Arnold, S. R., Pringle, K., and Boucher, O.: The scavenging processes controlling the seasonal cycle in Arctic sulphate and black carbon aerosol, *Atmos. Chem. Phys.*, 12, 6775–6798, doi:10.5194/acp-12-6775-2012, 2012.
- Di Pierro, M., Jaeglé, L., and Anderson, T. L.: Satellite observations of aerosol transport from East Asia to the Arctic: Three case studies, *Atmos. Chem. Phys.*, 11, 2225–2243, doi:10.5194/acp-11-2225-2011, 2011.
- Eckhardt, S., Quennehen, B., Olivie, D. J. L., Berntsen, T. K., Cherian, R., Christensen, J. H., Collins, W., Crepinsek, S., Daskalakis, N., Flanner, M., Herber, A., Heyes, C., Hodnebrog, Ø., Huang, L., Kanakidou, M., Klimont, Z., Langner, J., Law, K. S., Lund, M. T., Mahmood, R., Massling, A., Myriokefalitakis, S., Nielsen, I. E., Nøjgaard, J. K., Quaas, J., Quinn, P. K., Raut, J.-C., Rumbold, S. T., Schulz, M., Sharma, S., Skeie, R. B., Skov, H., Uttal, T., von Salzen, K., and Stohl, A.: Current model capabilities for simulating black carbon and sulfate concentrations in the Arctic atmosphere: a multi-model evaluation using a comprehensive measurement data set, *Atmos. Chem. Phys.*, 15, 9413–9433, doi:10.5194/acp-15-9413-2015, 2015.
- Fisher, J. A., Jacob, D. J., Wang, Q., Bahreini, R., Carouge, C. C., Cubison, M. J., Dibb, J. E., Diehl, T., Jimenez, J. L., Leibensperger, E. M., Lu, Z., Meinders, M. B. J., Pye, H. O. T., Quinn, P. K., Sharma, S., Streets, D.G., van Donkelaar,

- A., and Yantosca, R. M.: Sources, distribution, and acidity of sulfateammonium aerosol in the Arctic in winter-spring, *Atmos. Environ.*, 45, 7301–7318, doi:10.1016/j.atmosenv.2011.08.030, 2011.
- Flanner, M. G.: Arctic climate sensitivity to local black carbon, *J. Geophys. Res.-Atmos.*, 118, 1840–1851, doi:10.1002/jgrd.50176, 2013.
- 5 Flanner, M. G., Zender, C. S., Randerson, J. T., and Rasch, P. J.: Present-day climate forcing and response from black carbon in snow, *J. Geophys. Res.-Atmos.*, 112, D11202, doi:10.1029/2006JD008003, 2007.
- Garrett, T. J., Brattström, S., Sharma, S., Worthy, D. E. J., and Novelli, P.: The role of scavenging in the seasonal transport of black carbon and sulfate to the Arctic, *Geophys. Res. Lett.*, 38, L16805, doi:10.1029/2011GL048221, 2011.
- Garrett, T. J. and Zhao, C.: Increased Arctic cloud longwave emissivity associated with pollution from mid-latitudes, *Nature*, 10 440, 787–789, 2006.
- Hansen, J. and Nazarenko, L.: Soot climate forcing via snow and ice albedos, *Proc. Natl. Acad. Sci.*, 101, 423–428, doi:10.1073/pnas.2237157100, 2004.
- 15 [He, C., Li, Q., Liou, K.-N., Qi, L., Tao, S., and Schwarz, J. P.: Microphysics-based black carbon aging in a global CTM: constraints from HIPPO observations and implications for global black carbon budget, *Atmos. Chem. Phys.*, 16, 3077–3098, <https://doi.org/10.5194/acp-16-3077-2016>, 2016.](https://doi.org/10.5194/acp-16-3077-2016)
- Hirdman, D., Sodemann, H., Eckhardt, S., Burkhardt, J. F., Jefferson, A., Mefford, T., Quinn, P. K., Sharma, S., Ström, J., and Stohl, A.: Source identification of short-lived air pollutants in the Arctic using statistical analysis of measurement data and particle dispersion model output, *Atmos. Chem. Phys.*, 10, 669–693, doi:10.5194/acp-10-669-2010, 2010.
- Huang, L., Gong, S. L., Jia, C. Q., and Lavoue, D.: Importance of deposition processes in simulating the seasonality of the 20 Arctic black carbon aerosol, *J. Geophys. Res.-Atmos.*, 115, D17207, doi:10.1029/2009JD013478, 2010.
- Huang, K., Fu, S. J., Prikhodko, Y. V., Storey, M. J., Romanov, A., Hodson, L. E., Cresko, J., Morozova, I., Ignatieva, Y., and Cabaniss, J.: Russian anthropogenic black carbon: Emission reconstruction and Arctic black carbon simulation, *J. Geophys. Res.-Atmos.*, 120, 11306–11333, doi:10.1002/2015JD023358, 2015.
- Janssens-Maenhout, G., Crippa, M., Guizzardi, D., Dentener, F., Muntean, M., Pouliot, G., Keating, T., Zhang, Q., 25 Kurokawa, J., Wankmüller, R., Denier van der Gon, H., Kuenen, J. J. P., Klimont, Z., Frost, G., Darras, S., Koffi, B., and Li, M.: HTAP_v2.2: a mosaic of regional and global emission grid maps for 2008 and 2010 to study hemispheric transport of air pollution, *Atmos. Chem. Phys.*, 15, 11411–11432, doi:10.5194/acp-15-11411-2015, 2015.
- Kanaya, Y., Pan, X., Miyakawa, T., Komazaki, Y., Taketani, F., Uno, I., and Kondo, Y.: Long-term observations of black carbon mass concentrations at Fukue Island, western Japan, during 2009–2015: constraining wet removal rates and 30 emission strengths from East Asia, *Atmos. Chem. Phys.*, 16, 10689–10705, doi:10.5194/acp-16-10689-2016, 2016.
- Klonecki, A., Hess, P., Emmons, L., Smith, L., Orlando, J., and Blake, D.: Seasonal changes in the transport of pollutants into the Arctic troposphere-model study, *J. Geophys. Res.*, 108(D4), 8367, doi:10.1029/2002JD002199, 2003.
- Koch, D. and Hansen, J.: Distant origins of Arctic black carbon: A Goddard Institute for Space Studies ModelE experiment, *J. Geophys. Res.-Atmos.*, 110, D04204, doi:10.1029/2004JD005296, 2005.

- Koch, D., Schulz, M., Kinne, S., McNaughton, C., Spackman, J. R., Balkanski, Y., Bauer, S., Bernsten, T., Bond, T. C., Boucher, O., Chin, M., Clarke, A., De Luca, N., Dentener, F., Diehl, T., Dubovik, O., Easter, R., Fahey, D. W., Feichter, J., Fillmore, D., Freitag, S., Ghan, S., Ginoux, P., Gong, S., Horowitz, L., Iversen, T., Kirkevåg, A., Klimont, Z., Kondo, Y., Krol, M., Liu, X., Miller, R., Montanaro, V., Moteki, N., Myhre, G., Penner, J. E., Perlwitz, J., Pitari, G., Reddy, S., Sahu, L., Sakamoto, H., Schuster, G., Schwarz, J. P., Seland, Ø., Stier, P., Takegawa, N., Takemura, T., Textor, C., van Aardenne, J. A., and Zhao, Y.: Evaluation of black carbon estimations in global aerosol models, *Atmos. Chem. Phys.*, 9, 9001–9026, doi:10.5194/acp-9-9001-2009, 2009.
- Law, K. S. and Stohl, A.: Arctic air pollution: Origins and impacts, *Science*, 315, 1537–1540, doi:10.1126/science.1137695, 2007.
- 10 Lee, Y. H., Lamarque, J.-F., Flanner, M. G., Jiao, C., Shindell, D. T., Bernsten, T., Bisiaux, M. M., Cao, J., Collins, W. J., Curran, M., Edwards, R., Faluvegi, G., Ghan, S., Horowitz, L. W., McConnell, J. R., Ming, J., Myhre, G., Nagashima, T., Naik, V., Rumbold, S. T., Skeie, R. B., Sudo, K., Takemura, T., Thevenon, F., Xu, B., and Yoon, J.-H.: Evaluation of preindustrial to present-day black carbon and its albedo forcing from Atmospheric Chemistry and Climate Model Intercomparison Project (ACCMIP), *Atmos. Chem. Phys.*, 13, 2607–2634, doi:10.5194/acp-13-2607-2013, 2013.
- 15 Liu, H. Y., Jacob, D. J., Bey, I., and Yantosca, R. M.: Constraints from Pb-210 and Be-7 on wet deposition and transport in a global three-dimensional chemical tracer model driven by assimilated meteorological fields, *J. Geophys. Res.-Atmos.*, 106, 12109–12128, 2001.
- Liu, J., Fan, S., Horowitz, L. W., and Levy II, H.: Evaluation of factors controlling long-range transport of black carbon to the Arctic, *J. Geophys. Res.*, 116, D00A14, doi:10.1029/2010JD015145, 2011.
- 20 Lubin, D. and Vogelmann, A. M.: A climatologically significant aerosol longwave indirect effect in the arctic, *Nature*, 439, 453–456, 2006.
- Lund, M. T. and Bernsten, T.: Parameterization of black carbon aging in the OsloCTM2 and implications for regional transport to the Arctic, *Atmos. Chem. Phys.*, 12, 6999–7014, doi:10.5194/acp-12-6999-2012, 2012.
- 25 Mahmood, R., von Salzen, K., Flanner, M., Sand, M., Langner, J., Wang, H., and Huang, L.: Seasonality of global and Arctic black carbon processes in the Arctic Monitoring and Assessment Programme models, *J. Geophys. Res.-Atmos.*, 121, 7100–7116, doi:10.1002/2016JD024849, 2016.
- Matsui, H., Kondo, Y., Moteki, N., Takegawa, N., Sahu, L. K., Zhao, Y., Fuelberg, H. E., Sessions, W. R., Diskin, G., Blake, D. R., Wisthaler, A., and Koike, M.: Seasonal variation of the transport of black carbon aerosol from the Asian continent to the Arctic during the ARCTAS aircraft campaign, *J. Geophys. Res.-Atmos.*, 116, D05202, doi:10.1029/2010JD015067, 2011.
- 30 Oshima, N. and Koike, M.: Development of a parameterization of black carbon aging for use in general circulation models, *Geosci. Model Dev.*, 6, 263–282, <https://doi.org/10.5194/gmd-6-263-2013>, 2013.

- Park, R. J., Jacob, D. J., Palmer, P. I., Clarke, A. D., Weber, R. J., Zondlo, M. A., Eisele, F. L., Bandy, A. R., Thornton, D. C., Sachse, G. W., and Bond, T. C.: Export efficiency of black carbon aerosol in continental outflow: Global implications, *J. Geophys. Res.-Atmos.*, 110, D11205, doi:10.1029/2004JD005432, 2005.
- 5 [Qi, L., Li, Q., Li, Y., and He, C.: Factors controlling black carbon distribution in the Arctic, *Atmos. Chem. Phys.*, 17, 1037–1059, <https://doi.org/10.5194/acp-17-1037-2017>, 2017a.](#)
- [Qi, L., Li, Q., He, C., Wang, X., and Huang, J.: Effects of the Wegener–Bergeron–Findeisen process on global black carbon distribution, *Atmos. Chem. Phys.*, 17, 7459–7479, <https://doi.org/10.5194/acp-17-7459-2017>, 2017b.](#)
- [Qi, L., Li, Q., Henze, D. K., Tseng, H.-L., and He, C.: Sources of Springtime Surface Black Carbon in the Arctic: An Adjoint Analysis, *Atmos. Chem. Phys. Discuss.*, <https://doi.org/10.5194/acp-2016-1112>, 2017c.](#)
- 10 Quinn, P. K., Shaw, G., Andrews, E., Dutton, E. G., Ruoho-Airola, T., and Gong, S. L.: Arctic haze: current trends and knowledge gaps, *Tellus B*, 59, 99–114, doi:10.1111/j.1600-0889.2006.00238.x, 2007.
- Quinn, P. K., Bates, T. S., Baum, E., Doubleday, N., Fiore, A. M., Flanner, M., Fridlind, A., Garrett, T. J., Koch, D., Menon, S., Shindell, D., Stohl, A., and Warren, S. G.: Short-lived pollutants in the Arctic: their climate impact and possible mitigation strategies, *Atmos. Chem. Phys.*, 8, 1723–1735, doi:10.5194/acp-8-1723-2008, 2008.
- 15 Sand, M., Berntsen, T. K., von Salzen, K., Flanner, M. G., Langner, J., and Victor, D. G.: Response of Arctic temperature to changes in emissions of short-lived climate forcers, *Nature Clim. Change*, 6, 286–289, doi:10.1038/nclimate2880, 2016.
- Sharma, S., Ishizawa, M., Chan, D., Lavoue, D., Andrews, E., Eleftheriadis, K., and Maksyutov, S.: 16-year simulation of Arctic black carbon: Transport, source contribution, and sensitivity analysis on deposition, *J. Geophys. Res.-Atmos.*, 118, 943–964, doi:10.1029/2012jd017774, 2013.
- 20 Shindell, D.: Local and remote contributions to Arctic warming, *Geophys. Res. Lett.*, 34, L14704, doi:10.1029/2007GL030221, 2007.
- Shindell, D. and Faluvegi, G.: Climate response to regional radiative forcing during the twentieth century, *Nature Geosci.*, 2, 294–300, doi:10.1038/ngeo473, 2009
- Shindell, D. T., Chin, M., Dentener, F., Doherty, R. M., Faluvegi, G., Fiore, A. M., Hess, P., Koch, D. M., MacKenzie, I. A.,
25 Sanderson, M. G., Schultz, M. G., Schulz, M., Stevenson, D. S., Teich, H., Textor, C., Wild, O., Bergmann, D. J., Bey, I., Bian, H., Cuvelier, C., Duncan, B. N., Folberth, G., Horowitz, L. W., Jonson, J., Kaminski, J. W., Marmer, E., Park, R., Pringle, K. J., Schroeder, S., Szopa, S., Takemura, T., Zeng, G., Keating, T. J., and Zuber, A.: A multi-model assessment of pollution transport to the Arctic, *Atmos. Chem. Phys.*, 8, 5353–5372, doi:10.5194/acp-8-5353-2008, 2008
- 30 Stohl, A.: Characteristics of atmospheric transport into the Arctic troposphere, *J. Geophys. Res.-Atmos.*, 111, D11306, doi:10.1029/2005JD006888, 2006.
- Stohl, A., Andrews, E., Burkhardt, J. F., Forster, C., Herber, A., Hoch, S. W., Kowal, D., Lunder, C., Mefford, T., Ogren, J. A., Sharma, S., Spichtinger, N., Stebel, K., Stone, R., Ström, J., Tørseth, Wehrli, C., and Yttri, K. E.: Pan-Arctic

- enhancements of light absorbing aerosol concentrations due to North American boreal forest fires during summer 2004, *J. Geophys. Res.*, 111, D22214, doi:10.1029/2006JD007216, 2006.
- Stohl, A., Berg, T., Burkhardt, J. F., Fjæraa, A. M., Forster, C., Herber, A., Hov, Ø., Lunder, C., McMillan, W. W., Oltmans, S., Shiobara, M., Simpson, D., Solberg, S., Stebel, K., Störm, J., Tørseth, K., Treffeisen, R., Virkkunen, K., and Yttri, K. E.: Arctic smoke - record high air pollution levels in the European Arctic due to agricultural fires in Eastern Europe in spring 2006, *Atmos. Chem. Phys.*, 7, 511–534, doi:10.5194/acp-7-511-2007, 2007.
- Stohl, A., Klimont, Z., Eckhardt, S., Kupiainen, K., Shevchenko, V. P., Kopeikin, V. M., and Novigatsky, A. N.: Black carbon in the Arctic: the underestimated role of gas flaring and residential combustion emissions, *Atmos. Chem. Phys.*, 13, 8833–8855, doi:10.5194/acp-13-8833-2013, 2013.
- Stocks, B., Fosberg, M., Lynham, T., Mearns, L., Wotton, B., Yang, Q., Jin, J., Lawrence, K., Hartley, G., Mason, J., and McKenney, D.: Climate change and forest fire potential in Russian and Canadian boreal forests, *Clim. Change*, 38, 1–13, 1998.
- van der Werf, G. R., Randerson, J. T., Giglio, L., Collatz, G. J., Mu, M., Kasibhatla, P. S., Morton, D. C., DeFries, R. S., Jin, Y., and van Leeuwen, T. T.: Global fire emissions and the contribution of deforestation, savanna, forest, agricultural, and peat fires (1997–2009), *Atmos. Chem. Phys.*, 10, 11707–11735, doi:10.5194/acp-10-11707-2010, 2010.
- Wang, Y. H., Jacob, D. J., and Logan, J. A.: Global simulation of tropospheric O₃-NO_x-hydrocarbon chemistry 1. Model formulation, *J. Geophys. Res.-Atmos.*, 103, 10713–10725, 1998.
- Wang, Q., Jacob, D. J., Fisher, J. A., Mao, J., Leibensperger, E. M., Carouge, C. C., Le Sager, P., Kondo, Y., Jimenez, J. L., Cubison, M. J., and Doherty, S. J.: Sources of carbonaceous aerosols and deposited black carbon in the Arctic in winter-spring: implications for radiative forcing, *Atmos. Chem. Phys.*, 11, 12453–12473, doi:10.5194/acp-11-12453-2011, 2011.
- Wang, H. L., Rasch, P. J., Easter, R. C., Singh, B., Zhang, R. D., Ma, P. L., Qian, Y., Ghan, S. J., and Beagley, N.: Using an explicit emission tagging method in global modeling of source-receptor relationships for black carbon in the Arctic: Variations, sources, and transport pathways, *J. Geophys. Res.-Atmos.*, 119, 12888–12909, doi:10.1002/2014jd022297, 2014.
- Warneke, C., Froyd, K. D., Brioude, J., Bahreini, R., Brock, C. A., Cozic, J., de Gouw, J. A., Fahey, D. W., Ferrare, R., Holloway, J. S., Middlebrook, A. M., Miller, L., Montzka, S., Schwarz, J. P., Sodemann, H., Spackman, J. R., and Stohl, A.: An important contribution to springtime Arctic aerosol from biomass burning in Russia, *Geophys. Res. Lett.*, 37, L01801, doi:10.1029/2009GL041816, 2010.
- Zhang, X. Y., Wang, Y. Q., Niu, T., Zhang, X. C., Gong, S. L., Zhang, Y. M., and Sun, J. Y.: Atmospheric aerosol compositions in China: spatial/temporal variability, chemical signature, regional haze distribution and comparisons with global aerosols, *Atmos. Chem. Phys.*, 12, 779–799, doi:10.5194/acp-12-779-2012, 2012.

Table 1. Budgets of BC from individual sources for the period of 2007–2011.

Tracer ^a	Emission ^c , Gg yr ⁻¹	Poleward flux across 66°N (v>0), Gg yr ⁻¹	Burden in the Arctic, Gg	Deposition to the Arctic, Gg yr ⁻¹		Lifetime, days	
				Wet	Dry	Global	Arctic
EUR-AN	353.7 (2.6)	76.1	0.9	18.2	4.8	6.4	14.2
RUS-AN	196.8 (22.2)	103.0	1.5	26.7	15.2	9.1	12.9
EAS-AN ^b	1844.9 (0.0)	175.4	1.9	10.4	1.9	6.4	57.5
NAM-AN ^b	342.2 (0.6)	45.5	0.5	4.5	0.8	5.7	34.1
OTH-AN ^b	2946.9 (0.1)	110.5	1.2	4.0	0.7	7.6	92.7
SIB-BB ^b	114.2 (4.9)	42.5	0.5	15.5	2.3	7.9	10.1
ALC-BB ^b	64.0 (5.6)	27.0	0.4	12.6	2.1	6.3	8.6
OTH-BB ^b	1718.3 (0.0)	21.9	0.2	1.3	0.1	8.0	57.9
Total	7580.9 (35.9)	601.8	7.1	93.1	27.9	7.3	21.3

^aAN and BB indicate anthropogenic and biomass burning sources, respectively.

^bEAS-AN (East Asia) is the sum of JPN-AN, KOR-AN, NCH-AN and SCH-AN; NAM-AN (North America) is the sum of
5 NAM-AN and ALC-AN; OTH-AN is the sum of anthropogenic sources other than EUR-AN, RUS-AN, EAS-AN and NAM-
AN; SIB-BB is the sum of WRU-BB, S1-BB, S2-BB, S3-BB, S4-BB, S5-BB and S6-BB; ALC-BB is the sum of ALC-BB,
WCA-BB and EAC-BB; and OTH-BB is the sum of biomass burning sources other than SIB-BB and ALC-BB.

^cValues in brackets denote emissions from north of 66°N.

Table 2. Relative contributions from individual sources to the annual mean BC concentrations at the surface and 5 km altitude levels, annual deposition and burden in the Arctic (66°–90°N) (%).

Tracer ^a	Surface	5 km	Burden	Deposition
EUR-AN	13.4	12.2	12.6	19.0
RUS-AN	61.8	9.8	21.0	34.7
EAS-AN ^b	8.0	40.6	27.4	10.1
NAM-AN ^b	3.1	10.4	6.9	4.3
OTH-AN ^b	2.9	10.9	17.0	3.9
SIB-BB ^b	5.2	8.5	7.0	14.7
ALC-BB ^b	5.2	4.3	4.9	12.1
OTH-BB ^b	0.4	3.3	3.2	1.2

^aAN and BB indicate anthropogenic and biomass burning sources, respectively.

- 5 ^bEAS-AN (East Asia) is the sum of JPN-AN, KOR-AN, NCH-AN and SCH-AN; NAM-AN (North America) is the sum of NAM-AN and ALC-AN; OTH-AN is the sum of anthropogenic sources other than EUR-AN, RUS-AN, EAS-AN and NAM-AN; SIB-BB is the sum of WRU-BB, S1-BB, S2-BB, S3-BB, S4-BB, S5-BB and S6-BB; ALC-BB is the sum of ALC-BB, WCA-BB and EAC-BB; and OTH-BB is the sum of biomass burning sources other than SIB-BB and ALC-BB.

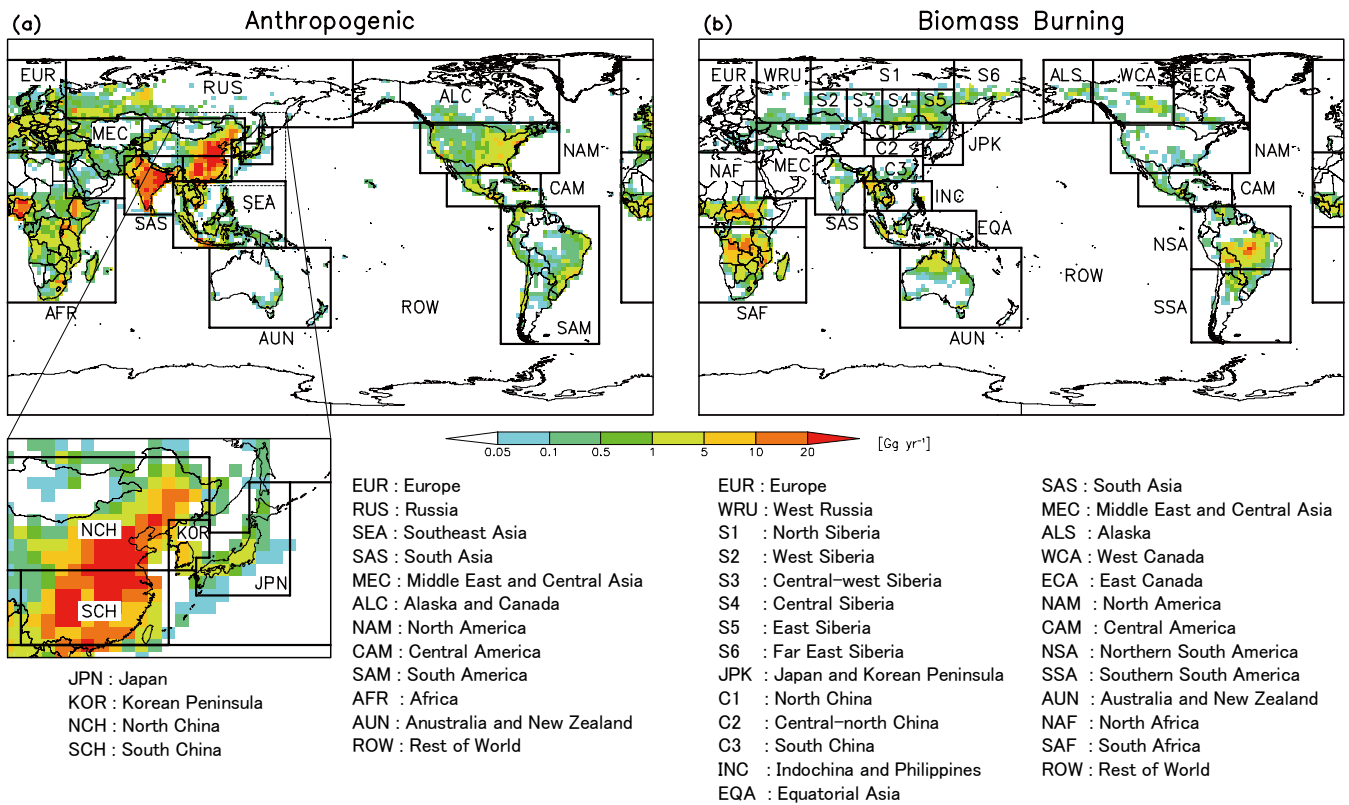
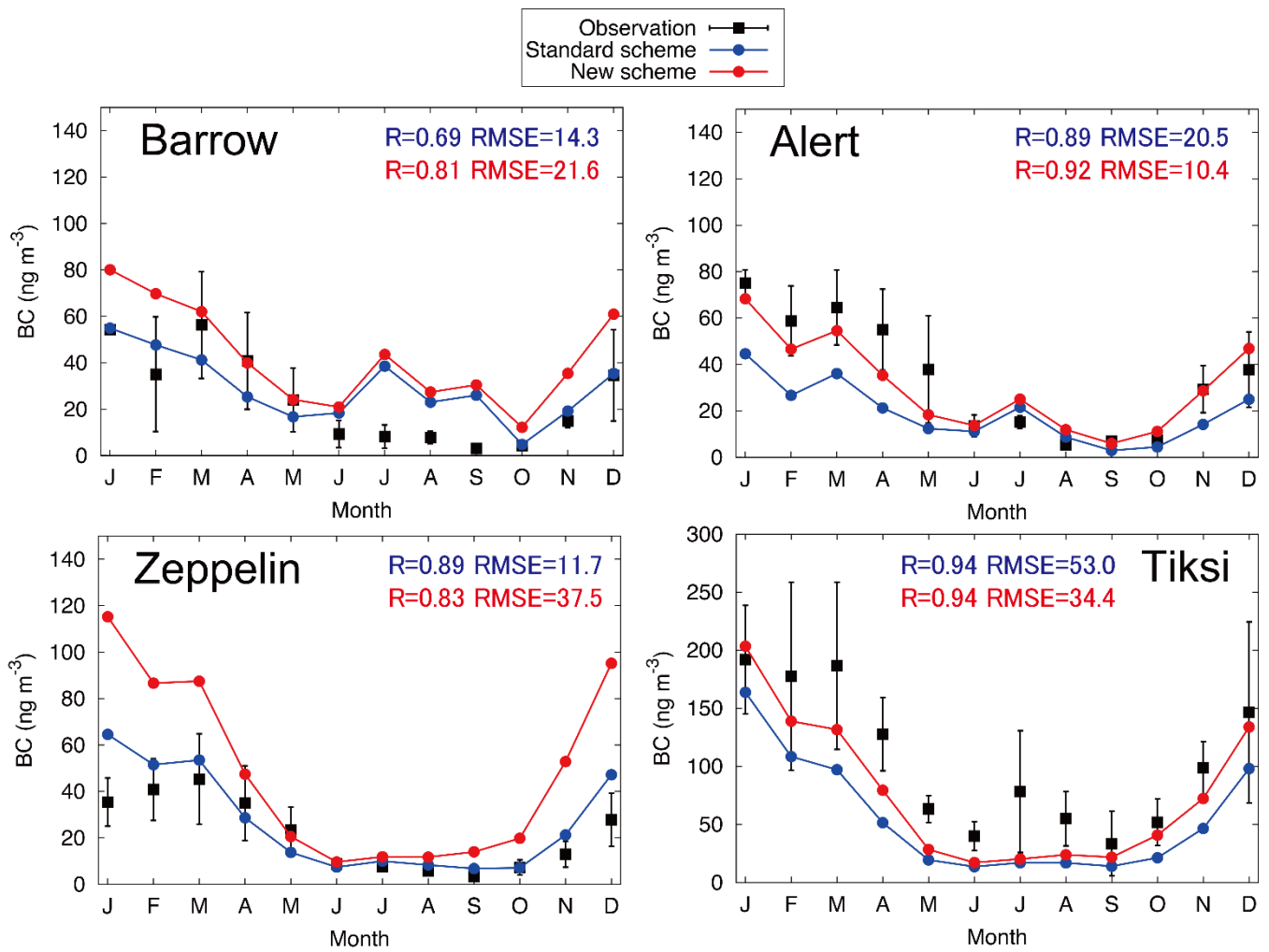


Figure 1: Annual emissions of BC from (a) anthropogenic and (b) biomass burning sources for the year 2010 and 2007–2011, respectively, and source regions for BC tracer tagging.



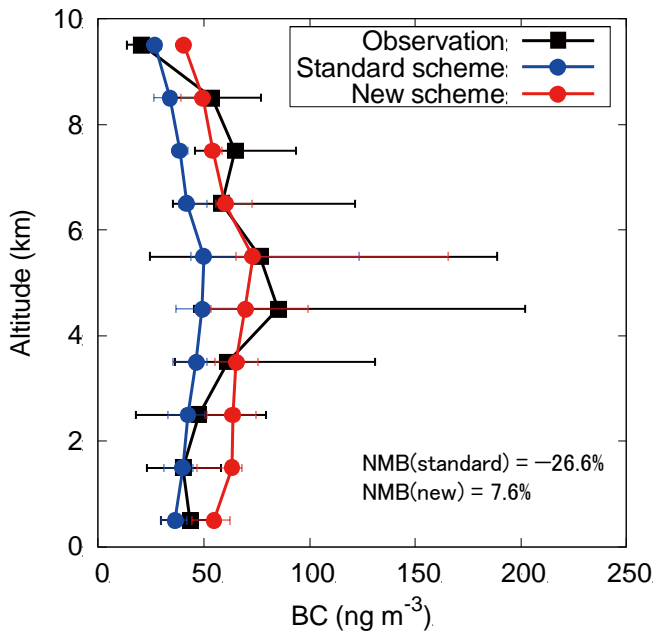


Figure 3: Mean vertical distributions of observed and simulated (blue solid line for standard scheme and red solid line for new scheme) BC over the region of ARCTAS aircraft campaign in April 2008. Black squares and colored circles represent the median values. The error bars indicate the 25th and 75th percentiles.

5

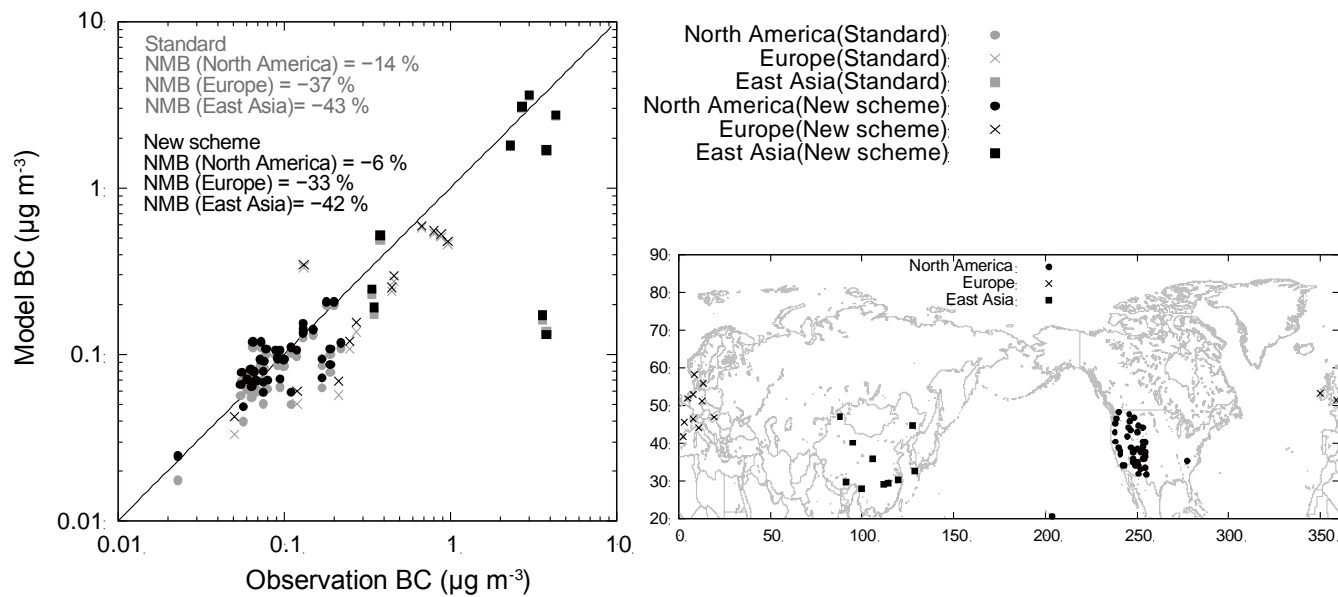


Figure 4: Scatterplots of annual mean BC concentrations modeled and observed at the surface sites in North America, Europe, and East Asia. Locations of the surface sites used for the comparisons (right).

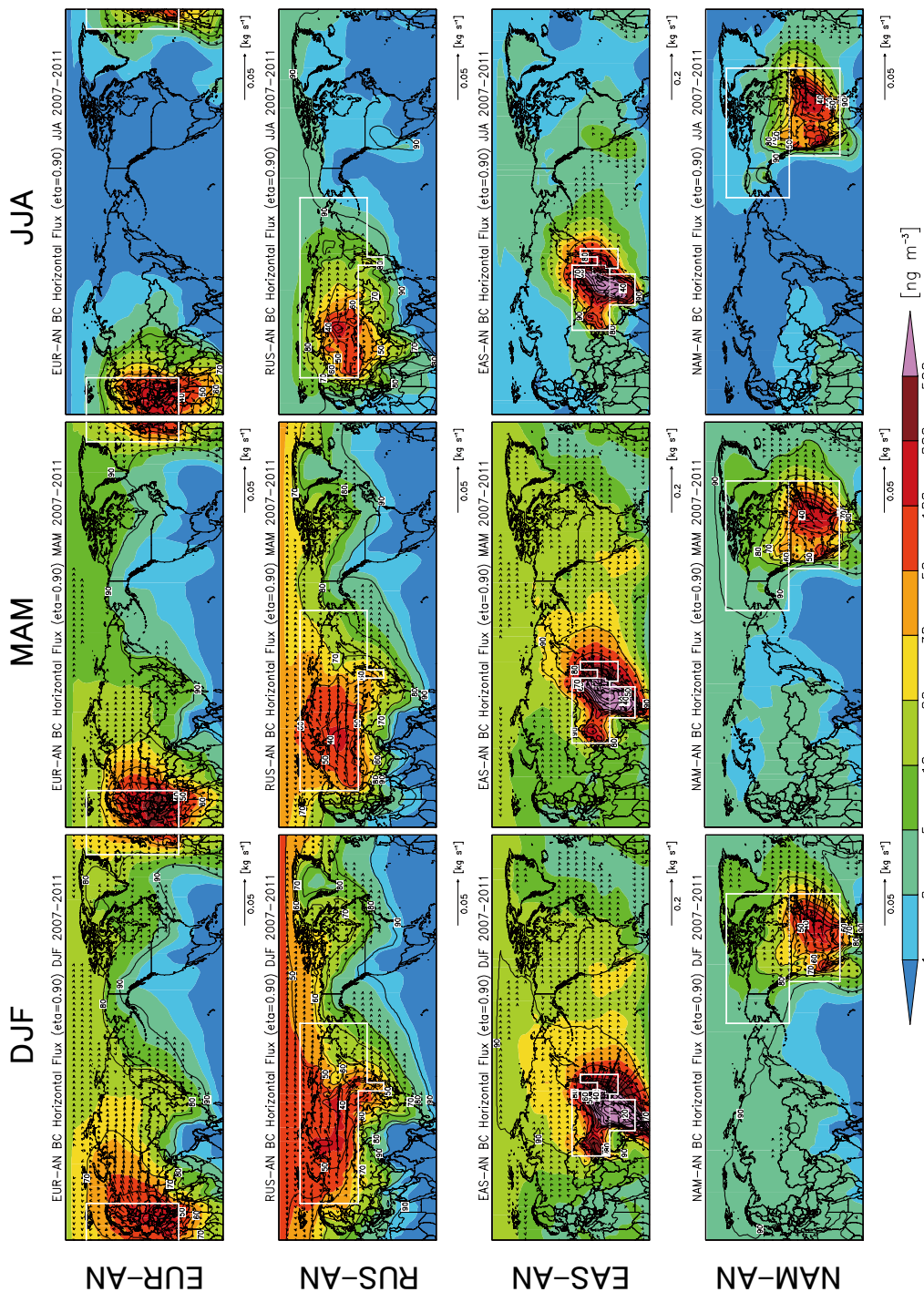


Figure 5: Distributions of seasonal mean concentrations (color) and horizontal fluxes (arrows) at 1 km altitude for selected tagged BC tracers in winter (DJF), spring (MAM) and summer (JJA): EUR-AN, RUS-AN, EAS-AN and NAM-AN. Wet scavenging ratios are also shown by solid lines. White lines indicate the source regions of BC tracers.

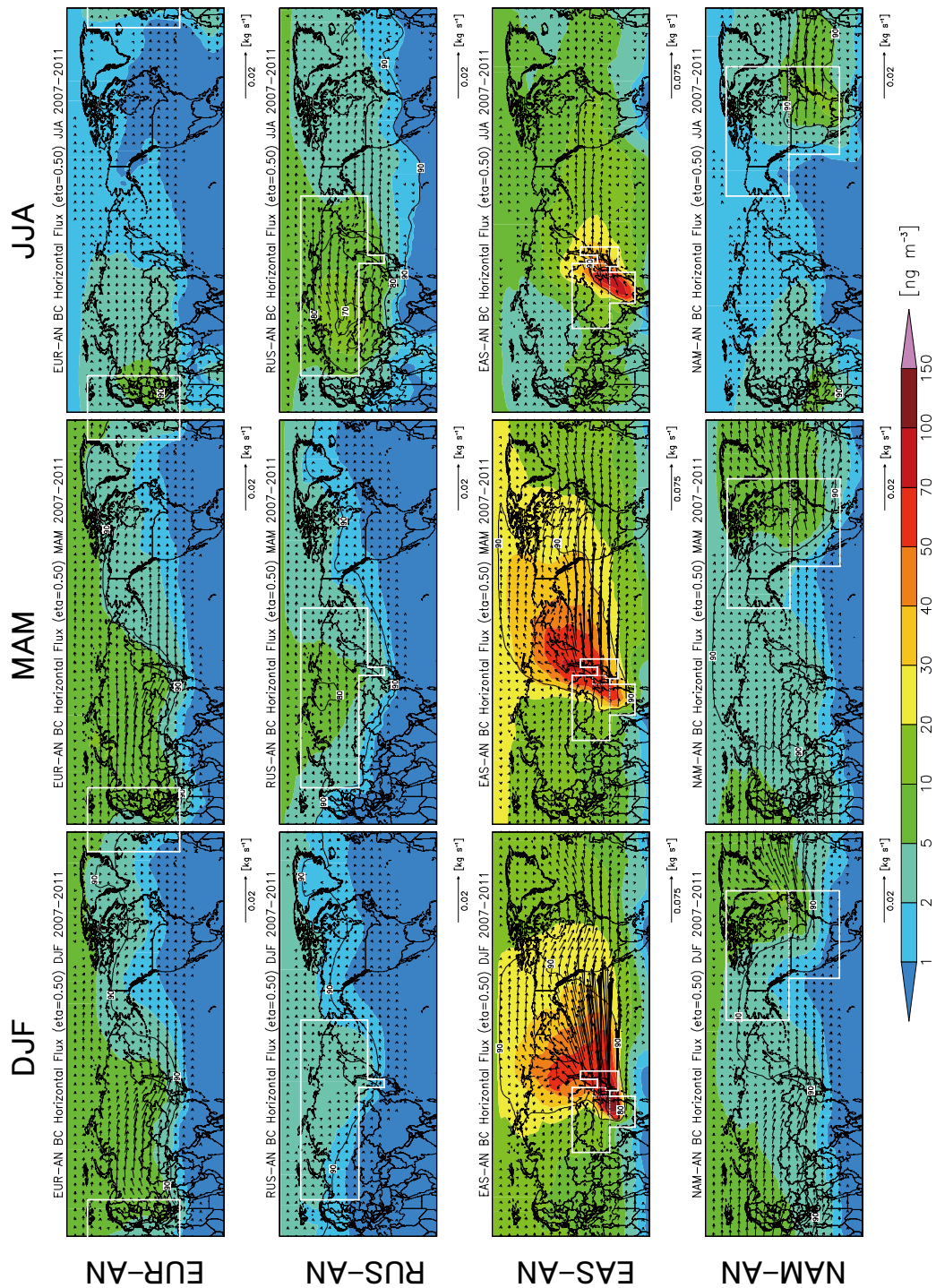


Figure 6: Same as Fig. 5 but for 5 km altitude.

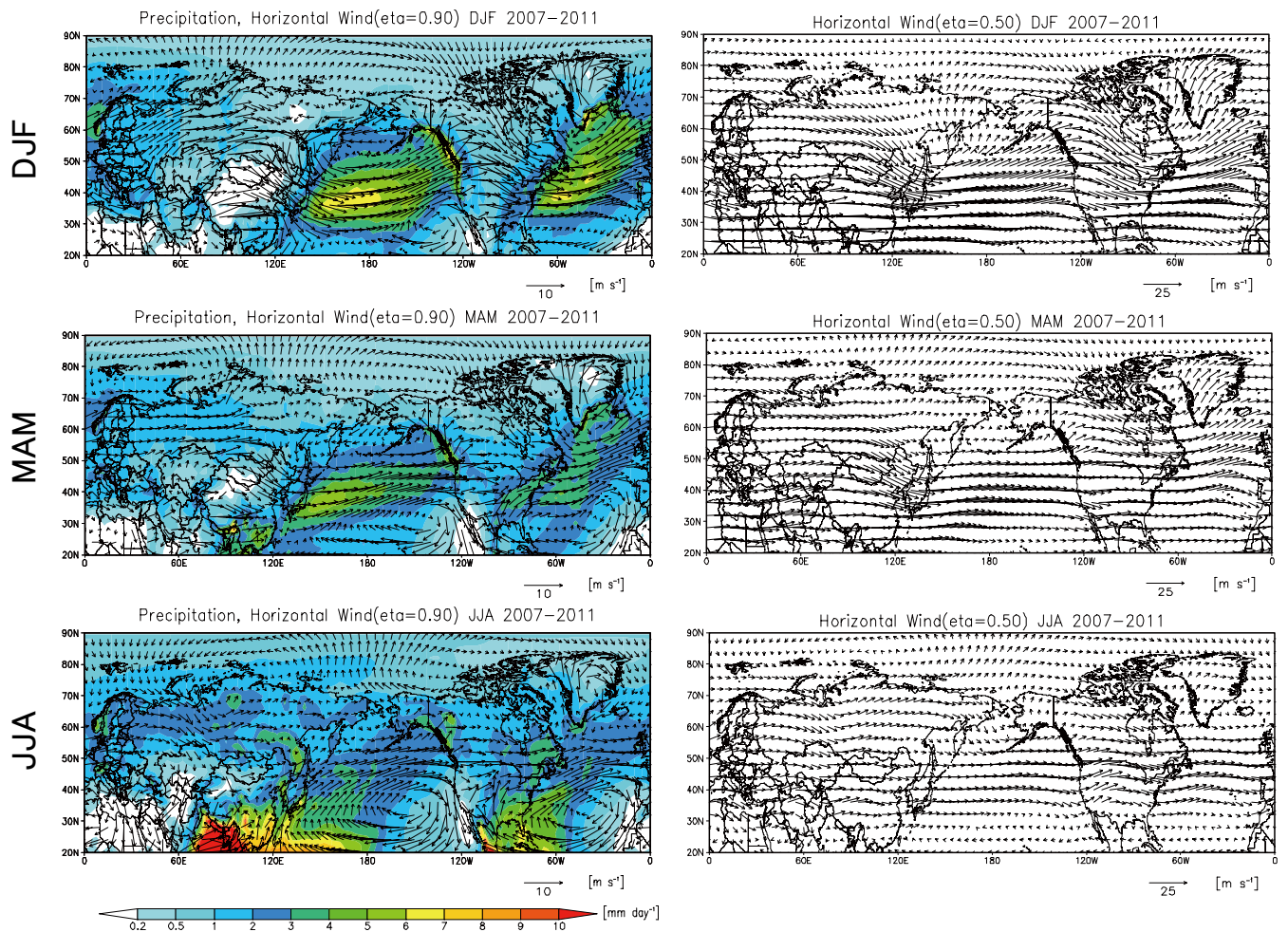


Figure 7: Distributions of seasonal mean precipitation (color) and horizontal winds (arrows) of GEOS-5 at 1 km (left) and 5 km (right) altitudes in winter (DJF), spring (MAM) and summer (JJA).

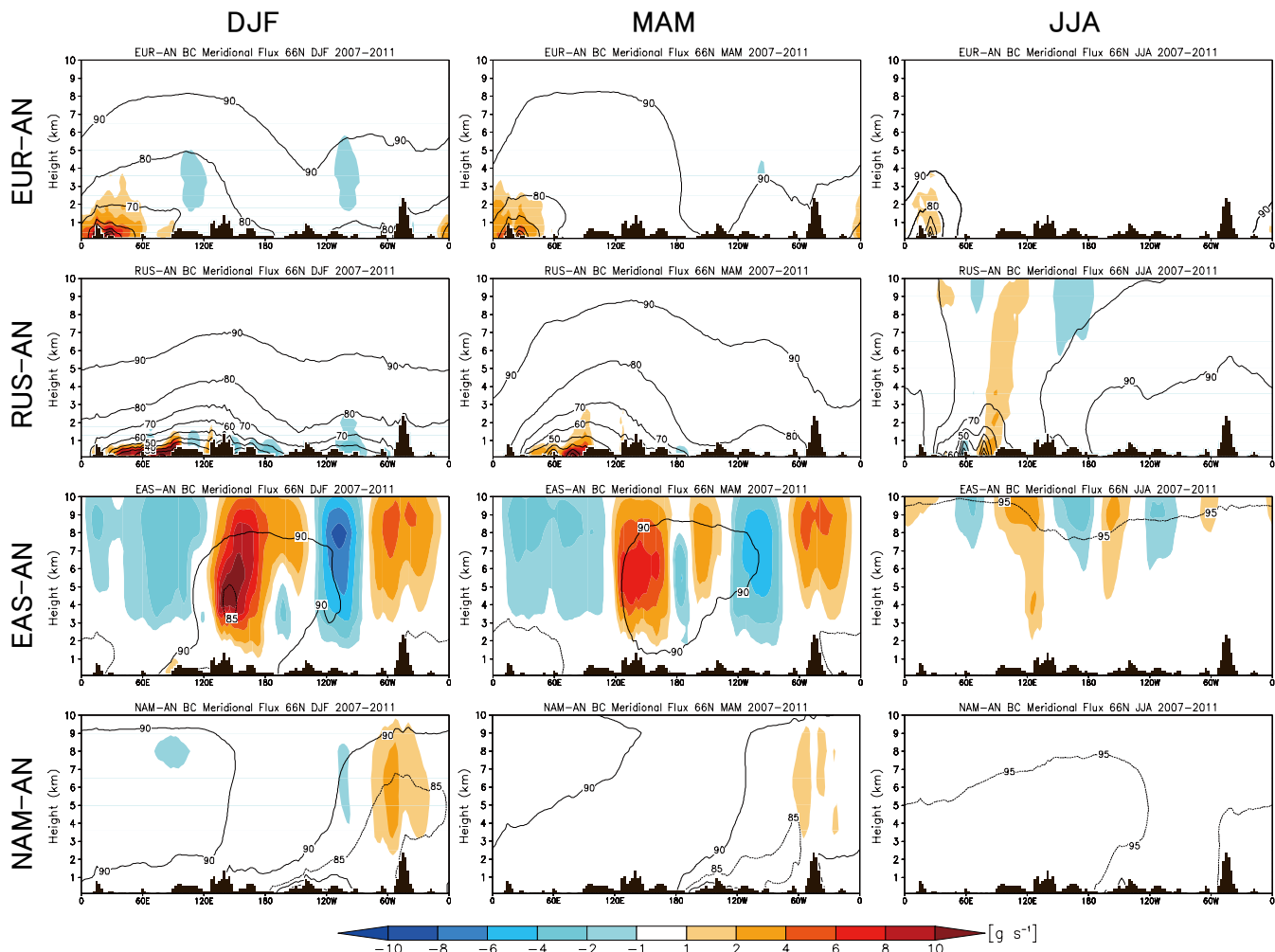


Figure 87: Longitude-height cross sections of mean net meridional fluxes at 66°N for selected tagged BC tracers in winter, spring and summer: EUR-AN, RUS-AN, EAS-AN and NAM-AN. Wet scavenging ratios are also shown by solid lines.

Arctic BC (66–90N)

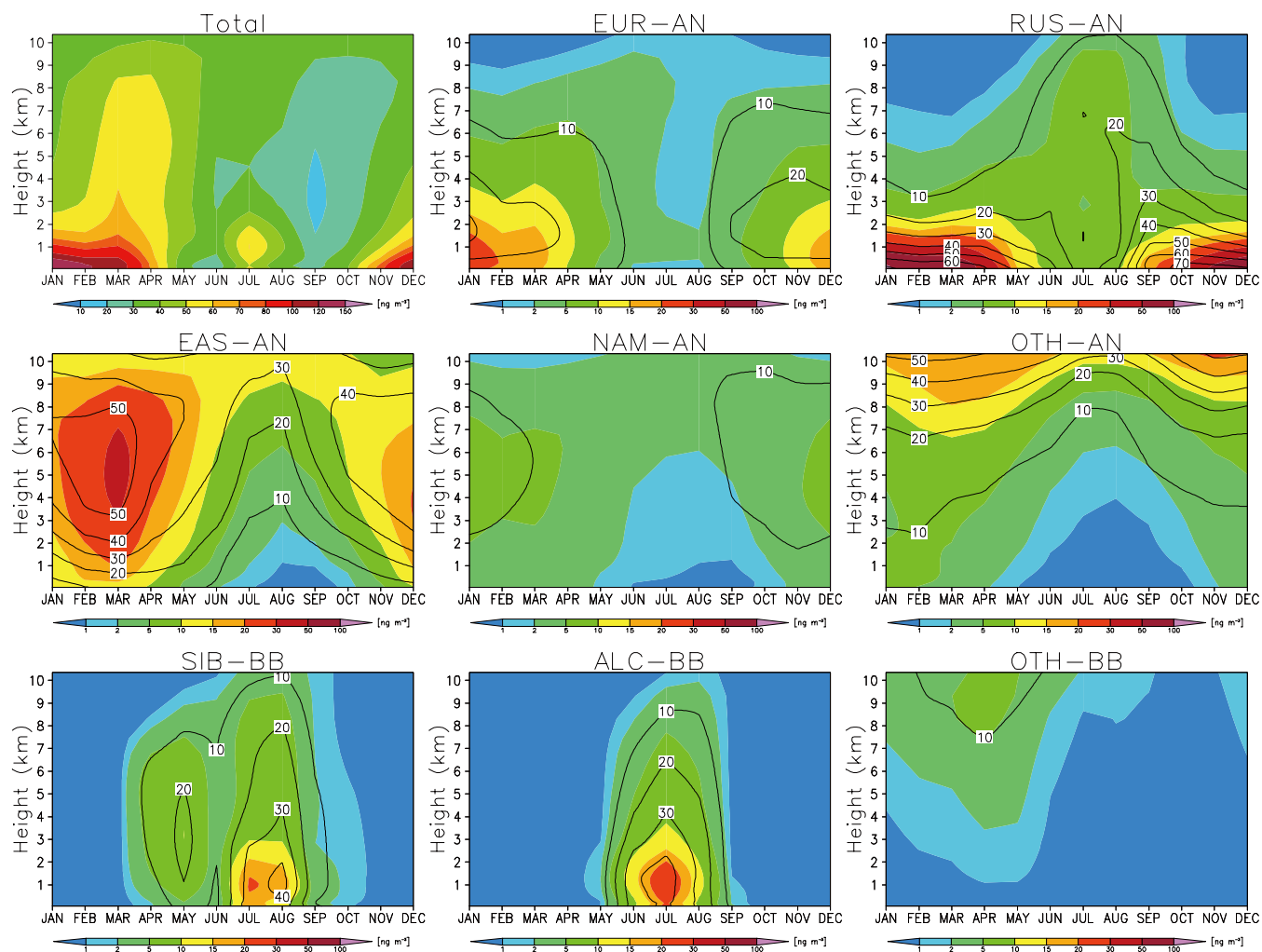


Figure 98: Month-altitude cross sections of mean BC concentrations from individual sources in the Arctic (66°–90°N). Relative contributions to total BC concentrations are also shown by solid lines.

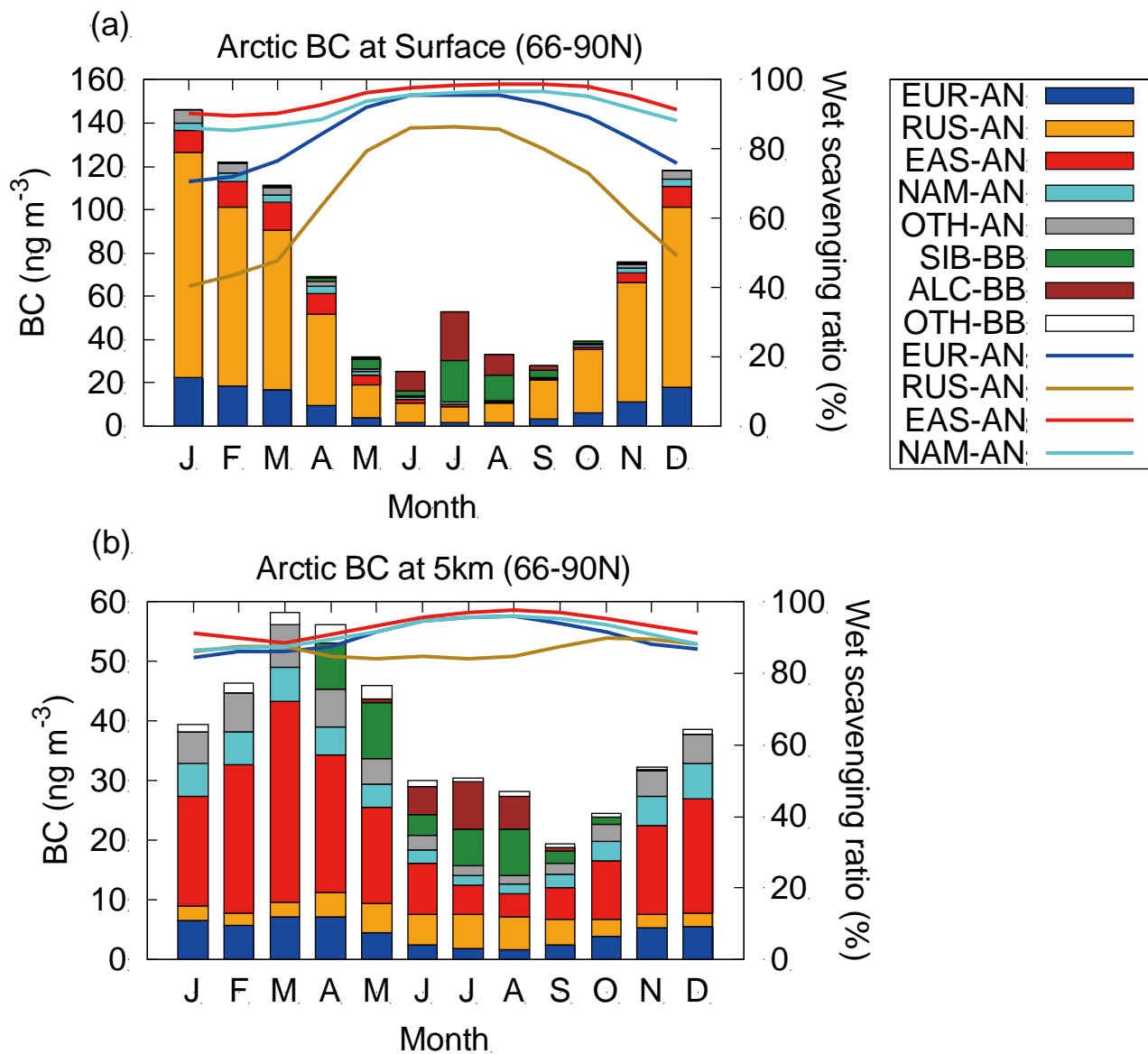


Figure 109: Seasonal variations of mean BC concentrations (left axis) from individual sources (a) near the surface and (b) at 5 km altitude in the Arctic (66°–90°N). Mean wet scavenging ratios (right axis) for major anthropogenic source regions are also shown by solid lines: EUR-AN, RUS-AN, EAS-AN and NAM-AN.