

## **Anonymous Referee #1**

We thank the referee for the criticism and suggestions that have help us improve the paper.

*1. The numerical experiments are based on one set of initial and lateral boundary conditions from NCEP Reanalysis. Hence, readers can easily raise a question like how sensitive the simulated aerosol effect is to the meteorological fields? One approach to address such concern is to carry out additional ensemble simulations by reasonably perturbing initial and boundary meteorological fields. With those analyses, the authors can obtain spread of simulated aerosol signals and justify the robustness of the aerosol effect. The similar approach has been used in the previous studies (Wang et al., 2014, Lin et al., 2016).*

Thank you for the suggestion. This is an interesting idea we look forward to following this line of work in the next study. We also included this idea as future work in the paper.

*2. Page 7 lines 5-9, the changes in upwelling vapor flux at cloud base are not well explained. Since the aerosol induced additional latent heat release is expected to occur well below the cloud base, the changes at the cloud base level may indicate the modification on the whole circulations in the cloud such as low level convergence.*

We have improved the explanation about the upwelling vapor flux. We appreciated the suggestion.

*3. Fig. 10 and 12, to better reveal the heterogeneous versus homogeneous ice nucleation, I suggest to provide 0 degree and -35 degree isothermal lines.*

We added a shaded area that corresponds to the layer between 0 and -35 degree *isothermal lines*. Thank you for the idea.

*4. Page 8 lines 20-24, more discussions are still needed to explain why CCN leads to an increase in graupel but a decrease in hail. Both hydrometeors are formed mainly by the riming processes. The authors only talk about cloud droplet size, but neglect the influence of the raindrop size. The finding about distinctive responses of graupel and hail is important, as some microphysics do not consider hail explicitly. A plot/table to show the riming efficiency is desired.*

We mainly focused on the effect of CCN on cloud droplet spectra as the collision efficiencies between liquid and ice particles dramatically vary when changing the drop size within the cloud droplet range (i.e., several orders of magnitude below 40 microns in radius), compared to those coming from potential changes in raindrops.

For small ice particles interacting with supercooled liquid particles the variation of collision efficiencies linked to changes in droplet size are expected to be far more important than the collision efficiencies impact within the raindrop size changes.

Actually, the circulation around the falling raindrop can invert the increasing response making collision efficiencies slightly lower when increasing raindrop size.

In the case of graupel/hail collecting liquid particles, changes in collision efficiencies produced by raindrop range size changes are expected to be almost negligible. Moreover, in this stage of growth, thermodynamic limits are expected to play a dominant role compared to the buck amount of liquid per unit time impacting the hail/graupel particle.

We have included in the atmospheric model section (**line 30-31**) that the riming efficiencies are described in detail by Saleeby et al. (2008).

*5. Since the latent heat release plays a central role in the aerosol invigoration effect, it is extremely valuable to display the spatial distribution of latent heat explicitly.*

Thank you for the suggestion. We have added the total precipitation over the space and a figure with the ratio between convective/stratiform precipitation in order to give more detail about MCS structure.

*6. References mentioned above and suggested to be discussed in the manuscript:*

Thank you for suggesting the references, we have included them in the text.

## **Anonymous Referee #2**

We thank the referee for the criticism and suggestions that have help us improve the paper.

*1. The authors spend some time describing the features of an MCS in the introductory text, and then touch on none of them during the analysis and discussion. For example: there is a description of previous work on cold pool vs. shear dynamics, yet aside from a quick plot of buoyancy, the authors didn't examine how the actual storm organization changed with increased CCN. Were the cold pools deeper, colder, more widespread? Did this affect the longevity of individual convective cores or help to promote the growth of new ones? Could any difference be seen in the shape/tilt of the updrafts with a different shear/cold pool balance?*

Dear referee, we have isolated the cold pools in order to examine the aerosol impacts on them. Unfortunately we have had several problems in isolating them due to the complexity of the simulation:

- The model grid spacing is 2.5 km. We believe that it would be easier to isolate the cold pools in finer grids;
- The topography of the domain is complex thus upslope and downslope circulation combine with cold pools and confounding the distinction between the two.
- The horizontal temperature gradient was quite strong due to a cold front approach, thus making it hard to distinguish the effect of the cold pool.

The automatic cold pool localization did not converge due to these reasons. This will be an issue for future research.

*2. Most of the results were presented as domain averages, which leaves out a lot of details. The particularly interesting thing about an MCS is its complex structure, and averaging over all of this may gloss over important features. It would be quite useful, for instance, to know if any notable difference occurs in the storm anvil vs the convective core, or between convective and stratiform precipitation.*

Thank you for the suggestion. We have computed and included in the paper the ratio between convective and stratiform precipitation in order to show with more detail features about MCS's precipitation.

*3) The calculation of updrafts used in Figs 8,15 are not explained well. Are you considering an 'updraft' as a core consisting of multiple model columns? It is not clear how Fig 8 A and B are different. More analysis of the behavior of updraft cores would be beneficial, but the authors need to be clear in their definitions.*

We appreciated your suggestions. We have improved the text in order to make it clear. The changes are highlighted.

# Biomass burning CCNs enhance the dynamics of a Mesoscale Convective System over the La Plata Basin: a numerical approach

Gláuber Camponogara<sup>1</sup>, Maria Assunção Faus da Silva Dias<sup>1</sup>, and Gustavo G. Carrió<sup>2</sup>

<sup>1</sup>Instituto de Astronomia, Geofísica e Ciências Atmosféricas da Universidade de São Paulo, Brazil

<sup>2</sup>Department of Atmospheric Sciences of Colorado State University, USA

*Correspondence to:* G. Camponogara (glauberic@gmail.com)

**Abstract.** High aerosol loadings are discharged into the atmosphere every year by biomass burning in the Amazon and Central Brazil during the dry season (July–December). These particles, suspended in the atmosphere, can be carried via a low level jet toward the La Plata Basin, one of the largest hydrographic basins in the world. Once they reach this region, the aerosols can affect mesoscale convective systems (MCS), whose frequency is higher during the spring and summer over the basin. The present study is one of the first that seeks to understand the microphysical effects of biomass burning aerosols from the Amazon Basin on mesoscale convective systems over the La Plata Basin. We performed numerical simulations initialized with idealized CCN profiles for an MCS case observed over the La Plata Basin on 21 September 2010. The experiments reveal an important link between CCN number concentration and MCS dynamics, where stronger downdrafts were observed under higher amounts of aerosols, generating more updraft cells in response. Moreover, the simulations show higher amounts of precipitation as the CCN concentration increases. Despite the model’s uncertainties and limitations, these results represent an important step toward the understanding of possible impacts on the Amazon biomass burning aerosols over neighboring regions such as the La Plata Basin.

## 1 Introduction

The Amazon Basin exhibits a huge contrast in terms of aerosol concentration between wet (January-June) and dry (July-December) seasons (Andreae et al., 2004; Martin et al., 2010; Artaxo et al., 2013). Aerosol loading is typically about hundreds of particles per  $\text{cm}^3$  in the wet season with a similar pattern and microphysical characteristics to those found in remote ocean regions. For this reason, the Amazon region has been referred to as "green ocean" (Williams et al., 2002). However, during the dry season, when the Amazon Basin faces a polluted regime with tons of particles being released into the atmosphere by biomass burning, the number of aerosols increases drastically, close to one order of magnitude. The majority of these emissions are due to anthropogenic activities regarding agriculture and deforestation (Reinhardt et al., 2001; Morton et al., 2008). According to Freitas et al. (2005), these aerosols can be transported by the wind to other regions such as the La Plata Basin.

The La Plata Basin is one of most intense convective regions in the world (Zipser et al., 2006) with significant lightning events (Albrecht et al., 2016). This region is dominated by mesoscale convective systems (MCSs) during the spring and summer

seasons (Velasco and Fritsch, 1987; Conforte, 1997; Torres and Nicolini, 2002; Vera et al., 2006; Salio et al., 2007; Durkee and Mote, 2010), which have an important role in the La Plata Basin's hydrological cycle, being responsible for approximately 90% of the total rainfall over the basin (Nesbitt et al., 2006). These systems may produce strong winds, floods, heavy rain and hail (Velasco and Fritsch, 1987; Fritsch and Forbes, 2001).

5 Mesoscale convective systems normally result from the combination of certain ingredients such as atmospheric instability, mesoscale circulation, the weak midlevel short-wave trough and low level jet (LLJ). Mesoscale circulations contribute to air parcels reaching the free convection level; atmospheric instability favors convection development; the midlevel short-wave trough intensifies low level convergence; and the LLJ brings moisture and heat from the Amazon (Fritsch and Forbes, 2001; Silva Dias et al., 2009). Moreover, the LLJ may also advect huge amounts of aerosols from the Amazon to the La Plata Basin  
10 during the dry and dry to wet transition seasons (Freitas et al., 2005), which may interact with MCS in different ways.

Aerosols can absorb and scatter solar radiation (direct effect) leading to a decrease in the surface temperature (semi-direct effect) or even a stabilization of the atmosphere by warming the surrounding air (Eck et al., 1998; Koren et al., 2004, 2008). Part of the aerosols can have affinity with water and act as cloud condensation nuclei (CCN), this being known as the indirect or microphysical effect. In addition, CCNs can increase the warm cloud albedo for a constant liquid water content (Twomey,  
15 1974) and change the lifecycle and the warm rain triggering mechanism (Albrecht, 1989; Martins et al., 2009).

As mentioned in the literature (Rosenfeld, 1999; Khain et al., 2005; Rosenfeld et al., 2008; van den Heever et al., 2006; Carrió and Cotton, 2011; Carrió et al., 2014; Zhou et al., 2016), the aerosol microphysical effect is related to the number of cloud droplets that are nucleated. For example, a polluted atmosphere (large number of CCN particles) produces more cloud droplets than a clean one if there is enough water vapor to support a larger population. This effect leads to a narrower  
20 cloud droplet size spectrum filled with smaller cloud droplets, which delays the collection growth onset. Hence, more cloud droplets are thrust into freezing levels, becoming supercooled. Finally, the supercooled droplets may either be collected by ice particles (riming process) or freeze homogeneously producing graupel and eventually hail, and ultimately affecting rainfall at the surface.

By using the Brazilian development on the Regional Atmospheric Modeling System (BRAMS), Martins et al. (2009) investigated the aerosol effects on cloud microphysical processes during the end of the Amazon dry season and observed significant  
25 impacts on precipitation process in spatial and temporal dimensions. The maximum liquid water values increased for high aerosol concentrations in all runs. By using a combination of different observational data sets, Gonçalves et al. (2015) noted that a high concentration of aerosol in the Amazon Basin may increase the cloud lifetime during the dry season as well as convection strengthening.

30 The microphysical effects of aerosols in the precipitation produced by deep convective clouds are nonlinear and, thereby, sensitive to several processes such as environmental conditions, aerosol particle size and chemistry and meteorological system type. Through numerical simulations, Li et al. (2009) observed that, under polluted condition, WRF model produced more precipitation and increased its intensity locally. Wang et al. (2011) verified an increase in precipitation of 16% generated by an MCS under polluted conditions, suppressing light and moderate precipitation and enhancing heavy precipitation. Moreover,  
35 precipitation enhancements under polluted scenarios were also observed in tropical cyclones (Wang et al., 2014).

The invigoration of convective cells due to a CCN increase is usually explained by the latent heat release increase caused by riming enhancement (van den Heever et al., 2006; Rosenfeld et al., 2008). However, CCNs also can affect cold pool and wind shear interaction, modulating the convection strength (Fan et al., 2009). When cold pool and wind shear strengths are balanced, convective cells tend to become more upright, and, consequently, more intense (Rotunno et al., 1988). Environments with high CCN concentrations may invigorate the convection by weakening the cold pool under weak shear conditions (Fan et al., 2009; Lebo and Morrison, 2014). Polluted atmospheres favor the development of fewer but larger raindrops, hence, evaporation cooling is reduced, which decreases the cold pool strength. On the other hand, a combination of strong wind shear with high aerosol loadings may overcome the latent heat release and, as a consequence, weaken convection. This occurs because stronger cold pools are needed to keep the updraft cells more upright under strong wind shear conditions, as shown by Rotunno et al. (1988).

Lebo and Morrison (2014) also observed different responses in precipitation when wind shear is intensified under polluted conditions. As wind shear increases, aerosols tend to generate more precipitation due to greater condensation. In contrast, precipitation was significantly reduced in the strongest wind shear scenario. This effect was caused by an excessively tilting downshear of updraft cells that led to raindrops to fall ahead of the gust front and thus to immediately evaporate.

Through a bidimensional cloud resolving model, Tao et al. (2007) examined the aerosol effects in three distinct deep convection cases from regions with different environments: sea breeze convection in Florida, USA; the squall line in Kansas, USA; and the tropical mesoscale convective system over the Pacific Ocean. For all cases, rainfall suppression was observed under high CCN concentrations during the initial stages of the systems. Conversely, in the mature stage, rainfall underwent suppression only over Kansas, being little affected over Florida and intensified over the Pacific. These results suggest that evaporation cooling plays an important role in this phenomenon since stronger (weaker) evaporation was observed in polluted environments under moister (drier) conditions. Stronger evaporation favors more intense downdrafts and cold pools, which, depending on atmospheric shear, may intensify the convection and then increase the precipitation. In addition, [Clavner et al. \(2017\) show that changes in downdraft and cold pool intensities by enhancing CCN concentration can lead to a significant impact on MCS derechos.](#)

According to Fan et al. (2007), large aerosol loadings are capable of greatly changing the convection strengthening and rain rate in environments with a high moisture content. On the other hand, Carrió et al. (2014) observed a stronger effect of CCN on hail under low level drier conditions, which favor higher cloud bases, and which do not contribute to warm rain processes, allowing more cloud droplets to become supercooled. As a result, the riming process is enhanced, and hail mass is increased. However, a further CCN increase may generate much smaller droplets, causing riming inhibition and, therefore, homogeneous freezing enhancement. [In addition, Seigel and van den Heever \(2013\) observed that hail size can impact convection strength by hail recirculation mechanism, which makes the interaction between CCN and hail even more complex. Seigel and van den Heever \(2013\) suggest that the recirculation mechanism at midlevel in upshear-tilted squall lines contributes to the updraft invigoration by latent head release. This effect leads to an increase in precipitation and cold pool intensity, which contributes to an increase in the squall line strength.](#)

Larger anvil areal coverage for squall lines was observed by Saleeby et al. (2016) during experiments with the Regional Atmospheric Modeling System (RAMS). The authors found a strong relationship between ice particles and the anvil area, in which larger areal anvils are related to more ice particles regardless ice mixing ratio under polluted scenarios. This effect is an important radiative forcing since increase ice particle residence time and albedo, and reduce the cloud top cooling. Fan et al. (2012) suggest that the warming effect at freezing levels in deep convective clouds caused by aerosol enhancement may balance at certain degree the aerosol radiative cooling effect due to extent the low level clouds life time.

In summary, MCSs can be affected by aerosol and environmental conditions. Aerosol effects on MCSs can also be influenced by the environment, making the study of this phenomenon even more complex. As mentioned by Wall (2013), Camponogara et al. (2014) and Gonçalves et al. (2015), separating aerosol effects from environmental forcing is a great challenge. Therefore, despite the limitations, numerical models appear to be an important tool to understand the aerosol-cloud-precipitation processes, as pointed out by Tao et al. (2012). The present study is one of the first that seeks to understand the microphysical effects of biomass burning aerosols from the Amazon Basin on mesoscale convective systems over the La Plata Basin. In order to do so, we performed numerical simulations varying CCN number concentration for an MCS case over the La Plata Basin during the spring season. Section 2.1 gives a brief description of the atmospheric model, focusing on its microphysical parametrization, and Sect. 2.2 describes how the numerical experimentation was performed. Finally, results and discussion are presented in Sect. 3, followed by conclusions in Sect. 4.

## 2 Methodology

### 2.1 The Atmospheric Model

Originally developed from RAMS (Regional Atmospheric Modeling System), the Brazilian development on the Regional Atmospheric Modeling System (BRAMS), version 4.3, is used in this study. RAMS was created by a research group from Colorado State University, joining three numerical models as reported by Cotton et al. (2003): a cloud/mesoscale model (Tripoli and Cotton, 1982); a hydrostatic version of this cloud model (Tremback, 1990); and a sea breeze model (Mahrer and Pielke, 1977). According to Cotton et al. (2003), RAMS, as well as BRAMS, is a non-hydrostatic model with several options related to its physics, which can be set according to the experiment type. It is possible to set different grid spacing using multiple grids, which can be nested either 1-way (coarser grids communicating with finer grids) or 2-way (both coarser and finer grids communicating with each other). Detailed description of the current BRAMS version may be seen in Freitas et al. (2017).

BRAMS has been updated with the two moment microphysical bulk scheme currently used in RAMS, version 6.0, which predicts number concentration and mixing ratio for eight hydrometeor species: cloud, drizzle, rain, pristine ice, snow, aggregates, graupel and hail. All hydrometeor categories have their own size distribution represented by a generalized gamma function (Walko et al., 1995; Meyers et al., 1997; Cotton et al., 2003; Saleeby and Cotton, 2004, 2008).

Together, cloud and drizzle categories represent a bimodal distribution of cloud droplets, as reported by Hobbs et al. (1980), and often observed in nature, where drizzle is basically large cloud droplets. The larger droplets function as an intermediate state between cloud droplets and raindrops, slowing the time that the cloud droplet takes to grow into raindrop size in a more realistic way. Pristine ices are primary ice crystals and grow only by vapor deposition. Once these ice crystals reach sizes greater than  $100\ \mu\text{m}$  they become snow. Aggregates are produced by collision and coalescence of pristine ice and snow species. Only snow and aggregate categories can be converted to graupel. The high-density ice particles such as frozen raindrops and hailstone are represented by the hail category.

Cloud number concentrations are predicted by consulting a look-up table that was pre-computed through a bin-parcel model. This variable is a function of the air temperature, vertical velocity and the CCN number of particles. Drizzle number concentration can be produced by cloud droplet self-collection or Giant CCN activation (such as CCN activation). Pristine ice number concentration is predicted by either IN activation, which depends on ice supersaturation, or homogeneous freezing. The aerosol concentrations can be defined as either a homogeneous (single vertical profile) or a heterogeneous field and can be advected and diffused.

The riming processes are computed by using a binned approach, which tends to be more accurate owing to considering an individual collection efficiency for each bin instead of taking just one collection efficiency for the entire gamma distribution (Saleeby and Cotton, 2008). **The rimming efficiencies of all ice categories, used by the RAMS's microphysical scheme, can be found in Saleeby and Cotton (2008).** Bin sedimentation, sea salt and dust treatment and an algorithm for heat and vapor diffusion, without requiring iterations, are other examples of implementations currently present in the microphysical scheme (Cotton et al., 2003).



## 2.2 Experiments design

Numerical experiments were performed with BRAMS, version 4.3, for an MCS case observed over the La Plata Basin on 21 September 2010 (Fig. 3). We use three 1-way nesting grids with 16 km, 4 km and 2.5 km of grid spacing, respectively from the course to finest one. All grids are centered over the La Plata Basin, as can be seen in Fig. 1, and their domain sizes are 5 4800×5120 km (grid 1), 1400×1416 km (grid 2) and 1250×1250 km (grid 3). Figure 1 also shows a shaded area related to the La Plata Basin topography elevation. The vertical grid spacing varies from 100 m to 600 m, with a ratio of 1.1, whereas the top of domain extends to near 20 km, with 45 vertical levels. All experiments started on 20 September 2010 at 12:00 UTC. Table 1 shows the other important settings used in the experiments.

We performed four experiments with different vertical profiles of CCN concentrations, based on the work of Freitas et al. 10 (2005) (Fig. 2). The CCN profiles have their peaks at 2.5 km height, where CN-Low, CN-Mid, CN-High and CN-ExtHigh have 500, 1200, 1800 and 2800 particles per centimeter, respectively. Above 4.9 km, the CCN concentrations were considered 100 cm<sup>-3</sup>. These profiles were also nudged on the northern boundary of the finest grid domain, covering five meridional grid cells in order to maintain a constant aerosol input into the grid, as observed in northerly low level flow events (Freitas et al., 2005).

15 All the experiments were initialized heterogeneously by using the third generation of reanalysis from the National Centers for Environmental Prediction (NCEP) Climate Forecast System Reanalysis (CFSR). These data sets have 37 vertical levels, 4 times a day (00, 06, 12, 18 UTC), horizontal grid spacing of 0.5° × 0.5° and are available for the period from 01/01/1979 up to 01/01/2011. Moreover, the model also was fed with the Normalized Difference Vegetation Index (NDVI), heterogeneous soil moisture, sea surface temperature weekly averaged, topography, land use and soil texture, downloaded from the *Centro* 20 *de Previsão do Tempo e Estudos Climáticos* of *Instituto Nacional de Pesquisas Espaciais* (CPTEC/INPE) through the link <http://brams.cptec.inpe.br>.

## 3 Results and discussion

Numerical experiments varying CCN concentrations (Fig. 2) were performed by using the BRAMS-4.3 model for the MCS case observed over the La Plata Basin on 21 September 2010. This mesoscale system was observed by the satellite GOES 12, 25 whose images can be visualized in Fig. 3. The first cells started over northeast of Argentina near 06:00 UTC. In the next few hours these convective cells begin to grow and become organized, forming a large cloud shield at 08:30 UTC. Near 11:00 UTC, the MCS reaches its mature stage, the South of Brazil almost entirely.

Synoptic fields are made from CFSR (Fig. 4) and used as initial and boundary conditions in BRAMS. Sea level pressure (contour lines) and thickness (shaded) are given by Fig. 4a. The thickness refers to the difference between the geopotential 30 heights of the pressure levels of 500 hPa and 1000 hPa. This variable is proportional to the mean temperature in the layer between 500–1000 hPa. A trough, aligned meridionally, can be seen over the Argentina coast with a strong temperature gradient ahead (Fig. 4a). Furthermore, it is possible to note a warm air mass over the La Plata Basin, where a peak of thickness is found over northwest of Paraguay, the north of Argentina and the south of Bolivia, which is followed by a low pressure displaced

southward (Fig. 4a). Figure 4b shows the wind field (vectors) and specific humidity (shaded) at 850 hPa. A meridional flow is seen advecting moisture (Fig. 4b) and heat (Fig. 4a) from the Amazon Basin to Paraguay, northern Argentina and southern Brazil. The trough observed in Fig. 4a also appears in the wind field at 850 hPa as well as the South Atlantic High. Geopotential height (contour) and vertical p-velocity (shaded) at 500 hPa are given by Fig. 4c. The trough observed in at 1000 hPa and 5 850 hPa levels, also appears at 500 hPa, but slightly displaced to the northeast (Fig. 4c), followed by strong upward motions ahead with peaks of  $-2.5 \text{ Pa/s}$ . A large region of significant negative values of p-velocity associated to the trough is observed over the Atlantic Ocean ( $50^\circ\text{W} - 35^\circ\text{W}$  and  $50^\circ\text{S} - 33^\circ\text{S}$ ) and the La Plata Basin. Figure 4d depicts the wind direction (vector) and magnitude (shaded) at 250 hPa. The subtropical high level jet is observed over Argentina near to a diffluence zone that covers Uruguay, southern Brazil, the northeast of Argentina and Paraguay, which may contribute to upward motion. 10 Conversely, the wind is significantly decelerating over this area, possibly leading to the opposite effect of the diffluence. This configuration may explain why wind divergence is not observed at 250 hPa in the region (not shown here). In addition, the trough observed at other levels also appears at 250 hPa slightly displaced to the northeast.

The dynamical patterns presented in Figura 4 provide a favorable environment for convection development over the La Plata Basin. The trough, which extends vertically along the troposphere slightly tilted to northeast, moves toward the La Plata Basin, 15 contributing to low level convergence, and, therefore, upward motion. Furthermore, north wind at low levels advects heat and moisture, which provide an atmosphere favorable to MCS development.

Synthetic satellite imagery is computed from model output in order to compare the simulations to GOES satellite observations. The synthetic brightness temperature is generated for the thermal channel  $10.7 \mu\text{m}$  by using the Community Radiative Transfer Model (CRTM) that is described by Chen et al. (2008). Figure 5 shows these results at 06:00, 08:30 and 11:00 UTC 20 for different CCN concentrations, where the brightness temperature is shaded. The MCS area was delimited by contouring the brightness temperature equal to  $-32^\circ\text{C}$  (Maddox, 1980), in order to use this area as a mask for statistical analyses. By comparing the Fig. 5 against satellite observations (Fig. 3), we can see that the convective cells are slightly displaced toward the east, and the convection over the northeast of Argentina was not well simulated, and the lack of dense observational network in the region may partially explain the model's errors. However, the model presented results with reasonable accuracy 25 and was able to simulate the main system's life cycle, which allows for the study of aerosol impacts on the simulated MCS. Slight differences between the runs are noted, especially at 11:00 UTC. Experiments with more aerosols show smaller values of brightness temperature, which are located in different places for each simulation. These results suggest that CCNs can modify the microphysical structure of the system, although they do not seem capable of significantly changing its overall shape. Thus, a more detailed analysis is shown in the following paragraphs.

30 **The accumulated precipitation produced by the MCS is given in Figure 6. Experiments with more CCN number concentration present larger precipitation values spreaded over a bigger area when compared with CN-Low experiment.** Figure 7 shows the precipitation results in terms of covered area, total accumulated and maximum rate as function of time. The covered area is computed by adding up the grid cell areas with precipitation for each 30 min; the total accumulated is basically the total of the precipitation occurred throughout time integration from 03:00 UTC; and the maximum rate is the maximum hourly accumulated precipitation in the finest grid domain for each 30 min. For these computations, we consider grid cells with at least 35

2 mm/h of precipitation. Precipitation shows different responses to CCN enhancements, depending on the point of view. The smallest amounts of total accumulated precipitation as well as the precipitation covered area are seen in the CN-Low run. As the CCN increases, larger amounts of total accumulated precipitation, covering bigger areas, are observed. On the other hand, the highest peak of the precipitation rate is seen at 09:00 UTC for CN-Med, followed by CN-Low, CN-High and CN-ExtHigh.

5 The CN-Med experiment presents higher precipitation rates during most of the time.

The ratio between total convective and stratiform precipitation is shown in Figure 8. This ratio was computed by dividing the total convective precipitation by the total stratiform precipitation for each 30 min. Both precipitation variables were produced only by the MCS. The methodology used to compute convective and stratiform partition follows that one described by Saleeby et al. (2016), which was based on Marinescu et al. (2016), Churchill and Houze (1984), Lang et al. (2003) and Feng et al. (2011).

10 Changes in convective/stratiform partition can be easily seen in Figure 8 where a large difference between CN-Low and the other experiments develops at first hours of MCS life cycle, where the clear environment presented less convective precipitation when compared to the stratiform one. Between 06:30 and 09:00 UTC, the experiment CN-Low dominates showing the larger ratios, which means less convective precipitation related to stratiform precipitation. After 09:30 UTC, the CN-Low experiment shows the smaller ratio.

15 Figure 9 shows the total integrated upwelling vapor flux at cloud base, taking into account only the grid cells with vertical velocity greater than zero. This variable is computed by multiplying the vertical velocity on the cloud base by the vapor mixing ratio right below and then integrating horizontally in area. We consider grid cells with cloud mixing ratio bigger than  $1 \times 10^{-6}$  g/kg and positive vertical velocity. Slight enhancement of CCN concentrations is enough to significantly change the input of vapor into the system. Further CCN enhancement leads to stronger upwelling vapor flux but does not increase the flux proportionally, revealing non-monotonical behavior. An increase in the upwelling vapor flux indicates that more vapor mass is entering the cloud system, which may be due to an intensification of the low level convergence as a response to changes in the latent heat release caused by aerosols enhancements.

20 Updraft morphology is a key factor to understand the aerosol impact on cloud dynamics, as has been demonstrated in the literature (van den Heever et al., 2006; Carrió et al., 2011; Lebo and Morrison, 2014). Therefore, we computed the number and total area of updrafts for all runs as function of time (Fig. 10). To compute the number of updraft cells we select the grid columns with mean vertical velocity (between 2 and 8 km height) greater than 0.9 m/s, hence, updrafts with a reasonable vertical extension are kept; second, we group neighboring columns, which means that an updraft cell may consist of multiple columns; third, we keep grid cells within these columns that have vertical velocities greater than 1 m/s in order to find the updraft boundaries. The total updraft area was calculated by adding up the maximum horizontal area in the vertical of each localized updraft cell. Experiments with higher aerosol concentrations tend to produce more updrafts, which, in turn, cover larger areas. These differences become apparent for certain periods such as 04:00 – 05:00 (system formation), 07:00 – 08:00, 08:00 – 09:30 and 09:30 – 11:00 (mature stage). The greatest differences between CN-Low and the other experiments occur during the mature stage, where CN-Med, CN-High and CN-ExtHigh exhibit about 250 updrafts, whereas CN-low has about 200 updrafts.

When we compare Figs. 7, 9 and 10, similarities between these variables become evident and show an important link between cloud microphysics and dynamics. The number of updrafts and, consequently, their total covered area increase as aerosol concentration is enhanced. This effect results in higher values of total upwelling vapor flux at cloud base which feeds the condensation process. Hence, larger amounts of total accumulated precipitation are generated over a bigger area. It is important to note that the total accumulated covered area, the total upwelling vapor flux, the number of updraft cells and the total updraft area were computed using different approaches, which end up reinforcing the outcomes.

Volume integrals for liquid categories throughout time are computed for updraft greater than 5 m/s (Fig. 11). In order to avoid meaningless computation, the volume integrals for concentrations of each liquid hydrometeor class are weighted by their mass. The maximum quantities of liquid mass, resulting from warm processes, are noted between 08:30 and 09:00 UTC. As CCN increases, cloud droplets and supercooled droplets increase in mass and number, whereas drizzle and rain demonstrate an opposite pattern. This effect is widely discussed in the scientific literature. In fact, higher aerosol loadings nucleate larger number of cloud droplets, inducing a narrow cloud droplet spectrum, in other words, lots of droplets with smaller sizes. As a consequence, the cloud droplet collection and warm rain formation are suppressed, allowing cloud droplets to be thrust aloft to upper levels. Once cloud droplets reach the freezing levels, they immediately become supercooled and are eventually either collected by ice particles or freeze.

Figure 12 shows the mean vertical profiles of mixing ratio and number of particles for cloud, drizzle, rain and supercooled droplets, considering the grid columns whose vertical velocity is greater than 5 m/s (Fig. 12). The number concentration is weighted by the hydrometeor mass as in Fig. 11. By comparing Figs. 12 and 11, we can see that the aerosol effect observed in the volume integrals also clearly appears in the mean vertical profiles. In addition, we can see two well defined peaks in the supercooled profile at 5 and 8 km, respectively. It is also possible to note two sharp decreases in the droplet mixing ratio; the first one, placed between 5 and 7 km, is probably related to the riming process; and the second one, above 8 km, is associated to homogeneous freezing since cloud droplets freeze instantaneously at this height (regardless of the size) where the temperature is below  $-35^{\circ}\text{C}$ .

Similar to Fig. 11, Fig. 13 depicts the volume integral of mass and number concentration for pristine and aggregates as a function of time. The total pristine mass does not show a clear response to aerosol increase, although huge amounts of aerosol seem to contribute to a decrease in the pristine mass. On the other hand, pristine number concentration has a monotonic response to CCN enhancement. The total aggregate mass and number concentration present a nonlinear response to aerosol increase, as already mentioned. Therefore, a slight increase in CCN (CN-Med compared to CN-Low) favors aggregate formation. However, further enhancements have the same impact on CN-Med, in other words, total aggregate mass and concentration do not change at the same rate as CCN particles increase. The average profiles for pristine and aggregates, given by Fig. 14 (constructed as Fig. 12), also captured the aerosol effect revealed in the volume integral. Moreover, above 8 km height, pristine mass and number concentration increase, while supercooled droplets decrease, indicating that ice particles are being formed by homogeneous freezing of cloud droplets.

Immersed within an environment rich in supercooled liquid water, aggregate particles are likely to grow by the rimming process, rapidly allowing these ice particles to become graupel by collecting cloud droplets. Figure 15 (computed as Fig. 11)

illustrates this effect clearly, with a monotonically increase in the graupel mixing ratio as CCN is enhanced. In contrast, hail decreases monotonically as aerosol increases because of the cloud diameter reduction in response to high CCN concentration, as explained earlier. Indeed, tiny cloud droplets are more likely to be deflected by the air flow around the hailstones since they do not have enough inertia. Figure 14, computed as Fig. 12, also shows this effect, being even clearer for the hail mixing ratio.

5 Figure 17 compares the vertical velocities produced by the experiments, where the left-hand panel shows an average of the three highest updraft peaks, whereas the right-hand panel shows the vertical velocity profile of the column with the strongest updraft. The updraft response to CCN number variation is highly nonlinear and depends on several factors. However, the updraft seems more intense for higher aerosol concentrations after 09:00 UTC (Fig. 17a), which might be associated to aggregate and graupel categories. The maximum vertical velocity is produced by the CN-ExtHigh experiment, followed by the CN-Med, 10 CN-Low and CN-High experiments (Fig. 17b). High aerosol loading may displace the updraft peak aloft as a consequence of homogeneous freezing enhancement (Carrió et al., 2014). This effect is due to riming suppression since cloud droplets are too small, being deflected by the air flow around the ice particles. Furthermore, riming suppression also causes a decrease in the updraft intensity below 10 km (Fig. 17b) owing to the lower latent heat realized.

Columns from the ground up to height of 2 km with downdraft greater than 1 m/s were averaged for buoyancy, rain mixing 15 ratio and downdraft speed (Fig. 18) for the time period between 9:00 and 10:00 UTC. The model outputs were saved every 5 min to compute these profiles. The CN-ExtHigh experiment stands out with the largest values of rain mixing ratio, leading to stronger buoyancy and downdraft than the CN-Low experiment. In addition, the other two experiments, CN-Med and CN-High, present similar behavior when compared to CN-Low, although less pronounced. The highest rain mixing ratio of the CN-ExtHigh experiment may suggest the contribution of ice melting. Indeed, higher amounts of rain favor stronger negative 20 buoyancy since the drops evaporate in an unsaturated environment, lowering the air temperature. This effect leads to heavier air parcels, which increase the vertical velocity toward the ground. Finally, stronger downdrafts intensify the low level convergence, which, in turn, may contribute to the formation and intensification of updrafts (Tao et al., 2007, 2012; Lebo and Morrison, 2014).

#### 4 Conclusions

25 Many studies have shown the importance of studying the effect of biomass burning aerosols on cloud systems over the Amazon and neighboring regions (Andreae et al., 2004; Freitas et al., 2005; Koren et al., 2004, 2008; Martins et al., 2009; Martin et al., 2010; Artaxo et al., 2013; Gonçalves et al., 2015). Some authors suggest that these aerosols can be transported by low level flow to the La Plata Basin (Freitas et al., 2005). In this context, we performed four experiments with BRAMS-4.3, varying CCN concentration for an MCS case occurring over the La Plata Basin on 21 September 2010. The model was initialized with 30 idealized CCN profiles that were based on Freitas et al. (2005).

Generally, higher CCN loadings increase the concentration of cloud droplets, and, consequently, reduce the collision-coalescence efficiency. This effect allows more droplets to reach the freezing levels and become supercooled. The availability of supercooled cloud droplets is directly linked to the riming efficiency. The chances of these hydrometers being collected by

ice particles increase since there are more supercooled droplets available. Therefore, larger aggregates and graupel mixing ratios were observed as aerosol number concentration increases. Conversely, the hail mixing ratio decreased under larger aerosol loadings, which could be explained by the droplet size. Small cloud droplets are more likely to be deflected by the flow around hail particles, thereby reducing the riming efficiency. Then tiny supercooled droplets reach levels with temperatures below  
5 -35 °C, being instantaneously frozen.

The reduction of riming efficiency leads to a decrease in the updraft velocity below the homogeneous freezing level (below 10 km height) because less latent heat is released. However, since these small droplets were not collected by hail, they are capable of freezing homogeneously at upper levels. This effect increases the vertical velocity which, in turn, displaces the updraft peak to higher levels.

10 An invigoration of the downdrafts was verified for high CCN concentrations at low levels (below 2 km). The experiments with more CCN particles showed larger values of rain mixing ratio at low levels. Since there is more mass to evaporate, higher values of negative buoyancy were noted. This phenomenon leads to an invigoration of the downdrafts. Stronger downdrafts helped to increase the number of updraft cells, and, consequently, the total area covered by them. With more updraft cells, higher amounts of total upwelling vapor flux were observed, favoring the condensation process. Associated with this effect,  
15 larger amounts of total accumulated precipitation over a bigger area were generated under higher concentration of CCN. **In addition, changes in convective/stratiform precipitation also were noted as a result of the microphysical and dynamical response to CCN concentration enhancements.**

This paper is the first to study the impact of Amazon biomass burning aerosols on mesoscale convective system over the La Plata Basin from a numerical modeling point of view taking into account cloud microphysics – dynamics interactions.  
20 We showed an important link between aerosol microphysical effects, cloud dynamics and precipitation for the specific case of aerosols feeding an MCS in the La Plata Basin. Camponogara et al. (2014) observed a decrease in precipitation in the La Plata Basin associated with an increase in AOD (Aerosol Optical Depth) measured in the Amazon Basin as one of the possible scenarios detected in the data available for the period from 1999 up to 2012. They also detected a pattern where no aerosol effect on rainfall could be detected. Indeed, cloud-aerosol interactions are highly nonlinear, and different responses may occur,  
25 depending on environmental conditions as discussed in Sect. 1. Therefore, this issue needs further investigation, particularly with an extended number of cases **and ensemble simulations (Wang et al., 2014; Lin et al., 2016)**, in order to fully understand the role of Amazon aerosols on mesoscale convective systems that take place over the La Plata Basin.

*Acknowledgements.* We thank the *Laboratório Nacional de Computação Científica* (LNCC) and the *Sistema Nacional de Processamento de Alto Desempenho* (SINAPAD) as well as the *Instituto Nacional de Pesquisas Espaciais* (INPE) and the *Centro de Previsão de Tempo e Estudos Climáticos* (CPTEC) for making available their computational resources to perform numerical simulations. We also thank Dr. Saulo Freitas for his support with respect to BRAMS. This research was supported by São Paulo Research Foundation (FAPESP), grant no. 2009/15235-8, 2012/08115-9 and 2014/05351-9.

## References

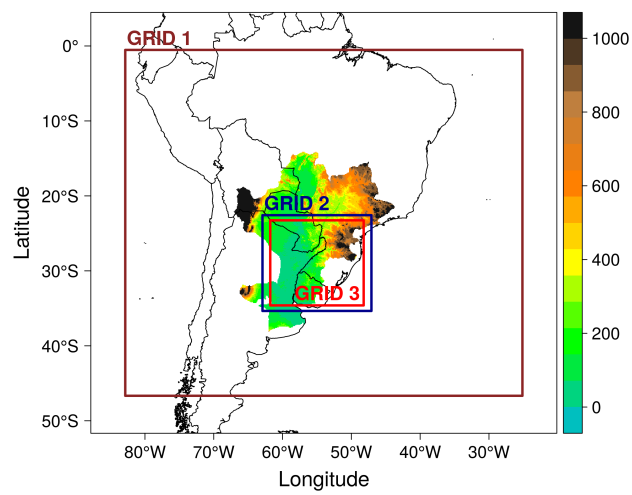
- Albrecht, B. A.: Aerosols, cloud microphysics, and fractional cloudiness, *Science*, 245, 1227–1230, 1989.
- Albrecht, R. I., Goodman, S. J., Buechler, D. E., Blakeslee, R. J., and Christian, H. J.: Where are the lightning hotspots on Earth?, *B. Am. Meteorol. Soc.*, doi:10.1175/BAMS-D-14-00193.1, 2016.
- 5 Andreae, M. O., Rosenfeld, D., Artaxo, P., Costa, A. A., Frank, G. P., Longo, K. M., and Silva Dias, M. A. F.: Smoking rain clouds over the Amazon, *Science*, 303, 1337–1342, 2004.
- Artaxo, P., Rizzo, L. V., Brito, J. F., Barbosa, H. M. J., Arana, A., Sena, E. T., Cirino, G. G., Bastos, W., Martin, S. T., Andreae, M. O.: Atmospheric aerosols in Amazonia and land use change: from natural biogenic to biomass burning conditions, *Faraday discussions*, 165, 203–235, 2013.
- 10 Camponogara G., Silva Dias, M. A. F., and Carrió, G. G.: Relationship between Amazon biomass burning aerosols and rainfall over the La Plata Basin. *Atmospheric Chemistry and Physics*, *Atmospheric Chemistry and Physics.*, 14, 4397–4407, 2014.
- Carrió, G. G., Cotton, W. R., and Cheng, W. Y. Y: Urban growth and aerosol effects on convection over Houston: Part I: The August 2000 case, *Atmospheric Research*, 96, 560–574, 2010.
- Carrió, G. G. and Cotton, W. R.: Urban growth and aerosol effects on convection over Houston. Part II: Dependence of aerosol effects on  
15 instability, *Atmospheric Research*, 102, 167–174, 2011.
- Carrió, G. G., Cotton, W. R. and Loftus, A. M.: On the response of hailstorms to enhanced CCN concentrations, *Atmospheric Research*, 143, 342–350, 2014.
- Chen, C. and Cotton, W. R.: The physics of the marine stratocumulus-capped mixed layer, *Journal of the Atmospheric Sciences*, 44(20), 2951–2977, 1987.
- 20 Chen, Y., Weng, F., Han, Y. and Liu, Q.: Validation of the community radiative transfer model by using CloudSat data, *Journal of Geophysical Research*, 113(D18), 2008.
- Churchill, D. D. and Houze, R. A.: Development and structure of winter monsoon cloud clusters on 10 December 1978, *Journal of the Atmospheric Sciences*, 41(6), 933–960, 1984.
- Clavner, M., Grasso, L. D., Cotton, W. R and van den Heever, S. C.: The response of a simulated mesoscale convective system to increased  
25 aerosol pollution: Part II: Derecho characteristics and intensity in response to increased pollution, *Atmospheric Research*, 2017.
- Conforte, J. C.: Um estudo de complexos convectivos de mesoescala sobre a América do Sul, Ph.D. thesis, INPE, 112, 1997.
- Cotton, W. R., Pielke, R. A., Walko, R. L., Liston, G. E., Tremback, C. J., Jiang, H., McAnelly R. L., Harrington, J. Y., Nicholls, M. E., Carrió, G. G., and Mcfadden, J. P.: RAMS 2001: Current status and future directions, *Meteorology and Atmospheric Physics*, 82, 5–29, 2003.
- 30 Durkee, J. D. and Mote, T. L.: A climatology of warm-season mesoscale convective complexes in subtropical South America, *Int. J. Climatol.*, 30, 418–431, 2010.
- Eck, T. F, Holben, B. N., Slutsker, I. and Setzer, A.: Measurements of irradiance attenuation and estimation of aerosol single scattering albedo for biomass burning, *Journal of Geophysical Research*, 103, 31–865, 1998.
- Fan, J., Zhang, R., Li, G., and Tao, W.-K.: Effects of aerosols and relative humidity on cumulus clouds, *J. Geophys. Res.: Atmospheres*  
35 (1984–2012), 112(D14), doi:10.1029/2006JD008136, 2007.

- Fan, J., Yuan, T., Comstock, J. M., Ghan, S., Khain, A., Leung, L. R., Li, Z., Martins, V. J., and Ovchinnikov, M.: Dominant role by vertical wind shear in regulating aerosol effects on deep convective clouds, *J. Geophys. Res.: Atmospheres* (1984–2012), 114(D22), doi:10.1029/2009JD012352, 2009.
- Fan, J., Rosenfeld, D., Ding, Y., Leung, L. R., and Li, Z.: Potential aerosol indirect effects on atmospheric circulation and radiative forcing through deep convection, *Geophysical Research Letters*, 39, 2012.
- Feng, Z., Dong, X., Xi, B., Schumacher, C., Minnis, P., Khaiyer, M.: Top-of-atmosphere radiation budget of convective core/stratiform rain and anvil clouds from deep convective systems, *Journal of Geophysical Research: Atmospheres*, 116(D23), 2011.
- Feingold, G., and Heymsfield, A. J.: Parameterizations of condensational growth of droplets for use in general circulation models, *Journal of the Atmospheric Sciences*, 49, 2325–2342, 1992.
- 10 Freitas, S. R., Longo, K. M., Silva Dias, M. A. F., Silva Dias, P. L., Chatfield, R., Prins, E., Artaxo, P., Grell, G. A., and Recuero, F. S.: Monitoring the transport of biomass burning emissions in South America, *Environ. Fluid Mech.*, 5, 135–167, 2005.
- Freitas, S. R., Panetta, J., Longo, K. M., Rodrigues, L. F., Moreira, D. S., Rosário, N. E., Silva Dias, P. L., Silva Dias, M. A. F., Souza, E. P., Freitas, E. D., Longo, M., Frassoni, A., Fazenda, A. L., Santos e Silva, C. M., Pavani, C. A. B., Eiras, D., França, D. A., Massaru, D., Silva, F. B., Santos, F. C., Pereira, G., Camponogara, G., Ferrada, G. A., Campos Velho, H. F., Menezes, I., Freire, J. L., Alonso, M. F.,
- 15 Gácita, M. S., Zarzur, M., Fonseca, R. M., Lima, R. S., Siqueira, R. A., Braz, R., Tomita, S., Oliveira, V., and Martins, L. D.: The Brazilian developments on the Regional Atmospheric Modeling System (BRAMS 5.2): an integrated environmental model tuned for tropical areas, *Geoscientific Model Development*, 10(1), 2017.
- Fritsch, J. M. and Forbes, G. S.: Mesoscale Convective Systems, Severe Convective Storms, *Meteorol. Monogr.*, 323–356, 2001.
- Grell, G. A.: Prognostic evaluation of assumptions used by cumulus parameterizations, *Monthly Weather Review*, 121(3), 764–787, 1993.
- 20 Gonçalves, W. A., Machado, L. A. T., and Kirstetter, P. E.: Influence of biomass aerosol on precipitation over the Central Amazon: an observational study, *Atmospheric Chemistry and Physics*, 15, 6789–6800, 2015.
- Hobbs, P. V., Politovich, M. K., and Radke, L. F.: The structures of summer convective clouds in eastern Montana. I: Natural clouds, *Journal of Applied Meteorology*, 19, 645–663, 1980.
- Khain, A., Rosenfeld, D. and Pokrovsky, A.: Aerosol impact on the dynamics and microphysics of deep convective clouds, *Quarterly Journal of the Royal Meteorological Society*, 131, 2639–2663, 2005.
- 25 Klemp, J. B., and Wilhelmson, R. B.: The simulation of three-dimensional convective storm dynamics, *Journal of the Atmospheric Sciences*, 35(6), 1070–1096, 1978.
- Koren, I., Kaufman, Y. J., Remer, L. A. and Martins, J. V.: Measurement of the effect of Amazon smoke on inhibition of cloud formation, *Science*, 303, 1342–1345, 2004.
- 30 Koren, I., Martins, J. V., Remer, L. A., and Afargan, H.: Smoke invigoration versus inhibition of clouds over the Amazon, *Science*, 321, 946–949, 2008.
- Lang, S., Tao, W. K., Simpson, J., and Ferrier, B.: Modeling of convective–stratiform precipitation processes: Sensitivity to partitioning methods, *Journal of Applied Meteorology*, 42, 505–527, 2003.
- Lebo, Z. J., and Morrison, H.: Dynamical effects of aerosol perturbations on simulated idealized squall lines, *Monthly Weather Review*, 142, 991–1009, 2014.
- 35 Li, G., Wang, Y., Lee, K., Diao, Y. and Zhang, R.: Impacts of aerosols on the development and precipitation of a mesoscale squall line, *Journal of Geophysical Research: Atmospheres*, 114(D17), 2009.

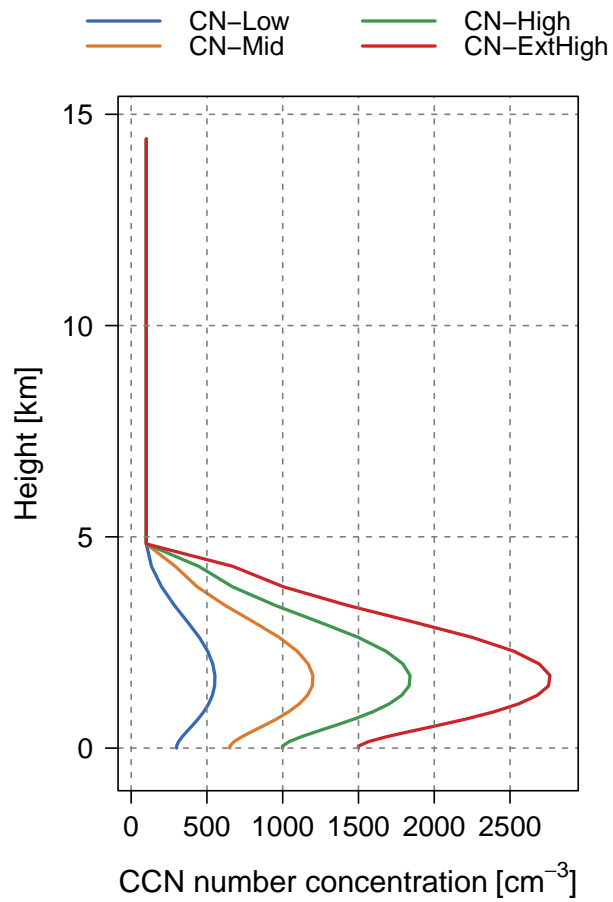


- Lin, Y., Wang, Y., Pan, B., Hu, J., Liu, Y., and Zhang, R.: Distinct Impacts of Aerosols on an Evolving Continental Cloud Complex during the RACORO Field Campaign, *Journal of the Atmospheric Sciences*, 73, 3681–3700, 2016.
- Maddox, R. A.: Mesoscale convective complexes, *Bulletin of the American Meteorological Society*, 61(11), 1374–1387, 1980.
- Mahrer, Y., and Pielke, R. A.: A numerical study of the airflow over irregular terrain, *Beiträge zur Physik der Atmosphäre*, 50, 98–103, 1977.
- 5 Marinescu, P. J., van den Heever, S. C., Saleeby, S. M., and Kreidenweis, S. M.: The microphysical contributions to and evolution of latent heating profiles in two MC3E MCSs, *Journal of Geophysical Research: Atmospheres*, 121, 7913–7935, 2016.
- Martin, S. T., Andreae, M. O., Artaxo, P., Baumgardner, D., Chen, Q., Goldstein, A. H., Guenther, A., Heald, C. L., Mayol-Bracero, O. L., McMurry, P. H., Pauliquevis, T., Pöschl, U., Prather, K. A., Roberts, G. C., Saleska, S. R., Silva Dias, M. A. F., Spracklen, D. V., Swietlicki, E., and Trebs, I.: Sources and properties of Amazonian aerosol particles, *Reviews of Geophysics*, 48, 2010.
- 10 Martins, J. A., Silva Dias, M. A. F., and Gonçalves, F. L. T.: Impact of biomass burning aerosols on precipitation in the Amazon: A modeling case study, *J. Geophys. Res.*, 114, D02207, doi:10.1029/2007JD009587, 2009.
- Mellor, G. L., and Yamada, T.: Development of a turbulence closure model for geophysical fluid problems, *Reviews of Geophysics*, 20(4), 851–875, 1982.
- Meyers, M. P., Walko, R. L., Harrington, J. Y. and Cotton, W. R.: New RAMS cloud microphysics parameterization. Part II: The two-moment
- 15 scheme, *Atmospheric Research*, 45, 3–39, 1997.
- Morton, D. C., Defries, R. S., Randerson, J. T., Giglio, L., Schroeder, W., and Van Der Werf, G. R.: Agricultural intensification increases deforestation fire activity in Amazonia, *Global Change Biology*, 14, 2262–2275, 2008.
- Nesbitt, S. W., Cifelli, R., Rutledge, S. A.: Storm morphology and rainfall characteristics of TRMM precipitation features, *Mon. Weather Rev.*, 134, 2702–2721, 2006.
- 20 Reinhardt, T. E., Ottmar, R. D., and Castilla, C.: Smoke impacts from agricultural burning in a rural Brazilian town, *Journal of the Air & Waste Management Association*, 51, 443–450, 2001.
- Rosenfeld, D.: TRMM observed first direct evidence of smoke from forest fires inhibiting rainfall, *Geophys. Res. Lett.*, 26, 3105–3108, 1999.
- Rosenfeld, D., Lohmann, U., Raga, G. B., O’Dowd, C. D., Kulmala, M., Fuzzi, S., Reissell, A., Andreae, M. O.: Flood or drought: how do aerosols affect precipitation?, *Science*, 321, 1309–1313, 2008.
- 25 Rotunno, R., Klemp, J. B., and Weisman, M. L.: A theory for strong, long-lived squall lines, *Journal of the Atmospheric Sciences*, 45, 463–485, 1988.
- Saleeby, S. M., and Cotton, W. R.: Simulations of the North American Monsoon System. Part I: Model Analysis of the 1993 Monsoon Season, *Journal of Climate*, 17, 2004.
- Saleeby, S. M., and Cotton, W. R.: A binned approach to cloud-droplet riming implemented in a bulk microphysics model, *Journal of Applied*
- 30 *Meteorology and Climatology*, 47, 694–703, 2008.
- Saleeby, S. M., van den Heever, S. C., Marinescu, P. J., Kreidenweis, S. M., and DeMott, P. J.: Aerosol effects on the anvil characteristics of mesoscale convective systems, *Journal of Geophysical Research: Atmospheres*, 121, 2016.
- Salio, P., Nicolini, M., and Zipser, E. J.: Mesoscale convective systems over southeastern South America and their relationship with the South American Low Level Jet, *Mon. Weather Rev.*, 135, 1290–1309, 2007.
- 35 Seigel, R. B. and van den Heever, S. C.: Squall-line intensification via hydrometeor recirculation, *Journal of the Atmospheric Sciences*, 70, 2012–2031, 2013.
- Silva Dias, M. A. F., Rozante, J. R., and Machado, L. A. T.: Complexos Convectivos de Mesoescala na América do Sul, *Tempo e Clima no Brasil*, pp. 181–194, 2009.

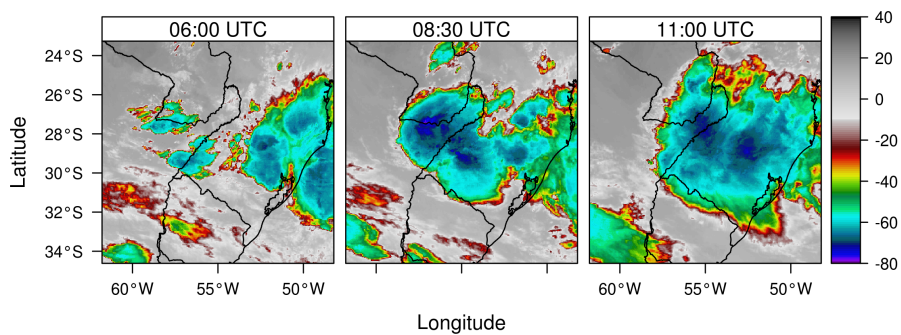
- Tao, W. K., Li, X., Khain, A., Matsui, T., Lang, S., and Simpson, J.: Role of atmospheric aerosol concentration on deep convective precipitation: Cloud-resolving model simulations, *J. Geophys. Res.*, 112(D24), D24S18, doi:10.1029/2007JD008728, 2007.
- Tao, W. K., Chen, J. P., Li, Z., Wang, C., and Zhang, C.: Impact of aerosols on convective clouds and precipitation, *Reviews of Geophysics*, 50, 2007.
- 5 Tremback, C. J.: Numerical simulation of a mesoscale convective complex: Model development and numerical results, Ph.D. thesis, CSU, 247, 1990.
- Tripoli, G. J., and Cotton, W. R.: The Colorado State University three-dimensional cloud mesoscale model – 1982. Part I: General theoretical framework and sensitivity, 16, 185–220, 1982.
- Torres, J. C. and Nicolini, M.: A composite mesoscale convective systems over southern South America and its relationship to low-level jet events, in: CONFERENCE ON SOUTH AMERICAN LOW-LEVEL JET, CD-ROM, Santa Cruz de la Serra, 2002.
- 10 Twomey, S.: Pollution and the planetary albedo, *Atmospheric Environment*, 8, 1251–1256, 1974.
- van den Heever, S. C., Carrió, G. G., Cotton, W. R., DeMott, P. J., and Prenni, A. J.: Impacts of nucleating aerosol on Florida storms. Part I: Mesoscale simulations, *J. Atmos. Sci.*, 63, 1752–1775, 2006.
- Velasco, I. and Fritsch, J. M.: Mesoscale convective complexes in the Americas, *J. Geophys. Res.*, 92, 9591–9613, 1987.
- 15 Vera, C., Baez, J., Douglas, M., Emmanuel, C. B., Marengo, J., Meitin, J., Nicolini, M., Nogues-Paegle, J., Paegle, J., Penalba, O., Salio, P., Saulo, C., Silva Dias, M. A. F., Silva Dias, P., and Zipser, E. J.: The South American Low-Level Jet experiment, *B. Am. Meteorol. Soc.*, 87, 63–77, 2006.
- Walko, R. L., Cotton, W. R., Meyers, M. P., and Harrington, J. Y.: New RAMS cloud microphysics parameterization part I: the single-moment scheme, *Atmospheric Research*, 38, 29–62, 1995.
- 20 Wall, C. L.: The impact of aerosols on convective clouds: a global perspective, Ph.D. thesis, The University of Utah, 2013.
- Wang, Y., Wan, Q., Meng, W., Liao, F., Tan, H. and Zhang, R.: Long-term impacts of aerosols on precipitation and lightning over the Pearl River Delta megacity area in China, *Atmospheric Chemistry and Physics*, 11, 12421–12436, 2011.
- Wang, Y., Lee, K., Lin, Y., Levy, M. and Zhang, R.: Distinct effects of anthropogenic aerosols on tropical cyclones, *Nature Climate Change*, 4, 2014.
- 25 Williams, E., Rosenfeld, D., Madden, N., Gerlach, J., Gears, N., Atkinson, L., Dunnemann, N., Frostrom, G., Antonio, M., Biazon, B., Camargo, R., Franca, H., Gomes, A., Lima, M., Machado, R., Manhaes, S., Nachtigall, L., Piva, H., Quintiliano, W., Machado, L., Artaxo, P., Roberts, G., Renno, N., Blakeslee, R., Bailey, J., Boccippio, D., Betts, A., Wolff, D., Roy, B., Halverson, J., Rickenbach, T., Fuentes, J. and Avelino E.: Contrasting convective regimes over the Amazon: Implications for cloud electrification, *J. Geophys. Res.: Atmospheres*, 107(D20), 2002.
- 30 Zipser, E. J., Cecil, D. J., Liu, C., Nesbitt, S. W., and Yorty, D. P.: Where are the most intense thunderstorms on Earth?, *B. Am. Meteorol. Soc.*, 87, 1057–1072, 2006.
- Zhou, C., Zhang, X., Gong, S., Wang, Y. and Xue, M.: Improving aerosol interaction with clouds and precipitation in a regional chemical weather modeling system, *Atmos. Chem. Phys.*, 16, 145–160, doi:10.5194/acp-16-145-2016, 2016.



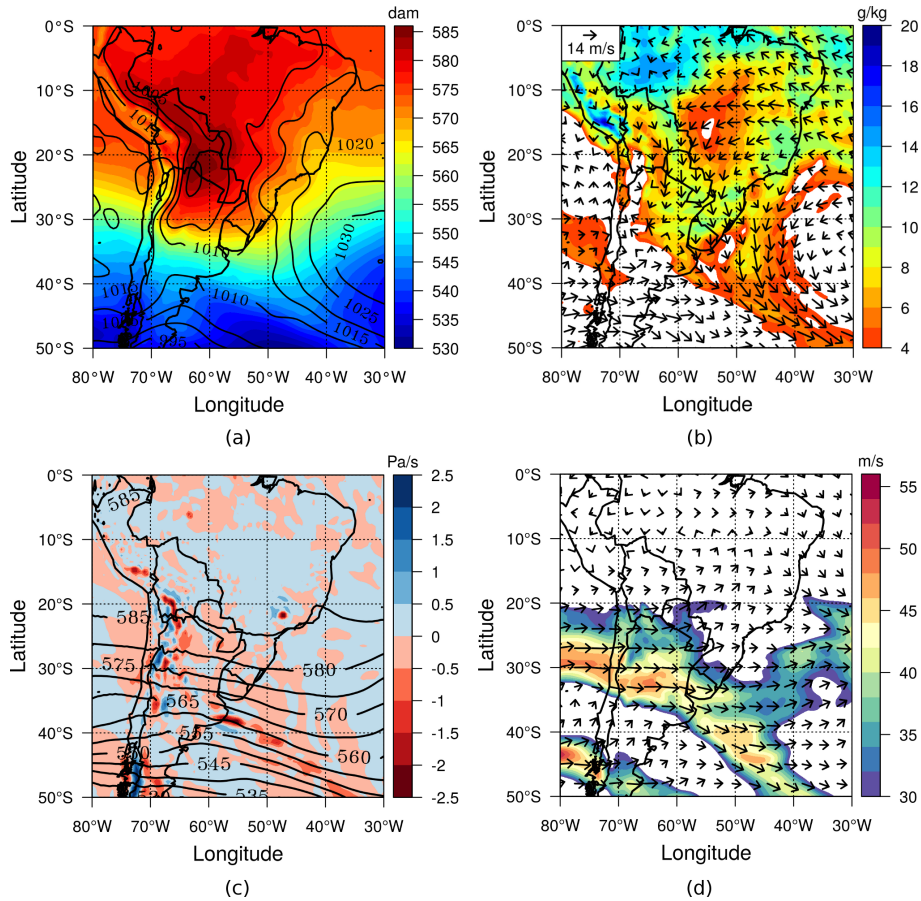
**Figure 1.** Model domain for 16 km (brown box), 4 km (blue box) and 2.5 km (red box) of grid spacing. The topography elevation of the La Plata Basin is shaded.



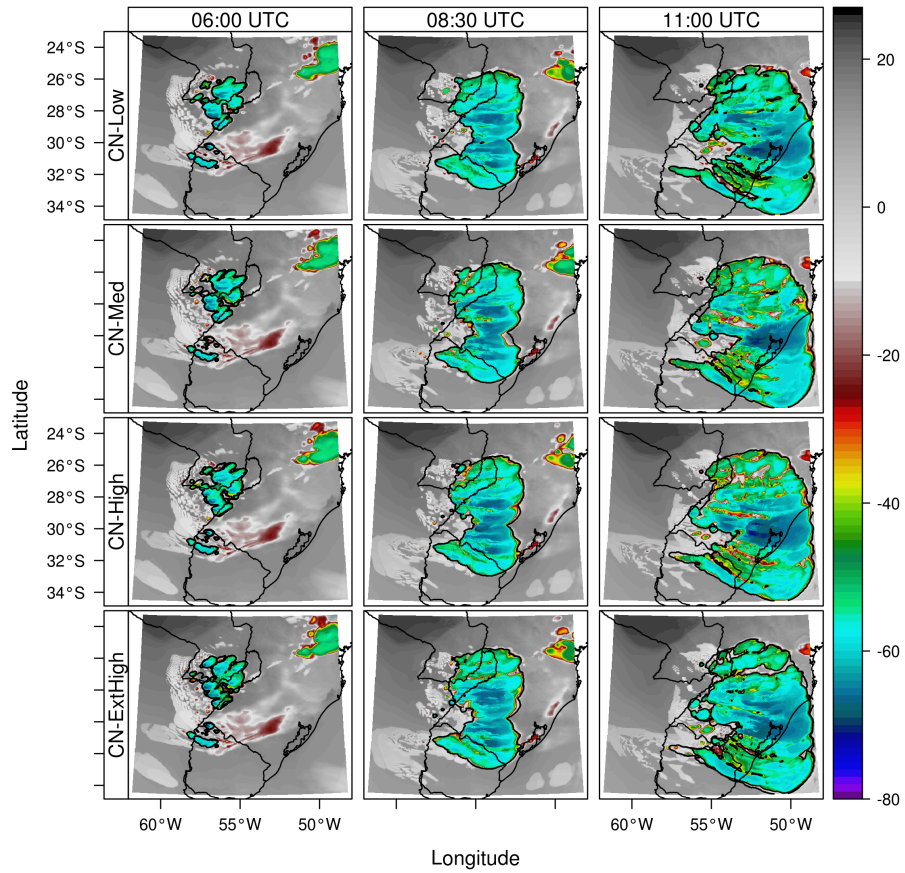
**Figure 2.** Vertical profiles of CCN number concentrations used to initialize the model.



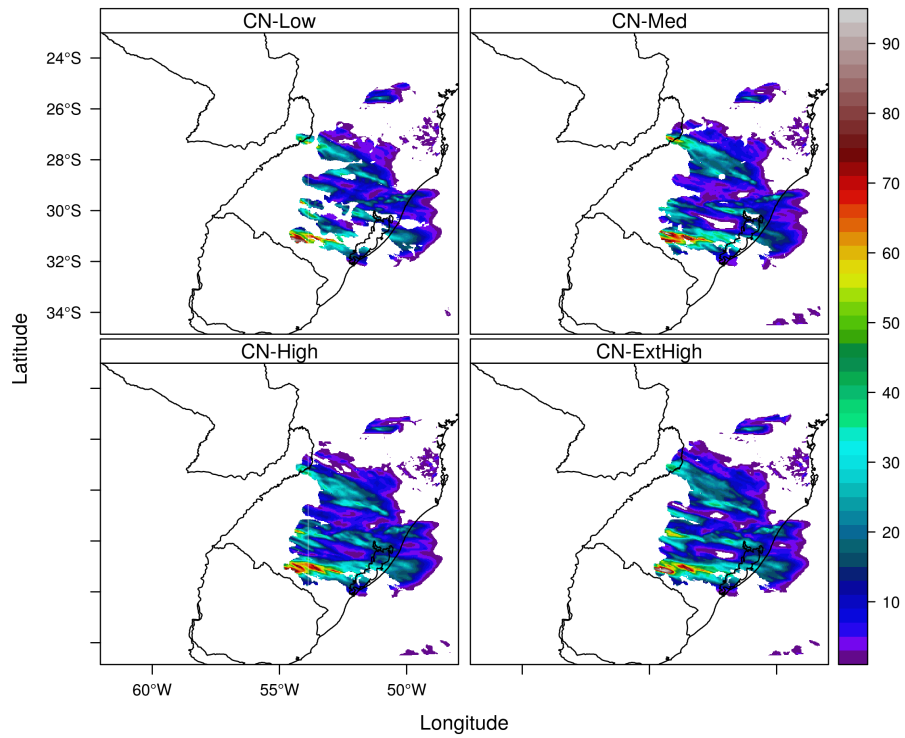
**Figure 3.** Enhanced infrared satellite images from GOES 12 for an MCS case observed over the La Plata Basin on 21 September 2010. Colors indicate infrared temperatures.



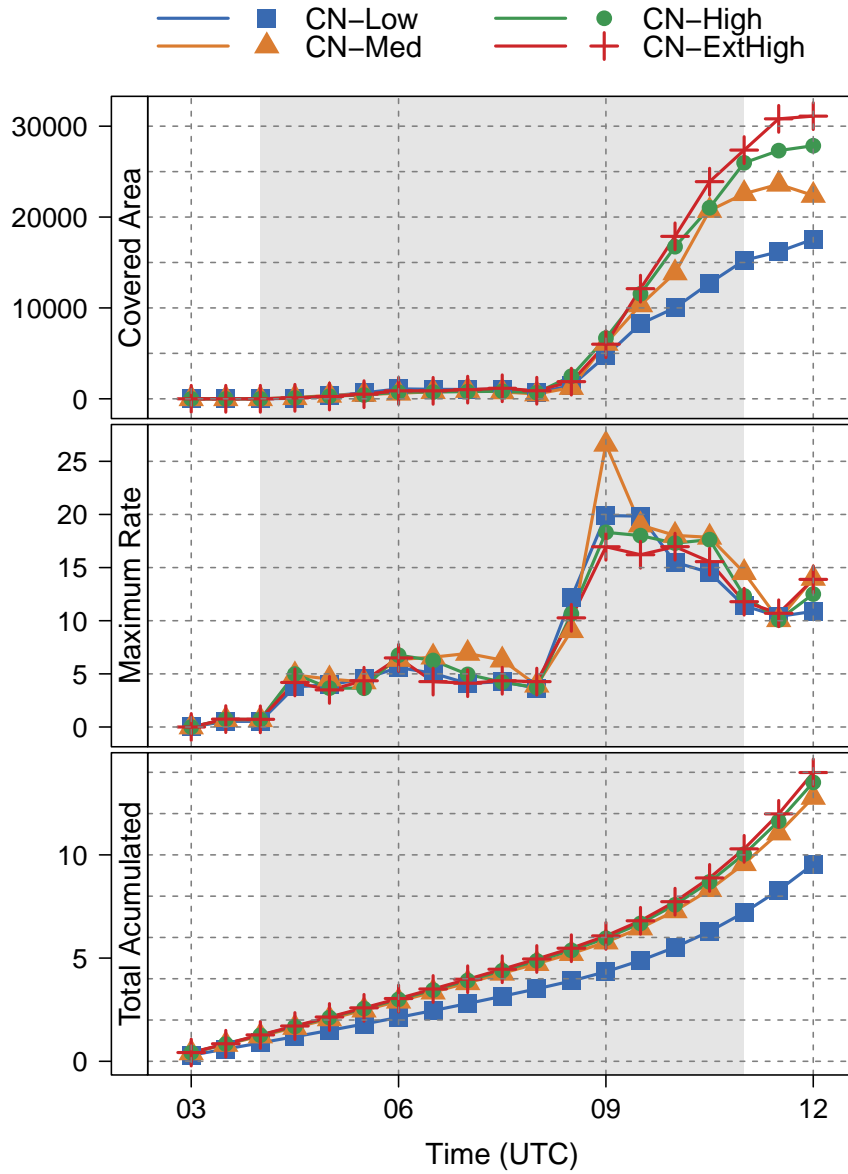
**Figure 4.** Synoptic fields on 21 September 2010 at 00:00 UTC: (a) sea level pressure (contour lines) and thickness (shaded); (b) wind (vectors) and specific humidity (shaded) at 850 hPa; (c) geopotential height (contour) and vertical p-velocity (shaded) at 500 hPa; and (d) wind direction (vector) and magnitude (shaded) at 250 hPa.



**Figure 5.** Synthetic infrared satellite images for the CN-Low, CN-Med, CN-High and CN-ExtHigh experiments at 06:00 (left panels), 08:30 (middle panels) and 11:00 UTC (right panels). Colors indicate brightness temperature at channel  $10.7 \mu m$ . The black contour line refers to the brightness temperature equal to  $-32^\circ C$ , which delimits the MCS area (Maddox , 1980).

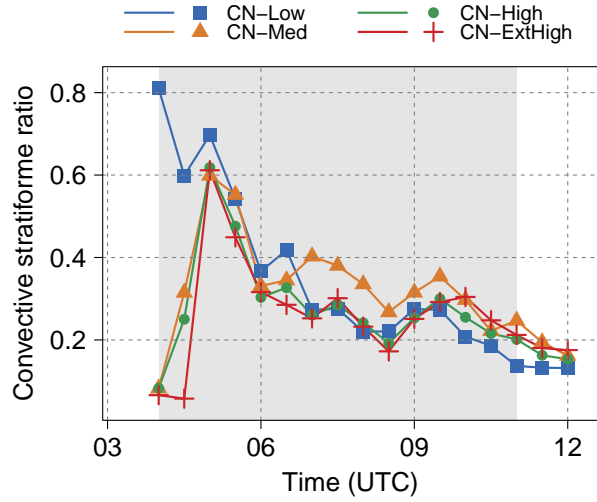


**Figure 6.** Accumulated precipitation produced by the MCS for CN-Low, CN-Med, CN-High and CN-ExtHigh experiments.

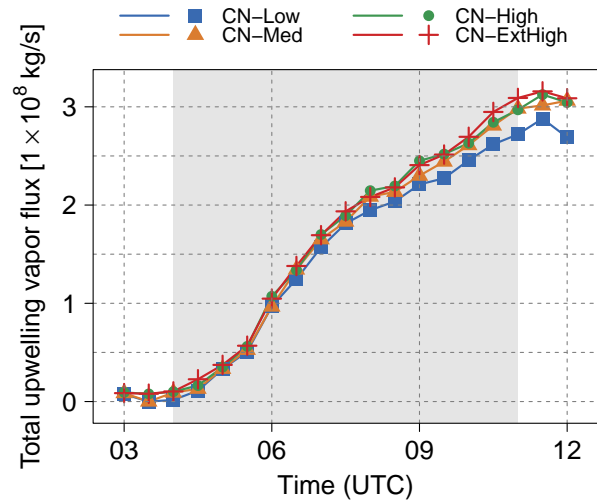


**Figure 7.** Precipitation covered area (km<sup>2</sup>), maximum precipitation rate (mm/h) and total accumulated precipitation ( $1 \times 10^5$  mm) as a function of time for the CN-Low (blue), CN-Med (marigold), CN-High (green) and CN-ExtHigh (red) experiments. The shaded area in grey represents the time period that the entire MCS is within the grid domain.

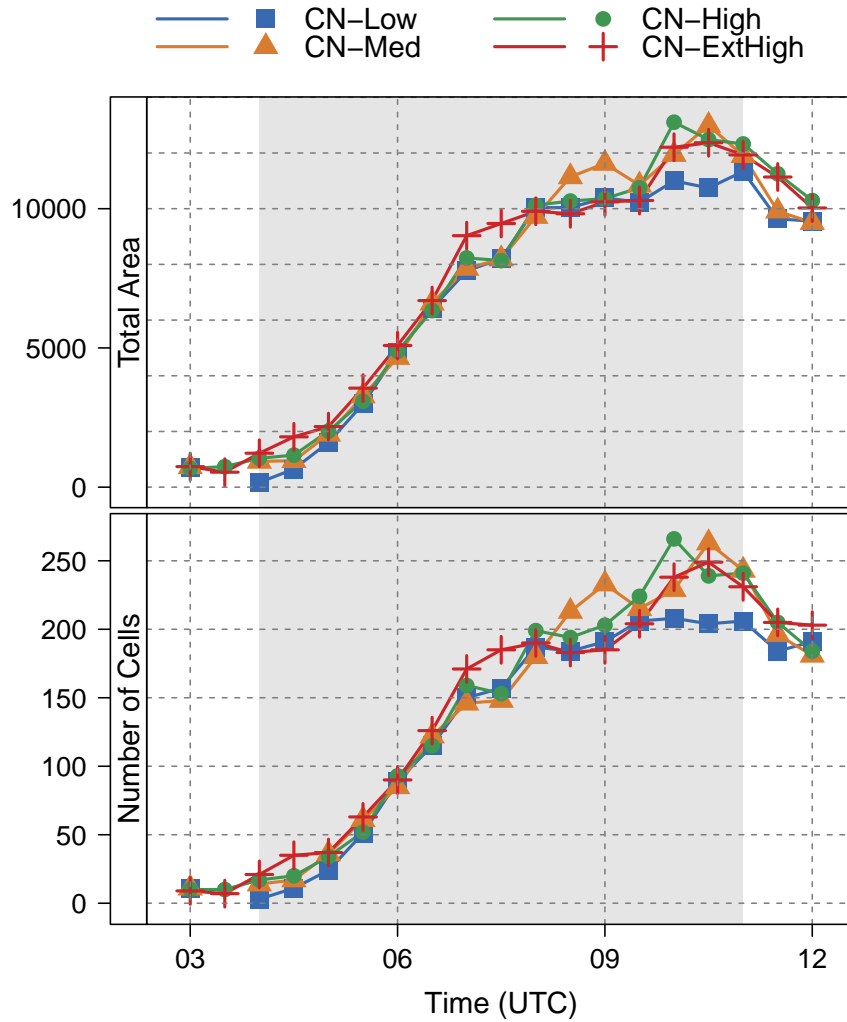




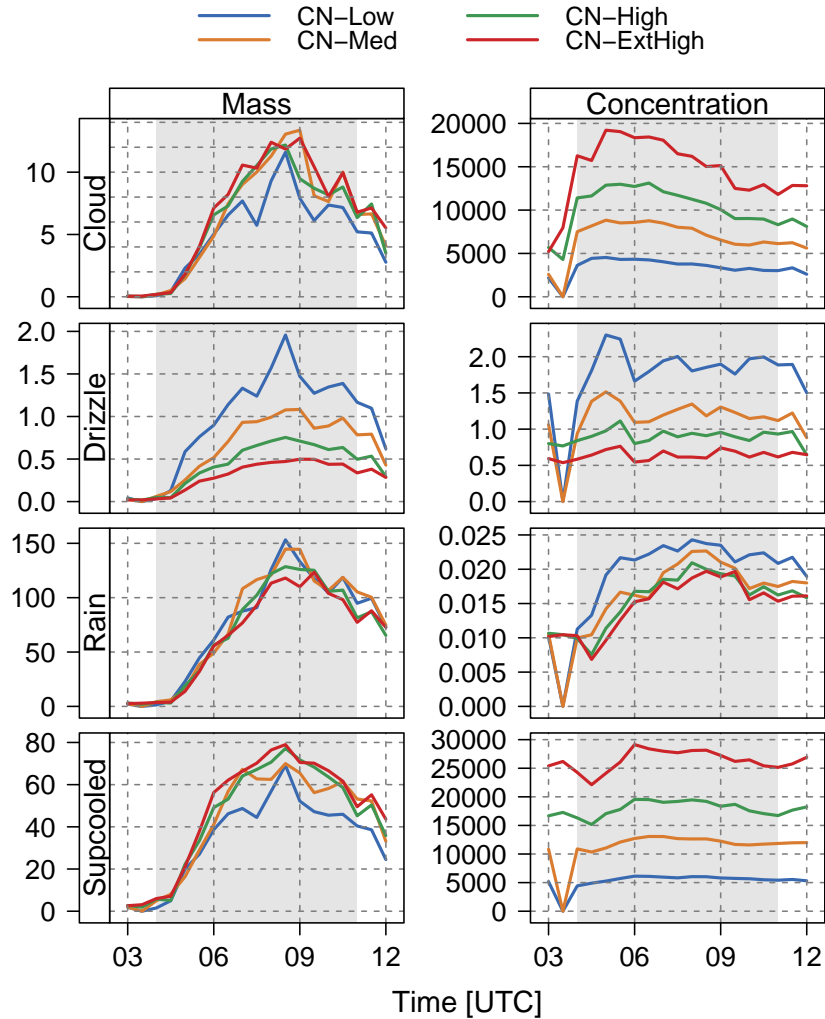
**Figure 8.** Ratio between total convective and stratiform precipitation produced by the MCS as a function of time for the CN-Low (blue), CN-Med (marigold), CN-High (green) and CN-ExtHigh (red) experiments.



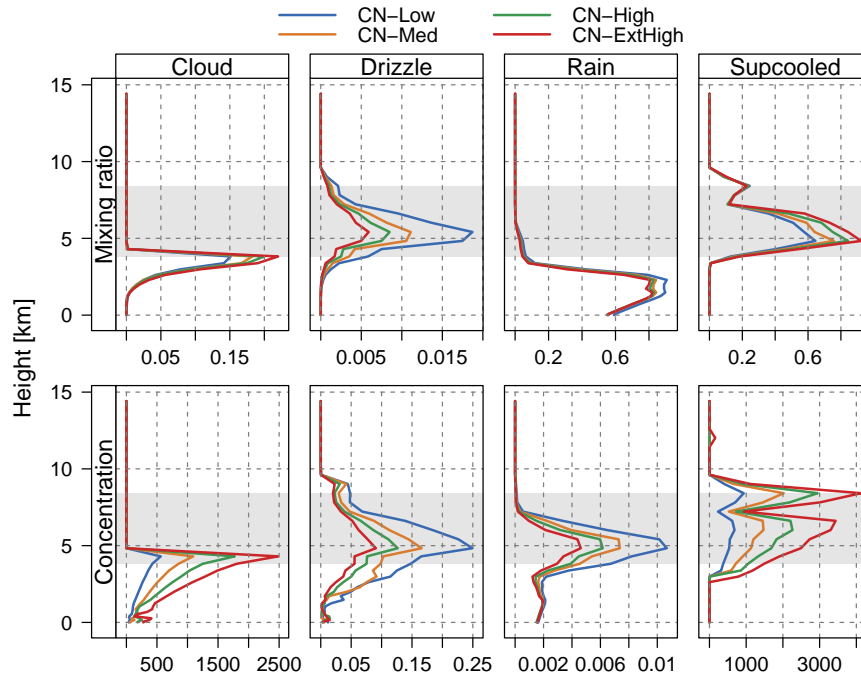
**Figure 9.** Total upwelling vapor flux at cloud base as function of time for the CN-Low (blue), CN-Med (marigold), CN-High (green) and CN-ExtHigh (red) experiments. The shaded area in grey represents the time period that the entire MCS is within the grid domain.



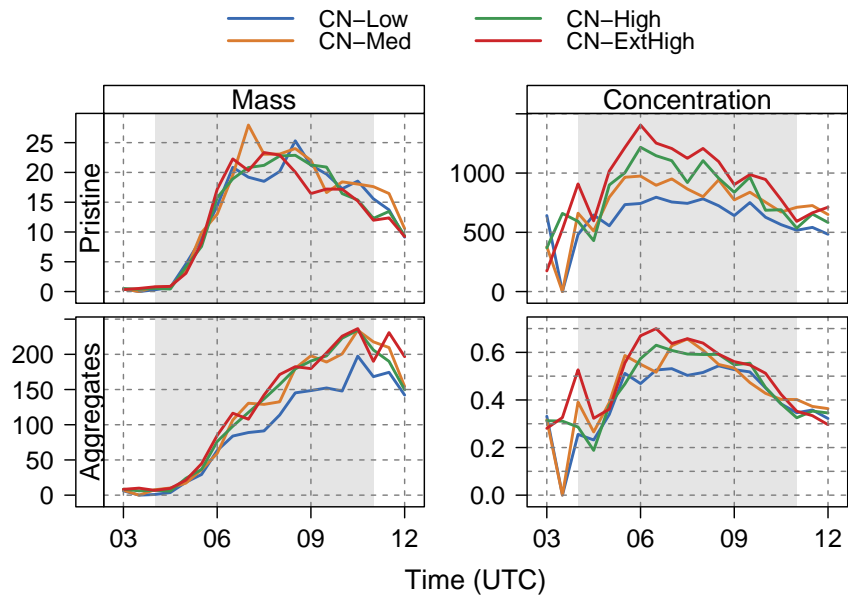
**Figure 10.** Total area of updraft ( $\text{km}^2$ ) and number of updraft cells as a function of time for the CN-Low (blue), CN-Med (marigold), CN-High (green) and CN-ExtHigh (red) experiments. The volume integral of concentrations is weighted by their respective mass. The shaded area in grey represents the time period that the entire MCS is within the grid domain.



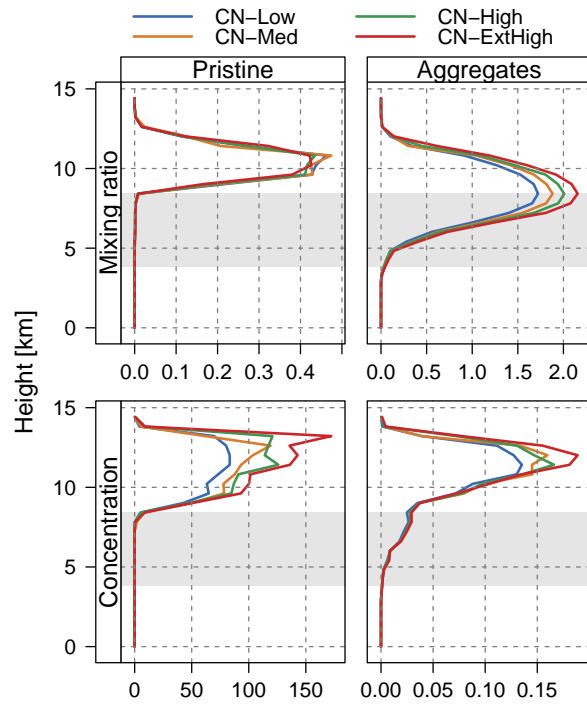
**Figure 11.** Volume integrals of cloud, drizzle, rain and supercooled cloud in terms of mass ( $1 \times 10^8$  kg) and number concentration ( $1 \times 10^5$   $\text{m}^{-3}$ ) throughout time for the CN-Low (blue), CN-Med (marigold), CN-High (green) and CN-ExtHigh (red) experiments. Only grid columns with updraft greater than 5 m/s are considered in the computation. The number concentrations are weighted by their respective mass. The shaded area in grey represents the time period that the entire MCS is within the grid domain.



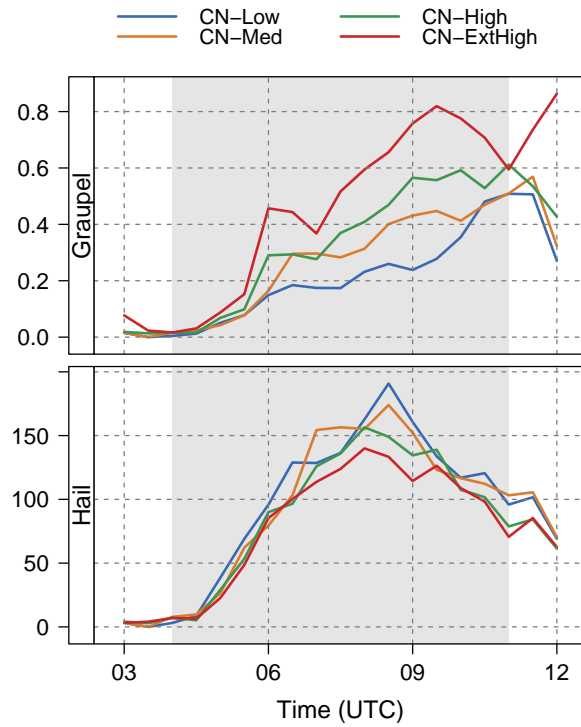
**Figure 12.** Mean vertical profiles of mixing ratio (g/kg) and number concentration ( $1 \times 10^6 \text{ m}^{-3}$ ) for cloud, drizzle, rain and supercooled cloud for the CN-Low (blue), CN-Med (marigold), CN-High (green) and CN-ExtHigh (red) experiments. Only grid columns with updraft greater than 5 m/s are considered in the computation. **The shaded area in grey represents the vertical layer between  $0^\circ\text{C}$  and  $-35^\circ\text{C}$ .**



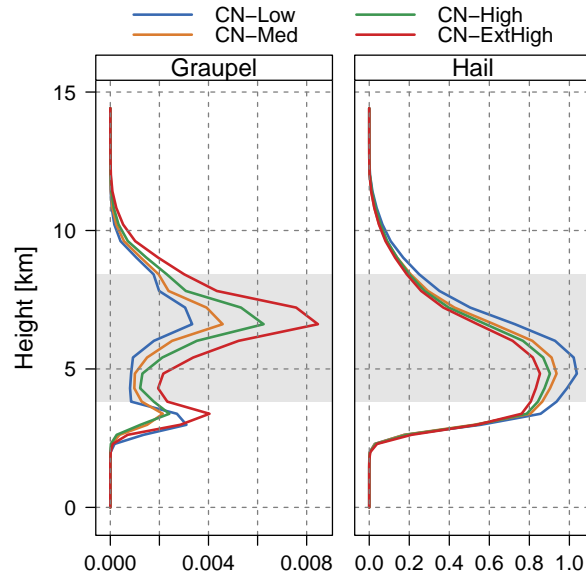
**Figure 13.** As in Figure 11, but for pristine and aggregate categories.



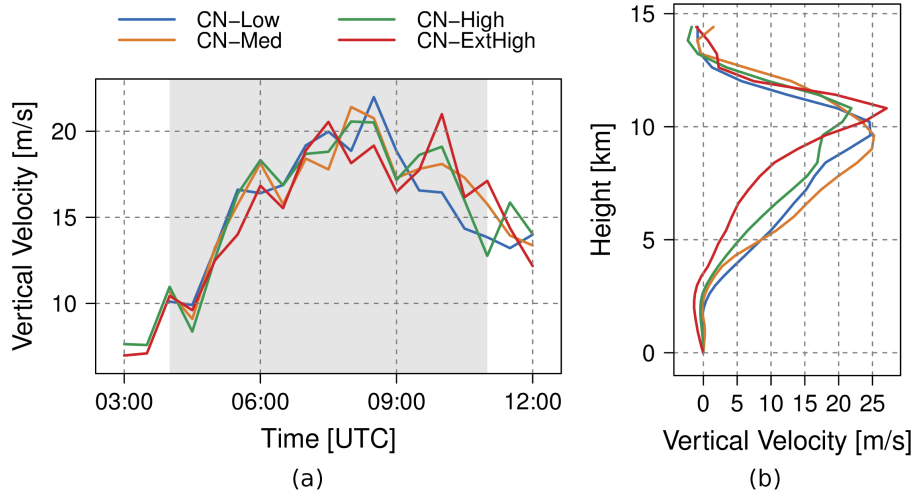
**Figure 14.** As in Figure 12, but for pristine and aggregate categories.



**Figure 15.** As in Figure 11, but for graupel and hail mixing ratios.

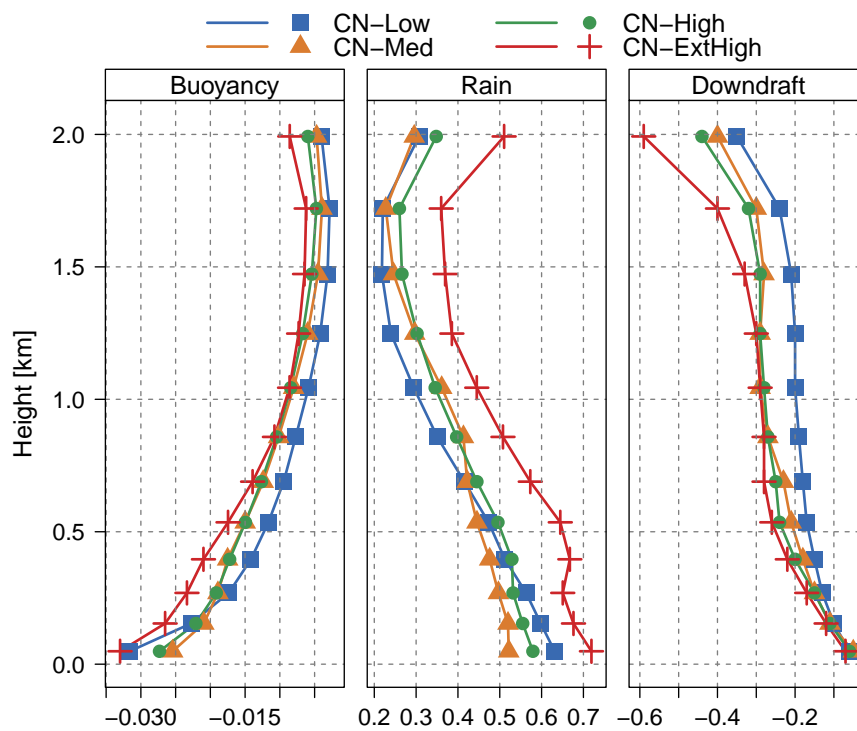


**Figure 16.** As in Figure 12, but for graupel and hail mixing ratios.



**Figure 17.** Average of the three highest updraft peaks throughout time (a) and strongest updraft profile (b) for the CN-Low (blue), CN-Med (marigold), CN-High (green) and CN-ExtHigh (red) experiments. The shaded area in grey represents the time period that the entire MCS is within the grid domain.





**Figure 18.** Averaged buoyancy, rain mixing ratio and downdraft between 9:00 and 10:00 UTC for the CN-Low (blue), CN-Med (marigold), CN-High (green) and CN-ExtHigh (red) experiments. The model outputs were saved every 5 min to compute these profiles. Only vertical velocities smaller than -1 m/s are considered for the average.

**Table 1.** BRAMS main configuration.

---

Number of points for lateral boundary nudging	5
Nudging time scale for lateral boundary	1800 s
Nudging time scale for the top of domain	10800 s
Lateral boundary condition	Klemp and Wilhelmson (1978)
Shortwave/Longwave radiation parametrization	Chen and Cotton (1987)
Turbulence parametrization	Mellor and Yamada (1982)
Convective parametrization (activated only for grid 1)	Grell (1993)

---