

Responses to Reviewer Comments
Modeling inter-continental transport of ozone in North America with CAMx for the Air Quality Model
Evaluation International Initiative (AQMEII) Phase 3

doi:10.5194/acp-2017-194, 2017.

Uarporn Nopmongcol et al.

The authors thank the reviewers for their helpful comments. Below we respond to each and note our changes to the manuscript.

Anonymous Referee #1 Received and published: 11 April 2017

General comments: The paper analyzes several model approaches for estimating the impact of long-range ozone transport, including use of: brute-force sensitivity tests, chemically-reactive tracers, and inert tracers. The regional CAMx modeling for the U.S. (12km) is based on well-established inputs from the AQMEII Phase 3 effort and sufficient information is presented regarding the model's ability to replicate observations from the simulation period (2010). There are several areas of focus within the manuscript: 1) the impact of boundary conditions on simulated ozone within the U.S., 2) parsing these boundary condition impacts by height, 3) assessing the impacts of 20% reductions in emissions globally and from East Asia, 4) a limited comparison of the boundary conditions in CAMx to another regional model (CMAQ), and 5) comparisons of the various model approaches (e.g., sensitivity vs. reactive tracers) in estimating boundary impacts. The key takeaway from the manuscript is that regional models will be sensitive to biases and errors in boundary conditions, especially in the inter-mountain States in the western U.S. The overall quality of the paper is good and the subject matter is of keen significance to the air quality management community. One general commentary on the manuscript is that there are a number of instances where a finding is made and then several hypotheses are offered for why the finding might be what it is, without any followup analyses to assess the merit of the various hypotheses. Examples include: section 3.1 ("potential causes are ..." deposition, halogen chemistry, mixing), section 3.2 ("other factors must be contributing (not examined here)"), section 3.7 ("factors contributing to these differences may include ..."). Recognizing that no manuscript can be exhaustive, the authors are encouraged to reassess if more analyses are possible in the scope of this work to determine the causes for these modeled features. We especially encourage additional analyses in section 3.7 which, in its current form, raises as many questions as it answers. To the extent, that resources do not permit additional analyses, the authors are encouraged to limit the number of "dangling" hypotheses; either by saving them all for Section 4 as a sort of "next steps" list, or by deleting the sections with conclusions without identified causes.

Response 1: We agree that further investigation into difference between CAMx and CMAQ (and other model) results will be useful and note that US EPA is leading this effort and their paper will be submitted to this same Special Issue. We have added their paper to our reference list (Liu et al.). The point of Section 3.7 is to emphasize the magnitude of bias using the inert tracer approach relative to chemically-reactive tracers, and the fact that this bias is much larger than differences between two inert models using the same inputs. We have added the following text in bold to Section 3.7.

"Differences between the CMAQ and CAMx inert tracer impacts are smaller than the differences between inert and reactive tracers in CAMx which exceed 10 ppb (Figure 5), but they are notable, in a range of 4-8 ppb in summer and 2-6 ppb in spring with CAMx being higher. Factors contributing to these differences may include fewer vertical layers in CAMx (26 compared to 35 in CMAQ), which may cause

more numerical diffusion of UTLS O₃ to ground level (Emery et al. (2012), omission of wet scavenging for the CAMx inert tracers, treatment of deep convective transport in CMAQ, or differences in model treatments of O₃ dry deposition. **Liu et al. (this issue) performed multi-model process comparisons with four AQMEII models and draw similar conclusions regarding factors that can contribute to differences in tracer impacts."**

Reference: Liu, P., Hogrefe, C., Bieser, J., Im, U., Mathur, R., Nopmongkol, U., Roselle, S., Spero, T.: Multi-Model Comparison of Lateral Boundary Contributions to Surface Ozone Over the United States, in preparation.

We think including our hypotheses within their respective sections (the way the text is currently written) is useful. As suggested by the reviewer, we have also summarized these hypotheses in Section 4 as suggestions for future work.

Specific comments: The two most likely "policy-relevant" conclusions to be cited from this manuscript are that 1) boundary conditions impacts on the Denver area average 57 ppb on the days with the highest MDA8 O₃, and 2) that a 20% reduction in emissions from East Asia will have < 1 ppb impact on surface O₃ in the U.S. Particularly for that first conclusion, the manuscript would be improved if more detail was provided about the robustness of the conclusion. For instance, it is not clear to this reader whether the city-specific analyses are based on a single site or an aggregate of sites within an area. Additionally, given the note in the paper about the high modeled bias on the the H4MDA8 O₃ day (observed O₃ = 50 ppb while BC impacts alone > 70 ppb), it would be helpful if the model bias/error values for the top 30 subset of days were also included in table 3 or elsewhere. Given the paper's conclusion that biases/errors in the boundary conditions will affect regional concentrations, it is imperative to understand what the biases/errors are on these Top 30 days before too much weight is assigned to the 57 ppb conclusion in Denver (i.e., if there's a positive bias in O₃ over those 30 days, then that specific estimate of the role of BC may also be overestimated). The Denver area is notoriously hard to model. Are the authors comfortable that the 12km CAMx modeling is properly capturing the meteorology ("Denver cyclone") and other daily-varying conditions that lead to a complex mix of local/regional/natural/international contributions in this area? It's hard to discern that from seasonal-average tables of bias and error.

Response 2: We thank the reviewer for this suggestion. We have added quantile-quantile (Q-Q) plots to the SI (Figure S8; Denver example is shown in Figure R1). Q-Q plots compare the independently sorted (time-unpaired) values of observed and modeled concentrations and are useful for evaluating whether the model can reproduce the distribution of observed values (perfect model performance would show all data points along a 1:1 line). Our Q-Q plots suggest good model distributions (e.g., data points nearly match the 1:1 line) for Los Angeles, Sacramento, Phoenix, Denver, Dallas, Houston, Pittsburgh, and Philadelphia. In Denver, the model captures the ozone distribution below 65 ppb well and slightly under predicts ozone above 65 ppb, but it over predicts the highest MDA8 ozone. We have added the following statement (text in bold) to the second paragraph of Section 3.1.

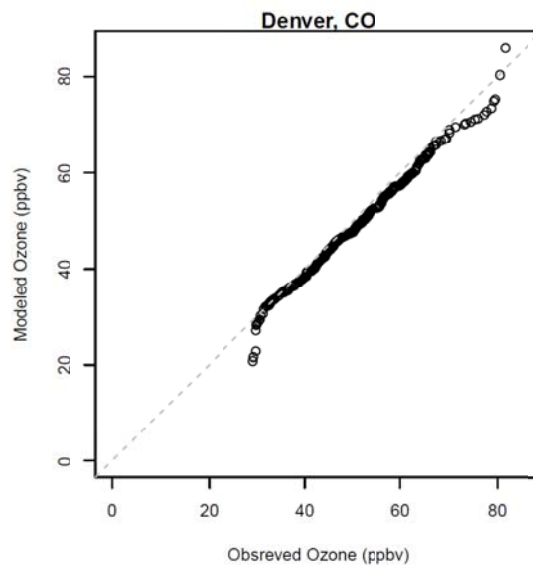


Figure R1. Example of Q-Q plot for Denver

“We additionally provide quantile-quantile (Q-Q) plots (Figure S8) which compare independently sorted (time-unpaired; space-paired) observed and modeled O_3 for each city. The Q-Q plots suggest good model distributions (e.g., data pairs near the 1:1 line) for Los Angeles, Sacramento, Phoenix, Denver, Dallas, Houston, Pittsburgh, and Philadelphia.”

The city analyses are based on a single site that shows the highest H4MDA8 within the metropolitan statistical area as described at the end of Section 2.2 and in Figure S1. The selected AQS site ID is provided in Table S3.

Per the finding that there is a near-linear relationship between the O_3 changes in the boundary conditions and the surface O_3 changes in the western U.S., might there be a more direct way to visualize this finding than the 16-panel plots? Seems like scatterplots of delta O_3 vs. delta tracer would show this conclusion more directly (by region, if needed). Alternatively, perhaps spatial maps of percent O_3 or tracer changes (as opposed to absolute change) would make the point more directly.

Response 3: We added two scatter plots to Figure 7 (See Figure R2 below) to help explain the information offered in this figure. The two scatter plots show the relationship of delta O_3 vs. delta tracer for Denver in spring and summer. The scatter plots also illustrate the regression analyses that we performed to develop Figure 7. Columns 3 and 4 in Figure 7 show the regression parameters for each surface grid cell and match the scatter plots for Denver. We have revised our text (shown in bold) in the second paragraph of Section 3.6 to better describe this plot.

“We examine more closely the relationship between changes in O_3 and reactive tracers in the EAS scenario. In each surface grid cell, we regress hourly O_3 changes against reactive tracer concentration changes (summed over boundary height ranges) to compute slope and r as demonstrated in the two scatter plots for Denver in spring and summer. Slope and r values of 1 indicate that the O_3 changes are explained entirely by the changes in O_3 BC reactive tracers. The delta total O_3 and delta tracer O_3 relationship is near-linear at Denver with a slope of 0.87 and r of 0.9. The 16 panels in Figure 7 show the regression parameters for each grid surface cell and match the scatter plots for Denver. The slope and r (Figure 7, 3rd and 4th columns) values have similar spatial patterns in all seasons. In winter and fall the slope values are near 1 with r of 0.8 to 1 across the US suggesting strong influence of O_3 transport from Asia during these seasons. In spring, strong correlation ($r = 0.8$ to 1) is seen in the Western US but areas in the Eastern US have a slope lower than 0.2 and r lower than 0.4 indicating that the O_3 BC tracers

can explain only a fraction of the total O_3 change. The lowest correlation ($r < 0.2$) is in the summertime over the Southeastern US in a region where the EAS scenario produces almost no change in surface O_3 indicating that transport from Asia becomes unimportant. High correlation in the Western US in all seasons emphasizes the influence of O_3 transport from Asia in this region.”

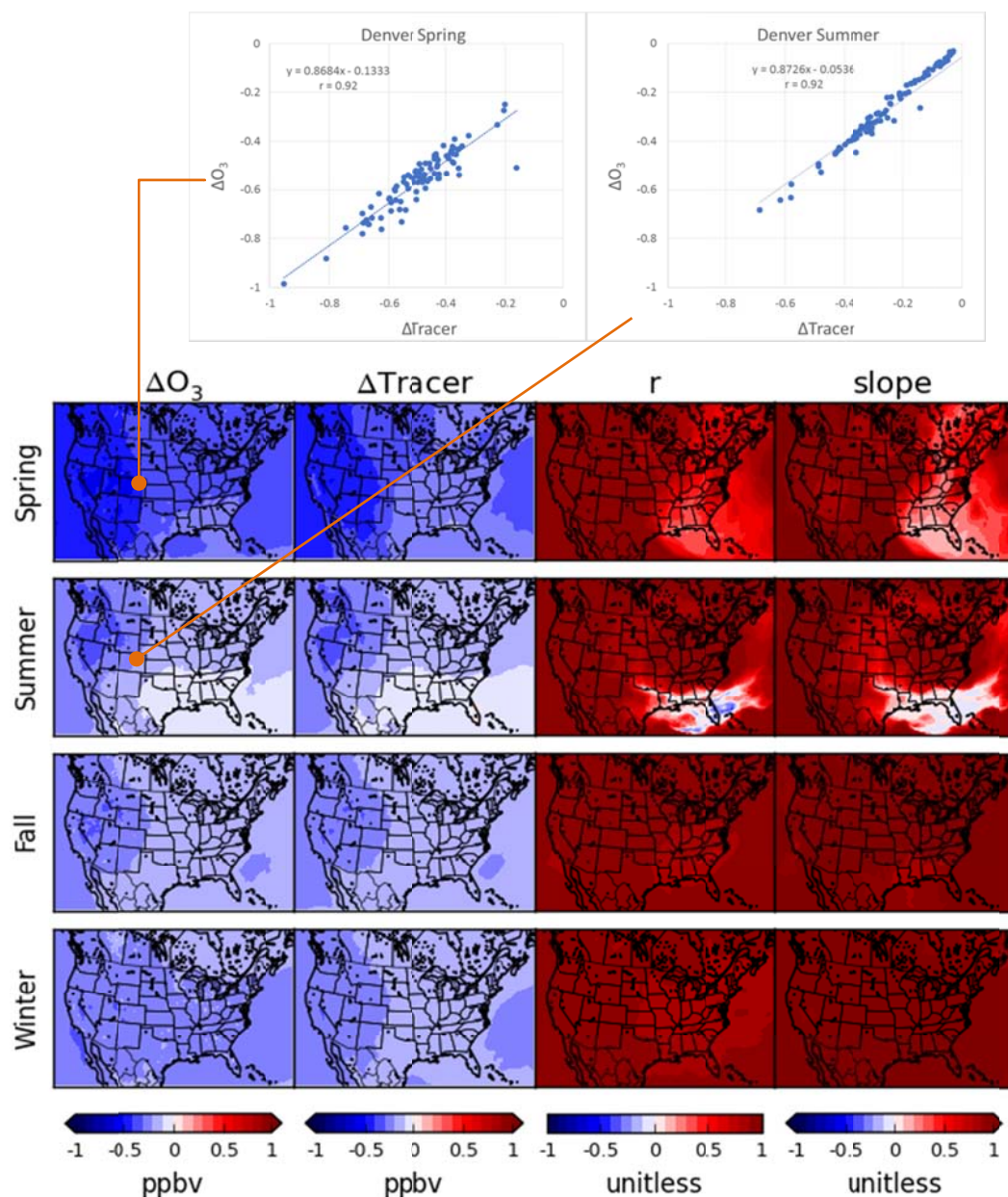


Figure R2: Scatter plots on the top show delta daily average O_3 (y-axis) and reactive tracer BC O_3 contribution (x-axis) for Denver in spring and summer for 20% reduction in East Asia emissions (EAS scenario). The 16 panels summarize the same information showing seasonal delta total O_3 (left column) and reactive tracer BC O_3 contribution (column 2) for each grid surface. The correlation (r) and slope of a linear regression of column 2 against column are shown in columns 3 and 4, respectively.

Per Figure 4, can the plot be modified to show the count of data points in each box/whisker. If there are some boxes with less than some small number of data, perhaps those should be combined into a larger range w/ more statistical robustness.

Response 4: We have included the count of predicted data points in Figure 4 as suggested by the reviewer. We prefer not to group data into larger ranges because it creates uneven spacing and loses detail. Additional modification to Figure 4 is described in our Response#5 below.

Would it be possible for the authors to comment on an additional possible conclusion from Denver/Fig 4? It appears to me that the model is overestimating the BC → total O₃ slope in this area (in Phoenix as well). The BC/total slope in the model appears to be close to 1 (i.e., what distinguishes high days from low days in Denver is BC contributions), whereas the observations suggest something much flatter (i.e., what distinguishes high days from low days in Denver is something other than BC). This seems like a potentially important finding. Once the model exceeds 50 ppbv, the BC terms are large (and appear to be overdone).

Response 5: We agree that the model tends to overestimate BC on the highest days and this is the reason we look at multiple ozone metrics including summer average and Top 30 days. The model is not perfect, but it captures the ozone distribution at Denver quite well based on the Q-Q plot we added to the SI (Figure S8 in the SI; Figure R3 in this document). The conclusions we can draw from Figure 4 are limited because BC contributions cannot be derived from measurements. We have decided that including observations in Figure 4 is confusing and taking away the key point we want to make (i.e., different pattern of how total O₃ changes as the modelled BC contributions increase seen in the west and the east). So we removed observations (yellow bars) from this plot and revised the relevant text in Section 3.3 as shown in bold below.

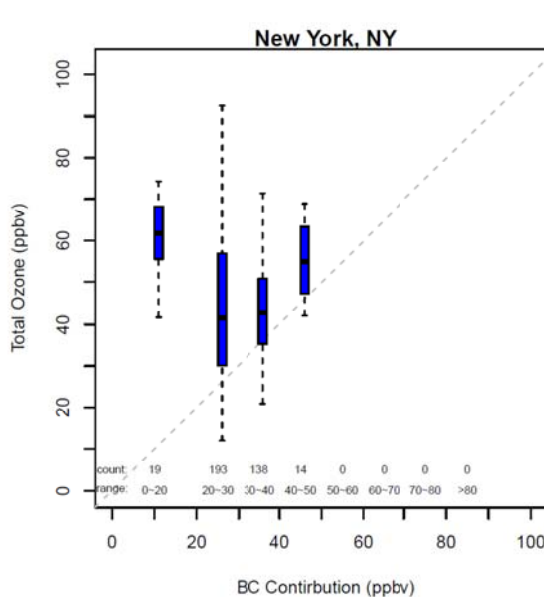
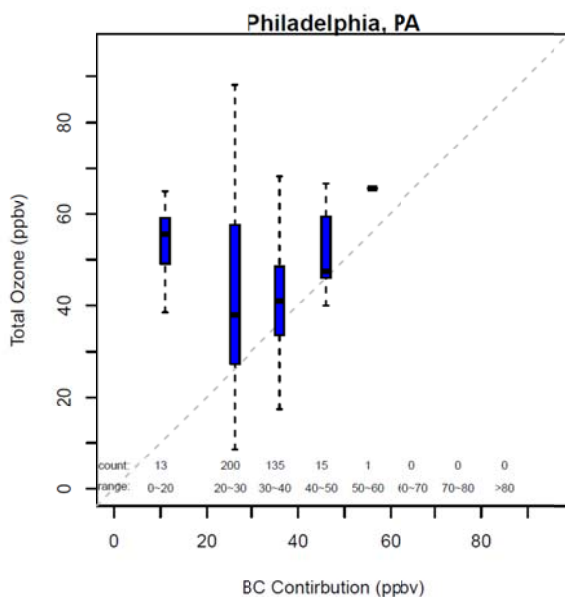
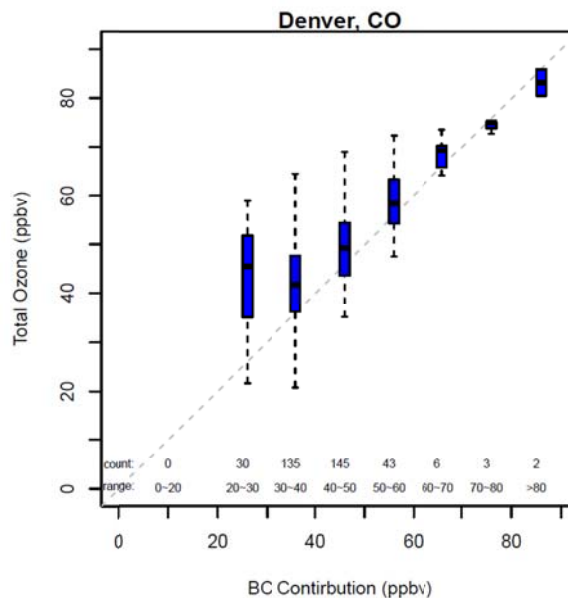
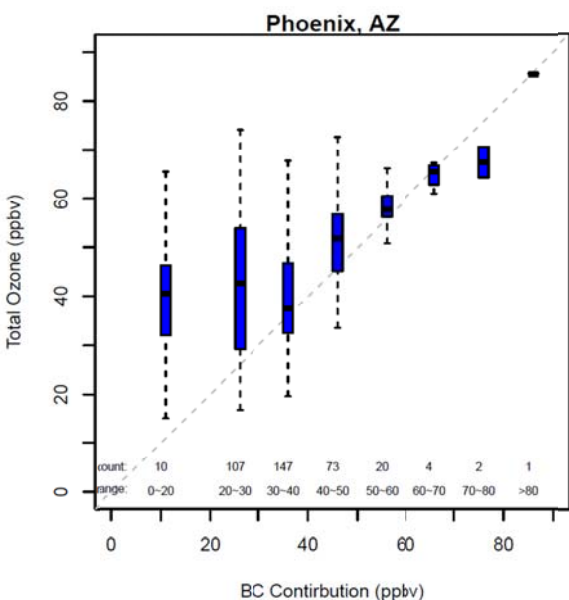


Figure R3: Box-and-whisker plots comparing modeled total MDA8 O₃ to modeled BC contribution in 10 ppb ranges paired in time and space.

“We further investigated how total O₃ changes as the modelled BC contributions increase (in 10 ppb increments) as shown in Figure 4 for several cities. The relationships vary between cities and the model captures this variation with the Western cities (Denver and Phoenix) showing different patterns than Eastern cities (Philadelphia and Atlanta). For Denver and Phoenix in the Intermountain West, total O₃ increases with BC contribution and approaches the 1:1 line at higher BC contribution revealing small groups of days when MDA8 O₃ exceeded 60 ppb (**11 days for Denver and 7 days for Phoenix**) and the modelling indicates that BCs accounted for almost all of this O₃. **In other words, BC contributions alone distinguish high O₃ days from low days.** These groups of **high BC-contributed** days are important because local emission reductions, or even US-wide emission reductions, would be ineffective at reducing O₃. However, there are other days in Denver when total MDA8 O₃ exceeded 60 ppb with modelled BC contribution below 30 ppb (see first and second bars in Figure 4) on which reducing local or US emissions would lower O₃. Air quality managers need methods to identify dates when emission reductions would be ineffective so that those dates can be excluded from emission strategy development. **Nonetheless, these results should be interpreted with consideration given to model performance. As shown in the Q-Q plot for Denver (Figure S8), the model can capture the O₃ distribution quite well, although it underestimates MDA8 O₃ over 65 ppb and overestimates MDA8 O₃ over 80 ppb. For this reason, we encourage making use of multi-day metrics (such as Top 30) rather than a single-day metric (e.g., H4MDA8) “**

Anonymous Referee #2 Received and published: 12 April 2017

The work presented in an interesting contribution to the scope of the ACP Special Issue and fits very well within the papers that I have seen published so far. In fact in its relative simplicity it addresses questions that are nicely linking the global and the regional scale in two relevant ways: the influence of long range transport on regional scale chemical budgets (read Ozone); but also the possible influences of global scale models on regional scale ones, which acquires from the first the mass budget at the boundaries. The paper is well written. If I have to find a criticism I would say that it is probably too well written or better to little written. What I mean by that is that in many places, basically all sections the explanations as well as the writing style are a bit too concise and to the essence. A contrast is present between the will to present facts and figures and the fact that most of the time qualitative definitions like, “large, bigger, better, acceptable” are use to characterize the results.

Response 6: We have checked to make sure that any qualitative characterization is always accompanied by numerical statement. For example, “CAMx has a large over prediction bias exceeding 15 ppb at the two sites when observations are low (~20 ppb).”

The figures are nice and give clear quantitative indication of the various aspects that the study tackles, which however is not reflected in the text at times. More elaboration and quantification is needed here and there to make the story more interesting and appealing and to elevate the valuable content of this paper from a report style. I am not asking to re-write the paper here, cause that would be unfair, just to indulge in a deeper explanation of the results by deepening only into those explanations that are worth exploring.

Response 7: We thank the reviewer for this suggestion. We have added more analyses and expanded our conclusion section to better capture essence of our story. Please see our modified conclusion as shown in bold text below.

“

The overall MDA8 O₃ performance is within evaluation goals. We do not see evidence of systematic problems with the model setup, although performance at individual monitor does vary, and the potential for hidden biases and errors always exists. Future studies could benefit from refining model assumptions that may be important at specific sites. For example, overstated MBL O₃ at Trinidad Head is partly attributable to the lack of O₃ destruction by oceanic halogen chemistry. Other possible reasons include insufficient O₃ deposition to the ocean, too strong vertical mixing in the MBL, or a combination of factors. The model tendency to overestimate O₃ in spring may suggest overstated BC contributions as seen at Denver site. Perfecting model performance at individual sites across the US is not pursued in the current study. If accuracy in estimating BC contributions is critical, such as in demonstrating attainment of O₃ standards, model performance and BC contributions especially on high O₃ days cannot be overlooked.

Inert BC O₃ tracers consistently estimate higher BC contributions to seasonal average MDA8 O₃ across the US than reactive tracers, particularly in summer. The inherent bias in the inert tracer approach (i.e., omitting chemical destruction) can exceed 10 ppb in seasonally averaged MDA8 O₃ which is substantial in comparison to the 70 ppb level of the O₃ NAAQS. This information is critical for interpreting results obtained with inert tracers in AQMEII-3 and other studies.

Comparing inert tracers in two regional models that used substantially the same input data found differences in MDA8 O₃ that were **generally within 5 ppb**, smaller than the differences between inert and reactive tracers **run in a single model (CAMx)**, but nevertheless **those inert model differences** were notable. Potential causes include differing numbers of model vertical layers (influencing movement of UTLS O₃ to ground level) and differences in model treatments of deposition. **This exercise emphasizes that source contribution analyses of BC O₃ (or other non-inert pollutants) using the inert tracer approach should only be interpreted qualitatively especially during the spring and summer period. Making tracers reactive is a simple improvement that is very important to this type of analysis. Future studies should consider adopting the reactive tracer approach.**

Contributions from O₃ BCs in three height ranges (LT, MT and UTLS) differ spatially and temporally. The LT BC tracers do not penetrate very far inland **with contributions to MDA8 O₃ up to 20 ppb in the coastal states**. The largest contributions to MDA8 O₃ are from the MT BCs with springtime maxima exceeding 40 ppb in the high terrain of the Western US. The high contribution of BC O₃ to ground level O₃ in portions of the Western US presents a significant challenge to air quality management approaches based solely on local emission reductions. Nonetheless, model comparison with observations suggests that estimated high BC contributions in the Intermountain West could be overstated and that the bias inherent in O₃ BCs can affect model performance. **Replicating the highest end of observed O₃ distribution is particularly challenging. We encourage adopting multi-day metrics (such as Top 30) as an alternative to a single-day metric (e.g., H4MDA8) when examining contributions from international transport.**

Reducing emissions in East Asia (EAS scenario) revealed a near linear relationship between changes in BC O₃ and changes in surface O₃ in the Western US in all seasons and across the US in fall and winter with a near 1:1 slope. However, the surface O₃ decreases are small: below 1 ppb in spring and below 0.5 ppb in other seasons. These O₃ reductions result mostly from reductions in MT and LT BC contributions. **Our 2010 EAS contribution results are slightly higher than the estimates of 0.35-0.45 ppb from multi-model experiment that also simulated the EAS scenario but for the year 2001 (Reidmiller et al.,2009).** This is expected as East Asia emissions have increased over the last decade. Assuming a linear relationship, our study suggests an EAS total contribution of 2.5 ppb in certain seasons based on 0.5

ppb O₃ reduction with 20% emission decrease. It is difficult to quantify how the model biases affect the O₃ response to emission perturbations because the sources of biases are unknown. In the GLO scenario US surface O₃ is more sensitive to domestic emission reductions than changes in the BCs.

“

Cities are taken as locations for the comparison with data. It is important to characterize the monitoring sites and clarify whether those location are suitable to measure background levels of ozone.

Response 8: Our interest is high ozone and the selected locations have high ozone exposure. For this reason we look at the AQS rather than CASTNET monitors. The 22 major cities are selected based on their population size (~200K in Salt Lake to 8.5M in New York) and geographical location. If a city has multiple AQS monitors, then we select the one with highest H4MDA8. This is described at the end of Section 2.2 and in Figure S1. The selected AQS site ID is provided in Table S3.

The inert ozone tracer is a powerful tool that should be exploited more in the future, considering the relevance of the impact of BC bias on regional scale models.

Response 9: In our view, inert tracers are useful, but subject to a clear bias. Making tracers reactive is a simple improvement that is very important to this type of analysis and the community should adopt that approach.

A more detail break down in the vertical would be very instructive when studying for example boundary layer exchanges or transition from marine to land ABL. But this is probably for the future.

Response 10: We agree with this future-work recommendation.

Modeling inter-continental transport of ozone in North America with CAMx for the Air Quality Model Evaluation International Initiative (AQMEII) Phase 3

Uarporn Nopmongcol¹, Zhen Liu¹, Till Stoeckenius¹, Greg Yarwood¹

5 ¹Ramboll Environ, 773 San Marin Dr., Suite 2115, Novato, CA 94945

Correspondence to: Dr. Uarporn Nopmongcol (unopmongcol@ramboll.com)

Abstract. Inter-continental ozone (O₃) transport extends the geographic range of O₃ air pollution impacts and makes local air pollution management more difficult. Phase 3 of the Air Quality Modeling Evaluation International Initiative (AQMEII-3) is examining the contribution of inter-continental transport to regional air quality by applying regional scale atmospheric models jointly with global models. We investigate methods for tracing O₃ from global models within regional models. The CAMx photochemical grid model was used to track contributions from boundary condition (BC) O₃ over a North America modeling domain for calendar year 2010 using a built-in tracer module called RTCMC. RTCMC can track BC contributions using chemically reactive tracers and also using inert tracers in which deposition is the only sink for O₃. Lack of O₃ destruction chemistry in the inert tracer approach leads to over estimation biases that can exceed 10 ppb. The flexibility of RTCMC also allows tracking O₃ contributions made by groups of vertical BC layers. The largest BC contributions to seasonal average daily maximum 8-hour averages (MDA8) of O₃ over the US are found to be from the mid-troposphere (over 40 ppb) with small contributions (a few ppb) from the upper troposphere-lower stratosphere. Contributions from the lower troposphere are shown to not penetrate very far inland. Higher contributions in the Western than the Eastern US, reaching an average of 57 ppb in Denver for the 30 days with highest MDA8 O₃ in 2010, present a significant challenge to air quality management approaches based solely on local or US-wide emission reductions. The substantial BC contribution to MDA8 O₃ in the Intermountain West means regional models are particularly sensitive to any biases and errors in the BCs. A sensitivity simulation with reduced BC O₃ in response to 20% lower emissions in Asia found a near linear relationship between the BC O₃ changes and surface O₃ changes in the Western US in all seasons and across the US in fall and winter. However, the surface O₃ decreases are small: below 1 ppb in spring and below 0.5 ppb in other seasons.

25 1 Introduction

Inter-continental ozone (O₃) transport extends the geographic range of O₃ air pollution impacts and makes local air pollution management more difficult (Jaffe et al., 2003; Zhang et al., 2011; Emery et al., 2012). The Air Quality Model Evaluation International Initiative (AQMEII) aims to better understand uncertainties in regional-scale model predictions and foster continued model improvement by providing a collaborative, cross-border forum for model development and evaluation in

North America and Europe (Galmarini and Rao, 2011). While phases 1 and 2 of the AQMEII focused on performance of different types of regional-scale models, Phase 3 (AQMEII-3) examines the contribution of inter-continental transport to regional air quality by applying regional scale atmospheric models jointly with global models (Galmarini et al., 2017). Other AQMEII-3 objectives include assessing the sensitivity of regional transport to emissions changes in key source regions world-wide and inter-comparing the performance of global and regional-scale models. Multiple models were applied in the AQMEII-3 for North American (NA) and Europe (EU) regional domains with each model required to track the inflow of O₃ from the lateral domain boundaries at various vertical heights. As in previous Phases of AQMEII the organizers made available key model input data to promote consistent model applications and simplify interpretation of results across participating models.

We applied the Comprehensive Air Quality Model with Extensions (CAMx) photochemical grid model (Ramboll Environ, 2015) for the NA domain using model inputs provided by the AQMEII. Our simulations address the first two objectives of AQMEII-3 by evaluating contributions introduced via boundary conditions (BC) as inert tracer (i.e., excluding photochemical removal process) and examining O₃ response to reduction of anthropogenic emissions in East Asia or globally. Our study is unique in that we are the only AQMEII-3 participants to also track BC O₃ using chemically reactive tracers.

2 Methodology

2.1 Base Case Modeling

Air quality modeling for the NA domain and calendar year 2010 used CAMx version 6.2 (Ramboll Environ, 2015) to simulate formation and transport of O₃. Gas-phase chemistry was included using the Carbon Bond (CB05) mechanism (Yarwood et al., 2005) but heterogeneous-phase chemistry was not included for efficiency and because the focus is on O₃. The CAMx modeling domain covers the Continental US with 459 by 299 grid cells of 12 by 12 km resolution and 26 vertical layers (Table S1). The vertical height of the first layer is 20 meters. Model inputs were prepared from data provided to all AQMEII participants supplemented by other data sources (described later). The 2010 annual simulation was initialized on December 22, 2009, to limit the influence of initial concentrations.

This study uses reactive tracers with a chemical mechanism compiler (RTCMC) in CAMx to track contributions from BCs. The RTCMC module simulates explicit tracers in parallel to the host model and represents sources (emissions and BCs), transport processes (advection and diffusion), deposition and user-defined chemistry (Yarwood et al., 2014). RTCMC chemistry can use species concentrations from the host model, e.g., OH radical, in the reactions of tracers. If no chemistry is defined for an O₃ tracer, then it becomes chemically inert and deposition is the only sink. Currently, RTCMC models dry deposition of tracers but not wet deposition which will result in conservative estimates of BC contributions.

CAMx can also track BC O₃ contributions through the ozone source apportionment technology (OSAT; Ramboll Environ, 2015) module but we use RTRAC because it offers flexibility to model reactive and inert tracers, and to track BC O₃ from specific groups of vertical layers. Vertical attribution is valuable in identifying height ranges of transported O₃ that are most influential to ground-level O₃. Baker et al. (2015) compared RTCMC and OSAT over North America and found that the two approaches estimated very similar BC O₃ contributions in warmer months. Baker et al. also evaluated computational efficiency of RTCMC tracers. We use the same RTCMC scheme for reactive O₃ tracers as Baker et al. (Table S2) which includes O₃ destruction by odd-hydrogen (i.e., HO₂ and OH) and alkenes but not O₃ destruction by NO because this would entail tracking conversion of BC O₃ to/from several NO_y species including NO₂, PAN and HNO₃. OSAT accounts for O₃ destruction by NO and Baker et al. show that omission of O₃ destruction by NO in the RTCMC scheme causes some positive bias in BC O₃ estimates in winter months (Baker et al., 2015).

The BC O₃ contributions are analysed in terms of MDA8 by season because the MDA8 is relevant to the US National Ambient Air Quality Standard (NAAQS) for O₃ which is set at a level of 70 ppb. Seasonal averages are used to evaluate how BC contributions depend upon transport patterns and photochemistry.

2.1.1 Meteorology

Meteorological data for calendar year 2010 were developed by the US Environmental Protection Agency (EPA) for AQMEII phase 2 using the Weather Research Forecast (WRF; Skamarock et al., 2008) model with 12 km resolution. The WRF domain was defined in Lambert Conformal Projection with 471 by 311 grid cells and 35 vertical layers with a 20 meter deep surface layer. The WRF physics options were described in Gilliam et al., 2012. The WRFCAMx pre-processor reformatted WRF output for CAMx and diagnosed vertical mixing parameters. CAMx employed fewer vertical layers (26) than WRF (35) to reduce the computational burden of the air quality simulations. The CAMx vertical layers exactly matched those used in WRF for the lowest 10 layers (up to 577 m); above this height several WRF layers were combined to single CAMx layers (Table S1). The minimum vertical diffusivity (K_v) was set to 0.1-1.0 m²/s based on input landuse.

2.1.2 Emissions

Anthropogenic and fire emissions for 2010 were provided by AQMEII (Pouliot et al., 2015) separately for surface emissions and six elevated source groups, namely fires, international marine shipping, electric generating units (EGU), other point sources (non-EGU), Mexico point sources, and Canada point sources. Biogenic emissions were obtained from the Model of Emissions of Gases and Aerosols from Nature version 2.1 (MEGAN; Guenther, et al., 2006; Sakulyanontvittaya, et al., 2008). MEGAN has a global database of landcover derived from satellite data at 1 km resolution. Meteorological input data for MEGAN (i.e., temperature and solar radiation) were taken from the WRF predictions. Annual emissions in 2010 in the modeling domain for each source sector are summarized in Table 1.

2.1.3 Boundary Conditions

BCs were provided by the European Centre for Medium-Range Weather Forecasts (ECMWF). The ECMWF BC data were based on the Composition-Integrated Forecast System (C-IFS) model (Flemming et al., 2015) which output three-hourly, three-dimensional gridded concentrations which were formatted for CAMx.

5

We tracked contributions from O₃ BCs in three height ranges defined at the CAMx boundaries, namely from layers 1 to 16 (layers below 750 mb; lower troposphere; LT), 17 to 23 (layers between 750 mb and 240 mb; middle troposphere; MT), and 24 to 26 (layers above 250 mb; upper troposphere and lower stratosphere; UTLS). We introduced both reactive and inert O₃ tracers for the same vertical groups. Reactive tracers undergo chemical decay according to chemistry scheme defined using the RTCMC, whereas inert tracers only participate in physical processes with no chemical removal. Table S2 presents the RTCMC chemistry scheme for reactive tracers as well as the physical properties for both reactive and inert tracers.

10

2.2 Sensitivity Scenarios

Two sensitivity simulations defined by AQMEII were conducted to quantify O₃ response to anthropogenic emission reductions. The GLO scenario reduced all anthropogenic emissions by 20% globally and the EAS scenario reduced anthropogenic emissions in the East Asia by 20%. In the GLO scenario, the CAMx NA anthropogenic emissions were reduced by 20% for the entire modeling domain with no changes to fire and biogenic emissions. Under the EAS scenario the CAMx NA emissions are the same as in the base case. ECMWF provided BCs specific for each scenario. The ECMWF BCs inadvertently omitted H₂O₂ for the EAS scenario and so we followed AQMEII suggestion to use H₂O₂ from the base case for both the EAS and GLO scenarios. Other modeling inputs are unchanged from the base case. The annual CAMx sensitivity simulations were conducted with the inert and active boundary O₃ tracers described above. Several metrics are used when comparing sensitivity scenarios to the base case including the 4th highest maximum daily 8-hour average (H4MDA8), the average of the thirty highest MDA8 O₃ days (Top 30), and seasonal average MDA8. We show the results for the entire modeling domain and additionally discuss our findings for 22 selected major cities in a wide variety of climatic and geographic environments (Figure S1). Cities are represented by the monitoring site with highest H4MDA8 in the metropolitan statistical area.

20

25

3 Results

3.1 Model Performance Evaluation (MPE) of Ozone

We evaluate O₃ model performance for the base case relative to benchmarks that are accepted in NA. Predictions of MDA8 O₃ are evaluated against observations from the Clean Air Status and Trends Network (CASTNET; rural) and the Air Quality System (AQS; urban and rural). Observations are considered valid when at least 75 percent of data are available. A 40 ppb

30

O₃ cutoff is applied to focus on the upper end of O₃ frequency distributions. Statistical metrics used in this evaluation include two bias metrics, normalized mean bias (NMB) and fractional bias (FB); and two error metrics, normalized mean error (NME) and fractional error (FE) (Table 2). Table 3 shows that model biases (NMB, FB) are less than ±12% and errors (NME, FE) up to 15% for all seasons and both networks, well within the bias/error goals of less than ±15% and 35% recommended by EPA (1991). The model tends to overestimate O₃ in spring and summer, while underestimate in fall and winter. Model biases and errors are slightly improved, by less than 2%, at CASTNET sites. The AQS network includes many urban sites that are heavily impacted by local emissions not well resolved by our modeling grid.

The seasonal spatial distributions of NMB, NME, and Pearson's correlation coefficient (r) at individual CASTNET and AQS sites are shown in Figures S2 – S5. The springtime performance is weakest ($|r| < 0.5$) in the Western US where high terrain prevails. Stratospheric O₃ intrusions are influential in the high terrain of the Western US during spring (Langford et al., 2009; 2015; Lin et al., 2012b; Emery et al., 2012) but models do not always represent this process accurately. In summer, the performance is weakest along the Gulf coast and California coast. Model performance against AQS observations is presented separately for selected 22 major cities. CAMx performs well at these cities, with NMB of -12% to 12% and NME of 12% to 21% for MDA8 with zero threshold (Table S3), satisfying the bias/error goals. The performance statistics improve when applying a 40 ppb threshold (Table S4). We additionally provide quantile-quantile (Q-Q) plots (Figure S8) which compare independently sorted (time-unpaired; space-paired) observed and modeled O₃ for each city. The Q-Q plots suggest good model distributions (e.g., data pairs near the 1:1 line) for Los Angeles, Sacramento, Phoenix, Denver, Dallas, Houston, Pittsburgh, and Philadelphia.

We evaluated vertical profiles of O₃ at Trinidad Head (41.0541°, -124.151°) on the northern coast of California (Figure S6-S7). This location is indicative of O₃ entering the US with prevailing winds from the Pacific Ocean and useful for evaluating O₃ BCs over the Pacific. CAMx reproduces the strong gradient in O₃ starting at the tropopause (between ~10 and ~14 km) but sometimes underestimates O₃ near the model top (~16 km). In the free troposphere (~1 to ~10 km), CAMx performance is reasonable with a mix of over and under-predictions. In the marine boundary layer (MBL; < 500 m), CAMx tends to over predict surface O₃ because the model lacks a consistently observed gradient toward lower O₃ (typically lower than 50 ppb) at the surface. Potential causes are too little O₃ deposition to the ocean, lack of O₃ destruction by halogen chemistry in the MBL, too strong vertical mixing in the MBL, or a combination of factors. The influence of low bias in the Pacific MBL will be confined to West Coast States because this air is blocked effectively by western mountain ranges (see Section 3.5). However, similar biases in the MBL over the Gulf of Mexico and Atlantic Ocean could influence O₃ across the Southern and Eastern US (see Section 3.2). Further analysis is required to address this uncertainty.

3.2 Regional MPE Analysis at Remote Sites along the Gulf Coast

We found a consistent high bias for summer O₃ at sites near the Gulf coast and investigated potential causes using our tracer simulation results. Global modeling studies have reported high O₃ bias simulated in air arriving along the Texas coast (Fiore et al., 2002; 2014; McDonald-Buller et al., 2011; Zhang et al., 2011). The high O₃ bias over 10 ppb has been reported by a regional modeling study (Sarwar et al., 2015; Smith et al., 2015). Adding reactions of halogens (especially iodine; Smith et al., 2015) to the O₃ chemistry in CAMx mitigated (e.g., ~3 ppb reduction of MDA8 O₃ at coastal sites) but did not eliminate this bias. This study provides an opportunity to examine whether bias in O₃ BCs could contribute to O₃ bias along the Gulf coast.

- 10 Time series of daily MDA8 O₃ together with O₃ BC contributions are shown in Figure 1 for Galveston and Sabine Pass in Texas. CAMx tends to over predict O₃ during summer months when onshore winds are prevalent (TCEQ, 2016) due to the enhancement of Bermuda High bringing warm air from the Gulf of Mexico (Zhu and Liang, 2013). During this period CAMx has a large over prediction bias exceeding 15 ppb at the two sites when observations are low (~20 ppb). Reactive O₃ tracers exceed observed O₃ by an average of 2-3 ppb which explains only a portion of the total model bias so other factors must be contributing (not examined here). Inert O₃ tracers are on average higher than the reactive tracers by 10-12 ppb, demonstrating that inert tracers can over estimate BC contributions.

3.3 BC Ozone Contributions to Surface Ozone

- BC contributions based on the active tracers to seasonal average MDA8 O₃ over the US are higher in spring than summer (Figure 2). Spring contributions are over 40 ppb across the Western US which is the region most influenced by pollution transported from Asia (Jaffe et al., 2003; Zhang et al., 2011; Lin et al., 2012; Emery et al., 2012). In particular, high O₃ events over the high terrain in the Western US have been linked to intercontinental transport and stratospheric intrusions (Lin et al., 2012a, b). The highest modeled contributions occur in spring which is consistent with observations (Parish et al., 2012; Cooper et al., 2012) and previous modeling studies (Emery et al., 2012; Fiore et al., 2014). BC contributions in the Eastern US are generally below 40 ppb in spring and below 30 ppb in other seasons.

- 25 BC contributions on high O₃ days are compared to the summer average BC contributions in Figure 3 for 22 major cities. The metrics for high O₃ are the H4MDA8, which is relevant to the NAAQS but is a single day, and the Top 30 which includes a variety of conditions that can lead to high O₃. They are compared to the summer average MDA8 O₃ metric which includes high and low O₃ days. In 15 of the 22 major cities (Los Angeles, Sacramento, Dallas, Kansas City, St. Louis, Chicago, Atlanta, Cincinnati, Columbus, Detroit, Pittsburgh, Baltimore, Philadelphia, New York, and Boston), the BC contribution to the Top 30 and summer average days differs by less than 15% indicating that higher O₃ on the Top 30 days is mainly attributable to larger O₃ production within the modeling domain. BC contributions to the H4MDA8 are smaller than to the

Top 30 in 16 of the 22 cities which is consistent with greater destruction of BC O₃ by local photochemistry on the highest O₃ days in these cities. Los Angeles and Sacramento fall in this category with BC contributions to H4MDA8 below 20 ppb. For the cities east of the Rocky Mountains the H4MDA8 contributions range from 19 ppb (St. Louis) to 34 ppb (Detroit) and the differences among the three metrics are generally within 5 ppb with no metric consistently being highest or lowest. In contrast, for cities in the Intermountain West (Boise, Phoenix, Salt Lake and Denver) the BC contribution is consistently lower for summer average than the two high O₃ day metrics (i.e., differences are more than 8 ppb). For Denver, our model estimates 57 ppb of BC contribution to the Top 30 and 72 ppb to the H4MDA8. However, the modeled 72 ppb BC contribution to the Denver H4MDA8 is certainly over-stated, because the observed MDA8 on this day was only 50 ppb, and we place more emphasis on metrics like the Top 30 that consider multiple days. BC contributions tend to be higher in the western than the Eastern US because of higher terrain and deeper planetary boundary layer (PBL) that can efficiently transport mid-tropospheric O₃ to ground level, and longer O₃ lifetimes in the PBL (Fiore et al., 2002).

We further investigated how total O₃ changes as the modelled BC contributions increase (in 10 ppb increments) as shown in Figure 4 for several cities. The relationships vary between cities and the model captures this variation with the Western cities (Denver and Phoenix) showing different patterns than Eastern cities (Philadelphia and Atlanta). For Denver and Phoenix in the Intermountain West, total O₃ increases with BC contribution and approaches the 1:1 line at higher BC contribution revealing small groups of days when MDA8 O₃ exceeded 60 ppb (11 days for Denver and 7 days for Phoenix) and the modelling indicates that BCs accounted for almost all of this O₃. In other words, BC contributions alone distinguish high O₃ days from low days. These groups of high BC-contributed days are important because local emission reductions, or even US-wide emission reductions, would be ineffective at reducing O₃. However, there are other days in Denver when total MDA8 O₃ exceeded 60 ppb with modelled BC contribution below 30 ppb (see first and second bars in Figure 4) on which reducing local or US emissions would lower O₃. Air quality managers need methods to identify dates when emission reductions would be ineffective so that those dates can be excluded from emission strategy development. Nonetheless, these results should be interpreted with consideration given to model performance. As shown in the Q-Q plot for Denver (Figure S8), the model can capture the O₃ distribution quite well, although it underestimates MDA8 O₃ over 65 ppb and overestimates MDA8 O₃ over 80 ppb. For this reason, we encourage making use of multi-day metrics (such as Top 30) rather than a single-day metric (e.g., H4MDA8).

3.4 Inert vs Active Ozone BCs

Contributions to seasonal average MDA8 from reactive and inert tracers are shown in Figure 5 where positive differences indicate larger contributions from inert tracers in all seasons. In summer, when photochemistry is active, the differences are more than 10 ppb. At the Galveston and Sabine Pass sites, the differences frequently exceed 20 ppb in summer days (Figure 1). During spring and fall, contributions from inert tracers are 5 ppb higher than contributions from active tracers in Southern regions and less than 5 ppb elsewhere. In winter when photochemistry is less active the estimated contributions from the

inert and active tracers are similar. Such seasonal variation is consistent across all 3 groups of vertical layers (Figure S9-S11). These results emphasize the critical role of O₃ chemistry and highlight the estimation bias inherent to the inert tracer approach.

3.5 O₃ Contributions by Boundary Height Range

- 5 The largest BC contributions to seasonal average MDA8 O₃ over the US are from the MT with small contributions from the UTLS (Figure 6). The contributions from the MT are highest in spring, followed by summer, fall and winter. The attribution of the MT to spring maxima is over 40 ppb across the Western US, but less than 25 ppb in the Eastern US. The contributions from the LT are highest (more than 30 ppb) along the western boundary but decrease sharply at the coastline as a result of dilution as the boundary layer moves onshore along with higher O₃ deposition velocities over land. Dissipating contributions from the model boundaries with distance are seen at all lateral sides because O₃ deposits to the earth's surface and is destroyed by chemical reactions in the atmosphere. The penetration of LT BC O₃ inland O₃ peaks in winter when chemistry and deposition are least active. The UTLS BC tracers contribute only a few ppb, mostly over the highest western terrain, and up to 6 ppb in summer when vertical convection is most active.

3.6 Sensitivity to Changing Anthropogenic Emissions (GLO and EAS Scenarios)

- 15 Reducing emissions in East Asia by 20% (EAS scenario) decreases average O₃ across the US in all seasons (Figure 7, left column). As expected, decreases are highest in the west because the Western US is closest to Asia and has high terrain. The O₃ decreases are small: below 1 ppb in spring and below 0.5 ppb in other seasons. Decreases in O₃ BC reactive tracers (Figure 7, 2nd column) are almost identical to modeled O₃ decreases but slightly smaller (e.g., generally within 0.1 ppb) because the reactive tracers omit some chemical interactions.

- 20 We examine more closely the relationship between changes in O₃ and reactive tracers in the EAS scenario. In each surface grid cell, we regress hourly O₃ changes against reactive tracer concentration changes (summed over boundary height ranges) to compute slope and r as demonstrated in the two scatter plots for Denver in spring and summer. Slope and r values of 1 indicate that the O₃ changes are explained entirely by the changes in O₃ BC reactive tracers. The delta total O₃ and delta tracer O₃ relationship is near-linear at Denver with a slope of 0.87 and r of 0.9. The 16 panels in Figure 7 show the regression parameters for each grid surface cell and match the scatter plots for Denver. The slope and r (Figure 7, 3rd and 4th columns) values have similar spatial patterns in all seasons. In winter and fall the slope values are near 1 with r of 0.8 to 1 across the US suggesting strong influence of O₃ transport from Asia during these seasons. In spring, strong correlation (r = 0.8 to 1) is seen in the Western US but areas in the Eastern US have a slope lower than 0.2 and r lower than 0.4 indicating that the O₃ BC tracers can explain only a fraction of the total O₃ change. The lowest correlation (r < 0.2) is in the summertime over the Southeastern US in a region where the EAS scenario produces almost no change in surface O₃ indicating that transport from

Asia becomes unimportant. High correlation in the Western US in all seasons emphasizes the influence of O₃ transport from Asia in this region.

Reducing global emissions by 20% (GLO scenario), including US emissions, decreases summertime average O₃ by up to 4 ppb (Figure 8). The largest reductions occur over the Eastern US where US emissions cause domestic O₃ production. O₃ reductions in fall and winter are small, generally lower than 1-2 ppb. Many NO_x-rich areas (e.g., urban cores) show O₃ increases as a result of NO_x emission reductions (i.e., NO_x disbenefit) in all seasons. The spatial pattern and magnitude of the changes in BC O₃ tracers differs from the changes in surface O₃ (Figure 8, 1st and 2nd columns) except near the boundaries and in winter. The correlation between changes in surface O₃ and BC tracers is low ($|r| < 0.4$) in all seasons except winter (Figure 8, 4th column). Overall, in the GLO scenario US surface O₃ is more sensitive to domestic emission reductions than changes in BCs.

We use summer average MDA O₃ to show how the two emission scenarios change BC contributions for the 22 major cities (Figure 9). The EAS scenario reduces BC contribution in all cities with reductions range from 0.06 ppb (Houston) to 0.3 ppb (Boise). Reductions are larger in the Western US and more northern latitude in the Eastern US (e.g., larger reduction in Columbus than Atlanta). These reductions result mostly from smaller MT and LT BC contributions because the EAS scenario scaled back the contribution of each height range about equally. The EAS scenario changed the UTLS BC contributions by less than 0.01 ppb. The GLO scenario produced larger reductions than the EAS scenario and they range from 0.4 ppb (Boston) to 1.2 ppb (Los Angeles). These reductions are mainly driven by the MT BCs in all of the cities except Dallas and Houston. Higher influence from the LT in the GLO scenario than the EAS scenario for most cities is consistent with the GLO scenario reducing emissions just outside the CAMx domain whereas in the EAS scenario the emission reductions occur only in East Asia.

3.7 Comparing BC O₃ Contributions in Two Regional Models

The AQMEII activity permits comparison of BC O₃ contributions in different regional models. US EPA applied the CMAQ model over the NA domain with the same model input data as we used with CAMx except for biogenic emissions. The WRF-CMAQ system was configured using WRFv3.4 and CMAQv5.0.2 (Appel et al., 2013; see also Foley et al., 2010 and Byun and Schere, 2006). Options in CMAQ include wet deposition as described in Byun and Schere (2006) and dry deposition as described in Pleim and Ran (2011). Additional details on the CMAQ configuration used in these simulations can be found in Solazzo et al. in this issue). Figure 10 compares BC O₃ contributions to seasonal average MDA8 O₃ estimated by CAMx and CMAQ using inert BC O₃ tracers (CMAQ was not run with reactive tracers). Differences between the CMAQ and CAMx inert tracer impacts are smaller than the differences between inert and reactive tracers in CAMx, which exceed 10 ppb (Figure 5), but they are notable, in a range of 4-8 ppb in summer and 2-6 ppb in spring with CAMx being higher. Factors contributing to these differences may include fewer vertical layers in CAMx (26, compared to 35 in

CMAQ) allowing greater transport of UTLS O₃ to ground level (Emery et al. (2012), omission of wet scavenging for the CAMx inert tracers, treatment of deep convective transport in CMAQ, or differences in model treatments of O₃ dry deposition. Liu et al. (this issue) performed multi-model process comparisons with four AQMEII models and draw similar conclusions regarding factors that can contribute to differences in tracer impacts.

5 4 Conclusions

The overall MDA8 O₃ performance is within evaluation goals. We do not see evidence of systematic problems with the model setup, although performance at individual monitor does vary, and the potential for hidden biases and errors always exists. Future studies could benefit from refining model assumptions that may be important at specific sites. For example, overstated MBL O₃ at Trinidad Head is partly attributable to the lack of O₃ destruction by oceanic halogen chemistry. Other possible reasons include insufficient O₃ deposition to the ocean, too strong vertical mixing in the MBL, or a combination of factors. The model tendency to overestimate O₃ in spring may suggest overstated BC contributions as seen at Denver site. Perfecting model performance at individual sites across the US is not pursued in the current study. If accuracy in estimating BC contributions is critical, such as in demonstrating attainment of O₃ standards, model performance and BC contributions especially on high O₃ days cannot be overlooked.

Inert BC O₃ tracers consistently estimate higher BC contributions to seasonal average MDA8 O₃ across the US than reactive tracers, particularly in summer. The inherent bias in the inert tracer approach (i.e., omitting chemical destruction) can exceed 10 ppb in seasonally averaged MDA8 O₃ which is substantial in comparison to the 70 ppb level of the O₃ NAAQS. This information is critical for interpreting results obtained with inert tracers in AQMEII-3 and other studies.

Comparing inert tracers in two regional models that used substantially the same input data found differences in MDA8 O₃ that were generally within 5 ppb, smaller than the differences between inert and reactive tracers run in a single model (CAMx), but nevertheless those inert model differences were notable. Potential causes include differing numbers of model vertical layers (influencing movement of UTLS O₃ to ground level) and differences in model treatments of deposition. This exercise emphasizes that source contribution analyses of BC O₃ (or other non-inert pollutants) using the inert tracer approach should only be interpreted qualitatively especially during the spring and summer period. Making tracers reactive is a simple improvement that is very important to this type of analysis. Future studies should consider adopting the reactive tracer approach.

Contributions from O₃ BCs in three height ranges (LT, MT and UTLS) differ spatially and temporally. The LT BC tracers do not penetrate very far inland with contributions to MDA8 O₃ up to 20 ppb in coastal states. The largest contributions to MDA are from the MT BCs with springtime maxima exceeding 40 ppb in the high terrain of the Western US. The high

contribution of BC O₃ to ground level O₃ in portions of the Western US presents a significant challenge to air quality management approaches based solely on local emission reductions. Nonetheless, model comparison with observations suggest that estimated high BC contributions in the Intermountain West could be overstated and that the bias inherited in O₃ BCs can affect model performance. Replicating the highest end of observed O₃ distribution is particularly challenging. We encourage making use of multi-day metrics (such as Top 30) as an alternative to a single-day metric (e.g., H4MDA8) when examining contributions from international transport.

Reducing emissions in East Asia (EAS scenario) revealed a near linear relationship between changes in BC O₃ and changes in surface O₃ in the Western US in all seasons and across the US in fall and winter with a near 1:1 slope. However, the surface O₃ decreases are small: below 1 ppb in spring and below 0.5 ppb in other seasons. These reductions result mostly from smaller MT and LT BC contributions because the EAS scenario scaled back the contribution from each height range about equally. In the GLO scenario US surface O₃ is more sensitive to domestic emission reductions than changes in the BCs. Our 2010 EAS contribution results are slightly higher than the estimates of 0.35-0.45 ppb from multi-model experiment that also simulated the EAS scenario but for the year 2001 (Reidmiller et al.,2009). This is expected as East Asia emissions have increased over the last decade. Assuming a linear relationship, our study suggests an EAS total contribution of 2.5 ppb in certain seasons based on 0.5 ppb O₃ reduction with 20% emission decrease. It is difficult to quantify how the model biases affect the O₃ response to emission perturbations because the sources of biases are unknown.

Acknowledgement

This study was supported by Coordinating Research Council Atmospheric Impacts Committee.

We gratefully acknowledge the contribution of various groups to the third air Quality Model Evaluation international Initiative (AQMEII) activity: U.S. EPA, Environment Canada, Mexican Secretariat of the Environment and Natural Resources (Secretaría de Medio Ambiente y Recursos Naturales-SEMARNAT) and National Institute of Ecology (Instituto Nacional de Ecología-INE) (North American national emissions inventories); U.S. EPA (North American emissions processing and meteorology inputs); ECMWF/MACC project & Météo-France/CNRM-GAME (Chemical boundary conditions). We thank Christian Hogrefe for discussions and CMAQ results.

Supplementary Information

Supplementary information associated with this article can be found in the online version, at doi:xxx.

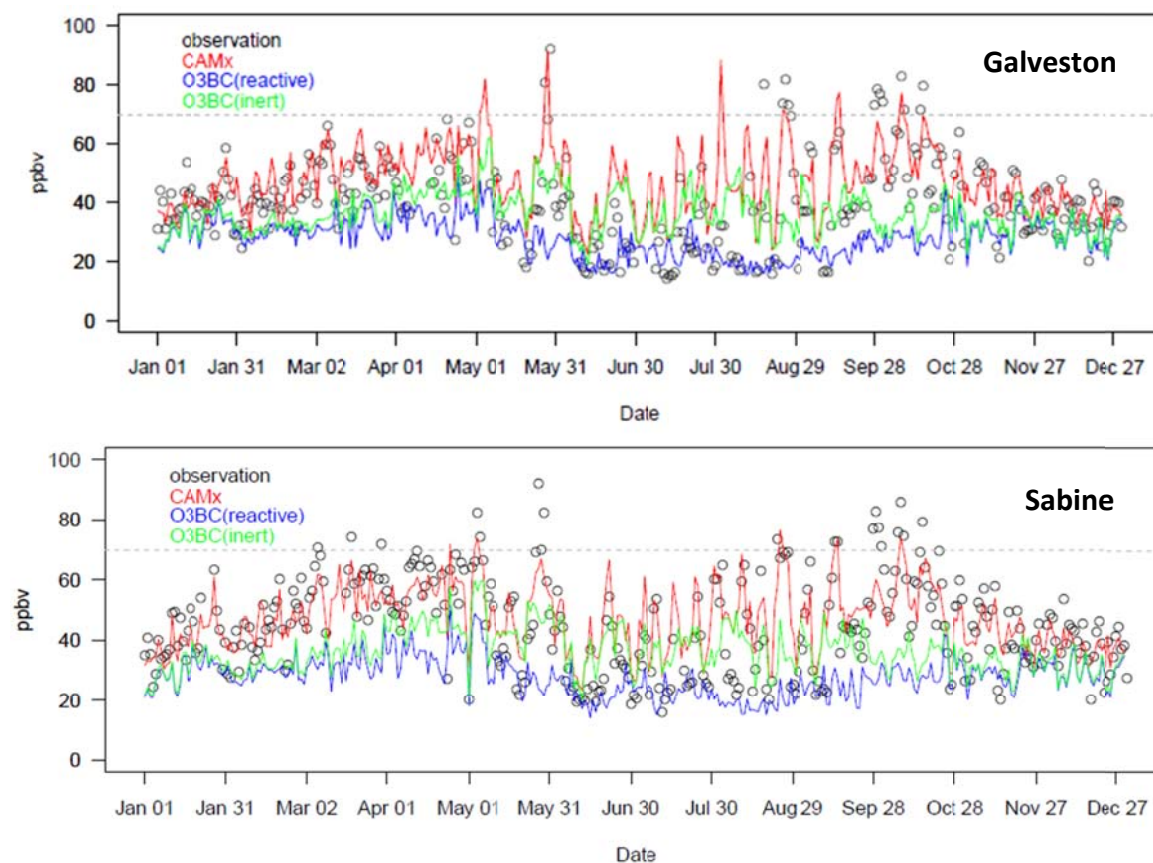
References

- Appel, K. W., Pouliot, G. A., Simon, H., Sarwar, G., Pye, H. O. T., Napelenok, S. L., Akhtar, F., and Roselle, S. J.: Evaluation of dust and trace metal estimates from the Community Multiscale Air Quality (CMAQ) model version 5.0, *Geosci. Model. Dev.*, 6, 883-899, doi:10.5194/gmd-6-883-2013, 2013.
- 5 Byun, D. W. and Schere, K. L.: Review of the governing equations, computational algorithms, and other components of the Models- 3 Community Multiscale Air Quality (CMAQ) Modeling System, *Appl. Mech. Rev.*, 59, 51–77, 2006.
- Baker, K.R., Emery, C., Dolwick, P. and Yarwood, G.: Photochemical grid model estimates of lateral boundary contributions to ozone and particulate matter across the continental United States. *Atmos. Environ.*, 123, pp.49-62, 2015.
- Cooper, O. R., Gao, R.-S., Tarasick, D., Leblanc, T., and Sweeney, C.: Long-term ozone trends at rural ozone monitoring
10 sites across the United States, 1990–2010, *J. Geophys. Res.*, 117, D22307, doi:10.1029/2012JD018261, 2012.
- Emery, C., Jung, J., Downey, N., Johnson, J., Jimenez, J., Yarwood, G., Morris, R.: Regional and global modeling estimates of policy relevant background ozone over the United States, *Atmos. Environ.*, 47, 206–217, doi:10.1016/j.atmosenv.2011.11.012, 2012.
- Environmental Protection Agency (EPA): Guidance for Regulatory Application of the Urban Airshed Model (UAM). Office
15 of Air Quality Planning and Standards, Research Triangle Park, NC., 1991.
- Fiore, A. M., Jacob, D. J., Bey, I., Yantosca, R. M., Field, B. D., and Fusco, A. C.: Background ozone over the United States in summer: origin, trend, and contribution to pollution episodes, *J. Geophys. Res.*, 107 (D15), 4275, doi: 10.1029/2001JD000982, 2002.
- Fiore, A. M., Oberman, J. T., Lin, M.Y., Zhang, L., Clifton, O.E., Jacob, D.J., Naik, V., Horowitz, L.W., Pinto, J.P., and
20 Milly, G.P.: Estimating North American background ozone in U.S. surface air with two independent global models: Variability, uncertainties, and recommendations, *Atmos. Environ.*, 96, 284-300, doi:10.1016/j.atmosenv.2014.07.045, 2014.
- Flemming, J., Huijnen, V., Arteta, J., Bechtold, P., Beljaars, A., Blechschmidt, A.-M., Diamantakis, M., Engelen, R. J., Gaudel, A., Inness, A., Jones, L., Josse, B., Katragkou, E., Marecal, V., Peuch, V.-H., Richter, A., Schultz, M. G., Stein,
25 O., and Tsikerdekis, A.: Tropospheric chemistry in the Integrated Forecasting System of ECMWF, *Geosci. Model Dev.*, 8, 975-1003, doi:10.5194/gmd-8-975-2015, 2015.
- Foley, K. M., Roselle, S. J., Appel, K. W., Bhawe, P. V., Pleim, J. E., Otte, T. L., Mathur, R., Sarwar, G., Young, J. O., Gilliam, R. C., Nolte, C. G., Kelly, J. T., Gilliland, A. B., and Bash, J. O.: Incremental testing of the Community Multiscale Air Quality (CMAQ) modeling system version 4.7, *Geosci. Model. Dev.*, 3, 205–226, doi:10.5194/gmd-3-205-
30 2010, 2010.
- Galmarini, S. and Rao, S.T., 2011: The AQMEII two-continent Regional Air Quality Model Evaluation study: fueling ideas with unprecedented data. *Atmos. Environ.* 45, 2464, doi: 10.1016/j.atmosenv.2011.03.025, 2011.

- Galmarini, S., Koffi, B., Solazzo, E., Keating, T., Hogrefe, C., Schulz, M., Benedictow, A., Griesfeller, J. J., Janssens-Maenhout, G., Carmichael, G., Fu, J., and Dentener, F.: Technical note: Coordination and harmonization of the multi-scale, multi-model activities HTAP2, AQMEII3, and MICS-Asia3: simulations, emission inventories, boundary conditions, and model output formats, *Atmos. Chem. Phys.*, 17, 1543-1555, doi:10.5194/acp-17-1543-2017, 2017.
- 5 Gilliam, R.C., Godowitch, J.M., and Rao, S.T.: Improving the horizontal transport in the lower troposphere with four dimensional data assimilation, *Atmos. Environ.*, 53, pp.186-201, doi:10.1016/j.atmosenv.2011.10.064, 2012.
- Guenther, A., Karl, T., Harley, P., Wiedinmyer, C., Palmer, and Geron, C.: Estimates of global terrestrial isoprene emissions using MEGAN (Model of Emissions of Gases and Aerosols from Nature), *Atmos. Chem. Phys.*, 6, 3181-3210, 2006.
- Jaffe, D., McKendry, I., Anderson, T., and Price, H.: Six 'new' episodes of trans-Pacific transport of air pollutants., *Atmos.*
 10 *Environ.*, 37(3), pp.391-404, 2003.
- Langford, A.O., Aikin, K.C., Eubank, C.S., and Williams, E.J.: Stratospheric contribution to high surface ozone in Colorado during springtime, *Geophys. Res. Lett.*, 36(12), 2009.
- Langford, A.O., Senff, C.J., Alvarez, R.J., Brioude, J., Cooper, O.R., Holloway, J.S., Lin, M.Y., Marchbanks, R.D., Pierce, R.B., Sandberg, S.P., and Weickmann, A.M.: An Overview of the 2013 Las Vegas Ozone Study (LVOS): Impact of
 15 stratospheric intrusions and long-range transport on surface air quality, *Atmos. Environ.*, 109, pp.305-322, 2015.
- Lin, M., Fiore, A.M., Horowitz, L.W., Cooper, O.R., Naik, V., Holloway, J., Johnson, B.J., Middlebrook, A.M., Oltmans, S.J., Pollack, I.B., and Ryerson, T.B.: Transport of Asian ozone pollution into surface air over the western United States in spring, *J. Geophys. Res.: Atmospheres*, (1984–2012), 117(D21), 2012a.
- Lin, M., Fiore, A.M., Cooper, O.R., Horowitz, L.W., Langford, A.O., Levy, H., Johnson, B.J., Naik, V., Oltmans, S.J. and
 20 Senff, C.J.: Springtime high surface ozone events over the western United States: Quantifying the role of stratospheric intrusions, *J. Geophys. Res.: Atmospheres* (1984–2012), 117(D21), 2012b.
- Liu, P., Hogrefe, C., Bieser, J., Im, U., Mathur, R., Nopmongkol, U., Roselle, S., Spero, T.: Multi-Model Comparison of Lateral Boundary Contributions to Surface Ozone Over the United States, in preparation.
- McDonald-Buller, E.C., Allen, D.T., Brown, N., Jacob, D.J., Jaffe, D., Kolb, C.E., Lefohn, A.S., Oltmans, S., Parrish, D.D.,
 25 Yarwood, G. and Zhang, L.: Establishing policy relevant background (PRB) ozone concentrations in the United States. *Environ. Sci. Technol.*, 45(22), pp.9484-9497, 2011.
- Parrish, D. D., et al.: Long-term changes in lower tropospheric baseline ozone concentrations at northern mid-latitudes, *Atmos. Chem. Phys.*, 12, 11,485–11,504, doi:10.5194/acp-12-11485-2012, 2012.
- Pleim, J. and Ran, L.: Surface Flux Modeling for Air Quality Applications. *Atmosphere*, 2, 271-302, 2011.
- 30 Pouliot, G., Denier van der Gon, H., Kuenen, J., Makar, P., Moran M., and Zhang J.: Analysis of the Emission Inventories and Model-Ready Emission Datasets of Europe and North America for Phase 2 of the AQMEII Project, *Atmos. Environ.*, 115, pp.345-360, doi:10.1016/j.atmosenv.2014.10.061, 2015.
- Ramboll Environ: CAMx Users Guide, available at http://www.camx.com/files/camxusersguide_v6-20.pdf, 2015.

- Reidmiller, D.R., Fiore, A.M., Jaffe, D.A., Bergmann, D., Cuvelier, C., Dentener, F.J., Duncan, B.N., Folberth, G., Gauss, M., Gong, S. and Hess, P.: The influence of foreign vs. North American emissions on surface ozone in the US. *Atmos. Chem. Phys.*, 9(14), pp.5027-5042, 2009.
- Sakulyanontvittaya, T., Duhl, T., Wiedinmyer, C., Helmig, D., Matsunaga, S., Potosnak, M., Milford, J., and Guenther, A.:
5 Monoterpene and Sesquiterpene Emission Estimates for the United States, *Environ. Sci. Technol.*, 2008, 42, p. 1623-1629, 2008.
- Sarwar, G., Gantt, B., Schwede, D., Foley, K., Mathur, R., and Saiz-Lopez, A.: Impact of enhanced ozone deposition and halogen chemistry on tropospheric ozone over the Northern Hemisphere, *Environ. Sci. Technol.*, 49(15), pp.9203-9211, 2015.
- 10 Skamarock, W.C., Klemp, J.B., Dudhia, J., Gill, D.O., Barker, D.M., Duda, M.G., Huang, X-Y, Wang, W., and Powers, J.G.: A Description of the Advanced Research WRF Version 3, NCAR Technical Note, NCAR/TN-45+STR, 2008.
- Smith, J. H., Estes. M., Mellberg, J., Nopmongcol. U., and Yarwood, G.: Addressing model over-prediction of ozone influx from the Gulf of Mexico, Presented at Community Modeling and Analysis System (CMAS) conference, available at <https://www.cmascenter.org/conference/2015/agenda.cfm>, 2015.
- 15 Solazzo, E., Bianconi, R., Hogrefe, C., Curci, G., Alyuz, U., Balzarini, A., Baro, R., Bellasio, R., Bieser, J., Brandt, J., Christensen, J.H., Colette, A., Francis, X., Fraser, A., Garcia Vivanco, M., Jiménez-Guerrero, P., Im, U., Manders, A., Nopmongcol, U., Kitwiroon, N., Pirovano, G., Pozzoli, L., Prank, M., Sokhi, R.S., Tuccella, P., Yarwood, G., and Galmarini, S.: Evaluation and Error Apportionment of an Ensemble of Atmospheric Chemistry Transport Modeling Systems: Multi-Variable Temporal and Spatial Breakdown, *Atmos. Chem. Phys.*, 17, 3001-3054, doi:10.5194/acp-17-
20 3001-2017, 2017.
- Texas Commission of Environmental Quality (TCEQ): Illustrations of wind direction movement at particular Texas cities from 1984 to 1992, available at <http://www.tceq.state.tx.us/airquality/monops/windroses.html>, 2016.
- Yarwood, G., Emery, C., Baker, K., and Dolwick, P.: Resolving and Quantifying Ozone Contributions from Boundary Conditions Within Regional Models, published as a book chapter in *Air Pollution Modeling and its Application XXIII*,
25 ISSN 2213-8684, pp 445-450, doi: 10.1007/978-3-319-04379-1_73, 2014.
- Yarwood, G., Sakulyanontvittaya, T., Nopmongcol, U., and Koo, B.: Ozone Depletion by Bromine and Iodine over the Gulf of Mexico, Final Report for Work Order No. 582-11-10365-FY14-12, available at https://www.tceq.texas.gov/airquality/airmod/project/pj_report_pm.html, 2015.
- Zhang, L., Jacob, D.J., Downey, N.V., Wood, D.A., Blewitt, D., Carouge, C.C., van Donkelaar, A., Jones, D.B.A., Murray,
30 L.T., and Wang, Y.: Improved estimate of the policy-relevant background ozone in the United States using the GEOS-Chem global model with 1/2 x 2/3 horizontal resolution over North America, *Atmos. Environ.*, 45, 6769-6776, doi:10.1016/j.atmosenv.2011.07.054, 2011.
- Zhu, J. and Liang, X: Impacts of the Bermuda High on Regional Climate and Ozone over the United States, *J. Climate*, 26, 1018–103, doi: <http://dx.doi.org/10.1175/JCLI-D-12-00168.1>, 2013.

Figures



5

Figure 1: Observed (black circle) and CAMx-predicted (red line) daily MDA8 O₃ at Galveston (top; coordinates: 29.254474°, -94.861289°), and Sabine Pass (bottom; coordinates: 29.727931°, 93.894081°) monitoring sites located on the Texas Gulf coast near Houston and Beaumont, respectively. Contributions are shown for inert (green line) and reactive (blue line) BC O₃ tracers summed over boundary height ranges.

10

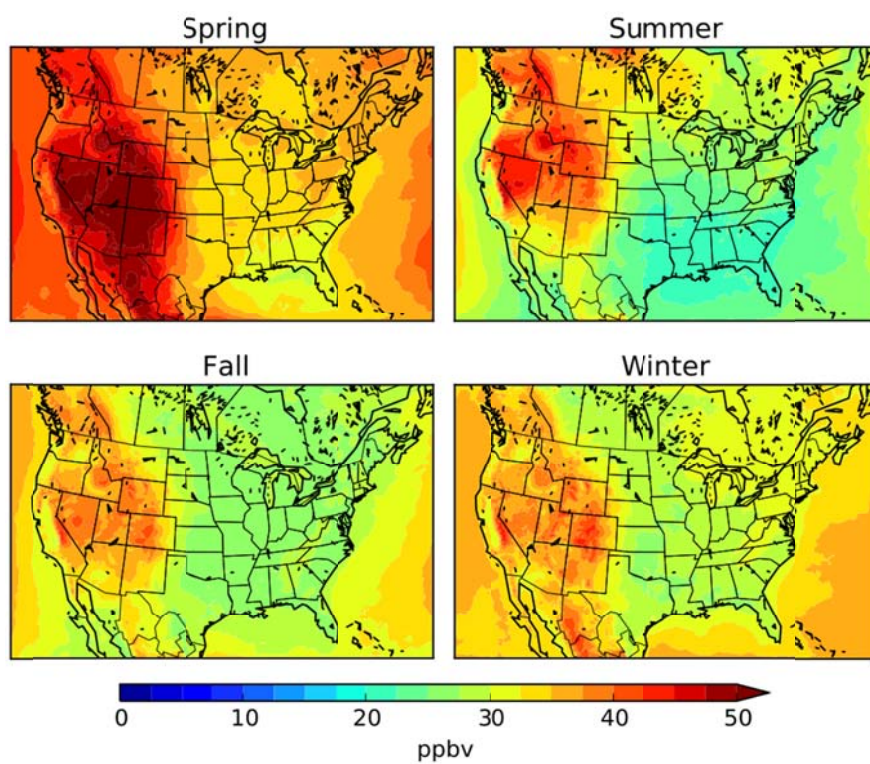


Figure 2: BC contributions to seasonal average MDA8 O₃ from reactive tracers summed over boundary height ranges.

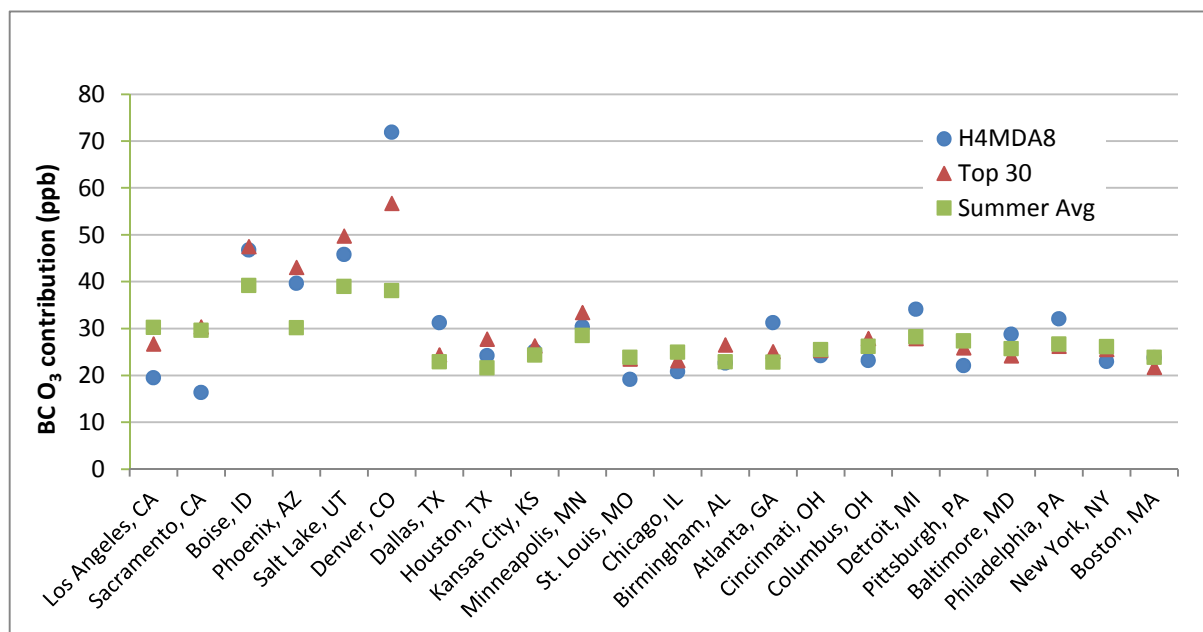


Figure 3: BC O₃ contributions to the H4MDA (blue dot), average MDA8 on the Top 30 MDA8 O₃ days (red triangle), and summer average MDA8 (green square) at 22 major cities.

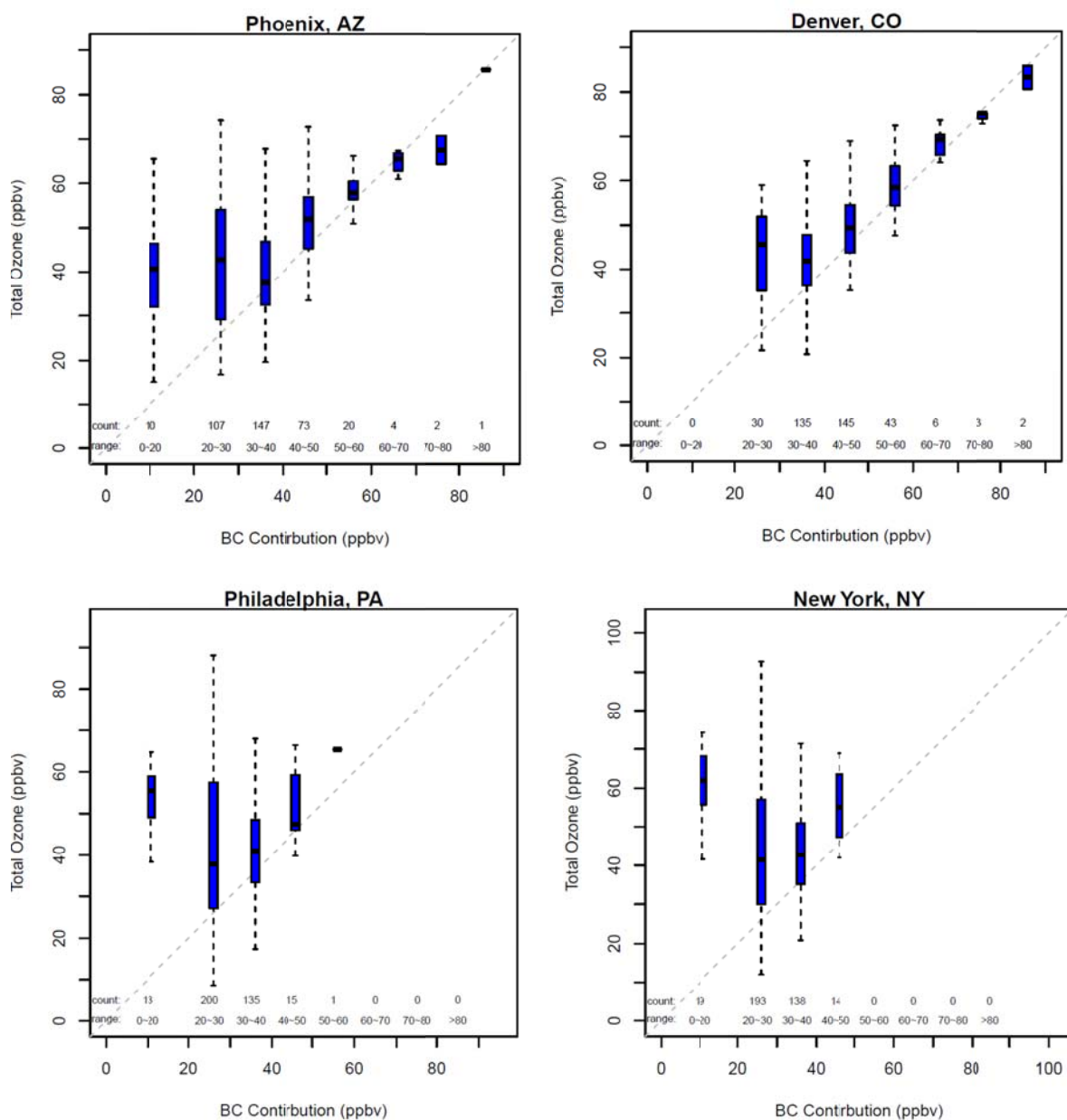


Figure 4: Box-and-whisker plots comparing modeled total MDA8 O₃ to modeled BC contribution in 10 ppb ranges paired in time and space for Phoenix, Denver, Philadelphia, and New York.

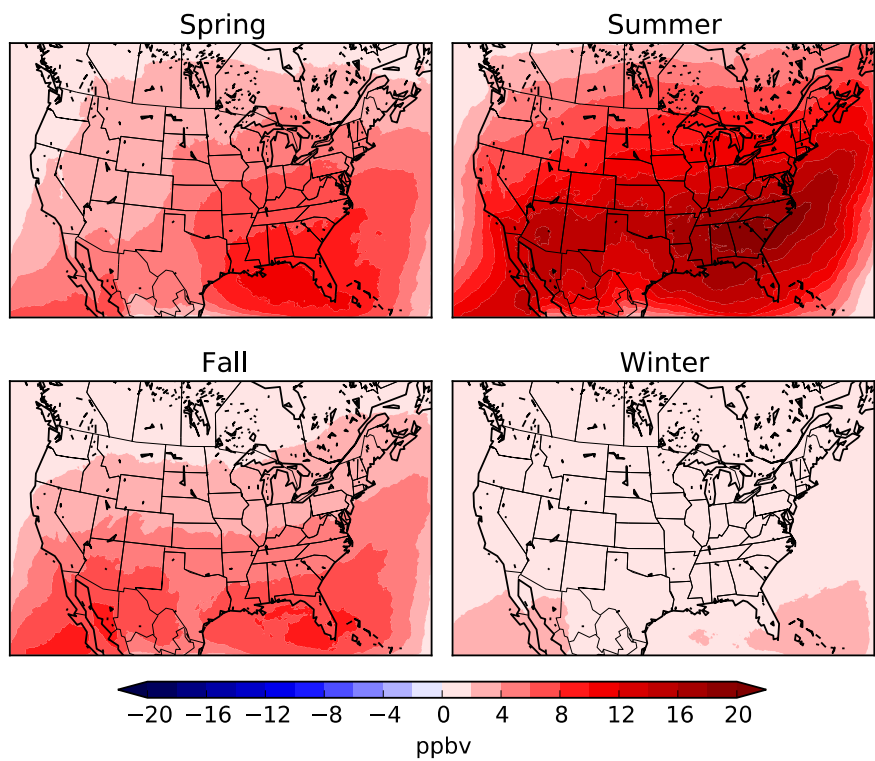


Figure 5: Differences between inert and reactive BC O₃ tracer contributions to seasonally averaged MDA8 O₃ (inert – reactive) summed over all boundary height ranges.

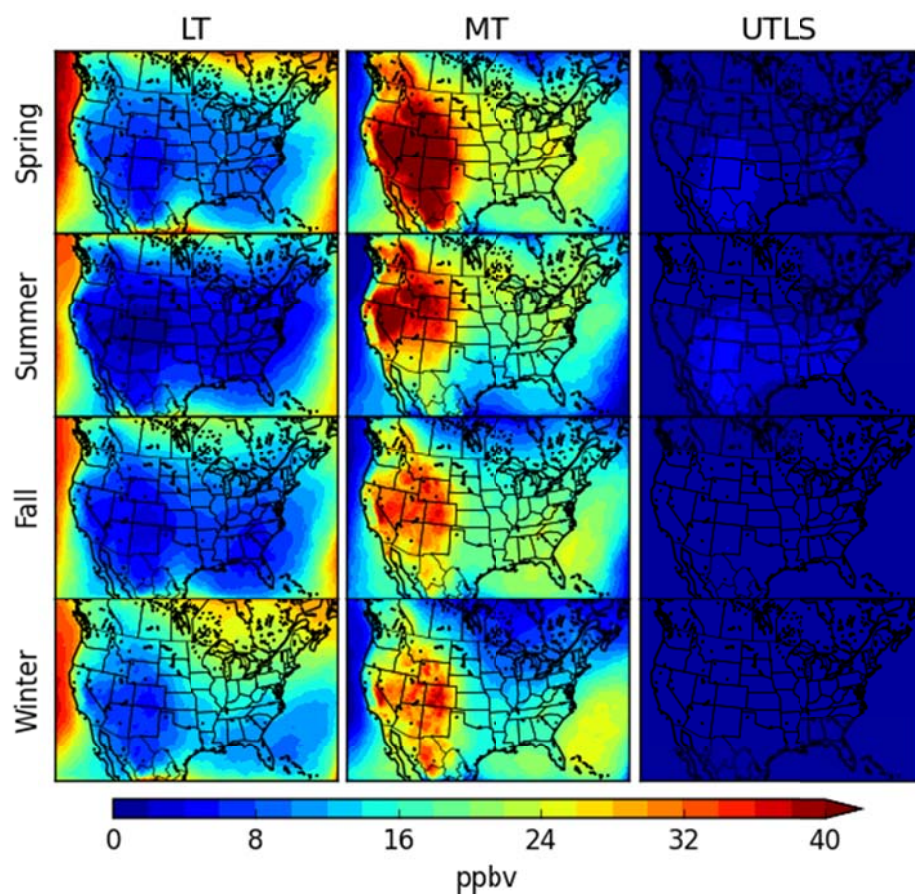


Figure 6: Seasonal average MDA8 O₃ contributions from boundary height ranges using reactive BC O₃ tracers.

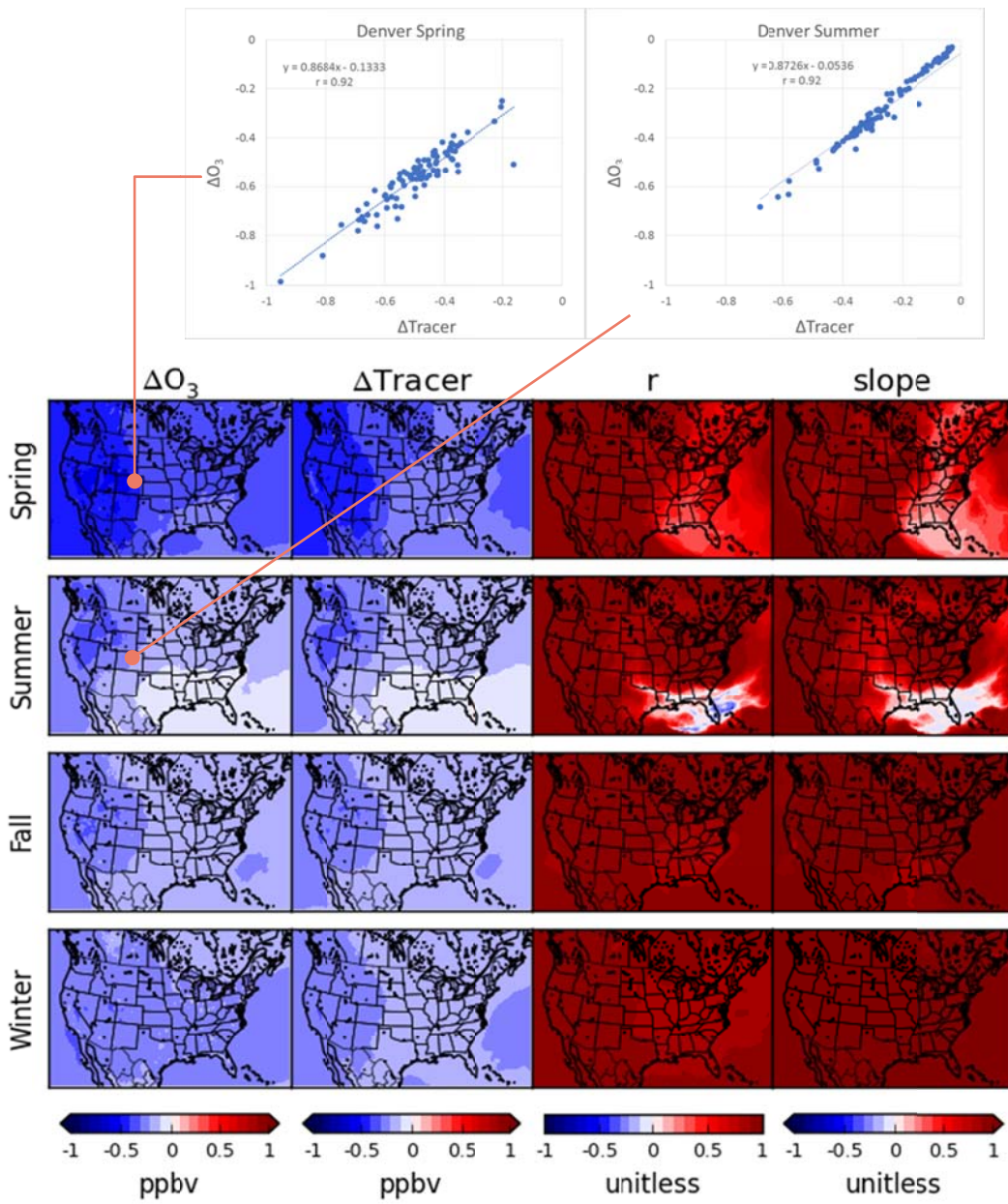


Figure 7: Scatter plots on the top show delta daily average O_3 (y-axis) and reactive tracer BC O_3 contribution (x-axis) for Denver in spring and summer for 20% reduction in East Asia emissions (EAS scenario). The 16 panels summarize the same information showing seasonal delta total O_3 (left column) and reactive tracer BC O_3 contribution (column 2) for each grid surface. The correlation (r) and slope of a linear regression of column 2 against column are shown in columns 3 and 4, respectively.

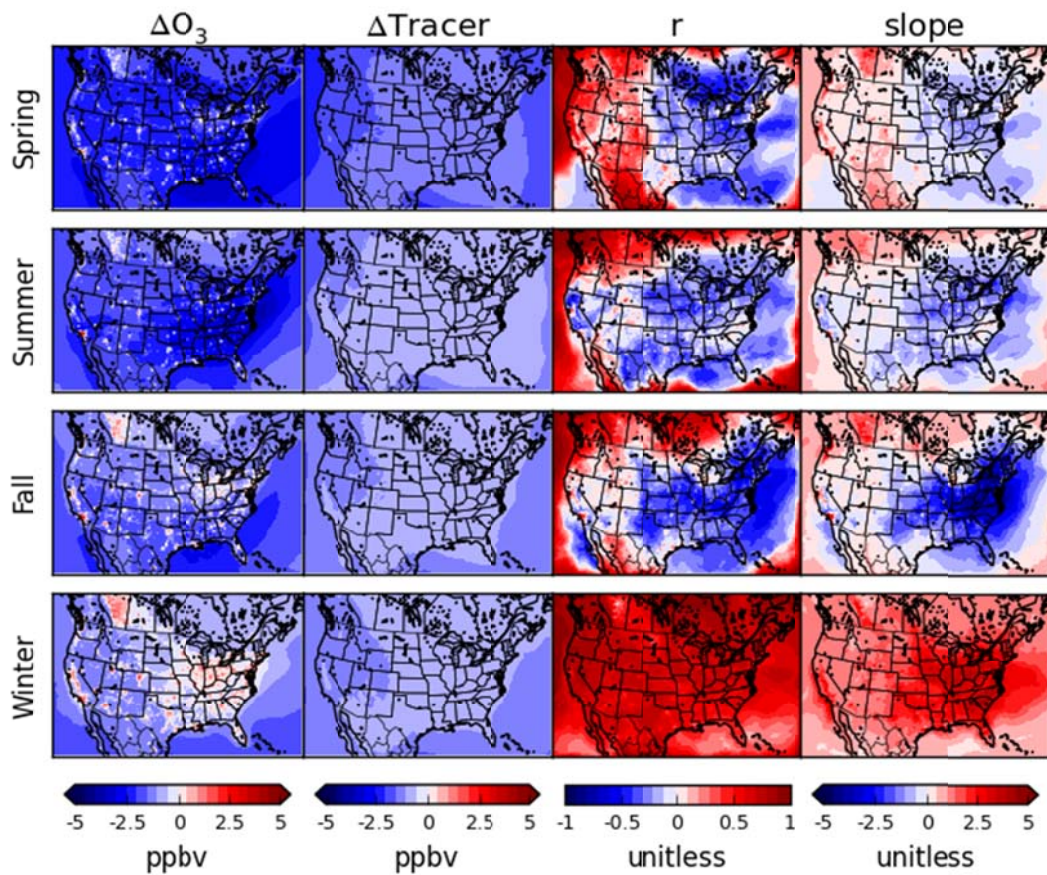


Figure 8: Changes to seasonal average O_3 (left column) and reactive tracer BC O_3 contribution (column 2) for 20% reduction of Global emissions (GLO scenario). The correlation (r) and slope of a linear regression of column 2 against column are shown in columns 3 and 4, respectively.

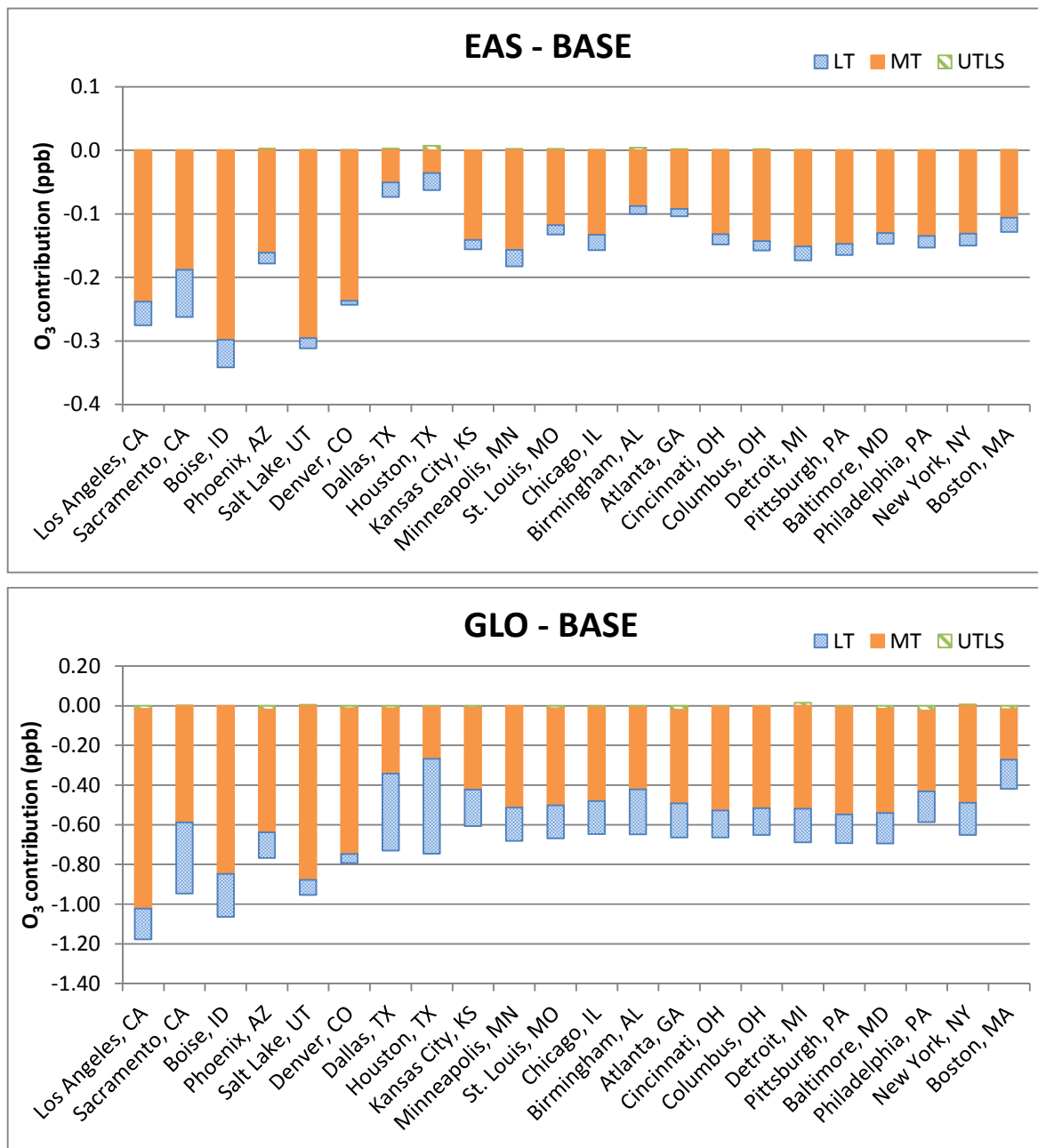


Figure 9: Changes in BC contribution (ppb) to summer average MDA8 O₃ by height range for the EAS (top) and GLO (bottom) scenarios from the Base case.

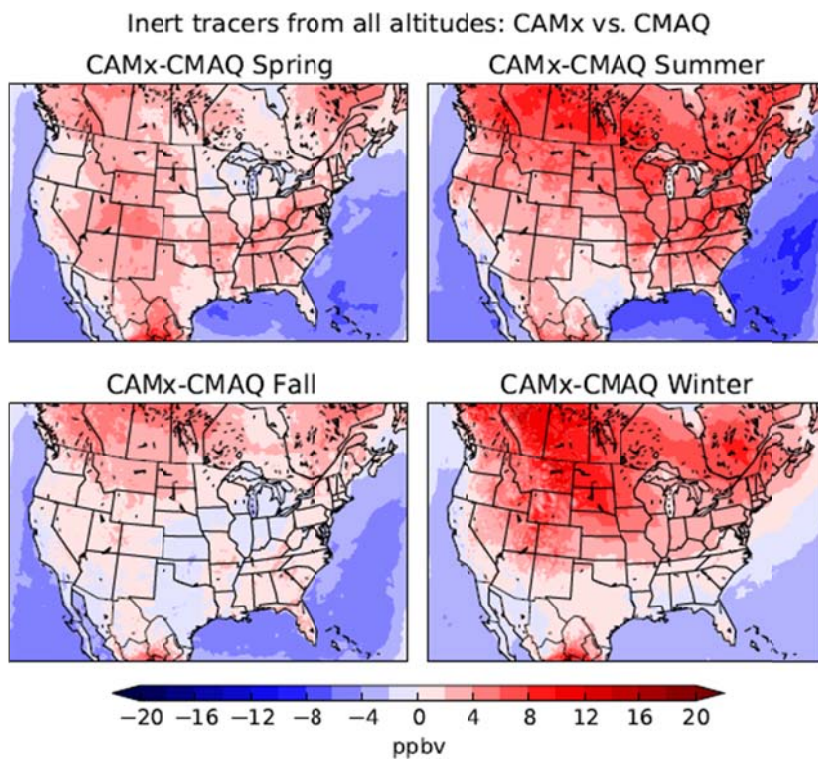


Figure 10: Differences in seasonally averaged MDA8 contributions from inert BC O₃ tracers in CAMx and CMAQ (CAMx – CMAQ).

Tables

Table 1: Annual emissions by source sector in 2010 (Thousand short tons/year).

Sector	NO _x	VOC	CO
<i>Elevated Sources</i>			
EGU (ptipm)	2,141	41	691
Non-EGU (ptnonipm)	1,558	323	2,047
International Shipping			
(c3marine)	1,186	45	99
Mexico (mexpt)	384	50	153
Canada (canpt)	504	577	834
Fire (ptfire)	198	1,783	13,172
<i>Low level sources</i>			
Anthropogenic surface	13,067	15,562	58,672
Biogenic	728	53,469	4,309
<i>Total</i>	19,765	71,850	79,977

5 Table 2: Model performance metrics where $\langle o \rangle$ is the mean and σ_o is the standard deviation of the observed (o) or modeled (m) concentrations (C).

Metric (potential range)	Equation
Normalized Mean Bias (%) (-100% to +∞)	$NMB = \frac{\sum_{i=1}^N (C_m - C_o)}{\sum_{i=1}^N C_o}$
Normalized Mean Error (%) (0% to +∞)	$NME = \frac{\sum_{i=1}^N C_m - C_o }{\sum_{i=1}^N C_o}$
Fractional Bias (%) (-200% to +200%)	$FE = \frac{1}{N} \sum_{i=1}^N \frac{ C_m - C_o }{\left(\frac{C_o + C_m}{2}\right)}$
Fractional Error (%) (0% to +200%)	$FB = \frac{1}{N} \sum_{i=1}^N \frac{(C_m - C_o)}{\left(\frac{C_o + C_m}{2}\right)}$
Correlation coefficient	$r = \frac{1}{N-1} \sum_{i=1}^N \left(\frac{C_m - \langle C_m \rangle}{\sigma_m} \right) \left(\frac{C_o - \langle C_o \rangle}{\sigma_o} \right)$

Root Mean Square Error

$$RMSE = \sqrt{\frac{\sum_{i=1}^N (C_m - C_o)^2}{N}}$$

Table 3: Seasonal and annual model performance statistics for MDA8 O₃ (with 40 ppb cutoff) at AQS and CASTNET sites.

Season	Network	#Obs	Mean	NMB (%)	NME (%)	FB (%)	FE (%)	r	RMSE
spring	AQS	71074	53.6	2.7	10.9	2.6	10.8	0.61	7.44
	CASTNET	5737	54.2	1.9	10.3	1.9	10.2	0.63	7.11
summer	AQS	72548	57.3	5.6	13.4	5.4	13.0	0.61	9.53
	CASTNET	5029	56	5.5	12.4	5.6	12.1	0.63	8.47
fall	AQS	41729	48.7	-5.9	12.1	-6.4	12.4	0.68	8.26
	CASTNET	3597	47.3	-7.3	10.9	-7.6	11.2	0.71	7.24
winter	AQS	11823	40	-10.6	14.0	-11.8	15.1	0.30	8.35
	CASTNET	2328	41.3	-9.0	12.1	-10.0	13.1	0.51	6.67
Annual	AQS	197174	53.1	1.3	12.3	0.9	12.2	0.64	8.48
	CASTNET	16691	51.5	-0.4	11.3	-0.7	11.4	0.66	7.52

See Table 2 for definitions of the statistical metrics