

## *Supplementary Information*

### **Impacts of Large-Scale Circulation on Urban Ambient Concentrations of Gaseous Elemental Mercury in New York, USA**

Huiting Mao<sup>1†</sup>, Dolly Hall<sup>2</sup>, Zhuyun Ye<sup>1</sup>, Ying Zhou<sup>1</sup>, Dirk Felton<sup>3</sup>, and Leiming Zhang<sup>4</sup>

<sup>1</sup>Department of Chemistry, State University of New York College of Environmental Science and Forestry, Syracuse, NY 13210

<sup>2</sup>Department of Atmospheric and Oceanic Science, University of Maryland, College Park, MD 20742

<sup>3</sup>Bureau of Air Quality Surveillance, Division of Air Resources, New York State Department of Environmental Conservation, Albany, NY 12233

<sup>4</sup>Air Quality Research Division, Science and Technology Branch, Environment and Climate Change Canada, Toronto, M3H 5T4, Canada

†Correspondence to: hmao@esf.edu

#### **Contents**

**Figure S1.** 500 hPa geopotential height maps for the climatological mean of the springs of 1980-2010, and seasonal average in each spring over 2009 – 2015.

**Figure S2.** 500 hPa geopotential height maps for the climatological mean of the summers of 1980-2010, and seasonal average in each summer over 2009 – 2014.

**Figure S3.** Sea level pressure maps for the climatological mean of the springs of 1980-2010, and seasonal average in each spring over 2009 – 2015.

**Figure S4.** Sea level pressure maps for the climatological mean of the summers of 1980-2010, and seasonal average in each summer over 2009 – 2014.

**Figure S5.** Seasonal percentile mixing ratios of CO at the Bronx site in a) spring, b) summer, c) fall, and d) winter.

**Figure S6.** Wintertime percentile mixing ratios of NO<sub>2</sub> and SO<sub>2</sub> at the Bronx site.

1980-2010 Mar - May

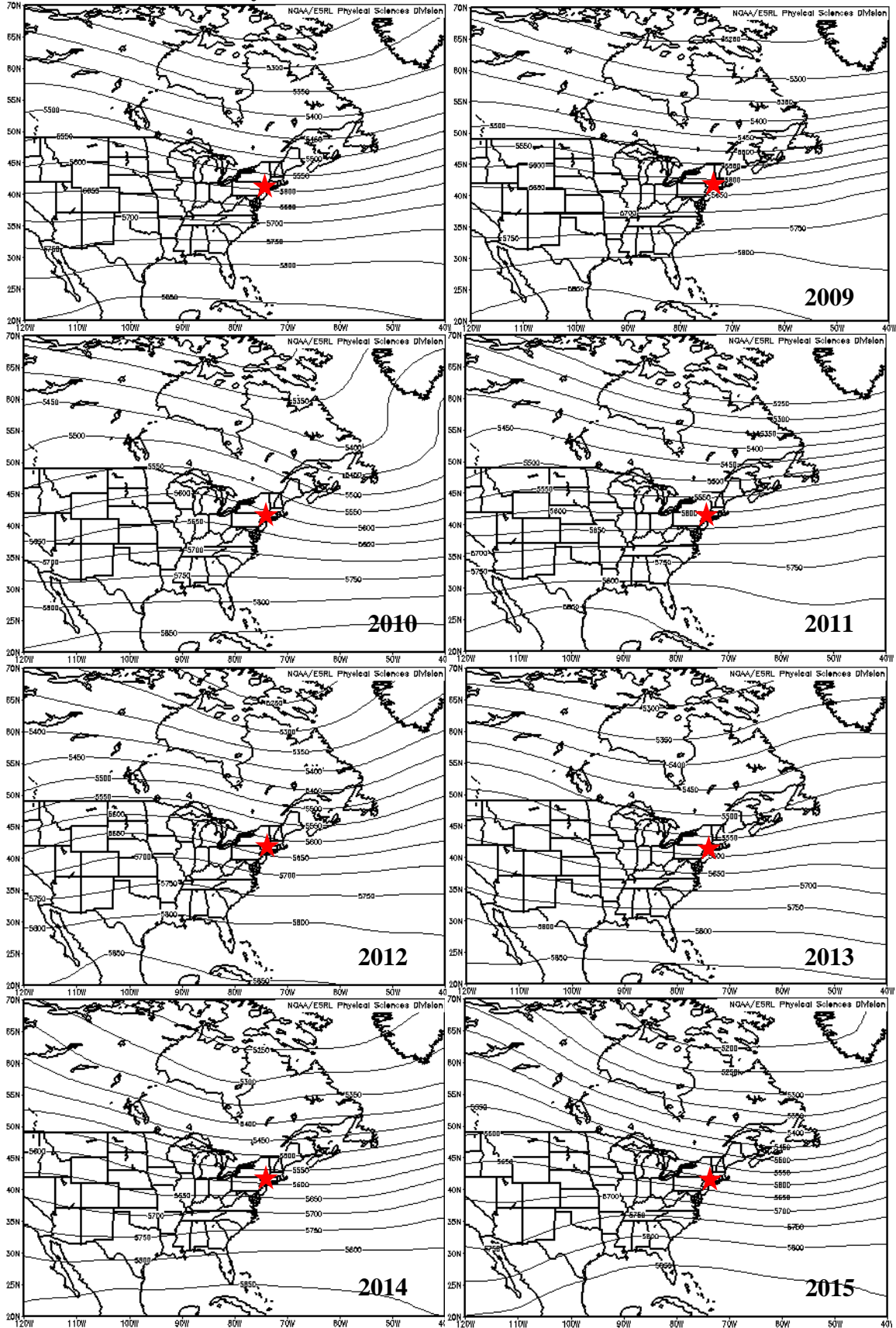
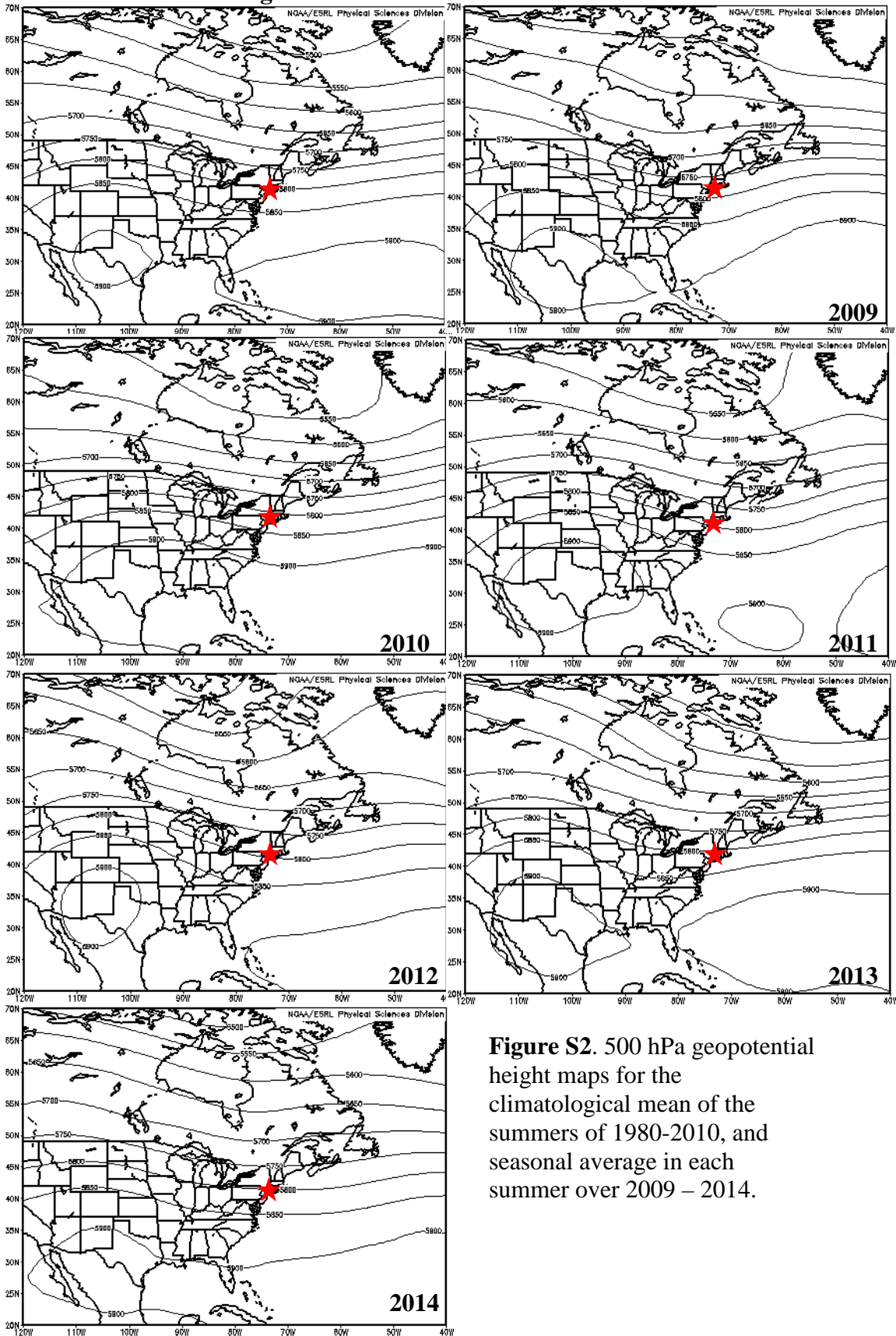


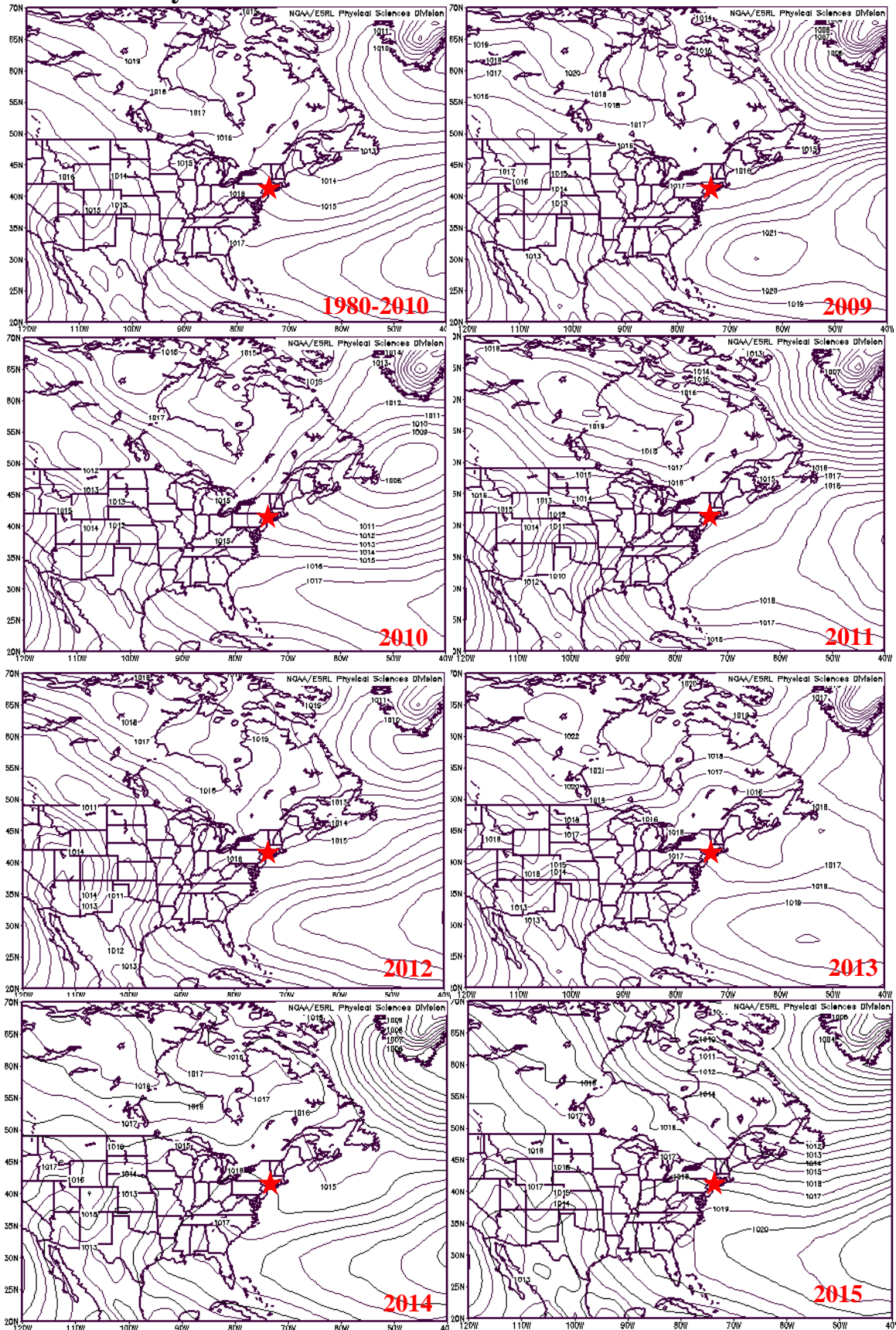
Figure S1. 500 hPa geopotential height maps for the climatological mean of the springs of 1980-2010, and seasonal average in each spring over 2009 – 2015.

1980-2010 Jun - Aug



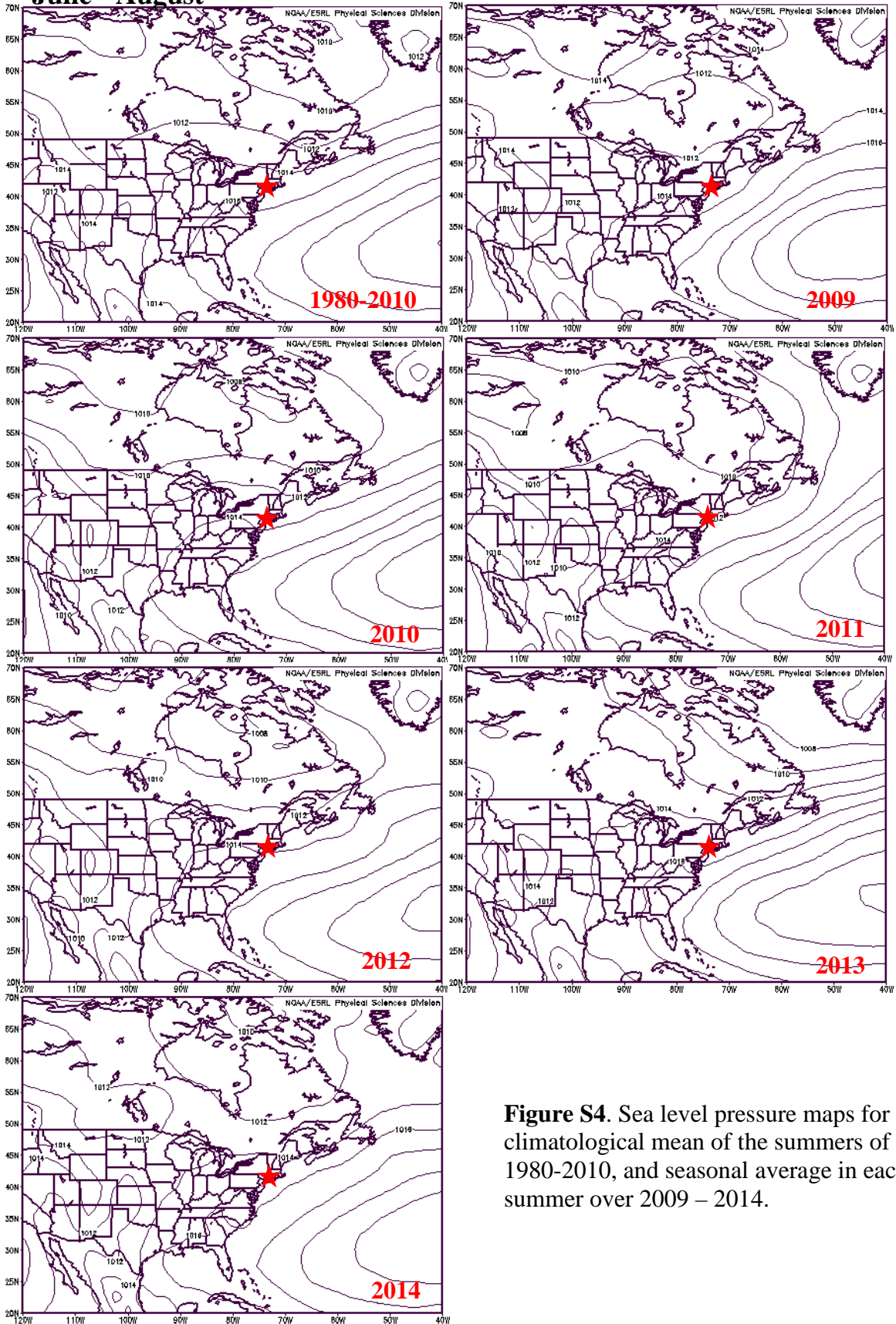
**Figure S2.** 500 hPa geopotential height maps for the climatological mean of the summers of 1980-2010, and seasonal average in each summer over 2009 – 2014.

# March - May

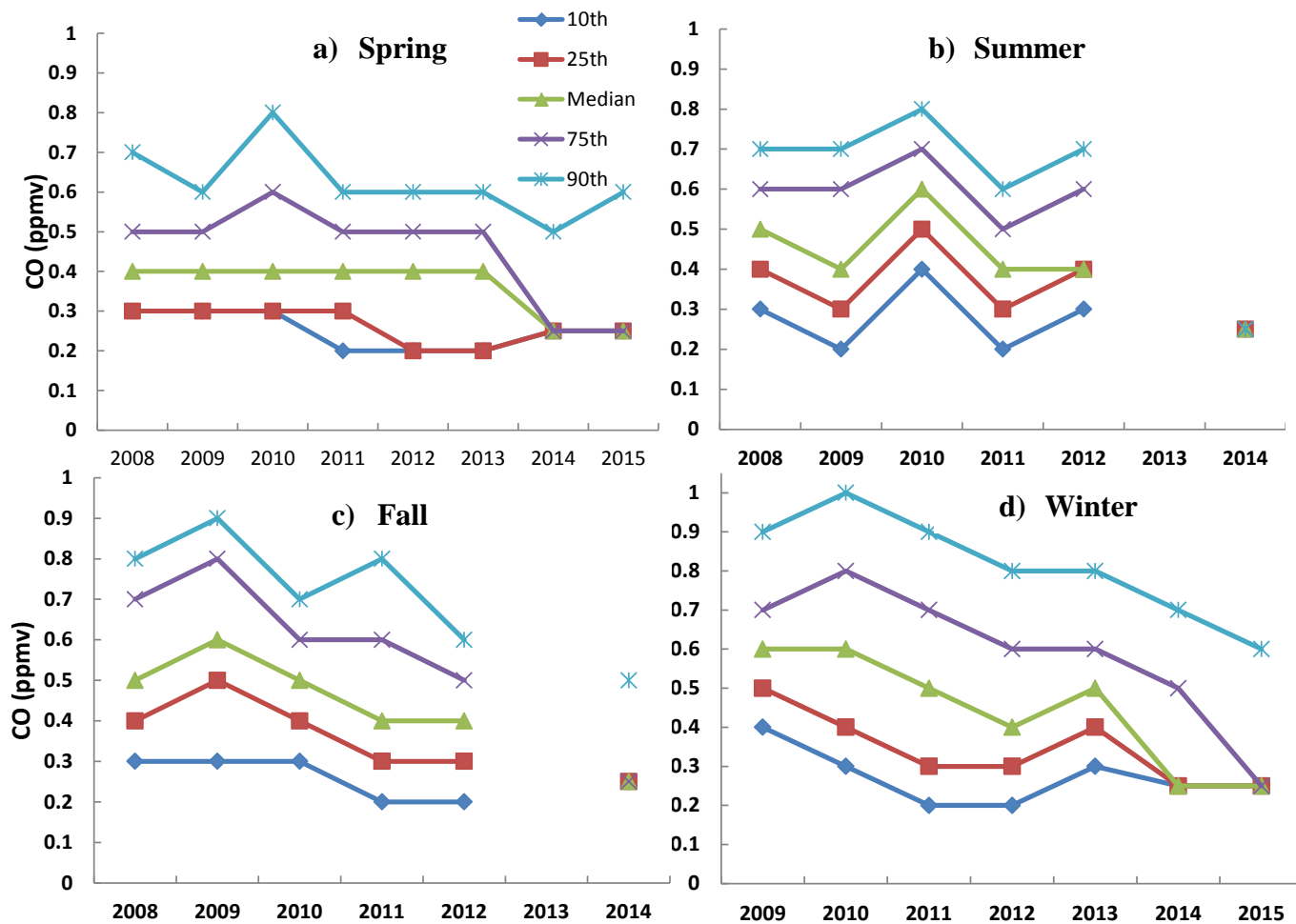


**Figure S3.** Sea level pressure maps for the climatological mean of the springs of 1980-2010, and seasonal average in each spring over 2009 – 2015.

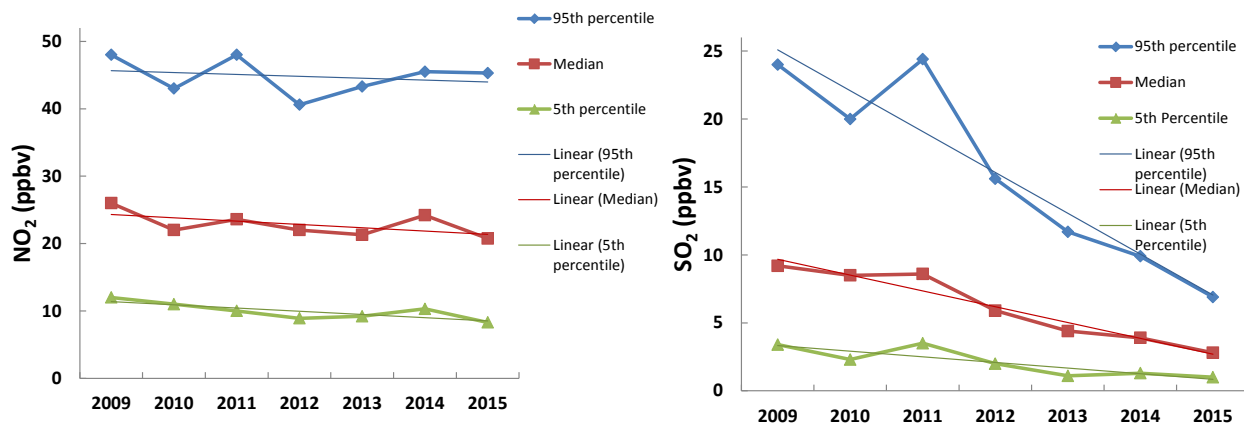
# June - August



**Figure S4.** Sea level pressure maps for the climatological mean of the summers of 1980-2010, and seasonal average in each summer over 2009 – 2014.



**Figure S5.** Seasonal percentile mixing ratios of CO at the Bronx site in a) spring, b) summer, c) fall, and d) winter.



**Figure S6.** Wintertime percentile mixing ratios of NO<sub>2</sub> and SO<sub>2</sub> at the Bronx site.