

Supporting Information

Characterization of local and regional sources of Chinese urban air pollution based on effect of Spring Festival

Chuan Wang, Xiao-Feng Huang*, Qiao Zhu, Li-Ming Cao, Bin Zhang, Ling-Yan He

Key Laboratory for Urban Habitat Environmental Science and Technology, School of Environment and Energy, Peking University Shenzhen Graduate School, Shenzhen, 518055, China.

*Corresponding author: huangxf@pku.edu.cn

Table of Contents

| | |
|--|---|
| Table S1 List of reported VOCs along with their protonated m/z, limits of detection (LOD), and classification..... | 3 |
| Figure S1 The location of the sampling site..... | 4 |
| Figure S2 Wind rose plots for the (A) SF, (B) NSF, (C) Tran. and (D) NSFT periods..... | 5 |
| Figure S3 Time series of meteorological conditions and various air pollutants measured during the SF and NSF periods in 2014. (A) Wind speed and direction, (B) temperature and relative humidity, (C) PM _{2.5} and BC, (D) TVOCs, (E) NO _x and SO ₂ , (F) O ₃ , (G) AMS species and (H) NR-PM ₁ compositions..... | 6 |
| Figure S4 Time series of meteorological conditions and various air pollutants measured during the SF and NSF periods in 2015. (A) Wind speed and direction, (B) temperature and relative humidity, (C) PM _{2.5} and BC, (D) TVOCs, (E) NO _x and SO ₂ , (F) O ₃ , (G) AMS species and (H) NR-PM ₁ compositions..... | 7 |
| Figure S5 Time series of meteorological conditions and various air pollutants measured during the SF and NSF periods in 2016. (A) Wind speed and direction, (B) temperature and relative humidity, (C) PM _{2.5} and BC, (D) TVOCs, (E) NO _x and SO ₂ , (F) O ₃ , (G) AMS species and (H) NR-PM ₁ compositions..... | 8 |

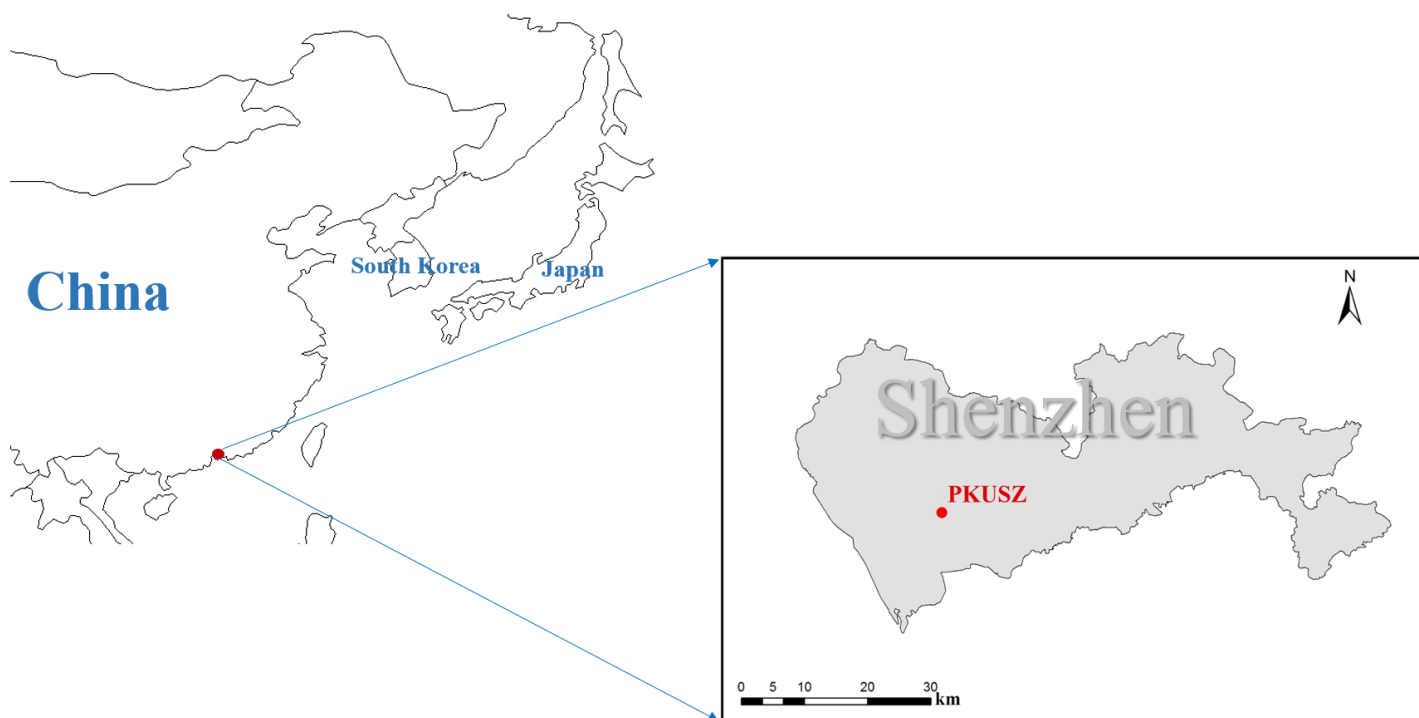
29 **Figure S6** Percent change in the concentration of VOCs between the SF and NSF periods over 2014–
30 2016..... 9
31 **Figure S7** Annual percent change in concentration of air pollutants between the SF and NSF periods
32 in 2014–2016..... 10
33 **Figure S8** Diurnal variations of concentrations of OVOCs and aromatics during the SF and NSF
34 periods..... 11
35 **Figure S9** Variations of concentrations of OVOCs and aromatics as the function of wind speed during
36 the SF and NSF periods..... 12
37
38
39
40
41
42
43
44
45
46
47
48
49
50
51

52 **Table S1** List of reported VOCs along with their protonated m/z, limits of detection (LOD), and
53 classification.

| Compound | Protonated m/z | LOD (ppb) | Group |
|--------------------------|----------------|-----------|------------------------|
| Methanol | 33 | 0.358 | Oxygenated |
| Acetonitrile | 42 | 0.052 | Biomass burning tracer |
| Acetaldehyde | 45 | 0.069 | Oxygenated |
| Acetone | 59 | 0.049 | Oxygenated |
| Acetic Acid | 61 | 0.020 | Oxygenated |
| Dimethyl sulfide (DMS) | 63 | 0.023 | Marine tracer |
| Isoprene | 79 | 0.011 | Biogenic |
| Methy ethyl ketone (MEK) | 73 | 0.031 | Oxygenated |
| Benzene | 79 | 0.009 | Aromatic |
| Toluene | 93 | 0.015 | Aromatic |
| Styrene | 105 | 0.010 | Aromatic |
| C8 Aromatics | 107 | 0.019 | Aromatic |
| C9 Aromatics | 121 | 0.040 | Aromatic |

54

55 **Figure S1** The location of the sampling site.



56

57

58

59

60

61

62

63

64

65

66

67

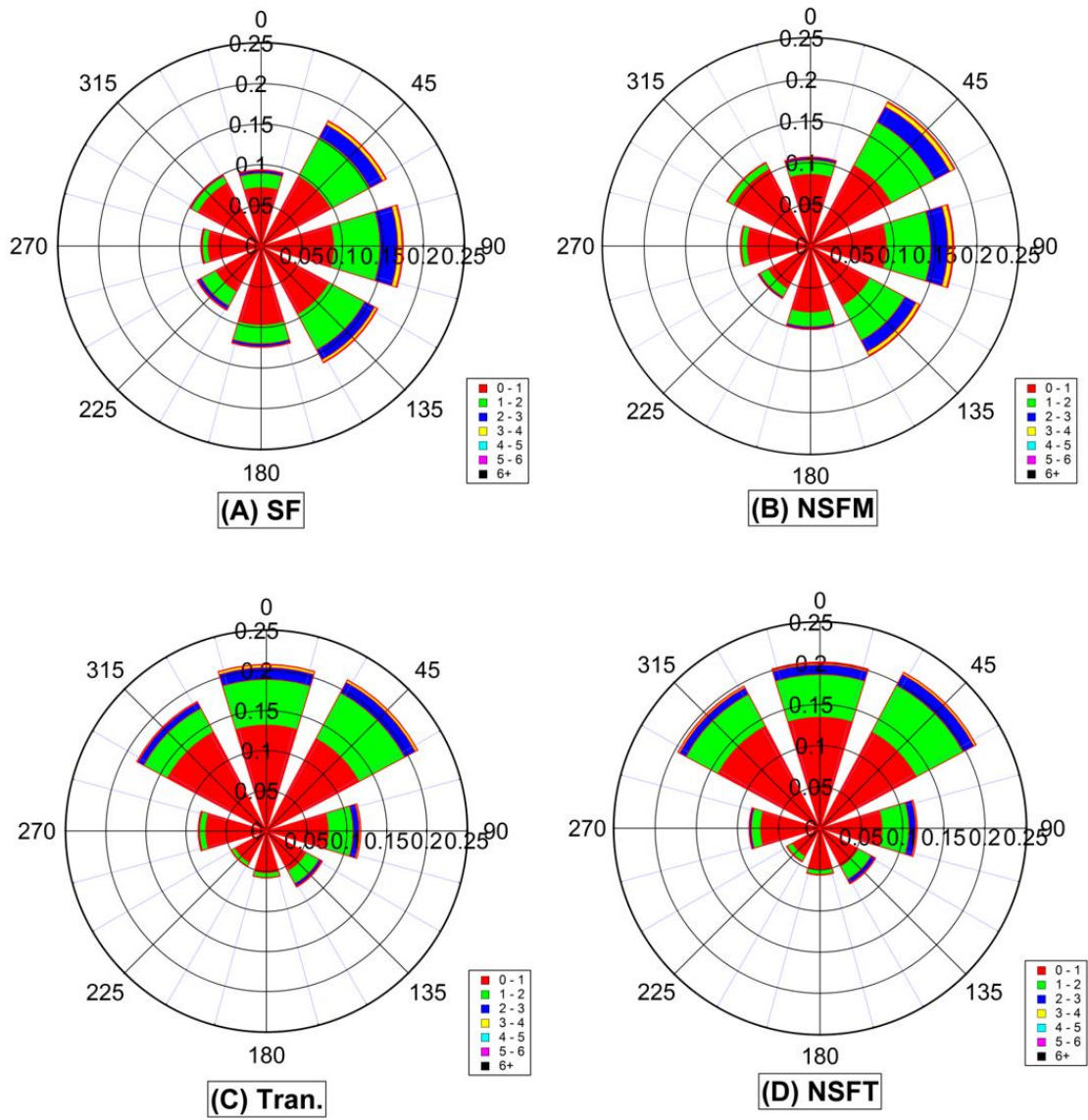
68

69

70

71

72 **Figure S2** Wind rose plots for the (A) SF, (B) NSFM, (C) Tran. and (D) NSFT periods.



73

74

75

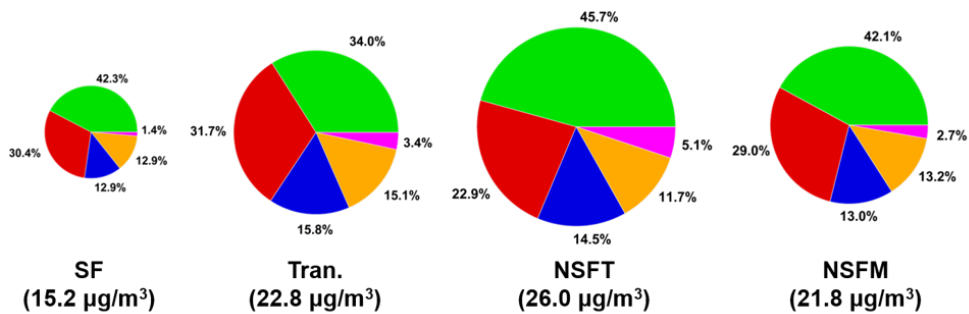
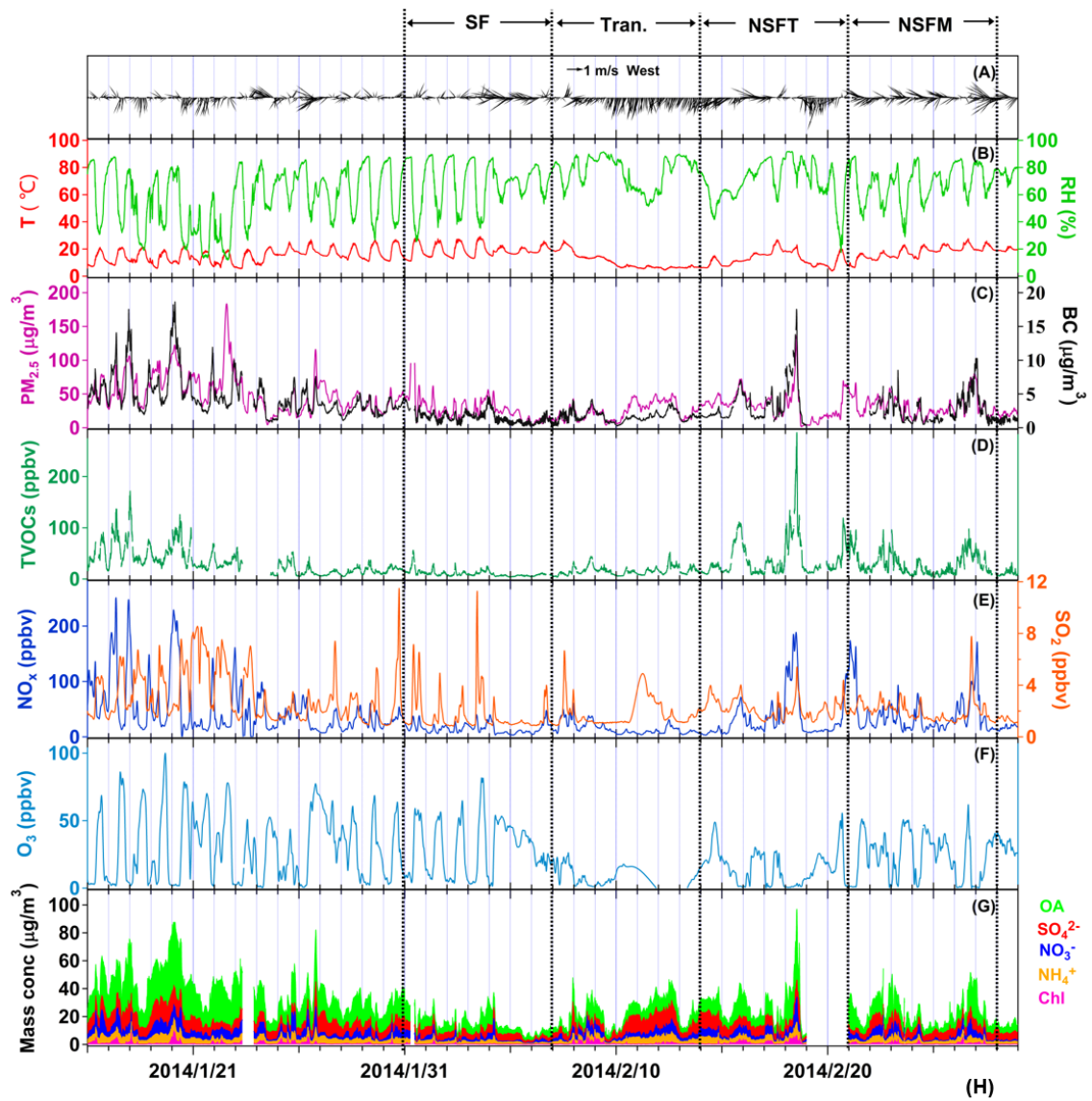
76

77

78

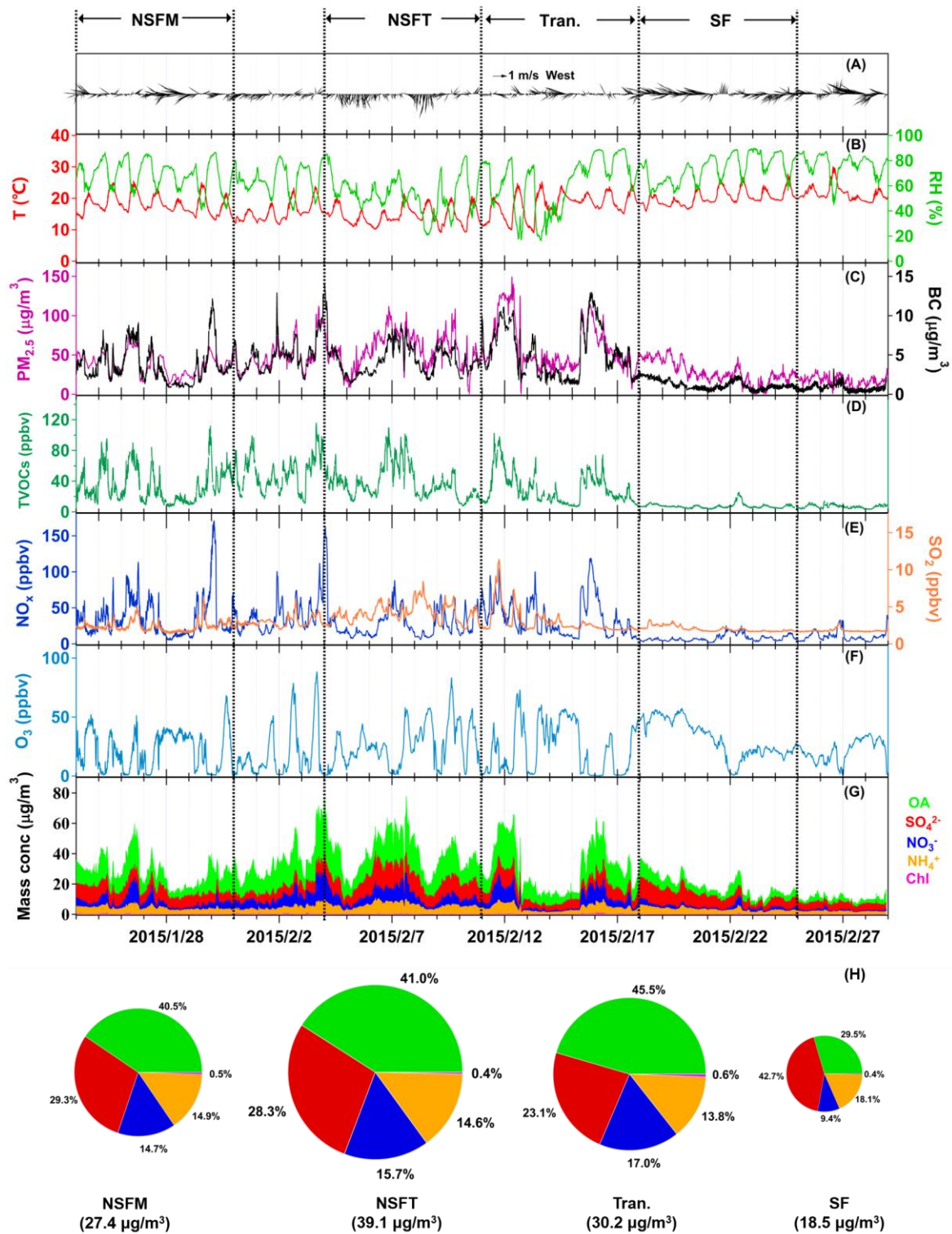
79

80 **Figure S3** Time series of meteorological conditions and various air pollutants measured during the SF
 81 and NSF periods in 2014. (A) Wind speed and direction, (B) temperature and relatively humidity, (C)
 82 $PM_{2.5}$ and BC, (D) TVOCs, (E) NO_x and SO_2 , (F) O_3 , (G) AMS species and (H) NR- PM_1 compositions.



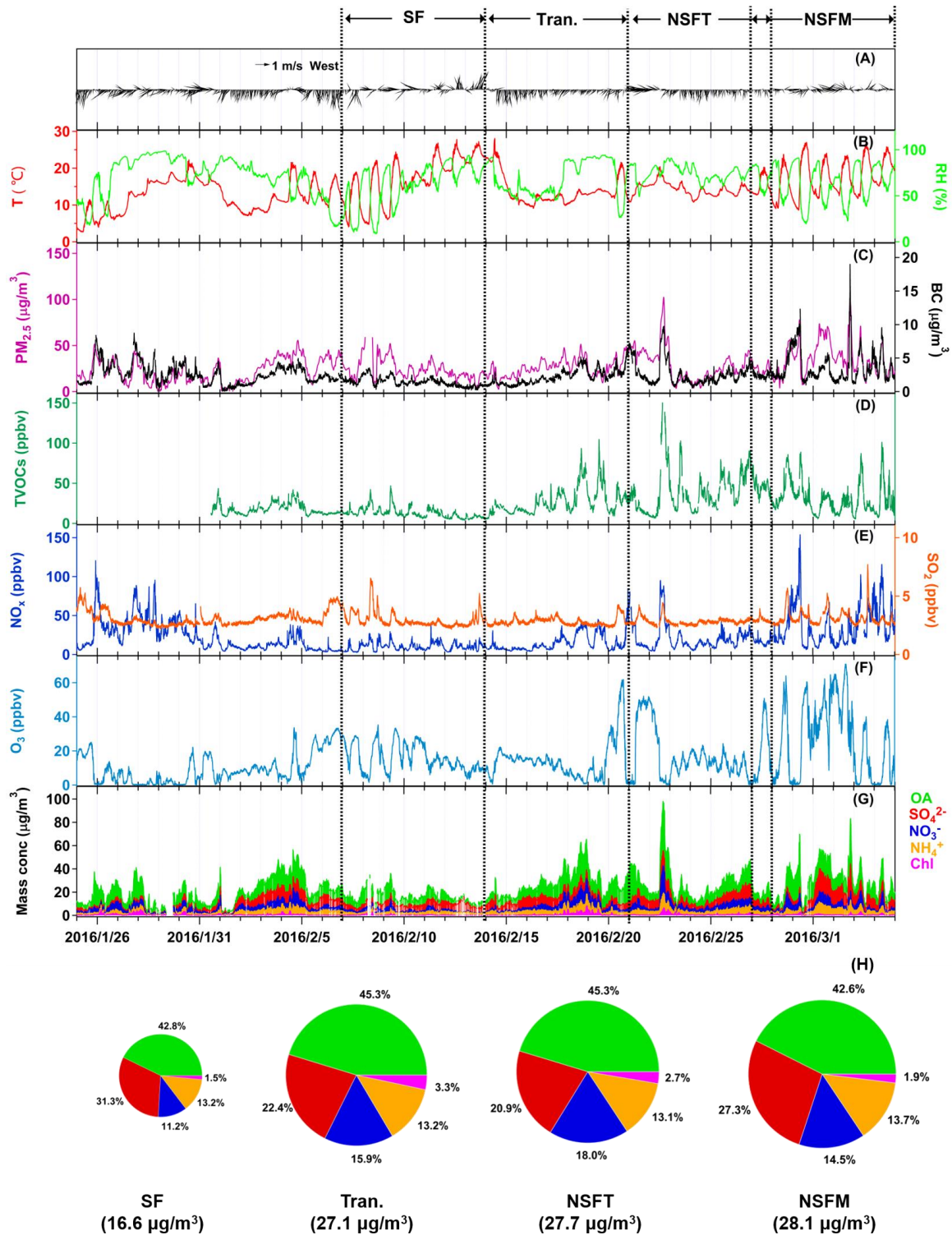
83

84 **Figure S4** Time series of meteorological conditions and various air pollutants measured during the SF
 85 and NSF periods in 2015. (A) Wind speed and direction, (B) temperature and relatively humidity, (C)
 86 $PM_{2.5}$ and BC, (D) TVOCs, (E) NO_x and SO_2 , (F) O_3 , (G) AMS species and (H) NR- PM_1 compositions.



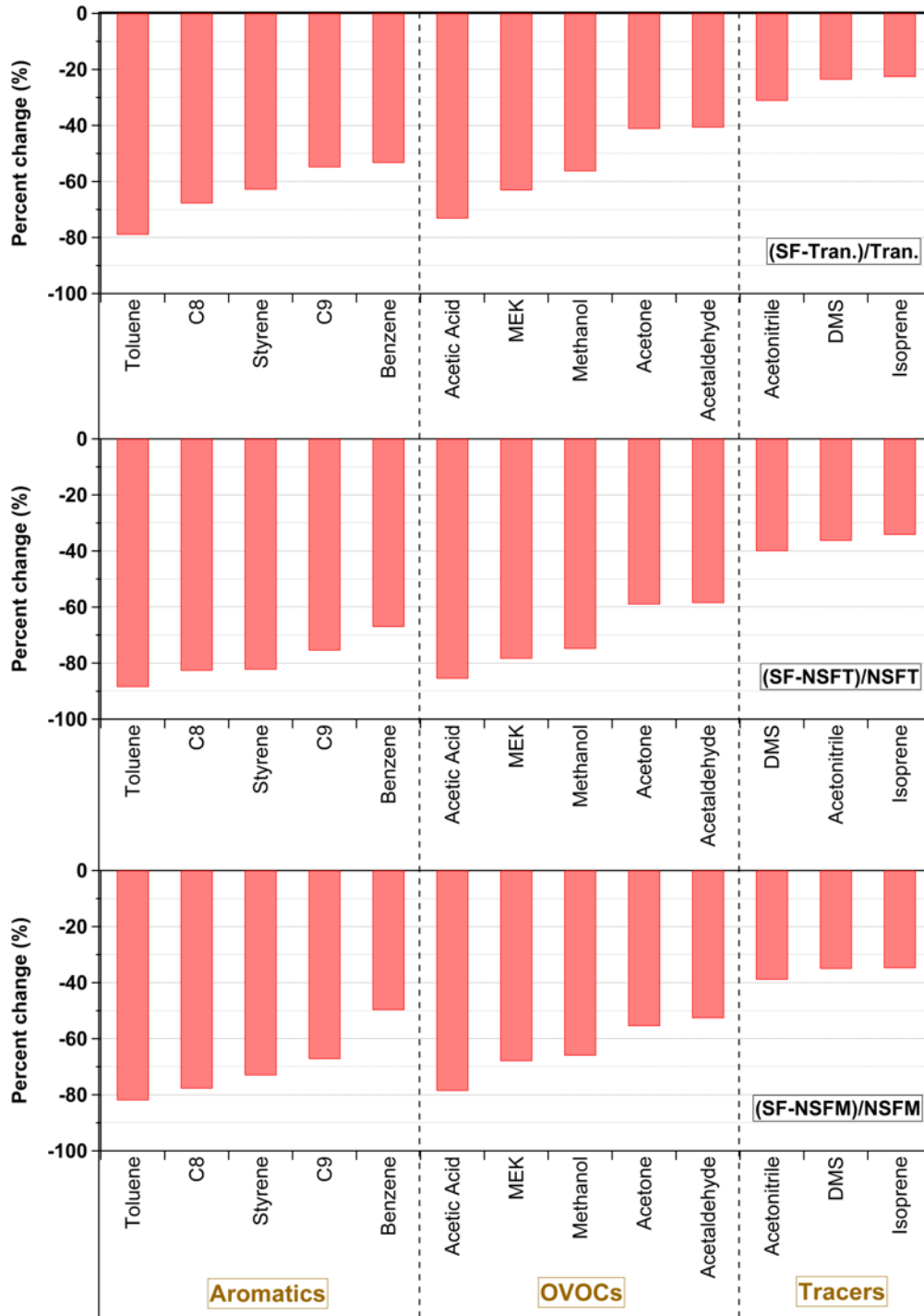
87

88 **Figure S5** Time series of meteorological conditions and various air pollutants measured during the SF
 89 and NSF periods in 2016. (A) Wind speed and direction, (B) temperature and relatively humidity, (C)
 90 $PM_{2.5}$ and BC, (D) TVOCs, (E) NO_x and SO_2 , (F) O_3 , (G) AMS species and (H) NR- PM_1 compositions.



91

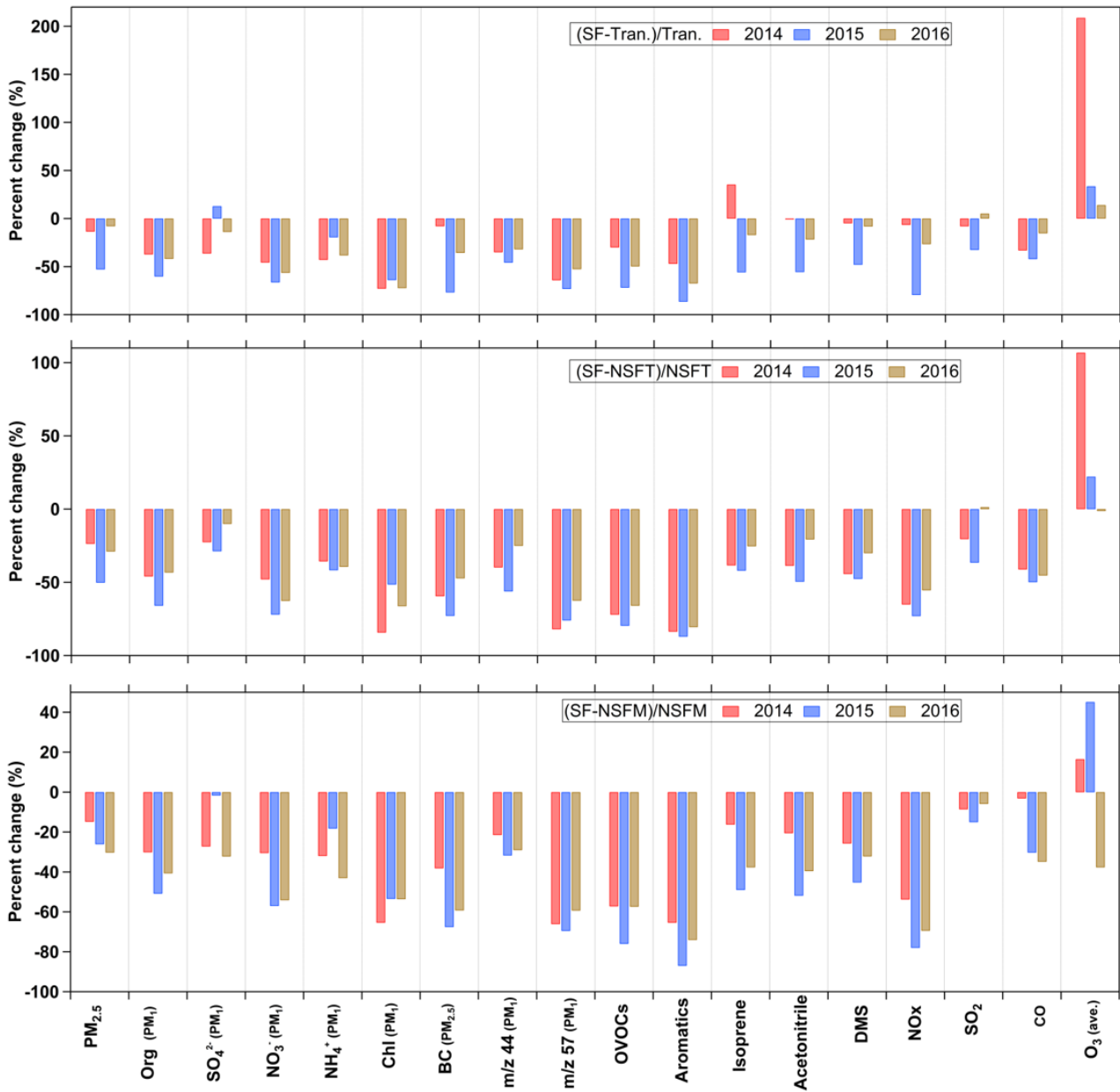
92 **Figure S6** Percent change in the concentration of VOCs between the SF and NSF periods over
 93 2014–2016.



94

95

96 **Figure S7** Annual percent change in concentration of air pollutants between the SF and NSF periods
 97 in 2014–2016.



98

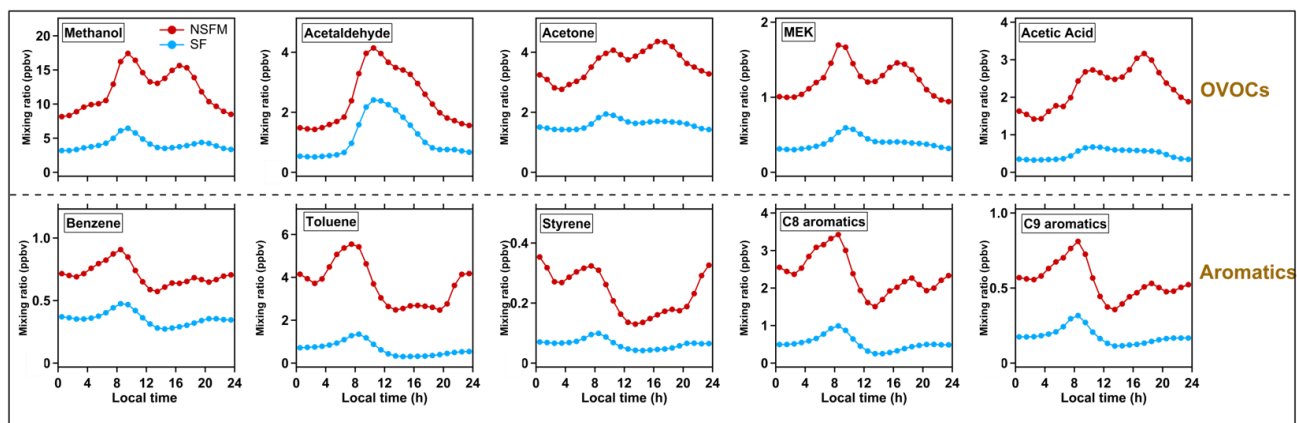
99

100

101

102

103 **Figure S8** Diurnal variations of concentrations of OVOCs and aromatics during the SF and NSFM
104 periods.



105

106

107

108

109

110

111

112

113

114

115

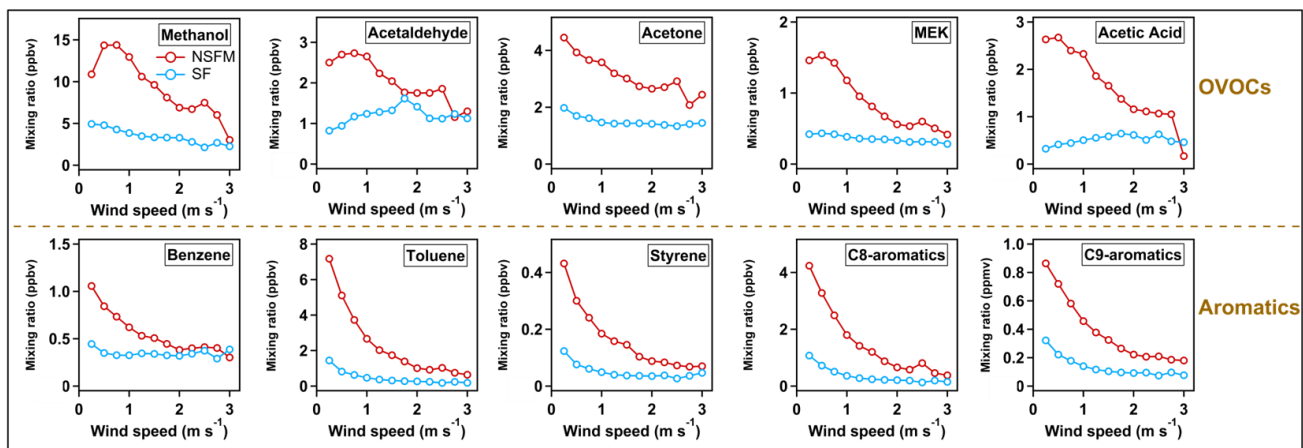
116

117

118

119

120 **Figure S9** Variations of concentrations of OVOCs and aromatics as the function of wind speed
121 during the SF and NSFM periods.



122

123