

Supplementary Information

Insight into winter haze formation mechanisms based on aerosol hygroscopicity and effective density measurements

Yuanyuan Xie, Xingnan Ye*, Zhen Ma, Ye Tao, Ruyu Wang, Ci Zhang, Xin Yang, Jianmin Chen,
Hong Chen

Shanghai Key Laboratory of Atmospheric Particle Pollution and Prevention (LAP³), Department
of Environmental Science and Engineering, Fudan University, Shanghai 200433, China.

*Corresponding authors. Tel.: +86-21-65648211, Fax: +86-21-65642080.

E-mail addresses: yexingnan@fudan.edu.cn; jmchen@fudan.edu.cn

Supplementary Figures

Figure S1 Meteorological conditions during the representative PM episode from 7 to 12 January.

Figure S2 Time series of concentrations of NO, NO₂, SO₂, and CO during the representative PM episode from 7 to 12 January.

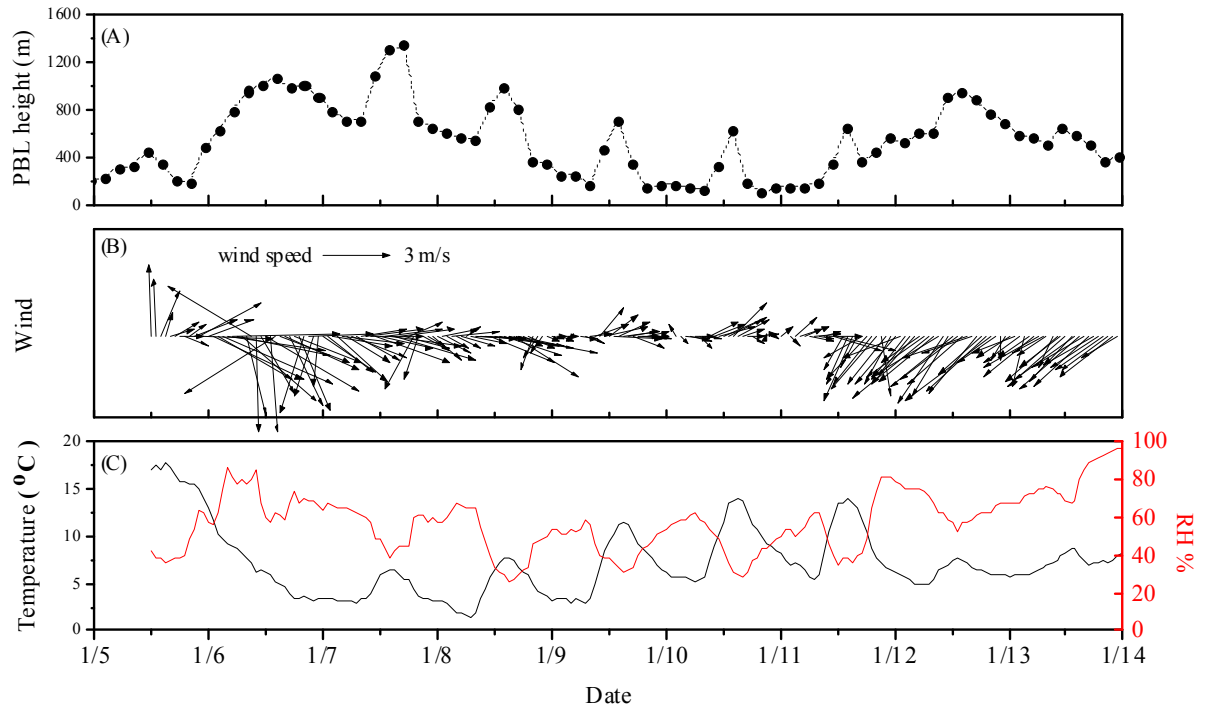


Figure S1 Meteorological conditions during the representative PM episode from 7 to 12 January.

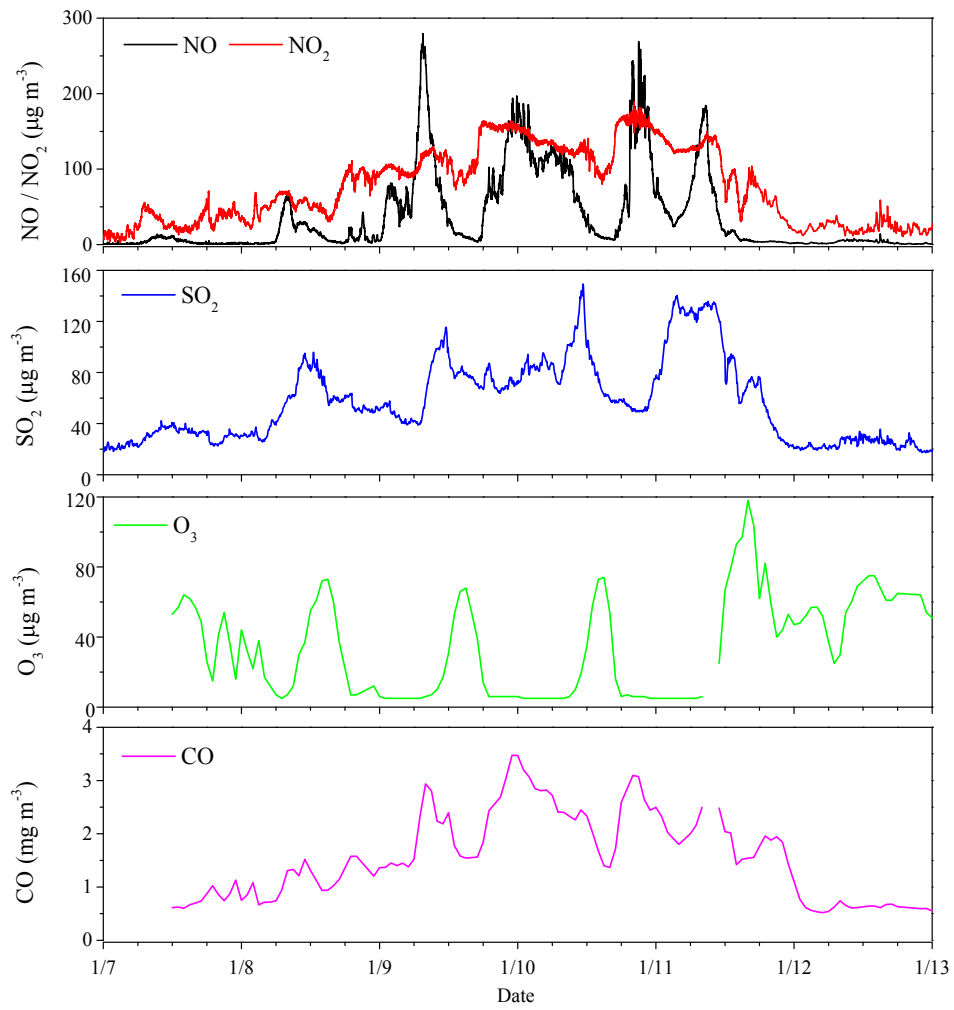


Figure S2 Time series of concentrations of NO, NO₂, SO₂, and CO during the representative PM episode from 7 to 12 January.