

1
2
3
4
5
6
7
8
9
10
11
12
13
14
15
16
17
18

SUPPLEMENTARY MATERIAL

**SOURCES OF SUBMICROMETRE PARTICLES NEAR A
MAJOR INTERNATIONAL AIRPORT**

Mauro Masiol, Roy M. Harrison, Tuan V. Vu, David C.S. Beddows

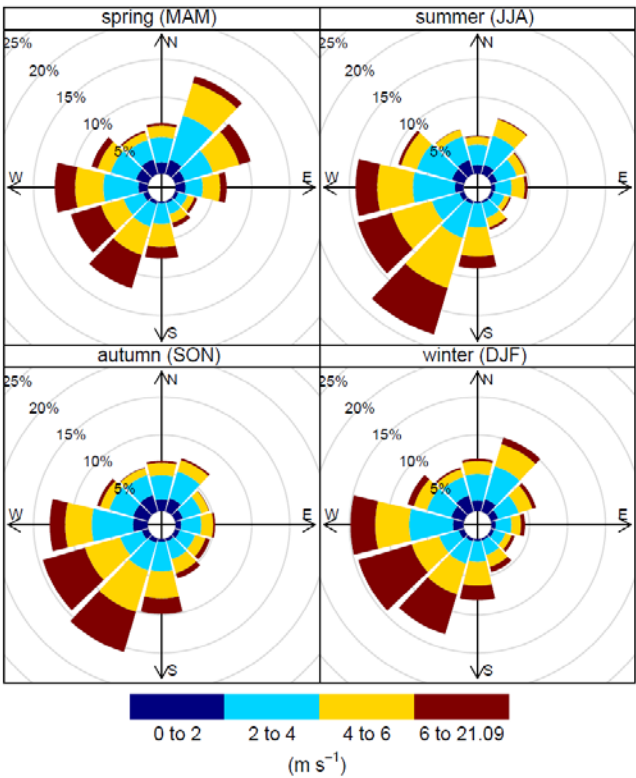


Figure SI1. Seasonal wind roses calculated from data collected at Heathrow (MetOffice station 708) over the 2005/2012 period.

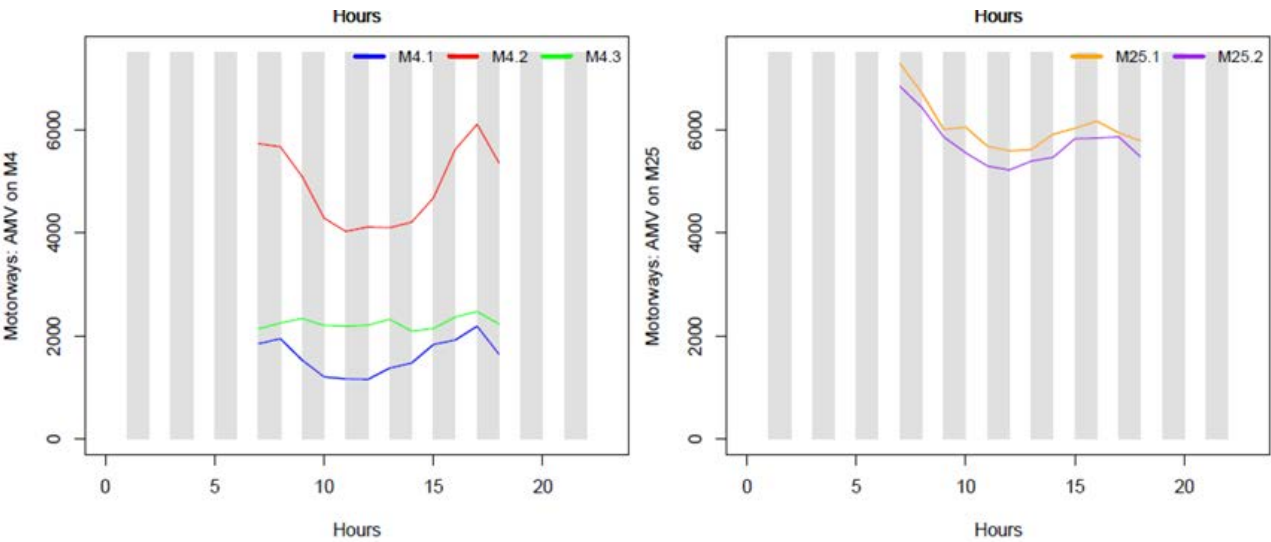
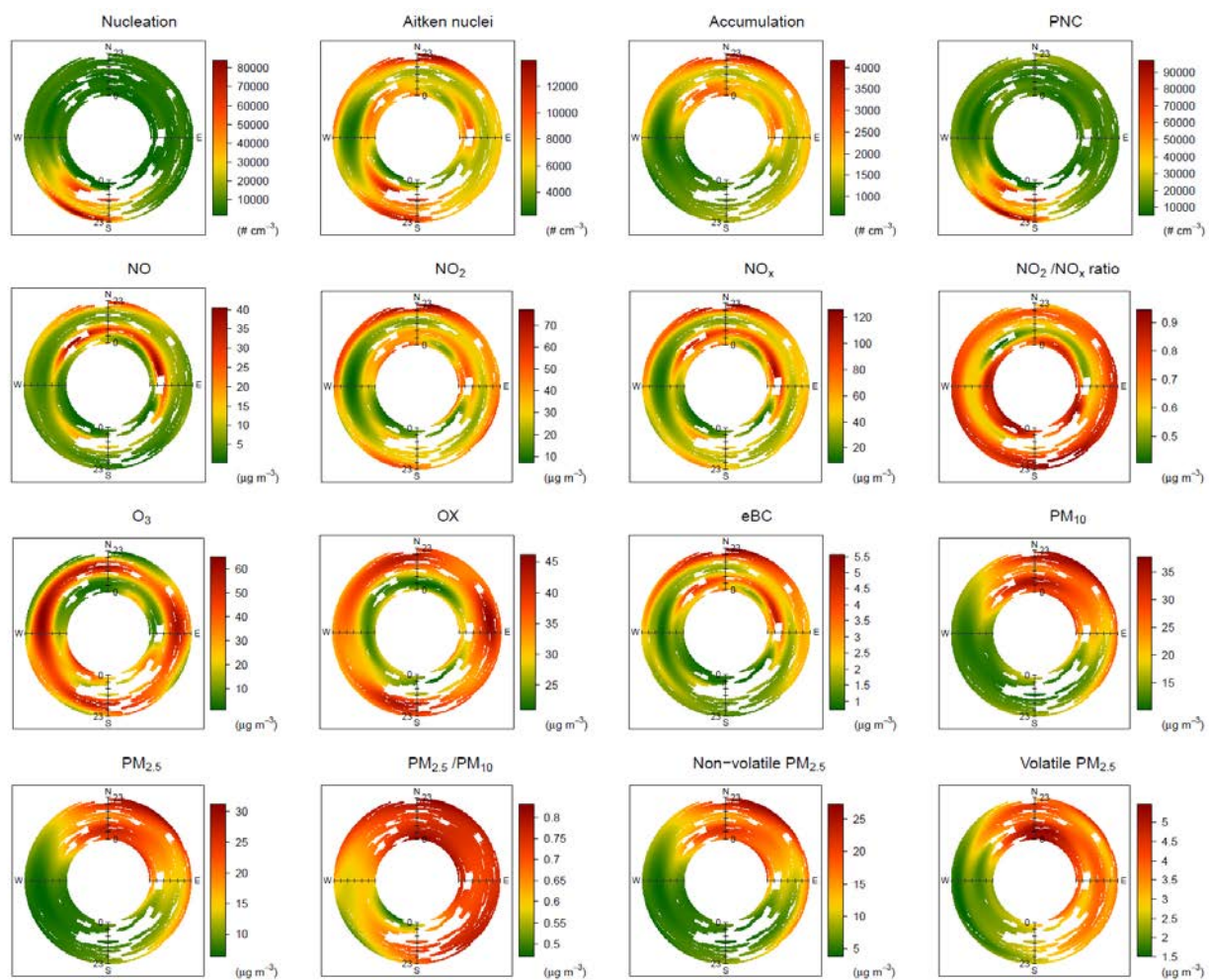


Figure SI2. Hourly traffic count data for the motorways close to LHR. Data are provided by the UK Department for Transport, which commissions manual counts of traffic for a number of count points every year. The counts take place between 7 am and 7 pm; each road link is counted a maximum of one day in a year (adapted from Masiol et al., 2015).



33

34 **Figure SI3.** Polar Annuli calculated from data collected during the warm season.

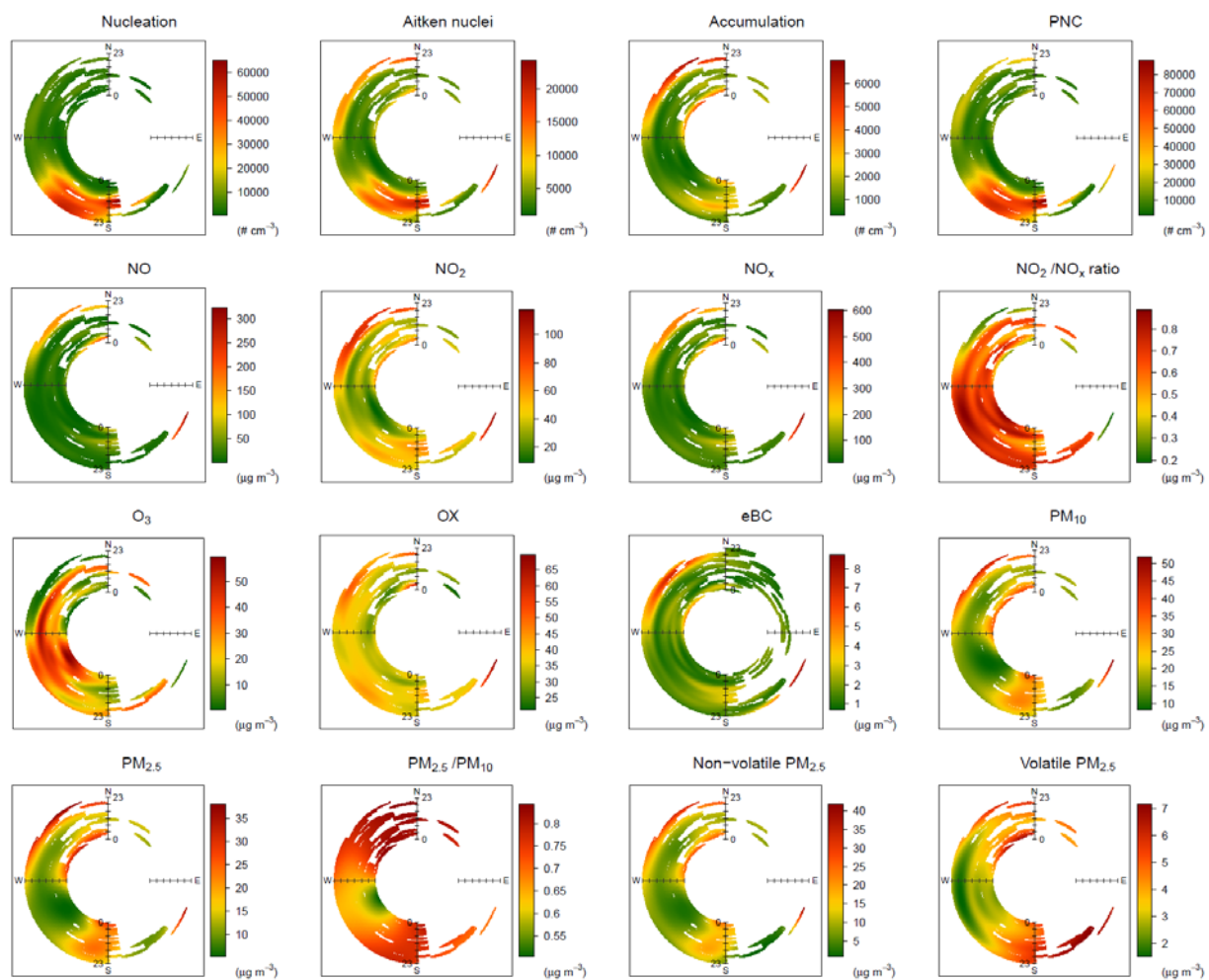


Figure SI4. Polar Annuli calculated from data collected during the cold season.

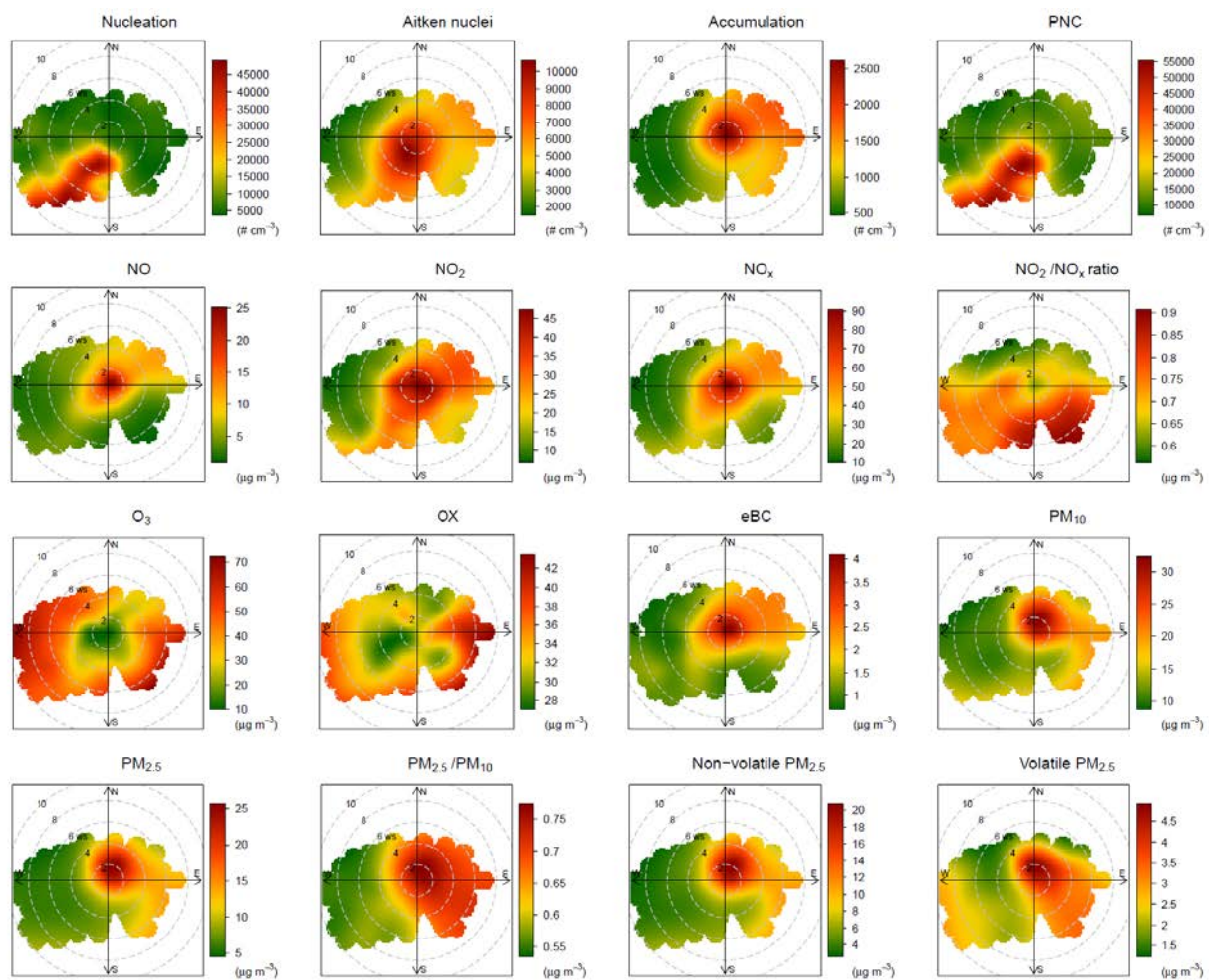


Figure SI5. Polar Plots calculated over from collected during the cold season.

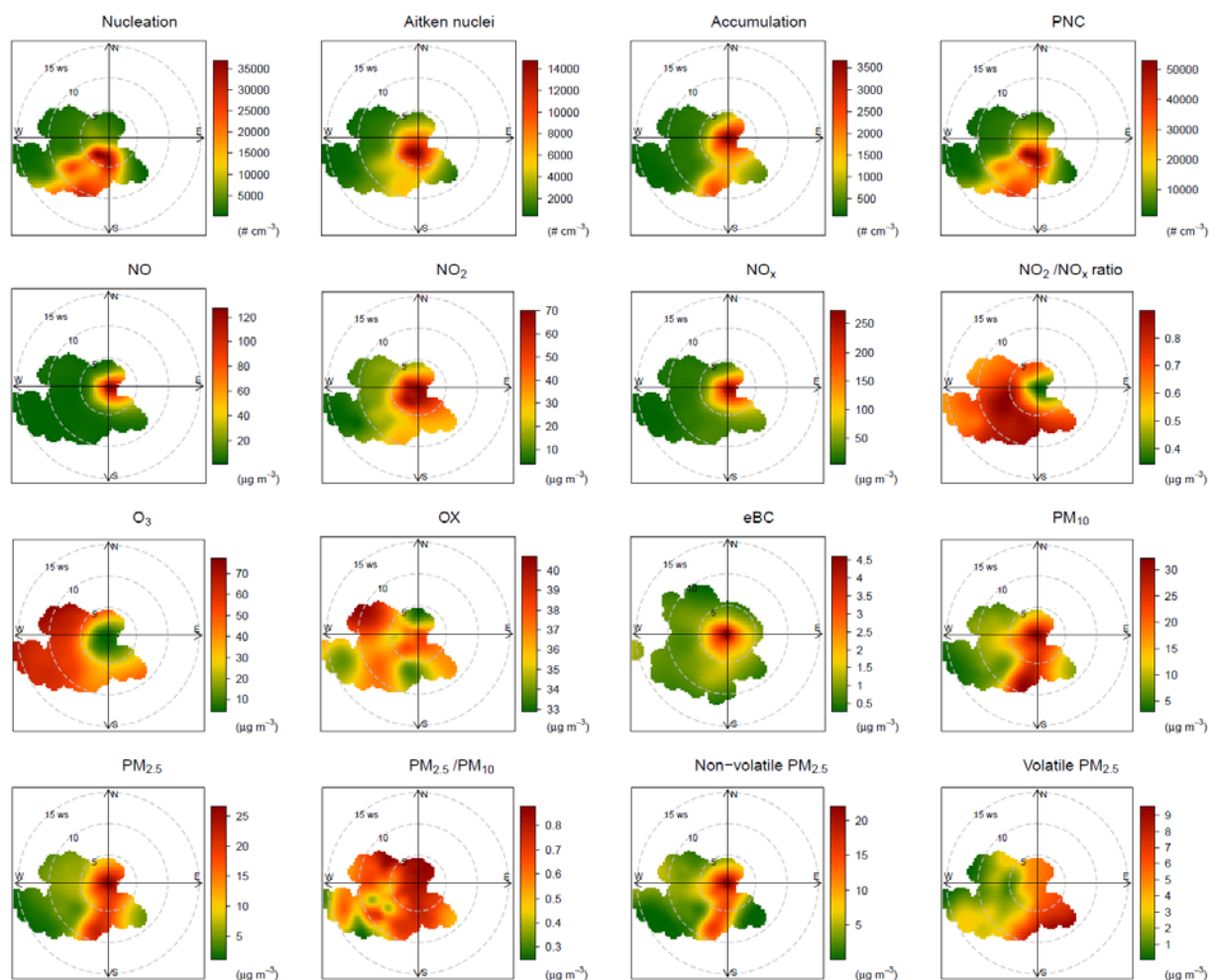


Figure SI6. Polar Plots calculated from data collected during the cold season.

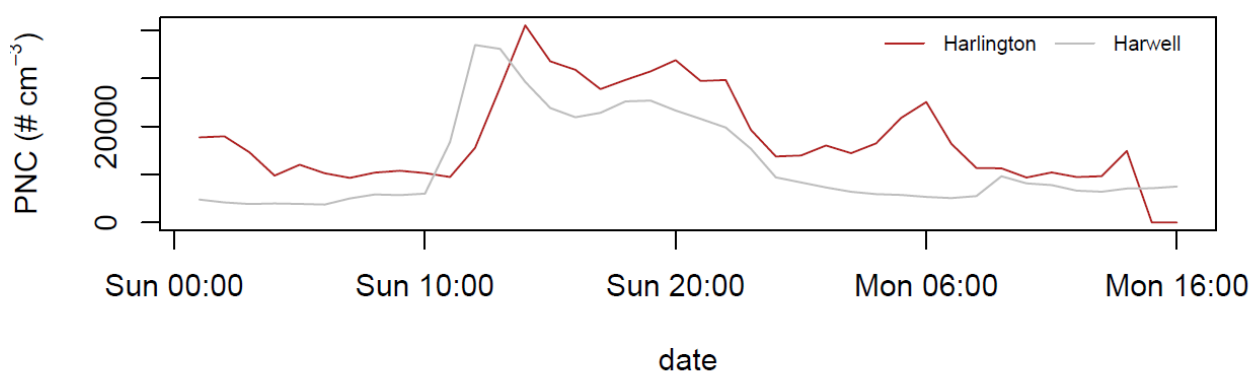


Figure SI7. Time series of total PNC measured at Harwell and Harlington during the regional nucleation episode.