

We are thankful to the two reviewers for their thoughtful comments and suggestions that help improve the manuscript significantly. We have revised the manuscript accordingly. Listed below are our point-by-point responses in blue to each reviewer's comments

Response to reviewer #1

Aerosol source apportionment is crucial for employing effective control strategies to improve air quality. This study presents seasonal and diurnal variations of different OA factors based on long-term (2 years) observations, and analyzes OA sources with the multilinear engine (ME-2), providing valuable information for studying the polluted events in Beijing. The manuscript is well written and figures are clearly presented. I recommend it for publication after some minor revisions.

We thank the reviewer's positive comments.

Comments:

1. In many sections, the manuscript uses evolution of atmospheric boundary layer (ABL) to explain diurnal and seasonal variations of OA factors. Are ABL measurements available? It would be helpful if the authors can show ABL results and include a more detailed discussion comparing ABL and OA.

We thank the reviewer's comments. Unfortunately, the measurements of ABL heights were not available in this study. However, the mixing layer heights (MLHs) that were previously retrieved from the ceilometers measurements in Beijing show clear diurnal cycles during all seasons (Tang et al., 2016). As shown in Figure R1, the average MLHs at nighttime was ~400 – 500 m in spring and summer in Beijing, which are ubiquitously lower than those during daytime. Also, MLHs showed clearly daytime increases from ~400 – 500 m in early morning to > 1 km in the late afternoon. Such diurnal variations of MLHs support our conclusions. In the revised manuscript, the reference of Tang et al. (2016) was cited to support our discussions.

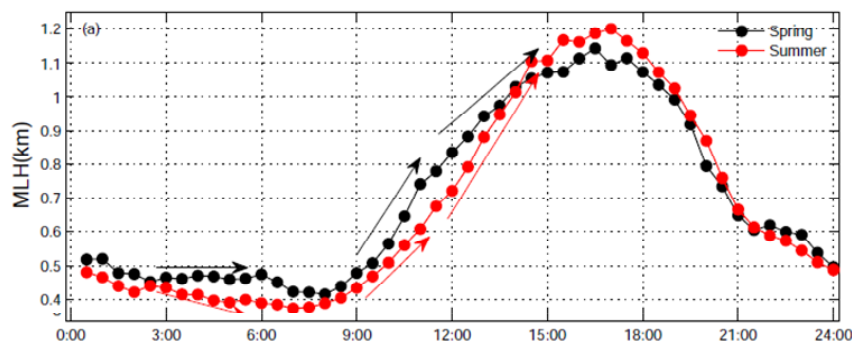


Figure R1. Average diurnal cycles of MLHs in spring and summer in Beijing (Tang et al., 2016).

2. Regarding regional transport, the manuscript proposes 200 km as the distance of surrounding regions to control emissions in winter. Have the authors considered influences of different weather systems on regional transport in each season? Also, please provide more details on how '200 km' is determined? Is there any evidence from back trajectory?

Thank the reviewer's comments. We concluded this mainly based on the PSCF analysis during the four seasons. For a reference, the distance between our sampling site (BJ) and Hengshui (HS) city is approximately 250 km. As indicated in Figure 8a, high potential source regions for different OA factors are mostly located in the regions with the distance from Beijing being less than 250 km during all seasons although there are several exceptions (e.g., MO-OOA in Sp13). In the revised manuscript, we corrected 200 km as 250 km.

We agree with the reviewer that the different weather systems can affect the regional transport in each season. For example, the potential source regions in the same season yet in different years, e.g., summer 2011 and 2012, are different. Such differences could be due to the differences in weather systems in the two years. While the analysis of weather systems is beyond the scope of this study, the PSCF in Figure 8 likely suggest two main weather systems from the south/southwest and southeast in different seasons.

3. For 'regional cloud processing' in line 20 on page 14, can the authors elaborate more on this? Also, will cloud convection influence MO-OOA transport?

We thank the reviewer's comments. We originally concluded this because sulfate is dominantly from cloud processing (~80% globally) (Harris et al., 2013) and shows regional characteristics. With the data in this study, it is very difficult to characterize the influence of cloud convection on MO-OOA transport. Still, we reworded this sentence in the revised manuscript as: "with sulfate that is mainly formed over a regional scale (Zhang et al., 2012)".

4. The authors propose explanations for different phenomena, such as 'one explanation is that MO-OOA from a regional scale was circulated from the Bohai sea before arriving at Beijing', as well as some explanations in other paragraphs. Please provide references to justify these explanations.

Such explanations are mainly based on back trajectory analysis. As shown in Figure 8, MO-OOA in summer 2012 shows a high potential source region over Bohai sea. We found that the high concentrations of MO-OOA in summer 2012 mainly occurred during the period of 19 - 21 June when back trajectories show clear transport from Bohai sea to Beijing. This is also consistent with the MODIS image showing severe haze over Bohai sea. Therefore, we conclude that "MO-OOA from a regional scale was circulated from the Bohai sea before arriving at Beijing".

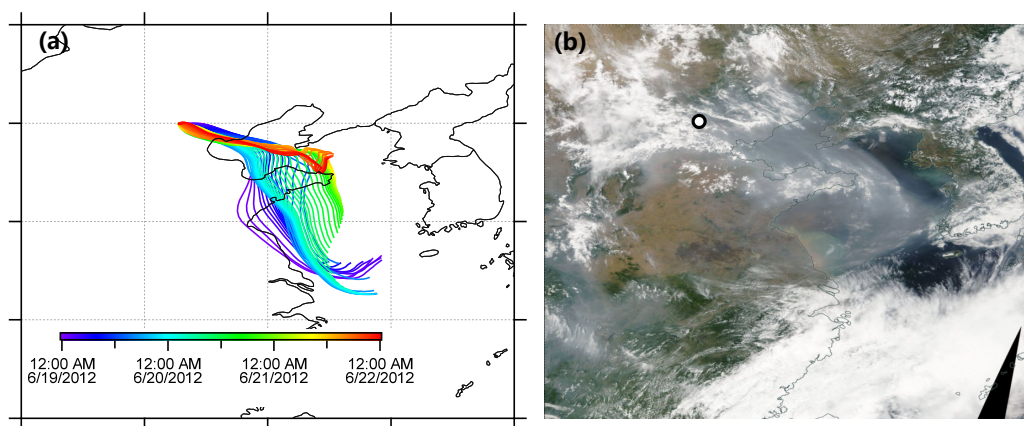


Figure R2. (a) 72 hr back trajectories arriving at Beijing during the period of 19 – 21 June, 2012, (b) the MODIS image on 20 June, 2012 (<https://earthdata.nasa.gov/labs/worldview/>).

Following the reviewer's suggestions, we added "Indeed, the periods with high concentrations of MO-OOA in summer 2012 (19 – 21 June) show clear transport from Bohai sea to Beijing as indicated by Fig. S9." in the revised manuscript, and also Figure R2 in supplementary.

5. In line 27 on page 15, can the authors explain more about 'the formation of MO-OOA from both aqueous-phase and photochemical processing'? The manuscript also mentions aqueous-phase processes in other paragraphs. It would be helpful if the authors can elaborate more on why MO-OOA and sulfate correlation leads to the conclusion that MO-OOA is formed through aqueous-phase reactions, and also provide some typical aqueous-phase reactions for MO-OOA formation. In addition, can the authors provide some insights on the possible contribution percentages of aqueous-phase processes and photochemical processes. Identifying dominant processes would be very useful for OA studies.

Thank the reviewer's comments. Sulfate is dominantly from aqueous-phase production, mostly cloud processing, therefore, good correlations between sulfate and MO-OOA support their similar processes. Our previous studies also showed that the aqueous-phase related OOA was well correlated with both sulfate and liquid water content (Sun et al., 2016). Compared with sulfate, nitrate particularly in

wintertime, is mostly from photochemical production (Sun et al., 2013). We found that MO-OOA was also correlated with nitrate for most of the time, suggesting the potential contributions from photochemical production. However, the MO-OOA cannot be further separated into two types of OOA representing photochemical and aqueous-phase processing due to the limited sensitivity, and low mass resolution of the Q-ACSM measurements. In fact, we have evaluated the effects of aqueous-phase and photochemical processing on SOA formation and evolution in Beijing using three HR-ToF-AMS datasets (Xu et al., 2017). The results showed that aqueous-phase processing has a dominant impact on the formation of more oxidized SOA (MO-OOA), and the contribution of MO-OOA to OA increases substantially as a function of relative humidity or liquid water content. Therefore, we expect a dominant contribution of MO-OOA from aqueous-phase processing at high RH levels, while more from photochemical processing at low RH levels.

Response to reviewer #2

Review of Sun et al. "Source apportionment of organic aerosol from two-year highly time-resolved measurements by an aerosol chemical speciation monitor in Beijing, China" The authors present two-year measurements on organic aerosols (OA) in Beijing with an aerosol chemical speciation monitor (ACSM). Source apportionment was performed using multilinear engine (ME-2). Five factors, including fossil fuel organic aerosol (FFOA), biomass burning organic aerosol (BBOA), cooking organic aerosol (COA), less oxidized oxygenated organic aerosol (LO-OOA), and more oxidized oxygenated organic aerosol (MO-OOA). Based on the source apportionment results, seasonal variations, loading dependence (Section 3.2, see suggestion on change of section title below), RH/T dependence, and potential source regions, were thoroughly discussed in view of emission and formation of OA in Beijing. The dataset is highly valuable in view of its long duration and deep analyses. The analyses are rigorous and the manuscript is generally well written. This work is certainly within the scope of ACP and of interest to readers of ACP. I do, however, have a few points for the authors to address, as below.

[We thank the reviewer's positive comments.](#)

Major comments:

1. Mixing of factors. It is understood that statistical models like positive matrix factorization (PMF) suffer from this problem, even with ME-2, and especially with less chemically resolved ACSM. The mixing of hydrocarbon-like organic aerosol (HOA) and coal combustion organic aerosol (CCOA), resulting in FFOA, is a well justified one. But there are still a few other complications. For example, in page 9 line 10 and line 20, the authors admitted that FFOA/COA and BBOA/LO-OOA pairs might not be well resolved. Since the entire paper is based on the quantitative fractionation of OA into those factors, one might be skeptical about how well

PMF/ME-2 can separate those distinct primary sources (FFOA/COA) and changing primary/secondary OA (BBOA/LO-OOA). In order not to let readers take those numbers (i.e., mass concentrations and mass fractions of different OA factors) for granted, at least a caveat has to be mentioned about the potential uncertainties in separating OA factors using ACSM data and PMF analysis. Better yet, further exploration can provide some quantitative estimates on the uncertainties. Take the FFOA/COA pair for example. FFOA (either as HOA or CCOA) has associated markers (BC and/or Chl) that might be strongly correlated with it (HOA or CCOA) according to previous studies. If using data points from periods with minimal COA contribution (e.g., morning rush hours or after midnight), one can get good correlations and scale factors between FFOA and BC/Chl in non-cooking periods. In the case of FFOA in summer, which is suspiciously mixed with COA, one can use the scale factors to estimate the “real” FFOA during cooking periods. Although the so-called “real” FFOA is even less rigorously obtained compared to that from PMF/ME-2, one can at least have a quantitative understanding on how much difference can it be between the FFOA obtained from these two methods, serving as an uncertainty for PMF analysis.

The reviewer suggested an excellent point for evaluating the uncertainties of ME-2 results. In fact, it is very challenging to separate traffic related HOA from COA using quadrupole AMS or ACSM measurements in summer (Sun et al., 2010; Sun et al., 2012). We then tried to use black carbon (BC) as a tracer to separate HOA from COA assuming that BC is dominantly from traffic emissions while the contribution from cooking is small (Pei et al., 2016). Because BC was not available for the entire study, here we just evaluated the BC-tracer method in August 2012 with two-factor PMF solution, i.e., POA and SOA. We first checked the hourly correlations between BC and POA, and found that these two species were well correlated ($r^2 > 0.75$) between 4:00 – 10:00 when cooking emissions are not significant (Figure R3a). The ratios of POA/BC were also the lowest during this period of time, suggesting the dominant contribution of traffic related HOA to POA. Figure R3b shows the scatter

plot of POA vs. BC. The average ratio of POA/BC during the period without significant cooking influences is 0.96. With this, we estimated the mass concentrations of HOA and COA as below:

$$(1) \text{ HOA} = (\text{POA/BC})_{nc} \times \text{BC} - \text{COA}_b$$

$$(2) \text{ COA} = \text{POA} - \text{HOA}$$

Where POA is primary organic aerosol from two factor solution of PMF analysis, $(\text{POA/BC})_{nc}$ is the average ratio of POA/BC during the periods without significant influences from cooking, which is 0.96 here, and COA_b is the background concentration of cooking aerosols. According to the diurnal cycles of COA in previous studies in Beijing (Huang et al., 2010; Hu et al., 2016; Hu et al., 2017), we found a background concentration of $1.30 \pm 0.39 \mu\text{g m}^{-3}$ even during periods without cooking emissions.

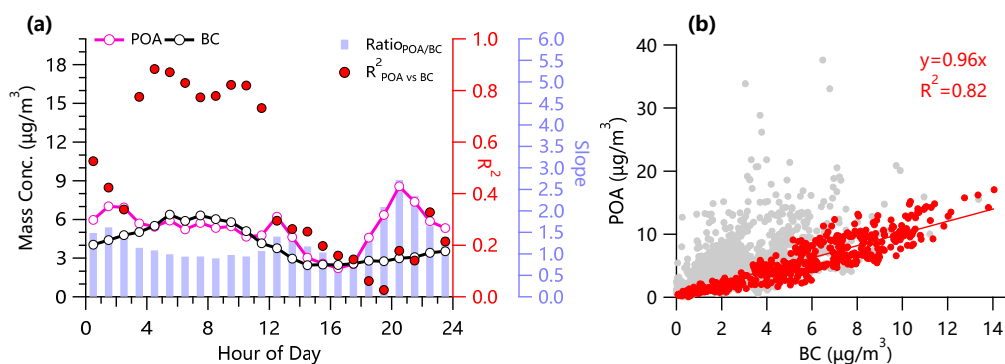


Figure R3. (a) Diurnal variations of POA, BC, correlation coefficients and slopes of POA vs. BC, (b) scatter plot of POA vs. BC, and the red circles are the data between 4:00 – 10:00.

As shown in Figure R4, the estimated time series of COA is relatively well correlated with m/z 55, which has a significant contribution from cooking aerosol (Sun et al., 2011), and the diurnal cycle is also consistent with previous observations showing two pronounced peaks during meal times. The estimated HOA and COA on average contributed 12% and 13%, respectively to OA in August 2012. Compared with the results of ME-2 analysis in Table 1, the contribution of COA is the same (13%), while that of HOA (6%) from ME-2 analysis is much lower.

One of the reasons is that the BC-tracer method did not resolve biomass burning OA, which is ubiquitously observed in Beijing during all seasons (Zhang et al., 2008). Still, the sum of HOA and BBOA from ME-2 analysis is 17%, which has a 5% difference compared with that from the BC-tracer method (12%).

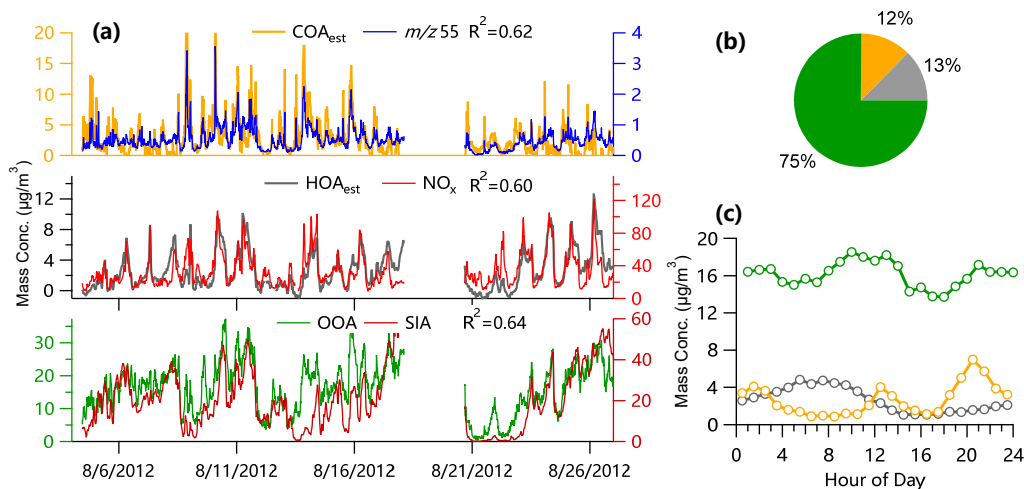


Figure R4. Time series and diurnal cycles of estimated COA and HOA using BC as a tracer. The pie chart shows average OA composition for August 2012.

We also compared with previously resolved HOA and COA from PMF analysis of high resolution AMS spectra at another urban site, Peking university, in Beijing (Huang et al., 2010; Hu et al., 2016; Hu et al., 2017). The results showed that HOA and COA on average contributed 11 – 17% and 16 – 21%, respectively to OA, but varied differently among different years. Such results are comparable with those in our study, which are 5 – 22% and 10 – 18% for HOA and COA, respectively considering that the sampling sites are different. These results together suggest that the results from ME-2 analysis are reasonable in terms of relative contributions although the diurnal cycle of HOA in summer is affected by that of COA.

Following the reviewer's suggestions, we expanded the discussions on ME-2 analysis in Section 2.2

We also noticed that the diurnal cycle of FFOA showed similar pronounced mealtime peaks as that of COA in summer although these two factors were forced to separate in ME-2 analysis. To better understand the uncertainties in quantification of FFOA and COA, we estimated COA concentrations using BC as a tracer for the traffic-related FFOA in August 2012. Indeed, POA from the two factor solution of PMF-ACSM was highly correlated ($r^2 > 0.75$) with BC between 4:00 and 10:00 when cooking emissions are small, suggesting the dominant contribution of traffic emissions on BC. The average ratio of POA/BC during this period of time (0.96) was then used to derive the traffic-related FFOA, and COA was estimated as the difference between POA and FFOA. Our results showed that COA estimated using BC-tracer method on average contributed 13% to OA in August which agrees well with that from ME-2 analysis (Table 1), while that of FFOA (12%) was lower than the sum of FFOA and BBOA (17%). These results together suggest that the results of ME-analysis are quite reasonable even in summer when FFOA and COA are difficult to separate.

2. PSCF analysis. The potential source analysis on primary (assuming unchanged) is reasonable, but might be easily over-interpreted. For instance, the author stated that COA should not be regional, but its “potential source” can extend to very far a distance from the sampling site (to the Bohai Sea in Sp12 and S12 in Figure 8, and distinct hot spots southwest of the city in F11 and Sp13). The same analysis applied to secondary factors might be even more difficult to apprehend. In that type of analysis, does it mean the precursors are from those regions or the oxidation occur in those regions? Again, some precautions should be mentioned to avoid over-interpretation of PSCF results, which only provide a very rough estimate on the coupling of air mass transport and chemical species.

We totally agree with the reviewer that PSCF can only provide a very rough estimate of potential source regions. Although most potential source regions of

primary OA, e.g., COA, are reasonable, the hot spots, e.g., Hengshui (HS) and Baoding (BD) regions for COA in Sp12 are more likely from the uncertainties of PSCF analysis, and do not necessarily indicate that they are important sources of COA in Beijing. This is also supported by previous studies showing that COA dropped rapidly outside of major urban areas (Ots et al., 2016). Comparatively, the wide and uninterrupted source regions are often real, e.g., MO-OOA in summer 2012 (S12) showed a high potential source region over Bohai sea. We found that the high concentrations of MO-OOA in S12 mainly occurred during the period of 19 - 21 June when back trajectories show clear transport from Bohai sea to Beijing. This is also consistent with the MODIS image showing severe haze over Bohai sea (Figure R2). Therefore, we conclude that “MO-OOA from a regional scale was circulated from the Bohai sea before arriving at Beijing”. Following the reviewer’s suggestions, we didn’t over interpret the PSCF analysis.

3. Conclusions. With a number of aspects discussed, the manuscript presents a number of conclusions. It is difficult to pin-point what new findings were obtained with this two-year dataset (very valuable, indeed), and how much this work is different from other AMS studies in Beijing, many of which were done by the authors. I strongly suggest the authors to distill the conclusions into one or two major leaps that this work achieves compared to other one-month or even one-year measurements.

We thank the reviewer’s comments. In the revised manuscript, we shortened the conclusions substantially.

4. Some obstacles in smooth reading. There are a number of places that requires careful grammatical check. Below in the minor comments are a few examples I spotted. More thorough checking will help increase the readability of this paper.

We thank the reviewer's comments. We went through the revised manuscript, and corrected the grammar mistakes as much as we can.

Minor comments:

1. Page 2, line 22. "real-time" to "real time".

Corrected

2. Page 2, line 24. I don't think PCA/PMF/ME-2 can "differentiate" OA factors from sources/processes. They can resolve the OA matrix into different factors, which correspond to different sources/processes.

Good point. We revised it as "can further resolve various OA factors that correspond to different sources and processes"

3. Page 2, line 30-31. Two sentences here that need splitting.

It was split

4. Page 3, line 8. "one year" to "one-year".

Corrected

5. Page 3, line 9. "season variation" to "seasonal variation".

Corrected

6. Page 3, line 11. "this study". Which study? Sun et al. (2015)? Zhang et al. (2013)? Or Hu et al. (2017)? Are all these three studies lack of seasonal variations of OA?

It refers to Sun et al. (2015). We clarified this in the revised manuscript.

7. Page 3, line 13. "two years" to "two-year", and other few places using the same form.

Changes as suggested

8. Page 4, line 9-11. It is ambiguous here. Should be “. . .and default relative ionization efficiencies (RIE) were used, except for ammonium whose RIE was determined from measurements with ammonium nitrate.”?

Changed as the reviewer suggested. It now reads: “and default relative ionization efficiencies (RIE) were used, except for ammonium whose RIE was determined from measurements of pure ammonium nitrate.”

9. Page 4, line 18. “mass resolution” to “low mass resolution”.

Corrected

10. Page 5, line 11. “the seasonal ME2-ACSM reports” looks odd. Should be “the seasonally average SOA concentrations are overall 16% higher using PMF/ME-2 analysis with the ACSM dataset compared to those using conventional PMF analysis.”?

This sentence was reworded as “the seasonal ME2-ACSM analysis reports an overall 16% higher SOA concentrations than the conventional PMF-ACSM analysis”

11. Page 5, line 14. “ME-2 analysis” to “from ME-2 analysis”.

Added

12. Page 5, line 15. “during the first eight months’ measurements” to during the first eight months”.

Corrected

13. Page 5, line 16. “during the rest of months” to “during the other months”; “with differences less than 3%” to “with differences of less than 3%”.

Corrected

14. Page 6, line 14. “which is much higher” to “which are much higher”.

Corrected

15. Page 7, line 1-2. This can be incorrectly understood as COA is more important than traffic emissions in all time in Beijing. Suggest to put “in non-heating seasons” to the second half of the sentence.

Added as suggested

16. Page 7, line 15. “much differences” to “many differences”.

Corrected

17. Page 8, line 3 – 22. The first and the last sentences of this paragraph looks contradicting. Does MO-OOA have a pronounced seasonal variation or not?

Thank the reviewer for pointing this out. It is not contradict. The first sentence means “seasonal variation of **mass concentration** of MO-OOA” while the last sentence refers to “seasonal variation of **mass fraction** of MO-OOA”.

18. Page 9, Section 3.2. Suggest to change the section title to “Loading-dependent OA composition” because it is basically what this section is about.

Good point. Changed as suggested

19. Page 10, line 14. “during lunch and dinner times respectively” to “during lunch and dinner times, respectively”.

Changed

20. Page 11, line 25. “at ~50 – 60%” to “to ~50 – 60%”.

Corrected

21. Page 12, line 17. FFOA emissions or FFOA formation? I believe FFOA is primary (emission).

This sentence was now revised as “supporting more FFOA emissions, e.g., from coal combustion, at lower *T* and higher RH levels.”

22. Page 12, line 24. “dependence” to “dependences”.

Corrected

23. Page 14, line 6. “surprising” to “surprisingly”. 24. Page 14, line 7. Delete “we”.

Corrected

25. Page 15, line 10. The previous discussion stressed on the constant mass concentrations of COA, not constant mass fractions. And the authors stated previously that COA mass fractions increased during clean periods. Should this be modified to be consistent with the points made in the discussion?

Thanks for the comments. Although the contributions of COA during clean periods are high, they are relatively constant in terms of seasonal averages. Here we refer to “seasonal average contributions of COA are relatively constant”. We added “average” in the sentence to clarify this.

26. Page 15, line 26. “correlated”? The authors used a present tense almost throughout the whole discussion. How come a past tense is used here suddenly? Is it “is correlated”?

Right, it is “is also correlated”

27. Page 25, Figure 1-c1. “FOA” to “FFOA”.

Corrected

References:

- Harris, E., Sinha, B., van Pinxteren, D., Tilgner, A., Fomba, K. W., Schneider, J., Roth, A., Gnauk, T., Fahlbusch, B., Mertes, S., Lee, T., Collett, J., Foley, S., Borrmann, S., Hoppe, P., and Herrmann, H.: Enhanced Role of Transition Metal Ion Catalysis During In-Cloud Oxidation of SO₂, *Science*, 340, 727-730, 10.1126/science.1230911, 2013.
- Hu, W., Hu, M., Hu, W., Jimenez, J. L., Yuan, B., Chen, W., Wang, M., Wu, Y., Chen, C., Wang, Z., Peng, J., Zeng, L., and Shao, M.: Chemical composition, sources and aging process of submicron aerosols in Beijing: contrast between summer and winter, *J. Geophys. Res.*, 121, 1955-1977, 10.1002/2015JD024020, 2016.
- Hu, W., Hu, M., Hu, W.-W., Zheng, J., Chen, C., Wu, Y., and Guo, S.: Seasonal variations in high time-resolved chemical compositions, sources, and evolution of atmospheric

- submicron aerosols in the megacity Beijing, *Atmos. Chem. Phys.*, **17**, 9979-10000, 10.5194/acp-17-9979-2017, 2017.
- Huang, X. F., He, L. Y., Hu, M., Canagaratna, M. R., Sun, Y., Zhang, Q., Zhu, T., Xue, L., Zeng, L. W., Liu, X. G., Zhang, Y. H., Jayne, J. T., Ng, N. L., and Worsnop, D. R.: Highly time-resolved chemical characterization of atmospheric submicron particles during 2008 Beijing Olympic Games using an Aerodyne High-Resolution Aerosol Mass Spectrometer, *Atmos. Chem. Phys.*, **10**, 8933-8945, 10.5194/acp-10-8933-2010, 2010.
- Ots, R., Vieno, M., Allan, J. D., Reis, S., Nemitz, E., Young, D. E., Coe, H., Di Marco, C., Detournay, A., Mackenzie, I. A., Green, D. C., and Heal, M. R.: Model simulations of cooking organic aerosol (COA) over the UK using estimates of emissions based on measurements at two sites in London, *Atmos. Chem. Phys.*, **16**, 13773-13789, 10.5194/acp-16-13773-2016, 2016.
- Pei, B., Cui, H., Liu, H., and Yan, N.: Chemical characteristics of fine particulate matter emitted from commercial cooking, *Front. Environ. Sci. Eng.*, **10**, 559-568, 10.1007/s11783-016-0829-y, 2016.
- Sun, J., Zhang, Q., Canagaratna, M. R., Zhang, Y., Ng, N. L., Sun, Y., Jayne, J. T., Zhang, X., Zhang, X., and Worsnop, D. R.: Highly time- and size-resolved characterization of submicron aerosol particles in Beijing using an Aerodyne Aerosol Mass Spectrometer, *Atmos. Environ.*, **44**, 131-140, 2010.
- Sun, Y., Du, W., Fu, P., Wang, Q., Li, J., Ge, X., Zhang, Q., Zhu, C., Ren, L., Xu, W., Zhao, J., Han, T., Worsnop, D., and Wang, Z.: Primary and secondary aerosols in Beijing in winter: sources, variations and processes, *Atmos. Chem. Phys.*, **16**, 8309-8329, 10.5194/acp-16-8309-2016, 2016.
- Sun, Y. L., Zhang, Q., Schwab, J. J., Demerjian, K. L., Chen, W. N., Bae, M. S., Hung, H. M., Hogrefe, O., Frank, B., Rattigan, O. V., and Lin, Y. C.: Characterization of the sources and processes of organic and inorganic aerosols in New York City with a high-resolution time-of-flight aerosol mass spectrometer, *Atmos. Chem. Phys.*, **11**, 1581-1602, 10.5194/acp-11-1581-2011, 2011.
- Sun, Y. L., Wang, Z., Dong, H., Yang, T., Li, J., Pan, X., Chen, P., and Jayne, J. T.: Characterization of summer organic and inorganic aerosols in Beijing, China with an Aerosol Chemical Speciation Monitor, *Atmos. Environ.*, **51**, 250-259, 10.1016/j.atmosenv.2012.01.013, 2012.
- Sun, Y. L., Wang, Z. F., Fu, P. Q., Yang, T., Jiang, Q., Dong, H. B., Li, J., and Jia, J. J.: Aerosol composition, sources and processes during wintertime in Beijing, China, *Atmos. Chem. Phys.*, **13**, 4577-4592, 10.5194/acp-13-4577-2013, 2013.
- Tang, G., Zhang, J., Zhu, X., Song, T., Munkel, C., Hu, B., Schäfer, K., Liu, Z., Zhang, J., Wang, L., Xin, J., Suppan, P., and Wang, Y.: Mixing layer height and its implications for air pollution over Beijing, China, *Atmos. Chem. Phys.*, **16**, 2459-2475, 10.5194/acp-16-2459-2016, 2016.
- Xu, W., Han, T., Du, W., Wang, Q., Chen, C., Zhao, J., Zhang, Y., Li, J., Fu, P., Wang, Z., Worsnop, D. R., and Sun, Y.: Effects of Aqueous-phase and Photochemical Processing on Secondary Organic Aerosol Formation and Evolution in Beijing, China, *Environ. Sci. Technol.*, **51**, 762-770, 10.1021/acs.est.6b04498, 2017.

- Zhang, H., Li, J., Ying, Q., Yu, J. Z., Wu, D., Cheng, Y., He, K., and Jiang, J.: Source apportionment of PM_{2.5} nitrate and sulfate in China using a source-oriented chemical transport model, *Atmos. Environ.*, 62, 228-242, <http://dx.doi.org/10.1016/j.atmosenv.2012.08.014>, 2012.
- Zhang, T., Claeys, M., Cachier, H., Dong, S., Wang, W., Maenhaut, W., and Liu, X.: Identification and estimation of the biomass burning contribution to Beijing aerosol using levoglucosan as a molecular marker, *Atmos. Environ.*, 42, 7013-7021, DOI: 10.1016/j.atmosenv.2008.04.050, 2008.

Source apportionment of organic aerosol from two-year highly time-resolved measurements by an aerosol chemical speciation monitor in Beijing, China

Yele Sun^{1,2,3}, Weiqi Xu^{1,2}, Qi Zhang⁴, Qi Jiang^{1*}, Francesco Canonaco⁵, André S. H. Prévôt⁵, Pingqing Fu^{1,2,3}, Jie Li¹, John Jayne⁶, Douglas R. Worsnop⁶, and Zifa Wang^{1,2,3}

¹State Key Laboratory of Atmospheric Boundary Layer Physics and Atmospheric Chemistry, Institute of Atmospheric Physics, Chinese Academy of Sciences, Beijing 100029, China

²University of Chinese Academy of Sciences, Beijing 100049, China

³Center for Excellence in Regional Atmospheric Environment, Institute of Urban Environment, Chinese Academy of Sciences, Xiamen 361021, China

⁴Department of Environmental Toxicology, University of California, 1 Shields Ave., Davis, CA 95616, USA

⁵Laboratory of Atmospheric Chemistry, Paul Scherrer Institute, Villigen PSI 5232, Switzerland

⁶Aerodyne Research, Inc., Billerica, MA 01821, USA

*Now at National Meteorological Centre, Beijing 100081, China

Correspondence to: Yele Sun (sunyele@mail.iap.ac.cn)

Abstract. Organic aerosol (OA) represents a large fraction of submicron aerosols in the megacity of Beijing, yet long-term characterization of its sources and variations is very limited. Here we present [an](#) analysis of in situ measurements of OA in submicrometer particles with an aerosol chemical speciation monitor (ACSM) for two years from July 2011 to May 2013. The sources of OA are analyzed with multilinear engine (ME-2) by constraining three primary OA factors including fossil fuel related OA (FFOA), cooking OA (COA), and biomass burning OA (BBOA). Two secondary OA (SOA), representing a less oxidized oxygenated OA (LO-OOA) and a more oxidized (MO-OOA) are identified during all seasons. The monthly average concentration OA varied from 13.6 to 46.7 $\mu\text{g m}^{-3}$ with a strong seasonal pattern that is usually highest in winter and lowest in summer. FFOA and BBOA show similarly pronounced seasonal variations with much higher concentrations and contributions in winter due to enhanced coal combustion and biomass burning emissions. The contribution of COA to OA, however, is relatively stable (10 – 15%) across different seasons, yet presents significantly higher values at low relative humidity levels ($\text{RH} < 30\%$), highlighting the important role of COA during clean periods. The two SOA factors present very different seasonal variations. The pronounced enhancement of LO-OOA concentrations in winter indicates that emissions from combustion-related primary emissions could be a considerable source of SOA under low temperature (T) conditions. Comparatively, MO-OOA shows high concentrations consistently at high RH levels across different T levels, and the contribution of MO-OOA to OA is different seasonally with lower values occurring more in winter (30 – 34%) than other seasons (47 – 64%). Overall, SOA (= LO-OOA + MO-OOA) dominates OA composition during all seasons by contributing 52 – 64% of the total OA mass in heating season, and 65 – 75% in non-heating seasons. The variations of OA composition

as a function of OA mass loading further illustrates the dominant role of SOA in OA across different mass loading scenarios during all seasons. However, we also observed a large increase in FFOA associated with a corresponding decrease in MO-OOA during periods with high OA mass loadings in heating season, illustrating an enhanced role of coal combustion emissions during highly polluted episodes. Potential source contribution function analysis further shows that the transport
5 | from the regions located to the south and southwest of Beijing within ~~~200-250~~ km can contribute substantially to high FFOA and BBOA concentrations in heating season.

1 Introduction

Organic aerosol (OA) is ubiquitous in the atmosphere and constitutes a large fraction of submicron aerosol worldwide (Zhang et al., 2007;Jimenez et al., 2009). Organic aerosol has two different sources. One is direct emissions from
10 | combustion processes (e.g., burning of fossil fuel and biomass), which is known as primary organic aerosol (POA). The other is secondary formation from the oxidation of volatile organic compounds (VOCs) termed as secondary organic aerosol (SOA) (Hallquist et al., 2009). Recent studies have found that SOA is the major component of OA not only in rural and remote regions, but also in the highly polluted urban regions (Zhang et al., 2007;Jimenez et al., 2009). Although model simulations of SOA have been improved during the last decade attributing to significant improvements in understanding the
15 | formation mechanisms and volatility of OA, the discrepancy between model simulations and ambient observations can still be substantial (Shrivastava et al., 2011;Fu et al., 2012;Fast et al., 2014). As a result, SOA contributes one of the largest uncertainties in evaluating climate radiation forcing of aerosol particles (Boucher et al., 2013). While a better understanding of SOA formation and evolutionary mechanisms is essential to improve model performances (Shrivastava et al., 2017), constraining the models with observations, particularly long-term measurements would be one of the most effective ways to
20 | reduce the radiative forcing uncertainties.

Aerodyne aerosol mass spectrometer (Jayne et al., 2000;Canagaratna et al., 2007) is one of the state-of-the-art instruments by providing quantitative measurement of organic aerosol in real-time. Subsequent analysis of OA mass spectra using receptor models, e.g., multiple component analysis (Zhang et al., 2005), positive matrix factorization (PMF, Ulbrich et al., 2009) and
multilinear engine (Canonaco et al., 2013) can further ~~differentiate-resolve~~ various OA factors ~~that correspond to from~~
25 | different sources and processes. Since 2006, AMS has been widely deployed at various regions in China for real-time characterization of non-refractory submicron aerosol (NR-PM₁) species (Li et al., 2017b and references therein). The sources of OA in different seasons were analyzed using PMF. While hydrocarbon-like OA (HOA) and oxygenated OA (OOA) are ubiquitously identified, cooking OA (COA) in urban areas, biomass burning OA (BBOA) and coal combustion OA (CCOA) in specific seasons are also resolved. PMF analysis of high resolution OA mass spectra can further differentiate different
30 | types of SOA, for instance, less oxidized OOA (LO-OOA) and more oxygenated OOA (MO-OOA). However, most of these studies are focused on intensive measurements in relatively short periods (e.g., 1–2 months) in a single season (mostly in

either summer or winter), long-term measurements and characterization of OA in China are still rather limited. Zhang et al. (2013) reported the season variations of NR-PM₁ species in Beijing in 2008. The results showed the dominance of OA during all seasons. Similar conclusions were also found from the high resolution AMS (HR-AMS) measurements from 2012 to 2013 in Beijing (Hu et al., 2017). While both studies showed the dominant role of OOA in summer, the contribution of POA was quite different (76% vs. 50%). However, most measurements in the these two studies lasted approximately one month in each season, and our understanding of the sources and variations of OA is far from complete, particularly in a city with frequent changes in different air masses and largely different emissions sources (Guo et al., 2014; Sun et al., 2015; Zheng et al., 2016). Sun et al. (2015) conducted ~~one-one~~-year real-time measurements of NR-PM₁ species from 2011 – 2012 using an aerosol chemical speciation monitor (ACSM). While OA showed a similar seasonal variation as those in Zhang et al. (2013) and Hu et al. (2017), substantial differences in monthly averaged mass concentrations were also observed, highlighting the importance of continuous real-time measurements- for understanding seasonal characteristics. However, Sun et al. (2015)~~since this study~~ only presents the characterization of the total OA, the sources and seasonal variations of different OA factors remain less understood.

In this work, we present an analysis of nearly two-~~years~~² measurements of OA by an ACSM in the megacity of Beijing. Although year - round measurements of NR-PM₁ species and source characterization of OA have been reported at many sites throughout the globe (Minguillón et al., 2015; Parworth et al., 2015; Petit et al., 2015; Ripoll et al., 2015; Bressi et al., 2016; Schlag et al., 2016; Rattanavaraha et al., 2017), real-time source characterization of OA in Beijing for more than one year is never reported. Here the sources of OA in each season are determined by the bilinear model with multilinear engine (ME-2) (Paatero, 1999). The seasonal variations, diurnal cycles, and relative humidity and temperature dependence of OA source factors are elucidated. The roles of different OA factors, and POA and SOA in haze pollution are discussed, and the potential source regions are also investigated with potential source contribution function analysis. To our knowledge, this study presents the longest continuous characterization of OA in Beijing, which is of great importance for validating and constraining the chemical transport models.

2 Experimental methods

2.1 Sampling

An Aerodyne Aerosol Chemical Speciation Monitor (Ng et al., 2011b) was deployed at an urban site, the tower branch of Institute of Atmospheric Physics (39°58'N, 116°22'E; ASL: 49 m), in Beijing for a long-term real-time measurements of NR-PM₁ species including organics (Org), sulfate (SO₄), nitrate (NO₃), ammonium (NH₄) and chloride (Chl). The measurements were conducted for nearly two years from July 2011 to May 2013 with a time resolution of approximately 15 min. In addition, gaseous species of NO_y, NO, and O₃ were simultaneously measured with a suite of gas analyzers during the

same period, while CO and SO₂ were measured during the period of December 2011 – May 2013. Black carbon (BC), light extinction of dry particles at 630 nm, gaseous NO₂ were also measured from August 2012 to May 2013 using an Aethalometer (AE22, Magee Scientific), a Cavity Attenuated Phase Shift (CAPS) extinction monitor, and a CAPS NO₂ monitor (Kebabian et al., 2008), respectively. The meteorological parameters, temperature (*T*) and relative humidity (RH) at ground site, and wind direction (WD) and wind speed (WS) at 240 m were obtained from the measurements on the Beijing 325 m meteorological tower. More detailed descriptions of the sampling site, the operations of the ACSM, and the collocated measurements are given elsewhere (Sun et al., 2012; Ge et al., 2013; Sun et al., 2015; Wang et al., 2015).

2.2 Data Analysis

The ACSM data were analyzed using the standard software (v.1.5.3.0) written in Igor Pro (WaveMetrics, Inc., Oregon USA). The mass concentrations of NR-PM₁ species, and the mass spectra of OA (*m/z* 12 – 140) were determined using a composition-dependent collection efficiency recommended by Middlebrook et al. (2012) and default relative ionization efficiencies (RIE) were used, except for ammonium ~~that whose RIE~~ was determined from measurements of pure ammonium nitrate. More detailed evaluations on the mass quantifications are given elsewhere (Sun et al., 2012; Sun et al., 2013b).

Positive matrix factorization was first performed to the ACSM OA mass spectra (*m/z* 12 – 120) in each season. The detailed procedures for pretreatment of data and error matrices have been given in Ng et al. (2011b) and Sun et al. (2012). As shown in Fig. S1, two factors, i.e., a hydrocarbon-like OA (HOA) and an oxygenated OA (OOA) can be relatively well resolved during all seasons. Although extending the PMF solution to more factors can help to reduce uncertainties in separation of POA and SOA, e.g., four factors in winter 2011-2012 (Sun et al., 2013b), it often generates unrealistic factors due to the low sensitivity, low mass resolution, and limited *m/z*'s of the ACSM measurements. Moreover, it is very challenging for PMF-ACSM to separate BBOA from other POA factors, traffic-related HOA from COA in summer, and different types of SOA in winter according to our previous studies (Sun et al., 2012; Sun et al., 2013b; Zhang et al., 2016). Therefore, the multilinear engine algorithm (ME-2) (Paatero, 1999) by using the prior known source information as constraints was used for source apportionment of OA.

In this work, the *a*-value approach was used for ME-2 analysis (Canonaco et al., 2013). The mass spectral profiles of three primary OA factors, i.e., standard HOA and BBOA from Ng et al. (2011a) and COA from Sun et al. (2016b) were constrained by varying *a*-values from 0 to 1, while the other factors were left free. ME-2 analysis was first performed to the entire dataset assuming that all OA factors have similar spectral profiles in different seasons. Such an assumption could introduce large uncertainties for secondary aerosol factors considering the large differences in meteorological conditions and precursors of VOCs in different seasons. We then performed ME-2 analysis on the seasonal datasets of ACSM, which include summer 2011 (S11), fall 2011 (F11), winter 2011 (W11), spring 2012 (Sp12), summer 2012 (S12), fall 2012 (F12),

winter 2012 (W12), and spring 2013 (Sp13). Indeed, the mass spectral profiles of LO-OOA from the seasonal ME2-ACSM analysis show large differences in different seasons (Fig. 1). Therefore, the results from the seasonal ME2-ACSM analysis are used for the discussions. To better compare the variations in primary and secondary OA in different seasons, and also allow for some degrees of freedom for model runs, the five-factor solution, i.e., fossil fuel related OA (FFOA), COA, BBOA, and a less oxidized OOA (LO-OOA) and a more oxidized OOA (MO-OOA), from the average of three model runs with a-values of 0, 0.1 and 0.2 were selected. ~~In addition, the~~ The ME-2 results with a-value of 0.2 are also presented for comparisons. It should be noted that the traffic-related HOA shows a remarkably similar spectral pattern as CCOA at $m/z < 120$ (Sun et al., 2016b), which cannot be separated with PMF-ACSM. Therefore, FFOA here represents a combined factor of traffic-related HOA and CCOA. We also noticed that the diurnal cycle of FFOA showed similar pronounced mealtime peaks as that of COA in summer although these two factors were forced to separate in ME-2 analysis. To better understand the uncertainties in quantification of FFOA and COA, we estimated COA concentrations using BC as a tracer for the traffic-related FFOA in August 2012. Indeed, POA from the two factor solution of PMF-ACSM was highly correlated ($r^2 > 0.75$) with BC between 4:00 and 10:00 when cooking emissions are small, suggesting the dominant contribution of traffic emissions on BC. The average ratio of POA/BC during this period of time (0.96) was then used to derive the traffic-related FFOA, and COA was estimated as the difference between POA and FFOA. Our results showed that COA estimated using BC-tracer method on average contributed 13% to OA in August which agrees well with that from ME-2 analysis (Table 1), while that of FFOA (12%) was lower than the sum of FFOA and BBOA (17%). These results together suggest that the results of ME-analysis are quite reasonable even in summer when FFOA and COA are difficult to separate.

Figures S2 and S3 shows a comparison of source apportionment results from three different approaches. While the monthly average SOA (= LO-OOA + MO-OOA) and POA (= HOA + COA + BBOA) are highly correlated ($r^2 = 0.76$ and 0.89 , respectively, Fig. S3), the seasonal ME2-ACSM analysis reports an overall 16% higher SOA concentrations than the ~~two-factor solution of conventional~~ PMF-ACSM analysis. The largest differences occur mainly in cold season, for example November – March, which can be partially explained by the changes in LO-OOA. Comparatively, the contributions of POA and SOA are close in warm season, for example July – October. We also compared the results between the seasonal and entire dataset from ME-2 analysis. As shown in Fig. S2, the POA and SOA contributions present differences of 5 – 14% on average during the first eight months' ~~measurements~~, while they are very consistent during the ~~rest of other~~ months with the differences of less than 3%. Figure S4 presents a comparison of POA and SOA contributions from ME2-ACSM in this study with those reported previously from PMF-ACSM (Sun et al., 2012; Jiang et al., 2013; Sun et al., 2013b; Sun et al., 2014; Jiang et al., 2015). The results are overall consistent except for winter 2011 – 2012, which shows a higher SOA contribution (54%) in this study than that (31%) reported in Sun et al. (2013b). We found that such a difference was mainly caused by the contribution of LO-OOA (23.6%), which was not resolved in the Sun et al. (2013b) study with PMF-ACSM.

2.3 Potential source contribution function analysis

The potential source regions of five OA factors in each season were determined using potential source contribution function (PSCF) analysis (Polissar, 1999) with 72 hr back trajectories that were calculated hourly using the HYSPLIT model (Draxler and Rolph, 2013) at a releasing height of 100 m. The back trajectories are counted in gridded cells (i,j), and the PSCF is calculated as the ratio of the number of points above a threshold value (75th percentile in this study, m_{ij}) to the total points (n_{ij}) in each grid cell. A weighing function that is the same as Sun et al. (2015) was further applied to the calculation to downweight cells associated with low values of n_{ij} . The regions with high PSCF values indicate the potential sources for high concentrations of OA factors.

3 Results and discussion

3.1 Mass concentrations, composition, and seasonal variations

Figure 2 shows the time series of organics, five OA factors and meteorological parameters for the entire study. OA presents dynamic variations during all seasons with hourly average concentrations ranging from 0.45 to 301 $\mu\text{g m}^{-3}$, and daily average values from 3.0 to 120 $\mu\text{g m}^{-3}$. The variations in OA are much larger in heating season than in summertime, mainly due to the more frequent changes between clean periods and polluted episodes (Sun et al., 2013b; Sun et al., 2015). Indeed, our previous studies showed a much higher frequency of clean periods ($\text{NR-PM}_{10} < 10 \mu\text{g m}^{-3}$) in winter than summer (23% vs. 5%) (Sun et al., 2015). As shown in Fig. 3, OA presents a strong seasonal variation with monthly average concentrations ranging from 13.6 to 46.7 $\mu\text{g m}^{-3}$. The concentrations in wintertime are nearly twice those in summertime mainly due to the largely enhanced coal combustion emissions in heating season (Sun et al., 2015), and the highest concentration occurred in January 2013, a month with severe haze pollution (Sun et al., 2014; Wang et al., 2014). High OA concentration (monthly average of 37.2 $\mu\text{g m}^{-3}$) was also observed in June 2012, mainly due to the impacts of agricultural burning.

Five OA factors vary differently across different seasons. FFOA that is mainly associated with traffic and coal combustion emissions presents the strongest seasonal variation among the OA factors. The monthly average FFOA concentrations are 3.7 – 6.9 $\mu\text{g m}^{-3}$ and 4.4 – 8.5 $\mu\text{g m}^{-3}$ in the heating seasons of 2011-2012 and 2012-2013, respectively, which ~~is~~ are much higher than 1.1 – 1.5 $\mu\text{g m}^{-3}$ in summer (Fig. 4a). Consistently, the contribution of FFOA to OA is significantly increased from 5 – 8% in summer to 13 – 22% in heating season (Fig. 3). The time series of FFOA (Fig. 2d) also shows a substantial increase after the heating season starts on 15 November in both 2011 and 2012, supporting the large impacts of coal combustion emissions on FFOA. Comparatively, FFOA in summer is expected to be mainly from traffic emissions considering that residential coal combustion emissions could not be significant. Assuming that traffic-related FFOA is relatively constant throughout the year, we then estimate an upper limit of ~70% of FFOA from coal combustion emissions in heating season (~30% from traffic emissions). This results is consistent with our previous high resolution aerosol mass

spectrometer (HR-AMS) analysis in winter that HOA and CCOA on average contributed 10% and 20% to OA, respectively (Sun et al., 2016b).

The temporal variations of COA are characterized by pronounced daily peaks that are associated with cooking emissions (Fig. 2e). However, the seasonal difference of COA is much smaller than that of FFOA, for example, the COA concentration is 3.8 – 4.2 $\mu\text{g m}^{-3}$ in winter 2011 – 2012, which is only ~50 – 60% higher than that in summer 2011 (Fig. 4b). This is overall consistent with the facts that cooking emissions are expected to be relatively constant throughout the year. The seasonal differences in COA concentrations can be explained by the different mixing layer heights (MLH) in different seasons, for example, ~40% higher MLH during daytime in summer than winter (Tang et al., 2016). Despite the seasonal concentration differences, the contributions of COA to OA are relatively stable by varying from 10 to 15% except slightly higher values in April (17 – 18%). These results indicate that COA is an important source of OA during all seasons, consistent with previous results observed in Beijing (Huang et al., 2010; Elser et al., 2016; Hu et al., 2016). In fact, the contributions of COA to OA are higher than those of FFOA by 3 – 10% in non-heating seasons, indicating that cooking emission is a more important primary source than traffic emissions in non-heating seasons in the megacity of Beijing.

BBOA shows a similarly pronounced seasonal variation as FFOA. As shown in Fig. 4c, the BBOA concentration increases gradually from summer ($< \sim 2 \mu\text{g m}^{-3}$) to winter (mostly $> 4 \mu\text{g m}^{-3}$) with an enhancement by a factor of more than 2. Consistently, the contribution of BBOA to OA shows an increase from 7 – 8% in summer to 11 – 14% in winter (Fig. 3). These results indicate that BBOA is a more important source of OA in winter than summer, which is overall consistent with the fact that biomass is also an important fuel for residential heating in northern China (Chen et al., 2017). However, we also observed high BBOA concentrations in June and October, two months with significant impacts from agricultural burning. Our subsequent measurements in June 2013 at a suburban site, Xianghe, which is approximately 50 km southeast of Beijing further support the significant agricultural burning impacts on OA, and the contribution of BBOA was increased from 11% to 21% during the periods with biomass burning (Sun et al., 2016c). However, compared with winter, the BB impacts in June and October are relatively short and usually last only a few days.

LO-OOA also presents a pronounced seasonal variation pattern, yet the highest concentration occurs in the heating season (Fig. 4d). This is not expected as the photochemical processing is more significant in summer. As indicated in Fig. 1, the mass spectral profiles of LO-OOA have ~~much~~-many differences in different seasons in terms of m/z 43/44 ratios and the fractions of large m/z 's. For example, the LO-OOA spectrum in winter presents much higher signals at $m/z > 60$, and the time series of LO-OOA is even correlated with primary aerosol species, e.g., FFOA ($r^2 = 0.58 - 0.75$), BC ($r^2 = 0.73$), and Chl ($r^2 = 0.58 - 0.65$) (Fig. S5). LO-OOA is also correlated with FFOA and Chl in spring and fall seasons, and high concentrations mainly occur during the periods with residential heating, i.e., 15 – 30 November and 1 – 15 March. These results suggest that LO-OOA in heating season is more like a combustion-related SOA that is formed under low

temperature. Another possibility is that LO-OOA is still mixed with part of primary coal combustion OA, yet cannot be completely separated using the standard traffic-related HOA spectrum as a constrain. For example, previous HR-AMS studies in Beijing showed higher signals of large m/z 's in CCOA than HOA (Hu et al., 2016; Sun et al., 2016b). In comparison, LO-OOA is weakly correlated with other species in summer, supporting its different characteristics from those in winter. Note that LO-OOA shows high concentrations during the late June 2012 when there are significant biomass burning impacts, and the LO-OOA spectrum is remarkably similar to that of oxygenated OA influenced by biomass burning (OOA-BB) observed in Nanjing during harvest seasons (Zhang et al., 2015). These results suggest that a larger fraction of LO-OOA in June is likely from the oxidized BBOA. Indeed, a recent study of transported wildfire plumes showed that BBOA becomes significantly oxidized through atmospheric aging and that the mass spectra of aged BBOA can appear highly similar to low-volatility OOA (LV-OOA) (Zhou et al., 2017). In addition, our previous studies at the suburban site (Xianghe) near Beijing also found that biomass burning aerosols can be rapidly oxidized to form a considerable fraction of LO-OOA (Sun et al., 2016c). LO-OOA represents a large fraction of OA, on average accounting for 16 – 29% and 19 – 30% in heating seasons of 2011 – 2012 and 2012– 2013, respectively, and also as much as ~15 – 20% during other seasons except for the summer of 2012 (~10%).

The monthly average concentration of MO-OOA varies from 7.6 to 17.2 $\mu\text{g m}^{-3}$, and does not present a strong seasonal variation in the two years (Fig. 4e). Also, the highest concentrations of MO-OOA occur in different months in different years, for example, May – July in 2012 (15.2 – 17.4 $\mu\text{g m}^{-3}$) and January – March in 2013 (13.9 – 17.2 $\mu\text{g m}^{-3}$). MO-OOA is tightly correlated with secondary inorganic aerosol species including nitrate, sulfate, and ammonium during all seasons ($r^2 > 0.60$ for most of the time), and has slightly better correlations with nitrate particularly in winter (Fig. S5). Although the MO-OOA spectrum is similar during all seasons and also resembles that of low volatility OOA (LV-OOA) (Ng et al., 2011a), MO-OOA is still likely a mixed factor with different types of SOA. It cannot be separated with ME-2 in this study due to the limited chemical resolution of the ACSM measurements, for instance, the aqueous-phase SOA factor observed in winter (Sun et al., 2016b). Our results appear to be different from previous findings that LO-OOA tends to represent semi-volatile SOA that is generally correlated with nitrate, while MO-OOA usually represents low-volatility OOA that is generally correlated with sulfate (Lanz et al., 2007; Zhang et al., 2011). In fact, previous studies in Beijing show that LO-OOA is often weakly correlated with nitrate, for example, $r^2 < 0.12$ in fall 2015 (Zhao et al., 2017), likely indicating the different chemical processing between LO-OOA and nitrate. For example, the nighttime heterogeneous formation of nitrate was recently found to be similarly important as that of gas-particle partitioning of nitric acid (Wang et al., 2017), while the nighttime formation of LO-OOA is not clear yet. In addition, the similarly tight correlations between MO-OOA and secondary inorganic species highlight another fact that secondary aerosols in Beijing can have large contributions from regional transport (Sun et al., 2014). This is also consistent with the simultaneous increases during the formation stage of most polluted episodes (Zhao et al., 2013; Sun et al., 2016a). Overall, MO-OOA constitutes the largest fraction of OA mass among five OA factors during all

seasons, and the contributions present a pronounced seasonal variation with the highest values in summer (47 – 64%) and the lowest values in winter (30 – 34%).

Table 1 presents a summary of monthly average concentrations and fractions of five OA factors. It is clear that the contributions of POA and SOA show strong seasonal differences. SOA (= LO-OOA + MO-OOA) shows the largest contribution to OA during the non-heating season by accounting for 65 – 75%. Although the contributions decrease to 52 – 64% in heating season, they are still higher than those of POA, indicating that SOA plays a more important role controlling OA chemistry than POA during all seasons. Consistently, the dominance of SOA in OA mass has been widely reported at various urban sites (Zhang et al., 2007; Jimenez et al., 2009). We also noticed the seasonal changes in SOA composition. For example, the contributions of LO-OOA generally exceed those of MO-OOA in heating season. Compared with SOA, POA (= FFOA + BBOA + COA) shows a large increase from ~30% in summer to ~40 – 50% in winter, and such increases are mainly driven by FFOA and BBOA from coal combustion and biomass burning emissions, respectively, supporting the large impacts of these two sources on POA in heating season.

3.2 Chemically-resolved Loading-dependent OA composition

Figure 5 shows chemically-resolved OA composition as a function of OA mass loadings during four seasons. In summer, the SOA contribution first shows an increase at low OA mass loadings ($< 20 \mu\text{g m}^{-3}$), and then remains at relatively high values (~70 – 74%) at high mass loadings. These results indicate that SOA plays a dominant role in OA across different OA mass loadings in summer. However, we observe a significant change in SOA composition as a function of OA mass loadings. In particular, LO-OOA shows large increases from ~10% to nearly 30% associated with corresponding decreases in MO-OOA as OA mass loadings increase to $> 40 \mu\text{g m}^{-3}$. These results suggest that the periods with high OA loadings facilitate the formation of less oxidized SOA. A change in POA composition was also observed in summer 2011, which is characterized by an increase in FFOA and a corresponding decrease in COA as a function of OA mass loadings. As discussed in Section 3.3, FFOA in summer presents a similar pronounced diurnal profile as COA suggesting that FFOA and COA might not be well separated even with the constrained mass spectral profiles. In fact, the contributions of the sum of FFOA and COA are relatively stable across different OA mass loadings, which are ~20 – 25% except the period of $\text{OA} > 65 \mu\text{g m}^{-3}$ in the summer of 2012 with significant BB impacts.

Similar mass loading dependent OA composition is also observed in the fall season, yet with some differences between 2011 and 2012 (Fig. 5b). The SOA contribution in fall 2011 first shows a large increase from ~50% to 65% at $\text{OA} < 30 \mu\text{g m}^{-3}$, then remains at relatively constant levels (67 – 69%) at high OA mass loadings. In comparison, it is consistently high (65 – 70%) at $\text{OA} < 50 \mu\text{g m}^{-3}$ with a slight decrease to ~60% as OA mass loading increases in the fall of 2012. We also noticed large differences in BBOA and LO-OOA contributions at low mass loadings ($\text{OA} < 15 \mu\text{g m}^{-3}$) between 2011 and 2012, yet

the total contribution of BBOA and LO-OOA was close. One of the reasons is due to the uncertainties in splitting BBOA and LO-OOA with the ME-2 analysis. Indeed, the mass spectrum of LO-OOA resembles to that of BBOA during the two fall seasons (Fig. 1). Although the contributions of the sum of FFOA and COA are relatively constant across different mass loadings, which are 21 – 25% and 23 – 27% in the fall of 2011 and 2012, respectively, we observed a clear increase in FFOA contribution by nearly a factor of 2 as OA mass loading increases. One reason is due to the half month period of the fall season (15 – 30 November) when FFOA shows a large increase because of residential heating (Wang et al., 2015). This is particularly clear for the bins with the largest OA mass loading (80 – 85 and 90 – 95 $\mu\text{g m}^{-3}$ in F11 and F12, respectively), which occurred mainly during the half month period of the heating season (Fig. 2). As a result, the contribution of FFOA increased to 23% and 27% in 2011 and 2012, respectively, which was associated with a large decrease in MO-OOA (15 and 22%, respectively).

The POA composition changes significantly as a function of OA mass loading in winter (Fig. 5c). The contribution of FFOA gradually increases from 3 – 7% to 22 – 28% when OA mass loading increases from less than 20 $\mu\text{g m}^{-3}$ to > 60 $\mu\text{g m}^{-3}$, highlighting a largely enhanced role of FFOA during highly polluted periods. In comparison, the COA contribution shows a large decrease from ~30% to < 10% although the mass concentration is relatively stable at ~ 5-6 $\mu\text{g m}^{-3}$, consistent with our previous conclusion that COA is a more important POA during clean periods with low OA mass loadings. The total contribution of SOA shows a small decrease by 5 – 10% at high OA mass loading periods mainly due to the decreases in MO-OOA, yet it is still as high as 52 – 58%. Such a result indicates that SOA is still important during the highly polluted periods in winter (Huang et al., 2014). The changes in OA composition as a function of OA mass loading in spring are similar to those in fall. The SOA contribution shows a decrease during more polluted periods, yet it is still higher than that of POA (56 – 64% vs. 36 – 44%). Again, FFOA shows a large increase at high OA mass loading. For example, the FFOA contribution increases from 6 – 9% to ~20% as OA increases from < 20 $\mu\text{g m}^{-3}$ to > 50 $\mu\text{g m}^{-3}$. This is consistent with the fact that the spring season is also consisted of half month of heating season when OA presents the highest mass loading (Fig. 2)

3.3 Diurnal variations of OA factors

The diurnal profiles of five OA factors in four seasons are shown in Fig. 6. Similar to previous studies (Sun et al., 2011b; Ge et al., 2012), COA presents similar and pronounced diurnal cycles during all seasons, which are characterized by two peaks during lunch and dinner times, respectively. The nighttime COA peak is nearly twice that of noontime during all seasons except for summer indicating higher cooking emissions at nighttime coupled with shallower boundary layer height compared to the middle of the day (Tang et al., 2016). The contribution of COA to OA is correspondingly high at nighttime (~20 – 25%), supporting the significant impact of cooking activities on OA loading in urban areas. FFOA presents the lowest concentrations throughout the day in summer, yet two small peaks corresponding to mealtimes are also observed. Such a

diurnal profile is not expected as the traffic-related HOA typically peaks during rush hours. One of the reasons is that the FFOA factor was not fully resolved and was partially influenced by cooking organic aerosol. Previous summer studies (Sun et al., 2010; Sun et al., 2012; Zhang et al., 2015) using quadrupole AMS or ACSM have indeed shown PMF analysis has difficulty resolving traffic-related HOA from COA in summer due to their relatively similar mass spectra measured by unit
5 mass resolution instruments. In comparison, PMF analysis of the high resolution mass spectra of OA is able to separate HOA from COA in summer in Beijing (Huang et al., 2010; Hu et al., 2016), and the results show substantially different diurnal profiles between these two factors. Compared to summer, FFOA and COA can be relatively well separated during other seasons as indicated by the much smaller noon peaks of FFOA. As shown in Fig. 6, FFOA presents much higher concentrations at nighttime than daytime due to 1) the enhanced coal combustion emissions, and 2) traffic emissions from
10 diesel trucks and heavy duty vehicles that are only allowed inside the city between 22:00 – 6:00 (Han et al., 2009), and 3) shallow boundary layer (Tang et al., 2016). We also found that COA exceeds FFOA before midnight during most of the seasons although it shows a rapid decrease after 21:00 when cooking activities are significantly reduced. FFOA then becomes a more important primary OA after midnight until ~11:00. These results indicate the different roles of primary OA in different time of the day. Compared to FFOA and COA, the diurnal profiles of BBOA are less pronounced with slightly
15 higher concentrations at nighttime.

The diurnal profiles of the two SOA factors are different during most of the seasons. As shown in Fig. 6c, MO-OOA presents the largest increase during daytime in winter, and the concentration is continuously increased by a factor of 2 from 8:00 until 19:00, indicating the strong photochemical production of SOA. The continuous daytime increase of MO-OOA is interrupted by a temporal decrease in the late afternoon during the other three seasons, which is very likely due to the rising
20 boundary layer height with the dilution effect exceeding the secondary production. Compared to the diurnal changes in mass concentrations, the contribution of MO-OOA to OA shows similar diurnal trends during all seasons (Fig. S6), and the contributions increase gradually from the early morning and reach the maximum values at 16:00 – 17:00. For example, the contributions increase from 30% to 48% and 53% in winter 2011 and 2012, respectively (Fig. S6c), and from ~40% to ~56% in the fall seasons (Fig. S5b). Although the contributions are decreased slightly at lunch time in summer due to the largely
25 increased COA, they are still as high as 47 – 52%. Also note that MO-OOA constitutes the largest fraction in OA throughout the day during all seasons, highlighting the ubiquity and dominance of SOA at urban sites (Zhang et al., 2007; Jimenez et al., 2009).

The diurnal profiles of LO-OOA are overall similar during three seasons – winter, spring and autumn. The concentrations decrease gradually during daytime, reach the minimum values typically between 16:00 – 17:00, and then increase rapidly
30 during the rest time of the day. Such diurnal profiles are exactly opposite to those of temperatures, likely indicating that gas-partitioning driven by T plays the dominant role. Higher concentrations at nighttime than daytime also resemble somewhat to those of FFOA, which highlights another possibility that LO-OOA is combustion-related SOA as discussed above. It should

be noted that the decreases in LO-OOA correspond to the increases in MO-OOA, which likely indicates the continuous transformation of LO-OOA into MO-OOA due to photochemical aging (Morgan et al., 2010; Sun et al., 2011a). LO-OOA presents a very different diurnal profile in summer compared to those during the other three seasons, which is characterized by similar COA peaks at lunch and dinner times. One explanation is that LO-OOA was not well separated from COA in summer and was mixed with part of COA. Another explanation is that part of LO-OOA in summer was from the oxidation of VOCs from cooking emissions, which is consistent with a recent study showing that aging of different cooking aerosol can form less oxidized SOA ($O/C = 0.24 - 0.46$) (Liu et al., 2017b). Overall, SOA dominates OA throughout the day during all seasons. The contributions vary between 60 – 80% in spring, summer and fall although they are decreased ~~at~~to ~50 – 60% in winter. These results indicate that secondary formation processes in winter via either photochemical and/or aqueous-phase reactions could be similarly important as primary emissions.

3.4 RH/T dependence of OA

The RH/T dependence of NR-PM₁ species in Beijing is presented in Sun et al. (2015). Here, we mainly focus on the impacts of RH and T on OA factors. As shown in Fig. 7a1, FFOA presents the highest concentrations in the right-bottom region with low T and high RH. This is consistent with the significantly enhanced primary emissions (e.g., coal combustion and biomass burning) in winter. At similarly low T levels, FFOA concentrations increase substantially as a function of RH particularly at RH > 50%. In winter, the periods with high RH levels are typically characterized by stagnant meteorological conditions, e.g., low wind speed (Fig. S7a) and shallow boundary layer height (Tang et al., 2016), which lead to the accumulation of primary pollutants and the increases in FFOA concentrations. However, the ratios of FFOA/OA also present high values in the similar right-bottom region (Fig. 7a2) indicating that high RH conditions could also facilitate the formation of more FFOA from coal combustion emissions (Sun et al., 2013a).

Compared with FFOA, the concentration gradients of COA as a function of RH/ T are much smaller (Fig. 7b). The COA emissions are relatively constant throughout the year and are not expected to have a strong RH/ T dependence. Thus, the concentration gradients of COA would be mainly caused by the dilution or accumulation effects. For example, low concentrations in the left region (RH < 30%) are mainly caused by high WS (Fig. S7a), while high values in the right-bottom region are mainly due to the stagnant conditions which is consistent with those of FFOA. However, the RH/ T dependence of COA/OA is largely different from that of FFOA/OA. In particular, COA/OA presents the highest values at low RH levels (<30%) across different T levels. These results highlight the dominant role of COA in OA in clean periods during all seasons. We further evaluated the RH/ T dependence of FFOA/COA (Fig. S7b). Because FFOA is from both traffic and seasonal dependent coal combustion emissions, the ratio of FFOA/COA can be used as a diagnostic for the impacts of source emissions. Indeed, the highest FFOA/COA ratio (> 1.5) occurred when $T < 6$ °C and RH > 40% (Fig. S7b), supporting ~~the~~

~~facts that 1) more FFOA emissions, e.g., from coal combustion, at lower T , and 2) more FFOA formation at and higher RH levels.~~

The RH/ T dependence of BBOA is similar to that of FFOA (Fig. 7c), which shows higher concentrations in right-bottom region, indicating more biomass burning emissions at high RH levels in winter. The contribution of BBOA to OA is relatively constant at ~6 – 10% across different RH and T levels except for the high contribution in the region with RH > 70% and low T (-6 – 0 °C). Such a result could be potentially important for a better understanding of aqueous-phase SOA formation as a recent study found that aqueous-phase processing of biomass-burning emissions can contribute to ambient SOA formation substantially (Gilardoni et al., 2016).

The RH/ T dependences of two SOA factors are very different. As shown in Fig. 7d, LO-OOA presents the highest concentrations in the region with RH > 40% and T < 6°C. Although such a distribution is similar to that of FFOA, we also observed moderately high concentrations at high T when RH is above 60%. The RH/ T dependence of LO-OOA/OA is also different from those of other OA factors. The dominance of LO-OOA (~30%) is observed in the bottom region with T below 0 °C, while it was similarly important in other regions with different RH and T levels. These results indicate two different formation mechanisms of LO-OOA. While gas-particle partitioning plays a dominant role in LO-OOA formation at low T , photochemical production becomes more important during other periods. Compared with LO-OOA, the MO-OOA concentrations show strong RH dependence during all seasons while the T dependence is not clear (Fig. 7e). Such a distribution illustrates that aqueous-phase processing might be an important mechanism in the formation of MO-OOA. This is also supported by the correlations between MO-OOA and sulfate, a species dominantly from cloud and aqueous-phase processing, during all seasons. However, the contribution of MO-OOA to OA presents a strong T dependence with much higher contributions at T > 18°C than those below 12°C (~> 50% vs. ~30 – 40%). Such a T dependent MO-OOA/OA clearly highlights the importance of MO-OOA in summer than other seasons across different RH levels.

3.5 Potential source regions of OA

Figure 8 shows the PSCF analysis of five OA factors during four seasons. FFOA shows high PSCF values in a small region near the sampling site in the summer seasons of 2011 and 2012, supporting the dominant source of local emissions. This is consistent with the fact that FFOA in summer is mainly from traffic-related emissions. While FFOA shows a similarly dominant local source in the fall of 2011, it is also characterized by a high PSCF region to the southwest of Beijing in the fall of 2012. These results indicate that FFOA can have very different contributions from local sources and regional transport in the same season in different years. In the winters of 2011 and 2012, FFOA shows high PSCF values in the regions located to the south and southwest of Beijing, indicating that regional transport plays an important role for the high concentrations of FFOA in winter in Beijing. In fact, the coal boilers for residential heating have been all replaced with natural gas inside the

Beijing city, and a large contribution of FFOA at the sampling site would be expected from regional transport (Cheng et al., 2016; Sun et al., 2017). For example, Sun et al. (2014) found that regional transport can contribute 84% of coal combustion emissions during the peak of severe haze pollution in 12-13 January 2013. Note that the high PSCF is not beyond the cities of Shijiazhuang and Hengshui, suggesting that the transport is mainly dominated in a region less than ~~200-250~~ km. This is consistent with the results from a recent study that the regional transport during severe haze episodes is dominantly from the south/southwest (e.g., Baoding, Cangzhou, and Hengshui) and south/southeast (e.g., Langfang and Tianjin), while that from farther regions, e.g., Shijiazhuang, Xiangtai, and Handan are negligible (Li et al., 2017a). The contribution of regional transport to high FFOA concentrations are even more important in spring seasons of 2012 and 2012, which is characterized by a narrow high PSCF band along Mountain Taihang. The cities of Baoding and Hengshui (approximately 250 km from Beijing) are both potential source regions of Beijing FFOA. These results are consistent with the wind rose plots in Fig. S8 showing more frequency of high WS from the southwest in spring than winter. Therefore, reducing coal combustion emissions in the regions to the south/southwest of Beijing would greatly help mitigate FFOA pollution in Beijing in winter season.

Compared to FFOA, the regions with high PSCF values for COA are much smaller during all seasons, consistent with the fact that COA is dominantly from local cooking emissions. ~~However~~ In addition, a small high PSCF region (typically less than 50 km) located to the east/southeast is frequently observed in many seasons, indicating that a short-distance transport could contribute the high COA at our sampling site. However, some hot spots near HS and BD are more likely from artifacts and not expected to be important source of COA in Beijing. For example, A recent modeling study ~~of COA in UK also~~ found that the COA concentrations decrease rapidly outside of the city and could not have a significant impact on rural areas (Ots et al., 2016). ~~However, a small high PSCF region (typically less than 50 km) located to the east/southeast is frequently observed in many seasons, indicating that a short-distance transport could contribute the high COA at our sampling site.~~ As shown in Fig. 8c, the PSCF regions of BBOA are very similar to those of FFOA in fall, winter, and spring seasons. We also noticed that BBOA is moderately correlated with FFOA during these three seasons ($r^2 = 0.44 - 0.80$, Fig. S5), suggesting similar seasonal emission characteristics between BBOA and FFOA. Previous studies have shown that residential emissions contribute substantially to the regional air pollution in northern China in winter (Liu et al., 2016). While coal is the dominant fuel for residential heating in winter, biomass is also an important fuel (Liu et al., 2017a). Not surprisingly, coal combustion and biomass burning show similar temporal variations in winter. As ~~we~~ discussed above, high concentrations of FFOA and BBOA in spring and fall mainly occur during the half month period in heating season (15 – 30 November and 1 – 15 March), and the high PSCF regions of BBOA and FFOA in these two seasons are consistently contributed by the high concentrations during these two periods. The PSCF region of BBOA is quite different from that of FFOA in summer, indicating their different source regions. While FFOA in summer is dominantly contributed by local traffic emissions, BBOA still has an important source from regional transport.

The potential source regions of the two SOA factors are quite different in different seasons (Figs. 8d and 8e). In the spring seasons of 2012 and 2013, both LO-OOA and MO-OOA show similar potential source regions as those of FFOA and BBOA with high PSCF values located to the southwest of Beijing. These results indicate that regional transport from the southwest is an important contribution of both primary and secondary OA. Figure 8e also shows nearly twice farther high potential source region of MO-OOA than LO-OOA and FFOA in spring 2012, consistent with the formation of more oxidized SOA over a wider regional scale. During the other three seasons, MO-OOA shows ubiquitously wider potential source regions than LO-OOA, suggesting that the formation of MO-OOA is more regional than LO-OOA. This is also consistent with the good correlations between MO-OOA with sulfate that is mainly formed ~~via regional cloud processing~~ over a regional scale (Zhang et al., 2012). For instance, the potential source region of LO-OOA is limited in a small region to the south of Beijing in summer 2011, while that of MO-OOA is beyond approximately 250 km. These results suggest that LO-OOA in summer is likely mainly from local photochemical production while MO-OOA has more contributions from regional transport. Even in the same season, the source regions could be different. For example, LO-OOA presents two potential source regions located to the southwest and southeast of Beijing, respectively, while that of MO-OOA is dominantly from the southeast. Note that a potential source region over the Bohai sea was also observed for MO-OOA. One explanation is that MO-OOA from a regional scale was circulated from the Bohai sea before arriving at Beijing. Indeed, the periods with high concentrations of MO-OOA in summer 2012 (19 – 21 June) show clear transport from Bohai sea to Beijing as indicated by Fig. S9. Compared to other seasons, the potential source region of MO-OOA in winter is much smaller, which is mainly located to the southwest in 2011, and the whole south of Beijing in winter 2012, while the highly polluted cities, e.g., Shijiazhuang and Hengshui in Hebei province, appear not to contribute significantly to both POA and SOA in Beijing. These results highlight the importance of employing different control strategies in reducing the number of severely polluted days in Beijing in different seasons, in particular, more efforts are needed to control emissions in the surrounding regions within ~~200-250~~ km in winter.

4 Conclusions

An aerosol chemical speciation monitor was deployed at an urban site in Beijing for ~~two-two-years~~² real-time measurements of NR-PM₁ species from July 2011 to May 2013. Organics present a pronounced seasonal variation with the average concentration in winter being twice higher than the average in summer mainly due to coal combustion emissions in the heating season. The ME-2 analysis of seasonal datasets identified five OA factors during all seasons, including FFOA from traffic and coal combustion emissions, BBOA, COA, LO-OOA and MO-OOA. FFOA and BBOA present similar seasonal variations with high concentrations in heating season, which is mainly caused by enhanced coal combustion and biomass burning emissions in winter. ~~Another support is the pronounced diurnal cycles of the two factors with much higher concentrations at nighttime due to the increased emissions for residential heating.~~ Comparatively, the seasonal variation of COA is much less pronounced, and the average contributions are relatively constant (10 – 15%) across different seasons. High concentration of BBOA is also observed in June due to agricultural burning impacts. The seasonal variation of LO-

OOA is more similar to that of FFOA and BBOA, likely indicating that LO-OOA is a combustion-related SOA, and gas-particle partitioning under low T plays a major role. This is also consistent with the diurnal profile which presents much higher concentrations at nighttime than daytime during most of the seasons. MO-OOA constitutes the largest fraction in OA during all seasons, and the contributions present a pronounced seasonal variation with the highest values in summer (47 – 64%) and the lowest values in winter (30 – 34%).

The chemically-resolved OA composition demonstrates the different roles of OA factors in different levels of pollution. While SOA dominates OA across different mass loadings during all seasons, a large increase in FFOA contribution as a function of OA mass loading was also observed particularly in winter indicating an enhanced role of coal combustion emissions during severely polluted episodes. ~~We also noticed a change in SOA composition as the increase of OA mass loading, which is characterized by an increase in LO-OOA associated with a corresponding decrease in MO-OOA. Such a result likely suggests an influence of OA mass loadings on aging of different SOA factors (Shilling et al., 2009).~~ The RH/ T dependence of OA factors shows ubiquitously high concentrations at low T and high RH, elucidating the most occurrence frequency of severe haze episodes at high RH conditions in winter. COA presents the weakest RH/ T dependence among OA factors, yet the contribution to OA is much higher at RH < 30%, highlighting the important role of COA during clean periods. MO-OOA shows higher concentrations at higher RH levels across different T levels, and is also correlated with both nitrate and sulfate during all seasons, indicating the formation of MO-OOA from both aqueous-phase and photochemical processing. The potential source regions of five OA factors are further investigated with PSCF analysis, which show different source regions between primary and secondary OA across different seasons. ~~FFOA shows high potential source regions located to the south/southwest of Beijing during three seasons except summer with dominant sources from local emissions. These results indicate that regional transport is also important for high FFOA concentrations in heating season in Beijing in winter. Compared with FFOA, COA is dominantly from local emissions and the small regions near the sampling site. The two SOA factors show quite different potential source regions. In particular, MO-OOA shows much wider source regions than the other OA factors, supporting the formation of highly oxidized SOA over a regional scale.~~

5 Abbreviations

ACSM	Aerosol Chemical Speciation Monitor
HR-AMS	High-resolution Time-of-Flight Aerosol Mass Spectrometer
CAPS	Cavity Attenuated Phase Shift
NR-PM ₁	Non-refractory Submicron Aerosol
OA	Organic Aerosol
SOA	Secondary Organic Aerosol
POA	Primary Organic Aerosol
FFOA	Fossil Fuel Related Organic Aerosol

HOA	Hydrocarbon-like Organic Aerosol
COA	Cooking Organic Aerosol
CCOA	Coal Combustion Organic Aerosol
BBOA	Biomass Burning Organic Aerosol
OOA	Oxygenated Organic Aerosol
LO-OOA	Less-oxidized Oxygenated Organic Aerosol
MO-OOA	More-oxidized Oxygenated Organic Aerosol
LV-OOA	Low Volatility Oxygenated Organic Aerosol
ME-2	Multilinear Engine
PMF	Positive Matrix Factorization
PSCF	Potential Source Contribution Function
VOCs	Volatile Organic Compounds
WD	Wind Direction
WS	Wind Speed
RH	Relative Humidity
T	Temperature
MLH	Mixing Layer Height

Acknowledgments

This work was supported by the National Natural Science Foundation of China (41575120, 91744207, 41571130034) and the National Key Project of Basic Research (2014CB447900).

5 References

- Boucher, O., Randall, D., Artaxo, P., Bretherton, C., Feingold, G., Forster, P., Kerminen, V.-M., Kondo, Y., Liao, H., Lohmann, U., Rasch, P., Satheesh, S. K., Sherwood, S., Stevens, B., and Zhang, X. Y.: Clouds and aerosols, in: Climate change 2013: the physical science basis. Contribution of Working Group I to the Fifth Assessment Report of the Intergovernmental Panel on Climate Change, Cambridge University Press, 2013.
- 10 Bressi, M., Cavalli, F., Belis, C. A., Putaud, J. P., Fröhlich, R., Martins dos Santos, S., Petralia, E., Prévôt, A. S. H., Berico, M., Malaguti, A., and Canonaco, F.: Variations in the chemical composition of the submicron aerosol and in the sources of the organic fraction at a regional background site of the Po Valley (Italy), *Atmos. Chem. Phys.*, 16, 12875-12896, 10.5194/acp-16-12875-2016, 2016.
- 15 Canagaratna, M., Jayne, J., Jimenez, J. L., Allan, J. A., Alfarra, R., Zhang, Q., Onasch, T., Drewnick, F., Coe, H., Middlebrook, A., Delia, A., Williams, L., Trimborn, A., Northway, M., Kolb, C., Davidovits, P., and Worsnop, D.: Chemical and microphysical characterization of aerosols via Aerosol Mass Spectrometry, *Mass Spectrom. Rev.*, 26, 185-222, 2007.
- 20 Canonaco, F., Crippa, M., Slowik, J. G., Baltensperger, U., and Prévôt, A. S. H.: SoFi, an IGOR-based interface for the efficient use of the generalized multilinear engine (ME-2) for the source apportionment: ME-2 application to aerosol mass spectrometer data, *Atmos. Meas. Tech.*, 6, 3649-3661, 10.5194/amt-6-3649-2013, 2013.

- Chen, J., Li, C., Ristovski, Z., Milic, A., Gu, Y., Islam, M. S., Wang, S., Hao, J., Zhang, H., He, C., Guo, H., Fu, H., Miljevic, B., Morawska, L., Thai, P., Lam, Y. F., Pereira, G., Ding, A., Huang, X., and Dumka, U. C.: A review of biomass burning: Emissions and impacts on air quality, health and climate in China, *Sci. Total Environ.*, 579, 1000-1034, 2017.
- Cheng, N., Zhang, D., Li, Y., and Fan, M.: Residential emissions in Beijing: About 400×10^4 t, *Proc. Natl. Acad. Sci. U.S.A.*, 113, E5778-E5779, 10.1073/pnas.1613118113, 2016.
- Draxler, R. R., and Rolph, G. D.: HYSPLIT (HYbrid Single-Particle Lagrangian Integrated Trajectory) Model access via NOAA ARL READY Website (<http://www.arl.noaa.gov/HYSPLIT.php>), NOAA Air Resources Laboratory, College Park, MD, 2013.
- Elser, M., Huang, R. J., Wolf, R., Slowik, J. G., Wang, Q., Canonaco, F., Li, G., Bozzetti, C., Daellenbach, K. R., Huang, Y., Zhang, R., Li, Z., Cao, J., Baltensperger, U., El-Haddad, I., and Prévôt, A. S. H.: New insights into PM_{2.5} chemical composition and sources in two major cities in China during extreme haze events using aerosol mass spectrometry, *Atmos. Chem. Phys.*, 16, 3207-3225, 10.5194/acp-16-3207-2016, 2016.
- Fast, J. D., Allan, J., Bahreini, R., Craven, J., Emmons, L., Ferrare, R., Hayes, P. L., Hodzic, A., Holloway, J., Hostetler, C., Jimenez, J. L., Jonsson, H., Liu, S., Liu, Y., Metcalf, A., Middlebrook, A., Nowak, J., Pekour, M., Perring, A., Russell, L., Sedlacek, A., Seinfeld, J., Setyan, A., Shilling, J., Shrivastava, M., Springston, S., Song, C., Subramanian, R., Taylor, J. W., Vиноj, V., Yang, Q., Zaveri, R. A., and Zhang, Q.: Modeling regional aerosol and aerosol precursor variability over California and its sensitivity to emissions and long-range transport during the 2010 CalNex and CARES campaigns, *Atmos. Chem. Phys.*, 14, 10013-10060, 10.5194/acp-14-10013-2014, 2014.
- Fu, T. M., Cao, J. J., Zhang, X. Y., Lee, S. C., Zhang, Q., Han, Y. M., Qu, W. J., Han, Z., Zhang, R., Wang, Y. X., Chen, D., and Henze, D. K.: Carbonaceous aerosols in China: top-down constraints on primary sources and estimation of secondary contribution, *Atmos. Chem. Phys.*, 12, 2725-2746, 10.5194/acp-12-2725-2012, 2012.
- Ge, B., Sun, Y., Liu, Y., Dong, H., Ji, D., Jiang, Q., Li, J., and Wang, Z.: Nitrogen dioxide measurement by cavity attenuated phase shift spectroscopy (CAPS) and implications in ozone production efficiency and nitrate formation in Beijing, China, *J. Geophys. Res.*, 118, 9499-9509, 10.1002/jgrd.50757, 2013.
- Ge, X., Setyan, A., Sun, Y., and Zhang, Q.: Primary and secondary organic aerosols in Fresno, California during wintertime: Results from high resolution aerosol mass spectrometry, *J. Geophys. Res.*, 117, D19301, 10.1029/2012JD018026, 2012.
- Gilardoni, S., Massoli, P., Paglione, M., Giulianelli, L., Carbone, C., Rinaldi, M., Decesari, S., Sandrini, S., Costabile, F., Gobbi, G. P., Pietrogrande, M. C., Visentin, M., Scotto, F., Fuzzi, S., and Facchini, M. C.: Direct observation of aqueous secondary organic aerosol from biomass-burning emissions, *Proc. Natl. Acad. Sci. U. S. A.*, 113, 10013-10018, 10.1073/pnas.1602212113, 2016.
- Guo, S., Hu, M., Zamora, M. L., Peng, J., Shang, D., Zheng, J., Du, Z., Wu, Z., Shao, M., Zeng, L., Molina, M. J., and Zhang, R.: Elucidating severe urban haze formation in China, *Proc. Natl. Acad. Sci. U.S.A.*, 111, 17373-17378, 10.1073/pnas.1419604111, 2014.
- Hallquist, M., Wenger, J. C., Baltensperger, U., Rudich, Y., Simpson, D., Claeys, M., Dommen, J., Donahue, N. M., George, C., Goldstein, A. H., Hamilton, J. F., Herrmann, H., Hoffmann, T., Iinuma, Y., Jang, M., Jenkin, M. E., Jimenez, J. L., Kiendler-Scharr, A., Maenhaut, W., McFiggans, G., Mentel, T. F., Monod, A., Prevot, A. S. H., Seinfeld, J. H., Surratt, J. D., Szmigielski, R., and Wildt, J.: The formation, properties and impact of secondary organic aerosol: current and emerging issues, *Atmos. Chem. Phys.*, 9, 5155-5235, 2009.
- Han, S., Kondo, Y., Oshima, N., Takegawa, N., Miyazaki, Y., Hu, M., Lin, P., Deng, Z., Zhao, Y., Sugimoto, N., and Wu, Y.: Temporal variations of elemental carbon in Beijing, *J. Geophys. Res.*, 114, D23202, doi:10.1029/2009JD012027, 2009.
- Hu, W., Hu, M., Hu, W., Jimenez, J. L., Yuan, B., Chen, W., Wang, M., Wu, Y., Chen, C., Wang, Z., Peng, J., Zeng, L., and Shao, M.: Chemical composition, sources and aging process of submicron aerosols in Beijing: contrast between summer and winter, *J. Geophys. Res.*, 121, 1955-1977, 10.1002/2015JD024020, 2016.
- Hu, W., Hu, M., Hu, W.-W., Zheng, J., Chen, C., Wu, Y., and Guo, S.: Seasonal variations in high time-resolved chemical compositions, sources, and evolution of atmospheric submicron aerosols in the megacity Beijing, *Atmos. Chem. Phys.*, 17, 9979-10000, 10.5194/acp-17-9979-2017, 2017.
- Huang, R.-J., Zhang, Y., Bozzetti, C., Ho, K.-F., Cao, J.-J., Han, Y., Daellenbach, K. R., Slowik, J. G., Platt, S. M., Canonaco, F., Zotter, P., Wolf, R., Pieber, S. M., Bruns, E. A., Crippa, M., Ciarelli, G., Piazzalunga, A., Schwikowski, M., Abbaszade, G., Schnelle-Kreis, J., Zimmermann, R., An, Z., Szidat, S., Baltensperger, U., Haddad, I. E., and Prevot, O.

- A. S. H.: High secondary aerosol contribution to particulate pollution during haze events in China, *Nature*, 514, 218 - 222, 10.1038/nature13774, 2014.
- Huang, X. F., He, L. Y., Hu, M., Canagaratna, M. R., Sun, Y., Zhang, Q., Zhu, T., Xue, L., Zeng, L. W., Liu, X. G., Zhang, Y. H., Jayne, J. T., Ng, N. L., and Worsnop, D. R.: Highly time-resolved chemical characterization of atmospheric submicron particles during 2008 Beijing Olympic Games using an Aerodyne High-Resolution Aerosol Mass Spectrometer, *Atmos. Chem. Phys.*, 10, 8933-8945, 10.5194/acp-10-8933-2010, 2010.
- Jayne, J. T., Leard, D. C., Zhang, X., Davidovits, P., Smith, K. A., Kolb, C. E., and Worsnop, D. R.: Development of an aerosol mass spectrometer for size and composition analysis of submicron particles, *Aerosol Sci. Tech.*, 33, 49-70, 2000.
- Jiang, Q., Sun, Y., Wang, Z., and Yin, Y.: Real-time online measurements of the inorganic and organic composition of haze fine particles with an Aerosol Chemical Speciation Monitor (ACSM) (in Chinese), *Chin. Sci. Bull. (Chin Ver)*, 58, 3818-3828, doi: 10.1360/972013-501, 2013.
- Jiang, Q., Sun, Y. L., Wang, Z., and Yin, Y.: Aerosol composition and sources during the Chinese Spring Festival: fireworks, secondary aerosol, and holiday effects, *Atmos. Chem. Phys.*, 15, 6023-6034, 10.5194/acp-15-6023-2015, 2015.
- Jimenez, J. L., Canagaratna, M. R., Donahue, N. M., Prevot, A. S. H., Zhang, Q., Kroll, J. H., DeCarlo, P. F., Allan, J. D., Coe, H., Ng, N. L., Aiken, A. C., Docherty, K. S., Ulbrich, I. M., Grieshop, A. P., Robinson, A. L., Duplissy, J., Smith, J. D., Wilson, K. R., Lanz, V. A., Hueglin, C., Sun, Y. L., Tian, J., Laaksonen, A., Raatikainen, T., Rautiainen, J., Vaattovaara, P., Ehn, M., Kulmala, M., Tomlinson, J. M., Collins, D. R., Cubison, M. J., E, Dunlea, J., Huffman, J. A., Onasch, T. B., Alfarra, M. R., Williams, P. I., Bower, K., Kondo, Y., Schneider, J., Drewnick, F., Borrmann, S., Weimer, S., Demerjian, K., Salcedo, D., Cottrell, L., Griffin, R., Takami, A., Miyoshi, T., Hatakeyama, S., Shimono, A., Sun, J. Y., Zhang, Y. M., Dzepina, K., Kimmel, J. R., Sueper, D., Jayne, J. T., Herndon, S. C., Trimborn, A. M., Williams, L. R., Wood, E. C., Middlebrook, A. M., Kolb, C. E., Baltensperger, U., and Worsnop, D. R.: Evolution of organic aerosols in the atmosphere, *Science*, 326, 1525-1529, doi:10.1126/science.1180353, 2009.
- Kebabian, P. L., Wood, E. C., Herndon, S. C., and Freedman, A.: A Practical Alternative to Chemiluminescence-Based Detection of Nitrogen Dioxide: Cavity Attenuated Phase Shift Spectroscopy, *Environ. Sci. Technol.*, 42, 6040-6045, 10.1021/es703204j, 2008.
- Lanz, V. A., Alfarra, M. R., Baltensperger, U., Buchmann, B., Hueglin, C., and Prévôt, A. S. H.: Source apportionment of submicron organic aerosols at an urban site by factor analytical modelling of aerosol mass spectra, *Atmos. Chem. Phys.*, 7, 1503-1522, 2007.
- Li, J., Du, H., Wang, Z., Sun, Y., Yang, W., Li, J., Tang, X., and Fu, P.: Rapid formation of a severe regional winter haze episode over a mega-city cluster on the North China Plain, *Environ. Pollut.*, 223, 605-615, 2017a.
- Li, Y. J., Sun, Y., Zhang, Q., Li, X., Li, M., Zhou, Z., and Chan, C. K.: Real-time chemical characterization of atmospheric particulate matter in China: A review, *Atmos. Environ.*, 158, 270-304, 2017b.
- Liu, J., Mauzerall, D. L., Chen, Q., Zhang, Q., Song, Y., Peng, W., Klimont, Z., Qiu, X., Zhang, S., Hu, M., Lin, W., Smith, K. R., and Zhu, T.: Air pollutant emissions from Chinese households: A major and underappreciated ambient pollution source, *Proc. Natl. Acad. Sci. U.S.A.*, 10.1073/pnas.1604537113, 2016.
- Liu, P., Zhang, C., Xue, C., Mu, Y., Liu, J., Zhang, Y., Tian, D., Ye, C., Zhang, H., and Guan, J.: The contribution of residential coal combustion to atmospheric PM_{2.5} in northern China during winter, *Atmos. Chem. Phys.*, 17, 11503-11520, 10.5194/acp-17-11503-2017, 2017a.
- Liu, T., Li, Z., Chan, M., and Chan, C. K.: Formation of secondary organic aerosols from gas-phase emissions of heated cooking oils, *Atmos. Chem. Phys.*, 17, 7333-7344, 10.5194/acp-17-7333-2017, 2017b.
- Middlebrook, A. M., Bahreini, R., Jimenez, J. L., and Canagaratna, M. R.: Evaluation of composition-dependent collection efficiencies for the Aerodyne Aerosol Mass Spectrometer using field data, *Aerosol Sci. Tech.*, 46, 258-271, 2012.
- Minguillón, M. C., Ripoll, A., Pérez, N., Prévôt, A. S. H., Canonaco, F., Querol, X., and Alastuey, A.: Chemical characterization of submicron regional background aerosols in the western Mediterranean using an Aerosol Chemical Speciation Monitor, *Atmos. Chem. Phys.*, 15, 6379-6391, 10.5194/acp-15-6379-2015, 2015.
- Morgan, W. T., Allan, J. D., Bower, K. N., Highwood, E. J., Liu, D., McMeeking, G. R., Northway, M. J., Williams, P. I., Krejci, R., and Coe, H.: Airborne measurements of the spatial distribution of aerosol chemical composition across Europe and evolution of the organic fraction, *Atmos. Chem. Phys.*, 10, 4065-4083, 2010.

- Ng, N. L., Canagaratna, M. R., Jimenez, J. L., Zhang, Q., Ulbrich, I. M., and Worsnop, D. R.: Real-time methods for estimating organic component mass concentrations from Aerosol Mass Spectrometer data, *Environ. Sci. Technol.*, 45, 910-916, 10.1021/es102951k, 2011a.
- Ng, N. L., Herndon, S. C., Trimborn, A., Canagaratna, M. R., Croteau, P. L., Onasch, T. B., Sueper, D., Worsnop, D. R., Zhang, Q., Sun, Y. L., and Jayne, J. T.: An Aerosol Chemical Speciation Monitor (ACSM) for routine monitoring of the composition and mass concentrations of ambient aerosol, *Aerosol Sci. Tech.*, 45, 770 - 784, 2011b.
- Ots, R., Vieno, M., Allan, J. D., Reis, S., Nemitz, E., Young, D. E., Coe, H., Di Marco, C., Detournay, A., Mackenzie, I. A., Green, D. C., and Heal, M. R.: Model simulations of cooking organic aerosol (COA) over the UK using estimates of emissions based on measurements at two sites in London, *Atmos. Chem. Phys.*, 16, 13773-13789, 10.5194/acp-16-13773-2016, 2016.
- Paatero, P.: The multilinear engine - A table-driven, least squares program for solving multilinear problems, including the n-way parallel factor analysis model, *Journal of Computational and Graphical Statistics*, 8, 854-888, 1999.
- Parworth, C., Fast, J., Mei, F., Shippert, T., Sivaraman, C., Tilp, A., Watson, T., and Zhang, Q.: Long-term Measurements of Submicrometer Aerosol Chemistry at the Southern Great Plains (SGP) Using an Aerosol Chemical Speciation Monitor (ACSM), *Atmos. Environ.*, 106, 43-55, 2015.
- Petit, J. E., Favez, O., Sciare, J., Crenn, V., Sarda-Estève, R., Bonnaire, N., Močnik, G., Dupont, J. C., Haeffelin, M., and Leoz-Garziandia, E.: Two years of near real-time chemical composition of submicron aerosols in the region of Paris using an Aerosol Chemical Speciation Monitor (ACSM) and a multi-wavelength Aethalometer, *Atmos. Chem. Phys.*, 15, 2985-3005, 10.5194/acp-15-2985-2015, 2015.
- Polissar, A. V., P.K. Hopke, P. Paatero, Y.J. Kaufman, D.K. Hall, B.A. Bodhaine, E.G. Dutton, J.M. Harris: The aerosol at Barrow, Alaska: long-term trends and source locations, *Atmos. Environ.*, 33, 2441-2458, 1999.
- RattanaVaraha, W., Canagaratna, M. R., Budisulistiorini, S. H., Croteau, P. L., Baumann, K., Canonaco, F., Prevot, A. S. H., Edgerton, E. S., Zhang, Z., Jayne, J. T., Worsnop, D. R., Gold, A., Shaw, S. L., and Surratt, J. D.: Source apportionment of submicron organic aerosol collected from Atlanta, Georgia, during 2014-2015 using the aerosol chemical speciation monitor (ACSM), *Atmos. Environ.*, 167, 389-402, 2017.
- Ripoll, A., Minguillón, M. C., Pey, J., Jimenez, J. L., Day, D. A., Sosedova, Y., Canonaco, F., Prévôt, A. S. H., Querol, X., and Alastuey, A.: Long-term real-time chemical characterization of submicron aerosols at Montsec (southern Pyrenees, 1570 m a.s.l.), *Atmos. Chem. Phys.*, 15, 2935-2951, 10.5194/acp-15-2935-2015, 2015.
- Schlag, P., Kiendler-Scharr, A., Blom, M. J., Canonaco, F., Henzing, J. S., Moerman, M., Prévôt, A. S. H., and Holzinger, R.: Aerosol source apportionment from 1-year measurements at the CESAR tower in Cabauw, the Netherlands, *Atmos. Chem. Phys.*, 16, 8831-8847, 10.5194/acp-16-8831-2016, 2016.
- Shilling, J. E., Chen, Q., King, S. M., Rosenoern, T., Kroll, J. H., Worsnop, D. R., DeCarlo, P. F., Aiken, A. C., Sueper, D., Jimenez, J. L., and Martin, S. T.: Loading-dependent elemental composition of α -pinene SOA particles, *Atmos. Chem. Phys.*, 9, 771-782, 2009.
- Shrivastava, M., Fast, J., Easter, R., Gustafson Jr, W. I., Zaveri, R. A., Jimenez, J. L., Saide, P., and Hodzic, A.: Modeling organic aerosols in a megacity: comparison of simple and complex representations of the volatility basis set approach, *Atmos. Chem. Phys.*, 11, 6639-6662, 10.5194/acp-11-6639-2011, 2011.
- Shrivastava, M., Cappa, C. D., Fan, J., Goldstein, A. H., Guenther, A. B., Jimenez, J. L., Kuang, C., Laskin, A., Martin, S. T., Ng, N. L., Petaja, T., Pierce, J. R., Rasch, P. J., Roldin, P., Seinfeld, J. H., Shilling, J., Smith, J. N., Thornton, J. A., Volkamer, R., Wang, J., Worsnop, D. R., Zaveri, R. A., Zelenyuk, A., and Zhang, Q.: Recent advances in understanding secondary organic aerosol: implications for global climate forcing, *Rev. Geophys.*, 55, 509-559, 10.1002/2016RG000540, 2017.
- Sun, J., Zhang, Q., Canagaratna, M. R., Zhang, Y., Ng, N. L., Sun, Y., Jayne, J. T., Zhang, X., Zhang, X., and Worsnop, D. R.: Highly time- and size-resolved characterization of submicron aerosol particles in Beijing using an Aerodyne Aerosol Mass Spectrometer, *Atmos. Environ.*, 44, 131-140, 2010.
- Sun, J., Huang, L., Liao, H., Li, J., and Hu, J.: Impacts of Regional Transport on Particulate Matter Pollution in China: a Review of Methods and Results, *Current Pollution Reports*, 3, 182-191, 10.1007/s40726-017-0065-5, 2017.
- Sun, Y., Chen, C., Zhang, Y., Xu, W., Zhou, L., Cheng, X., Zheng, H., Ji, D., Li, J., Tang, X., Fu, P., and Wang, Z.: Rapid formation and evolution of an extreme haze episode in Northern China during winter 2015, *Sci. Rep.*, 6, 27151, 10.1038/srep27151, 2016a.

- Sun, Y., Du, W., Fu, P., Wang, Q., Li, J., Ge, X., Zhang, Q., Zhu, C., Ren, L., Xu, W., Zhao, J., Han, T., Worsnop, D., and Wang, Z.: Primary and secondary aerosols in Beijing in winter: sources, variations and processes, *Atmos. Chem. Phys.*, 16, 8309-8329, 10.5194/acp-16-8309-2016, 2016b.
- 5 Sun, Y., Jiang, Q., Xu, Y., Ma, Y., Zhang, Y., Liu, X., Li, W., Wang, F., Li, J., Wang, P., and Li, Z.: Aerosol Characterization over the North China Plain: Haze Life Cycle and Biomass Burning Impacts in Summer, *J. Geophys. Res.*, 121, 2508-2521, 10.1002/2015JD024261, 2016c.
- Sun, Y. L., Zhang, Q., Schwab, J. J., Chen, W. N., Bae, M. S., Lin, Y. C., Hung, H. M., and Demerjian, K. L.: A case study of aerosol processing and evolution in summer in New York City, *Atmos. Chem. Phys.*, 11, 12737-12750, 10.5194/acp-11-12737-2011, 2011a.
- 10 Sun, Y. L., Zhang, Q., Schwab, J. J., Demerjian, K. L., Chen, W. N., Bae, M. S., Hung, H. M., Hogrefe, O., Frank, B., Rattigan, O. V., and Lin, Y. C.: Characterization of the sources and processes of organic and inorganic aerosols in New York City with a high-resolution time-of-flight aerosol mass spectrometer, *Atmos. Chem. Phys.*, 11, 1581-1602, 10.5194/acp-11-1581-2011, 2011b.
- Sun, Y. L., Wang, Z., Dong, H., Yang, T., Li, J., Pan, X., Chen, P., and Jayne, J. T.: Characterization of summer organic and inorganic aerosols in Beijing, China with an Aerosol Chemical Speciation Monitor, *Atmos. Environ.*, 51, 250-259, 10.1016/j.atmosenv.2012.01.013, 2012.
- 15 Sun, Y. L., Wang, Z., Fu, P., Jiang, Q., Yang, T., Li, J., and Ge, X.: The impact of relative humidity on aerosol composition and evolution processes during wintertime in Beijing, China, *Atmos. Environ.*, 77, 927-934, 2013a.
- Sun, Y. L., Wang, Z. F., Fu, P. Q., Yang, T., Jiang, Q., Dong, H. B., Li, J., and Jia, J. J.: Aerosol composition, sources and processes during wintertime in Beijing, China, *Atmos. Chem. Phys.*, 13, 4577-4592, 10.5194/acp-13-4577-2013, 2013b.
- 20 Sun, Y. L., Jiang, Q., Wang, Z., Fu, P., Li, J., Yang, T., and Yin, Y.: Investigation of the sources and evolution processes of severe haze pollution in Beijing in January 2013, *J. Geophys. Res.*, 119, 4380-4398, 10.1002/2014JD021641, 2014.
- Sun, Y. L., Wang, Z. F., Du, W., Zhang, Q., Wang, Q. Q., Fu, P. Q., Pan, X. L., Li, J., Jayne, J., and Worsnop, D. R.: Long-term real-time measurements of aerosol particle composition in Beijing, China: seasonal variations, meteorological effects, and source analysis, *Atmos. Chem. Phys.*, 15, 10149-10165, 10.5194/acp-15-10149-2015, 2015.
- 25 Tang, G., Zhang, J., Zhu, X., Song, T., Munkel, C., Hu, B., Schäfer, K., Liu, Z., Zhang, J., Wang, L., Xin, J., Suppan, P., and Wang, Y.: Mixing layer height and its implications for air pollution over Beijing, China, *Atmos. Chem. Phys.*, 16, 2459-2475, 10.5194/acp-16-2459-2016, 2016.
- Ulbrich, I. M., Canagaratna, M. R., Zhang, Q., Worsnop, D. R., and Jimenez, J. L.: Interpretation of organic components from Positive Matrix Factorization of aerosol mass spectrometric data, *Atmos. Chem. Phys.*, 9, 2891-2918, 2009.
- 30 Wang, H., Lu, K., Chen, X., Zhu, Q., Chen, Q., Guo, S., Jiang, M., Li, X., Shang, D., Tan, Z., Wu, Y., Wu, Z., Zou, Q., Zheng, Y., Zeng, L., Zhu, T., Hu, M., and Zhang, Y.: High N₂O₅ Concentrations Observed in Urban Beijing: Implications of a Large Nitrate Formation Pathway, *Environ. Sci. Technol. Lett.*, 4, 416-420, 10.1021/acs.estlett.7b00341, 2017.
- 35 Wang, Q., Sun, Y., Jiang, Q., Du, W., Sun, C., Fu, P., and Wang, Z.: Chemical composition of aerosol particles and light extinction apportionment before and during the heating season in Beijing, China, *J. Geophys. Res.*, 120, 12708-12722, 10.1002/2015JD023871, 2015.
- Wang, Y., Yao, L., Wang, L., Liu, Z., Ji, D., Tang, G., Zhang, J., Sun, Y., Hu, B., and Xin, J.: Mechanism for the formation of the January 2013 heavy haze pollution episode over central and eastern China, *Sci. China Earth Sci.*, 57, 14-25, 10.1007/s11430-013-4773-4, 2014.
- 40 Zhang, H., Li, J., Ying, Q., Yu, J. Z., Wu, D., Cheng, Y., He, K., and Jiang, J.: Source apportionment of PM_{2.5} nitrate and sulfate in China using a source-oriented chemical transport model, *Atmos. Environ.*, 62, 228-242, <http://dx.doi.org/10.1016/j.atmosenv.2012.08.014>, 2012.
- Zhang, Q., Alfarra, M. R., Worsnop, D. R., Allan, J. D., Coe, H., Canagaratna, M. R., and Jimenez, J. L.: Deconvolution and quantification of hydrocarbon-like and oxygenated organic aerosols based on aerosol mass spectrometry, *Environ. Sci. Technol.*, 39, 4938-4952, doi:4910.1021/es048568l, 2005.
- 45 Zhang, Q., Jimenez, J. L., Canagaratna, M. R., Allan, J. D., Coe, H., Ulbrich, I., Alfarra, M. R., Takami, A., Middlebrook, A. M., Sun, Y. L., Dzepina, K., Dunlea, E., Docherty, K., DeCarlo, P. F., Salcedo, D., Onasch, T., Jayne, J. T., Miyoshi, T., Shimono, A., Hatakeyama, S., Takegawa, N., Kondo, Y., Schneider, J., Drewnick, F., Weimer, S., Demerjian, K., Williams, P., Bower, K., Bahreini, R., Cottrell, L., R.J.Griffin, Rautiainen, J., Sun, J. Y., Zhang, Y. M., and Worsnop, D.
- 50

- R.: Ubiquity and dominance of oxygenated species in organic aerosols in anthropogenically-influenced northern hemisphere mid-latitudes, *Geophys. Res. Lett.*, 34, L13801, doi:10.1029/2007GL029979, 2007.
- Zhang, Q., Jimenez, J., Canagaratna, M., Ulbrich, I., Ng, N., Worsnop, D., and Sun, Y.: Understanding atmospheric organic aerosols via factor analysis of aerosol mass spectrometry: a review, *Anal. Bioanal. Chem.*, 401, 3045-3067, 10.1007/s00216-011-5355-y, 2011.
- 5 Zhang, Y., Sun, J., Zhang, X., Shen, X., Wang, T., and Qin, M.: Seasonal characterization of components and size distributions for submicron aerosols in Beijing, *Sci. China Earth Sci.*, 56, 890 - 900, 10.1007/s11430-012-4515-z, 2013.
- Zhang, Y., Sun, Y., Du, W., Wang, Q., Chen, C., Han, T., Lin, J., Zhao, J., Xu, W., Gao, J., Li, J., Fu, P., Wang, Z., and Han, Y.: Response of aerosol composition to different emission scenarios in Beijing, China, *Sci. Total Environ.*, 571, 902-908, 10
- 2016.
- Zhang, Y. J., Tang, L. L., Wang, Z., Yu, H. X., Sun, Y. L., Liu, D., Qin, W., Canonaco, F., Prévôt, A. S. H., Zhang, H. L., and Zhou, H. C.: Insights into characteristics, sources, and evolution of submicron aerosols during harvest seasons in the Yangtze River delta region, China, *Atmos. Chem. Phys.*, 15, 1331-1349, 10.5194/acp-15-1331-2015, 2015.
- Zhao, J., Du, W., Zhang, Y., Wang, Q., Chen, C., Xu, W., Han, T., Wang, Y., Fu, P., Wang, Z., Li, Z., and Sun, Y.: Insights 15
- into aerosol chemistry during the 2015 China Victory Day parade: results from simultaneous measurements at ground level and 260 m in Beijing, *Atmos. Chem. Phys.*, 17, 3215-3232, 10.5194/acp-17-3215-2017, 2017.
- Zhao, X. J., Zhao, P. S., Xu, J., Meng, W., Pu, W. W., Dong, F., He, D., and Shi, Q. F.: Analysis of a winter regional haze event and its formation mechanism in the North China Plain, *Atmos. Chem. Phys.*, 13, 5685-5696, 10.5194/acp-13-5685-2013, 2013.
- 20 Zheng, G., Duan, F., Ma, Y., Zhang, Q., Huang, T., Kimoto, T., Cheng, Y., Su, H., and He, K.: Episode-Based Evolution Pattern Analysis of Haze Pollution: Method Development and Results from Beijing, China, *Environ. Sci. Technol.*, 50, 4632-4641, 10.1021/acs.est.5b05593, 2016.
- Zhou, S., Collier, S., Jaffe, D. A., Briggs, N. L., Hee, J., Sedlacek Iii, A. J., Kleinman, L., Onasch, T. B., and Zhang, Q.: Regional influence of wildfires on aerosol chemistry in the western US and insights into atmospheric aging of biomass 25
- burning organic aerosol, *Atmos. Chem. Phys.*, 17, 2477-2493, 10.5194/acp-17-2477-2017, 2017.

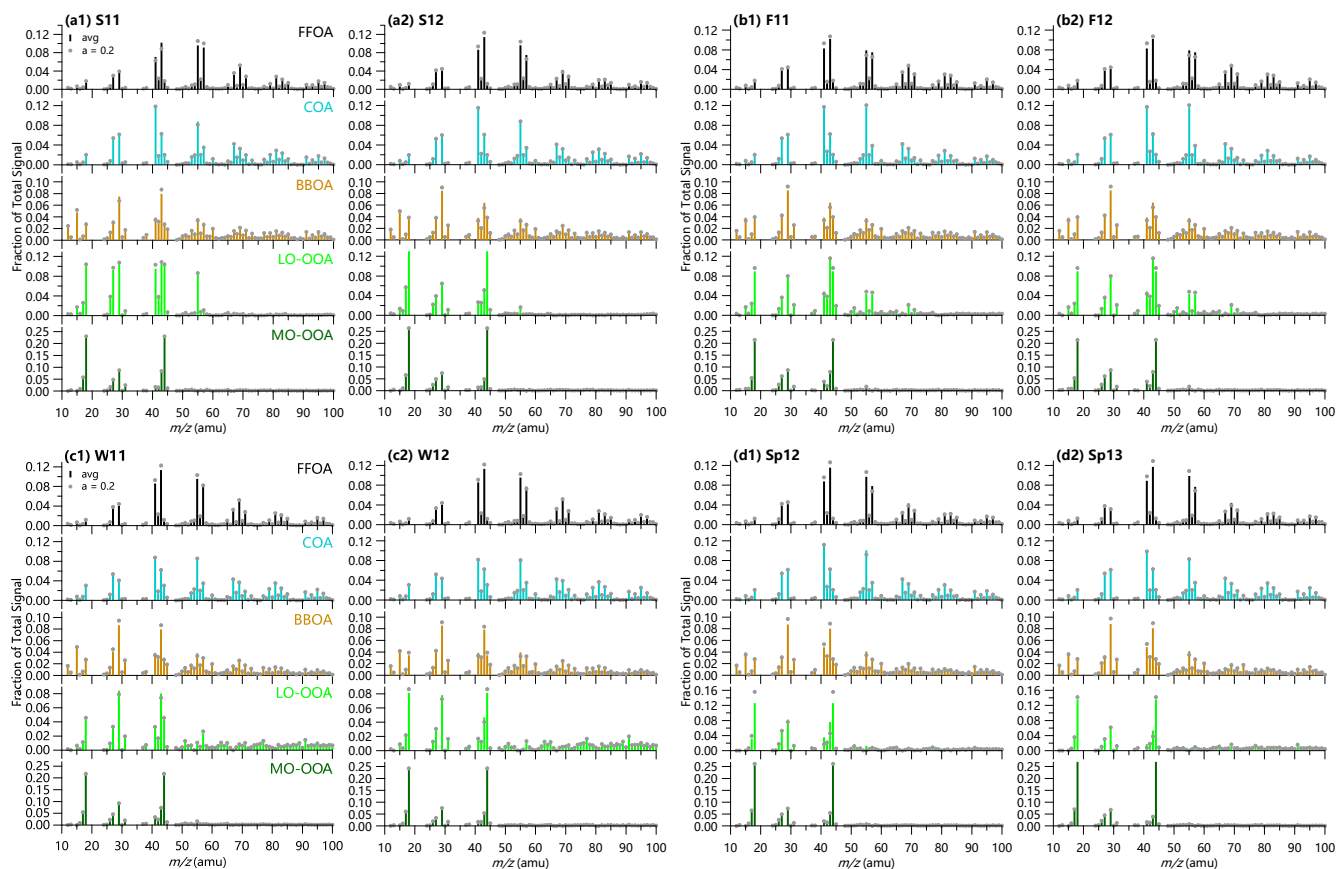


Figure 1: Mass spectral profiles of five OA factors from ME2-ACSM analysis in (a1) S11, summer 2011, (a2) S12, summer 2012, (b1) F11, fall 2011, (b2) F12, fall 2012, (c1) W11, winter 2011, (c2) W12, winter 2012, (d1) Sp12, spring 2012, and (d2) Sp13, spring 2013.

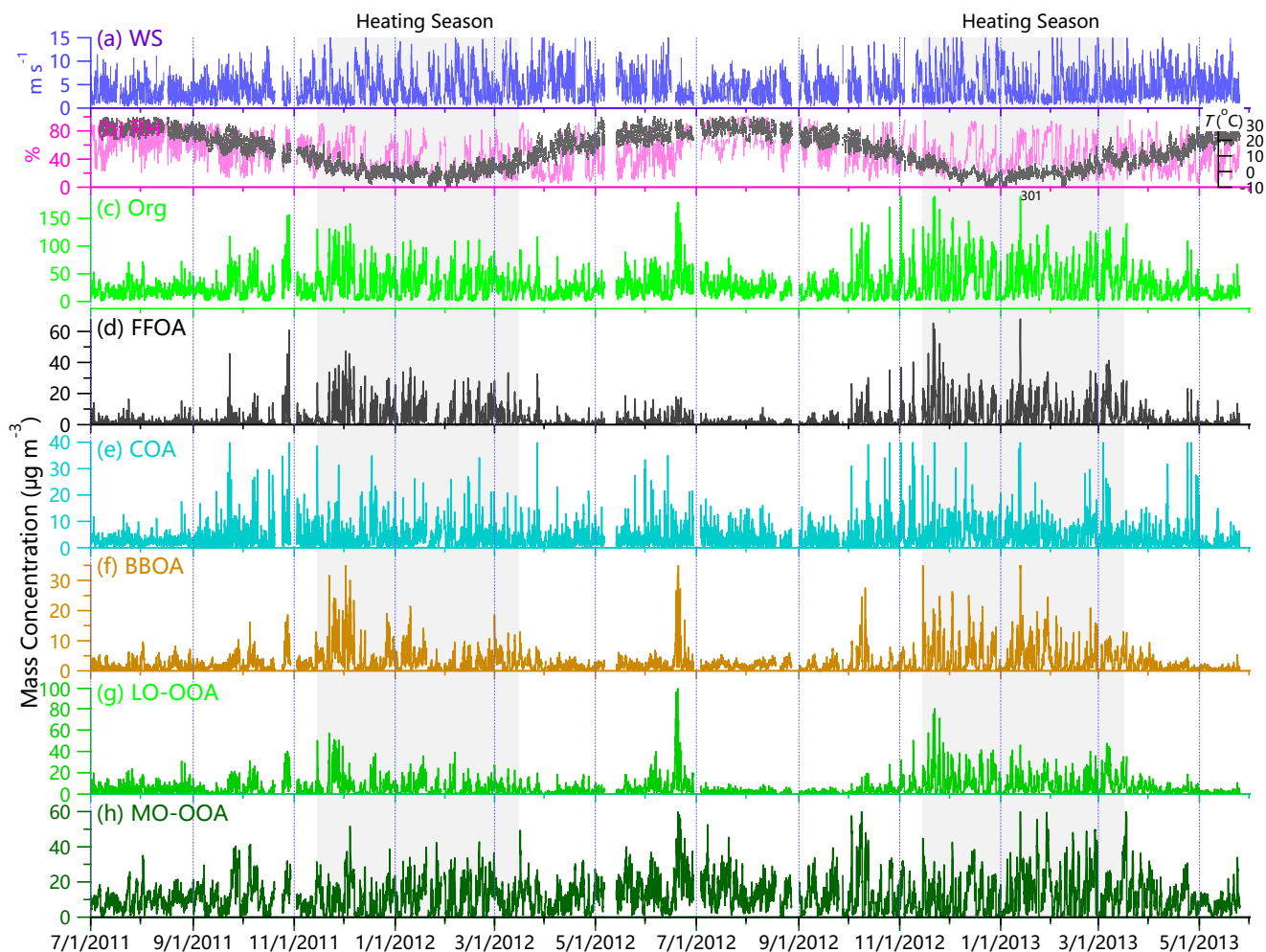


Figure 2: Time series of meteorological parameters (a) WS and (b) RH and T , and hourly average mass concentrations of (c) organics (Org), and (d-h) five OA factors, i.e., FFOA, COA, BBOA, LO-OOA and MO-OOA. The period of heating season (15 November – 15 March) is also marked as shaded areas.

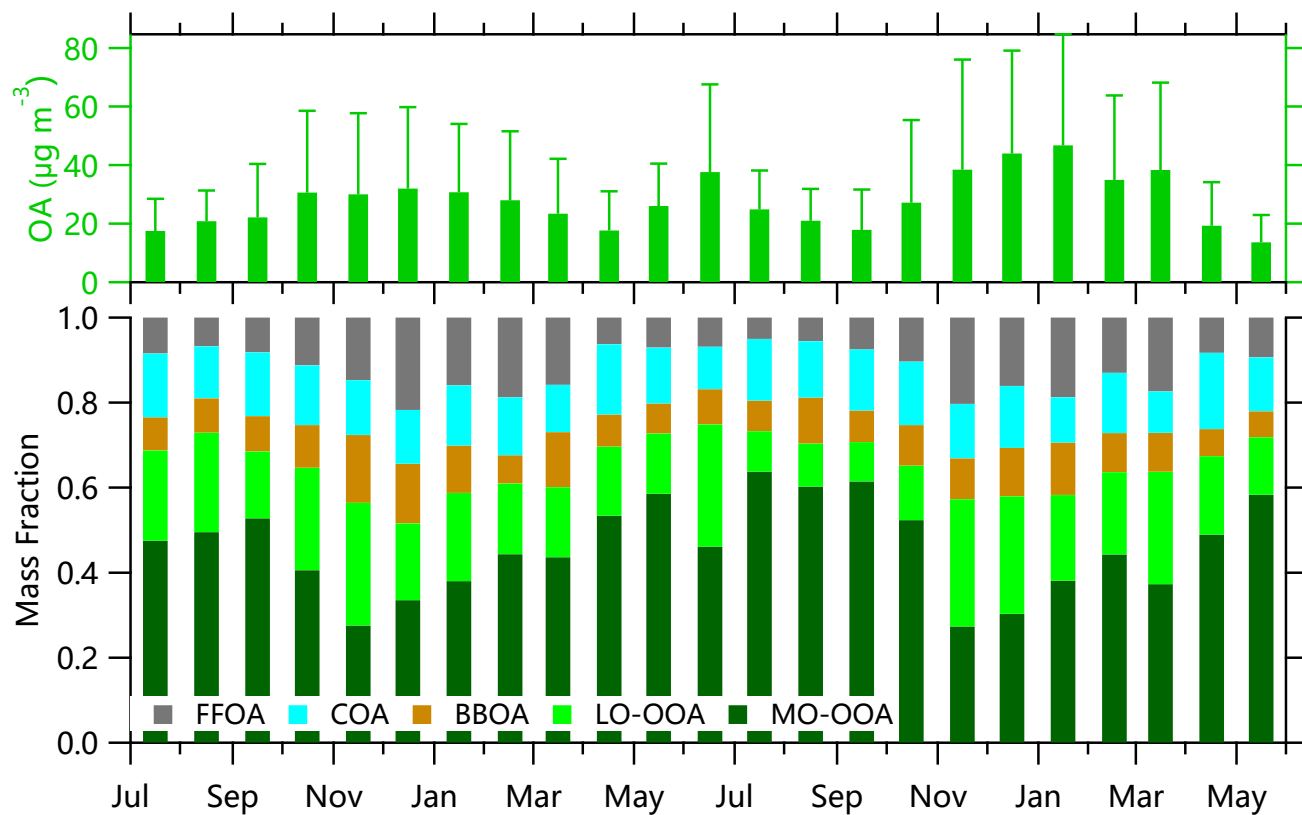


Figure 3: Monthly average OA mass concentrations and composition. The error bars represent one standard deviations of monthly averages.

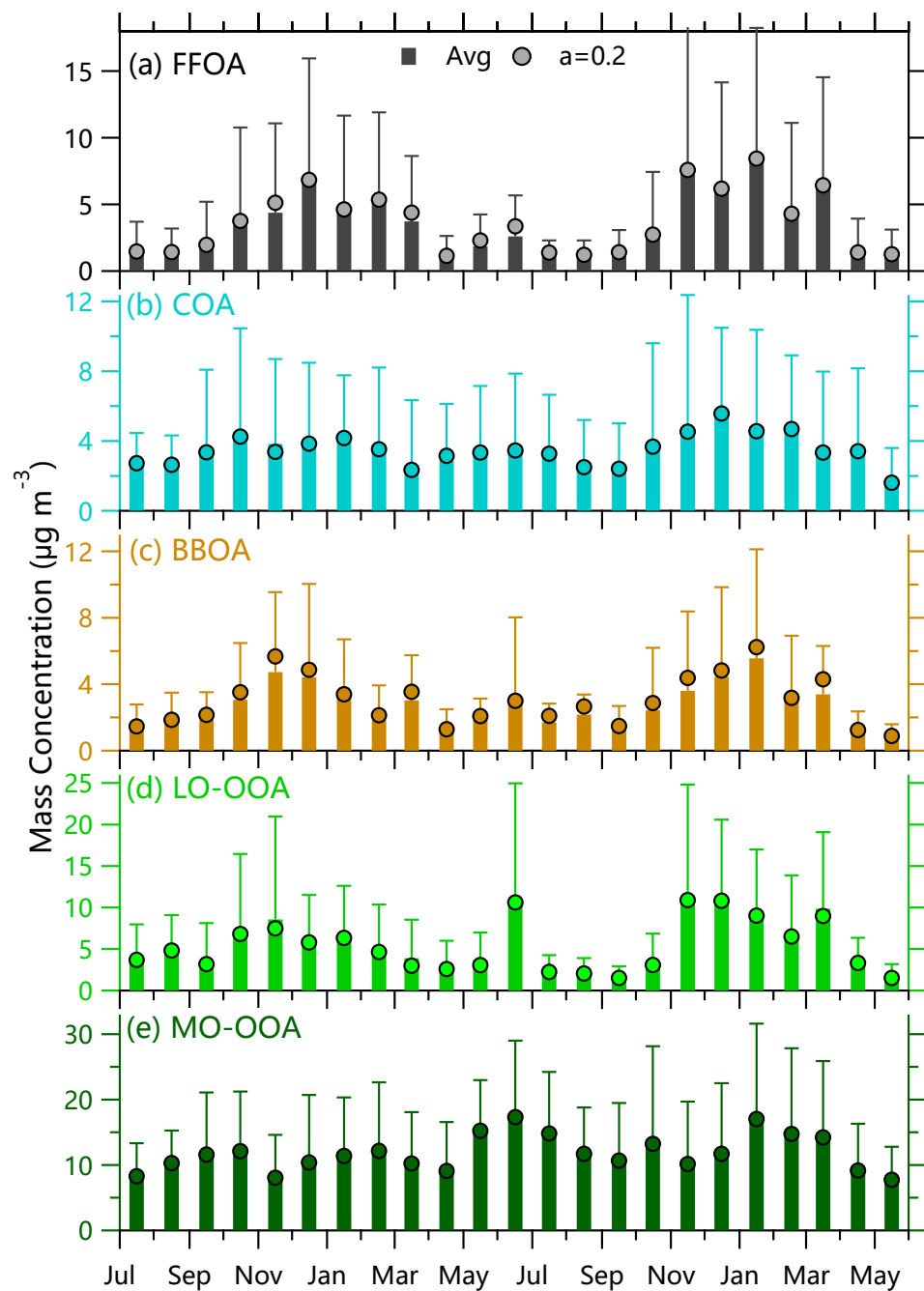


Figure 4: Monthly average mass concentrations of five OA factors. The bars are the average of ME-2 results from three model runs, i.e., $a = 0, 0.1$, and 0.2 . The results with $a = 0.2$ are also shown for a comparison. The error bars represent one standard deviations of monthly averages.

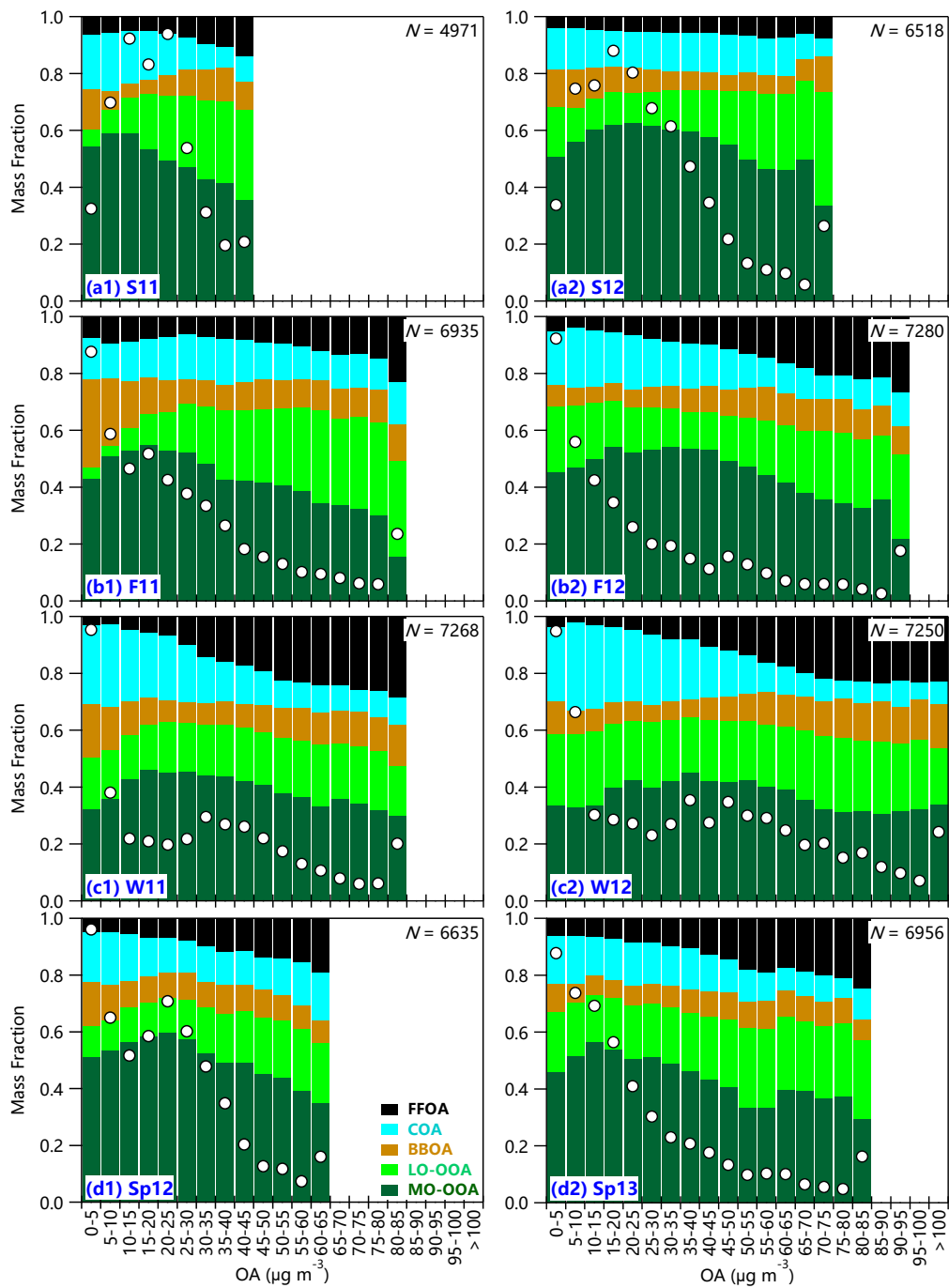


Figure 5: Variations of OA composition as a function of OA mass loadings during four seasons. The data are grouped in OA bins ($5 \mu\text{g m}^{-3}$ increment). The white circles indicate the frequency of each OA bin and the total number of points (N) for each season is also shown.

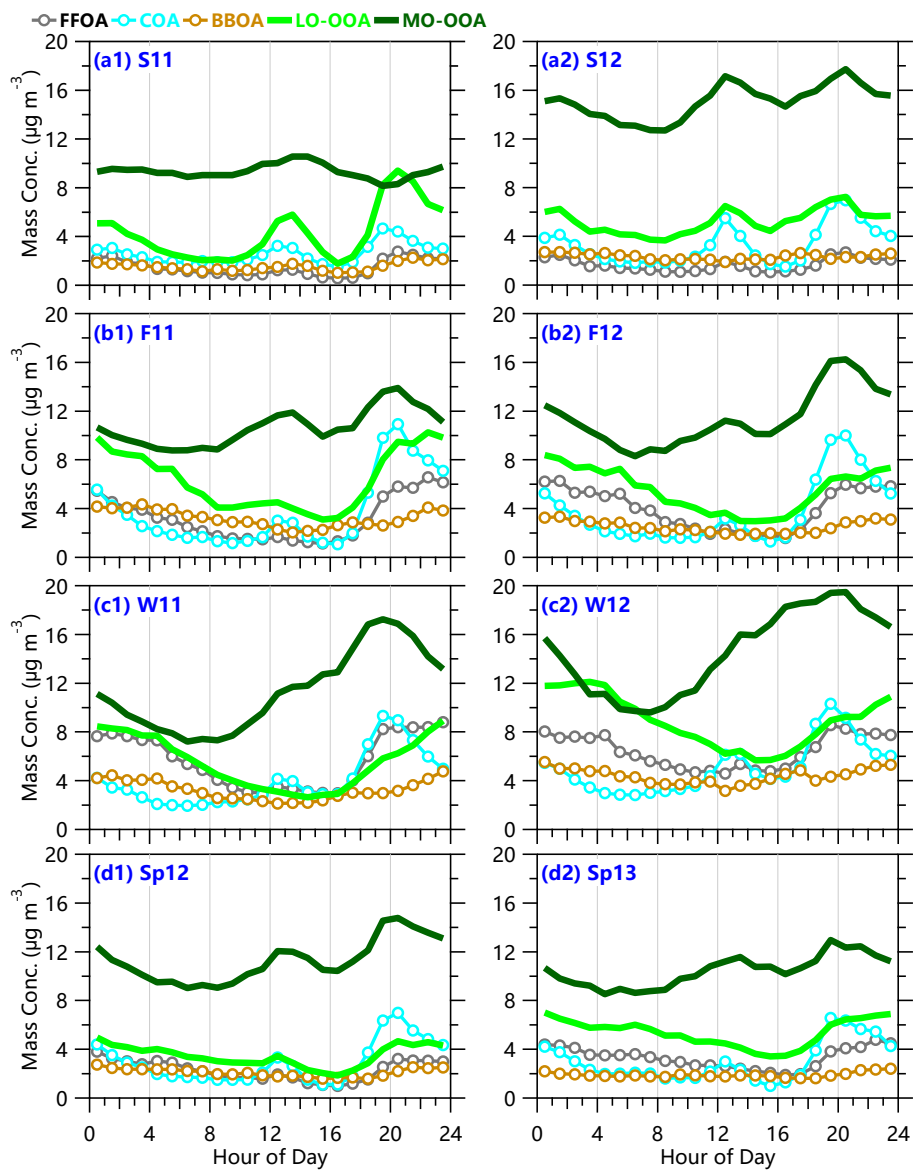


Figure 6: Average diurnal cycles of five OA factors during four seasons.

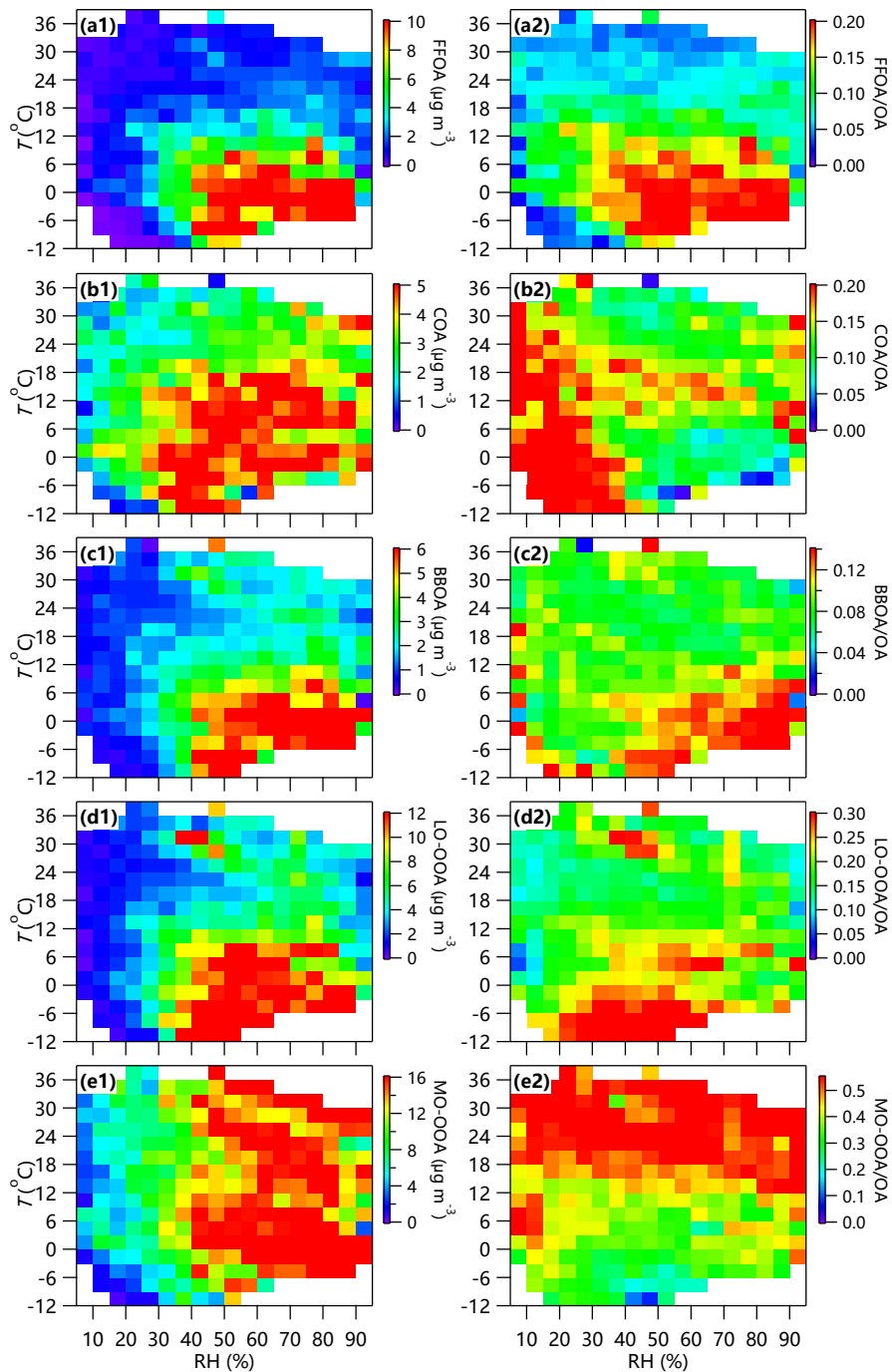


Figure 7. RH/ T dependence of mass concentrations and mass fractions of five OA factors for the entire study. The data are grouped into grids with increments of RH and T being 5% and 3 °C, respectively. Grid cells with the number of data points fewer than 10 are excluded.

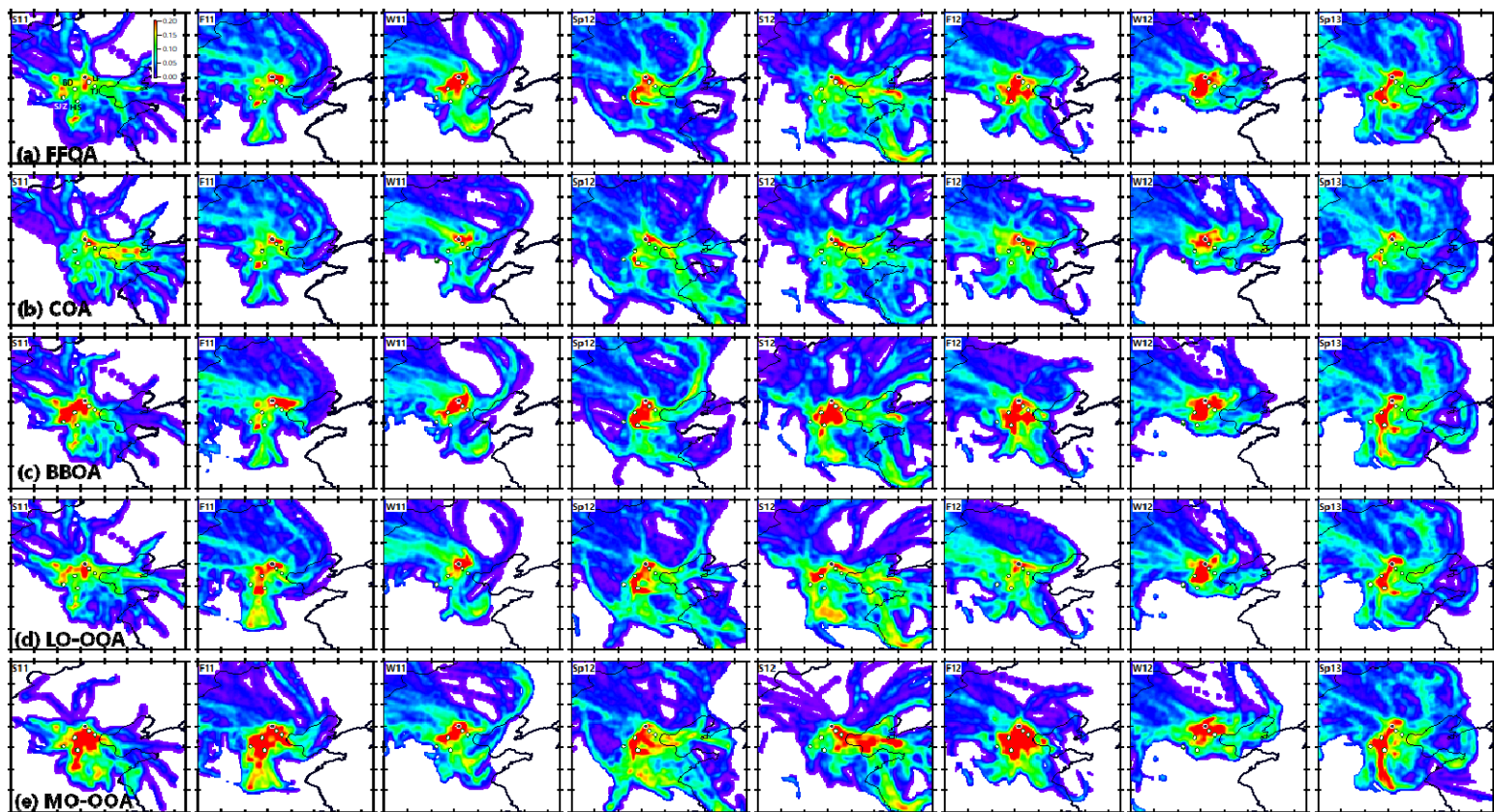


Figure 8: PSCF of five OA factors in each season. The cities marked as solid circles in each panel are Tianjing (TJ), Langfang (LF), Baoding (BD), Shijiazhuang (SJZ), and Hengshui (HS). The color scales indicate the values of PSCF.

Table 1: A summary of monthly average mass concentrations and mass fractions of five OA factors, POA (= FFOA+ COA+ BBOA) and SOA (= LO-OOA + MO-OOA).

Month- Year	Mass Concentrations ($\mu\text{g m}^{-3}$)							Mass Fractions of OA						
	FFOA	COA	BBOA	LO-OOA	MO-OOA	POA	SOA	FFOA	COA	BBOA	LO-OOA	MO-OOA	POA	SOA
Jul-11	1.5	2.6	1.4	3.7	8.4	5.5	12.1	0.08	0.15	0.08	0.21	0.47	0.31	0.69
Aug-11	1.4	2.6	1.7	4.9	10.4	5.7	15.3	0.07	0.12	0.08	0.23	0.49	0.27	0.73
Sep-11	1.8	3.3	1.8	3.5	11.7	7.0	15.2	0.08	0.15	0.08	0.16	0.53	0.31	0.69
Oct-11	3.4	4.3	3.1	7.3	12.3	10.8	19.7	0.11	0.14	0.10	0.24	0.41	0.35	0.65
Nov-11	4.4	3.8	4.7	8.6	8.2	12.9	16.7	0.15	0.13	0.16	0.29	0.28	0.44	0.56
Dec-11	6.9	4.0	4.4	5.7	10.6	15.3	16.3	0.22	0.13	0.14	0.18	0.33	0.48	0.52
Jan-12	4.7	4.2	3.3	6.2	11.3	12.3	17.5	0.16	0.14	0.11	0.21	0.38	0.41	0.59
Feb-12	5.2	3.8	1.8	4.6	12.3	10.8	16.9	0.19	0.14	0.07	0.17	0.44	0.39	0.61
Mar-12	3.7	2.6	3.0	3.9	10.3	9.4	14.1	0.16	0.11	0.13	0.16	0.44	0.40	0.60
Apr-12	1.1	2.9	1.3	2.8	9.2	5.3	12.1	0.06	0.17	0.08	0.16	0.53	0.30	0.70
May-12	1.8	3.4	1.8	3.7	15.2	7.1	18.9	0.07	0.13	0.07	0.14	0.59	0.27	0.73
Jun-12	2.6	3.8	3.1	10.9	17.4	9.5	28.2	0.07	0.10	0.08	0.29	0.46	0.25	0.75
Jul-12	1.2	3.5	1.7	2.3	15.2	6.4	17.5	0.05	0.15	0.07	0.10	0.64	0.27	0.73
Aug-12	1.1	2.7	2.2	2.0	12.1	6.0	14.2	0.06	0.13	0.11	0.10	0.60	0.30	0.70
Sep-12	1.3	2.5	1.3	1.6	10.7	5.1	12.3	0.08	0.14	0.07	0.09	0.61	0.29	0.71
Oct-12	2.7	3.8	2.4	3.3	13.4	8.9	16.6	0.10	0.15	0.10	0.13	0.52	0.35	0.65
Nov-12	7.6	4.8	3.6	11.2	10.2	16.0	21.4	0.20	0.13	0.10	0.30	0.27	0.43	0.57
Dec-12	6.3	5.7	4.4	10.8	11.8	16.4	22.6	0.16	0.15	0.11	0.28	0.30	0.42	0.58
Jan-13	8.5	4.8	5.6	9.2	17.2	18.9	26.4	0.19	0.11	0.12	0.20	0.38	0.42	0.58
Feb-13	4.4	4.7	3.1	6.5	14.8	12.1	21.2	0.13	0.14	0.09	0.19	0.44	0.36	0.64
Mar-13	6.5	3.6	3.4	9.9	13.9	13.5	23.7	0.17	0.10	0.09	0.26	0.37	0.36	0.64
Apr-13	1.5	3.3	1.2	3.4	9.0	6.0	12.5	0.08	0.18	0.06	0.18	0.49	0.33	0.67
May-13	1.2	1.6	0.8	1.8	7.6	3.7	9.3	0.09	0.13	0.06	0.14	0.58	0.28	0.72