

# Airborne observations of newly formed boundary layer aerosol particles under cloudy conditions

Barbara Altstädter<sup>1</sup>, Andreas Platis<sup>2</sup>, Michael Jähn<sup>3,a</sup>, Holger Baars<sup>3</sup>, Janine Lückerrath<sup>4</sup>,  
Andreas Held<sup>4,b</sup>, Astrid Lampert<sup>1</sup>, Jens Bange<sup>2</sup>, Markus Hermann<sup>3</sup>, and Birgit Wehner<sup>3</sup>

<sup>1</sup>Institute of Flight Guidance, Technische Universität Braunschweig, Braunschweig, Germany

<sup>2</sup>Center for Applied Geosciences, Eberhard Karls University Tübingen, Tübingen, Germany

<sup>3</sup>Leibniz Institute for Tropospheric Research, Leipzig, Germany

<sup>4</sup>Atmospheric Chemistry, University of Bayreuth, Bayreuth, Germany

<sup>a</sup>Now at: Laboratory for Air Pollution/Environmental Technology, Empa, Swiss Federal Laboratories for Materials Science and Technology, Dübendorf, Switzerland

<sup>b</sup>Now at: Environmental Chemistry and Air Research, Technical University of Berlin, Berlin, Germany

*Correspondence to:* Barbara Altstädter (b.altstaedter@tu-braunschweig.de)

**Abstract.** This study describes the appearance of ultrafine boundary layer aerosol particles under classical called "non favourable" conditions at the research site of TROPOS (Leibniz Institute for Tropospheric Research) in Melpitz. Airborne measurements for vertical profiling atmospheric boundary layer (ABL) properties and aerosol particles in the size between 5 nm and 10 µm were repeatedly performed with the unmanned aerial system ALADINA (Application of Light-weight Aircraft for Detecting  
5 IN-situ Aerosol) during three seasons between October 2013 and July 2015. More than 100 measurement flights were operated on 23 different days with a total flight duration of 53 h. In 26 % of cases, maxima of ultrafine particles were observed close to inversion layer in altitudes between 400 and 600 m, rapidly mixed in the verticality and mainly transported downwards during short time intervals of cloud gaps. This presentation focuses on two measurement days affected by low-level strato cumulus clouds, but different wind directions (NE, SW) and minimal concentrations ( $< 4.6 \mu\text{g m}^{-3}$ ) of SO<sub>2</sub>, as common indicator for  
10 precursor gases at ground. Taken from vertical profiles, the onset of clouds led to non-linearity of humidity that resulted in increased turbulence at local-scale and caused fast nucleation (e.g., Bigg, 1997; Wehner et al., 2010), but in relation to rapid dilution of surrounding air, seen in sporadic clusters of ground data, so that ultrafine particles disappeared in the verticality. The typical "banana shape" (Heintzenberg et al., 2007) of new particle formation (NPF) and growth was not seen at ground and thus might not have been classified as NPF by pure surface studies.

## 15 1 Introduction

The knowledge of atmospheric aerosols is still incomplete and thus contributes to the most significant uncertainties in climate model predictions, especially the aerosol sources, sinks and transformation processes (IPCC, 2007). Depending on their optical properties, aerosols interact significantly with solar radiation and hence influence the climate directly. In particular, the formation of new particles due to nucleation by gas to particle conversion is subject of investigations. In this context, the  
20 formation and growth rates of nucleation mode particles (ca. 1-15 nm) need a more profound understanding, as by subsequent

and sufficient growth, the particles can act as cloud condensation nuclei and therefore influence the Earth's climate indirectly via affecting the hydrological cycle (e.g., Kerminen et al., 2005). Particle burst events were measured worldwide on different platforms like research stations for long-term monitoring, ships and airborne systems. Studies were performed at various altitudes from the boundary layer up into the lower stratosphere and suggested different sources and proposed several mechanisms for new particle formation (e.g., Wiedensohler et al., 1996; Keil and Wendisch, 2001; Birmili et al., 2003; Kulmala et al., 2004; Hamed et al., 2010; Hamburger et al., 2011). According to these studies, new particle formation (NPF) is likely during preconditions of low temperature, high water vapour content, low surface of pre-existing particles that are often in relation to a low condensation sink, presence of precursor gases and high incoming solar radiation. However, further studies presented events of NPF under non favourable conditions, likewise under the presence of clouds (e.g., Wiedensohler et al., 1997), and these investigations stress the hypothesis that nucleation might be possible under a wider range of conditions than it has been expected so far.

In particular, the small-scale vertical distribution of aerosols in the atmospheric boundary layer (ABL) needs a more profound understanding and has to be implemented in models (Boy et al., 2006). A strong connection between the vertical variability of aerosols and thermodynamic structures, caused by turbulence in the continental boundary layer, has been identified by Boy et al. (2003) at SMEARII (Station for Measuring Ecosystem-Atmosphere Relations) in Hyytiälä in Finland. The study suggested a connection between NPF and higher values of turbulent kinetic energy, in particular for so called "A-events" with high formation and growth rate of particles with a particle diameter of 3 nm. Nilsson et al. (2001) considered that formation mechanisms are caused by dynamic processes in the mixed layer and entrainment zone. Bigg (1997) hypothesized that high humidity and temperature fluctuations may enhance new particle formation. Besides, Easter and Peters (1994) assumed favourable conditions near the inversion due to mixing processes that was afterwards demonstrated by Siebert et al. (2004) with the help of vertical profiling the continental ABL with a balloon-borne system. However, the measurements mentioned so far, except for the balloon, were conducted only in one fixed location so that the situation on a larger scale and in particular, a temporal development in different altitudes is missing.

In this context, the use of airborne systems for atmospheric research is essential to deliver a detailed three-dimensional picture of the aerosol spatio-temporal distribution from the surface up to the free troposphere. For instance, the results of O'Dowd et al. (2009) showed the large-scale variability of the particle concentrations along air mass trajectories, and NPF and growth was observed over distances of several 100 km. For small-scale differences in atmospheric conditions (e.g. cloud occurrence), NPF is distributed heterogeneously. The continental cloud top is favourable for NPF, furthermore the cloud-free regions in between of two cloud parcels (Keil and Wendisch, 2001).

The study of Wehner et al. (2015) presented the variety of nucleation mode particles around clouds over Barbados. The measurements were performed with the helicopter-borne measurement payload ACTOS (Airborne Cloud Turbulence Observation System) in the boundary layer. A high frequency of occurrence of nucleation events (around 83 % of all measurement days) was observed, whereby 50 % of the events existed on a small-scale within 100 m in horizontal extent. In addition, the important role of the entrainment zone for NPF was confirmed by the large data set of 91 flights and the influence of clouds for favourable NPF conditions was verified. Hamburger et al. (2012) studied atmospheric aerosols with the research aircraft FAAM BAe-146

and DLR Falcon 20 and suggested nucleation events in the ABL caused by the presence of high pressure systems and one event in the free troposphere around 8 km altitude due to the updraft during frontal passages. All in all, a high vertical variability of atmospheric aerosols at different locations but in particular in the ABL was observed, however no detailed evolution of the vertical distribution of ABL aerosol in the same area.

- 5 This publication presents results of the unmanned aerial system (UAS) ALADINA that has already been extensively used for boundary layer aerosol field studies in Melpitz (Altstädter et al., 2015; Platis et al., 2016) and was applied for turbulence measurements in West-Africa (Bärfuss et al., 2018). Prior investigations of Platis et al. (2016) showed NPF in correlation with temperature and humidity fluctuations of several orders of magnitudes higher than in the remaining part of the ABL, as assumed by Easter and Peters (1994). In addition, downwards transport of freshly formed particles to ground level was
- 10 observed and supported by the appearance of nucleation mode particles and their subsequent growth relating to an increase of SO<sub>2</sub> concentrations by clear sky. Due to the large data set of vertical profiles that were performed during three different seasons with ALADINA at the research site of TROPOS since 2013, a more complex role of new particle formation influenced by ABL processes is identified. In contrast to typical NPF events at ground by high incoming solar irradiance, other events were observed that might have not been considered by surface observations due to sporadic appearance of ultrafine particles.
- 15 The publication benefits from the comparison of ALADINA with instrumentation at ground and one model output that was applied for the MelCol (Melpitz Column) 2015 experiment, in order to get a better understanding of NPF conditions between the surface and the free troposphere.

This article is structured as followed: Section 2 provides an overview of the instrumentation on the UAS (Subsect. 2.1) and operation at the research site of TROPOS (Subsect. 2.2). The expanded version of the used LES model output is presented

20 in Subsect. 2.3. Section 3 shows the results of newly formed boundary layer aerosol under cloudy conditions during the two measurement days, influenced by the main wind directions (NE, SW), respectively. Finally, Sect. 4 concludes the presented study with the main goal to show the complexity and more frequent occurrence of NPF induced by local processes due to clouds in the ABL.

## **2 Instrumentation, model and research site for profiling boundary layer aerosol**

### **25 2.1 Aerosol and meteorological payload on the unmanned research aircraft ALADINA**

The aircraft Carolo P360 "ALADINA" (Application of Light-weight Aircraft for Detecting IN-situ Aerosol) was designed and developed for atmospheric research in order to investigate the vertical and the horizontal aerosol distribution depending on atmospheric boundary layer properties. The aircraft design and the set up of the instrumentation can be taken from Altstädter et al. (2015). The reliability of the UAS was further supported by the results of Platis et al. (2016) and Bärfuss et al. (2018).

30 Whereby latter presented a detailed overview of ALADINA's flight operation, data procedure and the current payload that was re-engineered in the meantime. In the following, only the instrumentation will be introduced that are of interest in the current article. The payload is equipped with aerosol instrumentation and meteorological sensors with high temporal resolution.

The total aerosol particle number concentration is derived by two Condensation Particle Counters, CPCs (model 3007, TSI Inc., St Paul, USA), with different lower threshold diameters. In the first case study here, the cut-off sizes were 5 and 10 nm, respectively. The difference in the particle number concentrations of both CPCs ( $N_5$  and  $N_{10}$ ), in the following referred to as  $N_{5-10}$ , is used for the number concentration of freshly formed particles. During the second case study, the lower threshold diameters of both CPCs were 7 and 12 nm ( $N_7$ ,  $N_{12}$ ;  $N_{7-12}$ ), respectively. The CPCs were characterised to measure within an uncertainty of  $\pm 20\%$  with a fast response time of 1.3 s. The laboratory results were confirmed by Bärffuss et al. (2018) during field studies in Melpitz. The UAS was placed at the same aerosol inlet as ground monitoring and  $N_{7-12}$  coincide with ground data in the same particle size within the deviations of  $\pm 20\%$  during the sampling period of 1.5 h. The CPC data was not corrected for pressure effect, because for the pressure range of interest, 900–1025 hPa, the counting efficiency of the CPC changes only minimal, i.e., less than 4 % (e.g., Heintzenberg et al., 1999), which is still within the range of the overall CPC uncertainty.

In addition, an Optical Particle Counter, OPC (model GT-526, Met One Instruments Inc., Washington, USA), is installed and measures the size distribution of aerosol particles with six channels from 0.39 to 10  $\mu\text{m}$  (ambient) with an uncertainty of  $\pm 15\%$  and a temporal resolution of 1 s. Here, the aerosol particle size distributions are analysed in the size windows between 390 to 700 nm, as larger particles were not relevant in the study due to minimal appearance. In the following, the particle size distributions of the three channels refer to the total aerosol particle number distribution in the size range between 390 and 500 nm ( $N_{390}$ ), between 500 and 700 nm ( $N_{500}$ ) and 500 to 700 nm ( $N_{700}$ ).

The meteorological instruments are mounted at the tip of the aircraft nose next to the aerosol inlet. The sensor package consists of one five hole probe for measuring the three-dimensional wind vector with a temporal resolution of up to 40 Hz and wind speed with an accuracy of  $\pm 0.5 \text{ m s}^{-1}$  (Wildmann et al., 2014a). The fast temperature sensors have a resolution of 10–20 Hz with an accuracy of  $\pm 0.1 \text{ K}$  (Wildmann et al., 2013). Additionally, one humidity sensor is integrated that probes the water vapour content with a response time of 1.5 s with  $\pm 3\%$  RH accuracy (Wildmann et al., 2014b).

## 2.2 Research site Melpitz and available instrumentation during experiments

The research site Melpitz of TROPOS (51° 32' N, 12° 56' E, 87 m a.s.l.) is located in the lowlands of Saxony, 41 km NE of Leipzig, Germany, and surrounded by flat grass, agricultural areas and forests (e.g. Spindler et al., 2001; Spindler et al., 2004). The flat surface and the fact that no obstacle is in the direct vicinity of the station, enables the use as airfield for a safe take-off and landing of the UAS.

Air masses arriving at Melpitz consist up to 60 % of originally maritime air, due to long distance transport by westerly winds and with predominantly enhanced concentrations of organic matter, sulphate and nitrate (Spindler et al., 2012). In the other frequent case, air masses are transported from industrial regions of the continental site of Eastern Europe and therefore polluted with distinctly higher aerosol particle number concentrations in the boundary layer (e.g. Engler et al., 2007; Junkermann et al., 2016). Aerosol loads are in this case primarily characterised by anthropogenic emissions and classified as "near city background" by Putaud et al. (2004). Manninen et al. (2010) investigated NPF events at 12 different European sites including Melpitz within the framework of the EUCAARI (European Integrated project on Aerosol, Cloud, Climate, and Air Quality

Interactions) project. During the intensive measurement period from March 2008 till April 2009, 57 % of the available analyses were classified as NPF event days with the major occurrence in warm seasons and a significant maximum in May. The highest occurrence of NPF during summer was measured by Hamed et al. (2010), who focused on NPF events in connection with sulphur dioxide ( $\text{SO}_2$ ) concentrations in a ten year period for the Melpitz site from 1996–2006. The fraction of NPF occurrence was 30 to 50 % and related to an increase of  $\text{SO}_2$  concentrations. During the earlier 1.5 y period between 1996 and 1997, 50 % of the available data was classified as nucleation with a maximum in June. However, only 30 % corresponded to NPF in the period from 2003 and 2006 with the highest frequency from June–September.

Therefore, high occurrence of NPF in spring and summer was expected during airborne observations of the presented study. A detailed description of meteorological sensors and gas analysers on site can be taken for instance from Hamed et al. (2010).

This article takes into account the gas concentrations of  $\text{SO}_2$  and  $\text{NO}_x$ , measured in 1 min intervals at ground. The temporal evolution of aerosol is estimated by a Twin Scanning Mobility Particle Sizer, TSMPS, in the size between 3 and 800 nm with a 20 min scan (Wiedensohler et al., 2012). Clouds and aerosol layers are indicated in the lowermost 3–4 km with backscatter signals of ceilometer and lidar. The given range corrected signal (see Fig. 3 and Fig. 5) is the uncalibrated attenuated backscatter coefficient that is damped by molecules and particles, respectively. During the first measurement day, ceilometer data is presented in the wavelength of 1064 nm (e.g., Heese et al., 2010; Wiegner and Geiß, 2012). Whereby during the second measurement day in 2015 (see Subsect. 3.2), the Polly<sup>XT</sup> lidar was available and backscatter signals are shown in the wavelength of 532 nm (e.g., Pal et al., 1992; Althausen et al., 2009; Engelmann et al., 2016). In addition, particle fluxes and fluxes of  $\text{CO}_2$  are estimated in the second case in order to study vertical transport processes of aerosol particles and possible sources and to link between surface and UAS data.

### 2.3 Large-eddy simulations with forced meso-scale model output for MelCol 2015

ALADINA was operated during the field study Melpitz Column (MelCol) from June 16 until July 1, 2015. An LES model output was applied for the experiment and is used for ABL description in order to derive a continuous data set of vertical distribution of turbulent parameters, shown in latent heat flux ( $w'q'$ ), sensible heat flux ( $w'\theta'$ ) and turbulent kinetic energy (TKE). The model itself is described in the following.

Simulations associated with the MelCol 2015 measurement campaign are performed with the All Scale Atmospheric Model (ASAM, Jähn et al., 2015). It has recently been used to investigate heat island effects on atmospheric boundary layer modification, cloud initiation and vertical tracer mixing in the trade wind regime (Jähn et al., 2016). For the present study, large-eddy simulations (LES) for selected days during the campaign were performed with respect to the present synoptic situation, including changes due to large-scale advective tendencies and incoming radiation.

The computational domain is  $25.2 \times 25.2 \text{ km}^2$  wide with Melpitz field site located in the domain centre, see Fig. 1. Since the focus lies on atmospheric boundary layer, the model top is set to a height of 4 km. The land use around Melpitz is characterised by mainly different forest types (farm land, shrubland, urban areas). Due to the relatively flat environment, orographic structures are not taken into account for the simulations, i.e., the model domain could be chosen as flat surface.

The model physics is described by the prognostic TKE equation (Deardorff, 1972; Moeng and Wyngaard, 1989), by the two-moment microphysics scheme (Seifert and Beheng, 2006) with excluded ice phase in order to save computation time and by the multi-layer soil and land-use model (TERRA\_ML, Doms et al., 2011) with a revised scheme for the surface layer (Jiménez et al., 2012).

- 5     The utilised model set up is similar to the one described in Heinze et al. (2017), and it includes large-scale forcing tendencies due to advection of heat and water vapour, subsidence from COSMO (Consortium for Smallscale Modeling, Baldauf et al., 2011) reanalysis; direct, diffuse and terrestrial radiation (1 min averages) directly measured at the field site and soil data (temperature and moisture) from the German weather service (Deutscher Wetterdienst, DWD) station “Klitzschen bei Torgau”, which is located 3 km away from the Melpitz field site.

## 10   **3 Results and discussion**

To almost one third of the performed flight days with ALADINA, bursts of ultrafine particles were observed under cloudy conditions close to the inversion layer. Two of the six measurement days were selected explicitly due to similar weather conditions after the passage of a low pressure system, minimal SO<sub>2</sub> concentrations, but different wind (NE, SW) directions that mainly influence the site (e.g., Engler et al., 2007; Spindler et al., 2012).

### 15   **3.1 Case I April 2014**

- In this section, NPF observations are shown on April 4, 2014, as this day is in contrast to previous investigations from Platis et al. (2016) under clear sky conditions. Large scale analysis revealed that air masses were transported initially from Saharan regions over Eastern Europe within the last days via north-easterly winds. According to data of surface pressure systems that are publicly available by DWD, the research station was influenced by a low pressure system and especially by the passage of  
20   a cold front that finally occluded around 18:00 UTC (-02:00 MEZ).

- A typical "banana shape" (Heintzenberg et al., 2007), as a consequence of adequate condensation of precursor gases, was not observed this day. The development of the size distribution at ground level was calculated from TSMPS (see Subsect. 2.2) data from the research site. The total aerosol particle number concentration in the size of 10 to 800 nm was rather low with a mean concentration of  $8 \times 10^3 \text{ cm}^{-3}$  compared to other days in spring time (e.g., Hamed et al., 2010; Platis et al., 2016). Particles  
25   from 100 to 200 nm in size were predominant with a mean total aerosol particle number concentration of  $1.0 \times 10^4 \text{ cm}^{-3}$  and evenly distributed during the whole day. Larger particles in diameter from 200 to 800 nm played a minor role with a few hundred particles per  $\text{cm}^3$ . Only the ultrafine particles with 10 to 100 nm particle diameter could be distinguished in the temporal distribution and were clustered in two events in the early morning at 02:00 and 04:15 UTC, also one further event in the afternoon at 14:00 UTC (Fig. 2a). A fourth sporadic occurrence of particles between 80 and 150 nm in diameter was  
30   detected at around 19:00 UTC and reached a total maximum aerosol particle number concentration of  $1.5 \times 10^4 \text{ cm}^{-3}$ .

In addition, gas concentrations of SO<sub>2</sub> and NO<sub>x</sub> are presented in Fig. 2b. The SO<sub>2</sub> concentration varied between 1.4 and 4.4  $\mu\text{g m}^{-3}$  from the early morning until 10:00 UTC. Afterwards, the concentration increased slowly to a total maximum of

$11 \mu\text{g m}^{-3}$  at 20:40 UTC and decreased to  $4.8 \mu\text{g m}^{-3}$  in the night.  $\text{NO}_x$  concentrations were measured between 10.2 and  $24.6 \mu\text{g m}^{-3}$  during the day, with temporary higher concentrations in the early morning at 03:50 UTC, from 07:55 to 09:40 UTC and in the afternoon around 18:00 UTC that further coincide with the appearance of ultrafine particles estimated with the TSMPS data.

- 5 The temperature was low between 5.3 and  $12.3^\circ\text{C}$  and the relative humidity reached high values up to 98.1 % in the early morning with a maximum at 08:25 UTC. Due to specific more and only short periods of clear sky, the global radiation,  $GR$ , varied between 400 and  $720 \text{ W m}^{-2}$  (Fig. 2c). The wind speed was moderate in the range of 2 and  $4 \text{ m s}^{-1}$ . Besides one sharp change of the wind direction,  $dd$ , from north to south-west between 08:15 and 08:55 UTC, the prevailing wind direction was from north-east (Fig. 2c).

### 10 3.1.1 Cloudy conditions and heterogeneously mixed atmosphere

A heterogeneous lower atmospheric structure was identified with the ceilometer data and the results for the lowermost 4 km are presented in Fig. 3. A stable night time ABL with a depth of less than 600 m was observed from midnight until around 07:00 UTC. Dense ABL clouds formed within this humid layer from about 07:00 to 10:00 UTC. After 10:00 UTC, the clouds dissolved and the humid convective boundary layer started growing. The maximum ABL depth was observed at around 14:30  
 15 UTC with an ABL-top of 800 m. Convection decayed and a residual layer (RL) remained after 16:00 UTC. Various particle (shown as green and yellow colours) and cloud (shown in white) layers were observed at different altitudes during the whole day. Partly, the lofted aerosol layers (steady existent up to 1.5 km) were mixed into the ABL during the growth process. The higher aerosol layers above 1.5 km height were also present during the whole day but did obviously not affect the boundary layer aerosol conditions. After 20:00 UTC, precipitation was observed which did not reach the ground.

### 20 3.1.2 NPF in the vertical distribution

In the following, vertical profiles obtained with the UAS ALADINA are shown and the flight times are summarised and connected with weather conditions and gas concentration of  $\text{SO}_2$  in Tab. 1. During Case I, on April 4, six measurement flights were performed between a maximum height of 700 and 1000 m a.g.l. from 06:15 until 13:58 UTC.

- Figure 4 displays four vertical profiles, from left to right, of potential temperature  $\theta$ , water vapour mixing ratio  $q$ , total  
 25 aerosol particle number concentration  $N_5$  (green line),  $N_{10}$  (black line) and  $N_{5-10}$  (grey dot), given by the two CPCs, and the total aerosol particle number concentration with the three OPC channels above  $N_{390}$  (blue line),  $N_{500}$  (red line) and  $N_{700}$  (black dashed line) in the time interval at (a) 09:06 UTC, (b) 10:45 UTC, (c) 11:47 and (d) 13:50 UTC.

- The first profile was taken at 09:06 UTC (Fig. 4a) and showed a strong inversion layer in the height between 420 and 550 m a.g.l. that was influenced by air masses of high moisture, identified by the rapid increase of  $q$  from 2 to  $18.5 \text{ g kg}^{-1}$  within  
 30 the inversion layer.  $N_5$  decreased continuously from  $6.0 \times 10^3$  to  $4.0 \times 10^3 \text{ cm}^{-3}$  between the height of 100 and 420 m a.g.l.. Above, NPF event was observed, shown by  $N_{5-10} = 3.5 \times 10^3 \text{ cm}^{-3}$  that was strongly connected to the layer of high moisture. Above the inversion, the total aerosol particle number concentration decreased to  $3.0 \times 10^3 \text{ cm}^{-3}$  for the particles measured with both CPCs and remained constant to the height of 700 m a.g.l. In case of the OPC data, larger particles were mixed below

inversion layer and significantly decreased above. At ground, less than  $250\text{ cm}^{-3}$  were measured with the 390 nm channel,  $50\text{ cm}^{-3}$  for the particle diameter of 500 nm and larger particles (700 nm to  $5\text{ }\mu\text{m}$ ) were almost not detectable. Up to the inversion layer at 420 m a.g.l., the vertical distributions of  $N_{390}$  and  $N_{500}$  were constant and decreased rapidly along with the maximum of  $N_{5-10}$ . Between the altitude of 470 and 700 m a.g.l., the total aerosol particle number concentration of  $N_{390}$  and  $N_{500}$  were constant with low values of  $N_{390}=110\text{ cm}^{-3}$  and  $N_{500}=20\text{ cm}^{-3}$ . At 10:45 UTC (Fig. 4b), the inversion layer was lifted up to the height between 500 and 700 m a.g.l. and still connected to the layer of high moisture. Here, only data from the CPC with the lower cut-off size of 5 nm were available. The CPC detected particles up to  $0.8\times 10^4\text{ cm}^{-3}$  between ground level and the capping inversion at the height of 450 m a.g.l. Hereafter, the amount of  $N_5$  increased steadily to  $3.8\times 10^4\text{ cm}^{-3}$  at the altitude around 700 m a.g.l. with two distinct layers of particles. Below the inversion, ultrafine particles were evenly dispersed within the BL, but above the inversion a heterogeneous distribution was observed up to the height of 800 m a.g.l., where the total aerosol particle number concentration decreased rapidly to a minimum of  $N_5=0.5\times 10^4\text{ cm}^{-3}$ . At the same time,  $N_{390}$  was also evenly distributed below the inversion and reached values around  $220\text{ cm}^{-3}$ . Within the height of 450 and 500 m a.g.l., the concentration decreased to  $N_{390}=130\text{ cm}^{-3}$ . Between 500 and 950 m a.g.l. in altitude, the total aerosol particle number concentration varied between 110 and  $120\text{ cm}^{-3}$ . The same distribution occurred for particles in the diameter size of 500 nm, but with minimal concentrations. The next vertical profile was taken at 11:47 UTC (Fig. 4c). A high increase of  $N_5$  with a maximum total aerosol particle number concentration of  $3.8\times 10^4\text{ cm}^{-3}$  was observed in the height between 150 and 250 m a.g.l. A second layer with enhanced values of  $N_5$  was detected above the inversion layer in the heights of 630 and 950 m a.g.l. with a maximum of  $3.4\times 10^4\text{ cm}^{-3}$ . The results of the OPC were almost the same as 1 h before and significantly affected by the inversion layer. Later, at 13:50 UTC (Fig. 4d), the total aerosol particle number concentration was detected with both CPCs again. From ground level up to the inversion at 800 m a.g.l., the maximum of  $N_{5-10}=0.5\times 10^4\text{ cm}^{-3}$  appeared. Above 800 m a.g.l., the decline of  $N_{390}$  and  $N_{500}$  was still present and linked to the increase of ultrafine particles.

The overall observation was the occurrence of NPF connected to a layer of high moisture close to the inversion depending on the decline of particles  $> 390\text{ nm}$  in size, as an indicator for the condensation sink that might have favoured the particle formation process. Strong gradients in the vertical distribution of the humidity intensified turbulence and caused fast nucleation, as it was proposed by (e.g., Bigg, 1997; Wehner et al., 2010). Although, the main wind direction was from NE, the authors do not consider any emission via long range transport by a combustion source in this case, as it was stated by Junkermann et al. (2016). If there would be a source of ultrafine particles upwind of the site, the particles would grow fast ( $> 50\text{ nm}$  in size) during the transport. Furthermore, if the ultrafine particles observed in Melpitz would have been formed far away, they would not appear as single bursts. Such small structures with sharp gradients to the environment would dilute very quickly within the order of minutes in maximum. However, local sources can not be excluded, as  $\text{NO}_x$  increased during sporadic appearances of particles  $< 50\text{ nm}$  at ground. However, the authors suggest that these particles were produced elsewhere and transported to the site.



### 3.2 Case II June 2015

The second case presents observations from June 21, 2015. ALADINA flights were performed as part of the MelCol 2015 experiment so that additional instrumentation was available at site. Within the last five days starting on June 16, 2015, retrieved back-trajectories showed air masses originated over the Atlantic, so that a low aerosol load was expected. The research site was  
5 influenced by a low pressure system that led to a mixed structure of strato cumulus (StCu) clouds in the height of 500–2500 m. The cloud coverage can be further taken from the Polly<sup>XT</sup> lidar (e.g., Althausen et al., 2009; Engelmann et al., 2016; Baars et al., 2017) data from 06:00 until 18:00 UTC (Fig. 5).

An overview of the performed measurement flights with ALADINA in connection with weather conditions and gas concentrations of SO<sub>2</sub> (between 0.8 and 3.7 µg m<sup>-3</sup>) can be found in Tab. 2. In this case, seven flights were performed between  
10 08:00 and 15:32 UTC with a total maximum height of 1200 m a.g.l. The temperature at 1 m height was in the range of 9.4 and 18.3°C during the day. The wind speed was weak between 0–3.7 m s<sup>-1</sup> coming from SW, so that nucleation was not expected by clean air masses, according to the results of Junkermann et al. (2016).

The size distribution measured by TSMPS at ground is displayed in Fig. 6a. The aerosol load was constantly dispersed until 07:20 UTC with the highest total aerosol particle number concentrations of  $5.0 \times 10^4$  cm<sup>-3</sup> in the size between 30 and 50 nm.  
15 Particles belonging to the accumulation mode were insignificant on this day and reached values of only a few 100 particles cm<sup>-3</sup>. At 07:50 UTC, a sporadic NPF event was observed with a maximum total aerosol particle number concentration of  $1.5 \times 10^5$  cm<sup>-3</sup> in the size between 3 and 10 nm. At the same time, a significant decline of accumulation mode particles was measured. However, the new particle formation event dissolved within 20 min and the total aerosol particle number concentration of particles larger than 20 nm increased, although the concentrations were still low during the day. In the following, five  
20 events of a significant increase of the total aerosol particle number concentration in diameter size between 7 and 20 nm were temporarily clustered at 10:10, 11:50, 13:20, 14:50 and 16:10 UTC. The sporadic appearances of small particles were ongoing with a decrease of total aerosol particle number concentration of particles in the diameter of 30–50 nm. Figure 6b displays the diurnal cycle of CO<sub>2</sub> fluxes,  $w'CO_2'$ , estimated with the EC station that was deployed during the analysed measurement day. During non events, the fluxes were positive and reached a maximum of 0.2 mg kg<sup>-1</sup> m s<sup>-1</sup> in the night at 01:30 UTC. At 05:00  
25 UTC, negative values of  $w'CO_2'$  occurred with a maximum of -0.2 mg kg<sup>-1</sup> m s<sup>-1</sup> at 08:40 UTC, that was at the same time with the sporadic appearance of small particles. In order to show a direct dependence of water vapour on nucleation, Fig. 6c depicts the liquid water path, LWP, calculated from the LES model during the measurement period. Highest values of up to 10 kg m<sup>-2</sup> indicated the existence of dense ABL clouds and nucleation occurred in short time period by mean LWP of 3.5 kg m<sup>-2</sup>. Gas concentrations of SO<sub>2</sub> were low ( $< 3.7$  µg m<sup>-3</sup>) during measurement flights, see Fig. 6d. The maximum occurred in relation  
30 to the occurrence of ultrafine particles in the afternoon at around 14:50 UTC. In contrast to the previous measurement day, the concentration of NO<sub>x</sub> was minimal between 2.5 and 10.1 µg m<sup>-3</sup> and did not coincide with sporadic appearance of ultrafine particles in the TSMPS data.

A similar observation of clustered NPF during cloudy conditions and west wind in Melpitz was recently presented in the study of Größ et al. (2018). Insufficient particle growth rate was significantly connected to fluctuations of hydroxyl radicals and

$\text{H}_2\text{SO}_4$  (shown in the so called Case 4) that were steadily suppressed by clouds in contrast to high increase of  $\text{H}_2\text{SO}_4$  during clear sky events. The authors suggested local processes and steadily influences sources as cause for this formation behaviour. In order to understand possible local processes in the current work, additional estimations of particle fluxes will be considered for the day. Fig. 7 displays particle fluxes taken from the EC (eddy-covariance) station that was deployed several metres away from the UAS operation and ground monitoring. Short lifetime and quick fluctuations of emission (shown in blue, positive particle flux) and deposition (shown in red, negative particle flux) are prevailing during the day. Significant deposition occurred with a maximal particle flux of  $-26 \times 10^6 \text{ m}^{-2} \text{ s}^{-1}$  at 12:30 UTC, taken from the 30 min averaging, that is in relation to the occurrence of ultrafine particles and the break of ABL clouds. Deposition with a maximum of  $-75 \times 10^6 \text{ m}^{-2} \text{ s}^{-1}$  was shown by Buzorius et al. (2001) during a clear nucleation event with particle growth rate, measured with cut-off sizes of 7 and 14 nm, respectively. Moreover, the study observed high frequencies (87 %) of downwards fluxes during nucleation events that might lead to the assumption of local sources from upper layers so that not only emissions near ground level should be considered. Possible causes for NPF in the ABL, initiated by turbulence were as well previously suggested by Nilsson et al. (2001).

Again, no typical shape of new particle formation with high and steadily increasing growth rate was observed during this day with dense cloud coverage of strato cumulus, however nucleation appeared sporadically affected by local processes of clouds.

### 3.2.1 ABL properties during the NPF event

Atmospheric boundary layer conditions were not available from the UAS and estimated with the LES-model output (Sect. 2.3) in a vertical resolution of 50 m, beginning at the altitude of 25 m. The top of the ABL height varied between 900 to 1200 m in the period of 06:00 until 16:00 UTC (Fig. 8). The water vapour mixing ratio  $q$  reached maxima between the heights of 950 and 1210 m near the inversion layer. The total maximum of  $q=18.5 \text{ g kg}^{-1}$  was estimated in the afternoon in the 1 h time interval between 14:00 and 15:00 UTC in the height of 1200 m. The vertical profile of turbulent kinetic energy, TKE, from the surface up to 1500 m showed a strong connection with the structure of the ABL with highest rates between 0.6 and 1.15. In the lowermost 50 m, TKE reached highest value and a total maximum of  $1.18 \text{ m}^2 \text{ s}^{-2}$  between 06:00 and 07:00 UTC. At 150 m, TKE decreased compared to the surface inversion and was stable between 1200 and 1500 m. Close to the transition zone into the FT, TKE was negligible. All in all, the LES output showed a capped inversion with high moisture and moderate wind speed in the lowermost 200 m and simultaneously the highest value of TKE.

### 3.2.2 Vertical mixing of NPF

Two of the six sporadic nucleation events (see Fig. 6) were observed with the UAS ALADINA on June 21, 2015. The first case corresponds to the NPF event at around 08:00 UTC and the results are shown in Fig. 9. The vertical profile of sensible heat flux  $w'\theta'$  and latent heat flux  $w'q'$  were estimated with the LES model and presented for an 1 h interval between 08:00 and 09:00 UTC from the surface up to 1000 m a.g.l. in altitude. During this period, three vertical profiles of the UAS were performed at 08:13 UTC (solid line), 08:20 UTC (dotted line) and 08:26 UTC (dashed line) in the height between 100 and 950 m a.g.l. Note, during this study, the lower cut-off sizes of the two CPCs were 7 and 12 nm in the particle diameter, respectively (see Subsect. 2.1). At 08:13 UTC (black line), the vertical profile of  $N_{7-12}$  showed a high variance; at 100 m a.g.l.  $N_{7-12}$  was

$8 \times 10^4 \text{ cm}^{-3}$  and decreased to  $3 \times 10^4 \text{ cm}^{-3}$  at the height of 390 m a.g.l. Above, a significant maximum of  $16 \times 10^4 \text{ cm}^{-3}$  was measured at the height of 500 m a.g.l. and existed up to 790 m a.g.l. Between the height of 800 and 950 m a.g.l.,  $N_{7-12}$  decreased to  $10 \times 10^4 \text{ cm}^{-3}$  in connection to a layer of maximum  $w'q'=25 \text{ g kg}^{-1} \text{ m s}^{-1}$  and negative values of  $w'\theta'$  from -2 to  $-18 \times 10^{-3} \text{ K m s}^{-1}$ . Only 17 min later, at 08:20 UTC, the lifted layer of enhanced aerosol concentration above 500 m a.g.l. was not observed anymore. However, below the altitude of 410 m a.g.l., the vertical distribution of  $N_{7-12}$  was as before. At 08:26 UTC, the total aerosol particle number concentration of  $N_{7-12}$  was homogeneously mixed in the vertical distribution with a mean total aerosol number concentration of  $2.5 \times 10^4 \text{ cm}^{-3}$ .

For comparison, TSMPS data was estimated for the same size of  $N_{7-12}$ . At 07:40 UTC,  $N_{7-12}=2 \times 10^4 \text{ cm}^{-3}$  was measured at surface, before nucleation started. During the first flight of ALADINA, the maximum of  $N_{7-12}$  was  $9 \times 10^4 \text{ cm}^{-3}$  at ground. Further,  $N_{7-12}$  decreased to  $3 \times 10^4 \text{ cm}^{-3}$  at 08:30 UTC and  $1 \times 10^4 \text{ cm}^{-3}$  at 08:50 UTC. ALADINA observations in the lowermost 100 m a.g.l. were consistent with TSMPS data at ground. Thus, ground observations calculated by integration of a size scan over 20 min can not reproduce the significant spread of  $N_{7-12}$  within the ABL, but are still consistent with profiling data.

Figure 10 displays the same parameters as given in Fig. 9 for the time interval between 14:00 and 15:00 UTC, corresponding to the fifth sporadic nucleation event seen in TSMPS observations on June 21, 2015. At 14:16 UTC, the vertical profile of ALADINA (solid line) showed a homogeneous distribution of  $N_{7-12}$  with a mean total aerosol particle number concentration of  $3.5 \times 10^4 \text{ cm}^{-3}$ . The second profile was measured at 14:57 UTC (dotted line) with a significant increase of  $N_{7-12}=1.8 \times 10^5 \text{ cm}^{-3}$  at ground and decreased rapidly in the vertical pattern between the height of 160 and 1100 m. The region corresponds to a maximum of sensible heat flux of  $56 \times 10^{-3} \text{ K m s}^{-1}$ . The third vertical profile was taken at 15:06 UTC (dashed line) and  $N_{7-12}$  was mixed in the vertical distribution by a mean total aerosol number concentration of  $4.2 \times 10^4 \text{ cm}^{-3}$ . The vertical distribution of latent heat flux showed an continuously increase with a maximum of  $38 \text{ g kg}^{-1} \text{ m s}^{-1}$  at 1150 m.

Again, airborne data was consistent with ground observations by TSMPS, however the temporal evolution of vertical profiles led to the assumption, that NPF occurred at ground instead of aloft. However, fast mixing was observed and at the same time an increase of the total aerosol particle number concentration in the vertical pattern.

## 4 Concluding remarks

Freshly formed boundary layer aerosol was measured with the unmanned aerial system ALADINA under cloudy conditions at the research site of TROPOS in Melpitz. In total, 105 airborne measurements with total flight duration of 53 h were performed on 23 measurement days since October 2013. During six of these measurement days, new particle formation (NPF) events were observed under non favourable conditions (e.g., low concentrations of precursor gases, dense cloud coverage) near the inversion layer and were mixed vertically induced by atmospheric boundary layer (ABL) dynamic processes. However, only sporadic appearances of small particles were detected at ground and might not have been taken into account as NPF event. This study focused on two different measurement days: I) on April 4, 2014 by north-east wind and II) on June 21, 2015 under south-west wind. During the first case, a maximum of  $N_{5-10}=3.5 \times 10^3 \text{ cm}^{-3}$  was detected above a capping inversion layer at

the height of around 400 m a.g.l. in connection with a decline of  $N_{390}$  from 230 to 130  $\text{cm}^{-3}$ . High moisture with a maximum of  $q=18.5 \text{ g kg}^{-1}$  was present above the inversion layer. The layer of the freshly formed aerosol spread out vertically in the boundary layer with a maximum of  $3.8 \times 10^4 \text{ cm}^{-3}$  for particles with a diameter size exceeding 5 nm. However, altered clusters (particle size between 30 and 50 nm) were measured at ground with a TSMPS during the process in relation to an increase of  $\text{NO}_x$  so that anthropogenic emissions might have been favoured the NPF occurrence in the residual layer, as well. The research site was influenced by NE wind, so that high emissions of anthropogenic sources were expected from Eastern Europe like stated by Junkermann et al. (2016), who found new particle formation events in connection with local plumes over Eastern Germany. However, changes in wind direction were not seen in wind measurements with ALADINA. The study of Bianchi et al. (2016) at the Jungfraujoch site in the free troposphere might support the present observations that NPF occurs under more conditions as expected so far; NPF was not related to sulphuric acid formation, which is a common identifier for nucleation, instead NPF depended on high concentrations of organic compounds from anthropogenic origin. On June 21, 2015, the site was influenced by a low pressure system with strato cumulus clouds and SW wind. At 08:13 UTC, ALADINA observed a maximum of  $N_{7-12} = 1.6 \times 10^5 \text{ cm}^{-3}$  at the altitude of 420 m a.g.l. and decreased while descending. Within 17 min, the newly formed aerosol load was mixed vertically or disappeared as confirmed by pronounced fluxes of sensible heat, taken from an LES model output, with a maximum of  $w'\theta' = 81 \times 10^{-3} \text{ K m s}^{-1}$  in the lowermost 160 m. The temporal evolution showed that the formation observed at ground originated from the ABL and was mixed vertically and transported downwards to the surface, as previously observed in Platis et al. (2016) under clear sky conditions. Another sporadic occurrence of ultrafine particles was captured with the UAS in the afternoon between 14:10 and 15:10 UTC and showed the formation process occurred at ground and was rapidly mixed in the vertical distribution initiated by significant increase of  $w'\theta' = 58 \times 10^{-3} \text{ K m s}^{-1}$  in the lowermost 150 m. Besides, the UAS observations were consistent with TSMPS data in the same diameter range of  $N_{7-12}$ , clarifying the reliability of the system.  $\text{CO}_2$  and particle fluxes indicated large fluctuations upwards and downwards, depending on the variation of ABL clouds, that coincide with sporadic NPF at ground. For instance, high deposition with a maximum particle flux of  $-26 \times 10^6 \text{ m}^{-2} \text{ s}^{-1}$  was measured along with a particle burst in the size of 10 and 40 nm.

To conclude, high water content, and pronounced turbulent fluxes were clearly the dominant factor in the atmospheric boundary layer to make occur NPF, even if conditions were generally not favourable. The authors' hypothesis is that the events observed here are locally restricted and not homogeneous over larger regions. This is because in particular the clouds create inhomogeneities in the intensity of solar radiation reaching the ground. On the other hand, clouds and their surrounding regions, as well as the inversion layer, are influenced by large gradients in various parameters. These gradients in combination with local turbulence may create strong non-linearities being a favourable environment for new particle formation which has been discussed theoretically by Easter and Peters (1994) and shown in-situ by Wehner et al. (2015). The dynamics of such an event being locally restricted to small regions are completely different and can not be explained by characteristics of a large-scale event and relation to air mass. The small NPF events may occur suddenly, followed by fast growth but also fast dilution, confirmed by sporadic clusters in TSMPS data. To summarise, the observations lead to the assumption, that occurrence of NPF within the boundary layer are underestimated, if only ground observations are available and a more profound understanding of the vertical structure of the ABL is necessary in order to characterise NPF events.

*Code and data availability.* At the current state, the data sets are not publicly accessible, as analyses and further publications of the campaign MelCol 2015 are still in progress by other participants, but will be delivered upon request. The open access of data in e.g. PANGAEA will be provided in future. To get access to the source code and additional scripts for pre- and postprocessing of LES model, registration at the TROPOS Git hosting website [gitorious.tropos.de/](http://gitorious.tropos.de/) is mandatory. Additional information can be found at the ASAM webpage (<http://asam.tropos.de/>).

*Competing interests.* The authors declare that they have no conflict of interest.

*Acknowledgements.* This work is funded by the German Research Foundation (DFG) under the project numbers LA 2907/5-1, WI 1449/22-1, BA 1988/14-1 and LA 2907/5-2, WI 1449/22-2, BA 1988/14-2. The authors thank Lutz Bretschneider, Nico Weil and Simon Nieschke for their technical support and for performance as good safety pilots. We acknowledge Norman Wildmann, Henning Busse and Andreas Scholtz for active assistance with the ALADINA system. Thanks to Huguette Djoumsap Takam, Mareike Decker and Maike Siekmann who were studying different formation events in Melpitz and have brought forward this study. A special thank to the whole TROPOS-team and MelCol participants, especially Ralf Käthner, Achim Grüner and Gerald Spindler for the valuable support on site and for offering the access to Melpitz and TROPOS data. The authors thank Armin Raabe of the Institute of Meteorology from the University Leipzig for providing turbulence data at ground. The simulations were performed at the Center for Information Services and High Performance Computing (ZIH) at TU Dresden. The authors acknowledge the two anonymous referees and Wolfgang Junkermann for detailed proof reading of the manuscript and their constructive comments.

## References

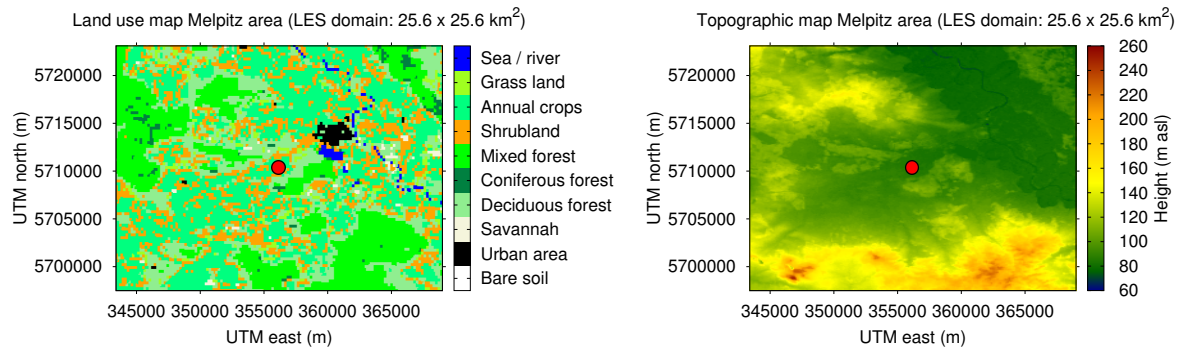
- Althausen, D., Engelmann, R., Baars, H., Heese, B., Ansmann, A., Müller, D., and Komppula, M.: Portable Raman Lidar Pol-lyXT for automated profiling of aerosol backscatter, extinction, and depolarization, *J. Atmos. Ocean. Tech.*, 26, 2366–2378, <https://doi.org/10.1175/2009JTECHA1304.1>, 2009.
- 5 Altstädter, B., Platis, A., Wehner, B., Scholtz, A., Wildmann, N., Hermann, M., Käthner, R., Baars, H., Bange, J., and Lampert, A.: ALADINA – an unmanned research aircraft for observing vertical and horizontal distributions of ultrafine particles within the atmospheric boundary layer, *Atmos. Meas. Tech.*, 8, 1627–1639, doi:10.5194/amt-8-1627-2015, 2015.
- Baars, H., Seifert, P., Engelmann, R., and Wandinger, U.: Target categorization of aerosol and clouds by continuous multiwavelength-polarization lidar measurements, *Atmos. Meas. Tech.*, 10, 3175–3201, <https://doi.org/10.5194/amt-10-3175-2017>, 2017
- 10 Baldauf, M., Seifert, A., Förstner, J., Majewski, D., Raschendorfer, M., and Reinhardt, T.: Operational convective-scale numerical weather prediction with the COSMO model: description and sensitivities, *Mon. Weather Rev.*, 139, 3887–3905, <https://doi.org/10.1175/MWR-D-10-05013.1>, 2011.
- Bärfuss, K., Pätzold, F., Altstädter, B., Kathe, E., Nowak, S., Bretschneider, L., Bestmann, U., and Lampert, A.: New Setup of the UAS ALADINA for Measuring Boundary Layer Properties, Atmospheric Particles and Solar Radiation, *Atmosphere*, 9, 28, doi:10.3390/atmos9010028, 2018.
- 15 Bianchi, F., Tröstl, J., Junninen, H., Frege, C., Henne, S., Hoyle, C.R., Molteni, U., Herrmann, E., Adamov, A., Bukowiecki, N., Chen, X., Duplissy, J., Gysel, M., Hutterli, M., Kangasluoma, J., Kontkanen, J., Kürten, A., Manninen, H. E., Münch, S., Peräkylä, O., Petäjä, T., Rondo, L., Williamson, C., Weingartner, E., Curtius, J., Worsnop, D. R., Kulmala, M., Dommen, J., and Baltensperger, U.: New particle formation in the free troposphere: A question of chemistry and timing, *Science*, 352, 6289, 1109–1112, doi:10.1126/science.aad5456, 2016.
- 20 Bigg, E. K.: A mechanism for the formation of new particles in the atmosphere, *Atmos. Res.*, 43, 2, 129–137, doi:10.1016/S0169-8095(96)00020-8, 1997.
- Birmili, W., Berresheim, H., Plass-Dülmer, C., Elste, T., Gilge, S., Wiedensohler, A., and Uhrner, U.: The Hohenpeissenberg aerosol formation experiment (HAFEX): a long-term study including size-resolved aerosol, H<sub>2</sub>SO<sub>4</sub>, OH, and monoterpenes measurements, *Atmos. Chem. Phys.*, 3, 361–376, doi:10.5194/acp-3-361-2003, 2003.
- 25 Boy, M., Hellmuth, O., Korhonen, H., Nilsson, E. D., ReVelle, D., Turnipseed, A., Arnold, F., and Kulmala, M.: MALTE – model to predict new aerosol formation in the lower troposphere, *Atmos. Chem. Phys.*, 6, 4499–4517, doi:10.5194/acp-6-4499-2006, 2006.
- Boy, M., Rannik, Ü., Lehtinen, K. E. J., Tarvainen, V., Hakola, H., and Kulmala, M.: Nucleation events in the continental boundary layer: Long-term statistical analyses of aerosol relevant characteristics, *J. Geophys. Res.*, 108, 4667, doi:10.1029/2003JD003838, 2003.
- 30 Buzorius, G., Rannik, Ü., Nilsson, D., and Kulmala, M.: Vertical fluxes and micrometeorology during aerosol particle formation events, *Tellus B*, 53, 4, 394–405, doi:10.3402/tellusb.v53i4.16612, 2001.
- Deardorff, J. W.: Numerical Investigation of Neutral and Unstable Boundary Layers, *J. Atmos. Sci.*, 29, 91–115, 1972.
- Doms, G., Förstner, J., Heise, E., Herzog, H.-J., Mironov, D., Raschendorfer, M., Reinhardt, T., Ritter, B., Schrodin, R., Schulz, J.-P., and Vogel, G.: A Description of the Nonhydrostatic Regional COSMO Model, *Deutscher Wetterdienst*, 2011.
- 35 Easter, R. C., and Peters, L. K.: Binary homogeneous nucleation: Temperature and relative humidity fluctuations, nonlinearity, and aspects of new particle production in the atmosphere, *J. Appl. Meteorol.*, 33, 775–784, doi:http://dx.doi.org/10.1175/1520-0450(1994)033<0775:BHTAR>2.0.CO;2, 1994.

- Engelmann, R., Kanitz, T., Baars, H., Heese, B., Althausen, D., Skupin, A., Wandinger, U., Komppula, M., Stachlewska, I. S., Amiridis, V., Marinou, E., Mattis, I., Linné, H., and Ansmann, A.: The automated multiwavelength Raman polarization and water-vapor lidar PollyXT: the neXT generation, *Atmos. Meas. Tech.*, 9, 1767–1784, <https://doi.org/10.5194/amt-9-1767-2016>, 2016.
- Engler, C., Rose, D., Wehner, B., Wiedensohler, A., Brüggemann, E., Gnauk, T., Spindler, G., Tuch, T., and Birmili, W.: Size distributions of non-volatile particle residuals ( $D_p < 800$  nm) at a rural site in Germany and relation to air mass origin, *Atmos. Chem. Phys.*, 7, 5785–5802, [doi:10.5194/acp-7-5785-2007](https://doi.org/10.5194/acp-7-5785-2007), 2007.
- Größ, J., Hamed, A., Sonntag, A., Spindler, G., Manninen, H. E., Nieminen, T., Kulmala, M., Hörrak, U., Plass-Dülmer, C., Wiedensohler, A., and Birmili, W.: Atmospheric new particle formation at the research station Melpitz, Germany: connection with gaseous precursors and meteorological parameters, *Atmos. Chem. Phys.*, 18, 1835–1861, <https://doi.org/10.5194/acp-18-1835-2018>, 2018.
- 10 Hamed, A., Birmili, W., Joutsensaari, J., Mikkonen, S., Asmi, A., Wehner, B., Spindler, G., Jaatinen, A., Wiedensohler, A., Korhonen, H., Lehtinen, K.E.J., and Laaksonen, A.: Changes in the production rate of secondary aerosol particles in Central Europe in view of decreasing  $\text{SO}_2$  emissions between 1996 and 2006, *Atmos. Chem. Phys.*, 10, 1071–1091, [doi:10.5194/acp-10-1071-2010](https://doi.org/10.5194/acp-10-1071-2010), 2010.
- Hamburger, T., McMeeking, G., Minikin, A., Birmili, W., Dall’Osto, M., O’Dowd, C. D., Flentje, H., Henzing, B., Junninen, H., Kristensson, A., de Leeuw, G., Stohl, A., Burkhardt, J. F., Coe, H., Krejci, R., and Petzold, A.: Overview of the synoptic and pollution situation over Europe during the EUCAARI-LONGREX field campaign, *Atmos. Chem. Phys.*, 11, 1065–1082, [doi:10.5194/acp-11-1065-2011](https://doi.org/10.5194/acp-11-1065-2011), 2011.
- 15 Hamburger, T., McMeeking, G., Minikin, A., Petzold, A., Coe, H., and Krejci, R.: Airborne observations of aerosol microphysical properties and particle ageing processes in the troposphere above Europe, *Atmos. Chem. Phys.*, 12, 11533–11554, [doi:10.5194/acp-12-11533-2012](https://doi.org/10.5194/acp-12-11533-2012), 2012.
- Heese, B., Flentje, H., Althausen, D., Ansmann, A., and Frey, S.: Ceilometer lidar comparison: backscatter coefficient retrieval and signal-to-noise ratio determination, *Atmos. Meas. Tech.*, 3, 1763–1770, <https://doi.org/10.5194/amt-3-1763-2010>, 2010.
- 20 Heinze, R., Moseley, C., Böske, L. N., Muppa, S. K., Maurer, V., Raasch, S., and Stevens, B.: Evaluation of large-eddy simulations forced with mesoscale model output for a multi-week period during a measurement campaign, *Atmos. Chem. Phys.*, 17, 7083–7109, <https://doi.org/10.5194/acp-17-7083-2017>, 2017.
- Heintzenberg, J., Wiedensohler, A., Conrath, T., Kütz, S., and Dubois, R.: Modification of a commercial condensation particle counter for boundary layer balloon-borne aerosol studies, *J. Aerosol Sci.*, 29, S707–S708, [https://doi.org/10.1016/S0021-8502\(98\)90536-5](https://doi.org/10.1016/S0021-8502(98)90536-5), 1999.
- 25 Heintzenberg, J., Wehner, B., and Birmili, W.: ‘How to find bananas in the atmospheric aerosol’: new approach for analyzing atmospheric nucleation and growth events, *Tellus B*, 59, 273–282, [doi:10.1111/j.1600-0889.2007.00249.x](https://doi.org/10.1111/j.1600-0889.2007.00249.x), 2007.
- IPCC, 2007, Climate change 2007: the physical science basis, In: Solomon, S., et al., (Eds.), Contribution of Working Group I to the Fourth Assessment Report of the Intergovernmental Panel on Climate Change. Cambridge University Press, Cambridge and New York, 996, 2007.
- 30 Jähn, M., Knoth, O., König, M., and Vogelsberg, U.: ASAM v2.7: a compressible atmospheric model with a Cartesian cut cell approach. *Geosci. Model Dev.*, 8, 317–340, [doi: 10.5194/gmd-8-317-2015](https://doi.org/10.5194/gmd-8-317-2015), 2015.
- Jähn, M., Muñoz-Esparza, D., Chouza, F., Reitebuch, O., Knoth, O., Haarig, M., and Ansmann, A.: Investigations of boundary layer structure, cloud characteristics and vertical mixing of aerosols at Barbados with large eddy simulations, *Atmos. Chem. Phys.*, 16, 651–674, [doi:10.5194/acp-16-651-2016](https://doi.org/10.5194/acp-16-651-2016), 2016.
- 35 Jiménez, P. A., Dudhia, J., Gonzalez-Rouco, J. F., Navarro, J., Montavez, J. P., and Garcia-Bustamante, E.: A Revised Scheme for the WRF Surface Layer Formulation, *Mon. Weather Rev.*, 140, 898–918, 2012.

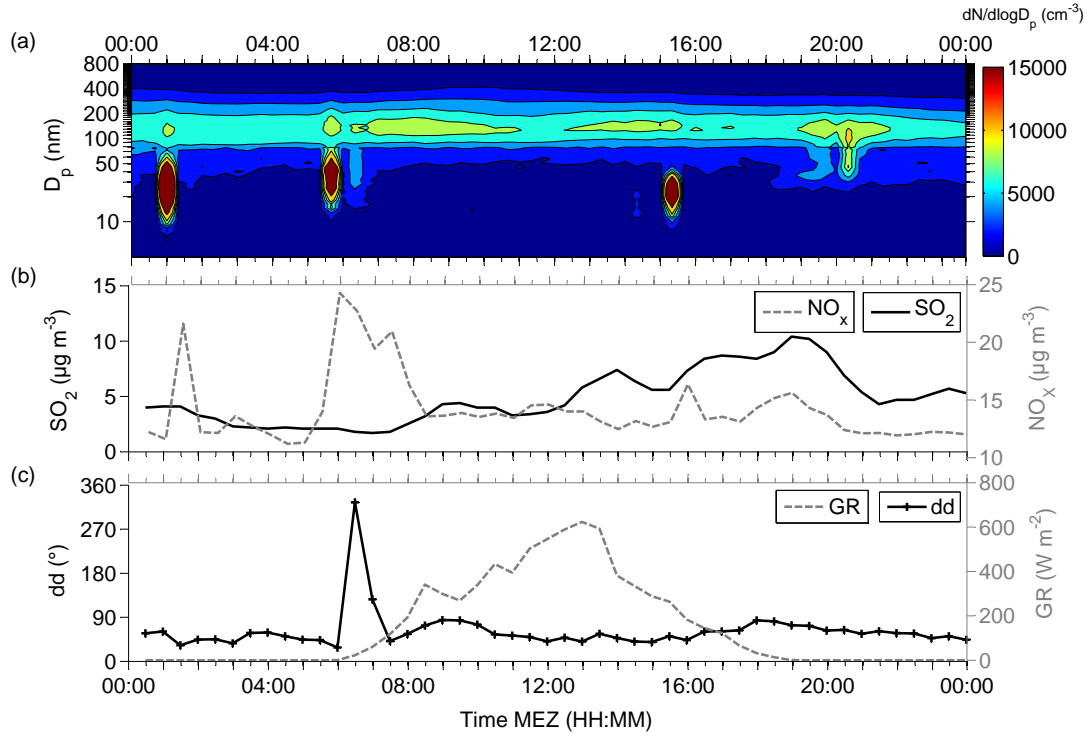
- Junkermann, W., Vogel, B., and Bangert, M.: Ultrafine particles over Germany – an aerial survey, *Tellus B*, 68, 29250, <http://dx.doi.org/10.3402/tellusb.v68.29250>, 2016.
- Keil, A., and Wendisch, M.: Bursts of Aitken mode and ultrafine particles observed at the top of continental boundary layer clouds, *Aerosol Sci.*, 32, 649–660, doi:10.1016/S0021-8502(00)00102-6, 2001.
- 5 Kerminen, V.-M., Lihavainen, H., Komppula, M., Viisanen, Y., and Kulmala, M.: Direct observational evidence linking atmospheric aerosol formation and cloud droplet activation, *Geophys. Res. Lett.*, 32, L14803, doi:10.1029/2005GL023130, 2005.
- Kulmala, M., Vehkamäki, H., Petäjä, T., Dal Maso, M., Lauri, A., Kerminen, V.-M., Birmili, W., and McMurry, P. H.: Formation and growth rates of ultrafine atmospheric particles: a review of observations, *Aerosol Sci.*, 35, 2, 143–176, doi:10.1016/j.jaerosci.2003.10.003, 2004.
- Manninen, H. E., Nieminen, T., Asmi, E., Gagné, S., Häkkinen, S., Lehtipalo, K., Aalto, P., Vana, M., Mirme, A., Mirme, S., Hörrak, U.,  
10 Plass-Dülmer, C., Stange, G., Kiss, G., Hoffer, A., Törő, N., Moerman, M., Henzing, B., de Leeuw, G., Brinkenberg, M., Kouvarakis, G. N., Bougiatioti, A., Mihalopoulos, N., O’Dowd, C. D., Ceburnis, D., Arneth, A., Svenningsson, B., Swietlicki, E., Tarozzi, L., Decesari, S., Facchini, M. C., Birmili, W., Sonntag, A., Wiedensohler, A., Boulon, J., Sellegri, K., Laj, P., Gysel, M., Bukowiecki, N., Weingartner, E., Wehrle, G., Laaksonen, A., Hamed, A., Joutsensaari, J., Petäjä, T., Kerminen, V.-M., and Kulmala, M.: EUCAARI ion spectrometer measurements at 12 European sites – analysis of new particle formation events, *Atmos. Chem. Phys.*, 10, 7907–7927, doi:10.5194/acp-  
15 10-7907-2010, 2010.
- Moeng, C.-H. and Wyngaard, J. C.: Evaluation of Turbulent Transport and Dissipation Closures in Second-Order Modeling, *J. Atmos. Sci.*, 46, 2311–2330, 1989.
- Nilsson, E. D., Rannik, Ü., Kulmala, M., Buzorius, G., and O’Dowd, C. D.: Effects of continental boundary layer evolution, convection, turbulence and entrainment, on aerosol formation, *Tellus*, 53, 4, 441–461, doi:10.1034/j.1600-0889.2001.d01-31.x, 2001.
- 20 O’Dowd, C. D., Yoon, Y. J., Junkermann, W., Aalto, P., Kulmala, M., Lihavainen, H., and Viisanen, Y.: Airborne measurements of nucleation mode particles II: boreal forest nucleation events, *Atmos. Chem. Phys.*, 9, 937–944, doi:10.5194/acp-9-937-2009, 2009.
- Pal, S. R., W. Steinbach, and Carswell, A. I.: Automated method for lidar determination of cloud-base height and vertical extent, *Appl. Optics*, 31, 1488–1494, <https://doi.org/10.1364/AO.31.001488>, 1992.
- Platis, A., Altstädter, B., Wehner, B., Wildmann, N., Lampert, A., Hermann, M., Birmili, W., and Bange, J.: An observational case  
25 study on the influence of atmospheric boundary layer dynamics on the new particle formation, *Bound.-Lay. Meteorol.*, 158, 1, 67–92, doi:10.1007/s10546-015-0084-y, 2016.
- Putaud, J.-P., Raes, F., Van Dingenen, R., Brüggemann, E., Facchini, M.-C., Decesari, S., Fuzzi, S., Gehrig, R., Hüglin, C., Laj, P., Lorbeer, G., Maenhaut, W., Mihalopoulos, N., Müller, K., Querol, X., Rodriguez, S., Schneider, J., Spindler, G., Ten Brink, H., Tørseth, K., and Wiedensohler, A.: A European aerosol phenomenology – 2: chemical characteristics of particulate matter at kerbside, urban, rural and  
30 background sites in Europe, *Atmos. Environ.*, 38, 16, 2579–2595, doi:10.1016/j.atmosenv.2004.01.041, 2004.
- Seifert, A., and Beheng, K. D.: A two-moment cloud microphysics parameterization for mixed-phase clouds, *Meteorol. Atmos. Phys.*, 92, 45–66, 2006.
- Siebert, H., Stratmann, F., and Wehner, B.: First observations of increased ultrafine particle number concentrations near the inversion of a continental planetary boundary layer and its relation to ground-based measurements, *Geophys. Res. Lett.*, 31, L09102, doi:10.1029/2003GL019086, 2004.
- 35 Spindler, G., Gnauk, T., Grüner, A., Iinuma, Y., Müller, K., Scheinhardt, S., and Herrmann, H.: Size-segregated characterization of PM10 at the EMEP site Melpitz (Germany) using a five-stage impactor: a six year study, *J. Atmos. Chem.*, 69, 127–157, doi:10.1007/s10874-012-9233-6, 2012.



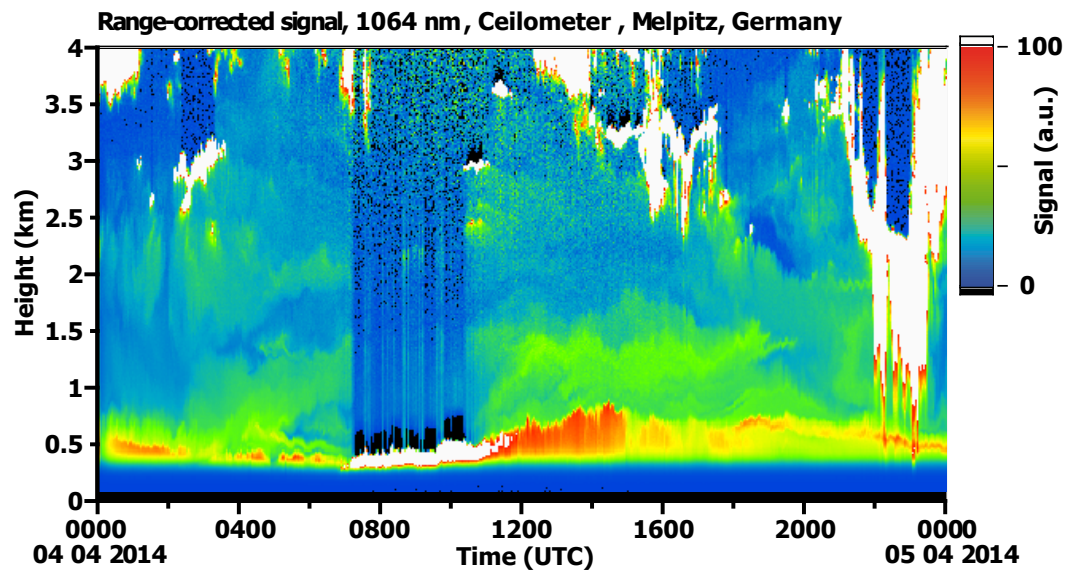
- Spindler, G., Müller, K., Brüggemann, E., Gnauk, T., Herrmann, H.: Long-term-size-segregated characterization of PM<sub>10</sub>, PM<sub>2.5</sub> and PM<sub>1</sub> at the IfT research station Melpitz downwind of Leipzig (Germany), *Atmos. Environ.*, 38, 5333–5347, doi:10.1016/j.atmosenv.2003.12.047, 2004.
- Spindler, G., Teichmann, U., and Sutton, M. A.: Ammonia dry deposition over grassland – micrometeorological flux-gradient measurements and bi-directional flux calculations using an inferential model, *Q. J. R. Meteorol. Soc.*, 127, 795–814, doi:10.1002/qj.49712757305, 2001.
- Wehner, B., Siebert, H., Ansmann, A., Ditas, F., Seifert, P., Stratmann, F., Wiedensohler, A., Apituley, A., Shaw, R. A., Manninen, H. E., and Kulmala, M.: Observations of turbulence-induced new particle formation in the residual layer, *Atmos. Chem. Phys.*, 10, 4319–4330, <https://doi.org/10.5194/acp-10-4319-2010>, 2010.
- Wehner, B., Werner, F., Ditas, F., Shaw, R. A., Kulmala, M., and Siebert, H.: Observations of new particle formation in enhanced UV irradiance zones near cumulus clouds, *Atmos. Chem. Phys.*, 15, 11701–11711, doi:10.5194/acp-15-11701-2015, 2015.
- Wiedensohler, A., Birmili, W., Nowak, A., Sonntag, A., Weinhold, K., Merkel, M., Wehner, B., Tuch, T., Pfeifer, S., Fiebig, M., and others: Mobility particle size spectrometers: harmonization of technical standards and data structure to facilitate high quality long-term observations of atmospheric particle number size distributions, *Atmos. Meas. Tech.*, 5, 657–685, doi:10.5194/amt-5-657-2012, 2012.
- Wiedensohler, A., Covert, D. S., Swietlicki, E., Aalto, P., Heintzenberg, J., and Leck, C.: Occurrence of an ultrafine particle mode less than 20 nm diameter in the marine boundary layer during Arctic summer and autumn, *Tellus*, 48, 213–222, doi:10.1034/j.1600-0889.1996.t01-1-00006.x, 1996.
- Wiedensohler, A., Hansson, H.-C., Orsini, D., Wendisch, M., Wagner, F., Bower, K. N., Chouurlarton, T. W., Wells, M., Parkin, M., Acker, K., Wieprecht, W., Facchini, M. C., Lind, J. A., Fuzzi, S., Arends, B. G., and Kulmala, M.: Night-time formation and occurrence of new particles associated with orographic clouds, *Atm. Environ.*, 31, 16, 2545–2559, doi:10.1016/S1352-2310(96)00299-3, 1997.
- Wiegner, M., and Geiß, A.: Aerosol profiling with the Jenoptik ceilometer CHM15kx, *Atmos. Meas. Tech.*, 5, 1953–1964, <https://doi.org/10.5194/amt-5-1953-2012>, 2012.
- Wildmann, N., Mauz, M., and Bange, J.: Two fast temperature sensors for probing of the atmospheric boundary layer using small remotely piloted aircraft (RPA), *Atmos. Meas. Tech.*, 6, 8, 2101–2113, doi:10.5194/amt-6-2101-2013, 2013.
- Wildmann, N., Ravi, S., and Bange, J.: Towards higher accuracy and better frequency response with standard multi-hole probes in turbulence measurement with remotely piloted aircraft (RPA), *Atmos. Meas. Tech.*, 7, 1027–1041, <https://doi.org/10.5194/amt-7-1027-2014>, 2014a.
- Wildmann, N., Kaufmann, F., and Bange, J.: An inverse modelling approach for frequency response correction of capacitive humidity sensors in ABL research with small unmanned aircraft, *Atmos. Meas. Tech.*, 7, 4407–4438, doi:10.5194/amtd-7-4407-2014, 2014b.



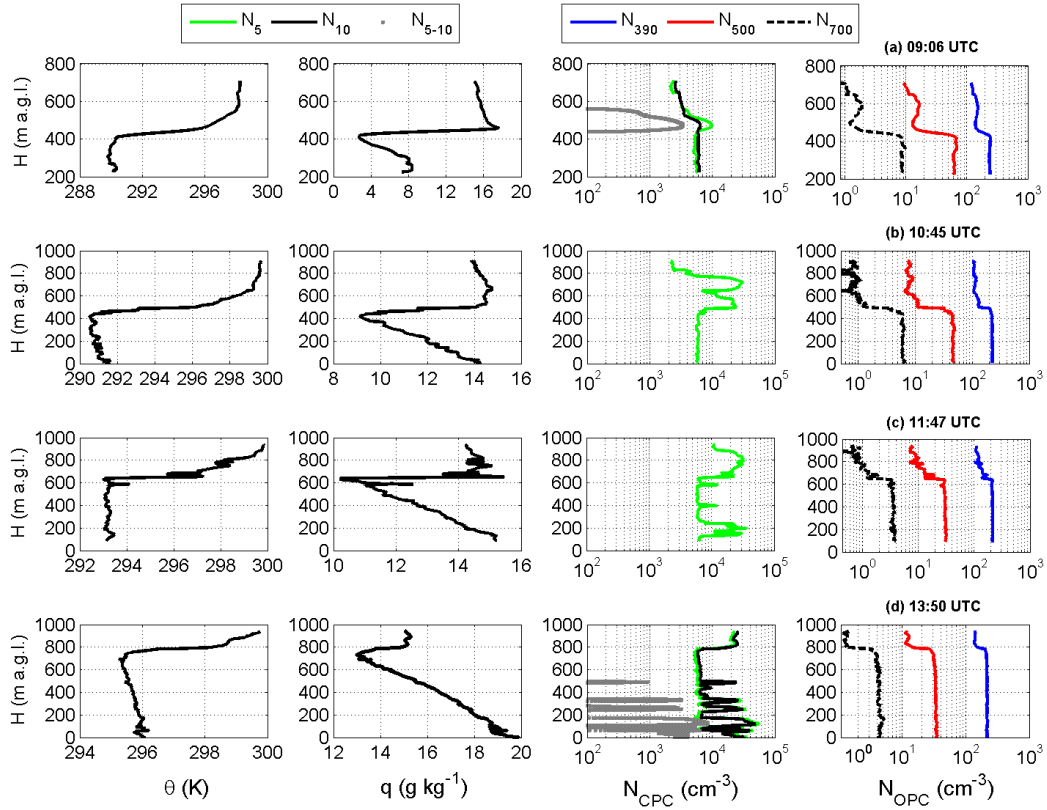
**Figure 1.** Land use and topography of the simulation domain considered in the All Scale Atmospheric Model (ASAM, Jähn et al., 2015) around the Melpitz field site, located in the domain centre (red dot). The large variation of vegetations on small-scale are indicated by different colours (left) and the topography ranging from 60 to 260 m above sea level (a.s.l.) is also indicated with the same resolution (right).



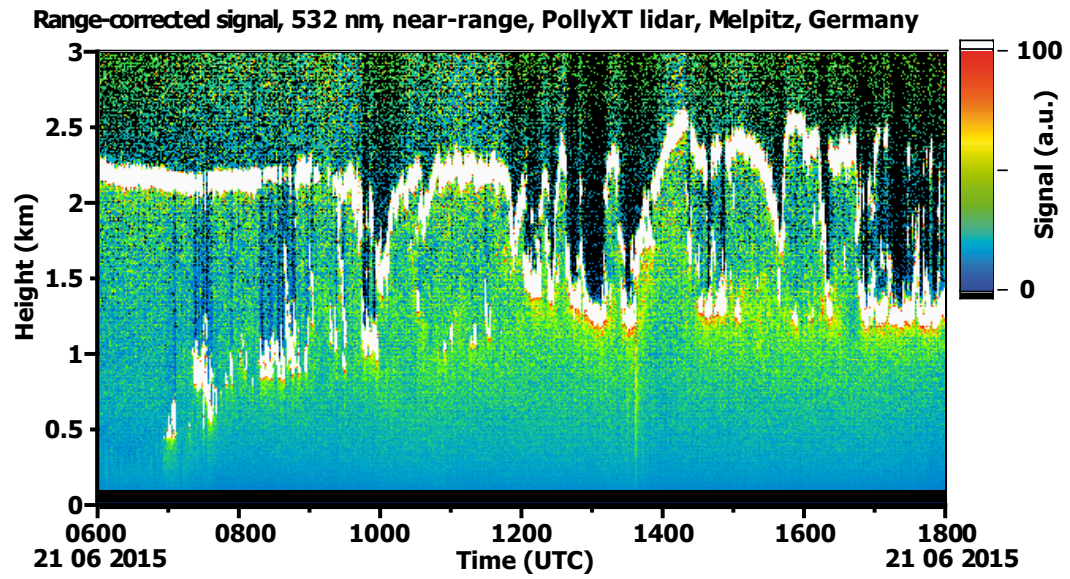
**Figure 2.** Ground observations in Melpitz on April 4, 2014. (a) Particle size distribution measured with TSMPS between 3 and 800 nm, (b) gas concentrations of  $\text{SO}_2$  and  $\text{NO}_x$ , (c) wind direction  $dd$  and global radiation  $GR$ . More information on ground instrumentation can be taken from Wiedensohler et al. (2012) and Hamed et al. (2010).



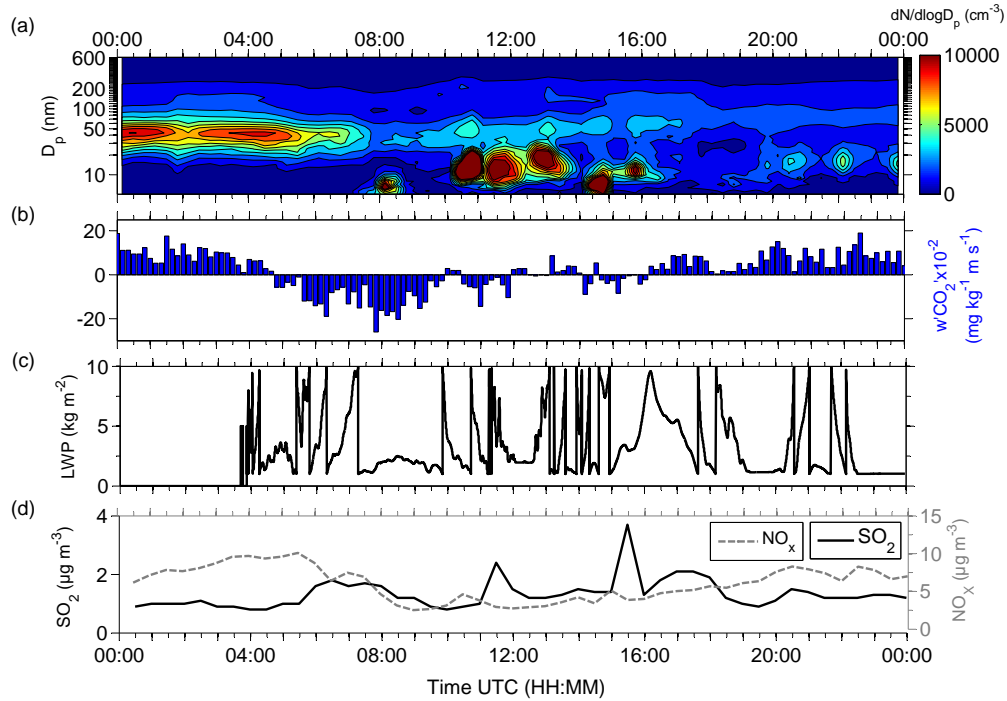
**Figure 3.** Backscatter signals (range corrected at the wavelength of 1064 nm) of the ceilometer (e.g., Heese et al., 2010; Wiegner and Geiß, 2012) installed at Melpitz on April 4, 2014. White parts show clouds and colour scales in green up to red the existence of atmospheric particles.



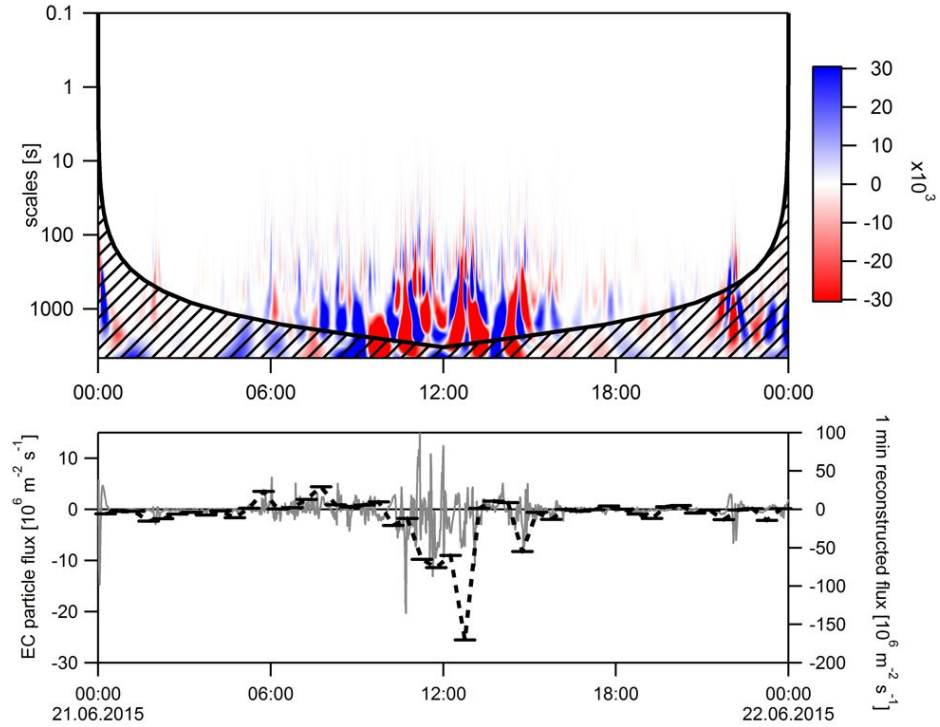
**Figure 4.** Vertical profiles of potential temperature  $\theta$ , water vapour mixing ratio  $q$ , total aerosol particle number concentration of ultrafine particles measured with two CPCs in the particle diameter above 5 nm (green line), above 10 nm (black line) and  $N_{5-10}$  (grey dot). Total aerosol particle number concentration measured with OPC in the size above 390 nm (blue line), 500 nm (red line) and 700 nm (dashed black line). All data were measured with ALADINA at (a) 09:06, (b) 10:45, (c) 11:47 and (d) 13:50 UTC on April 4, 2014.



**Figure 5.** Backscatter signals (range corrected at the wavelength of 532 nm) of Polly<sup>XT</sup> lidar installed at Melpitz on June 21, 2015. White parts show clouds and colour scales in green up to red the existence of atmospheric particles. More details of the lidar can be taken from Engelmann et al. (2016).

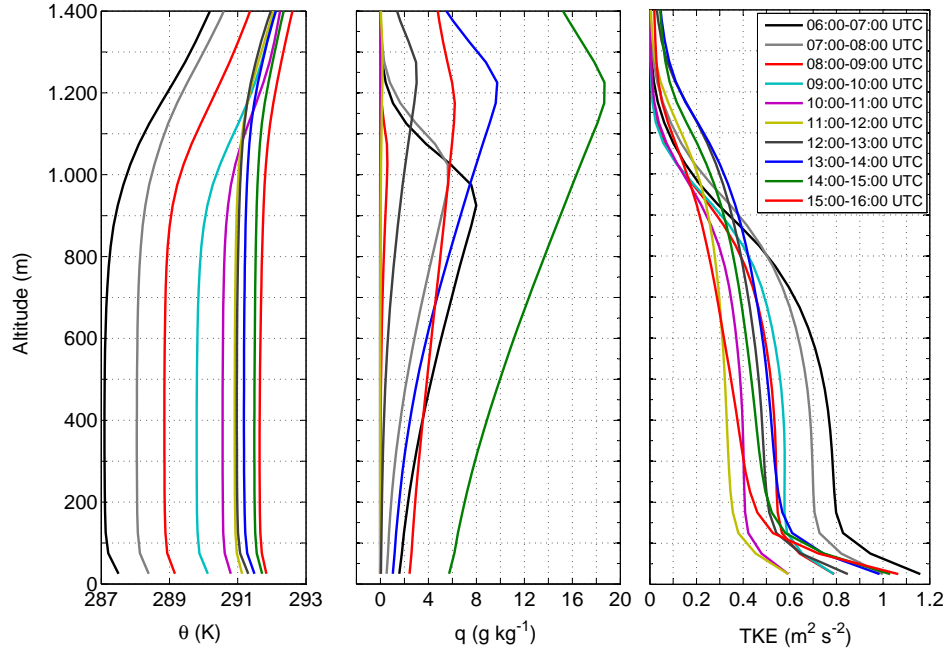


**Figure 6.** (a) Particle size distribution measured with TSMPS, (b) fluxes of  $\text{CO}_2$ , (c) liquid water path, LWP, and (d) gas concentrations of  $\text{SO}_2$  and  $\text{NO}_x$  during MelCol experiment on June 21, 2015. The homogeneous aerosol load was affected by ABL growth after 07:30 UTC and six sporadic formation events (seen in red dots in the size range of 10 to 20 nm) were indicated during daytime between 08:10 and 16:10 UTC under cloudy conditions and SW wind.

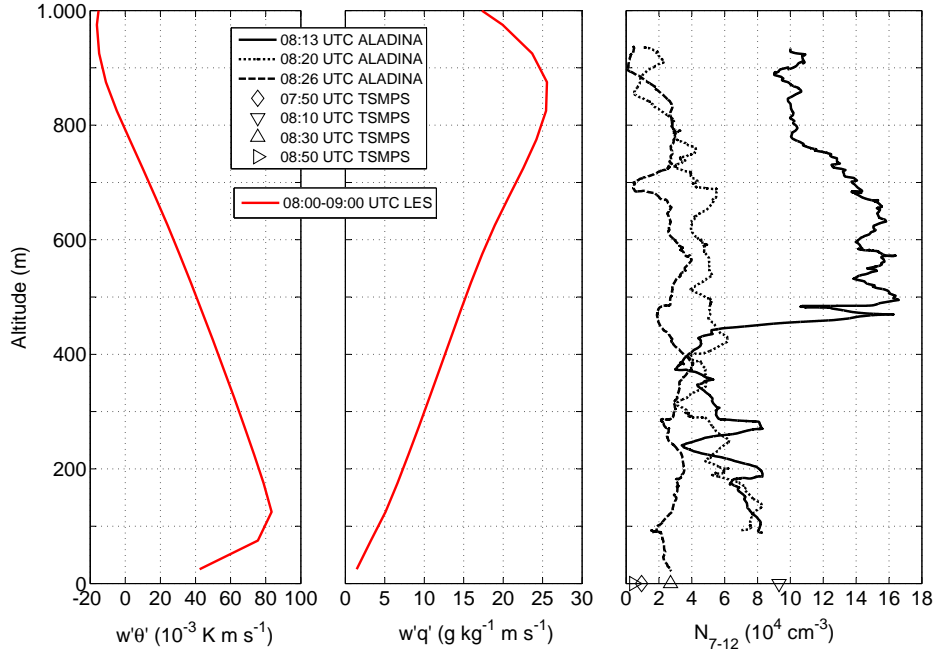


**Figure 7.** Cross wavelet spectrum of vertical wind and particle number from EC station on June 21, 2015 (top panel). Colors indicate positive and negative contributions of different time scales to the particle flux over the day. During sporadic new particle formation, deposition was observed (red), in contrast to emission during non-event sections (blue). The hatched regions at both ends show the cone of influence, where edge effects influence the wavelet analysis. Bottom panel: Particle fluxes calculated by standard eddy covariance procedures for 30 min intervals (black dashed line), and reconstructed from wavelet analysis for 1 min intervals (grey). The 30 min EC particle fluxes show significant deposition affected by NPF at 12:30 UTC.

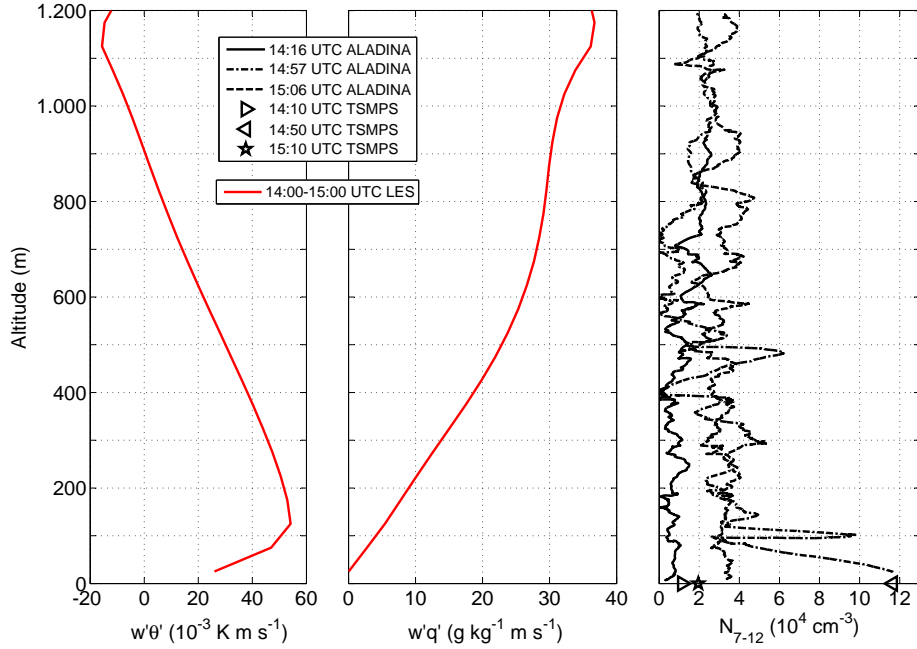




**Figure 8.** Potential temperature  $\theta$ , water vapour mixing ratio  $q$  and turbulent kinetic energy TKE depending on the altitude, estimated with the LES model in 1 h time intervals starting from 06:00 until 16:00 UTC during the MelCol experiment on June 21, 2015. Highest values of  $q$  were estimated between the height of 950 and 1210 m close to inversion layer, respectively and appeared before sporadic NPF occurrence at ground.



**Figure 9.** Vertical profiles of sensible heat flux  $w'\theta'$  in  $\text{K m s}^{-1}$  and latent heat flux  $w'q'$  in  $\text{g kg}^{-1} \text{ m s}^{-1}$  obtained by LES output in the interval of 08:00–09:00 UTC (red lines). Besides, three vertical profiles of freshly formed boundary layer aerosol in the particle diameter between 7 and 12 nm ( $N_{7-12}$ ) measured with the CPCs on the UAS ALADINA at 08:13 UTC (solid line), 08:20 UTC (dotted line) and 08:26 UTC (dashed line) are compared with the total aerosol particle number concentration derived by TSMPS in the diameter range of 7 and 12 nm at 07:50 UTC, 08:10 UTC, 08:30 UTC and 08:50 UTC. All data were derived during the MelCol experiment on June 21, 2015.



**Figure 10.** Vertical profiles of sensible heat flux  $w'\theta'$  and latent heat flux  $w'q'$  obtained by LES output in the interval of 14:00–15:00 UTC (red lines). Besides, three vertical profiles of freshly formed boundary aerosol in the particle diameter between 7 and 12 nm ( $N_{7-12}$ ) measured with the CPCs on the UAS ALADINA at 14:16 UTC (solid line), 14:57 UTC (dotted line) and 15:06 UTC (dashed line) are compared with the total aerosol particle number concentration derived by TSMPS in the diameter range of 7 and 12 nm at 14:10 UTC, 14:50 UTC and 15:10 UTC. All data were derived during the MelCol experiment on June 21, 2015.

**Table 1.** Airborne measurements performed with the UAS ALADINA during Case I on 4 April, 2014. The flight time of ALADINA between take-off and landing and the maximum altitude of flights. In addition, prevailing conditions of clouds, SO<sub>2</sub> gas concentration, pressure at surface  $p_0$  and temperature  $T_{1m}$  from mast in 1 m height are presented in relation to the corresponding flights.

Flight	Flight time (UTC)	Max. height (m a.g.l.)	Sky conditions	SO <sub>2</sub> ( $\mu\text{g m}^{-3}$ )	$p_0$ (hPa)	$T_{1m}$ ( $^{\circ}\text{C}$ )
1	06:15-06:50	950	StCu	1.7–2.4	998	7.7–8.8
2	07:50-08:17	700	ABL clouds	1.1–2.2	999	5.3–6.1
3	08:55-09:30	750	ABL clouds	1.9–2.9	999	7.0–9.1
4	10:41-11:28	1000	ABL clouds	3.7–4.6	1000	10.8–11.3
5	11:45-12:27	950	ABL clouds–StCu	2.7–4.4	1000	10.8–12.1
6	13:20-13:58	950	StCu	3.6–5.0	1001	11.8–12.3

**Table 2.** Performed airborne measurements with the UAS ALADINA during MelCol experiment Case II on June 21, 2015. The flight time of ALADINA between take-off and landing and the maximum altitude of flights. In addition, prevailing conditions of clouds, SO<sub>2</sub> gas concentration, pressure at surface  $p_0$  and temperature  $T_{1m}$  from mast in 1 m height are presented in relation to corresponding flight time series.

Flight	Flight time (UTC)	Max. height (m a.g.l.)	Sky conditions	SO <sub>2</sub> ( $\mu\text{g m}^{-3}$ )	$p_0$ (hPa)	$T_{1m}$ ( $^{\circ}\text{C}$ )
1	08:00-08:35	950	ABL clouds–StCu	1.2–1.6	1007	14.8–15.9
2	08:46-09:15	950	StCu	0.9–1.2	1007	15.4–17.4
3	09:28-10:01	950	StCu	0.8–0.9	1007	14.7–17.4
4	12:03-12:38	1100	StCu	1.2–1.5	1007	15.7–17.1
5	12:51-13:15	1200	StCu	1.2–1.3	1006	15.7–16.3
6	13:51-14:23	1200	StCu	1.4–1.5	1005	15.6–18.3
7	14:57-15:32	1200	StCu	1.4–3.7	1005	16.9–17.7