

## Response to Referee's Comments #1

1. More information is needed about Jingtang port, for example the annual traffic, exposure to other atmospheric emissions such as passing ships and centres of population. A map could be useful here.

5 **Response:**

Thanks for the helpful suggestion. Background information about Jingtang Port is necessary to help explain the significance of exploring the emission characteristics of shipping emissions at berth in this place. The basic information including atmospheric geographic location, annual throughput, traffic, and population are described in the Experimental and Methods part of the manuscript. A map is also provided as you suggested.

10 **Revision in manuscript:**

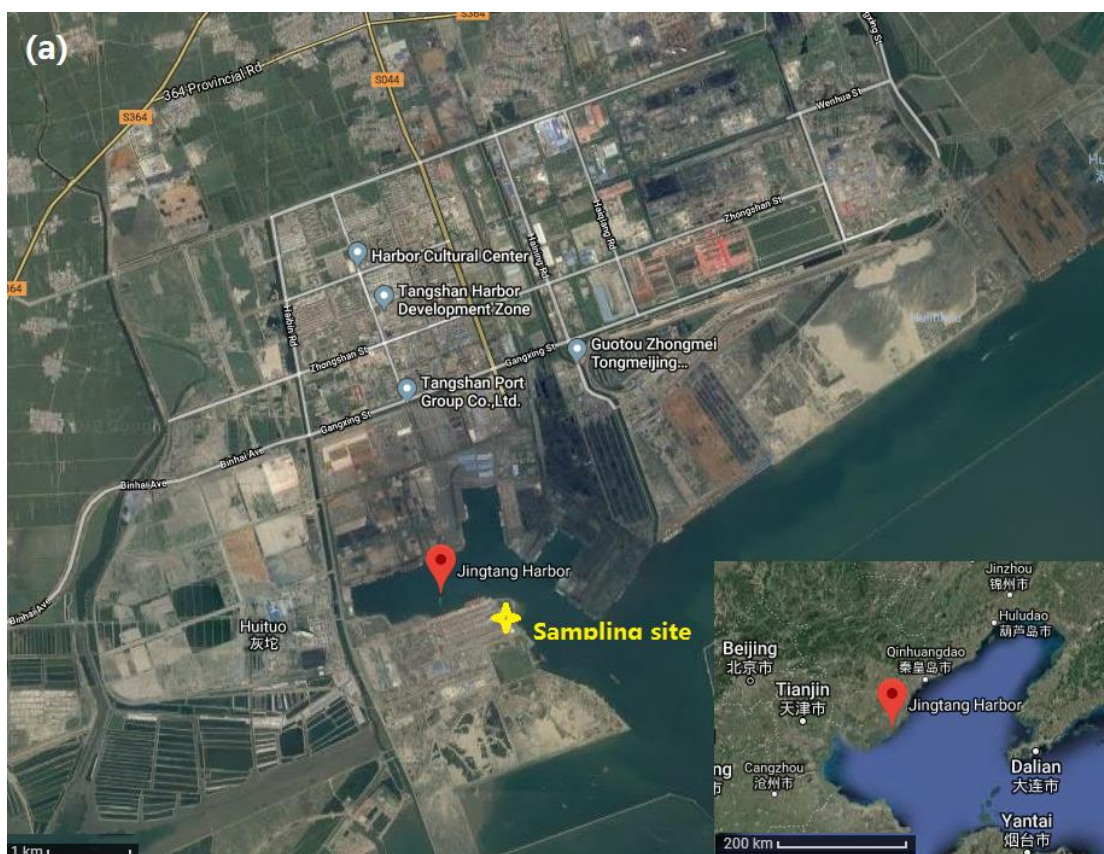
(1) Page 4, Line 27: The title of Section 2.1.1 is revised as "Information of Jingtang Port, sampling site and ships".

15 (2) Page 4, Line 28- Page 5, Line 20: "Ambient sampling site was located inside Jingtang Port, Tangshan City, Hebei Province, China. Jingtang Port is located in Bohai Bay and belongs to Port of Tangshan, which is among the core ports in domestic emission control area. According to the China Port Yearbook 2015, the annual traffic of ships in Port of Tangshan reached 15084 and the total throughput exceeded 500 million tons, ranking 5<sup>th</sup> among global port throughputs. Jingtang Port area is surrounded by the Port Economic Development Area, which has a population of 78, 300. Tangshan is a typical industrial city with average PM<sub>2.5</sub> concentration in winter of 117 µg/m<sup>3</sup> (Zhang et al., 2017). The current PM<sub>2.5</sub> source apportionment studies in Tangshan did not include shipping emissions due to the lack of basic information and researches. The background information indicates the significance and urgency of studying the impact of shipping emissions and the effect of the fuel switching policy.

25 As is shown in **Fig. 1(a)**, the center of population mainly concentrates in the residential area, located in the north of the port area, about 2km away from the port. About 2.5km in the west of the port area there is a thermal power plant with after-treatment facilities according to the strict emission control standards to power plants in China. Between the port and the other zones are two main roads with trucks driving to carry containers in and out of the port, which is about 30 1km away from the sampling site. Besides trucks and the power plants, there's no further emission source near the port area.

The site for ambient particle collection and instrumental analysis is surrounded by the four pools and the channel, on an open and flat corner close to the #26 and #27 Berth as well as the container yard inside the port, as is shown in **Fig. 1(b)**. No tall buildings exist around the sampling instrument. The distribution of berths, pools and the sampling site guarantees that plumes from ships at berth are prone to reach the sampling instrument."

35 (3) **Figure 1(a)** with the title of "The location and surroundings of Jingtang Port shown in both larger scale and smaller scale" is added to briefly introduce the location of Jingtang Port and its surroundings.



2. It should be noted that the new Chinese sulphur limit for auxiliary engines corresponds to the global shipping limit that will apply from the year 2020. The findings presented in this manuscript are also relevant to proposals for ships in berth to be able to use electricity from land instead of auxiliary engines – it would be helpful to discuss this option in the light of the measurements made.

**Response:**

Yes, we agree that the results presented in this article should be combined with the discussion of the ultimate goal of lowering shipping emissions to the maximum. This issue is discussed in detail from two perspectives in the end of Section 3.5. Both the estimation of emission reduction by other studies and the results of the source apportionment in this study are used to illustrate the importance of land electricity.

**Revision in Manuscript:**

Page 16, Line 6- Line 22: “The new Chinese sulfur limit for auxiliary engines corresponds to the global shipping limit that will apply from the year 2020. Studies have been done to estimate the effect of the low sulfur fuel limit. On global level, according to Sofiev’s (Sofiev et al., 2018) estimation, the global implementation of the 0.5% sulfur content policy can reduce the annual average sulfate concentration by 2-4  $\mu\text{g}/\text{m}^3$ . However, even after the implementation of 0.5% sulfur limit for ships at berth, the PM and SO<sub>2</sub> emissions still remain at a level of 770 and 2500kt respectively. In China ports, under the scenario of all ships changing over to low sulfur fuel (<0.5%) in all China’s emission control area, the remaining of at berth PM and SO<sub>2</sub> emissions can reach up to 1kt and 8kt respectively in Jing-Jin-Ji port area(Liu et al., 2018). If electricity from land could be applied, these emissions could be further reduced.

According to the source apportionment of sulfate particles in port area, the number concentration contribution of sulfates from shipping emission at berth are lowered from 35% to 27% after the switching oil policy implementation after January 1<sup>st</sup>, 2017. The stricter fuel sulfur limit did reduce the contribution of shipping emission, but these emissions would continue to play an important role in atmospheric pollution and electricity from land will be demanded to ameliorate this situation.

In general, PM and SO<sub>2</sub> emissions can't be eliminated by merely controlling the sulfur content of fuels, though the stricter sulfur limits is an effective way to reduce emissions. Hence the option of using electricity from land will probably help maximizing the emission reduction of SO<sub>2</sub> and PM."

**3. More detail is needed concerning the ambient sampling. Was the sampling site placed so that it was significantly affected by passing ship traffic and/or built up areas and road traffic?**

**Response:**

Thank you for the important suggestion and information about ambient sampling site should be well introduced. It should be noticed that the collection of particles and VOCs emitted by ships at berth was accomplished via on-board sampling directly from the vessel stacks, not from the plume in the ambient sampling site. All the emission profiles were based on direct sampling from stacks. Ambient particles were sampled by SPAMS in the sampling site and the source apportionment was done using the species profiles combined with all the ambient particle information. The detailed description of the sampling site is added in Section 2.1.1 following the introduction of the port information. An amplified map is used here (**Figure 1 (b)**) in order to clearly illustrate the impact of ships and road traffic on the ambient sampling.

**Revision in Manuscript:**

(1) A new **Figure 1(b)** is added showing the surroundings of the sampling site in the port area.



(2) Page 5, Line 16-20: "The site for ambient particle collection and instrumental analysis is surrounded by the four pools and the channel, located on an open and flat corner close to the #26 and #27 Berth as well as the container yard inside the port, as is shown in **Fig. 1(b)**. No



tall buildings exist around the sampling instrument. The distribution of berths, pools and the sampling site guarantees that plumes from ships at berth are prone to reach the sampling instrument.”

4. In the conclusions, a “slight decrease from 23.82% to 23.61%” is noted. Given the uncertainties involved in the sampling, it may be more reasonable to state that the ratio was unchanged at 24%, unless it can be shown that the ratio can be measured to better than 1% uncertainty.

**Response:**

We consider your suggestion very reasonable. Indeed, we didn’t take the uncertainty into consideration and the accuracy of sampling and instruments is not high enough to achieve uncertainty better than 1%. Therefore, if the wind direction is not considered, the sulfate number concentration contribution of shipping emissions at berth is considered as unchanged after the switching oil policy implementation during the whole sampling period.

Secondly, we have done some update on the source apportionment of sulfate particles. If taking the variation of wind direction into consideration during sampling, the result is different. After combining the wind direction with the position of sampling site and berths, we selected the ambient data during periods of certain wind direction including northwest, north and conducted source apportionment using the same method. The updated result is 35% before January 1<sup>st</sup>, 2017 and 27% after January 1<sup>st</sup>, 2017, indicating a decrease of at berth shipping emission contribution to ambient sulfates.

**Revision in manuscript:**

(1) Abstract, Page 1, Line 26-29: “The average percentage of sulfate particles from shipping emissions before and after switching to marine diesel oil kept unchanged at a level of 24%. Under certain wind direction with berths on upwind directions, the ratio before and after January 1<sup>st</sup> is 35% and 27% respectively.”

(2) Text, Page 15, Line 22-Page 16, Line 5: “Generally, the average ratio of ship source sulfate particles to ambient sulfate particles before and after January 1<sup>st</sup> were 23.82% and 23.61%, respectively. With regard to the uncertainty in sampling, analysis and calculation, the results can be regarded as unchanged at a level of 24%.

To better focus on the shipping emissions, we take the wind direction data into consideration. The wind direction of the whole sampling period was shown as **Fig. 9(b)**. According to the geographic positions of berths and wind directions, as the berths mainly distribute in the northwest, north and east direction of the sampling site, wind from these directions will driving the plumes to the sampling site. Moreover, no obvious emission sources other than ships at berth could interfere the ambient sampling.

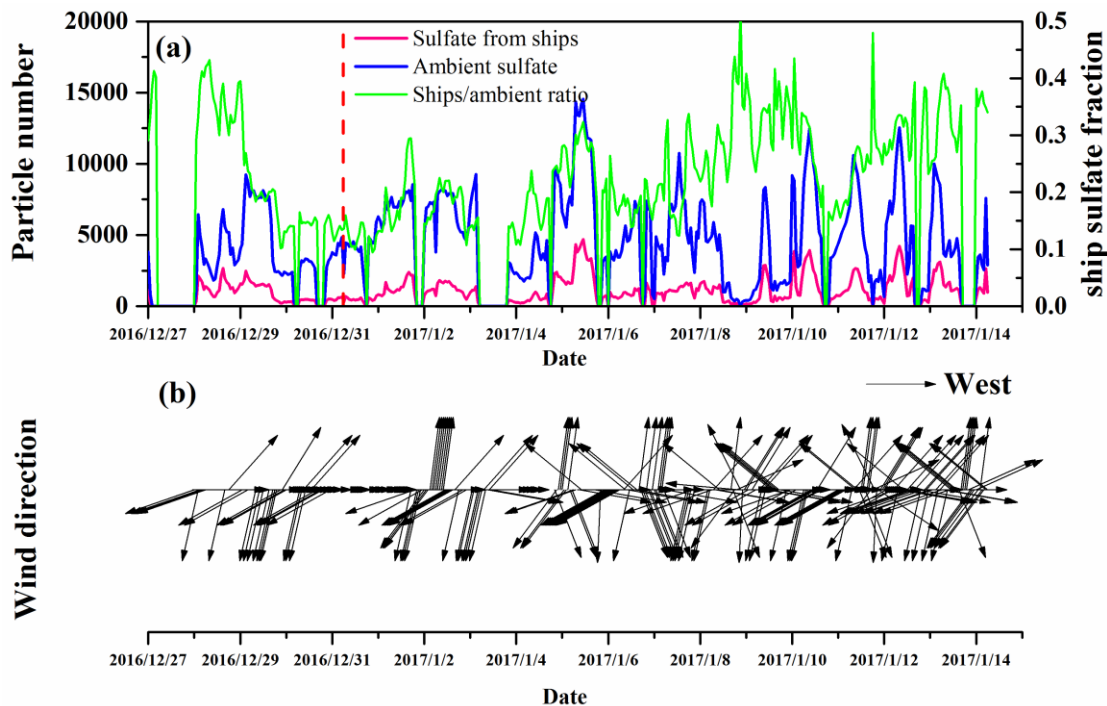
Ambient data with wind direction in the range of northwest to southeast (clockwise) were extracted and divided by January 1<sup>st</sup>, 2017. A total of 10 hours with 37825 particles and a total of 133 hours with 682176 particles were calculated before and after January 1<sup>st</sup>, respectively. The results considering wind direction for the ratio of sulfates identified as shipping emissions to ambient were 35% and 27% respectively for the two periods, indicating a decrease of at berth shipping emission contribution to ambient sulfates.”

(3) Conclusion, Page 17, Line 13-18: “Comparing post-January 1<sup>st</sup> data to that of December, the ratio of ship-source sulfate particles to ambient sulfate particles remained unchanged at a level of 24%. When considering the wind direction with berths at upwind, the sulfate contribution of

ships at berth could be observed from 35% to 27% before and after the implementation of switching oil policy. The contribution of shipping emissions at berth to the ambient sulfates was lowered by the stricter sulfur limit in fuels.”

- (4) Previous **Figure 10** has now been revised with the change of wind direction upon time as **Figure 9 (a) and (b)**.

5



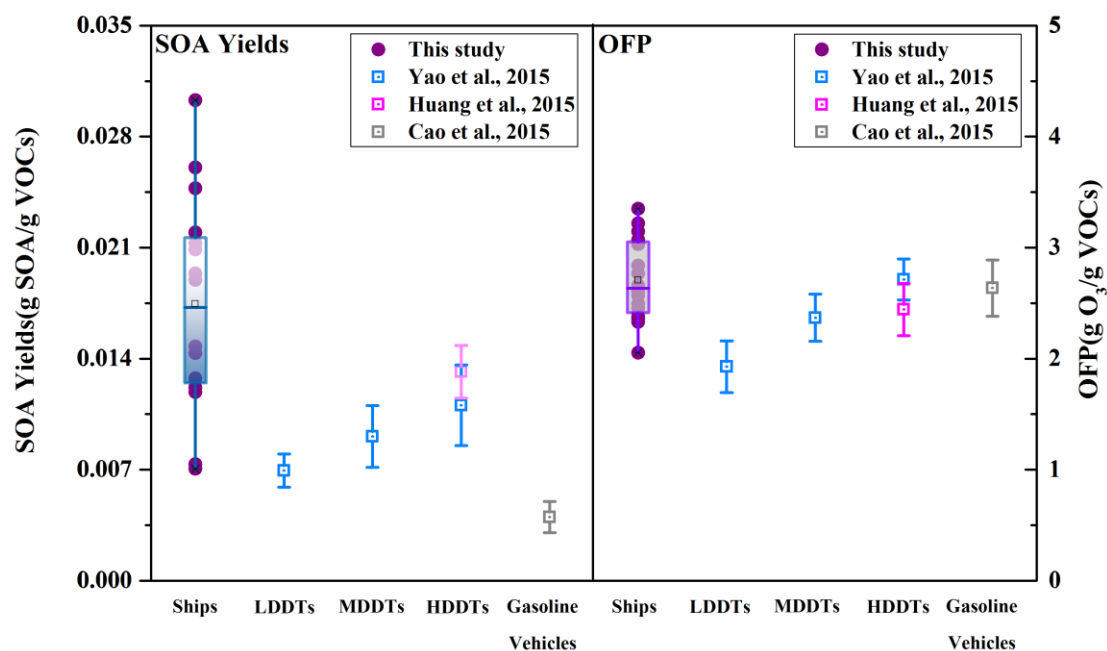
**5. Figure 2: the symbols for ship emissions should be explained. Why are there no error bars for diesel and gasoline?**

**Response:**

- 10 Accepted. One single purple dot represented a value of SOA yield/OFP of one individual ship. The ranges and error bars are added in **Figure 2** (now renamed as **Figure 3**). In addition, more data from related researches (Cao et al., 2015; Huang et al., 2015; Yao et al., 2015) are also collected in the revised figure to make a comprehensive comparison between this study and literature results.

**Revision in manuscript:**

- 15 (1) Page 8, Line 15-18: “Also, VOC source profile of 3 types of diesel trucks (light-, middle- and heavy-duty truck respectively) (Yao et al., 2015;Huang et al., 2015a) and profiles of heavy-duty diesel trucks in Huang’s study(Huang et al., 2015a) were referenced to calculate and make comparison.”
- 20 (2) Previous **Figure 2** has been revised as **Figure 3**. Error bars are more data plots from Huang’s study are added.



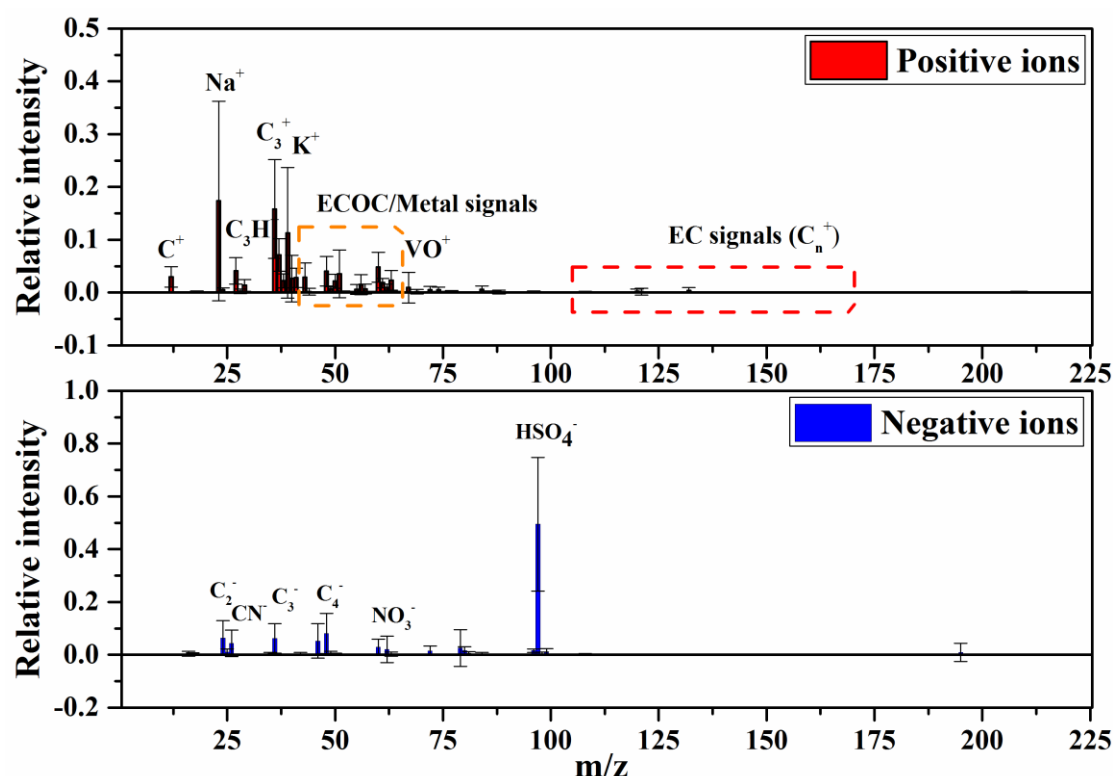
6. Figure 4 is large and gives unnecessary detail. Delete this figure and show ranges and/or standard deviations in Figure 3.

**Response:** Accepted. The original **Figure 3** (now renamed as **Figure 4**) was revised by showing the ranges and standard deviations. The previous **Figure 4** and corresponding contents in the manuscript have been deleted.

**Revision in manuscript:**

(1) Page 9, Line 12: **Figure 4** and the sentence "Individual ion mass spectra for each ship were shown in Fig. 4." in the text has been deleted.

(2) Previous **Figure 3** has been revised as **Figure 4** with standard deviation and typical ion signals have been marked in this figure.



7. Figure 7 shows a lack of clear correlation between sulfur and vanadium. 6 ships have high sulfur but low vanadium.

**Response:**

- 5 Firstly, owing to the fact that vanadium is a typical metallic element existed mostly in heavy fuel oil with higher sulfur content than distillate fuel (Moldanov á et al., 2009;Celo et al., 2015), when obvious signal of vanadium occur in the ion mass spectra of particles from a certain ship, this ship is very likely to use heavy fuel oil. Accordingly, the sulfur intensity can be very high. However, for the ships with high sulfur but low vanadium, the actual contents of sulfur and vanadium of fuels
- 10 used by these ships are unknown and this phenomenon cannot be well explained in this study due to the limit of instrument and the quantity of particles analyzed in each sample. The main instrument applied in this study is SPAMS, which is considered as semi-quantitative and unable to give accurate emission factors of sulfur and vanadium. Moreover, similar studies using the same methods on shipping emissions are very rare. Therefore, this issue demands further exploration.

15 **Revised in manuscript:**

- Page 12, Line 21-Page 13, Line 2: “Owing to the fact that vanadium is a typical metallic element existed mostly in heavy fuel oil with higher sulfur content than distillate fuels (Moldanov á et al., 2009;Celo et al., 2015), when obvious signal of vanadium occurred in the ion mass spectra of particles from ship 13 and ship 17, these ships were very likely to use heavy fuel oils at berth.
- 20 Accordingly, the sulfur intensity could be very high. However, for the ships with high sulfur but low vanadium, the actual contents of sulfur and vanadium of fuels used by these ships are unknown and this phenomenon cannot be well explained in this study due to the limit of instrument and the quantity of particles analyzed in each sample. The main instrument applied in this study is SPAMS, which is considered as semi-quantitative and unable to give accurate emission factors of sulfur and
- 25 vanadium. Moreover, similar studies using the same methods on shipping emissions are very rare. Therefore, this issue demands further exploration.”

8. **Figure 8 does not add important information and can be deleted.**

**Response:**

Your suggestion regarding **Figure 8** is accepted and we has deleted this figure and revised the corresponding contents in the manuscript.

5 **Revision in manuscript:**

Page 13, Line 3-8: *“The two ships with vanadium signals higher than others included a total particle number of 30009 and among which 2633 were measured with ion mass spectra. In the ion mass spectra of these ships, higher  $V^+ / VO^+$  and  $HSO_4^-$  signals of over 0.8 in relative intensity while the other ships had average  $HSO_4^-$  relative intensity of 0.59 and no apparent  $V^+ / VO^+$  signals. Due to the relatively fewer particles of such ships, there might be abnormality in low positive EC signals in their ion mass spectra. Nonetheless, major chemical PM characteristics of different fuel types could be observed through ion mass spectra.”*

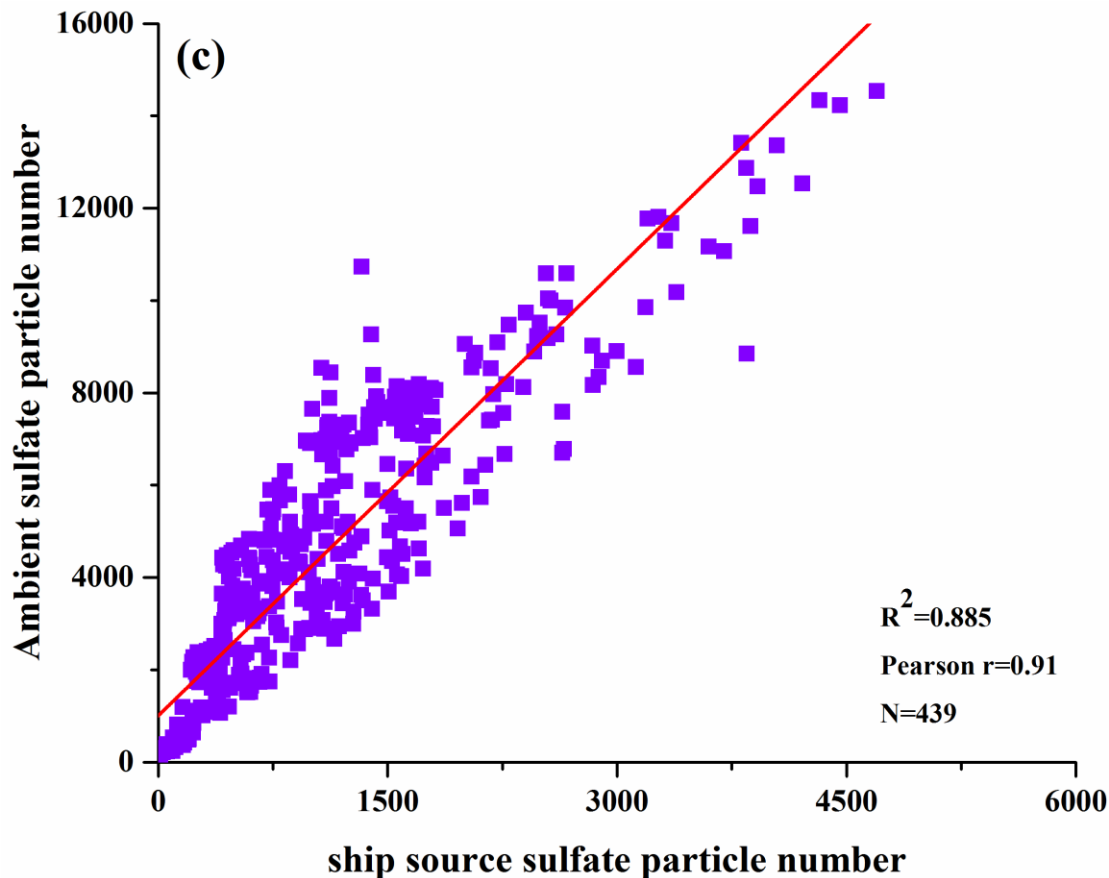
9. **Figure 10 – complement with an ambient/vessel correlation.**

**Response:**

15 Accepted. The previous **Figure 10** has been renamed of **Figure 9**. A scatter plot figure is attached as **Figure 9 (c)** providing the correlation between ambient and ship source sulfate particles. A total of 439 sets of data is presented and Pearson correlation coefficient was 0.91, indicating that those two variables have strong correlation.

**Revision in manuscript:**

20 (1) Page 15, Line 5-7: *“A total of 439 sets of data were included in the source apportionment analysis. By linear fitting for ship-source and ambient sulfate particle numbers, the Pearson Correlation Coefficient was 0.91 as shown in **Fig. 9(c)**.”*





## 10. Editorial points:

(1) A table of abbreviations is provided as Table 1.

**Table 1: Abbreviations**

Abbreviations	Full name
BC	black carbon
EC	elemental carbon
ECOC	elemental carbon-organic carbon
GC-MS	gas chromatography-mass spectrometer
HC	Hydrocarbon
HFO	heavy fuel oil
MDO	marine diesel oil
OC	organic carbon
OFP	ozone forming potential
PM	particulate matter
SOA	secondary organic aerosol
SPAMS	single particle aerosol mass spectrometer
VOCs	volatile organic compounds

- 5 (2) Descriptions of each figures have been revised to provide more information and explanations.  
(3) The language and grammar of the whole article has been reviewed and revised carefully.

## Reference

- Celo, V., Dabek-Zlotorzynska, E., and McCurdy, M.: *Chemical Characterization of Exhaust Emissions from Selected Canadian Marine Vessels: The Case of Trace Metals and Lanthanoids*, *Environmental Science & Technology*, 49, 5220-5226, 10.1021/acs.est.5b00127, 2015.
- Huang, C., Wang, H. L., Li, L., Wang, Q., Lu, Q., de Gouw, J. A., Zhou, M., Jing, S. A., Lu, J., and Chen, C. H.: *VOC species and emission inventory from vehicles and their SOA formation potentials estimation in Shanghai, China*, *Atmospheric Chemistry and Physics*, 15, 11081-11096, 10.5194/acp-15-11081-2015, 2015.
- Liu, H., Meng, Z.-H., Shang, Y., Lv, Z.-F., Jin, X.-X., Fu, M.-L., and He, K.-B.: *Shipping emission forecasts and cost-benefit analysis of China ports and key regions' control*, *Environmental Pollution*, 236, 49-59, <https://doi.org/10.1016/j.envpol.2018.01.018>, 2018.
- Moldanová, J., Fridell, E., Popovicheva, O., Demirdjian, B., Tishkova, V., Faccinnetto, A., and Focsa, C.: *Characterisation of particulate matter and gaseous emissions from a large ship diesel engine*, *Atmospheric Environment*, 43, 2632-2641, 10.1016/j.atmosenv.2009.02.008, 2009.
- Sofiev, M., Winebrake, J. J., Johansson, L., Carr, E. W., Prank, M., Soares, J., Vira, J., Kouznetsov, R., Jalkanen, J. P., and Corbett, J. J.: *Cleaner fuels for ships provide public health benefits with climate tradeoffs*, *Nature Communications*, 9, 406, 2018.
- Yao, Z., Shen, X., Ye, Y., Cao, X., Jiang, X., Zhang, Y., and He, K.: *On-road emission characteristics of VOCs from diesel trucks in Beijing, China*, *Atmospheric Environment*, 103, 87-93, 10.1016/j.atmosenv.2014.12.028, 2015.
- Zhang, H., Lang, J., Wei, W., Cheng, S., and Gang, W.: *Pollution Characteristics and Regional Transmission of PM<sub>2.5</sub> in Tangshan*, *Journal of Beijing University of Technology*, 2017.

## Response to Referee's Comments 2

1. As stated in the manuscript, a total of 93 VOC species were detected and all of them have carbon numbers larger than four. Is it due to the limitation of the equipment and analyzing method used that lower carbon compounds were not detected? Or, that is a real atmospheric phenomenon?

### Response:

Thank you for coming up with this issue. First it should be noticed that not all of the 93 detected species have carbon number smaller than 4. Only alkanes, olefins and aromatics have more than 4 carbons and some haloalkanes and oxygenated compounds detected in this study have carbon number of 1-3. This issue is mainly relevant to the analysis method and instruments. VOCs were analyzed and calibrated by GC-MS 5975/7890 according to the USEPA methods of TO-15 and PAMS. Due to the limit of chromatographic column used during the analysis period, some typical organic compounds such as aldehydes and short chain carbonyls with carbon number lower than 4 were not detected in this study. The relatively high concentration of acetone shown in the VOCs column figure is in correlation with other study (Reda et al., 2015) in which emission factors of VOCs are detected. And according to previous studies (Gentner et al., 2012), compounds with higher carbon numbers (usually higher than 6) are more relevant to secondary organic aerosol yields.

### Revision in manuscript:

Page 6, Line 5-8: "Owing to the limit of chromatographic column property equipped on the GC-MS, alkanes and olefins with carbon number smaller than 4 were not detected. VOCs with carbon number larger than 6 are more relevant to the yield of secondary organic aerosols (Gentner et al., 2012)."

2. A large amount of Na-rich particles are found in the sampled exhaust from the ships, which has been attributed to full of sea salt in the intake of ships. If so, could sea salt also have perturbations on other elements such as K, Mg, and Fe as well as OC? Would such a perturbation depend on environmental and meteorological conditions during the sampling time?

### Response:

First we admit that the opinion of attributing the peak of  $\text{Na}^+$  and the existence of Na-rich particles to the sea salt is not precise. In view of the composition of fuel combusted by marine engine, Na does exist with a mass concentration of around 13-22mg/kg in several samples of heavy fuel oil (HFO) and lower content in marine diesel oil (Moldanov á et al., 2013; Lack et al., 2009). Moldanova (Moldanov á et al., 2009) analyzed particle from ship exhausts by using two-step laser mass spectrometry and  $\text{Na}^+$  was observed with obvious peak in the mass spectra. According to Sippula's (Sippula et al., 2014) research on marine diesel engine, Na can also exist in lubrication oil and be exhausted along with the lubrication and grinding process.

It is widely recognized that the metal content existed in exhausted particles has strong correlation with that in fuel (Celo et al., 2015; Moldanov á et al., 2013). Although the content of Na is obviously lower than that of vanadium in fuel (55-133.8mg/kg), the peaks of  $\text{Na}^+$  in ion mass spectra are mostly higher than peaks of  $\text{V}^+/\text{VO}^+$  signal from exhausts. This phenomenon indicates that there are external sources of Na and one of the most possible sources is sea salt, whose typical elements are Na. In conclusion, the Na-rich particles come from a multiple source of both fuel composition and sea salt perturbation.

According to literature study (O'Dowd et al., 1997; Fitzgerald, 1991), sea salt aerosol is rich mainly in inorganic elements such as Mg, K, Cl and Na. Therefore, there might exist perturbation regarding K, Mg and Na. The content of K in exhausted particles is also higher than the other elements with their contents comparable to K in fuels. The mechanism of K from is similar to that of Na. The content of Mg in marine fuels is obviously lower than other metallic elements (Moldanová et al., 2009; Sippula et al., 2014; Winnes and Fridell, 2012) (e.g. <1mg/kg in Moldanova's research) and almost no  $Mg^+$  signals are observed in the ion mass spectra because of the probable interference of  $C_2^+$  signal sharing the same m/z of 24. As for Fe, it is rarely mentioned to exist widely in sea salt. Due to the fact that OC is predominant content in engine exhausts, the perturbation from sea salt OC can be ignored even if there exists such perturbation.

Considering the fact that the particles were directly collected from inside the exhaust pipes, which is unlike the plume capture in the open air, the possibility of external impacts is greatly lowered. And no discussions with regard to this issue are founded in other relevant measurements.

#### **Revision in manuscript:**

Page 10, Line 14-Page 15, Line 1: "In view of the composition of fuel combusted by marine engine, Na does exist with a mass concentration of around 13-22mg/kg in several samples of heavy fuel oil (HFO) and lower content in marine diesel oil (Moldanová et al., 2013; Lack et al., 2009). Moldanova (Moldanová et al., 2009) analyzed particle from ship exhausts by using two-step laser mass spectrometry and  $Na^+$  was observed with obvious peak in the mass spectra. According to Sippula's (Sippula et al., 2014) research on marine diesel engine, Na can also exist in lubrication oil and be exhausted along with the lubrication and grinding process. It is widely recognized that the metal content existed in exhausted particles has strong correlation with that in fuel (Celo et al., 2015; Moldanová et al., 2013). Although the content of Na is obviously lower than that of vanadium in fuel (55-133.8mg/kg), the peaks of  $Na^+$  in ion mass spectra are mostly higher than peaks of  $V^+/VO^+$  signal in exhaust. This phenomenon indicate that there are external sources of Na and one of the most possible sources is sea salt, whose typical elements are Na. In conclusion, the Na-rich particles come from a multiple source of both fuel composition and sea salt perturbation. Only particles with relative area of  $Na^+$  obviously higher than other positive ions were counted as Na-rich particles. The same rule also adapted to K-rich particles. Owing to the fact that the content of K in most marine fuels is lower than that of Na, V and other typical metallic elements, one of the possible sources of K-rich particles is sea salt (O'Dowd et al., 1997), which is similar to the source of Na-rich particles."

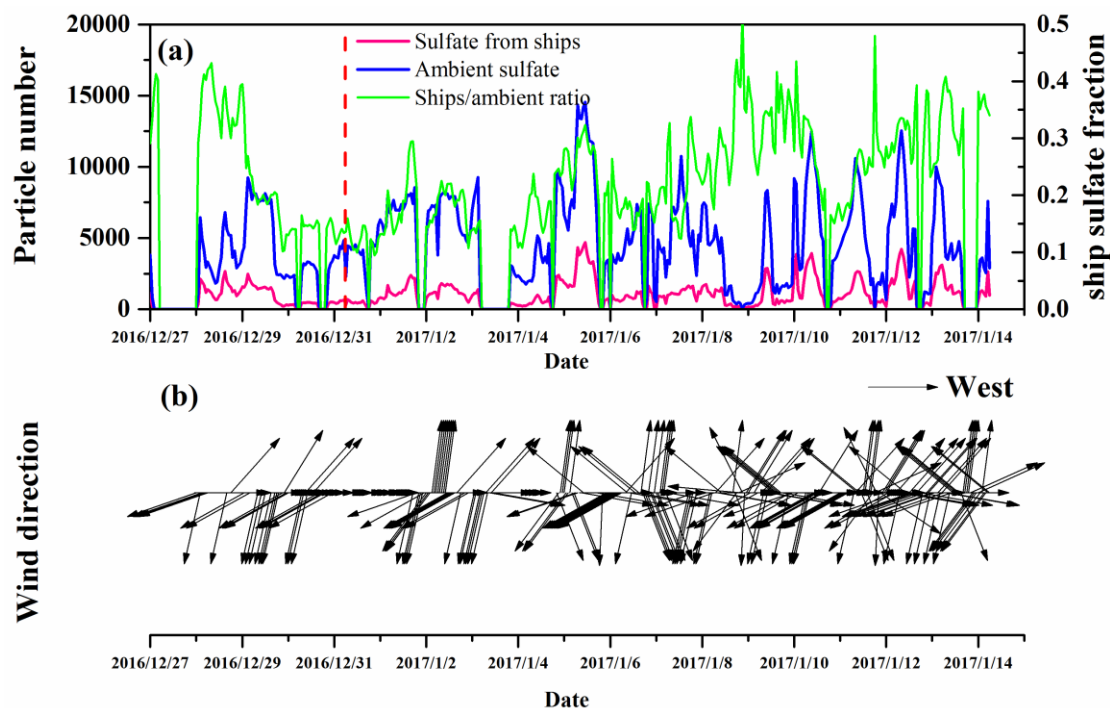
3. As described in the manuscript, ambient particle sampling was conducted from 27 December 2016 to 15 January 2017. However, the positions of the ships and measurement site during the experiment are not well introduced. Since the ambient particle sampling was conducted in an open atmosphere, the local meteorological conditions should have a large influence on the experimental results. The ship plume effect needs to be investigated in detail.

**Response:** Your comments regarding the influence of meteorological conditions are quite helpful and illuminating. Wind direction is recognized as the most significant meteorological conditions. Owing to the variation of wind direction and the position distribution of berths, yards and sampling sites, the contribution of each sources identified by the ambient sampling instrument may change. For example, winds from the north and north east will expose plumes from ships to the sampling site, while west wind may bring the emissions from power plant and diesel truck exhausts from the

container yard next to the sampling site. Therefore, the ships plume effect needs to be discussed considering wind directions.

**Revision in manuscript:**

- 5 (1) Page 5, Line 16-20: *“The site for ambient particle collection and instrumental analysis is surrounded by the four pools and the channel, located on an open and flat corner close to the #26 and #27 Berth as well as the container yard inside the port, as is shown in **Figure 1(b)**. No tall buildings exist around the sampling instrument. The distribution of berths, pools and the sampling site guarantees that plumes from ships at berth are prone to reach the sampling instrument.”*
- 10 (2) Abstract, Page 1, Line 26-29: *“The average percentage of sulfate particles from shipping emissions before and after switching to marine diesel oil kept unchanged at a level of 24%. Under certain wind direction with berths on upwind directions, the ratio before and after January 1<sup>st</sup> is 35% and 27% respectively.”*
- 15 (3) Text, Page 15, Line 22-Page 16, Line 5: *“Generally, the average ratio of ship source sulfate particles to ambient sulfate particles before and after January 1<sup>st</sup> were 23.82% and 23.61%, respectively. With regard to the uncertainty in sampling, analysis and calculation, the results can be regarded as unchanged at a level of 24%.*  
*To better focus on the shipping emissions, we take the wind direction data into consideration. The wind direction of the whole sampling period was shown as **Fig. 9(b)**. According to the*  
20 *geographic positions of berths and wind directions, as the berths mainly distribute in the northwest, north and east direction of the sampling site, wind from these directions will driving the plumes to the sampling site. Moreover, no obvious emission sources other than ships at berth could interfere the ambient sampling.*  
*Ambient data with wind direction in the range of northwest to southeast (clockwise) were*  
25 *extracted and divided by January 1<sup>st</sup>, 2017. A total of 10 hours with 37825 particles and a total of 133 hours with 682176 particles were calculated before and after January 1<sup>st</sup>, respectively. The results considering wind direction for the ratio of sulfates identified as shipping emissions to ambient were 35% and 27% respectively for the two periods, indicating a decrease of at berth shipping emission contribution to ambient sulfates.”*
- 30 (4) Conclusion, Page 17, Line 13-18: *“Comparing post-January 1<sup>st</sup> data to that of December, the ratio of ship-source sulfate particles to ambient sulfate particles remained unchanged at a level of 24%. When considering the wind direction with berths at upwind, the sulfate contribution of ships at berth could be observed from 35% to 27% before and after the implementation of switching oil policy. The contribution of shipping emissions at berth to the ambient sulfates was*  
35 *lowered by the stricter sulfur limit in fuels.”*
- (5) Previous **Figure 10** has now been revised with the change of wind direction upon time and renamed as **Figure 9 (a) and (b)**.



4. It is unclear and misleading to use a percentage to describe the ratio of sulfate particles from shipping emissions (a flux) over ambient sulfate particles (a concentration).

**Response:** First we should admit that the description of methodology may be not precise enough and caused some misunderstanding. Actually the sulfate particles from shipping emissions in the Section 3.5 are not those collected via on-board sampling. The basic principle of the source apportionment in this study is to identify the ambient sulfate particles with ion mass characteristics similar to those sampled directly from the exhaust pipes. This process is achieved by neural network and iterations via MATLAB. The description of methodology is revised accordingly.

**Revision in manuscript:**

Page 14, Line 21-27: "The first step was to identify and extract ship-source particles out of all that were sampled and analyzed by SPAMS. The identification was based on information obtained from the analyzed ion mass spectra after on-board sampling. Then by algorithm calculation via MATLAB, certain particles were identified as from ship exhaust according to the similarity to the defined characteristics. The next was to extract sulfate particles from the identified particles from ships and ambient, respectively. This step was accomplished by finding particles as sulfates with  $m/z = -97$  or  $-80$ , which represented  $\text{HSO}_4^-$  and  $\text{SO}_3^-$ , two typical markers of sulfates. Finally the temporal (1h resolution) number change of identified sulfate particles from ships and ambient particles as well as the ratio was obtained."



## Reference

- Celo, V., Dabek-Zlotorzynska, E., and McCurdy, M.: Chemical Characterization of Exhaust Emissions from Selected Canadian Marine Vessels: The Case of Trace Metals and Lanthanoids, *Environmental Science & Technology*, 49, 5220-5226, 10.1021/acs.est.5b00127, 2015.
- 5 Fitzgerald, J. W.: Marine aerosols: A review, *Atmospheric Environment, part A, general Topics*, 25, 533-545, 1991.
- Gentner, D. R., Isaacman, G., Worton, D. R., Chan, A. W. H., Dallmann, T. R., Davis, L., Liu, S., Day, D. A., Russell, L. M., Wilson, K. R., Weber, R., Guha, A., Harley, R. A., and Goldstein, A. H.: Elucidating secondary organic aerosol from diesel and gasoline vehicles through detailed characterization of organic carbon emissions, *Proceedings of the National Academy of Sciences of the United States of America*, 109, 18318-18323, 10.1073/pnas.1212272109, 2012.
- 10 Lack, D. A., Corbett, J. J., Onasch, T., Lerner, B., Massoli, P., Quinn, P. K., Bates, T. S., Covert, D. S., Coffman, D., and Sierau, B.: Particulate emissions from commercial shipping: Chemical, physical, and optical properties, *Journal of Geophysical Research Atmospheres*, 114, doi:10.1029/2008JD011300, 2009.
- 15 Moldanová, J., Fridell, E., Popovicheva, O., Demirdjian, B., Tishkova, V., Faccinnetto, A., and Focsa, C.: Characterisation of particulate matter and gaseous emissions from a large ship diesel engine, *Atmospheric Environment*, 43, 2632-2641, 2009.
- Moldanová, J., Fridell, E., Winnes, H., and Holminfridell, S.: Physical and chemical characterisation of PM emissions from two ships operating in European Emission Control Areas, *Atmospheric Measurement Techniques*, 6, 3577-3596, 2013.
- 20 O'Dowd, C. D., Smith, M. H., Consterdine, I. E., and Lowe, J. A.: Marine aerosol, sea-salt, and the marine sulphur cycle: a short review, *Atmospheric Environment*, 31, 73-80, 1997.
- Reda, A. A., Schnelle-Kreis, J., Orasche, J., Abbaszade, G., Lintelmann, J., Arteaga-Salas, J. M., Stengel, B., Rabe, R., Harndorf, H., and Sippula, O.: Gas phase carbonyl compounds in ship emissions: Differences between diesel fuel and heavy fuel oil operation, *Atmospheric Environment*, 112, 370-380, 2015.
- 25 Sippula, O., Stengel, B., Sklorz, M., Streibel, T., Rabe, R., Orasche, J., Lintelmann, J., Michalke, B., Abbaszade, G., and Radischat, C.: Particle emissions from a marine engine: chemical composition and aromatic emission profiles under various operating conditions, *Environmental Science & Technology*, 48, 11721-11729, 2014.
- 30 Winnes, H., and Fridell, E.: Particle Emissions from Ships: Dependence on Fuel Type, *Journal of the Air & Waste Management Association*, 59, 1391-1398, 10.3155/1047-3289.59.12.1391, 2012.

# Characteristics of marine shipping emissions at berth: profiles for PM and VOCs

5 Qian Xiao<sup>1,2#</sup>, Mei Li<sup>3#</sup>, Huan Liu<sup>1,2\*</sup>, Fanyuan Deng<sup>1,2</sup>, Mingliang Fu<sup>1,2</sup>, Hanyang Man<sup>1,2</sup>, Xinxin Jin<sup>1,2</sup>, Shuai Liu<sup>1,2</sup>, Zhaofeng Lv<sup>1,2</sup>, Kebin He<sup>1,2</sup>

<sup>1</sup> State Key Joint Laboratory of ESPC, School of Environment, Tsinghua University, Beijing 100084, China

<sup>2</sup> State Environmental Protection Key Laboratory of Sources and Control of Air Pollution Complex, Beijing, 100084, China

10 <sup>3</sup> Atmospheric Environment Institute of Safety and Pollution Control, Jinan University, Guangdong, 510632, China

\*Correspondence to: Huan Liu ([liu\\_env@tsinghua.edu.cn](mailto:liu_env@tsinghua.edu.cn))

#These authors contributed equally to this work.

**Abstract.** Emissions from ships at berth play an important role in the exposure of atmospheric pollutants to high density population in port areas, but these emissions have not been understood very well. In this study, volatile organic compounds (VOCs) and particle emissions from 20 container ships at berth were sampled and analyzed during the fuel switch period at Jingtang Port in Hebei Province, China. VOCs and particles were analyzed by gas chromatography-mass spectrometer (GC-MS) and the Single Particle Aerosol Mass Spectrometer (SPAMS), respectively. VOCs analysis showed that alkanes and aromatics, especially benzene, toluene and heavier compounds eg., n-heptane, n-octane, n-nonane, dominated the total identified species. Secondary organic aerosol yields and ozone forming potential were  $0.017 \pm 0.007$ g SOA/g VOCs and  $2.63 \pm 0.37$ g O<sub>3</sub>/g VOCs, respectively. Both positive and negative ion mass spectra from individual ship were derived and intensity of specific ions could be quantified. Results showed that element carbon (35.74%), element carbon-organic carbon mixture (33.95%) and Na-rich particles (21.12%) were major classes with a total number fraction of 90.7%. Particles from ship auxiliary engines were in a size range of 0.2 to 2.5 $\mu$ m, with a peak occurring at around 0.4 $\mu$ m. The issue of vanadium as tracer element was discussed that V was not a proper tracer when using low sulfur content diesel oil. The average percentage of sulfate particles from shipping emissions before and after switching to marine diesel oil ~~were 23.82% and 23.61% respectively, kept unchanged at a level of 24%. Under certain wind~~

direction with berths on upwind directions, the ratio before and after January 1<sup>st</sup> is 35% and 27% respectively. The total results provide robust evidences in port area air quality assessment and source apportionment.

## 1. Introduction

5 Emissions of multiple pollutants and greenhouse gases like NO<sub>x</sub>, SO<sub>2</sub>, particulate matters(PM) and CO<sub>2</sub> from ocean-going ships have been significant sources to global air pollution(Eyring et al., 2010;Corbett et al., 1999), of which the impacts were on a global scale and widely-spread. Along with the impacts on air quality(Vutukuru and Dabdub, 2008) and climate change, health impacts were also revealed and researched by plenty of recent studies(Andersson et al., 2009;Corbett et al., 2007). There were about  
10 60,000 cases of deaths due to cancer and cardiovascular diseases associated with ship exhausts worldwide(Tian et al., 2013). In East Asia, where 8 out of 10 top container ports were located, ship emissions caused premature deaths of between 14,500 to 37,500 in 2013, almost doubled comparing to that in 2005(Liu et al., 2016).

Emission characteristics, including size distribution of particles, chemical compositions of particles and  
15 volatile organic compounds (VOCs), are with particular importance to understand the climate and health impacts of shipping. Plenty of studies on emission factors and chemical characteristics were conducted throughout China and western countries. In terms of domestic gaseous pollutants and PM emission factors, CO, HC, NO<sub>x</sub> and PM emission factors during maneuvering and cruising conditions from 7 in-use ships (4 container ships included) were tested by portable emission measurement system, illustrating  
20 the nucleation and accumulation mode of major PM (Peng et al., 2016), and in another case 3 offshore vessels were tested by on-board systems(Zhang et al., 2016). Black carbon in exhausts from 71 ships were analyzed in California(Buffaloe et al., 2013). Apart from those direct sampling of shipping exhausts, plumes were sampled via aircraft 100km off the California coast(Chen, 2005) and in-port ambient PM measurements were also done in the Port of Dock using aerosol time-of-flight mass spectrometer(Healy  
25 et al., 2009). Chemical properties of PM in plumes of 1100 commercial ships were studied by time-of-flight aerosol mass spectrometer in Mexico Gulf(Lack et al., 2009). In summary, these listed studies generally focused on emission factors of typical gaseous pollutants and PM, and plume studies were more relevant to the mixture of primary and secondary aerosol, result in insufficiency of directly-

exhausted gas and PM studies. Another noticeable fact was that these studies on emission characteristics mostly explored the at-sea parts of shipping emissions, thus paying no adequate attention on specific at-berth conditions.

Based on the studies mentioned above, it could be concluded that one of the major gaps in exploring emission characteristics is to understand specific shipping emissions under at-berth mode. The significance of at-berth emissions was attributed to the fact that contribution of emissions under operation mode of 'at berth', mainly dominated by the auxiliary engine emissions, increased rapidly as the target areas shrank from global scale to the port regions. For global shipping emissions, the share of emissions from auxiliary engines under at-berth mode was between 2-6% (Corbett and Koehler, 2003). When the domain was limited to a region-scale, eg. East Asia, the contribution of SO<sub>2</sub> and NO<sub>x</sub> emissions at berth increased to 26% (Liu et al., 2016). When focusing on the national coastal area, the shares continued growing to 28% and up (Fu et al., 2017). An in-port shipping emission inventory of Yangshan Port in China (Song, 2014) revealed that auxiliary engine exhausts contributed 40.5% and 43.3% to overall PM<sub>2.5</sub> and SO<sub>x</sub> respectively. This is why the Fuel Switch at Berth regulation was proposed in 2011 and enforced in July 2015 in Hong Kong, then proposed in 2015 and enforced in 2017 in Main land China as the first step on marine fuel quality control. Yet no valid and comprehensive studies on chemical properties of auxiliary engine exhausts have been conducted in China, which owned 12 of 20 listed world's largest ports by 2010 (Report, 2013). Consequently, the lack of studies on chemical characteristics of at-berth emissions became a barrier to further analyze the mechanism of organic aerosol transition and toxicology of human health. Owing to the lack of these specific studies, it was more difficult to apply accurate at-berth data in evaluating health impact instead of using general average of shipping emission data without distinguishing both at-sea emission and at-berth emission.

Apart from the significance of at-berth emissions, another critical issue was the impact of different fuels on shipping emission chemical characteristics. The main fuel types applied in ship main engines or auxiliary engines were mainly residential oil, heavy fuel or intermediate fuel oils (Hays et al., 2008) as well as marine diesel oil. Low-grade heavy fuel oil (HFO), known as bunker oil or residual oil, which usually had sulfur content of higher than 0.5% and metallic elements such as vanadium, nickel and copper, was commonly used in marine engines and was responsible for high level of PM and gaseous pollutants such as SO<sub>x</sub> (Agrawal et al., 2009). In contrast, marine diesel oil (MDO) was lighter and cleaner diesel with lower sulfur and metallic element content (Corbett and Winebrake, 2008). Aiming at reducing the

emissions, More stringent limit on fuel sulfur content and switching to cleaner marine diesel fuels became a common trend(IMO, 2017). Various studies illustrated the distinction of using HFO and MDO in shipping emission chemical characteristics. For black carbon, using low sulfur content MDO could result in a reduction of up to 80% of total BC emissions comparing to using HFO(Lack and Corbett, 2012).

5 Recent comparative study focused on HFO and MDO in Europe sulfate emission control area (SECA) and results showed that a decline of sulfur content from 0.48% to 0.092% lead to a reduction of 67% in PM mass and 80% in SO<sub>2</sub> emission(Zetterdahl et al., 2016). Another comprehensive study including PM, EC, heavy metals was made to make comparison between HFO and standardized diesel fuel (Streibel et al., 2017). Following the regulations of using low sulfur fuels implemented by western countries, China  
10 began to launch its own stepwise regulations associated with domestic emission control areas (DECAs) to minimize conventional pollutants from shipping emissions. Under the new regulation ships were required to use diesel with a lower sulfur content of below 0.5% at berth, corresponding to the vital role that at-berth emissions played in air quality. Fuel switch would lead to changes in chemical characteristics of ship-exhausted gas-phase VOCs and PM, which were closely relevant to ambient air quality in port  
15 areas and health impact on population. Nevertheless, previous comparative studies on different fuels tended to emphasize the diversity in total amount and emission factors, there lacked of studies revealing chemical characteristics caused by fuel switch especially in China.

In order to explore the chemical composition of VOCs and particulate matters (PM) from ship auxiliary engines, this research was located in a key port area and was designed to cover the primary period of new  
20 policy implementation: from December 27<sup>th</sup>, 2016 to January 15<sup>th</sup>, 2017 in Jingtang Port, which was among the pilot key ports where new regulation came into effect since January 1<sup>st</sup>, 2017. An amount of 20 container ships were sampled and measured for VOC and PM emissions from auxiliary engines in the mode of at-berth. Via the application of gas chromatography-mass spectrometer (GC-MS) and single particle aerosol mass spectrometer (SPAMS), this research conducted a comprehensive exploration in  
25 perspectives of VOC profiles, PM size distribution and typical ion mass spectra, which could act as fundamental to impact assessment of shipping emissions and source apportionment in key port regions.

## 2 Experimental and methods

### 2.1 Sampling methods and instruments



### 2.1.1 Information of Jingtang Port, sampling sites and ships

~~Ambient sampling site was located inside Jingtang Port area in Hebei Province, China. Instruments were settled inside a container on a flat ground close to the #28 Berth and on the east side was the channel that allowed ships sailing in and out of the berth.~~ Ambient sampling site was located inside Jingtang Port,

5 Tangshan City, Hebei Province, China. Jingtang Port is located in Bohai Bay and belongs to Port of Tangshan, which is among the core ports in domestic emission control area. According to the China Port Yearbook 2015, the annual traffic of ships in Port of Tangshan reached 15084 and the total throughput exceeded 500 million tons, ranking 5th among global port throughputs. Jingtang Port area is surrounded by the Port Economic Development Area, which has a population of 78, 300. Tangshan is a typical  
10 industrial city with average PM<sub>2.5</sub> concentration in winter of 117 µg/m<sup>3</sup> (Zhang et al., 2017). The current PM<sub>2.5</sub> source apportionment studies in Tangshan did not include shipping emissions due to the lack of basic information and researches. The background information indicates the significance and urgency of studying the impact of shipping emissions and the effect of the fuel switching policy.

15 As is shown in Fig. 1(a), the center of population mainly concentrates in the residential area, located in the north of the port area, about 2km away from the port. About 2.5km in the west of the port area there is a thermal power plant with after-treatment facilities according to the strict emission control standards to power plants in China. Between the port and the other zones are two main roads with trucks driving to carry containers in and out of the port, which is about 1km away from the sampling site. Besides trucks and the power plants, there's no further emission sources near the port area.

20 The site for ambient particle collection and instrumental analysis is surrounded by the four pools and the channel, located on an open and flat corner close to the #26 and #27 Berth as well as the container yard inside the port, as is shown in Fig. 1(b). No tall buildings exist around the sampling instrument. The distribution of berths, pools and the sampling site guarantees that plumes from ships at berth are prone to reach the sampling instrument.

25 The information of 20 container ships included in this study was collected via on-board inquiry and was listed in **Table 12**.

### 2.1.2 VOCs sampling and analysis by GC-MS

VOCs from ship at berth were sampled via Entech summa canisters with standard volume of 3.2L. When

auxiliary engines were in operation, Teflon tubing with a length of 1m was stretched into the exhaust pipe, with the other end linked to summa canister. The flow rate was kept constant by Entech CS1200ES passive canister sampler, which also filtered impurities like particles and ashes. The first patch of samples was regarded as preliminary tests in order to determine proper dilution factors and sampling time and flow rate. Sample dilution was conducted by Entech 4600 dynamic diluter with various dilution factor range from 10 to 80, depending on the original sample concentration. Agilent 5975C-7890A was calibrated with standard gas and used for analyzing diluted VOC samples. A total of 93 VOC species were detected and mass percentage of single compound could be calculated according to sample inlet volume, dilution factor and calibration curve. Owing to the limit of chromatographic column property equipped on the GC-MS, alkanes and olefins with carbon number smaller than 4 were not detected. VOCs with carbon number larger than 6 are more relevant to the yield of secondary organic aerosols (Gentner et al., 2012).

### 2.1.3 Particles sampling and analysis by SPAMS

Ship exhaust particles were collected directly from exhaust pipes of auxiliary engines on ships by Tedlar bags and metal tubing designed specifically for particle sampling. The whole sampling process was achieved by a non-contact sampling box and air pump. Then samples were sent to the Single Particle Aerosol Mass Spectrometer from Hexin Analytical CO., Ltd(Li et al., 2011) as soon as possible to be analyzed. SPAMS shared common principle and mechanism with Aerosol Time-of-Flight Mass Spectrometer (ATOFMS). It was frequently applied in online measurement and analysis of single particle aerosol from heavy diesel vehicle exhausts(Shields et al., 2007) and biomass burning(Bi et al., 2011; Xu et al., 2017).

Ambient particle sampling was conducted from December 27<sup>th</sup>, 2016 to January 15<sup>th</sup>, 2017, spanning about 20 days. Ambient particles were sampled and analyzed by SPAMS, with the inlet fixed at a height of 3.6m from the ground level.

## 2.2 Ion mass spectra identification and manual grouping

Ion mass spectra with positive and negative ion information were derived from SPAMS output as fundamental for further analysis. Both positive and negative ions were in an  $m/z$  range of 1-250. Based on ART-2a neural network algorithm(Song et al., 1999), single particles sharing similar mass spectral

signatures were further grouped into clusters. The whole algorithm process was operated on MATLAB 2011a, and a vigilance factor of 0.7 as well as a learning rate of 0.05 was set respectively with 20 iterations. Then further manual classification was demanded in order to merging particle clusters into expected types, depending on the target of research. Clusters that counted for top 95% of all particles would be analyzed according to the method mentioned previously.

To identify each type of particles, ions with certain  $m/z$  value were used as markers(Fu et al., 2014). For element carbon (EC) particles,  $[C_n]$  signals were the most typical markers distributing in both positive and negative ion mass spectra. For organic carbon (OC) particles, ions with  $m/z=29, 37, 41, 43, 51, 61, 63, \dots$  represent  $C_2H_3^+, C_3H^+, C_3H_5^+, C_4H_3^+, \dots$ , respectively. Meanwhile, there existed a status of EC ions signals mixed with typical OC signals, which should be classified into EC-OC mixed particles (ECOC), and it was hard to accurately divide them into EC or OC types owing to the coexistence of EC and OC ion signals in single particle spectrum. ECOC particles were formed by EC or VOCs that had been oxidized in the air into OC attaching on the surface of the EC particles(Liu et al., 2003).  $Na^+$  mostly came both from sea salt while and contents existed in fuels, especially in heavy fuel oil or residual oil.  $K^+$  came from biomass burning as well as sea spray sources as well as the fuels(Leeuw et al., 2011).  $V^+$  and its oxidized ion  $VO^+$  were considered as the symbol of ship exhaust for V existed in fuel like heavy fuel oils (HFO). Previous studies (Celo et al., 2015;Liu et al., 2017) frequently used  $V^+$  and  $VO^+$  to identify particles from ship exhausts, though they could be observed more rarely comparing to other large-quantity particles. Other metallic ions such as  $Fe^+$  and  $Cu^+$  could also be observed, and they had relatively small relative intensity, for the metal elements scarcely existed in atmosphere and fuels combusted in powertrain systems. In most cases, particles with relative intensity of metallic ions higher than 0.05 and no other obvious high signals could be classified into metal rich particles.

### 3 Result and Discussion

#### 3.1 VOCs speciation

AExhausts from a total of 20 ships have been sampled in the previous measurements on board and all samples have been diluted to a concentration of approximately 3-4 ppm in order to guarantee the validity and accuracy of GC-MS analysis. 93 species were detected for each ship sample. The sum of mass concentration of identified 93 species was defined as 1, thus normalizing the mass concentration of single

species. 4 samples were excluded for their irregularity after 3-sigma test for all data. Then the remaining 16 samples were averaged by percentage of mass concentration and then VOCs speciation profile was obtained for all 16 ships, which shared similarity in species mass concentration distribution. The histogram of VOC profile by mass percentage was shown in **Fig. 42** and top 32 species were listed in **Table 23**. Alkanes and aromatics dominated the total identified VOCs from ship auxiliary engine exhaust. N-heptane, methylcyclohexane, n-octane, n-nonane, n-decane and n-undecane contributed considerably to alkane emissions, which indicated that alkanes with carbon number of more than 7 were more likely to be emitted from ship diesel engines compared with other mobile sources. Among aromatics benzene and toluene contributed approximately 9% to total VOCs emissions. This result was acceptably in consistence with study of Huang et al. on diesel emissions in Shanghai(Huang et al., 2015b;Huang et al., 2015a). In view of oxygenated VOCs and haloalkane contents, acetone and CH<sub>2</sub>Cl<sub>2</sub> exceeded benzene and toluene. However, there were considerable standard deviations in average oxygenated VOCs and haloalkanes mass proportion due to obvious ship-based difference and quantification inaccuracy of GC-MS for ~~these~~ these two ~~kinds~~ classes of compounds.

### 3.2 SOA Yields and OFP by VOCs from ship exhausts

Based on VOCs profile, SOA yields and ozone forming potential for ships were calculated. SOA yield value for individual precursor and definition of non-precursors were referenced from Gentner's study(Gentner et al., 2012). Here was a noticeable fact that intermediate VOCs (IVOCs) were not identified and quantified in this study, which may cause underestimation of the actual SOA yields. Also, VOC source profile of 3 types of diesel trucks (light-, middle- and heavy-duty truck respectively) (Yao et al., 2015) ~~and average profile for light-duty passenger gasoline vehicles were collected from previous domestic research and profiles of heavy-duty diesel trucks in Huang's study (Huang et al., 2015a) were referenced to calculate and make comparison. Average profile for light-duty passenger gasoline vehicles were collected from previous research in China~~ (Cao et al., 2015) to make comparison among them. Considering this comparison could provide insights to emission control strategy and fuel quality for different sectors in the same country, the comparison made among studies in China would make more sense. The results were presented in **Fig. 23**, and the average SOA yield for 16 ships measured was 0.017g SOA/g VOCs. As seen in **Fig. 23**, conclusion can be drawn that in terms of SOA yields, ship-exhaust VOCs would generate more SOA than that of diesel trucks as well as gasoline vehicles. The main

reason was the content difference of heavy organic compounds. Ship exhausts contained more heavy VOCs like alkanes and aromatics with carbon number of more than 9 than that of vehicles, among which aromatic contents like benzene, toluene and xylene were especially responsible for SOA yields. The unconsidered IVOCs tended to exist more commonly in heavy fuels rather than diesel oil or gasoline.

5 ~~For ozone~~ Ozone forming potential, ~~it~~ showed different trend against SOA generation in that VOCs from ship exhausts had ~~approximate~~ approximately equal OFP with diesel and gasoline vehicles. According to the calculating method of maximum increment reactivity (MIR)(Carter, 1994), lighter VOC had higher MIR scale, which meant more contribution to ozone formation. VOCs from ship exhausts had relatively lower content of light hydrocarbons, thus lowering the overall ozone forming potential. The average OFP  
10 of ship emitted VOCs was 2.63g O<sub>3</sub>/g VOCs. In conclusion, VOCs from ship exhausts might play a more important role in secondary organic aerosol formation in port area than diesel trucks and gasoline vehicles.

### 3.3 Overall particle characteristics by SPAMS

#### 3.3.1 Average ion mass spectra

~~A total of 31 samples~~ Samples collected by Tedlar bags and glass bottles from 20 ships at berth were  
15 analyzed by SPAMS. Excluding some invalid samples with very few particles, the average ion mass spectra of both positive and negative ions expressed in relative area were obtained after SPAMS analysis and classification, as shown in **Fig. 3**. ~~Individual ion mass spectra for each ship were shown in Fig. 4.4.~~  
The average ion mass spectra presented overall characteristics of total 20 ships. For positive ion spectrum, it could be noticed that Na<sup>+</sup> signal was observed as the highest peak. ~~Na<sup>+</sup> was recognized as symbolic ions from sea salt particles. It can be observed in the exhaust because the intake air of ships are full of sea salt.~~  
20 ~~ions from sea salt particles. It can be observed in the exhaust because the intake air of ships are full of sea salt.~~ Another sort of abundant ions represented EC and OC, occurring in the form of C<sup>+</sup>, C<sub>2</sub><sup>+</sup>, C<sub>3</sub><sup>+</sup>... as EC and C<sub>3</sub>H<sup>+</sup>, C<sub>2</sub>H<sub>3</sub><sup>+</sup>...as OC, respectively. It was easy to find that the relative signal area of EC ions were higher and more widely distributed than OC ions, which was consistent with previous researches that fuel combustion produced more EC than OC particles. Though not as obvious as those abundant  
25 sorts above, the percentage of V<sup>+</sup> and VO<sup>+</sup> were relatively low but not negligible, which were commonly used to identify ship source particles.

For negative ion spectrum, the components were not as complex as positive. The highest peak was HSO<sub>4</sub><sup>-</sup> with m/z=97, which exceeded 50% of the overall negative ion relative area. HSO<sub>4</sub><sup>-</sup> was typical marker



of sulfate particles, which were formed via secondary reaction in atmosphere. This part will be further discussed in following sections. EC signals such as  $C_2^-$ ,  $C_3^-$ , and  $C_4^-$  could also be observed in negative spectrum. In addition, markers of nitrates with  $m/z=46$  and  $62$  were  $NO_2^-$  and  $NO_3^-$ . Nitrates were regarded as secondary particles that might come from the aging of primary particles emitted directly by fuel combustion or the transformation of gas-phase  $NO_2$ . The relative area of nitrate signals was much lower than  $HSO_4^-$ , illustrating that nitrate particles were not predominant in ship exhausts and not the main research goal in this study.

### 3.3.2 Manual grouping results

Based on single particle ion spectrum similarity and ART-2a neural network algorithm, particles from ship exhaust were further grouped into clusters of 175, among which the top 86 clusters covered 95%, with the rest defined as others. Clusters were set as OC, EC, ECOC, Na (Na-Rich), K (K-rich), V (V-rich), Cu (Cu-rich), Fe (Fe-rich), Mn (Mn-rich) and others, depending on the similarity and manual grouping. Method and criterion of the manual grouping mainly focused on positive ions. Particle grouping could be a fundamental access to accurate source apportionment of a target region.

After that a composition analysis was conducted and result was shown in **Fig. 5**. It was shown that EC and ECOC particles dominated with a proportion of 35.74% and 33.95%, while Na-rich particles ranked 3<sup>rd</sup> with percentage of 21.12%. Data of EC and ECOC indicated that carbon emitted by fuel combustion tended to product more EC and ECOC than purely OC particles. The amount and ratiofraction of OC particles was remarkably lower than EC and ECOC with a factor of ~10. Meanwhile, OC tended to attach to EC particles and thus forming ECOC particles and increasing the ratio of ECOC particles. ~~The explanation for high proportion of Na-rich particles was from sea spray sources. When engine works, air from above the sea is inhaled into engine and Na particles attached to the exhaust products after fuel combustion. In fact, part of ECOC and OC, EC particles still had high  $Na^+$  ion signals.~~fraction of ECOC particles. In view of the composition of fuel combusted by marine engine, Na does exist with a mass concentration of around 13-22mg/kg in several samples of heavy fuel oil (HFO) and lower content in marine diesel oil(Moldanov á et al., 2013;Lack et al., 2009). Moldanova (Moldanov á et al., 2009) analyzed particle from ship exhausts by using two-step laser mass spectrometry and  $Na^+$  was observed with obvious peak in the mass spectra. According to Sippula's (Sippula et al., 2014) research on marine diesel engine, Na can also exist in lubrication oil and be exhausted along with the lubrication and grinding

process. It is widely recognized that the metal content existed in exhausted particles has strong correlation with that in fuel (Celo et al., 2015; Moldanov et al., 2013). Although the content of Na is obviously lower than that of vanadium (55-133.8mg/kg), the peaks of Na<sup>+</sup> in ion mass spectra are mostly higher than peaks of V<sup>+</sup>/VO<sup>+</sup> signal. This phenomenon indicate that there are external sources of Na and one of the most possible sources is sea salt, whose typical elements are Na. In conclusion, the Na-rich particles come from a multiple source of both fuel composition and sea salt perturbation. Only particles with relative area of Na<sup>+</sup> obviously higher than other positive ions were counted as Na-rich particles. The same rule also adapted to K-rich particles. Owing to the fact that the content of K in most marine fuels is lower than that of Na, V and other typical metallic elements, one of the possible sources of K-rich particles is sea salt (O'Dowd et al., 1997), which is similar to the source of Na-rich particles. Na<sup>+</sup> and K<sup>+</sup> were both widely spread among all particles. V-rich particles were likely to contain mixtures of ammonia sulfate or sulfuric acids (Divita et al., 1996), which could be proved by ion mass spectra. Particles with relatively high V<sup>+</sup>/VO<sup>+</sup> signals occupied only 1.1% according to the classification criterion, which were contributed by a few numbers of ships. This will be discussed in following parts.

### 3.3.3 Size distribution

Particles with aerodynamic diameter ranging from 0.2μm to 2.5μm, covering the accumulation mode (0.1μm to 1μm) and coarse mode (over 1μm) (Frick and Hoppel, 2010), were analyzed by SPAMS and this size range has a significant correlation with PM<sub>2.5</sub> pollution, which should be ~~evaluate~~evaluated seriously. Size information of 257911 particles from 20 ships were derived from SPAMS and 19342 of them were hit. It showed a skewed distribution with a peak appeared between 0.38μm and 0.44μm. This result disagreed with the measurements conducted in Ireland using SMPS (Healy et al., 2009), in which particles measured were mostly within the size range of 100nm. Moreover, bimodal distribution was not observed for the reason of limited size range measurement of smaller than 2.5μm, while the coarse mode usually occurred beyond that. The divergence might result from the difference of measuring instruments and fuels. 95% of all particles with size information lay in 0.2μm-1.46μm, which implied that particles from ship auxiliary engine exhaust could be classified into fine particles, contributing to the PM<sub>2.5</sub> in ambient air. It is remarkable that the magnitude of size distribution in this study was consistent with some of the test results ~~in difference in fuel used~~ by engines: using different fuels. Most of the samples in this study were collected after January 1<sup>st</sup>, ~~after which~~when new policy of forcing ships to switch to clean

diesel fuel ~~when at berth~~ had taken effect. This could result in the decline of particle aerodynamic diameter. In order to further analyze the size distribution information of different sorts of grouped particles, **Fig. 6** was drawn to reveal the ~~percentage proportion~~ variation among different particles over size range. As OC particles only occupied less than 5% of overall particles, they show no apparent trends and distributed dispersedly in each section. It can be observed that in sections of larger than 1.30 $\mu\text{m}$  OC particles occasionally “disappeared” in some bins, while they kept continuously between 0.2-1.30 $\mu\text{m}$ , which might indicated that OC tended to concentrate in a relatively tiny size section. The rule of EC particle distribution was a little similar to bimodal distribution, with the first peak settled in the section of 0-0.6 $\mu\text{m}$ . In the section of 1.75 $\mu\text{m}$  to 2.5 $\mu\text{m}$ , it appeared to present another peak but not as obvious as the first one. Accordingly, in section of 0.2-0.5 $\mu\text{m}$ , proportion of ECOC particles was lower than that in the section of over 0.5 $\mu\text{m}$ , implying that ECOC tended to form larger particles comparing to EC. Another obvious fact was that K-rich particles were more likely to present normal distribution in the range of 0.25 $\mu\text{m}$  to 1.0 $\mu\text{m}$ , which was discrepant with size distribution of Na-rich particles. Na-rich particles distributed almost equally among bins in 0.2-1.25 $\mu\text{m}$ , and proportion increased starting from 1.25 $\mu\text{m}$ . Metal contained particles were observed between 0.25 $\mu\text{m}$  to 1.25 $\mu\text{m}$ , occupying much lower proportion comparing to other massive sorts of particles. Metal contained in particles emitted by ship engine mainly came from combustion of heavy fuel oil and were known to catalyze the oxidation of  $\text{SO}_2$  and subsequence formation of sulfuric acid or sulfate particles.

### 3.4 Whether vanadium can be used as tracers of ship fuel combustion in port area atmosphere?

#### 3.4.1 Ion mass spectra difference between ships using different fuels

Owing to the fact that all samples were collected after January 1<sup>st</sup>, 2017, the regulated date of fuel switch, it could not be judged by date whether ships had changed to diesel fuel. However, from the ion mass spectra of individual ships it could be noticed that some of the ships had higher V intensity while others not (Ni was also a certain element mostly from heavy fuel, but SPAMS seemed to perform less sensitivity of Ni detection(Agrawal et al., 2009)), and there existed considerable difference in  $\text{HSO}_4^-$  intensity. In order to better distinguish ships using HFO and MDO, operation in MATLAB analysis was carried out. Signals satisfied the intersection of conditions that intensity of peak  $m/z=51$  and  $m/z=67$  were higher than 100 while  $m/z=37$  lower than 100, could be recognized as vanadium-related signals, excluding the

possibility of counting OC signals for V signals. Ship13 and ship17 shared a similarity in both high V and  $\text{HSO}_4^-$  relative intensity, as shown in Fig. 7. ~~Separate ion mass spectra of these two types were derived respectively as shown in Fig. 8, in which ship13 and ship17 were defined as Type1 while the rest as Type2. Owing to the fact that vanadium is a typical metallic element existed mostly in heavy fuel oil~~  
 5 ~~with higher sulfur content than distillate fuels (Moldanov áet al., 2009;Celo et al., 2015), when obvious signal of vanadium occur in the ion mass spectra of particles from ship 13 and ship 17, they were very likely to use heavy fuel oils at berth. Accordingly, the sulfur intensity can be very high. However, for the ships with high sulfur but low vanadium, the actual contents of sulfur and vanadium of fuels used by these ships are unknown and this phenomenon cannot be well explained in this study due to the limit of~~  
 10 ~~instrument and the quantity of particles analyzed in each sample. The main instrument applied in this study is SPAMS, which is considered as semi-quantitative and unable to give accurate emission factors of sulfur and vanadium. Moreover, similar studies using the same methods on shipping emissions are very rare. Therefore, this issue demands further exploration.~~

~~Type1 ships~~The two ships with vanadium signals higher than others included a total particle number of 30009 and among which 2633 were measured with ion mass spectra. ~~Type2 ships had a total number of 227902 and 23855 were measured. The average hit ratio approximated 10%.~~In the ion mass spectra of ~~Type1these~~ ships, higher  $\text{V}^+ / \text{VO}^+$  and  $\text{HSO}_4^-$  signals of over 0.8 in relative intensity while ~~Type2the~~ other ships had average  $\text{HSO}_4^-$  relative intensity of 0.59 and no apparent  $\text{V}^+/\text{VO}^+$  signals. ~~In addition, signal of  $m/z=192$  occurred in negative ions of Type1, which could represent heavy EC signals relating to heavy oil combustion. Based on these features, it could be concluded that Type1 represented ships using HFO and Type2 for MDO ships.~~—Due to the relatively fewer particles of ~~HFOsuch~~ ships, there might be abnormality in low positive EC signals in ~~their~~ ion mass spectra ~~of HFO ships~~. Nonetheless, major chemical PM characteristics of different fuel types could be observed through ion mass spectra.

### 3.4.2 Comparison of vanadium intensity between shipping emissions and ambient data

25 Previous studies have illustrated that owing to the vanadium contents in heavy fuel, vanadium in ambient atmosphere could be used as tracers indicating the heavy fuel combustion related to ship exhausts(Celo and Dabek-Zlotorzynska, 2010). Field measurements in Shanghai Port in 2011 revealed that the V/Ni ratio could be applied to identification of shipping traffic emission(Zhao et al., 2013); domestic researches elsewhere focused on Bohai Rim in 2013 identified and quantified contribution of ship PM

emission to ambient air quality using V as tracers(Zhang et al., 2014). Moreover, studies in Europe also focused on metallic elements representing shipping-source particulate matters in atmosphere, which played crucial roles in ambient PM source apportionment analysis (Marco et al., 2011;Perez et al., 2016). As the new regulation came into effect and ships were demanded to use low sulfur diesel oil at berth, whether vanadium could still be used as tracers of ship emission to accomplish shipping source identification is worthy of exploration. Distinct from previous researches that mainly based on filter analysis, this study provided an innovative perspective of spectrometry analysis.

Owing to the working principle of SPAMS, mass ~~ratio~~fraction of vanadium element to other symbolic elements could not be derived, and Ni as well as La showed no apparent signals in SPAMS spectra. The main methodology was to make comparison between the vanadium intensity of particles from ships to that of particles sampled in ambient atmosphere. If the vanadium intensity in ship exhausts is commonly lower than that of the corresponding ambient data, then it is no longer a proper tracer for vanadium to identify ship exhaust sources. Calculation was performed using a method similar to the one mentioned previously. Due to the fact that sampled and particle numbers detected by SPAMS differ apparently among ships, we defined the ratio of total intensity to SPAMS detected particle number as vanadium-related intensity. The results of overall 20 ships sampled during January 4<sup>th</sup> to January 16<sup>th</sup> as well as the ambient vanadium intensity is shown as **Fig. 98**.

Noticing that the ordinate was logarithmic, considerable distinction existed among ships in vanadium intensity. ~~17 out of 20 ships~~The intensities in the exhausts from 17ships were well below or comparable to corresponding ambient intensity, while ship2, ship13 and ship17 can be observed with apparently high vanadium intensity. This phenomenon might revealed the fact that after fuel substitution, vanadium from ship exhausts at berth would not appear remarkably higher than that of the ambient in most cases. Another crucial evidence is the element analysis of 3 diesel samples collected during field measurements (shown in **Table 3**). ~~Among none~~4. None of the 3 diesel samples were vanadium detected, which showed significantly decrease from the literature data of 38.0-133.8mg/kg in previous studies using intermediate fuel oils(IFO) as shown in **Table 34**(Celo et al., 2015). From the aspect of vanadium “sources”, it can be referred that if the content of vanadium in fuel keeps declining, the role it plays will not be as significant as it used to be. It will be much harder to detect the existence of vanadium in ambient atmosphere.

### 3.5 Sulfate particle contribution of ~~ship exhausts to ambient particles~~at berth shipping emissions

The primary goal of domestic ship emission control areas was to control SO<sub>2</sub> and sulfate emissions. The concrete demand for emission reduction was lowering sulfur content in fuel oil to a certain level, which had been designed as lower than 0.5% by weight percentage. Based on these facts, it's meaningful to evaluate the impact of switching to ~~clean diesel oil~~low sulfur oils on ambient air quality. One of the effective methods was to ~~extract ship source~~identify sulfate particles from ships out of overall ambient particles that were sampled by SPAMS and observe the change of ~~ambient sulfate particle number as well as ship source sulfate ratio over time~~contribution from ships.

The first step was to identify and extract ship-source particles out of all that were sampled and analyzed by SPAMS. The operation was based on information ~~and properties of particles from ship exhausts, which had been analyzed and~~ obtained from ~~average~~the analyzed ion mass spectra ~~after on-board sampling~~. Then by ~~setting a certain similarity and using~~algorithm calculation via MATLAB, ~~if the ion spectra of a particle shared similarity exceeding the setting value, it would be judged~~certain particles are identified as ~~particle~~from ship exhaust. The next was to extract sulfate particles ~~out of ship source~~from the identified particles from ships and ambient, respectively. This step was accomplished by finding particles as sulfates with  $m/z = -97$  ~~and/or~~  $-80$ , which represented HSO<sub>4</sub><sup>-</sup> and SO<sub>3</sub><sup>-</sup>, two typical markers of sulfates. Finally the temporal (1h resolution) number change of identified sulfate particles from ships and ambient particles as well as the ratio was obtained. The temporal profile (1 hour resolution) of ship-source and ambient particle number sampled by SPAMS between 18:00, December 27<sup>th</sup> and 18:00, January 15<sup>th</sup> was shown in **Fig. 10-9(a)**, while the green line referred to the number ~~ratio~~fraction of ship-source to ambient sulfates. The red dashed line vertical to the time axis represented the time of 0:00 on January 1<sup>st</sup> when regulation of demanding clean diesel fuel to be switched came into effect.

A total of 439 sets of data were included in the source apportionment analysis. By linear fitting for ship-source and ambient sulfate particle ~~number, the correlation coefficients  $r$ =numbers~~, the Pearson Correlation Coefficient was 0.885,91 as shown in Fig. 9(c), indicating that sulfate particles from ~~ships~~ships and ambient had a strong correlation with each other. Meanwhile, it also can be seen from the change tendency that the change of sulfate particles in ambient air always kept synchronous with that of ship-source particles, proving the fact that ship-source sulfate particles had made relatively stable contribution to ambient sulfate particle concentration.

The analysis was divided into two sections by the time of January 1<sup>st</sup>, 2017. Before the time spot, it can be seen that around December 29<sup>th</sup>, both ambient and ship-source sulfate particles formed several peaks

as well as the ship-source/ambient ratio. Peaks of ship sulfate particles were formed largely depending on ships sailing into or out of the berth, thus producing plumes sampled by SPAMS. In the following days during December 29<sup>th</sup> to January 4<sup>th</sup>, evident decrease could be seen, especially around January 1<sup>st</sup>, which might due to switching to low sulfur diesel oil. Brief surveys had been conducted towards crew on board during measurement periods and it was informed that some of the ships had switched to low sulfur oil in advance of the regulated date. Between January 4<sup>th</sup> and January 6<sup>th</sup> a peak higher than others could be observed, while the ratio kept even lower than around December 29<sup>th</sup>. The ship-source/ambient sulfate ratio reached peaks at 18:00 on January 9<sup>th</sup> and 16:00 on January 12<sup>th</sup> respectively, however, during these two time sections the quantity of measured particle numbers was apparently low, which could cause errors that were easy to be neglected.

Generally, the average ratio of ship source sulfate particles to ambient sulfate particles before and after January 1<sup>st</sup> were 23.82% and 23.61%, respectively. ~~In view of the data obtained from this method and measurements, using low sulfur fuel slightly bring down the contribution of ship source sulfate particles to atmospheric sulfates, though the numerical distinction was rather small. However, the fact that some ships had begun to use low sulfur fuel right before January 1<sup>st</sup> should be taken into consideration for the numerical results and further measurements as well as more solid data collection should be done to dig out the accurate impact of new regulation. With regard to the uncertainty in sampling, analysis and calculation, the results can be regarded as unchanged at a level of 24%.~~

To better focus on the shipping emissions, we take the wind direction data into consideration. The wind direction of the whole sampling period was shown as Fig. 9(b). According to the geographic positions of berths and wind directions, as the berths mainly distribute in the northwest, north and east direction of the sampling site, wind from these directions will driving the plumes to the sampling site. Moreover, no obvious emission sources other than ships at berth could interfere the ambient sampling.

Ambient data with wind direction in the range of northwest to southeast (clockwise) were extracted and divided by January 1<sup>st</sup>, 2017. A total of 10 hours with 37825 particles and a total of 133 hours with 682176 particles were calculated before and after January 1<sup>st</sup>, respectively. The updated results for the ratio of sulfates identified as shipping emissions to ambient were 35% and 27% before and after January 1<sup>st</sup>, 2017 respectively, indicating a decrease of at berth shipping emission contribution to ambient sulfates. The new Chinese sulfur limit for auxiliary engines corresponds to the global shipping limit that will apply from the year 2020. Studies have been done to estimate the effect of the low sulfur fuel limit. On global



level, according to Sofiev's (Sofiev et al., 2018) estimation, the global implementation of the 0.5% sulfur content policy can reduce the annual average sulfate concentration by 2-4  $\mu\text{g}/\text{m}^3$ . However, even after the implementation of 0.5% sulfur limit for ships at berth, the PM and  $\text{SO}_2$  emissions still remain at a level of 770 and 2500kt respectively. In China ports, under the scenario of all ships changing over to low sulfur fuel (<0.5%) in all China's emission control area, the remaining of at berth PM and  $\text{SO}_2$  emissions can reach up to 1kt and 8kt respectively in Jing-Jin-Ji port area(Liu et al., 2018). If electricity from land could be applied, these emissions could be further reduced.

According to the source apportionment of sulfate particles in port area, the number concentration contribution of sulfates from shipping emission at berth are lowered from 35% to 27% after the switching oil policy implementation after January 1<sup>st</sup>, 2017. The stricter fuel sulfur limit did reduce the contribution of shipping emission, but these emissions would continue to play an important role in atmospheric pollution and electricity from land will be demanded to ameliorate this situation.

In general, PM and  $\text{SO}_2$  emissions can't be eliminated by merely controlling the sulfur content of fuels, though the stricter sulfur limits is an effective way to reduce emissions. Hence the option of using electricity from land will probably help maximizing the emission reduction of  $\text{SO}_2$  and PM.

#### 4 Conclusions

Sampling of VOCs and particles from 20 ships at berth was conducted in winter Jingtang Port during the period of December 27<sup>th</sup>, 2016 to January 15<sup>th</sup>, 2017. Average VOC source profile of container ships was obtained, and SOA yields as well as ozone forming potential were calculated based on source profile.

Comparisons ~~have been~~were made to diesel and gasoline vehicles according to the source profile in previous researches. Secondary organic aerosol yields and ozone forming potential were  $0.017 \pm 0.007\text{g SOA/g VOCs}$  and  $2.63 \pm 0.37\text{g O}_3/\text{g VOCs}$ , respectively. Results showed that VOCs from ships tended to yield more secondary organic aerosol than diesel and gasoline vehicles, while ozone forming potential was comparable to them.

SPAMS sampling and analysis provided information of particle average ion mass spectra, manual grouping, total and specified group size distribution as well as impact of ship-source sulfate particles on ambient atmosphere. EC, ECOC and Na-rich particles were predominant sorts in overall particles, occupying over 90.7% of all particles. Size distribution indicated that most particles concentrated in the

range of 0.2-1.4 $\mu$ m, and different sorts of particles had various distribution patterns.

The issue of vanadium as tracer element was demonstrated and conclusion was drawn that after the fuel substitution, fuel vanadium contents had been significantly lowered and vanadium from ship auxiliary engine exhausts showed no obvious excess comparing to corresponding ambient data in most cases.

- 5 After identifying and extracting ship-source sulfate particles out of ambient sulfate particles during the whole sampling period, a temporal profile with resolution of 1hour was obtained. Comparing post-January 1<sup>st</sup> data to that of December, the ratio of ship-source sulfate particles to ambient sulfate particles presented a slight decrease from 23.82% to 23.61%. ~~The reason why evident decrease was not observed may be the lack of solid data in December and that some ships had switched to low sulfur fuel in advance.~~
- 10 ~~To better evaluate the impact of using low sulfur oil, more and further measurements and data were demanded.~~ remain unchanged at a level of 24%. When considering the wind direction with berths at upwind, the sulfate contribution of ships at berth could be observed from 35% to 27% before and after the implementation of switching oil policy. The contribution of shipping emissions at berth to the ambient sulfates was lowered by the stricter sulfur limit in fuels.

## 15 Acknowledgements

- This work was supported by ~~the~~ National ~~Nature~~Natural Science ~~Fund~~Foundation of China (~~grant numbers~~No. 91544110, ~~and~~ 41571447 ~~and~~ 21607056), ~~the special fund of~~), Beijing Nova Program (Z181100006218077), National Key R&D Program (2016YFC0201504), Special Fund of State Key Joint Laboratory of Environment Simulation and Pollution Control (~~grant number~~ 16Y02ESPCT), ~~the~~
- 20 ~~National Key R&D Program (grant number 2016YFC0201504)] and the~~and National Program on Key Basic Research Project (~~grant number~~ (2014CB441301).

## References

- Agrawal, H., Eden, R., Zhang, X., Fine, P. M., Katzenstein, A., Miller, J. W., Ospital, J., Teffera, S., and Rd, C. D.: Primary particulate matter from ocean-going engines in the Southern California Air Basin, *Environmental Science & Technology*, 43, 5398-5402, 2009.
- Andersson, C., Bergström, R., and Johansson, C.: Population exposure and mortality due to regional background PM in Europe &dash; Long-term simulations of source region and shipping contributions, *Atmospheric Environment*, 43, 3614-3620, 2009.
- Bi, X., Zhang, G., Li, L., Wang, X., Li, M., Sheng, G., Fu, J., and Zhou, Z.: Mixing state of biomass burning particles by single particle aerosol mass spectrometer in the urban area of PRD, China, *Atmospheric Environment*, 45, 3447-3453, 2011.
- Buffaloe, G. M., Lack, D. A., Williams, E. J., Coffman, D., Hayden, K. L., Lerner, B. M., Li, S. M., Nuaaman, I., Massoli, P., and Onasch, T. B.: Black carbon emissions from in-use ships: a California regional assessment, *Atmospheric Chemistry & Physics*, 13, 1881-1896, 2013.
- Cao, X., Yao, Z., Shen, X., Ye, Y., and Jiang, X.: On-road emission characteristics of VOCs from light-duty gasoline vehicles in Beijing, China, *Atmospheric Environment*, 124, 2015.
- Carter, W. P. L.: Development of Ozone Reactivity Scales for Volatile Organic Compounds, *Journal of the Air & Waste Management Association*, 44, 881-899, 1994.
- Celo, V., and Dabek-Zlotorzynska, E.: Concentration and Source Origin of Trace Metals in PM(2.5) Collected at Selected Canadian Sites within the Canadian National Air Pollution Surveillance Program, in: *Urban Airborne Particulate Matter: Origin, Chemistry, Fate and Health Impacts*, edited by: Zereini, F., and Wiseman, C. L. S., *Environmental Science and Engineering*, 19-38, 2010.
- Celo, V., Dabek-Zlotorzynska, E., and McCurdy, M.: Chemical Characterization of Exhaust Emissions from Selected Canadian Marine Vessels: The Case of Trace Metals and Lanthanoids, *Environmental Science & Technology*, 49, 5220-5226, 10.1021/acs.est.5b00127, 2015.
- Chen, G.: An investigation of the chemistry of ship emission plumes during ITCT 2002, *Journal of Geophysical Research*, 110, 10.1029/2004jd005236, 2005.
- Corbett, J. J., Fischbeck, P. S., and Pandis, S. N.: Global nitrogen and sulfur inventories for oceangoing ships, *Journal of Geophysical Research Atmospheres*, 104, 3457-3470, 1999.
- Corbett, J. J., and Koehler, H. W.: Updated emissions from ocean shipping, *Journal of Geophysical Research Atmospheres*, 108, 87-107, 2003.
- Corbett, J. J., Winebrake, J. J., Green, E. H., Kasibhatla, P., Eyring, V., and Lauer, A.: Mortality from Ship Emissions: A Global Assessment, *Environmental Science & Technology*, 41, 8512-8518, 2007.
- Corbett, J. J., and Winebrake, J. J.: Emissions tradeoffs among alternative marine fuels: total fuel cycle analysis of residual oil, marine gas oil, and marine diesel oil, *Journal of the Air & Waste Management Association*, 58, 538-542, 2008.
- Divita, F., Ondov, J. M., and Suarez, A. E.: Size Spectra and Atmospheric Growth of V-Containing Aerosol in Washington, DC, *Aerosol Science and Technology*, 25, 256-273, 10.1080/02786829608965395, 1996.
- Eyring, V., Isaksen, I. S. A., Berntsen, T., Collins, W. J., Corbett, J. J., Endresen, O., Grainger, R. G., Moldanova, J., Schlager, H., and Stevenson, D. S.: Transport impacts on atmosphere and climate: Shipping, *Atmospheric Environment*, 44, 4735-4771, 10.1016/j.atmosenv.2009.04.059, 2010.
- Fitzgerald, J. W.: Marine aerosols: A review, *Atmospheric Environment.part A.general Topics*, 25, 533-

545, 1991.

Frick, G. M., and Hoppel, W. A.: Airship Measurements of Ship's Exhaust Plumes and Their Effect on Marine Boundary Layer Clouds, *Journal of the Atmospheric Sciences*, 57, 2625-2648, 2010.

5 Fu, H. Y., Yan, C. Q., Zheng, M., Cai, J., Li, X. Y., Zhang, Y. J., Zhou, Z., Fu, Z., Li, M., and Li, L.: [Application of on-line single particle aerosol mass spectrometry (SPAMS) for studying major components in fine particulate matter], *Environmental Science*, 35, 4070, 2014.

Fu, M., Liu, H., Jin, X., and He, K.: 1 National- to port-level inventories of shipping emissions in China, *Environmental Research Letters*, 2017.

10 Gentner, D. R., Isaacman, G., Worton, D. R., Chan, A. W. H., Dallmann, T. R., Davis, L., Liu, S., Day, D. A., Russell, L. M., Wilson, K. R., Weber, R., Guha, A., Harley, R. A., and Goldstein, A. H.: Elucidating secondary organic aerosol from diesel and gasoline vehicles through detailed characterization of organic carbon emissions, *Proceedings of the National Academy of Sciences of the United States of America*, 109, 18318-18323, 10.1073/pnas.1212272109, 2012.

15 Hays, M. D., Beck, L., Barfield, P., Lavrich, R. J., Dong, Y., and Wal, R. L. V.: Physical and Chemical Characterization of Residential Oil Boiler Emissions, *Environmental Science & Technology*, 42, 2496, 2008. Healy, R. M., O'Connor, I. P., Hellebust, S., Allanic, A., Sodeau, J. R., and Wenger, J. C.: Characterisation of single particles from in-port ship emissions, *Atmospheric Environment*, 43, 6408-6414, 2009.

20 Huang, C., Wang, H. L., Li, L., Wang, Q., Lu, Q., de Gouw, J. A., Zhou, M., Jing, S. A., Lu, J., and Chen, C. H.: VOC species and emission inventory from vehicles and their SOA formation potentials estimation in Shanghai, China, *Atmospheric Chemistry and Physics*, 15, 11081-11096, 10.5194/acp-15-11081-2015, 2015a.

Huang, C., Wang, H. L., Li, L., Wang, Q., Lu, Q., De Gouw, J. A., Zhou, M., Jing, S. A., Lu, J., and Chen, C. H.: VOC species and emission inventory from vehicles and their SOA formation potentials estimation in Shanghai, China, *Atmospheric Chemistry & Physics Discussions*, 15, 7977-8015, 2015b.

25 IMO: Emission Control Areas (ECAs) designated under MARPOL Annex VI, 2017.

Lack, D. A., Corbett, J. J., Onasch, T., Lerner, B., Massoli, P., Quinn, P. K., Bates, T. S., Covert, D. S., Coffman, D., and Sierau, B.: Particulate emissions from commercial shipping: Chemical, physical, and optical properties, *Journal of Geophysical Research Atmospheres*, 114, doi:10.1029/2008JD011300, 2009.

30 Lack, D. A., and Corbett, J. J.: Black carbon from ships: a review of the effects of ship speed, fuel quality and exhaust gas scrubbing, *Atmospheric Chemistry & Physics*, 12, 3985-4000, 2012.

Leeuw, G. D., Andreas, E. L., Anguelova, M. D., Fairall, C. W., Lewis, E. R., O'Dowd, C., Schulz, M., and Schwartz, S. E.: Production flux of sea spray aerosol, *Reviews of Geophysics*, 49, 193-209, 2011.

35 Li, L., Huang, Z., Dong, J., Li, M., Gao, W., Nian, H., Fu, Z., Zhang, G., Bi, X., and Cheng, P.: Real time bipolar time-of-flight mass spectrometer for analyzing single aerosol particles, *International Journal of Mass Spectrometry*, 303, 118-124, 2011.

Liu, D. Y., Wenzel, R. J., and Prather, K. A.: Aerosol time-of-flight mass spectrometry during the Atlanta Supersite Experiment: 1. Measurements, *Journal of Geophysical Research-Atmospheres*, 108, 10.1029/2001jd001562, 2003.

40 Liu, H., Fu, M., Jin, X., Shang, Y., Shindell, D., Faluvegi, G., Shindell, C., and He, K.: Health and climate impacts of ocean-going vessels in East Asia, *Nature Climate Change*, 6, 1037-+, 10.1038/nclimate3083, 2016.

Liu, H., Meng, Z.-H., Shang, Y., Lv, Z.-F., Jin, X.-X., Fu, M.-L., and He, K.-B.: Shipping emission forecasts and cost-benefit analysis of China ports and key regions' control, *Environmental Pollution*, 236, 49-59, <https://doi.org/10.1016/j.envpol.2018.01.018>, 2018.

- Liu, Z., Lu, X., Feng, J., Fan, Q., Zhang, Y., and Yang, X.: Influence of Ship Emissions on Urban Air Quality: A Comprehensive Study Using Highly Time-Resolved Online Measurements and Numerical Simulation in Shanghai, *Environmental Science & Technology*, 51, 202, 2017.
- Marco, P., Yolanda, G. C., Andrés, A., Rosa, J. D., De La, Enrique, M., A Sanchez, D. L. C., Xavier, Q., Jorge, P., Fulvio, A., and Teresa, M.: Source apportionment of PM 10 and PM 2.5 at multiple sites in the strait of Gibraltar by PMF: impact of shipping emissions, *Environmental Science & Pollution Research*, 18, 260-269, 2011.
- Moldanová, J., Fridell, E., Popovicheva, O., Demirdjian, B., Tishkova, V., Faccineto, A., and Focsa, C.: Characterisation of particulate matter and gaseous emissions from a large ship diesel engine, *Atmospheric Environment*, 43, 2632-2641, 2009.
- Moldanová, J., Fridell, E., Winnes, H., and Holminfridell, S.: Physical and chemical characterisation of PM emissions from two ships operating in European Emission Control Areas, *Atmospheric Measurement Techniques*, 6, 3577-3596, 2013.
- O'Dowd, C. D., Smith, M. H., Consterdine, I. E., and Lowe, J. A.: Marine aerosol, sea-salt, and the marine sulphur cycle: a short review, *Atmospheric Environment*, 31, 73-80, 1997.
- Peng, Z., Ge, Y., Tan, J., Fu, M., Wang, X., Chen, M., Yin, H., and Ji, Z.: Emissions from several in-use ships tested by portable emission measurement system, *Ocean Engineering*, 116, 260-267, 10.1016/j.oceaneng.2016.02.035, 2016.
- Perez, N., Pey, J., Reche, C., Cortes, J., Alastuey, A., and Querol, X.: Impact of harbour emissions on ambient PM10 and PM2.5 in Barcelona (Spain): Evidences of secondary aerosol formation within the urban area, *Sci Total Environ*, 571, 237-250, 10.1016/j.scitotenv.2016.07.025, 2016.
- Reda, A. A., Schnelle-Kreis, J., Orasche, J., Abbaszade, G., Lintelmann, J., Arteaga-Salas, J. M., Stengel, B., Rabe, R., Harndorf, H., and Sippula, O.: Gas phase carbonyl compounds in ship emissions: Differences between diesel fuel and heavy fuel oil operation, *Atmospheric Environment*, 112, 370-380, 2015.
- Report, C. S.: CHINA SHIPPING REPORT, China Shipping Report, 2013.
- Shields, L. G., Suess, D. T., and Prather, K. A.: Determination of single particle mass spectral signatures from heavy-duty diesel vehicle emissions for PM2.5 source apportionment, *Atmospheric Environment*, 41, 3841-3852, <https://doi.org/10.1016/j.atmosenv.2007.01.025>, 2007.
- Sippula, O., Stengel, B., Sklorz, M., Streibel, T., Rabe, R., Orasche, J., Lintelmann, J., Michalke, B., Abbaszade, G., and Radischat, C.: Particle emissions from a marine engine: chemical composition and aromatic emission profiles under various operating conditions, *Environmental Science & Technology*, 48, 11721-11729, 2014.
- Sofiev, M., Winebrake, J. J., Johansson, L., Carr, E. W., Prank, M., Soares, J., Vira, J., Kouznetsov, R., Jalkanen, J. P., and Corbett, J. J.: Cleaner fuels for ships provide public health benefits with climate tradeoffs, *Nature Communications*, 9, 406, 2018.
- Song, S.: Ship emissions inventory, social cost and eco-efficiency in Shanghai Yangshan port, *Atmospheric Environment*, 82, 288-297, 10.1016/j.atmosenv.2013.10.006, 2014.
- Song, X.-H., Hopke, P. K., Fergenson, D. P., and Prather, K. A.: Classification of Single Particles Analyzed by ATOFMS Using an Artificial Neural Network, ART-2A, *Analytical Chemistry*, 71, 860-865, 10.1021/ac9809682, 1999.
- Streibel, T., Schnelle-Kreis, J., Czech, H., Harndorf, H., Jakobi, G., Jokiniemi, J., Karg, E., Lintelmann, J., Matuschek, G., Michalke, B., Muller, L., Orasche, J., Passig, J., Radischat, C., Rabe, R., Reda, A., Ruger, C., Schwemer, T., Sippula, O., Stengel, B., Sklorz, M., Torvela, T., Weggler, B., and Zimmermann, R.: Aerosol emissions of a ship diesel engine operated with diesel fuel or heavy fuel oil, *Environ Sci Pollut Res Int*, 24,

10976-10991, 10.1007/s11356-016-6724-z, 2017.

Tian, L., Ho, K.-f., Louie, P. K. K., Qiu, H., Pun, V. C., Kan, H., Yu, I. T. S., and Wong, T. W.: Shipping emissions associated with increased cardiovascular hospitalizations, *Atmospheric Environment*, 74, 320-325, 10.1016/j.atmosenv.2013.04.014, 2013.

- 5 Vutukuru, S., and Dabdub, D.: Modeling the effects of ship emissions on coastal air quality: A case study of southern California, *Atmospheric Environment*, 42, 3751-3764, 2008.

Winnes, H., and Fridell, E.: Particle Emissions from Ships: Dependence on Fuel Type, *Journal of the Air & Waste Management Association*, 59, 1391-1398, 10.3155/1047-3289.59.12.1391, 2012.

- Xu, J., Li, M., Shi, G., Wang, H., Ma, X., Wu, J., Shi, X., and Feng, Y.: Mass spectra features of biomass burning boiler and coal burning boiler emitted particles by single particle aerosol mass spectrometer, *Science of The Total Environment*, 598, 341-352, <https://doi.org/10.1016/j.scitotenv.2017.04.132>, 2017.
- 10

Yao, Z., Shen, X., Ye, Y., Cao, X., Jiang, X., Zhang, Y., and He, K.: On-road emission characteristics of VOCs from diesel trucks in Beijing, China, *Atmospheric Environment*, 103, 87-93, 10.1016/j.atmosenv.2014.12.028, 2015.

- 15 Zetterdahl, M., Moldanová, J., Pei, X., Pathak, R. K., and Demirdjian, B.: Impact of the 0.1% fuel sulfur content limit in SECA on particle and gaseous emissions from marine vessels, *Atmospheric Environment*, 145, 338-345, 2016.

Zhang, F., Chen, Y., Tian, C., Wang, X., Huang, G., Fang, Y., and Zong, Z.: Identification and quantification of shipping emissions in Bohai Rim, China, *Science of the Total Environment*, 497, 570-577, 10.1016/j.scitotenv.2014.08.016, 2014.

20

Zhang, F., Chen, Y., Tian, C., Lou, D., Li, J., Zhang, G., and Matthias, V.: Emission factors for gaseous and particulate pollutants from offshore diesel engine vessels in China, *Atmospheric Chemistry and Physics*, 16, 6319-6334, 10.5194/acp-16-6319-2016, 2016.

- Zhang, H., Lang, J., Wei, W., Cheng, S., and Gang, W.: Pollution Characteristics and Regional Transmission of PM<sub>2.5</sub> in Tangshan, *Journal of Beijing University of Technology*, 2017.
- 25

Zhao, M., Zhang, Y., Ma, W., Fu, Q., Yang, X., Li, C., Zhou, B., Yu, Q., and Chen, L.: Characteristics and ship traffic source identification of air pollutants in China's largest port, *Atmospheric Environment*, 64, 277-286, 10.1016/j.atmosenv.2012.10.007, 2013.

30

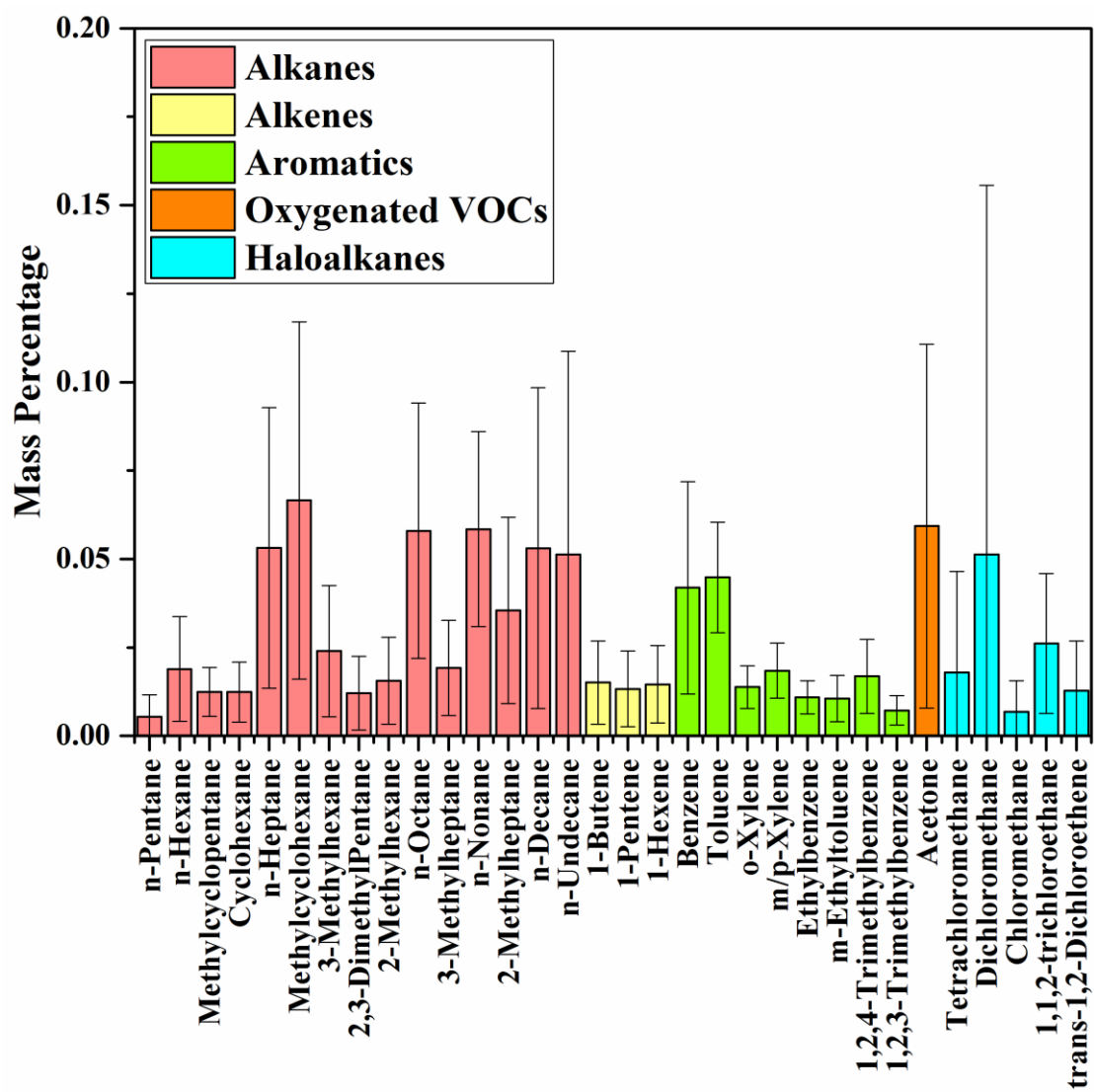
35

5

10

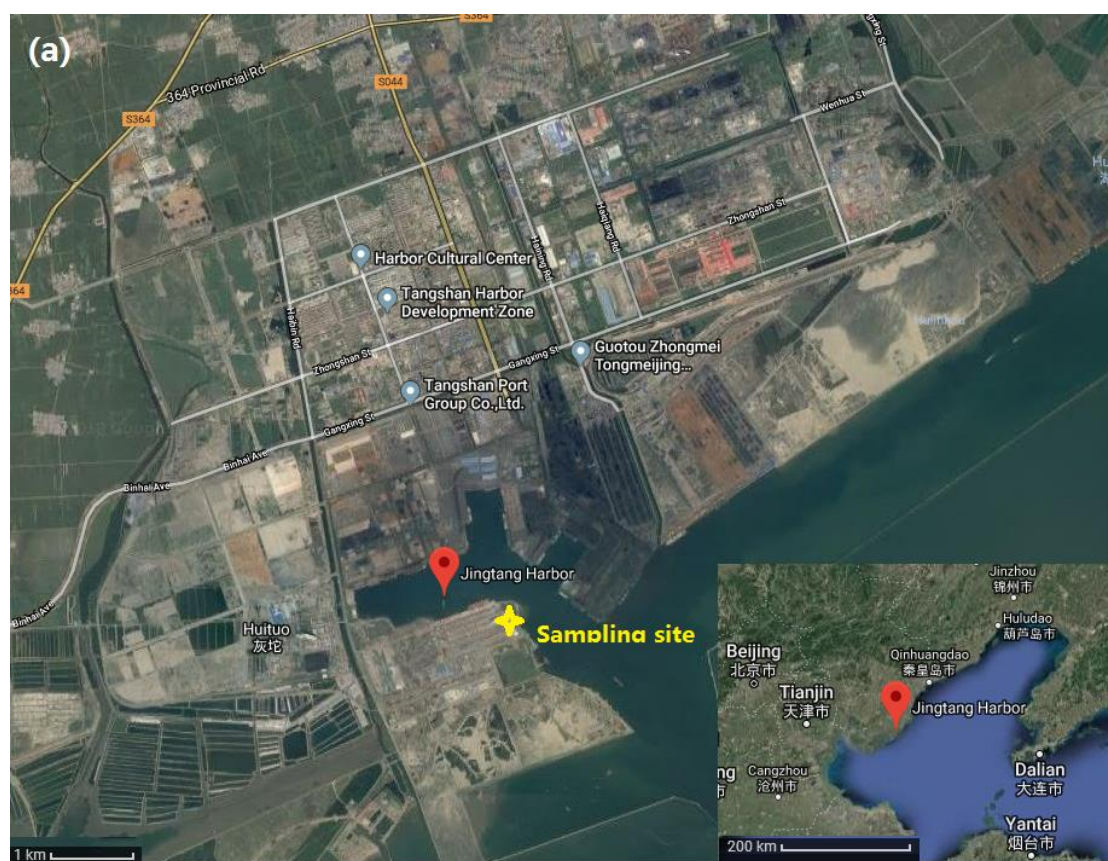
**Figures**





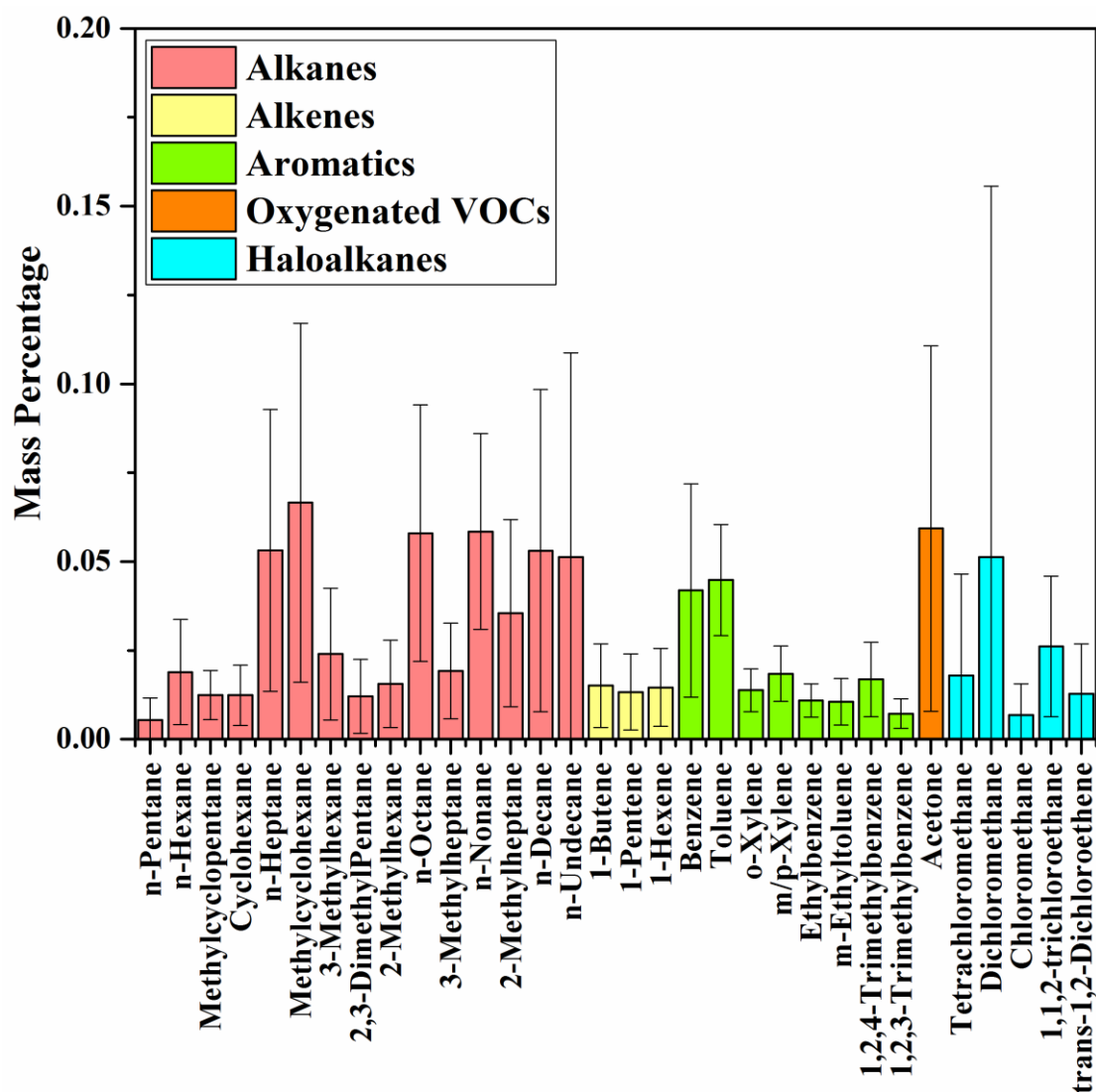
Figure

1

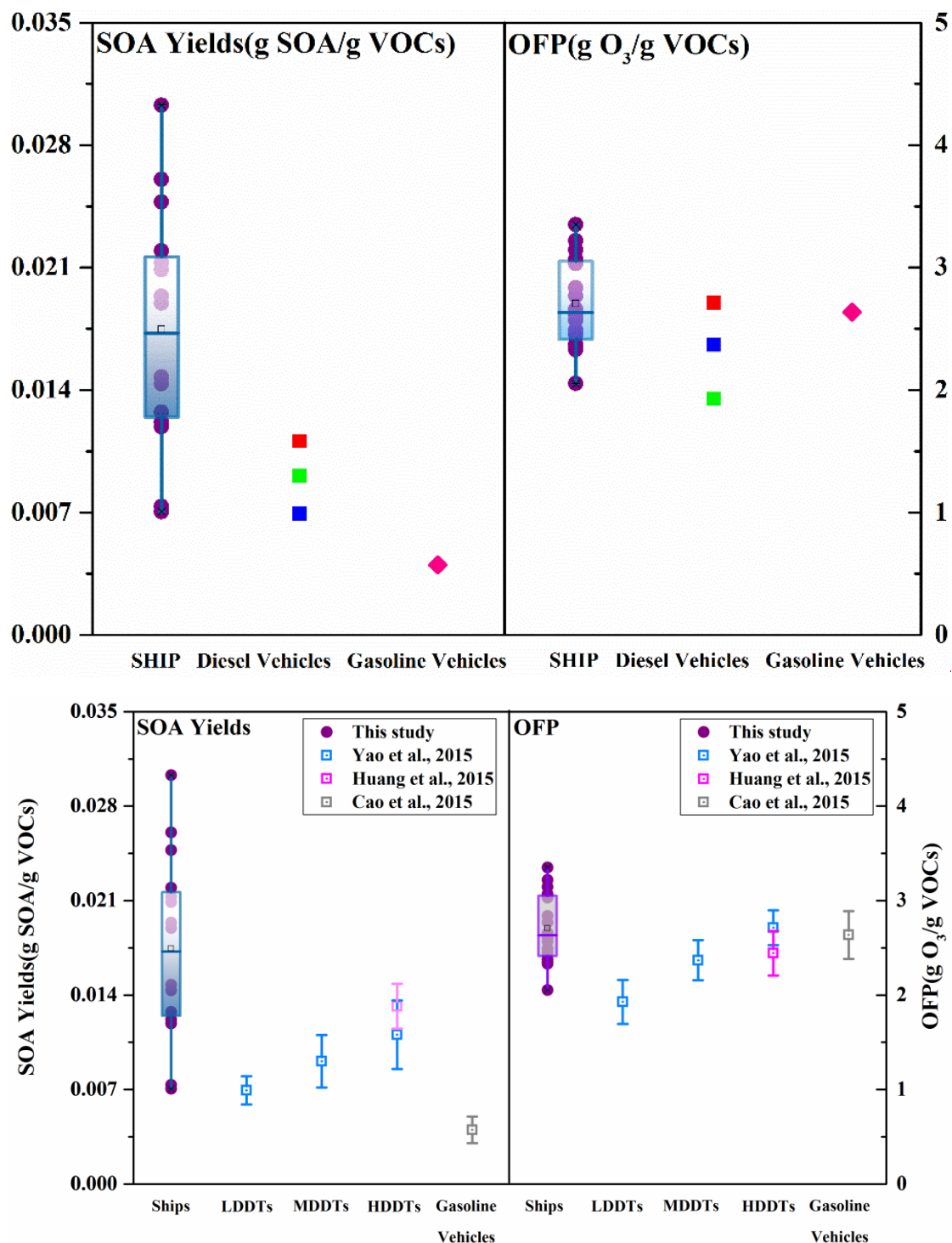


**Figure 1:** (a) The location and surroundings of Jingtang Port shown in both larger scale and smaller scale. The yellow marker represents the sampling site inside the port area. The road, residential distribution and

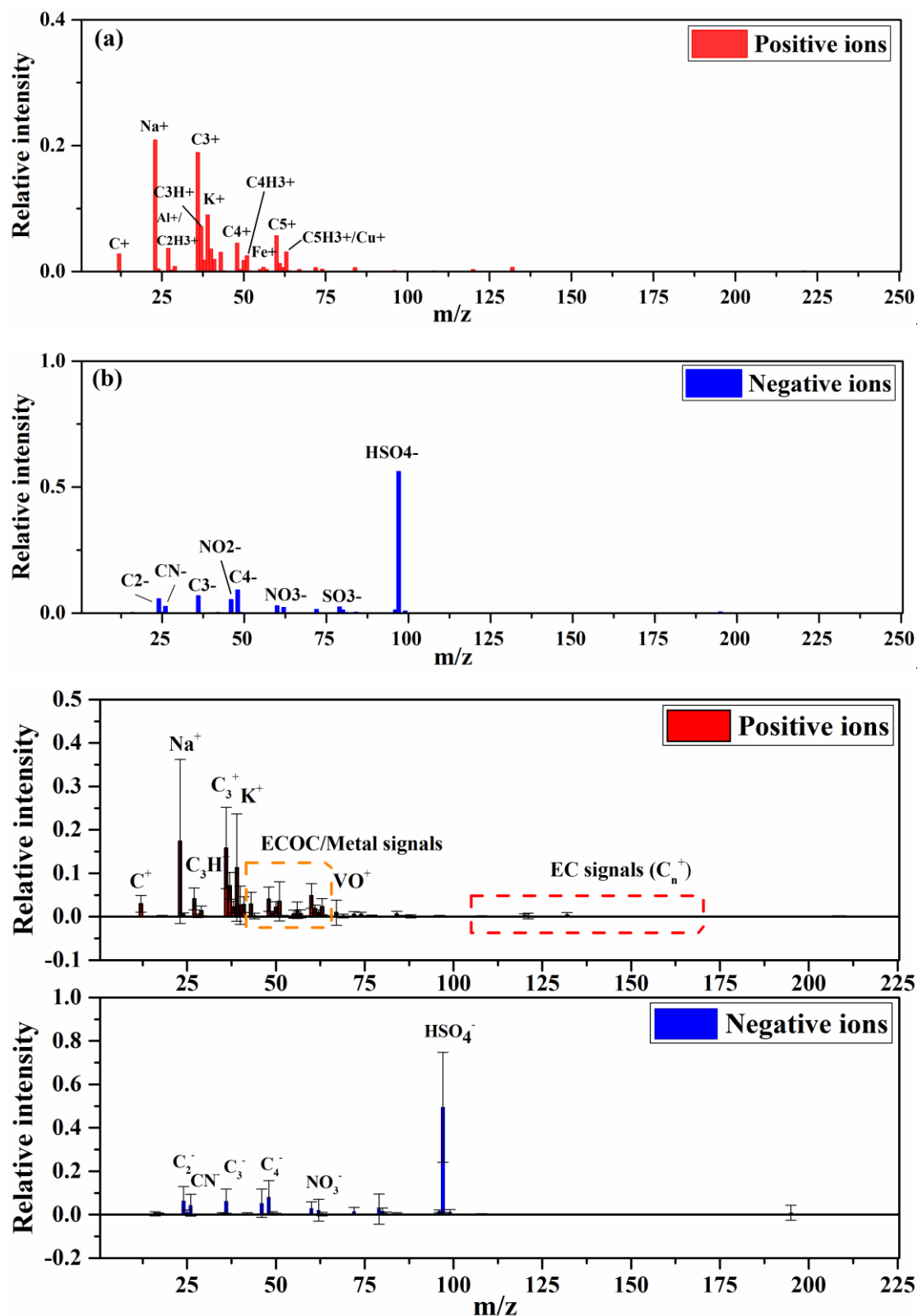
their distance to the port can be observed by this map. (b) The location of sampling site on an amplified scale. The distribution of the berths, pools as well as the surroundings of the sampling site is illustrated on this map.



5 **Figure 2:** VOC source profile from ship auxiliary engine exhausts analyzed by GC-MS, 93 species including PAMS and TO-15. VOC species are classified into alkanes, alkenes, aromatics, oxygenated compounds and haloalkanes respectively. Species among top 32 by weight percentage are listed in this figure.



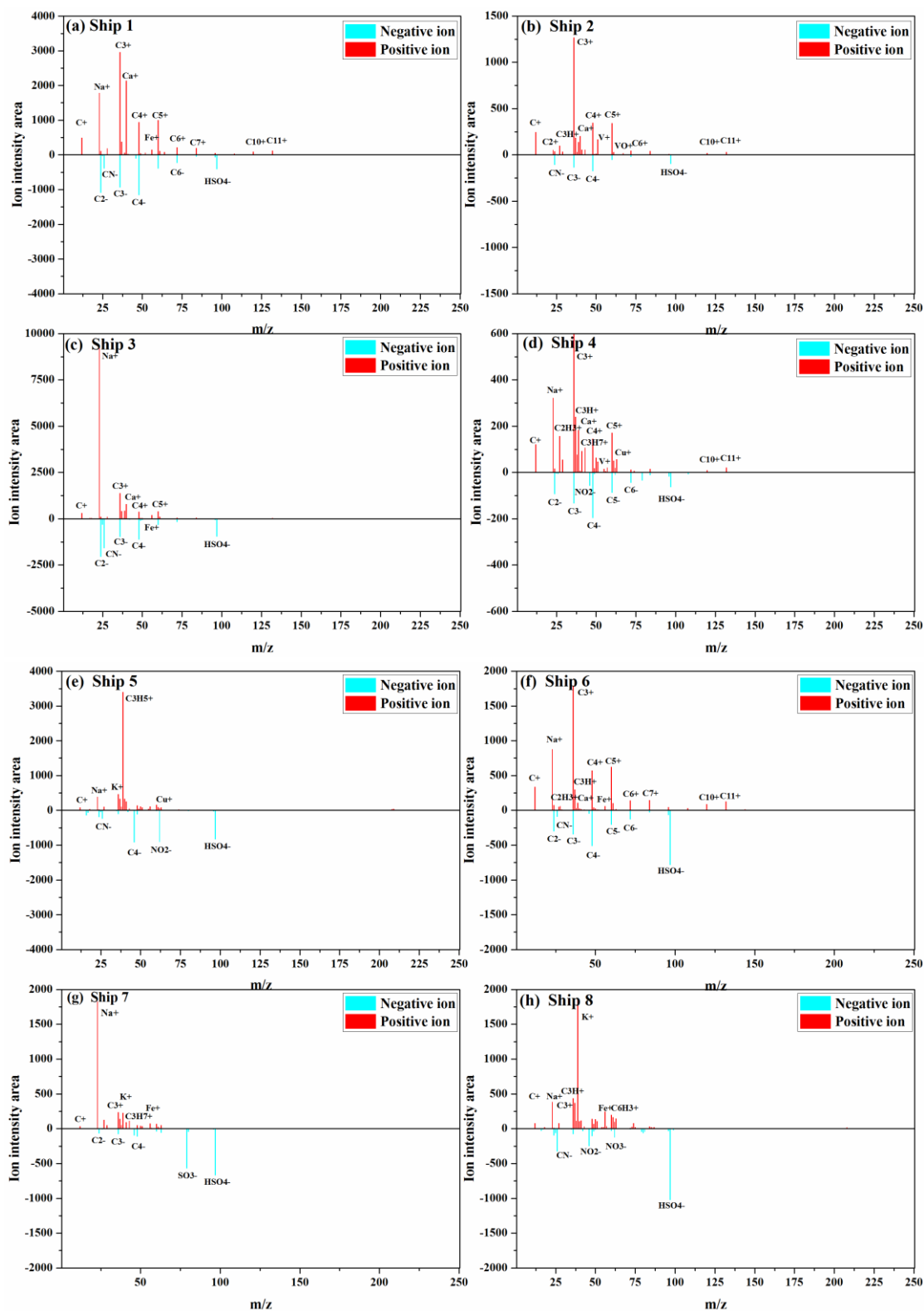
**Figure 23:** Comparison of SOA yields and ozone forming potential (OFP) calculated based on VOC source profile with VOC profile from previous study (Yao et al., 2015) calculated results from previous study (Yao et al., 2015; Cao et al., 2015; Huang et al., 2015). The purple dots represent ships tested in this study. Diesel trucks are divided into 3 types: light-duty diesel trucks (LDDTs), medium-duty diesel trucks (MDDTs) and heavy-duty diesel trucks (HDDTs).

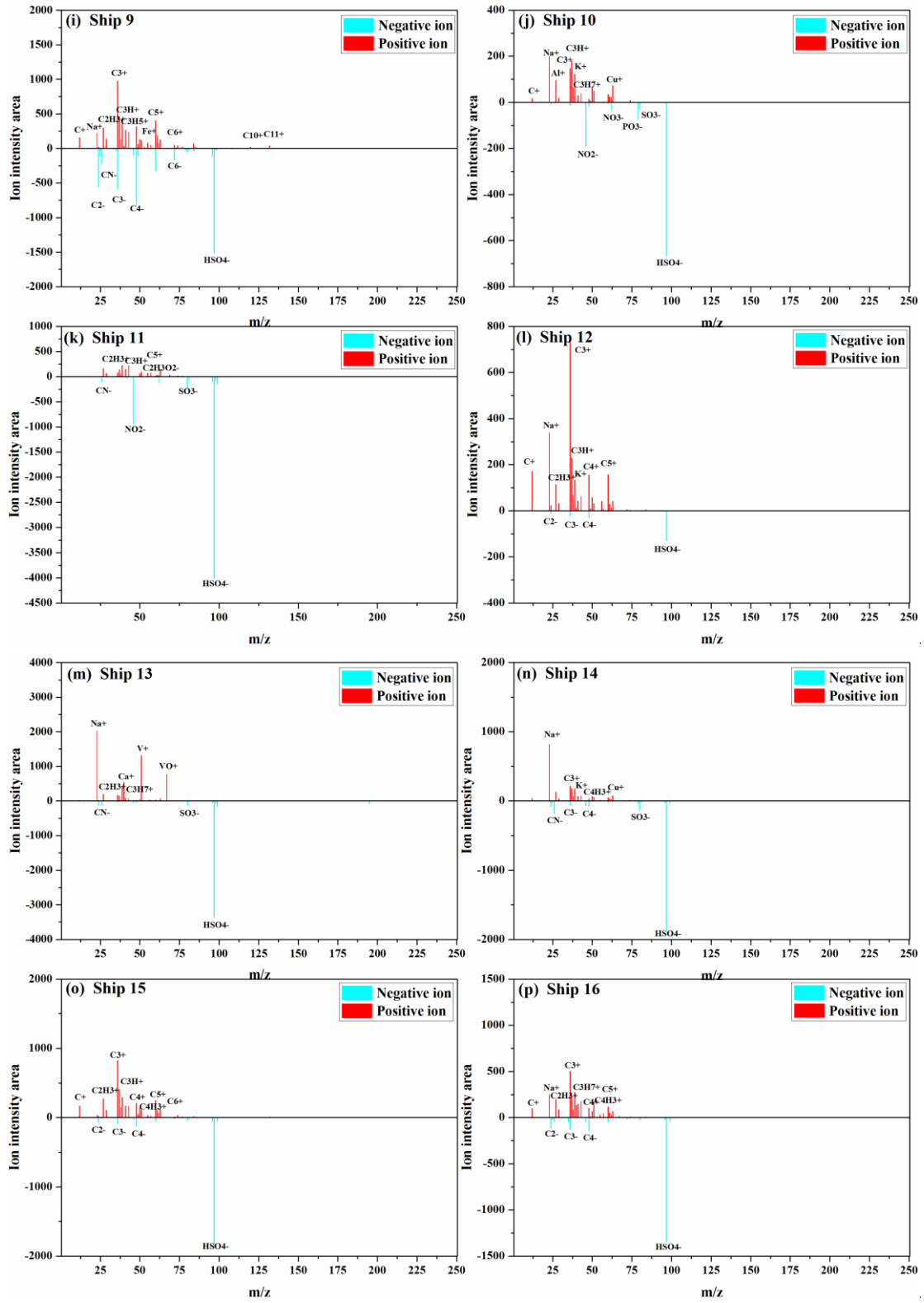


**Figure 34:** Average ion mass spectra derived from SPAMS of 20 samples of ship exhausts. Figure 3(a)

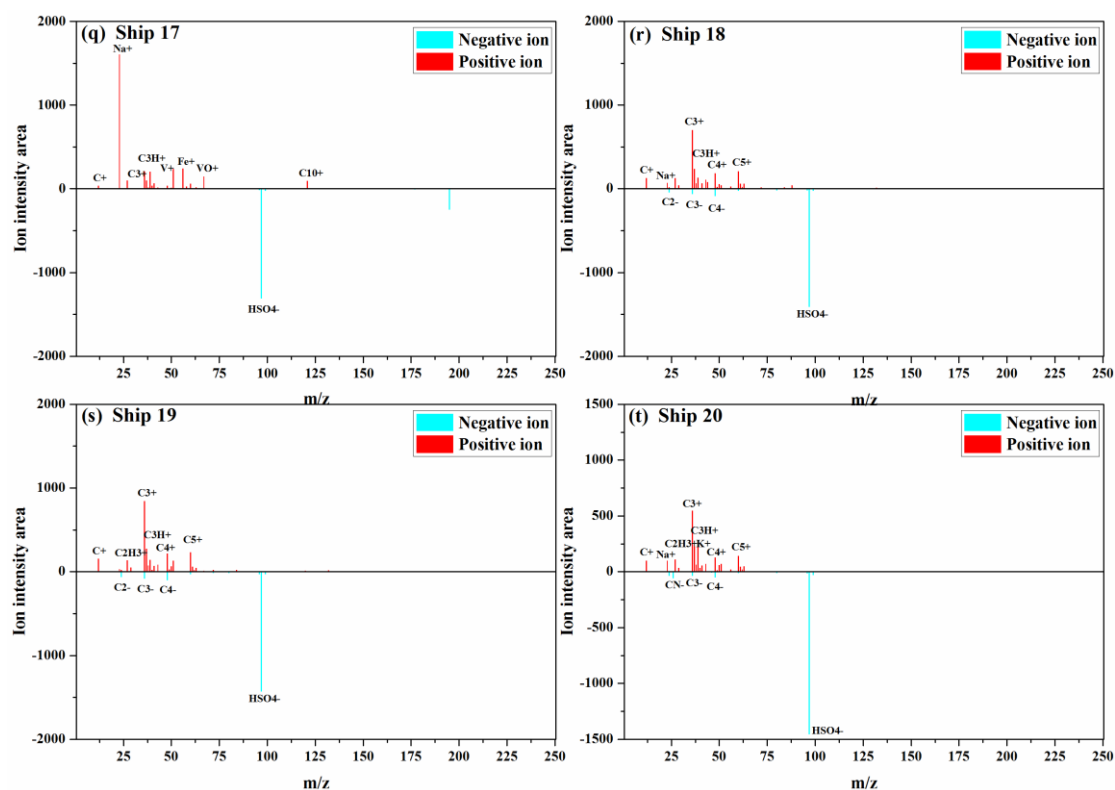
5 stands for Standard deviations are given in the positive ions figure and (b) stands for the negative ions.



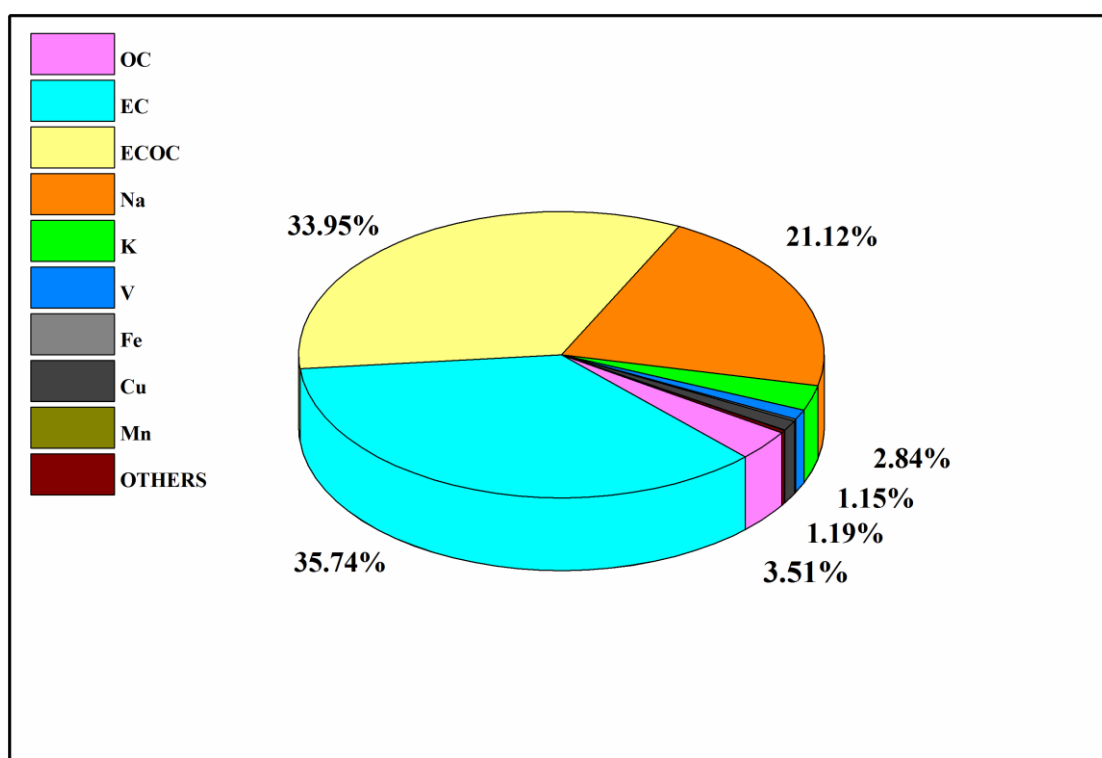




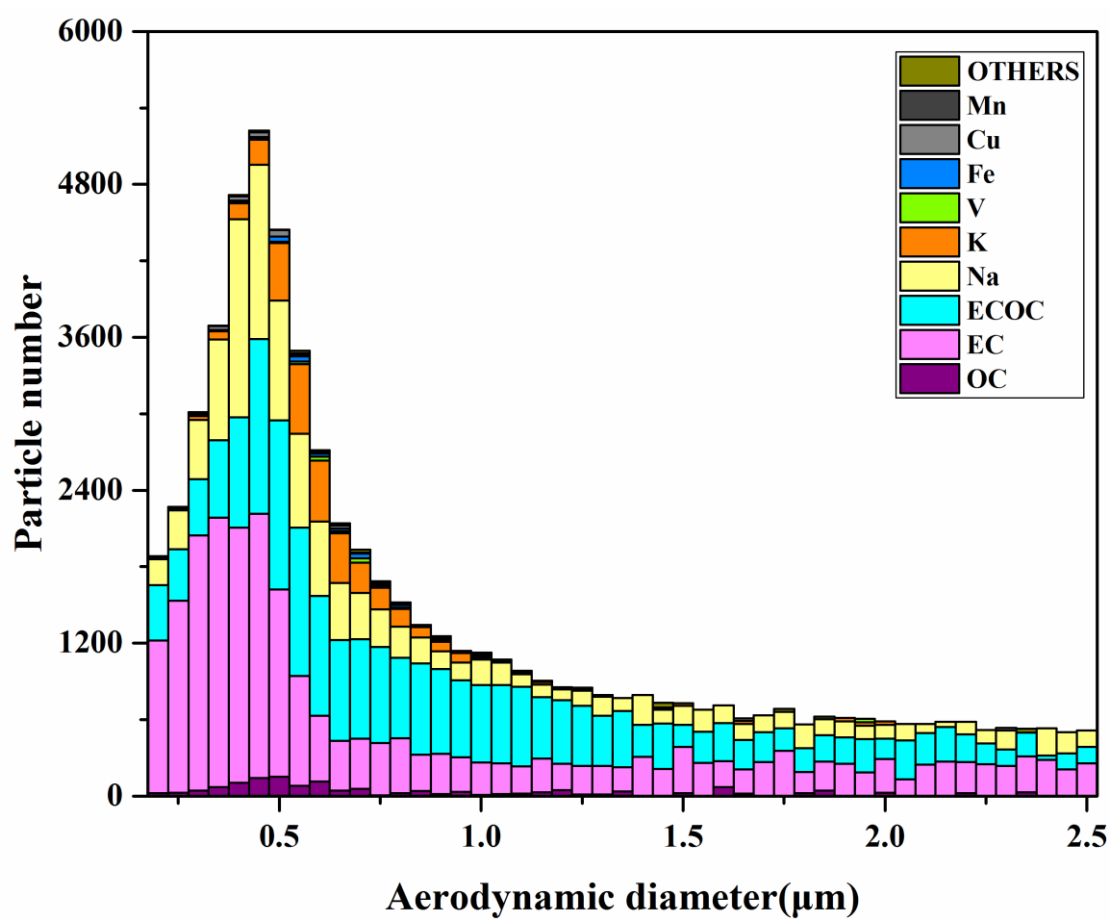




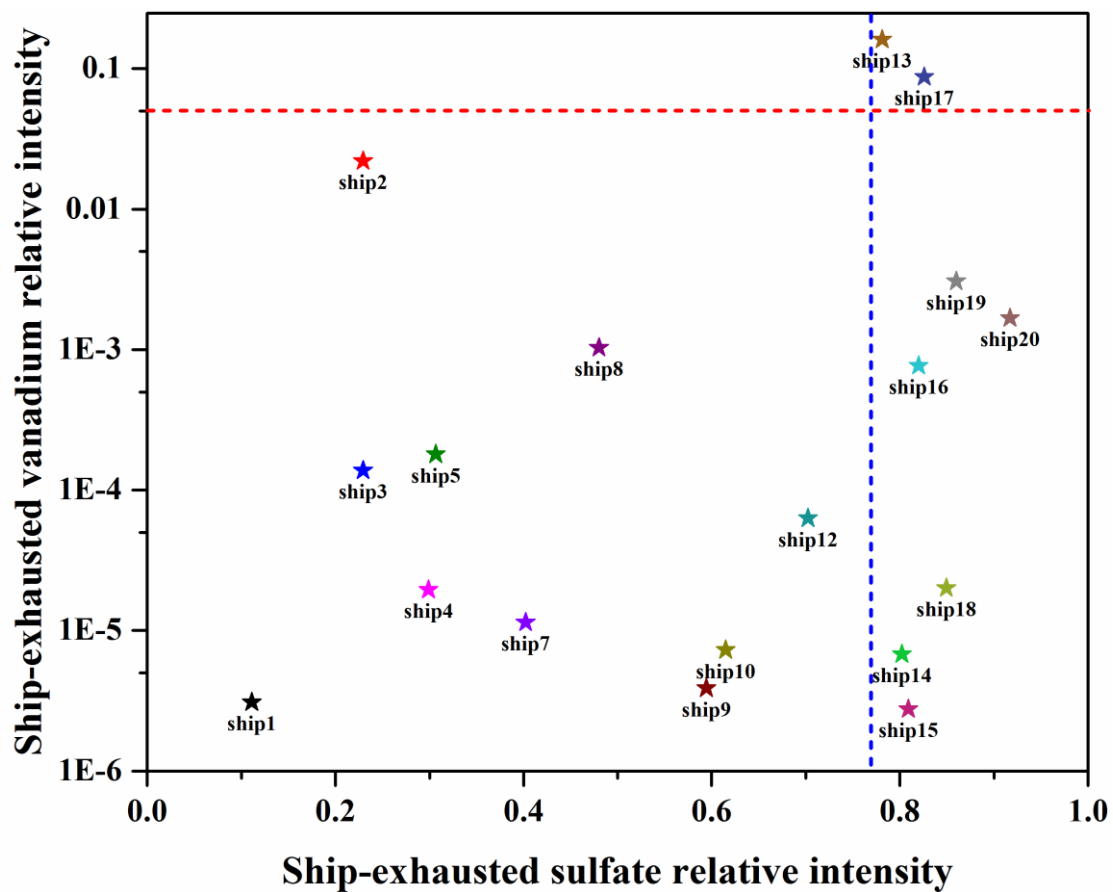
**Figure 4:** Individual typical ion mass spectra of 20 ships (a) (t) including peaks are also marked in both positive ions and negative ions ion mass spectra.



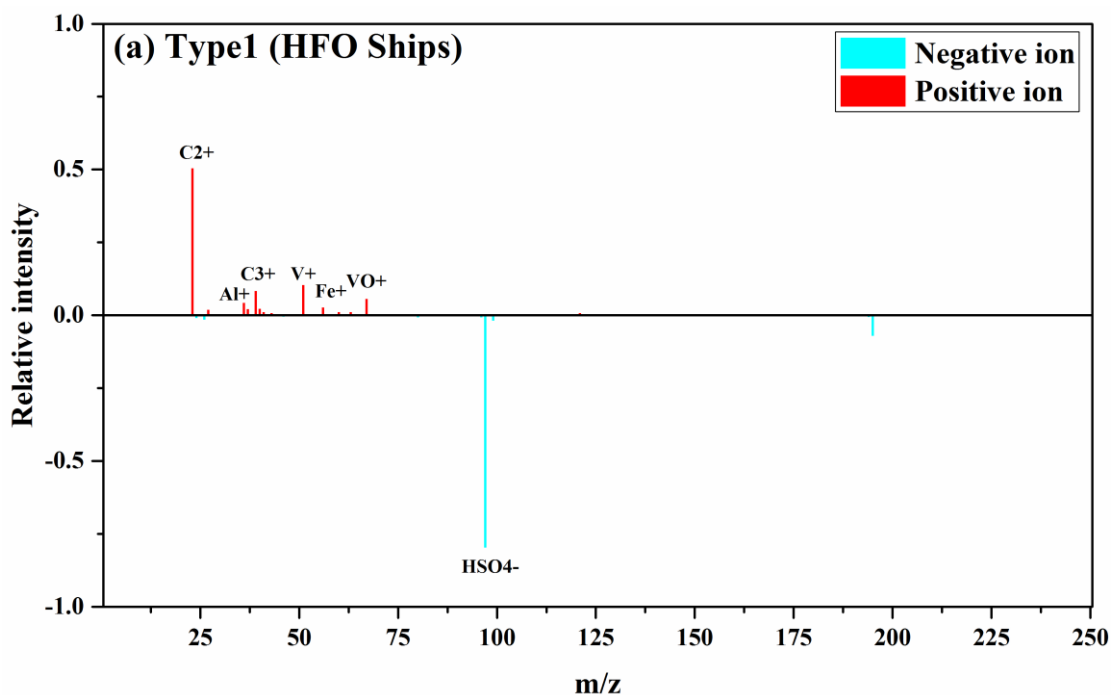
**Figure 5:** Manual classification of ten types of particles from 20 samples and their proportion by numbers.

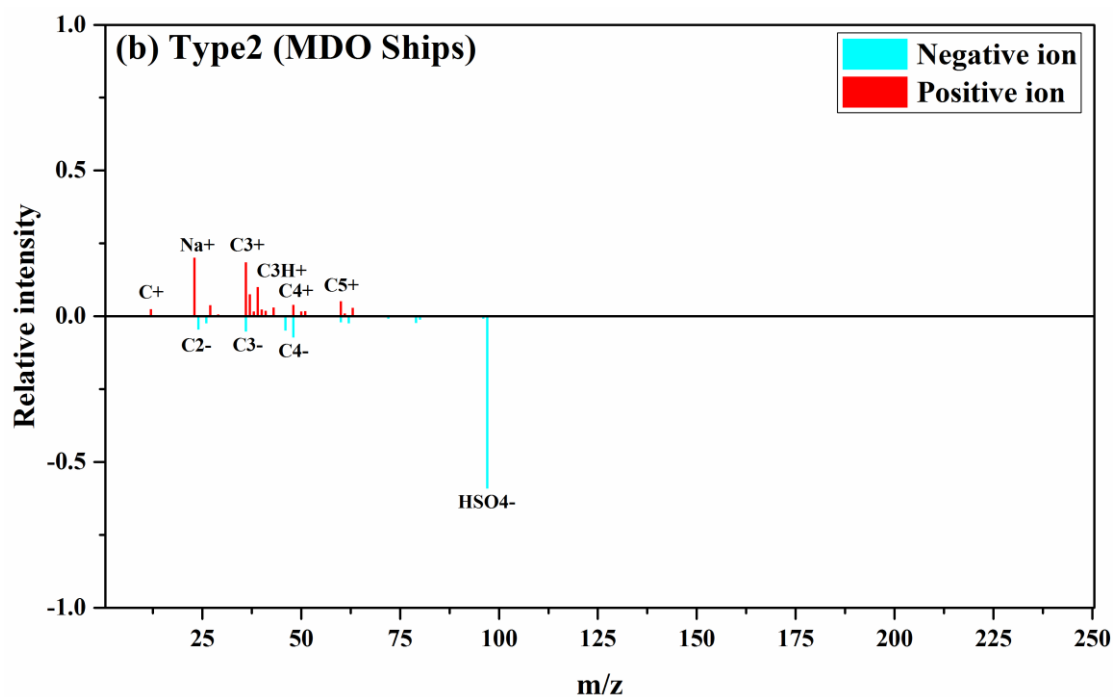


**Figure 6:** SizeSpecific size distribution of 10 classes of particles based-on-manual-classificationin the range of 0.2-2.5 μ m.

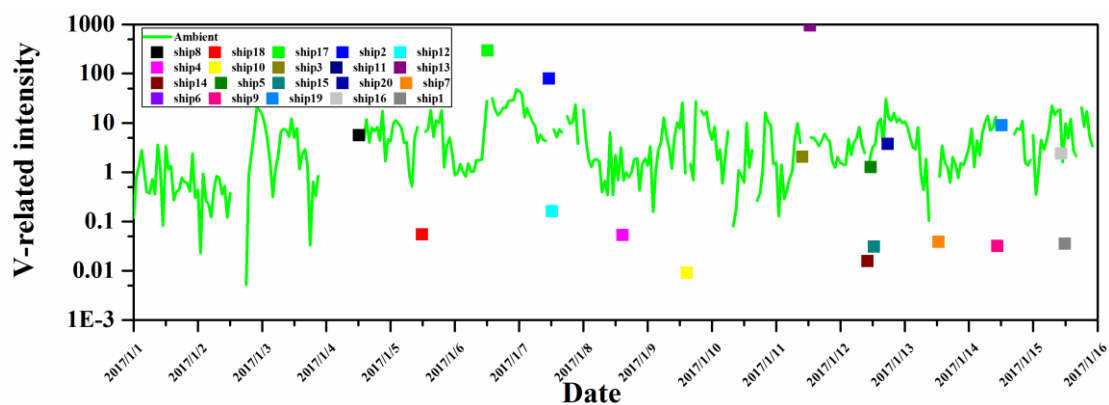


**Figure 7:** Vanadium and sulfate relative intensity correlation obtained from the ion mass spectra of 20 ships.

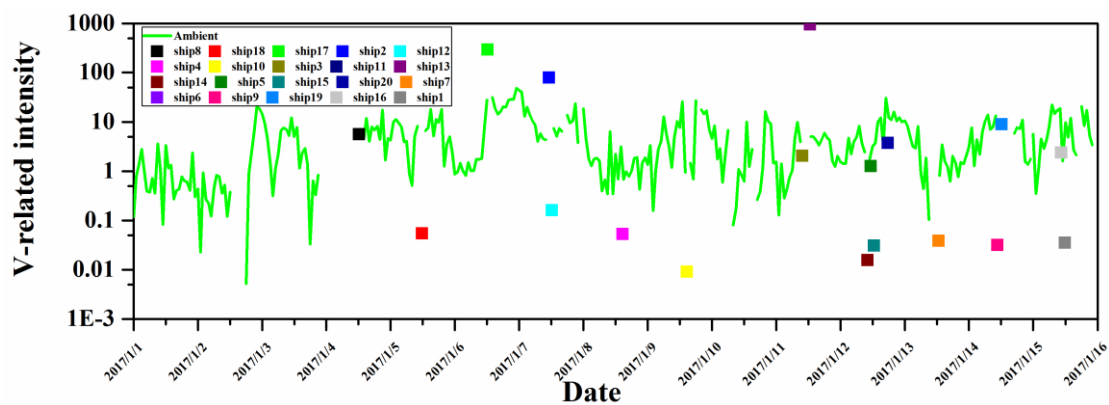




**Figure 8:** Ion mass spectra and grouping of 2 divided ship types based on fuel identification. (a) Type1 ships stands for ships using heavy fuel oil, and (b) Type2 ships stands for diesel ships.

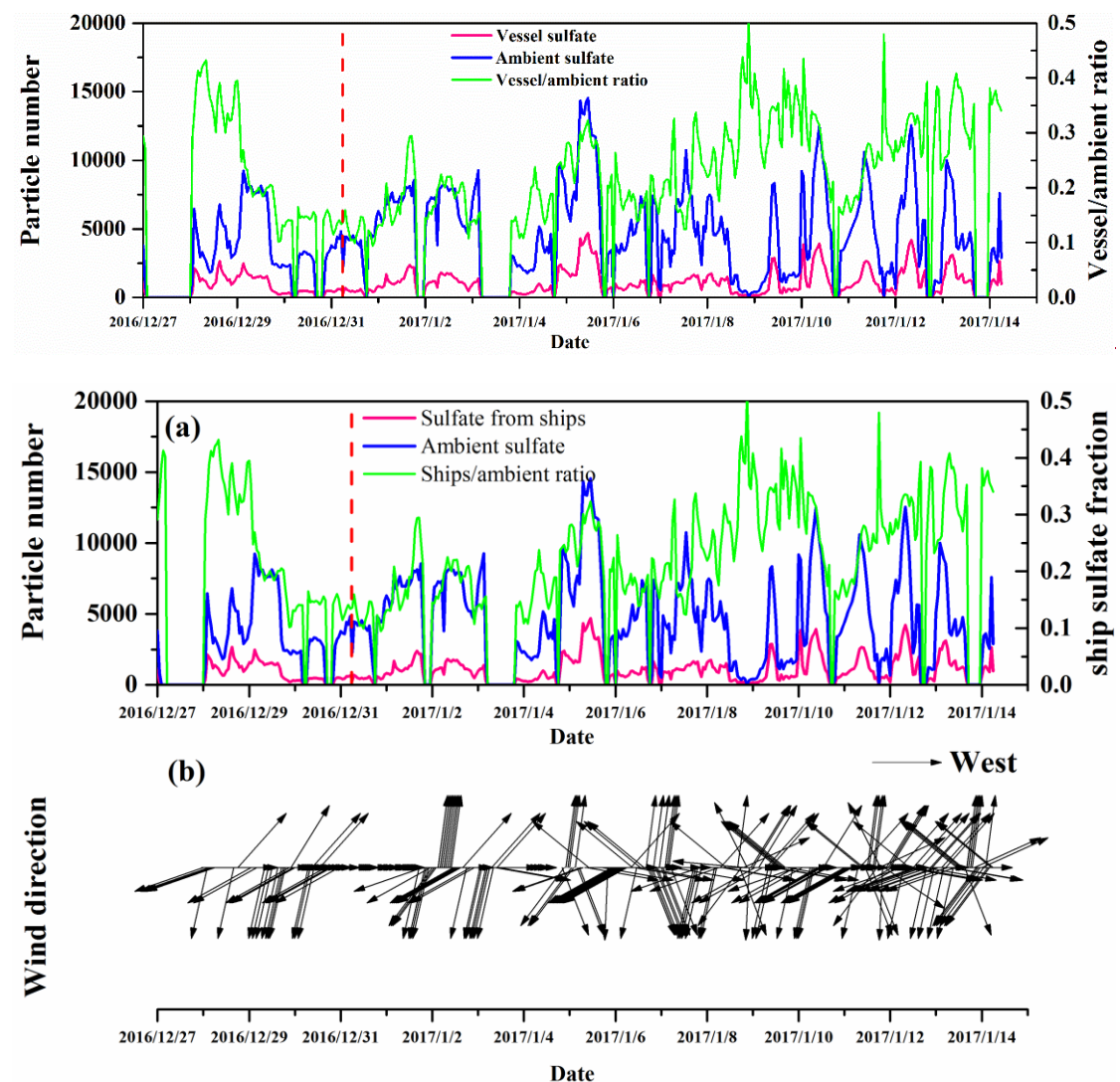


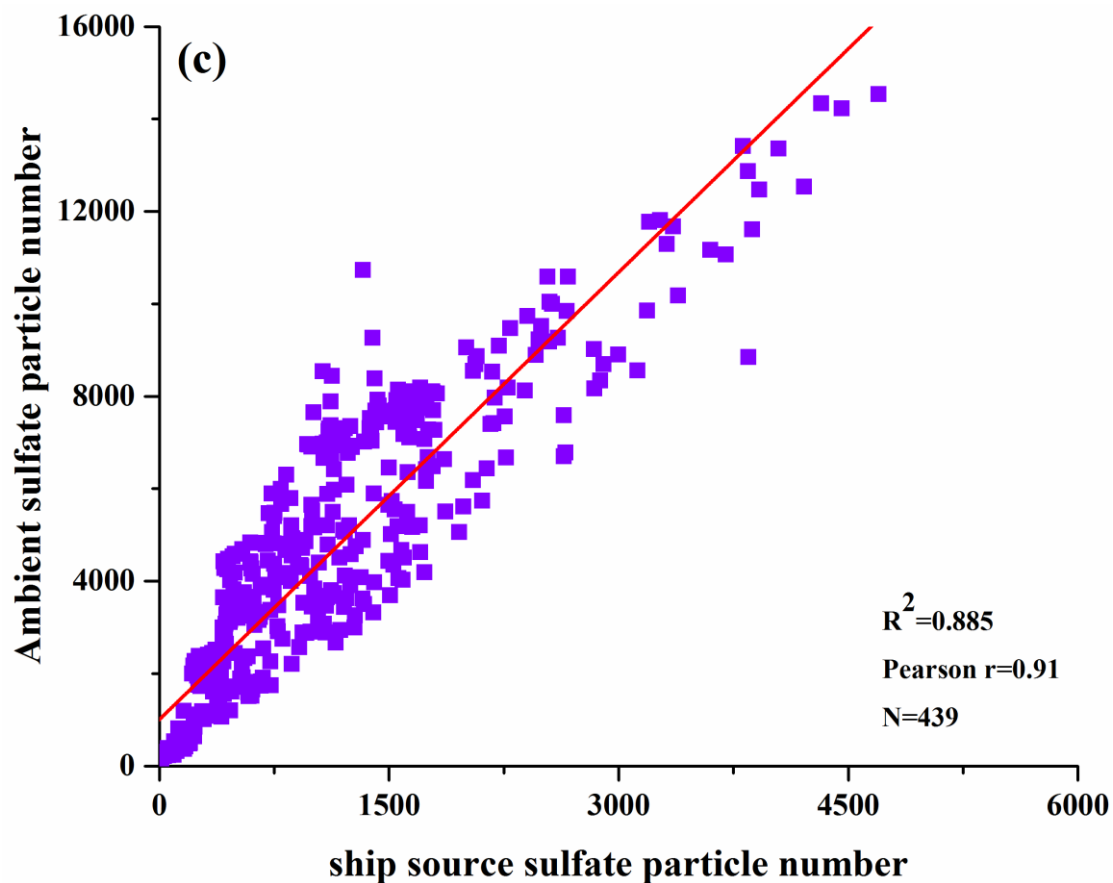
**Figure 9**



**Figure 8:** Comparison of vanadium intensity of 20 individual ship particle samples to ambient particle samples from January 1<sup>st</sup> to January 16<sup>th</sup>. The green line is the average vanadium intensity of ambient

particles over time, and the colored dots represent the average vanadium intensity of different ships distributed by sampling time.





**Figure 10:** Hourly number average of ship-exhausted identified sulfate particle and from ships, ambient sulfate particles and the ratio of the two numbers over time. (b) Wind direction variation over time during the entire measurements whole sampling period. (c) Correlation between identified sulfates from ships and ambient sulfates. The number of data sets and correlation coefficient are provided.

Tables

Table 1: Abbreviations

Abbreviations	Full name
BC	black carbon
EC	elemental carbon
ECOC	elemental carbon-organic carbon
GC-MS	gas chromatography-mass spectrometer
HC	Hydrocarbon
HFO	heavy fuel oil
MDO	marine diesel oil
OC	organic carbon
OFP	ozone forming potential
PM	particulate matter
SOA	secondary organic aerosol
SPAMS	single particle aerosol mass spectrometer
VOCs	volatile organic compounds

5

10

15

20



**Table 2:** Brief information of 20 sampled ships

Ship No.	Length*Width(m)	Model Year	Dead	Auxiliary Engine		Sulfur Content (%)
			Weight Tonnage(t)	Rated Power(kW)	Rated Speed(rpm)	
1	144*20.8	2015				
2	255.1*37.3	2013	49717	1760	900	
3	140*20	2006	12301.8	200	1500	0.08
4						
5	161*23					
6	147*9.8	2012		900	1000	0.09
7	98*15	2009		358.8	1500	
8						
9	124*11.6	2015	5420	600	1500	0.029
10	158.6*22.6	2014	18060	900	1500	0.095
11	132*19					
12				900		0.02
13	180*28	2014	28791			0.3
14	158.5*22.6	2015	11872	900	1000	0.07
15	140*19.8	2009	10685	220	1000	
16	255.1*37.3	2012	67040	600	1500	0.029
17	180*28	2014	27821			
18						
19	255.1*37.3	2013	66903	1320	900	
20						

**Table 23:** Top 32 VOC species mass percentage from 16 container ships

Compounds	Percentage	Standard deviation	Compounds	Percentage	Standard deviation
n-Pentane	0.536278	0.629109	1-Pentene	1.325768	1.070632
n-Hexane	1.891022	1.481339	1-Hexene	1.457199	1.094036
Methylcyclopentane	1.239405	0.691045	Benzene	4.190024	3.000858
Cyclohexane	1.241246	0.847235	Toluene	4.47936	1.565238
n-Heptane	5.313712	3.965797	o-Xylene	1.379276	0.603842
Methylcyclohexane	6.655522	5.044339	m/p-Xylene	1.84439	0.778013
3-Methylhexane	2.397949	1.855725	Ethylbenzene	1.091218	0.472748
2,3-DimethylPentane	1.206319	1.044379	m-Ethyltoluene	1.05578	0.652482
2-Methylhexane	1.559125	1.225618	1,2,4-Trimethylbenzene	1.684083	1.045932
n-Octane	5.798276	3.61007	1,2,3-Trimethylbenzene	0.718099	0.414425
3-Methylheptane	1.918903	1.344047	Acetone	5.92993	5.138703
n-Nonane	5.844313	2.757486	CCl <sub>4</sub>	1.791729	2.854673
2-Methylheptane	3.546112	2.630706	CH <sub>2</sub> Cl <sub>2</sub>	5.132463	10.42498
n-Decane	5.305601	4.532773	CH <sub>3</sub> Cl	0.681607	0.871668
n-Undecane	5.125647	5.741735	1,1,2-trichloroethane	2.610167	1.975113
1-Butene	1.507865	1.176521	trans-1,2-Dichloroethene	1.274261	1.402993

**Table 34:** Element analysis of 3 fuel samples and comparison with previous studies

	Celo et al., 2015				This study (Sampled on Jan 14th, 2017)			
Fuel	IFO380	IFO180	IFO60	MDO	MDO (ship 9)	MDO (ship 19)	MDO (unplanned ship)	
15°C density ( $\text{kg} \cdot m^{-3}$ )	988	973.7	957.6	854.3	848.2	853.1	846.3	
w%	C	86.26	86.78	87.22	86.85	85.16	84.78	86.83
	H	11.26	10.7	11.05	12.97	13.07	13.21	13.15
	N	0.39	0.38	0.38	0.026	0.027	0.026	0.010
	S	2.7	2.21	1.22	0.119	0.38	0.080	0.065
mg $\cdot kg^{-1}$	Fe	31.44	17.71	Not detected	Not detected	2.7	<1	<1
	V	133.8	102.4	38.0	Not detected	Not detected	Not detected	Not detected
	Ni	63.2	46.5	21.0	Not detected	Not detected	Not detected	Not detected
	Cu	29.51	23.63	Not detected	Not detected	Not detected	Not detected	Not detected

IFO: Intermediate Fuel Oil MDO: Marine Diesel Oil

Two of the fuel samples were from ship 9 and ship 19, and the sample marked as unplanned ship indicated that this ship was not among the 20 ships included in this study.