

Reviewer #3:

I think the authors have done a good job of addressing the comments of previous referees, and I also think that the paper presents a careful and compelling analysis of GOSAT data, with important sectoral information and comparisons to TCCON. I agree with the authors' comment that while they might not completely satisfy the concerns of Referee #2, it is useful for the community to continue the discussion in the literature. However, I think that the paper could be more explicit in terms of how it is different from Turner et al., GRL, (2016) and how it addresses the issues raised by Bruhwiler et al., (2017). For example, it should say in the introduction that the Turner et al. paper inferred a trend from top-down emission estimates while this paper is using a statistical analysis of GOSAT methane enhancements. This means that the Bruhwiler et al. concerns about different inversion methods and the influence of the prior in poorly constrained regions would not apply to this analysis, which should be noted in the introduction.

Turner et al. (2016) was also based on statistical analysis of GOSAT enhancements. We now make that clearer in the introduction, and also explain how we respond to Bruhwiler et al. concerns.

Specific comments:

p. 4 line 29: "at least eight valid retrievals for a given year" What is the sensitivity to this choice?

A larger sample size does not affect the mean and percentiles, but too small sample size (here less than 8 retrievals) may bias the annual mean value and percentiles. We updated the text as "We require grid cells to have at least eight valid retrievals for a given year (to avoid bias in the annual mean value and percentiles)".

p. 5 lines 5-6: "Some areas are sparsely sampled, such as California" Please show how under-sampling this region could affect the national trend given the bottom-up inventories (i.e., some estimate of trend sampling error)

We think this under-sampling is not error but bias. We added the text: "This under-sampling bias in California is unlikely to affect the trend estimate on the national scale because California accounts for less than 5% of US national total according to the bottom-up inventories."

Figure 1. Caption does not explain green vs. blue lines.

We updated the caption as "...The percentiles (blue plus signs) are plotted on a normal probability scale such that a normal distribution would plot as a straight line (green)."

2010-2016 methane trends over Canada, the United States, and Mexico observed by the GOSAT satellite: contributions from different source sectors

Jian-Xiong Sheng^{1,2}, Daniel J. Jacob¹, Alexander J. Turner¹, Joannes D. Maasakkers¹, Joshua Benmergui¹, A. Anthony Bloom³, Claudia Arndt², Ritesh Gautam², Daniel Zavala-Araiza², Hartmut Boesch^{4,5}, and Robert J. Parker^{4,5}

¹School of Engineering and Applied Sciences, Harvard University, Cambridge, MA, USA

²Environmental Defense Fund, Austin, TX, USA

³Jet Propulsion Laboratory, California Institute of Technology, Pasadena, CA, USA

⁴Leicester Institute for Space and Earth Observation, University of Leicester, Leicester, UK

⁵NERC National Center for Earth Observation, UK

Correspondence to: Jian-Xiong Sheng (jsheng@seas.harvard.edu)

Abstract. We use seven years (2010-2016) of methane column observations from the Greenhouse Gases Observing Satellite (GOSAT) to examine trends in atmospheric methane concentrations over North America and infer trends in emissions. Local methane enhancements above background are diagnosed in the GOSAT data on a $0.5^\circ \times 0.5^\circ$ grid by estimating the local background as the low (10th-25th) percentiles of the deseasonalized frequency distributions of the data for individual years.

- 5 Trends in methane enhancements on the $0.5^\circ \times 0.5^\circ$ grid are then aggregated nationally and for individual source sectors, using information from state-of-science bottom-up inventories. We find that US methane emissions increased by $2.5 \pm 1.4\% \text{ a}^{-1}$ (mean \pm one standard deviation) over the seven-year period, with contributions from both oil/gas systems (possibly unconventional oil/gas production) and from livestock in the Midwest (possibly swine manure management). Mexican emissions show a decrease that can be attributed to a decreasing cattle population. Canadian emissions show year-to-year variability driven by
- 10 wetlands emissions and correlated with wetland areal extent. The US emission trends inferred from the GOSAT data account for about 20% of the observed increase in global methane over the 2010-2016 period.

1 Introduction

Methane is an important greenhouse gas with a calculated climate impact as important as carbon dioxide over a 10-year time horizon (Myhre et al., 2013; Etminan et al., 2016). Livestock, oil/gas, and waste are the leading anthropogenic sources. Wetlands are the dominant natural source. Contributions from different source sectors and regions remain poorly quantified (Kirschke et al., 2013; Saunio et al., 2016). Atmospheric methane concentrations leveled off in the 1990s but have been increasing again since 2007 (Dlugokencky et al., 2009). Interpretations of atmospheric observations from surface networks have reached conflicting conclusions as to the cause of the renewed increase, with attributions to (1) natural gas production based on correlation with ethane (Franco et al., 2016; Hausmann et al., 2016; Helmig et al., 2016), (2) agriculture/wetlands based on isotopic information (Nisbet et al., 2016; Schaefer et al., 2016), (3) reduced biomass burning to reconcile the ethane and isotopic constraints (Worden et al., 2017), and (4) declining concentrations of the OH radical (the main methane sink) based on the methylchloroform proxy (Rigby et al., 2017; Turner et al., 2017).

Satellite-based observations of atmospheric methane columns have been available from the TANSO-FTS instrument aboard the Greenhouse Gases Observing Satellite (GOSAT) continuously since May 2009 (Kuze et al., 2016). Cressot et al. (2016) found that the GOSAT data had limited success in detecting regional year-to-year trends for 2009-2011. Turner et al. (2016) used ~~GOSAT data~~ a linear regression of GOSAT trends from January 2010 to January 2014 to infer a $2.8\% \text{ a}^{-1}$ increase in methane emissions from the contiguous United States (CONUS), ~~. Their analysis was~~ based on the trend in the CONUS enhancement of methane relative to the Pacific Ocean taken as background. Bruhwiler et al. (2017) argued that ~~this such a~~ trend inference could have been biased by the brevity of the GOSAT record, atmospheric transport variability, seasonal bias in GOSAT sampling frequency, and the use of Pacific data as background. They also pointed out that global inversions of the surface network data for 2000-2012 from the North American Carbon Program (NACP) reveal no significant CONUS emission trend.

Here we reexamine the trend in CONUS emissions implied by statistical analysis of the GOSAT data ~~by using, addressing the concerns expressed by Bruhwiler et al. (2017). We use~~ a longer record (January 2010 - December 2016), an improved definition of the background that accounts for atmospheric transport variability, and ~~sectoral source information from a new gridded version of the US Environmental Protection Agency (EPA) Greenhouse Gas Inventory (Maasackers et al., 2016). We relate the inferred trends to trends in the underlying activities, and evaluate consistency with trends in the~~ we also evaluate the trends for consistency with an inversion using the NACP surface network data. We ~~also further~~ extend the trend analysis to Canada and Mexico, attribute the trends to specific methane source sectors using information from new emission inventories, and relate the trends to independent data on sectoral activities.

2 Methods

GOSAT was launched in January 2009 in a Sun-synchronous low Earth orbit. It retrieves the atmospheric methane column by nadir measurements of solar back-scatter ($1.65 \mu\text{m}$ absorption band). There has been no degradation of retrieval accuracy since the beginning of the record (Kuze et al., 2016). Observations in the standard mode are made at three circular pixels of 10 km

diameter across the orbit track 260 km apart, separated by 260 km along the track. The same locations are sampled every 3 days, making for a temporally dense data set at those locations. The observations often switch from the standard mode to focus on targets and this affects the regularity of the sampling.

5 Here we use the version 7.0 proxy nadir retrievals of GOSAT methane data from Parker et al. (2011, 2015). The proxy method uses prior knowledge of carbon dioxide columns (based on the MACC-II inversion product (v13r2; Chevallier F. et al., 2010) accounting for seasonal and interannual variations) to infer methane column average dry mole fractions X_{CH_4} (in ppb) from the ratio of retrieved methane and carbon dioxide columns. The proxy method takes advantage of the much larger variability in methane than in carbon dioxide mixing ratios (Frankenberg et al., 2006; Parker et al., 2015). The resulting GOSAT X_{CH_4} data
10 have been validated against the ground-based Total Carbon Column Observing Network (TCCON), and found to be of high quality with a single-scene precision of 0.7% (random error) and a systematic error of 4-6 ppb (Parker et al., 2015; Buchwitz et al., 2015, 2016). GOSAT observes in all seasons with near-uniform frequency south of 45°N (CONUS and Mexico), but observations further north (Canada) are biased toward summer. The number of successful retrievals over Canada is 2-3 times less in winter than in summer (see Supplemental Material).

15 From a simple mass balance perspective, enhancements of column methane above the surrounding background in a strong source region can be linearly related to the emissions in that region (Jacob et al., 2016; Buchwitz et al., 2017). Turner et al. (2016) estimated the CONUS background by using glint mode retrievals from GOSAT over the Pacific Ocean for the corresponding latitudes. Bruhwiler et al. (2017) pointed out that changes in large-scale meridional transport could alias trends in this background estimate onto trends in the emissions.

20 Here we define local background methane for a given CONUS location ($0.5^\circ \times 0.5^\circ$ grid cell, typically including a single repeated GOSAT measurement location) and for a given year as the low (10th-25th) percentiles of the deseasonalized GOSAT methane observations within the given $0.5^\circ \times 0.5^\circ$ grid cell, with seasonality removed using the seasonal-trend loess (STL) decomposition method (Cleveland et al., 1990). This approach assumes that the low percentiles of concentrations reflect meteorological conditions where local sources have relatively little effect on methane concentrations due to rapid ventilation.
25 Low percentiles are a standard approach for estimating the regional background at a measurement location (Goldstein et al., 1995). By choosing the 10th-25th percentile rather than a lower extreme we guard against the effect of measurement noise (random error). A permutation resampling test shows that GOSAT observations across North America are sufficiently precise that ≥ 10 th percentiles are not affected by measurement noise (see Supplemental Material). We use the range defined by the 10th-25th percentile range as a measure of uncertainty in the background for purpose of determining the enhancement.

30 Systematic errors of 4-6 ppb in GOSAT observations (Buchwitz et al., 2016) do not affect the enhancement because the bias can be expected to similarly affect all percentiles of the methane observations. Local enhancements are inversely proportional to wind speed (Jacob et al., 2016), but we find no significant trends in wind speeds over the 2010-2016 period that would contribute to our aggregated trends in methane enhancements (see Supplemental Material). Any trends in OH concentrations would also not affect the enhancement because the lifetime of methane against oxidation is 9-10 years (Prather et al., 2012;
35 Kirschke et al., 2013), very long compared to the timescale for ventilation from the source region.

We examined the validity of our approach by comparing frequency distributions of GOSAT methane columns and related trends to continuous ground-based column observations available from the TCCON (Wunch et al., 2011) network site at Lamont, Oklahoma (36.6°N, 97.4°W). Figure 1 shows the frequency distributions of the deseasonalized GOSAT and TCCON observations at Lamont. The GOSAT background defined by the 10th-25th percentiles is consistent with TCCON; we see
5 that the repeated observation strategy of GOSAT at its discrete sampling locations makes for a sufficiently dense data set for defining the 10th-25th percentiles with little effect from instrument noise. The local annual mean background increases between 2010 and ~~2015~~ 2016 in a consistent way in the GOSAT and TCCON data sets, reflecting the global increase in the methane background. The enhancements above background also show comparable 2010-2016 trends between the two data sets, although the error standard deviations defined by the ranges of the 10th-25th percentiles are large and the trends at this single site are
10 marginally significant ($p = 0.07$). Below we will use enhancement statistics aggregated over a large number of sites in order to reduce that uncertainty and quantify trends.

To aggregate trends in methane enhancements for individual source sectors, we use bottom-up annual mean sectoral information with $0.1^\circ \times 0.1^\circ$ spatial resolution from the gridded 2012 US EPA inventory of Maasakkers et al. (2016), the 2013 Canadian and 2010 Mexican oil/gas emission inventories of Sheng et al. (2017), and the EDGAR v4.2 global inventory for
15 2008 (European Commission, 2011) for other Canadian and Mexican sources. Compared to EDGAR v4.2, the more recent EDGAR v4.3.2 (Janssens-Maenhout et al., 2017) has similar national totals and spatial patterns for non-oil/gas anthropogenic methane emissions in North America. For wetlands, we use multiyear annual mean values from two climatological inventories with $0.5^\circ \times 0.5^\circ$ spatial resolution: (1) the mean of inventories contributing to the Wetland CH₄ Inter-Comparison Of Models Project (WETCHIMP) (Melton et al., 2013), and (2) the 2010-2015 mean of the WetCHARTs extended ensemble wetland
20 methane emissions inventory by Bloom et al. (2017). From these inventories we select high-emitting grid cells at $0.5^\circ \times 0.5^\circ$ resolution dominated by a particular source sector. The high-emitting grid cells are defined as having emissions larger than 0.5 tons h^{-1} , encompassing 80-90% of anthropogenic and wetland emissions in all three countries. A high-emitting grid cell is identified as dominated by a given source sector if that source sector accounts for more than 70% of the total emissions in the cell. This allows us to define grid cells dominated specifically by oil/gas, livestock, waste, and wetlands emissions.
25 Contributions from other sectors (up to 30%) may lead to some smoothing of results. Wetland-dominated areas determined by the WETCHIMP mean and WetCHARTs inventories differ significantly (see Supplemental Material). Using either of the two inventories alone may bias our results, and thus we conservatively require wetland-dominated areas to be determined as such in both inventories.

We define a total methane enhancement Δ for a given year, source sector, and country as

$$30 \quad \Delta = \sum_i (\bar{X}_{CH_4,i} - X_{CH_4,b,i}), \quad (1)$$

where $\bar{X}_{CH_4,i}$ is the annual mean value of the deseasonalized column average dry mole fractions in $0.5^\circ \times 0.5^\circ$ grid cell i for the given year, $X_{CH_4,b,i}$ is the corresponding local background value, and the summation is over all high-emitting grid cells for that sector and country. We require grid cells to have at least eight valid retrievals for a given year (to avoid bias in the annual mean value and percentiles), and about 70% of grid cells meet this requirement. To account for local background

variation due to atmospheric transport, the summation in Equation (1) is conducted for 1000 Monte Carlo realizations where the background $X_{CH_4,b,i}$ for each grid cell and for individual years is obtained by random sampling of percentiles in the 10th-25th range. Results are only weakly sensitive to the choice of that range (see Supplemental Material). The resulting summation statistics define the probability density function of the total enhancement Δ , and this is used in what follows to test the statistical significance of year-to-year trends in Δ .

3 Results and discussion

Figure 2 (upper panel) shows the spatial distribution of GOSAT methane trends in local enhancements over North America at $0.5^\circ \times 0.5^\circ$ spatial resolution from January 2010 to December 2016 (seven years of data). The $0.5^\circ \times 0.5^\circ$ trends are inferred from ordinary least-square linear regression of the enhancements for individual years. The trends are not statistically significant at that resolution. We will aggregate grid cells in what follows to increase statistical significance. Some areas are sparsely sampled, such as California, while the central US is more densely observed due to a more regular schedule of standard measurements. [This sampling bias in California is unlikely to affect the trend estimate on the national scale because California accounts for less than 5% of US national total according to the bottom-up inventories.](#) Spatial averaging to $4^\circ \times 4^\circ$ as in Turner et al. (2016) does not improve significance (see Supplemental Material) because methane emissions are not correlated on that scale. A major reason for the weaker statistical significance of our results relative to Turner et al. (2016) is the choice of background. Enhancements defined relative to the Pacific background, as in Turner et al. (2016), are larger than in our approach where the background is defined locally.

We improve the statistical significance of the CONUS enhancement trends by taking national statistics over all $0.5^\circ \times 0.5^\circ$ grid cells. This is shown in the lower panels of Figure 2 with the CONUS frequency distribution of trends in mean methane, local background, and the enhancements computed by difference. The mean 2010-2016 trend in methane enhancements over CONUS is 0.25 ± 0.48 ppb a⁻¹ (mean \pm one standard deviation), which is statistically significant (sample size $n = 241$ and p -value < 0.01). The mean 2010 methane enhancement for high-emitting grid cells in CONUS relative to local background is 10.8 ppb, comparable to that found by Janardanan et al. (2017). If this mean enhancement is taken as a measure of CONUS emissions, then a 0.25 ± 0.48 ppb a⁻¹ trend implies a $2.3 \pm 4\%$ a⁻¹ increase in emissions for 2010-2016. The Turner et al. frequency distributions, shown in the lower left panel, are much broader than ours because they did not use annual averaging of the data. Their Pacific background distribution is similarly broader and is also lower than our local background, which is appropriately elevated by continental influences. Below we will use the aggregated enhancements by source sectors (Equation 1) to infer the trends and reduce the uncertainty.

Figure 3 shows the locations of high-emitting $0.5^\circ \times 0.5^\circ$ grid cells dominated by different sectors as identified by the bottom-up inventories of Section 2. Also shown are national emission totals from these inventories. Wetland-dominated areas in Figure 3 are those identified by both the WETCHIMP mean and Bloom et al. (2017) inventories in order to avoid false positives. There is clear separation of grid cells dominated by wetlands, oil/gas, and livestock source sectors. Waste emissions dominate in urban areas but are more localized. Offshore oil/gas emissions over the Gulf of Mexico account for more than 50%

of Mexican oil/gas total (Sheng et al., 2017), but are not directly detectable by GOSAT nadir measurements over land. Glint observations are available over the ocean but are much sparser.

Figure 4 shows GOSAT methane enhancement trends for 2010-2016 (expressed as percent change since 2010) over Canada, CONUS, and Mexico, along with contributions from the sector-resolved high-emitting grid cells. Here the trends are calculated for the summed enhancement Δ in Equation (1) calculated for individual years and for high-emitting grid cells of individual countries or high-emitting sectors. Inferring significant trends for a given source sector generally requires ~ 50 contributing $0.5^\circ \times 0.5^\circ$ grid cells. The largest source of uncertainty is the selection of the local background within the 10th-25th percentile range, and this is reflected by the error bars in the figure.

The Canadian methane emissions show no significant seven-year trend but large year-to-year variability driven by wetlands. The 2014 maximum can be explained by a maximum of wetland areal extent (Bloom et al., 2017) (See Fig. S6 in Supplemental Material). Observations in the oil/gas dominated region of Canada (mainly natural gas in Alberta) are too sparse for inferring a significant oil/gas emission trend and are not shown here.

Mexican national emissions (excluding oil/gas offshore emissions) show a 5-10% decrease over the 2010 to 2016 period that appears to be largely driven by livestock. The decrease of livestock emissions ($4.0 \pm 1.6\% \text{ a}^{-1}$) is consistent with the 17% decrease in the Mexican cattle population over that period as reported by the Foreign Agriculture Service of the US Department of Agriculture (2015) and shown in Figure 5. The slight increase in Mexican emissions from 2012 on suggests an increasing source to compensate for the declining livestock emissions but GOSAT observations are too sparse to identify that source.

The CONUS data imply a significant increase in methane emissions from 2010 to 2016, with a trend of $2.5 \pm 1.4\% \text{ a}^{-1}$ derived from linear regression that is consistent with our previously calculated mean trend of $2.3\% \text{ a}^{-1}$ averaged over the $0.5^\circ \times 0.5^\circ$ gridded trends in Figure 2. Breakdown by sector suggests that US oil/gas emissions increased at a marginally significant level ($2.9\% \text{ a}^{-1}$, $p = 0.03$) from 2010 to 2015. Oil and unconventional (hydraulic fracturing) gas production grew by $15\% \text{ a}^{-1}$ and $19\% \text{ a}^{-1}$, respectively during that period (Figure 5), though production rate is not necessarily a predictor of emissions (Peischl et al., 2015).

The US livestock emissions show a $3.5 \pm 1.8\% \text{ a}^{-1}$ increase in our analysis, largely reflecting the agricultural Midwest where high-emitting grid cells are concentrated (Figure 3). These grid cells emit $0.95 \text{ Tg CH}_4 \text{ a}^{-1}$ from enteric fermentation (cattle) and $0.55 \text{ Tg CH}_4 \text{ a}^{-1}$ from manure management (swine) according to the gridded EPA inventory (Maasakkers et al., 2016). The cattle population in that region does not show a significant trend (Figure 5), but swine population in Iowa (accounting for most of the swine population in the Midwest) increased by two million heads from 2010 to 2016 (USDA National Agricultural Statistics Service, 2015b; Iowa Department of Natural Resources, 2017) (Figure 5). This would increase swine manure management emissions by $0.02\text{-}0.1 \text{ Tg CH}_4 \text{ a}^{-1}$ over the 2010-2016 period assuming the IPCC (2006) emission factor of $10\text{-}45 \text{ kg CH}_4 \text{ head}^{-1} \text{ a}^{-1}$. Here a larger value of the emission factor is more likely. The emission factor may have increased during that time due to an increase in swine body weight and a 30% rise in concentrated animal feeding operations (CAFOs) with more than 1,000 animal units (Iowa Department of Natural Resources, 2017). Those CAFOs tend to use liquid manure storage (US EPA, 2016) and have extended manure storage time (Iowa Department of Natural Resources, 2011), which lead to greater

methane emissions. A recent bottom-up study from Wolf et al. (2017) found a steady increasing trend since the 1990s in US methane emissions from manure management.

US wetlands emissions do not show a significant trend over 2010-2016 but large year-to-year variability, which contributes in part to the total national trend after 2012. Correlation with driving variables in the WetCHARTs yearly ensemble of Bloom et al. (2017) suggests that this year-to-year variability is related to wetland areal extent, same as for Canada (See Fig. S6 in Supplemental Material), though the definition of wetland areal extent may vary significantly (Poulter et al., 2017). Here the WetCHARTs extended ensemble used GLOBCOVER land cover data (Bontemps et al., 2011) and the Global Lakes and Wetlands Database (GLWD; Lehner and Dölla, 2004) to represent spatial wetland extent, and ERA-interim precipitation to account for temporal wetland extent (Bloom et al., 2017).

Inverse analyses of methane concentrations in surface air measured as part of the North American Carbon Program (NACP; Wofsy and Harris, 2002) for 2010-2014 reveal no significant trends in US emissions over that period (Benmergui et al., 2015). We examined whether the trends inferred from this work (significant trends after 2012) are consistent with the information provided by NACP surface data. For this purpose, we examined the residuals (observed minus simulated methane concentrations) of the CarbonTracker-Lagrange (CT-L) methane transport model (Benmergui et al., 2015) driven with two sets of emissions (1) the CT-L posterior emissions for 2010-2014 that are optimized to match all NACP data and show no significant trend, and (2) a scaled version of the CT-L posterior emissions that matches the sector-resolved trends derived in this work. Figure 7 shows annual statistics and trends of the residuals for both simulations at three NACP sites included in the CT-L inversion: LEF (Park Falls, Wisconsin, 45.9°N, 90.3°W), WBI (West Branch, Iowa, 41.7°N, 91.4°W), and WKT (Moody, Texas, 31.3°N, 97.3°W). These sites are strongly influenced by large livestock/wetlands, livestock, and oil/gas sources, respectively (Benmergui et al., 2015). There is no significant trend in the residuals of the CT-L simulation driven by either our GOSAT-inferred emission trends or CT-L posterior emissions, and the two sets of residuals are statistically indistinguishable. We find similar results for other NACP sites that are less sensitive to source regions. This implies that the trends found in this work are compatible with the constraints provided by NACP data. This also suggests that the surface data may be spatially too sparse to adequately infer trends of the magnitude detected by GOSAT.

25 4 Conclusions

In conclusion, analysis of seven years (2010-2016) of GOSAT methane trends over Canada, the contiguous US (CONUS), and Mexico suggests a significant increase in total US methane emissions after 2012 and decrease in Mexican emissions. The Mexican decreasing trend appears to be due to a declining cattle population. Canada shows no significant long-term trend but large year-to-year variability associated with wetlands and correlated with variations in wetland areal extent, though this trend is weighted toward summer because of the seasonal bias in observation frequency (less observations in winter). The US trend is $+2.5 \pm 1.4\% \text{ a}^{-1}$ for the period and appears to reflect contributions from both oil/gas and livestock. Assuming 38-55 Tg CH₄ a⁻¹ for the CONUS emissions, including 29-40 Tg CH₄ a⁻¹ from anthropogenic sources (Miller et al., 2013; Wecht et al., 2014; Turner et al., 2015; Maasackers et al., 2016) and 9-15 Tg CH₄ a⁻¹ from wetlands (Melton et al., 2013; Bloom

et al., 2017), we deduce an increasing emission trend of 0.9-1.3 Tg CH₄ a⁻¹ over the 2010-2016 period, which would account for about 20% of the global increase in atmospheric methane (Rigby et al., 2017). Our analysis is mainly limited by the length of GOSAT record, and a longer record can provide more reliable results. The definition of local background may also not fully account for the variation in atmospheric transport. Our trend analysis should be compared to trends inferred from inverse modeling (Bruhwiler et al., 2017), which better account for the role of atmospheric transport but have their own errors notably in the prior assumptions of emission patterns (Maasackers et al., 2016). Future inversions combining GOSAT and surface network data with improved bottom-up estimates are needed to provide more robust trend analyses.

Acknowledgements. This work was supported by the NASA Earth Science Division and by the Environmental Defense Fund. Part of the funding for this study was provided through NASA Grant #NNH14ZDA001N-CMS. J. Sheng and C. Arndt were partially funded by the Kravis Scientific Research Fund at Environmental Defense Fund. Funding for EDF's work on livestock methane was provided by Sue and Steve Mandel. A.J. Turner was supported by a Department of Energy (DOE) Computational Science Graduate Fellowship (CSGF). Part of this research was carried out at the Jet Propulsion Laboratory, California Institute of Technology, under a contract with the National Aeronautics and Space Administration. R.J. Parker was funded via an ESA Living Planet Fellowship with additional funding from the UK National Centre for Earth Observation (NCEO) and the ESA Greenhouse Gas Climate Change Initiative (GHG-CCI). We thank the Japanese Aerospace Exploration Agency, National Institute for Environmental Studies, and the Ministry of Environment for the GOSAT data and their continuous support as part of the Joint Research Agreement. This research used the ALICE High Performance Computing Facility at the University of Leicester. TCCON data were obtained from the TCCON Data Archive, hosted by CaltechData (<http://tccodata.org>).

Methane column frequency distributions and trends at Lamont, Oklahoma

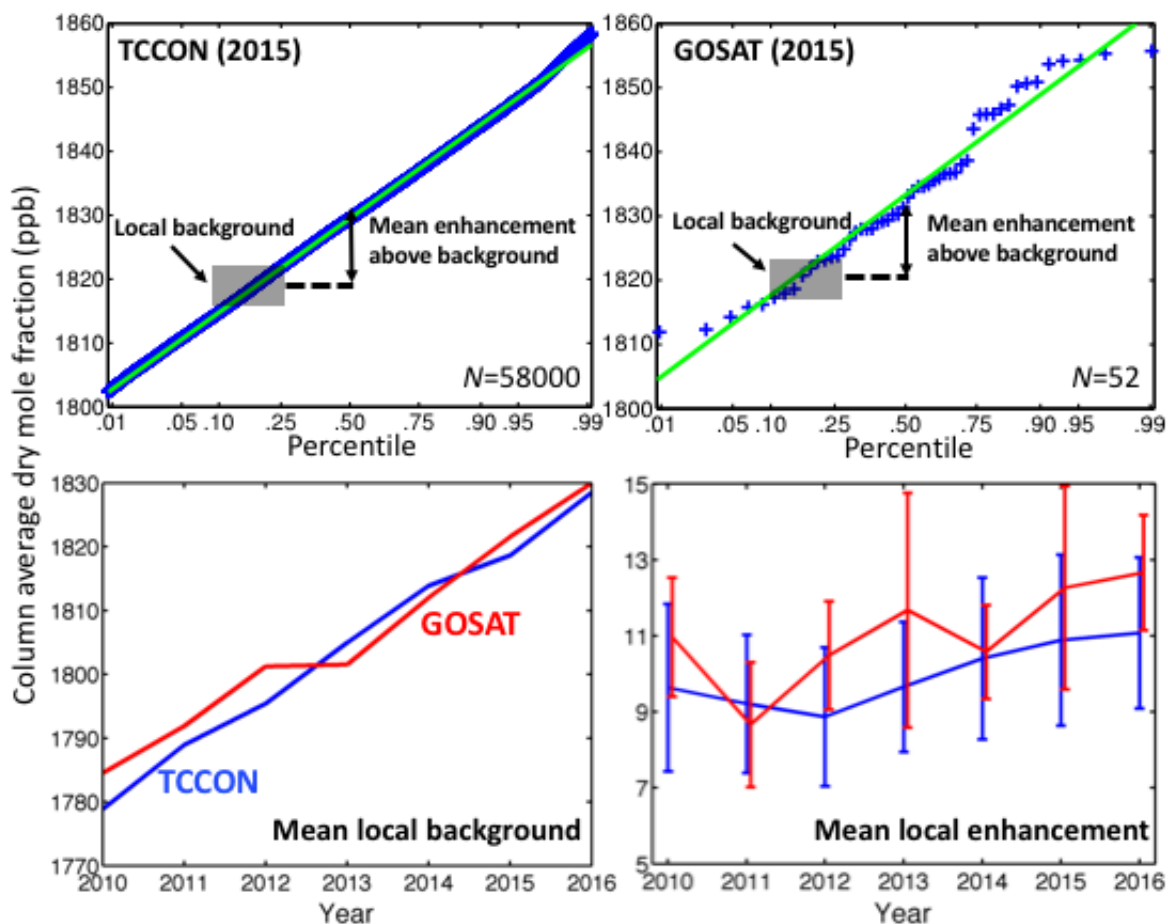


Figure 1. Frequency distributions and 2010-2016 trends of methane column average dry mole fractions X_{CH_4} at Lamont, Oklahoma (36.6°N, 97.4°W) as measured by TCCON and GOSAT. The upper panels show the deseasonalized 2015 frequency distributions from TCCON and GOSAT. The percentiles (blue plus signs) are plotted on a normal probability scale such that a normal distribution would plot as a straight line (green). The local background is defined by the 10th-25th percentile range and the mean annual local enhancement relative to this background is defined by the difference with the mean of the distribution. Lower panels compare TCCON and GOSAT backgrounds and enhancements for 2010-2016, with error standard deviations on the enhancements as described in the text.

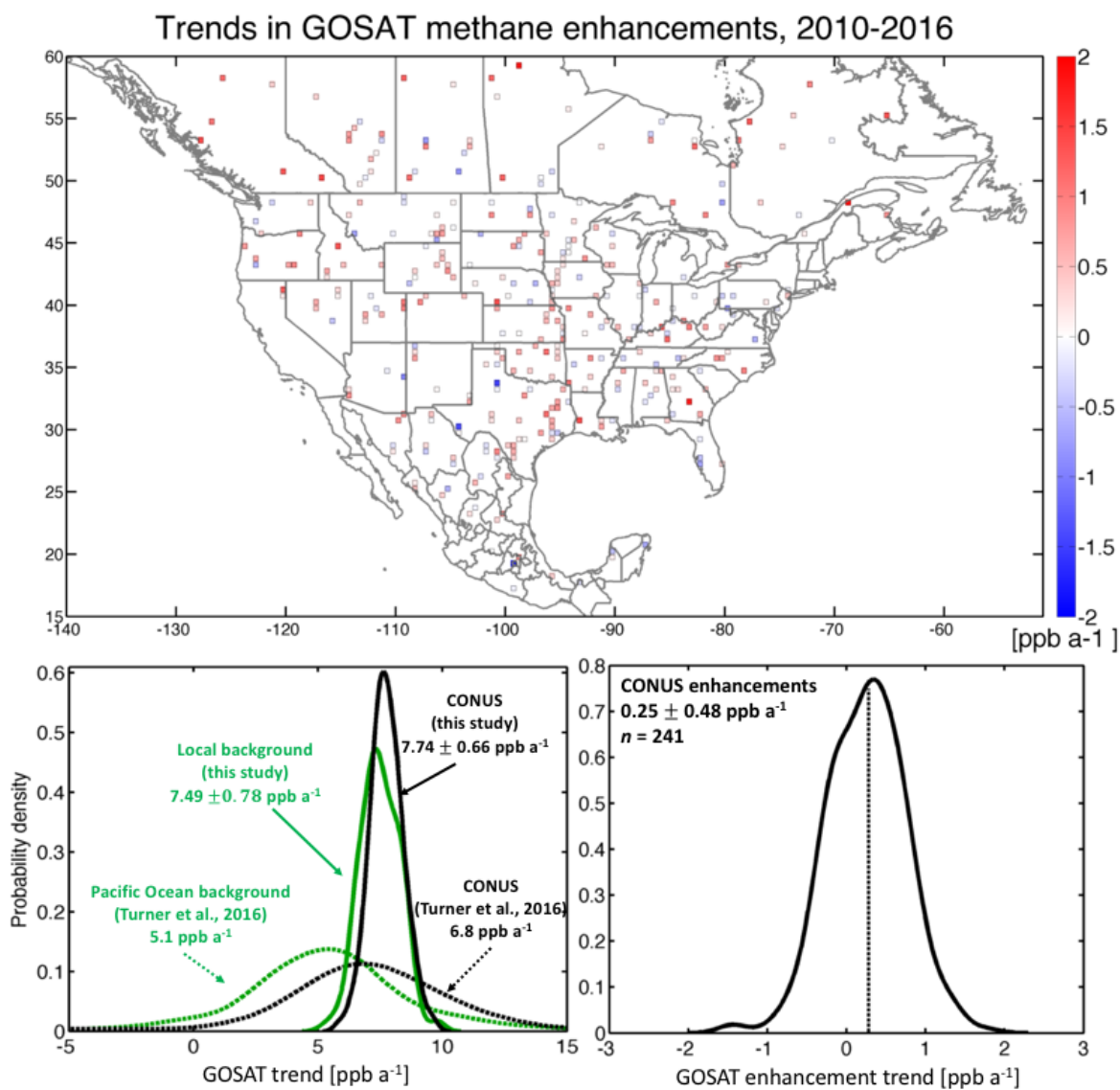


Figure 2. 2010-2016 trends in GOSAT methane enhancements over North America. Upper panel: ordinary least-square linear regression trends for $0.5^\circ \times 0.5^\circ$ grid cells with sufficient GOSAT observations, where the deseasonalized annual mean methane enhancements are defined relative to a local low-percentile background as described in the text. The trends are not statistically significant at that resolution (see text). Lower panels: spatial frequency distributions for the $0.5^\circ \times 0.5^\circ$ grid cells over the contiguous United States (CONUS) of mean methane and local background (at left), and local methane enhancements computed by difference (at right). The dashed black line in the lower right panel indicates the mean trend in CONUS enhancements. Also shown in the lower left panel are the 2010-2013 trend distributions from Turner et al. (2016).

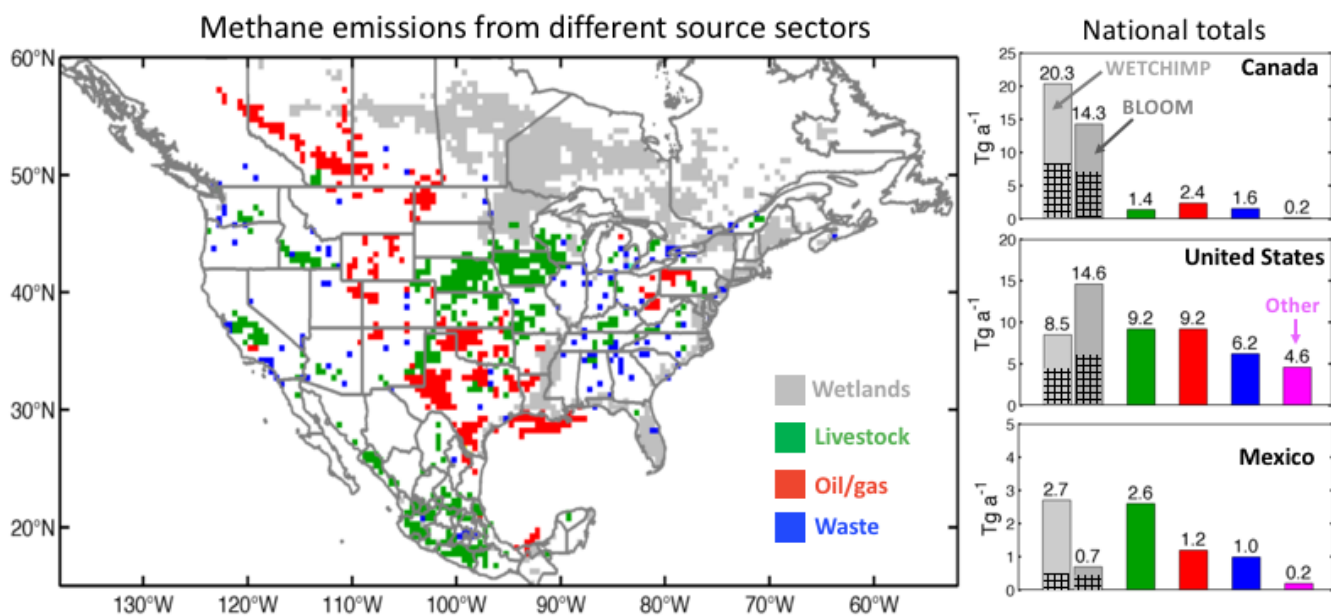


Figure 3. Methane emissions in North America and contributions from different source sectors. The left panel shows $0.5^\circ \times 0.5^\circ$ grid cells with high emissions dominated by a particular sector as identified by the bottom-up inventories (see text for details). High-emitting wetland areas are those identified by both the WETCHIMP mean inventory and the Bloom et al. (2017) mean inventory. Livestock includes enteric fermentation and manure management. Oil/gas includes the complete systems from production to distribution. Waste includes landfills and wastewater plants. The right panel shows national emissions for 2008-2013 from the bottom-up inventories. “Other” includes smaller sources from coal, rice, combustion, petrochemical production, ferroalloy production, and biomass burning. Total emissions in the high-emitting wetland areas are indicated by gridded areas.

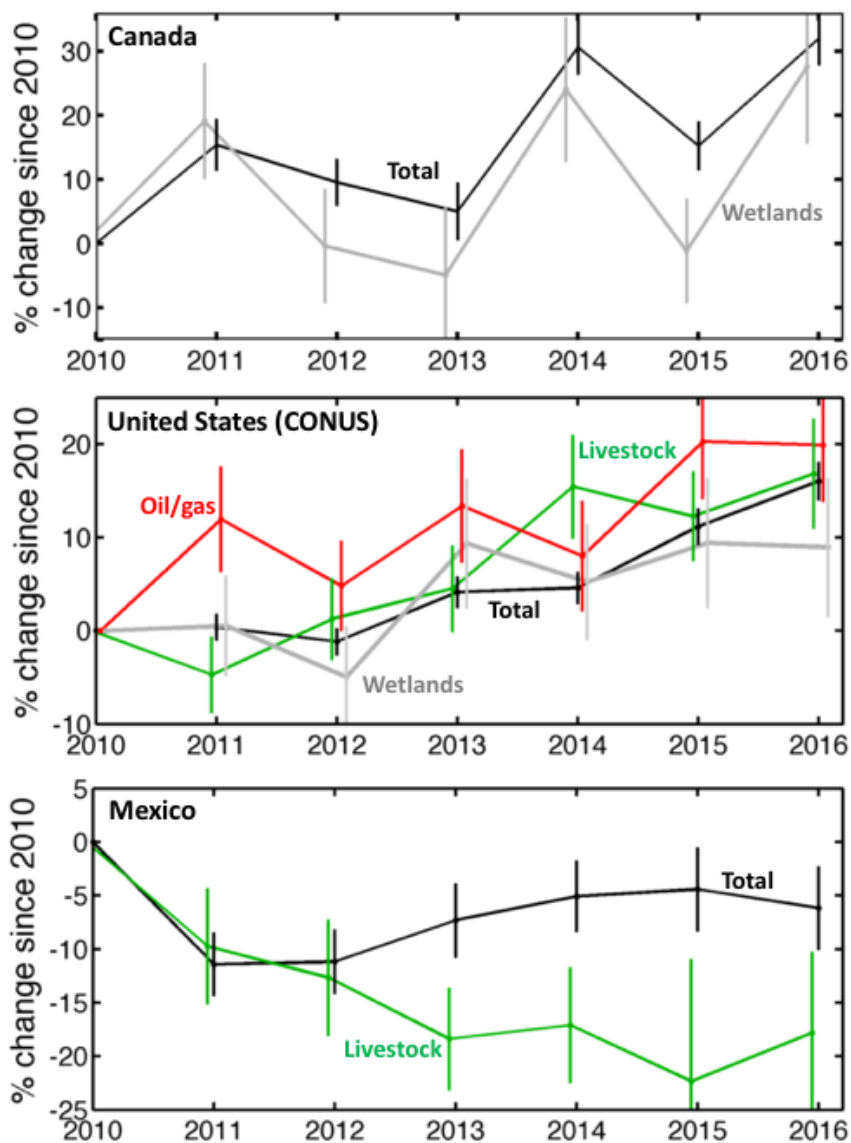


Figure 4. National trends in methane emissions since 2010 inferred from GOSAT, and contributions from specific source sectors where sufficient data are available. The trends are defined by relative year-to-year changes in the summed methane enhancements Δ relative to the local backgrounds as computed from Equation (1), and vertical bars are standard deviations derived from uncertainty in the local background (see text).

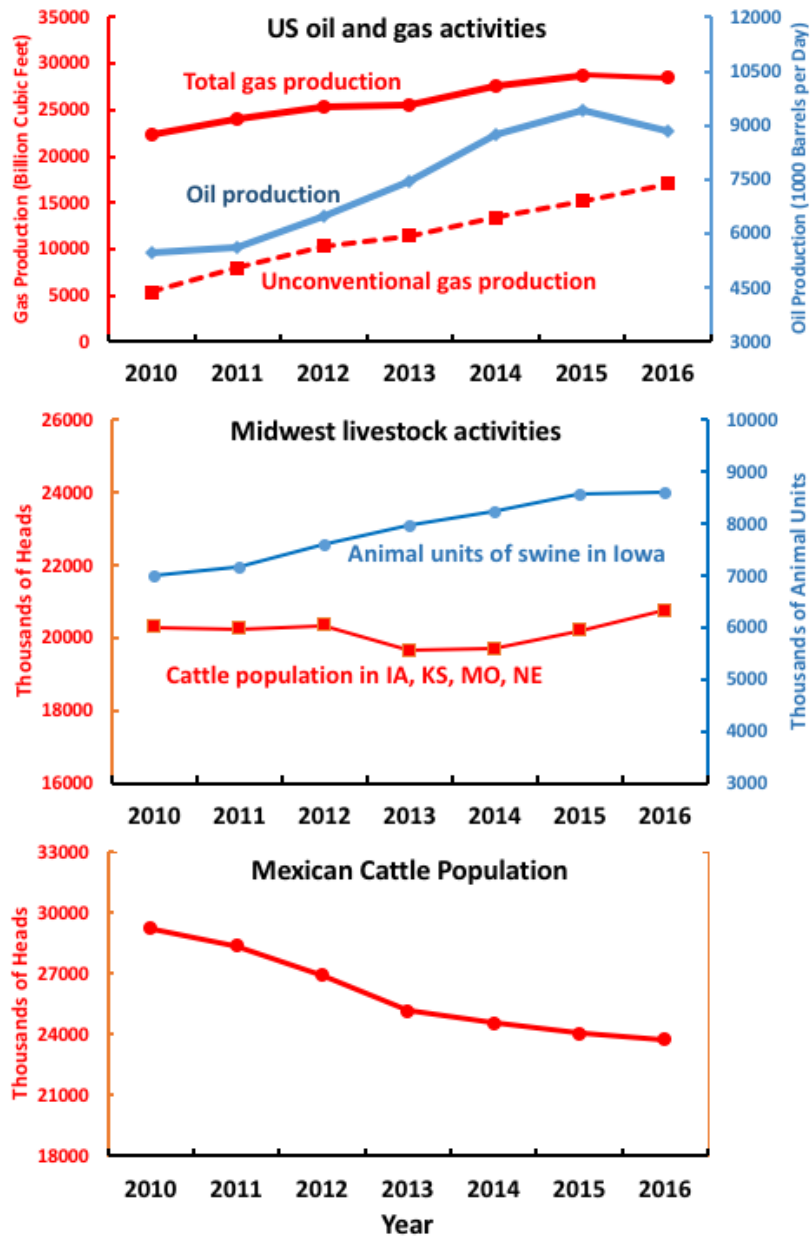


Figure 5. 2010-2016 changes in methane emitting activities. Upper panel: oil and natural gas production in CONUS (Drillinginfo, 2016). Middle panel: cattle population in Iowa, Kansas, Missouri, and Nebraska (USDA National Agricultural Statistics Service, 2015a), and animal units of swine in Iowa (Iowa Department of Natural Resources, 2017). One animal unit accounts for 3-5 heads of swine depending on body weight (USDA National Agricultural Statistics Service, 1995). Lower panel: total cattle population in Mexico (USDA Foreign Agricultural Service, 2015).

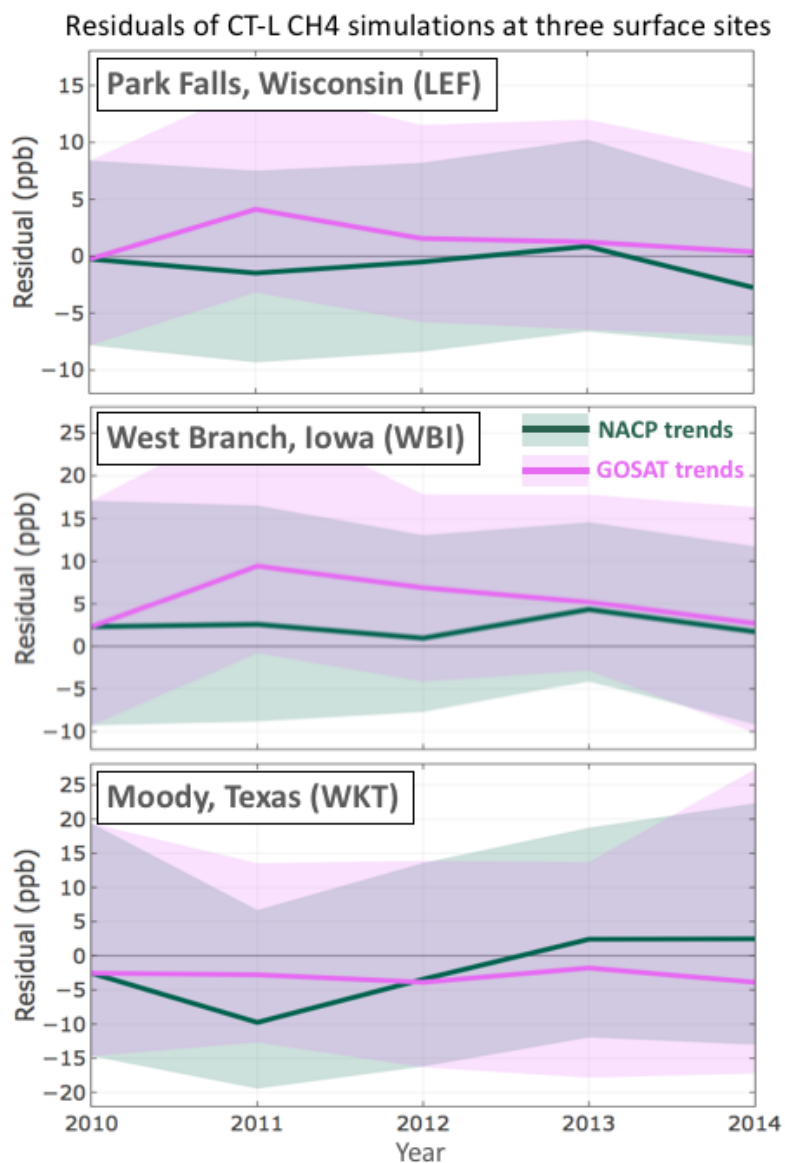


Figure 6. Time series of the residuals (observed minus simulated methane concentrations) of the CarbonTracker-Lagrange (CT-L) CH₄ transport model simulations driven by posterior emissions optimized for NACP data (green) and scaled to GOSAT-inferred emission trends (purple) for three surface sites particularly sensitive to emissions from different sectors: LEF (45.9°N, 90.3°W), WBI (41.7°N, 91.4°W), and WKT (31.3°N, 97.3°W). Solid lines show the medians of NACP and GOSAT trends, and shaded areas show the 25th-75th percentile envelope.

References

- Benmergui et al. Integrating diverse observations of North American CH₄ into flux inversions in CarbonTrackerLagrange-CH₄. In 2015
5 *AGU Fall Meeting*. Agu, 2015.
- A. A. Bloom, K. W. Bowman, M. Lee, A. J. Turner, R. Schroeder, J. R. Worden, R. Weidner, K. C. McDonald, and D. J. Jacob. A global wetland methane emissions and uncertainty dataset for atmospheric chemical transport models (WetCHARTs version 1.0). *Geosci. Model Dev.*, 10(6):2141–2156, June 2017. ISSN 1991-9603. <https://doi.org/10.5194/gmd-10-2141-2017>. URL <https://www.geosci-model-dev.net/10/2141/2017/>.
- 10 S. Bontemps, P. Defourny, E. Bogaert, O. Arino, V. Kalogirou, and J. Perez. GLOBCOVER 2009: Products Description and Validation Report. *Tech. rep., ESA*, 2, 2011.
- L. M. Bruhwiler, S. Basu, P. Bergamaschi, P. Bousquet, E. Dlugokencky, S. Houweling, M. Ishizawa, H.-S. Kim, R. Locatelli, S. Maksyutov, S. Montzka, S. Pandey, P. K. Patra, G. Petron, M. Saunio, C. Sweeney, S. Schwietzke, P. Tans, and E. C. Weatherhead. US CH₄ Emissions from Oil and Gas Production: Have Recent Large Increases Been Detected? *Journal of Geophysical Research: Atmospheres*, Jan. 2017. ISSN 2169-8996. <https://doi.org/10.1002/2016JD026157>. URL <http://onlinelibrary.wiley.com/doi/10.1002/2016JD026157/abstract>.
- 15 M. Buchwitz, M. Reuter, O. Schneising, H. Boesch, S. Guerlet, B. Dils, I. Aben, R. Armante, P. Bergamaschi, T. Blumenstock, H. Bovensmann, D. Brunner, B. Buchmann, J. P. Burrows, A. Butz, A. Chédin, F. Chevallier, C. D. Crevoisier, N. M. Deutscher, C. Frankenberg, F. Hase, O. P. Hasekamp, J. Heymann, T. Kaminski, A. Laeng, G. Lichtenberg, M. De Mazière, S. Noël, J. Notholt, J. Orphal, C. Popp, R. Parker, M. Scholze, R. Sussmann, G. P. Stiller, T. Warneke, C. Zehner, A. Bril, D. Crisp, D. W. T. Griffith, A. Kuze, C. O'Dell, S. Oshchepkov, V. Sherlock, H. Suto, P. Wennberg, D. Wunch, T. Yokota, and Y. Yoshida. The Greenhouse Gas Climate Change Initiative (GHG-CCI): Comparison and quality assessment of near-surface-sensitive satellite-derived CO₂ and CH₄ global data sets. *Remote Sensing of Environment*, 162:344–362, June 2015. ISSN 0034-4257. <https://doi.org/10.1016/j.rse.2013.04.024>. URL <http://www.sciencedirect.com/science/article/pii/S0034425713003520>.
- 20 M. Buchwitz, B. Dils, H. Boesch, C. Crevoisier, D. Detmers, C. Frankenberg, O. Hasekamp, W. Hewson, A. Laeng, S. Noël, and others. ESA Climate Change Initiative (CCI) Product Validation and Intercomparison Report (PVIR) for the Essential Climate Variable (ECV) Greenhouse Gases (GHG) for data set Climate Research Data Package No. 4 (CRDP# 4). *Version*, 5(4):253, 2016. URL http://www.esa-ghg-cci.org/?q=webfm_send/300.
- M. Buchwitz, O. Schneising, M. Reuter, J. Heymann, S. Krautwurst, H. Bovensmann, J. P. Burrows, H. Boesch, R. J. Parker, P. Somkuti, R. G. Detmers, O. P. Hasekamp, I. Aben, A. Butz, C. Frankenberg, and A. J. Turner. Satellite-derived methane hotspot emission estimates using a fast data-driven method. *Atmos. Chem. Phys.*, 17(9):5751–5774, May 2017. ISSN 1680-7324. <https://doi.org/10.5194/acp-17-5751-2017>. URL <https://www.atmos-chem-phys.net/17/5751/2017/>.
- 30 Chevallier F., Ciais P., Conway T. J., Aalto T., Anderson B. E., Bousquet P., Brunke E. G., Ciattaglia L., Esaki Y., Fröhlich M., Gomez A., Gomez-Pelaez A. J., Haszpra L., Krummel P. B., Langenfelds R. L., Leuenberger M., Machida T., Maignan F., Matsueda H., Morguá J. A., Mukai H., Nakazawa T., Peylin P., Ramonet M., Rivier L., Sawa Y., Schmidt M., Steele L. P., Vay S. A., Vermeulen A. T., Wofsy S., and Worthy D. CO₂ surface fluxes at grid point scale estimated from a global 21 year reanalysis of atmospheric measurements. *Journal of Geophysical Research: Atmospheres*, 115(D21), Nov. 2010. ISSN 0148-0227. <https://doi.org/10.1029/2010JD013887>. URL <https://agupubs.onlinelibrary.wiley.com/doi/full/10.1029/2010JD013887>.
- R. B. Cleveland, W. S. Cleveland, and I. Terpenning. STL: A seasonal-trend decomposition procedure based on loess. *Journal of Official Statistics*, 6(1):3, 1990.

- C. Cressot, I. Pison, P. J. Rayner, P. Bousquet, A. Fortems-Cheiney, and F. Chevallier. Can we detect regional methane anomalies? A comparison between three observing systems. *Atmos. Chem. Phys.*, 16(14):9089–9108, July 2016. ISSN 1680-7324. <https://doi.org/10.5194/acp-16-9089-2016>. URL <https://www.atmos-chem-phys.net/16/9089/2016/>.
- E. J. Dlugokencky, L. Bruhwiler, J. W. C. White, L. K. Emmons, P. C. Novelli, S. A. Montzka, K. A. Masarie, P. M. Lang, A. M. Crotwell, J. B. Miller, and L. V. Gatti. Observational constraints on recent increases in the atmospheric CH₄ burden. *Geophys. Res. Lett.*, 36(18):L18803, 2009. ISSN 1944-8007. <https://doi.org/10.1029/2009GL039780>. URL <http://onlinelibrary.wiley.com/doi/10.1029/2009GL039780/abstract>.
- 10 Drillinginfo. Drillinginfo’s Production Data Platform – HPDI, 2016. URL <http://info.drillinginfo.com/drillinginfo-di-desktop/>.
- M. Etminan, G. Myhre, E. J. Highwood, and K. P. Shine. Radiative forcing of carbon dioxide, methane, and nitrous oxide: A significant revision of the methane radiative forcing. *Geophys. Res. Lett.*, 43(24):2016GL071930, Dec. 2016. ISSN 1944-8007. <https://doi.org/10.1002/2016GL071930>. URL <http://onlinelibrary.wiley.com/doi/10.1002/2016GL071930/abstract>.
- European Commission. Emission Database for Global Atmospheric Research (EDGAR), release version 4.2. 2011.
- 15 B. Franco, E. Mahieu, L. K. Emmons, Z. A. Tzompa-Sosa, E. V. Fischer, K. Sudo, B. Bovy, S. Conway, D. Griffin, J. W. Hannigan, K. Strong, and K. A. Walker. Evaluating ethane and methane emissions associated with the development of oil and natural gas extraction in North America. *Environ. Res. Lett.*, 11(4):044010, 2016. ISSN 1748-9326. <https://doi.org/10.1088/1748-9326/11/4/044010>. URL <http://stacks.iop.org/1748-9326/11/i=4/a=044010>.
- C. Frankenberg, J. F. Meirink, P. Bergamaschi, A. P. H. Goede, M. Heimann, S. Körner, U. Platt, M. van Weele, and T. Wagner. Satellite 20 cartography of atmospheric methane from SCIAMACHY on board ENVISAT: Analysis of the years 2003 and 2004. *J. Geophys. Res.*, 111(D7):D07303, Apr. 2006. ISSN 2156-2202. <https://doi.org/10.1029/2005JD006235>. URL <http://onlinelibrary.wiley.com/doi/10.1029/2005JD006235/abstract>.
- A. H. Goldstein, S. C. Wofsy, and C. M. Spivakovsky. Seasonal variations of nonmethane hydrocarbons in rural New England: Constraints on OH concentrations in northern midlatitudes. *J. Geophys. Res.*, 100(D10):21023–21033, Oct. 1995. ISSN 2156-2202. <https://doi.org/10.1029/95JD02034>. URL <http://onlinelibrary.wiley.com/doi/10.1029/95JD02034/abstract>.
- 25 P. Hausmann, R. Sussmann, and D. Smale. Contribution of oil and natural gas production to renewed increase in atmospheric methane (2007–2014): top–down estimate from ethane and methane column observations. *Atmos. Chem. Phys.*, 16(5):3227–3244, Mar. 2016. ISSN 1680-7324. <https://doi.org/10.5194/acp-16-3227-2016>. URL <http://www.atmos-chem-phys.net/16/3227/2016/>.
- D. Helmig, S. Rossabi, J. Hueber, P. Tans, S. A. Montzka, K. Masarie, K. Thoning, C. Plass-Duelmer, A. Claude, L. J. Carpenter, A. C. 30 Lewis, S. Punjabi, S. Reimann, M. K. Vollmer, R. Steinbrecher, J. W. Hannigan, L. K. Emmons, E. Mahieu, B. Franco, D. Smale, and A. Pozzer. Reversal of global atmospheric ethane and propane trends largely due to US oil and natural gas production. *Nature Geosci*, advance online publication, June 2016. ISSN 1752-0894. <https://doi.org/10.1038/ngeo2721>. URL <http://www.nature.com/ngeo/journal/vaop/ncurrent/full/ngeo2721.html>.
- Iowa Department of Natural Resources. Manure on Frozen and Snow-covered Ground: Report to the Governor and General Assembly, 2011. 35 URL www.iowadnr.gov/Portals/idnr/uploads/afo/report_frozgrnd11.pdf.
- Iowa Department of Natural Resources. The online Animal Feeding Operations database, 2017. URL <https://programs.iowadnr.gov/animalfeedingoperations/>.
- IPCC. 2006 IPCC Guidelines for National Greenhouse Gas Inventories (Volume 4): Agriculture, Forestry and Other Land Use, 2006. URL <https://www.ipcc-nggip.iges.or.jp/public/2006gl/vol4.html>.

- D. J. Jacob, A. J. Turner, J. D. Maasakkers, J. Sheng, K. Sun, X. Liu, K. Chance, I. Aben, J. McKeever, and C. Frankenberg. Satellite observations of atmospheric methane and their value for quantifying methane emissions. *Atmos. Chem. Phys.*, 16(22):14371–14396, Nov. 2016. ISSN 1680-7324. <https://doi.org/10.5194/acp-16-14371-2016>. URL <http://www.atmos-chem-phys.net/16/14371/2016/>.
- 5 R. Janardanan, S. Maksyutov, A. Ito, Y. Yukio, and T. Matsunaga. Assessment of Anthropogenic Methane Emissions over Large Regions Based on GOSAT Observations and High Resolution Transport Modeling. *Remote Sensing*, 9(9):941, Sept. 2017. <https://doi.org/10.3390/rs9090941>. URL <http://www.mdpi.com/2072-4292/9/9/941>.
- G. Janssens-Maenhout, M. Crippa, D. Guizzardi, M. Muntean, E. Schaaf, F. Dentener, P. Bergamaschi, V. Pagliari, J. G. J. Olivier, J. A. H. W. Peters, J. A. v. Aardenne, S. Monni, U. Doering, and A. M. R. Petrescu. EDGAR v4.3.2 Global Atlas of the three major Greenhouse Gas Emissions for the period 1970–2012. *Earth System Science Data Discussions*, pages 1–55, Aug. 2017. ISSN 1866-3508. <https://doi.org/https://doi.org/10.5194/essd-2017-79>. URL <https://www.earth-syst-sci-data-discuss.net/essd-2017-79/>.
- 10 S. Kirschke, P. Bousquet, P. Ciais, M. Saunois, J. G. Canadell, E. J. Dlugokencky, P. Bergamaschi, D. Bergmann, D. R. Blake, L. Bruhwiler, P. Cameron-Smith, S. Castaldi, F. Chevallier, L. Feng, A. Fraser, M. Heimann, E. L. Hodson, S. Houweling, B. Josse, P. J. Fraser, P. B. Krummel, J.-F. Lamarque, R. L. Langenfelds, C. Le Quééré, V. Naik, S. O’Doherty, P. I. Palmer, I. Pison, D. Plummer, B. Poulter, R. G. Prinn, M. Rigby, B. Ringeval, M. Santini, M. Schmidt, D. T. Shindell, I. J. Simpson, R. Spahni, L. P. Steele, S. A. Strode, K. Sudo, S. Szopa, G. R. van der Werf, A. Voulgarakis, M. van Weele, R. F. Weiss, J. E. Williams, and G. Zeng. Three decades of global methane sources and sinks. *Nature Geosci*, 6(10):813–823, Oct. 2013. ISSN 1752-0894. <https://doi.org/10.1038/ngeo1955>. URL <http://www.nature.com/ngeo/journal/v6/n10/full/ngeo1955.html>.
- 15 A. Kuze, H. Suto, K. Shiomi, S. Kawakami, M. Tanaka, Y. Ueda, A. Deguchi, J. Yoshida, Y. Yamamoto, F. Kataoka, T. E. Taylor, and H. L. Buijs. Update on GOSAT TANSO-FTS performance, operations, and data products after more than 6 years in space. *Atmos. Meas. Tech.*, 9(6):2445–2461, June 2016. ISSN 1867-8548. <https://doi.org/10.5194/amt-9-2445-2016>. URL <http://www.atmos-meas-tech.net/9/2445/2016/>.
- 20 B. Lehner and P. Dölla. Development and validation of a global database of lakes, reservoirs and wetlands. *Journal of Hydrology*, 296(1): 1–22, Aug. 2004. ISSN 0022-1694. <https://doi.org/10.1016/j.jhydrol.2004.03.028>. URL <http://www.sciencedirect.com/science/article/pii/S0022169404001404>.
- J. D. Maasakkers, D. J. Jacob, M. P. Sulprizio, A. J. Turner, M. Weitz, T. Wirth, C. Hight, M. DeFigueiredo, M. Desai, R. Schmeltz, L. Hockstad, A. A. Bloom, K. W. Bowman, S. Jeong, and M. L. Fischer. Gridded National Inventory of U.S. Methane Emissions. *Environ. Sci. Technol.*, 50(23):13123–13133, Dec. 2016. ISSN 0013-936X. <https://doi.org/10.1021/acs.est.6b02878>. URL <http://dx.doi.org/10.1021/acs.est.6b02878>.
- 30 J. R. Melton, R. Wania, E. L. Hodson, B. Poulter, B. Ringeval, R. Spahni, T. Bohn, C. A. Avis, D. J. Beerling, G. Chen, A. V. Eliseev, S. N. Denisov, P. O. Hopcroft, D. P. Lettenmaier, W. J. Riley, J. S. Singarayer, Z. M. Subin, H. Tian, S. Zürcher, V. Brovkin, P. M. van Bodegom, T. Kleinen, Z. C. Yu, and J. O. Kaplan. Present state of global wetland extent and wetland methane modelling: conclusions from a model inter-comparison project (WETCHIMP). *Biogeosciences*, 10(2):753–788, Feb. 2013. ISSN 1726-4189. <https://doi.org/10.5194/bg-10-753-2013>. URL <http://www.biogeosciences.net/10/753/2013/>.
- 35 S. M. Miller, S. C. Wofsy, A. M. Michalak, E. A. Kort, A. E. Andrews, S. C. Biraud, E. J. Dlugokencky, J. Eluskiewicz, M. L. Fischer, G. Janssens-Maenhout, B. R. Miller, J. B. Miller, S. A. Montzka, T. Nehrkorn, and C. Sweeney. Anthropogenic emissions of methane in the United States. *PNAS*, 110(50):20018–20022, Dec. 2013. ISSN 0027-8424, 1091-6490. <https://doi.org/10.1073/pnas.1314392110>. URL <http://www.pnas.org/content/110/50/20018>.

- G. Myhre, D. Shindell, F.-M. Bréon, W. Collins, J. Fuglestvedt, J. Huang, D. Koch, J.-F. Lamarque, D. Lee, B. Mendoza, and others. Anthropogenic and natural radiative forcing. *Climate change*, 423, 2013.
- 5 E. G. Nisbet, E. J. Dlugokencky, M. R. Manning, D. Lowry, R. E. Fisher, J. L. France, S. E. Michel, J. B. Miller, J. W. C. White, B. Vaughn, P. Bousquet, J. A. Pyle, N. J. Warwick, M. Cain, R. Brownlow, G. Zazzeri, M. Lanoisellé, A. C. Manning, E. Gloor, D. E. J. Worthy, E.-G. Brunke, C. Labuschagne, E. W. Wolff, and A. L. Ganesan. Rising atmospheric methane: 2007–2014 growth and isotopic shift. *Global Biogeochemical Cycles*, 30(9):1356–1370, Sept. 2016. ISSN 1944-9224. <https://doi.org/10.1002/2016GB005406>. URL <http://onlinelibrary.wiley.com/doi/10.1002/2016GB005406/abstract>.
- 10 R. Parker, H. Boesch, A. Cogan, A. Fraser, L. Feng, P. I. Palmer, J. Messerschmidt, N. Deutscher, D. W. T. Griffith, J. Notholt, P. O. Wennberg, and D. Wunch. Methane observations from the Greenhouse Gases Observing SATellite: Comparison to ground-based TCCON data and model calculations. *Geophys. Res. Lett.*, 38(15):L15807, Aug. 2011. ISSN 1944-8007. <https://doi.org/10.1029/2011GL047871>. URL <http://onlinelibrary.wiley.com/doi/10.1029/2011GL047871/abstract>.
- R. J. Parker, H. Boesch, K. Byckling, A. J. Webb, P. I. Palmer, L. Feng, P. Bergamaschi, F. Chevallier, J. Notholt, N. Deutscher, T. Warneke, 15 F. Hase, R. Sussmann, S. Kawakami, R. Kivi, D. W. T. Griffith, and V. Velasco. Assessing 5 years of GOSAT Proxy XCH₄ data and associated uncertainties. *Atmos. Meas. Tech.*, 8(11):4785–4801, Nov. 2015. ISSN 1867-8548. <https://doi.org/10.5194/amt-8-4785-2015>. URL <http://www.atmos-meas-tech.net/8/4785/2015/>.
- J. Peischl, T. B. Ryerson, K. C. Aikin, J. A. de Gouw, J. B. Gilman, J. S. Holloway, B. M. Lerner, R. Nadkarni, J. A. Neuman, J. B. Nowak, M. Trainer, C. Warneke, and D. D. Parrish. Quantifying atmospheric methane emissions from the Haynesville, Fayetteville, and 20 northeastern Marcellus shale gas production regions. *J. Geophys. Res. Atmos.*, 120(5):2014JD022697, Mar. 2015. ISSN 2169-8996. <https://doi.org/10.1002/2014JD022697>. URL <http://onlinelibrary.wiley.com/doi/10.1002/2014JD022697/abstract>.
- B. Poulter, P. Bousquet, J. G. Canadell, P. Ciais, A. Peregon, Marielle Saunio, V. K. Arora, D. J. Beerling, V. Brovkin, C. D. Jones, F. Joos, Nicola Gedney, A. Ito, T. Kleinen, C. D. Koven, K. McDonald, J. R. Melton, C. Peng, Shushi Peng, C. Prigent, R. Schroeder, W. J. Riley, M. Saito, R. Spahni, H. Tian, Lyla Taylor, N. Viovy, D. Wilton, A. Wiltshire, X. Xu, B. Zhang, Z. Zhang, and Q. Zhu. Global wetland 25 contribution to 2000–2012 atmospheric methane growth rate dynamics. *Environ. Res. Lett.*, 12(9):094013, 2017. ISSN 1748-9326. <https://doi.org/10.1088/1748-9326/aa8391>. URL <http://stacks.iop.org/1748-9326/12/i=9/a=094013>.
- M. J. Prather, C. D. Holmes, and J. Hsu. Reactive greenhouse gas scenarios: Systematic exploration of uncertainties and the role of atmospheric chemistry. *Geophys. Res. Lett.*, 39(9):L09803, May 2012. ISSN 1944-8007. <https://doi.org/10.1029/2012GL051440>. URL <http://onlinelibrary.wiley.com/doi/10.1029/2012GL051440/abstract>.
- 30 M. Rigby, S. A. Montzka, R. G. Prinn, J. W. C. White, D. Young, S. O’Doherty, M. F. Lunt, A. L. Ganesan, A. J. Manning, P. G. Simmonds, P. K. Salameh, C. M. Harth, J. Mühle, R. F. Weiss, P. J. Fraser, L. P. Steele, P. B. Krummel, A. McCulloch, and S. Park. Role of atmospheric oxidation in recent methane growth. *PNAS*, page 201616426, Apr. 2017. ISSN 0027-8424, 1091-6490. <https://doi.org/10.1073/pnas.1616426114>. URL <http://www.pnas.org/content/early/2017/04/11/1616426114>.
- M. Saunio, P. Bousquet, B. Poulter, A. Peregon, P. Ciais, J. G. Canadell, E. J. Dlugokencky, G. Etiopé, D. Bastviken, S. Houweling, 35 G. Janssens-Maenhout, F. N. Tubiello, S. Castaldi, R. B. Jackson, M. Alexe, V. K. Arora, D. J. Beerling, P. Bergamaschi, D. R. Blake, G. Brailsford, V. Brovkin, L. Bruhwiler, C. Crevoisier, P. Crill, K. Covey, C. Curry, C. Frankenberg, N. Gedney, L. Höglund-Isaksson, M. Ishizawa, A. Ito, F. Joos, H.-S. Kim, T. Kleinen, P. Krummel, J.-F. Lamarque, R. Langenfelds, R. Locatelli, T. Machida, S. Maksyutov, K. C. McDonald, J. Marshall, J. R. Melton, I. Morino, V. Naik, S. O’Doherty, F.-J. W. Parmentier, P. K. Patra, C. Peng, S. Peng, G. P. Peters, I. Pison, C. Prigent, R. Prinn, M. Ramonet, W. J. Riley, M. Saito, M. Santini, R. Schroeder, I. J. Simpson, R. Spahni, P. Steele, A. Takizawa, B. F. Thornton, H. Tian, Y. Tohjima, N. Viovy, A. Voulgarakis, M. v. Weele, G. R. v. d. Werf, R. Weiss, C. Wiedinmyer,

- D. J. Wilton, A. Wiltshire, D. Worthy, D. Wunch, X. Xu, Y. Yoshida, B. Zhang, Z. Zhang, and Q. Zhu. The global methane budget 2000–2012. *Earth System Science Data*, 8(2):697–751, Dec. 2016. ISSN 1866-3508. <https://doi.org/10.5194/essd-8-697-2016>. URL <http://www.earth-syst-sci-data.net/8/697/2016/>.
5
- H. Schaefer, S. E. M. Fletcher, C. Veidt, K. R. Lassey, G. W. Brailsford, T. M. Bromley, E. J. Dlugokencky, S. E. Michel, J. B. Miller, I. Levin, D. C. Lowe, R. J. Martin, B. H. Vaughn, and J. W. C. White. A 21st-century shift from fossil-fuel to biogenic methane emissions indicated by 13ch4. *Science*, 352(6281):80–84, Apr. 2016. ISSN 0036-8075, 1095-9203. <https://doi.org/10.1126/science.aad2705>. URL <http://science.sciencemag.org/content/352/6281/80>.
- 10 J.-X. Sheng, D. J. Jacob, J. D. Maasakkers, M. P. Sulprizio, D. Zavala-Araiza, and S. P. Hamburg. A high-resolution ($0.1^\circ \times 0.1^\circ$) inventory of methane emissions from Canadian and Mexican oil and gas systems. *Atmospheric Environment*, 2017. ISSN 1352-2310. <https://doi.org/10.1016/j.atmosenv.2017.02.036>. URL <http://www.sciencedirect.com/science/article/pii/S1352231017301164>.
- A. J. Turner, D. J. Jacob, K. J. Wecht, J. D. Maasakkers, E. Lundgren, A. E. Andrews, S. C. Biraud, H. Boesch, K. W. Bowman, N. M. Deutscher, M. K. Dubey, D. W. T. Griffith, F. Hase, A. Kuze, J. Notholt, H. Ohyama, R. Parker, V. H. Payne, R. Sussmann, C. Sweeney,
15 V. A. Velazco, T. Warneke, P. O. Wennberg, and D. Wunch. Estimating global and North American methane emissions with high spatial resolution using GOSAT satellite data. *Atmos. Chem. Phys.*, 15(12):7049–7069, June 2015. ISSN 1680-7324. <https://doi.org/10.5194/acp-15-7049-2015>. URL <http://www.atmos-chem-phys.net/15/7049/2015/>.
- A. J. Turner, D. J. Jacob, J. Benmergui, S. C. Wofsy, J. D. Maasakkers, A. Butz, O. Hasekamp, and S. C. Biraud. A large increase in U.S. methane emissions over the past decade inferred from satellite data and surface observations. *Geophys. Res. Lett.*, 43(5):2016GL067987,
20 Mar. 2016. ISSN 1944-8007. <https://doi.org/10.1002/2016GL067987>. URL <http://onlinelibrary.wiley.com/doi/10.1002/2016GL067987/abstract>.
- A. J. Turner, C. Frankenberg, P. O. Wennberg, and D. J. Jacob. Ambiguity in the causes for decadal trends in atmospheric methane and hydroxyl. *PNAS*, page 201616020, Apr. 2017. ISSN 0027-8424, 1091-6490. <https://doi.org/10.1073/pnas.1616020114>. URL <http://www.pnas.org/content/early/2017/04/18/1616020114>.
- 25 US EPA. Inventory of U.S. Greenhouse Gas Emissions and Sinks 1990-2014. 2016.
- USDA Foreign Agricultural Service. Mexico: Livestock and Products Annual, 2015. URL <https://www.fas.usda.gov/data/mexico-livestock-and-products-annual-0>.
- USDA National Agricultural Statistics Service. Animal manure management, RCA (Soil and Water Resources Conservation Act) issue brief #7, Dec. 1995. URL https://www.nrcs.usda.gov/wps/portal/nrcs/detail/national/technical/nra/rca/?&cid=nrcs143_014211.
- 30 USDA National Agricultural Statistics Service. Cattle Inventory, 2015a. URL <http://usda.mannlib.cornell.edu/MannUsda/viewDocumentInfo.do?documentID=1017>.
- USDA National Agricultural Statistics Service. Hog Inventory, 2015b. URL <http://usda.mannlib.cornell.edu/MannUsda/viewDocumentInfo.do?documentID=1086>.
- K. J. Wecht, D. J. Jacob, C. Frankenberg, Z. Jiang, and D. R. Blake. Mapping of North American methane emissions with high spatial resolution by inversion of SCIAMACHY satellite data. *J. Geophys. Res. Atmos.*, 119(12):2014JD021551, 2014. ISSN 2169-8996. <https://doi.org/10.1002/2014JD021551>. URL <http://onlinelibrary.wiley.com/doi/10.1002/2014JD021551/abstract>.
- S. C. Wofsy and R. C. Harris. The North American Carbon Program (NACP): Report of the NACP Committee of the U.S. Interagency Carbon Cycle Science Program., *U.S. Global Change Res. Program, Washington, D. C.*, 2002.

- J. Wolf, G. R. Asrar, and T. O. West. Revised methane emissions factors and spatially distributed annual carbon fluxes for global livestock. *Carbon Balance and Management*, 12:16, Sept. 2017. ISSN 1750-0680. <https://doi.org/10.1186/s13021-017-0084-y>. URL <https://doi.org/10.1186/s13021-017-0084-y>.
- 5 J. R. Worden, A. A. Bloom, S. Pandey, Z. Jiang, H. M. Worden, T. W. Walker, S. Houweling, and T. Röckmann. Reduced biomass burning emissions reconcile conflicting estimates of the post-2006 atmospheric methane budget. *Nature Communications*, 8(1):2227, Dec. 2017. ISSN 2041-1723. <https://doi.org/10.1038/s41467-017-02246-0>. URL <https://www.nature.com/articles/s41467-017-02246-0>.
- 10 D. Wunch, G. C. Toon, J.-F. L. Blavier, R. A. Washenfelder, J. Notholt, B. J. Connor, D. W. T. Griffith, V. Sherlock, and P. O. Wennberg. The Total Carbon Column Observing Network. *Philosophical Transactions of the Royal Society of London A: Mathematical, Physical and Engineering Sciences*, 369(1943):2087–2112, May 2011. ISSN 1364-503X, 1471-2962. <https://doi.org/10.1098/rsta.2010.0240>. URL <http://rsta.royalsocietypublishing.org/content/369/1943/2087>.