

Supplementary material

Temporal characteristics of atmospheric ammonia and nitrogen dioxide over China based on emission data, satellite observations and atmospheric transport modeling since 1980

Lei Liu ^a, Xiuying Zhang ^{a,*}, Wen Xu ^b, Xuejun Liu ^b, Yi Li ^c, Xuehe Lu ^a, Yuehan Zhang ^d, Wuting Zhang ^{a,c}

^a Jiangsu Provincial Key Laboratory of Geographic Information Science and Technology, International Institute for Earth System Science, Nanjing University, Nanjing 210023, China

^b College of Resources and Environmental Sciences, Centre for Resources, Environment and Food Security, Key Lab of Plant-Soil Interactions of MOE, China Agricultural University, Beijing 100193, China

^c Air Quality Division, Arizona Department of Environmental Quality, Phoenix, AZ, 85007, USA

^d School of Atmospheric Sciences, Nanjing University, Nanjing, China

^e Jiangsu Center for Collaborative Innovation in Geographical Information Resource Development and Application, Nanjing 210023, China

* Corresponding authors: Xiuying Zhang (lzhxy77@163.com)

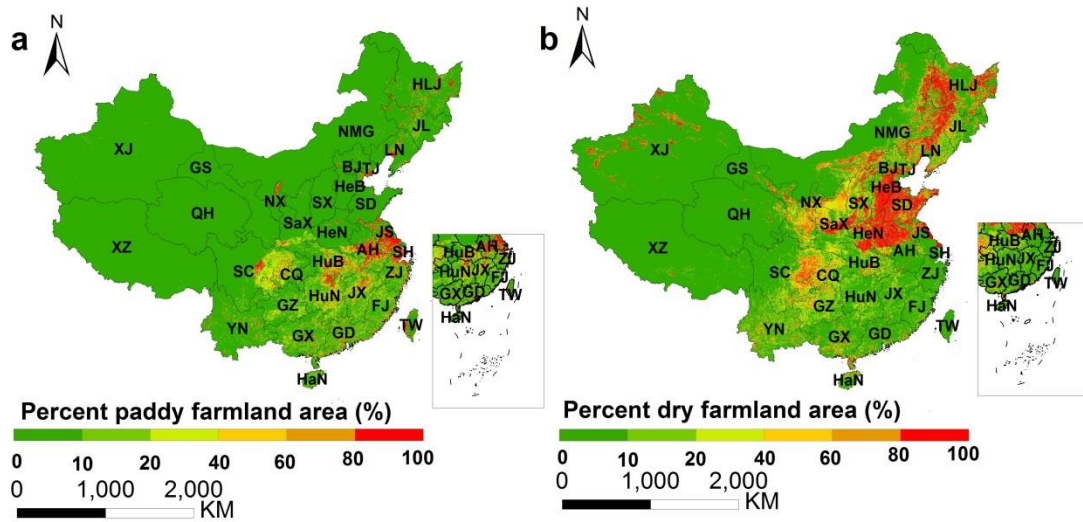


Fig. S1. Percent farmland area. This refers to the Tsinghua University 30 meter resolution global land cover product of 2010 (<http://data.ess.tsinghua.edu.cn>). The map was generated by using ArcGIS 10.2 software.

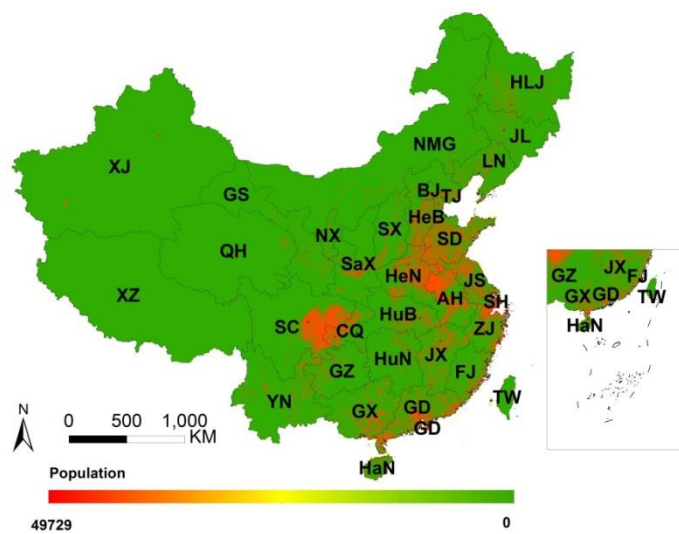


Fig. S2. The distribution of population (people/km²) in China in 2010.