

Figure S1. The CC between SCES and September (a), October (b) and November (c) Arctic sea ice from 1979 to 1997 after detrending. The black dots indicate CC exceeding the 95% confidence level (t test).

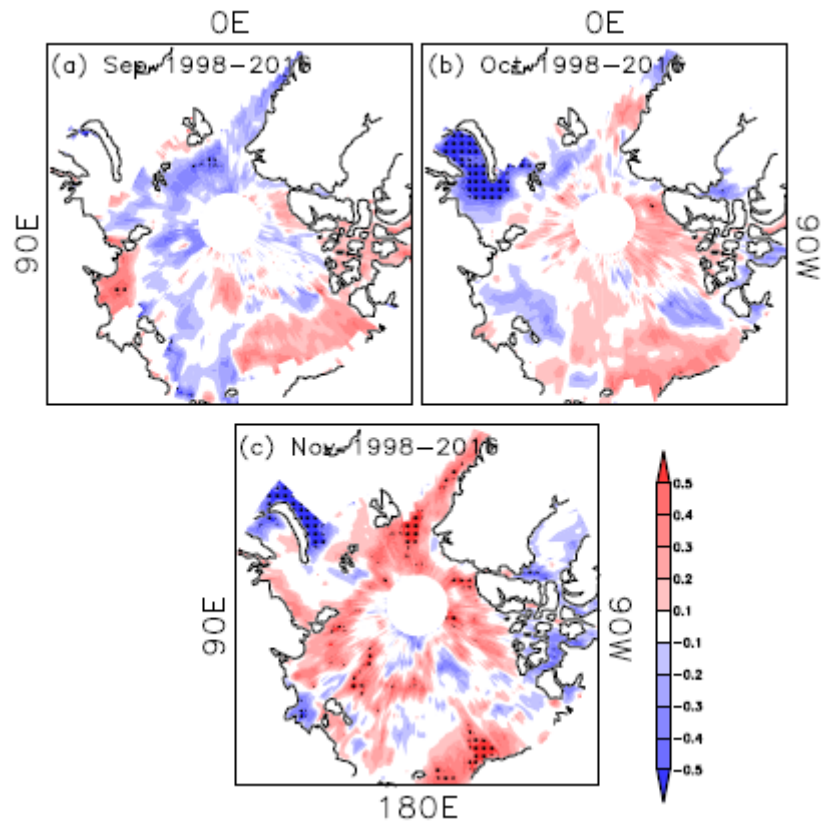


Figure S2. The CC between SCES and September (a), October (b) and November (c) Arctic sea ice from 1998 to 2016 after detrending. The black dots indicate CC exceeding the 95% confidence level (t test).