

## ***Interactive comment on “Long-term study on coarse mode aerosols in the Amazon rain forest with the frequent intrusion of Saharan dust plumes” by Daniel Moran-Zuloaga et al.***

**Daniel Moran-Zuloaga et al.**

daniel.moran@mpic.de

Received and published: 14 December 2017

On figure 1, the composite maps the lower panel (g) "CO Total Column" is now corrected with the corresponding dry season map in the figure attached.

---

Interactive comment on Atmos. Chem. Phys. Discuss., <https://doi.org/10.5194/acp-2017-1043>, 2017.

Printer-friendly version

Discussion paper



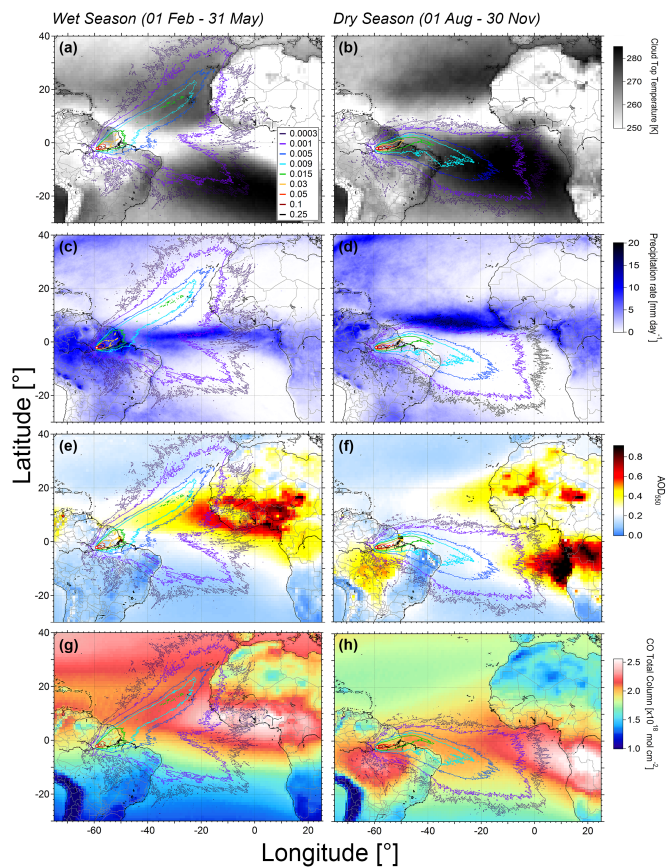


Fig. 1.