

## ***Interactive comment on “Long-term study on coarse mode aerosols in the Amazon rain forest with the frequent intrusion of Saharan dust plumes” by Daniel Moran-Zuloaga et al.***

**Daniel Moran-Zuloaga et al.**

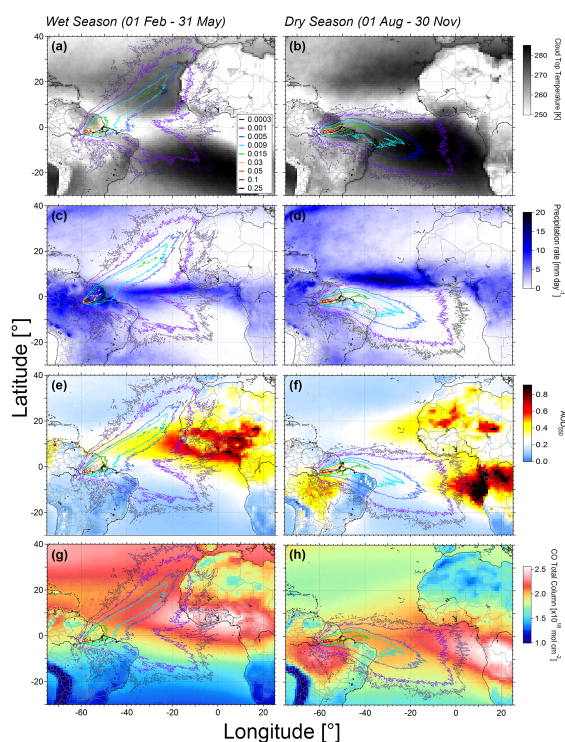
daniel.moran@mpic.de

Received and published: 14 December 2017

On figure 1, the composite maps the lower panel (g) "CO Total Column" is now corrected with the corresponding dry season map in the figure attached.

Interactive comment on Atmos. Chem. Phys. Discuss., <https://doi.org/10.5194/acp-2017-1043>, 2017.

C1



**Fig. 1.**

C2