

# Vertical distributions of aerosol optical properties during the spring 2016 ARIAs airborne campaign in the North China Plain

Fei Wang<sup>1,2</sup>, Zhanqing Li<sup>1,3</sup>, Xinrong Ren<sup>3,4,5</sup>, Qi Jiang<sup>6</sup>, Hao He<sup>3</sup>, Russell R. Dickerson<sup>3</sup>, Xiaobo Dong<sup>7</sup>, Feng Lv<sup>7</sup>

<sup>1</sup>State Key Laboratory of Earth Surface Processes and Resource Ecology and College of Global Change and Earth System Science, Beijing Normal University, Beijing, 100875, China

<sup>2</sup>Key Laboratory for Cloud Physics, Chinese Academy of Meteorological Sciences, Beijing, 100081, China

<sup>3</sup>Department of Atmospheric and Oceanic Science, University of Maryland, College Park, MD 20742, USA

<sup>4</sup>Air Resources Laboratory, National Oceanic and Atmospheric Administration, College Park, MD, USA

<sup>5</sup>Cooperative Institute for Climate and Satellites, University of Maryland, College Park, MD, USA

<sup>6</sup>National Meteorological Center, Beijing, 100081, China

<sup>7</sup>Weather Modification Office of Hebei Province, Shijiazhuang, 050021, China

*Correspondence to:* Zhanqing Li (zli@atmos.umd.edu)

**Abstract.** Vertical distributions of aerosol optical properties derived from measurements made during 11 aircraft flights over the North China Plain (NCP) in May-June 2016 during the Air Chemistry Research In Asia (ARIAs) were analyzed. Aerosol optical data from in situ aircraft measurements show good correlation with ground-based measurements. The regional variability of aerosol optical profiles such as aerosol scattering and backscattering, absorption, extinction, single scattering albedo (SSA), and the Ångström exponent ( $\alpha$ ) are for the first time thoroughly characterized over the NCP. The SSA at 550 nm showed a regional mean value of  $0.85 \pm 0.02$  with moderate to strong absorption and the  $\alpha$  ranged from 0.49 to 2.53 (median 1.53) indicating both mineral dust and accumulation mode aerosols. Most of the aerosol particles were located in the lowest 2 km of the atmosphere. We describe three typical planetary boundary layer (PBL) scenarios and associated transport pathways as well as the correlation between aerosol scattering coefficients and relative humidity (RH). Aerosol scattering coefficients decreased slowly with height in the clean PBL condition, but decreased sharply above the PBL under polluted conditions, which showed a strong correlation ( $R^2 \geq 0.78$ ) with ambient RH. Back-trajectory analysis shows that clean air masses generally originated from the distant north-western part of China while most of the polluted air masses were from the heavily polluted interior and coastal areas near the campaign area.

## 1 Introduction

Aerosol loading in East China has become exceptionally heavy and highly variable due to drastic increases in the emissions of pollutants during the last several decades. Changes in air quality and climate are strongly coupled (Li et al., 2016), and both have tremendous impacts on the public health of the densely populated region (Kan et al., 2012).

Aerosol particles are considered to be an important radiative forcing agent in the climate system, but the detailed effects remain uncertain (Stocker et al., 2013). Aerosols modify the local and regional radiation budget and climate by absorbing and scattering solar radiation through the aerosol direct effect (Charlson and Hofmann, 1992) and impact photochemistry (Dickerson et al., 1997). Aerosols can also affect cloud-precipitation processes and aerosol-cryosphere interactions through indirect and semi-direct effects (Twomey, 1974; Lohmann and Feichter, 2005; Andreae and Rosenfeld, 2008; Nair et al., 2013). Several recent studies have shown that the magnitude of precipitation is strongly correlated to aerosol concentration (Zhao et al., 2006; Li et al., 2011; Tao et al., 2012), through various mechanisms as summarized most recently in Li et al. (2017b). Precipitation frequency and intensity are also altered by the long-term impacts of aerosols (Guo et al., 2016, 2017). Much of the uncertainty in aerosol radiative forcing comes from the variability of optical properties in anthropogenic aerosol such as scattering, absorption, backscatter, Ångström exponent ( $\alpha$ ), and aerosol optical depth (AOD). These properties depend strongly on particle size distribution, chemical composition, and the ambient relative humidity (Anderson et al., 2003). The spatial and temporal variations of these properties, especially horizontal and vertical distributions, are essential factors in the effects of aerosols on both climate and the environment (Haywood and Boucher, 2000).

Aerosol scattering and absorption coefficients ( $\sigma_{\text{sca}}$  and  $\sigma_{\text{abs}}$ , respectively) are important parameters related to atmospheric characteristics such as visibility and air quality. Observed  $\sigma_{\text{sca}}$  and  $\sigma_{\text{abs}}$  are generally distinct within vs. above the PBL. The structure of the PBL, in part determined by the vertical distribution of the aerosol extinction coefficient ( $\sigma_{\text{ext}}$ , the sum of  $\sigma_{\text{sca}}$  and  $\sigma_{\text{abs}}$ ), is a crucial factor in estimating aerosol pollution conditions (Yu et al., 2002; Dong et al., 2017), partially due to their strong interactions/coupling (Li et al., 2017a). Given the variability of PBL structure and its interaction with aerosols, the transport of pollutants is yet to be fully understood. Distinguishing between local air pollutants and pollutants transported from other source regions, and identifying transport patterns under different atmospheric circulation conditions also need to be addressed. Dust aerosols can be lifted into the free troposphere, i.e., above the PBL, and transported over a long distance, altering aerosol vertical distributions over remote areas (Han et al., 2008). Topographically-generated local circulations can carry high concentrations of surface air pollutants and change the PBL structure (Chen et al., 2009). Such variable aerosol vertical distributions can alter the optical properties of aerosols such as AOD, thus affecting the regional radiation balance (Liu et al., 2012) and even the global radiative forcing estimation (Zhang et al., 2013). A number of field programs have been carried out to measure the vertical distribution of dust or biomass burning aerosols with airborne and surface-based instruments (Johnson et al., 2008). The observations, combine with a radiative transfer model, allow the accurate calculation of radiative effects including aerosol optical properties (Gadhavi and Jayaraman, 2006) and absorption of solar radiation at the top of atmosphere (TOA) (Meloni et al., 2005).

Three-dimensional information about aerosol optical properties (especially vertical distributions) is of importance, but such measurements are scant (Kahn et al., 2017). Given the potential impact of aerosols on climate, additional accurate measurements of the vertical profiles of aerosol optical properties are needed. These data can be obtained directly or indirectly from platforms such as meteorological towers (Zhao et al., 2017), tethered balloons (Stratmann et al., 2003; Ferrero et al., 2010), and unmanned aerial vehicles (Corrigan et al., 2008). Although limited in terms of temporal and geographic coverage,

airborne sensing provides direct, high resolution, in situ aerosol vertical profiles, used to evaluate numerical models and satellite retrievals (Chazette and Liousse, 2001).

Airborne instruments have been used to characterize aerosol properties in the lower troposphere around the world (Ulla et al., 2002; Haywood et al., 2003a; Taubman et al., 2004; Taubman et al., 2006; Hains et al., 2008; Ferrero et al., 2011; Ryder et al., 2013; Kim et al., 2015; Schwarz et al., 2016; Babu et al., 2016), as well as in China, e.g., in Beijing (Zhang et al., 2006, 2009, 2011; Liu et al., 2009), Dongbei (Dickerson et al., 2007), Hebei (Sun et al., 2013), and Shanxi (Li et al., 2015a, 2015b). Most of the measurements were made for parameters such as aerosol number concentration or size distribution.

In May-June 2016, a comprehensive joint ground and airborne experiment was conducted in the north China Plain (NCP). The study described here aimed to examine the consistency of airborne and surface-based measurements, and to evaluate aerosol radiative characteristics and the distribution and transport of air pollutants both horizontally and vertically. It is an integral part of, also a foundation for, a series studies on aerosol-cloud-climate interactions in a densely populated and rapidly developing region of China (Li et al., 2017a).

A twin-engine, turboprop airplane was deployed to measure trace gases and aerosol optical properties in the lower atmosphere, in coordination with ground-based in situ and remote measurements at the Xingtai supersite. The airplane flew ascents and descents in the boundary layer and the lower free troposphere to obtain vertical profiles of aerosol optical properties. High-resolution aircraft measurements of aerosol optical properties give detailed information about the occurrence, extent, and evolution of aerosol vertical distributions. Aerosol optical properties such as  $\sigma_{\text{sca}}$  and  $\sigma_{\text{abs}}$ , backscattering, extinction, SSA,  $\alpha$ , and AOD from the airborne measurements are presented and discussed.

Details about the field experiment and the instruments used are given in Section 2. The vertical and regional distributions of aerosol optical properties are presented in Section 3. In Section 4, the structure of the PBL under both clean and polluted conditions, the correlation between vertical  $\sigma_{\text{sca}}$  and relative humidity (RH), and back trajectory analyses are discussed. Section 5 summarizes the major conclusions from this study.

## 2 Experimental Description

### 2.1 Sites and flight information

The Aerosol Atmosphere Boundary-layer Cloud (A<sup>2</sup>BC) campaign took place in Hebei Province of the NCP, about 300 km south of Beijing, from May to December 2016. An intensive observation period (IOP) was from May to June when airborne observations were conducted using two airplanes to measure aerosol and cloud properties, respectively. A supersite was established in Xingtai (XT; 114.36°E, 37.18°N, 182 m above sea level, or ASL). The NSF supported the project “Air chemistry Research In Asia” (ARIAs), with the goal of integrating *in-situ* observations, satellite remote sensing, and chemical transport models to characterize and quantify tropospheric chemistry and composition over the NCP and to improve modeling tools used to eventually evaluate the effectiveness of air pollutant reduction policies. These trace gases and aerosols have major

consequences for downwind areas such as Japan and South Korea, and even for North America. NASA's Korean US Experiment (KORUS-AQ) was conducted at roughly the same time. One of the airplanes (Y-12) was based at the Luancheng Airport (LC; 114.59°E, 37.91°N, 58 m ASL), located in southeast of Shijiazhuang, the capital of Hebei Province measured aerosol properties. The airplane was flown to three locations in the area to conduct spirals from ~300 m to ~3.5 km, as shown in Fig. 1. These locations include XT, Julu (JL; 115.02°E, 37.22°N, 30 m ASL), and Quzhou (QZ; 114.96°E, 36.76°N, 40 m ASL). All four sites are located to the east of the Taihang Mountains with XT right at the foothill of the mountain range. A total of 11 flights were conducted during the A<sup>2</sup>BC and ARIAS IOP period (Table 1).

Comprehensive measurements of aerosol optical properties were made during the field campaign using the instrumented turboprop Y-12 airplane operated by the Weather Modification Office of Hebei Meteorological Bureau. The typical speed of the aircraft is 60-70 m s<sup>-1</sup> with ascent/descent rates of 2-5 m s<sup>-1</sup>. The aircraft was equipped with multiple aerosol and gas measurement instruments, rigorously tested and calibrated during a ground-based campaign to optimize instrument performance. Table 2 summarizes the instruments deployed on the plane and ground.

## 2.2 Aircraft Instruments

### 2.2.1 Nephelometer

Measurements of  $\sigma_{\text{sca}}$  from the Y-12 aircraft were made using an integrating Nephelometer (TSI, model 3565) at three wavelengths: blue (450 nm), green (550 nm), and red (700 nm). Details about the instrument calibration and uncertainties have been described elsewhere (Anderson and Ogren, 1998; Anderson et al., 2009). The Nephelometer was calibrated prior to the field campaign using CO<sub>2</sub> gas and filtered zero air as described in the instrument manual. It aspirates air at a flow rate of 30 L min<sup>-1</sup> through a forward facing air inlet. Data were recorded at a frequency of 1 Hz.

The conical double diffuser aerosol inlet, designed for a Twin Otter, was installed on the Y-12. This inlet system was manufactured by the Droplet Measurements Technologies (MP-1806-A and MP-1807-A, Boulder, CO) (Hegg et al., 2005). It has been used extensively on the University of Maryland's Cessna 402 (Brent et al., 2015). The passing efficiency is expected to be near 100% for particle diameters up to 2.5  $\mu\text{m}$  and near 50% for particles between 3-4  $\mu\text{m}$  (Huebert et al., 2004; McNaughton et al., 2007).

The actual range of total scattering angles captured by the nephelometer is less than the ideal range of 0° to 180°. To correct the biases, we adjusted with empirically-derived angular truncation correction factors using the calculated  $\alpha$  (Anderson and Ogren, 1998). To account for the hygroscopic growth of aerosols, the scattering values were adjusted using a correction factor  $f(\text{RH})$  (Anderson et al., 2003; Shinozuka et al., 2007), calculated as:

$$f(\text{RH}) = \left[ \frac{(100 - \text{RH}_{\text{neph}})}{(100 - \text{RH}_{\text{amb}})} \right]^{\nu}, \quad (1)$$

$$\sigma_{\text{sca\_adj}} = \sigma_{\text{sca}} \times C \times f(\text{RH}), \quad (2)$$

where  $RH_{\text{neph}}$  is the internal nephelometer RH,  $RH_{\text{amb}}$  is the ambient RH,  $\gamma$  is an experimentally determined dry versus humid factor of the hygroscopicity (Beyersdorf et al., 2016),  $\sigma_{\text{sca\_adj}}$  is the adjusted scattering coefficient,  $\sigma_{\text{sca}}$  is the measured scattering coefficient, and  $C$  is the angular truncation factor. During the study period, the relative uncertainty after calibration was around a few percent (evaluated from the reproducibility of laboratory measurements).

## 5 2.2.2 PSAP

A particle soot absorption photometer (PSAP, Radiance Research, 565 nm) provides highly sensitive absorption measurements without interference by scattering signals. The measurement principle of the PSAP and errors caused by non-absorbing particulate have been described elsewhere (Bond et al., 1999; Sheridan et al., 2005; Virkkula et al., 2005), and the PSAP has been used near Beijing (Chaudhry et al., 2007). To ensure a steady sample flow during flights, we monitored the total flow and PSAP flow rates to enhance the accuracy of measurements. The instrument operates at a flow rate of  $2 \text{ L min}^{-1}$  when one-minute measurement averages are used. The raw absorption coefficients from the PSAP,  $\sigma_{\text{abs}, \lambda=565\text{nm}}$ , were corrected to 550 nm using Eq. 3:

$$\sigma_{\text{abs}, \lambda_i} = \sigma_{\text{abs}, \lambda=565\text{nm}} \times \frac{565}{\lambda_i}, \quad (3)$$

where  $\lambda_i$  is the  $i^{\text{th}}$  wavelength. Ideally, for this calculation, the absorption coefficient would also be measured under ambient conditions, but it is somewhat less dependent on humidification than is scattering (Schafer et al., 2014). Therefore, such calibrated measurement was not done during the field campaign.

## 2.2.3 Meteorological instruments

A cloud water inertial probe (CWIP, Rain Dynamics) measuring pressure, temperature (T), and RH was installed on the Y-12 aircraft. It was calibrated prior to the deployment and synchronized with the global positioning system (GPS) time and geolocation of the scientific data, dually calibrated by the GPS and the compass navigation satellite system (CNSS).

## 2.3 Instrumentation at the Xingtai supersite

A full suite of instruments to measure aerosol and meteorological parameters was deployed at the Xingtai surface supersite. Those of concern to this study include aerosol optical remote sensing observation (CIMEL radiometer), in situ particle light extinction measurement (Cavity Attenuated Phase Shift particle light extinction monitor, CAPS), and radiosondes for meteorological parameters.

### 2.3.1 CAPS

We present field measurements of ambient aerosol extinction coefficients ( $\sigma_{\text{ext}}$ ) by using a cavity attenuated phase shift spectroscopy (CAPS) instrument with a time resolution of 1 s at the Xingtai supersite. This technique has advantages such as

high sensitivity, cost-efficiency, easy control and a long effective absorption optical path. The CAPS measures the phase shift of a distorted waveform of the modulated light from a light emitting diode (LED) in a sample cell with two high reflectivity mirrors (Sun et al., 2014). It has a demonstrated sensitivity of less than  $2 \text{ Mm}^{-1}$  for 1 s sampling periods. A method description, including results from laboratory characterization and field deployment, has been reported previously (Massoli et al., 2010).  
5 The CAPS extinction and the  $\sigma_{\text{ext}}$  measured by the combination of Nephelometer + PSAP showed a good correlation in both laboratory-generated test particles and ambient aerosols (Petzold et al., 2013). The detailed principle of the CAPS technology, optical path adjustment process and calibration method can be found in previous studies (Kebabian et al., 2008; Kebabian and Freedman, 2007).

### 2.3.2 Radiosondes

10 For comparisons with airborne measurements, radiosondes (Model DFM-09, Graw Radiosonde GmbH & Co. KG, Germany) were launched from the Xingtai supersite during the IOP. The DFM-09 radiosonde is a lightweight weather radiosonde that measures temperature (at a resolution of  $0.1^\circ\text{C}$  with an accuracy of  $0.2^\circ\text{C}$ ), pressure (at a resolution of  $0.1 \text{ hPa}$  with an accuracy of  $0.5 \text{ hPa}$ ), RH (at a resolution of 1% with an accuracy of 2%), and wind speed (accuracy =  $0.2 \text{ m s}^{-1}$ ) (Navas-Guzmán et al., 2014). RH is measured by a thin-film capacitance sensor and its uncertainties and errors depend on temperature and GPS  
15 location (Steinke et al., 2015). Data acquisition and processing were performed at the Graw ground station located at the Xingtai supersite using the Grawmet software.

### 2.3.3 CIMEL automatic Sun-sky radiometer

To obtain an optical characterization of aerosol vertical distribution and to complement airborne measurements, we deployed a CIMEL sun photometer, the standard instrument used in the Aerosol Robotic Network (AERONET). The CIMEL (CE-318)  
20 used at the Xingtai AERONET site is a two detector eight channel (340, 380, 440, 500, 675, 870, 940, and 1020 nm) radiometer designed to make automatically track and measure direct solar and sky radiances with a field of view of approximately  $1.2^\circ$ . AOD and SSA are computed at each wavelength except the 940 nm channel, used to retrieve total column water vapor. The measurement uncertainty for field instruments, primarily due to calibration uncertainty, is spectrally dependent with higher errors in the UV (Eck et al., 1999). The details of the CIMEL radiometer operating principles and network are described by  
25 Holben et al. (1998).

## 3 Vertical and regional distributions of aerosol optical properties

### 3.1 Comparison between aircraft and ground-based measurements

Ground-based measurements collected at XT were matched in time and space with airborne measurements over the site. Fig. 2 shows the vertical profiles of RH and T from the sounding done at 05:55 coordinated universal time (UTC, 13:55 local time)  
30 on 8 May 2016 and from aircraft measurements made over the site before the radiosonde launch (04:40–05:40 UTC, one

descent spiral and two ascent spirals). Both RH and T derived from sounding data and measured from the aircraft follow the same general trends with inversions near 800 and 2400 m.

For a final evaluation of the performance of the airborne instruments in measuring ambient aerosol characteristics,  $\sigma_{\text{ext}}$  measured by the nephelometer/PSAP onboard the aircraft and by the ground-based CAPS  $\text{PM}_{\text{ex}}$  during research flight (RF) 6 (RF6; 21 May), RF7 (28 May), RF8 (28 May), and RF11 (11 June) are shown in Fig. 3. CAPS-measured  $\sigma_{\text{ext}}$  collected during the spiralling part of the flight were averaged and all  $\sigma_{\text{ext}}$  data were adjusted to a wavelength of 550 nm. In general, mean values of surface  $\sigma_{\text{ext}}$  were consistent with (~12% smaller than) the corresponding aircraft-measured  $\sigma_{\text{ext}}$  located at the bottom of the profiles.

There is an expected comparability of retrieval parameters (e.g., SSA) between ground-based observation and aircraft measurement. For example, the SSA derived from AERONET aerosol monitoring network in Baltimore-Washington, DC region were on average 0.011 lower than the values derived from aircraft profile measurements (Schafer et al., 2014). For aircraft-AERONET (based on Nephelometer + PSAP, also used in this study) comparisons with ground-based AERONET at multiple sites in South Africa, the SSA with a mean difference of 0.01 (RMS: 0.03) in biomass burning aerosol measurements (Leahy et al., 2007). There is also a small difference between aircraft in situ (0.87) and CIMEL (0.85) measurements of SSA on a day with both an upper-level smoke aerosol layer and low-level dust layer in the Banizoumbou (Johnson et al., 2010). For this study, retrievals from a ground-based CIMEL automatic Sun-sky radiometer (CE-318) were compared with aircraft in situ measurements.

We calculated the columnar SSA from airborne measurements and its uncertainties following Leahy et al. (2007) and Schafer et al. (2014). The sampled SSA ( $\omega_{\text{sample}}$ ) was calculated from  $\sigma_{\text{sca}}$  and  $\sigma_{\text{abs}}$  measured by a nephelometer and a PSAP, respectively. We assumed that *in-situ* SSA measured between the minimum and maximum flight levels represents the entire column. In order to produce a column mean SSA ( $\omega_{\text{column}}$ ) and compare it with that retrieved from AERONET data, the SSA values were averaged for the duration of the profile after weighting the values according to aerosol loading. The columnar SSA was calculated with the same method for different types of aerosol layers in vertical. Considering the vertical distributions of  $\sigma_{\text{sca}}$  and  $\sigma_{\text{abs}}$ , the SSA measured at higher altitudes (lower aerosol loading) is substantially less than in the lower troposphere or the aerosol enrichment layer. Thus, the weighted mean is better than a simple average of  $\omega_{\text{sample}}$ , which would over-estimate the absorption features of aerosol that has negligible effect on radiation at the surface where the CIMEL radiometer is located. Aerosol loading, denoted by  $\sigma_{\text{sca}}$  values and the profiles were limited to samples collected at the lower level below 400 m and higher level greater than 2000 m to adequately represent the entire column. For every profile, weighting factors for each SSA measurement were generated that corresponded to the normalized magnitude of  $\sigma_{\text{sca}}$ . The measured SSA values were scaled proportionally to the aerosol loading at the altitude of the observation as in the following equation:

$$\omega_{\text{column}} = \frac{\sum_{i=0}^N \left[ \frac{\sigma_{\text{sca}}}{\sigma_{\text{sca}}(\text{profile\_mean})} * \omega_{\text{sample}} \right]}{N}, \quad (4)$$

where N equals the number of  $\omega_{\text{sample}}$  in the profile.

The SSA at 550 nm retrieved from the CIMEL (0.93) agreed well with airborne measurements (0.94) on 28 May (Table 3). The well-matched vertical profiles and ground-based data present a more complete profile of aerosol optical information in the lower atmosphere, demonstrating that the high credibility and quality of airborne measurements. These SSA values obtained in the NCP are lower than those observed in Africa, and in northeast United States. The reason for the difference is probably due to different type of aerosols in these different locations: primarily mineral dust aerosols in Africa and secondary aerosols in Northeast US, while the mixed of these two types of aerosols in the NCP.

### 3.2 Statistics of aerosol optical properties

A statistical summary of aerosol optical properties retrieved from aircraft measurements over the four target areas (LC, JL, QZ, and XT) is given in Table 4. Aerosol scattering coefficients ( $\sigma_{\text{sca}}$ ) and backscattering coefficients ( $\sigma_{\text{bsca}}$ ) are directly obtained from the nephelometer. The truncation correction was applied and the  $\sigma_{\text{sca}}$  were corrected for the ambient RH. The mean  $\sigma_{\text{sca}}$  at 550 nm measured at LC, JL, QZ, and XT were  $57.10 \pm 67.71$ ,  $95.57 \pm 106.61$ ,  $87.00 \pm 100.43$ , and  $75.30 \pm 84.58 \text{ Mm}^{-1}$ , respectively, and the mean  $\sigma_{\text{bsca}}$  in each target area was  $7.67 \pm 7.6$ ,  $9.91 \pm 9.19$ ,  $11.12 \pm 10.51$ , and  $9.21 \pm 8.6 \text{ Mm}^{-1}$ , respectively. Aerosol absorption properties at LC and XT were stronger than those at JL and QZ. Note that each variable has a large standard deviation, and there were large variations associated with these aerosol optical properties.

Mean vertical distributions of  $\sigma_{\text{sca}}$  and  $\sigma_{\text{abs}}$  at 550 nm derived from aircraft measurements made over the four target areas are shown in rows 3 and 4 of Fig. 4. In general, the values of  $\sigma_{\text{sca}}$  and  $\sigma_{\text{abs}}$  decrease with altitude. Peaks in the  $\sigma_{\text{sca}}$  profiles at certain heights are seen at JL, QZ, and XT. The  $\sigma_{\text{sca}}$  profile at LC changes little below 3000 m. Compared with the other target areas,  $\sigma_{\text{abs}}$  at JL have relatively lower values near the ground and gradually decrease with height, which suggests that there were less light-absorbing and more scattering aerosols in this area.

Based on measurements of aerosol scattering and absorption coefficients, aerosol extinction coefficient ( $\sigma_{\text{ext}}$ , defined as the sum of  $\sigma_{\text{sca}}$  and  $\sigma_{\text{abs}}$ ) and SSA ( $\omega$ , defined as the ratio of  $\sigma_{\text{sca}}$  to  $\sigma_{\text{ext}}$ ) were calculated at 550 nm following Eq. 5,

$$\omega_{\lambda} = \frac{\sigma_{\text{sca}, \lambda}}{\sigma_{\text{ext}, \lambda}} = \frac{\sigma_{\text{sca}, \lambda}}{\sigma_{\text{sca}, \lambda} + \sigma_{\text{abs}, \lambda}}. \quad (5)$$

The small mismatch in calculating  $\omega$  was corrected by linearly extrapolating the  $\sigma_{\text{abs}}$  values to the wavelengths of the scattering measurements as defined. Both  $\sigma_{\text{ext}}$  and  $\omega$  are considered as primary determinants for the direct radiative effect of aerosols. The vertical profile of  $\sigma_{\text{ext}}$  closely follows that of aerosol mass concentration (Kim et al., 2015). SSA was described as an important factor in controlling whether an aerosol layer has a cooling or warming effect; it can also be used for studying the radiative forcing at the top of the atmosphere (Bergstrom and Russell, 1999). In this study, the  $\omega_{550}$  in the range 0.68-0.99 with a mean value of 0.85 indicates the importance of absorbing aerosols.

The  $\alpha$  was calculated using Eq. 6 where  $\sigma_{\text{sca}, \lambda}$  is the scattering coefficient at a given reference wavelength  $\lambda$ :

$$\alpha(\lambda_2/\lambda_1) = \frac{-\log(\sigma_{\text{sca}, \lambda_2}/\sigma_{\text{sca}, \lambda_1})}{\log(\lambda_2/\lambda_1)}, \quad (6)$$



In this study, we used two wavelengths,  $\lambda_1 = 450$  nm and  $\lambda_2 = 700$  nm.

An analogous expression can be written for the wavelength-dependence of absorption. In general,  $\alpha$  is a basic measure of the aerosol size distribution. It is related to the ratio of fine to coarse particles with  $\alpha$  less than 1 for coarse-mode aerosol such as dust particles and  $\alpha \sim 2.0$  for very fine-mode aerosol such as smoke particles (Hamonou et al., 1999). Vertical profiles of the median values of  $\omega_{550}$  and  $\alpha$  are shown in rows 5 and 6 of Fig. 4. The profiles were generated by calculating the median value at each altitude layer from all the measured profiles. The variations seen may reflect changes in the origin of aerosol particles and transport routes (Léon et al., 2009), although the values fall well within the range of the standard deviations.

Angular-corrected data from the nephelometer is the scattered light intensity in the backward hemisphere of the particle ( $90^\circ$ – $180^\circ$ ). The backscattering fraction,  $\beta_{\text{sca}}$ , is the ratio of the backscattering coefficient over the total scattering coefficient at a given wavelength (Garland et al., 2009). The ratio of forward scattering to backscattering varies with the particle size parameter and reflects the angular characteristics of particle scattering and the proportion of fine particles (diameters  $< 2$   $\mu\text{m}$ ). During the field campaign,  $\beta_{\text{sca}}$  remained at low values below 2000 m. Mean values of  $\beta_{\text{sca}}$  measured in the four target areas were  $0.13 \pm 0.003$ ,  $0.11 \pm 0.005$ ,  $0.12 \pm 0.003$ , and  $0.12 \pm 0.006$ . Fluctuations above 2000 m suggest that particle sizes changed quickly due presumably to different air masses transported from different directions.

During the experiment period, the majority of aerosol layers were well characterized by the sampled vertical profiles and most aerosols resided below the maximum flight levels. Mie theory was applied to calculate the extinction profiles and the AOD, and to estimate the impact of different aerosol vertical distributions on these optical properties. The AOD was calculated by integrating the extinction coefficient over height as:

$$\text{AOD}_{(z_1 \sim z_2)} = \int_{z_1}^{z_2} \sigma_{\text{ext}}(z) dz, \quad (7)$$

Where the  $\sigma_{\text{sca}}(z)$  is the extinction coefficient at a height of  $z$  and  $Z_2$  is above most of the aerosol. Fig. 5 shows the mean AOD at 550 nm for different altitude ranges. The regional mean AOD in each altitude range ( $< 1$  km, 1–2 km, and 2–3 km) was  $0.10 \pm 0.08$ ,  $0.10 \pm 0.07$ , and  $0.03 \pm 0.03$ , respectively. Standard deviations are greater than 50% of the mean, suggesting that AODs varied greatly within an altitude range. The magnitude of AOD generally decreased with altitude. The effect of the transport of atmospheric pollutants is evident at QZ where the largest AOD values were found in the 1–2 km layer instead of at the surface.

#### 4 PBL structure and aerosol $\sigma_{\text{sca}}$ as a function of RH

The vertical distribution of aerosol particles is important for determining radiative effects, especially in the presence of clouds. During haze episodes, the vertical profiles of CO, the aerosol concentration, and the scattering coefficient have been found to be well correlated (Haywood et al., 2003b). Formenti et al. (2003a, 2003b) presented a full analysis of the correlations among these variables. Examples of typical vertical profiles of aerosol scattering and RH, and transport pathways over the target areas are presented here.

## 4.1 Clean PBL

Generally driven by the weather conditions at flight time, a clean PBL is defined as mean value of  $\sigma_{\text{sca}}$  less than  $100 \text{ Mm}^{-1}$  in every 100 m layer except adjacent to the surface layer). Fig. 6a, 6c show the vertical profiles of  $\sigma_{\text{sca}}$  and ambient RH, retrieved from airborne measurements made under clean PBL conditions. Values of  $\sigma_{\text{sca}}$  near the surface ranged from  $11.7$  to  $84.5 \text{ Mm}^{-1}$  with an average value of  $48.5 \text{ Mm}^{-1}$ . In general,  $\sigma_{\text{sca}}$  slowly decreased with height, which suggests that the atmosphere was relatively clean with no distinct aerosol layer identified. The mean  $\sigma_{\text{sca}}$  profile decreases approximately exponentially with height, expressed as:

$$\sigma_{\text{sca},H} = \begin{cases} \sigma_{\text{sca},0} \cdot \exp(-(H-H_{\text{RS}})/H_p), & (\text{if } H > H_{\text{RS}}) \\ \sigma_{\text{sca},0}, & (\text{if } H \leq H_{\text{RS}}) \end{cases}, \quad (8)$$

where  $\sigma_{\text{sca},0}$  is  $\sigma_{\text{sca}}$  measured at the surface,  $H$  is the altitude above sea level, and  $H_p$  is the aerosol scale height ( $H_p$  represents the height where  $\sigma_{\text{sca}}$  is reduced to  $1/e$  of its surface value);  $H_{\text{RS}}$  represent a relative stable layer near surface where the vertical variation of  $\sigma_{\text{sca}}$  was in significant. In the cases of clean PBL,  $\sigma_{\text{sca},0}=124 \text{ Mm}^{-1}$ ,  $H_p=1146 \text{ m}$  and  $H_{\text{RS}}=837 \text{ m}$ . A linear regression analysis shows the correlation coefficient,  $r^2=0.96$ . The ambient RH under clean PBL conditions was divided into two groups: dry (RH: 27.4–36.8%) and humid (RH: 53.1–83.6%). Under dry conditions,  $\sigma_{\text{sca}}$  and ambient RH showed a good correlation ( $R^2=0.62$ , Fig. 8a), while under humid conditions, the correlation was low ( $R^2=0.23$ ). To understand the sources and transport pathways of aerosols over the target areas during the field campaign, we calculated isentropic air mass back trajectories for 72 hours using the NOAA Hybrid Single Particle Lagrangian Integrated Trajectory (HYSPLIT) model (Draxler and Hess, 1997; Stein et al., 2016) at 0.5, 1.5, and 2.5 km above mean sea level. The HYSPLIT model (<http://ready.arl.noaa.gov/HYSPLIT.php>) was used along with the National Center for Environmental Prediction's Global Data Assimilation System  $1^\circ \times 1^\circ$  meteorological database to calculate backward trajectories terminated at the Xingtai supersite. Fig. 9a shows 72-hour air mass back trajectories under clean PBL conditions during the field campaign. Air masses most commonly originated from the north-western region of the study area. Some of the trajectories can be traced back as far as Mongolia and Siberia, passing over the arid areas to the west of southern Hebei. Some clean and moist air masses originating from the less polluted southern and local areas were also seen.

## 4.2 Pollution in the lower layer of the PBL

The vertical distribution of air pollutants varied greatly from case to case due to a variety of influences. One of the crucial factors was PBL structure, which determines the vertical profile of  $\sigma_{\text{sca}}$ ; see Fig. 6b. The corresponding ambient RH profiles (Fig. 6d),  $\sigma_{\text{sca}}$  as a function of RH (Eq. 9), and the back-trajectory analysis (Fig. 9b) are also shown. The PBL height is determined by the shapes of  $\sigma_{\text{sca}}$  vertical profiles. When pollution is confined primarily to the lower layer of the troposphere, the magnitude of  $\sigma_{\text{sca}}$  increased slightly with height up to an altitude where  $\sigma_{\text{sca}}$  decreased sharply. In this study, the mean rate of decrease was about  $0.81 \text{ Mm}^{-1} \text{ m}^{-1}$ . We defined the bottom of this layer as PBL height ( $H_{\text{PBL}}$ ). We normalized by the shapes of  $\sigma_{\text{sca}}$  vertical profiles, and the PBL heights of different  $\sigma_{\text{sca}}$  and ambient RH profiles were adjusted to the same level to show

the similarity of the shapes. The PBL heights, as determined by vertical profiles of  $\sigma_{\text{sca}}$ , ranged from 900 to 2000 m with an average value of ~1400 m. The average  $\sigma_{\text{sca}}$  profile was determined as follows:

$$\sigma_{\text{sca}, H} = \begin{cases} \sigma_{\text{sca}, \text{PBL}} \cdot \exp(-(H-H_{\text{PBL}})/H_p), & (\text{if } H > H_{\text{PBL}}) \\ \sigma_{\text{sca}, 0} + k \cdot H, & (\text{if } H \leq H_{\text{PBL}}) \end{cases}, \quad (9)$$

5 where  $H_{\text{PBL}}$  is the normalized altitude of PBL height,  $H_p$  is the aerosol scale height in the free troposphere,  $k$  is the changing rate of  $\sigma_{\text{sca}}$  in the PBL. In these cases,  $\sigma_{\text{sca},0}=171 \text{ Mm}^{-1}$ ,  $H_p=216 \text{ m}$ ,  $k=0.03 \text{ Mm}^{-1} \text{ m}^{-1}$  and  $r^2=0.9394$ . Fig. 6d shows the ambient RH profiles under dry and humid conditions. The shapes of dry and humid RH profiles were similar in the PBL, but at the top of the PBL, the RH<sub>dry</sub> profiles decreased dramatically, but the RH<sub>humid</sub> profiles changed only slightly. Linear fits were made to determine the correlation between RH and  $\sigma_{\text{sca}}$ . Under dry condition, there was a pronounced correlation ( $r^2=0.95$ ) between RH<sub>dry</sub> and  $\sigma_{\text{sca}}$  profiles. But under humid condition, the correlation coefficient was only 0.12, suggesting little  
10 impact of RH on  $\sigma_{\text{sca}}$ .

Most back trajectories under polluted conditions originated from the heavily populated and industrialized interior and coastal areas south of the study area (Fig. 9b). Some drier air masses (corresponding to RH<sub>dry</sub>) were traced back to southern and local areas just as in the case of clean air masses. Moist air masses originated from the clean marine atmosphere to the southeast, then passed over the densely populated eastern/southeastern regions in the free troposphere before reaching the observation  
15 site. This analysis of both dry and moist air masses with aerosols in the lowest layer of the PBL shows that heavy local/regional pollution dominated during the field campaign and that the long-range transport of aerosols was less significant.

### 4.3 Pollution in the middle and upper layers of the PBL

In addition to high aerosol concentrations in the lower PBL, upper-layer (referred to as the type A case, an example of which occurred on 2 June 2016) and multi-layer (referred to as the type B case, an example of which occurred on 6 June 2016) aerosol  
20 vertical distributions were also observed. In the type A case (Fig. 7a), the vertical profile of aerosol  $\sigma_{\text{sca}}$  retrieved from airborne measurements shows a mean  $\sigma_{\text{sca}}$  near the surface of about  $45 \text{ Mm}^{-1}$ , little varied below 1 km. A sharp increase in  $\sigma_{\text{sca}}$  was observed above with a peak value of  $200 \text{ Mm}^{-1}$  occurring around 2–3 km, aloft the  $\sigma_{\text{sca}}$  profile decreased exponentially with height. For the type B case (Fig. 7b), mean  $\sigma_{\text{sca}}$  varied greatly with height, which suggests that multiple layers of aerosol particles were present in the PBL. The vertically inhomogeneous distribution of  $\sigma_{\text{sca}}$  suggests that aerosol particles in the PBL  
25 might be significantly affected by the long-range transport of air pollutants or local emissions in the study area. The profiles of  $\sigma_{\text{sca}}$  and ambient RH for type A and type B cases have similar shapes with a correlation coefficient of  $R^2 = 0.91$  and  $0.59$ , respectively (Fig. 8c and 8d).

As shown in Fig. 9c, back trajectories for the type A case originated from less polluted regions in the northeast China which then moved toward the marine atmosphere over Bohai Bay and the densely populated region east of the study area. The aerosol  
30 enrichment in the upper layer of the PBL was probably due to regional transport and mixture of anthropogenic and sea-salt aerosols into the free troposphere. The back trajectories ending at 0.5, 1.5, and 2.5 km over the observation site for the type B

case (Fig. 9d) show that air masses originated from the clean marine environment to the southeast, from the polluted environment to the southwest, and from the eastern coastal region. This could explain the strata, i.e., the multi-layered vertical distribution of aerosols in the PBL.

## 5 Conclusions

5 Vertical distributions of aerosol optical properties were characterized using extensive measurements made by airborne and ground-based instruments during a field experiment in May and June of 2016 in the heavily industrialized North China Plain around Xingtai, Hebei Province. During the field campaign, a total of 11 research flights (about 25 flight hours in total) were made as a part of the A<sup>2</sup>BC and ARIAS experiment. Measurements used in this study include aerosol scattering and backscattering, absorption, extinction, single scattering albedo, Ångström exponent, and AOD. The vertical and regional characteristics of the PBL structure were characterized to understand better their impact on air quality and climate.

10 Statistical summaries of the vertical distributions of aerosol optical properties focused on four target areas in the NCP region. A total of 38 profiles were compiled and analyzed. Ground-based CAPS and CIMEL retrievals, and meteorological soundings were made at the same time as the airborne measurements to ensure data comparability. Aircraft measurements agree generally well with independent measurements made by radiosonde for temperature and humidity, and with aerosol extinction from CAPS, and aerosol single scattering albedo from the CIMEL sun photometer. While aerosol scattering and extinction coefficients generally decreased with height, there were distinct patterns of profiles for clean and polluted episodes. Profiles over the target area showed relatively high values of  $\sigma_{\text{sca}}$  and  $\sigma_{\text{abs}}$  suggesting that there were higher concentrations of light-absorbing and scattering pollutants in this region. Mean SSA ( $\omega_{.550}$ ) ranged from 0.83–0.87 over the four regions, suggesting that moderately strong absorbing aerosols present in the region. The regional mean AOD in each altitude range (< 1 km, 1–2 km, and 2–3 km) was  $0.10 \pm 0.08$ ,  $0.10 \pm 0.07$ , and  $0.03 \pm 0.03$ , respectively. Most of the total aerosol concentration in the lower troposphere was found below 2 km during the aircraft campaign.

15 Three typical PBL structures were identified with distinct air mass transport pathways and correlations between  $\sigma_{\text{sca}}$  and RH. In the clean PBL,  $\sigma_{\text{sca}}$  is strong near the surface and slowly weakens with height. The correlation coefficient of  $\sigma_{\text{sca}}$  and ambient RH under relatively dry conditions was 0.62. Clean air masses most commonly originated from the northwest, which is far from the study area.

25 When there was pollution in the lower PBL,  $\sigma_{\text{sca}}$  increased slightly with height then sharply decreased at the top of the PBL. Aerosol scattering and relative humidity showed a good correlation ( $R^2 = 0.78$ ) in the PBL. Most trajectories of this type originated from the heavily polluted interior and coastal areas south and east of the study area. When there was a pollution layer higher in the PBL or multiple layers of pollution, the  $\sigma_{\text{sca}}$  and ambient RH profiles had similar shapes, the PBL structure could be explained by the source and transmission process of air masses.

30

*Acknowledgements.* This work was funded by the National Basic Research Program of China “973” (grant no. 2013CB955801), the National Science Foundation of US (grant no. 1558259). We also thank all A<sup>2</sup>BC and ARIAs research team, especially the flight crew of Hebei Weather Modification Office’s Y-12 airplane.

5

## References

- Anderson, T. L., and Ogren, J. A.: Determining Aerosol Radiative Properties Using the TSI 3563 Integrating Nephelometer, *Aerosol Science and Technology*, 29, 57-69, 1998.
- 10 Anderson, T. L., Masonis, S. J., Covert, D. S., Ahlquist, N. C., Howell, S. G., Clarke, A. D., and Mcnaughton, C. S.: Variability of aerosol optical properties derived from in situ aircraft measurements during ACE-Asia, *Journal of Geophysical Research Atmospheres*, 108, ACE 15-11, 2003.
- Anderson, T. L., Covert, D. S., Marshall, S. F., Laucks, M. L., Charlson, R. J., Waggoner, A. P., Ogren, J. A., Caldow, R., Holm, R. L., and Quant, F. R.: Performance Characteristics of a High-Sensitivity, Three-Wavelength, Total Scatter/Backscatter Nephelometer, *Journal of Atmospheric & Oceanic Technology*, 13, 967, 2009.
- 15 Andreae, M. O., and Rosenfeld, D.: Aerosol–cloud–precipitation interactions. Part 1. The nature and sources of cloud-active aerosols, *Earth Science Reviews*, 89, 13-41, 2008.
- Babu, S. S., Nair, V. S., Gogoi, M. M., and Moorthy, K. K.: Seasonal variation of vertical distribution of aerosol single scattering albedo over Indian sub-continent: RAWEX aircraft observations, *Atmospheric Environment*, 125, 312-323, 2016.
- 20 Bergstrom, R. W., and Russell, P. B.: Estimation of aerosol direct radiative effects over the mid-latitude North Atlantic from satellite and in situ measurements, *Geophysical Research Letters*, 26, 1731–1734, 1999.
- Beyersdorf, A. J., Ziemba, L. D., Chen, G., Corr, C. A., Crawford, J. H., Diskin, G. S., Moore, R. H., Thornhill, K. L., Winstead, E. L., and Anderson, B. E.: The impacts of aerosol loading, composition, and water uptake on aerosol extinction variability in the Baltimore-Washington, D.C. region, *Atmospheric Chemistry & Physics*, 16, 1003-1015, 2016.
- 25 Bond, T. C., Anderson, T. L., and Campbell, D.: Calibration and Intercomparison of Filter-Based Measurements of Visible Light Absorption by Aerosols, *Aerosol Science and Technology*, 30, 582-600, 1999.
- Brent, L., Thorn, W., Gupta, M., Leen, B., Stehr, J., He, H., Arkinson, H., Weinheimer, A., Garland, C., and Pusede, S.: Evaluation of the use of a commercially available cavity ringdown absorption spectrometer for measuring NO<sub>2</sub> in flight, and observations over the Mid-Atlantic States, during DISCOVER-AQ, *Journal of Atmospheric Chemistry*, 72, 503-521, 2015.
- 30 Charlson, R. J., and Hofmann, D. J.: Climate forcing by anthropogenic aerosols, *Science*, 255, 423, 1992.
- Chaudhry, Z., Martins, J. V., Li, Z., Tsay, S. C., Chen, H., Wang, P., Wen, T., Li, C., and Dickerson, R. R.: In situ measurements of aerosol mass concentration and radiative properties in Xianghe, southeast of Beijing, *Journal of Geophysical Research Atmospheres*, 112, 6033-6044, 2007.
- 35 Chazette, P., and Lioussé, C.: A case study of optical and chemical ground apportionment for urban aerosols in Thessaloniki, *Atmospheric Environment*, 35, 2497-2506, 2001.
- Chen, Y., Zhao, C., Zhang, Q., Deng, Z., Huang, M., and Ma, X.: Aircraft study of Mountain Chimney Effect of Beijing, China, *Journal of Geophysical Research Atmospheres*, 114, 1-10, 2009.
- Corrigan, C. E., Roberts, G. C., Ramana, M. V., Kim, D., and Ramanathan, V.: Capturing vertical profiles of aerosols and black carbon over the Indian Ocean using autonomous unmanned aerial vehicles, *Atmospheric Chemistry & Physics*, 7, 737-747, 2008.
- 40 Dickerson, R., Kondragunta, S., Stenchikov, G., Civerolo, K., Doddridge, B., and Holben, B.: The impact of aerosols on solar ultraviolet radiation and photochemical smog, *Science*, 278, 827-830, 1997.
- Dickerson, R. R., Li, C., Li, Z., Marufu, L. T., Stehr, J. W., McClure, B., Krotkov, N., Chen, H., Wang, P., and Xia, X.: Aircraft observations of dust and pollutants over northeast China: Insight into the meteorological mechanisms of transport, *Journal of Geophysical Research Atmospheres*, 112, 177-180, 2007.
- 45 Dong, Z., Li, Z., Yu, X., Cribb, M., Li, X., and Dai, J.: Opposite long-term trends in aerosols between low and high altitudes: a testimony to the aerosol–PBL feedback, *Atmospheric Chemistry & Physics*, 17, 1-19, 2017.
- Draxler, R. R., and Hess, G. D.: Description of the HYSPLIT\_4 modelling system, National Oceanic & Atmospheric Administration Technical Memorandum Erl Arl, 1997, 197-199,

- Eck, T. F., Holben, B. N., Reid, J. S., Dubovik, O., Smirnov, A., O'Neill, N. T., Slutsker, I., and Kinne, S.: Wavelength dependence of the optical depth of biomass burning, urban, and desert dust aerosols, *Journal of Geophysical Research Atmospheres*, 104, 333-331, 1999.
- Ferrero, L., Perrone, M. G., Petraccone, S., Sangiorgi, G., Ferrini, B. S., Porto, C. L., Lazzati, Z., Cocchi, D., Bruno, F., and Greco, F.: Vertically-resolved particle size distribution within and above the mixing layer over the Milan metropolitan area, *Atmospheric Chemistry & Physics & Discussions*, 10, 3915-3932, 2010.
- Ferrero, L., Mocnik, G., Ferrini, B. S., Perrone, M. G., Sangiorgi, G., and Bolzacchini, E.: Vertical profiles of aerosol absorption coefficient from micro-Aethalometer data and Mie calculation over Milan, *Science of the Total Environment*, 409, 2824-2837, 2011.
- Formenti, P., Elbert, W., Maenhaut, W., Haywood, J., and Andreae, M. O.: Chemical composition of mineral dust aerosol during the Saharan Dust Experiment (SHADE) airborne campaign in the Cape Verde region, September 2000, *Journal of Geophysical Research Atmospheres*, 108, 1409-1419, 2003a.
- Formenti, P., Elbert, W., Maenhaut, W., Haywood, J., Osborne, S., and Andreae, M. O.: Inorganic and carbonaceous aerosols during the Southern African Regional Science Initiative (SAFARI 2000) experiment: Chemical characteristics, physical properties, and emission data for smoke from African biomass burning, *Journal of Geophysical Research: Atmospheres*, 108, 335-346, 2003b.
- Gadhavi, H., and Jayaraman, A.: Airborne lidar study of the vertical distribution of aerosols over Hyderabad, an urban site in central India, and its implication for radiative forcing calculations, *Annales Geophysicae*, 2006, 2461-2470.
- Garland, R. M., Schmid, O., Nowak, A., Achtert, P., Wiedensohler, A., Gunthe, S. S., Takegawa, N., Kita, K., Kondo, Y., and Hu, M.: Aerosol optical properties observed during Campaign of Air Quality Research in Beijing 2006 (CAREBeijing-2006): Characteristic differences between the inflow and outflow of Beijing city air, *Journal of Geophysical Research Atmospheres*, 114, 1065-1066, 2009.
- Guo, J., Deng, M., Lee, S. S., Wang, F., Li, Z., Zhai, P., Liu, H., Lv, W., Yao, W., and Li, X.: Delaying Precipitation and Lightning by Air Pollution over the Pearl River Delta. Part I: Observational Analyses, *Journal of Geophysical Research Atmospheres*, 121, 6472-6488, 2016.
- Guo, J., Su, T., Li, Z., Miao, Y., Li, J., Liu, H., Xu, H., Maureen, C., and Zhai, P.: Declining frequency of summertime local-scale precipitation over eastern China from 1970&ndash;2010 and its potential link to aerosols, *Geophysical Research Letters*, 44, 2017.
- Hains, J. C., Taubman, B. F., Thompson, A. M., Stehr, J. W., Marufu, L. T., Doddridge, B. G., and Dickerson, R. R.: Origins of chemical pollution derived from Mid-Atlantic aircraft profiles using a clustering technique, *Atmospheric Environment*, 42, 1727-1741, 2008.
- Hamonou, E., Chazette, P., Balis, D., Dulac, F., Schneider, X., Galani, E., Ancellet, G., and Papayannis, A.: Characterization of the vertical structure of Saharan dust export to the Mediterranean basin, *Journal of Geophysical Research Atmospheres*, 104, 22257&ndash;22270, 1999.
- Han, Y., Fang, X., Zhao, T., and Kang, S.: Long range trans-Pacific transport and deposition of Asian dust aerosols, *Journal of Environmental Sciences*, 20, 424-428, 2008.
- Haywood, J., and Boucher, O.: Estimates of the direct and indirect radiative forcing due to tropospheric aerosols: A review, *Reviews of Geophysics*, 38, 513&ndash;543, 2000.
- Haywood, J., Francis, P., Dubovik, O., Glew, M., and Holben, B.: Comparison of aerosol size distributions, radiative properties, and optical depths determined by aircraft observations and Sun photometers during SAFARI 2000, *Journal of Geophysical Research*, 108, 225-231, 2003a.
- Haywood, J. M., Osborne, S. R., Francis, P. N., Keil, A., Formenti, P., Andreae, M. O., and Kaye, P. H.: The mean physical and optical properties of regional haze dominated by biomass burning aerosol measured from the C-130 aircraft during SAFARI 2000, *Journal of Geophysical Research: Atmospheres (1984&ndash;2012)*, 108, 225-231, 2003b.
- Hegg, D. A., Covert, D. S., Jonsson, H., and Covert, P. A.: Determination of the transmission efficiency of an aircraft aerosol inlet, *Aerosol science and technology*, 39, 966-971, 2005.
- Holben, B. N., Eck, T. F., Slutsker, I., Tanré, D., Buis, J. P., Setzer, A., Vermote, E., Reagan, J. A., Kaufman, Y. J., and Nakajima, T.: AERONET—A Federated Instrument Network and Data Archive for Aerosol Characterization, *Remote Sensing of Environment*, 66, 1-16, 1998.
- Huebert, B., Bertram, T., Kline, J., Howell, S., Eatough, D., and Blomquist, B.: Measurements of organic and elemental carbon in Asian outflow during ACE-Asia from the NSF/NCAR C-130, *Journal of Geophysical Research: Atmospheres*, 109, 2004.
- Johnson, B., Heese, B., McFarlane, S. A., Chazette, P., Jones, A., and Bellouin, N.: Vertical distribution and radiative effects of mineral dust and biomass burning aerosol over West Africa during DABEX, *Journal of Geophysical Research: Atmospheres*, 113, 2008.
- Johnson, B. T., Christopher, S., Haywood, J. M., Osborne, S. R., Mcfarlane, S., Hsu, C., Salustro, C., and Kahn, R.: Measurements of aerosol properties from aircraft, satellite and ground-based remote sensing: a case-study from the Dust and Biomass-burning Experiment (DABEX), *Quarterly Journal of the Royal Meteorological Society*, 135, 922-934, 2010.
- Kahn, R. A., Berkoff, T. A., Brock, C., Chen, G., Ferrare, R. A., Ghan, S., Hansico, T. F., Hegg, D. A., Martins, J. V., and McNaughton, C. S.: SAM-CAAM: A Concept for Acquiring Systematic Aircraft Measurements to Characterize Aerosol Air Masses, *Bulletin of the American Meteorological Society*, 2017.
- Kan, H., Chen, R., and Tong, S.: Ambient air pollution, climate change, and population health in China, *Environment International*, 42, 10-19, 2012.
- Kebabian, P. L., Wood, E. C., Herndon, S. C., and Freedman, A.: A practical alternative to chemiluminescence-based detection of nitrogen dioxide: cavity attenuated phase shift spectroscopy, *Environmental Science & Technology*, 42, 6040, 2008.

- Kim, P. S., Jacob, D. J., Fisher, J. A., Travis, K., Yu, K., Zhu, L., Yantosca, R. M., Sulprizio, M. P., Jimenez, J. L., and Campuzano-Jost, P.: Sources, seasonality, and trends of Southeast US aerosol: an integrated analysis of surface, aircraft, and satellite observations with the GEOS-Chem chemical transport model, Working Paper, 15, 17651-17709, 2015.
- 5 Leahy, L. V., Anderson, T. L., Eck, T. F., and Bergstrom, R. W.: A synthesis of single scattering albedo of biomass burning aerosol over southern Africa during SAFARI 2000, *Geophysical Research Letters*, 34, 261-263, 2007.
- Léon, J. F., Derimian, Y., Chiapello, I., Tanré, D., Podvin, T., Chatenet, B., Diallo, A., and Deroo, C.: Aerosol vertical distribution and optical properties over M'Bour (16.96° W; 14.39° N), Senegal from 2006 to 2008, *Atmospheric Chemistry & Physics*, 9, 9249-9261, 2009.
- 10 Li, J., Liu, X., Yuan, L., Yin, Y., Li, Z., Li, P., Ren, G., Jin, L., Li, R., and Dong, Z.: Vertical distribution of aerosol optical properties based on aircraft measurements over the Loess Plateau in China, *Journal of Environmental Sciences*, 34, 44-56, 2015a.
- Li, J., Yin, Y., Li, P., Li, Z., Li, R., Cribb, M., Dong, Z., Zhang, F., Li, J., and Ren, G.: Aircraft measurements of the vertical distribution and activation property of aerosol particles over the Loess Plateau in China, *Atmospheric Research*, 155, 73-86, 2015b.
- Li, Z., Niu, F., Fan, J., Liu, Y., Rosenfeld, D., and Ding, Y.: Long-term impacts of aerosols on the vertical development of clouds and precipitation, *Nature Geoscience*, 4, 888-894, 2011.
- 15 Li, Z., Lau, W. K. M., Ramanathan, V., Wu, G., Ding, Y., Manoj, M. G., Liu, J., Qian, Y., Li, J., and Zhou, T.: Aerosol and monsoon climate interactions over Asia, *Reviews of Geophysics*, 54, 2016.
- Li, Z., Guo, J., Ding, A., Liao, H., Liu, J., Sun, Y., Wang, T., Xue, H., Zhang, H., and Zhu, B.: Aerosol and boundary-layer interactions and impact on air quality, *National Science Review*, 2017a.
- Li, Z., Rosenfeld, D., and Fan, J.: Aerosols and their Impact on Radiation, Clouds, Precipitation & Severe Weather Events, Pacific Northwest National Lab.(PNNL), Richland, WA (United States), 2017b.
- 20 Liu, J., Zheng, Y., Li, Z., Connor, F., and Maureen, C.: Seasonal variations of aerosol optical properties, vertical distribution and associated radiative effects in the Yangtze Delta region of China, *Medicină Internă*, 13, 933-945, 2012.
- Liu, P., Zhao, C., Zhang, Q., Deng, Z., Huang, M., Xincheng, M. A., and Tie, X.: Aircraft study of aerosol vertical distributions over Beijing and their optical properties, *Tellus Series B-chemical & Physical Meteorology*, 61, 756-767, 2009.
- 25 Lohmann, U., and Feichter, J.: Global indirect aerosol effects: a review, *Atmospheric Chemistry & Physics*, 5, 715-737, 2005.
- Massoli, P., Kebedian, P. L., Onasch, T. B., Hills, F. B., and Freedman, A.: Aerosol Light Extinction Measurements by Cavity Attenuated Phase Shift (CAPS) Spectroscopy: Laboratory Validation and Field Deployment of a Compact Aerosol Particle Extinction Monitor, *Aerosol Science & Technology*, 44, 428-435, 2010.
- McNaughton, C. S., Clarke, A. D., Howell, S. G., Pinkerton, M., Anderson, B., Thornhill, L., Hudgins, C., Winstead, E., Dibb, J. E., and Scheuer, E.: Results from the DC-8 Inlet Characterization Experiment (DICE): Airborne versus surface sampling of mineral dust and sea salt aerosols, *Aerosol science and technology*, 41, 136-159, 2007.
- 30 Meloni, D., Di Sarra, A., Di Iorio, T., and Fiocco, G.: Influence of the vertical profile of Saharan dust on the visible direct radiative forcing, *Journal of Quantitative Spectroscopy and Radiative Transfer*, 93, 397-413, 2005.
- Nair, V. S., Babu, S. S., Moorthy, K. K., Sharma, A. K., Marinoni, A., and Ajai: Black carbon aerosols over the Himalayas: Direct and surface albedo forcing, *Tellus Series B-chemical & Physical Meteorology*, 65, 129-133, 2013.
- 35 Navas-Guzmán, F., Fernández-Gálvez, J., Granados-Muñoz, M. J., Guerrero-Rascado, J. L., Bravo-Aranda, J. A., and Alados-Arboledas, L.: Tropospheric water vapour and relative humidity profiles from lidar and microwave radiometry, *Atmos. Meas. Tech.*, 7, 1201-1211, 10.5194/amt-7-1201-2014, 2014.
- Petzold, A., Onasch, T., Kebedian, P., and Freedman, A.: Intercomparison of a Cavity Attenuated Phase Shift-based extinction monitor (CAPS PMex) with an integrating nephelometer and a filter-based absorption monitor, *Atmospheric Measurement Techniques*, 6, 1141-1151, 10.5194/amt-6-1141-2013, 2013.
- 40 Ryder, C. L., Highwood, E. J., Rosenberg, P. D., Trembath, J., Brooke, J. K., Bart, M., Dean, A., Crosier, J., Dorsey, J., and Brindley, H.: Optical properties of Saharan dust aerosol and contribution from the coarse mode as measured during the Fennec 2011 aircraft campaign, *Atmospheric Chemistry & Physics*, 13, 303-325, 2013.
- 45 Schafer, J. S., Eck, T. F., Holben, B. N., Thornhill, K. L., Anderson, B. E., Sinyuk, A., Giles, D. M., Winstead, E. L., Ziemba, L. D., and Beyersdorf, A. J.: Intercomparison of aerosol single-scattering albedo derived from AERONET surface radiometers and LARGE in situ aircraft profiles during the 2011 DRAGON-MD and DISCOVER-AQ experiments, *Journal of Geophysical Research Atmospheres*, 119, 7439-7452, 2014.
- Schwarz, J. P., Weinzierl, B., Samset, B. H., Dollner, M., Heimerl, K., Markovic, M. Z., Perring, A. E., and Ziemba, L.: Aircraft Measurements of Black Carbon Vertical Profiles Show Upper Tropospheric Variability and Stability, *Geophysical Research Letters*, 44, 2016.
- 50 Sheridan, P. J., Arnott, W. P., Ogren, J. A., Andrews, E., Atkinson, D. B., Covert, D. S., Moosmüller, H., Petzold, A., Schmid, B., and Strawa, A. W.: The Reno Aerosol Optics Study: An Evaluation of Aerosol Absorption Measurement Methods, *Aerosol Science and Technology*, 39, 1-16, 2005.

- Shinozuka, Y., Clarke, A. D., Howell, S. G., Kapustin, V. N., Mcnaughton, C. S., Zhou, J., and Anderson, B. E.: Aircraft profiles of aerosol microphysics and optical properties over North America: Aerosol optical depth and its association with PM<sub>2.5</sub> and water uptake, *Journal of Geophysical Research Atmospheres*, 112, 1037-1044, 2007.
- 5 Stein, A. F., Draxler, R. R., Rolph, G. D., Stunder, B. J. B., Cohen, M. D., and Ngan, F.: NOAA's HYSPLIT Atmospheric Transport and Dispersion Modeling System, *Bulletin of the American Meteorological Society*, 96, 150504130527006, 2016.
- Stocker, T. F., Qin, D., Plattner, G. K., Tignor, M., Allen, S. K., Boschung, J., Nauels, A., Xia, Y., and Bex, V.: The physical science basis. Contribution of Working Group I to the Fifth Assessment Report of the Intergovernmental Panel on Climate Change, *Computational Geometry*, 18, 95-123, 2013.
- 10 Stratmann, F., Siebert, H., Spindler, G., Wehner, B., Althausen, D., Heintzenberg, J., Hellmuth, O., Rinke, R., Schmieder, U., and Seidel, C.: New-particle formation events in a continental boundary layer: first results from the SATURN experiment, *Atmospheric Chemistry & Physics*, 3, 1445-1459, 2003.
- Sun, X., Yin, Y., Sun, Y., Sun, Y., Liu, W., and Han, Y.: Seasonal and vertical variations in aerosol distribution over Shijiazhuang, China, *Atmospheric Environment*, 81, 245-252, 2013.
- 15 Sun, Y., Jiang, Q., Wang, Z., Fu, P., Li, J., Yang, T., and Yin, Y.: Investigation of the sources and evolution processes of severe haze pollution in Beijing in January 2013, *Journal of Geophysical Research Atmospheres*, 119, 4380-4398, 2014.
- Tao, W. K., Chen, J. P., Li, Z., Wang, C., and Zhang, C.: Impact of aerosols on convective clouds and precipitation, *Reviews of Geophysics*, 50, 1-62, 2012.
- 20 Taubman, B. F., Marufu, L. T., Piety, C. A., Doddridge, B. G., Stehr, J. W., and Dickerson, R. R.: Airborne Characterization of the Chemical, Optical, and Meteorological Properties, and Origins of a Combined Ozone-Haze Episode over the Eastern United States, *Journal of the Atmospheric Sciences*, 61, 1781-1793, 10.1175/1520-0469(2004)061<1781:acotco>2.0.co;2, 2004.
- Taubman, B. F., Hains, J. C., Thompson, A. M., Marufu, L. T., Doddridge, B. G., Stehr, J. W., Piety, C. A., and Dickerson, R. R.: Aircraft vertical profiles of trace gas and aerosol pollution over the mid-Atlantic United States: Statistics and meteorological cluster analysis, *Journal of Geophysical Research Atmospheres*, 111, 10-17, 2006.
- 25 Twomey, S.: Pollution and the planetary albedo, *Atmospheric Environment*, 8, 1251-1256, 1974.
- Ulla, W., Detlef, M., Christine, B., Dietrich, A., Volker, M., Jens, B., Volker, W., Markus, F., Manfred, W., and Andreas, S.: Optical and microphysical characterization of biomass- burning and industrial-pollution aerosols from- multiwavelength lidar and aircraft measurements, 107, LAC 7-1–LAC 7-20, 2002.
- 30 Virkkula, A., Ahlquist, N. C., Covert, D. S., Arnott, W. P., Sheridan, P. J., Quinn, P. K., and Coffman, D. J.: Modification, Calibration and a Field Test of an Instrument for Measuring Light Absorption by Particles, *Aerosol Science and Technology*, 39, 68-83, 2005.
- Yu, H., Liu, S. C., and Dickinson, R. E.: Radiative effects of aerosols on the evolution of the atmospheric boundary layer, *Journal of Geophysical Research Atmospheres*, 107, 4142, 2002.
- Zhang, L., Li, Q., Gu, Y., Liou, K., and Meland, B.: Dust vertical profile impact on global radiative forcing estimation using a coupled chemical-transport-radiative-transfer model, *Atmospheric Chemistry & Physics*, 13, 2013.
- 35 Zhang, Q., Zhao, C., Tie, X., Wei, Q., Huang, M., Li, G., Ying, Z., and Li, C.: Characterizations of aerosols over the Beijing region: A case study of aircraft measurements, *Atmospheric Environment*, 40, 4513-4527, 10.1016/j.atmosenv.2006.04.032, 2006.
- Zhang, Q., Ma, X., Tie, X., Huang, M., and Zhao, C.: Vertical distributions of aerosols under different weather conditions: Analysis of in-situ aircraft measurements in Beijing, China, *Atmospheric Environment*, 43, 5526-5535, 10.1016/j.atmosenv.2009.05.037, 2009.
- Zhang, Q., Quan, J., Tie, X., Huang, M., and Ma, X.: Impact of aerosol particles on cloud formation: Aircraft measurements in China, *Atmospheric Environment*, 45, 665-672, 10.1016/j.atmosenv.2010.10.025, 2011.
- 40 Zhao, C., Tie, X., and Lin, Y.: A possible positive feedback of reduction of precipitation and increase in aerosols over eastern central China, *Geophysical Research Letters*, 33, 229-239, 2006.
- Zhao, J., Du, W., Zhang, Y., Wang, Q., Chen, C., Xu, W., Han, T., Wang, Y., Fu, P., and Wang, Z.: Insights into aerosol chemistry during the 2015 China Victory Day parade: results from simultaneous measurements at ground level and 260 m in Beijing, *Atmospheric Chemistry & Physics*, 17, 1-29, 2017.
- 45



**Table 1.** Flight summary.

Flight number, Date	Time range (UTC)	Profile region	Vertical height, asl (m)
RF1, 20160508	02:30–06:32	JL, QZ, XT	58–3751
RF2, 20160515	04:17–07:04	JL, QZ	58–3679
RF3, 20160516	07:03–07:54		58–467
RF4, 20160517	01:21–03:13	JL, QZ	58–2924
RF5, 20160519	07:42–09:09	LC	58–3733
RF6, 20160521	03:57–06:41	QZ, XT	58–3242
RF7, 20160528	02:16–05:26	JL, XT	58–3101
RF8, 20160528	08:29–10:24	XT	58–3130
RF9, 20160602	05:47–06:53	LC	58–3591
RF10, 20160606	02:09–04:02	JL	58–3178
RF11, 20160611	02:52–05:45	LC, XT	58–3203

JL = Julu; LC = Luancheng Airport; QZ = Quzhou; XT = Xingtai

**Table 2.** Instruments used in this study.

	Instrument	Parameter used in this study	Frequency	Accuracy
Airborne platform	Nephelometer, TSI Model 3565, USA	$\sigma_{\text{sca}}, \sigma_{\text{bsca}}$	1s	$0.5\text{Mm}^{-1}$
	PSAP, Radiance Research Inc., USA	$\sigma_{\text{abs}}$	60s	$0.1\text{Mm}^{-1}$
		T	1s	$\pm 1^\circ\text{C}$
	CWIP, Rain Dynamics, USA	RH	1s	2%
		Position	0.1s	
Xingtai supersite	CAPS, Aerodyne Res. Inc., USA	$\sigma_{\text{ext}}$	1s	$<2\text{Mm}^{-1}$
		Pressure		0.1hpa
	Radiosondes, Graw Model DFM-09, Germany	T	1s	$0.1^\circ\text{C}$
		RH		1%
	CIMEL, CE-318, France	SSA	Hourly	0.03

5

**Table 3.** Comparison of AERONET-retrieved and in situ aircraft-measured  $\omega_{.550}$  from this and other studies.

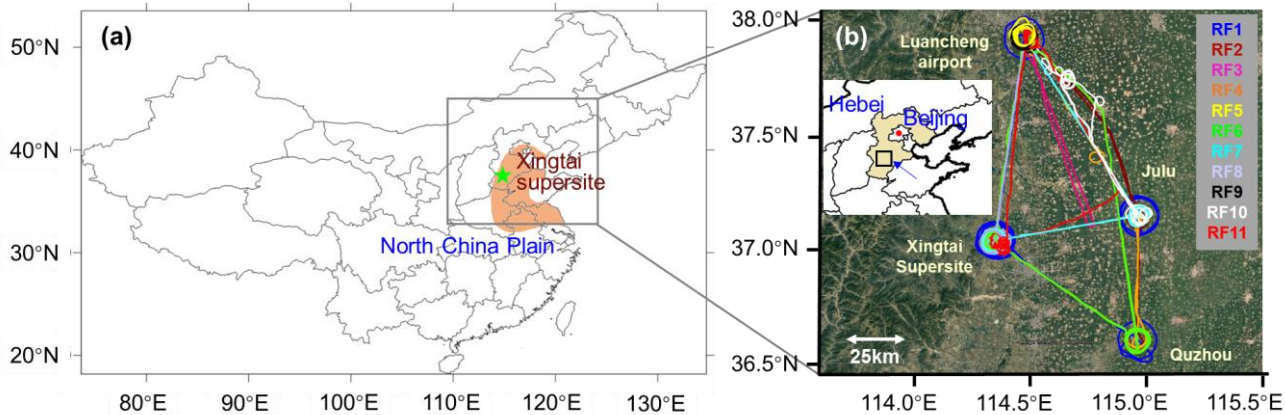
Location	Period	AERONET (CE-318)	Aircraft in situ (Neph TSI-3536; PSAP)	Reference
Northeastern United States	Summer 2011	0.979	0.99	(Schafer et al., 2014)
South Africa	August to September 2000	$0.85 \pm 0.02$	$0.89 \pm 0.03$	(Leahy et al., 2007)
West Africa	19 January 2006	0.85	0.87	(Johnson et al., 2010)
North China	28 May 2016	0.93	0.94	This work

**Table 4.** Means and standard deviations of aerosol optical properties over LC, JL, QZ, and XT during the experiment.

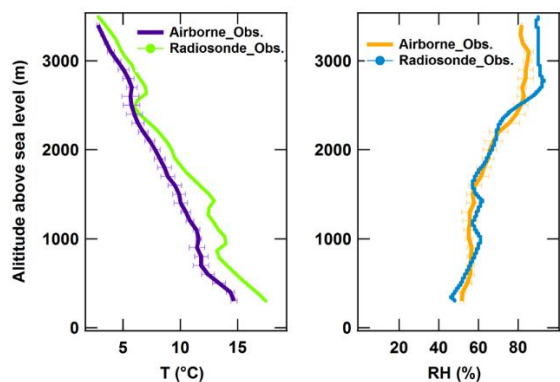
Parameter	LC	JL	QZ	XT
$\sigma_{\text{sca}} (550\text{nm}) (\text{Mm}^{-1})$	$57.1 \pm 67.71$	$95.57 \pm 106.61$	$87 \pm 100.43$	$75.3 \pm 84.58$
$\sigma_{\text{bsca}} (550\text{nm}) (\text{Mm}^{-1})$	$7.67 \pm 7.6$	$9.91 \pm 9.19$	$11.12 \pm 10.51$	$9.21 \pm 8.6$

$\sigma_{\text{abs}}(550\text{nm}) (\text{Mm}^{-1})$	9.06±9.17	5.06±4.43	6.67±7.34	8.13±6.75
$\sigma_{\text{ext}}(550\text{nm}) (\text{Mm}^{-1})$	74.24±77.25	103.14±110.07	100.46±109.24	89.56±91.04
$\beta_{\text{sca}}(550\text{nm})$	0.17±0.21	0.15±0.24	0.18±0.24	0.18±0.31
$\alpha(450\text{--}700\text{nm})$	1.46±0.97	1.57±0.73	1.56±0.97	1.6±0.81
$\omega(550\text{nm})$	0.83±0.11	0.87±0.12	0.83±0.15	0.83±0.15

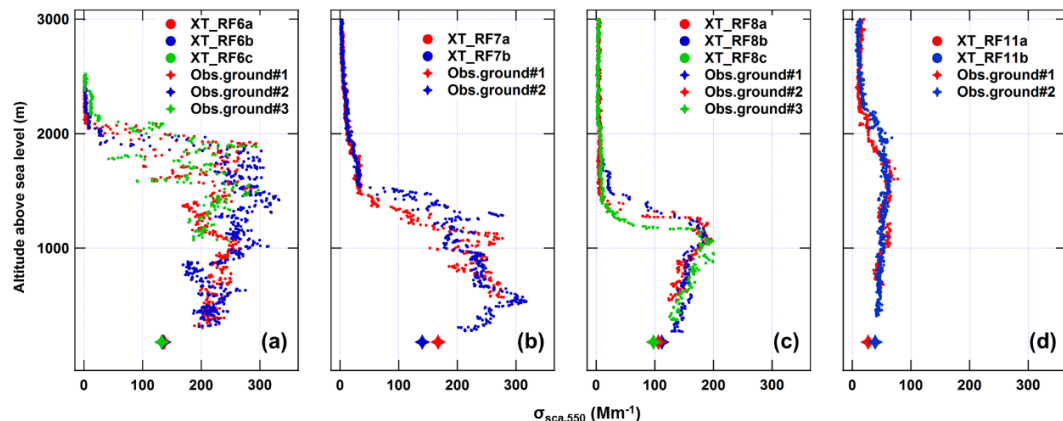
JL = Julu; LC = Luancheng Airport; QZ = Quzhou; XT = Xingtai



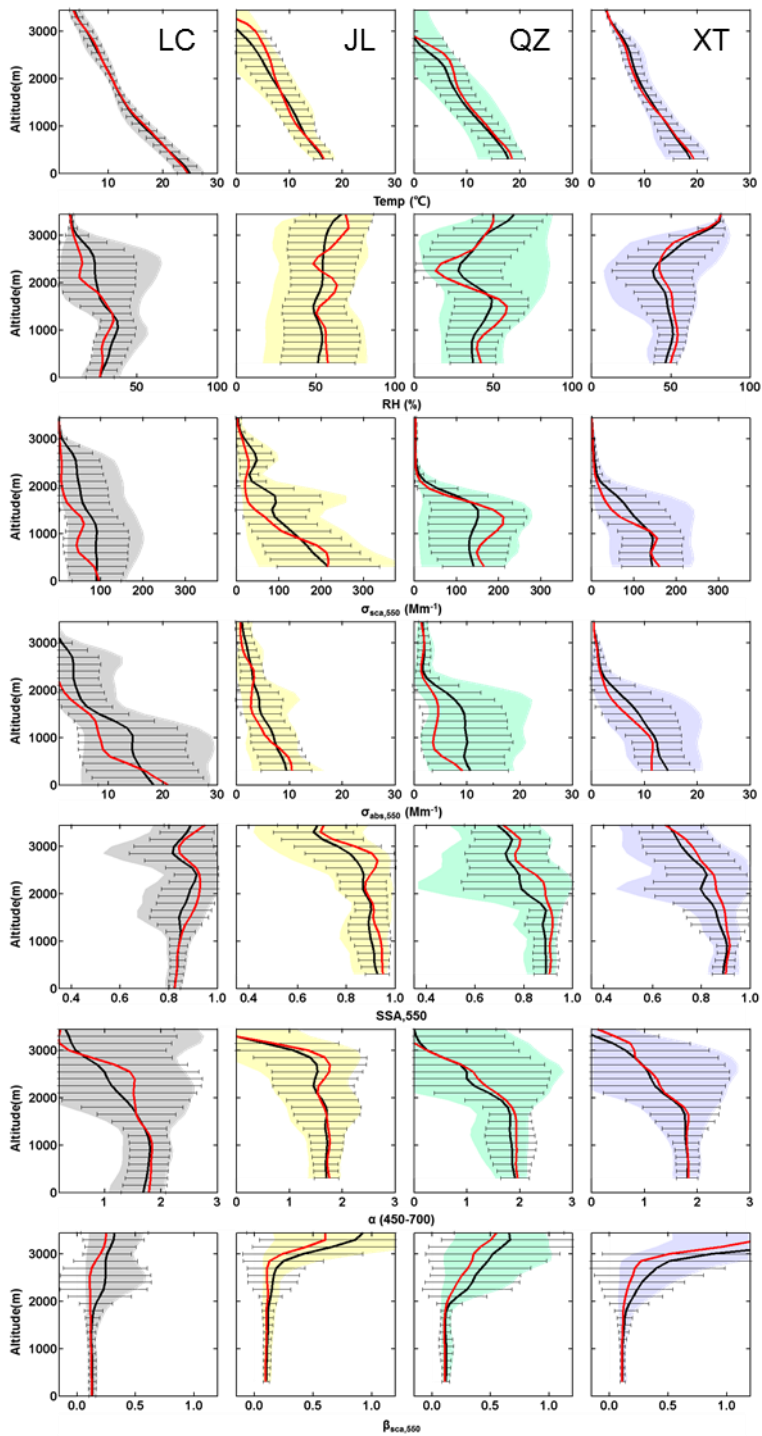
**Fig. 1.** Map of the geographic location of North China Plain and the Xingtai supersite (a), and the flight tracks of the 11 research flights conducted over Hebei Province during the May-June 2016 (b).



5 **Fig. 2.** Vertical profiles of temperature (T, left) and relative humidity (RH, right) from radiosonde and airborne measurements made on 8 May 2016 over Xingtai supersite. Horizontal bars represented standard deviations.

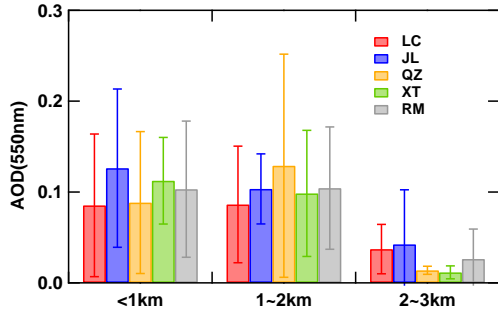


**Fig. 3.** Aircraft-measured vertical profiles (colored circles) and surface CAPS-measured (colored plus symbols)  $\sigma_{\text{ext}}$  at 550 nm on (a) May 21 (RF6, a, b, and c represent spiral up/down), (b) May 28 (RF7), (c) May 28 (RF8), and (d) June 11 (RF11).



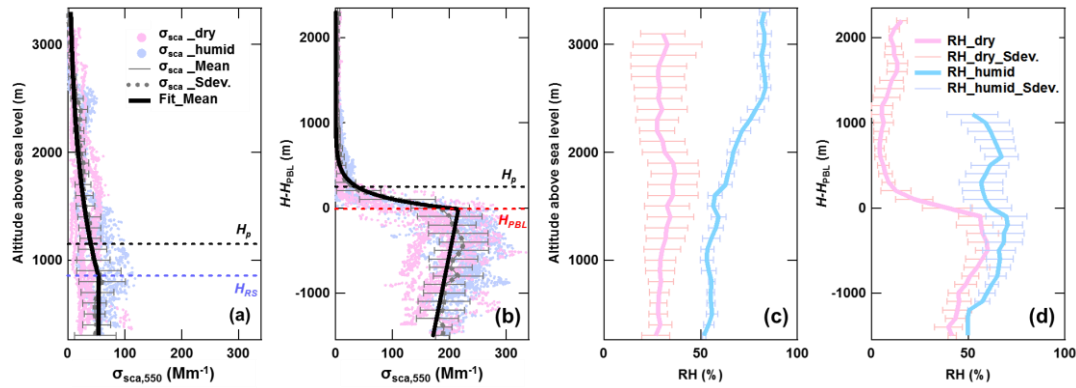
**Fig. 4.** Mean vertical distributions of (from the top row to the bottom row) temperature ( $^{\circ}\text{C}$ ), relative humidity (%),  $\sigma_{\text{sca}}$  at 550 nm ( $\text{Mm}^{-1}$ ),  $\sigma_{\text{abs}}$  at 550 nm ( $\text{Mm}^{-1}$ ), SSA at 550 nm, Ångström exponent ( $\alpha$ ), and  $\beta_{\text{sca}}$  at 550nm over LC, JL, QZ and XT (from left column to right column),

respectively). Black and red lines represent the mean and the median, respectively, and horizontal bars are standard deviations at every 150-m level. The colored shaded areas represent the 10<sup>th</sup> and 90<sup>th</sup> percentiles of the data.



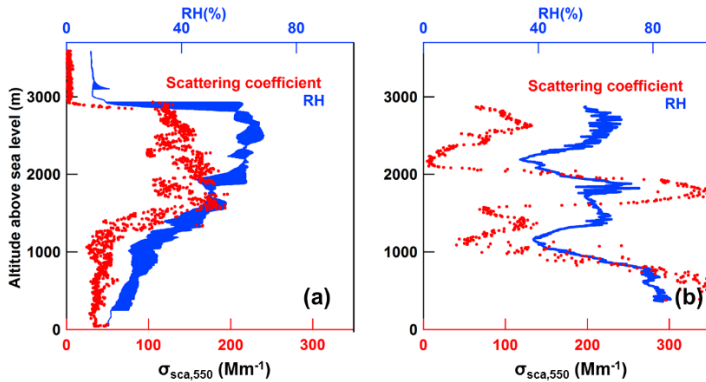
**Fig. 5.** Mean AOD at 550 nm at LC, JL, QZ, and XT, and overall mean AOD (RM) at 550 nm for different altitude ranges (< 1 km, 1–2 km, and 2–3 km). Standard deviations are also shown.

5

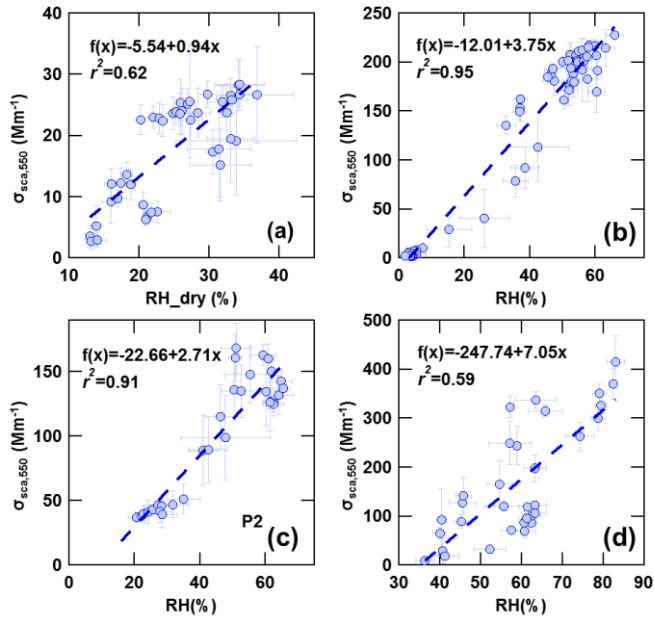


**Fig. 6.** Mean vertical distributions of  $\sigma_{sca}$  at 550 nm (in Mm<sup>-1</sup>) and relative humidity (%) during the flight campaign for those cases of (a, c) clean PBL and (b, d) pollution in the lower layer of the PBL where PBL heights have been normalized to the same altitude. Grey dashed lines represent mean  $\sigma_{sca}$  vertical profiles, the light pink and blue dots represent 1 s Nephelometer-measured  $\sigma_{sca}$ , under dry of humid condition respectively. Thick lines show the calculated fitting curves of the  $\sigma_{sca}$  profiles (see Eq. 8 and 9). Magenta and blue lines represent RH data collected under dry or humid conditions (c, d). The horizontal error bars represent the standard deviations at every 100 m level.

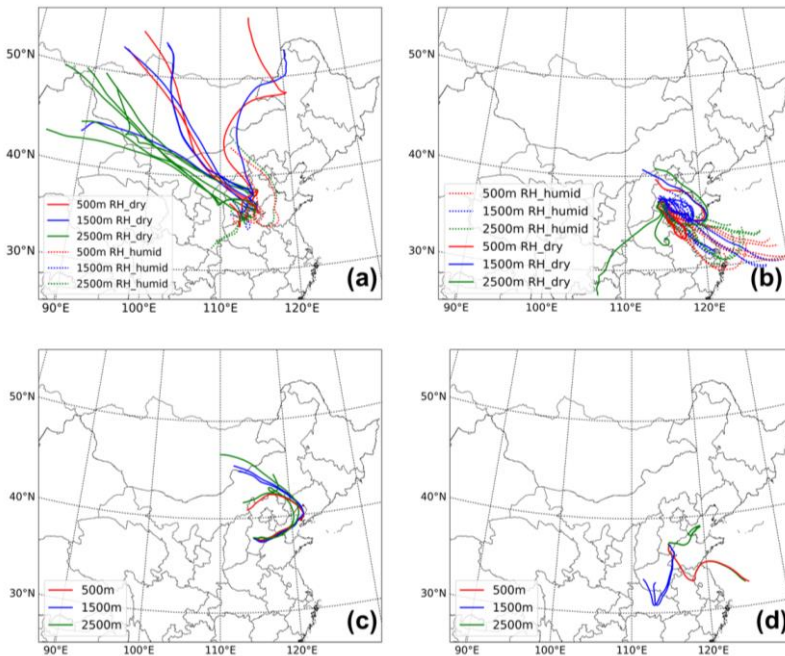
10



**Fig. 7.** Vertical distributions of  $\sigma_{\text{sca}}$  at 550 nm (red) and relative humidity (RH, blue) for the enrichment of aerosols in the upper layer of the PBL on 2 June in LC (a) and in multiple layers of the PBL on 6 June in JL (b).



**Fig. 8.**  $\sigma_{\text{sca}}$  at 500 nm as a function of relative humidity (RH, in %) for those cases when the PBL was (a) clean and dry, (b) polluted in the lower PBL and dry, (c) polluted in the upper PBL in the flight on June 2, and (d) polluted in multiple layers of the PBL in the flight on June 6. The linear regression best-fit lines through the data are shown (dashed lines). The regression relationships and coefficients of determination are given in each panel.



**Fig. 9.** 72 hours HYSPLIT back trajectories for the cases when the PBL was (a) clean, (b) polluted in the lower PBL, (c) polluted in the upper PBL in the flight on June 2, and (d) polluted in multiple layers of the PBL in the flight on June 6. Trajectories at different levels under dry (solid lines) and humid (dashed lines) conditions are shown: 500 m (red), 1500 m (blue), and 2500 m (green) above mean sea level.