

Interactive comment on “Characterizing the evolution of physical properties and mixing state of black carbon particles: from near a major highway to the broader urban plume in Los Angeles” by Trevor S. Krasowsky et al.

G. Ban-Weiss

banweiss@usc.edu

Received and published: 20 November 2017

Dear reviewer, In our other reply to your comment we have uploaded larger versions of Figures 3 and 11. Attached here is a better version of Figure 5 with larger axis labels. I hope this helps and thanks for your comment, George

Interactive comment on Atmos. Chem. Phys. Discuss., <https://doi.org/10.5194/acp-2017-1020>, 2017.

C1

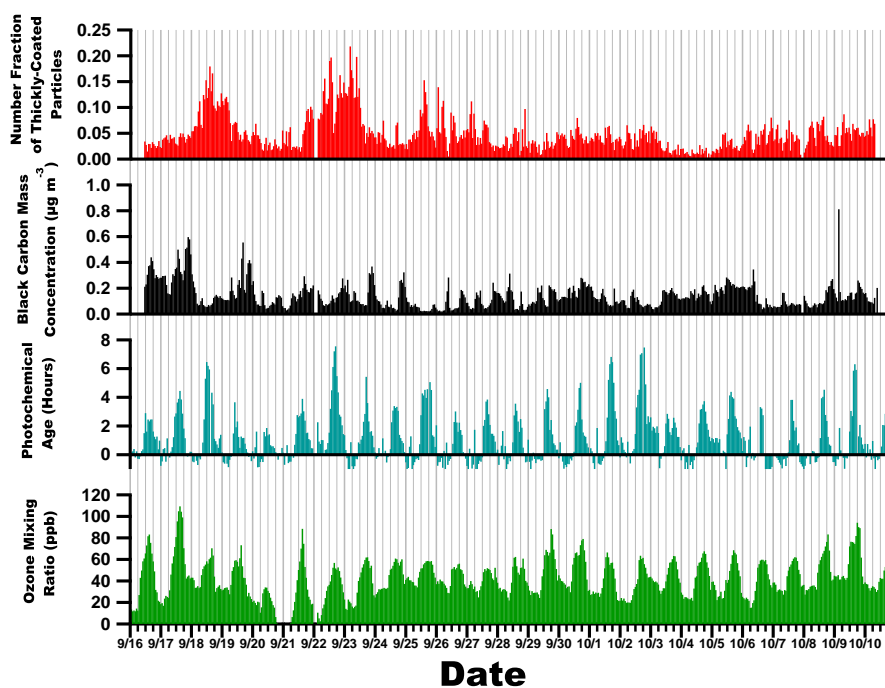


Fig. 1.

C2