

This authors response contains the responses to both reviewers followed by a track-changes version of the manuscript.

REVIEWER 1

We thank reviewer 1 for their thoughtful and helpful review. Our response is below.

1. *I worry that the study overestimates the effects of dilution on OA concentrations. Specifically, Fig. 6d predicts significant evaporation of OA for the two lowest-intensity fires (approximately 40% reduction in OA mass over the first ~30 min). These predictions do not seem consistent, qualitatively or quantitatively, with any ambient observations that I am aware of. For example, see Fig. 7 of Cubison et al. (2011), which compiles results for BB plume aging over similar timescales. Even in Akagi et al. (2012), where a net decrease in OA was observed, the ambient observations are qualitatively quite dissimilar from the predictions in this paper.*

Response: Our simulations suggest the patterns of OA evolution are sensitive to the fire sizes. The burn area for Williams prescribed fire in the study of Akagi et al. (2012) was 81 hectare (i.e. 0.81 km²). This may be more comparable with our simulation for the fire size of 1 km². May et al. (2015) showed that OA reduction was approximately 50% during the plume evolution, which is more similar to our smaller simulated fires. We added the following in the main text from line 68: "...production or even a net loss (Akagi et al., 2012; May et al., 2015). OA loss in first hour after emission was approximately 50% in the study of May et al. (2015), OA consists of ..."

The current results would seem to predict that BB emissions at night would undergo even more dramatic decreases in OA, since they would likely be far more impacted by dilution than chemical SOA production (even assuming nitrate radical chemistry). I'm not sure if nighttime BB plume evolution has ever been observed, and perhaps some of the differences noted above are due to fire intensity, but I would push the authors to evaluate their predictions of dilution/evaporation further.

7. *Similarly, it may be outside the scope of this study, but can the authors use their results to make conclusions about the evolution of BB emissions at night?*

We combined our response to address above two points about night-time evolution: It may be difficult to generalize about day/night differences due to various aspects being different between day and night on average. In general, nighttime plumes may have (1) less dispersion in the boundary layer due to more-stable air, (2) different chemistry, and (3) lower emission fluxes as peak fire intensities are typical during the day (this may

affect fire size too; Zhang and Kondragunta, 2008; Wooster and Lagoudakis, 2009). It's unclear how the convolution of these differences might impact the plumes, and it probably varies between cases.

We added the text from line 554: "For nighttime OA evolution, it may be difficult to generalize about day/night differences due to various aspects being different between day and night on average. In general, nighttime plumes may have (1) less dispersion in the boundary layer due to more-stable air, (2) different chemistry, and (3) lower emission fluxes as peak fire intensities are typical during the day (this may affect fire size too; Zhang and Kondragunta, 2008; Wooster and Lagoudakis, 2009). It's unclear how the convolution of these differences might impact the plumes, and it probably varies between cases."

2. As stated by the authors (line 316), OAER_{chem} cannot really be evaluated against observations. It is completely dependent upon parameters that can vary quite a bit across different models. This study demonstrates a few of the model parameters that influence OAER_{chem}, but there are many more. I found the motivation for OAER_{chem} to be quite confusing (lines 309-317). I encourage the authors to more clearly describe what it is that they hope to show with this quantity, and how it can be used in practice (beyond the current study). For example, they point to some valid limitations of OAER_{inert}, but there would seem to be equal (if not greater) limitations of OAER_{chem} simply introduced by different models or the choice of model parameters.

Response: OAER_{chem} can certainly vary across models due to different assumptions. We introduced OAER_{chem} to isolate the effect of SOA formation to give an alternate metric to OAER_{inert}, which is the convolution of evaporation and SOA formation. While OAER_{chem} cannot be evaluated against measurements, it does tell us what the isolated impact of SOA formation is *for the choice of model parameters used in the simulation*. We have modified the motivation of OAER_{chem} from line 309: "To isolate the impact of SOA formation alone on our simulations, we introduce the chemistry OA mass enhancement ratio (OAER_{chem}) to give an alternate metric of OAER_{inert} (which is the convolution of both evaporation and SOA formation). We define OAER_{chem} as the ratio of predicted..."

3. In Section 3.4, the authors should add some discussion to prior studies that make similar observations: e.g., Capes et al. (2008) observed significant increases in O:C ratios of the organic aerosol, but a small decrease in the normalized OA mass concentrations; Hennigan et al. (2011) present similar observations through their "aged POA" analysis.

Response: We have added text in the lines 552-555. "Papers analyzing field observations have suggested this possibility. Capes et al. (2008) and Cubison et al.

(2011) observed significant increases in O:C ratios of the organic aerosol with aging, but a small decrease in the normalized OA mass concentrations; Akagi et al. (2012) observed the decrease of OA with aging and attributed this to the processes of particle evaporation. Similarly, Jolleys et al. (2015) observed increasing O:C elemental ratio with aging but lowering normalized OA concentrations in the smoke plumes, and they attributed this to the combination of dilution and chemical processing. May et al. (2015) also suggested the competition between dilution-driven evaporation and SOA formation during the plume transport may be occurring in their observed plumes, as they found approximately 50% reduction of OA after several hours of aging with increasing in the O:C ratio. Additionally, the lab study of Hennigan et al. (2011) also showed increased O:C ratios in experiments with decreasing OA concentrations. Our modeling result is consistent with the findings from these observational studies reporting increased oxygenation with time for the OA even with observed decreases in the relative amount of OA (or a relative constant or lower $OAER_{inert}$).”

4. *In the treatment of vapor wall loss, does the model allow for the reversible partitioning of vapors from the walls back to the gas phase as a compound is oxidized? Vapor wall loss is described as an equilibrium process (line 96), which implies that it is reversible – if this is/is not treated – how does this impact the current predictions?*

Response: The vapor wall loss is treated as a reversible partitioning process. Previous studies (Bian et al., 2015, Zhang et al, 2015) suggested two variables could influence vapor wall loss: the effective saturation of vapor with respect to the wall ($C_w/M_w\gamma_w$) and the accommodation coefficient for vapor into the wall (α_w). We performed the sensitivity tests on these two variables and showed that the simulations overlap with the measurement of Hennigan et al. (2011). However, as we stated in the manuscript, we are unable to determine which set of α_w , $C_w/M_w\gamma_w$, and chemistry assumptions best represent the actual processes occurring in the chamber, since different combinations of these values can reproduce the observed $OAER_{inert}$ range. However, if vapor wall loss is turned off, the amount of OA mass increases greatly over simulations with vapor wall loss on – regardless of what vapor-wall-loss and chemistry parameters are chosen. Therefore, the prediction of vapor wall loss has large uncertainties depending on the two variables, but this does not influence our main conclusion.

5. *This is more of a stylistic comment, but the writing in the first person is highly distracting. The terms “we” and “our” are used too extensively throughout the paper. I recommend changing to the third person voice, where possible.*

Our use of “we” and “our” is to keep our writing concise and direct, and to generally use the active voice. This link (https://cgi.duke.edu/web/sciwriting/index.php?action=passive_voice) provides a nice

overview of the pros and cons of active and passive voice in scientific writing (but does not conclude that one must err to using one or the other). I (Jeff Pierce writing here) feel personally that the advantages of active voices outway disadvantages, and I personally find writing that avoids “we” and “our” harder to follow and more work to read. If you see me (Jeff again) at a conference or meeting, feel free to approach me about this if you don't mind losing your anonymity. I'm interested in learning about why you feel “we” and “our” is distracting as I realize that not everyone has the same writing preferences, and it's good to try to write in a way that satisfies as broad an audience as possible.

6. *This is probably outside the scope of this study, but it is worth noting that other factors related to fire intensity may also contribute to different aging characteristics in BB plumes (e.g., in a high intensity fire, the smoke optical thickness may produce differences in photochemistry...the formation of pyrocumulus clouds could also dramatically impact chemistry...etc.).*

Fire intensity certainly influences OA evolution in the plume. We performed the test on the high and low emission mass flux (5×10^{-6} and 2×10^{-8} $\text{kg m}^{-2}\text{s}^{-1}$). For OA evolution for fire size of 1 km^2 under Atmospheric Class of D in Fig 7 and 8, high emission mass flux (i.e. large fire intensity) has lower $\text{OAER}_{\text{inert}}$ and $\text{OAER}_{\text{chem}}$, compared with low emission mass flux, suggesting that under the same dilution ratio, lower emission mass flux has slightly more-effective SOA formation. OA concentrations for lower emission mass flux quickly drop close or below the background non-volatile OA concentrations and further dilution does not lead to further evaporation. The evaporated organics are available for SOA formation. Both of $\text{OAER}_{\text{inert}}$ and $\text{OAER}_{\text{chem}}$ after 4 hrs were thus higher for low emission mass flux than high emission mass flux.

We added text to the paragraph after line 523: “Fire intensity also influences OA evolution in the plume through changes in emission fluxes. Compared OA evolution for fire size of 1 km^2 under Atmospheric Class of D in Fig 7 and 8, high emission mass flux (i.e. large fire intensity) has lower $\text{OAER}_{\text{inert}}$ and $\text{OAER}_{\text{chem}}$ than that of low emission mass flux, suggesting that under the same dilution ratio, lower emission mass flux has slightly more-effective SOA formation. OA concentrations for lower emission mass flux quickly drop close or below the background non-volatile OA concentrations and further dilution does not lead to further evaporation. The evaporated organics are available for SOA formation. Both of $\text{OAER}_{\text{inert}}$ and $\text{OAER}_{\text{chem}}$ after 4 hrs were thus higher for low emission mass flux than high emission mass flux.” We also added the background OA concentration line in the Figures 6 to 8.

Mok et al. (2016) estimated that the reduced UV due to brown carbon and black carbon could slow down the photochemical rate as radicals OH, HO₂ and RO₂ was decreased

in the plume by 17%, 15% and 14%, respectively. Also, cloud processing of smoke from biomass burning in the pyrocumulus clouds (and other clouds that the plume cycles through) could largely alter the smoke chemistry (Yokelson et al., 2003; Akagi et al., 2011). However, due to the limited information to constrain the chemical mechanism in our model, we only simulate gas-phase functionalization and do not include aerosol-phase or heterogeneous reactions, or cloud processing. We also added the text after line 228: “We also do not include aerosol-phase or heterogeneous reactions, cloud processing, or effects of smoke on oxidant fields in our model, although these processes may affect the chemistry of plume (Yokelson et al., 2003; Akagi et al., 2011; Mok et al., 2016). The SOA mass yield $\alpha_{i,j}$ is assumed to be 1 for all reactions. We use this simple assumption of chemistry as a first test in our chamber and plume systems as we found that we did not have enough information to constrain gas-phase yields or additional chemistry mechanisms beyond this.”

8. *Finally, the References need to be carefully checked – they are out of order, and some are not the correct form (e.g., ACPD article cited when the article has been published in ACP).*

Corrected.

Technical Corrections

1. *Delete Lines 141 – 149 (“We describe our aerosol microphysics model...presents our conclusions.”) – the sections have clear headings so this is redundant.*

Done.

2. *Delete the sentence starting on line 320 – the section heading is just above this sentence.*

Done.

3. *Delete the sentence starting on line 344 – the section heading is just above this sentence.*

Done.

4. *Line 571: change “the” to “some”*

Done.

5. *Line 67: Grieshop et al. (2009) was a chamber study, not a field study.*

Deleted.

6. *Line 188: most chambers are rectangular or cubic – what is chamber radius?*

The chamber of Carnegie Mellon University was nearly cubic. We assume the chamber to be a sphere to allow for an analytical solution of turbulent wall-loss rates following Crump and Seinfeld (1981) and implemented in Pierce et al., (2008) on a similarly shaped chamber.

Changed to "... R is the radius of the chamber on the assumption that the chamber is a sphere..."

7. *Line 324: rewrite this sentence to be less awkward.*

Done.

8. *Line 328: "...simulations are shown..."*

Done.

9. *Line 438: is the term "perfect accommodation" technically preferred?*

Changed to "...A value of 1 represents no limitation on the vapor-wall loss rates due to this process..."

10. *Line 520: do the authors mean 'OA' instead of 'BC'?*

Corrected.

References:

Akagi, S. K., et al.: Emission factors for open and domestic biomass burning for use in atmospheric models, *Atmos. Chem. Phys.*, 11, 4039-4072, 2011

Akagi, S. K., et al.: Evolution of trace gases and particles emitted by a chaparral fire in California, *Atmos. Chem. Phys.*, 12, 1397-1421, 2012.

Bian, Q., et al.: Investigation of particle and vapor wall-loss effects on controlled wood-smoke smog-chamber experiments, *Atmos. Chem. Phys.*, 15, 11027-11045, 2015

Capes, G., et al.: Aging of biomass burning aerosols over West Africa: Aircraft

measurements of chemical composition, microphysical properties, and emission ratios, *J. Geophys. Res.*, 113, D00C15, 2008.

Crump and Seinfeld: Turbulent deposition and gravitational sedimentation of an aerosol in a vessel of arbitrary shape, *J Aerosol Sci.*, 5, 405-415, 1981.

Cubison, M. J., et al.: Effects of aging on organic aerosol from open biomass burning smoke in aircraft and laboratory studies, *Atmos. Chem. Phys.*, 11, 12049-12064, 2011.

May, A. A., et al: Observations and analysis of organic aerosol evolution in some prescribed fire smoke plumes, *Atmos. Chem. Phys.*, 15, 6323-6335, 2015.

Mok, J., et al.: Impacts of brown carbon from biomass burning on surface UV and ozone photochemistry in the Amazon Basin, *Scientific reports* 6, 36940, doi:10.1038/srep36940, 2016.

Roberts, G and Lagoudakis, E.: Annual and diurnal African biomass burning temporal dynamics, *Biogeosciences*, 6, 849-866, 2009.

Yokelson, R. J., et al.: Trace gas measurements in nascent, aged, and cloud-processed smoke from African savanna fires by airborne Fourier transform infrared spectroscopy (AFTIR), *J. Geophys. Res.*, 108, 8478, doi: 10. 1029/2002JD002322, D13, 2003

Zhang, X. and Kondragunta, S.: Temporal and spatial variability in biomass burned areas across the USA derived from the GOES fire product, *Remote Sens. Environ.*, 112, 2886-2897, 2008.

REVIEWER 2

We thank reviewer 2 for their thoughtful and helpful review. Our responses are below.

The authors found that accounting for vapor wall losses leads to 2-3 times increases in the total SOA production in chamber experiments. This conclusion, however, depends on how the adjustable parameters in the model are tuned against chamber observations, and as a result the enhancement in SOA production in the absence of vapor wall loss could vary with different model parameterizations. The authors mentioned that the OA concentrations from FLAME-III experiments are used to constrain the model performance, yet the comparison of simulations with experimental observations are not given in details throughout of the paper. Ideally, the organic aerosol temporal profile by AMS/SMPS during one representative experiment should be given together with corresponding simulations (e.g., Figure 3) to better visualize the model performance.

Response: We do not compare each individual simulation with each corresponding observation because May et al. (2015) was only able to derive a single volatility distribution across the FLAME III 18 experiments. Additionally the IVOC volatility distribution that we use was from FLAME IV experiments that do not directly correspond to the specific FLAME III experiments. Thus, we do expect error in individual experiments due to these assumptions, but we seek to capture the mean behavior across all of the experiments.

We added the following text near Line 408: "...are in very good agreement with those observations. May et al. (2015) was only able to derive a single volatility distribution across the FLAME III 18 experiments and the IVOC volatility distribution from FLAME IV experiments do not directly correspond to the specific FLAME III experiments. Thus, we expect the error in individual experiments due to the single volatility distributions across all simulations. We thus seek to capture the mean behavior across all of the experiments rather than comparing individual simulations to their corresponding experiments. Our simulations also show that..."

Another question related, have the authors conducted optimal fitting of simulations to chamber measured quantities such as organic aerosol mass, O:C and H:C ratios?

We do not simulate O:C and H:C. We do compare organic aerosol mass, at least implicitly; this is what is being evaluated in Figures 4 and 5. The initial organic aerosol masses in the simulations are identical to the measurements, $OAER_{inert}$ effectively evaluates OA mass as the inert-tracer wall losses for these experiments have been evaluated in Bian et al., 2015.

We added the following text around Line 406: "...Since the initial organic aerosol masses in the simulations are identical to the measurements, we use $OAER_{inert}$ to evaluate simulated OA mass against measurements in Figs. 4 and 5 as the inert-tracer wall losses for these experiments have been evaluated in Bian et al. (2015)."

Is there more than one set of parameters that could well represent the observations? What is the physical meaning of each best-fit parameter that is chosen to describe the BBOA evolution?

Yes, more than one set of parameters could well represent the observations because we do not have enough experimental data to determine which combination of parameters for the study of FLAME III. This is shown in Figures 4 and 5, and we discuss the conclusion that multiple sets of assumptions can describe the measurements from line 415 to 456. We neither evaluate nor declare "best fit parameters" for the study of the influence of wall loss on secondary-organics evolution.

To reinforce this point, we modified the text from line 453, "...can better represent the FLAME-III experiments; however, we are unable to provide the "best-fit parameters" for the simulations as we cannot determine which set of α_w , $C_w/M_w\gamma_w$, and chemistry assumptions best represent the actual processes occurring in the chamber..."

For the ambient plume simulations, the authors are suggested to add discussions on how the values of key parameters, such as fire sizes and atmospheric stability classes, are assigned. Are they representative of the fire plume transportation in the air? A thorough search on the ambient fire plume properties in literatures might be useful to rationalize the sensitivity tests conducted in this study.

Cochrane et al. (2012) reported 14 wildfires with fire size from 5.28 to 1868.78 km². The burning areas for prescribed fires observed in Akagi et al. (2013) ranged from 0.162 to 1.47 km². The fire size for agricultural and pile burns can be as small as 7×10^{-5} km² (Springsteen, et al. 2015). The fire sizes in our sensitive test are 10⁻⁴, 0.01, 1, 100 km², covering most of this observed range. Atmospheric stability includes six classes from A (unstable) to F(stable), which represent all the possible atmospheric stability conditions that range from clear sunny days (very unstable) to calm clear nights (very stable). We do not try to simulate any specific fire, just a range of possible conditions. We revised the manuscript from lines 477 to 479 accordingly:

"...The initial plume width is associated with fire size, which means that the fire size could largely influence the plume evolution (Sakamoto et al., 2016). Cochrane et al. (2012) reported 14 wildfires with fire size from 5 to over 1000 km². Akagi et al. (2013) also recorded the burn areas for the observed prescribed fire range from 0.162 to 1.47 km². The burning area for Williams fire was 0.81 km² (Akagi et al., 2012). The fire size

for agricultural and pile burns can be as small as $7 \times 10^{-5} \text{ km}^2$ (Springsteen, et al. 2015). We therefore perform simulations on the evolution of ambient OA concentrations over 4 hours of simulated transport, for four different fire areas of 1×10^{-4} , 1×10^{-2} , 1×10^0 and $1 \times 10^2 \text{ km}^2$ (with the fire width assumed to be the square root of these areas), which largely cover the reported burned areas above...”

Recent two-dimensional VBS frameworks have incorporated gas-phase fragmentation processes as a function of the O:C ratio of individual volatility bins (e.g., Jimenez et al. 2009). The original distribution of volatility bins upon one generation of oxidation (drops in volatility per reactions) would correspondingly change by adding this branch of mechanism into the model framework. Upon OH-exposure in the order of $\sim 10^{10}$ molecules $\text{cm}^{-3} \text{ s}$ (typically several hours of reactions in the atmosphere), fragmentation should have occurred to some extent, depending on the OH reactivity of the parent precursors. The authors are suggested to discuss uncertainties caused by the assumption of zero fragmentation in the reaction mechanisms.

We agree that lack of simulating fragmentation is a limitation of our study. We have added text to emphasize this after line 341: “...and the alkane k_{OH} set with the two-volatility-bin drop per reaction as a lower bound for SOA formation. Jimenez et al. (2009) showed that fragmentation would produce more-volatile species compared with parent species. The assumption of zero fragmentation and unity SOA mass yield may cause overestimation of SOA production in our study.”

We also changed the text from Line 581: “...Uncertainties in parameters that control vapor wall losses, such as the wall saturation concentration and wall accommodation coefficient, as well as uncertainties in gas-phase chemistry with the assumption of zero fragmentation and unity SOA mass yield, lead to uncertainties in our simulations.”

Minor:

Page 5, Line 168: How are the black carbon and organic contents treated in each particle size bin in the model? Are they well mixed?

We assume that all species are internally mixed within each size section, meaning the black and OA exists in the all particles at the same ratio within each size bin. However, for purposes for calculating OA partitioning, we assume that OA and black carbon exist in separate phases within each particle, and thus this presence of black carbon does not enhance partitioning of OA to the particle phase. We have added text after Line 168: “... and water with 36 logarithmically spaced size sections from 3 nm to 10 μm . We assume that all species are internally mixed within each size section, meaning that the ratio of BC and OA are the same for all particles within each size bin. When calculating OA partitioning, we assume that OA and BC exist in separate phases, and thus the

presence of BC does not influence OA partitioning to the particle phase in the model. In our previous study examining the influence of wall loss...”

Page 9, Line 328: Add 'are' before 'shown'.

Corrected.

Page 29, Figure 1: How are the vapor concentrations calculated, based on equilibrium partitioning?

We assume that you are asking how the initial vapor concentrations are calculated. We set the organic aerosol concentration equal to that measured by the AMS, assume the total-organic volatility distributions from May et al. (2015) and Hatch et al. (2016), and estimate the vapor concentration necessary to sustain the AMS-measured OA mass based on aerosol partitioning theory (Pankow, 1994) on the assumption of gas and particle equilibrium partitioning.

We revised lines 175 to 179 : “In this current study, we expand the simulated organics from eight to fifteen “species” including more volatile organics between 10^6 to 10^{11} $\mu\text{g m}^{-3}$, based on the FLAME-4 study of Hatch et al. (2016), to account for chemical transformations from both volatile and semivolatile organic species and estimate the initial organic vapor concentration based on aerosol partitioning theory (Pankow, 1994) on the assumption of gas and particle equilibrium partitioning (Fig. 1a). The evolution of the organic vapors is calculated based on partitioning theory (to get equilibrium vapor pressures above the particle), wall-equilibrium vapor pressures, and kinetic mass transfer to/from the particles and the walls. “

References:

Akagi, et al.: Evolution of trace gases and particles emitted by a chaparral fire in California, *Atmos. Chem. Phys.*, 12, 1397-1421, 2012

Akagi, et al.: Measurements of reactive trace gases and variable O_3 formation rates in some South Carolina biomass burning plumes, *Atmos. Chem. Phys.*, 13, 1141-1165, 2013.

Cochrane, et al: Estimation of wildfire size and risk changes due to fuels treatments, *Int. J. Wildland Fire*, 21, 357-367, 2012

Jimenez, et al.: Evolution of Organic Aerosols in the Atmosphere, *Science* 326, 1525, doi:10.1126/science.1180353, 2009

Springsteen, et al.: Forest biomass diversion in the Sierra Nevada: Energy, economics

and emissions, *Calif. Agric.*, 69, 142-149, DOI: 10.3733/ca.v069n03p142, 2015

Pankow, J. F.: An absorption model of gas/particle partitioning of organic compounds in the atmosphere, *Atmos. Environ.*, 28, 185–188, 1994.

Yokelson, et al.: Emissions from biomass burning in the Yucatan, *Atmos. Chem. Phys.*, 9, 5785-5812, 2009.

Secondary organic aerosol formation in biomass-burning plumes: Theoretical analysis of lab studies and ambient plumes

Qijing Bian¹, Shantanu H. Jathar², John K. Kodros¹, Kelley C. Barsanti³, Lindsay E. Hatch³, Andrew A. May⁴, Sonia M. Kreidenweis¹, and Jeffrey R. Pierce^{1,5}

¹Department of Atmospheric Science, Colorado State University, Fort Collins, CO, USA

²Department of Mechanical Engineering, Colorado State University, Fort Collins, CO, USA

³Department of Chemical and Environmental Engineering and College of Engineering – Center for Environmental Research and Technology (CE-CERT), University of California, Riverside, CA, USA

⁴Department of Civil, Environmental and Geodetic Engineering, the Ohio State University, Columbus, OH, USA

⁵Department of Physics and Atmospheric Science, Dalhousie University, Halifax, NS, Canada

Abstract

Secondary organic aerosol (SOA) has been shown to form in biomass-burning emissions in laboratory and field studies. However, there is significant variability among studies in mass enhancement, which could be due to differences in fuels, fire conditions, dilution, and/or limitations of laboratory experiments and observations. This study focuses on understanding processes affecting biomass-burning SOA formation in laboratory smog-chamber experiments and in ambient plumes. Vapor wall losses have been demonstrated to be an important factor that can suppress SOA formation in laboratory studies of traditional SOA precursors; however, impacts of vapor wall losses on biomass-burning SOA have not yet been investigated. We use an aerosol microphysics model that includes representations of volatility and oxidation chemistry to estimate the influence of vapor wall loss on SOA formation observed in the FLAME-III smog-chamber studies. Our simulations with base-case assumptions for chemistry and wall loss predict a mean OA mass enhancement (the ratio of final to initial OA mass, corrected for particle-phase wall losses) of 1.8 across all experiments when vapor wall losses are modeled, roughly matching the mean observed enhancement during FLAME-III. The mean OA enhancement increases to over 3 when vapor wall losses are turned off, implying that vapor wall losses reduce the apparent SOA formation. We find that this decrease in the apparent SOA formation due to vapor wall losses is robust across the ranges of uncertainties in the key model assumptions for wall-loss and mass-transfer coefficients and chemical mechanisms.

We then apply similar assumptions regarding SOA formation chemistry and physics to smoke emitted into the atmosphere. In ambient plumes, the plume dilution rate impacts the organic partitioning between the gas and particle phases, which may impact the potential for SOA to form as well as the rate of SOA formation. We add Gaussian dispersion to our aerosol microphysical model to estimate how SOA formation may vary under different ambient-plume conditions (e.g. fire size, emission mass flux,

atmospheric stability). Smoke from small fires, such as typical prescribed burns, dilutes rapidly, which drives evaporation of organic vapor from the particle phase, leading to more effective SOA formation. Emissions from large fires, such as intense wildfires, dilute slowly, suppressing OA evaporation and subsequent SOA formation in the near field. We also demonstrate that different approaches to the calculation of OA enhancement in ambient plumes can lead to different conclusions regarding SOA formation. OA mass enhancement ratios of around 1 calculated using an inert tracer, such as [black carbon BC](#) or CO, have traditionally been interpreted as exhibiting little or no SOA formation; however, we show that SOA formation may have greatly contributed to the mass in these plumes.

In comparison of laboratory and plume results, the possible inconsistency of OA enhancement between them could be in part attributed to the effect of chamber walls and plume dilution. Our results highlight that laboratory and field experiments that focus on the fuel and fire conditions also need to consider the effects of plume dilution or vapor losses to walls.

1. Introduction

Biomass burning is an important source of carbonaceous compounds that have significant influence on air quality (Jaffe and Widger, 2012), climate (Bond et al., 2013) and human health (Naeher et al., 2007; Jassen, 2012; Johnston et al., 2012). It is a major source of primary fine carbonaceous (black and organic carbon) particles (Akagi et al., 2011), but the contribution of biomass burning to ambient concentrations of secondary organic aerosol (SOA, organic aerosol formed in the atmosphere) is highly variable because of the complexities of physical and chemical evolution of biomass-burning plumes. Laboratory studies have observed both significant organic aerosol (OA) increase and OA decrease in biomass-burning emissions (Hennigan et al. 2011; Ortega et al., 2013). Some field studies of biomass burning also observed organic aerosol (OA) formation (~~Grieshop et al., 2009~~; Yokelson et al., 2009) and some showed little OA production or even a net loss (Akagi et al., 2012; [Capes et al., 2008](#); May et al., 2015). [OA loss was approximately 50% in first hour after emission- in the study of May et al. \(2015\).](#) OA consists of thousands of species, but only a small portion of these have been identified, and thus understanding of phase partitioning and the chemistry occurring in biomass-burning emissions is still poor (Heilman et al., 2014).

The semi-volatile nature of biomass-burning primary organic aerosol (POA) as identified in recent studies (Grieshop et al., 2009; May et al., 2013) further complicates the phase dynamics during the evolution of biomass-burning emissions, both in the laboratory and in ambient air. In an ambient plume, positive impacts on emitted OA mass could occur

by the condensation of low-volatile organics produced from the oxidation of volatile and semi-volatile organics (Yokelson et al., 2009); while on the other hand, reductions in OA mass could occur due to evaporation of organic vapors driven by dilution (Jolleys et al., 2012) or by fragmentation reactions creating higher-volatility species. Hence, observations of OA evolution in the field are always influenced by plume dilution and complex chemical pathways that compete for OA enhancement and loss (Akagi et al. 2012; May et al. 2015) and it is difficult to observationally separate those effects. An extensive literature search reveals little work exploring how fire conditions (e.g. fire size and mass flux) and atmospheric stability conditions (e.g. unstable or stable) affect OA evolution in a chemically evolving plume and how those factors would influence the observed plume characteristics.

To reduce some of the complexity inherent in ambient observations, smog chambers are widely used to study the evolution of organic aerosol. The mechanism of particle wall loss has been well studied (Crump and Seinfeld, 1981; McMurry and Rader, 1985; Pierce et al., 2008) and is commonly used to correct aerosol measurements in smog-chamber studies (Weitkamp et al., 2007; Hennigan et al., 2011). Wall loss of organic vapors may also be important and leads to impacts on gas-particle partitioning in chamber experiments, as has been demonstrated in recent studies (Matsunaga and Ziemann, 2010; Yeh and Ziemann, 2015; Zhang et al., 2015; Bian et al., 2015; Krechmer et al., 2016). Vapor uptake to Teflon chamber walls demonstrates absorptive partitioning behavior following Henry's Law. The resulting loss of SOA precursors to chamber walls makes them unavailable for reaction and leads to underestimates of SOA production in chamber studies (Matsunaga and Ziemann, 2010; Yeh and Ziemann, 2015; Zhang et al., 2014; Zhang et al., 2015). Zhang et al. (2014) predicted that vapor wall losses in a 25 m³ chamber may lead to factor-of-4 underestimates of SOA mass formation from biogenic and anthropogenic precursor vapors. Kokkola et al. (2014) also showed that SOA formation from ozonolysis of α -pinene may be underestimated by a factor up to 4 in a 4 m³ chamber. Based on the work of Lim and Ziemann (2009) and Matsunaga and Ziemann (2010), La et al. (2016) suggested that SOA yield from mixtures of alkanes, alkenes and alcohols or ketones may be underestimated by a factor of 2 in chambers of volumes of 5.9 and 1.7 m³. Cappa et al. (2016) estimated that SOA was increased by factors of ~2-10, depending on scenario, when vapor wall losses were accounted for in air quality model simulations. However, it has also been pointed out that increasing seed surface area could effectively compete for vapor absorption, suppressing vapor wall losses and increasing SOA formation in chamber studies (Zhang et al., 2014; McVay et al., 2014). Nah et al. (2016) also observed that the effects of vapor wall deposition on SOA mass yields could be constrained if vapor condensation occurs under quasi-equilibrium growth (i.e. the particles and vapors reach equilibrium quickly).

Several modeling studies have examined SOA formation in ambient air from biomass-burning emissions (Mason et al., 2001; Alvarado and Prinn, 2009; Alvarado, et al., 2015). One difficulty is that the compounds that act as precursors of SOA in biomass-burning emissions are not well understood. Including only known SOA precursors (mainly aromatic species like toluene) in the model largely underestimates SOA production, probably because of limited knowledge about additional SOA precursor vapors, such as intermediate-volatility organic compounds (IVOCs) (Alvarado and Prinn, 2009; Jathar et al., 2014). Alvarado et al. (2015) included assumptions of unidentified IVOCs, semi-volatile and extremely low volatility organic compounds in the modeling of OA and O₃ formation and successfully reproduced ambient observations. However, their study did not consider the specific impacts of vapor wall losses on laboratory observations of biomass-burning SOA and how this might constrain SOA formation chemistry. Further, dilution effects on SOA formation during plume transport have not yet been investigated. In previous work, Bian et al. (2015) showed that organic-vapor wall loss in Teflon chamber experiments may drive evaporation of primary biomass-burning organic aerosol; however, the resulting impacts on SOA formation were not investigated in that work.

In this study, we (1) investigate the influence of vapor wall loss on biomass-burning SOA formation in a smog chamber, based on current knowledge of particle and vapor wall-loss rates, and (2) explore the effect of dilution on SOA formation in ambient plumes. For the smog-chamber portion of this work, we use an aerosol-microphysics model that includes particle/vapor wall losses and SOA chemistry to simulate observations reported in Hennigan et al. (2011) from smog chamber experiments conducted in the third Fire Lab At Missoula Experiments (FLAME III) study. For the ambient-plume portion of this work, we add Gaussian dispersion to the aerosol-microphysics-chemistry model, and perform sensitivity simulations that capture the effects of fire size, variable mass flux, and atmospheric stability. ~~We describe our aerosol-microphysics model in Section 2. The smog-chamber model is described in Section 2.1, and the ambient plume model is described in Section 2.2. In Section 3.1, we present results for the sensitivity of the smog-chamber simulations to SOA-chemistry assumptions. In Section 3.2, we demonstrate the influence of vapor wall loss on SOA formation in smog-chamber experiments. In Section 3.3, we investigate the impact of fire/plume characteristics on SOA formation in ambient plumes, based on the knowledge gained from simulating the lab studies, and Section 4 presents our conclusions.~~

2. Methods

2.1. Smog-chamber simulations

Wood-smoke primary organic aerosol partitioning and SOA formation were investigated

for the smog-chamber experiments conducted during the FLAME III study from Sep-Oct 2009 (Hennigan et al., 2011; May et al., 2013 and 2014; Ortega et al., 2011; Bian et al., 2015). Eighteen fuels that frequently burn in wild or prescribed fires across North America were studied (Table 1). In each experiment, the combustion emissions were introduced into the smog chamber at a dilution ratio of ~25:1 (relative to the USDA/USFS Fire Sciences Laboratory, FSL, combustion chamber). Photo-oxidation was initiated for 3-4.5 hr using sunlight / UV light after a 75 min dark period during which primary gas and particle concentrations were characterized in the smog chamber. Additional experimental details are included in Hennigan et al. (2011), May et al. (2013), and Bian et al. (2015).

For our smog-chamber simulations, we use the Two-Moment Aerosol Sectional (TOMAS) microphysics model (Adams and Seinfeld, 2002; Pierce and Adams, 2009; Pierce et al., 2011) combined with particle and vapor wall-loss algorithms and a SOA production matrix to estimate SOA formation for the 18 FLAME III experiments considered in Bian et al. (2015). Simulated aerosol species include black carbon, organics, and water with 36 logarithmically spaced size sections from 3 nm to 10 μm .

We assume that all species are internally mixed within each size section, meaning that the ratio of BC and OA are the same for all particles within each size bin. When calculating OA partitioning, we assume that OA and BC exist in separate phases, and thus this presence of BC does not influence OA partitioning to the particle phase in the model.

In our previous study examining the influence of wall loss on primary semi-volatile organics in the chamber (Bian et al., 2015), we simulated eight organic “species” within the Volatility Basis Set (Donahue et al., 2006) with logarithmically spaced effective saturation concentrations (C^*) spanning from 10^{-3} to $10^4 \mu\text{g m}^{-3}$ using the volatility distribution derived by May et al. (2013). C^* of $10^4 \mu\text{g m}^{-3}$ is the least-constrained volatility bin in the analysis of May et al. (2013), and the large amount of material in this bin may represent some of the vapor in higher bins. In this current study, we expand the simulated organics from eight to fifteen “species” including more volatile organics between 10^6 to $10^{11} \mu\text{g m}^{-3}$, based on the FLAME-4 study of Hatch et al. (2016), to account for chemical transformations from both volatile and semi-volatile organic species and estimate the initial organic vapor concentration based on aerosol partitioning theory (Pankow, 1994) on the assumption of gas and particle equilibrium partitioning (Fig. 1a). The evolution of the organic vapors is calculated based on partitioning theory (to get equilibrium vapor pressures above the particle), wall-equilibrium vapor pressures, and kinetic mass transfer to/from the particles and the walls. As described in Bian et al. (2015), we retrieved a representative turbulence rate (k_e, s^{-1} , Crump and Seinfeld, 1981) by applying the Aerosol Parameter Estimation (APE) model to ~~SMPS the data of scanning mobility particle sizer data~~ following the method in Pierce et al. (2008). We then estimated the size-dependent particle wall-loss rates ($k_{w,p}(D_p)$, Eqn 1) and reversible vapor wall-loss rate coefficients ($k_{w,on}$ and $k_{w,off}$, Eqn 2

and 3) using the fitted turbulence rate (k_e),

$$\frac{dC_p}{dt} = k_{w,p0} + \frac{6\sqrt{D_{gas}}}{D_p} D_1\left(\frac{C_p}{2\sqrt{D_{gas}}}\right) + \frac{C_p}{4\tau/3} \quad \text{Eqn 1}$$

$$\frac{dC_p}{dt} = \left(\frac{D}{D_p}\right) \frac{\left(\frac{C_p}{C^*}\right)}{1.0 + \left(\frac{D}{D_p}\right) \left[\frac{C_p}{4(D_{gas} D_p)^{0.5}}\right]} \quad \text{Eqn2}$$

$$\frac{dC_p}{dt} = \frac{D_{gas}}{D_p} = \frac{D_{gas}}{D_p} \left(\frac{C_p^*}{C_p}\right) \quad \text{Eqn3}$$

where D is the Brownian diffusivity of the particle of size D_p , R is the radius of the chamber [on the assumption that the chamber is a sphere](#), v_s is the gravitational settling velocity of the particle, and $k_{w,p0}$ is a size-independent wall-loss rate that is used to represent the effect of electrostatic forces on the wall loss. D_1 is the Debye function (Abramowitz and Stegun, 1964). The fitted values of k_e and $k_{w,p0}$ are listed in Table 1. $k_{w,on}$ is the rate coefficient for the transfer of gas-phase organic vapors to the wall, A/V is the surface to volume ratio of the chamber, α_w is the mass accommodation coefficient of vapors onto the chamber walls, $(m\ s^{-1})$ is the mean thermal speed of the molecules (calculated using the molecular weights of each organic volatility bin), k_e is a function of the turbulent kinetic energy in the chamber (derived from the APE model described above), and D_{gas} is the molecular diffusivity ($m^2\ s^{-1}$). $k_{w,-off}$ is the evaporation rate coefficient from the wall. K_w is the gas-particle partitioning coefficient. C_w is the equivalent or effective organic mass concentration of the walls (in units of mass per chamber volume). C^* is the saturation concentration ($\mu g\ m^{-3}$). M_p and M_w are the average molecular weights of the organic species in the particles and in the Teflon film comprising the chamber ($\mu g\ m^{-3}$). γ_w and γ_p are the activity coefficients of the organic species in the Teflon film and the particle phase, respectively.

Previous studies have shown two variables primarily control vapor wall-loss rates: the effective saturation of vapor with respect to the wall ($C_w/M_w\gamma_w$) and the accommodation coefficient for vapor into the wall (α_w , Bian et al., 2015, Zhang et al., 2015). Matsunaga and Ziemann (2010) suggested $C_w/M_w\gamma_w$ values of 9, 20, 50 and 120 $\mu mole\ m^{-3}$ for n-alkanes, 1-alkenes, 2-ketones, and 2-alcohols, respectively. Krechmer et al. (2016) extended the vapor-wall-loss study of Matsunaga and Ziemann (2010) to species over a broader volatility range, suggesting that C_w be treated as a function of C^* . Zhang et al. (2015) also implied that C_w could depend on C^* , but their calculated C_w values were smaller than those recommended by Krechmer et al. (2016) for C^* lower than $10^5\ \mu g\ m^{-3}$. For the mass accommodation coefficient of vapors on wall (α_w), Matsunaga and Ziemann (2010) found it to be above 1×10^{-5} while Zhang et al (2015) found that α_w is also dependent on C^* . In our simulations of the smog-chamber experiments that are presented here, we use the Krechmer $C_w/M_w\gamma_w$ values and a α_w of 1×10^{-5} in the base-

case simulations and then perform sensitivity tests by varying $C_w/M_w\gamma_w$ and α_w according to the range of previously reported values.

The gas-phase organic chemistry matrix used in the model follows the study of Jathar et al. (2014). We assume that only functionalization occurs in the biomass-burning experiments, with the product organic vapors having volatilities that are either 2 or 4 volatility bins lower than the parent (Table 2). We also do not include aerosol-phase ~~and~~ or heterogeneous reactions, ~~or cloud processing, or effects of smoke on oxidant fields~~ in our model, ~~although these processes may some more factors affect were able to significantly alter the chemistry of plume (Yokelson et al., 2003; Akagi et al., 2011; Mok et al., 2016) e.g. influence of smoke optical properties (Mok et al., 2016) and the cloud processing of smoke in pyrocumulus clouds or boundary layer clouds (Yokelson et al., 2003; Akagi et al., 2011)).~~ The SOA mass yield α_{ij} is assumed to be 1 for all reactions. We use this simple assumption of ~~unity SOA mass yield chemistry~~ as a first test of chemistry in our chamber and plume systems as we found that we did not have enough information to constrain ~~gas-phase the yields or additional chemistry mechanisms~~ beyond this. The chemical mechanism is represented as follows:

$$\frac{d[X_j]}{dt} = -k_{OH,j}[OH][X_j] \quad \text{Eqn 4}$$

$$\frac{d[M_i]}{dt} = \sum_j \alpha_{ij} k_{OH,j}[OH][X_j] \quad \text{Eqn 5}$$

where $[X_j]$ represents the concentration of a gas-phase species in volatility bin j , $k_{OH,x}$ is the reaction rate constant between the oxidant OH and the organic species X_j , and α_{ij} is the mass yield of gaseous product M_i in volatility bin i (assumed to be 1 in our study). OH exposure (OH concentration integrated over the time of the experiment) for each experiment is taken from Hennigan et al. (2011) and the average OH exposure across all of the experiments is assigned to the two experiments with missing values (Table 1). OH concentration ($[OH]$) is estimated on the assumption that the photochemical aging time in all the experiments was 4 hours. k_{OH} is computed from the mathematical relationship retrieved by Jathar et al. (2014) based on the data of Atkinson and Arey (2003): $k_{OH} = -5.7 \times 10^{-12} \ln(C^*) + 1.14 \times 10^{-10}$ for aromatics and $k_{OH} = -1.84 \times 10^{-12} \ln(C^*) + 4.27 \times 10^{-10}$ for alkanes. We use the fits for aromatics (faster chemistry) and alkanes (slower chemistry) separately in different simulations to provide bounds for the chemical reaction rates. As the relationships were derived from a limited number of species, we applied a minimum k_{OH} value to constrain the extrapolation to the broader volatility range, as these relationships give negative k_{OH} values at the highest volatility bins. We then test the sensitivity of the OA enhancement ratios to the choice of minimum k_{OH} value of either 5×10^{-12} or 1×10^{-12} . We do not consider condensed-phase chemistry in this study. The initial values of parameters used in the model simulations, including temperature, particle number concentration, number size distribution, mass

concentration and organic mass fraction, are listed in Table 1 for each experiment.

2.2 Investigating OA in expanding plumes

We apply a simple Gaussian-dispersion framework to represent plume volume expansion in our box model. We assume that the pollutants are uniformly distributed within a box with a crosswind width of $y \pm 2\sigma_y$ and height $z \pm 2\sigma_z$ (the thickness of the box in the wind direction is fixed at 1 m), so that the plume volume in the simulation is $4\sigma_y \times 4\sigma_y \times 1 \text{ m}^3$. We assume that the initial plume width (σ_y) is the same as the fire width (the square root of the fire area). The maximum plume height (σ_z) is constrained by the boundary layer depth, which is set to be 2500 m, equivalent to a σ_z of 625 m. We perform sensitivity tests for fire areas of 1×10^{-4} , 1×10^{-2} , 1 and $1 \times 10^2 \text{ km}^2$ (equivalent initial σ_y of 2.5, 25, 250, and 2500 m, respectively) for a neutral atmospheric stability class (D) and an emission mass flux of $5 \times 10^{-6} \text{ kg m}^{-2} \text{ s}^{-1}$ (on the larger end of the fluxes in the GFED4 emission inventory as found by Sakamoto et al., 2016). The smallest fire size ($1 \times 10^{-4} \text{ km}^2$) was selected to represent a prescribed fire and the larger fire sizes (1 and $1 \times 10^2 \text{ km}^2$) represent wildfire sources. For a fire size of 1 km^2 , we also test the sensitivity to atmospheric stability class (A (unstable), D (neutral) and F (stable)) for mass fluxes of 2×10^{-8} and $5 \times 10^{-6} \text{ kg m}^{-2} \text{ s}^{-1}$. The dispersion parameters used to estimate σ_y and σ_z for different Pasquill stability classes are taken from Klug (1969). The background is considered to be non-volatile OA with a fixed concentration of $5 \mu\text{g m}^{-3}$, and this aerosol is entrained into the box as it expands. The organic-vapor chemistry scheme is the same as used in the chamber study. The input parameters for the TOMAS Gaussian dispersion dilution simulations are listed in Table 3.

2.3 Definitions of OA enhancement

We use two definitions of the “observed” OA enhancement ratio, both found in the literature, to demonstrate that these definitions impact the amount of apparent SOA formation in chambers and in plumes. In smog-chamber and field studies of biomass burning, the OA mass enhancement ratio is often calculated as the change in OA mass relative to the background, and also relative to a species assumed to be inert on the experimental timescales. A commonly reported variable is the normalized excess mixing ratio (NEMR; Akagi et al., 2012), where the in-plume OA concentrations are corrected for background concentrations and normalized to an inert tracer (IT) also emitted from the fire (e.g. CO or black carbon [BC]):

$$\text{NEMR}_t = \frac{(\text{OA}_{\text{plume}} - \text{OA}_{\text{background}}) / \text{IT}_{\text{plume}}}{(\text{OA}_{\text{background}} - \text{OA}_{\text{background}}) / \text{IT}_{\text{background}}} \quad \text{Eqn 6}$$

where t denotes that NEMR is a time-dependent (equivalently, downwind-distance-dependent) variable. If the OA and IT are non-reactive and non-depositing (or depositing at the same rate), and OA is nonvolatile, then NEMR remains unchanged

with time and represents the emitted ratio of the two species, specific to the fuel and combustion conditions; as such, it can be compared with lab studies aimed at quantifying these emission ratios (e.g., May et al., 2014). In the case of smog-chamber experiments, the OA and IT background concentrations are negligible because the chamber is filled with clean air before injecting emissions. In this work, we use BC mass as our IT (Grieshop et al., 2009; Hennigan et al., 2011). We further normalize $NEMR_t$ by the initial NEMR value (at the start of the lab experiments or at emission for the expanding plumes) to define the inert OA mass enhancement ratio ($OAER_{inert}$) (Eqn 7):

$$OAER_{inert,t} = \frac{NEMR_t}{NEMR_0} \quad \text{Eqn 7}$$

The subscript 0 refers to values at the initial time, and the subscript t refers to any subsequent time in the simulations or observations. As BC concentration decreases due to particle-phase wall losses (in smog chambers) and dilution (in ambient plumes), $OAER_{inert}$ normalizes the relative change in OA by the decrease in concentration of BC, and thus corrects for particle-phase wall losses and dilution. If these are the only processes occurring, then $OAER_{inert}$ remains fixed at a value of 1 at any time t. Other situations result in time-dependent $OAER_{inert}$. Net OA production leads to $OAER_{inert}$ values greater than 1, and net OA evaporation leads to $OAER_{inert}$ values less than 1. $OAER_{inert}$ is thus a scale factor that can be applied to OA emission factors to account for time-dependent in-plume net production/loss of OA.

Although $OAER_{inert}$ can be computed readily from observations and can indicate when other processes besides dilution are active, POA evaporation and SOA production may compensate for each other, so that it is impossible to quantify the impact of SOA production through $OAER_{inert}$ (or NEMR) alone, as has been pointed out previously (e.g., DeCarlo et al., 2010; Akagi et al. 2012; May et al., 2015). ~~On the other hand, via the modeling approach used in this work we can directly compare simulations with and without chemistry, and thus we can isolate the impact of chemistry on our simulations and on the “observed” $OAER_{inert}$. To isolate the impact of chemistry alone on our simulations, we introduce the chemistry OA mass enhancement ratio ($OAER_{chem}$) to give an alternate metric of $OAER_{inert}$, which is the convolution of evaporation and SOA formation. We define the chemistry OA mass enhancement ratio ($OAER_{chem}$) as the ratio of predicted OA concentrations in the chemistry-on and chemistry-off simulations:~~

$$OAER_{chem,t} = \frac{(C_{OA,chem-on,t} - C_{OA,chem-off,t})}{(C_{BC,chem-on,t} - C_{BC,chem-off,t})} \quad \text{Eqn 8}$$

While $OAER_{chem}$ is not calculable from field or laboratory observations, it is the indicator of how SOA production enhances OA in the model, with all other processes being equal.

3. Results and discussions

3.1. Simulated chamber SOA production in absence of particle and vapor wall losses

~~This section describes simulations where we test our assumptions about gas-phase chemistry with vapor and wall losses turned off. Specifically, w~~We test the sensitivity of OA to our assumed k_{OH} values and the drop in volatility of organic product species (relative to the parent compound) with each reaction with OH [as described in \(Table 2\)](#).

Fig. 2 shows the OA enhancement ratios for ~~each of our first set of~~the chemistry sensitivity cases. In these simulations, $OAER_{inert}$ and $OAER_{chem}$ are equivalent as chemistry is the only process affecting OA mass (no wall losses or dilution), so the OA enhancement ratios in Fig. 2 represent both OAERs described above. The starting volatility distribution in these simulations [are](#) shown in Fig. 1a. Each bar in Fig. 2 is the OA enhancement ratio averaged over simulations of all 18 experiments. The predicted OA enhancements are insensitive to the chosen minimum k_{OH} values (i.e. 5×10^{-12} and 1×10^{-12} $\text{cm}^3 \text{molec}^{-1} \text{s}^{-1}$); the difference in OA enhancement ratios for these choices is less than 1%. We therefore use a minimum value of 5×10^{-12} $\text{cm}^3 \text{molec}^{-1} \text{s}^{-1}$ throughout the rest of this study. The OA enhancement ratio for the four-volatility-bin drop assumption, Case A (1.9 ± 0.2 for aromatic k_{OH} set and 1.6 ± 0.2 for alkane k_{OH} set), is slightly larger than for the case assuming a two-volatility-bin drop, Case B (1.8 ± 0.2 for aromatic k_{OH} set and 1.5 ± 0.2 alkane k_{OH} set). The OA enhancement ratios simulated using the aromatic k_{OH} set are larger than those using the alkane k_{OH} set, because k_{OH} for aromatics is generally larger than alkanes when C^* is lower than 10^8 $\mu\text{g m}^{-3}$. Therefore, in the remaining simulations presented here, we use the aromatic k_{OH} set with a four-volatility-bin drop per reaction as an upper bound for SOA formation, and the alkane k_{OH} set with the two-volatility-bin drop per reaction as a lower bound for SOA formation. [Jimenez et al. \(2009\) showed that fragmentation would produce more-volatile species compared with parent species. The assumption of zero fragmentation and unity SOA mass yield may cause overestimation of SOA production in our study.](#)

3.2. Influence of particle and vapor wall losses on the apparent SOA production in smog chambers

~~This section investigates the impact of particle and vapor wall losses on the apparent SOA formation in the FLAME-III chamber studies.~~Figure 3a shows the time evolution of organic material between the gas, particle, and wall phases, when both particle and vapor wall losses are considered in the model. The first hour simulates the evolution of primary emitted vapor and particulate organics in the dark period prior to initiating photochemistry. OM in the vapor phase decreases as vapor is absorbed into the wall. OM in the particle phase decreases due to both direct particle losses and the loss of aerosol-phase mass from evaporation of the particles driven by the vapor losses to the walls. The extent of the vapor wall loss is mainly controlled by the reversible vapor wall loss rate coefficients (i.e. k_{on} and k_{off}) in Eqn 3. These two variables are mainly

influenced by two vapor-wall interaction parameters: —the effective saturation concentration of vapor with respect to the wall ($C_w/M_w\gamma_w$), and the accommodation coefficient for vapor with the wall, α_w (Bian et al., 2015). We demonstrate the sensitivity of our results to values of these parameters later in this section.

The starting volatility distribution of the chemistry portion of simulations with vapor wall loss on (and base-case assumptions) is shown in Fig. 1b, representing the volatility distribution after 1 hour of vapor-aerosol-wall re-equilibration during the “dark” phase of each smog chamber experiment (see Bian et al. (2015) for a full analysis of these experiments). Photo-oxidation was then initiated and the simulations were continued for 4 hours. The dotted lines in Figure 3a show how the system evolves over the 5 hours of the experiment when no photo-oxidation is allowed to occur. This evolution is contrasted with that depicted by the solid lines, for which the chemical oxidation mechanism was activated in the model after the first hour (dark / equilibration period), to represent the experimental period when chamber irradiation began; chemistry was allowed to proceed for the next 4 hours. In Figure 3, the upper-bound chemistry assumptions have been applied (k_{OH} set for aromatics with a four-volatility-bin drop per reaction). In Figure 3a, since particle and vapor wall losses were allowed to continue to occur in parallel with SOA formation from vapor oxidation, the extent of net SOA formation depends on the competition between the oxidation of organic vapors and wall losses of these same vapors, as well as the competition between absorption of product vapors into the walls and into the aerosol phase. The role of the vapors lost to the walls is explored in Fig. 3b, which shows the same case but with vapor wall losses turned off. More SOA is produced in this second case, and OM in the vapor phase is strongly reduced due in part to the higher efficiency of the chemical reactions. In both scenarios, the produced SOA from vapor oxidation compensates some of the OM particle wall loss, but stronger OM production also leads to more OM lost to the wall as deposited particles (green lines). As demonstrated in these examples, the net SOA production in chambers is therefore dependent on interactions between the photochemical reaction rates (and associated changes in organic volatility) and the wall-loss kinetics and applicable parameters (i.e., wall saturation concentration and mass accommodation coefficient of vapors to the wall).

The $OAER_{chem}$ value for the base simulations with vapor wall losses on is 2.6 ± 0.5 (i.e., the ratio of the solid red to dashed red lines in Fig. 3a, calculated by Eqn 7) after 5 hours, while the $OAER_{chem}$ value for the simulations with vapor wall losses off (Fig. 3b) is 3.4 ± 0.7 at this same time. Thus, these simulations suggest that vapor wall losses measurably reduce the amount of SOA formed in the chamber by removing precursor vapors. On the other hand, the averaged $OAER_{inert}$ value (the metric used by Hennigan et al. (2011) to report their experimental observations) for our simulations with vapor wall losses on (Fig. 3a, using BC as the tracer, not shown on this figure) is 1.9 ± 0.4 after

5 hours, while our $\text{OAER}_{\text{inert}}$ value for the simulations with vapor wall losses off (Fig. 3b) is 3.3 ± 0.7 . Thus, the $\text{OAER}_{\text{inert}}$ values are lower than the $\text{OAER}_{\text{chem}}$ values when vapor wall losses are on, but the two metrics are similar when vapor wall losses are off. This difference arises because evaporation of OA, driven by vapor wall losses, decreases the OA/BC ratio throughout the experiment, lowering the value of $\text{OAER}_{\text{inert}}$. Since vapor wall losses drive evaporation in both the chem-on and chem-off experiments, $\text{OAER}_{\text{chem}}$ is a better metric for isolating the effect of chemistry than is $\text{OAER}_{\text{inert}}$. However, because the differences between $\text{OAER}_{\text{inert}}$ and $\text{OAER}_{\text{chem}}$ are not great when vapor wall losses are off, and because $\text{OAER}_{\text{inert}}$ is more directly comparable to the experimental analysis of Hennigan et al. (2011), we use $\text{OAER}_{\text{inert}}$ as the representative OA enhancement ratio for the remainder of the discussion on smog-chamber SOA. We will revisit $\text{OAER}_{\text{chem}}$ when discussing ambient plumes, where $\text{OAER}_{\text{inert}}$ and $\text{OAER}_{\text{chem}}$ show important differences.

Since the initial organic aerosol masses in the simulations are identical to the measurements, we use $\text{OAER}_{\text{inert}}$ to evaluate simulated OA mass against measurements in Figs. 4 and 5 as the inert-tracer wall losses for these experiments have been evaluated in Bian et al. (2015). The range of $\text{OAER}_{\text{inert}}$ values presented in Hennigan et al. (2011) was 1.7 ± 0.7 , so our comparable simulations with vapor wall loss on are in very good agreement with those observations. May et al. (2015) was only able to derive a single volatility distribution across the FLAME III 18 experiments and the IVOC volatility distribution from FLAME IV experiments do not directly correspond to the specific FLAME III experiments. Thus, we expect the error in individual simulation-experiment pairs are thus expected due to the single volatility distributions across all simulations. these assumptions and to We thus seek to capture the mean behavior across all of the experiments rather than comparing individual simulations to their corresponding experiments become our target. The initial organic aerosol masses in the simulations are identical to the measurements. $\text{OAER}_{\text{inert}}$ effectively evaluates OA mass since the inert tracer wall losses for these experiments have been evaluated in Bian et al. (2015). Our simulations also show that these experimentally derived enhancement ratios would be higher in the absence of vapor wall loss, since our simulated $\text{OAER}_{\text{inert}}$ for the simulations with vapor wall losses off is almost doubled, 3.3 ± 0.7 . As the predicted underestimation of SOA formation attributed to vapor wall losses depends on our assumptions for various wall-loss parameters and the details of the chemistry scheme, the rest of this section explores how robust these results are to the wall-loss and chemical-mechanism uncertainties.

We perform sensitivity tests using documented values of $C_w/M_w\gamma_w$ (9, 20, 50, $120 \mu\text{g m}^{-3}$ and two sets of $C_w/M_w\gamma_w$ that vary with volatility) to estimate their influence on SOA production in the simulated chamber experiments. α_w is set to 10^{-5} . Fig. 4a summarizes the predicted values of $\text{OAER}_{\text{inert}}$ under our upper-bound chemistry assumptions (k_{OH}

Formatted: Subscript

set for aromatics with four-volatility-bin drop per reaction) for the various $C_w/M_w\gamma_w$ assumptions, while Fig. 4b shows the same but for the lower-bound chemistry assumptions (k_{OH} set for alkanes with two-volatility-bin drop per reaction). The $OAER_{inert}$ values using Krechmer's $C_w/M_w\gamma_w$ set are comparable to those using the fixed $9 \mu\text{g m}^{-3}$ value but less than Zhang's $C_w/M_w\gamma_w$ set, because Krechmer's $C_w/M_w\gamma_w$ leads to more vapor wall losses than Zhang's $C_w/M_w\gamma_w$ (Table 4). The difference in OA enhancement ratios for these varying $C_w/M_w\gamma_w$ is as much as 119% if estimated using the upper-bound chemistry assumptions (Fig. 4a) and as much as 63% for the lower-bound assumptions (Fig. 4b). For the upper-bound-chemistry simulations, $OAER_{inert}$ for the simulations using $C_w/M_w\gamma_w$ of 20 and $9 \mu\text{mole m}^{-3}$ and Krechmer's values (1.6, 1.9 and 1.9) are close to the experimental values (1.7 ± 0.7) reported by Hennigan et al. (2011), suggesting our simulations using these parameter settings could reflect the conditions in the chamber experiments. Generally, the lower-bound-chemistry simulations all underpredict the experimental range of Hennigan et al. (2011). Most of those simulations result in a net loss of OA ($OAER_{inert}$ less than 1), although the simulations with the Zhang $C_w/M_w\gamma_w$ set overlap with the low end of the Hennigan et al. (2011) range.

The vapor accommodation coefficient with the walls, α_w , has also been demonstrated to be an important parameter in chambers that influences the vapor-wall loss rates (Zhang et al. 2014; Bian et al., 2015). A value of 1 ~~represents perfect accommodation,~~ representing no limitation on the vapor-wall loss rates due to this process. Based on their series of lab studies, Matsunaga and Ziemann (2010) recommended values of α_w larger than 10^{-5} . Zhang et al. (2014) and Bian et al. (2015) both showed the insensitivity of vapor wall loss to α_w when $\alpha_w > 10^{-4}$, but vapor wall loss was largely suppressed using the varying α_w as a function of C^* that was suggested by Zhang et al. (2015). We thus simulate the experiments for choices of $\alpha_w = 1$ and for varying α_w , as sensitivity tests from our previously assumed value of 10^{-5} . $C_w/M_w\gamma_w$ is set to Krechmer's values for this series of simulations. Fig. 5 shows that assuming $\alpha_w = 1$ decreases $OAER_{inert}$ by 18-31% compared with the base-case simulations using $\alpha_w = 1 \times 10^{-5}$, since k_{On} is nearly one order of magnitude higher for $\alpha_w = 1$ than for $\alpha_w = 1 \times 10^{-5}$ (Table 3). On the other hand, $OAER_{inert}$ nearly doubles when using the varying α_w relative to the 1×10^{-5} simulations, as vapor wall loss is slower on average for the varying α_w (i.e. 3.7×10^{-9} to 1.1×10^{-6} for our simulated C^* range). Compared with the experimental values of Hennigan et al. (2011), it appears that using α_w of 1×10^{-5} , or the varying α_w values with the lower-bound-chemistry assumptions, can better represent the FLAME-III experiments; however, we are unable to provide the "best-fit parameters" for the simulations as we cannot determine which set of α_w , $C_w/M_w\gamma_w$, and chemistry assumptions best represent the actual processes occurring in the chamber, since different combinations of these values can reproduce the observed $OAER_{inert}$ range.

Whether the upper- or lower-bound chemical mechanism assumptions are applied, our simulations show that $OAER_{inert}$ increases significantly for most of the cases when vapor wall losses are shut off, implying that vapor-wall-loss suppression of SOA formation is a robust result across our simulations (Fig. 4). For example, $OAER_{inert}$ for the upper-bound-chemistry simulations without vapor wall loss is 3.3 ± 0.7 (Fig. 4a), or over a 200% increase in OA attributable to chemical formation of SOA from species that are lost to the walls in typical experiments. Most of the measurements and simulations including vapor wall losses result in OA increases due to SOA formation of 100% or less. Thus, our simulations imply that SOA production in biomass-burning-smoke SOA laboratory smog chamber experiments may be underestimated by a factor of 2 or more due to vapor wall losses, and that applying lab-derived apparent SOA formation rates to simulations of the evolution of ambient OA would similarly underestimate the impacts of photo-oxidation of biomass-burning products. We explore these potential atmospheric impacts in the next section.

3.3 SOA production in ambient plumes

The semi-volatile nature of organics from biomass burning not only complicates SOA estimation from chamber studies, but also can influence OA evolution during plume transport and dilution. In dispersion, the initial plume cross-sectional area is a key factor that determines the relative plume dilution rate during transport (Sakamoto et al., 2016). The initial plume width is associated with fire size, which means that the fire size could largely influence the plume evolution (Sakamoto et al., 2016). [Cochrane et al. \(2012\)](#) reported 14 wildfires with fire size from 5 to over 1000 thousands km^2 . [Akagi et al. \(2013\)](#) also recorded the burn areas for the observed prescribed fire range from 0.162 to 1.47 km^2 . The burning area for Williams fire was 0.81 km^2 (Akagi et al., 2012). [The fire size for agricultural and pile burns can be as small as \$7 \times 10^{-5} km^2\$ \(Springsteen, et al. 2015\)](#). We therefore perform simulations on the evolution of ambient OA concentrations over 4 hours of simulated transport, for four different fire areas of 1×10^{-4} , 1×10^{-2} , 1×10^0 and $1 \times 10^2 km^2$ (with the fire width assumed to be the square root of these areas), which largely almost cover the reported burned areas above. In these simulations, we set the mass flux to $5 \times 10^{-6} kg m^{-2} s^{-1}$ and the atmospheric stability to the neutral atmospheric Pasquill stability condition, D . The initial mass concentrations for different-sized fires are assumed to be similar in all cases ($\sim 10^3 \mu g m^{-3}$). The simulated time evolution of various key quantities is shown for each of the four different fire sizes in Fig. 6, with the upper-bound chemistry cases shown as solid lines and the lower-bound chemistry as dotted lines.

The organic mass (OM) concentration in the gas and particle phases predicted for the small fire ($1 \times 10^{-4} km^2$, prescribed fire size) drops quickly from 1×10^3 to $3 \times 10^{-3} \mu g m^{-3}$ over the four simulated hours (blue lines, Figs. 6a and b) due to the strong dilution: a dilution ratio of over 10^5 with respect to the initial volume is achieved within 2 hours, as

Formatted: Superscript

Formatted: Superscript

shown in Fig 6c. The OA concentration for the large fire ($1 \times 10^2 \text{ km}^2$, wildfire size) decreases from around 3×10^3 to $1 \times 10^3 \text{ } \mu\text{g m}^{-3}$ because of weak dilution (dilution ratio < 10). $\text{OAER}_{\text{inert}}$ increases to around 1.06-1.20 (depending on upper- versus lower-bound chemistry) for the 100 km^2 fire area; however, for the smaller fires, $\text{OAER}_{\text{inert}}$ initially decreases due to the dominant role of OA evaporation driven by dilution, but eventually recovers as SOA formation rates exceed the loss rates (particularly for the upper-bound-chemistry simulations, Fig. 6d). The upper-bound-chemistry simulated $\text{OAER}_{\text{inert}}$ after 4 h transport are all above 1, while $\text{OAER}_{\text{inert}}$ remains below 1 for the small fires in the lower-bound-chemistry simulations. Thus, the range in the simulations shown in Fig. 6d captures the range in the competition between OA evaporation due to dilution and OA formation due to chemistry and condensation. Interestingly, $\text{OAER}_{\text{inert}}$ evolves virtually identically for the two smallest fires (Fig. 6d), despite different dilution ratios (Fig. 6c) due to the biomass-burning OA concentrations dropping below the concentration background OA entrained into the plume ($5 \text{ } \mu\text{g m}^{-3}$) in both plumes, which suggests that the background OA concentration also plays a role affecting the OAER values.

Atmospheric stability is an important parameter that influences the dilution rate. Figs 7 and 8 show the impacts on the predictions of changing atmospheric stability for low (Fig. 7) and high (Fig. 8) emission mass fluxes (2×10^{-8} and $5 \times 10^{-6} \text{ kg m}^{-2} \text{ s}^{-1}$), all for moderate 1 km^2 fire areas. Unstable atmospheres (stability-class A) favor the vertical and horizontal mixing of air parcels that enhances dilution (Fig 7c). Stable atmospheres (stability-class F) resist vertical mixing and have weaker dilution. Therefore, OA evolution in unstable atmospheres (A) behaves qualitatively similar to the small fires in Fig. 7 and has a similar decreasing-then-increasing pattern for $\text{OAER}_{\text{inert}}$. OA evolution in stable atmospheres (F) behaves qualitatively similar to the large fires in Fig. 7, leading to a steady increase in $\text{OAER}_{\text{inert}}$ with time (Fig. 7). For the low-emission mass flux (Fig. 8), $\text{OAER}_{\text{inert}}$ shows a similar pattern across all stability classes, increasing steadily with time. This monotonic increase arises because the plumes begin in a dilute state where the biomass-burning OA concentrations quickly drop below the background non-volatile BC-OA concentrations entrained into the plume ($5 \text{ } \mu\text{g m}^{-3}$). In this limit, further dilution does not lead to further evaporation, so in each of the stability cases chemistry exceeds evaporation. Again, this shows that the results should be sensitive to background non-volatile OA concentrations. Fire intensity would also influence OA evolution in the plume through changes in emission fluxes. Compared OA evolution for fire size of 1 km^2 under Atmospheric Class of D in Fig 7 and 8, high emission mass flux (i.e. large fire intensity) has lower $\text{OAER}_{\text{inert}}$ and $\text{OAER}_{\text{chem}}$ than that of low emission mass flux, suggesting that under the same dilution ratio, lower emission mass flux has slightly more-effective SOA formation. OA concentrations for lower emission mass flux quickly drop close or below the background non-volatile OA concentrations and further dilution does not lead to further evaporation. The evaporated organics are available for

Formatted: Superscript

Formatted: Subscript

Formatted: Subscript

SOA formation. Both of $OAER_{inert}$ and $OAER_{chem}$ after 4 hrs were thus higher for low emission mass flux than high emission mass flux. Fire intensity would also influence OA evolution in the plume. Compared OA evolution for fire size of 1 km² under Atmospheric Class of D in Fig 7 and 8, high emission mass flux (i.e. large fire intensity) has lower $OAER_{inert}$ and $OAER_{chem}$ than that of low emission mass flux, suggesting that under the same dilution ratio, lower emission mass flux has slightly more effective SOA formation. OA concentrations for lower emission mass flux quickly drop close or below the background non-volatile OA concentrations and further dilution does not lead to further evaporation. The evaporated organics are available for SOA formation. Both of $OAER_{inert}$ and $OAER_{chem}$ after 4 hrs were thus higher for low emission mass flux than high emission mass flux.

Formatted: Subscript

Formatted: Subscript

The sensitivity tests shown in Figs. 6-8 demonstrate that OA enhancement ratios measured in the field using BC or CO as a conserved tracer ($OAER_{inert}$) may undergo very different trajectories based on (1) the fire size, (2) the emissions mass flux, and (3) the stability of the atmosphere - even when the OA volatility distribution and chemical mechanisms are identical. This variance with fire size, mass flux, and stability may explain at least some of the variability in the measured time evolution of OA enhancement ratios ($OAER_{inert}$) reported in field studies. For nighttime OA evolution, it may be difficult to generalize about day/night differences due to various aspects being different between day and night on average. In general, nighttime plumes may have (1) less dispersion in the boundary layer due to more-stable air, (2) different chemistry, and (3) lower emission fluxes as peak fire intensities are typical during the day (this may affect fire size too; Zhang and Kondragunta, 2008; Wooster and Lagoudakis, 2009). It is unclear how the convolution of these differences might impact the plumes, and it probably varies between cases.

3.4. Is the traditional OA enhancement ratio reported in field studies a good proxy for SOA formation? $OAER_{inert}$ versus $OAER_{chem}$

As described earlier, $OAER_{inert}$ (the OA enhancement ratio calculated by using an inert tracer, such as BC, to account for physical dilution) and $OAER_{chem}$ (the OA enhancement ratio calculated comparing simulations with chemistry on versus chemistry off) differed for our simulations of smog-chamber experiments with vapor wall losses on. We find that the differences between $OAER_{chem}$ and $OAER_{inert}$ can be even more dramatic in our plume simulations. Fig. 6 shows that $OAER_{chem}$ increases steadily across all four different-sized fires. Unlike $OAER_{inert}$, which had the largest increases for the large fire, $OAER_{chem}$ has the largest increases for small fires, reaching values of 2.2 for the small fires and 1.3 for the large fires (with upper-bound chemistry). More organic material is evaporated from particles in plumes of smaller fires, which gives a larger reservoir of SOA precursors to generate SOA, compared to the plumes of larger fires. Thus, while $OAER_{inert}$ estimates that are traditionally reported in field studies may show

values similar to or less than 1, the OA in these plumes may actually be strongly enhanced by SOA formation, and indeed evaporation of precursors driven by dilution is required to replenish the reservoir of SOA precursors in the gas phase so that these processes are not only in competition but are dependent on each other. In cases where little apparent SOA production is occurring, our studies suggest that SOA formation is simply balancing the loss of OA from evaporation. Papers analyzing field observations have suggested this possibility. Papers analyzing field observations have suggested this possibility. Capes et al. (2008) and Cubison et al. (2011) observed significant increases in O:C ratios of the organic aerosol, but a small decrease in the normalized OA mass concentrations.; Akagi et al. (2012) observed the decrease of OA and attributed this to the processes of particle evaporation. Similarly, Jolleys et al. (2015) observed the increased O:C elemental ratio but lower OA in the smoke plumes, and they attributed this to the combination of dilution and chemical processing. May et al. (2015) also suggested the competition between dilution-driven evaporation and SOA formation during the plume transport may be occurring in their observed plumes, as they found approximately 50% reduction of OA after several hours of aging with increasing in the O:C ratio. Additionally, the lab study of Hennigan et al. (2011) also showed increased O:C ratios in experiments with decreasing OA concentrations. ~~This explanation~~ Our modeling result is consistent with the findings from ~~thesesome~~ observational studies reporting increased oxygenation with time for the OA even with observed decreases in the relative amount of OA (or a relative constant or lower decreasing $OAER_{inert}$) (Jolleys et al., 2015).

Analogous results are shown for the influence of atmospheric stability in Fig. 7. The $OAER_{inert}$ values are largest for the most-stable conditions. On the other hand $OAER_{chem}$ values are largest for the least-stable conditions that have the most organic-vapor evaporation generating the largest pool of SOA precursor vapors. Under low emission-flux conditions (Fig. 8), the plume is already dilute upon emission and thus both $OAER_{inert}$ and $OAER_{chem}$ have nearly identical values, monotonically increasing with transport time.

This comparison of $OAER_{inert}$ and $OAER_{chem}$ shows that $OAER_{inert}$ computed from field measurements may not be indicative of the relative amount of SOA formed in the plume, due to competition with OA loss to dilution. Further, the relationship between $OAER_{inert}$ and $OAER_{chem}$ can depend greatly on the fire size, smoke emission flux, and the atmospheric stability, and different conclusions regarding the efficiency and impact of photooxidation can be drawn for the same fuels, combustion phases, and chemical mechanisms if the emissions are sampled under those varying fire size and environmental conditions.

4. Summary and Conclusions

We investigated [the some](#) processes controlling biomass-burning OA evolution in smog chambers and in ambient plumes. We used aerosol microphysics simulations with resolved organic volatility, kinetic condensation/evaporation, and gas-phase chemistry (ignoring potential particle- and heterogeneous-phase chemistry) to explore these processes. We found that differences seen between laboratory and field observations may be explained, in part, due to processes that control OA evaporation (and SOA precursor losses) in these experiments.

For laboratory smog-chamber experiments in Teflon chambers (specifically the FLAME-III experiments reported by Hennigan et al., 2011), our simulations showed that vapor wall losses remove SOA precursor vapors and drive OA evaporation. Uncertainties in parameters that control vapor wall losses, such as the wall saturation concentration and wall accommodation coefficient, as well as uncertainties in gas-phase chemistry [with the assumption of zero fragmentation and unity SOA mass yield](#), lead to uncertainties in our simulations. We are able to reproduce the observed OA concentration profiles from the FLAME-III experiments using a range of wall-loss and chemistry parameters that fall within previously published estimates, but there is no unique set of parameters that can be identified at this time. However, under all assumed parameters, the apparent SOA formation was suppressed by vapor wall losses. For the simulations that best reproduced the OA concentration profiles from the FLAME-III experiments, we found that turning off vapor wall losses in these simulations leads to 2-3x increases in the total apparent SOA production in the experiment. Thus, vapor-phase wall losses should be considered and corrected for in biomass-burning SOA smog-chamber experiments.

For ambient expanding plumes, we showed through similar simulations with identical gas-phase chemistry assumptions that the fire area, mass emissions flux, and atmospheric stability strongly modulate initial plume concentrations and plume dilution rates. Conditions with fast dilution (small fire areas and unstable atmospheric conditions) drive faster OA evaporation relative to slow-dilution conditions. However, the evaporated OA serves as precursor vapors for SOA formation. Thus, quickly diluting plumes may have substantial initial drops in the ratio of OA to inert tracers (relative to slowly diluting plumes), but the ratio of OA to inert tracers later increases more rapidly in the quickly diluting plumes due to the faster SOA formation.

To decouple the influences of POA evaporation and SOA formation on the evolution of the net OA, we defined two metrics: (1) $OAER_{inert}$, which uses an inert tracer (e.g. CO or BC) to normalize OA in the plume, as is commonly done in laboratory and field experiments, and (2) $OAER_{chem}$, which uses a simulation with chemistry turned off to normalize the OA in the plume, which is generally only possible in modeling studies. While $OAER_{inert}$ is influenced by both POA evaporation and SOA condensation,

OAER_{chem} shows influence of SOA condensation which allowed us to decouple the influence of POA evaporation and SOA condensation. Through these two metrics, we showed that many plumes with OAER_{inert} values near 1 (implying little net change in OA) may be strongly influenced by SOA production that is balanced by POA evaporation. We found the SOA-production influence to be strongest for rapidly diluting plumes (such as those from small-area fires or under unstable atmospheric conditions), where SOA may contribute to a doubling of OA concentrations within 4 hours relative to a simulation with chemistry off, even though field measurements might have observed little to no net change in OA in the plume with time.

Our results highlight that the evolution of OA in the atmosphere depends on more than the details of the fuel types, the combustion efficiency of those fuels, the size of the fire and the meteorological conditions may also influence whether a net OA increase or decrease is inferred, when ~~dilution alone is accounted for by~~ OA is normalized with an inert-tracer concentrations. The large range in reported observed OA changes in experiments and ambient plume profiles (e.g., Grieshop et al., 2009; Yokelson et al., 2009; Cubison et al., 2011; Hennigan et al. 2011; Akagi et al., 2012; Ortega et al., 2013; May et al., 2015) may be explained, in part, by these factors. Additionally, as we used identical chemistry assumptions in all of our simulations, we showed that the changes in OA with time in laboratory and field experiments cannot easily be compared to each other due to different influences of chamber walls and plume dilution. The apparent observed OA evolution in the laboratory and field may be drastically different (e.g. showing a net gain in the lab while showing a net loss in the field) even with identical chemical mechanisms and rates in the laboratory and field experiments. These findings may also explain in part the systematic inconsistencies in reported OA enhancements measured in the laboratory and in field experiments (e.g., Jolleys et al., 2014). Thus, laboratory and field observations require a thorough understanding of the processes that drive OA evaporation (and SOA-precursor losses) before the impact of photochemical SOA production can be isolated and quantified.

Acknowledgement

This study was supported by the Joint Fire Science Program (JFSP) under projects of 14-1-03-26 and 14-1-03-44. We thank the Fire Lab At Missoula Experiment (FLAME) III project team and Cyle Wold, Emily Lincoln, and Wei Min Hao from the FSL for their support in organizing and conducting the FLAME-III study and for providing the data set used here. We thank Chris Hennigan, Gabriella Engelhart, Marissa Miracolo, Albert Presto, and Allen Robinson for their smog-chamber measurements during FLAME-III. Funding for the FLAME-III project was provided by the National Park Service, JFSP and the EPA STAR program through the National Center for Environmental Research (NCER) under grants R833747 and

R834554, and DOE (BER, ASR program) DE-SC0006035. The views, opinions, and/or findings contained in this paper are those of the authors and should not be construed as an official position of the funding agencies. Although the research described in this article has been funded in part by the United States Environmental Protection Agency, it has not been subjected to the Agency's required peer and policy review and therefore does not necessarily reflect the views of the Agency and no official endorsement should be inferred.

References:

Abramowitz, M. and Stegun, I.: Handbook of Mathematical Functions: With Formulas, Graphs, and Mathematical Tables, Courier Corporation, Dover, New York, 1964.

Adams, P. J. and Seinfeld, J. H.: Predicting global aerosol size distributions in general circulation models, *J. Geophys. Res.*, 107, 4370, doi:10.1029/2001JD001010, 2002.

Akagi, S. K., Yokelson, R. J., Wiedinmyer, C., Alvarado, M.J., Reid, J.S., Karl, T., Crounse, J. D., and Wennberg, P. O.: Emission factors for open and domestic biomass burning for use in atmospheric models, *Atmos. Chem. Phys.*, 11, 4039-4072, doi:10.5194/acp-11-4039-2011, 2011.

Akagi, S. K., Craven, J. S., Taylor, J. W., McMeeking, G. R., Yokelson, R. J., Burling, I. R., Urbanski, S. P., Wold, C. E., Seinfeld, J. H., Coe, H., Alvarado, M. J., and Weise, D. R.: Evolution of trace gases and particles emitted by a chaparral fire in California, *Atmos. Chem. Phys.*, 12, *Atmos. Chem. Phys.*, 12, 1397–1421, doi:10.5194/acp-12-1397-2012, 2012.

[Akagi, S. K., Yokelson, R.J., Burling, I.R., Meinardi, S., Simpson, I., Blake, D. R., McMeeking, G. R., Sullivan, A., Lee, T., Kreidenweis, S., Urbanski, S., Reardon, J., Griffith, D. W. T., Johnson, T. J., and Weise, D. R.: Measurements of reactive trace gases and variable O₃ formation rates in some South Carolina biomass burning plumes, *Atmos. Chem. Phys.*, 13, 1141-1165, doi:10.5194/acp-13-1141-2013, 2013.](#)

Alvarado, M. J. and Prinn, R. G.: Formation of ozone and growth of aerosol in young smoke plumes from biomass burning: 1. Lagrangian parcel studies, *J. Geophys. Res.*, 114, D09306, doi:10.1029/2008JD011144, 2009.

Alvarado, M. J., Lonsdale, C. R., Yokelson, R. J., Akagi, S. K., Coe, H., Craven, J. S., Fischer, E. V., McMeeking, G. R., Seinfeld, J. H., Soni, T., Taylor, J. W., Weise, D. R., Wold, C. E.: Investigating the links between ozone and organic aerosol chemistry in a biomass burning plume from a prescribed fire in California chaparral, *Atmos. Chem. Phys.*, 15, 6667-6688, doi:10.5194/acp-15-6667-2015, 2015.

Atkinson, R. and Arey, J.: Atmospheric Degradation of Volatile Organic Compounds, *Chem. Rev.*, 4605-4638, DOI: 10.1021/cr0206420, 2003.

Bian, Q., May, A. A., Kreidenweis, S. M. Pierce, J.R.: Investigation of particle and vapor wall-loss effects on controlled wood-smoke smog-chamber experiments, *Atmos. Chem. Phys.*, 15, 11027-11045, doi:10.5194/acp-15-11027-2015, 2015.

[Capes, G. Johnson, B., McFiggans, G., Williams, P.I., Haywood, J., and Coe, H.: Aging of biomass burning aerosols over West Africa: Aircraft measurements of chemical composition, microphysical properties, and emission ratios, *J. Geophys. Res.*, 113, D00C15, 2008.](#)

Cappa, C. D., Jathar, S. H., Kleeman, M. J., Docherty, K. S., Jimenez, J. L., Seinfeld, J. H., Wexler, A. S.: Simulating secondary organic aerosol in a regional air quality model using the statistical oxidation model – Part 2: Assessing the influence of vapor wall losses, *Atmos. Chem. Phys.*, 15, 30081-30126, doi:10.5194/acp-16-3041-2016, 2016.

[Cochrane, M. A., Moran, C. J., Wimberly, M.C., Baer, A. D., Finney, M. A., Beckendorf, K. L., Eidenshink J. and Zhu, Z.: Estimation of wildfire size and risk changes due to fuels treatments, *Int. J. Wildland Fire*, 21, 357-367, 2012](#)

Crump, J. G. and Seinfeld, J. H.: Turbulent deposition and gravitational sedimentation of an aerosol in a vessel of arbitrary shape, *J. Aerosol Sci.*, 12, 405–415, doi:10.1016/0021-8502(81)90036-7, 1981.

Cubison, M. J., Ortega, A. M., Hayes, P.L., Farmer, D. K., Day, D., Lechner, M. J., Brune, W. H., Apel, E., Diskin, G. S., Fisher, J. A., Fuelberg, H. E., Hecobian, A., Knapp, D. J., Mikoviny, T., Riemer, D., Sachse, G. W., Sessions, W., Weber, R. J., Weinheimer, A. J., Wisthaler, A., Jimenez, J. L., Effects of aging on organic aerosol from open biomass burning smoke in aircraft and laboratory studies, *Atmos. Chem. Phys.*, 11., 12049-12064, doi:10.5194/acp-11-12049-2011, 2011.

DeCarlo, P. F., Ulbrich, I. M., Crouse, J., de Foy, B., Dunlea, E. J., Aiken, A. C., Knapp, D., Weinheimer, A. J., Campos, T., Wennberg, P. O., and Jimenez, J. L.: Investigation of the sources and processing of organic aerosol over the Central Mexican Plateau from aircraft measurements during MILAGRO, *Atmos. Chem. Phys.*, 10, 5257-5280, doi:10.5194/acp-10-5257-2010, 2010.

Donahue, N. M., Robinson, A. L., Stanier, C. O., and Pandis, S. N.: Coupled partitioning, dilution, and chemical aging of semivolatile organics, *Environ. Sci. Technol.*, 40, 2635–2643, doi:10.1021/es052297c, 2006.

Grieshop, A. P., Logue, J. M., Donahue, N. M., and Robinson, A. L.: Laboratory investigation of photo chemical oxidation of organic aerosol from wood fires 1:

measurement and simulation of organic aerosol evolution, *Atmos. Chem. Phys.*, 9, 1263-1277, doi:10.5194/acp-9-1263-2009, 2009.

[Hatch, L. E., Yokelson, R. J., Stockwell, C. E., Veres, P. R., Simpson, I. J., Blake, D. R., Orlando, J. J., and Barsanti, K. C.: Multi-instrument comparison and compilation of non-methane organic gas emissions from biomass burning and implications for smoke-derived secondary organic aerosol precursors, *Atmos. Chem. Phys. Discuss.*, doi:10.5194/acp-2016-598, 2016.](#)

[Heilman, W.E., Liu, Y.Q., Urbanski, S., Kovalev, V., and Mickler, R. \(2014\) Wildland fire emissions, carbon, and climate: plume transport, and chemistry processes. *Forest Ecology and Management* 317, 70–79. doi:10.1016/J.FORECO.2013.02.001, 2014.](#)

[Hennigan, C. J., Miracolo, M. A., Engelhart, G. J., May, A. A., Presto, A. A., Lee, T., Sullivan, A.P., McMeeking, G. R., Coe, H., Wold, C.E., Hao, W.-M., Gilman, J.B., Kuster, W.C., de Gouw, J., Schichtel, B.A., Collett Jr., J. L., Kreidenweis, S. M., and Robinson, A. L.: Chemical and physical transformations of organic aerosol from the photo-oxidation of open biomass burning emissions in an environmental chamber, *Atmos. Chem. Phys.*, 11, 7669-7686, doi:10.5194/acp-11-7669-2011, 2011.](#)

~~Krechmer, J. E., Pagonis, D. P., Ziemann, P. J., Jimenez, J. L. L.: Quantification of gas-wall partitioning in Teflon environmental chambers using rapid bursts of low-volatility oxidized species generated in-situ, *Environ. Sci. & Technol.*, 50, 5757-5765, DOI: 10.1021/acs.est.6b00606, 2016.~~

~~Klug, W.: A method for determining diffusion conditions from synoptic observations, *Staub-Reinhalt. Luft*, 29, 14–20, 1969.~~

~~Jathar, S. H., Donahue, N. M., Adams, P. J., Robinson, A. L.: Testing secondary organic aerosol models using smog chamber data for complex precursor mixtures: influence of precursor volatility and molecular structure, *Atmos. Chem. Phys.*, 14, 5771-5780, doi:10.5194/acp-14-5771-2014, 2014.~~

Jassen, N. A. H., Gerlofs-Nijland, M. E., Lanki, T., Salonen, R. O., Cassee, F., Hoek, G., Fischer, P., Brunekreef, B., and Krzyzonowski, M.: Health Effects of Black Carbon, World Health Organization, Regional Office for Europe, available at: http://www.euro.who.int/__data/assets/pdf_file/0004/162535/e96541.pdf (last access: June 2015), 2010.

[Jathar, S. H., Donahue, N. M., Adams, P. J., Robinson, A. L.: Testing secondary organic aerosol models using smog chamber data for complex precursor mixtures: influence of precursor volatility and molecular structure, *Atmos. Chem. Phys.*, 14, 5771-5780, doi:10.5194/acp-14-5771-2014, 2014.](#)

Formatted: Highlight

[Johnston, F. H., Henderson, S. B., Chen, Y., Randerson, J. T., Marlier, M., DeFries, R. S., Kinney, P., Bowman, D. M. J. S., and Brauer, M.: Estimated global mortality attributable to smoke from landscape fires, *Environ. Health Persp.*, 120, 695–701, DOI:10.1289/ehp.1104422, 2012.](#)

[Jathar, S. H., Gordon, T. D., Hennigan, C. J., Pye, H. O. T., Pouliot, G., Adams, P. J., Donahue, N. M., and Robinson: Unspeciated organic emissions from combustion sources and their influence on the secondary organic aerosol budget in the United States, *Proc. Natl. Acad. Sci.*, 10473–10478, doi: 10.1073/pnas.1323740111, 2014.](#)

[Jimenez, J. L., Canagaratna, M. R., Donahue, N. M., Prevot, A. S. H., Zhang, Q., Kroll, J. H., DeCarlo, P. F., Allan, J. D., Coe, H., Ng, N. L., Aiken, A. C., Docherty, K. S., Ulbrich, I. M., Grieshop, A. P., Robinson, A. L., Duplissy, J., Smith, J. D., Wilson, K. R., Lanz, V. A., Hueglin, C., Sun, Y. L., Tian, J., Laaksonen, A., Raatikainen, T., Rautiainen, J., Vaattovaara, P., Ehn, M., Kulmala, M., Tomlinson, J. M., Collins, D. R., Cubison, D. R., Dunlea, E. J., Huffman, J. A., Onasch, T. B., Alfarra, M. R., Williams, P. I., Bower, K., Kondo, Y., Schneider, J., Drewnick, F., Borrmann, S., Weimer, S., Demerjian, K., Salcedo, D., Cottrell, L., Griffin, R., Takami, A., Miyoshi, T., Hatakeyama, S., Shimojo, A., Sun, J. Y., Zhang, Y. M., Dzepina, K., Kimmel, J. R., Sueper, D., Jayne, J. T., Herndon, S. C., Trimborn, A. M., Williams, L. R., Wood, E. C., Middlebrook, A. M., Kolb, C. E., Baltensperger, U., and Worsnop, D. R.: Evolution of organic aerosols in the atmosphere, *Science*, 326, 1525–1529, doi:10.1126/science.1180353, 2009.](#)

[Johnston, F. H., Henderson, S. B., Chen, Y., Randerson, J. T., Marlier, M., DeFries, R. S., Kinney, P., Bowman, D. M. J. S., and Brauer, M.: Estimated global mortality attributable to smoke from landscape fires, *Environ. Health Persp.*, 120, 695–701, DOI:10.1289/ehp.1104422, 2012.](#)

Formatted: Highlight

[Jolleys, M. D., Coe, H., McFiggans, G., Capes, G., Allan, J. D., Crosier, J., Williams, P. I., Allen, G., Bower, K. N., Jimenez, J. L., Russell, L. M., Grutter, M., Baumgardner, D.: Characterizing the aging of biomass burning organic aerosol of mixing ratios, *Environ. Sci. Technol.*, 46, 13093–13102, DOI: 10.1021/es302386v, 2012.](#)

Formatted: Highlight

[Jolleys, M. D., Coe, H., McFiggans, G., McMeeking, G. R., Lee, T., Kreidenweis, S. M., Collett Jr., J. L., Sullivan A.P.: Organic aerosol emission ratios from the laboratory combustion of biomass fuels, *J. Geophys. Res. Atmos.*, 119, 12,850–12,871, doi:10.1002/2014JD021589, 2014.](#)

Formatted: Highlight

[Jolleys, M. D., Coe, H., McFiggans, G., Taylor, J. W., O'Shea, S. J., Le Breton, M., Bauquitte, S. J. –B., Moller, S., Di Carlo, P., Aruffo, E., Palmer, P. I., Lee, J. D., Percival, C. J., Gallagher, M. W.: Properties and evolution of biomass burning organic aerosol from Canadian boreal forest fires, *Atmos. Chem. Phys.*, 15, 3077–3095, doi:10.5194/acp-15-3077-2015, 2015.](#)

Formatted: Highlight

~~Hatch, L. E., Yokelson, R. J., Stockwell, C. E., Veres, P. R., Simpson, I. J., Blake, D. R., Orlando, J. J., and Barsanti, K. C.: Multi-instrument comparison and compilation of non-methane organic gas emissions from biomass burning and implications for smoke-derived secondary organic aerosol precursors, Atmos. Chem. Phys. Discuss., doi:10.5194/acp-2016-598, 2016.~~

~~Heilman, W.E., Liu, Y.Q., Urbanski, S., Kovalev, V., and Mickler, R. (2014) Wildland fire emissions, carbon, and climate: plume transport, and chemistry processes. Forest Ecology and Management 317, 70–79. doi:10.1016/J.FORECO.2013.02.001, 2014.~~

~~Hennigan, C. J., Miracolo, M. A., Engelhart, G. J., May, A. A., Presto, A. A., Lee, T., Sullivan, A.P., McMeeking, G. R., Coe, H., Wold, C.E., Hao, W.-M., Gilman, J.B., Kuster, W.C., de Gouw, J., Schichtel, B.A., Collett Jr., J. L., Kreidenweis, S. M., and Robinson, A. L.: Chemical and physical transformations of organic aerosol from the photo-oxidation of open biomass burning emissions in an environmental chamber, Atmos. Chem. Phys., 11, 7669–7686, doi:10.5194/acp-11-7669-2011, 2011.~~

~~Klug, W.: A method for determining diffusion conditions from synoptic observations, Staub-Reinhalt. Luft, 29, 14–20, 1969~~

~~Kokkola, H., Yli-Pirilä, P., Vesterinen, M., Korhonen, H., Keskinen, H., Romakkaniemi, S., Hao, L., Kortelainen, A., Joutsensaari, J., Worsnop, D.R., Virtanen, A., Lehtinen, K.E.J.: The role of low volatile organics on secondary organic aerosol formation, Atmos. Chem. Phys., 14, 1689–1700, doi:10.5194/acp-14-1689-2014, 2014.~~

~~Krechmer, J. E. Pagonis, D. P., Ziemann, P. J., Jimenez, J. L. L.: Quantification of gas-wall partitioning in Teflon environmental chambers using rapid bursts of low-volatility oxidized species generated in-situ, Environ. Sci. & Technol., 50, 5757–5765, DOI: 10.1021/acs.est.6b00606, 2016.~~

Formatted: Highlight

~~La, Y.S., Camredon, M., Ziemann, P.J., Valorso, R., Matsunaga, A., Lannuque, V., Lee-Taylor, J., Hodzic, A., Madronick, S., Aumont, B.: Impact of chamber wall loss of gaseous organic compounds on secondary organic aerosol formation: explicit modeling of SOA formation from alkane and alkene oxidation, Atmos. Chem. Phys., 16, 1417–1431, doi: 10.5194/acp-16-1417-2016, 2016.~~

~~Jathar, S. H., Gordon, T. D., Hennigan, C. J., Pye, H. O. T., Pouliot, G., Adams, P. J., Donahue, N. M., and Robinson: Unspeciated organic emissions from combustion sources and their influence on the secondary organic aerosol budget in the United States, Proc. Natl. Acad. Sci, 10473–10478, doi: 10.1073/pnas.1323740111, 2014.~~

~~Jimenez, J. L., Canagaratna, M. R., Donahue, N. M., Prevot, A. S. H., Zhang, Q., Kroll, J. H., DeCarlo, P. F., Allan, J. D., Coe, H., Ng, N. L., Aiken, A. C., Docherty, K. S.,~~

Ulbrich, I. M., Grieshop, A. P., Robinson, A. L., Duplissy, J., Smith, J. D., Wilson, K. R., Lanz, V. A., Hueglin, C., Sun, Y. L., Tian, J., Laaksonen, A., Raatikainen, T., Rautiainen, J., Vaattovaara, P., Ehn, M., Kulmala, M., Tomlinson, J. M., Collins, D. R., Cubison, D. R., Dunlea, E. J., Huffman, J. A., Onasch, T. B., Alfarra, M. R., Williams, P. I., Bower, K., Kondo, Y., Schneider, J., Drewnick, F., Borrmann, S., Weimer, S., Demerjian, K., Salcedo, D., Cottrell, L., Griffin, R., Takami, A., Miyoshi, T., Hatakeyama, S., Shimono, A., Sun, J. Y., Zhang, Y. M., Dzepina, K., Kimmel, J. R., Sueper, D., Jayne, J. T., Herndon, S. C., Trimborn, A. M., Williams, L. R., Wood, E. C., Middlebrook, A. M., Kolb, C. E., Baltensperger, U., and Worsnop, D. R.: Evolution of organic aerosols in the atmosphere, *Science*, 326, 1525–1529, doi:10.1126/science.1180353, 2009.

Jolleys, M. D., Coe, H., McFiggans, G., Capes, G., Allan, J. D., Crosier, J., Williams, P. I., Allen, G., Bower, K. N., Jimenez, J. L., Russell, L. M., Grutter, M., Baumgardner, D.: Characterizing the aging of biomass burning organic aerosol of mixing ratios, *Environ. Sci. Technol.*, 46, 13093–13102, DOI: 10.1021/es302386v, 2012.

Jolleys, M. D., Coe, H., McFiggans, G., McMeeking, G. R., Lee, T., Kreidenweis, S. M., Collett Jr., J. L., Sullivan A.P.: Organic aerosol emission ratios from the laboratory combustion of biomass fuels, *J. Geophys. Res. Atmos.*, 119, 12,850–12,871, doi:10.1002/2014JD021589, 2014.

Jolleys, M. D., Coe, H., McFiggans, G., Taylor, J. W., O'Shea, S. J., Le Breton, M., Bauguitte, S. J. B., Moller, S., Di Carlo, P., Aruffo, E., Palmer, P. I., Lee, J. D., Percival, C. J., Gallagher, M. W.: Properties and evolution of biomass burning organic aerosol from Canadian boreal forest fires, *Atmos. Chem. Phys.*, 15, 3077–3095, doi:10.5194/acp-15-3077-2015, 2015.

Mason, S.A., Trentmann, J., Winterrath, T., Yokelson, R. J., Christian, T. J., Carlson, Lm J., Warner, T. R., Wolfe, L. C., Andreae, M. O.: Intercomparison of Two Box Models of the Chemical Evolution in Biomass-Burning Smoke Plumes, *J. Atmos. Chem*, 55, 273–297, 2001.

Matsunaga, A. and Ziemann, P. J.: Gas-wall partitioning of organic compounds in a teflon film chamber and potential effects on reaction product and aerosol yield measurements, *Aerosol Sci. Tech.*, 44, 881–892, doi:10.1080/02786826.2010.501044, 2010.

May, A. A., Levin, E. J. T., Hennigan, C. J., Riipinen, I., Lee, T., Collett, J. L., Jimenez, J. L., Kreidenweis, S. M., and Robinson, A. L.: Gas-particle partitioning of primary organic aerosol emissions: 3. Biomass burning, *J. Geophys. Res. Atmos.*, 118, 11327–11338, doi:10.1002/jgrd.50828, 2013.

May, A. A., McMeeking, G. R., Lee, T., Taylor, J. W., Craven, J. S., Burling, I., Sullivan,

A. P., Akagi, S., Collett Jr., J. L., Flynn, M., Coe, H., Urbanski, S. P., Seinfeld, J. H., Yokelson, R. J., Kreidenweis, S. M.: Aerosol emissions from prescribed fires in the United States: A synthesis of laboratory and aircraft measurements, *J. Geophys. Res. Atmos.*, 119, 11,826–11,849, doi:10.1002/2014JD021848, 2014.

May, A. A., Lee, T., McMeeking, G. R., Akagi, S., Sullivan, A. P., Urbanski, S., Yokelson, R. J., Kreidenweis, S. M.: Observations and analysis of organic aerosol evolution in some prescribed fire smoke plumes, *Atmos. Chem. Phys.*, 15, 6323-6335, doi:10.5194/acp-15-6323-2015, 2015.

McMurry, P. H. and Grosjean, D.: Gas and aerosol wall losses in Teflon film smog chambers, *Environ. Sci. Technol.*, 19, 1176–1182, doi: 10.1021/es00142a006, 1985.

McVay, R. C., Cappa, C. D., and Seinfeld, J. H.: Vapo–wall deposition in chambers: theoretical considerations, *Environ. Sci. Technol.*, 48, 10251–10258, doi:10.1021/es502170j, 2014.

[Mok, J., Krotkov, N. A., Arola, A., Torres, O., Jethva, H., Andrade, M., Labow, G., Eck, T. F., Li, Z., Dickerson, R. R., Stenchikov, G. L., Stenchikov, G. L., Osipov, S., and Ren, X.: Impacts of brown carbon from biomass burning on surface UV and ozone photochemistry in the Amazon Basin, *Scientific reports* 6, 36940, doi:10.1038/srep36940, 2016.](#)

Naeher, L. P., Brauer, M., Lipsette M., Zelikoff, J. T., Simpson, C. D., Koenig, J.Q., and Smith, K. R.: Woodsmoke health effects: a review, *Inhal. Toxicol.*, 19, 67-106, DOI: [10.1080/08958370600985875](#), 2007.

Nah, T., McVay, R. C., Zhang, X., Boyd, C. M., Seinfeld, J. H., Ng, N.L.: Influence of seed aerosol surface area and oxidation rate on vapor wall deposition and SOA mass yields: a case study with α -pinene ozonolysis, *Atmos. Chem. Phys.*, 16., 9361-9379, doi:10.5194/acp-16-9361-2016, 2016.

Ortega, I. K., Suni, t., boy, M., Grönholm, T., Manninen, H.E., Nieminen, T., Ehn, M., Junninen, H., Hakola, H., Hellén, H., Valmari, T., Arvela, H., Zegelin, S., Hughes, D., Kitchen, M., Cleugh, H., Worsnop, D.R., Kulmala, M., and Kerminen, V.-M.: New insights into nocturnal nucleation, *Atmos. Chem. Phys.*, 12, 4297-4312, doi:10.5194/acp-12-4297-2012, 2012.

[Pankow, J. F.: An absorption model of gas/particle partitioning of organic compounds in the atmosphere, *Atmos. Environ.*, 28, 185–188, 1994.](#)

Pierce, J. R. and Adams, P. J.: A computationally efficient aerosol nucleation / condensation method: pseudo-steady-state sulfuric acid, *Aerosol Sci. Tech.*, 43, 216–226, DOI: 10.1080/02786820802587896, 2009.

[Pierce, J. R., Engelhart, G. J., Hildebrandt, L., Weitkamp, E. A., Pathak, R. K., Donahue, N. M., Robinson, A. L., Adams, P. J., and Pandis, S. N.: Constraining particle evolution from wall losses, coagulation, and condensation-evaporation in smog chamber experiments: optimal estimation based on size distribution measurements, *Aerosol Sci. Tech.*, 42, 1001–1015, doi:10.1080/02786820802389251, 2008.](#)

[Roberts, G and Lagoudakis, E.: Annual and diurnal African biomass burning temporal dynamics, *Biogeosciences*, 6, 849-866, 2009.](#)

Sakamoto, K. M., Laing, J. R., Stevens, R. G., Jaffe, D. A., and Pierce, J. R.: The evolution of biomass-burning aerosol size distributions due to coagulation: dependence on fire and meteorological details and parameterization, *Atmos. Chem. Phys.*, 16, 7709–7724, doi:10.5194/acp-16-7709-2016, 2016.

[Springsteen, B., Christofk, T, York, R. A., Mason, T., Baker, S., Lincoln, E., Hartsough, B., Yoshioka, T.: Forest biomass diversion in the Sierra Nevada: Energy, economics and emissions, *Calif. Agric.*, 69, 142-149, DOI: 10.3733/ca.v069n03p142, 2015.](#)

Weitkamp, E. A., Sage, A. M., Pierce, J. R., Donahue, N. M., and Robinson, A. L.: Organic aerosol formation from photochemical oxidation of diesel exhaust in a smog chamber, *Environ. Sci. Technol.*, 41, 6969–6975, doi: 10.1021/es070193r, 2007.

Yeh, G. K. and Ziemann, P. J.: Alkyl nitrate formation from the reactions of C8–C14 n-Alkanes with OH Radicals in the Presence of NO_x : measured yields with essential corrections for gas-wall partitioning, *J. Phys. Chem. A.*, 118, 8147–8157, DOI: 10.1021/jp500631v, 2014.

[Yokelson, R. J., Bertschi, I. T., Christian, T. J., Hobbs, P. V., Ward, D. E., and Hao, W. M.: Trace gas measurements in nascent, aged, and cloud-processed smoke from African savanna fires by airborne Fourier transform infrared spectroscopy \(AFTIR\), *J. Geophys. Res.*, 108, 8478, doi: 10.1029/2002JD002322, D13, 2003](#)

Yokelson, R. J., Crouse, J. D., DeCarlo, P. F., Karl, T., Urbanski, S., Atlas, E., Campos, T., Shinozuka, Y., Kapustin, V., Clarke, A.D., Weinheimer, A., Knapp, D.J., Montzka, D. D., Holloway, J., Weibring, P., Flocke, F., Zheng, W., Toohey, D., Wennberg, P. O., Wiedinmyer, C., Mauldin, L., Fried, A., Richter, D., Walega, J., Jimenez, J. L., Adachi, K., Buseck, P. R., Hall, S. R., Shetter, R.: Emissions from biomass burning in the Yucatan, *Atmos. Chem. Phys.*, 9, 5785–5812, doi:10.5194/acp-9-5785-2009, 2009.

Zhang, X., Cappa, C. D., Jathar, S. H., McVay, R. C., Ensberg, J. J., Kleeman, M. J., and Seinfeld, J. H.: Influence of vapor wall loss in laboratory chambers on yields of secondary organic aerosol, *P. Natl. Acad. Sci. USA*, 111, 5802–5807,

doi:10.1073/pnas.1404727111, 2014.

Zhang, X. and Kondragunta, S.: Temporal and spatial variability in biomass burned areas across the USA derived from the GOES fire product, Remote Sens. Environ., 112, 2886-2897, 2008.

Zhang, X., Schwantes, R. H., McVay, R. C., Lignell, H., Coggon, M. M., Flagan, R. C., and Seinfeld, J. H.: Vapor wall deposition in Teflon chambers, Atmos. Chem. Phys., 15, 4197–4214, doi:10.5194/acp-15-4197-2015, 2015.

Formatted: Space After: 12 pt

Table 1. Data for 18 wood smoke samples introduced to the smog chamber, including fuel types, initial number concentration and corresponding size distribution parameters (median diameter in nm and geometric standard deviation, σ), initial total aerosol nonrefractory mass concentration, the organic mass fraction of the aerosol phase and OH exposure rate. The Burn ID and OH exposure refer to the schedule of burns in FLAME III, as reported in Hennigan et al. (2011).

Burn ID	Fuel type	Temp (K)	Initial particle number concentration (cm^{-3})	Num. size dist.		Initial total mass concentration n^1 ($\mu\text{g m}^{-3}$)	Organic mass fraction ²	$k_{w,p0}$ (s^{-1})	k_e (s^{-1})	OH exposure (molecules cm^{-3} s)
				Median diameter (nm)	σ					
37	Lodgepole Pine	292.9	5843	157	1.73	44.96	0.943	8.03×10^{-5}	1.07	1.56×10^{10}
38	Lodgepole Pine	286.8	7612	127	1.67	40.96	0.896	6.27×10^{-5}	1.41	1.40×10^{10}
40	Ponderosa Pine	279.5	6505	160	1.84	63.73	0.954	8.67×10^{-5}	0.69	2.71×10^{10}
42	Wire Grass	277.0	8107	123	1.55	19.63	0.484	1.07×10^{-4}	0.77	3.50×10^{10}
43	Saw Grass	284.2	5406	123	1.73	18.16	0.347	1.07×10^{-4}	0.52	3.10×10^{10}
45	Turkey Oak	286.3	6334	106	1.63	16.80	0.506	8.11×10^{-5}	0.99	2.09×10^{10}
47	Gallberry	286.7	8265	123	1.61	39.16	0.881	7.37×10^{-5}	0.19	6.12×10^{10}
49	Sage	285.0	5486	127	1.71	17.76	0.321	8.84×10^{-5}	0.84	1.84×10^{10}
51	Alaskan Duff	282.5	4175	88	1.83	20.38	0.898	7.00×10^{-5}	0.32	$^3 4.29 \times 10^{10}$
53	Sage	287.2	5619	132	1.76	16.09	0.348	8.43×10^{-5}	0.91	$^3 4.29 \times 10^{10}$
55	White Spruce	281.6	4641	115	1.83	27.73	0.761	8.13×10^{-5}	0.31	6.59×10^{10}
57	Ponderosa Pine	277.9	6624	161	1.81	72.83	0.935	8.43×10^{-5}	0.96	7.99×10^{10}
59	Chamise	281.9	7173	148	1.79	24.89	0.221	7.58×10^{-5}	0.83	4.95×10^{10}
61	Lodgepole Pine	283.1	6059	153	1.79	63.03	0.944	6.30×10^{-5}	0.29	7.89×10^{10}
63	Pocosin	277.9	7463	112	1.65	26.20	0.603	8.46×10^{-5}	0.37	8.22×10^{10}
65	Gallberry	275.3	7763	159	1.68	85.98	0.899	1.43×10^{-4}	0.62	4.94×10^{10}
66	Black Spruce	279.0	9828	96	1.66	35.21	0.852	1.02×10^{-4}	0.36	2.63×10^{10}
67	Wire Grass	274.5	11580	129	1.52	36.51	0.619	5.78×10^{-5}	0.28	3.06×10^{10}

¹total mass = [OA] + [SO₄²⁻] + [NO₃⁻] + [NH₄⁺] + [Cl⁻] + [BC], total aerosol non-refractory mass concentration as measured by the Aerodyne quadruple aerosol mass spectrometer and black carbon was determined by a seven-channel Aethalometer at 880 nm.

²organic fraction = [OA] / ([OA] + [SO₄²⁻] + [NO₃⁻] + [NH₄⁺] + [Cl⁻] + [BC])

³We have assumed the average OH exposure of the other 16 experiments, as no OH exposure rate was provided for these two experiments.

Table 2. Gas-phase chemistry volatility matrix that describes the change in volatility of the gas-phase organics after a single reaction with OH. Labels a and b represent the cases with four- and two-volatility-bin drops per reaction, respectively.

Precursor $\log_{10}C^*$ ($\mu\text{g m}^{-3}$)	Product $\log_{10}C^*$ ($\mu\text{g m}^{-3}$)												
	-3	-2	-1	0	1	2	3	4	5	6	7	8	9
-2	a, b												
-1	a, b												
0	a	b											
1	a		b										
2		a		b									
3			a		b								
4				a		b							
5					a		b						
6						a		b					
7							a		b				
8								a		b			
9									a		b		
10										a		b	
11											a		b

Table 3. Input parameters for the ambient-plume Gaussian dispersion simulations.

Parameter	Description	Value
D_p	Emission particle dry diameter, μm	0.157
σ	Emission particle size distribution standard deviation	1.7
k_{OH}	Ambient reaction rate constant, $\text{cm}^3 \text{molecule}^{-1} \text{s}^{-1}$	upper: $-5.70 \times 10^{-12} \ln(C^*) + 1.14 \times 10^{-10}$ lower: $-1.84 \times 10^{-12} \ln(C^*) + 4.27 \times 10^{-10}$
[OH]	Ambient OH concentration, molecules cm^{-3}	1.08×10^6
Mass Flux	Emission mass flux from fire, $\text{kg m}^{-2} \text{s}^{-1}$	2×10^{-8} , 5×10^{-6}
Fire area	Fire emissions area, km^2	1×10^2 , 1, 1×10^{-2} , 1×10^{-4}
Wind speed	Mean boundary-layer wind speed, ms^{-1}	5
Stability class	Pasquill stability classes for atmospheric turbulence	A, D, F
Boundary height	Mean boundary height, m	2500
T	Ambient temperature during dilution, K	298
Mass _{bg}	Background aerosol mass concentration, $\mu\text{g m}^{-3}$	5.0
$D_{p,\text{bg}}$	Dry diameter of background particles, μm	0.3
$\sigma_{p,\text{bg}}$	Geometric standard deviation of size distribution of background particles, μm	1.8

Table 4. Vapor wall-loss rate constants (s^{-1} , $k_{w,on}$ and $k_{w,off}$) for each volatility bin for cases with varying $C_w/M_w\gamma_w$ (Krechmer et al., 2016), for different α_w as shown; last column is for the case varying $C_w/M_w\gamma_w$ as in Zhang et al., (2015).

	varying $C_w/M_w\gamma_w$ (Krechmer et al., 2016); $\alpha_w=1\times 10^{-5}$		varying $C_w/M_w\gamma_w$ (Krechmer et al., 2016); $\alpha_w=1$		varying $C_w/M_w\gamma_w$ (Krechmer et al., 2016); varying α_w (Zhang et al. 2015)		varying $C_w/M_w\gamma_w$ (Zhang et al., 2015); $\alpha_w=1\times 10^{-5}$	
$\log_{10}C^*$	k_{on}	k_{off}	k_{on}	k_{off}	k_{on}	k_{off}	k_{on}	k_{off}
-3	7.33×10^{-4}	2.01×10^{-8}	4.01×10^{-3}	1.10×10^{-7}	1.55×10^{-4}	4.26×10^{-9}	7.33×10^{-4}	9.90×10^{-5}
-2	7.58×10^{-4}	2.26×10^{-7}	4.02×10^{-3}	1.20×10^{-6}	1.05×10^{-4}	3.15×10^{-8}	7.58×10^{-4}	1.58×10^{-4}
-1	7.86×10^{-4}	2.56×10^{-6}	4.02×10^{-3}	1.31×10^{-5}	7.15×10^{-5}	2.33×10^{-7}	7.86×10^{-4}	2.55×10^{-4}
0	8.18×10^{-4}	2.94×10^{-5}	4.03×10^{-3}	1.45×10^{-4}	4.86×10^{-5}	1.75×10^{-6}	8.18×10^{-4}	4.16×10^{-4}
1	8.54×10^{-4}	8.61×10^{-5}	4.03×10^{-3}	4.07×10^{-4}	3.31×10^{-5}	3.34×10^{-6}	8.54×10^{-4}	6.91×10^{-4}
2	8.97×10^{-4}	2.57×10^{-4}	4.04×10^{-3}	1.16×10^{-3}	2.27×10^{-5}	6.51×10^{-6}	8.97×10^{-4}	1.16×10^{-3}
3	9.47×10^{-4}	7.85×10^{-4}	4.06×10^{-3}	3.36×10^{-3}	1.56×10^{-5}	1.30×10^{-5}	9.47×10^{-4}	2.02×10^{-3}
4	1.01×10^{-3}	2.47×10^{-3}	4.07×10^{-3}	9.97×10^{-3}	1.09×10^{-5}	2.68×10^{-5}	1.01×10^{-3}	3.58×10^{-3}
5	1.09×10^{-3}	6.50×10^{-3}	4.09×10^{-3}	2.45×10^{-2}	7.75×10^{-6}	4.63×10^{-5}	1.09×10^{-3}	6.68×10^{-3}
6	1.10×10^{-3}	6.90×10^{-2}	4.10×10^{-3}	2.56×10^{-1}	5.10×10^{-6}	3.19×10^{-4}	1.10×10^{-3}	1.01×10^{-2}
7	1.10×10^{-3}	6.90×10^{-1}	4.10×10^{-3}	2.56×10^0	3.28×10^{-6}	2.05×10^{-3}	1.10×10^{-3}	1.43×10^{-2}
8	1.10×10^{-3}	6.90×10^0	4.10×10^{-3}	2.56×10^1	2.12×10^{-6}	1.32×10^{-2}	1.10×10^{-3}	2.05×10^{-2}
9	1.10×10^{-3}	6.90×10^1	4.10×10^{-3}	2.56×10^2	1.36×10^{-6}	8.47×10^{-2}	1.10×10^{-3}	2.91×10^{-2}
10	1.10×10^{-3}	6.90×10^2	4.10×10^{-3}	2.56×10^3	8.72×10^{-7}	5.45×10^{-1}	1.10×10^{-3}	4.12×10^{-2}
11	1.10×10^{-3}	6.90×10^3	4.10×10^{-3}	2.56×10^4	5.61×10^{-7}	3.50×10^0	1.10×10^{-3}	5.87×10^{-2}

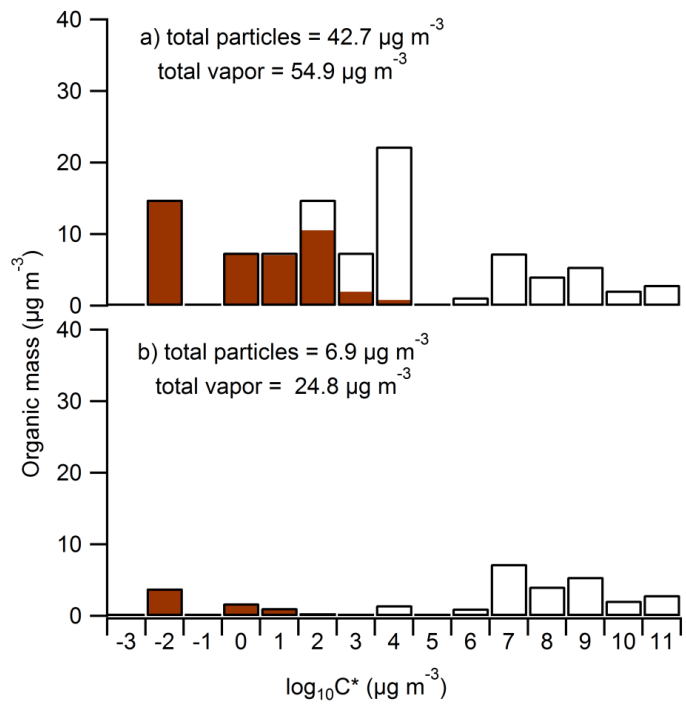


Figure 1. a) Volatility distribution with 15 volatility bins, adapted from the work of May et al. (2013) and Hatch et al. (2016). The average total initial organic aerosol mass concentration is $42.7 \mu\text{g m}^{-3}$ over the 18 experiments. For this mass concentration, the shaded area represents the organic mass in the particulate phase in each volatility bin. b) The simulated volatility distribution without chemistry after 4 hr of particle and vapor wall loss. The concentrations are the means across all 18 experiments.

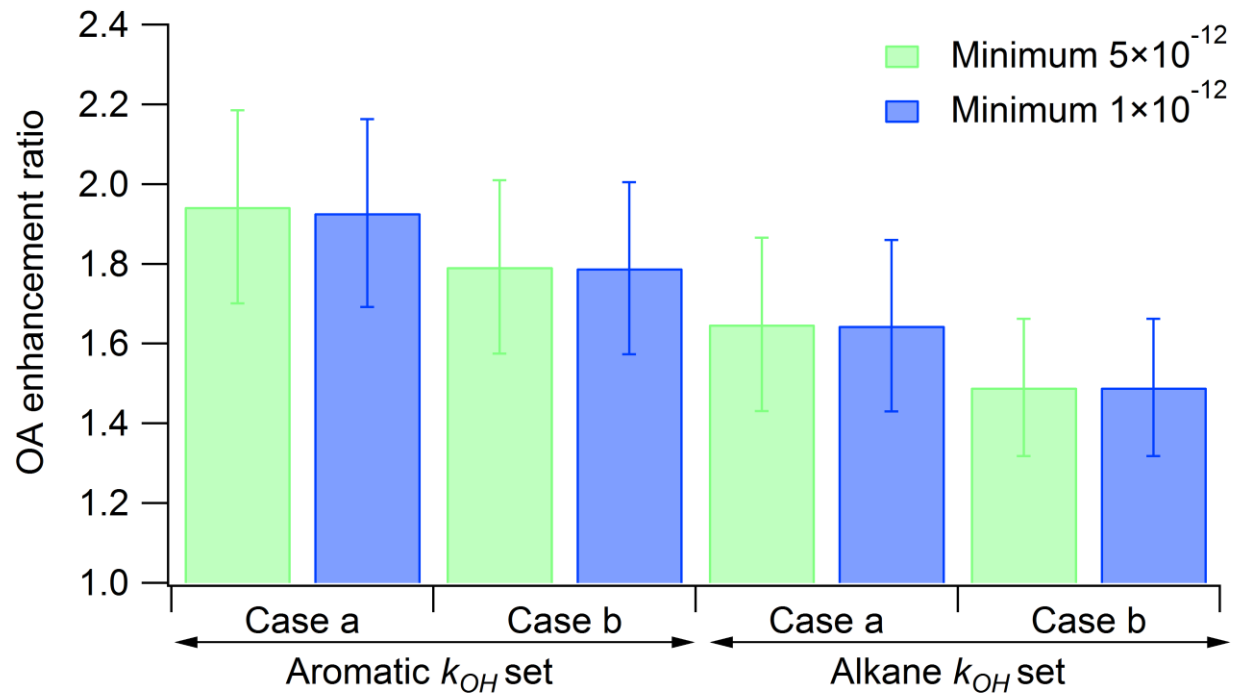


Figure 2. OA enhancement ratios ($OAER_{inert}$ and $OAER_{chem}$ are equivalent in these simulations), in the absence of particle and vapor wall losses, averaged over the 18 experimental simulations using k_{OH} sets fitted for aromatics and alkanes with a four-volatility-bin drop per reaction (Case a) and a two-volatility bin drop per reaction (Case b). The minimum k_{OH} value is set to be 5×10^{-12} (green bars) and 1×10^{-12} (blue bars) $\text{cm}^3 \text{mole}^{-1} \text{s}^{-1}$, respectively. The error bars represent one standard deviation across the 18 simulations and represent experiment-to-experiment variability.

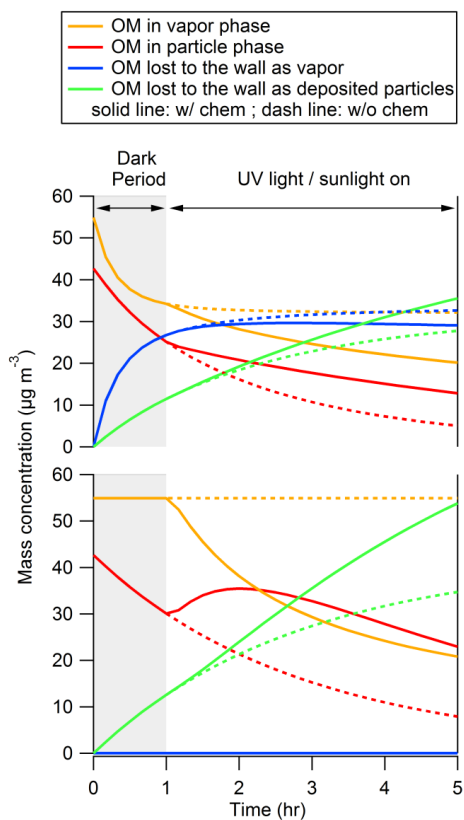


Figure 3. Time evolution of organic mass (OM, in units of $\mu\text{g m}^{-3}$) in the vapor phase (gold lines) and particulate phase (red lines), averaged over the 18 simulations, assuming no chemical reactions occurring (dashed lines) and including oxidation reactions (solid lines). Simulations with chemistry on use k_{OH} fitted for aromatics with a four-volatility-bin- drop in volatility assumed for the products. a) with particle and vapor wall loss on; b) with vapor wall loss off. Particle-phase wall losses are included in both simulations; the masses of particles and vapors lost to the walls have been normalized by the volume of the bag to obtain mass concentration units. The simulations use Krechmer's saturation concentrations ($C_w/M_w\gamma_w$) (Krechmer et al. 2016) and a mass accommodation coefficient of 1×10^{-5} . In all cases, the first hour simulates the process of primary organic aerosol characterization in the dark (no chemical reactions).

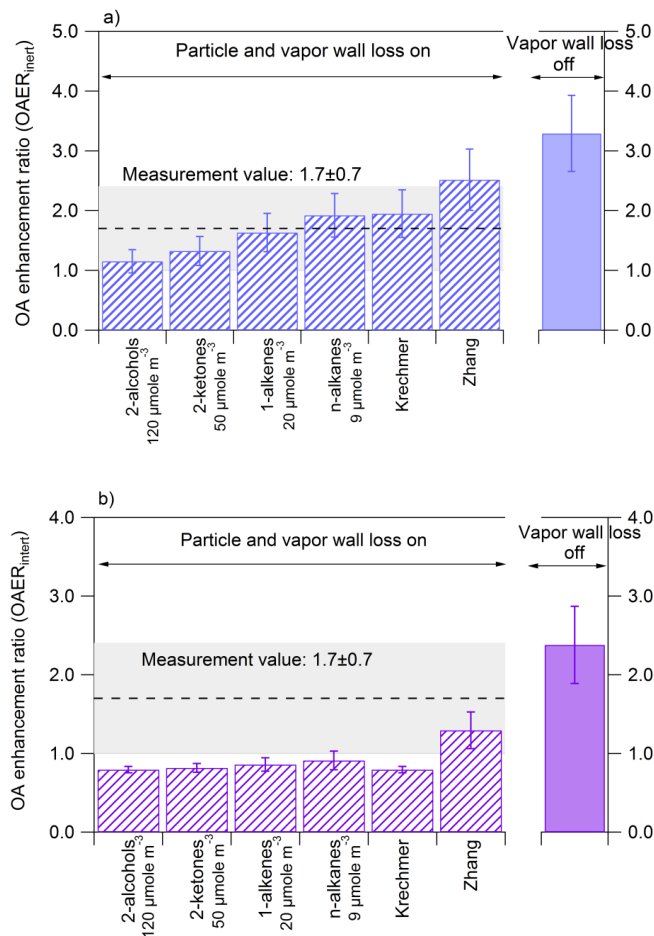


Figure 4. OAER_{inert} enhancement ratios in the simulations, as calculated from Eqn 7, using saturation concentrations ($C_w/M_w\gamma_w$) of 120, 50, 20, and 9 $\mu\text{mole m}^{-3}$ as suggested by Matsunaga and Ziemann (2010), and for varying $C_w/M_w\gamma_w$ as suggested by Krechmer et al. (2016) and Zhang et al. (2015). Two sets of reaction rates have been applied: a) upper-bound chemistry (k_{OH} set for aromatics with four-volatility-bin drop per reaction) and b) lower-bound chemistry (k_{OH} set for alkanes with two-volatility-bin drop per reaction). The mass accommodation coefficient is set to 1×10^{-5} in all simulations. The striped bars represent the simulations with particle and vapor wall loss on and the solid bars represent the simulations with vapor wall loss off. The dashed line and grey area represent the measurement value and its standard deviation from Hennigan et al. (2011).

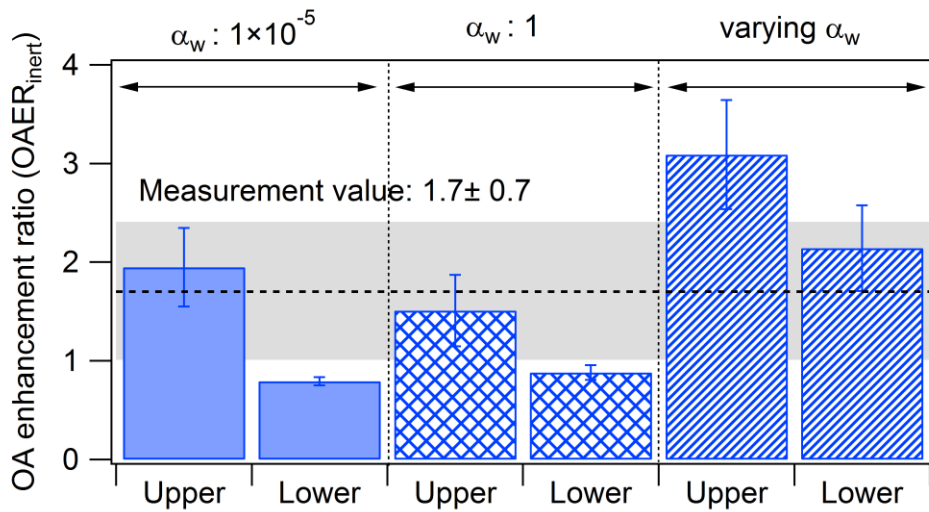


Figure 5. The effect of variable mass accommodation coefficients on the OAER_{inert} enhancement ratios shown in Fig. 4. All simulations used varying $C_w/M_w\gamma_w$ (Krechmer et al. 2016). Results for upper- and lower-bound chemistry assumptions are shown, with assumed α_w of 1×10^{-5} (solid bars), 1 (gridded bars) and varying α_w as a function of C^* (striped bars, Zhang et al., 2015). The dashed line and grey area represent the measurement value and its standard deviation from Hennigan et al. (2011).

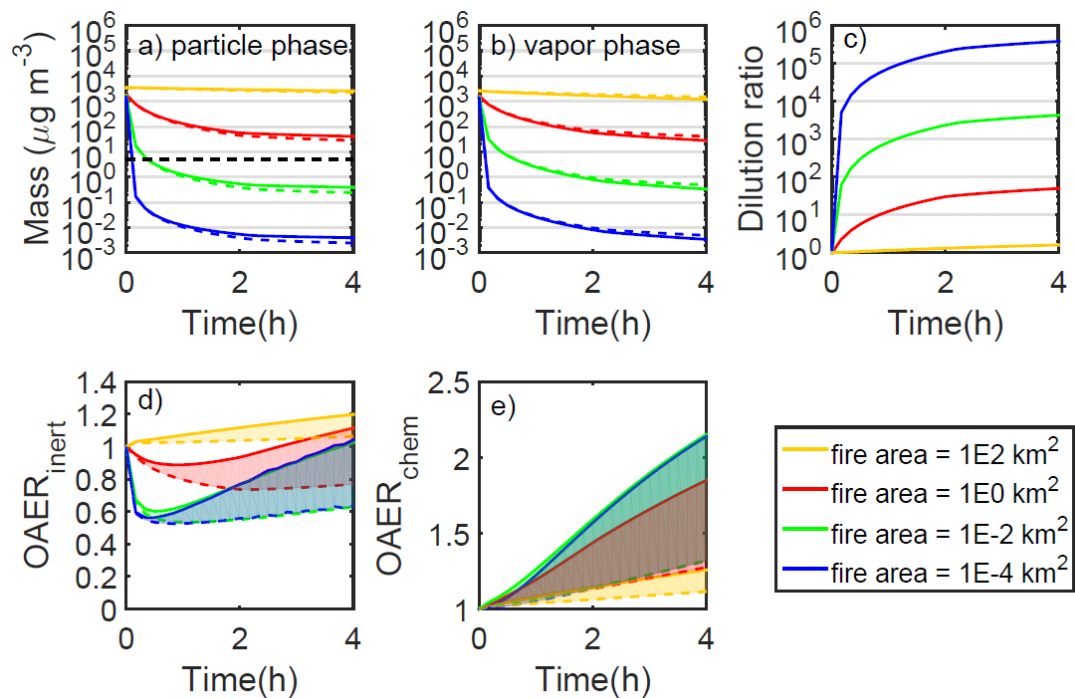


Figure 6. Time evolution of a) organic mass (OM) in the particle phase, b) OM in the vapor phases, c) dilution ratios, d) $OAER_{inert}$ and e) $OAER_{chem}$ during Gaussian dispersion, using the parameters listed in Table 3 with fire areas of 100, 1, 1×10^{-2} and 1×10^{-4} km^2 and an emission flux of 5×10^{-6} $kg\ m^{-2}\ s^{-1}$. Solid lines represent the upper-bound-chemistry simulations and dashed lines represent the lower-bound-chemistry simulations. Shaded areas bound the ranges of estimated OA enhancement. The black dash line on panel a represents the background non-volatile OA concentration ($5\ \mu g\ m^{-3}$).

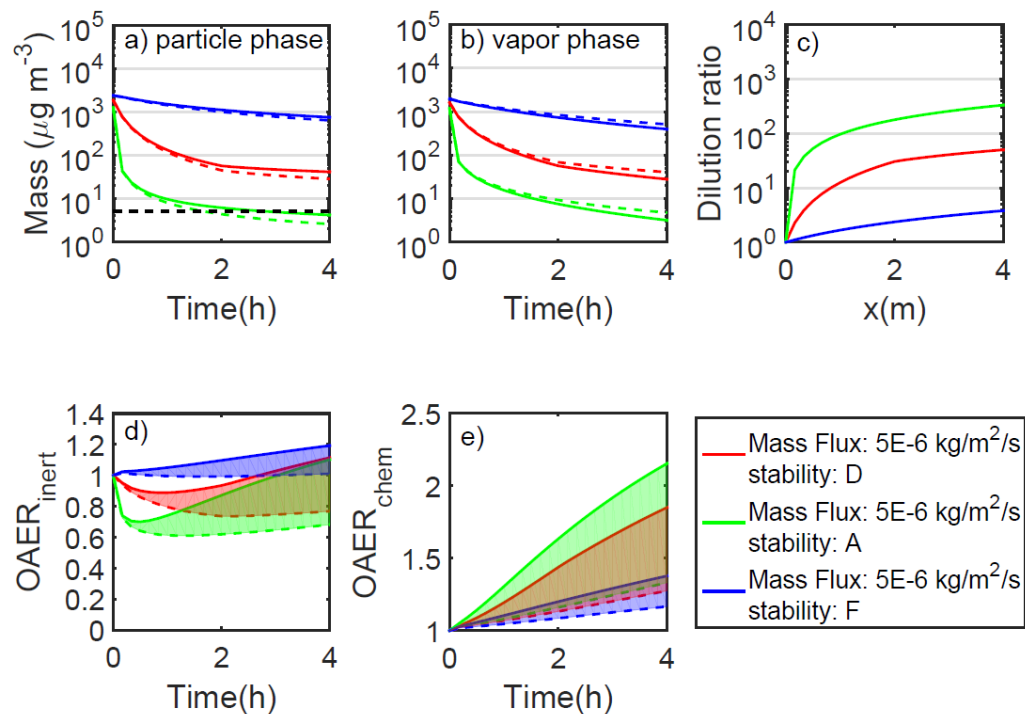


Figure 7. Time evolution during Gaussian dispersion of a) organic mass (OM) in the particle phase, b) OM in the vapor phases, c) dilution ratio, d) $\text{OAER}_{\text{inert}}$, and e) $\text{OAER}_{\text{chem}}$, with a fire area of 1 km^2 , a mass flux (ML) of $5 \times 10^{-6} \text{ kg m}^{-2} \text{ s}^{-1}$, and assuming different atmospheric stability classes (A, D, and F; see Table 3). The black dash line on panel a represents the background non-volatile OA concentration ($5 \mu\text{g m}^{-3}$).

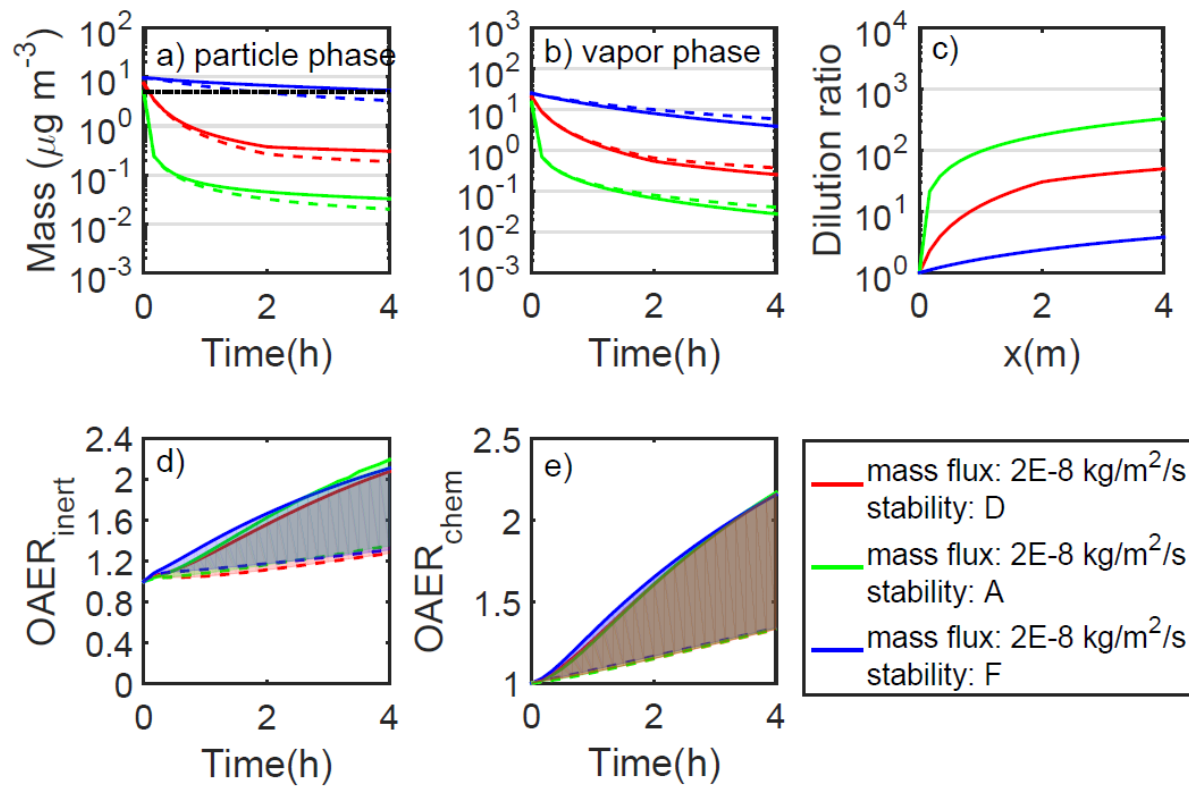


Figure 8. As in Fig. 7, but for an assumed mass flux of $2 \times 10^{-8} \text{ kg m}^{-2} \text{ s}^{-1}$.