

We would like to thank both referees for their help to improve this manuscript. Below is a list with point for point answers to both referees. The referee comments are repeated in italic font, eventual comments are given in normal font. Eventual changes to the text are given in blue colour.

5 Referee #1

- 1) *Page 5, line 30 - page 6, line 7. This paragraph can be greatly shortened or removed. There is no necessity to describe the intrinsic details of the code which are not directly connected to the physical problem.*

We agree that the paragraph is too detailed at this place.

We have moved it from the main text into the supplementary material.

- 10 2) *The model resolution is 10 m (page 6, line 24), so the grid step is not fine enough to perform building resolved simulation. The methods of accounting of the urbanized surface should be described, at least the roughness parameter and the displacement height should be specified. Are the results sensitive to the chosen drag coefficients?*

15 As a basis for the production of the topographic map we use laser scanning data. The smoothing to a 10 m resolution from the high resolution laser scans implicitly includes a surface displacement in the case of strongly variable topography. No further displacement height is included into the simulations as the non-resolved roughness elements are small compared to the resolved mountain topography (see picture below). The unresolved roughness length in LES of places embedded in complex topography is an interesting question itself but goes beyond the scope of the work presented here. We have therefore chosen a constant roughness length across the entire domain of 0.5 m.

20 A test with roughness length of 2 m showed qualitatively similar results with some quantitative differences. We therefore assume the roughness length to be a relevant parameter that should be studied further but assume the overall conclusions of this publication not to be dependent on it.



The above stated paragraph is included into the main text (page 7, line 2 in the tracked changes version).

- 25 3) *Page 8, lines 23-24. It might be explained what the authors mean when writing about the temperature at the level 2 m. The method of extrapolation from the rough grid should be specified.*

The 2 m temperature is calculated as a linear downward extrapolation of the temperature curve between the first two vertical grid-levels above the topography at 5 and 15 m.

The above stated paragraph is included into the main text (page 8, line 26 in the tracked changes version).

- 4) Page 8, line 30. The authors wrote "The land surface temperature can therefore adapt to the fjord temperature due to the advection of relatively warmer air". It is not evident and depends on the heat fluxes balance. Moreover, the breeze circulation should transfer air from the land to the fjord (as it is shown in Fig. 4) but not vice versa.

5 Through the recirculation in the valley and the limited domain size, the domain mean air temperature will adapt over time to the different sea surface temperatures. After very long simulations the simulations with the same wind-speed scenario should therefore converge (when ignoring the static temperatures over the smaller water bodies aside the fjord) to the same circulation with simple constant offsets in the surface/air temperature according to the fjord surface temperature.

10 An improved explanation is given in the text (page 9, line 5)

- 5) Figure 5 should be redrawn, because the discontinuities in wind direction are artificial and connected with periodicity of the angle scale.

We agree with this comment.

15 The figure has been redrawn with dots marking the wind-direction instead of lines and a shift in the wind-direction scale in order to avoid discontinuities as much as possible (Figure 5).

- a) The volume of the paper could be reduced by avoiding long discussions.

We have removed some discussion and moved some parts to the supplementary material.

- b) The grid resolution sensitivity tests are not presented. It will be better to perform at least two additional runs for any presented case with finer and rougher grids to ensure the stability of the results and conclusions.

20 We have conducted simulations with each double and half the resolution for scenario 6.

For comparison, second moments of the turbulence statistics are included into the supplementary material (Figures S.1-S.3).

- c) PALM code permits the calculations inside the non-periodic domains. It is recommended to perform at least one additional numerical experiment to show that the periodicity does not influence the results.

25 We are interested in the problem of fluid dynamics inside a cavity. This could be sufficiently answered with the periodic boundary conditions. We now conducted a new set of experiments with a stronger focus on the emissions in the valley but with a larger domain (12.79 x 17.27 km²). This includes an increase of the domain both on the southern and the eastern edges. The narrow artificial channel in the topographic input used for this manuscript could therefore be removed and the steep tapering zone in the east was relocated. While comparison is difficult due to some changes in the model setup, the general picture remains consistent with the simulations presented in this manuscript, especially the wind shear around the top of the inversion. The results are therefore to a degree independent of the exact choice of the domain size. While being an interesting possibility to use non-periodic boundary conditions, this project was already extremely costly in terms of computational time. We see further tests into this direction therefore as beyond the scope of this publication.

- d) *It would be better to present some turbulence statistics (at least the second moments) in ABL above the land and the sea to ensure that LES reproduces turbulent dynamics.*

We agree with this comment.

Second moments in the ABL above the land and sea are added to the supplementary material (Figures S.1-S.3) and briefly discussed there.

Referee #2

- 1) *My main concern is related to periodic boundary conditions used in the simulations. There is some discussion how it could affect the results, and suggestion that larger domain should be used. 1000m buffer zone is used with linearly interpolated surface. Is it tested that this 1000m is enough? For example in E-W direction the slope is quite steep, if I understood the method correctly. Later there is discussion on page 11 that the artificially generated outflow at the northern border is affecting the results, but not expected to change the conclusions. This should be tested, maybe using non-periodic boundaries are larger domain.*

See answer c) to Referee #1. This is also true for differently sized buffer zones.

- 2) *Case 0 is not analyzed. It would help a non-expert reader a lot if there would be 3D figure (similar to figure 1 in Wolf et al. (2014)), where the flows in the valley would be shown schematically in case when there is no sensible heat forcing from the surface. This could be included already in section 3.1. After such a plot figures 4-7 and the changes in local circulation would be easier to understand.*

We included a figure showing the results from Case 0 into the manuscript. For consistence and ease of recognition the figure is however done in the same way as Fig. 4. The figure mentioned by the reviewer is a 3-D colour figure showing the local topography. Combining such a figure with information on circulation details would in our estimation be too complex.

The figure is included as the new Figure 6.

- 3) *Page 5: Lines 30 onward. I agree with Reviewer 1 that this is too detailed and could be removed.*

See answer 1) to Referee #1.

- 4) *Page 6: lines 13-14: Based on Figure 2 it is not so obvious that the Bergen valley is open towards south-west.*

Fig. 2 illustrates the area of the valley included in the PALM simulations. Therefore, the features of the Bergen valley further south are not visible in Fig. 2 and the information is given as a description in the text.

- 5) *Figure 2: It would be nice to see the geostrophic wind direction added to figure 2, or maybe figure 4.*

We agree with this comment.

We included an arrow indicating the geostrophic wind direction into Fig. 2.

- 6) *Era1 wind speeds from 410m are used down to 100m. Would the results change if the information from 10m wind speeds would be used to create the initial profiles?*

The ERA-Interim wind is used as geostrophic wind. This component is treated as a forcing in PALM. Simulations with a few different setups showed some changes but consistent results. The specification of the geostrophic wind in an LES model within mountainous terrain is to our knowledge open research question. As the resolution of ERA-Interim is low, the ground at the location of the Bergen valley is at 400 m above mean sea level as outlined in the text. A thorough evaluation of this question goes beyond the aim of the study at hand.

7) *Figure 6: The colormap for the tracer concentration is quite hard to interpret. Would it be better to compare against reference simulation and present the difference, or maybe use some other colormap to make plots easier to interpret.*

We agree with this comment.

5

We used a more suitable colourmap in the two figures showing passive tracer concentrations.

Sensitivity of local air quality to the interplay between small- and large-scale circulations: a Large Eddy Simulation study

Tobias Wolf-Grosse¹, Igor Esau¹, Joachim Reuder²

¹Nansen Environmental and Remote Sensing Center, Bergen, NO-5006, Norway

²Geophysical Institute, University of Bergen, Bergen, NO-5007, Norway

Correspondence to: Tobias Wolf-Grosse (tobias.wolf@nersc.no)

Abstract. Street-level urban air pollution is a challenging concern for modern urban societies. Pollution dispersion models assume that the concentrations decrease monotonically with raising wind speed. This convenient assumption breaks down in flows with local recirculations such as those found in topographically complex coastal areas. This study looks at a practically important and sufficiently common case of air pollution in a coastal valley city. Here, the observed concentrations are determined by the interaction between large-scale topographically forced and local-scale breeze-like recirculations.

Analysis of a long observational dataset in Bergen, Norway, revealed that the most extreme cases of recurring wintertime air pollution episodes were accompanied by increased large-scale wind speeds above the valley. Contrary to the theoretical assumption and intuitive expectations, the maximum NO₂ concentrations were not found for the lowest 10 m ERA-Interim wind speeds but in situations with wind speeds of 3 m s^{-1} . To explain this phenomenon we investigated empirical relationships between the large-scale forcing, and local wind and air quality parameters. We conducted 16 Large Eddy Simulation (LES) experiments with the PALM model. The LES accounted for the realistic relief and coastal configuration as well as for the large-scale forcing and local surface condition heterogeneity in Bergen. They revealed that emerging local breeze-like circulations strongly enhance the urban ventilation and dispersion of the air pollutants in situations with weak large-scale winds. Slightly stronger large-scale winds however can counteract these local recirculations leading to enhanced surface air stagnation.

Furthermore, this study looks at the concrete impact of the relative configuration of warmer water bodies in the city and the major transport corridor. We found that a relatively small local water body acted as a barrier for the horizontal transport of air pollutants from the largest street in the valley and along the valley bottom, transporting them vertically instead and hence diluting them. We found that the stable stratification accumulates the street-level pollution from the transport corridor in shallow air pockets near the surface. The polluted air pockets are transported by the local recirculations to other less polluted areas with only slow dilution. This combination of relatively long distance and complex transport paths together with weak dispersion is not sufficiently resolved in classical air pollution models. The findings have important implications for the air quality predictions over urban areas. Any prediction not resolving these, or similar local dynamic features, might not be able to correctly simulate the dispersion of pollutants in cities.

Deleted: We present an analysis of the interaction between a topographically forced recirculation of the large-scale flow above an urbanized coastal valley and a local breeze-like circulation. We found that such an interaction can enhance the stagnation inside the valley under cold air pool conditions. Analysis of a large dataset of air quality measurements in Bergen, Norway, revealed that the most extreme cases of recurring winter-time air pollution episodes are usually accompanied by an increased wind speed above the valley. The 10 m ERA-Interim wind-speed distribution against local NO₂ measurements had a maximum at 3 m s^{-1} in contrast to a monotonic decrease, as it would be expected from theory developed for flat, homogenous surfaces. We conducted a set of 16 Large Eddy Simulation (LES) experiments with the PALM model to account for the realistic orography of the mountains surrounding the city. The simulations were driven by the typical circulation above the valley during observed air pollution episodes, and a heterogeneous combination of constant temperatures over water and a constant negative sensible surface heat flux over land. The LES revealed a strong steering of the local circulation during cold air pool conditions by a land-breeze between the warm sea and the cold land. This breeze circulation is counteracted by a recirculation of the flow above the valley. For certain combinations of both, this leads to a maximum in the local stagnation. Furthermore, a relatively small local water body acted as a barrier for the dispersion of air pollutants along the valley bottom, dispersing them vertically and hence diluting them. These findings have important implications for the air quality predictions over urban areas. Any prediction not resolving these, or similar local dynamic features, might not be able to correctly simulate the dispersion of pollutants in cities.

1 Introduction

Urban air pollution is a major concern for urban dwellers and city managers (Baklanov et al., 2007). Typically, urban air pollution is thought of in connection with large industrial areas and megacities with high local emissions (e.g. Zhang et al., 2012). Air pollution episodes can, however, also affect smaller cities (e.g. Junk et al., 2003; Schicker and Seibert, 2009; Grange et al., 2013). In areas with comparatively low emissions, slow removal and long accumulation of locally emitted pollutants are usually responsible for the occurrence of air pollution episodes. For cities in mountainous areas, this can be caused either by a local circulation trapping the pollutants or by local stagnation within the surrounding mountains (Rotach et al., 2004; Steyn et al., 2013). The most prominent examples of such local stagnations are typically observed in stably-stratified cold air pools trapped in valleys and other orographic depressions (e.g. Reeves and Stensrud, 2009; Hoch et al., 2011; Sheridan et al., 2014; Hughes et al., 2015).

The local trapping and stagnation conditions are notoriously difficult to study, as their interaction with the controlling large-scale circulation in the free atmosphere can be complex and non-linear (e.g. Whiteman and Doran, 1993; Zängl, 2003). Interactions within the cold air pools can be further complicated by other local dynamic effects, such as breeze-like circulations (e.g. Lareau et al., 2013), or up- and down-slope winds (Fernando, 2010). This complexity challenges numerical weather prediction (NWP) models, which often cannot properly resolve, and hence predict air pollution episodes, in particular those developing during the periods with strong stable stratification in the lower atmosphere and mountainous terrain (e.g. Berge et al., 2002; Fay and Neuhäuserer, 2006; Baklanov et al., 2011). Thus, the problem could be partially related to an insufficient spatial model resolution with respect to the relevant topographic features. But partially, it should be also related to the breakdown of inadequate turbulent mixing schemes for the atmospheric stably-stratified boundary layer (Atlaskin and Vihma, 2012; Fernando and Weil, 2010; Mahrt, 2014; Zilitinkevich et al., 2015). These and other inaccuracies in the air quality assessment and modelling motivated the Pan-Eurasian Experiment (PEEX) community to include air pollution in the stably stratified boundary layers in the list of research priorities addressing the environmental and socio-economic challenges of the northern high latitudes (Lappalainen et al., 2016).

Large eddy simulations (LES) can resolve much of the relevant turbulence dynamics. The computational costs of high resolution LES over larger urban areas are, however, too high to be used operationally. While this might change in the near future (Schalkwijk et al., 2015), LES models are today mostly used for the simulation of specific scenarios or for process studies in order to gain a deeper understanding of the flow features at hand (Bergot et al., 2015; Esau, 2012, 2007; Patnaik and Boris, 2010). Increased local knowledge and general understanding of the relevant processes (e.g. Glazunov et al., 2016) can then help the forecasters to improve air quality predictions based on NWP models, as suggested by Steyn et al. (2013).

LES models are more and more used for the study of the air flow in model domains with realistic urban topography. One could name a few relevant urban studies. E.g. Letzel et al., 2008, and Nakayama et al., 2012 simulated the flow on the neighbourhood-scale in Tokyo, Japan. Esau (2012) studied the dispersion of a passive tracer over central Paris, France. Keck

Deleted: planners

Deleted: is

Deleted: example

Deleted: the

Deleted: stagnation is the frequently

Deleted:

Deleted: Atmospheric Boundary Layer (ABL) in mountain basins, also referred to as

Deleted: same

Deleted: , however, that lead to this high accumulation of pollutants, also make them

Deleted: . The coupling of the local

Deleted: inside a valley with

Deleted: flow above

Deleted: Additionally, an interaction with the local

Deleted: . Numerical Weather Prediction (NWP) models often struggle with the correct prediction of air pollution episodes, in particular during stable stratification and within

Deleted: This has been associated with both,

Deleted: in order

Deleted: resolve

Deleted: and problems with the parameterisation

Deleted: the

Deleted:

Deleted: ABL

Field Code Changed

Deleted: . This attribution (e.g. Wolf et al., 2014) motivated the Pan-Eurasian Experiment community to include the air pollution transport and dispersion in the stably stratified boundary layers as one of the research priorities in the collaborative cross-disciplinary research plan

Deleted: To

Deleted: ,

Field Code Changed

Deleted: . (

Deleted:)

et al. (2014) used an LES model for an assessment of the effect of a new **densely built-up** artificial island in Macau, China. Park et al. (2015a, 2015b) studied the street-level ventilation in Seoul, South-Korea.

So far however, **most of the published studies were** conducted under neutral or slightly convective conditions. While the use of LES for the simulation of **the** stably stratified conditions has become more common in the recent years, only few studies

5 **run LES of the urban** stably stratified ABL. E.g. Cheng et al. (2010) and Tomas et al. (2016) studied **a stratified** flow over arrays of surface mounted boxes. Xie et al. (2013) studied the effect of **stable stratification** on the dispersion conditions over a

10 **kilometre-scale domain in** London. Chen et al. (2011) **developed a coupled** modelling system, **which includes** WRF and LES **models and** Wyszogrodzki et al. (2012) applied this modelling system **to study** convective and weakly stably stratified flows over a

15 **kilometre-scale domain in** Oklahoma City. A review of **urban ABL** modelling in a number of different settings was **published by** Barlow (2014). **Nevertheless, up to** our knowledge there is **no** high resolution **studies** devoted to the simulation of the stably stratified urban ABL

20 **in a domain relevant to urban management and decision-making.** **This study is intended to reduce the mentioned knowledge gap. It is based on a new set of fine-resolution** LES of the topography and breeze induced circulation for the realistic topography of **a larger part of** Bergen, Norway. Strongly stable stratification of the lowermost atmospheric layers **has been** recognized as a precursor for the accumulation of air pollutants and subsequent air quality hazards in **Bergen**. The city centre is embedded in a coastal valley ending at a large sea inlet

25 **called Byfjorden.** Periods of high air pollution are observed during persistent temperature inversions, indicating the stably stratified conditions inside the valley (Wolf et al., 2014, hereafter WE14; Wolf and Esau, 2014). **Observations** of the typical circulation and **temperature** conditions **above and within the valley** are used to drive the LES runs. We would like to focus on the interaction between the large-scale circulation above the valley, modified by the local topography, and a local land-

breeze between the cold land and the warm fjord under inversion conditions. This interaction is leading to the strongest stagnation and hence accumulation of pollutants inside the valley. The simulations should further serve as a proof of concept for the added value of high resolution LES for the analysis of urban air pollution dispersion in complex mountain terrain.

This study is structured as follows. In section 2 we will present an observational dataset that motivated this work. In the third section we will outline the applied methodology and the results will be presented in the third, and summarized and discussed in the last section.

2 Observational perspective on air pollution in coastal cities

For coastal cities land/sea breeze circulations can have a strong impact on the local circulation. This can lead to a transport of pollutants from high emission areas onwards to inhabited areas (Gariazzo et al., 2007) or a closed recirculation and hence accumulation of pollutants (Crosman and Horel, 2016; Lo et al., 2006; Rimetz-Planchon et al., 2008). Most of these works

30 have in common that the background circulation reduces the relevance of the local effects (Crosman and Horel, 2010). For coastal mountain cities there is, however, also the possibility of an interaction between local circulations such as local breezes and cold air pools (Holmer et al., 1999; Lareau et al., 2013). These local circulations can be either dominating the

- Deleted:** , densely covered by buildings, on the street-level ventilation
- Deleted:** and
- Deleted:** Most studies,
- Deleted:** are
- Deleted:** exist for the application of
- Deleted:** to
- Deleted:** over urban and urban like areas
- Deleted:** for example
- Deleted:** the
- Deleted:** a stably stratified approach flow
- Deleted:** 1.2 × 0.8 km large
- Deleted:** over central
- Deleted:** reported on
- Deleted:** coupling
- Deleted:** with an
- Deleted:** model.
- Deleted:** for LES over a 1.6 × 1.6 km large domain for
- Deleted:** of the urban ABL
- Deleted:** conducted
- Deleted:** To
- Deleted:** up to now
- Deleted:** study
- Deleted:** beyond the neighbourhood-scale
- Deleted:** In this paper, we will present
- Deleted:** is
- Deleted:** urbanized valleys.
- Deleted:** of Bergen
- Deleted:** , the Bergen fjord
- Deleted:** The observations
- Deleted:** above the valley
- Deleted:** the
- Deleted:** inside it
- Deleted:**

local circulation forced by the large-scale flow or interact with it. Both can lead to a deviation from the usual situation of a weaker background flow leading to higher local accumulation of air pollutants.

Fig. 1 illustrates this based on the distribution of the NO_2 concentrations against wind speeds above and inside the Bergen valley. Wind speeds inside the valley are measured on a mast on top of the Geophysical Institute (GFI, compare Section 3.1)

at 12 m above the roof (approximately 50 m height). The air flow at this height is unobstructed by other buildings. The measurements should therefore be representative of the air flow in the middle of the valley. Quality controlled hourly data for the entire period between 2003 and 2013 were readily available online (Norwegian Meteorological Institute, 2016). The expected logarithmic decrease of the NO_2 concentrations with increasing wind speeds inside the valley is visible for both an

urban background (UB) and high pollution (HP) reference station (compare to section 3.1, data downloaded from Norwegian Institute for Air Research, 2016). For the surface (10 m) wind speeds from the ERA-Interim (EraI) reanalysis product, however, such a clear decrease does not exist. Due to the low resolution of EraI, the 10 m winds are not influenced by small-scale topographic features such as the Bergen valley. They should therefore represent the large-scale flow that is only

modified by the Norwegian topographic features on scales larger than a few tens of kilometres. The maximum NO_2 air pollution is found for wind speeds around 3 m s^{-1} . This maximum in the concentrations at some nonzero background wind speed suggests an interaction of the background flow with a local forcing under the cold air pool conditions. Some combination of all three circulation features then leads to a maximum stagnation over the valley bottom.

Thus, we observe that any air quality prediction based on meteorological fields from models that are not resolving this local forcing could fail to resolve the highest local air pollution concentrations. We assume that the most relevant local forcing in the Bergen valley is the breeze circulation caused by the temperature difference through the land-sea interface. The relevance of the interplay between the larger scale circulation, the local topography and the local forcing is therefore assessed in this study.

3 Model experiments

3.1. Geographical description of the simulation domain

Bergen, Norway is located at the Norwegian West coast (60.4° N , 5.3° E). The central part of the city is located in a curved valley with a minimum width at the valley base of approximately 1 km (Fig. 2). The surrounding mountain tops are between 344 and 642 m high. Inside the valley there are a number of water bodies aside the fjord. Only the largest ones close to the city centre are explicitly treated in this study.

Since 2003 two measurement stations have been monitoring the street level (2 m above surface) air quality in the Bergen valley, a high pollution reference station (HP) that is located nearby one of the busiest crossroads in the city and an urban background reference station (UB). The valley favours frequent winter-time ground-based temperature inversions (WE14) leading to the exceedances of air quality thresholds for NO_2 and $\text{PM}_{2.5}$ especially in areas with high traffic. In contrast to some cold air pools in large valleys (e.g. *Zhong et al.*, 2001), the cold air pools connected to air quality hazards in the Bergen

Field Code Changed

Deleted: For cases of high

Deleted: there

Deleted: a maximum

Deleted: exceedance

valley are caused by ground-based temperature inversions. They cannot exist without persistent long wave (LW) radiative cooling such as during fair-weather events in wintertime with no or only little solar insolation and clouds. Temperature inversions in the Bergen valley usually appear in connection with a specific circulation pattern both in- and outside the valley. WE14 analysed the 10 min wind-measurements from an automatic meteorological station (AMS) on top of GFI together with measurements of the vertical temperature profile above GFI. The study identified almost exclusively down-valley winds during measurements with temperature inversions, while during measurements without temperature inversions both up-valley and down-valley channelled flows existed. This, together with the previously mentioned south-easterly background flow above the Bergen valley during high air pollution events, gave reason to assume that the preferred wind direction inside the valley simply follows the large-scale wind direction above. In this case the mountain to the south-east of the Bergen valley would shelter the valley. This is, however, a too simplistic picture since the sheltering mountains would represent a backward facing step for the approaching winds that can lead to very complicated flow regimes (Mohamad and Viskanta, 1995).

Deleted: They found

During persistent winter-time temperature inversions in the Bergen valley the local lakes often freeze over. The fjord, however, remains mostly ice free, causing large temperature contrasts between the relatively warm fjord surface and the cold land surface possibly leading to the local breeze circulation inside the valley. The large water body roughly in the middle of the domain is connected to the fjord only through a narrow channel. It therefore has a lower salinity than the fjord and tends to freeze over with a thin layer of ice during persistent temperature inversion episodes. It is consequently treated as a lake later on.

Deleted: is

Deleted: rather brackish water

3.2. The model

In the experiments for this study we used the Parallelised Large-Eddy Simulation Model for Atmospheric and Oceanic flows PALM (Maronga et al., 2015; Raasch and Schröter, 2001). PALM solves the finite difference numerical realisation of the non-hydrostatic, filtered, incompressible Navier-Stokes equations in their Boussinesq approximated form. The model employs a 1.5 order closure using a subgrid-scale TKE balance equation (Deardorff, 1980; Moeng and Wyngaard, 1988; Saiki et al., 2000). Advection terms are computed using the 5th order scheme after Wicker and Skamarock (Wicker and Skamarock, 2002). The model time-step is adjusted dynamically. The incompressibility condition is satisfied with a predictor-corrector method, using the Temperton fast Fourier transformation to solve the Poisson pressure equation. Spatial discretisation is done on an Arakawa type C grid. Topographic features of the urban area are simplified as ground-mounted boxes. Topographic input needs to be specified as a separate input file that fits the horizontal model grid. Vertical discretisation of the surface height onto the model grid is done automatically by the model.

Field Code Changed

3.3. Modifications to the PALM code

PALM runs either with Neumann surface temperature boundary condition (BC), where the kinematic surface heat flux (H_s) is prescribed, or with Dirichlet BC, where the surface temperature (T_s) is fixed. In the case of the Dirichlet BC, heat fluxes

Deleted: the

Deleted: the

on horizontal surfaces are calculated by assuming a Prandtl layer. In order to be able to simulate the potential breeze effect in the valley, we added the possibility to use mixed Dirichlet and Neumann BC to the model. Consistent with the large heat capacity of water, we kept T_s constant over the water-covered parts of the computational domain. This allows for the development of the typical pattern of organised turbulence over the water surface, as it has been repeatedly found for breeze circulations, e.g. induced by arctic leads (Esau, 2007; Lüpkes et al., 2008). Over the land surface we kept H_s constant in order to represent the effect of LW radiative cooling. While specifying negative H_s can be problematic for LES studies (Basu et al., 2008), it was necessary here to incorporate the inhomogeneities in surface temperature due to the large differences in surface elevation and the land-sea interface. A description of our modifications to PALM for the usage of heterogeneous surface boundary conditions is given in the supplementary material. In order to be able to study the dispersion of pollutants from different emission sources, we used the same approach for reading heterogeneous fields for the surface flux of a passive tracer F_s . To avoid unphysical recycling of the passive tracer due to periodic boundary conditions, we set the passive tracer to 0 at the lateral boundaries of the computational domain.

3.4. Domain

The simulations are done for the realistic topography of the city of Bergen, Norway. For this, we received laser scanning data from the municipality of Bergen for a 5 km square around Bergen city hall. In the choice of the final domain size, we tried to include the mountains directly surrounding the inner part of the city, while attempting to keep the computational domain as small as possible. At the lateral boundaries, we used periodic BC. The Bergen valley is open towards the north-west and south-west. (not visible in Fig. 2 due to the small domain used for the simulations). In order to allow for a more realistic free flow along the valley axis, we created an artificial channel at the northern end of the domain. While necessary in order to avoid an unnatural stagnation in the southern part of the valley, this channel might also alter the circulation over the fjord at the northern boundary of the computational domain. For future studies this should be avoided by using a larger north-south extent of the domain. At the lateral boundaries we used a 1000 m wide buffer zone, both in the x- and y-directions. In this buffer zone surface elevations are linearly interpolated in order to guarantee a smooth transition through the periodic boundaries.

Polygons of all water bodies in Bergen were provided by Bergen municipality. From this, we produced the input files for the areas with constant H_s over land and constant T_s for grid-boxes that were covered by more than 50 % of water. As a simplification we ignored most fresh-water lakes. The final domain consists of 1024×1024 grid nodes in the horizontal x- and y-directions including the buffer zones, and 128 levels in the vertical z-direction. The model resolution is 10 m for each coordinate axis in the lower 750 m of the computational domain. Above 750 m the grid is vertically stretched by 1 % for each additional grid level. The total domain size is $L_x = L_y = 10240$ m and $L_z = 1451$ m – well above the highest mountain top at 650 m. We smoothed the topography with a running mean filter over three grid cells in both lateral directions.

Deleted: ¶

The heterogeneous fields for H_s and T_s are specified via separate ASCII files, containing arrays with the same dimension as the computational domain (Maronga and Raasch (2013), Björn Maronga personal communication). The files are read into the model in the beginning of each simulation. The arrays contain the value 1 if a specific heat flux or surface temperature should be used for the corresponding model grid-cell and 0 otherwise. The values of H_s and T_s for all grid-cells are then prescribed for a freely chosen number of times during the run via a separately read ASCII list. The use of mixed BC is reached by running the model with the Dirichlet BC and correcting H_s back to the prescribed value over the land surface area for every time step, including a correction of the calculation of the friction velocity and temperature in the Prandtl layer routine. At each grid-point, either H_s or T_s have to be prescribed.

Deleted: .

The extent of the fjord in this setup is roughly 4 km in the E-W direction and 3 km in the N-S direction. The western boundary of the fjord is representative for the location of a large island closing the fjord, except for a 700 m wide passage. To the north, the fjord extends in reality much further than in our setup. The artificially set northern boundary therefore reduces the fjords extend. A comparison to *Esau* (2007) shows, however, that 2 – 4 km is the size where the drag of air from warm arctic leads stagnates at its maximum, meaning that the convergence in the N-S direction should be sufficient to cause a realistic drag of air in the valley.

It should be noted that a 10 m resolution is clearly too coarse in order to resolve the circulation in street canyons (Letzel et al., 2008, 2012). It is also too coarse for the simulation of the stably stratified ABL over flat and homogeneous surfaces (Beare et al., 2006; Mason and Derbyshire, 1990). The focus of this study, however, is on the effect of the larger topographic features (valley width above 1 km) and the convection over the fjord on the circulation within the valley. Both forcings should be sufficiently reproduced with the chosen resolution. An analysis of the kinematic heat fluxes of sensitivity test simulations with 5 and 20 m resolutions in addition to the here chosen 10 m resolution confirmed this.

The smoothing to a 10 m resolution from the laser scanning point clouds implicitly includes a surface displacement in the case of strongly variable topography. No further displacement height is included into the simulations as the non-resolved roughness elements are small compared to the resolved mountain topography. The unresolved roughness length in LES of urban areas and strong topography is an interesting question itself but goes beyond the scope of the work presented here. We have therefore chosen a constant roughness length across the entire domain of 0.5 m. A test with roughness length of 2 m showed qualitatively similar results with some quantitative differences. We therefore assume the roughness length to be a relevant parameter that should be studied further but assume the overall conclusions of this publication not to be dependent on it.

Deleted: around

3.5. Numerical Experiments

The numerical experiments are listed in Table 1. All experiments share a common basic setup: The latitude was 60.38° N, corresponding to Bergen. At initialisation, the surface potential temperature was 273.15 K with constant potential temperature up to 650 m, and a constant potential temperature gradient of $5.5 \times 10^{-3} K m^{-1}$ above. This is the mean potential temperature gradient above Bergen during high pollution cases derived from the Eral data set. H_s over land was chosen as $-0.025 K m s^{-1}$, corresponding to approximately $-25 W m^{-2}$. This is in agreement with heat fluxes found from observational studies (Brümmer and Schultze, 2015; Nordbo et al., 2012). In addition to the cases with mixed BC, we also simulated a test-case with a constant $H_s = 0 K m s^{-1}$ over the entire domain, representing a situation with neutral stratification.

All simulations were run for 12 h in order to reach a quasi-equilibrium state. During this time we kept the surface potential temperature over most water bodies at 273.15 K. The surface potential temperature of the elongated lake in the north-east of the Bergen valley was 273.89 K. This is the potential temperature corresponding to a temperature of 0 °C at the height of the

lake surface (approximately 75 m). The temperature chosen over the fjord is given in Table 1 for each simulation. For cases 1 through 12 we included emission of a passive tracer over the entire urban area into the model simulations. As emission rate we chose an arbitrary value of $1 [kg m^{-2} s^{-1}]$. In order to mimic the actual extend of the build-up city area we only allowed for emissions over land-covered grid-cells with surface elevation below 70 m in the original input file. For the last three cases we used the same emission strength, but only for the area covered by the largest street in the valley (see Fig. 1). The exact geographic location of this street was provided to us by Bergen municipality.

PALM simulations are usually driven with an imposed geostrophic wind profile. For the geostrophic winds in our model experiments we used three different scenarios illustrated in Fig. 2. The profile with the lowest wind speeds follows the mean of the wind speed profiles from Eral above Bergen during days with high NO_2 air pollution (at least one hourly mean measurement exceeding $200 \mu g m^{-3}$ at the high traffic reference station). Because of the varying height of the Eral model levels, we linearly interpolated the wind profiles between the nearest model levels to 410, 450, 600, 800, 1000, 1200 and 2000 m height before averaging. Since Eral has a rather low resolution, the lowest grid-layer over Bergen is at approximately 410 m, depending on surface pressure. In four out of the total 45 high pollution days in the measurement record, the lowest model layer was centred above 410 m. For these cases, no wind speed was available at the 410 m height.

As the lowest point in the PALM domain is the sea surface, it was, however, necessary to specify a wind speed below 410 m height. We chose to use the wind speed from 410 m in Eral at 100 m height in our PALM simulations and $0 m s^{-1}$ wind speed at sea level. The mean wind direction profile during all high pollution cases changed from 100° at the lowest levels to 120° higher up. For simplicity, we kept the wind direction constant at 110° . The two higher wind speed scenarios follow vertical wind speed gradients of 1.5 and 2 times the mean gradient for all height levels above 100 m.

3.6. ERA-Interim data

Eral data are available from the ECMWF archive (Dee et al., 2011; ECMWF, 2016). The resolution of Eral (T255) is too coarse to resolve any of the relevant features of the Bergen valley. We therefore used the Eral wind speed and direction for the specification of the background winds in PALM. We downloaded data at a horizontally interpolated grid of 0.25° resolution and used the mean over the two grid-boxes centred at $5.5^\circ E, 60.25^\circ N$ and $5.5^\circ E, 60.5^\circ N$ that represented best the location of Bergen. For calculating the daily mean fields, we used Eral data at a 3-hourly resolution from a combination of the analysis steps at 6, 12, 18 and 0 UTC plus the 3 and 9 h lead time forecasts of the 0 and 12 UTC analyses.

4. Results

4.1. Main features of the Bergen valley circulation

The setup used here was chosen to study the potential effect of the breeze-induced circulation on the dispersion of pollutants in the Bergen valley under the conditions of typical winter time temperature inversions. Here we will highlight the most

relevant features and briefly compare them to the results of the observational study conducted by WE14 in order to better understand the circulation in the valley. By this we will also investigate the potential and limitations of the chosen setup for the proposed flow interactions. We use case 3 ~~with the mean wind speed profile during all high air pollution cases as a~~ **Deleted:** as a baseline that uses ~~baseline~~. The fjord temperature of 2.5 °C should be realistic for typical persistent winter-time temperature inversions.

5 After 12 hours all simulations are in quasi-steady-state conditions. The resulting 2 m temperatures over the fjord and area 1 and 2 of the city are given in Table 1. ~~The 2 m temperature is calculated as a linear extrapolation of the temperature curve between the first two vertical grid-levels above the topography at 5 and 15 m.~~ While the absolute temperatures over the different areas are irrelevant for this study, their differences are an indicator for the breeze circulation. By design, the difference between the air temperatures over the fjord and the temperatures over the city are increasing with increasing fjord surface temperatures, consequently applying the forcing for a breeze circulation. In addition, the air temperature over the interior part of the valley is, except for case 12, lower than the air temperature over the outer part of the valley. This could exert another breeze-like forcing between these two parts of the valley. The dependence of the breeze effect on the prescribed fjord surface temperature decreases over time. This lets ~~simulations based on the same wind profile converge.~~ The reason is that over land the heat flux is fixed ~~instead of the absolute temperature.~~ The land surface temperature therefore ~~slowly adapts~~ to the fjord ~~surface~~ temperature due to the advection of relatively warmer air ~~from the recirculation within the valley and the periodic BC.~~ The latter is caused by an imbalance in the SHF across the entire domain through different fjord surface temperatures. ~~Neglecting the constant temperature over the smaller water bodies, after very long simulation times in principle the atmosphere should reach an equilibrium circulation that is equal for all different fjord surface temperature scenarios.~~ How fast this equilibrium is established depends on the total volume of the computational domain and the land and sea fractions. No convergence was visible for any of the wind speed scenarios simulated here.

Fig. 4 shows the wind field from case 3 on the vertical level centred at 55 m together with H_s . This is the first vertical level above the AMS used in WE14 (marked in Fig. 2). The south-easterly, down-valley mean flow above GFI is reproduced in our simulation. The mean H_s over all water bodies is 143 Wm^{-2} . Maximum values of up to 1000 Wm^{-2} for a few grid nodes are located in direct proximity to the coast in areas with the strongest seaward flow, as a result from the temperature contrast between the land and the fjord surface. Over the fjord, H_s is not simply decreasing towards the middle of the fjord, but reaches its minimum in the areas of flow convergence. These are for case 3 organised in form of two convergence lines.

Fig. 5 shows local profiles of temperature, wind speed and wind direction over and around the large water body in the middle of the valley. Area 2 in the plot is centred over GFI. The south-easterly flow is visible up to a height of 95 m. For areas 1 and 2 there is a gradual eastwards rotation of the wind direction, likely caused by a combination of the proximity to the warm sea inlet and the local topography. Between 95 m and 105 m height, the wind direction jumps from easterly to north-westerly before rotating back to mostly easterly wind between 300 m and 400 m. Over area 3, the wind direction remains ~~almost~~ constant for the lowest parts of the ABL before gradually turning to the same north-westerly wind around 300 m.

Deleted: as a baseline that uses

Deleted: the different

Deleted: ,

Deleted: ,

Deleted: , not

Deleted: can

Deleted: adapt

Case 0 (Fig. 6) with missing surface temperature and heat flux heterogeneity, showed a northerly up-valley flow, both above the fjord and inside the valley. The down-valley flow at the valley bottom was absent. The up-valley flow seems to be a persistent feature of the Bergen valley topography under the given geostrophic wind profile, to some degree balancing the south-easterly down-valley flow that is caused by the convergence over the fjord. The flow in the valley is therefore not simply following the upper air wind-distribution, but clearly locally forced.

The north-westerly flow higher up in the valley ABL is only visible for the simulations with 270.65, 273.15 and 275.65 K fjord surface temperature, and case 11 with 278.15 K fjord surface temperature and wind speed scenario 3. For the simulations with higher fjord surface temperatures it is not detectable and might be masked by the south-easterly flow from the convergence over the fjord. A reverse flow above a breeze circulation is usually associated with the returning branch of the breeze circulation. An increase in the strength of the land-breeze should therefore also result in an increase of the return branch. This being not the case for our simulations here for increasing fjord surface temperatures indicates that the north-westerly flow higher up in the valley ABL is not the return branch of the land-breeze above the valley bottom.

The modelled temperature profiles in Fig. 5 show inversions up to 135 m height split into two separate inversions with two closely adjacent maxima for areas 1 and 2. The top of the lowest inversion was at 75 m and the highest at 135 m. For area 3, there is only one inversion ending in between the two maxima from area 1 and 2. The results of the measurements with a passive microwave temperature profiler (MTP-5HE from Attex) on the rooftop platform of GFI, presented in WE14, provide the possibility for a comparison with observed inversion heights in the Bergen valley. This instrument does not measure the vertical profiles directly above the instrument, but averages over variable horizontal distances based on the scanning angle. The measured temperature profiles are therefore rather comparable to a combination of the profiles along the horizontal measurement path with the lower height levels including a larger horizontal distance along the measurement direction than the higher height levels. Areas 1-3 are roughly placed along the measurement path of the microwave radiometer, and should therefore be appropriate locations for a comparison. Due to the limited vertical resolution, the angular scanning microwave radiometer smoothes out fine structures, such as e.g. two closely adjacent maxima. For the other simulated cases, the inversion heights were rather similar, varying between 85 and 145 m. The observed inversion depths in the Bergen valley are typically ranging between 70 and 270 m, with the majority of observations between 70 and 220 m. Inversion episodes lasting longer than 2 hours were on average most frequently 170 m deep. This indicates that our LES simulations somewhat underestimate the inversion depth. The modelled maximum inversion strength in the order of 1 – 3 K is in accordance to the observations (WE14). Since the simulations presented here are rather idealised, it is likely that relevant physical processes for a more realistic representation of the inversions, such as large-scale subsidence or LW radiation divergence in the atmosphere, are not fully considered. (Hoch et al., 2011) suggested a cooling of the inversion top together with a simultaneous heating of the air layers above and below. This could be a possible mechanism for further inversion growth. In addition, the temperature profile above the inversion is usually weakly stable, whereas our simulations show a well mixed profile almost to the top of the computational domain. This is caused by the application of the periodic boundary conditions in the model simulations. A nudging of the mean potential temperature gradient above the valley could reduce this problem.

Deleted: ,

Deleted: also

Deleted: north-westerly

Deleted: However, the

Deleted: north-westerly

Deleted: Tests with slightly smaller and 1.4 times larger domain sizes under neutral conditions, showed a similar north-westerly flow. Due to a lack of laser scanning data over the larger domain, this test simulation is based on topographic input from a digital terrain model that does not include buildings and therefore underestimates the topographic height over the city. Due to missing information on the land-sea fraction for this data set, no test simulations were conducted with the larger domain size and non-neutral conditions.

Deleted: validation

Deleted:

Deleted: long-wave

Deleted: solve

but is not available in the model setup we used. Improving the representation of both processes in the model is expected to result in a growth of the inversion depth. Furthermore, the flow along the valley bottom through the southern domain boundary might be overestimated in our simulations. Even though, this flow feature might to some extent also exist in reality, ~~due to the large water bodies further south in the Bergen valley causing convergence and hence draining of air out of~~ the city centre, this could reduce the potential for cold air pooling. Finally, ~~the relatively low spatial resolution for the simulation of the stably stratified ABL might also negatively impact the representation of the temperature inversions in the Bergen valley.~~

However, our simulations produced ground-based inversions higher than the 55 m model level. This means that they should be able to give us relevant information on the mean flow around the height of the AMS and below, the levels most relevant for the dispersion of locally emitted air pollutants.

4.2. The interplay between the local and the larger scale conditions

The range of selected fjord surface temperatures and geostrophic wind speeds allows ~~investigating the interplay between the~~ south-easterly down-valley flow, triggered by the convection over the fjord, and the north-westerly up-valley flow, forced by the flow above the valley, and its effect on the dispersion of pollutants inside the valley. Fig. 7 shows the wind-field at 55 m height and the terrain following concentration of the surface emitted passive tracer at 2 m above the ground, ~~calculated the same way as the 2 m temperature before.~~ The runs with fjord temperatures of 2.5 °C ~~or more~~ show clear signs of flow convergence in the wind field over the fjord and a distinct signature of prevailing down-valley flow. For the leftmost panels with 0 °C fjord surface temperature, this convergence line is pushed all the way towards the coastline and the flow in the exterior part of the Bergen valley is even reversed towards an up-valley flow. For case 9, the convergence line is masked by this up-valley flow at the 55 m height level and therefore only visible for the lower level wind fields. The results show a gradual movement of the convergence line with decreasing fjord surface temperatures and increasing geostrophic wind speeds inwards towards the city centre. This is caused by a weakening of the convergence over the colder fjord. ~~The overall flow pattern becomes more and more dominated by the up-valley recirculation, especially for the scenarios with higher wind speeds.~~ It should, however, be mentioned that the outflow out of the artificially generated channel at the northern border of the computational domain seems to interact with the up-valley flow, enhancing it and hence pushing the convergence line towards the ~~coast.~~ Down-valley flows are almost never observed during temperature inversions in the valley, but they are visible in our simulations. While the coldest fjord surface temperatures considered here are rarely observed, possibly explaining this lack of observations of the up-valley flow, it could also be artificially enhanced in our simulations by this ~~domain~~ boundary effect. This is, however, a persistent feature of all simulations. It might therefore shift the balance between the up-valley circulation, forced by the flow above the valley, and the breeze circulation towards lower geostrophic wind speeds and higher fjord temperatures, respectively, but is not expected to change the conclusions on the existence of the balance itself.

Deleted: as there are

Deleted: that should cause

Deleted: a

Deleted: ,

Deleted: to investigate

Deleted: 6

Deleted: .

Deleted: and above

Deleted: and the

Deleted: is

Deleted: land

The effect of this on the circulation inside the valley is summarised in Fig. 8 in terms of the horizontal mean of the passive tracer concentration 2 m above the ground and the wind speed and direction at the 55 m height level and 10 m above the ground. For each of the given wind speed scenarios, there is a combination of geostrophic winds and local breeze circulations, that leads to a maximum in the stagnation in the exterior part of the valley (area 1, Fig. 2). For the winds, this is visible as a plateau for the wind speed in scenarios 2 and 3, and a turning of the wind direction both at the 55 m height level and 10 m above the ground. Based on this, it can be assumed that there would be a minimum in the local wind speeds at intermediate fjord temperatures between 0 °C and 2.5 °C. For scenario 1, with the lowest considered wind speeds, this balancing is not yet reached for the 10 m wind, while the wind at the 55 m height level is already rotated towards an up-valley flow. This indicates, however, that the rotation of the winds at 10 m above the surface would occur at fjord surface temperatures below 0 °C. To investigate this further we conducted a test-simulation with a fjord surface temperature of -2.5 °C. This scenario, however, led to an unrealistic maximum in convergence over all other water bodies, except for the fjord. While the absolute temperatures of the fjord and land surface are not relevant, the relative temperature differences are. During the winter the fresh water bodies are usually colder than the fjord. The constant temperature of 0 °C over the fresh water bodies in our simulations, therefore, causes an unrealistic circulation in the valley at fjord surface temperatures below 0 °C.

Deleted: 7

For the interior part of the valley (area 2, Fig. 2) a balance, like for the exterior part of the valley, is not visible. The set of simulations with the lowest fjord surface temperatures of 0 °C show both, the lowest wind speeds and maximum pollutant concentrations and no reversal of the wind direction is seen for any of the simulations at the height of the GFI AMS. One reason for this distinctly different behaviour of the interior part of the valley is the colder temperature there. The temperature difference between the 2 m surface air temperatures over area 1 and 2 at least for the lower fjord surface temperatures is similar to the temperature difference between the surface air temperatures over area 3 and 1 (see Table 1 for comparison). The different land surface temperatures therefore exert an additional forcing on the air in the interior part of the valley. Furthermore, as the large water body in the middle of the valley is warmer than the surrounding land, it causes another centre of flow convergence similar to the fjord. It enhances an up-valley flow over area 1, while it weakens it for area 2. This effect is increasing with decreasing fjord surface temperature due to the changes in land surface temperature between the different model simulations. Especially for the cases with 0 °C fjord surface temperature, however, the convergence over the water body in the middle of the valley is most likely overestimated, since the brackish water lake usually cools off much faster than the fjord, resulting in a smaller temperature difference between the lakes and the surrounding land. A thin layer of ice, as it is typical on this water body, utterly reduces this effect.

The impact of the wind circulation on the dispersion of the passive tracer is two-fold. Locally, more stagnant conditions in area 1 lead to an increased accumulation of pollutants in this region. The concentration over area 2 is in general higher than over area 1, except for case 7. This part of the valley is more protected from the geostrophic winds than area 1. In addition, the wind direction plays a more important role for area 1. An up-valley flow automatically leads to a lower pollutant concentration there, since air from the fjord, with considerably lower tracer concentrations, will be transported inland.

Deleted: ,

Deleted: ,

Deleted: as

4.3. Analysis of single road contribution

For many valleys the main pollutant emissions over land come from single transit roads. The same is the case for the NO₂ emissions in the Bergen valley. The main emission source for traffic emitted pollutants is the transit road marked in Fig. 1.

5 Emissions from a reduced area give insight into the efficiency of the horizontal dispersion for the most relevant areas that was obscured by the areal emissions assessed before. Therefore, we repeated cases 9 to 11 with tracer emissions only from this road. The wind fields, together with the passive tracer concentrations 2 m above the surface, are shown in Fig. 9. We chose to use sc 3 for the wind speeds in order to see the full range of conditions, from a down-valley flow to maximum stagnation.

10 The up-valley flow in case 13 transports the passive tracer away from the city centre. As the emissions from the street here are only scaling with the area covered by the street, ignoring traffic density and pattern for the emission factors, the large interchange road is causing the highest density of emissions. However, the high tracer concentrations are not transported to other places in the valley. They are rather caught by the convection from the lake in the middle of the valley, which serves as an effective barrier also for the tracer transport from this street. This is, to a reduced degree, also visible for the other two cases. Emissions from area 2 contribute less to the pollution directly north of the lake. This indicates that even relatively smaller interior water bodies could improve the urban ventilation through driving convective and local-scale circulations.

15 For the other two cases, the mean down-valley flow transports the tracer along the valley axis. While for case 14 there is still an accumulation visible because of a relative stagnation, the down-valley flow is sufficiently strong and keeps the passive tracer concentrations at a low level over large parts of the city centre for case 15.

20 5. Summary and Discussion

In this study, we run a set of large-eddy simulations with the PALM model to evaluate the role of local circulations and their sensitivity to the interplay between external large-scale forcing and local forcing due to heterogeneities in the surface conditions. Specifically, we addressed the sea-land temperature difference, the large-scale wind speed and the imposed static stability of the lower atmosphere for typical conditions leading to high air pollution in Bergen, Norway.

25 Urban settlements in mountainous terrain at high latitudes are especially prone to adverse effects of temperature inversions on the air quality. A lack of solar heating in winter and topographic constraints on the low level atmospheric circulation can lead to an accumulation of air pollutants near the surface. At the same time, large sea-land surface temperature differences create local and meso-scale circulations in coastal cities, which can partially compensate or even overwhelm the low level circulations forced by the large-scale atmospheric flow. Whether and to what degree will the circulations due to the surface
30 heterogeneity impact the urban ventilation and hence the air quality? The outcome depends not only on the case specific geographical features of the terrain and the specific emissions in the city, but also on more universal physical mechanisms

Deleted: 8

and scalings. Such dependencies have already been extensively studied for flat surfaces and more regular heterogeneities, e.g. related to the sea ice fractures or leads in the Arctic Ocean (Esau, 2007) or to idealized surface plot patterns (van Heerwaarden et al., 2014). Published studies on urbanized mountain valleys often did not have sufficiently fine resolution to reproduce interactions between the flow above and the local flow features inside the valley. Moreover, they have not addressed these interactions in the stably stratified boundary layers, when the air pollution may be particularly dangerous.

The conducted joint analysis of the NO₂ concentration and meteorological parameters for the Bergen valley revealed an unexpected build-up of air pollution under synoptic situations with significant non-zero large-scale winds. There was a distinct maximum in the distribution of observed NO₂ concentrations against the Era-Interim surface wind speeds at around 3 m s^{-1} . This behaviour is inconsistent with the usually assumed monotonic concentration-wind speed dependencies and the faster depletion of valley cold air pools with increasing wind speeds (e.g. Zängl, 2003; Lareau and Horel, 2014). The behaviour of monotonically decreasing concentrations against wind speeds is, however, recovered for the actually measured surface winds. This indicates that some sufficiently strong local circulations emerge near the surface that are able to counteract the large-scale winds, but are not resolved in ERA-Interim. We therefore studied the physical mechanisms, dynamics and sensitivities to the surface features for those circulations with a set of 16 PALM scenarios (Table 1) for the realistic terrain surrounding the city.

The simulations showed that, both, the local circulation, forced by the large-scale flow, or the locally forced breeze circulation could dominate the dispersion of air pollution in the lower valley atmosphere. The maximum pollutant trapping under prevailing inversion conditions was dependent on the exact interplay of the three circulation features, i.e. large-scale flow, topographic steering and breeze circulation. The simulations with the lowest fjord surface temperatures showed a mean up-valley flow dominated by the topographically steered recirculation of the large-scale flow. The pollution emitted from urban activities was represented by a passive tracer emitted from the land surface over the urban area. The up-valley winds therefore caused the advection of tracer free air from over the fjord into the city centre. The simulations with the higher fjord surface temperatures showed a mean down-valley flow dominated by the breeze circulation. For the highest fjord surface temperatures this lead to an efficient depletion of the tracer emitted over the urban area. For the simulations with intermediate temperatures, however, both circulation features balanced each other, leading to local stagnation and an accumulation of the tracer.

Perhaps one of the most interesting implications of this study is the possibility to analyse pollution scenarios for a specific area induced by concrete emission sources. Such inverse diffusion problems are frequently solved through a Green function method for regular domains (Lin and Hildemann, 1996), but for irregular domains, the direct simulations remain more computationally efficient. The simulations demonstrated that the strongly localized concentrations are rather sensitive to small-scale convective sources such as interior lakes. These effectively work as barriers for the dispersion of pollutants near the ground. An approach to predict local air quality without resolving such local features will not be able to simulate the pollutant dispersion pattern correctly.

Acknowledgements

This study was funded by the GC Rieber foundation. We thank Bergen Municipality for provision of the topographic input data, the land-sea mask and the position of roads in the Bergen valley. We further thank the Norwegian Meteorological Institute and the Geophysical Institute at the University of Bergen for providing wind measurement data, the European Centre for Medium-Range Weather Forecasts for the ERA-Interim data and the Norwegian Institute for Air Research for the air quality measurement data. Sigfried Raasch and Björn Maronga with the Institute of Meteorology and Climatology at the University of Hannover were helpful in adapting and applying the PALM code.

References

- Atlaskin, E. and Vihma, T.: Evaluation of NWP results for wintertime nocturnal boundary-layer temperatures over Europe and Finland, *Q. J. R. Meteorol. Soc.*, 138(667), 1440–1451, doi:10.1002/qj.1885, 2012.
- 10 Baklanov, A., Hänninen, O., Slørdal, L. H., Kukkonen, J., Bjergene, N., Fay, B., Finardi, S., Hoe, S. C., Jantunen, M., Karppinen, A., Rasmussen, A., Skouloudis, A., Sokhi, R. S., Sørensen, J. H. and Ødegaard, V.: Integrated systems for forecasting urban meteorology, air pollution and population exposure, *Atmos. Chem. Phys.*, 7(3), 855–874, doi:10.5194/acp-7-855-2007, 2007.
- 15 Baklanov, A. a., Grisogono, B., Bornstein, R., Mahrt, L., Zilitinkevich, S. S., Taylor, P., Larsen, S. E., Rotach, M. W. and Fernando, H. J. S.: The Nature, Theory, and Modeling of Atmospheric Planetary Boundary Layers, *Bull. Am. Meteorol. Soc.*, 92(2), 123–128, doi:10.1175/2010BAMS2797.1, 2011.
- Barlow, J. F.: Progress in observing and modelling the urban boundary layer, *Urban Clim.*, 44, doi:10.1016/j.uclim.2014.03.011, 2014.
- 20 Basu, S., Holtslag, A., Wiel, B., Moene, A. and Steeneveld, G.-J.: An inconvenient “truth” about using sensible heat flux as a surface boundary condition in models under stably stratified regimes, *Acta Geophys.*, 56(1), 88–99, doi:10.2478/s11600-007-0038-y, 2008.
- Beare, R. J., Macvean, M. K., Holtslag, A. a. M., Cuxart, J., Esau, I., Golaz, J.-C., Jimenez, M. a., Khairoutdinov, M., Kosovic, B., Lewellen, D., Lund, T. S., Lundquist, J. K., McCabe, A., Moene, A. F., Noh, Y., Raasch, S. and Sullivan, P.: An
- 25 Intercomparison of Large-Eddy Simulations of the Stable Boundary Layer, *Boundary-Layer Meteorol.*, 118(2), 247–272, doi:10.1007/s10546-004-2820-6, 2006.
- Berge, E., Walker, S.-E., Sorteberg, A., Lenkopane, M., Eastwood, S., Jablonska, H. I. and Ødegaard Køltzow, M.: A Real-Time operational Forecast Model for Meteorology and Air Quality during Peak Air Pollution Episodes in Oslo, Norway, *Water, Air Soil Pollut. Focus*, 2(5/6), 745–757, doi:10.1023/A:1021378005618, 2002.
- 30 Bergot, T., Escobar, J. and Masson, V.: Effect of small-scale surface heterogeneities and buildings on radiation fog: Large-eddy simulation study at Paris-Charles de Gaulle airport, *Q. J. R. Meteorol. Soc.*, 141(686), 285–298, doi:10.1002/qj.2358, 2015.

- Brümmer, B. and Schultze, M.: Analysis of a 7-year low-level temperature inversion data set measured at the 280 m high Hamburg weather mast, *Meteorol. Zeitschrift*, 24(5), 481–494, doi:10.1127/metz/2015/0669, 2015.
- Chen, F., Kusaka, H., Bornstein, R., Ching, J., Grimmond, C. S. B., Grossman-Clarke, S., Loridan, T., Manning, K. W., Martilli, A., Miao, S., Sailor, D., Salamanca, F. P., Taha, H., Tewari, M., Wang, X., Wyszogrodzki, A. A. and Zhang, C.:
 5 The integrated WRF/urban modelling system: Development, evaluation, and applications to urban environmental problems, *Int. J. Climatol.*, 31(2), 273–288, doi:10.1002/joc.2158, 2011.
- Cheng, W. C., Liu, C.-H. and Leung, D. Y. C.: Large-eddy simulation of turbulent transport in urban street canyons in different thermal stabilities, in *The Fifth International Symposium on Computational Wind Engineering (CWE2010)*, Chapel Hill, North Carolina, USA. [online] Available from: ftp://ftp.atdd.noaa.gov/pub/cwe2010/Files/Papers/064_Liu.pdf, 2010.
- 10 Crosman, E. T. and Horel, J. D.: Sea and Lake Breezes: A Review of Numerical Studies, *Boundary-Layer Meteorol.*, 137(1), 1–29, doi:10.1007/s10546-010-9517-9, 2010.
- Crosman, E. T. and Horel, J. D.: Winter Lake Breezes near the Great Salt Lake, *Boundary-Layer Meteorol.*, 159(2), 439–464, doi:10.1007/s10546-015-0117-6, 2016.
- Deardorff, J. W.: Stratocumulus-capped mixed layers derived from a three-dimensional model, *Boundary-Layer Meteorol.*,
 15 18(4), 495–527, doi:10.1007/BF00119502, 1980.
- Dee, D. P., Uppala, S. M., Simmons, a. J., Berrisford, P., Poli, P., Kobayashi, S., Andrae, U., Balmaseda, M. a., Balsamo, G., Bauer, P., Bechtold, P., Beljaars, a. C. M., van de Berg, L., Bidlot, J., Bormann, N., Delsol, C., Dragani, R., Fuentes, M., Geer, a. J., Haimberger, L., Healy, S. B., Hersbach, H., Hólm, E. V., Isaksen, L., Kållberg, P., Köhler, M., Matricardi, M., McNally, a. P., Monge-Sanz, B. M., Morcrette, J.-J., Park, B.-K., Peubey, C., de Rosnay, P., Tavolato, C., Thépaut, J.-N.
 20 and Vitart, F.: The ERA-Interim reanalysis: configuration and performance of the data assimilation system, *Q. J. R. Meteorol. Soc.*, 137(656), 553–597, doi:10.1002/qj.828, 2011.
- ECMWF: MARS, the ECMWF archive, [online] Available from: <https://software.ecmwf.int/wiki/display/UDOC/MARS+user+documentation> (Accessed 30 September 2016), 2016.
- Esau, I.: A Health Damage Pattern Due to Street-Level Pollution in the Central Paris Area Estimated With a Turbulence-
 25 Resolving Model, in *Sustainable Environmental Design in Architecture*, vol. 56, edited by S. T. Rassia and P. M. Pardalos, pp. 307–324, Springer New York, New York, NY., 2012.
- Esau, I. N.: Amplification of turbulent exchange over wide Arctic leads: Large-eddy simulation study, *J. Geophys. Res.*, 112(D8), D08109, doi:10.1029/2006JD007225, 2007.
- Fay, B. and Neunhüserer, L.: Evaluation of high-resolution forecasts with the non-hydrostatic numerical weather prediction
 30 model Lokalmodell for urban air pollutione pisodes in Helsinki, Oslo and Valencia, *Atmos. Chem. Phys.*, 6(8), 2107–2128, doi:10.5194/acp-6-2107-2006, 2006.
- Fernando, H. J. S.: Fluid Dynamics of Urban Atmospheres in Complex Terrain, *Annu. Rev. Fluid Mech.*, 42(1), 365–389, doi:10.1146/annurev-fluid-121108-145459, 2010.
- Fernando, H. J. S. and Weil, J. C.: Whither the stable boundary layer?, *Bull. Am. Meteorol. Soc.*, 91, 1475–1484,

Deleted: pollution episodes

Deleted: .

- doi:10.1175/2010BAMS2770.1, 2010.
- Gariazzo, C., Papaleo, V., Pelliccioni, A., Calori, G., Radice, P. and Tinarelli, G.: Application of a Lagrangian particle model to assess the impact of harbour, industrial and urban activities on air quality in the Taranto area, Italy, *Atmos. Environ.*, 41(30), 6432–6444, doi:10.1016/j.atmosenv.2007.06.005, 2007.
- 5 Glazunov, A., Rannik, Ü., Stepanenko, V., Lykosov, V., Auvinen, M., Vesala, T. and Mammarella, I.: Large-eddy simulation and stochastic modeling of Lagrangian particles for footprint determination in the stable boundary layer, *Geosci. Model Dev.*, 9(9), 2925–2949, doi:10.5194/gmd-9-2925-2016, 2016.
- Grange, S. K., Salmond, J. A., Trompeter, W. J., Davy, P. K. and Ancelet, T.: Effect of atmospheric stability on the impact of domestic wood combustion to air quality of a small urban township in winter, *Atmos. Environ.*, 70, 28–38, doi:10.1016/j.atmosenv.2012.12.047, 2013.
- 10 van Heerwaarden, C. C., Mellado, J. P. and de Lozar, A.: Scaling Laws for the Heterogeneously Heated Free Convective Boundary Layer, *J. Atmos. Sci.*, 140904132538003, doi:10.1175/JAS-D-13-0383.1, 2014.
- Hoch, S. W., Whiteman, C. D. and Mayer, B.: A Systematic Study of Longwave Radiative Heating and Cooling within Valleys and Basins Using a Three-Dimensional Radiative Transfer Model, *J. Appl. Meteorol. Climatol.*, 50(12), 2473–2489, doi:10.1175/JAMC-D-11-083.1, 2011.
- 15 Holmer, B., Haeger-eugensson, M., Holmer, B. and Haeger-eugensson, M.: Winter land breeze in a high latitude complex coastal area, *Phys. Geogr.*, 20(2), 152–172, doi:10.1080/02723646.1999.10642674, 1999.
- Hughes, J. K., Ross, A. N., Vosper, S. B., Lock, A. P. and Jemmett-Smith, B. C.: Assessment of valley cold pools and clouds in a very high-resolution numerical weather prediction model, *Geosci. Model Dev.*, 8(10), 3105–3117, doi:10.5194/gmd-8-3105-2015, 2015.
- 20 Junk, J., Helbig, A. and Lüers, J.: Urban climate and air quality in Trier Germany, *Int. J. Biometeorol.*, 47(4), 230–238, doi:10.1007/s00484-003-0162-6, 2003.
- Keck, M., Raasch, S., Letzel, M. O. and Ng, E.: First Results of High Resolution Large-Eddy Simulations of the Atmospheric Boundary Layer, *J. Heat Isl. Inst. Int.*, 9, 39–43, 2014.
- 25 Lappalainen, H. K., Kerminen, V.-M., Petäjä, T., Kurten, T., Baklanov, A., Shvidenko, A., Bäck, J., Vihma, T., Alekseychik, P., Arnold, S., Arshinov, M., Asmi, E., Belan, B., Bobylev, L., Chalov, S., Cheng, Y., Chubarova, N., de Leeuw, G., Ding, A., Dobrolyubov, S., Dubtsov, S., Dyukarev, E., Elansky, N., Eleftheriadis, K., Esau, I., Filatov, N., Flint, M., Fu, C., Glezer, O., Gliko, A., Heimann, M., Holtslag, A. A. M., Hörrak, U., Janhunen, J., Juhola, S., Järvi, L., Järvinen, H., Kanukhina, A., Konstantinov, P., Kotlyakov, V., Kieloaho, A.-J., Komarov, A. S., Kujansuu, J., Kukkonen, I., Kyrö, E., Laaksonen, A., Laurila, T., Lihavainen, H., Lisitzin, A., Mahura, A., Makshtas, A., Mareev, E., Mazon, S., Matishov, D., Melnikov, V., Mikhailov, E., Moiseev, D., Nigmatulin, R., Noe, S. M., Ojala, A., Pihlatie, M., Popovicheva, O., Pumpanen, J., Regerand, T., Repina, I., Shcherbinin, A., Shevchenko, V., Sipilä, M., Skorokhod, A., Spracklen, D. V., Su, H., Subetto, D. A., Sun, J., Terzhevik, A. Y., Timofeyev, Y., Troitskaya, Y., Tynkkynen, V.-P., Kharuk, V. I., Zaytseva, N., Zhang, J., Viisanen, Y., Vesala, T., Hari, P., Hansson, H. C., Matvienko, G. G., Kasimov, N. S., Guo, H., Bondur, V., Zilitinkevich, S. and Kulmala,

- M.: Pan-Eurasian Experiment (PEEX): Towards holistic understanding of the feedbacks and interactions in the land - atmosphere - ocean- society continuum in the Northern Eurasian region, *Atmos. Chem. Phys. Discuss.*, (April), 1–107, doi:10.5194/acp-2016-186, 2016.
- Lareau, N. P. and Horel, J. D.: Dynamically Induced Displacements of a Persistent Cold-Air Pool, *Boundary-Layer Meteorol.*, 154(2), 291–316, doi:10.1007/s10546-014-9968-5, 2015.
- Lareau, N. P., Crosman, E., Whiteman, C. D., Horel, J. D., Hoch, S. W., Brown, W. O. J. and Horst, T. W.: The Persistent Cold-Air Pool Study, *Bull. Am. Meteorol. Soc.*, 94(1), 51–63, doi:10.1175/BAMS-D-11-00255.1, 2013.
- Letzel, M. O., Krane, M. and Raasch, S.: High resolution urban large-eddy simulation studies from street canyon to neighbourhood scale, *Atmos. Environ.*, 42(38), 8770–8784, doi:10.1016/j.atmosenv.2008.08.001, 2008.
- Letzel, M. O., Helmke, C., Ng, E., An, X., Lai, A. and Raasch, S.: LES case study on pedestrian level ventilation in two neighbourhoods in Hong Kong, *Meteorol. Zeitschrift*, 21(6), 575–589, doi:10.1127/0941-2948/2012/0356, 2012.
- Lin, J.-S. and Hildemann, L. M.: Analytical solutions of the atmospheric diffusion equation with multiple sources and height-dependent wind speed and eddy diffusivities, *Atmos. Environ.*, 30(2), 239–254, doi:10.1016/1352-2310(95)00287-9, 1996.
- Lo, J. C. F., Lau, A. K. H., Fung, J. C. H. and Chen, F.: Investigation of enhanced cross-city transport and trapping of air pollutants by coastal and urban land-sea breeze circulations, *J. Geophys. Res.*, 111(D14), D14104, doi:10.1029/2005JD006837, 2006.
- Lüpkes, C., Gryanik, V. M., Witha, B., Gryschka, M., Raasch, S. and Gollnik, T.: Modeling convection over arctic leads with LES and a non-eddy-resolving microscale model, *J. Geophys. Res.*, 113(C9), C09028, doi:10.1029/2007JC004099, 2008.
- Mahrt, L.: Stably Stratified Atmospheric Boundary Layers, *Annu. Rev. Fluid Mech.*, 46(1), 23–45, doi:10.1146/annurev-fluid-010313-141354, 2014.
- Maronga, B., Gryschka, M., Heinze, R., Hoffmann, F., Kanani-Sühring, F., Keck, M., Ketelsen, K., Letzel, M. O., Sühring, M. and Raasch, S.: The Parallelized Large-Eddy Simulation Model (PALM) version 4.0 for atmospheric and oceanic flows: model formulation, recent developments, and future perspectives, *Geosci. Model Dev.*, 8(8), 2515–2551, doi:10.5194/gmd-8-2515-2015, 2015.
- Mason, P. J. and Derbyshire, S. H.: Large-Eddy Simulation of the stably-stratified atmospheric boundary layer, *Boundary-Layer Meteorol.*, 53(1–2), 117–162, doi:10.1007/BF00122467, 1990.
- Moeng, C.-H. and Wyngaard, J. C.: Spectral analysis of large-eddy simulations of the convective boundary layer, *J. Atmos. Sci.*, 45(23), 3573–3587, doi:10.1175/1520-0469(1988)045<3573:SAOLES>2.0.CO;2, 1988.
- Mohamad, A. A. and Viskanta, R.: Flow and heat transfer in a lid-driven cavity filled with a stably stratified fluid, *Appl. Math. Model.*, 19(January), 465–472, doi:10.1016/0307-904X(95)00030-N, 1995.
- Nakayama, H., Takemi, T. and Nagai, H.: Large-eddy simulation of urban boundary-layer flows by generating turbulent inflows from mesoscale, *Atmos. Sci. Lett.*, 13(April), 180–186, doi:10.1002/asl.377, 2012.

Deleted: Maronga, B. and Raasch, S.: Large-Eddy Simulations of Surface Heterogeneity Effects on the Convective Boundary Layer During the LITFASS-2003 Experiment, *Boundary-Layer Meteorol.*, 146(1), 17–44, doi:10.1007/s10546-012-9748-z, 2013.¶

- Nordbo, A., Järvi, L. and Vesala, T.: Revised eddy covariance flux calculation methodologies – effect on urban energy balance, *Tellus B*, 64, 1–20, doi:10.3402/tellusb.v64i0.18184, 2012.
- Norwegian Institute for Air Research: Luftkvaliteten i Norge, [online] Available from: <http://admin.luftkvalitet.info> (Accessed 30 September 2016), 2016.
- 5 Norwegian Meteorological Institute: eKlima, the climate database of the Norwegian Meteorological Institute, [online] Available from: http://sharki.oslo.dnmi.no/portal/page?_pageid=73,39035,73_39101&_dad=portal&_schema=PORTAL (Accessed 30 September 2016), 2016.
- Park, S.-B., Baik, J.-J. and Lee, S.-H.: Impacts of Mesoscale Wind on Turbulent Flow and Ventilation in a Densely Built-up Urban Area, *J. Appl. Meteorol. Climatol.*, 54(4), 811–824, doi:10.1175/JAMC-D-14-0044.1, 2015a.
- 10 Park, S.-B., Baik, J.-J. and Han, B.-S.: Large-eddy simulation of turbulent flow in a densely built-up urban area, *Environ. Fluid Mech.*, 15(2), 235–250, doi:10.1007/s10652-013-9306-3, 2015b.
- Patnaik, G. and Boris, J.: FAST3D-CT: an LES model for urban aerodynamics, in *The Fifth International Symposium on Computational Wind Engineering (CWE2010)*, Chapel Hill, North Carolina, USA. [online] Available from: ftp://ftp.atdd.noaa.gov/pub/cwe2010/Files/Papers/394_Patnaik.pdf, 2010.
- 15 Raasch, S. and Schröter, M.: PALM – A large-eddy simulation model performing on massively parallel computers, *Meteorol. Zeitschrift*, 10(5), 363–372, doi:10.1127/0941-2948/2001/0010-0363, 2001. Reeves, H. D. and Stensrud, D. J.: Synoptic-Scale Flow and Valley Cold Pool Evolution in the Western United States, *Weather Forecast.*, 24(6), 1625–1643, doi:10.1175/2009WAF2222234.1, 2009.
- Rimetz-Planchon, J., Perdrix, E., Sobanska, S. and Brémard, C.: PM10 air quality variations in an urbanized and industrialized harbor, *Atmos. Environ.*, 42(31), 7274–7283, doi:10.1016/j.atmosenv.2008.07.005, 2008.
- 20 Rotach, M. W., Calanca, P., Graziani, G., Gurtz, J., Steyn, D. G., Vogt, R., Andretta, M., Christen, A., Cieslik, S., Connolly, R., De Wekker, S. F. J., Galmarini, S., Kadygrov, E. N., Kadygrov, V., Miller, E., Neiningner, B., Rucker, M., Van Gorsel, E., Weber, H., Weiss, A. and Zappa, M.: Turbulence Structure and Exchange Processes in an Alpine Valley: The Riviera Project, *Bull. Am. Meteorol. Soc.*, 85(9), 1367–1385, doi:10.1175/BAMS-85-9-1367, 2004.
- 25 Saiki, E. M., Moeng, C. and Sullivan, P. P.: Large Eddy Simulation of the stably stratified planetary boundary layer, *Boundary-Layer Meteorol.*, 95(1), 1–30, doi:10.1023/A:1002428223156, 2000.
- Schalkwijk, J., Jonker, H. J. J., Siebesma, A. P. and Van Meijgaard, E.: Weather Forecasting Using GPU-Based Large-Eddy Simulations, *Bull. Am. Meteorol. Soc.*, 96(5), 715–723, doi:10.1175/BAMS-D-14-00114.1, 2015.
- Schicker, I. and Seibert, P.: Simulation of the meteorological conditions during a winter smog episode in the Inn Valley, *Meteorol. Atmos. Phys.*, 103(1–4), 211–222, doi:10.1007/s00703-008-0346-z, 2009.
- 30 Sheridan, P. F., Vosper, S. B. and Brown, a. R.: Characteristics of cold pools observed in narrow valleys and dependence on external conditions, *Q. J. R. Meteorol. Soc.*, 140(679), 715–728, doi:10.1002/qj.2159, 2014.
- Steyn, D. G., DeWekker, S. F. J., Kossmann, M. and AlbertoMartilli: Boundary Layers and Air Quality in Mountainous Terrain, in *Mountain Weather Research and Forecasting*, edited by F. K. Chow, S. F. J. De Wekker, and B. J. Snyder, pp.

Deleted: ¶

Deleted: -eddy simulation

Deleted: , (October 1999)

- 261–289, Springer Netherlands, Dordrecht., 2013.
- Tomas, J. M., Pourquie, M. J. B. M. and Jonker, H. J. J.: Stable Stratification Effects on Flow and Pollutant Dispersion in Boundary Layers Entering a Generic Urban Environment, *Boundary-Layer Meteorol.*, doi:10.1007/s10546-015-0124-7, 2016.
- 5 Whiteman, C. D. and Doran, J. C.: The Relationship between Overlying Synoptic-Scale Flows and Winds within a Valley, *J. Appl. Meteorol.*, 32, 1669–1682, doi:10.1175/1520-0450(1993)032<1669:TRBOSS>2.0.CO;2, 1993.
- Wicker, L. J. and Skamarock, W. C.: Time-Splitting Methods for Elastic Models Using Forward Time Schemes, *Mon. Weather Rev.*, 130(8), 2088–2097, doi:10.1175/1520-0493(2002)130<2088:TSMFEM>2.0.CO;2, 2002.
- Wolf, T. and Esau, I.: A proxy for air quality hazards under present and future climate conditions in Bergen, Norway, *Urban*
- 10 *Clim.*, 10, 801–814, doi:10.1016/j.uclim.2014.10.006, 2014.
- Wolf, T., Esau, I. and Reuder, J.: Analysis of the vertical temperature structure in the Bergen valley, Norway, and its connection to pollution episodes, *J. Geophys. Res. Atmos.*, 119(18), 10,645–10,662, doi:10.1002/2014JD022085, 2014.
- Wyszogrodzki, A. A., Miao, S. and Chen, F.: Evaluation of the coupling between mesoscale-WRF and LES-EULAG models for simulating fine-scale urban dispersion, *Atmos. Res.*, 118, 324–345, doi:10.1016/j.atmosres.2012.07.023, 2012.
- 15 Xie, Z. T., Hayden, P. and Wood, C. R.: Large-eddy simulation of approaching-flow stratification on dispersion over arrays of buildings, *Atmos. Environ.*, 71, 64–74, doi:10.1016/j.atmosenv.2013.01.054, 2013.
- Zhang, J. P., Zhu, T., Zhang, Q. H., Li, C. C., Shu, H. L., Ying, Y., Dai, Z. P., Wang, X., Liu, X. Y., Liang, a. M., Shen, H. X. and Yi, B. Q.: The impact of circulation patterns on regional transport pathways and air quality over Beijing and its surroundings, *Atmos. Chem. Phys.*, 12(11), 5031–5053, doi:10.5194/acp-12-5031-2012, 2012.
- 20 Zhong, S., Whiteman, C. D., Bian, X., Shaw, W. J. and Hubbe, J. M.: Meteorological Processes Affecting the Evolution of a Wintertime Cold Air Pool in the Columbia Basin, *Mon. Weather Rev.*, 129(10), 2600–2613, doi:10.1175/1520-0493(2001)129<2600:MPATEO>2.0.CO;2, 2001.
- Zilitinkevich, B. S., Kulmala, M. and Esau, I.: Megacities – Refining Models to Client Environment, *WMO Bull.*, 64(1), 20–
- 22 [online] Available from: <http://public.wmo.int/en/resources/bulletin/megacities-refining-models-client-environment>,
- 25 2015.
- Zängl, G.: The impact of upstream blocking, drainage flow and the geotrophic pressure gradient on the persistence of cold-air pools, *Q. J. R. Meteorol. Soc.*, 129(587), 117–137, doi:10.1256/qj.02.99, 2003.

Deleted: -%E2%80%93-

Table 1: model simulations

Case	Wind scenario	θ_{fjord} [K]	$T_{2m}(fjord)$ [K]**	$T_{2m}(area\ 1)$ [K]**	$T_{2m}(area\ 2)$ [K]**
Case 0*	sc 1	-	-	-	-
Case 1	sc 1	270.7	271.5	269.8	268.0
Case 2	sc 1	273.2	273.6	271.3	269.1
Case 3	sc 1	275.7	275.4	272.0	270.1
Case 4	sc 1	278.2	277.4	273.0	271.6
Case 5	sc 2	273.2	273.7	271.5	269.0
Case 6	sc 2	275.7	275.4	272.2	270.8
Case 7	sc 2	278.2	277.4	273.3	272.8
Case 8	sc 2	280.7	279.1	274.4	273.3
Case 9	sc 3	273.2	273.7	271.7	269.8
Case 10	sc 3	275.7	275.5	272.5	271.0
Case 11	sc 3	278.2	277.3	273.5	272.4
Case12	sc 3	280.7	279.1	275.1	275.2
Case 13***	sc 3	273.2	273.7	271.7	269.8
Case 14***	sc 3	275.7	275.5	272.5	271.1
Case 15***	sc 3	278.2	277.3	273.5	272.4

* Simulation with Neumann BC and $H_s = 0\ K\ m\ s^{-1}$ over entire domain

** Calculated from a linear extrapolation of the potential temperature gradient between the two lowest grid-points above topography. Absolute temperature calculated with reference pressure 1000 hPa. The mean temperatures over land contain areas up to 70 m surface elevation. In inversion conditions this results in a higher mean temperature than only for the lowest areas.

*** Emissions only from the largest street in the Bergen valley.

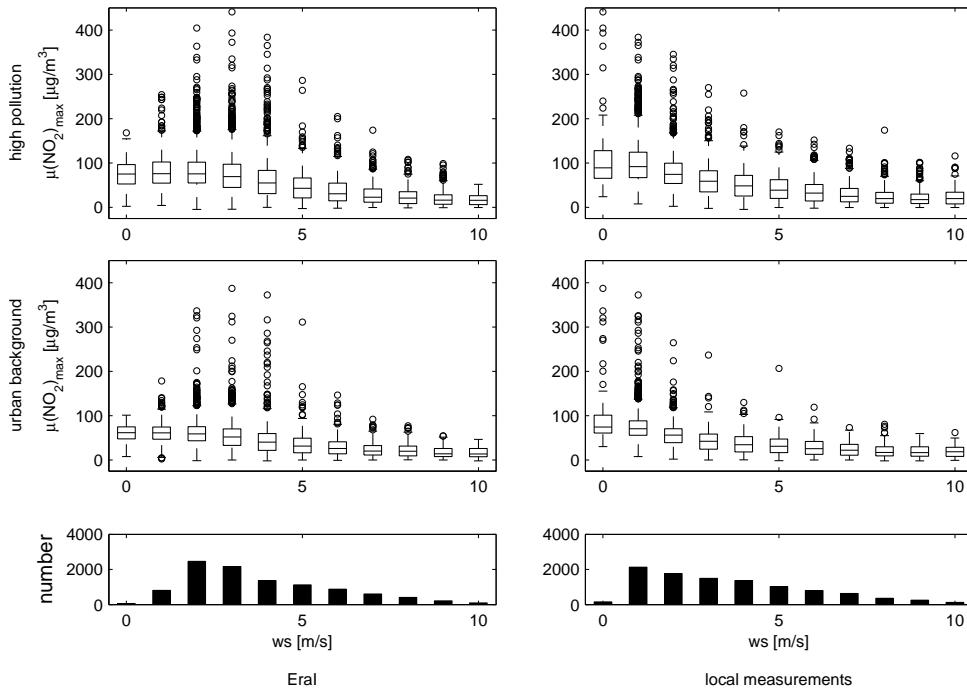


Figure 1: NO₂ concentrations at the two air quality reference stations in Bergen against the 10 m wind speeds (ws) over the Bergen valley from EraI and from local measurements inside the valley between 2003 and 2013. EraI data are available every 3 hours. NO₂ concentrations and the local measured winds represent hourly means. The NO₂ concentrations are the 3-hourly maxima and the local wind data are the 3-hourly means around the three-hour time steps. Only wintertime data (Nov-Feb) are included. The edges of the boxes are the 25th and 75th percentiles. Lines inside the boxes show the median. The maximum whiskers length is 1.5 times the distance between the 25th and 75th percentiles or the maxima and minima of the data. Outliers with higher or lower concentration values than that are shown as circles. The lower panels show the number of simultaneously valid wind and pollution measurements within each wind speed bin.

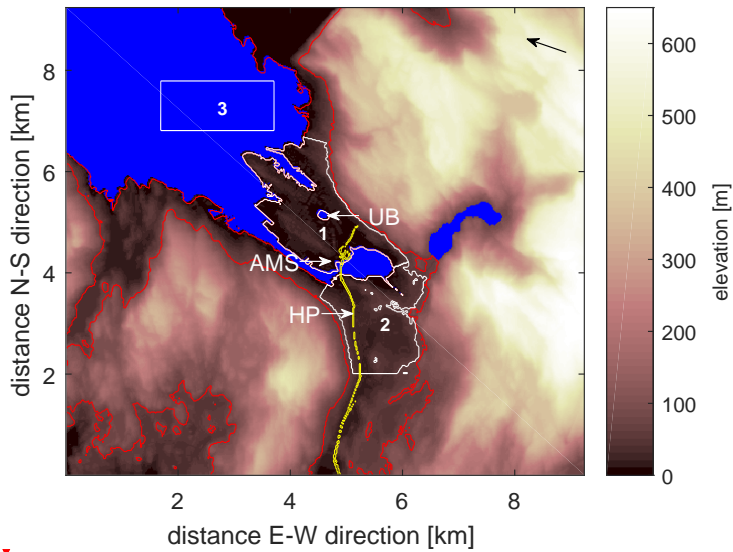
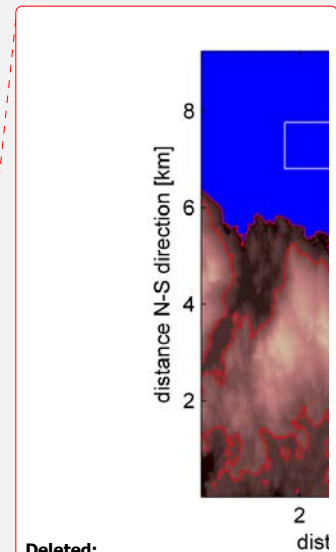


Figure 2: Topographic map of the Bergen area represented in the model simulations. Blue colour indicates water. The white contour line marks the areas 1 and 2 selected for averaging of the wind and passive tracer concentration. The red contour line marks the area of passive tracer emissions in most of the experiments. Both lines are overlapping along the coast. The yellow line represents the main street along the valley, eventually disappearing into a tunnel after having crossed the valley. White arrows indicate the positions of the wind measurements (AMS), and the UB and HP reference stations for NO₂ air pollution. The area for averaging of the 2 m temperature over the fjord in Table 1 is marked as area 3; averaging of the 2 m temperature over the city centre is done separately over areas 1 and 2. The black arrow in the upper right corner indicates the 110° geostrophic wind direction used for the simulations.



Deleted:

Deleted: computational domain for

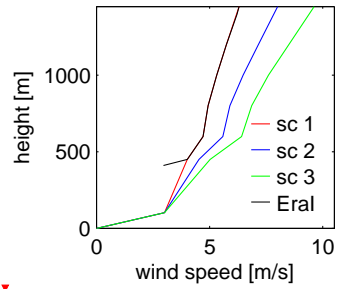
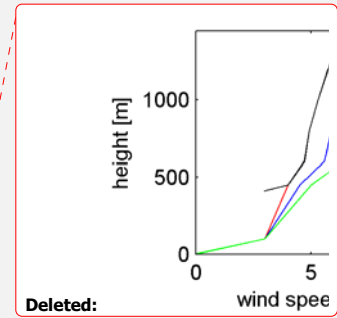


Figure 3: Geostrophic wind profile scenarios used for the model simulations. The black line shows the mean Eral wind profile over the Bergen valley for all high pollution cases (they start only at 410 m due to the low horizontal resolution of Eral). Above 450 m the red and black lines are overlapping.



5

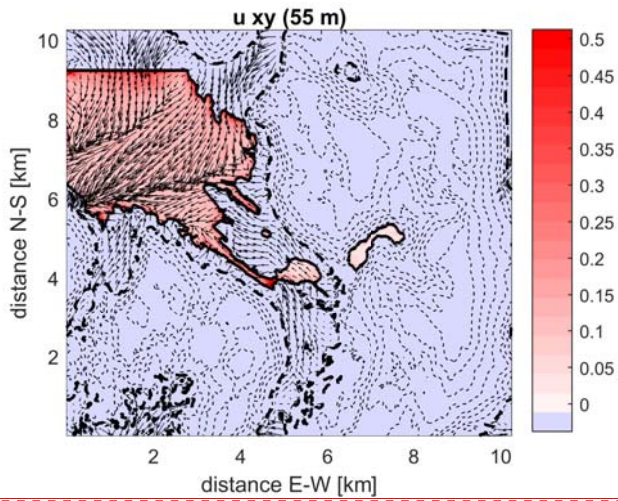
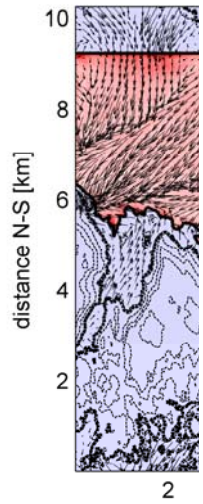


Figure 4: The 55 m wind field from case 3 together with $H_s [K m s^{-1}]$. The figure shows the mean fields over the last 15 min of the 12 h simulation time. Wind vectors point into the flow direction. The wind-vector in the upper right corner indicates the scale of the wind vector length. It shows a wind speed of $3 m s^{-1}$. The 55 m topographic line is indicated by the thick black dashed line. The water-land interface is shown by the thick solid line.

5



Deleted:

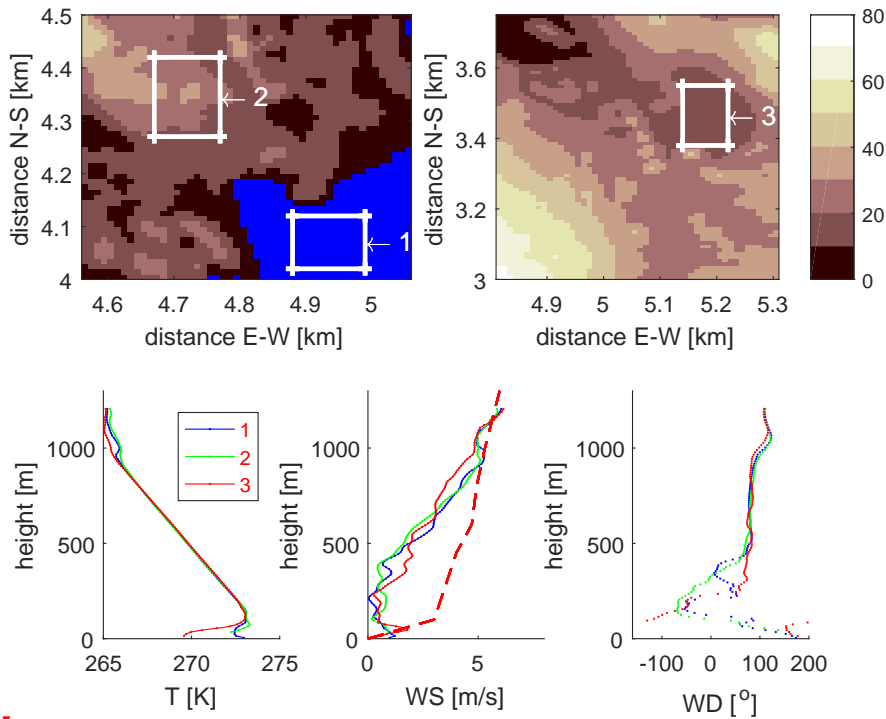
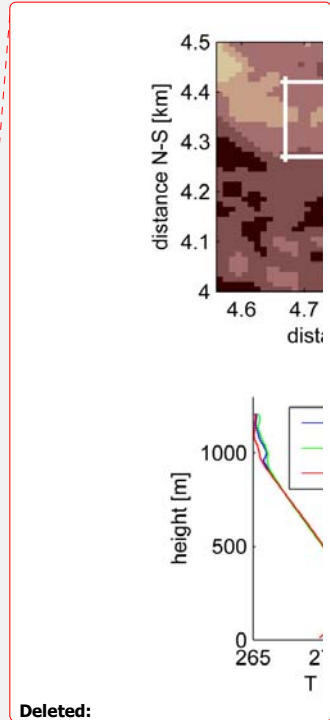


Figure 5: Vertical profiles for temperature and wind speed and wind direction (lower panels) at three locations in the Bergen valley (marked in the upper panels). The figures show the 15 *min* mean data corresponding to case 3 presented in Fig. 4. All profiles are horizontal averages over the areas indicated in the top panels. The blue areas indicate water surface. The brown shading gives the surface elevation in m. The AMS is located in the centre of area 2. The geostrophic wind profile for this scenario is indicated as a black line in the lower middle panel.



Deleted:

Deleted: centre

Deleted: 1

... [1]

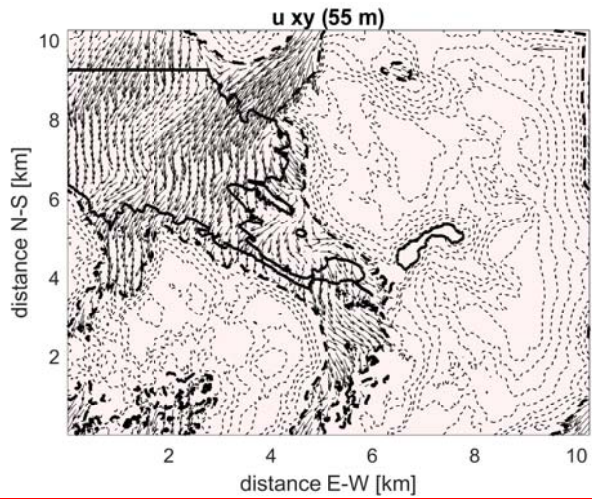


Figure 6: Same as fig. 4 but for case 0 with Neumann BC and neutral ABL.

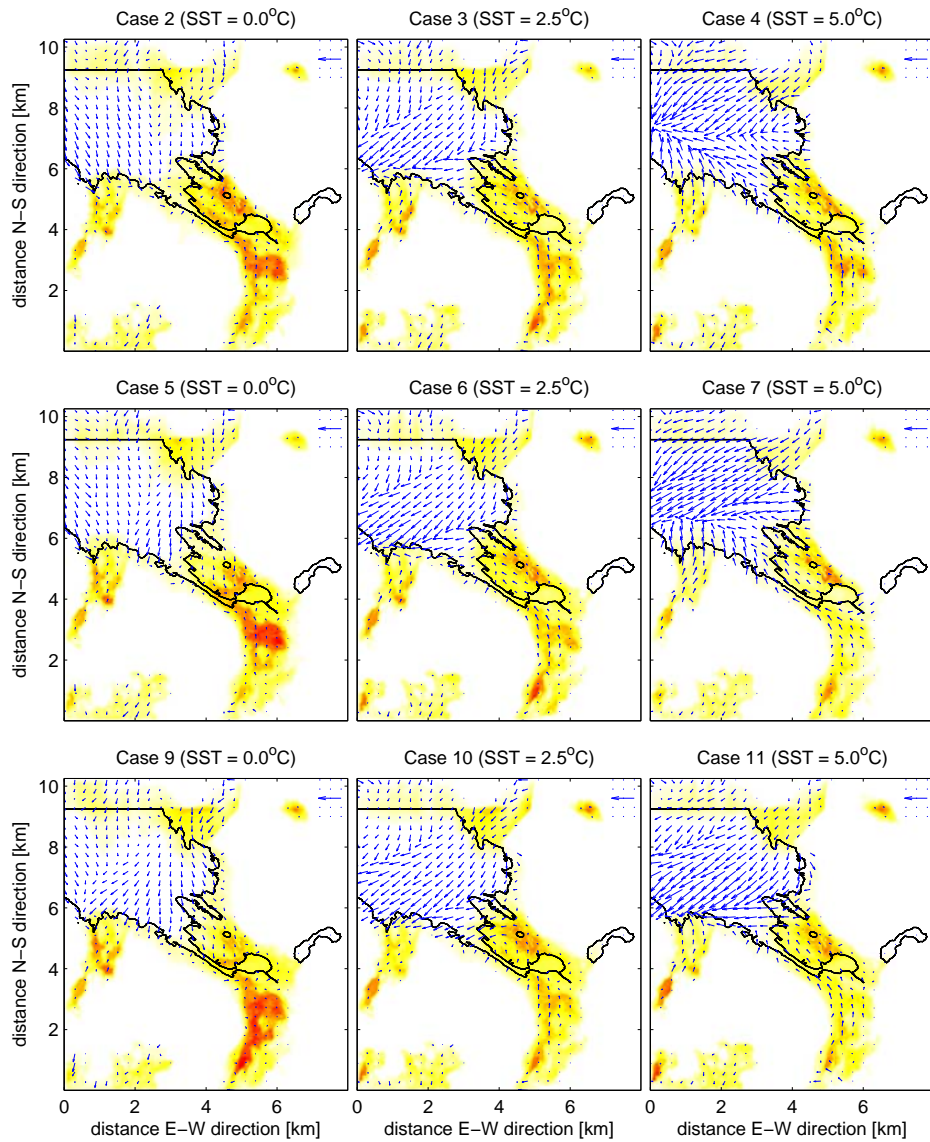
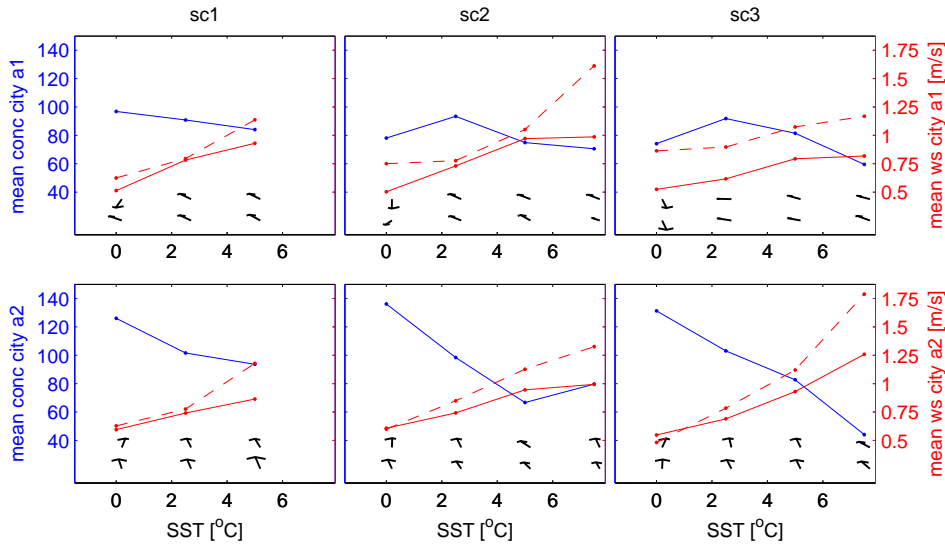


Figure 7: Wind-fields at 55 m height and passive tracer concentration 2 m above the surface. The top, middle and bottom panels show the results for wind speed scenario 1, 2 and 3, respectively. All data are means over the last 4 output steps of the 12 h simulation. Each output step is an average of 15 min. Colour and wind speed scales are the

same in all panels. Darker colour means higher tracer concentrations. The domain is cut off at the right boundary since the topography here was mostly above 55 m. The wind-vector in the upper right corner indicates a wind speed of 5.2 m/s. The water-land interface is shown by the black solid line.



5

Figure 8: Mean passive tracer concentration (blue) and wind speed at 55 m (red, dashed) and 10 m above the surface (red, solid) for area 1 and 2 as indicated in Fig. 1 for the three wind speed scenarios as indicated in Table 1. The wind-vectors indicate the mean wind direction in the area at the 55 m height level (top) and 10 m above the ground (bottom). Vectors point into the direction of the flow. All data are averaged over the last 4 output steps of the 12 h simulations corresponding to Fig. 7.

10

Deleted: 7:

Deleted: 6

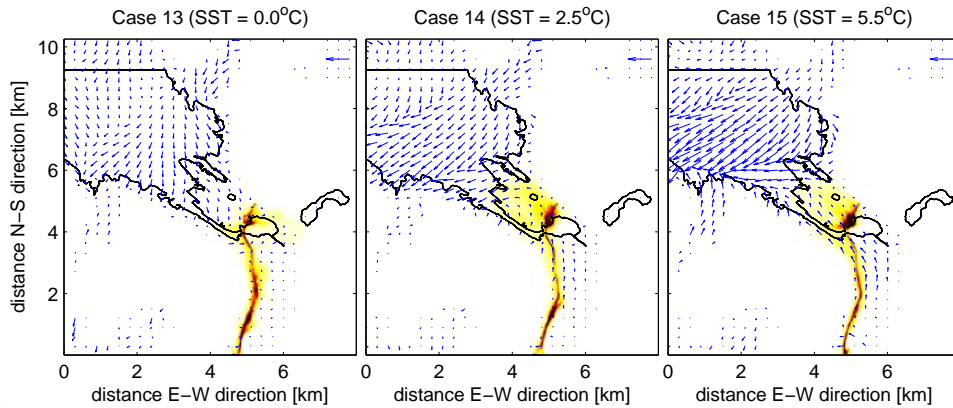
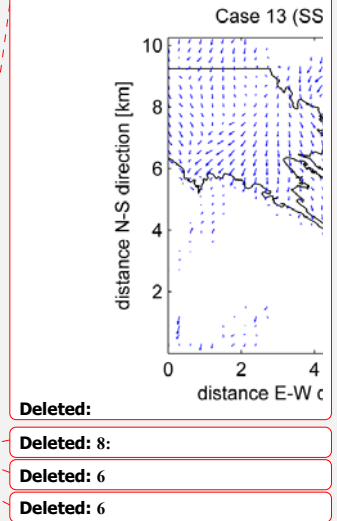


Figure 9: Same as Fig. 7 but for the cases with emissions only from the main street inside the Bergen valley. The colour coding for the concentration is the same in all three panels, but different from Fig. 7. Shading is chosen as to show the horizontal distribution of the pollutants and not the maximum values over the street.



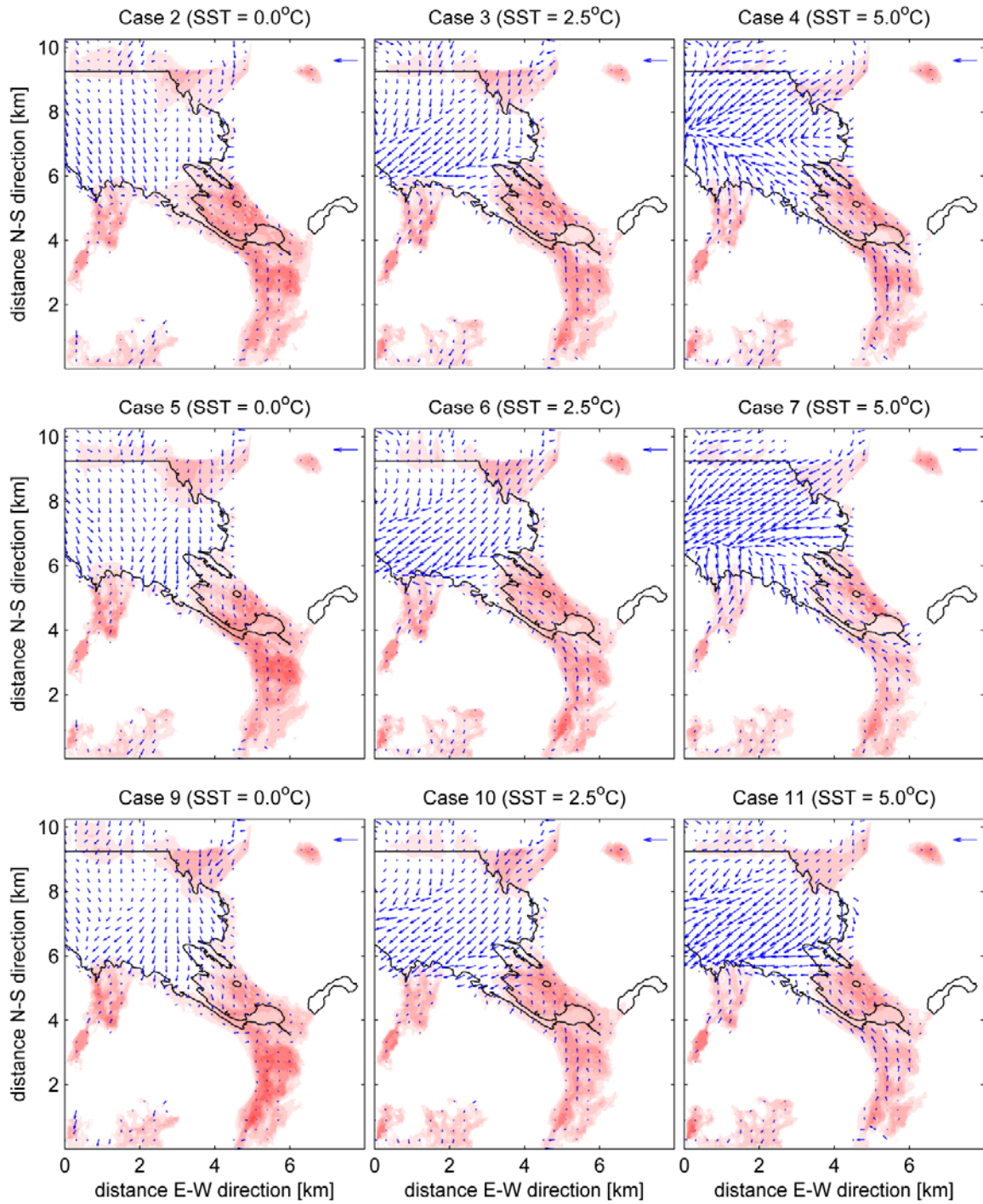


Figure 6: