

Atmospheric aerosol compositions over the South China Sea: Temporal variability and source apportionment

Hong-Wei Xiao^{1,2}, Hua-Yun Xiao^{1,2*}, Li Luo^{1,2*}, Chun-Yan Shen³, Ai-Min Long⁴, Lin Chen⁵, Zhen-Hua Long⁵,
5 Da-Ning Li⁵

¹Laboratory of Atmospheric Environment, Key Laboratory of Nuclear Resources and Environment (Ministry of Education), East China University of Technology, Nanchang 330013, China

²School of Water Resources and Environmental Engineering, East China University of Technology, Nanchang
10 330013, China

³College of Fisheries, Guangdong Ocean University, Zhanjiang 524088, China

⁴State Key Laboratory of Tropical Oceanography, South China Sea Institute of Oceanology, Chinese Academy of Sciences, Guangzhou 510301, China

⁵Xisha Deep Sea Marine Environment Observation and Research Station, South China Sea Institute of Oceanology,
15 Chinese Academy of Sciences, Sansha 573199, China

*Correspondence to: Hua-Yun Xiao (xiaohuayun@ecit.cn) and Li Luo (luoli@ecit.cn)

Abstract. In order to evaluate impacts of different source emission on marine atmospheric particles over the South
20 China Sea (SCS), major inorganic ionic concentrations (Na^+ , Cl^- , SO_4^{2-} , Ca^{2+} , Mg^{2+} , K^+ , NH_4^+ , NO_3^-) were determined in total suspended particulates (TSP) at Yongxing Island, from March 2014 to February 2015. The annual average concentration of TSP was $89.6 \pm 68.0 \mu\text{g}/\text{m}^3$, with 114.7 ± 82.1 , 60.4 ± 27.0 , and $59.5 \pm 25.6 \mu\text{g}/\text{m}^3$ in cool, warm, and transition seasons, respectively. Cl^- had the highest concentration, with an annual average of $7.73 \pm 5.99 \mu\text{g}/\text{m}^3$, followed by SO_4^{2-} ($5.54 \pm 3.65 \mu\text{g}/\text{m}^3$), Na^+ ($4.00 \pm 1.88 \mu\text{g}/\text{m}^3$), Ca^{2+} ($2.15 \pm 1.54 \mu\text{g}/\text{m}^3$), NO_3^-
25 ($1.95 \pm 1.34 \mu\text{g}/\text{m}^3$), Mg^{2+} ($0.44 \pm 0.33 \mu\text{g}/\text{m}^3$), K^+ ($0.33 \pm 0.22 \mu\text{g}/\text{m}^3$), and NH_4^+ ($0.07 \pm 0.07 \mu\text{g}/\text{m}^3$). Concentrations of TSP and the major ions showed seasonal variations which were higher in the cool season and lower in the warm and transition seasons. Factors of influence were wind speed, temperature, relatively humidity, rain, and air masses. Back trajectories, concentration weighted trajectories (CWT), and positive matrix factorization (PMF) of chemical compositions were analyzed for source apportionment, source contribution, and spatio-temporal

30 variation of major ions. Back trajectories and CWTs showed that air masses at Yongxing Island were mainly from
the northeast, southwest, and southeast in the cool, warm, and transition seasons, respectively. The PMF results
showed that Na^+ of 77.4% and Cl^- of 99.3% were from sea salt. 60.5% of NH_4^+ was of oceanic emission.
Anthropogenic sources were very important for atmospheric aerosols over the island. Secondary inorganic aerosol
of SO_2 and NO_x from fossil fuel combustion (especially coal in Chinese coastal regions) was the dominant source
35 of NO_3^- (69.5%) and SO_4^{2-} (57.5%).

Keywords: Source apportionment; crust; secondary inorganic aerosol; oceanic emission

1 Introduction

Aerosols or particulate matters potentially affect global atmospheric processes, chemistry, cloud formation,
40 acid and nutrient deposition in sensitive ecosystems, affect human health as air pollution, and have effects on
climate (Chin, 2009; Davidson, et al., 2005; Deng et al., 2010; Liu et al., 2014; Steyn and Chaumerliac, 2016;
Zhang et al., 2011; Zhang et al., 2015). Aerosols have many sources. Primary aerosols, emitted directly from natural
and anthropogenic sources, such as terrestrial dust from weathering, wind-blown sand and minerals, sea spray,
combustion processes, and biological emissions (Chin, 2009; Davidson, et al., 2005; Rinaldi et al., 2010; Pavuluri
45 et al., 2015). There are also secondary aerosols, which form from condensable atmospheric gases such as SO_2 , NO_x ,
 NH_3 , and volatile organic compounds (Chin, 2009; Kolb and Worsnop, 2013; Xiao et al., 2012a, 2014; Zhang et
al., 2011). Therefore, aerosols are composed of various chemical components (Xiao and Liu, 2004) and contain
sulfate, nitrate, ammonium, mineral elements, black carbon and particulate organic matter (Zhang et al., 2007;
Zhang et al., 2011; Chin, 2009; Pavuluri et al., 2015; Steyn and Chaumerliac, 2016). Because of rapid economic
50 and industrial development in the last few decades in South and East Asia, many aerosols and their precursors
released by human activities have become a major environmental problem (Steyn and Chaumerliac, 2016).
Aerosols from anthropogenic emissions can be transported long distances from polluted regions to remote open
oceans, which is well recognized as a major pathway for the supply of anthropogenic material to ocean surface
waters (Duce et al., 2008; Lawrence and Lelieveld, 2010; Jung et al., 2012).

55 The South China Sea (SCS) is in the tropical–subtropical rim of the Northwest Pacific Ocean and is one of
the largest marginal seas in the world (Fig. 1). The SCS is adjacent to several rapidly growing Asian economies,
including China, the Philippines, Malaysia, Vietnam, and Indonesia (Kim et al., 2014). Consequently, the sea
receives substantial amounts of aerosols from surrounding regions through long-range atmospheric transport (Fig.
1; Atwood et al., 2013; Jung et al., 2012). The SCS has a monsoon climate, with a northeast monsoon in winter and

60 spring and a southwest monsoon in summer and autumn (Cui et al., 2016). Thus, aerosol optical thickness (AOT) shows spatial and seasonal variations, with higher AOT in the northern SCS during the cool season and higher AOT in the southern SCS in the warm season (Fig. 1). The SCS receives dust and pollutions from the northeast in winter and spring, e.g., from China and Japan (Liu et al., 2014; Wang et al., 2013; Xiao et al., 2015); during summer and autumn, the SCS receives particulate and gas phase pollutants from biomass burning in the southwest of SCS, 65 e.g., from Malaysia and Indonesia (Atwood et al., 2013). However, the observational data on aerosol chemistry over the SCS are very sparse (Xiao et al., 2015).

To get better understanding of potential sources, source contributions, and spatio-temporal variations of marine aerosols over the SCS, total suspended particulate (TSP) were continuously collected at Yongxing Island from March 2014 to February 2015. The concentrations of major inorganic water-soluble ions were determined. 70 Furthermore, back trajectories, concentration-weighted trajectory (CWT) and positive matrix factorization (PMF) analyses were also used to identify and apportion the main sources of aerosols and their chemical composition over the SCS.

2 Materials and Methods

75 2.1 Study site

Aerosol samples were collected from March 2014 through February 2015 on the rooftop of Xisha Deep Sea Marine Environment Observation and Research Station, South China Sea Institute of Oceanology, Chinese Academy of Sciences (SCSIO, CAS). This station is at the Yongxing Island (YXI, Fig. 1; 16.83°N, 112.33°E). This island has a tropical monsoon climate, with northeast monsoon in winter and spring, and southwest monsoon 80 in summer and autumn (Xiao et al., 2015). The island is located in the high aerosol concentrations area of the northern SCS during winter and spring, and also at the periphery of the high concentrations area of the southern SCS during summer and autumn (Fig. 1). Therefore pollutants can arrive from Northeast Asia in winter and spring, and Southeast Asia in summer and autumn (Liu et al., 2014; Wang et al., 2013; Xiao et al., 2015; Atwood et al., 2013). It is also influenced by local SCS marine sources. More information about Yongxing Island is given 85 elsewhere (Xiao et al., 2015 and 2016). In the present study, the sampling period was divided into three seasons based on wind direction and back trajectories. The cool season was March, April, October, November, December 2014 and January, February 2015, with principal air masses from the northeast and 25.9 °C of temperature, and the warm season was June–September 2014, with air masses primarily from the southwest and 29.7 °C of temperature. The transition season was May 2014, with local and short air masses primarily from the southeast. Yongxing Island

90 has an annual average temperature of 27.7 ± 2.7 °C, relative humidity (RH) of $80 \pm 7\%$, and wind speeds of 3.6 ± 1.8 m/s. There were strong seasonal variations between March 2014 and February 2015 (Fig. 2). Accumulated annual rainfall was 1526 mm during this period, with about 30% occurring in the cool season (Fig. 2).

2.2 Sample collection and chemical analyses

95 Aerosol was collected on quartz filters using a special high-flow rate (1.05 ± 0.03 m³/min) KC-1000 sampler, and aerosol water-soluble major anion concentrations (F^- , Cl^- , NO_3^- , SO_4^{2-} , Br^-) were determined by ICS-90 ion chromatography (Dionex, California, USA) and water-soluble metal and nonmetal elemental concentrations (Al, Ca, Fe, K, Mg, Mn, Na, SiO₂, Sr) were analyzed by an MPX inductively coupled plasma optical emission spectrometer (ICP-OES, Vista, CA, USA), NH_4^+ concentration was determined by spectrophotometry after
100 treatment with Nessler's reagent, as described in detail information in supplementary text S1.

2.3 Sea salt and non-sea salt contributions

In order to determine the source contributions to the ionic compositions in TSP, the sea salt ion (SS) and the non-sea salt ion (NSS), are calculated using Na as a reference element for marine origin by the following equations
105 (Eq. 1 and 2; Xiao et al., 2013):

$$SS(\%) = 100(X / Na^+)_{sea} / (X / Na^+)_{TSP} \quad (1)$$

$$NSS(\%) = 100 - SS \quad (2)$$

where X represents the ionic composition and the data of $(X/Na^+)_{sea}$ comes from Keene et al., (1986).

110 2.4 Back trajectories and concentration weighted trajectories analysis

Back trajectories and concentration weighted trajectories (CWT) are used to determine the long-distance transport of atmospheric pollutants and regional source areas by the program of TrajStat (Cheng et al., 2013; Wang et al., 2009; Xiao et al., 2014 and 2015). The detail methods were described in supplementary text S2.

115 2.5 Positive matrix factorization model

Receptor models are used to quantify the contributions of sources based on the composition or fingerprints of the sources (Norris et al., 2014). The positive matrix factorization (PMF) is an effective source apportionment receptor model that does not require source profiles prior to analysis and has no limitation on source numbers (Crippa et al., 2013; Tiwari et al., 2013; Zhang et al., 2011; Zhang et al., 2015). In our study, EPA PMF 5.0 was

120 used to determine source apportionment of each major ion. The detail methods were described in supplementary
text S3.

3 Results and Discussion

3.1 Aerosol chemical composition over the SCS and comparison with global marine aerosols

125 3.1.1 Aerosol characteristics over the SCS

Figs. 3, 4 and Table 1, provide information on atmospheric concentrations of TSP and major inorganic ions during the sampling period at Yongxing Island. The annual average TSP concentration at the island was $89.6 \pm 68.0 \mu\text{g}/\text{m}^3$, with a range of 16.4 to $440.1 \mu\text{g}/\text{m}^3$. The major inorganic ionic concentrations (Na^+ , Cl^- , SO_4^{2-} , Ca^{2+} , Mg^{2+} , K^+ , NH_4^+ , and NO_3^-) accounted for 24.8% of TSP. Total major inorganic ionic concentrations was $22.21 \mu\text{g}/\text{m}^3$. Cl^- had the highest concentration among these ions, from 0.39 to $36.47 \mu\text{g}/\text{m}^3$, with an annual average of $7.73 \pm 5.99 \mu\text{g}/\text{m}^3$. It was followed by SO_4^{2-} (range 0.52– $23.34 \mu\text{g}/\text{m}^3$, average $5.54 \pm 3.65 \mu\text{g}/\text{m}^3$), Na^+ (0.9– $8.86 \mu\text{g}/\text{m}^3$, average $4.00 \pm 1.88 \mu\text{g}/\text{m}^3$), Ca^{2+} (0.17– $9.65 \mu\text{g}/\text{m}^3$, average $2.15 \pm 1.54 \mu\text{g}/\text{m}^3$), NO_3^- (0.10– $10.05 \mu\text{g}/\text{m}^3$, average $1.95 \pm 1.34 \mu\text{g}/\text{m}^3$), Mg^{2+} (0.02– $1.55 \mu\text{g}/\text{m}^3$, average $0.44 \pm 0.33 \mu\text{g}/\text{m}^3$), K^+ (0.06– $1.13 \mu\text{g}/\text{m}^3$, average $0.33 \pm 0.22 \mu\text{g}/\text{m}^3$), NH_4^+ (0.01– $0.32 \mu\text{g}/\text{m}^3$, average $0.07 \pm 0.07 \mu\text{g}/\text{m}^3$).

135

3.1.2 Aerosols over SCS compared with global marine aerosols

The annual average TSP concentration at Yongxing Island is also lower than the annual average value over the northern Yellow Sea ($123.2 \mu\text{g}/\text{m}^3$), another Chinese marginal sea (Wang et al., 2013). However, the mean TSP concentration at Yongxing Island is not lower than those at other remote islands or other seas, such as the Indian Ocean ($21.1 \mu\text{g}/\text{m}^3$), Pacific Ocean ($36.7 \mu\text{g}/\text{m}^3$), Mediterranean Sea ($46.9 \mu\text{g}/\text{m}^3$), Southern Atlantic ($39.1 \mu\text{g}/\text{m}^3$), and three islands of Okinawa ($22.6 \mu\text{g}/\text{m}^3$ in summer and $44.5 \mu\text{g}/\text{m}^3$ in spring) (Arakaki et al., 2014; Balasubramanian et al., 2013; Zhang et al., 2010).

140

The aforementioned annual average TSP and ionic concentration are comparable to those reported in many remote oceans (Fig. 5), e.g., Hedo, which is at the junction of the East China Sea and Northwest Pacific. The marine ions (Na^+ and Cl^-) accounted for 53% of total major ions (Fig. 4). Na^+ and Cl^- concentrations at Yongxing Island were higher than most reported values among all locations and remote sites (Fig. 5), such as the Indian Ocean (3.0 and $4.4 \mu\text{g}/\text{m}^3$, respectively), Arabian Sea (1.9 and $2.2 \mu\text{g}/\text{m}^3$, respectively), Oki (3.3 and $4.3 \mu\text{g}/\text{m}^3$, respectively) and Rishiri islands (1.2 and $2.7 \mu\text{g}/\text{m}^3$, respectively) in the Sea of Japan, Amsterdam Island (1.4 and $2.3 \mu\text{g}/\text{m}^3$, respectively) in the Southern Ocean, Bermuda (3.3 and $4.8 \mu\text{g}/\text{m}^3$, respectively) in the Atlantic Ocean, and Hawaii

145

150 (0.5 and 0.4 $\mu\text{g}/\text{m}^3$, respectively) in the Pacific (Kumar et al., 2008; Okuda et al., 2006; Claeys et al., 2010; Moody et al., 2014; Carrillo et al., 2002). However, Na^+ and Cl^- concentrations were lower than samples from cruises, such as over the northern Atlantic-2 (7.0 and 9.6 $\mu\text{g}/\text{m}^3$, respectively) and Pacific (5.8 and 9.0 $\mu\text{g}/\text{m}^3$, respectively) (Zhang et al., 2010). The Ca^{2+} concentration was the highest among all locations and contributes 10% of major ions (Fig. 4), followed by the Mediterranean Sea, southern Atlantic and northern Atlantic-2 (Fig. 5). The relatively high
155 Ca^{2+} concentration may be because of Asian terrestrial dust transported to Yongxing Island. nss-Ca^{2+} accounted for 93% of total Ca^{2+} , ranging from 0.14 to 9.31 $\mu\text{g}/\text{m}^3$ with an annual average of 1.99 $\mu\text{g}/\text{m}^3$. Large contributions of nss-Ca^{2+} were also found in the Mediterranean Sea, southern Atlantic and northern Atlantic-2, being at 88.4%, 90.3% and 90.0%, respectively (Zhang et al., 2010). The relatively high nss-Ca^{2+} concentrations in those oceans were potentially from the crust or dust from some deserts (Zhang et al., 2010). Comparing Yongxing Island with
160 among all locations, average Mg^{2+} concentrations were higher at Yongxing Island than most reported values among all locations (Fig. 5). K^+ was also the highest among all locations (Fig. 5). nss-K^+ ranged from 0 to 0.87 $\mu\text{g}/\text{m}^3$, with an annual average of 0.18 $\mu\text{g}/\text{m}^3$ and a contribution of 55% to total water soluble K^+ at Yongxing. In general, SO_4^{2-} , NO_3^- and NH_4^+ were major in the form of secondary inorganic aerosols. They accounted for only 34.0% of total inorganic ionic concentrations, giving them an intermediate position among all locations (Fig. 5). The average
165 SO_4^{2-} concentration at Yongxing was the highest among all locations. As shown in Fig. 4, the mean contribution of SO_4^{2-} to major inorganic ionic components was $\sim 25\%$ at Yongxing. The nss-SO_4^{2-} concentration was 3.66 $\mu\text{g}/\text{m}^3$, with a contribution of 66.1% to total SO_4^{2-} . Similar to SO_4^{2-} , the average concentration of NO_3^- in this study was the highest among all locations. It accounted for 9% of major ions at Yongxing Island. This indicates that a large number of anthropogenic sources affected the concentrations of SO_4^{2-} and NO_3^- . It was surprising that NH_4^+ had
170 relatively low concentrations over most oceans, except for the southern Atlantic and Mediterranean Sea (Fig. 5). The average NH_4^+ concentration was $0.07 \pm 0.07 \mu\text{g}/\text{m}^3$ in aerosol at Yongxing Island (Fig. 3), representing $< 1\%$ of total major ions (Fig. 4). Further, low concentrations of NH_4^+ were also observed in rainwater on the island (Xiao et al., 2016).

175 3.1.3 Global marine aerosol chemical patterns

Globally, sea salt ions (Na^+ and Cl^-) were the most important components in marine atmospheric aerosol, with higher concentration of Cl^- than Na^+ , except over the Mediterranean and North seas (Fig. 5; Zhang et al., 2010; Ebert et al., 2000). In the marine atmosphere, sea salt aerosol (NaCl) can react with sulfuric acid and nitric acid to release HCl , which results in a deficit of Cl^- relative to Na^+ (Zhang et al., 2010). It is also found that a deficit of Cl^-

180 in transition season at Yongxing Island (Fig. 4 and Table 2), was most likely because air masses were primarily
from local oceanic areas far from the continent (Fig. 1), where wind is weak (Fig. 2). The mole equivalent ratios of
Cl⁻/Na⁺ (neq/L) in aerosols were slightly larger than seawater in annual, cool and warm seasons at Yongxing Island
(Table 2). This suggests that Cl⁻ enrichment had an anthropogenic or other natural origin (Duan et al., 2006; Jung
et al., 2012; Xiao et al., 2013). For SO₄²⁻ with ss-SO₄²⁻ and nss-SO₄²⁻, nss-SO₄²⁻ was greatly influenced by
185 anthropogenic sources from developed industrial areas, leading to higher concentrations of SO₄²⁻ than Na⁺ and Cl⁻.
Examples were Bermuda, Ogasawara, and the Arabian Sea (Fig. 5; Moody et al., 2014; Kumar et al., 2008), where
nss-SO₄²⁻ was the preferred species for acid displacement (Zhang et al., 2010). As another important ion of
anthropogenic sources, NO₃⁻ concentrations were often good relationships with those of nss-SO₄²⁻ (Zhang et al.,
2010), with relatively high concentrations among major ions (Fig. 5). Relatively high concentrations of SO₄²⁻ and
190 NO₃⁻ were also found over the SCS (Figs. 3 and 4). NH₄⁺ had the lowest concentrations among the major ions in
most marine atmospheric aerosols, suggesting little ammonia transport to the open ocean, such as Yongxing Island.
However, there were some exceptions. For example, the southern Atlantic and Mediterranean Sea had the highest
NH₄⁺ concentrations among major ions (Fig. 5). Over most seas, the order was Ca²⁺ > Mg²⁺ > K⁺. However, we
found that Mg²⁺ had higher concentrations than Ca²⁺ in some remote ocean areas, such as in the Pacific, Atlantic
195 and Southern oceans (Zhang et al., 2010). This indicates that Ca²⁺ of crustal origin was difficult to transport to the
remote oceans, and Mg²⁺ may mainly be from sea salt over the open ocean (Moody et al., 2014).

3.2 Seasonal patterns of aerosol chemical species over SCS and adjacent areas

3.2.1 Seasonal characteristics at Yongxing Island

200 As illustrated in Figs. 4 and 6, seasonal and monthly TSP concentrations and major inorganic water-soluble
ion concentrations had distinct features at Yongxing Island. Generally, concentrations of TSP and major inorganic
ions were higher in the cool season than in the warm season (Fig. 6). Seasonal variations were the same as those in
other studies, such as Okinawa, and 18 urban, rural and remote sites in various regions of China (Arakaki et al.,
2014; Wang et al., 2006; Xiao and Liu, 2004; Zhang et al., 2012).

205 Average TSP concentrations were 114.7 ± 82.1 , 60.4 ± 27.0 and 59.5 ± 25.6 $\mu\text{g}/\text{m}^3$ in the cool, warm and
transition seasons, respectively, with the highest monthly average in November 2014 and the lowest in April (39.4
 $\mu\text{g}/\text{m}^3$) and September (39.9 $\mu\text{g}/\text{m}^3$) of that year (Fig. 6). There were lower concentrations in the warm season than
in the cool season, because 70% of rainfall at Yongxing Island happens during the warm season (Fig. 2), being the
same as other studies, such as Shanghai and over the China Sea (Wang et al., 2006; Zhao et al., 2015). The positive

210 correlation between TSP concentration and wind speed ($p < 0.01$) shown in Table 3 suggests that relatively high speeds can produce many particles from both sea spray and terrigenous matter. We discovered negative correlations between TSP concentration and temperature ($p < 0.01$) and relative humidity ($p < 0.01$) (Table 2), indicating that warm temperatures and high relative humidity enhance particle activation and scavenging is happening (Liu et al., 2011).

215 As shown in Figs. 4 and 6, sea salt ions Na^+ and Cl^- were characterized by a gradual increase from the transition to cool season. Their concentrations (in $\mu\text{g}/\text{m}^3$) in the cool, warm and transition seasons were 4.91 ± 1.82 and 3.04 ± 1.08 , 2.28 ± 1.35 and 9.93 ± 6.78 , and 5.25 ± 2.63 and 3.73 ± 3.63 , respectively, with corresponding contributions of 52%, 57% and 57% to total major ions in those seasons. The highest Na^+ and Cl^- concentrations in a single sample were found in November, with the lowest concentrations in May and April, respectively. The highest average monthly concentrations were in November. Positive relationships between Na^+ or Cl^- and wind speed in 220 Table 3 ($p < 0.01$, correlation coefficient $R = 0.44$ and $p < 0.01$, $R = 0.43$, respectively) at Yongxing Island suggest that sea salt concentrations were dependent on wind speed. This is consistent with results at Chichijima Island (Boreddy and Kawamura, 2015). There was a low negative relationship between Na^+ and rainfall ($p < 0.05$, $R = 0.27$) but no relationship between Cl^- and rainfall ($p > 0.05$) in Table 3, suggesting that Na^+ mainly existed in coarse 225 particles and was readily removed by rainfall. As shown in Table 3, concentrations of Na^+ and Cl^- were also negatively influenced by temperature and relative humidity. Although Mg^{2+} is often treated as crustal-derived ions and elements in continental studies (Zhang et al., 2015), its highest monthly average concentrations were in November at Yongxing Island, the same as Na^+ and Cl^- (Fig. 5). As shown in Fig. 5, Tables 1 and 2, similar trends and strong correlation were observed among Na^+ , Cl^- and Mg^{2+} , and the ratios of Mg^{2+} to Na^+ in aerosols were close 230 to that in seawater, suggesting that Mg^{2+} may mainly derive from sea salt rather than continental sources. However, there were no relationships between Mg^{2+} and wind speed, temperature, relative humidity, or rainfall (Table 2), in contrast to other ions, such as Na^+ and Cl^- . These results reveal that Mg^{2+} has different behaviors in the marine atmosphere at Yongxing Island. The different behaviors of Mg^{2+} was also found in rainwater at Yongxing Island (Xiao et al., 2016).

235 As shown in Fig. 6, the highest monthly average concentrations of Ca^{2+} were in February. Its monthly trends were different from those of TSP, Na^+ and Cl^- , and the ratios of Ca^{2+} to Na^+ in aerosols were much higher than those in seawater (Table 2), suggesting that Ca^{2+} from terrestrial dust sources may be influenced by different factors. Ca^{2+} accounted for 10%, 13% and 8% of total major ions in the cool, transition and warm seasons, respectively (Fig. 4). There was no correlation between Ca^{2+} and wind speed, in contrast to TSP, Na^+ and Cl^- (Table 3). However,

240 there was a negative relationship between Ca^{2+} and rainfall ($p < 0.05$; Table 3). These results suggest that Ca^{2+} existed in coarse particles that can be readily removed by rainfall. Thus, a low mass concentration was observed for Ca^{2+} in the rainy (warm) season (Fig. 6), with a low percentage being in the warm season in Fig. 4.

245 K^+ concentrations were $0.42 \pm 0.23 \mu\text{g}/\text{m}^3$ in the cool season, $0.22 \pm 0.18 \mu\text{g}/\text{m}^3$ in warm season, and $0.15 \pm 0.07 \mu\text{g}/\text{m}^3$ in the transition season at Yongxing, with the maximum monthly average concentrations in February and the minimum in July (Fig. 6). However, the lowest nss- K^+ monthly average concentration was in August. The results suggest that nss- K^+ is derived from Chinese biomass/biofuel burning in the cool season (Lawrence and Lelieveld, 2010). Streets et al. (2003) computed that China contributes 25% of total biomass burning in Asia. Sites in Chinese coastal regions had higher K^+ and nss- K^+ concentrations than those at Yongxing Island (Wang et al. 2006) were observed, further indicating that Chinese and other Northeast Asian regions' biomass/biofuel burning have a strong influence on atmospheric composition over the SCS.

250 Similar to K^+ , the highest monthly concentrations of SO_4^{2-} and NO_3^- were observed in February, being at 13.08 ± 9.04 and $4.99 \pm 4.33 \mu\text{g}/\text{m}^3$, respectively (Fig. 6). As shown in the figure, SO_4^{2-} concentrations in the cool and warm seasons were 7.22 ± 3.92 and $3.26 \pm 1.26 \mu\text{g}/\text{m}^3$, respectively, accounting for 26% and 22% of total major ions, and NO_3^- concentrations were 2.43 ± 1.54 and $1.30 \pm 0.64 \mu\text{g}/\text{m}^3$, accounting for 9% and 9%. The NH_4^+ showed maxima in the cool season and minima in the warm season, being 0.08 ± 0.08 and $0.04 \pm 0.03 \mu\text{g}/\text{m}^3$, respectively.

3.2.2 Seasonal patterns over SCS and adjacent areas

260 The spatial variability in seasonal patterns of the major inorganic ionic components at Yongxing Island and adjacent sites of the Acid Deposition Monitoring Network in East Asia (EANET) in 2011 is portrayed in Fig. 7. In general, total major inorganic ionic concentrations tended to be higher in cool seasons and lower in warm seasons to the north of Phnom Penh, including Phnom Penh, Hoa Binh, Hanoi, Hongwen, Hedo, Ogasawara, and Yongxing Island, consistent with previous studies (Boreddy and Kawamura, 2015; Wang et al., 2006; Xiao and Liu, 2004). There was no substantial seasonal variation at other sites of EANET, and there was no strong seasonal variation of rainfall there either. These results suggest that rainfall and wind patterns, anthropogenic activities influence the ionic seasonal variations (Lawrence and Lelieveld, 2010; Wang et al., 2006; Xiao et al., 2013; Xiao and Liu, 2004). Additionally, total major ionic concentrations were higher in the north than in the south, indicating more anthropogenic pollutants in the north, such as SO_4^{2-} and NO_3^- (Lawrence and Lelieveld, 2010). As it is well known, the most densely populated regions in the north, including Hanoi, northeastern China, Pearl River Delta of China,

270 Korea, and Japan release large amounts of pollutants (Lawrence and Lelieveld, 2010), which then transport to the
SCS in the cool seasons (Fig. 1).

The total ionic concentrations were higher at the three islands than sites to the south of Phnom Penh. As shown
in Fig. 7, relatively high concentrations of Na^+ and Cl^- were found at those islands, suggesting that ions from sea
salt had large contributions to total major ions, i.e., 52.8%, 62.5% and 55.6% at Yongxing, Ogasawara and Hedo,
275 respectively. This represents high mass concentrations of sea salt in the marine atmospheric aerosol. The highest
concentrations of both Na^+ and Cl^- appeared in November at Yongxing and Hedo islands, which were influenced
by a strong northeast monsoon. The highest concentrations of both Na^+ and Cl^- were in September at Ogasawara
Island, which were influenced by a strong southeast monsoon from the Pacific. The relationship between Na^+ , Cl^-
and wind speed at Yongxing ($p < 0.01$) is shown in Table 3. Other sites in Fig. 7 were also influenced by wind
280 speed and winds directly from the ocean. However, the highest Na^+ and Cl^- concentrations at some sites did not
appear in the same month, e.g., at Hongwen, the highest concentrations of Na^+ were in April and the highest of Cl^-
were in January. Excess Cl^- in January has been observed by anthropogenic sources in China (Duan et al., 2006).

The highest concentrations of Mg^{2+} were in the same months as Na^+ at most sites, indicating that Mg^{2+} may
be from sea salt with Na^+ for almost all stations. The exceptions were at Hoa Binh and Tanah Rata with the
285 maximum Mg^{2+} concentrations being in December and July, respectively. This suggests that Mg^{2+} originates from
the crust rather than oceans (Xiao and Liu, 2004), or from both crust and ocean at these sites. Hoa Binh was
influenced by the northeast monsoon, which carries strongly weathering crustal matters from China Yunnan-
Guizhou Plateau karst (Hien et al., 2004; Xiao et al., 2013), and there was a strong relationship between Mg^{2+} and
 Ca^{2+} ($R = 0.7$, $p < 0.05$). Ca^{2+} had its highest concentrations in July at Phnom Penh, Tanah Rata, Petaling Jaya,
290 Serpong, and Danum Valley, all of which are located in the south of the SCS. In these regions, relatively little
rainfall (rainfall data from EANET) and strong sunlight were observed in that month, leading to strong weathering
that generated Ca^{2+} . However, the highest Ca^{2+} concentrations were found at other sites in the cool season, during
which there was much dust from Northeast Asia (Fig. S1; Boreddy and Kawamura, 2015; Liu et al., 2014; Wang
et al., 2011). This result is consistent with earlier studies (Boreddy and Kawamura, 2015; Cheng et al., 2000; Liu
295 et al., 2014; Zhao et al., 2015). The Ca^{2+} data also proved that Asian dust can affect the northern SCS, but it is
difficult for Asian dust to be transported to the southern SCS (Fig. S1).

Figure 8 shows fire spot data from MODIS global fire mapping around the SCS during March 2014 through
February 2015. Additionally, smoke surface concentrations every day in that period and region is shown in Fig. S1.
The fire spot and smoke data give information on seasonal variations of biomass burning around the SCS. This

300 activity was strong from January to April in the west of the SCS, including Vietnam, Thailand and Laos, and
between July and October in the south of the SCS, including Malaysia and Indonesia (Figs. 8 and S1). These data
are consistent with other studies showing substantial monthly CO emissions from biomass burning during
February–April and August–October in Southeast Asia, and February–May in southern China and Taiwan (Streets
et al., 2003). K^+ is commonly used as a tracer of biomass and biofuel burning (Deng et al., 2010). As shown in Fig.
305 7, we found that the maximum K^+ was in the aforementioned months at most sites, suggesting that Asian biomass
burning influenced the SCS region.

Fossil fuel combustion, industrial processes, biofuel burning, agricultural and waste handling often generate
large quantities of SO_2 , NO_x , NH_3 in Asia (Lawrence and Lelieveld, 2010; Liu et al., 2013; Xiao et al., 2012a; Xiao
et al., 2014; Xiao et al., 2015), although natural emissions of SO_2 and NH_3 include from biomass burning, marine
and soil biological processes (Streets et al., 2003; Altieri et al., 2014; Boreddy and Kawamura, 2015; Xiao et al.,
310 2012a), and NO_x from those processes and lightning (Price et al., 1997; Xiao et al., 2015). In general, the three
marine sites (Yongxing, Hedo, and Ogasawara islands) had smaller proportions of SO_4^{2-} , NO_3^- and NH_4^+ than inland
sites, with the three ions accounting for ~35% at the three marine sites and up to 65% at the other sites. This
indicates that anthropogenic contributions are smaller over remote open oceans than at continental sites. Figure 6
315 shows that the highest SO_4^{2-} , NO_3^- and NH_4^+ concentrations were found during the cool season in the north of
Phnom Penh, including Phnom Penh, Hoa Binh, Hanoi, Hongwen, Hedo, Ogasawara, and Yongxing, consistent
with total inorganic major ions. This indicates that the pollutants from Northeast Asia have a great impact on the
Northwest Pacific. Figure S1 confirms these findings that pollutants from nature and anthropogenic activities effect
the Northwest Pacific. We also found that most sites in the south of Phnom Penh had maximum SO_4^{2-} and NO_3^-
320 concentrations in the same months as the highest K^+ concentrations occurred, suggesting that biomass and biofuel
burning are important sources for SO_4^{2-} and NO_3^- in those regions. Lawrence and Lelieveld (2010) found that such
burning was important in the emissions of SO_4^{2-} and NO_3^- in southern Asia, whereas fossil fuel combustion and
industrial processes tended to be dominant in northern Asia (Xiao et al., 2015). However, maximum NH_4^+
concentrations at some sites (e.g., Petaling Jaya, Serpong, Danum Valley) were inconsistent with SO_4^{2-} and NO_3^- .
325 Moreover, there was no relationship between SO_4^{2-} or NO_3^- and NH_4^+ at these sites in the south of Phnom Penh,
including Phnom Penh and Yongxing Island (both $p > 0.05$). The results are inconsistent with previous studies
(Boreddy and Kawamura, 2015; Hsu et al., 2007; Wang et al., 2006; Xiao et al., 2013; Xiao and Liu, 2004). In the
marine atmosphere, SO_4^{2-} and NO_3^- are predominant in coarse particles (Boreddy and Kawamura, 2015; Xiao et al.,

2015); while NH_4^+ is often predominant in fine particles and may exist in the form of $(\text{NH}_4)_2\text{SO}_4$ in their
330 accumulation mode (Oooki et al., 2007; Ottley and Harrison, 1992).

3.3 Source identification, apportionment, and region

Based on the PMF 5.0 model, five potential sources of atmospheric chemical components at Yongxing Island
were identified: sea salt (two species), crust, SIA, and oceanic emission. Table 4 summarizes source apportionment
335 of the relative contributions of each identified source to major ions. Figs. 9 and 10 show the modeled source profiles
and the time series of modeled concentrations for each identified main source.

Further, CWTs were plotted for TSP and major ions (Fig. 11) to explore likely regional sources and transport
pathways for the island. Air masses at Yongxing Island had obvious unique and seasonal variations, from northeast
of the island in the cool season, southwest in the warm season, and southeast in the transition season (Fig. 11). This
340 reveals that aerosol or chemical compositions at the island originated from different regions in different seasons
(Figs. 1, 8, 11 and S1). The air masses with high TSP concentrations were from China coastal regions bordering
the Yellow and East China Seas and northern South China (Fig. 11). This is consistent with the seasonal variations
of TSP concentrations in Fig. 6. The average aerosol optical thickness (AOT) over the Northwest Pacific (Fig. 1)
confirmed this result. A relatively large average AOT was found over the northern SCS and East China Sea in the
345 cool season, and Karimata Strait in the warm season (Fig. 1). But there was a relatively low average AOT over the
entire SCS in the transition season (Fig. 1).

The first source, sea salt, generally has strong marine elements, such as Na^+ (Cl^-) and Mg^{2+} , which Na^+ exists
in super-micron size aerosols, whereas Mg^{2+} in sub-micron size aerosols (Moody et al., 2014). They contributed
77.4% (Na^+), 93.9% (Cl^-) and 70.4% (Mg^{2+}) from sea salt at Yongxing Island (Table 4). Although the CWT for
350 Mg^{2+} was larger in the cool season and lower in the warm season, air masses with relatively high concentrations of
 Mg^{2+} originated offshore of China (Fig. 10). This further indicates that Mg^{2+} was mainly from sea salt. Other
significant sources were crust, SIA and oceanic emission, with contributions $< 10\%$ for Na^+ and Cl^- , and $< 16\%$ for
 Mg^{2+} . According to data of rainwater at Yongxing Island, a part of Na^+ and Cl^- could be from crust and produced
by burning (Xiao et al., 2016). Coal combustion and biomass burning also produce Na^+ and Cl^- (Liu et al., 2000;
355 Tiwari et al., 2013; Zhang et al., 2015). Zhang et al. (2015) found that coal combustion was the most likely dominant
source of Cl^- in Beijing. The mole equivalent Cl^-/Na^+ ratios were larger in the cool season than in the transition and
warm seasons at Yongxing, indicating that the crust, fossil combustion, and biofuel and biomass burning affected
 Na^+ and Cl^- concentrations over the Northwest Pacific (Figs. 8 and S1). As shown in Table 3, there were strong

relationships between Na^+ (Cl^-) and SO_4^{2-} (Ca^{2+} , K^+), further proving that crust, fossil combustion and biomass
360 burning can generate Na^+ and Cl^- . Moreover, NaCl can react with acids such as H_2SO_4 , HNO_3 and $\text{H}_2\text{C}_2\text{O}_4$, altering
 Na^+ and Cl^- concentrations in the marine atmosphere and producing secondary chlorine-containing salt (Boreddy
and Kawamura, 2015). Sea salt provided K^+ , Ca^{2+} and SO_4^{2-} , constituting 53.2%, 33.9% and 24.0%, respectively.
The ratios of K^+/Na^+ , $\text{Ca}^{2+}/\text{Na}^+$ and $\text{SO}_4^{2-}/\text{Na}^+$ in Table 2 also indicate that part of them are from sea salt. The
results are consistent with other studies (Boreddy and Kawamura, 2015).

365 The second source, crust, has a substantial crustal elements Ca^{2+} and Mn (Fig. 9), which are tracers of crust
(Suzuki and Tsunogai, 1988; Xiao et al., 2013; Xiao and Liu, 2004; Norris et al., 2014). However, Ca^{2+} from the
crust, only had a contribution of 9.8% (Table 4). The result indicates that it is difficult for Ca^{2+} directly derived
from crust to transport to open ocean. But CWTs for Ca^{2+} were larger in the cool season and lower in the warm
season, indicating that dust from Northeast Asia influenced aerosol chemistry in the remote marine areas (Figs. 1,
370 11 and S1). The result suggests that when it reacts with H_2SO_4 and HNO_3 to generate secondary inorganic aerosol,
e.g. CaSO_4 and $\text{Ca}(\text{NO}_3)_2$, it may transport to a longer distance.

The third source is relevant to secondary inorganic aerosol, which are typically characterized by remarkable
 SO_4^{2-} and NO_3^- . They contributed 57.5% and 69.5% from SIA at Yongxing Island (Table 4) and good relationship
between them was observed (Table 2). Fossil fuel (especially coal) combustion releases large amounts of SO_2 and
375 NO_x (Xiao et al., 2012b, 2014 and 2015). Lawrence and Lelieveld (2010) attributed 61% of total NO_x and 77% of
total SO_2 emissions from fossil fuel combustion in southern Asia, 76% of total NO_x and 75% of total SO_2 in northern
Asia, resulting in the transport of substantial secondary inorganic aerosols containing SO_4^{2-} and NO_3^- to the SCS
(Figs. 1, 11 and S1). As with TSP and Ca^{2+} , air masses from China coastal regions had high SO_4^{2-} and NO_3^-
concentrations in the cool season (Fig. 11), owing to rapid economic development and great coal demand in the
380 country, especially in its coastal regions (Lawrence and Lelieveld, 2010). Figure S1 also shows that SO_4^{2-} from
central and eastern China reached coastal regions in the cool season. In Chinese coastal provinces, emission
intensities of SO_2 and NO_x were about 10 and 15 tons/ km^2 , respectively, much higher than other Chinese provinces
(China Environment Statistical Yearbook, 2014). Rapidly growing economies and high population densities in
these regions (Kim et al., 2014) release pollutants that are transported to the Northwest Pacific. In the atmosphere,
385 the products (H_2SO_4 and HNO_3) of SO_2 and NO_x can easily combine alkaline ions, such as Ca^{2+} and K^+ (Xiao et
al., 2013), which K^+ is characterized as an effective tracer of biomass and biofuel burning aerosols (Zhang et al.,
2015). As shown in Table 4, SIA had much bigger contributions of 56.3% to Ca^{2+} and 27.7% to K^+ . We found that
there were strong relationships between SO_4^{2-} (NO_3^-) and Ca^{2+} (K^+) (Table 3). These suggest that SO_4^{2-} and NO_3^-

changed source attribution of some alkaline ions to transport to open ocean. In this case, it is difficult to distinguish
390 the Ca^{2+} and K^{+} sources using PMF model.

The fourth source is oceanic emission, which released NO_x , NH_3 and DMS (Altieri et al., 2014; Jickells et al.,
2003; Boreddy and Kawamura, 2015; Phinney et al., 2006), with respective contributions of 1.6% to NO_3^- , 60.5%
to NH_4^+ , and 6.9% to SO_4^{2-} at Yongxing Island (Table 4). As shown in Fig. 11, air masses with high NH_4^+
395 concentrations were from remote open oceans such as the southeastern and northeastern SCS. There were relatively
higher NH_4^+ concentrations in the cool season and lower values in the warm season at Yongxing Island (Fig. 6).
These suggest that it is feasible for the ocean to be a NH_4^+ source. Substantial NH_x may be released from degraded
organic nitrogen-containing compounds and excretion from zooplankton in the ocean (Norman and Leck, 2005).
Altieri et al. (2014) suggested that the efficient kinetics of ammonia evasion from surface seawater causes NH_3 to
accumulate in the marine atmosphere. The contribution of oceanic emission to NH_4^+ was much larger at Yongxing
400 than at global marine atmospheric NH_x sources in the review of Duce et al. (2008), which showed 87.5% from
anthropogenic sources. However, Altieri et al. (2014) found that the anthropogenic contribution was < 87.5% at
Bermuda, an island in the North Atlantic Ocean (Fig. 5). Atmospheric NH_x is usually rapidly deposited near source
regions and has a short residence time, about several hours in the marine boundary layer (Boreddy and Kawamura,
2015; Xiao et al., 2012a; Xiao and Liu, 2002). Thus, NH_x transportation from continental to remote sea sites is
405 limited. Therefore, NH_4^+ in aerosol at Yongxing Island was possibly from oceanic emission, as being reported at
other marine sites (Altieri et al., 2014; Jickells et al., 2003). DMS is the most abundant marine biogenic volatile
sulfur emitted from the ocean surface to atmosphere, and can be oxidized to SO_4^{2-} in the marine atmosphere
(Phinney et al., 2006). Yang et al. (2015) reported that biogenic SO_4^{2-} from the Bohai and northern Yellow seas
near China was 0.114–0.551 $\mu\text{g}/\text{m}^3$, with an average of 0.247 $\mu\text{g}/\text{m}^3$, accounting for 1.4% of nss- SO_4^{2-} . Biogenic
410 SO_4^{2-} in the northern SCS was ~1.2 and 0.6 $\mu\text{g}/\text{m}^3$ in summer and winter, respectively (Zhang et al., 2007),
constituting ~8% and 12% of nss- SO_4^{2-} . CWTs for SO_4^{2-} in Fig. 11, also show some SO_4^{2-} were from marine
biogenic source. Thus, natural sources had large contributions to marine atmospheric aerosols over the Northwest
Pacific.

Figure 10 illustrates the time series of daily concentrations contributed by each identified source. In order to
415 examine if the results are reasonable, we compared the modeled results of each source with the observed seasonal
variations of the specific chemical species (Figs. 6 and 11). As shown in Fig. 9, the highest and lowest contributions
of sea salt were in November-December and April-May, respectively, which are consistent with the seasonal
variations of aerosol Na^+ , Cl^- and Mg^{2+} . For crust, the resulting time series show that it has a higher concentration

in March, 2014 and February, 2015, relatively close to the observed values of Ca^{2+} and K^+ (Figs. 6 and 11). SIA
420 has higher contributions from November, 2014 to February, 2015 and lower other months, which also consistent
with the observed and CWTs data of SO_4^{2-} and NO_3^- shown in Figs. 6 and 11. This result is definitely related to the
photochemistry that accounts for SIA formation (Zhang et al., 2013). The formed SIA species may not appear in
their original emission sources (Zhang et al., 2013), such as coal combustion, biomass burning and crust. It is
obvious that oceanic emission has highest contribution in March, and secondary highest in October, consistent with
425 the seasonal change of NH_4^+ . The PMF and CWTs modeled results seem to be promising because the corresponding
time series of each source's contribution are very consistent with the observations.

4 Conclusions

Chemical compositions of 1-year aerosols at Yongxing Island were investigated to help better understand their
430 chemical characteristics, sources, and transport pathways over the SCS. Sea salt (Na^+ and Cl^-) had the greatest
contribution to total major inorganic ions in aerosols at the island, followed by SO_4^{2-} , Ca^{2+} , NO_3^- , Mg^{2+} , K^+ and
 NH_4^+ . The concentrations of TSP and all major inorganic ions showed seasonal variations, with higher
concentrations in the cool season and lower in the warm season, which was influenced by meteorological
parameters (e.g., wind speed, temperature, relative humidity and rainfall) and air masses. Using PMF and CWT
435 models, fire spot and AOT, we found that Na^+ , Cl^- , and Mg^{2+} were mainly derived from sea salt, SO_4^{2-} and NO_3^- of
secondary inorganic aerosol mainly came from fossil fuel combustion (especially coal combustion in the Northern
Asia). NH_4^+ was mainly from oceanic emission in the remote ocean. In summary, fossil fuel combustion seriously
affected marine atmospheric aerosol chemical compositions over the Northwest Pacific.

440 **Acknowledgements** This work was supported by the National Natural Science Foundation of China (Grant nos.
41425014, 41663003, and 41203015), Strategic Priority Research Program of the Chinese Academy of Sciences
(Grant nos. XDA11030103 and XDA11020202), Doctoral Scientific Research Foundation of East China University
of Technology (Grant no. DHBK2015327), Research Foundation of Key Laboratory of Nuclear Resources and
Environment (Grant no. Z1609) and Scientific Research Foundation of East China University of Technology for
445 Science and Technology Innovation Team (Grant no. DHKT2015101).

References

Altieri, K.E., Hastings, M.G., Peters, A.J., Oleynik, S. and Sigman, D.M.: Isotopic evidence for a marine ammonium source
in rainwater at Bermuda, *Global Biogeochemical Cycles*, 28(10), 1066 - 1080, 2014.

- 450 Aouizerats, B., Van Der Werf, G. R., Balasubramanian, R. and Betha, R.: Importance of transboundary transport of biomass burning emissions to regional air quality in Southeast Asia during a high fire event, *Atmospheric Chemistry and Physics*, 15, 363-373, 2015.
- Arakaki, T., Azechi, S., Somada, Y., Ijyu, M., Nakaema, F., Hitomi, Y., Handa, D., Oshiro, Y., Miyagi, Y. and Ai, T.: Spatial and temporal variations of chemicals in the TSP aerosols simultaneously collected at three islands in Okinawa, Japan, *Atmospheric Environment*, 97, 479-485, 2014.
- 455 Atwood, S.A., Reid, J.S., Kreidenweis, S.M., Cliff, S.S., Zhao, Y., Lin, N.H., Tsay, S.C., Chu, Y.C. and Westphal, D.L.: Size resolved measurements of springtime aerosol particles over the northern South China Sea, *Atmospheric Environment*, 78(676), 134-143, 2013.
- Balasubramanian, R., Karthikeyan, S., Potter, J., Wurl, O. and Durville, C.: Chemical characterization of aerosols in the equatorial atmosphere over the Indian Ocean, *Atmospheric Environment*, 78(3), 268-276, 2013.
- 460 Boreddy, S. and Kawamura, K.: A 12-year observation of water-soluble ions in TSP aerosols collected at a remote marine location in the western North Pacific: an outflow region of Asian dust, *Atmospheric chemistry and physics*, 15(11), 6437-6453, 2015.
- Carrillo, J.H., Hastings, M.G., Sigman, D.M. and Huebert, B.J.: Atmospheric deposition of inorganic and organic nitrogen and base cations in Hawaii, *Global Biogeochemical Cycles*, 16(4), doi: 10.1029/2002GB001892, 2002
- 465 Cheng, I., Zhang, L., Blanchard, P., Dalziel, J. and Tordon, R.: Concentration-weighted trajectory approach to identifying potential sources of speciated atmospheric mercury at an urban coastal site in Nova Scotia, Canada, *Atmospheric Chemistry And Physics*, 13(12), 6031-6048, 2013.
- Cheng, Z.L., Lam, K.S., Chan, L.Y., Wang, T. and Cheng, K.K.: Chemical characteristics of aerosols at coastal station in Hong Kong. I. Seasonal variation of major ions, halogens and mineral dusts between 1995 and 1996, *Atmospheric Environment*, 34(17), 2771-2783, 2000.
- 470 Chin, M: *Atmospheric Aerosol Properties and Climate Impacts*, DIANE Publishing, 2009.
- Claeys, M., Wang, W., Vermeylen, R., Kourtchev, I., Chi, X., Farhat, Y., Surratt, J.D., Gómez-González, Y., Sciare, J. and Maenhaut, W.: Chemical characterisation of marine aerosol at Amsterdam Island during the austral summer of 2006–2007, *Aerosol Science*, 41, 13-22, 2010.
- 475 Crippa, M., Canonaco, F., Slowik, J. G., El Haddad, I., DeCarlo, P. F., Mohr, C., Heringa, M.F., Chirico, R., Marchand, N., Temime-Roussel, B., Abidi, E., Poulain, L., Wiedensohler, A., Baltensperger, U. and Prévôt, A.S.H: Primary and secondary organic aerosol origin by combined gas-particle phase source apportionment, *Atmospheric Chemistry & Physics*, 13(16), 8411-8426, 2013.
- 480 Cui, D.Y., Wang, J.T., Tan, L.J. and Dong, Z.Y.: Impact of atmospheric wet deposition on phytoplankton community structure in the South China Sea, *Estuarine Coastal & Shelf Science*, 173, 1 – 8, 2016.
- Davidson, C.I., Phalen, R.F. and Solomon, P.A.: Airborne particulate matter and human health: a review, *Aerosol Science and*

Technology, 39, 737–749, 2005.

- 485 Deng, C., Zhuang, G., Huang, K., Li, J., Zhang, R., Wang, Q., Liu, T., Sun, Y., Guo, Z. and Fu, J.S.: Chemical characterization of aerosols at the summit of Mountain Tai in Central East China, *Atmospheric Chemistry & Physics*, 11(14), 7319-7332, 2010.
- Duan, F.K., He, K.B., Ma, Y.L., Yang, F.M., Yu, X.C., Cadle, S.H., Chan, T. and Mulawa, P.A.: Concentration and chemical characteristics of PM_{2.5} in Beijing, China: 2001 – 2002, *Science of the Total Environment*, 355(1-3), 264-75, 2006.
- 490 Duce, R.A., Laroche, J., Altieri, K., Arrigo, K.R., Baker, A.R., Capone, D.G., Cornell, S., Dentener, F., Galloway, J. and Ganeshram, R.S.: Impacts of atmospheric anthropogenic nitrogen on the open ocean, *Science*, 320(5878), 893-7, 2008.
- Ebert, M., Weinbruch, S., Hoffmann, P. and Ortner, H.M.: Chemical characterization of North Sea aerosol particles, *Journal of Aerosol Science*, 31(31), 613-632, 2000.
- Fang, Y.T., Koba, K., Wang, X.M., Wen, D.Z., Li, J., Takebayashi, Y., Liu, X.Y. and Yoh, M.: Anthropogenic imprints on nitrogen and oxygen isotopic composition of precipitation nitrate in a nitrogen-polluted city in southern China, *Atmospheric Chemistry and Physics*, 11(3), 1313-1325, 2011.
- 495 Han, J.S., Moon, K.J., Lee, S.J., Kim, Y.J., Ryu, S.Y., Cliff, S.S. and Yi, S.M.: Size-resolved source apportionment of ambient particles by positive matrix factorization at Gosan background site in East Asia, *Atmospheric Chemistry & Physics*, 5(4), 211-223, 2006.
- Hien, P.D., Bac, V.T. and Thinh, N.: PMF receptor modelling of fine and coarse PM₁₀ in air masses governing monsoon conditions in Hanoi, northern Vietnam, *Atmospheric Environment*, 38(2), 189-201, 2004.
- 500 Hsu, S.C., Liu, S.C., Kao, S.J., Jeng, W.L., Huang, Y.T., Tseng, C.M., Tsai, F., Tu, J.Y. and Yang, Y.: Water-soluble species in the marine aerosol from the northern South China Sea: High chloride depletion related to air pollution, *Journal of Geophysical Research Atmospheres*, 112(D19), 216-229, 2007.
- Jia, G. and Chen, F.: Monthly variations in nitrogen isotopes of ammonium and nitrate in wet deposition at Guangzhou, south China, *Atmospheric Environment*, 44(19), 2309-2315, 2010.
- 505 Jickells, T.D., Kelly, S.D., Baker, A.R., Biswas, K., Dennis, P.F., Spokes, L.J., Witt, M. and Yeatman, S.G.: Isotopic evidence for a marine ammonia source, *Geophysical Research Letters*, 30(7), 359-376, 2003.
- Jung, J., Furutani, H. and Uematsu, M.: Atmospheric inorganic nitrogen in marine aerosol and precipitation and its deposition to the North and South Pacific Oceans, *Journal of Atmospheric Chemistry*, 68(2), 157-181, 2012.
- 510 Keene, W.C., Moody, J.L., Galloway, J.N., Prospero, J.M., Cooper, O.R., Eckhardt, S. and Maben, J.R.: Long-term trends in aerosol and precipitation composition over the western North Atlantic Ocean at Bermuda, *Atmospheric Chemistry & Physics*, 29(14), 292-303, 2005.
- Kim, T.W., Lee, K., Duce, R. and Liss, P.: Impact of atmospheric nitrogen deposition on phytoplankton productivity in the South China Sea, *Geophysical Research Letters*, 41(9), 3156-3162, 2014.
- 515 Kolb, C.E. and Worsnop, D.R.: ChemInform Abstract: Chemistry and Composition of Atmospheric Aerosol Particles, *Annual*

Review of Physical Chemistry, 44(63), 471-491, 2013.

Kumar, A., Sudheer, A.K. and Sarin, M.M.: Chemical characteristics of aerosols in MABL of Bay of Bengal and Arabian Sea during spring inter-monsoon: A comparative study, *Journal of Earth System Science*, 117(S1), 325-332, 2008.

Lawrence, M.G. and Lelieveld, J.: Atmospheric pollutant outflow from southern Asia: a review, *Atmospheric Chemistry & Physics*, 10(22), 11017-11096, 2010.

Lin, N. H., Tsay, S. C., Maring, H. B., Yen, M. C., Sheu, G. R., Wang, S. H., Chi, K.H., Chuang, M.T., Ou-Yang, C.F., Fu, J.S., Reid, J.S., Lee, L.C., Wang, L.C., Wang, J.L., Hsu, C.N., Sayer, A.M., Holben, B.N., Chu, Y.C., Nguyen, X.A., Sopajaree, K., Chen, S.J., Cheng, M.T., Tsuang, B.J., Tsai, C.J., Peng, C.M., Schnell, R.C., Conway, T., Chang, C.T., Lin, K.S., Tsai, Y.I., Lee, W.J., Change, S.C., Liu, J.J., Chiang, W.L., Huang, S.J., Lin, T.H. and Liu, G.R.: An overview of regional experiments on biomass burning aerosols and related pollutants in Southeast Asia: From BASE-ASIA and the Dongsha Experiment to 7-SEAS, *Atmospheric Environment*, 78, 1-19, 2013.

Liu, P. F., Zhao, C. S., Göbel, T., Hallbauer, E., Nowak, A., Ran, L., Xu, W.Y., Deng, Z.Z., Ma, N., Mildeberger, K., Henning, S., Stratmann, F. and Henning, S.: Hygroscopic properties of aerosol particles at high relative humidity and their diurnal variations in the North China Plain. *Atmospheric Chemistry and Physics*, 11(7), 3479-3494, 2011.

Liu, S., Chen, M. and Zhuang, Q: Aerosol effects on global land surface energy fluxes during 2003–2010, *Geophysical Research Letters*, doi: 10.1002/2014GL061640, 2014.

Liu, X., Espen, P.V., Adams, F., Cafmeyer, J. and Maenhaut, W.: Biomass Burning in Southern Africa: Individual Particle Characterization of Atmospheric Aerosols and Savanna Fire Samples, *Journal of Atmospheric Chemistry*, 36(2), 135-155, 2000.

Liu, X., Zhang, Y., Han, W., Tang, A., Shen, J., Cui, Z., Vitousek, P., Erisman, J.W., Goulding, K. and Christie, P.: Enhanced nitrogen deposition over China, *Nature*, 494(7438), 459-62, 2013.

Liu, Y., Sun, L., Zhou, X., Luo, Y., Huang, W., Yang, C., Wang, Y. and Huang, T.: A 1400-year terrigenous dust record on a coral island in South China Sea, *Scientific Reports*, 4(20), 4994-4994, 2014.

Moody, J.L., Keene, W.C., Cooper, O.R., Voss, K.J., Aryal, R., Eckhardt, S., Holben, B., Maben, J.R., Izaguirre, A. and Galloway, J.N.: Flow climatology for physicochemical properties of dichotomous aerosol over the western North Atlantic Ocean at Bermuda, *Atmospheric Chemistry and Physics*, 14, 691-717, 2014.

Norris, G. A., Duvall, R., Brown, S. G. and Bai, S.: EPA Positive Matrix Factorization (PMF) 5.0 fundamentals and User Guide Prepared for the US Environmental Protection Agency Office of Research and Development, Washington, DC. DC EPA/600/R-14/108, 2014.

Norman, M. and Leck, C.: Distribution of marine boundary layer ammonia over the Atlantic and Indian Oceans during the Aerosols99 cruise, *Journal of Geophysical Research*, doi:10.1029/2005JD005866, 2005.

Okuda, T., Tenmoku, M., Kato, J., Mori, J., Sato, T., Yokochi, R. and Tanaka, S.: Long-term observation of trace metal concentration in aerosols at a remote island, Rishiri, Japan by using inductively coupled plasma mass spectrometry equipped with laser ablation, *Water, Air, and Soil Pollution*, 174, 3-17, 2006.

- 550 Ooki, A., Uematsu, M. and Noriki, S.: Size-resolved sulfate and ammonium measurements in marine boundary layer over the North and South Pacific, *Atmospheric Environment*, 41(1), 81-91, 2007.
- Ottley, C.J. and Harrison, R.M.: The spatial distribution and particle size of some inorganic nitrogen, sulphur and chlorine species over the North Sea, *Atmospheric Environment. Part A. General Topics*, 26(9), 1689-1699, 1992.
- Paatero, P., Eberly, S., Brown, S. G. and Norris, G. A.: Methods for estimating uncertainty in factor analytic solutions. 555 *Atmospheric Measurement Techniques*, 7(3), 781-797, 2014.
- Pan, Y., Tian, S., Liu, D., Fang, Y., Zhu, X., Zhang, Q., Zheng, B., Michalshi, G., and Wang, Y.: Fossil fuel combustion-related emissions dominate atmospheric ammonia sources during severe haze episodes: Evidence from ¹⁵N-stable isotope in size-resolved aerosol ammonium, *Environmental Science & Technology*, DOI: 10.1021/acs.est.6b00634.
- Pavuluri, C.M., Kawamura, K., and Fu, P.Q.: Atmospheric chemistry of nitrogenous aerosols in northeastern Asia: biological 560 sources and secondary formation, *Atmospheric Chemistry and Physics*, 15, 9883-9896, 2015.
- Phinney, L., Leaitch, W.R., Lohmann, U., Boudries, H., Worsnop, D.R., Jayne, J.T., Toom-Sauntry, D., Wadleigh, M., Sharma, S. and Shantz, N.: Characterization of the aerosol over the sub-arctic north east Pacific Ocean, *Deep Sea Research Part II Topical Studies in Oceanography*, 53(20 - 22), 2410-2433, 2006.
- Price, C., Penner, J. and Prather, M.: NO_x from lightning: 1. Global distribution based on lightning physics, *Journal of Geophysical Research Atmospheres*, 102(D5), 5929-5942, 1997. 565
- Rinaldi, M., Decesari, S., Finessi, E., Giulianelli, L., Carbone, C., Fuzzi, S., O'Dowd, C., Ceburnis, D. and Facchini, M.C.: Primary and secondary organic marine aerosol and oceanic biological activity: Recent results and new perspectives for future studies, *Advances in Meteorology*, doi:10.1155/2010/310682, 2010.
- Schmale, J., Schneider, J., Nemitz, E., Tang, Y.S., Dragosits, U., Blackall, T.D., Trathan, P.N., Phillips, G.J., Sutton, M. and 570 Braban, C.F.: Sub-Antarctic marine aerosol: dominant contributions from biogenic sources, *Atmospheric Chemistry & Physics*, 13(17), 8669-8694, 2013.
- Šmilauer, P. and Lepš, J.: *Multivariate analysis of ecological data using CANOCO 5*, Cambridge University Press, 2014.
- Steyn, D.G. and Chaumerliac, N.: *Air Pollution Modeling and its Application XXIV*, Utrecht: Springer, 2016.
- Streets, D.G., Yarber, K.F., Woo, J.H. and Carmichael, G.R.: Biomass burning in Asia: annual and seasonal estimates and 575 atmospheric emissions, *Global Biogeochem Cycles*, 17(4), 1759-1768, 2003.
- Suzuki, T. and Tsunogai, S.: Origin of calcium in aerosols over the western north Pacific, *Journal of Atmospheric Chemistry*, 6(4), 363-374, 1988.
- Tiwari, S., Pervez, S., Cinzia, P., Bisht, D.S., Kumar, A. and Chate, D.: Chemical characterization of atmospheric particulate matter in Delhi, India, part II: Source apportionment studies using PMF 3.0, *Sustainable Environment Research*, 23, 295-306, 2013.
- 580 Tiwari, S., Pervez, S., Cinzia, P., Bisht, D.S., Kumar, A. and Chate, D.: Chemical characterization of atmospheric particulate matter in Delhi, India, part II: Source apportionment studies using PMF 3.0, *Sustainable Environment Research*, 23, 295-306, 2013.

- Wang, J.: Classical multidimensional scaling. In *Geometric Structure of High-Dimensional Data and Dimensionality Reduction* (pp. 115-129). Springer Berlin Heidelberg, 2012
- 585 Wang, L., Qi, J.H., Shi, J.H., Chen, X.J. and Gao, H.W.: Source apportionment of particulate pollutants in the atmosphere over the Northern Yellow Sea, *Atmospheric Environment*, 70(4), 425-434, 2013.
- Wang, S.H., Hsu, N.C., Tsay, S.C., Lin, N.H., Sayer, A.M., Huang, S.J. and Lau, W.K.: Can Asian dust trigger phytoplankton blooms in the oligotrophic northern South China Sea?, *Geophysical Research Letters*, 39(5), 2012.
- 590 Wang, S.H., Tsay, S.C., Lin, N.H., Chang, S.C., Li, C., Welton, E.J., Holben, B.N., Hsu, N.C., Lau, W.K.M. and Lolli, S.: Origin, transport, and vertical distribution of atmospheric pollutants over the northern South China Sea during the 7-SEAS/Dongsha Experiment, *Atmospheric Environment*, 78(3), 124 - 133, 2013.
- Wang, S.H., Tsay, S.C., Lin, N.H., Hsu, N.C., Bell, S.W., Li, C., Ji, Q., Jeong, M.J., Hansell, R.A. and Welton, E.J.: First detailed observations of long-range transported dust over the northern South China Sea, *Atmospheric Environment*, 45(27), 4804-4808, 2011.
- 595 Wang, Y., Zhuang, G., Zhang, X., Huang, K., Xu, C., Tang, A., Chen, J. and An, Z.: The ion chemistry, seasonal cycle, and sources of PM_{2.5} and TSP aerosol in Shanghai, *Atmospheric Environment*, 40(16), 2935-2952, 2006.
- Wang, Y.Q., Zhang, X.Y. and Draxler, R.: TrajStat: GIS-based software that uses various trajectory statistical analysis methods to identify potential sources from long-term air pollution measurement data, *Environmental Modelling & Software*, 24: 938-939, 2009.
- 600 Xiao, H., Long, A., Xie, L., Xiao, H. and Liu, C.: Chemical characteristics of precipitation in South China Sea, *Environmental Science*, 35(2), 475-480, 2014 (Chinese with English Abstract).
- Xiao, H., Xiao, H., Long, A. and Wang, Y.: Who controls the monthly variations of NH₄⁺ nitrogen isotope composition in precipitation?, *Atmospheric Environment*, 54, 201-206, 2012a.
- Xiao, H., Xiao, H., Long, A. and Wang, Y.: Nitrogen isotopic composition and source of nitrate in precipitation at Guiyang, *Acta Scientiae Circumstantiae*, 32(4), 940-945, 2012b (Chinese with English Abstract).
- 605 Xiao, H., Xiao, H., Long, A., Wang, Y. and Liu, C.: Chemical composition and source apportionment of rainwater at Guiyang, SW China, *Journal of Atmospheric Chemistry*, 70(3), 269-281, 2013.
- Xiao, H., Xiao, H., Long, A., Wang, Y. and Liu, C.: Sources and meteorological factors that control seasonal variation of δ³⁴S values in rainwater, *Atmospheric Research*, 149, 154-165, 2014.
- 610 Xiao, H., Xiao, H., Zhang, Z., Wang, Y., Long, A. and Liu, C.: Chemical characteristics and source apportionment sources of precipitation in Yongxing Island, China *Environmental Science*, 36(11), 3237-3244, 2016 (Chinese with English Abstract).
- Xiao, H., Xie, L., Long, A., Ye, F., Pan, Y., Li, D., Long, Z., Chen, L., Xiao, H. and Liu, C.: Use of isotopic compositions of nitrate in TSP to identify sources and chemistry in South China Sea, *Atmospheric Environment*, 109, 70-78, 2015.
- 615 Xiao, H.Y. and Liu, C.Q.: Sources of nitrogen and sulfur in wet deposition at Guiyang, southwest China, *Atmospheric*

Environment, 36(33), 5121-5130, 2002.

Xiao, H.Y. and Liu, C.Q.: Chemical characteristics of water-soluble components in TSP over Guiyang, SW China, 2003, Atmospheric Environment, 38(37), 6297-6306, 2004.

620 Yu, L., Wang, G., Zhang, R., Zhang, L., Song, Y., Wu, B., Li, X., An, K. and Chu, J.: Characterization and Source Apportionment of PM_{2.5} in an Urban Environment in Beijing, Aerosol & Air Quality Research, 13(2), 574-583, 2013.

Zhang, M., Chen, J.M., Wang, T., Cheng, T.T., Lin, L., Bhatia, R.S. and Havey, M.: Chemical characterization of aerosols over the Atlantic Ocean and the Pacific Ocean during two cruises in 2007 and 2008, Journal of Geophysical Research, 115, 1842-1851, 2010.

625 Zhang, N., Cao, J., Liu, S., Zhao, Z.Z., Xu, H. and Xiao, S.: Chemical composition and sources of PM_{2.5} and TSP collected at Qinghai Lake during summertime, Atmospheric Research, 138(3), 213 - 222, 2014.

Zhang, Q., Jimenez, J. L., Canagaratna, M. R., Ulbrich, I. M., Ng, N. L., Worsnop, D. R., and Sun, Y. L.: Understanding atmospheric organic aerosols via factor analysis of aerosol mass spectrometry: a review, Analytical and Bioanalytical Chemistry, 401, 3045-3067, 2011.

630 Zhang, R., Jing, J., Tao, J., Hsu, S.C., Wang, G., Cao, J., Lee, C.S.L., Zhu, L., Chen, Z. and Zhao, Y.: Chemical characterization and source apportionment of PM_{2.5} in Beijing: Seasonal perspective, Atmospheric Chemistry and Physics, 7053-7074, 2015.

Zhang, X., Zhuang, G., Guo, J., Yin, K. and Zhang, P.: Characterization of aerosol over the Northern South China Sea during two cruises in 2003, Atmospheric Environment, 41(36), 7821-7836, 2007.

635 Zhang, X.Y., Wang, Y.Q., Niu, T., Zhang, X.C., Gong, S.L., Zhang, Y.M. and Sun, J.Y.: Atmospheric aerosol compositions in China: spatial/temporal variability, chemical signature, regional haze distribution and comparisons with global aerosols, Atmospheric Chemistry and Physics, 12(2), 779-799, 2012.

Zhao, R., Han, B., Lu, B., Zhang, N., Zhu, L. and Bai, Z.: Element composition and source apportionment of atmospheric aerosols over the China Sea, Atmospheric Pollution Research, 6(2), 191-201, 2015.

640

Table Captions

Table 1 Annual average, minimum and maximum mass concentrations ($\mu\text{g}/\text{m}^3$) of TSP and aerosol chemical species at Yongxing Island.

645 **Table 2** Mole equivalent ratios for major ionic species in aerosols at Yongxing Island (annual, cool, transition and warm seasons), together with seawater ratios for comparison.

Table 3 Correlation coefficients among major ions in aerosol and meteorological parameters.

Table 4 Relative contributions (%) for different major ions from potential five sources of TSP at Yongxing

Island over the year, based on PMF 5.0 model.

650 **Figure Captions**

Figure 1 Distribution of seasonal average aerosol optical thickness (AOT) at 550 nm (T550) over Northwest Pacific in cool, warm and transition seasons during sampling period. Monthly AOT products (from Moderate Resolution Imaging Spectrometer, MODIS) with 4-km resolution were downloaded from Globcolour (<http://hermes.acri.fr/>). The GlobColour project began in 2005 as an ESA Data User Element project to provide a continuous dataset of merged Level 3 Ocean Colour products.

Figure 2 Three-hour temperature, relative humidity, wind speed and precipitation at Yongxing Island during sampling period (March 2014 through February 2015).

Figure 3 Annual average mass concentrations of aerosol chemical species at Yongxing Island. Box boundary indicates 25th and 75th percentile. Lines within the box show the mean. Whiskers above and below the box indicate 90th and 10th percentiles.

Figure 4 Mean contributions of each major ionic component to total ionic mass concentration of (a) Yongxing Island (YXI) annual, (b) YXI cool season, (c) YXI warm season, and (d) YXI transition season.

Figure 5 Comparisons of major ions in aerosol at Yongxing Island with global ocean. Data of Oki, Ogasawara and Hedo are from EANET (www.eanet.asia); those of Rishiri Island are from Okuda et al. (2006); those of Hawaii are from Carrillo et al. (2002); those of Bermuda are from Moody et al. (2014); those of Amsterdam Island are from Claeys et al. (2010); those of the Arabian Sea and Indian Ocean are from Kumar et al. (2008); those of Helgoland are from Ebert et al. (2000); those of the Mediterranean Sea, northern Atlantic-1 and 2, Pacific and southern Atlantic are from Zhang et al. (2010). Pentagrams represent sampling sites on islands; others represent cruises. N.A. indicates no data.

Figure 6 Seasonal variations of TSP mass concentration and associated species, including Na⁺, Cl⁻, SO₄²⁻, Mg²⁺, K⁺, Ca²⁺, NH₄⁺, and NO₃⁻ at Yongxing Island (cool season: C; warm season: W; annual: A). Shown are the mean and standard deviation for each bar.

Figure 7 Comparison of aerosol chemical species between Yongxing Island and around the South China Sea (data from EANET).

Figure 8 Fire spot data from MODIS global fire mapping from March 2014 to February 2015 around South China Sea (<https://firms.modaps.eosdis.nasa.gov/firemap/>).

Figure 9 Profiles of five sources identified from the PMF 5.0 model, including sea salt (two species), crust, secondary inorganic aerosol and oceanic emission.

680 **Figure 10** Time series contributions from each identified sources, including sea salt (two species), crust, secondary inorganic aerosol, and oceanic emission.

Figure 11 Ten-day back trajectories of warm (black, June through September 2014), cool (blue, March and April 2014 and October 2014 through February 2015) seasons, and transition season (red, May 2014) at Yongxing Island. Additionally, CWT (concentration weighted trajectory) plots for daily weighted-average concentrations of TSP, Ca^{2+} , Mg^{2+} , K^+ , SO_4^{2-} , NO_3^- and NH_4^+ at Yongxing Island.

685

Supporting Information

Figure S1. Modeled NAAPS total aerosol optical depth (AOD) for every month of March 2014 through February 2015, for total, sulfate, dust and smoke (data from <http://www.nrlmry.navy.mil/aerosol/#aerosolobservations>).

Table 1 Annual average, minimum and maximum mass concentrations ($\mu\text{g}/\text{m}^3$) of TSP and aerosol chemical species at Yongxing Island.

	TSP	Na ⁺	Cl ⁻	K ⁺	Ca ²⁺	Mg ²⁺	SO ₄ ²⁻	NO ₃ ⁻	NH ₄ ⁺
Annual	89.6 ± 68.0	4.00 ± 1.88	7.73 ± 5.99	0.33 ± 0.22	2.15 ± 1.54	0.44 ± 0.33	5.54 ± 3.65	1.95 ± 1.34	0.07 ± 0.07
Minimum	16.4	0.90	0.39	0.06	0.17	0.02	0.52	0.10	0.01
Maximum	440.1	8.86	36.47	1.13	9.65	1.55	23.34	10.05	0.32

Table 2 Mole equivalent ratios for major ionic species in aerosols at Yongxing Island (annual, cool, transition and warm seasons), together with seawater ratios for comparison.

	Yongxing Island				Seawater ^a
	annual	cool	transition	warm	
Cl ⁻ /Na ⁺	1.25	1.31	1.06	1.12	1.17
Mg ²⁺ /Na ⁺	0.21	0.21	0.19	0.23	0.22
K ⁺ /Na ⁺	0.048	0.051	0.040	0.042	0.021
Ca ²⁺ /Na ⁺	0.62	0.64	0.83	0.47	0.044
SO ₄ ²⁻ /Na ⁺	0.66	0.71	0.73	0.51	0.12
nss-SO ₄ ²⁻ /Na ⁺	0.54	0.58	0.61	0.39	-
NO ₃ ⁻ /Na ⁺	0.18	0.18	0.22	0.16	-
NH ₄ ⁺ /Na ⁺	0.022	0.021	0.044	0.016	-
NO ₃ ⁻ /nss-SO ₄ ²⁻	0.34	0.32	0.36	0.41	-
NH ₄ ⁺ /nss-Ca ²⁺	0.038	0.035	0.056	0.038	-

^aSeawater ratios from Keene et al. (1986).

697 **Table 3** Correlation coefficients among major ions in aerosol and meteorological parameters.

	TSP	Na ⁺	Cl ⁻	SO ₄ ²⁻	Ca ²⁺	Mg ²⁺	K ⁺	NH ₄ ⁺	NO ₃ ⁻	WS	T	RH	R
TSP	1	0.77**	0.92**	0.77**	0.92**	0.32**	0.75**	-0.05	0.52**	0.36**	-0.47**	-0.44**	-0.20
Na ⁺		1	0.91**	0.69**	0.72**	0.57**	0.78**	-0.03	0.48**	0.44**	-0.51**	-0.46**	-0.27*
Cl ⁻			1	0.71**	0.83**	0.49**	0.77**	-0.04	0.45**	0.43**	-0.37**	-0.36**	-0.19
SO ₄ ²⁻				1	0.86**	0.56**	0.85**	0.26*	0.87**	0.04	-0.56**	-0.58**	-0.29*
Ca ²⁺					1	0.36**	0.81**	-0.03	0.69**	0.24	-0.51**	-0.53**	-0.27*
Mg ²⁺						1	0.63**	0.45**	0.59**	0.04	-0.12	-0.08	-0.18
K ⁺							1	-0.18	0.72**	0.15	-0.51**	-0.45**	-0.27*
NH ₄ ⁺								1	0.36**	-0.13	-0.18	0.11	-0.18
NO ₃ ⁻									1	-0.05	-0.50**	-0.50**	-0.31**

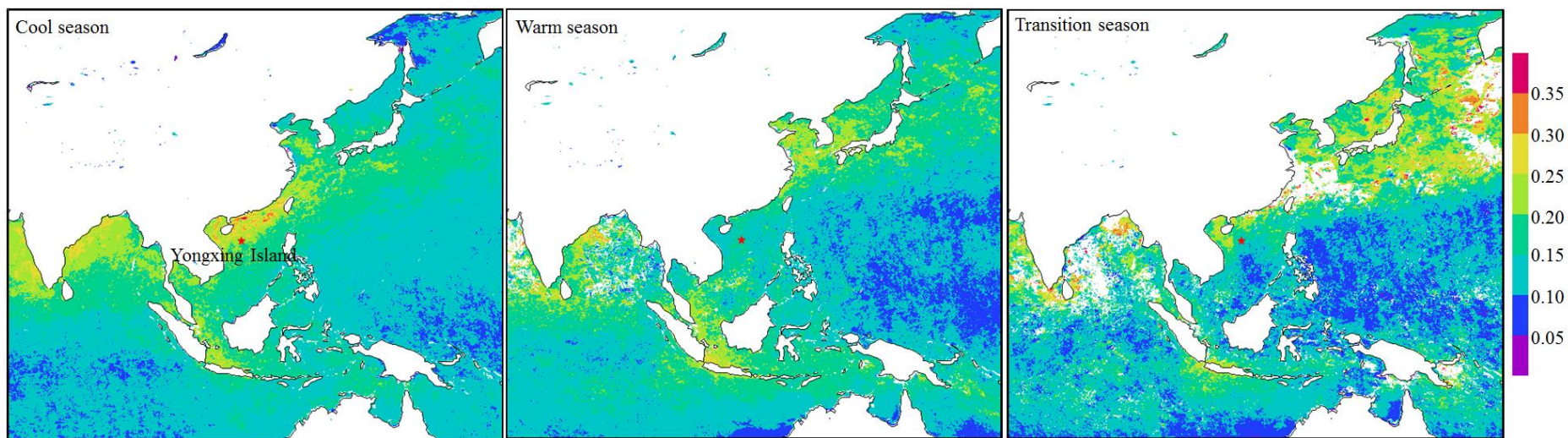
698 **Correlation significant at 0.01 level (2-tailed), * significant at 0.05 level (2-tailed). WS: wind speed (m/s); T: temperature (°C); RH: relative humidity (%); R: rainfall (mm/h)

699 **Table 4** Relative contributions (%) for different major ions from potential five sources of TSP
 700 at Yongxing Island over the year, based on PMF 5.0 model.

Source	Na ⁺	Cl ⁻	K ⁺	Ca ²⁺	Mg ²⁺	SO ₄ ²⁻	NO ₃ ⁻	NH ₄ ⁺
Sea salt (two species)	77.4	93.9	53.2	33.9	70.4	24.0	13.1	6.7
Crust	6.1	5.5	10.8	9.8	11.9	11.5	15.9	23.6
SIA	8.8	0.0	27.7	56.3	15.8	57.5	69.5	9.1
Oceanic emission	7.7	0.6	8.3	0.0	2.0	6.9	1.6	60.5

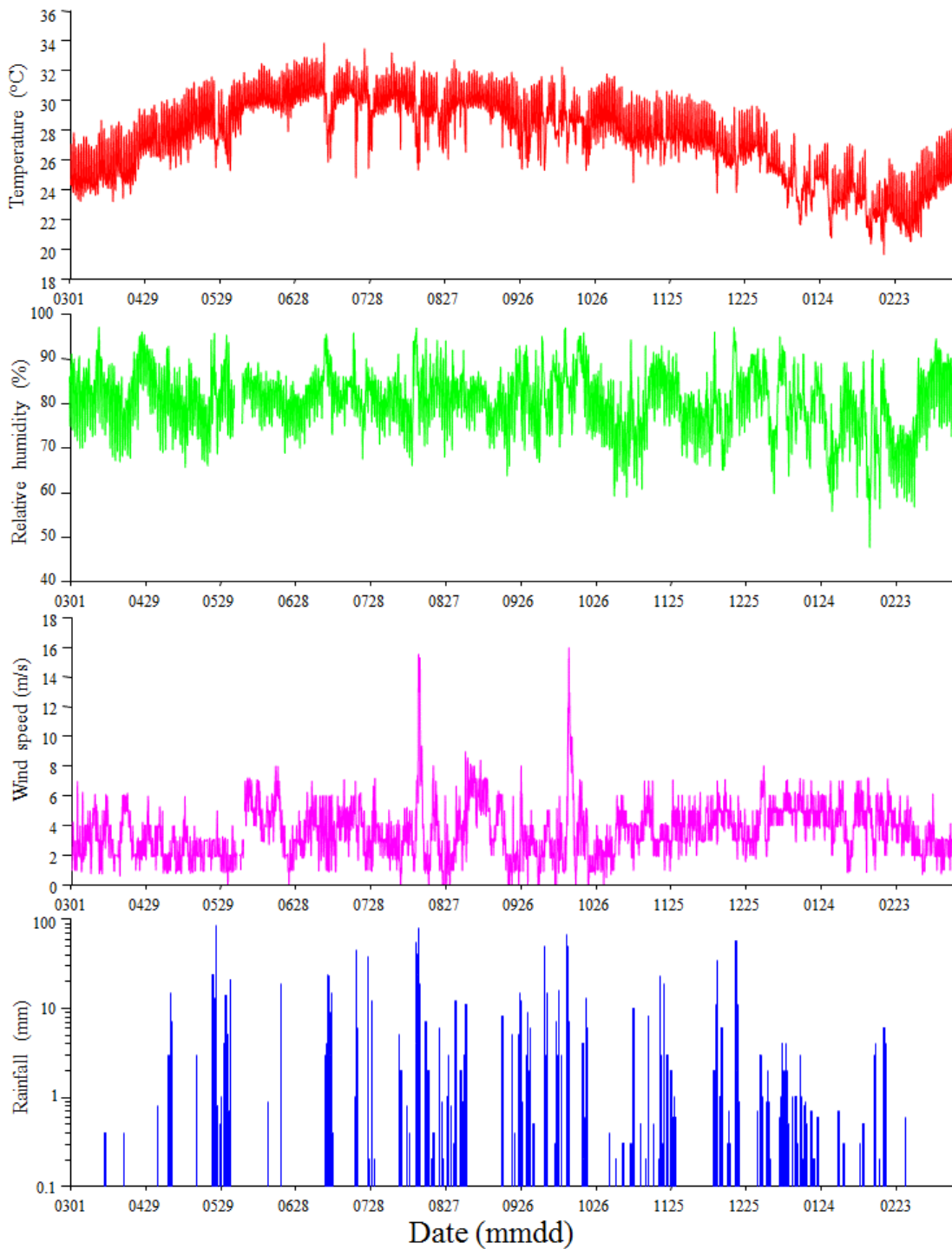
701

702 **Figure 1** Distribution of seasonal average aerosol optical thickness (AOT) at 550 nm (T550) over Northwest Pacific in cool, warm and transition seasons during
703 sampling period. Monthly AOT products (from Moderate Resolution Imaging Spectrometer, MODIS) with 4-km resolution were downloaded from Globcolour
704 (<http://hermes.acri.fr/>). The GlobColour project began in 2005 as an ESA Data User Element project to provide a continuous dataset of merged Level 3 Ocean
705 Colour products.



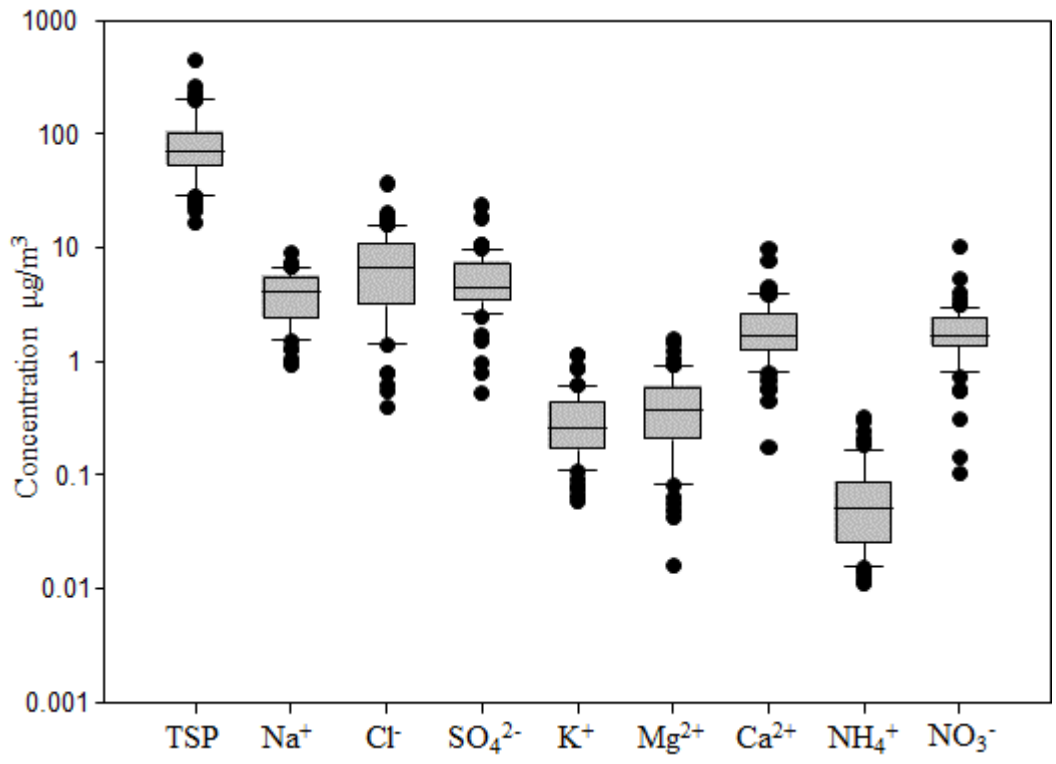
706

707 **Figure 2** Three-hour temperature, relative humidity, wind speed and precipitation at Yongxing
708 Island during sampling period (March 2014 through February 2015).



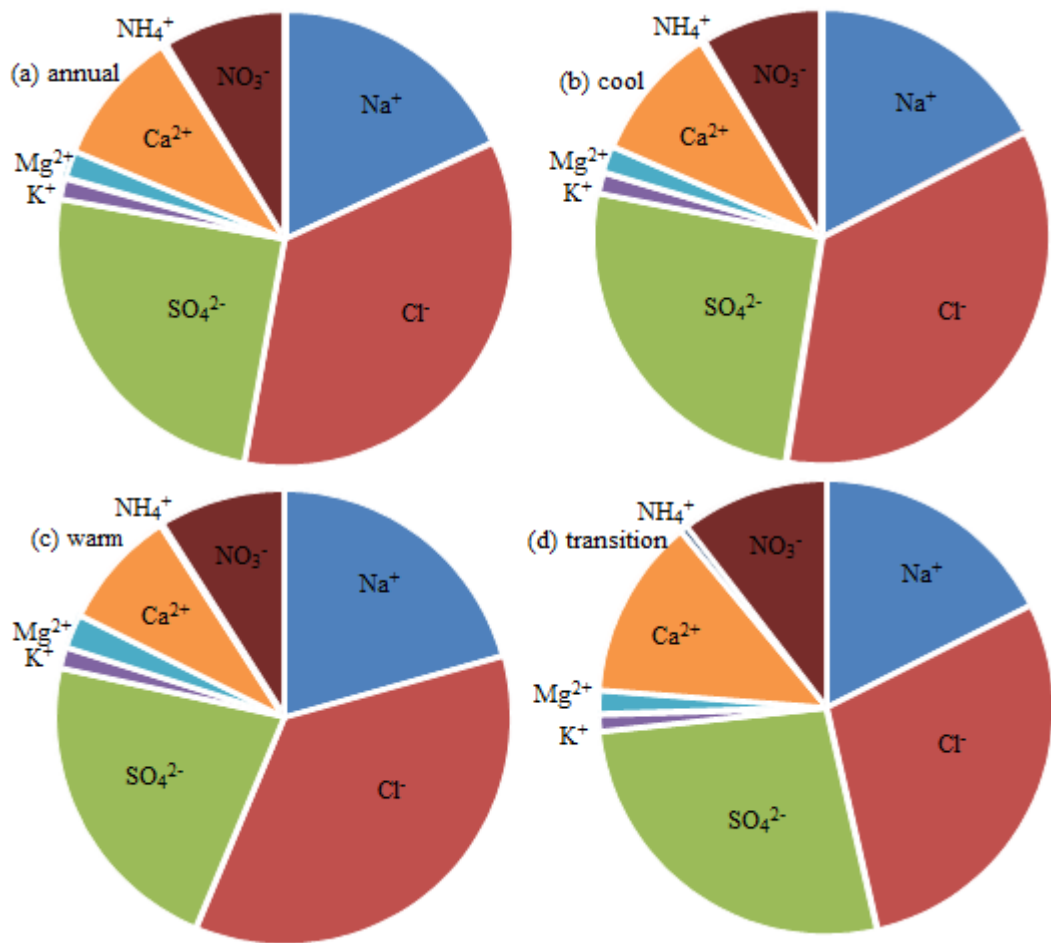
709

710 **Figure 3** Annual average mass concentrations of aerosol chemical species at Yongxing Island.
711 Box boundary indicates 25th and 75th percentile. Lines within the box show the mean. Whiskers
712 above and below the box indicate 90th and 10th percentiles.



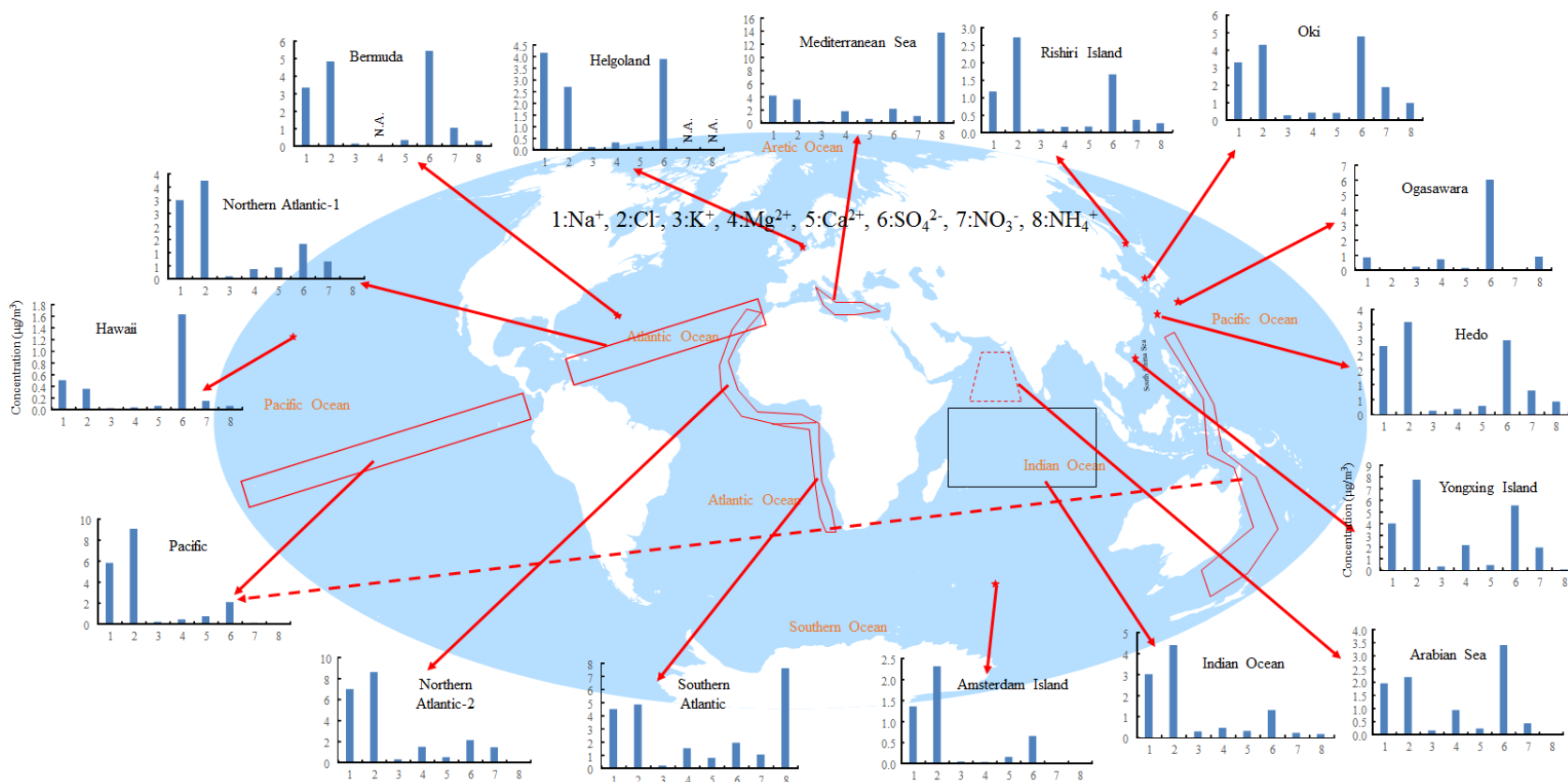
713

714 **Figure 4** Mean contributions of each major ionic component to total ionic mass concentration
715 of (a) Yongxing Island (YXI) annual, (b) YXI cool season, (c) YXI warm season, and (d) YXI
716 transition season.



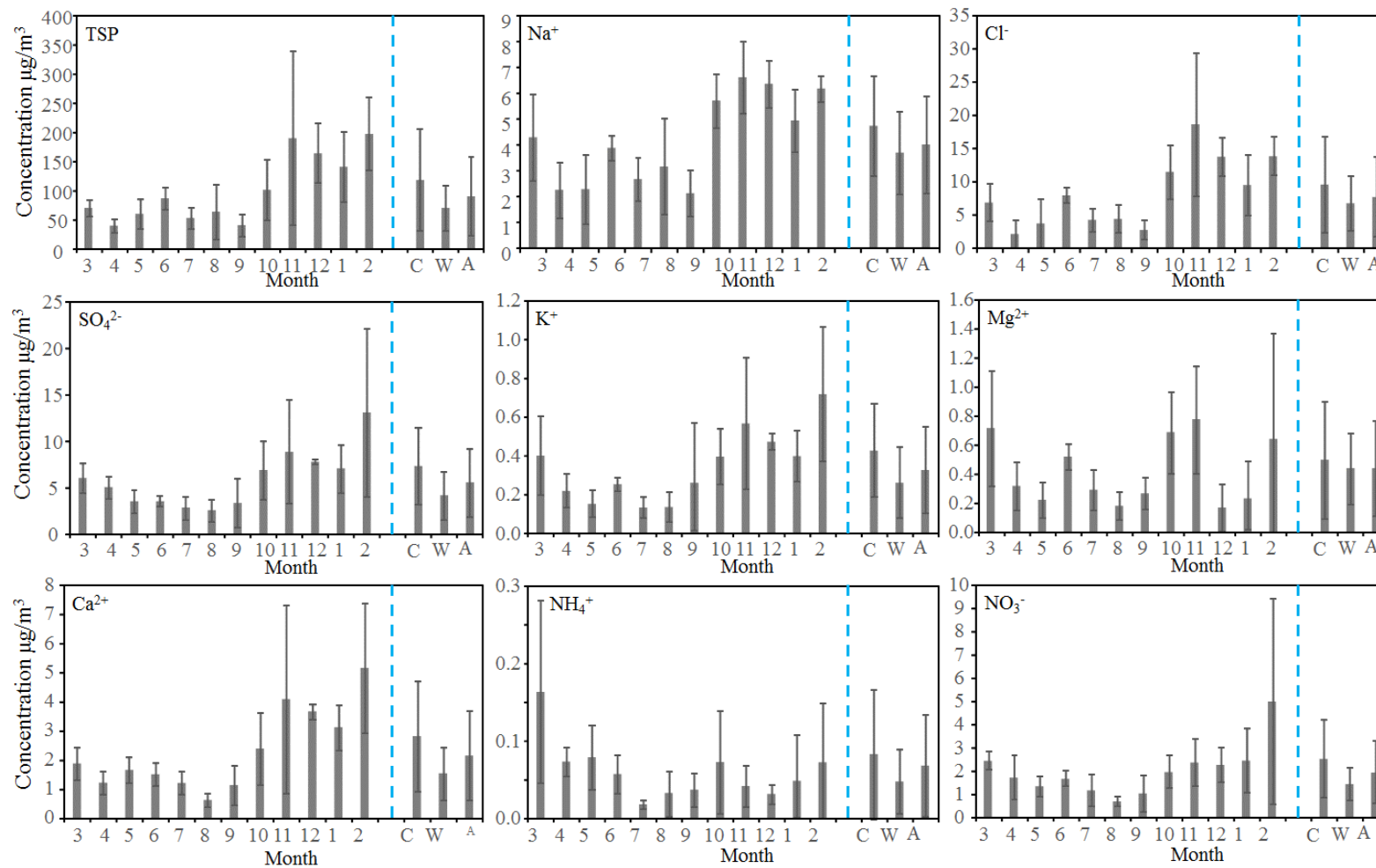
717

718 **Figure 5** Comparisons of major ions in aerosol at Yongxing Island with global ocean. Data of Oki, Ogasawara and Hedo are from EANET (www.eanet.asia);
 719 those of Rishiri Island are from Okuda et al. (2006); those of Hawaii are from Carrillo et al. (2002); those of Bermuda are from Moody et al. (2014); those of
 720 Amsterdam Island are from Claeys et al. (2010); those of the Arabian Sea and Indian Ocean are from Kumar et al. (2008); those of Helgoland are from Ebert et
 721 al. (2000); those of the Mediterranean Sea, northern Atlantic-1 and 2, Pacific and southern Atlantic are from Zhang et al. (2010). Pentagrams represent sampling
 722 sites on islands; others represent cruises. N.A. indicates no data.



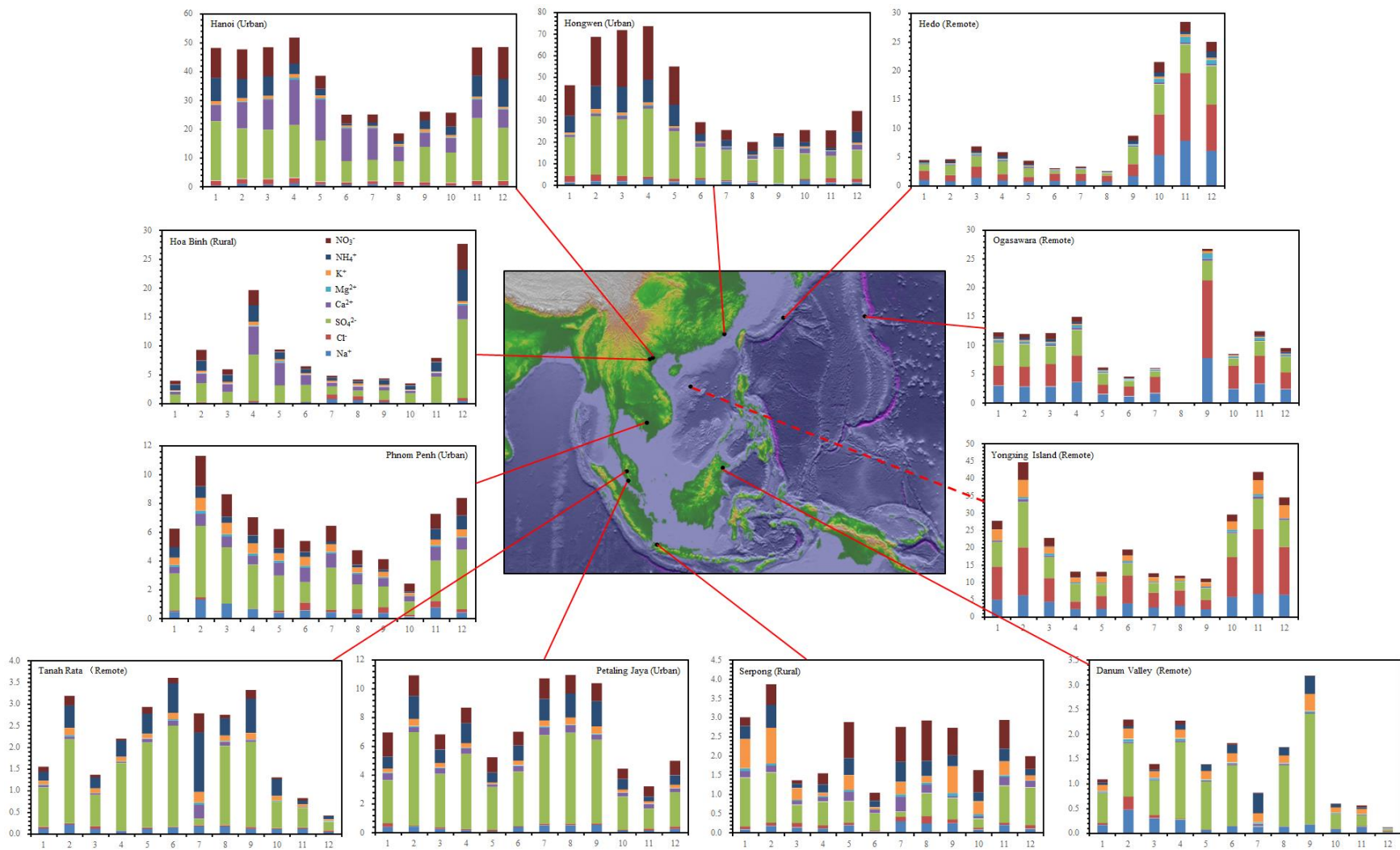
723

724 **Figure 6** Seasonal variations of TSP mass concentration and associated species, including Na^+ , Cl^- , SO_4^{2-} , Mg^{2+} , K^+ , Ca^{2+} , NH_4^+ , and NO_3^- at Yongxing Island
 725 (cool season: C; warm season: W; annual: A). Shown are the mean and standard deviation for each bar.



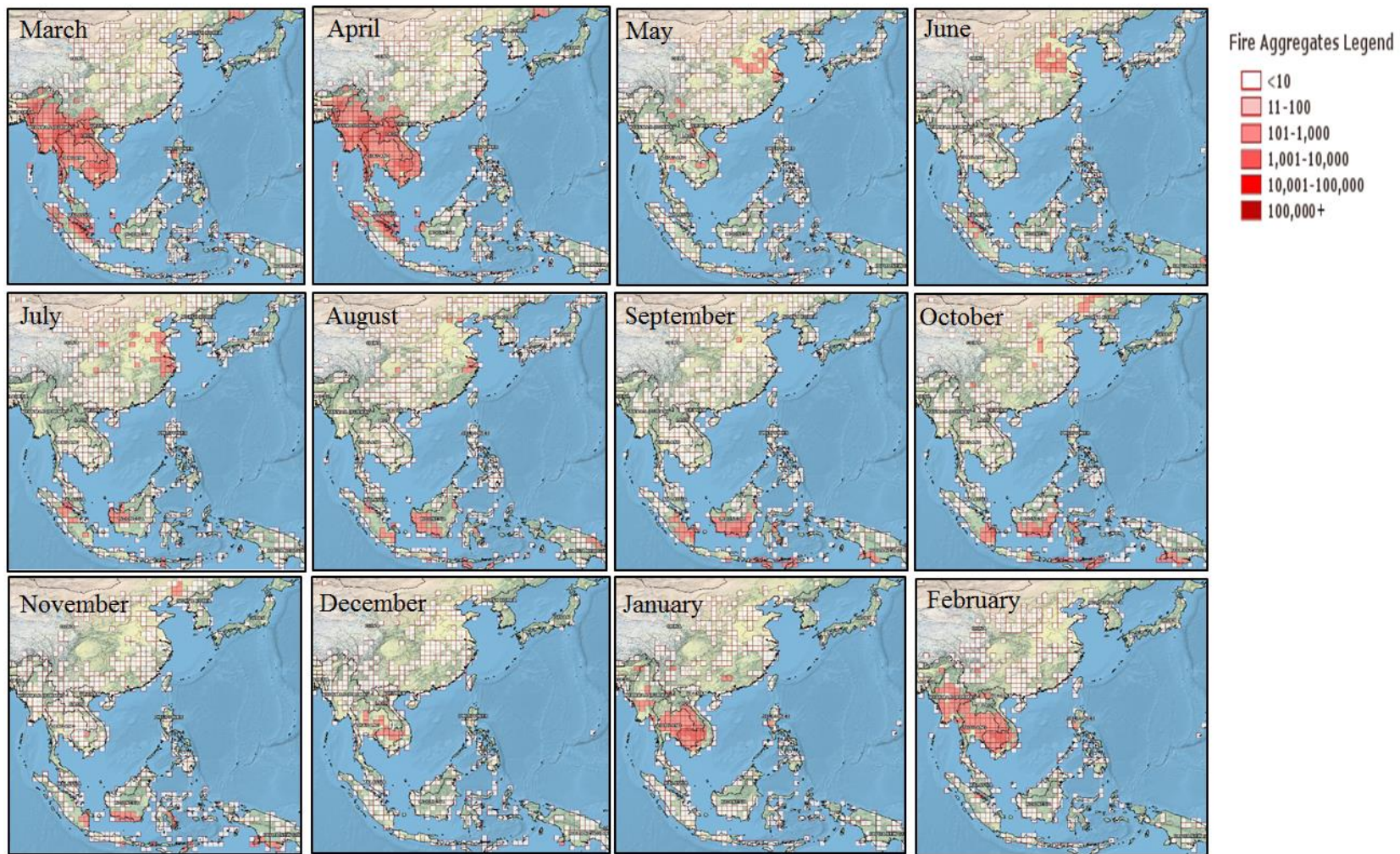
726

727 **Figure 7** Comparison of aerosol chemical species between Yongxing Island and around the South China Sea (data from EANET).



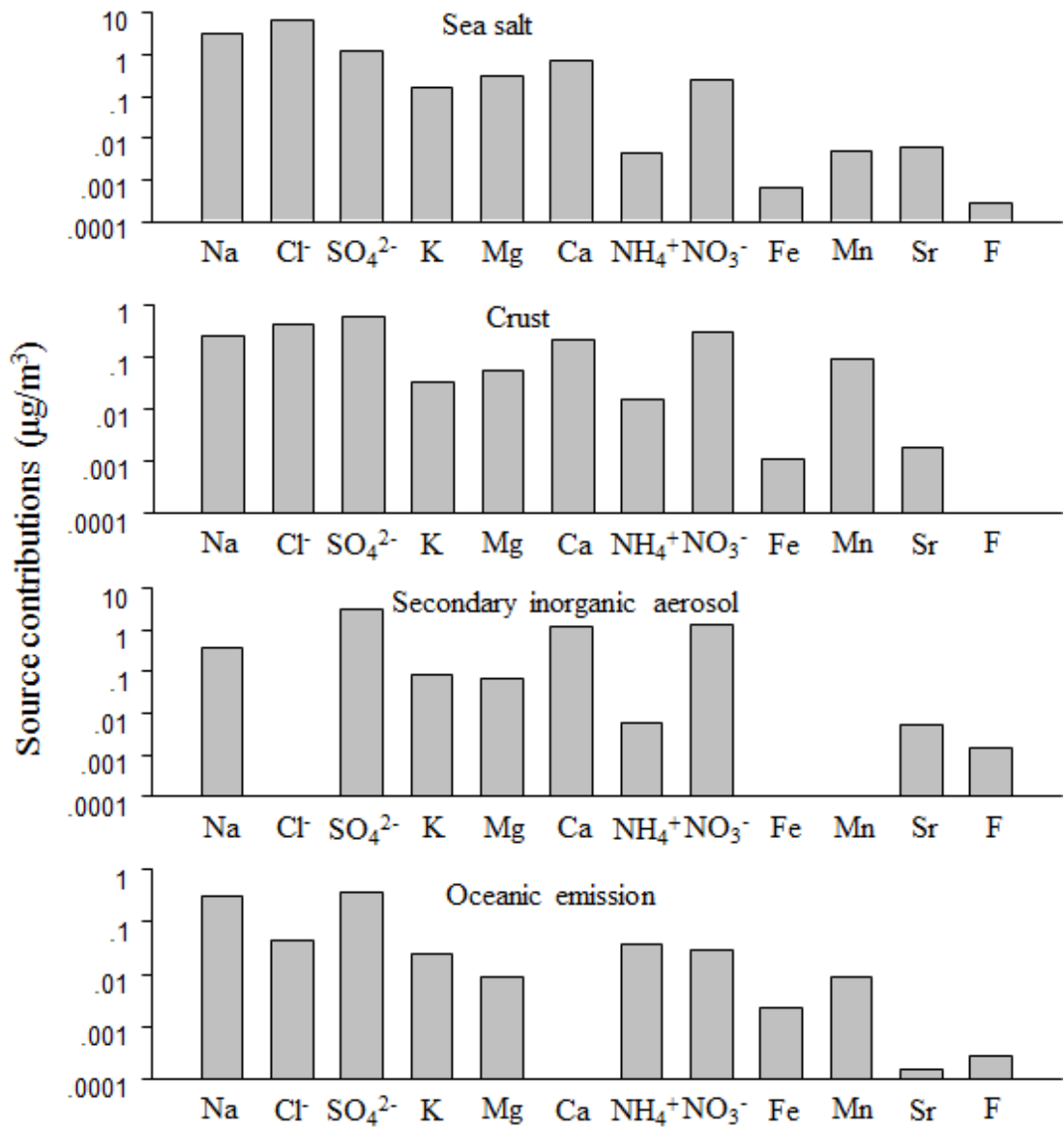
728

729 **Figure 8** Fire spot data from MODIS global fire mapping from March 2014 to February 2015 around South China Sea
730 (<https://firms.modaps.eosdis.nasa.gov/firemap/>).



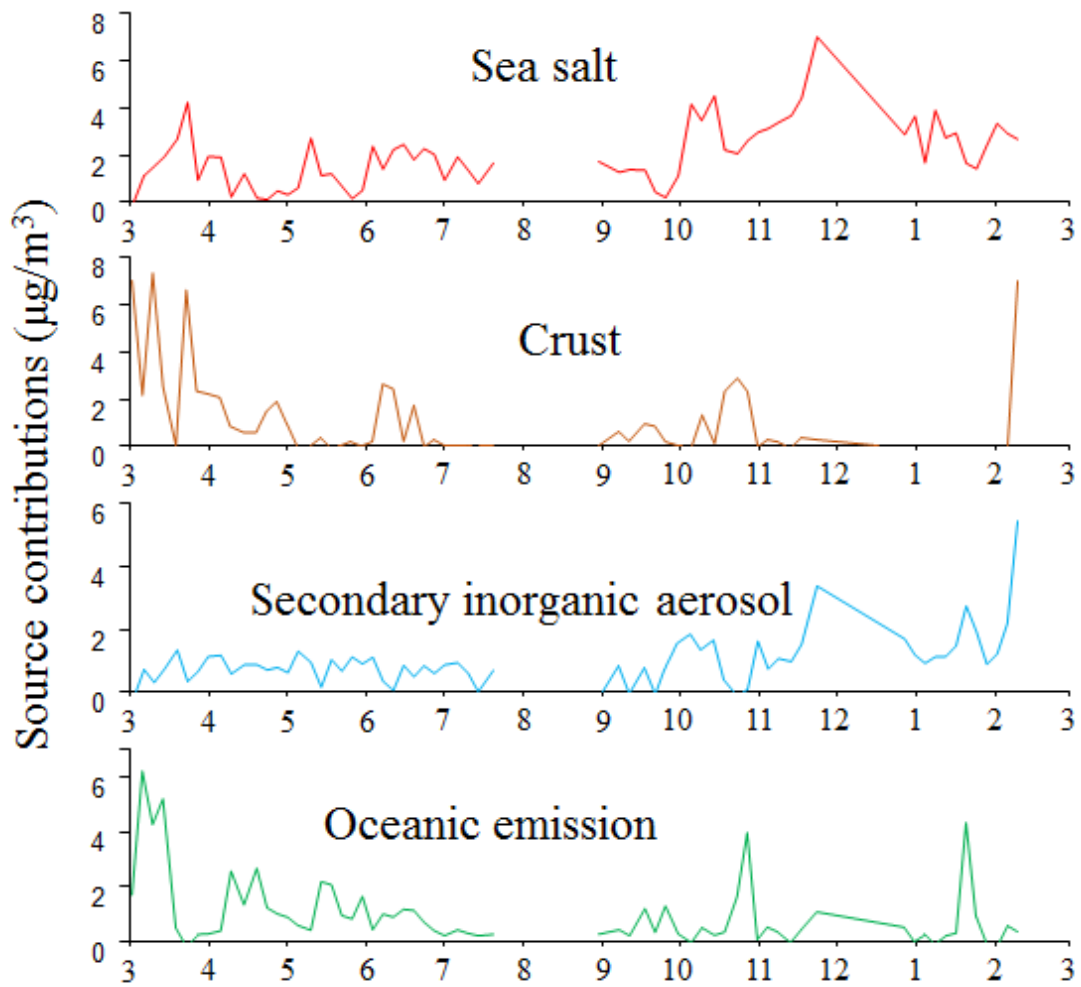
731

732 **Figure 9** Profiles of five sources identified from the PMF 5.0 model, including sea salt (two
 733 species), crust, secondary inorganic aerosol and oceanic emission.
 734



735

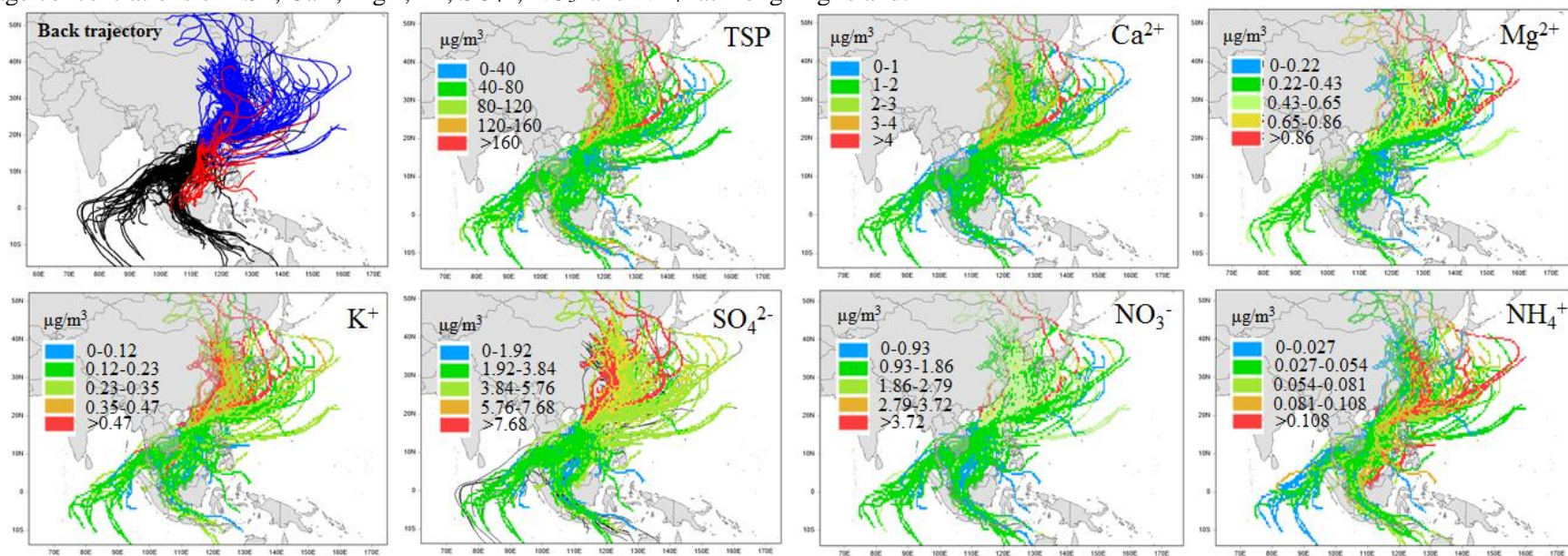
736 **Figure 10** Time series contributions from each identified sources, including sea salt (two
737 species), crust, secondary inorganic aerosol, and oceanic emission.f



738

739

740 **Figure 11** Ten-day back trajectories of warm (black, June through September 2014), cool (blue, March and April 2014 and October 2014 through February
 741 2015) seasons, and transition season (red, May 2014) at Yongxing Island. Additionally, CWT (concentration weighted trajectory) plots for daily weighted-
 742 average concentrations of TSP, Ca²⁺, Mg²⁺, K⁺, SO₄²⁻, NO₃⁻ and NH₄⁺ at Yongxing Island.



743