

Widespread and Persistent Ozone Pollution in Eastern China

Guohui Li^{1*}, Naifang Bei², Junji Cao^{1*}, Jiarui Wu¹, Xin Long¹, Tian Feng^{1, 2}, Wenting Dai¹, Suixin Liu¹, Qiang Zhang³, and Xuexi Tie¹

¹Key Lab of Aerosol Chemistry and Physics, SKLLQG, Institute of Earth Environment, Chinese Academy of Sciences, Xi'an, China

²School of Human Settlements and Civil Engineering, Xi'an Jiaotong University, Xi'an, Shaanxi, China

³Department of Environmental Sciences and Engineering, Tsinghua University, Beijing, China

*Correspondence to: Guohui Li (ligh@ieecas.cn) and Junji Cao (jjcao@ieecas.cn)

13 **Supplementary Information Section**

14 The supplementary information (SI) provides description about the NO₂ simulations.

15

16

17

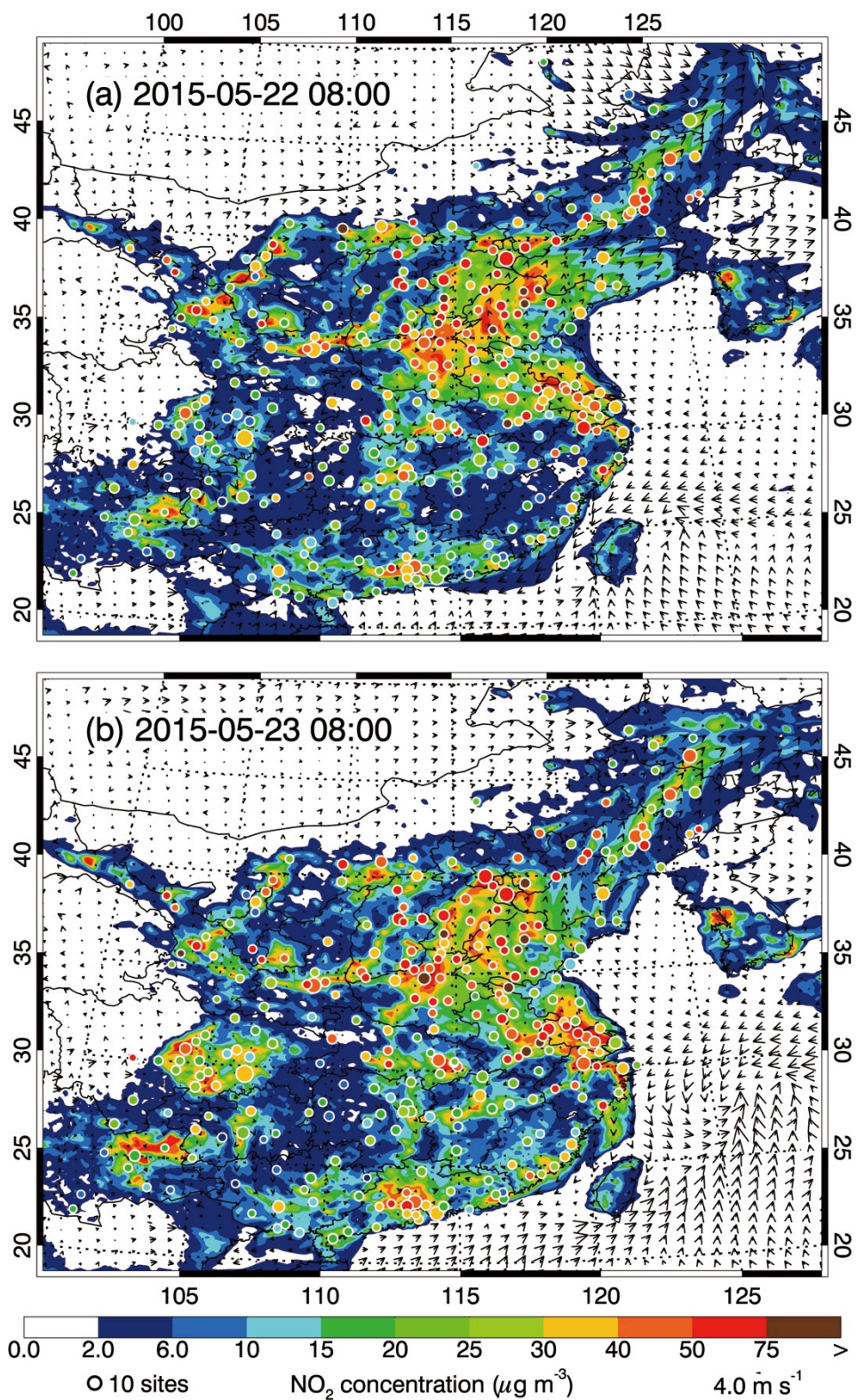
18

Supplementary Figure Captions

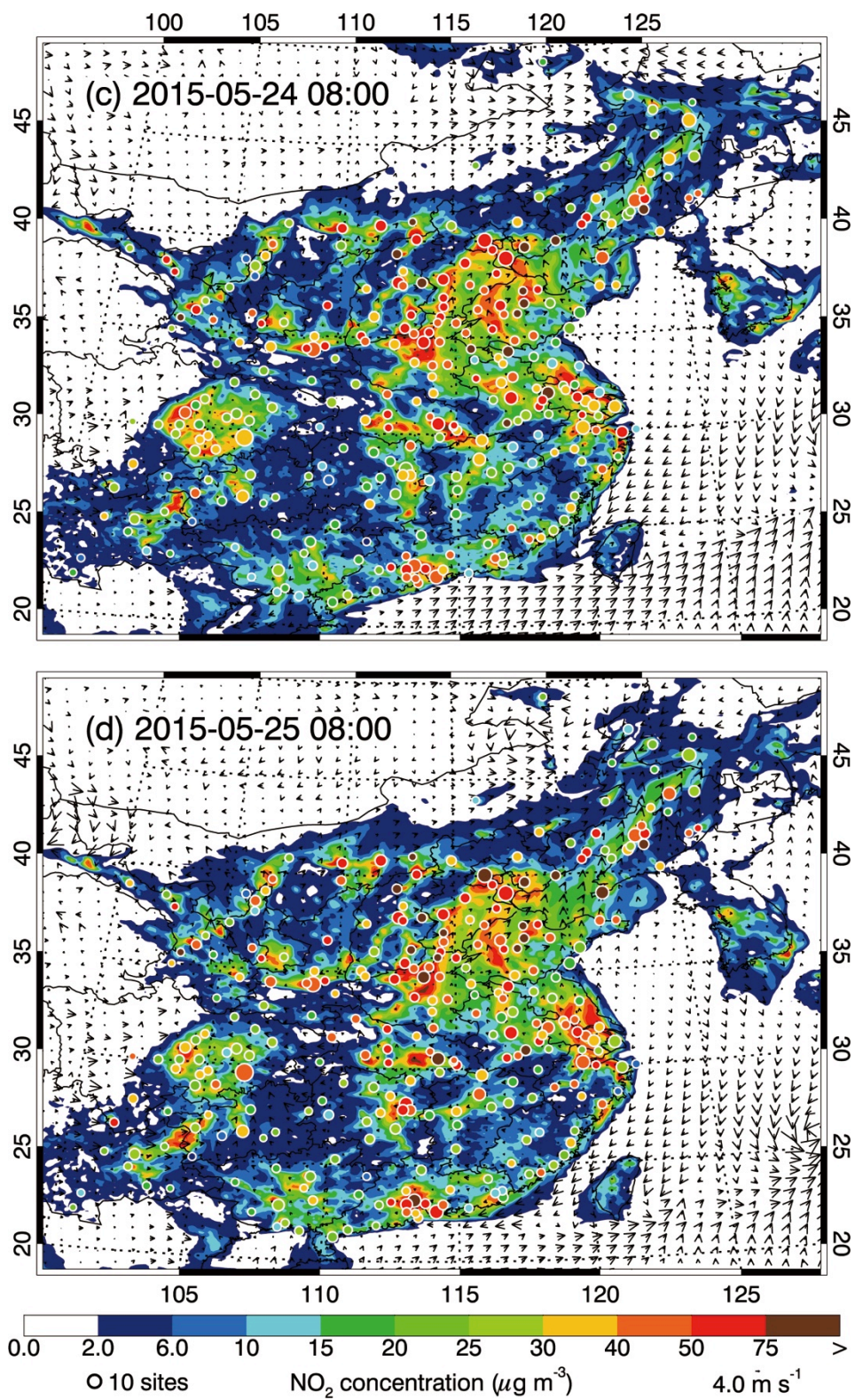
- SI-Figure 1 Defined four sections in Eastern China. 1) Northeast China (NEC): Heilongjiang, Jilin, Liaoning, and the east part of Inner Mongolia, 2) North China Plain and surrounding areas (NCPs): Beijing, Tianjin, Hebei, Shandong, Henan, Shanxi, and the north part of Jiangsu and Anhui, 3) YRD and surrounding areas (YRDs): the south part of Jiangsu and Anhui, Shanghai, Zhejiang, and Hubei, and 4) PRD and surrounding areas (PRDs): Fujian, Jiangxi, Hunan, Guangxi, and Guangdong.
- SI-Figure 2 Pattern comparison of simulated vs. observed near-surface NO₂ at 08:00 BJT from 22 to 27 May 2015. Colored circles: NO₂ observations; color contour: NO₂ simulations; black arrows: simulated surface winds.
- SI-Figure 3 Comparison of measured (black dots) and predicted (blue line) diurnal profiles of near-surface NO₂ averaged over all ambient monitoring stations in provinces of Eastern China from 22 to 28 May 2015.



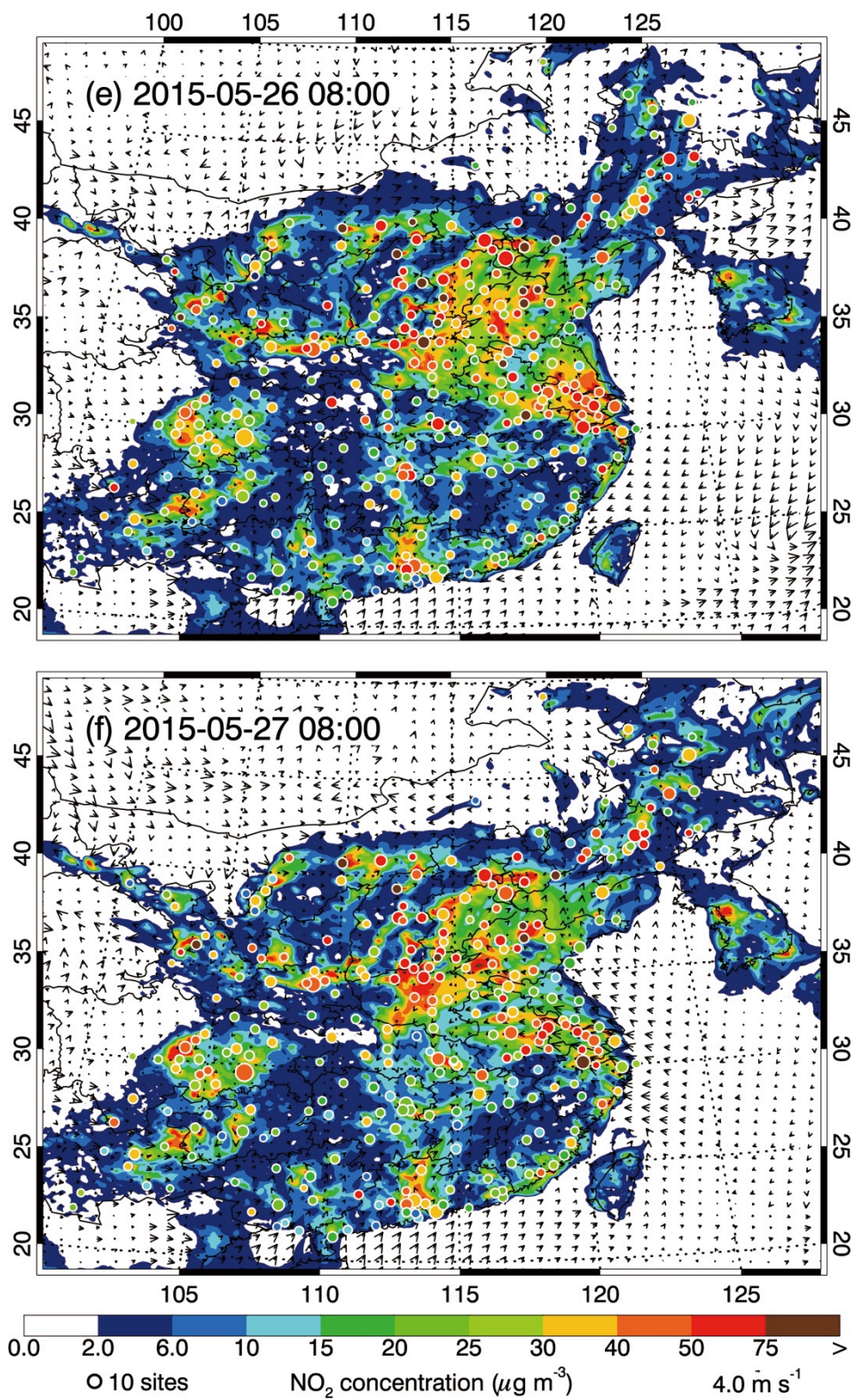
SI-Figure 1 Defined four sections in Eastern China. 1) Northeast China (NEC): Heilongjiang, Jilin, Liaoning, and the east part of Inner Mongolia; 2) North China Plain and surrounding areas (NCPs): Beijing, Tianjin, Hebei, Shandong, Henan, Shanxi, and the north part of Jiangsu and Anhui; 3) YRD and surrounding areas (YRDs): the south part of Jiangsu and Anhui, Shanghai, Zhejiang, and Hubei; and 4) PRD and surrounding areas (PRDs): Fujian, Jiangxi, Hunan, Guangxi, and Guangdong.



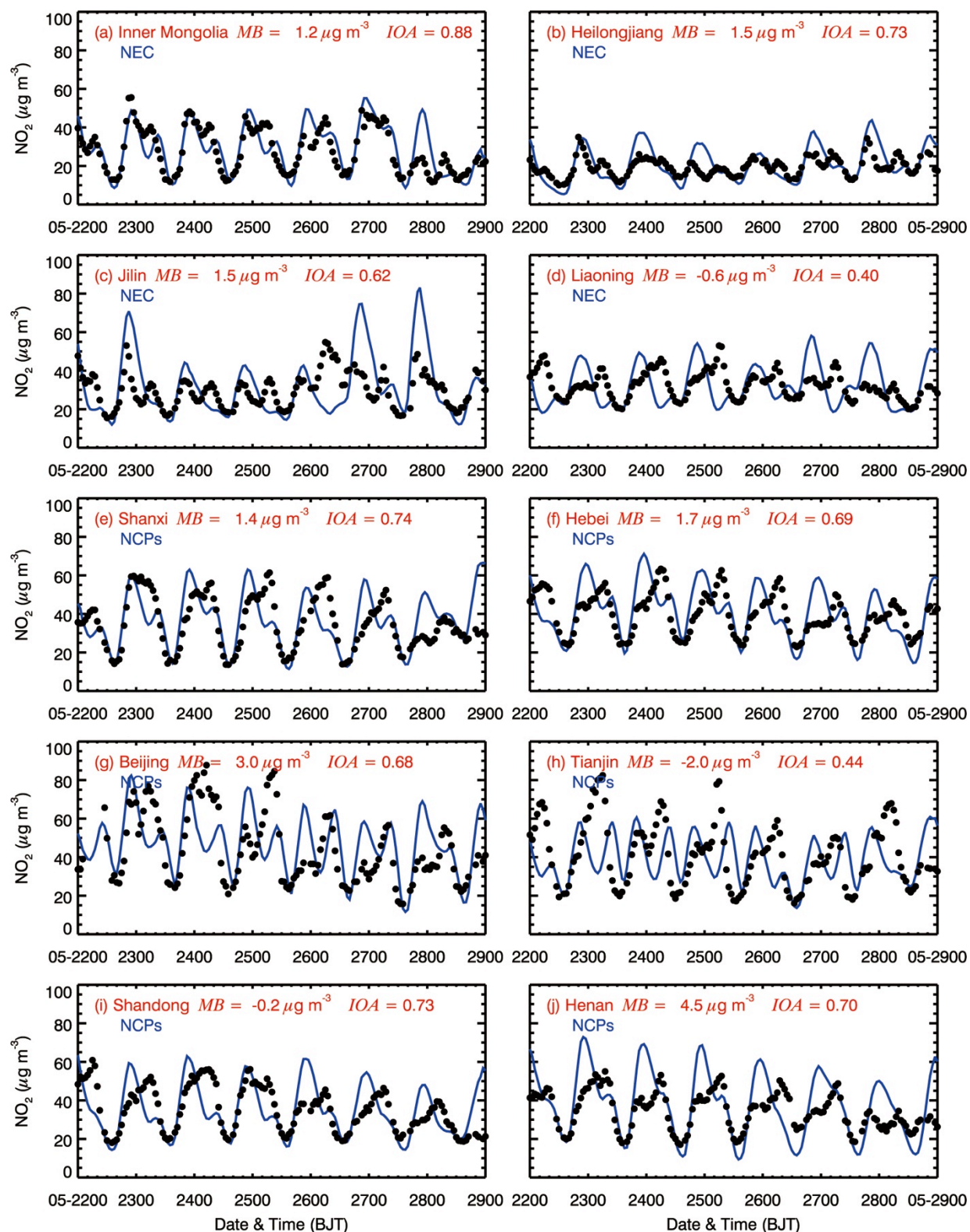
SI-Figure 2 Pattern comparison of simulated vs. observed near-surface NO₂ at 08:00 BJT from 22 to 27 May 2015. Colored circles: NO₂ observations; color contour: NO₂ simulations; black arrows: simulated surface winds.



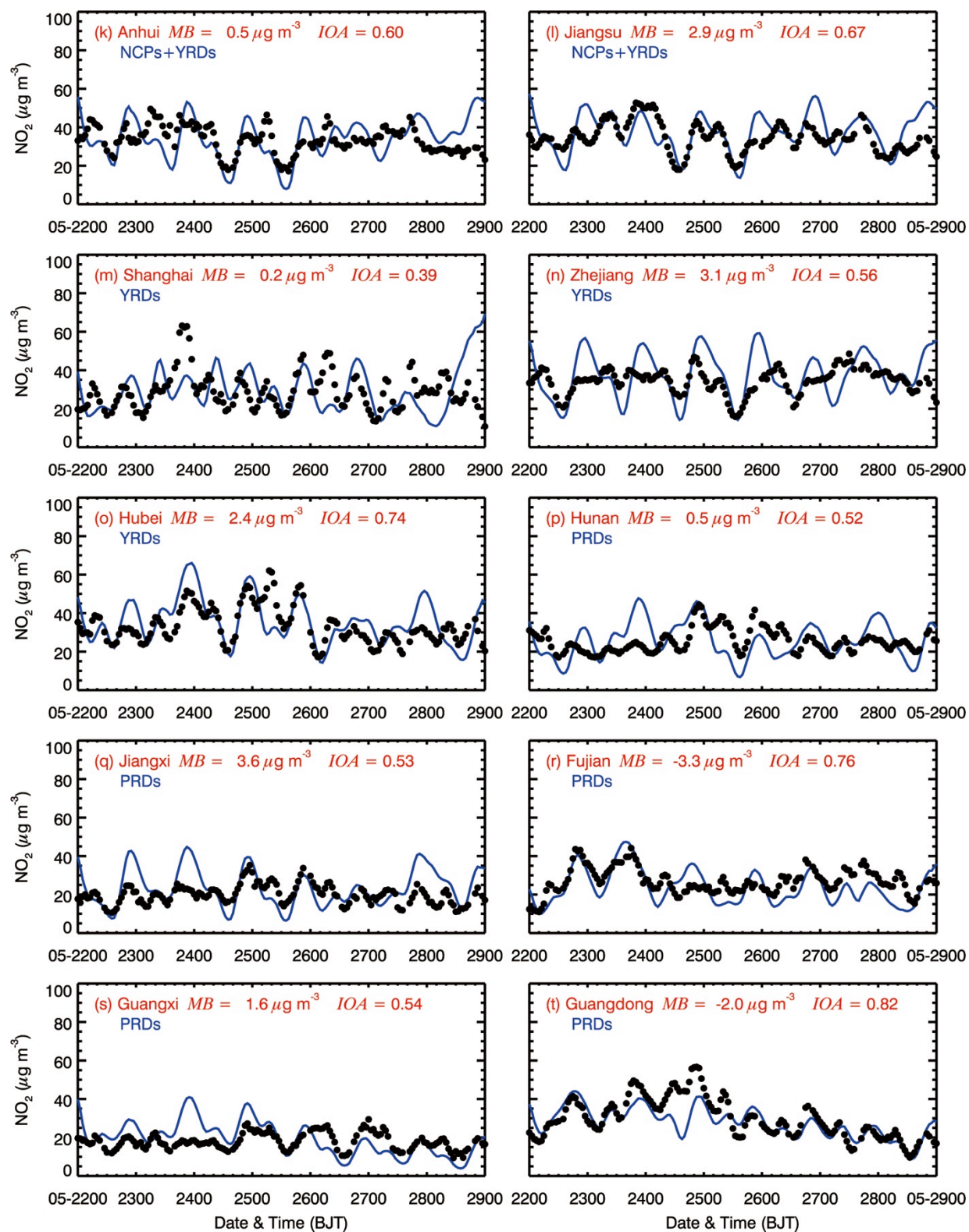
SI-Figure 2 Continued.



SI-Figure 2 Continued.



SI-Figure 3 Comparison of measured (black dots) and predicted (blue line) diurnal profiles of near-surface NO_2 averaged over all ambient monitoring stations in provinces of Eastern China from 22 to 28 May 2015.



SI-Figure 3 Continued.