

Dear referees,

Thank you very much for your positive feedback and valuable suggestions. We revised the manuscript according to your comments and will discuss the individual points in the following. Your comments are printed in bold, our answers in regular and changes to the manuscript in italic. The revised manuscript is attached to our answers with changes marked in red.

Referee I

10 **Page 8, Line 9: Fischer et al. [2012] and Jacob et al. [2002] include acetone production from higher alkanes (C4 –C5) in addition to propane. The contribution from C4 – C5 alkanes is not negligible, it is on the order of 20% of the contribution from propane.**

In the modelling studies of Jacob et al. (2002) and Fischer et al. (2012), the contribution of propane to the total acetone source is assumed to be in the range of 19 – 33 %, whereas the contribution of C4 – C5 alkanes, namely isobutane and isopentane, is expected to be only 6 – 7 %.

15 Nevertheless, we decided to include the C4 – C5 alkanes in our calculations, as the effect could also be larger and is worth investigating. In most, if not in all available inventories, isobutane and isopentane are not treated individually. In the MACCity inventory (van der Werf et al., 2006; Lamarque et al., 2010; Granier et al., 2011; Diehl et al., 2012) we use for anthropogenic emissions, isobutane and isopentane are included in the category “butanes and higher alkanes”.

20 Therefore, we estimate the general proportion of those isomers by using the VOC speciation given in Calvert et al. (2009), which is based on the data of Passant (2002). Please note that this data was obtained for the United Kingdom and might not be representative for global emissions. In an effort to find and consider other data, we contacted the authors of another study, but have not get an answer yet. To calculate the secondary acetone production, we use the mean of the respective yields suggested by Jacob et al. (2002) and Pozzer et al. (2010).

25 As a result, the total acetone fluxes increased on average by ~12 % for North America and by ~8 % for Southeast Asia. In general, the impact is highest in winter (up to 23 % for North America and 10 % for Southeast Asia), when biogenic contributions to the acetone source are small. We conclude that the contribution of C4 – C5 alkanes is indeed not negligible and thank the referee for pointing this out to us.

30 Changes:

On page 2, line 15, we added: "*The contribution from C4 - C5 alkanes is expected to be 6-7 % (Jacob et al., 2002; Fischer et al., 2012).*"

On page 8, lines 8–9, we changed the sentence to: "*According to Jacob et al. (2002) and Fischer et al. (2012), the three dominant precursors of acetone are propane (13-22 Tg a⁻¹ acetone), higher alkanes (4-7 Tg a⁻¹ acetone) and monoterpenes (5-6 Tg a⁻¹ acetone).*"

5 On page 8, line 11, we added: "*For isobutane and isopentane, we use the "butanes and higher alkanes" data of MACCity and calculate the proportion of the two species according to the VOC speciation of Passant (2002) and Calvert et al. (2009). The resulting amount of acetone is derived using the means of the yields suggested by Jacob et al. (2002) and Pozzer et al. (2010), which are 0.96 mol mol⁻¹ for isobutane and 0.72 mol mol⁻¹ for isopentane.*"

10 On page 18, lines 8-9, we likewise added the consideration of higher alkanes: "*Jacob et al. (2002) and Fischer et al. (2012) assumed that propane is by far the dominant precursor of acetone on a global scale followed by higher alkanes and monoterpenes. Here, we consider propane, isobutane and isopentane, [...]*"

On page 38, Figure 9, and on page 39, Figure 10, the acetone production from isobutane and isopentane was included.

Page 8, Line 13: It is worth noting that there is a relatively large range of yields reported in the literature for acetone from alpha- and beta- pinene. The yields that were chosen here are on the high end of the ranges. There are published yields for limonene, sabinene, myrcene, delta-3-carene, and ocimene as well. I am not sure if this matters, but perhaps it is worth discussing. See the following references: [...]

You are right. We chose the yields of Wisthaler et al. (2001), as the authors included secondary acetone formation from the degradation of intermediates in their yields. This might explain why the yields are on the high end of the ranges.

20 However, considering the literature you refer to, we come to the conclusion that we might have oversimplified our treatment of monoterpenes in general. Consequently, we followed your suggestion and also included the above mentioned monoterpenes. There is no emission inventory in the ECCAD database that differs between the individual monoterpenes, but the partitioning given in Sindelarova et al. (2014) seems to be adequate, as it is of the same authors providing the MEGAN-MACC inventory we use.

25 Regarding the respective acetone yields from monoterpene oxidation, we refrain from relying on only one study and now consider the available literature when calculating mean yields for each compound and the two main degradation processes (reaction with OH and O₃). The two processes are weighted according to the reaction rates. The same was done for methylbutenol (MBO). We should note that we did not include the yields of the work by Vinckier et al. (1998), which you mentioned, as they conducted their experiment at a significantly lower pressure (~2.7 hPa) compared to all other studies, which were performed at atmospheric pressure (Wisthaler et al., 2001). We compiled the yields of all considered studies and

30 our calculations in a separate spreadsheet provided as a supplement.

Although the mean yields for α -pinene and β -pinene (8.9 % and 9.3 %, respectively) are lower than the previously used ones, the additional consideration of the other monoterpene species led to an increase in the calculated amount of acetone produced from the sum of monoterpenes (molar yield of 11.9 % instead of 7.8 %). Assuming global monoterpene emissions

of 95 Tg a^{-1} (Sindelarova et al., 2014), this corresponds to an annual production of 4.3 Tg acetone, which is well in the range given by Jacob et al. (2002) (3–9 Tg) and close to the amount estimated by Fischer et al. (2012) (5 Tg including MBO).

Changes:

5 On page 8, line 11, we included: *"For the monoterpenes, we use the emission data for the sum of monoterpenes from MEGAN-MACC (Sindelarova et al., 2014) and the relative contributions provided in Sindelarova et al. (2014) to calculate the emissions of the following individual monoterpene species: α -pinene, β -pinene, limonene, trans- β -ocimene, myrcene, sabinene and 3-carene. For each species, we derive mean acetone yields based on the available literature. Here, we consider the two main degradation processes of monoterpenes, reaction with OH and O_3 , and weight the yields according to the respective reaction rates (i.e. to the importance of the reaction on the degradation process). All considered yields and calculations are provided as a supplement."*

On page 15, line 9, we revised the acetone bottom-up estimate for North America and assessment thereof with regard to the contributions from isobutane, isopentane and individual monoterpene species: *"This is in very good agreement with the bottom-up estimate of 5.8 Tg a^{-1} "* instead of *"This is in good agreement with the bottom-up estimate of 5.4 Tg a^{-1} ".*

15 On page 16, lines 21–22, we revised the acetone bottom-up estimate for Southeast Asia accordingly: *"The inventory data for acetone and its precursors suggests a mean annual flux of $149 \cdot 10^{-13} \text{ kg m}^{-2} \text{ s}^{-1}$ and an annual source of 3.7 Tg a^{-1} for Southeast Asia, which is lower than our estimates, but well within the standard deviation."*

On page 18, lines 9–10, we included the differentiation between the individual monoterpene species: *"Here, we consider propane, isobutane and isopentane, seven individual monoterpene species and methylbutenol (MBO) as precursors of acetone."*

On page 18, lines 11–13, we likewise adapted the sentence regarding MBO and adapted the numbers: *"As MBO emission data are not available in the ECCAD-database, we scale the monthly monoterpene surface emissions in a way that annual MBO emissions equal the estimate of 2.2 Tg by Guenther et al. (2012). Based on the available literature, we derive and apply a mean molar acetone yield of 0.46 for the oxidation of MBO. When assuming an instantaneous conversion on ground (which is justified for the shorter-lived precursors) MBO oxidation leads to an annual mean acetone production of $\sim 5.6 \cdot 10^{-13} \text{ kg m}^{-2} \text{ s}^{-1}$, whereas the oxidation of propane ($\sim 2.7 \cdot 10^{-13} \text{ kg m}^{-2} \text{ s}^{-1}$), higher alkanes ($\sim 3.4 \cdot 10^{-13} \text{ kg m}^{-2} \text{ s}^{-1}$) and of monoterpenes ($\sim 3.6 \cdot 10^{-13} \text{ kg m}^{-2} \text{ s}^{-1}$) produce considerably less acetone. Secondary production is largest in summer ($\sim 14 \cdot 10^{-13} \text{ kg m}^{-2} \text{ s}^{-1}$, $\sim 4.1 \cdot 10^{-13} \text{ kg m}^{-2} \text{ s}^{-1}$, $\sim 3.4 \cdot 10^{-13} \text{ kg m}^{-2} \text{ s}^{-1}$ and $\sim 9.1 \cdot 10^{-13} \text{ kg m}^{-2} \text{ s}^{-1}$ respectively)".*

30 On page 19, lines 6–9, we updated the numbers accordingly: *"Biogenic emission dominates throughout the year with a minimum in January ($\sim 64 \cdot 10^{-13} \text{ kg m}^{-2} \text{ s}^{-1}$) and a maximum in May ($\sim 154 \cdot 10^{-13} \text{ kg m}^{-2} \text{ s}^{-1}$). Biomass burning emissions peak in the late dry season (January–April) and contribute to an annual maximum of acetone emissions in March ($\sim 208 \cdot 10^{-13} \text{ kg m}^{-2} \text{ s}^{-1}$) being twice as large as the maximum acetone flux of North America."*

On page 38, Figure 9, the data was updated and the footnote in the caption changed to "*includes propane, isobutane, isopentane, seven monoterpene species and methylbutenol as precursors of acetone and ethene, ($\geq C_4$)-alkanes, ($\geq C_3$)-alkenes and monoterpenes as precursors of CO.*"

5 On page 39, Figure 10, data and footnote were changed accordingly to: "*includes propane, isobutane, isopentane, seven monoterpene species and methylbutenol as precursors of acetone and ethene, ($\geq C_4$)-alkanes, ($\geq C_3$)-alkenes and monoterpenes as precursors of CO.*"

Page 13, Lines 5 – 14: Significantly more detail is required here with respect to how the trajectories were used to classify the samples. Did the trajectories simply have to pass through the box for one hour, or the entire trajectory? Was there any altitude requirement. What percentage of the data was classified as linked to one of the four regions? Similarly, the number of measurements (or groups of measurements, i.e. events) associated with each box mean and box plot shown in Figure 8 should be provided with the figure.

10 In a first step, all EnRs, assigned to a trajectory passing the box in any way, have been assigned to the corresponding region. This was done regardless of the trajectory's residence time inside the box. However, when we calculated the (weighted) mean EnR of the box, the individual EnRs were weighted according to the trajectory's residence time inside the box. This means that an EnR assigned to a trajectory, which was within the box for the entire period, has been weighted with a factor of 120 (=5×24 hours). There was no altitude requirement. We have deliberately refrained from such a requirement, because not all transport processes are represented by single trajectory calculations (e.g. convection; cf. Stohl et al., 2002). Therefore, we believe it is not unlikely, that samples assigned to a trajectory, which is at high altitudes for the entire 5 days, had contact with convected air masses from the boundary layer of the underlying region. As the probability of such an incident increases with time, we chose the residence time of the trajectory above the respective region as weighting factor.

20 We agree with you that the number of underlying events should be given in Figure 8. In this respect, we should also clarify that the EnRs in the underlying distributions have been weighted as described above. This is simply attained by duplicating each EnR for each hour the assigned trajectory was above the region of interest. For the sake of clarity, we decided to provide the numbers of unique (i.e. not duplicated) EnRs and the percentages related to the total number of EnRs in a separate table.

25 Please note that individual EnRs are assigned to multiple regions, when the trajectory passes through more than one region. For this reason, adding the numbers or percentages horizontally does not result in the global number of EnRs or 100 %. Most EnRs are assigned to North America or Southeast Asia.

30

	North America		Europe		East Asia		Southeast Asia		global	
JJAS	3060	15 %	1218	6 %	1272	6 %	992	5 %	6535	32 %
DJFM	1725	8 %	1688	8 %	685	3 %	2255	11 %	7686	37 %
other months	2085	10 %	1344	7 %	1343	7 %	2262	11 %	6431	31 %
all months	6870	33 %	4250	21 %	3300	16 %	5509	27 %	20652	100 %

Table 7: Numbers and percentages of individual EnRs for different months and regions. EnRs are associated with a specific region, when the assigned trajectory passes through the box of the region. For the assignment it does not matter whether only one waypoint or the entire trajectory lies inside the box. Assignment to multiple regions occurs, when the trajectory crosses more than one box. The boxes of the respective regions are indicated in Fig. 8.

Changes:

On page 13, line 8, we inserted "*In practice, this means that for each hourly waypoint of the trajectory, the assigned EnR is duplicated and associated with the coordinates of the waypoint instead of the sample location.*"

In lines 9–10, "[EnRs] duplicated this way [...]" was added.

The three sentences in lines 11–15 have been replaced by a new paragraph describing the source assignment and the underlying distributions of Fig. 8 in more detail: "*The assignment of EnRs to source regions is done as follows: In a first step, longitude-latitude-boxes are defined for the regions of interest. Here, we focus on the four regions North America, Europe, East Asia and Southeast Asia as depicted in Fig. 8. All EnRs with coordinates inside a box, including the duplicates from the trajectory mapping, are assigned to the corresponding region. This means, that an EnR is initially assigned to a region regardless whether the trajectory passed through the box only for 1 hour or the entire 5 days. However, when it comes to averaging over all EnRs of a certain region, we distinguish between such cases. For this purpose, we do not eliminate the duplicates created by the trajectory mapping. Consequently, an EnR associated with a trajectory passing the box only for 1 hour, is represented only once in the regional subset, whereas an EnR with a trajectory staying in the box for 5 days, is represented in the subset 120 (=5×24 hours) times. When averaging over EnRs of a certain region, this naturally leads to a weighting based on the trajectory's residence time above the region. We refrained from an altitude requirement, as not all transport processes are represented by single trajectory calculations (e.g. convection; cf. Stohl et al., 2002). Furthermore, in single trajectory calculations infinitesimally small air parcel are assumed (e.g. Stohl et al., 2002), whereas the volumes of sampled air masses are extended. For these reasons, we believe that even though a trajectory passes a region at high altitudes, there is certain likelihood that the sampled air mass had contact with convected air masses from the boundary layer of the underlying region. As the probability of such an incident increases with time, weighting according to the trajectory's residence time over the region makes most sense to us.*

In Fig. 9, the weighted mean EnRs and box plots are shown for each source region and the months JJAS and DJFM, respectively. The numbers of the underlying, unique (i.e. non-duplicated) EnRs and percentages of the total number of EnRs are given in Table 7. Please note that single EnRs can be assigned to multiple regions, when the trajectories pass through more than one region. The best coverage is archived for North America (33 %) and Southeast Asia (27 %), which is also why we focus on these regions in the following."

The caption of Fig. 7 on page 36 was adapted accordingly: "Geographical distribution of EnRs duplicated along the hourly waypoints of the assigned 5-day back trajectories."

as well as the one of Fig. 8 on page 37: "In the underlying distributions, individual EnRs have been duplicated along the hourly waypoints of the assigned 5-day back trajectories to consider the residence time of the samples above the region."

The numbers of individual, unique EnRs as well as percentages related to the total number of EnRs are given in Table 7."

Page 14, line 11: How sensitive are the results to choice of a 10 ppb CO enhancement as the cutoff for analysis?

To be strictly accurate, we used 10 times the measurement uncertainty of CO as threshold, but this is on average close to 10 ppb. With regard to this and your question, we repeated the analysis for North America with exactly 10 ppb and 15 ppb as cutoff thresholds. The number of derived EnRs, their monthly means and standard deviations thereof as well as the resulting acetone source estimates are summarized in Table 8, which we add to and address in a dedicated section of the appendix.

Changes:

On page 11, line 12, we added: "This problem and the sensitivity of results with regard to the chosen threshold are further addressed in section A.2 of the appendix."

On page 14, line 10f. we clarified the used cutoff threshold by adding "10 times the measurement uncertainty of CO".

On page 19, line 5, we inserted the following section A.2 "Sensitivity of results for North America with regard to the CO enhancement requirement": "In section 4.1, we motivate our choice to restrict the analysis to EnR with a CO enhancement greater than 10 times the measurement uncertainty of CO, which is on average close to 10 ppb. To demonstrate the latter, we repeat the analysis done in section 4.3.2 for North America with a threshold of exactly 10 ppb CO enhancement. In Table 8, the results are compared with the previous analysis. The annual acetone source of (6.1 ± 3.1) Tg is in excellent agreement with the (6.0 ± 3.1) Tg derived when using 10 times the measurement uncertainty of CO as threshold.

In a second reanalysis we use a threshold of 15 ppb to test the sensitivity of the result to a higher threshold (results, s. Table 8). Increasing the threshold to such an CO enhancement reduces the dataset for North America by ~75 % leading to the situation that there is not enough data for November and December, although North America is the region with the best coverage (s. Table 7).

The mean of the monthly EnR decreases from $21.3 \text{ ppt ppb}^{-1}$ to $18.4 \text{ ppt ppb}^{-1}$, which can be explained as follows: The exclusion of events with CO enhancements of 10–15 ppb puts more emphasis on the events with high CO enhancements,

5 but the high CO enhancements are not completely compensated by high acetone enhancements, i.e. the EnRs of this subset are lower. Nevertheless, the means for all three requirements are still in the standard deviations of each other. The standard deviation itself naturally decreases when the number of EnRs fulfilling the requirement is strongly reduced. When changing the threshold to significantly lower CO enhancements, the monthly mean EnRs increase. However, in such a situation it becomes impossible to our mind to distinguish between an increase caused by shifting the weight of certain EnRs and an increase related to the temporal evolution of EnRs, which we discussed in section 4.1. Consequently, we can only investigate the sensitivity in respect to higher CO enhancements. Thresholds higher than 15 ppb are not feasible with our dataset, as the number of such events is too small."

10

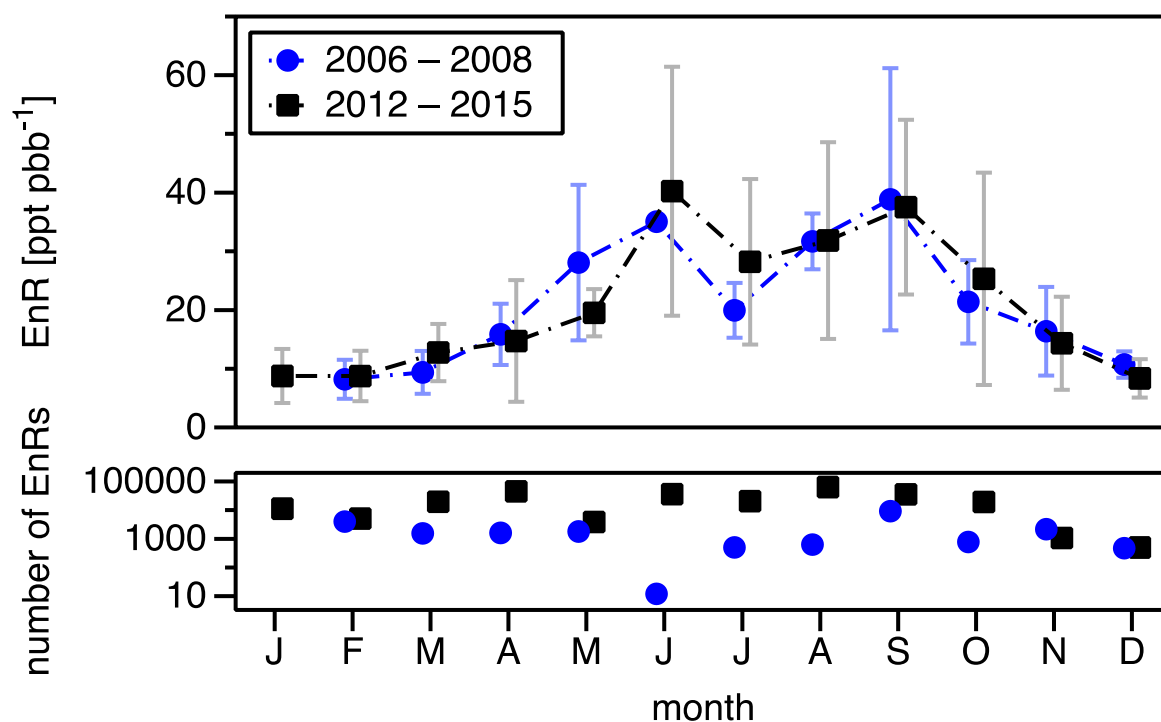
	<u>$\Delta\text{CO} > 10 \sigma$</u>			<u>$\Delta\text{CO} > 10 \text{ ppb}$</u>			<u>$\Delta\text{CO} > 15 \text{ ppb}$</u>		
month:	n	mean + std EnR	S_{Ac}	n	mean + std EnR	S_{Ac}	n	mean + std EnR	S_{Ac}
1	543	8.8 ± 4.6	0.1	465	9.0 ± 4.9	0.1	115	6.5 ± 6.2	0.1
2	339	8.5 ± 3.9	0.1	278	8.7 ± 4.1	0.1	154	9.0 ± 5.0	0.1
3	744	12.5 ± 4.9	0.2	688	12.6 ± 4.9	0.2	163	11.8 ± 5.3	0.2
4	1427	14.8 ± 10.2	0.3	1400	14.8 ± 10.3	0.3	362	12.4 ± 8.0	0.2
5	167	22.2 ± 9.1	0.5	167	22.2 ± 9.1	0.5	50	21.0 ± 5.8	0.5
6	568	40.2 ± 21.2	1.3	565	40.1 ± 21.2	1.3	51	29.8 ± 2.7	1.0
7	434	28.0 ± 14.0	1.1	434	28.0 ± 14.0	1.1	239	28.4 ± 13.8	1.1
8	1102	31.8 ± 16.7	1.0	1102	31.8 ± 16.7	1.0	361	24.9 ± 11.0	0.7
9	956	37.8 ± 16.7	0.7	722	40.2 ± 17.2	0.8	100	21.1 ± 10.1	0.4
10	397	25.2 ± 17.8	0.4	371	24.8 ± 17.9	0.4	53	34.2 ± 15.3	0.5
11	94	15.7 ± 7.7	0.2	77	16.0 ± 8.6	0.2	0	--	
12	99	9.5 ± 3.1	0.1	52	9.3 ± 3.2	0.1	4	3.7 ± 0.2	0.0
all	6870	21.3 ± 11.3	6.0 ± 3.1	6321	21.5 ± 11.6	6.1 ± 3.1	1652	18.4 ± 10.3	4.8 ± 1.9

Table 8: Results of 3 different cutoff requirements (top row) applied to the dataset for North America. For each month and cutoff requirement, the number of unique EnRs (n), the mean EnR and standard deviation in ppt ppb⁻¹ and the resulting acetone source (S_{Ac}) in Tg are provided. The means and standard deviations for all months (last row) are based on the monthly values.

15

Overall: Do the authors see any differences in the enhancement ratio between the early data 2006 – 2008 and the later data 2012-2015? The emissions of light alkanes over North America are hypothesized to have been growing over this time period, and I am curious as to whether there is a change in the acetone EnRs.

The mean of all EnRs in the period 2006–2008 is (25.0 ± 19.8) ppt ppb⁻¹, whereas the one for 2012–2015 is (26.8 ± 18.2) ppt ppb⁻¹. However, these two values are hardly comparable, as samples are not evenly spread throughout the years. Therefore, we also compare the EnRs on a monthly basis:



10 Again we do not see an evident trend in the data, which could be related to an increase in the emissions of light alkenes, but we also doubt that such an increase would be clearly visible in acetone-CO EnRs derived with our method.

I found only one minor wording fix: Pg 2, line 21: change “remained” to “continues to be”

Thank you for pointing out this error. It was corrected in the revised manuscript.

15

Referee II

What are the contributions to the error for the fluxes (just a statistics) (e.g. for eqn.12)?

Here, we used the standard deviation of the mean EnR of the respective month and region. Further contributions come from the flux estimates for CO and its precursors, which are based on inventory data and CO yields taken from the literature. Here, we used the same yields as Duncan et al. (2007), who specified Altshuller (1991) as main reference and provided uncertainties for a few, but not for all precursors. Besides the uncertainties in CO yields, which affect the secondarily produced CO, the larger uncertainty probably lies in the inventory fluxes and underlying emission factors thereof. These factors “attempt to relate the quantity of a pollutant released with an activity associated with the release of that pollutant” (Pouliot et al., 2012), but are often based on relatively few samples, which might be not representative on a global level (Duncan et al., 2007) or might be outdated. We are aware that this is an important topic, as the majority of emission estimates depends on these factors and yields, but going into more detail would be out of the scope of this study.

Changes:

Therefore, we added the following statement to section 3.5 on page 8, line 18: "*As uncertainties are not provided for all yields and emission inventory fluxes, we refrain from performing a comprehensive uncertainty analysis. However, considerable uncertainties might exist and estimates based on these data have to be taken with care. In our analysis, at least the statistical uncertainties of fluxes are strongly reduced by averaging over large regions and time periods.*"

What is the range of uncertainty for the curves in Figure 3, when applying e.g. the uncertainties of the main reaction rates? How does this transfer to eqn.12?

We absolutely agree with you that the uncertainties should be considered. The uncertainties of the reaction rates k with OH are reported to be approximately 20 % (Atkinson et al., 2004, 2006). For the acetone photolysis rate, we assumed the same (cf. Neumaier et al., 2014). For reasons of clarity, we included the resulting uncertainty ranges only for selected curves in Fig. 3. Derived uncertainties are lowest in wintertime, when reactions are slow, and for the boundary layer, in which dilution dominates over chemical loss. The highest uncertainty is found for large EnR in the summertime free troposphere and an increase or decrease cannot be predicted with reasonable certainty. Nevertheless, the likelihood of an increase in EnR in the absence of secondary acetone production, as discussed in section 4.1, is considerable.

As we do not know the true uncertainties of the measurement-based EnRs and only use means of a large number thereof in Eq. 12, we do not see a direct relation between the discussion and Eq. 12.

Changes:

On page 9, lines 7–8, we added "*and uncertainties thereof*" and in line 9: "*The latter are reported to be ~20 %. The same was assumed for the acetone photolysis rate (cf. Neumaier et al., 2014).*"

On page 10, line 13, we added "*For reasons of clarity, the range of uncertainty based on the uncertainties of the main reaction rates is provided only for selected curves.*"

On page 11, line 19, we added "*[...], although we have to admit that the range of uncertainty is very large in one case.*"

On page 32, Figure 3, we added "*For selected curves, the range of uncertainty is exemplarily shown in light grey color.*"

On page 44, Table 5, we added the calculated uncertainties of the chemical degradation rates L and lifetimes and exchanged "reaction" by "*chemical loss*" to avoid misunderstandings regarding L and k rates (e.g. $L_{Ac} = k_{Ac}[OH] + J_{Ac}$).

10

Further I would appreciate a figure, which shows the derived slopes (or a subset e.g. for Asia) and their variability on the basis of the measured data.

Plotting all measured data (or a regional subset thereof) together with the found correlations would certainly overload the plot. But we do see your point and therefore decided to add a scatter plot (Fig. 3) showing the acetone-CO data and derived slopes of 17 flights, which were selected in a manner to avoid too much data overlap. Although the selection is not necessarily representative of the full dataset, we still believe that the plot gives a good impression of the diversity of EnRs based on temporally and spatially coherent events. In addition, the figure gives a good opportunity to show the difference in results of the standard least squares fit and the Williams-York fit.

15

20 Changes:

On page 7, line 25, we added the following explanatory paragraph in addition to the figure: "*In Fig. 3, the differences between the two approaches and fit algorithms are illustrated based on the data of 17 selected flights. The flights were chosen in such a way that larger overlaps of data were avoided. The diversity of the event-based EnRs, ranging from 1.3 to 77.2 ppt ppb⁻¹, is clearly visible. Furthermore, it is shown that initial averaging over the total data (classical approach) instead of averaging over the individual EnRs of coherent events makes a difference. The mean of the individual EnRs (18.6 ppt ppb⁻¹) is by a factor of 1.9 larger than the slope of the classical approach (9.8 ppt ppb⁻¹). In addition, the EnR of the Williamson-York fit (9.8 ppt ppb⁻¹) is smaller than the one of the standard least squares fit (11.2 ppt ppb⁻¹), as the former puts (more) weight on the small VMRs due to their lower uncertainties. Less weight is put on the large VMRs, in particular the acetone VMRs, as they have larger uncertainties than the CO VMRs.*"

30

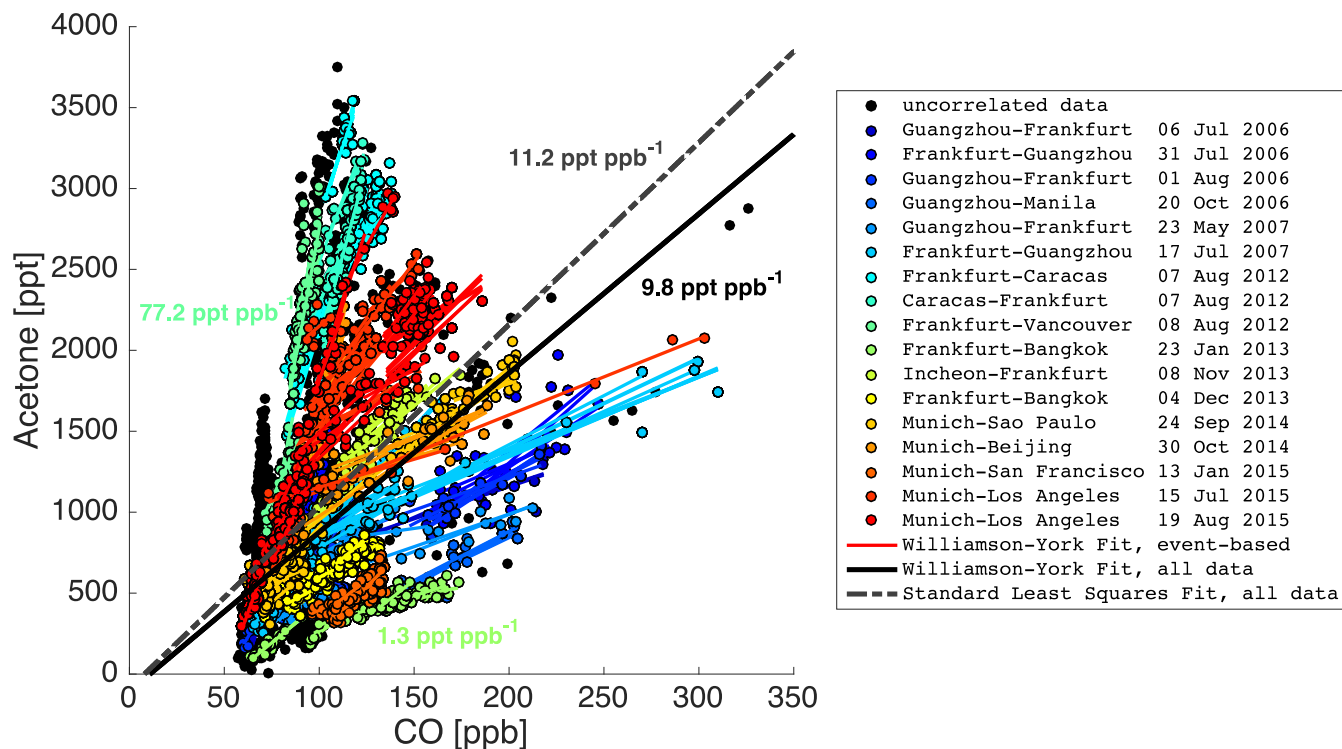


Figure 3: Scatter plot of tropospheric acetone and CO data of 17 selected CARIBIC flights. Detected correlations are shown as regression lines plotted in the range of the underlying data. Colorcoding denotes to which flight data and correlations belong to. Data, which did not fall into our event-based correlation criteria, are shown as filled black circles regardless of their flight affiliation. The solid black and the grey dashed line represent the results of a Williamson-York fit (EnR: 9.8 ppt ppb^{-1}) and of a standard least-squares fit (EnR: $11.2 \text{ ppt ppb}^{-1}$), respectively, applied to all data of the 17 flights. The minimum, mean and maximum value of the event-based EnRs are 1.3, 18.6 and 77.2 respectively (all values in ppt ppb^{-1}).

Changes not related to the referee comments

10

While preparing the data of the new Table 7, we discovered a programming error in the code generating the EnR subset for Southeast Asia. One condition had an incorrect sign. The effects of this error are so small that we barely see visible changes in the corrected versions of Figure 8d) and 10c), which have been renumbered to Figure 9d) and 11c) in the revised manuscript. The derived results and messages of the manuscript are not affected at all. We apologize for the incidence and would appreciate it if the necessary correction is approved. Further minor corrections related to this error include:

15

On page 1, line 26, page 16, line 15 and page 17, line 13: " $(185 \pm 80) 10^{-13} \text{ kg m}^{-2} \text{ s}^{-1}$ " instead of $(186 \pm 81) 10^{-13} \text{ kg m}^{-2} \text{ s}^{-1}$.

On page 16, line 5: " $12.2 \text{ ppt ppb}^{-1}$ " instead of $12.3 \text{ ppt ppb}^{-1}$.

On page 7, line 15, it should read "*temporally and spatially coherent events*" instead of "temporal and spatial [...]".

References

- Altshuller, A. P.: The production of carbon monoxide by the homogeneous NO_x-induced photooxidation of volatile organic compounds in the troposphere, *J. Atmos. Chem.*, 13(2), 155–182, doi:10.1007/BF00115971, 1991.
- 5 Atkinson, R., Baulch, D. L., Cox, R. A., Crowley, J. N., Hampson, R. F., Hynes, R. G., Jenkin, M. E., Rossi, M. J. and Troe, J.: IUPAC Task Group on Atmospheric Chemical Kinetic Data Evaluation, <http://iupac.pole-ether.fr>, *Atmos. Chem. Phys.*, 4(6), 1461–1738, doi:10.5194/acp-4-1461-2004, 2004.
- Atkinson, R., Baulch, D. L., Cox, R. A., Crowley, J. N., Hampson, R. F., Hynes, R. G., Jenkin, M. E., Rossi, M. J. and Troe, J.: Evaluated kinetic and photochemical data for atmospheric chemistry: Volume II – gas phase reactions of organic
10 species, *Atmos. Chem. Phys.*, 6(11), 3625–4055, doi:10.5194/acp-6-3625-2006, 2006.
- Calvert, J., Derwent, R., Orlando, J., Tyndall, G. and Wallington, T.: Mechanisms of Atmospheric Oxidation of the Alkanes. By Jack G. Calvert et al., *Angew. Chemie Int. Ed.*, 48(28), doi:10.1002/anie.200901202, 2009.
- Diehl, T., Heil, A., Chin, M., Pan, X., Streets, D., Schultz, M. and Kinne, S.: Anthropogenic, biomass burning, and volcanic emissions of black carbon, organic carbon, and SO₂ from 1980 to 2010 for hindcast model experiments, *Atmos. Chem. Phys. Discuss.*, 12(9), 24895–24954, doi:10.5194/acpd-12-24895-2012, 2012.
15
- Duncan, B. N., Logan, J. A., Bey, I., Megretskaia, I. A., Yantosca, R. M., Novelli, P. C., Jones, N. B. and Rinsland, C. P.: Global budget of CO, 1988–1997: Source estimates and validation with a global model, *J. Geophys. Res. Atmos.*, 112, D22301, doi:10.1029/2007JD008459, 2007.
- Fischer, E. V., Jacob, D. J., Millet, D. B., Yantosca, R. M. and Mao, J.: The role of the ocean in the global atmospheric
20 budget of acetone, *Geophys. Res. Lett.*, 39, L01807, doi:10.1029/2011GL050086, 2012.
- Granier, C., Bessagnet, B., Bond, T., D’Angiola, A., van der Gon, H., Frost, G. J., Heil, A., Kaiser, J. W., Kinne, S., Klimont, Z., Kloster, S., Lamarque, J.-F., Liousse, C., Masui, T., Meleux, F., Mieville, A., Ohara, T., Raut, J.-C., Riahi, K., Schultz, M. G., Smith, S. J., Thompson, A., Aardenne, J., Werf, G. R. and Vuuren, D. P.: Evolution of anthropogenic and biomass burning emissions of air pollutants at global and regional scales during the 1980–2010 period, *Clim. Change*, 109(1), 163–190, doi:10.1007/s10584-011-0154-1, 2011.
25
- Guenther, A. B., Jiang, X., Heald, C. L., Sakulyanontvittaya, T., Duhl, T., Emmons, L. K. and Wang, X.: The Model of Emissions of Gases and Aerosols from Nature version 2.1 (MEGAN2.1): an extended and updated framework for modeling biogenic emissions, *Geosci. Model Dev.*, 5(6), 1471–1492, doi:10.5194/gmd-5-1471-2012, 2012.
- Jacob, D. J., Field, B. D., Jin, E. M., Bey, I., Li, Q., Logan, J. A., Yantosca, R. M. and Singh, H. B.: Atmospheric budget of
30 acetone, *J. Geophys. Res. Atmos.*, 107(D10), 4100, doi:10.1029/2001JD000694, 2002.

- Lamarque, J.-F., Bond, T. C., Eyring, V., Granier, C., Heil, A., Klimont, Z., Lee, D., Liousse, C., Mieville, A., Owen, B., Schultz, M. G., Shindell, D., Smith, S. J., Stehfest, E., Van Aardenne, J., Cooper, O. R., Kainuma, M., Mahowald, N., McConnell, J. R., Naik, V., Riahi, K. and van Vuuren, D. P.: Historical (1850–2000) gridded anthropogenic and biomass burning emissions of reactive gases and aerosols: methodology and application, *Atmos. Chem. Phys.*, 10(15), 7017–7039, doi:10.5194/acp-10-7017-2010, 2010.
- 5
- Neumaier, M., Ruhnke, R., Kirner, O., Ziereis, H., Stratmann, G., Brenninkmeijer, C. A. M. and Zahn, A.: Impact of acetone (photo)oxidation on HO_x production in the UT/LMS based on CARIBIC passenger aircraft observations and EMAC simulations, *Geophys. Res. Lett.*, 41(9), 3289–3297, doi:10.1002/2014GL059480, 2014.
- Passant, N. R.: Speciation of UK emissions of non-methane volatile organic compounds, 2002.
- 10 Pouliot, G., Wisner, E., Mobley, D. and Hunt, W.: Quantification of emission factor uncertainty, *J. Air Waste Manage. Assoc.*, 62(3), 287–298, doi:10.1080/10473289.2011.649155, 2012.
- Pozzer, A., Pollmann, J., Taraborrelli, D., Jöckel, P., Helmig, D., Tans, P., Hueber, J. and Lelieveld, J.: Observed and simulated global distribution and budget of atmospheric C₂–C₅ alkanes, *Atmos. Chem. Phys.*, 10(9), 4403–4422, doi:10.5194/acp-10-4403-2010, 2010.
- 15 Sindelarova, K., Granier, C., Bouarar, I., Guenther, A., Tilmes, S., Stavrou, T., Müller, J.-F., Kuhn, U., Stefani, P. and Knorr, W.: Global data set of biogenic VOC emissions calculated by the MEGAN model over the last 30 years, *Atmos. Chem. Phys.*, 14(17), 9317–9341, doi:10.5194/acp-14-9317-2014, 2014.
- Stohl, A., Eckhardt, S., Forster, C., James, P., Spichtinger, N. and Seibert, P.: A replacement for simple back trajectory calculations in the interpretation of atmospheric trace substance measurements, *Atmos. Environ.*, 36(29), 4635–4648, doi:10.1016/S1352-2310(02)00416-8, 2002.
- 20 van der Werf, G. R., Randerson, J. T., Giglio, L., Collatz, G. J., Kasibhatla, P. S. and Arellano, A. F.: Interannual variability in global biomass burning emissions from 1997 to 2004, *Atmos. Chem. Phys.*, 6(11), 3423–3441, doi:10.5194/acp-6-3423-2006, 2006.
- Wisthaler, A., Jensen, N. R., Winterhalter, R., Lindinger, W. and Hjorth, J.: Measurements of acetone and other gas phase product yields from the OH-initiated oxidation of terpenes by proton-transfer-reaction mass spectrometry (PTR-MS), *Atmos. Environ.*, 35(35), 6181–6191, doi:10.1016/S1352-2310(01)00385-5, 2001.
- 25

Acetone-CO enhancement ratios in the upper troposphere based on 7 years of CARIBIC data: New insights and estimates of regional acetone fluxes

5 Garlich Fischbeck¹, Harald Bönisch¹, Marco Neumaier¹, Carl Brenninkmeijer², Johannes Orphal¹,
Joel Brito³, Julia Becker¹, Detlev Sprung⁴, Peter van Velthoven⁵, Andreas Zahn¹

¹Karlsruhe Institute of Technology (KIT), Institute of Meteorology and Climate Research (IMK-ASF), Karlsruhe, Germany

²Max Planck Institute for Chemistry (MPIC), Air Chemistry Division, Mainz, Germany

³Laboratory for Meteorological Physics (LaMP), University Blaise Pascal, Aubière, France

⁴Fraunhofer Institute of Optronics, System Technologies and Image Exploitation (IOSB), Ettlingen, Germany

10 ⁵Royal Netherlands Meteorological Institute (KNMI), De Bilt, the Netherlands

Correspondence to: Marco Neumaier (marco.neumaier@kit.edu)

Abstract. Acetone and carbon monoxide (CO) are two important trace gases controlling the oxidation capacity of the troposphere. Enhancement ratios (EnRs) are useful to assess their sources and fate between emission and sampling, especially in pollution plumes. In this study, we focus on in-situ data from the upper troposphere recorded by the passenger
15 aircraft based IAGOS-CARIBIC observatory over the periods 2006-2008 and 2012-2015. This data set is used to investigate the seasonal and spatial variation of acetone-CO-EnRs. Furthermore, we utilize a box model accounting for dilution, chemical degradation and secondary production of acetone from precursors. In former studies, increasing acetone-CO-EnRs in a plume were associated with secondary production of acetone. Results of our box model question this common
20 presumption and show increases of acetone-CO-EnR over time without taking secondary production of acetone into account. The temporal evolution of EnRs in the upper troposphere, especially in summer, is not negligible and impedes the interpretation of EnRs as means for partitioning of acetone and CO sources in the boundary layer. In order to ensure that CARIBIC EnRs represent signatures of source regions with only small influences by dilution and chemistry, we limit our analysis to temporal and spatial coherent events of high CO enhancement. We mainly focus on North America and Southeast Asia, because of their different mix of pollutant sources and the good data coverage. For both regions, we find the expected
25 seasonal variation in acetone-CO-EnRs with maxima in summer, but with higher amplitude over North America. We derive mean (\pm standard deviation) annual acetone fluxes of $(53 \pm 27) 10^{-13} \text{ kg m}^{-2} \text{ s}^{-1}$ and $(18\cancel{56} \pm 8\cancel{04}) 10^{-13} \text{ kg m}^{-2} \text{ s}^{-1}$ for North America and Southeast Asia, respectively. The derived flux for North America is consistent with the inventories, whereas Southeast Asia acetone emissions appear to be underestimated by the inventories.

1 Introduction

Acetone (CH_3COCH_3) is the most abundant small ketone in the upper troposphere (UT) with mixing ratios occasionally exceeding 2 ppb in summer (Singh et al., 1994; Pöschl et al., 2001; own measurements). In the dry UT, acetone constitutes an important source of HO_x radicals and ozone (e.g. Singh et al., 1995; McKeen et al., 1997; Folkins and Chatfield, 2000; Neumaier et al., 2014). At high NO_x levels, acetone can form peroxyacetyl nitrate (PAN), which acts as a temporary reservoir for NO_x thus enabling long-range transport of reactive nitrogen (Singh et al., 1986, 1992; Folkins and Chatfield, 2000; Hansel and Wisthaler, 2000; Fischer et al., 2014). Consequently, acetone is considered to be a key species in the chemistry of the upper troposphere and lower stratosphere (UTLS) (e.g. Fischer et al., 2012; Neumaier et al., 2014).

Acetone is either directly emitted by anthropogenic and biogenic sources or formed in the atmosphere by oxidation of precursor compounds (e.g. $>\text{C}_2$ -alkanes). Biogenic sources (including secondary production from biogenic precursors) are believed to account for ~50–70 % of the total acetone emissions (Jacob et al., 2002; Fischer et al., 2012; Hu et al., 2013; Khan et al., 2015). Until recently, propane was thought to be the dominant acetone precursor accounting for ~30 % of the total acetone budget (Fischer et al., 2012). However, the latest STOCHEM-CRI model calculations by Khan et al. (2015) suggest that oxidation of short-lived biogenic compounds such as α -pinene and β -pinene could account for more than 60 % of atmospheric acetone with propane oxidation being much less important (~12 %). The contribution from C4 - C5 alkanes is expected to be 6-7 % (Jacob et al., 2002; Fischer et al., 2012).

Acetone is also directly emitted from biomass burning (BB) (Holzinger et al., 1999; Holzinger et al., 2005) with an estimated contribution of ~4-10 % to the global source (Jacob et al., 2002; Singh et al., 2004; Fischer et al., 2012). The main tropospheric sinks of acetone are oxidation by OH and photolysis, with about equal importance in the mid-latitudes. The resulting overall tropospheric mean lifetime of acetone is in the range of 14-35 days (Jacob et al., 2002; Schade and Goldstein, 2006; Fischer et al., 2012; Hu et al., 2013; Khan et al., 2015). Despite an increasing number of UT measurements of acetone (mainly from several research aircraft campaigns), it is obvious that there ~~remained~~ continues to be a paucity of representative data of global atmospheric acetone. To tackle this problem, efforts have been made to retrieve acetone from ACE-FTS (Coheur et al., 2007; Harrison et al., 2011; Tereszchuk et al., 2013; Dufour et al., 2016) and MIPAS satellite data (Moore et al., 2012), but the signature of acetone is hard to detect (Stiller et al., 2004; Waterfall et al., 2005) and the vertical resolution of the respective instruments limited to 2-3 km (Moore et al., 2012; Dufour et al., 2016). Therefore, limited acetone data have been provided this way. Given the poor understanding of the oceans as an acetone reservoir (Marandino, 2005; Fischer et al., 2012; Dixon et al., 2013) and the strong temporal and spatial variability of other sources constraining the global acetone source clearly requires more extended data sets. Current global source estimates range from 42.5 Tg a^{-1} (Arnold et al., 2005) to 127 Tg a^{-1} (Elias et al., 2011).

In this study, we adopt the approach by Zahn et al. (2002) who identified CO- O_3 -correlations from small to regional scales in the CARIBIC dataset, and investigate the relationship of acetone and CO using 7 years of IAGOS-CARIBIC measurements covering large parts of the Northern Hemisphere.

The paper is organized as follows: In Section 2, we introduce the concept of enhancement ratios (EnRs). The IAGOS-CARIBIC project and the applied measurement techniques are described in the Sections 3.1 to 3.3. In Section 3.4, we explain how to analyse the data. The emission inventories used for comparison with CARIBIC EnRs are described in Section 3.5. In Section 4.1, we use a box model to examine the temporal evolution of EnR. The results derived from the statistical analysis of the full data set are presented in Sections 4.2 and 4.3. We summarize the results and give a conclusion in the Section 5.

2 The concept of enhancement ratios

A powerful tool for quantifying acetone emissions is the analysis of enhancement ratios (EnRs) in plumes (e.g. Singh et al., 2004; Lai et al., 2011). The EnR is obtained by dividing the plume enhancement of a species X (above to the background) by the enhancement of another species Y (Lefer et al., 1994; Lee et al., 1997; Mauzerall et al., 1998):

$$EnR = \frac{IX_{plume} - IX_{bgnd}}{IY_{plume} - IY_{bgnd}} \quad (1)$$

For acetone, it became common practice to use carbon monoxide (CO) as a reference species, because both gases are emitted during incomplete combustion (Andreae and Merlet, 2001; Wisthaler, 2002; Greenberg et al., 2006; Warneke et al., 2011). In practice, the EnR is either determined by measuring the volume mixing ratios (VMRs) inside and outside the plume (e.g. Simpson et al., 2011) or from continuous airborne measurements during plume passage (see Fig. 1) (Yokelson et al., 2013). In a scatter plot, the data points will ideally lie on the mixing line that connects the higher concentrations in the plume with the background.

When an EnR is measured at the source, it equals its molar emission ratio (ER) (Yokelson et al., 2013). Downwind the source, the EnR remains equal to the ER as long as production or removal of X and Y in the plume are negligible and as long as the plume mixes in the same fixed background (Mauzerall et al., 1998; Yokelson et al., 2013). This is due to the fact that dividing the enhancement of X by the enhancement of Y normalizes for dilution, as both species dilute at the same rate (Akagi et al., 2012; Yokelson et al., 2013). We prefer to use EnR whenever it cannot be excluded that the ratio has changed since emission. As shown in Fig. 1, this is particularly the case for measurements in the UT. Plume air initially mixes with planetary boundary layer (PBL) air and subsequently enters the “cleaner” UT. Plume ratios observed in the UT significantly differ from the PBL EnR value simply because the UT background has a different acetone-CO ratio as the PBL background. The most comprehensive overview of acetone-CO-EnRs to date has been given by de Reus et al. (2003) using data of five research aircraft campaigns. For each campaign, the authors split the data into measurements from the marine boundary layer (0-1 km), free troposphere (1-12.5 km) or lower stratosphere ($O_3 > 150$ ppb, $CO < 60$ ppb) and derived one EnR per layer. Please note, that in this way, data of different flights, i.e. data of “unrelated” measurements in terms of distance and time

span, were used to derive a single EnR estimate. The authors found different EnRs for the different layers, but, surprisingly, consistent values among the campaigns. Since then, EnRs have been frequently reported for individual plumes and various conditions. In **Tables 1-3**, we give an overview of literature acetone-CO-ERs and EnRs, without any claim to completeness. It is worth noting that ERs are only available for biomass and biofuel burning and are generally lower (mean: 2.5 ppt ppb⁻¹) than the observed free-tropospheric EnRs, which are on average 9.9 ppt ppb⁻¹ for biomass burning plumes and 12.5 ppt ppb⁻¹ for other plumes. In order to understand the underlying processes that change EnR, it is worth estimating how fast plumes usually mix with background air masses. In simple models, this mixing is prescribed with a constant dilution rate. In a few studies, dilution rates were determined experimentally; the results are summarized in **Table 4**.

3 Methods

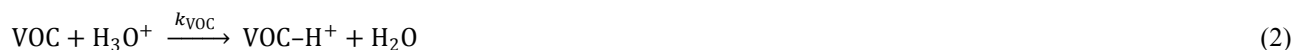
10 3.1 IAGOS-CARIBIC Project

In the CARIBIC project (Civil Aircraft for the Regular Investigation of the atmosphere based on an Instrument Container), regular atmospheric measurements are conducted on board a commercial passenger aircraft (Brenninkmeijer et al., 2007). The present aircraft is a Lufthansa Airbus A340-600 equipped with a multi-line air inlet system (installed below the forward cargo bay) to supply the instruments with sample air. Currently, 15 instruments for in-situ and one for remote-sensing measurements of trace gases and aerosols as well as sample collecting systems for trace gas and aerosol are installed in a modified airfreight container (1.6 ton). Since May 2005, the CARIBIC laboratory is monthly deployed during regular service for 4-6 consecutive long-range flights. Detailed meteorological analysis for the CARIBIC flights (including backward and forward trajectories) is based on ECMWF (European Centre for Medium range Weather Forecasts) model data and provided by van Velthoven (2016). In 2008, CARIBIC joined the European Research Infrastructure IAGOS (In-service Aircraft for a Global Observing System) and is named IAGOS-CARIBIC since then (Petzold et al., 2015). In April 2015, the coordination and operation of CARIBIC was handed over from the Max-Planck-Institute for Chemistry (MPIC) to the Karlsruhe Institute of Technology (KIT). Further information about the project, flight routes and data access can be obtained from the regularly updated project website (www.caribic-atmospheric.com).

3.2 Acetone measurements

25 In IAGOS-CARIBIC, we use a proton transfer reaction mass spectrometer (PTR-MS) for the detection of acetone and other volatile organic compounds (VOCs), e.g. acetonitrile (Sprung and Zahn, 2010). Here, we briefly describe the PTR-MS and refer to the extensive literature for details (e.g. Lindinger et al., 1998; de Gouw and Warneke, 2007). In general, a PTR-MS consists of an ion source, a reaction chamber, a mass analyser and a detection unit. In the ion source, H₃O⁺ ions are produced and injected into a drift tube (= reaction chamber), which is continuously flushed with sample air and where H₃O⁺ ions react

with VOCs in the sample via the following reaction:



5

The reaction takes place with the compound related collision rate k_{VOC} if the proton affinity (PA) of the VOC (for acetone $\text{PA}_{\text{Ac}} = 812 \text{ kJ mol}^{-1}$) is higher than $\text{PA}_{\text{H}_2\text{O}}$ ($\approx 697 \text{ kJ mol}^{-1}$). The protonated VOCs and the remaining primary ions are guided by an electrical field towards the end of the drift tube and further to a quadrupole mass analyser. Protonated acetone is detected at the mass-to-charge ratio m/z 59. Since isobaric compounds are not separated with this technique, an unambiguous assignment to specific compounds is not always possible. In principle, the signal at m/z 59 may also have contributions from protonated propanal and glyoxal. However, other studies have shown that the contribution of propanal and glyoxal are negligible compared to acetone in free tropospheric measurements (Warneke et al., 2003; de Gouw and Warneke, 2007).

The ratio of the VOC-H^+ and H_3O^+ count rates (given in cps = counts per second) is proportional to the VMR of the respective VOC in the sample air. As the H_3O^+ count rate varies over longer time periods, the proportional factor and the count rates are normalized to 10^6 primary ion counts (ncps = normalized counts per second). The proportional factor, known as sensitivity, is regularly derived in the laboratory by sampling a calibration gas with certified VOC concentrations (Apel-Riemer Environmental, Inc., Colorado, USA) under similar experimental conditions as during flight. The precision of the acetone measurement is mainly determined by counting statistics (de Gouw et al., 2003) and can be expressed as

20

$$\Delta[\text{Ac}]_{\text{ppb}} = \frac{1}{S_{\text{Ac}} \cdot [\text{H}_3\text{O}^+]_{10^6 \text{cps}}} \sqrt{\frac{[\text{Ac}]_{\text{cps}}^{\text{sample}} + [\text{Ac}]_{\text{cps}}^{\text{bgnd}}}{t_{\text{dwell}}}} \quad (3)$$

with S_{Ac} the sensitivity of acetone, t_{dwell} the dwelltime of the measurement at $m/z = 59$ and $[\text{Ac}]^{\text{bgnd}}$ the count rate measured at $m/z = 59$ in the absence of acetone. With a mean observed sensitivity of 30 ncps ppb^{-1} , a mean primary ion signal of $6 \cdot 10^6 \text{ cps}$, a dwelltime of 5 seconds and a mean background signal of 60 cps, the precision is $\sim 3\text{-}5 \%$ at typical acetone VMRs of 0.5-2 ppb. Since 2010 the noise is on average ~ 2 times higher than noise derived from counting statistics in Eq. (3) due to imperfect electrical grounding.

The chemical background determines the limit of detection, which corresponds to a signal-to-noise ratio of 3 and is $\sim 140 \text{ ppt}$ for acetone at 5 s integration time. The accuracy is limited largely by the uncertainty of the concentration in the calibration gas, which is given as $\pm 5 \%$ by the manufacturer. The CARIBIC PTR-MS runs in the multiple ion detection mode and scans 16 masses within a duty cycle of 30 seconds, corresponding to 7.5 km flight distance at cruising speed. Background

30

measurements are conducted every 50 minutes by diverting the sample flow for 5 minutes through a catalytic converter filled with a Pt catalyst (Shimadzu Corp., Japan) kept at 350° C.

3.3 Carbon monoxide and ozone measurements

Carbon monoxide (CO) is measured with a vacuum ultraviolet (UV) resonance fluorescence instrument (Scharffe et al., 2012) with a time resolution of 1 Hz. The CO molecule absorbs photons from a UV lamp (143 -155 nm) and emits fluorescence light over the spectral range of 150-220 nm. The number of fluorescence photons, being proportional to the CO concentration, is detected with a photomultiplier. The precision of the instrument is 1-2 ppb at an integration time of 1 s (Scharffe et al., 2012). Ozone (O₃) is measured with a fast and precise chemiluminescence detector described in Zahn et al. (2012) and calibrated using a likewise installed UV-photometer. At typical O₃ mixing ratios (10-100 ppb), the precision is 0.3-1.0 % at 10 Hz.

3.4 Data analysis

Data from the individual IAGOS-CARIBIC instruments are combined into single “merge” files for each flight with a time binning of 10 s. Data with a sampling frequency >0.1 Hz, like the CO measurements (1 Hz), are averaged over the 10 s intervals, whereas low frequency data (<0.1 Hz), like the acetone measurements (0.03 Hz), are assigned to the corresponding 10 s interval. The correlation analysis is restricted to UT air masses. Data from ascend and descend are rarely available because of the long run-up time of the PTR-MS after take-off and an automatic equipment shutdown procedure well before landing. Stratospheric acetone-CO correlations are not well suited for our purpose to investigate source patterns, because of the long transport times. To exclude stratospheric data, we use our concomitant CARIBIC ozone data and apply the definition of the chemical tropopause as proposed by Zahn and Brenninkmeijer (2003) and Zahn et al. (2004) and verified by Thouret et al. (2006). Air masses with an ozone concentration above the threshold value of

$$[\text{O}_3]^{\text{TP}} = 97 \text{ ppb} + 26 \text{ ppb} \sin\left(2\pi \frac{\text{doy}-30}{365}\right), \quad (4)$$

where *doy* denotes day of the year, are identified as stratospheric and excluded. In the rare event of ozone data being unavailable, we use potential vorticity (PV) calculated from ECMWF model and discard measurements with a PV > 2 pvu, a threshold commonly used to define the dynamical tropopause (e.g., Hoskins et al., 1985; Holton et al., 1995). In this way, 42 % of the acetone-CO data was identified as stratospheric.

In the remaining dataset, we search for physically meaningful correlations in all possible subsets of data fulfilling the following two requirements adapted from Zahn et al. (2002) and Brito, 2012: (i) The subset consists of at least 10 successive measurements that are each other no further apart than 50 km and cover less than 500 km flight path; (ii) The range of CO VMRs in the subset is greater than 10 times the average measurement uncertainty of CO. These criteria ensure that only

temporal and spatial coherent events with a “fresh” source signature are considered and will be discussed in more detail in Section 4.1. For each possible subset, Pearson’s linear correlation coefficient r and corresponding p -value are calculated. We assume a good linear correlation in the event $r > 0.5$ and $p < 0.05$ (5 % significance level). In such a case, the slope is calculated using the bivariate least-squares method of Williamson-York (York, 1966; Williamson, 1968; York et al., 2004) as suggested by Cantrell (2008). The Williamson-York fit has the advantage to account for the different uncertainties of both acetone and CO measurements and precludes a dependence of EnR on the axis assignments.

A high Pearson’s correlation coefficient can also arise when respective acetone-CO-VMRs form two clusters. To exclude such physically meaningless correlations, we implemented a cluster analysis based on Gaussian mixture models (GMM) (Everitt and Hand, 1981; McLachlan and Peel, 2000). In our case, two GMM are fitted to the acetone-CO subset. The first model expects only one cluster and the second two clusters. In order to choose the best fitting model, we use the corrected Akaike’s information criterion (AIC_C) (Sugiura, 1978; Hurvich and Tsai, 1989). Subsets with an AIC_C suggesting two clusters ($AIC_{C,n=2} < AIC_{C,n=1}$) are discarded. **Figure 2** shows two exemplary subsets: Whereas the first subset shows no clustering, the second is affected by a strong clustering into two groups with no measurements in between to support the correlation. Although the correlation coefficient ($r = 0.79$) suggests a good correlation, the cluster analysis reveals that two well-separated air masses were measured. Such a subset is excluded from our analysis as the above-mentioned rejection criterion is fulfilled.

In general, our approach differs from the “classical” straightforward approach in the way that the diagnosed correlations are by definition limited to temporally and spatially coherent events. The enhancement ratios detected with our approach mainly characterize the mean partitioning of acetone and CO sources in the boundary layer on a regional scale. The spread of these source regions depends on the time the analysed air parcel spends in the boundary layer before it is released into the free and upper troposphere. Therefore, one could interpret the correlations derived from our approach as “event-based” EnRs, whereby the “event” is the release of an individual air parcel out of the boundary layer into the free troposphere. In contrast to our analysis, non-coherent correlations detected in former studies will often mirror spatial (e.g. latitudinal) gradients of acetone and CO, respectively, or imply differences of the trace gas composition of different air masses, but not enhancement ratios that characterize pollution sources and the chemical processing between emission in the boundary layer and sampling in the upper troposphere. For this reason, we believe that our approach is best suited for the analysis of source patterns with tropospheric EnRs.

In Fig. 3, the differences between the two approaches and fit algorithms are illustrated based on the data of 17 selected flights. The flights were chosen in such a way that larger overlaps of data were kept at a minimum. The diversity of the event-based EnRs, ranging from 1.3 to 77.2 ppt ppb⁻¹, is clearly visible. Furthermore, it is shown that initial averaging over the total data (classical approach) instead of averaging over the individual EnRs of coherent events makes a difference. The mean of the individual EnRs (18.6 ppt ppb⁻¹) is by a factor of 1.9 larger than the slope of the classical approach (9.8 ppt ppb⁻¹). In addition, the EnR of the Williamson-York fit (9.8 ppt ppb⁻¹) is smaller than the one of the standard least squares fit

(11.2 ppt ppb⁻¹), as the former puts (more) weight on the small VMRs due to their lower uncertainties. Less weight is put on the large VMRs, in particular the acetone VMRs, as they have larger uncertainties than the CO VMRs.

3.5 Emission inventories

In this study, we use surface emission data from different inventories made available in the ECCAD (Emissions of atmospheric Compounds & Compilation of Ancillary Data) database (Granier et al., 2013) of the French Atmospheric Chemistry Data Centre ESPRI (former Ether; <http://eccad.sedoo.fr/>). The objective is to derive the total acetone flux from the boundary layer into the upper troposphere for different regions and compare this flux with the acetone source strengths derived from the enhancement ratios and CO inventory data. Ideally, we would have preferred to use inventory data of exactly the same years for which CARIBIC data were used in this study (2006-2008; 2012-2015), but not all data in the ECCAD database is yet available for the full period. Therefore, we chose the last 6 years with complete data coverage (2005-2010) as reference period. This period has a similar duration as the CARIBIC periods and at least covers the first CARIBIC data period. Except for biomass burning emissions, there is currently only one possible inventory for each source type for the given period. Hence, anthropogenic emissions are taken from the MACCcity inventory (van der Werf et al., 2006; Lamarque et al., 2010; Granier et al., 2011; Diehl et al., 2012) and biogenic emissions from MEGAN-MACC (Sindelarova et al., 2014). For biomass burning emissions we decided to use the GFED3 inventory (van der Werf et al., 2010) instead of GFASv1.0 for reasons of easier data handling, as GFED3 data in ECCAD has the same temporal and spatial resolution as MACCcity and MEGAN-MACC. Furthermore, Kaiser et al. (2012) found that the budgets of GFED3(.1) are consistent with GFASv1.0. As we are interested in the total flux of acetone, i.e. primary emissions and secondary production, we also include emission data from the major precursors of acetone and CO. According to Jacob et al. (2002) and Fischer et al. (2012), the three dominant precursors of acetone are propane (13-22 Tg a⁻¹ acetone), higher alkanes (4-7 Tg a⁻¹ acetone) and ~~and~~ monoterpenes (5-6 Tg a⁻¹ acetone).

In order to estimate the acetone source from propane oxidation, we use propane emission data from MACCcity and GFED3 and a molar acetone yield of 72% (Jacob et al., 2002; Pozzer et al., 2010). For isobutane and isopentane, we use the "butanes and higher alkanes" data of MACCcity and calculate the proportion of the two species according to the VOC speciation of Passant (2002) and Calvert et al. (2009). The resulting amount of acetone is derived using the means of the yields suggested by Jacob et al. (2002) and Pozzer et al. (2010), which are 0.96 mol mol⁻¹ for isobutane and 0.72 mol mol⁻¹ for isopentane. For the monoterpenes, we use the emission data for the sum of monoterpenes from MEGAN-MACC (Approximately half of the monoterpenes in MEGAN-MACC are α - and β -pinene (Sindelarova et al., 2014) and the relative contributions provided in Sindelarova et al. (2014) to calculate the emissions of the following individual monoterpene species: α -pinene, β -pinene, limonene, trans- β -ocimene, myrcene, sabinene and 3-carene. For each species, we derive mean acetone yields based on the available literature. Here, we consider the two main degradation processes of monoterpenes, reaction with OH and O₃, and weight the yields according to the respective reaction rates (i.e. to the importance of the reaction with regard to all degradation processes). All considered yields and calculations are provided as a supplement.

~~, which are known precursors of acetone as well. We use molar acetone yields of 15% and 16% for α and β pinene respectively that were reported by Wisthaler et al. (2001).~~ For the secondary production of CO, we only consider precursors with an annual global contribution of more than 25 Tg CO according to Duncan et al. (2007) and an atmospheric lifetime shorter than that of acetone, i.e. isoprene, methanol, monoterpenes, ($\geq C_4$)-alkanes, ($\geq C_3$)-alkenes and ethene. The respective CO production yields are taken from the same study and do not account for loss of intermediate traces gases by deposition, which might over-predict the contribution from longer-lived precursors (Duncan et al., 2007). As uncertainties are not provided for all yields and emission inventory fluxes, we refrain from performing a comprehensive uncertainty analysis. However, considerable uncertainties might exist and estimates based on these data have to be taken with care. In our analysis, at least the statistical uncertainties of fluxes are strongly reduced by averaging over large regions and time periods.

10 4 Results and Discussions

4.1 Temporal evolution of EnR between emission and sampling

For the CARIBIC measurements in the UT, it is important to consider the possible temporal evolution of the EnR, because transport timescales and typical tropospheric lifetimes of acetone and CO are of comparable range. So far, the combined influence of dilution and chemical transformation on acetone-CO EnRs has not been addressed in previous studies. In order to better assess their impact, we first examine the temporal evolution of EnRs from a theoretical point of view. We apply a simple one-box model, in which the box represents the volume of the plume at time $t = 0$. Whereas the plume expands with time, the considered box volume is held constant to take dilution into account. The temporal evolution of the mixing ratio of a compound X inside the plume can then be approximated by (McKeen and Liu, 1993; McKeen et al., 1996):

$$20 \quad \frac{d[X]_{\text{plume}}}{dt} = -L_X [X]_{\text{plume}} - D ([X]_{\text{plume}} - [X]_{\text{bgnd}}) + P_{Z,X} [Z]_{\text{plume}} \quad (5)$$

where L_X is the overall chemical loss rate of X , D is the first order dilution rate and $P_{Z,X}$ is the production rate of X from the oxidation of the precursor compound Z . The overall chemical loss rate L_X is the sum of all loss mechanisms, which are for acetone reaction with OH and photolysis ($L_{Ac} = k_{Ac} [OH] + J_{Ac}$) and for CO reaction with OH ($L_{CO} = k_{CO} [OH]$). As the lifetimes of both species are at least weeks, we simply assume constant reaction and dilution rates over the considered time period. Consequently, we apply daily averaged photolysis rates obtained from the tropospheric ultraviolet and visible radiation model (TUV, version 5.0; Madronich and Flocke, 1999; Madronich et al., 2010), which uses the quantum yields for acetone by Blitz et al. (2004), and monthly mean OH concentrations from Spivakovsky et al. (2000). The OH reaction rates and uncertainties thereof are taken from the latest recommendations of the IUPAC (International Union of Pure and Applied Chemistry) Task Group on Atmospheric Chemical Kinetic Data Evaluation (Atkinson et al., 2004, 2006). The latter are reported to be ~20 %. The same was assumed for the acetone photolysis rate (cf. Neumaier et al., 2014).

As we are interested in the evolution of $[X]_{\text{plume}}(t)$, we need to integrate Eq. (5), which is impeded by the additional time-dependent variable $[Z]_{\text{plume}}$. We show the following steps without the production term $P_{Z,X} [Z]_{\text{plume}}$ in order to derive an analytical solution. However, in the examples given in **Fig. 43**, we have solved the full equation numerically including $P_{Z,X} [Z]_{\text{plume}}$ by progressively calculating the changes of $[X]_{\text{plume}}$ and $[Z]_{\text{plume}}$ at hourly intervals, which are short compared to the net reaction rates. Integration of Eq. (5) without the production term $P_{Z,X} [Z]_{\text{plume}}$ leads to:

$$[X]_{\text{plume}}(t) = \left([X]_{\text{plume},t=0} - \frac{D}{L_X+D} [X]_{\text{bgnd}} \right) e^{-(L_X+D)t} + \frac{D}{L_X+D} [X]_{\text{bgnd}} . \quad (6)$$

Since the function does not consider the quasi-equilibrium of the background, it allows for unphysical low mixing ratios in the plume ($[X]_{\text{plume}} < [X]_{\text{bgnd}}$). Thus, Eq. (6) is only valid for times

$$0 < t < t_{\text{max}} = \frac{\ln\left(\frac{[X]_{\text{plume},t=0}}{[X]_{\text{bgnd}}}\left(1 + \frac{D}{L_X}\right) - \frac{D}{L_X}\right)}{L_X+D} . \quad (7)$$

Placing Eq. (6) into the definition of EnR in Eq. (1) leads to the time-dependent function:

$$\text{EnR}(t) = \frac{\left([X]_{\text{plume},t=0} - \frac{D}{L_X+D} [X]_{\text{bgnd}} \right) e^{-(L_X+D)t} - \frac{L_X}{L_X+D} [X]_{\text{bgnd}}}{\left([Y]_{\text{plume},t=0} - \frac{D}{L_Y+D} [Y]_{\text{bgnd}} \right) e^{-(L_Y+D)t} - \frac{L_Y}{L_Y+D} [Y]_{\text{bgnd}}} . \quad (8)$$

In the case of no chemical processing ($L_X = L_Y = 0$) or if $L_X, L_Y \ll D$, Eq. (8) simplifies to

$$\text{EnR} = \frac{[X]_{\text{plume},t=0} - [X]_{\text{bgnd}}}{[Y]_{\text{plume},t=0} - [Y]_{\text{bgnd}}} = \text{const.}, \quad (9)$$

i.e. in contrast to the ratio $[X]_{\text{plume}}/[Y]_{\text{plume}}$, the EnR remains constant as long as the plume mixes into the same background. In turn, any temporal change of EnR points to chemical processing inside the plume. However, as soon as chemical decomposition takes place, the assumption $L_X = L_Y = 0$ used in Eq. (9) is no longer valid and the combined impact of both chemical transformation and dilution has to be taken into account in the model.

In contrast to most previous studies, we consider both processes in our model and exclude the background reservoir from any chemical degradation (quasi-steady-state), as changes in the total balance of all sources and sinks are negligible on these short time scales. Based on the evaluation of our model, we find that the direction of change of EnR without secondary production does not only depend on the chemical lifetimes of X and Y , as stated in former studies, but also strongly depends on the initial concentrations of X and Y relative to their background (cf. Eq. (8)). If the enhancement of X approaches zero

faster than the enhancement of Y , the EnR decreases and ultimately becomes zero. For the opposite case, the EnR increases and tends towards infinity when approaching the singularity caused by the denominator.

In Fig. 43, the temporal evolution for two initial EnR values at different conditions (season, atmospheric layers and secondary production of acetone) is illustrated. For reasons of clarity, the range of uncertainty based on the uncertainties of the main reaction rates is provided only for selected curves. The underlying mixing ratios and rates are given in Table 5. The free-tropospheric background concentrations are derived from CARIBIC data (see also Fig. 76). For the PBL, we use estimates based on year-round measurements in Minnesota (Hu et al., 2013), California (Schade and Goldstein, 2006) and at Mace Head, Ireland (Novelli et al., 2003). The plume enhancements are scaled according to the selected EnR values. The chemical degradation rates are calculated as described above for 44°N, 1000 hPa (PBL) and 500 hPa (FT) and January (winter) and July (summer). The dilution rates are taken from Table 4 except for the FT in winter, for which we estimate a dilution rate due to the lack of available data. Propane volume mixing ratios are estimated using data of Pozzer et al. (2010), Lewis et al. (2013) and Baker et al. (2014).

In the planetary boundary layer, EnR (without secondary production) hardly changes until dissolution of the plume, as dilution is the dominant loss process and the approximation used in Eq. (9) is valid. Taking the dilution rates (Table 5) as best estimate, our initially applied enhancements ratios will be completely dissolved in the PBL within less than one day in summer and 3 days in winter. Consequently, it is very likely that emissions of different adjacent sources may have mixed before the release into the free troposphere. This means that the free-tropospheric EnR as observed during IAGOS-CARIBIC flights will largely reflect a mean value representing the release of regionally well-mixed PBL air into the troposphere and not the emission ratios of single point sources of acetone and CO. In other words, the mixing in the PBL ensures that air masses released into the free troposphere have a specific signature that on average represents the general proportion of acetone and CO emissions within a certain radius. As already noted in Section 3.4, the spread of this source region depends on the residence time of the air mass in the PBL. Furthermore, the footprint is not restricted to sources that simultaneously emit both acetone and CO, but includes sources emitting only acetone or CO and also secondary production from precursors, if the residence time in the PBL is long compared to their lifetime.

As we are interested in the pure signature to assess the sources, the question arises as to how long the unaltered EnR is conserved in the free troposphere. The examples given in Fig. 43 clearly show that the EnR changes stronger and faster in summer due to shorter lifetimes. In any case, changes become largest in aged plumes, in which the CO enhancements in the denominator of the EnR become small. As the EnR tends towards infinity when the denominator converges towards zero, the CO enhancement is more sensitive than the acetone enhancement and, therefore, better suited e.g. to define the dissolution of the plume. In Fig. 43, we use a CO enhancement of 5 ppb as dissolution criterion for the calculated evolution of EnRs. In the given examples for the free troposphere in summer, the change of EnR is as high as ~300 % at the time of dissolution, strongly depending on the initial CO enhancement and the presence of secondary acetone production. As we do not have information about the actual age of the plumes observed in CARIBIC and thus cannot correct for the temporal changes, we limit our analysis to plumes with a CO enhancement greater than 10 ppb (more specifically, 10 times the mean measurement

uncertainty of CO; see Section 3.4). We are aware that this threshold (open circles in Fig. 43) represents a trade-off between maximizing the number of detected correlations to achieve good statistics and minimizing the consideration of aged plumes with EnRs that have been changed by chemistry and dilution to such an extent that conclusions about the source signature are not possible. This problem and the sensitivity of results with regard to the chosen threshold are further addressed in section A.2 of the appendix.

In former studies, the observation of high acetone-CO EnRs was often associated with secondary production of acetone in the plume (Wisthaler, 2002; Holzinger et al., 2005). Propane is primarily considered as precursor in this context, as it is co-emitted by biomass burning and assumed to be the dominant precursor of acetone (Jacob et al., 2002; Fischer et al., 2012). If considering this source of acetone in our model, the loss of acetone is partly compensated and may lead to an increase in EnR. For plumes in the PBL, the temporal increase in EnR is therefore an indicator for secondary production of acetone. In the free troposphere, the situation is more complex and our model predicts an increase of EnR in three of four cases even without the presence of propane, although we have to admit that the range of uncertainty is very large in one case. Especially in summer, when the curves of the higher EnR with and without secondary production do not differ significantly, it seems to be hardly feasible to distinguish between the different reasons of increasing EnRs.

As mentioned earlier, another reason for possible changes in EnR between emission and measurement is the subsequent mixing with different backgrounds (e.g. Mauzerall et al., 1998; Yokelson et al., 2013). Equation (8) is only valid as long as the terms $[X]_{\text{bgnd}}$ and $[Y]_{\text{bgnd}}$ are constant. Whenever the background mixing ratios change, e.g. the plume enters the free troposphere, the EnR becomes larger under the condition

$$20 \quad ([X]_{\text{bgnd,old}} - [X]_{\text{bgnd,new}}) > EnR_{\text{old}} ([Y]_{\text{bgnd,old}} - [Y]_{\text{bgnd,new}}) \quad (10)$$

and smaller for the reverse inequality. Figure 1 illustrates this common scenario and the resulting change of the slope of the mixing line.

4.2 Observation of EnR within IAGOS-CARIBIC

25 4.2.1 Temporal and spatial distribution of data

The analysis of acetone-CO EnR relies on the availability of the simultaneous measurement of acetone and CO in the troposphere. At the time of the study, tropospheric acetone data is available for 105 CARIBIC flights between February 20th, 2006 and December 13th, 2008 and for 109 CARIBIC flights between March 6th, 2012 and July 16th, 2015. The gap is due to a larger modification of the instrument and subsequent re-certification. As shown in Fig. 54, about 90 % of simultaneous tropospheric acetone and CO measurements were carried out in the Northern Hemisphere, mainly in the subtropics and mid-latitudes along the routes between Germany and Caracas/Bogota, Sao Paolo, Chennai, Bangkok and Guangzhou/Hong Kong.

Although IAGOS-CARIBIC flights to North America took place frequently, mainly stratospheric air was sampled due to the lower tropopause heights there. In order to obtain statistically reliable results, we focus on the subtropics and mid-latitudes.

4.2.2 Frequency distribution of EnR

In **Fig. 65**, frequency distributions of the acetone-CO-EnR are compared for summer (JJAS) and winter (DJFM). We extended the commonly used months JJA and DJF by one month to improve the statistics. Compared to the airborne and ground observations by others (cf. Table 2-3), the CARIBIC observations provide a surprisingly clear picture. In order to quantify the distributions, we use Gaussian profiles (see parameters in **Table 6**). In winter, the approximated Gaussian profile has its centre at 8.5 ppt ppb⁻¹ (FMHW = 8.2 ppt ppb⁻¹). Thus, the centre is slightly lower than the mean literature values derived for plumes with and without biomass burning influence (9.9 ppt ppb⁻¹ and 12.5 ppt ppb⁻¹, respectively; cf. Table 2-3), but both values lie within the 1 σ -range. It is clear that the real distribution differs from a normal distribution, as 33 % / 21 % of the EnRs exceed the 1 σ / 2 σ -range of the Gaussian profile. This asymmetry is probably a result of the sampling of aged plumes as discussed in Section 4.1.

In summer, observed EnRs are on average ~2.3 times larger compared to winter. The centre of the Gaussian profile (19.3 ppt ppb⁻¹) is higher than the mean literature values, but again the values lie within the 1 σ -range. The FMHW of the Gaussian profile is even ~3.7 times greater (~30.4 ppt ppb⁻¹), reflecting the larger natural variability in summer. As in winter, the real distribution of CARIBIC EnRs is shifted towards larger values (mean: 27.2 ppt ppb⁻¹). About 30 % / ~16 % of the EnRs exceed the 1 σ / 2 σ -range of the Gaussian profile. The great majority of high EnRs in summer was sampled in air masses measured above or originating from North America (see next section).

To identify the reason for the considerable seasonal variation of the acetone-CO-EnR in the upper troposphere, we plot the regression lines for the mean and median parameters as derived from our EnR distributions (Table 6) alongside the VMRs of the total measurements (**Fig. 76**). It becomes clear that the factor of ~2.3 between summer and winter EnR is mainly the consequence of the considerable seasonality of acetone. The mean CO VMRs between JJAS and DJFM differ by only 6 %, simply as the CO maximum and minimum in the UT occur in March-April and September-October, respectively (Zahn et al., 2002; Zbinden et al., 2013; Petetin et al., 2015; Osman et al., 2016).

4.3 Regional differences in EnR and comparison with emission inventories

In this subsection, we use sample location and 5-day ECMWF backwards trajectories calculated every 3 minutes along the flight track (van Velthoven, 2016) to assign EnR to selected source regions. If a correlation is found in a subset of data (see Section 3.4), the derived EnR is assigned to each acetone-CO-data pair of the subset and to the closest 5-day back trajectory thereof.

According to our box model (see grey dashed line in **Fig. 43**), in the free troposphere chemical decay (no dilution) does not significantly alter the EnR within 5 days; in the given examples, changes are below 5 % in summer and below 1 % in winter.

Therefore, we assign each EnR to the full path of the corresponding 5-day back trajectory, which is given with a temporal resolution of 1 h. In practice, this means that for each hourly waypoint of the trajectory, the assigned EnR is duplicated and the coordinates of the sample location are exchanged by the ones of the waypoint. This domain-filling technique is also known as trajectory mapping and has been applied elsewhere for similar in-situ datasets (Stohl et al., 2001; Osman et al., 2016). In **Fig. 87**, the resulting geographical distribution and frequency of EnRs duplicated this way per $5^\circ \times 5^\circ$ is shown for a $5^\circ \times 5^\circ$ grid. We are aware that back trajectories have a limited reliability. However, random trajectory errors should be negligible in our case, with respect to the large number of trajectory-mapped EnRs.

The assignment of EnRs to source regions is done as follows: In a first step, longitude-latitude-boxes are defined for the regions of interest. Here, In a first step, we focus on the four source regions (North America, Europe, East Asia and Southeast Asia), as depicted in Fig. 87. All EnRs with coordinates inside a box, including the duplicates from the trajectory mapping, are assigned to the corresponding region. This means, that an EnR is initially assigned to a region regardless whether the trajectory passed through the box only for 1 hour or the entire 5 days. However, when it comes to averaging over all EnRs of a certain region, we distinguish between such cases. For this purpose, we do not eliminate the duplicates created by the trajectory mapping. Consequently, an EnR associated with a trajectory passing the box only for 1 hour, is represented only once in the regional subset, whereas an EnR with a trajectory staying in the box for 5 days, is represented in the subset $120 (=5 \times 24)$ times. When averaging over EnRs of a certain region, this naturally leads to a weighting based on the trajectory's residence time above the region. We refrained from an altitude requirement, as not all transport processes are represented by single trajectory calculations (e.g. convection; cf. Stohl et al., 2002). Furthermore, in single trajectory calculations infinitesimally small air parcel are assumed (e.g. Stohl et al., 2002), whereas the volumes of sampled air masses are extended. For these reasons, we believe that even though a trajectory passes a region at high altitudes, there is certain likelihood that the sampled air mass had contact with convected air masses from the boundary layer of the underlying region. As the probability of such an incident increases with time, ~~When averaged, the EnRs are weighted~~ according to the trajectory's residence time over the region, ~~which should describe the situation realistically~~ makes most sense to us.

In Fig. 9, the weighted mean EnRs and box plots are shown for each source region and the months JJAS and DJFM, respectively.

The mean EnR indicated in Fig. 8 show that The numbers of the underlying, unique (i.e. non-duplicated) EnRs and percentages of the total number of EnRs are given in Table 7. Please note that single EnRs can be assigned to multiple regions, when the trajectories pass through more than one region. The best coverage is archived for North America (33 %) and Southeast Asia (27 %), which is also why we focus on these regions in the following.

North America stands out with the highest EnRs observed in IAGOS-CARIBIC. In summer, the median EnR ($31.7 \text{ ppt ppb}^{-1}$) is ~ 3.4 times larger than in winter (9.4 ppt ppb^{-1}) and the interquartile range is even ~ 5.4 times larger compared to winter. The significantly higher EnR in summer compared to winter can be explained by the following reasons: (i) the much stronger biogenic source strength in summer, (ii) the more frequent sampling of younger (acetone-rich) plumes due to strong convection and (iii) the faster increase in EnR due to shorter chemical lifetimes (see Section 4.1 and Fig. 43) The seasonality

is less pronounced (in descending order) above Europe, Southeast Asia and East Asia. In contrast to the mean EnRs, individual low EnRs are observed throughout the year in all regions, as can be seen from the overlap of the lower whiskers in Fig. 98. Low EnR in summer might be an indication for rapidly ascended plumes from sources with low acetone-CO emission ratios, such as smouldering fires and other incomplete combustion processes (cf. Table 1).

5 4.3.1 Emission rates in North America

As a next logical step towards identifying the cause for the high EnR ratios over North America in summer, we consider emission estimates given in inventories for different source types (e.g. anthropogenic, biogenic and biomass burning emissions; see Section 3.5). This classification enables an assessment of the influence of the different sources on the respective total source, which helps us to interpret the observed seasonal variability in EnR. Therefore, we derive a total emission ratio (TER) defined as

$$TER = \frac{M_{CO}}{M_{Ac}} \cdot \frac{\sum_i S_{Ac,i}}{\sum_i S_{CO,i}} \quad (11)$$

where M is the molar mass of the respective compound and S is the emission flux of the individual source averaged over the reference time period 2005-2010.

In Fig. 109, the seasonal variation of a) the acetone emission rates, b) the CO emission rates and c) the monthly means of TERs and EnRs are shown. The emissions of acetone and CO are in phase with maxima in summer and minima in winter, but the seasonal amplitude for acetone is much stronger due to the larger proportion of biogenic emissions. In Fig. 109c, we compare the inventory-based TER (with and without the consideration of biomass burning emissions) with the monthly means of IAGOS-CARIBIC EnR identified during the two time periods 2006-2008 and 2012-2015. A direct comparison only makes sense if the considered CARIBIC EnRs are not significantly altered by dilution and chemical processing. As discussed in Section 4.1, the effects of these processes are not negligible and for this reason, we limit our analysis to events with a CO enhancement of at least 10 [times the measurement uncertainty of CO \(~10 ppb\)](#). In the ideal case, this restriction ensures that CARIBIC EnRs primarily reflect the chemical signature of the source regions.

Highest EnR are found in June and September (~40 ppt ppb⁻¹) with a temporary decline in-between. On the first view, this seems to be an insignificant feature, but there are some further observations that identify biomass burning as the most likely reason:

1. We observed elevated acetonitrile VMRs during this time period. In ~53 % of the air masses with correlated acetone and CO measurements we find acetonitrile VMRs greater than 200 ppt, which according to Sakamoto et al. (2015) presents a threshold for the detection of biomass burning plumes. EnRs in June appear to be unaffected by biomass burning, supported by the consistently lower acetonitrile VMR level (<200 ppt) compared to the following month.

2. The EnR decline is also apparent in TER with a shift of one month ahead, which can be attributed to biomass burning (orange diamonds in Fig. 109c). The reason lies in the low acetone-CO emission ratio of boreal forest fires of 1.6-3.0 ppt ppb⁻¹ (cf. Table 1). Warneke et al. (2006) found various plumes attributed to biomass burning during flights along the U.S. East Coast in July and August 2004 and concluded that 30 % of the CO enhancement is related to forest fires in Alaska and Canada, which is in good agreement with the emission inventory data (~32 %). We therefore assume that the lower EnRs in July and August (~30 ppt ppb⁻¹) are related to a then larger influence of biomass burning.

In July, we find a mean (\pm standard deviation) EnR of (28.0 \pm 14.0) ppt ppb⁻¹, which is comparable to the ones found during aircraft campaigns over Eastern Canada, i.e. by de Reus et al. (2003) during STREAM98 in July 1998 (24.4 ppt ppb⁻¹) and by Singh et al. (1994) during ABLE3B in July and August 1990 (30 ppt ppb⁻¹). The higher variability in the IAGOS-CARIBIC EnR is presumably due to the large regional and annual variations in emissions, which are only resolved when considering local correlations over a longer time interval such as in IAGOS-CARIBIC.

4.3.2 Estimation of North American acetone source

Emission and enhancement ratios are frequently used to estimate global acetone emissions from biomass burning (e.g. Holzinger et al., 1999, 2005; Jacob et al., 2002; Wisthaler, 2002; Singh et al., 2004; van der Werf et al., 2010; Akagi et al., 2011). Singh et al. (2010) denote that this top-down-approach is often useful to assess the accuracy of emission inventories that are generally derived from bottom-up data. Since we did not restrict our analysis to BB plumes, the IAGOS-CARIBIC EnRs should reflect the total acetone source. In order to derive the total acetone flux S_{Ac} from our observations, the mass-corrected CARIBIC EnR is multiplied by the total flux of CO derived from inventories:

$$S_{Ac} = EnR \cdot \frac{M_{Ac}}{M_{CO}} \cdot \sum_i S_{CO,i} . \quad (12)$$

For North America, we estimate a mean annual flux of (53 \pm 27) 10⁻¹³ kg m⁻² s⁻¹ corresponding to total emissions of (6.0 \pm 3.1) Tg a⁻¹. This is in very good agreement with the bottom-up estimate of 5.4-8 Tg a⁻¹, we derived by summing up the mean acetone emissions given in the source-specific emission inventories (see Section 3.5).

In contrast, Hu et al. (2013) determined a North American acetone source of 10.9 Tg a⁻¹ from tall-tower measurements and inverse modelling, consisting of 5.5 Tg from biogenic sources and 5.4 Tg from anthropogenic sources. Whereas the biogenic source is similar to our estimate because the a priori source is equal (4.8 Tg), they assume a much higher anthropogenic source based on the US EPA NEI 2005 (NEI-05) inventory (12 % primary, 88 % secondary). We note that anthropogenic emissions of acetone, propane and CO in NEI-05 are ~3, ~2 and ~1.5 times higher, respectively, than the ones given by the MACCity inventory used in this study. Several studies state that NEI-05 overestimates anthropogenic emissions of CO and other species (Brioude et al., 2011, 2013; S. Y. Kim et al., 2013; J. Li et al., 2015), whereas Stein et al. (2014) report that the anthropogenic emissions of CO in MACCity underestimate the source in Northern Hemisphere industrialized countries in

winter. The latter would be in accordance with our observation of lower EnR compared to TER in winter in Fig. 109c. A larger anthropogenic acetone source would push EnRs in the opposite direction and is not supported by IAGOS-CARIBIC EnR results. Further investigations are required to resolve the discrepancy between the above-mentioned model result of Hu et al. (2013) and the bottom-up and top-down estimates.

5 4.3.3 Emission rates in Southeast Asia

In this Section, we focus our EnR-based approach to assess regional acetone sources to the Southeast Asia region. Because of its increasing role in global air pollution and the current shortage of in-situ studies regarding the emissions of this region, Southeast Asia stands out as a highly interesting region (Jaffe et al., 1999; de Laat et al., 2001; Lelieveld et al., 2001, 2015). The rapid industrialization is accompanied by wide-spread biomass burning resulting in a significantly different pollution source profile compared to North America (e.g. de Laat et al., 2001). Here we focus on the region of Southeast Asia (including Pakistan, India, Bangladesh, Bhutan, Myanmar, Thailand, Laos, Cambodia, Vietnam and the Philippines) as defined in van der Werf et al. (2006). In this region, the acetone emission fluxes given in the inventories (Fig. 110a) are on average ~3 times higher than in North America and show a different seasonality due to the different (i.e. mainly wet tropical and humid subtropical) climate. Emissions of CO (Fig. 110b) are mainly assigned to anthropogenic sources throughout the year, showing a maximum in March due to biomass burning emissions and a minimum in July.

In Fig. 110c, TER and IAGOS-CARIBIC EnR are plotted for comparison. As for North America, both are in the same range and show the same seasonal variation when fitting a sinusoidal function to the monthly TER and EnR, but EnR (annual mean: $12.3\text{-}2$ ppt ppb⁻¹) are on average ~3 ppt ppb⁻¹ higher than TER (annual mean: 9.2 ppt ppb⁻¹). EnR values derived from the research aircraft campaign INDOEX conducted over the Indian Ocean in February-March 1999 are even higher than mean CARIBIC EnRs for February and March (9.7 ppt ppb⁻¹). De Reus et al. (2003) found a mean EnR of 21.6 ppt ppb⁻¹ and 16.2 ppt ppb⁻¹ when integrating over all flights in the free troposphere and in the marine boundary layer air, respectively. De Gouw et al. (2001) derived an EnR of 14 ppt ppb⁻¹ using data from the same campaign, but averaged acetone and CO values for level flight tracks before applying the correlation analysis. The results are consistent with the EnRs of 13.4 – 17.2 ppt ppb⁻¹ found in individual plumes in the marine boundary layer over the Indian Ocean (Reiner et al., 2001; Wisthaler, 2002). The reasons for the high EnRs in INDOEX compared to the mean TER of Southeast Asia (~7.7 ppt ppb⁻¹) and the mean CARIBIC EnR (9.7 ppt ppb⁻¹) can be manifold. Besides this comprehensive campaign in 1999, little data has been published on acetone emissions in this region. Based on the IAGOS-CARIBIC EnR and inventory data for CO and its precursors, we derive a mean (\pm standard deviation) acetone flux of $(18\text{56} \pm 80\text{4}) 10^{-13} \text{ kg m}^{-2} \text{ s}^{-1}$ corresponding to total emissions of $(4.9\text{8} \pm 2.1) \text{ Tg a}^{-1}$. Langford et al. (2010) observed a mean acetone flux of $(33 \pm 181) 10^{-13} \text{ kg m}^{-2} \text{ s}^{-1}$ above a tropical rainforest in Malaysia in 2008, whereas Karl et al. (2004) reported a mean midday flux of $250 10^{-13} \text{ kg m}^{-2} \text{ s}^{-1}$ above a tropical rainforest in Costa Rica. All three fluxes are in the same range, but hardly comparable, because of the different spatial and temporal scopes of the measurements. Whereas the in-situ flux measurements at individual locations reflect local conditions, the mean CARIBIC EnRs are representative for extended heterogeneous source regions and also capture

secondary acetone production during transport. The inventory data for acetone and its precursors suggests a mean annual flux of ~~135-149~~ 10^{-13} kg m⁻² s⁻¹ and an annual source of 3.74 Tg a⁻¹ for Southeast Asia, which is lower than our estimates, but well within the standard deviation.

5 Summary and conclusions

5 In this study, we give a major update on enhancement ratios of acetone and CO in the upper troposphere. We present a new method to detect coherent correlations that are physically more meaningful than correlations based on spatially or temporally distant measurements. We apply this method to the IAGOS-CARIBIC dataset of acetone and CO and utilize the concept of enhancement ratios for interpretation. In former studies, free tropospheric acetone-CO enhancement ratios were often compared directly with emission ratios of individual sources, although enhancement ratios are only equivalent to the
10 emission ratio when measured at the source. For EnRs higher than the ERs, the authors assumed secondary production of acetone in the plume. We show using a box model, that an increase in EnR is not inevitably caused by secondary production of acetone, but strongly depends on the initial quantities of acetone and CO in the plume. Dilution rates from other studies indicate that common enhancements are rapidly mixed in the planetary boundary layer and rather contribute to the PBL background than being directly transported into the free troposphere. We conclude that an uplift of these air masses leads to
15 tropospheric EnRs that can be seen as a chemical signature of the boundary layer air, therefore rather reflecting larger regional source patterns than distinct emissions from single point sources. As the sources vary by season, we investigate the seasonality of EnR and find that in the Northern Hemisphere mid-latitudes they are on average 2.3 times larger in summer than in winter. Given the coverage and representativeness of the IAGOS-CARIBIC data set, it is also possible to investigate regional differences in EnR and its seasonality. We compare the seasonality of EnR observed over North America, Europe,
20 East Asia and Southeast Asia and find the same behaviour for all four regions, but with varying degrees. We assume that these differences are mainly caused by regional differences in acetone and CO sources and therefore enable the comparison of EnR with emission estimates of inventories. The monthly ratios of the total acetone and CO bottom-up source estimates lie well within the standard deviation of mean EnR observed over the respective region and show the same seasonal course as EnR. We calculate regional acetone fluxes by using well-constrained CO emission data and monthly averaged EnR. For
25 North America, we estimate a mean annual acetone flux of $53 \cdot 10^{-13}$ kg m⁻² s⁻¹ and for Southeast Asia ~~1856~~ 10^{-13} kg m⁻² s⁻¹, reflecting the dominance of biogenic acetone emissions that are larger in tropical to subtropical Southeast Asia. With our EnR-based approach, it will be also possible to estimate regional acetone fluxes for other regions in the future. First preliminary evaluations for tropical South America show that EnRs are significantly lower than the monthly total emission ratios derived from inventories, except for months with high biomass burning emissions. It could well be that the large
30 biogenic source of the Amazon rainforest does not provide sufficiently strong regional gradients (plumes) to be captured by our event-based detection algorithm. However, the detected EnRs might be related to biomass burning or polluted air masses from the highly populated coastal regions. Further investigations, e.g. analysis of other tracers or evaluation of our box

model adapted to the particular conditions, are necessary to understand this potential discrepancy. In addition, further measurements over this region would be of great value. We conclude that free-tropospheric EnR data with a large spatial and temporal coverage are a powerful tool to investigate the regional and seasonal differences in sources, to estimate the total acetone flux of specific regions and potentially to assess the quality of acetone emission inventories.

5 Acknowledgements

The authors wish to thank Lufthansa, Lufthansa Technik and all CARIBIC partners for their ongoing support of the IAGOS-CARIBIC laboratory. We especially acknowledge D. Scharffe for supplying the CO data and A. Rauthe-Schöch for supplying the merge files. We thank T. Gehrlein, S. Heger, C. Koeppel, A. Petrelli, D. Scharffe and S. Weber for their commitment in operating the CARIBIC container. The CARIBIC data is available from the CARIBIC website
10 (www.caribic-atmospheric.com) on signing the CARIBIC data protocol. We acknowledge the NCAR Atmospheric Chemistry Division (ACD) for providing the TUV Radiation Model. We thank the Centre National d'Etudes Spatiales (CNES) and the Centre National de la Recherche Scientifique (CNRS) - Institut National des Sciences de l'Univers (INSU) for distributing the emission inventory data in the ECCAD-database. ECCAD is part of the ESPRI Data centre (former Ether) and the emission database of the GEIA (Global Emissions Initiative) project, which are gratefully acknowledged. The
15 emission inventory data is available from the website (<http://eccad.sedoo.fr/>) on signing the data protocol.

Appendix

A.1 Detailed description of emission data in Figure 109

The strongest source of acetone in North America is direct biogenic emission with an annual mean of $\sim 31 \cdot 10^{-13} \text{ kg m}^{-2} \text{ s}^{-1}$ and a strong maximum in July/August ($\sim 70 \cdot 10^{-13} \text{ kg m}^{-2} \text{ s}^{-1}$). The second largest source is secondary production from precursors.
20 Jacob et al., (2002) and Fischer et al., (2012) assumed that propane is by far the dominant precursor of acetone on a global scale followed by higher alkanes and monoterpenes. Here, we consider propane, isobutane and isopentane, seven
individual-monoterpene species α -pinene and β -pinene and methylbutenol (MBO) as precursors of acetone.
Methylbutenol is emitted by pine trees native exclusively to North America (e.g. Harley et al., 1998, S. Kim et al., 2010) and therefore considered as regional source. As MBO emission data are not available in the ECCAD-database, we scale the
25 monthly monoterpene surface emissions in a way that annual MBO emissions equal the estimate of 2.2 Tg to the total MBO
source estimated by Guenther et al. (2012). Based on the available literature, we derive and apply a mean molar acetone
yield of 0.46 for the oxidation of MBO, and use the molar acetone yield of 0.6 given by Ferronato et al., 1998. When assuming an instantaneous conversion on ground (which is justified for the shorter-lived precursors) MBO oxidation leads to
an annual mean acetone production of $\sim 5.675 \cdot 10^{-13} \text{ kg m}^{-2} \text{ s}^{-1}$, whereas the oxidation of propane ($\sim 2.7 \cdot 10^{-13} \text{ kg m}^{-2} \text{ s}^{-1}$), higher

alkanes ($\sim 3.4 \cdot 10^{-13} \text{ kg m}^{-2} \text{ s}^{-1}$) and of α -pinene and β -pinene monoterpenes (~~together~~ $\sim 3.62 \cdot 10^{-13} \text{ kg m}^{-2} \text{ s}^{-1}$) produce considerably less acetone.

Secondary production is largest in summer (~~$\sim 19.14 \cdot 10^{-13} \text{ kg m}^{-2} \text{ s}^{-1}$~~ , $\sim 4.1 \cdot 10^{-13} \text{ kg m}^{-2} \text{ s}^{-1}$, $\sim 3.4 \cdot 10^{-13} \text{ kg m}^{-2} \text{ s}^{-1}$ and $\sim 5.7 \cdot 10^{-13} \text{ kg m}^{-2} \text{ s}^{-1}$ respectively), because of the much higher, light- and temperature-driven release of biogenic VOCs and additional propane emissions from boreal forest fires. In contrast, direct anthropogenic emissions of acetone (originating from solvent use, chemical manufacturers and car exhaust) are spread uniformly throughout the year with $\sim 1.6 \cdot 10^{-13} \text{ kg m}^{-2} \text{ s}^{-1}$ and account only for a small percentage of the source ($\sim 2\%$ in summer and $\sim 9\%$ in winter). As we do not account for potential losses (e.g. deposition) of precursors before their conversion, but assume instantaneous conversion, the given emission strengths likely represent upper limits.

Carbon monoxide emissions (Fig. 109b) show a very different source composition. Direct anthropogenic emission is overall the strongest source and is evenly distributed throughout the year with a mean flux of $\sim 4.5 \cdot 10^{-11} \text{ kg m}^{-2} \text{ s}^{-1}$. Biomass burning is the second largest individual source and limited to the burning season (the summer months) with the relative source contribution exceeding 30% and fluxes of $\sim 9 \cdot 10^{-11} \text{ kg m}^{-2} \text{ s}^{-1}$. However, we must stress that BB emissions vary considerably from year to year and there have been years (e.g. 2004, cf. Turquety et al., 2007) in which emissions were 2-3 times higher than the average over the period 2005–2010. As already ascertained for acetone, biogenic emissions (primary and secondary) are highest in summer and account for $\sim 45\%$ of the North American CO source in this season. Hudman et al. (~~2008~~) found an even higher contribution of $\sim 56\%$ from the oxidation of biogenic VOCs in the summer of 2004, but firstly, they limited their study to the contiguous United States, where no biomass burning occurred and secondly, considered a higher CO yield for isoprene (0.45 per C-atom, compared to 0.2 per C-atom found by Duncan et al. (2007) as global average and applied in our study). However, we must point out that the production rate strongly depends on local NO_x concentrations (Miyoshi et al., 1994) and a higher yield may be reasonable for the US. In contrast to acetone, primary biogenic CO fluxes are relatively low ($\sim 0.6 \cdot 10^{-11} \text{ kg m}^{-2} \text{ s}^{-1}$) and the secondary production from isoprene and methanol oxidation (mean annual flux: $\sim 2.2 \cdot 10^{-11} \text{ kg m}^{-2} \text{ s}^{-1}$) dominates.

A.2 Sensitivity of results for North America with regard to the CO enhancement requirement

In section 4.1, we motivate our choice to restrict the analysis to EnR with a CO enhancement greater than 10 times the measurement uncertainty of CO, which is on average close to 10 ppb. To demonstrate the latter, we repeat the analysis done in section 4.3.2 for North America with a threshold of exactly 10 ppb CO enhancement. In Table 8, the results are compared with the previous analysis. The annual acetone source of $(6.1 \pm 3.1) \text{ Tg}$ is in excellent agreement with the $(6.0 \pm 3.1) \text{ Tg}$ derived when using 10 times the measurement uncertainty of CO as threshold.

In a second reanalysis we use a threshold of 15 ppb to test the sensitivity of the result to a higher threshold (results, s. Table 8). Increasing the threshold to such an CO enhancement reduces the dataset for North America by $\sim 75\%$ leading to the

situation that there is not enough data for November and December, although North America is the region with the best coverage (s. Table 7).

The mean of the monthly EnR decreases from 21.3 ppt ppb⁻¹ to 18.4 ppt ppb⁻¹, which can be explained as follows: The exclusion of events with CO enhancements of 10–15 ppb puts more emphasis on the events with high CO enhancements, but the high CO enhancements are not completely compensated by high acetone enhancements, i.e. the EnRs of this subset are lower. Nevertheless, the means for all three requirements are still in the standard deviations of each other. The standard deviation itself naturally decreases when the number of EnRs fulfilling the requirement is strongly reduced.

When changing the threshold to significantly lower CO enhancements, the monthly mean EnRs increase. However, in such a situation it becomes impossible to our mind to distinguish between an increase caused by shifting the weight of certain EnRs and an increase related to the temporal evolution of EnRs, which we discussed in section 4.1. Consequently, we can only investigate the sensitivity in respect to higher CO enhancements. Thresholds higher than 15 ppb are not feasible with regard to the number of such events in our dataset.

A.32 Detailed description of emission data in Figure 110

Biogenic emission dominates throughout the year with a minimum in January ($\sim 641 \cdot 10^{-13} \text{ kg m}^{-2} \text{ s}^{-1}$) and a maximum in May ($\sim 148\text{-}154 \cdot 10^{-13} \text{ kg m}^{-2} \text{ s}^{-1}$). Biomass burning emissions peak in the late dry season (January–April) and contribute to an annual maximum of acetone emissions in March ($\sim 208\text{-}193 \cdot 10^{-13} \text{ kg m}^{-2} \text{ s}^{-1}$) being twice as large as the maximum acetone flux of North America.

For the same reason, CO emissions (Fig. 110b) peak in March. However, besides the large contribution of biomass burning (37 %), other anthropogenic sources make up the greatest part (48%) of the total CO flux ($\sim 131 \cdot 10^{-11} \text{ kg m}^{-2} \text{ s}^{-1}$), which is 7 times larger than the maximum CO flux of North America. Over the year as a whole, anthropogenic emissions account for ~ 70 % of the total South East Asian CO source and are responsible for the seasonal variation with minima in summer and maxima in winter. The largest anthropogenic CO source is residential (bio-)fuel combustion for cooking and heating, followed by emissions from the industry and transport sector (e.g. Ohara et al., 2007; M. Li et al., 2015). Biogenic emissions of CO and its precursors peak in April-May ($\sim 22 \cdot 10^{-11} \text{ kg m}^{-2} \text{ s}^{-1}$), but only account for ~ 28 % of the total emission flux during this time and ~ 18 % of the total annual source.

References

- Akagi, S. K., Yokelson, R. J., Wiedinmyer, C., Alvarado, M. J., Reid, J. S., Karl, T., Crounse, J. D. and Wennberg, P. O.: Emission factors for open and domestic biomass burning for use in atmospheric models, *Atmos. Chem. Phys.*, 11(9), 4039–4072, doi:10.5194/acp-11-4039-2011, 2011.
- 5 Akagi, S. K., Craven, J. S., Taylor, J. W., McMeeking, G. R., Yokelson, R. J., Burling, I. R., Urbanski, S. P., Wold, C. E., Seinfeld, J. H., Coe, H., Alvarado, M. J. and Weise, D. R.: Evolution of trace gases and particles emitted by a chaparral fire in California, *Atmos. Chem. Phys.*, 12(3), 1397–1421, doi:10.5194/acp-12-1397-2012, 2012.
- Andreae, M. O. and Merlet, P.: Emissions of trace gases and aerosols from biomass burning, *Global Biogeochem. Cycles*, 15(4), 955–966, 2001.
- 10 Arnold, S. R., Chipperfield, M. P. and Blitz, M. A.: A three-dimensional model study of the effect of new temperature-dependent quantum yields for acetone photolysis, *J. Geophys. Res.*, 110(D22), D22305, doi:10.1029/2005JD005998, 2005.
- Atkinson, R., Baulch, D. L., Cox, R. A., Crowley, J. N., Hampson, R. F., Hynes, R. G., Jenkin, M. E., Rossi, M. J. and Troe, J.: IUPAC Task Group on Atmospheric Chemical Kinetic Data Evaluation, <http://iupac.pole-ether.fr>, *Atmos. Chem. Phys.*, 4(6), 1461–1738, doi:10.5194/acp-4-1461-2004, 2004.
- 15 Atkinson, R., Baulch, D. L., Cox, R. A., Crowley, J. N., Hampson, R. F., Hynes, R. G., Jenkin, M. E., Rossi, M. J. and Troe, J.: Evaluated kinetic and photochemical data for atmospheric chemistry: Volume II – gas phase reactions of organic species, *Atmos. Chem. Phys.*, 6(11), 3625–4055, doi:10.5194/acp-6-3625-2006, 2006.
- Baker, A. K., Traud, S., Brenninkmeijer, C. A. M., Hoor, P., Neumaier, M., Oram, D. E., Rauthe-Schöch, A., Sprung, D., 20 Schloegl, S., Slemr, F., van Velthoven, P. F. J., Wernli, H., Zahn, A. and Ziereis, H.: Pollution patterns in the upper troposphere over Europe and Asia observed by CARIBIC, *Atmos. Environ.*, 96, 245–256, doi:10.1016/j.atmosenv.2014.06.010, 2014.
- Blitz, M. A., Heard, D. E., Pilling, M. J., Arnold, S. R. and Chipperfield, M. P.: Pressure and temperature-dependent quantum yields for the photodissociation of acetone between 279 and 327.5 nm, *Geophys. Res. Lett.*, 31, L06111, 25 doi:10.1029/2003GL018793, 2004.
- Brenninkmeijer, C. A. M., Crutzen, P., Boumard, F., Dauer, T., Dix, B., Ebinghaus, R., Filippi, D., Fischer, H., Franke, H., Frieß, U., Heintzenberg, J., Helleis, F., Hermann, M., Kock, H. H., Koepfel, C., Lelieveld, J., Leuenberger, M., Martinsson, B. G., Miemczyk, S., Moret, H. P., Nguyen, H. N., Nyfeler, P., Oram, D., O’Sullivan, D., Penkett, S., Platt, U., Pucek, M., Ramonet, M., Randa, B., Reichelt, M., Rhee, T. S., Rohwer, J., Rosenfeld, K., Scharffe, D., Schlager, H., 30 Schumann, U., Slemr, F., Sprung, D., Stock, P., Thaler, R., Valentino, F., van Velthoven, P., Waibel, A., Wandel, A., Waschitschek, K., Wiedensohler, A., Xueref-Remy, I., Zahn, A., Zech, U. and Ziereis, H.: Civil Aircraft for the regular investigation of the atmosphere based on an instrumented container: The new CARIBIC system, *Atmos. Chem. Phys.*, 7(18), 4953–4976, doi:10.5194/acp-7-4953-2007, 2007.

- Brioude, J., Kim, S.-W., Angevine, W. M., Frost, G. J., Lee, S.-H., McKeen, S. A., Trainer, M., Fehsenfeld, F. C., Holloway, J. S., Ryerson, T. B., Williams, E. J., Petron, G. and Fast, J. D.: Top-down estimate of anthropogenic emission inventories and their interannual variability in Houston using a mesoscale inverse modeling technique, *J. Geophys. Res.*, 116, D20305, doi:10.1029/2011JD016215, 2011.
- 5 Brioude, J., Angevine, W. M., Ahmadov, R., Kim, S.-W., Evan, S., McKeen, S. A., Hsie, E.-Y., Frost, G. J., Neuman, J. A., Pollack, I. B., Peischl, J., Ryerson, T. B., Holloway, J., Brown, S. S., Nowak, J. B., Roberts, J. M., Wofsy, S. C., Santoni, G. W., Oda, T. and Trainer, M.: Top-down estimate of surface flux in the Los Angeles Basin using a mesoscale inverse modeling technique: assessing anthropogenic emissions of CO, NO_x and CO₂ and their impacts, *Atmos. Chem. Phys.*, 13(7), 3661–3677, doi:10.5194/acp-13-3661-2013, 2013.
- 10 Brito, J.: A Lightweight High-sensitivity Chemical Mass Spectrometer for Organic Compounds, Ph.D. thesis, Karlsruhe Institute for Technology (KIT), 2012.
- Calvert, J., Derwent, R., Orlando, J., Tyndall, G. and Wallington, T.: Mechanisms of Atmospheric Oxidation of the Alkanes. By Jack G. Calvert et al., *Angew. Chemie Int. Ed.*, 48(28), doi:10.1002/anie.200901202, 2009.
- Cantrell, C. A.: Technical Note: Review of methods for linear least-squares fitting of data and application to atmospheric chemistry problems, *Atmos. Chem. Phys.*, 8(17), 5477–5487, doi:10.5194/acp-8-5477-2008, 2008.
- 15 Coheur, P.-F., Herbin, H., Clerbaux, C., Hurtmans, D., Wespes, C., Carleer, M., Turquety, S., Rinsland, C. P., Remedios, J., Hauglustaine, D., Boone, C. D. and Bernath, P. F.: ACE-FTS observation of a young biomass burning plume: first reported measurements of C₂H₄, C₃H₆O, H₂CO and PAN by infrared occultation from space, *Atmos. Chem. Phys.*, 7(20), 5437–5446, doi:10.5194/acp-7-5437-2007, 2007.
- 20 Diehl, T., Heil, A., Chin, M., Pan, X., Streets, D., Schultz, M. and Kinne, S.: Anthropogenic, biomass burning, and volcanic emissions of black carbon, organic carbon, and SO₂ from 1980 to 2010 for hindcast model experiments, *Atmos. Chem. Phys. Discuss.*, 12(9), 24895–24954, doi:10.5194/acpd-12-24895-2012, 2012.
- Dixon, J. L., Beale, R. and Nightingale, P. D.: Production of methanol, acetaldehyde, and acetone in the Atlantic Ocean, *Geophys. Res. Lett.*, 40(17), 4700–4705, doi:10.1002/grl.50922, 2013.
- 25 Dufour, G., Szopa, S., Harrison, J. J., Boone, C. D. and Bernath, P. F.: Seasonal variations of acetone in the upper troposphere–lower stratosphere of the northern midlatitudes as observed by ACE-FTS, *J. Mol. Spectrosc.*, 323, 67–77, doi:10.1016/j.jms.2016.02.006, 2016.
- Duncan, B. N., Logan, J. A., Bey, I., Megretskaia, I. A., Yantosca, R. M., Novelli, P. C., Jones, N. B. and Rinsland, C. P.: Global budget of CO, 1988–1997: Source estimates and validation with a global model, *J. Geophys. Res. Atmos.*, 112, D22301, doi:10.1029/2007JD008459, 2007.
- 30 Elias, T., Szopa, S., Zahn, A., Schuck, T., Brenninkmeijer, C., Sprung, D. and Slemr, F.: Acetone variability in the upper troposphere: analysis of CARIBIC observations and LMDz-INCA chemistry-climate model simulations, *Atmos. Chem. Phys.*, 11(15), 8053–8074, doi:10.5194/acp-11-8053-2011, 2011.

- Everitt, B. S. and Hand, D. J.: *Mixtures of normal distributions* BT - *Finite Mixture Distributions*, Springer Netherlands, Dordrecht, 1981.
- Fischer, E. V., Jacob, D. J., Millet, D. B., Yantosca, R. M. and Mao, J.: The role of the ocean in the global atmospheric budget of acetone, *Geophys. Res. Lett.*, 39, L01807, doi:10.1029/2011GL050086, 2012.
- 5 Fischer, E. V., Jacob, D. J., Yantosca, R. M., Sulprizio, M. P., Millet, D. B., Mao, J., Paulot, F., Singh, H. B., Roiger, A., Ries, L., Talbot, R. W., Dzepina, K. and Pandey Deolal, S.: Atmospheric peroxyacetyl nitrate (PAN): a global budget and source attribution, *Atmos. Chem. Phys.*, 14(5), 2679–2698, doi:10.5194/acp-14-2679-2014, 2014.
- Folkens, I. and Chatfield, R.: Impact of acetone on ozone production and OH in the upper troposphere at high NO_x, *J. Geophys. Res. Atmos.*, 105(D9), 11585–11599, doi:10.1029/2000JD900067, 2000.
- 10 de Gouw, J. A. and Warneke, C.: Measurements of volatile organic compounds in the earth's atmosphere using proton-transfer-reaction mass spectrometry, *Mass Spectrom. Rev.*, 26(2), 223–257, doi:10.1002/mas.20119, 2007.
- de Gouw, J. A., Warneke, C., Scheeren, H. A., van der Veen, C., Bolder, M., Scheele, M. P., Williams, J., Wong, S., Lange, L., Fischer, H. and Lelieveld, J.: Overview of the trace gas measurements on board the Citation aircraft during the intensive field phase of INDOEX, *J. Geophys. Res. Atmos.*, 106(D22), 28453–28467, doi:10.1029/2000JD900810, 2001.
- 15 de Gouw, J. A., Goldan, P. D., Warneke, C., Kuster, W. C., Roberts, J. M., Marchewka, M., Bertman, S. B., Pszenny, A. A. P. and Keene, W. C.: Validation of proton transfer reaction-mass spectrometry (PTR-MS) measurements of gas-phase organic compounds in the atmosphere during the New England Air Quality Study (NEAQS) in 2002, *J. Geophys. Res. Atmos.*, 108(D21), 4682, doi:10.1029/2003JD003863, 2003.
- Granier, C., Bessagnet, B., Bond, T., D'Angiola, A., van der Gon, H., Frost, G. J., Heil, A., Kaiser, J. W., Kinne, S., 20 Klimont, Z., Kloster, S., Lamarque, J.-F., Liousse, C., Masui, T., Meleux, F., Mieville, A., Ohara, T., Raut, J.-C., Riahi, K., Schultz, M. G., Smith, S. J., Thompson, A., Aardenne, J., Werf, G. R. and Vuuren, D. P.: Evolution of anthropogenic and biomass burning emissions of air pollutants at global and regional scales during the 1980–2010 period, *Clim. Change*, 109(1), 163–190, doi:10.1007/s10584-011-0154-1, 2011.
- Granier, C., Boulanger, D., D'Angiola, A., Darras, S., Liousse, C., Marlière, J.-F., Miéville, A., Paulin, M., Pignot, V. and 25 Zemankova, K.: Access to Emissions Distributions and Related Ancillary Data through the ECCAD database, in *EGU General Assembly Conference Abstracts*, vol. 15, p. 10593, 2013.
- Greenberg, J. P., Friedli, H., Guenther, A. B., Hanson, D., Harley, P. and Karl, T.: Volatile organic emissions from the distillation and pyrolysis of vegetation, *Atmos. Chem. Phys.*, 6(1), 81–91, doi:10.5194/acp-6-81-2006, 2006.
- Guenther, A. B., Jiang, X., Heald, C. L., Sakulyanontvittaya, T., Duhl, T., Emmons, L. K. and Wang, X.: The Model of 30 Emissions of Gases and Aerosols from Nature version 2.1 (MEGAN2.1): an extended and updated framework for modeling biogenic emissions, *Geosci. Model Dev.*, 5(6), 1471–1492, doi:10.5194/gmd-5-1471-2012, 2012.
- Hansel, A. and Wisthaler, A.: A method for real-time detection of PAN, PPN and MPAN in ambient air, *Geophys. Res. Lett.*, 27(6), 895–898, doi:10.1029/1999GL010989, 2000.

- Harley, P., Fridd-Stroud, V., Greenberg, J., Guenther, A. and Vasconcellos, P.: Emission of 2-methyl-3-buten-2-ol by pines: A potentially large natural source of reactive carbon to the atmosphere, *J. Geophys. Res. Atmos.*, 103(D19), 25479–25486, doi:10.1029/98JD00820, 1998.
- Harrison, J. J., Humpage, N., Allen, N. D. C., Waterfall, A. M., Bernath, P. F. and Remedios, J. J.: Mid-infrared absorption cross sections for acetone (propanone), *J. Quant. Spectrosc. Radiat. Transf.*, 112(3), 457–464, doi:10.1016/j.jqsrt.2010.09.002, 2011.
- Holton, J. R., Haynes, P. H., McIntyre, M. E., Douglass, A. R., Rood, R. B. and Pfister, L.: Stratosphere-troposphere exchange, *Rev. Geophys.*, 33(4), 403, doi:10.1029/95RG02097, 1995.
- Holzinger, R., Warneke, C., Hansel, A., Jordan, A., Lindinger, W., Scharffe, D. H., Schade, G. and Crutzen, P. J.: Biomass burning as a source of formaldehyde, acetaldehyde, methanol, acetone, acetonitrile, and hydrogen cyanide, *Geophys. Res. Lett.*, 26(8), 1161–1164, doi:10.1029/1999GL900156, 1999.
- Holzinger, R., Williams, J., Salisbury, G., Klüpfel, T., de Reus, M., Traub, M., Crutzen, P. J. and Lelieveld, J.: Oxygenated compounds in aged biomass burning plumes over the Eastern Mediterranean: evidence for strong secondary production of methanol and acetone, *Atmos. Chem. Phys.*, 5(1), 39–46, doi:10.5194/acp-5-39-2005, 2005.
- Hoskins, B. J., McIntyre, M. E. and Robertson, A. W.: On the use and significance of isentropic potential vorticity maps, *Q. J. R. Meteorol. Soc.*, 111(470), 877–946, doi:10.1002/qj.49711147002, 1985.
- Hu, L., Millet, D. B., Kim, S. Y., Wells, K. C., Griffis, T. J., Fischer, E. V., Helmig, D., Hueber, J. and Curtis, A. J.: North American acetone sources determined from tall tower measurements and inverse modeling, *Atmos. Chem. Phys.*, 13(6), 3379–3392, doi:10.5194/acp-13-3379-2013, 2013.
- Hudman, R. C., Murray, L. T., Jacob, D. J., Millet, D. B., Turquety, S., Wu, S., Blake, D. R., Goldstein, A. H., Holloway, J. and Sachse, G. W.: Biogenic versus anthropogenic sources of CO in the United States, *Geophys. Res. Lett.*, 35, L04801, doi:10.1029/2007GL032393, 2008.
- Hurvich, C. M. and Tsai, C.-L.: Regression and time series model selection in small samples, *Biometrika*, 76(2), 297–307, doi:10.1093/biomet/76.2.297, 1989.
- Jacob, D. J., Field, B. D., Jin, E. M., Bey, I., Li, Q., Logan, J. A., Yantosca, R. M. and Singh, H. B.: Atmospheric budget of acetone, *J. Geophys. Res. Atmos.*, 107(D10), 4100, doi:10.1029/2001JD000694, 2002.
- Jaffe, D., Anderson, T., Covert, D., Kotchenruther, R., Trost, B., Danielson, J., Simpson, W., Berntsen, T., Karlsdottir, S., Blake, D., Harris, J., Carmichael, G. and Uno, I.: Transport of Asian air pollution to North America, *Geophys. Res. Lett.*, 26(6), 711–714, doi:10.1029/1999GL900100, 1999.
- Kaiser, J. W., Heil, A., Andreae, M. O., Benedetti, A., Chubarova, N., Jones, L., Morcrette, J.-J., Razinger, M., Schultz, M. G., Suttie, M. and van der Werf, G. R.: Biomass burning emissions estimated with a global fire assimilation system based on observed fire radiative power, *Biogeosciences*, 9(1), 527–554, doi:10.5194/bg-9-527-2012, 2012.
- Karl, T.: Exchange processes of volatile organic compounds above a tropical rain forest: Implications for modeling tropospheric chemistry above dense vegetation, *J. Geophys. Res.*, 109(D18), D18306, doi:10.1029/2004JD004738, 2004.

- Khan, M. A. H., Cooke, M. C., Utembe, S. R., Archibald, A. T., Maxwell, P., Morris, W. C., Xiao, P., Derwent, R. G., Jenkin, M. E., Percival, C. J., Walsh, R. C., Young, T. D. S., Simmonds, P. G., Nickless, G., O'Doherty, S. and Shallcross, D. E.: A study of global atmospheric budget and distribution of acetone using global atmospheric model STOCHEM-CRI, *Atmos. Environ.*, 112, 269–277, doi:10.1016/j.atmosenv.2015.04.056, 2015.
- 5 Kim, S., Karl, T., Guenther, A., Tyndall, G., Orlando, J., Harley, P., Rasmussen, R. and Apel, E.: Emissions and ambient distributions of Biogenic Volatile Organic Compounds (BVOC) in a ponderosa pine ecosystem: interpretation of PTR-MS mass spectra, *Atmos. Chem. Phys.*, 10(4), 1759–1771, doi:10.5194/acp-10-1759-2010, 2010.
- Kim, S. Y., Millet, D. B., Hu, L., Mohr, M. J., Griffis, T. J., Wen, D., Lin, J. C., Miller, S. M. and Longo, M.: Constraints on carbon monoxide emissions based on tall tower measurements in the US Upper Midwest, *Environ. Sci. Technol.*, 47(15),
10 8316–24, doi:10.1021/es4009486, 2013.
- de Laat, A. T. J., de Gouw, J. A., Lelieveld, J. and Hansel, A.: Model analysis of trace gas measurements and pollution impact during INDOEX, *J. Geophys. Res. Atmos.*, 106(D22), 28469–28480, doi:10.1029/2000JD900821, 2001.
- Lai, S. C., Baker, A. K., Schuck, T. J., Slemr, F., Brenninkmeijer, C. A. M., van Velthoven, P., Oram, D. E., Zahn, A. and Ziereis, H.: Characterization and source regions of 51 high-CO events observed during Civil Aircraft for the Regular
15 Investigation of the Atmosphere Based on an Instrument Container (CARIBIC) flights between south China and the Philippines, 2005–2008, *J. Geophys. Res.*, 116, D20308, doi:10.1029/2011JD016375, 2011.
- Lamarque, J.-F., Bond, T. C., Eyring, V., Granier, C., Heil, A., Klimont, Z., Lee, D., Liousse, C., Mieville, A., Owen, B., Schultz, M. G., Shindell, D., Smith, S. J., Stehfest, E., Van Aardenne, J., Cooper, O. R., Kainuma, M., Mahowald, N., McConnell, J. R., Naik, V., Riahi, K. and van Vuuren, D. P.: Historical (1850–2000) gridded anthropogenic and biomass
20 burning emissions of reactive gases and aerosols: methodology and application, *Atmos. Chem. Phys.*, 10(15), 7017–7039, doi:10.5194/acp-10-7017-2010, 2010.
- Langford, B., Misztal, P. K., Nemitz, E., Davison, B., Helfter, C., Pugh, T. A. M., MacKenzie, A. R., Lim, S. F. and Hewitt, C. N.: Fluxes and concentrations of volatile organic compounds from a South-East Asian tropical rainforest, *Atmos. Chem. Phys.*, 10(17), 8391–8412, doi:10.5194/acp-10-8391-2010, 2010.
- 25 Lee, M., Heikes, B. G., Jacob, D. J., Sachse, G. and Anderson, B.: Hydrogen peroxide, organic hydroperoxide, and formaldehyde as primary pollutants from biomass burning, *J. Geophys. Res. Atmos.*, 102(D1), 1301–1309, doi:10.1029/96JD01709, 1997.
- Lefer, B. L., Talbot, R. W., Harriss, R. H., Bradshaw, J. D., Sandholm, S. T., Olson, J. O., Sachse, G. W., Collins, J., Shipham, M. A., Blake, D. R., Klemm, K. I., Klemm, O., Gorzelska, K. and Barrick, J.: Enhancement of acidic gases in
30 biomass burning impacted air masses over Canada, *J. Geophys. Res.*, 99(D1), 1721, doi:10.1029/93JD02091, 1994.

- 5 Lelieveld, J., Crutzen, P. J., Ramanathan, V., Andreae, M. O., Brenninkmeijer, C. A. M., Campos, T., Cass, G. R., Dickerson, R. R., Fischer, H., de Gouw, J. A., Hansel, A., Jefferson, A., Kley, D., de Laat, A. T. J., Lal, S., Lawrence, M. G., Lobert, J. M., Mayol-Bracero, O. L., Mitra, A. P., Novakov, T., Oltmans, S. J., Prather, K. A., Reiner, T., Rodhe, H., Scheeren, H. A., Sikka, D. and Williams, J.: The Indian Ocean Experiment: Widespread Air Pollution from South and Southeast Asia, *Science* (80-.), 291(5506), 1031–1036, doi:10.1126/science.1057103, 2001.
- Lelieveld, J., Evans, J. S., Fnais, M., Giannadaki, D. and Pozzer, A.: The contribution of outdoor air pollution sources to premature mortality on a global scale, *Nature*, 525(7569), 367–371, 2015.
- Lewis, A. C., Evans, M. J., Hopkins, J. R., Punjabi, S., Read, K. A., Purvis, R. M., Andrews, S. J., Moller, S. J., Carpenter, L. J., Lee, J. D., Rickard, A. R., Palmer, P. I. and Parrington, M.: The influence of biomass burning on the global distribution of selected non-methane organic compounds, *Atmos. Chem. Phys.*, 13(2), 851–867, doi:10.5194/acp-13-851-2013, 2013.
- 10 Li, J., Georgescu, M., Hyde, P., Mahalov, A. and Moustouli, M.: Regional-scale transport of air pollutants: impacts of Southern California emissions on Phoenix ground-level ozone concentrations, *Atmos. Chem. Phys.*, 15(16), 9345–9360, doi:10.5194/acp-15-9345-2015, 2015.
- 15 Li, M., Zhang, Q., Kurokawa, J., Woo, J.-H., He, K. B., Lu, Z., Ohara, T., Song, Y., Streets, D. G., Carmichael, G. R., Cheng, Y. F., Hong, C. P., Huo, H., Jiang, X. J., Kang, S. C., Liu, F., Su, H. and Zheng, B.: MIX: a mosaic Asian anthropogenic emission inventory for the MICS-Asia and the HTAP projects, *Atmos. Chem. Phys. Discuss.*, 15(23), 34813–34869, doi:10.5194/acpd-15-34813-2015, 2015.
- Lindinger, W., Hansel, A. and Jordan, A.: On-line monitoring of volatile organic compounds at pptv levels by means of proton-transfer-reaction mass spectrometry (PTR-MS) medical applications, food control and environmental research, *Int. J. Mass Spectrom. Ion Process.*, 173(3), 191–241, doi:10.1016/S0168-1176(97)00281-4, 1998.
- 20 Madronich, S. and Flocke, S.: The Role of Solar Radiation in Atmospheric Chemistry, in *Environmental Photochemistry*, edited by P. Boule, Springer Berlin Heidelberg, Berlin, Heidelberg, pp. 1–26, 1999.
- Madronich, S., Flocke, F., Zeng, J., Petropavlovskikh, I. and Lee-Taylor, J.: Tropospheric Ultraviolet-Visible Model (TUV), version 5.0, NCAR/ACD, 2010.
- 25 Marandino, C. A.: Oceanic uptake and the global atmospheric acetone budget, *Geophys. Res. Lett.*, 32, L15806, doi:10.1029/2005GL023285, 2005.
- Mauzerall, D. L., Logan, J. A., Jacob, D. J., Anderson, B. E., Blake, D. R., Bradshaw, J. D., Heikes, B., Sachse, G. W., Singh, H. and Talbot, B.: Photochemistry in biomass burning plumes and implications for tropospheric ozone over the tropical South Atlantic, *J. Geophys. Res. Atmos.*, 103(D7), 8401–8423, doi:10.1029/97JD02612, 1998.
- 30 McKeen, S. A. and Liu, S. C.: Hydrocarbon ratios and photochemical history of air masses, *Geophys. Res. Lett.*, 20(21), 2363–2366, doi:10.1029/93GL02527, 1993.

- McKeen, S. A., Liu, S. C., Hsie, E.-Y., Lin, X., Bradshaw, J. D., Smyth, S., Gregory, G. L. and Blake, D. R.: Hydrocarbon ratios during PEM-WEST A: A model perspective, *J. Geophys. Res. Atmos.*, 101(D1), 2087–2109, doi:10.1029/95JD02733, 1996.
- McKeen, S. A., Gierczak, T., Burkholder, J. B., Wennberg, P. O., Hanisco, T. F., Keim, E. R., Gao, R.-S., Liu, S. C.,
5 Ravishankara, A. R. and Fahey, D. W.: The photochemistry of acetone in the upper troposphere: A source of odd-hydrogen radicals, *Geophys. Res. Lett.*, 24(24), 3177–3180, doi:10.1029/97GL03349, 1997.
- McLachlan, G. and Peel, D.: *Finite Mixture Models*, John Wiley & Sons, Inc., 2000.
- Miyoshi, A., Hatakeyama, S. and Washida, N.: OH radical- initiated photooxidation of isoprene: An estimate of global CO production, *J. Geophys. Res.*, 99(D9), 18779, doi:10.1029/94JD01334, 1994.
- 10 Moore, D. P., Remedios, J. J. and Waterfall, A. M.: Global distributions of acetone in the upper troposphere from MIPAS spectra, *Atmos. Chem. Phys.*, 12(2), 757–768, doi:10.5194/acp-12-757-2012, 2012.
- Neumaier, M., Ruhnke, R., Kirner, O., Ziereis, H., Stratmann, G., Brenninkmeijer, C. A. M. and Zahn, A.: Impact of acetone (photo)oxidation on HO_x production in the UT/LMS based on CARIBIC passenger aircraft observations and EMAC simulations, *Geophys. Res. Lett.*, 41(9), 3289–3297, doi:10.1002/2014GL059480, 2014.
- 15 Novelli, P. C.: Reanalysis of tropospheric CO trends: Effects of the 1997–1998 wildfires, *J. Geophys. Res.*, 108(D15), 4464, doi:10.1029/2002JD003031, 2003.
- Ohara, T., Akimoto, H., Kurokawa, J., Horii, N., Yamaji, K., Yan, X. and Hayasaka, T.: An Asian emission inventory of anthropogenic emission sources for the period 1980–2020, *Atmos. Chem. Phys.*, 7(16), 4419–4444, doi:10.5194/acp-7-4419-2007, 2007.
- 20 Osman, M. K., Tarasick, D. W., Liu, J., Moeini, O., Thouret, V., Fioletov, V. E., Parrington, M. and Nédélec, P.: Carbon monoxide climatology derived from the trajectory mapping of global MOZAIC-IAGOS data, *Atmos. Chem. Phys.*, 16(15), 10263–10282, doi:10.5194/acp-16-10263-2016, 2016.
- Passant, N. R.: *Speciation of UK emissions of non-methane volatile organic compounds*, 2002.
- Petetin, H., Thouret, V., Fontaine, A., Sauvage, B., Athier, G., Blot, R., Boulanger, D., Cousin, J.-M. and Nedelec, P.:
25 Characterizing tropospheric ozone and CO around Frankfurt between 1994–2012 based on MOZAIC-IAGOS aircraft measurements, *Atmos. Chem. Phys. Discuss.*, 15(17), 23841–23891, doi:10.5194/acpd-15-23841-2015, 2015.
- Petzold, A., Thouret, V., Gerbig, C., Zahn, A., Brenninkmeijer, C. A. M., Gallagher, M., Hermann, M., Pontaud, M., Ziereis, H., Boulanger, D., Marshall, J., Nédélec, P., Smit, H. G. J., Friess, U., Flaud, J.-M., Wahner, A., Cammas, J.-P. and Volz-Thomas, A.: Global-scale atmosphere monitoring by in-service aircraft - current achievements and future prospects of the
30 European Research Infrastructure IAGOS, *Tellus B*, 67, 1–24, doi:10.3402/tellusb.v67.28452, 2015.
- Pöschl, U., Williams, J., Hoor, P., Fischer, H., Crutzen, P. J., Warneke, C., Holzinger, R., Hansel, A., Jordan, A., Lindinger, W., Scheeren, H. A., Peters, W. and Lelieveld, J.: High Acetone Concentrations throughout the 0-12 km Altitude Range over the Tropical Rainforest in Surinam, *J. Atmos. Chem.*, 38(2), 115–132, doi:10.1023/A:1006370600615, 2001.

- Pozzer, A., Pollmann, J., Taraborrelli, D., Jöckel, P., Helmig, D., Tans, P., Hueber, J. and Lelieveld, J.: Observed and simulated global distribution and budget of atmospheric C₂-C₅ alkanes, *Atmos. Chem. Phys.*, 10(9), 4403–4422, doi:10.5194/acp-10-4403-2010, 2010.
- Reiner, T., Sprung, D., Jost, C., Gabriel, R., Mayol-Bracero, O. L., Andreae, M. O., Campos, T. L. and Shelter, R. E.:
5 Chemical characterization of pollution layers over the tropical Indian Ocean: Signatures of emissions from biomass and fossil fuel burning, *J. Geophys. Res. Atmos.*, 106(D22), 28497–28510, doi:10.1029/2000JD900695, 2001.
- de Reus, M., Fischer, H., Arnold, F., de Gouw, J. A., Holzinger, R., Warneke, C. and Williams, J.: On the relationship between acetone and carbon monoxide in different air masses, *Atmos. Chem. Phys.*, 3(5), 1709–1723, doi:10.5194/acp-3-1709-2003, 2003.
- 10 Sakamoto, K. M., Allan, J. D., Coe, H., Taylor, J. W., Duck, T. J. and Pierce, J. R.: Aged boreal biomass-burning aerosol size distributions from BORTAS 2011, *Atmos. Chem. Phys.*, 15(4), 1633–1646, doi:10.5194/acp-15-1633-2015, 2015.
- Schade, G. W. and Goldstein, A. H.: Seasonal measurements of acetone and methanol: Abundances and implications for atmospheric budgets, *Global Biogeochem. Cycles*, 20, GB1011, doi:10.1029/2005GB002566, 2006.
- Scharffe, D., Slemr, F., Brenninkmeijer, C. A. M. and Zahn, A.: Carbon monoxide measurements onboard the CARIBIC
15 passenger aircraft using UV resonance fluorescence, *Atmos. Meas. Tech.*, 5(7), 1753–1760, doi:10.5194/amt-5-1753-2012, 2012.
- Simpson, I. J., Akagi, S. K., Barletta, B., Blake, N. J., Choi, Y., Diskin, G. S., Fried, A., Fuelberg, H. E., Meinardi, S., Rowland, F. S., Vay, S. A., Weinheimer, A. J., Wennberg, P. O., Wiebring, P., Wisthaler, A., Yang, M., Yokelson, R. J. and Blake, D. R.: Boreal forest fire emissions in fresh Canadian smoke plumes: C₁-C₁₀ volatile organic compounds
20 (VOCs), CO₂, CO, NO₂, NO, HCN and CH₃CN, *Atmos. Chem. Phys.*, 11(13), 6445–6463, doi:10.5194/acp-11-6445-2011, 2011.
- Sindelarova, K., Granier, C., Bouarar, I., Guenther, A., Tilmes, S., Stavrou, T., Müller, J.-F., Kuhn, U., Stefani, P. and Knorr, W.: Global data set of biogenic VOC emissions calculated by the MEGAN model over the last 30 years, *Atmos. Chem. Phys.*, 14(17), 9317–9341, doi:10.5194/acp-14-9317-2014, 2014.
- 25 Singh, H. B., Salas, L. J. and Viezee, W.: Global distribution of peroxyacetyl nitrate, *Nature*, 321(6070), 588–591, 1986.
- Singh, H. B., Herlth, D., O’Hara, D., Zahnle, K., Bradshaw, J. D., Sandholm, S. T., Talbot, R., Crutzen, P. J. and Kanakidou, M.: Relationship of peroxyacetyl nitrate to active and total odd nitrogen at northern high latitudes: Influence of reservoir species on NO_x and O₃, *J. Geophys. Res.*, 97(D15), 16523, doi:10.1029/91JD00890, 1992.
- Singh, H. B., O’Hara, D., Herlth, D., Sachse, W., Blake, D. R., Bradshaw, J. D., Kanakidou, M. and Crutzen, P. J.: Acetone
30 in the atmosphere: Distribution, sources, and sinks, *J. Geophys. Res.*, 99(D1), 1805, doi:10.1029/93JD00764, 1994.
- Singh, H. B., Kanakidou, M., Crutzen, P. J. and Jacob, D. J.: High concentrations and photochemical fate of oxygenated hydrocarbons in the global troposphere, *Nature*, 378(6552), 50–54, 1995.

- Singh, H. B., Salas, Chatfield, Czech, Fried, Walega, Evans, Field, Jacob, Blake, Heikes, Talbot, Sachse, Crawford, Avery, Sandholm and Fuelberg: Analysis of the atmospheric distribution, sources, and sinks of oxygenated volatile organic chemicals based on measurements over the Pacific during TRACE-P, *J. Geophys. Res.*, 109, D15S07, doi:10.1029/2003JD003883, 2004.
- 5 Singh, H. B., Anderson, B. E., Brune, W. H., Cai, C., Cohen, R. C., Crawford, J. H., Cubison, M. J., Czech, E. P., Emmons, L. and Fuelberg, H. E.: Pollution influences on atmospheric composition and chemistry at high northern latitudes: Boreal and California forest fire emissions, *Atmos. Environ.*, 44(36), 4553–4564, doi:10.1016/j.atmosenv.2010.08.026, 2010.
- Spivakovsky, C. M., Logan, J. A., Montzka, S. A., Balkanski, Y. J., Foreman-Fowler, M., Jones, D. B. A., Horowitz, L. W., Fusco, A. C., Brenninkmeijer, C. A. M., Prather, M. J., Wofsy, S. C. and McElroy, M. B.: Three-dimensional climatological distribution of tropospheric OH: Update and evaluation, *J. Geophys. Res. Atmos.*, 105(D7), 8931–8980, doi:10.1029/1999JD901006, 2000.
- 10 Sprung, D. and Zahn, A.: Acetone in the upper troposphere/lowermost stratosphere measured by the CARIBIC passenger aircraft: Distribution, seasonal cycle, and variability, *J. Geophys. Res.*, 115, D16301, doi:10.1029/2009JD012099, 2010.
- Stein, O., Schultz, M. G., Bouarar, I., Clark, H., Huijnen, V., Gaudel, A., George, M. and Clerbaux, C.: On the wintertime low bias of Northern Hemisphere carbon monoxide found in global model simulations, *Atmos. Chem. Phys.*, 14(17), 9295–9316, doi:10.5194/acp-14-9295-2014, 2014.
- 15 Stiller, G. P., von Clarmann, T., Glatthor, N., Höpfner, M., Kellmann, S., Kimmich, E., Linden, A., Milz, M., Steck, T. and Fischer, H.: Retrieval of Upper Tropospheric Species and Parameters from MIPAS/ENVISAT Data, edited by P. Borrell, P. M. Borrell, J. P. Burrows, and U. Platt, Springer Berlin Heidelberg, Berlin, Heidelberg, pp. 167–180, 2004.
- 20 Stohl, A., James, P., Forster, C., Spichtinger, N., Marengo, A., Thouret, V. and Smit, H. G. J.: An extension of Measurement of Ozone and Water Vapour by Airbus In-service Aircraft (MOZAIC) ozone climatologies using trajectory statistics, *J. Geophys. Res. Atmos.*, 106(D21), 27757–27768, doi:10.1029/2001JD000749, 2001.
- Stohl, A., Eckhardt, S., Forster, C., James, P., Spichtinger, N. and Seibert, P.: A replacement for simple back trajectory calculations in the interpretation of atmospheric trace substance measurements, *Atmos. Environ.*, 36(29), 4635–4648, doi:10.1016/S1352-2310(02)00416-8, 2002.
- 25 Sugiura, N.: Further analysts of the data by akaike' s information criterion and the finite corrections, *Commun. Stat. - Theory Methods*, 7(1), 13–26, doi:10.1080/03610927808827599, 1978.
- Tereszchuk, K. A., González Abad, G., Clerbaux, C., Hadji-Lazaro, J., Hurtmans, D., Coheur, P.-F. and Bernath, P. F.: ACE-FTS observations of pyrogenic trace species in boreal biomass burning plumes during BORTAS, *Atmos. Chem. Phys.*, 13(9), 4529–4541, doi:10.5194/acp-13-4529-2013, 2013.
- 30 Thouret, V., Cammas, J.-P., Sauvage, B., Athier, G., Zbinden, R., Nédélec, P., Simon, P. and Karcher, F.: Tropopause referenced ozone climatology and inter-annual variability (1994–2003) from the MOZAIC programme, *Atmos. Chem. Phys.*, 6(4), 1033–1051, doi:10.5194/acp-6-1033-2006, 2006.

- Turquety, S., Logan, J. A., Jacob, D. J., Hudman, R. C., Leung, F. Y., Heald, C. L., Yantosca, R. M., Wu, S., Emmons, L. K., Edwards, D. P. and Sachse, G. W.: Inventory of boreal fire emissions for North America in 2004: Importance of peat burning and pyroconvective injection, *J. Geophys. Res.*, 112, D12S03, doi:10.1029/2006JD007281, 2007.
- van Velthoven, P. F. J.: Meteorological analysis of CARIBIC by KNMI, 2016.
- 5 Warneke, C., de Gouw, J. A., Kuster, W. C., Goldan, P. D. and Fall, R.: Validation of Atmospheric VOC Measurements by Proton-Transfer- Reaction Mass Spectrometry Using a Gas-Chromatographic Preseparation Method, *Environ. Sci. Technol.*, 37(11), 2494–2501, doi:10.1021/es026266i, 2003.
- Warneke, C., de Gouw, J. A., Stohl, A., Cooper, O. R., Goldan, P. D., Kuster, W. C., Holloway, J. S., Williams, E. J., Lerner, B. M., McKeen, S. A., Trainer, M., Fehsenfeld, F. C., Atlas, E. L., Donnelly, S. G., Stroud, V., Lueb, A. and Kato, S.:
10 Biomass burning and anthropogenic sources of CO over New England in the summer 2004, *J. Geophys. Res. Atmos.*, 111, D23S15, doi:10.1029/2005JD006878, 2006.
- Warneke, C., Roberts, J. M., Veres, P., Gilman, J., Kuster, W. C., Burling, I., Yokelson, R. and de Gouw, J. A.: VOC identification and inter-comparison from laboratory biomass burning using PTR-MS and PIT-MS, *Int. J. Mass Spectrom.*, 303(1), 6–14, doi:10.1016/j.ijms.2010.12.002, 2011.
- 15 Waterfall, A. M., Allen, G., Remedios, J. J. and Sembhi, H.: Infrared remote sensing of organic compounds in the upper troposphere, in *Proceedings of the 2004 Envisat & ERS Symposium (ESA SP-572)*, edited by H. Lacoste and L. Ouwehand, ESA Publications Division, Noordwijk, The Netherlands, 2005.
- van der Werf, G. R., Randerson, J. T., Giglio, L., Collatz, G. J., Kasibhatla, P. S. and Arellano, A. F.: Interannual variability in global biomass burning emissions from 1997 to 2004, *Atmos. Chem. Phys.*, 6(11), 3423–3441, doi:10.5194/acp-6-
20 3423-2006, 2006.
- van der Werf, G. R., Randerson, J. T., Giglio, L., Collatz, G. J., Mu, M., Kasibhatla, P. S., Morton, D. C., DeFries, R. S., Jin, Y. and van Leeuwen, T. T.: Global fire emissions and the contribution of deforestation, savanna, forest, agricultural, and peat fires (1997–2009), *Atmos. Chem. Phys.*, 10(23), 11707–11735, doi:10.5194/acp-10-11707-2010, 2010.
- Williamson, J. H.: Least-squares fitting of a straight line, *Can. J. Phys.*, 46(16), 1845–1847, doi:10.1139/p68-523, 1968.
- 25 Wisthaler, A.: Organic trace gas measurements by PTR-MS during INDOEX 1999, *J. Geophys. Res.*, 107(D19), 8024, doi:10.1029/2001JD000576, 2002.
- Yokelson, R. J., Andreae, M. O. and Akagi, S. K.: Pitfalls with the use of enhancement ratios or normalized excess mixing ratios measured in plumes to characterize pollution sources and aging, *Atmos. Meas. Tech.*, 6(8), 2155–2158, doi:10.5194/amt-6-2155-2013, 2013.
- 30 York, D.: Least-Squares fitting of a straight line, *Can. J. Phys.*, 44(5), 1079–1086, doi:10.1139/p66-090, 1966.
- York, D., Evensen, N. M., Martínez, M. L. and De Basabe Delgado, J.: Unified equations for the slope, intercept, and standard errors of the best straight line, *Am. J. Phys.*, 72(3), 367, doi:10.1119/1.1632486, 2004.
- Zahn, A. and Brenninkmeijer, C. A. : New Directions: A Chemical Tropopause Defined, *Atmos. Environ.*, 37(3), 439–440, doi:10.1016/S1352-2310(02)00901-9, 2003.

- Zahn, A., Brenninkmeijer, C. A. M., Asman, W. A. H., Crutzen, P. J., Heinrich, G., Fischer, H., Cuijpers, J. W. M. and van Velthoven, P. F. J.: Budgets of O₃ and CO in the upper troposphere: CARIBIC passenger aircraft results 1997-2001, *J. Geophys. Res. Atmos.*, 107(D17), 4337, doi:10.1029/2001JD001529, 2002.
- 5 Zahn, A., Brenninkmeijer, C. A. M. and van Velthoven, P. F. J.: Passenger aircraft project CARIBIC 1997–2002, Part I: the extratropical chemical tropopause, *Atmos. Chem. Phys. Discuss.*, 4(1), 1091–1117, doi:10.5194/acpd-4-1091-2004, 2004.
- Zahn, A., Weppner, J., Widmann, H., Schlote-Holubek, K., Burger, B., Kühner, T. and Franke, H.: A fast and precise chemiluminescence ozone detector for eddy flux and airborne application, *Atmos. Meas. Tech.*, 5(2), 363–375, doi:10.5194/amt-5-363-2012, 2012.
- 10 Zbinden, R. M., Thouret, V., Ricaud, P., Carminati, F., Cammas, J.-P. and Nédélec, P.: Climatology of pure tropospheric profiles and column contents of ozone and carbon monoxide using MOZAIC in the mid-northern latitudes (24° N to 50° N) from 1994 to 2009, *Atmos. Chem. Phys.*, 13(24), 12363–12388, doi:10.5194/acp-13-12363-2013, 2013.

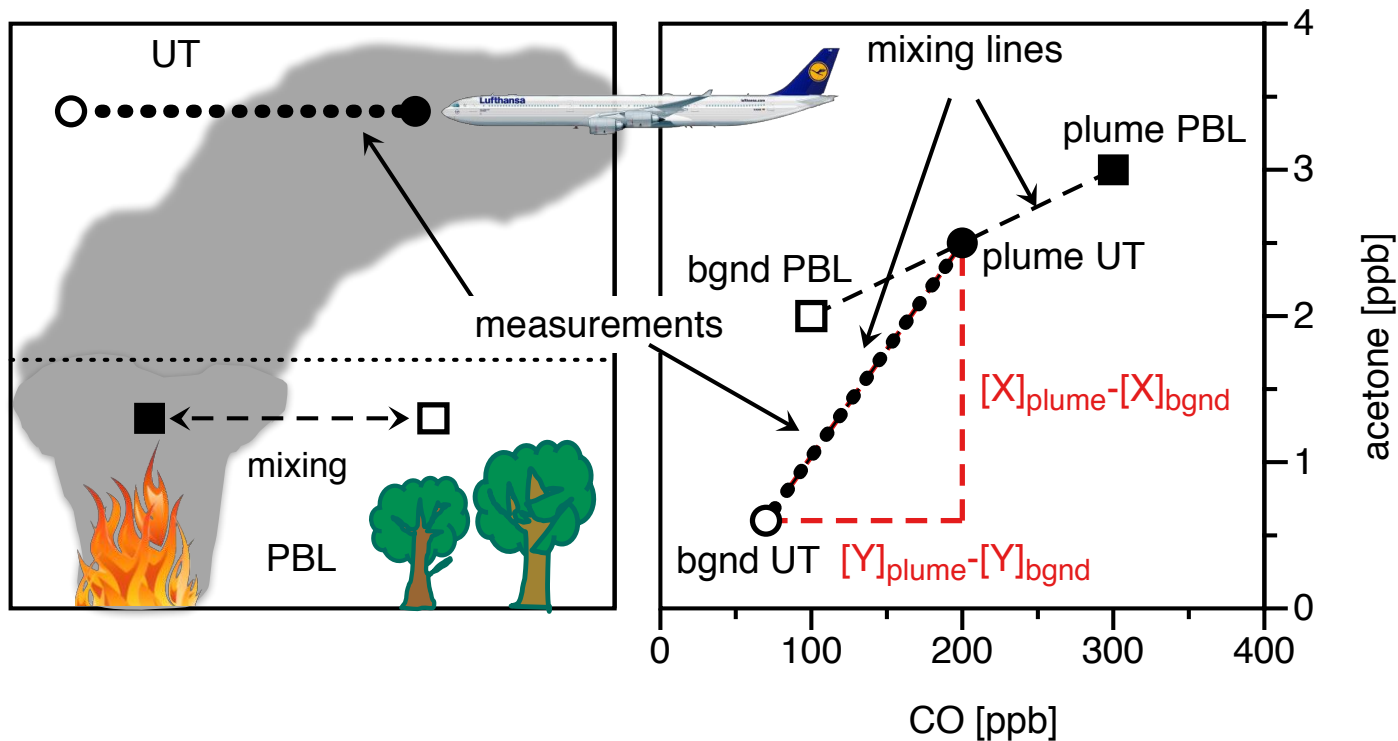


Figure 1: Left: schematic drawing (adapted from Mauzerall et al., 1998) of a biomass burning plume and its transport from the planetary boundary layer (PBL) into the upper troposphere (UT), where sampling takes place. Right: acetone plotted versus CO concentrations. Black filled square (plume PBL): acetone/CO concentration in the fresh plume near the ground, which initially mixes with adjacent background (bgnd) air of the PBL (open square, bgnd PBL). When the resulting plume (full circle) rises into the upper troposphere, the enhancement of acetone and CO are reduced as the plume mixes with background air of the UT (open circle, bgnd UT). In an ideal case, measured concentrations lie on the UT mixing line when the aircraft passes the plume. The slope of the mixing lines, equivalent to EnR (cf. Eq. (1)), may differ considerably in the PBL and the UT.

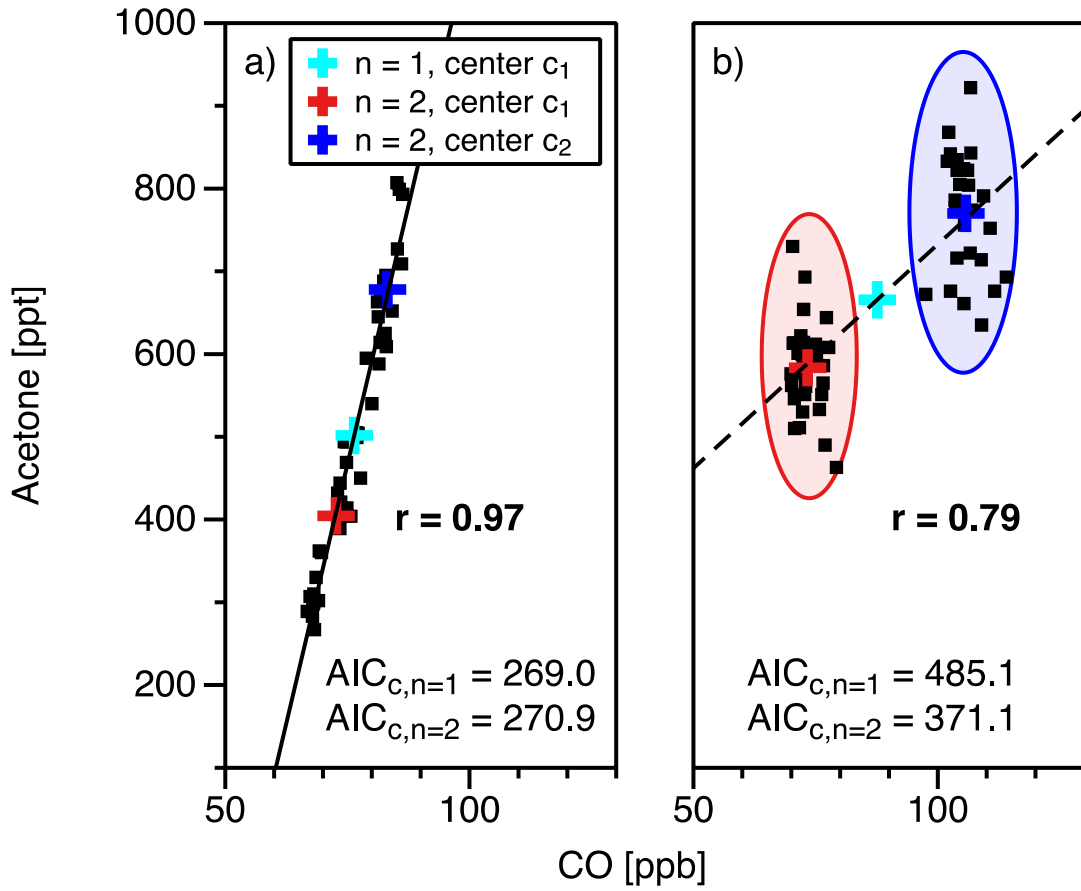


Figure 2: Scatter plots of two exemplary subsets of subsequently measured acetone and CO VMRs. Panel a) shows a subset with highly correlated data ($r = 0.97$) and no visible clustering, which is also confirmed by the cluster analysis ($AIC_{C,n=1} \leq AIC_{C,n=2}$). In Panel b) two distinct clusters are visible and automatically identified by the cluster analysis ($AIC_{C,n=1} > AIC_{C,n=2}$). Although the Pearson's correlation coefficient indicates a good correlation ($r = 0.79$), this subset is rejected for determination of EnR.

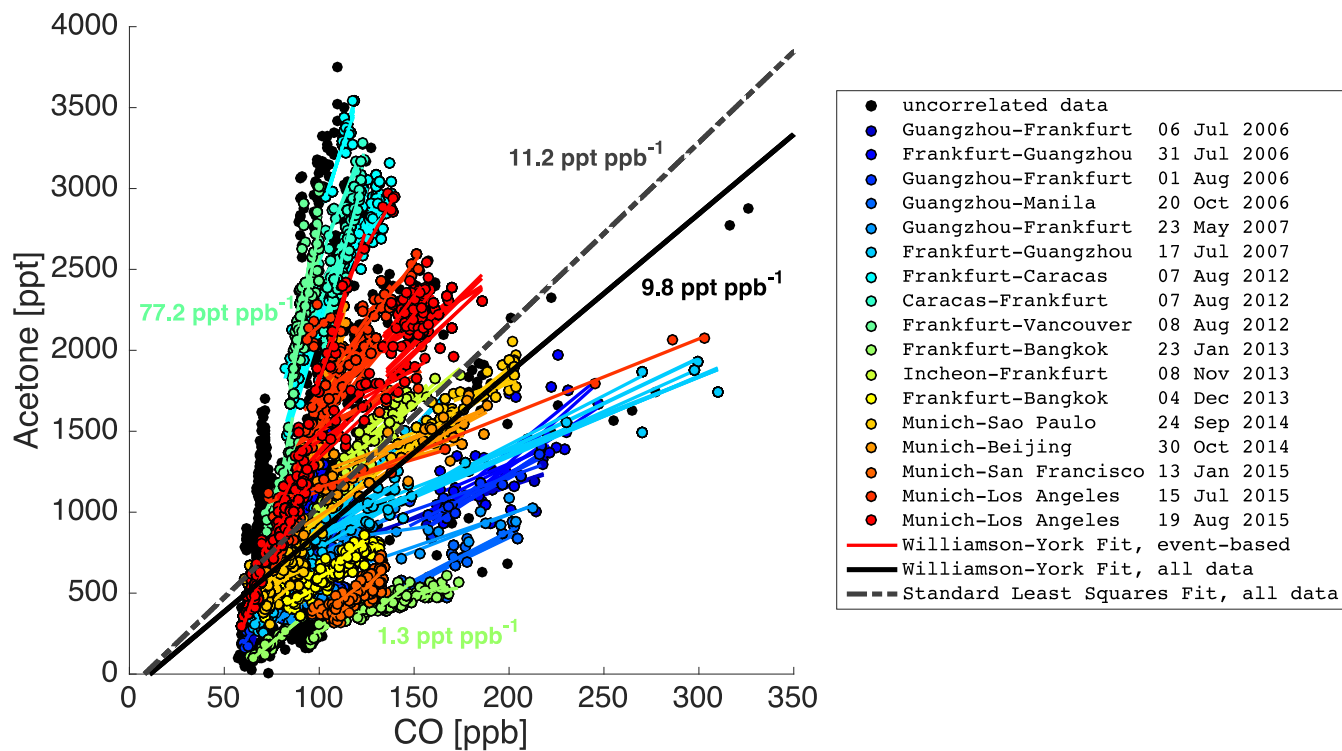


Figure 3: Scatter plot of tropospheric acetone and CO data of 17 selected CARIBIC flights. Detected correlations are shown as regression lines plotted in the range of the underlying data. Colorcoding denotes to which flight data and correlations belong to. Data, which did not fall into our event-based correlation criteria, are shown as filled black circles regardless of their flight affiliation. The solid black and the grey dashed line represent the results of a Williamson-York fit (EnR: 9.8 ppt ppb⁻¹) and of a standard least-squares fit (EnR: 11.2 ppt ppb⁻¹), respectively, applied to all data of the 17 flights. The minimum, mean and maximum value of the event-based EnRs are 1.3, 18.6 and 77.2 respectively (all values in ppt ppb⁻¹).

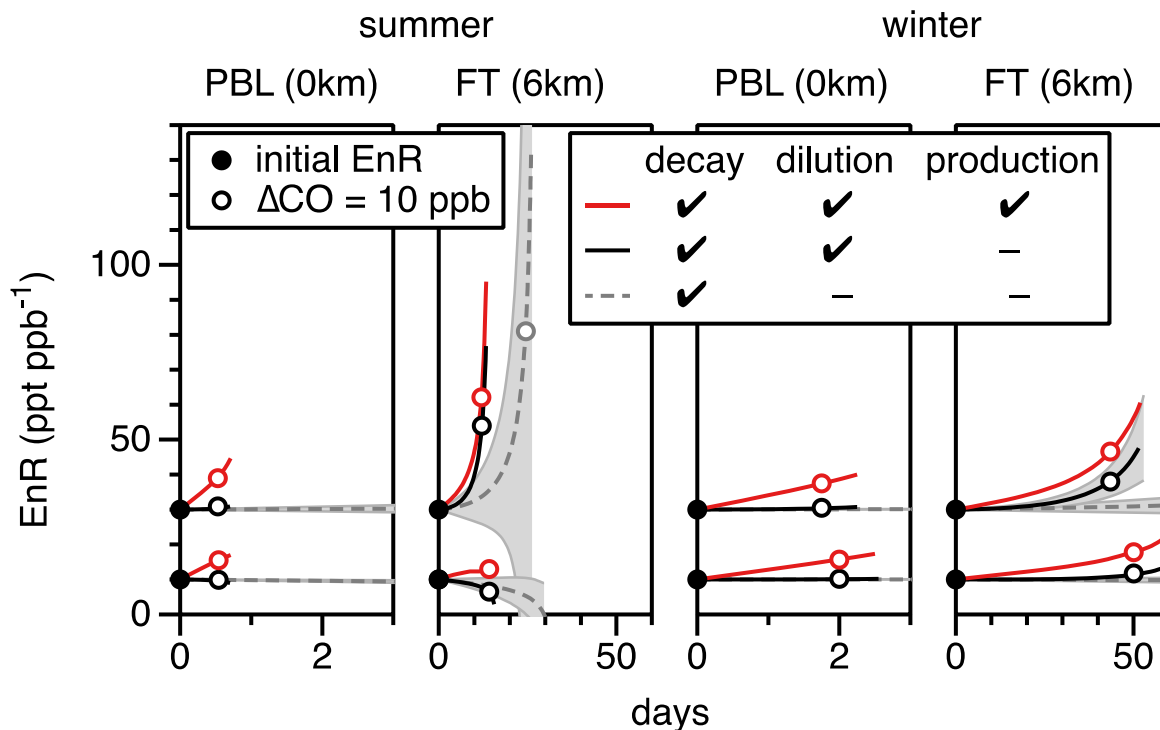


Figure 34: Evolution of acetone-CO enhancement ratios (EnRs) in the mid-latitude planetary boundary layer (PBL) and free troposphere (FT) for summer and winter in the Northern Hemisphere calculated numerically (full equation including production term). In the grey dashed lines, only chemical decay of acetone and CO is considered. In the solid black lines dilution is considered in addition. The red lines represent the EnR evolution if acetone is additionally produced by the oxidation of propane. **For selected curves, the range of uncertainty is exemplarily shown in light grey color.** The terminating condition for the EnR calculation is a CO enhancement of 5 ppb. The open circles indicate an CO enhancement of 10 ppb. The underlying rates and concentrations are given in Table 5.

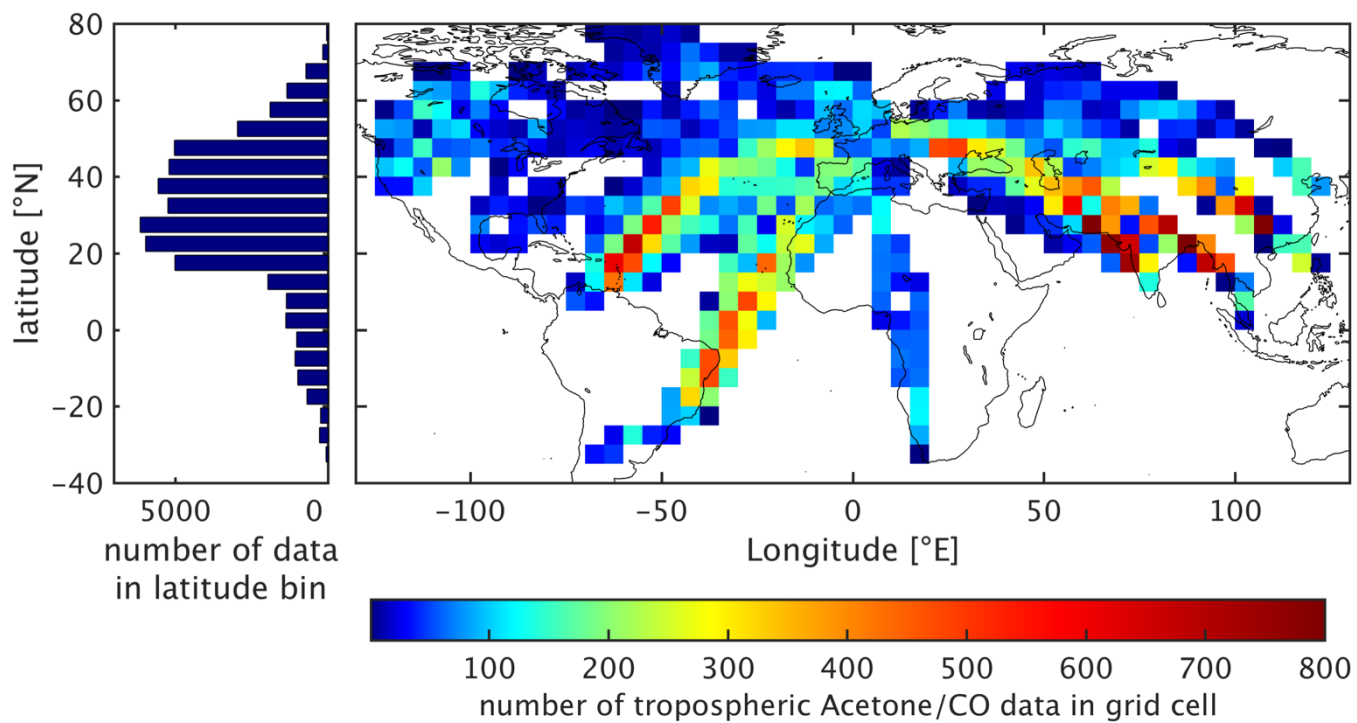
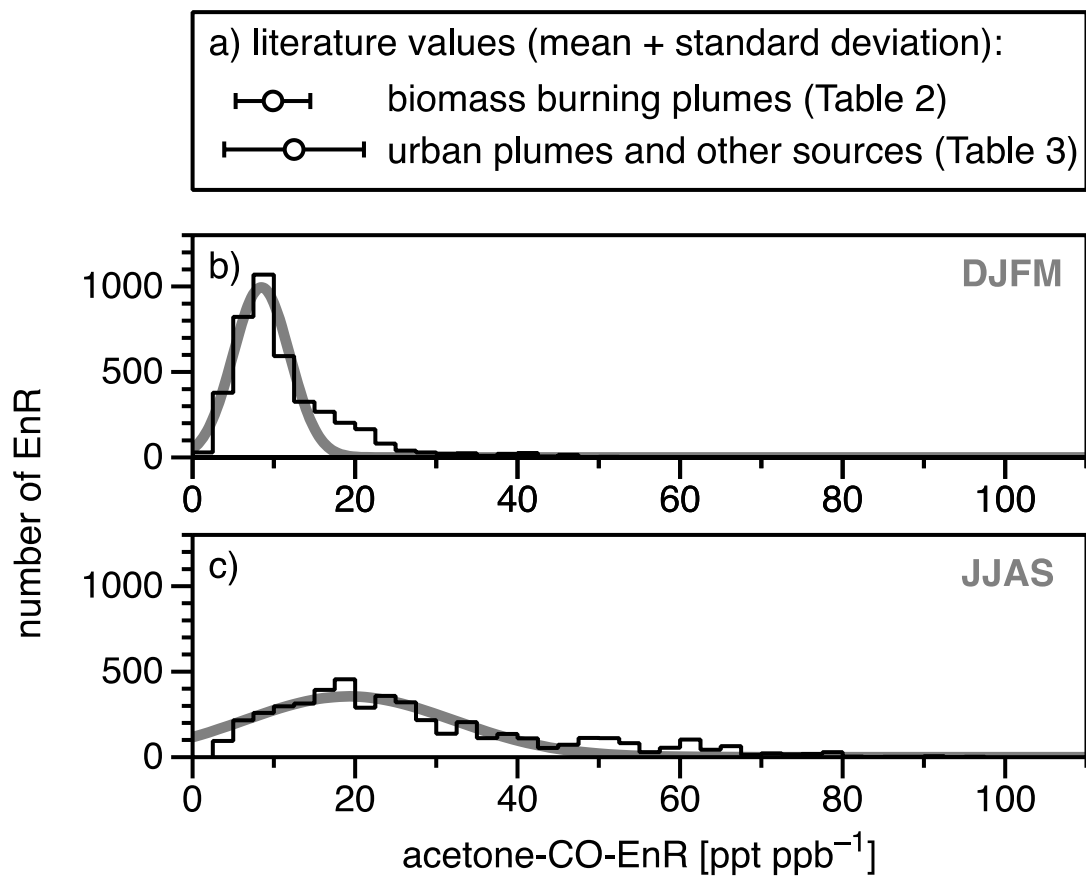


Figure 45: Latitudinal (left) and geographical distribution (right) of simultaneous tropospheric acetone and CO measurements in the time periods 02/2006-12/2008 and 03/2012-07/2015. Grid cells without data are left blank.

5



5 | Figure 56: Comparison of a) the mean literature values for biomass burning plumes and for plumes of other origin with the distribution of EnR observed with CARIBIC in the Northern Hemisphere subtropics and mid-latitudes (23.5°N – 66.5°N) in b) winter (DJFM) and c) summer (JJAS). The grey lines represent Gaussian curves fitted to the histograms. The values of the most important statistical variables describing the distributions are given in Table 6.

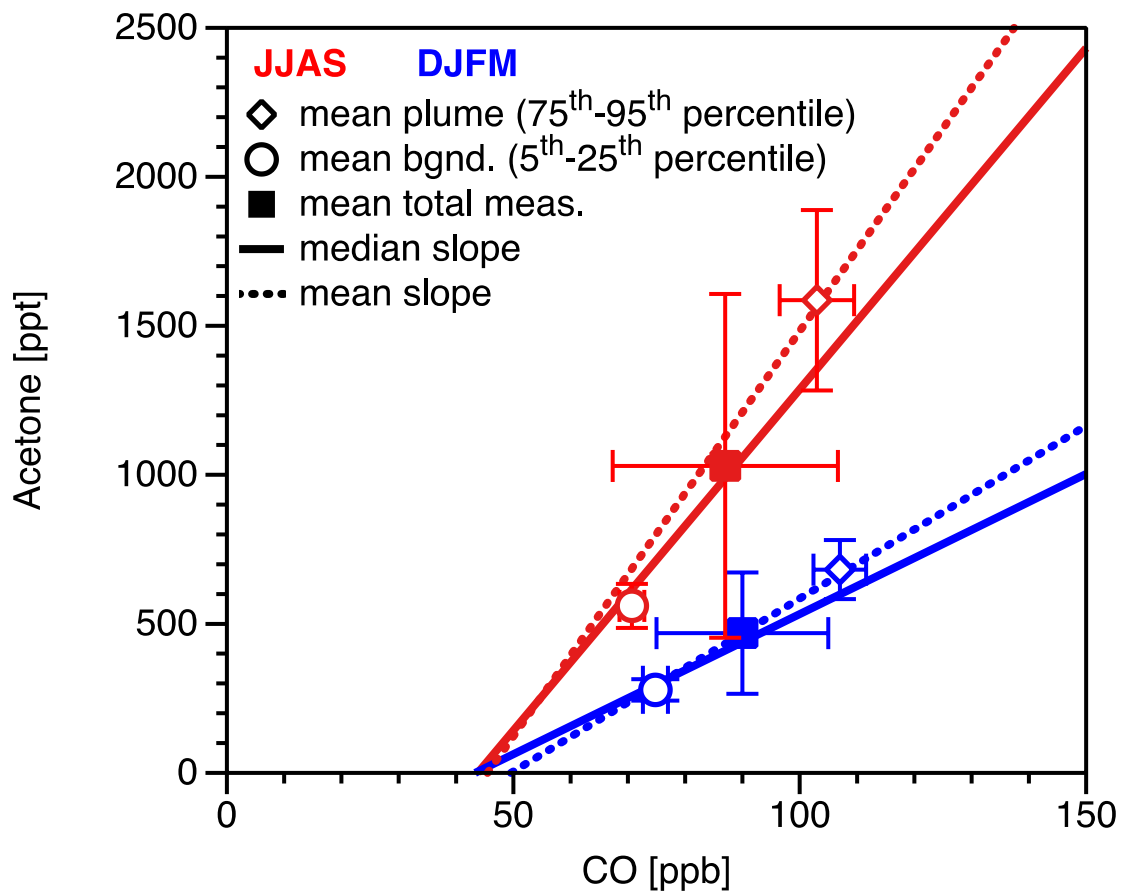


Figure 67: Regression lines for summer (red) and winter (blue), using mean slope (solid line) and median slope (dotted line) given in Table 6. The filled squares represent the mean VMRs of the total measurements, whereas the open circles (diamonds) are the mean of all values lying in the 5th to 25th (75th and 95th) percentile, respectively.

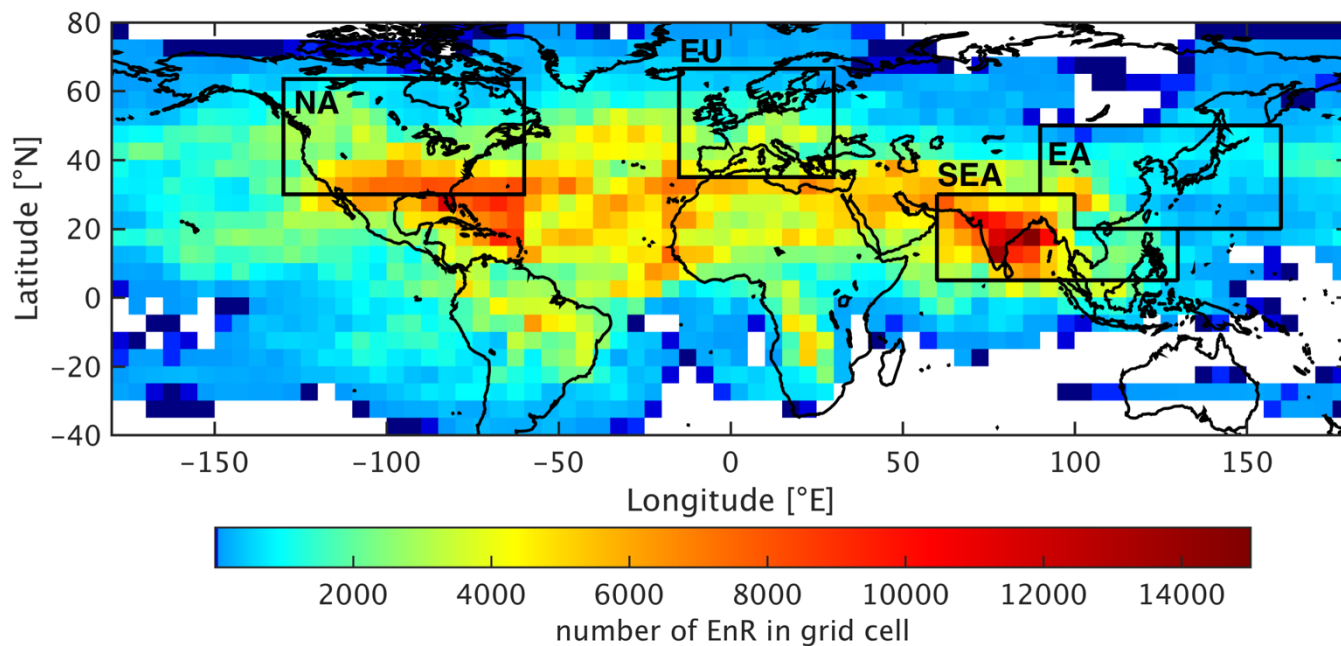


Figure 78: Geographical distribution of EnRs duplicated along the waypoints of attached-~~the~~ assigned 5-5-day back trajectories. Grid cells without data are left blank. Four areas of interest (rectangles) are considered: North America (NA), Europe (EU), Southeast Asia (SEA) or East Asia (EA).

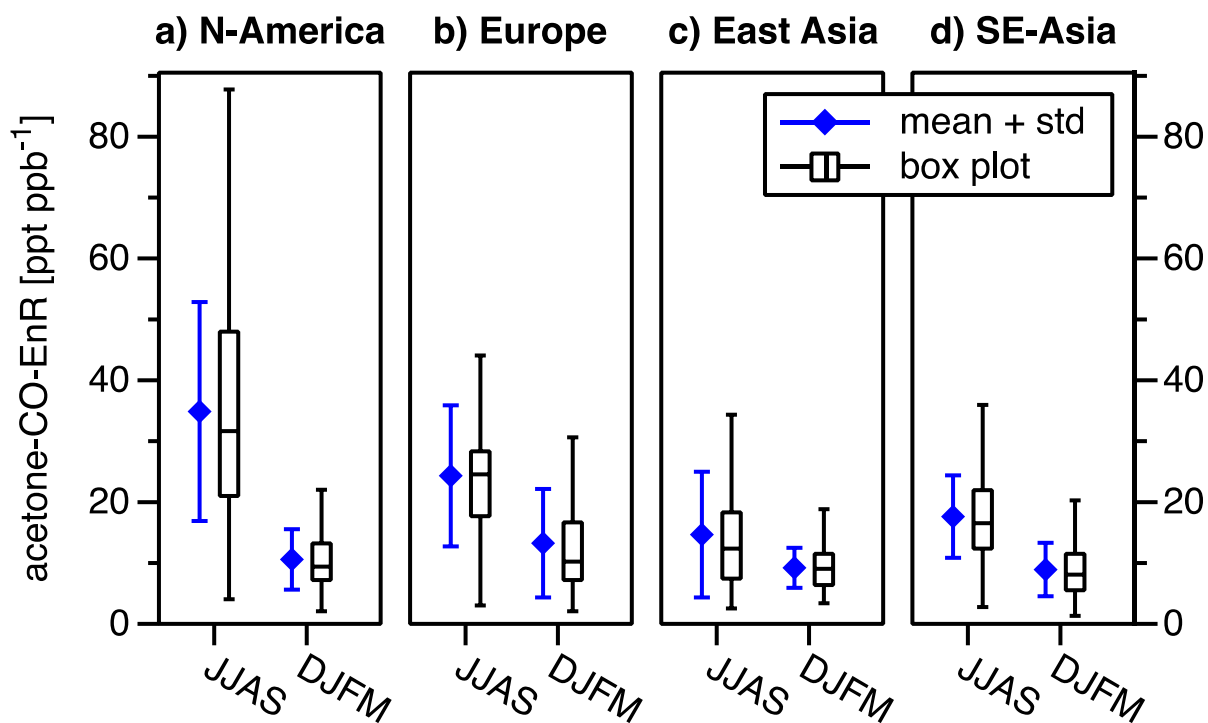


Figure 89: Mean and standard deviation (std) (blue) and box plots (black) of EnR summer (JJAS) and winter (DJFM) distributions for four selected regions as shown in Fig. 78. In the underlying distributions, individual EnRs have been duplicated along the hourly waypoints of the assigned 5-day back trajectories to consider the residence time of the samples above the region. The numbers of individual, unique EnRs as well as percentages related to the total number of EnRs are given in Table 7.

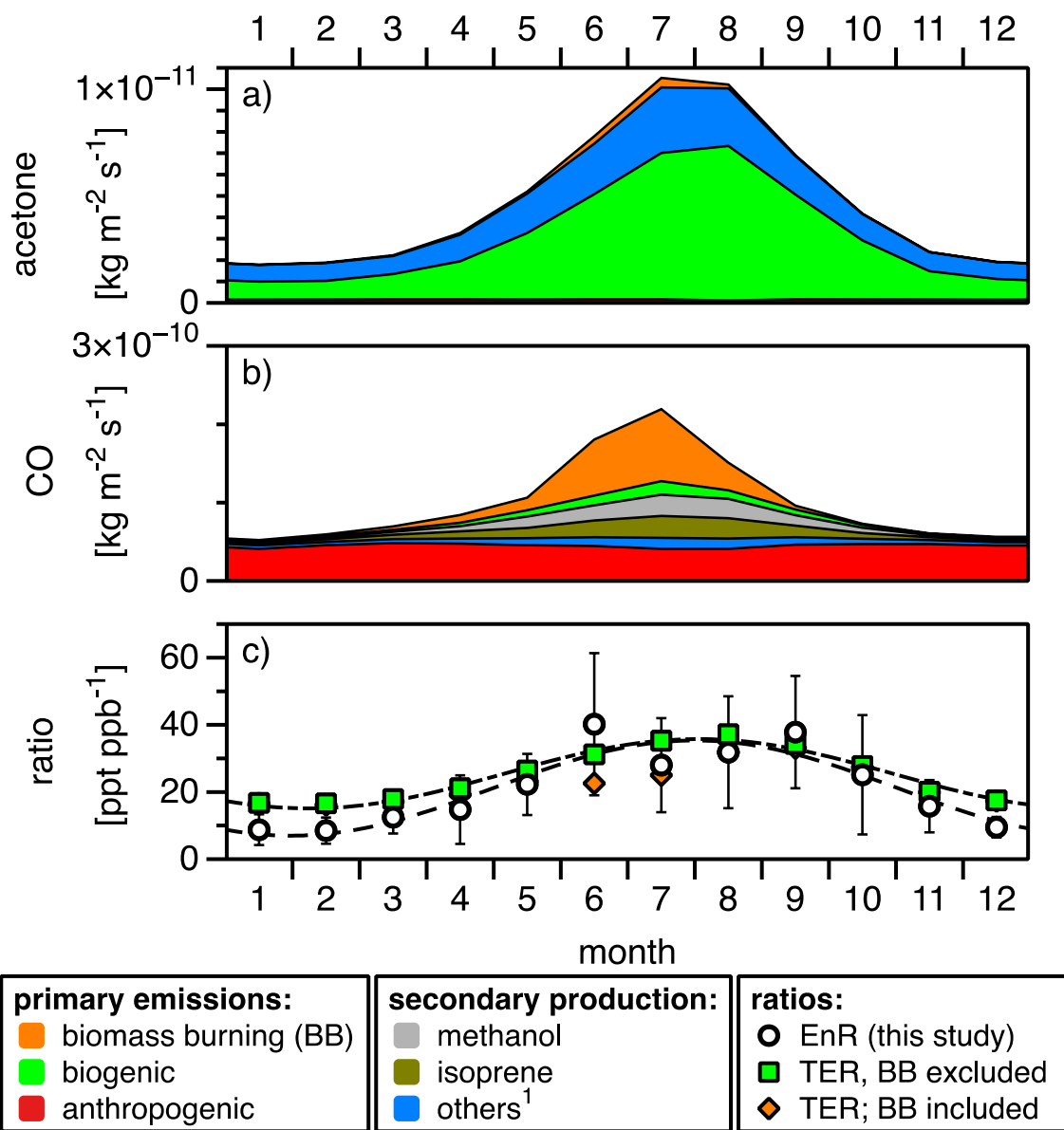


Figure 910: North American emission rates of a) acetone and b) CO according to the ECCAD inventory database, averaged over the time period 2005–2010. c) Mean EnRs derived from IAGOS-CARIBIC measurements are compared to ECCAD total emissions volume ratios (TER) of acetone and CO with and without consideration of biomass burning (BB). The dashed lines show sinusoidal functions fitted to the monthly means of EnR and TER (biomass burning excluded).

¹includes propane, isobutane, isopentane, α - and β -pinene seven monoterpene species and methylbutenol as precursors of acetone and ethene, ($\geq C_4$)-alkanes, ($\geq C_3$)-alkenes and monoterpenes as precursors of CO.

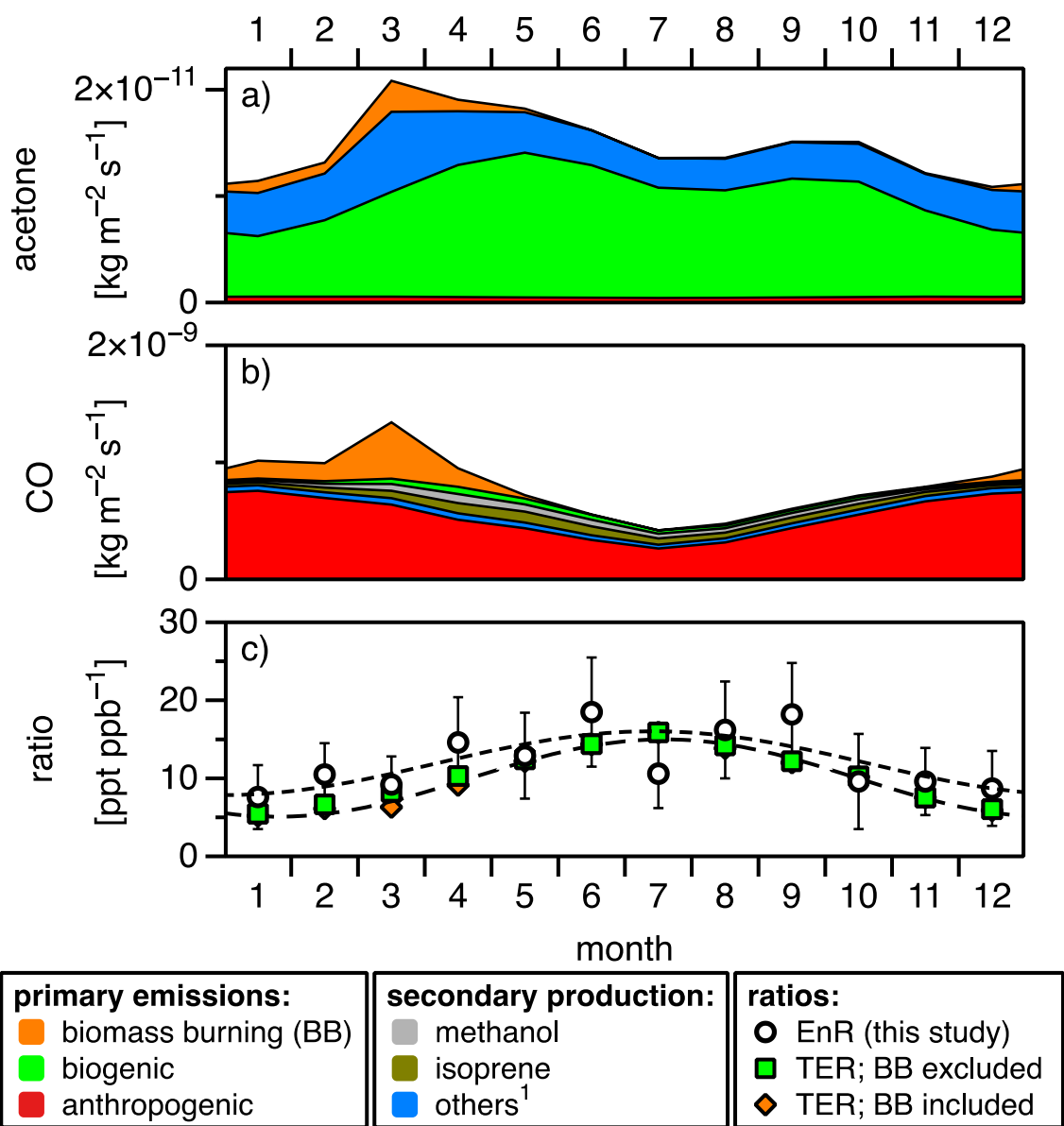


Figure 1011: Southeast Asia emission rates of a) acetone and b) CO according to the ECCAD database for the time period 2005-2010. c) volume ratio of total emissions of acetone and CO displayed for three different scenarios and compared to EnR derived from IAGOS-CARIBIC in-situ data. A sinusoidal function (dashed line) is fitted to the monthly means of EnR and TER, respectively.

¹includes ~~α - and β -pinene and propane, isobutane, isopentane and seven monoterpene species~~ as precursors of acetone and ethene, ($\geq C_4$)-alkanes, ($\geq C_3$)-alkenes and monoterpenes as precursors of CO.

ER	Air mass, location, time	Ref.
0.06–0.25	Biofuel burning	Andreae and Merlet (2001)
0.84	Vegetation from the southwest U.S.; laboratory experiment	Warneke et al. (2011)
1.2	Savanna biomass burning	Akagi et al. (2011)
1.6	Fresh Canadian boreal biomass burning plumes, June–July 2008	Simpson et al. (2011)
1.7–2.05	North American wildfires	Friedli et al. (2001)
1.9–4.6	Savanna and grassland biomass burning	Andreae and Merlet (2001)
2.3–2.7	Extratropical forest biomass burning	Andreae and Merlet (2001)
1.93	Vegetation from the southeast U.S.; laboratory experiment	Warneke et al. (2011)
1.94	Pines spruce; laboratory experiment	Warneke et al. (2011)
2.8	Boreal forest biomass burning	Akagi et al. (2011)
2.9	Peatland burning	Akagi et al. (2011)
2.9	Tropical forest biomass burning	Andreae and Merlet (2001)
2.9	Charcoal burning	Andreae and Merlet (2001)
2.9	Residential heating	Kaltsonoudis et al. (2016)
3.0	Extratropical/Boreal forest biomass burning	Akagi et al. (2011)
3.3	Tropical forest biomass burning	Akagi et al. (2011)
4.8	Fresh Savannah fire, Africa	Jost et al. (2003)
5.4	Savanna grass, laboratory experiment	Holzinger et al. (1999)
2.5 ± 1.3	Mean acetone-CO-ER	

Table 1: Literature values of acetone-CO emission ratios (ERs) in ppt ppb⁻¹.

EnR	Air mass, location, time	Ref.
4.7	Fresh biomass burning plume, summer 2008	Singh et al. (2010)
5.0	Biomass burning plumes, Canada, June-July 2008	Hornbrook et al. (2011)
5.7	Aged boreal biomass burning plumes from North America, July–August 2011	Tereszczuk et al. (2013)
6.0	Biomass burning plumes, California, June-July 2008	Hornbrook et al. (2011)
6.2	Aged boreal biomass burning plumes from Siberia, July–August 2011	Tereszczuk et al. (2013)
6.3	Aged plumes of Alaskan and Canadian forest fire, July 2004	De Gouw et al. (2006);
6.6	Aged Biomass burning plumes, Yucatan, March 2006	Yokelson et al. (2009)
6.6–22	Aged biomass burning plumes, free troposphere, Pacific, winter/spring 2001	Jost et al. (2002)
7.2–10.3	Biomass burning plumes, South Atlantic, Sept.–October 1992	Mauzerall et al. (1998)
7.1	Biomass burning plumes, Canada, June-July 2008	Hornbrook et al. (2011)
7.5	Biomass burning plumes, TRACE-P	Singh et al. (2004)
7.7	Forest Fire Lake Baikal, April 2008	De Gouw et al. (2009)
9.0	Asian biomass burning plumes, June-July 2008	Hornbrook et al. (2011)
10.6	Aged (1–5 days) biomass burning and urban plumes, summer 2008	Singh et al. (2010)
11.3	Fresh Savannah fire plumes (0-125 min plume age), Africa	Jost et al. (2003)
11.7	Agricultural Fires Kazakhstan, April 2008	De Gouw et al. (2009)
14.3	Fresh boreal biomass burning plumes from Siberia, July–August 2011	Tereszczuk et al. (2013)
16.8	Fresh boreal biomass burning plumes from North America, July–August 2011	Tereszczuk et al. (2013)
18	Aged biomass burning plumes, Crete, August 2001	Holzinger et al. (2005)
20.4	Young biomass burning plume, Tanzania, October 2005 (using background VMR over Pacific ocean)	Coheur et al. (2007)
9.9 ± 4.6	Mean acetone-CO EnR	

Table 2: Literature values of acetone-CO enhancement ratios (EnRs) in biomass burning plumes in ppt ppb⁻¹.

EnR	Air mass, location, time	Ref.
1.57	Urban air, Central Eastern China, March-April 2011	Yuan et al. (2013)
3.18	Urban air, London, winter 2012	Valach et al. (2014)
3.4	Free troposphere, Indian Ocean, February-March 1999	Reiner et al. (2001)
3.59	Urban air (with vehicular emissions), Sao Paolo, February-April 2013,	Brito et al. (2015)
5.0	Mount Tai, China, June 2006	Inomata et al. (2010)
5.8	Fresh urban plumes, Eastern U.S., July-August 2004	Warneke et al. (2007)
6.12	High-altitude (> 9km), Pacific Ocean, February-March 1994	McKeen et al. (1997)
13-16	Marine boundary layer	De Reus et al. (2003)
13.4-17.2	Ship measurements, Indian Ocean, March 1999	Whistaler et al. (2002)
14	Marine boundary layer, Indian Ocean, March 1999	Reiner et al. (2001);
14.2	Los Angeles, April-May 2002	Warneke et al. (2007)
18.3	Urban plumes, summer 2008	Singh et al. (2010)
19.5	Aged high-altitude plumes, Surinam, March 1998	Andreae et al. (2001)
21-25	Free troposphere	De Reus et al. (2003)
~22	Los Angeles Basin, May-June 2010	Warneke et al. (2012)
30	Troposphere, Eastern Canada, July-August 1990	Singh et al. (1994)
12.5 ± 8.6	Mean acetone-CO EnR	

Table 3: Literature values of acetone-CO enhancement ratios (EnRs) in air masses unaffected by biomass burning in ppt ppb⁻¹.

Dilution rate (day⁻¹)	Location, time	Ref.
0.1	Atlantic air masses, summer	Arnold et al. (2007)
0.1	Inside smoke plume, July	Pisso et al. (2009)
0.16 (0.05–0.2)	Biomass burning plume over North Atlantic, summer	Real et al. (2007)
0.24	Free troposphere, April	Price et al. (2004)
1	Outside smoke plume, July	Pisso et al. (2009)
1.44	Planetary boundary layer, South Africa, winter	Igbafe et al. (2006)
1.5	Mexico city plateau, March	Voss et al. (2010); Shrivastava et al. (2011)
5.5	Planetary boundary layer, California, summer	Dillon et al. (2002)
4.8–10.3	Planetary boundary layer, Germany	Kramp and Volz-Thomas (1997)

Table 4: Dilution rates in the literature.

		summer		winter	
		PBL	FT	PBL	FT
Background [ppb]	Acetone	2.0	0.6	0.5	0.3
	CO	100	70	150	80
	Propane	0.1	0.1	1.0	0.2
Enhancement [ppb]	Acetone	4.2 / 2.0			
	CO	140 / 200			
	Propane	0.5			
Chemical degradation rate [d ⁻¹] (Lifetime [weeks])	Acetone	0.029 ± 0.004 (5.0 ± 0.7)	0.049 ± 0.007 (2.9 ± 0.4)	0.002 ± 0.000 (82.9 ± 11.8)	0.004 ± 0.001 (37.0 ± 5.2)
	CO	0.026 ± 0.005 (5.5 ± 1.1)	0.039 ± 0.008 (3.6 ± 0.7)	0.002 ± 0.000 (94.0 ± 18.8)	0.003 ± 0.001 (49.3 ± 9.9)
	Propane	0.111 ± 0.023 (1.3 ± 0.3)	0.154 ± 0.031 (0.9 ± 0.2)	0.005 ± 0.001 (26.7 ± 5.3)	0.009 ± 0.002 (15.2 ± 3.0)
Dilution rate [d ⁻¹]		4.80	0.10	1.44	0.05

Table 5: Mixing ratios, ~~reaction~~ chemical loss and dilution rates used for the simulation of the temporal evolution of acetone-CO EnRs shown in Fig. 43.

Season		Slope/EnR [ppt ppb ⁻¹]
JJAS	arithmetic mean $\pm \sigma$	27.2 \pm 17.0
	median	22.9
	Gaussian line centre $\pm \sigma$	19.3 \pm 12.9
	Number of correlated / all measurements	4747 / 12896
DJFM	arithmetic mean $\pm \sigma$	11.6 \pm 7.2
	median	9.4
	Gaussian line centre $\pm \sigma$	8.5 \pm 3.5
	Number of correlated / all measurements	4137 / 10311

Table 6: Mean and median values of EnR frequency distributions and centre of the fitted Gaussian distributions.

	<u>North America</u>		<u>Europe</u>		<u>East Asia</u>		<u>Southeast Asia</u>		<u>global</u>	
<u>JJAS</u>	<u>3060</u>	<u>15 %</u>	<u>1218</u>	<u>6 %</u>	<u>1272</u>	<u>6 %</u>	<u>992</u>	<u>5 %</u>	<u>6535</u>	<u>32 %</u>
<u>DJFM</u>	<u>1725</u>	<u>8 %</u>	<u>1688</u>	<u>8 %</u>	<u>685</u>	<u>3 %</u>	<u>2255</u>	<u>11 %</u>	<u>7686</u>	<u>37 %</u>
<u>other months</u>	<u>2085</u>	<u>10 %</u>	<u>1344</u>	<u>7 %</u>	<u>1343</u>	<u>7 %</u>	<u>2262</u>	<u>11 %</u>	<u>6431</u>	<u>31 %</u>
<u>all months</u>	<u>6870</u>	<u>33 %</u>	<u>4250</u>	<u>21 %</u>	<u>3300</u>	<u>16 %</u>	<u>5509</u>	<u>27 %</u>	<u>20652</u>	<u>100 %</u>

Table 7: Numbers and percentages of individual EnRs for different months and regions. EnRs are associated with a specific region, when the assigned trajectory passes through the box of the region. For the assignment it does not matter whether only one waypoint or the entire trajectory lies inside the box. Assignment to multiple regions occurs, when the trajectory crosses more than one box. The boxes of the respective regions are indicated in Fig. 8.

	<u>$\Delta\text{CO} > 10 \sigma$</u>			<u>$\Delta\text{CO} > 10 \text{ ppb}$</u>			<u>$\Delta\text{CO} > 15 \text{ ppb}$</u>		
<u>month:</u>	<u>n</u>	<u>mean + std</u> <u>EnR</u>	<u>S_{Ac}</u>	<u>n</u>	<u>mean + std</u> <u>EnR</u>	<u>S_{Ac}</u>	<u>n</u>	<u>mean + std</u> <u>EnR</u>	<u>S_{Ac}</u>
<u>1</u>	<u>543</u>	<u>8.8 ± 4.6</u>	<u>0.1</u>	<u>465</u>	<u>9.0 ± 4.9</u>	<u>0.1</u>	<u>115</u>	<u>6.5 ± 6.2</u>	<u>0.1</u>
<u>2</u>	<u>339</u>	<u>8.5 ± 3.9</u>	<u>0.1</u>	<u>278</u>	<u>8.7 ± 4.1</u>	<u>0.1</u>	<u>154</u>	<u>9.0 ± 5.0</u>	<u>0.1</u>
<u>3</u>	<u>744</u>	<u>12.5 ± 4.9</u>	<u>0.2</u>	<u>688</u>	<u>12.6 ± 4.9</u>	<u>0.2</u>	<u>163</u>	<u>11.8 ± 5.3</u>	<u>0.2</u>
<u>4</u>	<u>1427</u>	<u>14.8 ± 10.2</u>	<u>0.3</u>	<u>1400</u>	<u>14.8 ± 10.3</u>	<u>0.3</u>	<u>362</u>	<u>12.4 ± 8.0</u>	<u>0.2</u>
<u>5</u>	<u>167</u>	<u>22.2 ± 9.1</u>	<u>0.5</u>	<u>167</u>	<u>22.2 ± 9.1</u>	<u>0.5</u>	<u>50</u>	<u>21.0 ± 5.8</u>	<u>0.5</u>
<u>6</u>	<u>568</u>	<u>40.2 ± 21.2</u>	<u>1.3</u>	<u>565</u>	<u>40.1 ± 21.2</u>	<u>1.3</u>	<u>51</u>	<u>29.8 ± 2.7</u>	<u>1.0</u>
<u>7</u>	<u>434</u>	<u>28.0 ± 14.0</u>	<u>1.1</u>	<u>434</u>	<u>28.0 ± 14.0</u>	<u>1.1</u>	<u>239</u>	<u>28.4 ± 13.8</u>	<u>1.1</u>
<u>8</u>	<u>1102</u>	<u>31.8 ± 16.7</u>	<u>1.0</u>	<u>1102</u>	<u>31.8 ± 16.7</u>	<u>1.0</u>	<u>361</u>	<u>24.9 ± 11.0</u>	<u>0.7</u>
<u>9</u>	<u>956</u>	<u>37.8 ± 16.7</u>	<u>0.7</u>	<u>722</u>	<u>40.2 ± 17.2</u>	<u>0.8</u>	<u>100</u>	<u>21.1 ± 10.1</u>	<u>0.4</u>
<u>10</u>	<u>397</u>	<u>25.2 ± 17.8</u>	<u>0.4</u>	<u>371</u>	<u>24.8 ± 17.9</u>	<u>0.4</u>	<u>53</u>	<u>34.2 ± 15.3</u>	<u>0.5</u>
<u>11</u>	<u>94</u>	<u>15.7 ± 7.7</u>	<u>0.2</u>	<u>77</u>	<u>16.0 ± 8.6</u>	<u>0.2</u>	<u>0</u>	<u>--</u>	
<u>12</u>	<u>99</u>	<u>9.5 ± 3.1</u>	<u>0.1</u>	<u>52</u>	<u>9.3 ± 3.2</u>	<u>0.1</u>	<u>4</u>	<u>3.7 ± 0.2</u>	<u>0.0</u>
<u>all</u>	<u>6870</u>	<u>21.3 ± 11.3</u>	<u>6.0 ± 3.1</u>	<u>6321</u>	<u>21.5 ± 11.6</u>	<u>6.1 ± 3.1</u>	<u>1652</u>	<u>18.4 ± 10.3</u>	<u>4.8 ± 1.9</u>

Table 8: Results of 3 different cutoff requirements (top row) applied to the dataset for North America. For each month and cutoff requirement, the number of unique EnRs (n), the mean EnR and standard deviation in ppt ppb⁻¹ and the resulting acetone source (S_{Ac}) in Tg are provided. The means and standard deviations for all months (last row) are based on the monthly values.