

1 Attributions of meteorological and emission factors to the 2015 winter severe
2 haze pollution episodes in China Jing-Jin-Ji area

3 Tingting Liu^{1,2}, Sunling Gong^{2,4}, Jianjun He², Meng Yu³, Qifeng Wang⁴, Huairui Li⁴, Jie Zhang³, Lei
4 Li³, Xuguan Wang³, Shuli Li³, Yanli Lu³, Haitao Du⁵, Yaqiang Wang², Chunhong Zhou², Hongli Liu²,
5 Qichao Zhao⁴

6 ¹ School of Mechanical Engineering, Hangzhou Dianzi University, Hangzhou, China

7 ² State Key Laboratory of Severe Weather & Key Laboratory of Atmospheric Chemistry of CMA,
8 Chinese Academy of Meteorological Sciences, Beijing, China

9 ³ Langfang Bureau of Environmental Protection, Langfang, Hebei, China

10 ⁴ Langfang Academy of Eco Industrialization for Wisdom Environment, Langfang, Hebei, China

11 ⁵ Langfang Bureau of Meteorology, Langfang, Hebei, China

12

13 Abstract

14 Northern China in the 2015 winter month of December has witnessed the most severe air
15 pollution phenomena since the 2013 winter haze events occurred, which triggered the first ever
16 Red Alert in the air pollution control history of Beijing, with an instantaneous PM_{2.5} concentration
17 over 1 mg m⁻³. Air quality observations reveal that there exist large temporal-spatial variations of
18 PM_{2.5} concentrations over Beijing-Tianjin-Hebei (Jing-Jin-Ji) area between 2014 and 2015.
19 Compared to 2014, the PM_{2.5} concentrations over the area in 2015 decreased significantly except
20 in November and December, with an increase of 36% in December. Analysis shows that the PM_{2.5}
21 concentrations are significantly correlated with the local meteorological parameters in the Jing-
22 Jin-Ji area, such as the stable conditions, relative humidity, wind field etc.. A comparison of two
23 month simulations (December 2014 and 2015) with the same emission data was performed to
24 explore and quantify the meteorological impact on the PM_{2.5} over the Jing-Jin-Ji area.
25 Observation and modeling results show that the worsening meteorological conditions are the
26 main reasons behind this unusual increase of air pollutant concentrations and the emission

1 control measures taken during this period of time have contributed to mitigate the air pollution
2 (~9%) in the region. This work provides a scientific insight of the emission control measures vs.
3 meteorology impacts for the period.

4

5

1. Introduction

Severe air pollution has been observed in China for the last 15-20 years, with an annual mean concentration of fine particulate matter (PM_{2.5}) ranging from 80 to 120 $\mu\text{g m}^{-3}$ and over 1000 $\mu\text{g m}^{-3}$ during some heavy haze episode. Haze phenomenon has become a major pollution problem in many China cities (Han et al., 2013; Wang et al., 2015), which causes wide public concern and has an adverse impact on human health and environment (Gurjar et al., 2010; Kan et al., 2012). Therefore, it is necessary to comprehensively investigate the emission sources, meteorological factors, and other characteristics of the PM_{2.5} pollution in China and provide more effective control measures (Wang et al., 2008; Zhang et al., 2014).

Since the strict control measures of air pollutants over the country were enforced in 2013 by the government, a steady decrease of air pollutant concentrations has been observed with an annual mean PM_{2.5} concentration dropping from about 85 $\mu\text{g m}^{-3}$ in 2014 to 80 $\mu\text{g m}^{-3}$ in 2015 for Beijing, from 86 to 70 for Tianjin, and from 118 to 88 for Shijiazhuang (Three typical cities in North China, <http://www.mep.gov.cn/gkml/>). Meteorological conditions, especially the large-scale circulations, are important factors to determine the variations of pollution level (He et al., 2016a; Jia et al., 2015). Significant regional transport, caused by special meteorological conditions, is critical for the formation of 2015 winter severe haze in Beijing (Sun et al., 2016). A number of papers have tried to analyze the meteorological contributions (He et al., 2017; Liao et al., 2015; Wang et al., 2013; Zeng et al., 2014) for individual cases but could not consider the emission changes for a comprehensive analysis. The most recent consensus is that these decreases partially can attribute to the difference in the meteorological conditions but largely should be

1 attributed to the control measures taken. However, due to the complex interactions between
2 pollution sources and meteorology, the quantitative contributions for each factor remain to be
3 separated.

4 The year of 2015 was an unusual year in terms of air pollution situation in Northern China,
5 which was in the middle of an El Niño-Southern Oscillation (ENSO) event around the globe
6 (Varotsos et al., 2016). Unusual climate and extreme weather happened everywhere. It was
7 found that the El Niño event had a significant effect on air pollution in eastern China (Chang et
8 al., 2016). In the first half of 2015, a steady decrease in major air pollutants was observed
9 compared to those in 2014 in northern China. However, in the last two months, a dramatic
10 increase was observed. The PM_{2.5} concentration reached as high as 1000 µg m⁻³ in Beijing and
11 triggered the first ever Red Alert of severer air pollution in the city. Would this unusual increase
12 of air pollution have anything to do with special meteorological conditions and the El Niño event,
13 and what was the role of emission control measures being played in this?

14 This paper presents an analysis and modeling study of air pollution conditions in December
15 2015 in Beijing-Tianjin-Hebei (Jing-Jin-Ji) area located in North China and explores the major
16 reasons behind these unusual increases from both the meteorological and emission points of
17 views. To evaluate the contribution of meteorological factors toward the severe pollution in
18 December 2015, the wind speed convergence lines (WSCL), static wind frequency data and other
19 parameters in December 2015 were specifically investigated and compared with data for the
20 same period of 2014. An analysis of this heavy haze pollution episode was also simulated with
21 the Chinese Unified Atmospheric Chemistry Environment (CUACE) model (Gong and Zhang, 2008).

1 The aim of this study was to provide information on the impact degree and mechanism of
2 meteorology variations and emission changes on the PM_{2.5} haze pollution in this region.

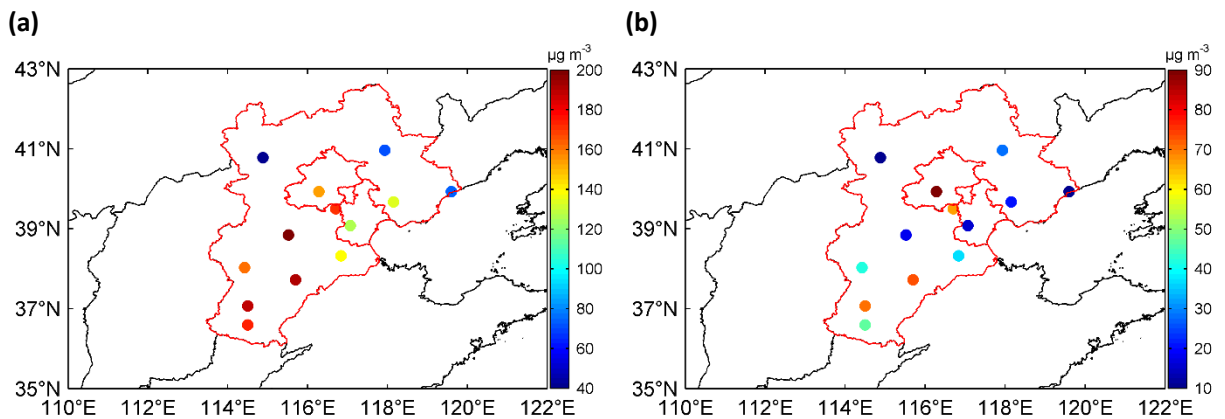
3 2. Methodology

4 The research starts with the analysis of air pollution levels between 2014 and 2015, with a
5 focus on the last month of each year. The difference lays the foundation for the investigation,
6 where the meteorology factors that mostly influence the air pollution levels such as the stable
7 conditions, wind speed and directions as well as the relative humidity are probed, which will give
8 a qualitative description of the reasons for pollution changes from 2014 to 2015. Based on EAR-
9 Interim reanalysis data from European Centre for Medium-Range Weather Forecasts (ECMWF),
10 the potential effect of ENSO on atmospheric circulation and air quality in Jing-Jin-Ji area is also
11 investigated robustly. In order to quantify the meteorology impacts, a modeling study is carried
12 with the same emission rates in the model for 2014 and 2015 where the pollution level changes
13 are considered to be caused by meteorology only. The impact of emission changes on air
14 pollution can then be inferred from the difference between the observed pollution level changes
15 and the modelled level changes only due to the meteorology.

16 3. Air Quality Observations

17 The observational pollution data used in this study were from the near real time (NRT)
18 monitoring stations of the Ministry of Environmental Protection across the Northern China
19 (<http://www.cnemc.cn/>), with hourly concentrations of six major pollutants: particulate matter
20 with an aerodynamic diameter of less than 2.5 µm and 10 µm (PM_{2.5} and PM₁₀), sulphur dioxide
21 (SO₂), nitrogen dioxide (NO₂), carbon monoxide (CO) and ozone (O₃). The monthly and annual

1 mean concentrations of PM_{2.5} in three typical cities (Beijing, Tianjin, and Shijiazhuang) and Jing-
2 Jin-Ji area were investigated. PM_{2.5} concentration in Jing-Jin-Ji area represents the regional
3 average for 13 cities, i.e., Beijing, Tianjin, Shijiazhuang, Handan, Xingtai, Hengshui, Cangzhou,
4 Baoding, Langfang, Tangshan, Qinhuangdao, Chengde, and Zhangjiakou. Spatial distribution of
5 13 cities has been shown in Figure 1. Based upon the entire year data for 2014 and 2015, the
6 annual mean concentrations of PM_{2.5} are overall in a decreasing trend. For three typical cities of
7 Beijing, Tianjin and Shijiazhuang, the annual mean PM_{2.5} concentrations in 2015 are 5.7%, 18.5%
8 and 29.2% lower than those in 2014, respectively.

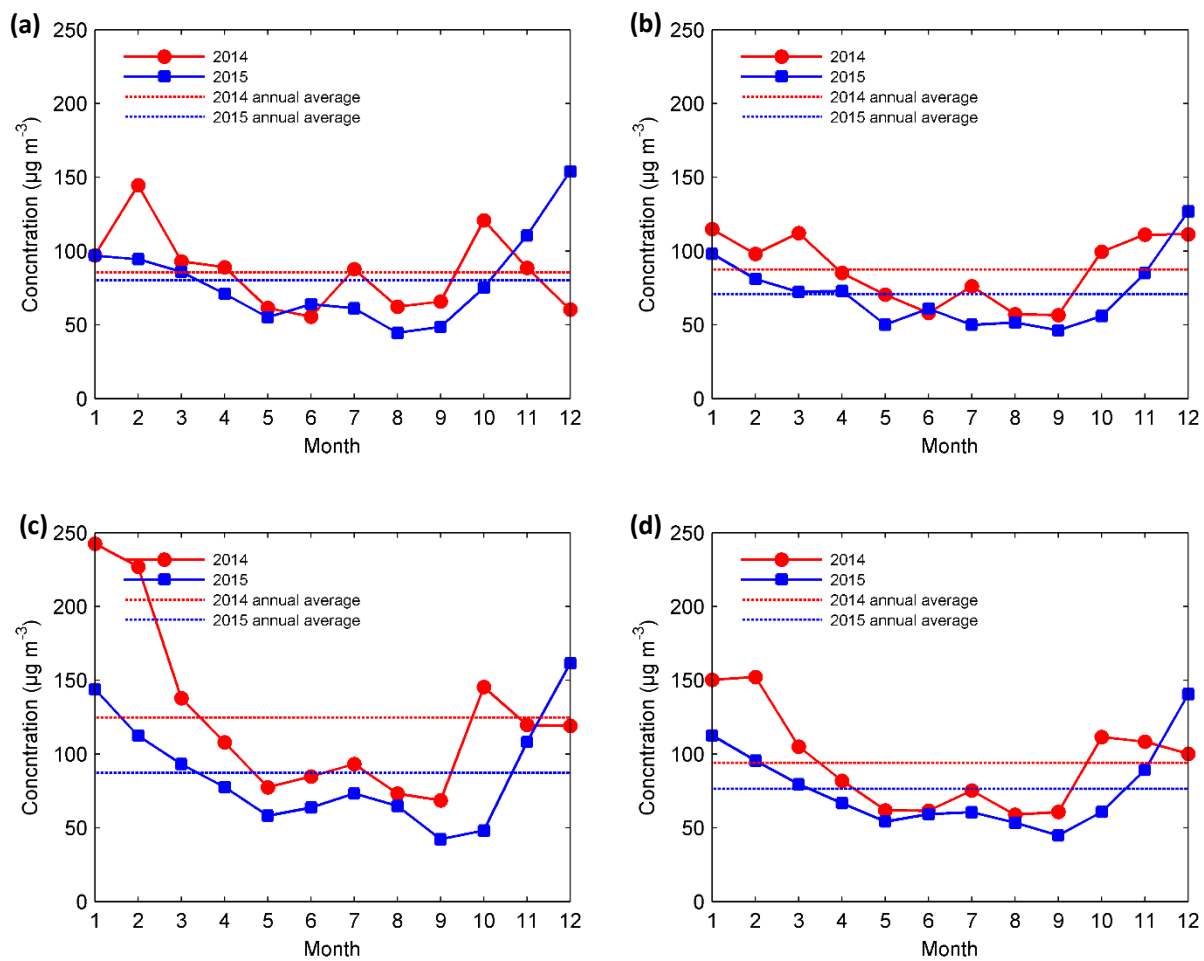


9
10 Figure 1: (a) Monthly mean PM_{2.5} concentrations in December 2015 and (b) and the change of
11 monthly mean PM_{2.5} concentration in December between 2015 and 2014 over Jing-Jin-Ji area.
12

13 The regional mean PM_{2.5} concentration over Jing-Jin-Ji area decreases 17.8%. The two year
14 monthly mean PM_{2.5} concentrations (Fig. 2) indicate that from January to October, the
15 concentrations in 2015 are much lower than those in the same months in 2014. The unusual
16 increases of PM_{2.5} concentration are found in the last two months, especially for December,
17 which is the focus of this study.

1 Regionally, the monthly mean PM_{2.5} concentrations in December 2015 saw a large increase
 2 compared to the same month in 2014, ranging from 5% to 137% in Jing-Jin-Ji area, with a mean
 3 increase of 36% (Fig. 1). Beijing had the largest increase of 137%, jumping from approximately 61
 4 $\mu\text{g m}^{-3}$ in 2014 to 145 $\mu\text{g m}^{-3}$ in 2015, while Qinhuangdao had the smallest increase of 5%, jumping
 5 from approximately 69 $\mu\text{g m}^{-3}$ in 2014 to 72 $\mu\text{g m}^{-3}$ in 2015.

6



7

8

9 Figure 2: Comparison of monthly average PM_{2.5} concentrations of 2015 and 2014 in (a)Beijing,
 10 (b)Tianjin, (c) Shijiazhuang and (d)Jing-Jin-Ji area.

11

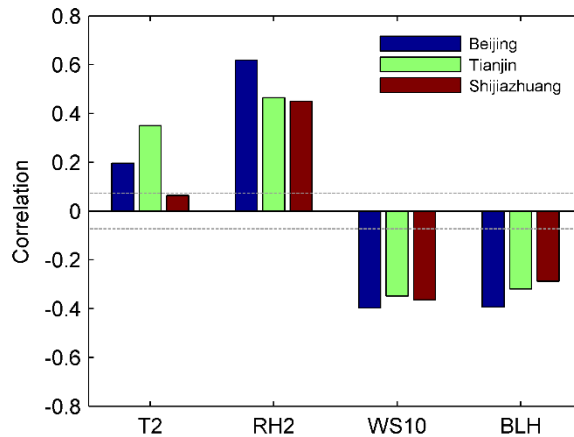
12

1 Certain factors must have had a dramatic change to cause this to happen. In view of the
2 steady decreases of air pollutants over Jing-Jin-Ji area in the first ten months of 2015, it can be
3 inferred that the emission reduction measures implemented in the region, including traffic
4 restriction and eliminating vehicles that fail to meet the European No. 1 standard for exhaust
5 emission, reducing coal consumption, forbidding straw burning, and reducing volatile organic
6 compounds (VOC) emission (<http://bj.people.com.cn/n/2015/0526/c233088-25012933.html>),
7 were effective in bringing the averaged concentrations of major pollutants down. In next session,
8 the meteorological conditions for the last month of 2014 and 2015 will be analyzed in details to
9 elucidate the reasons for this dramatic increase in Jing-Jin-Ji area.

10 4. Meteorology Factor Analysis

11 Closely related to the air pollution variations, meteorological conditions are the important
12 factors determining day-to-day variations of pollutant concentrations (He et al., 2016a). The
13 correlation between daily average $PM_{2.5}$ concentrations and four meteorological parameters, i.e.
14 2-m temperature (T2), 2-m relative humidity (RH2), 10-m wind speed (WS10) and boundary layer
15 height (BLH), is shown in Figure 3. The data processing in correlation calculation is the same as in
16 He et al. (2017). $PM_{2.5}$ concentrations are positively correlated with T2 and RH2, while negatively
17 correlated with WS10 and BLH. The correlation coefficients are significant except correlation for
18 T2 in Shijiazhuang. The positive correlation between $PM_{2.5}$ concentrations and RH2 reveals the
19 importance of hygroscopic growth for PM in Jing-Jin-Ji area. The increase of WS10 and BLH
20 enhances the ventilation and diffusion capacity, and brings good air quality. The comparison of
21 correlation coefficients in three cities reveals that local meteorological condition has more

1 significant effect in Beijing than that in Tianjin and Shijiazhuang. Located in the northern edge of
2 the North China Plain, regional transport of pollutant in Beijing is less complex than other cities,
3 which may explain high correlation between PM_{2.5} concentration and meteorological parameters
4 in Beijing.

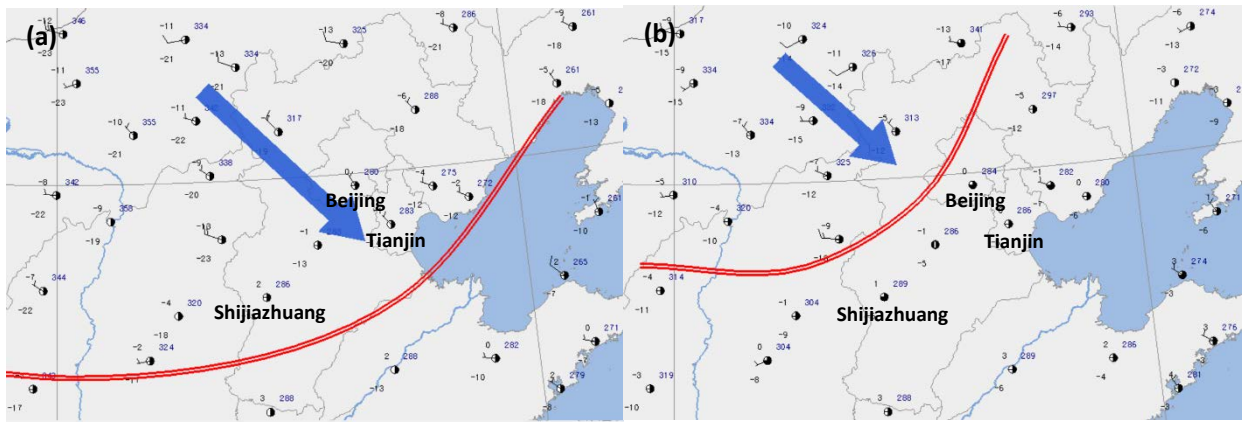


5
6 Figure 3: The correlation between daily average PM_{2.5} concentrations and daily average
7 meteorological parameters during 2014-2015. The dashed lines represent the critical correlation
8 coefficient that passes the t-test at a 95% confidence level.

9
10 Previous studies have shown that a major factor controlling the pollutant accumulation is
11 the atmospheric stability in association with the convergence at lower levels, which leads to the
12 accumulation of the polluted air from the surrounding areas and prevents pollutants from
13 diffusing away from the source regions (Liao et al., 2015; Wang et al., 2013; Zeng et al., 2014).
14 Therefore, the location of the convergence zone is critical in identifying the meteorological
15 conditions that are favorable or not for the formation of heavy pollution.

16 Two weather analysis maps are constructed based on average surface meteorological data
17 for December of 2014 and 2015 from China Meteorological Administration (CMA) (Figure 4). The

1 mean wind speed for December of 2014 reveals that large wind exists in Hebei province while
2 small wind speed exists in the south of Hebei province. Wind speed shear, i.e., abrupt decrease
3 (increase) of wind speed, forms a convergence (divergence) zone, ie. WSCL. The WSCL locates in
4 the boundary of Hebei and Shandong provinces. A serious pollution band nearby the WSCL will
5 usually be formed due to the adverse dispersion conditions and pollutant accumulation.
6 Compared to 2014, the WSCL shifts to Beijing municipality and the center of Hebei province in
7 2015. The relocation of the WSCL results in the moving of pollution band northward and more
8 serious air pollution in Beijing and surrounding cities.

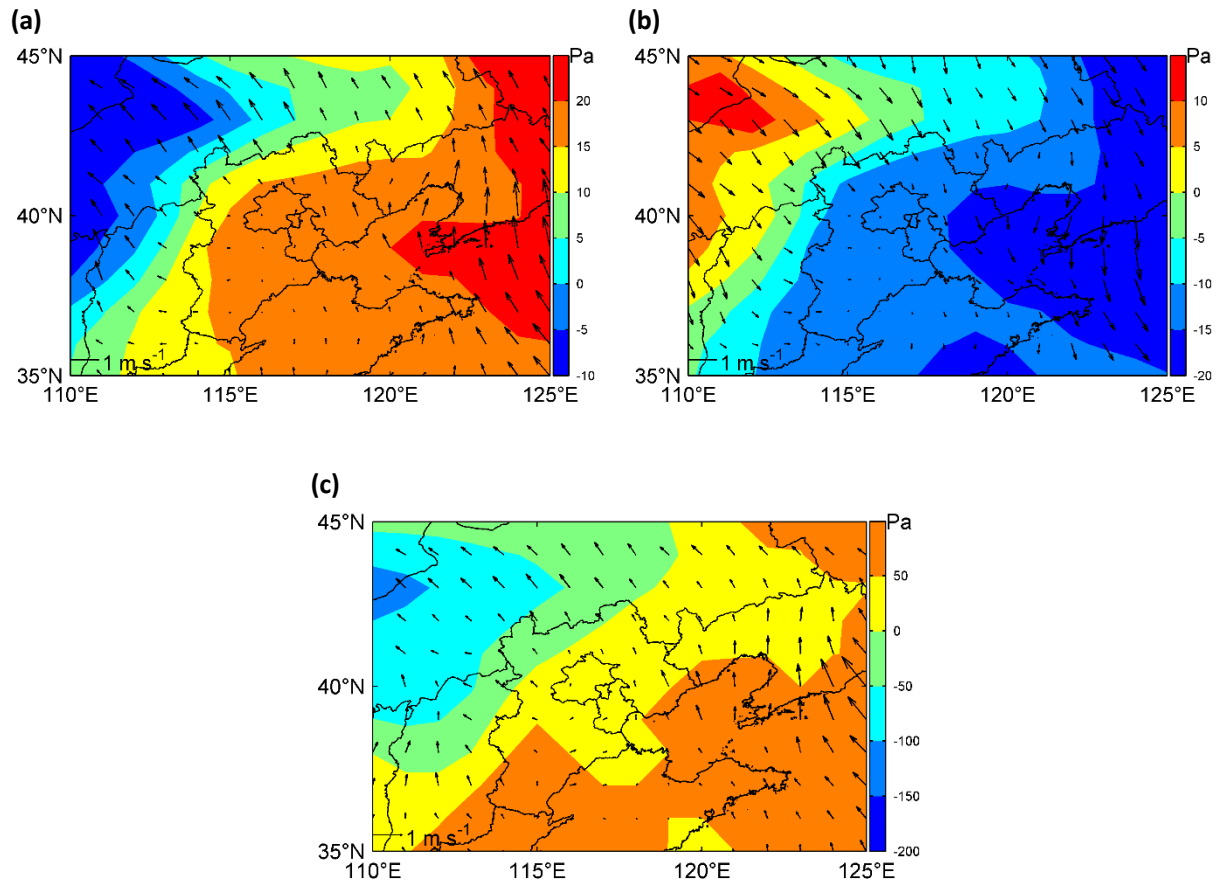


10 Figure 4: The weather analysis maps in December 2014 (a) and 2015 (b). Red line represents
11 WSCL.

12
13
14 Observational evidence has shown a teleconnection between the central Pacific and East Asia
15 during the extreme phases of ENSO cycles. This Pacific–East Asian teleconnection is confined to
16 the lower troposphere. The key system that bridges the warm (cold) events in the eastern Pacific
17 and the weak (strong) East Asian winter monsoons (EAWM) is an anomalous lower-tropospheric
18 anticyclone (cyclone) located in the western North Pacific (Wang et al., 2000). Si et al. (2016) has
19 found that during the 2015 El Niño period, the EAWM was weaker than normal during the 2015

1 winter with a temperature increase of 1.1 °C. The subtropical high was stronger and had a large
2 area than normal years (Li et al., 2016). As a consequence of the weaker EAWM, the cold front in
3 2015 could not extend to farther south than in 2014, leading to a northward shifting of the WSCL.

4 Chang et al. (2016) finds a close relationship between ENSO and air pollution in North China
5 in 2015. To deeply investigate the relation between ENSO and the air quality in North China, EAR-
6 Interim reanalysis data in December 1979-2015, including sea surface temperature (SST), mean
7 sea level pressure (MSL), 2-m temperature (T2), 10-m U and V wind component (U10 and V10),
8 were used. Area averaged SST anomalies (SSTA) over the Nino3 region (5°N-5°S, 150°-90°W)
9 provide an index typically used to represent ENSO variability (Tang et al., 2016). Time series of
10 monthly averaged SSTA over the Nino3 region are shown in Figure S3. Significant ENSO events
11 were found in 1982, 1997 and 2015. The MSL and 10-m wind anomalies over North China region
12 are shown in Figure 5. It seems that ENSO (SSTA>0) results in weak cold air and northerly wind,
13 while opposite for La Nina (SSTA<0). These relations indicate that the worse air quality in
14 December 2015 over North China may be related to the significant ENSO. Further study is needed
15 to investigate this correlation with longer period of data.



1

2

3 Figure 5: The MSL and 10-m wind anomalies over North China region. (a): SSTA larger than zero;
 4 (b) SSTA less than zero; (c) December 2015.

5

6 There are three consequences of the WSCL shifting. First of all, accompanied with the

7 northerly shift of the WSCL is the shifting of the stable atmosphere zone to the central Hebei and

8 Beijing areas in 2015, allowing the pollutants to easily accumulate along the lines. The observed

9 static wind frequency (SWF, wind speed less than 1 m s^{-1}) distribution clearly supports this

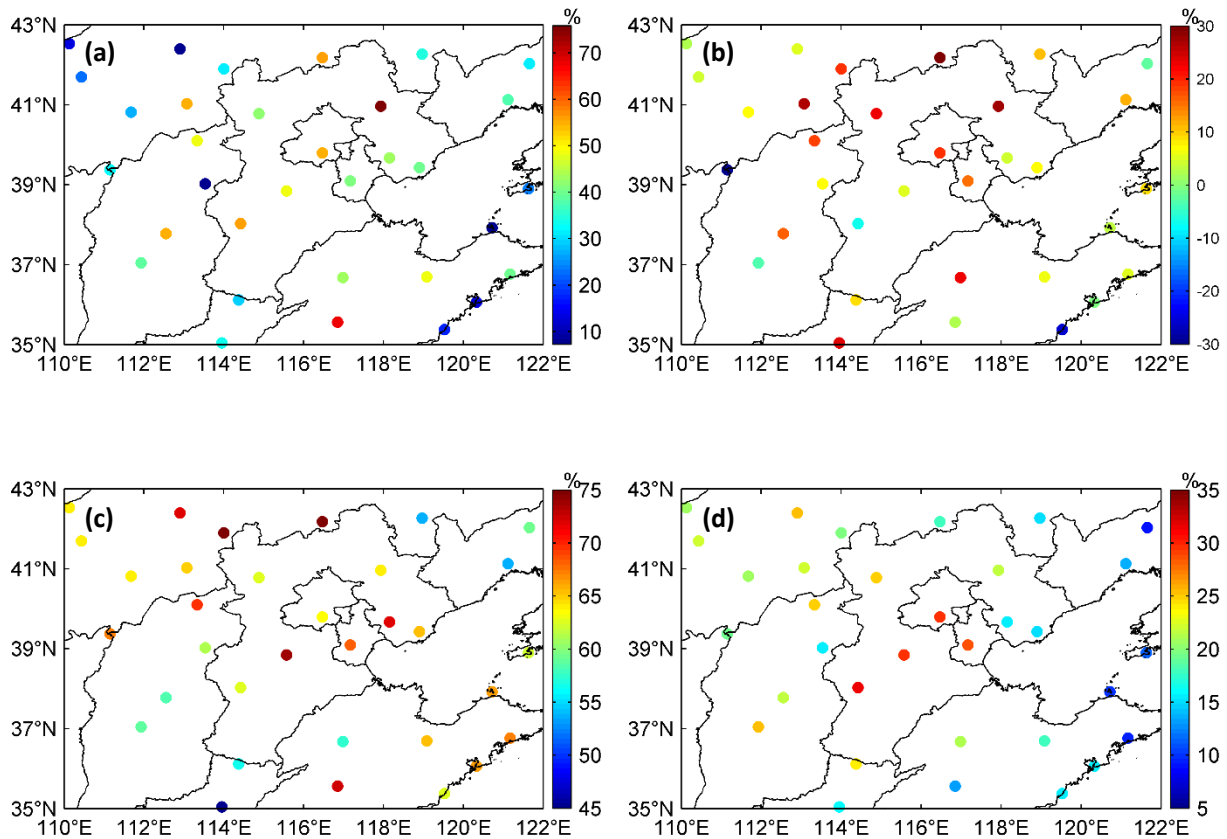
10 observation. Figure 6a is the regional distribution of SWF in December 2015, showing a high

11 frequency along the convergence line, with the SWF changes from 2014 (Fig. 6b). Table 1 lists the

12 SWF for three typical cities and regional mean over Jing-Jin-Ji area. Except for Shijiazhuang which

13 had an unusual high SWF in 2014 and a decreasing SWF in 2015, other cities experienced an

1 increasing trend for stable weather. Impacted heavily by the shifting, Beijing and Tianjin had a
 2 16-19% increase of SWF compared to 2014. Even with a decreasing trend for SWF, Shijiazhuang
 3 had a similar SWF with other cities with more than half of the days (>50%) under static stable
 4 environment.



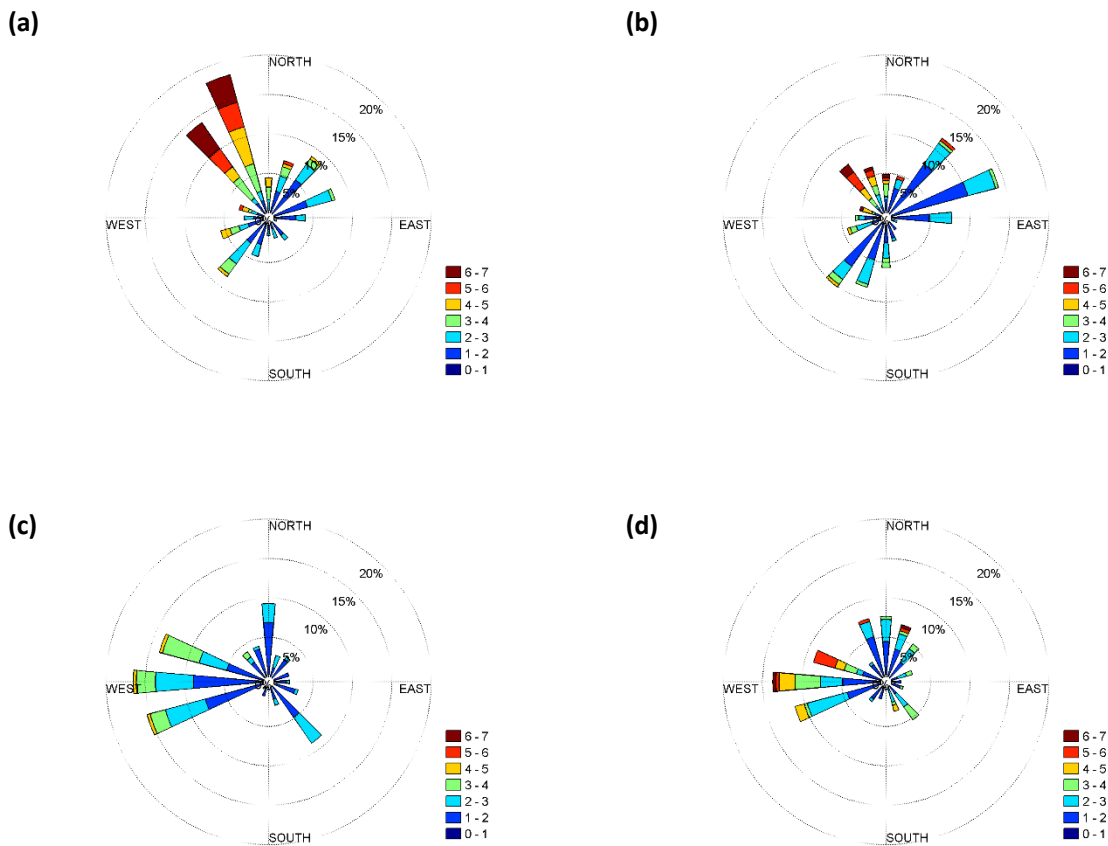
6
 7 Figure 6: The observed SWF and RH2 distributions averaged for December in 2015 (a, c); Changes
 8 from 2014 (b, d).

9 Table 1: Comparison of SWF (%), WS10 ($m s^{-1}$) and RH2 (%) for December 2015 and 2014

City	Beijing			Tianjin			Shijiazhuang			Jing-Jin-Ji		
	SWF	WS10	RH2	SWF	WS10	RH2	SWF	WS10	RH2	SWF	WS10	RH2
2014	35	1.5	34	25	1.1	40	63	0.7	31	38	1.4	42
2015	54	0.5	64	41	0.6	68	55	0.6	63	50	0.8	67

10

1 In Beijing, the WSCL shifting in December 2015 not only increased the SWF but also changed
 2 the wind directions. It is shown from Figure 7 that the north-west winds that usually diffuse the
 3 air pollution away from Beijing were reduced by about 20% in December 2015 compared to the
 4 same period in 2014, while the southerly wind frequencies were increased by 8% that brought
 5 air pollution to Beijing. Compared to Beijing, the city of Shijiazhuang was not seen such a large
 6 change (Fig. 7). The SWF in Shijiazhuang was reduced, and the northerly wind frequency even
 7 increased by 6% in December 2015.



8

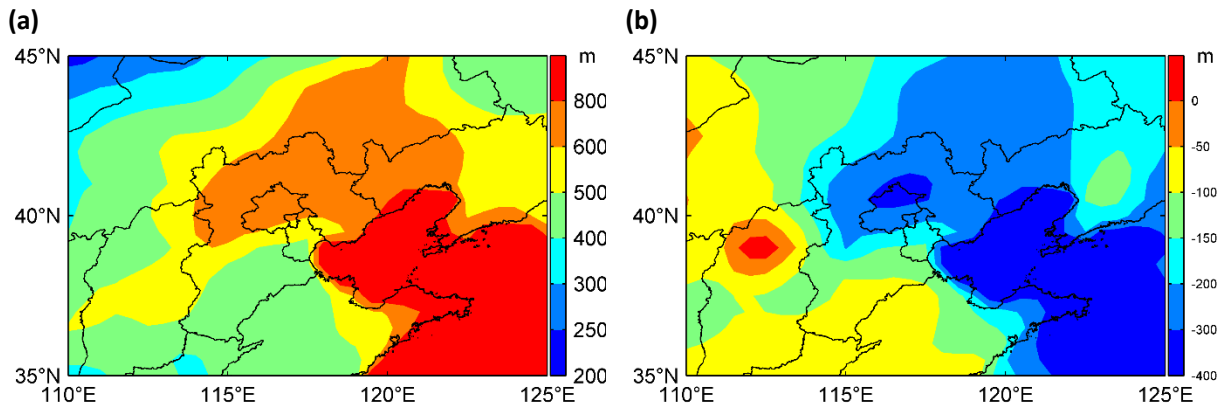
9
 10 Figure 7: (a) The observed wind frequency and directions averaged for December 2014 and 2015
 11 in Beijing (a-b) and Shijiazhuang (c, d) respectively.

12

1 The second consequence of the WSCL shifting is the northerly movement of moisture
2 from the South. Figure 6c and 6d shows the averaged RH2 for December of 2015 and changes
3 from 2014. It is obvious that as the shift of the WSCL to the North, the RH increases are primarily
4 on the north side of the WSCL with an increase of 30% in Beijing (other cities in Table 1). PM_{2.5}
5 concentration is positively correlated with RH2 (Figure 3). The impact of increasing RH has an
6 adverse influence on the visibility under the same loading of particulate matters and also
7 promotes the formation of secondary formation of particulate matters from gaseous species.
8 Because of the WSCL shifting, the increase of RH in Shijiazhuang was even slightly larger than that
9 in Beijing, at about 32%. Researches (Chang et al., 2009) have shown that the extent of SO₂
10 oxidation to sulfate and NO₂ oxidation to nitrate increased with the increase of relative humidity
11 during both of the episode daytime and nighttime pollution in Taiwan. Gund et al. (1991) found
12 that the oxidation rate of SO₂ to sulfate could increase by about 10 times if the relative humidity
13 increased from 40 to 80% in sea-salt aerosols. If NO₂ (SO₂:NO₂ = 1:1) was added to the gas phase,
14 the rate for example at a relative humidity of 40% - could be increased by 24 times, indicating
15 the enhanced conversion tendency of SO₂ to PM_{2.5} by both relative humidity and NO₂ (Gund et al.
16 1991). Though the detailed mechanism of this enhanced oxidation in Northern China needs
17 further study, the increased relative humidity may partially be attributed to the decreases of SO₂
18 (from 86 μg m⁻³ to 61 μg m⁻³ in Jing-Jin-Ji area) during the heavy pollution months in 2015 winter
19 as compared to the same period of 2014.

20 The third consequence of the WSCL shifting is the decrease of BLH. Previous research (Liu et
21 al., 2010) has revealed that the invasion of cold air increases the turbulence flux and the BLH over
22 Beijing area. Compared to 2014, the weaker cold air in December 2015 resulted in the decrease

1 of BLH in the range from 50 to 300 m over Jing-Jin-Ji area (Figure 8), which was one of the main
2 reasons for heavy haze pollution in December 2015.



3
4 Figure 8: (a) The monthly mean BLH in December 2014 and (b) the change of monthly average
5 BLH in December between 2015 and 2014 over North China.
6

7 5. Modeling Analysis

8 In order to further explore and quantify the meteorological impact on the changes of the air
9 pollution situation between Decembers of 2014 and 2015, a comparison of two year's
10 simulations with the same emission data was performed for December. The differences of the
11 results in any air pollutants can be attributed to the difference impacted by the meteorological
12 conditions.

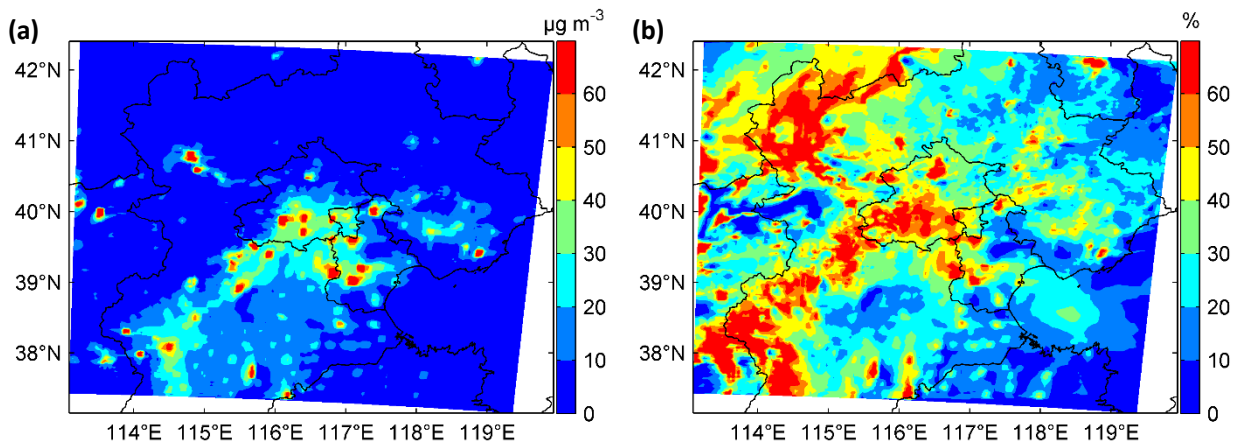
13 The CUACE is an atmospheric chemistry module including an emission modeling system,
14 gaseous/aerosol and chemistry processes, as well as related thermodynamic equilibrium
15 modules for processing the transformation between gas and particle matter (Gong et al., 2003;
16 Wang et al., 2010; Zhou et al., 2012). The meteorological model coupled by CUACE is the fifth-
17 generation Penn State/NCAR mesoscale model (MM5). The model system MM5/CUACE was run

1 with three nested domains (a horizontal resolution of 27 km, 9 km, and 3 km) to reduce spurious
2 inner domain boundary effects (Figure S1). In the vertical, there are a total of 35 full eta levels
3 extending to the model top at 10 hPa, with 16 levels below 2 km. One month (December) of
4 simulation was done for 2014 and 2015, respectively, with the result differences presented for
5 the analysis. The comparison of the CUACE emission inventory (representing the emission in 2013)
6 to other inventories, and the details of the integration scheme, initial and boundary conditions
7 were presented in He et al. (2016b).

8 Six statistical indices, i.e., index of agreement (IOA), correlation coefficient (R), standard
9 deviation (STD), root mean square error (RMSE), mean bias (MB), and mean error (ME) were
10 employed to investigate the performance of MM5/CUACE, with the routine meteorological data
11 from CMA, and hourly average $PM_{2.5}$ concentrations from the Ministry of Environmental
12 Protection. The statistical performance based on hourly observed data were provided in Table S1
13 and Table S2 for MM5 and CUACE, respectively. Directly comparisons between observed and
14 simulated daily average $PM_{2.5}$ concentrations are shown in Figure S2. The error in December 2015
15 is larger than that in December 2014, which maybe relate to the uncertainty of emission
16 inventory which represents the emission in 2013. The MB of $PM_{2.5}$ reached 25-30 $\mu g m^{-3}$ in the
17 simulation for July and December 2013 (He et al., 2016), while it decreases to 19 and 17 $\mu g m^{-3}$
18 for December 2014 and 2015 respectively (Table S2), indicating that the emission in CUACE model
19 might be overestimated considering the emission reduction gradually in recent years. The error
20 of simulated meteorological fields is another important source for the error of simulated $PM_{2.5}$
21 concentrations. In generally, MM5 and CUACE model can well reproduce the variation

1 characteristics of meteorological parameters and air pollution, and is comparable with previous
2 studies (He et al., 2016b; Kioutsioukis et al., 2016).

3 Figure 9a shows the December $PM_{2.5}$ concentration difference between 2015 and 2014. It is
4 clear that the meteorological conditions alone have contributed to the worsening air quality
5 ($PM_{2.5}$) in Northern China, with a high degradation of about $30-60 \mu g m^{-3}$ in the southern Beijing
6 and southern Hebei regions in December 2015, corresponding well with WSCL from the surface
7 meteorological data analysis (Fig. 4), which indicates the more stable zone moving to closer to
8 southern Beijing.



9

10 Figure 9: (a) Simulated $PM_{2.5}$ concentrations difference between December of 2015 and 2014. (b)
11 $PM_{2.5}$ fractional difference.

12

13

14 From the modeling results, it can also be found out that the $PM_{2.5}$ difference percentage (i.e.,
15 the concentration difference between December 2015 and 2014 divided by the average
16 concentration in December 2014) due to meteorological difference between December 2014 and
17 2015 for the major cities in Jing-Jin-Ji area is in the range of 10-150% (Fig. 9b), a system-wide

1 negative impacts on air quality in the region in 2015. This simulated difference is a comprehensive
2 consequence of the meteorological impacts, including the circulation, dispersing ability,
3 deposition, transports and chemical reactions.

4 It is well known that the PM_{2.5} concentrations are determined by three major factors:
5 emissions, meteorology and atmospheric processes. Given that the degree of meteorological
6 impacts was simulated by the model as well as the observed differences between December 2014
7 and 2015 were known, the impact from emission changes can be inferred from the observed
8 differences and the simulated meteorological impacts.

9 Table 2 is a summary of the difference for major cities in Jing-Jin-Ji area between December
10 2014 and 2015. The observed percentage changes are all smaller than those by simulations
11 except Beijing, indicating that if no emission controls measures were taken during this period,
12 the observed difference would be much larger than the reality. Therefore, it can be deduced that
13 despite of the un-favorite weather conditions that worsened the air quality in December 2015,
14 the control measures have made a great contribution to reduce the ambient concentrations with
15 about 9% in Jing-Jin-Ji area. The increase of relative variation of simulated PM_{2.5} concentration
16 for December between 2015 and 2014 in Beijing is larger than observed value, which might be
17 related to the bias of local wind field. In fact, it is very difficult for mesoscale meteorological
18 model to capture the local wind field very exactly. The comparison of wind rose map between
19 observation and simulation in December 2015 over Beijing (Figure S4) reveals that MM5
20 overestimated the frequency of northwesterly wind, which results in the underestimation of
21 regional transport and PM_{2.5} concentration in the model. This can explain that there is a
22 difference of relative change of PM_{2.5} in Beijing with other cities (Table 2). Another factor needs

1 further investigation is the observational data quality itself, which may have large uncertainty
2 associated from different stations and may influence the accurate assessment of the impact.

3

4 Table 2: Comparison of observed and simulated PM_{2.5} in December 2015 and 2014

City	Observed PM _{2.5} (µg m ⁻³)			Simulated PM _{2.5} (µg m ⁻³)		
	2014	2015	Diff (%)	2014	2015	Diff (%)
Beijing	61	145	137	68	114	68
Tianjin	113	125	10	92	129	40
Shijiazhuang	121	158	30	83	125	51
Jing-Jin-Ji	102	139	36	82	119	45

5

6 6. Conclusions

7 The meteorological data analysis and modeling study of 2015 winter heavy haze pollution
8 episodes were carried out to explore the causes of the unusual increase of haze (PM_{2.5}) in
9 December. It is found out that the monthly mean PM_{2.5} concentrations in December 2015 saw a
10 large increase compared to the same month in 2014, ranging from 5% to 137% in Jing-Jin-Ji area,
11 with a mean increase of 36%. As unusual atmospheric circulation in winter 2015 (El Niño event),
12 the warm and wet flow has been enhanced in North China and the WSCL has shifted northerly
13 compared to that in 2014. The SWH and RH2 increase 12 and 25% in Jing-Jin-Ji area, respectively.
14 These changes of meteorology brought more static stable weather, which was the primary
15 responsibility for degradation of air pollution in winter 2015. Modeling analysis further confirmed
16 that the meteorological conditions contributed to the worsening air quality in the Jing-Jin-Ji area

1 in winter 2015, with the PM_{2.5} concentration for the major cities in December 2015 increased 45%
2 compared to the same period of 2014. With the same emission data in the modeling study for
3 2014 and 2015, the relative changes of pollution level between two years were larger than those
4 from the observation, indicating the control measures have effectively brought the PM_{2.5} down
5 (~9%) to compensate the negative meteorological impacts.

6 Acknowledgments

7 This research was financially supported by the Science and Technology support program
8 (2014BAC16B03) and by the National Natural Science Foundation of China (No.51305112).

9

1 Reference:

- 2 Change, L., Xu, J., Tie, X., and Wu, J.: Impact of the 2015 El Nino event on winter air quality in
3 China, *Scientific Reports*, 6, 34275, doi:10.1038/srep34275, 2016.
- 4 Chang, L. P., Yao, Y. C., Liao, C. F., Chiang, S. W., and Tsai J. H.: Influence of ozone and humidity
5 on the formation of sulfate and nitrate in airborne fine particles, *Journal of Environmental
6 Science and Health Part A*, 44(8), 767-777, 2009.
- 7 Gong, S. L., Barrie, L. A., Blanchet, J. P., von Salzen K., Lohmann, U., Lesins, G., Spacek, L., Zhang,
8 L. M., Girard, E., Lin, H., Leaitch, R., Leighton, H., Chylek, P., and Huang, P.: Canadian aerosol
9 module: a size-segregated simulation of atmospheric aerosol processes for climate and air
10 quality models 1. Model development, *J. Geophys. Res.*, 108, 4007,
11 doi:10.1029/2001JD002002, 2003.
- 12 Gong, S. L., and Zhang, X. Y.: CUACE/Dust - an integrated system of observation and modeling
13 systems for operational dust forecasting in Asia, *Atmos. Chem. Phys.*, 8, 2333-2340,
14 doi:10.5194/acp-8-2333-2008, 2008.
- 15 Gund, G., Wien, F., and Weisweiler, W.: Oxidation of SO₂ to sulfate in sea salt aerosols, *Fresenius
16 J. Anal. Chem.*, 340, 616-620, 1991.
- 17 Gurjar, B. R., Jain, A., Sharma, A., Agarwal, A., Gupta, P., Nagpure, A. S., and Lelieveld, J.: Human
18 health risks in megacities due to air pollution, *Atmospheric Environment*, 44(36), 4606-4613,
19 doi:10.1016/j.atmosenv.2010.08.011, 2010.
- 20 Han, X., Zhang, M., Tao, J., Wang, L., Gao, J., Wang, S., and Chai, F.: Modeling aerosol impacts on
21 atmospheric visibility in Beijing with RAMS-CMAQ, *Atmospheric Environment*, 72, 177-191,
22 doi:10.1016/j.atmosenv.2013.02.030, 2013.
- 23 He, J., Yu, Y., Xie, Y., Mao, H., Wu, L., Liu, N., and Zhao, S.: Numerical model-based artificial neural
24 network model and its application for quantifying impact factors of urban air quality. *Water,
25 Air & Soil Pollution*, 227, 235, doi:10.1007/s11270-016-2930-z, 2016a.
- 26 He, J., Wu, L., Mao, H., Liu, H., Jing, B., Yu, Y., Ren, P., Feng, C., and Liu, X.: Development of a
27 vehicle emission inventory with high temporal-spatial resolution based on NRT traffic data
28 and its impact on air pollution in Beijing – Part 2: Impact of vehicle emission on urban air
29 quality. *Atmos. Chem. Phys.*, 16, 3171–3184, doi:10.5194/acp-16-3171-2016, 2016b.
- 30 He, J., Gong, S., Yu, Y., Yu, L., Wu, L., Mao, H., Song, C., Zhao, S., Liu, H., Li, X., and Li, R.: Air
31 pollution characteristics and their relation to meteorological conditions during 2014-2015
32 in major Chinese Cities, *Environmental Pollution*, underview, 2017.
- 33 Jia, B., Wang, Y., Yao, Y., and Xie, Y.: A new indicator on the impact of large-scale circulation on
34 wintertime particulate matter pollution over China, *Atmos. Chem. Phys.*, 15, 11919–11929,
35 doi:10.5194/acp-15-11919-2015, 2015.

- 1 Kan, H., Chen, R., and Tong, S.: Ambient air pollution, climate change, and population health in
2 China, *Environ. Int.*, 42, 10-19, doi:10.1016/j.envint.2011.03.003, 2012.
- 3 Kioutsioukis, I., de Meij, A., Jakobs, H., Katragkou, E., Vinuesa, J., and Kazantzidis, A.: High
4 resolution WRF ensemble forecasting for irrigation: Multi-variable evaluation, *Atmos. Res.*,
5 167, 156-174, doi:10.1016/j.atmosres.2015.07.015, 2016.
- 6 Li, M., Hua, C., and Ma, X.: Analysis of the December 2015 Atmospheric Circulation and Weather,
7 *Meteorological Monthly*, 42(3), 382-388, 2016 (in Chinese).
- 8 Liao, X., Sun, Z., Tang, Y., Pu, W., Li, Z., and Lu, B.: Meteorological Mechanism for the Formation
9 of a Serious Pollution Case in Beijing in the Background of Northerly Flow at Upper Levels,
10 *Environmental Science*, 36(3), 801-808, doi:10.13227 /j.hjkx.2015. 03.007, 2015 (in Chinese).
- 11 Liu, X., Hu, F., Zou, H., Cao, X., and Dou, J.: Analysis on characteristic of atmospheric boundary
12 layer during a typical heavy fog process in Beijing area, *Plateau Meteorology*, 29(5), 1174-
13 1182, 2010 (in Chinese).
- 14 Si, D., Liu, Y., Shao, X., and Wang, Y.: Anomalies of Oceanic and Atmospheric Circulation in 2015
15 and Their Impacts on Climate in China, *Meteorological Monthly*, 42(4), 481-488, 2016 (in
16 Chinese).
- 17 Sun, Y., Chen, C., Zhang, Y., Xu, W., Zhou L., Cheng, X., Zheng, H., Ji, D., Li, J., Tang, X., Fu, P., Wang,
18 Z.: Rapid formation and evolution of an extreme haze episode in Northern China during
19 winter 2015, *Scientific Reports*, 6, 27151, doi: 10.1038/srep27151, 2016.
- 20 Tang, Y., Li, L., Dong, W., and Wang, B.: Tracing the source of ENSO simulation differences to the
21 atmospheric component of two CGCMs, *Atmospheric Science Letters*, 17, 155-161, 2016.
- 22 Varotsos, C. A., Tzanis, C. G., and Sarlis, N. V.: On the progress of the 2015–2016 El Niño event,
23 *Atmos. Chem. Phys.*, 16(4), 2007-2011, 2016.
- 24 Wang, B., Wu, R., and Fu, X.: Pacific-East Asian teleconnection: how does ENSO affect East Asian
25 climate?, *Journal of Climate*, 13(9), 1517-1536, 2000.
- 26 Wang, C., YANG, Y., LI, Y., and Fan, Y.: Analysis on the meteorological condition and formation
27 mechanism of serious pollution in south Hebei Province in January 2013, *Research of*
28 *Environmental Sciences*, 26(7), 695-702, doi:10.13198/j.res.2013.07.4.wangcm.006, 2013
29 (in Chinese).
- 30 Wang, H., Gong, S., Zhang, H., Chen, Y., Shen, X., Chen, D., Xue, J., Shen, Y., Wu, X., and Jin, Z.: A
31 new-generation sand and dust storm forecasting system GRAPES_CUACE/Dust: Model
32 development, verification and numerical simulation, *Science Bulletin*, 55(7), 635-649,
33 doi:10.1007/s11434-009-0481-z, 2010.
- 34 Wang, L., Hao, J., He, K., Wang, S., Li, J., Zhang, Q., Streets, D., Fu, J., Jang, C., Takekawa, H., and
35 Chatani, S.: A Modeling Study of Coarse Particulate Matter Pollution in Beijing: Regional
36 Source Contributions and Control Implications for the 2008 Summer Olympics, *Journal of*

- 1 the Air & Waste Management Association, 58(8), 1057-1069, doi:10.3155/1047-
2 3289.58.8.1057, 2008.
- 3 Wang, L., Wei, Z., Wei, W., Fu, J. S., Meng, C., and Ma, S.: Source apportionment of PM_{2.5} in top
4 polluted cities in Hebei, China using the CMAQ model, *Atmospheric Environment*, 122, 723-
5 736, doi:10.1016/j.atmosenv.2015.10.041, 2015.
- 6 Zeng, J., Wang, M., and Zhang, H.: Correlation between atmospheric PM_{2.5} concentration and
7 meteorological factors during summer and autumn in Beijing, China, *Chinese Journal of*
8 *Applied Ecology*, 25(9), 2695 — 2699, doi:10.13287/j.1001-9332.20140616.002, 2014 (in
9 Chinese).
- 10 Zhang, S., Wu, Y., Wu, X., Li, M., Ge, Y., Liang, B., Xu, Y., Zhou, Y., Liu, H., Fu, L., and Hao, J.: Historic
11 and future trends of vehicle emissions in Beijing, 1998-2020:A policy assessment for the
12 most stringent vehicle emission control program in China, *Atmospheric Environment*, 89,
13 216-229, doi:10.1016/j.atmosenv.2013.12.002, 2014.
- 14 Zhou, C., Gong, S., Zhang, X., Liu, H., Xue, M., Cao, G., An, X., Che, H., Zhang, Y., and Niu, T.:
15 Towards the improvements of simulating the chemical and optical properties of Chinese
16 aerosols using an online coupled model-CUACE/Aero, *Tellus B*, 64,
17 doi:10.3402/tellusb.v64i0.18965, 2012.