

Dear Prof. Chul Han Song,

Thank you very much for the efficient handling of the reviewing process for our manuscript. We carefully addressed all of the referee's comments and made the requested revisions in the manuscript. The corresponding changes are described below in our point-to-point responses to the referee's comments.

- 5 All the changes and corrections are highlighted in the revised manuscript and in the Supplementary Material which are also provided below. We hope that you will find our response satisfactory.

Respectfully,

Igor Konovalov

on behalf of all the authors

Authors' response to the comments of the anonymous referee # 1

We are very grateful to the Referee for the positive evaluation of our manuscript and for the useful comments which are carefully addressed in the revised manuscript. Below we describe our point-to-point responses to the Referee's comments.

- 5 *Referee's comment: P4 lines 11-14: The sentence starting with "Konovalov et al. (2014) optimized BB emissions..." and till the end of the paragraph is very difficult to read. I had trouble understanding if the values of the factors 2.2 and 2.9 refer to emissions or to ratios of optimal BB emissions. Please rephrase.*

The values of the factors 2.2 and 2.9 refer to ratios of the optimal BB emissions. We understand that the sentence indicated by the referee was difficult to read. It has been rephrased in the revised manuscript.

- 10 *Referee's comment: P9 lines 10-24: I understood from this section (specifically P9 lines 16-17: "...we zeroed emissions of other types of aerosol and disabled secondary aerosol formation from anthropogenic and biogenic precursors.") that model runs including BB emissions (VBS and STN) only include BB aerosols without the other background aerosol. Does this mean that to obtain total AOD for, say, VBS run you add VBS_AOD and BGR_AOD? If so, then I can't see where this is stated explicitly (or this is what P10 lines 30-34 mean?). Please clarify.*

Indeed, to obtain total AOD, we added AOD from the BGR run and AOD from the STN (or VBS) run. It was not explained explicitly, and we are sorry for this omission. The corresponding explanation is introduced at the end of the first paragraph in Sect. 2.2.2.

- 20 *Referee's comment: P11 lines 14-15: Should T_1 read T_0 ? From the definition of trace species on P8 line 20, it looks like T_0 is the only chemically passive species, the concentration of which will stay constant over time in the presence of OH. If I am mistaken and you insist that there should be T_1 please elaborate (on P11 line 14, after the words "would be constant") on why this is so.*

Yes, T_1 should read T_0 , while T_2 should read T_i . We are sorry for the confusion. The corresponding typos are corrected in the revised manuscript.

- 25 *Referee's comment: P12 line 23: what is BB part of the observed AOD? Is this total MODIS AOD less the background AOD? In which case, is this observed background AOD value obtained by averaging the most background-like values as described in P10 line 27 – P11 line 2?*

- 30 Indeed, the BB part of the observed AOD is, by definition, the total MODIS AOD less the background AOD. And yes, the background AOD value can be estimated by averaging the most background-like values selected in the same way as described in P10 line 27 – P 11 line 2 in the reviewed manuscript. To avoid possible misunderstanding, we have slightly modified the corresponding text. Specifically, we removed the words "the BB part" and indicated that the background part of AOD was evaluated by using both the measurement and simulation AOD data as explained in the same section below (specifically, the corresponding explanation is provided in the second paragraph after Eq. 9).

- 35 *Referee's comment: Also, from here on in the text, only one kind of background values are referenced. These are all the variables with subscript b. It is not very clear to me if these background values are all from the model, or there are separate backgrounds for model and observations (e.g. in Eq. 9 are the same values subtracted from the first (obs) and the second (model) parts of the terms in the parentheses?), or it is some combined value applicable to both model and observation? I see that this is explained somewhat afterwards (P13 line 25 till the end of*

the section), but this still does not answer the question of using the same or different backgrounds for model and observation in the same equation.

5 In our analysis, the background values are not available directly from observations but can be evaluated only by using a model for selection of the grid cells and days corresponding to the background-like conditions. On the other hand, the modeled background values can be affected by biases that are corrected by using the observational data as explained in Sect. 2.2.2. Thus, it was not feasible to evaluate the background values for the modeled and observed AOD separately. Rather, we used the combined values (obtained in the two different ways as explained in the second paragraph after Eq. 9) applicable to both measurements and observations. In the revised manuscript, we clarify (by means of a statement following after Eq. 9) that the background values, v_b and τ_b , of the CO columns and AOD are the same for the corresponding observations and simulations Eq. (9).
10

Referee's comments: Suggested technical changes:

P5 line 9: "ageing" should be "aging". I noticed this instance, but please check the rest of the manuscript for consistency.

P5 line 21: remove "and" between "algorithm" and "is".

15 P8 line 23: remove either 'is' or 'it is' between the words 'as' and 'follows'.

P16 line 9: remove "and" between "comparison" and "of the measurement".

Fig. 2b: Y-axis label contains subscript bm , which is not used anywhere else in the paper. Please make consistent or explain.

20 Fig.5 in the headers of the figures: dt is nowhere defined. From the text in section 3.2, I deduced that this is probably the bin width, but could be helpful if the notation was also mentioned.

We thank the referee for the suggested technical changes, all of which are introduced in the revised manuscript. Note that owing to the referee's comment, we noticed some inconsistency in the notations. Specifically, while the width of the photochemical age bin was originally denoted as d_a , in some instances (including the headers of several figures), the same value was mistakenly referred to as d_t . Both the text and figures are corrected accordingly in the revised manuscript.
25

Authors' response to the comments of the anonymous referee # 2

We thank the Referee for the positive evaluation of our manuscript and for the helpful suggestions. All of them are carefully addressed in the revised manuscript. Below we describe our point-to-point responses to the Referee's comments.

5 *Referee's comment: ... I have highlighted a few specific issues that need to be addressed, but certainly not all of them. I suggest that the authors use the identified issues (including typos and grammatical errors) as only examples of things to look out for, as they very carefully read the manuscript to find and correct similar occurrences of such issues or others wherever they exist in the manuscript.*

10 We are sorry for any grammatical errors and typos that we did not notice before submission of the reviewed manuscript. We have followed the reviewer's suggestion and carefully re-read the manuscript. Corresponding corrections and some stylistic changes are made in the revised manuscript.

Referee's comment: The authors state (Page 19, Lines 1-3) that: "the analysis presented in Fig. 5 clearly indicates that the VBS scheme enables more adequate representation of BB aerosol dynamics than the standard scheme at the first (growing) stage of BB aerosol aging." However, only STN simulations are shown in Figure 4.
15 *It would be good to include (later in the manuscript) a figure showing the spatial visualization (similar to Figure 4) of simulations comparing the results of incorporating the aging process in the model against those that do not consider aging. Such visuals would more readily demonstrate the benefit of this work.*

Our decision not to include a figure showing the AOD spatial distribution according to the VBS simulation in the reviewed manuscript was made by taking into account that it was similar to that depicted in Sect. 4d (as noted in
20 Sect. 3.1). However, the referee's comment indicates that the omission of this figure was not sufficiently justifiable. Accordingly, the missing distribution has been included in the revised manuscript. To do it in the optimal way, we have split the original Fig. 4 into two figures, one of which (Fig. 4) shows only CO columns, while another demonstrates AOD distributions. Furthermore, we have provided additional plots showing the results of the VBS simulation for the two selected days (21 and 22 July, 2012) in the Supplementary material (see Fig. S3).
25 The extension of Fig. S3 allowed us to visualize some improvement in the agreement between the spatial distributions of the measured and simulated AOD values due to the use of the VBS scheme instead of the standard one.

The fact that a direct comparison of the AOD simulations and observations (when they are averaged temporally or spatially) did not allow us to tell which of the model configurations is more adequate (as it is explained in Sect.
30 3.1) emphasizes the benefits of the method introduced in our paper. Indeed, in contrast to a conventional comparative analysis, our statistical consideration of the AOD enhancement ratio as a function of the BB aerosol photochemical age demonstrated quite clearly that the VBS scheme enables more adequate representation of BB aerosol dynamics than the standard scheme at the first (growing) stage of BB aerosol aging. This result allows us to believe that our method provides a convenient tool to visualize the effects of BB aerosol aging in the simulated
35 data (as noted at the end of Sect. 4).

*Referee's comment: At various points in the article, the authors raise an important issue that needs to be investigated, but immediately state that it is "beyond the scope of this study" (e.g. Page 8 - Line 6, Page 15 - Line 13, Page 18 - Line 5, Page 18 - Line 29). Given that the scope of a study is not set in stone anywhere, but typically determined by the authors themselves, it is unnecessary to identify an essential aspect of an investigation and
40 turn around to say that it is beyond the scope of your study. There is no rule preventing the authors from conducting such analyses in this study. Therefore, I suggest that the authors find a better way to express why they cannot*

conduct such relevant analyses, make a suggestion on how to effectively approach each of such issues, or avoid raising them in the first place.

Indeed, we mentioned several points which, in our opinion, deserve careful consideration in the framework of dedicated studies, and we agree that it was unnecessary. Accordingly, following the reviewer's suggestion, we have tried to avoid raising such points. We believe that the corresponding stylistic changes did not affect the overall quality of the scientific discussion.

Referee's comment: Page 4, Line 6: change "doubled" to "increased". You have "by a factor of 2" later in the sentence, which makes the use of "doubled" repetitive.

The sentence is corrected in the revised manuscript as suggested by the referee.

10 *Referee's comment: Page 5, Line 21: delete "and" from "algorithm and is".*

The misprint is corrected in the revised manuscript.

Referee's comments: Page 6, Line 21-22: delete one "type" from "a given type of land cover type".

The corresponding sentence is re-phrased to avoid the repetitive use of the words "land cover types".

Referee's comments: Page 8, Line 22: It is not clear what is meant by: "as it is follows from ours simulations".

15 We meant that the indicated mean value of the OH concentration in BB plumes was obtained from our model results. In the revised manuscript, instead of referring to our simulations (which are described only after the sentence in question), we provided a reference to relevant experimental results.

20 *Referee's comments: Page 11, Lines 1-2: Unconventional sentence construct: "Only those grid cells and days were considered to be representative of background conditions, where the contribution of the fires to the simulated values of both CO columns and AOD did not exceed 10 percent." Please rephrase.*

The sentence criticized by the referee has been rephrased as follows: "A given grid cell and day was assumed to be representative of background conditions only if the BB fractions in the simulated values (based on the STN and BGR model runs) of both CO columns and AOD did not exceed 10 percent."

25 *Referee's comments: Page 12, Line 9: insert "to" after "corresponding". Page 15, Line 5: delete "of" before "parameters".*

The suggested correction is inserted in the revised manuscript.

Referee's comments: Page 17, Line 17: replace "adequate" with "reasonable". Since the differences between measured and modeled values are still apparently significant, these results should not be described by the term "adequate".

30 The suggested change is made in the revised manuscript.

Referee's comments: Page 21, Line 31: There are no "green crosses" in Figure 7b. The crosses are black.

The mistake is corrected in the revised manuscript: the word "green" is replaced with the word "black".

35 *Referee's comments: Page 24, Line 2: It is not clear how "absorption" can increase the surface area of aerosol particles. Please explain the physical mechanism implied here. I think you probably mean "hygroscopicity" (which involves the absorption of moisture that may cause aerosol particle to swell). However, "absorption" is not the technical term used to describe that process. "Absorption" is mostly used to refer to light absorption (as opposed to "scattering").*

We meant that liquid or amorphous aerosol particles can grow as a result of absorption (uptake) of both organic and inorganic compounds from the gas phase (according to the partitioning equilibrium theory). However, we agree that the term “absorption” is mostly used to refer to optical properties of aerosol. Accordingly, in the revised manuscript, we replaced it with a more general (and more conventional) term “condensation”.

5 *Referee's comments: Page 26, Line 23: change “then unity” to “than unity”.*

The suggested correction is made in the revised manuscript.

Probing into the aging dynamics of biomass burning aerosol by using satellite measurements of aerosol optical depth and carbon monoxide

Igor B. Konovalov¹, Matthias Beekmann², Evgeny V. Berezin¹, Paola Formenti², Meinrat O. Andreae^{3,4}

5 ¹Institute of Applied Physics, Russian Academy of Sciences, Nizhny Novgorod, Russia

²LISA/IPSL, Laboratoire Interuniversitaire des Systèmes Atmosphériques, UMR CNRS 7583, Université Paris Est Créteil (UPEC) et Université Paris Diderot (UPD), France

³Biogeochemistry Department, Max Planck Institute for Chemistry, Mainz, Germany

⁴Scripps Institution of Oceanography, University of California San Diego, La Jolla, CA 92093, USA

10 *Correspondence to:* Igor B. Konovalov (konov@appl.sci-nnov.ru)

Abstract. Carbonaceous aerosol released into the atmosphere from open biomass burning (BB) is known to undergo considerable chemical and physical transformations (aging). However, there ~~exists-is~~ substantial controversy about the nature and observable effects of these transformations. A shortage of consistent observational evidence on BB aerosol aging processes ~~in-under~~ different environmental conditions and at various temporal scales hinders developing their adequate representations in chemistry transport models (CTMs). In this study, we obtain insights into the BB aerosol dynamics by using available satellite measurements of aerosol optical depth (AOD) and carbon monoxide (CO). The basic concept of our method is to consider AOD as a function of the BB aerosol "photochemical age" (that is, the time period characterizing the exposure of BB aerosol emissions to atmospheric oxidation reactions) predicted by means of model tracers. We evaluate the AOD enhancement ratio (ER) defined as the ratio of optical depth of actual BB aerosol with respect to that of a modeled aerosol tracer that is assumed to originate from the same fires as the real BB aerosol but is not affected by any aging processes. To limit possible effects of model transport errors, the AOD measurements are normalized to CO column amounts that are also retrieved from satellite measurements. The method is applied to the analysis of the meso- and synoptic-scale evolution of aerosol in smoke plumes from major wildfires that occurred in Siberia in summer 2012. AOD and CO retrievals from, ~~respec-~~
~~tively;~~ MODIS and IASI measurements, respectively, are used in combination with simulations performed with the CHIMERE CTM. The analysis indicates that aging processes strongly affected the evolution of BB aerosol in the situation considered, especially in dense plumes (with spatial average PM_{2.5} concentration exceeding 100 µg m⁻³). For such plumes, the ER is found to increase almost twofold on the scale of ~ 10 hours of ~~the-daytime~~ aerosol evolution ~~of-aerosol~~ (after a few first hours of the evolution that are not resolved in our analysis). The robustness of this finding is corroborated by sensitivity tests and Monte Carlo experiments. Furthermore, a simulation using the volatility basis set framework suggests that a large part of the increase in the ER can be explained by atmospheric processing of semi-volatile organic compounds. Our results are consistent with findings of a number of earlier studies reporting considerable underestimation of AOD by CTMs in which BB aerosol aging processes have either been disregarded or simulated in a highly simplified way. In general, this study demonstrates the feasibility of using satellite measurements of AOD in biomass burning plumes in combination with

aerosol tracer simulations for the investigation of BB aerosol evolution and validation of BB aerosol aging schemes in atmospheric models.

1 Introduction

5 | Aerosol from open biomass burning (BB) is an important agent of the climate and weather systems, ~~which~~ since it affects the optical characteristics and thermal balance of the atmosphere both directly, by absorbing and scattering incoming solar radiation, and indirectly, by modifying cloud properties (e.g., Haywood and Boucher, 2000; Andreae and Merlet; 2001; Pierce et al., 2007, Bond et al., 2013; Andreae and Ramanathan, 2013; Alonso-Blanco et al., 2014). It is also an important ~~factor in the~~ context source of air pollution, as smoke plumes from wildfires and other types of BB have been reported to drastically degrade air quality in many regions worldwide (e.g., Bertschi and Jaffe, 2005; Konovalov et al., 2011; Strand et al., 2012; Engling et al., 2014).

The two major carbonaceous fractions of BB aerosol that are conventionally considered to characterize its physical and chemical properties are black (or elemental) carbon and organic aerosol (or organic carbon). Black carbon (BC) constituting typically 2-10% of the mass concentration of biomass burning aerosol (see, e.g., Reid et al., 2005a and references therein) is commonly implied to represent the major light-absorbing component of BB aerosol and is typically composed of graphite-like structures that predominantly consist of carbon atoms (Andreae and Gelencsér, 2006). Organic aerosol (OA) commonly makes up most of BB aerosol particle mass and consists of thousands of individual organic compounds covering a wide range of physical and chemical properties. Typically, OA features much lower mass absorption efficiency than BC and contributes mostly to light scattering in the atmosphere (see, e.g., Keil and Haywood, 2003); however, OA in BB plumes is also known to have a low-volatility light-absorbing fraction called "brown carbon" (BrC) that (similar to BC) has been shown to be an important factor in aerosol radiative forcing (Andreae and Ramanathan, 2013; Saleh et al., 2014). Apart from the carbonaceous fractions, BB aerosols contain a typically minor ~~(of order of 10%)~~ mass fraction (of order of 10%) of inorganic species, such as potassium, sulfate, chloride, etc. (Reid et al., 2005a).

25 | There is abundant evidence that BB aerosol undergoes considerable chemical and physical transformations, ~~that~~ which are commonly referred to as aerosol "aging". For example, substantial enhancements of the oxygenated organic fraction of wood burning aerosol were observed by Grieshop et al. (2009), Hennigan et al. (2011), and Heringa et al. (2011) in smog chamber experiments after several hours of photochemical processing of biomass burning emissions. Consistently with the laboratory experiments, mass-spectroscopic measurements acquired during several aircraft campaigns in different regions of North America (DeCarlo et al., 2008; Cubison et al., 2011; Jolleys et al., 2015; May et al., 2015) revealed that the BB OA is usually more oxygenated downwind of fires than in fresh smoke plumes. Aging of BB aerosol has also been shown to be associated with increasing single scattering albedo (Reid et al., 1998; Abel et al., 2003), decreasing real and imaginary parts of the complex refractive index (Adler et al., 2011), and evolution of the number size distribution (Dubovik et al., 2002; Formenti et al., 2003; Capes et al., 2008).

There is, however, substantial controversy regarding the effects of aging on the mass concentration of BB aerosol. Such effects are commonly evaluated by means of the normalized excess mixing ratio (NEMR) or enhancement ratio (ER), both of which, in the given context, represent the ratio of mass concentration of BB aerosol or its component, such as OA, to that of the BB fraction of a long-lived tracer (such as BC, CO₂ or CO₂). On the one hand, smog chamber experiments indicated that the ER of OA with respect to BC typically increases after a few hours of aging, although there has been significant variability among results of individual experiments, some of which showed a strong increase of this ratio (up to a factor of 4), while some others resulted in a net loss of OA (Grieshop et al., 2009; Hennigan et al., 2011; Heringa et al. 2011). A strong increase (by more than a factor of 2) of the ER for PM_{2.5} with respect to CO during first two hours of the atmospheric evolution of smoke plumes from deforestation and crop residue fires on the Yucatan peninsula was detected in aircraft measurements (Yokelson et al., 2009). DeCarlo et al. (2010) estimated (also using aircraft measurements) that aging of BB plumes around Mexico City results in adding OA mass equivalent to about 32–42% of the primary OA emissions over several hours to a day. A steep growth of the ER for the mass concentration of submicron aerosol (PM₁) originating from fires in African savannas during the first few hours of atmospheric transport was reported by Vakkari et al. (2014). Reid et al. (1998) estimated that aerosols from fires in the Amazon region grew in mass by about ~~from~~ 20 to 40% during much longer evolution (over one to four days). Recently, Konovalov et al. (2015) found observational evidence for a substantial increase (by a factor of 2) of the ER for PM₁₀ in smoke plumes that ~~have~~had been transported from a source region in the European part of Russia to Finland during one to two days.

On the other hand, there is evidence across several field studies that aging of BB plumes is not necessarily connected with a net increase in OA mass. In particular, Capes et al. (2008) found the relationship between BB OA mass concentration and CO concentration measured by aircraft over Western Africa to be almost unaffected by BB plume ages. Similarly, analyzing aircraft measurements of BB plumes from wildfires in Canada, Sakamoto et al. (2015) found no detectable evidence of production or loss of OA mass within the aged BB plumes (with an age of 1-2 days) from wildfires in Canada. Akagi et al. (2012) reported a net decrease of OA by about 20% over 4 hours of aging of BB emissions from chaparral fires in California, although an initial sharp decrease of the ER for OA was followed by its gradual increase after ~ 2 hours of ~~the~~ evolution. Jolleys et al. (2012) calculated ERs for OA from ambient measurements recorded during four field campaigns in Australia, western Africa, and North America and found that their values in fresh plumes (identified by means of an indirect criterion based on the magnitude of the OA concentration) had been consistently larger compared to those in aged plumes. More recently, Jolleys et al. (2015) reported a similar finding from aircraft measurements of BB plumes from wildfires in Canada, although they pointed out that the observed difference between ERs for fresh and aged plumes could be influenced by a change in dominant combustion conditions throughout the campaign.

Since it is evident that transformations of BB aerosol properties associated with atmospheric processing can be very significant, adequate representation of BB aerosol ~~age~~ing in chemistry transport and climate models is an essential prerequisite for the reliability of their results. Meanwhile, a number of studies involving comparisons of observations of BB aerosol with

simulations revealed major systematic discrepancies that may be indicative of serious shortcomings of model schemes commonly used to simulate BB aerosol evolution. In particular, atmospheric models have been found to underestimate BB aerosol optical depth (AOD) observed in different regions of the world (e.g., Matichuk et al., 2008; Johnson et al., 2008; Colarco et al., 2010; Kaiser et al., 2012; Tosca et al., 2013; Petrenko et al., 2012; Konovalov et al., 2014, Reddington et al., 2016).

5 | These underestimations are commonly corrected by manual enhancements in BB aerosol emissions. For example, in order to match simulations and satellite observations of AOD, Tosca et al. (2013) ~~doubled~~ increased biomass burning carbonaceous aerosol emissions based on the GFEDv3 inventory (van der Werf, 2010) by a factor of 2 globally and applied additional regional scaling factors ranging from 1.45 (in North America) to 2.4 (in South America). While introducing the GFAS v1.0 fire emission inventory, Kaiser et al. (2012) recommended increasing the BB emissions of particulate matter globally by a
10 | factor of 3.4 in order to ensure a reasonable agreement between observed and modeled values of AOD over major BB regions worldwide. As a result of calibration of both particulate matter (PM) and CO emissions from Siberian wildfires against satellite measurements of AOD and CO columns, Konovalov et al. (2014) ~~optimized BB emissions of both particulate matter and CO in Siberia by using satellite measurements of AOD and CO columns and~~ found that the ~~ratios of optimal PM and CO~~ optimal emission ratios were by more than a factor of two ~~BB emissions of these species were considerably larger (specifically, by factors of 2.2 and 2.9 in the cases of forest and grass fires, respectively)~~ than values ~~those~~ based on typical ~~values of~~ emission factors from literature.

The reasons for the persistent discrepancies between measurements and simulations of AOD in regions affected by large fires remain largely unknown. On the one hand, there is evidence (e.g., Petrenko et al., 2012) that the underestimation of AOD by models can indeed be explained (at least partly) by uncertainties in emission inventories. On the other hand, Konovalov et al. (2015) found (for the case of BB plumes from the Russian 2010 fires) that the agreement between satellite AOD
20 | observations and the corresponding simulations constrained with ground based measurements in a source region could be substantially improved by taking into account the source of secondary organic aerosol (SOA) due to oxidation of semi-volatile organic compounds in the simulations. Although such a source of SOA has been shown to play an important role in the evolution of atmospheric OA originating from both biomass and fossil fuel burning (see, e.g., Robinson et al., 2007;
25 | Grieshop et al., 2009), it has not been taken into account in most of the models employed for simulations of ~~the~~ BB aerosol evolution.

To distinguish errors in model results due to uncertainties in biomass burning emissions from those associated with shortcomings of the model description of BB aerosol aging processes, Konovalov et al. (2015) considered ground-based PM₁₀ and CO ~~ground-based~~ measurements (matched to corresponding model data) within the fire region and about thousand kilometers
30 | downwind. However, such age-resolved measurement datasets have so far been available only from a relatively small number of case studies and field campaigns (e.g., Yokelson et al., 2009; Akagi et al., 2012; Vakkari et al., 2014) and, as noted above, these data provide rather inconsistent evidence about the effects of aging on BB aerosol properties.

The goal of this study is to investigate the feasibility of deriving the information on BB aerosol aging from satellite measurements of AOD and CO columns. To this end, we analyze the data retrieved from MODIS (Remer et al., 2005) and IASI (Clerbaux et al., 2009) measurements of a major biomass burning event that occurred in Siberia in summer 2012 (Konovalov et al., 2014). To estimate the photochemical age of the observed BB plumes, we use model tracers that are assumed to have the same sources as the actual BB aerosol contributing to the satellite AOD measurements. Unlike ground-based and dedicated aircraft BB plume measurements ~~that are~~ limited in time and space, satellite observations provide data on major biomass burning events practically daily and worldwide. Therefore, satellite data combined with simulations ~~may~~ have the potential to substantially enrich current knowledge of BB aerosol aging in different environments and to provide a useful way for evaluating and improving ~~the~~ representation of atmospheric processing of BB aerosol in chemistry transport and climate models.

This paper is organized as follows. Section 2 describes measurement and model data used in our analysis; it also provides a description of the methods used in this study to estimate the photochemical age of BB aerosol and to derive AOD dynamics associated with BB aerosol aging from satellite measurements. The results of our analysis are presented in Section 3, which begins with a preliminary comparison of model and simulated data and continues with a presentation of our estimates and tests concerning the dynamics of BB aerosol aging. The results are summarized and discussed in Section 4. Concluding remarks are provided in Section 5.

2 Data and method description

2.1 Input datasets derived from satellite measurements

2.1.1 AOD measurements

Our analysis is based on ~~using the~~ retrievals of AOD at 550 nm from MODIS measurements onboard the AQUA and TERRA satellites. ~~The satellites, which~~ are positioned ~~at on~~ sun-synchronous circular orbits. The ground path of AQUA crosses the equator at 13:30 LST (~~at on~~ the ascending node), the equator crossing time of TERRA is about 10:30 LST (~~at on~~ the descending node). The AOD retrievals provided nominally at 10 km \times 10 km horizontal resolution were obtained as the Level-2 orbital granule data from the Level 1 and Atmosphere Archive and Distribution System (LAADS) ftp site (ftp://ladsweb.nascom.nasa.gov/allData/51/). The retrieval algorithm ~~and~~ is described elsewhere (Remer et al., 2005; Levy et al., 2007). Validation studies (e.g., Levy et al., 2010) indicate that the multiplicative and additive errors of MODIS retrieved AOD typically do not exceed $\pm 15\%$ and ± 0.05 , respectively.

The available valid data (with the quality flag ≥ 1) for AOD at 550 nm were unpacked and projected onto a rectangular 1 by 1 degree grid covering the study region and period (as specified below) with hourly temporal resolution. The data (from either of the two satellites) falling into the same grid cell at the same hour were averaged.

2.1.2 CO columns

Along with AOD data, we used the total CO column amounts retrieved from the measurements by the Infrared Atmospheric Sounding Interferometer (IASI) on board the METOP-A satellite (Clerbaux et al., 2009). The Level-2 CO retrievals were provided by LATMOS/CNRS and ULB (http://ether.ipsl.jussieu.fr/ether/pubipsl/iasi_CO_uk.jsp). The METOP-A satellite is positioned on a sun synchronous polar orbit with equator crossing at around 21:30 and 9:30 LST for the ascending and descending nodes, respectively. ~~A-~~The nominal spatial resolution of the IASI measurements is about 12 km on the ground, within a swath of about 2×1100 km. The CO columns were retrieved from the cloud-screened measurements in the infrared spectrum centered at $4.7 \mu\text{m}$ by using the FORLI (Fast Optimal Retrievals on Layers for IASI) algorithm (Hurtmans et al., 2012). Previous studies (e.g., Turquety et al., 2009; Krol et al., 2013; Konovalov et al., 2014) indicated that the IASI CO retrievals provide useful information on atmospheric CO originating from fires. The data were processed in the same way as in Konovalov et al. (2014). In particular, the selection criterion based on the DOFS (the Degree of Freedom of the Signal) values indicating sensitivity of the IASI measurements in the boundary layer (George et al., 2009) was applied: only those data were used that featured a DOFS value exceeding 1.7. The CO retrievals were projected at hourly resolution to the same grid as the AOD data.

2.1.3 FRP measurements and BB emissions

In addition to the atmospheric composition data outlined above, we used the Fire Radiative Power (FRP) data that, like the AOD data, were retrieved from the MODIS measurements (Kaufman et al., 1998; Justice et al., 2002). The FRP data were used in this study to calculate BB emissions, as explained below. Exactly the same data had been used earlier in Konovalov et al. (2014); accordingly, the details on their processing can be found therein.

Following Kaiser et al. (2009) and Konovalov et al. (2011; 2014; 2015), the BB emissions for a given species s , $E^s(t)$ ($\text{g s}^{-1} \text{m}^{-2}$), in a given grid cell at the moment t were calculated as follows, assuming that BB rate (BBR) is linearly proportional to FRP:

$$E^s(t) = \Phi_d \sum_l \alpha \rho_l \beta_l^s h_l(t), \quad (1)$$

where Φ_d (W m^{-2}) is the daily mean FRP density, α ($\text{g}[\text{dry biomass}] \text{ s}^{-1} \text{ W}^{-1}$) is the empirical factor referred to below as the FRP-to-BBR conversion factor, ρ_l is ~~at the fraction of a given land cover type, l , of the land cover,~~ β_l^s ($\text{g}[\text{model species}] \text{ g}^{-1}[\text{dry biomass}]$) are the emission factors ~~for a given type, l , of the land cover, ρ_l is a fraction of a given land cover type,~~ and $h_l(t)$ is the diurnal variation of FRP density. The Φ_d and $h_l(t)$ were derived directly from the FRP measurements as explained in Konovalov et al. (2014; 2015). In the simulations performed in this study, the daytime maxima of $h_l(t)$ were ~~of~~ 3.2 for forest fires and ~~of~~ 2.7 for other fires. The emission factor values for organic carbon (OC), black carbon (BC), CO, NO_x , and

non-methane volatile organic compounds (VOC) were specified using Andreae and Merlet (2001) and subsequent updates (M.O. Andreae, unpublished data, 2014) and were the same as in Konovalov et al. (2015, see Table 2 therein).

5 | Following Konovalov et al. (2011; 2014; 2015), the FRP-to-BBR conversion factor was evaluated by fitting the AOD and CO columns predicted by our model (see Sect. 2.2 below) to the corresponding measurement data. To do so, it was convenient to represent α as the product of its “a priori” value, α_0 (taken to be $3.68 \times 10^{-4} \text{ g s}^{-1} \text{ W}^{-1}$ as evaluated by Wooster et al., 2005), and the correction factor, F_α :

$$\alpha = \alpha_0 F_\alpha, \quad (2)$$

The optimal value of F_α was found by minimizing the following cost function, J :

$$J = \sum_{j=1}^{Nd} \sum_{i=1}^{Nc} \theta^{ij} (V_r^{ij} - V_m^{ij})^2 \quad (3)$$

10 | where V_r^{ij} are the satellite retrievals of AOD or CO columns, V_m^{ij} are their modeled counterparts, i and j are indices of a grid cell and a day, respectively, and θ^{ij} is the data selection operator equal either to one or zero. The criteria for the data selection are specified below in Sect. 2.2.2, where it is also explained how the daily values involved in Eq. (3) were calculated using the corresponding hourly values. The minimization procedure was identical to that described in Konovalov et al. (2015). Briefly, it involved “twin” model runs with $F_\alpha = 0$ and $F_\alpha = 1$ and a linear scaling of the difference between their results. When necessary, the estimation was re-iterated using F_α inferred from the previous twin runs.

The optimization of the BB emissions was performed using only data available for the study region that covered the western and central parts of Siberia (50-76°N, 60-111°E) and for the study period that included 46 days of summer 2012, from July 1 to August 15. The study period covered the major fire events that occurred in western and central Siberia during the hot and dry summer of 2012. Fig. 1 illustrates the BB emission sources in the study region by showing the spatial distribution of BBR (which is numerically equivalent to E^s evaluated using Eq. (1) with β_i^s equal unity) obtained by averaging “a priori” hourly BBR values (that is, estimated with $\alpha = \alpha_0$) over the study period. Note that the study region covers only the part of the model domain (also shown in Fig. 1) employed for the simulations used in this study. BBR values presented in Fig. 1 were aggregated separately over the two categories of vegetation land cover, the first of which included coniferous and deciduous forest (see Fig. 1a) and the second all other vegetation land cover types, such as (mainly) grass, agricultural land, and shrubs (see Fig. 1b). Our calculations indicate that the forest fires were predominant. Specifically, we estimated that the total amount of the biomass burned in forest fires in the study region and period was a factor of 2.4 larger than that of the biomass burned in other vegetation fires.

2.2 Simulated data

2.2.1 The CHIMERE chemistry transport model: brief description and configuration of model runs

The simulations used in the analysis presented below were performed with the CHIMERE chemistry transport model (CTM). The CHIMERE CTM is an Eulerian 3D model that enables simulations of air pollution at different scales, from urban to continental. A detailed description of the model can be found in Menut et al. (2013) as well as in the model documentation (available at <http://www.lmd.polytechnique.fr/chimere/>). CHIMERE was successfully used in a number of studies including those focusing on environmental effects of wildfires (e.g., Hodzic et al., 2007; Konovalov et al., 2012; Berezin et al., 2013; Péré et al., 2014; Turquety et al., 2014).

The configuration of the simulations performed in this study was largely the same as in Konovalov et al. (2015). One difference with Konovalov et al. (2015) is that the simulations used in this study were done with a lower horizontal resolution ($1^\circ \times 1^\circ$ degree ~~resolution is used~~ instead of the former $0.5^\circ \times 0.5^\circ$ ~~resolution~~, because a much larger model domain is used in this study). Another difference is that here we used the EDGAR v4.2 data (EC-JRC/PBL, 2011) for anthropogenic emissions (instead of the EMEP emission data that do not cover Siberia). Note that the same anthropogenic emission data were used in the simulations presented by Konovalov et al. (2014). The simulations were performed with 12 layers in the vertical (up to the 200 hPa pressure level). The lateral and upper boundary conditions were specified using the data of climatological runs of the LMDz-INCA global model (Folberth et al., 2006). Meteorological data were provided by the WRF-ARW (v.3.6) model (Skamarock et al., 2008), which was driven with the NCEP Reanalysis-2 data. A noteworthy feature of our simulations is the use of AOD data retrieved from the MODIS measurements (see Sect. 2.1.1) to account for the effect of BB aerosol on photolysis rates by means of off-line calculations with the TUV model (Madronich et al., 1998), as described in Konovalov et al. (2011); this allowed us to obtain more realistic estimates of the BB aerosol photochemical age (depending on the OH level, ~~that-which~~ is strongly affected by photolysis reactions) and also to take into account a possible feedback on BB aerosol through the modulation of the OH level and the SOA formation (Konovalov et al., 2016). The injection heights of the BB emissions were parameterized as a function of FRP using the formulation proposed by Sofiev et al. (2012). The initial date of the simulations was 17 June 2012; the first 14 days were used for the model's spin-up.

In this study, the CHIMERE chemical mechanism was ~~insignificantly~~ extended by introducing four "trace" species, one of which, T_0 , was chemically passive, while the others, T_1 , T_2 and T_3 , reacted only with OH (without consuming it). The reaction rates (k_{OH}) were 9×10^{-12} , 3×10^{-11} and $3 \times 10^{-12} \text{ s}^{-1} \text{ cm}^3$, respectively. Assuming a typical daytime OH concentration of about $4.5 \times 10^6 \text{ cm}^{-3}$ ~~in biomass burning plumes (as it is follows from ours simulations)~~ [Akagi et al., 2012](#), these reaction rates correspond to tracer lifetimes of ~~~76~~, 2, and ~~20-19~~ hours, respectively. The tracers were used in our analysis to estimate the photochemical age of BB OA (as explained below in Sect. 2.3).

In the analysis that follows, we consider the results of two model runs; in which OA evolution was simulated with two different OA schemes, both of which have been described in detail in earlier publications (Menut et al., 2013; Zhang et al., 2013; Konovalov et al., 2015). The first run, referred below to as the "STN" run, was performed with the aerosol scheme implemented in the standard version of CHIMERE (Menut et al., 2013). The aerosol scheme used in the second ("VBS") run was based on the volatility basis set (VBS) method (Donahue et al., 2006; Robinson et al., 2007). In this study, parameter

configurations of the first and second schemes were the same as in the model runs "STN" and "VBS-3" in Konovalov et al. (2015), respectively. The BB aerosol emissions were calibrated independently for each model run (see Sect. 2.1.3). The emission rates for the tracers were specified to be the same as the BB aerosol emission rates in the STN run. The tracer concentrations used in the analysis presented below were simulated in the STN model run. An additional model run (labeled below as "BGR") was done without BB emissions of aerosols and gases to simulate anthropogenic and biogenic aerosols under "background" (with respect to the BB events) conditions (see Konovalov et al., 2015 for further details). Note that the OA simulations performed in this study with the two different schemes were only intended to demonstrate the influence of different representations of OA aging processes on the simulated evolution of BB aerosol: we did not presume that one of the schemes had to perform much better than another in the complex situation considered.

~~Note that the OA simulations performed in this study with the two different schemes were only intended to demonstrate the influence of different representations of OA aging processes on the simulated evolution of BB aerosol. Achieving good quantitative agreement between simulations and measurements (e.g., through optimization of model parameters) in the complex situation considered was beyond the scope of this study.~~ Key assumptions underlying the first ("standard") scheme are that primary OA is composed of non-volatile material and that secondary OA can be formed in a single step from oxidation products of only aromatic and biogenic VOC precursors (Pun et al., 2006). A potentially more important SOA source (Robinson et al., 2007; Grieshop et al., 2009) associated with continuous oxidation of emitted semi-volatile organic compounds (SVOCs) is disregarded. The second scheme (Zhang et al., 2013; Shrivastava et al., 2013; Konovalov et al., 2015) allows taking into account the well-established fact that BB OA consists of organic compounds covering a broad spectrum of volatilities (see, e.g., May et al., 2013). This latter scheme (referred below to as the "VBS" scheme) also involves representation of SOA formation due to oxidation (functionalization) of SVOCs and IVOCs, as well as an inverse (fragmentation) process resulting in an eventual loss of SOA mass and formation of non-volatile SOA. Similar to Konovalov et al. (2015), we assumed that BB aerosol was externally mixed with other types of aerosol in the study region. ~~So, to~~ to simulate the evolution of BB aerosol (in the STN or VBS runs), we zeroed emissions of other types of aerosol and disabled secondary aerosol formation from anthropogenic and biogenic precursors. Note that, in the same runs, anthropogenic and biogenic emissions of gases as well as the standard boundary conditions for gases were taken into account along with BB emissions of gases in order to ensure a realistic level of oxidant concentrations. The OA and BC emissions were distributed among 9 size bins according to a lognormal size distribution with a mass mean diameter of 0.25 μm and a geometric standard deviation of 1.6. Similar to Konovalov et al. (2015), ~~an~~ the inorganic fraction of BB aerosol, ~~that which~~ usually ~~provides~~ makes a minor contribution to BB aerosol mass concentration (Reid et al., 2005a), was disregarded to simplify our analysis. We also disregarded ~~a~~ the coarse fraction of BB aerosol, ~~that which~~ is unlikely to contribute significantly to ~~aerosol properties determining~~ AOD at 550 nm (Reid et al. 2005b).

2.2.2 Using model output data to calculate AOD and CO columns

AOD was evaluated using model output data for the mass concentration of aerosol (or aerosol tracers) in the same way as in Konovalov et al. (2014, 2015), following a simple but robust method (Ichoku and Kaufman, 2005) that linearly relates AOD to the aerosol mass column concentration through the mass extinction efficiency (MEE). The latter was evaluated as the sum of the mass scattering efficiency and mass absorption efficiency by taking into account in-situ experimental data collected in extratropical forests during several campaigns and reviewed by Reid et al. (2005b). Specifically, we assumed, ~~for definiteness,~~ that the MEE for BB aerosol equals $4.3 \text{ m}^2 \text{ g}^{-1}$. Note that according to Reid et al. (2005b) this value (given with an uncertainty of $\pm 0.7 \text{ m}^2 \text{ g}^{-1}$) best characterizes fresh and dry BB aerosol, whereas the MEE of aged dry BB aerosol tends to be larger ($4.7 \pm 0.7 \text{ m}^2 \text{ g}^{-1}$); but still within the error bars of the value for fresh aerosol. Using a constant value of MEE also implies that the effects of smoke particle hygroscopicity on AOD were ~~also~~ disregarded; possible implications of this simplification for the results of this study are discussed in Sect. 4. The same value of MEE ($4.3 \text{ m}^2 \text{ g}^{-1}$) was applied to the total mass concentration of other types of aerosol (such as anthropogenic, biogenic, and dust aerosols, which provide ~~ing~~ only a minor contribution to the total aerosol mass in the region and period considered), due to the lack of reliable knowledge about their optical properties. A bias in the simulated "background" AOD values that can be caused by such a simplistic assumption was evaluated and taken into account in our analysis as explained later in this section. Since BB aerosol was simulated separately from other types of aerosol (which are assumed to represent background conditions), the simulated AOD values corresponding in our analysis to the AOD measurements were calculated by adding the AOD values obtained from the BGR and STN (or VBS) model runs.

The CHIMERE output data for mass concentration of aerosol (or aerosol tracers) and for CO concentration were processed consistently (in time and space) with the corresponding satellite retrievals of AOD and CO columns by taking into account the availability of reliable measurements and, in the case of CO measurements, their vertical sensitivity. Specifically, if any quality-assured measurement for a given grid cell and hour was unavailable, the corresponding simulated data were disregarded. The simulated CO vertical profiles (partial columns) corresponding to each individual CO retrieval were transformed following recommendations by Fortems-Cheiney et al. (2009) and similar to Konovalov et. (2014) into the total CO columns by applying the individual averaging kernels associated with the measurements. The simulated partial columns above the upper layer of the CHIMERE CTM were taken to be equal to the corresponding a priori values. The CO columns transformed with different averaging kernels but corresponding to the same model grid cell and hour were averaged.

In the following analysis, we consider only those AOD and CO data that fall into ~~a~~ the time window from 09:00 to 12:00 LST (thus with a maximum time lag of three hours). Hourly data falling into this time window and corresponding to the same grid cell and day were averaged. Ideally, the AOD and CO measurements should have been taken during the same hour; however, because of the difference between the TERRA (or, especially, AQUA) and IASI overpassing times, such a strict requirement would considerably limit the amount of data available for our analysis. We also did not require overlapping of pixels of AOD and CO measurements available for a given day, but only demanded that they fell into the same grid cell (otherwise, that grid cell was excluded from a combined dataset for a given day). Inconsistencies between the AOD and

CO measurements are not expected to affect significantly the results and conclusions of our study, not only because we consider large-scale BB plumes covering multiple grid cells of our model, but mostly because CO measurements and simulations play only an auxiliary role in our analysis (as explained in Sect. 2.4).

Biases in the simulated values of CO columns and AOD are assumed to be due to inaccuracies in their background fractions (as the BB fractions are fitted to observations, see Sect. 2.1.3) and are evaluated in the same way as in Konovalov et al. (2014). Briefly, we selected the grid cells and days corresponding to background conditions (~~without~~ where an impact of fires significant impact from fires on both CO columns and AOD was not significant) and averaged the selected measurement and simulated data inside of sufficiently large spatial and temporal windows covering 41 and 21 grid cells in west-to-east and south-to-north directions, respectively, and 15 days around a given grid cell and a day. A relative (in the case of AOD) or an absolute (in the case of CO) difference between these averaged measurement and simulated data is applied to the corresponding values of CO columns or AOD simulated in the "BGR" model run. ~~Only those grid cells and days were considered to be representative of background conditions, where~~ A given grid cell and a day were assumed to be representative of background conditions, only if the BB fractions contribution of the fires to in the simulated values (based on the STN and BGR model runs) of both CO columns and AOD ~~of both CO columns and AOD~~ did not exceed 10 percent. Note that a bias evaluated in such a way cannot fully account for differences between the simulated and observed data on ~~the~~ scales that are smaller than the sizes of the averaging window. However, it is expected that these differences are manifested as quasi-random uncertainties in our simulations of CO columns or AOD, and are thus taken into account in the confidence intervals of our estimates.

2.3 Photochemical age estimation

We estimate the photochemical age, t_a , of BB aerosol at a given location by using the model tracers described in Sect. 2.2.1:

$$t_a = -t_c \ln(C_{T_i} / C_{T_0}), \quad (4)$$

where C_{T_0} and C_{T_i} are the mass column amounts of the tracers T_0 and T_i ($i=1, 2$, or 3), and t_c is the constant time scale (defined below). As explained above (see Sect 2.2.1), one of the tracers, T_0 , was simulated as a chemically passive model species that could be affected (after being emitted into the atmosphere) only by transport processes, while the other tracer, T_i , was provided with a chemical sink by reacting with OH with a constant rate, k_{OH} . In an ideal box model simulation with a constant OH concentration, $[OH]_c$, the concentration of ~~T_1~~ T_1 would be constant, whereas that of ~~T_2~~ T_2 would decrease exponentially with time ($\sim \exp[-k_{OH}[OH]_c t]$). So, t_a would be equal to the actual time of "aging" of ~~T_1~~ T_1 , if t_c was defined as follows:

$$t_c = (k_{OH}[OH]_c)^{-1}. \quad (5)$$

In reality, the concentration of OH varies both in time and space. Moreover, because of horizontal wind shear, the model tracers (or actual BB aerosol) may have different sources and different "history" at different altitudes. Nonetheless, we ex-

pect that the photochemical age estimate given by Eq. (4) can allow us to distinguish between fresh and more aged BB plumes, at least in typical situations where most of the tracer (or actual BB aerosol) amounts are concentrated within the boundary layer. In our analysis, t_c was defined as in Eq. (5), with $[\text{OH}]_c$ representing a characteristic mean OH concentration in the BB plumes considered. To evaluate $[\text{OH}]_c$, we first calculated weighted vertical mean OH concentrations in each grid cell of a horizontal model domain and in each hour of the study period, with the concentration of the inert tracer T_0 used as the weights. Then, the vertical mean hourly OH concentrations were averaged, taking into account only the grid cells and hours selected for our analysis (see Sect. 2.2.2).

Note that several studies (e.g., Kleinman et al. 2008; Hodzic et al. 2010) estimated the photochemical age of aerosol in air pollution plumes by using observed concentrations of NO_x and NO_y as $-\log_{10}(\text{NO}_x/\text{NO}_y)$. Conceptually, that estimate is similar to ours, as the NO_x concentration is expected to decrease exponentially by reacting with OH, but the main difference is that our estimate is based on model data. Both kinds of estimates can only qualitatively translate into an actual time of aerosol evolution, because the OH concentration in air surrounding any given aerosol particle at any given moment is not known, neither in the real atmosphere nor in our simulations performed with an Eulerian model.

2.4 Analysis of the AOD enhancement ratio

2.4.1 Basic formulations

To characterize the effects of BB aerosol aging, we considered the evolution of the AOD enhancement ratio (ER), γ_a , that can be defined, in a general case, as follows:

$$\gamma_a(t_a) = \frac{(\tau(t_a) - \tau_b(t_a))\tau_t(t_a)^{-1}}{(\tau(t_a = t_0) - \tau_b(t = t_0))\tau_t(t = t_0)^{-1}}, \quad (6)$$

where τ is the optical depth of an actual mixture of BB and background aerosol at a given location and at a time corresponding to the photochemical age t_a , τ_b is the "background" AOD (in the absence of BB aerosol), and τ_t is the AOD of a hypothetical BB aerosol passive tracer that has the same sources as the actual BB aerosol but is not affected by any processes except for advective transport and turbulent mixing. By this definition, γ_a is unity when the photochemical age gets a value of t_0 (which can, in principle, be chosen arbitrarily). A deviation of γ_a from unity may be due to a variety of factors, including chemical processes (such as, e.g., oxidation processes leading to SOA formation) affecting the BB aerosol mass concentration, composition and optical properties, adsorption (or condensation) and desorption (or evaporation) of particle material, wet and dry deposition, and coagulation. Note that the meaning of γ_a as defined by Eq. (6) is similar to that of the NEMR or ER of OA evaluated in field studies and smog chamber experiments (see Introduction), except that γ_a is formulated in terms of AOD. In principle, Eq. (6) permits estimating the ER for AOD at any moment by using the AOD derived from satellite measurements (as τ) and simulated values of τ_t and τ_b . However, because of transport errors and uncertainties in BB emission data, a direct application of Eq. (6) to the available measurement and simulated data is rather impractical, as estimates

of γ_a obtained in such a way would be extremely sensitive to measurement and model errors. Accordingly, instead of employing Eq. (6) directly, we retrieved temporal variations (dynamics) of the ER by solving an optimization problem formulated following a data assimilation approach (in a very basic form).

Specifically, we considered γ_a as a parameter that allows adjusting a simulation of the tracer's AOD, τ_t , to a BB part of the observed AOD (denoted below as τ_o). A modeled counterpart of τ_o (denoted below as τ_m) was defined as follows:

$$\tau_m = \gamma_a \eta \tau_t + \tau_b, \quad (7)$$

where τ_t and τ_b represent AOD (see Sect. 2.2.2) values calculated using passive tracer (T_0) and background aerosol concentrations, respectively, and η is a constant auxiliary factor depending on t_θ . The background part of AOD (τ_b) was evaluated by using both the measurement and simulation AOD data as explained later in this section below. The data selected for the analysis were split into several (N_a) bins, such that each bin n covers a different range of photochemical ages ($t_a \in [t_a^n - d_a/2, t_a^n + d_a/2]$, where t_a^n is the median value, and d_a is the "width" of the bins). Then γ_a could simply be estimated as a function of t_a^n as follows:

$$\gamma_a(t_a^n) = \arg \min \sum_{i,j \in \Lambda n} (\tau_o^{ij} - \tau_m^{ij})^2, \quad n \in [1, N_a] \quad (8)$$

where i and j are the indexes of grid cells and days in the region and period considered, Λ_n is a selection of the data corresponding to a given bin n , and τ_m is given by Eq. (7); for definiteness, η (involved in Eq. 7) was evaluated such that γ_a for the first bin equals unity. Eq. (8) specifies fitting of the simulated AOD to the corresponding observations by the least squares method through optimization of just one parameter, γ_a , for each bin n .

To reduce the effect of model transport errors on our analysis (as discussed later in this section), the contributions of BB to both τ_o and τ_m were normalized to the corresponding BB contributions to the measured and modeled CO columns approximately matching in time and space the corresponding AOD data. Accordingly, Eq. (8) was modified as follows:

$$\gamma_a(t_a^n) = \arg \min \sum_{i,j \in \Lambda n} \left(\frac{\tau_o^{ij} - \tau_b^{ij}}{\nu_o^{ij} - \nu_b^{ij}} - \frac{\tau_m^{ij} - \tau_b^{ij}}{\nu_m^{ij} - \nu_b^{ij}} \right)^2, \quad n \in [1, N_a] \quad (9)$$

where ν_o and ν_m are the CO columns retrieved from the IASI measurements and simulated with CHIMERE, respectively, and ν_b are the background CO columns. Note that the background values, ν_b and τ_b , of the CO columns and AOD are the same for the corresponding observations and simulations in Eq. (9).

The rationale behind using Eq. (9) instead of Eq. (8) is illustrated in Fig. 2, demonstrating the relationships between the photochemical age and AOD associated with a non-reactive aerosol tracer (τ_t) in comparison with a similar relationship between the photochemical age and AOD normalized to BB CO column amounts ($\tau_t(\nu_m - \nu_b)^{-1}$). It is clearly seen that τ_t exhibits much

larger variability than $\tau_t(v_m-v_b)^{-1}$. This fact indicates that τ_t is likely much more strongly affected by model errors than $\tau_t(v_m-v_b)^{-1}$. Moreover, although both quantities tend to decrease with the photochemical age, the decline of the linear fit for τ_t (reflecting dilution of BB plumes) is much stronger than that for $\tau_t(v_m-v_b)^{-1}$. Potentially, a significant relationship between passive tracer concentration and photochemical age can result in systematic errors of γ_a . For example, in the situation where τ_t decreases with ~~the~~ age, a mismatch of fresher BB plumes in simulations with older BB plumes in the real atmosphere due to model transport errors could result in an erroneous upward tendency of γ_a . Note that in an ideal situation with perfect measurements and a model where each bin could be reduced to just one data point, γ_a estimated with Eq. (8) or Eq. (9) would be identical to that given by Eq. (6).

To ensure robustness of our estimates of γ_a with respect to possible uncertainties associated with the contributions of background aerosol to the AOD and to CO columns, we evaluated τ_b and v_b in two different ways. In the first way, τ_b and v_b were calculated directly by using simulation data obtained in the "BGR" run and additionally corrected for possible biases as explained in Sect. 2.2.2. In the second way, we estimated τ_b and v_b by averaging over the corresponding measured data representing (based on [the criterion](#) indicated in Sect. 2.2.2) background conditions and falling inside the same moving windows that were used for estimation of the biases; an additional condition was that the selected values of the AOD and CO column amounts representing the background conditions in a given grid cell and day were not to exceed the corresponding values of τ_o and v_o in the same grid cell and day. An advantage of the first approach is that it potentially enables more realistic representation of the spatial and temporal variability of τ_b and v_b (if the model is sufficiently accurate). On the other hand, estimates obtained ~~in~~ [by](#) the second approach are less dependent on model data, ~~that~~ [which](#) may be less accurate than their measurement counterparts.

Before applying Eq. (8) or Eq. (9), the measurement and simulation data were "screened" using a criterion discriminating between more and less dense BB plumes. The criterion was based on values of CO columns, rather than on AOD values, as we presumed that any limitations imposed on the range of AOD values involved in Eq. (8) were more likely to result in artifacts (biases) in the retrieved dependence of γ_a on the photochemical age than those ~~on~~ [of](#) CO data, which play an auxiliary role in our estimation procedure. Specifically, we considered the following relative differences:

$$\delta_o^{co} = \frac{v_o - v_b}{v_b}. \quad (10)$$

where the background CO columns, v_b , were predicted by CHIMERE. Values of δ_o^{co} along with their counterparts, δ_m^c , involving simulated CO columns (v_m) instead of v_o were calculated for all CO data points except for those characterizing the background conditions (see Sect. 2.2.2) and then were arranged with respect to their magnitudes. A given data point was selected for our analysis only if both δ_o^{co} and δ_m^c values exceeded the value of a certain percentile (considered as an internal parameter, $p\%$, of our procedure) of the corresponding distributions.

2.4.2 Evaluation of the confidence intervals

Confidence intervals for our estimates of γ_a were evaluated using a bootstrapping technique (Efron, 1993). Specifically, we first calculated the differences involved in the right hand parts of Eq. (8) or (9). These differences represent the misfits between the model and measurement data (or their combination as in Eq. 9). Then, we replaced the measured AOD values (in the case of Eq. 8) or the fraction involving the measured AOD and CO data (in the case of Eq. 9) with the synthetic data obtained as the sum of their modeled counterparts and the misfits that had been randomly sampled from a set of their values available for each photochemical age bin. The estimation procedure involving different samples of the synthetic data (instead of the measurement data) were iterated 5000 times, and the spread of estimates of γ_a for each bin was used to evaluate the confidence intervals for the optimal estimate of the ER in terms of the 95th percentile. Finally, the difference between the ER estimates due to the difference in the values of τ_b and v_b estimated in the two ways explained above was also added to the confidence interval for each bin of the photochemical age values. Note that estimation of γ_a for a given bin is equivalent to fitting a linear regression line without the intercept term, which allowed us to verify the confidence intervals by using a commercial statistical software.

2.4.3 Configuration of the estimation procedure

The results of the estimation procedure described above depend on just two parameters: the width of the photochemical age bin, d_a , and the threshold percentile, $p\%$, of the distributions of δ_o^{co} and δ_m^c . In principle, values of these parameters can be assigned rather arbitrarily. Larger values of d_a would result in a lower resolution of the retrieved dependence of the ER for AOD (γ_a) on the BB aerosol photochemical age (t_a) but, probably, also in a lower uncertainty range for the estimate of γ_a for each photochemical age bin (because each bin would include a larger number of data points). An increase in $p\%$ could be expected to have a two-fold effect on the uncertainty in the estimates of γ_a . On the one hand, it would reduce the number of data points available for any bin, and, therefore, it could result in a larger statistical uncertainty in $\gamma_a(t_a^n)$. On the other hand, a larger $p\%$ also means that more dense BB plumes would be considered, and so the estimates of γ_a would likely be less affected by uncertainties in the background values of the CO columns and AOD. An analysis of the dependence of γ_a on t_a within the whole range of possible parameters values would be a rather impractical task [that was not undertaken in and goes far beyond the scope of](#) this study. Instead, taking the above considerations into account, we focus our analysis on the dynamics of γ_a retrieved only with some definite (but still rather arbitrarily chosen) parameter values that would allow us to retrieve any kind of non-trivial and yet statistically significant variations of $\gamma_a(t_a^n)$.

To select these parameter values in a semi-automatic way, we introduced an *ad hoc* "cost function", $G(d_a, p\%)$, that involves, in essence, the "noise to signal ratio" with respect to variations of $\gamma_a(t_a^n)$ and their uncertainties and, at the same time, favors parameter values providing a higher temporal resolution of our estimates. Specifically, $G(d_a, p\%)$ was defined as follows:

$$G(d_t, p\%) = \frac{1}{(N_a - 1)} \left[\sum_{n=2}^{N_a} (\Delta_n)^2 \left(\sum_{n=2}^{N_a} (\gamma_a(t_a^n) - 1)^2 \right)^{-1} \right]^{1/2}, \quad (11)$$

where $\gamma_a(t_a^n)$ and Δ_n are the optimal value of the ER for the bin n and its confidence interval, and N_a is the total number (depending on both d_a and $p\%$) of consecutive bins. In Eq. (11), the "signal" is represented by deviations of the ER at times t_a^n from unity, while the term inversely proportional to $(N_a - 1)$ introduces a "penalty" for configurations with a low temporal resolution. So, minimization of this cost function is expected to provide a reasonable compromise between the requirements of low noise to signal ratio and high temporal resolution of our estimates.

As an additional rather arbitrary setting, the left bound of the first bin ($t_a^1 - d_a/2$) was chosen to be 1 hour (taking into account that the measurement data matched to the simulations were averaged hourly, and therefore, our photochemical age estimates have an intrinsic uncertainty of at least 1 hour). We also required that each of the bins (including the first one) contained at least 10 data points.

Minimization of $G(d_t, d_a, p\%)$ is not an easy task, given the essentially nonlinear nature of this function that may have several local minima. However, we did not really need to optimize it exactly, because (as explained above), the "optimal" values of d_t, d_a and $p\%$ are no more "correct" than any other feasible values of those parameters. Instead, the parameter space of $G(d_t, d_a, p\%)$ was scanned by varying both d_t, d_a and $p\%$ with small constant steps within rather wide intervals. Specifically, d_t, d_a was changed with a step of 0.1 hour from 3.0 to 6.0 hours, and $p\%$ was varied by a step of 0.01 from 0.70 to 0.95. The fact that $G(d_t, d_a, p\%)$ strongly and steadily increased toward the bounds of the parameter intervals considered indicated that the global minimum of $G(d_t, d_a, p\%)$ was unlikely to be found outside of these intervals.

3 Results

3.1 Preliminary analysis and comparison of the measurement and model data

In this section, we present an overview of CO columns and AOD retrieved from satellite measurements and simulated with the CHIMERE CTM. Note that as this paper is not focused on aerosol modeling, model results obtained using different representations of aerosol processes are only briefly discussed below. Figure 3 shows the daily time series of CO columns and AOD averaged over the study region. The BB emissions were optimized (as explained in Sect. 2.1.3) independently for each configuration of the model runs and for each species (CO or aerosol) considered in our analysis, and the corresponding estimates of the correction factor (F_a) are indicated in the figures. Evidently/Obviously, when the BB emissions are taken into account, the model reproduces the daily variability of both CO columns and AOD rather well (such that the correlation coefficient exceeds 0.85). Big differences between the AOD values simulated with and without BB emissions indicate that fires provided a major contribution to column mass concentration of aerosol in the troposphere over the study region during most of the period considered.

It is noteworthy that the correction factor estimated using the AOD values from the STN run is considerably larger (by a factor of 2) than that estimated using the CO columns. This result is in line with the findings of previous modeling studies (see Introduction) where BB aerosol emissions calculated with the measured emission factors had to be strongly increased in order to avoid negative biases in AOD simulations. However, when the correction factor is estimated using the AOD values from the VBS run, it turns out to be rather close to the CO measurement based estimate of F_{α} . Consistently with the results of an earlier study (Konovalov et al., 2015), this finding indicates that BB emission estimates derived from AOD measurements by using an inverse modeling approach can considerably depend on the model representation of OA processes.

It may also be noteworthy (and even puzzling) that in spite of the quite noticeable differences between the optimal estimates of F_{α} for the different aerosol simulations, the corresponding time series of daily AOD values are very similar. That implies that a comparative analysis of the time series of the mean modeled and measured AOD values does not allow us to tell which of the model configurations is more adequate, in spite of the major differences in the corresponding representations of aerosol processes. Most likely, the striking similarity of AOD values from the STN and VBS runs is a consequence of the spatial averaging (both in the horizontal and vertical dimensions) of the model output data. Indeed, a comparison of the time series (not shown here) representing simulated data for individual model grid cells reveals quite large differences between temporal variations of aerosol mass concentration predicted by those two runs. Presumably, such quasi-random differences tend to cancel out each other out when the model data are averaged over many grid cells. In contrast, and as expected, the differences between the temporal variations of aerosol mass concentrations from the STN run and the corresponding temporal variations of the aerosol tracer are typically small, even when the data for individual grid cells are considered, except for very rare (in the region and period considered) locations and moments-times where and when the aerosol concentration simulated in the STN run was affected by wet deposition.

Figures 4 and 5 shows the spatial distributions of the CO columns and AOD averaged in time over the study period. Strong enhancements in the CO columns and AOD due to fires are evident in the central part of the study region, both in the measurements and the simulations performed with BB emissions. Big differences between the simulations made with and without fire emissions indicate that the atmospheric composition was significantly affected by fires over most of the study region. The model tends to underestimate both CO columns and AOD in the hot spots, but, in general, the simulated and measured distributions are rather similar. These similarities further confirm that our aerosol and CO simulations are rather adequate-reasonable.

Note that similar to the AOD time series obtained from simulations with different model configurations and discussed above, the AOD distributions for the STN and VBS runs are not considerably different (cf. Fig. 5c and Fig. 5d). This observation emphasizes a difficulty of evaluating the adequacy of different representations of aerosol processes by means of a conventional comparative analysis of simulation and measurement AOD data. ~~only the simulations performed with the "STN" and "BGR" configurations of CHIMERE are presented in Fig. 4; the AOD distribution for the VBS run was found to be quite similar to that depicted in Fig. 4d. The model tends to underestimate both CO columns and AOD in the hot spots, but, in~~

~~general, the simulated and measured distributions are rather similar. These similarities further confirm that our aerosol and CO simulations are rather adequate.~~

3.2 The ER dynamics: measurement-based vs. model estimates

The dynamics of the ER for AOD (γ_a) estimated according to Eq. (9) is presented in Fig. 56, which shows the results obtained using the three different aging (reactive) tracers (T_1 - T_3). The ER values inferred from the satellite data are shown in comparison ~~with to~~ those derived from the corresponding modeled data (from the STN and VBS model runs). Note that to evaluate the behavior of the ER for the modeled data, values of τ_0 and ν_0 in Eq. (9) were replaced with their modeled counterparts. As an indicator of the "density" of the corresponding BB plumes, Fig. 56 also shows the near-surface $PM_{2.5}$ concentration calculated for each bin by averaging the corresponding output data of the STN run. The parameters of the estimation procedure were evaluated for each tracer using Eq. (11), as explained in Sect. 2.4, and the parameter values are also indicated in Fig. 56. The changes of the mean OH concentration ($\sim 4.5 \cdot 10^6 \text{ cm}^{-3}$) between the cases considered in Fig. 56 were found to be very insignificant.

Our major finding is that the ER evaluated with the satellite data exhibits statistically significant changes in dependence on the photochemical age. Specifically, it increases (in the case with the tracer T_1 , see Fig. 5a6a) from unity at the first bin ($t_a \in [1.0; 6.1]$ h) up to 1.9 at the third bin ($t_a \in [11.2; 16.3]$), and tends to decrease afterwards. The same type of the ER behavior is evident for the cases with the other tracers, T_2 (see Fig. 5b6b) and T_3 (see Fig. 5c6c), although there are quantitative differences between the cases. Taking into account the confidence intervals for our estimates of γ_a , one can argue that the observed increase of the ER with the increase of the photochemical age is not an artifact of uncertainties in the measured or simulated data. In contrast, although the decreasing part of the dependence of γ_a is quite pronounced, the uncertainties in our estimates of γ_a we cannot preclude us from claiming that the decrease of γ_a is real rather than, e.g., being an artifact of ~~uncertainties, e.g., errors~~ in the assumed background fractions of τ_0 and ν_0 . ~~To make a reliable conclusion as to whether or not the ER is actually decreasing, we would have to take into account that the uncertainties in different bins may be not fully independent. This kind of a statistical analysis goes beyond the scope of the present study. So~~ Therefore, in the analysis and discussion that follow we will focus on the increasing part of the dependence of γ_a on t_a .

Considerable differences between the ER estimates obtained with different aging tracers are an expected consequence of the fact that any grid cell always contains a mixture of aerosol fractions of different origin and age, and so the same AOD (and CO) data can be attributed to different photochemical age bins, depending on the reactivity of the aging tracer. Indeed, the different fractions get different weight in the photochemical age estimates obtained with different tracers. For example, relatively fresh BB aerosol can be expected to affect a photochemical age estimate obtained with a more reactive tracer (such as T_2) much more strongly than a similar estimate obtained with a less reactive tracer (e.g., T_3), because the contribution of more aged aerosol fractions to the concentration of T_3 at a given moment of time is, by definition, larger than the contribu-

tion of the same fractions to the concentration of T_2 . As a result, the photochemical age estimated with the tracer T_2 should typically be smaller than that estimated with the tracer T_3 . This is indeed evident in Fig. 56. On the other hand, an entrainment of relatively aged BB aerosol into a fresh BB plume would result in a positive shift of the photochemical age estimate; this shift has to be larger with a less reactive tracer. Therefore, it seems reasonable to suggest that if we are interested in distinguishing the effects of BB aerosol aging that presumably occurs on a certain time scale, T_a , then, on the one hand, the lifetime of the aging tracer should not be much larger than T_a , so that a contribution of "old" aerosol to the photochemical age estimate could be filtered out. On the other hand, it should not be much smaller than T_a in order to limit an effect of a fresh aerosol fraction on the photochemical age characterizing a more aged aerosol fraction of interest.

A comparison of the results obtained with the different tracers (see Fig. 56) confirms this reasoning: the use of the tracer T_1 having a characteristic lifetime of about 7 hours reveals more pronounced or more significant changes on the time scale T_a of the order of 10 hours than the use of the two other tracers having too large or too small lifetimes compared to T_a . Nonetheless, it would hardly be reasonable to try to "fit" a tracer's lifetime to T_a , because the actual lifetime of any tracer varies strongly both in space and time, reflecting variability of OH. It would be more reasonable to find an "optimal" tracer by using a criterion similar to that based on Eq. (11). Indeed, fact, the magnitude of $G(d_a, p\%)$ with the parameter values indicated in Fig. 5-6 is found to be ~~indeed~~ smaller in the case with the tracer T_1 (0.14) than in the cases with the tracers T_2 (0.18) or T_3 (0.22). However, formal optimization of a tracer's ~~reactivity~~ reactivity would require far more computational resources than were available for ~~goes far beyond the scope of~~ this study.

Another important finding is that the use of the photochemical age estimates allows one to "visualize" the major difference between the BB OA dynamics simulated with the different aerosol schemes. Specifically, whereas the BB aerosol simulated with the standard scheme behaves (as expected) very similar to a passive tracer (the ER deviates from unity only slightly, initially increasing probably due to SOA formation from "traditional" precursors but then slowly decreasing as a result of deposition), the ER for aerosol simulated with the VBS scheme strongly increases by a factor of 1.9. Furthermore, the analysis presented in Fig. 5-6 clearly indicates that the VBS scheme enables more adequate representation of BB aerosol dynamics than the standard scheme ~~at~~ during the first (growing) stage of BB aerosol aging. Such a conclusion would be impossible to make simply by comparing the time series discussed in Sect. 3.1.

The agreement between the ER estimates derived from the measurements and VBS simulations is obviously not perfect. In particular, the modeled values obtained with the VBS run increase more slowly during the initial stage of the BB aerosol evolution and do not decrease considerably afterwards; moreover, the confidence intervals for the measurement-based and model estimates of the ER do not intersect in the third bin in the case shown in Fig. 5a6a. Although a likely increase (not taken into account in our simulations) of the mass extinction efficiency by $\sim 10\%$ (Reid et al., 2005b) as a result of aerosol aging would be sufficient to ensure that the difference between the measurement-based and model estimates of the ER is not statistically significant, it could still not bring the measurement-based and modeled estimates of the ER into perfect agreement. These observations indicate that the representation of BB aerosol with the available VBS scheme is not yet fully ade-

quate, and probably could be improved further by optimization of the parameters of the VBS scheme. This task can be addressed in future studies. In particular, other formulations of the VBS scheme are possible (e.g., Shrivastava et al., 2015), in which fragmentation reactions get larger weight, leading to a net decrease of BB aerosol concentration after some time.

Note that the measurement and model data covered by different photochemical age bins do not necessarily represent the same BB plumes (but at different stages of their evolution). However, we assume that the difference between our ER estimates for different bins is indeed representative of the difference between the optimal ER values for an ensemble of the plumes at different stages of their evolution. An analysis of a particular situation in which it turned out to be possible to trace the atmospheric evolution of the same BB plumes as they are transported from one ("source") region into another ("receptor") region is presented in the Supplementary material. The analysis reveals that, in line with the results of the more general analysis presented in this section (see Fig. 5a6a), the optical depth of the actual BB aerosol increased with respect to the optical depth of the BB aerosol simulated with the standard OA scheme as a result of BB aerosol aging.

Fig. 6-7 illustrates the effect of the data selection procedure (see Eq. (11) and the corresponding explanations in Sect. 2.4) on the results of our analysis. Specifically, it shows the dependence of the maximum value of the ER on the value of the parameter $p\%$ (a threshold percentile that was used to select the data [see Sect. 2.4]) corresponding to sufficiently dense BB plumes). The dependence was obtained with a fixed width of the photochemical age bin of 5.1 hours, while the photochemical age itself was estimated with the tracer T_1 (as in the analysis illustrated in Fig. 5a6a, where $p\%$ was equal to 83%). By definition, larger values of $p\%$ correspond to denser BB plumes: this is evident in the dependence (also shown in Fig. 6-7) of the mean near surface concentration of $PM_{2.5}$ in grid cells and days covered by a photochemical age bin in which the ER reaches a maximum value.

The obtained dependence of the maximum ER values on $p\%$ demonstrates a clear upward trend that extends up to a value of $p\%$ of 86 %. The fact that the trend is "submerged" in the confidence intervals of individual estimates of the ER does not necessarily mean that the trend is insignificant, particularly because the uncertainties of the individual estimates are not independent (since the datasets selected for the different estimates were overlapping). Nonetheless, we cannot claim with confidence that the trend is "real" either (i.e., is not an artifact of our analysis) ~~either~~, since our estimates of the ER can be biased to a different extent with different values of $p\%$. Specifically, apart from the "vertical" uncertainty reflecting discrepancies between model and measurement data covered by a given photochemical bin, there can also be a "horizontal" uncertainty in our estimates due to mismatches between the photochemical ages of the actual BB aerosol and its simulated counterpart. The mismatches (or, in other words, uncertainties in our estimates of the photochemical age) could occur due to model transport errors, as well as due to uncertainties in modeled spatial-temporal distributions of BB aerosol and CO sources. It seems reasonable to expect that the uncertainties in the photochemical age estimates have a quasi-random character (at least when the region and period considered are sufficiently large) and are manifested as the "diffusion" of data points forming the dependencies shown in Fig. 6-7 across different bins. If so, the horizontal uncertainty in our estimates of the ER should be associated with a flattening of the dependence of γ_a on t_a and with a negative bias in the ER maximum (for given values of $p\%$ and

d_p). Such a bias can be different for different selections of the modeled and measured data (and, in particular, can be dependent on $p\%$), but it is difficult to evaluate without using any independent data on the photochemical age of the real BB aerosol.

Compared to the maximum ER estimates obtained with the measurement data, the corresponding estimates based on the simulated data do not show any prominent trend. In principle, an upward trend in the dependence of the maximum ER on $p\%$ can be explained by suggesting that gas-phase oxidation of organic material originating from fires results in formation of, predominantly, rather volatile products that remain mostly in the gas phase unless the density of OA becomes sufficiently high. The fact that such a trend is missing in the estimates based on the modeled data that were obtained with the VBS scheme may be considered as one more indication that the representation of BB aerosol with the VBS scheme used in this study is not sufficiently adequate. Making a firmer conclusion in this regard is presently not possible in view of the possible bias in our estimates, which has been mentioned above.

3.3 Sensitivity tests and Monte Carlo experiments

A goal of the analysis presented in this section is to evaluate the robustness of our major findings presented in the previous section in view of possible uncertainties and biases in the input data. The results of the analysis are presented in Fig. 78.

First (Fig. 7a8a), we examined to which-what extent our estimates of the ER could be affected if our estimation procedure would not involve normalizing AOD to CO column amounts, that is, if the estimation was based on Eq. (8) instead of Eq. (9). Indeed, although using the CO columns in Eq. (9) is likely to result in reducing possible uncertainties due to mismatches between BB plumes in the real atmosphere and in the simulations (as discussed in Sect. 2.4), it might have led to some artifacts in the ER retrievals if there were major systematic discrepancies between the CO columns derived from satellite measurements and simulated with a CTM. The discrepancies may be, e.g., -due to model errors in the injection height of BB emissions, but also due to probable underestimation of CO columns in the IASI retrievals close to emissions (Turquety et al., 2009). However, the test estimation performed with the same parameters as in Fig. 5a-6a but without using the CO data yields almost the same maximum increase (by a factor of 2.0) of the ER as in the base case (see Fig. 5a6a), although, as expected, the uncertainty of the ER estimates has-increased (by ~40% on the average). Moreover, when CO columns were processed instead of AOD values (again using Eq. 8), the corresponding estimates of γ_a (see a purple line in Fig. 7a8a) were not found to manifest any statistically significant deviations from unity (except for the ER estimate for the last bin, with t_a larger than 26.5 h), as would be expected for the behavior of ER for a passive tracer. Note that underestimation of the retrieved CO columns in fresh BB plumes (corresponding to the first bin of the photochemical age) with respect to those in more aged plumes could result in underestimation of the ER values obtained with Eq. (9) for the other bins, and, therefore, could not explain the increasing part of the dependence of the ER on the photochemical age (see, e.g., Fig. 5a6a). Moreover, unlike near-surface $PM_{2.5}$ concentration, CO columns do not exhibit any strong variations across photochemical age bins (see green dashed line in Fig. 7a8a); this indicates that variability of the ER for CO columns (see purple line in Fig. 7a8a) is like-

ly mostly due to model errors in the vertical distribution of CO. Accordingly, the test results presented in Fig. 7a-8a provide strong evidence that the increasing part of the ER dependence on the photochemical age is not an artifact of any systematic errors in the modeled or simulated CO columns.

Second (see Fig. 7b8b), we tried to assess whether ~~or not~~ the increase of the ER can be an artifact of uncertainties in our model estimates of the photochemical age due to transport errors. To roughly evaluate the effect of such errors, we considered how good the model's prediction is that the CO column amount in a given grid cell and on a given day is noticeably (at least by 10-% with ~~the~~ respect to its background value predicted by the model) affected by fires. Specifically, we evaluated the "hit rate", h , defined ~~in our case~~ as follows:

$$h = \frac{n_c}{n_t}, \quad (12)$$

where n_c is the number of correct predictions (that is, the number of grid cells/days where both the model and measurements indicate that the contribution of fires to a CO column was noticeable), and n_t is the total number of grid cell/days affected by fires according to the measurements. The hit rate was evaluated separately for each photochemical age bin ~~separately~~ using the original set of CO columns retrieved from the IASI satellite measurements and those simulated by our model. The values of h (see black crosses in Fig. 7b8b) were then used to set up Monte Carlo experiments in which the values of AOD and CO columns from the measurements were replaced with synthetic data obtained by mixing the corresponding modeled values in the horizontal plane. That is, the aerosol and CO data for a given grid cell (i,j) were replaced with the data from another grid cell (k,l) (and vice versa). The differences between k and i or l and j were assigned as random values sampled from a Gaussian distribution $N(0,\sigma_s)$, with the σ_s value of 8.0. The value of σ_s was defined such that the hit rates calculated for each photochemical age bin with the mixed synthetic data (see ~~green-black~~ crosses in Fig. 7b8b) were smaller than the corresponding hit rates calculated with the original data. The experiments were performed both without and with using CO columns for normalization of AOD values, that is, using the cost function defined by both Eq. (8) and Eq. (9). The AOD values were calculated using the simulated data for the tracer T_0 .

The results of the corresponding Monte Carlo experiments are presented by solid and dashed lines in Fig. 7b8b. ~~Evidently~~ It is evident that, ~~the~~ deviations of the ER estimates from unity due to the random replacements of the modeled data turned out to be much smaller than those found with real data. In the case where CO columns were not used, the maximum deviation was about 31%; there is also an upward trend (starting from the second bin) that can be explained by the factors mentioned in Sect. 2.4. The deviations were found to be smallest (less than 12%) in the case where AOD values had been normalized to CO columns according to Eq. (9). Note that the hit rates considered can be smaller than unity not only because of model transport errors or similar errors due to misplacements of BB aerosol emission sources, but also due to many other kinds of uncertainties in the measured and simulated data. That is, our Monte Carlo experiments are likely to provide an upper limit for the effects of transport errors. Therefore, the results shown in Fig. 7b-8b strongly suggest that the major features of the

ER behavior found in the analysis of the real data (see, e.g., Fig. 5a6a) ~~is~~ are unlikely due to model transport errors and associated errors in our estimates of the BB aerosol photochemical age.

Third (Fig. 7e8c), we investigated whether the derived increase of the ER was a general property of BB aerosol evolution in the study region, or was mostly associated with a single specific episode, like the one considered in the Supplementary material. To do so, we split the original dataset into two parts, such that the first part included only odd days of the study period, and the second part included only even days. This splitting allowed us to get ER estimates based on entirely different subsets of the data. To enable a straightforward comparison of the ER estimates derived from each data subset, they were obtained for the same photochemical age bins as the base case estimates shown in Fig. 5a6a; that is, the estimation procedure involved Eq. (9), but Eq. (11) was not employed in this test.

As a result, we found that the ER estimates derived from the both data subsets demonstrate qualitatively similar "humped" dependencies on the BB aerosol photochemical age, although there are considerable (but not statistically significant) quantitative differences between them. Not surprisingly, withdrawing half of the data from the original dataset resulted in an increase of uncertainties in the ER estimates. Similar results (not shown here) were obtained when the original dataset was split into two parts in about the middle of the study period, such that the amount of data in the two data subsets was similar. All these results clearly indicate that the increase of the ER is not due to a haphazard feature of a single BB plume observed from satellites, but a rather general property of BB aerosol evolution in the region and period considered.

Fourth (Fig. 7e8d), we examined the sensitivity of our estimates to possible systematic errors in the injection height of the BB emissions. To do so, we performed a test model run (for the STN scenario) in which the injection height of the BB emissions was increased: specifically, a factor of two was applied to the injection height estimates calculated in accordance with the method by Sofiev et al. (2012, see Eq. 10 therein). The model data for aerosol tracers and CO from that test run were then used for estimation of the ER instead of the data from the original STN run.

The injection height parameterization implemented in this study can be expected to underestimate the observed height of a part of the major BB plumes reaching the free troposphere (see Sofiev et al., 2012 and Fig. 2d therein). In turn, the underestimation of BB plume heights can result in systematic mismatches between the AOD fields obtained from the observations and from the model in the presence of a strong vertical wind shear. In particular, in such a case, the model is likely to overestimate AOD for fresh plumes corresponding to the first photochemical age bin, leading to a positive deviation of the ER estimates for other bins from unity, even if the real BB aerosol behaved as a passive tracer. A possible effect of the underestimation of BB plume height on the modeled CO columns is twofold. On one hand, the CO columns can be overestimated for the same reason as AOD, leading to a compensation of a bias associated with the overestimation of the simulated AOD. But on the other hand, the simulated CO columns processed with the IASI averaging kernels can be underestimated due to decreasing sensitivity of the IASI instrument at lower altitudes, resulting again in a positive bias in the ER estimates. Visual inspection of Fig. 2d in Sofiev et al. (2012) reveals that doubling of the calculated injection height would eliminate its underestimation for most of the cases where the underestimation occurs if the injection height is calculated using the original

formula. Therefore, if the deviations from unity of the ER estimates shown in Fig. 5a-6a were actually due to only the underestimation of the injection height of BB emissions, doubling of the injection height values used in our simulations would result in a major reduction of such deviations and in a decrease of the maximum value of the ER. However, the analysis performed with the output data from the test run (see the orange curve in Fig. 7d8d) evidently do not reveal any major decrease in the ER maximum, thus indicating that the potential underestimation of the injection height of BB emissions cannot be the primary reason for the increase of the ER in our case.

Finally, in addition to the main test cases presented above, we analyzed some other test cases that will not be discussed here in detail. In particular, we tried to ensure that the derived evolution of the ER is not an artifact of our data selection procedure (see Eq. 10 and the discussion around it Sect. 2.4.1) by using AOD values instead of CO columns in Eq. (10) in it. We also obtained test estimates of the ER by using the modeled CO columns to which no transformation involving averaging kernels was applied. These modifications of our procedure did not result in any qualitative changes of the ER behavior, either. Accordingly, we came to the conclusion that the strong increase of the ER is not an artifact of our procedure or model errors but, rather, a real property of BB aerosol evolution in the study region and period.

4 Discussion

In this section, we qualitatively discuss possible physical and chemical mechanisms that could be responsible for the distinctive features of BB aerosol evolution, which were revealed in our analysis of the MODIS AOD measurements (see Sect. 3.2 and Fig. 5a[MOA1]). We also discuss possible implications of our results for future studies of BB aerosols.

The ER defined by Eq. (6) and estimated using either Eq. (8) or Eq. (9) can vary with the BB aerosol age as a result of physical and chemical transformations, affecting the optical properties of BB aerosol. These transformations can be initiated by several processes, including nucleation (new particle formation), ~~absorption~~condensation/evaporation, coagulation and deposition (see, e.g., Seinfeld and Pandis, 2006), as well as morphological changes (see, e.g., Martin et al., 2013) and heterogeneous oxidation (see, e.g., Kroll et al., 2015). As both nucleation and ~~absorption~~condensation (of, e.g., organic compounds) increase the surface area of the ensemble of aerosol particles, they are likely to result in an increase of AOD and, thus, of the ER, while evaporation and deposition are most likely to lead to the opposite effect. Depending on the aerosol particle concentration and size distribution, coagulation (which is typically a slow process, except in very dense and fresh plumes) may cause both a decrease of the mass extinction efficiency (and thus AOD) due to a decrease of the number of particles, but possibly also an increase, as the size of the remaining particles grows and they become more efficient in light scattering. Heterogeneous oxidation is likely to lead to a loss of particle carbon to the gas phase as a result of fragmentation reactions (Kroll et al., 2015), although there are also functionalization reactions introducing more oxygen atoms to the particle material.

Substantial changes of the physical and chemical characteristics of BB aerosol have previously been observed in smog chamber experiments when BB emissions were exposed to UV radiation and are believed to be initiated by gas-phase oxidation of SVOCs and IVOCS (e.g., Grieshop et al., 2009; Hennigan et al., 2011; and Heringa et al., 2011). In particular, Grie-

shop et al. (2009) found that photochemical oxidation of organic gases was associated with an increase of the mass concentration of BB OA by a factor of 1.5 to 2.8 and with an increase of the O:C ratio by a factor of 1.5 (on average). Even larger changes were detected in the field measurements in southern Africa by Vakkari et al. (2014), who found that atmospheric processing of BB plumes during a few hours resulted not only in a strong increase (up to a factor of 10) of the ratio of BB aerosol and CO mass concentrations but also in a major enhancement (by a factor of 6) of the aerosol scattering coefficient ~~related~~ relative to CO concentration. A strong increase (by a factor of 2.5) in the aerosol scattering coefficient (normalized to a tracer concentration) was also reported by Akagi et al. (2012) from aircraft measurements of BB plumes in California.

It seems reasonable to assume that similar changes could have occurred in BB plumes in the study region and that such changes could be responsible for the increase in the ER as a function of ~~the~~ photochemical age. For example, an increase in the scattering coefficient (relative to a tracer concentration) throughout the vertical column of BB aerosol would result in an enhancement of AOD (and thus of the ER), if other optical parameters of the aerosol remained constant. A problem is that available laboratory and in situ measurements providing evidence for major physical and chemical transformations of BB aerosol address rather short periods of BB evolution (< 5 h). Such periods would be covered by the first bin of our photochemical age estimates, and therefore the results of the experimental studies mentioned above do not have direct implications for the interpretation of our findings. However, as long as some of the primary BB aerosol, which is likely to be composed mainly of SVOCs (see, e.g., May et al., 2013), evaporates upon dilution (which normally does not occur in BB aerosol aging chamber experiments), there can be a continuous influx of fresh organic material into the gas phase. As a result of gas-phase oxidation, this material is likely to gain in mass, lose in volatility, and be absorbed again by BB aerosol particles (Grieshop et al., 2009). Accordingly, it may be suggested that the physical and chemical processes leading to an increase of AOD can remain efficient on ~~a~~ much longer time scales than those addressed in chamber experiments, depending on the temporal scale of dilution (which, in turn, can vary, depending on meteorological conditions).

Such a scenario is confirmed by our simulations based on the VBS scheme. Indeed, with the reaction rate of SVOCs with OH of $2 \times 10^{-11} \text{ s}^{-1} \text{ cm}^3$ (based on the recommendations by Grieshop et al., 2009) and a typical OH concentration of $4.5 \times 10^6 \text{ cm}^{-3}$ in daytime, the gas-phase oxidation of primary organic aerosol material, if it occurred in one step, could be mostly accomplished within 3-4 hours, while actually (see Fig. 56) it takes up to ~ 20 hours (or even longer, depending on the photochemical age estimates). The fact that there are quantitative differences between the ER estimates based on the measurements and the VBS simulations in the growing stage of the BB aerosol evolution (specifically, the ER growth rate is underestimated by the model) is not surprising, taking into account that the OA evolution simulated in the framework of the VBS method depends on many parameters (Donahue et al., 2006), none of which were optimized for the particular situation considered in this study. In addition, it should be noted that the ER estimates based on the simulated data were obtained under the assumption that the aerosol mass extinction efficiency does not change as the aerosol ages, while the available measurement data (Reid et al., 2005b) indicate that it is usually greater for dry aged BB aerosol than for dry fresh BB aerosol.

Typically, the difference in the mass extinction efficiency for fresh and aged BB aerosol is rather small (~10%) (Reid et al., 2005b). However, much larger changes in the mass extinction efficiency can be expected to occur due to new particle formation, which was observed in fresh BB smoke (with an age of less than 2 hours) both in the real atmosphere (Hobbs et al., 2003; Vakkari et al., 2014) and in the laboratory (Hennigan et al., 2012), but is not taken into account in our model. To the
5 best of our knowledge, there is no experimental evidence that new particle formation can be important after the BB aerosol age exceeds a few hours. Moreover, the smog chamber experiment by Hennigan et al. (2012) indicates that the particle formation rate drops abruptly after just one hour of BB smoke evolution (that is, after a period that was entirely excluded from our analysis). Accordingly, the discussed behavior of our ER estimates derived from satellite measurements, as well as their difference from the ER estimates obtained from the model data are unlikely to be due to the effects of new particle forma-
10 tion.

Considerable changes in the mass extinction efficiency of BB aerosol in the real atmosphere can also be due to ~~uptake ab-~~
~~sorption~~ of water by BB aerosol particles. This process is also not taken into account in our simulations. The effect of water uptake on light scattering by aerosol particles can be characterized by the aerosol humid growth factor, $f(\text{RH})$ (see, e.g., Day
et al., 2006), ~~while-whereas~~ the impact of humidification on light absorption by BB aerosol is believed to be negligible (Reid
15 et al., 2005b). The product of the mass scattering efficiency of dry aerosol with $f(\text{RH})$ provides an estimate of the mass scattering efficiency of the aerosol in an ambient atmosphere. The humid growth factor depends on the aerosol particle composition and size distribution, but the key parameter determining its magnitude is ambient RH (Kasten, 1969). The BB plumes considered in this study evolved in a relatively dry atmosphere, where RH was typically lower than 60% in the daytime (when the satellite measurements were taken). Mean RH values calculated as a function of the BB aerosol photochemical
20 age and corresponding to the same grid cells / hours that were taken into account in our analysis illustrated in Fig. ~~5a-6a~~ are presented in Fig. ~~8-9~~ along with the corresponding values of temperature. Both RH and temperature were calculated using the WRF-ARW model data (see Sect. 2.2.1) as a weighted vertical average, with the concentrations of the inert tracer T_0 used as the weights. In addition, Fig. ~~8-9~~ also shows their mean values for the first (near-surface) model layer. It can be seen, that while the vertically averaged temperature decreases with the photochemical age (due to transport of aerosol into higher
25 levels), RH remains nearly constant and below 60%. Available measurements (see, e.g., Hand et al., 2010) suggest that $f(\text{RH})$ is likely to remain smaller than 1.2 under such conditions. Therefore, even though $f(\text{RH})$ might increase with aerosol age due to changes in aerosol composition, aerosol particle humidification can explain neither the major increase in the ER as BB aerosol ages nor the difference between the ER estimates based on measurement and model data.

The decreasing part of the measurement-based dependence of the ER on the photochemical age is more difficult to explain,
30 particularly because it is not reproduced by our model. As noted in Sect. 3.2, we cannot claim that the ER is actually decreasing after the initial growth, taking into account the uncertainty range of our estimates. Nonetheless, as the decreasing part is a general feature of the dependencies presented above (see Fig. ~~5b~~), it may ~~be-~~not entirely ~~be~~ an artifact of our analysis. It can be suggested that the decrease of the ER can reflect a decrease in BB OA mass concentration due to either evaporation of

SOA, followed by fragmentation rather than functionalization reactions of the evaporated material (Donahue et al., 2012; 2013), or due to heterogeneous oxidation (George and Abbatt, 2010; Kroll et al., 2015), which can be a major oxidation mechanism for OA particles over timescales of several days, but is not taken into account in our model, or both. Importantly, the behavior of the ER according to our analysis is qualitatively consistent with the current theoretical understanding of the evolution of OA in the atmosphere: in particular, a similar "humped" dependence of OA concentration was obtained by Donahue et al. (2013, see Fig. 3 therein) in a simulation with an idealized box model. Furthermore, Donahue et al. (2013) pointed out that real atmospheric OA can, in some cases, be oxidized very quickly (e.g., over less than 1 day), depending on environmental conditions (and OH concentration in particular). Our results indicate (see Fig. 5e6c) that if the downward trend continues beyond the time scales considered, the ER will eventually become less than unity. In this sense, our analysis does not contradict earlier reports (Jolleys et al. 2012; 2015), which indicated that the normalized excess ratios for aged BB aerosol measured in several aircraft campaigns were, on average, smaller than for fresh BB aerosol.

The results of our analysis have direct implications for the development and evaluation of models representing BB aerosol evolution. In particular, they confirm the findings of earlier studies (e.g., Hodzich et al., 2010; Konovalov et al., 2015; Shrivastava et al., 2015) indicating the importance of taking BB aerosol transformations associated with the oxidation of SVOCs into account in CTMs. Indeed, the simulations based on the VBS method (which provides a convenient framework for model representations of processes involving SVOCs) demonstrate a much better overall agreement with the ER estimates derived from satellite measurements than the simulation based on a simpler ("conventional") OA scheme, in which primary BB OA is assumed to be composed of only non-volatile material and in which an SOA source associated with oxidation of SVOCs is not taken into account. Our results also support the argumentation (Konovalov et al., 2015) that inadequate representation of BB aerosol aging processes may be one of the key reasons for the systematic underestimation of AOD by CTMs employing a conventional OA scheme (see Introduction and references therein). Indeed, on the one hand, our analysis indicates that when the BB aerosol simulations are based on the VBS method, the optimal agreement between the simulated and measured AOD data can be achieved with smaller (by a factor of 1.8 in our case) particulate matter emissions than when BB aerosol simulations are performed using the conventional aerosol scheme. On the other hand, as noted above, the VBS method is found to provide a more realistic representation of the effects of BB aerosol aging than the conventional aerosol scheme. Future modeling studies should involve optimization of the parameters of the VBS scheme in order to better fit better the ER estimates obtained with the model data to those derived from measurements.

Our results may also have implications for experimental studies of BB aerosol evolution. Indeed, our analysis provided observational evidence (to the best of our knowledge, for the first time) of major BB aerosol transformations that occur in the real atmosphere on temporal scales in the range from ~5 to ~20 hours. This is a rather unexpected finding in view of previous studies of BB aerosol evolution, which focused mostly on either shorter or longer time scales. Therefore, our results indicate that more focus should be given in laboratory and field studies to the time scales corresponding to meso- and synoptic scale transport of BB plumes. It would be useful to pay special attention to the role of dilution and to the dependence of

aging processes on the ambient concentration of BB aerosol, and it would be important to ensure (in field experiments) that the photochemical age of a BB plume is well defined and is not affected significantly by entrainment of fresher or more aged smoke. The BB aerosol photochemical age estimation method proposed in this paper may be helpful in this regard.

Finally, we would like to point out that our analysis based on Eq. (8) or Eq. (9) provides a convenient tool to visualize the effects of BB aerosol aging in simulated data, as it is done, for example, with simulations performed with the different aerosol schemes (cf. red and brown lines in Fig. 56). We believe that, in this way, our method can be helpful, in particular, in various sensitivity studies, as it allows one to easily observe the effects of a parameter change on BB aerosol evolution. Note that an analysis of the effects associated with aerosol aging could be quite straightforward when using a Lagrangian model. However, with an Eulerian model, a practical alternative to the method described in this paper would be a rather cumbersome analysis of transport patterns and spatial-temporal distributions of BB aerosol (like the special case analysis presented in the Supplementary material).

5 Conclusions

In this paper we used MODIS AOD measurements combined with IASI CO measurements and output data from the CHIMERE CTM to probe the effects of aging of BB aerosol in smoke plumes from Siberian wildfires. To quantify the AOD changes due to BB aerosol aging, we considered the AOD "enhancement ratio" (ER), ~~that~~ which indicates how much the optical depth of the actual BB aerosol changes ~~with respect~~ compared to the optical depth associated with a passive aerosol tracer originating from the same sources ~~as the actual aerosol~~. The AOD ER has basically the same meaning as the normalized excess mixing ratio (NEMR) used in earlier studies involving in-situ measurements (e.g., Jolleys et al., 2012; Vakkari et al., 2014; Konovalov et al., 2015), but is defined in terms of AOD values rather than mixing ratios. The satellite-observation-based analysis ~~obviously~~ allows obtaining results for larger regions and for ~~the~~ a larger number of BB plumes than in-situ measurements. The ER was evaluated as a function of the BB aerosol photochemical age by matching the measured AOD values to their modeled counterparts calculated as the AOD of a passive aerosol tracer featuring the same sources as the BB aerosol but not affected by any process except for transport. The photochemical age was estimated by combining the passive aerosol tracer concentration with that of another virtual tracer reacting with OH. The model was also used to evaluate "background" AOD values in the absence of fires. The CO columns derived from the IASI measurements and simulated by the model played an auxiliary role in our analysis, counterbalancing possible mismatches between the measured and simulated AOD fields. The analysis addressed a big region (50-76°N, 60-111°E) in Central and Western Siberia in summer 2012 (specifically, from 1 July to 15 August) where and when intense and numerous forest fires had occurred.

We found that in sufficiently "dense" plumes (where the near-surface PM_{2.5} concentration is of the order of 100 µg m³), the ER demonstrates a substantial (up to a factor of 1.9) and statistically significant enhancement on the time scale of up to 15 hours. The increase of the ER was found to be followed by a decrease; however, the presence of the decreasing part of the ER evolution cannot be considered as a well-established fact in view of the uncertainties in our estimates. The ER was

found to increase less in less dense plumes. The robustness of our finding that real BB aerosol evolves quite ~~distinctly~~ differently from a hypothetical passive aerosol tracer on the time scales considered is corroborated by the results of our analysis of several test cases involving different modifications of the input data and estimation procedure, as well as by a Monte Carlo experiment intended to replicate the effects of model transport errors. The formal statistical analysis of the BB aerosol evolution is supplemented by the analysis of a special case where an enhancement of AOD with respect to the CO columns was associated with transport of BB plumes from a "source" to a "receptor" region.

We also found that the increase in the ER can, to a large extent but not completely, be reproduced by the BB aerosol simulations using the same VBS scheme that ~~was~~ had been successfully evaluated previously in Konovalov et al. (2015) for the case of BB plumes originating from fires in the European part of Russia. At the same time, no significant enhancement was found in the ER estimates derived from AOD data simulated with the "standard" aerosol scheme of CHIMERE, in which processes involving SVOCs are disregarded. These results and the fact that the initial BB evolution over the first few hours after emission could not be resolved in our analysis allowed us to suggest that the "observed" enhancement of the ER is particularly due to the oxidation of SVOCs evaporated upon dilution from aerosol particles.

Finally, we discussed numerous implications of our findings for future experimental and modeling studies of BB aerosol. In particular, our findings emphasize the importance of carefully planned field studies addressing time scales exceeding those (of the order of a few hours) typical for chamber experiments, as well as the importance of a proper representation of physical and chemical processes involving SVOCs in CTMs. We also argued that the analysis method presented in this paper can become a helpful tool for developing and validation of CTMs.

Acknowledgements. This study was supported by the Russian Science Foundation (grant agreement no. 15-17-10024). The simulations involved in the analysis were performed with support from Russian Foundation for Basic Research (grant nos. 14-05-00481 and 15-45-02516). I.B. Konovalov acknowledges travel expenses in the framework of the PARCS (Pollution in the ARctic System - PARCS) national project. M. O. Andreae is funded by the Max Planck Society.

References

Abel, S., Haywood, J. M., Highwood, E. J., Li, J., and Buseck, P. R.: Evolution of biomass burning aerosol properties from an agricultural fire in south Africa, *Geophys. Res. Lett.*, 30, 15, 1783, doi:10.1029/2003GL017342, 2003.

Adler, G., Flores, J. M., Abo Riziq, A., Borrmann, S., and Rudich, Y.: Chemical, physical, and optical evolution of biomass burning aerosols: a case study, *Atmos. Chem. Phys.*, 11, 1491-1503, doi:10.5194/acp-11-1491-2011, 2011.

Akagi, S. K., Craven, J. S., Taylor, J. W., McMeeking, G. R., Yokelson, R. J., Burling, I. R., Urbanski, S. P., Wold, C. E., Seinfeld, J. H., Coe, H., Alvarado, M. J., and Weise, D. R.: Evolution of trace gases and particles emitted by a chaparral fire in California, *Atmos. Chem. Phys.*, 12, 1397–1421, doi:10.5194/acp-12-1397-2012, 2012.

- Alonso-Blanco, E., Calvo, A.I., Pont, V., Mallet, M., Fraile, R., Castro, A.: Impact of biomass burning on aerosol size distribution, aerosol optical properties and associated radiative forcing, *Aerosol Air Qual. Res.*, 14, 708–724, doi:10.4209/aaqr.2013.05.0163, 2014.
- Andreae, M. O. and Merlet, P.: Emission of trace gases and aerosols from biomass burning, *Glob. Biogeochem. Cy.*, 15, 955–966, doi:10.1029/2000GB001382, 2001.
- Andreae, M. O., and Gelencsér, A., Black carbon or brown carbon? The nature of light-absorbing carbonaceous aerosols: *Atmos. Chem. Phys.*, 6, 3131-3148, 2006.
- Andreae, M. O. and Ramanathan, V.: Climate's Dark Forcings, *Science*, 340, 280–281, doi:10.1126/science.1235731, 2013.
- Berezin, E. V., Konovalov, I. B., Gromov, S. A., Beekmann, M., Schulze, E. -D.: The model study of the wildfire impact on the spatial distribution of deposition of sulfur and nitrogen compounds in Siberia, *Russ. Meteor. Hydr.*, 38(11), 750-758, doi: 10.3103/S1068373913110046, 2013.
- Bertschi, I. T. and Jaffe, D. A.: Long-range transport of ozone, carbon monoxide, and aerosols in the NE Pacific troposphere during the summer of 2003: observations of smoke plumes from Asian boreal fires, *J. Geophys. Res.*, 110, D05303, doi:10.1029/2004JD005135, 2005.
- 15 Bond, T. C., Doherty, S. J., Fahey, D. W., Forster, P. M., Berntsen, T., DeAngelo, B. J., Flanner, M. G., Ghan, S., Kärcher, B., Koch, D., Kinne, S., Kondo, Y., Quinn, P. K., Sarofim, M. C., Schultz, M. G., Schulz, M., Venkataraman, C., Zhang, H., Zhang, S., Bellouin, N., Guttikunda, S. K., Hopke, P. K., Jacobson, M. Z., Kaiser, J. W., Klimont, Z., Lohmann, U., Schwarz, J. P., Shindell, D., Storelvmo, T., Warren, S. G. and Zender, C. S.: Bounding the role of black carbon in the climate system: A scientific assessment, *J. Geophys. Res. Atmos.*, 118, 5380–5552, doi:10.1002/jgrd.50171, 2013.
- 20 Capes, G., Johnson, B., McFiggans, G., Williams, P. I., Haywood, J., and Coe H.: Aging of biomass burning aerosols over West Africa: Aircraft measurements of chemical composition, microphysical properties, and emission ratios, *J. Geophys. Res.*, 113, D00C15, doi:10.1029/2008JD009845, 2008.
- Clerbaux, C., Boynard, A., Clarisse, L., George, M., Hadji-Lazaro, J., Herbin, H., Hurtmans, D., Pommier, M., Razavi, A., Turquety, S., Wespes, C., and Coheur, P.-F.: Monitoring of atmospheric composition using the thermal infrared IASI/MetOp
25 sounder, *Atmos. Chem. Phys.*, 9, 6041–6054, doi:10.5194/acp-9-6041-2009, 2009.
- Colarco, P., da Silva, A., Chin, M., and Diehl, T.: Online simulations of global aerosol distributions in the NASA GEOS-4 model and comparisons to satellite and ground-based aerosol optical depth, *J. Geophys. Res.-Atmos.*, 115, D14207, doi:10.1029/2009JD012820, 2010.
- Cubison, M. J., Ortega, A. M., Hayes, P. L., Farmer, D. K., Day, D., Lechner, M. J., Brune, W. H., Apel, E., Diskin, G. S.,
30 Fisher, J. A., Fuelberg, H. E., Hecobian, A., Knapp, D. J., Mikoviny, T., Riemer, D., Sachse, G. W., Sessions, W., Weber, R.

- J., Weinheimer, A. J., Wisthaler, A., and Jimenez, J. L.: Effects of aging on organic aerosol from open biomass burning smoke in aircraft and laboratory studies, *Atmos. Chem. Phys.*, 11, 12049–12064, doi:10.5194/acp-11-12049-2011, 2011.
- Day, D. E., Hand, J. L., Carrico, C. M., Engling, G., and Malm, W. C.: Humidification factors from laboratory studies of fresh smoke from biomass fuels, *J. Geophys. Res.*, 111, D22202, doi:10.1029/2006JD007221, 2006.
- 5 DeCarlo, P. F., Dunlea, E. J., Kimmel, J. R., Aiken, A. C., Sueper, D., Crouse, J., Wennberg, P. O., Emmons, L., Shinzuka, Y., Clarke, A., Zhou, J., Tomlinson, J., Collins, D. R., Knapp, D., Weinheimer, A. J., Montzka, D. D., Campos, T., and Jimenez, J. L.: Fast airborne aerosol size and chemistry measurements above Mexico City and Central Mexico during the MILAGRO campaign, *Atmos. Chem. Phys.*, 8, 4027–4048, doi:10.5194/acp-8-4027-2008, 2008.
- DeCarlo, P. F., Ulbrich, I. M., Crouse, J., de Foy, B., Dunlea, E. J., Aiken, A. C., Knapp, D., Weinheimer, A. J., Campos,
10 T., Wennberg, P. O., and Jimenez, J. L.: Investigation of the sources and processing of organic aerosol over the Central Mexican Plateau from aircraft measurements during MILAGRO, *Atmos. Chem. Phys.*, 10, 5257–5280, doi:10.5194/acp-10-5257-2010, 2010.
- Donahue, N. M., Robinson, A. L., Stanier, C. O., and Pandis, S. N.: Coupled partitioning, dilution, and chemical aging of semivolatile organics, *Environ. Sci. Technol.*, 40, 2635–2643, doi:10.1021/es052297c, 2006.
- 15 Donahue, N. M., Kroll, J. H., Pandis, S. N., and Robinson, A. L.: A two-dimensional volatility basis set – Part 2: Diagnostics of organic-aerosol evolution, *Atmos. Chem. Phys.*, 12, 615–634, doi:10.5194/acp-12-615-2012, 2012.
- Donahue, N. M., Chuang, W., Epstein, S. A., Kroll, J. H., Worsnop, D. R., Robinson, A. L., Adams, P. J., and Pandis, S. N.: *Environ. Chem.*, 10, 151–157, doi: 10.1071/EN13022, 2013.
- Dubovik, O., Holben, B., Eck, T. F., Smirnov, A., Kaufman, Y. J., King, M. D., Tanre, D., and Slutsker, I.: Variability of
20 absorption and optical properties of key aerosol types observed in worldwide locations, *J. Atmos. Sci.*, 59, 590–608, 2002.
- EC-JRC/PBL (European Commission, Joint Research Centre/ Netherlands Environmental Assessment Agency): Emission Database for Global Atmospheric Research (EDGAR), release version 4.2, available at: <http://edgar.jrc.ec.europa.eu> (last access: 15 March 2016), 2011.
- Efron, B. and Tibshirani, R. J.: An introduction to the bootstrap, New York, Chapman & Hall, 1993.
- 25 Engling, G., He, J., Betha, R., and Balasubramanian, R.: Assessing the regional impact of Indonesian biomass burning emissions based on organic molecular tracers and chemical mass balance modeling, *Atmos. Chem. Phys.*, 14, 8043–8054, doi:10.5194/acp-14-8043-2014, 2014.
- Folberth, G. A., Hauglustaine, D. A., Lathière, J., and Brocheton, F.: Interactive chemistry in the Laboratoire de Météorologie Dynamique general circulation model: model description and impact analysis of biogenic hydrocarbons on tropospheric
30 chemistry, *Atmos. Chem. Phys.*, 6, 2273–2319, doi:10.5194/acp-6-2273-2006, 2006.

- Formenti, P., Elbert, W., Maenhaut, W., Haywood, J., Osborne, S., and Andreae, M. O.: Inorganic and carbonaceous aerosols during the Southern African Regional Science Initiative (SAFARI 2000) experiment: Chemical characteristics, physical properties, and emission data for smoke from African biomass burning, *J. Geophys. Res.*, 108(D13), 8488, doi:10.1029/2002JD002408, 2003.
- 5 Fortems-Cheiney, A., Chevallier, F., Pison, I., Bousquet, P., Carouge, C., Clerbaux, C., Coheur, P.-F., George, M., Hurtmans, D., and Szopa, S.: On the capability of IASI measurements to inform about CO surface emissions, *Atmos. Chem. Phys.*, 9, 8735-8743, doi:10.5194/acp-9-8735-2009, 2009.
- George, M., Clerbaux, C., Hurtmans, D., Turquety, S., Coheur, P.-F., Pommier, M., Hadji-Lazaro, J., Edwards, D. P., Worden, H., Luo, M., Rinsland, C., and McMillan, W.: Carbon monoxide distributions from the IASI/METOP mission: evaluation
10 with other space-borne remote sensors, *Atmos. Chem. Phys.*, 9, 8317–8330, doi:10.5194/acp-9-8317-2009, 2009.
- George, I. J. and Abbatt, J. P. D.: Chemical evolution of secondary organic aerosol from OH-initiated heterogeneous oxidation, *Atmos. Chem. Phys.*, 10, 5551-5563, doi:10.5194/acp-10-5551-2010, 2010.
- Grieshop, A. P., Logue, J. M., Donahue, N. M., and Robinson, A. L.: Laboratory investigation of photochemical oxidation of organic aerosol from wood fires 1: measurement and simulation of organic aerosol evolution, *Atmos. Chem. Phys.*, 9, 1263–
15 1277, doi:10.5194/acp-9-1263-2009, 2009.
- Hand, J. L., Day, D. E., McMeeking, G. M., Levin, E. J. T., Carrico, C. M., Kreidenweis, S. M., Malm, W. C., Laskin, A., and Desyaterik, Y.: Measured and modeled humidification factors of fresh smoke particles from biomass burning: role of inorganic constituents, *Atmos. Chem. Phys.*, 10, 6179-6194, doi:10.5194/acp-10-6179-2010, 2010.
- Haywood, J. and Boucher, O.: Estimates of the direct and indirect radiative forcing due to tropospheric aerosols, A review, *Reviews of Geophysics*, 38(4), 513-543, doi:10.1029/1999RG000078, 2000.
20
- Hennigan, C. J., Miracolo, M. A., Engelhart, G. J., May, A. A., Presto, A. A., Lee, T., Sullivan, A. P., McMeeking, G. R., Coe, H., Wold, C. E., Hao, W.-M., Gilman, J. B., Kuster, W. C., de Gouw, J., Schichtel, B. A., Collett Jr., J. L., Kreidenweis, S. M., and Robinson, A. L.: Chemical and physical transformations of organic aerosol from the photo-oxidation of open biomass burning emissions in an environmental chamber, *Atmos. Chem. Phys.*, 11, 7669–7686, doi:10.5194/acp-11-
25 7669-2011, 2011.
- [Hennigan, C. J., Westervelt, D. M., Riipinen, I., Engelhart, G. J., Lee, T., Collett, J. L., Pandis, S. N., Adams, P. J., and Robinson, A. L.: New particle formation and growth in biomass burning plumes: An important source of cloud condensation nuclei, *Geophys. Res. Lett.*, 39, doi:10.1029/2012gl050930, 2012.](#)
- Heringa, M. F., DeCarlo, P. F., Chirico, R., Tritscher, T., Dommen, J., Weingartner, E., Richter, R., Wehrle, G.,
30 Prévôt, A. S. H., and Baltensperger, U.: Investigations of primary and secondary particulate matter of different wood com-

- bustion appliances with a high-resolution time-of-flight aerosol mass spectrometer, *Atmos. Chem. Phys.*, 11, 5945-5957, doi:10.5194/acp-11-5945-2011, 2011.
- [Hobbs, P. V., Sinha, P., Yokelson, R. J., et al.: Evolution of gases and particles from a savanna fire in South Africa, *J. Geophys. Res.*, 108\(D13\), 8485, doi:10.1029/2002JD002352, 2003.](#)
- 5 Hodzic, A., Madronich, S., Bohn, B., Massie, S., Menut, L., and Wiedinmyer, C.: Wildfire particulate matter in Europe during summer 2003: meso-scale modeling of smoke emissions, transport and radiative effects, *Atmos. Chem. Phys.*, 7, 4043–4064, doi:10.5194/acp-7-4043-2007, 2007.
- Hodzic, A., Jimenez, J. L., Madronich, S., Canagaratna, M. R., DeCarlo, P. F., Kleinman, L., and Fast, J.: Modeling organic aerosols in a megacity: Potential contribution of semi-volatile and intermediate volatility primary organic compounds to secondary organic aerosol formation, *Atmos. Chem. Phys.*, 10, 5491–5514, doi:10.5194/acp-10-5491-2010, 2010.
- 10 Hurtmans, D., Coheur, P.-F., Wespes, C., Clarisse, L., Scharf, O., Clerbaux, C., Hadji-Lazaro, J., George, M., and Turquety, S.: FORLI radiative transfer and retrieval code for IASI, *J. Quant. Spectrosc. Ra.*, 113, 1391–1408, 2012.
- Ichoku, C. and Kaufman, J. Y: A method to derive smoke emission rates from MODIS fire radiative energy measurements, *IEEE T. Geosci. Remote*, 43(11), 2636–2649, 2005.
- 15 Johnson, B. T., Heese, B., McFarlane, S. A., Chazette, P., Jones, A., and Bellouin, N.: Vertical distribution and radiative effects of mineral dust and biomass burning aerosol over West Africa during DABEX, *J. Geophys. Res.*, 113, D00C12, doi:10.1029/2008JD009848, 2008.
- Jolleys, M. D., Coe, H., McFiggans, G., Capes, G., Allan, J. D., Crosier, J., Williams, P. I., Allen, G., Bower, K. N., Jimenez, J. L., Russell, L. M., Grutter, M., and Baumgardner, D.: Characterizing the aging of biomass burning organic aerosol by use of mixing ratios: a meta-analysis of four regions, *Environ. Sci. Tech.*, 46, 13093–13102, doi:10.1021/es302386v, 2012.
- 20 Jolleys, M. D., Coe, H., McFiggans, G., Taylor, J. W., O'Shea, S. J., Le Breton, M., Bauguitte, S. J.-B., Moller, S., Di Carlo, P., Aruffo, E., Palmer, P. I., Lee, J. D., Percival, C. J., and Gallagher, M. W.: Properties and evolution of biomass burning organic aerosol from Canadian boreal forest fires, *Atmos. Chem. Phys.*, 15, 3077-3095, doi:10.5194/acp-15-3077-2015, 2015.
- 25 Justice, C. O., Giglio, L., Korontzi, S., Owens, J., Morisette, J. T., Roy, D., Descloitres, J., Alleaume, S., Petitcolin, F., and Kaufman, Y.: The MODIS fire products, *Remote Sens. Environ.*, 83, 244–262, 2002.
- Kaiser, J.W., Flemming, J., Schultz, M. G., Suttie, M., and Wooster, M. J.: The MACC Global Fire Assimilation System: First Emission Products (GFASv0), Tech. Memo. 596, ECMWF, Reading, UK, 2009.
- Kaiser, J. W., Heil, A., Andreae, M. O., Benedetti, A., Chubarova, N., Jones, L., Morcrette, J.-J., Razinger, M., Schultz, M. G., Suttie, M., and van der Werf, G. R.: Biomass burning emissions estimated with a global fire assimilation system based on observed fire radiative power, *Biogeosciences*, 9, 527–554, doi:10.5194/bg-9-527-2012, 2012.
- 30

- Kasten F.: Visibility in the phase of pre-condensation, *Tellus*, 21, 631–635, 1969.
- Kaufman, Y. J., Justice, C.O., Flynn, L. P., Kendall, J. D., Prins, E. M., Giglio, L., Ward, D. E., Menzel, W. P., and Setzer, A. W.: Potential global fire monitoring from EOS-MODIS, *J. Geophys. Res.*, 103, 32215–32238, 1998.
- Keil, A. and Haywood, J. M.: Solar radiative forcing by biomass burning aerosol particles during SAFARI 2000: A case study based on measured aerosol and cloud properties, *J. Geophys. Res.*, 108, D13, doi:10.1029/2002JD002315, 2003.
- Kleinman, L. I., Springston, S. R., Daum, P. H., Lee, Y.-N., Nunnermacker, L. J., Senum, G. I., Wang, J., Weinstein-Lloyd, J., Alexander, M. L., Hubbe, J., Ortega, J., Canagaratna, M. R., and Jayne, J.: The time evolution of aerosol composition over the Mexico City plateau, *Atmos. Chem. Phys.*, 8, 1559–1575, doi:10.5194/acp-8-1559-2008, 2008.
- Konovalov, I. B., Beekmann, M., Kuznetsova, I. N., Yurova, A., and Zvyagintsev, A. M.: Atmospheric impacts of the 2010 Russian wildfires: integrating modelling and measurements of an extreme air pollution episode in the Moscow region, *Atmos. Chem. Phys.*, 11, 10031–10056, doi:10.5194/acp-11-10031-2011, 2011.
- Konovalov, I. B., Beekmann, M., D’Anna, B., George, C.: Significant light induced ozone loss on biomass burning aerosol: Evidence from chemistry-transport modeling based on new laboratory studies, *Geophys. Res. Lett.*, 39, L17807, doi:10.1029/2012GL052432, 2012.
- 15 Konovalov, I. B., Berezin, E. V., Ciais, P., Broquet, G., Beekmann, M., Hadji-Lazaro, J., Clerbaux, C., Andreae, M. O., Kaiser, J. W., and Schulze, E.-D.: Constraining CO₂ emissions from open biomass burning by satellite observations of co-emitted species: a method and its application to wildfires in Siberia, *Atmos. Chem. Phys.*, 14, 10383–10410, doi:10.5194/acp-14-10383-2014, 2014.
- Konovalov, I. B., Beekmann, M., Berezin, E. V., Petetin, H., Mielonen, T., Kuznetsova, I. N., and Andreae, M. O.: The role of semi-volatile organic compounds in the mesoscale evolution of biomass burning aerosol: a modeling case study of the 2010 mega-fire event in Russia, *Atmos. Chem. Phys.*, 15, 13269–13297, doi:10.5194/acp-15-13269-2015, 2015.
- Konovalov, I. B., Berezin, E. V., and Beekmann, M.: Effect of photochemical self-action of carbon-containing aerosol: wildfires, *Izv. Atm. Ocean. Phys.*, 52(3), 263–270, doi: 10.1134/S0001433816030063, 2016.
- Krol, M., Peters, W., Hooghiemstra, P., George, M., Clerbaux, C., Hurtmans, D., McInerney, D., Sedano, F., Bergamaschi, P., El Hajj, M., Kaiser, J. W., Fisher, D., Yershov, V., and Muller, J.-P.: How much CO was emitted by the 2010 fires around Moscow?, *Atmos. Chem. Phys.*, 13, 4737–4747, doi:10.5194/acp-13-4737-2013, 2013.
- 25 Kroll, J.H., Lim, C.Y., Kessler, S.H., and Wilson, K.R.: Heterogeneous oxidation of atmospheric organic aerosol: kinetics of changes to the amount and oxidation state of particle-phase organic carbon, *J. Phys. Chem. A*, 119(44), 10767–10783, doi: 10.1021/acs.jpca.5b06946, 2015.

- Levy, R.C., Remer, L.A., Mattoo, S., Vermote, E.F., and Kaufman, Y.J.: Second-generation operational algorithm: retrieval of aerosol properties over land from inversion of Moderate Resolution Imaging Spectroradiometer spectral reflectance, *J. Geophys. Res.* 112: 13211, doi: 10.1029/2006JD007811, 2007.
- Levy, R. C., Remer, L. A., Kleidman, R. G., Mattoo, S., Ichoku, C., Kahn, R., and Eck, T. F.: Global evaluation of the Collection 5 MODIS dark-target aerosol products over land, *Atmos. Chem. Phys.*, 10, 10399–10420, doi:10.5194/acp-10-10399-2010, 2010.
- Madronich, S., McKenzie, R. E., Bjorn, L. O., and Caldwell, M. M.: Changes in biologically active ultraviolet radiation reaching the earth's surface, *J. Photochem. Photobiol. B: Biology*, 46, 5–19, 1998.
- Martin, M., Tritscher, T., Jurányi, Z., Heringa, M. F., Sierau, B., Weingartner, E., Chirico, R., Gysel, M., Prévôt, A. S. H., Baltensperger, U., and Lohmann, U.: Hygroscopic properties of fresh and aged wood burning particles. *J. Aerosol Sci.*, 56, 15-29, doi:10.1016/j.jaerosci.2012.08.006, 2013.
- Maticchuk, R. I., Colarco, P. R., Smith, J. A., and Toon, O. B.: Modeling the transport and optical properties of smoke plumes from South American biomass burning, *J. Geophys. Res.*, 113, D07208, doi:10.1029/2007JD009005, 2008.
- May, A. A., Levin, E. J. T., Hennigan, C. J., Riipinen, I., Lee, T., Collett Jr., J. L., Jimenez, J. L., Kreidenweis, S. M., and Robinson, A. L.: Gas-particle partitioning of primary organic aerosol emissions: 3. Biomass burning, *J. Geophys. Res. Atmos.*, 118, 11327–11338, doi:10.1002/jgrd.50828, 2013.
- May, A. A., Lee, T., McMeeking, G. R., Akagi, S., Sullivan, A. P., Urbanski, S., Yokelson, R. J., and Kreidenweis, S. M.: Observations and analysis of organic aerosol evolution in some prescribed fire smoke plumes, *Atmos. Chem. Phys.*, 15, 6323-6335, doi:10.5194/acp-15-6323-2015, 2015.
- Menut, L., Bessagnet, B., Khvorostyanov, D., Beekmann, M., Blond, N., Colette, A., Coll, I., Curci, G., Foret, G., Hodzic, A., Mailler, S., Meleux, F., Monge, J.-L., Pison, I., Siour, G., Turquety, S., Valari, M., Vautard, R., and Vivanco, M. G.: CHIMERE 2013: a model for regional atmospheric composition modelling, *Geosci. Model Dev.*, 6, 981–1028, doi:10.5194/gmd-6-981-2013, 2013.
- Péré, J. C., Bessagnet, B., Mallet, M., Waquet, F., Chiapello, I., Minvielle, F., Pont, V., and Menut, L.: Direct radiative effect of the Russian wildfires and its impact on air temperature and atmospheric dynamics during August 2010, *Atmos. Chem. Phys.*, 14, 1999–2013, doi:10.5194/acp-14-1999-2014, 2014.
- Petrenko, M., Kahn, R., Chin, M., Soja, A., Kucsera, T., and Harshvardhan: The use of satellite-measured aerosol optical depth to constrain biomass burning emissions source strength in the global model GOCART, *J. Geophys. Res.*, 117, D18212, doi:10.1029/2012JD017870, 2012.

- Pierce, J. R., Chen, K., and Adams, P. J.: Contribution of primary carbonaceous aerosol to cloud condensation nuclei: processes and uncertainties evaluated with a global aerosol microphysics model, *Atmos. Chem. Phys.*, 7, 5447–5466, doi:10.5194/acp-7-5447-2007, 2007.
- Pun, B. K., Seigneur, C., and Lohmann, K.: Modeling secondary organic aerosol formation via multiphase partitioning with molecular data, *Environ. Sci. Technol.*, 40, 4722–4731, 2006.
- Reddington, C. L., Spracklen, D. V., Artaxo, P., Ridley, D., Rizzo, L. V., and Arana, A.: Analysis of particulate emissions from tropical biomass burning using a global aerosol model and long-term surface observations, *Atmos. Chem. Phys.*, 16, 11083–11106, doi:10.5194/acp-16-11083-2016, 2016.
- Reid, J. S., Hobbs, P. V., Ferek, R. J., Blake, D. R., Martins, J. V., Dunlap, M. R., and Liousse, C.: Physical, chemical and optical properties of regional hazes dominated by smoke in Brazil, *J. Geophys. Res.*, 103, 32 059–32 080, 1998.
- Reid, J. S., Koppmann, R., Eck, T. F., and Eleuterio, D. P.: A review of biomass burning emissions part II: intensive physical properties of biomass burning particles, *Atmos. Chem. Phys.*, 5, 799–825, doi:10.5194/acp-5-799-2005, 2005a.
- Reid, J. S., Eck, T. F., Christopher, S. A., Koppmann, R., Dubovik, O., Eleuterio, D. P., Holben, B. N., Reid, E. A., and Zhang, J.: A review of biomass burning emissions part III: intensive optical properties of biomass burning particles, *Atmos. Chem. Phys.*, 5, 827–849, doi:10.5194/acp-5-827-2005, 2005b.
- Remer, L. A., Kaufman, Y. J., Tanre, D., Mattoo, S., Chu, D. A., Martins, J. V., Li, R.-R., Ichoku, C., Levy, R. C., Kleidman, R. G., Eck, T. F., Vermote, E., and Holben, B. N.: The MODIS aerosol algorithm, products, and validation, *J. Atmos. Sci.*, 62, 947–973, 2005.
- Robinson, A. L., Donahue, N. M., Shrivastava, M. K., Weitkamp, E. A., Sage, A. M., Grieshop, A. P., Lane, T. E., Pierce, J. R., and Pandis, S. N.: Rethinking organic aerosols: Semivolatile emissions and photochemical aging, *Science*, 315, 1259–1262, doi:10.1126/science.1133061, 2007.
- Sakamoto, K. M., J. D. Allan, H. Coe, J. W. Taylor, T. J. Duck, and J. R. Pierce: Aged boreal biomass-burning aerosol size distributions from BORTAS 2011. *Atmos. Chem. Phys.*, 15, 1633–1646, doi:10.5194/acp-15-1633-2015, 2015.
- Saleh, R., Robinson, E. S., Tkacik, D. S., Ahern, A. T., Liu, S., Aiken, A. C., Sullivan, R. C., Presto, A. A., Dubey, M. K., Yokelson, R. J., Donahue, N. M., and Robinson, A. L.: Brownness of organics in aerosols from biomass burning linked to their black carbon content, *Nature Geoscience*, 7, 647–650, doi:10.1038/ngeo2220, 2014.
- Seinfeld, J. H. and Pandis, S. N.: *Atmospheric chemistry and physics: From air pollution to climate change*, 2nd Edition, Wiley-Interscience, J. Wiley & Sons, Inc., New York, 2006.

- Shrivastava, M., Zelenyuk, A., Imre, D., Easter, R.C., Beranek, J., Zaveri, R.A., and Fast, J.D.: Implications of low volatility and gas-phase fragmentation reactions on SOA loadings and their spatial and temporal evolution in the atmosphere. *J. Geophys. Res. Atmos.*, 118(8), 3328-3342, doi: 10.1002/jgrd.50160, 2013.
- Shrivastava, M., Easter, R., Liu, X., Zelenyuk, A., Singh, B., Zhang, K., Ma, P-L, Chand, D., Ghan, S., Jimenez, J. L.,
5 Zhang, Q., Fast, J., Rasch, P., and Tiitta, P.: Global transformation and fate of SOA: Implications of low volatility SOA and gasphase fragmentation reactions, *J. Geophys. Res.-Atmos.*, 120, 4169–4195, doi:10.1002/2014JD022563, 2015.
- Skamarock, W. C., Klemp, J. B., Dudhia, J., Gill, D. O., Barker, D. M., Duda, M. G., Huang, X.-Y., Wang W., and Powers, J. G.: A Description of the advanced research WRF version 3, NCAR Tech. Notes–475CSTR, Boulder, Colorado, USA, 113 pp., 2008.
- 10 Sofiev, M., Ermakova, T., and Vankevich, R.: Evaluation of the smoke-injection height from wild-land fires using remote-sensing data, *Atmos. Chem. Phys.*, 12, 1995–2006, doi:10.5194/acp-12-1995-2012, 2012.
- Strand, T. M., Larkin, N., Craig, K. J., Raffuse, S., Sullivan, D., Solomon, R., Rorig, M., Wheeler, N., and Pryden, D.: Analyses of BlueSky Gateway PM_{2.5} predictions during the 2007 southern and 2008 northern California fires, *J. Geophys. Res.*, 117, D17301, doi:10.1029/2012JD017627, 2012.
- 15 Tosca, M. G., Randerson, J. T., and Zender, C. S.: Global impact of smoke aerosols from landscape fires on climate and the Hadley circulation, *Atmos. Chem. Phys.*, 13, 5227–5241, doi:10.5194/acp-13-5227-2013, 2013.
- Turquety, S., Hurtmans, D., Hadji-Lazaro, J., Coheur, P.-F., Clerbaux, C., Josset, D., and Tsamalis, C.: Tracking the emission and transport of pollution from wildfires using the IASI CO retrievals: analysis of the summer 2007 Greek fires, *Atmos. Chem. Phys.*, 9, 4897-4913, doi:10.5194/acp-9-4897-2009, 2009.
- 20 Turquety, S., Messina, P., Stromatas, S., Anav, A. , Menut, L., Bessagnet, B. Pere, J.C., Drobinski, P., Coheur, P.F., Rhoni, Y.: Impact of Fire Emissions on Air Quality in the Euro-Mediterranean Region, Air pollution modeling and its application, Edited by: Steyn, D.G.; Builtjes, P.J.H.; Timmermans, R.M.A., Book Series: NATO Science for Peace and Security Series C-Environmental Security, Pages: 363-367, doi: 10.1007/978-94-007-5577-2, 2014.
- Vakkari, V., Kerminen, V.-M., Beukes, J. P., Tiitta P., van Zyl, P. G., Josipovic, M., Venter, A. D., Jaars, K., Worsnop, D.
25 R., Kulmala, M. and Laakso, L.: Rapid changes in biomass burning aerosols by atmospheric oxidation, *Geophys. Res. Lett.*, 41, 2644–2651, doi:10.1002/ 2014GL059396, 2014.
- van der Werf, G. R., Randerson, J. T., Giglio, L., Collatz, G. J., Mu, M., Kasibhatla, P. S., Morton, D. C., DeFries, R. S., Jin, Y., and van Leeuwen, T. T.: Global fire emissions and the contribution of deforestation, savanna, forest, agricultural, and peat fires (1997–2009), *Atmos. Chem. Phys.*, 10, 11707–11735, doi:10.5194/acp-10-11707-2010, 2010.

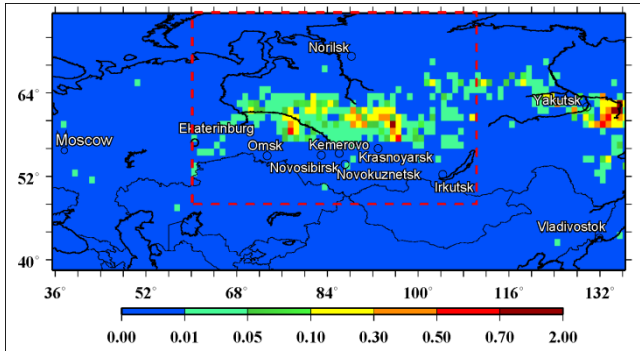
Wooster, M. J., Roberts, G., Perry, G. L. W., and Kaufman, Y. J.: Retrieval of biomass combustion rates and totals from fire radiative power observations: FRP derivation and calibration relationships between biomass consumption and fire radiative energy release, *J. Geophys. Res.*, 110, D24311, doi:10.1029/2005JD006318, 2005.

5 Yokelson, R. J., Crounse, J. D., DeCarlo, P. F., Karl, T., Urbanski, S., Atlas, E., Campos, T., Shinozuka, Y., Kapustin, V., Clarke, A. D., Weinheimer, A., Knapp, D. J., Montzka, D. D., Holloway, J., Weibring, P., Flocke, F., Zheng, W., Toohey, D., Wennberg, P. O., Wiedinmyer, C., Mauldin, L., Fried, A., Richter, D., Walega, J., Jimenez, J. L., Adachi, K., Bu-seck, P. R., Hall, S. R., and Shetter, R.: Emissions from biomass burning in the Yucatan, *Atmos. Chem. Phys.*, 9, 5785–5812, doi:10.5194/acp-9-5785-2009, 2009.

10 Zhang, Q. J., Beekmann, M., Drewnick, F., Freutel, F., Schneider, J., Crippa, M., Prevot, A. S. H., Baltensperger, U., Poulain, L., Wiedensohler, A., Sciare, J., Gros, V., Borbon, A., Colomb, A., Michoud, V., Doussin, J.-F., Denier van der Gon, H. A. C., Haeffelin, M., Dupont, J.-C., Siour, G., Petetin, H., Bessagnet, B., Pandis, S. N., Hodzic, A., Sanchez, O., Honoré, C., and Perrussel, O.: Formation of organic aerosol in the Paris region during the MEGAPOLI summer campaign: evaluation of the volatility-basis-set approach within the CHIMERE model, *Atmos. Chem. Phys.*, 13, 5767–5790, doi:10.5194/acp-13-5767-2013, 2013.

15

(a)



(b)

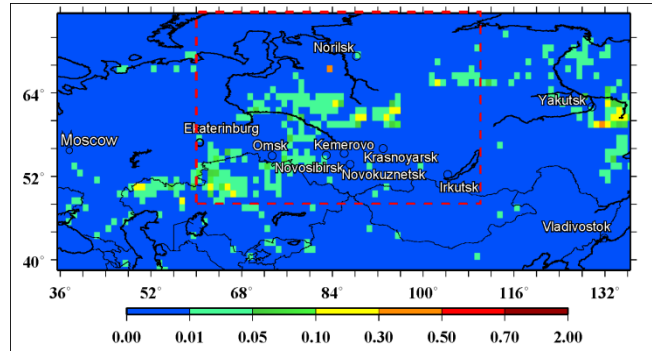
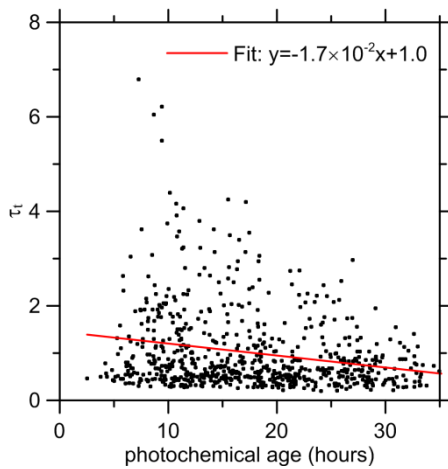
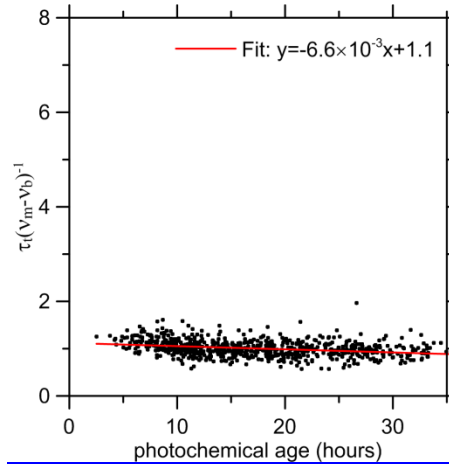


Figure 1: Mean biomass burning rate ($\text{g m}^{-2} \text{h}^{-1}$) for (a) forest fires and (b) other vegetation fires in the territories covered by the domain of the CHIMERE model employed in the simulations performed in this study over the period from 1 July to 15 August 2012 according to the calculations based on the MODIS FRP data. Also shown (see red dashed rectangles) is the study region.

(a)



(b)



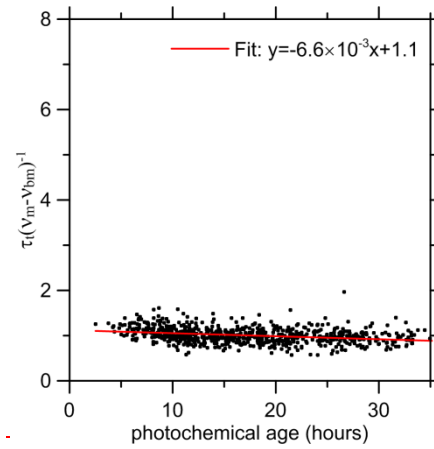


Figure 2: (a) Relationship between aerosol photochemical age (estimated using the model tracers T_0 and T_1) and the modeled BB aerosol optical depth (τ_t) calculated by using the simulated concentrations of the passive BB aerosol tracer (T_0); (b) the same as in the plot (a) but for τ_t normalized to the BB fraction of the simulated CO columns ($v_m - v_b$). Different data points correspond to different grid cells and/or days. For better readability, only each 10th data point is depicted. Both τ_t and $\tau_t (v_m - v_b)^{-1}$ have been normalized to their mean values.

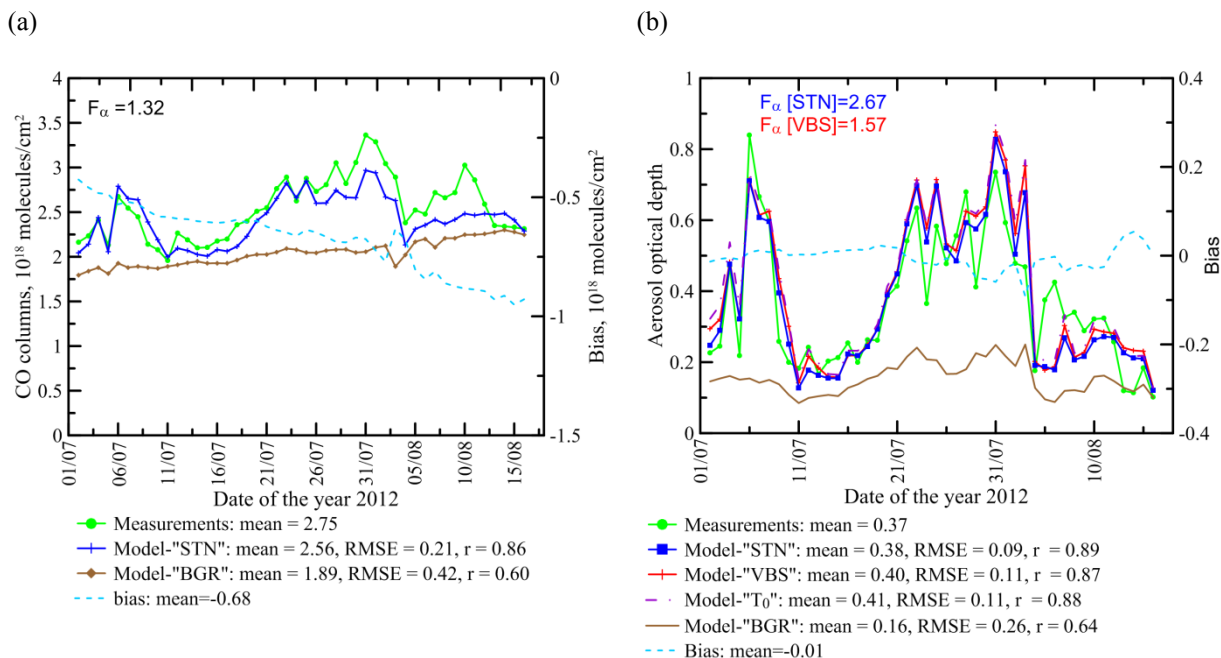


Figure 3: Time series of daily values of (a) CO columns and (b) AOD averaged over the study region according to IASI CO and MODIS AOD measurements and corresponding simulated (bias-corrected) data obtained in different runs (STN and VBS) of the CHIMERE model and combined with the data from the background (BGR) model run. The BB emissions used in the simulations were optimized (see Sect. 2.1.3) independently for each model run and for each species (CO or aerosol) considered; the corresponding estimates of the correction factors, F_{α} , are indicated in the figures. The modeled AOD values marked as "T₀" were obtained using passive tracer (T₀) concentrations simulated in the STN run and are almost indistinguishable from those calculated with of "actual" BB aerosol data from the STN run.

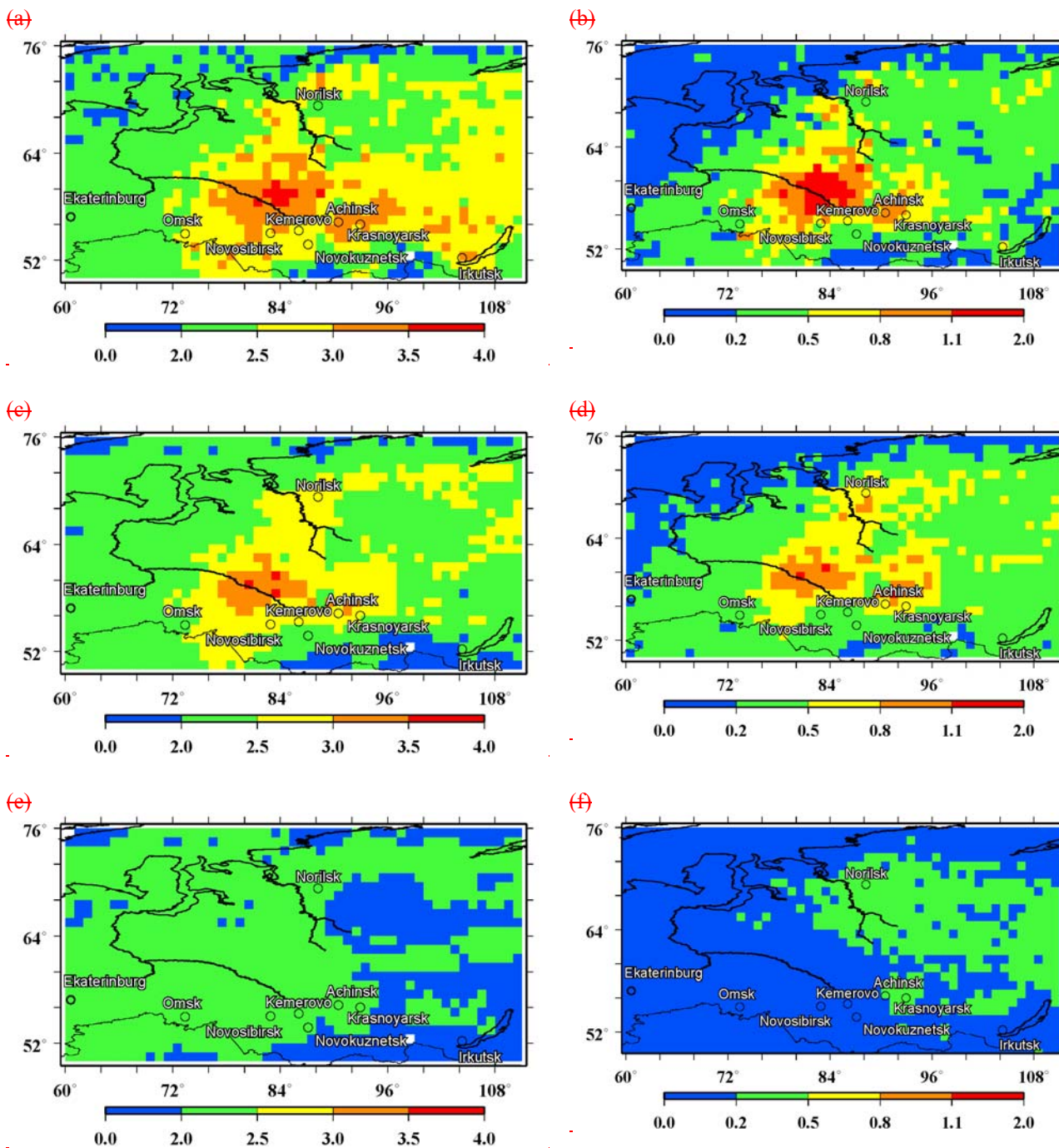


Figure 4: Spatial distributions of (a, c, e) the CO columns (10^{18} molecules cm^{-2}) and (b, d, f) AOD according to (a, b) satellite (IASI and MODIS) measurements and simulations (for the STN case) performed (c, d) with and (e, f) without BB emissions. The CO columns and AOD values shown are averaged over the study period (1 July – 15 August 2012).

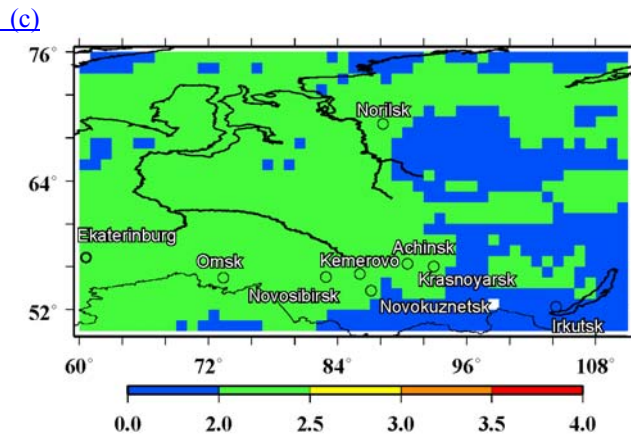
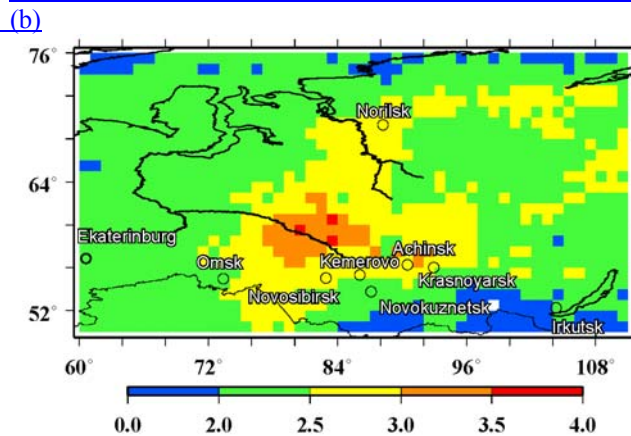
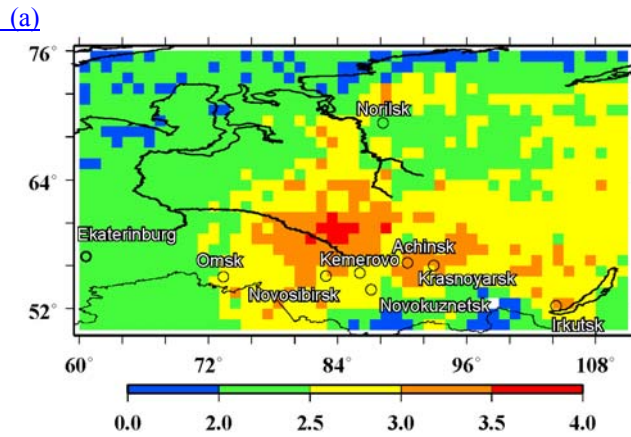
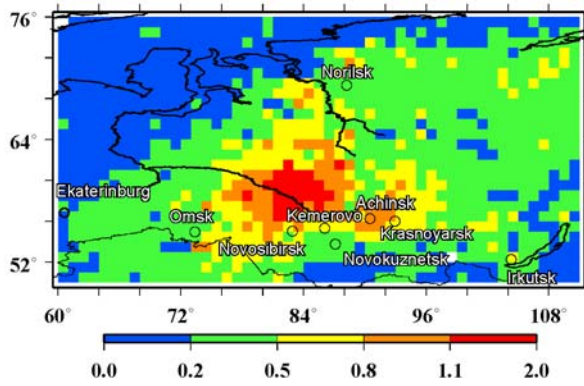
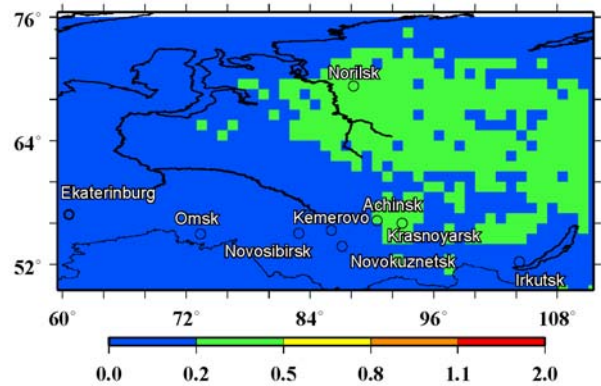


Figure 4: Spatial distributions of the CO columns (10^{18} molecules cm^{-2}) according to (a) satellite (IASI) measurements and simulations performed (b) with and (c) without BB emissions. The CO columns are averaged over the study period (1 July – 15 August 2012).

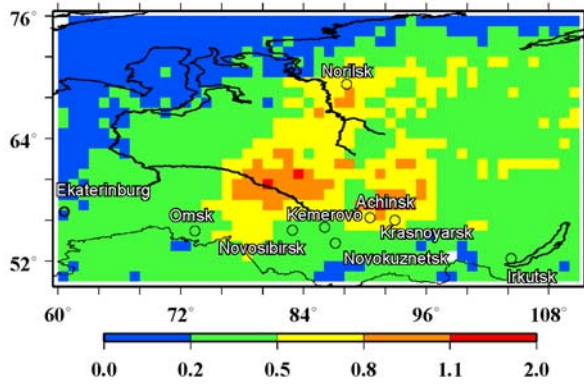
(a)



(b)



(c)



(d)

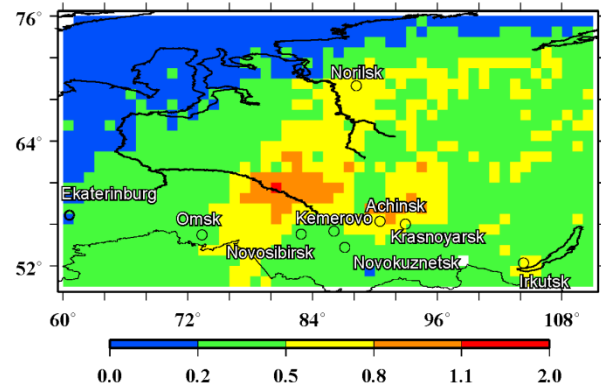
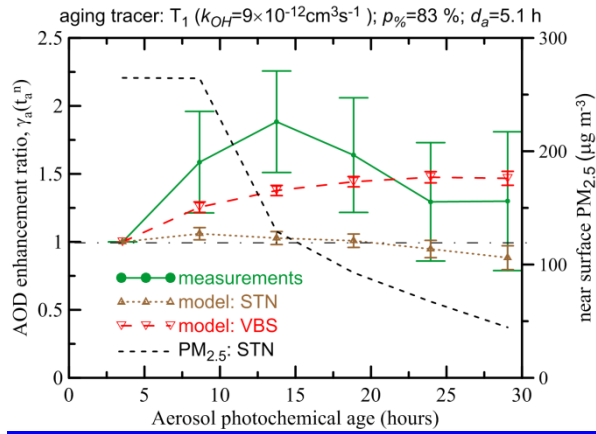
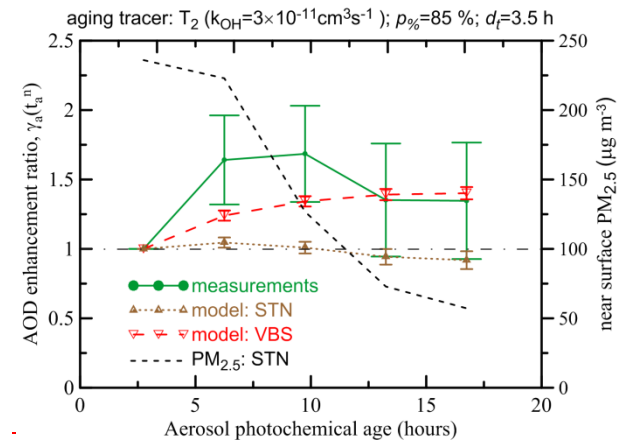
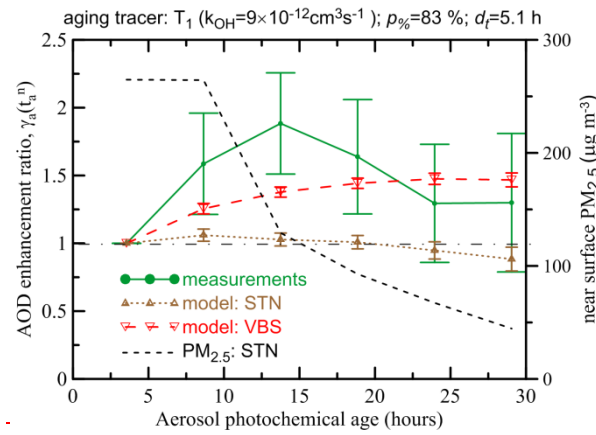
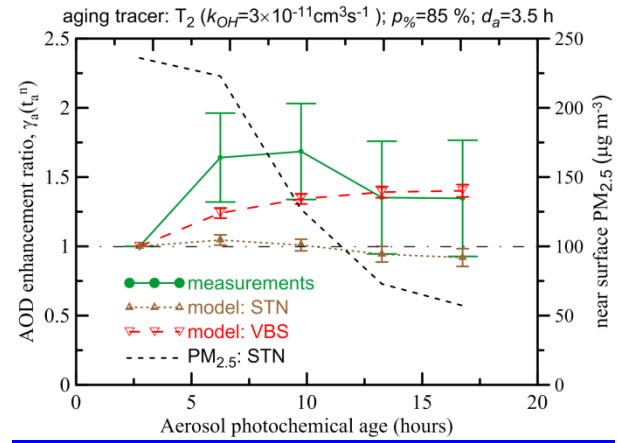


Figure 5: The same as in Fig. 4 but for AOD according to (a) the MODIS measurements and the CHIMERE simulations performed (b) without and (c, d) with BB emissions for the (c) STN and (d) VBS cases.

(a)**(b)****(c)**

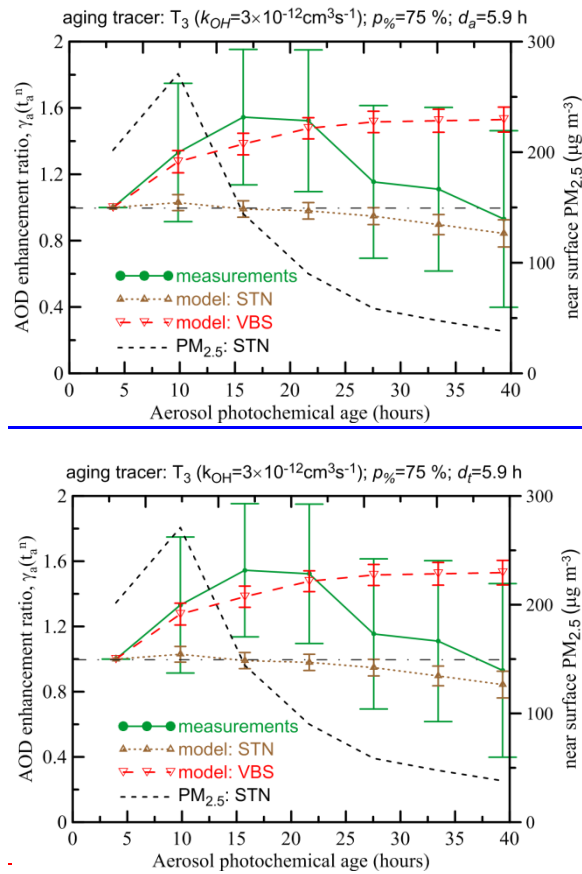


Figure 56: The AOD enhancement ratio (ER) estimates (γ_a) as a function of the BB aerosol photochemical age evaluated using different aging tracers: (a) T_1 , (b) T_2 , and (c) T_3 . The OH reaction rates corresponding to each tracer, along with the values of the parameters involved in the analysis (see Sect. 2.4) are indicated in the plots. Along with the ER estimates derived from data of satellite (MODIS and IASI) measurements, the figure shows the estimates obtained by substituting the measurement data with their modeled counterparts provided by the CHIMERE model, which was run with two different aerosol schemes (STN and VBS). Also shown is the mean near-surface $PM_{2.5}$ concentration corresponding to the grid cells and days represented by the data covered by each photochemical age bin. The figure headers show the values of the parameters - k_{OH} (the tracer's reactivity), $p_{\%}$ (the threshold percentile of the distributions of CO columns), and d_a (the photochemical age bin width) - used in the corresponding analyses.

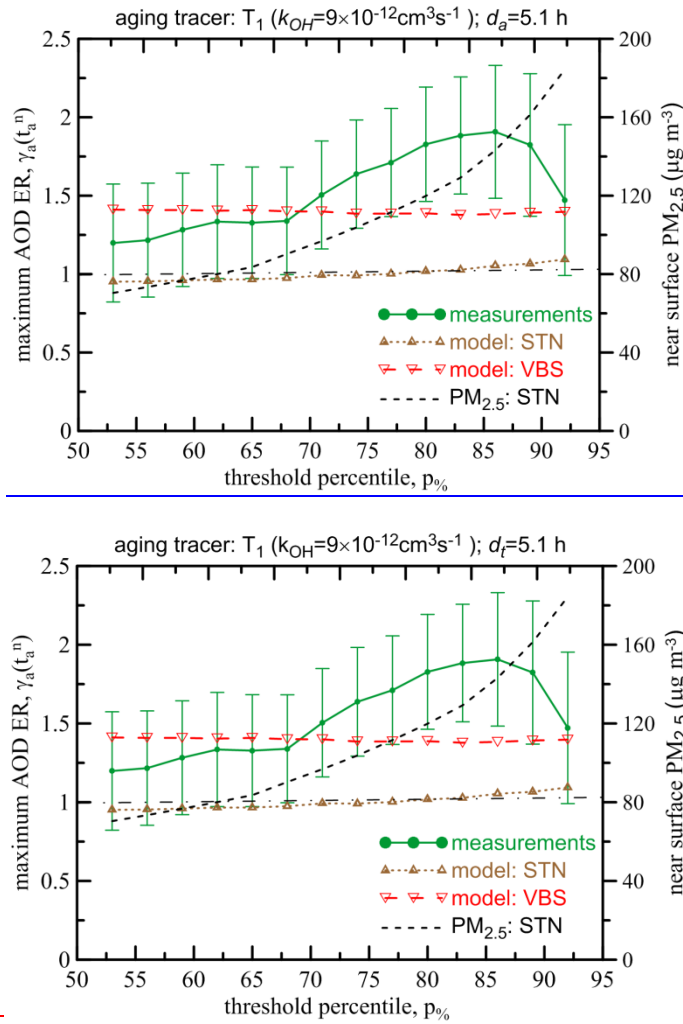


Figure 67: The ER maximum values reached in [the](#) dependence on the photochemical age (see Fig. [5a6a](#)) as a function of the threshold percentile, $p\%$, of the distributions of the BB fraction of the CO columns related to their background fraction (see Eq.10). The threshold percentile was used to select the data (see Sect. 2.4) corresponding to sufficiently dense BB plumes. Also shown is the mean near-surface $PM_{2.5}$ concentration corresponding to the grid cells and days represented by the data covered by the photochemical age bin corresponding to an ER maximum.

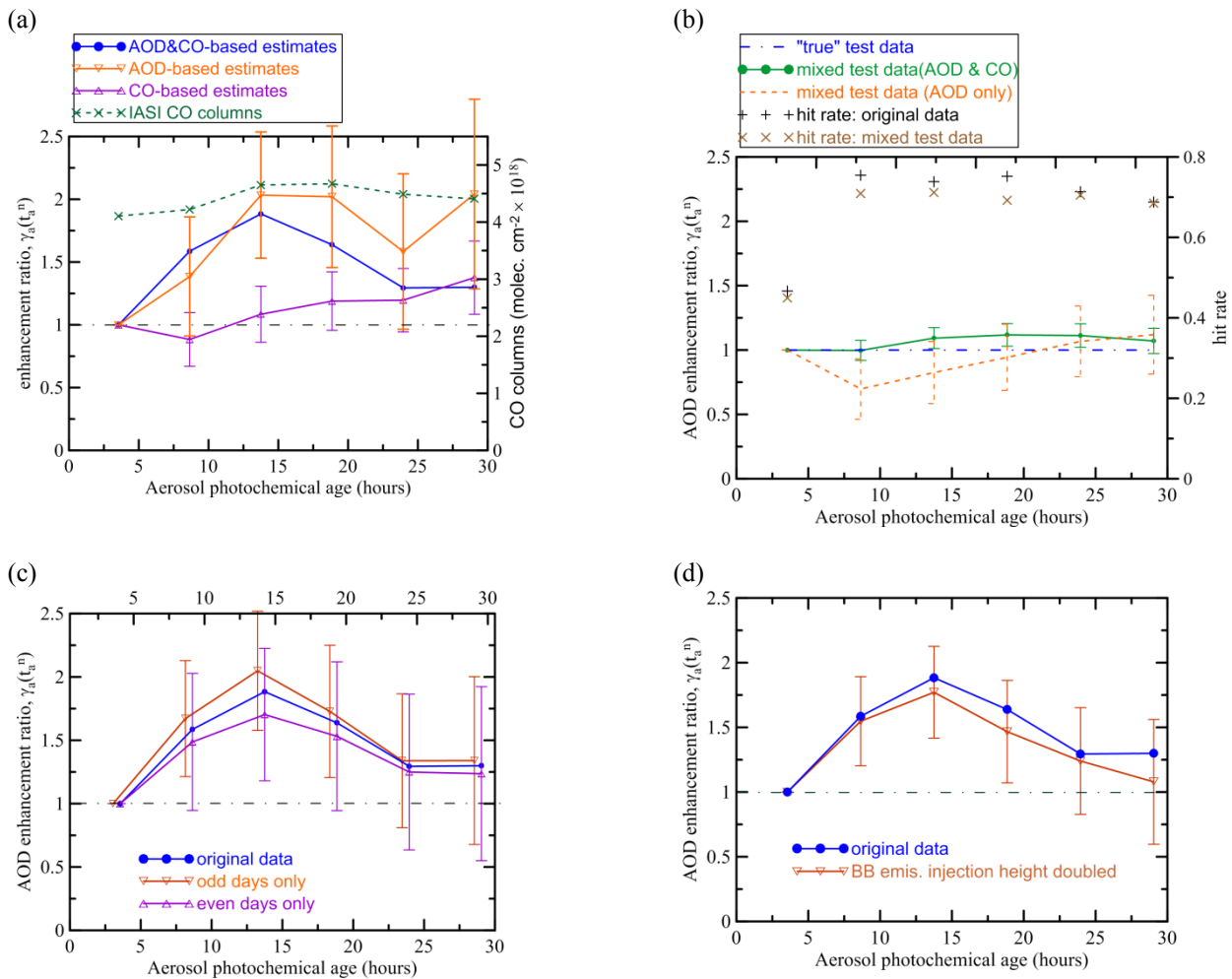


Figure 78: Results of the sensitivity tests and Monte Carlo experiments examining the robustness of the estimates presented in Fig. 5a6a: (a) the ER estimates derived from AOD MODIS measurements without using CO columns for their normalization, as well as the estimates obtained using satellite measurements of CO columns as proxy for the AOD measurements in Eq. (8); also shown are the mean IASI CO column amounts for corresponding bins; (b) the ER estimates obtained in the Monte Carlo experiments in which the measured AOD values were replaced with the synthetic data generated by means of random replacements of the simulated AOD and CO values (based on the modeled concentration of the passive tracer T_0 in the horizontal domain (see experimental details in Sect. 3.3); (c) the ER estimates derived from the two data subsets obtained by splitting the original dataset such that the first and second subsets included only odd and even days of the study period, respectively; note that the "odd days" estimates are depicted by using the upper abscissa axis, which is slightly shifted to improve readability; (d) estimates derived from the original MODIS and CO data but using the data of the CHIMERE run in which the injection heights of BB emissions were doubled.

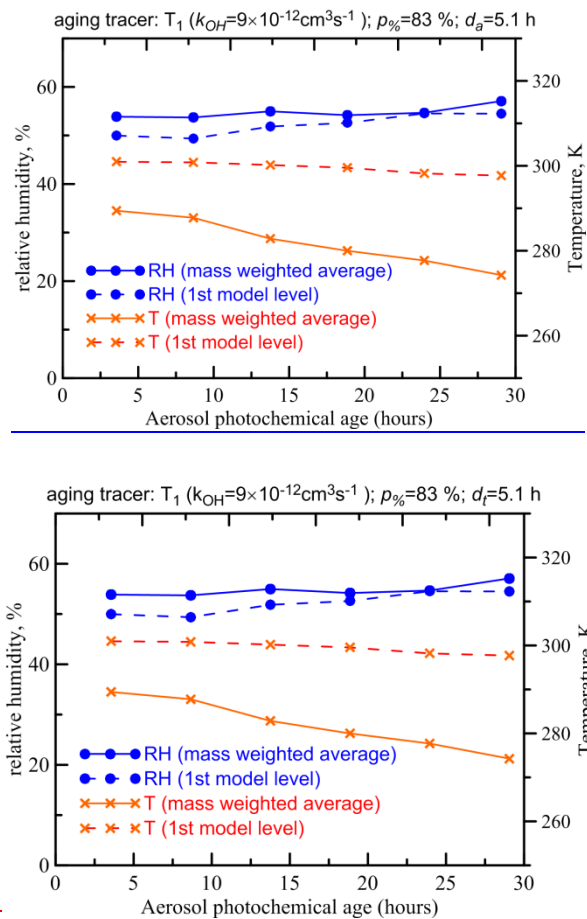


Figure 89: Mean relative humidity (RH) and temperature values corresponding to the same grid cells / hours that were taken into account in the analysis illustrated in Fig. 5a6a. Both RH and temperature were calculated using the WRF-ARW model data as a weighted vertical average, with the concentrations of the inert tracer T_0 used as the weights. The mean values for the first (near -surface) model layer are also shown.

Probing into the aging dynamics of biomass burning aerosol by using satellite measurements of aerosol optical depth and carbon monoxide

Igor B. Konovalov¹, Matthias Beekmann², Evgeny V. Berezin¹, Paola Formenti², Meinrat O. Andreae^{3,4}

5 ¹Institute of Applied Physics, Russian Academy of Sciences, Nizhniy Novgorod, Russia

²LISA/IPSL, Laboratoire Interuniversitaire des Systèmes Atmosphériques, UMR CNRS 7583, Université Paris Est Créteil (UPEC) et Université Paris Diderot (UPD), France

³Biogeochemistry Department, Max Planck Institute for Chemistry, Mainz, Germany

⁴Scripps Institution of Oceanography, University of California San Diego, La Jolla, CA 92093, USA

10 *Correspondence to:* Igor B. Konovalov (konov@appl.sci-nnov.ru)

Here, we address a special situation where it turned out to be possible to elucidate some effects associated with aging of BB plumes without invoking the statistical analysis described in Sect. 2.4. We identified and considered such a situation in order to assess the adequacy of the photochemical age estimates defined by Eq. (4), as well as to get a tentative insight into the phenomena analyzed in Sect. 3.2 using a more general approach.

15 The analysis described in this section follows the same ideas as that presented in Konovalov et al. (2015) for a different region and period, except that here satellite measurements of aerosol and CO are used instead of ground-based (in-situ) measurements. In particular, we identified two sub-regions (see Fig. S1) referred below to as the "source" and "receptor" regions. The source region covers the locations of ~~the~~ major fires that occurred, in particular (but not only), on 21 July, [2012](#). Consideration of the dynamics of the BB aerosol hourly fields (see Fig. S2) simulated with CHIMERE indicates that BB
20 plumes originating from [the](#) fires that occurred on 21 July were transported in the northeast direction and passed, on 22 July, over the "receptor" region, where no large fires occurred on those two days. The BB emissions of particulate matter on 21 and 22 July, [2012](#) are shown in Fig. S1a and Fig. S1b, respectively. Note that the aerosol emissions in the simulations discussed below were calibrated (see Sect. 2.1.3) by using the available MODIS AOD measurements only for the source region on 21 July; likewise, the emissions of gaseous species were calibrated against the respective IASI CO measurements.

25 The corresponding estimates of the BB aerosol photochemical age are shown in Fig. S1c and Fig. S1d. As expected, the photochemical age of BB aerosol in the receptor region is larger than in the source region. Specifically, while the photochemical age is estimated to be less than 10 hours for 82% of grid cells (provided with data) in the source region on 21 July, 80% of grid cells in the receptor region feature the photochemical age larger than 15 hours; the median values of the photochemical age are found to be 8.2 and 15.7 hours, respectively. It should be kept in mind that the photochemical age
30 estimated in this study characterizes the column amounts of BB aerosol. As BB aerosol particles may have different ages at different altitudes, [vertical averaging of the](#) ~~our vertically averaged~~ photochemical age ~~s~~ might attenuate the contrast (with respect to the [local](#) photochemical age) between the source and receptor regions.

Fig. S3 presents the spatial distributions of AOD on 21 and 22 July according to the MODIS measurements and the
35 CHIMERE simulations [performed with the STN and VBS schemes](#). A large BB plume featuring high AOD values (> 2) and passing over the receptor region on 22 July is clearly seen both in the measurements and simulations, while similar AOD values are found mostly southwest, in the source region, and south (only in the measurements) from the receptor region on 21 July. The differences in the measured and simulated AOD values for 21 July indicate that emissions from fires that likely occurred somewhere south from the receptor region and north from Novosibirsk, Kemerovo and Achinsk have been missing (or strongly underestimated) in our simulations. However, the trajectories (see Fig. S4) calculated with the HYSPLIT model
40 (<http://ready.arl.noaa.gov/hysplit-bin>) suggest that, due to ~~the~~ [a](#) prevailing anticyclonic circulation around a high pressure area centered at about 82° E and 60° N on 21 and 22 July (according to data from the WRF-ARW model used in this study),

the air masses over the locations of the probable missing aerosol sources were advected mostly southwestward, and so such sources could hardly contribute considerably to the BB plumes observed over the receptor region on 22 July.

The spatial distributions of the CO columns shown in Fig. S5 are qualitatively similar to those of AOD. This similarity confirms that CO and aerosol contributing to the major enhancements of CO columns and AOD over the study region originate from the same sources (that are most likely associated with wildfires). In addition to the above discussion of the sources and transport of BB plumes on 21 and 22 July, it can be noted that the differences between the distributions of CO columns on 21 and 22 July may be not only due to transport but also due to accumulation of air pollution from active fires over one day.

Figure S6 shows the relationships between BB fractions of CO columns (Δv) and AOD ($\Delta \tau$) in the source and receptor regions according to the measurements and simulations. Note that the data shown in Fig. S6 were selected using the same criterion (based on the parameter $p_{\%}$) as in the analysis illustrated in Fig. S6a. The relationships between CO columns and AOD are analyzed here in the same way as the relationships between CO and PM_{10} concentrations in Konovalov et al. (2015, see Fig.7 therein) and are characterized quantitatively by linear regressions without intercept ($y=ax$). Note that the regression coefficient (a) evaluates the fractions involved in the right-hand part of Eq. (9); it can also be regarded as an analogue to NEMR (see Introduction) in a special case where CO and aerosol column amounts are considered (under the assumption that changes in the mass extinction efficiency of BB aerosol can be disregarded) instead of CO and aerosol mass concentrations ~~considered as in a more common case~~. Apart from the simulations performed with the "standard" aerosol scheme (that is, for the STN scenario), Fig. S6 shows the simulated data obtained from the VBS run of CHIMERE.

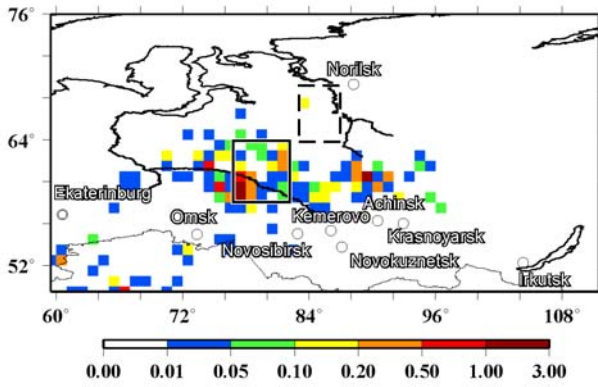
As expected, due to the calibration of BB emissions against satellite measurements, there is a close agreement between the regression slopes calculated for the measurements and simulations in the source region. However, similar to Konovalov et al. (2015), we find considerable differences between the regression lines fitted to the measurement and simulation data for the receptor region. Specifically, the regression coefficient for the receptor region turns out to be almost a factor of 2 larger in the case with the measurement data than in the case with the simulated data obtained from the STN run. The use of the VBS scheme instead of the standard aerosol scheme in our model improves the agreement between the measurements and simulations to some extent (a value of a for the VBS run is about 15 % larger compared to the one for the STN run), but the difference between the slopes of the linear fits for the measurements and simulations still remains significant. Note that consistently with the results shown in Fig. S6, some improvement in the agreement between the measured and simulated AOD values in the receptor region due to the use of the VBS scheme instead of the standard one is also visible in Fig. S3 showing the spatial distributions of AOD (cf. Fig. S3b, Fig. S3d and Fig. S3f). ~~Note~~ Note also that Konovalov et al. (2015) found that the use of the VBS scheme instead of the standard one to simulate near surface concentrations of BB OA resulted in a more substantial increase (specifically, by 47 %) of the regression coefficient than in this study, while the differences between the regressions fitted to the measurement data and to the simulations performed with the VBS scheme were not statistically significant. Presumably, the difference between the results of the VBS and STN runs is relatively small in the case addressed here partly because BB aerosol mass concentration was integrated over the vertical dimension (so, depending on vertical and horizontal transport patterns, a vertical column of BB aerosol might include aerosol particles having very different photochemical ages). This could also be partly because BB aerosol in the source region, although being relatively "fresh" compared to the aerosol in the receptor region, could still undergo considerable atmospheric processing (as evidenced by its median photochemical age of 8.6 hours).

The differences between the linear fits to the measurement data and simulations in the receptor region indicate that transport of BB plumes from the source region to the receptor region could be associated with a major increase of the optical depth of ~~actual-real~~ BB aerosol with respect to the simulated AOD values (especially from the STN run). Furthermore, such an increase can be interpreted as a manifestation of BB aerosol aging processes that are not properly taken into account in our

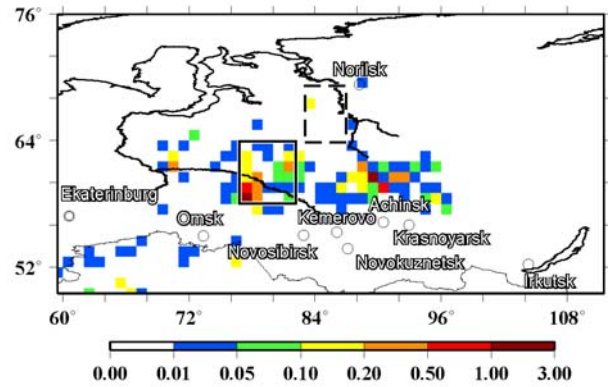
model. The increase of AOD could ~~be~~ not only be due to an enhancement of the aerosol mass column density relative to the CO columns, but also due to an increase in the mass extinction efficiency, which was assumed to be constant in our simulations. It should be noted, however, that apart from effects of aging processes, the inconsistencies between the measurements and simulations in the receptor region ~~can~~ could, in principle, be caused by some other reasons, such as, e.g.,
5 temporal variations in ~~the~~ actual magnitudes of the emission factors or errors in the modeled vertical distributions of CO. Although such reasons are, in our opinion, less probable, they still cannot be definitely ruled out. Therefore, the results presented above should be regarded as evidence but not as a proof of an important role played by aging processes in the evolution of BB aerosol in the region and period considered.

The results shown in Fig. S6 at least do not contradict to the results of the more general analysis (see Sect. 3.2 and Fig. ~~5a~~ 6a)
10 that reveal an increase in the ER values within the first 15 hours of atmospheric processing of BB aerosol. Most of the data points (29 out of 32) corresponding to the source region on 21 July fall into the first and second bins ($t_a < 11.2$ h) of the photochemical age values based on concentration of the aging tracer T_1 , while most of the data points (12 out of 20) corresponding to the receptor region on 22 July fall into the third bin ($t_a \in [11.2; 16.3]$); the rest of the data points for the receptor region belong to the fourth bin ($t_a \in [16.3; 21.4]$). Accordingly, the increase of AOD with respect to CO columns in
15 the episode considered here could contribute to the increasing part of the dependence shown in Fig. 5a. However, the results of the two kinds of analysis are hard to compare quantitatively, particularly because the data points corresponding to the episode considered here provide only a minor contribution to the whole data set considered in Sect. 3.2 (taking into account
that specifically, the first, second, third and fourth photochemical age bins defined with the tracer T_1 contain 50, 439, 457, and 329 data points, respectively).

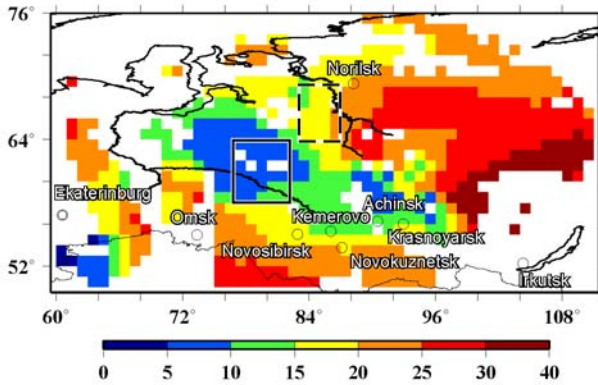
(a)



(b)



(c)



(d)

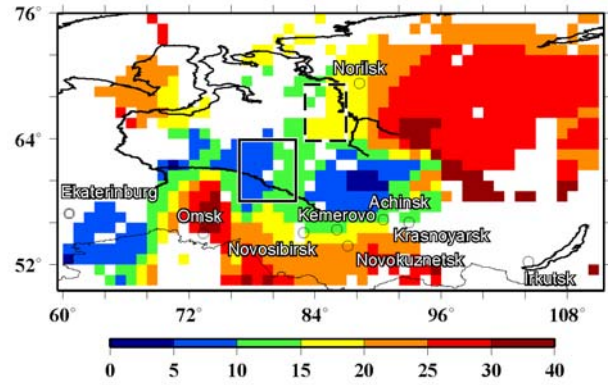


Figure S1: Spatial distributions of (a, b) the [daily emissions of particulate matter in the STN configuration](#) ($\text{g}\cdot\text{m}^{-2}$) and (c, d) the photochemical age (hours) of BB aerosol in the study region on (a, c) 21 and (b, d) 22 July 2012. Rectangles depicted with solid and dashed lines indicate the "source" and "receptor" regions. Note that the photochemical age was calculated using the tracers T_0 and T_1 (and is shown) only for those grid cells where the measurement AOD and CO data matching the simulations were available and BB emissions contributed significantly to both CO columns and AOD (according to the [criteria given specified in Sect. 2.12.32](#)).

5

10

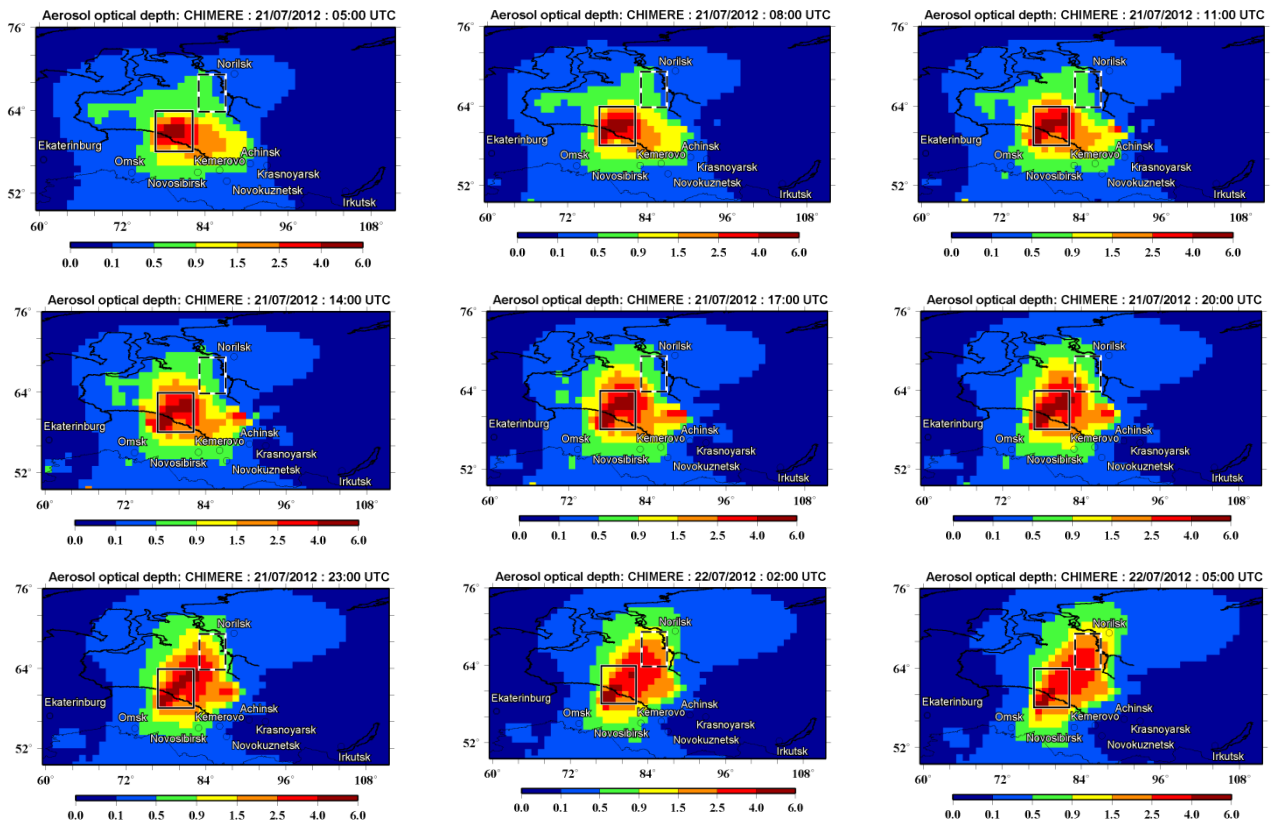
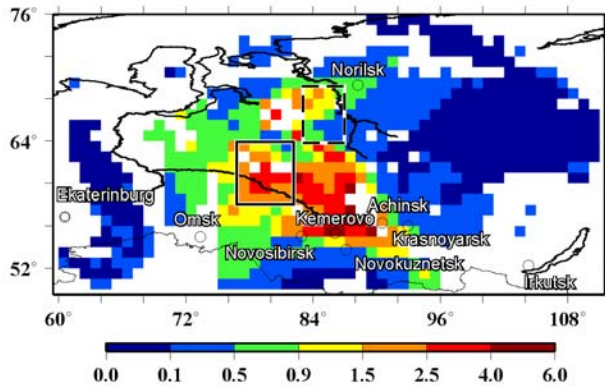
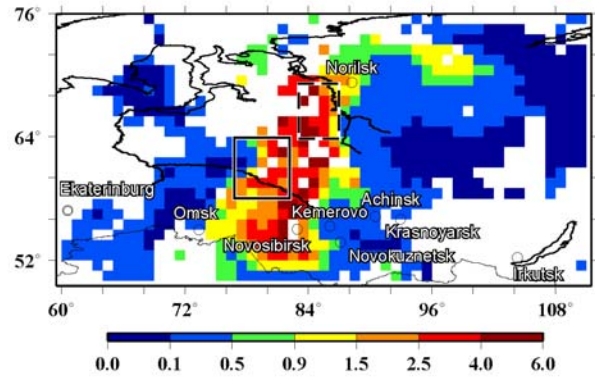


Figure S2: "Snapshots" of the spatial distribution of AOD in the period from 05:00 UTC July 21 to 05:00 UTC July 22 according to the CHIMERE simulations [with the STN configuration](#).

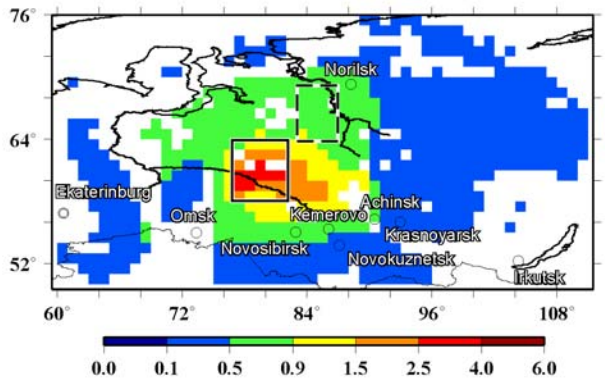
(a)



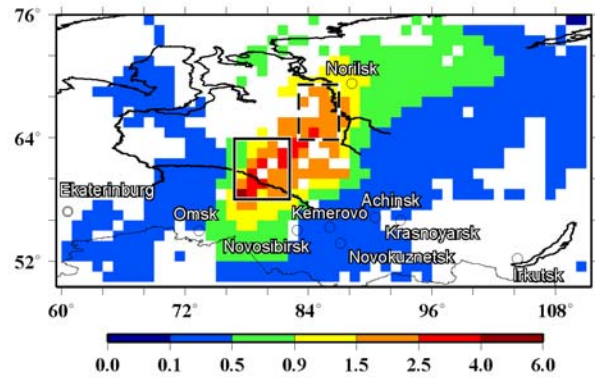
(b)



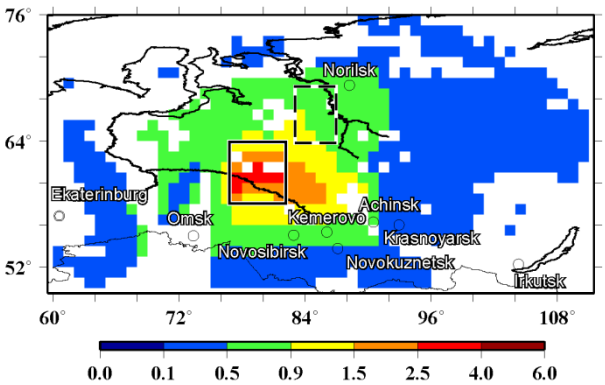
(c)



(d)



(e)



(f)

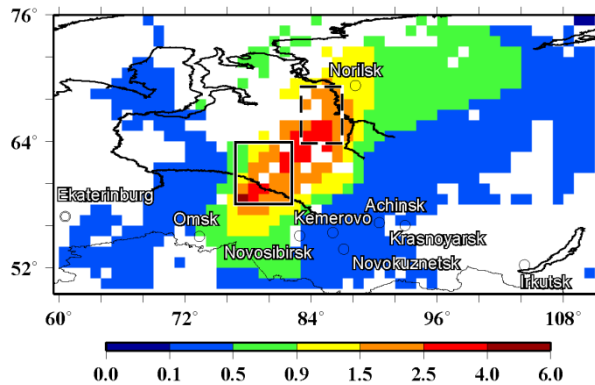


Figure S3: The spatial distributions of AOD on (a, c, e) 21 and (b, d, f) 22 July according to (a, b) the MODIS measurements and (c, d) the CHIMERE simulations with the (c, d) STN and (e, f) VBS configurations.

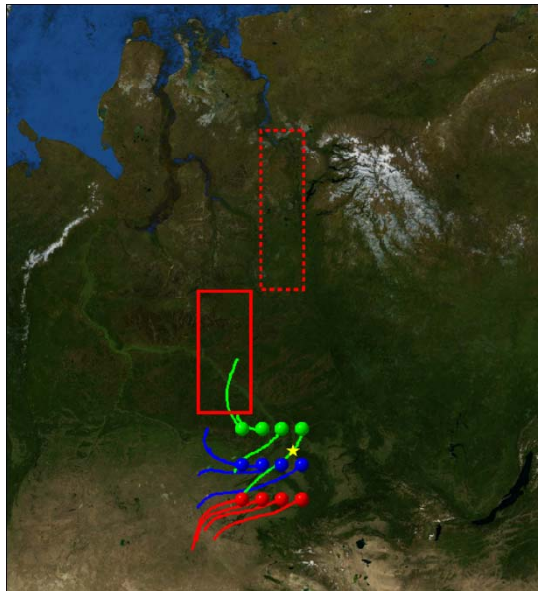
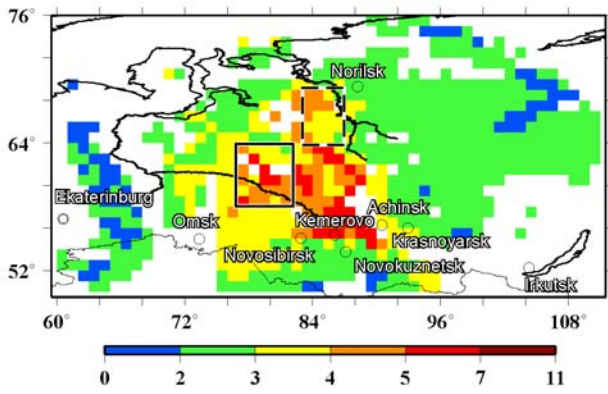
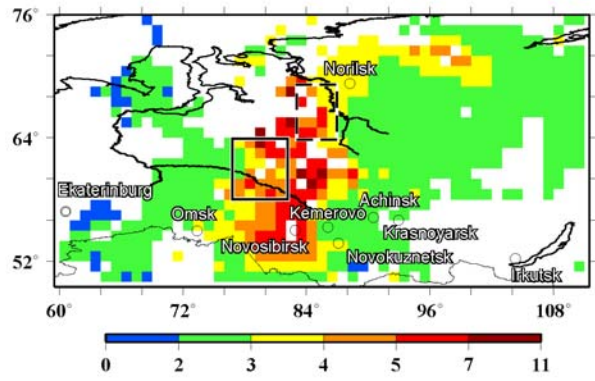


Figure S4: The HYSPLIT 24h forward trajectories starting from several locations (at altitude of 1000 m) on 21 July 2012 at 6:00 UTC (~11:30 LST). A yellow asterisk indicates the location of the Kemerovo city. The red rectangles depicted by solid and dotted curve indicate the source and receptor regions, respectively.

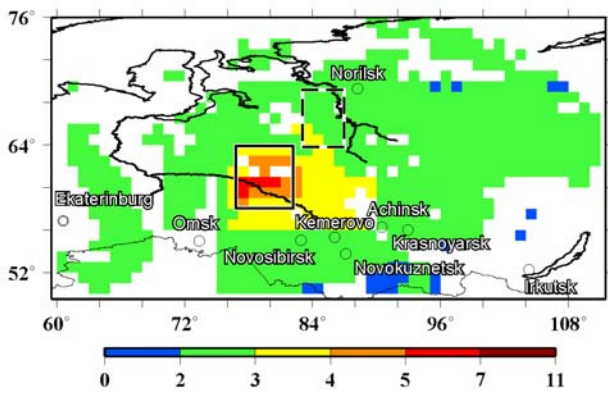
(a)



(b)



(c)



(d)

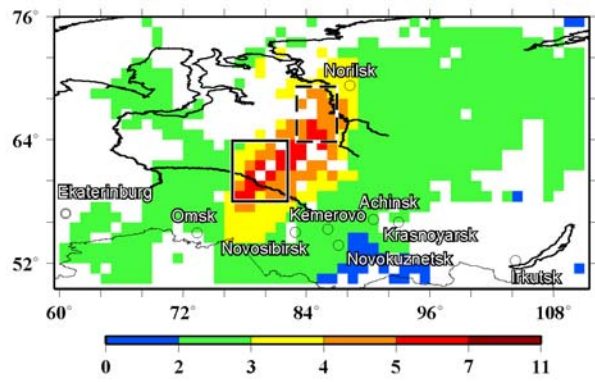


Figure S5: The spatial distributions of the total CO column amounts (10^{18} molecules cm^{-2}) on (a,c) 21 and (b,d) 22 July according to (a,b) the IASI measurements and (c,d) the CHIMERE simulations.

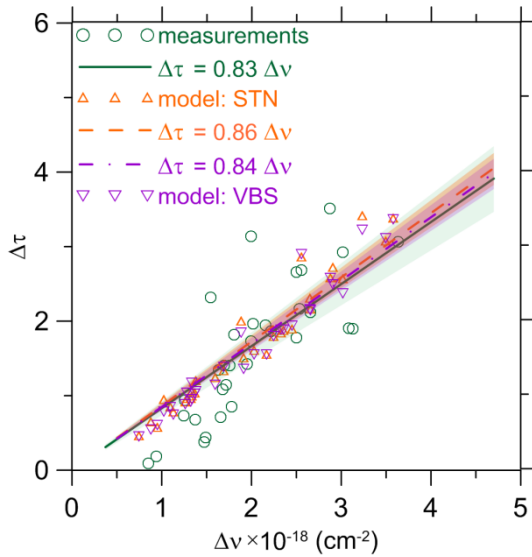
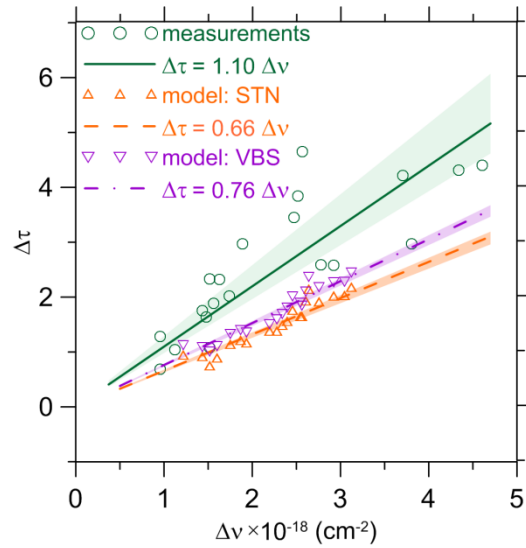
(a)**(b)**

Figure S6: The relationships between BB fractions of (a) CO columns (Δv) and (b) AOD ($\Delta\tau$) in (a) the source region on 21 July and (b) in the receptor region on 22 July 2012 according to the satellite (MODIS and IASI) measurements (see green lines) and the simulations ~~for~~ with the STN (orange dashed lines) and VBS (purple dash dot lines) configurations. The source and receptor regions are shown in Fig. S1. The relationships are fitted by means of ~~the~~ a linear regression "through the origin". The regression coefficient values are indicated in the figure legends. Shaded areas depict the confidence intervals evaluated for the 95th percentile confidence level.