



OMI air-quality monitoring over the Middle East

Michael Barkley¹, Gonzalo Gonzalez Abad², Thomas P. Kurosu³, Robert Spurr⁴,
Sara Torbatian⁵, and Christophe Lerot⁶

¹Earth Observation Science Group, Department of Physics and Astronomy, University of Leicester,
UK.

²Atomic and Molecular Physics Division, Harvard-Smithsonian Center for Astrophysics,
Cambridge, Massachusetts, USA.

³NASA Jet Propulsion Laboratory, Pasadena, California, USA.

⁴RT Solutions Inc, Cambridge, Massachusetts, USA.

⁵Air Quality Meteorologist, Air Quality Control Company (AQCC), Tehran, Iran.

⁶Belgian Institute for Space Aeronomy (BIRA-IASB), Brussels, Belgium.

Correspondence to: Michael Barkley (mpb14@le.ac.uk)

Abstract. Using Ozone Monitoring Instrument (OMI) trace gas vertical column observations of nitrogen dioxide (NO₂), formaldehyde (HCHO), sulphur dioxide (SO₂), and glyoxal (CHOCHO), we have conducted a robust and detailed time series analysis to assess changes in local air-quality for over 1000 locations (focussing on urban, oil refineries, oil ports, and power plant targets) over the Middle East for 2005–2014. Apart from NO₂, which is highest over urban locations, average tropospheric column levels of these trace gases are highest over oil ports and refineries. The highest average pollution levels over urban settlements are typically in Bahrain, Kuwait, Qatar, and United Arab Emirates.

We detect 278 statistically significant and real linear NO₂ trends in total. Over urban areas NO₂ increased by up to 12% yr⁻¹, with only two locations showing a decreasing trend. Over oil refineries, oil ports, and power plants, NO₂ increased by about 2–9 % yr⁻¹. For HCHO, 70 significant and real trends were detected, with HCHO increasing by 2–7 % yr⁻¹ over urban settlements and power plants, and by about 2–4 % yr⁻¹ over refineries and ports. Very few SO₂ trends were detected, which varied in direction and magnitude (23 increasing and 9 decreasing). Apart from two locations where CHOCHO is decreasing, we find glyoxal tropospheric column levels are not changing over the Middle East. Hence for many locations in the Middle East, OMI observes a degradation in air-quality over 2005–2014. This study therefore demonstrates the capability of OMI to generate long-term air-quality monitoring at local scales over this region.

1 Introduction

It is well-established that poor air-quality can significantly impact human health, ecosystems and agriculture, the built environment, and regional climate (Monks et al., 2009). The human and monetary costs associated with increasing levels of air-pollution are substantial. For example, the World



Health Organisation (WHO) estimates that globally nearly 7 million premature deaths were attributed to household and ambient air pollution during 2012 (WHO, 2014). Similarly, the Organisation for Economic Co-operation and Development (OCED) estimated that outdoor air pollution is costing its 34 member states, plus the People's Republic of China and India, an estimated 3.5 trillion dollars a year in terms of the value of lives lost and ill health (OCED, 2014).

Regulatory control of urban air-quality is typically most effective when important target areas are extensively monitored, so pollutant emissions can be quantified and their atmospheric chemical processing well-understood. In addition to in situ measurements made by ground stations and aircraft campaigns, satellite observations also form an important component of air-quality monitoring (Martin, 2008; Duncan et al., 2014). Satellite measurements of pollutants such as nitrogen dioxide (NO₂), carbon monoxide (CO), troposphere ozone O₃, formaldehyde (HCHO), sulphur dioxide (SO₂), and aerosol particulate matter (PM), have been widely used to characterise their global atmospheric distributions, to quantify surface precursor emissions, and to evaluate local air-quality (see e.g., Martin, 2008; Streets et al., 2013; Duncan et al., 2014, and references therein). Furthermore, with the advent of successive and longer-duration satellite missions, particularly the sequence of ultra-violet-visible (UV-VIS) instruments of GOME (Burrows et al., 1999), SCIAMACHY (Bovensmann et al., 1999), and GOME-2 (Callies et al., 2006), together with the OMI sensor (Levelt et al., 2006), there is a growing ability to study long-term changes in air-quality from space. Some notable studies that have used satellite trace gas measurements to examine air pollution trends include: Richter et al. (2005); van der A et al. (2006, 2008); Ghude et al. (2008); De Smedt et al. (2010, 2015); Russell et al. (2012); Schneider and van der A (2012); Hilboll et al. (2013); Jin and Holloway (2015); Krotkov et al. (2015); Lamsal et al. (2015); Lelieveld et al. (2015), and Duncan et al. (2016).

The Middle East is a region where long-term changes in air-quality have probably been less well studied, in comparison to Asia, Europe, and North America. Besides frequent dust-storms (Furman and Hadar, 2003), the region's air-quality is characterised by year-long high ozone levels (Lelieveld et al., 2009), with an observed summer maximum (Liu et al., 2009; Zanis et al., 2014). The high ozone levels are in part due to long-range transport, strong local emissions, and favourable conditions for ozone photochemistry (Lelieveld et al., 2009). In-situ instruments frequently record high pollutant concentrations in urban areas which exceed recommended guidelines (e.g., Modarres and Dehkordi, 2005; Nasralla and Seroji, 2007; Abdul-Wahab, 2009; Munir et al., 2013; Rashki et al., 2013).

The severity and variability of the region's air pollution can be directly observed from space. For example, several studies have reported appreciable trends in NO₂ vertical column over Middle Eastern cities prior to 2011, with increases of order 2–9 % yr⁻¹ found over Tehran, 4–5 % yr⁻¹ over Jeddah, 6–7 % yr⁻¹ over Riyadh, and 10–20 % yr⁻¹ over Baghdad, depending on the satellite instrument and the averaging period (van der A et al., 2008; Schneider and van der A, 2012; Hilboll et al., 2013). Similarly, De Smedt et al. (2010) also found an increasing trend of 1–3 % yr⁻¹ in



60 GOME and SCIAMACHY tropospheric HCHO columns over Tehran and Baghdad during 1997–
2009, but a decrease of about 2 % yr⁻¹ over Riyadh.

More recently, Lelieveld et al. (2015) examined annual changes in OMI NO₂ and SO₂ columns
over the Middle East over 2005–2014, reporting that after increases in the period 2005–2010, there
was a reduction in these gases, either due to new regulatory legislation, or due to falls in economic
65 output associated with regional conflicts and geopolitical controls. In particular, decreases in NO₂
tropospheric columns of order 40–50% were noted over Damascus and Aleppo since 2011, coincid-
ing with the start of Syria’s civil war. A similar regional-scale study by Krotkov et al. (2015), also
observed that during 2005–2008 OMI NO₂ column increased by 20% but remained approximately
constant thereafter, whereas OMI SO₂ columns dropped by 20% after 2010, only recovering to 2005
70 levels in 2014. A further OMI NO₂ column trend analysis over the region’s major cities by Duncan
et al. (2016) likewise reported decreases over Damascus and Aleppo, but of about 3–4 % yr⁻¹, with
increases of about 2–6 % yr⁻¹ elsewhere.

However, besides these valuable studies and to the best of our knowledge, long-term changes in
local air-quality for many smaller Middle-Eastern cities and towns have not been reported. In this
75 study we aim to remedy this situation by determining the changes in air-pollution over local popu-
lation centres and also oil/energy infrastructure from space using a decade’s worth of observations
from the OMI instrument. Our target areas are therefore (1) cities and towns, (2) large-scale oil
refineries and ports, and (3) coal, gas and oil fuelled electricity generating power-plants.

To track the air-quality over our specified targets, we use OMI tropospheric vertical column ob-
80 servations of NO₂, HCHO, glyoxal (CHOCHO), together with retrieved boundary layer column
concentrations of SO₂. Although each of these reactive species has different sources and sinks, they
are all established key indicators of anthropogenic emissions, active photochemistry, and air pollu-
tion. For example, the dominant sources of NO_x (=NO+NO₂) in the troposphere are the combustion
of fossil fuels, biomass burning, emissions from soil, and lightning. Boundary layer SO₂ is pre-
85 dominantly generated by the burning of sulphur laden fossil fuels and the refinement of sulphur
ores; volcanic SO₂ emissions are typically injected high into the atmosphere well above the bound-
ary layer. The chemical reactions of NO₂ and SO₂ lead to the formation of nitrate and sulphate
aerosols, which contribute to PM_{2.5} (particulate matter with diameters <2.5 μm), another critical
pollutant (Kim et al., 2015). HCHO and CHOCHO are reaction products from the oxidation of an-
90 thropogenic, biogenic, and pyrogenic volatile organic compounds (VOCs); they can also be directly
emitted from fires. Observed HCHO and CHOCHO distributions therefore contain the signature of
underlying VOC emissions. Quantifying VOC emissions is important, as the oxidation of VOCs in
the presence of high NO_x and sunlight leads to the formation of tropospheric ozone, which is a major
air pollutant contributing to photochemical smog, as well as a key greenhouse gas and atmospheric
95 oxidant (Monks et al., 2015). Apart from SO₂, which has lifetime of about one week, the trace gases



are also relatively short-lived (order of hours to a day), so that spatial displacements from emission sources are often small.

In this study, we have two broad goals: (1) to establish which locations have the highest pollution levels and (2) to use time series analysis in order to determine which locations have statistically significant trends and to quantify the trend magnitudes. The structure of this paper is as follows. In section 2 we introduce the OMI data products. In Section 3 we discuss how the OMI data is gridded and describe the time series analysis. We present our results in Section 4, with a discussion on their validity in Section 5. Finally, we conclude the paper in Section 6.

2 OMI Satellite Data

2.1 The Ozone Monitoring Instrument (OMI)

The Dutch-Finnish Ozone Monitoring Instrument (OMI) (Levelt et al., 2006), is a nadir-viewing UV-VIS 2-dimensional charged-couple device (CCD) spectrometer, launched on board NASA's Aura satellite in July 2004. OMI orbits the Earth in a Sun-synchronous polar orbit, crossing the Equator at 13:30 local time (LT) in its ascending mode. The instrument has a 114° field-of-view producing a 2600 km wide swath which contains 60 cross-track pixels that range in size from $14 \times 26 \text{ km}^2$ at nadir to $28 \times 160 \text{ km}^2$ at the swath edges. With these viewing geometry and orbital characteristics, OMI achieves global coverage daily (in nominal operational mode). However, from 2007 onwards, OMI's coverage has been considerably reduced due to problems with certain rows of its CDD detector (see Section 3.1 for further details).

In this work we use 10 years (2005–2014) of OMI vertical column observations of NO_2 , HCHO, CHOCHO, and SO_2 . A brief overview of these products is given below; explicit details of each trace gas retrieval are given in the cited references.

2.2 SAO Formaldehyde

The official NASA HCHO product is provided by the updated Smithsonian Astrophysical Observatory (SAO) retrieval, as described in González Abad et al. (2015). HCHO slant columns are retrieved through a direct non-linear least-squares fitting of spectral radiances within the interval 328.5–356.5 nm. The retrieval algorithm includes dynamic calibration of solar and radiance wavelengths, the use of a daily radiance reference spectra, an under-sampling correction, and computation of common-mode residual spectrum. The cross-sections of HCHO and other absorbers are fitted, together with a Ring effect correction, scaling and closure polynomials, and a spectral shift parameter. The retrieved slant columns are converted to vertical columns using air-mass factors (AMFs) taken from look-up tables pre-computed using the VLIDORT radiative transfer model (Spurr, 2008), which uses a priori HCHO profiles from a global $2.0^\circ \times 2.5^\circ$ GEOS-Chem chemistry transport model simulation (originally described in Bey et al., 2001). Effective cloud fraction and cloud-top pressure are taken from



130 the OMI O₂-O₂ cloud product (Acarreta et al., 2004), whilst the surface reflectivity for clear-sky
scenes, is extracted from the OMI mode Lambertian Equivalent Reflectivity (LER) dataset created
by Kleipool et al. (2008). A daily post-processing normalisation correction (a function of latitude
and detector row) is applied to reduce retrieval biases, minimise noise and reduce cross-track strip-
ing. Over our domain of interest (20–80°E, 10–50°N) we find the median uncertainty of a single
135 measurement is about 60–70%, with an inter-quartile range (IRQ) of about 175%.

2.3 DOMINO NO₂ Vertical Columns

Tropospheric NO₂ vertical columns are from the KNMI DOMINO v2 product (Boersma et al.,
2011a, b). The NO₂ slant columns are retrieved using the differential optical absorption spectro-
scopic (DOAS) technique, by fitting the absorption cross sections of NO₂, O₃, and H₂O, along with
140 a synthetic Ring spectrum, to observed reflectance spectra in the 405–465 nm interval (Boersma et al.,
2007). The retrieved total slant columns are then assimilated into the TM4 chemistry model (Den-
tener et al., 2003), to estimate and remove the stratospheric NO₂ component. Finally, tropospheric
vertical columns are then derived by applying altitude-resolved AMFs from a precomputed look-up
generated with the KNMI DAK radiative transfer model using TM4 NO₂ profiles from a 2.0° × 3.0°
145 global simulation. Surface reflectivity and cloud-parameters are taken from Kleipool et al. (2008)
and Acarreta et al. (2004), respectively. The median uncertainty of an individual measurement over
our target region is about 60–70%, with an IQR of about 54%.

2.4 BIRA CHOCHO Vertical Columns

Glyoxal vertical columns are retrieved from OMI spectra using an updated DOAS retrieval origi-
nally devised for GOME-2 (Lerot et al., 2010). The retrieval uses a daily mean Earthshine Pacific
150 radiance spectrum, and applies a row-dependent wavelength calibration. An initial pre-fit of liquid
water optical depth (in 405–490 nm) is performed, before the absorption cross-sections of CHOCHO
and other interfering absorbers are fitted in the spectral window 435–490 nm to retrieve the slant
columns. Tropospheric vertical columns are obtained using pre-computed look-up tables of altitude
155 resolved AMFs, which uses a priori profiles over land from a global 2.0° × 2.5° IMAGES simulation
(Müller and Stavrakou, 2005). Over the oceans a single oceanic profile is used for the AMFs, derived
from airborne MAX-DOAS measurements over the Pacific Ocean (Volkamer et al., 2015). Unlike
the retrievals of HCHO and NO₂, the cloud effects are not accounted for in the AMF calculation (via
the independent pixel approximation); instead only ‘clear-sky’ observations are retained by rejecting
160 scenes with effective cloud fractions >20%. The median uncertainty of an individual measurement
is about 50–60% with an IQR of about 250%.



2.5 NASA Sulphur Dioxide

To assess changes in anthropogenic SO₂ we use planetary boundary layer columns (NASA product OMSO2 v1.2.0) determined using a principal component analysis (PCA) retrieval that is sensitive
165 to surface concentrations (Li et al., 2013). The algorithm applies the PCA technique to OMI UV sun-normalised radiances (310.5–340 nm) over an SO₂-free region (in the Equatorial Pacific) to establish the principal components of the main physical and measurement spectral features that do not correspond to SO₂ absorption. A set of principal components and SO₂ radiance Jacobians (i.e. that describe the radiance sensitivities to changes in the SO₂ column), are then iteratively fitted
170 to observed OMI radiances to obtain the slant column density. An estimate of the boundary layer SO₂ is then calculated based on the assumptions of the vertical SO₂ distribution (Krotkov, 2014). The algorithm applies the PCA technique to each OMI detector row individually, and uses the VLI-DORT radiative transfer code to compute the SO₂ Jacobians, with RT model inputs based on a fixed atmospheric profile and climatological SO₂ profile over the summertime eastern US, the latter corresponding to an effective AMF of 0.36 (Fioletov et al., 2016). Scenes with strong ozone absorption of
175 >1500 Dobson Units (1 DU = 2.69 × 10¹⁶ molecules cm⁻²) are excluded due to spectral interference in the retrieval. For this study we only use SO₂ data from OMI rows 4–54 (0-based) and with cloud radiance fraction <0.3 (Krotkov, 2014). Although SO₂ over the Middle East is mostly unaffected by volcanic emissions over 2005–2014 (Krotkov et al., 2015), transient volcanic SO₂ enhancements
180 were removed if they exceeded a threshold of 5 DU (Fioletov et al., 2011). The estimated uncertainty of the SO₂ PBL is about 0.5 DU (Li et al., 2013; Krotkov, 2014).

3 Methods

3.1 Data Gridding

We monthly-average the OMI observations onto a high resolution 0.05° × 0.05° grid using an area-
185 weighting tessellation algorithm (Spurr, 2003; Hewson et al., 2015). The gridding algorithm properly accounts for the areal proportions of grid cells underlying the satellite footprint and inversely weights each observation according to the measurement uncertainty and OMI ground pixel-size. Spatial zoom orbits are not included in our analyses, nor are scenes with >20% fractional cloud cover and solar zenith angles > 70°. We also follow the data recommendations provided with each prod-
190 uct to reject non-optimum observations. The quality of the level 1B radiance data from certain rows of OMI's CCD detector is known to be affected by blockage effects, wavelength shifts, and stray light originating from outside the nominal field of view. This dynamic behaviour is the well-known OMI row anomaly (<http://www.knmi.nl/omi/research/product/rowanomaly-background.php>), which impacts atmospheric retrievals from the affected rows. The temporal variability of the row anomaly
195 is also known to compromise the derivation of long-term trace gas trends (De Smedt et al., 2015).



For this reason, we follow a similar approach to De Smedt et al. (2015), by using the OMI XTrack-QualityFlags (Dutch Space, 2009) to construct a static mask based on the most affected rows at the end of 2013, to then discard row-anomaly observations over the entire 2005–2014 period. This quality filtering largely removes any statistically significant sampling trends in the generated monthly datasets, except for the SAO HCHO and DOMINO NO₂ data. Therefore, for these gases we further use the XTrackQualityFlags to identify affected observations not flagged by the static mask, whose measurement uncertainties we then increase by a factor of 1000, so that these observations are included in the analysis without affecting the monthly averaged fields (i.e. they are assigned a very low weight in the averaging). On average there are typically 20–35 samples per grid-cell per month. To reduce noise in the monthly gridded data we smooth the data with a 0.15° × 0.15° Gaussian filter of 1-σ width. For the noisier CHOCHO fields, a 2-σ Gaussian is used. The spatial smoothing enhances localised ‘hot-spots’ and is preferable to averaging the data onto a coarser resolution grid where the atmospheric signatures of target features can be lost. The median uncertainties of the gridded data are about 4% for NO₂, 6% for HCHO, 27% for CHOCHO, and 40% for SO₂.

Figure 1 shows the 2005 annual distributions of each species over the broad Middle East region. Clearly visible in the NO₂, HCHO and CHOCHO maps are the major urban areas of Riyadh, Baghdad, Tehran, Jeddah, and pollution enhancements along the eastern and northern coasts of the Persian Gulf. Intense SO₂ hotspots are found over the Jeddah and Mecca region, Kharg Island (in the Gulf) and near Kerman (Iran), where the Sarcheshmeh Copper Complex smelter is found.

3.2 Time Series Construction

To determine the temporal variability of the OMI vertical column data over urban areas we use the Global Rural-Urban Mapping Project Version 1 (GRUMPv1) settlement points database (Balk et al., 2006; SEDAC, 2015) to identify the geolocation coordinates of 818 cities and towns, that have populations ranging from over 50 to nearly 7 million inhabitants (as determined for the year 2000). We then construct a 10-year time-series (of 120 months) by averaging those monthly-gridded data that lie within ±2 grid-cells of the city or town location, which corresponds to a radial distance of approximately 10 km from the urban centre. Visual inspection of these spatial masks overlaid onto GoogleEarth imagery shows this filtering criteria is well-suited to capture the extent of most urban areas (see e.g., Figure 2). For Baghdad, Riyadh, and Tehran, which have larger urban spread, the average of ±4 grid-cells is used instead, consistent with an approximate 20 km radial distance. In addition to the trace gas vertical columns, we also construct coincident times series for the associated cloud fraction, cloud-top pressure (or height), AMFs (where appropriate), and number of grid-cell samples. This helps clarify whether any observed trends in the trace gases are real, by applying the same time-series analysis to all the retrieved parameters.

We use this same approach to examine air-quality variability over oil refineries, oil ports and power plants. The 2010 Oil Refining Survey (Kootungal, 2010) was used to identify 41 major



crude oil refineries, whereas the Global Energy Observatory (GEO) free online resource (<http://globalenergyobservatory.org>) was used to locate 18 oil ports and 155 power plants. Where different types of power plants (e.g., oil versus gas fuelled) were closely co-located, a single geolocation coordinate was used to mark that target. The geographical distribution of the selected targets is shown in Figure 3a, and as an example, Figure 3b shows the urban spatial filtering masks, applied to the observed 2005 annual OMI NO₂ distributions over northern Iran. The latter figure shows that this approach treats the larger cities, such as Tehran, as individual urban regions, with intention of resolving trends of separate districts, and that in some cases the spatial masks can partially overlap for targets which are close to one another.

Considering all locations, we find that by applying a weighted average to the data within ± 2 grid-cells of the target, the median uncertainties of the trace gas vertical column time series reduce to 0.37% for NO₂, 0.73% for HCHO, 1.63% for CHOCHO, and 1.82% for SO₂.

3.3 Time Series Analysis

Each time series consists of monthly mean OMI observations $y(t)$ over a given target site, where time t is in fractional years. We analyse each time series individually for each location following a consistent procedure. First, we filter the time series data for outliers, rejecting observations that lie beyond 3 median absolute standard deviations (Leys et al., 2013). This helps to reduce difficulties in the analysis and interpretation of noisy vertical column data when encountered; the filtering is not required for AMFs, cloud-parameters or the number of samples. Second, we linearly interpolate across missing data points, applying a quality filter that if $>20\%$ of values are missing from the time series then the dataset is rejected. However, we find that on average less than 6% of points may be missing from any given time-series. Third, we then fit to the data a model function $F(t)$ consisting of a linear component plus a four-term harmonic Fourier series, defined as follows:

$$F(t) = \mu + \omega t + \sum_{n=1}^4 [A_n \cos(2\pi n t) + B_n \sin(2\pi n t)] \quad (1)$$

where μ is the mean value of the time series data at time $t = 0$, ω is the linear trend of the variable (per year), and the parameters A_n and B_n are the Fourier series coefficients that essentially model seasonal and inter-seasonal variability. Many other trend studies have fitted very similar functions (see e.g. van der A et al., 2006; Gardiner et al., 2008; De Smedt et al., 2010; Hilboll et al., 2013; Jin and Holloway, 2015). We fit this model to the data using a non-linear least squares Levenberg-Marquardt algorithm, which generates an estimate of the fit parameters μ , ω , A_n and B_n plus their uncertainties and covariance.

Fourth, we check that the trend ω is real, i.e. significant at the 95% confidence level. The generally accepted rule for determining whether a trend is statistically significant is $|\omega/\sigma_\omega| > 2$, provided the lag-one autocorrelation of the fit residual is small (Weatherhead et al., 1998; van der A et al., 2006). To determine the precision (σ_ω) of the trend we follow the approach of Gardiner et al. (2008) by



bootstrap resampling (with replacement) the initial fit residuals to reconstruct the fitted function with representative noise. The model function $F(t)$ is then refitted to this data and the fit parameters recalculated. This process is repeated 2000 times to build a sampling distribution for each of the fit
 270 coefficients, with the difference between the 2.5th and 97.5th percentiles representing the coefficient's associated 2σ uncertainty (De Smedt et al., 2010). The advantage of the bootstrap resampling method is that it enables non-normally distributed data to be treated robustly (Gardiner et al., 2008).

Fifth, we additionally filter the initial fit residuals with short and long-term filters, to derive several other quantities of interest. For this we follow closely the curve fitting routines adopted by
 275 the NOAA's Earth System Earth System Research Laboratory (ERSL) Global Monitoring Division (GMD), which are based on the original study of Thoning et al. (1989) and are fully described online (at <http://www.esrl.noaa.gov/gmd/ccgg/mb/crvfit/crvfit.html>). The general approach is to transform the residuals into the frequency domain using a Fast Fourier Transform (FFT), apply a low-pass filter function to the frequency data, then transform the filtered data to the time domain using an inverse
 280 FFT. We use a low-pass frequency filter $H(f)$ of the form:

$$H(f) = \exp\left[-\ln 2 \times \left(\frac{f}{f_c}\right)^6\right] \quad (2)$$

where f is the frequency (cycle per year), and f_c is the frequency response of the filter. We filter the initial fit residual twice, once with a short-term cut-off value for smoothing the data, and once with a long-term value to remove any remaining seasonal oscillation and to track inter-annual variability.
 285 Once the residual has been filtered, several curves can be constructed:

1. A *smoothed function fit* $F_S(t)$ which is the function fit $F(t)$ plus the residual filtered using the short-term cutoff value. Its uncertainty is given by $\sigma_{F_S}^2 = \sigma_F^2 + \sigma_S^2$, where σ_S^2 is the uncertainty of the short-term filtered residual, and σ_F is the uncertainty of the model function estimated from the covariance matrix of the fit parameters using error propagation.
- 290 2. A *long-term trend fit* $F_T(t)$, which is the linear component of $F(t)$ plus the residual filtered using the long-term filter. It represents the long-term trend with the seasonal cycle removed. Its uncertainty is $\sigma_{F_T}^2 = \sigma_F^2 + \sigma_L^2$, where σ_L^2 is the uncertainty of the long-term filtered residual.
3. A *de-trended seasonal cycle* $F_C(t)$ which is computed by subtracting the long-term trend fit from the smoothed function fit, that is, $F_C(t) = F_S(t) - F_T(t)$. It represents the annual seasonal oscillation with any long-term trend removed. Its uncertainty is given by $\sigma_{F_C}^2 = \sigma_{F_S}^2 + \sigma_{F_T}^2$. The average seasonal amplitude is defined as the median peak to trough difference of $F_C(t)$.
 295
4. A *growth rate curve* $F_G(t)$ which is the rate of change of the long-term trend $F_T(t)$, determined using a three-point (quadratic) Lagrangian interpolation to compute the first derivative.
 300 Its uncertainty is given by $\sigma_G^2 = 2 \times \sigma_{F_T}^2$ since the derivative is approximately equal to the



taking the difference of two data points one year apart, and plotting this difference midway between the two points. The average growth rate G , is then simply the median value of $F_G(t)$.

The statistical uncertainty of the residual filters (σ_S and σ_L) are calculated following Thoning et al. (1989), via:

$$305 \quad \sigma_{\text{filter}}^2 = \sigma_{rsd}^2 \sum_{i=1}^{n_c} c_i^2 + 2 \sum_{j=1}^{n_c-1} \sum_{k=j+1}^{n_c} c_j c_k r_{(k-j)} \quad (3)$$

where σ_{rsd} is the residual standard deviation and $r_{(k-j)}$ are the lags in a first-order auto-regressive process (defined as $r(k) = r(1)^k$ for $k = 1, 2, \dots$), and n_c is the number of filter weights. The filter weights c_i are the values of the impulse response functions (IRF) of the filter transfer functions, which are measure of filter responses to a delta function impulse in the time domain (Thoning et al.,
 310 1989). We compute the filter uncertainties for the short- and long-term cut-off values individually, and apply them to calculate the uncertainties in the derived curves. In this study, we use short-term and long-term filters of 200 and 667 days, respectively. Sensitivity tests using filters of 100, 150, 500, and 720 days, indicate that these two filter values offer the best compromise for slightly higher correlations between the data and fitted curves, versus slightly smaller curve uncertainties.

315 Figure 4 shows an example of a time-series fit to observed NO_2 data over Dahuk in Iraq (43.00°N , 36.87°E , population: 65683), where a statistically significant large upward linear trend of $2.77 \pm 0.35 \times 10^{14}$ molecules $\text{cm}^{-2} \text{yr}^{-1}$ is found. This corresponds to a linear growth of $12.23 \pm 1.54\%$ relative to the observed 2005–2014 median VCD. In this example, $|\omega/\sigma_\omega| = 7.9$ and the uncertainties of the trend (F_T) and smoothed curves (F_S) are about 5% and 7.5%, respectively. The median growth rate G
 320 is $12.44 \pm 8.18\%$, whilst the mean seasonal amplitude is $1.78 \pm 0.32 \times 10^{15}$ molecules cm^{-2} (about $79 \pm 14\%$ relative to the median column). A similar analysis of the coincident time series of the NO_2 AMF, cloud fraction, cloud-top pressure and number of samples, reveals no other significant trend. This indicates that the upward growth in NO_2 is not caused by a trend in any other retrieval parameter and is real at the 95% confidence level. Figures S1 to S3 show similar fits for HCHO, CHOCHO,
 325 and SO_2 , respectively.

Although no underlying trends have been reported in the OMI data (Boersma et al., 2011b; Li et al., 2013; González Abad et al., 2015), as a precaution we performed the time series analysis on gridded OMI data over the remote Pacific ocean (60N – 60S , 90 – 170W). No statistically significant trends were found for any species.

330 4 Results

In this section we present our main results, with Tables 1– 4 providing a concise summary of the analysis. Tables S1 to S2 (both excel files) provide a more complete classification of the analysis, where the highest ranked median levels and absolute linear trends for each target category are tabulated. Only the top 50 ranked locations are given for urban and power plants categories.



335 4.1 Average Pollution Levels

We use the observed median vertical columns for each category (i.e. not the fitted μ in equation 1) to assess average pollution levels (see Table S1). The overall average median columns are 26.98×10^{14} molecules cm^{-2} for NO_2 , 3.97×10^{15} molecules cm^{-2} for HCHO, 18.71×10^{13} molecules cm^{-2} for CHOCHO, and 0.21 DU for SO_2 . Relative to the overall median column, the highest mean NO_2 values are found over urban areas and oil ports, which are about 5% and 15% higher than refineries and power plants, respectively. Whereas for HCHO, we find that highest average columns are found over ports, with values about 5% higher than those for refineries, 15% higher than urban areas, and 16% higher than power plants. The highest average CHOCHO levels are also found over ports, with refineries, power plants, and urban areas being about 5%, 16%, and 25% less, respectively. For SO_2 the highest average values are found over ports and refineries, which are 57% higher than power plants, and 81% higher than urban regions. Hence the general conclusion we can make is that average trace gas levels tend to be highest over oil ports and refineries (with the exception of NO_2).

The interquartile range (IQR) of the observed median columns gives some indication of the spread of the trace gas levels within a given target category. For NO_2 the IQR varies between 68% for urban areas, 59% for refineries, 45% for ports and 53% for power plants (as a percentage of the overall average median values). The higher IQR over urban areas may reflect the larger variability of underlying NO_x emissions between different towns and cities. For HCHO, the IQR only varies between 13% for urban areas and ports, to 20% for refineries and 26% for power plants. The similar IQR values likely indicate a lower variation in HCHO sources and sinks over different locations. For CHOCHO, the IQR varies between 25% for urban areas to 51% over refineries, with the IQR over ports and plants about 46–47%. For SO_2 , the IQR is lowest over urban areas (42%), but increases substantially over ports (100%), power plants (114%) to a maximum over refineries (148%).

Figure S4 shows the statistical box-and-whisker plots of the observed median vertical columns over urban targets for each country. The highest average pollution levels are typically found in Bahrain, Kuwait, Qatar, and the United Arab Emirates (UAE). For example, NO_2 columns over Bahrain, Kuwait, and UAE, are 52%, 66% and 53% above the median urban level of 28.13×10^{14} molecules cm^{-2} , respectively. Similarly for SO_2 , Bahrain is 246%, Kuwait 490%, Qatar 208%, and UAE 166% above the average urban level, whilst for CHOCHO, the corresponding values are Bahrain 33%, Kuwait 72%, Qatar 30%, and UAE 58%. Meanwhile for HCHO, only Qatar at 30% is prominently above the average urban level, whereas Bahrain is 18%, Kuwait 8%, UAE 19%, and Yemen 15%. According to the World Data Bank (<http://data.worldbank.org>) 2014 gross domestic product per capita, Bahrain, Kuwait, Qatar, and UAE were ranked 39th, 22th, 2nd, and 21st, respectively. By comparison, Iraq and Iran were ranked only 109th and 118th. Thus, over this region we find the more economically developed countries tend to have the highest pollution levels.

370 Considering average NO_2 levels over individual urban locations, we find Kuwait has 25 settlements in the top 50 highest ranked places, whereas Saudi Arabia has 9 locations, Bahrain 5, Iran 5,



and UAE 5. The highest average NO_2 columns were found over Funtas (in Kuwait), with a median value of 63×10^{14} molecules cm^{-2} . Funtas is one of several coastal settlements adjacent to the Mina Al-Ahmadi and Mina Abdullah refineries, which all have high average NO_2 levels. These two refineries had median vertical column levels of 55.07×10^{14} molecules cm^{-2} , which were the highest of all refineries. Similarly, the adjacent Mina Al-Ahmadi port had the highest columns over all ports (of 64.11×10^{14} molecules cm^{-2}). Thus, this general area is a particularly intense NO_2 hotspot, as indicated in Figure 1, due to the close proximity of several emission sources. For comparison, the highest NO_2 columns over power plants were found at the Tarasht Shahid Firouzi power station near Tehran, which had a median level of 74.18×10^{14} molecules cm^{-2} .

For HCHO, Iran with 16 locations, Yemen 13, and Saudi Arabia 6, dominated the top-50 ranked urban settlements. The five locations with the highest median values were located in Yemen, along its western coast, with the highest columns found over al-Marawiah, which had an average value of 5.28×10^{15} molecules cm^{-2} . Over refineries, the highest median HCHO columns of 4.86×10^{15} molecules cm^{-2} were detected at the Umm Said refinery in Qatar. In addition, 6 of the highest 10 ranked power plants were also located in Qatar, particularly, those near Doha and Masaieed. However, higher median column values of 4.99 and 5.03×10^{15} molecules cm^{-2} were found over the Bandar-e Khomeni port, and Petroshimi and Bandar Immam power plants, respectively. Both these sites are closely located to the Bandar Imam Petrochemical facility in south Iran, which may indicate a potentially strong VOC source.

The top-50 ranked urban locations for SO_2 were dominated by Kuwait (26 locations) and Iran (13 locations). The highest level of 0.73 DU was found at Rafsanjan (Iran), which is closely located to the Sarcheshmeh copper mine and smelter facility. The coastal settlements adjacent near to the Shuaiba, Mina Al-Ahmadi and Mina Abdullah refineries (in Kuwait) again had high pollutant levels, typically 0.65–0.68 DU. Similarly, the oil ports of Kharg Island (in the Gulf) and Jeddah terminal also have high levels of 0.85 DU and 0.76 DU. Over power plants, the highest average levels were found over Mobin Petroshimi open gas cycle turbine (OGCT) facility, and the Asalooyeh OCGT near Bushehr (Iran), with levels of 1.00 DU and 0.98 DU, respectively.

The highest average CHOCHO values over urban areas were found mostly in Iran (17 locations), Saudi Arabia (13), and Kuwait (17). The cities of Mecca and Tehran have the largest average levels of 44.32 and 39.44×10^{13} molecules cm^{-2} , respectively. The highest levels over refineries are found at Tehran (34.87×10^{13} molecules cm^{-2}) and the three main coastal Kuwait refineries of Shuaiba, Mina Al-Ahmadi and Mina Abdullah (30.34 – 30.80×10^{13} molecules cm^{-2}). The oil port of Mina Al-Ahmadi also has the highest median level of 30.48×10^{13} molecules cm^{-2} . The Mecca OCGT power plant recorded the highest level of 43.81×10^{13} molecules cm^{-2} ; other notable CHOCHO levels over power facilities were at Tarasht Shahid Firouzi and Besat (in Tehran) with columns of 42.72 and 39.85×10^{13} molecules cm^{-2} , respectively.



4.2 Observed Maximum Pollution Levels

We find median maximum values range from 41–79% above the overall median VCD for NO₂ (and
410 are highest over ports), 68–92% for HCHO (highest over ports), 118–135% for CHOCHO (high-
est over refineries), and 93–318% for SO₂ (highest over refineries). However, the actual maximum
values observed can be substantially higher. For example, the three highest NO₂ columns were
found at (1) the 247.5MW Oil Besat Thermal Power Plant in Tehran, Iran (189.85×10^{14} molecules
cm⁻², 604% above overall median VCD), (2) the Tarasht Shahid Firouzi power plant also in Tehran
415 (167.78×10^{14} molecules cm⁻², 522% higher), and (3) over Tehran itself (136.65×10^{14} molecules
cm⁻², 407% higher).

For HCHO, the highest three values are found over the Iranian towns of (1) Shahrkord (10.49×10^{15}
molecules cm⁻², 164% higher than median VCD), (2) Somehsara (9.89×10^{15} molecules cm⁻²,
149%), and (3) Fuman (9.83×10^{15} molecules cm⁻², 148%). Whilst for CHOCHO, the highest val-
420 ues are found in the towns of (1) Piranshahr (Iran) which had a maximum of 112.10×10^{13} molecules
cm⁻² (499%), (2) Tafileh in Jordan (96.57×10^{13} molecules cm⁻², 416%), and (3) Qaemshahr in Iran
(80.52×10^{13} molecules cm⁻², 330%).

Lastly, for SO₂ the the three highest values were at the (1 & 2) Mobin Petroshimi OCGT CHP
and Asalooyeh OCGT power plants, both in Bushehr (Iran), which had values of 2.22 DU (957%)
425 and 2.05 (876%) respectively, and (3) the oil port at Kharg Island, which had a value of 1.98 DU
(843%).

4.3 Seasonal Variability

For NO₂ median seasonal amplitudes are very similar irrespective of target categories. Typical am-
plitudes of $10\text{--}12 \times 10^{14}$ molecules cm⁻² are observed (about 39–46% relative to the overall median).
430 The highest seasonal amplitude of 66×10^{14} molecules cm⁻² was found over Besat Thermal Power
Plant in Iran, whereas the lowest amplitude of 1.49×10^{14} molecules cm⁻² was determined over Ataq
in Yemen. Unlike NO₂, HCHO exhibits greater seasonal variability (relative to the overall median)
with seasonal amplitudes that vary from $3.02\text{--}3.43 \times 10^{15}$ molecules cm⁻² (or about 60–86%) with
the highest of 5.65×10^{15} molecules cm⁻² over Dahuk in Iran, and a lowest of 1.20×10^{15} molecules
435 cm⁻² over Salalah OCGT power plant in Dhofar (Oman). Similarly, CHOCHO also exhibits large
seasonal variability as median amplitudes vary from $14.38\text{--}16.48 \times 10^{13}$ molecules cm⁻², or 77–
88%, with the highest amplitude of 44.53×10^{13} molecules cm⁻² over Qaemshahr (Iran) and lowest
amplitude over Bilin (Palestine) of 8.89×10^{13} molecules cm⁻². Even larger seasonal variability is
demonstrated for SO₂, as amplitudes range from 0.21–0.44 DU (100–210%) with the lowest ampli-
440 tude of 0.09 DU over Al Gaydah (Yemen) and highest over 1.15 DU over Shahreza (Iran). However,
the higher amplitudes in the CHOCHO and SO₂ data may reflect the greater noise in the time series
data compared to the other gases (see e.g., Figure S2–3).



4.4 Linear Trends μ

For NO_2 , statistically significant real linear trends were determined for 198 of 818 urban locations (a
445 detection rate of 24%). However, if we disregard Palestine, where only 1 out of its 274 urban targets
had a real trend, then this value increase to 36%. The corresponding ‘detection percentages’ for oil
refineries, oil ports, and power plants are 42%, 33%, and 37% respectively (Table 1). Urban trends
ranged from -3.05 ± 0.93 to 12.23 ± 1.54 % per year (relative to the observed median column), with
the highest trend in Dahuk (Section 3.3, Figure 4). Generally, Iraq and Iran have the highest linear
450 NO_2 trends. For example, 5 of top 7 highest linear trends were found in Iraq, whereas 21 Iranian
cities appeared in the top 50 (see Table S2). Overall, the median linear trend is about 3% yr^{-1} ,
although for the top 50 highest ranked locations, the trends were of order 2–12 % yr^{-1} , relative to
each locations observed median VCD. Only two locations showed a decrease in NO_2 : Aleppo (a.k.a
Halab; of -2.43 ± 1.06 % yr^{-1}) and As-Safira (-3.05 ± 0.93 % yr^{-1}), both in Syria. On a per-country
455 basis, 75% of urban targets in Iraq had a real increasing trend, 58% in Iran, 53% Lebanon, 50%
Qatar, 44% Oman, 38% Saudi Arabia, 31% Jordan, 22% Syria, 11% Kuwait, 4% in Israel, 3%
Yemen, and Palestine <1%. No trends were detected in the UAE or Bahrain.

Trends over refineries ranged from about 2–6 % yr^{-1} , with a maximum found over the Daura
refinery, near Baghdad; its capacity is smaller than some of the larger refineries which may indicate
460 the influence of other nearby NO_2 sources. For Iran, Iraq, and UAE, about 60% of the refineries
studied showed an NO_2 increase. Trends over oil ports ranged from about 2–9 % yr^{-1} , with highest
trend found over Umm Qasr in Iraq. Trends over power plants ranged from about 2–8 % yr^{-1} , with
5 of top highest 10 trends found in Iran. The highest trends for power stations were detected over
the two Sabiya plants in Kuwait which had trends of 8.13 ± 0.14 % yr^{-1} . Figure 5, which shows
465 the geographical distribution of NO_2 trends (top left panel), indicates that there are several local
and regional locations where consistent increases NO_2 are observed. For example, there are several
targets with increasing trends situated close to Riyadh, Tehran, Baghdad, Muscat (in Oman), as well
as Isfahan and Yazid (both in Iran). Regional trend hot-spots include the areas south-west of Tehran,
and a thin corridor stretching from northern Jordan to Lebanon, passing through south-west Syria.

470 For HCHO, statistically significant real linear trends were determined for only 4% of urban loca-
tions. The corresponding trend detection percentages are 15% for oil refineries, 22% for oil ports,
and 17% for power plants (Table 2). Urban trends ranged from 2–7 % yr^{-1} . The highest absolute
linear urban trend was found al-Wakrah in Qatar (Figure S1), although this was only about 5% yr^{-1}
in relative terms; the highest percentage trend was found over Attaif in Saudi Arabia (6.95 ± 2.42 %
475 yr^{-1} ; see Table S2). Generally, Saudi Arabia has the highest number of settlements with increasing
HCHO trends (13 of the corresponding 34 trends found). Elsewhere there were 6 trends found in
Oman, 5 in Qatar, 3 in Iran, 3 in UAE, 1 Iraq and 1 Israel. Only six trends were detected over oil
refineries, which ranged from 2–3.5 % yr^{-1} , with a maximum found over the Ruwais refinery in
UAE. Only four trends over oil ports were found, which ranged from 2–4 % yr^{-1} , with highest trend



480 found over the Ras Laffan port at Al Khawr (Qatar). Trends over power plants ranged from 2–7 %
yr⁻¹, but were only found over Saudi Arabia (8 stations), Iran (5), Qatar (4), and UAE (5). Figure 5
(top right panel) shows that the target locations with trends are mostly found along the western Gulf
coast, particularly along the Saudi Arabian coast near Ad-Dammam, and also near Doha in Qatar.

For SO₂, very few trends were detected, only 2% over urban targets, 7% over refineries, 11% over
485 ports and 6% over power plants (Table 4). Over urban areas, trends ranged from -61.64 ± 28.73 %
yr⁻¹ in Hamismusayt (Saudi Arabia) to 118.49 ± 42.78 in Azrashahr (Iran); the latter value is inflated
by a median SO₂ column of approximately zero over its location. Notably, 11 of the 18 trends were
detected in Iran. Over refineries, three trends were detected of about 9–15 % yr⁻¹. Over ports, the
Iranian ports of Bandar-e Khomeini and Kharg Island, showed decreases of about 6% yr⁻¹. Lastly,
490 over power plants 5 locations had decreasing trends of -7 to -22 % yr⁻¹, and 4 stations increasing
trends of about 6–305 % yr⁻¹ (again the latter value has a median SO₂ column of approximately
zero). Figure 5 (bottom left panel) shows the geographical distribution of the SO₂ trends; it is evident
that several closely located targets exhibit similar trends, particularly near (1) Abba (in southwest
Saudi Arabia), (2) around Neka, Sari and Behhshahr in northern Iran, which are close to the Shamid
495 Salimi power plant at Nowzarabad, and (3) Tarbiz, Azrashahr, and Maragheh in Iran.

For CHOCHO only two trends were detected: (1) at Al-Hawr (Qatar) of -4.58 % yr⁻¹, and (2)
at the Ras Laffan Power plant in Qatar of -4.83 % yr⁻¹, which are located close to each other
(Figure 5; bottom right panel).

4.5 Median Growth Rates *G*

500 Figures 6 show the growth rates that correspond to sites with statistically significant linear trends
(i.e. where we can be sure that the trend is not attributed to variations in other retrieval parameters),
and Figure 7 shows their difference, here defined as the linear trend (in % yr⁻¹) minus the growth
rate (in % yr⁻¹). While the overall median differences are quite small (typically less than 2 % yr⁻¹),
for individual locations they can be much larger. Typically for NO₂ and HCHO, the differences can
505 range between ± 5 % yr⁻¹ (Table S3). Such occurrences are non-negligible. For example, the NO₂
linear trend and growth rates over Ibri (in Oman), were about 3 % yr⁻¹ and 8 % yr⁻¹, respectively.
For SO₂ the differences can be even more substantial (i.e. tens of percent per year), but this is
likely an effect from filtering much noisier fit residuals (e.g., as shown in Figure S3). Furthermore,
Figure 7 show that there is no clear spatial patterns or coherence to the geographical distribution of
510 the linear and growth differences. This raises the interesting question for AQ trend studies: should
one consider linear changes in a trace gas, or use a growth rate? The former does not capture shorter-
term variations in growth, but the latter is more susceptible to the choice of fit residual filter and has
larger uncertainties.



5 Trends: Fact or fiction?

515 It is, perhaps, tempting to try explain the trends in terms of variations in underlying emissions and/or atmospheric chemistry. However, it seems more prudent to carefully assess the validity of our presented results instead. We do this by examining our analytical uncertainties, by performing a series of sensitivity tests, and by discussing our results in the context of other recent satellite studies.

5.1 Uncertainties

520 Calculated uncertainties in the linear trend and other derived curves mostly reflect the noise of the trace gases time series. For NO_2 , and considering only those locations with real statistically significant trends, we find the median uncertainty in the linear trend is about 1%. The median uncertainties are about 4% for the trend curves, 6–7% for the smoothed curves, 5–6% in the growth curves, and about 6–8% seasonal-cycles, respectively. For HCHO , corresponding values are very similar; 5% in
525 the trend curves, 7% in the smoothed, 7% in the growth and 9% in the seasonal curves, with the median uncertainty in the linear trend about 1%. For CHOCHO , uncertainties are slightly higher, being 10% in the trend curves, 15% in the smoothed, 14% in the growth and 18% in the seasonal curves. The median uncertainty in the linear trend is about 2%. The uncertainties are noticeably higher for SO_2 , with errors of 10–23% in the trend curves, 15–34% in the smoothed, 14–32% in the growth
530 and 18–40% in the seasonal curves. The median uncertainty in the SO_2 linear trend is about 2–5%. Thus for the most part, the uncertainties in the linear trends are comparable or smaller than than the trends themselves. However, uncertainties in the growth rates are comparable or higher than the derived average growth trends.

5.2 Sensitivity Tests

535 Subtle differences in the data analysis approach may affect the choice of locations where trends are detected, or may change existing trend directions and magnitudes. Given this situation several additional tests were carried out to determine the sensitivity of our results to various parameters. These are outlined below. Tables S4–S7 record how many trends were now detected in each test, and whether or not they were previously detected in the default approach (as outlined in Section 3.3).

540 – **Test 1: Construct each 10-year time series using a mask of ± 4 grid-cells (~ 20 km radius around each target), instead of the default ± 2 grid-cells (~ 10 km radius around each target).**

For NO_2 , there were 22 and 12 extra trends detected over urban and power plants, respectively, compared to our default analysis (shown in Table 1). The number of NO_2 trends detected over
545 oil ports and refineries were unchanged. However, some trends previously detected were now missing, compensated by new trends over other locations. For example, in the case of urban targets, 170 locations in this test were also previously detected in the default scenario, but 28



of the previous trends were missing, and 50 new trends detected (see Table S34). Nevertheless, median linear trends were of similar order (about -2 to 10 % yr^{-1}). The highest urban NO_2 trends were still at Dahuk and Irbil (in Iraq), but marginally changed from 12.23 ± 1.54 % yr^{-1} to 10.39 ± 1.42 % yr^{-1} , and from 8.76 ± 1.17 % yr^{-1} to 8.18 ± 1.16 % yr^{-1} , respectively. Umm Qasr and Zubayr oil terminals were still the highest ranked ports, at 8–9 % yr^{-1} . Similarly, the Sabiya CCGT and OCGT power plants still had the highest trend of about 8 % yr^{-1} .

For HCHO this resulted in an extra 25 trends being detected (spread over all categories); nevertheless the median linear trends were still about 2–3 % yr^{-1} . The majority of trends previously found in the default case were still present in this test. However, notably, the number of detections over ports doubled from 4 to 8, with the highest trend now found over Sitrah in Bahrain 4.03 ± 1.14 % (the trends over the Ras Laffan and Al-Ruwais ports were now displaced to second and third highest). That said, both al-Wakarah and Doha still had the highest (absolute) trends for cities (of about 3–4 % yr^{-1}), and again the Ras Abu Fountas OCGT power plant in Doha (Qatar) also topped the highest ranked trends over power stations.

For SO_2 the highest urban trends were still over Ilam and Tabriz (Iran), and also Baghdad and Irbil (Iraq). Although 18 urban trends were still detected, only 9 were previously found in the default scenario (including those over Sari, Neka and Maragheh), thus 9 new trend locations were found. Over ports the highest trend was now over Umm Qasr relative trend of 23.09 ± 5.87 % yr^{-1} , as a trend was now not detected at Bandar-e Khomeni (BIK); Kharg Island still reported a decrease of about -6 % yr^{-1} . SO_2 trends were found over the same three refineries, and were still about 9–12 % yr^{-1} . Median trends over urban areas changed from 9.8 to 12.0 % yr^{-1} , but refineries and power plants remained at about 9 and 6 % yr^{-1} , respectively. The Sabiya CCGT and OCGT power plants in Kuwait were still the highest-ranked trends.

For CHOCHO, in addition to the trend of al-Hawr, only an extra urban trend at Shushtar (Iran) of -5.33 ± 2.58 % yr^{-1} was detected. An additional trend at the Ras Laffan (Qatar) refinery was also found of about -4.27 ± 1.91 % yr^{-1} ; the trend over the Ras Laffan power stations was also present as in the default scenario.

In summary, although increasing the averaging radius to ~ 20 km around each target has a small impact on overall median trends, it can result in differences at individual locations. Generally however, most of the trends found in the default approach were still present.

– **Test 2: Use of different cloud fraction filters (40% instead of 20%)**

For this we used only OMI NO_2 and HCHO observations with a cloud fraction ≤ 40 % in the analysis; CHOCHO and SO_2 and were untested, as the use of a strict cloud threshold is advised (Krotkov, 2014).



585 For NO₂, there were 45 fewer trends detected in total (mostly over urban locations, 165 compared to 198 previously). The majority of trends in the default analysis were still present - hence the relative median trends were still about 3–4 % yr⁻¹. Furthermore, the top ten urban ranked trends were also mostly unchanged, as were those over ports, refineries and power plants compared to the default scenario.

590 For HCHO there were two less detections in total, with the highest urban trend found over Ardebil (Iran) at 7.06±2.53 % yr⁻¹. Again the majority of locations with trends were consistent with those detected in the default scenario; hence the median trends are still about 3 % yr⁻¹.

Thus, in summary, increasing the cloud fraction for NO₂ and HCHO slightly decreases the number of trends found, and on average, has a small impact on overall median trends. Differences at individual locations can still occur, compared to the default approach.

595 – **Test 3: Use of OMI detector rows totally unaffected by the row-anomaly (rows 5-23)**

Despite the use of the static masks and OMI level-1B XTrackQualityFlags in the data gridding (Section 3.1), statistically significant sampling trends are present for a number of locations where VCD trends occur (Tables 1–4). Therefore, we repeated our analysis but using only data from OMI's unaffected rows.

600 However, despite using data from the unaffected detector rows, we still find sampling trends present in some time series. For example, for NO₂ 227 statistically significant VCD trends were now detected in total, but 57 of those had a sampling trend. As a consequence, for NO₂ only 136 'real' trends in total were detected (instead of 278; see Table 1), in particular over 100 less trends were found over settlements, and nearly half the amount over power plants. 605 Nevertheless, trends were found over the same locations (especially in the top 20 ranked urban) with median trends now 3.0–6.5 % yr⁻¹ (was 3–4 % yr⁻¹). The Daura refinery (near Baghdad) and the Umm Qasr port still had the highest trends of these categories (but now of 5.78±0.95 and 7.76±0.91 % yr⁻¹, respectively).

610 For HCHO, only 38 trends were detected in total (was previous total was 70), in particular, 27 urban and 16 power plant trends previously detected were now missing. Median linear trends about 3.0–5.0 % yr⁻¹, with the highest urban trends now found over over Sarepol (7.39±3.41 % yr⁻¹) and Torbatejam (8.41±2.60 % yr⁻¹), both in Iran.

615 For SO₂ there were 7 fewer trends detected in total, but notably 9 of the default of 18 urban trends were still detected. Median trends were about –7 to 13 % yr⁻¹ (formerly –7 to 10 % yr⁻¹). Urban trends now ranged from about –12 to 150 % yr⁻¹, and power plants –7 to 75 % yr⁻¹. A decrease of about 7 % yr⁻¹ was found over Kharg Island port, as was an increase of 9.69±2.40 % yr⁻¹ over the Daura refinery.



For CHOCHO, only two trends over the towns of Ardebil (of about $25\% \text{ yr}^{-1}$) and Shushtar (of about $-18\% \text{ yr}^{-1}$), both in Iran, were detected.

620 Thus, in summary, we find that using less observations results in fewer trends being detected (since there are less observations in averaging which increases the noise). Also, we find that use of the unaffected rows results in slightly higher median trends overall.

– **Test 4: Increased smoothing of gridded monthly averages**

625 To further reduce noise in the gridded data we increase the degree of smoothing by using a larger Gaussian filter of $0.35^\circ \times 0.35^\circ$ with a $2\text{-}\sigma$ width. This had a small effect on our results, as the total number of trends detected for all species and categories was more or less the same in the default scenario, and nearly all the trends locations in the default scenario are still detected. Median trends were also unchanged.

– **Test 5: No filtering for outliers in VCD time series analysis**

630 Whilst filtering for VCD outliers in the time series fitting is advantageous in improving the modelling fitting, it may also remove genuine data points that may affect trend detection.

For NO_2 the number of detections and their locations are approximately the same, albeit with 27 new urban trends replacing 26 default trends. Tehran is now the top-ranked city (in absolute terms) although its relative trend of $8.82 \pm 2.59\% \text{ yr}^{-1}$ is still less than that found at Dahuk 635 ($15.86 \pm 2.33\% \text{ yr}^{-1}$). Considering all target categories, we find median trends range from about -2 to $16\% \text{ yr}^{-1}$ (as opposed to about -3 to $12\% \text{ yr}^{-1}$). Similarly for HCHO, the number of detections and their locations are approximately the same, and the range of trends is unchanged.

640 For the most part SO_2 trends are also in the same places, with a few exceptions over urban and power plant targets. Trends over urban and refinery targets cover a higher range -23 to $148\% \text{ yr}^{-1}$, and 10 – $20\% \text{ yr}^{-1}$, respectively, than previously. This results in higher median values of 14 and $15\% \text{ yr}^{-1}$ for these categories (compared to the default case). Median values over ports and power plants are unchanged.

645 Lastly, for CHOCHO, only one urban trend was now detected over Shushtar (Iran) at $-8.65 \pm 3.83\% \text{ yr}^{-1}$, and two extra trends were found over the closely located power plants both at the Az Zour plant complex in Mina Said (Kuwait), which had a trend of $-3.64 \pm 1.75\% \text{ yr}^{-1}$.

In summary, not filtering for VCD outliers only has a small effect on our results. Typically, most trends in the default scenario are detected, albeit with some changes in trend magnitudes (mostly for NO_2 and SO_2).

650 – **Test 6: Focus only on cities with >500,000 people using a spatial mask of ± 16 grid-cells (~ 80 km radius around each target)**



In this test we focused on the integrated signals from large population centres, which correspond to 32 targets only. For NO₂ there are 22 trends detected (a detection rate of 69%), for HCHO there were 9 trends (32% detection rate), and SO₂ 3 trends were found (9% detection rate). No trends were found for CHOCHO.

We find NO₂ trends are similar to those found in the default analysis. For example, trends over Tehran, Baghdad, Riyadh, Kirkuk, Orumiyeh (Iran), Isfahan and Ad-Dammam are approximately the same, although at Irbil the linear trend is now 6 % yr⁻¹; previously it was about 9 % yr⁻¹.

For HCHO there were three locations which could be compared to the default case. These were: Attaif (now 3 % yr⁻¹ was previously 7 % yr⁻¹), Abu Zabi (now 2 % yr⁻¹ was 3 % yr⁻¹) and Addammam (still about 3 % yr⁻¹), but there were 6 new trend locations found with trends from 2–3 % yr⁻¹, consistent with HCHO trends over other urban settlements.

For SO₂ only Tarbiz has trend that was previously detected (61 % yr⁻¹), but now with a value of 37 % yr⁻¹. We now find two other trends of about 15 % yr⁻¹ at Kermanshah (Iran) and 22 % yr⁻¹ at al-Mawsil (Mosul, Iraq).

In summary, for NO₂ and HCHO, we find that the trend detection percentages (relative to the 32 targets) increase, but generally the trends over co-existing locations found in the default analysis do not really change.

Therefore, whilst different approaches in the time series analysis may, in some cases, affect trends found over individual locations, overall there are a large number of targets (per gas species) where trends of approximately the same magnitude are consistently detected. This gives some level of confidence in the robustness of the trend analysis.

5.3 Comparative Studies

Another way to corroborate our results is through comparison to other similar independent studies. For example, Duncan et al. (2016) performed NO₂ trend analysis for the world's major cities using the official NASA product, as described in Bucsela et al. (2013), available from the NASA Goddard Earth Sciences Data Active Archive Centre (<http://disc.sci.gsfc.nasa.gov>). In that study, monthly mean values were based on the average of OMI data falling within 0.3° × 0.3° boxes centred over the cities. We find good agreement in trend magnitudes (within cited errors) for Tehran, Baghdad, Kirkuk, Kuwait City, Beirut, Aleppo, Mecca (not classified in our analysis as a 'real' trend) and Jerusalem (not classified here as significant). There is disagreement at Mosul (4.43 ± 1.18 % yr⁻¹, here 2.14 ± 1.02 % yr⁻¹) and Riyadh (0.00 ± 1.19 % yr⁻¹, here 3.27 ± 0.85 % yr⁻¹), Homs (−0.81 ± 0.99 % yr⁻¹, here 1.26 ± 0.74 % yr⁻¹ and classified as real but not significant), and Damascus (−3.72 ± 1.10 % yr⁻¹, here −0.65 ± 0.92 % yr⁻¹ classified as not significant or real). These



small discrepancies likely occur because of the different choices of OMI data set and different analysis methodology.

Similarly, a top-down multi-species inversion involving OMI DOMINO NO₂ columns by Miyazaki et al. (2016) indicated NO_x emissions trends of 3.7 % yr⁻¹ for Tehran and 4.7 % yr⁻¹ for Kuwait City; which are broadly consistent with our results. However, Miyazaki et al. (2016) also found an emissions trend of -6.0 % yr⁻¹ for Dubai, whereas we find a NO₂ trend of -0.56±1.05 % yr⁻¹ (classified as real but not significant).

We have also compared our results with the global catalogue of SO₂ emission sources produced by Fioletov et al. (2016). Over the Middle East we were able to identify thirty corresponding targets, for which we compared the linear trends of the derived SO₂ emissions to our derived SO₂ trace gas trends. We find five locations where the SO₂ trends in both studies agree (within errors), and where we class the trends as real and significant. For example, there is excellent agreement at Kharg Island (here -6.89±2.20% yr⁻¹ versus -7.84±2.50 % yr⁻¹) and the Besat power plant in Tehran (in this study 3.54±3.35% yr⁻¹, versus 3.86±3.61% yr⁻¹). However, we also find good agreement at an additional 16 sites, where we class the trends as real but not significant, thus indicating the good correspondence between the two independent studies.

Lastly, both Lelieveld et al. (2015) and Duncan et al. (2016) have used independent economic and social information to attempt an interpretation of observed changes in OMI NO₂ and SO₂ over the Middle East. We have further compared our derived trends to the linear growth in the Organisation of Petroleum Exporting Countries (OPEC) oil production and demand data, and additionally, population, GDP per capita (GDP), and energy consumption per capita (EC) data, from the World Data Bank (<http://data.worldbank.org>). We find such comparisons, are at the very least, difficult to interpret. For example, over 2005–2014 Iran's GDP grew by 2.8 % yr⁻¹, inline with the NO₂ and HCHO median linear trends of 2–4 % yr⁻¹, but its oil production fell by -2.5 % yr⁻¹ conflicting with the increasing OMI trace gas trends found over refineries.

6 Summary and Outlook

We have performed a robust and detailed time series analysis on 10 years of OMI trace gas observations of NO₂, HCHO, SO₂, and CHOCHO, to assess changes in local air-quality for over 1000 urban, oil and energy target locations over the Middle East during the period 2005–2014.

We find the highest average pollution levels of HCHO, SO₂, and CHOCHO are over the major oil ports and refineries, compared to urban areas and power plants. For HCHO and CHOCHO, the average trace columns are about 15–25% higher over the ports and refineries, whereas for SO₂ the columns are about 60–80% higher. In contrast, NO₂ is found to be slightly higher over the urban areas and ports by about 5–15%. The highest average pollution levels over urban settlements are typically in Bahrain, Kuwait, Qatar, and UAE. Other notable pollutant hotspots include: (1) Kuwait



City, Tehran and Mecca; (2) the west coast of Yemen where HCHO levels are high, and (3) elevated SO₂ near Rasanjan and over Kharg Island. We find the observed vertical columns can exceed average levels by about 40–320%, depending on the trace gas species.

Our analysis shows that NO₂ linear trends over urban locations range from about –3 to 12 % yr^{–1}, although only two locations showed a decrease in NO₂. Linear trends over oil refineries and ports are about 2–6 % yr^{–1} and 2–9 % yr^{–1}, respectively. Trends over power plants range from 2–8 % yr^{–1}, with 5 of the topmost 10 trends found in Iran. For HCHO, we find urban trends are 2–7 % yr^{–1}. Only six trends of 2–3.5 % yr^{–1} were detected over oil refineries, and only four trends of 2–4 % yr^{–1} were detected over oil ports. Trends over power plants ranged from 2–7 % yr^{–1}. The increasing HCHO trends are mostly found along the western Gulf coast, particularly along the Saudi Arabian coast near Ad-Dammam, and also near Doha in Qatar. Very few SO₂ trends were detected. Over urban areas, trends ranged from about –60 to 120 % yr^{–1}, with 11 of the 18 trends were detected in Iran. However, some of the high relative SO₂ trends can be attributed to median levels of approximately zero over the location. Over refineries, three trends were detected of about 9–15 % yr^{–1}, whilst the Iranian ports of Bandar-e Khomeni and Kharg Island, showed decreases of about 6% yr^{–1}. Apart from two locations, we find CHOCHO levels are not changing over the Middle East. Derived growth rates, are, on average, very similar to the fitted linear trends, although difference can occur for individual locations, particularly for SO₂. We find our derived linear trends are generally consistent with other independent OMI trend studies over this region.

Therefore, based on this analysis, we can conclude that for a large number of locations, air-quality has deteriorated over 2005–2014. Whilst effective regulatory measures have been established in some countries, it is clear that effective pollutant emission controls are required to limit health impacts on the region's population. Whether this goal is achievable is an open question, especially in countries experiencing civil unrest (e.g., Iraq, Syria, Yemen, Palestine) or increasing economic growth (e.g., Iran).

In the near future, the TROPospheric Ozone Monitoring Instrument (TROPOMI), which is expected to be launched in 2016 and has a smaller spatial observational footprint compared to OMI, should further help evaluate changes in air-quality at local scales. However, it is important that such future measurements are carefully validated and integrated with in-situ measurements and chemical transport models, so that they can be utilised properly to influence air-quality policy decision-making in Middle Eastern countries.

Acknowledgements. This research used the ALICE and SPECTRE High Performance Computing Facility at the University of Leicester. We acknowledge the free use of DOMINO tropospheric NO₂ column data from www.temis.nl, and the HCHO and SO₂ data from the NASA OMI portal (<http://disc.sci.gsfc.nasa.gov/Aura/data-holdings/OMI>).



References

- Abdul-Wahab, S. A.: Two case studies of air pollution from Oman and Kuwait, *International Journal of Environmental Studies*, 66, 179–191, doi:10.1080/00207230903069403, 2009.
- Acarreta, J. R., De Haan, J. F., and Stammes, P.: Cloud pressure retrieval using the O₂-O₂ absorption band at 477 nm, *J. Geophys. Res.*, 109, D05204, doi:10.1029/2003JD003915, 2004.
- 765 Balk, D., Deichmann, U., Yetman, G., Pozzi, F., and Hay, S. Land Nelson, A.: Determining Global Population Distribution: Methods, Applications and Data, *Advances in Parasitology*, 62, 119–156, doi:http://dx.doi.org/10.1016/S0065-308X(05)62004-0, 2006.
- Bey, I., Jacob, D. J., Yantosca, R. M., Logan, J. A., Field, B. D., Fiore, A. M., Li, Q., Liu, H. Y., Mickley, L. J., and Schultz, M. G.: Global modeling of tropospheric chemistry with assimilated meteorology: Model description and evaluation, *J. Geophys. Res.*, 106(D19), 23 073–23 096, doi:10.1029/2001JD000807, 2001.
- 765 Boersma, K. F., Eskes, H. J., Veeffkind, J. P., Brinksma, E. J., van der A, R. J., Sneep, M., van den Oord, G. H. J., Levelt, P. F., Stammes, P., Gleason, J. F., and Bucsela, E. J.: Near-real time retrieval of tropospheric NO₂ from OMI, *Atmos. Chem. Phys.*, 7, 2103–2118, doi:10.5194/acp-7-2103-2007, 2007.
- 770 Boersma, K. F., Braak, R., and van der A, R. J.: Dutch OMI NO₂ (DOMINO) data product v2.0, HE5 Data File User Manual, 2011a.
- Boersma, K. F., Eskes, H. J., Dirksen, R. J., van der A, R. J., Veeffkind, J. P., Stammes, P., Huijnen, V., Kleipool, Q. L., Sneep, M., Claas, J., Leitão, J., Richter, A., Zhou, Y., and Brunner, D.: An improved tropospheric NO₂ column retrieval algorithm for the Ozone Monitoring Instrument, *Atmos. Meas. Tech.*, 4, 1905–1928, doi:10.5194/amt-4-1905-2011, 2011b.
- 775 Bovensmann, H., Burrows, J. P., Buchwitz, M., Frerick, J., Noël, S., Rozanov, V. V., Chance, K. V., and Goede, A.: SCIAMACHY mission objectives and measurement modes, *J. Atmos. Sci.*, 56, 127–150, 1999.
- Bucsela, E. J., Krotkov, N. A., Celarier, E. A., Lamsal, L. N., Swartz, W. H., Bhartia, P. K., Boersma, K. F., Veeffkind, J. P., Gleason, J. F., and Pickering, K. E.: A new stratospheric and tropospheric NO₂ retrieval algorithm for nadir-viewing satellite instruments: applications to OMI, *Atmos. Meas. Tech.*, 6, 2607–2626, doi:10.5194/amt-6-2607-2013, 2013.
- 780 Burrows, J. P., Weber, M., Buchwitz, M., Rozanov, V., Ladstätter-Weissenmayer, A., Richter, A., Debeek, R., Hoogen, R., Bramstedt, K., Eichmann, K.-U., Eisinger, M., and Perner, D.: The Global Ozone Monitoring Experiment (GOME): Mission Concept and First Scientific Results., *J. Atmos. Sci.*, 56, 151–175, 1999.
- 785 Callies, J., Corpaccioli, E., Eisinger, M., Hahne, A., and Lefebvre, A.: GOME-2- Metop's second-generation sensor for operational ozone monitoring, *ESA Bull.*, pp. 28–36, 2006.
- De Smedt, I., Stavrou, T., Müller, J.-F., van der A, R. J., and Van Roozendaal, M.: Trend detection in satellite observations of formaldehyde tropospheric columns, *Geophys. Res. Lett.*, 37, L18 808, doi:10.1029/2010GL044245, 2010.
- 790 De Smedt, I., Stavrou, T., Hendrick, F., Danckaert, T., Vlemmix, T., Pinardi, G., Theys, N., Lerot, C., Gielen, C., Vigouroux, C., Hermans, C., Fayt, C., Veeffkind, P., Müller, J.-F., and Van Roozendaal, M.: Diurnal, seasonal and long-term variations of global formaldehyde columns inferred from combined OMI and GOME-2 observations, *Atmos. Chem. Phys.*, 15, 12 519–12 545, doi:10.5194/acp-15-12519-2015, 2015.



- Dentener, F., van Weele, M., Krol, M., Houweling, S., and van Velthoven, P.: Trends and inter-annual variability
795 of methane emissions derived from 1979–1993 global CTM simulations, *Atmos. Chem. Phys.*, 3, 73–88,
doi:10.5194/acp-3-73-2003, 2003.
- Duncan, B. N., Prados, A. I., Lamsal, L. N., Liu, Y., Streets, D. G., Gupta, P., Hilsenrath, E., Kahn, R. A.,
Nielsen, J. E., Beyersdorf, A. J., Burton, S. P., Fiore, A. M., Fishman, J., Henze, D. K., Hostetler, C. A.,
Krotkov, N. A., Lee, P., Lin, M., Pawson, S., Pfister, G., Pickering, K. E., Pierce, R. B., Yoshida, Y., and
800 Ziemba, L. D.: Satellite data of atmospheric pollution for U.S. air quality applications: Examples of ap-
plications, summary of data end-user resources, answers to FAQs, and common mistakes to avoid, *Atmos.*
Environ., 94, 647 – 662, doi:http://dx.doi.org/10.1016/j.atmosenv.2014.05.061, 2014.
- Duncan, B. N., Lamsal, L. N., Thompson, A. M., Yoshida, Y., Lu, Z., Streets, D. G., Hurwitz, M. M., and
Pickering, K. E.: A space-based, high-resolution view of notable changes in urban NO_x pollution around the
805 world (2005–2014), *J. Geophys. Res.*, 121, 976–996, doi:10.1002/2015JD024121, 2015JD024121, 2016.
- Dutch Space: GDPS Input/Output Data Specification (IODS) Volume 2, SD-OMIE-7200-DS-467, 2009.
- Fioletov, V. E., McLinden, C. A., Krotkov, N., Moran, M. D., and Yang, K.: Estimation of SO₂ emissions using
OMI retrievals, *Geophys. Res. Lett.*, 38, n/a–n/a, doi:10.1029/2011GL049402, 121811, 2011.
- Fioletov, V. E., McLinden, C. A., Krotkov, N., Li, C., Joiner, J., Theys, N., Carn, S., and Moran, M. D.: A global
810 catalogue of large SO₂ sources and emissions derived from the Ozone Monitoring Instrument, *Atmos. Chem.*
Phys. Discuss., 2016, 1–45, doi:10.5194/acp-2016-417, 2016.
- Furman, H. and Hadar, K.: Dust Storms in the Middle East: Sources of Origin and Their Temporal Characteris-
tics, *Indoor and Built Environment*, 12, 419–426, doi:10.1177/1420326X03037110, 2003.
- Gardiner, T., Forbes, A., de Mazière, M., Vigouroux, C., Mahieu, E., Demoulin, P., Velasco, V., Notholt, J.,
815 Blumenstock, T., Hase, F., Kramer, I., Sussmann, R., Stremme, W., Mellqvist, J., Strandberg, A., Ellingsen,
K., and Gauss, M.: Trend analysis of greenhouse gases over Europe measured by a network of ground-
based remote FTIR instruments, *Atmos. Chem. Phys.*, 8, 6719–6727, doi:10.5194/acp-8-6719-2008, http:
//www.atmos-chem-phys.net/8/6719/2008/, 2008.
- Ghude, S. D., Fadnavis, S., Beig, G., Polade, S. D., and van der A, R. J.: Detection of surface emission hot
820 spots, trends, and seasonal cycle from satellite-retrieved NO₂ over India, *J. Geophys. Res.*, 113, D20 305,
doi:10.1029/2007JD009615, 2008.
- González Abad, G., Liu, X., Chance, K., Wang, H., Kurosu, T. P., and Suleiman, R.: Updated Smithsonian
Astrophysical Observatory Ozone Monitoring Instrument (SAO OMI) formaldehyde retrieval, *Atmos. Meas.*
Tech., 8, 19–32, doi:10.5194/amt-8-19-2015, 2015.
- 825 Hewson, W., Barkley, M. P., Gonzalez Abad, G., Bösch, H., Kurosu, T., Spurr, R., and Tilstra, L. G.: Devel-
opment and characterisation of a state-of-the-art GOME-2 formaldehyde air-mass factor algorithm, *Atmos.*
Meas. Tech., 8, 4055–4074, doi:10.5194/amt-8-4055-2015, 2015.
- Hilboll, A., Richter, A., and Burrows, J. P.: Long-term changes of tropospheric NO₂ over megacities derived
from multiple satellite instruments, *Atmos. Chem. Phys.*, 13, 4145–4169, doi:10.5194/acp-13-4145-2013,
830 http://www.atmos-chem-phys.net/13/4145/2013/, 2013.
- Jin, X. and Holloway, T.: Spatial and temporal variability of ozone sensitivity over China observed from the
Ozone Monitoring Instrument, *J. Geophys. Res.*, 120, 7229–7246, doi:10.1002/2015JD023250, 2015.



- Kim, K.-H., Kabir, E., and Kabir, S.: A review on the human health impact of airborne particulate matter, *Environment International*, 74, 136–143, doi:<http://dx.doi.org/10.1016/j.envint.2014.10.005>, 2015.
- 835 Kleipool, Q. L., Dobber, M. R., de Haan, J. F., and Levelt, P. F.: Earth surface reflectance climatology from 3 years of OMI data, *J. Geophys. Res.*, 113, D18308, doi:10.1029/2008JD010290, 2008.
- Kootungal, L.: 2010 WorldWide Refining Survey, *Oil & Gas Journal*, 6, 2010.
- Krotkov, N.: OMSO2 Readme File v1.2.0, NASA Goddard Space Flight Centre, USA., 2014.
- Krotkov, N. A., McLinden, C. A., Li, C., Lamsal, L. N., Celarier, E. A., Marchenko, S. V., Swartz, W. H., Bucsela, E. J., Joiner, J., Duncan, B. N., Boersma, K. F., Veefkind, J. P., Levelt, P. F., Fioletov, V. E., Dickerson, R. R., He, H., Lu, Z., and Streets, D. G.: Aura OMI observations of regional SO₂ and NO₂ pollution changes from 2005 to 2014, *Atmos. Chem. Phys. Discuss.*, 15, 26 555–26 607, doi:10.5194/acpd-15-26555-2015, 2015.
- 840 Lamsal, L. N., Duncan, B. N., Yoshida, Y., Krotkov, N. A., Pickering, K. E., Streets, D. G., and Lu, Z.: U.S. NO₂ trends (2005–2013): EPA Air Quality System (AQS) data versus improved observations from the Ozone Monitoring Instrument (OMI), *Atmospheric Environment*, 110, 130–143, doi:<http://dx.doi.org/10.1016/j.atmosenv.2015.03.055>, 2015.
- Lelieveld, J., Hoor, P., Jöckel, P., Pozzer, A., Hadjinicolaou, P., Cammas, J.-P., and Beirle, S.: Severe ozone air pollution in the Persian Gulf region, *Atmos. Chem. Phys.*, 9, 1393–1406, doi:10.5194/acp-9-1393-2009, 850 2009.
- Lelieveld, J., Beirle, S., Hörmann, C., Stenchikov, G., and Wagner, T.: Abrupt recent trend changes in atmospheric nitrogen dioxide over the Middle East, *Science Advances*, 1, doi:10.1126/sciadv.1500498, 2015.
- Lerot, C., Stavrou, T., De Smedt, I., Müller, J.-F., and Van Roozendaal, M.: Glyoxal vertical columns from GOME-2 backscattered light measurements and comparisons with a global model, *Atmos. Chem. Phys.*, 10, 855 12 059–12 072, doi:10.5194/acp-10-12059-2010, 2010.
- Levelt, P. F., van den Oord, G. H. J., Dobber, M. R., Mälkki, A., Visser, H., de Vries, J., Stammes, P., Lundell, J. O. V., and Saari, H.: The Ozone Monitoring Instrument, *IEEE Trans. GeoSci. Remote Sens.*, 44, 1093–1101, doi:10.1109/TGRS.2006.872333, 2006.
- Ley, C., Ley, C., Klein, O., Bernard, P., and Licata, L.: Detecting outliers: Do not use standard deviation around the mean, use absolute deviation around the median, *Journal of Experimental Social Psychology*, 49, 764–766, doi:<http://dx.doi.org/10.1016/j.jesp.2013.03.013>, 2013.
- 860 Li, C., Joiner, J., Krotkov, N. A., and Bhartia, P. K.: A fast and sensitive new satellite SO₂ retrieval algorithm based on principal component analysis: Application to the ozone monitoring instrument, *Geophys. Res. Lett.*, 40, 6314–6318, doi:10.1002/2013GL058134, 2013.
- 865 Liu, J. J., Jones, D. B. A., Worden, J. R., Noone, D., Parrington, M., and Kar, J.: Analysis of the summertime buildup of tropospheric ozone abundances over the Middle East and North Africa as observed by the Tropospheric Emission Spectrometer instrument, *J. Geophys. Res.*, 114, doi:10.1029/2008JD010993, d05304, 2009.
- Martin, R. V.: Satellite remote sensing of surface air quality, *Atmos. Environ.*, 42, 7823 – 7843, 870 doi:<http://dx.doi.org/10.1016/j.atmosenv.2008.07.018>, 2008.



- Miyazaki, K., Eskes, H., Sudo, K., Boersma, K. F., Bowman, K., and Kanaya, Y.: Decadal changes in global surface NO_x emissions from multi-constituent satellite data assimilation, *Atmos. Chem. Phys. Discuss.*, 2016, 1–48, doi:10.5194/acp-2016-529, 2016.
- Modarres, R. and Dehkordi, A.: Daily air pollution time series analysis of Isfahan City, *International Journal of Environmental Science & Technology*, 2, 259–267, doi:10.1007/BF03325885, 2005.
- 875 Monks, P., Granier, C., Fuzzi, S., Stohl, A., Williams, M., Akimoto, H., Amann, M., Baklanov, A., Baltensperger, U., Bey, I., Blake, N., Blake, R., Carslaw, K., Cooper, O., Dentener, F., Fowler, D., Fragkou, E., Frost, G., Generoso, S., Ginoux, P., Grewe, V., Guenther, A., Hansson, H., Henne, S., Hjorth, J., Hofzumahaus, A., Huntrieser, H., Isaksen, I., Jenkin, M., Kaiser, J., Kanakidou, M., Klimont, Z., Kulmala, M., Laj, P., Lawrence, M., Lee, J., Liousse, C., Maione, M., McFiggans, G., Metzger, A., Mieville, A., Moussiopoulos, N., Orlando, J., O'Dowd, C., Palmer, P., Parrish, D., Petzold, A., Platt, U., Poschl, U., A.S.H.Prevot, Reeves, C., Reimann, S., Rudich, Y., Sellegri, K., Steinbrecher, R., Simpson, D., ten Brink, H., Theloke, J., van der Werf, G., Vautard, R., Vestreng, V., Vlachokostas, C., and von Glasow, R.: Atmospheric composition change – global and regional air quality, *Atmos. Environ.*, 43, 5268–5350, doi:http://dx.doi.org/10.1016/j.atmosenv.2009.08.021, 2009.
- 885 Monks, P. S., Archibald, A. T., Colette, A., Cooper, O., Coyle, M., Derwent, R., Fowler, D., Granier, C., Law, K. S., Mills, G. E., Stevenson, D. S., Tarasova, O., Thouret, V., von Schneidmesser, E., Sommariva, R., Wild, O., and Williams, M. L.: Tropospheric ozone and its precursors from the urban to the global scale from air quality to short-lived climate forcer, *Atmos. Chem. Phys.*, 15, 8889–8973, 2015.
- 890 Müller, J.-F. and Stavrakou, T.: Inversion of CO and NO_x emissions using the adjoint of the IMAGES model, *Atmos. Chem. Phys.*, 5, 1157–1186, doi:10.5194/acp-5-1157-2005, 2005.
- Munir, S., Habeebullah, T. M., Seroji, A. R., Gabr, S. S., Mohammed, A. M., and Morsy, E. A.: Quantifying temporal trends of atmospheric pollutants in Makkah (1997–2012), *Atmos. Environ.*, 77, 647–655, doi:http://dx.doi.org/10.1016/j.atmosenv.2013.05.075, 2013.
- 895 Nasralla, M. and Seroji, A.: Primary pollutants and potential photochemical smog formation in Makkah, Saudi Arabia, *Arab Gulf Journal of Scientific Research*, 25(4), 153–161, 2007.
- OCED: The Cost of Air Pollution – Health Impacts of Road Transport, OECD Publishing, doi:10.1787/9789264210448-en, 2014.
- Rashki, A., Rautenbach, C., Eriksson, P., Kaskaoutis, D., and Gupta, P.: Temporal changes of particulate concentration in the ambient air over the city of Zahedan, Iran, *Air Quality, Atmosphere & Health*, 6, 123–135, doi:10.1007/s11869-011-0152-5, 2013.
- 900 Richter, A., Burrows, J. P., Nüß, H., Granier, C., and Niemeier, U.: Increase in tropospheric nitrogen dioxide over China observed from space, *Nature*, 437, 129–132, doi:10.1038/nature04092, 2005.
- Russell, A. R., Valin, L. C., and Cohen, R. C.: Trends in OMI NO_2 observations over the United States: effects of emission control technology and the economic recession, *Atmos. Chem. Phys.*, 12, 12 197–12 209, doi:10.5194/acp-12-12197-2012, http://www.atmos-chem-phys.net/12/12197/2012/, 2012.
- 905 Schneider, P. and van der A, R. J.: A global single-sensor analysis of 2002–2011 tropospheric nitrogen dioxide trends observed from space, *J. Geophys. Res.*, 117, doi:10.1029/2012JD017571, d16309, 2012.
- SEDAC: Center for International Earth Science Information Network - CIESIN - Columbia University, International Food Policy Research Institute - IFPRI, The World Bank, and Centro Internacional
- 910



- de Agricultura Tropical - CIAT. 2011. Global Rural-Urban Mapping Project, Version 1 (GRUMPv1): Settlement Points. Palisades, NY: NASA Socioeconomic Data and Applications Center (SEDAC). <http://dx.doi.org/10.7927/H4M906KR>, 2015.
- Spurr, R.: Area-weighting tessellation for nadir-viewing spectrometers, Internal Technical Note, Harvard-Smithsonian Centre for Astrophysics, 2003.
- 915 Spurr, R.: LIDORT and VLIDORT: Linearized pseudo-spherical scalar and vector discrete ordinate radiative transfer models for use in remote sensing retrieval problems, *Light Scattering Reviews*, Volume 3, ed. A. Kokhanovsky, Springer, 2008.
- Streets, D. G., Canty, T., Carmichael, G. R., de Foy, B., Dickerson, R. R., Duncan, B. N., Edwards, D. P., Haynes, J. A., Henze, D. K., Houyoux, M. R., Jacob, D. J., Krotkov, N. A., Lamsal, L. N., Liu, Y., Lu, Z., Martin, R. V., Pfister, G. G., Pinder, R. W., Salawitch, R. J., and Wecht, K. J.: Emissions estimation from satellite retrievals: A review of current capability, *Atmos. Environ.*, 77, 1011–1042, doi:<http://dx.doi.org/10.1016/j.atmosenv.2013.05.051>, <http://www.sciencedirect.com/science/article/pii/S1352231013004007>, 2013.
- 920 Thoning, K. W., Tans, P. P., and Komhyr, W. D.: Atmospheric carbon dioxide at Mauna Loa Observatory: 2. Analysis of the NOAA GMCC data, 1974–1985, *J. Geophys. Res.*, 94, 8549–8565, doi:10.1029/JD094iD06p08549, 1989.
- van der A, R. J., Peters, D. H. M. U., Eskes, H., Boersma, K. F., Van Roozendael, M., De Smedt, I., and Kelder, H. M.: Detection of the trend and seasonal variation in tropospheric NO₂ over China, *J. Geophys. Res.*, 111, D12 317, doi:10.1029/2005JD006594, 2006.
- 930 van der A, R. J., Eskes, H. J., Boersma, K. F., van Noije, T. P. C., Van Roozendael, M., De Smedt, I., Peters, D. H. M. U., and Meijer, E. W.: Trends, seasonal variability and dominant NO_x source derived from a ten year record of NO₂ measured from space, *J. Geophys. Res.*, 113, doi:10.1029/2007JD009021, d04302, 2008.
- Volkamer, R., Baidar, S., Campos, T. L., Coburn, S., DiGangi, J. P., Dix, B., Eloranta, E. W., Koenig, T. K., Morley, B., Ortega, I., Pierce, B. R., Reeves, M., Sinreich, R., Wang, S., Zondlo, M. A., and Romashkin, P. A.: Aircraft measurements of BrO, IO, glyoxal, NO₂, H₂O, O₂–O₂ and aerosol extinction profiles in the tropics: comparison with aircraft-/ship-based in situ and lidar measurements, *Atmos. Meas. Tech.*, 8, 2121–2148, doi:10.5194/amt-8-2121-2015, 2015.
- 935 Weatherhead, E. C., Reinsel, G. C., Tiao, G. C., Meng, X.-L., Choi, D., Cheang, W.-K., Keller, T., DeLuisi, J., Wuebbles, D. J., Kerr, J. B., Miller, A. J., Oltmans, S. J., and Frederick, J. E.: Factors affecting the detection of trends: Statistical considerations and applications to environmental data, *J. Geophys. Res.*, 103, 17 149–17 161, doi:10.1029/98JD00995, 1998.
- 940 WHO: 7 million premature deaths annually linked to air pollution, Public Health, Social and Environmental Determinants of Health Department, World Health Organisation, 1211 Geneva 27, Switzerland, <http://www.who.int/mediacentre/news/releases/2014/air-pollution/en/>, 2014.
- Zanis, P., Hadjinicolaou, P., Pozzer, A., Tyrllis, E., Dafka, S., Mihalopoulos, N., and Lelieveld, J.: Summertime free-tropospheric ozone pool over the eastern Mediterranean/Middle East, *Atmos. Chem. Phys.*, 14, 115–132, doi:10.5194/acp-14-115-2014, 2014.

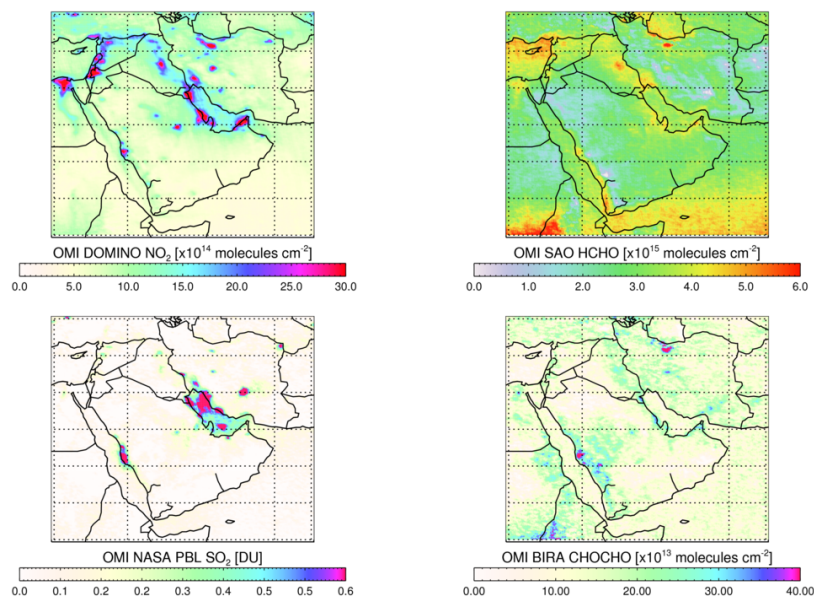


Figure 1. The OMI 2005 annual mean distributions of NO₂, HCHO, SO₂, and CHOCHO. The OMI data have been averaged onto a 0.05° × 0.05° grid using observations with cloud fractions < 20% and solar zenith angles ≤ 70°. Observations affected by the row-anomaly are excluded, as described in Section 3.1, and the gridded data have been smoothed with a 0.15° × 0.15° Gaussian filter of 1-σ width (2-σ for CHOCHO).



Figure 2. Example of GoogleEarth imagery showing the ± 2 grid-cell spatial filtering mask (in light green) relative to the centre of the city of Kerman (Iran), as discussed in Section 3.2. The mask corresponds to an approximate radial distance of about 10 km.

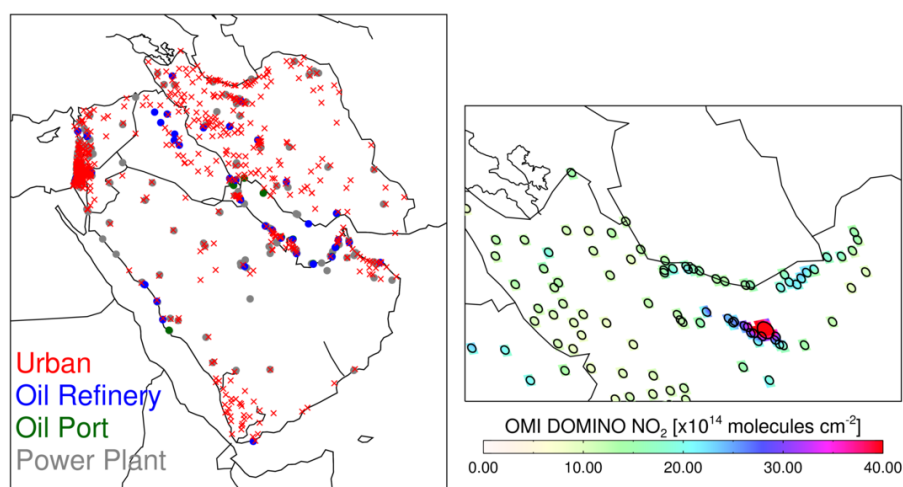


Figure 3. Left: the geographical distributions of the target locations showing cities/towns (in red) as specified by the GRUMP v1 settlement point data base (Balk et al., 2006; SEDAC, 2015) oil refineries (in blue) (based on Kootungal, 2010), and oil ports and power plants based on the Global Energy Observatory (GEO) online resource (<http://globalenergyobservatory.org>). Right: OMI 2005 NO₂ annual mean of over northern Iran, with a spatial filtering mask applied to extract observations over urban centres (see Section 3.2). The OMI data have been averaged onto a $0.05^\circ \times 0.05^\circ$ grid using observations with cloud fractions $< 20\%$ and solar zenith angles $\leq 70^\circ$. Observations affected by the row-anomaly are excluded, as described in Section 3.1, and have been smoothed with a $0.15^\circ \times 0.15^\circ$ Gaussian filter of $1-\sigma$ width.

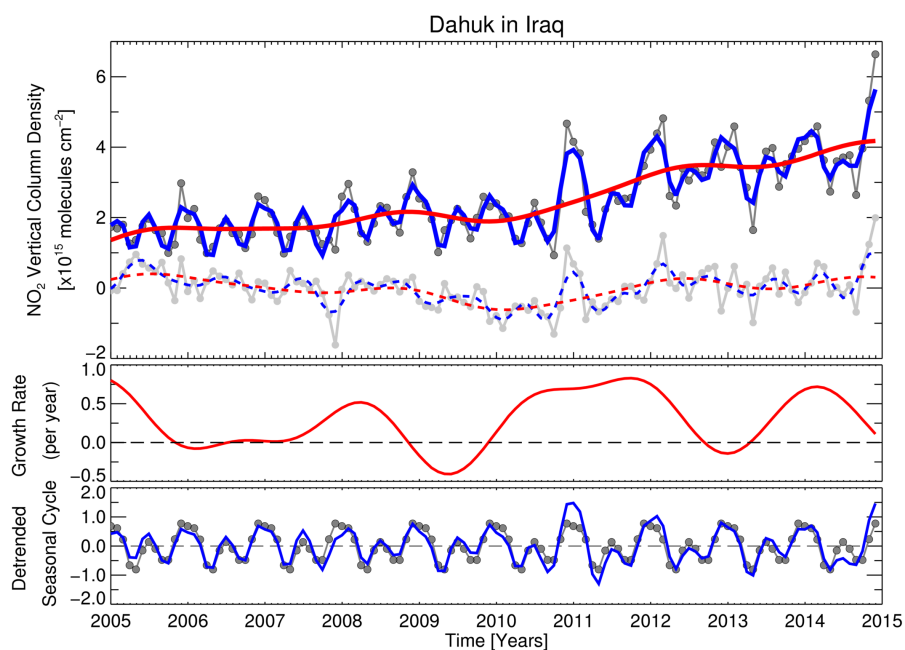


Figure 4. An example of a time series fit to observed NO_2 data over Dahuk, Iraq, as outlined in Section 3.3. Top panel: the monthly OMI NO_2 vertical columns are indicated by dark grey filled circles, whilst the light grey filled circles represent the fitting residual, which has been smoothed with a short-term 200-day filter (dashed blue line) and long-term 667-day filter (red dashed line). The solid red line is the long-term trend $F_T(t)$, given by the linear component of the fitted function $F(t)$ (equation 1) plus the residual filtered using the long-term filter. The solid blue line is the smoothed fitted curve $F_S(t)$ given by $F(t)$ plus the residual filtered using the short-term filter. Middle panel: The NO_2 vertical column growth rate in $\times 10^{15}$ molecules $\text{cm}^{-2} \text{yr}^{-1}$, which is the derivative of the long-term trend $F_T(t)$ shown in the top-panel. Bottom panel: the de-trended seasonal cycle $F_C(t)$ which is the difference between the long-term trend and the smoothed function fit (i.e. $F_S(t) - F_L(t)$). This represents the annual seasonal oscillation with any long-term trend removed. The dark grey filled circles are the fitted harmonic components of $F(t)$.

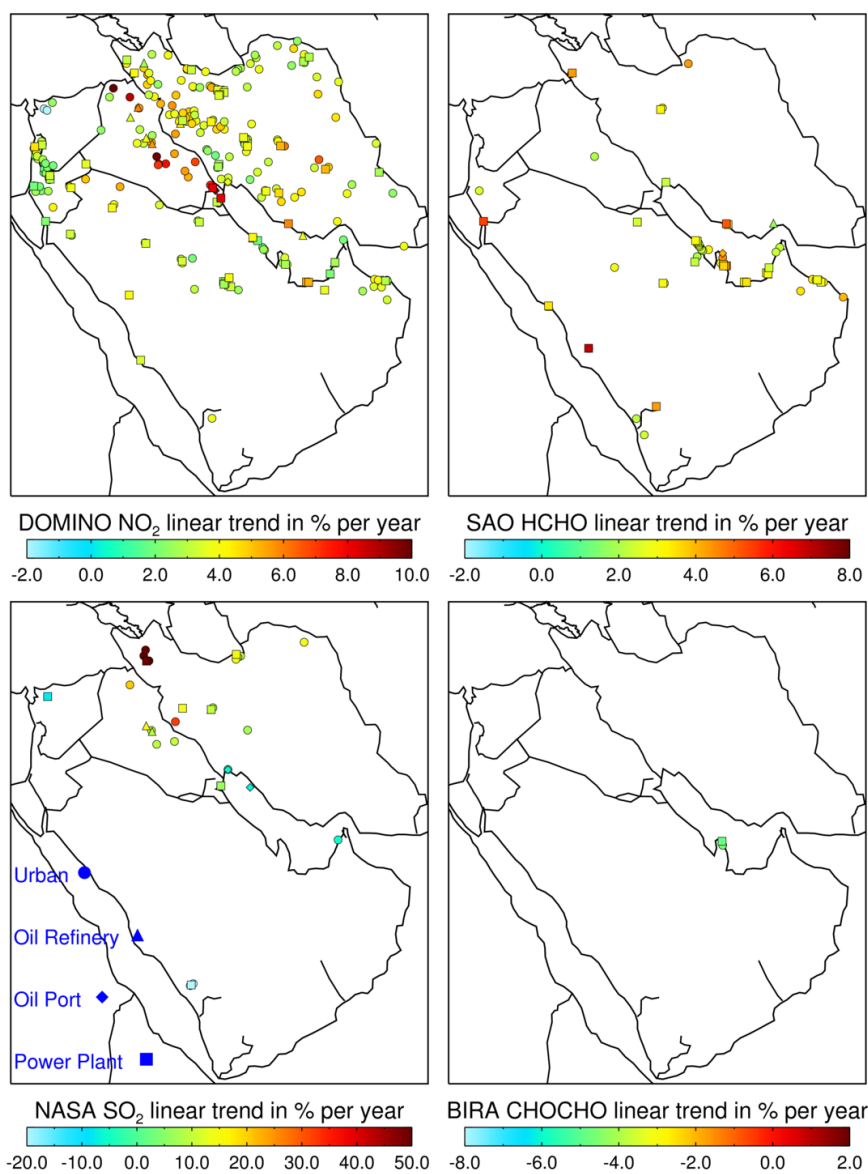


Figure 5. Geographical distribution of locations with statistically significant linear trends in NO₂ (top left), HCHO (top right), SO₂ (bottom left), and CHOCHO (bottom right) expressed in percent per year, relative to each location's 2005–2014 median vertical column.

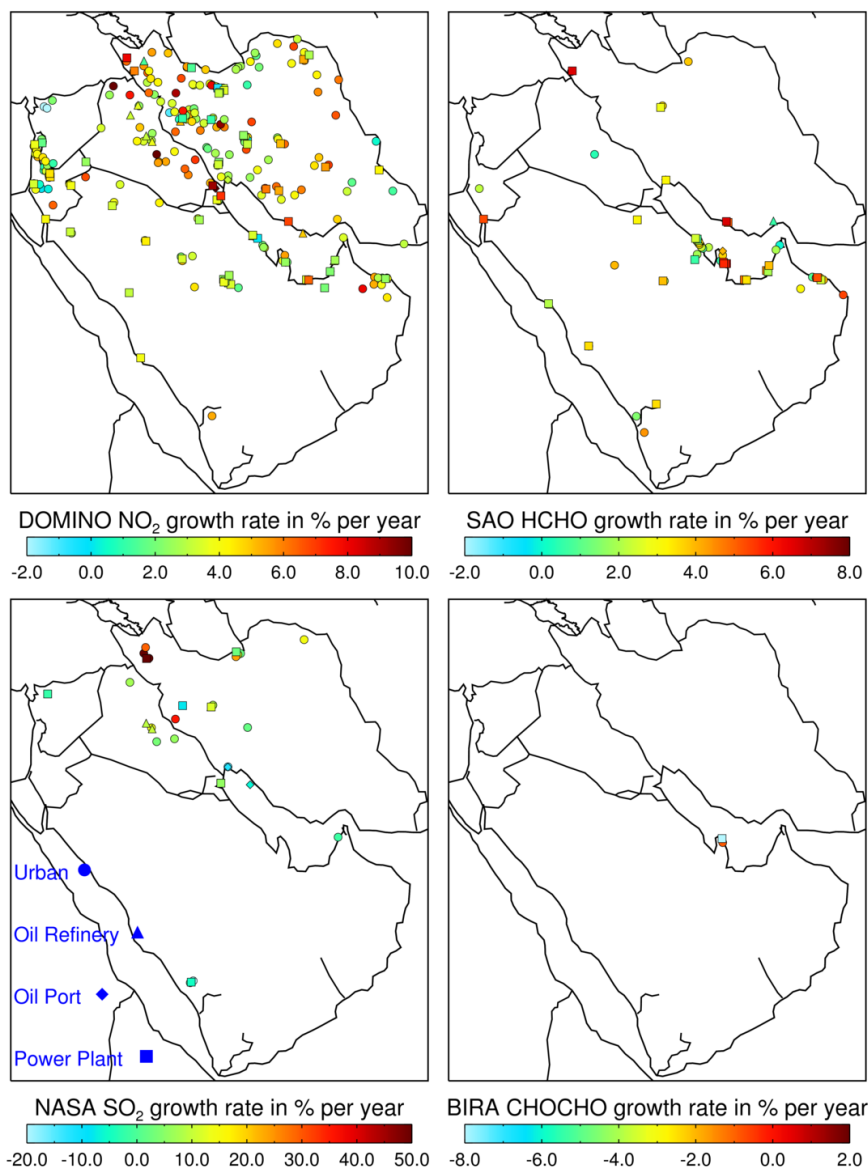


Figure 6. Geographical distribution of locations with statistically significant linear trends in NO₂ (top left), HCHO (top right), SO₂ (bottom left), and CHOCHO (bottom right) but here showing the growth rate expressed in percent per year, relative to each location's 2005–2014 median vertical column.

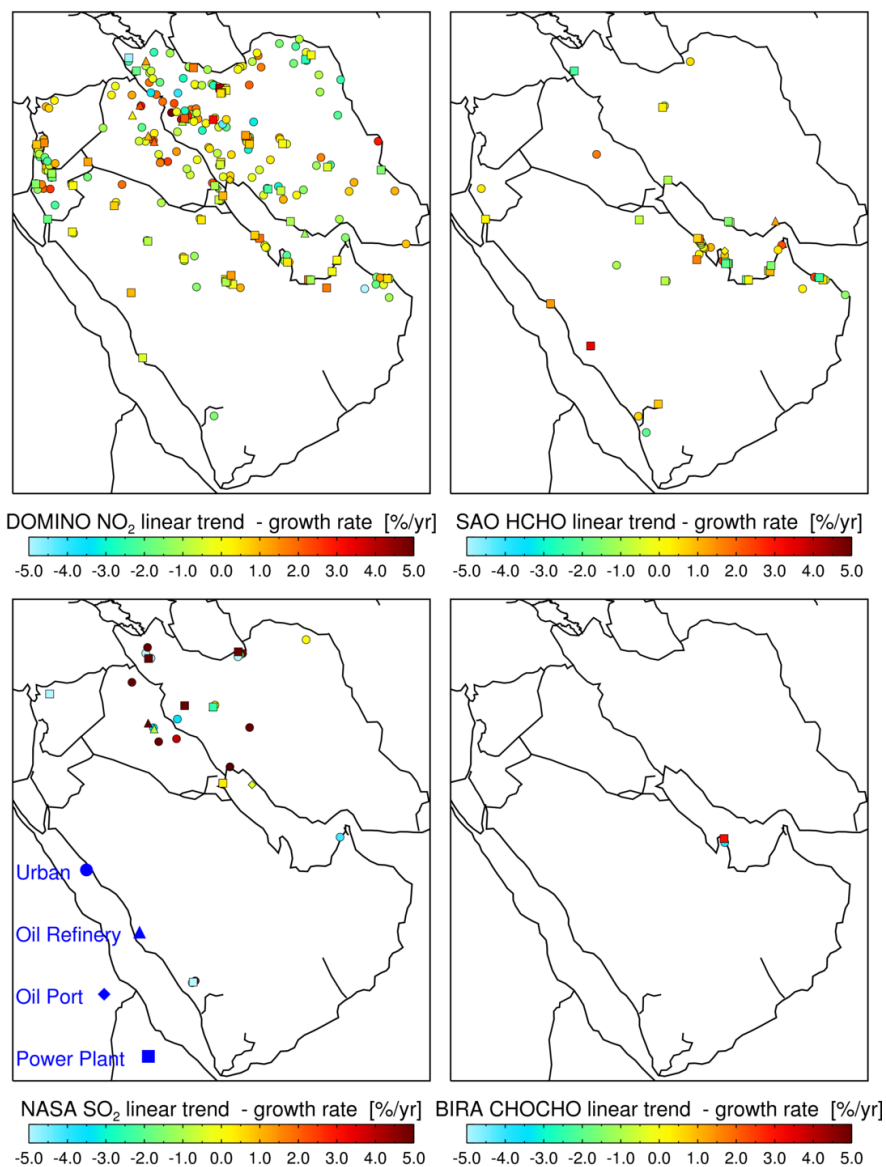


Figure 7. Geographical distribution of locations with statistically significant linear trends in NO₂ (top left), HCHO (top right), SO₂ (bottom left), and CHOCHO (bottom right), but here showing the linear trend (in percent per year) minus the growth rate (in percent per year).



Table 1. Statistical summary of the DOMINO NO₂ vertical column density (VCD) analysis conducted at an approximate 10 km radius over the target locations. Statistical values are shown for those locations which have a real VCD trend, i.e. those locations without a corresponding trend in either the air mass factor (AMF), cloud fraction (CFR), cloud-top pressure (CTP), or number of samples (SAM). Values in parentheses correspond to statistics for all locations of a given category. VCD values are given in 10¹⁴ molecules cm⁻² and IQR is the inter-quartile range.

	Urban	Refinery	Oil Ports	Power Plants
# locations	818	41	18	155
<u># locations with trends</u>				
VCD	318	32	13	112
VCD and AMF	71	7	2	19
VCD and CFR	24	6	3	19
VCD and CTP	14	5	2	9
VCD and SAM	35	5	2	18
VCD only	198	17	6	57
<u>Observed VCD</u>				
Median	18.27 (28.31)	26.74 (27.10)	33.00 (28.19)	27.22 (24.32)
IQR	15.00 (18.29)	15.78 (15.78)	11.45 (12.18)	14.20 (14.16)
Maximum	136.65 (136.65)	87.90 (87.90)	64.92 (100.72)	189.85 (189.85)
Minimum	-4.87 (-10.61)	-6.63 (-6.63)	10.55 (5.94)	-6.63 (-6.63)
<u>Seasonal Amplitude</u>				
Median	8.82 (12.38)	11.86 (11.86)	11.54 (11.83)	11.02 (10.52)
IQR	5.30 (8.01)	9.78 (8.77)	6.93 (5.28)	6.03 (6.60)
Maximum	38.88 (38.88)	33.05 (33.05)	18.50 (21.30)	46.32 (66.32)
Minimum	3.07 (1.49)	4.62 (3.28)	7.05 (5.76)	4.34 (1.68)
<u>Linear Trend</u>				
Median	0.58 (0.26)	0.84 (0.81)	1.05 (0.97)	0.89 (0.65)
IQR	0.48 (0.49)	0.69 (0.66)	2.16 (1.26)	0.45 (0.68)
Maximum	2.77 (3.14)	2.65 (2.65)	3.12 (3.35)	2.65 (3.34)
Minimum	-0.75 (-0.75)	0.57 (-0.23)	0.74 (-0.01)	0.25 (-0.72)
<u>Growth Rate</u>				
Median	0.64 (0.42)	0.83 (0.70)	0.95 (0.89)	0.82 (0.62)
IQR	0.56 (0.52)	0.71 (0.95)	2.59 (1.68)	0.64 (0.83)
Maximum	2.82 (4.89)	1.74 (2.55)	3.44 (4.31)	2.95 (3.91)
Minimum	-0.91 (-0.98)	0.19 (-0.57)	0.51 (0.14)	-0.33 (-0.84)
<u>Median Errors</u>				
Linear trend	0.19 (0.27)	0.27 (0.27)	0.29 (0.28)	0.27 (0.25)
Trend Curve	0.80 (1.13)	1.13 (1.13)	1.20 (1.16)	1.14 (0.99)
Smoothed Curve	1.13 (1.68)	1.38 (1.63)	1.84 (1.78)	1.70 (1.53)
Growth Curve	1.14 (1.60)	1.59 (1.59)	1.70 (1.64)	1.61 (1.40)
Seasonal Curve	1.39 (2.02)	1.74 (1.95)	2.20 (2.13)	2.03 (1.84)



Table 2. Statistical summary of the SAO HCHO vertical column density (VCD) analysis conducted at an approximate 10 km radius over the target locations. Statistical values are shown for those locations which have a real VCD trend, i.e. those locations without a corresponding trend in either the air mass factor (AMF), cloud fraction (CFR), cloud-top pressure (CTP), or number of samples (SAM). Values in parentheses correspond to statistics for all locations of a given category. VCD values are given in 10^{15} molecules cm^{-2} and IQR is the inter-quartile range.

	Urban	Refinery	Oil Ports	Power Plants
# locations	818	41	18	155
<u># locations with trends</u>				
VCD	63	13	6	40
VCD and AMF	9	1	0	6
VCD and CFR	8	4	0	9
VCD and CTP	0	0	0	0
VCD and SAM	16	4	2	6
VCD only	34	6	4	26
<u>Observed VCD</u>				
Median	4.36 (3.73)	3.95 (4.12)	4.51 (4.32)	4.13 (3.70)
IQR	1.03 (0.53)	0.67 (0.78)	0.80 (0.51)	0.88 (0.95)
Maximum	8.99 (10.49)	7.95 (9.10)	8.58 (8.91)	8.89 (9.22)
Minimum	-0.80 (-3.11)	0.84 (-1.53)	1.00 (0.15)	-0.80 (-1.53)
<u>Seasonal Amplitude</u>				
Median	3.19 (3.13)	2.85 (3.27)	3.45 (3.43)	3.07 (3.02)
IQR	0.85 (1.09)	0.65 (1.15)	0.70 (1.31)	0.69 (0.95)
Maximum	4.15 (5.65)	3.27 (4.54)	4.08 (4.40)	4.54 (4.89)
Minimum	1.51 (1.37)	2.46 (1.55)	3.17 (2.33)	1.83 (1.20)
<u>Linear Trend</u>				
Median	0.11 (0.02)	0.12 (0.07)	0.14 (0.08)	0.13 (0.04)
IQR	0.04 (0.06)	0.05 (0.06)	0.04 (0.06)	0.06 (0.09)
Maximum	0.22 (0.22)	0.15 (0.18)	0.16 (0.16)	0.22 (0.22)
Minimum	0.09 (-0.12)	0.07 (-0.02)	0.11 (-0.01)	0.08 (-0.11)
<u>Growth Rate</u>				
Median	0.13 (0.01)	0.08 (0.08)	0.15 (0.10)	0.16 (0.05)
IQR	0.09 (0.10)	0.04 (0.10)	0.06 (0.14)	0.11 (0.13)
Maximum	0.33 (0.33)	0.15 (0.26)	0.16 (0.18)	0.32 (0.32)
Minimum	-0.00 (-0.50)	0.02 (-0.06)	0.08 (-0.04)	0.02 (-0.15)
<u>Median Errors</u>				
Linear trend	0.05 (0.05)	0.04 (0.05)	0.05 (0.05)	0.05 (0.05)
Trend Curve	0.19 (0.23)	0.19 (0.20)	0.20 (0.21)	0.20 (0.21)
Smoothed Curve	0.30 (0.35)	0.30 (0.32)	0.31 (0.32)	0.31 (0.32)
Growth Curve	0.27 (0.32)	0.27 (0.29)	0.28 (0.29)	0.28 (0.29)
Seasonal Curve	0.36 (0.41)	0.36 (0.38)	0.36 (0.38)	0.37 (0.38)



Table 3. Statistical summary of the NASA SO₂ vertical column density (VCD) analysis conducted at an approximate 10 km radius over the target locations. Statistical values are shown for those locations which have a real VCD trend, i.e. those locations without a corresponding trend in either the cloud fraction (CFR), cloud-top pressure (CTP), or number of samples (SAM). Values in parentheses correspond to statistics for all locations of a given category. VCD values are given in DU, and IQR is the inter-quartile range.

	Urban	Refinery	Oil Ports	Power Plants
# locations	818	41	18	155
<u># locations with trends</u>				
VCD	24	3	3	14
VCD and AMF	0	0	0	0
VCD and CFR	0	0	0	0
VCD and CTP	0	0	0	0
VCD and SAM	6	0	1	5
VCD only	18	3	2	9
<u>Observed VCD</u>				
Median	0.17 (0.11)	0.30 (0.28)	0.63 (0.28)	0.29 (0.16)
IQR	0.23 (0.09)	0.33 (0.31)	0.11 (0.21)	0.27 (0.24)
Maximum	1.22 (1.79)	1.05 (1.85)	1.98 (1.98)	1.17 (2.22)
Minimum	-0.61 (-1.36)	-0.22 (-0.64)	-0.02 (-0.40)	-0.46 (-0.46)
<u>Seasonal Amplitude</u>				
Median	0.33 (0.21)	0.36 (0.44)	0.55 (0.39)	0.37 (0.28)
IQR	0.21 (0.09)	0.13 (0.26)	0.11 (0.20)	0.19 (0.28)
Maximum	0.69 (1.15)	0.47 (1.13)	0.77 (0.86)	0.51 (1.14)
Minimum	0.17 (0.09)	0.34 (0.16)	0.33 (0.20)	0.18 (0.12)
<u>Linear Trend</u>				
Median	0.021 (-0.002)	0.028 (0.001)	-0.041 (-0.002)	0.026 (-0.001)
IQR	0.023 (0.008)	0.022 (0.023)	0.009 (0.025)	0.046 (0.011)
Maximum	0.044 (0.044)	0.042 (0.042)	-0.024 (0.028)	0.028 (0.031)
Minimum	-0.024 (-0.041)	0.019 (-0.016)	-0.059 (-0.059)	-0.023 (-0.023)
<u>Growth Rate</u>				
Median	0.015 (-0.002)	0.036 (0.003)	-0.052 (-0.002)	0.005 (-0.003)
IQR	0.032 (0.011)	0.034 (0.027)	0.002 (0.034)	0.032 (0.017)
Maximum	0.048 (0.051)	0.046 (0.046)	-0.049 (0.047)	0.036 (0.057)
Minimum	-0.056 (-0.056)	0.012 (-0.045)	-0.055 (-0.055)	-0.012 (-0.039)
<u>Median Errors</u>				
Linear trend	0.009 (0.007)	0.010 (0.010)	0.014 (0.010)	0.010 (0.008)
Trend Curve	0.039 (0.030)	0.042 (0.041)	0.062 (0.044)	0.039 (0.035)
Smoothed Curve	0.058 (0.046)	0.066 (0.061)	0.091 (0.068)	0.064 (0.053)
Growth Curve	0.056 (0.042)	0.060 (0.058)	0.087 (0.063)	0.056 (0.050)
Seasonal Curve	0.070 (0.055)	0.079 (0.072)	0.110 (0.081)	0.075 (0.064)



Table 4. Statistical summary of the BIRA CHOCHO vertical column density (VCD) analysis conducted at an approximate 10 km radius over the target locations. Statistical values are shown for those locations which have a real VCD trend, i.e. those locations without a corresponding trend in either the air mass factor (AMF), cloud fraction (CFR), cloud-top pressure (CTP), or number of samples (SAM). Values in parentheses correspond to statistics for all locations of a given category. VCD values are given in 10^{13} molecules cm^{-2} and IQR is the inter-quartile range.

	Urban	Refinery	Oil Ports	Power Plants
# locations	818	41	18	155
<u># locations with trends</u>				
VCD	8	0	0	4
VCD and AMF	5	0	0	3
VCD and CFR	1	0	0	1
VCD and CTP	0	0	0	0
VCD and SAM	1	0	0	0
VCD only	1	0	0	1
<u>Observed VCD</u>				
Median	18.22 (16.18)	NaN (19.95)	NaN (20.84)	18.26 (17.88)
IQR	NaN (4.58)	NaN (9.61)	NaN (8.72)	NaN (8.60)
Maximum	33.76 (112.10)	NaN (63.18)	NaN (57.19)	35.50 (80.37)
Minimum	0.18 (-66.32)	NaN (-23.96)	NaN (-21.89)	2.63 (-44.75)
<u>Seasonal Amplitude</u>				
Median	9.50 (15.03)	NaN (16.48)	NaN (14.38)	11.77 (16.32)
IQR	NaN (6.54)	NaN (4.78)	NaN (4.80)	NaN (5.74)
Maximum	9.50 (44.53)	NaN (28.34)	NaN (21.10)	11.77 (32.14)
Minimum	9.50 (8.89)	NaN (9.56)	NaN (9.93)	11.77 (9.12)
<u>Linear Trend</u>				
Median	-0.83 (-0.22)	NaN (-0.05)	NaN (-0.01)	-0.88 (-0.10)
IQR	NaN (0.66)	NaN (0.49)	NaN (0.53)	NaN (0.57)
Maximum	-0.83 (3.02)	NaN (0.40)	NaN (0.30)	-0.88 (0.87)
Minimum	-0.83 (-1.38)	NaN (-1.03)	NaN (-0.77)	-0.88 (-1.29)
<u>Growth Rate</u>				
Median	-0.16 (-0.38)	NaN (-0.12)	NaN (-0.13)	-1.46 (-0.22)
IQR	NaN (1.06)	NaN (0.98)	NaN (0.83)	NaN (1.10)
Maximum	-0.16 (3.85)	NaN (1.26)	NaN (0.83)	-1.46 (2.05)
Minimum	-0.16 (-2.96)	NaN (-1.70)	NaN (-1.52)	-1.46 (-1.95)
<u>Median Errors</u>				
Linear trend	0.42 (0.58)	NaN (0.53)	NaN (0.50)	0.44 (0.55)
Trend Curve	1.79 (2.49)	NaN (2.28)	NaN (2.11)	1.83 (2.41)
Smoothed Curve	2.84 (3.95)	NaN (3.59)	NaN (3.38)	2.79 (3.66)
Growth Curve	2.53 (3.52)	NaN (3.22)	NaN (2.98)	2.58 (3.40)
Seasonal Curve	3.35 (4.68)	NaN (4.23)	NaN (3.99)	3.34 (4.38)