

1 **Supplementary material for the manuscript:**

2
3 **Oceanic emissions unlikely to account for the missing source of atmospheric**
4 **carbonyl sulfide**
5
6

7 **S.T. Lennartz¹, C.A. Marandino¹, M. von Hobe², P. Cortés³, B. Quack¹, R. Simó³, D.**
8 **Booge¹, A. Pozzer⁴, T. Steinhoff¹, D.L. Arévalo-Martínez¹, C. Kloss², A. Bracher⁵, R.**
9 **Röttgers⁶, E. Atlas⁷, and K. Krüger⁸**

10 ¹GEOMAR Helmholtz-Centre for Ocean Research Kiel, Kiel, Germany

11 ²Forschungszentrum Jülich GmbH, Institute of Energy and Climate Research (IEK-7), Jülich,
12 Germany

13 ³Institut de Ciències del Mar, CSIC, Barcelona, Catalonia, Spain

14 ⁴Max-Planck-Institute for Chemistry, Mainz, Germany

15 ⁵ Alfred-Wegener-Institute Helmholtz Center for Polar and Marine Research, Bremerhaven, and
16 Institute of Environmental Physics, University of Bremen

17 ⁶Helmholtz-Zentrum Geesthacht, Geesthacht, Germany

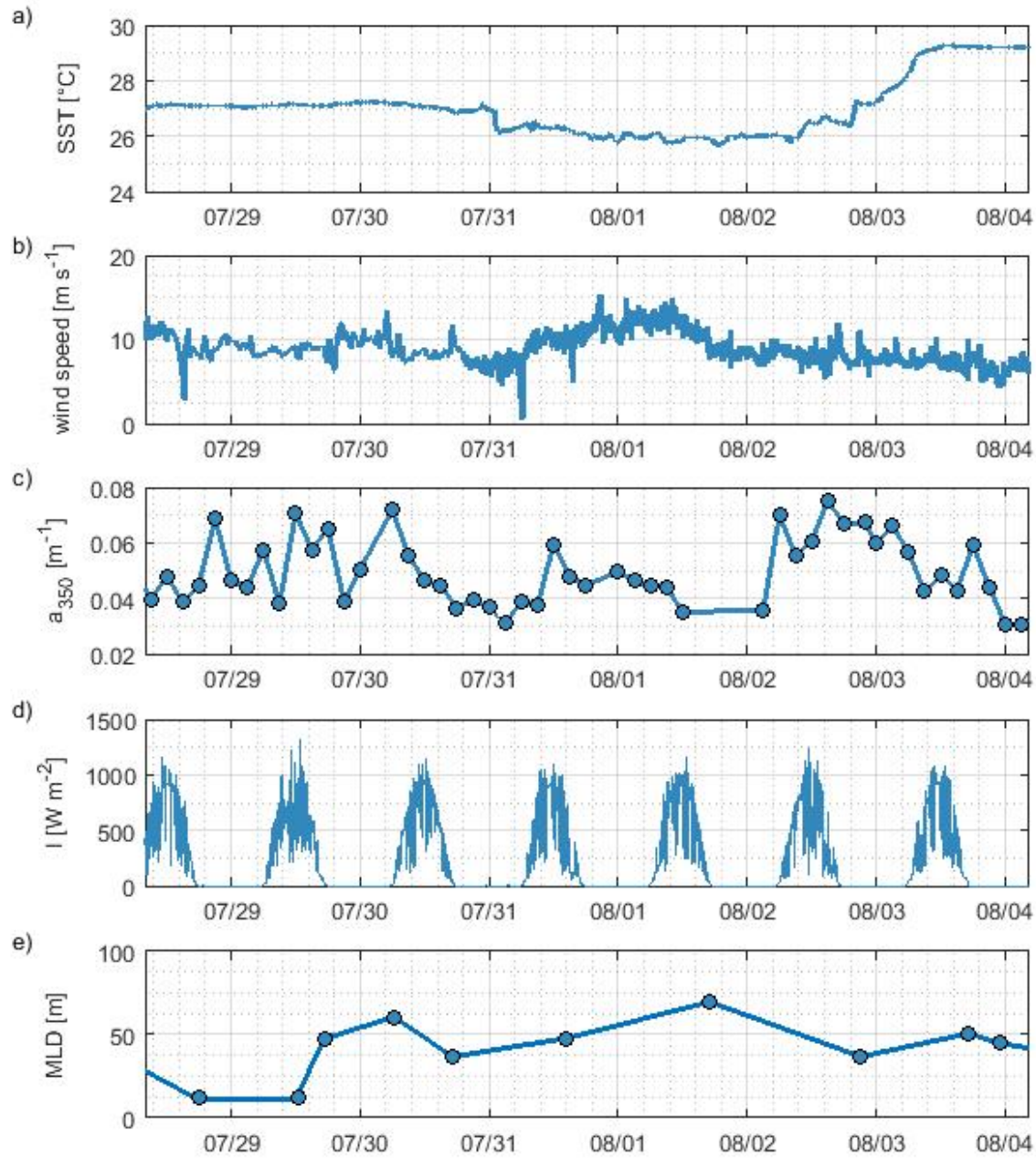
18 ⁷RSMAS, Miami, Florida, USA

19 ⁸Department of Geosciences, University of Oslo, Oslo, Norway

20
21 Corresponding author: Sinikka T. Lennartz (slennartz@geomar.de)
22
23

24 **Supplementary figures**

25

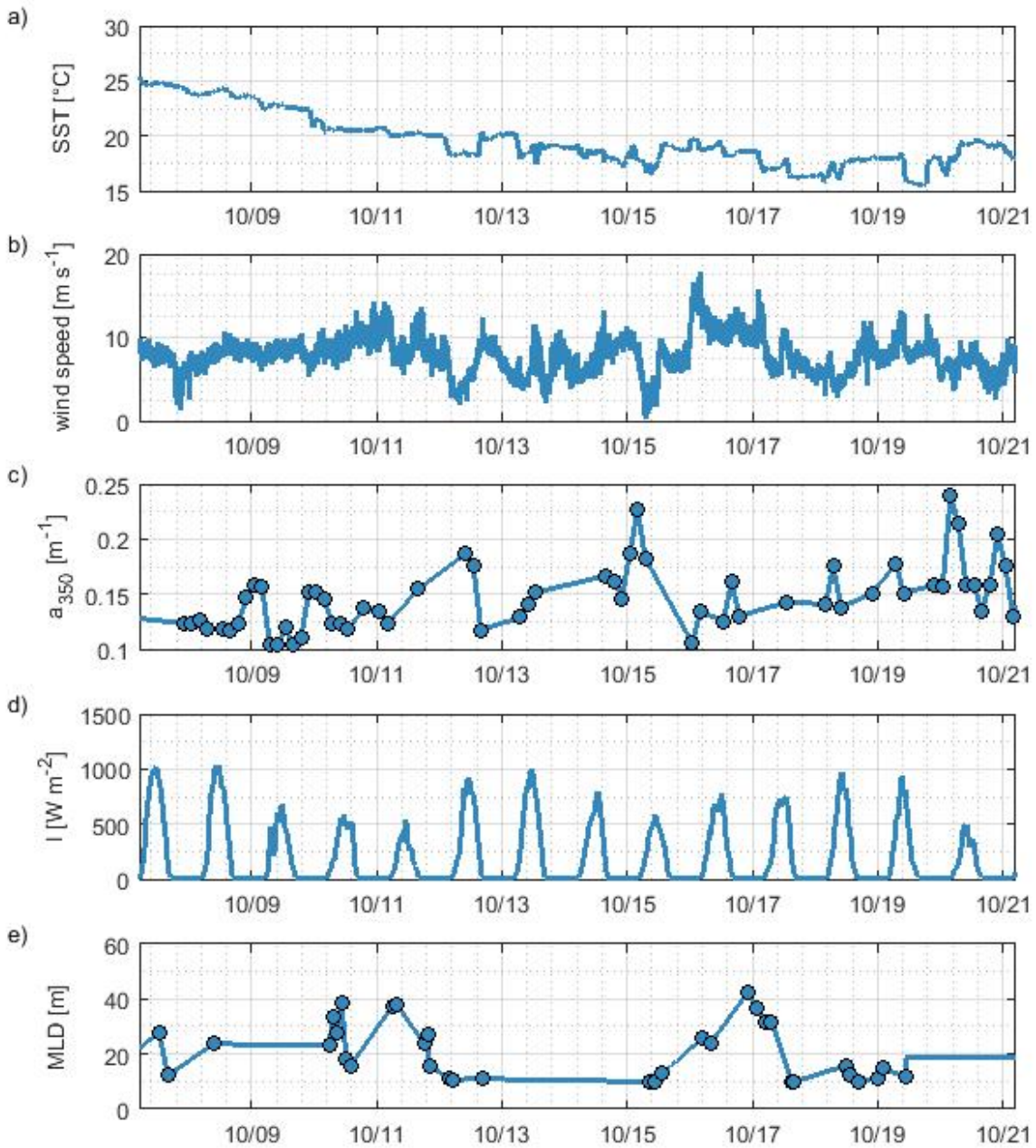


26

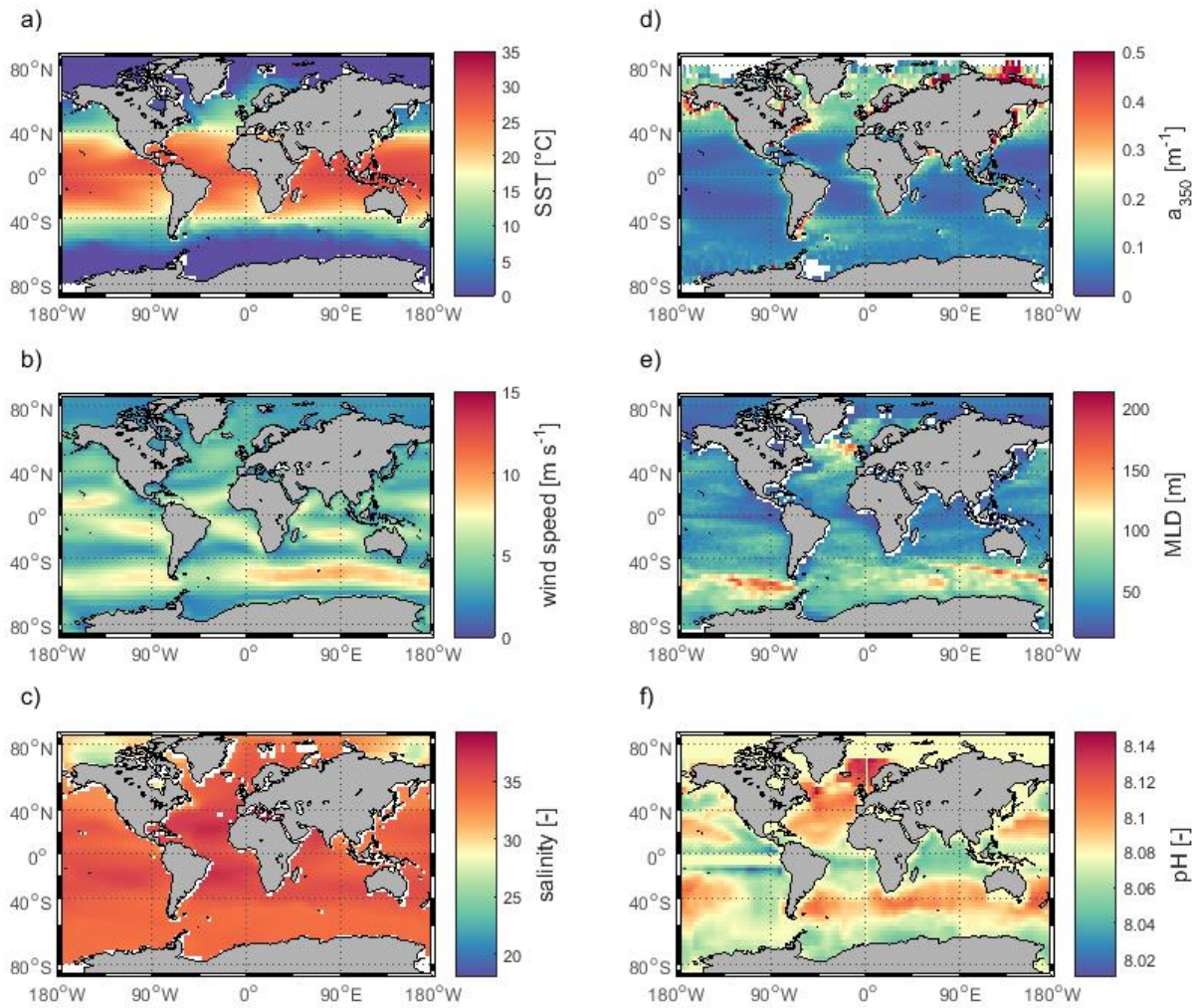
27 S-Fig 1: Input parameters for case study box model simulation for the OASIS cruise to the Indian Ocean

28 for a) SST, b) wind speed corrected to 10 m height, c) absorption at 350 nm, d) global radiation, e) mixed

29 layer depth; all measured directly onboard RV SONNE I in 2014.

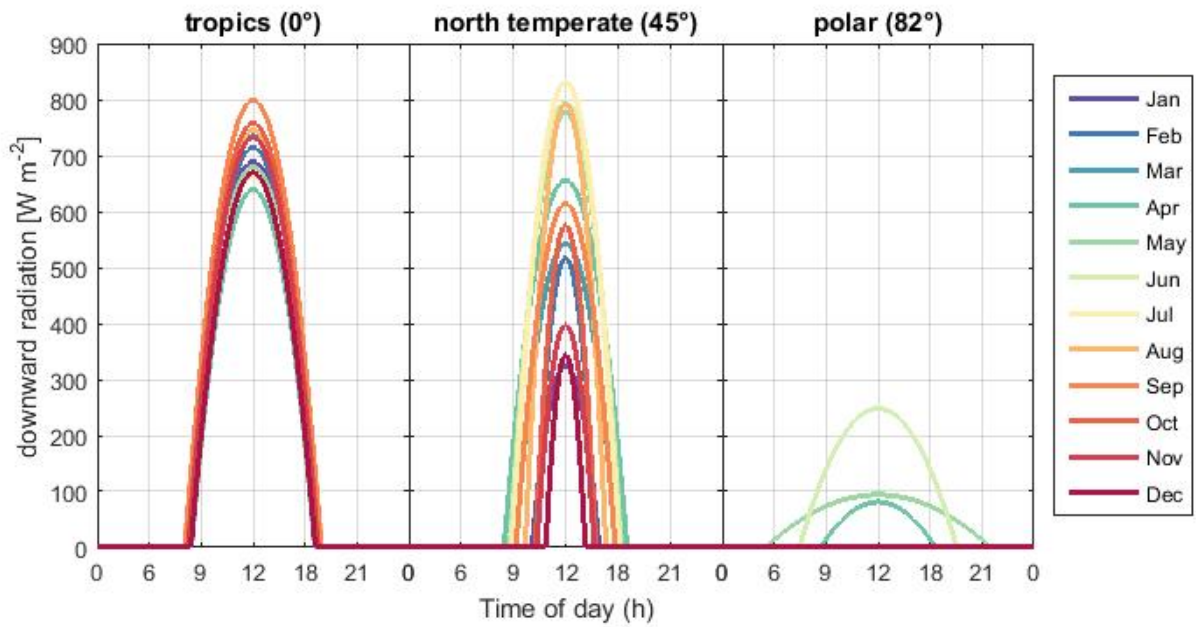


31
 32 S-Fig 2: Input parameters for case study box model simulation for the ASTRA-OMZ cruise to the eastern
 33 Pacific Ocean for a) SST, b) wind speed corrected to 10 m height, c) absorption at 350 nm, d) global
 34 radiation, e) mixed layer depth; all measured directly onboard RV SONNE II in 2015.



35 S-Fig 3: Annual mean for input parameters of a) sea surface temperature SST, b) wind speed, c) salinity,
 36 d) absorption of CDOM at 350 nm a_{350} , e) mixed layer depth, and f) pH. Details on data sources can be
 37 found in S-Tab. 4.
 38

39
 40
 41
 42
 43
 44
 45
 46
 47
 48
 49
 50



52

53

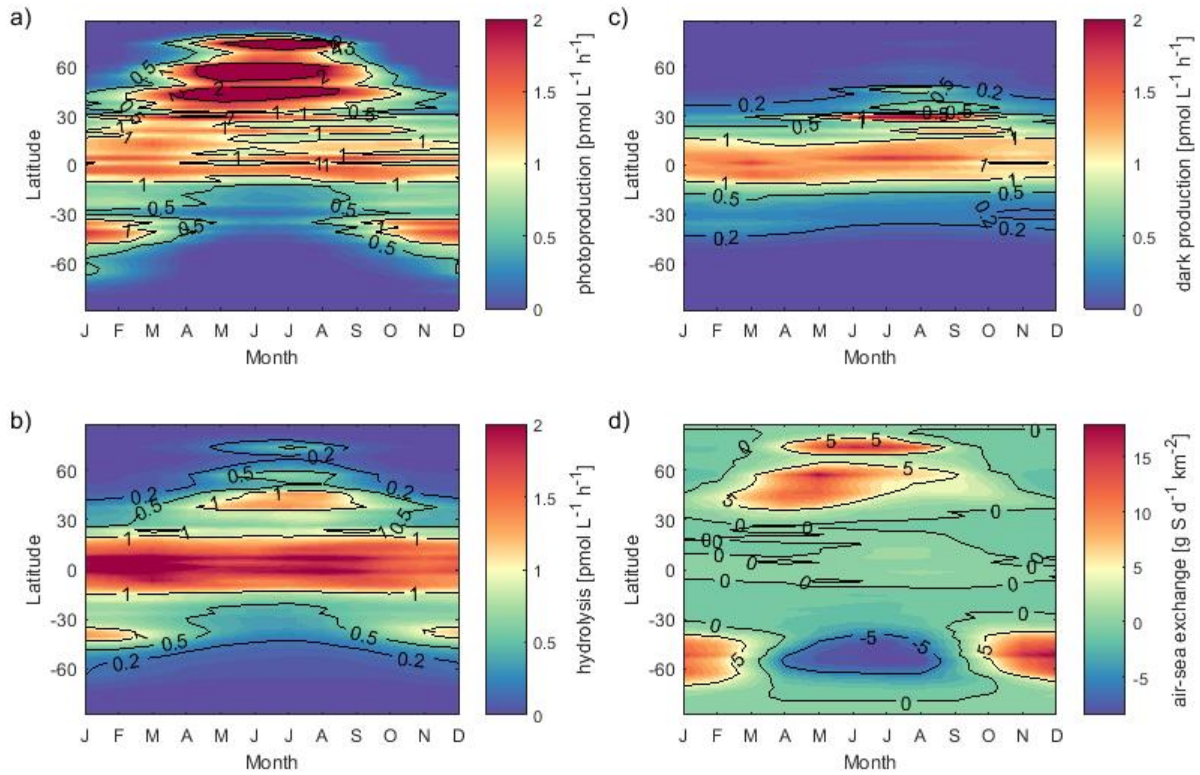
54 S-Fig. 4: Diurnal cycles of downward radiation from the tropics, north temperate and polar regions

55 resulting from fitting a parable to the sunshine duration and downwelling radiance from ERAInterim (Eq.

56 13, S-Tab. 4). Color coding refers to mean monthly diurnal cycles.

57

58



59 S-Fig. 5: Rates of a) photoproduction , b) hydrolysis, c) dark production and d) air sea exchange in the
 60 mixed layer for each month and latitude from the box model simulation.
 61

62

63

64

65

66

67

68

69

70

71

72

73

74

75

76

77

78

79

80

81

82

83 **Supplementary tables**

84 S-Tab. 1: Input parameter for the box model for the OASIS cruise (Indian Ocean). Measurements were
 85 linearly interpolated to a time grid of 2 minute resolution.

86

Parameter	Data source
global radiation	shipboard meteorological equipment, 10 minute mean
CDOM absorption spectrum	measured onboard, ca. 3-hour resolution, LWCC setup ¹
sea surface temperature	continuously (every minute) measured at seawater intake for underway system, Seabird MicroCat SBE41
sea surface salinity	continuously (every minute) measured at seawater intake for underway system, Seabird MicroCat SBE41
pH	calculated from dissolved inorganic carbon and alkalinity sampled at seawater intake from underway system, ca. 3-hourly resolution
wind speed	measured onboard, corrected to 10 m height, 10 minute averages
atm. volume mixing ratio of OCS	sampled onboard, ca. 3-hourly resolution, air canister samples analysed at RSMAS ^{2,3}
mixed layer depth	obtained from CTD profiles, using the Lorbacher ⁴ criterion, 1-2 times per day
sea level air pressure	measured onboard, 10 minute averages

87

88

89 S-Tab. 2: Input parameter for the box model for the ASTRA-OMZ cruise (Pacific Ocean). Measurements
 90 were linearly interpolated to a time grid of 2 minute resolution.

91

Parameter	Data source
global radiation	shipboard meteorological equipment, 10 minute mean
CDOM absorption spectrum	measured onboard, ca. 3-hour resolution, LWCC setup ¹
sea surface temperature	continuously (every minute) measured at seawater intake for underway system, Seabird MicroCat SBE41
sea surface salinity	continuously (every minute) measured at seawater intake for underway system, Seabird MicroCat SBE41
pH	mean value of 8.1 assumed (minor sensitivity to pH confirmed in sensitivity tests)
wind speed	measured onboard, corrected to 10 m height, 10 minute averages
atm. volume mixing ratio of OCS	sampled onboard, ca. 3-hourly resolution, air canister samples analysed at RSMAS ^{2,3}
mixed layer depth	obtained from CTD profiles, using the Lorbacher ⁴ criterion, 0-4 times per day
sea level air pressure	measured onboard, 10 minute averages

92

93

94

95 S.-Tab 3: Input parameter for the global box model. Data was linearly interpolated to a time grid of 2 h
 96 resolution.

97

Parameter	Input
Global radiation	Diurnal cycle fitted to downwards radiation and sunshine duration from 2014 ERAInterim reanalysis data (ECMWF)
CDOM absorption 350 nm	MODIS Aqua satellite data “absorption due to gelbstoff and detritus 443 nm”, GIOP model, corrected to 350nm assuming an exponential spectrum, climatological monthly mean 2002-2014 ⁵
sea surface temperature	ERAInterim reanalysis, climatology from 2002-2014 synoptic monthly means ⁶
sea surface salinity	World Ocean Atlas climatology ⁷
pH	Takahashi climatology ⁸
wind speed	ERAInterim reanalysis, climatology from 2002-2014 synoptic monthly means
atm. volume mixing ratio for OCS	assumed 550 ppt
mixed layer depth	MIMOC climatology ⁹
sea level air pressure	ERAInterim reanalysis, climatology from 2000-2014 synoptic monthly means
initial condition	8 pmol L ⁻¹
spin-up until stable global mean	2 years

98

99

References

- 100
101
102 1 Miller, R. L., Belz, M., Del Castillo, C. & Trzaska, R. Determining CDOM absorption spectra in diverse
103 coastal environments using a multiple pathlength, liquid core waveguide system. *Continental Shelf*
104 *Research* **22**, 1301-1310, doi:10.1016/s0278-4343(02)00009-2 (2002).
- 105 2 Schauffler, S. M. *et al.* Measurements of bromine containing organic compounds at the tropical tropopause.
106 *Geophysical Research Letters* **25**, 317-320, doi:10.1029/98gl00040 (1998).
- 107 3 de Gouw, J. A. *et al.* Carbonyl sulfide as an inverse tracer for biogenic organic carbon in gas and aerosol
108 phases. *Geophysical Research Letters* **36**, n/a-n/a, doi:10.1029/2008gl036910 (2009).
- 109 4 Lorbacher, K., Dommenges, D., Niiler, P. P. & Köhl, A. Ocean mixed layer depth: A subsurface proxy of
110 ocean-atmosphere variability. *Journal of Geophysical Research: Oceans* **111**, n/a-n/a,
111 doi:10.1029/2003jc002157 (2006).
- 112 5 NASA. *MODIS-Aqua Ocean Color Data*, 2014).
- 113 6 Dee, D. P. *et al.* The ERA-Interim reanalysis: configuration and performance of the data assimilation
114 system. *Quarterly Journal of the Royal Meteorological Society* **137**, 553-597, doi:10.1002/qj.828 (2011).
- 115 7 Antonov, J. I. *et al.* (ed S. Levitus) 184 (Government Printing Office, Washington, D.C., NOAA Atlas
116 NESDIS 69, 2010).
- 117 8 Takahashi, T. *et al.* Climatological distributions of pH, pCO₂, total CO₂, alkalinity, and CaCO₃ saturation
118 in the global surface ocean, and temporal changes at selected locations. *Marine Chemistry* **164**, 95-125,
119 doi:10.1016/j.marchem.2014.06.004 (2014).
- 120 9 Schmidtko, S., Johnson, G. C. & Lyman, J. M. MIMOC: A global monthly isopycnal upper-ocean
121 climatology with mixed layers. *Journal of Geophysical Research-Oceans* **118**, 1658-1672,
122 doi:10.1002/jgrc.20122 (2013).
- 123
124