

We thank the reviewer#1 for the very constructive and detailed review that helps to clarify and strengthen our argumentation. In the following, we address the raised points directly, with the *review in italics* and **our reply in bold** font.

Overview:

The authors present new bottom-up measurements and analysis of COS and CS₂ from 3 ocean cruises. The ocean source is a dominant source of uncertainty in global COS budgets so the authors should be commended for presenting new, high quality data. However, the central conclusion in the manuscript title and text is not supported by the measurements. Nevertheless, the measurements and analysis provide a very important contribution to understanding COS budgets and I suggest only simple, but critical, revisions to the title and text.

We will address the conclusions drawn in the specific comment below, but changed the title to “Direct oceanic emissions are unlikely to account for the missing source”, because our observations, previous observations and the box model reproducing both reasonably well reveal a direct emission estimate that is a factor of 3-8 below the missing source estimate and thus very unlikely. We still deem indirect emissions as unlikely to account for the whole missing source, but acknowledge the uncertainty related to these emission estimates by changing the title.

Specific Comments:

The title and several statements in the text should be changed so that the conclusions become consistent with the data. In particular, the measurements are not a representative sample for extrapolating to the global source and thus conclusions on the global source should not be made. There are of course many other exciting conclusions that are possible. The measurements are not representative of the global source for following reason. Global satellite observations show global hot spot for the source in the Pacific Warm Pool for most of the year and in June/July/Aug more broadly across the tropical and mid-latitude Pacific. The cruise measurements from this study that are used in the global extrapolation do not cover this critical region. If the author’s were looking to uncover information on the missing source they should target locations/times that top-down data points to for the missing source. However, the cruise data presented here are in times and locations where the top-down data suggest that the ocean source should be small or even a sink. I still think the global analysis is useful to include because it is already done and likely points to the problem with scaling up from non-representative data.

Obviously, the use of the word “extrapolation” in the context of relating our new observations to the global source estimate has been misleading. To estimate tropical and global oceanic OCS emissions, we use a model that is much simplified with respect to mixed layer dynamics and vertical mixing, but contains state-of-the-art parameterizations of the known processes governing OCS concentrations in seawater. To our knowledge, these process parameterizations have not been seriously challenged and have always yielded good results in studies comparing observed and simulated OCS for individual cruises from different parts of the oceans. In our paper, we present the first extensive study of this type focused on the tropical ocean, and find that here, too, the established model reproduces observed OCS quite well. The tropical observations are used to fine-tune the model, in particular corroborating the relationship of photochemical production on a_{CDOM} . The model is then used in a similar way as has been done by Kettle (2002) to estimate fluxes from all regions of the global ocean and integrate the results to yield a global flux estimate.

To clarify this approach and its benefits, we apply the following changes in a revised manuscript:

- 1. We add a more thorough description of the development and history of the box model and then point out how the new observations are used to fine-tune the model and to enlarge the range of biogeochemical regimes, for which the model is tested.**

p. 6, l. 23ff: “A box model to simulate surface concentration of OCS is further developed from the latest version from von Hobe et al. (2003, termed vH2003), where concentrations along the cruistracks of 5 Atlantic cruises have been simulated and compared. The vH2003 model results from successful tests and validation to observations on several cruises to the Altantic Ocean covering all seasons (i.e. Flöck and Andreae (1996) in January 1994, Uher and Andreae (1997) in April/May 1992, Von Hobe et al. (1999) in June/July 1997, Kettle et al. (2001) in September/October 1998). By comparing photoproduction rate constants of the 5 cruises to CDOM absorption, von Hobe (2003) suggests a second order process for photoproduction with the photoproduction rate constant being dependent on the absorption of CDOM in seawater.

In our approach, we test vH2003 along the cruise track of two cruises, include a new way of determining the photoproduction rate constant (see below) and apply it with global climatological input (termed L2016). (Kettle, 2000; Kettle, 2002) applied a similar version of vH2003 globally, which included an optimized photoproduction constant from Atlantic transect cruise data, an optimized constant light-independant production and a linear regression to obtain CDOM from chlorophyll a. In comparison to K2000, we use (i) a new way of determining the photoproduction rate constant incorporating information from three ocean basins, (ii) the most recent parameterization of light-independent production available, and (iii) satellite observations for sea surface CDOM instead of an empiric relationship based on chlorophyll a.

Launois et al. (2015) implemented parameterizations for light-independant production, hydrolysis and air-sea exchange similar to vH2003 in the 3D global ocean model NEMO-PISCES. The main differences to the approach used here is the lack of accounting for mixing in L2016 (discussed in section 3.2.2., which will theoretically lead to higher simulated concentrations in our case) and the application of a photoproduction rate constant in our model that incorporates information from three open ocean basins in contrast to one from a study in the North Sea (Launois et al., 2015).”

2. In a new table (Tab. 4), we compare the physico-chemical conditions encountered during our OASIS and ASTRA-OMZ to those of the Pacific Warm Pool where the atmospheric inversion studies suggest the hotspot of oceanic OCS emissions, demonstrating that the conditions in the Indian Ocean and the Pacific Warm Pool are similar and the known processes should thus yield similar OCS concentrations and direct fluxes.

Parameter	OASIS	ASTRA-OMZ	Pacific Warm Pool
SST [°C]	27.0±1.0	19.6±2.6	28.9±0.9
SSS [g kg ⁻¹]	35.0±0.3	35.1±0.3	34.5±0.42
wind speed [m s ⁻¹]	8.2±1.7	7.5±1.8	5.3±0.4
a ₃₅₀ [m ⁻¹]	0.039±0.02	0.146±0.02	0.050±0.08
I [W m ⁻²]	226.5±303.0	196.4±283.1	206.4±286.6*
SR [J m ⁻²]	1.9 10 ⁷ ±1.7 10 ⁶	1.6 10 ⁷ ±4.5 10 ⁶	8.9 10 ⁶ ±1.3 10 ⁶
pH [-]	8.03±0.01	-**	8.07±0.01
MLD [m]	43.3±15.8	18.9±7.5	35.9±14.1

3. In another table (Tab. 5), we compare the results of our global box model simulations to previously observed concentrations and fluxes.

References	Season	Region	Mean OCS±std. [pmol L ⁻¹]	n	L2016 mean [pmol L ⁻¹]
Mihalopoulos et al. (1992)		open Indian Ocean 20°N-37°S			
	Mar/May 1986	OCEAT II	19.9±0.5*	20	11.2±6.3
	Jul 1987	OCEAT III	19.9±1.0*	14	17.7±13.1
Staubes and Georgii (1993)	Nov-Dec 1990	Wedell Sea 40°-72°S,72°W-24°E	109**	126	66.6±49.8
Ulshöfer et al. (1995)		North Atlantic Ocean			
	Apr/May 1992	47°N 20°W	14.9±6.9	118	42.8±11.3
	Jan 1994	48-50°N, 10-17°W	5.3±1.6	120	8.9±3.2
	Sep 1994	48-50°N, 10-17°W	19.0±8.3	23 5	33.4±3.5
Flöck and Andreae (1996)	Jan 1994	Northeast Atlantic Ocean 49°N, 12°W	6.7 (4-11)	120	9.6±3.7
Ulshöfer and Andreae (1998)	Mar 1995	West Atlantic 32°N, 64°W	8.1±7.0	323	15.8
von Hobe et al. (1999)	Jun/Jul 1997	Northeast Atlantic Ocean 30-40°N, 8-15°W	23.6±16.0	940	30.5±12.6
Kettle et al. (2001)	Sep/Oct 1998	Atlantic transect 50°N-60°S, 1°-64°W	21.7±19.1	783	22.9±3.2
von Hobe et al. (2001)	Aug 1999	Sargasso Sea/BATS 32°N, 64°W	8.6±2.8	518	8.1
Xu et al. (2001)	Oct/Nov 1997	Atlantic meridional transect 53°N-34°S,25°W-20°E	14.8±11.4	306	11.8±12.7
	May/Jun 1998	Atlantic meridional transect 53°N-34°S,25°W-20°E	18.1±16.1	440	27.8±47.9

To discuss this table and compare to previous shipboard measurements, we added a new section “3.2.1. Comparison to previous shipbased measurements” p. 11, l. 18: “The global simulation of OCS surface water concentrations generally reproduced the lower picomolar range of concentrations (Tab. 5), the seasonal pattern of higher concentrations during summer compared to winter (as e.g. in (Ulshöfer et al., 1995)) and the spatial pattern of higher concentrations in higher latitudes (e.g. Southern Ocean, (Staubes and Geogrii, 1993)). Given that monthly means of a model simulation driven by climatological data of the input parameters is compared to cruise measurements, the absolute mean error of 6.9 pmol L⁻¹ and the mean error of 3.7 pmol L⁻¹ indicate an overall good reproduction of observations (differences between observation and model output were weighted to number of observations in Tab. 5). It has to be noted that on average, the model overestimates OCS concentrations as indicated by the positive mean error, suggesting our emission estimate to be an upper limit to direct oceanic OCS emissions in most regions. Largest deviation from observations are found in the Southern Ocean (vgl. (Staubes and Geogrii, 1993) in Tab. 5), where the model underestimated observations by ~40%. While this can have several reasons, i.e. a possible violation of the underlying assumption of a constant OCS production in regions with deep mixed layers such as the Southern Ocean, or the missing satellite data for CDOM during polar nights, it is a clear indication of the need of more observations from high latitudes. However, this underestimation does not infer with our conclusion drawn for the tropical oceans, where the location of the missing source is derived from top-down approaches.”

We hope that with these modifications and additions, it becomes clearer how our line of arguments leads to the conclusions drawn.

Robust conclusions for this study could instead focus on describing the ocean source for the times/locations of the three cruises shown in Figure 1. A qualitative comparison could also be made with previous top-down analysis. This seems to be good ground for an exciting conclusion of consistency between top-down and bottom-up estimates. In this case there appear to be some strong similarities between the bottom-up and top-down estimates. The TranPEGASO cruise covers a section of the Atlantic in Oct/Nov, showing a small source. This is qualitatively consistent with the MIPAS data along the same path in Sept/Oct/Nov. The Oasis cruise covers a small area in the central Indian Ocean in July/Aug showing a sink. This is roughly consistent with a MIPAS Jun/Jul/Aug map and a TES June map that show this region to be on the border between a source and sink.

The suggested qualitative comparison of data from a single cruise for OCS is difficult, because the satellite data and atmospheric inversions do not differentiate between direct and indirect emissions. We use our measurements to increase process understanding on a broader scale and use this to address the question of sources and sinks combining direct and indirect sources. As already stated in the text, it is impossible to conclude whether or not the ocean was a net source or sink for direct OCS from TransPEGASO, as only 2 measurements per day were available.

ASTRA-OMZ show a strong source in October for the Peru-Chile upwelling region. MIPAS Sept/Oct/Nov do not show this. However, MIPAS is an upper troposphere estimate so it is not expected to provide a close relationship to surface fluxes in regions without strong atmospheric convection such as the Peru-Chile upwelling region. TES provides a lower altitude sensitivity and could provide a better top-down on small regions of sources such as the Peru-Chile upwelling regions. While TES data have only been published for June, TES retrievals for other months are in preparation.

As the reviewer correctly mentions, TES would be a better comparison to our combined flux maps, but is unfortunately not yet available. Similarly to our comment above, indirect fluxes contribute significantly to the atmospheric budget and can currently not be differentiated by satellites.

Several revisions are needed in the introduction. Page 2 indicates that top-down studies were not consistent with the Kettle bottom-up estimates for sources and sinks. This should be corrected to say that the bottom-up and top-down info does not agree with Kettle. Kettle was a misinterpretation of the bottom-up information from plant studies which was first pointed out in the bottom-up study of Sandoval-Soto et al. and then later confirmed by multiple topdown studies (Campbell et al, Suntharalingam et al, Berry et al, etc.) and other bottom-up studies using chamber (Stimler et al) and canopy (Asaf et al, Maseyk et al) approaches.

We thank the reviewer for pointing us to these studies and added/adapted the following lines to the manuscript p. 2, l. 21ff "Nonetheless, current figures for tropospheric OCS sources and sinks carry large uncertainties (Kremser et al., 2016). While the budget has been previously considered closed (Kettle, 2002), a recent upward revision of the vegetation sink (Sandoval-Soto et al., 2005; Suntharalingam et al., 2008; Berry et al., 2013) led to a gap, i.e. a missing source, in the atmospheric budget of 230-800 Gg S per year (Suntharalingam et al., 2008; Berry et al., 2013; Kuai et al., 2015; Glatthor et al., 2015)(Tab. 1). , with the most recent estimates at the higher end of the range. This revision of vegetation uptake was suggested as to (i) take into account the different deposition velocities of CO₂ and OCS within the leaf and base it on GPP instead of net primary production (Sandoval-Soto et al., 2005) as well as (ii) to better reproduce observed seasonality of

OCS mixing ratios in several atmospheric models (Berry et al., 2013; Kuai et al., 2015; Glatthor et al., 2015)."

The top down evidence from the global scale should be better specified. First it should be clear that there are four independent lines of five independent lines of evidence that point to a tropical source: MIPAS satellite (Glatthor et al), TES satellite (Kuai et al), FTIR (Wang et al, ACP, 2016... this ref isn't in the manuscript but might be added), NOAA and HIPPO observations (Berry et al, Kuai et al, Suntharlingam et al).

We agree that we did not fully address all of the mentioned studies. However, only a latitudinal gradient on mixing ratios alone does not point to a tropical hotspot source (i.e. it could also be stronger high-latitude sinks) or an ocean source (i.e. other sources such as anthropogenic sources are possible). We wanted to highlight the magnitude of the missing source suggested by the inverse modelling studies in this section. The fact that highest atmospheric volume mixing ratios are found in the tropical atmosphere does not *per se* contradict our bottom-up emission estimate, as the oceanic emission is still confirmed as one of the dominant sources to the global budget in our study. We thus adjusted the following sentence, including the suggestions from the reviewer p. 2, l. 28: "Based on independent top-down approaches using the MIPAS (Glatthor et al., 2015) and TES (Kuai et al., 2015) satellite observations, FTIR measurements (Wang et al., 2016) as well as NOAA ground based time series stations and the HIPPO aircraft campaign (Berry et al., 2013; Kuai et al., 2015) together with inverse modelling, the missing source of OCS was suggested to originate from the (tropical) ocean."

A critical point should be raised to alert the reader to alternative explanations for the top-down trends. In particular, the MIPAS remote sensing data is the upper troposphere (10km) and transport from Asia to the upper troposphere in the deep tropics (e.g. Ashfold et al ACP 2015).

We included this point in our manuscript by adding p.2, l. 32: "Other potential sources like e.g. advection from air masses from Asia have been discussed (Glatthor et al., 2015) but not tested."

Recent anthropogenic emission estimates for Asia are not yet sufficient to explain the missing source but they are based on very little bottom-up data from Asia (Campbell et al 2015). Other hypotheses could be mentioned as well such as a soil source which has been shown in a recent survey of global soils but not particularly large in the tropics (Whelan et al ACP 2016). Biomass burning is another but the most recent review of emission factors shows a relatively small source (Campbell et al 2015).

We added a sentence on the potential of biomass burning as the missing source p.14, l.10: "While biomass burning is known to emit OCS and is present close to the assumed source region, e.g. around Indonesia, the most recent review of emission factors result in a source too small to close the atmospheric budget (Campbell et al., 2015)". Two other points are already described in our conclusion section on p. 14, line 12ff (other anthropogenic sources, now extended "However, Lee and Brimblecombe (2016) reevaluated the anthropogenic emissions of OCS and its precursors and provide a higher number than previously considered of 598 Gg S yr⁻¹. They attribute the largest direct OCS emissions to biomass and biofuel burning as well as pulp and paper factory, and the largest CS₂ emissions to the rayon industry. Hence, a hot spot of anthropogenic emissions in the Asian continent might be a potential candidate, together with atmospheric transport, to produce atmospheric mixing ratios as observed by the satellite.") and p.14, l.18ff (soils).

The Van Hobe study was included but more could be done to explain what other cruise data is available. The introduction needs to explain how the cruise measurements and ocean box modeling fit within the context of previous cruise measurement and ocean box modeling. Were these cruises in seasons or locations that have others have not gone?

We agree that an overview on previous cruise data should be stressed more in this manuscript, which we do with the following addition apart from the new table 5. and box model description in section 2.4 described in our first comment above.

We add a more detailed description on previous OCS, CS₂ and DMS measurements in the surface ocean in the introduction, p.3, l. 3ff: “OCS and its atmospheric precursors are naturally produced in the ocean. In the surface open ocean, OCS is present in the lower picomolar range <100 pmol L⁻¹, and has been measured on numerous cruises to the Atlantic (Ulshöfer et al., 1995; Ulshöfer et al., 1996; Ulshöfer and Andreae, 1998; Von Hobe et al., 1999) (including 3 latitudinal transects (Kettle et al., 2001; Xu et al., 2001), the Indian Ocean (Mihalopoulos et al., 1992), the Pacific Ocean (Weiss et al., 1995) and the Southern Ocean (Staubes and Geogrii, 1993). OCS is produced photochemically from chromophoric dissolved organic matter (CDOM) (Andreae and Ferek, 2002; Ferek and Andreae, 1984) and by a not fully understood light independent production pathway that depends on temperature and CDOM concentration (Flöck et al., 1997; Von Hobe et al., 2001) Dissolved OCS is efficiently hydrolyzed to CO₂ and H₂S at a rate depending on pH and temperature (Elliott et al., 1989). CS₂ has been measured in the Pacific and Atlantic oceans in a range of 7.2-27.5 pmol L⁻¹ (Xie et al., 1998) and during two Atlantic transects (summer and winter) in a range of 4-40 pmol L⁻¹ (Xu et al., 2001). It is produced photochemically (Xie et al., 1998) and biologically (Xie and Moore, 1999), and no significant loss process other than air-sea gas exchange has been identified (Xie et al., 1998). DMS is present in the lower nanomolar range in the surface ocean and has been extensively studies in several campaigns, summarized in a climatology by Lana et al. (2011). DMS is biogenically produced and consumed in the surface ocean, as well as photo-oxidized and ventilated by air-sea exchange (Stefels et al., 2007).”

The introduction or discussion could also compare the modeling approach here to what has been done previously. In particular the recent paper by Launois et al.

We now discuss the comparison to Launois et al., 2015 on p. 7, l. 4ff: “Launois et al. (2015) to implemented parameterizations for light-independent production, hydrolysis and air-sea exchange similar to vH2003 in the 3D global ocean model NEMO-PISCES. The main differences to the approach used here is the lack of accounting for mixing in our model (discussed in section 3.2.2 (which will theoretically lead to higher simulated concentrations in our case) and the application of a photoproduction rate constant in our model that incorporates information from three open ocean basins in contrast to one from a study in the North Sea (Launois et al., 2015).”

A section on the development of the box model used in this study is now added on p. 6., l. 23ff.

Some comments may be helpful on alternative approaches for validating these flux estimates. Spatial gradients in atmospheric mixing ratios have been used recently (Berkelhammer et al below). Are other approaches also possible? (M. Berkelhammer, H.C. Steen-Larsen, A. Cosgrove, A. Peters, R. Johnson, M. Hayden and S.A. Montzka (Minor Revisions, July 2016) Radiation and atmospheric circulation controls on carbonyl sulfide concentrations in the marine boundary layer. Journal of Geophysical Research (available upon request).

Validation of the flux estimates would need different methods for different scales. Using atmospheric gradients could help to qualitatively validate sources and sinks, but since OCS is such a long-lived gas, the volume mixing ratio of OCS on larger scales is determined by many factors among which direct emissions are only one part (i.e. indirect emissions, conversion in the atmosphere, boundary layer height, trajectory history,...). The mentioned study shows that the ocean can be a source or have a zero net flux regionally, which qualitatively confirms our results, but of course cannot quantitatively validate global emission estimates.

Fluxes are physically defined by $F=k \times \Delta c$, and computing them by measuring the concentration gradient is an established method that has been validated before (Johnson, 2010). Quantitatively validating the emission estimate on the local scale would mean using an independent way of measuring OCS emissions. This can be done by direct flux measurements, e.g. eddy covariance. As

OCS is such a long-lived gas, any validation on the global scale needs the global consideration of all sources and sinks, and atmospheric inversions can be used to establish a budget, but need the bottom-up validation of measurements themselves. Any additional data constraints from e.g. time series stations in the tropics and more measurements at sea, tested against the box model, would be beneficial in that respect.

Section 2.3 should describe how the box model relates to the measurements. This is done in the results section "Following an earlier study (von Hobe et al., 2003), we use our observations ..." but belongs in the methods. A few additional sentences of explanation may be helpful.

We shifted the mentioned part to the method section. Additionally, we clarified that the box model simulations of the two cruises were used as case studies to derive the photoproduction rate constant and validate against data from the tropical region, as a proof-of-concept for the global application of the model on p. 8, l. 15ff. "To extend the p-CDOM-relationship for other ocean basins, we use the two cruises OASIS and ASTRA-OMZ as case studies for parameter optimization of the photoproduction rate constant p. The photoproduction constant p in the case study simulations was fitted individually for periods of daylight $>100 \text{ W m}^{-2}$ (Fig. 2, blue lines) with a Levenberg-Marquart optimization routine in MatLab version 2015a (8.5.0), by minimizing residuals between simulated and hourly averaged measurements. Different starting values were tested to reduce the risk of the fitted p being a local minimum."

Why was the parameter p chosen for fitting the model as opposed to the numerous other parameters. Were other parameters also examined? If not then perhaps this should be stated as an important next step for future work.

The parameter p was chosen for fitting since this is the one that is the most difficult to determine from measurements when a wavelength-integrated approach is chosen as is done in our model. We added on p.8 l.10ff: "The rate coefficients for hydrolysis, light-independent production and air-sea exchange are all reasonably well constrained and parameterizations have been derived from dedicated laboratory and field experiments (hydrolysis, air-sea exchange) or from nighttime OCS observations in several regions assuming steady-state (dark production, (Von Hobe et al., 2001)). On the contrary, the photoproduction rate constant p is not well constrained and no generally applicable parameterization exists. von Hobe (2003) have made a start of parameterizing p in terms of CDOM absorption, and found this to be dependent on the exact model setup used with respect to wavelength integration and mixed layer treatment."

Why was the von Hobe et al., 2003 study used but not other studies? What is the spatial and temporal extent of the Von Hobe data?

The model from von Hobe et al., 2003, is the most recent version of the box model which was further developed in our approach. We added a paragraph on the evolution of this model (beginning of section 2.4, p. 6), see also our comment 2, point (1) above.

"global radiation I was" not sure what "I" is

The "I" should have been in italics, as it is the symbol for global radiation in the equations, which we now corrected.

page 6, explain what you mean by "case study simulations"

We meant our two cruises as case studies for the global model, which we clarify by adding p. 8, l.15: "To extend the p-CDOM-relationship for other ocean basins, we use the two cruises OASIS and ASTRA-OMZ as case studies for parameter optimization of the photoproduction rate constant

p. The photoproduction constant p in the case study simulations was fitted individually for periods of daylight >100 W m⁻² (Fig. 2, blue lines) with a Levenberg-Marquart optimization routine in MatLab version 2015a (8.5.0), by minimizing residuals between simulated and hourly averaged measurements.

define "CTD profiles"

now defined "...CTD (conductivity, temperature, depth)..." p.8, l.1

The methods section should also include a summary of the time and location of the 3 cruises.

We added a new section 2.1 to summarize the study sites and cruises.

p.4, l. 5: "Several cruises were conducted to measure the trace gases OCS (OASIS, TransPEGASO, ASTRA-OMZ) and CS₂ (TransPEGASO, ASTRA-OMZ). Cruise tracks are depicted in Fig. 1. The OASIS cruise onboard RV SONNE I to the Indian Ocean started from Port Louis, Mauritius to Male, Maledives in July and August 2014, where mainly oligotrophic waters were encountered. TransPEGASO was an Atlantic transect starting in Gibraltar leading to Buenos Aires, Argentina and Punto Arenas, Chile. It took place in October and November 2014 and covered a variety of biogeochemical regimes. ASTRA-OMZ onboard RV SONNE II started in Guayaquil, Ecuador and ended in Antofagasta, Chile, in October 2015. Although 2015 was an El Nino year, upwelling together with high biological production was still encountered during the cruise (Stramma et al., 2016)."

The section "2.1 Measurement set-up for trace gases" present a different method for each cruise. It would be helpful if this section also summarized the impact of having different methods on the different cruises in terms of different precision and other factors that may or may not influence the quality of these measurements.

The different methods are discussed in section 2.1, with detailed description of the different methods and precisions for all methods (i.e. OA-ICOS for OCS during OASIS/ASTRA-OMZ, GC-MS for OCS during TransPEGASO as well as for CS₂ during TransPEGASO and ASTRA-OMZ) including standards and calibration procedures, temporal resolution of the measurements, precision etc. We added the following on p. 5, l. 29.: **"The systems are calibrated against a standard each, but had not been directly intercompared. Still, our measurements are consistent with previous measurements using independent methods as discussed in section 3.2.1. and 3.3"**.

Table 3 missing km⁻² in TransPEGASO flux

Now corrected

"an non-negligible" to "a"

Now corrected

Some description is needed of the error associated with assuming a constant atmospheric mixing ratio on TransPEGASO. Seasonal and spatial variation in atmospheric mixing ratios can be on the order of 100 ppt.

We performed a sensitivity test for a scenario with 450 and 550 ppt, and added the following sentences to the manuscript p. 6, l. 6: **"As air volume mixing ratios of OCS vary over the course of a year, we performed a sensitivity test for a scenrio of 450 and 550 ppt and found mean deviations of +7.8 and -7.8 % respectively."**

"leaving the missing source still explained" should be "unexplained"?

Now corrected

Again this is an important contribution of new, high quality data and a well written manuscript. The authors present a compelling approach and with further data could provide a key to closing the global COS budget.

References:

Andreae, M. O., and Ferek, R. J.: Photochemical production of carbonyl sulfide in seawater and its emission to the atmosphere, *Glob. Biogeochem. Cycle*, 6, 175-183, 2002.

Berry, J., Wolf, A., Campbell, J. E., Baker, I., Blake, N., Blake, D., Denning, A. S., Kawa, S. R., Montzka, S. A., Seibt, U., Stimler, K., Yakir, D., and Zhu, Z.: A coupled model of the global cycles of carbonyl sulfide and CO₂: A possible new window on the carbon cycle, *Journal of Geophysical Research: Biogeosciences*, 118, 842-852, 10.1002/jgrg.20068, 2013.

Campbell, J. E., Whelan, M. E., Seibt, U., Smith, S. J., Berry, J. A., and Hilton, T. W.: Atmospheric carbonyl sulfide sources from anthropogenic activity: Implications for carbon cycle constraints, *Geophysical Research Letters*, 42, 3004-3010, 10.1002/2015gl063445, 2015.

Elliott, S., Lu, E., and Rowland, F. S.: Rates and mechanisms for the hydrolysis of carbonyl sulfide in natural waters, *Environmental Science & Technology*, 23, 458-461, 10.1021/es00181a011, 1989.

Ferek, R. J., and Andreae, M. O.: Photochemical production of carbonyl sulphide in marine surface waters, *Letters to Nature*, 1984, 148-150, 1984.

Flöck, O. R., and Andreae, M. O.: Photochemical and non-photochemical formation and destruction of carbonyl sulfide and methyl mercaptan in ocean waters, *Marine Chemistry*, 54, 11-26, 1996.

Flöck, O. R., Andreae, M. O., and Dräger, M.: Environmentally relevant precursors of carbonyl sulfide in aquatic systems, *Marine Chemistry*, 59, 71-85, 10.1016/S0304-4203(97)00012-1, 1997.

Glatthor, N., Höpfner, M., Baker, I. T., Berry, J., Campbell, J. E., Kawa, S. R., Krysztofiak, G., Leyser, A., Sinnhuber, B. M., Stiller, G. P., Stinecipher, J., and Clarmann, T. v.: Tropical sources and sinks of carbonyl sulfide observed from space, *Geophysical Research Letters*, n/a-n/a, 10.1002/2015gl066293, 2015.

Johnson, M. T.: A numerical scheme to calculate temperature and salinity dependent air-water transfer velocities for any gas, *Ocean Science*, 6, 913-932, 10.5194/os-6-913-2010, 2010.

Kettle, A. J.: Extrapolations of the flux of dimethylsulfide, carbon monoxide, carbonyl sulfide and carbon disulfide from the oceans, PhD, Graduate Program in Chemistry, North York, Ontario, 2000.

Kettle, A. J., Rhee, T. S., von Hobe, M., Poulton, A., Aiken, J., and Andreae, M. O.: Assessing the flux of different volatile sulfur gases from the ocean to the atmosphere, *Journal of Geophysical Research: Atmospheres*, 106, 12193-12209, 10.1029/2000jd900630, 2001.

Kettle, A. J.: Global budget of atmospheric carbonyl sulfide: Temporal and spatial variations of the dominant sources and sinks, *Journal of Geophysical Research*, 107, 10.1029/2002jd002187, 2002.

Kremser, S., Thomason, L. W., von Hobe, M., Hermann, M., Deshler, T., Timmreck, C., Toohey, M., Stenke, A., Schwarz, J. P., Weigel, R., Fueglistaler, S., Prata, F. J., Vernier, J.-P., Schlager, H., Barnes, J. E., Antuña-Marrero, J.-C., Fairlie, D., Palm, M., Mahieu, E., Notholt, J., Rex, M., Bingen, C., Vanhellemont, F., Bourassa, A., Plane, J. M. C., Klocke, D., Carn, S. A., Clarisse, L., Trickl, T., Neely, R., James, A. D., Rieger, L., Wilson, J. C., and Meland, B.: Stratospheric aerosol—observations, processes, and impact on climate, *Reviews of Geophysics*, 54, n/a-n/a, 10.1002/2015rg000511, 2016.

Kuai, L., Worden, J. R., Campbell, J. E., Kulawik, S. S., Li, K.-F., Lee, M., Weidner, R. J., Montzka, S. A., Moore, F. L., Berry, J. A., Baker, I., Denning, A. S., Bian, H., Bowman, K. W., Liu, J., and Yung, Y. L.: Estimate of carbonyl sulfide tropical oceanic surface fluxes using aura tropospheric emission spectrometer observations, *Journal of Geophysical Research: Atmospheres*, 120, 11,012-011,023, 10.1002/2015jd023493, 2015.

Lana, A., Bell, T. G., Simo, R., Vallina, S. M., Ballabrera-Poy, J., Kettle, A. J., Dachs, J., Bopp, L., Saltzman, E. S., Stefels, J., Johnson, J. E., and Liss, P. S.: An updated climatology of surface dimethylsulfide concentrations and emission fluxes in the global ocean, *Glob. Biogeochem. Cycle*, 25, 10.1029/2010gb003850, 2011.

Launois, T., Belviso, S., Bopp, L., Fichot, C. G., and Peylin, P.: A new model for the global biogeochemical cycle of carbonyl sulfide - part 1: Assessment of direct marine emissions with an oceanic general circulation and biogeochemistry model, *Atmos. Chem. Phys.*, 15, 2295-2312, 10.5194/acp-15-2295-2015, 2015.

Lee, C.-L., and Brimblecombe, P.: Anthropogenic contributions to global carbonyl sulfide, carbon disulfide and organosulfides fluxes, *Earth-Science Reviews*, 160, 1-18, <http://dx.doi.org/10.1016/j.earscirev.2016.06.005>, 2016.

Mihalopoulos, N., Nguyen, B. C., Putaud, J. P., and Belviso, S.: The oceanic source of carbonyl sulfide (cos), *Atmospheric Environment*, 26A, 1383-1394, 1992.

Sandoval-Soto, L., Stanimirov, M., von Hobe, M., Schmitt, V., Valdes, J., Wild, A., and Kesselmeier, J.: Global uptake of carbonyl sulfide (cos) by terrestrial vegetation: Estimates corrected by deposition velocities normalized to the uptake of carbon dioxide (co₂), *Biogeosciences*, 2, 125-132, 2005.

Staubes, R., and Geogrii, H.-W.: Biogenic sulfur compounds in seawater and the atmosphere of the antarctic region, *Tellus*, 45B, 127-137, 1993.

Stefels, J., Steinke, M., Turner, S., Malin, G., and Belviso, S.: Environmental constraints on the production and removal of the climatically active gas dimethylsulphide (dms) and implications for ecosystem modelling, *Biogeochemistry*, 83, 245-275, 10.1007/s10533-007-9091-5, 2007.

Stramma, L., Fischer, T., Grundle, D. S., Krahnemann, G., Bange, H. W., and Marandino, C. A.: Observed el niño conditions in the eastern tropical pacific in october 2015, *Ocean Sci.*, 12, 861-873, 10.5194/os-12-861-2016, 2016.

Suntharalingam, P., Kettle, A. J., Montzka, S. M., and Jacob, D. J.: Global 3-d model analysis of the seasonal cycle of atmospheric carbonyl sulfide: Implications for terrestrial vegetation uptake, *Geophysical Research Letters*, 35, L19801, 10.1029/2008gl034332, 2008.

Uher, G., and Andreae, M. O.: The diel cycle of carbonyl sulfide in marine surface waters: Field study results and a simple model, *Atmospheric Geochemistry*, 2, 313-344, 1997.

Ulshöfer, V. S., Uher, G., and Andreae, M. O.: Evidence for a winter sink of atmospheric carbonyl sulfide in the northeast atlantic ocean, *Geophysical Research Letters*, 22, 2601-2604, 1995.

Ulshöfer, V. S., Flöck, O. R., Uher, G., and Andreae, M. O.: Photochemical production and air-sea exchange of carbonyl sulfide in the eastern mediterranean sea, *Marine Chemistry*, 53, 25-39, 1996.

Ulshöfer, V. S., and Andreae, M. O.: Carbonyl sulfide (cos) in the surface ocean and the atmospheric cos budget, *Atmospheric Geochemistry*, 3, 283-303, 1998.

Von Hobe, M., Kettle, A. J., and Andreae, M. O.: Carbonyl sulphide in and over seawater: Summer data from the northeast atlantic ocean, *Atmospheric Environment*, 33, 3503-3514, 1999.

Von Hobe, M., Cutter, G. A., Kettle, A. J., and Andreae, M. O.: Dark production: A significant source of oceanic cos, *Journal of Geophysical Research*, 106, 31217, 10.1029/2000jc000567, 2001.

von Hobe, M.: Photochemical and physical modeling of carbonyl sulfide in the ocean, *Journal of Geophysical Research*, 108, 10.1029/2000jc000712, 2003.

Wang, Y., Deutscher, N. M., Palm, M., Warneke, T., Notholt, J., Baker, I., Berry, J., Suntharalingam, P., Jones, N., Mahieu, E., Lejeune, B., Hannigan, J., Conway, S., Mendonca, J., Strong, K., Campbell, J. E., Wolf, A., and Kremser, S.: Towards understanding the variability in biospheric co₂ fluxes: Using ftir spectrometry and a chemical transport model to investigate the sources and sinks of carbonyl sulfide and its link to co₂, *Atmos. Chem. Phys.*, 16, 2123-2138, 10.5194/acp-16-2123-2016, 2016.

Weiss, P. S., Johnson, J. E., Gammon, R. H., and Bates, T. S.: Reevaluation of the open ocean source of carbonyl sulfide to the atmosphere, *Journal of Geophysical Research*, 100, 23083-23092, 1995.

Xie, H., Moore, R. M., and Miller, W. L.: Photochemical production of carbon disulphide in seawater, *Journal of Geophysical Research: Oceans*, 103, 5635-5644, 10.1029/97jc02885, 1998.

Xie, H., and Moore, R. M.: Carbon disulfide in the north atlantic and pacific oceans, *Journal of Geophysical Research*, 104, 5393, 10.1029/1998jc900074, 1999.

Xu, X., Bingemer, H. G., Georgii, H. W., Schmidt, U., and Bartell, U.: Measurements of carbonyl sulfide (cos) in surface seawater and marine air, and estimates of the air-sea flux from observations during two atlantic cruises, *Journal of Geophysical Research*, 106, 3491, 10.1029/2000jd900571, 2001.

We thank the reviewer#2 for the review that helps to improve our manuscript. In the following, we address the raised points directly, with the *review in italics* and **our reply in bold font**.

I find it striking that such broad generalizations are made from data that cover a fairly small portion of the global ocean. The authors have a great deal of new observations to address the important issue of quantifying OCS fluxes from the ocean. But to draw broad conclusions without considering the previous data more carefully is inappropriate. Their data add to the picture in useful and interesting ways. To "conclusively answer the question of whether the missing OCS source... can really be ascribed to the direct OCS emissions from tropical oceans" would seem to require another level of effort that isn't yet part of this manuscript.

We agree that we need to add information on a comparison of our model simulation with previous cruises, which we now added in a new Table (Table 5) where we compare previous studies from various seasons and regions with our box model simulation (>4000 measurements). We discuss this in a new section "3.2.1 Comparison to previous ship-based measurements" (p.11). We find overall good agreement even though we compare monthly climatological means from the box model simulation with cruise data. This further increases the confidence in our model simulation. In addition, we emphasize again that the box model had already been established previously and tested with data from several cruises and seasons (p. 6, l.22ff). We further improve the model by consolidating the aCDOM dependence of the photoproduction rate constant p and constrain the model by important new data from tropical regions which had been missing previously.

See also our response to a similar comment by reviewer #1.

New Tab. 5

References	Season	Region	Mean OCS±std. [pmol L ⁻¹]	n	L2016 mean [pmol L ⁻¹]
Mihalopoulos et al. (1992)		open Indian Ocean 20°N-37°S			
	Mar/May 1986	OCEAT II	19.9±0.5*	20	11.2±6.3
	Jul 1987	OCEAT III	19.9±1.0*	14	17.7±13.1
Staubes and Georgii (1993)	Nov-Dec 1990	Wedell Sea 40°-72°S,72°W-24°E	109**	126	66.6±49.8
Ulshöfer et al. (1995)		North Atlantic Ocean			
	Apr/May 1992	47°N 20°W	14.9±6.9	118	42.8±11.3
	Jan 1994	48-50°N, 10-17°W	5.3±1.6	120	8.9±3.2
	Sep 1994	48-50°N, 10-17°W	19.0±8.3	235	33.4±3.5
Flöck and Andreae (1996)	Jan 1994	Northeast Atlantic Ocean 49°N, 12°W	6.7 (4-11)	120	9.6±3.7
Ulshöfer and Andreae (1998)	Mar 1995	West Atlantic 32°N, 64°W	8.1±7.0	323	15.8
von Hobe et al. (1999)	Jun/Jul 1997	Northeast Atlantic Ocean 30-40°N, 8-15°W	23.6±16.0	940	30.5±12.6
Kettle et al. (2001)	Sep/Oct 1998	Atlantic transect 50°N-60°S, 1°-64°W	21.7±19.1	783	22.9±3.2
von Hobe et al. (2001)	Aug 1999	Sargasso Sea/BATS 32°N, 64°W	8.6±2.8	518	8.1
Xu et al. (2001)	Oct/Nov 1997	Atlantic meridional transect 53°N-34°S,25°W-20°E	14.8±11.4	306	11.8±12.7
	May/June 1998	Atlantic meridional transect 53°N-34°S,25°W-20°E	18.1±16.1	440	27.8±47.9

New section 3.2.1:

“The global simulation of OCS surface water concentrations generally reproduced the lower picomolar range of concentrations (Tab. 5), the seasonal pattern of higher concentrations during summer compared to winter (as e.g. in (Ulshöfer et al., 1995)) and the spatial pattern of higher concentrations in higher latitudes (e.g. Southern Ocean, (Staubes and Geogrii, 1993)). Given that monthly means of a model simulation driven by climatological data of the input parameters is compared to cruise measurements, the absolute mean error of 6.9 pmol L⁻¹ and the mean error of 3.7 pmol L⁻¹ indicate an overall good reproduction of observations (differences between observation and model output were weighted to number of observations in Tab. 5). It has to be noted that on average, the model overestimates OCS concentrations as indicated by the positive mean error, suggesting our emission estimate to be an upper limit to direct oceanic OCS emissions in most regions. Largest deviation from observations are found in the Southern Ocean (vgl. (Staubes and Geogrii, 1993) in Tab. 5), where the model underestimated observations by ~40%. While this can have several reasons, i.e. a possible violation of the underlying assumption of a constant OCS production in regions with deep mixed layers such as the Southern Ocean, or the missing satellite data for CDOM during polar nights, it is a clear indication of the need of more observations from high latitudes. However, this underestimation does not infer with our conclusion drawn for the tropical oceans, where the location of the missing source is derived from top-down approaches.”

New paragraph with detailed description of the evolution of the box model:

p. 6, l. 22ff: “A box model to simulate surface concentration of OCS is further developed from the latest version from (von Hobe et al., 2003, termed vH2003), where concentrations along the cruistracks of 5 Atlantic cruises have been simulated and compared. The vH2003 model results from successful tests and validation to observations on several cruises to the Atlantic Ocean covering all seasons (i.e. (Flöck and Andreae, 1996) in January 1994, (Uher and Andreae, 1997a) in April/May 1992, (Von Hobe et al., 1999) in June/July 1997, (Kettle et al., 2001) in September/October 1998). By comparing photoproduction rate constants of the 5 cruises to CDOM absorption, (von Hobe, 2003) suggests a second order process for photoproduction with the photoproduction rate constant being dependent on the absorption of CDOM in seawater.

In our approach, we test vH2003 along the cruise track of two cruises, include a new way of determining the photoproduction rate constant (see below) and apply it with global climatological input (termed L2016).

(Kettle, 2000; Kettle, 2002) applied a similar version of vH2003 globally, which included an optimized photoproduction constant from Atlantic transect cruise data, an optimized constant light-independent production and a linear regression to obtain CDOM from chlorophyll a. In comparison to K2000, we use (i) a new way of determining the photoproduction rate constant incorporating information from three ocean basins, (ii) the most recent parameterization of light-independent production available, and (iii) satellite observations for sea surface CDOM instead of an empiric relationship based on chlorophyll a.

Launois et al. (2015) implemented parameterizations for light-independent production, hydrolysis and air-sea exchange similar to vH2003 in the 3D global ocean model NEMO-PISCES. The main differences to the approach used here is the lack of accounting for mixing in L2016 (discussed in section 3.2.2., which will theoretically lead to higher simulated concentrations in our case) and the application of a photoproduction rate constant in our model that incorporates information from three open ocean basins in contrast to one from a study in the North Sea (Launois et al., 2015).”

I realize that the model helps the authors extrapolate their results to broader scales, but the results derived are only as good as the data considered by the model. If the authors really hope to be able to "constrain the variability of OCS emissions in the tropic[al ocean]" then I would think they would have to consider the details of previous ocean-going measurements (ocean basin, ocean regime, season, etc.) together with their new data to determine if, in fact, that most of the major global ocean regimes have been adequately sampled to allow such a conclusion.

Additional to considering previous measurements (see above), we also added a comparison of the water properties of our cruises and the assumed source region (Pacific Warm Pool, new Tab. 4). The properties encountered during our 2 cruises which we use to further improve and validate the box model (OASIS, ASTRA-OMZ) comprise the range of properties found in the Pacific Warm Pool except for SST and windspeed. We discuss this in p. 10, l. 20ff in the revised manuscript.

New Tab. 4:

Parameter	OASIS	ASTRA-OMZ	Pacific Warm Pool
SST [$^{\circ}\text{C}$]	27.0 \pm 1.0	19.6 \pm 2.6	28.9 \pm 0.9
SSS [g kg^{-1}]	35.0 \pm 0.3	35.1 \pm 0.3	34.5 \pm 0.42
wind speed [m s^{-1}]	8.2 \pm 1.7	7.5 \pm 1.8	5.3 \pm 0.4
α_{350} [m^{-1}]	0.039 \pm 0.02	0.146 \pm 0.02	0.050 \pm 0.08
I [W m^{-2}]	226.5 \pm 303.0	196.4 \pm 283.1	206.4 \pm 286.6*
SR [J m^{-2}]	1.9 $10^7 \pm 1.7 10^6$	1.6 $10^7 \pm 4.5 10^6$	8.9 $10^6 \pm 1.3 10^6$
pH [-]	8.03 \pm 0.01	-**	8.07 \pm 0.01
MLD [m]	43.3 \pm 15.8	18.9 \pm 7.5	35.9 \pm 14.1

Discussion of Tab. 4 in the text:

p.10, l.20: "The water masses encountered during the cruises to the Indian Ocean (OASIS) and eastern Pacific (ASTRA-OMZ), which are used to constrain the global box model, differ considerably with respect to the properties relevant for OCS cycling and thus span a large range of possible OCS variability. The properties encountered during these two cruises comprise or exceed the ones of the Pacific warm pool (climatological averages, Tab. 4), which is where the missing source has been located (Glatthor et al., 2015; Kuai et al., 2015). Both higher SST and lower wind speeds (Tab. 5) would decrease the OCS sea surface concentrations in the ocean and thus decrease emissions to the atmosphere: higher SSTs favor a stronger degradation by hydrolysis (Elliott et al., 1989), and lower wind speeds decrease the transfer velocity k and thus the emissions to the atmosphere. Lower integrated daily radiation (SR in Tab. 4) in the Pacific warm pool also points to lower OCS production. Hence, our new OCS observations presented here likely span the range of emission variability in the tropics."

Note that the box model has been used in a number of studies comparing observed and simulated OCS for individual cruises from different parts of the oceans and always yielded reasonable results.

For example, it is informative and important that their results are consistent with an upper flux limit from Kettle et al., 2002, but no mention is made of how that consistency actually increases our understanding of total OCS flux from the ocean. If the sampled regions were similar, then this is a confirmation of that original estimate, but potentially not much progress in understanding the broader-scale contribution of the ocean to atmospheric OCS abundances.

Kettle et al. 2002 built his global model on data from a transect through various regimes in the Atlantic, so our new data from the Indian, Atlantic (comparable) and East Pacific increase the data bases and model test cases for two new ocean basins (discussed on p.6 l.32ff in the revised manuscript).

"(Kettle, 2000; Kettle, 2002) applied a similar version of vH2003 globally, which included an optimized photoproduction constant from Atlantic transect cruise data, an optimized constant light-independant

production and a linear regression to obtain CDOM from chlorophyll a. In comparison to K2000, we use (i) a new way of determining the photoproduction rate constant incorporating information from three ocean basins, (ii) the most recent parameterization of light-independent production available, and (iii) satellite observations for sea surface CDOM instead of an empiric relationship based on chlorophyll a."

Suggestion: scale back the broad conclusions and focus on your results and how they compare with others, or consider the broader literature on OCS flux measurements (observation-based and model-derived) in a more detailed fashion to determine if the available data allow an accurate quantification of the global and, most importantly, tropical OCS flux from the ocean.

As described above, we considered the broader literature by (i) comparing our model simulations to 9 studies and (ii) describing more detailed in which regions the box model had been tested previously. With changing the title to "Direct Oceanic OCS emissions are unlikely to account for the missing source of atmospheric carbonyl sulfide" we acknowledge the higher uncertainty associated with the indirect emission estimates.

On uncertainties. Any comparison of derived oceanic fluxes with a shortfall needs to fully consider uncertainties. Many uncertainties are discussed (air-sea exchange, mixed layer depth, parameterization of production, etc.,) but aren't explicitly included in the derivation of the direct flux of 130 GgS/yr and in the discussion of the global budget discrepancy (no uncertainty is provided on this number).

We restructured the results part and discuss uncertainties now in a new section "3.2.2 Uncertainties" (p. 12, l. 1ff). From our comparison to measurements from section 3.2.1, we use the mean error to derive an uncertainty for the global emission estimate, which results in an uncertainty of 50 Gg S per year.

p. 12, l.1: "Simulated concentrations and fluxes carry uncertainties from input parameters and process parameterizations. One major uncertainty associated with the mixed-layer box model approach arises from the fact that it does not adequately account for downward mixing and vertical concentration gradients within the mixed layer. Under most circumstances, and especially in the tropical open ocean, where hydrolysis greatly exceeds surface outgassing and low a_{350} makes photoproduction extend further down in the water column, the model tends to overestimate the real OCS concentrations, as was shown for our two cruises above. Therefore, we deem the fluxes from our global simulation to represent an upper limit of the true fluxes. Only at high latitudes would we expect more complex uncertainties, because hydrolysis at low temperatures is slow and only photoproduction and loss by outgassing are directly competing at the very surface. Other uncertainties are associated with the calculation of the photoproduction rate. The wavelength of 443nm combines the absorption of detritus and CDOM, which could have an impact especially in river plumes, where terrestrial material is advected into the ocean. As it is the CDOM that is important for photochemistry, assuming the 443nm is purely CDOM would lead to an overestimation of photoproduction and thus is a conservative estimate. It also has to be noted that a single spectral slope from 443nm to 350nm in the global simulation is a simplification. Furthermore, using a wavelength integrated photoproduction rate constant instead of a wavelength resolved approach, which would take global variations in the CDOM and light spectra into account, is an additional simplification. It has been shown that this does not lead to large differences regionally (von Hobe, 2003), but potentially could lead to variations globally. Our p-CDOM-relationship is a first step for constraining this variability globally in one parameterization, as it incorporates optimized photoproduction rate constants optimized to observations and thus accounting for differences in the light and CDOM spectra. More data from different regions can help to further constrain this relationship in future studies. However, despite these simplifications, the simulated concentrations agree very well with previous observations (n>4000, Tab. 5).

To test the sensitivity of our box model to the photoproduction rate constant, we performed a sensitivity test with a photoproduction increased by a factor of 5 in the tropical region 30°N-30°S, note that this factor is considerably larger than the uncertainty in the p-CDOM-relationship). This leads to an annual mean concentration of 35.1 pmol L⁻¹ in the tropics (30°N-30°S), resulting in tropical direct emissions of 160 Gg S as OCS per year. The efficient hydrolysis in warm tropical waters prevents OCS concentrations from accumulating despite the high photoproduction, and still results in emissions too low to account for the missing source.

With an mean error of 3.7 pmol L⁻¹ in the OCS surface water concentrations added to (subtracted from) the modelled concentration and subsequent calculation of fluxes using annual mean climatologies for wind, pressure and SST (same data sources as global simulation forcing data), we calculate an uncertainty of 60%, which translates into a total uncertainty of the integrated global flux of 80 Gg S yr⁻¹."

Similarly, the origin of stated uncertainties in the derivation of indirect fluxes from DMS are not discussed, but I would imagine are substantially larger than estimated. Without a fair treatment of these uncertainties, it isn't possible to gauge the true magnitude of the budget shortfall, which is a main point of the manuscript.

We agree that the uncertainty of the DMS conversion is large, which is why we took the highest published estimate of 0.7% OCS yield from DMS oxidation as a conservative estimate for remote, pristine atmospheric conditions. The emission pattern of DMS does not point to a specific tropical source. This implies that if emissions and subsequent oxidation of DMS was to account for the missing source, a conversion process specifically favored in the tropical troposphere is required. We now discuss the conversion factor of OCS to DMS in greater detail (p. 12, l. 31ff). Any additional investigation on the conversion factor is beyond the scope of this paper, as the spatial pattern of the missing source would then require an atmospheric, not an oceanic driver to produce a pattern with a hot spot of OCS production in the Pacific warm pool.

The revised section on OCS emission factors p. 12, l. 31:

"A significant contribution to the OCS budget in the atmosphere results from oceanic emissions of DMS and CS₂ that are partially converted to OCS on time scales of hours to days (Chin and Davis, 1993; Watts, 2000; Kettle, 2002). A yield of 0.7 % for OCS is used for the reaction of DMS with OH (Barnes et al., 1994), which results in a global oceanic source of DMS from OCS of 80 (65 - 110) Gg S yr⁻¹ based on the procedure described in section 2.5. The uncertainty range of 65-110 Gg S yr⁻¹ originated from the uncertainty in oceanic emissions, not the conversion factor. This conversion factor is much more uncertain, as the formation of OCS from DMS involves a complex multi-step reaction mechanism that is not fully understood. It has been shown in laboratory experiments, that the presence of NO_x reduces the OCS yield considerably (Arsene et al., 2001), which would make our indirect emission estimate an upper limit. However, the yield was measured under laboratory conditions, and may be different and more variable under natural conditions. \\ DMS emissions do not show a pronounced hot spot in the Pacific warm pool region, but as DMS transports much more sulfur across the air-sea interface than OCS, even low changes in the OCS yield could affect the atmospheric budget of OCS. As the spatial oceanic emission pattern of DMS does not reflect the spatial pattern of the assumed missing source, a locally specific tropospheric change in the conversion yield would be one potential way of bringing the patterns in agreement. While it is possible that the OCS yield could vary under certain conditions, e.g. it cannot be excluded that the low OH concentrations in the broader Pacific warm pool area as suggested by Rex et al. (2014) influence the yield, the (local) increase of the conversion factor would need to be in the order of a factor of 10-100."

Details: P1, line 7-8. It only has implications for GPP derived from OCS observations on certain scales, not all.

Now changed

p.2, line 25-26. It also makes much more chemical sense given our understanding of how COS interacts with carbonic anhydrase in leaf waters.

We added this point on p. 2, l. 25ff: “This revision of vegetation uptake was suggested to (i) take into account the different deposition velocities of CO₂ and OCS within the leaf and base it on GPP instead of net primary production (Sandoval-Soto et al., 2005) as well as (ii) to better reproduce observed seasonality of OCS mixing ratios in several atmospheric models (Berry et al., 2013; Suntharalingam et al., 2008; Glatthor et al., 2015; Kuai et al., 2015).”

Table 1 and p. 9 line 27-30. The paper from Suntharalingam does not state or suggest that the missing source is oceanic.

This is correct, so we took the citation out of the text on p. 9. We still leave it in Tab. 1, as it is one of the missing source estimates. The caption of Tab. 1 specifies that if the missing source is assigned to the tropical oceans (which other studies do), then this would result in the total ocean flux listed.

p.3 line 13. Underrepresentation of global flux is also true for the measurements made here, despite the use of a box model for extrapolation.

This is true theoretically, but the difference in photoproduction constants between the open Atlantic ocean and the North Sea has been compared specifically in Uher and Andreae (1997a). We thus adjusted the sentence to: p. 3, l. 25: “However, the oceanic OCS photoproduction in the ocean model included a parameterization for OCS photoproduction derived from an experiment in the North Sea (Uher and Andreae, 1997b), which might not be representative for the global ocean, as indicated by an order of magnitude lower photoproduction constants in the Atlantic ocean compared to the German Bight (Uher and Andreae, 1997a).”

Figure 3, and line 10, p. 9. Is $R = 0.7$ or $R^2 = 0.7$ in this relationship? These different values seem given for one relationship. Also, given the non-normal distribution of these results this value is not as significant as one might presume.

Because the data is not normally distributed, we used Spearman’s rank correlation coefficient r , which is correctly displayed in the figure, and now also corrected in the text. By relating the photoproduction rate constant to a_{350} , we establish a semi-empirical relationship, which is a reasonable and globally available, but not perfect proxy (i.e. CDOM is only an approximation for the precursor).

The conclusion section is a bit unusual in that it includes speculations not supported by the work. It also reads like a research planning document. On what basis do the authors conclude (p. 11, line 22) that observations could be reproduced “without increasing the vegetation sink”? An extensive body of recent literature has suggested that the interaction between OCS and vegetation is best explained by a substantially larger sink than discussed in earlier papers; to discount those studies without substantial evidence is inappropriate, making this conclusion one that does not follow from the evidence presented in the paper.

In the last chapter we meant to conclude our results and give a systematic outlook on further research. We changed the section title to “Conclusion and Outlook”. Nevertheless, we still want to discuss possible ways of reducing uncertainties in the emission estimates and closing the budget. Suggestions that could be misinterpreted as discounting previous research have been deleted.

References

Arsene, C., Barnes, I., Becker, K. H., and Mocanu, R.: Ft-ir product study on the photo-oxidation of dimethyl sulphide in the presence of nox - temperature dependence, *Atmospheric Environment*, 35, 3769-3780, 10.1016/s1352-2310(01)00168-6, 2001.

Barnes, I., Becker, K. H., and Patroescu, I.: The tropospheric oxidation of dimethyl sulfide: A new source of carbonyl sulfide, *Geophysical Research Letters*, 21, 2389-2392, 10.1029/94gl02499, 1994.

Berry, J., Wolf, A., Campbell, J. E., Baker, I., Blake, N., Blake, D., Denning, A. S., Kawa, S. R., Montzka, S. A., Seibt, U., Stimler, K., Yakir, D., and Zhu, Z.: A coupled model of the global cycles of carbonyl sulfide and co₂: A possible new window on the carbon cycle, *Journal of Geophysical Research: Biogeosciences*, 118, 842-852, 10.1002/jgrg.20068, 2013.

Chin, M., and Davis, D. D.: Global sources and sinks of ocs and cs₂ and their distributions, *Glob. Biogeochem. Cycle*, 7, 321-337, 10.1029/93gb00568, 1993.

Elliott, S., Lu, E., and Rowland, F. S.: Rates and mechanisms for the hydrolysis of carbonyl sulfide in natural waters, *Environmental Science & Technology*, 23, 458-461, 10.1021/es00181a011, 1989.

Flöck, O. R., and Andreae, M. O.: Photochemical and non-photochemical formation and destruction of carbonyl sulfide and methyl mercaptan in ocean waters, *Marine Chemistry*, 54, 11-26, 1996.

Glatthor, N., Höpfner, M., Baker, I. T., Berry, J., Campbell, J. E., Kawa, S. R., Krysztofiak, G., Leyser, A., Sinnhuber, B. M., Stiller, G. P., Stinecipher, J., and Clarmann, T. v.: Tropical sources and sinks of carbonyl sulfide observed from space, *Geophysical Research Letters*, n/a-n/a, 10.1002/2015gl066293, 2015.

Kettle, A. J.: Extrapolations of the flux of dimethylsulfide, carbon monoxide, carbonyl sulfide and carbon disulfide from the oceans, PhD, Graduate Program in Chemistry, North York, Ontario, 2000.

Kettle, A. J., Rhee, T. S., von Hobe, M., Poulton, A., Aiken, J., and Andreae, M. O.: Assessing the flux of different volatile sulfur gases from the ocean to the atmosphere, *Journal of Geophysical Research: Atmospheres*, 106, 12193-12209, 10.1029/2000jd900630, 2001.

Kettle, A. J.: Global budget of atmospheric carbonyl sulfide: Temporal and spatial variations of the dominant sources and sinks, *Journal of Geophysical Research*, 107, 10.1029/2002jd002187, 2002.

Kuai, L., Worden, J. R., Campbell, J. E., Kulawik, S. S., Li, K.-F., Lee, M., Weidner, R. J., Montzka, S. A., Moore, F. L., Berry, J. A., Baker, I., Denning, A. S., Bian, H., Bowman, K. W., Liu, J., and Yung, Y. L.: Estimate of carbonyl sulfide tropical oceanic surface fluxes using aura tropospheric emission spectrometer observations, *Journal of Geophysical Research: Atmospheres*, 120, 11,012-011,023, 10.1002/2015jd023493, 2015.

Rex, M., Wohltmann, I., Ridder, T., Lehmann, R., Rosenlof, K., Wennberg, P., Weisenstein, D., Notholt, J., Kruger, K., Mohr, V., and Tegtmeier, S.: A tropical west pacific oh minimum and implications for stratospheric composition, *Atmospheric Chemistry and Physics*, 14, 4827-4841, 10.5194/acp-14-4827-2014, 2014.

Sandoval-Soto, L., Stanimirov, M., von Hobe, M., Schmitt, V., Valdes, J., Wild, A., and Kesselmeier, J.: Global uptake of carbonyl sulfide (cos) by terrestrial vegetation: Estimates corrected by deposition velocities normalized to the uptake of carbon dioxide (co₂), *Biogeosciences*, 2, 125-132, 2005.

Staubes, R., and Geogrii, H.-W.: Biogenic sulfur compounds in seawater and the atmosphere of the antarctic region, *Tellus*, 45B, 127-137, 1993.

Suntharalingam, P., Kettle, A. J., Montzka, S. M., and Jacob, D. J.: Global 3-d model analysis of the seasonal cycle of atmospheric carbonyl sulfide: Implications for terrestrial vegetation uptake, *Geophysical Research Letters*, 35, L19801, 10.1029/2008gl034332, 2008.

Uher, G., and Andreae, M. O.: The diel cycle of carbonyl sulfide in marine surface waters: Field study results and a simple model, *Atmospheric Geochemistry*, 2, 313-344, 1997a.

Uher, G., and Andreae, M. O.: Photochemical production of carbonyl sulfide in north sea water: A process study, *Limnology and Oceanography*, 42, 432-442, 1997b.

Ulshöfer, V. S., Uher, G., and Andreae, M. O.: Evidence for a winter sink of atmospheric carbonyl sulfide in the northeast atlantic ocean, *Geophysical Research Letters*, 22, 2601-2604, 1995.

Von Hobe, M., Kettle, A. J., and Andreae, M. O.: Carbonyl sulphide in and over seawater: Summer data from the northeast atlantic ocean, *Atmospheric Environment*, 33, 3503-3514, 1999.

von Hobe, M.: Photochemical and physical modeling of carbonyl sulfide in the ocean, *Journal of Geophysical Research*, 108, 10.1029/2000jc000712, 2003.

Watts, S. F.: The mass budgets of carbonyl sulfide, dimethyl sulfide, carbon disulfide and hydrogen sulfide, *Atmospheric Environment*, 34, 761-779, 10.1016/s1352-2310(99)00342-8, 2000.

[..*] Direct oceanic emissions unlikely to account for the missing source of atmospheric carbonyl sulfide

Sinikka T. Lennartz¹, Christa A. Marandino¹, Marc von Hobe², Pau Cortes³, Birgit Quack¹, Rafel Simo³, Dennis Booge¹, Andrea Pozzer⁴, Tobias Steinhoff¹, Damian L. Arevalo-Martinez¹, Corinna Kloss², Astrid Bracher^{5,6}, Rüdiger Röttgers⁷, Elliot Atlas⁸, and Kirstin Krüger⁹

¹GEOMAR Helmholtz-Centre for Ocean Research Kiel, Düsternbrooker Weg 20, 24105 Kiel, Germany

²Forschungszentrum Jülich GmbH, Institute of Energy and Climate Research (IEK-7), Wilhelm-Johnen-Strasse, 52425 Jülich, Germany

³Institut de Ciències del Mar, CSIC, Pg. Marítim de la Barceloneta, 37-49, 08003 Barcelona, Catalonia, Spain

⁴Max-Planck-Institute for Chemistry, Hahn-Meitner-Weg 1, 55128 Mainz, Germany

⁵Alfred-Wegener-Institute Helmholtz Center for Polar and Marine Research, Bussestrasse 24, 27570 Bremerhaven, Germany

⁶Institute of Environmental Physics, University of Bremen, 28334 Bremen, Germany

⁷Helmholtz-Zentrum Geesthacht, 21502 Geesthacht, Germany

⁸Rosenstiel School of Marine and Atmospheric Science, Miami, FL 33149 Florida, USA

⁹University of Oslo, Department of Geosciences, 0315 Oslo, Norway

Correspondence to: S. T. Lennartz (slennartz@geomar.de)

Abstract. The climate active trace-gas carbonyl sulfide (OCS) is the most abundant sulfur gas in the atmosphere. A missing source in its atmospheric budget is currently suggested, resulting from an upward revision of the vegetation sink[..²]. Tropical oceanic emissions have been proposed to close the resulting gap in the atmospheric budget. We present a bottom-up approach including (i) new observations of OCS in surface waters of the tropical Atlantic, Pacific and Indian oceans and (ii) a further improved global box model to show that direct OCS emissions are [..³]unlikely to account for the missing source. [..⁴]The box model suggests [..⁵]an undersaturation of the surface water with respect to OCS integrated over the entire tropical ocean area and, further, [..⁶]global annual direct emissions of OCS well below that suggested by top-down estimates. In addition, we discuss the potential of indirect emission from CS₂ and DMS to account for the gap in the atmospheric budget. This bottom-up estimate of oceanic emissions has implications for using OCS as a proxy for global terrestrial CO₂ uptake, which is currently [..⁷]impeded by the inadequate quantification of atmospheric OCS sources and sinks.

*removed: Oceanic

²removed: in top-down approaches. Oceanic

³removed: insufficient

⁴removed: Extrapolation of our observations using a biogeochemical

⁵removed: oceanic net uptake instead of emission for the

⁶removed: a global ocean source strength

⁷removed: hampered

1 Introduction

Carbonyl sulfide (OCS) is the most abundant reduced sulfur compound in the atmosphere. It enters the atmosphere either by direct emissions, e.g. from oceans, wetlands, anoxic soils or anthropogenic emissions, or indirectly via oxidation of the short-lived precursor gases dimethylsulfide (DMS) and carbon disulfide (CS₂) (Chin and Davis, 1993; Watts, 2000; Kettle, 5 2002). Both precursor gases are naturally produced in the oceans, and CS₂ has an additional anthropogenic source (Kettle, 2002; Stefels et al., 2007; Campbell et al., 2015). Combining direct and indirect marine emissions, the ocean is considered as the dominant source of atmospheric OCS (Chin and Davis, 1993; Watts, 2000; Kettle, 2002). The most important sink of atmospheric OCS is uptake by terrestrial vegetation [⁸](Brown and Bell, 1986; Protoschill-Krebs and Kesselmeier, 1992; Campbell et al., 2008) and oxic soils, while chemical loss by photolysis and reaction with the hydroxyl radical (OH) in the 10 atmosphere are minor loss processes (Chin and Davis, 1993; Watts, 2000; Kettle, 2002). While tropospheric volume mixing ratios show a distinct annual cycle (Montzka et al., 2007), the interannual to decadal variation is low (Montzka et al., 2007; Kremser et al., 2015).

Accurate accounts of sources and sinks of atmospheric OCS are crucial for two reasons.

- 15 – First, OCS is climate-relevant because it influences the radiative budget of the Earth as a greenhouse gas and by contributing significant amounts of sulfur to the stratospheric aerosol layer [⁹](Crutzen, 1976; Brühl et al., 2012; Notholt et al., 2003; Turco et al., 1980) that exerts a cooling effect [¹⁰](Turco et al., 1980; Kremser et al., 2016). The two opposite effects are currently in balance (Brühl et al., 2012), but future changes in atmospheric circulation, as well as the magnitude and distribution of OCS sources and sinks, could change that. Hence, a better understanding of the tropospheric budget is needed to predict the effect of OCS in future climate scenarios (Kremser et al., 2016).
- 20 – Second, OCS has recently been suggested as a promising tool to constrain terrestrial CO₂ uptake, i.e. gross primary production (GPP), as it is taken up by plants in a similar way as CO₂ (Asaf et al., 2013). GPP, a major global CO₂ flux, can only be inferred from indirect methods, because the uptake of CO₂ occurs along with a concurrent release by respiration. Unlike CO₂, OCS is irreversibly degraded within the leaf. GPP can thus be estimated based on the uptake ratio of OCS and CO₂, from the leaf to regional scale (Asaf et al., 2013) or even global scale (Beer et al., 2010), under 25 the condition that other sources are negligible or well quantified. The magnitude of terrestrial biogeochemical feedbacks on climate has been suggested to be similar to that of physical feedbacks (Arneeth et al., 2010). In order to reduce existing uncertainties, it is thus crucial to better constrain single processes in the carbon cycle, especially GPP.

Nonetheless, current figures for tropospheric OCS sources and sinks carry large uncertainties (Kremser et al., 2016). [¹¹]
]While the budget [¹²]has been previously considered closed (Kettle, 2002), a recent upward revision of the vegetation sink

⁸removed: (Campbell et al., 2008)

⁹removed: (Brühl et al., 2012; Notholt et al., 2003; Turco et al., 1980)

¹⁰removed: (Crutzen, 1976; Kremser et al., 2016)

¹¹removed: Recent sources and sinks inferred from top-down approaches (Suntharalingam et al., 2008; Berry et al., 2013; Kuai et al., 2015; Glatthor et al., 2015) do not match observation-based bottom-up approaches (Kettle, 2002).

¹²removed: was

[..¹³](Sandoval-Soto et al., 2005; Suntharalingam et al., 2008; Berry et al., 2013) led to a gap, i.e. a missing source [..¹⁴] in the atmospheric budget of 230-800 Gg S per year (Suntharalingam et al., 2008; Berry et al., 2013; Kuai et al., 2015; Glatthor et al., 2015) (Tab. 1), with the most recent estimates at the higher end of the range. This revision of vegetation uptake was [..¹⁵] suggested to (i) take into account the different deposition velocities of CO₂ and OCS within the leaf and base it on GPP instead of net primary production (Sandoval-Soto et al., 2005) as well as (ii) to better reproduce observed seasonality of OCS mixing ratios in several atmospheric models (Berry et al., 2013; Kuai et al., 2015; Glatthor et al., 2015). Based on [..¹⁶] independent top-down [..¹⁷] approaches using MIPAS (Glatthor et al., 2015) and TES (Kuai et al., 2015) satellite observations, FTIR measurements (Wang et al., 2016) as well as NOAA ground based time series stations and the HIPPO aircraft campaign (Berry et al., 2013; Kuai et al., 2015), the missing source of OCS was suggested to originate from the [..¹⁸](tropical) ocean, most likely from the region of the Pacific warm pool. Other potential sources like e.g. advection of air masses from Asia have been discussed (Glatthor et al., 2015), but not tested. If the ocean was to account for the missing source, the total top-down oceanic source strength would then be the *a priori* oceanic flux plus the missing source estimate of each inverse model simulation (Tab. 1). This addition would imply a [..¹⁹] 200-380% increase of the *a priori* estimated oceanic source. If oceanic direct and indirect emissions were to account for the total missing source, an ocean source strength of 465-1089 Gg S yr⁻¹ would be required (Tab. 1).

OCS and its atmospheric precursors are naturally produced in the ocean. [..²⁰] In the surface open ocean, OCS is present in the lower picomolar range, and has been measured on numerous cruises in the Atlantic (Ulshöfer et al., 1995; Flöck and Andreae, 1996; Ulshöfer and Andreae, 1998; von Hobe et al., 1999), including 3 latitudinal transects (Kettle et al., 2001; Xu et al., 2001), the Indian Ocean (Mihalopoulos et al., 1992), the Pacific Ocean (Weiss et al., 1995a) and the Southern Ocean (Staubes and Georgii, 1993). Measurements in tropical latitudes, where the missing source is assumed to be located, have previously been performed in the Indian Ocean (Mihalopoulos et al., 1992) and during the Atlantic transects (Kettle et al., 2001; Xu et al., 2001). OCS is produced photochemically from chromophoric dissolved organic matter (CDOM) (Andreae and Ferek, 2002; Ferek and Andreae, 1984) and by a not fully understood light independent production [..²¹] that has been suggested to be linked to radical formation (Flöck et al., 1997; Pos et al., 1998). Dissolved OCS is efficiently hydrolyzed to CO₂ and H₂S at a rate depending on pH and temperature (Elliott et al., 1989). CS₂ has been measured in the Pacific and Atlantic oceans in a range of 7.2-27.5 pmol L⁻¹ (Xie et al., 1998) and during two Atlantic transects (summer and winter) in a range of 4-40 pmol L⁻¹ (Xu, 2001). It is produced photochemically (Xie et al., 1998) and biologically (Xie et al., 1999), and no significant loss process other than air-sea gas exchange has been identified (Xie et al., 1998). DMS

¹³removed: (Suntharalingam et al., 2008; Berry et al., 2013)

¹⁴removed: ,

¹⁵removed: needed to

¹⁶removed: a

¹⁷removed: approach using satellite observations and inverse modelling

¹⁸removed: tropical ocean (Kuai et al., 2015; Glatthor et al., 2015). This missing source must thus be added on top of direct and indirect oceanic emissions estimated in earlier studies.

¹⁹removed:

²⁰removed: OCS is

²¹removed: pathway that depends on temperature and CDOM concentration (Flöck et al., 1997; von Hobe et al., 2001)

is present in the lower nanomolar range in the surface ocean and has been extensively studied in several campaigns, summarized in a climatology by Lana et al. (2011). DMS is biogenically produced and consumed in the surface ocean, as well as photo-oxidized and ventilated by air-sea exchange (Stefels et al., 2007).

Available bottom-up estimates of the global oceanic OCS fluxes from shipboard observations range from -16 Gg S yr⁻¹ to 320 Gg S yr⁻¹ (Tab. 2). However, the highest estimates were biased, because mainly summertime and daytime observations of water concentrations were considered. With the discovery of the seasonal oceanic sink of OCS during wintertime (Ulshöfer et al., 1995) and a pronounced diel cycle (Ferek and Andreae, 1984), direct oceanic emissions were corrected downwards.

Only recently, OCS emissions have been estimated with the biogeochemical ocean model NEMO-PISCES (Launois et al., 2015a) at a magnitude of 813 Gg S yr⁻¹, sufficient to account for the missing source. This oceanic emission inventory [..²²] had been used to constrain GPP based on OCS on a global scale (Launois et al., 2015b). However, the oceanic OCS photoproduction in the ocean model included a parameterization for OCS photoproduction derived from an experiment in the North Sea (Uher and Andreae, 1997b), which might not be representative for the global ocean, as indicated by an order of magnitude lower photoproduction constants in the Atlantic ocean compared to the German Bight (Uher and Andreae, 1997a).

Here, we [..²³] present new observations in all three tropical ocean basins, two of them measured with unprecedented precision and time resolution. Direct fluxes were inferred from continuous OCS measurements in the tropical Pacific and Indian Oceans, covering a range of regimes with respect to CDOM content, ultraviolet radiation (UV) and sea surface temperature (SST). [..²⁴] These observations are used to further constrain and validate a biogeochemical box model which had previously been shown to reproduce OCS concentration in the Atlantic Ocean reasonably well (von Hobe et al., 2001). The box model is now updated from its previous global application (Kettle, 2002) by adding and further developing the most recent process parametrizations to estimate the global source strength of direct OCS emissions. The emission estimate is further complemented by discussing the potential of indirect OCS emissions, i.e. the emissions of short-lived precursor gases CS₂ and DMS, to account for the gap in the budget. [..²⁵]

2 Methods

2.1 Study sites

Several cruises were conducted to measure the trace gases OCS (OASIS, TransPEGASO, ASTRA-OMZ) and CS₂ (TransPEGASO, ASTRA-OMZ). Cruise tracks are depicted in Fig 1. The OASIS cruise onboard RV SONNE I to the

²²removed: has been used in a first attempt

²³removed: quantify OCS emissions from these regions based on direct observations to resolve this discrepancy and to conclusively answer the question of whether the missing OCS source identified in the atmospheric top-down approaches can really be ascribed to the direct OCS emission from tropical oceans. Fluxes were directly

²⁴removed: A time resolution on the order of minutes allowed for an accurate integration over full diel cycles. The new data are complemented by measurements obtained at coarser resolution across

²⁵removed: The observations were further used to improve a state of the art box model of the production and consumption processes, which was then employed to estimate oceanic OCS emissions on the global scale.

Indian Ocean started from Port Louis, Mauritius to Male, Maldives in July and August 2014, where mainly oligotrophic waters were encountered. TransPEGASO was an Atlantic transect starting in Gibraltar leading to Buenos Aires, Argentina and Punto Arenas, Chile. It took place in October and November 2014 and covered a variety of biogeochemical regimes. ASTRA-OMZ onboard RV SONNE II started in Guayaquil, Ecuador and ended in Antofagasta, Chile, in October 5 2015. Although 2015 was an El Niño year, upwelling together with high biological production was still encountered during the cruise (Stramma et al., 2016).

2.2 Measurement set-up for trace gases

OCS was measured during two cruises on board the [..²⁶]RV SONNE I (OASIS) and SONNE II (ASTRA-OMZ) with a continuous underway system [..²⁷]similar to the one described in Arévalo-Martínez et al. (2013), at a measurement frequency 10 of 1 Hz. The system consisted of a Weiss-type equilibrator, through which seawater is pumped from approximately 5 m below the surface with a flow of 3-4 L min⁻¹. The air from the equilibrator headspace was Nafion dried and continuously pumped into an OCS-analyzer (Model DL-T-100, Los Gatos Research) that uses off axis - integrated cavity output spectroscopy (OA-ICOS) technique. The instrument used on board is a prototype of a commercial instrument (www.lgrinc.com/documents/OCS_Analyzer_Datasheet.pdf), developed by Los Gatos Research (LGR) in collaboration with Forschungszentrum Jülich GmbH 15 (Schrade, 2011). Data were averaged over 2 minutes, achieving a precision of 15 ppt. OCS mixing ratios in the MBL were determined by pumping outside air ca. 50 m from the ship's deck to the OCS analyzer (KNF Neuberger pump). A measurement cycle consisted of 50 min water sampling and 10 min air sampling, where the first 3 minutes after switching until stabilization of the signal were discarded.

Before and after the cruise the analyzer was calibrated over a range of concentrations using permeation devices. Both 20 calibrations were consistent. However, during calibration the output of the internal spectral retrieval differed significantly from post processing of the recorded spectra, which matched the known concentrations (this offset is not present in the commercial instruments). The calibration data were thus used to derive a correction function. After correction all data stayed within 5% of the standards. The calibration scale of the permeation devices was 5% below the NOAA scale. As the OCS analyzer measured CO₂ simultaneously, and CO₂ standards were available during the cruise, drift of the instrument was tested by measuring 25 CO₂ standard gases before and after the cruise and found to be less than 1% of the signal. Special care was taken to avoid contamination and all materials used have been tested for contamination before use.

During OASIS, the mirrors inside the cavity of the OCS analyzer were not completely clean, which led to a reduced signal. To correct the data, an attenuation factor was determined from simultaneous CO₂ measurements, because no OCS standard was available onboard, and OASIS data was corrected accordingly.

30 An independent quality check of the data was performed by comparing volume mixing ratios of the MBL from the OCS analyzer with samples from air canisters sampled during both cruises and measured independently (Schauffler et al., 1998; de Gouw et al., 2009). The calibrated (and attenuation corrected for OASIS) OA-ICOS data were on average 5% lower than

²⁶removed: R/V

²⁷removed: (Arévalo-Martínez et al., 2013)

the air canister samples, which reflects the 5% difference between the calibration at Forschungszentrum Jülich and the NOAA scale.

During ASTRA-OMZ, CS₂ was directly measured on board within 1 hour of collection using a purge and trap system attached to a gas chromatograph and mass spectrometer (GC/MS; Agilent 7890A/Agilent 5975C; inert XL MSD with triple axis detector) running in single ion mode. The discrete surface seawater samples (50 mL) were taken each hour to every three hours from the same pump system as for continuous OCS measurements. CS₂ was stripped by purging with helium (70 mL min⁻¹) for 15 minutes. The gas stream was dried using a Nafion membrane dryer (Perma Pure) and CS₂ was preconcentrated in a trap cooled with liquid nitrogen. After heating the trap with hot water, CS₂ was injected into the GC/MS. Retention time for CS₂ (m/z 76, 78) was 4.9 minutes. The analyzed data was calibrated each day using gravimetrically prepared liquid CS₂ standards in ethylene glycol. While purging, 500 μL gaseous deuterated DMS (d3-DMS) and isoprene (d5-isoprene) were added to each sample as an internal standard to account for possible sensitivity drift between calibrations.

During the TransPEGASO cruise on board R/V Hesperides, surface ocean OCS and CS₂ were measured in discrete seawater samples by purge and trap and gas chromatography with mass spectrometry detection (GC-MSD). Samples were collected every day at 9:00 and 15:00 h local time in glass bottles without headspace and analyzed within 1 hour. Aliquots of 25 mL were withdrawn with a glass syringe and filtered through GF/F while injected into the purge and trap system (Stratum, Teledyne Tekmar). The water was heated to 30°C and volatiles were stripped by bubbling with 40 mL min⁻¹ of ultrapure helium for 12 minutes and trapped in a U-shaped VOCARB 9 trap at room temperature. After flash thermal desorption, volatiles were injected into an Agilent 5975T LTM GC-MSD equipped with an Agilent LTM DB-VRX column (20 m x 0.18 mm OD x 1 μm) maintained at 30°C. Retention times for OCS (m/z 60) and CS₂ (m/z 76) were 1.3 and 2.7 min, respectively. Peak quantification was achieved with respect to gaseous (OCS in N₂) and liquid (CS₂ in methanol and water) standards that were analyzed in the same way. Samples were run in duplicates. Detection limits were 1.8 pM (OCS) and 1.4 pM (CS₂), and precision was typically around 5%.

The systems are calibrated against a standard each, but had not been directly intercompared. Still, our measurements are consistent with previous measurements using independent methods as discussed in section 3.2.1 and 3.3.

2.3 Calculation of air-sea exchange

Fluxes F of all gases were calculated with Eq. 1:

$$F = k_w \cdot \Delta C \quad (1)$$

where k_w is the gas transfer velocity in water (i.e. physical constraints on exchange) and ΔC the air-sea concentration gradient (i.e. the chemical constraint on exchange). The air-side transfer velocity (Liss and Slater, 1974) for OCS was calculated to be seven orders of magnitude smaller and was therefore neglected. The concentration gradient was determined using the temperature dependent Henry [..²⁸] constant (De Bruyn et al., 1995) and the measurements in the surface water and [..²⁹

²⁸removed: constantv

²⁹removed: MBL

]marine boundary layer (MBL) for OASIS and ASTRA-OMZ. During TransPEGASO, no atmospheric volume mixing ratio was measured, and a value of 500 ppt was assumed (Montzka et al., 2007). As air volume mixing ratios of OCS vary over the course of a year, we performed a sensitivity test for a scenario of 450 and 550 ppt and found mean deviations of +7.8 and -7.8 % respectively. The transfer velocity k_w was determined using a quadratic parameterization based on wind speed (Nightingale et al., 2000) which was directly measured onboard (10 minute averages). Furthermore k_w was corrected for OCS and CS₂ by scaling it with the Schmidt number calculated from the molar volume of the gases (Hayduk and Laudie, 1974). It should be noted that the choice of the parameterization for k_w has [..³⁰] a non-negligible influence on the global emission estimate. Linear, quadratic and cubic parameterizations of k_w are available, with differences increasing at high wind speeds in the order of a factor of 2 (Lennartz et al., 2015; Wanninkhof et al., 2009). Evidence suggests that the air-sea exchange of insoluble gases such as CO₂, OCS and CS₂, follows a cubic relationship to wind speed because of bubble-mediated gas transfer (McGillis et al., 2001; Asher and Wanninkhof, 1998). However, this difference between soluble and non-soluble gases is not always consistent (Miller et al., 2009), and too little data is available for a reliable parameterization at high wind speeds above 12 m s⁻¹, where the cubic and the quadratic parameterizations diverge the most. For reasons of consistency, e.g. for the fitted photoproduction p from previous studies, and the fact that most of the previous emission estimates were computed using a quadratic k_w parameterization, we chose the same quadratic parameterization representing the mean range of observations (Nightingale et al., 2000). For a sensitivity test, we computed the global oceanic emission with a cubic relationship (McGillis et al., 2001), which results in an additional 40 Gg S per year as direct OCS emissions, leaving the missing source still [..³¹] unexplained. However, better constraints on the transfer velocity of insoluble gases would decrease the uncertainty of global oceanic emissions of marine trace gases.

20 2.4 Box model of OCS concentration in the surface ocean

[..³²] A box model to simulate surface concentration of OCS is further developed from the latest version from von Hobe et al. (2003, termed vH2003), where concentrations along the cruistracks of 5 Atlantic cruises have been simulated and compared. The vH2003 model results from successful tests and validation to observations on several cruises to the Atlantic Ocean covering all seasons (i.e. Flöck and Andreae (1996) in January 1994, Uher and Andreae (1997a) in April/May 25 1992, von Hobe et al. (1999) in June/July 1997, Kettle et al. (2001) in September/October 1998). By comparing photoproduction rate constants of the 5 cruises to CDOM absorption, von Hobe et al. (2003) suggests a second order process for photoproduction with the photoproduction rate constant being dependent on the absorption of CDOM in seawater. In our approach, we test vH2003 along the cruise track of two cruises, include a new way of determining the photoproduction rate constant (see below) and apply it with global climatological input (termed L2016). Kettle (2000, 2002, termed 30 K2000) applied a similar version of vH2003 globally, which included an optimized photoproduction constant from Atlantic transect cruise data, an optimized constant light-independent production and a linear regression to obtain CDOM from

³⁰removed: an

³¹removed: explained

³²removed: The box model (von Hobe et al., 2003) included parameterizations for hydrolysis (Elliott et al., 1989),

chlorophyll *a*. In comparison to K2000, we use (i) a new way of determining the photoproduction rate constant incorporating information from three ocean basins, (ii) the most recent parameterization of light-independent production available, and (iii) satellite observations for sea surface CDOM instead of an empirical relationship based on chlorophyll *a*.

- Launois et al. (2015a) implemented parameterizations for light-independent production, hydrolysis and air-sea exchange
- 5 [..³³] similar to vH2003 in the 3D global ocean model NEMO-PISCES. The main differences to the approach used here is the lack of accounting for mixing in L2016 (discussed in section 3.2.2, which will theoretically lead to higher simulated concentrations in our case) and the application of a photoproduction rate constant in our model that incorporates information from three open ocean basins in contrast to one from a study in the North Sea (Launois et al., 2015a).
- In L2016, the light-independent production [..³⁴] term of OCS was parameterized depending on SST [K] and the absorption
- 10 coefficient of CDOM at 350nm wavelength, a_{350} (von Hobe et al., 2001) (Eq. 2).

$$\frac{dC_{OCS}}{dt} = a_{350} \cdot 10^{-6} \cdot \exp\left(55.8 - \frac{16200}{SST}\right) \quad (2)$$

The parameterization for hydrolysis describes alkaline and acidic degradation of OCS by the reactions R1 and R2:



It was parameterized as a first order kinetic reaction including the rate constant k_h according to Eq. 3-5:

$$\frac{dC_{OCS}}{dt} = [OCS] \cdot k_h \quad (3)$$

$$k_h = \exp\left(24.3 - \frac{10450}{SST}\right) + \exp\left(22.8 - \frac{6040}{SST}\right) \cdot \frac{K}{a[H^+]} \quad (4)$$

20

$$-\log_{10}K = \frac{3046.7}{SST} + 3.7685 + 0.0035486 \cdot \sqrt{SSS} \quad (5)$$

where $a[H^+]$ is the proton activity and K the ion product of seawater (Dickinson and Riley, 1979).

Fluxes were calculated with Eq. 1 using the same parameterization for k_w as for the emission calculation from measurements described above.

- 25 Photoproduction was integrated over the mixed layer depth (MLD), assuming a constant concentration of OCS and CDOM throughout the mixed layer, with the photoproduction rate constant p [mol J⁻¹], a_{350} [m⁻¹] and the UV [W m⁻²] (Sikorski

³³removed: (Nightingale et al., 2000),

³⁴removed: (von Hobe et al., 2001) and photochemical production (von Hobe et al., 2003; Weiss et al., 1995a).

and Zika, 1993) (Eq. 6).

$$\frac{dC_{OCS}}{dt} = \int_{-MLD}^0 p a_{350} UV dz \quad (6)$$

MLD was obtained from CTD (conductivity, temperature, depth) profiles and interpolated between these locations (S-Fig 1,2). The photochemically active radiation that reaches the ocean surface was approximated by Eq. 7 (Najjar et al., 1995):

$$5 \quad UV = 2.85 \cdot 10^{-1} \cdot I \cdot \cos^2 \theta \quad (7)$$

with global radiation I [$W m^{-2}$] and the zenith angle $\cos \theta$. The attenuated UV light intensity directly below the surface (Sikorski and Zika, 1993) down to the respective depth of the mixed layer was calculated in 1 m steps, taking into account attenuation by CDOM and pure seawater. As a simplification in this global approach, the box model did not resolve the whole wavelength spectrum, but rather used a_{350} and applied a photoproduction rate constant that takes into account the integrated
 10 spectrum. A similar approach had been tested and compared to a wavelength spectrum resolving version by von Hobe et al. (2003).

[..³⁵]

The rate coefficients for hydrolysis, light-independent production and air-sea exchange are all reasonably well constrained and parameterizations have been derived from dedicated laboratory and field experiments (hydrolysis, air-sea exchange)
 15 or from nighttime OCS observations in several regions assuming steady-state (dark production, von Hobe et al. (2001)). On the contrary, the photoproduction rate constant p is not well constrained and no generally applicable parameterization exists. von Hobe et al. (2003) have made a start of parameterizing p in terms of CDOM absorption, and found this to be dependent on the exact model setup used with respect to wavelength integration and mixed layer treatment. To extend
 20 the p -CDOM-relationship for other ocean basins, we use the two cruises OASIS and ASTRA-OMZ as case studies for parameter optimization of the photoproduction rate constant p . The photoproduction constant p in the case study simulations was fitted individually for periods of daylight $>100 W m^{-2}$ (Fig. 2, blue lines) [..³⁶] with a Levenberg-Marquart optimization routine in MatLab version 2015a (8.5.0), by minimizing residuals between simulated and hourly averaged measurements. Different starting values were tested to reduce the risk of the fitted p being a local minimum. Together with photoproduction rate constants obtained by a similar optimization procedure by von Hobe et al. (2003) (Tab. 2 therein, termed MLB STC), a relationship of the photoproduction constant p dependent on a_{350} was established (Fig. 3). The resulting linear relationship thus
 25 includes values from the Atlantic, Pacific and Indian Ocean, making it a good approximation for a globally valid dependence. For the global box model, p was calculated in every time step based on this relationship ($r=0.71$, Eq. 8):

$$p = 3591.3 \cdot a_{350} + 329.4 \quad (8)$$

³⁵removed: The photoproduction constant in the case

³⁶removed: . The rate constant p was fitted

[..³⁷][..³⁸][..³⁹]

[..⁴⁰]

[..⁴¹][..⁴²][..⁴³][..⁴⁴]

[..⁴⁵][..⁴⁶][..⁴⁷]

5

[..⁴⁸]

[..⁴⁹]

[..⁵⁰][..⁵¹][..⁵²]

10

[..⁵³]

The scatter in Fig. 3 likely reflects the inhomogeneity of the water masses across the three oceanic basins considered, as CDOM absorbance is a valid proxy, but carries some uncertainty in the concentration of the actual precursor.

The model input for simulations of the cruises OASIS and ASTRA-OMZ consisted of measurements made during the respective cruise, including SST and SSS (MicroCAT SBE41) measured every minute, CDOM absorption coefficient (spectrophotometrically measured ca. every 3 hours with a liquid capillary cell setup) and the ship's in situ measured meteorological data such as wind speed and global radiation averaged over 10 minutes (S-Fig. 1,2, S-Tab. 1,2). Forcing data was linearly interpolated to the time step of integration of 2 minutes.

For the global box model, monthly global meteorological fields with a spatial resolution of $2.8 \times 2.8^\circ$ were used (S-Tab. 3, S-Fig. 3). For global a_{350} at the sea surface, monthly climatological means for absorption due to gelbstoff and detritus a [..⁵⁴]₄₄₃ from the MODIS-Aqua satellite (all available data, 2002-2014) (NASA, 2014) were corrected to 350 nm with Eq. 9 (Fichot and Miller, 2010; Launois et al., 2015a):

$$a_{350} = a_{443} \cdot \exp(-0.02[..⁵⁵] \cdot (350 - 443)) \quad (9)$$

SST, wind speed, and atmospheric pressure were obtained as monthly climatological means from the same period, i.e. 2002 to 2014, by ERAInterim (Dee et al., 2011). A diel cycle of global radiation [..⁵⁶]/ was obtained by fitting the parable parameters

³⁷removed: OCS is also produced by a light-independent production term, which was parameterized depending on SST

³⁸removed: K

³⁹removed: and a_{350} (von Hobe et al., 2001) (Eq. 2).

⁴¹removed: The parameterization for hydrolysis describes alkaline and acidic degradation of OCS by the reactions R1 and R2:

⁴²removed: $OCS + H_2O \rightarrow H_2S + CO_2$

⁴³removed: $OCS + OH^- \rightarrow SH^- + CO_2$

⁴⁴removed: It was parameterized as a first order kinetic reaction including the rate constant k_h according to Eq. 3-5:

⁵⁰removed: where a

⁵¹removed: H^+

⁵²removed: is the proton activity and K the ion product of seawater (Dickinson and Riley, 1979).

⁵³removed: Fluxes were calculated with Eq. 1 using the same parameterization for k_w as for the emission calculation from measurements described above.

⁵⁴removed: a_{443}

⁵⁶removed: I

a and b during time of the day t in Eq. 10 (S-Fig. 4):

$$I = -a \cdot t^2 + b \tag{10}$$

to conditions of (i) x-axis interceptions in the distance of the sunshine duration and (ii) the integral being the daily incoming energy by ERAInterim (Dee et al., 2011). Monthly climatologies of mixed layer depths were used from the MIMOC project (Schmidtko et al., 2013). For details of data sources please refer to S-Tab. 1-3 provided in the supplementary material. The time step of the model was set to 120 minutes, which had been tested to result in negligible (<3%) smoothing.

2.5 Assessing the indirect contribution of DMS with EMAC

Model output from the ECHAM/MESSy Atmospheric Chemistry (EMAC) from the simulation RC1SDbase-10a of the ES-CiMo project (Jöckel et al., 2015) are used to evaluate the contribution of DMS on the production of OCS. The model results were obtained with ECHAM5 version 5.3.02 and MESSy version 2.51, with a T42L90MA resolution (corresponding to a quadratic Gaussian grid of approx. 2.8 by 2.8 ° in latitude and longitude) and 90 vertical hybrid pressure levels up to 0.01 hPa. The dynamics of the general circulation model were nudged by Newtonian relaxation towards ERA-Interim reanalysis data. DMS emissions were calculated with the AIRSEA submodel (Pozzer et al., 2006), which takes in account concentration of DMS in the atmosphere and in the ocean, following a two-layer conceptual model to calculate emissions (Liss and Slater, 1974). While atmospheric concentrations are estimated online by the model (with DMS oxidation), the oceanic concentrations are prescribed as monthly climatologies (Lana et al., 2011). It was shown that such an online calculation of emissions provides the most realistic results when compared to measurements compared to a fixed emission rate (Lennartz et al., 2015). The online calculated concentration of DMS and OH have then been used to estimate the production of OCS. A production yield of 0.7% has been used for the reaction of DMS with OH (Barnes et al., 1994), using the reaction rate constant suggested by the International Union of Pure and Applied Chemistry (IUPAC) (Atkinson et al., 2004).

3 Results and Discussion

3.1 Observations of OCS in the tropical ocean

OCS was measured in the surface ocean and ⁵⁷MBL during three cruises in the tropics. Measurement locations (Fig. 1) include oligotrophic open ocean regions in the Indian Ocean (OASIS, 07-08/2014), open ocean and shelf areas in the eastern Pacific (ASTRA-OMZ, 10/2015) and a meridional transect in the Atlantic (TransPEGASO, 10-11/2014). In the Indian and Pacific Oceans, continuous underway measurements provided the necessary temporal resolution to observe diel cycles of OCS concentrations in surface water. Dissolved OCS concentrations exhibited diel cycles with maxima 2 to 4 hours after local noon (Fig. 1), which are a consequence of photochemical production and removal by hydrolysis (Uher and Andreae,

⁵⁷removed: the marine boundary layer (MBL)

1997a). OCS concentrations also varied spatially. Taking [..⁵⁸] a_{350} [..⁵⁹] as a proxy for CDOM content, daily mean OCS concentrations were higher in CDOM rich (Tab. 3, 28.3 ± 19.7 pmol OCS L⁻¹, a_{350} : 0.15 ± 0.03 m⁻¹) than in CDOM poor waters (Tab. 3, OASIS: 9.1 ± 3.5 pmol OCS L⁻¹, a_{350} : 0.03 ± 0.02 m⁻¹). Samples during TransPEGASO were measured with gas chromatography/mass spectrometry twice a day (around 8-10 and 15-17 h local times). Therefore, the full diel cycles could not be reconstructed and potential variations of OCS with CDOM absorption were overlaid by diel variations. Nevertheless, the observed range of OCS concentrations in the Atlantic corresponds well to the observations from the eastern Pacific and Indian Ocean (Tab 3), and is consistent with measurements from a previous Atlantic meridional transect (AMT-7) cruise (Kettle et al., 2001) (1.3 - 112.0 pmol OCS L⁻¹, mean 21.7 pmol OCS L⁻¹).

Air-sea fluxes calculated from surface concentrations and mixing ratios of OCS as a function of wind speed generally follow the diel cycle of the surface ocean concentration. While supersaturation prevailed during the day, low nighttime concentrations usually led to oceanic uptake of atmospheric OCS. OCS fluxes integrated over one day ranged from -0.024 to -0.0002 g S km⁻² in the open Indian Ocean and from 0.38 to 2.7 g S km⁻² in the coastal Pacific. During the observed periods, the ocean was a net sink of atmospheric OCS in the Indian Ocean, whereas it was a net source in the eastern Pacific. Although an assessment of net flux is difficult given the lower temporal resolution during TransPEGASO, calculated emissions were in the same range as the ones measured in the Pacific and Indian Ocean. [..⁶⁰]

The water masses encountered during the cruises to the Indian Ocean (OASIS) and eastern Pacific (ASTRA-OMZ), which are used to constrain the global box model, differ considerably with respect to the properties relevant for OCS cycling and, thus, span a large range of possible OCS variability. The properties encountered during these two cruises encompass or exceed the ones of the Pacific warm pool (climatological averages, Tab. 4), which is where the location of the missing source has been hypothesized (Glatthor et al., 2015; Kuai et al., 2015). Both higher SST and lower wind speeds (Tab. 4) would decrease the OCS sea surface concentrations in the ocean, leading to decreased emissions to the atmosphere: higher SSTs favor a stronger degradation by hydrolysis (Elliott et al., 1989), and lower wind speeds decrease the transfer velocity k . Lower integrated daily radiation (SR in Tab. 4) in the Pacific warm pool also points to lower OCS production. Hence, our new OCS observations presented here likely span the range of emission variability in the tropics.

The observed concentrations and calculated emissions are approximately one order of magnitude lower than the annual mean surface concentrations and emissions simulated in the 3D global ocean model NEMO-PISCES (Launois et al., 2015a).

3.2 A direct global oceanic emission estimate for OCS

[..⁶¹] The OCS observations from the Indian and Pacific Ocean were used to improve a box model for simulating OCS concentrations in the surface ocean (Kettle, 2002; Uher and Andreae, 1997b; von Hobe et al., 2003)[..⁶²]

⁵⁸removed: the absorption coefficient at 350 nm (

⁵⁹removed:)

⁶⁰removed: Together, they likely constrain the variability of OCS emissions in the tropics. Our

⁶¹removed: Our

⁶²removed: that includes air-sea exchange (Nightingale et al., 2000), photoproduction, light-independent production (von Hobe et al., 2001), and hydrolysis (Elliott et al., 1989).

[..⁶³]. With the a_{350} [..⁶⁴] dependent photoproduction constant included, the model reproduced the diel pattern of OCS concentrations in the surface oceans for both cruises (Fig. 2, black lines). [..⁶⁵] A slight overestimation of observed concentrations [..⁶⁶] is present for the Indian Ocean cruise OASIS (observed mean concentration: 9.1 ± 3.5 pmol L⁻¹; simulated: 10.8 ± 3.9 pmol L⁻¹) [..⁶⁷]. This overestimation was more pronounced in the eastern Pacific (observed mean: 28.3 ± 19.7 pmol L⁻¹; simulated: 47.3 ± 25.4 pmol L [..⁶⁸]⁻¹) and can largely be attributed to a lack of downward mixing inherent in the mixed layer box model due to the assumption of the OCS concentration being constant throughout the entire mixed layer.

Using the linear p - a_{350} parameterization for the first time in a global model, the same box model as for the case studies is applied to estimate sea surface concentrations and fluxes of OCS on a global scale (Fig. 4). The OCS production is consistent with the global distribution of CDOM absorption (S-Fig. 5) with highest concentrations calculated for coastal regions and higher latitudes. Despite the photochemical hotspot in the tropics (30°N-30°S), degradation by hydrolysis prevents any accumulation of OCS in the surface water, as we calculated the lifetime due to hydrolysis to be only 7 hours (S-Fig. 5). The simulated range of water concentrations is too low to sustain emissions in the tropics that could close the atmospheric budget of OCS (Fig. 4). Integrated over one year, the tropical ocean (30°N-30°S) is even [..⁶⁹] undersaturated with respect to OCS, uptaking 3.0 Gg S yr⁻¹. Globally, the integration over one year yields annual oceanic OCS emissions of 130 Gg S. Our results corroborate the upper limit of an earlier study that used an observation-derived emission inventory (Tab. 1) (Kettle, 2002) [..⁷⁰], but includes more process oriented [..⁷¹] parametrizations as described in section 2.4. Clearly, our results from both observations and modelling contradict the latest bottom-up emission estimate from the NEMO-PISCES model (Launois et al., 2015a), and do not support [..⁷²] a hot spot of direct OCS emissions in the Pacific Warm Pool or the tropical oceans in general.

3.2.1 Comparison to previous shipbased measurements

20 The global simulation of OCS surface water concentrations generally reproduced the lower picomolar range of concentrations (Tab. 5), the seasonal pattern of higher concentrations during summer compared to winter (as e.g. in Ulshöfer et al., 1995) and the spatial pattern of higher concentrations in higher latitudes (e.g. Southern Ocean, Staubes and Georgii, 1993). Given that monthly means of a model simulation driven by climatological data of the input parameters is compared to cruise measurements, the absolute mean deviation of 6.9 pmol L⁻¹ and the mean deviation of 3.7 pmol L⁻¹ indicate an

⁶³removed: Following an earlier study (von Hobe et al., 2003), we use our observations to optimize the photoproduction rate constant p in an inverse set-up of the box model, considering only periods of sunlight in homogeneous water masses (Fig. 2, blue lines). The optimized p and the mean a

⁶⁴removed: (as a proxy for CDOM absorption) for each fitting period as well as p - a_{350} pairs from a previous study in the Atlantic (von Hobe et al., 2003) are used to derive a linear relationship ($R^2=0.71$, Fig. 3) that was found to reproduce the temporal variability of OCS during our cruises in the Indian and Pacific Oceans rather well when used in the forward mode of the model

⁶⁵removed: The general

⁶⁶removed: in both

⁶⁷removed: and

⁶⁸removed: ⁻¹)

⁶⁹removed: a small net sink of -3.0

⁷⁰removed: . Compared to the model used in that study, our box model study has a

⁷¹removed: physical basis; in particular p depends on a_{350} derived from observations in different regions

⁷²removed: the finding from

overall good reproduction of observations (differences between observation and model output were weighted to number of observations in Tab. 4). It should be noted that, on average, the model overestimates OCS concentrations as indicated by the positive mean error, suggesting our emission estimate to be an upper limit to direct oceanic OCS emissions in most regions. The largest deviation from observations are found in the Southern Ocean (vgl. Staubes and Georgii, 1993 in Tab. 4), where the model underestimated observations by 40%. While this can be due to several explanations, i.e. a possible violation of the underlying assumption of a constant OCS production in regions with deep mixed layers such as the Southern Ocean, or the missing satellite data for CDOM during polar nights, it is a clear indication of the need of more observations from high latitudes. However, this underestimation does not interfere with our conclusion drawn for the tropical oceans, where the location of the missing source is derived from top-down [..⁷³] approaches.

10 3.2.2 Uncertainties

Simulated concentrations and fluxes carry [..⁷⁴] uncertainties from input parameters and [..⁷⁵] process parameterizations. One major uncertainty associated with the mixed-layer box model approach arises from the fact that it does not adequately account for downward mixing and vertical concentration gradients within the mixed layer. Under most circumstances, and especially in the tropical open ocean, where hydrolysis greatly exceeds surface outgassing and low a_{350} makes photoproduction extend further down in the water column, the model tends to overestimate the real OCS concentrations, as was shown for our two cruises above. Therefore, we deem the fluxes from our global simulation to represent an upper limit of the true fluxes. Only at high latitudes would we expect more complex uncertainties, because hydrolysis at low temperatures is slow and only photoproduction and loss by outgassing are directly competing at the very surface. [..⁷⁶]

Other uncertainties are associated with the calculation of the photoproduction rate. The wavelength of 443nm combines the absorption of detritus and CDOM, which could have an impact especially in river plumes, where terrestrial material is transported into the ocean. As it is the CDOM that is important for photochemistry, assuming the 443nm is purely CDOM would lead to an overestimation of photoproduction and therefore is a conservative estimate. It should also be noted that a single spectral slope from 443nm to 350nm in the global simulation is a simplification. Furthermore, using a wavelength integrated photoproduction rate constant instead of a wavelength resolved approach, which would take global variations in the CDOM and light spectra into account, is an additional simplification. It has been shown that this does not lead to large differences regionally (von Hobe et al., 2003), but, potentially, could lead to variations globally. Our p-CDOM-relationship is a first step for constraining this variability globally in one parameterization, as it incorporates photoproduction rate constants optimized to observations and thus accounting for differences in the light and CDOM spectra. More data from different regions can help to further constrain this relationship in future studies. Despite these

⁷³removed: (Suntharalingam et al., 2008; Berry et al., 2013; Kuai et al., 2015; Glatthor et al., 2015; Launois et al., 2015a) approaches that the missing OCS source can be ascribed to direct emissions from the ocean, either tropical or global.

⁷⁴removed: some

⁷⁵removed: the gas-exchange parameterization

⁷⁶removed: Nevertheless, even at high latitudes OCS concentrations in our global simulation are in the same range as past observations (Ulshöfer et al., 1995; Uher and Andreae, 1997a).

simplifications, the simulated concentrations agree very well with previous observations ($n > 4000$, Tab. 4). To test the sensitivity of our box model to the photoproduction rate constant, we performed a sensitivity test with a photoproduction increased by a factor of 5 in the tropical region (30°N - 30°S , note that this factor is considerably larger than the uncertainty in the p-CDOM-relationship). This leads to an annual mean concentration of 35.1 pmol L^{-1} in the tropics (30°N - 30°S),
5 resulting in tropical direct emissions of 160 Gg S as OCS per year. The efficient hydrolysis in warm tropical waters prevents OCS concentrations from accumulating despite the high photoproduction, and still results in emissions too low to account for the missing source.

With a mean error of 3.7 pmol L^{-1} in the OCS surface water concentrations added to (subtracted from) the modelled concentration and subsequent calculation of fluxes using annual climatologies for wind, pressure and SST (same data
10 sources as global simulation forcing data), we calculate an uncertainty of 60%, which translates into a total uncertainty of the integrated global flux of 80 Gg S yr^{-1} .

3.3 Indirect ^[..⁷⁷] OCS emissions by DMS and CS_2

A significant contribution to the OCS budget in the atmosphere results from oceanic emissions of DMS and CS_2 that are partially converted to OCS on time scales of hours to days (Chin and Davis, 1993; Watts, 2000; Kettle, 2002). A yield of 0.7
15 % for OCS is used for the reaction of DMS with OH (Barnes et al., 1994), which results in a ^[..⁷⁸] global oceanic source of DMS from OCS of $80 (65 - 110) \text{ Gg S yr}^{-1}$ ^[..⁷⁹] based on the procedure described in section 2.5. The uncertainty range of $65\text{-}110 \text{ Gg S yr}^{-1}$ originated from the uncertainty in oceanic emissions, not the conversion factor. This conversion factor is much more uncertain, as the ^[..⁸⁰] formation of OCS from DMS involves a complex multi-step reaction mechanism that is ^[..⁸¹] not fully understood. It has been shown in laboratory experiments, that the presence of NO_x reduces the OCS yield
20 considerably (Arsene et al., 2001), which would make our indirect emission estimate ^[..⁸²] an upper limit. However, the yield was measured under laboratory conditions, and may be different and more variable under natural conditions. ^[..⁸³]

DMS emissions do not show a pronounced hot spot in the Pacific warm pool region, but as DMS transports much more sulfur across the air-sea interface than OCS, even low changes in the OCS yield could affect the atmospheric budget of OCS. As the spatial oceanic emission pattern of DMS does not reflect the spatial pattern of the assumed missing
25 source, a locally specific tropospheric change in the conversion yield would be one potential way of bringing the patterns in agreement. While it is possible that the OCS yield could vary under certain conditions, e.g. it cannot be excluded that the low OH concentrations in the broader Pacific warm pool area as suggested by Rex et al. (2014) influence the yield, the (local) increase of the conversion factor would need to be in the order of a factor of 10-100.

⁷⁷ removed: tropical

⁷⁸ removed: mean indirect OCS source of

⁷⁹ removed: from

⁸⁰ removed: global ocean. However, the

⁸¹ removed: far from being

⁸² removed: based on the yield of 0.7%

⁸³ removed: Better constraining the OCS yield of DMS is thus crucial to reduce uncertainties in the indirect emission estimate

For CS₂, the atmospheric reaction pathway producing OCS is better understood with a well constrained molar conversion ratio of 0.81 (Chin and Davis, 1993). However, the global distribution of oceanic CS₂ concentration, hence its emissions to the atmosphere, are poorly known. [⁸⁴] In our study, surface CS₂ concentrations (S-Fig. 6) were on average 17.8±8.9 pmol L⁻¹ during ASTRA-OMZ, and 62.5±42.1 pmol L⁻¹ during TransPEGASO (Tab. 3). The latter values are higher than
5 previously reported concentrations from the AMT-7 cruise in the central Atlantic (Kettle et al., 2001) (10.9±15.2 pmol L⁻¹). We extrapolate a weighted mean of the CS₂ emissions from TransPEGASO (n=42, 13.7±9.8 g S d⁻¹ km⁻²), ASTRA-OMZ (n=122, 4.1±3.2 g S d⁻¹ km⁻²) and AMT-7 (Kettle et al., 2001) (n=744, 1.6±1.8 g S d⁻¹ km⁻²) in order to estimate CS₂ derived OCS emissions from the global ocean. According to our extrapolation, 135 (7-260) Gg S yr⁻¹ enter the atmosphere as oceanic CS₂ emissions converted to OCS. [⁸⁵]

10 The uncertainty range of 7-260 Gg S yr⁻¹ results from extrapolating the highest and the lowest emissions encountered during the cruises to the global ocean. This number is at the highest end of the range for CS₂OCS emissions from globally simulated CS₂ oceanic concentrations (Kettle, 2000, 2002), as measured CS₂ concentrations from the cruises ASTRA-OMZ and TransPEGASO are higher than the simulated surface concentrations in Kettle (2000) for the respective month. However, the spatial pattern of higher concentrations and emissions in the tropical region in our measurements agrees
15 well with the spatial pattern simulated in Kettle (2000). Nonetheless, even the extrapolation of the highest measurement would not close the budget for the three largest missing source estimates (Tab. 1).

For oceanic emission estimates used to constrain GPP, quantifying the seasonal cycle of the single contributors is essential. For example, high emissions during oceanic spring and fall blooms could mask OCS uptake by the terrestrial vegetation, and therefore neglecting them could lead to an underestimation of global GPP, with implications for the atmospheric and terrestrial
20 carbon budget.

4 Conclusions and Outlook

Considering the observational evidence and the modelled global emission estimate of 130±80 Gg S yr⁻¹, direct OCS emissions from the oceans are too low to account for the missing atmospheric source. Together with indirect emissions, the oceanic source strength of OCS [⁸⁶] would add up to 345 Gg S yr⁻¹ compared to 465-1089 Gg S yr⁻¹ required to balance the
25 suggested increase of vegetation uptake. [⁸⁷] Direct and even additional indirect oceanic emissions of OCS are thus unlikely to balance the budget after the upward revision of the vegetation sink.

⁸⁴removed: Few field studies reported CS₂ in the surface ocean (Kim and Andreae, 1992; Xie and Moore, 1999), with evidence for photochemical production (Xie et al., 1998) as well as for a biological source (Xie et al., 1999).

⁸⁵removed: This number agrees with previous estimates and is also lower than the missing source of OCS.

⁸⁶removed: adds

⁸⁷removed: Hence, direct and

[..⁸⁸] Largest uncertainties are associated with the indirect emission estimates, especially in the conversion of DMS to OCS and the global source strength of CS₂.

As our study suggests, the search for an additional source of OCS to the atmosphere should [..⁸⁹] include other sources than oceanic emissions alone. There are indications of other parts of the OCS budget being underestimated, such as domestic coal combustion [..⁹⁰] (Du et al., 2016). While biomass burning is known to emit OCS and is present close to the assumed source region, e.g. around Indonesia, the most recent review of OCS emission factors result in a source too small to close the atmospheric budget (Campbell et al., 2015). However, Lee and Brimblecombe (2016) reevaluated the anthropogenic emissions of OCS and its precursors and provide a higher number than previously considered of 598 Gg S yr⁻¹. They attribute the largest direct OCS emissions to biomass and biofuel burning, as well as pulp and paper manufacturing, and the largest CS₂ emissions to the rayon industry. Hence, a hot spot of anthropogenic emissions in the Asian continent might be a potential candidate, together with atmospheric transport, to produce atmospheric mixing ratios as observed by satellite.

[..⁹¹] A redistribution of the magnitude and seasonality of known sources and sinks could also bring top-down and bottom-up estimates [..⁹²] closer together. For example, the general view of oxic soils as a sink for OCS has recently been challenged. Field (Maseyk et al., 2014; Billesbach et al., 2014) and incubation studies (Whelan et al., 2016) show that some oxic soils may shift from OCS uptake to emission depending on the temperature and water content. [..⁹³] Furthermore, it has been speculated previously that vegetation uptake might not be solely responsible for the decrease in OCS mixing ratios in fall, because of the temporal lag between CO₂ and OCS minimum (Montzka et al., 2007). The observed seasonality in mixing ratios is a superposition of the seasonality of all individual sources and sinks. These seasonalities are currently neglected or associated with a considerable uncertainty. An improved understanding of the seasonality of the individual sources and sinks could [..⁹⁴] help to better constrain the gap in the [..⁹⁵] atmospheric budget. First steps to resolve OCS seasonality in sources and sinks are currently undertaken, e.g. in the case of anthropogenic emissions (Campbell et al., 2015).

All in all, better constraints on the seasonality and magnitude of the atmospheric OCS sources and sinks are critical for a better assessment of the role of this compound in climate and its application to quantify GPP on a global scale. This study confirms oceanic emission as the largest known single source of atmospheric OCS, but shows that its magnitude is [..⁹⁶] unlikely to balance the [..⁹⁷] gap in the atmospheric OCS budget.

⁸⁸removed: To resolve this imbalance, top-down and bottom-up derived emission inventories have to be brought to agreement. On one hand, given the large range of the suggested missing source of 235-800 Gg S yr⁻¹, reducing the uncertainty in inverse estimates would help to better constrain the likelihood of such a large gap in the atmospheric budget.

⁸⁹removed: focus on

⁹⁰removed: , are currently underestimated (Du et al., 2016).

⁹¹removed: On the other hand, a

⁹²removed: into agreement, making the missing source at least partly obsolete

⁹³removed: The role of soils, especially in warmer regions such as the tropics would be worth reevaluating.

⁹⁴removed: be sufficient to reproduce observations without increasing the vegetation sink. This would balance the resulting

⁹⁵removed: budget without requiring an additional ocean source

⁹⁶removed: not enough

⁹⁷removed: suggested increased vegetation sink

Appendix A: List of parameters

Symbol	Meaning
a_{350}	absorption coefficient of CDOM at 350nm
a	fitted parameter in diurnal cycle of I
b	fitted parameter in diurnal cycle of I
c_{air}	concentration in air
C_{OCS}	concentration of OCS in water
[.. ⁹⁸] F	gas flux
[.. ⁹⁹] H	Henry constant
[.. ¹⁰⁰] I	downwelling solar radiation
[.. ¹⁰¹] K	ion product of seawater
k_w	water side transfer velocity in air-sea gas exchange
MLD	mixed layer depth
p	photoproduction rate constant
SSS	sea surface salinity
SST	sea surface temperature
[.. ¹⁰²] Sc	Schmidt number
[.. ¹⁰³] t	time
θ	zenith angle
u_{10}	wind speed at 10m height
UV	ultra violet radiation
[.. ¹⁰⁴] z	depth

Acknowledgements. We thank the captain and crew of the research vessels SONNE I and II as well as HESPERIDES for assistance during the cruises SO235-OASIS (BMBF - FK03G0235A), SO243-ASTRA-OMZ (BMBF - FK03G0243A) and TransPEGASO. We thank H.W. Bange and A. Körtzinger for providing equipment for the continuous underway system and C. Schlundt for support during CS₂ measurements. This work was supported by the German Federal Ministry of Education and Research through the project ROMIC-THREAT (BMBF-FK01LG1217A and 01LG1217B) and ROMIC- SPITFIRE (BMBF- FKZ: 01LG1205C). Additional funding for C.A.M. and S.T.L. came from the Helmholtz Young Investigator Group of C.A. M., TRASE-EC (VH-NG-819), from the Helmholtz Association through the President's Initiative and Networking Fund and the GEOMAR Helmholtz-Zentrum für Ozeanforschung Kiel. K.K. acknowledges financial support from [..¹⁰⁵] [the EU FP7 StratoClim project](#) (603557), and P.C. and R.S. acknowledge support from Spanish MINECO through PEGASO (CTM2012-37615). We gratefully acknowledge the data provided by ECMWF (ERAInterim) and NASA (MODIS Aqua). DKRZ and its scientific steering committee are gratefully acknowledged for providing the HPC and data archiving resources for this consortial project ESCiMo (Earth System Chemistry Integrated Modelling). E.A. acknowledges support from NASA Upper Atmosphere Research Program.

¹⁰⁵removed: StratoClim

References

- Andreae, M. O. and Ferek, R.: Photochemical production of carbonyl sulfide in seawater and its emission to the atmosphere, *Global Biogeochemical Cycles*, 6, 175–183, 2002.
- Arnth, A., Harrison, S. P., Zaehle, S., Tsigaridis, K., Menon, S., Bartlein, P. J., Feichter, J., Korhola, A., Kulmala, M., O'Donnell, D., Schurgers, G., Sorvari, S., and Vesala, T.: Terrestrial biogeochemical feedbacks in the climate system, *Nature Geoscience*, 3, 525–532, 2010.
- Arsene, C., Barnes, I., Becker, K. H., and Mocanu, R.: FT-IR product study on the photo-oxidation of dimethyl sulphide in the presence of NO_x - temperature dependence, *Atmospheric Environment*, 35, 3769–3780, times Cited: 39, 2001.
- Arévalo-Martínez, D. L., Beyer, M., Krumbholz, M., Piller, I., Kock, A., Steinhoff, T., Körtzinger, A., and Bange, H. W.: A new method for continuous measurements of oceanic and atmospheric N₂O, CO and CO₂: performance of off-axis integrated cavity output spectroscopy (OA-ICOS) coupled to non-dispersive infrared detection (NDIR), *Ocean Sci.*, 9, 1071–1087, oS, 2013.
- Asaf, D., Rotenberg, E., Tatarinov, F., Dicken, U., Montzka, S. A., and Yakir, D.: Ecosystem photosynthesis inferred from measurements of carbonyl sulphide flux, *Nature Geoscience*, 6, 186–190, 2013.
- Asher, W. E. and Wanninkhof, R.: The effect of bubble-mediated gas transfer on purposeful dual-gaseous tracer experiments, *Journal of Geophysical Research: Oceans*, 103, 10 555–10 560, 1998.
- Atkinson, R., Baulch, D. L., Cox, R. A., Crowley, J. N., Hampson, R. F., Hynes, R. G., Jenkin, M. E., Rossi, M. J., and Troe, J.: Evaluated kinetic and photochemical data for atmospheric chemistry: Volume I - gas phase reactions of Ox, HO_x, NO_x and SO_x species, *Atmos. Chem. Phys.*, 4, 1461–1738, aCP, 2004.
- Barnes, I., Becker, K. H., and Patroescu, I.: The tropospheric oxidation of dimethyl sulfide: A new source of carbonyl sulfide, *Geophysical Research Letters*, 21, 2389–2392, 1994.
- Beer, C., Reichstein, M., Tomelleri, E., Ciais, P., Jung, M., Carvalhais, N., Rödenbeck, C., Arain, M. A., Baldocchi, D., and Bonan, G. B.: Terrestrial gross carbon dioxide uptake: global distribution and covariation with climate, *Science*, 329, 834–838, 2010.
- Berry, J., Wolf, A., Campbell, J. E., Baker, I., Blake, N., Blake, D., Denning, A. S., Kawa, S. R., Montzka, S. A., Seibt, U., Stimler, K., Yakir, D., and Zhu, Z.: A coupled model of the global cycles of carbonyl sulfide and CO₂: A possible new window on the carbon cycle, *Journal of Geophysical Research: Biogeosciences*, 118, 842–852, 2013.
- Billesbach, D. P., Berry, J. A., Seibt, U., Maseyk, K., Torn, M. S., Fischer, M. L., Abu-Naser, M., and Campbell, J. E.: Growing season eddy covariance measurements of carbonyl sulfide and CO₂ fluxes: COS and CO₂ relationships in Southern Great Plains winter wheat, *Agricultural and Forest Meteorology*, 184, 48–55, 2014.
- Brühl, C., Lelieveld, J., Crutzen, P. J., and Tost, H.: The role of carbonyl sulphide as a source of stratospheric sulphate aerosol and its impact on climate, *Atmos. Chem. Phys.*, 12, 1239–1253, aCP, 2012.
- Brown, K. A. and Bell, J. N. B.: Vegetation—The missing sink in the global cycle of carbonyl sulphide (COS), *Atmospheric Environment* (1967), 20, 537–540, 1986.
- Campbell, J. E., Carmichael, G. R., Chai, T., Mena-Carrasco, M., Tang, Y., Blake, D. R., Blake, N. J., Vay, S. A., Collatz, G. J., Baker, I., Berry, J. A., Montzka, S. A., Sweeney, C., Schnoor, J. L., and Stanier, C. O.: Photosynthetic Control of Atmospheric Carbonyl Sulfide During the Growing Season, *Science*, 322, 1085–1088, times Cited: 44, 2008.
- Campbell, J. E., Whelan, M. E., Seibt, U., Smith, S. J., Berry, J. A., and Hilton, T. W.: Atmospheric carbonyl sulfide sources from anthropogenic activity: Implications for carbon cycle constraints, *Geophysical Research Letters*, 42, 3004–3010, 2015.

- Chin, M. and Davis, D. D.: Global sources and sinks of OCS and CS₂ and their distributions, *Global Biogeochemical Cycles*, 7, 321–337, 1993.
- Crutzen, P. J.: The possible importance of CSO for the sulfate layer of the stratosphere, *Geophysical Research Letters*, 3, 73–76, 1976.
- De Bruyn, W., Swartz, E., Hu, J., Shorter, J., Davidovits, P., Worsnop, D., Zahniser, M., and Kolb, C.: Henry's law solubilities and Setchenow coefficients for biogenic reduced sulphur species obtained from gas-liquid uptake measurements, *Journal of Geophysical Research Atmosphere*, 100, 7245–7251, 1995.
- de Gouw, J. A., Warneke, C., Montzka, S. A., Holloway, J. S., Parrish, D. D., Fehsenfeld, F. C., Atlas, E. L., Weber, R. J., and Flocke, F. M.: Carbonyl sulfide as an inverse tracer for biogenic organic carbon in gas and aerosol phases, *Geophysical Research Letters*, 36, 2009.
- Dee, D. P., Uppala, S. M., Simmons, A. J., Berrisford, P., Poli, P., Kobayashi, S., Andrae, U., Balmaseda, M. A., Balsamo, G., Bauer, P., Bechtold, P., Beljaars, A. C. M., van de Berg, L., Bidlot, J., Bormann, N., Delsol, C., Dragani, R., Fuentes, M., Geer, A. J., Haimberger, L., Healy, S. B., Hersbach, H., Hólm, E. V., Isaksen, I., Kållberg, P., Köhler, M., Matricardi, M., McNally, A. P., Monge-Sanz, B. M., Morcrette, J. J., Park, B. K., Peubey, C., de Rosnay, P., Tavolato, C., Thépaut, J. N., and Vitart, F.: The ERA-Interim reanalysis: configuration and performance of the data assimilation system, *Quarterly Journal of the Royal Meteorological Society*, 137, 553–597, 2011.
- Dickinson, A. G. and Riley, J.: The estimation of acid dissociation constants in seawater media from potentiometric titrations with strong base, *Mar. Chem.*, 7, 89–99, 1979.
- Du, Q., Zhang, C., Mu, Y., Cheng, Y., Zhang, Y., Liu, C., Song, M., Tian, D., Liu, P., Liu, J., Xue, C., and Ye, C.: An important missing source of atmospheric carbonyl sulfide: Domestic coal combustion, *Geophysical Research Letters*, pp. n/a–n/a, 2016.
- Elliott, S., Lu, E., and Rowland, F. S.: Rates and mechanisms for the hydrolysis of carbonyl sulfide in natural waters, *Environmental Science & Technology*, 23, 458–461, 1989.
- Ferek, R. and Andreae, M. O.: The supersaturation of carbonyl sulfide in surface waters of the Pacific oceans off Peru, *Geophysical Research Letters*, 10, 393–395, 1983.
- Ferek, R. and Andreae, M. O.: Photochemical production of carbonyl sulphide in marine surface waters, *Letters to Nature*, 1984, 148–150, 1984.
- Fichot, C. G. and Miller, W. L.: An approach to quantify depth-resolved marine photochemical fluxes using remote sensing: Application to carbon monoxide (CO) photoproduction, *Remote Sensing of Environment*, 114, 1363–1377, 2010.
- Flöck, O. and Andreae, M. O.: Photochemical and non-photochemical formation and destruction of carbonyl sulfide and methyl mercaptan in ocean waters, *Marine Chemistry*, 54, 11–26, 1996.
- Flöck, O. R., Andreae, M. O., and Dräger, M.: Environmentally relevant precursors of carbonyl sulfide in aquatic systems, *Marine Chemistry*, 59, 71–85, 1997.
- Glatthor, N., Höpfner, M., Baker, I. T., Berry, J., Campbell, J. E., Kawa, S. R., Krysztofiak, G., Leyser, A., Sinnhuber, B. M., Stiller, G. P., Stenke, J., and Clarmann, T. v.: Tropical sources and sinks of carbonyl sulfide observed from space, *Geophysical Research Letters*, 2015.
- Hayduk, W. and Laudie, H.: Prediction of diffusion coefficients for nonelectrolytes in dilute aqueous solutions, *AIChE Journal*, 20, 611–615, 1974.
- Jöckel, P., Tost, H., Pozzer, A., Kunze, M., Kirner, O., Brenninkmeijer, C. A. M., Brinkop, S., Cai, D. S., Dyroff, C., Eckstein, J., Frank, F., Garny, H., Gottschaldt, K. D., Graf, P., Grewe, V., Kerkweg, A., Kern, B., Matthes, S., Mertens, M., Meul, S., Neumaier, M., Nützel, M., Oberländer-Hayn, S., Ruhnke, R., Runde, T., Sander, R., Scharffe, D., and Zahn, A.: Earth System Chemistry Integrated Modelling

- (ESCiMo) with the Modular Earth Submodel System (MESSy, version 2.51), *Geosci. Model Dev. Discuss.*, 2015, 8635–8750, gMDD, 2015.
- Johnson, J. E. and Harrison, H.: Carbonyl Sulfide Concentrations in the Surface Waters and Above the Pacific Ocean, *Journal of Geophysical Research*, 91, 7883–7888, 1986.
- 5 Kettle, A.: Extrapolations of the Flux of Dimethylsulfide, Carbon Monoxide, Carbonyl Sulfide and Carbon Disulfide from the Oceans, Ph.D. thesis, 2000.
- Kettle, A. J.: Global budget of atmospheric carbonyl sulfide: Temporal and spatial variations of the dominant sources and sinks, *Journal of Geophysical Research*, 107, 2002.
- Kettle, A. J., Rhee, T. S., von Hobe, M., Poulton, A., Aiken, J., and Andreae, M. O.: Assessing the flux of different volatile sulfur gases from
10 the ocean to the atmosphere, *Journal of Geophysical Research: Atmospheres*, 106, 12 193–12 209, 2001.
- Kim, K. H. and Andreae, M. O.: Carbon disulfide in the estuarine, coastal and oceanic environments, *Marine Chemistry*, 40, 179–197, 1992.
- Kremser, S., Jones, N. B., Palm, M., Lejeune, B., Wang, Y., Smale, D., and Deutscher, N. M.: Positive trends in Southern Hemisphere carbonyl sulfide, *Geophysical Research Letters*, 42, 9473–9480, 2015.
- Kremser, S., Thomason, L. W., von Hobe, M., Hermann, M., Deshler, T., Timmreck, C., Toohey, M., Stenke, A., Schwarz, J. P., Weigel, R.,
15 Fueglistaler, S., Prata, F. J., Vernier, J.-P., Schlager, H., Barnes, J. E., Antuña-Marrero, J.-C., Fairlie, D., Palm, M., Mahieu, E., Notholt, J., Rex, M., Bingen, C., Vanhellemont, F., Bourassa, A., Plane, J. M. C., Klocke, D., Carn, S. A., Clarisse, L., Trickl, T., Neely, R., James, A. D., Rieger, L., Wilson, J. C., and Meland, B.: Stratospheric aerosol—Observations, processes, and impact on climate, *Reviews of Geophysics*, 54, 2016.
- Kuai, L., Worden, J. R., Campbell, J. E., Kulawik, S. S., Li, K.-F., Lee, M., Weidner, R. J., Montzka, S. A., Moore, F. L., Berry, J. A., Baker,
20 I., Denning, A. S., Bian, H., Bowman, K. W., Liu, J., and Yung, Y. L.: Estimate of carbonyl sulfide tropical oceanic surface fluxes using Aura Tropospheric Emission Spectrometer observations, *Journal of Geophysical Research: Atmospheres*, 120, 11,012–11,023, 2015.
- Lana, A., Bell, T. G., Simo, R., Vallina, S. M., Ballabrera-Poy, J., Kettle, A. J., Dachs, J., Bopp, L., Saltzman, E. S., Stefels, J., Johnson, J. E., and Liss, P. S.: An updated climatology of surface dimethylsulfide concentrations and emission fluxes in the global ocean, *Global Biogeochemical Cycles*, 25, times Cited: 55, 2011.
- 25 Launois, T., Belviso, S., Bopp, L., Fichot, C. G., and Peylin, P.: A new model for the global biogeochemical cycle of carbonyl sulfide - Part 1: Assessment of direct marine emissions with an oceanic general circulation and biogeochemistry model, *Atmos. Chem. Phys.*, 15, 2295–2312, aCP, 2015a.
- Launois, T., Peylin, P., Belviso, S., and Poulter, B.: A new model of the global biogeochemical cycle of carbonyl sulfide – Part 2: Use of carbonyl sulfide to constrain gross primary productivity in current vegetation models, *Atmos. Chem. Phys.*, 15, 9285–9312, aCP, 2015b.
- 30 Lee, C.-L. and Brimblecombe, P.: Anthropogenic contributions to global carbonyl sulfide, carbon disulfide and organosulfides fluxes, *Earth-Science Reviews*, 160, 1–18, 2016.
- Lennartz, S. T., Krysztofiak, G., Marandino, C. A., Sinnhuber, B. M., Tegtmeier, S., Ziska, F., Hossaini, R., Krüger, K., Montzka, S. A., Atlas, E., Oram, D. E., Keber, T., Bönisch, H., and Quack, B.: Modelling marine emissions and atmospheric distributions of halocarbons and dimethyl sulfide: the influence of prescribed water concentration vs. prescribed emissions, *Atmos. Chem. Phys.*, 15, 11 753–11 772,
35 aCP, 2015.
- Liss, P. S. and Slater, P. G.: Flux of gases across air-sea interface, *Nature*, 247, 181–184, times Cited: 897, 1974.

- Maseyk, K., Berry, J. A., Billesbach, D., Campbell, J. E., Torn, M. S., Zahniser, M., and Seibt, U.: Sources and sinks of carbonyl sulfide in an agricultural field in the Southern Great Plains, *Proceedings of the National Academy of Sciences of the United States of America*, 111, 9064–9069, times Cited: 8, 2014.
- McGillis, W. R., Edson, J. B., Hare, J. E., and Fairall, C. W.: Direct covariance air-sea CO₂ fluxes, *Journal of Geophysical Research-Oceans*, 5 106, 16 729–16 745, times Cited: 120, 2001.
- Mihalopoulos, N., Nguyen, B. C., Putaud, J. P., and Belviso, S.: The oceanic source of carbonyl sulfide (COS), *Atmospheric Environment*, 26A, 1383–1394, 1992.
- Miller, S., Marandino, C., De Bruyn, W., and Saltzman, E. S.: Air-sea gas exchange of CO₂ and DMS in the North Atlantic by eddy covariance, *Geophysical Research Letters*, 36, 2009.
- 10 Montzka, S. A., Calvert, P., Hall, B. D., Elkins, J. W., Conway, T. J., Tans, P. P., and Sweeney, C.: On the global distribution, seasonality, and budget of atmospheric carbonyl sulfide (COS) and some similarities to CO₂, *Journal of Geophysical Research*, 112, 2007.
- Najjar, R., Erickson, D., and Madronich, S.: Modeling the air-sea fluxes of gases formed from the decomposition of dissolved organic matter: Carbonyl sulfide and carbon monoxide, pp. 107–132, John Wiley & Sons, 1995.
- NASA: MODIS-Aqua Ocean Color Data, 2014.
- 15 Nightingale, P. D., Malin, G., Law, C. S., Watson, A. J., Liss, P. S., Liddicoat, M. I., Boutin, J., and Upstill-Goddard, R. C.: In situ evaluation of air-sea gas exchange parameterizations using novel conservative and volatile tracers, *Global Biogeochemical Cycles*, 14, 373–387, times Cited: 526, 2000.
- Notholt, J., Kuang, Z., Rinsland, C. P., Toon, G. C., Rex, M., Jones, N., Albrecht, T., Deckelmann, H., Krieg, J., Weinzierl, C., Bingemer, H., Weller, R., and Schrems, O.: Enhanced Upper Tropical Tropospheric COS: Impact on the Stratospheric Aerosol Layer, *Science*, 300, 20 307–310, 2003.
- Pos, W. H., Riemer, D. D., and Zika, R. G.: Carbonyl sulfide (OCS) and carbon monoxide (CO) in natural waters: evidence of a coupled production pathway, *Marine Chemistry*, 62, 89–101, 1998.
- Pozzer, A., Jöckel, P., Sander, R., Williams, J., Ganzeveld, L., and Lelieveld, J.: Technical Note: The MESSy-submodel AIRSEA calculating the air-sea exchange of chemical species, *Atmos. Chem. Phys.*, 6, 5435–5444, aCP, 2006.
- 25 Protoschill-Krebs, G. and Kesselmeier, J.: Enzymatic Pathways for the Consumption of Carbonyl Sulphide (COS) by Higher Plants*, *Botanica Acta*, 105, 206–212, 1992.
- Rasmussen, R. A., Khalil, M. A. K., and Hoyt, S. D.: The oceanic source of carbonyl sulfide (OCS), *Atmospheric Environment*, 16, 1591–1594, 1982.
- Rex, M., Wohltmann, I., Ridder, T., Lehmann, R., Rosenlof, K., Wennberg, P., Weisenstein, D., Notholt, J., Kruger, K., Mohr, V., and 30 Tegtmeier, S.: A tropical West Pacific OH minimum and implications for stratospheric composition, *Atmospheric Chemistry and Physics*, 14, 4827–4841, 2014.
- Sandoval-Soto, L., Stanimirov, M., von Hobe, M., Schmitt, V., Valdes, J., Wild, A., and Kesselmeier, J.: Global uptake of carbonyl sulfide (COS) by terrestrial vegetation: Estimates corrected by deposition velocities normalized to the uptake of carbon dioxide (CO₂), *Biogeosciences*, 2, 125–132, 2005.
- 35 Schauffler, S. M., Atlas, E. L., Flocke, F., Lueb, R. A., Stroud, V., and Travnicek, W.: Measurements of bromine containing organic compounds at the tropical tropopause, *Geophysical Research Letters*, 25, 317–320, times Cited: 56, 1998.
- Schmidtko, S., Johnson, G. C., and Lyman, J. M.: MIMOC: A global monthly isopycnal upper-ocean climatology with mixed layers, *Journal of Geophysical Research-Oceans*, 118, 1658–1672, 2013.

- Schrade, S.: Ground based measurements of Carbon Dioxide and other climatically relevant trace gases using Off-Axis Integrated-Cavity-Output-Spectroscopy (ICOS), Ph.D. thesis, 2011.
- Sikorski, R. J. and Zika, R. G.: Modeling mixed-layer photochemistry of H₂O₂: Optical and chemical modeling of production, *Journal of Geophysical Research: Oceans*, 98, 2315–2328, 1993.
- 5 Staubes, R. and Georgii, H.-W.: Biogenic sulfur compounds in seawater and the atmosphere of the Antarctic region, *Tellus*, 45B, 127–137, 1993.
- Stefels, J., Steinke, M., Turner, S., Malin, G., and Belviso, S.: Environmental constraints on the production and removal of the climatically active gas dimethylsulphide (DMS) and implications for ecosystem modelling, *Biogeochemistry*, 83, 245–275, 2007.
- Stramma, L., Fischer, T., Grundle, D. S., Krahnemann, G., Bange, H. W., and Marandino, C. A.: Observed El Niño conditions in the eastern tropical Pacific in October 2015, *Ocean Sci.*, 12, 861–873, oS, 2016.
- 10 Suntharalingam, P., Kettle, A. J., Montzka, S. M., and Jacob, D. J.: Global 3-D model analysis of the seasonal cycle of atmospheric carbonyl sulfide: Implications for terrestrial vegetation uptake, *Geophysical Research Letters*, 35, L19 801, 2008.
- Turco, R. P., Whitten, R. C., Toon, O. B., Pollack, J. B., and Hamill, P.: OCS, stratospheric aerosols and climate, *Nature*, 283, 283–285, 10.1038/283283a0, 1980.
- 15 Uher, G. and Andreae, M. O.: The diel cycle of carbonyl sulfide in marine surface waters: field study results and a simple model, *Atmospheric Geochemistry*, 2, 313–344, 1997a.
- Uher, G. and Andreae, M. O.: Photochemical production of carbonyl sulfide in North Sea water: A process study, *Limnology and Oceanography*, 42, 432–442, 1997b.
- Ulshöfer, V. and Andreae, M. O.: Carbonyl Sulfide (COS) in the Surface Ocean and the Atmospheric COS Budget, *Atmospheric Geochemistry*, 3, 283–303, 1998.
- 20 Ulshöfer, V., Uher, G., and Andreae, M. O.: Evidence for a winter sink of atmospheric carbonyl sulfide in the northeast Atlantic Ocean, *Geophysical Research Letters*, 22, 2601–2604, 1995.
- von Hobe, M., Kettle, A. J., and Andreae, M. O.: Carbonyl sulphide in and over seawater: summer data from the northeast Atlantic Ocean, *Atmospheric Environment*, 33, 3503–3514, 1999.
- 25 von Hobe, M., Cutter, G. A., Kettle, A. J., and Andreae, M. O.: Dark production: A significant source of oceanic COS, *Journal of Geophysical Research*, 106, 31 217, 2001.
- von Hobe, M., Najjar, R., Kettle, A., and Andreae, M.: Photochemical and physical modeling of carbonyl sulfide in the ocean, *Journal of Geophysical Research*, 108, 2003.
- Wang, Y., Deutscher, N. M., Palm, M., Warneke, T., Notholt, J., Baker, I., Berry, J., Suntharalingam, P., Jones, N., Mahieu, E., Lejeune, B., Hannigan, J., Conway, S., Mendonca, J., Strong, K., Campbell, J. E., Wolf, A., and Kremser, S.: Towards understanding the variability in biospheric CO₂ fluxes: using FTIR spectrometry and a chemical transport model to investigate the sources and sinks of carbonyl sulfide and its link to CO₂, *Atmos. Chem. Phys.*, 16, 2123–2138, aCP, 2016.
- 30 Wanninkhof, R., Asher, W. E., Ho, D. T., Sweeney, C., and McGillis, W. R.: Advances in Quantifying Air-Sea Gas Exchange and Environmental Forcing, *Annual Review of Marine Science*, 1, 213–244, 2009.
- 35 Watts, S. F.: The mass budgets of carbonyl sulfide, dimethyl sulfide, carbon disulfide and hydrogen sulfide, *Atmospheric Environment*, 34, 761–779, 2000.
- Weiss, P., Andrews, S., Johnson, J. E., and Zafiriou, O.: Photoproduction of carbonyl sulfide in south Pacific Ocean waters as a function of irradiation wavelength, *Geophysical Research Letters*, 22, 215–218, 1995a.

- Weiss, P., Johnson, J. E., Gammon, R., and Bates, T.: Reevaluation of the open ocean source of carbonyl sulfide to the atmosphere, *Journal of Geophysical Research*, 100, 23 083–23 092, 1995b.
- Whelan, M. E., Hilton, T. W., Berry, J. A., Berkelhammer, M., Desai, A. R., and Campbell, J. E.: Carbonyl sulfide exchange in soils for better estimates of ecosystem carbon uptake, *Atmos. Chem. Phys.*, 16, 3711–3726, aCP, 2016.
- 5 Xie, H. and Moore, R. M.: Carbon disulfide in the North Atlantic and Pacific oceans, *Journal of Geophysical Research*, 104, 5393, 1999.
- Xie, H., Moore, R. M., and Miller, W. L.: Photochemical production of carbon disulphide in seawater, *Journal of Geophysical Research: Oceans*, 103, 5635–5644, 1998.
- Xie, H., Scarratt, M. G., and Moore, R. M.: Carbon disulphide production in laboratory cultures of marine phytoplankton, *Atmospheric Environment*, 33, 3445–3453, 1999.
- 10 Xu, X.: Investigations into the tropospheric cycle of COS: atmospheric distribution, air-sea and air-vegetation exchanges, Phd thesis, 2001.
- Xu, X., Bingemer, H. G., Georgii, H. W., Schmidt, U., and Bartell, U.: Measurements of carbonyl sulfide (COS) in surface seawater and marine air, and estimates of the air-sea flux from observations during two Atlantic cruises, *Journal of Geophysical Research*, 106, 3491, 2001.

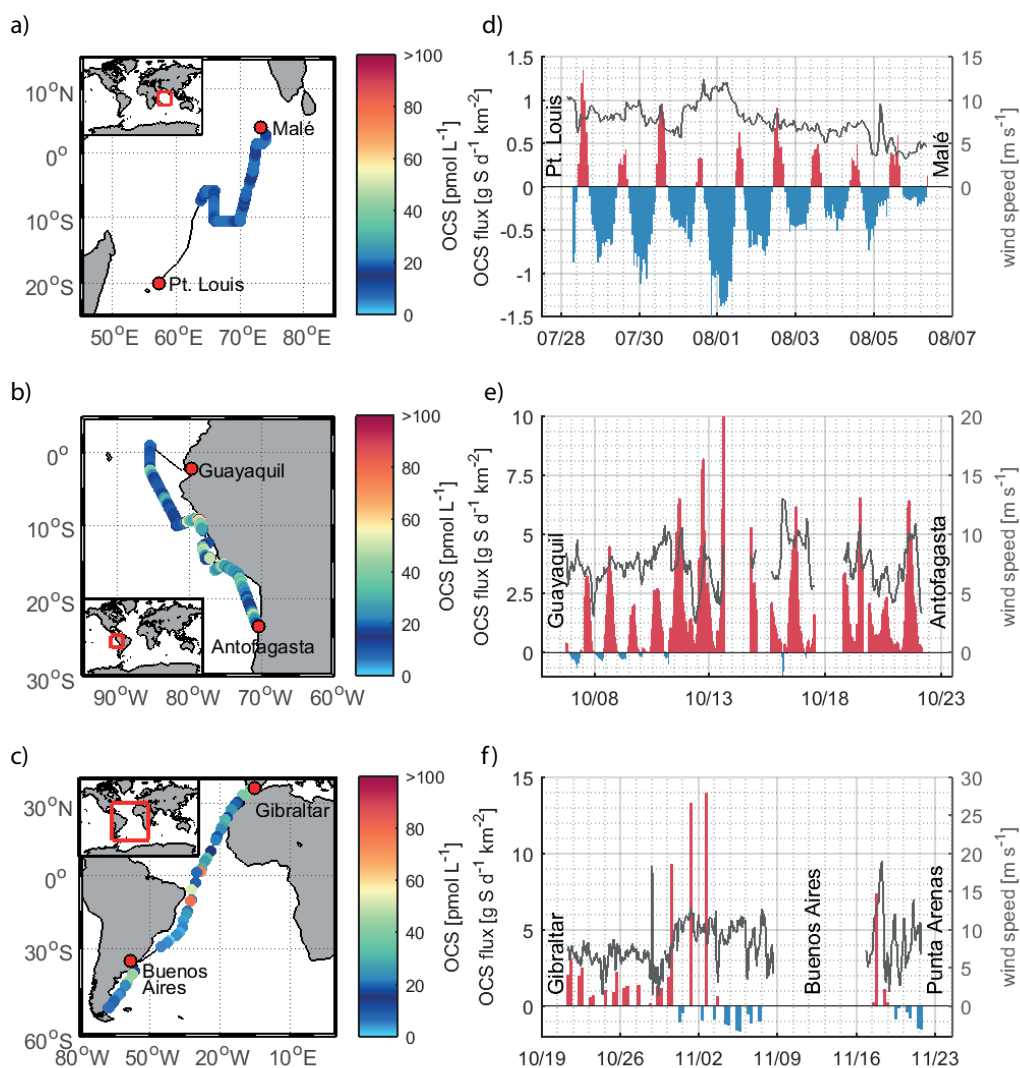


Figure 1. Observed OCS water concentrations and calculated emissions: Observations of OCS concentrations in the surface ocean during three cruises a) OASIS, b) ASTRA-OMZ, and c) TransPEGASO; and the corresponding emissions calculated based on the concentration gradient between water and marine boundary layer (d-f). Outgassing is indicated in red bars; oceanic uptake in blue bars. The grey line shows wind speed measured onboard the vessels. Flux data are shown with different scales on the y-axes. Data gaps occurred during stays in port and territorial waters or during instrument tests.

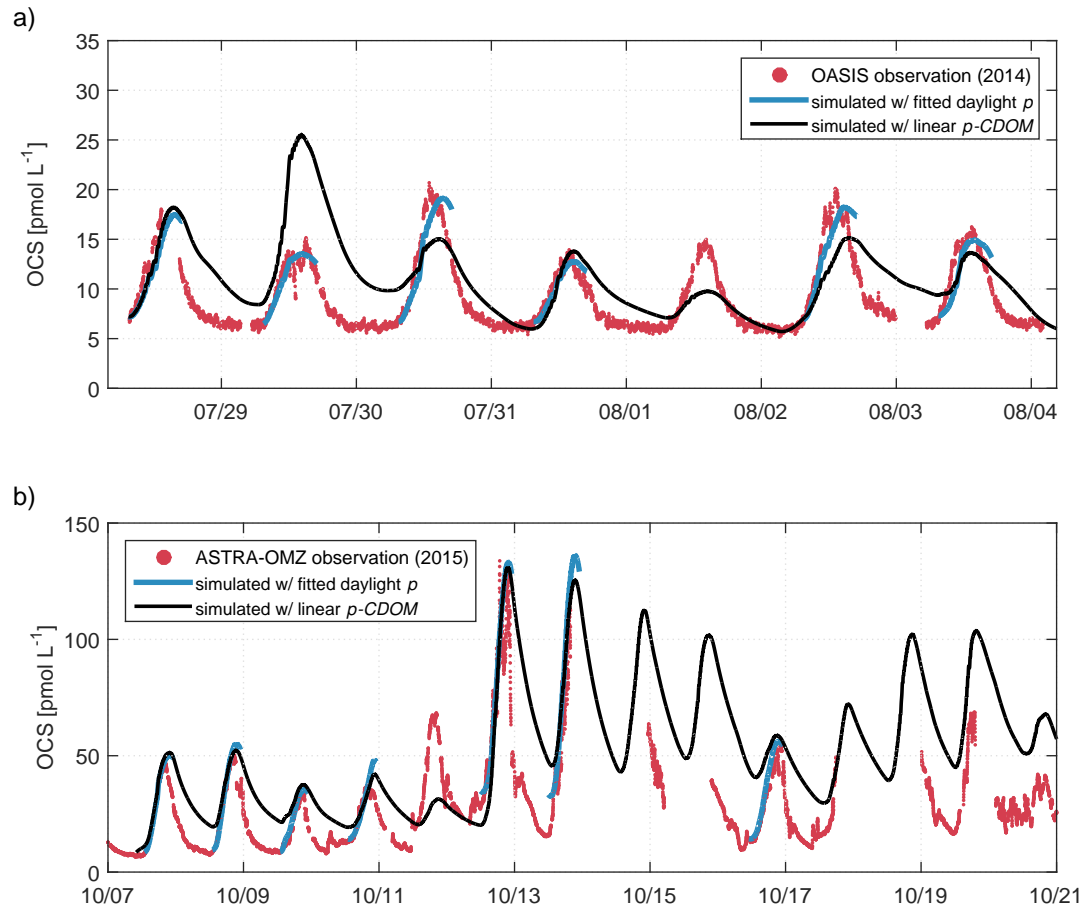


Figure 2. Box model simulations compared to observations: Comparison of simulated OCS water concentrations against measurements from the OASIS cruise to the Indian Ocean (a) and the eastern Pacific Ocean during the ASTRA-OMZ cruise (b). Blue indicates OCS concentrations with a least-square fit for the photoproduction rate constant p during daylight, fitted individually for days with homogeneous water masses (SST, a_{350}). Black shows the simulation including the p depending on a_{350} , obtained from linear regression of individually fitted p with a_{350} ($R^2=0.71$). The time on the x-axis is local time (GMT+5 during OASIS 2014, GMT-4 during ASTRA-OMZ 2015).

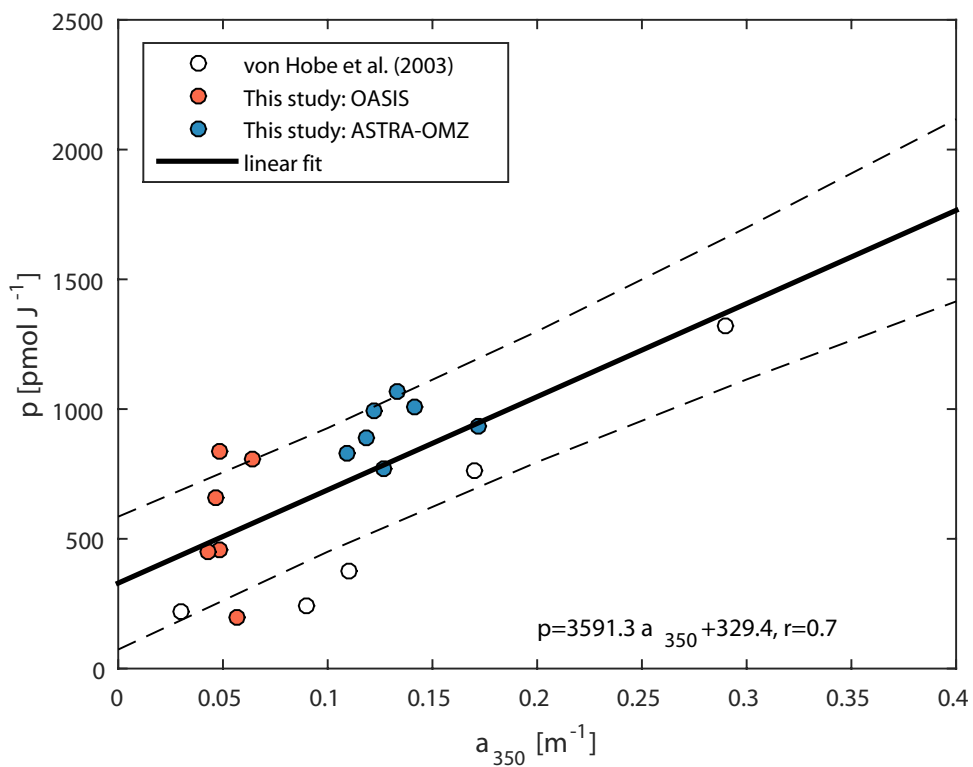


Figure 3. Dependence of photoproduction rate constant p on a_{350} including own fits for p (resulting in blue lines in Fig. 2) and fits from a similar study (von Hobe et al., 2003). Dashed lines indicate the 95% confidence interval.

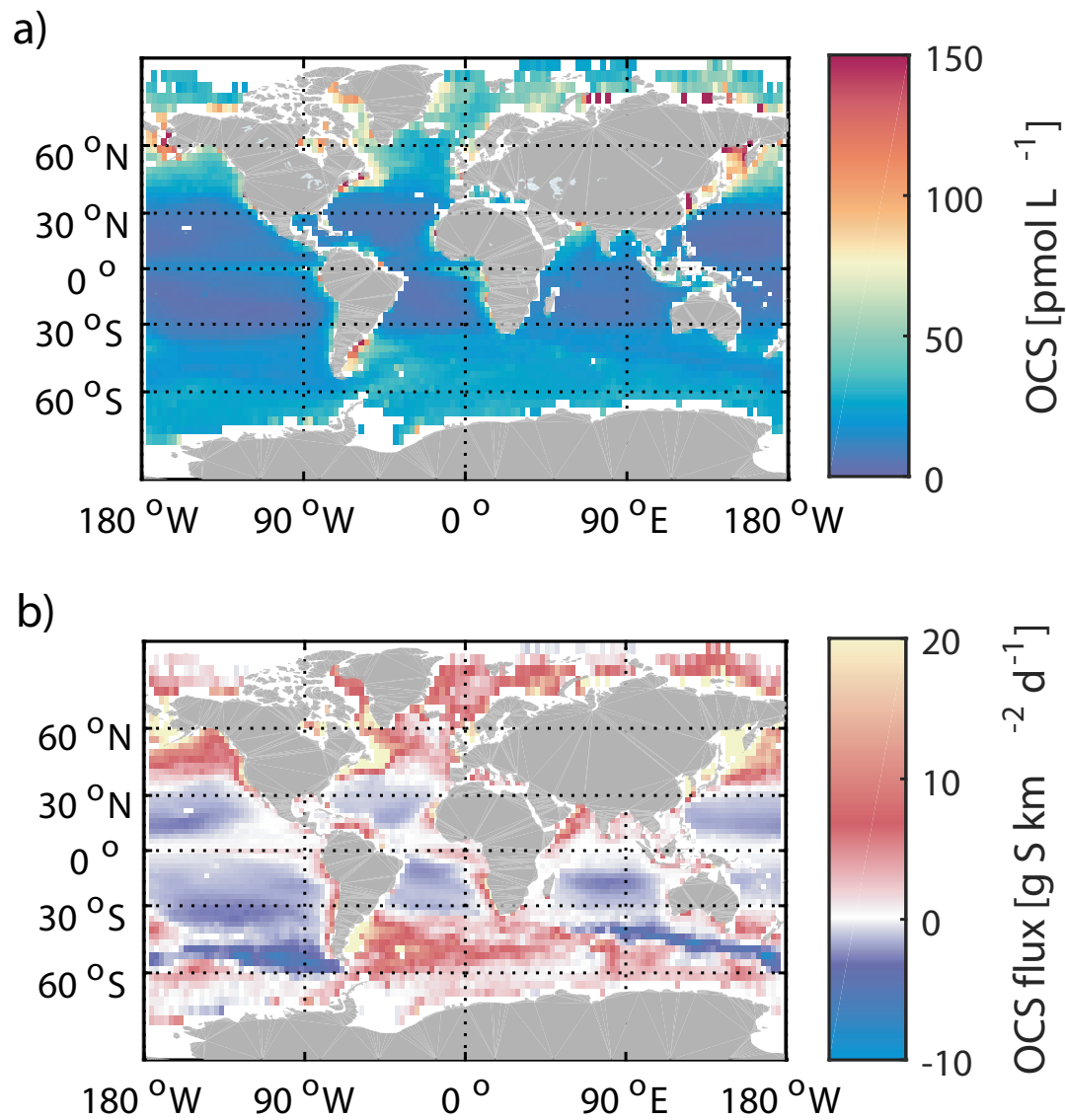


Figure 4. Annual mean of surface ocean concentrations of OCS simulated with the box model (a) and corresponding emissions (b).

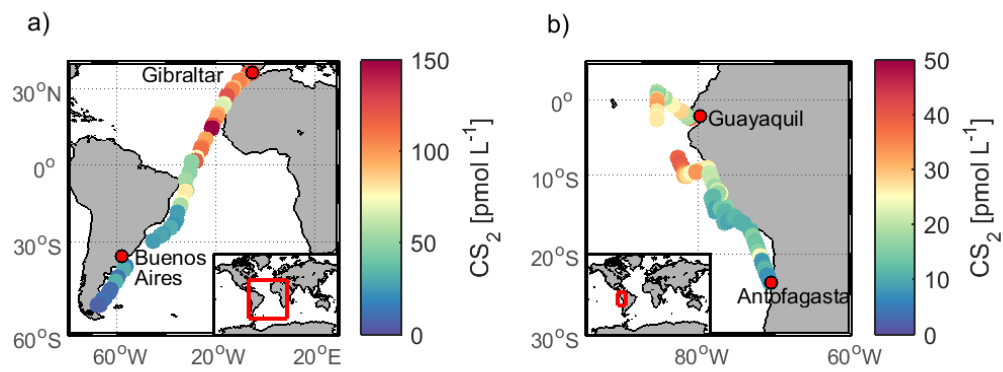


Figure 5. Measured concentration of CS_2 in surface waters during a) ASTRA-OMZ in the East Pacific Ocean and b) TransPEGASO in the Atlantic Ocean.

Table 1. Missing source estimates derived from top-down approaches: The listed studies used an increased vegetation sink and an *a priori* direct and indirect ocean flux to estimate the magnitude of the missing source. Assigning the missing source to oceanic emissions results in the total ocean flux listed here. Fluxes are given in Gg S per year.

Reference	<i>a priori</i> ocean flux	missing source	total ocean flux
Suntharalingam et al. (2008)	235	230	465
Berry et al. (2013)	276	600	876
Kuai et al. (2015)	289	800	1089
Glatthor et al. (2015)	276	714	992

Table 2. Global oceanic emission estimates of OCS: Direct ocean emission estimates of OCS from bottom-up approaches[..¹⁰⁶]. Uncertainties are given in parenthesis as in the original paper either as range or \pm standard deviation. (^aunits deviate from original paper, converted to Gg S for comparison, ^bupper limit)

[.. ¹⁰⁷] Reference	[.. ¹⁰⁸] Emitted S as OCS (Gg S yr ⁻¹)
extrapolated from measurements	
Rasmussen et al. (1982)	320 (± 160) ^a
Ferek and Andreae (1983)	245 ^a
Johnson and Harrison (1986)	110-210 ^a
Mihalopoulos et al. (1992)	230 (110-210) ^a
Chin and Davis (1993)	160 (85-340) ^a
Weiss et al. (1995b)	-16 (10-30) ^a
Ulshöfer and Andreae (1998)	41-80 ^a
Watts (2000)	53 (± 80) ^a
Xu et al. (2001)	53 ^a
model simulations	
Kettle (2002)	41 (± 154)
Launois et al. (2015a)	813 (573-3997)
[.. ¹⁰⁹] This study	130^b
[.. ¹¹⁰]	

Table 3. Average, standard deviation and range of parameters observed during the cruises OASIS (Indian Ocean, 2014), ASTRA-OMZ (Pacific Ocean, 2015) and TransPEGASO (Atlantic Ocean, 2014).

		average (\pm std. dev.)	minimum	maximum
OASIS (Indian Ocean)				
OCS sea surface concentration	[pmol L ⁻¹]	9.1 (\pm 3.5)	5.1	20.7
OCS flux	[g S d ⁻¹ km ⁻²]	-0.25 (\pm 0.5)	-1.6	1.5
SST	[°C]	27.0 (\pm 1.4)	22.2	32.0
salinity	[-]	34.9 (\pm 0.3)	34.3	35.4
wind speed	[m s ⁻¹]	7.6 (\pm 2.1)	0.2	14.5
$a_{CDOM}(350)$	[m ⁻¹]	0.03(\pm 0.02)	n.d.	0.12
ASTRA-OMZ (Pacific Ocean)				
OCS sea surface concentration	[pmol L ⁻¹]	28.3 (\pm 19.7)	6.5	133.8
OCS flux	[g S d ⁻¹ km ⁻²]	1.5 (\pm 2.1)	-1.5	19.9
CS ₂ sea surface concentration	[pmol L ⁻¹]	17.8 (\pm 8.9)	6.7	40.1
CS ₂ flux	[g S d ⁻¹ km ⁻²]	4.1 (\pm 3.2)	0.2	14.4
SST	[°C]	20.1 (\pm 2.9)	15.6	26.9
salinity	[-]	35.0 (\pm 0.43)	33.4	35.5
wind speed	[m s ⁻¹]	7.4 (\pm 2.0)	0.3	15.5
$a_{CDOM}(350)$	[m ⁻¹]	0.15 (\pm 0.03)	0.1	0.24
TransPEGASO (Atlantic Ocean)				
OCS sea surface concentration	[pmol L ⁻¹]	23.6 (\pm 19.3)	2.6	78.3
OCS flux	[g S d ⁻¹]	1.3 (\pm 3.5)	-1.7	14.0
CS ₂ sea surface concentration	[pmol L ⁻¹]	62.5 (\pm 42.1)	23.2	154.8
CS ₂ flux	[g S d ⁻¹ km ⁻²]	13.7 (\pm 9.8)	0.3	33.9
SST	[°C]	22.6 (\pm 6.3)	7.1	29.6
salinity	[-]	34.9 (\pm 2.6)	28.4	38.1
wind speed	[m s ⁻¹]	7.4 (\pm 3.1)	0.4	19.0
$a_{CDOM}(350)$	[m ⁻¹]	0.13 (\pm 0.11)	0.0023	0.45

Table 4. Comparison of water properties relevant for OCS production and consumption for the cruises OASIS (Indian Ocean, Jul-Aug 2014) and ASTRA-OMZ (Östlicher Pazifik, Oct-Nov 2015) with the assumed source region in the Pacific warm pool (15°N-15°S, 120°-180°E). Data from cruises are in situ-measurements; the data for the Pacific warm pool was extracted from climatological monthly means from sources for the global model run as specified in the supplementary material.*calculated from an annual mean diurnal cycle based on ERA-Interim sunshine duration and flux. SR=surface radiation, daily integral **assumed pH=8.15 for box model simulation.

Parameter	OASIS	ASTRA-OMZ	Pacific Warm Pool
SST [°C]	27.0±1.0	19.6±2.6	28.9±0.9
SSS [g kg ⁻¹]	35.0±0.3	35.1±0.3	34.5±0.42
wind speed [m s ⁻¹]	8.2±1.7	7.5±1.8	5.3±0.4
a ₃₅₀ [m ⁻¹]	0.039±0.02	0.146±0.02	0.050±0.08
I [W m ⁻²]	226.5±303.0	196.4±283.1	206.4±286.6*
SR [J m ⁻²]	1.9 10 ⁷ ±1.7 10 ⁶	1.6 10 ⁷ ±4.5 10 ⁶	8.9 10 ⁶ ±1.3 10 ⁶
pH [-]	8.03±0.01	-**	8.07±0.01
MLD [m]	43.3±15.8	18.9±7.5	35.9±14.1

Table 5. Comparison of previous shipcampaign measurements with corresponding month and approx. geolocation from the global box model in this study (L2016), taken either from figures or tables as provided in the original references. Note that the box model is based on input data from climatological means that do not fully represent the conditions encountered during the respective cruises. Only observational data with measurements of the full diel cycle were included for comparison. n=number of measurements. *converted from ng L⁻¹ with a molar mass of OCS of 60.07g. **converted from ng S L⁻¹ with a molar mass of S of 32.1g.

References	Season	Region	Mean OCS±std. [pmol L ⁻¹]	n	L2016 mean [pmol L ⁻¹]
Mihalopoulos et al. (1992)		open Indian Ocean 20°N-37°S			
	Mar/May 1986	OCEAT II	19.9±0.5*	20	11.2±6.3
	Jul 1987	OCEAT III	19.9±1.0*	14	17.7±13.1
Staubes and Georgii (1993)	Nov-Dec 1990	Wedell Sea 40°-72°S,72°W-24°E	109**	126	66.6±49.8
Ulshöfer et al. (1995)		North Atlantic Ocean			
	Apr/May 1992	47°N 20°W	14.9±6.9	118	42.8±11.3
	Jan 1994	48-50°N, 10-17°W	5.3±1.6	120	8.9±3.2
	Sep 1994	48-50°N, 10-17°W	19.0±8.3	23 5	33.4±3.5
Flöck and Andreae (1996)	Jan 1994	Northeast Atlantic Ocean 49°N, 12°W	6.7 (4-11)	120	9.6±3.7
Ulshöfer and Andreae (1998)	Mar 1995	West Atlantic 32°N, 64°W	8.1±7.0	323	15.8
von Hobe et al. (1999)	Jun/Jul 1997	Northeast Atlantic Ocean 30-40°N, 8-15°W	23.6±16.0	940	30.5±12.6
Kettle et al. (2001)	Sep/Oct 1998	Atlantic transect 50°N-60°S, 1°-64°W	21.7±19.1	783	22.9±3.2
von Hobe et al. (2001)	Aug 1999	Sargasso Sea/BATS 32°N, 64°W	8.6±2.8	518	8.1
Xu et al. (2001)	Oct/Nov 1997	Atlantic meridional transect 53°N-34°S,25°W-20°E	14.8±11.4	306	11.8±12.7
	May/Jun 1998	Atlantic meridional transect 53°N-34°S,25°W-20°E	18.1±16.1	440	27.8±47.9