

# 1 Terpenoid and carbonyl emissions from Norway spruce in Finland 2 during the growing season

3  
4  
5 Hannele Hakola<sup>1</sup>, Virpi Tarvainen<sup>1</sup>, Arnaud P. Praplan<sup>1</sup>, Kerneels Jaars<sup>2</sup>, Marja Hemmilä<sup>1</sup>,  
6 Markku Kulmala<sup>3</sup>, Jaana Bäck<sup>4</sup>, Heidi Hellén<sup>1</sup>

7  
8 <sup>1</sup>Finnish Meteorological Institute, Atmospheric Composition Unit, P.O. Box 503, 00101 Helsinki, Finland

9 <sup>2</sup>Unit for Environmental Sciences and Management, North-West University, Potchefstroom, South Africa

10 <sup>3</sup>Department of Physics, P.O. Box 64, 00014 University of Helsinki, Finland

11 <sup>4</sup>Department of Forest Ecology, P.O. Box 27, 00014 University of Helsinki, Finland

12 *Correspondence to:* Hannele Hakola ([hannele.hakola@fmi.fi](mailto:hannele.hakola@fmi.fi))

13  
14 **Abstract.** We present spring and summer volatile organic compound (VOC) emission rate measurements from Norway  
15 spruce (*Picea abies* L. Karst) growing in a boreal forest in southern Finland. The measurements were conducted using  
16 in situ gas-chromatograph with 1 to 2-hour time resolution to reveal quantitative and qualitative short-term and seasonal  
17 variability of the emissions. The measurements cover altogether 14 weeks in years 2011, 2014 and 2015. Monoterpene  
18 (MT) and sesquiterpene (SQT) emission rates were measured all the time, but isoprene only in 2014 and 2015 and  
19 acetone and C<sub>4</sub>-C<sub>10</sub> aldehydes only in 2015. The emission rates of all the compounds were low in spring, but MT,  
20 acetone and C<sub>4</sub>-C<sub>10</sub> aldehydes emission rates increased as summer proceeded, reaching maximum emission rates in  
21 July. Late summer mean values (late July and August) were 29, 17 and 33 ng g(dw)<sup>-1</sup> h<sup>-1</sup> for MTs, acetone and  
22 aldehydes respectively. SQT emission rates increased during the summer and highest emissions were measured late  
23 summer (late summer mean value 84 ng g(dw)<sup>-1</sup> h<sup>-1</sup>) concomitant with highest linalool emissions most likely due to  
24 stress effects. The between-tree variability of emission pattern was studied by measuring seven different trees during  
25 the same afternoon using adsorbent tubes. Especially the contributions of limonene, terpinolene and camphene were  
26 found to vary between trees, whereas proportions of α- and β-pinene were more stable. Our results show that it is  
27 important to measure emissions on canopy level due to irregular emission pattern, but reliable SQT emission data can  
28 be measured only from enclosures. SQT emissions contributed more than 90 % of the ozone reactivity most of the  
29 time, and about 70 % of the OH reactivity during late summer. The contribution of aldehydes to OH reactivity was  
30 comparable to the one of MT during late summer, 10 %-30 % most of the time.

## 31 32 **1 Introduction**

33 The boreal forest is the largest terrestrial biome, forming an almost continuous belt around the northern hemisphere.  
34 The boreal forest zone is characterized by a short growing season and a limited number of tree species. The most  
35 common tree species are Scots pine, Norway spruce and silver and downy birch and they produce and emit vast  
36 amounts of biogenic volatile organic compounds (VOCs) (Bourtsoukidis et al., 2014a, b; Bäck et al., 2012; Cojocariu

37 et al., 2004; Grabmer et al., 2006; Hakola et al., 2001, 2006; Tarvainen et al., 2005; Yassaa et al., 2012). The  
38 compounds are mainly isoprene, monoterpenes (MT), sesquiterpenes (SQT) and oxygenated volatile organic  
39 compounds (OVOCs) (Tarvainen et al., 2007). There is a variety of factors controlling these emission, both biotic  
40 (Pinto-Zevallos et al., 2013; Joutsensaari et al., 2015) and abiotic stress (Vickers et a., 2009; Bourtsoukidis et al.,  
41 2012; Bourtsoukidis et al., 2014c) factors can initiate or alter VOC emissions. Abiotic stress factors have been  
42 reviewed by Loreto and Schnizler (2010). Terpenes for example relieve oxidative and thermal stresses of trees. Many  
43 stress factors can also interact and cause additive effects (Niinemets, 2010; Holopainen and Gershenzon, 2010).  
44 Biotic stresses such as acarid species infestation have been shown to initiate farnesene and linalool emissions in  
45 spruce seedlings (Kännaste et al., 2008). Emission potentials and composition varies a lot between different tree  
46 species (Guenther et al. 2012). However, there is also a lot of variation in the emissions of different individuals of the  
47 same tree species. Bäck et al. (2012) showed that Scots pine trees of the same age, growing in the same environment,  
48 emit very different monoterpene selections. These so called different chemotypes cause uncertainties in emission  
49 modelling.

50 In the atmosphere VOCs are oxidized, which affects the tropospheric ozone formation (Chameides et al., 1992) and  
51 contribute to the lifetime of methane by consuming hydroxyl radicals. In addition reaction products of VOCs also  
52 participate in the formation and growth of new particles (Tunved et al., 2006). In smog chamber studies secondary  
53 organic aerosol (SOA) yields for different hydrocarbons and even for different MTs have been found to vary  
54 considerably (Griffin et al., 1999). Jaoui et al. (2013) studied SOA formation from SQT and found that the high  
55 reactivity of SQT produced generally high conversion into SOA products. Furthermore, they found that the yields were  
56 dependent on the oxidant used and were highest for nitrate radical (NO<sub>3</sub>) reactions. Of the SQT acidic products, only  
57 β-caryophyllinic acid has been observed in ambient samples (Jaoui et al., 2013; Vestenius et al., 2014). Due to their  
58 high reactivity, SQT are not usually found in ambient air. Hakola et al. (2012) detected longifolene and isolongifolene  
59 in boreal forest air during late summer. Hence, the best way to evaluate the atmospheric impact of SQTs is to measure  
60 them from emissions.

61 In addition to isoprene and MTs and SQTs, plants emit also large amounts of oxygenated compounds i.e. alcohols,  
62 carbonyl compounds and organic acids (Koppmann and Wildt, 2007). OVOCs containing six carbon atoms (C<sub>6</sub>) are  
63 emitted directly by plants often as a result of physical damage (Fall et al., 1999; Hakola et al., 2001). Saturated  
64 aldehydes (hexanal, heptanal, octanal, nonanal, and decanal) have also been found in direct emissions of plants (Wildt  
65 et al., 2003) as well as methanol, acetone and acetaldehyde (Bourtsoukidis et al. 2014b).

66 In the present study we conducted on-line gas-chromatographic measurements of emissions of MTs and SQTs as well  
67 as C<sub>4</sub>-C<sub>10</sub> saturated aliphatic carbonyls from Norway spruce (*Picea abies* L. Karst) branches. Although Norway spruce  
68 is one of the main forest tree species in Central and Northern Europe, there are relatively limited amount of data on its  
69 emissions (Hakola et al., 2003; Grabmer et al., 2006; Bourtsoukidis et al., 2014a and b, Yassaa et al. 2012). Rinne et  
70 al. (2009) identified knowledge gaps concerning VOC emissions from boreal environment and concluded that there is  
71 a lack of knowledge in non-terpenoid emissions from most of the boreal tree species. They also pointed out that  
72 chemotypic variations are not well enough understood to be taken into account in emission modelling. To fill this

73 knowledge gap we conducted BVOC emission measurements from Norway spruce. On-line gas-chromatograph mass  
74 spectrometer (GC-MS) was chosen because in addition to detection of individual MTs it allows sensitive detection of  
75 SQTs, which is often difficult to perform under field conditions. The on-line measurements were considered essential  
76 for evaluating the factors affecting emission rates, for example their temperature and light dependence. Our campaigns  
77 cover periods of years 2011, 2014 and 2015 during spring and summer, altogether about 14 weeks. In 2015 also  
78 carbonyl compounds were added to the measurement scheme, since there is no earlier data of their emissions.

## 79 **2 Methods**

### 80 **2.1 VOC measurements**

81 The measurements were conducted at the SMEAR II station (Station for Measuring Forest Ecosystem-Atmosphere  
82 Relations, 61°51'N, 24°18'E, 181 a.s.l) in Hyytiälä, southern Finland (Hari and Kulmala 2005) in 2011, 2014, and  
83 2015. The measurements took place in spring/early summer 2011 (two weeks in April, five days in May and three days  
84 in June), spring/summer 2014 (one week in May, two weeks in June and one week in July), and summer 2015 (one  
85 week in June and two weeks in August) and they were conducted using an in situ gas-chromatograph.

86 Two different trees were measured; tree 1 in 2011 and tree2 in 2014 and 2015. The selected trees were growing in a  
87 managed mixed conifer forest (average tree age ca 50 years), and located about 5 meters from the measurement  
88 container. The height of the tree 1 in 2011 was about 10 meters (age about 40 years). The measured branch was a  
89 fully sunlit, healthy lower canopy branch pointing towards a small opening at about 2 meters height. In 2014 and  
90 2015 a younger tree (tree 2, ca. 1 m tall, age ca 15 years) about 5 meters away from the tree used in 2011 was  
91 selected for the study. The branches were placed in a Teflon enclosure and the emission rates were measured using a  
92 dynamic flow through technique. The setup is shown in supporting material. The volume of the cylinder shape  
93 transparent Teflon enclosure was approximately 8 litres and it was equipped with inlet and outlet ports and a  
94 thermistor (Philips KTY 80/110, Royal Philips Electronics, Amsterdam, Netherlands) covered with Teflon tubing  
95 inside the enclosure. The photosynthetically active photon flux density (PPFD) was measured just above the  
96 enclosure by quantum sensor (LI-190SZ, LI-COR Biosciences, Lincoln, USA).

97 The flow through the enclosure was kept at about 3-5 litres min<sup>-1</sup>. Ozone was removed from the incoming air using  
98 manganese oxide (MnO<sub>2</sub>) coated copper nets. The emission rates were measured using the on-line GC-MS. From the  
99 enclosure outlet port air was directed through the 6 m long fluorinated ethylene propylene (FEP) inlet line (i.d. 1/8  
100 inch) to the GC-MS with the flow of ~0.8 L/min. Subsamples were taken from this main flow with the flow of 40-60  
101 ml/min directly into the cold trap of a thermal desorption unit (Perkin Elmer ATD-400) packed with Tenax TA in 2011  
102 and Tenax TA/Carbopack-B in 2014 and 2015. The trap material was changed since isoprene was found not to be  
103 retained fully in the cold trap in 2011. The trap was kept at 20°C during sampling to prevent water vapour present in  
104 the air from accumulating into the trap. The thermal desorption instrument was connected to a gas chromatograph (HP  
105 5890) with DB-1 column (60 m, i.d. 0.25 mm, f.t. 0.25  $\mu$ m) and a mass selective detector (HP 5972). One 20-minutes

106 sample was collected every other hour. The system was calibrated using liquid standards in methanol injected on Tenax  
107 TA-Carbopack B adsorbent tubes. The detection limit was below 1 pptv for every MT- and SQT.

108 The following compounds were included in the calibration solutions: 2-methyl-3-buten-2-ol (MBO) (Fluka), camphene  
109 (Aldrich), 3-carene (Aldrich), p-cymene (Sigma-Aldrich), 1,8-cineol (Aldrich), limonene (Fluka), linalool (Aldrich),  
110 myrcene (Aldrich),  $\alpha$ -pinene (Sigma-Aldrich),  $\beta$ -pinene (Fluka), terpinolene (Fluka), bornylacetate (Aldrich),  
111 longicyclene (Aldrich), isolongifolene (Aldrich),  $\beta$ -caryophyllene (Sigma), aromadendrene (Sigma-Aldrich),  $\alpha$ -  
112 humulene (Aldrich),  $\beta$ -farnesene (Chroma Dex). Isoprene was calibrated using gaseous standard from National  
113 Physical Laboratory (NPL). We had no standard for sabinene and therefore it was quantified using the calibration curve  
114 of  $\beta$ -pinene, because both species elute close each other and their mass spectra are similar. Therefore the results for  
115 sabinene are only semi-quantitative, but it enables the observations of diurnal and seasonal changes. Compared to off-  
116 line adsorbent methods this in situ GC-MS had clearly lower background for carbonyl compounds and in 2015 we  
117 were able to measure also acetone/propanal and C<sub>4</sub>-C<sub>10</sub> aldehyde emission rates. The aldehydes included in the  
118 calibration solutions were: butanal (Fluka), pentanal (Fluka), hexanal (Aldrich), heptanal (Aldrich), octanal (Aldrich),  
119 nonanal (Aldrich) and decanal (Fluka). Unfortunately, acetone co-eluted with propanal and the calibration was not  
120 linear due to high acetone background in adsorbent tubes used for calibrations.

## 121 **2.2 Calculation of emission rates**

122 The emission rate is determined as the mass of compound per needle dry weight and per time according to

123

$$124 \quad E = \frac{(C_2 - C_1)F}{m} \quad (1)$$

125

126 Here  $C_2$  is the concentration in the outgoing air,  $C_1$  is the concentration in the incoming air, and  $F$  is the flow rate  
127 into the enclosure. The dry weight of the biomass ( $m$ ) was determined by drying the needles and shoot from the  
128 enclosure at 75 °C for 24 hours after the last sampling date. We also measured needle leaf areas and the specific leaf  
129 area SLA is 136 m<sup>2</sup> g<sup>-1</sup>.

## 130 **2.3 Emission potentials**

131 A strong dependence of biogenic VOC emissions on temperature has been seen in all emission studies of isoprene,  
132 MTs, and SQTs (e.g. Kesselmeier and Staudt 1999; Ciccioli et al. 1999; Hansen and Seufert 2003; Tarvainen et al.  
133 2005; Hakola et al. 2006). The temperature dependent pool emission rate is usually parameterized using a log-linear  
134 formulation

135

136  
137  
138

$$E(T) = E_S \exp(\beta(T - T_S)) \quad (2)$$

139 where  $E(T)$  is the emission rate ( $\mu\text{g g}^{-1} \text{h}^{-1}$ ) at leaf temperature  $T$  and  $\beta$  is the slope  $\frac{d \ln E}{dT}$  (Guenther et al. 1993).  $E_S$  is  
140 the emission rate at standard temperature  $T_S$  (usually set at 30 °C). The emission rate at standard temperature is also  
141 called the emission potential of the plant species, and while it is sometimes held to be a constant it may show variability  
142 related to e.g. season or the plant developmental stage (e.g. Hakola et al. 1998, 2001, 2003, 2006; Tarvainen et al.  
143 2005, Aalto et al 2014).

144 Besides the temperature-dependent nature of the biogenic emissions, light dependence has been discovered already in  
145 early studies of plant emissions (e.g. the review of biogenic isoprene emission by Sanadze 2004 and e.g. Ghirardo et  
146 al 2010). The effect of light on the emission potentials is based on the assumption that the emissions follow similar  
147 pattern of saturating light response which is observed for photosynthesis, and the formulation of the temperature effect  
148 is adopted from simulations of the temperature response of enzymatic activity. The algorithm formulation is given e.g.  
149 in Guenther et al. 1993 and Guenther 1997.

150 In this work we have carried out nonlinear regression analysis with two fitted parameters, arriving at individual  
151 standard emission rates and slope values for the modelled MTs and SQTs compounds during each model period. The  
152 compounds analysed with the temperature dependent pool emission rate were the most copiously emitted MTs and  
153 SQTs, other MTs, other SQTs, acetone and sum of aldehydes. The light and temperature controlled instant emission  
154 rates were obtained for isoprene. An alternative modelling approach was tested using a hybrid emission algorithm,  
155 which has both the temperature-dependent pool emission and the light and temperature controlled instant emission  
156 terms.

157  
158  
159

## 160 **2.4 Chemotype measurements**

161 In order to estimate the between-tree variability of the emissions, we conducted a study in 2014, where we made  
162 qualitative monoterpene analysis from six different spruces (trees 3-8) growing in a same area not farther than about  
163 10 metres from each other. All the trees were about 1 m high and naturally regenerated from local seeds. A branch was  
164 enclosed in a Teflon bag and after waiting for 5 minutes we collected a 5 minute sample on a Tenax TA/Carbopack-B  
165 tube and analysed later in a laboratory using Perkin-Elmer thermodesorption instrument (Turbomatrix 650) connected  
166 to Perkin-Elmer gas-chromatograph (Clarus 600) mass spectrometer (Clarus 600T) with DB-5 column. The samples  
167 were taken during one afternoon on 24 June 2014.

## 168 2.4 Calculating the reactivity of the emissions

169 We calculated the total reactivity of the emissions ( $TCRE_x$ ) by combining the emission rates ( $E_i$ ) with reaction rate  
170 coefficients ( $k_{i,x}$ ).

$$171 \quad TCRE_x = \sum E_i k_{i,x} \quad (3)$$

172 This determines approximately the relative role of the compounds or compound classes in local OH, and O<sub>3</sub>  
173 chemistry. The reaction rate coefficients are listed in Table 1. When available, temperature-dependent rate  
174 coefficients have been used. When experimental data was not available, the reaction coefficients have been estimated  
175 with the AopWin™ module of the EPI™ software suite (<https://www.epa.gov/tsca-screening-tools/epi-suitetm-estimation-program-interface>, EPA, U.S.A).

## 177 3. Results and discussion

### 178 3.1 Weather patterns during the measurements

179 According to the statistics of the Finnish Meteorological Institute, the weather conditions in Finland were close to  
180 normal during the growing season in the years the measurements were carried out. The main features of the weather  
181 patterns are characterised here briefly to provide an average estimate of the conditions in the measurement years  
182 compared with the long-term average conditions in Finland.

183 In 2011, the spring was early and warm. Thermal spring (mean daily temperature above 0°C) started in the whole  
184 country during the first few days of April. The average temperatures were higher than the normal long-term average  
185 temperatures. In addition to the warm temperatures, April had very little precipitation. The same pattern continued in  
186 May, with slightly higher temperatures than the normal long-term average. Towards the end of the month the weather  
187 turned more unstable, with more rains and cooler night temperatures. The average temperature in June was a little over  
188 two degrees higher than the normal long-term average, and there were some intense thunderstorms.

189 In 2014, the weather conditions in May were quite typical, with the average temperatures close to the long-term average  
190 values in all parts of the country. The month started with temperatures cooler than the long-term average, and the cool  
191 period continued for about three weeks. After the cool period the weather became warmer with a south-eastern air  
192 flow, and hot (over 25°C) air temperatures were observed in southern and central parts of the country. Towards the  
193 end of May, cooler air spread over the country from the northeast, and the temperature drops could be high in eastern  
194 Finland. May was also characterised with precipitation, especially in eastern Finland. June started with a warm spell,  
195 but towards the end the weather was much cooler, with the average temperatures 1 to 2 degrees lower than the long-  
196 term average. The precipitation was regionally quite variable in June, the amount could be doubly the long-term  
197 average in some areas, while the amounts were only half of it in many places in central Finland. July was much warmer  
198 than the long-term average temperatures, especially in western Finland and in Lapland. July also had very little rain.

199 In 2015, the June average temperatures were 1 to 2 degrees below the long-term averages, especially in the western  
200 parts of central Finland, and southern Lapland. There were also more rain showers than normally. In July the cold spell  
201 and rainy days continued, with the average temperatures below the long-term averages, especially in the eastern parts  
202 of the country. Highest precipitation rates were measured in the southern and western coastal regions, and in the eastern  
203 parts of the country. In August the warmth returned after two cooler months, with average temperatures 1 to 2 degrees  
204 above the long-term average values. August also had very little rain, except for some parts in eastern Finland and in  
205 Lapland.

206 The observed mean temperature and precipitation amounts at the Juupajoki weather station in Hyytiälä during each  
207 measurement month in 2011, 2014, and 2015 are shown in Table 2.

### 208 **3.2 Variability of the VOC emissions**

209 Seasonal mean emission rates of isoprene, 2-methyl-3-buten-2-ol (MBO), MTs and SQTs are presented in Table 3  
210 and Fig 1. Typical diurnal variations of the most abundant compounds for each season are shown in Fig. 2. Since  
211 most of the emission rates of the measured compounds were higher in late summer than in early summer, we  
212 calculated the spring (April and May), early summer (June to mid-July) and late summer (late July and August) mean  
213 emissions separately. This describes the emission rate changes better than monthly means.

214 Isoprene emission rates were low in spring and early summer, but increased in August. In spring emission rates were  
215 below detection limit most of the time and early and late summer means were  $1.3 \pm 3.7$  and  $6.0 \pm 12$  ng g(dry weight)<sup>-1</sup>  
216 h<sup>-1</sup>, respectively. The highest daily maxima isoprene emissions were about 70-80 ng g(dw)<sup>-1</sup> h<sup>-1</sup>, but usually they  
217 remained below 20 ng g(dw)<sup>-1</sup> h<sup>-1</sup>. Our measured values (Table 3) match very well with the measurements by  
218 Bourtsoukidis et al (2014b) who report season medians varying from 1.6 ng g(dry weight)<sup>-1</sup> h<sup>-1</sup> in autumn to 3.7 ng  
219 g(dry weight)<sup>-1</sup> h<sup>-1</sup> in spring. However, while the highest emission rates were measured in late summer in the present  
220 study, Bourtsoukidis et al. (2014b) found highest emission rates in spring.

221 MT emission rates were below 50 ng g(dw)<sup>-1</sup> h<sup>-1</sup> most of the time in April, May and still in the beginning of June for  
222 every measurement year, below 50 ng g(dw)<sup>-1</sup> h<sup>-1</sup> most of the time. At the end of June the MT emission rates started to  
223 increase (about 30 %) to the level where they remained until the end of August, the daily maxima or their sum  
224 remaining below 300 ng g(dw)<sup>-1</sup> h<sup>-1</sup>. In comparison with the study by Bourtsoukidis et al. (2014b), MT emission rates  
225 in Finland are four to ten times lower than those measured in Germany and their seasonal cycles are different. As with  
226 isoprene, they measured the highest MT emission rates during spring, whereas our highest emissions take place late  
227 summer. Median seasonal values reported by them are 203.1, 136.5 and 80.8 ng g(dw)<sup>-1</sup> h<sup>-1</sup> for spring, summer and  
228 autumn, respectively. Our averages are 8, 21 and 28 ng g(dw)<sup>-1</sup> h<sup>-1</sup> for spring, early summer and late summer,  
229 respectively (Table 3).

230 A substantial change in the emission patterns took place at the end of July, when SQT emission rates increased up to  
231 3-4 times higher than the MT emission rates at the same time (Table 3). Such a change in emissions was not observed

232 in the study by Boutsoukidis et al. (2014b). ). Instead of late summer increase, they observed again highest emissions  
233 already during the spring (118.6 and 64.9 ng g(dw)<sup>-1</sup> h<sup>-1</sup> in spring and summer, respectively) after which emissions  
234 significantly declined. Moreover, they report that MTs dominated the Norway spruce emissions through the entire  
235 measuring period (April-November), SQT emission rates being equal to MT emission rates during spring, but only  
236 about half of MT emission rates during summer and about 20 % during autumn. One potential explanation for such a  
237 different seasonality and emission strengths may lie in the differences between site specific factors such as soil moisture  
238 conditions, local climate (winter in Germany is much milder and the trees do not face as dramatic change as in Finland  
239 when winter turns to spring), stand age or stress factors. The tree measured in Germany was much older (about 80  
240 years). In a boreal forest, late summer normally is the warmest and most humid season favouring high emissions, as  
241 was also the case in our study periods. On the contrary, in central Germany July was relatively cold and wet, and  
242 according to the authors, reduced emissions were therefore not surprising (Boutsoukidis et al 2014b).

243 Another interesting feature can be seen in the specified emission rates of different compounds. In the present study the  
244 main SQT in spruce emissions was  $\beta$ -farnesene. About 50% of the SQT emission consisted of  $\beta$ -farnesene and its  
245 maximum emission rate (155 ng g(dw)<sup>-1</sup> h<sup>-1</sup>) was measured on the afternoon of 31 July 2015. Two other identified  
246 SQTs were  $\beta$ -caryophyllene and  $\alpha$ -humulene. There were two more SQTs, which also contributed significantly to the  
247 total SQT emission rates, but since no calibration standards were available for these , their quantification is only  
248 tentative. Linalool emissions increased simultaneously with SQT emissions (Fig. 1) reaching maximum concentrations  
249 during late summer in August, in the same way as was previously observed in the measurements of Scots pine  
250 emissions in the same forest in southern Finland (Hakola et al., 2006), where emissions were found to increase late  
251 summer concomitant with the maximum concentration of the airborne pathogen spores, and Hakola et al. (2006)  
252 suggested a potential defensive role of the conifer linalool and SQT emissions. Several other reports point to similar  
253 correlations between SQT (in particular  $\beta$ -farnesene) and oxygenated MTs such as linalool emissions and biotic  
254 stresses in controlled experiments. For example, increases in farnesene, methyl salicylate (MeSA) and linalool  
255 emissions were reported to be an induced response by Norway spruce seedlings to feeding damage by mite species  
256 (Kännaste et al. 2009), indicating that their biosynthesis might prevent the trees from being damaged. Interestingly,  
257 the release of  $\beta$ -farnesene seemed to be mite specific and attractive to pine weevils, whereas linalool and MeSA were  
258 deterrents. Blande et al. (2009) discovered pine weevil feeding to clearly induce the emission of MTs and SQTs,  
259 particularly linalool and (E)- $\beta$ -farnesene, from branch tips of Norway spruce seedlings, Also, in a licentiate thesis of  
260 Petterson (2007) linalool and  $\beta$ -farnesene were shown to be emitted due to stress. The emissions from Norway spruce  
261 increased significantly after trees were treated with methyljasmonate (MeJA). Martin et al (2003) discovered that MeJA  
262 triggered increases in the rate of linalool emission more than 100-fold and that of SQTs more than 30-fold. Emissions  
263 followed a pronounced diurnal rhythm with the maximum amount released during the light period, suggesting that they  
264 are induced de novo after treatment. Our study shows that such major changes in emission patterns can also occur in  
265 trees in field conditions, and without any clear visible infestations or feeding, indicating that they probably are systemic  
266 defence mechanisms rather than direct ones (Eyles et al 2010).

267 In 2015 we measured also acetone/propanal and C<sub>4</sub>-C<sub>10</sub> aldehyde emission rates. The total amount of these measured  
268 carbonyl compounds was comparable to the amount of MTs (Table 3) although with our method it was not possible to



269 measure emissions of the most volatile aldehydes, formaldehyde and acetaldehyde, which are also emitted from trees  
270 in significant quantities (Cojocariu et al., 2004, Koppmann and Wildt, 2007; Bourtsoukidis et al., 2014b). In summer  
271 2015 the carbonyl compounds consisted mainly of acetone (30 %), and the shares for the other compounds were as  
272 follows: nonanal (21%), decanal (17%), heptanal (14%), hexanal (10%) and pentanal (5%). The shares of butanal and  
273 octanal were less than 2% each. The seasonal mean values are shown in Table 3. Aldehydes with shorter carbon  
274 backbones (butanal, pentanal, hexanal) have higher emissions in early summer like most MTs, while aldehydes with  
275 longer carbon backbones (heptanal, octanal, nonanal, decanal) have higher emissions in late summer similarly to SQTs.

276 Diurnal variability of the emission rates of MT and SQT, acetone/propanal and larger aldehydes are shown in Fig.2.  
277 They all show similar temperature dependent variability with maxima during the afternoon and minima in the night.  
278 The SQT daily peak emissions were measured two hours later than MT and aldehyde peaks.

279

### 280 3.3 Tree to tree variability in emission pattern

281 When following the emission seasonality, we discovered that the MT emission patterns were somewhat different  
282 between the two trees measured. The tree measured in 2011 (tree 1) emitted mainly  $\alpha$ -pinene in May, whereas the tree  
283 measured in 2014 and 2015 (tree 2) emitted mainly limonene in May (Table 4). As summer proceeded the contribution  
284 of limonene emission decreased in both trees and the share of  $\alpha$ -pinene increased in tree 2. The species specific Norway  
285 spruce emissions have been measured earlier at least by Hakola et al. (2003) and Bourtsoukidis et al. (2014a). The  
286 measurements by Hakola et al. covered all seasons, but only a few daytime samples for each season, whereas the  
287 measurements by Bourtsoukidis et al. covered three weeks in September-October in an Estonian forest. The main MTs  
288 detected in the Estonian forest were  $\alpha$ -pinene (59 %) and 3-carene (26 %), but also camphene, limonene,  $\beta$ -pinene and  
289  $\beta$ -phellandrene were detected. In the study by Hakola et al. (2003) the MT emission composed mainly of  $\alpha$ -pinene,  $\beta$ -  
290 pinene, camphene and limonene, but only very small amounts of 3-carene were observed, similarly to the present study.  
291 This raises a question whether spruces would have different chemotypes in a similar way as Scots pine has (Bäck et  
292 al., 2012).

293 In order to find out how much variability there was between the trees in monoterpene emission pattern, we conducted  
294 a study in June in 2014, where we made qualitative analysis from six different spruces growing in a same area (labelled  
295 as tree 3 - tree 8). The results for MT emissions are shown in Figure 3. SQT emissions were not significant at that time  
296 (about  $1 \text{ ng g(dw)}^{-1} \text{ h}^{-1}$ ). As expected, the MT emission pattern of the trees was quite different; terpinolene was one  
297 of the main MT in the emission of four trees whereas tree 3 emitted only 3% terpinolene. Also limonene and camphene  
298 contributions were varying from few percent to about third of the total MT emission. All the measured trees emitted  
299 rather similar proportions of  $\alpha$ - and  $\beta$ -pinene. The shares of myrcene,  $\beta$ -pinene and 3-carene were low in every tree.  
300 Since different MTs react at different rates in the atmosphere (Table 1), the species specific measurements are  
301 necessary when evaluating MTs influence on atmospheric chemistry. Currently, air chemistry models very often use  
302 only single branch measurements and this can lead to biased results when predicting product and new particle

303 formation. This study and the study of Scots pine emissions by Bäck et al. (2012) show that species specific  
304 measurements are necessary, but also that flux measurements are more representative than branch scale emission  
305 measurements and averaging over larger spatial scale may be better suited for air chemistry models.

### 306 **3.4 Standard emission potentials**

307 The standard emission potentials were obtained by fitting the measured emission rates to the temperature dependent  
308 pool emission algorithm (equation 2) and the light and temperature dependent algorithm (equations 3-5) described in  
309 section 2.2). For the temperature dependent algorithm, the nonlinear regression was carried out with two fitted  
310 parameters, yielding both the emission potentials and individual  $\beta$  coefficients for each compound group. With the  
311 light and temperature dependent algorithm, only emission potentials were obtained. The compounds' emissions fitted  
312 using the temperature dependent pool emission algorithm were the ones of the most abundant MT, SQT and the sum  
313 of carbonyls for each season, while the analysis with the light and temperature dependent emission algorithm was  
314 carried out for isoprene emissions. In the analysis, obvious outliers and other suspicious data were not included. The  
315 excluded values typically were the first values obtained right after starting a measurement period, which might still  
316 show the effects of handling the sample branch. The isoprene emissions obtained in 2011 were not taken into account  
317 in the analysis as they were not properly collected on the cold trap. This was fixed in 2014 and 2015 by changing the  
318 adsorbent material. An approach with a hybrid algorithm, where the emission rate is described as a function of two  
319 source terms, de novo synthesis emissions and pool emissions, was also tested. However, the results were not  
320 conclusive.

321 The standard emission potentials of isoprene, the selected MT and SQT, acetone and C<sub>4</sub>-C<sub>6</sub> aldehyde sums are presented  
322 in Table 5. Emission potentials are given as spring, early summer, and late summer values. The coefficient of  
323 determination ( $R^2$ ) is also given, even though it is an inadequate measure for the goodness of fit in nonlinear models  
324 (e.g. Spiess and Neumeyer, 2010). A more reliable parameter for estimating the goodness of fit is the standard error of  
325 the estimate, which is also given.

326 The summertime emission potentials of MT and SQT reflect the typical behaviour of the temperature variability in  
327 summer, with low emissions in spring and high emissions in the higher temperatures of late summer. The variability  
328 of the emission potential during the growing season and between the individual compounds is large. In late summer  
329 limonene and  $\alpha$ -pinene had the highest MT emission potentials. SQT exhibit a similar behavior as monoterpene  
330 emission potentials with very low springtime and early summer emission potentials while the late summer emission  
331 potential is high. In a review by Kesselmeier and Staudt (1999) the reported standard emission potentials (30°C, 1000  
332  $\mu\text{mol m}^{-2} \text{s}^{-1}$ ) of Norway spruces for monoterpenes vary from 0.2 to 7.8  $\mu\text{g g(dry weight)}^{-1} \text{h}^{-1}$  and in a study by  
333 Bourtsoukidis et al. (2014b) mean emission potential of Norway spruce was 0.89  $\mu\text{g g(dry weight)}^{-1} \text{h}^{-1}$  for all data  
334 (spring, summer, fall). Our standardized MT emission potentials are lower than earlier reported values being 0.1  $\mu\text{g}$   
335  $\text{g(dry weight)}^{-1} \text{h}^{-1}$  during late summer, when they were at their highest.

336 This is the first time we have applied fitting the traditional temperature-based emission potential algorithms to  
337 measured carbonyl emissions, and based on the spruce emission results, the approach appears to be applicable also on  
338 these compounds. The best fit was obtained with the temperature dependent algorithm. The temporal variability of the  
339 emission potential was similar to MT- and SQTs. Unfortunately, acetone/propanal and C4-C10 aldehyde measurements  
340 were only carried out during the last measurement campaign, but the emission pattern possibly indicates a midsummer  
341 maximum, because emissions were clearly identified in June, and already decreasing in late July-August. The isoprene  
342 emissions, fitted with the light and temperature emission algorithm, also reflect the light/temperature pattern of  
343 summer, with low emissions in spring and high emissions in late summer.

344 In late summer when isoprene emissions were a bit higher the emission model fits the data better and the emission  
345 potential for isoprene was  $56.5 \text{ ng g(dry weight)}^{-1}\text{h}^{-1}$ . In a review by Kesselmeier and Staudt (1999) the reported  
346 standard emission potentials ( $30^\circ\text{C}$ ,  $1000 \mu\text{mol m}^{-2} \text{ s}^{-1}$ ) of isoprene vary from 0.34 to  $1.8 \mu\text{g g(dry weight)}^{-1} \text{ h}^{-1}$ . Our  
347 standardized late summer mean ( $56.5 \text{ ng g(dry weight)}^{-1} \text{ h}^{-1}$ ) is much lower than these earlier reported values.

### 348 **3.5 Relative reactivity of emissions**

349 In summer in ambient air at this site most of the known OH reactivity (which is ~50 % of the total measured OH  
350 reactivity) is coming from the VOCs (Sinha et al. 2010; Nölcher et al. 2012). Other trace gases ( $\text{NO}_x$ , CO,  $\text{O}_3$ ,  $\text{CH}_4$ )  
351 have a lower contribution. Of these VOCs, aromatic hydrocarbons have only minor contribution compared to the  
352 terpenoids (Hakola et al. 2012). In these ambient air studies contribution of SQTs has been much lower than MTs, but  
353 those results are misleading, since lifetimes of most SQTs are so short that they can not be detected in ambient air and  
354 estimation of their contribution to the local reactivity is possible only directly from the emissions. Here we studied the  
355 relative role of different BVOCs to the reactivity of Norway spruce emissions.

356 The relative contribution from each class of compounds to the total calculated OH and  $\text{O}_3$  reactivity of the emissions  
357  $TCRE_{OH}$  and  $TCRE_{O_3}$ , respectively, is depicted in Fig. 3. Nitrate radicals are likely to contribute also significantly to  
358 the reactivity, but since the reaction rate coefficients were not available for the essential compounds like  $\beta$ -farnesene,  
359 the nitrate radical reactivity is not shown. SQT are very reactive towards ozone and they clearly dominate the ozone  
360 reactivity. Isoprene contribution is insignificant all the time towards ozone reactivity, but it contributes 20-30 % of OH  
361 reactivity, although the emission rates are quite low. SQT dominate also OH reactivity during late summer due to their  
362 high emission rates, but early summer MT contribution is equally important. Contribution of acetone to the  $TCRE_{OH}$   
363 was very small (~0.05% of total reactivity), but reactivity of C<sub>4</sub>-C<sub>10</sub> aldehydes was significant, averagely 15% and  
364 sometimes over 50% of the  $TCRE_{OH}$ . Of the aldehydes decanal, nonanal and heptanal had the highest contributions. It  
365 is also possible to measure total OH reactivity directly and in the total OH reactivity measurements by Nölscher et al.  
366 (2013) the contribution of SQTs in Norway spruce emissions also in Hyytiälä was very small (~1%). This is in  
367 contradiction to our measurements, where we found very high share of SQTs (75% in late summer). Nölscher et al.  
368 (2013) found also very high fraction of missing reactivity (>80%) especially in late summer. Their measurements  
369 covered spring, summer and autumn. Emissions of C<sub>4</sub>-C<sub>10</sub> aldehydes, which were not studied by Nölscher et al. (2013)  
370 could explain part of the missing reactivity.

371

372

373

#### 374 **4 Conclusions**

375 Norway spruce VOC emissions were measured in campaigns in 2011, 2014 and 2015. Measurements covered  
376 altogether 14 spring and summer weeks. The measured compounds included isoprene, MT and SQT and in 2015 also  
377 acetone and C<sub>4</sub>-C<sub>10</sub> aldehydes. MT and SQT emission rates were low during spring and early summer. MT emission  
378 rates increased to their maximum at the end of June and declined a little in August. A significant change in SQT  
379 emissions took place at the end of July, when SQT emissions increased substantially. The seasonality is different from  
380 that observed earlier in Germany (Bourtsoukidis et al. 2014b). There Norway spruce emissions (isoprene, MT, SQT)  
381 were highest in spring and declined thereafter. The difference in seasonality can be due to different ages of the  
382 measured trees (10-15 years in the current study, 80 years in Bourtsoukidis et al. 2014b), different climate or different  
383 stress factors. These same factors can also cause lower emission rates measured now in comparison with other studies.  
384 The effect of age to the emission potentials should be studied.

385 In August SQT were the most abundant group in the emission,  $\beta$ -farnesene being the most dominant compound. SQT  
386 emissions increased simultaneously with linalool emissions and these emissions were suggested to be initiated due to  
387 stress effects. To our knowledge this is the first time when  $\beta$ -farnesene and linalool emissions have been shown to  
388 increase simultaneously in natural conditions, although they have been shown to increase in the emissions together due  
389 to stress effects. Of the measured compounds, SQTs had highest impact on local O<sub>3</sub> and OH chemistry. This clearly  
390 shows the importance of considering also SQTs in atmospheric studies in boreal environment.

391 Acetone and C<sub>4</sub>-C<sub>10</sub> aldehyde emissions were highest in July, when they were approximately at the same level as MT  
392 emissions. C<sub>4</sub>-C<sub>10</sub> aldehydes contributed as much as MT to the OH reactivity during late summer, but early summer  
393 only about half of the MT share in early summer. This demonstrates that also emissions of other BVOCs than the  
394 traditionally measured terpenoids are important and should be included in atmospheric studies.

395 The MT emission pattern varies a lot from tree to tree. During one afternoon in June we measured emission pattern of  
396 six different trees growing near each other and especially the amounts of terpinolene, camphene and limonene were  
397 varying. Due to inconsistent emission pattern the species specific emission fluxes on canopy level should be conducted  
398 in addition to the leaf level measurements for more representative measurements. However, only leaf level  
399 measurements produce reliable SQT data.

#### 400 **Acknowledgements**

401 The financial support by the Academy of Finland Centre of Excellence program (project no 272041) and Academy  
402 Research Fellow program (project no 275608) are gratefully acknowledged. The authors thank Dr. Juho Aalto for  
403 determining the specific leaf area of the needles.

404

405

## 406 **References**

- 407 Aalto J., Kolari P., Hari P., Kerminen V.-M., Schiestl-Aalto P., Aaltonen H., Levula J., Siivola E., Kulmala M. and  
408 Bäck J.: New foliage growth is a significant, unaccounted source for volatiles in boreal evergreen forests.  
409 *Biogeosciences*, 11, 1331-1344, 10.5194/bg-11-1331-2014, 2014
- 410 Albaladejo, J., Ballesteros, B., Jiménez, E., Martín, P., and Martínez, E.: A PLP-LIF kinetic study of the atmospheric  
411 reactivity of a series of C4-C7 saturated and unsaturated aliphatic aldehydes with OH. *Atmospheric Environment*, 36,  
412 3231–3239, 2002.
- 413 Atkinson, R., Aschmann, S.M., Arey, J.: Rate constants for the gas-phase reactions of OH and NO<sub>3</sub> radicals and O<sub>3</sub>  
414 with sabinene and camphene at 296±2 K. *Atmospheric Environment*, 24, 2647-2654, 10.1016/0960-1686(90)90144-  
415 C, 1990a.
- 416 Atkinson, R., Hasegawa, D. and Aschmann, S.M.: Rate constants for the gas-phase reactions of O<sub>3</sub> with a series of  
417 monoterpenes and related compounds at 296 ± 2 K. *International Journal of Chemical Kinetics*. 22, 871–887,  
418 doi:10.1002/kin.550220807, 1990b.
- 419 Atkinson, R., Arey, J., Aschmann, S.M., Corchnoy, S.B. and Shu, Y.: Rate constants for the gas-phase reactions of  
420 *cis*-3-Hexen-1-ol, *cis*-3-Hexenylacetate, *trans*-2-Hexenal, and Linalool with OH and NO<sub>3</sub> radicals and O<sub>3</sub> at 296 ± 2  
421 K, and OH radical formation yields from the O<sub>3</sub> reactions. *International Journal of Chemical Kinetics*, 27, 941–955,  
422 doi:10.1002/kin.550271002, 1995.
- 423 Atkinson, R. and Arey, J.: Atmospheric Degradation of Volatile Organic Compounds. *Chemical Reviews*, 103, 4605-  
424 4638, doi: 10.1021/cr0206420, 2003.
- 425 Atkinson, R., Baulch, D.L., Cox, R.A., Crowley, J.N., Hampson, R.F., Hynes, R.G., Jenkin, M.E., Rossi, M.J., Troe,  
426 J., and IUPAC Subcommittee: Evaluated kinetic and photochemical data for atmospheric chemistry: Volume II – gas  
427 phase reactions of organic species, *Atmospheric Chemistry and Physics*, 6, 3625-4055, 10.5194/acp-6-3625-2006,  
428 2006.
- 429 Blande, J.D., Turunen, K. and Holopainen, J.K.: Pine weevil feeding on Norway spruce bark has a stronger impact  
430 on needle VOC emissions than enhanced ultraviolet-B radiation. *Environmental Pollution*, 157, 174-180, 2009.
- 431 Bourtsoukidis, B. Bonn, A. Dittmann, H. Hakola, H. Hellen, and S. Jacobi: Ozone stress as a driving force of  
432 sesquiterpene emissions: a suggested parameterization. *Biogeosciences*, 9, 4337–4352, 10.5194/bg-9-4337-2012,  
433 2012.
- 434 Bourtsoukidis E., Bonn B., Noe S.: On-line field measurements of BVOC emissions from Norway spruce (*Picea*  
435 *abies*) at the hemiboreal SMEAR-Estonia site under autumn conditions. *Boreal Environment Research*, 19, 153–167,  
436 2014a.
- 437 Bourtsoukidis E., Williams J., Kesselmeier J., Jacobi S., and Bonn B.: From emissions to ambient mixing ratios:  
438 online seasonal field measurements of volatile organic compounds over a Norway spruce-dominated forest in central  
439 Germany, *Atmos. Chem. Phys.*, 14, 6495-6510, 10.5194/bg-9-4337-2012, 2014b.

440 Bourtsoukidis E., H. Kawaletz, D. Radacki, S. Schutz, H. Hakola, H. Hellén, S. Noe, I. Molder, C. Ammer and Boris  
441 Bonn.: Impact of flooding and drought conditions on the emission of volatile organic compounds of *Quercus robur*  
442 and *Prunus serotina*. *Trees*, 28, 193-204, 2014c.

443 Bowman, J.H., Barket, D.J., Jr., and Shepson, P.B.: Atmospheric Chemistry of Nonanal. *Environmental Science and*  
444 *Technology*, 37, 2218-2225, doi: 10.1021/es026220p, 2003.

445 Bäck J., Aalto J., Henriksson M., Hakola H., He Q. and Boy M.: Chemodiversity in terpene emissions in a boreal  
446 Scots pine stand. *Biogeosciences*, 9, 689–702, 10.5194/bg-9-689-2012, 2012.

447 Chameides, W. L., Fehsenfeld, F., Rodgers, M. O., Cardelino, C., Martinez, J., Parrish, D., Lonneman, W., Lawson,  
448 D. R., Rasmussen, R. A., Zimmerman, P., Greenberg, J., Middleton, P., and Wang, T.: Ozone precursor relationships  
449 in the ambient atmosphere, *Journal of Geophysical Research* 97(D5), 6037-6055, 1992.

450 Cicciooli, P., Brancaleoni, E., Frattoni, M., Di Palo, V., Valentini, R., Tirone, G., Seufert, G., Bertin, N., Hansen, U.,  
451 Csiky, O., Lenz, R., and Sharma, M.: Emissions of reactive terpene compounds from orange orchards and their  
452 removal by within-canopy processes, *Journal of Geophysical Research*, 104(D7), 8077-8094, 1999.

453 Coeur, C., Jacob, V., Foster, P. and Baussand, P.: Rate constant for the gas-phase reaction of hydroxyl radical with  
454 the natural hydrocarbon bornyl acetate. *International Journal of Chemical Kinetics*, 30, 497–502,  
455 10.1002/(SICI)1097-4601(1998)30:7<497::AID-KIN6>3.0.CO;2-N, 1998.

456 Cojocariu, C., Kreuzwieser, J. and Rennenberg, H.: Correlation of short-chained carbonyls emitted from *Picea abies*  
457 with physiological and environmental parameters. *New Phytologist*, 162, 717–727, 10.1111/j.1469-  
458 8137.2004.01061.x, 2004

459 Corchnoy, S.B. and Atkinson, R.: Kinetics of the gas-phase reactions of hydroxyl and nitrogen oxide (NO<sub>3</sub>) radicals  
460 with 2-carene, 1,8-cineole, p-cymene, and terpinolene. *Environmental Science and Technology*, 24, 1497-1502, doi:  
461 10.1021/es00080a007, 1990.

462 Eyles, A., Bonello, P., Ganley, R. and Mohammed, C.: Induced resistance to pests and pathogens in trees. *New*  
463 *Phytologist*, 185, 893–908, 10.1111/j.1469-8137.2009.03127.x, 2010.

464 Fall R.: Biogenic emissions of volatile organic compounds from higher plants. In: C.N. Hewitt (ed.) *Reactive*  
465 *Hydrocarbons in the Atmosphere*, San Diego: Academic Press., 43-96, 1999.

466 Ghirardo A., Koch K., Taipale R., Zimmer I., Schnitzler J.-P., Rinne J.. Determination of *de novo* and pool emissions  
467 of terpenes from four common boreal/alpine trees by <sup>13</sup>CO<sub>2</sub> labelling and PTR-MS analysis. *Plant, Cell &*  
468 *Environment*, 33, 781–792, 2010.

469 Gill, K.J. and Hites, R.A.: Rate Constants for the Gas-Phase Reactions of the Hydroxyl Radical with Isoprene, α- and  
470 β-Pinene, and Limonene as a Function of Temperature. *The Journal of Physical Chemistry A*, 106, 2538-2544,  
471 10.1021/jp013532q, 2002.

472 Grabmer, W., Kreuzwieser, J. Wisthaler, A., Cojocariu, C., Graus, M., Rennenberg, H., Steigner, D. Steinbrecher, R.,  
473 Hansel, A.: VOC emissions from Norway spruce (*Picea abies* L. [Karst]) twigs in the field - Results of a dynamic  
474 enclosure study. *Atmospheric Environment* 40 S1, 128-S137, 2006.

475 Griffin, R. J., Cocker III, D. R., Flagan, R. C., and Seinfeld, J. H.: Organic aerosol formation from the oxidation of  
476 biogenic hydrocarbons, *Journal of Geophysical Research*, 104(D3), 3555-3567, 1999.

477 Grosjean, E. and Grosjean, D.: Rate constants for the gas-phase reaction of ozone with unsaturated oxygenates.  
478 International Journal of Chemical Kinetics, 30, 21–29, 10.1002/(SICI)1097-4601(1998)30:1<21::AID-  
479 KIN3>3.0.CO;2-W, 1998.

480 Guenther, A. B., Zimmerman, P. R., Harley, P. C., Monson, R. K., and Fall, R.: Isoprene and monoterpene emission  
481 rate variability: Model evaluation and sensitivity analyses, Journal of Geophysical Research, 98(D7), 12,609-12,627,  
482 1993.

483 Guenther, A.: Seasonal and spatial variations in natural volatile organic compound emissions, Ecological  
484 applications, 7(1), 34-45, 1997.

485 Guenther, A. B., Jiang, X., Heald, C. L., Sakulyanontvittaya, T., Duhl, T., Emmons, L. K., and Wang, X.: The Model  
486 of Emissions of Gases and Aerosols from Nature version 2.1 (MEGAN2.1): an extended and updated framework for  
487 modeling biogenic emissions, Geosci. Model Dev., 5, 1471-1492, 10.5194/gmd-5-1471-2012, 2012.

488 Hakola, H., Rinne, J., and Laurila, T.: The hydrocarbon emission rates of Tea-Leaved Willow (*Salix phylicifolia*),  
489 Silver Birch (*Betula pendula*) and European Aspen (*Populus tremula*), Atmospheric Environment, 32(10), 1825-  
490 1833, 1998.

491 Hakola H., Laurila T., Lindfors V., Hellén H. Gaman A. and Rinne J.: Variation of the VOC emission rates of birch  
492 species during the growing season. Boreal Environment Research, 6, 237-249, 2001.

493 Hakola, H., Tarvainen, V., Laurila, T., Hiltunen, V., Hellén, H. and Keronen, P.: Seasonal variation of VOC  
494 concentrations above a boreal coniferous forest. Atmos. Environ., 37, 1623-1634, 2003.

495 Hakola, H., Tarvainen, V., Bäck, J., Rinne, J., Ranta, H., Bonn, B., and Kulmala, M.: Seasonal variation of mono-  
496 and SQT emission rates of Scots pine. Biogeosciences, 1726-4189/bg/2006-3-93, 93-101, 2006.

497 Hakola H., Hellén H., Henriksson M., Rinne J. and Kulmala M.: In situ measurements of volatile organic compounds  
498 in a boreal forest. Atmos. Chem. Phys., 12, 11665-11678, 2012.

499 Hansen, U. and Seufert, G.: Temperature and light dependence of  $\beta$ -caryophyllene emission rates, Journal of  
500 Geophysical Research 108(D24), 4801, 2003.

501 Hari, P. and Kulmala, M.: Station for measuring ecosystem-atmosphere relations (SMEAR II). Boreal Env. Res., 10,  
502 315-322, 2005.

503 Hites, R.A. and Turner, A.M.: Rate constants for the gas-phase  $\beta$ -myrcene + OH and isoprene + OH reactions as a  
504 function of temperature. International Journal of Chemical Kinetics, 41, 407–413, 10.1002/kin.20413, 2009.

505 Holopainen J. and Gershenson J.: Multiple stress factors and the emission of plant VOCs. Trends in plant science 15,  
506 176-184, 2010.

507 Jaoui M., Kleindienst T.E., Docherty K.S., Lewandowski M. and Offenberg J.H.: Secondary organic aerosol  
508 formation from the oxidation of a series of sesquiterpenes:  $\alpha$ -cedrene,  $\beta$ -caryophyllene,  $\alpha$ -humulene and  
509 farnesene with  $O_3$ , and  $NO_3$  radicals. Environ. Chem., 10, 178-193. 2013.

510 Jiménez, E., Lanza, B., Martínez, E., and Albaladejo, J.: Daytime tropospheric loss of hexanal and *trans*-2-hexenal:  
511 OH kinetics and UV photolysis. Atmospheric Chemistry and Physics, 7, 1565-1574, 10.5194/acp-7-1565-2007,  
512 2007.

513 Joutsensaari J., P. Yli-Pirilä, H. Korhonen, A. Arola, J. D. Blande, J. Heijari, M. Kivimäenpää, S. Mikkonen, L. Hao,  
514 P. Miettinen, P. Lyytikäinen-Saarenmaa, C. L. Faiola, A. Laaksonen, and J. K. Holopainen: Biotic stress accelerates

515 formation of climate-relevant aerosols in boreal forests. *Atmos. Chem. Phys.*, 15, 12139–12157, 10.5194/acp-15-  
516 12139-2015, 2015.

517 Kesselmeier, J. and Staudt, M.: Biogenic volatile organic compounds (VOC): An overview on emission, physiology  
518 and ecology. *Journal of Atmospheric Chemistry*, 33, 23-88, 1999.

519 Koppmann and Wildt: Oxygenated volatile organic compounds. In: Koppmann R. (ed.) *Volatile organic compounds*  
520 *in the atmosphere*. ISBN: 987-1-4051-3115-5. Blackwell Publishing, 129-173, 2007.

521 Kourtchev, I., Bejan, I., Sodeau, J.R. and Wenger, J.C.: Gas phase reaction of OH radicals with (E)- $\beta$ -farnesene at  
522  $296 \pm 2$  K: Rate coefficient and carbonyl products. *Atmospheric Environment*, 46, 338-345,  
523 10.1016/j.atmosenv.2011.09.061, 2012.

524 Kännaste A., Vongvanich N., Borg-Karlson A.-L.; Infestation by a Nalepella species induces emissions of  $\alpha$ - and  $\beta$ -  
525 farnesenes, (-)-linalool and aromatic compounds in Norway spruce clones of different susceptibility to the large pine  
526 weevil. *Arthropod-Plant Interactions*, 31–41, 2008.

527 Kännaste, A., Nordenhem, H., Nordlander, G. and Borg-Karlson, A.-K.: Volatiles from a Mite-Infested Spruce  
528 Clone and Their Effects on Pine Weevil Behavior. *J Chem Ecol*, 35,1262–1271, 2009.

529 Loreto F. and Schnitzler J.-P.; Abiotic stresses and induced BVOCs. *Trends in plant science* 15, 154-166, 2010.

530 Martin, D.M., Gershenzon, J. and Bohlmann, J.: Induction of Volatile Terpene Biosynthesis and Diurnal Emission by  
531 Methyl Jasmonate in foliage of Norway Spruce. *Plant Physiology*, 132, 1586–1599, 2003.

532 Niinemets Ü.; Responses of forest trees to single and multiple environmental stresses from seedlings to mature  
533 plants: Past stress history, stress interactions, tolerance and acclimation. *Forest ecology and management* 260 1623-  
534 1639, 2010.

535 Nölscher, A. C., Williams, J., Sinha, V., Custer, T., Song, W., Johnson, A. M., Axinte, R., Bozem, H., Fischer, H.,  
536 Pouvesle, N., Phillips, G., Crowley, J. N., Rantala, P., Rinne, J., Kulmala, M., Gonzales, D., Valverde-Canossa, J.,  
537 Vogel, A., Hoffmann, T., Ouwersloot, H. G., Vilà-Guerau de Arellano, J., and Lelieveld, J.: Summertime total OH  
538 reactivity measurements from boreal forest during HUMPPA-COPEC 2010, *Atmos. Chem. Phys.*, 12, 8257–8270,  
539 10.5194/acp-12-8257-2012, 2012.

540 Nölscher A.C., Bourtsoukidis E., Bonn B., Kesselmeier J., Lelieveld J. and Williams J.: Seasonal measurements of  
541 total OH reactivity emission rates from Norway spruce in 2011. *Biogeosciences*, 10, 4241–4257, 10.5194/bg-10-  
542 4241-2013, 2013.

543 Petterson Marie: Stress related emissions of Norway spruce plants. Licentiate thesis, KTH Royal Institute of  
544 Technology, Stockholm, ISBN 978-91-7178-644-9, 2007.

545 Pinto-Zevallos D., Hellén H., Hakola H., van Nouhuys S., Holopainen J., 2013. Herbivore-induced volatile organic  
546 compounds emitted by food plants of the Glanville Fritillary. *Phytochemistry letters* 6, 653-656

547 Rinne J., Bäck J. and Hakola H.: Biogenic volatile organic compound emissions from Eurasian taiga: current  
548 knowledge and future directions. *Boreal Env. Res.* 14: 807–826, 2009.

549 Sanadze, G. A.: Biogenic isoprene (a review), *Russian Journal of Plant Physiology* 51(6), 729-741, 2004.

550 Shu, Y., and Atkinson, R.: Atmospheric lifetimes and fates of a series of sesquiterpenes. *Journal of Geophysical*  
551 *Research*, 100, 7275–7281, 10.1029/95JD00368, 1995.



552 Sinha, V., Williams, J., Lelieveld, J., Ruuskanen, T., Kajos, M., Patokoski, J., Hellen, H., Hakola, H., Mogensen, D.,  
553 Boy, M., Rinne, J., and Kulmala, M.: OH Reactivity Measurements within a Boreal Forest: Evidence for Unknown  
554 Reactive Emissions, *Environ. Sci. Technol.*, 44, 6614–6620, 10.1021/es101780b, 2010

555 Spiess, A. and Neumeyer, N., 2010. An evaluation of  $R^2$  as an inadequate measure for nonlinear models in  
556 pharmacological and biochemical research: a Monte Carlo approach, *BMC Pharmacology* 10:6. 10.1186/1471-2210-  
557 10-6.

558 Tarvainen V., Hakola H., Hellén H., Bäck J., Hari P., Kulmala M.: Temperature and light dependence of the VOC  
559 emissions of Scots pine. *Atmos. Chem. Phys.*, 5, 6691-6718, 2005.

560 Thévenet, R., Mellouki, A. and Le Bras, G.: Kinetics of OH and Cl reactions with a series of aldehydes. *International*  
561 *Journal of Chemical Kinetics*, 32, 676–685, doi:10.1002/1097-4601(2000)32:11<676::AID-KIN3>3.0.CO;2-V,  
562 2000.

563 Tunved P., Hansson H.-C., Kerminen V.-M., Ström J., Dal Maso M., Lihavainen H., Viisanen Y., Aalto P.P.,  
564 Komppula M., and Kulmala M.; High natural aerosol loading over boreal forests. *Science* 312, 261-263, 2006.

565 Vestenius M., Hellén H., Levula J., Kuronen P., Helminen K.J., Nieminen T., Kulmala M., and Hakola H.; Acidic  
566 reaction products of monoterpenes and sesquiterpenes in atmospheric fine particles in a boreal forest. *Atmos. Chem.*  
567 *Phys.*, 14, 7883–7893, 2014.

568 Vickers, C. E., Gershenzon, J., Lerdau, M. T., and Loreto, F.: A unified mechanism of action for volatile isoprenoids  
569 in plant abiotic stress, *Nat Chem Biol*, 5, 283-291, 2009.

570 Wildt J., Kobel K., Schuh-Thomas G., Heiden A.C.; Emissions of oxygenated volatile organic compounds from  
571 plants, part II: Emissions of saturated aldehydes. *Journal of Atmospheric Chemistry*, 45, 173-196, 2003.

572 Yassaa, N., Song, W., Lelieveld, J., Vanhatalo, A., Bäck, J., and Williams, J.: Diel cycles of isoprenoids in the  
573 emissions of Norway spruce, four Scots pine chemotypes, and in Boreal forest ambient air during HUMPPA-  
574 COPEC-2010, *Atmos. Chem. Phys.*, 12, 7215–7229, 2012.

575

576 **Table 1: OH and O3 reaction rate coefficients used in reactivity calculations.**

Species	$k_{\text{OH}}$ (cm <sup>3</sup> s <sup>-1</sup> )	Reference	$k_{\text{O}_3}$ (cm <sup>3</sup> s <sup>-1</sup> )	Reference
Isoprene	$2.7 \cdot 10^{-11} \cdot e^{390/T}$	Atkinson et al. (2006) <sup>a</sup>	$1.03 \cdot 10^{-14} \cdot e^{-1995/T}$	Atkinson et al. (2006) <sup>a</sup>
2-Methyl-3-buten-2-ol	$6.3 \cdot 10^{-11}$	Atkinson et al. (2006) <sup>a</sup>	$1.0 \cdot 10^{-17}$	Atkinson et al. (2006) <sup>a</sup>
$\alpha$ -Pinene	$1.2 \cdot 10^{-11} \cdot e^{440/T}$	Atkinson et al. (2006) <sup>a</sup>	$8.05 \cdot 10^{-16} \cdot e^{-640/T}$	IUPAC <sup>b</sup>
Camphene	$5.33 \cdot 10^{-11}$	Atkinson et al. (1990a)	$6.8 \cdot 10^{-19}$	IUPAC <sup>b</sup>
Sabinene	$1.17 \cdot 10^{-10}$	Atkinson et al. (1990a)	$8.2 \cdot 10^{-17}$	IUPAC <sup>b</sup>
$\beta$ -Pinene	$1.55 \cdot 10^{-11} \cdot e^{467/T}$	Atkinson and Arey (2003)	$1.35 \cdot 10^{-15} \cdot e^{-1270/T}$	IUPAC <sup>b</sup>
Myrcene	$9.19 \cdot 10^{-12} \cdot e^{1071/T}$	Hites and Turner (2009)	$2.65 \cdot 10^{-15} \cdot e^{-520/T}$	IUPAC <sup>b</sup>
3-Carene	$8.8 \cdot 10^{-11}$	Atkinson and Arey (2003)	$4.8 \cdot 10^{-17}$	IUPAC <sup>b</sup>
<i>p</i> -Cymene	$1.51 \cdot 10^{-11}$	Corchnoy and Atkinson (1990)	$< 5.0 \cdot 10^{-20}$	Atkinson et al. (1990b)
Limonene	$4.2 \cdot 10^{-11} \cdot e^{401/T}$	Gill and Hites (2002)	$2.8 \cdot 10^{-15} \cdot e^{-770/T}$	IUPAC <sup>b</sup>
1,8-Cineol	$1.11 \cdot 10^{-11}$	Corchnoy and Atkinson (1990)	$< 1.5 \cdot 10^{-19}$	Atkinson et al. (1990)
Linalool	$1.59 \cdot 10^{-10}$	Atkinson et al. (1995)	$\geq 3.15 \cdot 10^{-16}$	Grosjean and Grosjean (1998)
Terpinolene	$2.25 \cdot 10^{-10}$	Corchnoy and Atkinson (1990) <sup>a</sup>	$1.6 \cdot 10^{-15}$	IUPAC <sup>b</sup>
Bornylacetate	$1.39 \cdot 10^{-11}$	Coeur et al. (1999)	-	
Longicyclene	$9.35 \cdot 10^{-12}$	AopWin <sup>TM</sup> v1.92	-	
Isolongifolene	$9.62 \cdot 10^{-11}$	AopWin <sup>TM</sup> v1.92	$1.0 \cdot 10^{-17}$	IUPAC <sup>b</sup>
$\beta$ -Caryophyllene	$2.0 \cdot 10^{-10}$	Shu and Atkinson (1995) <sup>a</sup>	$1.2 \cdot 10^{-14}$	IUPAC <sup>b</sup>
$\beta$ -Farnesene	$1.71 \cdot 10^{-10}$	Kourtchev et al. (2012)	$1.5 \cdot 10^{-12} \cdot e^{-2350/T}$	IUPAC <sup>b</sup>
$\alpha$ -Humulene	$2.9 \cdot 10^{-10}$	Shu and Atkinson (1995) <sup>a</sup>	$1.2 \cdot 10^{-14}$	IUPAC <sup>b</sup>
Alloaromadendrene	$6.25 \cdot 10^{-11}$	AopWin <sup>TM</sup> v1.92	$1.20 \cdot 10^{-17}$	AopWin <sup>TM</sup> v1.91
Zingiberene	$2.87 \cdot 10^{-10}$	AopWin <sup>TM</sup> v1.92	$1.43 \cdot 10^{-15}$	AopWin <sup>TM</sup> v1.91
Acetone	$8.8 \cdot 10^{-12} \cdot e^{-1320/T} + 1.7 \cdot 10^{-14} \cdot e^{423/T}$	Atkinson et al. (2006) <sup>a</sup>	-	
Butanal	$6.0 \cdot 10^{-12} \cdot e^{410/T}$	Atkinson et al. (2006) <sup>a</sup>	-	
Pentanal	$9.9 \cdot 10^{-12} \cdot e^{306/T}$	Thévenet et al. (2000)	-	
Hexanal	$4.2 \cdot 10^{-12} \cdot e^{565/T}$	Jiménez et al. (2007)	-	

Heptanal	$2.96 \cdot 10^{-11}$	Albaladejo et al. (2002)	-
Octanal	$3.2 \cdot 10^{-11}$	AopWin <sup>TM</sup> v1.92	-
Nonanal	$3.6 \cdot 10^{-11}$	Bowman et al. (2003)	-
Decanal	$3.5 \cdot 10^{-11}$	AopWin <sup>TM</sup> v1.92	-

577 <sup>a</sup>IUPAC recommendation

578 <sup>b</sup>IUPAC Task Group on Atmospheric Chemical Kinetic Data Evaluation (<http://iupac.pole-ether.fr>).

579

580

581

582

583

584

585

586

587

588 **Table 2: Mean temperatures (°C) and rain amounts (mm) during each measurement month in Hyytiälä.**

589

	2011		2014		2015	
	temp	rain	temp	rain	temp	rain
April	4.5	17.4				
May	9.3	44.3	9.4	57.4		
June	15.8	65.3	11.8	94.8	11.9	81.5
July			18.6	44.1	14.6	86.7
August					15.2	12.6

590

591

592 **Table 3: Seasonal mean emission rates of isoprene, 2-methylbutenol (MBO), MT, SQT, acetone and C<sub>4</sub>-C<sub>10</sub>**  
 593 **carbonyls in ng g(dw)<sup>-1</sup> h<sup>-1</sup>. “na” means that the compounds were not included in the analysis. Spring is April-**  
 594 **May, early summer 1.6-15.7 and late summer 16.7-31.8. bdl = below detection limit. Values are averages and**  
 595 **standard deviations for the three measurement years (2011, 2014, 2015). Other SQT = sum of all other SQTs**  
 596 **in emissions. The number of the measurements each season is in parentheses.**  
 597

	average	stdev	average	stdev	average	stdev
	spring	spring	early summer	early summer	late summer	late summer
isoprene			1.3	3.7	6.0	12
MBO			2.1	4.2	2.4	3.8
Camphene	1.1	1.8	2.9	4.4	3.8	4.1
3-Carene	0.3	0.7	1.1	1.7	0.9	0.6
p-cymene	0.3	0.6	0.9	1.8	0.5	0.5
Limonene	2.7	3.4	6.1	12.2	7.7	9.5
Myrcene	0.2	0.4	1.7	3.7	3.9	5.1
α-Pinene	2.1	3.4	5.8	11.1	9.6	11
β-Pinene	1.0	2.2	1.8	6.2	0.9	1.1
Sabinene	0	0.1	0.5	1.5	0.9	1.6
terpinolene	0	0.2	0.1	0.4	0.3	0.9
bornylacetate	0	0.2	0.5	2.0	1.1	2.1
1,8-Cineol	0.7	0.7	2.1	3.9	1.8	2.2
linalool	na		1.4	2.2	7.9	12
β-caryophyllene	0	0	0.4	2.1	7.2	5.9
β-farnesene	0	0	1.1	4.3	42	29
other SQT	0.1	0.4	1.4	4.7	35	30
Acetone	na		17	11	17	9.0
Butanal	na		2.0	0.7	0.3	0.3
Pentanal	na		4.1	1.1	2.4	0.9
Hexanal	na		5.0	3.0	4.9	2.1
Heptanal	na		5.2	1.2	7.5	2.4
Octanal	na		0.3	0.1	0.4	1.1
Nonanal	na		6.3	2.3	9.9	4.5
Decanal	na		5.6	2.3	7.4	3.8

598

599  
600  
601  
602  
603  
604  
605  
606  
607  
608  
609  
610

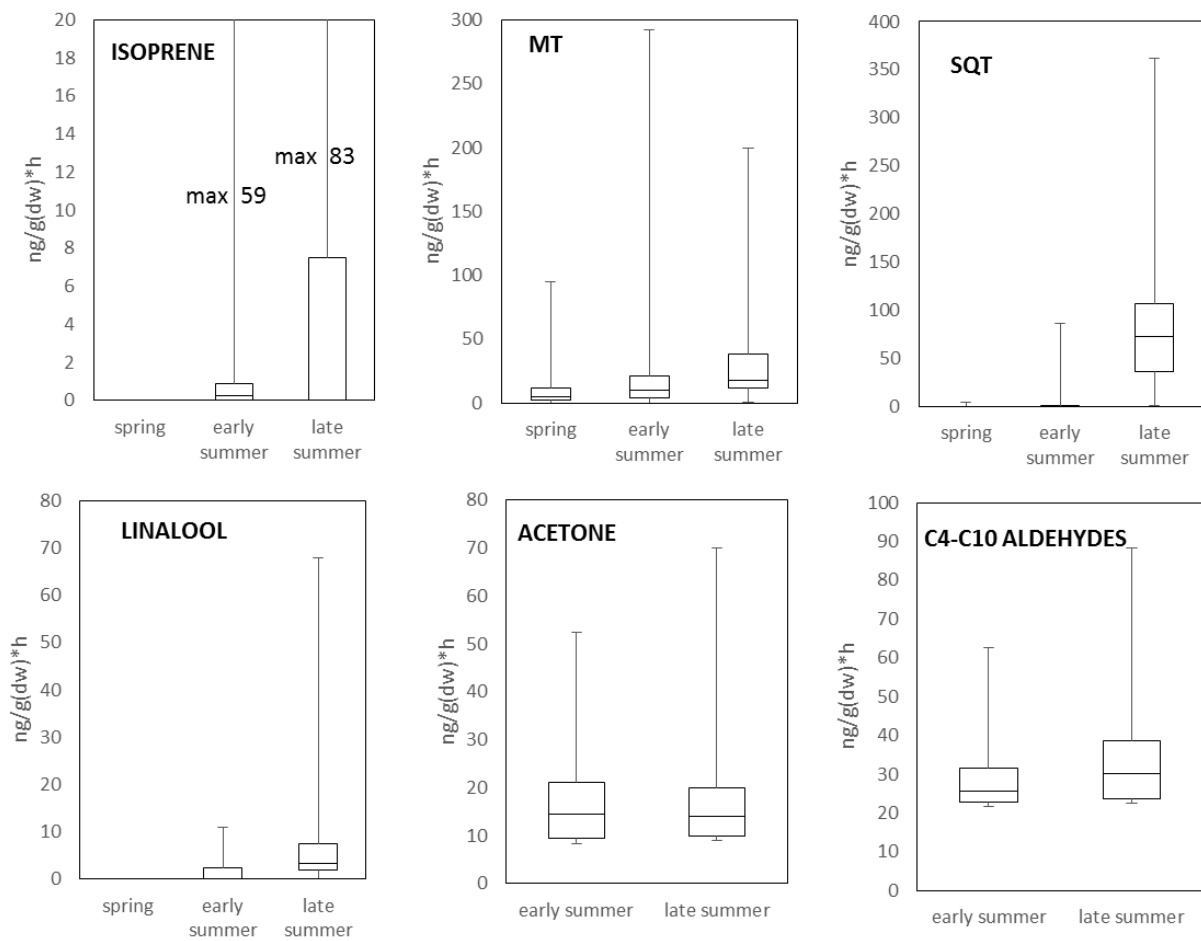
**Table 4: Average monthly abundances (%) of emitted MTs. T1 (tree1) includes 2011 and T2 2014 and 2015 measurements. The number of the measurements each month is in parentheses.**

	$\alpha$ -Pinene	Camphene	Sabinene	$\beta$ -Pinene	Myrcene	$\Delta^3$ -Carene	p-Cymene	Limonene	Terpinolene
April, T1 (160)	34	19	0	18	1	5	6	18	0
May, T1 (48)	59	9	1	7	1	1	9	10	3
June, T1 (34)	7	25	16	0	34	3	9	4	0
May, T2 (129)	16	11	0	10	5	5	2	51	0
June, T2 (396)	27	15	0	15	5	5	4	29	0
July, T2 (128)	32	15	2	5	7	5	2	27	1
Aug T2 (134)	34	11	3	3	15	3	1	29	1

611 Table 5: Standard (30 °C) MT, SQT, acetone and C<sub>4</sub>-C<sub>10</sub> aldehyde emission potentials obtained in 2011, 2014 and  
612 2015. For isoprene the standard (1000 μmol photons m<sup>-2</sup> s<sup>-1</sup>, 30 °C) emission potentials are from the 2015 campaign.  
613 The standard emission potential  $E_S$  and the  $\beta$  coefficient are given with the standard error of the estimate (StdErr, in  
614 parenthesis). R squared and the number of measurements (N, in parenthesis). The fits were made for the spring  
615 (April - May), early summer (June – mid July) and late summer (late July – August) periods.  
616

	<b>Es (StdErr) ng/g(dw)*h</b>	<b><math>\beta</math> K-1 (StdErr)</b>	<b>R2 (N)</b>
<b>Spring</b>			
$\alpha$ -pinene	11.6 (0.7)	0.097 (0.006)	0.423 (331)
camphene	2.5 (0.4)	0.045 (0.009)	0.071 (323)
$\beta$ -pinene	1.9 (0.2)	0.044 (0.007)	0.119 (324)
myrcene	0.6 (0.1)	0.010 (0.011)	0.007 (157)
limonene	5.0 (0.8)	0.032 (0.008)	0.049 (321)
other MT	2.9 (0.2)	0.085 (0.005)	0.433 (329)
$\beta$ -caryophyllene	0.2 (0.1)	0.018 (0.059)	0.026 (6)
$\beta$ -farnesene	-	-	- (0)
other SQT	0.7 (0.3)	0.046 (0.029)	0.029 (72)
<b>Early summer</b>			
$\alpha$ -pinene	14.1 (1.0)	0.058 (0.006)	0.145 (489)
camphene	7.0 (0.3)	0.060 (0.004)	0.230 (492)
$\beta$ -pinene	5.2 (0.6)	0.062 (0.010)	0.076 (426)
myrcene	5.8 (0.3)	0.078 (0.005)	0.326 (356)
limonene	16.7 (0.9)	0.069 (0.005)	0.239 (497)
other MT	7.0 (0.3)	0.074 (0.004)	0.385 (499)
$\beta$ -caryophyllene	4.8 (1.3)	0.018 (0.019)	0.023 (54)
$\beta$ -farnesene	6.9 (1.8)	0.012 (0.018)	0.007 (90)
other SQT	6.2 (0.7)	0.055 (0.010)	0.087 (238)
acetone	50.8 (7.2)	0.066 (0.010)	0.362 (71)
aldehydes	59.1 (4.4)	0.043 (0.005)	0.503 (71)
<b>Late summer</b>			
isoprene	56.5 (4.2)		0.473 (70)
$\alpha$ -pinene	39.3 (4.1)	0.153 (0.017)	0.359 (163)
camphene	7.7 (1.2)	0.064 (0.016)	0.094 (161)
$\beta$ -pinene	2.5 (0.3)	0.075 (0.015)	0.160 (120)
myrcene	21.1 (2.0)	0.191 (0.019)	0.476 (154)
limonene	32.3 (3.6)	0.155 (0.018)	0.336 (163)
other MT	9.9 (1.1)	0.133 (0.016)	0.298 (153)
$\beta$ -caryophyllene	11.0 (1.2)	0.020 (0.010)	0.032 (129)
$\beta$ -farnesene	76.9 (7.5)	0.060 (0.010)	0.183 (162)
other SQT	67.3 (8.2)	0.059 (0.013)	0.132 (157)
acetone	31.8 (2.2)	0.061 (0.007)	0.313 (163)
aldehydes	36.8 (3.0)	0.008 (0.007)	0.009 (163)

617  
618  
619



620

621

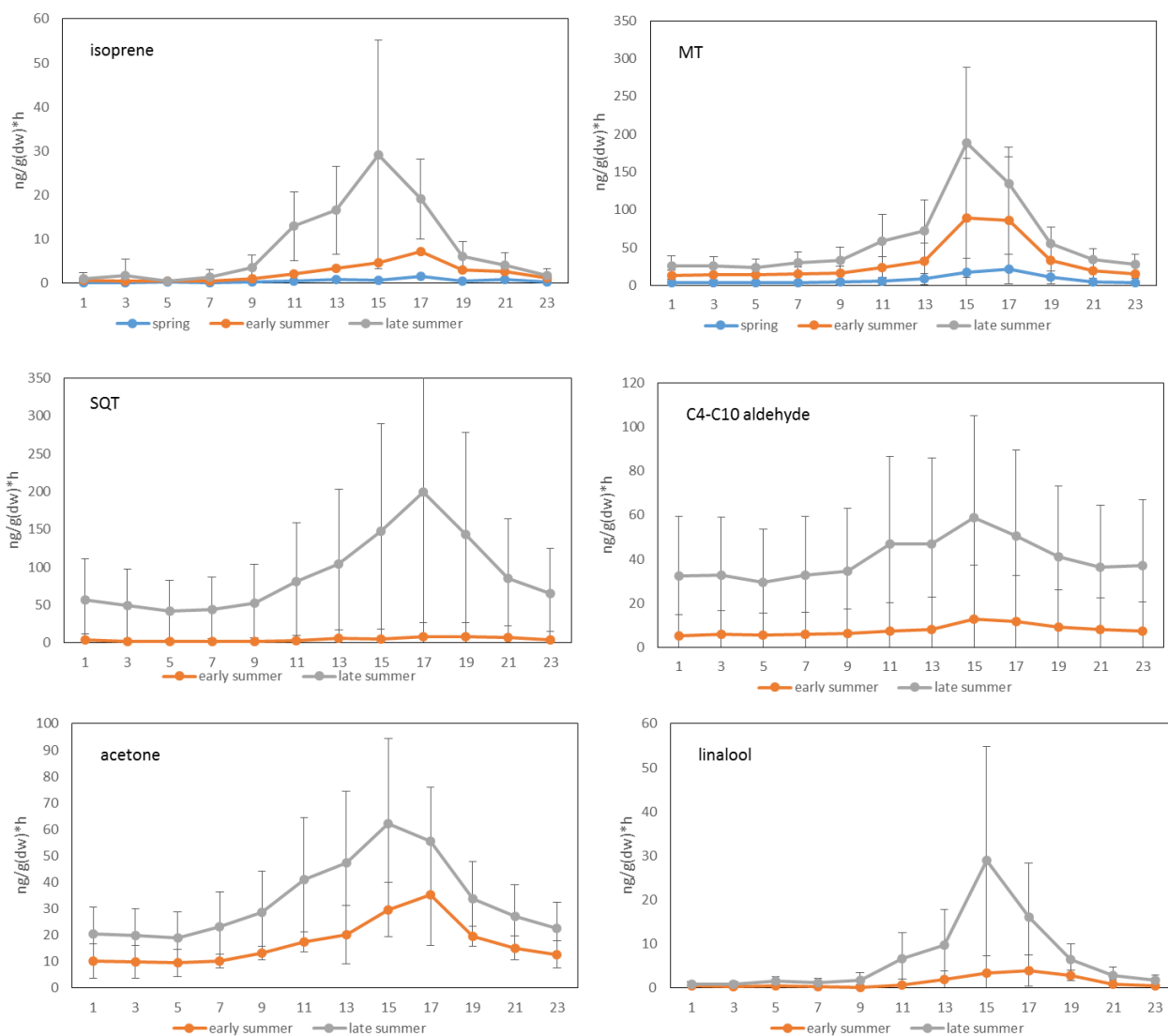
622

623

624

625

**Figure 1: Season mean box and whisker plots of isoprene, MT, SQT, acetone, C4-C10 aldehydes (butanal, pentanal, hexanal, heptanal, octanal, nonanal and decanal) and linalool. Boxes represent second and third quartiles and vertical lines in the boxes median values. Whiskers show the highest and the lowest observations.**

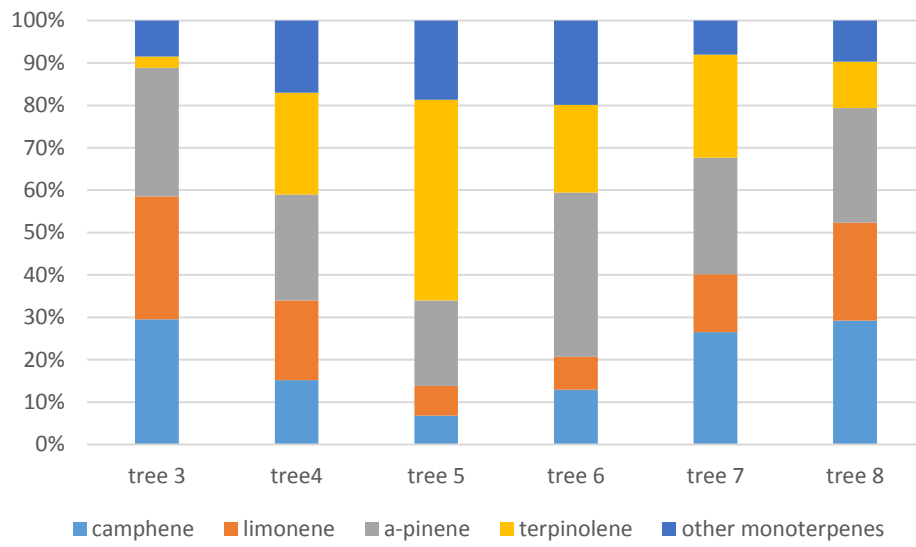


626  
627

628 **Figure 2: Mean diurnal variations of different compound groups in each season. Spring refers to April and**  
 629 **May, early summer June-mid July, late summer mid July-August. Aldehydes are sum of all C<sub>4</sub>-C<sub>10</sub> aldehydes**  
 630 **(butanal, pentanal, hexanal, heptanal, octanal, nonanal and decanal).**

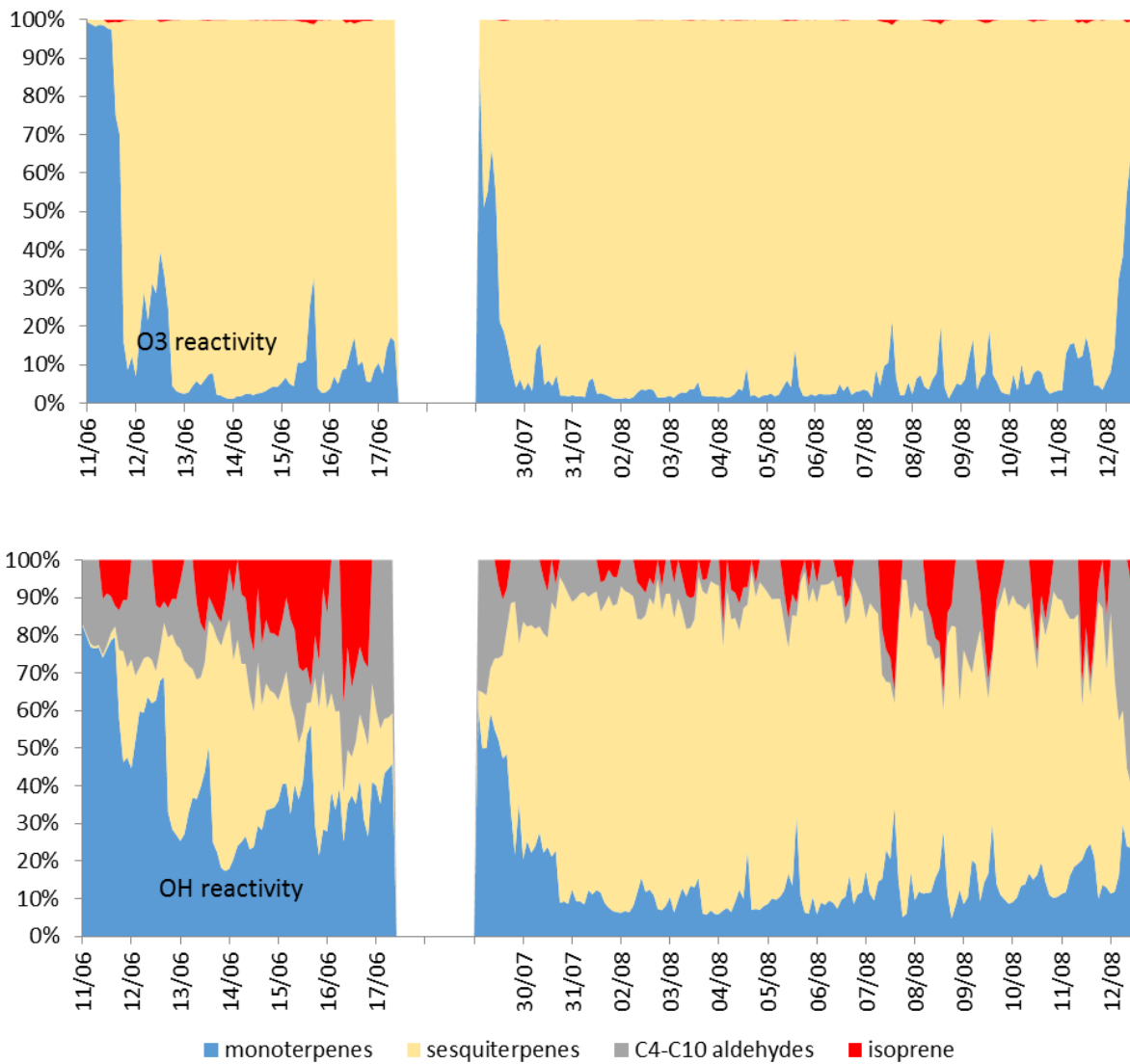
631  
632  
633  
634  
635  
636  
637  
638





639  
640  
641  
642  
643

**Figure 3: Relative abundances of emitted monoterpenes in six different spruce individuals on 24 June 2014.**



644  
 645 **Figure 4. Relative O<sub>3</sub> and OH reactivity of emissions for two periods in early and late summer 2015. The**  
 646 **compounds and reaction coefficients used for reactivity calculations are presented in Table 1.**

647

648