

Answer to Referee #1

We thank the referee for the careful reading the manuscript and the kind suggestions to improve it. Please find our answers to the specific comments and technical corrections below. Answers are typed in cursive letters and new text is typed in smaller letters.

Specific comments

P1L12, coarse mode is mentioned here, but only small and medium size are mentioned in P9L16 for same angstrom range 1-1.5. Unify the statements.

- *There was some mismatch, the statement was adapted in the abstract*

The majority of the Angström exponents were observed between 0.5 and 1.5 indicating a mixture of fine- and coarse-mode aerosols.

P3L32, the interval 2-3h was written, but the original time resolution was not indicated.

- *The original time resolution is 30 seconds and the vertical resolution is 7.5 meters.
New sentence P3L15:*

The vertical resolution of the raw profiles is 7.5~m and the data were stored with a temporal resolution of 30~seconds.

P6L18, What are 'large, non-spherical particles'? Are they dried sea salt stated in P9L10?

- *Large, non-spherical particles can in principle be dust particles, or sea-salt particles, or even ice particles (the latter is very unlikely here, due to the altitude and corresponding temperature). We just wanted to express, what a higher depolarization ratio implies. However, in this chapter of the manuscript the particle classification is not the subject, so we leave this sentence out here and come back to the particle classification later.*

P6L28 and Fig.4, is there any reason to choose 48 hours for backward trajectories here? Do authors just intend to show the air mass stayed there for long time? If trajectories are introduced to infer the origin of particles, 48 hours are insufficient.

- *Yes, here we wanted to show, that the air masses came from close by during the last 48 hours. The trajectory cluster analysis discussed in chapter 4.3, for which trajectories were calculated for 144 h, showed that only a few percentage of the air masses come from far away sources.*

P7L9 and Fig.5, does the particle extinction mean extinction of aerosol particles? In the figure, we see several peaks around 7- 8km. Are they cirrus or aerosol layers?

- *Particle extinction coefficient at 532 means the extinction of light by the aerosol particles. Figure 5 caption was corrected accordingly:*

Figure 5. All single and seasonal mean particle extinction coefficient profiles measured by the lidar at 532 nm during the entire observation period from November 2011 to June 2012.

- *Yes, the peaks around 7-8 km height are due to cirrus clouds.*

P8L2, How were the top heights of the lofted aerosol layers determined?

- *The top heights of the lofted aerosol layers were identified visually from the backscatter coefficient profiles. The top height was defined where the backscatter coefficients reach the molecular background, the lower boundary of the lofted layer was set to the minimum in the backscatter coefficient profile between the PBL and the lofted layer. We added this point as follows:*

The top heights and the depths of the lofted aerosol layers are shown in Fig.6. Both values were identified visually using the backscatter coefficient profiles. The top height was defined where the backscatter coefficients reach the molecular background and the lower boundary of the lofted layer was set to the minimum in the backscatter coefficient profile between the PBL and the lofted layer.

P9L5, Indicate literature to identify local sources using depolarization ratios and lidar ratios.

- *We did not want to state that the depolarization ratio and lidar ratios identify the source, but the type of the aerosol. Literature that is reporting similar optical properties is used in the discussion of these results at P9L33-35.*

Modified sentence:

Depolarization ratios below 5 % and high lidar ratios up to 80 sr are caused by particles of low reflection and high absorption capabilities. These are most likely freshly produced smoke and pollution particles arising from local sources.

P9L19, If authors identify lower Angstrom 0.1-0.3 as marine particles, the lower left part in Fig.7b should be marked similarly.

- *The data points of low Angström and low lidar ratio are identified as dust and dust mixtures because the origin of the particles was surveyed by individual trajectories. This is the only dust case of 2-3 December 2011 and is discussed in another paper, see P9L11.13.
Since there are no measurement points of pure marine particles, we did not mark this area separately.*

P10L14, 1200 m was determined from Fig.5?

- *The altitude of 1200 m was determined as the mean/median value of all identified PBL layer tops. They are not shown in a separate figure. However, you are right; the total of all extinction profiles in Figure 5 gives further evidence that it is reasonable to choose this height for the mean upper boundary of the PBL top.*

Technical corrections:

P9L30, a mean lidar ratio 56 ± 6 'sr' - done

P12L7, 1.28 ± 0.42 - done

Answer to Referee #2

We thank the referee for the careful reading the manuscript and the kind suggestions to improve it. Please find our answers to the specific comments and technical corrections below. Answers are typed in cursive letters and new text is typed in smaller letters.

Specific comments:

1. Generally, the capability of Raman-channel detecting aerosol extinction profile is quite limited in the daytime due to the sky noise. Some related information are missed in the manuscript as follows. What are the valid altitudes for the Raman-channel derived aerosol extinction profile in the daytime and night-time? What's the range of lidar geometric overlap function (GFF) (where the $GFF=1$)? How long is the time average for calculating aerosol extinction coefficient? Are all the aerosol extinction profiles in this manuscript derived from the Raman-channel in the night?

- *To emphasize this aspect, we added the following information to page 3 line 20:*

For the determination of the particle backscatter coefficient and particle extinction coefficient during night-time the Raman method (Ansmann, 1992) was applied. During daytime the Fernald-Klett method (Klett, 1981, Fernald, 1984) was used, but in this study only the Raman derived profiles were taken into account.

- *The valid altitudes for the Raman channel derived aerosol extinction profiles start at 1.5 km height. Below 1.5 km the data are effected by the geometric overlap. The overlap function could not be determined due to very high aerosol load at these altitudes (see page 4, line 3-6). Therefore, the extinction profiles below 1.5 km were extrapolated downwards using the backscatter profiles derived by the Raman method, where the overlap effect is eliminated by the ratio of two channels. To clarify we added this information in the text on page 4 from line 3:*

The lidar data presented here are without any overlap correction. The overlap function could not be calculated due to permanently high aerosol load in the atmosphere over the PRD. However, to be able to calculate the AOD from the lidar profiles, the Raman backscatter profiles were fitted to the Raman extinction profiles at the heights below 1.5 km height. The Raman backscatter profiles are not affected by the incomplete overlap since a ratio of two channels is used in the respective algorithm.

- *The average time to calculate the extinction coefficient profiles was 2 to 3 hours. This is written in the text at page 2 line 32, just before the overlap paragraph.*

2. For the statistical analysis such as the monthly average in the Table-1 and Fig.5 and Fig.7, How many days data for each month?

- *Nov 19, Dec 24, Jan 5, Feb 6, Mar 12, Apr 9, Mai 21, Jun 10, total number is 106. The same profiles were used for the statistics in Fig 6, 7, and 9.*
- *The number of profiles used in Table 1 are now added to the table caption.*
- *The number of single extinction profiles used for Fig 5 is less (99) and is described in chapter 3.3, at page 7:*
 - line 13: The mean November-December profile was calculated from 35 single profiles.*
 - line 16: The mean January-February profile is resulting from 11*
 - line 21: The mean March-April profile calculated from 20 single profiles*
 - line 26: The mean May-June profile was calculated from 33 single profiles*

3. In Fig.2 (upper panel), there are a lot of strips or lines that show very small values the whole profile or from the surface to free troposphere (e.g. at 00:00 24/03/2012). They seem artificial; what reasons cause them?

- *These blue lines indicate “no signal”, i.e. the laser is off due to a rain event or caused by insects flying through the rain sensor. This was mentioned in the text (page 6, line 10). However, for convenience, we added a comment to the figure caption as well.*

Fig. 2: Attenuated backscatter coefficient at 1064-nm (upper) and volume depolarization ratio (lower) for the 5-day period from March 23 to March 28, 2012. The blue, vertical lines in the plots occur when the laser is automatically switched off due to rain events. This may also be caused by insects flying through the rain sensor.

In Fig.2 ((lower panel), the clean layers of 2-km altitude show consistently higher depolarization ratios over the days. They seem not in the lower layers of aerosols, it is difficult to understand them. Did you check the possible distortion or nonlinearity of weak signals at those clean air layers?

- *Yes, these high depolarization ratios are observed in the lower part of the upper aerosol layers. The color scale may be misleading here concerning regions with low aerosol backscattering. It can be better seen in the profiles in Figure 3. We are confident that the data evaluation is correct.*

4. In Fig.3, the lower lidar-ratios (<40 sr) and higher depolarization ratio ($\geq 15\%$) at 2-km altitude are doubtful since the Angstrom exponents vary little over the altitude. Why are the aerosol extinction coefficient profiles cut below 1.5 km altitude? When calculating the aerosol backscatter profiles with the Raman and elastic-scattering signals, how do you determine the free aerosol or clean-air layer? What heights are generally used?

- *Below 1.5 km the geometric overlap of the lidar system is uncomplete. See also answer to question 1.*
- *The aerosol free layer for the Raman calculation is visually determined. Generally, heights above the aerosol layers are used where the signal to noise ratio is still high. These heights lie usually around 10 km altitude. This was also the case for the data in Fig 3.*

5. In Fig.5 or in the Line 9 of Page-7, are the single profiles of extinction the daily or hours averaged? Are they calculated from the Raman-channel in the night only?

- *The single particle extinction profiles are calculated from 2-3 hour Raman measurement. See also answer to 1) above.*

6. In the Section 4 Lofted aerosol layers. How do you define a lofted aerosol layer, visually or using a threshold of aerosol extinction against the molecular value? Because of the temporal-spatial variations of lofted aerosol layer, how do you take the layer height, using hourly or daily averaged profile?

- *Also here, 2-3 hour averaged measurements were used for to calculate the profiles. The top heights of the lofted aerosol layers were identified visually from the backscatter coefficient profiles. The top height was defined were the backscatter coefficients reach*

the molecular background and the lower boundary of the lofted layer was set to the minimum in the backscatter coefficient profile between the PBL and the lofted layer. We added this point as follows:

The top heights and the depths of the lofted aerosol layers are shown in Fig.5. Both values were identified visually using the backscatter coefficient profiles. The top height was defined where the backscatter coefficients reach the molecular background and the lower boundary of the lofted layer was set to the minimum in the backscatter coefficient profile between the PBL and the lofted layer.

7. In the Section 4.2 Aerosol classification, In Fig.7, are the data points the daily averaged values? Those circles marked for the aerosol types seem arbitrary or not objective based on some thresholds of aerosol optical parameters. What are your methods or any thresholds of aerosol optical properties for classifying these aerosol types? For the given type of aerosols, what is the difference between the "Pollution" and "Pollution mixture" aerosol? "Burning product" is a little confused, "biomass burning"?

- *Also here the data points are the same values for the 2-3 hours averaged profiles. The classification is based on the values obtained from lidar observations during recent years, especially in the frame of EARLINET and PollyNET. The respective literature is cited in the discussion of these Figures.*
- *Pollution mixtures in contrast to pollution refers to depolarisation ratios between 5% and 10%. These are caused by larger or more spherical particles. This aerosol type is discussed on page 9 line 6-10 in the chapter 4.2.*
- *Burning products include particles from biomass burning, industrial burning or domestic burning. We replaced the expression by "particles from burning processes" at two incidences.*

Page 9, line 22 : ... smaller particles from burning processes that contain soot.

Page 9, line 29: ... for urban particles and particles arising from burning processes.

8. In the Section 4.3 Origin of the aerosol layers- trajectory analysis, The lofted aerosols below 1200-m are probably from the local nocturnal residual layer since they are so low or in the PBL, thus they are probably not from the long-range transport.

- *Yes that is right. Most of the observed aerosol layers origins from local sources. This is part of the results of the trajectory analysis on page.*

Page-10, Line-12, a total number of 413 backward trajectories was obtained. It seems that they are not the daily averaged profiles since your total observation days are less than this number. How long is the time average for a lidar profile? That means that on some day you might have a lot of aerosol profiles while on other days you might only have one or none.

- *The time average for each profile is always 2-3 hours. The total number of profiles used is the same as before, but some profiles show more layers, so that the total number of upper-layers used was 147. Trajectories were calculated for three, sometimes five altitudes for each profile. Thus, the total number of 413 trajectories arises. Also here, the maximum number of profiles per day was restricted to four (see manuscript page 4, line 1-2)*

9. In the Section 4.4, If possible, the statistics of PBL aerosols optical properties can be given for the comparisons with the aloft aerosols because the PBL aerosol pollutants are more related to the human health or draw more attentions.

- *Due to the incomplete overlap, we cannot evaluate the particle extinction coefficient inside the PBL (see also answers to 1 and 4 above). This affects also the lidar ratios at 355 and 532 nm and the extinction Angström exponent. The depolarisation ratio is always below 5%, so only the statistics of the backscatter Angström exponent are left. Thus, another plot would not give much information. We prefer to concentrate this study on the lofted aerosol layer.*

10. In the Section 5 Conclusion, Page-12, Line 22-23, authors mention, "This was also observed in Guangzhou and is consistent with the Asian monsoon circulation in the region." There are no enough discussions about the effects of Asian monsoon circulation on the aerosols. How does the Asian monsoon affect the aerosols?

- *We were referring to the wind direction that is following with the Asian monsoon. This might not be made clear here. New part of the sentence:*

...and is consistent with the general wind circulation dominated by the Asian monsoon.

Page-12, Line 26-27, "The particles are locally and regionally produced and are only seldom mixed with transported particles from further away." This is not consistent with the Figure 8 (b) and (c), even Figure 8 (a). For instance, in Fig.8 (b), the cluster-3 for the long-distance transport shows 31% percentage against the 38% of the Cluster-1.

- *Long calculation time of the trajectories does not exclude that the aerosols come from sources close by. Our statement is based on the optical properties that were observed by the lidar measurements. We have adapted the text accordingly:*

These particles are mainly locally and regionally produced. During the summer monsoon season, they may also be mixed with particles of marine origin from the close-by sea. Dust mixtures into the pollution aerosol transported from sources further away was only observed in one case.

Technical corrections:

1. Page-1, Line-6, two "observed" appear in the sentence. Please delete the first one and move "by the sunphotometer" afterward to the second "observed". Please give the wavelength for the aerosol optical depth and lidar-ratio. - *done*

2. Page-1, Line-8, please delete the word "even". - *done*

3. Page-1, Line-9, "aerosol" should be "aerosol types". - *done*

4. Page-1, Line-11, please add "%" behind the number "3.7". - *done*

5. Page-1, Line-12, you may say the mixture of fine and coarse-mode aerosols. - *done*

6. Page-1, Line-13, the word "mainly" should be "main".

– *We wanted to express what is 'most of the time' = 'mostly' present in the atmosphere above PRD. We replaced 'mainly' by 'mostly'.*

7. Page-2, Line-9, please add the word “for” in front of “most of the time in the PRD”. - *done*

8. Page-3, Line-21, please revise the word “is increasing” with “increases”.

- *We changed “is including” with “includes” -We did not find “is increasing”*

9. Page-3, Line-26, please delete the word “also”. - *done*

10. Page-4, Line-1, this sentence is confused.

– *We changed the sentence:*

To avoid over-representation of long lasting cloud-free periods with constant aerosol conditions, the number of considered profiles per day during such periods was reduced to a maximum number of four.

11. Page-6, Line-22, “04:30 h” should be “04:30 am”. - *done*

12. Page-8, Line-2, please revise the sentence or just say:

“The top heights of the lofted aerosol layers range from a few cases of 1.5 km to 5 km (Fig. 6).” - *done*

13. Page-8, Line-9, please delete the word “depths” after “ 3 km”. - *done*

14. Page-8, Line-13, the word “is” should be ‘are’. - *done*

15. Page-9, Line-30, the word “6%” should be “6 sr”. - *done*

16. Page-11, Line-11, the word “calculate” should be “calculated”. - *done*

17. Page-11, Line-22, please add “sr” behind the number “50.7”. - *done*

18. Page-12, Line-7, the number “042” should be “0.42”. - *done*

List of other relevant changes

1) Several occurrences of the word “depolarisation” are replaced by “depolarization”.

They are all marked in the following marked manuscript.

2) I used LaTeXdiff to produce this marked manuscript to follow changes, as recommended. The program did mark all the changes correctly, but it also stopped at some point (after page 14). I could not find the reason for this, because LaTeXdiff introduced 68 new compilation errors, mainly pointing to some keyboard character problems. I guess there was some interference with characters in the text and LaTeXdiff, which I could not solve easily and fast. Therefore, I added the remaining pages (15 - 26) of the plain revised manuscript and highlighted the changes with a yellow marker. These are mainly figures and tables, so that there were only a few changes left.

The resulting manuscript is thus a mixture of LaTeXdiff produced pages and normal pages. I hope this combination of pages can be accepted as the requested marked manuscript.

CONTINUOUS VERTICAL AEROSOL PROFILING WITH A MULTI-WAVELENGTH RAMAN POLARIZATION LIDAR OVER THE PEARL RIVER DELTA, CHINA

Birgit Heese¹, Holger Baars¹, Stephanie Bohlmann¹, Dietrich Althausen¹, and Ruru Deng²

¹Leibniz Institute for Tropospheric Research (TROPOS), Permoserstrasse 15, 04318 Leipzig, Germany

²Sun Yat-sen University, Guangzhou, China

Correspondence to: Birgit Heese

(heese@tropos.de)

Abstract.

A dataset of particle optical properties of the highly polluted atmosphere over the Pearl River Delta, Guangzhou, China, is presented in this paper. The data were derived from the measurements of a multi-wavelengths Raman and depolarization lidar Polly^{XT} and a co-located AERONET sun photometer. The measurement campaign was conducted from November 2011 to mid June 2012. These are the first Raman lidar measurements in the PRD that were lasting for several months.

A mean value of aerosol optical depth ~~observed by the sun photometer~~ of 0.54 ± 0.33 was observed by the sun photometer at 500 nm in the polluted atmosphere over this megacity for the whole measurement period. The lidar profiles frequently show lofted aerosol layers which reach up to altitudes of 2 to 3 km and especially in spring season up to ~~even~~ 5 km. These layers contain between 12 and 56 % of the total AOD, with the highest values in spring. The aerosol types in these lofted layers were classified by their optical properties. The observed lidar ratio values are in the range from 30 to 80 sr with a mean value of $48.0 \text{ sr} \pm 10.7 \text{ sr}$ at 532 nm. The linear particle depolarization ratio at 532 nm lied mostly below 5% with a mean value of $3.6 \pm 3.7\%$. The majority of the Ångström exponents were observed between ~~1.0~~ 1.05 and 1.5 indicating a ~~coarse mode in addition to the fine mode in the particle size distribution~~ mixture of of fine- and coarse-mode aerosols.

These results reveal that ~~mainly~~ mostly urban pollution particles mixed with particles arisen from biomass and industrial burning are present in the atmosphere above the Pearl River Delta. Trajectory analyses show that these pollution mixtures arise mainly from local and regional sources.

1 Introduction

The Pearl River Delta (PRD) in the South-East of China is one of the largest urbanized areas in the world. High population density and a very strong economy leads to an almost permanent high aerosol load in the whole area around the city of Guangzhou in the PRD. The consequences for the geographical development, peoples health, and atmospheric pollution were studied in the frame of the German project Megacities Megachallenges. The atmosphere over the PRD is influenced by high urban and industrial activity but is also affected by the vicinity of the sea. Hence the predominant atmospheric particles

expected to be found in this area are a mixture of different aerosol types like urban haze, burning products from traffic and industry, and also sea-salt particles.

The visibility in Guangzhou has significantly decreased during the last four decades. Since 1972 the number of days with low visibility has increased from a few days per years to about 100-150 days per year from 1980 to 2006 (Deng et al. , 2008).

5 The authors could relate the low visibility to the increasing particle concentration observed by in-situ particle measurements during a case study in November 2005, where both high and low visibility episodes occurred. They found that 70% of the visibility is reduced by small scattering particles, and 20% by absorbing particles. A comprehensive overview over the air pollution at ground level since 1990 in megacities in China is given in Chan and Yao (2008). They found that particles arisen from traffic, industry, wood and coal burning are the major pollutants for most of the time in the PRD, and can causes high
10 pollution episodes and low visibility. This type of in-situ studies have revealed valuable information about the particle types and concentration measured at ground level that contribute to the severe air conditions in the PRD and other magacities. But how is the vertical distribution of these particles?

Only a limited number of vertically resolved aerosol observations are available over South-East China until the beginning of this century. The Asian dust lidar network was established in the late 1990 (Murayama et al. , 2001) with lidar stations
15 mainly in Japan and only occasionally in China. For example, a short-term study was conducted in July 2006 during the PRD2006 campaign (Sugimoto et al. , 2009). Here, a two-wavelength, backscatter and polarization lidar from the National Institute for Environmental Studies (NIES) in Japan was used. Two typhoon-driven flow episodes of northern air, periods of accumulation of air pollution within the PRD area, and three cases of lofted layers above the PBL were observed. This lidar was staying in Guangzhou until March 2009 and was measuring in Guangzhou for a long-term study on seasonal aerosol variations
20 (Hara et al. , 2011).

First Raman lidar measurements in the PRD were carried out by TROPOS during a one-month intensive field campaign in Xinken in October 2004 (Tesche et al. , 2007). The lidar used was the prototype of the mobile Raman lidar Polly with just one wavelength and two detection channels. High levels of aerosol load and the presence of lofted aerosol layers was observed during the entire period (Ansmann et al. , 2005).

25 In November and December 2009, as part of the Megacities project, a first short field campaign took place in Zhongshan in the southern part of the PRD. During this campaign a Raman lidar of the Anhui Institute of Optics and Fine Mechanics, Hefei, China and a sun photometer from TROPOS were deployed. To contrast the different aerosol conditions, two significant events of moderate and hazy pollution were characterized in detail by Chen at al. (2014). To investigate the aerosol conditions of this highly polluted area over a longer time period and to study the inter-seasonal differences, long-term observations in the
30 PRD were realised in the frame of the Megacities project. The campaign was performed from Autumn 2011 until summer 2012 in Guangzhou. The multi-wavelength Raman lidar Polly^{XT} (Althausen et al. , 2009) with depolarization capabilities was used for the characterization of the aerosol types over the PRD. The obtained results are presented in this paper. To our knowledge, this is the first time that continuous Raman lidar observations have been performed in the PRD for more than half a year. This provides a unique data set of the vertical aerosol distribution including the characterization of the optical properties in this area.

35 In the next section the campaign details are given, the instrumental set-up is described, and the climatic conditions are outlined. In section 3 a seasonal overview over the lidar and sun photometer measurements results are given and a case study of particularly high aerosol content in the vertical profile is presented. In section 4 the layered structure of the aerosol is analyzed, the aerosol is classified by lidar optical properties, and the origin of the observed aerosol is examined by trajectory cluster analysis. A statistical analysis of the measured optical properties is presented as well, and finally, a conclusion is given.

5 2 Experiment

2.1 Field site

The measurements for the vertically-resolved aerosol characterization were taken by a multi-wavelength Raman lidar of type Polly^{XT} (Althausen et al. , 2009; Engelmann et al. , 2016) of TROPOS and a dual-polar sun photometer of type CE-318dp (Cimel) from AERONET (Holben et al. , 1998). Both instruments were deployed on the roof-top of a laboratory building on the East-Campus of the Sun Yat-sen University of Guangzhou (23°04'08"N, 113°22'52"E, 23.5 m above sea level), where the meteorological education at the University takes place. The lidar was deployed on a roof terrace on the last floor of the building with easy access from the adjacent laboratories. The sun photometer was deployed on the flat roof-top of the building with a 360° panoramic sight undisturbed by obstacles. The sun photometer measurements started in the end of October 2011 and lasted until the beginning of July 2012. The lidar was running in a continuous 24/7 ~~measuring-measurement~~ mode from the beginning of November 2011 until mid June 2012 - only interrupted by rain periods. In the case of rain, a rain sensor is detecting the falling rain drops and the system is closing down the measurements immediately. The vertical resolution of the raw profiles is 7.5 m and the data were stored with a temporal resolution of 30 seconds.

The optical properties measured by the lidar are the particle backscatter coefficient at 355 nm, 532 nm, and 1064 nm, the particle extinction coefficient at 355 nm and 532 nm, and the linear depolarization ratio at 532 nm. For the determination of the particle backscatter coefficient and particle extinction coefficient during night time the Raman method (Ansmann et al. , 1992) was applied. During daytime the Fernald-Klett method (Fernald , 1984; Klett , 1981) was used, but in this study only the Raman derived profiles were taken into account. The linear total or volume depolarization ratio ~~is-including-molecular depolarisation~~ includes molecular depolarization effects. The linear particle depolarization ratio was calculated using the 90° calibration method described in detail by Freudenthaler et al. (2009). Further derived optical properties are the extinction-to-backscatter-coefficient ratio, also called lidar ratio, the linear particle depolarization ratio, the aerosol optical depth (AOD), and the respective backscatter and extinction related Ångström exponents.

These properties are used to identify the type of aerosol that was observed. While the particle backscatter coefficient indicates the present amount of particles, depending on their scattering abilities, the particle extinction coefficient ~~also~~ relates to the absorption abilities of the particles as well. The lidar ratio, the ratio between these coefficients, is dependent of the particle type, not on the amount. Also the particle ~~depolarisation~~ depolarization ratio is typical for the particle type and helps distinguishing between spherical and non-spherical particles. The Ångström exponents describe the wavelength dependence of the respective backscatter and extinction coefficients and are dependent on the size distribution of the particles.

The lidar data were analysed as follows: The data were visually cloud screened using the automatically produced quick-look images on the PollyNET-webpage: www.polly.tropos.de. Then, these data were evaluated manually in intervals of 2 h to 3 h to obtain comparable profiles for a statistical analysis. To ~~not over-represent long lasting cloud free periods and unchanged aerosol conditionson the same day~~ avoid over-representation of long lasting cloud-free periods with constant aerosol conditions, the number of considered profiles per day ~~for during~~ such periods was reduced to a maximum ~~of 4-~~ number of four.

5 The lidar data presented here are without any overlap correction. The overlap function could not be calculated due to permanently high aerosol load in the atmosphere over the PRD. However, to be able to calculate the AOD from the lidar profiles, the Raman backscatter profiles were fitted to the Raman extinction profiles ~~in the lower part of the profile. Thenat~~ the heights below 1.5 km height. The Raman backscatter profiles are not affected by the incomplete overlap since a ratio of two channels is used in the algorithm. Finally, the lowermost extinction value at about 150 m height was extrapolated to the
10 ground-level.

The sun photometer measures the direct and indirect Sun radiation at nine wavelengths from 340 nm to 1640 nm every 15 min when the Sun is visible. In addition, with this dual-polar instrument, the radiances at three different depolarization directions are measured by means of a second filter wheel (Li et al., 2009). However, the data used in this study are derived solely from direct Sun measurements. The products used are the AOD and the Ångström coefficients derived by AERONET
15 available from the AERONET-webpage: aeronet.gsfc.nasa.gov.

2.2 Atmospheric conditions

The atmospheric conditions of the PRD are controlled by a subtropical climate characterized by warm winters and hot and humid summers. The monthly mean temperatures are coldest in January: 13.9 °C and warmest in July: 28.8°C. The annual mean temperature is 22.4 °C. The weather is influenced by the Asian monsoon circulation. The main wind direction turns
20 with the dislocation of the Inter Tropical Convergence Zone (ITCZ) from north and north-easterly winds during the winter months to southerly winds during the summer months. Due to the strong solar irradiance in summer a trough is formed above the continent and warm and moist air masses are transported from the South China Sea onto the continent. The mean annual precipitation is 1720 mm. In the rainy season, which is lasting from April to September, monthly mean precipitation rates range from 100 mm to 300 mm per month. During wintertime the solar irradiance is low and cools down the continent. This results
25 in a continental anticyclone that transports dry air masses southward. During the winter month, the monthly mean precipitation lies between 30 mm and 90 mm (China Meteorological Administration, 2012).

The rainfall pattern during the winter and spring season 2011/2012 was different. After initially strong rainfall in November 2011 dry weather prevailed, so that no precipitation was registered in December 2011. From January 2012 to mid March 2012 there were numerous days with precipitation resulting in 105 mm in January, 74 mm in February and 66 mm in March 2012,
30 (National Climatic Data Center, 2012). This was caused by a less pronounced continental high pressure so that not dry air masses from the continent but moist air masses arriving from the sea were dominant. The increased precipitation activity in South-East Asia in 2012 is also attributed to the strong "La Niña" in 2010-2012 (e.g., Boening, 2012). In April 2012 the

monsoon season started in Guangzhou with more than 1000 mm precipitation until June 2012. The climatological mean value for April to June is around 700 mm.

3 Temporal and vertical aerosol distribution

In this section we present several aspects of the aerosol observations: First, an overview of the temporal development of the aerosol distribution over the entire measurement period is given by the AOD measured by lidar and sun photometer. A case study of the highly polluted atmosphere using the lidar profiles shows the typical aerosol distribution with lofted aerosol layers that contain a considerable amount of the total aerosol. Finally, seasonal mean profiles are calculated from all particle extinction profiles to identify seasonal patterns in the vertical aerosol distribution.

3.1 Total AOD

An overview over the aerosol conditions during the entire observation period is given by the derived AOD values. Fig. 1 shows the AERONET (Holben et al., 1998) level 2 AOD values at 500 nm measured by the sun photometer and the AOD values derived from Polly^{XT} Raman extinction profiles at 532 nm. The combination of the sun photometer working only at daytime and the Raman capabilities for lidar available during night-time offers the unique possibility to obtain a continuous time series of AOD whenever atmospheric conditions allow for it. The extrapolation procedure to calculate the AOD from the lidar profiles seem to underestimate the amount of aerosol close to the ground since it leads to slightly lower AOD values from the lidar than the ones measured by the sun photometer. On the other hand the sun photometer AOD measurements may be influenced by more humidity during daytime.

During November and December 2011, sun photometer AOD values are available on 17 and 22 days, respectively. After this period a lot of rain and cloudy weather was present over Guangzhou. As a consequence, for 2012, level 2 sun photometer AOD are only available on 28 days in total. However, these data still provide an overview over the development of the aerosol content throughout the observation period. In the beginning of the observations, in November and December 2011, most AOD values range between 0.2 and 0.6 with some peak AOD periods with high values up to 1.4. The monthly mean AOD in November was moderate with values of AOD=0.45 measured by the sun photometer and AOD = 0.49 measured by the Lidar. In December these values were AOD=0.49 / 0.39 (sun photometer / lidar). In January (AOD=0.57 / 0.24) and February 2012 (AOD=0.93 / 0.67) only a few observations were available to calculate the mean values, which were higher than in November and December. Unusual heavy rainfall was observed which seems to be triggered by the strong La Niña during that winter. In March 2012, a period with very high AOD values started to evolve. The monthly mean AOD of 1.16 / 0.84 was the highest value reached during this field campaign. This is plausible, since no more precipitation was observed that could remove the particles from the atmosphere.

The maximum AOD of 1.95 was measured by the sun photometer on March 28, 2012, which is a very high value compared to the rest of the time series. This high AOD may be the result of hygroscopic growth at the top of the boundary layer, which was observed by the lidar at the time of this measurement and may not be identified by the sun photometer. Towards the

summer season with the onset of the monsoon, the mean AOD decreases to 0.82 / 0.60 in April and 0.49 / 0.34 in May. In the beginning of June the mean AOD value was 0.32 / 0.36. For the whole observation period, the mean photometer AOD value at 500 nm was 0.54 / 0.33 and the lidar AOD value at 532 nm was 0.47 / 0.32. This is a little higher than the mean AOD derived from the only other long term lidar observations in Guangzhou. Hara et al. (2011) measured an annual mean AOD of 0.41 at 532 nm and observed seasonal AOD variation with peaks in springtime and autumn. These mean AOD values indicate a generally high mean background level of aerosol in the atmosphere above the PRD. For comparison, in Leipzig, Germany, a continental Central European site, the yearly mean AOD measured by sun photometer during recent years lies between 0.15 and 0.19 at 500 nm.

3.2 Case study

Fig. 2 shows the temporal evolution of the attenuated backscatter coefficient (calibrated range-corrected signal) at 1064 nm for a five day period from March 23 to 29, 2012 in the upper panel. The colors range from low backscatter signal in blue and to high backscatter signal in red. White colors that can be seen on top of the aerosol layers indicate mostly clouds. The blue vertical stripes occur if no signal is measured at all, as for example during a precipitation event on March 23 starting around 16:00 UTC. Several precipitation periods follow until about 10:00 UTC the next day. This plot shows the evolution of the aerosol layers that persist over these days. The planetary boundary layer (PBL) is developing every day starting around 00:00 UTC (08:00 LT) and is reaching up to heights of about 2 km - 2.5 km at its maximum. Above the PBL, another aerosol layer is visible, which is reaching from 2 km to 5.5 km in the beginning of the period and to 5 km during the following two days. The large heights of the lofted layers, as observed in this case, were mostly reached in spring. In the lower panel of Fig. 2 the volume ~~depolarisation~~ depolarization ratio at 532 nm is shown. Green and yellow colors show considerable volume ~~depolarisation~~ depolarization ratios. A narrow layer of elevated ~~depolarisation~~ depolarization ratio is visible just above 2 km height. This layer corresponds to the lower boundary of the observed lofted layer. ~~These are most probably large, non-spherical particles which sediment out from this layer.~~

Lidar profiles of the derived optical properties for March 26, 2012 from 18:00 to 20:30 UTC are presented in Fig. ???. The profiles of the particle backscatter coefficient, the particle extinction coefficient, and the resulting lidar ratio, the backscatter related Ångström exponent, and the linear particle depolarization ratio are shown. Local time of this measurement is 02:00 - 04:30 ~~h~~ am. The nocturnal PBL shows a two layer structure with higher particle backscatter and extinction coefficients below 1 km towards the ground and lower values between 1 and 2 km height. From 2 to 5 km height the pronounced lofted aerosol layer is visible with high values of the particle extinction coefficient of up to 300 Mm^{-1} at 532 nm. The mean lidar ratio of the lofted layer is $45.8 \text{ sr} \pm 7.5 \text{ sr}$ at 355 nm and $51.7 \text{ sr} \pm 8.3 \text{ sr}$ at 532 nm. The Ångström exponent shows values around 1.5 throughout the whole profile. The particle depolarization ratio is about 9 % below 2 km height and increases to 15 % below the lofted aerosol layer before it decreases to less than 5 % inside the lofted layer.

Fig. ??? shows HYSPLIT 48 h backward trajectories calculated for arrival heights of 500 m, 2200 m, and 3000 m. The heights represent the observed layer structure, where 500 m is inside the lower PBL, 2200 m is the lower part of the lofted layer, where

the ~~depolarisation~~-depolarization ratio is elevated, and 3000 m is at the maximum of the particle backscatter and extinction coefficient values inside the lofted layer.

All trajectories remained quite close to the measurement site for the last 48 h. The trajectory at 500 m was coming from the South Chinese Sea bringing some air with lower pollution levels. The trajectory arriving at 2200 m height stayed closest to the measurement site. It came from the north and circled above the measurement site at the same height for one day. The trajectory arriving at 3000 m is representing the lofted layer. It was rising from ground level just the day before and came from local and regional sources north-west of the measurement site.

- 5 This observed structure of particle layers frequently occurred above the measurements site: A PBL with a depth of 1.5 to about 2 km and a decoupled, lofted aerosol layer above. The lofted layers in this case study had a depth of 2.5 to 3 km, which was the highest depth observed. Typically these lofted layers had a depth between of 1 km and 2 km. The top boundaries of the lofted layers lied between 1.5 km and 5.5 km, as in this example. The optical properties of these lofted aerosol layers will be discussed in more detail in section 4.

10 3.3 Mean profiles

An overview over all evaluated lidar profiles of the particle extinction coefficient at 532 nm are plotted in Fig. ???. In total, 99 single profiles (plotted in grey) were considered for this analysis. To identify seasonal variations in the profile shape, four mean profiles over two month each were calculated and are plotted in bold, colored lines. Note that the scale of the x-axis is as high as 1000 Mm^{-1} in this plot.

- 15 The mean November-December profile was calculated from 35 single profiles. It shows a smooth decrease of the particle extinction coefficient with height and reached zero values at about 4 km. The highest value in the boundary layer was 275 Mm^{-1} , at 300 m which is the lowermost height of the profiles.

- The mean January-February profile is resulting from 11 single profiles only, which is due to the unusual rainy season that winter. The mean profile shows two minima at 1.5 and 2 km height, and a weak mean lofted layer between 2 and 4 km. Further
20 inspection of the single profiles show, that three cases with pronounced lofted layers in the end of February are included here. Also the mean January-February profile reached zero values at about 4 km height. The largest PBL value of the mean particle extinction coefficient was as high as 500 Mm^{-1} , which is the highest seasonal mean value.

- The mean March-April profile calculated from 20 single profiles is the most outstanding. The decrease in the PBL is less pronounced and a clear lofted layer is present between 2 and 4.5 km height with particle extinction coefficients of up to
25 170 Mm^{-1} at at 2.9 km height. This is more than four times of the values for the three other mean profiles. In total the mean March-April profile reached zero values at 5.5 km, the largest layer top height out of the four seasonal mean profiles. The largest mean particle extinction coefficient value in the PBL was 330 Mm^{-1} .

- The mean May-June profile was calculated from 33 single profiles and shows increased particle extinction coefficient values between 1 and 2.5 km height. Here, the lofted layers were located at lower altitudes than in the mean spring profile. The amount
30 of aerosol was less as well. The maximum value of the mean particle extinction coefficient in the PBL was 310 Mm^{-1} .

In total, the mean particle extinction coefficient profiles show that particles are present in lofted layers that reach up to heights of around 5 km. During spring these lofted layers even reached up to a mean value of 5.5 km. In the following discussion the focus is laid on these lofted layers to identify the aerosol types they contain.

4 Lofted aerosol layers

The top heights and the depths of the lofted aerosol layers are shown in Fig. ??. Both values were identified visually using the backscatter coefficient profiles. The top height was defined where the backscatter coefficients reach the molecular background
5 and the lower boundary of the lofted layer was set to the minimum in the backscatter coefficient profile between the PBL and the lofted layer. The top heights range from a few cases of ~~low top heights of~~ 1.5 km ~~up~~ to heights of 5 km (~~Fig. ??~~). The highest frequency of occurrences was observed from 2 km to 3 km, and a second smaller peak at 4 km and 4.5 km.

During the winter season (Nov 2011 - mid Feb 2012), mostly the low top heights of the lofted layers below 2.5 km were observed and only a few cases with higher top heights occurred. The highest aerosol layer tops were observed during the spring
10 season (end of February, March and April). In total, 21 cases of lofted layers with top heights of 3.5 km and higher occurred. During the summer months May and June the top heights were always between 2.5 km and 3 km height. In total, a variability of the top heights of lofted layers from 1.5 to 5 km was observed, with a majority of 79 cases between 2 and 3 km.

The depths of the observed lofted layers range from a few cases with less than 0.5 km up to cases of 3 km ~~depths~~. The maximum frequency of occurrence with 74 cases lied between 0.5 and 1.5 km, and in 23 cases the depth of the lofted layer
15 was between 1.5 and 3 km.

4.1 Lofted layer AOD

The lidar profiles of the case study shown in Fig. ?? ~~is an example with~~ are an example for very high aerosol content. The AOD on this day was among the highest values during the entire observation period: 1.04 at 355 nm and 0.60 at 532 nm. The AOD inside the lofted layer was 0.76 at 355 nm and 0.47 at 532 nm. The AOD-ratio, which is the ratio of the AOD inside the lofted
20 layer to the total AOD, is 73% at 355 nm and 78% at 532 nm in this case. This is partly due to the low AOD inside the lower layers on this day, since the PBL is rather clean at this time of the night. But also two days before, on March 24 and 25 (see Fig. 2), when the PBL was not so clean, the AOD-ratio for the lofted layers was about 70%.

The mean AOD for the lofted layers for each month and some seasonal periods are presented in Table 1. The mean AOD-ratio for the lofted layer in March was the highest with 56%. Also April and June show high AOD-ratios with 48% and 44%,
25 respectively, while the AOD-ratio for May is only 26%. During the winter months November, December, and January, the AOD-ratio was between 12% and 18% while in February it was with 22% already a bit higher. This is also due to three observations with higher aerosol content in the lofted layers in the end of the month. When counting these profiles rather for the spring period, the winter mean AOD-ratio was 15% and the spring mean AOD-ratio value was 48%. For the two summer months, the mean AOD-ratio was 34%. For the whole observation period, the mean AOD-ratio for the lofted layers was 32%.

30 Thus, a significant part of the aerosol over the PRD is present at high altitudes - especially during spring and summer. Obviously the aerosol can remain in these upper layers for some days, before it may be washed out by rain or is diluted by transport processes.

4.2 Aerosol classification

The lidar optical properties used to characterize the aerosol type of the observed particles are the the lidar ratio, the linear particle depolarization ratio, and the Ångström exponents. In Fig. ??, the mean values of the lidar ratio at 532 nm is plotted
5 versus the linear particle depolarization ratio at 532 nm (a) and the backscatter-related Ångström exponent at 355 nm / 532 nm (b) for all observed lofted layers. For each data point the lidar measurements were lasting over at least 2 hours. Each month has been coded by a color for easier identification. Fig. ?? (a) shows that most data points range between lidar ratios of 30 sr and 80 sr, while the linear depolarization ratio lies mainly below 10 %, and for the majority of cases even below 5 %. This means that most of the time spherical particles were observed. ~~Depolarisation~~ Depolarization ratios below 5 % and high lidar
10 ratios up to 80 sr ~~indicate~~ are caused by particles of low reflection and high absorption capabilities. These are most likely freshly produced smoke and pollution ~~arising most likely~~ particles arising from local sources. This is true for the observations during winter and also for May and June. In March and April the ~~depolarisation~~ depolarization ratio lies more often between 5 % and 10 % and the corresponding lidar ratios are between 40 sr and 60 sr. These properties fit to more aged particles and may be a result of the longer residence time of the particles inside the lofted layers during this time of year. They may also
15 indicate traces of dust (e.g. agricultural dust, road dust, or dust from biomass burning fires injected into the atmosphere) or other large, non-spherical particles (~~as~~ e.g. dried marine particles) ~~as observed in the case study~~. Only a few cases of high linear depolarization ratios >10 % were observed. The highest values of more than 20 % were measured on December 2 and 3, 2011 during the only dust advection event that took place during the measurement period. This event, where the dust did arrive from the desert areas north of China, was discussed in detail in Heese et al. (2012).

20 Further classification can be done by using the size dependent information given through the Ångström exponents. In Fig. ?? (b) the backscatter related Ångström exponent for 355 nm/532 nm is shown exemplified. The two other Ångström exponents show a comparable behaviour. It can be seen that the majority of Ångström exponents lies between 1 and 1.5 at lidar ratios between 40 and 60 sr. These properties indicate particles from urban pollution of small and medium size. Pollution mixed with larger particles can be identified by lidar ratios around 50 sr and Ångström exponents down to 0.5. Lidar ratios below 40 sr
25 indicate that marine particles may be mixed with the pollution particles. Pure marine particles are larger and would have a lower Ångström exponent of 0.1 to 0.3 (Miller et al., 2007). Another group of observed high Ångström exponents from 1.3 to 2 with lidar ratios from 60 to 80 sr and low ~~depolarisation~~ depolarization ratios are identified as more absorbing and smaller ~~burning products~~ particles from burning processes that contain soot ~~particles~~.

These results are consistent with ~~finding~~ findings from former studies. Tesche et al. (2007) measured high levels of aerosol
30 pollution over the PRD in October 2006 with lidar ratios between 40 and 55 sr and mean value of 47 ± 6 sr. (Ansmann et al., 2005) concluded that these lidar ratios are consistent with the presence of large, absorbing particles.

Baars et al. (2016) have evaluated the derived optical properties for all available PollyNET measurements performed with several Polly instruments at different sites worldwide until 2014 (for more details see also www.polly.tropos.de). From their study they found linear ~~depolarisation~~depolarization ratios at 355 nm and 532 nm below 5% and corresponding lidar ratios between 30 sr and 80 sr for urban particles and ~~burning products~~particles arising from burning processes.

Grot al. (2015) report a mean linear ~~depolarisation~~depolarization ratio of 6 ± 1 % and a mean lidar ratio 56 ± 6 ~~%-sr~~ for anthropogenic pollution in their aerosol classification scheme at 532 nm derived from several field campaigns.

5 A summary of lidar optical properties at 355 nm that will be used for the particle classification scheme for the upcoming EarthCARE satellite are presented in Illingworth et al. (2015). They also report linear ~~depolarisation~~depolarization ratios for smoke plumes and anthropogenic pollution below 5 % and lidar ratios from 30 sr to 80 sr and from 45 sr to 65 sr, respectively.

A study by Cattrall et al. (2005) is using AERONET sites for aerosol classification and found that particle optical properties over South-East Asia are distinct from those over other urban/industrial centers, owing to a greater number of large particles relative to fine particles.

10 In summary, we can conclude that particles of urban pollution arising from traffic, combustion of fuel, industrial and other burning processes are dominant over the PRD. Dust advection only plays a minor role, which was already observed by the Asian dust lidar network (e.g. Nishizawa et al. (2010)).

4.3 Origin of the aerosol layers - trajectory analysis

A backward trajectory analysis was performed using the HYSPLIT model (Stein et al. , 2015) to determine the origin and the
15 sources of the observed aerosol layers. Backward trajectories were calculated for 144 h for the periods of all evaluated lidar profiles. In most cases three arrival-heights were sufficient to cover the vertical aerosol structure, but in a few cases in which the aerosol extend up to very high altitudes, up to 5 arrival-heights were necessary. Arrival heights were set to the middle of an existing aerosol layer. From this analysis, a total number of 413 backward trajectories was obtained and a cluster analysis was performed to identify the main regions of the particle sources. For the cluster analysis all backward trajectories were divided
20 into arrival heights below and above 1200 m to separate the PBL and the lofted aerosol layers. Additionally, the lofted layers observed at very high altitudes above 3500 m were analysed separately since they show a seasonal dependence and occurred mainly in spring. In the following the results for these three layer categories are presented.

Lower layers - PBL

For this category the lowermost layers with a top height reaching up to a maximum of 1200 m were considered. This covers
25 mainly the PBL and only a few cases of very low lofted layers may be included. The number of clusters that were calculated was 5 (Fig. ?? a). Most of the trajectories arriving at these layers came from local and regional sources. 37 % of these local/regional trajectories came from north-easterly directions (cluster 1), 29 % from south-westerly directions (cluster 2), and 15 % came from westerly directions (cluster 3). Only about a fifth of all trajectories come from regions further away: 10 % of the trajectories come from westerly directions (cluster 4), reaching back to the Arabian and Saharan deserts and 9 % of the
30 trajectories (cluster 5) come from north-westerly directions, originating from the areas north of China. This is a results that

was expected for the lower altitudes above the PRD. Most air masses are of local origin, either from the mainland or from the close sea.

Lofted layers

The air masses arriving at the layers above 1200 m mainly came from the westerly and north-westerly directions (Fig. ?? b). 23 % of the air masses come from north-westerly regions (cluster 2) and 31 % came from closer sources from the West (cluster 3). Only 7 % of the trajectories indicate a possible source from farther arriving from westerly directions (cluster 5) and only 2 % of the trajectories arrive from far sources from North-west (cluster 4). Also for this category we can conclude that the majority of the aerosol burden originated from local sources that are close to or inside the PRD region.

Highest layers

A separate cluster analysis was performed for the highest observed layers above 3500 m. Here, only three clusters were calculated. However, the behaviour of these trajectories is comparable to lofted layer trajectories. 35 % of the trajectories came from westerly directions (cluster 3), 28 % of the trajectories came from slightly more north-westerly directions (cluster 2), and, again, 37 % of the trajectories came from local regions (cluster 1, Fig. ?? c). Thus, no significant difference concerning the origin was found for the particle layers observed up to very high altitudes in March and April 2012 compared to the lower lofted layers.

In summary we can conclude that only a very low percentage of aerosol is transported to the PRD from sources further away. About one third of all trajectories show air mass transport from close by, even if they were ~~calculate~~calculated for 6 days.

4.4 Statistics of lofted layer optical properties

In order to give a comprehensive overview over the typical aerosol conditions in the PRD, a statistical analysis of the measured optical properties of the observed lofted aerosol layers is given in the following. Statistical results are of importance if the data shall be used for further analyses, for example for modelling studies. In Fig. ??, the mean and median values and the standard deviations were calculated for the following properties: The lidar ratios at 355 nm (a) and 532 nm (b), the linear particle ~~depolarisation~~depolarization ratio at 532 nm and the Ångström exponents related to the extinction coefficient between 355 nm and 532 nm (d), the particle backscatter coefficient between 355 nm and 532 nm (e), and particle backscatter coefficient between 532 nm and 1064 nm (f).

The statistics of the lidar ratios show a wide range of values from 30 to 80 sr for both wavelengths (Fig. ?? (a) and (b)). Most of the lidar ratios lie between 30 and 60 sr, with a peak value of 50-55 sr at 355 nm and 40-50 sr at 532 nm. The mean lidar ratio at 355 nm is 50.7 sr and slightly higher than the mean lidar ratio at 532 nm of 48.1 sr. These values confirm the rare and very short former measurements done by lidar in the PRD region. From the first Megacity campaign in November 2009 (Chen et al., 2014) only lidar ratios at 355 nm were measured. They were 64 ± 10 sr for a hazy period and 56 ± 9 sr for a moderate

30 polluted period. Lidar ratios at 532 nm were measured in Xinken (PRD) in October 2004, and the mean value of the lidar ratio was 46.7 ± 5.6 sr (Ansmann et al. , 2005; Tesche et al. , 2007).

As already seen in the aerosol classification (Fig. ?? (c)), the statistics of linear particle ~~depolarisation~~depolarization ratio at 532 nm show that for the majority of 89 cases the ~~depolarisation~~depolarization ratio was below 5 % and only 11 cases lie between 5 and 10 %. In only 6 cases the ~~depolarisation~~depolarization ratio was higher than 10 %. This implies that mostly spherical particles were present and that non-spherical particles are seldom mixed into the aerosol. The mean value for the linear ~~depolarisation~~depolarization ratio is $3.6 \% \pm 3.7 \%$.

5 The histogram of the Ångström exponent related to the particle extinction coefficient at 355 nm to 532 nm (Fig. ?? (d)) show a few cases of low values below 1, a peak of 45 cases between 1.0 and 1.5, and a smaller peak of 26 cases from 1.5 to 2. Even higher values up to 3.0 were observed in 14 cases. The mean value for the extinction related Ångström exponent is 1.48 ± 0.49 .

The Ångström exponents related to the particle backscatter coefficients at 355 nm / 532 nm (Fig. ?? (e)) and 532 nm / 1064 nm (Fig. ?? (f)) show a comparable distribution. Most cases, 51 and 49, respectively, are lying between 1. and 1.5 and 27 and 24 cases, respectively, between 1.5 and 2.0. Only two cases lie above 2.0. Below 1.0, however, the number of cases is slightly higher for the particle backscatter related Ångström exponent for 532 nm / 1064 nm, and especially the number of cases below 0.5. is higher. The mean values for the backscatter related Ångström exponent are 1.28 ± 0.42 for 355 / 532 nm and 1.17 ± 0.49 for 532 / 1064 nm. Only a few cases show Ångström exponents below 0.5 that indicates larger particles in the coarse mode. This is consistent with the few observed cases of linear particle ~~depolarisation~~depolarization ratios above 10 %. The derived
15 mean particle optical properties are summarized in Table 2.

5 Conclusions

For the first time, continuous multi-wavelengths Raman and polarization lidar observations were performed over a long-term period in the highly polluted atmosphere of the Pearl River Delta, Guangzhou, China. The measurements were taken from November 2011 to mid June 1012. The observations show that a high load of aerosol is present not only in the planetary
20 boundary layer but also in lofted layers that reach up to several kilometers height. The heights of these lofted layers show a seasonal dependence with heights below 2 km during winter up to very high layer top heights above 5 km in spring. The aerosol optical depth in the lofted layers make a significant part of the total AOD observed in the vertical profile. The total AOD is rising from monthly mean winter values of 0.49 in November to 0.84 in March. The percentage of the AOD in the lofted layers varies from 12 to 20 % in the winter months to 48 and 55 % in spring.

25 These results confirm a previous study by Wang et al. (2011) who investigated seasonal variations of AOD over different locations in China using the Chinese Sun Hazemeter Network. In most parts of China, AODs are at a maximum in spring or summer and at a minimum in autumn or winter. This was also observed in Guangzhou and is consistent with the ~~Asian monsoon circulation in the region~~general wind circulation dominated by the Asian monsoon.

A classification of the observed aerosol in the lofted layers over the PRD by using the lidar optical properties shows mostly
30 low linear particle depolarization ratio and the wide range of the lidar ratios. These properties indicate that mainly particle

mixtures of urban pollution arising from traffic, combustion of fuel, industrial and other burning processes are present in these layers. ~~The particles are~~ These particles are mainly locally and regionally produced ~~and are only seldom mixed with transported particles from further away.~~ During the summer monsoon season, they may also be mixed with particles of marine origin from the close-by sea. Dust mixtures into the pollution aerosol transported from sources further away was only observed in one case.

Acknowledgements. The measurements were conducted in the frame of the special priority program Megacities-Megachallenge - Informal
5 Dynamics of Global Change (SPP 1233) funded by the German Research Foundation (DFG).

We thank our colleagues from the Sun Yat-sen University, Guangzhou, for their support throughout the measurement campaign.

References

- Althausen, D., R. Engelmann, H. Baars, B. Heese, A. Ansmann, D. Müller, M. Komppula, 2009: Portable Raman Lidar Polly^{XT} for Automated Profiling of Aerosol Backscatter, Extinction, and Depolarization. *J. Atmos. Oceanic Technol.*, 47, pp. 2366-2378.
- 5 Ansmann, A., U. Wandinger, M. Riebesell, C. Weitkamp, and W. Michaelis, 1992: Independent measurement of extinction and backscatter profiles in cirrus clouds by using a combined Raman elastic-backscatter lidar. *Appl. Opt.*, 31, No.33, 7113-7131.
- Ansmann A., R. Engelmann, D. Althausen, U. Wandinger, M. Hu, Y. Zhang, and Q. He, 2005: High aerosol load over the Pearl River Delta, China, observed with Raman lidar and sun photometer, *Geophys. Res. Lett.* 32, L13815, doi:10.1029/2005GL023094.
- Baars, H., Kanitz, T., Engelmann, R., Althausen, D., Heese, B., Komppula, M., Preier, J., Tesche, M., Ansmann, A., Wandinger, U., Lim,
10 J.-H., Ahn, J. Y., Stachlewska, I. S., Amiridis, V., Marinou, E., Seifert, P., Hofer, J., Skupin, A., Schneider, F., Bohlmann, S., Foth, A., Bley, S., Pfller, A., Giannakaki, E., Lihavainen, H., Viisanen, Y., Hooda, R. K., Pereira, S. N., Bortoli, D., Wagner, F., Mattis, I., Janicka, L., Markowicz, K. M., Achtert, P., Artaxo, P., Pauliquevis, T., Souza, R. A. F., Sharma, V. P., van Zyl, P. G., Beukes, J. P., Sun, J., Rohwer, E. G., Deng, R., Mamouri, R.-E., and Zamorano, F., 2016: An overview of the first decade of PollyNET: an emerging network of automated Raman-polarization lidars for continuous aerosol profiling, *Atmos. Chem. Phys.*, 16, 5111-5137, doi:10.5194/acp-16-5111-2016.
- 15 Boening, C., J. K. Willis, F. W. Landerer, R. S. Nerem, and J. Fasullo, 2012: The 2011 La Niña strong, the oceans fell, *Geophys. Res. Lett.*, 39, L19602, doi:10.1029/2012GL053055.
- Catrrall, C., J. Reagan, K. Thome, and O. Dubovik, 2005: Variability of aerosol and spectral lidar and backscatter and extinction ratios of key aerosol types derived from selected Aerosol Robotic Network locations, *J. Geophys. Res.*, 110, D10S11, doi:10.1029/2004JD005124.
- Chan, C.K., and X. Yao, 2008: Air pollution in mega cities in China, *Atmospheric Environment*, 42, pp 1-42,
20 <http://dx.doi.org/10.1016/j.atmosenv.2007.09.003>.
- Chen, Z., W. Liu, B. Heese, D. Althausen, H. Baars, T. Cheng, X. Shu, and T. Zhang, 2014: Aerosol optical properties observed by combined Raman-elastic backscatter lidar in winter 2009 in Pearl River Delta, south China, *J. Geophys. Res.* 119, 24962510, doi:10.1002/2013JD020200.
- China Meteorological Administration, Web pages: www.cma.gov.cn.
- 25 Deng, Xuejiao, Xuexi Tie, Dui Wu, Xiuji Zhou, Xueyan Bi, Hanbo Tan, Fei Li, Chenglin Jiang, 2008: Long-term trend of visibility and its characterizations in the Pearl River Delta (PRD) region, China, *Atmos. Env.*, 42, 7, 14241435, doi:10.1016/j.atmosenv.2007.11.025.
- Engelmann, R., Kanitz, T., Baars, H., Heese, B., Althausen, D., Skupin, A., Wandinger, U., Komppula, M., Stachlewska, I. S., Amiridis, V., Marinou, E., Mattis, I., Linn., and Ansmann, A., 2016: EARLINET Raman Lidar PollyXT: the neXT generation, *Atmos. Meas. Tech.*, 8, 7737-7780, doi:10.5194/amt-8-7737-2015.
- 30 [Fernald, F. G., 1984: Analysis of atmospheric lidar observations, Appl. Opt., 23, pp. 652-653.](#)
- Freudenthaler, V., Esselborn, M., Wiegner, M., Heese, B., Tesche, M., Ansmann, A., Müller, D., Althausen, D., Wirth, M., Fix, A., Ehret, G., Knippertz, P., Toledano, C., Gasteiger, J., Garhammer, M., Seefeldner, M., 2009: Depolarization ratio profiling at several wavelengths in pure Saharan dust during SAMUM 2006. *Tellus*, 61B, 165-179.
- Gro S., Freudenthaler, V., Wirth, M., and Weinzierl, B., 2015: Towards an aerosol classification scheme for future EarthCARE lidar observa-
35 tions and implications for research needs, *Atmos. Sci. Lett.*, 16, 7782, doi:10.1002/asl2.524.
- Hara, Y., Itsushi Uno, Nobuo Sugimoto, Atsushi Shimizu, Ichiro Matsui, Keiya Yumimoto, Jun-ichi Kurokawa, Toshimasa Ohara, Zhaoyan Liu, 2011: Seasonal Characteristics of Spherical Aerosol Distribution in Eastern Asia: Integrated Analysis Using Ground/Space-Based Lidars and a Chemical Transport Model, *SOLA*, 7, 212-124, doi:10.2151/sola.2011-031.

- Heese, B., Althausen, D., Bauditz, M., Bao, R., Deng, R., Li, Z., 2012: Lidar depolarization and sun photometer polarization measurements for particle characterization over Guangzhou, China, *Proceedings of the 26th ILRC, Porto Heli, Greece, 25-29 June*, 505-509.
- Holben B.N., T.F. Eck , I. Slutsker, D. Tanre, J.P. Buis, A. Setzer, E. Vermote, J.A. Reagan, Y. Kaufman, T. Nakajima, F. Lavenu, I. Jankowiak, and A. Smirnov, 1998: AERONET - A federated instrument network and data archive for aerosol characterization, *Rem. Sens. Environ.*, 5 66, 1-16.
- Illingworth, A. J. , H. W. Barker, A. Beljaars, M. Ceccaldi, H. Chepfer, N. Clerbaux, J. Cole, J. Delanoë, C. Domenech, D. P. Donovan, S. Fukuda, M. Hidakata, R. J. Hogan, A. Huenerbein, P. Kollias, T. Kubota, T. Nakajima, T. Y. Nakajima, T. Nishizawa, Y. Ohno, H. Okamoto, R. Oki, K. Sato, M. Satoh, M. W. Shephard, A. Velázquez-Blázquez, U. Wandinger, T. Wehr, and G.-J. van Zadelhoff, 2015:The EarthCARE Satellite: The Next Step Forward in Global Measurements of Clouds, Aerosols, Precipitation, and Radiation. *Bulletin of the American Meteorological Society*, Vol. 96, No. 8, pp.1311-1332, doi: 10.1175/BAMS-D-12-00227.1.
- Klett, J. D., 1981.: Stable analytical inversion solution for processing lidar returns, *Appl. Optics*, 20, 211–220.
- Li Z., P. Goloub, O. Dubovik, L. Blarel, W. Zhang, T. Podvin, A. Sinyuk, M. Sorokin, H. Chen, B. Holben, D. Tanré, M. Canini, J.-P. Buis, 2009: Improvements for ground-based remote sensing of atmospheric aerosol properties by additional polarimetric measurements, *J. of Quantitative Spectroscopy & Radiative Transfer*, 110, pp. 1954-1961.
- 15 Meteorological station No. 592870, National Climatic Data Center, 2012.
- Müller, D., Tesche, M., Eichler, H., Engelmann, R., Althausen, D., Ansmann, A., Cheng, Y. F., Zhang, Y. H., and Hu, M., 2006: Strong particle light absorption over the Pearl River Delta (south China) and Beijing (north China) determined from combined Raman lidar and sun photometer observations, *Geophys. Res. Lett.*, 33, L20811, doi:10.1029/2006GL027196.
- Müller, D., Ansmann, A., Mattis, I., Tesche, M., Wandinger, U., Althausen, D., and Pisani, G.,2007: Aerosol-type-dependent lidar ratios 20 observed with Raman lidar, *J. Geophys. Res.*, 112, D16202, doi:10.1029/2006JD008292.
- Murayama T., N. Sugimoto, I. Uno, K. Kinoshita, K. Aoki, N. Hagiwara, Z. Liu, I. Matsui, T. Sakai, T. Shibata, K. Arao, B.-J. Sohn, J.-G. Won, S.-C. Yoon, T. Li, J. Zhou, H. Hu, M. Abo, K. Iokibe, R. Koga, and Y. Iwasakaet, 2001: Ground-based network observations of Asian dust events of April 1998 in east Asia, *J. Geophys. Res.* 106(D16), 18345–18359. doi:10.1029/2000JD900554
- Nishizawa Tomoaki, Nobuo Sugimoto, Ichiro Matsui, Atsushi Shimizu, Xingang Liub, Yuanhang Zhangb, Ruhao Lic, Jun Liuc, 2010: 25 Vertical distribution of water-soluble, sea salt, and dust aerosols in the planetary boundary layer estimated from two-wavelength backscatter and one-wavelength polarization lidar measurements in Guangzhou and Beijing, China, *Atmosph. Res.*, 96, pp 602-611, doi:10.1016/j.atmosres.2010.02.002
- Nisantzi, A., Mamouri, R. E., Ansmann, A., Schuster, G. L., and Hadjimitsis, D. G., 2015: Middle East versus Saharan dust extinction-to-backscatter ratios, *Atmos. Chem. Phys.*, 15, 7071-7084, doi:10.5194/acp-15-7071-2015.
- 30 Schuster, G. L., M. Vaughan, D. MacDonnell, W. Su, D. Winker, O. Dubovik, T. Lapyonok, and C. Trepte, 2012: Comparison of CALIPSO aerosol optical depth retrievals to AERONET measurements, and a climatology for the lidar ratio of dust, *Atmos. Chem. Phys.*, 12, 7431–7452, doi:10.5194/acp-12-7431-2012.
- Stein, A.F., Draxler, R.R., Rolph, G.D., Stunder, B.J.B., Cohen, M.D., and Ngan, F., 2015: NOAA's HYSPLIT atmospheric transport and dispersion modeling system, *Bull. Amer. Meteor. Soc.*, 96, 2059-2077, <http://dx.doi.org/10.1175/BAMS-D-14-00110.1>.
- 35 Sugimoto, Nobuo, Tomoaki Nishizawa, Xingang Liu, Ichiro Matsui, Atsushi Shimizu, Yuanhang Zhang, Young J. Kim, Ruhao Li, and Jun Liu, Continuous Observations of Aerosol Profiles with a Two-Wavelength Mie-Scattering Lidar in Guangzhou in PRD2006, *Journal of Applied Meteorology and Climatology*, 48,9, pp 1822-1830, doi: 10.1175/2009JAMC2089.1.

- Tesche, M., Ansmann, A., Müller, D., Althausen, D., Engelmann, R., Hu, M., and Zhang, Y., 2007: Particle backscatter, extinction, and lidar ratio profiling with Raman lidar in South and North China. *Applied Optics*, 46(25), 6302-6308.
- Wang, Y., J. Xin, Z. Li, S. Wang, P. Wang, W. M. Hao, B. L. Nordgren, H. Chen, L. Wang, and Y. Sun, 2011: Seasonal variations in aerosol optical properties over China, *J. Geophys. Res.*, 116, D18209, doi:10.1029/2010JD015376.

Table 1. Monthly mean values of total AOD and AOD of identified lofted layers derived from lidar extinction profiles. The number of profiles used each month is Nov 19, Dec 24, Jan 5, Feb 6, Mar 12, Apr 9, May 21, and Jun 10. The total number of profiles is 106.

Period	total AOD	Layer AOD-LL	Percentage
November 2011	0.49 ± 0.29	0.06 ± 0.05	12.2%
December 2011	0.39 ± 0.26	0.07 ± 0.09	18.0%
January 2012	0.24 ± 0.07	0.03 ± 0.02	12.5%
February 2012	0.67 ± 0.46	0.15 ± 0.11	22.4%
March 2012	0.84 ± 0.27	0.47 ± 0.19	55.9%
April 2012	0.60 ± 0.41	0.29 ± 0.29	48.3%
May 2012	0.34 ± 0.26	0.09 ± 0.12	26.5%
June 2012	0.36 ± 0.21	0.16 ± 0.16	44.4%
November 2011 - February 2012	0.40 ± 0.27	0.06 ± 0.07	15.0%
February 2012 - April 2012	0.77 ± 0.34	0.37 ± 0.24	48.2%
May 2012 - June 2012	0.35 ± 0.24	0.12 ± 0.14	34.3%
November 2011 - June 2012	0.47 ± 0.32	0.15 ± 0.19	32.0%

Table 2. Summary of lidar mean optical properties for the lofted aerosol layers measured over the PRD region.

property	mean \pm std
AOD-LL 532 nm	0.15 ± 0.19
Lidar Ratio 355 nm (sr)	50.7 ± 9.1
Lidar Ratio 532 nm (sr)	48.1 ± 11.0
Ång EXT 355-532 nm	1.48 ± 0.49
Ång BSC 355-532 nm	1.28 ± 0.42
Ång BSC 532-1064 nm	1.17 ± 0.49
Depol Ratio (%)	3.6 ± 3.7

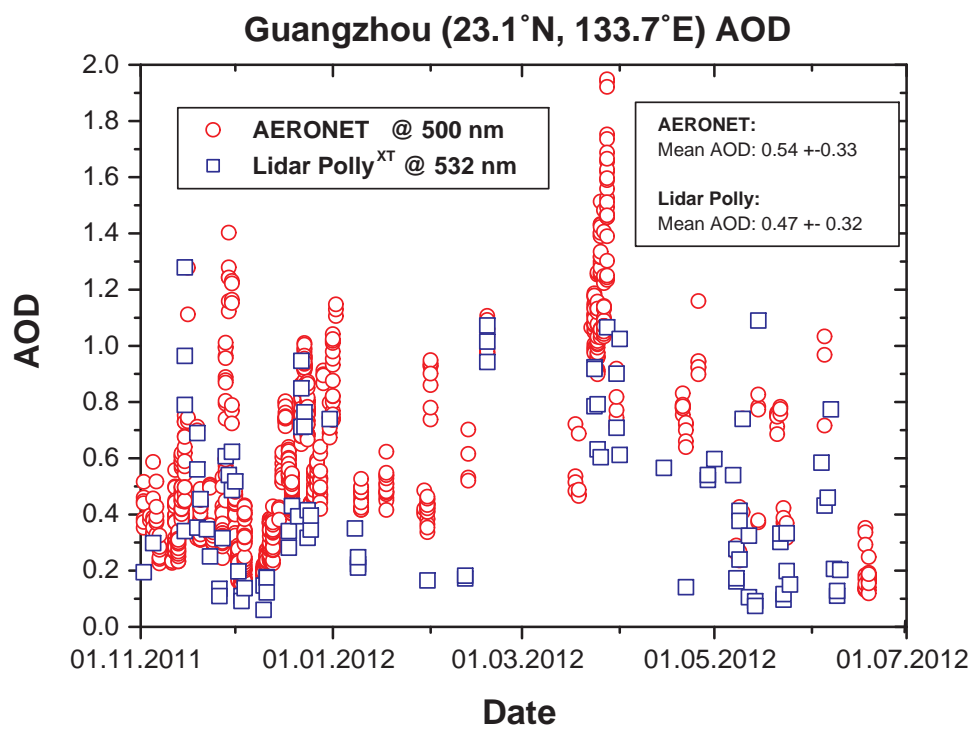


Figure 1. AOD derived from Polly^{XT} Raman extinction measurements at 532 nm and AERONET level 2 aerosol optical depth derived from sun photometer measurements at 500 nm.

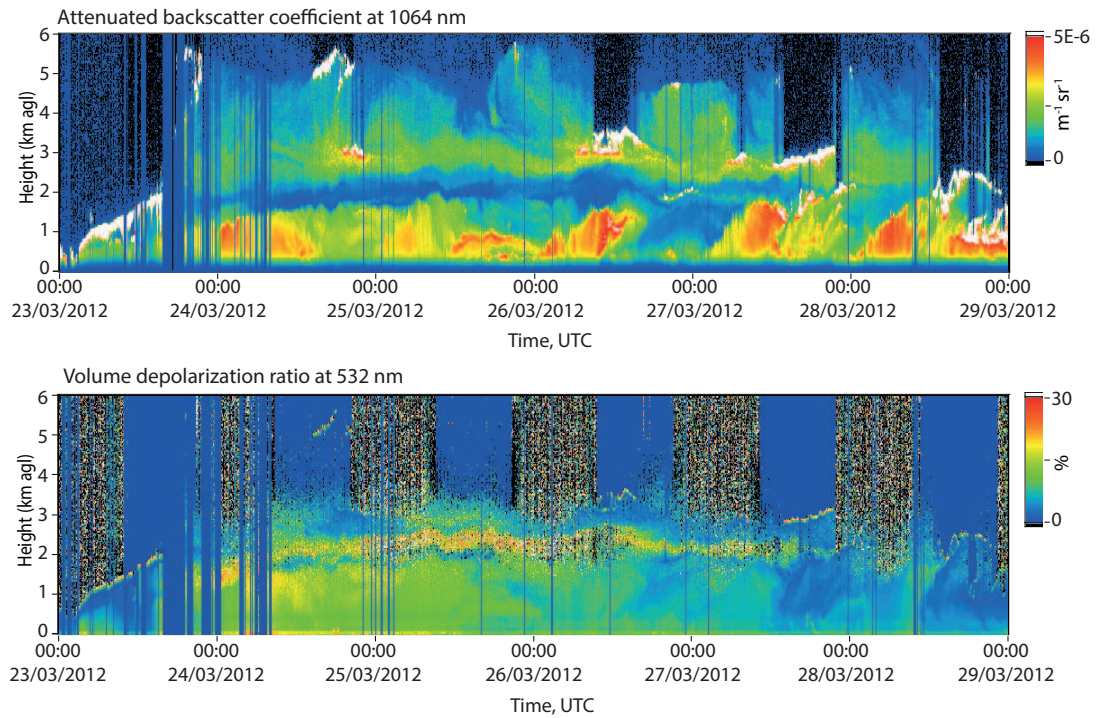


Figure 2. Attenuated backscatter coefficient at 1064 nm (upper) and volume depolarization ratio (lower) for the 5-day period from March 23 to March 28, 2012. The blue, vertical lines in the plots occur when the laser is automatically switched off due to rain events. This may also be caused by insects flying through the rain sensor.

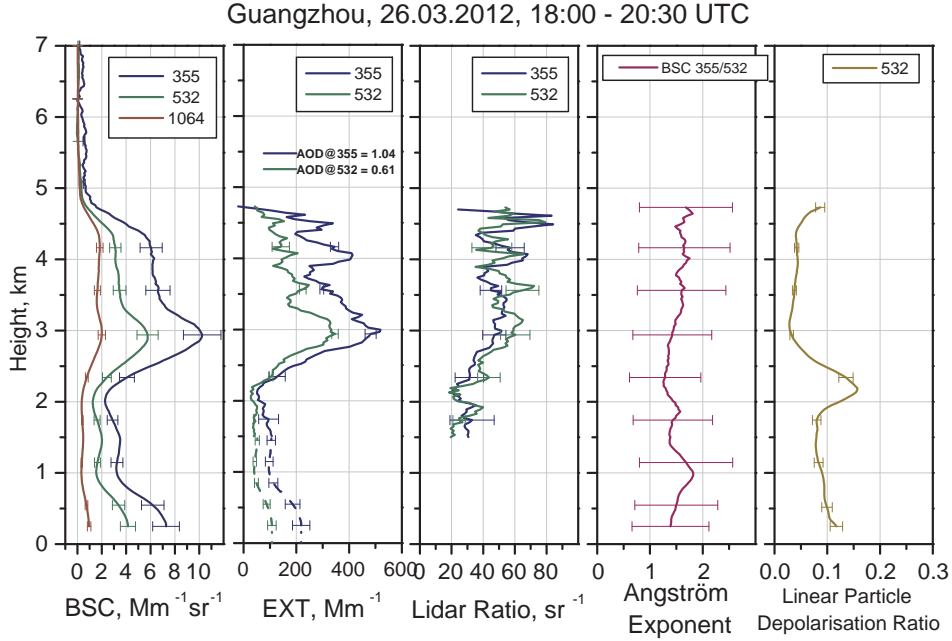


Figure 3. Lidar optical property profiles of particle backscatter coefficient (BSC), particle extinction coefficient (EXT), lidar ratio, Ångström exponent and linear particle depolarization ratio at 532 nm derived from Polly^{XT} measurement on March 26, 2012 (local time is + 8 h, 02:00 to 04:30 LT)). The profiles are vertically smoothed over 15 rangebins which corresponds to 450 m. The dashed prolongation of the particle extinction profiles towards the ground result from fitting the BSC to the EXT profile and extrapolation to the ground.

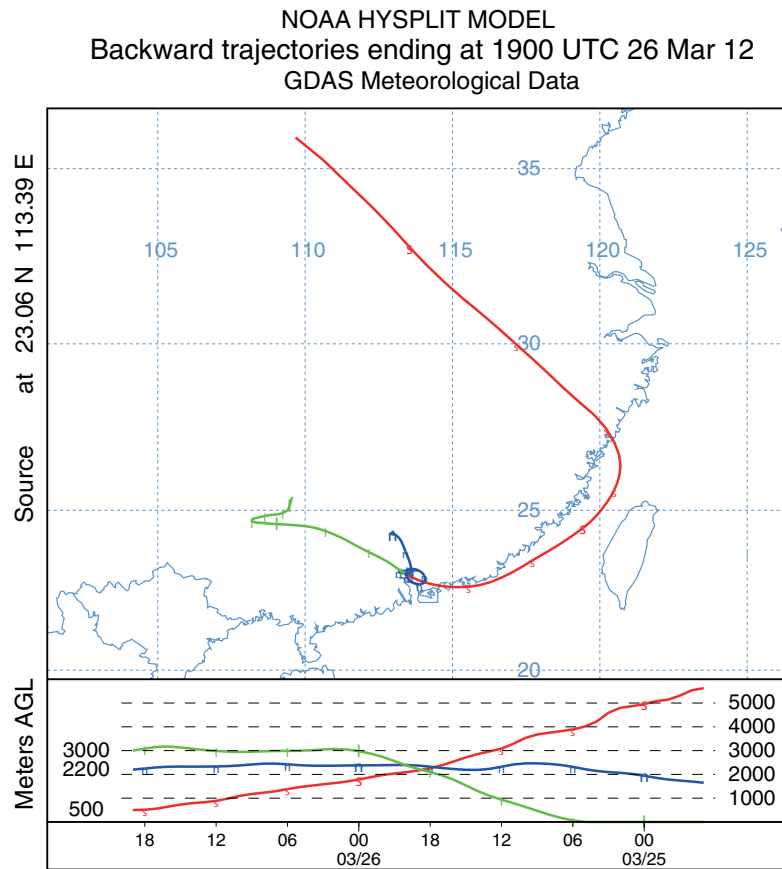


Figure 4. Trajectory analysis for March 26, 2012, 48 h back in time, arriving at 500 m inside the boundary layer, at 2200 meter below the lofted layer, and at 3000 m inside the lofted layer.

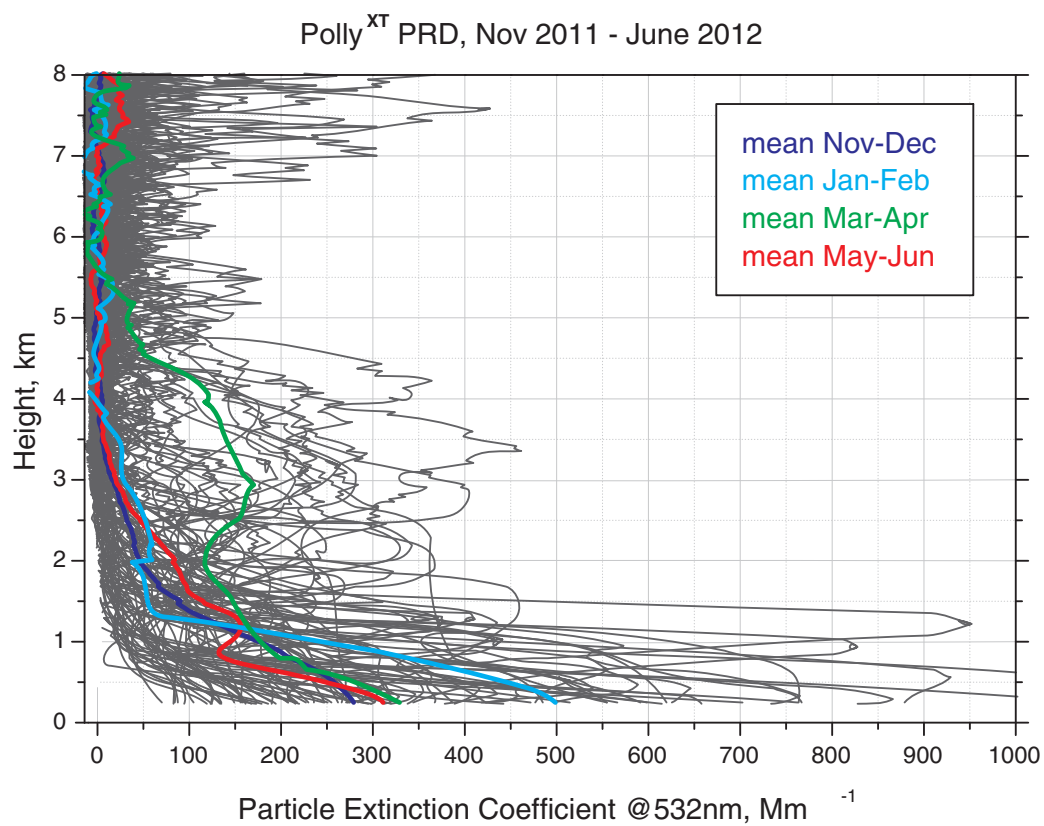


Figure 5. All single and seasonal mean particle extinction coefficient profiles measured the by the lidar at 532 nm during the entire observation period from November 2011 to June 2012.

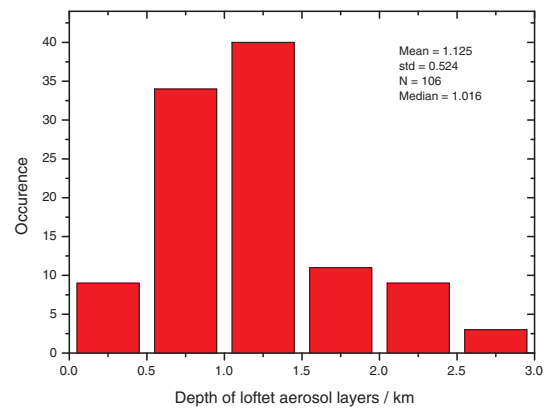
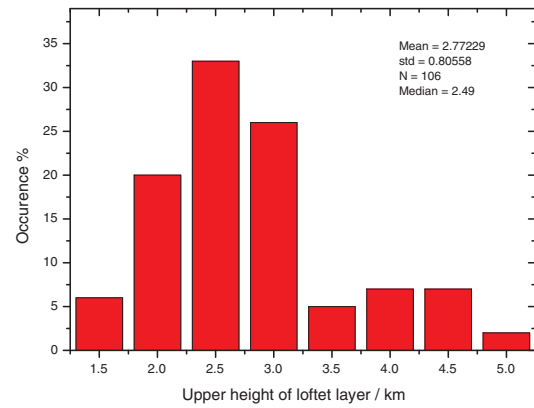


Figure 6. Histogram of lofted layer heights and depths

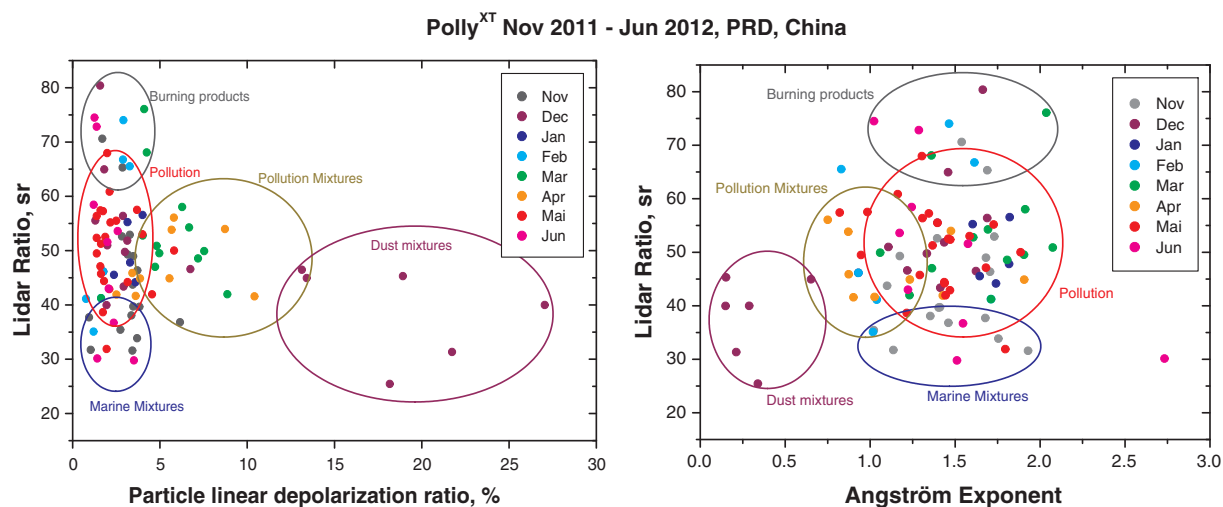


Figure 7. Aerosol classification using lidar ratio at 532 nm versus linear particle depolarization (left panel) and Ångström exponent for the particle backscatter coefficient for 532 nm / 1064 nm (right panel) for lofted layers in the period from November 2011 to June 2012. The colored circles indicate the identified particle mixtures and corresponding measurements.

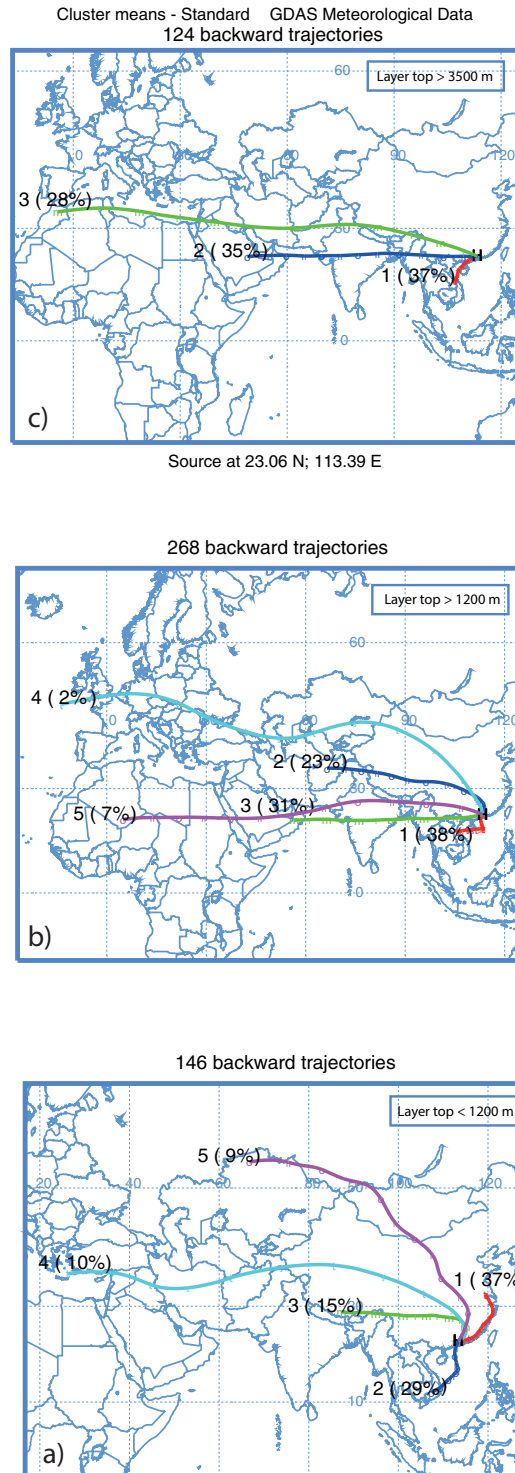


Figure 8. Trajectory cluster means for (a) PBL top heights up to 1200 m, (b) all lofted layers above 1200 m, and (c) lofted layers top height above 3500 m. All trajectories were calculated 144 h back in time.

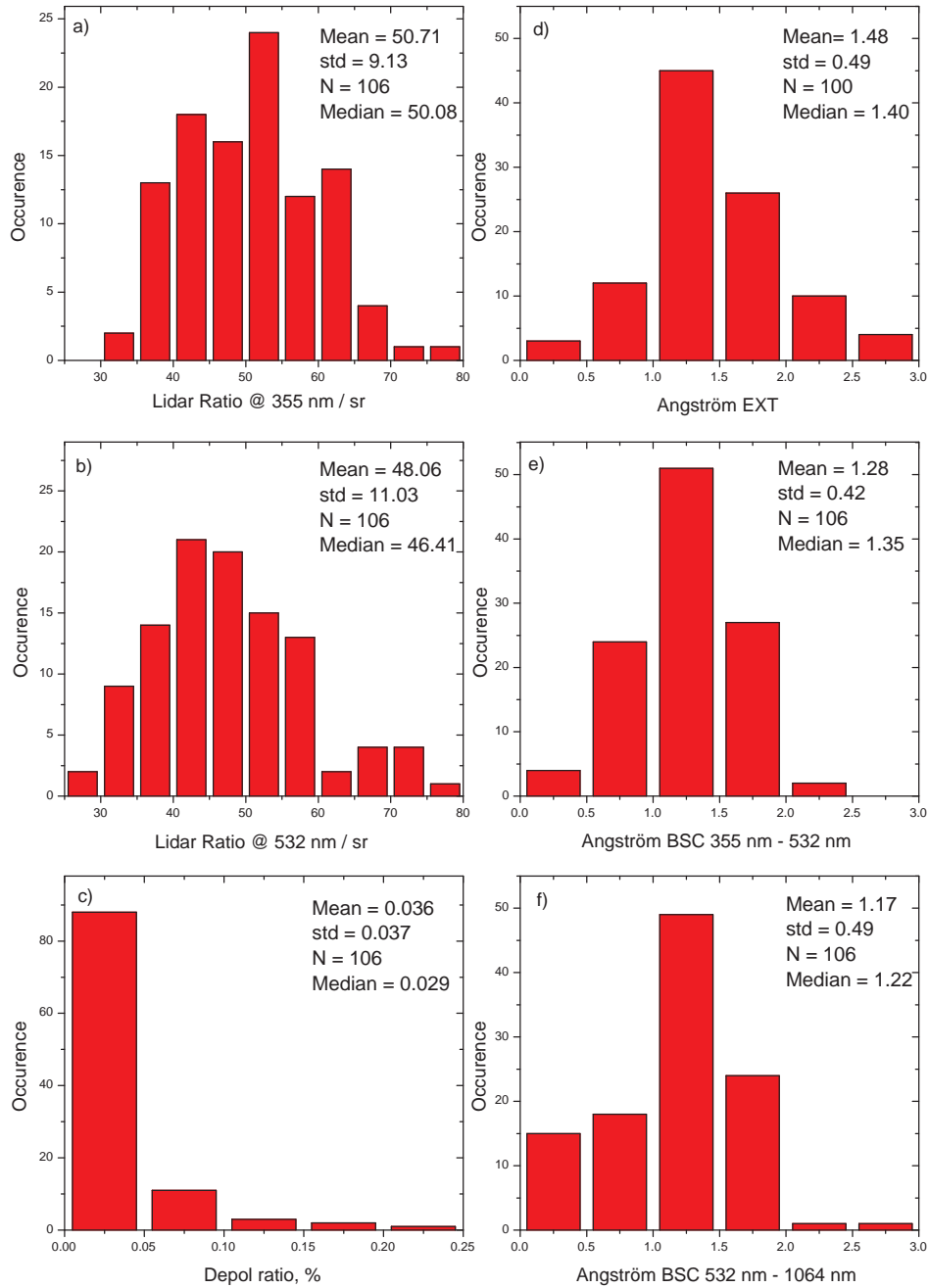


Figure 9. Statistical analysis of the optical properties of the observed lofted aerosol layers: (a) Lidar ratio at 355 nm, (b) Lidar ratio at 532 nm, (c) linear particle depolarization ratio at 532 nm, (d) Extinction Ångström exponent, (e) Backscatter Ångström exponent (355 nm / 532 nm), (f) Backscatter Ångström exponent (532 nm / 1064 nm).