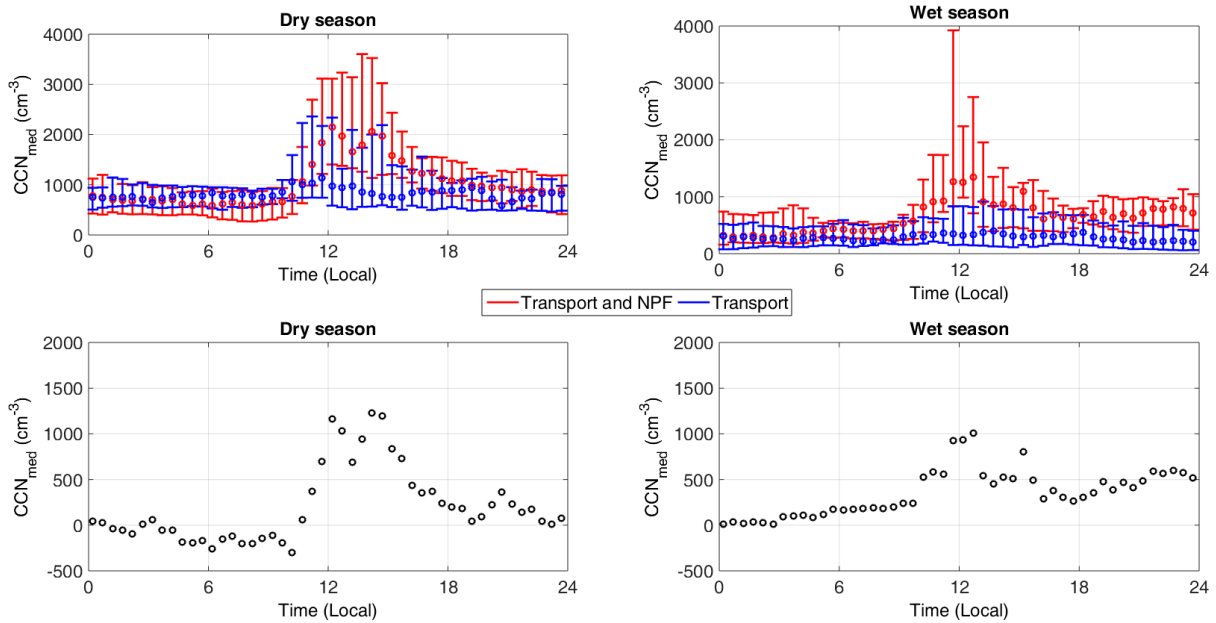


1 **Supplementary material – New particle formation and**
2 **impact on CCN concentrations in the boundary layer and**
3 **free troposphere at the high altitude station of Chacaltaya**
4 **(5240 m a.s.l.), Bolivia**

5
6 **1 Results**

7



17 Fig. S1. Median diurnal variation of CCN_{med} on event (upper panel, “Transport and NPF”)
18 and non-event days (upper panel, “Transport”). CCN_{med} attributed to NPF (lower panel)
19 is calculated as the difference of the concentrations recorded on event and non-event days.
20 Lower and upper limits of the error bars stand for the 1st and 3rd quartile, respectively.
21 Chacaltaya, 2012.

22

23

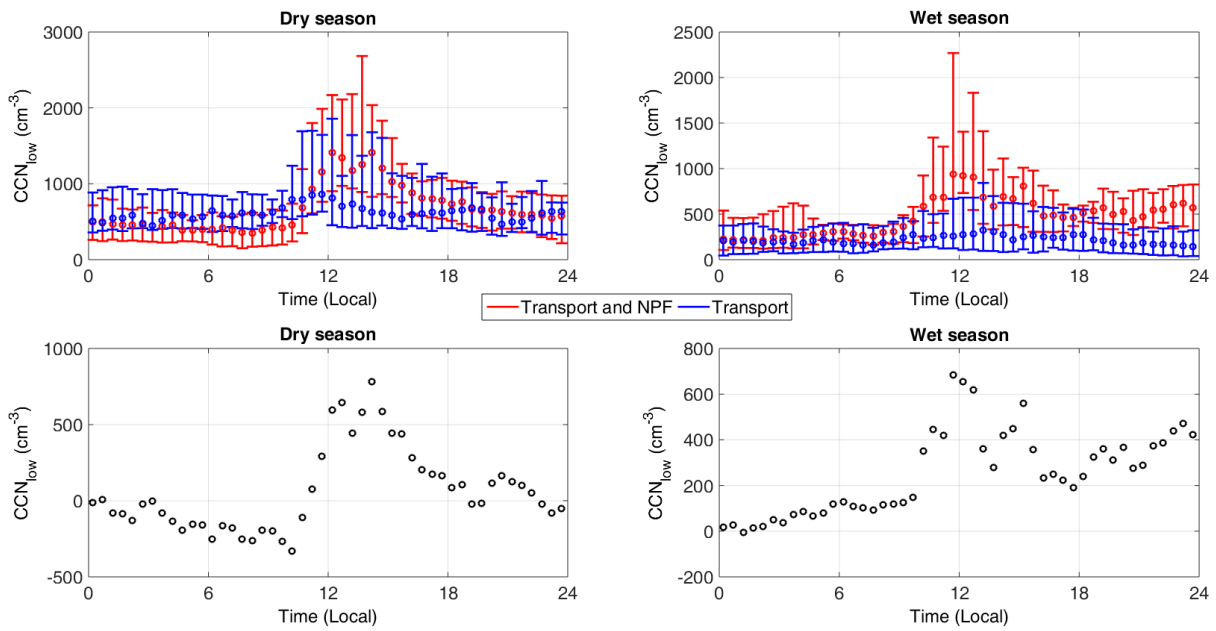
24

25

26

1

2



12 Fig. S2. Median diurnal variation of CCN_{low} on event (upper panel, “Transport and NPF”)
13 and non-event days (upper panel, “Transport”). CCN_{low} attributed to NPF (lower panel) is
14 calculated as the difference of the concentrations recorded on event and non-event days.
15 Lower and upper limits of the error bars stand for the 1st and 3rd quartile, respectively.
16 Chacaltaya, 2012.