

Response to Review Comments

Response to the Editor

We have now added further text to the manuscript to provide all additional information that was requested by the editor. These additions are highlighted in yellow.

Reviewer 1

We thank the reviewer for his/her thoughtful and constructive comments and we reply to each of these below.

General comments

The manuscript by Thompson et al. presents estimates for CH₄ emission fluxes in northern high latitudes for the time period 2005 to 2013 using an atmospheric inversion. The study is based on the Lagrangian transport model FLEXPART and measurement data from 22 observational sites in northern high latitudes. The sensitivity of the results to prior estimates of wetland emission fluxes and to the number of measurement sites included in the inversion is also investigated.

The atmospheric methane budget is an important topic and under ongoing scientific debate. There are large uncertainties on the total amount of emissions, but also on the importance of individual source categories, as well as on their change over time.

Especially natural emission estimates based on process-oriented models show a large uncertainty range. Atmospheric inversions are a widely used technique to gain new insights into methane fluxes. The present study makes use of a relatively new observational network in northern high latitudes. Some of these data have already been used for regional inversions, but not in a combined study for the total area north of 50N. Therefore, the study makes an important contribution to an improved picture of CH₄ emission fluxes and provides further insights in the quality of available CH₄ emission inventories. The results could also be used for evaluation and improvement of wetland emission models.

The manuscript is generally well written, the figures are well prepared and the results are discussed in an appropriate way. My main questions are related to the different time scales applied in the inversion, e.g. monthly or even annual emission fluxes, monthly initial methane mixing ratios, but 10-day backward trajectories and in-situ measurements. I have a couple of remarks and questions on the applied method as well as some suggestions for improvements (see below). After taking these comments into account I recommend the paper for publication.

Specific comments

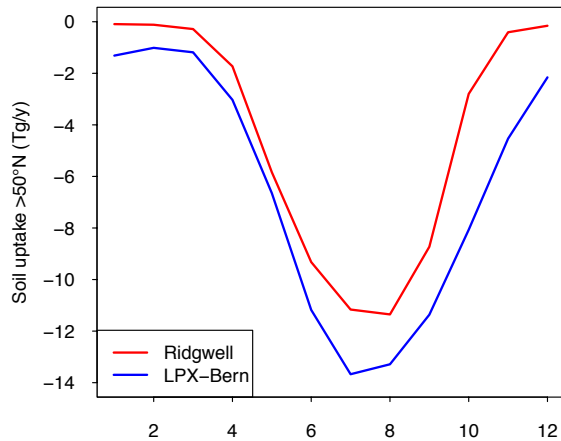
- Sect. 2.3: I would like to see Fig. 5 of the supplement in the main paper. Since the wetland data set is the main difference between S1 and S2, it is interesting to see how their spatial distributions differ.

We have moved Fig. 5 from the supplement to Fig. 3 of the manuscript.

- P8, 123-25: How does the dry soil uptake provided by Ridgwell et al. compare to the LPX-

Bern model in terms of absolute numbers and seasonality? Is there a strong interannual variability in the uptake calculated by LPX-Bern, which is neglected by the climatology?

Globally soil uptake in LPX-Bern is larger (49 Tg/y) than in Ridgwell et al. (38 Tg/y) and in



the high latitudes $>50^{\circ}\text{N}$ (6.5 and 4.3 Tg/y, respectively, see also Table 2). The seasonal cycles have a similar shape but LPX-Bern has more uptake in the summer (see figure). Inter-annual variability in the LPX-Bern soil uptake is small for the high northern latitudes; variations in the annual mean are less than 4%, therefore using a climatology should have little impact.

- Which meteorological input data was used for the two land surface models? Also ERA-Interim?

LPX-Bern used CRU climate data (version TS 3.23) and LPJ-DGVM used monthly mean temperature, cloud fraction and total precipitation (see Bergamaschi et al., 2007)

- P9, 18/9: Is there any reason for using 50% of the prior flux as uncertainty? How sensitive are your results to that assumption? And how often do your minimum and maximum thresholds apply?

We chose to use 50% for the uncertainty weighting on each grid cell, but the total uncertainty for the domain was scaled to 15 Tg/y ($\sim 25\%$) as plus/minus this value covers the approximate range of inventory and land-surface model estimates (see section 2.3). The sensitivity of the inversion to the prior flux uncertainty depends on how strong the atmospheric constraint is. In this study, we found the inversion to be not very sensitive to the prior uncertainty estimate. Note, that the prior uncertainty range is not a limit or threshold, but specifies the pdf of the prior fluxes. Figure 7 in the manuscript shows how the posterior fluxes differ from the prior ones. For example, for the region North America (i.e. Canada + Alaska) the posterior fluxes are outside the range given by prior S1 but within the range given by the prior S2 (see Table 4).

- P9, 120: What is the reason for calculating backward trajectories for 10 days? The prior emission fluxes are provided on a monthly or even annual basis. Are these 10 days an average transport or mixing time scale? Or is that an attempt to minimize the impact of

chemical methane loss on the results, i.e. to minimize the uncertainties from using a pre-calculated OH field?

Ten days was considered an appropriate time scale for the backward trajectories because the longer backwards in time virtual particles (or trajectories) are followed the further they travel from the point of observation, and the influence of fluxes further from the point of observation have less influence on that observation. This can also be expressed in terms of the degree of dispersion of the virtual particles the further they are traced backwards in time. After several days the particles are generally well dispersed (mixed) and the influence of fluxes from a specific location becomes very small.

Note also that the 10-days are not an average. We calculate trajectories every 3-hours and each trajectory is followed for 10-days. In summary, the surface influence (or emission sensitivity) is calculated every 3-hours.

- P9, 130-32: The calculation of methane loss by the reaction with OH is based on precalculated OH fields from the GEOS-Chem model. How does the GEOS-Chem OH field compare to other models? Could you provide a reference?

Over 10-days the loss due to oxidation by OH is very small (~1 ppb) so much less than the overall uncertainty in the observation space. We do not have access to other OH fields, so we cannot directly compare GEOS-Chem to other models, however, the influence of the OH field will be very small since the loss is over 10 days is very small. The reference for the GEOS-Chem OH fields is: Bey I, Jacob DJ, Yantosca RM, et al.: J. Geophys. Res., 106, 19, 23073-23095, 2001. We have added this reference to the manuscript.

- P10, 124: Here you state that the initial mixing ratios are calculated at a monthly temporal resolution. Again I have some difficulties to bring the different time resolutions together: monthly mean prior fluxes and initial fields, 10-days backward trajectories released every 3 hours, results compared to in-situ measurements. This approach certainly reduces uncertainties resulting from shortcomings in the representation of the chemical sink, the dry soil uptake, mixing processes, etc., which would become more important over a longer simulation period. However, it also neglects short-term variations that are visible in the observational data, e.g. in Fig. 4. Does that have an impact on your inversion results or not, because you are looking at total emissions over a month? My question probably reflects my limited knowledge of the FLEXINVERT framework.

To answer this question we explain briefly how our inversion method works but for a detailed description please see sections 2.1, 2.4 and 2.5 of the manuscript (and also Thompson and Stohl, GMD, 2014).

Our transport model, FLEXPART, represents the atmospheric transport at 3-hourly intervals and reproduces the short-term variations in the observational data very well (see Fig. 1 of the supplement). Please note that we do account for atmospheric mixing, the soil uptake of CH₄, as well as the CH₄ loss from oxidation by OH. With the prior fluxes, we achieve $R^2 > 0.3$ for the comparison of the modeled and observed mixing ratios using the daily afternoon averages (this is at all sites except CHM and ESP which have very low variability). All observations in a given month (on average about 300 observations) are used to optimize the fluxes in that month. This gives the average monthly fluxes a posteriori (the prior and posterior flux resolution is the same). We assume that the fluxes are not changing substantially over the

course of one month, and at the spatial scale of the fluxes (1×1 degree) this is a reasonable assumption. In summary, we do not neglect short-term variations in the observations at all.

- P13, 15-7: *I do not understand this sentence. Please re-formulate.*

We have reformulated this sentence.

- P13, 114/15: *Does the low bias in the prior mixing ratios indicate any flaws in the method used for calculating the initial and background mixing ratios?*

Please note that we discuss here normalized standard deviation (NSD) and not bias. The NSD is generally less than one, indicating that the prior modeled mixing ratios have less variability than the observations. Since the variability is largely due to the influence of fluxes within the domain (and considering that the prior model has a reasonably good correlation with the observations of $R^2 > 0.3$), the low NSD cannot be explained by errors in the background mixing ratios.

- P14, 14-5: *On page 13 you state that the comparison of the inversion results with independent observations is a better indicator for the performance of the inversion than the Taylor diagrams shown in Fig. 5. Figure 6 shows at two out of three independent sites only a modest improvement, which by the way is hard to see from Figure 6 (you might want to change the color scale). What does that mean for the quality of the inversion? Any explanation for that? Please comment on this.*

Of the three independent sites (i.e. not included in the inversion) we see some improvement at all sites but especially at ETL where the correlation improved from $R^2 = 0.33$ to 0.37. The other two sites, PFA and ESP, are less sensitive to the fluxes in the domain (ESP is a coastal site and PFA is not in an area where there are significant fluxes), hence we do not expect to see a big change in the modeled mixing ratios at these sites with posterior fluxes. Unfortunately, there are not very many observations in the high latitudes, so we chose to include almost all data in the inversion, leaving only these sites for the validation. We also looked at HIPPO aircraft data but found that these were not sensitive enough to the fluxes to be useful for the validation (HIPPO measurements were made over the northern Pacific Ocean and in the mid to upper troposphere).

- P14, 129: *How is the uncertainty in each grid cell defined? Is prior calculated as defined on page 9, line 9-10?*

The calculation of the prior uncertainty for each grid-cell is described on page 9 lines 8-14. The posterior uncertainty for each grid-cell is calculated as the 1-sigma standard deviation of all inversion results in a Monte Carlo ensemble (see page 5 lines 25-26).

- P15, 11/2: *Why is the largest uncertainty reduction found in Europe, western Siberia and Canada? Please comment on this.*

This is because these are the regions with the most observations, i.e., with the strongest constraint (see Fig. 1 and Fig. 2a).

- P15, discussion of Fig. 9: *The posterior fluxes in Fig. 9 show several secondary maxima in the annual cycle. On page 19, 122/23 you mention a small secondary peak in March. Is this*

the same feature as seen in Fig. 9? It would be great if you could comment on these peaks or at least refer to the later discussion.

Yes, the secondary maxima in spring (Fig. 9) are the same feature seen for North Eurasia (and more distinctly for WSL) in Fig. 11. In Fig. 9, there also appears to be a secondary spring maximum in North America for some years (e.g. 2008 and 2009) but this does not appear in the mean seasonal cycle for North America. We have now added a reference on page 15 to the discussion on page 19.

- Sect. 4.1: The discussion here is rather lengthy and it is hard to keep an overview over the various studies and flux estimates. I would prefer to see a table or a figure, e.g. a bar chart, summarizing the various inversion results.

We have included a new table (in the revision this is Table 4) to summarize our main results, and we have shortened the discussion somewhat.

- Sect. 4.2: I would suggest to merge this section with Sect. 4.1 to make the discussion a bit shorter and therefore clearer.

We have considered your suggestion to combine these two sections, but we rather prefer to keep these separated as we think it is easier for the reader to follow when the discussion is separated under different sub-headings. We have in any case shortened the discussion.

- P21, 131-32: Are the wetland models LPX-Bern and LPJ-DGVM also driven by ECMWF EI data? I remember that some of these models are driven by CRU data. In that case it might be misleading to explain the increase in the wetland source by an increase in soil moisture found in EI data.

LPX-Bern is driven by CRU climate data and LPJ-DGVM uses monthly mean meteorology and is a climatology. Regardless of which prior flux estimate we use, the inversions indicate that the fluxes are increasing over the period 2005 – 2013. This increase is obviously not seen in LPJ-DGVM (it is a climatology) and it is also not seen in LPX-Bern. On page 21, we hypothesize that the trend in northern North America and the HBL, as found by the inversion, could be due to an increase in soil temperature, while the increase in northern Europe could be due to an increase in soil moisture. ECMWF EI data show an increase in soil temperature in northern North America and an increase in soil moisture in northern Europe.

- Table 1: I would like to see the numbers for the region of $>50_N$ as well.

We have added the numbers for the region $>50^\circ\text{N}$ to Table 2 (note: we think the reviewer rather refers to Table 2).

- Table 3: There is only one reference to Table 3 in the text, discussing the lower cost of the prior flux estimate in S2 compared to the other priors. The other values given in the table are not discussed. Is this table really necessary? And what is actually listed in Table 3? How is the cost defined? Does it come with any units?

We agree that Table 3 is not necessary in the manuscript and we have now moved it to the supplement. The cost is the value of the cost function (see Eq. 1) and quantifies the mismatch between modeled and observed mixing ratios as well as the prior and posterior fluxes. The

cost is unitless.

- Fig. 7 and Fig. 10: I think the color scale could be improved, especially for the difference plots. It is hard to distinguish the different bluish shades.

We have changed the colour scale for the plots of the differences between posterior and prior fluxes (Fig. 7 and Fig. 10) as we agree that in these figures the variations in the blue colours were not so clear.

Review 2

We thank the reviewer for his/her thoughtful and constructive comments and we reply to each of these below.

General comments

This manuscript is a well-written, clearly presented description of an inverse modeling study focussing on high latitude sites. Other studies have focussed on this region, but this study is unique for the collection of sites used in the inversion, as well as the significant time period covered in the inversion. It also has somewhat higher spatial resolution than what is commonly used for global inversion studies, making use of different grid resolutions to reflect the measurements constraint on the fluxes for different regions. The combination of the extensive collection of measurements employed, the still uncertain and hotly contested topic of the (Arctic) methane budget, and the inversion approach make this study appropriate in terms of content for ACP. The results are interesting, and can be used to evaluate the performance of wetland models, and point to potential shortcomings of the anthropogenic emission inventories. Overall the manuscript is very well presented, although the discussion does run a bit long. (I support the previous reviewer's suggestion to summarize the key results in a table if possible, and condense the text somewhat.) I have only a few relatively minor suggestions, as outlined below.

Following the first reviewer's suggestion, we have added a table summarizing the main results (Table 4 in the revised manuscript). We have also shortened the discussion section.

Why was GFED3 at 0.5 degree/monthly resolution used? There are certainly newer versions of GFED, and temporal resolutions of higher than monthly are the norm now. (The emissions from GFED are still given at monthly resolution, but there are daily and even 3-hourly fields to scale the monthly emissions appropriately.) When trying to capture the synoptic scale variability in methane fluxes, it really does make a difference if the fire burned on July 1-5 vs. July 20-25, which at this point you're neglecting. Because the fire flux is of a relatively small term in your budget the impact is likely not critical, but it is an easily rectifiable methodological shortcoming. If not for this study, than certainly for future work.

When we commenced this study GFED3 was the most recent dataset available for fire emissions and GFED4 and GFED4s were released later. As the reviewer mentions, fires are a relatively small source of CH₄ for the Arctic region, therefore, using a more recent dataset in the prior emissions estimate would not make any notable difference to the results, especially considering that we find little sensitivity of the posterior fluxes to the prior estimate, as shown by the comparison of scenarios S1 and S2. As for using daily, or higher temporal resolution,

estimates, if the timing of the emissions is correct in the prior estimate, then a better a priori fit to the observations may be achieved, however, if the timing is wrong, then the fit may actually deteriorate compared to the lower temporal resolution prior estimate.

In Figure 2 (and in the model in general), is this sensitivity shown only for the lowest model level? Or is the addition from fluxes from other grid boxes within the PBL included?

The emission sensitivity is shown for the lowest level, i.e., 0 – 400 m. All fluxes are assumed to occur in this layer.

Figure 5 rather underwhelms in terms of improvements through inversion, however Figure 6 shows (for one set of independent data) a clear improvement in the bias from prior to posterior. Would it be possible to include the mean or median bias per site in Figure 5? This can be done with, for instance, the size of the marker. It would be interesting to see if this was the case for other stations as well, which would help support the argument that the posterior is a significant improvement on the prior, and the flux corrections are really robust.

We have added the mean error in a table in the Supplementary Information (Table 2). We decided not to include this information in Figure 5 (in the revised manuscript this is Figure 6) as we thought that this would not be clearly visible from the size of the points.

P11, L35: I think the section starting with "For other continental sites..." should go immediately after the previous paragraph i.e. the comment about the IGR representation error should come later. Or at least remind the reader what "this criterion" is, as it doesn't follow clearly as it's written now.

We have moved the section starting with "For other continental sites" to directly below the previous paragraph and the sentence about IGR to the end of the paragraph.

The citation to (Winderlich 2010) is incorrect.

We have corrected this citation.

There are several full references missing the full stop.

We have added the full stops

Methane fluxes in the high northern latitudes for 2005 – 2013 estimated using a Bayesian atmospheric inversion

Rona L. Thompson¹, Motoki Sasakawa², Toshinobu Machida², Tuula Aalto³, Doug Worthy⁴,
5 Jost V. Lavric^{5,6}, Cathrine Lund Myhre¹ and Andreas Stohl¹

¹NILU - Norwegian Institute for Air Research, Kjeller, Norway

²National Institute for Environmental Studies, Tsukuba, Japan

³Finnish Meteorological Institute (FMI), Helsinki, Finland

10 ⁴Environment Canada, Toronto, Canada

⁵Max Planck Institute for Biogeochemistry, Jena, Germany

⁶Integrated Carbon Observation System (ICOS), ERIC Head Office, Helsinki, Finland

Corresponding author: R. L. Thompson (rlt@nilu.no)

15

Abstract

We present methane (CH₄) flux estimates for 2005 to 2013 from a Bayesian inversion focusing on the high northern latitudes (north of 50°N). Our inversion is based on atmospheric transport modelled by the Lagrangian particle dispersion model, FLEXPART, and CH₄ observations from 17 in-situ and 5 discrete flask-sampling sites distributed over northern North America and Eurasia. CH₄ fluxes are determined at monthly temporal resolution and on a variable grid with maximum resolution of 1° × 1°. Our inversion finds a CH₄ source from the high northern latitudes of 82 to 84 Tg y⁻¹, constituting ~15% of the global total, compared to 64 to 68 Tg y⁻¹ (~12%) in the prior estimates. For northern North
20 America, we estimate a mean source of 16.6 to 17.9 Tg y⁻¹, which is dominated by fluxes in the Hudson Bay Lowlands (HBL) and western Canada, specifically, the province of Alberta. Our estimate for the HBL, of 2.7 to 3.4 Tg y⁻¹, is close to the prior estimate (which includes wetland fluxes from the land surface model, LPX-Bern) and to other independent inversion estimates. However, our estimate for Alberta, of 5.0 to 5.8 Tg y⁻¹ is significantly higher than
30 the prior (which also includes anthropogenic sources from the EDGAR-4.2FT2010 inventory). Since the fluxes from this region persist throughout the winter, this may signify that the anthropogenic emissions are underestimated. For North Eurasia, we find a mean source of 52.2 to 55.5 Tg y⁻¹, with a strong contribution from fluxes in the Western Siberian Lowlands

(WSL) for which we estimate a source of 19.3 to 19.9 Tg y⁻¹. Over the 9-year inversion period, we find significant year-to-year variations in the fluxes, which in North America and, specifically, in the HBL appear to be driven at least in part by soil temperature, while in the WSL, the variability is more dependent on soil moisture. Moreover, we find significant positive trends in the CH₄ fluxes in North America of 0.38 to 0.57 Tg y⁻², and North Eurasia of 0.76 to 1.09 Tg y⁻². In North America, this could be due to an increase in soil temperature, while in North Eurasia, specifically, Russia, the trend is likely due, at least in part, to an increase in anthropogenic sources.

10 **Keywords:** methane, emissions, wetlands, atmospheric transport modelling, atmospheric inversion, Arctic, boreal.

1. Introduction

Atmospheric methane (CH₄) increased globally during the 20th century, from a pre-industrial value of approximately 722 ppb (Etheridge et al. 1998) to 1773 ppb in 1999 (Kirschke et al. 2013), largely due to an increase in anthropogenic sources. The upward trend was interrupted between 1999 and 2006, when the atmospheric growth rate of CH₄ was close to zero but resumed again around 2007 (Dlugokencky et al. 2011; Kirschke et al. 2013; Nisbet et al. 2014) and, in 2014, the growth rate was substantially faster (12.5 ppb y⁻¹) than in any other year since 2007 (Nisbet et al. 2016). Changes in the atmospheric growth rate indicate changes in the balance of CH₄ sources and sinks, however, the cause of the 1999-2006 stabilization and subsequent rise in atmospheric CH₄, and its attribution to different sources is still not fully resolved (Nisbet et al. 2014).

25 The main CH₄ sources are either biogenic such as wetlands, rice-paddies, landfills and enteric fermentation, thermogenic such as fossil fuels, geological seeps and mud volcanoes or pyrogenic such as the combustion of fossil and bio fuel and biomass (Kirschke et al. 2013, and references therein). Different combinations of sources, particularly, wetlands, fossil fuels, and enteric fermentation have been proposed as the reason for the rise of atmospheric CH₄ since 2007 (Kirschke et al. 2013; Schaefer et al. 2016; Nisbet et al. 2016). Studies using atmospheric observations in global inversion models have pointed to an increase in tropical wetland emissions as well as in anthropogenic sources, especially fossil fuels, in the temperate northern hemisphere after 2006 (Bruhwiler et al. 2014; Bergamaschi et al. 2013). However, anomalously high temperatures in the Arctic in 2007 are thought to have also

Rona Thompson 28/12/2016 16:19

Deleted: 11

Rona Thompson 28/12/2016 16:19

Deleted: <http://www.esrl.noaa.gov/gmd/aggi/aggi.html>

resulted in higher wetland emissions and, consequently, contributed to the high growth rate of CH₄ in the same year (Dlugokencky et al. 2009; Bousquet et al. 2011; Rigby et al. 2008).

5 In recent decades, the high latitudes have warmed substantially with temperatures in the Arctic increasing at an average rate of 0.38°C per decade (Chylek et al. 2009) and the changing climate may have a considerable impact on CH₄ sources (Bridgham et al. 2013; AMAP, 2015). The northern high latitudes contain about 44% of the world's natural wetlands (Lehner and Döll, 2004) and contribute about 24 Tg y⁻¹, equivalently 26%, to the global natural wetland source of CH₄ (Cao et al. 1998). Temperature can impact wetland sources of
10 CH₄ directly, by influencing the metabolic rate of methanogens (Christensen et al. 2003; Christensen et al. 1996), and indirectly, via permafrost melt and changes to the water table depth, snow cover, and evapotranspiration (Bohn et al. 2007). Other climatic changes in the Arctic, such as increasing sea temperature and sea-ice loss (Stroeve et al. 2007) may also increase the source of CH₄ through possible destabilization of methane hydrates in ocean
15 sediments (e.g. Shakhova et al. 2010; Biastoch et al. 2011). In addition to natural sources, the oil and gas industries are particularly important sources in the high northern latitudes, especially in Russia where 20% of the world's natural gas is produced. With an estimated leak rate of 1 to 10% of gas production (Hayhoe et al. 2002) this would release 3.5 to 35 Tg y⁻¹ of CH₄. Given the rapid rate of climate change in the high latitudes and possible future
20 expansion of anthropogenic activities in the Arctic it is imperative to have accurate estimates of present-day CH₄ emissions, to better understand their natural variability, and to establish any trend.

Atmospheric observations can place a mass balance constraint on emissions and, since they
25 are available quasi-continuously over time scales of several years, can be used to examine inter-annual variations and trends. This method is formalized in atmospheric inversions in which fluxes are found by minimizing a cost function that includes the comparison of the observations and mixing ratios modeled from a prior estimate of the fluxes using a model of atmospheric transport (e.g. Enting, 2002). Until relatively recently, however, atmospheric
30 constraints on CH₄ emissions in the high northern latitudes were limited by the scarcity of observations in this region. Until the early 2000s, the ground-based network north of 50°N was limited to about ten discrete sampling sites and three sites with quasi-continuous monitoring (i.e., Barrow in Alaska, and Alert and Fraserdale in Canada). Satellite data in this region are also limited. Satellite measurements of CH₄ are made using either thermal infrared

(TIR) sounders, such as IASI, or near-infrared (NIR) measurements, such as by the SCIAMACHY instrument (onboard ENVISAT, 2003 – 2012) and the TANSO instrument (onboard GOSAT, since 2009). However, NIR measurements are limited to the summer and the availability of data is further reduced owing to filtering for aerosols and cloud cover. On the other hand, TIR measurements from IASI have lower sensitivity to near surface concentrations compared to TANSO or SCIAMACHY and have particularly large biases in the high latitudes (Xiong et al. 2013). Therefore, satellite observations of CH₄ from latitudes higher than 50° are presently not included in global atmospheric inversions (e.g. Bergamaschi et al. 2013; Houweling et al. 2014; Alexe et al. 2015; Monteil et al. 2013).

10

The observation coverage, however, has recently improved with the establishment of JR-STATION (Japan-Russia Siberian Tall Tower Inland Observation Network) (Sasakawa et al. 2010) and the Zotino Tall Tower Observatory (ZOTTO) (Winderlich et al. 2010) in Siberia, the Pallas station in Finland (Aalto et al. 2007), and the Environment Canada (EC) network in Canada (Worthy et al. 2003) (see Fig. 1). Some of the data from these networks/sites have been included in previous inversion studies, however, only with limited spatial and temporal coverage: the JR-STATION observations have been used in an inversion focusing on the Siberian lowlands in the year 2010 (Berchet et al. 2015) and the EC observations have been used in an inversion focusing on Canada and the US for 2007 and 2008 (Miller et al. 2014; Miller et al. 2016). We combine observations from all these new networks and stations in an atmospheric inversion for CH₄ focusing on the entire region north of 50°N, and over the period 2005 to 2013, when most observations are available. With the observational constraint of these data, a more accurate estimate of high latitude fluxes and their inter-annual variability is possible compared to earlier estimates, for which much of these data were not available (e.g. Bruhwiler et al. 2014; Bergamaschi et al. 2013).

25

In section 2, we present an overview of the inversion method and a description of its various components, including the observations, the atmospheric transport modelling, and the a priori fluxes. In Section 3, we analyse the performance of the inversions and compare the results to independent observations, i.e., data not used in the inversion. Section 4 discusses the spatial and temporal variability of the a posteriori fluxes and evidence for trends.

30

2. Methodology

2.1 Overview of the inversion framework

In this study we use the Bayesian inversion framework, FLEXINVERT, which is based on the Lagrangian particle dispersion model, FLEXPART (Stohl 1998; Stohl et al. 2005), and is fully described in Thompson and Stohl (2014) and has been previously used for CH₄ inversions (Thompson et al. 2015). FLEXINVERT uses so-called flux sensitivities (or source-receptor relationships) calculated by FLEXPART, which describe the relationship between a flux over a given area and time interval, and the associated change in atmospheric mixing ratio (in this case of CH₄) at another time and location (see section 2.2). FLEXINVERT finds the optimal CH₄ fluxes by minimizing the mismatch between modelled and observed mixing ratios with a constraint imposed by prior information and its uncertainty. This is described by the cost function:

$$J(\mathbf{x}) = \frac{1}{2}(\mathbf{x} - \mathbf{x}_b)^T \mathbf{B}^{-1}(\mathbf{x} - \mathbf{x}_b) + \frac{1}{2}(\mathbf{y} - \mathbf{H}\mathbf{x})^T \mathbf{R}^{-1}(\mathbf{y} - \mathbf{H}\mathbf{x}) \quad (1)$$

where \mathbf{x}_b and \mathbf{x} are respectively the prior and posterior state vectors of surface fluxes and \mathbf{H} is a Jacobian matrix of flux sensitivities, which relates the fluxes to the observed mixing ratios, \mathbf{y} . The observation-model and posterior-prior flux mismatches are weighted by their uncertainties, described by the error covariance matrices, \mathbf{R} and \mathbf{B} , respectively. The optimized state vector is found by solving the first order derivative of the cost function:

$$J'(\mathbf{x}) = \mathbf{B}^{-1}(\mathbf{x} - \mathbf{x}_b) - \mathbf{H}^T \mathbf{R}^{-1}(\mathbf{y} - \mathbf{H}\mathbf{x}) = 0 \quad (2)$$

FLEXINVERT takes advantage of the fact that in this case \mathbf{H} is a matrix operator and solves Eq. 2 directly (i.e., analytically).

The second order derivative of the cost function is equal to the reciprocal of the posterior uncertainty. Although, this could be used to calculate the posterior uncertainty, we find for our inversion framework that this leads to an underestimate of the uncertainty. This is because the matrix \mathbf{B} is not stored in computer memory but rather its Eigen decomposition with truncation of the smallest 0.01% of eigenvalues and their corresponding eigenvectors. For this reason, we use a Monte Carlo approach to calculate the posterior uncertainty following Chevallier et al. (2005).

We optimize the fluxes at monthly temporal resolution and on a grid of varying spatial resolution (with a finest resolution of $1^\circ \times 1^\circ$, see section 2.4 and Fig. 2) over the period 2005 to 2013. The various components of the inversion framework are described in the following sections.

2.2 Atmospheric observations

In this study, we make use of relatively new stations measuring CH₄ dry-air mole fractions (units of nmol mol⁻¹ or parts per billion, ppb) established in Siberia, Europe, and Canada (see Fig. 1 and Table 1). The JR-STATION network was established in 2004 and has expanded to a total of 9 tall tower sites with in-situ measurements of CH₄ (Sasakawa et al. 2010). Measurements of CH₄ are made using a semi-conductor sensor based on a tin dioxide natural gas leak detector that was developed for atmospheric measurements by Suto and Inoue (2010). The measurements have a repeatability of 3 ppb and are reported on the NIES-94 scale. The tall towers have two sampling inlets at different heights, each of which is sampled for 20 minutes during a 1-hour period (Sasakawa et al. 2010). In this study we use observations from seven towers and only from the upper inlets, which have heights between 43 and 85 metres above ground level (magl). Three towers (KRS, DEM, and NOY) are surrounded by taiga forest and wetlands. The IGR tower is located in a small town (population ~10,000) by the Ob River and is also surrounded by wetlands, the AZV and VGN towers are located in steppe regions, and the YAK tower is located in the East Siberian Taiga (for details see Sasakawa et al. 2010).

EC established two in-situ measurement sites more than 20 years ago, ALT and FSD, but since the early 2000s the network has expanded considerably. In this study, we include 6 sites, which have records of at least 4 years. Throughout most of this study, the measurements were made with approximately hourly resolution using Gas Chromatographs equipped with Flame Ionisation Detectors (GC-FID) and are reported on the WMOX2004 scale. However, at LLB and FSD the GC-FID instruments were replaced by Cavity Ring-Down Spectroscopy (CRDS) instruments in 2012 and 2013, respectively. FSD is located on the southern perimeter of the Hudson Bay Lowland and is surrounded by boreal forest and the closest town is approximately 70 km away (population of ~2500). CDL is in the province of Saskatchewan and is also surrounded by boreal forest and the closest town is 100 km away (population of ~35,000). ETL was established to replace CDL, which was discontinued in 2008. ETL is located 40 km away from CDL at the site of a 106 m high communication tower (compared to the 28 m high tower at CDL) and is also surrounded by boreal forest. LLB is located in a region of peatland and boreal forest in the province of Alberta and is approximately 200 km away from the city of Edmonton (population ~800,000). CHM is located in a boreal forest in eastern Canada in a cool humid climate. CHL is located on the southern coast of the Hudson

Bay with boreal forest to the south and Arctic tundra to the northwest. Flask-air sampling began at CHL in May 2007 and in-situ measurements in October 2011.

5 The Pallas station is located in northern Finland in an area of wetlands with some lakes and patches of forest (Aalto et al. 2007). Continuous CH₄ measurements have been made from 2004 to 2009 using a GC-FID instrument and, since 2009, using a CRDS instrument. The data are reported on the WMOX2004 scale and have an average repeatability of 1.5 ppb. Air is sampled from an inlet at 7 magl.

10 ZOTTO (<http://www.zottoproject.org/>) is a tall tower site surrounded by light taiga forest interspersed with bogs and has a CH₄ time series available since 2009 (Winderlich *et al.* 2010). The measurements are made using a CRDS instrument and buffer volumes on each sample line, which allows a continuous, near-concurrent measurement of air from six heights. For this study, we use data from the uppermost level at 301 magl. Data from each height are
15 reported at circa 20-minute intervals on the WMOX2004 scale with a repeatability of 0.3 ppb (Winderlich *et al.* 2010).

The Zeppelin observatory is located on a mountaintop on the island of Spitsbergen (the largest island of Svalbard) and has a CH₄ record dating from 2001. Methane measurements
20 were made using a GC-FID until April 2012 and were reported hourly with a repeatability of 3 ppb (from 2004 to 2012). In April 2012, the GC-FID was replaced by a CRDS instrument and data since then are reported with a repeatability of 0.2 ppb at 1-minute time resolution. Up until spring 2011, air was sampled from 2 m above the roof at the Zeppelin observatory and from then on, from a 15 m-tall mast. The whole time series from August 2001 has been
25 reprocessed as a part of the harmonisation of historic concentration measurements within the European Commission FP7 project, InGOS (<http://www.ingos-infrastructure.eu/>).

The NOAA flask-air sampling network includes eight sites north of 50°N (Dlugokencky et al. 2015). In this study, we use five of these sites that sample predominantly background air to
30 define the initial mixing ratios (see section 2.5) and the remaining three sites (BAL, CBA, and TIK) are used in the inversion. Discrete samples in the NOAA network are taken at approximately weekly frequency and are analysed in a central laboratory using a GC-FID. The concentrations are reported on the WMOX2004 scale and have a long-term repeatability of 2 ppb.

All data were adjusted to the WMOX2004 scale using the results of the World Meteorological Organisation Round Robin Comparison Experiment (<http://www.esrl.noaa.gov/gmd/ccgg/wmorr/>). We assimilated the in-situ observations as daily afternoon (between 12:00 and 16:00 local time) averages and the discrete observations without data selection or averaging as these samples are normally taken during daytime when the boundary layer is well mixed. Further data selection is performed on the in-situ observations and is discussed in section 2.6.

10 2.3 Prior information

For wetland fluxes, we compare estimates from two different land surface models (Fig. 3). The first is the LPX-Bern model (Land Surface Processes and Exchanges model of the University of Bern) (Spahni et al. 2013). LPX-Bern calculates CH₄ fluxes monthly at 1°×1° resolution for peatlands, inundated wetlands, wet and dry mineral soils, and rice paddies.

15 LPX-Bern is driven by CRU climate data (version TS-3.23, <https://crudata.uea.ac.uk/cru/data/hrg/>) and the wetland fraction and water table depth in each grid cell are calculated dynamically using the DYPTOP model (DYNAMICAL Peatland model based on TOPmodel) (Stocker et al. 2014). The second model is LPJ-DGVM (Lund-Potsdam-Jena Dynamic Global Vegetation Model; Bergamaschi et al. 2007). LPJ-DGVM uses monthly mean temperature, cloud fraction and total precipitation, as well as a fixed wetland area based on land-cover maps (Bergamaschi et al. 2007). In LPJ-DGVM substrate availability for methanogenesis is represented as the total soil respiration rate, which integrates the fast-turnover soil organic matter pool and soil temperature, and the water table depth is based on soil moisture (Bergamaschi et al. 2007). LPJ-DGVM calculates monthly CH₄ fluxes at 1°×1° resolution for inundated wetlands, wet soils and peatlands, but does not calculate the uptake of CH₄ by dry soils or the emissions from rice paddies. For the dry soil flux of CH₄, we use the monthly climatology of Ridgwell et al. (1999) (also at 1°×1° resolution), which has a similar seasonality and magnitude to that in LPX-Bern, with maximum uptake in July. For rice paddies, we use the estimate from the Emissions Database for Global Atmospheric Research (EDGAR-v4.2 FT2010, from hereon, EDGAR) with monthly emission factors from Matthews et al. (1991).

For the anthropogenic sources, which include emissions from enteric fermentation in domestic animals, oil, gas and coal exploitation, and landfills, we use annual estimates from

- Rona Thompson 13/2/2017 10:16
Formatted: Highlight
- Rona Thompson 13/2/2017 10:16
Formatted: Highlight
- Rona Thompson 13/2/2017 10:15
Deleted: T
- Rona Thompson 13/2/2017 10:16
Formatted: Highlight
- Rona Thompson 13/2/2017 10:18
Formatted: Highlight

- Rona Thompson 13/2/2017 10:13
Formatted: Highlight
- Rona Thompson 13/2/2017 10:07
Deleted: and f

EDGAR, which are provided at $0.1^\circ \times 0.1^\circ$ resolution. Since EDGAR is only available up to 2010, we used the 2010 emissions also for the years 2011 to 2013. Estimates of emissions from biomass burning were taken from the Global Fire Emissions Database (GFED-v3) (van der Werf et al. 2010), which are provided at monthly and at $0.5^\circ \times 0.5^\circ$ resolution. For ocean fluxes of CH_4 , we use the monthly climatology at $1^\circ \times 1^\circ$ resolution from Lambert and Schmidt (1993) and for the emissions from wild ruminant animals and termites, we use the monthly climatologies of Houweling et al. (1999) and Sanderson et al. (1996), respectively, both at $1^\circ \times 1^\circ$ resolution. The different soil flux estimates, i.e., LPX-Bern and LPJ-DGVM, form the basis of two different prior fluxes and, correspondingly, inversion scenarios, S1 and S2 (for an overview of the prior fluxes, see Table 2).

Prior flux uncertainties were calculated as 50% of the flux in each grid cell with minimum and maximum values of 1×10^{-12} and $1 \times 10^{-6} \text{ kg m}^{-2} \text{ h}^{-1}$, respectively. The prior flux error covariance matrix, \mathbf{B} , was calculated as the Kronecker product of the temporal and spatial covariance matrices, which were calculated using an exponential decay model and a temporal scale length of 90 days and spatial scale lengths of 500 km over land and 2000 km over ocean. The square root of the sum of all elements in the error covariance matrix was scaled to 15 Tg y^{-1} , representing $\sim 25\%$ of the total area integrated flux in the domain.

2.4 Flux sensitivities

The flux sensitivities are calculated using the backwards mode of FLEXPART, in which virtual particles are followed backwards in time from the observation times and locations (from hereon referred to as “receptors”). At 3-hourly intervals, 10000 virtual particles were released and followed backwards in time for 10 days to any point on the globe. Ten days was considered an appropriate time scale since after several days backwards in time the particles are well dispersed (well mixed) and the influence of fluxes from a specific location becomes very small. Flux sensitivities are calculated as proportional to the average residence time of P back-trajectories in a given grid cell in the model layer 0 – 400 m and time step (i, n) :

$$\frac{\partial y}{\partial x} = \frac{1}{P} \sum_{p=1}^P \frac{\Delta t'_{i,p,n}}{\rho_{p,n}} \quad (3)$$

where $\rho_{i,n}$ is the air density and $\Delta t'_{i,p,n}$ is the residence time of trajectory p in the spatio-temporal grid cell (i, n) (for details see Seibert and Frank 2004). FLEXPART simulations were made using European Centre for Medium-Range Weather Forecasts ERA-Interim (ECMWF EI) meteorological analyses with a 12-hour analysis window and a spatial

Rona Thompson 28/12/2016 16:31
Deleted: correlation

Rona Thompson 13/2/2017 10:24
Formatted: Highlight

Rona Thompson 13/2/2017 10:38
Formatted: Highlight

5 resolution of approximately 80 km (T255) on 60 vertical levels. The analyses were gridded to
1.0° × 1.0° and interpolated to 3-hourly fields. EI was chosen over the higher resolution
operational data because of its long-term consistency. Loss of CH₄ due to oxidation by OH
radicals was also calculated along the trajectories using pre-calculated OH fields from the
5 | GEOS-Chem model (Bey et al. 2001). However, over the 10-day calculation period the loss is
generally small, i.e., ~1 ppb.

10 The average flux sensitivity of all receptors over the year 2009 is used to define a grid of
varying spatial resolution for the inversion (the grid was kept constant throughout the 9-year
inversion). This grid has maximum resolution of 1.0° × 1.0° in regions where there is a strong
contribution from fluxes to the change in CH₄ mixing ratios at the measurement sites and
decreasing resolution in steps of factor two up to 8.0° × 8.0° in regions where there is only a
weak contribution (Thompson and Stohl 2014; Stohl et al. 2010) (Fig 2.). In this way, the
number of state variables is reduced without significantly increasing the aggregation error.

15 The flux sensitivities are calculated globally but only those north of 50°N are used to optimize
the fluxes. Sensitivities to surface fluxes outside this domain are generally low; however, we
calculate their contribution to the change in mixing ratio at each observation time and location
by integrating the product of flux sensitivity and prior fluxes outside the domain, following
20 Thompson and Stohl (2014). This is in addition to the contribution from mixing ratios at the
termination points of the virtual particles, i.e. 10 days before the observation was made (the
definition of these *initial* mixing ratios is discussed in section 2.5).

2.5 Initial and background mixing ratios

25 Since the Lagrangian simulations only account for changes in mixing ratios due to fluxes up
to 10 days before an observation was made, we need to provide an estimate for the
contribution prior to that, i.e., the *background* mixing ratio. The background mixing ratios
were calculated by coupling FLEXPART to *initial* mixing ratio fields according to the
method of Thompson and Stohl (2014). Initial mixing ratio fields were calculated for the
30 global troposphere, at monthly temporal and 10° longitude by 5° latitude spatial resolution,
using a bivariate interpolation of flask-air samples in the NOAA network (Fig. 4a.). We used
flask-air samples with approximately weekly frequency from 98 sites globally (note that none
of the sites used to determine the initial mixing ratios were used in the inversion). Before
being used in the interpolation, the time series from each site was filtered for short-lived

Rona Thompson 16/11/2016 16:21
Deleted: 3

signals (of less than one week) using a local regression method (Ruckstuhl et al. 2012) and gaps of more than one month were filled using a four harmonic plus second order polynomial function fitted to the whole time series. For the lower and mid stratosphere, we used mixing ratio fields from the TM5 model (Bergamaschi et al. 2015).

5

The contribution of the initial mixing ratios to the mixing ratio at a given observation time and location, i.e., the *background* mixing ratio, was calculated using the 3-hourly FLEXPART back-trajectories. The background mixing ratio is equal to the weighted average of the initial mixing ratios in the grid cells where the back-trajectories terminated 10 days prior to the observation. Figure 4b shows an example of the sensitivity to the initial mixing ratios calculated for the site IGR for January 2009. The background mixing ratio at each site is shown in the Supplementary Information Fig. 1.

10

2.6 Data selection and observation uncertainties

15

Many of the sites used in the inversion are located in the interior of a continent and at high latitude. At such locations, low wind speeds and strong surface-based temperature inversions can occur in winter. Under these conditions, CH₄ from local sources can accumulate in shallow layers and atmospheric mixing ratios are extremely difficult to model, as they are very sensitive to errors in the planetary boundary layer (PBL) height and PBL mixing. To examine the impact of the shallow PBL on the simulated mixing ratios, we performed a test in FLEXPART in which the condition of a minimum PBL height of 100 m was removed (see Fig. 5). Interestingly, the simulations with no set minimum PBL height were very similar to those with a minimum of 100 m, indicating that the PBL height based on the meteorological reanalyses is greater than 100 m most of the time.

20

25

As the model representation errors for observations made during these very cold periods are very large and not normally distributed, we have applied data selection criteria to avoid assimilating these observations in the inversion. At all sites in the JR-STATION network, temperature is measured at two heights, with the lower level between 11 and 45 magl and the upper between 43 and 85 magl, and wind speed is measured at one height. We filtered observations for times when the vertical temperature gradient from the lower to upper level was positive, i.e., the upper level was warmer by at least 1°C, indicating atmospheric inversion conditions, and when the wind speed was below 3 ms⁻¹ (see Fig. 5). By applying these selection criteria, periods when very large positive excursions (of several hundred ppb)

30

Rona Thompson 13/2/2017 10:28
Formatted: Highlight

Rona Thompson 16/11/2016 16:21
Deleted: 3

Rona Thompson 16/11/2016 16:21
Deleted: 4

Rona Thompson 16/11/2016 16:21
Deleted: 4

were observed, but not captured by the model, were removed. For other continental sites outside the JR-STATION network the temperature was not available at two heights so this criterion could not be used. However, the estimated model representation errors are likely much smaller at these sites (see Supplementary Information Fig. 1). In the case of ZOT, this is due to the height of the air intake, at 301 magl, compared to only 43 to 85 magl in the JR-STATION network, while PAL is located on a hill (565 masl), and both sites are remote from towns or industry. The continental sites in the EC network, FSD, CDL, LLB and ETL, are also remote from major towns or industry. At the JR-STATION site, IGR, the model representation errors are likely the largest of all sites owing to the relatively low intake height of 47 magl and its location in a small town, meaning that there are emissions in its near field, which cannot be resolved in the model.

Uncertainties in the observation space included estimates for the uncertainty in the measurements and model representation. For the measurement uncertainty, we used a conservative estimate of 5 ppb, which is larger than the precision stated by the data providers to account for variations in the instrumental performance. For the model representation uncertainty we included estimates of the transport uncertainty for the transport within the inversion domain and for the background mixing ratios. These estimates were based on differences between FLEXPART simulations made using different meteorological reanalysis data, i.e., ECMWF EI versus NCEP FNL. Since it is computationally demanding to run all FLEXPART calculations twice, we only ran simulations with the two meteorological datasets for 2009 and calculated the mean daytime (12:00 to 16:00) errors for each site and month. This proxy can be considered a lower bound for the true transport uncertainties but provides an indication of the magnitude and spatiotemporal variability of these uncertainties. We estimated uncertainties for the transport within the domain of 2 to 65 ppb and for background mixing ratios of 2 to 22 ppb. The uncertainty is larger for continental sites and in the winter months as expected due to the challenges of representing the shallow PBL (see Supplementary Information Fig. 1 and 2). In addition to the transport uncertainties, we included an estimate of the temporal representation uncertainty that arises due to the averaging of observations to a daytime mean. This last uncertainty was estimated simply as one standard deviation of the daytime observations. The total uncertainty in the observation space was calculated as the square root of the quadratic sum of the measurement uncertainty and the three model representation uncertainties. We used the square of the observation uncertainty for the diagonal elements of the observation error covariance matrix and assumed

Rona Thompson 28/12/2016 14:34

Deleted: - ... [1]

Rona Thompson 28/12/2016 14:34

Moved down [1]: In the case of IGR, the model representation errors are likely the largest of all sites owing to the relatively low intake height of 47 magl and its location in a small town, meaning that there are emissions in its near field, which cannot be resolved in the model.

Rona Thompson 28/12/2016 14:34

Moved (insertion) [1]

Rona Thompson 28/12/2016 14:35

Deleted: In the case of

the off-diagonal elements to be zero, i.e., that there is no error correlation between observations. As we use mean daytime observations, this assumption is reasonable.

3. Results

5 3.1 Comparison of simulated and observed mixing ratios

We start with the comparison of the simulated and observed CH₄ mixing ratios, specifically, the comparison between simulations using different prior flux estimates. Figure 6 shows Taylor diagrams of the Pearson's correlation coefficient and normalized standard deviation (NSD) for scenarios using the two different prior estimates, i.e., S1 and S2, at each site. It is noteworthy that the mixing ratios modelled using the two different prior flux estimates are distinguishable at most sites, indicating that the observations at these sites are sensitive to small differences in fluxes in the domain. The correlation, a priori, is mostly higher than 0.3 except at the sites CHM and ESP, which have quite low variability and sensitivity to fluxes in the domain (see Supplementary Information Fig. 1b). In general, the NSD for both prior flux estimates is significantly less than one, indicating that the variability in the mixing ratios is underestimated. It is to some extent expected that NSD is underestimated owing to the limited spatiotemporal resolution of the fluxes; however, it is especially apparent for continental sites, e.g., LLB, ETL, IGR, KRS, YAK and ZOT. Supplementary Fig. 1 shows that the prior fluxes not only underestimate the variability at these sites but also that the prior mixing ratios have a low bias. Overall, the prior flux estimate in S2 (which include the LPJ-DGVM wetland emissions) gives a slightly closer fit to the observations as seen from the lower cost (see Supplementary Information Table 1).

A posteriori, the simulated mixing ratios from inversion scenarios S1 and S2 are almost indistinguishable and the difference in the cost between these inversions is small. Furthermore, the mixing ratio simulated with the posterior fluxes matches the observations significantly better than a priori, as expected, and the posterior observation-model mismatches are nearly normally distributed and mostly fall within the assumed uncertainty range of the observations (see Supplementary Information Fig. 3). The comparison of the fit to the observations a posteriori is not a sufficient indicator of the inversion performance as the closeness of the fit a posteriori depends on the weighting given to the observation-model and prior-posterior flux mismatches (see Eq. 1). A better indicator of the inversion performance is the comparison of the posterior simulated concentrations with observations that were not included in the inversion, i.e., independent observations. however, there is a trade-off between including all

Rona Thompson 16/11/2016 16:22

Deleted: 5

Rona Thompson 16/11/2016 14:36

Deleted: signifying that

Rona Thompson 16/11/2016 14:37

Deleted: are sensitive to differences between these

Rona Thompson 28/12/2016 16:38

Deleted: a

Rona Thompson 16/11/2016 16:32

Deleted: 3

Rona Thompson 13/2/2017 10:31

Formatted: Highlight

observations and leaving some out for an independent comparison. Figure 7 shows the comparison of the prior and posterior simulations from scenario S1 with observations from regular aircraft profiles at Poker Flats (PFA, 65.1°N, 147.3°W), Estevan Point (ESP, 49.4°N, 126.5°W) and East Trout Lake (ETL, 54.3°, 105°W). The comparison was made for three altitude levels, from 4 to 10 km, 1 to 4 km, and 0 to 1 km. Ground-based measurements at ESP and ETL were included in the inversion, therefore, the aircraft data at the lower level are not completely independent. Most notable is that the prior fluxes result in a low bias compared to observations at ETL throughout the inversion period, which is visible up to ~4 km (Fig. 7a). Using the posterior fluxes, this bias is reduced and the correlation increased from 0.33, a priori, to 0.37, a posteriori (Fig. 7b). At the other independent sites, PFA and ESP, there is only a modest improvement a posteriori versus a priori because these sites are less sensitive to the fluxes in the domain; ESP is a coastal site and PFA is not in an area where there are significant fluxes.

Rona Thompson 16/11/2016 16:22

Deleted: 6

Rona Thompson 16/11/2016 16:22

Deleted: 6

Rona Thompson 16/11/2016 16:23

Deleted: 6

Rona Thompson 13/2/2017 10:33

Formatted: Highlight

Rona Thompson 13/2/2017 10:33

Formatted: Highlight

3.2 Comparison of the posterior fluxes from different scenarios

In addition to the inversion scenarios S1 and S2, using different prior flux estimates, we included a scenario, S3, to test for the impact of the changing observation network with time. Scenario S3 uses the same prior fluxes as S1 but includes only sites with quasi-continuous records over the period of inversion (see Table 1 and Supplementary Information Fig. 4). Figure 8 shows the annual mean posterior fluxes, as well as the posterior-prior flux differences, obtained for scenarios S1, S2 and S3 (note we show only the result for 2009 as the other years were analogous). For all three scenarios, the posterior flux distribution is very similar with the largest fluxes in the vicinity of the Western Siberian Lowlands (WSL), Europe, western Canada, and around the Hudson Bay Lowlands (HBL). In addition, there are a number of hot spots, notably in Eastern Europe and Russia, which are anthropogenic emissions present in the EDGAR inventory and are largely unaltered by the inversions. The distribution of the flux increments (i.e., the posterior-prior flux difference) is also similar across the three scenarios. This is not unexpected for S1 and S3 (Fig. 8b and 8f) as they use the same prior estimates, but it is noteworthy that S2 shows the same pattern of positive increments in the WSL and Eastern Canada and negative increments in Europe and western Russia. One difference in S2 compared to S1 and S3 though, is the negative increment in the HBL area, which results from the higher prior estimate of the LPJ-DGVM model for wetland fluxes in this region (S1 and S3, which use the LPX-Bern wetland fluxes, show almost no change for the HBL area).

Rona Thompson 16/11/2016 16:23

Deleted: 7

Rona Thompson 16/11/2016 16:24

Deleted: 7

Rona Thompson 16/11/2016 16:24

Deleted: 7

Figure 9 shows the uncertainty reduction for scenarios S1 and S3 calculated as $1 - \sigma_{\text{post}} / \sigma_{\text{prior}}$ where σ is the uncertainty in each grid cell. Since S2 uses the same observations and prior uncertainty estimates as S1, the uncertainty reduction is equal to that of S1 and is, therefore, not shown. Scenarios S1 and S2 include 19 sites and a total of 3291 observations in 2009, compared to 12 sites and 2499 observations in S3. The impact of the additional sites of YAK, VGN, AZV and ZOT in S1 and S2 can be seen in the greater uncertainty reduction in Siberia, and that of the site CHL, in Canada. In all scenarios, however, the uncertainty reduction is greatest in Europe, western Siberia, and Canada but modest in eastern Siberia, Greenland and Alaska.

Figure 10 shows the area-integrated fluxes for northern North America (Canada and Alaska) and North Eurasia (Europe and Russia) from the three scenarios. For North America, there is a clear difference between the prior fluxes in the phase of the seasonal cycle and the summer maximum, which is due to the different models used for wetlands (i.e., LPX-Bern versus LPJ-DGVM). In contrast, there is no significant difference between the posterior fluxes from scenarios S1 to S3, indicating first, that the seasonal cycle is well constrained in the inversion, and second, that the discontinuity of observations from the sites CHL and CHM has little impact on the northern North American integrated fluxes. For North Eurasia, there are again differences in the prior fluxes, owing to the choice of land surface model, which are no longer visible in the posterior fluxes. While the results from scenarios S1 and S2 are very similar, S3 results in higher summer maxima from 2008 onwards. This is due to the exclusion of data from four sites (YAK, VGN, AZV and ZOT) in S3, which means the inversion is more dependent on the remaining observations at IGR, DEM, and KRS for constraining fluxes in Siberia. A corollary of this is that since only these sites are available up to 2007, the posterior fluxes may be overestimated for 2005 to 2007 also in scenarios S1 and S2. The temporal variability and, in particular, the seasonality, of the fluxes is discussed in more detail in section 4.2.

4. Discussion

High latitude (>50°N) CH₄ emissions are largely from anthropogenic sources (particularly oil and gas exploitation), ~60%, and natural wetlands, ~40%, according to the prior estimates used in this study. The different sources are not always spatially distinct at the resolution of the emission sensitivities (in this study 1°×1°). In this case, it is not possible to resolve them

Rona Thompson 16/11/2016 16:25
Deleted: 8

Rona Thompson 16/11/2016 16:25
Deleted: 9

without the use of additional atmospheric tracers, such as changes in the ^{13}C to ^{12}C isotope ratio in CH_4 (written as $\delta^{13}\text{C}$), which is sensitive to the emission source (e.g. Dlugokencky et al. 2011). Currently observations of $\delta^{13}\text{C}$ are much scarcer than for CH_4 mixing ratios and we have not included these in our inversion. Therefore, we focus the discussion mainly on the distribution of the total CH_4 source.

We present regional emission totals giving the range of scenarios S1 and S2, which are better constrained than S3 as they include all available observations. The range is generally close to the uncertainty calculated for each scenario and which is given in Table 3. We, however, include S3 in the analysis of the inter-annual variability and trends, as this scenario uses only observations from sites that are available for most of the inversion period, thus year-to-year differences are independent of changes in the observation coverage.

4.1 Spatial distribution of the fluxes

4.1.1 North America

For northern North America ($>50^\circ\text{N}$), we estimate a mean total source of 16.6 to 17.9 Tg y^{-1} for 2005 – 2010 (the period overlapping with independent global inversion studies), which is 7.1 and 3.7 Tg y^{-1} higher than the prior estimates in scenarios S1 and S2 (which included wetland flux estimates from LPX-Bern and LPJ-DGVM, respectively). Our estimate is also substantially higher than the global inversion estimates of Carbon-Tracker CH_4 , of 8.1 Tg y^{-1} (Bruhwiler et al. 2014), and TM5, of 14.0 Tg y^{-1} (Bergamaschi et al. 2013) (see Table 3). However, it is lower than the regional inversion estimate of Miller et al. (2014) for Canada, of $21.3 \pm 1.6 \text{ Tg y}^{-1}$ for 2007 – 2008. The regions dominating northern North American CH_4 fluxes, and where we see differences from the prior estimates, are the HBL and western Canada.

Methane fluxes in the HBL ($50\text{-}60^\circ\text{N}$, $75\text{-}96^\circ\text{W}$) are largely dominated by wetlands, more than 90% of the total according to the prior estimates (see Fig. 3). For the HBL, the posterior fluxes from scenarios S1 and S2 are 2.7 to 3.4 Tg y^{-1} and are close to the prior estimate of S1, of 2.7 Tg y^{-1} , and to the inversion estimates of Miller et al. (2014), of $2.4 \pm 0.32 \text{ Tg y}^{-1}$, Bruhwiler et al. (2014), of 2.7 Tg y^{-1} , and Pickett-Heaps et al. (2011), of $2.3 \pm 0.3 \text{ Tg y}^{-1}$. However, our posterior fluxes are significantly lower (by 1.0 to 1.7 Tg y^{-1}) than the prior estimate of S2, which included wetland fluxes from LPJ-DGVM. Land surface models vary greatly in the estimate for HBL wetland emissions, from 2.2 to 11.3 Tg y^{-1} , due at least partly

Rona Thompson 16/11/2016 16:32

Deleted: 4

Rona Thompson 16/11/2016 16:32

Deleted: 4

Rona Thompson 16/11/2016 16:26

Deleted: Supplementary Information

Rona Thompson 16/11/2016 16:26

Deleted: 5

to the definition of wetland extent (Melton et al. 2013). The large discrepancy in LPJ-DGVM could be due to an over simplified calculation of water table depth, for which soil moisture is used as a proxy. LPX-Bern, in comparison, uses a dynamical calculation of water table depth based on the DYPTOP model.

5

In western Canada, the main source region approximately corresponds to the province of Alberta (in this study we compare the region 50-60°N, 110-120°W). In the prior flux estimates in scenarios S1 and S2, this region has quite low CH₄ emissions, 1.6 and 3.0 Tg y⁻¹, respectively. In contrast, all scenarios find a much larger source a posteriori, of 5.0 to 10 5.8 Tg y⁻¹, with most of the increase in the southern part of the province where there are no significant wetlands. Miller et al. (2014) also found large fluxes in Alberta and, similar to their study, we find that these fluxes persist throughout the year (Fig. 11 and 12) unlike fluxes dominated by wetlands, which have a strong seasonal cycle (see the HBL region in Fig. 12), suggesting that they may be of anthropogenic origin. We hypothesise that the emissions are 15 largely from natural gas production since Alberta produces 72% of Canada's natural gas and has Canada's largest shale gas reserves (<https://www.neb-one.gc.ca/index-eng.html>). Assuming that the wintertime wetland emissions are negligible, and that the seasonal variation in anthropogenic emissions is small (which has been found for emissions from oil and gas operations in North America (Smith et al. 2015)), we use the wintertime emissions as 20 an estimate for the anthropogenic source. Our estimate of 4.3 ± 1.3 Tg y⁻¹ is approximately 3 times larger than that of EDGAR and, for comparison, approximately 8 times larger than the estimate of the GAINS model (Höglund-Isaksson 2012), suggesting that anthropogenic sources in Alberta are currently strongly underestimated in at least these two inventories.

25 4.1.2 North Eurasia

For North Eurasia, we estimate mean total emissions of 52.5 to 55.5 Tg y⁻¹ (scenarios S1 and S2) for 2005 – 2010, which is 8.9 to 10.8 Tg y⁻¹ higher than the prior estimates. Our estimates are close to that found by the Carbon-Tracker CH₄ inversion of 49.7 Tg y⁻¹ (Bruhwiler et al. 2014) but much larger than those found by the TM5 inversions of approximately 34.0 Tg y⁻¹ 30 (Bergamaschi et al. 2013) (see Table 3). One reason for the low estimate from the inversion of Bergamaschi et al. (2013) could be the poor observational constraint for the high northern latitudes; the inversion included only seven sites north of 50°N, all of which have flask-air samples at only approximately weekly intervals, and none of the sites were located in Siberia.

Rona Thompson 16/11/2016 16:26

Deleted: 0

Rona Thompson 16/11/2016 16:26

Deleted: 1

Rona Thompson 16/11/2016 16:28

Deleted: 1

Rona Thompson 16/11/2016 16:32

Deleted: 4

Also, their global inversion that included SCIAMACHY observations did not contain any satellite observations north of 50°N.

5 The main increase in the posterior fluxes, relative to both priors, is in the WSL region (50-75°N, 60-95°E). A posteriori, we estimate a source of 19.3 to 19.9 Tg y⁻¹, which is 7.1 to 8.9 Tg y⁻¹ higher than the prior estimates in scenarios S1 and S2, respectively. Our posterior estimates, however, fall in the mid-range of a recent study, which gave a tolerance interval of 5 to 28 Tg y⁻¹ for the total source in 2010 based on a regional inversion (Berchet et al. 2015). Wetlands cover 25% of the land surface in the WSL and are an important source of CH₄ in this region (Bohn et al. 2015). In addition, there is extensive oil and gas production in the WSL, which is also a significant source of CH₄ and complicates the attribution of emissions from inversions to anthropogenic versus natural sources. Averaging the mean monthly emissions (from scenarios S1 and S2) for December to February, we estimate an anthropogenic source of 12.7 ± 3.6 Tg y⁻¹ or, equivalently, ~65% of the annual total. From the residual, we estimate a wetland source of 6.9 ± 3.6 Tg y⁻¹, assuming that the summer wild fire emissions are very small, which based on the prior estimate of GFED-3.1, of ~0.08 Tg y⁻¹ is reasonable. We note, however, that anthropogenic sources in WSL may have some seasonal variation and that this would also affect the wetland source estimate. One such seasonally dependent source could be, for example, gas flaring, which has been suggested to have higher CH₄ emissions in low temperatures owing to problems of igniting the flare. Our estimate of the wetland source is higher than the prior values from LPX-Bern and LPJ-DGVM of 4.9 and 5.9 Tg y⁻¹, respectively, but falls in the mid-range of estimates from Berchet et al. (2015), of 1 to 13 Tg y⁻¹, and is close to the mean of inversion estimates used in the inter-comparison study of Bohn et al. (2015), of 6.1 ± 1.2 Tg y⁻¹. On the other hand, it is lower than the estimate of Bruhwiler et al. (2014) of 10.3 Tg y⁻¹. Our anthropogenic flux estimate is higher than that from EDGAR, of 6.8 Tg y⁻¹, and the inversion of Bruhwiler et al. (2014), of 8.1 Tg y⁻¹, but in the mid-range of estimates from Berchet et al. (2015), of 6 to 16 Tg y⁻¹ and lower than that of GAINS, of 19 Tg y⁻¹.

30 Large fluxes of CH₄ from the ocean to the atmosphere have been reported for the East Siberian Arctic Shelf (ESAS) with a source estimated to total 17 Tg y⁻¹ representing ~3% of the global source to the atmosphere (Shakhova et al. 2010; Shakhova et al. 2015). Although our inversion has only a modest reduction in uncertainty in the ESAS region (see Fig. 9) we do not find any evidence of a large source in this region. This is consistent with a recent study

Rona Thompson 16/11/2016 16:29
Deleted: 8

based on atmospheric observations and inverse modelling, which found the ESAS region to be a source of only 0.5 to 4.5 Tg y⁻¹ (Berchet et al. 2016).

4.2 Temporal variability of the fluxes

5 4.2.1 Seasonal cycle

Emissions in the HBL region are dominated by wetlands. For this region, our inversion indicates a gradual increase in emissions in spring reaching a maximum in August to September, which is considerably later compared to the LPJ-DGVM model, but close to the LPX-Bern model (Fig. 12). The poorer representation of the seasonal cycle in LPJ-DGVM may be because this model over emphasizes the control of temperature on CH₄ production in the high latitudes (Bergamaschi et al. 2007). In autumn (September to October), the inversion indicates a more rapid decline in emissions compared to both models, and close to zero emissions from November to March. A similar pattern is seen for all of northern North America, suggesting that the wetland emissions are dominating the seasonality also at this scale. Although the annual emission is largely dominated by fluxes during the growing season (Whalen et al. 1992), a few studies have indicated high fluxes during spring and fall due to thaw and freeze dynamics (Mastepanov et al. 2008; Zona et al. 2016; Sweeney et al. 2016). This process is also parameterized in the LPX-Bern model. Our inversion results, however, do not indicate any large-scale emissions in the HBL outside the growing season.

20 In the WSL region the maximum occurs in July to August, and is earlier than that of LPX-Bern in August and later than that of LPJ-DGVM in June. The maximum in July-August is consistent with the majority of land surface models in the inter-comparison study of Bohn et al. (2015). Similarly to the HBL, LPJ-DGVM produces a too early onset for the spring increase in emissions, again this may be due to an over sensitivity to temperature, and both models have a more gradual decline in emissions in autumn compared to the inversion results. In contrast to the HBL, there are substantial emissions in winter, which are predominantly due to anthropogenic sources (Umezawa et al. 2012). Another notable feature is the small secondary peak in March. Berchet et al. (2015) also detected a March peak in 2010 and suggested that this may be due to anthropogenic emissions, in particular, from higher gas production during the late winter. We explored an alternative explanation for the spring peak, that is, wetland emissions during spring thaw, which have been previously observed in high latitudes from flux chamber and eddy covariance measurements (Tokida et al. 2007; Hargreaves et al. 2001; Mastepanov et al. 2013). Such emissions occur as snow melts and the

Rona Thompson 28/12/2016 17:05

Deleted: estimates a much later onset and more

Rona Thompson 28/12/2016 17:05

Deleted: , as well as a later

Rona Thompson 28/12/2016 17:06

Deleted: ,

Rona Thompson 28/12/2016 17:07

Deleted: while these features of the seasonal cycle are better reproduced by t

Rona Thompson 16/11/2016 16:29

Deleted: l

Rona Thompson 28/12/2016 17:14

Deleted: B

Rona Thompson 28/12/2016 17:15

Deleted: however, produce a more gradual decline in emissions following the summer maximum compared to the inversion, which indicates a rapid decline from September to October

Rona Thompson 28/12/2016 17:16

Deleted: -

... [2]

Rona Thompson 28/12/2016 17:20

Deleted: Although the mean seasonal cycle shows a peak in March, only five out of the nine years in our study had a spring peak, which occurred between March and April, and 2013 had a small peak in February. Some monthly variation in the anthropogenic emissions from oil and gas production is conceivable as very cold conditions can hamper production, which returns to normal levels only when temperatures start to increase. Unfortunately, monthly production statistics from this region are not available to confirm this hypothesis.

Rona Thompson 10/1/2017 10:08

Deleted: also

surface soil begins to thaw, allowing CH₄ that has been trapped below the surface during the winter, and which was formed by methanogenesis before the subsurface soil froze, to escape to the atmosphere. We examined air temperature measured at the three JR-STATION sites in northern WSL (IGR, DEM and NOY); the temperature is minimum in January to February and zero or above zero temperatures are only reached in March. We did not, however, find any consistent pattern between year-to-year spring temperature variation and the occurrence of a spring peak. To determine the cause of the spring peak in emissions, further information is required, such as measurements of atmospheric $\delta^{13}\text{C-CH}_4$.

10 4.2.2 Inter-annual variability

The inter-annual variability was calculated by first subtracting the mean seasonal cycle (resolved monthly) from the time series for each region, and second, by performing a running average on the residuals with a 6-month time window (see Fig. 13). In North Eurasia, the year-to-year variability in the posterior fluxes is considerable and is much larger than that in the prior fluxes. In 2005 to 2006, and 2011, the fluxes fell below the 10th percentile, while in 2007, 2008, 2010, and 2013, the fluxes reached or exceeded the 90th percentile. The inter-annual variability in the WSL is similar to that of all of North Eurasia ($R = 0.53$) and, in particular, the 2007 anomaly almost entirely originates in the WSL. The year 2007 was particularly warm in the WSL (+1.1°C compared to the 2005 – 2013 annual mean from ECMWF EI data) and particularly wet ($+0.87 \times 10^{-2} \text{ m}^3 \text{ m}^{-3}$ soil water volume). Therefore, it is likely that this anomaly is driven by increased CH₄ production by wetlands. We find an anomaly for the WSL in 2007 of +3.3 Tg of CH₄ (compared to the 2005 – 2013 annual mean), which is similar to that found by Bousquet et al. (2011) of +4 to +5 Tg for the boreal region. This finding further supports the hypothesis that the 2007 anomaly in the atmospheric growth rate was at least in part due to an increase in boreal wetland emissions as previously suggested (Rigby et al. 2008; Dlugokencky et al. 2009; Bousquet et al. 2011; Bruhwiler et al. 2014).

Although warmer temperature was a factor in the 2007 anomaly in the WSL, there is no significant correlation of temperature with CH₄ flux over 2005 – 2013, since positive temperature anomalies often coincided with negative soil moisture anomalies, which limit CH₄ production. In general for WSL, we find a weak correlation of CH₄ flux with soil moisture ($R = 0.33$, $p\text{-value} = <0.001$, see Supplementary Information Fig. 5), and that the correlation increases with a 6-month lag ($R = 0.66$, $p\text{-value} = <1 \times 10^{-12}$) suggesting that wintertime soil moisture may be important for the annual CH₄ production.

Rona Thompson 16/11/2016 16:30
Deleted: 2

Rona Thompson 16/11/2016 16:30
Deleted: 6

In North America, again considerable year-to-year variability in the posterior fluxes is seen and exceeds that of the prior. The years 2005 and 2013 had negative anomalies, while 2011 stood out as a strong positive anomaly. The time series for the HBL is strongly correlated with that of North America ($R = 0.80$), while that of Alberta was moderately correlated ($R = 0.59$). The year 2011 was a warm year in boreal North America ($+0.26^{\circ}\text{C}$ compared to the 2005 – 2013 annual mean). For the HBL, we find a moderate correlation with soil temperature ($R = 0.53$, $p\text{-value} = <1 \times 10^{-8}$) but a negative correlation with soil moisture (which arises as temperature and moisture are negatively correlated in the HBL) indicating that soil moisture is not limiting CH_4 production. This result contrasts with the result for the WSL, where soil moisture does appear to be a limiting factor. In addition, we looked for correlations between CH_4 flux and snow depth and precipitation (from ECMWF EI) but found these to be generally not significant (see Supplementary Information, Fig. 5).

Rona Thompson 16/11/2016 16:31

Deleted: 6

4.2.3 Analysis of flux trends

Mann Kendall tests showed significant trends over 2005 – 2013 in northern North America ($p\text{-value} < 0.01$) with a mean rate of increase of 0.38 to 0.57 Tg y^{-2} (range of all scenarios), and, specifically, in the HBL, with mean rate of increase of 0.22 to 0.23 Tg y^{-2} ($p\text{-value} \ll 0.001$). However, we find no significant trend for Alberta. ECMWF EI data show increasing soil temperature over North America ($0.08^{\circ}\text{C y}^{-1}$) and, especially, the HBL ($0.13^{\circ}\text{C y}^{-1}$), which suggests that the increase in CH_4 fluxes is due to wetlands.

Similarly, we find a significant trend ($p\text{-value} < 0.01$) in North Eurasia with mean of 0.76 to 2.50 Tg y^{-2} . The upper limit of this range is from S3, which was less well constrained for this region, without S3 the upper limit is 1.09 Tg y^{-2} , which we consider more plausible, thus we consider only scenarios S1 and S2 in the following discussion. The North Eurasian trend has approximately equal contributions from northern Europe (north of 50°N) and Russia of 0.53 to 0.57 Tg y^{-2} and 0.30 to 0.72 Tg y^{-2} , respectively. The result for northern Europe contrasts with the prior fluxes, which show a small decrease owing to a reduction in the anthropogenic emissions of -0.07Tg y^{-2} (according to EDGAR-4.2FT2010). Instead, the increase found in the inversions may be due to wetland sources, a hypothesis that is supported by ECMWF EI data, which show an increase in soil moisture ($0.07 \times 10^{-2} \text{m}^3 \text{m}^{-3} \text{y}^{-1}$). For Russia, on the other hand, the prior fluxes show a substantial increase of 0.30 Tg y^{-2} due to anthropogenic sources and this corresponds to our lower estimate from the inversions. Further support for an

Rona Thompson 29/12/2016 09:59

Deleted: EU countries

increase in anthropogenic sources is given by British Petroleum energy statistics, which show steady increases in oil and gas production in Russia between 2005 and 2013 of 4% and 12%, respectively, while over the same time period, there is no trend in the ECMWF EI soil moisture or temperature.

5

In contrast to our study, previous multi-annual inversions have not detected any trend in the high northern latitude CH₄ fluxes (Bruhwiler et al. 2014; Bergamaschi et al. 2013). This may be owing to the limited number of observation sites included (see section 4.1.2). The study of Bloom et al. (2010), conversely, predicted an increase in extra-tropical (45-67°N) and Arctic (>67°N) wetland fluxes from 2003 to 2007 (the period covered by their study), which was based on a positive correlation of CH₄ production and temperature.

10

5. Summary and conclusions

We have presented spatiotemporally resolved CH₄ flux estimates for the high northern latitudes (north of 50°N) from an atmospheric inversion for the period 2005 to 2013. The inversion included observations from in-situ measurement sites in the JR-STATION network in Siberia, the EC network in Canada, as well as the sites, Pallas in Finland, Zeppelin in Svalbard, Mace Head in Ireland, and ZOTTO in Siberia, and four discrete flask-air sampling sites. This is the first time that these observations have been used together in an atmospheric inversion. We find a CH₄ source from the high northern latitudes of 82.0 to 83.6 Tg y⁻¹ (the range of S1 and S2) representing ~15% of the global total (i.e., 548 Tg y⁻¹ from recent global inversions (Kirschke et al. 2013)). This is significantly higher than the prior estimates of 64.3 to 67.9 Tg y⁻¹ (12% of the global total).

15

20

25

For northern North America, we find an annual mean total source of 16.6 to 17.9 Tg y⁻¹ (Table 4), which is larger than the prior estimates based on EDGAR-4.2FT2010, for anthropogenic emissions, and the land surface models LPX-Bern and LPJ-DGVM, for the wetland fluxes. The regions of the HBL and Alberta were found to be dominating the source. In the HBL, the fluxes are mainly from wetlands and our estimate of 2.7 to 3.4 Tg y⁻¹ is close to the prior estimate in scenario S1 (which included wetland flux estimates from LPX-Bern) and to other inversion estimates, but lower than the prior estimate in S2 (which included wetland flux estimates from LPJ-DGVM). The seasonal cycle in the HBL showed a maximum in August to September, with a rapid decline in fluxes thereafter and near zero fluxes from November to March. In Alberta, our inversions reveal an important source of 5.0

30

Rona Thompson 28/12/2016 17:33

Deleted: As previously mentioned, the inversion of Bergamaschi et al. (2013) included only 7 discrete sampling sites north of 50°N and the only constraint on fluxes in Northern Eurasia is from continental outflow detected at remote sites, such as Zeppelin on Svalbard. Although the inversion of Bruhwiler et al. (2014) included more sites, as well as in-situ measurements, these were located largely in North America and, again, there were no observations in Siberia.

Rona Thompson 29/12/2016 10:02

Deleted: A recent study by Sweeney et al. (2016) based on atmospheric CH₄ measurements at Barrow in Alaska, detected a recent increase (from ~2010) in the late autumn to early winter fluxes from the North Slope of Alaska, which correlates with increasing surface temperatures. However, they did not detect any significant trend in the mean July to December fluxes. Their study focused on the atmospheric record, and thus did not fully examine climate or ecological changes on the North Slope of Alaska that may help explain the absence of a trend in the July-December fluxes despite the significant increase in surface temperature.

Rona Thompson 29/12/2016 10:49

Deleted: .

to 5.8 Tg y⁻¹, which was found to persist even during winter suggesting that it is of anthropogenic origin, in which case, current inventories significantly underestimate the emissions.

5 For North Eurasia, we find an annual mean total source of 52.2 to 55.5 Tg y⁻¹. This is significantly larger than the prior estimates, predominantly due to an increase in fluxes in the WSL, from 11.0 to 12.2 Tg y⁻¹, a priori, to 19.3 to 19.9 Tg y⁻¹, a posteriori. For the WSL, we estimate an anthropogenic source of 12.7 ± 3.6 Tg y⁻¹ and a wetland source of 6.9 ± 3.6 Tg y⁻¹. Anthropogenic emissions in the WSL are dominated by gas and oil production, and our
10 estimate is significantly larger than that of the EDGAR-4.2FT2010 inventory but lower than that of the GAINS model. The seasonal cycle in the WSL has a maximum in July to August, consistent with most land surface models, and shows considerable emissions in winter owing to anthropogenic sources. For Russia, we found an increasing trend in the fluxes of 0.30 to 0.72 Tg y⁻² with the lower end of this range corresponding to the trend in the anthropogenic
15 emissions in the EDGAR-4.2FT2010 inventory. The absence of any trend in soil temperature or moisture over our study period, further suggests that the increase is largely due to anthropogenic sources.

Although our study covers only a relatively short period, from 2005 to 2013, notable
20 variations in the year-to-year CH₄ fluxes have been identified. In particular, large positive anomalies were seen for the WSL in 2007, and for the HBL in 2011, both due to anomalously high temperatures. Moreover, we detect positive trends in the source from North America and, specifically, from the HBL, which are correlated with soil temperature. This result may indicate a positive temperature feedback on CH₄ emissions in the high latitudes, as expected
25 in the first order based on the temperature dependence of microbial CH₄ production. However, on longer timescales, the impact of higher temperature on hydrology and ecosystems in the boreal and Arctic regions, and thus on CH₄ production and oxidation, is very uncertain and an important area of on-going research.

30 **Datasets**

The observations of atmospheric CH₄ mixing ratio used in this paper are available from the following sources: NOAA ESRL data: <http://www.esrl.noaa.gov/gmd/dv/data/>, JR-STATION data: <http://db.cger.nies.go.jp/portal/geds/atmosphericAndOceanicMonitoring>, EC and Teriberka data: <http://ds.data.jma.go.jp/gmd/wdcgg/wdcgg.html>, Zeppelin data:

http://ebas.nilu.no, ZOTTO tower data: on request to J. V. Lavric at ICOS ERIC, Pallas station data: on request to T. Aalto at FMI, and AGAGE data: <http://agage.mit.edu/data>. The inversion framework, FLEXINVERT, is available from the website: <http://flexinvert.nilu.no>.

Rona Thompson 10/1/2017 10:16

Deleted: at MPI-BGC

5 Competing interests statement

The authors declare that they have no conflict of interest.

Acknowledgments

We thank Colm Sweeney and Ed Dlugokencky for use of the NOAA ESRL data, Peter Bergamaschi for providing TM5 inversion results, and Renato Spahni for providing LPX-Bern wetland fluxes. This study was funded by the Nordic Center of Excellence, eSTICC (eScience Tool for Investigating Climate Change in northern high latitudes), funded by Nordforsk (grant no. 57001) and the projects, SLICFONIA (emissions of Short-Lived Climate Forcers Near and In the Arctic), funded by the NORRUSS programme of the Research Council of Norway (grant no. 233642), and EVA (Earth system modeling of climate Variations in the Anthropocene), funded by the Research Council of Norway (grant no. 229771).

References

- Aalto, T., Hatakka, J. and Lallo, M.: Tropospheric methane in northern Finland: seasonal variations, transport patterns and correlations with other trace gases, *Tellus B*, 59(2), 251-259, doi:10.1111/j.1600-0889.2007.00248.x, 2007.
- Alexe, M., Bergamaschi, P., Segers, A., Detmers, R., Butz, A., Hasekamp, O., Guerlet, S., Parker, R., Boesch, H. and Frankenberg, C.: Inverse modelling of CH₄ emissions for 2010-2011 using different satellite retrieval products from GOSAT and SCIAMACHY, *Atmos. Chem. Phys.*, 15(1), 113-133, doi:10.5194/acp-15-113-2015, 2015.
- AMAP Assessment 2015: Methane as an Arctic climate forcer, Arctic Monitoring and Assessment Programme (AMAP), Oslo, Norway, 2015.
- Berchet, A., Bousquet, P., Pison, I., Locatelli, R., Chevallier, F., Paris, J. -, Dlugokencky, E. J., Laurila, T., Hatakka, J., Viisanen, Y., Worthy, D. E. J., Nisbet, E., Fisher, R., France, J., Lowry, D., Ivakhov, V. and Hermansen, O.: Atmospheric constraints on the methane emissions from the East Siberian Shelf, *Atmos. Chem. Phys.*, 16(6), 4147-4157, doi:10.5194/acp-16-4147-2016, 2016.

- Berchet, A., Pison, I., Chevallier, F., Paris, J. -, Bousquet, P., Bonne, J. -, Arshinov, M. Y., Belan, B. D., Cressot, C., Davydov, D. K., Dlugokencky, E. J., Fofonov, A. V., Galanin, A., Lavrič, J., Machida, T., Parker, R., Sasakawa, M., Spahni, R., Stocker, B. D. and Winderlich, J.: Natural and anthropogenic methane fluxes in Eurasia: a mesoscale quantification by generalized atmospheric inversion, *Biogeosciences*, 12(18), 5393-5414, doi:10.5194/bg-12-5393-2015, 2015.
- Bergamaschi, P., Corazza, M., Karstens, U., Athanassiadou, M., Thompson, R. L., Pison, I., Manning, A. J., Bousquet, P., Segers, A., Vermeulen, A. T., Janssens-Maenhout, G., Schmidt, M., Ramonet, M., Meinhardt, F., Aalto, T., Haszpra, L., Moncrieff, J., Popa, M. E., Lowry, D., Steinbacher, M., Jordan, A., O'Doherty, S., Piacentino, S. and Dlugokencky, E.: Top-down estimates of European CH₄ and N₂O emissions based on four different inverse models, *Atmos. Chem. Phys.*, 15(2), 715-736, doi:10.5194/acp-15-715-2015, 2015.
- Bergamaschi, P., Frankenberg, C., Meirink, J. F., Krol, M., Dentener, F., Wagner, T., Platt, U., Kaplan, J. O., Korner, S., Heimann, M., Dlugokencky, E. J. and Goede, A.: Satellite cartography of atmospheric methane from SCIAMACHY on board ENVISAT: 2. Evaluation based on inverse model simulations, *J. Geophys. Res.-Atmos.*, 112(D2), 2007.
- Bergamaschi, P., Houweling, S., Segers, A., Krol, M., Frankenberg, C., Scheepmaker, R. A., Dlugokencky, E., Wofsy, S. C., Kort, E. A., Sweeney, C., Schuck, T., Brenninkmeijer, C., Chen, H., Beck, V. and Gerbig, C.: Atmospheric CH₄ in the first decade of the 21st century: Inverse modeling analysis using SCIAMACHY satellite retrievals and NOAA surface measurements, *Atmospheric CH₄ in the first decade of the 21st century: Inverse modeling analysis using SCIAMACHY satellite retrievals and NOAA surface measurements*, *J. Geophys. Res.-Atmos.*, 118, 7350-7369, doi:10.1002/jgrd.50480, 2013.
- [Bey I., Jacob D. J., Yantosca R. M., et al.: Asian chemical outflow to the Pacific in spring: Origins, pathways, and budgets. *J. Geophys. Res.*, 106, 19, 23073-23095, 2001.](#)
- Biastoch, A., Treude, T., Rüpke, L. H., Riebesell, U., Roth, C., Burwicz, E. B., Park, W., Latif, M., Böning, C. W. and Madec, G.: Rising Arctic Ocean temperatures cause gas hydrate destabilization and ocean acidification, *Geophys. Res. Lett.*, 38(8), doi:10.1029/2011GL047222, 2011.
- Bloom, A. A., Palmer, P. I., Fraser, A., Reay, D. S. and Frankenberg, C.: Large-Scale Controls of Methanogenesis Inferred from Methane and Gravity Spaceborne Data , *Science*, 327, 322-327, doi:10.1126/science.1175176, 2010.
- Bohn, T. J., Lettenmaier, D. P., Sathulur, K., Bowling, L. C., Podest, E., McDonald, K. C. and Friborg, T.: Methane emissions from western Siberian wetlands: heterogeneity and

- sensitivity to climate change, *Environ. Res. Lett.*, 2(4), 045015, doi:10.1088/1748-9326/2/4/045015, 2007.
- Bohn, T. J., Melton, J. R., Ito, A., Kleinen, T., Spahni, R., Stocker, B. D., Zhang, B., Zhu, X., Schroeder, R., Glagolev, M. V., Maksyutov, S., Brovkin, V., Chen, G., Denisov, S. N., Eliseev, A. V., Gallego-Sala, A., McDonald, K. C., Rawlins, M. A., Riley, W. J., Subin, Z. M., Tian, H., Zhuang, Q. and Kaplan, J. O.: WETCHIMP-WSL: intercomparison of wetland methane emissions models over West Siberia, *Biogeosciences*, 12(11), 3321-3349, doi:10.5194/bg-12-3321-2015, 2015.
- Bousquet, P., Ringeval, B., Pison, I., Dlugokencky, E. J., Brunke, E. G., Carouge, C., Chevallier, F., Fortems-Cheiney, A., Frankenberg, C., Hauglustaine, D. A., Krummel, P. B., Langenfelds, R. L., Ramonet, M., Schmidt, M., Steele, L. P., Szopa, S., Yver, C., Viovy, N. and Ciais, P.: Source attribution of the changes in atmospheric methane for 2006 - 2008, *Atmos. Chem. Phys.*, 11(8), 3689-3700, doi:10.5194/acp-11-3689-2011, 2011.
- Bridgham, S. D., Cadillo-Quiroz, H., Keller, J. K. and Zhuang, Q.: Methane emissions from wetlands: biogeochemical, microbial, and modeling perspectives from local to global scales, *Glob. Chang. Biol.*, 19(5), 1325-46, doi:10.1111/gcb.12131, 2013.
- Bruhwiller, L., Dlugokencky, E., Masarie, K., Ishizawa, M., Andrews, A., Miller, J., Sweeney, C., Tans, P. and Worthy, D.: CarbonTracker-CH₄: an assimilation system for estimating emissions of atmospheric methane, *Atmos. Chem. Phys.*, 14(16), 8269-8293, doi:10.5194/acp-14-8269-2014, 2014.
- Cao, M., Gregson, K. and Marshall, S.: Global methane emission from wetlands and its sensitivity to climate change, *Atmospheric Environment*, 32(19), 3293-3299, doi:10.1016/S1352-2310(98)00105-8, 1998.
- Chevallier, F., Fisher, M., Peylin, P., Serrar, S., Bousquet, P., Bréon, F. M., Chédin, A. and Ciais, P.: Inferring CO₂ sources and sinks from satellite observations: Method and application to TOVS data, *J. Geophys. Res.*, 110, D24309, doi:10.1029/2005jd006390, 2005.
- Christensen, T. R., Ekberg, A., Ström, L., Mastepanov, M., Panikov, N., Öquist, M., Svensson, B. H., Nykänen, H., Martikainen, P. J. and Oskarsson, H.: Factors controlling large scale variations in methane emissions from wetlands, *Geophys. Res. Lett.*, 30(7), 1414, doi:10.1029/2002GL016848, 2003.
- Christensen, T. R., Prentice, I. C., Kaplan, J., Haxeltine, A. and Sitch, S.: Methane flux from northern wetlands and tundra, *Tellus B*, 48(5), 652-661, doi:10.1034/j.1600-0889.1996.t01-4-00004.x, 1996.

- Chylek, P., Folland, C. K., Lesins, G., Dubey, M. K. and Wang, M.: Arctic air temperature change amplification and the Atlantic Multidecadal Oscillation, *Geophys. Res. Lett.*, 36(14), L14801, doi:10.1029/2009gl038777, 2009.
- 5 Dlugokencky, E. J., Bruhwiler, L., White, J. W. C., Emmons, L. K., Novelli, P. C., Montzka, S. A., Masarie, K. A., Lang, P. M., Crotwell, A. M., Miller, J. B. and Gatti, L. V.: Observational constraints on recent increases in the atmospheric CH₄ burden, *Geophys. Res. Lett.*, 36(18), L18803, doi:10.1029/2009gl039780, 2009.
- 10 Dlugokencky, E. J., Nisbet, E. G., Fisher, R. and Lowry, D.: Global atmospheric methane: budget, changes and dangers, *Philos. Trans. Roy. Soc.*, 369(1943), 2058-2072, doi:10.1098/rsta.2010.0341, 2011.
- Dlugokencky, E., Lang, P., Crotwell, A., Masarie, K. and Crotwell, M.: Atmospheric Methane Dry Air Mole Fractions from the NOAA ESRL Carbon Cycle Cooperative Global Air Sampling Network, 1983-2014, Version: 2015-08-03, Available from: ftp://aftp.cmdl.noaa.gov/data/trace_gases/ch4/flask/surface/, 2015.
- 15 Enting, I. G.: *Inverse Problems in Atmospheric Constituent Transport*, Cambridge University Press, Cambridge, New York, 2002.
- Etheridge, D. M., Steele, L., Francey, R. J. and Langenfelds, R. L.: Atmospheric methane between 1000 AD and present: Evidence of anthropogenic emissions and climatic variability, *J. Geophys. Res.-Atmos.*, 103(D13), 15979-15993, doi:10.1029/98JD00923, 20
1998.
- Hargreaves, K. J., Fowler, D., Pitcairn, C. E. R. and Aurela, M.: Annual methane emission from Finnish mires estimated from eddy covariance campaign measurements, *Theoretical and Applied Climatology*, 70(1-4), 203-213, 2001.
- Hayhoe, K., Kheshgi, H. S., Jain, A. K. and Wuebbles, D. J.: Substitution of natural gas for coal: climatic effects of utility sector emissions, *Climatic Change*, 54(1-2), 107-139, doi:10.1023/A:1015737505552, 2002.
- 25 Houweling, S., Kaminski, T., Dentener, F., Lelieveld, J. and Heimann, M.: Inverse modeling of methane sources and sinks using the adjoint of a global transport model, *Journal of Geophys. Res.-Atmos.*, 104(D21), 26137-26160, doi:10.1029/1999jd900428, 1999.
- 30 Houweling, S., Krol, M., Bergamaschi, P., Frankenberg, C., Dlugokencky, E. J., Morino, I., Notholt, J., Sherlock, V., Wunch, D. and Beck, V.: A multi-year methane inversion using SCIAMACHY, accounting for systematic errors using TCCON measurements, *Atmos. Chem. Phys.*, 14(8), 3991-4012, doi:10.5194/acp-14-3991-2014, 2014.

- Höglund-Isaksson, L.: Global anthropogenic methane emissions 2005--2030: technical mitigation potentials and costs, *Atmos. Chem. Phys.*, 12(19), 9079-9096, doi:10.5194/acp-12-9079-2012, 2012.
- 5 Kirschke, S., Bousquet, P., Ciais, P., Saunois, M., Canadell, J. G., Dlugokencky, E. J., Bergamaschi, P., Bergmann, D., Blake, D. R., Bruhwiler, L., Cameron-Smith, P., Castaldi, S., Chevallier, F., Feng, L., Fraser, A., Heimann, M., Hodson, E. L., Houweling, S., Josse, B., Fraser, P. J., Krummel, P. B., Lamarque, J. -F., Langenfelds, R. L., Le Quere, C., Naik, V., O'Doherty, S., Palmer, P. I., Pison, I., Plummer, D., Poulter, B., Prinn, R. G., Rigby, M., Ringeval, B., Santini, M., Schmidt, M., Shindell, D. T., Simpson, I. J., Spahni, R., Steele, 10 L. P., Strode, S. A., Sudo, K., Szopa, S., van der Werf, G. R., Voulgarakis, A., van Weele, M., Weiss, R. F., Williams, J. E. and Zeng, G.: Three decades of global methane sources and sinks, *Nature Geosci*, 6(10), 813-823, doi:10.1038/ngeo1955, 2013.
- Lambert, G. and Schmidt, S.: Reevaluation of the oceanic flux of methane: Uncertainties and long term variations, *Chemosphere*, 26(1), 579-589, doi:10.1016/0045-6535(93)90443-9, 15 1993.
- Lehner, B. and Döll, P.: Development and validation of a global database of lakes, reservoirs and wetlands, *J. Hydrology*, 296(1-4), 1-22, doi:10.1016/j.jhydrol.2004.03.028, 2004.
- Mastepanov, M., Sigsgaard, C., Dlugokencky, E. J., Houweling, S., Ström, L., Tamstorf, M. P. and Christensen, T. R.: Large tundra methane burst during onset of freezing, *Nature*, 20 456(7222), 628-30, doi:10.1038/nature07464, 2008.
- Mastepanov, M., Sigsgaard, C., Tagesson, T., Ström, L., Tamstorf, M. P., Lund, M. and Christensen, T. R.: Revisiting factors controlling methane emissions from high-Arctic tundra, *Biogeosciences*, 10(7), doi:10.5194/bg-10-5139-2013, 2013.
- Matthews, E., Fung, I. and Lerner, J.: Methane emission from rice cultivation: Geographic and seasonal distribution of cultivated areas and emissions, *Global Biogeochem. Cycles*, 25 5(1), 3-24, doi:10.1029/90GB02311, 1991.
- Melton, J. R., Wania, R., Hodson, E. L., Poulter, B., Ringeval, B., Spahni, R., Bohn, T., Avis, C. A., Beerling, D. J., Chen, G., Eliseev, A. V., Denisov, S. N., Hopcroft, P. O., Lettenmaier, D. P., Riley, W. J., Singarayer, J. S., Subin, Z. M., Tian, H., Zürcher, S., 30 Brovkin, V., van Bodegom, P. M., Kleinen, T., Yu, Z. C. and Kaplan, J. O.: Present state of global wetland extent and wetland methane modelling: conclusions from a model inter-comparison project (WETCHIMP), *Biogeosciences*, 10(2), 753-788, doi:10.5194/bg-10-753-2013, 2013.

- Miller, S. M., Commane, R., Melton, J. R., Andrews, A. E., Benmergui, J., Dlugokencky, E. J., Janssens-Maenhout, G., Michalak, A. M., Sweeney, C. and Worthy, D. E. J.: Evaluation of wetland methane emissions across North America using atmospheric data and inverse modeling, *Biogeosciences*, 13(4), 1329-1339, doi:10.5194/bg-13-1329-2016, 2016.
- 5 Miller, S. M., Worthy, D. E., Michalak, A. M., Wofsy, S. C., Kort, E. A., Havice, T. C., Andrews, A. E., Dlugokencky, E. J., Kaplan, J. O. and Levi, P. J.: Observational constraints on the distribution, seasonality, and environmental predictors of North American boreal methane emissions, *Global Biogeochem. Cycles*, 28(2), 146-160, doi:10.1002/2013GB004580, 2014.
- 10 Monteil, G., Houweling, S., Butz, A., Guerlet, S., Schepers, D., Hasekamp, O., Frankenberg, C., Scheepmaker, R., Aben, I. and Röckmann, T.: Comparison of CH₄ inversions based on 15 months of GOSAT and SCIAMACHY observations, *J. Geophys. Res.-Atmos.*, 118(20), 11-807, doi:10.1002/2013JD019760, 2013.
- Nisbet, E. G., Dlugokencky, E. J. and Bousquet, P.: Methane on the Rise—Again, *Science*, 15 343(6170), 493-495, doi:10.1126/science.1247828, 2014.
- [Nisbet, E. G., Dlugokencky, E. J., Manning, M. R., Lowry, D., Fisher, R. E., France, J. L., Michel, S. E., Miller, J. B., White, J. W. C., Vaughn, B., Bousquet, P., Pyle, J. A., Warwick, N. J., Cain, M., Brownlow, R., Zazzeri, G., Lanoisellé, M., Manning, A. C., Gloor, E., Worthy, D. E. J., Brunke, E. -, Labuschagne, C., Wolff, E. W. and Ganesan, A. L.: Rising atmospheric methane: 2007–2014 growth and isotopic shift, *Global Biogeochem. Cycles*, 30, doi:10.1002/2016GB00540, 2016.](#)
- 20
- Pickett-Heaps, C. A., Jacob, D. J., Wecht, K. J., Kort, E. A., Wofsy, S. C., Diskin, G. S., Worthy, D. E. J., Kaplan, J. O., Bey, I. and Drevet, J.: Magnitude and seasonality of wetland methane emissions from the Hudson Bay Lowlands (Canada), *Atmos. Chem. Phys.*, 11(8), 3773-3779, doi:10.5194/acp-11-3773-2011, 2011.
- 25
- Ridgwell, A. J., Marshall, S. J. and Gregson, K.: Consumption of atmospheric methane by soils: A process-based model, *Global Biogeochemical Cycles*, 13(1), 59-70, doi:10.1029/1998gb900004, 1999.
- Rigby, M., Prinn, R. G., Fraser, P. J., Simmonds, P. G., Langenfelds, R. L., Huang, J., 30 Cunnold, D. M., Steele, L. P., Krummel, P. B., Weiss, R. F., O'Doherty, S., Salameh, P. K., Wang, H. J., Harth, C. M., Mühle, J. and Porter, L. W.: Renewed growth of atmospheric methane, *Geophys. Res. Lett.*, 35(22), doi:10.1029/2008gl036037, 2008.
- Ruckstuhl, A. F., Henne, S., Reimann, S., Steinbacher, M., Vollmer, M. K., O'Doherty, S., Buchmann, B. and Hueglin, C.: Robust extraction of baseline signal of atmospheric trace

- species using local regression, *Atmos. Meas. Tech.*, 5(11), 2613-2624, doi:10.5194/amt-5-2613-2012, 2012.
- Sanderson, M. G.: Biomass of termites and their emissions of methane and carbon dioxide: A global database, *Global Biogeochem. Cycles*, 10(4), 543-557, doi:10.1029/96gb01893, 1996.
- Sasakawa, M., Shimoyama, K., Machida, T., Tsuda, N., Suto, H., Arshinov, M., Davydov, D., Fofonov, A., Krasnov, O. and Saeki, T.: Continuous measurements of methane from a tower network over Siberia, *Tellus B*, 62(5), 403-416, doi:10.1111/j.1600-0889.2010.00494.x, 2010.
- 10 Schaefer, H., Fletcher, S. E., Veidt, C., Lassey, K. R., Brailsford, G. W., Bromley, T. M., Dlugokencky, E. J., Michel, S. E., Miller, J. B., Levin, I., Lowe, D. C., Martin, R. J., Vaughn, B. H. and White, J. W.: A 21st century shift from fossil-fuel to biogenic methane emissions indicated by $^{13}\text{CH}_4$, *Science*, doi:10.1126/science.aad2705, 2016.
- Seibert, P. and Frank, A.: Source-receptor matrix calculation with a Lagrangian particle dispersion model in backward mode, *Atmos. Chem. Phys.*, 4(1), 51-63, doi:10.5194/acp-4-51-2004, 2004.
- 15 Shakhova, N., Semiletov, I., Salyuk, A., Yusupov, V., Kosmach, D. and Gustafsson: Extensive Methane Venting to the Atmosphere from Sediments of the East Siberian Arctic Shelf, *Science*, 327(5970), 1246-1250, doi:10.1126/science.1182221, 2010.
- 20 Shakhova, N., Semiletov, I., Sergienko, V., Lobkovsky, L., Yusupov, V., Salyuk, A., Salomatin, A., Chernykh, D., Kosmach, D., Panteleev, G., Nicolsky, D., Samarkin, V., Joye, S., Charkin, A., Dudarev, O., Meluzov, A. and Gustafsson, O.: The East Siberian Arctic Shelf: towards further assessment of permafrost-related methane fluxes and role of sea ice, *Philos. Trans. A*, 373(2052), doi:10.1098/rsta.2014.0451, 2015.
- 25 Smith, M. L., Kort, E. A., Karion, A., Sweeney, C., Herndon, S. C. and Yacovitch, T. I.: Airborne Ethane Observations in the Barnett Shale: Quantification of Ethane Flux and Attribution of Methane Emissions, *Environ. Sci. Technol.*, 49(13), 8158-66, doi:10.1021/acs.est.5b00219, 2015.
- Spahni, R., Joos, F., Stocker, B. D., Steinacher, M. and Yu, Z. C.: Transient simulations of the carbon and nitrogen dynamics in northern peatlands: from the Last Glacial Maximum to the 21st century, *Climate of the Past*, 9(3), 1287-1308, doi:10.5194/cp-9-1287-2013, 2013.
- 30 Stocker, B. D., Spahni, R. and Joos, F.: DYPTOP: a cost-efficient TOPMODEL implementation to simulate sub-grid spatio-temporal dynamics of global wetlands and peatlands, *Geosci. Model Devel.*, 7(6), 3089-3110, doi:10.5194/gmd-7-3089-2014, 2014.

- Stohl: Computation, accuracy and applications of trajectories - A review and bibliography, *Atmos. Environ.*, 32(6), 947-966, doi:10.1016/s1352-2310(97)00457-3, 1998.
- Stohl, A., Forster, C., Frank, A., Seibert, P. and Wotawa, G.: Technical note: The Lagrangian particle dispersion model FLEXPART version 6.2, *Atmos. Chem. Phys*, 5(9), 2461-2474, doi:10.5194/acp-5-2461-2005, 2005.
- 5 Stohl, A., Kim, J., Li, S., O'Doherty, S., Mühle, J., Salameh, P. K., Saito, T., Vollmer, M. K., Wan, D., Weiss, R. F., Yao, B., Yokouchi, Y. and Zhou, L. X.: Hydrochlorofluorocarbon and hydrofluorocarbon emissions in East Asia determined by inverse modeling, *Atmos. Chem. Phys*, 10(8), 3545-3560, doi:10.5194/acp-10-3545-2010, 2010.
- 10 Stroeve, J., Holland, M. M., Meier, W., Scambos, T. and Serreze, M.: Arctic sea ice decline: Faster than forecast, *Geophys. Res. Lett.*, 34(9), doi:10.1029/2007GL029703, 2007.
- Suto, H. and Inoue, G.: A New Portable Instrument for In Situ Measurement of Atmospheric Methane Mole Fraction by Applying an Improved Tin Dioxide-Based Gas Sensor, *J. Atmos. Oceanic Tech.*, 27(7), 1175-1184, doi:10.1175/2010JTECHA1400.1., 2010.
- 15 Thompson, R. L. and Stohl, A.: FLEXINVERT: an atmospheric Bayesian inversion framework for determining surface fluxes of trace species using an optimized grid, *Geosci. Model Devel.*, 7, 2223-2242, doi:10.5194/gmd-7-2223-2014, 2014.
- Thompson, R. L., Stohl, A., Zhou, L. X., Dlugokencky, E., Fukuyama, Y., Tohjima, Y., Kim, S. -Y., Lee, H., Nisbet, E. G. and Fisher, R. E.: Methane emissions in East Asia for 2000-2011 estimated using an atmospheric Bayesian inversion, *J. Geophys. Res.-Atmos.*, doi:10.1002/2014JD022394, 2015.
- 20 Tokida, T., Mizoguchi, M., Miyazaki, T., Kagemoto, A., Nagata, O. and Hatano, R.: Episodic release of methane bubbles from peatland during spring thaw, *Chemosphere*, 70(2), 165-71, doi:10.1016/j.chemosphere.2007.06.042, 2007.
- 25 Umezawa, T., Machida, T., Aoki, S. and Nakazawa, T.: Contributions of natural and anthropogenic sources to atmospheric methane variations over western Siberia estimated from its carbon and hydrogen isotopes, *Global Biogeochem. Cycles*, 26(4), doi:10.1029/2011GB004232, 2012.
- van der Werf, G. R., Randerson, J. T., Giglio, L., Collatz, G. J., Mu, M., Kasibhatla, P. S., Morton, D. C., DeFries, R. S., Jin, Y. and van Leeuwen, T. T.: Global fire emissions and the contribution of deforestation, savanna, forest, agricultural, and peat fires (1997-2009), *Atmos. Chem. Phys*, 10(23), 11707-11735, doi:10.5194/acp-10-11707-2010, 2010.
- 30

Rona Thompson 29/12/2016 10:03

Deleted: Sweeney, C., Dlugokencky, E., Miller, C., Wofsy, S., Karion, A., Dinardo, S., Chang, R. Y. -W., Miller, J., Bruhwiler, L. and Crotwell, A.: No significant increase in long-term CH₄ emissions on North Slope of Alaska despite significant increase in air temperature, *Geophys. Res. Lett.*, doi:10.1002/2016GL069292, 2016.

- Whalen, S. C. and Reeburgh, W. S.: Interannual variations in tundra methane emission: A 4-year time series at fixed sites, *Global Biogeochem. Cycles*, 6(2), 139-159, doi:10.1029/92GB00430, 1992.
- Winderlich, J., Chen, H., Gerbig, C., Seifert, T., Kolle, O., Lavrič, J. V., Kaiser, C., Höfer, A. and Heimann, M.: Continuous low-maintenance CO₂/CH₄/H₂O measurements at the Zotino Tall Tower Observatory (ZOTTO) in Central Siberia, *Atmospheric Measurement Techniques*, 3(4), 1113-1128, doi:10.5194/amt-3-1113-2010, 2010.
- Worthy, D. E., Platt, J. A., Kessler, R., Ernst, M. and Racki, S.: The Greenhouse Gases Measurement Program, Measurement Procedures and Data Quality, Meteorological Service of Canada, 2003.
- Xiong, X., Barnet, C., Maddy, E. S., Gambacorta, A., King, T. S. and Wofsy, S. C.: Mid-upper tropospheric methane retrieval from IASI and its validation, *Atmos. Meas. Tech.*, 6(9), 2255-2265, doi:10.5194/amt-6-2255-2013, 2013.
- Zona, D., Gioli, B., Commane, R., Lindaas, J., Wofsy, S. C., Miller, C. E., Dinardo, S. J., Dengel, S., Sweeney, C., Karion, A., Chang, R. Y., Henderson, J. M., Murphy, P. C., Goodrich, J. P., Moreaux, V., Liljedahl, A., Watts, J. D., Kimball, J. S., Lipson, D. A. and Oechel, W. C.: Cold season emissions dominate the Arctic tundra methane budget, *Proc. Natl. Acad. Sci.*, 113(1), 40-5, doi:10.1073/pnas.1516017113, 2016.

Rona Thompson 17/11/2016 09:20

Deleted: -

Table 1. Atmospheric measurement sites included in the inversion.

Station	ID	Network	Latitude	Longitude	Altitude (m)	Time period
Zeppelin*	ZEP	NILU	78.9°N	11.9°E	479	2004 – 2013
Tiksi	TIK	NOAA	71.6°N	128.9°E	43	2011 – 2013
Teriberka*	TER	MGO	69.2°N	35.1°E	40	2004 – 2013
Pallas*	PAL	FMI	68.0°N	24.1°E	565	2004 – 2013
Noyabrsk	NOY	JRS	63.4°N	75.8°E	143	2005 – 2013
Igrim*	IGR	JRS	63.2°N	64.4°E	72	2005 – 2013
Yakutsk	YAK	JRS	62.1°N	129.4°E	287	2007 – 2013
ZOTTO	ZOT	MPI	60.8°N	89.4°E	125	2009 – 2013
Demyanskoe*	DEM	JRS	59.8°N	70.9°E	138	2005 – 2013
Churchill	CHL	EC	58.8°N	94.1°W	35	2007 – 2013
Karasevoe*	KRS	JRS	58.3°N	82.4°E	117	2004 – 2013
Baltic Sea	BAL	NOAA	55.5°N	16.7°E	28	2004 – 2011
Cold Bay*	CBA	NOAA	55.2°N	162.7°W	25	2004 – 2013
Lac La Biche*	LLB	EC	55.0°N	112.5°W	546	2004 – 2013 ^a
Azovo	AZV	JRS	54.7°N	73.0°E	150	2009 – 2013
Vaganovo	VGN	JRS	54.5°N	62.3°E	285	2008 – 2013
East Trout Lake*	ETL	EC	54.4°N	105.0°W	492	2005 – 2013
Candle Lake	CDL	EC	53.9°N	104.7°W	489	2004 – 2007
Mace Head*	MHD	AGAGE	53.3°N	9.9°W	25	2004 – 2013
Fraserdale*	FSD	EC	49.9°N	81.6°W	210	2004 – 2013
Chibougamau	CHM	EC	49.7°N	74.3°W	393	2007 – 2010
Estevan Point*	ESP	EC	49.4°N	126.6°W	39	2004 – 2013 ^b

a. flask samples from NOAA 2004 – 2007 and continuous thereafter

b. flask samples 2004 – 2009 and continuous thereafter

* sites used in scenario S3

5

Table 2. Prior fluxes (units Tg y⁻¹) by source type for 2009. For the wetland fluxes, two different models were used to form sets of prior fluxes for scenarios S1 and S2.

Source Type		Dataset		Globally		> 50°N	
		S1	S2	S1	S2	S1	S2
Natural	Wetlands	LPX-Bern	LPJ-DGVM	202	175	<u>25</u>	<u>27</u>
	Termites	Sanderson et al. 1996	Sanderson et al. 1996	19	19	<u>0</u>	<u>0</u>
	Wild animals	Houweling et al. 1999	Houweling et al. 1999	5	5	<u>1.2</u>	<u>1.2</u>
	Ocean	Lambert et al. 1993	Lambert & Schmidt 1993	17	17	<u>5.3</u>	<u>5.3</u>
	Soil oxidation	LPX-Bern	Ridgwell et al. 1999	-49	-38	<u>-6.5</u>	<u>-4.3</u>
	Biomass Burn.	GFED3.1	GFED3.1	13	13	<u>1.2</u>	<u>1.2</u>
Anthro-pogenic	Fuel & industry	EDGARv4.2-FT2010	EDGAR v4.2-FT2010	150	150	<u>25</u>	<u>25</u>
	Enteric ferment.	EDGAR v4.2-FT2010	EDGAR v4.2-FT2010	101	101	<u>6.5</u>	<u>6.5</u>
	Waste	EDGAR v4.2-FT2010	EDGAR v4.2-FT2010	61	61	<u>7.0</u>	<u>7.0</u>
	Rice cultivation	LPX-Bern	EDGAR v4.2-FT2010	36	38	<u>0.04</u>	<u>0.02</u>
Total				556	541	<u>65</u>	<u>69</u>

Table 3. Mean prior and posterior flux totals (units Tg y⁻¹) for each inversion scenario and comparison to independent inversion estimates for 2005 to 2010 (the overlapping period).

Inversion	No. in situ + (flask) sites	North America		North Eurasia	
		Prior	Posterior	Prior	Posterior
S1	17 + (5)	9.5 ± 5.1	16.6 ± 1.1	44.4 ± 12.5	55.2 ± 2.5
S2	17 + (5)	14.2 ± 5.1	17.9 ± 1.1	43.3 ± 12.5	52.2 ± 2.5
S3	10 + (2)	9.5 ± 5.1	17.1 ± 1.3	44.4 ± 12.5	59.5 ± 3.2
MACC NOAA ^a	(7)	-	14.0	-	34.0
CT-CH ₄ ^b	6 + (10)	7.5	8.1	60.3	49.7

a. Bergamaschi et al. (2013)

b. Bruhwiler et al. (2014)

Table 4. Summary showing the range of the prior and posterior estimates from scenarios S1 and S2 for the mean fluxes (Tg y⁻¹) for 2005 -2010 (as given in the text) and the trend (Tg y⁻²) over 2005 – 2013.

	<u>North America</u>	<u>HBL</u>	<u>Alberta</u>	<u>North Eurasia</u>	<u>WSL</u>
<u>prior fluxes</u>	9.5 – 14.2	2.7 – 4.4	1.6 – 3.0	43.3 – 44.4	11.0 – 12.2
<u>posterior fluxes</u>	16.6 – 17.9	2.7 – 3.4	5.0 – 5.8	52.5 – 55.5	19.3 – 19.9
<u>trend</u>	0.38 – 0.57	0.22 – 0.23	0	0.76 – 1.09	0

Rona Thompson 16/11/2016 16:11
Deleted: Table 3. Inversion cost a priori and a posteriori shown for 2009. .
 Cost a priori

Rona Thompson 16/11/2016 16:15
Deleted: 4

Rona Thompson 28/12/2016 15:23
Formatted Table

Figures

5 **Figure 1.** Map showing the atmospheric measurement sites used in the inversion. The grey dashed line indicates the southern boundary of the inversion domain at 50°N. Flask-air sampling sites are indicated in blue and in situ sites in red.

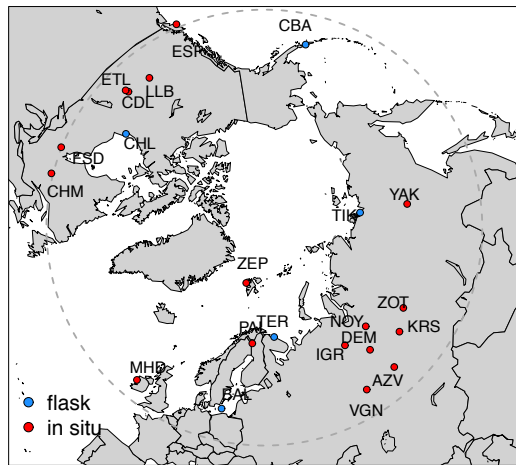


Figure 2. The annual mean emission sensitivity of all sites shown for 2009 (units of $\log_{10}(\text{s m}^3 \text{ kg}^{-1})$) with the southern domain boundary shown by the grey dashed line (a) and the grid used in the inversion based on the mean emission sensitivity (b). The sites used in the inversion are indicated by the black points.

5

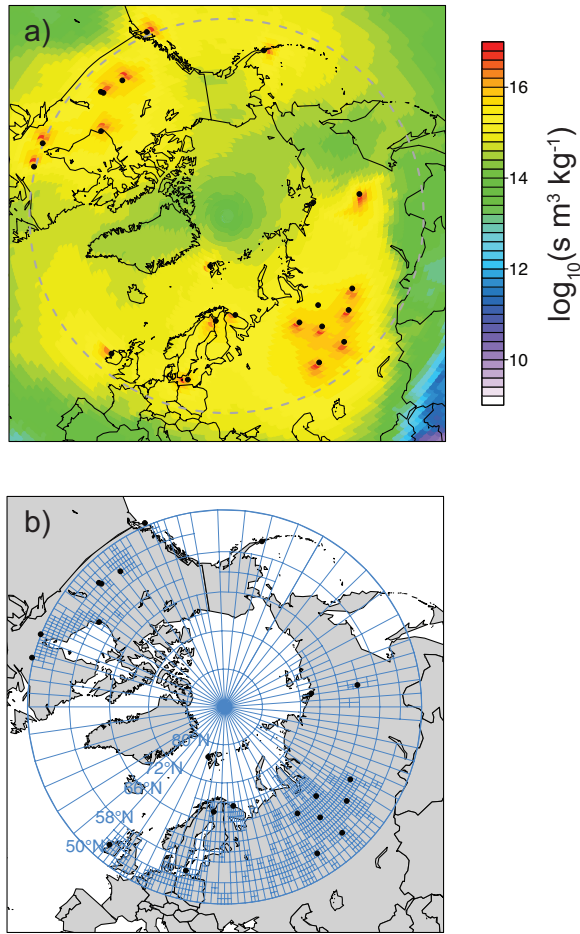
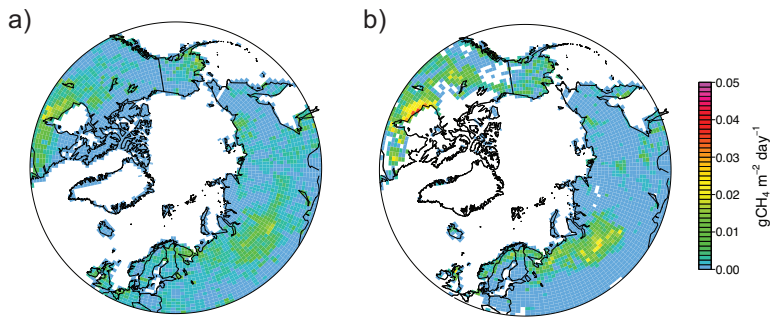
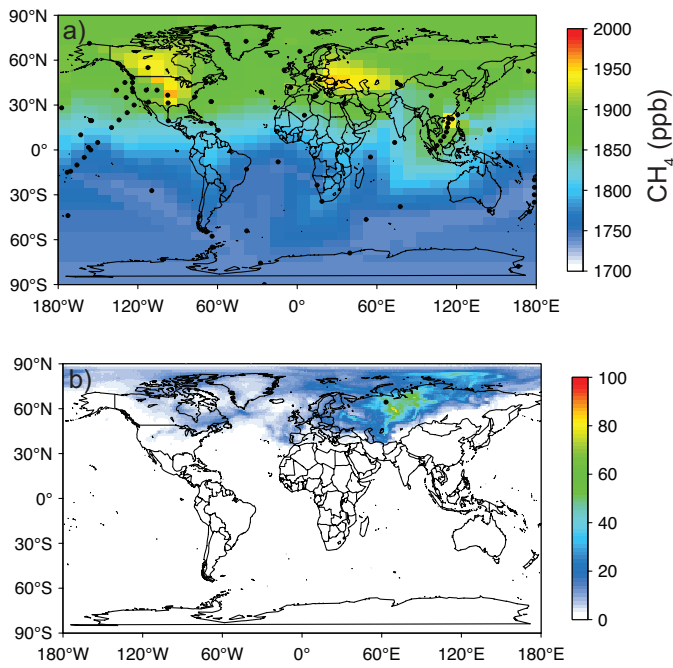


Figure 3. Wetland emissions estimates (units $\text{gCH}_4 \text{ m}^{-2} \text{ day}^{-1}$) from LPX-Bern (a) and LPJ-DGVM (b).



5 | **Figure 4.** Example of the initial concentration field (units ppb) for January 2009 interpolated from observations in the NOAA network (sites indicated by the black points) (a) and an example shown for site IGR (black dot) of the sensitivity to the initial concentrations (percentage) after 10 days backward calculation (mean January-2009).



5 | **Figure 5.** Example of measurements of CH₄, temperature at two heights on the tower, and wind speed, at IGR in January 2009 (a) and July 2009 (b). Also shown in the upper plots, are CH₄ concentrations simulated with prior fluxes using FLEXPART driven with ECMWF EI (blue) and NCEP FNL (red) meteorological analyses and a sensitivity test using ECMWF EI but with no minimum PBL height set in FLEXPART (green) (note that this is on top of the blue line). The vertical shading indicates periods when data were filtered out.

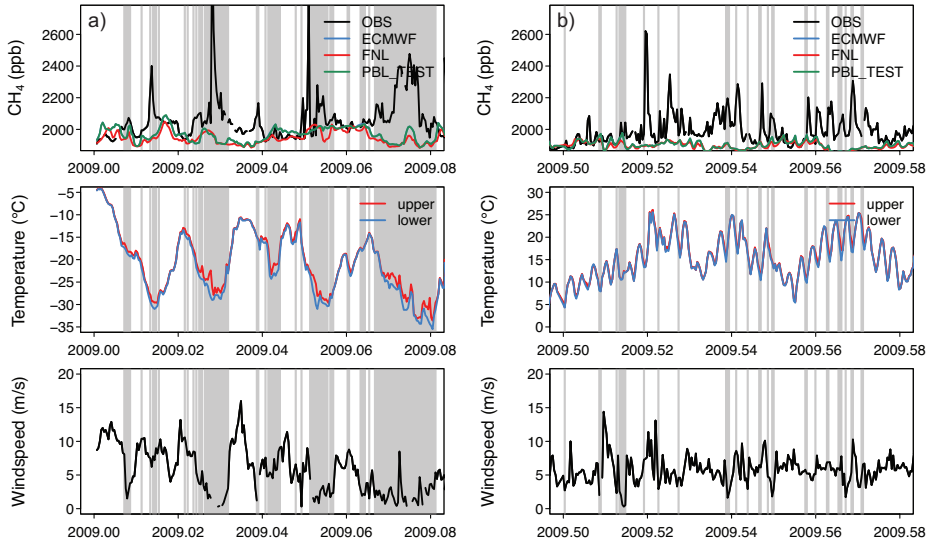
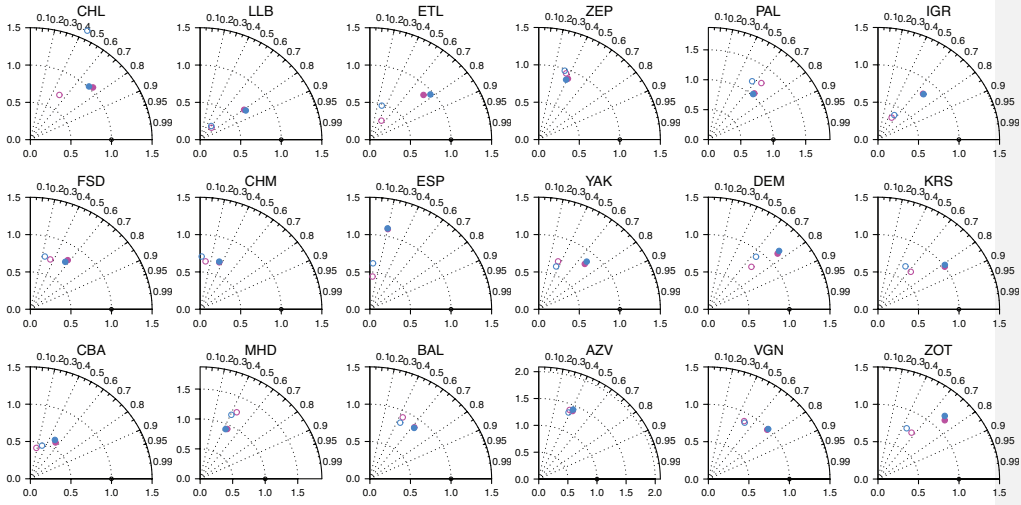


Figure 6. Taylor diagrams for the comparison of the prior (open circles) and posterior (solid circles) simulated concentrations with the observations for 2009 (the radius indicates the normalized standard deviation and the angle the correlation coefficient). The results for the two scenarios are shown (i.e., S1 in magenta and S2 in blue).

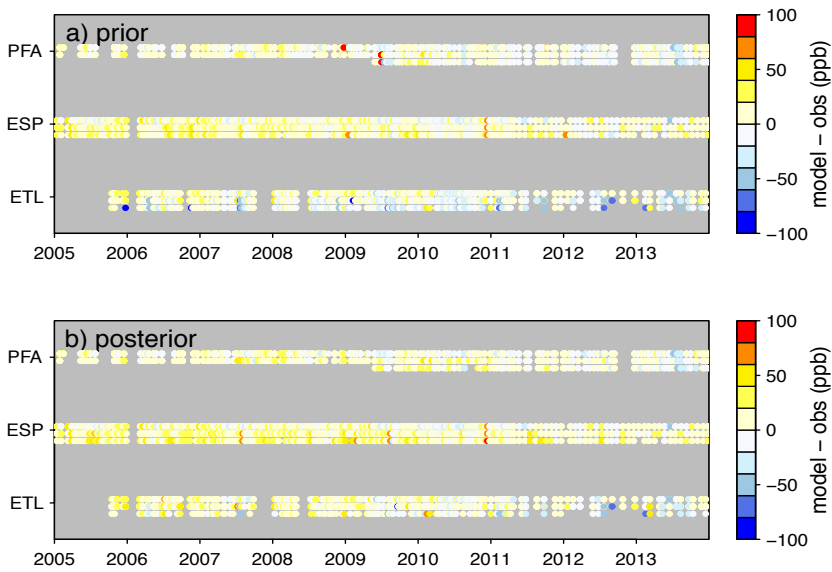
Rona Thompson 16/11/2016 16:15
Deleted: 5



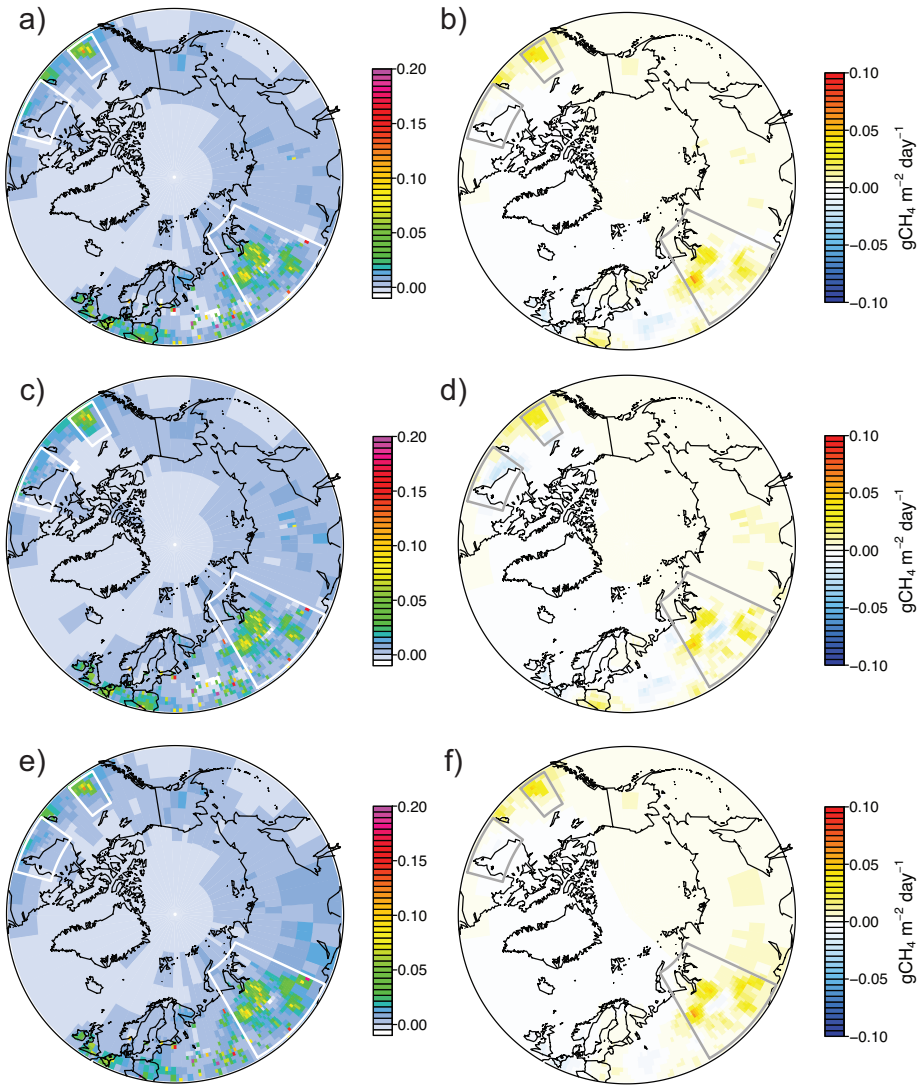
5

5 | **Figure 7.** Comparison of simulated concentrations from scenario S1 with independent observations from NOAA aircraft campaigns at Poker Flats (PFA), Estevan Point (ESP) and East Trout Lake (ETL) in Canada. The three rows of dots from top to bottom are the comparison for the mean of data between 4 to 10 km, 1 to 4 km and 0 to 1 km. Prior concentrations (a) and posterior concentrations (b).

Rona Thompson 16/11/2016 16:15
Deleted: 6



5 | **Figure 8.** Annual mean posterior fluxes of CH₄ shown for 2009 for scenario S1 (a), the difference between the posterior and prior fluxes for S1 (b), the posterior fluxes for scenario S2 (c) and the difference for S2 (d), the posterior fluxes for scenario S3 (e) and the difference for S3 (f). The bordered areas are Alberta in western Canada, the Hudson Bay Lowlands (HBL) in eastern Canada, and the Western Siberian Lowlands (WSL). (Units are gCH₄ m⁻² day⁻¹).



Rona Thompson 17/11/2016 13:26

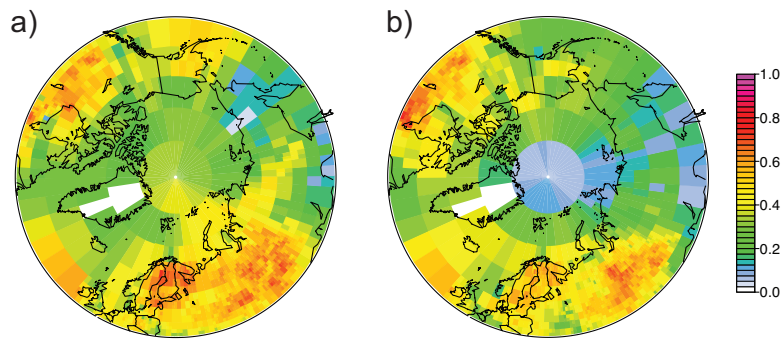
Deleted: <sp>

Rona Thompson 16/11/2016 16:16

Deleted: 7

| **Figure 9.** Fractional uncertainty reduction for 2009 for scenarios S1 and S2 (a), and S3 (b).

Rona Thompson 16/11/2016 16:15
Deleted: 8



5 | **Figure 10.** Area integrated CH₄ fluxes (units TgCH₄ y⁻¹) from the three scenarios shown monthly for northern North America and North Eurasia. The prior fluxes are shown by the dashed lines and the posterior fluxes by the solid lines (note that the prior fluxes used in scenarios S1 and S3 are the same). The grey shading indicates the prior uncertainty (shown only for the S1 prior) and the coloured shading indicates the posterior uncertainty.

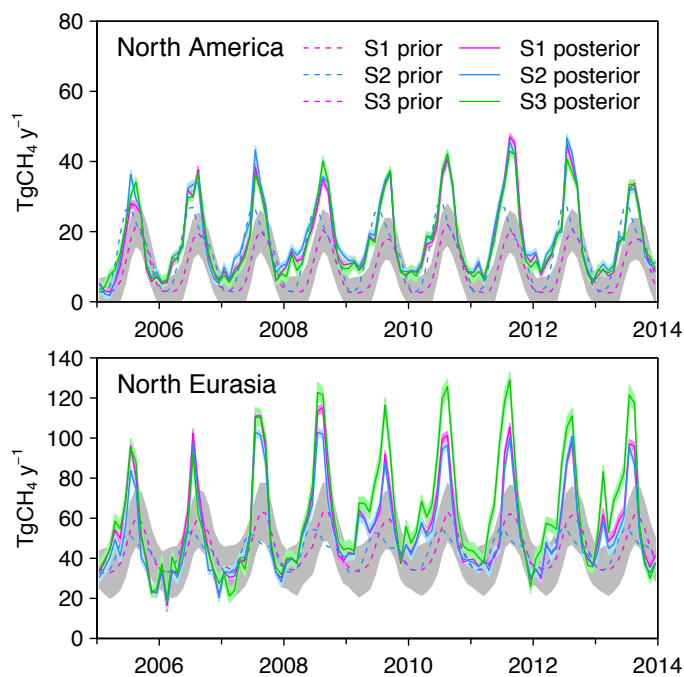
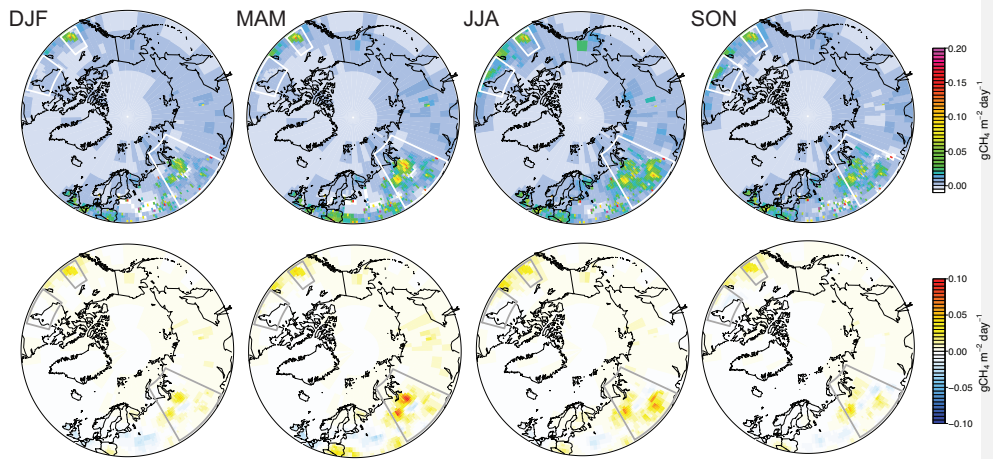


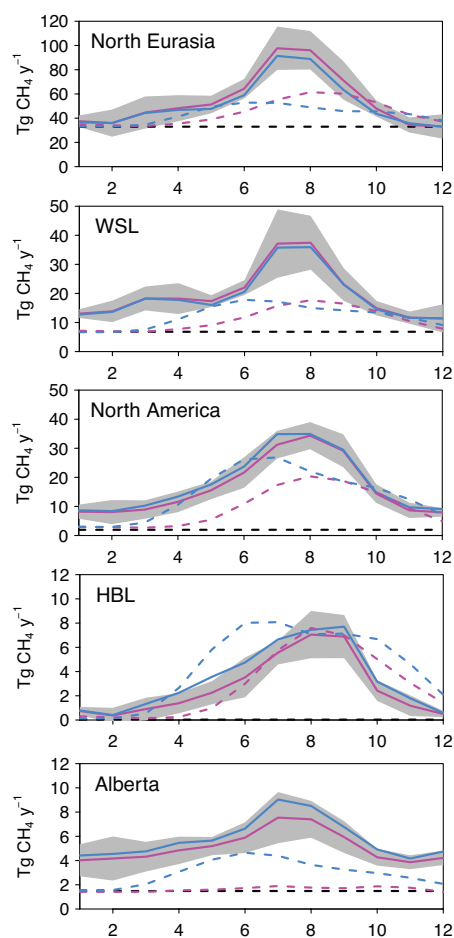
Figure 1 Mean posterior fluxes of CH₄ (top row) and posterior – prior differences (bottom row) shown for scenario S1 for winter 2008-2009 (DJF), spring 2009 (MAM), summer 2009 (JJA), and autumn 2009 (SON). (Units are gCH₄ m⁻² day⁻¹).

Rona Thompson 16/11/2016 16:16
Deleted: 0



5 |

5 | **Figure 12.** Mean seasonal cycles (2005 – 2013) of the integrated CH₄ flux for different regions (units Tg y⁻¹). The grey shading indicates the standard deviation of the monthly fluxes. The solid lines show the posterior fluxes and the dashed lines show the prior fluxes. Magenta is for scenario S1 (including wetland fluxes from LPX-Bern) and blue is for S2 (including wetland fluxes from LPJ-DGVM) and black (dashed) is the prior anthropogenic fluxes.



5 | **Figure 13.** Inter-annual variability in CH₄ fluxes (units Tg y⁻¹) for North Eurasia, WSL, northern North America, HBL and Alberta. The inter-annual variability was calculated by subtracting the mean seasonal cycle (resolved monthly) from the time series for each region and performing a running average on the residuals with a 6-month time window. The solid lines are the posterior fluxes from S1 (magenta), S2 (blue) and S3 (green) and the dashed lines are the prior fluxes from S1 and S2. The shading indicates the posterior uncertainty.

